

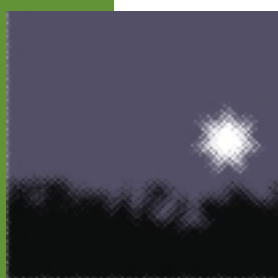


# Census of Population and Housing

## Selected Education and Labour Force Characteristics for Statistical Local Areas

### Northern Territory

2001



# **Census of Population and Housing**

## **Selected Education and Labour Force Characteristics for Statistical Local Areas**

**Northern Territory**

**2001**

**Robyn Elliott  
Regional Director, Northern Territory**

AUSTRALIAN BUREAU OF STATISTICS

EMBARGO: 11.30AM (CANBERRA TIME) TUES 18 FEB 2003

ABS Catalogue No. 2017.7

ISBN 0 642 47812 0

© Commonwealth of Australia 2003

This work is copyright. Apart from any use as permitted under the *Copyright Act 1968*, no part may be reproduced by any process without prior written permission from the Commonwealth. Requests and inquiries concerning reproduction and rights in this publication should be addressed to The Manager, Intermediary Management, Australian Bureau of Statistics, Locked Bag 10, Belconnen ACT 2616, by telephone (02) 6252 6998, fax (02) 6252 7102, or email <intermediary.management@abs.gov.au>.

In all cases the ABS must be acknowledged as the source when reproducing or quoting any part of an ABS publication or other product.

Produced by the Australian Bureau of Statistics

## INQUIRIES

- For further information about these and related statistics, contact the National Information and Referral Service on 1300 135 070.

# CONTENTS

*page*

Introduction . . . . .	iv
Summary of findings . . . . .	1

## TABLES

List of tables . . . . .	6
Main tables . . . . .	7
Basic Community Profile . . . . .	38

## ADDITIONAL INFORMATION

Explanatory Notes . . . . .	49
Appendix: Census Products and Services . . . . .	53
Glossary . . . . .	56

## MAPS

Statistical Subdivisions and Statistical Local Areas, 2001 edition . . . . .	60
Statistical Subdivisions and Statistical Local Areas, 2001 edition, Enlargement . . . . .	61

## INTRODUCTION

### STATISTICS PRESENTED IN THIS PUBLICATION

This publication presents a range of education and labour force statistics produced from the 2001 Census of Population and Housing for the Northern Territory (NT). For comparative purposes, it includes 1996 Census data presented on 2001 Census geography.

The tables in this publication provide selected characteristics of the population for Statistical Divisions (SDs), Statistical Subdivisions (SSDs) and Statistical Local Areas (SLAs). The purpose of these tables is to allow a broad comparison of characteristics between geographic areas.

This publication also contains the Basic Community Profile (BCP) for the NT. This set of tables is provided to illustrate the wide range of data available from the Census. The BCP consists of 33 tables. This publication contains tables 22 to 33 which focus on education and labour force characteristics. The remainder of the BCP, tables 1 to 21, is published in *Census of Population and Housing: Selected Social and Housing Characteristics for Statistical Local Areas, Northern Territory* (cat. no. 2015.7).

The statistics in this publication are presented on the basis of where people were counted on Census Night ('as enumerated' counts).

One of the important features of the Census is that it describes the characteristics of Australia's population for small geographic areas and small population groups. While not available in this publication, data at the smallest geographic level (Collection District) are available in a range of census products. For more information on these products, please refer to the Appendix—Census Products and Services. Concepts and definitions used in this publication are explained in the Glossary and more detailed information is available in the *2001 Census Dictionary* (cat. no. 2901.0). The Explanatory Notes in this publication provide a discussion of the scope and coverage of the Census, the different measures of population, and the limitations of census data.

This publication is one of a series of publications which provide data at the SLA level for each state and territory. A similar publication is also available for the whole of Australia, providing data at SSD level. See the Appendix—Census Products and Services for more information.

## SUMMARY OF FINDINGS

### LABOUR FORCE

In the Northern Territory (NT), the labour force grew from 89,603 to 96,148 persons aged 15 years and over, an increase of 7.3%, compared with 6.6% for Australia.

The growth in the NT's labour force can be attributed to an increase in the number of employed persons aged 50 years and over, up from 12,254 persons in 1996 to 17,705 persons in 2001, an increase of 44.5%. The population of persons aged 50 years and over grew 26.7% in the same period. This indicates that a proportion of persons aged 50 years and over may be re-entering the workforce following a period in retirement.

### EMPLOYED

In 2001, there were 90,434 employed persons of which 60,671 were full-time workers and 26,919 were part-time. This represented an increase of 9.0% (7,457 persons) since 1996 which was the third largest increase of all states and territories, after Victoria (10.5%) and Queensland (10.4%).

### Full-time/Part-time

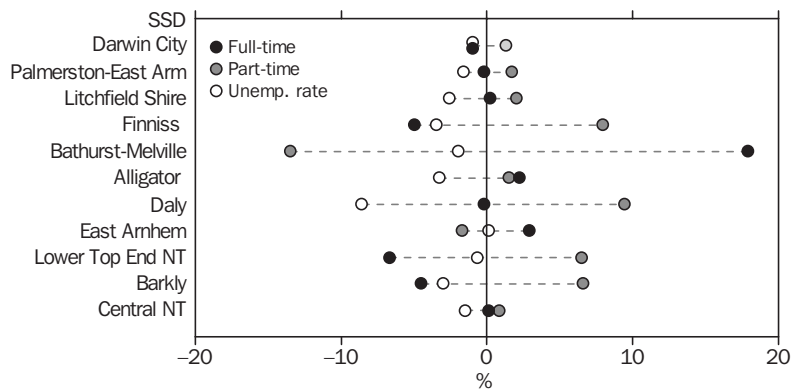
In 2001, there was a marginal fall in the proportion of full-time workers who represented 63.1% of the labour force, down from 63.4% in 1996. This fall was the smallest of all states and territories.

In the period 1996 to 2001, the number of persons employed part-time grew from 23,940 in 1996 to 26,919 in 2001, an increase of 12.4%, compared with 17.6% for Australia. These workers represented 28.0% of the labour force in 2001, compared with 26.7% in 1996.

Among most of the NT SSDs, both the unemployment rate and full-time employment rate are lower in 2001 than in 1996. The lower unemployment rate is associated with increased part-time employment.

The most notable SSD representing this was Barkly which experienced a decrease in the proportion of full-time employees (to 55.8% from 60.3% of the labour force), an increase in part-time employees (to 35.1% from 28.6%) and a fall in the unemployment rate (to 5.3% from 8.3%).

FULL/PART-TIME EMPLOYED AND UNEMPLOYMENT RATE,  
Difference in proportions of the labour force— 1996 to 2001



Source: 1996 and 2001 Censuses, ABS

## SUMMARY OF FINDINGS *continued*

### *Full-time/Part-time continued*

Another notable example of this is the SSD of Daly (unemployment rate decreased to 5.8% from 14.4%, while the proportion of part-time employed persons increased to 29.1% from 19.7%, and full-time employees decreased to 61.2% from 61.4%).

East Arnhem was the only SSD to experience an increase in the unemployment rate while incurring the second largest increase in proportion of persons employed full-time within the labour force (to 62.1% from 59.2%). East Arnhem also recorded the second largest decline in the proportion of persons employed part-time to (30.9% from 32.6%).

The largest increase in the proportion of persons employed full-time within the labour force was recorded in the SSD of Bathurst-Melville (to 37.3% from 19.4%), while the largest decrease was recorded in the Lower Top End NT (to 55.0% from 61.7%).

After the Daly SSD, the largest increase in the proportion of persons employed part-time within the labour force was Finniss (to 32.5% from 24.6%), while the largest decrease was recorded in Bathurst-Melville (to 46.8% from 60.3%).

In 2001, the SLAs with the highest proportions of full-time workers, as a proportion of persons in the labour force, were recorded in Litchfield (S) - Pt A (74.4%), Nhulunbuy (73.3%), Palmerston Bal (71.5%) and City - Remainder (71.4%). Off-Shore Areas and Migratory had a high proportion (84.4%).

The highest concentration of part-time workers, as a proportion of persons in the labour force, was recorded in Lee Point-Leanyer Swamp (66.8%) where the majority of the population was counted in caravan parks. High proportions of part-time workers were concentrated in regional areas, for example Gulf (53.5%), Sandover - Bal (52.4%), Tennant Creek - Bal (52.1%), and West Arnhem (49.2%).

### *Occupation*

In 2001, the largest occupation groups were Professionals (15,687 persons or 17.3%), Intermediate Clerical and Service Workers (14,233 persons or 15.7%), Associate Professionals (12,668 persons or 14.0%), Tradespersons and Related Workers (12,271 persons or 13.6%) and Labourers and Related Workers (9,033 persons or 10.0%). These proportions are similar to those in 1996.

High proportions of persons employed as Professionals were recorded in the Darwin SD, notably in Rapid Creek (29.8%), Brinkin (29.2%), Tiwi (28.9%), Nightcliff (27.1%), Fannie Bay (26.3%) and Nakara (25.2%). Alice Springs - Stuart and Alice Springs - Ross also had high proportions of persons employed as Professionals (25.2% and 22.3% respectively).

The highest proportions (ranging from 19.8% to 16.7%) of persons working as Associate Professionals were recorded in SLAs within the Darwin SD. Alice Springs - Stuart and Off-Shore Areas and Migratory had the highest proportions outside Darwin (16.6% and 25.8% respectively).

Persons employed as Intermediate Clerical, Sales and Services Workers were widespread throughout NT. The SLAs of Bakewell (21.7%) and Anula (20.8%) recorded the highest proportions. The SLA of Petermann (20.1%) which includes the Uluru National Park, also recorded a high proportion of persons employed in this occupation group.

## SUMMARY OF FINDINGS *continued*

### *Occupation continued*

The highest proportions of persons employed as Tradespersons and Related Workers were recorded in Litchfield - Pt A (42.7%), City-Remainder (28.0%), Nhulunbuy (20.5%), Lee Point - Leanyer Swamp (17.6%), and Winnelie and Woodroffe (both 17.4%).

Off-Shore Areas and Migratory had a high proportion of persons employed as Tradespersons and Related Workers (28.2%).

SLAs with the highest proportions of persons employed as Labourers and Related Workers were concentrated throughout the SSDs of Bathurst-Melville (25.0%), Barkly (24.7%), Daly (24.1%), Alligator (20.5%) and Lower Top End (20.1%).

### *Industry*

In 2001, the four largest industries of employment in the NT were Government Administration and Defence (15,963 persons or 17.7%), Retail Trade (10,729 persons or 11.9%), Health and Community Services (7,976 persons or 8.8%) and Property and Business Services (7,673 persons or 8.5%). These industries were also the top four industries in the NT in 1996. The top four industries in Australia in 2001 were Retail Trade, Manufacturing, Property and Business, and Health and Community.

At the SLA level, the highest proportions of persons employed in Government Administration and Defence were recorded in Litchfield - Pt A (66.7%), City - Remainder (60.2%), West Arnhem (58.0%) and Gulf (51.0%). Other SLAs with high proportions of persons employed in this industry were East Arnhem - Bal (47.7%), Tennant Creek - Bal (44.4%) and Off-Shore Areas and Migratory (60.5%).

Since 1996, there has been an increase in the percentage of persons employed in Retail Trade to 11.9% from 11.0%. Most of the metropolitan SLAs within the Darwin SD recorded high proportions of persons employed in Retail Trade including Wagaman (18.9%), Moulden (18.5%), Coconut Grove (17.4%) and Winnellie (17.3%). Outside of Darwin, Alice Springs recorded the highest proportions, notably the SLAs of Alice Spring - Charles (16.2%), Alice Spring - Larapinta (15.7%), Alice Spring - Ross (14.1%) and Alice Spring - Heavitree (13.6%).

High proportions of persons employed in Health and Community Services were scattered throughout both metropolitan and regional SLAs. The highest proportions of persons employed in this industry were recorded in Tiwi (21.0%), Alice Springs - Stuart (17.5%), Bathurst-melville (14.7%), Brinkin (14.4%) and Tennant Creek (13.8%).

Since 1996, the percentage of persons employed in Property and Business Services increased to 8.5% from 7.6%. The highest proportions were recorded in the metropolitan SLAs of Fannie Bay (15.6%) and The Gardens (14.9%). Alice Springs - Stuart (10.3%), Alice Springs - Ross (9.0%) and Alice Springs - Larapinta (8.0%) also registered high proportions of persons employed in this industry.

### UNEMPLOYMENT

The unemployment rate fell to 5.9% in 2001 from 7.4% in 1996. For Australia, the unemployment rate was 7.4% in 2001.

The proportion of unemployed persons looking for full-time work fell from 79.0% in 1996 to 76.0% in 2001, while the proportion looking for part-time work increased from 21.0% in 1996 to 24.0% in 2001.



## SUMMARY OF FINDINGS *continued*

### UNEMPLOYMENT *continued*

In the Darwin SD, SLAs with the highest unemployment rates were Winnellie (12.9%), Narrows (12.8%), Moulden (12.4%) and Gray (11.0%). Outside of the Darwin SD, the SLAs of Cox - Finnis (14.2%), Bathurst-melville (13.1%) and Elsey - Bal (12.9%) recorded the highest unemployment rates.

The SSDs that experienced the largest declines in unemployment rates between 1996 and 2001 were Daly (to 5.8% from 14.4%), Finniss (to 10.1% from 13.6%) and Alligator (to 4.6% from 7.9%).

For those aged 15–24 years, the unemployment rate fell to 10.5% in 2001 from 13.1% in 1996. This compares with a fall to 13.8% in 2001 from 15.7% in 1996 in Australia.

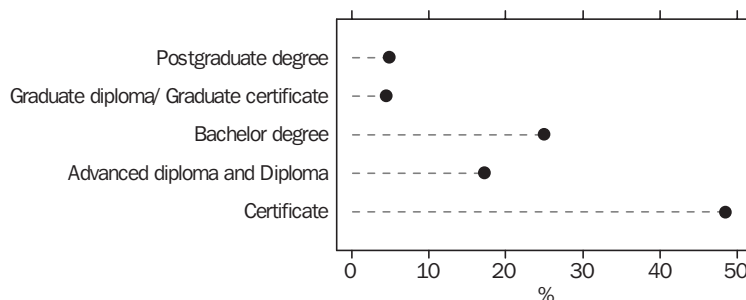
The SLAs with the highest youth unemployment rates were Narrows (29.4%), Bathurst-melville (26.4%), Elsey - Bal (22.4%), Winnellie (21.6%) and Moulden (21.0%).

### NON-SCHOOL QUALIFICATION

#### *Level of Education*

In 2001, there were 50,484 persons aged 15 years and over with a qualification, accounting for 32.9% of all persons aged 15 years and over in the NT. Between 1996 and 2001 this proportion rose from 28.8% (an increase of 9,744 persons). This compares with a rise to 34.7% from 30.0% for Australia.

NON-SCHOOL QUALIFICATION: LEVEL OF EDUCATION,  
Proportion of persons aged 15 years and over with a qualification—2001



Source: 2001 Census, ABS

Of those with a qualification, around half (24,491 persons or 48.5%) held a Certificate, 25.0% (12,606 persons) held a Bachelor Degree, 17.2% (8,668 persons) held an Advanced Diploma and Diploma and 9.3% (4,719 persons) held a Postgraduate Degree or Graduate Diploma and Graduate Certificate as their highest level of qualification.

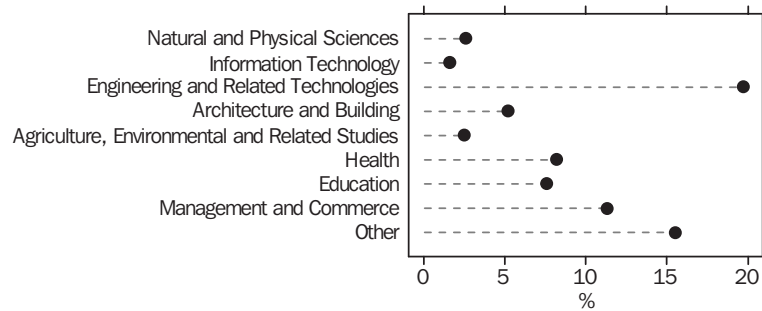
Within the Darwin SD, high proportions of persons aged 15 years and over with a Bachelor Degree or higher were recorded in Brinkin (23.8%), Rapid Creek (23.4%), Fannie Bay (22.5%), Nightcliff (22.4%) and Nakara (20.7%). These same areas also recorded high proportions of persons employed as Professionals. Alice Springs - Ross (18.2%) and Jabiru (16.3%) had the highest concentrations of persons with a Bachelor Degree or higher outside Darwin.

High proportions of persons aged 15 years and over with a Certificate as their highest level of qualification were dispersed throughout the Territory. Nhulunbuy (24.4%), Bakewell (22.5%), City - Remainder (22.1%), Litchfield - Pt B (22.0%) and Jabiru (21.5%) recorded the highest. Off-Shore Areas and Migratory noted a high proportion (29.5%). These SLAs also registered high proportions of persons employed as Tradespersons.

## SUMMARY OF FINDINGS *continued*

### Field of Study

#### 1 NON-SCHOOL QUALIFICATION: FIELD OF STUDY, Proportion of persons aged 15 years and over with a qualification— 2001



Source: 2001 Census, ABS

Engineering and Related Technologies (14,179 persons or 19.7% of those with a qualification), Management and Commerce (8,143 persons or 11.3%), Health (5,923 persons or 8.2%) and Education (5,495 persons or 7.6%) were the fields in which people most commonly held their highest level of qualification. Other, which includes Society and Culture, Creative Arts, Food, Hospitality and Personal Services, and Mixed Programmes (15.5% of persons with a qualification) also recorded a high proportion.

## LIST OF TABLES

*page*

### MAIN TABLES

<b>1</b>	Labour force characteristics, by Statistical Local Area . . . . .	7
<b>2</b>	Occupation, by Statistical Local Area . . . . .	10
<b>3</b>	Industry of employment, by Statistical Local Area . . . . .	16
<b>4</b>	Non-school qualification: level of education, by Statistical Local Area . . . . .	25
<b>5</b>	Non-school qualification: field of study, by Statistical Local Area . . . . .	28
<b>6</b>	Statistical Local Areas, ranked by unemployment rate . . . . .	34
<b>7</b>	Statistical Local Areas, ranked by participation rate . . . . .	36
<b>8</b>	Statistical Local Areas, ranked by proportion of persons aged 15 years and over with a qualification . . . . .	37

### BASIC COMMUNITY PROFILE TABLES

<b>B22</b>	Selected characteristics (second release processing), persons . . . . .	39
<b>B23</b>	Non-school qualification: level of education by sex, persons aged 15 years and over . . . . .	39
<b>B24</b>	Non-school qualification: field of study by sex, persons aged 15 years and over . . . . .	40
<b>B25</b>	Age by labour force status (full-time/part-time) by sex, persons aged 15 years and over . . . . .	41
<b>B26</b>	Industry by age by sex, employed persons . . . . .	42
<b>B27</b>	Occupation by age by sex, employed persons . . . . .	44
<b>B28</b>	Method of travel to work by sex, employed persons . . . . .	45
<b>B29</b>	Number of motor vehicles and number of motorbikes/motor scooters, occupied private dwellings . . . . .	46
<b>B30</b>	Weekly family income by family type, families in occupied private dwellings . . . . .	47
<b>B31</b>	Weekly household income by household type, occupied private dwellings . . . . .	47
<b>B32</b>	Household type by number of persons usually resident, occupied private dwellings . . . . .	48
<b>B33</b>	Selected averages . . . . .	48

## LABOUR FORCE CHARACTERISTICS, by Statistical Local Area(a)

Geographic area	EMPLOYED			UNEMPLOYED LOOKING FOR			UNEMPLOYMENT RATE		
	Full-time(b)	Part-time	Total(c)	Full-time work	Part-time work	Total	Not in the labour force	Aged 15-24 years	Aged 15 years and over
	no.	no.	no.	no.	no.	no.	no.	%	%
<b>DARWIN CITY (SD)</b>									
<b>Darwin City (SSD)</b>									
Alawa	696	274	1 007	70	24	94	436	14.5	8.5
Anula	828	357	1 224	51	19	70	442	11.7	5.4
Brinkin	409	186	610	18	25	43	208	12.7	6.6
City - Inner	1 444	651	2 132	80	28	108	782	8.3	4.8
Coconut Grove	769	345	1 139	81	27	108	575	13.5	8.7
Fannie Bay	956	366	1 360	58	16	74	509	11.6	5.2
Jingili	601	293	925	52	16	68	312	17.2	6.8
Karama	1 475	589	2 149	144	50	194	902	17.5	8.3
Larrakeyah	1 501	499	2 054	76	24	100	518	7.4	4.6
Leanyer	1 764	744	2 589	90	32	122	738	8.9	4.5
Lee Point-Leanyer Swamp	42	139	187	15	6	21	421	—	10.1
Ludmilla	630	248	893	62	21	83	403	9.4	8.5
Malak	1 002	480	1 532	118	35	153	642	18.1	9.1
Marrara	656	236	912	42	10	52	385	6.7	5.4
Millner	824	382	1 238	74	20	94	470	13.0	7.1
Moil	693	233	953	66	18	84	398	15.3	8.1
Nakara	683	308	1 014	26	24	50	340	11.0	4.7
Narrows	144	53	205	22	8	30	148	29.4	12.8
Nightcliff	1 336	511	1 900	114	38	152	638	13.1	7.4
Parap	656	233	908	67	17	84	402	13.2	8.5
Rapid Creek	1 128	487	1 659	96	35	131	551	13.3	7.3
Stuart Park	1 467	496	2 007	92	23	115	480	7.3	5.4
The Gardens	318	121	447	14	3	17	190	7.1	3.7
Tiwi	885	402	1 327	51	24	75	619	12.0	5.3
Wagaman	589	297	943	65	33	98	433	17.7	9.4
Wanguri	603	288	924	42	7	49	404	9.6	5.0
Winnellie	141	117	264	34	5	39	215	21.6	12.9
Wulagi	834	376	1 247	50	21	71	415	13.4	5.4
City - Remainder	1 150	353	1 540	49	22	71	593	6.4	4.4
<i>Total Darwin City (SSD) 2001</i>	<i>24 224</i>	<i>10 064</i>	<i>35 289</i>	<i>1 819</i>	<i>631</i>	<i>2 450</i>	<i>13 569</i>	<i>12.0</i>	<i>6.5</i>
<i>Total Darwin City (SSD) 1996</i>	<i>24 907</i>	<i>9 679</i>	<i>35 334</i>	<i>2 221</i>	<i>647</i>	<i>2 868</i>	<i>14 366</i>	<i>13.3</i>	<i>7.5</i>
<b>Palmerston-East Arm (SSD)</b>									
East Arm	3	—	3	—	—	—	361	—	—
Bakewell	1 088	334	1 459	64	19	83	331	11.3	5.4
Driver	930	376	1 343	76	28	104	409	12.3	7.2
Durack	878	290	1 194	23	19	42	302	7.9	3.4
Gray	901	382	1 310	123	39	162	669	20.1	11.0
Moulden	809	358	1 205	138	33	171	644	21.0	12.4
Woodroffe	1 044	439	1 527	93	16	109	582	14.6	6.7
Palmerston (C) Bal	997	317	1 349	34	11	45	384	5.4	3.2
<i>Total Palmerston-East Arm (SSD) 2001</i>	<i>6 650</i>	<i>2 496</i>	<i>9 390</i>	<i>552</i>	<i>165</i>	<i>717</i>	<i>3 682</i>	<i>13.5</i>	<i>7.1</i>
<i>Total Palmerston-East Arm (SSD) 1996</i>	<i>3 955</i>	<i>1 380</i>	<i>5 473</i>	<i>393</i>	<i>127</i>	<i>520</i>	<i>2 570</i>	<i>13.6</i>	<i>8.7</i>

— nil or rounded to zero (including null cells)

(a) Applicable to persons aged 15 years and over.

(b) Full-time is defined as having worked 35 hours or more in all jobs in the week prior to Census Night.

(c) Includes employed persons who did not state their hours worked and persons who stated they were employed, but worked nil hours in the week prior to Census Night.

Geographic area	EMPLOYED			UNEMPLOYED LOOKING FOR			Not in the labour force	UNEMPLOYMENT RATE	
	Full-time(b)	Part-time	Total(c)	Full-time work	Part-time work	Total		Aged 15-24 years	Aged 15 years and over
	no.	no.	no.	no.	no.	no.	no.	%	%
<b>DARWIN CITY (SD) cont.</b>									
Litchfield Shire (SSD)									
Litchfield (S) - Pt A	1 079	307	1 408	31	12	43	418	1.5	3.0
Litchfield (S) - Pt B	4 341	1 900	6 445	385	90	475	2 837	14.3	6.9
Total Litchfield Shire (SSD) 2001	5 420	2 207	7 853	416	102	518	3 255	8.4	6.2
Total Litchfield Shire (SSD) 1996	4 377	1 648	6 179	477	121	598	2 906	17.6	8.8
TOTAL DARWIN (SD) 2001	36 294	14 767	52 532	2 787	898	3 685	20 506	11.8	6.6
TOTAL DARWIN (SD) 1996	33 239	12 707	46 986	3 091	895	3 986	19 842	13.8	7.8
<b>NORTHERN TERRITORY - BAL (SD)</b>									
Finniss (SSD)									
Coomalie (CGC)	305	161	487	27	11	38	350	19.7	7.2
Cox-Finniss	169	126	308	44	7	51	320	11.1	14.2
Total Finniss (SSD) 2001	474	287	795	71	18	89	670	16.2	10.1
Total Finniss (SSD) 1996	488	205	720	91	22	113	666	16.1	13.6
Bathurst-Melville (SSD)									
Bathurst-Melville	264	331	615	71	22	93	796	26.4	13.1
Total Bathurst-Melville (SSD) 2001	264	331	615	71	22	93	796	26.4	13.1
Total Bathurst-Melville (SSD) 1996	149	464	654	71	45	116	579	34.2	15.1
Alligator (SSD)									
Jabiru (T)	551	245	813	16	11	27	260	4.4	3.2
South Alligator	300	285	601	34	5	39	504	10.7	6.1
West Arnhem	461	538	1 040	38	15	53	1 620	8.2	4.8
Total Alligator (SSD) 2001	1 312	1 068	2 454	88	31	119	2 384	7.7	4.6
Total Alligator (SSD) 1996	1 248	1 025	2 356	185	18	203	1 908	11.7	7.9
Daly (SSD)									
Daly	667	317	1 027	56	7	63	1 334	8.8	5.8
Total Daly (SSD) 2001	667	317	1 027	56	7	63	1 334	8.8	5.8
Total Daly (SSD) 1996	608	195	847	122	21	143	1 273	22.1	14.4
East Arnhem (SSD)									
East Arnhem - Bal	738	721	1 496	96	8	104	2 804	14.9	6.5
Groote Eylandt	512	217	771	17	10	27	722	5.2	3.4
Nhulunbuy	1 552	457	2 062	38	16	54	383	8.5	2.6
Total East Arnhem (SSD) 2001	2 802	1 395	4 329	151	34	185	3 909	10.8	4.1
Total East Arnhem (SSD) 1996	2 639	1 452	4 279	149	29	178	3 107	8.1	4.0
Lower Top End NT (SSD)									
Elsey - Bal	369	446	846	90	35	125	773	22.4	12.9
Gulf	473	683	1 217	38	22	60	909	5.6	4.7
Katherine (T)	2 911	1 206	4 274	240	69	309	2 040	10.7	6.7
Victoria	646	405	1 123	25	14	39	980	3.4	3.4
Total Lower Top End NT (SSD) 2001	4 399	2 740	7 460	393	140	533	4 702	9.5	6.7
Total Lower Top End NT (SSD) 1996	5 017	2 259	7 532	507	93	600	4 339	13.2	7.4

(a) Applicable to persons aged 15 years and over.

(b) Full-time is defined as having worked 35 hours or more in all jobs in the week prior to Census Night.

(c) Includes employed persons who did not state their hours worked and persons who stated they were employed, but worked nil hours in the week prior to Census Night.

Geographic area	EMPLOYED			UNEMPLOYED LOOKING FOR			Not in the labour force	UNEMPLOYMENT RATE	
	Full-time(b)	Part-time	Total(c)	Full-time work	Part-time work	Total		Aged 15-24 years	Aged 15 years and over
	no.	no.	no.	no.	no.	no.	no.	%	%
<b>NORTHERN TERRITORY - BAL (SD) cont.</b>									
<b>Barkly (SSD)</b>									
Tableland	367	182	569	13	6	19	313	3.2	3.2
Tennant Creek (T)	716	373	1 137	56	13	69	892	10.9	5.7
Tennant Creek - Bal	167	232	414	21	10	31	798	8.9	7.0
<b>Total Barkly (SSD) 2001</b>	<b>1 250</b>	<b>787</b>	<b>2 120</b>	<b>90</b>	<b>29</b>	<b>119</b>	<b>2 003</b>	<b>7.3</b>	<b>5.3</b>
<b>Total Barkly (SSD) 1996</b>	<b>1 634</b>	<b>774</b>	<b>2 483</b>	<b>163</b>	<b>62</b>	<b>225</b>	<b>1 958</b>	<b>12.0</b>	<b>8.3</b>
<b>Central NT (SSD)</b>									
Alice Springs (T) - Charles	1 660	702	2 426	117	29	146	953	11.1	5.7
Alice Springs (T) - Heavitree	798	475	1 316	54	11	65	1 027	13.8	4.7
Alice Springs (T) - Larapinta	3 049	1 081	4 250	119	43	162	1 253	8.3	3.7
Alice Springs (T) - Ross	2 988	1 013	4 110	95	31	126	1 055	5.7	3.0
Alice Springs (T) - Stuart	900	315	1 237	62	12	74	709	9.5	5.6
Petermann	1 294	528	1 870	33	16	49	1 050	4.0	2.6
Sandover - Bal	351	475	860	30	17	47	1 324	7.8	5.2
Tanami	767	496	1 403	103	25	128	2 638	14.8	8.4
<b>Total Central NT (SSD) 2001</b>	<b>11 807</b>	<b>5 085</b>	<b>17 472</b>	<b>613</b>	<b>184</b>	<b>797</b>	<b>10 009</b>	<b>8.4</b>	<b>4.4</b>
<b>Total Central NT (SSD) 1996</b>	<b>11 503</b>	<b>4 828</b>	<b>16 779</b>	<b>847</b>	<b>206</b>	<b>1 053</b>	<b>9 217</b>	<b>11.0</b>	<b>5.9</b>
<b>TOTAL NORTHERN TERRITORY - BAL (SD) 2001</b>	<b>22 975</b>	<b>12 010</b>	<b>36 272</b>	<b>1 533</b>	<b>465</b>	<b>1 998</b>	<b>25 807</b>	<b>9.3</b>	<b>5.2</b>
<b>TOTAL NORTHERN TERRITORY - BAL (SD) 1996</b>	<b>23 286</b>	<b>11 202</b>	<b>35 650</b>	<b>2 135</b>	<b>496</b>	<b>2 631</b>	<b>23 047</b>	<b>12.3</b>	<b>6.9</b>
<b>OFF-SHORE AREAS &amp; MIGRATORY (SD)</b>									
<b>Off-Shore Areas &amp; Migratory (SSD)</b>									
Off-Shore Areas & Migratory	1 402	142	1 630	25	6	31	123	2.0	1.9
<b>Total Off-Shore Areas &amp; Migratory (SSD) 2001</b>	<b>1 402</b>	<b>142</b>	<b>1 630</b>	<b>25</b>	<b>6</b>	<b>31</b>	<b>123</b>	<b>2.0</b>	<b>1.9</b>
<b>Total Off-Shore Areas &amp; Migratory (SSD) 1996</b>	<b>307</b>	<b>31</b>	<b>341</b>	<b>9</b>	<b>—</b>	<b>9</b>	<b>60</b>	<b>10.4</b>	<b>2.6</b>
<b>TOTAL OFF-SHORE AREAS &amp; MIGRATORY (SD) 2001</b>	<b>1 402</b>	<b>142</b>	<b>1 630</b>	<b>25</b>	<b>6</b>	<b>31</b>	<b>123</b>	<b>2.0</b>	<b>1.9</b>
<b>TOTAL OFF-SHORE AREAS &amp; MIGRATORY (SD) 1996</b>	<b>307</b>	<b>31</b>	<b>341</b>	<b>9</b>	<b>—</b>	<b>9</b>	<b>60</b>	<b>10.4</b>	<b>2.6</b>
<b>TOTAL NORTHERN TERRITORY 2001</b>	<b>60 671</b>	<b>26 919</b>	<b>90 434</b>	<b>4 345</b>	<b>1 369</b>	<b>5 714</b>	<b>46 436</b>	<b>10.5</b>	<b>5.9</b>
<b>TOTAL NORTHERN TERRITORY 1996</b>	<b>56 832</b>	<b>23 940</b>	<b>82 977</b>	<b>5 235</b>	<b>1 391</b>	<b>6 626</b>	<b>42 949</b>	<b>13.1</b>	<b>7.4</b>

— nil or rounded to zero (including null cells)

(a) Applicable to persons aged 15 years and over.

(b) Full-time is defined as having worked 35 hours or more in all jobs in the week prior to Census Night.

(c) Includes employed persons who did not state their hours worked and persons who stated they were employed, but worked nil hours in the week prior to Census Night.

## OCCUPATION, by Statistical Local Area(a)

<i>Geographic area</i>	<i>Managers and Administrators</i>	<i>Professionals</i>	<i>Associate Professionals</i>	<i>Tradespersons and Related Workers</i>	<i>Advanced Clerical and Service Workers</i>	<i>Intermediate Clerical, Sales and Service Workers</i>	<i>Intermediate Production and Transport Workers</i>
<b>DARWIN (SD)</b>							
<b>Darwin City (SSD)</b>							
Alawa	57	190	145	126	30	178	57
Anula	89	238	186	126	35	254	85
Brinkin	63	178	79	52	26	94	18
City - Inner	366	468	387	191	99	292	90
Coconut Grove	83	217	180	117	50	215	62
Fannie Bay	204	358	218	110	55	185	44
Jingili	77	193	132	121	25	147	62
Karama	131	282	296	311	72	421	170
Larrakeyah	284	460	380	222	83	332	77
Leanyer	223	463	446	334	74	433	150
Lee Point-Leanyer Swamp	28	28	18	33	9	23	14
Ludmilla	82	168	136	84	37	173	49
Malak	91	225	214	177	54	293	115
Marrara	77	146	146	106	51	168	58
Millner	65	258	159	158	28	236	91
Moil	65	180	135	146	32	147	67
Nakara	82	256	141	103	34	155	61
Narrows	24	37	34	25	6	31	21
Nightcliff	175	514	287	183	70	287	108
Parap	84	220	140	99	41	153	49
Rapid Creek	129	494	226	142	47	271	85
Stuart Park	211	429	335	229	77	352	97
The Gardens	62	112	71	41	17	85	17
Tiwi	87	384	182	128	34	204	77
Wagaman	56	139	125	125	29	171	67
Wanguri	72	211	117	89	47	162	62
Winnellie	29	20	44	46	5	36	35
Wulagi	92	217	172	177	46	214	94
City - Remainder	68	209	287	431	36	226	108
<i>Total Darwin City (SSD) 2001</i>	<i>3 156</i>	<i>7 294</i>	<i>5 418</i>	<i>4 232</i>	<i>1 249</i>	<i>5 938</i>	<i>2 090</i>
<i>Total Darwin City (SSD) 1996</i>	<i>3 101</i>	<i>6 905</i>	<i>4 874</i>	<i>4 492</i>	<i>1 388</i>	<i>6 254</i>	<i>2 178</i>
<b>Palmerston-East Arm (SSD)</b>							
East Arm	—	—	—	—	—	—	—
Bakewell	66	151	208	248	51	316	141
Driver	113	177	184	227	45	247	134
Durack	157	174	236	174	45	198	71
Gray	89	156	144	222	38	250	134
Moulden	62	124	155	182	40	230	130
Woodroffe	97	175	217	266	57	294	152
Palmerston (C) Bal	90	182	224	208	48	249	106
<i>Total Palmerston-East Arm (SSD) 2001</i>	<i>674</i>	<i>1 139</i>	<i>1 369</i>	<i>1 527</i>	<i>324</i>	<i>1 784</i>	<i>870</i>
<i>Total Palmerston-East Arm (SSD) 1996</i>	<i>326</i>	<i>639</i>	<i>626</i>	<i>924</i>	<i>236</i>	<i>1 056</i>	<i>506</i>

— nil or rounded to zero (including null cells)

(a) Applicable to employed persons only.

<i>Geographic area</i>	<i>Elementary Clerical, Sales and Service Workers</i>	<i>Labourers and Related Workers</i>	<i>Total(b)</i>
<b>DARWIN (SD)</b>			
<b>Darwin City (SSD)</b>			
Alawa	128	69	1 007
Anula	117	73	1 224
Brinkin	64	29	610
City - Inner	88	114	2 132
Coconut Grove	126	64	1 139
Fannie Bay	100	60	1 360
Jingili	77	72	925
Karama	239	186	2 149
Larrakeyah	109	67	2 054
Leanyer	268	145	2 589
Lee Point-Leanyer Swamp	12	13	187
Ludmilla	74	73	893
Malak	202	134	1 532
Marrara	95	49	912
Millner	129	96	1 238
Moil	94	70	953
Nakara	117	57	1 014
Narrows	14	10	205
Nightcliff	153	87	1 900
Parap	60	42	908
Rapid Creek	147	88	1 659
Stuart Park	134	102	2 007
The Gardens	20	15	447
Tiwi	121	80	1 327
Wagaman	113	92	943
Wanguri	105	45	924
Winnellie	17	26	264
Wulagi	132	79	1 247
City - Remainder	96	52	1 540
<i>Total Darwin City (SSD) 2001</i>	<i>3 151</i>	<i>2 089</i>	<i>35 289</i>
<i>Total Darwin City (SSD) 1996</i>	<i>2 934</i>	<i>2 266</i>	<i>35 334</i>
<b>Palmerston-East Arm (SSD)</b>			
East Arm	—	—	—
Bakewell	168	93	1 459
Driver	123	75	1 343
Durack	95	31	1 194
Gray	143	119	1 310
Moulden	151	106	1 205
Woodroffe	143	100	1 527
Palmerston (C) Bal	139	78	1 349
<i>Total Palmerston-East Arm (SSD) 2001</i>	<i>962</i>	<i>602</i>	<i>9 390</i>
<i>Total Palmerston-East Arm (SSD) 1996</i>	<i>550</i>	<i>439</i>	<i>5 473</i>

— nil or rounded to zero (including null cells)

(a) Applicable to employed persons only.

(b) Includes 'Inadequately described' and 'Not stated'.



OCCUPATION, by Statistical Local Area(a) *continued*

<i>Geographic area</i>	<i>Managers and Administrators</i>	<i>Professionals</i>	<i>Associate Professionals</i>	<i>Tradespersons and Related Workers</i>	<i>Advanced Clerical and Service Workers</i>	<i>Intermediate Clerical, Sales and Service Workers</i>	<i>Intermediate Production and Transport Workers</i>
<i>DARWIN (SD) cont.</i>							
Litchfield Shire (SSD)							
Litchfield (S) - Pt A	117	89	194	601	23	93	191
Litchfield (S) - Pt B	740	770	860	1 097	266	940	578
<i>Total Litchfield Shire (SSD) 2001</i>	857	859	1 054	1 698	289	1 033	769
<i>Total Litchfield Shire (SSD) 1996</i>	653	794	723	1 110	280	957	584
<i>TOTAL DARWIN (SD) 2001</i>	4 687	9 292	7 841	7 457	1 862	8 755	3 729
<i>TOTAL DARWIN (SD) 1996</i>	4 080	8 338	6 223	6 526	1 904	8 267	3 268
<i>NORTHERN TERRITORY - BAL (SD)</i>							
Finniss (SSD)							
Coomalie (CGC)	48	119	55	47	16	77	20
Cox-Finniss	45	50	30	29	13	40	23
<i>Total Finniss (SSD) 2001</i>	93	169	85	76	29	117	43
<i>Total Finniss (SSD) 1996</i>	94	137	76	90	31	84	30
Bathurst-Melville (SSD)							
Bathurst-Melville	29	103	73	39	8	86	49
<i>Total Bathurst-Melville (SSD) 2001</i>	29	103	73	39	8	86	49
<i>Total Bathurst-Melville (SSD) 1996</i>	12	87	51	36	9	81	36
Alligator (SSD)							
Jabiru (T)	70	170	118	98	16	133	66
South Alligator	75	126	58	51	16	115	28
West Arnhem	47	126	78	59	11	135	39
<i>Total Alligator (SSD) 2001</i>	192	422	254	208	43	383	133
<i>Total Alligator (SSD) 1996</i>	142	493	248	211	38	353	145
Daly (SSD)							
Daly	88	132	113	105	16	105	119
<i>Total Daly (SSD) 2001</i>	88	132	113	105	16	105	119
<i>Total Daly (SSD) 1996</i>	62	130	135	113	13	64	68
East Arnhem (SSD)							
East Arnhem - Bal	70	240	108	88	18	160	88
Groote Eylandt	25	124	78	111	5	78	122
Nhulunbuy	127	373	238	423	52	244	316
<i>Total East Arnhem (SSD) 2001</i>	222	737	424	622	75	482	526
<i>Total East Arnhem (SSD) 1996</i>	224	602	339	640	87	433	491
Top Lower End NT (SSD)							
Elsey - Bal	85	116	85	79	15	99	59
Gulf	66	137	66	73	7	85	129
Katherine (T)	320	690	604	741	118	712	286
Victoria	91	118	80	190	20	83	73
<i>Total Lower Top End NT (SSD) 2001</i>	562	1 061	835	1 083	160	979	547
<i>Total Lower Top End NT (SSD) 1996</i>	586	1 044	784	1 089	184	1 001	577

(a) Applicable to employed persons only.

<i>Geographic area</i>	<i>Elementary Clerical, Sales and Service Workers</i>	<i>Labourers and Related Workers</i>	<i>Total(b)</i>
<i>DARWIN (SD) cont.</i>			
Litchfield Shire (SSD)			
Litchfield (S) - Pt A	32	56	1 408
Litchfield (S) - Pt B	464	575	6 445
<i>Total Litchfield Shire (SSD)   2001</i>	496	631	7 853
<i>Total Litchfield Shire (SSD)   1996</i>	378	488	6 179
<i>TOTAL DARWIN (SD) 2001</i>	4 609	3 322	52 532
<i>TOTAL DARWIN (SD) 1996</i>	3 862	3 193	46 986
<i>NORTHERN TERRITORY - BAL (SD)</i>			
Finniss (SSD)			
Coomalie (CGC)	31	55	487
Cox-Finniss	14	58	308
<i>Total Finniss (SSD) 2001</i>	45	113	795
<i>Total Finniss (SSD) 1996</i>	33	115	720
Bathurst-Melville (SSD)			
Bathurst-Melville	31	154	615
<i>Total Bathurst-Melville (SSD)   2001</i>	31	154	615
<i>Total Bathurst-Melville (SSD)   1996</i>	28	222	654
Alligator (SSD)			
Jabiru (T)	60	62	813
South Alligator	38	69	601
West Arnhem	39	373	1 040
<i>Total Alligator (SSD) 2001</i>	137	504	2 454
<i>Total Alligator (SSD) 1996</i>	146	475	2 356
Daly (SSD)			
Daly	44	247	1 027
<i>Total Daly (SSD) 2001</i>	44	247	1 027
<i>Total Daly (SSD) 1996</i>	32	178	847
East Arnhem (SSD)			
East Arnhem - Bal	78	550	1 496
Groote Eylandt	35	154	771
Nhulunbuy	127	129	2 062
<i>Total East Arnhem (SSD) 2001</i>	240	833	4 329
<i>Total East Arnhem (SSD) 1996</i>	247	1 018	4 279
Top Lower End NT (SSD)			
Elsey - Bal	36	238	846
Gulf	55	548	1 217
Katherine (T)	344	353	4 274
Victoria	26	357	1 123
<i>Total Lower Top End NT (SSD)   2001</i>	461	1 496	7 460
<i>Total Lower Top End NT (SSD)   1996</i>	451	1 511	7 532

(a) Applicable to employed persons only.

(b) Includes 'Inadequately described' and 'Not stated'.

OCCUPATION, by Statistical Local Area(a) *continued*

<i>Geographic area</i>	<i>Managers and Administrators</i>	<i>Professionals</i>	<i>Associate Professionals</i>	<i>Tradespersons and Related Workers</i>	<i>Advanced Clerical and Service Workers</i>	<i>Intermediate Clerical, Sales and Service Workers</i>	<i>Intermediate Production and Transport Workers</i>
<i>NORTHERN TERRITORY - BAL (SD) cont.</i>							
<i>Barkly (SSD)</i>							
Tableland	38	46	38	80	19	40	35
Tennant Creek (T)	91	203	178	138	31	173	60
Tennant Creek - Bal	33	43	34	24	8	43	27
<i>Total Barkly (SSD) 2001</i>	<i>162</i>	<i>292</i>	<i>250</i>	<i>242</i>	<i>58</i>	<i>256</i>	<i>122</i>
<i>Total Barkly (SSD) 1996</i>	<i>186</i>	<i>348</i>	<i>263</i>	<i>305</i>	<i>53</i>	<i>276</i>	<i>187</i>
<i>Central NT (SSD)</i>							
Alice Springs (T) - Charles	159	398	304	384	96	431	179
Alice Springs (T) - Heavitree	117	190	157	176	54	239	100
Alice Springs (T) - Larapinta	265	791	605	512	161	775	259
Alice Springs (T) - Ross	352	918	640	420	130	756	212
Alice Springs (T) - Stuart	93	312	205	124	34	205	74
Petermann	149	289	239	149	44	375	114
Sandover - Bal	79	138	84	44	12	91	29
Tanami	116	228	138	170	13	108	146
<i>Total Central NT (SSD) 2001</i>	<i>1 330</i>	<i>3 264</i>	<i>2 372</i>	<i>1 979</i>	<i>544</i>	<i>2 980</i>	<i>1 113</i>
<i>Total Central NT (SSD) 1996</i>	<i>1 356</i>	<i>2 975</i>	<i>2 043</i>	<i>2 053</i>	<i>588</i>	<i>2 766</i>	<i>1 102</i>
<i>TOTAL NORTHERN TERRITORY - BAL (SD) 2001</i>	<i>2 678</i>	<i>6 180</i>	<i>4 406</i>	<i>4 354</i>	<i>933</i>	<i>5 388</i>	<i>2 652</i>
<i>TOTAL NORTHERN TERRITORY - BAL (SD) 1996</i>	<i>2 662</i>	<i>5 816</i>	<i>3 939</i>	<i>4 537</i>	<i>1 003</i>	<i>5 058</i>	<i>2 636</i>
<i>OFF-SHORE AREAS &amp; MIGRATORY (SD)</i>							
<i>Off-Shore Areas &amp; Migratory (SSD)</i>							
Off-Shore Areas & Migratory	111	215	421	460	5	90	231
<i>Total Off-Shore Areas &amp; Migratory (SSD) 2001</i>	<i>111</i>	<i>215</i>	<i>421</i>	<i>460</i>	<i>5</i>	<i>90</i>	<i>231</i>
<i>Total Off-Shore Areas &amp; Migratory (SSD) 1996</i>	<i>31</i>	<i>73</i>	<i>48</i>	<i>86</i>	<i>6</i>	<i>16</i>	<i>51</i>
<i>TOTAL OFF-SHORE AREAS &amp; MIGRATORY (SD) 2001</i>	<i>111</i>	<i>215</i>	<i>421</i>	<i>460</i>	<i>5</i>	<i>90</i>	<i>231</i>
<i>TOTAL OFF-SHORE AREAS &amp; MIGRATORY (SD) 1996</i>	<i>31</i>	<i>73</i>	<i>48</i>	<i>86</i>	<i>6</i>	<i>16</i>	<i>51</i>
<b>TOTAL NORTHERN TERRITORY 2001</b>	<b>7 476</b>	<b>15 687</b>	<b>12 668</b>	<b>12 271</b>	<b>2 800</b>	<b>14 233</b>	<b>6 612</b>
<b>TOTAL NORTHERN TERRITORY 1996</b>	<b>6 773</b>	<b>14 227</b>	<b>10 210</b>	<b>11 149</b>	<b>2 913</b>	<b>13 341</b>	<b>5 955</b>

(a) Applicable to employed persons only.

<i>Geographic area</i>	<i>Elementary Clerical, Sales and Service Workers</i>	<i>Labourers and Related Workers</i>	<i>Total(b)</i>
<i>NORTHERN TERRITORY - BAL (SD) cont.</i>			
<i>Barkly (SSD)</i>			
Tableland	16	217	569
Tennant Creek (T)	71	147	1 137
Tennant Creek - Bal	23	159	414
<i>Total Barkly (SSD) 2001</i>	<i>110</i>	<i>523</i>	<i>2 120</i>
<i>Total Barkly (SSD) 1996</i>	<i>149</i>	<i>613</i>	<i>2 483</i>
<i>Central NT (SSD)</i>			
Alice Springs (T) - Charles	230	212	2 426
Alice Springs (T) - Heavitree	121	123	1 316
Alice Springs (T) - Larapinta	482	303	4 250
Alice Springs (T) - Ross	383	231	4 110
Alice Springs (T) - Stuart	81	90	1 237
Petermann	226	234	1 870
Sandover - Bal	34	320	860
Tanami	50	265	1 403
<i>Total Central NT (SSD) 2001</i>	<i>1 607</i>	<i>1 778</i>	<i>17 472</i>
<i>Total Central NT (SSD) 1996</i>	<i>1 407</i>	<i>1 902</i>	<i>16 779</i>
<i>TOTAL NORTHERN TERRITORY - BAL (SD) 2001</i>	<i>2 675</i>	<i>5 648</i>	<i>36 272</i>
<i>TOTAL NORTHERN TERRITORY - BAL (SD) 1996</i>	<i>2 493</i>	<i>6 034</i>	<i>35 650</i>
<i>OFF-SHORE AREAS &amp; MIGRATORY (SD)</i>			
<i>Off-Shore Areas &amp; Migratory (SSD)</i>			
Off-Shore Areas & Migratory	6	63	1 630
<i>Total Off-Shore Areas &amp; Migratory (SSD) 2001</i>	<i>6</i>	<i>63</i>	<i>1 630</i>
<i>Total Off-Shore Areas &amp; Migratory (SSD) 1996</i>	<i>4</i>	<i>19</i>	<i>340</i>
<i>TOTAL OFF-SHORE AREAS &amp; MIGRATORY (SD) 2001</i>	<i>6</i>	<i>63</i>	<i>1 630</i>
<i>TOTAL OFF-SHORE AREAS &amp; MIGRATORY (SD) 1996</i>	<i>4</i>	<i>19</i>	<i>340</i>
<b>TOTAL NORTHERN TERRITORY 2001</b>	<b>7 290</b>	<b>9 033</b>	<b>90 434</b>
<b>TOTAL NORTHERN TERRITORY 1996</b>	<b>6 359</b>	<b>9 246</b>	<b>82 976</b>

(a) Applicable to employed persons only.

(b) Includes 'Inadequately described' and 'Not stated'.

## INDUSTRY OF EMPLOYMENT, by Statistical Local Area(a)

Geographic area	Agriculture, Forestry and Fishing	Mining	Manufacturing	Electricity, Gas and Water Supply	Construction	Wholesale Trade	Retail Trade
<b>DARWIN (SD)</b>							
<b>Darwin City (SSD)</b>							
Alawa	6	8	55	16	58	36	165
Anula	12	8	46	17	46	46	145
Brinkin	5	5	18	3	38	31	93
City - Inner	56	46	174	19	113	113	160
Coconut Grove	7	—	58	4	72	57	198
Fannie Bay	20	9	54	7	68	46	163
Jingili	13	3	50	13	62	33	126
Karama	23	17	136	22	141	102	350
Larrakeyah	31	23	73	15	87	83	200
Leanyer	36	24	135	28	155	128	443
Lee Point-Leanyer Swamp	20	3	17	—	10	5	29
Ludmilla	9	5	43	4	35	36	118
Malak	9	9	70	20	95	73	252
Marrara	4	5	50	7	57	34	124
Millner	13	10	51	11	75	59	194
Moil	7	7	48	15	72	38	132
Nakara	7	5	40	11	53	33	157
Narrows	—	—	14	—	11	7	28
Nightcliff	18	10	83	18	138	82	219
Parap	9	6	40	10	50	45	116
Rapid Creek	18	9	72	19	72	57	182
Stuart Park	33	15	112	14	122	94	256
The Gardens	8	8	19	8	13	22	47
Tiwi	11	10	61	8	68	43	180
Wagaman	10	6	41	7	83	41	178
Wanguri	10	8	44	7	64	43	153
Winnellie	10	5	33	3	13	17	46
Wulagi	7	7	59	17	71	57	169
City - Remainder	7	—	22	4	24	19	116
<i>Total Darwin City (SSD) 2001</i>	<i>421</i>	<i>273</i>	<i>1 718</i>	<i>329</i>	<i>1 966</i>	<i>1 480</i>	<i>4 739</i>
<i>Total Darwin City (SSD) 1996</i>	<i>301</i>	<i>395</i>	<i>1 660</i>	<i>206</i>	<i>2 780</i>	<i>1 564</i>	<i>4 360</i>
<b>Palmerston-East Arm (SSD)</b>							
East Arm	—	—	—	—	—	—	—
Bakewell	13	12	87	17	106	87	244
Driver	17	18	79	23	100	72	214
Durack	5	15	49	9	66	34	160
Gray	22	11	90	10	103	52	220
Moulden	16	9	74	10	92	80	223
Woodroffe	23	17	104	19	113	88	216
Palmerston (C) Bal	11	4	76	3	97	65	204
<i>Total Palmerston-East Arm (SSD) 2001</i>	<i>107</i>	<i>86</i>	<i>559</i>	<i>91</i>	<i>678</i>	<i>478</i>	<i>1 481</i>
<i>Total Palmerston-East Arm (SSD) 1996</i>	<i>58</i>	<i>87</i>	<i>358</i>	<i>22</i>	<i>593</i>	<i>374</i>	<i>822</i>
<b>Litchfield Shire (SSD)</b>							
Litchfield (S) - Pt A	28	5	34	3	43	19	59
Litchfield (S) - Pt B	460	103	451	79	692	338	810
<i>Total Litchfield Shire (SSD) 2001</i>	<i>488</i>	<i>108</i>	<i>485</i>	<i>82</i>	<i>735</i>	<i>357</i>	<i>869</i>
<i>Total Litchfield Shire (SSD) 1996</i>	<i>384</i>	<i>148</i>	<i>388</i>	<i>41</i>	<i>790</i>	<i>339</i>	<i>640</i>
<b>TOTAL DARWIN (SD) 2001</b>	<b>1 016</b>	<b>467</b>	<b>2 762</b>	<b>502</b>	<b>3 379</b>	<b>2 315</b>	<b>7 089</b>
<b>TOTAL DARWIN (SD) 1996</b>	<b>743</b>	<b>630</b>	<b>2 406</b>	<b>269</b>	<b>4 163</b>	<b>2 277</b>	<b>5 822</b>

— nil or rounded to zero (including null cells)

(a) Applicable to employed persons only.

<i>Geographic area</i>	<i>Accommodation, Cafes and Restaurants</i>	<i>Transport and Storage</i>	<i>Communication Services</i>	<i>Finance and Insurance</i>	<i>Property and Business Services</i>	<i>Government Administration and Defence</i>
<b>DARWIN (SD)</b>						
<b>Darwin City (SSD)</b>						
Alawa	46	56	13	16	117	87
Anula	53	78	35	26	109	171
Brinkin	24	25	4	9	76	69
City - Inner	207	166	17	53	292	287
Coconut Grove	61	60	20	35	135	134
Fannie Bay	87	100	15	39	212	164
Jingili	40	44	10	12	111	97
Karama	145	110	46	47	211	191
Larrakeyah	211	106	19	57	279	461
Leanyer	128	110	42	82	268	315
Lee Point-Leanyer Swamp	18	9	3	4	13	3
Ludmilla	72	56	9	25	108	144
Malak	99	70	30	33	159	177
Marrara	53	66	11	34	115	125
Millner	60	81	19	20	148	135
Moil	58	54	13	24	119	98
Nakara	59	37	10	34	112	116
Narrows	13	11	3	5	22	28
Nightcliff	86	117	30	48	239	215
Parap	72	50	22	13	118	109
Rapid Creek	75	120	25	28	219	170
Stuart Park	163	109	16	60	294	267
The Gardens	32	30	—	20	66	61
Tiwi	58	55	20	19	106	153
Wagaman	55	34	13	18	89	89
Wanguri	35	41	8	22	94	101
Winnellie	29	27	3	5	16	10
Wulagi	44	75	30	21	134	181
City - Remainder	60	30	8	33	63	926
<i>Total Darwin City (SSD) 2001</i>	<i>2 143</i>	<i>1 927</i>	<i>494</i>	<i>842</i>	<i>4 044</i>	<i>5 084</i>
<i>Total Darwin City (SSD) 1996</i>	<i>2 109</i>	<i>1 742</i>	<i>578</i>	<i>974</i>	<i>3 346</i>	<i>5 234</i>
<b>Palmerston-East Arm (SSD)</b>						
East Arm	—	—	—	—	—	—
Bakewell	63	94	25	35	144	192
Driver	67	62	23	25	102	257
Durack	35	39	15	31	94	387
Gray	69	67	19	27	125	182
Moulden	57	70	20	25	117	129
Woodroffe	52	104	31	40	151	170
Palmerston (C) Bal	52	77	26	32	140	236
<i>Total Palmerston-East Arm (SSD) 2001</i>	<i>395</i>	<i>514</i>	<i>159</i>	<i>215</i>	<i>873</i>	<i>1 553</i>
<i>Total Palmerston-East Arm (SSD) 1996</i>	<i>209</i>	<i>294</i>	<i>111</i>	<i>144</i>	<i>419</i>	<i>617</i>
<b>Litchfield Shire (SSD)</b>						
Litchfield (S) - Pt A	38	28	5	4	42	939
Litchfield (S) - Pt B	200	403	101	99	556	574
<i>Total Litchfield Shire (SSD) 2001</i>	<i>238</i>	<i>431</i>	<i>106</i>	<i>103</i>	<i>598</i>	<i>1 513</i>
<i>Total Litchfield Shire (SSD) 1996</i>	<i>185</i>	<i>338</i>	<i>93</i>	<i>74</i>	<i>463</i>	<i>627</i>
<b>TOTAL DARWIN (SD) 2001</b>	<b>2 776</b>	<b>2 872</b>	<b>759</b>	<b>1 160</b>	<b>5 515</b>	<b>8 150</b>
<b>TOTAL DARWIN (SD) 1996</b>	<b>2 503</b>	<b>2 374</b>	<b>782</b>	<b>1 192</b>	<b>4 228</b>	<b>6 478</b>

— nil or rounded to zero (including null cells)

(a) Applicable to employed persons only.

<i>Geographic area</i>	<i>Education</i>	<i>Health and Community Services</i>	<i>Other(b)</i>	<i>Total</i>
<b>DARWIN (SD)</b>				
<b>Darwin City (SSD)</b>				
Alawa	103	112	80	1 007
Anula	155	127	136	1 224
Brinkin	80	88	35	610
City - Inner	97	109	163	2 132
Coconut Grove	78	111	82	1 138
Fannie Bay	117	107	107	1 360
Jingili	92	90	87	925
Karama	181	191	168	2 149
Larrakeyah	92	118	145	2 054
Leanyer	206	244	197	2 589
Lee Point-Leanyer Swamp	15	19	6	187
Ludmilla	58	85	81	892
Malak	115	143	137	1 532
Marrara	70	72	70	912
Millner	114	103	101	1 238
Moil	85	96	70	953
Nakara	126	130	55	1 014
Narrows	20	12	19	201
Nightcliff	199	206	149	1 900
Parap	60	67	93	908
Rapid Creek	215	205	142	1 659
Stuart Park	131	111	144	2 007
The Gardens	32	40	34	444
Tiwi	127	279	87	1 327
Wagaman	76	92	70	943
Wanguri	109	91	80	923
Winnellie	14	13	7	266
Wulagi	92	124	129	1 247
City - Remainder	64	79	60	1 539
<i>Total Darwin City (SSD) 2001</i>	<i>2 923</i>	<i>3 264</i>	<i>2 734</i>	<i>35 289</i>
<i>Total Darwin City (SSD) 1996</i>	<i>2 705</i>	<i>3 428</i>	<i>2 728</i>	<i>35 334</i>
<b>Palmerston-East Arm (SSD)</b>				
East Arm	—	—	—	—
Bakewell	78	114	111	1 459
Driver	97	73	100	1 343
Durack	63	90	62	1 194
Gray	108	87	95	1 310
Moulden	79	84	95	1 205
Woodroffe	111	114	128	1 527
Palmerston (C) Bal	86	105	93	1 349
<i>Total Palmerston-East Arm (SSD) 2001</i>	<i>622</i>	<i>667</i>	<i>685</i>	<i>9 390</i>
<i>Total Palmerston-East Arm (SSD) 1996</i>	<i>341</i>	<i>385</i>	<i>421</i>	<i>5 473</i>
<b>Litchfield Shire (SSD)</b>				
Litchfield (S) - Pt A	29	39	68	1 408
Litchfield (S) - Pt B	479	422	487	6 445
<i>Total Litchfield Shire (SSD) 2001</i>	<i>508</i>	<i>461</i>	<i>555</i>	<i>7 853</i>
<i>Total Litchfield Shire (SSD) 1996</i>	<i>438</i>	<i>445</i>	<i>467</i>	<i>6 179</i>
<b>TOTAL DARWIN (SD) 2001</b>	<b>4 053</b>	<b>4 392</b>	<b>3 974</b>	<b>52 532</b>
<b>TOTAL DARWIN (SD) 1996</b>	<b>3 484</b>	<b>4 258</b>	<b>3 616</b>	<b>46 986</b>

— nil or rounded to zero (including null cells)

(a) Applicable to employed persons only.

(b) Includes 'Cultural and Recreational Services', 'Personal and Other Services', 'Non-Classifiable Economic Units' and 'Not stated'.

Geographic area	Agriculture, Forestry and Fishing	Mining	Manufacturing	Electricity, Gas and Water Supply	Construction	Wholesale Trade	Retail Trade
NORTHERN TERRITORY - BAL (SD)							
Finniss (SSD)							
Coomalie (CGC)	34	10	22	8	23	12	38
Cox-Finniss	46	3	11	—	18	6	29
Total Finniss (SSD) 2001	80	13	33	9	41	18	67
Total Finniss (SSD) 1996	74	41	58	4	40	20	60
Bathurst-Melville (SSD)							
Bathurst-Melville	21	—	9	3	24	3	47
Total Bathurst-Melville (SSD) 2001	21	—	9	3	24	3	47
Total Bathurst-Melville (SSD) 1996	3	—	4	—	5	—	26
Alligator (SSD)							
Jabiru (T)	4	192	21	6	34	10	72
South Alligator	37	9	28	—	25	19	22
West Arnhem	33	22	8	—	25	29	51
Total Alligator (SSD) 2001	74	223	57	8	84	58	145
Total Alligator (SSD) 1996	98	197	38	4	83	29	127
Daly (SSD)							
Daly	84	114	20	9	36	20	53
Total Daly (SSD) 2001	84	114	20	9	36	20	53
Total Daly (SSD) 1996	82	190	12	7	42	8	25
East Arnhem (SSD)							
East Arnhem - Bal	18	14	25	3	43	5	79
Groote Eylandt	—	232	3	—	47	5	31
Nhulunbuy	11	368	319	11	186	49	187
Total East Arnhem (SSD) 2001	29	614	347	15	276	59	297
Total East Arnhem (SSD) 1996	18	828	240	—	258	41	254
Lower Top End NT (SSD)							
Elsey - Bal	118	15	31	3	52	13	75
Gulf	69	134	15	5	48	8	46
Katherine (T)	136	31	89	50	303	135	522
Victoria	245	3	11	—	32	47	47
Total Lower Top End NT (SSD) 2001	568	181	146	58	435	203	690
Total Lower Top End NT (SSD) 1996	627	303	243	59	460	170	630
Barkly (SSD)							
Tableland	268	4	13	—	18	15	25
Tennant Creek (T)	29	20	17	22	100	25	141
Tennant Creek - Bal	48	4	3	—	11	3	16
Total Barkly (SSD) 2001	345	28	33	22	129	43	182
Total Barkly (SSD) 1996	357	211	43	25	117	47	161
Central NT (SSD)							
Alice Springs (T) - Charles	20	10	120	30	218	106	392
Alice Springs (T) - Heavitree	46	11	87	9	144	45	179
Alice Springs (T) - Larapinta	21	16	151	37	308	164	666
Alice Springs (T) - Ross	28	21	126	42	281	128	581
Alice Springs (T) - Stuart	33	7	52	12	68	42	121
Petermann	88	3	48	6	83	29	117
Sandover - Bal	139	6	9	—	32	6	25
Tanami	86	304	36	6	37	14	73
Total Central NT (SSD) 2001	461	377	629	143	1 171	534	2 154
Total Central NT (SSD) 1996	430	418	566	162	975	495	2 047

— nil or rounded to zero (including null cells)

(a) Applicable to employed persons only.



Geographic area	Accommodation, Cafes and Restaurants	Transport and Storage	Communication Services	Finance and Insurance	Property and Business Services	Government Administration and Defence
NORTHERN TERRITORY - BAL (SD)						
Finniss (SSD)						
Coomalie (CGC)	45	15	—	3	12	31
Cox-Finniss	25	15	3	3	24	55
Total Finniss (SSD) 2001	70	30	3	6	36	86
Total Finniss (SSD) 1996	43	12	6	8	30	52
Bathurst-Melville (SSD)						
Bathurst-Melville	16	14	—	3	9	226
Total Bathurst-Melville (SSD) 2001	16	14	—	3	9	226
Total Bathurst-Melville (SSD) 1996	26	3	—	—	7	382
Alligator (SSD)						
Jabiru (T)	113	44	9	12	45	65
South Alligator	117	51	3	7	34	76
West Arnhem	15	19	3	—	11	603
Total Alligator (SSD) 2001	245	114	13	21	90	744
Total Alligator (SSD) 1996	253	99	14	22	142	399
Daly (SSD)						
Daly	65	14	21	10	36	286
Total Daly (SSD) 2001	65	14	21	10	36	286
Total Daly (SSD) 1996	57	6	—	3	32	150
East Arnhem (SSD)						
East Arnhem - Bal	10	42	3	11	14	714
Groote Eylandt	52	13	5	3	37	151
Nhulunbuy	98	88	22	16	130	121
Total East Arnhem (SSD) 2001	160	143	28	30	181	986
Total East Arnhem (SSD) 1996	193	104	30	29	143	725
Lower Top End NT (SSD)						
Elsey - Bal	57	20	4	9	46	182
Gulf	25	35	—	—	36	620
Katherine (T)	288	181	51	72	267	841
Victoria	24	23	3	3	25	458
Total Lower Top End NT (SSD) 2001	394	259	60	84	374	2 101
Total Lower Top End NT (SSD) 1996	385	244	70	90	334	1 864
Barkly (SSD)						
Tableland	14	7	3	3	10	121
Tennant Creek (T)	72	38	13	12	82	129
Tennant Creek - Bal	22	—	—	—	4	182
Total Barkly (SSD) 2001	108	47	16	15	96	432
Total Barkly (SSD) 1996	149	93	27	23	91	410
Central NT (SSD)						
Alice Springs (T) - Charles	150	168	12	30	162	196
Alice Springs (T) - Heavitree	109	92	10	19	96	64
Alice Springs (T) - Larapinta	272	268	43	57	338	454
Alice Springs (T) - Ross	295	281	36	58	371	430
Alice Springs (T) - Stuart	140	71	8	17	128	66
Petermann	565	227	7	25	121	147
Sandover - Bal	29	17	—	4	33	335
Tanami	29	25	4	—	34	274
Total Central NT (SSD) 2001	1 589	1 149	120	212	1 283	1 966
Total Central NT (SSD) 1996	1 481	1 085	354	265	1 324	1 894

— nil or rounded to zero (including null cells)

(a) Applicable to employed persons only.

<i>Geographic area</i>	<i>Education</i>	<i>Health and Community Services</i>	<i>Other(b)</i>	<i>Total</i>
<b>NORTHERN TERRITORY - BAL (SD)</b>				
Finniss (SSD)				
Coomalie (CGC)	153	32	34	487
Cox-Finniss	27	22	18	309
<i>Total Finniss (SSD) 2001</i>	180	54	52	797
<i>Total Finniss (SSD) 1996</i>	152	44	38	720
Bathurst-Melville (SSD)				
Bathurst-Melville	75	90	52	614
<i>Total Bathurst-Melville (SSD) 2001</i>	75	90	52	614
<i>Total Bathurst-Melville (SSD) 1996</i>	42	70	36	655
Alligator (SSD)				
Jabiru (T)	66	41	59	813
South Alligator	35	50	67	600
West Arnhem	82	70	27	1 039
<i>Total Alligator (SSD) 2001</i>	183	161	153	2 454
<i>Total Alligator (SSD) 1996</i>	170	442	153	2 356
Daly (SSD)				
Daly	81	60	94	1 027
<i>Total Daly (SSD) 2001</i>	81	60	94	1 027
<i>Total Daly (SSD) 1996</i>	63	95	27	847
East Arnhem (SSD)				
East Arnhem - Bal	174	150	149	1 498
Groote Eylandt	74	34	51	771
Nhulunbuy	145	191	70	2 062
<i>Total East Arnhem (SSD) 2001</i>	393	375	270	4 329
<i>Total East Arnhem (SSD) 1996</i>	302	853	138	4 277
Lower Top End NT (SSD)				
Elsey - Bal	67	55	75	847
Gulf	51	54	29	1 215
Katherine (T)	347	542	262	4 274
Victoria	50	38	81	1 124
<i>Total Lower Top End NT (SSD) 2001</i>	515	689	447	7 460
<i>Total Lower Top End NT (SSD) 1996</i>	544	901	304	7 532
Barkly (SSD)				
Tableland	22	20	24	573
Tennant Creek (T)	123	157	116	1 137
Tennant Creek - Bal	46	22	31	410
<i>Total Barkly (SSD) 2001</i>	191	199	171	2 120
<i>Total Barkly (SSD) 1996</i>	180	385	80	2 483
Central NT (SSD)				
Alice Springs (T) - Charles	228	257	278	2 426
Alice Springs (T) - Heavitree	120	151	106	1 316
Alice Springs (T) - Larapinta	373	545	428	4 250
Alice Springs (T) - Ross	394	488	453	4 110
Alice Springs (T) - Stuart	76	216	156	1 237
Petermann	103	113	161	1 871
Sandover - Bal	75	78	57	860
Tanami	136	102	101	1 401
<i>Total Central NT (SSD) 2001</i>	1 505	1 950	1 740	17 472
<i>Total Central NT (SSD) 1996</i>	1 237	2 084	1 363	16 779

(a) Applicable to employed persons only.

(b) Includes 'Cultural and Recreational Services', 'Personal and Other Services', 'Non-Classifiable Economic Units' and 'Not stated'.

INDUSTRY OF EMPLOYMENT, by Statistical Local Area(a) *continued*

Geographic area	Agriculture, Forestry and Fishing	Mining	Manufacturing	Electricity, Gas and Water Supply	Construction	Wholesale Trade	Retail Trade
NORTHERN TERRITORY - BAL (SD) <i>cont.</i>							
TOTAL NORTHERN TERRITORY - BAL (SD) 2001	1 662	1 550	1 274	267	2 196	938	3 635
TOTAL NORTHERN TERRITORY - BAL (SD) 1996	1 689	2 188	1 204	261	1 980	810	3 330
OFF-SHORE AREAS & MIGRATORY (SD)							
Off-Shore Areas & Migratory (SSD)							
Off-Shore Areas & Migratory	110	198	23	12	19	21	5
Total Off-Shore Areas & Migratory (SSD) 2001	110	198	23	12	19	21	5
Total Off-Shore Areas & Migratory (SSD) 1996	8	86	3	—	5	8	6
TOTAL OFF-SHORE AREAS & MIGRATORY (SD) 2001	110	198	23	12	19	21	5
TOTAL OFF-SHORE AREAS & MIGRATORY (SD) 1996	8	86	3	—	5	8	6
<b>TOTAL NORTHERN TERRITORY 2001</b>	<b>2 788</b>	<b>2 215</b>	<b>4 059</b>	<b>781</b>	<b>5 594</b>	<b>3 274</b>	<b>10 729</b>
<b>TOTAL NORTHERN TERRITORY 1996</b>	<b>2 440</b>	<b>2 904</b>	<b>3 613</b>	<b>530</b>	<b>6 148</b>	<b>3 095</b>	<b>9 158</b>

— nil or rounded to zero (including null cells)

(a) Applicable to employed persons only.

INDUSTRY OF EMPLOYMENT, by Statistical Local Area(a) *continued*

Geographic area	Accommodation, Cafes and Restaurants	Transport and Storage	Communication Services	Finance and Insurance	Property and Business Services	Government Administration and Defence
NORTHERN TERRITORY - BAL (SD) <i>cont.</i>						
TOTAL NORTHERN TERRITORY - BAL (SD) 2001	2 647	1 770	261	381	2 105	6 827
TOTAL NORTHERN TERRITORY - BAL (SD) 1996	2 587	1 646	501	440	2 103	5 876
OFF-SHORE AREAS & MIGRATORY (SD)						
Off-Shore Areas & Migratory (SSD)						
Off-Shore Areas & Migratory	17	120	—	—	53	986
Total Off-Shore Areas & Migratory (SSD) 2001	17	120	—	—	53	986
Total Off-Shore Areas & Migratory (SSD) 1996	3	42	—	—	11	150
TOTAL OFF-SHORE AREAS & MIGRATORY (SD) 2001	17	120	—	—	53	986
TOTAL OFF-SHORE AREAS & MIGRATORY (SD) 1996	3	42	—	—	11	150
<b>TOTAL NORTHERN TERRITORY 2001</b>	<b>5 440</b>	<b>4 762</b>	<b>1 020</b>	<b>1 541</b>	<b>7 673</b>	<b>15 963</b>
<b>TOTAL NORTHERN TERRITORY 1996</b>	<b>5 093</b>	<b>4 062</b>	<b>1 283</b>	<b>1 632</b>	<b>6 342</b>	<b>12 504</b>

— nil or rounded to zero (including null cells)

(a) Applicable to employed persons only.

<i>Geographic area</i>	<i>Education</i>	<i>Health and Community Services</i>	<i>Other(b)</i>	<i>Total</i>
NORTHERN TERRITORY - BAL (SD) <i>cont.</i>				
<i>TOTAL NORTHERN TERRITORY - BAL (SD) 2001</i>	3 123	3 578	2 979	36 272
<i>TOTAL NORTHERN TERRITORY - BAL (SD) 1996</i>	2 690	4 874	2 139	35 649
OFF-SHORE AREAS & MIGRATORY (SD)				
<i>Off-Shore Areas &amp; Migratory (SSD)</i>				
<i>Off-Shore Areas &amp; Migratory Total Off-Shore Areas &amp; Migratory (SSD) 2001</i>	3	6	7	1 630
<i>Total Off-Shore Areas &amp; Migratory (SSD) 1996</i>	—	3	3	338
<i>TOTAL OFF-SHORE AREAS &amp; MIGRATORY (SD) 2001</i>	3	6	7	1 630
<i>TOTAL OFF-SHORE AREAS &amp; MIGRATORY (SD) 1996</i>	—	3	3	338
<b>TOTAL NORTHERN TERRITORY 2001</b>	<b>7 179</b>	<b>7 976</b>	<b>6 960</b>	<b>90 434</b>
<b>TOTAL NORTHERN TERRITORY 1996</b>	<b>6 174</b>	<b>9 135</b>	<b>5 758</b>	<b>82 973</b>

— nil or rounded to zero (including null cells)

(a) Applicable to employed persons only.

(b) Includes 'Cultural and Recreational Services',  
'Personal and Other Services', 'Non-Classifiable  
Economic Units' and 'Not stated'.

## NON-SCHOOL QUALIFICATION: LEVEL OF EDUCATION, by Statistical Local Area(a)

Geographic area	Postgraduate Degree	Graduate Diploma/ Graduate Certificate	Bachelor Degree	Advanced Diploma and Diploma	Certificate	Total persons 15 years and over(b)	15 years and over with qualification
	no.	no.	no.	no.	no.	no.	%
<b>DARWIN (SD)</b>							
<b>Darwin City (SSD)</b>							
Alawa	33	33	162	106	295	1 607	39.1
Anula	52	29	188	123	260	1 798	36.3
Brinkin	56	30	138	66	110	943	42.4
City - Inner	106	69	481	254	578	3 832	38.8
Coconut Grove	28	32	218	108	320	1 999	35.3
Fannie Bay	75	54	334	144	310	2 062	44.5
Jingili	32	37	160	86	240	1 383	40.1
Karama	41	47	244	189	583	3 458	31.9
Larrakeyah	87	56	448	250	493	2 966	45.0
Leanyer	77	71	370	276	623	3 533	40.1
Lee Point-Leanyer Swamp	7	13	51	45	131	676	36.5
Ludmilla	34	26	160	92	210	1 454	35.9
Malak	24	26	200	147	367	2 469	30.9
Marrara	28	26	117	96	273	1 410	38.3
Millner	37	31	197	118	325	1 921	36.9
Moil	22	33	149	88	272	1 521	37.1
Nakara	61	48	196	136	202	1 470	43.7
Narrows	6	7	39	18	70	429	32.6
Nightcliff	140	65	425	221	437	2 815	45.8
Parap	31	30	186	104	252	1 485	40.6
Rapid Creek	110	72	387	196	389	2 432	47.5
Stuart Park	64	64	403	230	489	2 897	43.1
The Gardens	12	18	99	51	130	751	41.3
Tiwi	66	59	304	152	321	2 171	41.5
Wagaman	26	23	134	80	227	1 534	31.9
Wanguri	35	22	172	87	230	1 424	38.3
Winnellie	5	4	19	41	119	643	29.2
Wulagi	39	35	165	124	357	1 800	40.0
City - Remainder	25	27	155	168	542	2 457	37.3
<i>Total Darwin City (SSD) 2001</i>	<i>1 359</i>	<i>1 087</i>	<i>6 301</i>	<i>3 796</i>	<i>9 155</i>	<i>55 340</i>	<i>39.2</i>
<i>Total Darwin City (SSD) 1996</i>	<i>994</i>	<i>987</i>	<i>5 259</i>	<i>3 674</i>	<i>7 997</i>	<i>55 636</i>	<i>34.0</i>
<b>Palmerston-East Arm (SSD)</b>							
East Arm	—	—	—	—	—	396	—
Bakewell	9	12	119	104	434	1 926	35.2
Driver	20	22	139	114	397	2 019	34.3
Durack	20	19	179	146	268	1 581	40.0
Gray	15	22	135	97	438	2 328	30.4
Moulden	12	13	85	81	382	2 191	26.2
Woodroffe	14	20	121	138	499	2 328	34.0
Palmerston (C) Bal	12	15	146	108	392	1 963	34.3
<i>Total Palmerston-East Arm (SSD) 2001</i>	<i>102</i>	<i>123</i>	<i>924</i>	<i>788</i>	<i>2 812</i>	<i>14 734</i>	<i>32.2</i>
<i>Total Palmerston-East Arm (SSD) 1996</i>	<i>47</i>	<i>66</i>	<i>410</i>	<i>430</i>	<i>1 513</i>	<i>8 986</i>	<i>27.4</i>

— nil or rounded to zero (including null cells)

(a) Applicable to persons aged 15 years and over.

(b) Includes 'Level of education inadequately described', 'Level of education not stated' and persons who have a qualification that is out of the scope

of the Australian Standard Classification of Education and persons with no qualifications.

Geographic area	Postgraduate Degree	Graduate Diploma/ Graduate Certificate	Bachelor Degree	Advanced Diploma and Diploma	Certificate	Total persons 15 years and over(b)	15 years and over with qualification
	no.	no.	no.	no.	no.	no.	%
<b>DARWIN (SD) cont.</b>							
Litchfield Shire (SSD)							
Litchfield (S) - Pt A	11	18	111	135	378	1 894	34.5
Litchfield (S) - Pt B	91	120	621	575	2 293	10 424	35.5
Total Litchfield Shire (SSD) 2001	102	138	732	710	2 671	12 318	35.3
Total Litchfield Shire (SSD) 1996	65	120	499	546	1 919	10 430	30.2
TOTAL DARWIN (SD) 2001	1 563	1 348	7 957	5 294	14 638	82 392	37.4
TOTAL DARWIN (SD) 1996	1 106	1 173	6 168	4 650	11 429	75 052	32.7
<b>NORTHERN TERRITORY - BAL (SD)</b>							
Finniss (SSD)							
Coomalie (CGC)	19	23	62	68	160	1 026	32.4
Cox-Finniss	7	7	32	42	103	764	25.0
Total Finniss (SSD) 2001	26	30	94	110	263	1 790	29.2
Total Finniss (SSD) 1996	20	24	103	90	197	1 628	26.7
Bathurst-Melville (SSD)							
Bathurst-Melville	7	6	26	36	68	1 533	9.3
Total Bathurst-Melville (SSD) 2001	7	6	26	36	68	1 533	9.3
Total Bathurst-Melville (SSD) 1996	4	9	30	18	28	1 402	6.3
Alligator (SSD)							
Jabiru (T)	31	30	134	89	257	1 196	45.2
South Alligator	34	21	123	90	238	1 318	38.4
West Arnhem	16	23	87	27	100	2 868	8.8
Total Alligator (SSD) 2001	81	74	344	206	595	5 382	24.2
Total Alligator (SSD) 1996	58	49	304	233	481	4 748	23.7
Daly (SSD)							
Daly	17	18	93	70	253	2 560	17.6
Total Daly (SSD) 2001	17	18	93	70	253	2 560	17.6
Total Daly (SSD) 1996	8	14	95	61	226	2 473	16.3
East Arnhem (SSD)							
East Arnhem - Bal	22	31	90	98	167	4 543	9.0
Groote Eylandt	14	13	75	59	207	1 648	22.3
Nhulunbuy	56	43	254	192	688	2 819	43.7
Total East Arnhem (SSD) 2001	92	87	419	349	1 062	9 010	22.3
Total East Arnhem (SSD) 1996	43	67	342	273	914	8 099	20.2
Lower Top End NT (SSD)							
Elsley - Bal	19	22	97	89	227	1 909	23.8
Gulf	6	14	70	67	200	2 549	14.0
Katherine (T)	76	95	537	405	1 386	7 001	35.7
Victoria	11	8	99	79	260	2 372	19.3
Total Lower Top End NT (SSD) 2001	112	139	803	640	2 073	13 831	27.2
Total Lower Top End NT (SSD) 1996	84	146	652	676	1 753	13 579	24.4

(a) Applicable to persons aged 15 years and over.

of the Australian Standard Classification of Education and persons with no qualifications.

(b) Includes 'Level of education inadequately described', 'Level of education not stated' and persons who have a qualification that is out of the scope

Geographic area	Postgraduate Degree	Graduate Diploma/ Graduate Certificate	Bachelor Degree	Advanced Diploma and Diploma	Certificate	Total persons 15 years and over(b)	15 years and over with qualification
	no.	no.	no.	no.	no.	no.	%
<b>NORTHERN TERRITORY - BAL (SD) cont.</b>							
<b>Barkly (SSD)</b>							
Tableland	6	7	37	35	143	964	23.7
Tennant Creek (T)	22	33	139	91	288	2 389	24.0
Tennant Creek - Bal	—	8	31	24	70	1 284	10.3
Total Barkly (SSD) 2001	30	48	207	150	501	4 639	20.2
Total Barkly (SSD) 1996	32	52	210	216	498	4 982	20.2
<b>Central NT (SSD)</b>							
Alice Springs (T) - Charles	54	48	274	196	678	3 738	33.4
Alice Springs (T) - Heavitree	40	43	175	145	469	2 537	34.4
Alice Springs (T) - Larapinta	99	112	580	372	1 076	5 981	37.4
Alice Springs (T) - Ross	192	159	697	358	965	5 747	41.3
Alice Springs (T) - Stuart	46	36	257	155	305	2 479	32.2
Petermann	48	45	275	236	501	3 183	34.7
Sandover - Bal	10	20	83	61	132	2 328	13.1
Tanami	21	38	168	102	304	4 394	14.4
Total Central NT (SSD) 2001	510	501	2 509	1 625	4 430	30 387	31.5
Total Central NT (SSD) 1996	329	379	2 032	1 621	3 622	28 861	27.7
TOTAL NORTHERN TERRITORY - BAL (SD) 2001	875	903	4 495	3 186	9 245	69 132	27.1
TOTAL NORTHERN TERRITORY - BAL (SD) 1996	578	740	3 768	3 188	7 719	65 772	24.3
<b>OFF-SHORE AREAS &amp; MIGRATORY (SD)</b>							
<b>Off-Shore Areas &amp; Migratory (SSD)</b>							
Off-Shore Areas & Migratory	11	19	154	188	608	2 060	47.6
Total Off-Shore Areas & Migratory (SSD) 2001	11	19	154	188	608	2 060	47.6
Total Off-Shore Areas & Migratory (SSD) 1996	—	10	45	55	111	415	53.3
TOTAL OFF-SHORE AREAS & MIGRATORY (SD) 2001	11	19	154	188	608	2 060	47.6
TOTAL OFF-SHORE AREAS & MIGRATORY (SD) 1996	—	10	45	55	111	415	53.3
<b>TOTAL NORTHERN TERRITORY 2001</b>	<b>2 449</b>	<b>2 270</b>	<b>12 606</b>	<b>8 668</b>	<b>24 491</b>	<b>153 584</b>	<b>32.9</b>
<b>TOTAL NORTHERN TERRITORY 1996</b>	<b>1 684</b>	<b>1 923</b>	<b>9 981</b>	<b>7 893</b>	<b>19 259</b>	<b>141 239</b>	<b>28.8</b>

— nil or rounded to zero (including null cells)

(a) Applicable to persons aged 15 years and over.

(b) Includes 'Level of education inadequately described', 'Level of education not stated' and persons who have a qualification that is out of the scope

of the Australian Standard Classification of Education and persons with no qualifications.



## NON-SCHOOL QUALIFICATION: FIELD OF STUDY, by Statistical Local Area(a)(b)

<i>Geographic area</i>	<i>Natural and Physical Sciences</i>	<i>Information Technology</i>	<i>Engineering and Related Technologies</i>	<i>Architecture and Building</i>	<i>Agriculture, Environmental and Related Studies</i>	<i>Health</i>	<i>Education</i>
<b>DARWIN (SD)</b>							
<b>Darwin City (SSD)</b>							
Alawa	30	21	164	46	29	57	69
Anula	37	25	161	32	16	71	97
Brinkin	32	18	60	18	13	58	38
City - Inner	66	36	393	76	46	146	109
Coconut Grove	36	18	153	51	16	68	62
Fannie Bay	33	28	196	62	20	103	96
Jingili	28	18	132	39	18	69	66
Karama	37	36	308	70	34	101	114
Larrakeyah	55	42	313	69	28	128	102
Leanyer	64	49	366	92	43	184	158
Lee Point-Leanyer Swamp	9	3	89	21	—	34	37
Ludmilla	22	11	109	32	19	44	60
Malak	22	21	210	55	12	74	86
Marrara	23	9	156	62	10	52	59
Millner	26	20	177	54	13	56	86
Moil	13	17	164	46	17	60	57
Nakara	36	26	121	37	16	97	100
Narrows	4	5	41	17	5	10	12
Nightcliff	82	31	270	98	35	168	149
Parap	22	10	144	50	18	63	55
Rapid Creek	66	32	236	56	33	172	158
Stuart Park	46	31	292	90	44	109	104
The Gardens	10	7	86	14	8	24	31
Tiwi	43	26	172	45	26	246	87
Wagaman	15	30	131	39	6	56	54
Wanguri	24	18	132	30	14	72	65
Winnellie	5	4	74	22	3	18	14
Wulagi	36	18	191	42	16	84	84
City - Remainder	30	20	357	38	20	68	39
<i>Total Darwin City (SSD) 2001</i>	<i>952</i>	<i>629</i>	<i>5 398</i>	<i>1 403</i>	<i>580</i>	<i>2 492</i>	<i>2 248</i>
<i>Total Darwin City (SSD) 1996</i>	<i>814</i>	<i>389</i>	<i>5 277</i>	<i>1 583</i>	<i>500</i>	<i>2 388</i>	<i>2 197</i>
<b>Palmerston-East Arm (SSD)</b>							
East Arm	—	—	—	—	3	—	—
Bakewell	27	19	229	47	24	41	52
Driver	17	23	211	44	23	69	60
Durack	22	24	148	36	6	63	61
Gray	18	11	224	62	12	59	60
Moulden	16	20	185	45	25	48	42
Woodroffe	21	24	246	72	26	70	64
Palmerston (C) Bal	18	17	200	45	17	63	67
<i>Total Palmerston-East Arm (SSD) 2001</i>	<i>139</i>	<i>138</i>	<i>1 443</i>	<i>351</i>	<i>135</i>	<i>413</i>	<i>406</i>
<i>Total Palmerston-East Arm (SSD) 1996</i>	<i>91</i>	<i>42</i>	<i>952</i>	<i>268</i>	<i>88</i>	<i>224</i>	<i>246</i>

— nil or rounded to zero (including null cells)

(b) Excludes schooling up to year 12.

(a) Applicable to persons aged 15 years and over.

<i>Geographic area</i>	<i>Management and Commerce</i>	<i>Other(c)</i>	<i>Total persons 15 years and over with qualification(d)</i>
<b>DARWIN (SD)</b>			
<b>Darwin City (SSD)</b>			
Alawa	95	159	814
Anula	115	142	821
Brinkin	93	93	533
City - Inner	351	335	2 493
Coconut Grove	154	195	997
Fannie Bay	165	262	1 167
Jingili	95	119	738
Karama	205	250	1 513
Larrakeyah	315	369	1 814
Leanyer	269	267	1 725
Lee Point-Leanyer Swamp	36	35	331
Ludmilla	96	160	682
Malak	145	174	1 082
Marrara	127	82	690
Millner	138	174	966
Moil	97	128	768
Nakara	126	115	789
Narrows	23	38	228
Nightcliff	207	308	1 596
Parap	120	143	783
Rapid Creek	164	289	1 388
Stuart Park	262	324	1 681
The Gardens	72	78	455
Tiwi	119	165	1 167
Wagaman	80	117	675
Wanguri	94	118	682
Winnellie	25	32	342
Wulagi	120	150	878
City - Remainder	124	276	1 292
<i>Total Darwin City (SSD) 2001</i>	<i>4 032</i>	<i>5 097</i>	<i>29 091</i>
<i>Total Darwin City (SSD) 1996</i>	<i>3 296</i>	<i>4 214</i>	<i>26 367</i>
<b>Palmerston-East Arm (SSD)</b>			
East Arm	—	—	388
Bakewell	124	148	839
Driver	124	152	965
Durack	131	159	738
Gray	127	150	1 016
Moulden	104	117	888
Woodroffe	130	172	1 051
Palmerston (C) Bal	130	147	992
<i>Total Palmerston-East Arm (SSD) 2001</i>	<i>870</i>	<i>1 045</i>	<i>6 876</i>
<i>Total Palmerston-East Arm (SSD) 1996</i>	<i>409</i>	<i>473</i>	<i>3 701</i>

— nil or rounded to zero (including null cells)

(a) Applicable to persons aged 15 years and over.

(b) Excludes schooling up to year 12.

(c) Includes 'Field of study inadequately described', 'Society and Culture', 'Creative Arts', 'Food', 'Hospitality and Personal Services', and 'Mixed Field Programmes'.

(d) Includes 'Field of study not stated'.

Geographic area	Natural and Physical Sciences	Information Technology	Engineering and Related Technologies	Architecture and Building	Agriculture, Environmental and Related Studies	Health	Education
<b>DARWIN (SD) <i>cont.</i></b>							
Litchfield Shire (SSD)							
Litchfield (S) - Pt A	9	21	240	48	19	43	42
Litchfield (S) - Pt B	115	70	1 293	378	206	354	334
<i>Total Litchfield Shire (SSD) 2001</i>	<i>124</i>	<i>91</i>	<i>1 533</i>	<i>426</i>	<i>225</i>	<i>397</i>	<i>376</i>
<i>Total Litchfield Shire (SSD) 1996</i>	<i>105</i>	<i>44</i>	<i>1 232</i>	<i>387</i>	<i>158</i>	<i>348</i>	<i>352</i>
<b>TOTAL DARWIN (SD) 2001</b>	<b>1 215</b>	<b>858</b>	<b>8 374</b>	<b>2 180</b>	<b>940</b>	<b>3 302</b>	<b>3 030</b>
<b>TOTAL DARWIN (SD) 1996</b>	<b>1 010</b>	<b>475</b>	<b>7 461</b>	<b>2 238</b>	<b>746</b>	<b>2 960</b>	<b>2 795</b>
<b>NORTHERN TERRITORY - BAL (SD)</b>							
<b>Finniss (SSD)</b>							
Coomalie (CGC)	13	—	73	23	19	32	57
Cox-Finniss	6	3	57	24	10	20	20
<i>Total Finniss (SSD) 2001</i>	<i>19</i>	<i>4</i>	<i>130</i>	<i>47</i>	<i>29</i>	<i>52</i>	<i>77</i>
<i>Total Finniss (SSD) 1996</i>	<i>30</i>	<i>—</i>	<i>124</i>	<i>38</i>	<i>27</i>	<i>47</i>	<i>80</i>
<b>Bathurst-Melville (SSD)</b>							
Bathurst-Melville	3	—	26	12	7	33	48
<i>Total Bathurst-Melville (SSD) 2001</i>	<i>3</i>	<i>—</i>	<i>26</i>	<i>12</i>	<i>7</i>	<i>33</i>	<i>48</i>
<i>Total Bathurst-Melville (SSD) 1996</i>	<i>3</i>	<i>—</i>	<i>12</i>	<i>8</i>	<i>—</i>	<i>18</i>	<i>39</i>
<b>Alligator (SSD)</b>							
Jabiru (T)	34	7	161	34	24	43	64
South Alligator	33	9	126	39	38	58	61
West Arnhem	15	—	53	27	14	38	64
<i>Total Alligator (SSD) 2001</i>	<i>82</i>	<i>16</i>	<i>340</i>	<i>100</i>	<i>76</i>	<i>139</i>	<i>189</i>
<i>Total Alligator (SSD) 1996</i>	<i>99</i>	<i>8</i>	<i>334</i>	<i>68</i>	<i>64</i>	<i>123</i>	<i>164</i>
<b>Daly (SSD)</b>							
Daly	6	7	155	42	16	62	67
<i>Total Daly (SSD) 2001</i>	<i>6</i>	<i>7</i>	<i>155</i>	<i>42</i>	<i>16</i>	<i>62</i>	<i>67</i>
<i>Total Daly (SSD) 1996</i>	<i>21</i>	<i>4</i>	<i>140</i>	<i>50</i>	<i>21</i>	<i>52</i>	<i>55</i>
<b>East Arnhem (SSD)</b>							
East Arnhem - Bal	11	3	101	46	14	64	108
Groote Eylandt	11	4	135	34	8	39	64
Nhulunbuy	49	15	537	82	31	157	114
<i>Total East Arnhem (SSD) 2001</i>	<i>71</i>	<i>22</i>	<i>773</i>	<i>162</i>	<i>53</i>	<i>260</i>	<i>286</i>
<i>Total East Arnhem (SSD) 1996</i>	<i>55</i>	<i>19</i>	<i>741</i>	<i>134</i>	<i>35</i>	<i>211</i>	<i>233</i>
<b>Lower Top End NT (SSD)</b>							
Elsley - Bal	12	7	108	40	48	62	76
Gulf	9	3	132	47	10	33	67
Katherine (T)	64	40	775	185	123	337	300
Victoria	17	5	138	67	54	47	43
<i>Total Lower Top End NT (SSD) 2001</i>	<i>102</i>	<i>54</i>	<i>1 153</i>	<i>339</i>	<i>235</i>	<i>479</i>	<i>486</i>
<i>Total Lower Top End NT (SSD) 1996</i>	<i>102</i>	<i>28</i>	<i>1 281</i>	<i>238</i>	<i>170</i>	<i>442</i>	<i>428</i>

— nil or rounded to zero (including null cells)

(b) Excludes schooling up to year 12.

(a) Applicable to persons aged 15 years and over.

<i>Geographic area</i>	<i>Management and Commerce</i>	<i>Other(c)</i>	<i>Total persons 15 years and over with qualification(d)</i>
<i>DARWIN (SD) cont.</i>			
Litchfield Shire (SSD)			
Litchfield (S) - Pt A	99	165	775
Litchfield (S) - Pt B	500	667	5 046
<i>Total Litchfield Shire (SSD) 2001</i>	599	832	5 821
<i>Total Litchfield Shire (SSD) 1996</i>	423	472	4 808
<i>TOTAL DARWIN (SD) 2001</i>	5 501	6 974	41 788
<i>TOTAL DARWIN (SD) 1996</i>	4 128	5 159	34 876
<i>NORTHERN TERRITORY - BAL (SD)</i>			
Finniss (SSD)			
Coomalie (CGC)	48	78	544
Cox-Finniss	28	43	329
<i>Total Finniss (SSD) 2001</i>	76	121	874
<i>Total Finniss (SSD) 1996</i>	37	95	701
Bathurst-Melville (SSD)			
Bathurst-Melville	18	40	291
<i>Total Bathurst-Melville (SSD) 2001</i>	18	40	291
<i>Total Bathurst-Melville (SSD) 1996</i>	8	13	200
Alligator (SSD)			
Jabiru (T)	95	96	715
South Alligator	68	97	776
West Arnhem	27	53	702
<i>Total Alligator (SSD) 2001</i>	190	246	2 193
<i>Total Alligator (SSD) 1996</i>	164	180	1 620
Daly (SSD)			
Daly	60	75	893
<i>Total Daly (SSD) 2001</i>	60	75	893
<i>Total Daly (SSD) 1996</i>	45	51	709
East Arnhem (SSD)			
East Arnhem - Bal	38	95	691
Groote Eylandt	37	56	587
Nhulunbuy	147	152	1 706
<i>Total East Arnhem (SSD) 2001</i>	222	303	2 984
<i>Total East Arnhem (SSD) 1996</i>	164	188	2 735
Lower Top End NT (SSD)			
Elsey - Bal	65	79	773
Gulf	31	59	918
Katherine (T)	367	496	3 422
Victoria	46	71	1 009
<i>Total Lower Top End NT (SSD) 2001</i>	509	705	6 121
<i>Total Lower Top End NT (SSD) 1996</i>	419	579	5 497

- (a) Applicable to persons aged 15 years and over.  
 (b) Excludes schooling up to year 12.  
 (c) Includes 'Field of study inadequately described', 'Society and Culture', 'Creative Arts', 'Food', 'Hospitality and Personal Services', and 'Mixed Field Programmes'.  
 (d) Includes 'Field of study not stated'.

<i>Geographic area</i>	<i>Natural and Physical Sciences</i>	<i>Information Technology</i>	<i>Engineering and Related Technologies</i>	<i>Architecture and Building</i>	<i>Agriculture, Environmental and Related Studies</i>	<i>Health</i>	<i>Education</i>
<b>NORTHERN TERRITORY - BAL (SD) <i>cont.</i></b>							
<b>Barkly (SSD)</b>							
Tableland	6	—	59	12	56	23	24
Tennant Creek (T)	16	6	138	55	22	103	98
Tennant Creek - Bal	3	—	31	12	10	24	28
<i>Total Barkly (SSD) 2001</i>	24	8	228	79	88	150	150
<i>Total Barkly (SSD) 1996</i>	45	9	309	83	81	154	135
<b>Central NT (SSD)</b>							
Alice Springs (T) - Charles	34	16	358	105	36	178	146
Alice Springs (T) - Heavitree	32	7	247	90	40	114	108
Alice Springs (T) - Larapinta	67	56	578	163	75	342	254
Alice Springs (T) - Ross	80	55	496	177	64	341	290
Alice Springs (T) - Stuart	18	13	164	51	22	180	81
Petermann	42	13	219	87	67	137	91
Sandover - Bal	8	3	69	19	23	57	66
Tanami	36	5	233	36	26	81	114
<i>Total Central NT (SSD) 2001</i>	317	166	2 364	728	353	1 430	1 150
<i>Total Central NT (SSD) 1996</i>	302	93	2 257	658	263	1 247	1 044
<b>TOTAL NORTHERN TERRITORY - BAL (SD) 2001</b>	<b>624</b>	<b>278</b>	<b>5 169</b>	<b>1 509</b>	<b>857</b>	<b>2 605</b>	<b>2 453</b>
<b>TOTAL NORTHERN TERRITORY - BAL (SD) 1996</b>	<b>657</b>	<b>161</b>	<b>5 198</b>	<b>1 277</b>	<b>661</b>	<b>2 294</b>	<b>2 178</b>
<b>OFF-SHORE AREAS &amp; MIGRATORY (SD)</b>							
<b>Off-Shore Areas &amp; Migratory (SSD)</b>							
Off-Shore Areas & Migratory	38	14	636	34	6	16	12
<i>Total Off-Shore Areas &amp; Migratory (SSD) 2001</i>	38	14	636	34	6	16	12
<i>Total Off-Shore Areas &amp; Migratory (SSD) 1996</i>	27	—	138	6	3	10	9
<b>TOTAL OFF-SHORE AREAS &amp; MIGRATORY (SD) 2001</b>	<b>38</b>	<b>14</b>	<b>636</b>	<b>34</b>	<b>6</b>	<b>16</b>	<b>12</b>
<b>TOTAL OFF-SHORE AREAS &amp; MIGRATORY (SD) 1996</b>	<b>27</b>	<b>—</b>	<b>138</b>	<b>6</b>	<b>3</b>	<b>10</b>	<b>9</b>
<b>TOTAL NORTHERN TERRITORY 2001</b>	<b>1 877</b>	<b>1 150</b>	<b>14 179</b>	<b>3 723</b>	<b>1 803</b>	<b>5 923</b>	<b>5 495</b>
<b>TOTAL NORTHERN TERRITORY 1996</b>	<b>1 694</b>	<b>636</b>	<b>12 797</b>	<b>3 521</b>	<b>1 410</b>	<b>5 264</b>	<b>4 982</b>

— nil or rounded to zero (including null cells)

(b) Excludes schooling up to year 12.

(a) Applicable to persons aged 15 years and over.

<i>Geographic area</i>	<i>Management and Commerce</i>	<i>Other(c)</i>	<i>Total persons 15 years and over with qualification(d)</i>
<b>NORTHERN TERRITORY - BAL (SD) <i>cont.</i></b>			
<b>Barkly (SSD)</b>			
Tableland	29	39	356
Tennant Creek (T)	65	118	1 045
Tennant Creek - Bal	16	23	239
<i>Total Barkly (SSD) 2001</i>	<i>110</i>	<i>180</i>	<i>1 641</i>
<i>Total Barkly (SSD) 1996</i>	<i>125</i>	<i>196</i>	<i>1 699</i>
<b>Central NT (SSD)</b>			
Alice Springs (T) - Charles	174	291	1 695
Alice Springs (T) - Heavitree	127	159	1 185
Alice Springs (T) - Larapinta	331	530	2 961
Alice Springs (T) - Ross	364	632	3 156
Alice Springs (T) - Stuart	109	205	1 672
Petermann	199	307	1 494
Sandover - Bal	38	78	562
Tanami	55	99	1 077
<i>Total Central NT (SSD) 2001</i>	<i>1 397</i>	<i>2 301</i>	<i>13 800</i>
<i>Total Central NT (SSD) 1996</i>	<i>1 128</i>	<i>1 762</i>	<i>11 982</i>
<b>TOTAL NORTHERN TERRITORY - BAL (SD) 2001</b>	<b>2 582</b>	<b>3 971</b>	<b>28 798</b>
<b>TOTAL NORTHERN TERRITORY - BAL (SD) 1996</b>	<b>2 090</b>	<b>3 064</b>	<b>25 143</b>
<b>OFF-SHORE AREAS &amp; MIGRATORY (SD)</b>			
<b>Off-Shore Areas &amp; Migratory (SSD)</b>			
Off-Shore Areas & Migratory	60	191	1 395
<i>Total Off-Shore Areas &amp; Migratory (SSD) 2001</i>	<i>60</i>	<i>191</i>	<i>1 395</i>
<i>Total Off-Shore Areas &amp; Migratory (SSD) 1996</i>	<i>12</i>	<i>43</i>	<i>270</i>
<b>TOTAL OFF-SHORE AREAS &amp; MIGRATORY (SD) 2001</b>	<b>60</b>	<b>191</b>	<b>1 395</b>
<b>TOTAL OFF-SHORE AREAS &amp; MIGRATORY (SD) 1996</b>	<b>12</b>	<b>43</b>	<b>270</b>
<b>TOTAL NORTHERN TERRITORY 2001</b>	<b>8 143</b>	<b>11 136</b>	<b>71 981</b>
<b>TOTAL NORTHERN TERRITORY 1996</b>	<b>6 230</b>	<b>8 266</b>	<b>60 289</b>

(a) Applicable to persons aged 15 years and over.

(b) Excludes schooling up to year 12.

(c) Includes 'Field of study inadequately described', 'Society and Culture', 'Creative Arts', 'Food', 'Hospitality and Personal Services', and 'Mixed Field Programmes'.

(d) Includes 'Field of study not stated'.

## STATISTICAL LOCAL AREAS, Ranked by unemployment rate(a)

Rank		Unemployment	Unemployed
		rate	persons
		%	
1	Cox-Finniss	14.2	51
2	Bathurst-Melville	13.1	93
3	Eley - Bal	12.9	125
4	Winnellie	12.9	39
5	Narrows	12.8	30
6	Moulden	12.4	171
7	Gray	11.0	162
8	Lee Point-Leanyer Swamp	10.1	21
9	Wagaman	9.4	98
10	Malak	9.1	153
11	Coconut Grove	8.7	108
12	Alawa	8.5	94
13	Ludmilla	8.5	83
14	Parap	8.5	84
15	Tanami	8.4	128
16	Karama	8.3	194
17	Moil	8.1	84
18	Nightcliff	7.4	152
19	Rapid Creek	7.3	131
20	Coomalie (CGC)	7.2	38
21	Driver	7.2	104
22	Millner	7.1	94
23	Tennant Creek - Bal	7.0	31
24	Litchfield (S) - Pt B	6.9	475
25	Jingili	6.8	68
26	Katherine (T)	6.7	309
27	Woodroffe	6.7	109
28	Brinkin	6.6	43
29	East Arnhem - Bal	6.5	104
30	South Alligator	6.1	39
31	Daly	5.8	63
32	Tennant Creek (T)	5.7	69
33	Alice Springs (T) - Charles	5.7	146
34	Alice Springs (T) - Stuart	5.6	74
35	Stuart Park	5.4	115
36	Anula	5.4	70
37	Marrara	5.4	52
38	Wulagi	5.4	71
39	Bakewell	5.4	83
40	Tiwi	5.3	75
41	Sandover - Bal	5.2	47
42	Fannie Bay	5.2	74
43	Wanguri	5.0	49
44	West Arnhem	4.8	53
45	City - Inner	4.8	108
46	Alice Springs (T) - Heavitree	4.7	65
47	Nakara	4.7	50
48	Gulf	4.7	60
49	Larrakeyah	4.6	100
50	Leanyer	4.5	122

(a) Applicable to persons aged 15 years and over.

Rank		Unemployment	Unemployed
		rate	persons
		%	
51	City - Remainder	4.4	71
52	Alice Springs (T) - Larapinta	3.7	162
53	The Gardens	3.7	17
54	Durack	3.4	42
55	Groote Eylandt	3.4	27
56	Victoria	3.4	39
57	Tableland	3.2	19
58	Palmerston (C) Bal	3.2	45
59	Jabiru (T)	3.2	27
60	Alice Springs (T) - Ross	3.0	126
61	Litchfield (S) - Pt A	3.0	43
62	Petermann	2.6	49
63	Nhulunbuy	2.6	54
64	Off-Shore Areas & Migratory	1.9	31
65	East Arm	np	np

np not available for publication but included in totals where applicable, unless otherwise indicated

(a) Applicable to persons aged 15 years and over.



# 7

## STATISTICAL LOCAL AREAS, Ranked by participation rate(a)

<i>Rank</i>		<i>Participation rate</i>	<i>Rank</i>		<i>Participation rate</i>
		<i>%</i>			<i>%</i>
1	Bakewell	79.7	36	City - Remainder	63.0
2	Durack	77.7	37	Moulden	62.6
3	Leanyer	76.0	38	Coconut Grove	61.9
4	Litchfield (S) - Pt A	74.8	39	Katherine (T)	61.0
5	Nhulunbuy	74.3	40	The Gardens	60.0
6	Off-Shore Areas & Migratory	74.0	41	Jabiru (T)	58.7
7	Alice Springs (T) - Larapinta	73.4	42	Tableland	56.2
8	Rapid Creek	72.9	43	Narrows	54.7
9	Wulagi	72.8	44	Alice Springs (T) - Heavitree	51.8
10	Nightcliff	71.7	45	Coomalie (CGC)	50.1
11	Driver	71.5	46	Gulf	49.8
12	Jingili	71.4	47	Tennant Creek (T)	48.6
13	Anula	71.3	48	Elsey - Bal	48.4
14	Nakara	71.3	49	Groote Eylandt	48.2
15	Stuart Park	71.2	50	Victoria	47.3
16	Palmerston (C) Bal	70.6	51	Bathurst-Melville	46.1
17	Woodroffe	70.0	52	Petermann	46.1
18	Alice Springs (T) - Ross	68.8	53	Cox-Finniss	45.2
19	Larrakeyah	68.6	54	City - Inner	42.6
20	Millner	68.2	55	Daly	41.6
21	Fannie Bay	68.1	56	Alice Springs (T) - Stuart	41.5
22	Malak	68.0	57	Winnellie	38.9
23	Brinkin	68.0	58	West Arnhem	37.8
24	Marrara	67.6	59	Sandover - Bal	37.4
25	Wanguri	67.5	60	East Arnhem - Bal	35.1
26	Alawa	67.5	61	Tanami	34.0
27	Alice Springs (T) - Charles	67.4	62	Tennant Creek - Bal	33.9
28	Wagaman	67.2	63	South Alligator	32.9
29	Karama	67.0	64	Lee Point-Leanyer Swamp	29.5
30	Moil	66.6	65	East Arm	np
31	Ludmilla	66.5			
32	Litchfield (S) - Pt B	65.6			
33	Parap	65.4			
34	Tiwi	63.5			
35	Gray	63.0			

np not available for publication but included in totals where applicable, unless otherwise indicated

(a) Applicable to persons aged 15 years and over.

# 8

## STATISTICAL LOCAL AREAS, Ranked by proportion of persons aged 15 years and over with a qualification(a)

Rank		15 years and over with qualification	%	Rank		15 years and over with qualification	%
1	Off-Shore Areas & Migratory		47.6	36	Litchfield (S) - Pt A		34.5
2	Rapid Creek		47.5	37	Alice Springs (T) - Heavitree		34.4
3	Nightcliff		45.8	38	Palmerston (C) Bal		34.3
4	Jabiru (T)		45.2	39	Driver		34.3
5	Larrakeyah		45.0	40	Woodroffe		34.0
6	Fannie Bay		44.5	41	Alice Springs (T) - Charles		33.4
7	Nakara		43.7	42	Narrows		32.6
8	Nhulunbuy		43.7	43	Coomalie (CGC)		32.4
9	Stuart Park		43.1	44	Alice Springs (T) - Stuart		32.2
10	Brinkin		42.4	45	Wagaman		31.9
11	Tiwi		41.5	46	Karama		31.9
12	The Gardens		41.3	47	Malak		30.9
13	Alice Springs (T) - Ross		41.3	48	Gray		30.4
14	Parap		40.6	49	Winnellie		29.2
15	Jingili		40.1	50	Moulden		26.2
16	Leanyer		40.1	51	Cox-Finiss		25.0
17	Wulagi		40.0	52	Tennant Creek (T)		24.0
18	Durack		40.0	53	Elsey - Bal		23.8
19	Alawa		39.1	54	Tableland		23.7
20	City - Inner		38.8	55	Groote Eylandt		22.3
21	South Alligator		38.4	56	Victoria		19.3
22	Wanguri		38.3	57	Daly		17.6
23	Marrara		38.3	58	Tanami		14.4
24	Alice Springs (T) - Larapinta		37.4	59	Gulf		14.0
25	City - Remainder		37.3	60	Sandover - Bal		13.1
26	Moil		37.1	61	Tennant Creek - Bal		10.3
27	Millner		36.9	62	Bathurst-Melville		9.3
28	Lee Point-Leanyer Swamp		36.5	63	East Arnhem - Bal		9.0
29	Anula		36.3	64	West Arnhem		8.8
30	Ludmilla		35.9	65	East Arm		np
31	Katherine (T)		35.7				
32	Litchfield (S) - Pt B		35.5				
33	Coconut Grove		35.3				
34	Bakewell		35.2				
35	Petermann		34.7				

np not available for publication but included in totals where applicable, unless otherwise indicated

(a) Includes the broad levels 'Postgraduate Degree', 'Graduate Diploma and Graduate Certificate', 'Bachelor Degree', 'Advanced Diploma and Diploma', and 'Certificate'.

## BASIC COMMUNITY PROFILE

---

### ABOUT THE BASIC COMMUNITY PROFILE

The key characteristics from the Census are summarised in a set of 33 standard tables which make up the Basic Community Profile (BCP).

The first 21 tables (B01–B21) provide a range of social, demographic and housing characteristics from the Census and are published for Australia and each state and territory in *Census of Population and Housing: Selected Social and Housing Characteristics for Statistical Local Areas* (cat. nos 2015.0–8). Similar BCP tables are available for other geographic areas, including Collection Districts, Local Government Areas, Postal Areas and Suburbs.

The remainder of the BCP series (B22–B33) are included in this publication and provide education and labour force related data.

BCPs for Statistical Local Areas are available from our web site free of charge.

For further information about the Community Profile Series, please refer to the Appendix—Census Products and Services.

**B22**

SELECTED CHARACTERISTICS (SECOND RELEASE PROCESSING),  
Persons (excluding overseas visitors)

	<i>Males</i>	<i>Females</i>	<i>Persons</i>
Employed:(a)			
Full-time(b)	37 412	23 259	60 671
Part-time	11 790	15 129	26 919
Not stated(c)	1 662	1 182	2 844
<b>Total</b>	<b>50 864</b>	<b>39 570</b>	<b>90 434</b>
Unemployed(a)	3 444	2 270	5 714
<b>Total labour force(a)</b>	<b>54 308</b>	<b>41 840</b>	<b>96 148</b>
Not in the labour force(a)	20 209	26 227	46 436
Unemployment rate(a) (%)	6.3	5.4	5.9
Same address 1 year ago(d)	73 009	67 176	140 185
Different address 1 year ago(d)	23 150	21 713	44 863
Same address 5 years ago(e)	43 964	40 783	84 747
Different address 5 years ago(e)	44 903	41 449	86 352

- (a) Applicable to persons aged 15 years and over.  
 (b) Full-time is defined as having worked 35 hours or more in all jobs in the week prior to Census Night.  
 (c) Includes persons who did not state their hours worked.  
 (d) Excludes persons less than 1 year of age.  
 (e) Excludes persons less than 5 years of age.

**B23**

NON-SCHOOL QUALIFICATION: LEVEL OF EDUCATION BY SEX(a),  
Persons aged 15 years and over (excluding overseas visitors)

	<i>Males</i>	<i>Females</i>	<i>Persons</i>
Postgraduate Degree	1 380	1 069	2 449
Graduate Diploma and Graduate Certificate	873	1 397	2 270
Bachelor Degree	5 331	7 275	12 606
Advanced Diploma and Diploma	4 159	4 509	8 668
Certificate	18 319	6 172	24 491
Not stated(b)	11 468	10 029	21 497
Not applicable(c)	39 159	42 444	81 603
<b>Total</b>	<b>80 689</b>	<b>72 895</b>	<b>153 584</b>

- (a) Excludes schooling up to Year 12.  
 (b) Includes 'Inadequately described'.  
 (c) Includes persons who do not have a qualification and persons who have a qualification out of scope of the Australian Standard Classification of Education.

NON-SCHOOL QUALIFICATION: FIELD OF STUDY BY SEX(a),  
Persons aged 15 years and over (excluding overseas visitors)

	Males	Females	Persons
Natural and Physical Sciences	1 141	736	1 877
Information Technology	713	437	1 150
Engineering and Related Technologies	13 547	632	14 179
Architecture and Building	3 587	136	3 723
Agriculture, Environmental and Related Studies	1 245	558	1 803
Health	1 263	4 660	5 923
Education	1 495	4 000	5 495
Management and Commerce	3 144	4 999	8 143
Society and Culture	2 135	3 367	5 502
Creative Arts	640	857	1 497
Food, Hospitality and Personal Services	1 537	1 767	3 304
Mixed Field Programmes	30	33	63
Field of Study inadequately described	480	290	770
Not stated	10 573	7 979	18 552
Not applicable(b)	39 159	42 444	81 603
<b>Total</b>	<b>80 689</b>	<b>72 895</b>	<b>153 584</b>

(a) Excludes schooling up to Year 12.

(b) Includes persons who do not have a qualification and persons who have a qualification out of the scope of the Australian Standard Classification of Education.

AGE BY LABOUR FORCE STATUS (FULL-TIME/PART-TIME) BY SEX,  
Persons aged 15 years and over (excluding overseas visitors)

	EMPLOYED WORKING			Total employed	UNEMPLOYED LOOKING FOR		Total unemployed	Total labour force	Not in the labour force	Not stated(c)	Total
	Full-time(a)	Part-time	Not stated(b)		Full-time work	Part-time work					
MALES											
15-19 years	1 258	1 348	193	2 799	275	144	419	3 218	3 550	592	7 360
20-24 years	3 857	1 397	240	5 494	466	89	555	6 049	1 686	672	8 407
25-34 years	10 457	2 717	431	13 605	797	124	921	14 526	2 857	1 410	18 793
35-44 years	10 068	2 397	345	12 810	620	84	704	13 514	2 300	1 304	17 118
45-54 years	8 246	2 209	285	10 740	473	50	523	11 263	2 167	1 005	14 435
55-64 years	3 183	1 373	122	4 678	237	63	300	4 978	3 437	557	8 972
65 years and over	343	349	46	738	14	8	22	760	4 212	632	5 604
<b>Total</b>	<b>37 412</b>	<b>11 790</b>	<b>1 662</b>	<b>50 864</b>	<b>2 882</b>	<b>562</b>	<b>3 444</b>	<b>54 308</b>	<b>20 209</b>	<b>6 172</b>	<b>80 689</b>
FEMALES											
15-19 years	771	1 571	144	2 486	217	180	397	2 883	3 507	486	6 876
20-24 years	2 706	1 390	125	4 221	278	118	396	4 617	2 294	549	7 460
25-34 years	6 610	3 738	261	10 609	370	210	580	11 189	5 335	1 267	17 791
35-44 years	6 094	3 943	289	10 326	304	172	476	10 802	3 790	1 035	15 627
45-54 years	5 451	2 952	237	8 640	221	72	293	8 933	3 079	660	12 672
55-64 years	1 521	1 352	91	2 964	64	47	111	3 075	4 060	322	7 457
65 years and over	106	183	35	324	9	8	17	341	4 162	509	5 012
<b>Total</b>	<b>23 259</b>	<b>15 129</b>	<b>1 182</b>	<b>39 570</b>	<b>1 463</b>	<b>807</b>	<b>2 270</b>	<b>41 840</b>	<b>26 227</b>	<b>4 828</b>	<b>72 895</b>
PERSONS											
15-19 years	2 029	2 919	337	5 285	492	324	816	6 101	7 057	1 078	14 236
20-24 years	6 563	2 787	365	9 715	744	207	951	10 666	3 980	1 221	15 867
25-34 years	17 067	6 455	692	24 214	1 167	334	1 501	25 715	8 192	2 677	36 584
35-44 years	16 162	6 340	634	23 136	924	256	1 180	24 316	6 090	2 339	32 745
45-54 years	13 697	5 161	522	19 380	694	122	816	20 196	5 246	1 665	27 107
55-64 years	4 704	2 725	213	7 642	301	110	411	8 053	7 497	879	16 429
65 years and over	449	532	81	1 062	23	16	39	1 101	8 374	1 141	10 616
<b>Total</b>	<b>60 671</b>	<b>26 919</b>	<b>2 844</b>	<b>90 434</b>	<b>4 345</b>	<b>1 369</b>	<b>5 714</b>	<b>96 148</b>	<b>46 436</b>	<b>11 000</b>	<b>153 584</b>

(a) Full-time is defined as having worked 35 hours or more in all jobs during the week prior to Census Night.

(b) Includes employed persons who did not state their hours worked.

(c) Includes persons who did not state their labour force status.

INDUSTRY BY AGE BY SEX, Employed persons (excluding overseas visitors)

	15-19 years	20-24 years	25-34 years	35-44 years	45-54 years	55-64 years	65 years and over	Total
MALES								
Agriculture, Forestry and Fishing	157	213	416	380	364	293	122	1 945
Mining	19	99	533	661	469	169	10	1 960
Manufacturing	125	310	816	869	692	332	43	3 187
Electricity, Gas and Water Supply	3	32	111	207	190	71	3	617
Construction	167	407	1 264	1 383	1 140	462	47	4 870
Wholesale Trade	78	238	648	652	474	202	36	2 328
Retail Trade	933	660	1 246	1 060	800	422	80	5 201
Accommodation, Cafes and Restaurants	212	444	734	461	385	188	32	2 456
Transport and Storage	48	212	909	968	904	403	50	3 494
Communication Services	12	48	141	194	204	39	4	642
Finance and Insurance	5	40	147	128	139	66	12	537
Property and Business Services	101	300	991	1 018	1 035	501	82	4 028
Government Administration and Defence	594	1 822	3 403	2 320	1 577	547	39	10 302
Education	25	72	375	595	717	278	25	2 087
Health and Community Services	44	118	481	517	478	224	43	1 905
Cultural and Recreational Services	70	128	385	330	283	108	24	1 328
Personal and Other Services	83	181	679	767	605	220	28	2 563
Non-Classifiable Economic Units	20	53	119	119	130	68	9	518
Not stated	103	117	207	181	154	85	49	896
<b>Total</b>	<b>2 799</b>	<b>5 494</b>	<b>13 605</b>	<b>12 810</b>	<b>10 740</b>	<b>4 678</b>	<b>738</b>	<b>50 864</b>
FEMALES								
Agriculture, Forestry and Fishing	43	105	165	187	160	153	30	843
Mining	5	34	87	78	38	12	—	254
Manufacturing	34	69	206	246	222	83	12	872
Electricity, Gas and Water Supply	5	12	50	57	35	5	—	164
Construction	12	39	194	225	177	70	7	724
Wholesale Trade	54	111	258	236	217	63	7	946
Retail Trade	1 067	668	1 252	1 164	998	332	47	5 528
Accommodation, Cafes and Restaurants	305	544	836	577	513	191	18	2 984
Transport and Storage	39	163	447	314	218	77	10	1 268
Communication Services	13	54	106	106	78	21	—	378
Finance and Insurance	37	148	372	249	151	43	4	1 004
Property and Business Services	118	387	1 054	963	821	274	28	3 645
Government Administration and Defence	268	747	1 726	1 491	1 098	301	30	5 661
Education	52	243	1 164	1 584	1 526	495	28	5 092
Health and Community Services	117	444	1 509	1 771	1 625	562	43	6 071
Cultural and Recreational Services	98	154	369	366	245	82	13	1 327
Personal and Other Services	117	205	557	457	291	107	8	1 742
Non-Classifiable Economic Units	17	38	87	92	80	26	7	347
Not stated	85	56	170	163	147	67	31	719
<b>Total</b>	<b>2 486</b>	<b>4 221</b>	<b>10 609</b>	<b>10 326</b>	<b>8 640</b>	<b>2 964</b>	<b>323</b>	<b>39 569</b>

— nil or rounded to zero (including null cells)

	15-19 years	20-24 years	25-34 years	35-44 years	45-54 years	55-64 years	65 years and over	Total
PERSONS								
Agriculture, Forestry and Fishing	200	318	581	567	524	446	152	2 788
Mining	24	133	620	739	507	181	10	2 214
Manufacturing	159	379	1 022	1 115	914	415	55	4 059
Electricity, Gas and Water Supply	8	44	161	264	225	76	3	781
Construction	179	446	1 458	1 608	1 317	532	54	5 594
Wholesale Trade	132	349	906	888	691	265	43	3 274
Retail Trade	2 000	1 328	2 498	2 224	1 798	754	127	10 729
Accommodation, Cafes and Restaurants	517	988	1 570	1 038	898	379	50	5 440
Transport and Storage	87	375	1 356	1 282	1 122	480	60	4 762
Communication Services	25	102	247	300	282	60	4	1 020
Finance and Insurance	42	188	519	377	290	109	16	1 541
Property and Business Services	219	687	2 045	1 981	1 856	775	110	7 673
Government Administration and Defence	862	2 569	5 129	3 811	2 675	848	69	15 963
Education	77	315	1 539	2 179	2 243	773	53	7 179
Health and Community Services	161	562	1 990	2 288	2 103	786	86	7 976
Cultural and Recreational Services	168	282	754	696	528	190	37	2 655
Personal and Other Services	200	386	1 236	1 224	896	327	36	4 305
Non-Classifiable Economic Units	37	91	206	211	210	94	16	865
Not stated	188	173	377	344	301	152	80	1 615
<i>Total</i>	5 285	9 715	24 214	23 136	19 380	7 642	1 061	90 433



	15-19 years	20-24 years	25-34 years	35-44 years	45-54 years	55-64 years	65 years and over	Total
MALES								
Managers and Administrators	20	174	834	1 484	1 688	810	170	5 180
Professionals	43	392	1 936	2 014	1 831	733	120	7 069
Associate Professionals	135	604	1 980	1 961	1 689	668	91	7 128
Tradespersons and Related Workers	644	1 675	3 473	2 730	1 786	656	81	11 045
Advanced Clerical and Service Workers	4	24	75	61	79	45	12	300
Intermediate Clerical, Sales and Service Workers	176	520	1 321	1 123	886	382	38	4 446
Intermediate Production and Transport Workers	333	624	1 524	1 560	1 232	604	62	5 939
Elementary Clerical, Sales and Service Workers	487	375	572	403	398	188	31	2 454
Labourers and Related Workers	834	938	1 574	1 151	880	440	66	5 883
Inadequately described	35	82	165	172	173	81	24	732
Not stated	88	86	151	151	98	71	43	688
<i>Total</i>	2 799	5 494	13 605	12 810	10 740	4 678	738	50 864
FEMALES								
Managers and Administrators	15	98	488	672	693	291	39	2 296
Professionals	78	595	2 593	2 537	2 110	649	56	8 618
Associate Professionals	110	507	1 573	1 567	1 332	414	37	5 540
Tradespersons and Related Workers	85	187	374	255	230	85	10	1 226
Advanced Clerical and Service Workers	45	172	692	681	606	271	33	2 500
Intermediate Clerical, Sales and Service Workers	590	1 445	2 710	2 470	1 909	613	50	9 787
Intermediate Production and Transport Workers	74	76	180	164	129	45	5	673
Elementary Clerical, Sales and Service Workers	1 064	707	1 061	972	752	252	28	4 836
Labourers and Related Workers	334	349	715	778	697	249	28	3 150
Inadequately described	16	40	97	101	80	31	8	373
Not stated	75	45	126	129	102	64	30	571
<i>Total</i>	2 486	4 221	10 609	10 326	8 640	2 964	324	39 570
PERSONS								
Managers and Administrators	35	272	1 322	2 156	2 381	1 101	209	7 476
Professionals	121	987	4 529	4 551	3 941	1 382	176	15 687
Associate Professionals	245	1 111	3 553	3 528	3 021	1 082	128	12 668
Tradespersons and Related Workers	729	1 862	3 847	2 985	2 016	741	91	12 271
Advanced Clerical and Service Workers	49	196	767	742	685	316	45	2 800
Intermediate Clerical, Sales and Service Workers	766	1 965	4 031	3 593	2 795	995	88	14 233
Intermediate Production and Transport Workers	407	700	1 704	1 724	1 361	649	67	6 612
Elementary Clerical, Sales and Service Workers	1 551	1 082	1 633	1 375	1 150	440	59	7 290
Labourers and Related Workers	1 168	1 287	2 289	1 929	1 577	689	94	9 033
Inadequately described	51	122	262	273	253	112	32	1 105
Not stated	163	131	277	280	200	135	73	1 259
<i>Total</i>	5 285	9 715	24 214	23 136	19 380	7 642	1 062	90 434

METHOD OF TRAVEL TO WORK BY SEX,  
Employed persons (excluding overseas visitors)

	Males	Females	Persons
One method only:			
Train	23	17	40
Bus	1 674	932	2 606
Ferry	35	13	48
Tram(a)	9	8	17
Taxi	254	157	411
Car, as driver	24 713	19 630	44 343
Car, as passenger	3 358	3 903	7 261
Truck	1 001	49	1 050
Motorbike/motor scooter	781	137	918
Bicycle	1 959	887	2 846
Other	1 627	246	1 873
Walked only	5 949	4 612	10 561
<b>Total</b>	<b>41 383</b>	<b>30 591</b>	<b>71 974</b>
Two methods:			
Train and Bus	15	3	18
Train and other (excluding bus)	6	5	11
Bus and other (excluding train)	184	190	374
Other two methods	777	449	1 226
<b>Total</b>	<b>982</b>	<b>647</b>	<b>1 629</b>
Three methods:			
Train and other two methods	10	3	13
Bus and other two methods (excluding train)	44	23	67
Other three methods	81	33	114
<b>Total</b>	<b>135</b>	<b>59</b>	<b>194</b>
Worked at home	1 656	1 723	3 379
Did not go to work	5 731	5 740	11 471
Not stated	977	811	1 788
<b>Total</b>	<b>50 864</b>	<b>39 571</b>	<b>90 435</b>

(a) Includes light rail.

*Dwellings*

Number of households with:	
No motor vehicles and:	
No motorbikes/motor scooters	7 169
1 motorbike/motor scooter	88
2 or more motorbikes/motor scooters	35
Not stated	1 446
<i>Total</i>	8 738
1 motor vehicle and:	
No motorbikes/motor scooters	7 926
1 motorbike/motor scooter	1 273
2 or more motorbikes/motor scooters	131
Not stated	15 113
<i>Total</i>	24 443
2 motor vehicles and:	
No motorbikes/motor scooters	5 649
1 motorbike/motor scooter	1 050
2 or more motorbikes/motor scooters	204
Not stated	11 046
<i>Total</i>	17 949
3 motor vehicles and:	
No motorbikes/motor scooters	1 717
1 motorbike/motor scooter	516
2 or more motorbikes/motor scooters	159
Not stated	3 891
<i>Total</i>	6 283
Number of motor vehicles not stated and:	
No motorbikes/motor scooters	45
1 motorbike/motor scooter	124
2 motorbikes/motor scooters	21
Not stated	7 454
<i>Total</i>	7 644
<b>Total</b>	<b>65 057</b>

# B30

## WEEKLY FAMILY INCOME BY FAMILY TYPE, Families in occupied private dwellings

	<i>Couple family with children</i>	<i>Couple family without children</i>	<i>One parent family</i>	<i>Other family</i>	<i>Total</i>
Negative/Nil income	46	76	65	—	187
\$1–\$199	88	76	743	15	922
\$200–\$299	179	151	722	25	1 077
\$300–\$399	1 369	1 410	1 062	103	3 944
\$400–\$499	884	559	750	76	2 269
\$500–\$599	867	435	672	54	2 028
\$600–\$699	884	551	519	67	2 021
\$700–\$799	859	493	427	79	1 858
\$800–\$999	1 903	1 099	648	75	3 725
\$1,000–\$1,199	1 847	1 224	505	59	3 635
\$1,200–\$1,499	2 697	1 832	289	75	4 893
\$1,500–\$1,999	3 443	2 463	278	59	6 243
\$2,000 or more	2 672	1 587	70	21	4 350
Partial income stated(a)	3 086	1 340	613	42	5 081
All incomes not stated(b)	379	278	323	36	1 016
<b>Total</b>	<b>21 203</b>	<b>13 574</b>	<b>7 686</b>	<b>786</b>	<b>43 249</b>

— nil or rounded to zero (including null cells)

(a) Includes families where at least one, but not all, member(s) aged 15 years and over did not state an income and/or at least one family member aged 15 years and over was temporarily absent.

(b) Includes families where no members present stated an income.

# B31

## WEEKLY HOUSEHOLD INCOME BY HOUSEHOLD TYPE, Occupied private dwellings(a)

	<i>Family households</i>	<i>Non-family households</i>	<i>Total</i>
Negative/Nil income	136	217	353
\$1–\$199	342	1 919	2 261
\$200–\$299	645	1 525	2 170
\$300–\$399	2 281	771	3 052
\$400–\$499	1 706	1 046	2 752
\$500–\$599	1 679	1 195	2 874
\$600–\$699	1 836	1 100	2 936
\$700–\$799	1 784	997	2 781
\$800–\$999	3 695	1 658	5 353
\$1,000–\$1,199	3 708	1 569	5 277
\$1,200–\$1,499	5 131	437	5 568
\$1,500–\$1,999	6 512	932	7 444
\$2,000 or more	4 734	352	5 086
Partial income stated(b)	5 176	342	5 518
All incomes not stated(c)	923	801	1 724
<b>Total</b>	<b>40 288</b>	<b>14 861</b>	<b>55 149</b>

(a) Excludes 'Other not classifiable households' and 'Visitor only households'.

(b) Includes families where at least one, but not all, member(s) aged 15 years and over did not state an income and/or at least one family member aged 15 years and over was temporarily absent.

(c) Includes households where no members present stated an income.

**B32**HOUSEHOLD TYPE BY NUMBER OF PERSONS USUALLY RESIDENT(a),  
Occupied private dwellings(b)NON-FAMILY  
HOUSEHOLDS

	<i>Family households</i>	<i>Lone person household</i>	<i>Group household</i>	<i>Total</i>
--	------------------------------	--------------------------------------	----------------------------	--------------

## Number of persons usually resident:

One	..	12 083	..	12 083
Two	14 323	..	2 004	16 327
Three	8 532	..	561	9 093
Four	8 636	..	140	8 776
Five	4 355	..	51	4 406
Six or more	4 442	..	22	4 464
<b>Total</b>	<b>40 288</b>	<b>12 083</b>	<b>2 778</b>	<b>55 149</b>

.. not applicable

(a) Includes partners, children, and co-tenants (in group households) who were temporarily absent on Census Night. A maximum of 3 temporary absentees can be counted in each household.

(b) Excludes 'Non-classifiable households' and 'Visitor only households'.

**B33**

## SELECTED AVERAGES(a)

Median age(b)	30
Median monthly housing loan repayments	\$1,000-\$1,199
Median weekly rent	\$100-\$149
Median weekly individual income	\$400-\$499
Median weekly family income	\$1,000-\$1,199
Median weekly household income	\$800-\$999
Mean household size (persons)	3.0

(a) Refer to 'Explanatory Notes' for further detail on Selected Averages.

(b) Excludes 'Overseas visitors'.

## EXPLANATORY NOTES

### SCOPE AND COVERAGE

**1** The 2001 Census of Population and Housing was held on 7 August 2001. Australia's first national Census was held in 1911 and since 1961 a census has been taken every five years, a frequency which is specified in the *Census and Statistics Act 1905*. The objective of the Census is to count the number of people in Australia on Census Night, identifying their key characteristics and those of the dwellings in which they live.

**2** The Census aims to count every person who spent Census Night in Australia. This includes Australian residents in Antarctica and people in the territories of Jervis Bay, Cocos (Keeling) Islands and Christmas Island. The other Australian External Territories, Norfolk Island and minor islands such as Heard and McDonald Islands, are outside the scope of the Australian Census. The only people in Australia on Census Night who are excluded from the Census are foreign diplomats and their families.

**3** The Census includes people on vessels in or between Australian ports, on board long distance trains, buses or aircraft and on oil or gas rigs off the Australian coast. People entering Australia before midnight on Census Night are counted while people leaving an Australian port for an overseas destination before midnight on Census Night are not. Visitors to Australia are included regardless of how long they have been in the country or how long they plan to stay. However, for people who intend to be in Australia less than one year, only basic demographic data are available. The Census includes homeless people and people camping out.

**4** All occupied dwellings are counted in the Census with the exception of diplomatic dwellings. Unoccupied private dwellings are also counted with the exception of unoccupied dwellings in caravan parks, marinas and manufactured home estates, and units in accommodation for the retired or aged (self-care). Unoccupied residences of owners, managers or caretakers of such establishments are counted.

**5** Details about the 2001 Census content, collection operations, confidentiality and privacy protection, processing and evaluation activities are contained in *2001 Census of Population and Housing: Nature and Content* (cat. no. 2008.0).

### STATISTICAL LOCAL AREA BOUNDARIES

**6** The boundaries of Statistical Local Areas (SLAs) are revised from time to time to accord with changes to Local Government Area (LGA) boundaries and to meet needs for small area information. The boundaries shown in this publication are those applying at the time of the 2001 Census. Further information on geographic classifications is contained in *Statistical Geography: Volume 1—Australian Standard Geographical Classification (ASGC), 2001* (cat. no. 1216.0).

### BASIC COMMUNITY PROFILE TABLES B22 TO B33

**7** Tables numbered B22 to B33 contained in this publication are from the *Census of Population and Housing: Basic Community Profile* (cat. no. 2001.0). These tables are available in hardcopy or electronic format for all standard census geographic areas. For more information about the Community Profiles please refer to the Appendix.

### ABS POPULATION ESTIMATES

**8** This publication contains population counts based on a 'place of enumeration' basis. 'Place of enumeration' means where the person was counted on Census Night. The Census can provide person counts based on 'place of usual residence' for Collection Districts (CDs) and aggregations of CDs.

## EXPLANATORY NOTES *continued*

### ABS POPULATION ESTIMATES *continued*

**9** The Estimated Resident Population (ERP) is the official Australian Bureau of Statistics (ABS) estimate of the Australian population. The ERP is based on results of the Census of Population and Housing. It is compiled as at 30 June of each census year and updated quarterly between censuses. The intercensal estimates of the resident population are revised following the next census.

**10** The ERP is derived from census usual residence counts, by making the following three important adjustments:

- An adjustment for census net underenumeration (or undercount). The level of underenumeration is derived from the Post Enumeration Survey which is conducted soon after the Census, and from estimates based on demographic analysis.
- The inclusion of an estimated number of Australian residents who are temporarily overseas on Census Night and are therefore not covered by the Australian Census. The number of such people is estimated from statistics on overseas arrivals and departures.
- The third adjustment occurs because the Census does not fall on 30 June. For example, the 2001 Census was held on 7 August. Back dating of population estimates from 7 August to 30 June is accomplished using data from birth and death registrations, overseas arrivals and departures, and estimates of interstate migration, for the period 1 July to 7 August.

**11** ABS population estimates are published in *Australian Demographic Statistics* (cat. no. 3101.0), produced quarterly, and in *Population by Age and Sex, Australian States and Territories* (cat. no. 3201.0) produced annually. ERPs for SLAs are published in *Regional Population Growth, Australia and New Zealand* (cat. no. 3218.0).

**12** The ABS also provides projections (based on different assumptions as to future fertility, mortality and migration) of the resident population of Australia, states and territories. These projections are published every two years in *Population Projections, Australia* (cat. no. 3222.0).

### DATA LIMITATIONS

**13** Census data are subject to a number of inaccuracies resulting from errors by respondents or mistakes in collection or processing. Whilst many of these are corrected by careful processing procedures, some still remain. The effect of the remaining errors is generally slight, although it may be more important for small groups in the population. The main kinds of error to keep in mind are:

- *Partial non-response*: In some cases where an answer is not provided to a question an answer is imputed (often from other information on the form). In other cases a 'Not stated' code is allocated.
- *Processing error*: While such errors can occur in any processing system, quality management is used continuously to improve the quality of processed data, and to identify and correct data of unacceptable quality.
- *Random adjustment*: Table cells containing small values are randomly adjusted or suppressed to avoid releasing information about particular individuals, families, or households. The effects of these adjustments are statistically insignificant.
- *Respondent error*: Because processing procedures cannot detect or repair all errors made by people in completing the forms, some remain in final data.
- *Undercount*: Although the Census aims to count each person, there are some people who are missed and others who are counted more than once. The data in this publication are not adjusted for the net undercount.

## EXPLANATORY NOTES *continued*

- DATA LIMITATIONS *continued* **14** Further information on data quality is provided progressively in *Census Update* and in *2001 Census Papers*.
- OVERSEAS VISITORS **15** Overseas visitors are defined differently for the 2001 Census. For the 1996 Census overseas visitors were defined as any person who stated they would be in Australia for less than 6 months. For the 2001 Census they are defined as any person who stated they would be in Australia for less than 12 months. Data for overseas visitors are restricted to age, sex and marital status.
- LABOUR FORCE STATISTICS **16** The labour force statistics collected from the Census are valuable in providing data for small groups of the population. They are not to be confused with the statistics from the monthly Labour Force Survey, which are only available at state, territory and capital city level.
- 17** Census figures differ from the survey figures because of differences in scope, questionnaire design and collection procedures. For more information refer to *Census Working Paper 99/2—1996 Census: Labour Force Status* and the *2001 Census Fact Sheet—Labour Force Status*.
- 18** Official monthly labour force statistics are published in *Labour Force, Australia* (cat. no. 6203.0), produced monthly.
- CALCULATIONS OF PROPORTIONS **19** When calculating the proportion of the population with a particular characteristic, 'Not stated' responses are included in the denominator. For example in table 4 the proportion of persons aged 15 years and over with qualification for each geographic area is calculated by dividing the number of persons who stated that they had a non-school qualification by the total population of the geographic area and expressing the result as a percentage. The total population includes the category 'Not stated'.
- 20** For census variables which include data for overseas visitors i.e. age, sex and marital status, the category 'Overseas visitor' is also included in the denominator.
- CALCULATION OF MEDIANS **21** A median is a measure of central tendency. It is a mid value which divides a population distribution into two, with half the observations falling below it and half above it. Unlike averages (means) medians are not usually skewed by extreme observations.
- 22** There are a number of issues to be aware of:
- The categories 'Not stated' and 'Not applicable' are not included in the calculation of medians.
  - The category 'Overseas visitor', is excluded in the calculation of all medians in this publication.
  - If a median falls into a category that has a text-only label, then a value of '0' is used for that category. For this publication this is only relevant to the calculation of median income, as the income classification includes categories 'Nil income' and 'Negative income'.
  - When calculating a median on a classification containing ranges, the median may fall into a range which is open-ended. In this case, the median would be set to the number in the label. For example, in the calculation of 'Median weekly individual income', if the median was to fall in the last range *\$1,500 or more*, then \$1,500 would be allocated as the median.



## EXPLANATORY NOTES *continued*

### CALCULATION OF MEDIANS

*continued*

- 'Median monthly housing loan repayment' and 'Median weekly rent' are based on the ranged variables HLRD01 and RNTD01 respectively. This is due to difficulties associated with the large number of small cells when using individual dollar values to perform these calculations. An adjustment has been made to HLRD01, with the range *\$1,500 and over* changed to *\$1,500–\$1,999* and an additional range *\$2,000 and over* added.

### SELECTED AVERAGES

- 23** 'Median monthly housing loan repayments' is applicable to occupied private dwellings being purchased and includes dwellings being purchased under a rent/buy scheme.
- 24** 'Median weekly rent' is applicable to occupied private dwellings being rented. It excludes dwellings being occupied rent free, Visitor only households and Non-classifiable households.
- 25** 'Median weekly individual income' is applicable to persons aged 15 years and over.
- 26** 'Median weekly family income' is applicable to families in occupied private dwellings. It excludes families where at least one family member aged 15 years and over did not state an income, and families where at least one family member aged 15 years and over was temporarily absent.
- 27** 'Median weekly household income' is applicable to occupied private dwellings. It excludes households where at least one member aged 15 years and over did not state an income, and households where at least one member aged 15 years and over was temporarily absent.
- 28** 'Mean household size' is applicable to occupied private dwellings. It is based on the number of persons usually resident in the dwelling. It includes partners, children, and co-tenants (in group households) who were temporarily absent on Census Night. A maximum of three temporary absentees can be counted in each household. It excludes Non-classifiable households.

### UNADJUSTED DOLLARS

- 29** The 1996 Census dollar values for 'Median weekly individual income', 'Median monthly housing loan repayments' and 'Median weekly rent' have not been adjusted into 2001 dollars.

### ABBREVIATIONS

ABS	Australian Bureau of Statistics
ASGC	Australian Standard Geographical Classification
Bal	Balance
BCP	Basic Community Profile
C	City
CD	Collection District
ERP	estimated resident population
GIS	geographic information system
LGA	Local Government Area
no.	number
NT	Northern Territory
Pt	Part
S	Shire
SD	Statistical Division
SLA	Statistical Local Area
SSD	Statistical Subdivision
T	Town

## APPENDIX CENSUS PRODUCTS AND SERVICES

### 2001 PRODUCTS AND SERVICES

A wide range of products and services are available from the 2001 Census of Population and Housing. Brief descriptions of these are included below. For more detailed information on the 2001 Census range of products and services, please refer to the *2001 Directory of Census Statistics* (cat. no. 2910.0).

Census products fall into two broad types: reference products and data products. Most of the reference products from the 2001 Census are available free of charge from the ABS web site.

### CENSUS REFERENCE PRODUCTS

#### *2001 Census Dictionary*

The *2001 Census Dictionary* (cat. no. 2901.0) is a comprehensive reference guide to the 2001 Census of Population and Housing. The Dictionary includes a complete listing of 2001 Census classifications. It describes new topics introduced for 2001 and highlights classification changes that have occurred since the 1996 Census. The Dictionary also explains the concepts relevant to census collection, processing and output of data.

#### *How Australia Takes a Census*

*How Australia Takes a Census* (cat. no. 2903.0) provides information about the history of the census, the planning process and the way in which the census is conducted.

#### *Geographic Classifications and Codes*

*Statistical Geography: Volume 1—Australian Standard Geographical Classification (ASGC) 2001 Census Edition* (cat. no. 1216.0) provides information about the names and codes of the standard geographic areas used in the 2001 Census. *Statistical Geography: Volume 2—Census Geographic Areas Australia 2001 Census Edition* (cat. no. 2905.0) and *Statistical Geography: Volume 3—Australian Standard Geographical Classification (ASGC) Urban Centres/Localities: 2001 Census Edition* (cat. no. 2909.0) provide information on additional geographic areas.

#### *2001 Census Statistical Local Area Maps*

These reference maps show the Statistical Local Areas (SLAs) from the 2001 Census. Each map shows the boundary of an SLA and the Collection District boundaries contained within.

#### *Digital Boundaries*

Census boundaries are made available electronically as *Digital Boundaries*. They include all of the Australian Standard Geographical Classification (ASGC), Urban Centres and Localities, and Census-specific areas.

### CENSUS DATA PRODUCTS

#### *Census Snapshots*

*Census Snapshots* are a new product designed to provide a summary overview for selected geographic areas and are available from the ABS web site, free of charge. *Census Snapshots* contain subsets of Community Profile data, including person counts, age and birthplace, presented in a narrative form for easy access by a wide audience. A *1901 Census Snapshot* for Australia is also available to celebrate the Centenary of Federation.

#### *Estimated Resident Population*

The Estimated Resident Population (ERP) is the official ABS population estimate. It is based on census usual residence counts, and is updated quarterly using births, deaths and migration data.

Two publications containing ERP data, based on 2001 Census figures are:

- *Australian Demographic Statistics — 2001 Census Edition*, cat. no. 3101.0
- *Regional Population Growth, Australia — 2001 Census Edition*, cat. no. 3218.0.

#### *Selected Characteristics*

*The Census of Population and Housing* suite of publications contains data and commentary on various person and dwelling characteristics from the 2001 Census at selected geographic levels. There are three series of publications in the suite with the following subtitles:

## APPENDIX CENSUS PRODUCTS AND SERVICES *continued*

### *Selected Characteristics continued*

- *Selected Social and Housing Characteristics, Australia 2001*, cat. no. 2015.0
- *Selected Social and Housing Characteristics for Statistical Local Areas 2001*, cat. nos 2015.1–8
- *Selected Characteristics for Urban Centres and Localities, Australia 2001*, cat. no. 2016.0
- *Selected Characteristics for Urban Centres and Localities 2001*, cat. nos 2016.1–7
- *Selected Education and Labour Force Characteristics, Australia 2001*, cat. no. 2017.0
- *Selected Education and Labour Force Characteristics for Statistical Local Areas 2001*, cat. nos 2017.1–8.

### *Community Profile Series*

The Community Profile Series provides detailed and comprehensive census characteristics of people, families and dwellings for small areas. This series is available for all standard census geographic areas, and is available in hardcopy and electronic formats.

The series comprises six Community Profiles:

- *Basic Community Profile* (cat. no. 2001.0) contains 33 tables of detailed data covering dwelling, household and family topics. This profile is available for all standard census geographic areas, Commonwealth and State Electoral Divisions, Postal Areas, and Suburbs, for the states/territories and Australia.
- *Indigenous Profile* (cat. no. 2002.0) contains 29 tables of key Census characteristics for Aboriginal and Torres Strait Islander people, for all ASGC areas from Statistical Local Area (SLA) level to whole of Australia, as well as Indigenous Areas and Aboriginal and Torres Strait Islander Commission (ATSIC) regions.
- *Time Series Community Profile* (cat. no. 2003.0) contains 22 tables comparing data from the 1991, 1996 and 2001 Censuses where the classifications are comparable. Data are presented on 2001 geographic boundaries.
- *Usual Residents Profile* (cat. no. 2004.0) contains 28 tables of data for persons usually resident in the selected area. This is the only community profile based on place of usual residence.
- *Expanded Community Profile* (cat. no. 2005.0) contains 49 tables available for SLAs and larger areas, comprising more detailed versions of some of the Basic Community Profile tables, plus additional tables.
- *Working Population Profile* (cat. no. 2006.0) contains 19 tables of labour force and related data on the characteristics of employed people.

### *Classification Counts*

*Classification Counts* (cat. nos 2022.0–8) provide frequency counts for 2001 Census variables in complete classificatory detail, for every state/territory and Capital City Statistical Division, cross-classified by sex where applicable.

### *CLIB2001*

*CLIB2001* is an electronic product provided free of charge to public libraries through the ABS Library Extension Program. The product contains a large volume of tabulated data and software that allows access, display and printing of the data. For 2001 this product will be available as both a CD-ROM and (limited access) Internet-based product. *CLIB2001* comprises the complete 2001 Census Community Profile Series and Classification Counts.

### *CDATA 2001*

*CDATA 2001* is a CD-ROM product which contains a large volume of tabulated census data, digital boundaries and base map data, with software to produce tables, maps and graphs of the data. The product is available at the Australia and state/territory levels.

## APPENDIX CENSUS PRODUCTS AND SERVICES *continued*

### *CDATA 2001 continued*

There are two *CDATA 2001* products available, offering different levels of functionality:

*CDATA 2001—Full Geographic Information System (GIS)*: This version is aimed at the expert GIS user who requires detailed spatial data analysis using Structured Query Language, geocoding and importation of 'client own' data.

*CDATA 2001—Quickbuild*: This version has been designed for GIS users with more basic spatial analysis requirements. It allows users to produce data reports, graphs and/or maps. The product is aimed at inexperienced or intermediate GIS users. *CDATA 2001—Quickbuild* users will also have the option to upgrade to *CDATA 2001—Full GIS* if so desired.

### *Social Atlas Series*

The *Social Atlas* (cat. nos 2030.0–8) publications feature colour maps of the key social, demographic and economic characteristics of each capital city. These will be released from November 2002.

### AUSTRALIA IN PROFILE—A REGIONAL ANALYSIS

*Australia in Profile—A Regional Analysis* (cat. no. 2032.0) provides commentary and data on a number of key social indicators from the 2001 Census, with the focus on regional distributions and comparisons.

### CONSULTANCY SERVICES

The following census specific services are available:

- *Customised Profiles Service* provides community profile data tailored to your needs, on a variety of media.
- *Customised Table Service* provides detailed cross-classified tables tailored to your needs on a variety of media.
- *Customised Geographic Data Reports Service* provides tabular geographic data which relate specifically to the census Geographic Areas and their characteristics (e.g. area).
- *Customised Mapping Service* provides both Customised Thematic Maps and Customised Reference Maps on request.

## GLOSSARY

General descriptions of terms and concepts used in this publication are provided below. Tables are also footnoted where applicable for additional clarity. Detailed definitions of classifications and concepts are available in the *2001 Census Dictionary* (cat. no. 2901.0).

<b>Couple family</b>	This is a family based on two persons who are in a registered or de facto marriage and who are usually resident in the same household. The family may include any number of dependents, non-dependents and/or other related individuals. As it is not necessary for a parent-child relationship to be formed, a couple family can consist of a couple without children.
<b>Family</b>	A family is defined by the ABS as two or more persons, one of whom is at least 15 years of age, who are related by blood, marriage (registered or de facto), adoption, step or fostering, and who are usually resident in the same household. The basis of a family is formed by identifying either a couple, parent-child or other blood relationship. Information on persons temporarily absent on Census Night is considered in family coding.
<b>Full-time/Part-time employment</b>	<p>This variable is based on the number of hours worked in all jobs held by employed people during the week before Census Night. It excludes any time off but includes any overtime or extra time worked:</p> <ul style="list-style-type: none"><li>■ Part-time workers: employed people who worked up to 34 hours</li><li>■ Full-time workers: employed people who worked 35 hours or more.</li></ul>
<b>Geographic areas</b>	<p>The tables in this publication are at the levels of Statistical Local Area, Statistical Subdivision and Statistical Division, as defined by the 2001 Census edition of the Australian Standard Geographical Classification (ASGC).</p> <p><i>Statistical Local Area (SLA)</i>: These areas consist of one or more Collection Districts and cover, in aggregate, the whole of Australia without gaps or overlaps.</p> <p><i>Statistical Subdivision (SSD)</i>: These areas consist of one or more SLAs and cover, in aggregate, the whole of Australia without gaps or overlaps.</p> <p><i>Statistical Division (SD)</i>: These areas consist of one or more SSDs and cover, in aggregate, the whole of Australia without gaps or overlaps. They do not cross state or territory boundaries. However, the Other Territories, Jervis Bay Territory and the Territories of Christmas Island and Cocos (Keeling) Islands together form one SD. Capital city SDs are predominantly urban in character and the boundaries are delineated to contain the anticipated urban development of the capital cities (and associated urban centres) for a period of at least 20 years.</p> <p>SDs outside the capital city are designed to be relatively homogeneous regions characterised by identifiable social and economic links between the inhabitants and the economic units in the region, under the unifying influence of one or more major towns or cities.</p> <p><i>State/territory (STE)</i>: States and territories consist of one or more SDs and are the largest type of spatial unit in the ASGC. The six Australian states and five territories which are part of geographic Australia and included in the 2001 ASGC are New South Wales, Victoria, Queensland, South Australia, Western Australia, Tasmania, Northern Territory, Australian Capital Territory, Jervis Bay Territory and the external Territories of Christmas Island and Cocos (Keeling) Islands. In the ASGC, Jervis Bay Territory, the Territory of Christmas Island and the Territory of Cocos (Keeling) Islands are combined to form Other Territories (OT).</p> <p>For this series of publications, data for Other Territories are published down to SSD level in 2017.0 (Australia), and down to SLA in 2017.1 (New South Wales) for Jervis Bay Territory and 2017.5 (Western Australia) for Christmas Island and Cocos (Keeling) Islands.</p>

## GLOSSARY *continued*

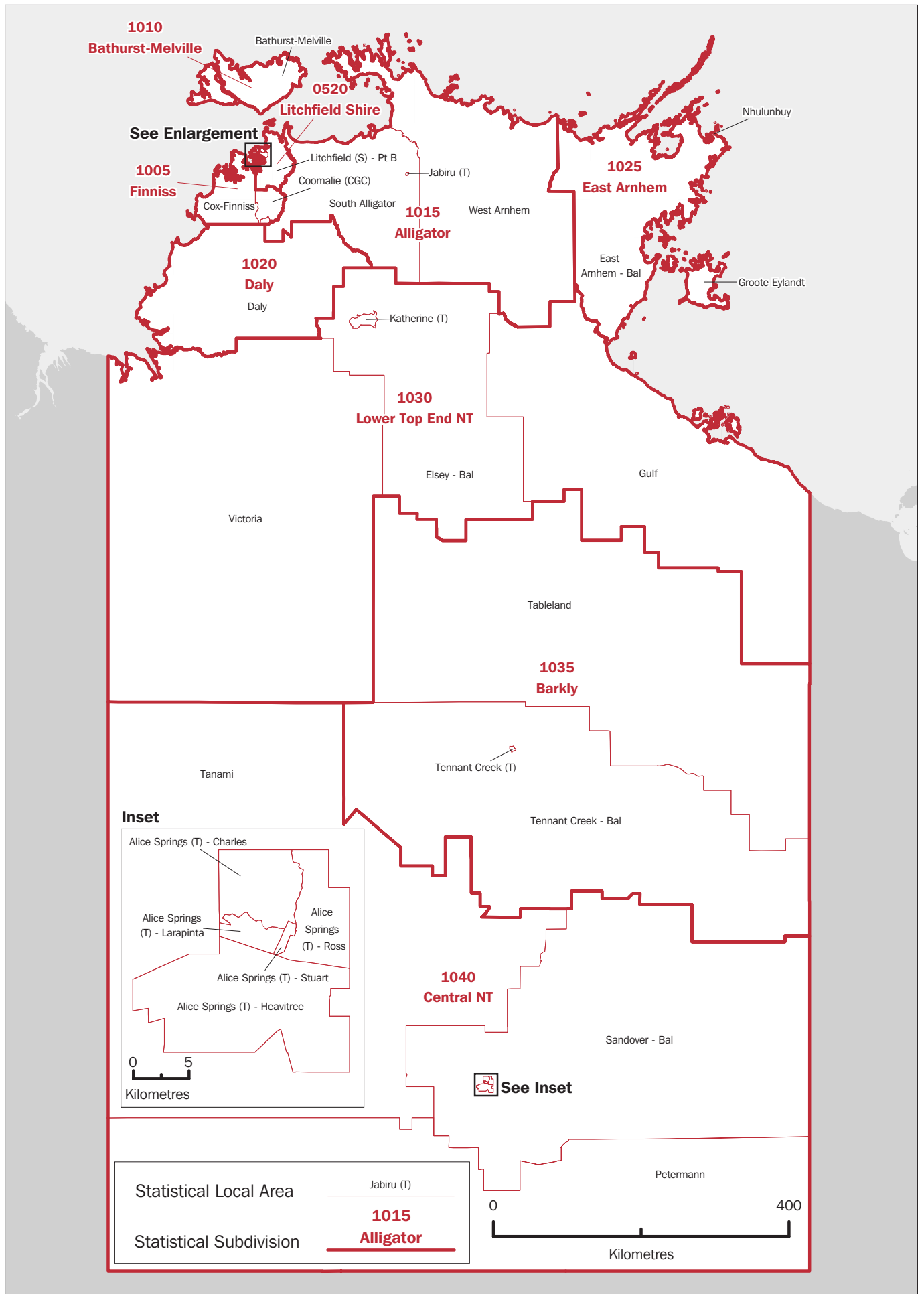
<b>Geographic areas</b> <i>continued</i>	More information about definitions, and lists of codes and names of the geographic areas can be found in <i>Statistical Geography Volume 1—Australian Standard Geographical Classification (ASGC) 2001</i> (cat. no. 1216.0) .
<b>Household</b>	<p>A household is defined as a group of two or more related or unrelated people who usually reside in the same dwelling, who regard themselves as a household, and who make common provision for food or other essentials for living; or a person living in a dwelling who makes provision for his/her own food and other essentials for living, without combining with any other person.</p> <p>Under this definition, in a group house where occupants share the dwelling, each occupant who usually supplies his/her own food should be counted as a separate household and issued with a separate Household Form. In practice, however, most such households usually only complete one form.</p>
<b>Household income</b>	<p>Household income is the sum of the individual incomes of each resident present in the household on Census Night. If any resident aged 15 years or over is temporarily absent, or does not state their income, then household income is not derived for that household.</p> <p>Although visitors' incomes are excluded in the calculation of household income, household income is still calculated for households that comprise only visitors, in order to collect data on household incomes in holiday resorts.</p>
<b>Income</b>	<p>People aged 15 years and over are asked to indicate their usual gross weekly income by selecting an income range on the census form. There are 16 options ranging from 'Negative income', 'Nil income' through to '\$1,500 or more per week'. For example, a person with a gross weekly income of \$650 per week would tick the range '\$600–\$699 per week'. Gross weekly income is the income before tax, superannuation, health insurance, or other deductions are made. Gross income includes: family allowance, parenting payment, pensions, unemployment benefits, student allowances, maintenance (child support), superannuation, wages, salary, overtime, dividends, rents received, interest received, business or farm income (less operation expenses) and worker's compensation received.</p>
<b>Industry (of employment)</b>	This variable describes the industries in which employed people (aged 15 years and over) work, and is coded to the <i>Australian and New Zealand Standard Industrial Classification (ANZSIC), 1993</i> (cat. no. 1292.0).
<b>Labour force</b>	The labour force is made up of employed and unemployed people aged 15 years and over.
<b>Labour force status</b>	<p>Labour force status identifies whether a person aged 15 years or over is employed, unemployed or not in the labour force.</p> <p><i>Employed</i> — includes those people who, during the week prior to Census Night, work for payment or profit; have a job from which they are on leave or otherwise temporarily absent; are on strike or stood down temporarily; or work as unpaid helpers in a family business.</p> <p><i>Unemployed</i> — includes people who, during the week prior to Census Night, do not have a job but are actively looking for work (either full-time or part-time) and are available to start work.</p> <p><i>Not in the labour force</i> — includes people aged 15 years and over who are not employed or unemployed as defined above. This includes people who are retired, pensioners and people engaged solely in home duties.</p>
<b>Non-School Qualification: Field of Study</b>	This variable describes the field of study of the highest completed non-school qualification.

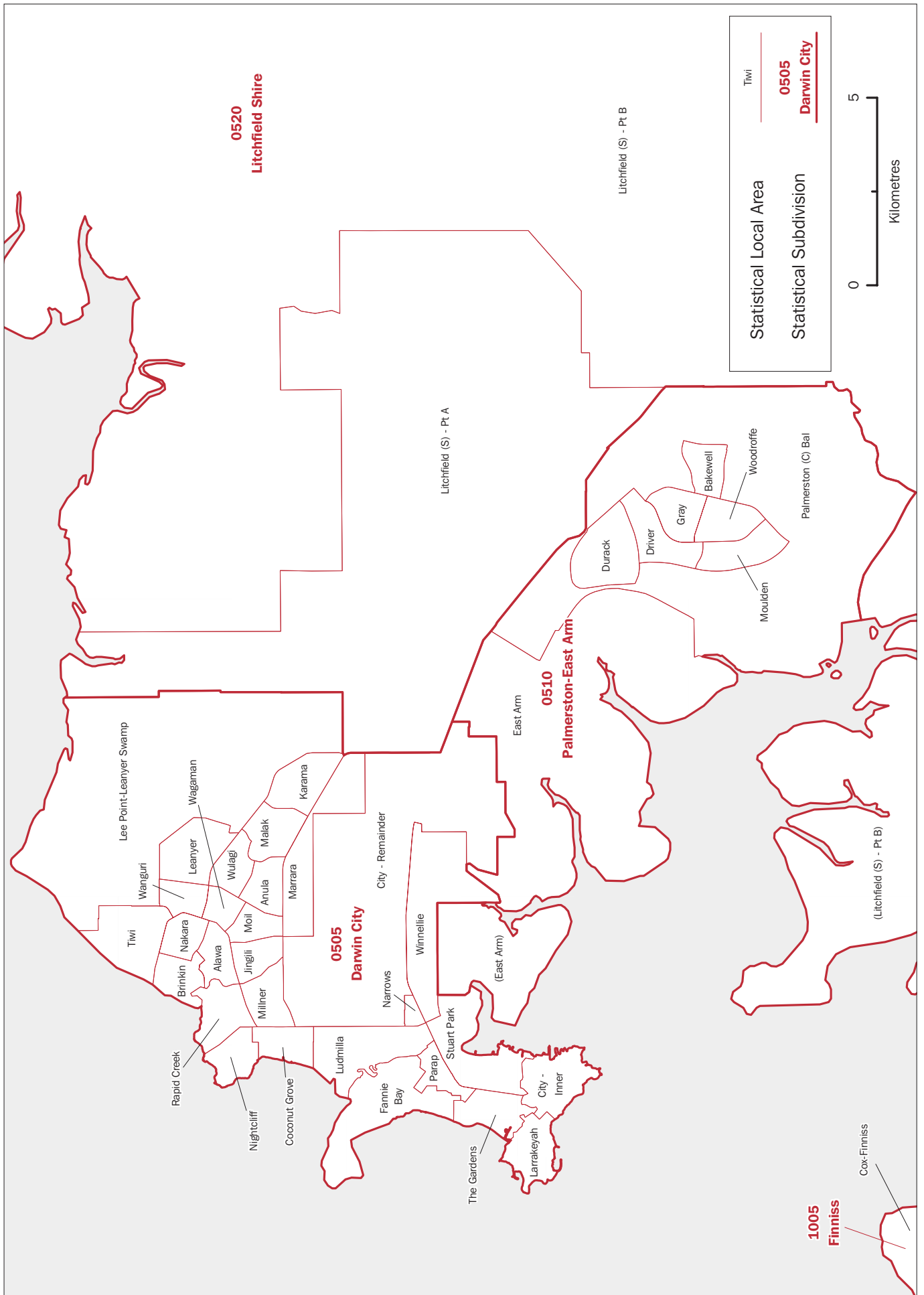
## GLOSSARY *continued*

- Non-School Qualification:  
Field of Study *continued*** The full classification for levels of education and fields of education, together with an explanation of the conceptual basis of the classification, can be found in the publication *Australian Standard Classification of Education (ASCED)* (cat. no. 1272.0).
- Non-School Qualification:  
Level of Education** This variable describes the level of education of the highest completed non-school qualification (e.g. bachelor degree, diploma).  
The full classification for levels of education and fields of education, together with an explanation of the conceptual basis of the classification, can be found in the publication *Australian Standard Classification of Education (ASCED)* (cat. no. 1272.0).
- Occupation** This variable describes the main job held by employed people (aged 15 years and over) during the week prior to Census Night, and is coded using the *ASCO — Australian Standard Classification of Occupations, Second Edition, 1996* (cat. no. 1220.0).
- One parent family** A one parent family consists of a lone parent with at least one child (regardless of age) who is usually resident in the household. The family may also include any number of other related individuals.
- Unemployment rate** The unemployment rate is the number of unemployed people expressed as a percentage of the labour force.













## FOR MORE INFORMATION . . .

- INTERNET* **www.abs.gov.au** the ABS web site is the best place to start for access to summary data from our latest publications, information about the ABS, advice about upcoming releases, our catalogue, and Australia Now—a statistical profile.
- LIBRARY* A range of ABS publications is available from public and tertiary libraries Australia-wide. Contact your nearest library to determine whether it has the ABS statistics you require, or visit our web site for a list of libraries.
- CPI INFOLINE* For current and historical Consumer Price Index data, call 1902 981 074 (call cost 77c per minute).
- DIAL-A-STATISTIC* For the latest figures for National Accounts, Balance of Payments, Labour Force, Average Weekly Earnings, Estimated Resident Population and the Consumer Price Index call 1900 986 400 (call cost 77c per minute).

## INFORMATION SERVICE

Data that is already published and can be provided within five minutes is free of charge. Our information consultants can also help you to access the full range of ABS information—ABS user-pays services can be tailored to your needs, time frame and budget. Publications may be purchased. Specialists are on hand to help you with analytical or methodological advice.

- PHONE* 1300 135 070
- EMAIL* [client.services@abs.gov.au](mailto:client.services@abs.gov.au)
- FAX* 1300 135 211
- POST* Client Services, ABS, GPO Box 796, Sydney NSW 1041

## WHY NOT SUBSCRIBE?

ABS subscription services provide regular, convenient and prompt deliveries of ABS publications and products as they are released. Email delivery of monthly and quarterly publications is available.

- PHONE* 1300 366 323
- EMAIL* [subscriptions@abs.gov.au](mailto:subscriptions@abs.gov.au)
- FAX* 03 9615 7848
- POST* Subscription Services, ABS, GPO Box 2796Y, Melbourne Vic 3001



2201770001015

ISBN 0 642 47812 0

Recommended retail price \$29.00

© Commonwealth of Australia 2003

Produced by the  
Australian Bureau of Statistics