

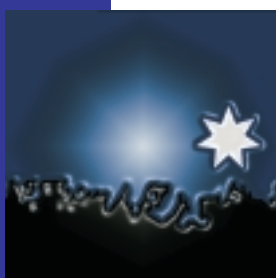
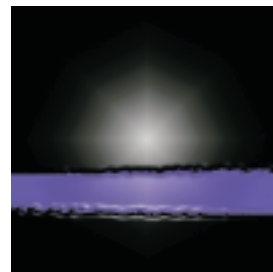


Census of Population and Housing

Selected Characteristics for Urban Centres and Localities

Tasmania

2001



Census of Population and Housing

Selected Characteristics for Urban Centres and Localities

Tasmania

2001

**Stevan R. Matheson
Regional Director, Tasmania**

AUSTRALIAN BUREAU OF STATISTICS

EMBARGO: 11.30AM (CANBERRA TIME) TUES 25 MAR 2003

ABS Catalogue No. 2016.6

ISBN 0 642 47802 3

© Commonwealth of Australia 2003

This work is copyright. Apart from any use as permitted under the *Copyright Act 1968*, no part may be reproduced by any process without prior written permission from the Commonwealth. Requests and inquiries concerning reproduction and rights in this publication should be addressed to The Manager, Intermediary Management, Australian Bureau of Statistics, Locked Bag 10, Belconnen ACT 2616, by telephone (02) 6252 6998, fax (02) 6252 7102, or email <intermediary.management@abs.gov.au>.

In all cases the ABS must be acknowledged as the source when reproducing or quoting any part of an ABS publication or other product.

Produced by the Australian Bureau of Statistics

INQUIRIES

- For further information about these and related statistics, contact the National Information and Referral Service on 1300 135 070.

CONTENTS

	<i>page</i>
Introduction	iv
Summary of findings	1

TABLES

1 Person characteristics	6
2 Labour force characteristics	12
3 Occupation of employed persons	15
4 Industry of employment	18
5 Dwelling characteristics	21
6 Occupied private dwellings	23
7 Family and household characteristics	26
8 Urban Centres and Localities, ranked by total number of persons	29

ADDITIONAL INFORMATION

Explanatory Notes	30
Appendix 1: Estimated Resident Population	33
Appendix 2: Census Products and Services	34
Glossary	37

MAPS

Tasmania, Urban centres and statistical local areas, 2001 edition	42
Tasmania, Urban centres and statistical local areas, 2001 edition, Enlargement 1	44
Tasmania, Urban centres and statistical local areas, 2001 edition, Enlargement 2	45

INTRODUCTION

STATISTICS PRESENTED IN THIS PUBLICATION

This publication presents a range of social and housing statistics produced from the 2001 Census of Population and Housing for Tasmania. For comparative purposes, it includes 1996 Census data based on 2001 Census geography.

The tables in this publication provide a selection of data for the population and their housing arrangements for Urban Centres/Localities (UC/L) and Sections of State (SOS). These geographic structures classify areas according to size of the population. Whilst the UC/L classification covers only part of each state and territory, the SOS classification covers each state and territory in its entirety. Refer to the Glossary for more information about the definitions of UC/L and SOS.

The data are presented on the basis of where people were counted on Census Night ('as enumerated'), and therefore data for each geographic area include visitors to that area, but exclude those people who were away on Census Night. All tables exclude overseas visitors unless otherwise stated.

Data released in *Selected Social and Housing Characteristics, Tasmania* (cat. no. 2015.6) provide various characteristics for Statistical Divisions (SDs), Statistical Subdivisions (SSDs) and Statistical Local Areas (SLAs). Refer to Appendix 2—Census Products and Services for more information.

POPULATION MEASURES

Census counts should not be confused with the Australian Bureau of Statistics' (ABS) official population estimate, the Estimated Resident Population (ERP) which is used for electoral purposes and in assisting in the distribution of government funds to state and local governments. The ERP is the definitive population estimate and is derived from the census counts. For a fuller description of population measures and the derivation of ERP, please see paragraphs 6, 7 and 8 of the Explanatory Notes. Appendix 1—Estimated Resident Population includes a table showing census counts and ERP for each state and territory.

One of the important features of the Census is that it describes the characteristics of Australia's population and housing for small geographic areas and small population groups. While not available in this publication, data at the smallest geographic level (Collection District) are available in a range of census products. For more information on these products, please refer to Appendix 2—Census Products and Services. Concepts and definitions used in this publication are explained in the Glossary and more detailed information is available in the *2001 Census Dictionary* (cat. no. 2901.0). The Explanatory Notes in this publication provide a discussion of the scope and coverage of the Census, the different measures of population, and the limitations of census data.

This publication is one of a series of publications which provide data for both UC/L and SOS geographic areas for each state and territory (cat. nos 2016.1–7). A similar publication is also available, providing data for urban centres across the whole of Australia (cat. no. 2016.0). See Appendix 2—Census Products and Services for more information.

SUMMARY OF FINDINGS

PERSON CHARACTERISTICS

Population distribution

The Census of Population and Housing conducted on 7 August 2001 counted 456,652 persons (including 1,811 overseas visitors) in Tasmania, a decrease of 0.7% since the 1996 Census (459,659 persons).

There were 36 Urban Centres and 65 Localities in Tasmania in 2001, with the highest population counts recorded in the Urban Centres of Hobart (126,048), Launceston (68,443), Devonport (21,575) and Burnie-Somerset (18,095). These Urban Centres accounted for 51.3% of the population.

Age

In 2001, the median age was 36 years, compared with 34 years in 1996. The proportion of persons aged 0–14 years decreased from 22.7% in 1996 to 21.4% in 2001, while the proportion of persons aged 65 years and over increased from 12.3% to 13.4% during the same period.

The highest percentages of persons aged 0–14 years were recorded in the Urban Centres of Bridgewater-Gagebrook (32.2%), Hadspen (29.0%), Seven Mile Beach (28.1%) and the Locality Woodbridge (27.6%).

A high proportion of persons aged 65 years and over was recorded in the Urban Centres of St Helens-Stieglitz (24.3%) and Bridport (21.3%), and in the Localities of Swansea (29.7%), Orford (26.8%) and Low Head (26.7%).

Sex

In 2001, there were more females (232,614) than males (224,038) with higher proportions of females recorded in urban areas (Major Urban (51.9%) and Other Urban (51.8%)). Proportionally more males were recorded in Rural Balance (51.7%).

Males outnumbered females in 63 Urban Centres and Localities. A higher proportion were recorded in the Urban Centres of Rosebery (56.6%) and Beauty Point (53.0%), and in the Localities of Tullah (57.2%), Primrose Sands (55.5%) and Eaglehawk Neck (54.5%).

A higher proportion of females were recorded in the Urban Centres of Deloraine (54.1%), Ulverstone (53.2%) and Wynyard (52.7%), and in the Localities of Low Head (54.1%), Franklin (53.9%), Oatlands (53.5%) and Lilydale (53.3%).

Median individual income

The median weekly income grew from \$257 in 1996 to \$314 in 2001, an increase of 22.2%, with slightly larger increases recorded in the Rural Balance (24.2%) and Major Urban (21.4%) sections of the state.

The highest median income was recorded in the Urban Centre of Seven Mile Beach (\$479) followed by Old Beach (\$425) and Lauderdale (\$396), while Localities with high median incomes were Fern Tree (\$495), Dilston (\$466) and Cremorne (\$457). The lowest incomes were recorded in the Localities of Maydena (\$225), Waratah (\$226) and St Marys (\$230).

Indigenous status

The number of persons who reported being of Indigenous origin increased by 13.7% to 15,773 persons in 2001, up from 13,873 persons in 1996, representing 3.5% of the Tasmanian population (excluding overseas visitors).

SUMMARY OF FINDINGS *continued*

<i>Indigenous status continued</i>	<p>Over half of the Urban Centres and Localities reported proportions of Indigenous persons equivalent to or less than the average for Tasmania (3.5%). The highest proportions were recorded in the Localities of Cygnet (24.9%), Geeveston (15.6%) and Dover (12.9%), and in the Urban Centres of Huonville-Ranelagh (10.0%) and Bridgewater-Gagebrook (9.8%).</p>
<i>Birthplace</i>	<p>The number of persons born in Australia decreased by 2.2% to 386,036 people in 2001, down from 394,782 persons in 1996, representing 84.9% of the population in Tasmania (excluding overseas visitors).</p> <p>In 15 of the urban centres and localities, 90.0% or more of the population were born in Australia. The highest proportions of Australian-born were recorded in the Localities of Bracknell (95.0%), Ringarooma (92.9%), Oatlands (92.6%) and Branxholm (91.4%).</p> <p>Of the population counted (excluding overseas visitors), 10.0% (45,375 persons) stated that they had been born overseas, with high proportions recorded in the Localities of Grindelwald (23.9%), Fern Tree (19.8%) and Dilston (19.6%), and in the Urban Centres of Kingston-Blackmans Bay (15.4%), Legana (13.9%) and Hobart (12.5%).</p>
<i>Internet and Personal computer use</i>	<p>Of the population counted (excluding overseas visitors), 37.6% (170,842 persons) used a personal computer at home in the week prior to Census Night. Of the same population, 90.0% (153,720 persons) used the Internet in the week prior to Census Night.</p> <p>The highest percentages of persons who used a personal computer at home were recorded in the Localities of Fern Tree (65.7%), Dilston (56.1%) and Otago (55.4%), while low proportions were recorded in the Localities of Triabunna (17.5%), Waratah and White Beach (both 18.7%)</p>
<i>Employed persons</i>	<p>In 2001, there were 182,522 employed persons (89.9% of the labour force), an increase of 311 persons since 1996.</p> <p>Urban Centres with the largest numbers of employed persons were Hobart (52,425 persons or 90.6% of the labour force), Launceston (27,696 or 89.8%), Devonport (7,820 or 87.0%) and Kingston-Blackmans Bay (6,581 or 93.5%).</p>
<i>Full-time employment</i>	<p>The number of full-time workers decreased by 5.7% from 117,904 persons in 1996 to 111,134 persons in 2001, this represents 60.9% of the employed population in Tasmania. As a proportion of persons in the labour force, the highest proportions of full-time workers were recorded in the Localities of Kempton (66.4%) and Currie (64.4%). Urban Centres with the highest proportions of full-time workers were Scottsdale (61.8%) and Rosebery (61.4%).</p>
<i>Part-time employment</i>	<p>In 2001, 66,030 workers (36.2% of employed persons) were employed part-time, an increase of 9.6% (5,811) since 1996. The highest proportions of part-time workers, as a proportion of persons in the labour force, were recorded in the Localities of White Beach (54.9%) and Eaglehawk Neck (50.0%). The Locality with the lowest proportion of part-time workers was Tullah (18.4%).</p>

SUMMARY OF FINDINGS *continued*

Unemployed persons

In 2001, 10.1% of the labour force (20,526 persons) were unemployed, compared with 11.0% (22,465 persons) in 1996. High unemployment rates were recorded in the Localities of Railton (32.2%), Waratah (28.0%) and Primrose Sands (21.3%).

For those aged 15–24 years the unemployment rate fell to 19.2% from 19.6% in 1996. The highest youth unemployment rates were recorded in the Localities of Waratah (50.0%), Bridgewater-Gagebrook (46.3%) and Railton (45.8%).

The number of unemployed persons looking for full-time employment decreased by 13.9%, down from 18,172 persons in 1996 to 15,639 in 2001. Those looking for part-time work increased by 13.8%, from 4,293 persons in 1996 up to 4,887 in 2001.

Occupation

In 2001, the largest occupation groups were Professionals and Associate Professionals (28.5%), Intermediate Clerical, Sales and Service Workers (16.7%) and Tradespersons and Related Workers (12.4%). These proportions are similar to those in 1996.

The highest percentages of Professionals and Associate Professionals were recorded in the Localities of Fern Tree (59.4%), Howden (47.3%) and Forth (46.9%).

High proportions of Intermediate Clerical, Sales and Service Workers were recorded in the Localities of Lewisham (23.4%), Collinsvale (23.2%) and Bagdad (21.7%).

The Localities with the highest proportions of Tradespersons and Related Workers were Waratah (22.9%), Low Head (21.3%) and Cressy (20.9%).

Industry

In 2001, the three largest industries of employment in Tasmania were Retail Trade (15.0%), Manufacturing and Health and Community Services (both 11.6%). These industries were also the top three industries in 1996.

The highest proportions of persons employed in Retail Trade were recorded in the Localities of Ross (23.9%), Gawler (22.9%) and Ridgley (20.8%).

The highest proportions of persons employed in Manufacturing were recorded in the Localities of George Town (33.0%), Branxholm (31.9%) and Railton (28.9%).

High proportions of persons employed in Health and Community Services were recorded in New Norfolk (19.2%), Opossum Bay (L) (15.7%) and Lilydale (L) (15.2%).

DWELLING CHARACTERISTICS

Total number of dwellings

The number of dwellings increased by 3.4% from 201,817 in 1996 to 208,702 in 2001. Of these dwellings, 86.8% (181,172) were occupied private dwellings, 12.9% (26,874) were unoccupied private dwellings and 0.3% (649) were non-private dwellings.

Total number of persons

The number of persons in occupied private dwellings decreased from 446,312 in 1996 to 443,715 in 2001. Of these, 44.7% (198,448 persons) were counted in Other Urban areas.

OCCUPIED PRIVATE DWELLINGS

Fully owned

Of the 181,172 occupied private dwellings in Tasmania, 41.6% were fully owned, compared with 42.4% in 1996. The Rural Balance and Bounded Locality areas recorded the highest proportions of fully owned dwellings in both 2001 and 1996.

Home ownership proportions were highest in the Localities of Dilston (63.9%), Bracknell (62.5%) and Fingal (61.4%).

SUMMARY OF FINDINGS *continued*

Being purchased In Tasmania, 28.2% of private dwellings were being purchased, compared with 27.0% in 1996. The Rural Balance recorded the highest percentages in both 2001 (31.1%) and 1996 (29.7%).

High proportions of homes being purchased were recorded in the Urban Centres of Old Beach (62.2%), Seven Mile Beach (49.7%) and Hadspen (L) (47.5%).

Housing loan repayments The median loan repayment increased by 3.5% up from \$593 in 1996 to \$614 in 2001. High median loan repayments were recorded in Otago (L) (\$866), Grindelwald (\$850) and Cremorne (L) (\$741).

Rented dwellings In 2001, 24.1% (43,649) of occupied private dwellings were being rented, compared with 24.9% in 1996. The Major Urban areas recorded the highest percentages in both 2001 (28.7%) and 1996 (29.7%).

The highest proportions of rented dwellings were recorded in Bridgewater-Gagebrook (63.4%), Currie (L) (37.6%) and Strahan (L) (32.6%).

Rent The median weekly rent increased by 11.8%, from \$93 in 1996 to \$104 in 2001. The Major Urban areas recorded the highest median rent (\$114) compared with the Rural Balance (\$83) section of the state.

High median rent was recorded in the Urban Centres of Old Beach (\$155), Lauderdale (\$140) and Seven Mile Beach (\$138), and in the Localities of Otago (\$191), Grindelwald (\$183) and Fern Tree (\$162).

FAMILY CHARACTERISTICS The number of families grew from 123,706 in 1996 to 124,078 families in 2001, an increase of 0.3%. Of these families, 43.7% were couples with dependent and non-dependent children, 38.4% were couples without children, 16.5% were one parent families and 1.4% were of other family type. In the Rural Balance area, 47.6% of couple families had dependent children, compared with 51.7% in 1996.

The highest proportions of couple families with dependent children were recorded in Collinsvale (L) (52.7%), Old Beach (50.5%) and Howden (L) (49.4%).

The highest proportions of couple families with no children were recorded in the Localities of Swansea (64.4%), Ross (57.7%) and White Beach (56.3%).

High proportions of one parent families were recorded in Bridgewater-Gagebrook (38.9%), Lilydale (L) (28.1%) and Maydena (L) (25.0%).

HOUSEHOLD CHARACTERISTICS The number of households grew from 170,911 in 1996 to 175,867 in 2001, an increase of 2.9%. Of these households, 26.9% were lone person households and 3.0% were group households. This is similar to 1996 (24.8% and 3.3% respectively).

The highest proportions of lone person households were recorded in the Localities of Primrose Sands (39.3%), Currie (36.3%) and Fingal (35.6%).

The highest proportions of groups households were recorded in the Localities of Gravelly Beach (5.0%) and Launceston (4.3%).

Geographic area	AGE(a)		Median age	SEX(a)		CENSUS COUNT(a)		INCOME
	Proportion of population aged 0-14 years	Proportion of population aged 65 years & over		Male	Female	Census Night 2001	Census Night 1996	Median weekly individual income
	%	%	years	no.	no.	no.	no.	\$
SECTION OF STATE								
2001								
Major Urban	18.3	15.4	37	60 623	65 425	126 048	n.a.	341
Other Urban	22.0	14.2	35	98 179	105 478	203 657	n.a.	298
Bounded Locality	22.0	14.6	39	15 373	15 304	30 677	n.a.	293
Rural Balance	24.2	8.8	37	49 283	46 061	95 344	n.a.	318
Migratory	8.7	16.2	45	580	346	926	n.a.	519
Total	21.4	13.4	36	224 038	232 614	456 652	n.a.	314
1996								
Major Urban	19.3	14.7	35	60 914	65 204	n.a.	126 118	281
Other Urban	23.1	12.9	33	100 916	106 965	n.a.	207 881	246
Bounded Locality	23.4	13.2	36	13 683	13 525	n.a.	27 208	235
Rural Balance	26.2	7.9	34	50 384	47 436	n.a.	97 820	256
Migratory	4.1	13.1	42	441	191	n.a.	632	673
Total	22.7	12.3	34	226 338	233 321	n.a.	459 659	257
URBAN CENTRE/LOCALITY								
2001								
Bagdad (L)	25.8	7.0	35	345	337	682	646	312
Beaconsfield	24.9	16.4	36	491	516	1 007	1 014	240
Beauty Point	17.9	19.5	40	623	553	1 176	1 194	232
Bicheno (L)	17.2	19.5	44	373	338	711	700	285
Bothwell (L)	20.9	14.9	42	185	165	350	356	267
Bracknell (L)	24.2	13.9	36	190	170	360	367	322
Branxholm (L)	22.4	12.1	41	117	115	232	266	290
Bridgewater-Gagebrook	32.2	4.6	25	3 232	3 461	6 693	7 451	234
Bridport	20.6	21.3	42	667	685	1 352	1 234	293
Burnie-Somerset	22.0	14.0	36	8 690	9 405	18 095	19 134	276
Campania (L)	17.7	19.5	39	118	108	226	230	304
Campbell Town (L)	18.9	22.4	42	354	401	755	816	250
Carrick (L)	20.5	11.9	40	153	159	312	331	387
Collinsvale (L)	23.8	7.6	36	133	144	277	297	351
Cremorne (L)	23.3	9.4	38	210	193	403	357	457
Cressy (L)	25.5	12.8	36	328	320	648	637	275
Currie (L)	19.8	15.9	37	429	364	793	841	414
Cygnets (L)	24.3	14.4	35	390	410	800	851	256
Deloraine	19.8	20.1	41	933	1 099	2 032	2 168	276
Devonport	21.1	15.9	37	10 348	11 227	21 575	22 299	290
Dilston (L)	19.3	11.8	44	148	148	296	323	466
Dodges Ferry	27.6	8.5	33	1 252	1 224	2 476	2 077	311
Dover (L)	17.6	17.2	41	247	242	489	481	311
Dunalley (L)	14.4	19.5	46	137	140	277	286	262
Eaglehawk Neck (L)	16.7	13.7	45	127	106	233	209	266
Evandale	25.9	8.9	35	533	524	1 057	1 033	373
Exeter (L)	21.4	22.0	40	151	162	313	382	295
Fern Tree (L)	21.1	5.1	36	288	305	593	584	495
Fingal (L)	23.1	17.5	41	164	161	325	379	246
Forth (L)	23.9	8.9	38	171	176	347	342	367
Franklin (L)	22.9	25.3	41	195	228	423	454	247

n.a. not applicable.

(a) Includes overseas visitors.

Geographic area	INDIGENOUS STATUS (a)		BIRTHPLACE OF INDIVIDUAL (b)		PERSONS WHO USED (c)	
	Indigenous (d)	Non-Indigenous	Australia	Other	a personal computer at home	the Internet anywhere
	no.	no.	no.	no.	no.	no.

SECTION OF STATE

2001						
Major Urban	3 216	117 398	103 285	15 599	50 231	49 310
Other Urban	7 727	187 919	174 672	17 488	71 749	63 677
Bounded Locality	1 383	28 256	26 363	2 783	10 273	8 801
Rural Balance	3 433	88 627	81 125	9 394	38 311	31 682
Migratory	14	682	591	111	278	250
Total	15 773	422 882	386 036	45 375	170 842	153 720
1996						
Major Urban	2 843	118 396	104 863	15 911	n.a.	n.a.
Other Urban	6 752	194 108	181 285	18 574	n.a.	n.a.
Bounded Locality	1 129	25 147	23 744	2 358	n.a.	n.a.
Rural Balance	3 139	91 595	84 485	9 739	n.a.	n.a.
Migratory	10	502	405	113	n.a.	n.a.
Total	13 873	429 748	394 782	46 695	n.a.	n.a.

URBAN CENTRE/LOCALITY

2001						
Bagdad (L)	23	653	633	21	240	226
Beaconsfield	38	927	896	54	268	170
Beauty Point	25	1 111	984	139	402	385
Bicheno (L)	20	632	575	72	176	149
Bothwell (L)	12	315	306	19	88	63
Bracknell (L)	3	353	342	10	109	105
Branxholm (L)	5	216	212	9	51	43
Bridgewater-Gagebrook	656	5 803	5 980	250	1 336	1 072
Bridport	33	1 280	1 184	100	458	317
Burnie-Somerses	868	16 553	15 717	1 316	5 988	5 243
Campania (L)	10	207	199	9	63	58
Campbell Town (L)	27	697	677	46	171	150
Carrick (L)	7	298	283	20	123	79
Collinsvale (L)	6	269	242	25	119	99
Cremorne (L)	5	391	360	30	180	187
Cressy (L)	9	625	580	32	193	116
Currie (L)	25	741	669	86	256	245
Cygnets (L)	199	575	693	63	220	169
Deloraine	88	1 828	1 735	161	548	435
Devonport	837	19 852	18 656	1 640	7 026	6 113
Dilston (L)	3	291	230	58	166	146
Dodges Ferry	83	2 298	2 167	182	812	734
Dover (L)	63	421	436	44	136	108
Dunalley (L)	21	246	243	14	63	61
Eaglehawk Neck (L)	16	211	207	23	67	55
Evandale	9	1 036	928	102	444	409
Exeter (L)	7	300	252	44	97	88
Fern Tree (L)	9	572	459	117	388	363
Fingal (L)	5	300	278	17	80	70
Forth (L)	9	329	291	49	175	136
Franklin (L)	20	398	365	49	138	107

n.a. not applicable.

(c) In the week before Census Night.

(a) Excludes persons who did not state their Indigenous status.

(d) Comprises persons of Aboriginal origin, Torres Strait Islander origin, or both Aboriginal and Torres Strait Islander origin.

(b) Excludes persons who did not state their birthplace.

Geographic area	AGE(a)		Median age	SEX(a)		CENSUS COUNT(a)		INCOME
	Proportion of population aged 0-14 years	Proportion of population aged 65 years & over		Male	Female	Census Night 2001	Census Night 1996	Median weekly individual income
	%	%	years	no.	no.	no.	no.	\$
URBAN CENTRE/LOCALITY cont.								
2001 cont.								
Gawler (L)	24.2	15.3	38	124	124	248	271	262
Geeveston (L)	26.5	13.1	36	404	423	827	778	264
George Town	24.3	11.6	34	2 059	2 070	4 129	4 522	258
Gravelly Beach (L)	24.3	12.4	37	292	289	581	559	284
Grindelwald (L)	22.5	17.7	40	291	301	592	n.a.	427
Hadspen	29.0	5.8	30	922	926	1 848	1 730	390
Heybridge (L)	19.1	11.7	40	170	154	324	341	295
Hobart	18.3	15.4	37	60 623	65 425	126 048	125 522	341
Howden (L)	25.2	12.6	37	140	154	294	263	373
Huonville-Ranelagh	24.7	13.2	33	837	871	1 708	1 718	293
Kempton (L)	23.4	14.6	37	155	161	316	327	272
Kettering (L)	23.5	12.9	40	162	148	310	314	314
Kingston-Blackmans Bay	22.6	12.6	35	7 029	7 798	14 827	14 333	384
Lanena-Blackwall (L)	21.6	15.1	41	261	263	524	488	296
Latrobe	21.8	16.4	36	1 303	1 387	2 690	2 765	278
Lauderdale	23.4	8.5	34	1 220	1 225	2 445	2 485	396
Launceston	20.1	14.4	35	32 774	35 669	68 443	68 216	316
Legana	26.6	10.7	34	1 049	1 095	2 144	1 987	371
Leith (L)	23.5	8.5	39	109	104	213	185	280
Lewisham (L)	23.7	10.9	37	347	361	708	647	372
Lilydale (L)	26.8	13.7	37	150	171	321	343	261
Longford	22.5	15.9	37	1 378	1 449	2 827	2 829	288
Low Head (L)	19.0	26.7	41	198	233	431	463	353
Margate (L)	23.7	12.4	33	469	490	959	1 034	359
Maydena (L)	23.9	9.3	38	133	114	247	331	225
Mole Creek (L)	19.7	12.7	39	109	104	213	256	234
New Norfolk	23.6	14.7	36	2 454	2 557	5 011	5 286	277
Nubeena (L)	16.5	26.3	44	121	134	255	264	288
Oatlands (L)	22.9	21.5	42	272	313	585	539	268
Old Beach	26.0	9.8	32	945	1 034	1 979	1 708	425
Opossum Bay (L)	19.4	18.3	45	128	140	268	251	286
Orford (L)	16.9	26.8	49	234	251	485	461	290
Otago (L)	20.4	10.9	41	265	249	514	470	446
Penguin	22.5	15.1	37	1 377	1 533	2 910	3 030	274
Perth	23.3	13.3	34	952	1 032	1 984	1 863	336
Pontville	26.7	7.4	30	822	830	1 652	1 424	368
Port Sorell	18.5	20.2	43	965	972	1 937	1 818	280
Primrose Sands (L)	18.0	12.2	41	376	302	678	698	254
Queenstown	25.1	10.3	33	1 217	1 135	2 352	2 631	289
Railton (L)	25.2	12.6	35	426	436	862	878	241
Richmond (L)	23.7	14.1	39	404	423	827	768	352
Ridgley (L)	24.4	8.5	33	214	221	435	427	276
Ringarooma (L)	23.0	14.6	35	114	112	226	232	276
Rosebery	22.9	3.9	34	631	484	1 115	1 439	354
Ross (L)	15.8	22.9	48	141	125	266	275	269
St Helens-Stieglitz	18.2	24.3	48	897	903	1 800	1 776	250

(a) Includes overseas visitors.

Geographic area	INDIGENOUS STATUS (a)		BIRTHPLACE OF INDIVIDUAL (b)		PERSONS WHO USED (c)	
	Indigenous (d)	Non-Indigenous	Australia	Other	a personal computer at home	the Internet anywhere
	no.	no.	no.	no.	no.	no.

URBAN CENTRE/LOCALITY *cont.*2001 *cont.*

Gawler (L)	21	215	223	14	83	63
Geeveston (L)	129	680	711	60	208	169
George Town	125	3 798	3 413	443	1 314	1 025
Gravelly Beach (L)	15	556	497	67	254	213
Grindelwald (L)	—	576	434	140	310	261
Hadspen	34	1 785	1 655	114	762	639
Heybridge (L)	25	285	292	18	95	92
Hobart	3 216	117 398	103 285	15 599	50 231	49 310
Howden (L)	10	276	241	45	139	119
Huonville-Ranelagh	171	1 455	1 452	117	559	439
Kempton (L)	5	299	277	25	86	49
Kettering (L)	13	282	260	43	126	115
Kingston-Blackmans Bay	391	14 138	12 021	2 277	7 161	6 541
Lanena-Blackwall (L)	11	498	420	89	212	174
Latrobe	165	2 448	2 377	172	816	695
Lauderdale	55	2 339	2 121	232	1 112	1 047
Launceston	1 798	63 720	57 987	6 452	25 815	24 110
Legana	24	2 043	1 735	298	1 040	845
Leith (L)	3	207	187	21	102	88
Lewisham (L)	20	675	620	67	276	246
Lilydale (L)	8	291	267	23	130	96
Longford	63	2 641	2 477	196	916	760
Low Head (L)	3	364	304	56	158	141
Margate (L)	57	873	807	103	386	354
Maydena (L)	5	232	195	34	52	59
Mole Creek (L)	10	195	184	20	58	50
New Norfolk	181	4 624	4 420	262	1 188	1 027
Nubeena (L)	23	222	209	32	57	39
Oatlands (L)	33	540	542	30	130	121
Old Beach	48	1 890	1 787	138	889	703
Opossum Bay (L)	4	259	226	34	109	100
Orford (L)	—	472	422	37	132	105
Otago (L)	10	499	439	60	285	247
Penguin	184	2 616	2 562	219	1 049	832
Perth	60	1 856	1 754	142	734	565
Pontville	56	1 557	1 494	83	504	431
Port Sorell	63	1 781	1 631	178	588	530
Primrose Sands (L)	28	626	574	52	168	157
Queenstown	109	2 186	2 107	124	616	543
Railton (L)	46	790	756	56	250	171
Richmond (L)	6	805	685	120	352	325
Ridgley (L)	7	422	401	13	149	119
Ringarooma (L)	4	220	210	7	65	52
Rosebery	75	985	947	89	375	361
Ross (L)	3	246	215	32	53	47
St Helens-Stieglitz	61	1 655	1 485	206	511	384

— nil or rounded to zero (including null cells)

(c) In the week before Census Night.

(a) Excludes persons who did not state their Indigenous status.

(d) Comprises persons of Aboriginal origin, Torres Strait Islander origin, or both Aboriginal and Torres Strait Islander origin.

(b) Excludes persons who did not state their birthplace.

Geographic area	AGE(a)		Median age	SEX(a)		CENSUS COUNT(a)		INCOME
	Proportion of population aged 0-14 years	Proportion of population aged 65 years & over		Male	Female	Census Night 2001	Census Night 1996	Median weekly individual income
	%	%	years	no.	no.	no.	no.	\$
URBAN CENTRE/LOCALITY <i>cont.</i>								
2001 <i>cont.</i>								
St Marys (L)	22.9	14.3	40	267	271	538	588	230
Scamander (L)	15.8	21.5	44	245	230	475	435	243
Scottsdale	21.0	19.2	36	914	990	1 904	1 922	330
Seven Mile Beach	28.1	7.4	34	552	532	1 084	1 057	479
Sheffield (L)	25.9	14.8	36	463	519	982	1 016	245
Sisters Beach (L)	24.8	7.9	36	138	140	278	277	379
Smithton	22.5	14.5	35	1 548	1 601	3 149	3 313	334
Snug (L)	22.8	13.5	38	387	407	794	804	304
Sorell-Midway Point	21.2	16.1	36	1 708	1 898	3 606	3 596	312
South Arm (L)	20.7	11.4	40	265	271	536	496	340
Stanley (L)	19.4	17.1	42	248	215	463	543	292
Strahan (L)	20.3	12.0	36	403	355	758	701	363
Sulphur Creek (L)	21.7	17.7	39	174	176	350	319	266
Swansea (L)	14.7	29.7	51	257	272	529	495	290
Triabunna (L)	20.6	15.1	39	348	352	700	766	250
Tullah (L)	24.4	7.2	33	143	107	250	268	254
Turners Beach	22.1	9.1	36	628	631	1 259	1 184	335
Ulverstone	20.3	19.3	40	4 449	5 066	9 515	9 792	269
Waratah (L)	22.8	12.6	38	129	117	246	230	226
Westbury	18.7	18.7	42	588	653	1 241	1 280	262
White Beach (L)	22.8	16.7	43	133	113	246	261	284
Woodbridge (L)	27.6	11.5	40	142	144	286	246	328
Wynyard	23.1	17.2	37	2 192	2 443	4 635	4 509	266
Zeehan (L)	25.1	4.9	31	469	423	892	1 116	364

(a) Includes overseas visitors.

Geographic area	INDIGENOUS STATUS (a)		BIRTHPLACE OF INDIVIDUAL (b)		PERSONS WHO USED (c)	
	Indigenous (d)	Non-Indigenous	Australia	Other	a personal computer at home	the Internet anywhere
	no.	no.	no.	no.	no.	no.

URBAN CENTRE/LOCALITY *cont.*2001 *cont.*

St Marys (L)	23	507	459	49	161	141
Scamander (L)	14	450	427	30	129	112
Scottsdale	40	1 746	1 713	80	540	402
Seven Mile Beach	7	1 065	935	105	582	532
Sheffield (L)	38	910	874	57	298	247
Sisters Beach (L)	9	262	239	22	100	84
Smithton	295	2 735	2 876	137	891	739
Snug (L)	37	737	694	72	320	274
Sorell-Midway Point	100	3 394	3 181	264	1 138	1 048
South Arm (L)	16	501	474	43	230	187
Stanley (L)	32	414	410	30	138	109
Strahan (L)	40	674	668	38	225	224
Sulphur Creek (L)	21	317	317	24	136	106
Swansea (L)	12	459	435	37	129	100
Triabunna (L)	51	631	629	25	122	103
Tullah (L)	14	224	201	26	58	60
Turners Beach	73	1 152	1 122	86	500	438
Ulverstone	555	8 337	8 108	651	2 978	2 600
Waratah (L)	8	233	210	30	46	50
Westbury	14	1 172	1 049	131	407	311
White Beach (L)	14	218	209	18	46	42
Woodbridge (L)	14	248	212	53	124	114
Wynyard	343	4 113	4 016	348	1 482	1 252
Zeehan (L)	38	826	775	74	287	253

(a) Excludes persons who did not state their Indigenous status.

(b) Excludes persons who did not state their birthplace.

(c) In the week before Census Night.

(d) Comprises persons of Aboriginal origin, Torres Strait Islander origin, or both Aboriginal and Torres Strait Islander origin.

LABOUR FORCE CHARACTERISTICS (a)

Geographic area	EMPLOYED			UNEMPLOYED LOOKING FOR			Not in the labour force	UNEMPLOYMENT RATE	
	Full-time (b)	Part-time	Total (c)	Full-time work	Part-time work	Total		Aged 15-24 years	Aged 15 years and over
	no.	no.	no.	no.	no.	no.	no.	%	%
SECTION OF STATE									
2001									
Major Urban	31 978	19 011	52 425	4 021	1 409	5 430	40 522	18.6	9.4
Other Urban	46 897	28 186	77 230	7 484	2 308	9 792	64 831	20.4	11.3
Bounded Locality	7 108	4 249	11 713	1 045	305	1 350	10 012	20.2	10.3
Rural Balance	24 918	14 442	40 712	3 070	861	3 931	25 206	17.0	8.8
Migratory	233	142	442	19	4	23	240	10.8	4.9
Total	111 134	66 030	182 522	15 639	4 887	20 526	140 811	19.2	10.1
1996									
Major Urban	34 140	17 603	52 727	4 577	1 167	5 744	40 798	18.3	9.8
Other Urban	50 770	25 913	78 442	8 748	2 056	10 804	67 172	20.8	12.1
Bounded Locality	6 489	3 536	10 295	1 047	243	1 290	8 789	19.9	11.1
Rural Balance	26 219	13 111	40 398	3 781	823	4 604	25 493	18.3	10.2
Migratory	286	56	349	19	4	23	163	19.6	6.2
Total	117 904	60 219	182 211	18 172	4 293	22 465	142 415	19.6	11.0
URBAN CENTRE/LOCALITY									
2001									
Bagdad (L)	159	113	286	22	3	25	189	14.6	8.0
Beaconsfield	158	110	279	47	7	54	382	27.5	16.2
Beauty Point	196	144	349	55	21	76	500	35.8	17.9
Bicheno (L)	131	120	256	26	11	37	243	27.1	12.6
Bothwell (L)	83	43	133	6	—	6	116	23.1	4.3
Bracknell (L)	96	36	136	12	7	19	113	12.5	12.3
Branxholm (L)	65	24	93	5	3	8	71	21.4	7.9
Bridgewater-Gagebrook	788	521	1 371	513	116	629	2 377	46.3	31.5
Bridport	285	172	484	30	9	39	517	5.8	7.5
Burnie-Somerset	3 781	2 411	6 371	840	194	1 034	6 095	22.7	14.0
Campania (L)	58	40	101	9	—	9	66	14.3	8.2
Campbell Town (L)	148	86	239	36	8	44	310	21.1	15.5
Carrick (L)	98	52	150	8	3	11	84	15.0	6.8
Collinsvale (L)	75	45	125	8	5	13	70	18.2	9.4
Cremorne (L)	126	73	210	11	—	11	83	9.1	5.0
Cressy (L)	154	71	244	20	—	20	203	15.0	7.6
Currie (L)	274	111	402	16	6	22	197	10.0	5.2
Cygnat (L)	151	91	248	28	8	36	295	21.3	12.7
Deloraine	432	261	713	63	20	83	717	12.6	10.4
Devonport	4 795	2 808	7 820	883	281	1 164	7 212	22.9	13.0
Dilston (L)	96	48	144	5	4	9	86	17.6	5.9
Dodges Ferry	475	392	890	99	34	133	706	25.2	13.0
Dover (L)	132	73	212	10	5	15	165	17.1	6.6
Dunalley (L)	62	41	103	10	6	16	108	31.6	13.4
Eaglehawk Neck (L)	38	59	101	13	4	17	71	30.0	14.4
Evandale	286	165	462	25	7	32	280	10.1	6.5
Exeter (L)	67	35	105	12	5	17	116	38.9	13.9
Fern Tree (L)	188	122	318	12	11	23	118	20.9	6.7
Fingal (L)	65	27	95	13	—	13	128	26.7	12.0
Forth (L)	109	47	160	6	4	10	89	27.3	5.9
Franklin (L)	69	48	122	9	3	12	189	18.8	9.0
Gawler (L)	58	36	94	4	6	10	72	—	9.6
Geeveston (L)	163	101	276	32	4	36	274	21.4	11.5

— nil or rounded to zero (including null cells)

(a) Applicable to persons aged 15 years and over.

(b) Full-time is defined as having worked 35 hours or more in all jobs in the week prior to Census Night.

(c) Includes employed persons who did not state their hours worked and persons who stated they were employed, but worked nil hours in the week prior to Census Night.

LABOUR FORCE CHARACTERISTICS (a) *continued*

Geographic area	EMPLOYED			UNEMPLOYED LOOKING FOR			Not in the labour force	UNEMPLOYMENT RATE	
	Full-time (b)	Part-time	Total (c)	Full-time work	Part-time work	Total		Aged 15-24 years	Aged 15 years and over
	no.	no.	no.	no.	no.	no.	no.	%	%
URBAN CENTRE/LOCALITY <i>cont.</i>									
2001 cont.									
George Town	822	444	1 311	191	36	227	1 431	25.1	14.8
Gravelly Beach (L)	122	92	223	26	4	30	175	17.9	11.9
Grindelwald (L)	162	81	246	8	4	12	191	10.0	4.7
Hadspen	538	307	861	47	12	59	366	14.0	6.4
Heybridge (L)	81	44	128	13	3	16	112	25.0	11.1
Hobart	31 978	19 011	52 425	4 021	1 409	5 430	40 522	18.6	9.4
Howden (L)	86	42	131	4	4	8	79	23.5	5.8
Huonville-Ranelagh	390	207	624	49	11	60	532	17.5	8.8
Kempton (L)	75	23	101	9	3	12	119	13.6	10.6
Kettering (L)	68	57	125	7	—	7	99	—	5.3
Kingston-Blackmans Bay	3 939	2 477	6 581	308	152	460	4 178	12.9	6.5
Lanena-Blackwall (L)	123	76	199	10	6	16	181	24.0	7.4
Latrobe	583	363	969	126	29	155	919	20.8	13.8
Lauderdale	716	422	1 179	62	16	78	561	13.4	6.2
Launceston	16 925	10 087	27 696	2 281	868	3 149	21 210	19.0	10.2
Legana	570	366	956	43	15	58	485	8.0	5.7
Leith (L)	57	23	80	10	4	14	62	26.7	14.9
Lewisham (L)	201	108	320	14	3	17	195	16.2	5.0
Lilydale (L)	64	43	112	10	—	10	99	—	8.2
Longford	633	377	1 045	93	25	118	926	16.9	10.1
Low Head (L)	102	50	160	8	—	8	122	—	4.8
Margate (L)	262	148	422	19	8	27	266	13.6	6.0
Maydena (L)	34	20	57	12	3	15	110	30.0	20.8
Mole Creek (L)	57	29	89	7	—	7	68	15.0	7.3
New Norfolk	959	562	1 578	253	47	300	1 788	30.2	16.0
Nubeena (L)	47	36	89	9	4	13	106	27.3	12.7
Oatlands (L)	114	58	178	9	8	17	239	22.2	8.7
Old Beach	592	324	935	36	14	50	473	7.7	5.1
Opossum Bay (L)	65	36	104	10	—	10	98	—	8.8
Orford (L)	84	72	165	11	8	19	206	17.6	10.3
Otago (L)	169	108	283	6	6	12	105	9.1	4.1
Penguin	614	398	1 043	115	36	151	983	21.9	12.6
Perth	541	272	831	54	22	76	559	14.3	8.4
Pontville	449	242	722	48	10	58	406	15.2	7.4
Port Sorell	416	230	674	65	23	88	728	18.1	11.5
Primrose Sands (L)	133	78	218	52	7	59	266	37.8	21.3
Queenstown	617	273	909	105	18	123	673	22.6	11.9
Railton (L)	115	76	194	75	17	92	327	45.8	32.2
Richmond (L)	192	144	348	19	10	29	234	8.6	7.7
Ridgley (L)	122	52	178	14	5	19	122	14.7	9.6
Ringarooma (L)	56	32	92	9	—	9	73	30.0	8.9
Rosebery	331	113	465	67	7	74	279	25.9	13.7
Ross (L)	51	35	89	6	3	9	120	—	9.2
St Helens-Stieglitz	265	242	526	71	21	92	766	17.6	14.9
St Marys (L)	76	73	153	28	4	32	224	25.0	17.3
Scamander (L)	87	62	154	21	8	29	202	24.1	15.8
Scottsdale	512	253	783	28	18	46	563	12.3	5.5
Seven Mile Beach	321	207	541	18	9	27	199	14.5	4.8
Sheffield (L)	174	104	282	55	15	70	355	38.2	19.9
Sisters Beach (L)	73	40	116	9	5	14	78	33.3	10.8
Smithton	855	458	1 358	67	25	92	905	10.6	6.3

— nil or rounded to zero (including null cells)

(a) Applicable to persons aged 15 years and over.

(b) Full-time is defined as having worked 35 hours or more in all jobs in the week prior to Census Night.

(c) Includes employed persons who did not state their hours worked and persons who stated they were employed, but worked nil hours in the week prior to Census Night.

LABOUR FORCE CHARACTERISTICS (a) *continued*

<i>Geographic area</i>	EMPLOYED			UNEMPLOYED LOOKING FOR			<i>Not in the labour force</i>	UNEMPLOYMENT RATE	
	<i>Full-time (b)</i>	<i>Part-time</i>	<i>Total (c)</i>	<i>Full-time work</i>	<i>Part-time work</i>	<i>Total</i>		<i>Aged 15-24 years</i>	<i>Aged 15 years and over</i>
	no.	no.	no.	no.	no.	no.	no.	%	%
URBAN CENTRE/LOCALITY <i>cont.</i>									
2001 <i>cont.</i>									
Snug (L)	180	107	295	25	7	32	262	25.0	9.8
Sorell-Midway Point	865	509	1 418	101	28	129	1 197	16.9	8.3
South Arm (L)	141	92	238	14	6	20	162	20.6	7.8
Stanley (L)	108	72	186	16	3	19	158	22.6	9.3
Strahan (L)	207	146	363	20	3	23	179	12.3	6.0
Sulphur Creek (L)	76	50	129	15	3	18	119	30.0	12.2
Swansea (L)	83	67	157	12	3	15	233	23.1	8.7
Triabunna (L)	136	93	235	25	9	34	266	20.0	12.6
Tullah (L)	62	19	85	14	4	18	73	—	17.5
Turners Beach	343	197	558	53	12	65	337	20.6	10.4
Ulverstone	1 846	1 136	3 074	384	116	500	3 421	27.2	14.0
Waratah (L)	48	21	72	25	3	28	87	50.0	28.0
Westbury	236	155	407	61	10	71	488	23.9	14.9
White Beach (L)	29	39	68	3	—	3	100	—	4.2
Woodbridge (L)	64	34	104	8	5	13	87	43.8	11.1
Wynyard	823	581	1 447	203	39	242	1 672	24.1	14.3
Zeehan (L)	257	125	396	46	7	53	197	21.7	11.8

— nil or rounded to zero (including null cells)

(a) Applicable to persons aged 15 years and over.

(b) Full-time is defined as having worked 35 hours or more in all jobs in the week prior to Census Night.

(c) Includes employed persons who did not state their hours worked and persons who stated they were employed, but worked nil hours in the week prior to Census Night.

OCCUPATION OF EMPLOYED PERSONS (a)

<i>Geographic area</i>	<i>Managers and Administrators</i>	<i>Professionals(b)</i>	<i>Tradespersons and Related Workers</i>	<i>Intermediate Clerical, Sales and Service Workers</i>	<i>Elementary Clerical, Sales and Service Workers</i>	<i>Labourers and Related Workers</i>	<i>Other(c)</i>	<i>Total</i>
SECTION OF STATE								
2001								
Major Urban	3 658	18 420	5 618	9 824	5 638	3 725	5 542	52 425
Other Urban	4 374	20 172	10 252	13 737	8 881	8 096	11 718	77 230
Bounded Locality	818	3 110	1 583	1 643	1 001	1 529	2 029	11 713
Rural Balance	6 930	10 097	5 179	5 240	2 750	4 508	6 008	40 712
Migratory	53	143	63	45	20	24	94	442
<i>Total</i>	<i>15 833</i>	<i>51 942</i>	<i>22 695</i>	<i>30 489</i>	<i>18 290</i>	<i>17 882</i>	<i>25 391</i>	<i>182 522</i>
1996								
Major Urban	3 820	17 258	6 262	10 045	4 948	3 914	6 480	52 727
Other Urban	4 980	19 574	11 576	13 012	7 837	7 865	13 598	78 442
Bounded Locality	810	2 460	1 472	1 435	799	1 326	1 993	10 295
Rural Balance	7 306	9 334	5 326	5 055	2 511	4 201	6 665	40 398
Migratory	21	134	62	23	8	7	94	349
<i>Total</i>	<i>16 937</i>	<i>48 760</i>	<i>24 698</i>	<i>29 570</i>	<i>16 103</i>	<i>17 313</i>	<i>28 830</i>	<i>182 211</i>
URBAN CENTRE/LOCALITY								
2001								
Bagdad (L)	19	43	52	62	29	31	50	286
Beaconsfield	16	37	42	28	23	52	81	279
Beauty Point	19	91	44	65	19	50	61	349
Bicheno (L)	13	87	22	23	27	41	43	256
Bothwell (L)	8	31	25	13	11	21	24	133
Bracknell (L)	7	22	16	22	10	19	40	136
Branxholm (L)	6	14	7	11	6	22	27	93
Bridgewater-Gagebrook	25	122	225	214	199	302	284	1 371
Bridport	29	117	68	66	36	67	101	484
Burnie-Somerset	279	1 604	899	1 132	757	669	1 031	6 371
Campania (L)	8	13	17	14	9	18	22	101
Campbell Town (L)	11	47	38	36	28	41	38	239
Carrick (L)	17	45	18	19	8	18	25	150
Collinsvale (L)	3	34	17	29	10	17	15	125
Cremorne (L)	12	94	27	30	15	8	24	210
Cressy (L)	8	33	51	28	23	42	59	244
Currie (L)	33	90	56	38	19	96	70	402
Cygnets (L)	19	42	32	41	32	50	32	248
Deloraine	46	159	100	133	78	70	127	713
Devonport	436	1 905	1 080	1 312	889	883	1 315	7 820
Dilston (L)	17	54	21	22	8	7	15	144
Dodges Ferry	54	189	140	185	106	104	112	890
Dover (L)	22	32	23	26	10	56	43	212
Dunalley (L)	12	27	8	16	5	22	14	104
Eaglehawk Neck (L)	8	29	12	17	—	11	23	100
Evandale	30	140	64	76	48	34	70	462
Exeter (L)	5	27	17	12	13	13	18	105
Fern Tree (L)	27	189	24	28	23	9	18	318
Fingal (L)	3	19	11	4	5	16	37	95
Forth (L)	11	75	15	21	13	10	15	160
Franklin (L)	16	21	16	11	11	28	19	122
Gawler (L)	4	23	14	13	10	13	18	95
Geeveston (L)	17	45	17	41	18	83	55	276
George Town	38	203	203	161	126	315	265	1 311
Gravelly Beach (L)	12	69	33	29	17	22	41	223
Grindelwald (L)	30	91	28	42	22	5	27	245

— nil or rounded to zero (including null cells)

(a) Applicable to employed persons only.

(b) Includes 'Associate Professionals'.

(c) Includes 'Advanced Clerical and Service Workers', 'Intermediate Production and Transport Workers', 'Inadequately described' and 'Not stated'.

OCCUPATION OF EMPLOYED PERSONS(a) *continued*

<i>Geographic area</i>	<i>Managers and Administrators</i>	<i>Professionals(b)</i>	<i>Tradespersons and Related Workers</i>	<i>Intermediate Clerical, Sales and Service Workers</i>	<i>Elementary Clerical, Sales and Service Workers</i>	<i>Labourers and Related Workers</i>	<i>Other(c)</i>	<i>Total</i>
URBAN CENTRE/LOCALITY <i>cont.</i>								
2001 <i>cont.</i>								
Hadspen	41	189	143	166	108	82	132	861
Heybridge (L)	7	27	17	19	14	12	32	128
Hobart	3 658	18 420	5 618	9 824	5 638	3 725	5 542	52 425
Howden (L)	18	61	10	11	6	5	18	129
Huonville-Ranelagh	31	109	85	80	70	145	104	624
Kempton (L)	3	17	19	12	6	20	24	101
Kettering (L)	16	45	22	14	—	13	13	123
Kingston-Blackmans Bay	494	2 236	684	1 373	737	403	654	6 581
Lanena-Blackwall (L)	11	62	28	37	21	16	25	200
Latrobe	50	202	153	139	107	129	189	969
Lauderdale	104	378	155	227	119	58	138	1 179
Launceston	1 623	8 122	3 283	5 259	3 387	2 353	3 669	27 696
Legana	79	269	145	186	100	57	120	956
Leith (L)	5	33	11	14	3	4	12	82
Lewisham (L)	19	74	51	75	36	16	49	320
Lilydale (L)	9	22	19	17	13	19	13	112
Longford	53	225	186	157	131	147	146	1 045
Low Head (L)	16	50	34	21	15	4	20	160
Margate (L)	29	97	52	77	50	44	73	422
Maydena (L)	—	18	—	8	—	7	20	53
Mole Creek (L)	10	22	8	7	—	13	25	85
New Norfolk	29	296	260	286	167	196	344	1 578
Nubeena (L)	8	23	9	13	7	12	17	89
Oatlands (L)	12	49	30	24	10	35	18	178
Old Beach	64	231	148	171	116	67	138	935
Opossum Bay (L)	6	35	14	16	10	9	12	102
Orford (L)	14	44	21	19	10	21	36	165
Otago (L)	13	109	41	46	33	12	29	283
Penguin	61	249	161	174	95	109	194	1 043
Perth	52	149	131	160	111	96	132	831
Pontville	25	98	148	150	95	69	137	722
Port Sorell	45	176	114	106	63	65	105	674
Primrose Sands (L)	12	41	34	24	27	35	45	218
Queenstown	45	195	168	109	70	112	210	909
Railton (L)	8	20	40	29	27	32	38	194
Richmond (L)	34	108	30	71	35	25	45	348
Ridgley (L)	7	35	33	32	22	11	38	178
Ringarooma (L)	12	16	13	7	4	12	28	92
Rosebery	17	109	86	37	29	65	122	465
Ross (L)	5	28	15	7	8	17	8	88
St Helens-Stieglitz	37	151	45	57	56	73	107	526
St Marys (L)	8	29	28	21	16	17	34	153
Scamander (L)	5	47	22	19	15	13	33	154
Scottsdale	48	119	94	97	65	172	188	783
Seven Mile Beach	40	197	64	109	41	30	60	541
Sheffield (L)	22	48	48	35	33	41	55	282
Sisters Beach (L)	5	47	24	14	12	4	10	116
Smithton	87	265	163	169	111	300	263	1 358
Snug (L)	17	76	43	52	21	38	48	295
Sorell-Midway Point	55	280	202	263	190	188	240	1 418
South Arm (L)	17	60	30	40	31	20	40	238
Stanley (L)	10	53	16	20	16	33	38	186
Strahan (L)	38	99	39	40	21	59	67	363

— nil or rounded to zero (including null cells)

(a) Applicable to employed persons only.

(b) Includes 'Associate Professionals'.

(c) Includes 'Advanced Clerical and Service Workers', 'Intermediate Production and Transport Workers', 'Inadequately described' and 'Not stated'.

OCCUPATION OF EMPLOYED PERSONS (a) *continued*

<i>Geographic area</i>	<i>Managers and Administrators</i>	<i>Professionals(b)</i>	<i>Tradespersons and Related Workers</i>	<i>Intermediate Clerical, Sales and Service Workers</i>	<i>Elementary Clerical, Sales and Service Workers</i>	<i>Labourers and Related Workers</i>	<i>Other(c)</i>	<i>Total</i>
URBAN CENTRE/LOCALITY <i>cont.</i>								
2001 <i>cont.</i>								
Sulphur Creek (L)	4	37	17	20	19	8	24	129
Swansea (L)	13	54	14	18	9	19	30	157
Triabunna (L)	11	31	23	30	18	48	74	235
Tullah (L)	—	19	17	13	5	11	18	83
Turners Beach	44	156	72	95	58	57	76	558
Ulverstone	188	768	436	484	346	359	493	3 074
Waratah (L)	4	18	16	7	—	14	11	70
Westbury	29	95	50	66	46	44	77	407
White Beach (L)	7	15	8	13	6	12	9	70
Woodbridge (L)	11	35	14	16	3	14	11	104
Wynyard	61	341	211	245	182	174	233	1 447
Zeehan (L)	21	110	55	37	31	65	77	396

— nil or rounded to zero (including null cells)

(a) Applicable to employed persons only.

(b) Includes 'Associate Professionals'.

(c) Includes 'Advanced Clerical and Service Workers', 'Intermediate Production and Transport Workers', 'Inadequately described' and 'Not stated'.

INDUSTRY OF EMPLOYMENT (a)

<i>Geographic area</i>	<i>Manufacturing</i>	<i>Retail Trade</i>	<i>Property and Business Services</i>	<i>Government Administration and Defence</i>	<i>Education</i>	<i>Health and Community Services</i>	<i>Other(b)</i>	<i>Total</i>
SECTION OF STATE								
2001								
Major Urban	4 566	7 990	5 247	4 255	4 965	6 829	18 573	52 425
Other Urban	10 322	13 249	5 742	3 080	6 201	9 268	29 368	77 230
Bounded Locality	1 354	1 637	676	586	864	1 069	5 527	11 713
Rural Balance	4 854	4 449	2 401	1 713	3 000	4 069	20 226	40 712
Migratory	29	29	47	58	10	26	243	442
<i>Total</i>	<i>21 125</i>	<i>27 354</i>	<i>14 113</i>	<i>9 692</i>	<i>15 040</i>	<i>21 261</i>	<i>73 937</i>	<i>182 522</i>
1996								
Major Urban	4 891	7 188	4 535	5 719	4 896	6 256	19 242	52 727
Other Urban	11 372	12 098	4 959	3 664	5 863	9 045	31 441	78 442
Bounded Locality	1 366	1 338	468	617	760	829	4 917	10 295
Rural Balance	4 601	4 307	2 059	1 937	2 863	3 775	20 856	40 398
Migratory	9	13	75	8	8	13	223	349
<i>Total</i>	<i>22 239</i>	<i>24 944</i>	<i>12 096</i>	<i>11 945</i>	<i>14 390</i>	<i>19 918</i>	<i>76 679</i>	<i>182 211</i>
URBAN CENTRE/LOCALITY								
2001								
Bagdad (L)	46	49	14	13	14	28	122	286
Beaconsfield	52	29	16	10	12	31	129	279
Beauty Point	52	40	27	13	34	34	149	349
Bicheno (L)	14	40	12	9	15	8	158	256
Bothwell (L)	3	15	5	12	8	7	83	133
Bracknell (L)	33	17	5	3	9	9	61	137
Branxholm (L)	30	8	3	3	5	4	41	94
Bridgewater-Gagebrook	270	240	104	45	48	145	519	1 371
Bridport	104	58	18	16	35	52	201	484
Burnie-Somerset	893	1 207	515	226	467	849	2 214	6 371
Campania (L)	17	14	6	—	7	13	44	101
Campbell Town (L)	30	41	9	12	13	23	111	239
Carrick (L)	18	13	11	6	8	20	74	150
Collinsvale (L)	16	24	11	15	12	16	31	125
Cremorne (L)	13	24	20	17	34	21	81	210
Cressy (L)	31	37	6	5	15	15	135	244
Currie (L)	91	44	14	19	28	25	181	402
Cygnets (L)	35	48	12	19	12	19	103	248
Deloraine	86	118	37	25	45	97	305	713
Devonport	1 241	1 415	601	281	576	791	2 915	7 820
Dilston (L)	14	21	18	3	27	19	43	145
Dodges Ferry	101	149	71	62	56	106	345	890
Dover (L)	21	23	—	3	8	11	145	211
Dunalley (L)	14	12	6	6	4	6	56	104
Eaglehawk Neck (L)	7	5	—	5	6	9	68	100
Evandale	45	75	41	18	40	57	186	462
Exeter (L)	21	22	9	3	8	12	31	106
Fern Tree (L)	19	30	53	43	61	37	75	318
Fingal (L)	—	12	3	6	5	5	63	94
Forth (L)	11	16	8	3	26	20	76	160
Franklin (L)	21	14	10	3	9	9	57	123
Gawler (L)	14	22	3	3	4	13	37	96
Geeveston (L)	42	34	3	13	18	34	133	277
George Town	433	177	92	26	54	123	406	1 311
Gravelly Beach (L)	38	27	14	10	26	20	88	223
Grindelwald (L)	21	48	13	8	14	36	105	245
Hadsden	104	173	51	25	42	91	375	861
Heybridge (L)	21	22	14	—	6	19	45	127
Hobart	4 566	7 990	5 247	4 255	4 965	6 829	18 573	52 425
Howden (L)	7	16	13	9	16	18	50	129

— nil or rounded to zero (including null cells)

(b) Includes all major Industries of Employment not listed, as well as 'Non-Classifiable Economic Units' and 'Not stated'.

(a) Applicable to employed persons only.

<i>Geographic area</i>	<i>Manufacturing</i>	<i>Retail Trade</i>	<i>Property and Business Services</i>	<i>Government Administration and Defence</i>	<i>Education</i>	<i>Health and Community Services</i>	<i>Other(b)</i>	<i>Total</i>
URBAN CENTRE/LOCALITY <i>cont.</i>								
2001 <i>cont.</i>								
Huonville-Ranelagh	63	116	25	28	24	48	320	624
Kempton (L)	13	11	4	9	4	7	53	101
Kettering (L)	15	13	9	—	10	12	65	124
Kingston-Blackmans Bay	507	1 067	609	514	619	855	2 410	6 581
Lanena-Blackwall (L)	18	35	14	9	27	24	73	200
Latrobe	174	163	60	30	43	126	373	969
Lauderdale	102	175	92	84	98	155	473	1 179
Launceston	3 273	4 897	2 190	913	2 637	3 584	10 202	27 696
Legana	121	170	71	25	96	133	340	956
Leith (L)	10	6	11	4	12	9	30	82
Lewisham (L)	25	48	30	24	25	38	130	320
Lilydale (L)	24	16	5	4	10	17	36	112
Longford	137	164	53	36	59	123	473	1 045
Low Head (L)	36	22	9	7	15	9	62	160
Margate (L)	35	77	41	26	22	52	169	422
Maydena (L)	3	3	—	3	5	3	40	57
Mole Creek (L)	15	10	3	—	6	4	48	86
New Norfolk	324	228	77	70	65	303	511	1 578
Nubeena (L)	3	8	—	3	8	9	58	89
Oatlands (L)	17	24	3	16	14	27	77	178
Old Beach	114	194	65	52	52	99	359	935
Opossum Bay (L)	7	9	3	13	7	16	47	102
Orford (L)	24	22	4	10	14	8	83	165
Otago (L)	30	51	28	19	29	28	98	283
Penguin	131	162	79	36	93	135	407	1 043
Perth	108	139	65	24	45	88	362	831
Pontville	122	132	45	35	44	62	282	722
Port Sorell	91	105	46	28	43	59	302	674
Primrose Sands (L)	28	39	14	13	6	26	92	218
Queenstown	48	114	39	33	63	58	554	909
Railton (L)	56	30	6	5	9	8	80	194
Richmond (L)	27	55	30	22	29	35	150	348
Ridgley (L)	30	37	6	8	11	18	68	178
Ringarooma (L)	19	13	—	3	6	3	47	91
Rosebery	28	47	24	6	40	20	300	465
Ross (L)	7	21	3	5	4	3	45	88
St Helens-Stieglitz	26	85	30	17	29	56	283	526
St Marys (L)	—	29	6	7	15	12	82	151
Scamander (L)	4	24	10	8	6	17	85	154
Scottsdale	208	118	38	18	40	51	310	783
Seven Mile Beach	48	59	62	43	51	50	228	541
Sheffield (L)	40	43	10	12	8	30	139	282
Sisters Beach (L)	16	23	10	7	14	13	33	116
Smithton	367	211	54	29	86	92	519	1 358
Snug (L)	33	48	23	17	27	23	124	295
Sorell-Midway Point	169	246	86	76	76	167	598	1 418
South Arm (L)	22	39	19	20	10	33	95	238
Stanley (L)	26	29	9	6	13	7	96	186
Strahan (L)	13	35	13	10	9	11	272	363
Sulphur Creek (L)	20	24	8	—	17	15	43	127
Swansea (L)	9	19	8	3	4	23	91	157
Triabunna (L)	52	24	3	11	8	10	127	235
Tullah (L)	3	6	5	3	3	3	66	89
Turners Beach	80	92	38	19	57	57	215	558
Ulverstone	446	573	196	136	288	326	1 109	3 074
Waratah (L)	5	4	3	6	5	3	45	71
Westbury	58	81	25	13	25	47	158	407
White Beach (L)	—	5	—	—	7	8	47	67

— nil or rounded to zero (including null cells)

(a) Applicable to employed persons only.

(b) Includes all major Industries of Employment not listed, as well as 'Non-Classifiable Economic Units' and 'Not stated'.

INDUSTRY OF EMPLOYMENT (a) *continued*

<i>Geographic area</i>	<i>Manufacturing</i>	<i>Retail Trade</i>	<i>Property and Business Services</i>	<i>Government Administration and Defence</i>	<i>Education</i>	<i>Health and Community Services</i>	<i>Other(b)</i>	<i>Total</i>
<i>URBAN CENTRE/LOCALITY cont.</i>								
2001 cont.								
Woodbridge (L)	11	5	3	9	11	6	59	104
Wynyard	196	230	100	68	119	198	536	1 447
Zeehan (L)	8	32	24	15	17	25	275	396

(a) Applicable to employed persons only.

(b) Includes all major Industries of Employment not listed, as well as 'Non-Classifiable Economic Units' and 'Not stated'.

DWELLING CHARACTERISTICS

<i>Geographic area</i>	<i>Occupied private dwellings</i>	<i>Unoccupied private dwellings</i>	<i>Non-private dwellings</i>	<i>Total dwellings</i>
SECTION OF STATE				
2001				
Major Urban	52 110	4 069	178	56 357
Other Urban	81 769	8 544	294	90 607
Bounded Locality	12 354	3 743	80	16 177
Rural Balance	34 939	10 518	97	45 554
<i>Total(a)</i>	<i>181 172</i>	<i>26 874</i>	<i>649</i>	<i>208 702</i>
1996				
Major Urban	50 353	4 335	183	54 871
Other Urban	79 828	8 147	330	88 305
Bounded Locality	10 541	3 514	75	14 130
Rural Balance	34 475	9 931	96	44 502
<i>Total(a)</i>	<i>175 197</i>	<i>25 927</i>	<i>684</i>	<i>201 817</i>
URBAN CENTRE/LOCALITY				
2001				
Bagdad (L)	246	9	—	255
Beaconsfield	403	44	3	450
Beauty Point	483	87	5	575
Bicheno (L)	297	234	5	536
Bothwell (L)	151	31	—	182
Bracknell (L)	125	10	—	135
Branxholm (L)	93	18	—	111
Bridgewater-Gagebrook	2 375	159	3	2 537
Bridport	584	285	5	874
Burnie-Somerset	7 471	850	31	8 352
Campania (L)	97	—	—	97
Campbell Town (L)	335	46	3	384
Carrick (L)	127	12	—	139
Collinsvale (L)	103	7	—	110
Cremorne (L)	161	50	—	211
Cressy (L)	236	21	—	257
Currie (L)	341	51	8	400
Cygnets (L)	316	41	—	357
Deloraine	857	106	9	972
Devonport	8 951	708	28	9 687
Dilston (L)	109	11	—	120
Dodges Ferry	1 002	415	—	1 417
Dover (L)	194	42	3	239
Dunalley (L)	119	54	—	173
Eaglehawk Neck (L)	109	193	—	302
Evandale	391	25	3	419
Exeter (L)	132	4	—	136
Fern Tree (L)	226	16	—	242
Fingal (L)	141	21	3	165
Forth (L)	124	6	3	133
Franklin (L)	134	14	—	148
Gawler (L)	93	4	—	97
Geeveston (L)	304	23	—	327
George Town	1 671	163	4	1 838
Gravelly Beach (L)	222	17	—	239
Grindelwald (L)	210	17	—	227
Hadspen	650	24	—	674
Heybridge (L)	134	22	—	156
Hobart	52 110	4 069	178	56 357
Howden (L)	104	10	—	114
Huonville-Ranelagh	647	50	—	697
Kempton (L)	127	11	—	138
Kettering (L)	129	14	—	143
Kingston-Blackmans Bay	5 594	357	10	5 961

— nil or rounded to zero (including null cells)

(a) Includes migratory and off-shore.

<i>Geographic area</i>	<i>Occupied private dwellings</i>	<i>Unoccupied private dwellings</i>	<i>Non-private dwellings</i>	<i>Total dwellings</i>
<i>URBAN CENTRE/LOCALITY cont.</i>				
2001 cont.				
Lanena-Blackwall (L)	214	37	—	251
Latrobe	1 043	100	7	1 150
Lauderdale	887	55	—	942
Launceston	27 884	2 419	106	30 409
Legana	719	56	—	775
Leith (L)	72	3	—	75
Lewisham (L)	292	71	—	363
Lilydale (L)	124	9	—	133
Longford	1 139	85	3	1 227
Low Head (L)	160	129	—	289
Margate (L)	385	20	—	405
Maydena (L)	108	30	—	138
Mole Creek (L)	91	6	—	97
New Norfolk	1 936	164	5	2 105
Nubeena (L)	107	29	3	139
Oatlands (L)	247	38	3	288
Old Beach	644	16	3	663
Opossum Bay (L)	114	110	—	224
Orford (L)	232	336	—	568
Otago (L)	185	11	—	196
Penguin	1 179	92	—	1 271
Perth	772	65	3	840
Pontville	575	40	—	615
Port Sorell	854	342	—	1 196
Primrose Sands (L)	332	438	—	770
Queenstown	958	217	12	1 187
Railton (L)	318	25	—	343
Richmond (L)	322	23	5	350
Ridgley (L)	156	10	—	166
Ringarooma (L)	90	7	—	97
Rosebery	462	180	4	646
Ross (L)	121	19	3	143
St Helens-Stieglitz	818	543	8	1 369
St Marys (L)	226	38	—	264
Scamander (L)	209	132	3	344
Scottsdale	790	68	6	864
Seven Mile Beach	381	19	—	400
Sheffield (L)	364	54	4	422
Sisters Beach (L)	123	201	3	327
Smithton	1 267	127	8	1 402
Snug (L)	313	26	—	339
Sorell-Midway Point	1 468	96	—	1 564
South Arm (L)	213	92	—	305
Stanley (L)	215	40	3	258
Strahan (L)	315	101	6	422
Sulphur Creek (L)	139	17	3	159
Swansea (L)	243	106	5	354
Triabunna (L)	291	39	—	330
Tullah (L)	103	57	3	163
Turners Beach	496	45	—	541
Ulverstone	3 951	304	14	4 269
Waratah (L)	101	59	3	163
Westbury	534	46	3	583
White Beach (L)	110	303	—	413
Woodbridge (L)	103	7	—	110
Wynyard	1 933	192	4	2 129
Zeehan (L)	377	109	3	489

— nil or rounded to zero (including null cells)

Geographic area	FULLY OWNED	BEING PURCHASED		RENTED		TOTAL	
	Dwellings no.	Dwellings(a) no.	Median monthly loan repayment \$	Dwellings no.	Median weekly rent \$	Dwellings(b) no.	Persons(c) no.

SECTION OF STATE

2001

Major Urban	20 315	13 909	652	14 968	114	52 110	121 047
Other Urban	32 100	22 989	582	22 341	103	81 769	198 448
Bounded Locality	6 020	3 389	563	2 174	96	12 354	30 046
Rural Balance	16 896	10 865	647	4 166	83	34 939	94 174
Total(d)	75 331	51 152	614	43 649	104	181 172	443 715

1996

Major Urban	19 789	13 005	618	14 959	106	50 353	120 877
Other Urban	32 319	21 236	571	22 326	91	79 828	201 911
Bounded Locality	5 179	2 806	551	1 848	84	10 541	26 678
Rural Balance	16 973	10 227	624	4 493	68	34 475	96 846
Total(d)	74 260	47 274	593	43 626	93	175 197	446 312

URBAN CENTRE/LOCALITY

2001

Bagdad (L)	91	113	656	35	123	246	682
Beaconsfield	158	105	493	109	100	404	984
Beauty Point	266	105	504	91	113	483	1 092
Bicheno (L)	148	45	564	71	103	299	644
Bothwell (L)	75	32	474	26	62	150	348
Bracknell (L)	80	32	506	10	93	128	360
Branxholm (L)	55	21	517	12	79	91	232
Bridgewater-Gagebrook	311	476	425	1 505	73	2 375	6 684
Bridport	284	150	633	106	105	585	1 332
Burnie-Somerset	3 040	1 955	501	2 143	91	7 471	17 697
Campania (L)	48	29	574	14	116	97	226
Campbell Town (L)	174	66	428	77	77	337	730
Carrick (L)	65	45	556	9	87	126	312
Collinsvale (L)	43	43	562	14	134	103	277
Cremorne (L)	60	71	741	17	133	161	403
Cressy (L)	108	77	485	35	103	233	638
Currie (L)	114	72	535	127	87	338	753
Cygnets (L)	124	83	543	89	93	316	797
Deloraine	400	196	544	210	85	857	1 949
Devonport	3 629	2 301	555	2 549	103	8 951	21 116
Dilston (L)	69	30	716	6	129	108	296
Dodges Ferry	300	424	549	211	111	1 003	2 476
Dover (L)	105	43	520	32	105	194	463
Dunalley (L)	69	25	359	17	71	122	274
Eaglehawk Neck (L)	62	24	479	13	87	109	230
Evandale	168	151	591	59	114	392	1 047
Exeter (L)	68	32	691	28	112	131	313
Fern Tree (L)	93	103	696	21	162	222	593
Fingal (L)	86	20	420	25	64	140	323
Forth (L)	60	49	594	13	135	125	342
Franklin (L)	69	36	523	28	112	136	357
Gawler (L)	52	35	650	—	137	91	248
Geeveston (L)	147	89	445	55	96	304	820
George Town	601	428	480	520	84	1 671	4 097
Gravelly Beach (L)	105	69	650	38	109	221	581

— nil or rounded to zero (including null cells)

(a) Comprises 'Being purchased' and 'Being purchased under a rent/buy scheme'.

(b) Includes 'Being occupied rent-free', 'Being occupied under a life tenure scheme', 'Other tenure type', and 'Not stated'.

(c) Includes overseas visitors.

(d) Includes migratory and off-shore.

Geographic area	FULLY OWNED	BEING PURCHASED		RENTED	TOTAL		
	Dwellings no.	Dwellings(a) no.	Median monthly loan repayment \$	Dwellings no.	Median weekly rent \$	Dwellings(b) no.	Persons(c) no.
URBAN CENTRE/LOCALITY <i>cont.</i>							
2001 cont.							
Grindelwald (L)	118	74	850	7	183	210	582
Hadspen	213	310	636	97	115	652	1 848
Heybridge (L)	80	30	583	14	72	134	324
Hobart	20 315	13 909	652	14 968	114	52 110	121 047
Howden (L)	50	45	657	7	104	105	294
Huonville-Ranelagh	248	171	572	182	109	646	1 698
Kempton (L)	55	35	550	29	89	128	316
Kettering (L)	66	31	629	28	116	128	309
Kingston-Blackmans Bay	2 312	1 986	678	1 105	129	5 594	14 679
Lanena-Blackwall (L)	113	65	546	21	112	214	524
Latrobe	400	298	546	282	97	1 043	2 572
Lauderdale	370	385	690	102	140	885	2 445
Launceston	10 489	7 616	594	8 241	109	27 884	65 820
Legana	312	310	711	73	138	717	2 092
Leith (L)	38	24	733	6	79	71	213
Lewisham (L)	113	128	644	41	121	292	708
Lilydale (L)	58	25	517	31	105	120	320
Longford	503	324	576	247	96	1 138	2 790
Low Head (L)	54	44	641	51	94	161	371
Margate (L)	148	159	675	62	145	385	959
Maydena (L)	57	28	349	12	68	109	244
Mole Creek (L)	46	30	491	12	90	95	210
New Norfolk	750	577	524	496	93	1 936	4 891
Nubeena (L)	57	16	474	22	71	107	229
Oatlands (L)	125	51	508	57	66	247	562
Old Beach	190	402	725	42	155	646	1 855
Opossum Bay (L)	58	36	650	13	87	114	268
Orford (L)	134	33	466	49	108	231	483
Otago (L)	100	67	866	10	191	184	514
Penguin	539	308	534	271	99	1 179	2 868
Perth	314	299	605	123	116	773	1 977
Pontville	203	264	661	83	130	576	1 648
Port Sorell	410	184	583	198	116	854	1 899
Primrose Sands (L)	147	119	452	42	98	330	678
Queenstown	556	136	422	199	73	956	2 284
Railton (L)	148	92	448	54	93	317	861
Richmond (L)	174	84	735	50	116	324	818
Ridgley (L)	72	59	539	21	106	155	435
Ringarooma (L)	48	28	428	8	54	87	225
Rosebery	231	66	403	121	45	465	1 076
Ross (L)	75	23	483	14	83	124	259
St Helens-Stieglitz	412	138	532	211	101	816	1 727
St Marys (L)	128	48	431	41	61	225	537
Scamander (L)	119	42	617	30	107	209	456
Scottsdale	305	219	622	211	89	791	1 816
Seven Mile Beach	145	191	697	38	138	384	1 084
Sheffield (L)	165	89	472	85	90	363	951
Sisters Beach (L)	54	44	486	21	106	124	276
Smithton	475	349	519	379	84	1 267	3 026
Snug (L)	153	101	621	40	126	315	794
Sorell-Midway Point	579	511	614	301	116	1 469	3 575
South Arm (L)	98	83	625	23	126	213	536
Stanley (L)	104	44	468	48	91	214	458

(a) Comprises 'Being purchased' and 'Being purchased under a rent/buy scheme'.

(b) Includes 'Being occupied rent-free', 'Being occupied under a life tenure scheme', 'Other tenure type', and 'Not stated'.

(c) Includes overseas visitors.

Geographic area	FULLY OWNED	BEING PURCHASED		RENTED	TOTAL		
	Dwellings	Dwellings(a)	Median monthly loan repayment	Dwellings	Median weekly rent	Dwellings(b)	Persons(c)
no.	no.	\$	no.	\$	no.	no.	
URBAN CENTRE/LOCALITY <i>cont.</i>							
2001 cont.							
Strahan (L)	129	44	628	103	100	316	694
Sulphur Creek (L)	73	51	535	12	112	139	346
Swansea (L)	128	38	574	43	97	242	486
Triabunna (L)	154	54	479	69	97	291	697
Tullah (L)	61	18	416	12	62	103	247
Turners Beach	214	159	642	103	107	496	1 259
Ulverstone	1 688	984	555	1 011	101	3 951	9 252
Waratah (L)	52	19	387	24	65	98	235
Westbury	265	119	556	110	106	534	1 237
White Beach (L)	62	20	569	14	91	109	246
Woodbridge (L)	58	27	641	13	127	102	260
Wynyard	820	392	537	620	89	1 933	4 556
Zeehan (L)	178	53	351	118	63	378	879

(a) Comprises 'Being purchased' and 'Being purchased under a rent/buy scheme'.

(b) Includes 'Being occupied rent-free', 'Being occupied under a life tenure scheme', 'Other tenure type', and 'Not stated'.

(c) Includes overseas visitors.

Geographic area	FAMILY TYPE					HOUSEHOLD TYPE			HOUSEHOLD SIZE
	Couple family with dependent children (a)	Couple family with non-dependent children	Couple family without children	One parent family	Other family	Lone person	Group	Total (b) (c)	Mean (d)
	no.	no.	no.	no.	no.	no.	no.	no.	persons
SECTION OF STATE									
2001									
Major Urban	11 059	2 303	12 549	6 244	611	15 900	2 162	50 622	2.3
Other Urban	19 463	3 992	20 928	10 340	785	22 195	2 228	79 609	2.4
Bounded Locality	3 130	622	3 624	1 204	90	3 057	248	11 933	2.5
Rural Balance	11 538	2 128	10 573	2 688	207	6 201	571	33 703	2.7
Total (e)	45 190	9 045	47 674	20 476	1 693	47 353	5 209	175 867	2.5
1996									
Major Urban	11 569	2 685	11 862	5 717	617	14 404	2 487	49 070	2.5
Other Urban	21 806	4 461	20 007	9 257	752	19 815	2 406	78 143	2.6
Bounded Locality	3 013	618	3 026	927	77	2 421	204	10 235	2.6
Rural Balance	12 764	2 345	9 589	2 366	248	5 797	543	33 463	2.9
Total (e)	49 152	10 109	44 484	18 267	1 694	42 437	5 640	170 911	2.6
URBAN CENTRE/LOCALITY									
2001									
Bagdad (L)	102	11	62	22	—	44	5	246	2.8
Beaconsfield	96	13	103	55	3	116	8	393	2.4
Beauty Point	91	16	162	50	—	132	16	465	2.3
Bicheno (L)	44	12	98	27	3	70	11	262	2.2
Bothwell (L)	38	4	44	8	—	46	—	140	2.3
Bracknell (L)	42	8	46	9	—	17	3	124	2.9
Branxholm (L)	23	3	35	14	—	15	—	91	2.7
Bridgewater-Gagebrook	584	126	339	685	26	554	37	2 337	2.8
Bridport	125	16	212	44	3	159	10	567	2.3
Burnie-Somerset	1 683	359	1 949	921	51	2 148	169	7 258	2.4
Campania (L)	17	9	25	15	3	26	3	96	2.3
Campbell Town (L)	65	16	102	26	4	111	6	330	2.2
Carrick (L)	35	11	40	12	3	25	3	126	2.5
Collinsvale (L)	39	8	19	8	—	26	3	103	2.7
Cremorne (L)	52	8	36	18	3	36	6	158	2.5
Cressy (L)	70	24	59	23	—	55	3	232	2.8
Currie (L)	68	14	86	26	3	118	12	325	2.2
Cygnets (L)	75	18	78	46	3	86	4	306	2.6
Deloraine	169	45	238	81	6	282	18	836	2.3
Devonport	1 924	429	2 419	1 181	67	2 475	238	8 698	2.4
Dilston (L)	35	7	42	9	—	13	3	109	2.8
Dodges Ferry	273	25	216	170	6	263	19	967	2.5
Dover (L)	39	17	58	17	3	56	3	191	2.4
Dunalley (L)	20	3	49	12	3	26	3	114	2.3
Eaglehawk Neck (L)	20	4	36	11	—	31	3	105	2.1
Evandale	131	24	109	47	—	75	5	389	2.7
Exeter (L)	23	9	39	18	—	41	—	131	2.4
Fern Tree (L)	76	8	62	23	3	43	9	221	2.6
Fingal (L)	37	6	31	11	3	48	—	135	2.3
Forth (L)	42	10	44	7	3	19	—	122	2.8
Franklin (L)	35	9	34	19	—	32	—	130	2.7
Gawler (L)	34	7	38	4	—	9	3	93	2.7
Geeveston (L)	78	21	87	41	5	62	7	300	2.7
George Town	395	90	426	235	14	438	22	1 616	2.5

— nil or rounded to zero (including null cells)

(a) Comprises Couple families with children under 15; Couple families with dependent students; and Couple families with children under 15 and dependent students.

(b) Excludes 'Visitors only' and 'Other not classifiable' households.

(c) Comprises 'Family', 'Lone person' and 'Group' households.

(d) Mean household size is the average number of persons usually resident in a household. Excludes 'Visitors only' and 'Other not classifiable' households.

(e) Includes migratory and off-shore.

Geographic area	FAMILY TYPE					HOUSEHOLD TYPE			HOUSEHOLD SIZE
	Couple family with dependent children (a)	Couple family with non-dependent children	Couple family without children	One parent family	Other family	Lone person	Group	Total(b) (c)	Mean(d)
	no.	no.	no.	no.	no.	no.	no.	no.	persons
URBAN CENTRE/LOCALITY <i>cont.</i>									
2001 <i>cont.</i>									
Gravelly Beach (L)	63	13	67	20	3	44	11	220	2.6
Grindelwald (L)	76	8	86	8	3	30	3	211	2.7
Hadspen	260	31	165	69	6	92	17	637	2.9
Heybridge (L)	31	7	43	14	3	31	4	132	2.4
Hobart	11 059	2 303	12 549	6 244	611	15 900	2 162	50 622	2.3
Howden (L)	40	8	26	7	—	19	3	103	2.9
Huonville-Ranelagh	164	34	165	94	9	151	14	625	2.6
Kempton (L)	36	10	29	14	4	31	—	124	2.6
Kettering (L)	31	6	46	14	—	25	4	125	2.5
Kingston-Blackmans Bay	1 731	321	1 447	700	37	1 204	88	5 499	2.6
Lanena-Blackwall (L)	51	11	80	22	—	39	7	208	2.5
Latrobe	241	79	269	135	11	285	16	1 031	2.5
Lauderdale	304	70	232	105	3	148	21	877	2.8
Launceston	5 969	1 274	6 709	3 530	384	8 209	1 164	27 125	2.4
Legana	296	46	224	49	—	88	9	710	2.9
Leith (L)	29	7	22	4	—	11	—	71	3.0
Lewisham (L)	74	13	98	27	3	69	4	287	2.4
Lilydale (L)	31	3	26	25	4	31	—	120	2.5
Longford	314	61	316	98	5	299	24	1 115	2.5
Low Head (L)	44	3	48	9	—	53	—	156	2.3
Margate (L)	116	15	103	40	6	84	12	376	2.6
Maydena (L)	22	4	25	17	—	34	—	101	2.4
Mole Creek (L)	19	4	28	12	3	20	3	89	2.3
New Norfolk	478	112	501	253	17	477	48	1 879	2.5
Nubeena (L)	20	5	33	9	—	34	3	105	2.2
Oatlands (L)	57	7	62	31	3	79	3	241	2.3
Old Beach	279	43	182	45	3	77	12	637	2.9
Opossum Bay (L)	25	6	38	7	—	28	4	109	2.4
Orford (L)	36	10	83	20	—	67	3	220	2.1
Otago (L)	61	18	63	10	—	25	7	181	3.0
Penguin	281	58	335	143	10	318	14	1 157	2.4
Perth	226	47	227	86	4	166	5	757	2.6
Pontville	219	40	147	65	3	89	14	571	2.8
Port Sorell	157	24	305	78	4	220	22	807	2.2
Primrose Sands (L)	56	9	76	40	4	125	9	318	2.1
Queenstown	254	47	214	90	16	291	16	924	2.4
Railton (L)	97	19	91	36	4	62	4	311	2.7
Richmond (L)	100	16	91	22	—	73	7	310	2.6
Ridgley (L)	58	8	44	16	—	27	—	154	2.8
Ringarooma (L)	24	4	32	8	—	22	—	90	2.5
Rosebery	130	20	105	26	3	129	5	418	2.4
Ross (L)	17	5	45	11	—	30	4	113	2.3
St Helens-Stieglitz	123	23	276	80	3	267	6	775	2.1
St Marys (L)	51	15	62	24	—	67	3	224	2.3
Scamander (L)	38	7	75	18	—	55	7	200	2.2
Scottsdale	184	27	206	81	5	258	18	779	2.3
Seven Mile Beach	153	19	105	41	—	52	5	376	2.9
Sheffield (L)	105	22	91	52	—	86	7	361	2.7
Sisters Beach (L)	25	—	39	15	—	33	—	115	2.3
Smithton	333	78	297	118	17	373	29	1 243	2.4

— nil or rounded to zero (including null cells)

(a) Comprises Couple families with children under 15; Couple families with dependent students; and Couple families with children under 15 and dependent students.

(b) Excludes 'Visitors only' and 'Other not classifiable' households.

(c) Comprises 'Family', 'Lone person' and 'Group' households.

(d) Mean household size is the average number of persons usually resident in a household. Excludes 'Visitors only' and 'Other not classifiable' households.

<i>Geographic area</i>	FAMILY TYPE					HOUSEHOLD TYPE			HOUSEHOLD SIZE
	<i>Couple family with dependent children (a)</i>	<i>Couple family with non-dependent children</i>	<i>Couple family without children</i>	<i>One parent family</i>	<i>Other family</i>	<i>Lone person</i>	<i>Group</i>	<i>Total (b) (c)</i>	<i>Mean (d)</i>
	no.	no.	no.	no.	no.	no.	no.	no.	persons
URBAN CENTRE/LOCALITY <i>cont.</i>									
2001 <i>cont.</i>									
Snug (L)	86	17	91	34	—	71	6	304	2.6
Sorell-Midway Point	376	76	383	189	12	375	27	1 432	2.4
South Arm (L)	60	12	67	17	3	45	7	206	2.6
Stanley (L)	40	10	52	27	—	68	5	202	2.2
Strahan (L)	65	6	78	24	3	88	11	274	2.3
Sulphur Creek (L)	38	11	47	8	—	33	3	140	2.5
Swansea (L)	31	6	87	11	—	66	3	205	2.1
Triabunna (L)	70	19	97	24	5	69	3	286	2.5
Tullah (L)	23	5	28	11	—	25	3	95	2.4
Turners Beach	143	29	159	42	3	108	7	489	2.5
Ulverstone	860	173	1 125	446	41	1 125	71	3 830	2.3
Waratah (L)	24	6	22	15	—	34	—	100	2.3
Westbury	113	33	151	52	4	161	8	518	2.3
White Beach (L)	21	3	40	7	—	36	—	108	2.3
Woodbridge (L)	29	3	32	10	—	24	—	99	2.6
Wynyard	404	84	510	256	9	591	26	1 872	2.4
Zeehan (L)	101	12	81	38	3	109	5	349	2.4

— nil or rounded to zero (including null cells)

(a) Comprises Couple families with children under 15; Couple families with dependent students; and Couple families with children under 15 and dependent students.

(b) Excludes 'Visitors only' and 'Other not classifiable' households.

(c) Comprises 'Family', 'Lone person' and 'Group' households.

(d) Mean household size is the average number of persons usually resident in a household. Excludes 'Visitors only' and 'Other not classifiable' households.

URBAN CENTRES/LOCALITIES, Ranked by total number of persons

		<i>Persons</i>			<i>Persons</i>
<i>Rank</i>		no.	<i>Rank</i>		no.
1	Hobart	125 162	54	Fern Tree (L)	591
2	Launceston	68 088	55	Grindelwald (L)	586
3	Devonport	21 528	56	Oatlands (L)	585
4	Burnie-Somerset	18 064	57	Gravelly Beach (L)	581
5	Kingston-Blackmans Bay	14 767	58	St Marys (L)	538
6	Ulverstone	9 499	59	South Arm (L)	536
7	Bridgewater-Gagebrook	6 692	60	Lanena-Blackwall (L)	524
8	New Norfolk	5 008	61	Swansea (L)	518
9	Wynyard	4 623	62	Otago (L)	514
10	George Town	4 123	63	Dover (L)	489
11	Sorell-Midway Point	3 604	64	Orford (L)	483
12	Smithton	3 148	65	Scamander (L)	475
13	Penguin	2 908	66	Stanley (L)	462
14	Longford	2 818	67	Ridgley (L)	433
15	Latrobe	2 689	68	Low Head (L)	430
16	Dodges Ferry	2 475	69	Franklin (L)	423
17	Lauderdale	2 437	70	Cremorne (L)	403
18	Queenstown	2 349	71	Bracknell (L)	360
19	Legana	2 141	72	Bothwell (L)	350
20	Deloraine	2 030	73	Sulphur Creek (L)	348
21	Perth	1 983	74	Forth (L)	347
22	Old Beach	1 979	75	Fingal (L)	325
23	Port Sorell	1 936	76	Heybridge (L)	321
24	Scottsdale	1 901	77	Lilydale (L)	321
25	Hadspen	1 845	78	Kempton (L)	316
26	St Helens-Stieglitz	1 799	79	Carrick (L)	312
27	Huonville-Ranelagh	1 708	80	Exeter (L)	312
28	Pontville	1 652	81	Kettering (L)	307
29	Bridport	1 352	82	Dilston (L)	296
30	Turners Beach	1 256	83	Howden (L)	292
31	Westbury	1 241	84	Woodbridge (L)	285
32	Beauty Point	1 162	85	Sisters Beach (L)	278
33	Rosebery	1 108	86	Collinsvale (L)	277
34	Seven Mile Beach	1 082	87	Dunalley (L)	277
35	Evandale	1 057	88	Opossum Bay (L)	268
36	Beaconsfield	1 000	89	Ross (L)	266
37	Sheffield (L)	981	90	Nubeena (L)	255
38	Margate (L)	959	91	Gawler (L)	248
39	Zeehan (L)	891	92	Tullah (L)	248
40	Railton (L)	862	93	Waratah (L)	246
41	Geeveston (L)	827	94	White Beach (L)	246
42	Richmond (L)	827	95	Maydena (L)	244
43	Cygnets (L)	799	96	Eaglehawk Neck (L)	233
44	Currie (L)	793	97	Branxholm (L)	232
45	Snug (L)	792	98	Campania (L)	226
46	Campbell Town (L)	755	99	Ringarooma (L)	226
47	Strahan (L)	740	100	Leith (L)	212
48	Lewisham (L)	707	101	Mole Creek (L)	211
49	Bicheno (L)	697			
50	Triabunna (L)	697			
51	Bagdad (L)	682			
52	Primrose Sands (L)	677			
53	Cressy (L)	648			

EXPLANATORY NOTES

SCOPE AND COVERAGE

1 The 2001 Census of Population and Housing was held on 7 August 2001. Australia's first national Census was held in 1911 and since 1961 a census has been taken every five years, a frequency which is specified in the *Census and Statistics Act 1905*. The objective of the Census is to count the number of people in Australia on Census Night, identifying their key characteristics and those of the dwellings in which they live.

2 The Census aims to count every person who spent Census Night in Australia. This includes Australian residents in Antarctica and people in the territories of Jervis Bay, Cocos (Keeling) Islands and Christmas Island. The other Australian External Territories, Norfolk Island and minor islands such as Heard and McDonald Islands, are outside the scope of the Australian Census. The only people in Australia on Census Night who are excluded from the Census are foreign diplomats and their families.

3 The Census includes people on vessels in or between Australian ports, on board long distance trains, buses or aircraft and on oil or gas rigs off the Australian coast. People entering Australia before midnight on Census Night are counted while people leaving an Australian port for an overseas destination before midnight on Census Night are not. Visitors to Australia are included regardless of how long they have been in the country or how long they plan to stay. However, for people who intend to be in Australia less than one year, only basic demographic data are available. The Census includes homeless people and people camping out.

4 All occupied dwellings are counted in the Census with the exception of diplomatic dwellings. Unoccupied private dwellings are also counted with the exception of unoccupied dwellings in caravan parks, marinas and manufactured home estates, and units in accommodation for the retired or aged (self-care). Unoccupied residences of owners, managers or caretakers of such establishments are counted.

5 Details about the 2001 Census content, collection operations, confidentiality and privacy protection, processing and evaluation activities are contained in *2001 Census of Population and Housing: Nature and Content* (cat. no. 2008.0).

ABS POPULATION ESTIMATES

6 All counts in this publication are on a 'place of enumeration' basis. 'Place of enumeration' means where the person was counted on Census Night. The Census can provide person counts based on 'place of usual residence' for Collection Districts (CDs) and aggregations of CDs. Appendix 1—Estimated Resident Population highlights the difference between these two measures.

7 The Estimated Resident Population (ERP) is the official Australian Bureau of Statistics (ABS) estimate of the Australian population. The ERP is based on results of the Census of Population and Housing. It is compiled as at 30 June of each census year and updated quarterly between censuses. The intercensal estimates of the resident population are revised following the next census.

8 The ERP is derived from census usual residence counts, by making the following three important adjustments:

- An adjustment for census net underenumeration (or undercount). The level of underenumeration is derived from the Post Enumeration Survey which is conducted soon after the Census, and from estimates based on demographic analysis.
- The inclusion of an estimated number of Australian residents who are temporarily overseas on Census Night and are therefore not covered by the Australian Census. The number of such people is estimated from statistics on overseas arrivals and departures.
- The third adjustment occurs because the Census does not fall on 30 June. For example, the 2001 Census was held on 7 August. Back dating of population estimates from 7 August to 30 June is accomplished using data from birth and death registrations, overseas arrivals and departures, and estimates of interstate migration, for the period 1 July to 7 August.

EXPLANATORY NOTES *continued*

ABS POPULATION ESTIMATES *continued*

9 ABS population estimates are published in *Australian Demographic Statistics* (cat. no. 3101.0), produced quarterly, and in *Population by Age and Sex, Australian States and Territories* (cat. no. 3201.0) produced annually. ERPs for Statistical Local Areas (SLAs) are published in *Regional Population Growth, Australia and New Zealand* (cat. no. 3218.0).

10 The ABS also provides projections (based on different assumptions as to future fertility, mortality and migration) of the resident population of Australia, states and territories. These projections are published every two years in *Population Projections, Australia* (cat. no. 3222.0).

DATA LIMITATIONS

11 Census data are subject to a number of inaccuracies resulting from errors by respondents or mistakes in collection or processing. Whilst many of these are corrected by careful processing procedures, some still remain. The effect of the remaining errors is generally slight, although it may be more important for small groups in the population. The main kinds of error to keep in mind are:

- *Partial non-response*: In some cases where an answer is not provided to a question an answer is imputed (often from other information on the form). In other cases a 'Not stated' code is allocated.
- *Processing error*: While such errors can occur in any processing system, quality management is used continuously to improve the quality of processed data, and to identify and correct data of unacceptable quality.
- *Random adjustment*: Table cells containing small values are randomly adjusted or suppressed to avoid releasing information about particular individuals, families, or households. The effects of these adjustments are statistically insignificant.
- *Respondent error*: Because processing procedures cannot detect or repair all errors made by people in completing the forms, some remain in final data.
- *Undercount*: Although the Census aims to count each person, there are some people who are missed and others who are counted more than once. The data in this publication are not adjusted for the net undercount.

12 Further information on data quality is provided progressively in *Census Update* and in *2001 Census Papers*.

QUALITY OF INDIGENOUS STATISTICS

13 For further information on the quality of Indigenous statistics, see *Population Distribution, Aboriginal and Torres Strait Islander Australians* (cat. no. 4705.0). This publication presents counts for Aboriginal and Torres Strait Islander Australians from the 2001 Census for Indigenous geographic areas, accompanied by information on data quality to help interpret the data. Estimates of the Indigenous population, based on the 2001 Census, are also included. For comprehensive information on the quality of Indigenous census data, see *Population Issues, Aboriginal and Torres Strait Islander Australians* (cat. no. 4708.0).

OVERSEAS VISITORS

14 Overseas visitors are defined differently for the 2001 Census. For the 1996 Census overseas visitors were defined as any person who stated they would be in Australia for less than 6 months. For the 2001 Census they are defined as any person who stated they would be in Australia for less than 12 months. Data for overseas visitors are restricted to age, sex and marital status.

CALCULATION OF PROPORTIONS

15 When calculating the proportion of the population with a particular characteristic, 'Not stated' responses are included in the denominator. For example, in the Summary of findings, the proportion of people who are of Indigenous origin is calculated by dividing the number of persons who stated that they were of Indigenous origin by the total population and expressing the result as a percentage. The total population includes the category 'Not stated'.

EXPLANATORY NOTES *continued*

CALCULATION OF PROPORTIONS *continued*

16 For census variables which include data for overseas visitors i.e. age, sex and marital status, the category 'Overseas visitor' is also included in the denominator.

CALCULATION OF MEDIANS

17 A median is a measure of central tendency. It is a mid value which divides a population distribution into two, with half the observations falling below it and half above it. Unlike averages (means) medians are not usually skewed by extreme observations.

18 There are a number of issues to be aware of:

- The categories 'Not stated' and 'Not applicable' are not included in the calculation of medians.
- The category 'Overseas visitor', is only included in the calculation of the median when data for overseas visitors is collected for the variable (see paragraph 14). For example, 'Median age' (table 1) includes overseas visitors whereas 'Median weekly individual income' (also in table 1) does not.
- If a median falls into a category that has a text-only label, then a value of '0' is used for that category. For this publication this is only relevant to the calculation of 'Median weekly individual income' (table 1), as the income classification (mnemonic INCP) includes categories 'Nil income' and 'Negative income'.
- When calculating a median on a classification containing ranges, the median may fall into a range which is open-ended. In this case, the median would be set to the number in the range's label. For example, in the calculation of 'Median weekly individual income', if the median was to fall in the last range *\$1,500 or more*, then \$1,500 would be allocated as the median.
- 'Median monthly loan repayment' and 'Median weekly rent' (both in table 6) are based on the ranged variables HLRD01 and RNTD01 respectively (see Glossary). This is due to difficulties associated with the large number of small cells when using individual dollar values to perform these calculations. An adjustment has been made to HLRD01, with the range *\$1,500 and over* changed to *\$1,500–\$1,999* and an additional range *\$2,000 and over* added.

UNADJUSTED DOLLARS

19 The 1996 Census dollar values for 'Median weekly individual income' (table 1), 'Median monthly loan repayment' (table 6) and 'Median weekly rent' (table 6) have not been adjusted into 2001 dollars.

ABBREVIATIONS

ABS	Australian Bureau of Statistics
ASGC	Australian Standard Geographical Classification
CD	Collection District
ERP	estimated resident population
GIS	geographic information system
L	Locality
no.	number
PC	personal computer
S/T	State or Territory
SD	Statistical Division
SLA	Statistical Local Area
SOS	Section of State
SSD	Statistical Subdivision
UC/L	Urban Centre/Locality

APPENDIX 1 ESTIMATED RESIDENT POPULATION

POPULATION MEASURES

This table is provided to highlight the difference between the Census 'as enumerated' and 'usual residence' counts and the Estimated Resident Population (ERP). The ERP is the official Australian Bureau of Statistics (ABS) estimate of the Australian population. It is based on the Census of Population and Housing usual residence counts and is updated quarterly using births, deaths and migration data.

POPULATION MEASURES—30 JUNE AND 7 AUGUST 2001

	<i>Census as Enumerated(a)</i>	<i>Census Usual Residence(b)</i>	<i>Estimated Resident Population(c)</i>
New South Wales	6 371 745	6 326 579	6 609 304
Victoria	4 644 950	4 660 991	4 822 663
Queensland	3 655 139	3 522 044	3 635 121
South Australia	1 467 261	1 470 057	1 514 854
Western Australia	1 851 252	1 828 294	1 906 114
Tasmania	456 652	460 672	472 931
Northern Territory	210 664	188 075	200 019
Australian Capital Territory	311 947	309 998	321 680
Australia(d)	18 972 350	18 769 249	19 485 278

- (a) Number of persons counted in each state/territory on Census Night, 7 August 2001.
- (b) Number of persons usually resident in each state/territory on Census Night on 7 August 2001 regardless of where they were counted on Census Night.
- (c) These are census usual resident counts, plus Australian residents temporarily overseas on Census Night, plus the estimated census underenumeration, plus deaths and less births, net overseas migration and net interstate migration occurring between 30 June and 7 August 2001, giving estimated resident population at 30 June 2001.
- (d) Includes Other Territories.

APPENDIX 2 CENSUS PRODUCTS AND SERVICES

2001 PRODUCTS AND SERVICES

A wide range of products and services are available from the 2001 Census of Population and Housing. Brief descriptions of these are included below. For more detailed information on the 2001 Census range of products and services, please refer to the *2001 Directory of Census Statistics* (cat. no. 2910.0).

Census products fall into two broad types: reference products and data products. Most of the reference products from the 2001 Census are available free of charge from the Australian Bureau of Statistics (ABS) web site.

CENSUS REFERENCE PRODUCTS

2001 Census Dictionary

The *2001 Census Dictionary* (cat. no. 2901.0) is a comprehensive reference guide to the 2001 Census of Population and Housing. The Dictionary includes a complete listing of 2001 Census classifications. It describes new topics introduced for 2001 and highlights classification changes that have occurred since the 1996 Census. The Dictionary also explains the concepts relevant to census collection, processing and output of data.

How Australia Takes a Census

How Australia Takes a Census (cat. no. 2903.0) provides information about the history of the census, the planning process and the way in which the census is conducted.

Geographic Classifications and Codes

Statistical Geography: Volume 1—Australian Standard Geographical Classification (ASGC) 2001 Census Edition (cat. no. 1216.0) provides information about the names and codes of the standard geographic areas used in the 2001 Census. *Statistical Geography: Volume 2—Census Geographic Areas, Australia 2001 Census Edition* (cat. no. 2905.0) and *Statistical Geography: Volume 3—Australian Standard Geographical Classification (ASGC) Urban Centres/Localities: 2001 Census Edition* (cat. no. 2909.0) provide information on additional geographic areas.

2001 Census Statistical Local Area Maps

These reference maps show the Statistical Local Areas (SLAs) from the 2001 Census. Each map shows the boundary of an SLA and the Collection District boundaries contained within.

Digital Boundaries

Census boundaries are made available electronically as *Digital Boundaries*. They include all of the Australian Standard Geographical Classification (ASGC), Urban Centres and Localities, and Census-specific areas.

CENSUS DATA PRODUCTS

Census Snapshots

Census Snapshots are a new product designed to provide a summary overview for selected geographic areas and are available from the ABS web site, free of charge. *Census Snapshots* contain subsets of Community Profile data, including person counts, age and birthplace, presented in a narrative form for easy access by a wide audience. A *1901 Census Snapshot* for Australia is also available to celebrate the Centenary of Federation.

Estimated Resident Population

The Estimated Resident Population (ERP) is the official ABS population estimate. It is based on census usual residence counts, and is updated quarterly using births, deaths and migration data.

Two publications containing ERP data, based on 2001 Census figures are:

- *Australian Demographic Statistics—2001 Census Edition*, cat. no. 3101.0
- *Regional Population Growth, Australia—2001 Census Edition*, cat. no. 3218.0.

Selected Characteristics

The *Census of Population and Housing* suite of publications contains data and commentary on various person and dwelling characteristics from the 2001 Census at selected geographic levels. There are three series of publications in the suite with the following subtitles:

APPENDIX 2 CENSUS PRODUCTS AND SERVICES *continued*

Selected Characteristics continued

- *Selected Social and Housing Characteristics, Australia 2001*, cat. no. 2015.0
- *Selected Social and Housing Characteristics for Statistical Local Areas 2001*, cat. nos 2015.1–8
- *Selected Characteristics for Urban Centres and Localities, Australia 2001*, cat. no. 2016.0
- *Selected Characteristics for Urban Centres and Localities 2001*, cat. nos 2016.1–7
- *Selected Education and Labour Force Characteristics, Australia 2001*, cat. no. 2017.0
- *Selected Education and Labour Force Characteristics for Statistical Local Areas 2001*, cat. nos 2017.1–8.

Community Profile Series

The Community Profile Series provides detailed and comprehensive census characteristics of people, families and dwellings for small areas. This series is available for all standard census geographic areas, and is available in hardcopy and electronic formats.

The series comprises six Community Profiles:

- *Basic Community Profile* (cat. no. 2001.0) contains 33 tables of detailed data covering dwelling, household and family topics. This profile is available for all standard census geographic areas, Commonwealth and State Electoral Divisions, Postal Areas, and Suburbs, for the states/territories and Australia.
- *Indigenous Profile* (cat. no. 2002.0) contains 29 tables of key Census characteristics for Aboriginal and Torres Strait Islander people, for all ASGC areas from Statistical Local Area (SLA) level to whole of Australia, as well as Indigenous Areas and Aboriginal and Torres Strait Islander Commission (ATSIC) regions.
- *Time Series Community Profile* (cat. no. 2003.0) contains 22 tables comparing data from the 1991, 1996 and 2001 Censuses where the classifications are comparable. Data are presented on 2001 geographic boundaries.
- *Usual Residents Profile* (cat. no. 2004.0) contains 28 tables of data for persons usually resident in the selected area. This is the only community profile based on place of usual residence.
- *Expanded Community Profile* (cat. no. 2005.0) contains 49 tables available for SLAs and larger areas, comprising more detailed versions of some of the Basic Community Profile tables, plus additional tables.
- *Working Population Profile* (cat. no. 2006.0) contains 19 tables of labour force and related data on the characteristics of employed people.

Classification Counts

Classification Counts (cat. nos 2022.0–8) provide frequency counts for 2001 Census variables in complete classificatory detail, for every state/territory and Capital City Statistical Division, cross-classified by sex where applicable.

CLIB2001

CLIB2001 is an electronic product provided free of charge to public libraries through the ABS Library Extension Program. The product contains a large volume of tabulated data and software that allows access, display and printing of the data. For 2001 this product will be available as both a CD-ROM and (limited access) Internet-based product. *CLIB2001* comprises the complete 2001 Census Community Profile Series and Classification Counts.

CDATA 2001

CDATA 2001 is a CD-ROM product which contains a large volume of tabulated census data, digital boundaries and base map data, with software to produce tables, maps and graphs of the data. The product is available at the Australia and state/territory levels.

APPENDIX 2 CENSUS PRODUCTS AND SERVICES *continued*

CDATA 2001 continued

There are two *CDATA 2001* products available, offering different levels of functionality:

CDATA 2001—Full Geographical Information System (GIS): This version is aimed at the expert GIS user who requires detailed spatial data analysis using Structured Query Language, geocoding and importation of 'client own' data.

CDATA 2001—Quickbuild: This version has been designed for GIS users with more basic spatial analysis requirements. It allows users to produce data reports, graphs and/or maps. The product is aimed at inexperienced or intermediate GIS users. *CDATA 2001—Quickbuild* users will also have the option to upgrade to *CDATA 2001—Full GIS* if so desired.

Social Atlas Series

The *Social Atlas* (cat. nos 2840.1–8) publications feature colour maps of the key social, demographic and economic characteristics of each capital city. These will be released from November 2002.

Australia in Profile—A Regional Analysis

Australia in Profile—A Regional Analysis (cat. no. 2032.0) provides commentary and data on a number of key social indicators from the 2001 Census, with the focus on regional distributions and comparisons.

CONSULTANCY SERVICES

The following census specific services are available:

- *Customised Profiles Service* provides community profile data tailored to your needs, on a variety of media.
- *Customised Table Service* provides detailed cross-classified tables tailored to your needs on a variety of media.
- *Customised Geographic Data Reports Service* provides tabular geographic data which relate specifically to the census Geographic Areas and their characteristics (e.g. area).
- *Customised Mapping Service* provides both Customised Thematic Maps and Customised Reference Maps on request.

GLOSSARY

General descriptions of terms and concepts used in this publication are provided below. Tables are also footnoted where applicable for additional clarity. Detailed definitions of classifications and concepts are available in the *2001 Census Dictionary* (cat. no. 2901.0).

Dependent child	A dependent child is a person who is either a child under 15 years of age or a dependent student. A dependent student is any child in a family under 15 years of age, or who is aged 15–24 years and is a full-time student. To be regarded as a child the individual can have no partner or child of his/her own usually resident in the same household.
Dwelling	<p>A dwelling is a structure which is intended to have people live in it, and which is habitable on Census Night.</p> <p>There are private and non-private dwellings:</p> <ul style="list-style-type: none">■ A private dwelling is normally a house, flat, part of a house, or even a room; but can also be a house attached to, or rooms above, shops or offices; an occupied caravan or unit in a caravan park or craft in a marina; occupied dwelling in a Manufactured Home Estate; occupied self-care unit in Accommodation for the Retired or Aged; a houseboat; or tent if it is standing on its own block of land. An occupied caravan situated on a residential allotment is also classed as a private dwelling. Private dwellings can be either occupied or unoccupied.■ Non-private dwellings are those dwellings not included above, which provide a communal or transitory type of accommodation. They are classified according to their function. These dwellings include hotels, motels, guest houses, prisons, religious and charitable institutions, defence establishments, hospitals and other communal dwellings. Only occupied non-private dwellings are included in the Census.
Employed	Employed people are those aged 15 years or more who, during the week prior to Census Night, worked for payment or profit; who had a job from which they were on leave or otherwise temporarily absent; were on strike or stood down temporarily; or worked as unpaid helpers in a family business.
Family	A family is defined by the ABS as two or more persons, one of whom is at least 15 years of age, who are related by blood, marriage (registered or de facto), adoption, step or fostering, and who are usually resident in the same household. The basis of a family is formed by identifying either a couple, parent-child or other blood relationship. Information on persons temporarily absent on Census Night is considered in family coding.
Full-time/Part-time employment	<p>This variable is based on the number of hours worked in all jobs held by employed people during the week before Census Night. It excludes any time off but includes any overtime or extra time worked:</p> <ul style="list-style-type: none">■ Part-time workers: employed people who worked up to 34 hours■ Full-time workers: employed people who worked 35 hours or more.
Geographic areas	<p>The tables in this publication use both the Section of State and Urban Centre/Locality classification structures as defined by the 2001 Census version of the Australian Standard Geographical Classification (ASGC).</p> <p><i>Section of State (SOS):</i> The SOS Structure uses population counts from the latest Census of Population and Housing to class CDs as either urban or rural. Unlike the UC/L Structure, the SOS Structure includes all CDs and therefore, in aggregate, the SOS Structure covers all of Australia. For the 2001 edition, three of the five different SOS have been divided into sub categories based on population size. Data for the sub categories are available through the Consultancy Services listed in <i>Appendix 2—Census Products and Services</i>.</p>

GLOSSARY *continued*

Geographic areas *continued*

Within a state/territory (S/T), each SOS represents an aggregation of non-contiguous geographical areas of a particular urban/rural type. These are based upon the UC/Ls current for the census year 2001. Not all SOS are represented in each S/T. The categories are:

- Major Urban: this category provides for a further three categories of urban areas (Urban Centres from the UC/L Structure) based upon population ranges of 1,000,000 or more, 250,000 to 999,999, and 100,000 to 249,999.
- Other Urban: this category provides for a further five categories of urban areas (Urban Centres from the UC/L Structure) based upon population ranges of 50,000 to 99,999, 20,000 to 49,999, 10,000 to 19,999, 5,000 to 9,999, and 1,000 to 4,999.
- Bounded Locality: this category provides for a further two categories of rural areas (Localities in the UC/L Structure) with a population of 500 to 999 and 200 to 499.
- Rural Balance: the remainder of the S/T.
- Migratory: areas composed of off-shore, shipping and migratory CDs.

Listings of component CDs of SOS, for census year 2001, are available from the ABS as a Customised Geographic Data Report.

Urban Centre/Locality (UC/L): The UC/L structure is defined using the population counts (place of enumeration) from the 2001 Census of Population and Housing. The structure is only current at the time of the Census.

The UC/L structure groups Census Collection Districts (CDs) together to form defined areas according to population size criteria. (The delimitation criteria for UC/Ls are based on those developed in 1965 by Dr G. J. R. Linge.) In broad terms an urban centre is a population cluster of 1,000 or more people, while a locality is a population cluster of between 200 and 999 people. For statistical purposes, people living in urban centres are classified as urban, while those in localities are classified as rural.

The UC/L Structure relates to CDs within defined areas only and thus in aggregate does not cover the whole of Australia. Urban centres may cross state or territory boundaries and in those instances, the separate portions are uniquely identified and reported in their relevant state or territory.

A full description of the definitions and delimitation criteria used for the UC/Ls may be found in the publication *Statistical Geography: Volume 1—Australian Standard Geographical Classification (ASGC) 2001* (cat. no. 1216.0), Chapter 6.

The UC/Ls determined following the 2001 Census are listed in the publication *Statistical Geography: Volume 3—Australian Standard Geographical Classification (ASGC) Urban Centres/Localities, 2001* (cat. no. 2909.0).

More information: Definitions, maps and lists of codes and names of the geographic areas are available in *Statistical Geography: Volume 1—Australian Standard Geographical Classification (ASGC) 2001* (cat. no. 1216.0) effective date 1 July 2001.

HLRD01 This is a derived variable which contains the amount of money spent on housing loan repayments in ranges. In standard census products, ranges are used rather than individual dollar amounts. Individual dollar amounts are available. More detail about this variable is available in the *2001 Census Dictionary* (cat. no. 2901.0).

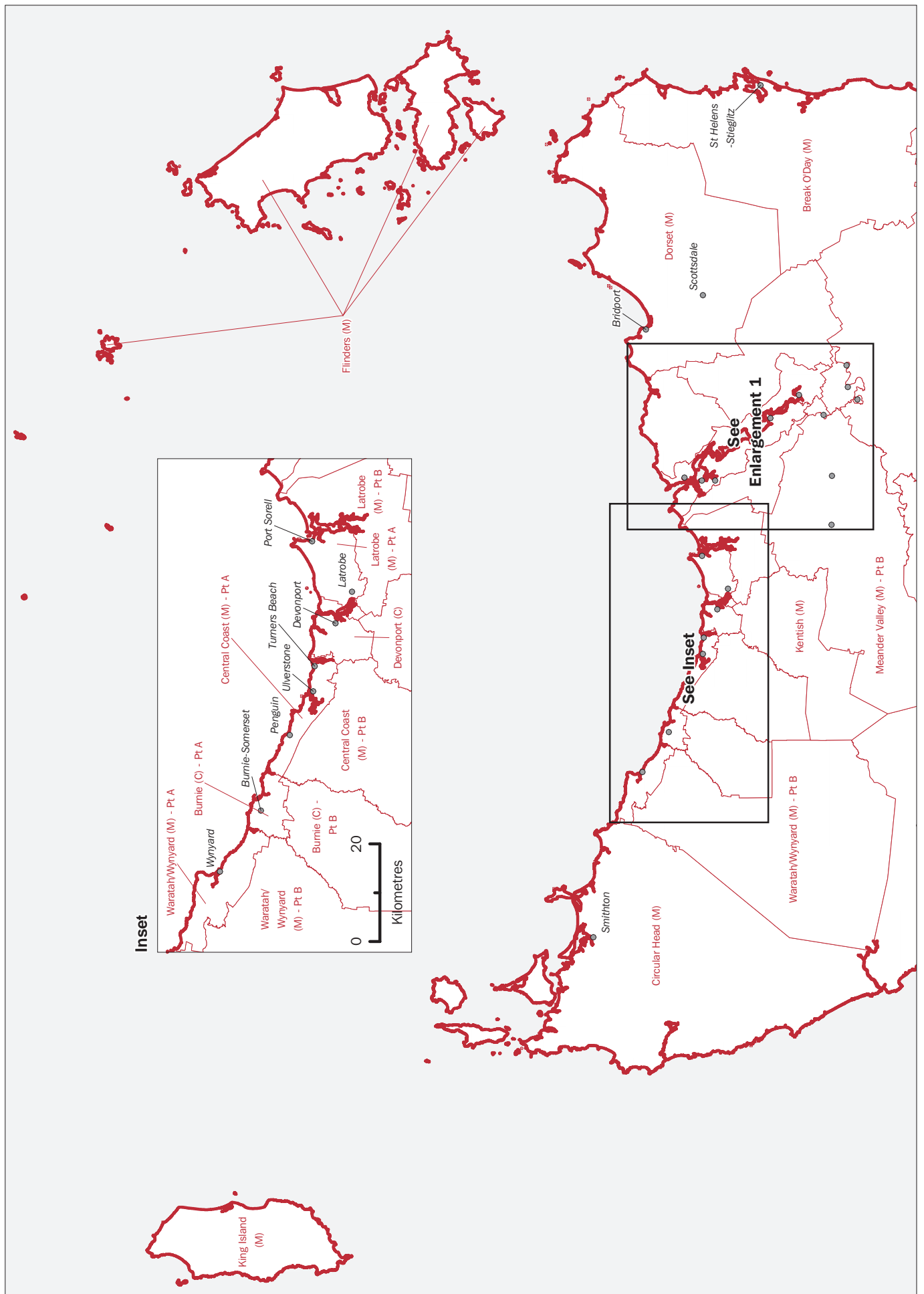
Household A household is defined as a group of two or more related or unrelated people who usually reside in the same dwelling, who regard themselves as a household, and who make common provision for food or other essentials for living; or a person living in a dwelling who makes provision for his/her own food and other essentials for living, without combining with any other person.

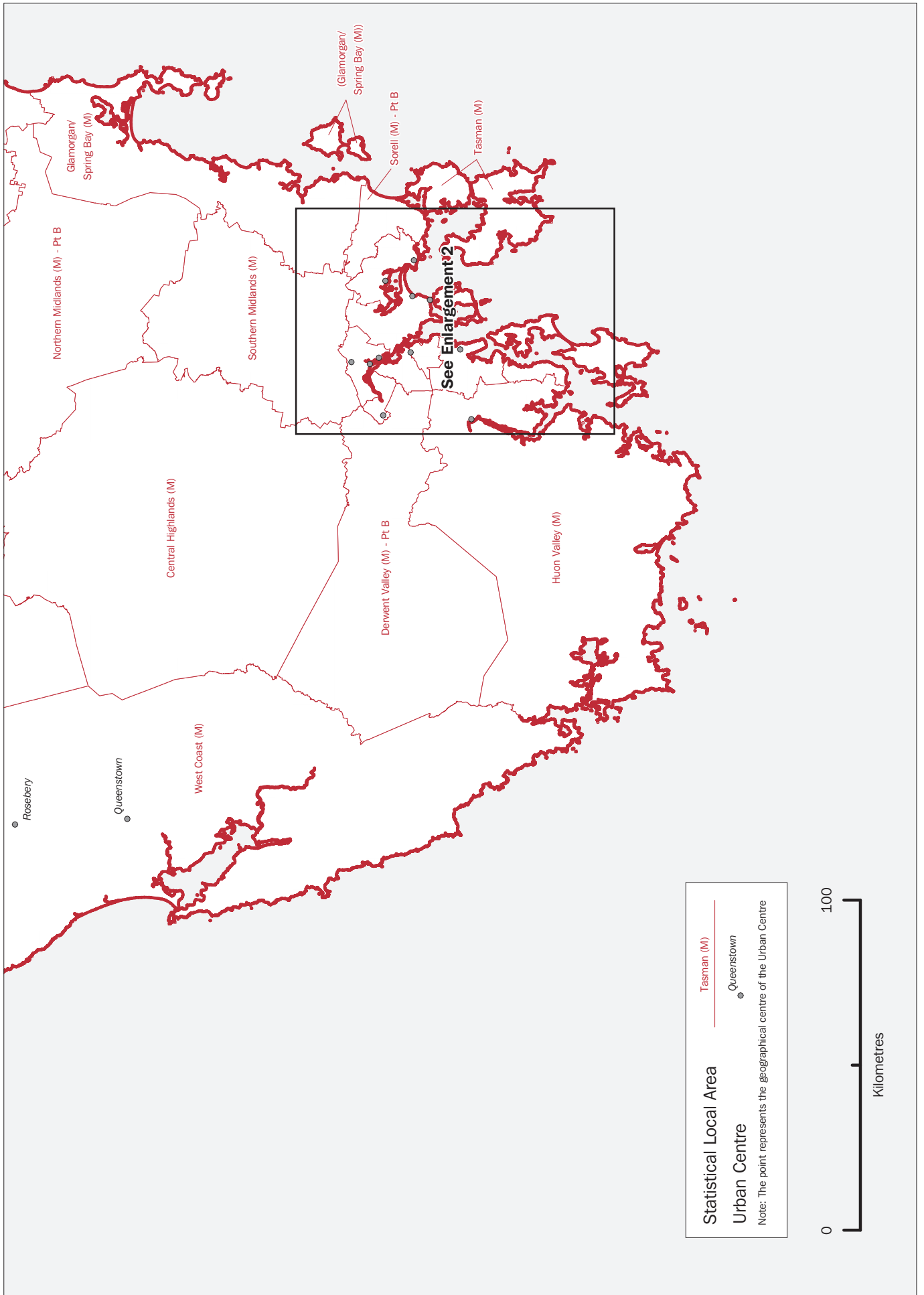
GLOSSARY *continued*

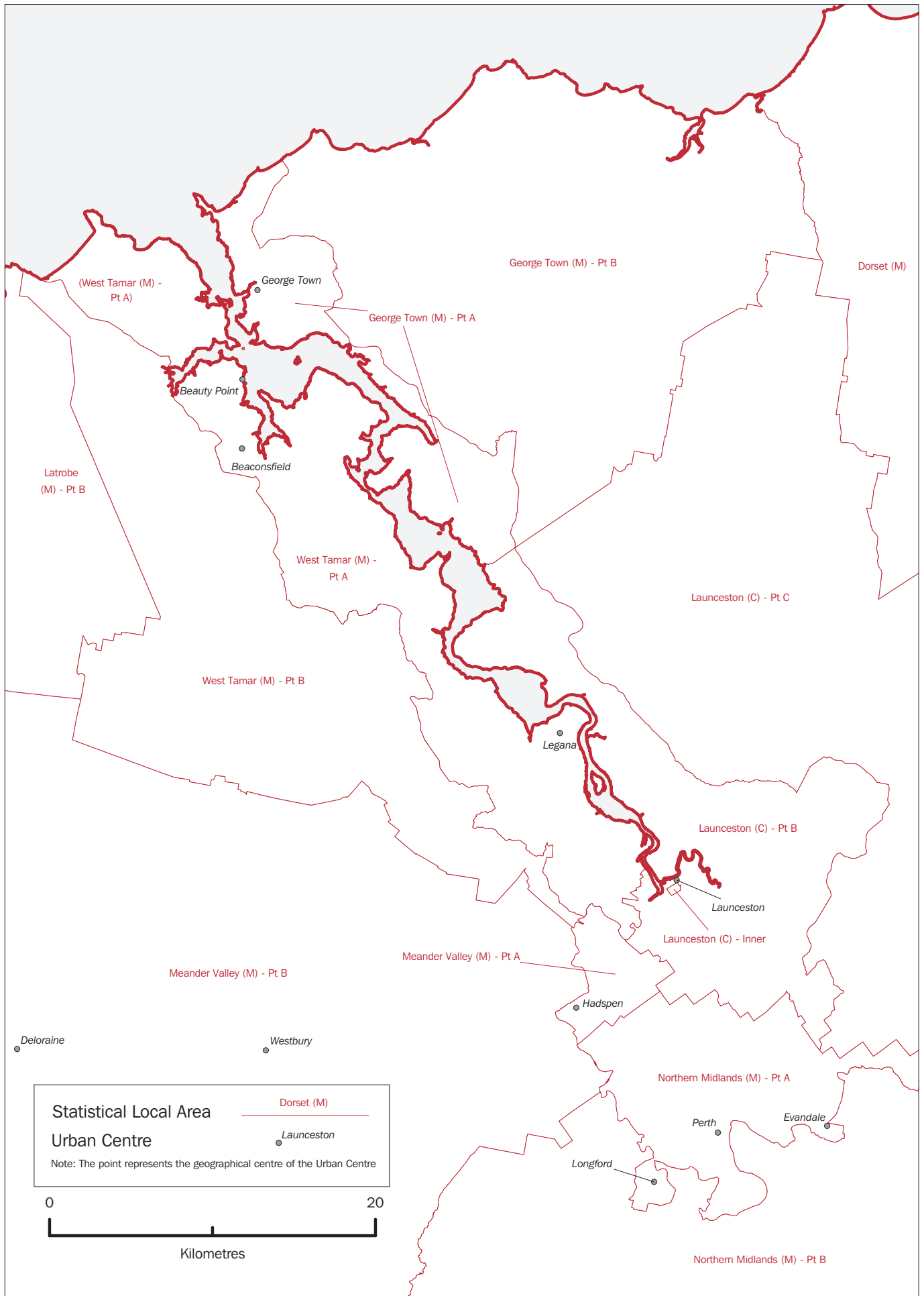
Household <i>continued</i>	Under this definition, in a group house where occupants share the dwelling, each occupant who usually supplies his/her own food should be counted as a separate household and issued with a separate Household Form. In practice, however, most such households usually only complete one form.
Income	People aged 15 years and over are asked to indicate their usual gross weekly income by selecting an income range on the census form. There are 16 options ranging from 'Negative income', 'Nil income' through to '\$1,500 or more'. For example, a person with a gross weekly income of \$650 per week would tick the range '\$600–\$699'. Gross weekly income is the income before tax, superannuation, health insurance, or other deductions are made. Gross income includes: family allowance, parenting payment, pensions, unemployment benefits, student allowances, maintenance (child support), superannuation, wages, salary, overtime, dividends, rents received, interest received, business or farm income (less operation expenses) and worker's compensation received. Household income is the sum of the personal incomes of each resident present in the dwelling.
Indigenous	A person is defined to be of Indigenous origin if he or she identifies himself or herself as of Aboriginal and/or Torres Strait Islander origin.
Industry (of employment)	This variable describes the industries in which employed people (aged 15 years and over) work, and is coded to the <i>Australian and New Zealand Standard Industrial Classification (ANZSIC), 1993</i> (cat. no. 1292.0).
Internet	Internet includes: Internet connections in private and business applications; Internet connection through a computer or set top box, games machine, mobile phone, or other means; and Internet used at other locations including libraries, Internet cafes, shops, educational institutions, or at a neighbour or friends place of residence.
Labour force	The labour force comprises employed and unemployed people aged 15 years and over.
Locality	See definition under Geographic areas.
Lone person household	A person who usually lives alone in a private dwelling.
Occupation (of main job)	This variable describes the main job held by employed people (aged 15 years and over) during the week prior to Census Night, and is coded using the <i>ASCO—Australian Standard Classification of Occupations, Second Edition</i> (cat. no. 1220.0).
Overseas-born	Overseas-born people are those who state that they were born in a country other than Australia, those born at sea, and those whose responses are classed as 'Inadequately described' or 'Not elsewhere classified'.
Personal Computer (PC)	PCs include: computers used at home for private and business purposes, portable computers, personal organisers, computers brought home from the workplace, and dedicated word processors. Game machines are not included.
RNTD01	This is a derived variable which identifies the weekly rent paid for a dwelling in ranges. In standard census products, ranges are used rather than individual dollar amounts. Individual dollar amounts are available. More detail about this variable is available in the <i>2001 Census Dictionary</i> (cat. no. 2901.0).
Section of State	See definition under Geographic areas.
Student	A student is an individual who attends a secondary or tertiary educational institution on a full-time/part-time basis.

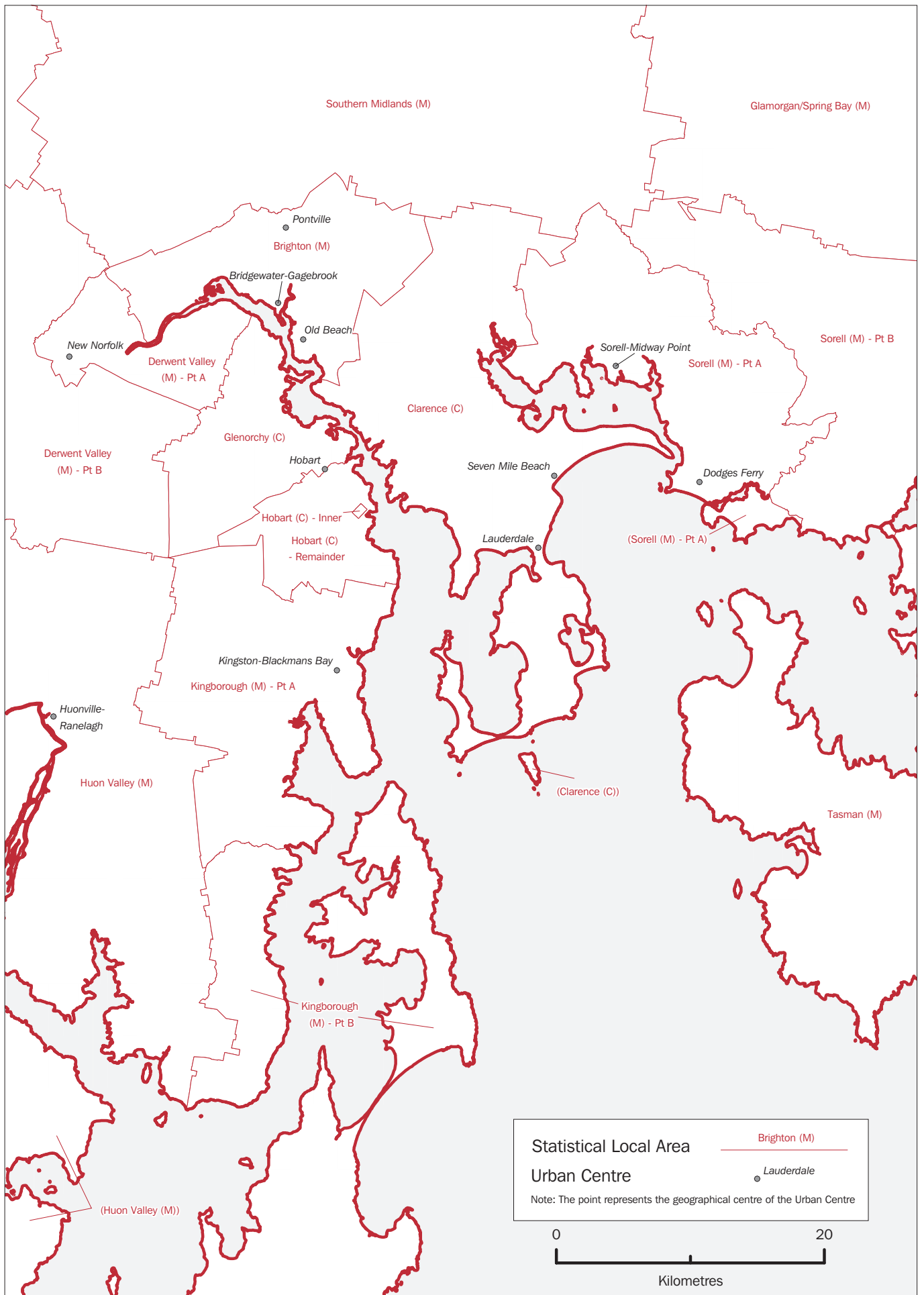
GLOSSARY *continued*

Unemployed	Unemployed people are those who, during the week prior to Census Night, did not have a job but were actively looking for work (either full-time or part-time) and were available to start work.
Unemployment rate	The unemployment rate is the number of unemployed persons expressed as a percentage of the labour force.
Urban Centre	See definition under Geographic areas.









FOR MORE INFORMATION . . .

<i>INTERNET</i>	www.abs.gov.au the ABS web site is the best place to start for access to summary data from our latest publications, information about the ABS, advice about upcoming releases, our catalogue, and Australia Now—a statistical profile.
<i>LIBRARY</i>	A range of ABS publications is available from public and tertiary libraries Australia-wide. Contact your nearest library to determine whether it has the ABS statistics you require, or visit our web site for a list of libraries.
<i>CPI INFOLINE</i>	For current and historical Consumer Price Index data, call 1902 981 074 (call cost 77c per minute).
<i>DIAL-A-STATISTIC</i>	For the latest figures for National Accounts, Balance of Payments, Labour Force, Average Weekly Earnings, Estimated Resident Population and the Consumer Price Index call 1900 986 400 (call cost 77c per minute).

INFORMATION SERVICE

Data which have been published and can be provided within five minutes are free of charge. Our information consultants can also help you to access the full range of ABS information—ABS user-pays services can be tailored to your needs, time frame and budget. Publications may be purchased. Specialists are on hand to help you with analytical or methodological advice.

<i>PHONE</i>	1300 135 070
<i>EMAIL</i>	client.services@abs.gov.au
<i>FAX</i>	1300 135 211
<i>POST</i>	Client Services, ABS, GPO Box 796, Sydney 2001

WHY NOT SUBSCRIBE ?

ABS subscription services provide regular, convenient and prompt deliveries of ABS publications and products as they are released. Email delivery of monthly and quarterly publications is available.

<i>PHONE</i>	1300 366 323
<i>EMAIL</i>	subscriptions@abs.gov.au
<i>FAX</i>	03 9615 7848
<i>POST</i>	Subscription Services, ABS, GPO Box 2796Y, Melbourne 3001



2201660001019

ISBN 0 642 47802 3

Recommended retail price \$27.00
© Commonwealth of Australia 2003
Produced by the
Australian Bureau of Statistics