

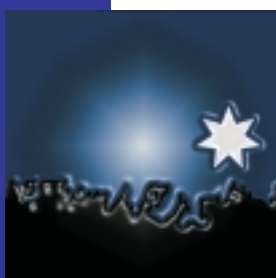
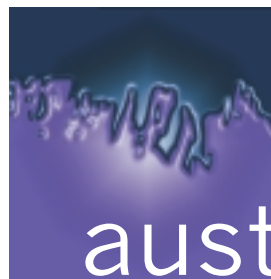
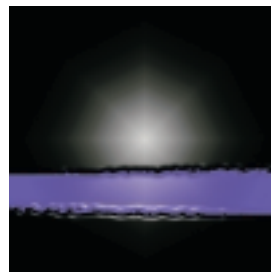


Census of Population and Housing

Selected Characteristics for Urban Centres and Localities

South Australia

2001



Census of Population and Housing

Selected Characteristics for Urban Centres and Localities

South Australia

2001

**Ian Crettenden
Regional Director, South Australia**

AUSTRALIAN BUREAU OF STATISTICS

EMBARGO: 11.30AM (CANBERRA TIME) TUES 25 MAR 2003

ABS Catalogue No. 2016.4

ISBN 0 642 47800 7

© Commonwealth of Australia 2003

This work is copyright. Apart from any use as permitted under the *Copyright Act 1968*, no part may be reproduced by any process without prior written permission from the Commonwealth. Requests and inquiries concerning reproduction and rights in this publication should be addressed to The Manager, Intermediary Management, Australian Bureau of Statistics, Locked Bag 10, Belconnen ACT 2616, by telephone (02) 6252 6998, fax (02) 6252 7102, or email <intermediary.management@abs.gov.au>.

In all cases the ABS must be acknowledged as the source when reproducing or quoting any part of an ABS publication or other product.

Produced by the Australian Bureau of Statistics

INQUIRIES

- For further information about these and related statistics, contact the National Information and Referral Service on 1300 135 070.

CONTENTS

	<i>page</i>
Introduction	iv
Summary of findings	1

TABLES

1 Person characteristics	6
2 Labour force characteristics	14
3 Occupation of employed persons	18
4 Industry of employment	22
5 Dwelling characteristics	26
6 Occupied private dwellings	29
7 Family and household characteristics	33
8 Urban Centres and Localities, ranked by total number of persons	37

ADDITIONAL INFORMATION

Explanatory Notes	39
Appendix 1: Estimated Resident Population	43
Appendix 2: Census Products and Services	44
Glossary	47

MAPS

South Australia, Urban centres and statistical local areas—2001 edition	52
South Australia, Urban centres and statistical local areas—2001 edition, Enlargement 1	54
South Australia, Urban centres and statistical local areas—2001 edition, Enlargement 2	56
South Australia, Urban centres and statistical local areas—2001 edition, Enlargements	57

INTRODUCTION

STATISTICS PRESENTED IN THIS PUBLICATION

This publication presents a range of social and housing statistics produced from the 2001 Census of Population and Housing for South Australia. For comparative purposes, it includes 1996 Census data based on 2001 Census geography.

The tables in this publication provide a selection of data for the population and their housing arrangements for Urban Centres/Localities (UC/L) and Sections of State (SOS). These geographic structures classify areas according to size of the population. Whilst the UC/L classification covers only part of each state and territory, the SOS classification covers each state and territory in its entirety. Refer to the Glossary for more information about the definitions of UC/L and SOS.

The data are presented on the basis of where people were counted on Census Night ('as enumerated'), and therefore data for each geographic area include visitors to that area, but exclude those people who were away on Census Night. All tables exclude overseas visitors unless otherwise stated.

Data released in *Selected Social and Housing Characteristics, South Australia* (cat. no. 2015.4) provide various characteristics for Statistical Divisions (SDs), Statistical Subdivisions (SSDs) and Statistical Local Areas (SLAs). Refer to Appendix 2—Census Products and Services for more information.

POPULATION MEASURES

Census counts should not be confused with the Australian Bureau of Statistics' (ABS) official population estimate, the Estimated Resident Population (ERP) which is used for electoral purposes and in assisting in the distribution of government funds to state and local governments. The ERP is the definitive population estimate and is derived from the census counts. For a fuller description of population measures and the derivation of ERP, please see paragraphs 6, 7 and 8 of the Explanatory Notes. Appendix 1—Estimated Resident Population includes a table showing census counts and ERP for each state and territory.

One of the important features of the Census is that it describes the characteristics of Australia's population and housing for small geographic areas and small population groups. While not available in this publication, data at the smallest geographic level (Collection District) are available in a range of census products. For more information on these products, please refer to Appendix 2—Census Products and Services. Concepts and definitions used in this publication are explained in the Glossary and more detailed information is available in the *2001 Census Dictionary* (cat. no. 2901.0). The Explanatory Notes in this publication provide a discussion of the scope and coverage of the Census, the different measures of population, and the limitations of census data.

This publication is one of a series of publications which provide data for both UC/L and SOS geographic areas for each state and territory (cat. nos 2016.1–7). A similar publication is also available, providing data for urban centres across the whole of Australia (cat. no. 2016.0). See Appendix 2—Census Products and Services for more information.

SUMMARY OF FINDINGS

PERSON CHARACTERISTICS	<p>The Census of Population and Housing conducted on 7 August 2001 counted 1,467,261 persons (including 8,349 overseas visitors) in South Australia (SA), an increase of 2.8% or 39,325 people since 1996 (1,427,936 people).</p> <p>There were 62 Urban Centres and 100 Localities in SA in 2001, with the highest population counts recorded in the Urban Centres of Adelaide (1,002,127), Mount Gambier (22,751), Whyalla (21,271) and Gawler (16,837). These Urban Centres accounted for 72.4% of the population.</p>
<i>Population distribution</i>	
Age	<p>In 2001, the median age was 37 years, compared with 35 years in 1996. The proportion of persons aged 0–14 years decreased from 20.6% in 1996 to 19.6% in 2001, while the proportion of persons aged 65 years and over increased from 13.8% to 14.4% during the same period.</p> <p>The highest percentages of persons aged 0–14 years were recorded in the Localities of Indulkana (35.0%), Mimili (32.6%), Yalata (31.8%) and Callington (31.0%).</p> <p>A high proportion of people aged 65 years and over was recorded in the Urban Centres of Victor Harbor (32.9%), Tumby Bay (30.5%) and Ardrossan (27.7%), and in the Localities of Port Broughton (41.1%), Stansbury (38.4%) and Port Vincent (37.7%).</p>
Sex	<p>In 2001, there were more females (744,934) than males (722,327) with higher proportions of females recorded in urban areas (Major Urban (51.4%) and Other Urban (50.8%)). Proportionally more males were recorded in Rural Balance (52.9%) and Bounded Locality (50.5%).</p> <p>Males outnumbered females in 70 Urban Centres and Localities. A higher proportion were recorded in the Urban Centres of Coober Pedy (55.9%) and Roxby Downs (55.6%), and in the Localities of Cadell (64.9%), Mintabie (62.5%) and Brukunga (61.0%).</p> <p>A higher proportion of females were recorded in the Urban Centres of Hahndorf (54.3%), Balaklava (53.9%) and McLaren Vale (53.7%), and the Localities of Springton (57.2%), Riverton and Ernabella (both 55.4%) and Amata (54.6%).</p>
<i>Median individual income</i>	<p>The median weekly income grew from \$267 in 1996 to \$345 in 2001, an increase of 29.2%, with slightly larger increases recorded in the Rural Balance (31.2%) and Bounded Locality (30.0%) sections of the state.</p> <p>The highest median income was recorded in the Urban Centre of Roxby Downs (\$825), followed by Crafers-Bridgewater (\$478) and Penola (\$428), while Localities with high median incomes were Woomera (\$733), Leigh Creek (\$709) and Woodside Barracks (\$645). Localities with the lowest median incomes were Mimili (\$172), Ernabella (\$174) and Yalata (\$175).</p>
<i>Indigenous status</i>	<p>The number of persons who reported being of Indigenous origin increased by 14.6% to 23,425 persons in 2001, up from 20,444 persons in 1996, representing 1.6% of the total population (excluding overseas visitors).</p>

SUMMARY OF FINDINGS *continued*

Indigenous status continued

Two thirds of the Urban Centres and Localities reported proportions of Indigenous persons equivalent to or less than the average for SA (1.6%). The highest proportions were recorded in the Localities of Indulkana (90.0%), Mimili (89.8%) and Amata (89.0%), and in the Urban Centres of Ceduna (20.4%) and Port Augusta (15.5%).

Birthplace

The number of persons born in Australia increased by 2.0% to 1,099,591 people in 2001, up from 1,077,540 people in 1996, representing 75.4% of the population of SA (excluding overseas visitors).

In 27 of the Urban Centres and Localities, 90.0% or more of the population were born in Australia. The highest proportions of Australian-born were recorded in the Localities of Yalata and Amata (both 98.2%), Mimili (98.1%) and Ernabella (97.5%).

Of the population counted (excluding overseas visitors), 20.3% (296,459 persons) stated that they had been born overseas, with high proportions recorded in the Localities of Virginia (37.9%), Andamooka Opal Fields (27.0%) and Carrickalinga (26.1%), and in the Urban Centres of Coober Pedy (26.0%) and Sellicks Beach (25.9%).

Internet and Personal computer use

Of the population counted (excluding overseas visitors), 40.7% (594,355 persons) used a personal computer at home in the week prior to Census Night. Of the same population, 35.4% (516,303 persons) used the Internet in the week prior to Census Night.

The highest proportions of persons who used a personal computer at home were recorded in the Localities of Summertown (60.0%), Houghton (59.5%), Crafers-Bridgewater (58.6%) and Oakbank (51.0%), while low proportions were recorded in the Localities of Indulkana (5.0%), Mimili (5.3%) and Amata (5.5%).

Employed persons

In 2001, there were 635,325 employed persons (92.4% of the labour force), an increase of 42,818 persons since 1996.

Urban Centres with the largest number of employed persons were Adelaide (434,961 persons or 92.0% of the labour force), Mount Gambier (10,238 or 93.1%), Whyalla (7,917 or 86.9%) and Gawler (7,056 or 92.3%).

Full-time employment

The number of full-time workers increased by 2.7% from 387,081 persons in 1996 to 397,681 in 2001. This represents 62.6% of the employed population in SA. As a proportion of persons in the labour force, the highest proportions of full-time workers were recorded in the Localities of Woomera (82.4%) and Woodside Barracks (79.8%). Urban Centres with the highest proportions of full-time workers were Roxby Downs (73.8%) and Penola (69.2%).

Part-time employment

In 2001, 221,056 workers (34.8% of employed persons) were employed part-time, an increase of 14.0% (27,232 persons) since 1996. The highest proportions of part-time workers, as a proportion of persons in the labour force, were recorded in the Localities of Mimili (67.4%) and Yalata (64.9%). The Locality with the lowest proportion of part-time workers was Woodside Barracks (11.3%).

SUMMARY OF FINDINGS *continued*

Unemployed persons

In 2001, 7.6% of the labour force (52,340 persons) were unemployed, compared with 10.4% (68,558 persons) in 1996. High unemployment rates were recorded in the Localities of Iron Knob (32.8%), Mintabie (30.8%) and Port Germein (27.1%).

For those aged 15–24 years the unemployment rate fell to 14.8% from 18.4% in 1996. The highest youth unemployment rates were recorded in the Localities of Owen (66.7%), Port Germein (50.0%) and Iron Knob (42.9%).

The number of unemployed persons looking for full-time employment decreased by 30.7%, from 55,497 in 1996 down to 38,434 in 2001. Those looking for part-time work increased by 6.5%, from 13,061 persons in 1996, up to 13,906 in 2001.

Occupation

In 2001, the largest occupation groups were Professionals and Associate Professionals (28.4%), Intermediate Clerical, Sales and Service Workers (16.5%), and Tradespersons and Related Workers (12.3%). These proportions are similar to those in 1996.

The highest proportions of Professionals and Associate Professionals were recorded in the Urban Centre of Crafers-Bridgewater (45.8%), and the Localities of Summertown (42.1%) and Indulkana (41.8%).

High proportions of Intermediate Clerical, Sales and Service Workers were recorded in Wasleys (L) (22.4%), Port Augusta (20.0%) and Houghton (L) (19.5%).

The Localities with the highest proportions of Tradespersons and Related Workers were Woodside Barracks (39.8%), Brukunga (39.5%) and Truro (25.0%).

Industry

In 2001, the three largest industries of employment in SA were Manufacturing (14.7%), Retail Trade (14.6%) and Health and Community Services (11.4%). These industries were also the top three industries in 1996.

The highest proportions of persons employed in Manufacturing were recorded in the Localities of Tarpeena (57.0%), Nangwarry (53.3%) and Kalangadoo (43.5%).

Retail Trade recorded high proportions of employed persons in the Localities of Indulkana (59.6%), Yorketown (25.1%) and Cleve (24.8%).

The highest proportions of persons employed in Health and Community Services were recorded in the Localities of Mimili (38.1%), Woomera (31.1%) and Fregon (18.7%).

DWELLING CHARACTERISTICS

Total number of dwellings

The number of dwellings increased by 4.7% from 618,677 in 1996 to 647,606 in 2001. Of these dwellings, 90.2% (584,042) were occupied private dwellings, 9.6% were unoccupied private dwellings and 0.3% were non-private dwellings.

Total number of persons

The number of persons in occupied private dwellings increased by 2.6% from 1,388,094 in 1996 to 1,424,534 in 2001. Of these, 68.4% (974,120 persons) were counted in Major Urban areas.

Fully owned

Of the 584,042 occupied private dwellings in SA, 39.8% were fully owned compared with 40.3% in 1996. The Rural Balance area recorded the highest proportions of fully owned dwellings in both 2001 (50.5%) and 1996 (51.0%).

SUMMARY OF FINDINGS *continued*

Fully owned continued Home ownership proportions were highest in the Localities of Fisherman Bay (70.6%), Orroroo (66.8%) and Port Vincent (66.7%).

Being purchased In SA, 29.1% of private dwellings were being purchased, compared with 27.4% in 1996. The Major Urban area recorded the highest percentages in both 2001 (29.8%) and 1996 (28.0%).

High proportions of homes being purchased were recorded in the Urban Centre of Angle Vale (62.1%), and the Localities of Wasleys (L) (58.8%) and Callington (L) (57.4%).

Housing loan repayments Median loan repayments increased by 6.3%, up from \$640 in 1996 to \$680 in 2001. High median loan repayments were recorded in the Locality of Oakbank (\$866), and the Urban Centres of Roxby Downs (\$862) and Crafers-Bridgewater (\$856).

Rented dwellings In 2001, 24.9% (145,689) of occupied private dwellings were being rented, compared with 26.7% in 1996. The Other Urban area recorded the highest percentages in both 2001 (27.5%) and 1996 (30.1%).

The Localities with the highest proportions of rented dwellings were Woodside Barracks (100.0%), Leigh Creek (95.2%) and Mimili (86.5%).

Rent The median weekly rent increased by 21.3%, from \$94 in 1996 to \$114 in 2001. The Major Urban area recorded the highest median rent (\$122) compared with the Bounded Locality (\$83) and the Rural Balance (\$72) sections of the state.

A high median rent was recorded in the Urban Centres of Crafers-Bridgewater (\$164), Hahndorf (\$157) and Angle Vale (\$152), and in the Localities of Houghton (\$203), Napperby (\$162) and Mount Torrens (\$160).

FAMILY CHARACTERISTICS

The number of families grew from 387,574 in 1996 to 397,435 in 2001, an increase of 2.5%. Of these families, 44.1% were couples with dependent and non-dependent children, 38.7% were couples without children, 15.6% were one parent families (up from 14.2% in 1996) and 1.6% were of other family type. In the Rural Balance area, 46.4% of couple families had dependent children, similar to 1996 (48.6%).

The highest proportions of couple families with dependent children were recorded in the Urban Centres of Roxby Downs (61.9%) and Angle Vale (59.6%), and the Localities of Yalata (60.5%) and Woodside Barracks (60.0%).

The highest proportions of couple families without children were recorded in the Localities of Port Vincent (74.5%), Fisherman Bay (70.3%) and Port Victoria (68.0%).

High proportions of one parent families were recorded in the Localities of Mimili (36.0%), Fregon (33.9%) and Amata (27.3%).

HOUSEHOLD CHARACTERISTICS

The number of households grew from 542,343 in 1996 to 567,074 in 2001, an increase of 4.6%. Of these households, 69.5% were family households, 27.4% were lone person households and 3.1% were group households. This is similar to the proportions in 1996.

The highest proportions of lone person households were recorded in the Localities of Mintabie (51.2%), Andamooka Opal Fields (44.2%) and Iron Knob (43.8%).

SUMMARY OF FINDINGS *continued*

HOUSEHOLD CHARACTERISTICS *continued* The highest proportions of group households were in the Localities of Booleroo Centre (5.0%) and Wudinna (4.9%).

Geographic area	AGE(a)			SEX(a)		CENSUS COUNT(a)		INCOME
	Proportion of population aged 0-14 years	Proportion of population aged 65 years & over	Median age	Male	Female	Census Night 2001	Census Night 1996	Median weekly individual income
	%	%	years	no.	no.	no.	no.	\$
SECTION OF STATE								
2001								
Major Urban	18.6	14.8	37	487 083	515 044	1 002 127	n.a.	352
Other Urban	21.4	15.7	37	128 373	132 580	260 953	n.a.	319
Bounded Locality	20.9	17.5	39	22 646	22 242	44 888	n.a.	295
Rural Balance	22.9	9.2	37	83 857	74 672	158 529	n.a.	362
Migratory	5.4	19.8	47	368	396	764	n.a.	357
Total	19.6	14.4	37	722 327	744 934	1 467 261	n.a.	345
1996								
Major Urban	19.4	14.4	35	474 543	503 557	n.a.	978 100	272
Other Urban	22.8	14.7	35	123 673	127 058	n.a.	250 731	249
Bounded Locality	22.3	17.4	37	20 814	20 758	n.a.	41 572	227
Rural Balance	24.6	8.3	35	82 844	74 091	n.a.	156 935	276
Migratory	3.5	22.2	45	341	257	n.a.	598	368
Total	20.6	13.8	35	702 215	725 721	n.a.	1 427 936	267
URBAN CENTRE/LOCALITY								
Adelaide	18.6	14.8	37	487 083	515 044	1 002 127	977 995	352
Aldinga Beach	26.2	11.8	33	2 764	2 775	5 539	4 638	291
Amata (L)	25.6	5.1	25	124	149	273	539	180
Andamooka Opal Fields (L)	18.9	18.9	44	295	203	498	506	239
Angaston	21.3	16.0	37	967	966	1 933	1 862	386
Angle Vale	30.6	3.1	30	648	587	1 235	1 011	419
Ardrossan	16.6	27.7	49	556	527	1 083	1 081	249
Arno Bay (L)	19.0	20.8	45	130	101	231	209	279
Auburn (L)	18.3	18.0	44	159	175	334	303	321
Balaklava	19.2	25.8	43	702	820	1 522	1 441	279
Balhannah	23.4	12.2	36	516	524	1 040	947	396
Barmera	16.7	26.9	44	923	1 023	1 946	1 837	279
Beachport (L)	16.5	18.9	44	217	190	407	441	351
Berri	19.8	15.5	36	2 088	2 153	4 241	3 912	344
Birdwood (L)	25.6	9.8	35	375	349	724	668	355
Blanchetown (L)	12.3	21.3	52	120	91	211	256	225
Blyth (L)	20.1	18.7	40	142	142	284	282	289
Booleroo Centre (L)	14.2	35.9	53	144	165	309	320	342
Bordertown	22.3	15.8	34	1 268	1 187	2 455	2 337	394
Brukunga (L)	28.5	3.9	31	139	89	228	148	369
Burra	20.8	18.6	41	551	555	1 106	1 008	283
Bute (L)	15.8	24.5	47	137	128	265	258	247
Cadell (L)	12.9	5.9	39	298	161	459	505	350
Callington (L)	31.0	6.3	31	169	167	336	325	295
Carrickalinga (L)	12.9	32.4	52	156	162	318	333	270
Ceduna	22.8	12.7	36	1 311	1 277	2 588	2 599	343
Clare	21.5	18.1	39	1 434	1 496	2 930	2 815	346
Cleve (L)	18.2	24.5	43	348	351	699	747	325

n.a. not applicable.

(a) Includes overseas visitors.

Geographic area	INDIGENOUS STATUS (a)		BIRTHPLACE OF INDIVIDUAL (b)		PERSONS WHO USED (c)	
	Indigenous (d)	Non-Indigenous	Australia	Other	a personal computer at home	the Internet anywhere
	no.	no.	no.	no.	no.	no.
SECTION OF STATE						
2001						
Major Urban	10 579	956 056	716 581	237 423	418 648	375 994
Other Urban	7 377	244 033	213 926	33 647	93 422	76 314
Bounded Locality	2 093	41 381	38 107	4 722	14 757	11 577
Rural Balance	3 361	149 066	130 547	20 566	67 381	52 265
Migratory	15	509	430	101	147	153
Total	23 425	1 391 045	1 099 591	296 459	594 355	516 303
1996						
Major Urban	9 056	940 851	701 543	244 088	n.a.	n.a.
Other Urban	6 523	236 012	207 476	33 790	n.a.	n.a.
Bounded Locality	796	39 592	35 443	4 798	n.a.	n.a.
Rural Balance	4 059	148 918	132 675	19 728	n.a.	n.a.
Migratory	10	496	403	113	n.a.	n.a.
Total	20 444	1 365 869	1 077 540	302 517	n.a.	n.a.
URBAN CENTRE/LOCALITY						
Adelaide	10 579	956 056	716 581	237 423	418 648	375 994
Aldinga Beach	85	5 184	4 106	1 062	1 944	1 438
Amata (L)	243	25	268	5	15	17
Andamooka Opal Fields (L)	9	467	338	134	123	99
Angaston	12	1 865	1 692	171	702	606
Angle Vale	11	1 210	968	228	612	451
Ardrossan	29	1 032	946	107	334	238
Arno Bay (L)	—	229	208	15	61	41
Auburn (L)	9	315	264	47	123	104
Balaklava	7	1 473	1 354	101	501	363
Balhannah	9	1 011	863	138	494	421
Barmera	86	1 772	1 552	251	464	416
Beachport (L)	5	393	358	35	110	104
Berri	170	3 900	3 495	540	1 301	1 233
Birdwood (L)	7	678	566	117	317	241
Blanchetown (L)	—	205	166	35	47	30
Blyth (L)	—	280	260	20	78	63
Booleroo Centre (L)	3	269	251	15	79	53
Bordertown	17	2 325	2 144	177	736	619
Brukunga (L)	3	218	192	21	86	61
Burra	9	1 023	925	100	414	290
Bute (L)	3	253	241	17	94	66
Cadell (L)	11	430	370	51	100	72
Callington (L)	—	327	295	30	114	88
Carrickalinga (L)	3	308	224	83	107	84
Ceduna	523	1 997	2 277	201	682	619
Clare	30	2 812	2 614	204	1 037	826
Cleve (L)	—	681	646	28	226	190

— nil or rounded to zero (including null cells)

n.a. not applicable.

(a) Excludes persons who did not state their Indigenous status.

(b) Excludes persons who did not state their birthplace.

(c) In the week before Census Night.

(d) Comprises persons of Aboriginal origin, Torres Strait Islander origin, or both Aboriginal and Torres Strait Islander origin.

Geographic area	AGE(a)			SEX(a)		CENSUS COUNT(a)		INCOME
	Proportion of population aged 0-14 years	Proportion of population aged 65 years & over	Median age	Male	Female	Census Night 2001	Census Night 1996	Median weekly individual income
	%	%	years	no.	no.	no.	no.	\$
URBAN CENTRE/LOCALITY <i>cont.</i>								
Cobdogla (L)	21.6	17.9	41	140	133	273	256	293
Coffin Bay (L)	15.0	21.0	47	247	206	453	396	317
Cooper Pedy	15.5	11.5	42	1 466	1 158	2 624	2 762	279
Coonalpyn (L)	19.2	20.7	46	116	97	213	233	280
Cowell (L)	20.3	20.6	42	398	394	792	748	277
Crafers-Bridgewater	21.1	9.3	38	6 467	6 730	13 197	13 027	478
Crystal Brook	21.3	20.6	40	626	633	1 259	1 323	256
Cummins (L)	19.8	22.1	39	325	336	661	695	332
Echunga (L)	24.1	9.2	33	236	275	511	454	406
Edithburgh (L)	17.2	22.8	50	221	208	429	400	218
Elliston (L)	20.5	17.5	42	136	98	234	217	333
Ernabella (L)	27.1	3.8	24	199	247	446	202	174
Eudunda (L)	13.9	30.8	51	289	314	603	642	254
Fisherman Bay (L)	16.1	24.4	52	150	149	299	234	240
Freeling	25.9	12.3	35	551	590	1 141	1 144	336
Fregon (L)	27.4	4.8	25	128	124	252	309	226
Gawler	21.6	14.3	36	8 122	8 715	16 837	14 989	336
Gladstone (L)	24.6	18.0	40	310	312	622	660	264
Goolwa	16.4	27.2	49	2 120	2 225	4 345	3 723	263
Greenock (L)	23.4	9.3	36	336	352	688	644	393
Gumeracha (L)	23.3	17.4	37	312	333	645	590	382
Hahndorf	17.8	20.8	43	841	1 001	1 842	1 727	354
Hamley Bridge (L)	27.6	14.3	35	329	327	656	617	289
Hawker (L)	14.4	17.4	45	163	135	298	319	376
Houghton (L)	26.1	7.5	34	227	214	441	454	417
Indulkana (L)	35.0	5.0	26	114	106	220	n.a.	195
Iron Knob (L)	23.6	15.3	41	112	91	203	224	197
Jamestown	20.9	24.3	42	635	717	1 352	1 430	284
Kadina	21.7	18.9	39	1 807	1 938	3 745	3 589	285
Kalangadoo (L)	23.8	9.7	35	159	139	298	322	287
Kapunda	21.4	17.0	40	1 112	1 191	2 303	2 195	280
Karoonda (L)	16.1	32.6	51	151	159	310	327	275
Keith	20.1	16.8	38	588	540	1 128	1 089	383
Kersbrook (L)	26.6	6.0	31	149	167	316	265	397
Kimba (L)	18.7	23.5	42	336	350	686	677	301
Kingscote	18.3	20.7	41	833	860	1 693	1 529	314
Kingston S.E.	20.5	20.3	41	723	763	1 486	1 431	303
Lameroo (L)	20.4	19.6	39	239	250	489	516	419
Laura (L)	21.1	26.2	44	246	265	511	507	266
Leigh Creek (L)	27.4	1.6	34	348	279	627	1 006	709
Lobethal	20.9	17.0	37	793	894	1 687	1 558	317
Loxton	18.8	20.4	40	1 644	1 714	3 358	3 310	329
Lucindale (L)	22.7	14.8	35	147	130	277	272	309
Lyndoch	25.3	10.1	36	621	630	1 251	1 137	403
Macclesfield (L)	26.6	6.6	36	395	403	798	692	374
McLaren Vale	20.1	23.9	40	1 203	1 394	2 597	2 313	328
Maitland (L)	23.1	23.3	41	461	531	992	999	288
Mallala (L)	25.3	15.5	35	342	350	692	652	321
Mannum	14.0	26.1	49	1 082	1 113	2 195	1 966	265

(a) Includes overseas visitors.

<i>Geographic area</i>	INDIGENOUS STATUS (a)		BIRTHPLACE OF INDIVIDUAL (b)		PERSONS WHO USED (c)	
	<i>Indigenous (d)</i>	<i>Non-Indigenous</i>	<i>Australia</i>	<i>Other</i>	<i>a personal computer at home</i>	<i>the Internet anywhere</i>
	no.	no.	no.	no.	no.	no.

URBAN CENTRE/LOCALITY *cont.*

Cobdogla (L)	3	248	223	15	91	77
Coffin Bay (L)	3	442	388	51	125	107
Cooper Pedy	330	1 724	1 374	634	482	520
Coonalpyn (L)	3	209	197	8	77	52
Cowell (L)	4	750	700	40	214	155
Crafrers-Bridgewater	36	12 730	10 192	2 474	7 691	6 856
Crystal Brook	23	1 217	1 143	83	473	353
Cummins (L)	3	625	603	25	239	181
Echunga (L)	—	497	449	42	227	180
Edithburgh (L)	—	415	349	61	120	105
Elliston (L)	4	219	209	17	62	55
Ernabella (L)	389	57	435	10	39	224
Eudunda (L)	6	586	522	57	151	95
Fisherman Bay (L)	—	283	273	8	70	61
Freeling	11	1 107	918	169	458	305
Fregon (L)	219	28	243	—	22	25
Gawler	162	16 207	13 129	3 025	7 018	5 676
Gladstone (L)	18	593	556	45	222	163
Goolwa	68	4 142	3 288	867	1 387	956
Greenock (L)	5	664	567	95	286	235
Gumeracha (L)	—	598	471	107	265	216
Hahndorf	7	1 781	1 444	326	848	707
Hamley Bridge (L)	9	625	542	80	236	170
Hawker (L)	32	258	264	17	91	79
Houghton (L)	—	438	338	88	262	196
Indulkana (L)	198	21	213	6	11	16
Iron Knob (L)	9	179	164	22	59	43
Jamestown	10	1 315	1 212	86	464	384
Kadina	36	3 506	3 276	230	1 231	997
Kalangadoo (L)	5	289	257	27	93	56
Kapunda	35	2 185	1 846	341	750	572
Karoonda (L)	7	300	277	17	88	75
Keith	7	1 073	1 010	67	344	310
Kersbrook (L)	3	306	252	49	124	101
Kimba (L)	—	673	647	19	228	159
Kingscote	29	1 574	1 380	203	523	428
Kingston S.E.	32	1 421	1 354	70	471	320
Lameroo (L)	—	480	448	25	174	128
Laura (L)	7	497	454	48	183	140
Leigh Creek (L)	40	568	562	47	314	261
Lobethal	8	1 636	1 420	205	596	468
Loxton	53	3 230	3 006	216	1 095	881
Lucindale (L)	4	266	259	10	95	95
Lyndoch	8	1 226	982	225	575	412
Macclesfield (L)	6	767	618	131	329	296
McLaren Vale	13	2 491	1 915	562	1 049	843
Maitland (L)	64	918	912	53	307	207
Mallala (L)	8	674	614	55	258	183
Mannum	37	2 059	1 784	276	562	418

— nil or rounded to zero (including null cells)

(c) In the week before Census Night.

(a) Excludes persons who did not state their Indigenous status.

(d) Comprises persons of Aboriginal origin, Torres Strait Islander origin, or both Aboriginal and Torres Strait Islander origin.

Geographic area	AGE(a)		Median age	SEX(a)		CENSUS COUNT(a)		INCOME
	Proportion of population aged 0-14 years	Proportion of population aged 65 years & over		Male	Female	Census Night 2001	Census Night 1996	Median weekly individual income
	%	%	years	no.	no.	no.	no.	\$
URBAN CENTRE/LOCALITY <i>cont.</i>								
Maslin Beach	20.2	10.6	36	512	504	1 016	958	344
Meadows (L)	30.0	5.9	31	382	397	779	686	362
Meningie (L)	20.4	19.6	39	429	468	897	918	295
Middleton (L)	20.0	19.5	42	430	457	887	730	271
Milang (L)	17.5	20.7	47	229	216	445	347	268
Millicent	20.7	17.3	37	2 166	2 270	4 436	4 717	295
Mimili (L)	32.6	2.7	22	136	128	264	264	172
Minlaton (L)	17.7	28.4	47	359	394	753	733	259
Mintabie (L)	17.8	10.6	49	130	78	208	239	201
Moonta	16.6	26.4	50	1 502	1 582	3 084	2 898	245
Moorook (L)	23.4	21.5	42	108	101	209	201	330
Morgan (L)	17.7	21.7	45	228	196	424	492	272
Mount Barker	24.9	10.4	32	4 337	4 816	9 153	7 908	371
Mount Burr (L)	26.3	8.7	34	188	181	369	391	298
Mount Compass (L)	26.8	4.4	30	250	246	496	367	308
Mount Gambier	22.5	12.7	34	11 077	11 674	22 751	22 037	367
Mount Pleasant (L)	22.6	21.6	42	272	289	561	516	296
Mount Torrens (L)	29.5	6.0	31	160	159	319	278	375
Murray Bridge	22.7	15.9	37	6 350	6 667	13 017	12 831	295
Nairne	26.8	6.8	32	1 389	1 394	2 783	2 450	383
Nangwarry (L)	21.4	9.7	35	250	236	486	563	331
Napperby (L)	26.5	10.3	36	133	120	253	241	257
Naracoorte	20.2	16.0	36	2 399	2 386	4 785	4 674	392
Normanville (L)	16.2	23.4	46	333	360	693	590	286
Nuriootpa	18.5	19.0	39	1 868	1 997	3 865	3 486	381
Oakbank (L)	23.6	11.4	36	219	230	449	439	441
Orroroo (L)	19.2	28.4	46	233	271	504	557	277
Owen (L)	19.3	18.8	41	117	101	218	229	233
Paringa (L)	21.6	12.2	37	433	379	812	753	377
Penola	20.9	17.8	36	598	624	1 222	1 189	428
Peterborough	20.4	18.8	42	827	856	1 683	1 855	243
Pinnaroo (L)	17.6	20.8	40	307	290	597	606	324
Port Augusta	22.4	11.8	35	6 642	6 552	13 194	13 914	320
Port Broughton (L)	12.6	41.1	58	350	380	730	628	249
Port Elliot	18.3	22.3	43	773	754	1 527	1 427	269
Port Germein (L)	16.8	16.1	48	149	130	279	235	203
Port Lincoln	22.6	13.3	34	6 281	6 383	12 664	11 678	336
Port MacDonnell (L)	19.0	17.7	42	314	292	606	662	291
Port Pirie	21.8	15.7	37	6 552	6 711	13 263	13 633	270
Port Victoria (L)	11.7	24.6	55	176	157	333	311	250
Port Vincent (L)	8.2	37.7	58	234	219	453	446	264
Port Wakefield (L)	16.1	20.9	45	260	237	497	543	279
Quom	22.9	20.1	41	477	528	1 005	1 038	260
Renmark	19.0	19.8	39	2 187	2 283	4 470	4 366	308
Riverton (L)	16.4	30.2	49	297	369	666	694	278
Robe (L)	19.1	20.2	40	486	479	965	816	369
Roseworthy (L)	24.2	5.2	29	284	254	538	375	370
Roxby Downs	30.5	1.0	28	2 014	1 606	3 620	2 446	825

(a) Includes overseas visitors.

<i>Geographic area</i>	INDIGENOUS STATUS (a)		BIRTHPLACE OF INDIVIDUAL (b)		PERSONS WHO USED (c)	
	<i>Indigenous (d)</i>	<i>Non-Indigenous</i>	<i>Australia</i>	<i>Other</i>	<i>a personal computer at home</i>	<i>the Internet anywhere</i>
	no.	no.	no.	no.	no.	no.
URBAN CENTRE/LOCALITY <i>cont.</i>						
Maslin Beach	15	964	704	254	428	356
Meadows (L)	5	760	672	86	347	260
Meningie (L)	83	781	808	48	248	194
Middleton (L)	4	828	667	162	288	193
Milang (L)	7	420	356	63	149	96
Millicent	83	4 226	3 769	473	1 312	1 147
Mimili (L)	237	27	259	5	14	15
Minlaton (L)	3	725	653	67	252	161
Mintabie (L)	3	175	123	50	30	45
Moonta	72	2 920	2 516	433	891	624
Moorook (L)	4	198	180	22	55	43
Morgan (L)	3	401	339	50	140	105
Mount Barker	73	8 798	7 629	1 133	3 896	3 129
Mount Burr (L)	—	357	306	46	87	57
Mount Compass (L)	—	490	412	73	235	174
Mount Gambier	296	21 439	19 177	2 212	8 359	7 014
Mount Pleasant (L)	6	509	438	69	176	125
Mount Torrens (L)	—	314	262	43	143	97
Murray Bridge	579	12 043	11 233	1 193	4 028	2 933
Nairne	19	2 691	2 265	397	1 280	960
Nangwarry (L)	—	469	389	83	150	117
Napperby (L)	—	245	225	15	109	85
Naracoorte	64	4 543	4 140	402	1 578	1 286
Normanville (L)	—	655	534	116	192	145
Nuriootpa	15	3 743	3 421	283	1 446	1 170
Oakbank (L)	—	444	373	60	228	195
Orroroo (L)	—	490	456	28	168	142
Owen (L)	—	211	193	18	60	50
Paringa (L)	6	794	735	56	313	236
Penola	3	1 193	1 112	71	400	332
Peterborough	63	1 576	1 442	152	413	358
Pinnaroo (L)	7	574	539	40	178	133
Port Augusta	2 038	10 575	11 294	984	3 919	3 296
Port Broughton (L)	6	707	634	67	173	123
Port Elliot	38	1 387	1 158	251	532	396
Port Germein (L)	18	247	209	50	51	39
Port Lincoln	611	11 470	10 774	1 126	4 280	3 779
Port MacDonnell (L)	9	582	532	47	166	146
Port Pirie	312	12 588	11 636	1 039	3 947	3 125
Port Victoria (L)	32	291	266	49	70	44
Port Vincent (L)	6	432	358	69	111	78
Port Wakefield (L)	3	478	429	46	132	97
Quom	82	881	879	62	281	235
Renmark	165	4 112	3 628	604	1 193	958
Riverton (L)	—	651	564	76	224	177
Robe (L)	9	918	811	93	305	258
Roseworthy (L)	—	532	428	76	238	175
Roxby Downs	71	3 459	3 174	307	1 833	1 635

— nil or rounded to zero (including null cells)

(a) Excludes persons who did not state their Indigenous status.

(b) Excludes persons who did not state their birthplace.

(c) In the week before Census Night.

(d) Comprises persons of Aboriginal origin, Torres Strait Islander origin, or both Aboriginal and Torres Strait Islander origin.

Geographic area	AGE(a)			SEX(a)		CENSUS COUNT(a)		INCOME
	Proportion of population aged 0-14 years	Proportion of population aged 65 years & over	Median age	Male	Female	Census Night 2001	Census Night 1996	Median weekly individual income
	%	%	years	no.	no.	no.	no.	\$
URBAN CENTRE/LOCALITY <i>cont.</i>								
Saddleworth (L)	17.8	27.2	46	182	200	382	409	264
Sellicks Beach	24.5	11.2	36	738	757	1 495	1 241	295
Snowtown (L)	16.8	29.1	46	187	205	392	429	265
Spalding (L)	16.7	26.0	43	104	100	204	204	260
Springton (L)	27.3	8.3	35	119	159	278	238	347
Stansbury (L)	14.1	38.4	56	257	274	531	524	240
Strathalbyn	21.4	19.7	39	1 521	1 696	3 217	2 962	322
Streaky Bay	20.1	18.8	40	568	513	1 081	1 011	319
Summertown (L)	28.0	5.5	35	202	238	440	384	424
Swan Reach (L)	17.6	18.7	42	145	122	267	255	254
Taillem Bend	19.9	17.7	40	681	709	1 390	1 488	261
Tantanoola (L)	26.7	8.6	31	120	135	255	260	345
Tanunda	18.8	19.2	39	1 879	1 986	3 865	3 499	404
Tarpeena (L)	21.9	8.2	33	201	178	379	454	337
Tintinara (L)	15.9	25.1	43	146	125	271	296	421
Truro (L)	23.0	7.2	34	156	162	318	176	343
Tumby Bay	15.6	30.5	49	592	636	1 228	1 151	266
Two Wells (L)	22.2	11.9	36	318	322	640	624	348
Uraidla (L)	20.1	17.0	37	210	232	442	440	372
Victor Harbor	14.5	32.9	52	4 221	4 747	8 968	7 343	273
Virginia (L)	23.2	13.2	32	156	146	302	287	268
Waikerie	19.5	22.5	40	866	904	1 770	1 798	292
Walleroo	16.8	23.9	47	1 361	1 359	2 720	2 516	242
Warooka (L)	19.7	26.1	43	114	104	218	236	253
Wasleys (L)	23.1	9.0	35	125	109	234	319	318
Whyalla	22.9	11.9	35	10 701	10 570	21 271	23 382	283
Williamstown	26.1	11.3	33	638	637	1 275	1 154	370
Willunga	25.8	12.0	36	910	998	1 908	1 622	366
Wilmington (L)	22.3	21.9	44	119	123	242	261	270
Wirrabara (L)	18.5	23.5	42	121	117	238	282	256
Woodside	23.7	12.7	33	784	785	1 569	1 384	378
Woodside Barracks (L)	26.8	—	22	125	84	209	22	645
Woomera (L)	18.6	4.5	36	331	271	602	1 349	733
Wudinna (L)	18.3	19.4	40	273	262	535	527	370
Yalata (L)	31.8	1.3	22	111	112	223	273	175
Yankalilla (L)	19.8	14.3	42	221	219	440	434	287
Yorke town (L)	18.6	24.0	43	313	332	645	692	274

— nil or rounded to zero (including null cells)

(a) Includes overseas visitors.

Geographic area	INDIGENOUS STATUS (a)		BIRTHPLACE OF INDIVIDUAL (b)		PERSONS WHO USED (c)	
	Indigenous (d)	Non-Indigenous	Australia	Other	a personal computer at home	the Internet anywhere
	no.	no.	no.	no.	no.	no.
URBAN CENTRE/LOCALITY <i>cont.</i>						
Saddleworth (L)	8	359	336	38	106	87
Sellicks Beach	27	1 416	1 042	385	546	360
Snowtown (L)	5	374	344	22	99	66
Spalding (L)	—	191	175	17	70	55
Springton (L)	—	266	209	59	105	72
Stansbury (L)	—	515	448	55	149	97
Strathalbyn	22	3 092	2 767	320	1 200	861
Streaky Bay	11	1 040	938	91	303	267
Summertown (L)	—	419	356	64	258	222
Swan Reach (L)	6	248	218	45	93	63
Tailem Bend	22	1 323	1 215	112	416	269
Tantanoola (L)	8	236	221	21	77	57
Tanunda	12	3 725	3 346	326	1 445	1 257
Tarpeena (L)	11	353	326	25	108	75
Tintinara (L)	6	260	239	17	95	86
Truro (L)	—	308	277	34	114	77
Tumby Bay	13	1 187	1 090	87	342	271
Two Wells (L)	8	606	519	90	228	166
Uraidla (L)	—	438	400	35	211	177
Victor Harbor	77	8 595	6 907	1 631	2 973	2 241
Virginia (L)	—	297	172	114	89	63
Waikerie	29	1 680	1 519	175	431	384
Walleroo	19	2 616	2 340	253	756	627
Warooka (L)	4	205	180	23	53	29
Wasleys (L)	16	217	192	38	79	65
Whyalla	627	19 873	15 361	4 791	7 684	6 511
Williamstown	12	1 244	1 015	217	545	414
Willunga	4	1 875	1 489	356	903	688
Wilmington (L)	10	229	221	14	82	55
Wirrabara (L)	3	224	213	15	56	44
Woodside	11	1 531	1 337	188	624	505
Woodside Barracks (L)	5	197	176	19	71	78
Woomera (L)	11	551	461	92	247	225
Wudinna (L)	—	530	480	39	219	196
Yalata (L)	186	36	219	4	19	16
Yankalilla (L)	3	432	343	85	154	113
Yorketown (L)	—	634	579	55	201	139

- nil or rounded to zero (including null cells)
- (a) Excludes persons who did not state their Indigenous status.
- (b) Excludes persons who did not state their birthplace.
- (c) In the week before Census Night.
- (d) Comprises persons of Aboriginal origin, Torres Strait Islander origin, or both Aboriginal and Torres Strait Islander origin.

LABOUR FORCE CHARACTERISTICS (a)

Geographic area	EMPLOYED			UNEMPLOYED LOOKING FOR			Not in the labour force	UNEMPLOYMENT RATE	
	Full-time (b)	Part-time	Total (c)	Full-time work	Part-time work	Total		Aged 15-24 years	Aged 15 years and over
	no.	no.	no.	no.	no.	no.	no.	%	%
SECTION OF STATE									
2001									
Major Urban	271 675	152 221	434 961	27 533	10 193	37 726	312 336	15.3	8.0
Other Urban	64 754	37 760	105 338	6 951	2 418	9 369	81 992	15.4	8.2
Bounded Locality	11 010	6 497	18 004	957	313	1 270	14 951	12.6	6.6
Rural Balance	50 147	24 483	76 826	2 969	978	3 947	37 583	10.1	4.9
Migratory	95	95	196	24	4	28	273	38.7	12.5
Total	397 681	221 056	635 325	38 434	13 906	52 340	447 135	14.8	7.6
1996									
Major Urban	265 365	134 753	407 523	39 322	9 391	48 713	316 164	18.5	10.7
Other Urban	61 740	32 708	96 444	9 944	2 248	12 192	80 099	20.0	11.2
Bounded Locality	9 847	5 289	15 505	1 436	336	1 772	14 473	19.3	10.3
Rural Balance	49 957	21 006	72 787	4 777	1 086	5 863	36 322	14.0	7.5
Migratory	172	68	248	18	—	18	232	16.1	6.8
Total	387 081	193 824	592 507	55 497	13 061	68 558	447 290	18.4	10.4
URBAN CENTRE/LOCALITY									
2001									
Adelaide	271 675	152 221	434 961	27 533	10 193	37 726	312 336	15.3	8.0
Aldinga Beach	1 040	719	1 816	206	81	287	1 759	27.0	13.6
Amata (L)	26	34	71	—	—	—	124	16.7	—
Andamooka Opal Fields (L)	100	49	156	23	5	28	203	27.8	15.2
Angaston	607	279	903	20	9	29	537	7.5	3.1
Angle Vale	367	226	608	24	14	38	201	13.0	5.9
Ardrossan	185	138	323	28	9	37	517	16.7	10.3
Arno Bay (L)	54	28	85	9	3	12	89	15.8	12.4
Auburn (L)	92	65	160	6	4	10	90	—	5.9
Balaklava	318	206	535	19	11	30	630	9.8	5.3
Balhannah	307	189	508	14	6	20	255	7.6	3.8
Barmera	417	234	677	58	19	77	757	20.2	10.2
Beachport (L)	113	62	182	12	5	17	129	—	8.5
Berri	1 204	556	1 804	124	37	161	1 293	17.0	8.2
Birdwood (L)	186	120	312	7	7	14	181	13.3	4.3
Blanchetown (L)	37	18	58	7	—	7	105	33.3	10.8
Blyth (L)	73	40	116	4	5	9	98	21.7	7.2
Booleroo Centre (L)	83	34	120	4	—	4	94	—	3.2
Bordertown	725	405	1 171	20	10	30	601	5.4	2.5
Brunkunga (L)	64	16	80	9	3	12	64	30.0	13.0
Burra	256	141	411	23	10	33	374	17.9	7.4
Bute (L)	60	25	89	3	—	3	117	16.7	3.3
Cadell (L)	121	46	180	3	—	3	214	—	1.6
Callington (L)	66	53	124	17	3	20	83	31.8	13.9
Carrickalinga (L)	48	40	91	10	—	10	166	23.5	9.9
Ceduna	641	467	1 151	59	15	74	677	8.8	6.0
Clare	832	480	1 339	40	19	59	816	10.5	4.2
Cleve (L)	210	97	319	4	—	4	233	—	1.2
Cobdogla (L)	61	47	108	7	—	7	78	—	6.1
Coffin Bay (L)	105	65	175	21	—	21	178	20.7	10.7
Cooper Pedy	456	333	821	146	16	162	722	30.3	16.5
Coonalpyn (L)	50	33	86	6	3	9	77	—	9.5
Cowell (L)	186	119	315	13	3	16	271	6.0	4.8

— nil or rounded to zero (including null cells)

(a) Applicable to persons aged 15 years and over.

(b) Full-time is defined as having worked 35 hours or more in all jobs in the week prior to Census Night.

(c) Includes employed persons who did not state their hours worked and persons who stated they were employed, but worked nil hours in the week prior to Census Night.

Geographic area	EMPLOYED			UNEMPLOYED LOOKING FOR			Not in the labour force	UNEMPLOYMENT RATE	
	Full-time (b)	Part-time	Total (c)	Full-time work	Part-time work	Total		Aged 15-24 years	Aged 15 years and over
	no.	no.	no.	no.	no.	no.	no.	%	%
URBAN CENTRE/LOCALITY <i>cont.</i>									
2001 cont.									
Crafrers-Bridgewater	4 124	2 580	6 864	195	132	327	2 948	12.9	4.5
Crystal Brook	248	143	404	43	11	54	510	17.7	11.8
Cummins (L)	163	86	254	13	—	13	232	11.6	4.9
Echunga (L)	163	91	258	7	—	7	111	9.8	2.6
Edithburgh (L)	65	48	117	12	5	17	211	37.5	12.7
Elliston (L)	55	45	104	8	3	11	65	18.8	9.6
Ernabella (L)	64	123	193	3	—	3	128	—	1.5
Eudunda (L)	120	78	209	10	4	14	284	14.3	6.3
Fisherman Bay (L)	44	47	91	6	3	9	139	—	9.0
Freeling	276	155	443	25	12	37	323	19.7	7.7
Fregon (L)	33	57	93	3	—	3	82	—	3.1
Gawler	4 343	2 550	7 056	430	158	588	5 185	16.7	7.7
Gladstone (L)	119	64	189	20	10	30	239	12.9	13.7
Goolwa	634	640	1 309	134	35	169	2 021	18.2	11.4
Greenock (L)	218	113	336	15	6	21	164	14.3	5.9
Gumeracha (L)	171	89	268	9	4	13	164	17.1	4.6
Hahndorf	506	291	815	42	11	53	602	9.2	6.1
Hamley Bridge (L)	116	87	211	20	5	25	227	18.2	10.6
Hawker (L)	94	52	150	4	3	7	85	—	4.5
Houghton (L)	131	82	216	12	—	12	95	16.7	5.3
Indulkana (L)	21	31	55	3	—	3	86	—	5.2
Iron Knob (L)	19	17	39	16	3	19	88	42.9	32.8
Jamestown	316	173	512	21	8	29	502	7.6	5.4
Kadina	788	490	1 318	101	36	137	1 259	19.6	9.4
Kalangadoo (L)	80	27	110	9	4	13	98	15.0	10.6
Kapunda	501	292	820	37	23	60	850	17.2	6.8
Karoonda (L)	75	40	118	5	—	5	134	—	4.1
Keith	363	174	554	14	4	18	297	6.5	3.1
Kersbrook (L)	95	56	154	5	—	5	62	—	3.1
Kimba (L)	195	109	311	3	3	6	228	—	1.9
Kingscote	392	277	681	59	18	77	543	13.3	10.2
Kingston S.E.	328	255	606	16	9	25	521	5.1	4.0
Lameroo (L)	162	69	236	3	4	7	132	11.5	2.9
Laura (L)	106	53	168	16	5	21	202	10.7	11.1
Leigh Creek (L)	268	95	373	5	3	8	69	7.5	2.1
Lobethal	446	278	736	24	13	37	530	9.6	4.8
Loxton	965	501	1 503	34	17	51	1 089	7.5	3.3
Lucindale (L)	87	40	136	3	—	3	71	13.0	2.2
Lyndoch	355	203	569	17	11	28	318	12.3	4.7
Macclesfield (L)	209	140	360	12	7	19	183	14.6	5.0
McLaren Vale	592	354	976	39	25	64	906	16.2	6.2
Maitland (L)	226	149	383	16	8	24	342	15.6	5.9
Mallala (L)	157	89	254	16	4	20	238	19.0	7.3
Mannum	402	317	736	70	12	82	982	20.1	10.0
Maslin Beach	270	168	454	33	20	53	275	23.9	10.5
Meadows (L)	210	125	349	9	10	19	172	11.7	5.2
Meningie (L)	226	145	382	12	3	15	285	—	3.8
Middleton (L)	150	120	277	24	7	31	358	21.6	10.1
Milang (L)	109	57	169	7	3	10	175	—	5.6
Millicent	1 123	607	1 788	122	37	159	1 468	15.5	8.2
Mimili (L)	25	58	86	—	—	—	94	—	—

— nil or rounded to zero (including null cells)

(a) Applicable to persons aged 15 years and over.

(b) Full-time is defined as having worked 35 hours or more in all jobs in the week prior to Census Night.

(c) Includes employed persons who did not state their hours worked and persons who stated they were employed, but worked nil hours in the week prior to Census Night.

Geographic area	EMPLOYED			UNEMPLOYED LOOKING FOR			Not in the labour force	UNEMPLOYMENT RATE	
	Full-time(b)	Part-time	Total(c)	Full-time work	Part-time work	Total		Aged 15-24 years	Aged 15 years and over
	no.	no.	no.	no.	no.	no.	no.	%	%
URBAN CENTRE/LOCALITY cont.									
2001 cont.									
Minlaton (L)	149	90	248	19	7	26	286	20.6	9.5
Mintabie (L)	26	19	45	20	—	20	82	—	30.8
Moonta	473	363	865	109	28	137	1 471	18.9	13.7
Moorook (L)	50	27	81	4	—	4	70	—	4.7
Morgan (L)	100	59	162	15	3	18	150	25.0	10.0
Mount Barker	2 471	1 451	4 038	165	95	260	2 379	11.5	6.0
Mount Burr (L)	81	43	130	14	4	18	122	16.7	12.2
Mount Compass (L)	141	84	225	9	7	16	116	17.9	6.6
Mount Gambier	6 682	3 305	10 238	553	203	756	5 747	13.5	6.9
Mount Pleasant (L)	114	79	199	13	8	21	166	15.6	9.5
Mount Torrens (L)	88	64	152	3	—	3	64	—	1.9
Murray Bridge	3 022	1 772	4 941	451	137	588	4 153	19.0	10.6
Nairne	830	446	1 303	52	33	85	608	14.8	6.1
Nangwarry (L)	154	52	212	10	—	10	147	10.8	4.5
Napperby (L)	56	29	85	15	—	15	78	36.4	15.0
Naracoorte	1 601	652	2 321	49	30	79	1 271	6.3	3.3
Normanville (L)	122	111	243	9	4	13	299	12.2	5.1
Nuriootpa	1 196	586	1 829	41	18	59	1 169	6.3	3.1
Oakbank (L)	153	80	233	6	6	12	93	13.5	4.9
Orroroo (L)	130	63	198	14	3	17	180	—	7.9
Owen (L)	33	39	72	9	3	12	87	66.7	14.3
Paringa (L)	257	134	406	13	8	21	200	7.4	4.9
Penola	445	168	631	9	3	12	296	6.1	1.9
Peterborough	245	185	442	80	20	100	752	27.4	18.5
Pinnaroo (L)	183	89	283	5	—	5	191	10.0	1.7
Port Augusta	2 955	1 855	4 968	491	94	585	4 154	15.8	10.5
Port Broughton (L)	101	81	186	17	6	23	411	31.3	11.0
Port Elliot	286	205	503	39	6	45	614	10.5	8.2
Port Germein (L)	34	28	62	20	3	23	127	50.0	27.1
Port Lincoln	3 161	1 965	5 261	382	131	513	3 577	16.4	8.9
Port MacDonnell (L)	134	82	221	20	4	24	228	29.0	9.8
Port Pirie	2 630	1 773	4 523	583	156	739	4 828	24.1	14.0
Port Victoria (L)	65	49	114	11	5	16	155	25.0	12.3
Port Vincent (L)	71	44	118	13	4	17	271	35.7	12.6
Port Wakefield (L)	108	71	182	24	8	32	192	25.8	15.0
Quorn	176	130	315	24	12	36	387	22.2	10.3
Renmark	1 100	561	1 724	104	53	157	1 570	13.9	8.3
Riverton (L)	140	92	238	13	4	17	283	11.1	6.7
Robe (L)	251	177	436	8	4	12	299	7.9	2.7
Roseworthy (L)	166	99	272	13	7	20	110	11.3	6.8
Roxby Downs	1 518	441	1 993	50	13	63	401	8.9	3.1
Saddleworth (L)	79	48	127	4	3	7	168	—	5.2
Sellicks Beach	304	226	541	51	18	69	487	18.9	11.3
Snowtown (L)	68	57	128	9	4	13	172	22.2	9.2
Spalding (L)	44	27	71	4	—	4	78	—	5.3
Springton (L)	71	40	111	4	—	4	74	—	3.5
Stansbury (L)	77	56	133	9	10	19	277	—	12.5
Strathalbyn	809	503	1 336	37	17	54	1 059	10.3	3.9
Streaky Bay	243	187	440	35	10	45	340	12.0	9.3
Summertown (L)	126	87	216	8	10	18	77	15.2	7.7
Swan Reach (L)	53	42	99	10	3	13	99	31.3	11.6

— nil or rounded to zero (including null cells)

(a) Applicable to persons aged 15 years and over.

(b) Full-time is defined as having worked 35 hours or more in all jobs in the week prior to Census Night.

(c) Includes employed persons who did not state their hours worked and persons who stated they were employed, but worked nil hours in the week prior to Census Night.

Geographic area	EMPLOYED			UNEMPLOYED LOOKING FOR			Not in the labour force	UNEMPLOYMENT RATE	
	Full-time(b)	Part-time	Total(c)	Full-time work	Part-time work	Total		Aged 15-24 years	Aged 15 years and over
	no.	no.	no.	no.	no.	no.	no.	%	%
URBAN CENTRE/LOCALITY <i>cont.</i>									
2001 <i>cont.</i>									
Taillem Bend	243	190	449	65	19	84	537	27.3	15.8
Tantanoola (L)	72	39	114	6	—	6	60	15.8	5.0
Tanunda	1 276	519	1 831	44	20	64	1 109	6.4	3.4
Tarpeena (L)	115	43	164	12	3	15	105	19.2	8.4
Tintinara (L)	103	38	141	—	—	—	77	—	—
Truro (L)	105	52	160	9	3	12	69	16.1	7.0
Tumby Bay	254	157	424	30	7	37	530	9.4	8.0
Two Wells (L)	192	81	285	12	—	12	183	14.3	4.0
Uraidla (L)	129	82	218	4	—	4	125	—	1.8
Victor Harbor	1 415	1 246	2 725	169	68	237	4 417	14.4	8.0
Virginia (L)	78	33	115	5	4	9	104	17.4	7.3
Waikerie	440	209	667	25	14	39	678	9.4	5.5
Walleroo	423	339	786	102	24	126	1 260	20.3	13.8
Warooka (L)	49	23	72	12	—	12	83	40.0	14.3
Wasleys (L)	58	38	99	8	—	8	72	—	7.5
Whyalla	4 932	2 735	7 917	911	287	1 198	6 659	24.5	13.1
Williamstown	349	183	549	18	13	31	357	14.6	5.3
Willunga	493	318	825	24	25	49	517	11.0	5.6
Wilmington (L)	55	37	98	3	3	6	82	—	5.8
Wirrabara (L)	40	40	83	3	—	3	102	—	3.5
Woodside	455	269	742	21	16	37	397	4.6	4.7
Woodside Barracks (L)	99	14	118	3	3	6	26	6.0	4.8
Woomera (L)	324	54	386	7	—	7	61	6.1	1.8
Wudinna (L)	201	69	275	7	3	10	150	8.9	3.5
Yalata (L)	27	72	108	3	—	3	41	—	2.7
Yankalilla (L)	80	79	167	12	3	15	165	42.9	8.2
Yorketown (L)	147	88	239	22	—	22	257	8.3	8.4

— nil or rounded to zero (including null cells)

(a) Applicable to persons aged 15 years and over.

(b) Full-time is defined as having worked 35 hours or more in all jobs in the week prior to Census Night.

(c) Includes employed persons who did not state their hours worked and persons who stated they were employed, but worked nil hours in the week prior to Census Night.

OCCUPATION OF EMPLOYED PERSONS (a)

<i>Geographic area</i>	<i>Managers and Administrators</i>	<i>Professionals(b)</i>	<i>Tradespersons and Related Workers</i>	<i>Intermediate Clerical, Sales and Service Workers</i>	<i>Elementary Clerical, Sales and Service Workers</i>	<i>Labourers and Related Workers</i>	<i>Other(c)</i>	<i>Total</i>
SECTION OF STATE								
2001								
Major Urban	29 670	133 373	52 363	78 889	43 248	39 160	58 258	434 961
Other Urban	7 247	27 005	14 769	15 799	9 781	15 171	15 566	105 338
Bounded Locality	1 688	4 243	2 562	2 310	1 367	2 978	2 856	18 004
Rural Balance	21 383	15 557	8 373	7 784	4 204	10 121	9 404	76 826
Migratory	22	64	14	50	10	10	26	196
<i>Total</i>	<i>60 010</i>	<i>180 242</i>	<i>78 081</i>	<i>104 832</i>	<i>58 610</i>	<i>67 440</i>	<i>86 110</i>	<i>635 325</i>
1996								
Major Urban	28 818	119 116	52 152	73 437	37 260	35 832	60 908	407 523
Other Urban	6 944	24 678	14 248	13 934	8 373	12 460	15 807	96 444
Bounded Locality	1 537	3 806	2 281	1 885	1 040	2 206	2 750	15 505
Rural Balance	21 284	14 138	8 124	6 826	3 574	9 347	9 494	72 787
Migratory	21	63	22	22	15	10	95	248
<i>Total</i>	<i>58 604</i>	<i>161 801</i>	<i>76 827</i>	<i>96 104</i>	<i>50 262</i>	<i>59 855</i>	<i>89 054</i>	<i>592 507</i>
URBAN CENTRE/LOCALITY								
2001								
Adelaide	29 670	133 373	52 363	78 889	43 248	39 160	58 258	434 961
Aldinga Beach	78	362	296	291	191	321	277	1 816
Amata (L)	3	30	—	—	7	16	16	72
Andamooka Opal Fields (L)	5	22	21	16	8	21	63	156
Angaston	77	220	105	100	58	229	114	903
Angle Vale	49	131	103	90	64	61	110	608
Ardrossan	22	61	59	40	29	38	74	323
Arno Bay (L)	8	16	16	9	3	15	18	85
Auburn (L)	13	43	12	26	5	37	23	159
Balaklava	41	142	72	71	42	77	90	535
Balhannah	46	153	53	75	54	58	69	508
Baramba	60	163	71	100	51	141	91	677
Beachport (L)	23	41	16	16	8	38	40	182
Berri	141	484	214	289	128	339	209	1 804
Birdwood (L)	14	108	49	47	18	39	37	312
Blanchetown (L)	4	14	4	3	10	12	11	58
Blyth (L)	17	20	12	9	6	25	27	116
Booleroo Centre (L)	21	25	24	11	9	13	17	120
Bordertown	92	214	212	112	77	313	151	1 171
Brunkunga (L)	4	11	32	8	3	13	10	81
Burra	41	115	60	53	35	63	44	411
Bute (L)	10	17	16	10	3	15	19	90
Cadell (L)	42	19	9	31	4	56	19	180
Callington (L)	8	26	19	22	10	19	20	124
Carrickalinga (L)	9	28	9	16	5	15	8	90
Ceduna	95	311	136	194	109	139	167	1 151
Clare	125	348	178	185	137	228	138	1 339
Cleve (L)	39	67	49	53	36	26	49	319
Cobdogla (L)	6	19	14	20	3	34	12	108
Coffin Bay (L)	37	43	20	11	11	23	30	175
Cooper Pedy	62	253	96	136	66	86	122	821
Coonalpyn (L)	11	20	13	10	8	12	12	86
Cowell (L)	62	64	34	34	22	53	46	315
Crafers-Bridgewater	685	3 142	660	983	469	340	585	6 864
Crystal Brook	36	116	58	61	35	36	62	404

— nil or rounded to zero (including null cells)

(c) Includes 'Advanced Clerical and Service Workers', 'Intermediate Production and Transport Workers', 'Inadequately described' and 'Not stated'.

(a) Applicable to employed persons only.

(b) Includes 'Associate Professionals'.

OCCUPATION OF EMPLOYED PERSONS(a) *continued*

Geographic area	Managers and Administrators		Tradespersons and Related Workers	Intermediate Clerical, Sales and Service Workers	Elementary Clerical, Sales and Service Workers	Labourers and Related Workers	Other(c)	Total
	Administrators	Professionals(b)		Workers	Workers			
URBAN CENTRE/LOCALITY <i>cont.</i>								
2001 <i>cont.</i>								
Cummins (L)	34	68	45	31	18	23	35	254
Echunga (L)	16	73	40	38	33	24	34	258
Edithburgh (L)	7	39	18	16	6	17	14	117
Elliston (L)	14	26	20	15	5	10	14	104
Ernabella (L)	7	53	—	26	20	52	35	193
Eudunda (L)	27	38	31	24	16	36	37	209
Fisherman Bay (L)	10	14	16	13	3	13	22	91
Freeling	28	84	79	74	30	78	70	443
Fregon (L)	3	35	3	5	—	39	5	90
Gawler	464	1 824	1 000	1 243	690	829	1 006	7 056
Gladstone (L)	16	44	25	25	22	28	29	189
Goolwa	64	293	223	195	144	222	168	1 309
Greenock (L)	25	79	43	52	29	64	44	336
Gumeracha (L)	23	76	45	38	23	27	36	268
Hahndorf	64	305	94	146	74	53	79	815
Hamley Bridge (L)	21	35	27	30	15	46	37	211
Hawker (L)	10	46	19	20	9	25	21	150
Houghton (L)	25	68	35	42	13	11	21	215
Indulkana (L)	4	23	—	6	3	15	4	55
Iron Knob (L)	3	7	6	—	3	8	10	37
Jamestown	50	143	86	68	38	49	78	512
Kadina	96	327	198	228	154	136	179	1 318
Kalangadoo (L)	6	12	11	9	5	27	39	109
Kapunda	47	205	127	103	75	153	110	820
Karoonda (L)	13	31	14	11	9	16	23	117
Keith	52	99	100	50	45	120	88	554
Kersbrook (L)	12	33	36	28	7	18	20	154
Kimba (L)	49	69	40	41	26	32	54	311
Kingscote	64	171	89	109	70	86	92	681
Kingston S.E.	75	122	77	66	39	145	82	606
Lameroo (L)	24	60	43	32	14	30	33	236
Laura (L)	19	36	24	19	13	25	32	168
Leigh Creek (L)	16	74	85	39	24	33	102	373
Lobethal	46	154	123	103	69	139	102	736
Loxton	123	351	161	177	114	392	185	1 503
Lucindale (L)	14	23	17	17	6	31	28	136
Lyndoch	46	159	78	86	38	79	83	569
Macclesfield (L)	34	100	46	52	23	66	39	360
McLaren Vale	87	251	131	172	76	133	126	976
Maitland (L)	39	97	51	62	30	55	49	383
Mallala (L)	14	58	43	43	9	35	52	254
Mannum	45	176	127	95	59	143	91	736
Maslin Beach	30	108	73	78	52	62	51	454
Meadows (L)	20	91	59	54	27	48	50	349
Meningie (L)	37	83	49	52	33	55	73	382
Middleton (L)	22	78	48	45	28	28	28	277
Milang (L)	21	28	20	12	8	67	13	169
Millicent	89	319	287	208	154	355	376	1 788
Mimili (L)	3	19	3	14	4	36	7	86
Minlaton (L)	22	72	43	31	27	23	30	248
Mintabie (L)	3	15	5	5	—	3	15	46
Moonta	77	230	119	142	70	117	110	865
Moorook (L)	14	16	8	7	3	26	8	82
Morgan (L)	7	38	21	22	9	46	19	162
Mount Barker	263	1 074	553	727	376	533	512	4 038
Mount Burr (L)	—	8	15	13	5	52	36	129

— nil or rounded to zero (including null cells)

(a) Applicable to employed persons only.

(b) Includes 'Associate Professionals'.

(c) Includes 'Advanced Clerical and Service Workers', 'Intermediate Production and Transport Workers', 'Inadequately described' and 'Not stated'.

OCCUPATION OF EMPLOYED PERSONS(a) *continued*

<i>Geographic area</i>	<i>Managers and Administrators</i>	<i>Professionals(b)</i>	<i>Tradespersons and Related Workers</i>	<i>Intermediate Clerical, Sales and Service Workers</i>	<i>Elementary Clerical, Sales and Service Workers</i>	<i>Labourers and Related Workers</i>	<i>Other(c)</i>	<i>Total</i>
URBAN CENTRE/LOCALITY cont.								
2001 cont.								
Mount								
Compass (L)	19	48	37	37	26	29	30	226
Mount Gambier	586	2 333	1 450	1 589	1 098	1 345	1 837	10 238
Mount Pleasant (L)	18	46	30	22	16	42	25	199
Mount Torrens (L)	18	33	23	14	15	29	20	152
Murray Bridge	379	973	685	688	499	993	724	4 941
Nairne	70	350	189	220	108	176	190	1 303
Nangwarry (L)	3	13	19	20	11	91	55	212
Napperby (L)	8	20	12	14	6	8	17	85
Naracoorte	148	481	328	298	211	570	285	2 321
Normanville (L)	17	59	36	38	22	44	27	243
Nuriootpa	135	416	226	251	140	389	272	1 829
Oakbank (L)	30	86	17	37	17	25	23	235
Orroroo (L)	33	50	26	25	11	26	27	198
Owen (L)	10	10	14	8	4	17	9	72
Paringa (L)	28	84	38	64	20	112	60	406
Penola	66	150	60	60	48	176	71	631
Peterborough	34	121	50	57	39	88	53	442
Pinnaroo (L)	42	43	46	25	15	52	60	283
Port Augusta	213	1 314	710	994	530	555	652	4 968
Port Broughton (L)	23	61	15	22	10	22	33	186
Port Elliot	29	155	84	78	48	62	47	503
Port Germein (L)	6	14	6	8	7	6	16	63
Port Lincoln	445	1 263	750	787	494	643	879	5 261
Port								
MacDonnell (L)	17	42	29	24	15	36	58	221
Port Pirie	216	1 078	656	702	554	501	816	4 523
Port Victoria (L)	5	31	16	9	6	14	33	114
Port Vincent (L)	8	46	16	16	11	11	9	117
Port Wakefield (L)	6	41	30	18	20	33	34	182
Quorn	36	88	36	40	19	37	59	315
Renmark	140	359	169	237	132	469	218	1 724
Riverton (L)	25	66	28	34	20	37	28	238
Robe (L)	54	119	57	32	27	90	57	436
Roseworthy (L)	23	52	50	43	17	45	42	272
Roxby Downs	91	470	425	190	116	185	516	1 993
Saddleworth (L)	14	29	20	12	14	24	16	129
Sellicks Beach	22	103	101	83	42	123	67	541
Snowtown (L)	6	30	14	20	6	22	29	127
Spalding (L)	8	18	9	12	3	15	8	73
Springton (L)	9	27	24	15	4	24	10	113
Stansbury (L)	18	39	19	17	11	14	17	135
Strathalbyn	99	320	181	179	117	260	180	1 336
Streaky Bay	46	92	69	76	38	42	77	440
Summertown (L)	17	91	29	33	15	12	19	216
Swan Reach (L)	16	20	12	8	6	23	14	99
Tailem Bend	24	74	71	53	50	102	75	449
Tantanoola (L)	3	13	18	12	5	31	30	112
Tanunda	159	531	209	252	132	307	241	1 831
Tarpeena (L)	5	11	19	11	8	53	57	164
Tintinara (L)	23	28	27	8	10	17	29	142
Truro (L)	7	27	40	12	16	36	22	160
Tumby Bay	51	102	65	52	37	53	64	424
Two Wells (L)	25	44	54	42	27	23	70	285
Uraidla (L)	25	71	28	29	23	20	22	218
Victor Harbor	153	792	409	411	297	325	338	2 725
Virginia (L)	30	17	14	11	10	7	26	115
Waikerie	46	142	66	57	54	220	82	667

(a) Applicable to employed persons only.

(b) Includes 'Associate Professionals'.

(c) Includes 'Advanced Clerical and Service Workers', 'Intermediate Production and Transport Workers', 'Inadequately described' and 'Not stated'.

OCCUPATION OF EMPLOYED PERSONS(a) *continued*

<i>Geographic area</i>	<i>Managers and Administrators</i>	<i>Professionals(b)</i>	<i>Tradespersons and Related Workers</i>	<i>Intermediate Clerical, Sales and Service Workers</i>	<i>Elementary Clerical, Sales and Service Workers</i>	<i>Labourers and Related Workers</i>	<i>Other(c)</i>	<i>Total</i>
URBAN CENTRE/LOCALITY <i>cont.</i>								
2001 <i>cont.</i>								
Walleroo	39	182	108	117	89	112	139	786
Warooka (L)	12	15	10	9	3	10	15	74
Wasleys (L)	5	17	13	22	8	19	14	98
Whyalla	410	1 941	1 259	1 147	801	873	1 486	7 917
Williamstown	31	115	90	86	49	93	85	549
Willunga	76	262	108	130	62	84	103	825
Wilmington (L)	17	26	16	13	6	7	13	98
Wirrabara (L)	12	18	13	5	3	14	17	82
Woodside	43	188	117	115	65	95	119	742
Woodside Barracks (L)	3	29	47	15	4	4	16	118
Woomera (L)	22	121	39	51	103	24	26	386
Wudinna (L)	26	81	53	26	20	24	45	275
Yalata (L)	3	23	3	9	9	53	8	108
Yankalilla (L)	9	30	28	26	20	35	19	167
Yorketown (L)	14	56	45	40	31	27	26	239

(a) Applicable to employed persons only.

(b) Includes 'Associate Professionals'.

(c) Includes 'Advanced Clerical and Service Workers', 'Intermediate Production and Transport Workers', 'Inadequately described' and 'Not stated'.

<i>Geographic area</i>	<i>Manufacturing</i>	<i>Retail Trade</i>	<i>Property and Business Services</i>	<i>Government Administration and Defence</i>	<i>Education</i>	<i>Health and Community Services</i>	<i>Other(b)</i>	<i>Total</i>
SECTION OF STATE								
2001								
Major Urban	67 072	65 408	46 946	19 547	31 452	53 605	150 931	434 961
Other Urban	16 079	17 165	7 486	3 661	7 507	11 218	42 222	105 338
Bounded Locality	2 001	2 461	915	979	1 305	1 819	8 524	18 004
Rural Balance	8 264	7 505	4 011	2 429	4 661	5 773	44 183	76 826
Migratory	12	10	16	8	8	26	116	196
<i>Total</i>	<i>93 428</i>	<i>92 549</i>	<i>59 374</i>	<i>26 624</i>	<i>44 933</i>	<i>72 441</i>	<i>245 976</i>	<i>635 325</i>
1996								
Major Urban	63 980	56 268	39 869	18 751	30 480	49 826	148 349	407 523
Other Urban	15 547	14 423	5 938	3 474	7 270	10 103	39 689	96 444
Bounded Locality	1 868	2 107	650	678	1 204	1 548	7 450	15 505
Rural Balance	7 243	6 200	3 409	2 075	4 479	5 569	43 812	72 787
Migratory	7	9	12	16	9	11	184	248
<i>Total</i>	<i>88 645</i>	<i>79 007</i>	<i>49 878</i>	<i>24 994</i>	<i>43 442</i>	<i>67 057</i>	<i>239 484</i>	<i>592 507</i>
URBAN CENTRE/LOCALITY								
2001								
Adelaide	67 072	65 408	46 946	19 547	31 452	53 605	150 931	434 961
Aldinga Beach	384	274	139	52	101	214	652	1 816
Amata (L)	—	5	—	41	14	8	3	71
Andamooka Opal Fields (L)	12	10	11	—	8	5	109	155
Angaston	309	99	43	16	46	88	302	903
Angle Vale	117	120	43	22	24	41	241	608
Ardrossan	45	62	17	8	20	31	140	323
Arno Bay (L)	5	10	3	—	3	6	57	84
Auburn (L)	37	20	3	6	15	12	66	159
Balaklava	46	96	19	16	57	74	227	535
Balhannah	49	90	43	20	40	52	214	508
Baramba	98	110	19	18	45	60	327	677
Beachport (L)	14	24	9	6	15	4	110	182
Berri	301	223	118	67	133	230	732	1 804
Birdwood (L)	46	39	29	8	31	36	123	312
Blanchetown (L)	3	13	3	—	3	3	35	60
Blyth (L)	8	14	6	3	5	9	72	117
Booloroo Centre (L)	6	11	—	3	10	19	70	119
Bordertown	171	158	47	22	42	85	646	1 171
Brukunga (L)	8	6	5	3	3	4	52	81
Burra	46	64	18	26	37	42	178	411
Bute (L)	10	13	3	—	8	7	48	89
Cadell (L)	17	9	—	3	7	6	136	178
Callington (L)	19	18	12	—	7	12	54	122
Carrickalinga (L)	9	18	10	4	8	3	38	90
Ceduna	39	205	67	87	105	145	503	1 151
Clare	166	250	86	31	103	134	569	1 339
Cleve (L)	11	79	11	13	34	32	139	319
Cobdogla (L)	24	15	5	—	6	11	46	107
Coffin Bay (L)	10	21	18	8	4	12	102	175
Cooper Pedy	42	111	38	80	51	97	402	821
Coonalpyn (L)	4	18	3	5	6	5	46	87
Cowell (L)	10	40	6	15	20	31	193	315
Crafrers-Bridgewater	540	827	946	377	857	1 060	2 257	6 864
Crystal Brook	34	74	17	12	33	58	176	404
Cummins (L)	19	48	4	10	15	26	132	254
Echunga (L)	30	45	19	7	19	30	108	258
Edithburgh (L)	5	15	3	3	5	12	74	117
Elliston (L)	—	8	3	12	9	17	55	104
Ernabella (L)	—	15	7	51	27	25	68	193

— nil or rounded to zero (including null cells)

(a) Applicable to employed persons only.

(b) Includes all major Industries of Employment not listed, as well as 'Non-Classifiable Economic Units' and 'Not stated'.

<i>Geographic area</i>	<i>Manufacturing</i>	<i>Retail Trade</i>	<i>Property and Business Services</i>	<i>Government Administration and Defence</i>	<i>Education</i>	<i>Health and Community Services</i>	<i>Other(b)</i>	<i>Total</i>
URBAN CENTRE/LOCALITY <i>cont.</i>								
2001 <i>cont.</i>								
Eudunda (L)	45	27	10	—	15	17	94	208
Fisherman Bay (L)	5	7	6	3	9	14	47	91
Freeling	111	47	23	13	25	51	173	443
Fregon (L)	—	4	4	6	10	17	50	91
Gawler	1 247	1 124	547	355	554	739	2 490	7 056
Gladstone (L)	15	34	7	4	25	15	89	189
Goolwa	153	235	97	49	58	147	570	1 309
Greenock (L)	100	51	21	9	25	23	107	336
Gumeracha (L)	40	31	19	17	29	23	109	268
Hahndorf	79	144	88	27	75	77	325	815
Hamley Bridge (L)	37	30	11	7	13	31	82	211
Hawker (L)	16	15	4	6	16	25	68	150
Houghton (L)	34	26	16	9	14	32	84	215
Indulkana (L)	—	34	—	6	9	5	3	57
Iron Knob (L)	6	6	—	—	3	—	21	36
Jamestown	32	110	24	24	33	66	223	512
Kadina	105	320	82	50	101	141	519	1 318
Kalangadoo (L)	47	9	5	3	—	3	41	108
Kapunda	168	121	45	18	63	103	302	820
Karoonda (L)	—	14	4	8	10	19	61	116
Keith	64	113	20	8	25	35	289	554
Kersbrook (L)	27	18	6	9	10	23	61	154
Kimba (L)	9	54	9	16	28	33	162	311
Kingscote	38	123	53	41	31	60	335	681
Kingston S.E.	54	87	26	23	33	43	340	606
Lameroo (L)	26	36	4	14	16	29	111	236
Laura (L)	36	29	3	7	15	18	60	168
Leigh Creek (L)	5	38	18	9	35	19	249	373
Lobethal	109	108	53	16	39	72	339	736
Loxton	144	236	85	30	104	154	750	1 503
Lucindale (L)	8	16	3	10	17	6	77	137
Lyndoch	137	64	23	22	46	50	227	569
Macclesfield (L)	57	44	31	8	38	35	147	360
McLaren Vale	177	135	68	29	71	114	382	976
Maitland (L)	11	65	18	12	46	62	169	383
Mallala (L)	38	26	10	16	10	38	116	254
Mannum	98	116	49	17	37	68	351	736
Maslin Beach	91	67	39	17	21	55	164	454
Meadows (L)	43	55	24	13	19	39	156	349
Meningie (L)	7	67	17	19	28	40	204	382
Middleton (L)	35	27	19	8	20	42	126	277
Milang (L)	24	16	12	3	10	13	93	171
Millicent	517	252	99	37	109	142	632	1 788
Mimili (L)	—	3	—	30	13	32	6	84
Minlaton (L)	15	56	12	13	24	36	92	248
Mintabie (L)	—	9	3	—	10	4	20	46
Moonta	55	165	53	28	86	110	368	865
Moorook (L)	8	10	—	3	—	4	55	80
Morgan (L)	12	23	—	13	8	10	95	161
Mount Barker	556	659	369	166	286	437	1 565	4 038
Mount Burr (L)	40	9	5	—	4	8	63	129
Mount Compass (L)	48	40	7	8	19	25	79	226
Mount Gambier	2 113	1 902	654	232	597	885	3 855	10 238
Mount Pleasant (L)	29	32	11	3	21	18	85	199
Mount Torrens (L)	18	20	13	5	6	20	70	152
Murray Bridge	798	888	257	145	282	462	2 109	4 941
Nairne	198	202	137	51	90	125	500	1 303
Nangwarry (L)	113	19	—	3	6	8	63	212

— nil or rounded to zero (including null cells)

(a) Applicable to employed persons only.

(b) Includes all major Industries of Employment not listed, as well as 'Non-Classifiable Economic Units' and 'Not stated'.

<i>Geographic area</i>	<i>Manufacturing</i>	<i>Retail Trade</i>	<i>Property and Business Services</i>	<i>Government Administration and Defence</i>	<i>Education</i>	<i>Health and Community Services</i>	<i>Other(b)</i>	<i>Total</i>
URBAN CENTRE/LOCALITY <i>cont.</i>								
2001 <i>cont.</i>								
Napperby (L)	19	11	6	3	5	14	27	85
Naracoorte	352	405	126	39	107	175	1 117	2 321
Normanville (L)	31	37	18	12	6	19	120	243
Nuriootpa	468	253	94	25	127	167	695	1 829
Oakbank (L)	20	27	35	5	20	23	105	235
Orroroo (L)	8	32	—	9	17	30	100	196
Owen (L)	10	5	—	3	3	7	44	72
Paringa (L)	32	60	19	9	26	39	221	406
Penola	165	71	17	14	34	41	289	631
Peterborough	42	74	27	20	45	40	194	442
Pinnaroo (L)	16	39	8	7	11	30	172	283
Port Augusta	231	929	327	316	433	710	2 022	4 968
Port Broughton (L)	6	21	15	10	16	26	92	186
Port Elliot	39	109	29	19	28	73	206	503
Port Germein (L)	5	13	3	3	—	9	29	62
Port Lincoln	487	915	359	150	367	487	2 496	5 261
Port MacDonnell (L)	34	23	7	7	13	18	119	221
Port Pirie	873	862	280	135	323	581	1 469	4 523
Port Victoria (L)	7	11	6	12	10	7	61	114
Port Vincent (L)	3	26	5	6	8	9	60	117
Port Wakefield (L)	21	20	4	15	8	8	106	182
Quorn	12	34	11	20	36	48	154	315
Renmark	223	248	82	37	93	137	904	1 724
Riverton (L)	18	33	21	6	27	30	103	238
Robe (L)	31	57	24	18	22	8	276	436
Roseworthy (L)	58	38	16	12	9	21	118	272
Roxby Downs	175	153	187	19	108	73	1 278	1 993
Saddleworth (L)	17	17	5	4	12	13	61	129
Sellicks Beach	118	72	36	16	16	64	219	541
Snowtown (L)	5	18	6	9	9	22	58	127
Spalding (L)	3	12	—	4	6	6	42	73
Springton (L)	14	14	10	5	6	10	54	113
Stansbury (L)	10	20	7	6	14	14	64	135
Strathalbyn	213	200	89	43	79	160	552	1 336
Streaky Bay	21	68	19	28	29	47	228	440
Summertown (L)	25	25	25	10	28	27	76	216
Swan Reach (L)	3	9	3	—	11	—	70	96
Tailem Bend	50	98	14	14	11	30	232	449
Tantanoola (L)	33	11	8	4	3	5	49	113
Tanunda	557	234	112	42	137	146	603	1 831
Tarpeena (L)	93	12	4	—	3	3	48	163
Tintinara (L)	9	25	3	6	6	6	88	143
Truro (L)	43	23	5	5	3	11	71	161
Tumby Bay	18	62	26	18	28	49	223	424
Two Wells (L)	56	45	11	14	14	14	131	285
Uraidla (L)	13	34	19	10	20	25	97	218
Victor Harbor	212	550	218	93	169	344	1 139	2 725
Virginia (L)	8	22	7	—	4	3	71	115
Waikerie	52	103	32	13	37	58	372	667
Walleroo	46	151	36	30	45	130	348	786
Warooka (L)	—	13	—	3	6	4	48	74
Wasleys (L)	15	11	6	6	4	15	41	98
Whyalla	1 971	1 257	667	228	638	877	2 279	7 917
Williamstown	142	74	31	22	29	48	203	549
Willunga	105	119	64	26	93	100	318	825
Wilmington (L)	—	10	3	8	10	10	56	97
Wirrbara (L)	19	10	3	3	6	8	35	84
Woodside	76	143	52	42	35	86	308	742

— nil or rounded to zero (including null cells)

(a) Applicable to employed persons only.

(b) Includes all major Industries of Employment not listed, as well as 'Non-Classifiable Economic Units' and 'Not stated'.

INDUSTRY OF EMPLOYMENT (a) *continued*

<i>Geographic area</i>	<i>Manufacturing</i>	<i>Retail Trade</i>	<i>Property and Business Services</i>	<i>Government Administration and Defence</i>	<i>Education</i>	<i>Health and Community Services</i>	<i>Other(b)</i>	<i>Total</i>
URBAN CENTRE/LOCALITY <i>cont.</i>								
2001 <i>cont.</i>								
Woodside Barracks (L)	—	—	7	89	3	5	14	118
Woomera (L)	5	21	60	46	13	120	121	386
Wudinna (L)	14	38	10	11	26	27	149	275
Yalata (L)	—	5	3	73	11	7	9	108
Yankalilla (L)	21	40	8	7	6	19	66	167
Yorketown (L)	15	60	8	12	15	26	103	239

— nil or rounded to zero (including null cells)

(a) Applicable to employed persons only.

(b) Includes all major Industries of Employment not listed, as well as 'Non-Classifiable Economic Units' and 'Not stated'.

DWELLING CHARACTERISTICS

<i>Geographic area</i>	<i>Occupied private dwellings</i>	<i>Unoccupied private dwellings</i>	<i>Non-private dwellings</i>	<i>Total dwellings</i>
SECTION OF STATE				
2001				
Major Urban	404 059	25 388	892	430 339
Other Urban	105 064	14 903	464	120 431
Bounded Locality	18 060	6 617	138	24 815
Rural Balance	56 859	14 994	165	72 018
<i>Total(a)</i>	<i>584 042</i>	<i>61 902</i>	<i>1 659</i>	<i>647 606</i>
1996				
Major Urban	386 106	26 131	735	412 972
Other Urban	98 326	14 557	414	113 297
Bounded Locality	16 691	5 315	112	22 118
Rural Balance	54 711	15 371	203	70 285
<i>Total(a)</i>	<i>555 834</i>	<i>61 374</i>	<i>1 464</i>	<i>618 677</i>

URBAN CENTRE/LOCALITY

2001				
Adelaide	404 059	25 388	892	430 339
Aldinga Beach	2 152	535	3	2 690
Amata (L)	50	17	—	67
Andamooka Opal Fields (L)	253	172	—	425
Angaston	786	47	4	837
Angle Vale	364	9	—	373
Ardrossan	492	104	4	600
Arno Bay (L)	111	83	—	194
Auburn (L)	145	38	4	187
Balaklava	632	82	4	718
Balhannah	409	28	—	437
Barmera	840	147	6	993
Beachport (L)	188	201	3	392
Berri	1 728	144	13	1 885
Birdwood (L)	272	14	—	286
Blanchetown (L)	108	218	—	326
Blyth (L)	119	15	—	134
Booleroo Centre (L)	124	12	4	140
Bordertown	965	108	6	1 079
Brukunga (L)	72	3	—	75
Burra	471	78	8	557
Bute (L)	120	14	—	134
Cadell (L)	139	32	3	174
Callington (L)	128	21	—	149
Carrickalinga (L)	147	471	—	618
Ceduna	954	135	10	1 099
Clare	1 171	118	13	1 302
Cleve (L)	293	42	4	339
Cobdogla (L)	109	8	—	117
Coffin Bay (L)	197	214	—	411
Coober Pedy	974	298	15	1 287
Coonalpyn (L)	96	22	3	121
Cowell (L)	340	44	4	388
Crafers- Bridgewater	4 876	252	7	5 135
Crystal Brook	496	54	4	554
Cummins (L)	281	36	3	320
Echunga (L)	191	12	—	203
Edithburgh (L)	196	117	4	317
Elliston (L)	89	47	3	139
Ernabella (L)	77	21	—	98
Eudunda (L)	262	46	3	311
Fisherman Bay (L)	144	369	—	513
Freeling	400	28	—	428
Fregon (L)	50	17	—	67

— nil or rounded to zero (including null cells)

(a) Includes migratory and off-shore.

<i>Geographic area</i>	<i>Occupied private dwellings</i>	<i>Unoccupied private dwellings</i>	<i>Non- private dwellings</i>	<i>Total dwellings</i>
URBAN CENTRE/LOCALITY <i>cont.</i>				
2001 <i>cont.</i>				
Gawler	6 509	354	12	6 875
Gladstone (L)	256	44	—	300
Goolwa	1 967	1 340	7	3 314
Greenock (L)	255	12	—	267
Gumeracha (L)	230	25	—	255
Hahndorf	696	72	5	773
Hamley Bridge (L)	251	25	—	276
Hawker (L)	141	31	—	172
Houghton (L)	142	10	—	152
Indulkana (L)	48	11	—	59
Iron Knob (L)	90	34	—	124
Jamestown	559	81	6	646
Kadina	1 522	136	8	1 666
Kalangadoo (L)	116	25	—	141
Kapunda	932	78	3	1 013
Karoonda (L)	142	25	4	171
Keith	463	43	3	509
Kersbrook (L)	111	11	—	122
Kimba (L)	295	43	6	344
Kingscote	689	124	9	822
Kingston S.E.	628	338	7	973
Lameroo (L)	213	42	3	258
Laura (L)	226	29	—	255
Leigh Creek (L)	227	219	4	450
Lobethal	652	57	—	709
Loxton	1 423	93	6	1 522
Lucindale (L)	114	23	—	137
Lyndoch	471	27	—	498
Macclesfield (L)	304	21	—	325
McLaren Vale	1 056	59	3	1 118
Maitland (L)	381	58	3	442
Mallala (L)	245	18	3	266
Mannum	976	213	6	1 195
Maslin Beach	413	61	—	474
Meadows (L)	273	19	—	292
Meningie (L)	363	59	6	428
Middleton (L)	407	463	—	870
Milang (L)	210	54	3	267
Millicent	1 841	241	7	2 089
Mimili (L)	37	—	—	37
Minlaton (L)	316	39	3	358
Mintabie (L)	122	67	—	189
Moonta	1 381	786	7	2 174
Moorook (L)	85	6	—	91
Morgan (L)	188	38	3	229
Mount Barker	3 557	217	3	3 777
Mount Burr (L)	139	29	—	168
Mount Compass (L)	170	10	—	180
Mount Gambier	9 026	680	40	9 746
Mount Pleasant (L)	218	21	3	242
Mount Torrens (L)	106	14	—	120
Murray Bridge	5 309	482	14	5 805
Nairne	1 015	46	—	1 061
Nangwarry (L)	194	35	—	229
Napperby (L)	85	6	—	91
Naracoorte	1 950	193	11	2 154
Normanville (L)	317	105	—	422
Nuriootpa	1 597	131	7	1 735
Oakbank (L)	177	17	—	194
Orroroo (L)	214	55	3	272
Owen (L)	101	14	—	115

— nil or rounded to zero (including null cells)

<i>Geographic area</i>	<i>Occupied private dwellings</i>	<i>Unoccupied private dwellings</i>	<i>Non- private dwellings</i>	<i>Total dwellings</i>
URBAN CENTRE/LOCALITY <i>cont.</i>				
2001 <i>cont.</i>				
Paringa (L)	329	30	3	362
Penola	509	76	5	590
Peterborough	741	193	7	941
Pinnaroo (L)	251	35	4	290
Port Augusta	5 055	655	24	5 734
Port Broughton (L)	339	191	4	534
Port Elliot	675	397	6	1 078
Port Germein (L)	124	44	—	168
Port Lincoln	5 030	442	38	5 510
Port MacDonnell (L)	264	160	—	424
Port Pirie	5 498	547	17	6 062
Port Victoria (L)	164	207	—	371
Port Vincent (L)	232	278	—	510
Port Wakefield (L)	219	54	—	273
Quorn	409	94	6	509
Renmark	1 915	138	8	2 061
Riverton (L)	297	35	—	332
Robe (L)	395	453	9	857
Roseworthy (L)	180	3	—	183
Roxby Downs	1 236	182	3	1 421
Saddleworth (L)	173	25	—	198
Sellicks Beach	590	199	—	789
Snowtown (L)	169	22	3	194
Spalding (L)	98	10	—	108
Springton (L)	109	12	—	121
Stansbury (L)	239	150	4	393
Strathalbyn	1 324	110	7	1 441
Streaky Bay	437	88	5	530
Summertown (L)	138	6	—	144
Swan Reach (L)	122	167	3	292
Tailem Bend	591	73	3	667
Tantanoola (L)	93	12	—	105
Tanunda	1 570	92	10	1 672
Tarpeena (L)	144	28	3	175
Tintinara (L)	120	20	—	140
Truro (L)	112	12	—	124
Tumby Bay	566	118	4	688
Two Wells (L)	238	15	—	253
Uraidla (L)	151	11	3	165
Victor Harbor	4 077	1 575	22	5 674
Virginia (L)	104	3	—	107
Waikerie	751	69	6	826
Walleroo	1 210	567	7	1 784
Warooka (L)	95	25	3	123
Wasleys (L)	87	7	—	94
Whyalla	8 789	1 137	21	9 947
Williamstown	454	25	3	482
Willunga	691	57	—	748
Wilmington (L)	101	18	—	119
Wirrabara (L)	111	27	3	141
Woodside	604	50	—	654
Woodside Barracks (L)	55	27	3	85
Woomera (L)	262	354	4	620
Wudinna (L)	210	30	5	245
Yalata (L)	50	12	—	62
Yankalilla (L)	193	28	—	221
Yorketown (L)	282	41	—	323

— nil or rounded to zero (including null cells)

Geographic area	FULLY OWNED	BEING PURCHASED	RENTED		TOTAL	
	Dwellings	Dwellings(a)	Median monthly loan repayment	Dwellings	Median weekly rent	Dwellings(b)
no.	no.	\$	no.	\$	no.	no.

SECTION OF STATE

2001							
Major Urban	155 340	120 324	703	106 041	122	404 059	974 120
Other Urban	40 343	29 479	616	28 905	102	105 064	252 732
Bounded Locality	8 224	4 838	535	3 662	83	18 060	43 395
Rural Balance	28 712	15 327	693	7 081	72	56 859	154 287
Total(d)	232 619	169 968	680	145 689	114	584 042	1 424 534

1996							
Major Urban	149 838	108 242	661	108 311	101	386 106	950 577
Other Urban	37 916	25 284	575	29 638	83	98 326	242 890
Bounded Locality	8 128	4 531	504	3 009	77	16 691	40 481
Rural Balance	27 919	14 518	634	7 185	60	54 711	154 146
Total(d)	223 801	152 575	640	148 143	94	555 834	1 388 094

URBAN CENTRE/LOCALITY

2001							
Adelaide	155 340	120 324	703	106 041	122	404 059	974 120
Aldinga Beach	691	894	556	412	134	2 152	5 446
Amata (L)	—	—	—	42	46	50	273
Andamooka Opal Fields (L)	153	33	420	37	69	251	491
Angaston	322	218	651	210	109	786	1 906
Angle Vale	110	226	792	17	152	364	1 235
Ardrossan	287	83	465	94	91	492	1 052
Arno Bay (L)	67	19	450	19	62	109	224
Auburn (L)	70	43	592	24	105	147	323
Balaklava	324	158	457	115	102	631	1 461
Balhannah	169	152	758	72	150	411	1 040
Barmera	332	140	547	323	93	840	1 814
Beachport (L)	99	35	657	39	106	186	403
Berri	566	321	615	728	110	1 728	4 052
Birdwood (L)	97	101	612	49	138	271	724
Blanchetown (L)	54	24	462	20	77	108	211
Blyth (L)	66	33	450	15	66	120	284
Booleroo Centre (L)	76	20	440	21	51	124	267
Bordertown	396	275	532	224	109	965	2 365
Brunkunga (L)	7	35	442	27	109	75	199
Burra	194	99	477	135	88	467	991
Bute (L)	73	30	358	11	78	117	264
Cadell (L)	70	33	516	27	88	139	346
Callington (L)	30	74	558	14	127	129	336
Carrickalinga (L)	86	28	466	22	132	146	318
Ceduna	338	206	543	323	92	955	2 372
Clare	469	339	607	318	107	1 172	2 789
Cleve (L)	153	68	522	58	82	292	656
Cobdogla (L)	50	25	450	15	95	108	273
Coffin Bay (L)	103	44	579	38	120	196	453
Cooper Pedy	344	90	447	253	68	974	2 170
Coonalpyn (L)	52	16	300	18	81	92	208
Cowell (L)	161	63	553	66	95	338	764
Crafers-Bridgewater	2 102	2 076	856	494	164	4 874	13 039
Crystal Brook	263	94	431	99	72	496	1 157

- nil or rounded to zero (including null cells)
- (a) Comprises 'Being purchased' and 'Being purchased under a rent/buy scheme'.
- (b) Includes 'Being occupied rent-free', 'Being occupied under a life tenure scheme', 'Other tenure type', and 'Not stated'.
- (c) Includes overseas visitors.
- (d) Includes migratory and off-shore.

Geographic area	FULLY OWNED	BEING PURCHASED	RENTED		TOTAL		
	Dwellings	Dwellings(a)	Median monthly loan repayment	Dwellings	Median weekly rent	Dwellings(b)	Persons(c)
	no.	no.	\$	no.	\$	no.	no.
URBAN CENTRE/LOCALITY <i>cont.</i>							
2001 <i>cont.</i>							
Cummins (L)	134	67	428	53	86	281	631
Echunga (L)	59	97	720	25	140	193	511
Edithburgh (L)	112	35	461	31	77	197	408
Elliston (L)	33	13	512	33	84	90	201
Ernabella (L)	—	—	—	62	35	75	440
Eudunda (L)	156	60	437	30	68	261	566
Fisherman Bay (L)	101	11	850	14	110	143	299
Freeling	132	196	565	53	111	399	1 105
Fregon (L)	—	—	450	41	29	51	252
Gawler	2 267	2 329	672	1 626	122	6 509	16 573
Gladstone (L)	135	64	403	43	77	256	619
Goolwa	994	443	516	415	117	1 967	4 186
Greenock (L)	100	108	673	31	139	254	688
Gumeracha (L)	79	105	754	34	112	230	599
Hahndorf	319	206	780	111	157	698	1 720
Hamley Bridge (L)	95	97	507	47	113	251	644
Hawker (L)	59	19	417	40	80	141	287
Houghton (L)	63	67	855	11	203	144	441
Indulkana (L)	—	—	—	42	34	49	220
Iron Knob (L)	47	13	379	16	37	89	176
Jamestown	301	127	524	105	80	559	1 269
Kadina	742	372	533	310	101	1 522	3 659
Kalangadoo (L)	56	41	419	17	83	117	297
Kapunda	409	312	546	149	107	932	2 264
Karoonda (L)	91	22	322	22	72	142	286
Keith	191	133	458	105	86	462	1 081
Kersbrook (L)	43	48	783	16	160	113	316
Kimba (L)	151	58	364	68	63	296	638
Kingscote	268	152	524	216	100	689	1 529
Kingston S.E.	298	151	512	139	90	625	1 423
Lameroo (L)	104	41	455	57	71	212	459
Laura (L)	114	53	557	46	78	224	494
Leigh Creek (L)	—	—	—	216	40	227	585
Lobethal	278	224	686	106	135	650	1 656
Loxton	628	291	565	422	108	1 421	3 223
Lucindale (L)	54	27	428	27	80	114	277
Lyndoch	192	210	683	54	130	472	1 251
Macclesfield (L)	101	144	677	39	140	302	798
McLaren Vale	471	302	767	166	141	1 057	2 512
Maitland (L)	186	88	404	84	86	385	928
Mallala (L)	110	97	508	31	126	248	663
Mannum	463	179	498	267	89	974	2 002
Maslin Beach	139	182	633	61	145	412	1 016
Meadows (L)	74	151	642	39	143	270	779
Meningie (L)	139	83	608	111	82	362	848
Middleton (L)	194	113	590	66	128	406	885
Milang (L)	106	62	495	28	91	212	443
Millicent	768	506	566	460	83	1 841	4 329
Mimili (L)	—	—	—	32	46	37	264
Minlaton (L)	163	67	487	68	80	317	701
Mintabie (L)	70	3	—	9	21	124	205

— nil or rounded to zero (including null cells)

(a) Comprises 'Being purchased' and 'Being purchased under a rent/buy scheme'.

(b) Includes 'Being occupied rent-free', 'Being occupied under a life tenure scheme', 'Other tenure type', and 'Not stated'.

(c) Includes overseas visitors.

Geographic area	FULLY OWNED	BEING PURCHASED		RENTED	TOTAL		
	Dwellings	Dwellings(a)	Median monthly loan repayment	Dwellings	Median weekly rent	Dwellings(b)	Persons(c)
	no.	no.	\$	no.	\$	no.	no.
URBAN CENTRE/LOCALITY <i>cont.</i>							
2001 <i>cont.</i>							
Moonta	798	272	488	243	102	1 382	3 000
Moorook (L)	48	19	512	10	108	84	209
Morgan (L)	91	44	450	42	103	188	415
Mount Barker	977	1 359	705	1 062	132	3 557	9 086
Mount Burr (L)	61	50	355	21	69	137	369
Mount Compass (L)	48	95	614	22	132	171	496
Mount Gambier	2 996	2 715	647	2 812	101	9 026	22 103
Mount Pleasant (L)	106	65	615	32	129	217	530
Mount Torrens (L)	40	51	592	11	160	102	319
Murray Bridge	1 952	1 307	566	1 721	97	5 309	12 783
Nairne	290	518	663	168	142	1 016	2 779
Nangwarry (L)	71	67	380	46	77	195	486
Napperby (L)	46	32	612	4	162	85	253
Naracoorte	758	551	534	528	102	1 950	4 590
Normanville (L)	141	84	617	66	126	319	693
Nuriootpa	683	422	688	359	119	1 597	3 742
Oakbank (L)	70	72	866	31	155	180	449
Orroroo (L)	143	31	433	32	67	214	472
Owen (L)	48	35	487	15	106	104	218
Paringa (L)	128	112	637	77	111	328	806
Penola	204	156	551	130	102	507	1 179
Peterborough	426	150	356	120	77	741	1 633
Pinnaroo (L)	132	66	355	35	59	251	557
Port Augusta	1 853	1 117	509	1 729	85	5 055	12 516
Port Broughton (L)	182	44	542	87	103	336	666
Port Elliot	293	201	579	127	124	675	1 495
Port Germein (L)	68	32	406	14	87	126	279
Port Lincoln	1 683	1 204	635	1 780	109	5 030	12 278
Port MacDonnell (L)	130	92	495	24	93	265	602
Port Pirie	2 289	1 354	482	1 620	83	5 498	12 959
Port Victoria (L)	90	33	431	33	88	163	333
Port Vincent (L)	154	27	525	31	96	231	453
Port Wakefield (L)	116	47	454	45	103	220	492
Quorn	219	95	415	78	86	409	941
Renmark	683	309	559	807	102	1 915	4 291
Riverton (L)	152	73	463	58	87	296	613
Robe (L)	187	78	546	105	104	395	900
Roseworthy (L)	65	86	777	16	134	180	538
Roxby Downs	160	376	862	635	114	1 236	3 454
Saddleworth (L)	100	42	387	28	72	173	382
Sellicks Beach	202	281	540	81	137	590	1 495
Snowtown (L)	98	38	329	18	66	167	358
Spalding (L)	59	19	318	13	62	98	202
Springton (L)	37	55	620	11	114	109	278
Stansbury (L)	155	34	533	38	100	239	486
Strathalbyn	570	367	639	326	128	1 324	3 125
Streaky Bay	197	73	519	132	95	434	1 005
Summertown (L)	61	59	693	8	104	136	440
Swan Reach (L)	65	24	459	21	67	123	262
Tailem Bend	279	147	421	133	106	593	1 349
Tantanoola (L)	37	42	508	8	103	95	254
Tanunda	699	452	691	311	137	1 571	3 700
Tarpeena (L)	53	70	482	16	83	145	369

(a) Comprises 'Being purchased' and 'Being purchased under a rent/buy scheme'.

(b) Includes 'Being occupied rent-free', 'Being occupied under a life tenure scheme', 'Other tenure type', and 'Not stated'.

(c) Includes overseas visitors.

OCCUPIED PRIVATE DWELLINGS *continued*

Geographic area	FULLY OWNED	BEING PURCHASED	RENTED		TOTAL		
	Dwellings	Dwellings(a)	Median monthly loan repayment	Dwellings	Median weekly rent	Dwellings(b)	Persons(c)
no.	no.	\$	no.	\$	no.	no.	
URBAN CENTRE/LOCALITY <i>cont.</i>							
2001 <i>cont.</i>							
Tintinara (L)	60	26	417	23	76	122	264
Truro (L)	47	47	625	12	137	113	318
Tumby Bay	291	108	564	137	92	568	1 191
Two Wells (L)	90	98	654	35	115	236	634
Uraidla (L)	67	61	856	15	122	154	418
Victor Harbor	2 179	728	637	825	128	4 077	8 613
Virginia (L)	50	26	733	20	108	102	302
Waikerie	272	111	555	284	106	751	1 687
Walleroo	609	220	463	305	103	1 208	2 633
Warooka (L)	54	18	462	17	77	94	216
Wasleys (L)	28	50	472	7	112	85	234
Whyalla	2 346	2 415	582	3 627	80	8 789	20 705
Williamstown	161	225	680	53	138	454	1 263
Willunga	315	286	714	74	139	691	1 907
Wilmington (L)	64	21	517	12	97	103	236
Wirrabara (L)	62	26	338	12	46	111	234
Woodside	192	264	714	116	136	605	1 543
Woodside Barracks (L)	—	—	—	53	114	53	162
Woomera (L)	10	—	—	118	22	259	544
Wudinna (L)	96	37	517	65	82	209	495
Yalata (L)	—	—	—	39	19	48	223
Yankalilla (L)	68	71	512	46	109	194	440
Yorketown (L)	149	59	469	64	95	283	631

— nil or rounded to zero (including null cells)

(a) Comprises 'Being purchased' and 'Being purchased under a rent/buy scheme'.

(b) Includes 'Being occupied rent-free', 'Being occupied under a life tenure scheme', 'Other tenure type', and 'Not stated'.

(c) Includes overseas visitors.

Geographic area	FAMILY TYPE					HOUSEHOLD TYPE			HOUSEHOLD SIZE
	Couple family with dependent children (a)	Couple family with non-dependent children	Couple family without children	One parent family	Other family	Lone person	Group	Total (b) (c)	Mean (d)
no.	no.	no.	no.	no.	no.	no.	no.	no.	persons
SECTION OF STATE									
2001									
Major Urban	94 713	23 717	101 523	45 663	5 088	112 047	14 093	394 551	2.4
Other Urban	25 016	4 550	29 316	11 245	784	28 491	2 335	101 287	2.4
Bounded Locality	4 285	735	5 550	1 549	132	4 804	357	17 225	2.4
Rural Balance	18 317	3 834	17 364	3 676	378	9 916	969	54 011	2.8
Total(e)	142 331	32 836	153 753	62 133	6 382	155 258	17 754	567 074	2.4
2001									
Major Urban	96 859	24 988	96 789	40 719	5 015	101 054	15 198	378 490	2.5
Other Urban	25 952	4 799	27 011	9 672	827	24 976	2 386	95 230	2.5
Bounded Locality	4 324	705	5 237	1 275	98	4 300	309	16 183	2.5
Rural Balance	19 288	4 198	16 198	3 224	396	8 665	855	52 440	2.9
Total(e)	146 423	34 690	145 235	54 890	6 336	138 995	18 748	542 343	2.5
URBAN CENTRE/LOCALITY									
2001									
Adelaide	94 713	23 717	101 523	45 663	5 088	112 047	14 093	394 551	2.4
Aldinga Beach	527	92	502	345	15	504	69	2 040	2.6
Amata (L)	24	8	16	18	—	4	—	45	5.7
Andamooka Opal Fields (L)	36	4	64	20	—	100	3	226	2.0
Angaston	187	44	244	72	4	198	25	772	2.4
Angle Vale	202	34	87	16	—	22	3	363	3.4
Ardrossan	87	13	189	34	3	147	5	476	2.1
Arno Bay (L)	18	—	33	8	—	43	3	106	2.0
Auburn (L)	30	3	52	12	—	45	3	145	2.2
Balaklava	142	30	196	60	5	179	11	621	2.3
Balhannah	113	23	117	57	3	93	—	403	2.6
Barmera	129	32	239	96	9	289	18	807	2.1
Beachport (L)	32	14	55	15	3	47	6	170	2.2
Berri	365	79	422	179	20	504	62	1 625	2.3
Birdwood (L)	88	17	68	29	—	52	7	261	2.7
Blanchetown (L)	10	—	38	7	—	42	5	103	2.1
Blyth (L)	29	7	38	12	3	31	3	119	2.5
Booleroo Centre (L)	22	5	45	4	3	36	6	119	2.2
Bordertown	253	40	261	76	9	251	45	930	2.5
Brunkunga (L)	22	4	14	13	—	15	3	71	2.7
Burra	77	11	145	40	—	155	10	439	2.1
Bute (L)	27	8	36	5	—	39	3	118	2.3
Cadell (L)	27	16	49	11	3	29	6	139	2.5
Callington (L)	45	3	27	14	—	32	4	125	2.7
Carrickalinga (L)	15	10	65	17	—	28	3	137	2.2
Ceduna	224	29	257	77	13	232	20	848	2.5
Clare	291	35	360	100	8	322	34	1 149	2.4
Cleve (L)	57	5	111	12	3	96	7	291	2.2
Cobdogla (L)	30	—	29	11	3	21	—	94	2.5
Coffin Bay (L)	34	7	79	5	3	46	8	180	2.2
Coober Pedy	125	35	172	75	9	266	17	686	2.3
Coonalpyn (L)	16	4	25	14	3	30	3	93	2.2
Cowell (L)	73	7	102	21	4	100	7	314	2.3
Crafers-Bridgewater	1 639	301	1 402	436	35	887	110	4 784	2.7

— nil or rounded to zero (including null cells)

(a) Comprises Couple families with children under 15; Couple families with dependent students; and Couple families with children under 15 and dependent students.

(b) Excludes 'Visitors only' and 'Other not classifiable' households.

(c) Comprises 'Family', 'Lone person' and 'Group' households.

(d) Mean household size is the average number of persons usually resident in a household. Excludes 'Visitors only' and 'Other not classifiable' households.

(e) Includes migratory and off-shore.

Geographic area	FAMILY TYPE					HOUSEHOLD TYPE			HOUSEHOLD SIZE
	Couple family with dependent children (a)	Couple family with non-dependent children	Couple family without children	One parent family	Other family	Lone person	Group	Total (b) (c)	Mean (d)
no.	no.	no.	no.	no.	no.	no.	no.	no.	persons
URBAN CENTRE/LOCALITY <i>cont.</i>									
2001 <i>cont.</i>									
Crystal Brook	118	21	138	44	3	148	6	477	2.4
Cummins (L)	69	6	83	20	3	81	11	271	2.3
Echunga (L)	70	5	51	20	—	40	4	187	2.7
Edithburgh (L)	30	4	65	12	3	57	3	172	2.1
Elliston (L)	18	3	15	9	—	27	—	73	2.3
Ernabella (L)	44	—	23	21	—	17	3	73	5.6
Eudunda (L)	43	13	96	14	3	79	8	256	2.2
Fisherman Bay (L)	18	4	64	5	—	41	—	131	2.1
Freeling	132	17	120	50	4	76	3	399	2.8
Fregon (L)	21	6	9	20	3	5	—	43	5.4
Gawler	1 760	368	1 725	803	64	1 576	127	6 384	2.5
Gladstone (L)	59	13	76	25	—	69	5	247	2.5
Goolwa	311	48	749	163	13	578	38	1 893	2.1
Greenock (L)	97	18	83	13	—	38	—	248	2.8
Gumeracha (L)	70	10	68	31	—	41	6	227	2.7
Hahndorf	185	43	202	57	4	178	20	684	2.5
Hamley Bridge (L)	71	10	58	33	4	73	3	248	2.6
Hawker (L)	19	6	27	11	—	41	—	104	2.2
Houghton (L)	67	12	38	7	—	15	3	142	3.1
Indulkana (L)	22	3	12	10	4	9	—	43	4.2
Iron Knob (L)	8	3	22	12	3	39	3	89	2.0
Jamestown	129	24	173	46	—	167	7	544	2.4
Kadina	363	64	461	140	11	407	21	1 462	2.4
Kalangadoo (L)	35	9	33	10	3	24	3	117	2.8
Kapunda	222	35	281	100	9	242	19	904	2.4
Karoonda (L)	21	3	47	14	4	49	3	141	2.0
Keith	109	21	139	31	—	133	17	448	2.3
Kersbrook (L)	41	10	30	7	—	18	—	107	2.9
Kimba (L)	62	7	92	13	5	100	7	286	2.2
Kingscote	138	30	191	56	5	218	11	647	2.2
Kingston S.E.	137	23	213	49	3	171	14	609	2.3
Lameroo (L)	47	5	58	12	—	83	5	211	2.1
Laura (L)	44	9	66	22	3	77	4	224	2.3
Leigh Creek (L)	77	5	62	11	—	51	5	209	2.7
Lobethal	172	35	217	60	6	145	13	644	2.5
Loxton	274	69	453	138	11	426	24	1 388	2.3
Lucindale (L)	28	5	31	3	3	41	4	114	2.3
Lyndoch	155	22	167	35	—	79	6	462	2.7
Macclesfield (L)	99	11	78	39	—	62	5	291	2.6
McLaren Vale	255	39	340	101	7	263	21	1 025	2.4
Maitland (L)	95	8	127	32	3	112	5	379	2.4
Mallala (L)	72	15	66	26	—	58	6	243	2.7
Mannum	136	32	308	83	5	353	17	930	2.0
Maslin Beach	94	14	123	68	7	84	12	396	2.5
Meadows (L)	109	7	58	39	3	55	4	273	2.8
Meningie (L)	79	15	108	36	3	108	8	355	2.3
Middleton (L)	69	10	133	37	3	116	4	369	2.2
Milang (L)	30	6	63	17	3	67	3	188	2.1
Millicent	436	78	537	188	19	528	23	1 806	2.4
Mimili (L)	22	3	7	18	—	6	—	33	6.4

— nil or rounded to zero (including null cells)

(a) Comprises Couple families with children under 15; Couple families with dependent students; and Couple families with children under 15 and dependent students.

(b) Excludes 'Visitors only' and 'Other not classifiable' households.

(c) Comprises 'Family', 'Lone person' and 'Group' households.

(d) Mean household size is the average number of persons usually resident in a household. Excludes 'Visitors only' and 'Other not classifiable' households.

Geographic area	FAMILY TYPE					HOUSEHOLD TYPE			HOUSEHOLD SIZE
	Couple family with dependent children (a)	Couple family with non-dependent children	Couple family without children	One parent family	Other family	Lone person	Group	Total(b)(c)	Mean(d)
no.	no.	no.	no.	no.	no.	no.	no.	no.	persons
URBAN CENTRE/LOCALITY cont.									
2001 cont.									
Minlaton (L)	65	10	106	23	—	104	5	313	2.2
Mintabie (L)	10	—	18	9	—	44	4	86	1.7
Moonta	229	30	547	105	7	366	24	1 303	2.2
Moorook (L)	20	5	33	6	3	14	3	83	2.6
Morgan (L)	33	10	67	17	4	55	—	185	2.2
Mount Barker	1 012	158	833	525	17	884	85	3 497	2.6
Mount Burr (L)	42	10	44	15	—	25	3	138	2.7
Mount Compass (L)	74	13	40	14	—	24	—	166	2.9
Mount Gambier	2 263	438	2 296	1 032	64	2 453	237	8 749	2.4
Mount Pleasant (L)	56	7	64	26	—	58	—	210	2.4
Mount Torrens (L)	48	—	22	11	3	19	3	106	3.1
Murray Bridge	1 161	221	1 413	670	51	1 561	137	5 181	2.4
Nairne	356	51	246	127	9	189	26	998	2.8
Nangwarry (L)	48	13	58	25	—	40	7	191	2.5
Napperby (L)	33	10	22	3	—	14	—	82	2.9
Naracoorte	475	67	544	177	18	567	54	1 899	2.4
Normanville (L)	42	17	118	26	—	84	7	293	2.2
Nuriootpa	384	89	457	110	11	463	39	1 547	2.3
Oakbank (L)	56	8	59	10	—	37	6	177	2.6
Orroroo (L)	46	9	75	12	—	66	—	208	2.2
Owen (L)	21	3	35	10	—	31	—	99	2.2
Paringa (L)	85	18	109	19	3	80	8	317	2.5
Penola	127	27	133	37	3	170	11	504	2.3
Peterborough	131	20	201	91	7	258	15	722	2.2
Pinnaroo (L)	49	11	75	19	4	79	7	244	2.2
Port Augusta	1 191	250	1 217	612	58	1 336	98	4 732	2.5
Port Broughton (L)	35	6	137	26	—	114	7	325	2.0
Port Elliot	133	16	215	54	3	184	16	617	2.3
Port Germein (L)	25	4	32	10	3	33	5	111	2.3
Port Lincoln	1 181	197	1 264	600	52	1 313	169	4 756	2.5
Port MacDonnell (L)	61	14	87	14	—	80	3	261	2.3
Port Pirie	1 230	293	1 450	645	35	1 672	85	5 382	2.4
Port Victoria (L)	17	3	68	9	3	45	3	147	2.1
Port Vincent (L)	14	10	105	12	—	58	—	200	2.0
Port Wakefield (L)	33	11	59	27	3	69	7	207	2.3
Quorn	99	8	125	38	3	115	5	389	2.4
Renmark	348	65	490	238	11	605	52	1 801	2.2
Riverton (L)	52	5	96	25	—	114	—	292	2.1
Robe (L)	79	14	127	30	—	102	14	367	2.3
Roseworthy (L)	76	11	52	13	—	22	4	178	3.0
Roxby Downs	560	27	259	52	6	244	33	1 175	2.9
Saddleworth (L)	31	7	63	14	—	54	4	173	2.1
Sellicks Beach	158	24	145	86	3	140	20	574	2.5
Snowtown (L)	32	4	57	9	—	59	3	165	2.1
Spalding (L)	13	3	39	7	—	33	—	93	2.1
Springton (L)	30	7	29	14	—	24	3	107	2.5
Stansbury (L)	30	6	97	19	—	74	—	227	2.0
Strathalbyn	298	59	393	139	8	391	23	1 306	2.4
Streaky Bay	91	7	121	37	4	125	14	399	2.4
Summertown (L)	69	8	33	10	—	17	—	136	3.2

— nil or rounded to zero (including null cells)

(a) Comprises Couple families with children under 15; Couple families with dependent students; and Couple families with children under 15 and dependent students.

(b) Excludes 'Visitors only' and 'Other not classifiable' households.

(c) Comprises 'Family', 'Lone person' and 'Group' households.

(d) Mean household size is the average number of persons usually resident in a household. Excludes 'Visitors only' and 'Other not classifiable' households.

Geographic area	FAMILY TYPE					HOUSEHOLD TYPE			HOUSEHOLD SIZE
	Couple family with dependent children (a)	Couple family with non-dependent children	Couple family without children	One parent family	Other family	Lone person	Group	Total (b) (c)	Mean (d)
no.	no.	no.	no.	no.	no.	no.	no.	no.	persons
URBAN CENTRE/LOCALITY <i>cont.</i>									
2001 <i>cont.</i>									
Swan Reach (L)	21	—	38	10	4	35	—	110	2.2
Tailem Bend	125	25	159	73	6	184	7	577	2.3
Tantanoola (L)	29	5	20	16	—	17	3	90	2.6
Tanunda	380	83	474	101	12	414	53	1 514	2.4
Tarpeena (L)	44	7	41	13	—	30	6	141	2.5
Tintinara (L)	29	4	41	5	—	32	3	115	2.2
Truro (L)	44	11	33	4	—	14	5	111	2.9
Tumby Bay	98	18	211	24	3	185	8	545	2.1
Two Wells (L)	64	19	69	33	3	46	4	237	2.7
Uraidla (L)	48	16	42	12	—	31	—	149	2.9
Victor Harbor	560	117	1 668	340	27	1 183	62	3 944	2.1
Virginia (L)	34	8	25	14	—	21	—	103	2.9
Waikerie	146	23	226	62	10	235	19	718	2.2
Walleroo	192	41	442	112	7	334	26	1 153	2.2
Warooka (L)	19	3	33	11	—	27	3	95	2.3
Wasleys (L)	28	7	26	10	—	13	3	87	2.7
Whyalla	2 025	326	2 143	1 101	45	2 756	155	8 522	2.3
Williamstown	169	16	145	48	—	70	6	453	2.8
Willunga	238	34	211	66	3	128	7	684	2.8
Wilmington (L)	27	3	37	9	—	23	3	102	2.4
Wirrabara (L)	23	4	28	12	—	38	3	108	2.3
Woodside	169	39	158	68	3	145	20	600	2.6
Woodside Barracks (L)	30	—	17	3	—	4	—	54	3.0
Woomera (L)	55	3	37	11	—	60	3	169	2.3
Wudinna (L)	54	5	66	9	—	57	10	203	2.4
Yalata (L)	26	—	6	8	3	8	—	46	3.7
Yankalilla (L)	38	3	69	25	—	50	7	190	2.3
Yorke town (L)	56	8	101	15	4	91	6	281	2.2

— nil or rounded to zero (including null cells)

(a) Comprises Couple families with children under 15; Couple families with dependent students; and Couple families with children under 15 and dependent students.

(b) Excludes 'Visitors only' and 'Other not classifiable' households.

(c) Comprises 'Family', 'Lone person' and 'Group' households.

(d) Mean household size is the average number of persons usually resident in a household. Excludes 'Visitors only' and 'Other not classifiable' households.

URBAN CENTRES/LOCALITIES, Ranked by total number of persons

Rank	Persons		Rank	Persons	
		no.			no.
1	Adelaide	995 955	62	Maitland (L)	992
2	Mount Gambier	22 656	63	Quorn	985
3	Whyalla	21 211	64	Robe (L)	950
4	Gawler	16 779	65	Meningie (L)	896
5	Port Pirie	13 253	66	Middleton (L)	882
6	Port Augusta	13 153	67	Paringa (L)	811
7	Crafers-Bridgewater	13 130	68	Macclesfield (L)	798
8	Murray Bridge	12 998	69	Cowell (L)	792
9	Port Lincoln	12 630	70	Meadows (L)	776
10	Mount Barker	9 114	71	Minlaton (L)	753
11	Victor Harbor	8 923	72	Port Broughton (L)	730
12	Aldinga Beach	5 518	73	Birdwood (L)	724
13	Naracoorte	4 745	74	Cleve (L)	699
14	Renmark	4 448	75	Mallala (L)	690
15	Millicent	4 430	76	Greenock (L)	687
16	Goolwa	4 330	77	Kimba (L)	684
17	Berri	4 213	78	Normanville (L)	684
18	Nuriootpa	3 845	79	Riverton (L)	666
19	Tanunda	3 841	80	Cummins (L)	660
20	Kadina	3 742	81	Hamley Bridge (L)	653
21	Roxby Downs	3 607	82	Gumeracha (L)	645
22	Loxton	3 350	83	Yorke town (L)	645
23	Strathalbyn	3 203	84	Two Wells (L)	636
24	Moonta	3 080	85	Leigh Creek (L)	627
25	Clare	2 920	86	Gladstone (L)	622
26	Nairne	2 776	87	Port MacDonnell (L)	605
27	Walleroo	2 717	88	Eudunda (L)	603
28	McLaren Vale	2 583	89	Woomera (L)	596
29	Ceduna	2 569	90	Pinnaroo (L)	594
30	Bordertown	2 440	91	Mount Pleasant (L)	560
31	Coober Pedy	2 440	92	Roseworthy (L)	536
32	Kapunda	2 295	93	Wudinna (L)	535
33	Mannum	2 187	94	Stansbury (L)	530
34	Barmera	1 937	95	Echunga (L)	511
35	Angaston	1 930	96	Laura (L)	511
36	Willunga	1 902	97	Orroroo (L)	502
37	Hahndorf	1 834	98	Andamooka Opal Fields (L)	496
38	Waikerie	1 764	99	Mount Compass (L)	496
39	Lobethal	1 682	100	Port Wakefield (L)	496
40	Peterborough	1 680	101	Lameroo (L)	488
41	Kingscote	1 666	102	Nangwarry (L)	486
42	Woodside	1 566	103	Cadell (L)	459
43	Balaklava	1 520	104	Port Vincent (L)	453
44	Port Elliot	1 516	105	Coffin Bay (L)	451
45	Sellicks Beach	1 485	106	Oakbank (L)	447
46	Kingston S.E.	1 477	107	Ernabella (L)	446
47	Tallem Bend	1 390	108	Milang (L)	445
48	Jamestown	1 348	109	Uraidla (L)	442
49	Williamstown	1 273	110	Houghton (L)	440
50	Crystal Brook	1 258	111	Yankalilla (L)	440
51	Lyndoch	1 244	112	Summertown (L)	430
52	Angle Vale	1 229	113	Edithburgh (L)	428
53	Tumby Bay	1 226	114	Morgan (L)	424
54	Penola	1 220	115	Beachport (L)	406
55	Freeling	1 141	116	Snowtown (L)	392
56	Keith	1 126	117	Saddleworth (L)	382
57	Burra	1 096	118	Tarpeena (L)	374
58	Ardrossan	1 080	119	Mount Burr (L)	369
59	Streaky Bay	1 080	120	Callington (L)	336
60	Balhannah	1 038	121	Port Victoria (L)	333
61	Maslin Beach	1 011	122	Auburn (L)	329

Rank	Persons		Rank	Persons	
		no.			no.
123	Carrickalinga (L)	318	146	Wilmington (L)	242
124	Mount Torrens (L)	318	147	Wirrabara (L)	238
125	Truro (L)	318	148	Elliston (L)	234
126	Kersbrook (L)	315	149	Wasleys (L)	234
127	Karoonda (L)	310	150	Arno Bay (L)	231
128	Booleroo Centre (L)	307	151	Brukungu (L)	228
129	Virginia (L)	301	152	Yalata (L)	223
130	Fisherman Bay (L)	299	153	Indulkana (L)	220
131	Kalangadoo (L)	296	154	Owen (L)	218
132	Hawker (L)	292	155	Warooka (L)	218
133	Blyth (L)	284	156	Coonalpyn (L)	213
134	Port Germein (L)	278	157	Blanchetown (L)	211
135	Springton (L)	277	158	Moorook (L)	209
136	Lucindale (L)	275	159	Mintabie (L)	208
137	Amata (L)	273	160	Woodside Barracks (L)	208
138	Cobdogla (L)	272	161	Spalding (L)	204
139	Tintinara (L)	271	162	Iron Knob (L)	203
140	Swan Reach (L)	266			
141	Bute (L)	265			
142	Mimili (L)	264			
143	Tantanoola (L)	255			
144	Napperby (L)	253			
145	Fregon (L)	252			

EXPLANATORY NOTES

SCOPE AND COVERAGE

1 The 2001 Census of Population and Housing was held on 7 August 2001. Australia's first national Census was held in 1911 and since 1961 a census has been taken every five years, a frequency which is specified in the *Census and Statistics Act 1905*. The objective of the Census is to count the number of people in Australia on Census Night, identifying their key characteristics and those of the dwellings in which they live.

2 The Census aims to count every person who spent Census Night in Australia. This includes Australian residents in Antarctica and people in the territories of Jervis Bay, Cocos (Keeling) Islands and Christmas Island. The other Australian External Territories, Norfolk Island and minor islands such as Heard and McDonald Islands, are outside the scope of the Australian Census. The only people in Australia on Census Night who are excluded from the Census are foreign diplomats and their families.

3 The Census includes people on vessels in or between Australian ports, on board long distance trains, buses or aircraft and on oil or gas rigs off the Australian coast. People entering Australia before midnight on Census Night are counted while people leaving an Australian port for an overseas destination before midnight on Census Night are not. Visitors to Australia are included regardless of how long they have been in the country or how long they plan to stay. However, for people who intend to be in Australia less than one year, only basic demographic data are available. The Census includes homeless people and people camping out.

4 All occupied dwellings are counted in the Census with the exception of diplomatic dwellings. Unoccupied private dwellings are also counted with the exception of unoccupied dwellings in caravan parks, marinas and manufactured home estates, and units in accommodation for the retired or aged (self-care). Unoccupied residences of owners, managers or caretakers of such establishments are counted.

5 Details about the 2001 Census content, collection operations, confidentiality and privacy protection, processing and evaluation activities are contained in *2001 Census of Population and Housing: Nature and Content* (cat. no. 2008.0).

ABS POPULATION ESTIMATES

6 All counts in this publication are on a 'place of enumeration' basis. 'Place of enumeration' means where the person was counted on Census Night. The Census can provide person counts based on 'place of usual residence' for Collection Districts (CDs) and aggregations of CDs. Appendix 1—Estimated Resident Population highlights the difference between these two measures.

7 The Estimated Resident Population (ERP) is the official Australian Bureau of Statistics (ABS) estimate of the Australian population. The ERP is based on results of the Census of Population and Housing. It is compiled as at 30 June of each census year and updated quarterly between censuses. The intercensal estimates of the resident population are revised following the next census.

8 The ERP is derived from census usual residence counts, by making the following three important adjustments:

- An adjustment for census net underenumeration (or undercount). The level of underenumeration is derived from the Post Enumeration Survey which is conducted soon after the Census, and from estimates based on demographic analysis.

EXPLANATORY NOTES *continued*

ABS POPULATION ESTIMATES

continued

- The inclusion of an estimated number of Australian residents who are temporarily overseas on Census Night and are therefore not covered by the Australian Census. The number of such people is estimated from statistics on overseas arrivals and departures.
- The third adjustment occurs because the Census does not fall on 30 June. For example, the 2001 Census was held on 7 August. Back dating of population estimates from 7 August to 30 June is accomplished using data from birth and death registrations, overseas arrivals and departures, and estimates of interstate migration, for the period 1 July to 7 August.

9 ABS population estimates are published in *Australian Demographic Statistics* (cat. no. 3101.0), produced quarterly, and in *Population by Age and Sex, Australian States and Territories* (cat. no. 3201.0) produced annually. ERPs for Statistical Local Areas (SLAs) are published in *Regional Population Growth, Australia and New Zealand* (cat. no. 3218.0).

10 The ABS also provides projections (based on different assumptions as to future fertility, mortality and migration) of the resident population of Australia, states and territories. These projections are published every two years in *Population Projections, Australia* (cat. no. 3222.0).

DATA LIMITATIONS

11 Census data are subject to a number of inaccuracies resulting from errors by respondents or mistakes in collection or processing. Whilst many of these are corrected by careful processing procedures, some still remain. The effect of the remaining errors is generally slight, although it may be more important for small groups in the population. The main kinds of error to keep in mind are:

- *Partial non-response*: In some cases where an answer is not provided to a question, an answer is imputed (often from other information on the form). In other cases a 'Not stated' code is allocated.
- *Processing error*: While such errors can occur in any processing system, quality management is used continuously to improve the quality of processed data, and to identify and correct data of unacceptable quality.
- *Random adjustment*: Table cells containing small values are randomly adjusted or suppressed to avoid releasing information about particular individuals, families, or households. The effects of these adjustments are statistically insignificant.
- *Respondent error*: Because processing procedures cannot detect or repair all errors made by people in completing the forms, some remain in final data.
- *Undercount*: Although the Census aims to count each person, there are some people who are missed and others who are counted more than once. The data in this publication are not adjusted for the net undercount.

12 Further information on data quality is provided progressively in *Census Update* and in *2001 Census Papers*.

QUALITY OF INDIGENOUS STATISTICS

13 For further information on the quality of Indigenous statistics, see *Population Distribution, Aboriginal and Torres Strait Islander Australians* (cat. no. 4705.0). This publication presents counts for Aboriginal and Torres Strait Islander Australians from the 2001 Census for Indigenous geographic areas, accompanied by information on data quality to help interpret the data. Estimates of the Indigenous population, based on the 2001 Census, are also included. For comprehensive information on the quality of Indigenous census data, see *Population Issues, Aboriginal and Torres Strait Islander Australians* (cat. no. 4708.0).

EXPLANATORY NOTES *continued*

OVERSEAS VISITORS

14 Overseas visitors are defined differently for the 2001 Census. For the 1996 Census overseas visitors were defined as any person who stated they would be in Australia for less than 6 months. For the 2001 Census they are defined as any person who stated they would be in Australia for less than 12 months. Data for overseas visitors are restricted to age, sex and marital status.

CALCULATION OF PROPORTIONS

15 When calculating the proportion of the population with a particular characteristic, 'Not stated' responses are included in the denominator. For example, in the Summary of findings, the proportion of people who are of Indigenous origin is calculated by dividing the number of persons who stated that they were of Indigenous origin by the total population and expressing the result as a percentage. The total population includes the category 'Not stated'.

16 For census variables which include data for overseas visitors i.e. age, sex and marital status, the category 'Overseas visitor' is also included in the denominator.

CALCULATION OF MEDIANS

17 A median is a measure of central tendency. It is a mid value which divides a population distribution into two, with half the observations falling below it and half above it. Unlike averages (means) medians are not usually skewed by extreme observations.

18 There are a number of issues to be aware of:

- The categories 'Not stated' and 'Not applicable' are not included in the calculation of medians.
- The category 'Overseas visitor', is only included in the calculation of the median when data for overseas visitors is collected for the variable (see paragraph 14). For example, 'Median age' (table 1) includes overseas visitors whereas 'Median weekly individual income' (also in table 1) does not.
- If a median falls into a category that has a text-only label, then a value of '0' is used for that category. For this publication this is only relevant to the calculation of 'Median weekly individual income' (table 1), as the income classification (mnemonic INCP) includes categories 'Nil income' and 'Negative income'.
- When calculating a median on a classification containing ranges, the median may fall into a range which is open-ended. In this case, the median would be set to the number in the range's label. For example, in the calculation of 'Median weekly individual income', if the median was to fall in the last range *\$1,500 or more*, then \$1,500 would be allocated as the median.
- 'Median monthly loan repayment' and 'Median weekly rent' (both in table 6) are based on the ranged variables HLRD01 and RNTD01 respectively (see Glossary). This is due to difficulties associated with the large number of small cells when using individual dollar values to perform these calculations. An adjustment has been made to HLRD01, with the range *\$1,500 and over* changed to *\$1,500–\$1,999* and an additional range *\$2,000 and over* added.

UNADJUSTED DOLLARS

19 The 1996 Census dollar values for 'Median weekly individual income' (table 1), 'Median monthly loan repayment' (table 6) and 'Median weekly rent' (table 6) have not been adjusted into 2001 dollars.

ABBREVIATIONS

ABS	Australian Bureau of Statistics
ASGC	Australian Standard Geographical Classification
CD	Collection District
ERP	estimated resident population
GIS	geographic information system

EXPLANATORY NOTES *continued*

L	Locality
no.	number
PC	personal computer
S/T	State or Territory
SA	South Australia
SD	Statistical Division
SLA	Statistical Local Area
SOS	Section of State
SSD	Statistical Subdivision
UC/L	Urban Centre/Locality

APPENDIX 1 ESTIMATED RESIDENT POPULATION

POPULATION MEASURES

This table is provided to highlight the difference between the Census 'as enumerated' and 'usual residence' counts and the Estimated Resident Population (ERP). The ERP is the official Australian Bureau of Statistics (ABS) estimate of the Australian population. It is based on the Census of Population and Housing usual residence counts and is updated quarterly using births, deaths and migration data.

POPULATION MEASURES—30 JUNE AND 7 AUGUST 2001

	<i>Census as Enumerated(a)</i>	<i>Census Usual Residence(b)</i>	<i>Estimated Resident Population(c)</i>
New South Wales	6 371 745	6 326 579	6 609 304
Victoria	4 644 950	4 660 991	4 822 663
Queensland	3 655 139	3 522 044	3 635 121
South Australia	1 467 261	1 470 057	1 514 854
Western Australia	1 851 252	1 828 294	1 906 114
Tasmania	456 652	460 672	472 931
Northern Territory	210 664	188 075	200 019
Australian Capital Territory	311 947	309 998	321 680
Australia(d)	18 972 350	18 769 249	19 485 278

- (a) Number of persons counted in each state/territory on Census Night, 7 August 2001.
- (b) Number of persons usually resident in each state/territory on Census Night on 7 August 2001 regardless of where they were counted on Census Night.
- (c) These are census usual resident counts, plus Australian residents temporarily overseas on Census Night, plus the estimated census underenumeration, plus deaths and less births, net overseas migration and net interstate migration occurring between 30 June and 7 August 2001, giving estimated resident population at 30 June 2001.
- (d) Includes Other Territories.

APPENDIX 2 CENSUS PRODUCTS AND SERVICES

2001 PRODUCTS AND SERVICES

A wide range of products and services are available from the 2001 Census of Population and Housing. Brief descriptions of these are included below. For more detailed information on the 2001 Census range of products and services, please refer to the *2001 Directory of Census Statistics* (cat. no. 2910.0).

Census products fall into two broad types: reference products and data products. Most of the reference products from the 2001 Census are available free of charge from the Australian Bureau of Statistics (ABS) web site.

CENSUS REFERENCE PRODUCTS

2001 Census Dictionary

The *2001 Census Dictionary* (cat. no. 2901.0) is a comprehensive reference guide to the 2001 Census of Population and Housing. The Dictionary includes a complete listing of 2001 Census classifications. It describes new topics introduced for 2001 and highlights classification changes that have occurred since the 1996 Census. The Dictionary also explains the concepts relevant to census collection, processing and output of data.

How Australia Takes a Census

How Australia Takes a Census (cat. no. 2903.0) provides information about the history of the census, the planning process and the way in which the census is conducted.

Geographic Classifications and Codes

Statistical Geography: Volume 1—Australian Standard Geographical Classification (ASGC) 2001 Census Edition (cat. no. 1216.0) provides information about the names and codes of the standard geographic areas used in the 2001 Census. *Statistical Geography: Volume 2—Census Geographic Areas, Australia 2001 Census Edition* (cat. no. 2905.0) and *Statistical Geography: Volume 3—Australian Standard Geographical Classification (ASGC) Urban Centres/Localities: 2001 Census Edition* (cat. no. 2909.0) provide information on additional geographic areas.

2001 Census Statistical Local Area Maps

These reference maps show the Statistical Local Areas (SLAs) from the 2001 Census. Each map shows the boundary of an SLA and the Collection District boundaries contained within.

Digital Boundaries

Census boundaries are made available electronically as *Digital Boundaries*. They include all of the Australian Standard Geographical Classification (ASGC), Urban Centres and Localities, and Census-specific areas.

CENSUS DATA PRODUCTS

Census Snapshots

Census Snapshots are a new product designed to provide a summary overview for selected geographic areas and are available from the ABS web site, free of charge. *Census Snapshots* contain subsets of Community Profile data, including person counts, age and birthplace, presented in a narrative form for easy access by a wide audience. A *1901 Census Snapshot* for Australia is also available to celebrate the Centenary of Federation.

Estimated Resident Population

The Estimated Resident Population (ERP) is the official ABS population estimate. It is based on census usual residence counts, and is updated quarterly using births, deaths and migration data.

Two publications containing ERP data, based on 2001 Census figures are:

- *Australian Demographic Statistics—2001 Census Edition*, cat. no. 3101.0
- *Regional Population Growth, Australia—2001 Census Edition*, cat. no. 3218.0.

Selected Characteristics

The Census of Population and Housing suite of publications contains data and commentary on various person and dwelling characteristics from the 2001 Census at selected geographic levels. There are three series of publications in the suite with the following subtitles:

APPENDIX 2 CENSUS PRODUCTS AND SERVICES *continued*

Selected Characteristics continued

- *Selected Social and Housing Characteristics, Australia 2001*, cat. no. 2015.0
- *Selected Social and Housing Characteristics for Statistical Local Areas 2001*, cat. nos 2015.1–8
- *Selected Characteristics for Urban Centres and Localities, Australia 2001*, cat. no. 2016.0
- *Selected Characteristics for Urban Centres and Localities 2001*, cat. nos 2016.1–7
- *Selected Education and Labour Force Characteristics, Australia 2001*, cat. no. 2017.0
- *Selected Education and Labour Force Characteristics for Statistical Local Areas 2001*, cat. nos 2017.1–8.

Community Profile Series

The Community Profile Series provides detailed and comprehensive census characteristics of people, families and dwellings for small areas. This series is available for all standard census geographic areas, and is available in hardcopy and electronic formats.

The series comprises six Community Profiles:

- *Basic Community Profile* (cat. no. 2001.0) contains 33 tables of detailed data covering dwelling, household and family topics. This profile is available for all standard census geographic areas, Commonwealth and State Electoral Divisions, Postal Areas, and Suburbs, for the states/territories and Australia.
- *Indigenous Profile* (cat. no. 2002.0) contains 29 tables of key Census characteristics for Aboriginal and Torres Strait Islander people, for all ASGC areas from Statistical Local Area (SLA) level to whole of Australia, as well as Indigenous Areas and Aboriginal and Torres Strait Islander Commission (ATSIC) regions.
- *Time Series Community Profile* (cat. no. 2003.0) contains 22 tables comparing data from the 1991, 1996 and 2001 Censuses where the classifications are comparable. Data are presented on 2001 geographic boundaries.
- *Usual Residents Profile* (cat. no. 2004.0) contains 28 tables of data for persons usually resident in the selected area. This is the only community profile based on place of usual residence.
- *Expanded Community Profile* (cat. no. 2005.0) contains 49 tables available for SLAs and larger areas, comprising more detailed versions of some of the Basic Community Profile tables, plus additional tables.
- *Working Population Profile* (cat. no. 2006.0) contains 19 tables of labour force and related data on the characteristics of employed people.

Classification Counts

Classification Counts (cat. nos 2022.0–8) provide frequency counts for 2001 Census variables in complete classificatory detail, for every state/territory and Capital City Statistical Division, cross-classified by sex where applicable.

CLIB2001

CLIB2001 is an electronic product provided free of charge to public libraries through the ABS Library Extension Program. The product contains a large volume of tabulated data and software that allows access, display and printing of the data. For 2001 this product will be available as both a CD-ROM and (limited access) Internet-based product. *CLIB2001* comprises the complete 2001 Census Community Profile Series and Classification Counts.

CDATA 2001

CDATA 2001 is a CD-ROM product which contains a large volume of tabulated census data, digital boundaries and base map data, with software to produce tables, maps and graphs of the data. The product is available at the Australia and state/territory levels.

APPENDIX 2 CENSUS PRODUCTS AND SERVICES *continued*

CDATA 2001 continued

There are two *CDATA 2001* products available, offering different levels of functionality:

CDATA 2001—Full Geographical Information System (GIS): This version is aimed at the expert GIS user who requires detailed spatial data analysis using Structured Query Language, geocoding and importation of 'client own' data.

CDATA 2001—Quickbuild: This version has been designed for GIS users with more basic spatial analysis requirements. It allows users to produce data reports, graphs and/or maps. The product is aimed at inexperienced or intermediate GIS users. *CDATA 2001—Quickbuild* users will also have the option to upgrade to *CDATA 2001—Full GIS* if so desired.

Social Atlas Series

The *Social Atlas* (cat. nos 2840.1–8) publications feature colour maps of the key social, demographic and economic characteristics of each capital city. These will be released from November 2002.

Australia in Profile—A Regional Analysis

Australia in Profile—A Regional Analysis (cat. no. 2032.0) provides commentary and data on a number of key social indicators from the 2001 Census, with the focus on regional distributions and comparisons.

CONSULTANCY SERVICES

The following census specific services are available:

- *Customised Profiles Service* provides community profile data tailored to your needs, on a variety of media.
- *Customised Table Service* provides detailed cross-classified tables tailored to your needs on a variety of media.
- *Customised Geographic Data Reports Service* provides tabular geographic data which relate specifically to the census Geographic Areas and their characteristics (e.g. area).
- *Customised Mapping Service* provides both Customised Thematic Maps and Customised Reference Maps on request.

GLOSSARY

General descriptions of terms and concepts used in this publication are provided below. Tables are also footnoted where applicable for additional clarity. Detailed definitions of classifications and concepts are available in the *2001 Census Dictionary* (cat. no. 2901.0).

Dependent child	A dependent child is a person who is either a child under 15 years of age or a dependent student. A dependent student is any child in a family under 15 years of age, or who is aged 15–24 years and is a full-time student. To be regarded as a child the individual can have no partner or child of his/her own usually resident in the same household.
Dwelling	<p>A dwelling is a structure which is intended to have people live in it, and which is habitable on Census Night.</p> <p>There are private and non-private dwellings:</p> <ul style="list-style-type: none">■ A private dwelling is normally a house, flat, part of a house, or even a room; but can also be a house attached to, or rooms above, shops or offices; an occupied caravan or unit in a caravan park or craft in a marina; occupied dwelling in a Manufactured Home Estate; occupied self-care unit in Accommodation for the Retired or Aged; a houseboat; or tent if it is standing on its own block of land. An occupied caravan situated on a residential allotment is also classed as a private dwelling. Private dwellings can be either occupied or unoccupied.■ Non-private dwellings are those dwellings not included above, which provide a communal or transitory type of accommodation. They are classified according to their function. These dwellings include hotels, motels, guest houses, prisons, religious and charitable institutions, defence establishments, hospitals and other communal dwellings. Only occupied non-private dwellings are included in the Census.
Employed	Employed people are those aged 15 years or more who, during the week prior to Census Night, worked for payment or profit; who had a job from which they were on leave or otherwise temporarily absent; were on strike or stood down temporarily; or worked as unpaid helpers in a family business.
Family	A family is defined by the ABS as two or more persons, one of whom is at least 15 years of age, who are related by blood, marriage (registered or de facto), adoption, step or fostering, and who are usually resident in the same household. The basis of a family is formed by identifying either a couple, parent-child or other blood relationship. Information on persons temporarily absent on Census Night is considered in family coding.
Full-time/Part-time employment	<p>This variable is based on the number of hours worked in all jobs held by employed people during the week before Census Night. It excludes any time off but includes any overtime or extra time worked:</p> <ul style="list-style-type: none">■ Part-time workers: employed people who worked up to 34 hours■ Full-time workers: employed people who worked 35 hours or more.
Geographic areas	<p>The tables in this publication uses both the Section of State and Urban Centre/Locality classification structures as defined by the 2001 Census edition of the Australian Standard Geographical Classification (ASGC).</p> <p><i>Section of State (SOS):</i> The SOS Structure uses population counts from the latest Census of Population and Housing to class CDs as either urban or rural. Unlike the UC/L Structure, the SOS Structure includes all CDs and therefore, in aggregate, the SOS Structure covers all of Australia. For the 2001 edition, three of the five different SOS have been divided into sub categories based on population size. Data for these sub categories are available through the Consultancy Services listed in <i>Appendix 2—Census Products and Services</i>.</p>

GLOSSARY *continued*

Geographic areas *continued*

Within a state/territory (S/T), each SOS represents an aggregation of non-contiguous geographical areas of a particular urban/rural type. These are based upon the UC/Ls current for the census year 2001. Not all SOS are represented in each S/T. The categories are:

- Major Urban: this category provides for a further three categories of urban areas (Urban Centres from the UC/L Structure) based upon population ranges of 1,000,000 or more, 250,000 to 999,999, and 100,000 to 249,999.
- Other Urban: this category provides for a further five categories of urban areas (Urban Centres from the UC/L Structure) based upon population ranges of 50,000 to 99,999, 20,000 to 49,999, 10,000 to 19,999, 5,000 to 9,999, and 1,000 to 4,999.
- Bounded Locality: this category provides for a further two categories of rural areas (Localities in the UC/L Structure) with a population of 500 to 999 and 200 to 499.
- Rural Balance: the remainder of the S/T.
- Migratory: areas composed of off-shore, shipping and migratory CDs.

Listings of component CDs of SOS, for census year 2001, are available from the ABS as a Customised Geographic Data Report.

Urban Centre/Locality (UC/L): The UC/L structure is defined using the population counts (place of enumeration) from the 2001 Census of Population and Housing. The structure is only current at the time of the Census.

The UC/L structure groups Census Collection Districts (CDs) together to form defined areas according to population size criteria. (The delimitation criteria for UC/Ls are based on those developed in 1965 by Dr G. J. R. Linge.) In broad terms an urban centre is a population cluster of 1,000 or more people, while a locality is a population cluster of between 200 and 999 people. For statistical purposes, people living in urban centres are classified as urban, while those in localities are classified as rural.

The UC/L Structure relates to CDs within defined areas only and thus in aggregate does not cover the whole of Australia. Urban centres may cross state or territory boundaries and in those instances, the separate portions are uniquely identified and reported in their relevant state or territory.

A full description of the definitions and delimitation criteria used for the UC/Ls may be found in the publication *Statistical Geography: Volume 1—Australian Standard Geographical Classification (ASGC) 2001* (cat. no. 1216.0), Chapter 6.

The UC/Ls determined following the 2001 Census are listed in the publication *Statistical Geography: Volume 3—Australian Standard Geographical Classification (ASGC) Urban Centres/Localities, 2001* (cat. no. 2909.0).

More information: Definitions, maps and lists of codes and names of the geographic areas are available in *Statistical Geography: Volume 1—Australian Standard Geographical Classification (ASGC) 2001* (cat. no. 1216.0) effective date 1 July 2001.

HLRD01 This is a derived variable which contains the amount of money spent on housing loan repayments in ranges. In standard census products, ranges are used rather than individual dollar amounts. Individual dollar amounts are available. More detail about this variable is available in the *2001 Census Dictionary* (cat. no. 2901.0).

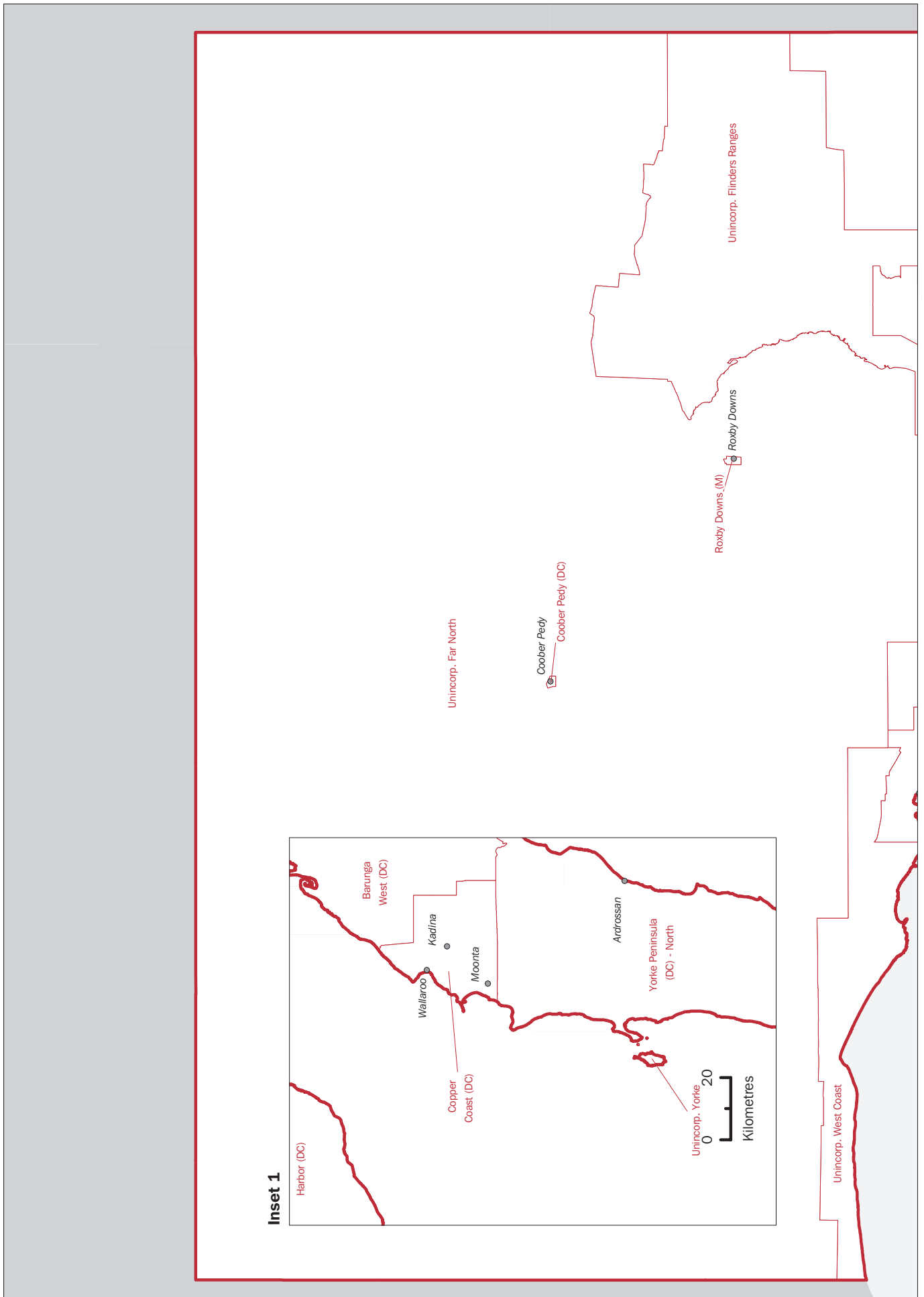
Household A household is defined as a group of two or more related or unrelated people who usually reside in the same dwelling, who regard themselves as a household, and who make common provision for food or other essentials for living; or a person living in a dwelling who makes provision for his/her own food and other essentials for living, without combining with any other person.

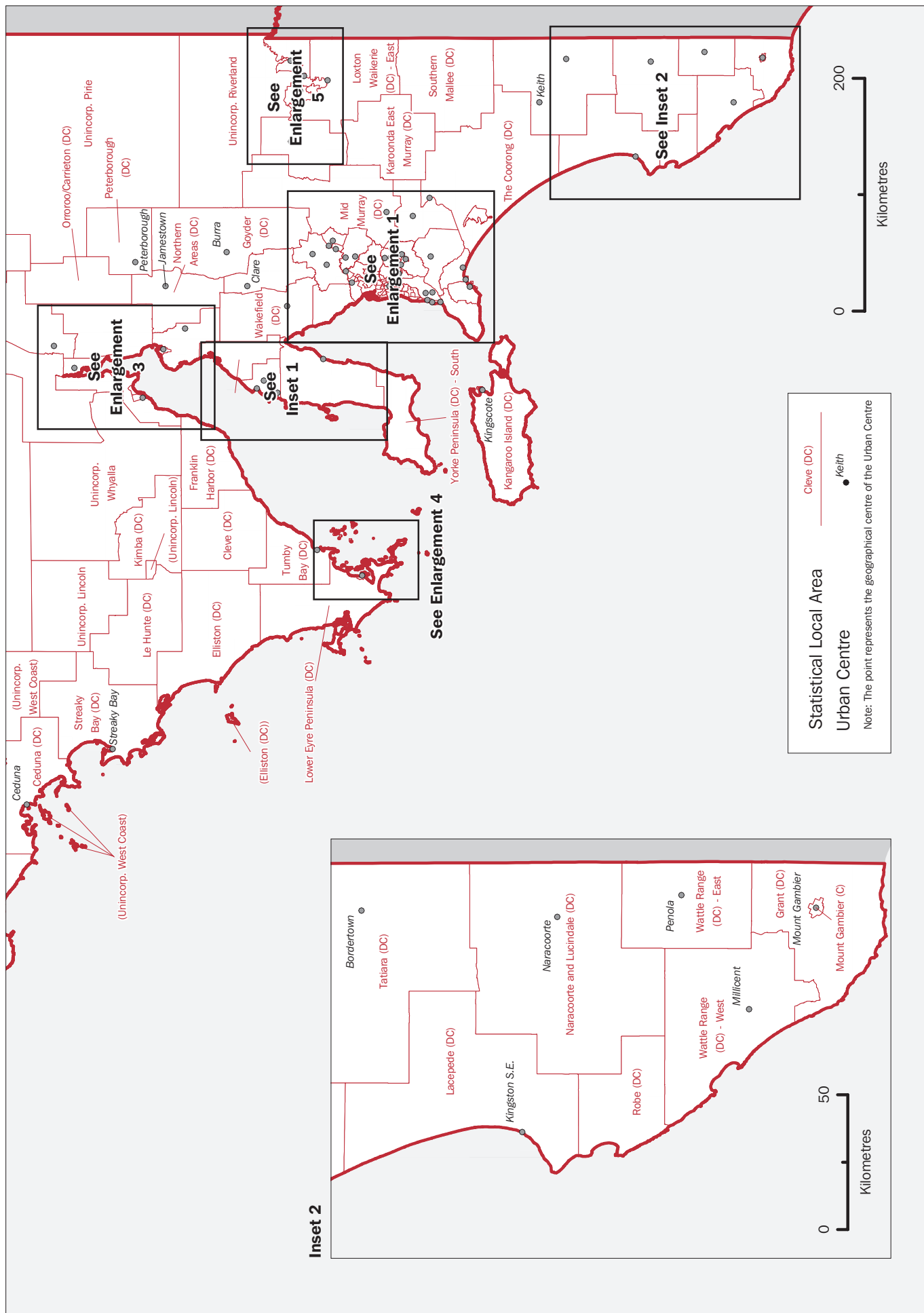
GLOSSARY *continued*

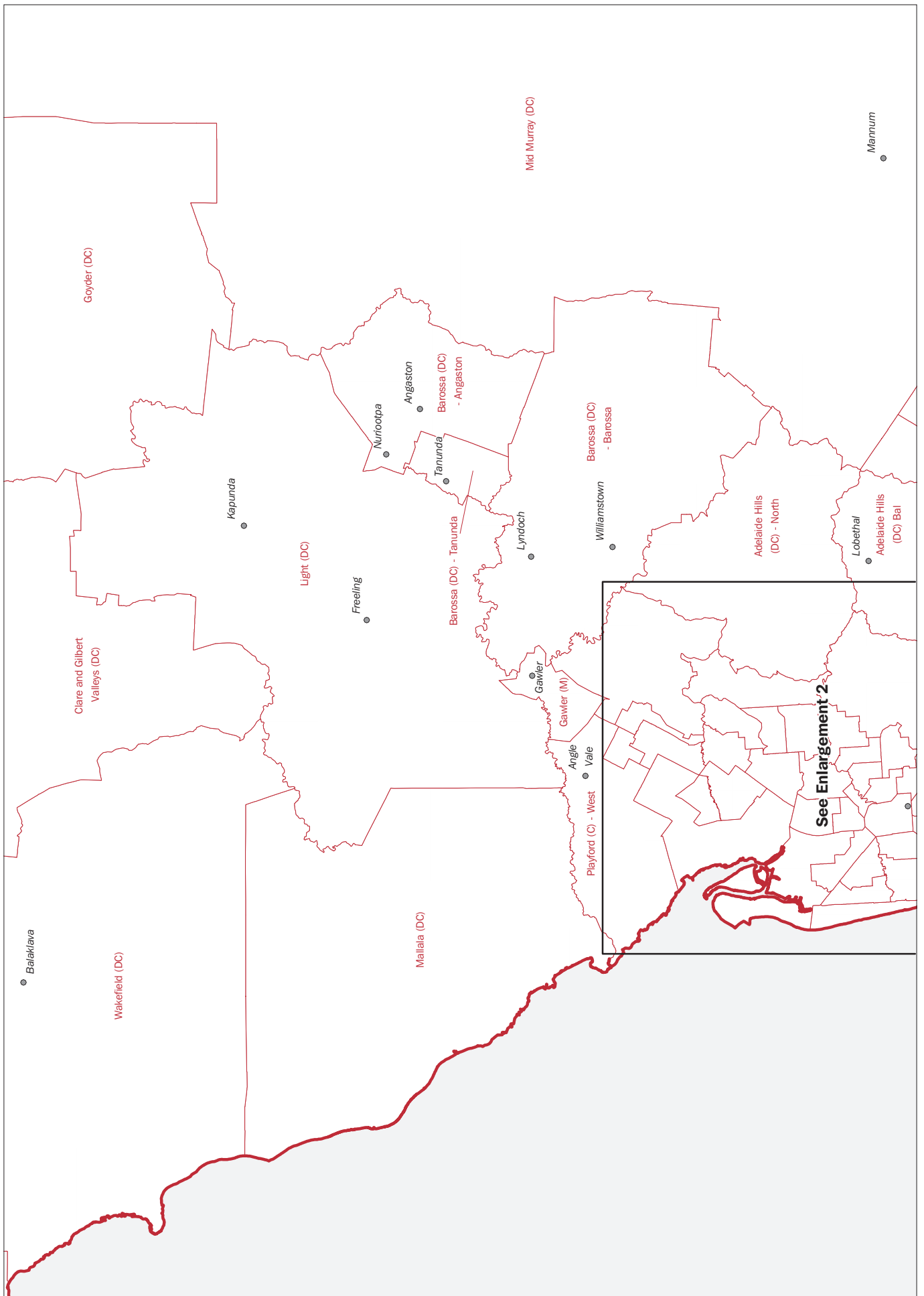
Household <i>continued</i>	Under this definition, in a group house where occupants share the dwelling, each occupant who usually supplies his/her own food should be counted as a separate household and issued with a separate Household Form. In practice, however, most such households usually only complete one form.
Income	People aged 15 years and over are asked to indicate their usual gross weekly income by selecting an income range on the census form. There are 16 options ranging from 'Negative income', 'Nil income' through to '\$1,500 or more'. For example, a person with a gross weekly income of \$650 per week would tick the range '\$600–\$699'. Gross weekly income is the income before tax, superannuation, health insurance, or other deductions are made. Gross income includes: family allowance, parenting payment, pensions, unemployment benefits, student allowances, maintenance (child support), superannuation, wages, salary, overtime, dividends, rents received, interest received, business or farm income (less operation expenses) and worker's compensation received. Household income is the sum of the personal incomes of each resident present in the dwelling.
Indigenous	A person is defined to be of Indigenous origin if he or she identifies himself or herself as of Aboriginal and/or Torres Strait Islander origin.
Industry (of employment)	This variable describes the industries in which employed people (aged 15 years and over) work, and is coded to the <i>Australian and New Zealand Standard Industrial Classification (ANZSIC), 1993</i> (cat. no. 1292.0).
Internet	Internet includes: Internet connections in private and business applications; Internet connection through a computer or set top box, games machine, mobile phone, or other means; and Internet used at other locations including libraries, Internet cafes, shops, educational institutions, or at a neighbour or friends place of residence.
Labour force	The labour force comprises employed and unemployed people aged 15 years and over.
Locality	See definition under Geographic areas.
Lone person household	A person who usually lives alone in a private dwelling.
Occupation (of main job)	This variable describes the main job held by employed people (aged 15 years and over) during the week prior to Census Night, and is coded using the <i>ASCO—Australian Standard Classification of Occupations, Second Edition</i> (cat. no. 1220.0).
Overseas-born	Overseas-born people are those who state that they were born in a country other than Australia, those born at sea, and those whose responses are classed as 'Inadequately described' or 'Not elsewhere classified'.
Personal Computer (PC)	PCs include: computers used at home for private and business purposes, portable computers, personal organisers, computers brought home from the workplace, and dedicated word processors. Game machines are not included.
RNTD01	This is a derived variable which identifies the weekly rent paid for a dwelling in ranges. In standard census products, ranges are used rather than individual dollar amounts. Individual dollar amounts are available. More detail about this variable is available in the <i>2001 Census Dictionary</i> (cat. no. 2901.0).
Section of State	See definition under Geographic areas.
Student	A student is an individual who attends a secondary or tertiary educational institution on a full-time/part-time basis.

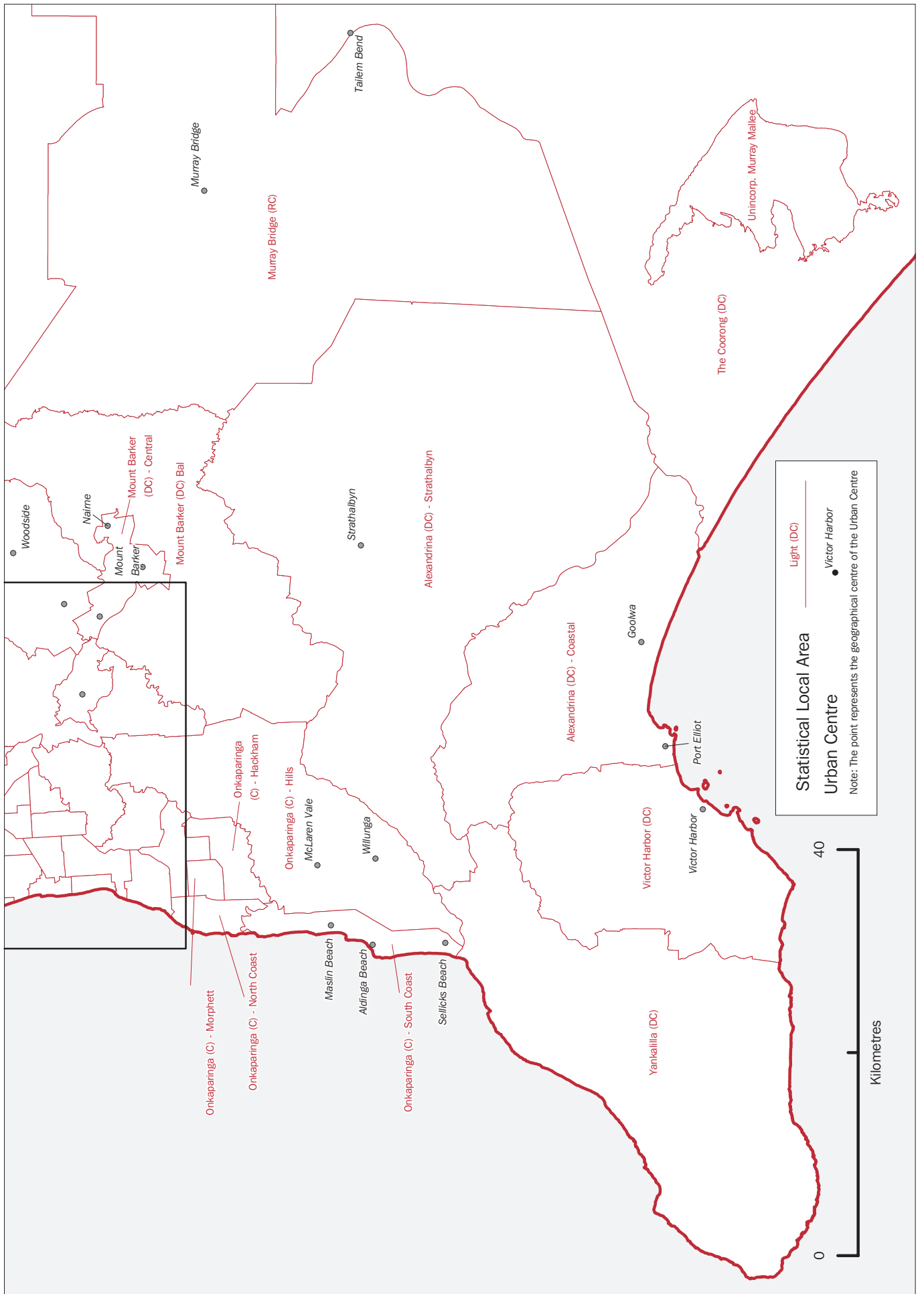
GLOSSARY *continued*

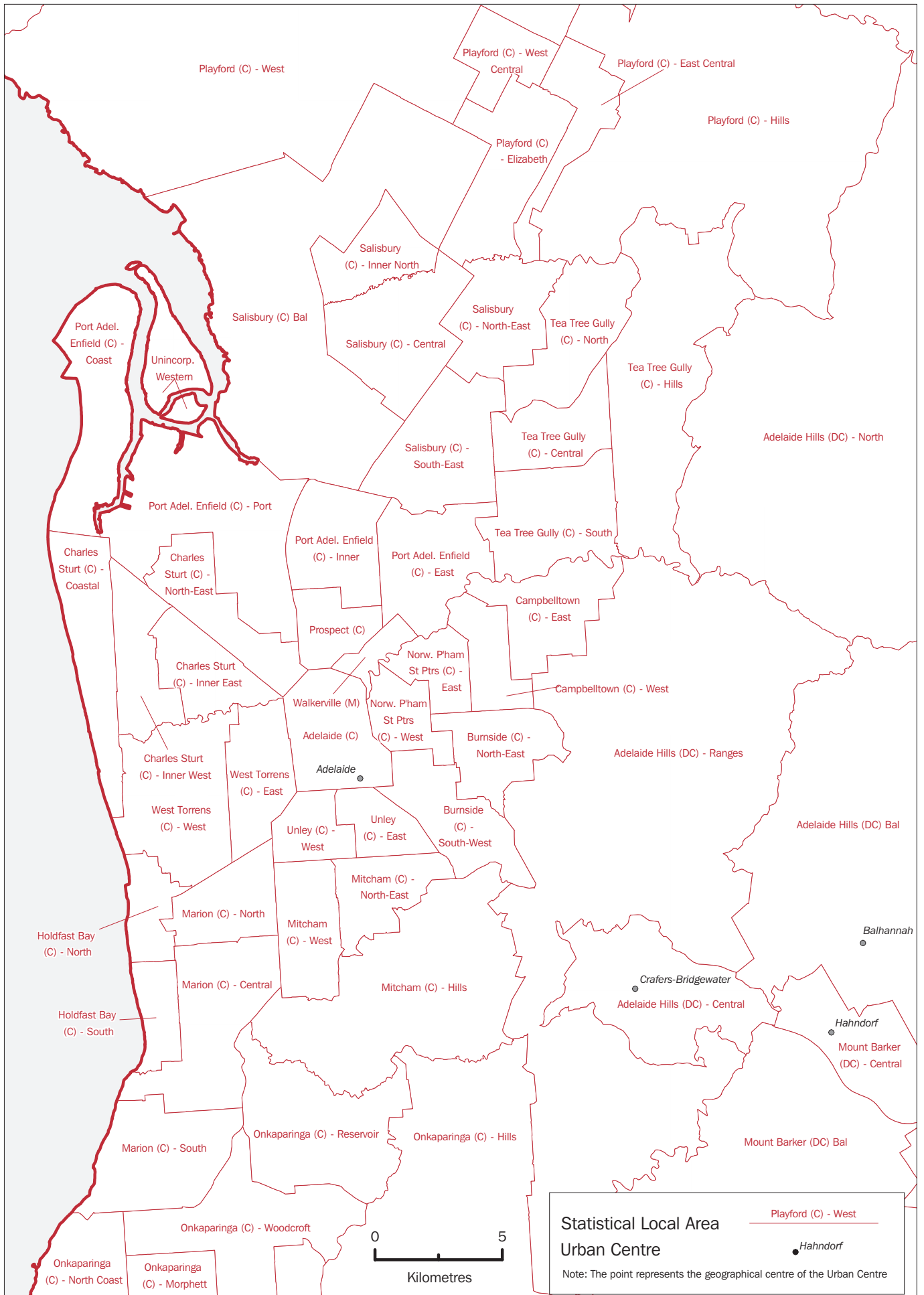
Unemployed	Unemployed people are those who, during the week prior to Census Night, did not have a job but were actively looking for work (either full-time or part-time) and were available to start work.
Unemployment rate	The unemployment rate is the number of unemployed persons expressed as a percentage of the labour force.
Urban Centre	See definition under Geographic areas.



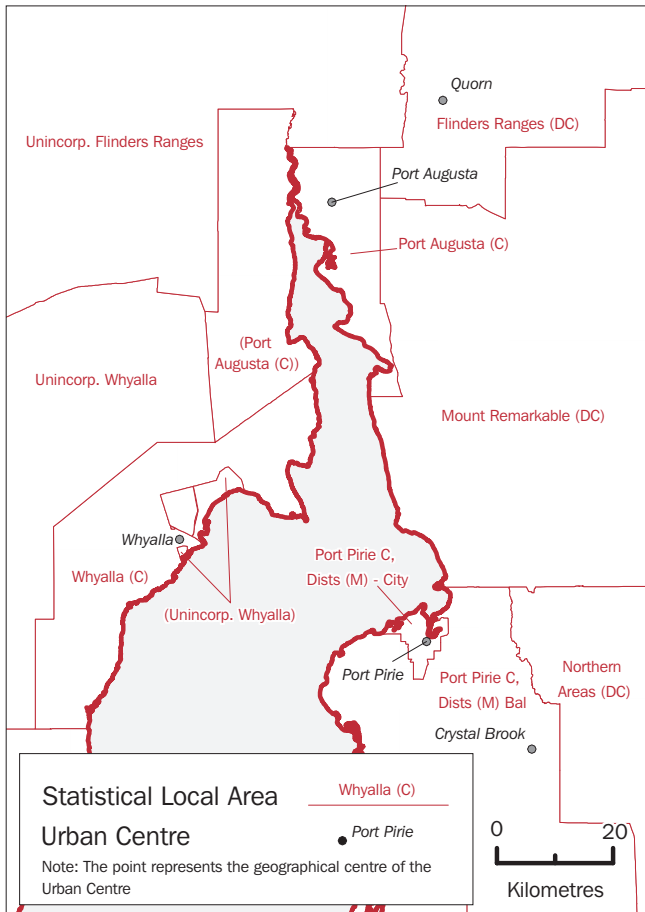




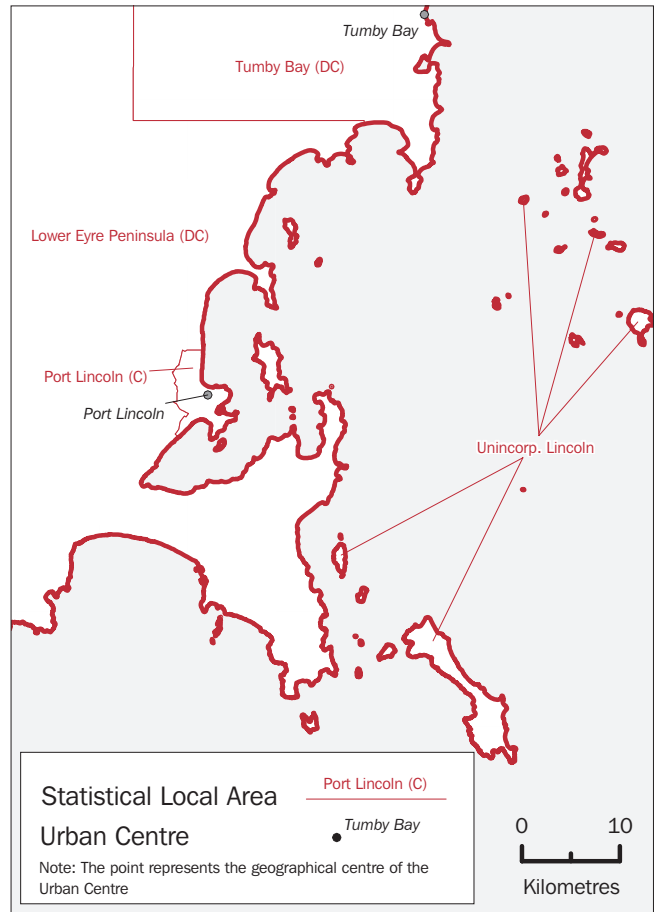




SOUTH AUSTRALIA, Urban centres and statistical local areas—2001 edition, Enlargements

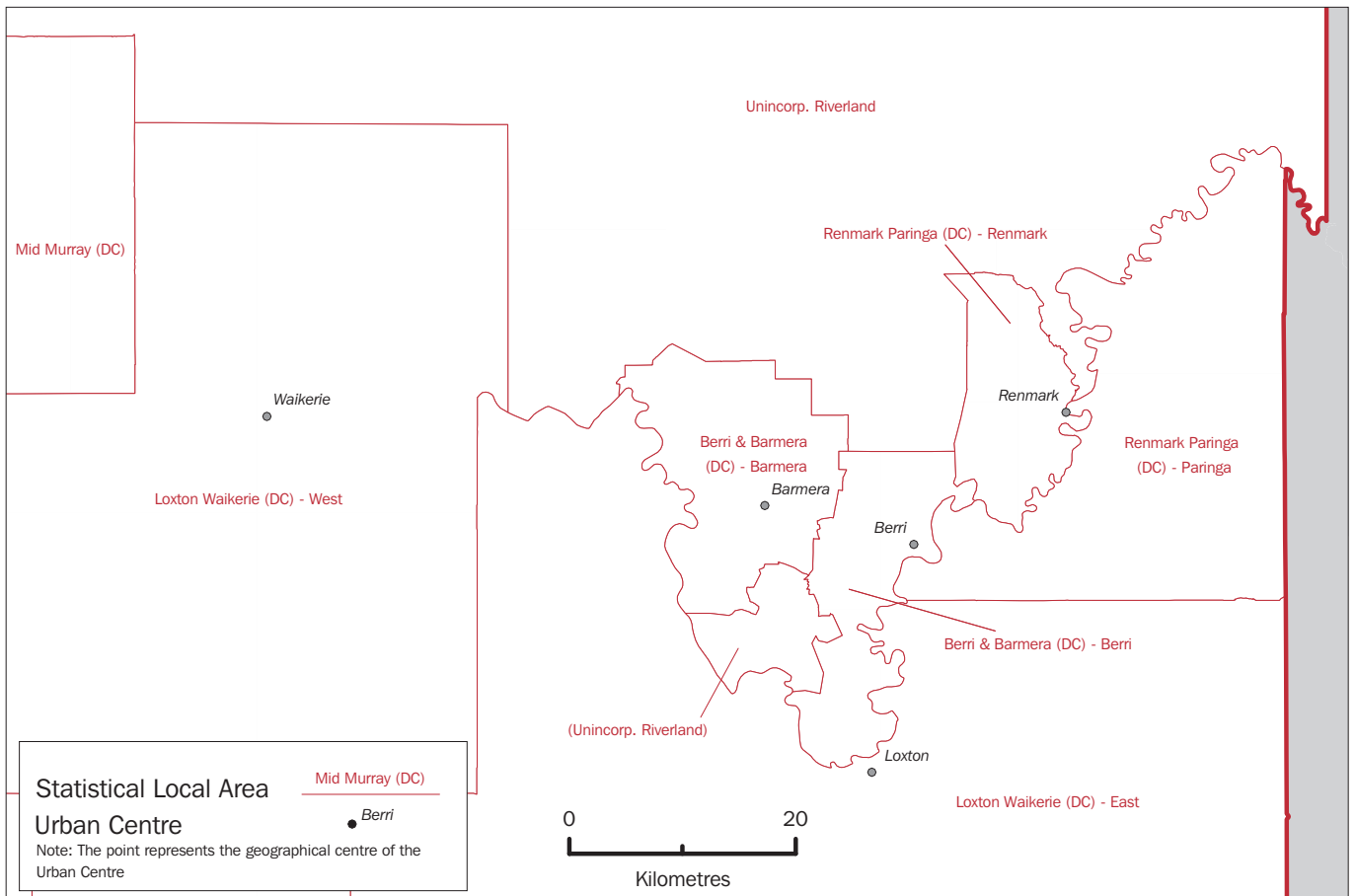


Enlargement 3



Enlargement 4

Enlargement 5



FOR MORE INFORMATION . . .

<i>INTERNET</i>	www.abs.gov.au the ABS web site is the best place to start for access to summary data from our latest publications, information about the ABS, advice about upcoming releases, our catalogue, and Australia Now—a statistical profile.
<i>LIBRARY</i>	A range of ABS publications is available from public and tertiary libraries Australia-wide. Contact your nearest library to determine whether it has the ABS statistics you require, or visit our web site for a list of libraries.
<i>CPI INFOLINE</i>	For current and historical Consumer Price Index data, call 1902 981 074 (call cost 77c per minute).
<i>DIAL-A-STATISTIC</i>	For the latest figures for National Accounts, Balance of Payments, Labour Force, Average Weekly Earnings, Estimated Resident Population and the Consumer Price Index call 1900 986 400 (call cost 77c per minute).

INFORMATION SERVICE

Data which have been published and can be provided within five minutes are free of charge. Our information consultants can also help you to access the full range of ABS information—ABS user-pays services can be tailored to your needs, time frame and budget. Publications may be purchased. Specialists are on hand to help you with analytical or methodological advice.

<i>PHONE</i>	1300 135 070
<i>EMAIL</i>	client.services@abs.gov.au
<i>FAX</i>	1300 135 211
<i>POST</i>	Client Services, ABS, GPO Box 796, Sydney 2001

WHY NOT SUBSCRIBE ?

ABS subscription services provide regular, convenient and prompt deliveries of ABS publications and products as they are released. Email delivery of monthly and quarterly publications is available.

<i>PHONE</i>	1300 366 323
<i>EMAIL</i>	subscriptions@abs.gov.au
<i>FAX</i>	03 9615 7848
<i>POST</i>	Subscription Services, ABS, GPO Box 2796Y, Melbourne 3001



2201640001015

ISBN 0 642 47800 7

Recommended retail price \$28.00
© Commonwealth of Australia 2003
Produced by the
Australian Bureau of Statistics