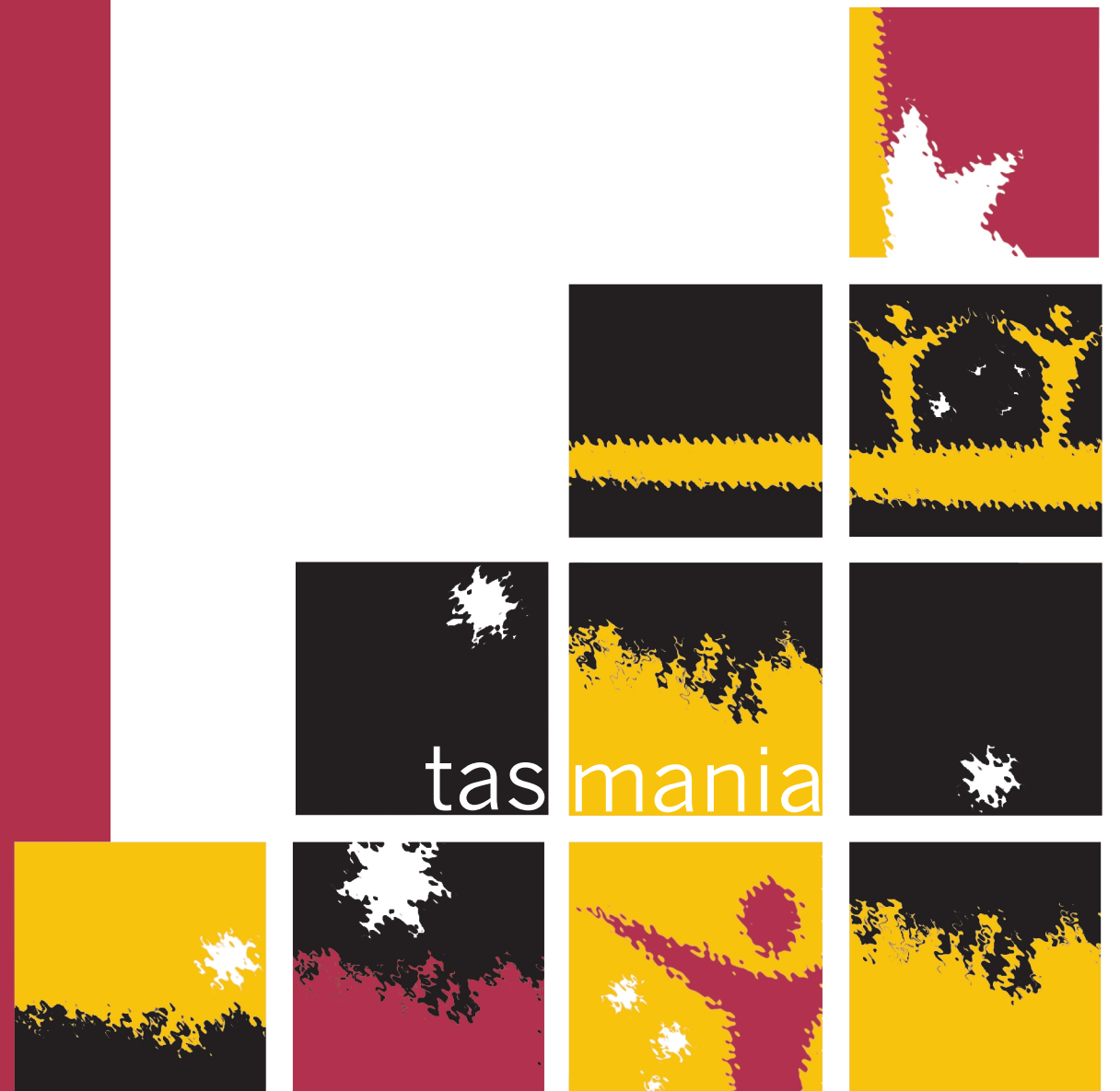


# Census of Population and Housing

## Selected Social and Housing Characteristics for Statistical Local Areas

### Tasmania

2001



2015.6 • CENSUS OF POPULATION & HOUSING • SELECTED SOCIAL & HOUSING CHARACTERISTICS • TASMANIA 2001



2201560001010

ISBN 0 642 47793 0

Recommended retail price \$28.00  
© Commonwealth of Australia 2002  
Produced by the  
Australian Bureau of Statistics

# **Census of Population and Housing**

## **Selected Social and Housing Characteristics for Statistical Local Areas**

**Tasmania**

**2001**

**Stevan R. Matheson  
Regional Director, Tasmania**

AUSTRALIAN BUREAU OF STATISTICS

EMBARGO: 11.30AM (CANBERRA TIME) THURS 12 SEP 2002

ABS Catalogue No. 2015.6  
ISBN 0 642 47793 0

© Commonwealth of Australia 2002

This work is copyright. Apart from any use as permitted under the *Copyright Act 1968*, no part may be reproduced by any process without written permission from AusInfo. Requests and inquiries concerning reproduction and rights should be addressed to the Manager, Legislative Services, AusInfo, GPO Box 84, Canberra, ACT, 2601.

In all cases the ABS must be acknowledged as the source when reproducing or quoting any part of an ABS publication or other product.

Produced by the Australian Bureau of Statistics

## INQUIRIES

- For further information about these and related statistics, contact the National Information and Referral Service on 1300 135 070 or Peter Clark on Canberra 02 6252 5934.

# CONTENTS

	<i>page</i>
	Introduction . . . . . iv
	Summary of findings . . . . . 1
<b>TABLES</b>	
	List of tables . . . . . 3
	Main tables . . . . . 4
	Basic Community Profiles . . . . . 29
<b>ADDITIONAL INFORMATION</b>	
	Explanatory notes . . . . . 48
	Appendix 1: Estimated Resident Population . . . . . 52
	Appendix 2: Census products and services . . . . . 53
	Glossary . . . . . 56
<b>MAPS</b>	
	Statistical Subdivisions and Statistical Local Areas, 2001 edition . . . . . 60
	Statistical Subdivisions and Statistical Local Areas, 2001 edition, Enlargement 1 . . . . . 62
	Statistical Subdivisions and Statistical Local Areas, 2001 edition, Enlargement 2 . . . . . 63

## INTRODUCTION

### STATISTICS PRESENTED IN THIS PUBLICATION

This publication presents a range of social and housing statistics produced from the 2001 Census of Population and Housing for Tasmania. For comparative purposes, it includes 1996 Census data presented on 2001 Census geography. In addition, selected 1901 Census data are included in table 1 to mark Australia's Centenary of Federation in 2001.

The tables in this publication provide selected characteristics of the population and their housing arrangements for Statistical Divisions (SDs), Statistical Subdivisions (SSDs) and Statistical Local Areas (SLAs). The purpose of these tables is to allow a broad comparison of characteristics between geographic areas.

This publication also contains the Basic Community Profile (BCP) for Tasmania. This set of tables is provided to illustrate the wide range of data available from the Census. The BCP consists of 33 tables. This publication contains the first 21 tables which focus on the social and housing characteristics. The remainder of the BCP, tables 22 to 33, will be published in *Census of Population and Housing: Selected Education and Labour Force Characteristics for Statistical Local Areas, Tasmania* (Cat. no. 2017.6).

The statistics in this publication are mostly presented on the basis of where people were counted on Census Night ('as enumerated' counts). Counts of people based on where they usually live ('usual residence' counts) are also provided.

### POPULATION MEASURES

Census counts should not be confused with the Australian Bureau of Statistics' (ABS) official population estimate, the Estimated Resident Population (ERP) which is used for electoral purposes and in assisting in the distribution of government funds to state and local governments. ERP is the definitive population estimate and is derived from the census counts. For example, ERP includes an estimate of Australians temporarily overseas. For a fuller description of population measures and the derivation of ERP, please see paragraphs 7, 8 and 9 of the Explanatory Notes. Appendix 1 includes a table showing census counts and ERP for each State and Territory.

One of the important features of the Census is that it describes the characteristics of Australia's population and housing for small geographic areas and small population groups. While not available in this publication, data at the smallest geographic level (Collection District) are available in a range of census products. For more information on these products, please refer to Appendix 2—Census Products and Services. Concepts and definitions used in this publication are explained in the Glossary and more detailed information is available in the *Census Dictionary* (Cat. no. 2901.0). The Explanatory Notes in this publication provide a discussion of the scope and coverage of the Census, the different measures of population, and the limitations of census data.

This publication is one of a series of publications which provide data at the SLA level for each State and Territory. A similar publication is also available for the whole of Australia, providing data at SSD level. See Appendix 2 (Census Products and Services) for more information.

## SUMMARY OF FINDINGS

### STATE OVERVIEW

The Census of Population and Housing conducted on 7 August 2001 counted 456,652 people in Tasmania on Census Night. This represents a decrease of 0.7% (3,007 people) in Tasmania's population since the 1996 Census (459,659 people). This compares with a 6.0% increase for Australia as a whole. Tasmania is the only State or Territory to record a decrease in population. Of those counted in Australia on Census Night, 460,672 people were usual residents of Tasmania.

#### *Selected person characteristics*

The median age in Tasmania was 36 years in 2001, up from 34 years in 1996. This compares with the national median age of 35 years in 2001. The proportion of people aged 65 years and over increased to 13.4% (61,370 people) compared with 12.6% for Australia. The proportion of people aged 0–14 years decreased to 21.4% (97,686 people) in 2001, from 22.7% in 1996. The proportion of males and females in the population has remained stable, with slightly more females (50.9%) than males (49.1%).

New topics for the 2001 Census included Computer use at home and Internet use. For Tasmania a higher proportion of males (38.8%) used a personal computer at home than females (36.4%). This compares with 43.5% of males and 40.5% of females for Australia. Similarly, a higher proportion of males (23.8%) than females (21.1%) used the Internet at home in Tasmania. For Australia, 29.5% of males and 25.9% of females used the Internet at home.

#### *Selected ethnic characteristics*

The majority of people counted in Tasmania were Australian born (84.9% or 386,036 people). In comparison to 72.6% for Australia, Tasmania recorded the highest proportion of people born in Australia. The largest overseas born group comprised people born in the United Kingdom at 4.7% (21,306 people) followed by New Zealand at 0.8% (3,590 people) and The Netherlands at 0.5% (2,483 people). Tasmania also recorded the highest proportion of people who speak English only at home, at 92.6% (421,034 people) of the population. This compares with 80.0% for Australia.

#### *Indigenous people*

The number of people who identified as being of Indigenous origin increased by 13.7% to 15,773 people in 2001, up from 13,873 people in 1996. The Indigenous population represented 3.5% of the Tasmania population. This compares with 2.2% for Australia. Of the people who identified as being of Indigenous origin, the majority (34.4% or 5,422 people) were enumerated in Greater Hobart (SSD), followed by 22.6% (3,561 people) in Burnie-Devonport (SSD) and 14.5% (2,287 people) in Greater Launceston (SSD).

#### *Housing characteristics*

There were 208,702 dwellings counted in Tasmania, an increase of 3.4% (6,885 dwellings) since 1996. This was the lowest increase of all States and Territories and compares with an 8.5% increase in dwellings for Australia as a whole. Of these dwellings, 86.8% (181,172) were occupied private dwellings, 12.9% (26,874) were unoccupied private dwellings and 0.3% (649) were non-private dwellings.

#### *Occupied private dwellings*

Dwellings which were fully owned or being purchased accounted for 69.8% of the 181,172 occupied private dwellings in Tasmania. For the occupied private dwellings being purchased (51,152 dwellings), the median monthly housing loan repayment was \$614, the lowest of any State or Territory. This compares with \$870 for Australia.

## SUMMARY OF FINDINGS *continued*

### *Occupied private dwellings continued*

The median weekly rent for the 24.1% of occupied private dwellings being rented (43,649 dwellings) was \$107. This was also the lowest of any State or Territory and compares with \$154 for Australia.

### *Household characteristics*

Of the 181,172 households counted in 2001, 68.1% (123,305 households) were family households, a decrease from 70.1% in 1996. The proportion of lone person households increased to 26.1% (47,353 households), up from 24.2% in 1996. The proportion of group households fell to 2.9% (5,209 households) in 2001, down from 3.2% in 1996.

The Census shows that 41.2% of all Tasmania households (74,603 households) used a personal computer at home in the week prior to the Census. This compares with 48.6% of all households for Australia. For the same period, 28.0% of Tasmanian households (50,657 households) reported using the Internet at home, compared with 36.1% of households for Australia.

### *Family type*

The 2001 Census counted 124,078 families in Tasmania, a marginal increase of 0.3% since 1996. In 2001, the proportion of couple families with children accounted for 43.7% (54,235 families) of all families, down from 47.9% in 1996. There were corresponding increases in the proportion of couple families without children (38.4% or 47,674 families), up from 36.0% in 1996, and one parent families (16.5% or 20,476 families), up from 14.8% in 1996.

## LIST OF TABLES

*page*

### MAIN TABLES

<b>1</b>	The Census in brief: 1901, 1996 and 2001 . . . . .	4
<b>2</b>	The Census in brief: Capital City Statistical Divisions . . . . .	5
<b>3</b>	Selected person characteristics by Statistical Local Area . . . . .	6
<b>4</b>	Selected ethnic characteristics by Statistical Local Area . . . . .	9
<b>5</b>	Housing characteristics by Statistical Local Area . . . . .	12
<b>6</b>	Occupied private dwellings by Statistical Local Area . . . . .	15
<b>7</b>	Selected household characteristics by Statistical Local Area . . . . .	18
<b>8</b>	Family type by Statistical Local Area . . . . .	21
<b>9</b>	Statistical Local Areas, Ranked by number of persons enumerated . . . . .	24
<b>10</b>	Statistical Local Areas, Ranked by number of persons usually resident . . . . .	25
<b>11</b>	Statistical Local Areas, Ranked by median age . . . . .	26
<b>12</b>	Statistical Local Areas, Ranked by median weekly individual income . . . . .	27
<b>13</b>	Statistical Local Areas, Ranked by proportion of persons born in Australia . . . . .	28

### BASIC COMMUNITY PROFILE TABLES

<b>B01</b>	Selected characteristics (first release processing), persons . . . . .	30
<b>B02</b>	State of usual residence on Census Night by sex, persons . . . . .	31
<b>B03</b>	Age by sex, persons . . . . .	32
<b>B04</b>	Age by registered marital status by sex, persons aged 15 years and over . . . . .	33
<b>B05</b>	Ancestry by birthplace of parents, responses and persons . . . . .	34
<b>B06</b>	Birthplace (countries) by sex, persons . . . . .	35
<b>B07</b>	Birthplace (regions) by sex, persons . . . . .	36
<b>B08</b>	Language spoken at home by sex, persons . . . . .	37
<b>B09</b>	Proficiency in spoken English by year of arrival in Australia, persons born overseas . . . . .	38
<b>B10</b>	Religious affiliation by sex, persons . . . . .	39
<b>B11</b>	Type of educational institution attending (full-/part-time) by sex, persons . . . . .	40
<b>B12</b>	Highest level of schooling completed by sex, persons aged 15 years and over . . . . .	41
<b>B13</b>	Weekly individual income by age by sex, persons aged 15 years and over . . . . .	42
<b>B14</b>	Relationship in household by age by sex, persons in occupied private dwellings . . . . .	43
<b>B15</b>	Age by computer usage by sex, persons (excluding overseas visitors) . . . . .	44
<b>B16</b>	Internet use by sex, persons . . . . .	45
<b>B17</b>	Family type, families and persons in families in occupied private dwellings . . . . .	45
<b>B18</b>	Dwelling structure, private dwellings and persons in occupied private dwellings . . . . .	46
<b>B19</b>	Dwelling structure by tenure type and landlord type, occupied private dwellings . . . . .	46
<b>B20</b>	Monthly housing loan repayment, occupied private dwellings being purchased . . . . .	47
<b>B21</b>	Weekly rent by landlord type, occupied private dwellings being rented . . . . .	47



		New South Wales	Victoria	Queensland	South Australia	Western Australia	Tasmania	Northern Territory(a)	Australian Capital Territory(a)	Australia(b)
<b>Persons(c)</b>										
2001	'000	6 371.7	4 645.0	3 655.1	1 467.3	1 851.3	456.7	210.7	311.9	18 972.4
1996	'000	6 038.7	4 373.5	3 368.9	1 427.9	1 726.1	459.7	195.1	299.2	17 892.4
1901(d)	'000	1 354.8	1 201.1	498.1	363.2	184.1	172.5	..	..	3 773.8
Change since 1996	%	5.5	6.2	8.5	2.8	7.3	-0.7	8.0	4.2	6.0
Change since 1901(d)	%	370.3	286.7	633.8	304.0	905.4	164.8	..	..	402.7
<b>Males(c)</b>										
2001	'000	3 145.4	2 279.1	1 803.8	722.3	922.3	224.0	110.2	153.4	9 362.0
1996	'000	2 983.4	2 150.3	1 673.2	702.2	862.6	226.3	101.4	147.8	8 849.2
1901(d)	'000	710.0	603.7	277.0	184.7	112.9	89.6	..	..	1 977.9
Change since 1996	%	5.4	6.0	7.8	2.9	6.9	-1.0	8.7	3.8	5.8
Change since 1901(d)	%	343.0	277.5	551.2	291.1	717.1	150.0	..	..	373.3
<b>Females(c)</b>										
2001	'000	3 226.3	2 365.9	1 851.3	744.9	929.0	232.6	100.5	158.6	9 610.3
1996	'000	3 055.2	2 223.2	1 695.6	725.7	863.5	233.3	93.7	151.4	9 043.2
1901(d)	'000	644.8	597.4	221.1	178.5	71.2	82.9	..	..	1 795.9
Change since 1996	%	5.6	6.4	9.2	2.6	7.6	-0.3	7.2	4.7	6.3
Change since 1901(d)	%	400.3	296.1	737.2	317.4	1 203.9	180.8	..	..	435.1
<b>Median age(c)</b>										
2001	years	35	35	35	37	34	36	30	32	35
1996	years	34	33	33	35	33	34	29	30	34
1901(d)	years	21	23	22	21	26	21	..	..	22
<b>Persons aged 0–14 years(c)</b>										
2001	%	20.7	20.4	21.1	19.6	21.3	21.4	23.6	21.1	20.7
1996	%	21.4	21.2	21.7	20.6	22.4	22.7	24.8	22.6	21.5
1901(d)	%	35.9	34.0	36.6	35.6	28.9	37.1	..	..	35.1
<b>Persons aged 65 years and over(c)</b>										
2001	%	13.1	12.7	12.3	14.4	11.1	13.4	5.3	8.3	12.6
1996	%	12.7	12.0	12.0	13.8	10.5	12.3	4.9	7.1	12.1
1901(d)	%	3.4	5.5	2.6	4.1	1.8	4.1	..	..	4.0
<b>Persons born in Australia</b>										
2001	%	70.5	71.1	77.7	75.4	67.8	84.9	77.9	73.9	72.6
1996	%	73.3	72.8	79.6	75.7	68.8	86.1	78.7	74.9	74.5
1901(d)	%	79.7	78.3	64.9	79.9	68.9	85.8	..	..	77.1
<b>Median weekly individual income</b>										
2001	\$	386	380	359	345	374	314	442	543	375
1996	\$	298	290	286	267	307	257	358	430	292
Change since 1996	%	29.5	31.0	25.5	29.2	21.8	22.2	23.5	26.3	28.4
<b>Average annual individual income</b>										
1901(d)	£	47	43	47	45	64	42	..	..	46
<b>Median monthly housing loan repayments</b>										
2001	\$	1 049	850	849	680	842	614	1 000	957	870
1996	\$	885	742	808	640	745	593	859	928	785
Change since 1996	%	18.5	14.6	5.1	6.3	13.0	3.5	16.4	3.1	10.8
<b>Median weekly rent</b>										
2001	\$	177	155	152	117	134	107	123	169	154
1996	\$	151	125	132	97	113	97	112	153	129
Change since 1996	%	17.2	24.0	15.2	20.6	18.6	10.3	9.8	10.5	19.4

.. not applicable

(a) 1901 data for the Northern Territory and the Australian Capital Territory are included in South Australia and New South Wales respectively. See also Explanatory Notes.

(b) Includes Other Territories.

(c) Includes overseas visitors.

(d) Under the constitution at federation, Indigenous people were not included in the Census. This changed following a referendum in 1967.

		Sydney	Melbourne	Brisbane	Adelaide	Perth	Greater Hobart	Darwin	Canberra
<b>Persons(a)</b>									
2001	'000	3 997.3	3 366.5	1 627.5	1 072.6	1 340.0	191.2	109.4	311.5
1996	'000	3 741.3	3 138.1	1 488.9	1 045.2	1 244.3	189.9	99.6	298.8
Change since 1996	%	6.8	7.3	9.3	2.6	7.7	0.6	9.9	4.2
<b>Males(a)</b>									
2001	'000	1 967.7	1 647.9	794.5	522.0	656.8	92.6	57.1	153.2
1996	'000	1 839.0	1 537.9	730.3	507.9	609.6	92.4	51.7	147.6
Change since 1996	%	7.0	7.2	8.8	2.8	7.7	0.2	10.4	3.8
<b>Females(a)</b>									
2001	'000	2 029.6	1 718.7	833.1	550.5	683.2	98.6	52.4	158.4
1996	'000	1 902.3	1 600.3	758.6	537.3	634.7	97.6	47.9	151.3
Change since 1996	%	6.7	7.4	9.8	2.5	7.6	1.0	9.3	4.7
<b>Median age(a)</b>									
2001	years	34	34	33	37	34	36	32	32
1996	years	33	33	32	35	33	34	30	30
<b>Persons aged 0–14 years(a)</b>									
2001	%	20.1	19.7	20.9	18.8	20.6	20.5	22.2	21.1
1996	%	20.5	20.3	21.4	19.7	21.5	22.0	22.9	22.6
<b>Persons aged 65 years and over(a)</b>									
2001	%	11.8	12.1	11.0	14.6	11.2	13.5	5.4	8.3
1996	%	11.8	11.5	11.0	14.1	10.8	12.5	5.1	7.1
<b>Persons born in Australia</b>									
2001	%	62.2	65.7	74.6	72.2	63.6	83.6	72.7	73.8
1996	%	65.3	67.3	76.2	72.2	64.5	84.4	72.8	74.9
<b>Median weekly individual income</b>									
2001	\$	444	405	388	354	379	344	524	543
1996	\$	343	311	309	273	307	283	422	430
Change since 1996	%	29.4	30.2	25.6	29.7	23.5	21.6	24.2	26.3
<b>Median monthly housing loan repayments</b>									
2001	\$	1 265	915	876	705	858	655	1 019	957
1996	\$	1 016	806	835	663	772	626	864	928
Change since 1996	%	24.5	13.5	4.9	6.3	11.1	4.6	17.9	3.1
<b>Median weekly rent</b>									
2001	\$	216	169	159	126	142	114	162	170
1996	\$	170	135	139	104	120	106	140	153
Change since 1996	%	27.1	25.2	14.4	21.2	18.3	7.5	15.7	11.1

(a) Includes overseas visitors.

SELECTED PERSON CHARACTERISTICS, by Statistical Local Area

	AGE(a)			SEX(a)		CENSUS COUNT		INCOME
	Population aged 0-14 years	Population aged 65 years & over	Median age	Males	Females	Census Night(a)	Usually resident	Median weekly individual income
	%	%	years	no.	no.	no.	no.	\$
<b>GREATER HOBART (SD)</b>								
Greater Hobart (SSD)								
Brighton (M)	29.2	6.1	29	6 136	6 406	12 542	12 599	287
Clarence (C)	20.9	14.2	38	23 095	24 351	47 446	48 202	351
Derwent Valley (M) - Pt A	23.6	13.3	36	3 054	3 177	6 231	6 361	285
Glenorchy (C)	20.4	15.7	37	20 512	22 006	42 518	42 963	296
Hobart (C) - Inner	7.1	22.4	43	537	478	1 015	459	320
Hobart (C) - Remainder	15.8	13.9	36	22 243	24 061	46 304	45 519	402
Kingborough (M) - Pt A	23.1	11.7	36	12 266	13 257	25 523	25 995	391
Sorell (M) - Pt A	23.8	11.7	35	4 747	4 843	9 590	9 821	317
Total Greater Hobart (SSD) 2001	20.5	13.5	36	92 590	98 579	191 169	191 919	344
Total Greater Hobart (SSD) 1996	22.0	12.5	34	92 386	97 558	189 944	na	283
TOTAL GREATER HOBART (SD) 2001	20.5	13.5	36	92 590	98 579	191 169	(b) 191 956	344
TOTAL GREATER HOBART (SD) 1996	22.0	12.5	34	92 386	97 558	189 944	na	283
<b>SOUTHERN (SD)</b>								
Southern (SSD)								
Central Highlands (M)	21.6	11.9	39	1 262	1 086	2 348	2 285	274
Derwent Valley (M) - Pt B	23.1	6.8	36	1 482	1 297	2 779	2 824	283
Glamorgan/Spring Bay (M)	18.3	18.2	43	2 089	1 991	4 080	3 932	282
Huon Valley (M)	25.0	11.6	36	6 669	6 491	13 160	13 413	285
Kingborough (M) - Pt B	21.4	12.2	42	1 265	1 203	2 468	2 506	280
Sorell (M) - Pt B	25.3	10.9	38	481	452	933	953	284
Southern Midlands (M)	25.2	10.7	36	2 807	2 714	5 521	5 622	279
Tasman (M)	21.3	14.9	41	1 151	1 116	2 267	2 203	261
Total Southern (SSD) 2001	23.3	12.1	38	17 206	16 350	33 556	33 738	280
Total Southern (SSD) 1996	24.7	10.7	35	17 087	16 206	33 293	na	221
TOTAL SOUTHERN (SD) 2001	23.3	12.1	38	17 206	16 350	33 556	33 738	280
TOTAL SOUTHERN (SD) 1996	24.7	10.7	35	17 087	16 206	33 293	na	221
<b>NORTHERN (SD)</b>								
Greater Launceston (SSD)								
George Town (M) - Pt A	23.4	12.7	36	2 628	2 635	5 263	5 335	273
Launceston (C) - Inner	6.5	6.7	37	254	163	417	226	657
Launceston (C) - Pt B	19.9	14.4	35	27 650	30 035	57 685	57 607	306
Meander Valley (M) - Pt A	24.5	10.5	33	3 699	3 925	7 624	7 642	400
Northern Midlands (M) - Pt A	23.2	12.9	36	3 426	3 565	6 991	7 141	332
West Tamar (M) - Pt A	22.4	13.9	37	8 701	8 923	17 624	17 995	325
Total Greater Launceston (SSD) 2001	21.1	13.8	35	46 358	49 246	95 604	95 946	316
Total Greater Launceston (SSD) 1996	21.8	13.0	33	46 682	49 300	95 982	na	256

na not available

(b) Includes 'Undefined Greater Hobart'.

(a) Includes overseas visitors.

SELECTED PERSON CHARACTERISTICS, by Statistical Local Area *continued*

	AGE(a)			SEX(a)		CENSUS COUNT		INCOME
	Population aged 0-14 years	Population aged 65 years & over	Median age	Males	Females	Census Night(a)	Usually resident	Median weekly individual income
	%	%	years	no.	no.	no.	no.	\$
<b>NORTHERN (SD) cont.</b>								
<b>Central North (SSD)</b>								
George Town (M) - Pt B	25.0	8.5	36	539	469	1 008	1 037	277
Launceston (C) - Pt C	24.0	7.8	35	1 406	1 325	2 731	2 811	298
Meander Valley (M) - Pt B	21.8	13.8	39	4 803	4 948	9 751	9 956	281
Northern Midlands (M) - Pt B	22.9	12.9	38	2 293	2 143	4 436	4 509	284
West Tamar (M) - Pt B	23.9	7.0	37	882	840	1 722	1 771	319
Total Central North (SSD) 2001	22.7	11.9	38	9 923	9 725	19 648	20 084	286
Total Central North (SSD) 1996	24.3	11.0	35	10 168	9 951	20 119	na	219
<b>North Eastern (SSD)</b>								
Break O'Day (M)	20.1	16.8	43	2 841	2 713	5 554	5 693	239
Dorset (M)	22.8	15.3	37	3 542	3 437	6 979	7 160	303
Flinders (M)	20.4	12.7	42	475	389	864	869	327
Total North Eastern (SSD) 2001	21.5	15.7	40	6 858	6 539	13 397	13 722	274
Total North Eastern (SSD) 1996	24.0	14.1	37	6 989	6 674	13 663	na	211
TOTAL NORTHERN (SD) 2001	21.4	13.7	36	63 139	65 510	128 649	129 752	305
TOTAL NORTHERN (SD) 1996	22.4	12.8	34	63 839	65 925	129 764	na	246
<b>MERSEY-LYELL (SD)</b>								
<b>Burnie-Devonport (SSD)</b>								
Burnie (C) - Pt A	22.1	13.5	35	7 746	8 421	16 167	16 361	282
Central Coast (M) - Pt A	21.2	16.3	39	8 069	8 779	16 848	17 286	279
Devonport (C)	21.2	15.4	37	11 084	11 946	23 030	23 522	292
Latrobe (M) - Pt A	21.3	15.1	38	3 587	3 594	7 181	7 322	291
Waratah/Wynyard (M) - Pt A	23.2	14.8	37	5 103	5 353	10 456	10 693	274
Total Burnie-Devonport (SSD) 2001	21.7	15.1	37	35 589	38 093	73 682	75 184	284
Total Burnie-Devonport (SSD) 1996	22.9	13.5	34	36 832	38 956	75 788	na	231
<b>North Western Rural (SSD)</b>								
Burnie (C) - Pt B	25.1	6.9	35	1 025	953	1 978	2 013	305
Central Coast (M) - Pt B	26.1	7.8	34	1 594	1 496	3 090	3 174	285
Circular Head (M)	24.3	10.8	34	3 968	3 734	7 702	7 823	329
Kentish (M)	24.4	10.4	36	2 728	2 679	5 407	5 388	268
King Island (M)	20.1	12.8	39	915	772	1 687	1 683	417
Latrobe (M) - Pt B	24.4	7.7	34	364	300	664	695	351
Waratah/Wynyard (M) - Pt B	25.9	8.0	34	1 379	1 248	2 627	2 550	301
Total North Western Rural (SSD) 2001	24.5	9.7	35	11 973	11 182	23 155	23 326	308
Total North Western Rural (SSD) 1996	26.2	8.7	32	12 322	11 580	23 902	na	253
<b>Lyell (SSD)</b>								
West Coast (M)	23.8	8.2	34	2 961	2 554	5 515	5 393	319
Total Lyell (SSD) 2001	23.8	8.2	34	2 961	2 554	5 515	5 393	319
Total Lyell (SSD) 1996	25.7	6.2	30	3 431	2 905	6 336	na	273
TOTAL MERSEY-LYELL (SD) 2001	22.4	13.5	37	50 523	51 829	102 352	103 903	289
TOTAL MERSEY-LYELL (SD) 1996	23.8	12.0	34	52 585	53 441	106 026	na	237

na not available

(a) Includes overseas visitors.

SELECTED PERSON CHARACTERISTICS, by Statistical Local Area *continued*

	AGE(a)			SEX(a)		CENSUS COUNT		INCOME
	Population aged 0-14 years	Population aged 65 years & over	Median age	Males	Females	Census Night(a)	Usually resident	Median weekly individual income
	%	%	years	no.	no.	no.	no.	\$
<b>OFF-SHORE AREAS &amp; MIGRATORY (SD)</b>								
Off-Shore Areas & Migratory (SSD)								
Off-Shore Areas & Migratory	8.7	16.2	45	580	346	926	250	519
<i>Total Off-Shore Areas &amp; Migratory (SSD) 2001</i>	8.7	16.2	45	580	346	926	250	519
<i>Total Off-Shore Areas &amp; Migratory (SSD) 1996</i>	4.1	13.1	41	441	191	632	na	677
<b>TOTAL OFF-SHORE AREAS &amp; MIGRATORY (SD) 2001</b>	<b>8.7</b>	<b>16.2</b>	<b>45</b>	<b>580</b>	<b>346</b>	<b>926</b>	<b>250</b>	<b>519</b>
<b>TOTAL OFF-SHORE AREAS &amp; MIGRATORY (SD) 1996</b>	<b>4.1</b>	<b>13.1</b>	<b>41</b>	<b>441</b>	<b>191</b>	<b>632</b>	<b>na</b>	<b>677</b>
<b>TOTAL TASMANIA 2001</b>	<b>21.4</b>	<b>13.4</b>	<b>36</b>	<b>224 038</b>	<b>232 614</b>	<b>456 652</b>	(b) <b>460 672</b>	<b>314</b>
<b>TOTAL TASMANIA 1996</b>	<b>22.7</b>	<b>12.3</b>	<b>34</b>	<b>226 338</b>	<b>233 321</b>	<b>459 659</b>	(b) <b>464 546</b>	<b>257</b>

na not available

(b) Includes 'Undefined Tas.' and 'Tas. no usual address'.

(a) Includes overseas visitors.

	INDIGENOUS STATUS(a)		BIRTHPLACE OF INDIVIDUAL(b)				LANGUAGE SPOKEN AT HOME(c)	
	Indigenous(d)	Non-	Australia	Europe(e)	East	Other(g)	English	Other
		Indigenous			Asia(f)			
<b>GREATER HOBART (SD)</b>								
Greater Hobart (SSD)								
Brighton (M)	820	11 361	11 267	497	36	77	11 852	191
Clarence (C)	1 291	44 671	40 751	3 330	259	800	44 169	1 105
Derwent Valley (M) - Pt A	212	5 775	5 518	272	17	48	5 864	56
Glenorchy (C)	1 545	39 454	36 165	3 012	393	638	38 235	2 344
Hobart (C) - Inner	27	770	628	110	21	32	708	60
Hobart (C) - Remainder	581	43 341	35 663	4 669	1 298	1 895	39 946	3 858
Kingborough (M) - Pt A	665	24 212	20 566	2 885	251	898	23 797	986
Sorell (M) - Pt B	281	9 016	8 412	566	28	139	9 095	147
<i>Total Greater Hobart (SSD) 2001</i>	<i>5 422</i>	<i>178 600</i>	<i>158 970</i>	<i>15 341</i>	<i>2 303</i>	<i>4 527</i>	<i>173 666</i>	<i>8 747</i>
<i>Total Greater Hobart (SSD) 1996</i>	<i>4 705</i>	<i>178 411</i>	<i>159 796</i>	<i>15 923</i>	<i>2 292</i>	<i>4 211</i>	<i>174 278</i>	<i>9 237</i>
<b>TOTAL GREATER HOBART (SD) 2001</b>	<b>5 422</b>	<b>178 600</b>	<b>158 970</b>	<b>15 341</b>	<b>2 303</b>	<b>4 527</b>	<b>173 666</b>	<b>8 747</b>
<b>TOTAL GREATER HOBART (SD) 1996</b>	<b>4 705</b>	<b>178 411</b>	<b>159 796</b>	<b>15 923</b>	<b>2 292</b>	<b>4 211</b>	<b>174 278</b>	<b>9 237</b>
<b>SOUTHERN (SD)</b>								
Southern (SSD)								
Central Highlands (M)	101	2 140	2 085	91	7	30	2 187	17
Derwent Valley (M) - Pt B	133	2 566	2 420	186	4	40	2 629	24
Glamorgan/Spring Bay (M)	133	3 696	3 438	260	13	68	3 727	64
Huon Valley (M)	1 285	11 268	10 882	1 118	33	258	12 168	255
Kingborough (M) - Pt B	98	2 232	1 865	338	21	82	2 225	94
Sorell (M) - Pt B	55	844	803	54	—	13	886	16
Southern Midlands (M)	207	5 172	5 013	202	12	42	5 256	39
Tasman (M)	125	2 030	1 906	163	10	49	2 127	32
<i>Total Southern (SSD) 2001</i>	<i>2 137</i>	<i>29 948</i>	<i>28 412</i>	<i>2 412</i>	<i>100</i>	<i>582</i>	<i>31 205</i>	<i>541</i>
<i>Total Southern (SSD) 1996</i>	<i>1 930</i>	<i>30 066</i>	<i>28 818</i>	<i>2 367</i>	<i>94</i>	<i>532</i>	<i>31 562</i>	<i>626</i>
<b>TOTAL SOUTHERN (SD) 2001</b>	<b>2 137</b>	<b>29 948</b>	<b>28 412</b>	<b>2 412</b>	<b>100</b>	<b>582</b>	<b>31 205</b>	<b>541</b>
<b>TOTAL SOUTHERN (SD) 1996</b>	<b>1 930</b>	<b>30 066</b>	<b>28 818</b>	<b>2 367</b>	<b>94</b>	<b>532</b>	<b>31 562</b>	<b>626</b>
<b>NORTHERN (SD)</b>								
Greater Launceston (SSD)								
George Town (M) - Pt A	140	4 826	4 280	504	19	74	4 801	112
Launceston (C) - Inner	8	324	273	27	18	16	300	31
Launceston (C) - Pt B	1 605	53 651	49 041	3 525	600	1 108	53 061	1 726
Meander Valley (M) - Pt A	133	7 237	6 619	476	42	116	7 124	188
Northern Midlands (M) - Pt A	143	6 608	6 150	416	32	82	6 660	100
West Tamar (M) - Pt A	258	16 822	14 547	1 726	126	455	16 452	547
<i>Total Greater Launceston (SSD) 2001</i>	<i>2 287</i>	<i>89 468</i>	<i>80 910</i>	<i>6 674</i>	<i>837</i>	<i>1 851</i>	<i>88 398</i>	<i>2 704</i>
<i>Total Greater Launceston (SSD) 1996</i>	<i>1 965</i>	<i>90 941</i>	<i>82 397</i>	<i>7 511</i>	<i>830</i>	<i>1 775</i>	<i>90 238</i>	<i>3 086</i>

— nil or rounded to zero (including null cells)

(a) Excludes persons who did not state their Indigenous status and overseas visitors.

(b) Excludes persons who did not state their birthplace and overseas visitors.

(c) Excludes persons who did not state their language spoken at home and overseas visitors.

(d) Comprises persons of Aboriginal origin, Torres Strait Islander origin, or both Aboriginal and Torres Strait Islander origin.

(e) Comprises the Major Groups North-West Europe, and Southern and Eastern Europe.

(f) Comprises the Major Groups South-East Asia and North-East Asia.

(g) Includes the Major Groups Oceania and Antarctica (excluding Australia), North Africa and the Middle East, Southern and Central Asia, Americas and Sub-Saharan Africa.

	INDIGENOUS STATUS(a)		BIRTHPLACE OF INDIVIDUAL(b)				LANGUAGE SPOKEN AT HOME(c)	
	Indigenous(d)	Non-Indigenous	Australia	Europe(e)	East	Other(g)	English	Other
					Asia(f)			
<b>NORTHERN (SD) cont.</b>								
<b>Central North (SSD)</b>								
George Town (M) - Pt B	20	949	857	54	3	24	939	20
Launceston (C) - Pt C	57	2 575	2 347	199	16	35	2 538	78
Meander Valley (M) - Pt B	246	9 076	8 212	737	33	213	9 120	146
Northern Midlands (M) - Pt B	91	4 188	3 939	199	14	54	4 192	30
West Tamar (M) - Pt B	20	1 655	1 489	125	5	29	1 643	23
<i>Total Central North (SSD) 2001</i>	<i>434</i>	<i>18 443</i>	<i>16 844</i>	<i>1 314</i>	<i>71</i>	<i>355</i>	<i>18 432</i>	<i>297</i>
<i>Total Central North (SSD) 1996</i>	<i>396</i>	<i>19 129</i>	<i>17 709</i>	<i>1 327</i>	<i>62</i>	<i>313</i>	<i>19 339</i>	<i>262</i>
<b>North Eastern (SSD)</b>								
Break O'Day (M)	160	5 181	4 624	447	33	116	5 234	65
Dorset (M)	137	6 552	6 225	259	13	116	6 583	74
Flinders (M)	147	690	778	40	3	15	813	14
<i>Total North Eastern (SSD) 2001</i>	<i>444</i>	<i>12 423</i>	<i>11 627</i>	<i>746</i>	<i>49</i>	<i>247</i>	<i>12 630</i>	<i>153</i>
<i>Total North Eastern (SSD) 1996</i>	<i>398</i>	<i>12 783</i>	<i>12 097</i>	<i>731</i>	<i>49</i>	<i>228</i>	<i>13 041</i>	<i>200</i>
<b>TOTAL NORTHERN (SD) 2001</b>	<b>3 165</b>	<b>120 334</b>	<b>109 381</b>	<b>8 734</b>	<b>957</b>	<b>2 453</b>	<b>119 460</b>	<b>3 154</b>
<b>TOTAL NORTHERN (SD) 1996</b>	<b>2 759</b>	<b>122 853</b>	<b>112 203</b>	<b>9 569</b>	<b>941</b>	<b>2 316</b>	<b>122 618</b>	<b>3 548</b>
<b>MERSEY-LYELL (SD)</b>								
<b>Burnie-Devonport (SSD)</b>								
Burnie (C) - Pt A	732	14 789	13 914	872	80	293	14 980	359
Central Coast (M) - Pt A	960	15 042	14 539	1 007	66	185	15 674	246
Devonport (C)	880	21 241	19 918	1 362	93	322	21 587	387
Latrobe (M) - Pt A	346	6 623	6 302	387	27	110	6 827	110
Waratah/Wynyard (M) - Pt A	643	9 484	9 137	637	41	122	9 884	126
<i>Total Burnie-Devonport (SSD) 2001</i>	<i>3 561</i>	<i>67 179</i>	<i>63 810</i>	<i>4 265</i>	<i>307</i>	<i>1 032</i>	<i>68 952</i>	<i>1 228</i>
<i>Total Burnie-Devonport (SSD) 1996</i>	<i>3 136</i>	<i>69 993</i>	<i>67 018</i>	<i>4 601</i>	<i>294</i>	<i>956</i>	<i>72 241</i>	<i>1 319</i>
<b>North Western Rural (SSD)</b>								
Burnie (C) - Pt B	55	1 883	1 765	98	6	26	1 920	14
Central Coast (M) - Pt B	154	2 827	2 674	202	13	35	2 934	52
Circular Head (M)	566	6 889	6 815	269	22	257	7 320	79
Kentish (M)	208	4 887	4 532	336	32	77	4 995	74
King Island (M)	32	1 597	1 410	124	12	60	1 579	55
Latrobe (M) - Pt B	31	621	621	16	—	5	646	—
Waratah/Wynyard (M) - Pt B	143	2 401	2 230	204	15	75	2 514	31
<i>Total North Western Rural (SSD) 2001</i>	<i>1 189</i>	<i>21 105</i>	<i>20 047</i>	<i>1 249</i>	<i>100</i>	<i>535</i>	<i>21 908</i>	<i>305</i>
<i>Total North Western Rural (SSD) 1996</i>	<i>1 036</i>	<i>22 133</i>	<i>21 001</i>	<i>1 357</i>	<i>95</i>	<i>538</i>	<i>22 897</i>	<i>381</i>
<b>Lyell (SSD)</b>								
West Coast (M)	285	5 034	4 825	243	23	101	5 177	88
<i>Total Lyell (SSD) 2001</i>	<i>285</i>	<i>5 034</i>	<i>4 825</i>	<i>243</i>	<i>23</i>	<i>101</i>	<i>5 177</i>	<i>88</i>
<i>Total Lyell (SSD) 1996</i>	<i>297</i>	<i>5 790</i>	<i>5 541</i>	<i>329</i>	<i>39</i>	<i>128</i>	<i>6 013</i>	<i>114</i>
<b>TOTAL MERSEY-LYELL (SD) 2001</b>	<b>5 035</b>	<b>93 318</b>	<b>88 682</b>	<b>5 757</b>	<b>430</b>	<b>1 668</b>	<b>96 037</b>	<b>1 621</b>
<b>TOTAL MERSEY-LYELL (SD) 1996</b>	<b>4 469</b>	<b>97 916</b>	<b>93 560</b>	<b>6 287</b>	<b>428</b>	<b>1 622</b>	<b>101 151</b>	<b>1 814</b>

— nil or rounded to zero (including null cells)

(a) Excludes persons who did not state their Indigenous status and overseas visitors.

(b) Excludes persons who did not state their birthplace and overseas visitors.

(c) Excludes persons who did not state their language spoken at home and overseas visitors.

(d) Comprises persons of Aboriginal origin, Torres Strait Islander origin, or both Aboriginal and Torres Strait Islander origin.

(e) Comprises the Major Groups North-West Europe, and Southern and Eastern Europe.

(f) Comprises the Major Groups South-East Asia and North-East Asia.

(g) Includes the Major Groups Oceania and Antarctica (excluding Australia), North Africa and the Middle East, Southern and Central Asia, Americas and Sub-Saharan Africa.

	INDIGENOUS STATUS(a)		BIRTHPLACE OF INDIVIDUAL(b)				LANGUAGE SPOKEN AT HOME(c)	
	Indigenous(d)	Non-Indigenous	Australia	Europe(e)	East Asia(f)	Other(g)	English	Other
<b>OFF-SHORE AREAS &amp; MIGRATORY (SD)</b>								
<b>Off-Shore Areas &amp; Migratory (SSD)</b>								
Off-Shore Areas & Migratory	14	682	591	97	5	9	666	31
<i>Total Off-Shore Areas &amp; Migratory (SSD) 2001</i>	14	682	591	97	5	9	666	31
<i>Total Off-Shore Areas &amp; Migratory (SSD) 1996</i>	10	502	405	84	7	22	476	33
<b>TOTAL OFF-SHORE AREAS &amp; MIGRATORY (SD) 2001</b>	<b>14</b>	<b>682</b>	<b>591</b>	<b>97</b>	<b>5</b>	<b>9</b>	<b>666</b>	<b>31</b>
<b>TOTAL OFF-SHORE AREAS &amp; MIGRATORY (SD) 1996</b>	<b>10</b>	<b>502</b>	<b>405</b>	<b>84</b>	<b>7</b>	<b>22</b>	<b>476</b>	<b>33</b>
<b>TOTAL TASMANIA 2001</b>	<b>15 773</b>	<b>422 882</b>	<b>386 036</b>	<b>32 341</b>	<b>3 795</b>	<b>9 239</b>	<b>421 034</b>	<b>14 094</b>
<b>TOTAL TASMANIA 1996</b>	<b>13 873</b>	<b>429 748</b>	<b>394 782</b>	<b>34 230</b>	<b>3 762</b>	<b>8 703</b>	<b>430 085</b>	<b>15 258</b>

(a) Excludes persons who did not state their Indigenous status and overseas visitors.

(b) Excludes persons who did not state their birthplace and overseas visitors.

(c) Excludes persons who did not state their language spoken at home and overseas visitors.

(d) Comprises persons of Aboriginal origin, Torres Strait Islander origin, or both Aboriginal and Torres Strait Islander origin.

(e) Comprises the Major Groups North-West Europe, and Southern and Eastern Europe.

(f) Comprises the Major Groups South-East Asia and North-East Asia.

(g) Includes the Major Groups Oceania and Antarctica (excluding Australia), North Africa and the Middle East, Southern and Central Asia, Americas and Sub-Saharan Africa.



## HOUSING CHARACTERISTICS, by Statistical Local Area

<i>Geographic area</i>	<i>Occupied private dwellings</i>	<i>Unoccupied private dwellings</i>	<i>Non- private dwellings</i>	<i>Total(a)</i>
<b>GREATER HOBART (SD)</b>				
Greater Hobart (SSD)				
Brighton (M)	4 347	244	7	4 598
Clarence (C)	18 448	1 402	29	19 879
Derwent Valley (M) - Pt A	2 374	194	5	2 573
Glenorchy (C)	17 707	1 166	23	18 896
Hobart (C) - Inner	132	28	26	186
Hobart (C) - Remainder	19 739	1 941	106	21 786
Kingborough (M) - Pt A	9 494	654	12	10 160
Sorell (M) - Pt A	3 831	1 112	3	4 946
<i>Total Greater Hobart (SSD) 2001</i>	<i>76 072</i>	<i>6 741</i>	<i>210</i>	<i>83 023</i>
<i>Total Greater Hobart (SSD) 1996</i>	<i>72 778</i>	<i>7 042</i>	<i>220</i>	<i>80 040</i>
<i>TOTAL GREATER HOBART (SD) 2001</i>	<i>76 072</i>	<i>6 741</i>	<i>210</i>	<i>83 023</i>
<i>TOTAL GREATER HOBART (SD) 1996</i>	<i>72 778</i>	<i>7 042</i>	<i>220</i>	<i>80 040</i>
<b>SOUTHERN (SD)</b>				
Southern (SSD)				
Central Highlands (M)	952	1 464	14	2 430
Derwent Valley (M) - Pt B	1 014	173	6	1 193
Glamorgan/Spring Bay (M)	1 771	1 539	18	3 328
Huon Valley (M)	4 935	1 117	18	6 070
Kingborough (M) - Pt B	1 043	711	3	1 757
Sorell (M) - Pt B	367	116	—	483
Southern Midlands (M)	2 077	265	3	2 345
Tasman (M)	926	1 092	10	2 028
<i>Total Southern (SSD) 2001</i>	<i>13 085</i>	<i>6 477</i>	<i>73</i>	<i>19 635</i>
<i>Total Southern (SSD) 1996</i>	<i>12 477</i>	<i>6 215</i>	<i>83</i>	<i>18 775</i>
<i>TOTAL SOUTHERN (SD) 2001</i>	<i>13 085</i>	<i>6 477</i>	<i>73</i>	<i>19 635</i>
<i>TOTAL SOUTHERN (SD) 1996</i>	<i>12 477</i>	<i>6 215</i>	<i>83</i>	<i>18 775</i>
<b>NORTHERN (SD)</b>				
Greater Launceston (SSD)				
George Town (M) - Pt A	2 117	324	6	2 447
Launceston (C) - Inner	112	35	8	155
Launceston (C) - Pt B	23 669	2 072	92	25 833
Meander Valley (M) - Pt A	2 867	160	—	3 027
Northern Midlands (M) - Pt A	2 688	205	9	2 902
West Tamar (M) - Pt A	6 668	1 035	19	7 722
<i>Total Greater Launceston (SSD) 2001</i>	<i>38 121</i>	<i>3 831</i>	<i>136</i>	<i>42 088</i>
<i>Total Greater Launceston (SSD) 1996</i>	<i>36 897</i>	<i>3 630</i>	<i>152</i>	<i>40 679</i>

— nil or rounded to zero (including null cells)

(a) Includes migratory and off-shore.

<i>Geographic area</i>	<i>Occupied private dwellings</i>	<i>Unoccupied private dwellings</i>	<i>Non- private dwellings</i>	<i>Total(a)</i>
<b>NORTHERN (SD) <i>cont.</i></b>				
<b>Central North (SSD)</b>				
George Town (M) - Pt B	385	381	—	766
Launceston (C) - Pt C	994	119	3	1 116
Meander Valley (M) - Pt B	3 838	491	17	4 346
Northern Midlands (M) - Pt B	1 719	493	13	2 225
West Tamar (M) - Pt B	625	92	—	717
<i>Total Central North (SSD) 2001</i>	<i>7 561</i>	<i>1 576</i>	<i>32</i>	<i>9 169</i>
<i>Total Central North (SSD) 1996</i>	<i>7 430</i>	<i>1 434</i>	<i>28</i>	<i>8 892</i>
<b>North Eastern (SSD)</b>				
Break O'Day (M)	2 396	1 626	17	4 039
Dorset (M)	2 813	779	13	3 605
Flinders (M)	358	246	4	608
<i>Total North Eastern (SSD) 2001</i>	<i>5 567</i>	<i>2 651</i>	<i>34</i>	<i>8 252</i>
<i>Total North Eastern (SSD) 1996</i>	<i>5 432</i>	<i>2 433</i>	<i>29</i>	<i>7 894</i>
<b>TOTAL NORTHERN (SD) 2001</b>	<b>51 249</b>	<b>8 058</b>	<b>202</b>	<b>59 509</b>
<b>TOTAL NORTHERN (SD) 1996</b>	<b>49 759</b>	<b>7 497</b>	<b>209</b>	<b>57 465</b>
<b>MERSEY-LYELL (SD)</b>				
<b>Burnie-Devonport (SSD)</b>				
Burnie (C) - Pt A	6 642	748	29	7 419
Central Coast (M) - Pt A	6 797	550	18	7 365
Devonport (C)	9 477	754	28	10 259
Latrobe (M) - Pt A	2 838	515	10	3 363
Waratah/Wynyard (M) - Pt A	4 200	645	10	4 855
<i>Total Burnie-Devonport (SSD) 2001</i>	<i>29 954</i>	<i>3 212</i>	<i>95</i>	<i>33 261</i>
<i>Total Burnie-Devonport (SSD) 1996</i>	<i>29 299</i>	<i>3 102</i>	<i>99</i>	<i>32 500</i>
<b>North Western Rural (SSD)</b>				
Burnie (C) - Pt B	713	79	—	792
Central Coast (M) - Pt B	1 090	128	—	1 218
Circular Head (M)	2 939	704	15	3 658
Kentish (M)	1 974	275	16	2 265
King Island (M)	696	223	10	929
Latrobe (M) - Pt B	244	36	—	280
Waratah/Wynyard (M) - Pt B	875	141	3	1 019
<i>Total North Western Rural (SSD) 2001</i>	<i>8 531</i>	<i>1 586</i>	<i>43</i>	<i>10 160</i>
<i>Total North Western Rural (SSD) 1996</i>	<i>8 434</i>	<i>1 428</i>	<i>32</i>	<i>9 894</i>
<b>Lyell (SSD)</b>				
West Coast (M)	2 281	800	26	3 107
<i>Total Lyell (SSD) 2001</i>	<i>2 281</i>	<i>800</i>	<i>26</i>	<i>3 107</i>
<i>Total Lyell (SSD) 1996</i>	<i>2 450</i>	<i>643</i>	<i>41</i>	<i>3 134</i>
<b>TOTAL MERSEY-LYELL (SD) 2001</b>	<b>40 766</b>	<b>5 598</b>	<b>164</b>	<b>46 528</b>
<b>TOTAL MERSEY-LYELL (SD) 1996</b>	<b>40 183</b>	<b>5 173</b>	<b>172</b>	<b>45 528</b>

— nil or rounded to zero (including null cells)

(a) Includes migratory and off-shore.

HOUSING CHARACTERISTICS, by Statistical Local Area *continued*

<i>Geographic area</i>	<i>Occupied private dwellings</i>	<i>Unoccupied private dwellings</i>	<i>Non- private dwellings</i>	<i>Total(a)</i>
OFF-SHORE AREAS & MIGRATORY (SD)				
Off-Shore Areas & Migratory (SSD)				
Off-Shore Areas & Migratory	—	—	—	7
<i>Total Off-Shore Areas &amp; Migratory     (SSD) 2001</i>	—	—	—	7
<i>Total Off-Shore Areas &amp; Migratory     (SSD) 1996</i>	—	—	—	9
<i>TOTAL OFF-SHORE AREAS &amp; MIGRATORY (SD) 2001</i>	—	—	—	7
<i>TOTAL OFF-SHORE AREAS &amp; MIGRATORY (SD) 1996</i>	—	—	—	9
<b>TOTAL TASMANIA 2001</b>	<b>181 172</b>	<b>26 874</b>	<b>649</b>	<b>208 702</b>
<b>TOTAL TASMANIA 1996</b>	<b>175 197</b>	<b>25 927</b>	<b>684</b>	<b>201 817</b>

— nil or rounded to zero (including null cells)

(a) Includes migratory and off-shore.

## OCCUPIED PRIVATE DWELLINGS, by Statistical Local Area

Geographic area	FULLY OWNED	BEING PURCHASED		RENTED		TOTAL OCCUPIED PRIVATE DWELLINGS	
	Dwellings	Dwellings(a)	Median monthly loan repayment	Dwellings	Median weekly rent	Dwellings(b)	Persons in occupied private dwellings(c)
	no.	no.	\$	no.	\$	no.	no.
<b>GREATER HOBART (SD)</b>							
Greater Hobart (SSD)							
Brighton (M)	997	1 525	624	1 663	79	4 347	12 405
Clarence (C)	7 850	5 986	654	3 784	113	18 448	46 426
Derwent Valley (M) - Pt A	958	747	551	536	98	2 374	6 111
Glenorchy (C)	6 837	4 973	589	4 967	109	17 707	42 010
Hobart (C) - Inner	32	17	750	63	143	132	313
Hobart (C) - Remainder	7 255	4 706	787	6 461	128	19 739	43 604
Kingborough (M) - Pt A	4 068	3 452	698	1 588	133	9 494	25 282
Sorell (M) - Pt A	1 453	1 502	607	656	114	3 831	9 554
<i>Total Greater Hobart (SSD) 2001</i>	<i>29 450</i>	<i>22 908</i>	<i>655</i>	<i>19 718</i>	<i>114</i>	<i>76 072</i>	<i>185 705</i>
<i>Total Greater Hobart (SSD) 1996</i>	<i>28 229</i>	<i>21 154</i>	<i>626</i>	<i>19 670</i>	<i>106</i>	<i>72 778</i>	<i>184 073</i>
<b>TOTAL GREATER HOBART (SD) 2001</b>	<b>29 450</b>	<b>22 908</b>	<b>655</b>	<b>19 718</b>	<b>114</b>	<b>76 072</b>	<b>185 705</b>
<b>TOTAL GREATER HOBART (SD) 1996</b>	<b>28 229</b>	<b>21 154</b>	<b>626</b>	<b>19 670</b>	<b>106</b>	<b>72 778</b>	<b>184 073</b>
<b>SOUTHERN (SD)</b>							
Southern (SSD)							
Central Highlands (M)	460	151	450	202	62	952	2 285
Derwent Valley (M) - Pt B	445	365	586	127	89	1 014	2 724
Glamorgan/Spring Bay (M)	925	308	552	344	100	1 771	3 836
Huon Valley (M)	2 302	1 427	570	827	106	4 935	13 003
Kingborough (M) - Pt B	565	246	621	128	108	1 043	2 438
Sorell (M) - Pt B	176	116	488	40	90	367	930
Southern Midlands (M)	945	649	591	320	89	2 077	5 464
Tasman (M)	509	191	492	125	94	926	2 101
<i>Total Southern (SSD) 2001</i>	<i>6 327</i>	<i>3 453</i>	<i>567</i>	<i>2 113</i>	<i>100</i>	<i>13 085</i>	<i>32 781</i>
<i>Total Southern (SSD) 1996</i>	<i>6 109</i>	<i>3 164</i>	<i>554</i>	<i>2 105</i>	<i>85</i>	<i>12 477</i>	<i>32 692</i>
<b>TOTAL SOUTHERN (SD) 2001</b>	<b>6 327</b>	<b>3 453</b>	<b>567</b>	<b>2 113</b>	<b>100</b>	<b>13 085</b>	<b>32 781</b>
<b>TOTAL SOUTHERN (SD) 1996</b>	<b>6 109</b>	<b>3 164</b>	<b>554</b>	<b>2 105</b>	<b>85</b>	<b>12 477</b>	<b>32 692</b>
<b>NORTHERN (SD)</b>							
Greater Launceston (SSD)							
George Town (M) - Pt A	790	567	508	598	88	2 117	5 171
Launceston (C) - Inner	20	12	1 250	59	111	112	213
Launceston (C) - Pt B	8 778	6 303	581	7 253	109	23 669	55 461
Meander Valley (M) - Pt A	1 031	1 136	698	561	129	2 867	7 485
Northern Midlands (M) - Pt A	1 176	902	602	478	108	2 688	6 900
West Tamar (M) - Pt A	3 237	2 069	645	1 039	118	6 668	17 349
<i>Total Greater Launceston (SSD) 2001</i>	<i>15 032</i>	<i>10 989</i>	<i>604</i>	<i>9 988</i>	<i>110</i>	<i>38 121</i>	<i>92 579</i>
<i>Total Greater Launceston (SSD) 1996</i>	<i>15 072</i>	<i>10 078</i>	<i>596</i>	<i>9 939</i>	<i>101</i>	<i>36 897</i>	<i>92 595</i>

(a) Comprises the categories 'Being purchased' and 'Being purchased under a rent/buy scheme'.

(b) Includes the categories 'Being occupied rent-free', 'Being occupied under a life tenure scheme', 'Other tenure type' and 'Not stated'.

(c) Includes overseas visitors counted in occupied private dwellings.

Geographic area	FULLY OWNED	BEING PURCHASED		RENTED		TOTAL OCCUPIED PRIVATE DWELLINGS	
	Dwellings	Dwellings(a)	Median monthly loan repayment	Dwellings	Median weekly rent	Dwellings(b)	Persons in occupied private dwellings(c)
	no.	no.	\$	no.	\$	no.	no.
<b>NORTHERN (SD) cont.</b>							
Central North (SSD)							
George Town (M) - Pt B	190	112	561	36	93	385	1 008
Launceston (C) - Pt C	499	315	617	112	108	994	2 728
Meander Valley (M) - Pt B	1 962	934	551	615	96	3 838	9 577
Northern Midlands (M) - Pt B	808	351	515	354	77	1 719	4 326
West Tamar (M) - Pt B	307	232	644	46	113	625	1 722
Total Central North (SSD) 2001	3 766	1 944	565	1 163	94	7 561	19 361
Total Central North (SSD) 1996	3 726	1 878	557	1 225	79	7 430	19 904
North Eastern (SSD)							
Break O'Day (M)	1 320	451	515	436	94	2 396	5 434
Dorset (M)	1 298	713	607	539	86	2 813	6 846
Flinders (M)	154	58	594	107	59	358	835
Total North Eastern (SSD) 2001	2 772	1 222	573	1 082	85	5 567	13 115
Total North Eastern (SSD) 1996	2 765	1 133	545	1 075	78	5 432	13 454
TOTAL NORTHERN (SD) 2001	21 570	14 155	596	12 233	106	51 249	125 055
TOTAL NORTHERN (SD) 1996	21 563	13 089	587	12 239	96	49 759	125 953
<b>MERSEY-LYELL (SD)</b>							
Burnie-Devonport (SSD)							
Burnie (C) - Pt A	2 685	1 737	510	1 893	92	6 642	15 778
Central Coast (M) - Pt A	3 088	1 827	572	1 482	102	6 797	16 531
Devonport (C)	3 908	2 471	562	2 602	104	9 477	22 571
Latrobe (M) - Pt A	1 287	810	606	572	110	2 838	7 023
Waratah/Wynyard (M) - Pt A	1 901	1 032	562	1 071	94	4 200	10 302
Total Burnie-Devonport (SSD) 2001	12 869	7 877	558	7 620	101	29 954	72 205
Total Burnie-Devonport (SSD) 1996	12 958	7 275	549	7 580	91	29 299	74 018
North Western Rural (SSD)							
Burnie (C) - Pt B	353	248	585	75	106	713	1 978
Central Coast (M) - Pt B	532	343	632	124	105	1 090	3 090
Circular Head (M)	1 235	783	545	616	90	2 939	7 563
Kentish (M)	938	579	541	269	100	1 974	5 210
King Island (M)	295	138	577	190	92	696	1 643
Latrobe (M) - Pt B	134	59	655	31	106	244	664
Waratah/Wynyard (M) - Pt B	429	280	557	108	95	875	2 493
Total North Western Rural (SSD) 2001	3 916	2 430	564	1 413	95	8 531	22 641
Total North Western Rural (SSD) 1996	4 100	2 264	560	1 424	82	8 434	23 520
Lyell (SSD)							
West Coast (M)	1 199	329	418	552	75	2 281	5 328
Total Lyell (SSD) 2001	1 199	329	418	552	75	2 281	5 328
Total Lyell (SSD) 1996	1 301	328	364	608	54	2 450	6 056
TOTAL MERSEY-LYELL (SD) 2001	17 984	10 636	555	9 585	98	40 766	100 174
TOTAL MERSEY-LYELL (SD) 1996	18 359	9 867	545	9 612	87	40 183	103 594

(a) Comprises the categories 'Being purchased' and 'Being purchased under a rent/buy scheme'.

(b) Includes the categories 'Being occupied rent-free', 'Being occupied under a life tenure scheme', 'Other tenure type' and 'Not stated'.

(c) Includes overseas visitors counted in occupied private dwellings.

Geographic area	FULLY OWNED	BEING PURCHASED		RENTED		TOTAL OCCUPIED PRIVATE DWELLINGS	
	Dwellings	Dwellings(a)	Median monthly loan repayment	Dwellings	Median weekly rent	Dwellings(b)	Persons in occupied private dwellings(c)
	no.	no.	\$	no.	\$	no.	no.
<b>OFF-SHORE AREAS &amp; MIGRATORY (SD)</b>							
Off-Shore Areas & Migratory (SSD)							
Off-Shore Areas & Migratory	—	—	—	—	—	—	—
Total Off-Shore Areas & Migratory (SSD) 2001	—	—	np	—	—	—	—
Total Off-Shore Areas & Migratory (SSD) 1996	—	—	—	—	—	—	—
<b>TOTAL OFF-SHORE AREAS &amp; MIGRATORY (SD) 2001</b>	—	—	np	—	—	—	—
<b>TOTAL OFF-SHORE AREAS &amp; MIGRATORY (SD) 1996</b>	—	—	—	—	—	—	—
<b>TOTAL TASMANIA 2001</b>	<b>75 331</b>	<b>51 152</b>	<b>614</b>	<b>43 649</b>	<b>107</b>	<b>181 172</b>	<b>443 715</b>
<b>TOTAL TASMANIA 1996</b>	<b>74 260</b>	<b>47 274</b>	<b>593</b>	<b>43 626</b>	<b>97</b>	<b>175 197</b>	<b>446 312</b>

— nil or rounded to zero (including null cells)

np not available for publication but included in totals where applicable, unless otherwise indicated

(a) Comprises the categories 'Being purchased' and 'Being purchased under a rent/buy scheme'.

(b) Includes the categories 'Being occupied rent-free', 'Being occupied under a life tenure scheme', 'Other tenure type' and 'Not stated'.

(c) Includes overseas visitors counted in occupied private dwellings.

## SELECTED HOUSEHOLD CHARACTERISTICS, by Statistical Local Area

Geographic area	HOUSEHOLD TYPE				SIZE Mean(c) persons	HOUSEHOLDS WHICH USED	
	Family(a) no.	Lone person no.	Group no.	Total(b) no.		a personal computer(d) no.	the Internet(d) no.
<b>GREATER HOBART (SD)</b>							
Greater Hobart (SSD)							
Brighton (M)	3 408	799	80	4 347	2.8	1 528	938
Clarence (C)	13 305	4 377	371	18 448	2.5	8 485	6 027
Derwent Valley (M) - Pt A	1 709	541	57	2 374	2.6	695	443
Glenorchy (C)	11 491	5 346	487	17 707	2.4	6 119	4 055
Hobart (C) - Inner	62	38	16	132	2.1	71	52
Hobart (C) - Remainder	10 939	6 642	1 372	19 739	2.2	10 470	7 780
Kingborough (M) - Pt A	7 237	1 913	161	9 494	2.7	5 350	3 914
Sorell (M) - Pt A	2 716	941	69	3 831	2.5	1 473	977
Total Greater Hobart (SSD) 2001	50 867	20 597	2 613	76 072	2.4	34 191	24 186
Total Greater Hobart (SSD) 1996	49 612	18 462	2 929	72 778	2.5	na	na
TOTAL GREATER HOBART (SD) 2001	50 867	20 597	2 613	76 072	2.4	34 191	24 186
TOTAL GREATER HOBART (SD) 1996	49 612	18 462	2 929	72 778	2.5	na	na
<b>SOUTHERN (SD)</b>							
Southern (SSD)							
Central Highlands (M)	616	234	16	952	2.5	267	135
Derwent Valley (M) - Pt B	782	187	15	1 014	2.7	379	237
Glamorgan/Spring Bay (M)	1 124	446	34	1 771	2.2	522	294
Huon Valley (M)	3 564	1 056	105	4 935	2.7	1 959	1 232
Kingborough (M) - Pt B	708	241	21	1 043	2.4	476	329
Sorell (M) - Pt B	262	83	7	367	2.6	151	94
Southern Midlands (M)	1 558	450	29	2 077	2.6	691	409
Tasman (M)	630	238	16	926	2.3	314	173
Total Southern (SSD) 2001	9 244	2 935	243	13 085	2.5	4 759	2 903
Total Southern (SSD) 1996	9 233	2 536	216	12 477	2.7	na	na
TOTAL SOUTHERN (SD) 2001	9 244	2 935	243	13 085	2.5	4 759	2 903
TOTAL SOUTHERN (SD) 1996	9 233	2 536	216	12 477	2.7	na	na
<b>NORTHERN (SD)</b>							
Greater Launceston (SSD)							
George Town (M) - Pt A	1 471	551	28	2 117	2.5	752	477
Launceston (C) - Inner	35	51	13	112	1.7	58	38
Launceston (C) - Pt B	14 888	7 109	1 037	23 669	2.3	9 363	6 363
Meander Valley (M) - Pt A	2 132	582	76	2 867	2.6	1 382	986
Northern Midlands (M) - Pt A	2 007	589	42	2 688	2.6	1 129	760
West Tamar (M) - Pt A	4 982	1 398	134	6 668	2.6	3 315	2 289
Total Greater Launceston (SSD) 2001	25 515	10 280	1 330	38 121	2.4	15 999	10 913
Total Greater Launceston (SSD) 1996	25 403	9 247	1 433	36 897	2.5	na	na

na not available

(a) Comprises one, two and three family households.

(b) Includes 'Visitors only' and 'Other not classifiable' households.

(c) Mean household size is the average number of persons usually resident in a household. Excludes 'Visitors only' and 'Other not classifiable' households.

(d) Used at home by at least one person in the household in the week before Census Night.

Geographic area	HOUSEHOLD TYPE				SIZE	HOUSEHOLDS WHICH USED	
	Family(a)	Lone person	Group	Total(b)	Mean(c)	a personal computer(d)	the Internet(d)
	no.	no.	no.	no.	persons	no.	no.
<b>NORTHERN (SD) cont.</b>							
<b>Central North (SSD)</b>							
George Town (M) - Pt B	289	71	7	385	2.6	139	85
Launceston (C) - Pt C	782	165	19	994	2.8	411	245
Meander Valley (M) - Pt B	2 732	945	71	3 838	2.5	1 449	882
Northern Midlands (M) - Pt B	1 223	410	32	1 719	2.6	596	371
West Tamar (M) - Pt B	494	109	9	625	2.8	279	184
<i>Total Central North (SSD) 2001</i>	<i>5 520</i>	<i>1 700</i>	<i>138</i>	<i>7 561</i>	<i>2.6</i>	<i>2 874</i>	<i>1 767</i>
<i>Total Central North (SSD) 1996</i>	<i>5 605</i>	<i>1 553</i>	<i>123</i>	<i>7 430</i>	<i>2.7</i>	<i>na</i>	<i>na</i>
<b>North Eastern (SSD)</b>							
Break O'Day (M)	1 583	663	33	2 396	2.3	785	453
Dorset (M)	1 962	720	51	2 813	2.5	947	526
Flinders (M)	238	101	6	358	2.4	137	92
<i>Total North Eastern (SSD) 2001</i>	<i>3 783</i>	<i>1 484</i>	<i>90</i>	<i>5 567</i>	<i>2.4</i>	<i>1 869</i>	<i>1 071</i>
<i>Total North Eastern (SSD) 1996</i>	<i>3 796</i>	<i>1 361</i>	<i>83</i>	<i>5 432</i>	<i>2.5</i>	<i>na</i>	<i>na</i>
<b>TOTAL NORTHERN (SD) 2001</b>	<b>34 818</b>	<b>13 464</b>	<b>1 558</b>	<b>51 249</b>	<b>2.4</b>	<b>20 742</b>	<b>13 751</b>
<b>TOTAL NORTHERN (SD) 1996</b>	<b>34 804</b>	<b>12 161</b>	<b>1 639</b>	<b>49 759</b>	<b>2.5</b>	<b>na</b>	<b>na</b>
<b>MERSEY-LYELL (SD)</b>							
<b>Burnie-Devonport (SSD)</b>							
Burnie (C) - Pt A	4 383	1 879	159	6 642	2.4	2 399	1 581
Central Coast (M) - Pt A	4 795	1 726	112	6 797	2.4	2 491	1 719
Devonport (C)	6 425	2 544	251	9 477	2.4	3 339	2 248
Latrobe (M) - Pt A	2 064	662	44	2 838	2.5	1 062	688
Waratah/Wynyard (M) - Pt A	2 918	1 127	51	4 200	2.5	1 543	1 023
<i>Total Burnie-Devonport (SSD) 2001</i>	<i>20 585</i>	<i>7 938</i>	<i>617</i>	<i>29 954</i>	<i>2.4</i>	<i>10 834</i>	<i>7 259</i>
<i>Total Burnie-Devonport (SSD) 1996</i>	<i>21 066</i>	<i>7 061</i>	<i>631</i>	<i>29 299</i>	<i>2.5</i>	<i>na</i>	<i>na</i>
<b>North Western Rural (SSD)</b>							
Burnie (C) - Pt B	569	120	9	713	2.8	299	179
Central Coast (M) - Pt B	881	169	9	1 090	2.9	490	334
Circular Head (M)	2 103	694	60	2 939	2.6	1 073	634
Kentish (M)	1 466	398	33	1 974	2.7	738	497
King Island (M)	471	181	17	696	2.4	275	166
Latrobe (M) - Pt B	187	49	4	244	2.8	101	67
Waratah/Wynyard (M) - Pt B	696	147	8	875	2.9	361	230
<i>Total North Western Rural (SSD) 2001</i>	<i>6 373</i>	<i>1 758</i>	<i>140</i>	<i>8 531</i>	<i>2.7</i>	<i>3 337</i>	<i>2 107</i>
<i>Total North Western Rural (SSD) 1996</i>	<i>6 527</i>	<i>1 564</i>	<i>157</i>	<i>8 434</i>	<i>2.8</i>	<i>na</i>	<i>na</i>
<b>Lyell (SSD)</b>							
West Coast (M)	1 418	661	38	2 281	2.4	740	451
<i>Total Lyell (SSD) 2001</i>	<i>1 418</i>	<i>661</i>	<i>38</i>	<i>2 281</i>	<i>2.4</i>	<i>740</i>	<i>451</i>
<i>Total Lyell (SSD) 1996</i>	<i>1 592</i>	<i>653</i>	<i>68</i>	<i>2 450</i>	<i>2.5</i>	<i>na</i>	<i>na</i>
<b>TOTAL MERSEY-LYELL (SD) 2001</b>	<b>28 376</b>	<b>10 357</b>	<b>795</b>	<b>40 766</b>	<b>2.5</b>	<b>14 911</b>	<b>9 817</b>
<b>TOTAL MERSEY-LYELL (SD) 1996</b>	<b>29 185</b>	<b>9 278</b>	<b>856</b>	<b>40 183</b>	<b>2.6</b>	<b>na</b>	<b>na</b>

na not available

(a) Comprises one, two and three family households.

(b) Includes 'Visitors only' and 'Other not classifiable' households.

(c) Mean household size is the average number of persons usually resident in a household. Excludes 'Visitors only' and 'Other not classifiable' households.

(d) Used at home by at least one person in the household in the week before Census Night.



<i>Geographic area</i>	HOUSEHOLD TYPE				SIZE Mean(c)	HOUSEHOLDS WHICH USED	
	<i>Family(a)</i>	<i>Lone person</i>	<i>Group</i>	<i>Total(b)</i>		<i>a personal computer(d)</i>	<i>the Internet(d)</i>
	no.	no.	no.	no.	persons	no.	no.
OFF-SHORE AREAS & MIGRATORY (SD)							
Off-Shore Areas & Migratory (SSD)							
Off-Shore Areas & Migratory	—	—	—	—	—	—	—
<i>Total Off-Shore Areas &amp; Migratory</i>							
(SSD) 2001	—	—	—	—	—	—	—
<i>Total Off-Shore Areas &amp; Migratory</i>							
(SSD) 1996	—	—	—	—	—	na	na
TOTAL OFF-SHORE AREAS & MIGRATORY (SD) 2001	—	—	—	—	—	—	—
TOTAL OFF-SHORE AREAS & MIGRATORY (SD) 1996	—	—	—	—	—	na	na
<b>TOTAL TASMANIA 2001</b>	<b>123 305</b>	<b>47 353</b>	<b>5 209</b>	<b>181 172</b>	<b>2.5</b>	<b>74 603</b>	<b>50 657</b>
<b>TOTAL TASMANIA 1996</b>	<b>122 834</b>	<b>42 437</b>	<b>5 640</b>	<b>175 197</b>	<b>2.6</b>	na	na

— nil or rounded to zero (including null cells)

na not available

(a) Comprises one, two and three family households.

(b) Includes 'Visitors only' and 'Other not classifiable' households.

(c) Mean household size is the average number of persons usually resident in a household. Excludes 'Visitors only' and 'Other not classifiable' households.

(d) Used at home by at least one person in the household in the week before Census Night.

## FAMILY TYPE, by Statistical Local Area

<i>Geographic area</i>	<i>Couple family with dependent children (a)</i>	<i>Couple family with non-dependent children only</i>	<i>Couple family without children</i>	<i>One parent family</i>	<i>Other family</i>	<i>Total</i>
<b>GREATER HOBART (SD)</b>						
Greater Hobart (SSD)						
Brighton (M)	1 379	281	894	854	31	3 439
Clarence (C)	4 889	1 070	5 059	2 236	149	13 403
Derwent Valley (M) - Pt A	628	147	636	286	20	1 717
Glenorchy (C)	3 830	956	4 098	2 490	207	11 581
Hobart (C) - Inner	14	3	28	13	4	62
Hobart (C) - Remainder	3 888	554	4 463	1 825	262	10 992
Kingborough (M) - Pt A	3 128	511	2 524	1 062	59	7 284
Sorell (M) - Pt A	1 066	173	974	493	28	2 734
<i>Total Greater Hobart (SSD) 2001</i>	<i>18 822</i>	<i>3 695</i>	<i>18 676</i>	<i>9 259</i>	<i>760</i>	<i>51 212</i>
<i>Total Greater Hobart (SSD) 1996</i>	<i>19 742</i>	<i>4 062</i>	<i>17 167</i>	<i>8 295</i>	<i>755</i>	<i>50 021</i>
<b>TOTAL GREATER HOBART (SD) 2001</b>	<b>18 822</b>	<b>3 695</b>	<b>18 676</b>	<b>9 259</b>	<b>760</b>	<b>51 212</b>
<b>TOTAL GREATER HOBART (SD) 1996</b>	<b>19 742</b>	<b>4 062</b>	<b>17 167</b>	<b>8 295</b>	<b>755</b>	<b>50 021</b>
<b>SOUTHERN (SD)</b>						
Southern (SSD)						
Central Highlands (M)	228	49	263	76	5	621
Derwent Valley (M) - Pt B	324	73	282	99	13	791
Glamorgan/Spring Bay (M)	305	75	620	116	13	1 129
Huon Valley (M)	1 398	239	1 380	546	39	3 602
Kingborough (M) - Pt B	254	37	336	83	4	714
Sorell (M) - Pt B	101	13	105	41	4	264
Southern Midlands (M)	642	123	586	199	22	1 572
Tasman (M)	195	30	324	79	3	631
<i>Total Southern (SSD) 2001</i>	<i>3 447</i>	<i>639</i>	<i>3 896</i>	<i>1 239</i>	<i>103</i>	<i>9 324</i>
<i>Total Southern (SSD) 1996</i>	<i>3 794</i>	<i>695</i>	<i>3 622</i>	<i>1 087</i>	<i>115</i>	<i>9 313</i>
<b>TOTAL SOUTHERN (SD) 2001</b>	<b>3 447</b>	<b>639</b>	<b>3 896</b>	<b>1 239</b>	<b>103</b>	<b>9 324</b>
<b>TOTAL SOUTHERN (SD) 1996</b>	<b>3 794</b>	<b>695</b>	<b>3 622</b>	<b>1 087</b>	<b>115</b>	<b>9 313</b>
<b>NORTHERN (SD)</b>						
Greater Launceston (SSD)						
George Town (M) - Pt A	519	106	569	267	15	1 476
Launceston (C) - Inner	6	3	20	5	3	37
Launceston (C) - Pt B	4 872	1 097	5 578	3 095	347	14 989
Meander Valley (M) - Pt A	946	130	794	253	19	2 142
Northern Midlands (M) - Pt A	814	160	779	256	10	2 019
West Tamar (M) - Pt A	1 950	344	2 051	623	42	5 010
<i>Total Greater Launceston (SSD) 2001</i>	<i>9 107</i>	<i>1 839</i>	<i>9 791</i>	<i>4 499</i>	<i>435</i>	<i>25 671</i>
<i>Total Greater Launceston (SSD) 1996</i>	<i>9 869</i>	<i>2 077</i>	<i>9 273</i>	<i>3 938</i>	<i>409</i>	<i>25 566</i>

(a) Comprises: Couple families with children under 15; Couple families with dependent students; and Couple families with children under 15 and dependent students.

Geographic area	Couple family with dependent children (a)	Couple family with non-dependent children only	Couple family without children	One parent family	Other family	Total
<b>NORTHERN (SD) cont.</b>						
<b>Central North (SSD)</b>						
George Town (M) - Pt B	113	20	119	37	—	289
Launceston (C) - Pt C	335	63	283	97	7	785
Meander Valley (M) - Pt B	997	230	1 150	333	36	2 746
Northern Midlands (M) - Pt B	484	116	509	115	8	1 232
West Tamar (M) - Pt B	208	42	192	53	5	500
<b>Total Central North (SSD) 2001</b>	<b>2 137</b>	<b>471</b>	<b>2 253</b>	<b>635</b>	<b>57</b>	<b>5 553</b>
<b>Total Central North (SSD) 1996</b>	<b>2 412</b>	<b>515</b>	<b>2 091</b>	<b>569</b>	<b>56</b>	<b>5 643</b>
<b>North Eastern (SSD)</b>						
Break O'Day (M)	504	89	780	206	13	1 592
Dorset (M)	732	119	860	245	12	1 968
Flinders (M)	81	19	108	27	3	238
<b>Total North Eastern (SSD) 2001</b>	<b>1 317</b>	<b>227</b>	<b>1 748</b>	<b>478</b>	<b>28</b>	<b>3 798</b>
<b>Total North Eastern (SSD) 1996</b>	<b>1 502</b>	<b>259</b>	<b>1 642</b>	<b>378</b>	<b>40</b>	<b>3 821</b>
<b>TOTAL NORTHERN (SD) 2001</b>	<b>12 561</b>	<b>2 537</b>	<b>13 792</b>	<b>5 612</b>	<b>520</b>	<b>35 022</b>
<b>TOTAL NORTHERN (SD) 1996</b>	<b>13 783</b>	<b>2 851</b>	<b>13 006</b>	<b>4 885</b>	<b>505</b>	<b>35 030</b>
<b>MERSEY-LYELL (SD)</b>						
<b>Burnie-Devonport (SSD)</b>						
Burnie (C) - Pt A	1 525	314	1 714	806	42	4 401
Central Coast (M) - Pt A	1 658	366	2 017	715	62	4 818
Devonport (C)	2 124	458	2 604	1 205	69	6 460
Latrobe (M) - Pt A	711	179	878	284	22	2 074
Waratah/Wynyard (M) - Pt A	1 022	222	1 195	472	24	2 935
<b>Total Burnie-Devonport (SSD) 2001</b>	<b>7 040</b>	<b>1 539</b>	<b>8 408</b>	<b>3 482</b>	<b>219</b>	<b>20 688</b>
<b>Total Burnie-Devonport (SSD) 1996</b>	<b>8 002</b>	<b>1 767</b>	<b>7 974</b>	<b>3 211</b>	<b>226</b>	<b>21 180</b>
<b>North Western Rural (SSD)</b>						
Burnie (C) - Pt B	247	45	215	57	7	571
Central Coast (M) - Pt B	421	75	317	69	5	887
Circular Head (M)	898	180	756	251	26	2 111
Kentish (M)	611	121	556	178	14	1 480
King Island (M)	157	44	222	41	7	471
Latrobe (M) - Pt B	78	23	70	15	3	189
Waratah/Wynyard (M) - Pt B	322	52	243	81	3	701
<b>Total North Western Rural (SSD) 2001</b>	<b>2 734</b>	<b>540</b>	<b>2 379</b>	<b>692</b>	<b>65</b>	<b>6 410</b>
<b>Total North Western Rural (SSD) 1996</b>	<b>3 063</b>	<b>628</b>	<b>2 204</b>	<b>596</b>	<b>73</b>	<b>6 564</b>
<b>Lyll (SSD)</b>						
West Coast (M)	586	95	523	192	26	1 422
<b>Total Lyell (SSD) 2001</b>	<b>586</b>	<b>95</b>	<b>523</b>	<b>192</b>	<b>26</b>	<b>1 422</b>
<b>Total Lyell (SSD) 1996</b>	<b>768</b>	<b>106</b>	<b>511</b>	<b>193</b>	<b>20</b>	<b>1 598</b>
<b>TOTAL MERSEY-LYELL (SD) 2001</b>	<b>10 360</b>	<b>2 174</b>	<b>11 310</b>	<b>4 366</b>	<b>310</b>	<b>28 520</b>
<b>TOTAL MERSEY-LYELL (SD) 1996</b>	<b>11 833</b>	<b>2 501</b>	<b>10 689</b>	<b>4 000</b>	<b>319</b>	<b>29 342</b>

— nil or rounded to zero (including null cells)

(a) Comprises: Couple families with children under 15; Couple families with dependent students; and Couple families with children under 15 and dependent students.

FAMILY TYPE, by Statistical Local Area *continued*

<i>Geographic area</i>	<i>Couple family with dependent children (a)</i>	<i>Couple family with non-dependent children only</i>	<i>Couple family without children</i>	<i>One parent family</i>	<i>Other family</i>	<i>Total</i>
OFF-SHORE AREAS & MIGRATORY (SD)						
Off-Shore Areas & Migratory (SSD)						
Off-Shore Areas & Migratory	—	—	—	—	—	—
Total Off-Shore Areas & Migratory (SSD) 2001	—	—	—	—	—	—
Total Off-Shore Areas & Migratory (SSD) 1996	—	—	—	—	—	—
TOTAL OFF-SHORE AREAS & MIGRATORY (SD) 2001	—	—	—	—	—	—
TOTAL OFF-SHORE AREAS & MIGRATORY (SD) 1996	—	—	—	—	—	—
<b>TOTAL TASMANIA 2001</b>	<b>45 190</b>	<b>9 045</b>	<b>47 674</b>	<b>20 476</b>	<b>1 693</b>	<b>124 078</b>
<b>TOTAL TASMANIA 1996</b>	<b>49 152</b>	<b>10 109</b>	<b>44 484</b>	<b>18 267</b>	<b>1 694</b>	<b>123 706</b>

— nil or rounded to zero (including null cells)

(a) Comprises: Couple families with children under 15; Couple families with dependent students; and Couple families with children under 15 and dependent students.

STATISTICAL LOCAL AREAS, Ranked by number of persons enumerated(a)

<i>Rank</i>		<i>Persons</i> no.
1	Launceston (C) - Pt B	57 685
2	Clarence (C)	47 446
3	Hobart (C) - Remainder	46 304
4	Glenorchy (C)	42 518
5	Kingborough (M) - Pt A	25 523
6	Devonport (C)	23 030
7	West Tamar (M) - Pt A	17 624
8	Central Coast (M) - Pt A	16 848
9	Burnie (C) - Pt A	16 167
10	Huon Valley (M)	13 160
11	Brighton (M)	12 542
12	Waratah/Wynyard (M) - Pt A	10 456
13	Meander Valley (M) - Pt B	9 751
14	Sorell (M) - Pt A	9 590
15	Circular Head (M)	7 702
16	Meander Valley (M) - Pt A	7 624
17	Latrobe (M) - Pt A	7 181
18	Northern Midlands (M) - Pt A	6 991
19	Dorset (M)	6 979
20	Derwent Valley (M) - Pt A	6 231
21	Break O'Day (M)	5 554
22	Southern Midlands (M)	5 521
23	West Coast (M)	5 515
24	Kentish (M)	5 407
25	George Town (M) - Pt A	5 263
26	Northern Midlands (M) - Pt B	4 436
27	Glamorgan/Spring Bay (M)	4 080
28	Central Coast (M) - Pt B	3 090
29	Derwent Valley (M) - Pt B	2 779
30	Launceston (C) - Pt C	2 731
31	Waratah/Wynyard (M) - Pt B	2 627
32	Kingborough (M) - Pt B	2 468
33	Central Highlands (M)	2 348
34	Tasman (M)	2 267
35	Burnie (C) - Pt B	1 978
36	West Tamar (M) - Pt B	1 722
37	King Island (M)	1 687
38	Hobart (C) - Inner	1 015
39	George Town (M) - Pt B	1 008
40	Sorell (M) - Pt B	933
41	Off-Shore Areas & Migratory	926
42	Flinders (M)	864
43	Latrobe (M) - Pt B	664
44	Launceston (C) - Inner	417

(a) Includes overseas visitors.

<i>Rank</i>		<i>Persons</i> no.
1	Launceston (C) - Pt B	57 607
2	Clarence (C)	48 202
3	Hobart (C) - Remainder	45 519
4	Glenorchy (C)	42 963
5	Kingborough (M) - Pt A	25 995
6	Devonport (C)	23 522
7	West Tamar (M) - Pt A	17 995
8	Central Coast (M) - Pt A	17 286
9	Burnie (C) - Pt A	16 361
10	Huon Valley (M)	13 413
11	Brighton (M)	12 599
12	Waratah/Wynyard (M) - Pt A	10 693
13	Meander Valley (M) - Pt B	9 956
14	Sorell (M) - Pt A	9 821
15	Circular Head (M)	7 823
16	Meander Valley (M) - Pt A	7 642
17	Latrobe (M) - Pt A	7 322
18	Dorset (M)	7 160
19	Northern Midlands (M) - Pt A	7 141
20	Derwent Valley (M) - Pt A	6 361
21	Break O'Day (M)	5 693
22	Southern Midlands (M)	5 622
23	West Coast (M)	5 393
24	Kentish (M)	5 388
25	George Town (M) - Pt A	5 335
26	Northern Midlands (M) - Pt B	4 509
27	Glamorgan/Spring Bay (M)	3 932
28	Central Coast (M) - Pt B	3 174
29	Derwent Valley (M) - Pt B	2 824
30	Launceston (C) - Pt C	2 811
31	Waratah/Wynyard (M) - Pt B	2 550
32	Kingborough (M) - Pt B	2 506
33	Central Highlands (M)	2 285
34	Tasman (M)	2 203
35	Burnie (C) - Pt B	2 013
36	West Tamar (M) - Pt B	1 771
37	King Island (M)	1 683
38	George Town (M) - Pt B	1 037
39	Sorell (M) - Pt B	953
40	Flinders (M)	869
41	Latrobe (M) - Pt B	695
42	Hobart (C) - Inner	459
43	Off-Shore Areas & Migratory	250
44	Launceston (C) - Inner	226

## STATISTICAL LOCAL AREAS, Ranked by median age(a)

<i>Rank</i>		<i>Median age years</i>
1	Off-Shore Areas & Migratory	45
2	Hobart (C) - Inner	43
3	Glamorgan/Spring Bay (M)	43
4	Break O'Day (M)	43
5	Kingborough (M) - Pt B	42
6	Flinders (M)	42
7	Tasman (M)	41
8	Central Highlands (M)	39
9	Meander Valley (M) - Pt B	39
10	Central Coast (M) - Pt A	39
11	King Island (M)	39
12	Clarence (C)	38
13	Sorell (M) - Pt B	38
14	Northern Midlands (M) - Pt B	38
15	Latrobe (M) - Pt A	38
16	Glenorchy (C)	37
17	Launceston (C) - Inner	37
18	West Tamar (M) - Pt A	37
19	West Tamar (M) - Pt B	37
20	Dorset (M)	37
21	Devonport (C)	37
22	Waratah/Wynyard (M) - Pt A	37
23	Derwent Valley (M) - Pt A	36
24	Hobart (C) - Remainder	36
25	Kingborough (M) - Pt A	36
26	Derwent Valley (M) - Pt B	36
27	Huon Valley (M)	36
28	Southern Midlands (M)	36
29	George Town (M) - Pt A	36
30	Northern Midlands (M) - Pt A	36
31	George Town (M) - Pt B	36
32	Kentish (M)	36
33	Sorell (M) - Pt A	35
34	Launceston (C) - Pt B	35
35	Launceston (C) - Pt C	35
36	Burnie (C) - Pt A	35
37	Burnie (C) - Pt B	35
38	Central Coast (M) - Pt B	34
39	Circular Head (M)	34
40	Latrobe (M) - Pt B	34
41	Waratah/Wynyard (M) - Pt B	34
42	West Coast (M)	34
43	Meander Valley (M) - Pt A	33
44	Brighton (M)	29

(a) Includes overseas visitors.

<i>Rank</i>		<i>Median weekly individual income</i>
		<i>\$</i>
1	Launceston (C) - Inner	657
2	Off-Shore Areas & Migratory	519
3	King Island (M)	417
4	Hobart (C) - Remainder	402
5	Meander Valley (M) - Pt A	400
6	Kingborough (M) - Pt A	391
7	Latrobe (M) - Pt B	351
8	Clarence (C)	351
9	Northern Midlands (M) - Pt A	332
10	Circular Head (M)	329
11	Flinders (M)	327
12	West Tamar (M) - Pt A	325
13	Hobart (C) - Inner	320
14	West Tamar (M) - Pt B	319
15	West Coast (M)	319
16	Sorell (M) - Pt A	317
17	Launceston (C) - Pt B	306
18	Burnie (C) - Pt B	305
19	Dorset (M)	303
20	Waratah/Wynyard (M) - Pt B	301
21	Launceston (C) - Pt C	298
22	Glenorchy (C)	296
23	Devonport (C)	292
24	Latrobe (M) - Pt A	291
25	Brighton (M)	287
26	Derwent Valley (M) - Pt A	285
27	Central Coast (M) - Pt B	285
28	Huon Valley (M)	285
29	Sorell (M) - Pt B	284
30	Northern Midlands (M) - Pt B	284
31	Derwent Valley (M) - Pt B	283
32	Burnie (C) - Pt A	282
33	Glamorgan/Spring Bay (M)	282
34	Meander Valley (M) - Pt B	281
35	Kingborough (M) - Pt B	280
36	Central Coast (M) - Pt A	279
37	Southern Midlands (M)	279
38	George Town (M) - Pt B	277
39	Waratah/Wynyard (M) - Pt A	274
40	Central Highlands (M)	274
41	George Town (M) - Pt A	273
42	Kentish (M)	268
43	Tasman (M)	261
44	Break O'Day (M)	239



<i>Rank</i>		<i>Persons born in Australia</i>
		<i>%</i>
1	Latrobe (M) - Pt B	93.5
2	Southern Midlands (M)	90.8
3	Flinders (M)	90.0
4	Brighton (M)	89.8
5	Burnie (C) - Pt B	89.5
6	Dorset (M)	89.3
7	Central Highlands (M)	88.8
8	Northern Midlands (M) - Pt B	88.8
9	Derwent Valley (M) - Pt A	88.6
10	Circular Head (M)	88.6
11	Northern Midlands (M) - Pt A	88.1
12	West Coast (M)	88.0
13	Latrobe (M) - Pt A	87.8
14	Sorell (M) - Pt A	87.8
15	Waratah/Wynyard (M) - Pt A	87.5
16	Derwent Valley (M) - Pt B	87.2
17	Meander Valley (M) - Pt A	86.9
18	Devonport (C)	86.7
19	Central Coast (M) - Pt B	86.7
20	West Tamar (M) - Pt B	86.5
21	Central Coast (M) - Pt A	86.4
22	Sorell (M) - Pt B	86.3
23	Burnie (C) - Pt A	86.2
24	Launceston (C) - Pt C	86.2
25	Clarence (C)	86.1
26	Launceston (C) - Pt B	85.5
27	Glenorchy (C)	85.2
28	George Town (M) - Pt B	85.2
29	Glamorgan/Spring Bay (M)	85.2
30	Waratah/Wynyard (M) - Pt B	84.9
31	Tasman (M)	84.7
32	Meander Valley (M) - Pt B	84.4
33	Kentish (M)	84.3
34	King Island (M)	83.8
35	Break O'Day (M)	83.3
36	Huon Valley (M)	82.8
37	West Tamar (M) - Pt A	82.8
38	George Town (M) - Pt A	81.5
39	Kingborough (M) - Pt A	80.9
40	Hobart (C) - Remainder	78.1
41	Kingborough (M) - Pt B	76.1
42	Launceston (C) - Inner	68.8
43	Hobart (C) - Inner	65.1
44	Off-Shore Areas & Migratory	64.4

## BASIC COMMUNITY PROFILES

---

### ABOUT THE BASIC COMMUNITY PROFILE

The key characteristics from the Census are summarised in a set of 33 standard tables which make up the Basic Community Profile (BCP).

The first 21 tables (B01–B21) included in this publication provide a range of social, demographic and housing characteristics from the Census. Similar BCP tables are available for other geographic areas, including Collection Districts, Local Government Areas, Postal Areas and Suburbs.

The remainder of the BCP series (B22–B33) provide education and labour force related data and are published in *Census of Population and Housing: Selected Education and Labour Force Characteristics* (Cat. nos 2017.0–8).

The first release BCPs for Statistical Local Areas are available from our web site free of charge.

For further information about the Community Profile Series, please refer to *Appendix 2, Census Products and Services*.

	Males	Females	Persons
Total Persons(a)	224 038	232 614	456 652
Aged 15 years and over(a)	173 943	185 023	358 966
Aged 65 years and over(a)	26 803	34 567	61 370
Aboriginal	6 760	6 846	13 606
Torres Strait Islander	639	614	1 253
Both Aboriginal & Torres Strait Islander(b)	467	447	914
<i>Total Indigenous persons</i>	<i>7 866</i>	<i>7 907</i>	<i>15 773</i>
Born in Australia	188 680	197 356	386 036
Born overseas(c)	22 777	22 598	45 375
Speaks English only	206 538	214 496	421 034
Speaks other language(d)	6 894	7 200	14 094
Indigenous Persons aged 18 years and over	4 022	4 334	8 356
Australian citizen	206 362	214 814	421 176
Australian citizen aged 18 years and over	150 036	161 062	311 098
Enumerated in private dwelling(a)	217 564	226 151	443 715
Enumerated elsewhere(a)(e)	6 474	6 463	12 937
Overseas visitors	859	952	1 811

- (a) Includes overseas visitors.
- (b) Applicable to persons who are of both Aboriginal and Torres Strait Islander origin.
- (c) Includes 'inadequately described', 'at sea' and 'not elsewhere classified'.
- (d) Includes 'non-verbal so described' and 'inadequately described'.
- (e) Includes non-private dwellings, migratory and off-shore.

	Males	Females	Persons
Counted at home	212 977	222 963	435 940
Visitor from:			
Same Statistical Local Area	2 389	2 197	4 586
Different Statistical Local Area in:			
New South Wales	505	423	928
Victoria	974	764	1 738
Queensland	329	329	658
South Australia	160	125	285
Western Australia	176	159	335
Tasmania	5 592	4 620	10 212
Northern Territory	32	24	56
Australian Capital Territory	45	58	103
Other Territories	—	—	—
Total	7 813	6 502	14 315
Total visitors	10 202	8 699	18 901
Overseas visitors	859	952	1 811
<b>Total</b>	<b>224 038</b>	<b>232 614</b>	<b>456 652</b>

— nil or rounded to zero (including null cells)

	Males	Females	Persons		Males	Females	Persons
0 years	2 884	2 735	5 619	45	3 443	3 477	6 920
1	2 983	2 831	5 814	46	3 283	3 377	6 660
2	3 209	3 081	6 290	47	3 137	3 360	6 497
3	3 192	3 016	6 208	48	3 250	3 257	6 507
4	3 233	3 124	6 357	49	3 230	3 178	6 408
0-4	15 501	14 787	30 288	45-49	16 343	16 649	32 992
5	3 297	3 148	6 445	50	3 175	3 250	6 425
6	3 472	3 249	6 721	51	3 102	3 058	6 160
7	3 483	3 189	6 672	52	2 965	3 050	6 015
8	3 379	3 225	6 604	53	3 099	3 008	6 107
9	3 367	3 292	6 659	54	3 302	3 215	6 517
5-9	16 998	16 103	33 101	50-54	15 643	15 581	31 224
10	3 506	3 402	6 908	55	2 605	2 692	5 297
11	3 541	3 205	6 746	56	2 557	2 544	5 101
12	3 508	3 378	6 886	57	2 600	2 483	5 083
13	3 393	3 268	6 661	58	2 300	2 245	4 545
14	3 583	3 362	6 945	59	2 304	2 200	4 504
10-14	17 531	16 615	34 146	55-59	12 366	12 164	24 530
15	3 512	3 385	6 897	60	2 183	2 181	4 364
16	3 580	3 428	7 008	61	2 084	2 068	4 152
17	3 372	3 309	6 681	62	2 057	2 009	4 066
18	3 299	3 115	6 414	63	1 977	2 002	3 979
19	3 144	3 018	6 162	64	1 877	1 933	3 810
15-19	16 907	16 255	33 162	60-64	10 178	10 193	20 371
20	2 961	2 975	5 936	65	1 744	1 859	3 603
21	2 838	2 753	5 591	66	1 696	1 691	3 387
22	2 726	2 690	5 416	67	1 642	1 678	3 320
23	2 527	2 554	5 081	68	1 590	1 713	3 303
24	2 484	2 502	4 986	69	1 573	1 715	3 288
20-24	13 536	13 474	27 010	65-69	8 245	8 656	16 901
25	2 590	2 591	5 181	70	1 607	1 737	3 344
26	2 571	2 650	5 221	71	1 530	1 629	3 159
27	2 642	2 724	5 366	72	1 508	1 683	3 191
28	2 675	2 913	5 588	73	1 442	1 676	3 118
29	2 793	3 170	5 963	74	1 362	1 517	2 879
25-29	13 271	14 048	27 319	70-74	7 449	8 242	15 691
30	3 127	3 335	6 462	75	1 405	1 597	3 002
31	2 949	3 112	6 061	76	1 225	1 545	2 770
32	3 014	3 236	6 250	77	1 101	1 472	2 573
33	2 930	3 145	6 075	78	1 040	1 425	2 465
34	2 800	3 171	5 971	79	973	1 387	2 360
30-34	14 820	15 999	30 819	75-79	5 744	7 426	13 170
35	2 795	3 082	5 877	80-84	3 139	5 367	8 506
36	3 099	3 301	6 400	85-89	1 620	3 243	4 863
37	3 321	3 554	6 875	90-94	453	1 242	1 695
38	3 305	3 554	6 859	95-99	98	301	399
39	3 441	3 627	7 068	100 years and over	18	35	53
35-39	15 961	17 118	33 079	Overseas visitors	859	952	1 811
40	3 664	3 952	7 616	<b>Total</b>	<b>224 038</b>	<b>232 614</b>	<b>456 652</b>
41	3 381	3 587	6 968				
42	3 531	3 673	7 204				
43	3 530	3 504	7 034				
44	3 252	3 448	6 700				
40-44	17 358	18 164	35 522				

**B04**

## AGE BY REGISTERED MARITAL STATUS BY SEX,

Persons aged 15 years and over

	MARRIED		SEPARATED		DIVORCED		WIDOWED		NEVER MARRIED		TOTAL		
	Males	Females	Males	Females	Males	Females	Males	Females	Males	Females	Males	Females	Persons
15-19 years	48	76	11	14	16	9	10	18	16 822	16 138	16 907	16 255	33 162
20-24 years	770	1 503	59	146	18	40	10	11	12 679	11 774	13 536	13 474	27 010
25-29 years	3 670	5 449	255	512	200	453	6	32	9 140	7 602	13 271	14 048	27 319
30-34 years	7 427	9 081	583	881	751	1 208	18	71	6 041	4 758	14 820	15 999	30 819
35-39 years	9 599	10 884	836	1 145	1 446	2 067	37	145	4 043	2 877	15 961	17 118	33 079
40-44 years	11 340	11 969	973	1 246	2 112	2 668	83	286	2 850	1 995	17 358	18 164	35 522
45-49 years	11 103	11 411	972	1 059	2 189	2 613	145	403	1 934	1 163	16 343	16 649	32 992
50-54 years	11 341	10 942	868	821	2 036	2 418	178	625	1 220	775	15 643	15 581	31 224
55-59 years	9 209	8 539	534	458	1 584	1 734	290	979	749	454	12 366	12 164	24 530
60-64 years	7 758	6 900	361	287	1 088	1 207	363	1 427	608	372	10 178	10 193	20 371
65-69 years	6 228	5 356	280	199	709	810	538	1 988	490	303	8 245	8 656	16 901
70-74 years	5 589	4 233	186	133	467	515	777	3 043	430	318	7 449	8 242	15 691
75-79 years	4 001	2 902	109	85	273	302	1 023	3 820	338	317	5 744	7 426	13 170
80-84 years	1 993	1 304	59	49	114	177	811	3 588	162	249	3 139	5 367	8 506
85 years and over	1 050	539	28	17	62	97	921	3 856	128	312	2 189	4 821	7 010
Overseas visitors	273	233	12	11	41	43	15	33	453	546	794	866	1 660
<b>Total</b>	<b>91 399</b>	<b>91 321</b>	<b>6 126</b>	<b>7 063</b>	<b>13 106</b>	<b>16 361</b>	<b>5 225</b>	<b>20 325</b>	<b>58 087</b>	<b>49 953</b>	<b>173 943</b>	<b>185 023</b>	<b>358 966</b>

ANCESTRY BY BIRTHPLACE OF PARENTS(a),  
Responses and Persons (excluding overseas visitors)(b)

	<i>Both parents born in Australia</i>	<i>Father only born overseas</i>	<i>Mother only born overseas</i>	<i>Both parents born overseas</i>	<i>Birthplace not stated(c)</i>	<i>Total responses(b)</i>
<b>Oceania:</b>						
Australian	187 732	11 660	8 257	1 133	6 732	215 514
Other Australian Peoples(d)	547	33	10	7	44	641
Maori	150	140	61	323	32	706
New Zealander	172	316	196	950	58	1 692
Other Oceanian(e)	67	85	82	222	18	474
<i>Total</i>	<i>188 668</i>	<i>12 234</i>	<i>8 606</i>	<i>2 635</i>	<i>6 884</i>	<i>219 027</i>
<b>North-West European:</b>						
English	133 165	12 392	8 464	26 183	5 542	185 746
Scottish	5 616	1 125	724	3 285	218	10 968
Irish	33 378	2 779	1 593	3 665	1 137	42 552
Dutch	1 615	1 183	702	4 462	142	8 104
German	7 411	1 181	617	3 359	307	12 875
Other North-West European(e)	2 102	704	390	2 929	124	6 249
<i>Total</i>	<i>183 287</i>	<i>19 364</i>	<i>12 490</i>	<i>43 883</i>	<i>7 470</i>	<i>266 494</i>
<b>Southern and Eastern European:</b>						
Italian	1 810	927	198	2 164	148	5 247
Maltese	102	91	23	189	4	409
Croatian	57	113	20	502	14	706
Greek	514	309	92	1 182	87	2 184
Macedonian	3	8	3	27	5	46
Serbian	60	100	10	403	3	576
Polish	505	357	96	1 773	48	2 779
Russian	70	54	28	337	15	504
Other Southern and Eastern European(e)	688	569	152	2 430	86	3 925
<i>Total</i>	<i>3 809</i>	<i>2 528</i>	<i>622</i>	<i>9 007</i>	<i>410</i>	<i>16 376</i>
<b>North African and Middle Eastern:</b>						
Lebanese	43	24	5	96	12	180
Turkish	5	9	3	52	8	77
Other North African and Middle Eastern(e)	73	65	17	508	31	694
<i>Total</i>	<i>121</i>	<i>98</i>	<i>25</i>	<i>656</i>	<i>51</i>	<i>951</i>
<b>South-East Asian:</b>						
Vietnamese	3	5	13	144	7	172
Filipino	18	15	175	752	30	990
Indonesian	7	13	12	90	4	126
Other	24	39	51	532	25	671
<i>Total</i>	<i>52</i>	<i>72</i>	<i>251</i>	<i>1 518</i>	<i>66</i>	<i>1 959</i>
<b>North-East Asian:</b>						
Chinese	563	161	112	1 705	68	2 609
Other North-East Asian(e)	43	22	41	490	21	617
<i>Total</i>	<i>606</i>	<i>183</i>	<i>153</i>	<i>2 195</i>	<i>89</i>	<i>3 226</i>
<b>Southern and Central Asian:</b>						
Indian	98	97	54	676	28	953
Other Southern and Central Asian(e)	42	39	22	357	22	482
<i>Total</i>	<i>140</i>	<i>136</i>	<i>76</i>	<i>1 033</i>	<i>50</i>	<i>1 435</i>
<b>People of the Americas</b>						
Sub-Saharan African	168	296	187	1 146	48	1 845
Not stated(f)	50	83	41	669	10	853
	17 044	846	572	1 549	12 951	32 962
<b>Total responses(b)</b>	<b>393 945</b>	<b>35 840</b>	<b>23 023</b>	<b>64 291</b>	<b>28 029</b>	<b>545 128</b>
<b>Total persons(b)</b>	<b>333 597</b>	<b>23 811</b>	<b>15 257</b>	<b>56 226</b>	<b>25 950</b>	<b>454 841</b>

(a) Refer to Glossary for further detail on ancestry.

(b) As this table is a multi-response table, the 'total responses' will not necessarily equal the 'total persons' count.

(c) Includes birthplace of either/both parents not stated.

(d) Includes responses of Aboriginal, Torres Strait Islander & Australian of South Sea Islander descent.

(e) If two responses are categorised in the 'other' category within the same region, only one is counted.

(f) Includes 'inadequately described'.

BIRTHPLACE (COUNTRIES) BY SEX,  
Persons

	<i>Males</i>	<i>Females</i>	<i>Persons</i>
Australia	188 680	197 356	386 036
Canada	239	271	510
China (excludes SARs and Taiwan Province)(a)	209	254	463
Croatia	178	120	298
Egypt	39	37	76
Fiji	109	151	260
France	80	91	171
Germany	953	955	1 908
Greece	332	256	588
Hong Kong (SAR of China)(a)	133	133	266
India	234	283	517
Indonesia	73	105	178
Ireland	306	298	604
Italy	674	453	1 127
Korea, Republic of (South)	109	183	292
Lebanon	31	18	49
Macedonia, FYROM(b)	15	10	25
Malaysia	357	362	719
Malta	63	37	100
Netherlands	1 259	1 224	2 483
New Zealand	1 836	1 754	3 590
Philippines	129	640	769
Poland	444	418	862
Singapore	114	141	255
South Africa	448	457	905
Sri Lanka	99	92	191
Turkey	22	16	38
United Kingdom(c)	10 703	10 603	21 306
United States of America	515	430	945
Viet Nam	90	69	159
Yugoslavia, Federal Republic of	196	117	313
Born elsewhere overseas(d)	2 788	2 620	5 408
Not stated	11 722	11 708	23 430
Overseas visitors	859	952	1 811
<b>Total</b>	<b>224 038</b>	<b>232 614</b>	<b>456 652</b>

- (a) SAR is an abbreviation of 'Special Administrative Region'. SARs comprise 'Hong Kong (SAR of China)' and 'Macau (SAR of China)'.
- (b) FYROM is an abbreviation of 'Former Yugoslav Republic of Macedonia'.
- (c) Includes 'England', 'Scotland', 'Wales', 'Northern Ireland', 'Channel Islands', 'Isle of Man', and 'United Kingdom, n.f.d.'.
- (d) Includes 'inadequately described', 'at sea' and 'not elsewhere classified'.



	Males	Females	Persons
<b>Oceania and Antarctica:</b>			
Australia(a)	188 680	197 356	386 036
Other(b)	2 102	2 113	4 215
<i>Total</i>	190 782	199 469	390 251
<b>North-West Europe:</b>			
North-West Europe, n.f.d.	—	—	—
United Kingdom	10 703	10 603	21 306
Ireland	306	298	604
Western Europe	2 666	2 561	5 227
Northern Europe	220	197	417
<i>Total</i>	13 895	13 659	27 554
<b>Southern and Eastern Europe:</b>			
Southern and Eastern Europe, n.f.d.	—	—	—
Southern Europe	791	532	1 323
South Eastern Europe	950	679	1 629
Eastern Europe	990	845	1 835
<i>Total</i>	2 731	2 056	4 787
<b>North Africa and Middle East:</b>			
North Africa and the Middle East, n.f.d.	—	—	—
North Africa	119	96	215
Middle East	202	151	353
<i>Total</i>	321	247	568
<b>South-East Asia:</b>			
South-East Asia, n.f.d.	—	—	—
Mainland South-East Asia	263	290	553
Maritime South-East Asia	677	1 261	1 938
<i>Total</i>	940	1 551	2 491
<b>North-East Asia:</b>			
North-East Asia, n.f.d.	—	—	—
Chinese Asia (includes Mongolia)	368	417	785
Japan and the Koreas	186	333	519
<i>Total</i>	554	750	1 304
<b>Southern and Central Asia:</b>			
Southern and Central Asia, n.f.d.	—	—	—
Southern Asia	384	407	791
Central Asia	21	6	27
<i>Total</i>	405	413	818
<b>Americas:</b>			
Americas, n.f.d.	—	—	—
Northern America	757	705	1 462
South America	149	167	316
Central America	114	110	224
Caribbean	11	18	29
<i>Total</i>	1 031	1 000	2 031
<b>Sub-Saharan Africa:</b>			
Sub-Saharan Africa, n.f.d.	—	—	—
Central and West Africa	31	29	60
Southern and East Africa	684	690	1 374
<i>Total</i>	715	719	1 434
Other(c)	83	90	173
Not stated	11 722	11 708	23 430
Overseas visitors	859	952	1 811
<b>Total</b>	<b>224 038</b>	<b>232 614</b>	<b>456 652</b>

— nil or rounded to zero (including null cells)  
(a) Includes 'Australian External Territories'.  
(b) Includes 'Oceania and Antarctica, n.f.d.'.  
(c) Includes 'inadequately described', 'at sea' and 'not elsewhere classified'.

LANGUAGE SPOKEN AT HOME BY SEX,  
Persons

	Males	Females	Persons
Speaks English only	206 538	214 496	421 034
Speaks other language:			
Arabic (including Lebanese)	248	165	413
Australian Indigenous languages	21	16	37
Chinese languages:			
Cantonese	373	341	714
Mandarin	293	264	557
Other	37	34	71
Total	703	639	1 342
Croatian	180	148	328
French	181	192	373
German	647	716	1 363
Greek	669	601	1 270
Hindi	94	122	216
Hungarian	68	71	139
Indonesian	65	71	136
Italian	779	685	1 464
Japanese	100	147	247
Khmer	5	4	9
Korean	87	85	172
Macedonian	18	15	33
Maltese	17	10	27
Netherlandic	543	687	1 230
Persian	63	42	105
Polish	418	503	921
Portuguese	26	20	46
Russian	78	74	152
Samoan	12	9	21
Serbian	76	71	147
Sinhalese	29	28	57
South Slavic n.f.d.	38	31	69
Spanish	286	299	585
Tagalog (Filipino)	58	293	351
Tamil	44	38	82
Turkish	25	21	46
Vietnamese	80	63	143
Other(a)	1 236	1 334	2 570
Total	6 894	7 200	14 094
Not stated	9 747	9 966	19 713
Overseas visitors	859	952	1 811
<b>Total</b>	<b>224 038</b>	<b>232 614</b>	<b>456 652</b>

(a) Includes 'inadequately described' and 'non-verbal so described'.

PROFICIENCY IN SPOKEN ENGLISH BY YEAR OF ARRIVAL IN AUSTRALIA,  
Persons born overseas (excluding overseas visitors)(a)

	2001	2000	1999	1998	1997	1996	1991– 1995	1986– 1990	Before 1986	Not stated	Total
Speaks English only	290	421	406	324	268	371	1 373	2 272	27 826	1 527	35 078
Speaks other language and speaks English:											
Very well or Well	297	435	317	257	198	184	831	862	4 939	335	8 655
Not well or Not at all	176	101	67	58	24	29	124	84	516	132	1 311
Not stated(b)	5	7	3	7	5	12	8	7	50	14	118
Total	478	543	387	322	227	225	963	953	5 505	481	10 084
Not stated(c)	—	3	3	—	—	—	6	3	121	78	214
<b>Total</b>	<b>768</b>	<b>967</b>	<b>796</b>	<b>646</b>	<b>495</b>	<b>596</b>	<b>2 342</b>	<b>3 228</b>	<b>33 452</b>	<b>2 086</b>	<b>45 376</b>

— nil or rounded to zero (including null cells)

(a) Excludes persons who did not state their birthplace.

(b) Includes cases where language spoken at home was stated but proficiency in English was not stated.

(c) Includes cases where both language spoken at home and proficiency in English were not stated.

	Males	Females	Persons
Buddhism	1 015	1 002	2 017
Christianity:			
Anglican	70 480	76 933	147 413
Baptist	4 263	4 721	8 984
Brethren	1 033	1 129	2 162
Catholic	41 860	45 831	87 691
Churches of Christ	643	835	1 478
Jehovah's Witnesses	836	1 114	1 950
Latter Day Saints	743	862	1 605
Lutheran	1 021	1 005	2 026
Oriental Christian	16	17	33
Orthodox	1 149	1 009	2 158
Presbyterian and Reformed	6 068	6 440	12 508
Salvation Army	1 110	1 381	2 491
Seventh-day Adventist	494	610	1 104
Uniting Church	13 624	16 752	30 376
Pentecostal	1 064	1 173	2 237
Other Protestant	338	433	771
Other Christian(a)	4 956	5 570	10 526
Total	149 698	165 815	315 513
Hinduism	242	250	492
Islam	499	366	865
Judaism	90	90	180
Other Religions:			
Australian Aboriginal Traditional Religions	13	4	17
Other Religious Groups	627	794	1 421
Total	640	798	1 438
No religion(b)	42 102	36 570	78 672
Inadequately described(c)	4 539	3 695	8 234
Not stated	24 354	23 076	47 430
Overseas visitors	859	952	1 811
<b>Total</b>	<b>224 038</b>	<b>232 614</b>	<b>456 652</b>

(a) Includes 'Christian, n.f.d.'.

(b) Includes 'No religion, n.f.d.', 'Agnosticism', 'Atheism', 'Humanism' and 'Rationalism'.

(c) Includes 'Religious belief, n.f.d.'.

TYPE OF EDUCATIONAL INSTITUTION ATTENDING (FULL-/PART-TIME) BY SEX,  
Persons

	<i>Males</i>	<i>Females</i>	<i>Persons</i>
Pre-school	2 230	2 024	4 254
Infants/Primary:			
Government	18 223	16 975	35 198
Catholic	3 338	3 514	6 852
Other Non Government	2 065	1 909	3 974
<i>Total</i>	23 626	22 398	46 024
Secondary:			
Government	10 018	9 926	19 944
Catholic	2 760	2 861	5 621
Other Non Government	2 258	2 182	4 440
<i>Total</i>	15 036	14 969	30 005
Technical or Further Education Institution:			
Full-time	2 754	2 973	5 727
Part-time	3 846	4 213	8 059
Not stated(a)	56	34	90
<i>Total</i>	6 656	7 220	13 876
University or other Tertiary Institution:			
Full-time	4 151	4 693	8 844
Part-time	1 915	2 621	4 536
Not stated(a)	19	27	46
<i>Total</i>	6 085	7 341	13 426
Other:			
Full-time	373	462	835
Part-time	694	1 308	2 002
Not stated(a)	28	38	66
<i>Total</i>	1 095	1 808	2 903
Not attending	158 762	165 888	324 650
Not stated(b)	9 689	10 014	19 703
Overseas visitors	859	952	1 811
<b>Total</b>	<b>224 038</b>	<b>232 614</b>	<b>456 652</b>

- (a) Includes persons who stated they were attending an educational institution, but did not state whether full-time or part-time.
- (b) Includes persons who did not state whether or not they were attending an educational institution.

**B12****HIGHEST LEVEL OF SCHOOLING COMPLETED BY SEX (a),  
Persons aged 15 years and over (excluding overseas visitors)**

	<i>Males</i>	<i>Females</i>	<i>Persons</i>
Year 8 or below	16 385	17 063	33 448
Year 9 or equivalent	19 545	18 895	38 440
Year 10 or equivalent	58 815	60 615	119 430
Year 11 or equivalent	11 985	14 317	26 302
Year 12 or equivalent	46 495	50 683	97 178
Still at school	6 324	6 804	13 128
Did not go to school	738	698	1 436
Not stated	12 862	15 082	27 944
<b>Total</b>	<b>173 149</b>	<b>184 157</b>	<b>357 306</b>

(a) Refers to Primary or Secondary schooling.

WEEKLY INDIVIDUAL INCOME BY AGE BY SEX,  
Persons aged 15 years and over

	15-19 years	20-24 years	25-34 years	35-44 years	45-54 years	55-64 years	65-74 years	75 years and over	Total
MALE									
Negative/Nil income	4 785	513	478	577	747	579	113	48	7 840
\$1-\$39	1 195	114	64	109	120	121	34	14	1 771
\$40-\$79	2 032	241	94	146	179	192	81	34	2 999
\$80-\$119	1 424	516	260	274	396	385	194	86	3 535
\$120-\$159	1 336	1 249	1 440	1 231	1 374	1 642	1 087	587	9 946
\$160-\$199	881	1 546	2 341	2 283	2 622	3 568	3 871	2 258	19 370
\$200-\$299	1 619	1 475	1 959	2 413	2 542	3 055	3 869	2 961	19 893
\$300-\$399	974	1 571	1 869	1 980	1 995	2 089	2 113	1 430	14 021
\$400-\$499	444	1 966	3 047	2 855	2 593	1 850	1 133	775	14 663
\$500-\$599	155	1 569	3 762	3 799	3 325	2 025	713	619	15 967
\$600-\$699	68	960	3 133	3 152	2 634	1 367	417	284	12 015
\$700-\$799	22	528	2 503	2 814	2 351	1 007	257	174	9 656
\$800-\$999	26	345	3 077	4 445	3 590	1 303	273	193	13 252
\$1,000-\$1,499	13	145	2 146	4 295	4 181	1 384	208	132	12 504
\$1,500 or more	22	44	554	1 443	1 885	814	173	90	5 025
Not stated	1 911	754	1 364	1 503	1 452	1 163	1 158	1 387	10 692
Overseas visitors	120	163	198	118	81	77	27	10	794
<b>Total</b>	<b>17 027</b>	<b>13 699</b>	<b>28 289</b>	<b>33 437</b>	<b>32 067</b>	<b>22 621</b>	<b>15 721</b>	<b>11 082</b>	<b>173 943</b>
FEMALE									
Negative/Nil income	3 981	472	985	1 384	2 209	1 308	153	106	10 598
\$1-\$39	1 302	138	418	576	480	291	60	37	3 302
\$40-\$79	2 132	347	1 082	1 156	664	384	183	124	6 072
\$80-\$119	1 530	688	1 400	1 337	835	674	420	243	7 127
\$120-\$159	1 593	1 162	1 799	1 834	1 918	2 001	1 314	842	12 463
\$160-\$199	1 025	1 332	2 015	2 517	3 354	4 763	4 304	2 935	22 245
\$200-\$299	1 665	2 154	4 205	5 074	4 325	4 513	5 693	7 375	35 004
\$300-\$399	917	2 195	4 323	4 971	3 491	2 259	1 682	1 484	21 322
\$400-\$499	240	1 754	3 390	4 229	3 124	1 358	671	770	15 536
\$500-\$599	99	1 245	2 835	3 063	2 758	1 017	339	344	11 700
\$600-\$699	54	762	2 048	2 297	2 019	670	162	141	8 153
\$700-\$799	11	357	1 476	1 582	1 415	454	110	107	5 512
\$800-\$999	4	184	1 731	2 048	2 226	681	113	104	7 091
\$1,000-\$1,499	6	72	806	1 311	1 440	439	92	79	4 245
\$1,500 or more	12	28	185	355	396	153	61	70	1 260
Not stated	1 684	584	1 349	1 548	1 576	1 392	1 541	2 853	12 527
Overseas visitors	177	182	203	91	89	69	32	23	866
<b>Total</b>	<b>16 432</b>	<b>13 656</b>	<b>30 250</b>	<b>35 373</b>	<b>32 319</b>	<b>22 426</b>	<b>16 930</b>	<b>17 637</b>	<b>185 023</b>
PERSONS									
Negative/Nil income	8 766	985	1 463	1 961	2 956	1 887	266	154	18 438
\$1-\$39	2 497	252	482	685	600	412	94	51	5 073
\$40-\$79	4 164	588	1 176	1 302	843	576	264	158	9 071
\$80-\$119	2 954	1 204	1 660	1 611	1 231	1 059	614	329	10 662
\$120-\$159	2 929	2 411	3 239	3 065	3 292	3 643	2 401	1 429	22 409
\$160-\$199	1 906	2 878	4 356	4 800	5 976	8 331	8 175	5 193	41 615
\$200-\$299	3 284	3 629	6 164	7 487	6 867	7 568	9 562	10 336	54 897
\$300-\$399	1 891	3 766	6 192	6 951	5 486	4 348	3 795	2 914	35 343
\$400-\$499	684	3 720	6 437	7 084	5 717	3 208	1 804	1 545	30 199
\$500-\$599	254	2 814	6 597	6 862	6 083	3 042	1 052	963	27 667
\$600-\$699	122	1 722	5 181	5 449	4 653	2 037	579	425	20 168
\$700-\$799	33	885	3 979	4 396	3 766	1 461	367	281	15 168
\$800-\$999	30	529	4 808	6 493	5 816	1 984	386	297	20 343
\$1,000-\$1,499	19	217	2 952	5 606	5 621	1 823	300	211	16 749
\$1,500 or more	34	72	739	1 798	2 281	967	234	160	6 285
Not stated	3 595	1 338	2 713	3 051	3 028	2 555	2 699	4 240	23 219
Overseas visitors	297	345	401	209	170	146	59	33	1 660
<b>Total</b>	<b>33 459</b>	<b>27 355</b>	<b>58 539</b>	<b>68 810</b>	<b>64 386</b>	<b>45 047</b>	<b>32 651</b>	<b>28 719</b>	<b>358 966</b>

RELATIONSHIP IN HOUSEHOLD BY AGE BY SEX,  
Persons in occupied private dwellings(a)

	0-14 years	15-24 years	25-34 years	35-44 years	45-54 years	55-64 years	65-74 years	75 years and over	Total
<b>MALES</b>									
Husband or wife in registered marriage	..	699	10 253	19 752	21 128	15 923	11 121	6 350	85 226
Partner in de facto marriage	..	2 137	5 273	3 378	2 141	861	252	73	14 115
Lone parent	..	102	418	1 173	1 074	395	228	220	3 610
Child under 15	47 878	..	..	..	..	..	..	..	47 878
Dependent student (15-24)	..	9 423	..	..	..	..	..	..	9 423
Non-dependent child	..	8 819	3 424	1 502	721	236	39	—	14 741
Other related individual	..	1 141	534	295	252	217	237	275	2 951
Unrelated individual living in family household	..	647	390	235	175	67	25	32	1 571
Group household member	..	2 433	1 786	736	584	380	239	141	6 299
Lone person	..	1 535	3 522	3 947	3 909	3 077	2 556	2 643	21 189
Visitor (from within Australia)	944	1 904	1 234	965	761	528	311	168	6 815
Overseas visitors	51	210	112	61	40	49	18	8	549
<b>Total</b>	<b>48 873</b>	<b>29 050</b>	<b>26 946</b>	<b>32 044</b>	<b>30 785</b>	<b>21 733</b>	<b>15 026</b>	<b>9 910</b>	<b>214 367</b>

<b>FEMALES</b>									
Husband or wife in registered marriage	..	1 456	13 750	21 946	21 276	14 609	9 008	4 140	86 185
Partner in de facto marriage	..	3 515	5 174	3 099	1 743	611	129	50	14 321
Lone parent	..	1 459	4 007	5 457	3 143	1 025	773	1 002	16 866
Child under 15	45 366	..	..	..	..	..	..	..	45 366
Dependent student (15-24)	..	9 276	..	..	..	..	..	..	9 276
Non-dependent child	..	5 448	1 597	561	354	159	47	4	8 170
Other related individual	..	969	254	190	317	355	449	811	3 345
Unrelated individual living in family household	..	581	181	89	69	26	18	20	984
Group household member	..	2 407	1 124	452	547	372	230	173	5 305
Lone person	..	1 557	2 089	1 958	3 253	4 035	5 189	8 083	26 164
Visitor (from within Australia)	1 063	1 806	926	598	658	543	342	330	6 266
Overseas visitors	70	288	134	61	59	53	24	20	709
<b>Total</b>	<b>46 499</b>	<b>28 762</b>	<b>29 236</b>	<b>34 411</b>	<b>31 419</b>	<b>21 788</b>	<b>16 209</b>	<b>14 633</b>	<b>222 957</b>

<b>PERSONS</b>									
Husband or wife in registered marriage	..	2 155	24 003	41 698	42 404	30 532	20 129	10 490	171 411
Partner in de facto marriage	..	5 652	10 447	6 477	3 884	1 472	381	123	28 436
Lone parent	..	1 561	4 425	6 630	4 217	1 420	1 001	1 222	20 476
Child under 15	93 244	..	..	..	..	..	..	..	93 244
Dependent student (15-24)	..	18 699	..	..	..	..	..	..	18 699
Non-dependent child	..	14 267	5 021	2 063	1 075	395	86	4	22 911
Other related individual	..	2 110	788	485	569	572	686	1 086	6 296
Unrelated individual living in family household	..	1 228	571	324	244	93	43	52	2 555
Group household member	..	4 840	2 910	1 188	1 131	752	469	314	11 604
Lone person	..	3 092	5 611	5 905	7 162	7 112	7 745	10 726	47 353
Visitor (from within Australia)	2 007	3 710	2 160	1 563	1 419	1 071	653	498	13 081
Overseas visitors	121	498	246	122	99	102	42	28	1 258
<b>Total</b>	<b>95 372</b>	<b>57 812</b>	<b>56 182</b>	<b>66 455</b>	<b>62 204</b>	<b>43 521</b>	<b>31 235</b>	<b>24 543</b>	<b>437 324</b>

.. not applicable

— nil or rounded to zero (including null cells)

(a) Excludes 'Persons in other not classifiable households' and 'Persons in migratory or off-shore CDs'.



AGE BY COMPUTER USE BY SEX,  
Persons (excluding overseas visitors)

	<i>Uses a computer at home</i>	<i>Does not use a computer at home</i>	<i>Not stated</i>	<i>Total</i>
MALES				
0-9 years	10 599	20 558	1 342	32 499
10-14 years	11 252	5 818	461	17 531
15-19 years	10 116	6 285	506	16 907
20-24 years	5 477	7 618	441	13 536
25-34 years	10 957	16 303	831	28 091
35-44 years	15 310	17 153	856	33 319
45-54 years	13 088	18 180	718	31 986
55-64 years	6 383	15 642	519	22 544
65-74 years	2 479	12 711	504	15 694
75 years and over	837	9 608	627	11 072
<i>Total</i>	<i>86 498</i>	<i>129 876</i>	<i>6 805</i>	<i>223 179</i>
FEMALES				
0-9 years	9 798	19 810	1 282	30 890
10-14 years	10 943	5 264	408	16 615
15-19 years	9 536	6 343	376	16 255
20-24 years	5 174	7 999	301	13 474
25-34 years	12 012	17 353	682	30 047
35-44 years	17 005	17 491	786	35 282
45-54 years	12 464	19 157	609	32 230
55-64 years	5 241	16 671	445	22 357
65-74 years	1 696	14 625	577	16 898
75 years and over	475	15 980	1 159	17 614
<i>Total</i>	<i>84 344</i>	<i>140 693</i>	<i>6 625</i>	<i>231 662</i>
PERSONS				
0-9 years	20 397	40 368	2 624	63 389
10-14 years	22 195	11 082	869	34 146
15-19 years	19 652	12 628	882	33 162
20-24 years	10 651	15 617	742	27 010
25-34 years	22 969	33 656	1 513	58 138
35-44 years	32 315	34 644	1 642	68 601
45-54 years	25 552	37 337	1 327	64 216
55-64 years	11 624	32 313	964	44 901
65-74 years	4 175	27 336	1 081	32 592
75 years and over	1 312	25 588	1 786	28 686
<i>Total</i>	<i>170 842</i>	<i>270 569</i>	<i>13 430</i>	<i>454 841</i>

# B16

## INTERNET USE BY SEX, Persons

	Male	Female	Persons
Used the Internet:			
At home	33 628	32 982	66 610
At work	11 601	13 377	24 978
Elsewhere	12 662	13 213	25 875
At home and at work	12 990	10 142	23 132
At home and elsewhere	5 323	5 017	10 340
At work and elsewhere	401	474	875
At home and at work and elsewhere	1 285	625	1 910
<i>Total</i>	<i>77 890</i>	<i>75 830</i>	<i>153 720</i>
Did not use the Internet	136 853	147 658	284 511
Not stated	8 436	8 174	16 610
Overseas visitors	859	952	1 811
<b>Total</b>	<b>224 038</b>	<b>232 614</b>	<b>456 652</b>

# B17

## FAMILY TYPE, Families and Persons in families in occupied private dwellings(a)

	Families(b)	Males(c)	Females(c)	Persons(c)
Couple family:				
with children under 15 and non-dependent children	2 103	4 947	4 620	9 567
with children under 15 without non-dependent children	30 246	60 334	59 271	119 605
with dependent students (15–24) and non-dependent children	2 139	4 549	4 073	8 622
with dependent students (15–24) without non-dependent children	4 062	6 515	6 558	13 073
with children under 15 & dependent students & non-dependent children	955	2 786	2 460	5 246
with children under 15 & dependent students without non-dependent children	5 685	13 274	13 030	26 304
with non-dependent children	9 045	15 607	12 583	28 190
<i>Total</i>	<i>54 235</i>	<i>108 012</i>	<i>102 595</i>	<i>210 607</i>
Couple family without children	47 674	47 090	47 374	94 464
One parent family:				
with children under 15 and non-dependent children	703	1 051	1 441	2 492
with children under 15 without non-dependent children	10 664	10 586	17 770	28 356
with dependent students (15–24) and non-dependent children	471	649	775	1 424
with dependent students (15–24) without non-dependent children	1 665	1 363	2 195	3 558
with children under 15 & dependent students & non-dependent children	169	324	412	736
with children under 15 & dependent students without non-dependent children	1 468	1 945	3 133	5 078
with non-dependent children	5 336	5 113	6 124	11 237
<i>Total</i>	<i>20 476</i>	<i>21 031</i>	<i>31 850</i>	<i>52 881</i>
Other family	1 693	1 811	1 710	3 521
<b>Total</b>	<b>124 078</b>	<b>177 944</b>	<b>183 529</b>	<b>361 473</b>

(a) Excludes overseas visitors.

(c) Excludes family members who were temporarily absent on Census Night.

(b) Includes same sex couple families.

# B18

## DWELLING STRUCTURE, Private dwellings and Persons in occupied private dwellings(a)

	<i>Dwellings</i>	<i>Persons</i>
Separate house	156 226	403 117
Semi detached, row or terrace house, townhouse etc. with:		
One storey	7 389	11 165
Two or more storeys	2 309	4 625
<i>Total</i>	9 698	15 790
Flat, unit or apartment:		
In a one or two storey block	9 849	14 338
In a three storey block	1 188	1 714
In a four or more storey block	637	939
Attached to a house	835	1 246
<i>Total</i>	12 509	18 237
Other dwelling:		
Caravan, cabin, houseboat	831	1 319
Improvised home, tent, sleepers out	143	250
House or flat attached to a shop, office, etc.	951	2 141
<i>Total</i>	1 925	3 710
Not stated	814	1 603
Unoccupied private dwellings	26 874	. .
<b>Total</b>	<b>208 046</b>	<b>442 457</b>

. . not applicable

(a) Excludes overseas visitors.

# B19

## DWELLING STRUCTURE BY TENURE TYPE AND LANDLORD TYPE, Occupied private dwellings

	<i>Fully owned</i>	<i>Being purchased</i>	<i>Being purchased under a rent/buy scheme</i>	RENTED			<i>Total</i>	<i>Other tenure type(b)</i>	<i>Not stated(c)</i>	<i>Total</i>
				<i>State/Territory housing authority</i>	<i>Other</i>	<i>Not stated(a)</i>				
Separate house	70 313	47 933	1 200	7 482	20 620	288	28 390	3 442	4 948	156 226
Semi-detached, row or terrace house, townhouse	2 151	962	26	2 125	3 538	87	5 750	321	488	9 698
Flat, unit or apartment	2 030	635	28	1 966	6 494	116	8 576	495	745	12 509
Other dwelling	599	223	11	3	685	9	697	190	206	1 926
Not stated	238	132	3	35	191	11	237	69	136	815
<b>Total</b>	<b>75 331</b>	<b>49 885</b>	<b>1 268</b>	<b>11 611</b>	<b>31 528</b>	<b>511</b>	<b>43 650</b>	<b>4 517</b>	<b>6 523</b>	<b>181 174</b>

(a) Includes rented dwellings where the landlord type was not stated.

(c) Includes dwellings where the tenure type was not stated.

(b) Includes dwellings being occupied rent-free and dwellings being occupied under a life tenure scheme.

**B20**MONTHLY HOUSING LOAN REPAYMENT,  
Occupied private dwellings being purchased(a)

*Dwellings*

no.

.....

\$1-\$199	2 417
\$200-\$399	6 674
\$400-\$599	14 070
\$600-\$799	11 629
\$800-\$999	6 223
\$1000-\$1199	3 176
\$1200-\$1399	1 600
\$1400-\$1599	793
\$1600-\$1799	584
\$1800-\$1999	244
\$2000 or more	1 072
Not stated	2 670
<b>Total</b>	<b>51 152</b>

.....

(a) Includes dwellings being purchased under a rent/buy scheme.

**B21**WEEKLY RENT BY LANDLORD TYPE,  
Occupied private dwellings being rented

	<i>Real estate agent</i>	<i>State/Territory housing authority</i>	<i>Other</i>	<i>Not stated</i>	<i>Total</i>
\$1-\$49	54	4 091	1 261	60	5 466
\$50-\$99	1 679	5 153	5 494	142	12 468
\$100-\$149	5 670	1 581	10 147	130	17 528
\$150-\$199	2 114	74	2 414	23	4 625
\$200-\$249	391	29	536	10	966
\$250-\$299	133	6	214	6	359
\$300-\$349	62	7	83	3	155
\$350-\$399	12	6	39	—	57
\$400-\$499	13	25	41	—	79
\$500 or more	63	49	199	8	319
Not stated	191	589	718	129	1 627
<b>Total</b>	<b>10 382</b>	<b>11 610</b>	<b>21 146</b>	<b>511</b>	<b>43 649</b>

.....

— nil or rounded to zero (including null cells)

## EXPLANATORY NOTES

### SCOPE AND COVERAGE

**1** The 2001 Census of Population and Housing was held on 7 August 2001. Australia's first national census was held in 1911 and since 1961 a census has been taken every five years, a frequency which is specified in the *Census and Statistics Act 1905*. The objective of the census is to count the number of people in Australia on Census Night, identifying their key characteristics and those of the dwellings in which they live.

**2** The Census aims to count every person who spent Census Night in Australia. This includes Australian residents in Antarctica and people in the territories of Jervis Bay, Cocos (Keeling) Islands and Christmas Island. The other Australian External Territories, Norfolk Island and minor islands such as Heard and McDonald Islands, are outside the scope of the Australian Census. The only people in Australia on Census Night who are excluded from the Census are foreign diplomats and their families.

**3** The Census includes people on vessels in or between Australian ports, on board long distance trains, buses or aircraft and on oil or gas rigs off the Australian coast. People entering Australia before midnight on Census Night are counted while people leaving an Australian port for an overseas destination before midnight on Census Night are not. Visitors to Australia are included regardless of how long they have been in the country or how long they plan to stay. However, for people who intend to be in Australia less than one year, only basic demographic data are available. The Census includes homeless people and people camping out.

**4** All occupied dwellings are counted in the Census with the exception of diplomatic dwellings. Unoccupied private dwellings are also counted with the exception of unoccupied dwellings in caravan parks, marinas and manufactured home estates, and units in accommodation for the retired or aged (self-care). Unoccupied residences of owners, managers or caretakers of such establishments are counted.

**5** Details about the 2001 Census content, collection operations, confidentiality and privacy protection, processing and evaluation activities are contained in *2001 Census of Population and Housing: Nature and Content* (Cat. no. 2008.0).

### BASIC COMMUNITY PROFILE TABLES B01 TO B21

**6** Tables numbered B01 to B21 contained in this publication are from the *Census of Population and Housing: Basic Community Profile* (Cat. no. 2001.0). These tables are available in hardcopy or electronic format for all standard census geographic areas. For more information about the Community Profiles please refer to Appendix 2, *Census Products and Services*.

### ABS POPULATION ESTIMATES

**7** Population counts on a 'Place of usual residence' basis are shown in this publication in tables 3 and 10. All other counts in this publication are on a 'Place of enumeration' basis. 'Place of enumeration' means where the person was counted on Census Night. The Census can provide person counts based on 'Place of usual residence' for Collection Districts (CDs) and aggregations of CDs.

**8** The Estimated Resident Population (ERP) is the official ABS estimate of the Australian population. The ERP is based on results of the Census of Population and Housing. It is compiled as at 30 June of each census year and updated quarterly between censuses. The intercensal estimates of the resident population are revised following the next census.

**9** The ERP is derived from census usual residence counts, by making the following three important adjustments:

## EXPLANATORY NOTES *continued*

### ABS POPULATION ESTIMATES

*continued*

- An adjustment for census net underenumeration (or undercount). The level of underenumeration is derived from the Post Enumeration Survey which is conducted soon after the Census, and from estimates based on demographic analysis;
- The inclusion of an estimated number of Australian residents who are temporarily overseas on Census Night and are therefore not covered by the Australian Census. The number of such people is estimated from statistics on overseas arrivals and departures; and
- The third adjustment occurs because the Census does not fall on 30 June. For example, the 2001 Census was held on 7 August. Back dating of population estimates from 7 August to 30 June is accomplished using data from birth and death registrations, overseas arrivals and departures, and estimates of interstate migration, for the period 1 July to 7 August.

**10** ABS population estimates are published in *Australian Demographic Statistics* (Cat. no. 3101.0), produced quarterly, and in *Population by Age and Sex, Australian States and Territories* (Cat. no. 3201.0) produced annually. ERPs for SLAs are published in *Regional Population Growth, Australia and New Zealand* (Cat. no. 3218.0).

**11** The ABS also provides projections (based on different assumptions as to future fertility, mortality and migration) of the resident population of Australia, States and Territories. These projections are published every two years in *Population Projections, Australia* (Cat. no. 3222.0).

### DATA LIMITATIONS

**12** Census data are subject to a number of inaccuracies resulting from errors by respondents or mistakes in collection or processing. Whilst many of these are corrected by careful processing procedures, some still remain. The effect of the remaining errors is generally slight, although it may be more important for small groups in the population. The main kinds of error to keep in mind are:

- *Partial non-response*: In some cases where an answer is not provided to a question an answer is imputed (often from other information on the form). In other cases a 'Not stated' code is allocated;
- *Processing error*: While such errors can occur in any processing system, quality management is used continuously to improve the quality of processed data, and to identify and correct data of unacceptable quality;
- *Random adjustment*: Table cells containing small values are randomly adjusted or suppressed to avoid releasing information about particular individuals, families, or households. The effects of these adjustments are statistically insignificant;
- *Respondent error*: Because processing procedures cannot detect or repair all errors made by people in completing the forms, some remain in final data; and
- *Undercount*: Although the census aims to count each person, there are some people who are missed and others who are counted more than once. The data in this publication are not adjusted for the net undercount.

**13** Further information on data quality is provided progressively in *Census Update* and in *2001 Census Papers*.

## EXPLANATORY NOTES *continued*

### QUALITY OF INDIGENOUS STATISTICS

**14** For further information on the quality of Indigenous statistics, see *Population Distribution, Aboriginal and Torres Strait Islander Australians* (Cat. no. 4705.0). This publication presents counts for Aboriginal and Torres Strait Islander Australians from the 2001 Census for Indigenous geographic areas, accompanied by information on data quality to help interpret the data. Estimates of the Indigenous population, based on the 2001 Census, are also included. For comprehensive information on the quality of Indigenous census data, see *Population Issues, Aboriginal and Torres Strait Islander Australians* (Cat. no. 4708.0).

### 1901 DATA

**15** Care should be taken when using 1901 data. These data are generally not comparable with data from more recent censuses.

- In 1901 Aboriginal and Torres Strait Islander people may have been counted in the Census but they were generally excluded from the published census data.
- The Northern Territory and the Australian Capital Territory were not established as separate entities until 1911 so 1901 data for these areas are included in South Australia and New South Wales respectively.
- As personal income was not included in the 1901 Census, average annual individual income has been estimated from other sources. This estimate is for all persons, whereas the 2001 Census only collects individual income for persons aged 15 years or more.

**16** In table 1, data for 1901 have come from two sources. Individual income came from *A Statistical Account of the Seven Colonies of Australasia 1901–1902*, by T. A. Coghlan, Statistician of New South Wales, published in 1902. All other 1901 data for table 1 came from the *Official Yearbook of the Commonwealth of Australia No. 1, 1901–1907*, published by the Commonwealth Statistician in 1908.

### OVERSEAS VISITORS

**17** Overseas visitors are defined differently for the 2001 Census. For the 1996 Census overseas visitors were defined as any person who stated they would be in Australia for less than 6 months. For the 2001 Census they are defined as any person who stated they would be in Australia for less than 12 months. Data for overseas visitors are restricted to age, sex and marital status.

### CALCULATIONS OF PROPORTIONS

**18** When calculating the proportion of the population with a particular characteristic, 'Not stated' responses are included in the denominator. For example, in table 1 the proportion of people born in Australia is calculated by dividing the number of persons who stated that they were Australian-born by the total population and expressing the result as a percentage. The 'Total population' includes the category 'Not stated'.

**19** For census variables which include data for overseas visitors i.e. age, sex and marital status, 'Overseas visitors' are also included in the denominator.

### CALCULATION OF MEDIANS

**20** A median is a measure of central tendency. It is a mid value which divides a population distribution into two, with half the observations falling below it and half above it. Unlike averages (means) medians are not usually skewed by extreme observations.

**21** There are a number of issues to be aware of:

- The categories 'Not stated' and 'Not applicable' are not included in the calculation of medians;

## EXPLANATORY NOTES *continued*

### CALCULATION OF MEDIANS

*continued*

- The category 'Overseas visitor', is only included in the calculation of the median when data for overseas visitors is collected for the variable (see paragraph 17). For example, 'Median age' in table 1 of this publication includes overseas visitors whereas 'Median weekly individual income' in the same table does not;
- If a median falls into a category that has a text only label, then a value of 0 is used for that category. For this publication this is only relevant to the calculation of median personal income, as the income classification includes categories 'Nil income' and 'Negative income';
- When calculating a median on a classification containing ranges, the median may fall into a range which is open-ended. In this case, the median would be set to the number in the label. For example, in the calculation of median weekly individual income, if the median was to fall in the last range *\$1,500 or more*, then \$1,500 would be allocated as the median; and
- 'Median monthly housing loan repayment' and 'Median weekly rent' are based on the ranged variables HLRD01 and RNTD01 respectively. This is due to difficulties associated with the large number of small cells when using individual dollar values to perform these calculations. An adjustment has been made to HLRD01, with the range *\$1,500 and over* changed to *\$1,500–\$1,999* and an additional range *\$2,000 and over* added.

### UNADJUSTED DOLLARS

**22** The 1996 Census dollar values for Median weekly individual income, Median monthly loan repayments and Median weekly rent have not been adjusted into 2001 dollars.

### ABBREVIATIONS

ABS	Australian Bureau of Statistics
ASGC	Australian Standard Geographical Classification
Bal	Balance
BCP	Basic Community Profile
C	City
CD	Collection District
ERP	estimated resident population
GIS	geographic information system
M	Municipality
n.f.d.	not further defined
PC	personal computer
Pt	Part
SD	Statistical Division
SLA	Statistical Local Area
SSD	Statistical Subdivision



## APPENDIX 1 ESTIMATED RESIDENT POPULATION

### POPULATION MEASURES

This table is provided to highlight the difference between the Census 'as enumerated' and 'usual residence' counts and the Estimated Resident Population (ERP). The ERP is the official ABS estimate of the Australian population. It is based on the Census of Population and Housing usual residence counts and is updated quarterly using births, deaths and migration data.

### POPULATION MEASURES—30 JUNE AND 7 AUGUST 2001

	<i>Census as Enumerated(a)</i>	<i>Census Usual Residence(b)</i>	<i>Estimated Resident Population(c)</i>
New South Wales	6 371 745	6 326 579	6 609 304
Victoria	4 644 950	4 660 991	4 822 663
Queensland	3 655 139	3 522 044	3 635 121
South Australia	1 467 261	1 470 057	1 514 854
Western Australia	1 851 252	1 828 294	1 906 114
Tasmania	456 652	460 672	472 931
Northern Territory	210 664	188 075	200 019
Australian Capital Territory	311 947	309 998	321 680
<b>Australia(d)</b>	<b>18 972 350</b>	<b>18 769 249</b>	<b>19 485 278</b>

- (a) Number of persons counted in each State/Territory on Census Night, 7 August 2001.
- (b) Number of persons usually resident in each State/Territory on 7 August 2001 regardless of where they were counted on Census Night.
- (c) These are census usual resident counts, plus Australian residents temporarily overseas on Census Night, plus the estimated census underenumeration, plus deaths and less births, net overseas migration and net interstate migration occurring between 30 June and 7 August 2001, giving estimated resident population at 30 June 2001.
- (d) Includes Other Territories.

## APPENDIX 2 CENSUS PRODUCTS AND SERVICES

### 2001 PRODUCTS AND SERVICES

A wide range of products and services are available from the 2001 Census of Population and Housing. Brief descriptions of these are included below. For more detailed information on the 2001 Census range of products and services, please refer to the *2001 Directory of Census Statistics* (Cat. no. 2910.0).

Census products fall into two broad types: reference products and data products. Most of the reference products from the 2001 Census are available free of charge from the ABS web site.

### CENSUS REFERENCE PRODUCTS

#### *2001 Census Dictionary*

The *2001 Census Dictionary* (Cat. no. 2901.0) is a comprehensive reference guide to the 2001 Census of Population and Housing. The Dictionary includes a complete listing of 2001 Census classifications. It describes new topics introduced for 2001 and highlights classification changes that have occurred since the 1996 Census. The Dictionary also explains the concepts relevant to census collection, processing and output of data.

#### *How Australia Takes a Census*

*How Australia Takes a Census* (Cat. no. 2903.0) provides information about the history of the census, the planning process and the way in which the census is conducted.

#### *Geographic Classifications and Codes*

*Statistical Geography Volume 1—Australian Standard Geographical Classification (ASGC) 2001 Census Edition* (Cat. no. 1216.0) provides information about the names and codes of the standard geographic areas used in the 2001 Census. *Statistical Geography: Volume 2—Census Geographic Areas Australia 2001 Census Edition* (Cat. no. 2905.0) and *Statistical Geography: Volume 3—Australian Standard Geographical Classification (ASGC) Urban Centres/Localities: 2001 Census Edition* (Cat. no. 2909.0) provide information on additional geographic areas.

#### *2001 Census Statistical Local Area Maps*

These reference maps show the Statistical Local Areas (SLAs) from the 2001 Census. Each map shows the boundary of an SLA and the Collection District boundaries contained within.

#### *Digital Boundaries*

Census boundaries are made available electronically as *Digital Boundaries*. They include all of the Australian Standard Geographical Classification (ASGC), Urban Centres and Localities, and Census-specific areas.

### CENSUS DATA PRODUCTS

#### *Census Snapshots*

*Census Snapshots* are a new product designed to provide a summary overview for selected geographic areas and are available from the ABS web site, free of charge. *Census Snapshots* contain subsets of Community Profile data, including person counts, age and birthplace, presented in a narrative form for easy access by a wide audience. A *1901 Census Snapshot* for Australia is also available to celebrate the Centenary of Federation.

#### *Estimated Resident Population*

The Estimated Resident Population (ERP) is the official ABS population estimate. It is based on census usual residence counts, and is updated quarterly using births, deaths and migration data.

Two publications containing ERP data, based on 2001 Census figures are:

- *Australian Demographic Statistics — 2001 Census Edition* (Cat. no. 3101.0); and
- *Regional Population Growth, Australia — 2001 Census Edition* (Cat. no. 3218.0).

## APPENDIX 2 CENSUS PRODUCTS AND SERVICES *continued*

### *Selected Characteristics*

The Census of Population and Housing suite of publications contains data and commentary on various person and dwelling characteristics from the 2001 Census at selected geographic levels. There are three series of publications in the suite with the following sub-titles:

- *Selected Social and Housing Characteristics, Australia 2001* (Cat. no. 2015.0);
- *Selected Social and Housing Characteristics for Statistical Local Areas 2001* (Cat. nos 2015.1–8);
- *Selected Characteristics for Urban Centres and Localities, Australia 2001* (Cat. no. 2016.0);
- *Selected Characteristics for Urban Centres and Localities 2001* (Cat. nos 2016.1–7);
- *Selected Education and Labour Force Characteristics, Australia 2001* (Cat. no. 2017.0); and
- *Selected Education and Labour Force Characteristics for Statistical Local Areas 2001* (Cat. nos 2017.1–8).

### *Community Profile Series*

The Community Profile Series provides detailed and comprehensive census characteristics of people, families and dwellings for small areas. This series is available for all standard census geographic areas, and is available in hardcopy and electronic formats.

The series comprises six Community Profiles:

- *Basic Community Profile* (Cat. no. 2001.0) contains 33 tables of detailed data covering dwelling, household and family topics. This profile is available for all standard census geographic areas, Commonwealth and State Electoral Divisions, Postal Areas, and Suburbs, for the States/Territories and Australia;
- *Indigenous Profile* (Cat. no. 2002.0) contains 29 tables of key Census characteristics for Aboriginal and Torres Strait Islander people, for all ASGC areas from Statistical Local Area (SLA) level to whole of Australia, as well as Indigenous Areas and Aboriginal and Torres Strait Islander Commission (ATSIC) regions;
- *Time Series Community Profile* (Cat. no. 2003.0) contains 22 tables comparing data from the 1991, 1996 and 2001 Censuses where the classifications are comparable. Data is presented on 2001 geographic boundaries;
- *Usual Residents Profile* (Cat. no. 2004.0) contains 28 tables of data for persons usually resident in the selected area. This is the only community profile based on place of usual residence;
- *Expanded Community Profile* (Cat. no. 2005.0) contains 49 tables available for SLAs and larger areas, comprising more detailed versions of some of the Basic Community Profile tables, plus additional tables; and
- *Working Population Profile* (Cat. no. 2006.0) contains 19 tables of labour force and related data on the characteristics of employed people.

### *Classification Counts*

*Classification Counts* (Cat. nos 2022.0–8) provide frequency counts for 2001 Census variables in complete classificatory detail, for every State/Territory and Capital City Statistical Division, cross-classified by sex where applicable.

### *CLIB2001*

*CLIB2001* is an electronic product provided free of charge to public libraries through the ABS Library Extension Program. The product contains a large volume of tabulated data and software that allows access, display and printing of the data. For 2001 this product will be available as both a CD-ROM and (limited access) Internet-based product. *CLIB2001* comprises the complete 2001 Census Community Profile Series and Classification Counts.

## APPENDIX 2 CENSUS PRODUCTS AND SERVICES *continued*

### CDATA 2001

*CDATA 2001* is a CD-ROM product which contains a large volume of tabulated census data, digital boundaries and base map data, with software to produce tables, maps and graphs of the data. The product is available at the Australia and State/Territory levels.

There are two *CDATA 2001* products available, offering different levels of functionality:

*CDATA 2001—Full GIS*: This version is aimed at the expert GIS user who requires detailed spatial data analysis using Structured Query Language, geocoding and importation of 'client own' data.

*CDATA 2001—Quickbuild*: This version has been designed for GIS users with more basic spatial analysis requirements. It allows users to produce data reports, graphs and/or maps. The product is aimed at inexperienced or intermediate GIS users. *CDATA 2001—Quickbuild* users will also have the option to upgrade to *CDATA 2001—Full GIS* if so desired.

### *Social Atlas Series*

The *Social Atlas* (Cat. nos 2030.0–8) publications feature colour maps of the key social, demographic and economic characteristics of each capital city. These will be released from November 2002.

### AUSTRALIA IN PROFILE—A REGIONAL ANALYSIS

*Australia in Profile—A Regional Analysis* (Cat. no. 2032.0) provides commentary and data on a number of key social indicators from the 2001 Census, with the focus on regional distributions and comparisons.

### CONSULTANCY SERVICES

The following census specific services are available:

*Customised Profiles Service* provides community profile data tailored to your needs, on a variety of media;

*Customised Table Service* provides detailed cross-classified tables tailored to your needs on a variety of media;

*Customised Geographic Data Reports Service* provides tabular geographic data which relate specifically to the census Geographic Areas and their characteristics (e.g. area); and

*Customised Mapping Service* provides both Customised Thematic Maps and Customised Reference Maps on request.

## GLOSSARY

General descriptions of terms and concepts used in this publication are provided below. Tables are also footnoted where applicable for additional clarity. Detailed definitions of classifications and concepts are available in the *2001 Census Dictionary* (Cat. no. 2901.0).

**Ancestry** A person's ancestry, when used in conjunction with the person's birthplace and their parents' birthplace, provides a good indication of the ethnic background of first and second generation Australians. This is particularly useful for identifying distinct ethnic or cultural groups (e.g. Maoris or Kurds), which cannot be identified using country of birth alone.

Respondents were asked to consider and mark the ancestries they most closely identified with, and to count their ancestry back as far as three generations. Respondents had the option of nominating several ancestries but only the first two answers were processed for output purposes.

**Dwelling** A dwelling is a structure which is intended to have people live in it, and which is habitable on Census Night. Some examples of dwellings are houses, motels, flats, caravans, prisons, tents, humpies and houseboats.

There are private and non-private dwellings:

A private dwelling is normally a house, flat, part of a house, or even a room; but can also be a house attached to, or rooms above, shops or offices; an occupied caravan or unit in a caravan park or craft in a marina; occupied dwelling in a Manufactured Home Estate; occupied self-care unit in Accommodation for the Retired or Aged; a houseboat; or tent if it is standing on its own block of land. An occupied caravan situated on a residential allotment is also classed as a private dwelling. Private dwellings can be either occupied or unoccupied.

Non-private dwellings are those dwellings not included above, which provide a communal or transitory type of accommodation. They are classified according to their function. These dwellings include hotels, motels, guest houses, prisons, religious and charitable institutions, defence establishments, hospitals and other communal dwellings. Only occupied non-private dwellings are included in the census.

**Family** A family is defined by the ABS as two or more persons, one of whom is at least 15 years of age, who are related by blood, marriage (registered or de facto), adoption, step or fostering, and who are usually resident in the same household. The basis of a family is formed by identifying either a couple, parent-child or other blood relationship. Information on persons temporarily absent on Census Night is considered in family coding.

**Geographic areas** The tables in this publication are at the levels of Statistical Local Area, Statistical Subdivision and Statistical Division, as defined by the 2001 Census edition of the Australian Standard Geographical Classification (ASGC).

*Statistical Local Area (SLA):* These areas consist of one or more Collection Districts and cover, in aggregate, the whole of Australia without gaps or overlaps.

*Statistical Subdivision (SSD):* These areas consist of one or more SLAs and cover, in aggregate, the whole of Australia without gaps or overlaps.

*Statistical Division (SD):* These areas consist of one or more SSDs and cover, in aggregate, the whole of Australia without gaps or overlaps. They do not cross State or Territory boundaries. However, the Other Territories, Jervis Bay Territory and the Territories of Christmas Island and Cocos (Keeling) Islands together form one SD. Capital city SDs are predominantly urban in character and the boundaries are delineated to contain the anticipated urban development of the capital cities (and associated urban centres) for a period of at least 20 years.

## GLOSSARY *continued*

- Geographic areas *continued*** SDs outside the capital city are designed to be relatively homogeneous regions characterised by identifiable social and economic links between the inhabitants and the economic units in the region, under the unifying influence of one or more major towns or cities.
- State/Territory (STE)*: States and Territories consist of one or more SDs and are the largest type of spatial unit in the ASGC. The six Australian States and five Territories which are part of geographic Australia and included in the 2001 ASGC are New South Wales, Victoria, Queensland, South Australia, Western Australia, Tasmania, Northern Territory, Australian Capital Territory, Jervis Bay Territory and the external Territories of Christmas Island and Cocos (Keeling) Islands. In the ASGC, Jervis Bay Territory, the Territory of Christmas Island and the Territory of Cocos (Keeling) Islands are combined to form Other Territories (OT).
- For this series of publications, data for Other Territories are published down to SSD level in 2015.0 (Australia) and down to SLA in 2015.1 (New South Wales) and 2015.5 (Western Australia). That is, Jervis Bay Territory is included in 2015.1 and Christmas Island and Cocos (Keeling) Islands are included in 2015.5.
- More information about definitions, and lists of codes and names of the geographic areas can be found in *Statistical Geography Volume 1—Australian Standard Geographical Classification (ASGC) 2001* (Cat. no. 1216.0) effective date 1 July 2001.
- Household** A household is defined as a group of two or more related or unrelated people who usually reside in the same dwelling, who regard themselves as a household, and who make common provision for food or other essentials for living; or a person living in a dwelling who makes provision for his/her own food and other essentials for living, without combining with any other person.
- Under this definition, in a group house where occupants share the dwelling, each occupant who usually supplies his/her own food should be counted as a separate household and issued with a separate Household Form. In practice, however, most such households usually only complete one form.
- Income** People aged 15 years and over are asked to indicate their usual gross weekly income by selecting an income range on the census form. There are 16 options ranging from 'Negative income', 'Nil income' through to '\$1,500 or more per week'. For example, a person with a gross weekly income of \$650 per week would tick the range '\$600–\$699 per week'. Gross weekly income is the income before tax, superannuation, health insurance, or other deductions are made. Gross income includes: family allowance, parenting payment, pensions, unemployment benefits, student allowances, maintenance (child support), superannuation, wages, salary, overtime, dividends, rents received, interest received, business or farm income (less operation expenses) and worker's compensation received.
- Indigenous** A person is defined to be of Indigenous origin if he or she identifies himself or herself as of Aboriginal and/or Torres Strait Islander origin.
- Internet** Internet includes: Internet connections in private and business applications; Internet connection through a computer or set top box, games machine, mobile phone, or other means; and Internet used at other locations including libraries, Internet cafes, shops, educational institutions, or at a neighbour or friends place of residence.
- Overseas-born** Overseas-born people are those who state that they were born in a country other than Australia, those born at sea, and those whose responses are classed as 'Inadequately described' or 'Not elsewhere classified'.

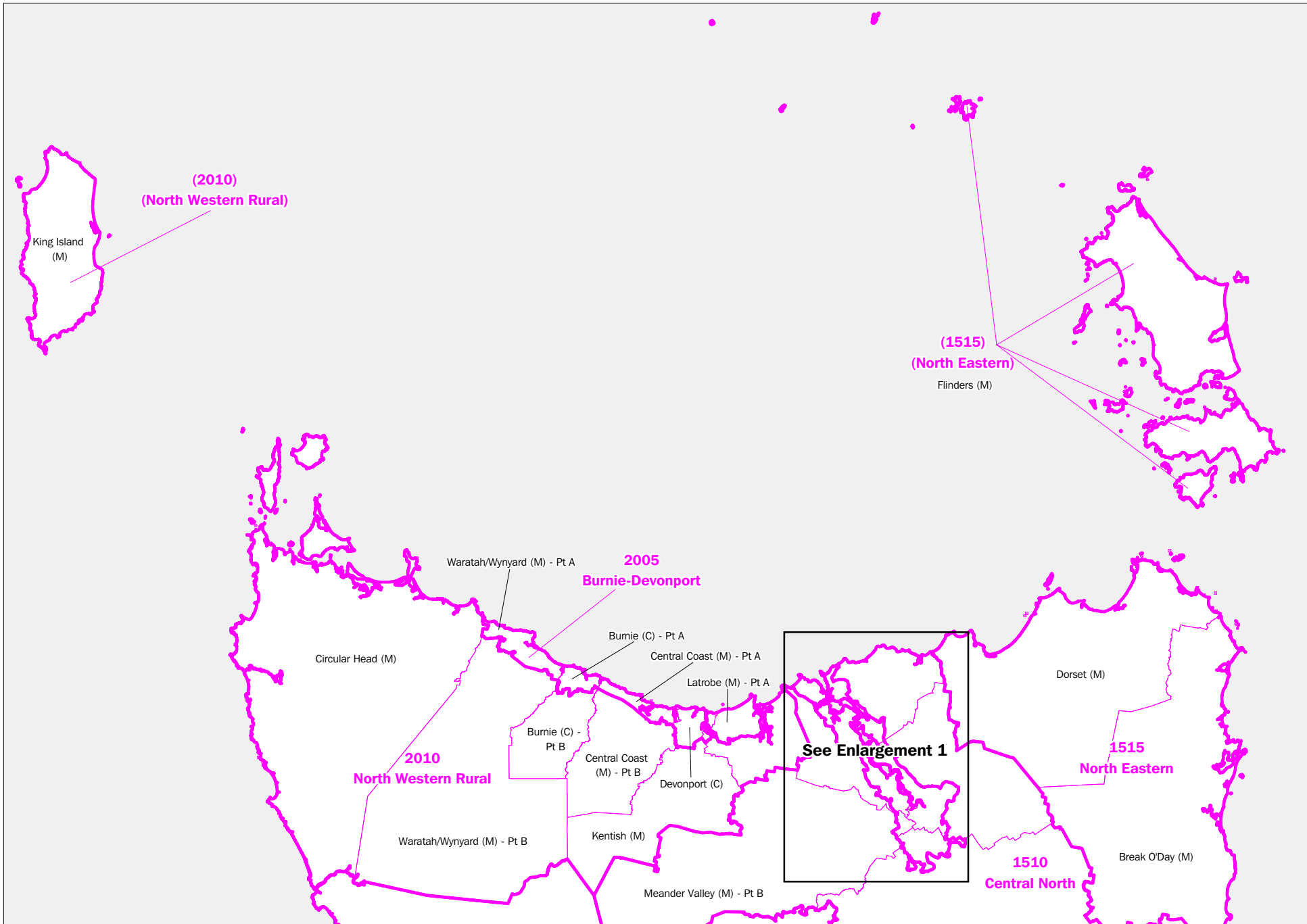
## GLOSSARY *continued*

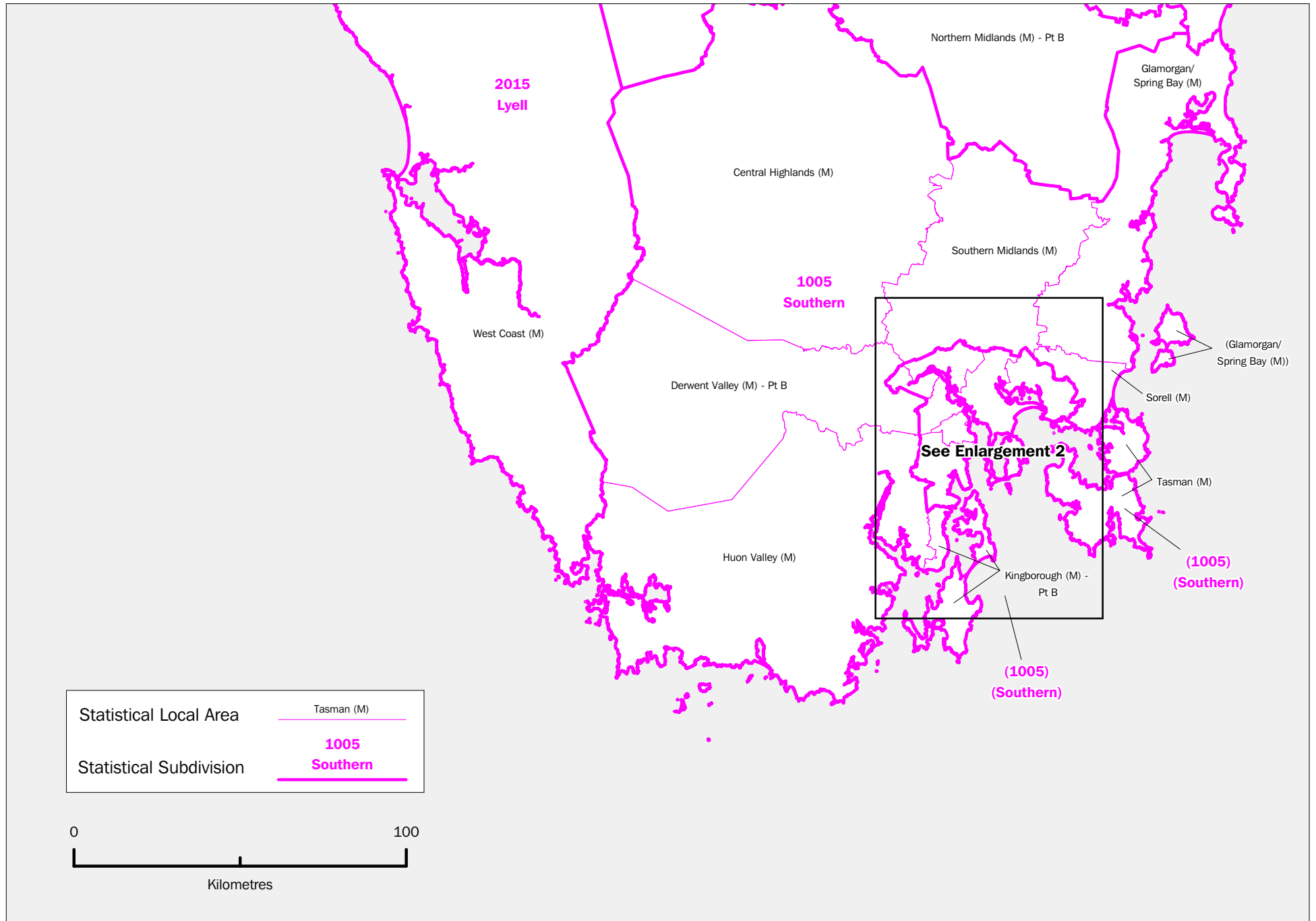
---

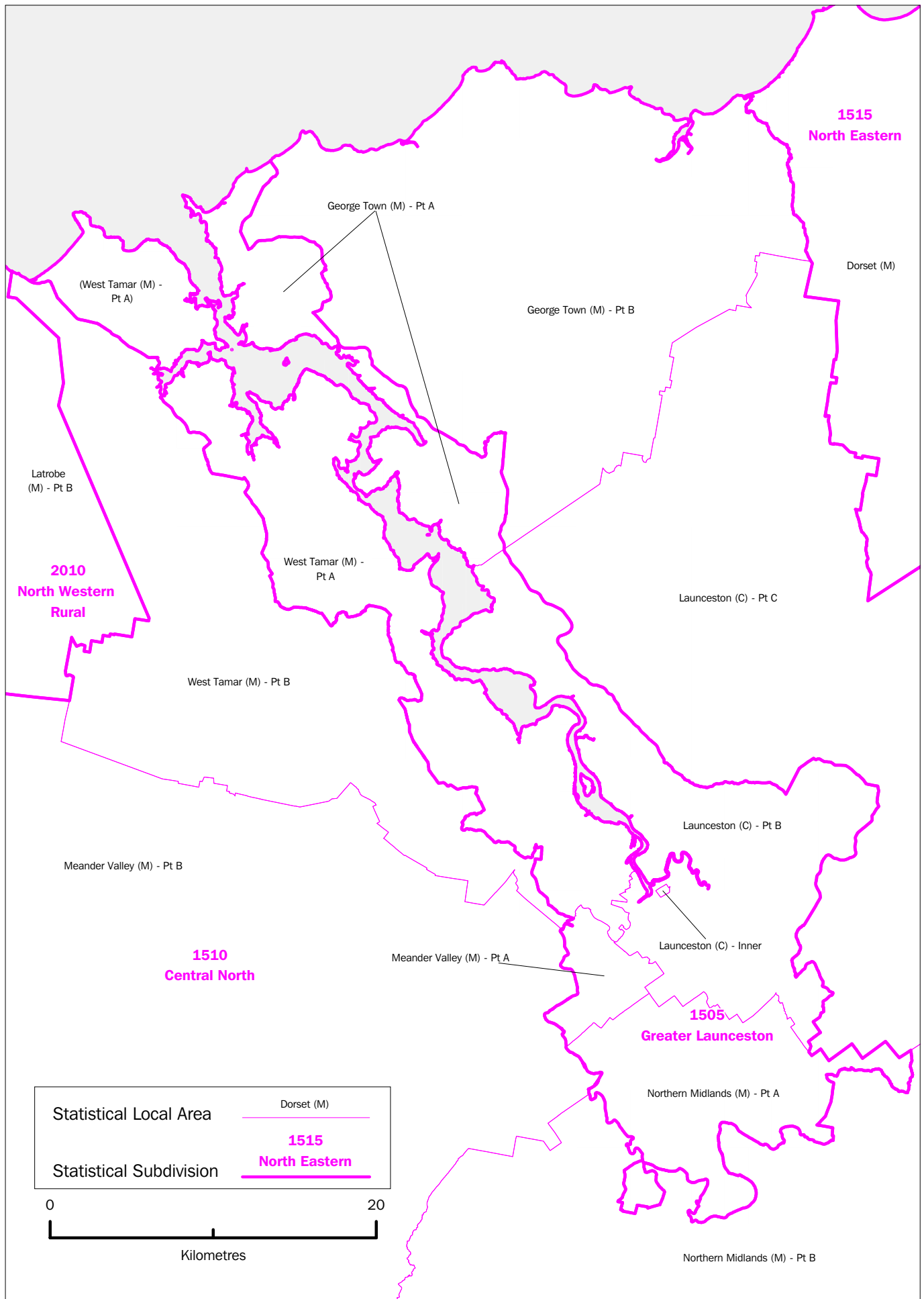
- Personal Computer (PC)** PCs include: computers used at home for private and business purposes, portable computers, personal organisers, computers brought home from the workplace, and dedicated word processors. Game machines are not included.
- Population** Table 3 shows the population on 'Census Night' and 'Usually resident'. The population on Census Night is on a 'Place of enumeration basis'. The usually resident population is on a 'Place of usual residence' basis. Most population counts presented in this publication are on a place of enumeration basis. Place of enumeration means where the person was counted on Census Night.

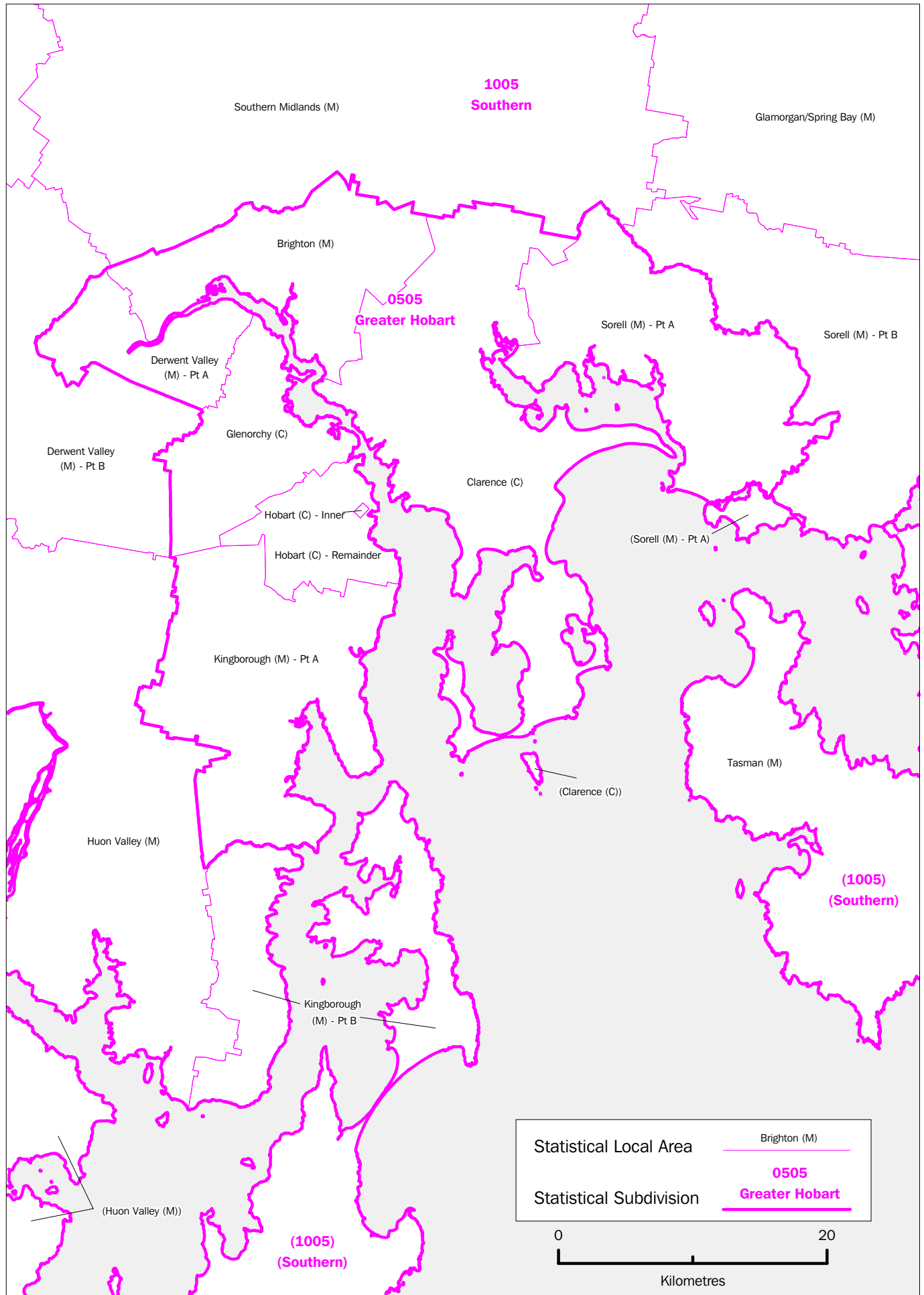












## FOR MORE INFORMATION . . .

- INTERNET* **www.abs.gov.au** the ABS web site is the best place to start for access to summary data from our latest publications, information about the ABS, advice about upcoming releases, our catalogue, and Australia Now—a statistical profile.
- LIBRARY* A range of ABS publications is available from public and tertiary libraries Australia-wide. Contact your nearest library to determine whether it has the ABS statistics you require, or visit our web site for a list of libraries.
- CPI INFOLINE* For current and historical Consumer Price Index data, call 1902 981 074 (call cost 77c per minute).
- DIAL-A-STATISTIC* For the latest figures for National Accounts, Balance of Payments, Labour Force, Average Weekly Earnings, Estimated Resident Population and the Consumer Price Index call 1900 986 400 (call cost 77c per minute).

### INFORMATION SERVICE

Data that is already published and can be provided within five minutes is free of charge. Our information consultants can also help you to access the full range of ABS information—ABS user-pays services can be tailored to your needs, time frame and budget. Publications may be purchased. Specialists are on hand to help you with analytical or methodological advice.

- PHONE* 1300 135 070
- EMAIL* [client.services@abs.gov.au](mailto:client.services@abs.gov.au)
- FAX* 1300 135 211
- POST* Client Services, ABS, GPO Box 796, Sydney NSW 1041

## WHY NOT SUBSCRIBE?

ABS subscription services provide regular, convenient and prompt deliveries of ABS publications and products as they are released. Email delivery of monthly and quarterly publications is available.

- PHONE* 1300 366 323
- EMAIL* [subscriptions@abs.gov.au](mailto:subscriptions@abs.gov.au)
- FAX* 03 9615 7848
- POST* Subscription Services, ABS, GPO Box 2796Y, Melbourne Vic 3001