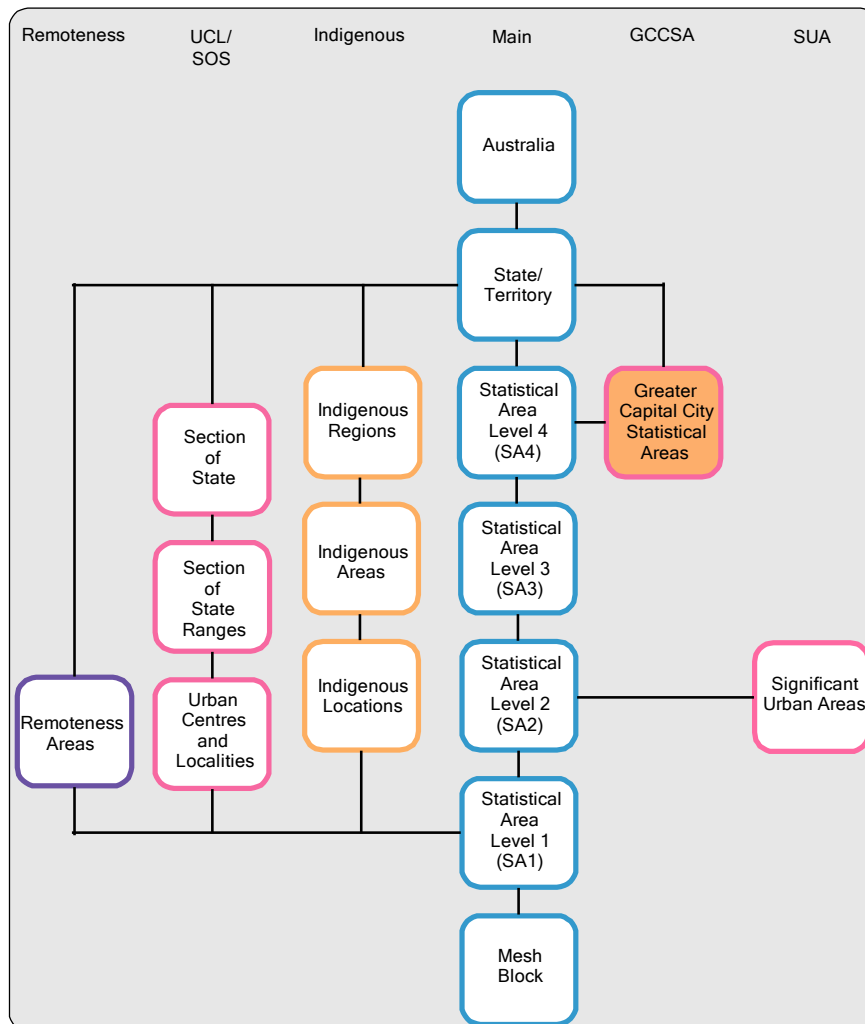


GREATER CAPITAL CITY STATISTICAL AREAS

What are Greater Capital City Statistical Areas?

Greater Capital City Statistical Areas (GCCSAs) are geographical areas that are designed to represent the functional extent of each of the eight state and territory capital cities. They replace the current Capital City Statistical Divisions and will provide a stable definition for these cities which will be used for the output of a range of social and economic survey data.

Diagram 1: ASGS ABS Structures



Within each state and territory, the area not defined as being part of the greater capital city is represented by a Rest of State region. There are 16 GCCSA regions covering the whole of Australia without gaps or overlaps. They are built up from whole Statistical Areas Level 4 (SA4s). There are 8 regions representing each of the Australian State and Territory capital cities and 7 regions covering

the rest of each state and territory—this excludes the ACT where there is only one GCCSA region for the entire territory. There is also one for the Other Territories of Jervis Bay, Christmas Island and Cocos (Keeling) Islands. Additional to these 16 GCCSA regions are 18 non-spatial GCCSA special purpose codes. There is a Migratory–Offshore–Shipping and a No usual address code for each state and territory including Other Territories.

What criteria were used to define the GCCSAs?

The GCCSAs have been designed to provide a stable and consistent boundary that reflects the functional extent of each of Australia’s capital cities. This definition is designed to include those within the urban area of the city as well as people who regularly socialise, shop or work within the city, but live in small towns and rural areas surrounding the city. It is important to note that GCCSAs do not define the built up edge of the city.

GCCSAs have been created using aggregations of whole SA4s, which were designed to reflect labour markets, using the 2006 Census travel to work data. Because of this, the GCCSAs reflect the labour market of each capital city. The labour market is sometimes used as a de-facto measure of the functional extent of a city since it contains the majority of the commuting population.

The design of the GCCSA boundaries also took into account feedback from the consultation process as well as likely future directions in urban planning over the next twenty years.

GCCSAs are not bound by a minimum population size criterion.

How do the GCCSAs differ from Statistical Divisions?

Capital City Statistical Division boundaries vary considerably in the manner in which they define each of the capital cities. For example the 2011 Sydney SD is a broad socio-economic definition of Sydney that contains the labour market and extends well beyond the built up edge of the city. In contrast the Adelaide 2011 SD barely contains the 2006 Adelaide Urban Centre and Locality (UCL).

The introduction of the new ASGS classification has improved the consistency of the treatment of each of the capital cities. As a result a number of significant changes have been made to the capital city definitions, these changes are outlined briefly below.

Under the GCCSA criteria the definitions of the Sydney and Darwin capital cities remain essentially unchanged.

The Canberra GCCSA now extends out to include the whole of the ACT and whilst this involves a large change in area when compared to the 2011 SD definition, the actual difference in population is minimal. Similarly, the area included in the Hobart GCCSA definition has increased however this has only resulted in a small change in population.

In contrast, the definition of the remaining capital cities of Melbourne, Brisbane, Adelaide and Perth have each seen significant increases in both area and population.

The Melbourne GCCSA boundary has been extended beyond the 2011 SD boundary to the north and west, to include the towns of Bacchus Marsh, Macedon, Lancefield, Wallan and Kinglake. The

southern and eastern boundaries of the Melbourne GCCSA remains unchanged from the SD with the exception of a small area east of Warburton which is now included.

The definition of the Brisbane capital city now extends south west to the NSW border to contain Beaudesert and Boonah. The GCCSA boundary between Gold Coast and Brisbane has been extended south from the Logan River to the Pimpama River, and the north-west boundary of the Brisbane GCCSA has been enlarged to include Laidley, Esk and Kilcoy. Gold Coast and Sunshine Coast are not included in the Brisbane GCCSA.

The northern boundary of the Adelaide GCCSA has been extended northwards to contain Gawler, Roseworthy and Two Wells. The eastern boundary of the Adelaide GCCSA includes a larger area of the Adelaide Hills, and towns such as Mt Barker and Lobethal are now included in the GCCSA.

The Perth GCCSA now includes Mandurah and Pinjarra to the south.

Maps illustrating a comparison between 2011 ASGC Capital City Statistical Division boundaries and 2011 ASGS GCCSA boundaries are provided below.

What data will be available on GCCSAs?

Consumer Price Index, Census data, Labour Force data and Estimated Resident Population data are some of the high profile collections that will be output on GCCSAs. In addition to this a range of other economic, cultural, health and environmental survey data will be available on GCCSAs. The 'ASGS Implementation Schedule for ABS Publications' chapter of the ABS Statistical Geography website <http://www.abs.gov.au/geography> provides a summary of data that will be available on GCCSAs.

Where can I get the GCCSA boundaries?

GCCSA boundaries are available in MapInfo Interchange and ESRI Shapefile formats and can be downloaded from the 'ABS Geography Publications' chapter of the ABS Statistical Geography website: <http://www.abs.gov.au/geography>

In addition, maps of the GCCSAs in Adobe PDF format are available for download from the 'Downloads' tab of the ASGS Main Structures online publication: [Australian Statistical Geography Standard \(ASGS\): Volume 1 - Main Structure and Greater Capital City Statistical Areas, July 2011](#) (cat. no. 1270.0.55.001).

Where can I get further information?

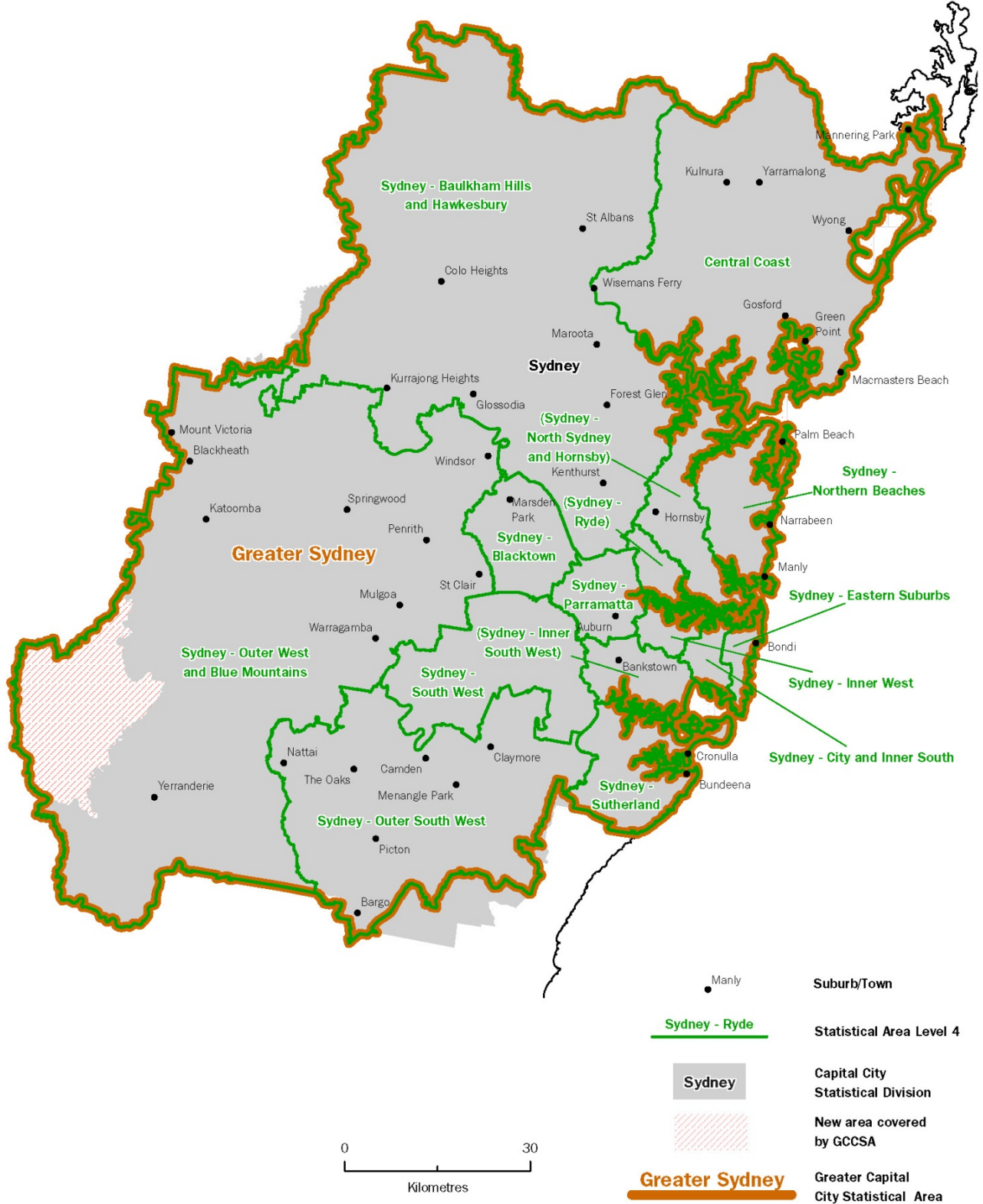
A detailed discussion of the GCCSAs and the criteria used in their design can be found in the online publication: [Australian Statistical Geography Standard: Design of the Statistical Areas Level 4, Capital Cities and Statistical Areas Level 3, May 2010](#) (cat. no. 1216.0.55.003).

More information on the ASGS and ABS Statistical Geography can be found by visiting the ABS website: <http://www.abs.gov.au/geography>

Any questions or comments can be emailed to geography@abs.gov.au

Greater Capital City Statistical Area (GCCSA)

Comparison with Sydney Capital City Statistical Division





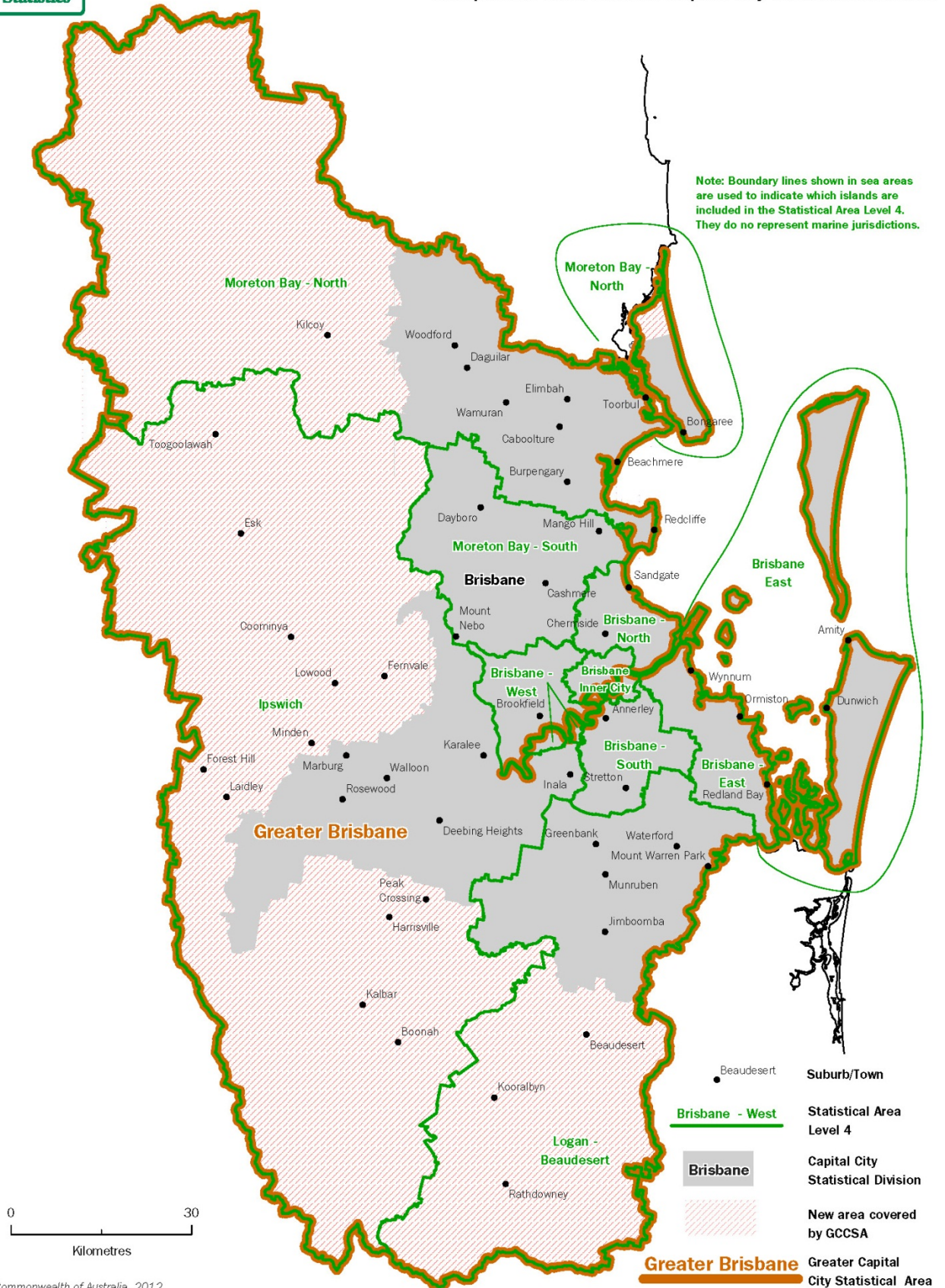
Greater Capital City Statistical Area (GCCSA)

Comparison with Melbourne Capital City Statistical Division



Greater Capital City Statistical Area (GCCSA)

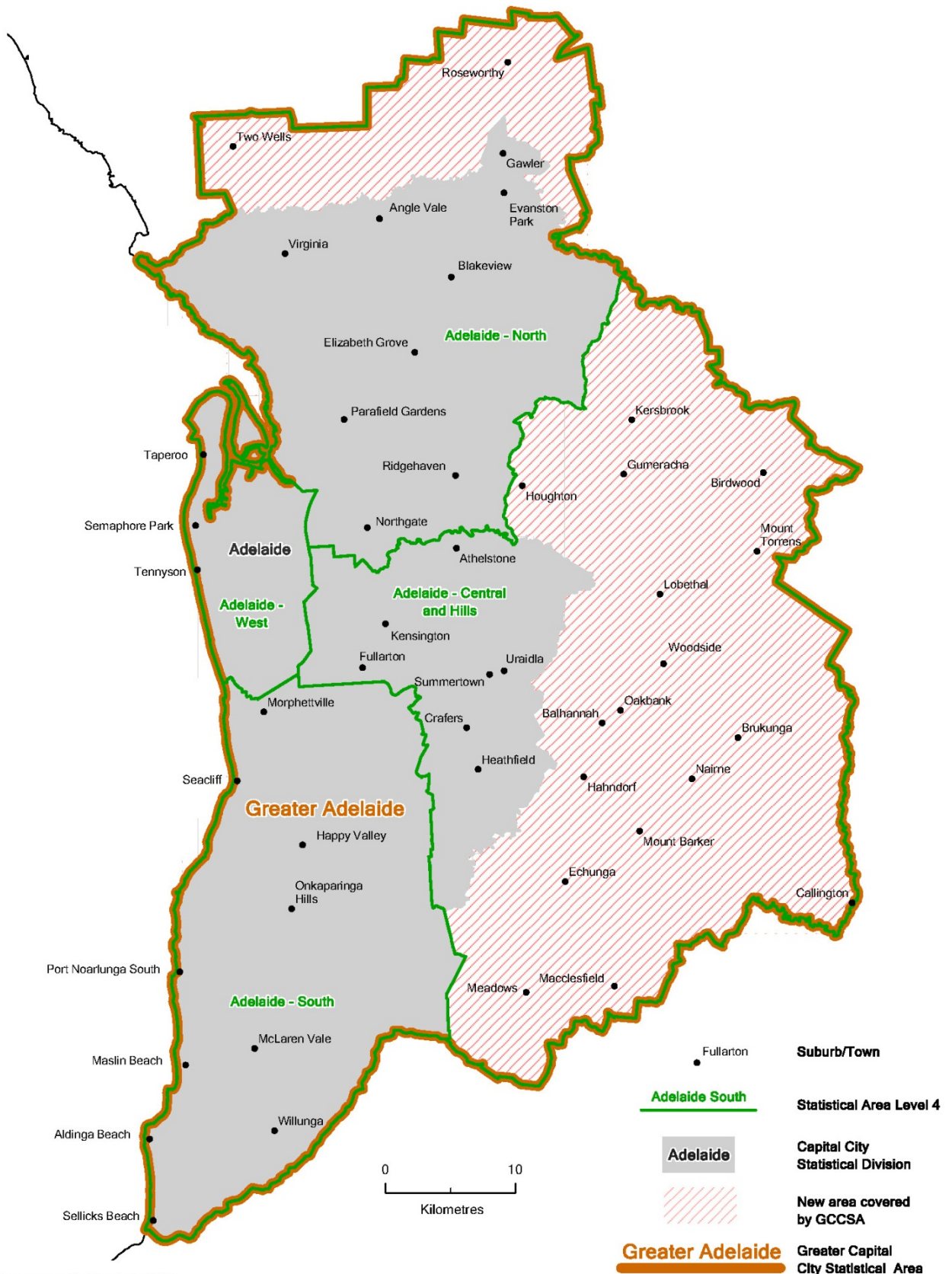
Comparison with Brisbane Capital City Statistical Division





Greater Capital City Statistical Area (GCCSA)

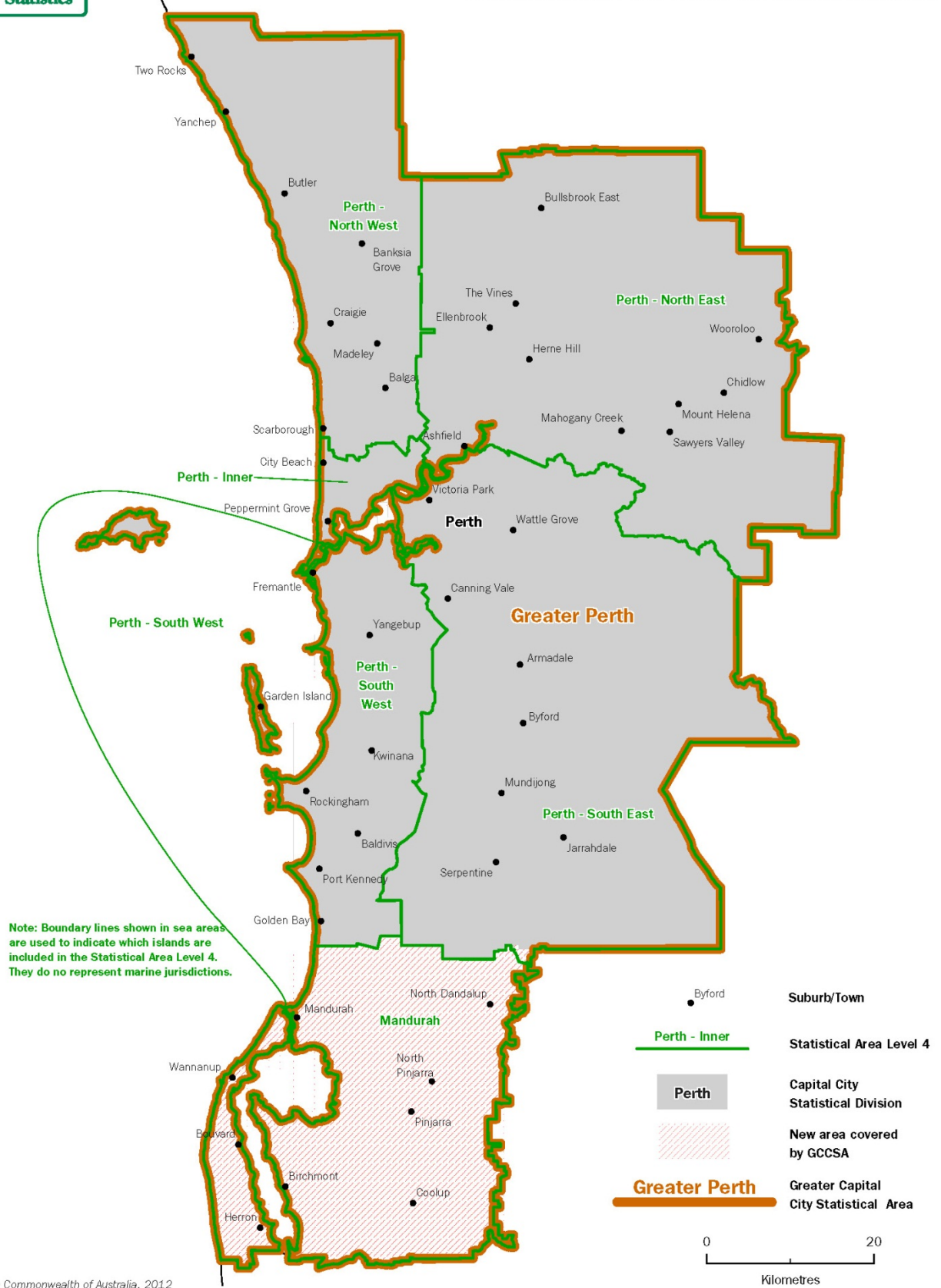
Comparison with Adelaide Capital City Statistical Division





Greater Capital City Statistical Area (GCCSA)

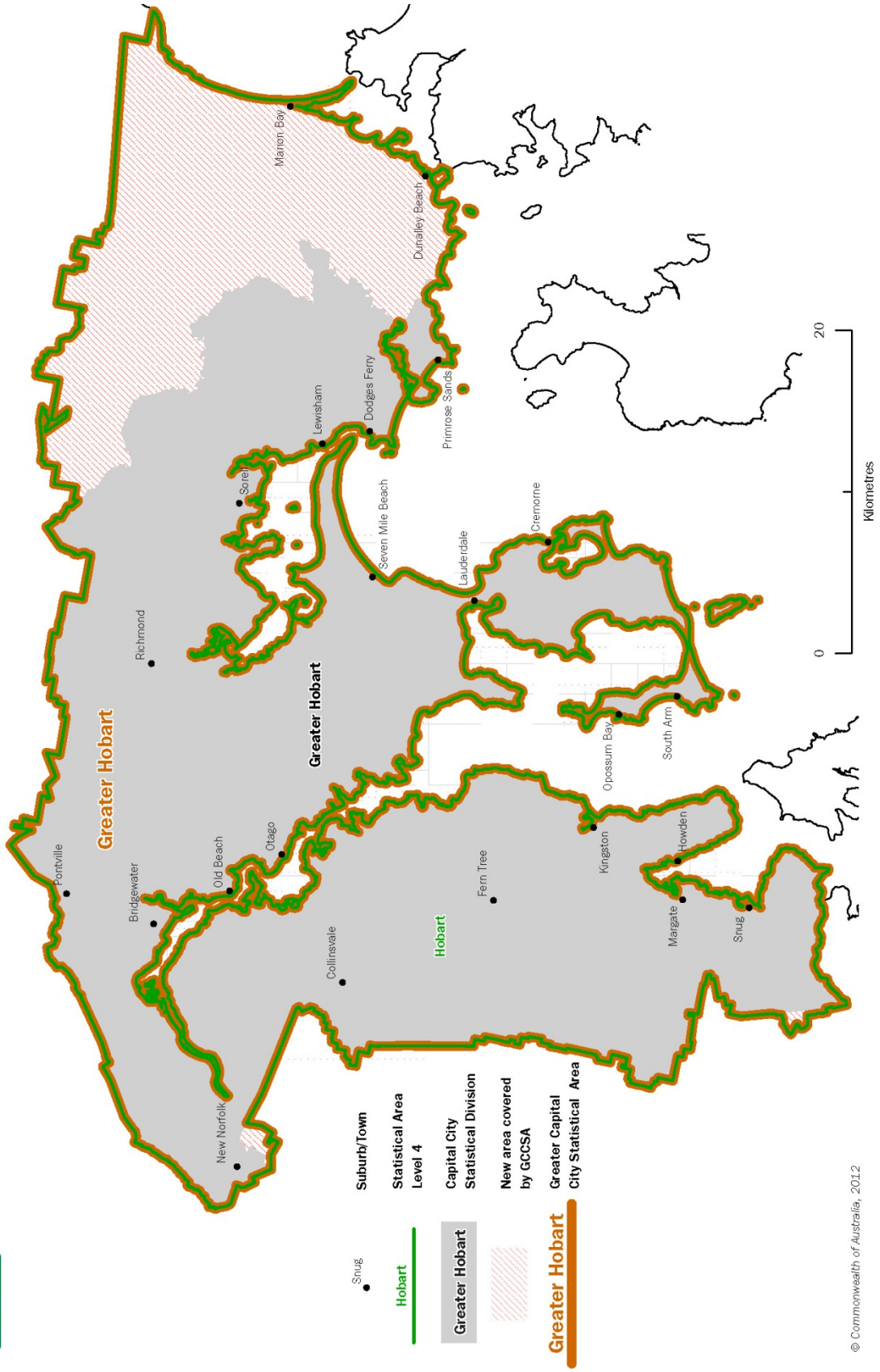
Comparison with Perth Capital City Statistical Division





Greater Capital City Statistical Area (GCCSA)

Comparison with Greater Hobart Capital City Statistical Division

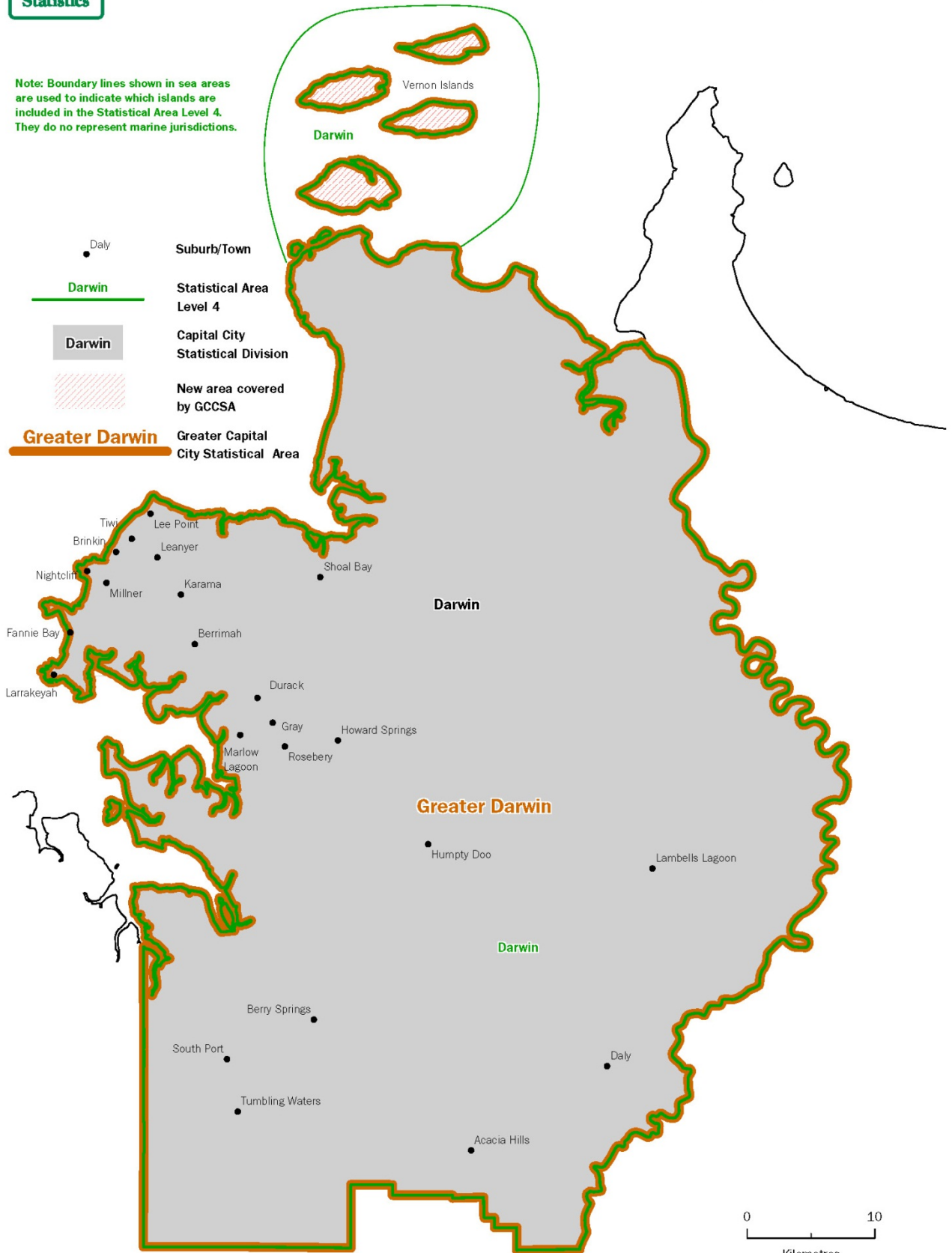




Greater Capital City Statistical Area (GCCSA)

Comparison with Darwin Capital City Statistical Division

Note: Boundary lines shown in sea areas are used to indicate which islands are included in the Statistical Area Level 4. They do not represent marine jurisdictions.





Greater Capital City Statistical Area (GCCSA)

Comparison with Canberra Capital City Statistical Division

