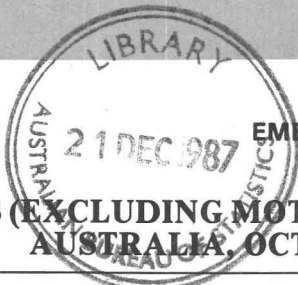


0588100  
AVS



CATALOGUE NO. 8501.0

EMBARGOED UNTIL 11.30 A.M. 21 DECEMBER 1987



### RETAIL SALES OF GOODS (EXCLUDING MOTOR VEHICLES, PARTS, PETROL, ETC.), AUSTRALIA, OCTOBER 1987

**PHONE INQUIRIES** • *about these statistics*—contact Mr Howard Williams on Canberra (062) 52 5631 or any ABS State office.

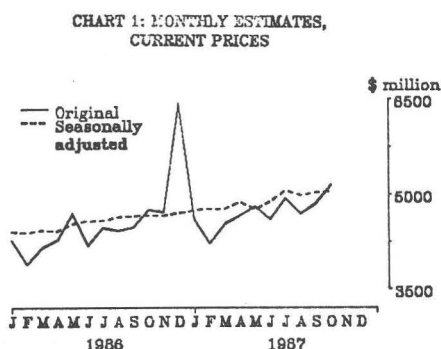
- *about the constant price estimates*—contact Mr Henry Foira on Canberra (062) 52 6724.
- *about other statistics and ABS services*—contact Information Services on Canberra (062) 52 6627, 52 5402, 52 6007 or any ABS State office.

**MAIL INQUIRIES** • *write to Information Services, ABS, P.O. Box 10, Belconnen, A.C.T. 2616* or any ABS State office.

**ELECTRONIC SERVICES** • on VIATEL — key \*656#. • on AUSSTATS — phone (062) 52 6017. • on TELESTATS — phone (062) 52 5404.

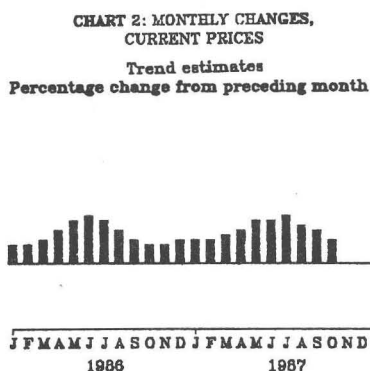
### MAIN FEATURES

TOTAL VALUE OF RETAIL SALES OF GOODS (EXCLUDING MOTOR VEHICLES, PARTS, PETROL, ETC.), AUSTRALIA



*This publication includes trend estimates of retail sales, which have been derived by smoothing the series of seasonally adjusted estimates. The smoothing of seasonally adjusted series is a means of reducing the impact of the irregular component of the series to provide a basis for identifying the underlying trend. However, the trend estimates for the most recent months are subject to revision as data for subsequent months become available. Further details are given in paragraphs 16 to 22 of the Explanatory Notes at the end of this publication.*

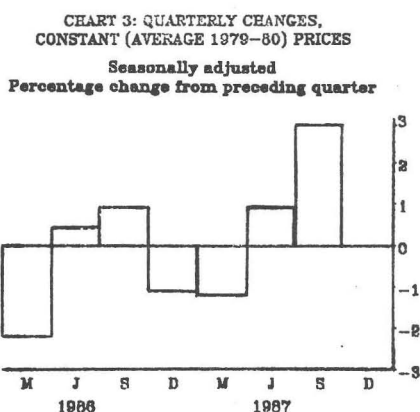
*Estimates are subject to sampling and non-sampling variability as explained in paragraphs 10 to 15.*



### AUSTRALIAN TOTAL ESTIMATES (see Charts 1 to 3)

For October 1987, the estimated value of retail sales in Australia (excluding sales of motor vehicles, parts, petrol etc), in original terms, is \$5,148.9 million (see Chart 1). While the trend estimates continue to show positive monthly growth, the rate of that growth has been declining over recent months from a peak of 1.0% in July 1987 to 0.5% in October 1987. This gradual slackening in the monthly growth rate of retail sales is consistent across all industries and all States.

The trend estimate for October 1987 is 8.2% higher than for October 1986.



In seasonally adjusted terms, October 1987 shows an increase of 0.3%. Users should take note of the comment contained in previous releases of this bulletin that the changes to school holiday arrangements in a number of States may have affected the seasonality of the series. The seasonal adjustment process is not able to identify and correct for any changed retail sales patterns that may have resulted. However, the influence of the change is largely removed by the process of producing trend estimates.

TOTAL VALUE OF RETAIL SALES OF GOODS  
(EXCLUDING MOTOR VEHICLES, PARTS, PETROL, ETC.),  
TREND ESTIMATES, MONTHLY CHANGES  
CURRENT PRICES, SELECTED INDUSTRIES, AUSTRALIA  
Percentage change from preceding month

CHART 4: GROCERS, CONFECTIONERS, TOBACCONISTS

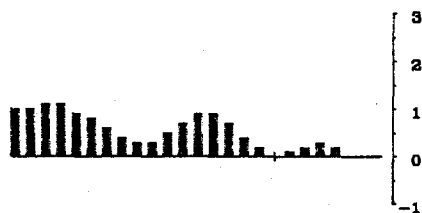


CHART 5: OTHER FOOD STORES

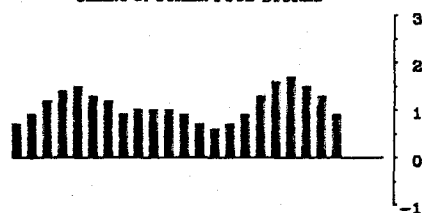


CHART 6: HOTELS, LIQUOR STORES, LICENSED CLUBS

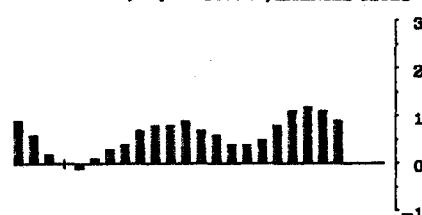


CHART 7: CLOTHING AND FABRICS STORES

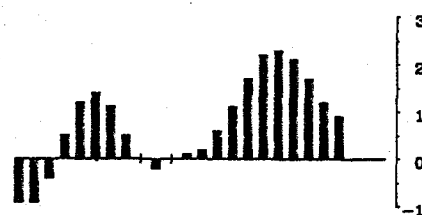


CHART 8: DEPARTMENT STORES

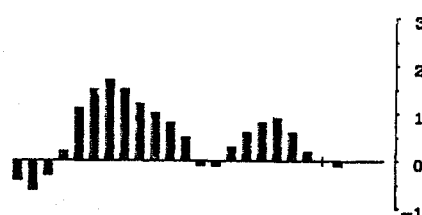
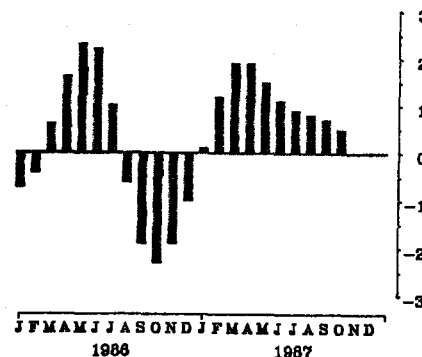


CHART 9: ELECTRICAL GOODS STORES



## INDUSTRY ESTIMATES (see Charts 4 to 9)

Trend estimates show that the value of retail sales is increasing for most retail industries but that the rate of this increase continues to decline for every industry.

Estimates for grocers, confectioners and tobacconists show negligible growth in the past 5 months (see Chart 4).

The trend series for other food stores (excluding butchers) grew by 0.9% in October, having peaked at 1.6% in June 1987 (see Chart 5).

Hotels, liquor stores and licenced clubs also show a monthly growth rate of 0.9% in October compared with 1.2% in August 1987 (see Chart 6).

For clothing and fabric stores the monthly growth rate in October was 0.9% having progressively fallen from a peak of 2.3% in June 1987 (see Chart 7). With the inclusion of October data, the growth rates for some earlier months have been revised downwards.

Department stores showed almost no change (-0.1%) in October compared with a positive growth rate of 0.9% in June 1987 (see Chart 8).

The monthly growth rate for electrical goods stores in October was 0.5% having peaked at 1.9% in April 1987 (see Chart 9).

## STATE ESTIMATES (see Charts 10 to 15 on page 7)

The monthly growth rate of retail sales is positive in all States but the rate of that growth is declining.

New South Wales (36% of total retail sales) trend estimates show a monthly growth rate of 0.5% in October 1987, down from a peak of 1.0% in May and June 1987 (see Chart 10).

For Victoria (26% of retail sales) trend estimates show a small monthly growth rate of 0.3% in October having peaked at 1.2% also in May and June 1987 (see Chart 11). With the inclusion of October data, the growth rates for the past three months have been revised downwards.

Trend estimates for Queensland show a monthly growth rate of 1.1% in October, marginally lower than the 1.2% growth rate measured for August and September 1987 (see Chart 12). With the inclusion of October data, the growth rates for the past three months have been revised upwards.

The trend growth in South Australia in October is only 0.2% compared with the growth rate in June 1987 of 1.0% (see Chart 13). Earlier growth rate estimates have been revised downwards.

For Western Australia, the monthly growth rate in October is 0.4%, down from 0.8% in September 1987 (see Chart 14).

Trend estimates for Tasmania show virtually no growth (0.1%) in retail sales in October, the growth rate of sales in that State having gradually declined from a peak of 1.5% in March 1987 (see Chart 15).

**TABLE 1. TOTAL VALUE OF RETAIL SALES OF GOODS (EXCLUDING MOTOR VEHICLES, PARTS, PETROL, ETC.), MONTHLY ESTIMATES, AT CURRENT PRICES, AUSTRALIA(a)**

Month	Original		Seasonally adjusted		Trend estimates		
	\$ m	% change from preceding month	\$ m	% change from preceding month	\$ m	% change from preceding month	% change from corresponding month of previous year
<i>1986—</i>							
August	4,433.7	-1.0	4,648.2	1.2	4,635.3	0.7	9.4
September	4,486.1	1.2	4,667.0	0.4	4,658.6	0.5	8.8
October	4,761.8	6.1	4,675.5	0.2	4,676.3	0.4	8.2
November	4,732.7	-0.6	4,673.0	-0.1	4,696.0	0.4	7.8
December	6,440.2	36.1	4,713.1	0.9	4,719.6	0.5	7.7
<i>1987—</i>							
January	4,609.4	-28.4	4,755.4	0.9	4,741.8	0.5	7.7
February	4,232.3	-8.2	4,779.0	0.5	4,764.8	0.5	7.8
March	4,538.6	7.2	4,776.1	-0.1	4,792.4	0.6	7.9
April	4,676.6	3.0	4,881.5	2.2	4,826.6	0.7	7.8
May	4,816.8	3.0	4,769.4	-2.3	4,867.7	0.9	7.7
June	4,609.1	-4.3	4,888.9	2.5	4,913.7	0.9	7.7
July	4,943.8	7.3	5,061.1	3.5	4,960.4	1.0	7.8
August	4,696.2	-5.0	4,991.7	-1.4	5,002.5	0.8	7.9
September	4,856.8	3.4	5,034.0	0.8	5,037.3	0.7	8.1
October	5,148.9	6.0	5,050.2	0.3	5,061.4	0.5	8.2
Standard error(b) of—							
October 1987	30.7						
Change: October 1987 from September 1987	21.3	0.4					

(a) Excluding Northern Territory. (b) See paragraphs 10 to 15 of Explanatory Notes.

**TABLE 2. TOTAL VALUE OF RETAIL SALES OF GOODS (EXCLUDING MOTOR VEHICLES, PARTS, PETROL, ETC.), QUARTERLY ESTIMATES, AT CONSTANT (AVERAGE 1979-80) PRICES, AUSTRALIA(a)**

Quarter	Original			Seasonally adjusted		
	\$m	% change from preceding quarter	% change from corresponding quarter of previous year	\$m	% change from preceding quarter	% change from corresponding quarter of previous year
<i>1986—</i>						
September quarter	8,166.3	-0.5	0.5	8,486.7	0.9	0.2
December quarter	9,453.7	15.8	-2.3	8,389.5	-1.1	-2.0
<i>1987—</i>						
March quarter	7,781.4	-17.7	-0.5	8,286.5	-1.2	-1.0
June quarter	8,133.5	4.5	-0.9	8,362.9	0.9	-0.6
September quarter	8,242.2	1.3	0.9	8,603.4	2.9	1.4

(a) Excluding Northern Territory.

TABLE 3. TOTAL VALUE OF RETAIL SALES OF GOODS (EXCLUDING MOTOR VEHICLES, PARTS, PETROL, ETC.), MONTHLY ESTIMATES, BY INDUSTRY, AT CURRENT PRICES, AUSTRALIA(a)

Month	Grocers, confectioners, tobacconists		Hotels, liquor stores, licensed clubs		Clothing and fabrics stores		Department stores		Footwear stores		Domestic hardware stores, jewellers		Electrical goods stores		Furniture stores		Floor coverings stores		Chemists		Newsagents		Other		Total	
	Butchers	General stores	Other food stores	Other licensed clubs	Stores	Stores	Stores	Stores	Stores	Stores	Stores	Stores	Stores	Stores	Stores	Stores	Stores	Stores	Stores	Stores	Stores	Stores	Stores	Stores		
ORIGINAL																										
\$ million																										
1986—																										
August	1,439.9	156.2	297.6	506.1	390.3	441.6	72.2	103.9	256.3	125.3	48.7	183.6	151.2	222.2	4,433.7											
September	1,429.8	152.4	297.0	501.7	400.6	506.9	80.6	104.6	234.6	122.9	48.2	183.0	152.7	229.3	4,486.1											
October	1,521.6	158.4	310.9	538.1	438.0	511.4	83.8	129.9	236.5	132.1	53.6	198.4	161.0	247.1	4,761.8											
November	1,482.2	151.7	310.0	540.2	438.2	540.9	77.3	142.9	231.4	127.7	54.3	189.0	161.9	243.6	4,732.7											
December	1,722.7	180.1	349.5	696.1	648.8	1,059.4	102.8	256.3	342.5	143.0	52.8	241.5	221.4	347.5	6,440.2											
1987—																										
January	1,527.6	144.9	336.0	571.5	371.1	472.5	81.7	117.0	220.0	114.6	41.3	190.1	165.0	219.7	4,609.4											
February	1,426.8	142.2	303.9	515.6	334.8	391.3	65.6	110.7	205.2	104.2	48.0	176.8	171.9	201.0	4,232.3											
March	1,501.0	147.0	310.3	536.6	397.9	463.0	72.6	113.3	220.9	113.4	55.1	182.6	170.3	217.3	4,538.6											
April	1,530.0	152.0	311.1	531.1	440.2	519.4	83.9	107.9	223.0	99.9	52.7	190.1	169.3	223.6	4,676.6											
May	1,525.3	156.7	310.8	518.0	491.6	552.2	92.8	115.9	253.2	110.5	53.9	200.7	174.4	218.2	4,816.8											
June	1,474.0	156.5	306.8	496.8	445.5	519.9	82.6	102.4	254.1	109.7	53.9	196.7	168.4	203.3	4,609.1											
July	1,544.3	162.1	339.3	538.6	490.7	557.0	88.2	109.3	261.7	124.3	65.3	201.8	183.7	235.0	4,943.8											
August	1,513.6	155.3	329.0	534.6	426.1	462.8	71.3	114.4	246.7	124.4	59.4	204.3	180.3	236.0	4,696.2											
September	1,515.2	155.5	337.9	554.9	467.0	519.7	83.4	126.3	241.0	121.1	57.5	208.2	181.8	245.4	4,856.8											
October	1,611.1	158.2	356.4	593.2	489.6	544.7	88.9	145.1	261.0	133.4	63.0	212.9	178.2	266.5	5,148.9											
Standard error of—	13.8	6.5	1.5	11.4	8.3	0.0	3.4	6.9	6.3	5.4	4.8	7.9	7.0	10.1	30.7											
Level(b)	9.1	3.4	0.6	5.8	5.5	0.0	2.2	4.4	4.3	7.2	3.8	4.0	3.6	6.9	21.3											
Change(c)																										
TREND ESTIMATES																										
\$ million																										
1986—																										
August	1,470.6	155.3	299.1	520.7	428.4	528.9	80.2	121.7	252.5	125.0	48.8	185.0	158.1	231.8	4,635.3											
September	1,474.4	154.5	302.0	524.1	428.5	528.4	80.9	123.0	247.6	124.4	48.2	187.1	159.7	233.4	4,658.6											
October	1,478.5	153.6	304.9	528.1	427.8	533.6	81.2	124.3	241.8	123.7	48.1	188.9	161.4	232.8	4,676.3											
November	1,485.2	152.9	308.0	532.3	427.8	538.1	81.5	125.4	237.3	122.8	48.8	190.2	163.4	231.1	4,696.0											
December	1,496.3	152.5	310.9	536.9	428.3	540.7	81.7	126.0	235.0	121.2	50.0	191.3	165.5	229.5	4,719.6											
1987—																										
January	1,510.2	152.7	313.1	540.9	429.1	540.2	81.7	126.1	235.2	118.8	51.3	192.7	168.1	228.6	4,741.8											
February	1,523.8	153.3	314.9	544.1	431.6	539.9	81.5	126.0	238.0	116.0	52.6	194.6	171.1	229.2	4,764.8											
March	1,534.7	154.6	317.1	546.4	436.2	541.3	81.5	126.1	242.5	113.7	53.9	196.9	174.5	231.4	4,792.4											
April	1,541.0	156.2	320.1	548.5	443.7	544.8	81.7	127.0	247.1	112.6	55.1	199.4	178.3	234.7	4,826.6											
May	1,543.4	157.5	324.4	551.3	453.5	549.3	82.2	128.8	250.8	113.3	56.2	201.7	182.0	238.5	4,867.7											
June	1,543.9	158.2	329.6	555.5	464.1	554.3	82.9	131.5	253.6	115.7	57.1	203.6	184.8	242.1	4,913.7											
July	1,545.6	158.0	335.2	561.5	474.0	557.8	83.6	134.5	256.0	118.9	58.0	205.4	186.5	245.6	4,960.4											
August	1,549.0	157.3	340.3	568.0	482.2	559.1	84.1	137.6	258.0	122.3	58.7	207.1	187.2	249.0	5,002.5											
September	1,553.1	156.3	344.8	574.2	488.2	558.9	84.3	140.4	259.7	125.2	59.1	208.6	187.2	252.0	5,037.3											
October	1,556.5	155.1	348.0	579.5	492.4	558.2	84.5	142.7	260.9	127.7	59.4	209.6	186.9	254.5	5,061.4											

For footnotes see end of table.

TABLE 3. TOTAL VALUE OF RETAIL SALES OF GOODS (EXCLUDING MOTOR VEHICLES, PARTS, PETROL, ETC.), MONTHLY ESTIMATES, BY INDUSTRY, AT CURRENT PRICES, AUSTRALIA(a)—continued

Month	Grocers, confect- ioners, tobacc- onists	Butchers	General stores	Other food stores	Hotels,			Department stores	Foot- wear stores	Domestic hardware stores, jewellers	Electrical goods stores	Furniture stores	Floor coverings stores	Chemists	News- agents	Other	Total
					liquor stores, licensed clubs	Clothing and fabrics stores	Electrical goods stores										
TREND ESTIMATES—continued																	
% change from preceding month																	
1986—	0.4	-0.1	1.7	0.9	0.4	0.5	1.5	0.7	0.7	0.7	-0.6	-0.2	-0.8	1.3	0.8	1.7	0.7
August	0.3	-0.5	1.4	1.0	0.7	0.0	0.9	1.1	1.1	1.1	-1.9	-0.5	-1.2	1.1	1.0	0.7	0.5
September	0.3	-0.6	0.7	1.0	0.8	-0.2	1.0	1.1	1.1	1.1	-2.3	-0.6	-0.2	1.0	1.1	-0.3	0.4
October	0.5	-0.5	0.2	1.0	0.8	0.0	0.8	0.9	0.9	0.9	-1.9	-0.7	1.5	0.7	1.2	-0.7	0.4
November	0.7	-0.3	-0.7	0.9	0.9	0.1	0.5	0.5	0.5	0.5	-1.0	-1.3	2.5	0.6	1.3	-0.7	0.5
December																	
1987—	0.9	0.1	-0.9	0.7	0.7	0.2	-0.1	0.0	0.1	0.1	0.1	-2.0	2.6	0.7	1.6	-0.4	0.5
January	0.9	0.4	-0.9	0.6	0.6	0.6	-0.1	-0.2	-0.1	-0.1	1.2	-2.4	2.5	1.0	1.8	0.3	0.5
February	0.7	0.8	-0.7	0.7	0.4	1.1	0.3	0.0	0.1	0.1	1.9	-2.0	2.5	1.2	2.0	1.0	0.6
March	0.4	1.0	-0.7	0.9	0.4	1.7	0.6	0.2	0.7	0.7	1.9	-1.0	2.2	1.3	2.2	1.4	0.7
April r	0.2	0.8	0.2	1.3	0.5	2.2	0.8	0.6	1.4	1.4	1.5	0.6	2.0	1.2	2.1	1.6	0.9
May r	0.0	0.4	1.0	1.6	0.8	2.3	0.9	0.9	2.1	2.1	1.1	2.1	1.6	0.9	1.5	1.5	0.9
June r	0.1	-0.1	1.7	1.7	1.1	2.1	0.6	0.8	2.3	2.3	0.9	2.8	1.6	0.9	0.9	1.4	1.0
July r	0.2	-0.4	2.1	1.5	1.2	1.7	0.2	0.6	2.0	2.0	0.8	2.9	1.6	0.8	0.4	1.4	0.8
August r	0.3	-0.6	2.3	1.3	1.1	1.2	0.0	0.2	2.0	2.0	0.7	2.4	0.7	0.7	0.1	1.2	0.7
September r	0.2	-0.8	2.0	0.9	0.9	0.9	-0.1	0.2	1.6	1.6	0.5	2.0	0.5	0.5	-0.3	1.0	0.5
October																	
% change from corresponding month of previous year																	
1986—	10.8	7.2	3.4	13.8	6.6	6.1	6.5	14.9	12.7	12.7	7.2	5.0	1.9	12.2	8.0	26.5	9.4
August	10.2	4.1	4.4	13.3	6.3	4.1	7.3	12.2	12.1	12.1	4.3	3.1	0.6	12.6	9.0	24.4	8.8
September	9.6	1.5	4.1	13.1	6.1	2.5	7.7	9.7	11.6	11.6	1.2	1.7	0.6	13.0	9.9	21.8	8.2
October	9.2	-0.2	3.1	13.4	5.8	2.0	8.1	8.5	11.1	11.1	-0.8	0.9	2.5	13.2	10.9	19.3	7.8
November	9.0	-0.8	1.2	13.8	5.6	2.5	8.5	8.4	10.6	10.6	-1.2	-0.2	6.2	12.9	11.4	16.9	7.7
December																	
1987—	8.9	-0.4	-0.5	13.9	5.4	3.6	8.8	9.1	9.9	9.9	-0.5	-2.0	9.9	12.6	12.1	14.9	7.7
January	8.8	0.3	-1.2	13.5	5.5	5.1	9.4	10.0	9.1	9.1	1.1	-4.4	12.9	12.4	12.9	13.4	7.8
February	8.4	1.3	-0.5	12.9	5.7	6.7	10.1	10.7	8.3	8.3	2.4	-6.7	14.4	12.5	14.1	12.2	7.9
March	7.7	2.0	0.2	12.4	6.1	8.0	10.6	10.3	8.0	8.0	2.7	-8.5	15.0	12.8	15.6	11.2	7.8
April r	6.9	2.1	1.2	12.2	6.7	9.0	10.3	8.9	8.5	8.5	1.8	-8.7	15.2	13.0	17.3	10.1	7.7
May r	6.0	2.2	2.2	12.5	7.4	10.1	9.6	7.2	9.7	9.7	0.8	-7.4	15.8	12.8	18.6	8.8	7.7
June r	5.5	1.6	2.9	13.1	8.3	11.2	8.5	5.8	11.3	11.3	0.7	-5.1	17.9	12.4	18.9	7.8	7.8
July r	5.3	1.3	3.3	13.8	9.1	2.6	7.1	4.9	13.1	13.1	2.2	-2.2	20.3	11.9	18.4	7.4	7.9
August r	5.3	1.2	4.2	14.2	9.6	13.9	5.8	4.2	14.1	14.1	4.9	0.6	22.6	11.5	17.3	8.0	8.1
September r	5.3	1.0	5.6	14.1	9.7	15.1	4.6	4.1	14.8	14.8	7.9	3.2	23.5	11.0	15.8	9.3	8.2
October																	

(a) Excluding Northern Territory. (b) The standard error of the estimate for the latest month—see paragraphs 10 to 15 of Explanatory Notes. (c) The standard error of the change of the latest month from the preceding month—see paragraphs 10 to 15 of Explanatory Notes.

**TABLE 4. TOTAL VALUE OF RETAIL SALES OF GOODS (EXCLUDING MOTOR VEHICLES, PARTS PETROL, ETC.), MONTHLY ESTIMATES, AT CURRENT PRICES, AUSTRALIA(a), STATES AND AUSTRALIAN CAPITAL TERRITORY**

Month	New South Wales	Victoria	Queensland	South Australia	Western Australia	Tasmania	Australian Capital Territory	Australia(a)
<b>ORIGINAL</b>								
\$ million								
1986—								
August	1,568.1	1,180.6	722.5	368.6	395.4	116.7	81.8	4,433.7
September	1,598.7	1,179.2	733.1	374.1	399.9	118.3	82.7	4,486.1
October	1,689.5	1,278.6	770.3	389.0	428.1	122.7	83.6	4,761.8
November	1,705.4	1,269.0	749.6	386.5	417.6	122.8	81.7	4,732.7
December	2,346.2	1,717.9	1,015.9	513.2	565.1	172.6	109.5	6,440.2
1987—								
January	1,625.9	1,223.5	767.8	376.8	424.2	116.5	74.6	4,609.4
February	1,494.4	1,140.8	674.3	342.5	393.5	112.5	74.3	4,232.3
March	1,604.6	1,232.5	722.7	371.2	405.2	118.7	83.8	4,538.6
April	1,658.1	1,251.1	734.4	391.3	428.7	127.7	85.4	4,676.6
May	1,720.9	1,290.3	744.4	396.5	448.2	128.4	88.1	4,816.8
June	1,657.4	1,220.3	721.4	379.4	420.9	125.2	84.6	4,609.1
July	1,759.8	1,312.0	801.4	405.9	444.7	128.7	91.2	4,943.8
August	1,681.0	1,240.7	758.8	386.7	422.9	121.4	84.6	4,696.2
September	1,734.8	1,277.0	788.7	396.7	443.5	126.7	89.5	4,856.8
October	1,828.3	1,363.6	842.2	415.4	473.5	135.4	90.6	5,148.9
Standard error of—								
Level(b)	20.1	17.1	12.3	5.8	7.0	2.1	2.3	30.7
Change(c)	12.7	11.8	8.9	6.2	5.3	1.3	2.3	21.3
<b>TREND ESTIMATES</b>								
\$ million								
1986—								
August	1,651.8	1,245.6	740.7	384.1	408.5	121.8	83.3	4,635.3
September	1,660.1	1,250.1	743.9	384.3	412.3	122.6	83.0	4,658.6
October	1,666.3	1,252.5	748.4	384.6	416.8	122.7	82.5	4,676.3
November	1,672.8	1,255.1	754.6	385.5	421.4	122.6	82.3	4,696.0
December	1,679.9	1,258.5	761.0	387.0	425.7	122.8	82.8	4,719.6
1987—								
January	1,687.3	1,261.7	765.2	388.5	429.8	123.5	83.8	4,741.8
February	1,696.8	1,265.9	767.1	390.0	433.8	124.9	85.1	4,764.8
March	1,709.2	1,272.6	768.0	391.6	437.6	126.8	86.2	4,792.4
April r	1,724.1	1,283.7	768.5	394.1	440.7	128.6	87.1	4,826.6
May r	1,740.6	1,298.6	770.6	397.4	443.5	130.0	87.8	4,867.7
June r	1,757.8	1,314.6	776.1	401.3	446.2	130.9	88.3	4,913.7
July r	1,774.3	1,328.9	784.7	405.0	449.1	131.4	88.8	4,960.4
August r	1,788.4	1,339.8	794.5	408.1	452.2	131.8	89.3	5,002.5
September r	1,799.9	1,347.0	804.1	410.2	455.6	132.3	89.7	5,037.3
October	1,808.4	1,350.7	812.9	411.1	457.6	132.4	90.0	5,061.4
% change from preceding month								
1986—								
August	0.8	0.7	0.3	0.0	0.6	0.9	0.5	0.7
September	0.5	0.4	0.4	0.1	0.9	0.7	-0.4	0.5
October	0.4	0.2	0.6	0.1	1.1	0.1	-0.6	0.4
November	0.4	0.2	0.8	0.2	1.1	-0.1	-0.2	0.4
December	0.4	0.3	0.8	0.4	1.0	0.2	0.6	0.5
1987—								
January	0.4	0.3	0.6	0.4	1.0	0.6	1.2	0.5
February	0.6	0.3	0.2	0.4	0.9	1.1	1.6	0.5
March	0.7	0.5	0.1	0.4	0.9	1.5	1.3	0.6
April r	0.9	0.9	0.1	0.6	0.7	1.4	1.0	0.7
May r	1.0	1.2	0.3	0.8	0.6	1.1	0.8	0.9
June r	1.0	1.2	0.7	1.0	0.6	0.7	0.6	0.9
July r	0.9	1.1	1.1	0.9	0.6	0.4	0.6	1.0
August r	0.8	0.8	1.2	0.8	0.7	0.3	0.6	0.8
September r	0.6	0.5	1.2	0.5	0.8	0.4	0.4	0.7
October	0.5	0.3	1.1	0.2	0.4	0.1	0.3	0.5
% change from corresponding month of previous year								
1986—								
August	9.4	11.9	9.2	5.5	7.9	6.4	9.7	9.4
September	8.6	11.2	8.5	4.6	7.9	6.3	9.1	8.8
October	7.9	10.7	7.8	3.8	8.2	5.7	8.1	8.2
November	7.5	10.3	7.5	3.4	8.4	4.9	7.3	7.8
December	7.7	10.1	7.4	3.1	8.5	4.5	7.3	7.7
1987—								
January	8.1	9.7	7.0	2.9	8.5	5.0	7.7	7.7
February	8.7	9.1	6.4	2.8	8.6	6.4	8.8	7.8
March	9.2	8.3	5.8	2.8	8.9	8.1	9.5	7.9
April r	9.3	7.7	5.2	3.1	9.3	9.4	9.7	7.8
May r	9.1	7.4	5.0	3.7	9.9	9.9	8.9	7.7
June r	8.6	7.3	5.4	4.5	10.3	9.6	7.8	7.7
July r	8.3	7.4	6.3	5.4	10.6	8.9	7.1	7.8
August r	8.3	7.6	7.3	6.2	10.7	8.2	7.2	7.9
September r	8.4	7.8	8.1	6.7	10.5	7.9	8.1	8.1
October	8.5	7.8	8.6	6.9	9.8	7.9	9.1	8.2

(a) Excluding Northern Territory. (b) The standard error of the estimate for the latest month—see paragraphs 10 to 15 of Explanatory Notes. (c) The standard error of the change of the latest month from the preceding month—see paragraphs 10 to 15 of Explanatory Notes.

TOTAL VALUE OF RETAIL SALES OF GOODS  
(EXCLUDING MOTOR VEHICLES, PARTS, PETROL, ETC.),  
TREND ESTIMATES, MONTHLY CHANGES,  
CURRENT PRICES, STATES  
Percentage change from preceding month

CHART 10: NEW SOUTH WALES

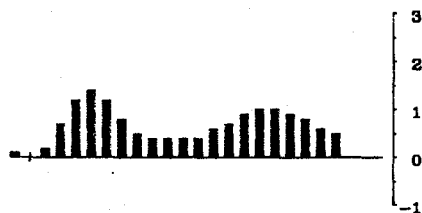


CHART 11: VICTORIA

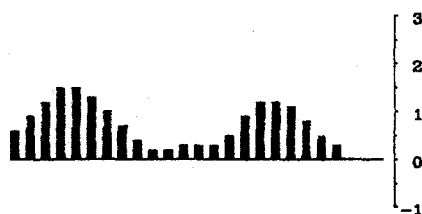


CHART 12: QUEENSLAND

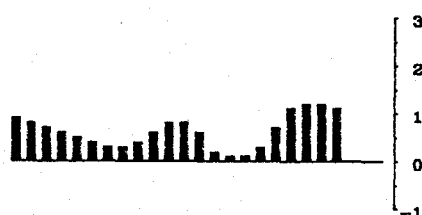


CHART 13: SOUTH AUSTRALIA

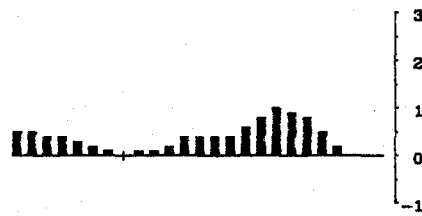


CHART 14: WESTERN AUSTRALIA

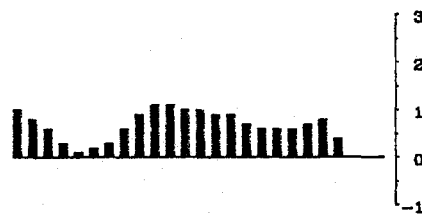


CHART 15: TASMANIA

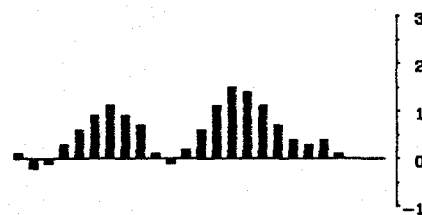


TABLE 5. TOTAL VALUE OF RETAIL SALES OF GOODS (EXCLUDING MOTOR VEHICLES, PARTS, PETROL, ETC.),  
MONTHLY ESTIMATES, BY INDUSTRY, STATES AND AUSTRALIAN CAPITAL TERRITORY  
(\$ million)

Month	NEW SOUTH WALES										Total					
	Grocers, confect- ioners, tobac- conists	Butchers	General stores	Other food stores	Hotels, liquor stores, licensed clubs	Clothing and fabrics stores	Depart- ment stores	Foot- wear stores	Domestic hardware stores, jewellers	Electrical goods stores		Furniture stores	Floor coverings stores	Chemists	News- agents	Other
1986—																
August	451.4	68.9	8.6	113.2	183.3	136.2	183.1	26.1	37.4	76.7	39.5	15.9	77.1	64.1	86.6	1,568.1
September	450.0	68.7	9.1	111.5	181.6	144.7	210.6	29.7	37.1	74.8	39.8	14.4	76.0	65.5	85.2	1,598.7
October	463.7	69.4	9.3	117.1	200.8	160.5	214.9	33.4	49.9	70.2	43.5	17.5	78.5	67.3	93.4	1,689.5
November	439.5	65.1	9.6	120.9	198.4	159.1	234.8	29.5	55.0	73.9	43.1	18.0	75.3	68.0	95.2	1,705.4
December	533.6	78.2	16.5	139.5	257.0	232.7	447.9	39.2	103.4	113.5	50.1	17.8	93.8	92.3	130.8	2,346.2
1987—																
January	471.4	62.7	8.0	122.0	208.3	135.4	197.2	30.4	44.1	66.8	39.3	10.1	81.6	60.7	87.9	1,625.9
February	434.9	62.0	7.7	112.7	188.5	118.3	165.7	23.5	41.3	61.2	39.3	12.3	75.2	73.3	78.4	1,494.4
March	457.1	64.6	8.9	114.8	197.5	140.8	195.1	26.3	41.5	68.2	41.6	15.5	76.1	71.4	85.3	1,604.6
April	465.1	67.3	9.2	115.1	201.0	162.1	206.7	30.9	40.7	71.6	36.0	20.3	79.0	69.6	83.5	1,658.1
May	469.5	69.5	9.6	114.3	193.0	188.9	219.8	34.2	44.5	80.6	38.9	18.7	83.4	71.7	84.1	1,720.9
June	452.9	69.2	8.9	113.7	185.5	166.7	218.0	30.2	36.7	84.5	37.8	18.8	84.4	69.2	82.8	1,657.4
July	469.7	73.3	10.4	125.1	200.7	175.4	231.3	31.5	40.6	79.6	44.4	22.9	84.4	80.1	90.5	1,759.8
August	473.2	71.4	9.3	122.9	199.5	152.6	193.4	24.2	41.4	74.0	45.1	19.8	83.8	77.3	93.2	1,681.0
September	469.5	70.9	9.9	126.7	204.0	172.7	211.5	30.0	46.6	75.6	43.3	18.2	87.0	76.0	93.0	1,734.8
October	488.5	72.5	13.7	127.3	226.0	181.3	215.8	32.1	58.2	83.4	47.2	21.7	86.8	75.4	98.4	1,828.3
Standard error of—																
Level(a)	7.4	5.2	1.0	6.7	7.9	5.1	0.0	1.6	5.4	4.3	3.0	3.6	6.0	5.4	6.8	20.1
Change(b)	3.8	1.8	0.6	6.2	3.3	2.9	0.0	1.2	3.4	2.3	5.3	1.9	2.7	2.2	4.0	12.7

For footnotes see end of table.

TABLE 5. TOTAL VALUE OF RETAIL SALES OF GOODS (EXCLUDING MOTOR VEHICLES, PARTS, PETROL, ETC.), MONTHLY ESTIMATES, BY INDUSTRY, STATES AND AUSTRALIAN CAPITAL TERRITORY—continued

Month	(\$ million)											Total			
	Grocers, confectioners, tobacconists	Butchers	General stores	Other food stores	Hotels, liquor stores, licensed clubs	Clothing and fabrics stores	Department stores	Foot-wear stores	Domestic hardware stores, jewellers	Electrical goods stores	Furniture stores		Floor coverings stores	Chemists	News-agents
VICTORIA															
1986—															
August	398.5	43.4	10.3	74.4	108.0	123.4	93.2	20.3	34.1	82.4	41.7	15.0	42.0	31.4	62.6
September	400.2	42.7	11.7	75.0	106.6	121.1	102.9	21.4	33.6	69.0	39.3	15.0	40.2	32.1	68.4
October	441.2	45.2	9.8	80.0	111.7	133.2	104.2	21.9	41.2	74.0	41.9	18.0	48.6	36.3	71.6
November	425.6	45.0	10.3	78.0	121.2	134.3	106.2	20.8	44.7	71.5	40.0	17.3	46.5	36.5	71.1
December	485.4	52.7	20.6	85.2	155.3	204.1	224.3	29.4	74.5	104.3	43.1	15.4	63.5	51.7	108.5
1987—															
January	432.5	42.4	8.7	87.0	127.3	114.4	97.2	22.4	39.6	64.5	35.4	14.8	43.3	39.0	55.0
February	407.8	41.0	8.7	78.9	117.2	107.2	80.8	20.1	36.8	61.0	29.8	17.5	41.8	37.3	54.8
March	431.4	42.6	9.4	81.6	119.5	131.1	99.9	22.5	38.9	65.0	31.5	18.6	44.2	35.8	60.6
April	425.2	43.9	11.4	86.4	114.8	139.2	115.6	25.1	35.4	66.6	31.4	13.8	45.4	36.0	61.0
May	421.9	46.3	11.3	86.1	114.6	149.4	122.8	28.1	37.3	75.1	33.8	14.8	50.2	36.8	61.5
June	403.9	46.1	9.4	85.8	108.8	137.5	113.6	23.4	33.1	72.8	32.8	14.3	48.5	36.1	61.5
July	431.1	44.9	10.5	88.7	119.5	150.1	119.1	25.7	36.9	78.1	37.4	17.6	47.3	37.3	67.7
August	411.7	42.6	9.1	88.2	118.6	132.5	95.9	20.9	40.1	75.0	37.8	15.9	49.4	36.7	66.5
September	411.7	43.2	10.0	89.9	126.0	138.4	109.6	21.6	45.5	70.1	38.0	16.3	49.9	37.2	69.6
October	453.1	43.5	10.2	94.8	129.3	145.5	118.5	25.0	47.1	72.5	40.9	19.7	53.7	36.8	72.8
Standard error of—	8.1	2.6	0.0	7.6	6.2	4.7	0.0	2.5	3.2	2.4	3.6	2.7	3.6	2.7	5.9
Change(b)	4.5	2.3	0.0	3.8	3.2	3.5	0.0	1.6	2.3	1.8	4.5	2.4	2.3	1.5	4.1
QUEENSLAND															
1986—															
August	257.0	23.2	7.1	49.8	102.5	52.7	60.1	10.5	15.6	39.4	18.9	4.9	28.2	26.0	26.7
September	250.0	20.1	7.5	49.1	100.7	56.4	73.2	12.6	17.3	36.6	18.7	4.8	30.4	27.3	28.6
October	266.4	23.2	7.5	52.4	102.9	60.8	68.5	11.6	18.6	38.2	18.3	6.6	32.3	29.1	33.7
November	257.5	22.0	7.4	50.8	101.5	59.7	69.0	10.0	20.6	36.1	18.0	7.0	30.4	28.9	30.7
December	299.6	24.4	14.8	59.0	128.7	84.8	151.1	13.4	36.5	55.1	20.0	6.8	39.9	39.6	42.2
1987—															
January	275.5	19.1	7.6	61.2	103.0	47.6	68.9	12.7	15.8	38.7	15.3	5.4	30.0	36.5	30.4
February	250.9	19.2	6.2	51.8	90.9	43.1	50.9	8.0	15.4	36.1	13.5	6.5	26.4	29.4	25.6
March	267.5	19.8	6.9	53.1	97.6	47.0	59.4	8.9	18.6	37.0	16.9	8.0	27.4	30.0	27.4
April	267.1	19.1	7.5	49.1	97.1	52.8	70.8	9.8	13.7	34.6	10.4	7.5	30.2	30.3	34.4
May	264.4	19.9	7.9	48.9	96.5	59.2	75.6	11.9	14.8	38.5	12.2	8.1	29.3	31.3	26.0
June	258.2	20.2	7.5	46.0	94.0	55.8	70.6	11.0	14.7	38.9	13.2	8.1	28.6	30.1	24.5
July	273.2	22.4	8.8	59.2	101.5	70.4	77.2	12.6	13.8	42.3	15.1	10.9	31.7	32.4	29.8
August	267.6	20.5	7.0	54.9	101.0	61.6	64.7	10.8	13.8	39.2	15.7	9.0	32.2	32.0	28.9
September	264.9	20.1	7.9	57.1	101.7	70.3	77.1	12.7	15.0	40.6	15.2	10.4	31.6	33.7	30.5
October	285.1	21.8	8.2	60.8	107.9	73.0	80.7	12.9	17.0	45.0	18.8	8.9	32.1	30.8	39.3
Standard error of—	6.8	2.4	0.1	3.4	3.8	3.9	0.0	1.1	2.5	3.2	2.3	1.3	3.0	2.5	3.7
Change(b)	5.0	1.4	0.0	3.3	1.9	2.6	0.0	0.5	1.4	2.9	1.5	1.9	1.6	1.3	2.7

For footnotes see end of table.



TABLE 5. TOTAL VALUE OF RETAIL SALES OF GOODS (EXCLUDING MOTOR VEHICLES, PARTS, PETROL, ETC.), MONTHLY ESTIMATES, BY INDUSTRY, STATES AND AUSTRALIAN CAPITAL TERRITORY—continued (\$ million)

Month	Grocers, confectioners, tobacconists	Butchers	General stores	Other food stores	Hotels, liquor stores, licensed clubs	Clothing and fabrics stores	Department stores	Footwear stores	Domestic hardware stores, jewellers	Electrical goods stores	Furniture stores	Floor coverings stores	Chemists	Newsagents	Other	Total
SOUTH AUSTRALIA																
1986—																
August	130.7	9.3	5.3	22.6	40.2	27.1	46.3	5.7	6.0	20.4	10.6	4.8	15.3	9.0	15.3	368.6
September	128.3	9.3	6.0	23.7	39.9	28.0	52.6	5.8	5.8	20.1	10.5	5.4	14.9	8.7	15.3	374.1
October	138.0	9.0	6.1	23.8	42.1	30.4	53.0	6.1	7.0	18.6	10.4	4.4	16.5	8.0	15.6	389.0
November	131.8	8.4	5.8	23.6	42.8	31.0	58.9	6.2	7.3	17.3	9.7	4.9	15.8	8.0	15.2	386.5
December	156.8	11.1	9.0	26.0	57.2	44.0	96.6	7.2	15.0	25.2	11.1	5.3	17.9	9.0	21.7	513.2
1987—																
January	132.6	10.0	5.0	26.6	43.9	25.8	47.4	6.2	6.6	18.7	10.7	4.4	14.8	6.8	17.2	376.8
February	124.8	8.9	4.2	23.0	40.1	22.3	40.0	5.1	6.2	18.1	9.2	4.6	13.7	7.6	14.6	342.5
March	131.4	9.1	4.4	23.5	40.8	29.3	46.1	6.2	6.7	20.6	10.5	4.7	14.8	8.3	14.8	371.2
April	143.7	9.3	5.4	23.3	43.3	30.9	53.4	7.5	6.4	18.9	9.1	3.7	14.4	8.4	13.6	391.3
May	141.2	8.8	5.1	23.7	41.4	31.5	56.9	7.7	6.4	21.5	10.2	3.3	15.3	8.4	15.2	396.5
June	137.2	8.9	4.7	23.7	38.9	29.2	51.5	6.8	6.7	21.7	10.3	3.5	15.7	8.3	12.3	379.4
July	144.2	8.2	5.0	26.9	41.7	32.1	56.4	7.5	6.8	23.7	9.9	3.8	16.2	8.2	15.3	405.9
August	139.6	8.3	4.5	26.2	42.0	27.8	48.9	6.6	7.5	22.3	9.3	4.3	16.1	8.4	14.9	386.7
September	139.6	8.4	4.7	26.6	42.6	30.8	51.7	7.6	7.2	21.1	9.6	3.9	17.1	8.5	17.1	396.7
October	143.2	8.3	5.0	29.5	47.1	30.6	57.9	8.0	9.0	23.0	9.3	4.6	16.6	7.8	15.6	415.4
Standard error of—																
Level(a)	3.2	0.7	1.0	2.0	2.4	1.1	0.0	1.0	1.0	1.4	0.8	0.4	1.1	1.1	1.8	5.8
Change(b)	4.4	0.2	0.1	1.2	1.4	0.9	0.0	0.2	0.5	0.8	0.7	0.3	0.5	0.8	2.1	6.2
WESTERN AUSTRALIA																
1986—																
August	136.8	5.3	6.6	26.9	50.9	36.1	34.7	6.7	7.5	25.6	9.1	5.8	14.5	12.0	17.0	395.4
September	135.2	5.5	7.2	27.3	51.9	35.3	40.2	7.9	7.2	21.7	9.0	6.3	14.9	12.0	18.2	399.9
October	143.9	5.1	7.4	26.8	58.4	37.5	42.3	7.5	9.1	24.9	12.3	4.6	15.5	13.2	19.6	428.1
November	140.2	5.2	7.4	26.2	54.3	38.0	42.9	7.6	10.7	22.5	11.1	4.5	14.5	13.4	19.0	417.6
December	168.8	5.8	13.8	28.7	69.0	59.0	82.2	9.2	18.1	29.0	12.3	4.9	17.8	19.1	27.5	565.1
1987—																
January	147.4	5.1	6.6	28.6	67.9	33.1	39.1	7.0	7.1	22.0	9.3	4.3	13.7	15.0	18.1	424.2
February	142.9	5.2	6.6	27.1	58.4	28.9	31.9	5.7	7.7	20.1	8.1	4.8	13.4	15.5	17.1	393.5
March	145.0	5.0	7.2	27.5	59.8	32.2	36.5	5.5	6.6	20.2	7.9	5.6	13.3	15.1	17.7	405.2
April	157.0	6.0	7.9	26.7	52.7	36.8	43.7	7.2	7.3	21.4	8.2	4.8	14.4	16.2	18.3	428.7
May	157.5	6.0	8.0	26.5	51.4	43.1	47.1	7.2	7.8	26.3	10.1	6.2	15.4	17.6	17.9	448.2
June	152.4	5.8	7.2	26.2	50.2	37.9	38.1	7.9	6.7	24.6	10.1	6.2	14.4	16.4	16.9	420.9
July	153.0	6.2	7.1	28.3	53.2	42.5	44.0	7.5	7.0	26.2	11.7	7.2	14.6	16.2	19.9	444.7
August	150.6	6.0	7.4	26.3	51.7	35.9	35.4	6.2	7.5	25.4	10.9	7.6	15.1	16.9	20.1	422.9
September	155.9	6.1	8.1	26.7	57.3	37.8	43.1	8.5	8.1	22.9	9.6	5.9	15.4	16.7	21.6	443.5
October	162.1	5.8	8.4	32.9	59.8	40.8	45.0	7.8	9.4	27.0	11.1	5.2	15.9	17.3	24.9	473.5
Standard error of—																
Level(a)	3.0	1.2	0.2	3.9	2.8	1.7	0.0	0.4	0.7	1.4	0.7	0.8	1.2	1.8	1.9	7.0
Change(b)	1.2	0.4	0.0	3.5	1.9	1.2	0.0	0.6	0.5	0.7	0.6	0.7	0.3	1.7	1.6	5.3

For footnotes see end of table.

TABLE 5. TOTAL VALUE OF RETAIL SALES OF GOODS (EXCLUDING MOTOR VEHICLES, PARTS, PETROL, ETC.),  
MONTHLY ESTIMATES, BY INDUSTRY, STATES AND AUSTRALIAN CAPITAL TERRITORY—continued  
(\$ million)

Month	Grocers		Hotels		Clothing		Department		Domestic		Electrical		Furniture		Floor		News-		Total
	confect- ioners, tobacc- onists	Butchers	General stores	Other food stores	liquor stores, licensed clubs	and fabrics stores	ment stores	wear stores	stores, jewellers	goods stores	stores	stores	coverings stores	Chemists	agents	Other			
TASMANIA																			
1986—																			
August	42.9	4.1	n.p.	6.2	14.7	8.2	12.8	2.0	1.5	6.3	2.7	1.3	3.8	4.5	n.p.	n.p.	116.7		
September	42.2	4.1	n.p.	6.1	14.5	8.9	14.3	2.2	1.7	6.3	2.7	1.3	4.1	4.0	n.p.	n.p.	118.3		
October	44.1	4.2	n.p.	6.8	15.8	9.3	13.5	2.2	2.0	6.0	2.4	1.5	4.2	4.2	n.p.	n.p.	122.7		
November	43.4	3.9	n.p.	6.7	15.8	9.8	14.7	2.1	2.4	5.8	2.5	1.5	3.7	4.2	n.p.	n.p.	122.8		
December	50.5	5.3	n.p.	7.1	21.7	15.8	30.3	3.0	3.9	9.4	2.8	1.7	5.2	6.6	n.p.	n.p.	172.6		
1987—																			
January	42.3	4.0	n.p.	6.8	15.3	9.2	11.4	1.8	2.3	5.6	2.0	1.4	4.2	4.4	n.p.	n.p.	116.5		
February	40.1	3.9	n.p.	6.1	14.2	9.4	11.3	2.2	1.9	5.0	2.2	1.4	3.8	5.8	n.p.	n.p.	112.5		
March	42.6	4.1	n.p.	6.0	14.6	10.2	12.9	2.0	2.1	5.6	2.2	1.7	4.1	5.2	n.p.	n.p.	118.7		
April	44.0	4.3	n.p.	6.9	15.3	11.1	14.9	2.2	2.9	5.9	2.3	1.6	4.3	4.9	n.p.	n.p.	127.7		
May	43.7	4.2	n.p.	6.9	14.2	11.2	14.7	2.4	3.1	6.7	2.5	1.7	4.5	4.9	n.p.	n.p.	128.4		
June	42.6	4.2	n.p.	6.8	13.5	11.4	13.8	1.9	3.1	7.1	2.4	2.0	4.5	4.6	n.p.	n.p.	125.2		
July	45.4	4.6	n.p.	6.2	14.8	12.2	13.7	2.1	2.5	6.5	2.3	1.9	5.0	5.4	n.p.	n.p.	128.7		
August	44.7	4.3	n.p.	6.0	14.1	9.1	12.9	1.7	2.4	5.7	2.3	2.0	4.9	5.1	n.p.	n.p.	121.4		
September	46.1	4.4	n.p.	6.2	14.7	9.9	14.4	1.9	2.1	5.9	2.2	1.9	4.6	5.3	n.p.	n.p.	126.7		
October	50.3	4.4	n.p.	6.4	16.6	10.4	14.1	2.0	2.1	5.8	2.6	2.2	5.0	5.6	n.p.	n.p.	135.4		
Standard error of—																			
Level(a)	1.2	0.3	n.p.	0.5	0.9	0.5	0.0	0.1	0.4	0.2	0.1	0.2	0.5	0.6	n.p.	n.p.	2.1		
Change(b)	0.8	0.2	n.p.	0.3	0.5	0.4	0.0	0.0	0.2	0.2	0.1	0.2	0.1	0.3	n.p.	n.p.	1.3		
AUSTRALIAN CAPITAL TERRITORY																			
1986—																			
August	22.6	1.9	n.p.	4.6	6.6	6.7	11.5	0.9	1.8	5.5	2.8	1.0	2.7	4.2	n.p.	n.p.	81.8		
September	23.9	1.9	n.p.	4.3	6.4	6.3	13.2	1.0	1.9	5.7	2.9	1.0	2.6	3.1	n.p.	n.p.	82.7		
October	24.3	2.3	n.p.	4.0	6.4	6.3	15.2	1.1	2.0	4.5	3.3	1.0	2.9	2.8	n.p.	n.p.	83.6		
November	24.3	2.1	n.p.	3.9	6.0	6.4	14.3	1.1	2.2	4.3	3.2	1.0	2.8	3.0	n.p.	n.p.	81.7		
December	28.0	2.6	n.p.	4.0	7.2	8.4	27.1	1.4	4.8	6.0	3.6	0.9	3.4	3.2	n.p.	n.p.	109.5		
1987—																			
January	25.8	1.6	n.p.	3.8	5.7	5.5	11.3	1.2	1.6	3.8	2.7	0.7	2.4	2.6	n.p.	n.p.	74.6		
February	25.3	1.8	n.p.	4.3	6.4	5.5	10.7	1.0	1.4	3.6	2.2	0.9	2.4	2.9	n.p.	n.p.	74.3		
March	26.0	1.9	n.p.	3.8	6.8	7.2	13.0	1.3	1.6	4.2	2.8	1.0	2.8	4.4	n.p.	n.p.	83.8		
April	27.8	2.1	n.p.	3.7	6.9	7.2	14.3	1.3	1.6	4.2	2.5	0.9	2.5	3.8	n.p.	n.p.	85.4		
May	27.1	2.1	n.p.	4.2	6.8	8.2	15.4	1.4	1.9	4.5	2.8	0.9	2.6	3.7	n.p.	n.p.	88.1		
June	26.8	2.1	n.p.	4.6	6.0	7.1	14.2	1.3	1.4	4.5	3.0	1.0	2.5	3.8	n.p.	n.p.	84.6		
July	27.6	2.5	n.p.	4.8	7.3	8.0	15.4	1.2	1.7	5.2	3.5	1.0	2.7	4.0	n.p.	n.p.	91.2		
August	26.2	2.2	n.p.	4.4	7.8	6.7	11.6	0.9	1.7	5.2	3.4	0.8	2.7	4.0	n.p.	n.p.	84.6		
September	27.4	2.5	n.p.	4.8	8.6	7.0	12.2	1.2	1.8	4.8	3.3	0.9	2.7	4.4	n.p.	n.p.	89.5		
October	28.7	1.9	n.p.	4.7	6.5	8.0	12.8	1.1	2.2	4.5	3.5	0.8	2.7	4.5	n.p.	n.p.	90.6		
Standard error of—																			
Level(a)	1.0	0.9	n.p.	0.8	0.6	0.9	0.0	0.1	0.0	0.5	0.2	0.1	0.1	0.4	n.p.	n.p.	2.3		
Change(b)	0.3	0.7	n.p.	0.4	1.7	0.4	0.0	0.1	0.1	0.2	0.0	0.1	0.0	0.1	n.p.	n.p.	2.3		

(a) The standard error of the estimate for the latest month—see paragraphs 10 to 15 of Explanatory Notes. (b) The standard error of the change of the latest month from the preceding month—see paragraphs 10 to 15 of Explanatory Notes.

## EXPLANATORY NOTES

### Introduction

This publication presents monthly estimates of the value of retail sales classified by *industry* (i.e. type of store) for Australia and each State.

2. Quarterly estimates of total retail sales at constant (average 1979-80) prices are also included.
3. All the series shown in this publication, with estimates for earlier periods, are available on AUSSTATS — see paragraph 30.
4. Quarterly estimates of retail sales classified by *commodity* were previously published in Catalogue No. 8503.0 which was published for the last time in respect of June quarter 1987.

### Scope and coverage

5. The estimates are derived from a survey which includes in its scope all retail trade establishments, i.e. establishments classified to subdivision 48 of the Australian Standard Industrial Classification (ASIC), 1983 Edition (Catalogue Nos. 1201.0 and 1202.0), *except* motor vehicle dealers, petrol retailers etc. (ASIC classes 4861-4868), bread and milk vendors (4878-4879), footwear repairers (4846) and electrical appliance repairers n.e.c. (4857). *Also included* are cafes and restaurants (9231), hotels, etc. (mainly drinking places) (9232), licensed clubs (9241-9243) and hairdressers (9351-9352).
6. The scope of the survey includes establishments in all States and the Australian Capital Territory, but excludes those in the Northern Territory.
7. The survey is based on a random sample of establishments within the scope defined above. From the data reported by the sampled establishments, aggregates comprising all retail sales in Australia (excluding Northern Territory) are estimated.
8. The retail sales reported are principally sales of new or used goods to final consumers for personal or household consumption. Excluded are sales of tools of trade, building materials and supplies, agricultural supplies and equipment, and business equipment. Sales of motor vehicles, parts, petrol, boats, caravans, etc. are out of scope of the estimates of retail sales in this publication. Also excluded are takings from meals consumed on the premises, accommodation, hairdressing, beauty treatments, and repairs. However, the estimates of retail sales in this publication include sales of take-away food, and beer, wine and spirits served with meals.

### Industry statistics

9. Details of the value of retail sales are available for 15 industries. The ASIC class(es) which make up each industry are as follows:

<i>Industry</i>	<i>ASIC Class(es)</i>
Grocers, confectioners, tobacconists	4881
Butchers	4882
General stores	4815
Other food stores	4883, 4885, 4886
Hotels, liquor stores, licensed clubs	9232, 4884, 9241, 9242, 9243
Clothing and fabrics stores	4843, 4844, 4847
Department stores	4814
Footwear stores	4845
Domestic hardware stores, jewellers	4853, 4854
Electrical goods stores	4855, 4856
Furniture stores	4849
Floor coverings stores	4848
Chemists	4891
Newsagents	4894
Other	4892, 4893, 4895, 4896, 4897, 9231, 9351, 9352

### Reliability of estimates

10. Since the estimates are based on information obtained from a sample survey of retail establishments, the estimates of levels and changes are subject to sampling variability; that is, they may differ from the figures that would have been produced if all units had been included in the survey. One measure of the likely difference is given by the standard error, which indicates the extent to which an estimate might have varied by chance because only a sample of units was included. There are about two chances in three that a sample estimate will differ by less than one standard error from the figure that would have been obtained if all units had been included, and about nineteen chances in twenty that the difference will be less than two standard errors.

11. Standard errors of estimates for the latest month and of estimates of change since the preceding month are shown in the tables. Examples of the use of these standard errors are given below:

- (a) The estimate of \$5,148.9 million for the total value of retail sales in October 1987 has a standard error of about \$30.7 million. Therefore, there are two chances in three that the figure which would have been obtained if all establishments had been included in the survey would be within the range \$5,118.2 million to \$5,179.6 million, and nineteen chances in twenty that the figure would be within \$5,087.5 million to \$5,210.3 million.
- (b) The estimated change of +\$292.1 million (+6.0 per cent) in the total value of retail sales between September 1987 and October 1987 has a standard error of about \$21.3 million (0.4 per cent). Therefore, there are two chances in three that the change which would have been obtained if all establishments had been included in the survey would be within the range +\$270.8 million to +\$313.4 million (+5.6 per cent to +6.4 per cent) and nineteen chances in twenty that the change would be within +\$249.5 million to +\$334.7 million (+5.2 per cent to +6.8 per cent).

12. Standard errors of estimates of change between non consecutive months are not shown in this publication. These standard errors are generally much higher than the standard errors of change between consecutive months. For example, the standard error of change between the latest month and the corresponding month of the previous year is, on average, approximately 1.4 times the standard error of *level* of the latest month.

13. Users of the statistics in this publication should note that the standard errors are relatively large for estimates for some industries in some States.

14. Seasonally adjusted, trend and constant price estimates are also subject to sampling variability. For seasonally adjusted estimates, the standard errors in percentage terms approximate those for the unadjusted series. For trend estimates, the standard errors are generally not larger than for the seasonally adjusted estimates and are likely to be smaller. For constant price estimates, the standard errors may be up to 10 per cent higher than those for the corresponding current price estimates, because of the sampling variability contained in the prices data used to deflate the current price estimates.

15. The imprecision due to sampling variability, which is measured by the standard error, should not be confused with inaccuracies that may occur because of imperfections in reporting

by respondents and errors made in collection and processing of data. Inaccuracies of this kind are referred to as the non-sampling error and they may occur in any collection, whether it be a full count or only a sample. Every effort is made to reduce the non-sampling error to a minimum by careful design of forms, editing of data and efficient operating procedures.

#### Seasonally adjusted and trend estimates

16. Seasonal adjustment is a means of removing the estimated effects of normal seasonal variation from the series so that the effects of other influences can be more clearly recognised. In the seasonal adjustment of the retail sales estimates, account has been taken of both normal seasonal factors and 'trading-day' effects (arising from the varying numbers of Sundays, Mondays, Tuesdays etc. in the month). For total retail sales for Australia, adjustment has also been made for the effects of change in the date of Easter and Australia Day holidays. Seasonal adjustment does not remove from the series the effect of irregular influences (e.g. abnormal weather, industrial disputes) and the seasonally adjusted estimates still reflect the sampling and non-sampling errors to which the original estimates are subject. Details of the methods used in seasonally adjusting these series are available on request.

17. The smoothing of seasonally adjusted series to create trend estimates is a means of reducing the impact of the irregular component of the series. The trend estimates of retail sales have been derived by applying a 13-term Henderson weighted moving average to the seasonally adjusted series.

18. While this smoothing technique enables estimates of trend to be produced for the latest month, it does result in revisions to the estimates for the most recent months as data for subsequent months become available. Generally subsequent revisions become smaller and after 3 months have a negligible impact on the series. There will also be revisions as a result of revisions to the original estimates and periodic reviews of seasonal and trading day factors.

19. This publication includes monthly estimates of trend of retail sales for Australia, classified by industry, and for each State (total all industries). Seasonally adjusted estimates for industries and States are not included. These series, which commence in April 1982, are not long enough to provide sufficient information to allow reliable seasonal adjustment at present, since the seasonally adjusted estimates are subject to a relatively high degree of revision as data for later months become available and are taken into account in the re-estimation of seasonal and trading day factors. However the estimates of trend included in this publication are not expected to be subject to the same degree of revision.

20. The seasonal adjustment of each industry series and each State series has been done independently and so, for any one month, the estimates of trend for industries and States may not add to the estimates of trend of total retail sales for Australia.

21. Seasonally adjusted and trend estimates of retail sales by industries in each State are not included because the series are not yet long enough to allow reliable adjustment.

22. Users may wish to refer to the ABS Information Papers *A Guide to Smoothing Time Series — Estimates of 'Trend'* (1316.0) and *Time Series Decomposition — An Overview* (1317.0) for more detailed information on smoothing of seasonally adjusted time series data.

#### Estimates at constant prices

23. A quarterly series of the value of total retail sales at average 1979-80 prices is provided in both original and seasonally adjusted form. The scope of the series at constant prices is identical to that of the series at current prices.

24. The series is a measure of change in value after the direct effects of price changes have been eliminated. Measures of this type are subject to approximations and assumptions, and should not be interpreted in any precise quantitative sense.

25. Further information on the nature and concepts of constant price estimates is contained in Chapter 4 of *Australian National Accounts: Concepts, Sources and Methods* (5216.0).

26. As indicated in paragraph 4, the estimates of retail sales (at current prices), for months subsequent to the latest quarterly release, may be revised following analysis of the quarterly commodity data. Similarly, the constant price estimates of total retail sales for quarters subsequent to the latest quarterly release may be revised and therefore should be regarded as preliminary.

#### Related publications

27. Estimates of retail sales at current and constant prices for States and commodity groups are published quarterly in *Retail Sales of Goods (Excluding Motor Vehicles, Parts, Petrol, etc.) Australia* (8503.0).

28. Current publications produced by the ABS are listed in the *Catalogue of Publications, Australia* (1101.0). The ABS also issues, on Tuesdays and Fridays, a *Publications Advice* (1105.0) which lists publications to be released in the next few days. The Catalogue and Publications Advice are available from any ABS office.

#### Symbols and other usages

r revised

n.p. not available for publication, but included in totals

29. Where figures have been rounded, discrepancies may occur between sums of the component items and totals.

#### Electronic services

30. VIATEL. Key \*656# for selected current economic, social and demographic statistics.

AUSSTATS. Thousands of up-to-date time series are available on this ABS on-line service through CSIRONET.

For further information phone the AUSSTATS Help Desk on (062) 52 6017.

TELESTATS. This service provides foreign trade statistics tailored to users' requirements.

Further information is available on (062) 52 5404.

IAN CASTLES  
Australian Statistician