

THE LABOUR FORCE

AUSTRALIA

NOVEMBER 1978

Catalogue No. 6203.0

AUSTRALIAN BUREAU OF STATISTICS Canberra

INQUIRIES

If you want to know more about these statistics, ring Mr Godfrey Laurie on Canberra 526565 or our State office, or write to Information Services, ABS, P.O. Box 10, Belconnen, A.C.T. 2616

For copies of this publication contact Information Services, Canberra 526627 or State offices.

CATALOGUE NO. 6203.0

NOON 8 FEBRUARY 1979

THE LABOUR FORCE, AUSTRALIA, NOVEMBER 1978

CONTENTS

NOTE. Revised estimates for the States and Territories for each August from 1971 to 1978 are shown in Table 5.

Table	Page
1. LABOUR FORCE ESTIMATES	
.. Explanatory notes	2
.. Graphs	6
Civilian population aged 15 years and over	
1. Employment status : Australia	7
2. Employment status and marital status : Australia	8
3. Employment status : States and Territories	8
4. Employment status : State capital cities	9
5. Employment status : States and Territories, August 1971 to 1978	10
Civilian population aged 15 to 19 years	
6. Employment status and whether attending school : Australia	14
Civilian labour force	
7. Employment status, birthplace and period of arrival in Australia	15
8. Seasonally adjusted series	16
9. Age	17
10. Participation rates, by age and birthplace	17
Employed persons	
11. Full-time and part-time status, by age	17
12. Hours worked	18
13. Full-time workers who worked less than 35 hours, by reason	18
14. Married women, by industry and hours worked	19
15. Average weekly hours worked, by industry and occupation	19
16. Part-time workers, whether preferred to work more hours, and whether looking for full-time work, by age	20
Unemployed persons	
17. Age : States	20
18. Whether looking for full-time or part-time work, by age	21
19. Age and birthplace	21
20. Duration of unemployment and age, etc.	22
21. Industry and occupation of last full-time job and duration of unemployment	23
22. Aged 15 to 19 years : duration of unemployment and whether attending school	24
Persons not in the labour force	
23. Age and marital status, etc.	24
Technical note	
Estimation procedure	25
Reliability of the estimates	25
Population survey reports	27

NOTE. Some additional labour force survey tables are included in other issues of this publication. For details see paragraph 35 of the explanatory notes.

2. REGISTERED UNEMPLOYED, REGISTERED VACANCIES AND UNEMPLOYMENT BENEFIT RECIPIENTS

24. Registered unemployed seeking full-time employment, and vacancies registered with the CES	28
25. Persons receiving unemployment benefit	28

1. LABOUR FORCE ESTIMATES

EXPLANATORY NOTES

Introduction

This section contains estimates of the civilian labour force derived from the population survey, which is now conducted monthly. Until February 1978, surveys were conducted in February, May, August and November each year.

2. A summary of the survey results is published in advance of this more detailed bulletin in *The Labour Force (Preliminary)* (6202.0). Preliminary unemployment estimates are also issued in advance of this publication in *Unemployment, Preliminary Estimates* (6201.0).

3. Although emphasis in the survey is placed on the regular collection of data on demographic and labour force characteristics of the population, supplementary surveys of particular aspects of the labour force or of other subjects are carried out from time to time. Statistics from supplementary surveys are published in bulletins which are available free on request. A list of titles is given on page 27.

The population survey

4. The survey is based on a multi-stage area sample of private dwellings (about 30,000 houses, flats, etc.) and non-private dwellings (hotels, motels, etc.), and covers about two-thirds of one per cent of the population of Australia. The information is obtained from the occupants of selected dwellings by carefully chosen and specially trained interviewers, the interviews being conducted during the two weeks beginning on the Monday between the 6th and 12th of each month. The information obtained relates to the week before the interview (i.e. the survey week). Before February 1978 the interviews were spread over four weeks, chosen so that the survey weeks generally fell within the limits of the calendar month.

Scope

5. The survey includes all persons aged fifteen years and over except :

- (a) members of the permanent defence forces
- (b) certain diplomatic personnel of overseas governments, customarily excluded from census and estimated populations
- (c) non-Australians on tour or holidaying in Australia, and
- (d) members of non-Australian defence forces (and their dependants) stationed in Australia.

Definitions

6. The labour force category to which a person is assigned depends on his *actual activity* (i.e. whether working, looking for work, etc.) during the survey week. The following definitions relate only to those persons within the scope of the survey.

7. *Employed persons* comprise all those aged 15 years and over who, during the survey week :

- (a) worked for one hour or more for pay, profit, commission or payment in kind in a job or business, or on a farm (including employees, employers and self-employed persons); or
- (b) worked for 15 hours or more without pay in a family business or on a farm (i.e. unpaid family helper); or
- (c) were employees who had a job but were not at work and were : on paid leave; on leave without pay for less than four weeks up to the end of the survey week; stood down without pay because of bad weather or plant breakdown at their place of employment for less than four weeks up to the end of the survey week; on strike or locked out; on workers' compensation and expected to be returning to their job; or receiving wages or salary while undertaking full-time study; or
- (d) were employers or self-employed persons who had a job, business or farm, but were not at work.

8. *Unemployed persons* are those aged 15 years and over who were not employed during the survey week, and

- (a) had actively looked for full-time or part-time work at any time in the four weeks up to the end of the survey week and :
 - (i) were available for work in the survey week, or would have been available except for temporary illness (i.e. lasting for less than four weeks to the end of the survey week); or
 - (ii) were waiting to start a new job within four weeks from the end of the survey week and would have started in the survey week if the job had been available then;
- or (b) were waiting to be called back to a full-time or part-time job from which they had been stood down without pay for less than four weeks up to the end of the survey week (including the whole of the survey week) for reasons other than bad weather or plant breakdown.

9. *Unemployed persons looking for first job* are those who had never worked for two weeks or more in a full-time job.

10. The *unemployment rate* for any group is the number unemployed expressed as a percentage of the labour force (i.e. employed plus unemployed) in the same group.

11. The *labour force* comprises all persons who, during the survey week, were employed or unemployed, as defined in paragraphs 7 and 8.

12. The *labour force participation rate* for any group is the labour force expressed as a percentage of the civilian population aged 15 years and over in the same group. Because it is not practicable to ascertain the birthplace of persons in institutions (who are classified as not in the labour force), labour force participation rates for persons classified by birthplace are calculated by using population estimates which exclude those in institutions.

13. *Full-time workers* are those who usually work 35 hours a week or more and others who, although usually part-time workers, worked 35 hours or more during the survey week. *Part-time workers* are those who usually work less than 35 hours a week and who did so during the survey week. When recording hours of work, fractions of an hour are disregarded.

14. *Hours of work.* The figures of aggregate hours and of average hours refer to actual hours worked during the survey week, not hours paid for. The figures may be affected by public holidays, leave, absenteeism; temporary absence from work due to sickness, injury, accident and industrial disputes; and stoppages of work due to bad weather, plant breakdown etc. When hours of work are recorded fractions of an hour are disregarded and this results in slightly lower figures than would be the case if actual time worked was recorded. Persons stood down for the whole of the survey week without pay because of bad weather or plant breakdown at their place of employment are regarded as employed and therefore are included (working no hours) in the calculation of average hours worked. Persons stood down in the survey week for reasons other than bad weather and plant breakdown and waiting to be called back to their job are regarded as unemployed and are therefore excluded from the calculation.

15. *Persons attending school* comprise those who, during the survey week, were enrolled full-time at secondary or high schools. Excluded are persons who were enrolled at universities, colleges of advanced education, technical colleges, other tertiary education institutions, and coaching and business schools. Persons attending school are classified as in the labour force if they were employed or unemployed as defined in paragraphs 7 and 8.

16. *Persons not in the labour force* are those who, during the survey week, were not in the categories 'employed' or 'unemployed'. This category includes persons who were keeping house (unpaid), attending an educational institution (school, university, etc.), retired, voluntarily inactive, permanently unable to work, inmates of institutions, trainee teachers, members of contemplative religious orders, and persons whose only activity during the survey week was jury service or unpaid voluntary work for a charitable organisation, provided they had not actively looked for work in the four weeks up to the end of the survey week, and

(a) in the survey week :

- (i) were without a job, business or farm; or
- (ii) had worked for less than one hour for pay, profit, commission or payment in kind; or
- (iii) had worked for less than 15 hours without pay in a family business or farm;

or (b) had been stood down without pay for four weeks or more up to the end of the survey week.

17. Although the wording of the above definitions of employed persons and unemployed persons is different from that appearing in issues of this bulletin prior to February 1978, the changes were made mainly for clarity; they do not signify any change of substance in the definitions, which still conform to the international standard definitions specified by the ILO.

Classification of industry and occupation

18. Industry is classified according to the *Australian Standard Industrial Classification (ASIC)* and occupation according to the *Classification and Classified List of Occupations, Revised June 1976*.

Revision of series

19. *Population benchmarks.* The population survey estimates are calculated in such a way as to conform to the independently estimated distribution of the population by age and sex. As a consequence, whenever these population "benchmarks" are revised it becomes necessary to revise the labour force estimates also.

20. Survey estimates from August 1971 are based on revised population estimates derived from the 1971 and 1976 population census results adjusted for underenumeration. For information concerning these population estimates see *Population and Vital Statistics : June Quarter 1977 (3212.0)*.

21. Survey estimates for February 1978 and subsequent months have been obtained by using a new sample and revised questionnaire. In order to provide a series for earlier periods as comparable as possible with the February 1978 and later estimates, the survey estimates for the period August 1971 to November 1977 have been revised.

22. Revised estimates for the period August 1976 to November 1977 were published in the February 1978 issue of this bulletin, which also contains information concerning the methods used in the revision. For periods prior to August 1976 detailed revised estimates are available for August of each year. For February, May and November only broad revised aggregates (as in Table 1) are available.

23. *The new sample and revised questionnaire.* The new sample was selected in order to reflect the changes in the distribution of the population shown by the 1976 Population Census results. The questionnaire, which had undergone little change since 1960 except for the

inclusion in 1975 of additional questions on job-seeking, was revised to provide more accurate and more detailed information concerning the labour force.

24. Copies of both the current questionnaire and the one previously used, together with a description of the main features of the questionnaire, are contained in *Information Paper : Questionnaires used in the Labour Force Survey* (6232.0).

Comparability of series

25. When comparing estimates for February 1978 and subsequent months with those for earlier periods it should be noted that with the introduction of monthly surveys the interviews are now conducted during a two-week period, whereas formerly the period was four weeks. (See paragraph 4.) This change of timing may affect the level of the figures for any month, but particularly for months during which unemployment may be changing rapidly.

26. Because of the revisions, the estimates in this bulletin are not comparable with those shown in issues before February 1978. Revised figures for periods before August 1971 will be published as soon as they become available.

27. The survey periods for February in the years 1972, 1974 and 1976 were later than in other years, and as a consequence the estimates of the proportion of the population 15 years and over who attended school was correspondingly higher. In addition, in February 1974 the survey period in Queensland was delayed by a further week in order to avoid as far as possible the effects of the flood in the south-east area of the State.

28. Because of the effects of cyclone Tracy the population survey was not conducted in Darwin in February 1975. The estimates for this period therefore exclude Darwin.

Reliability of the estimates

29. Since the estimates in this section are based on information obtained from occupants of a sample of dwellings they are subject to sampling variability; that is, they may differ from the figures that would have been produced if all dwellings had been included in the survey. An indication of the likely differences is given in the Technical Note, page 25.

Differences between population census and population survey estimates

30. The results of the 1971 population census, which have been published in a series of bulletins entitled *Summary of Population* (2221.0–2229.0), show that the census labour force estimates differ substantially from the corresponding estimates derived from the population surveys of May and August 1971.

31. The labour force definition used in the population census is similar to that used in the survey (see paragraphs 6 to 17). However, evidence from census post-enumeration surveys indicates that the personal interview approach, as used in the population survey, tends to identify a larger number of persons as being in

the labour force than does the filling in of the questions on the census schedule by the householder, and that this tendency increased between the 1966 and 1971 censuses.

32. These considerations should be borne in mind if comparisons of the total labour force or of labour force participation rates are made between the 1971 census and the 1971 labour force survey estimates.

Seasonally adjusted estimates

33. The move to the higher level of unemployment since 1974 appears to have been accompanied by shifts in the pattern of seasonal variation. For this reason the publication of seasonally adjusted figures of unemployment was suspended as from November 1977. The matter will be kept under review.

34. Seasonally adjusted quarterly estimates of employed persons, the labour force and labour force participation rates are published in the February, May, August and November issues. Calculation of seasonally adjusted monthly figures will not be possible until results of monthly surveys for two or three years are available. A table of revised seasonally adjusted figures, for the period August 1971 to August 1978, was published in the August 1978 issue of this bulletin.

Additional tables

35. Certain labour force estimates are included in only some issues of this bulletin, as shown below.

February, May, August and November –

Average weekly hours worked : Industry and occupation

Employed married women : Industry and hours worked

Seasonally adjusted series.

The following estimates are available for February, May, August and November but are published only for the months shown.

February –

Employed persons –

Industry and marital status

Industry and birthplace

Occupation and marital status

Occupation and birthplace.

May –

Employed persons : Occupation – major and minor groups.

August –

Employed persons : Industry by occupation.

Related publications

36. Users may also wish to refer to the following publications which are available on request :

Unemployment : Preliminary Estimates (6201.0)

The Labour Force (Preliminary) (6202.0)

Information Paper : Questionnaires used in the Labour Force Survey (6232.0)

Civilian Employees (6213.0)

Publications listed on page 27.

All publications produced by the ABS are listed in *Catalogue of Publications* (1101.0), which is available free of charge from any ABS office.

Symbols and other usages

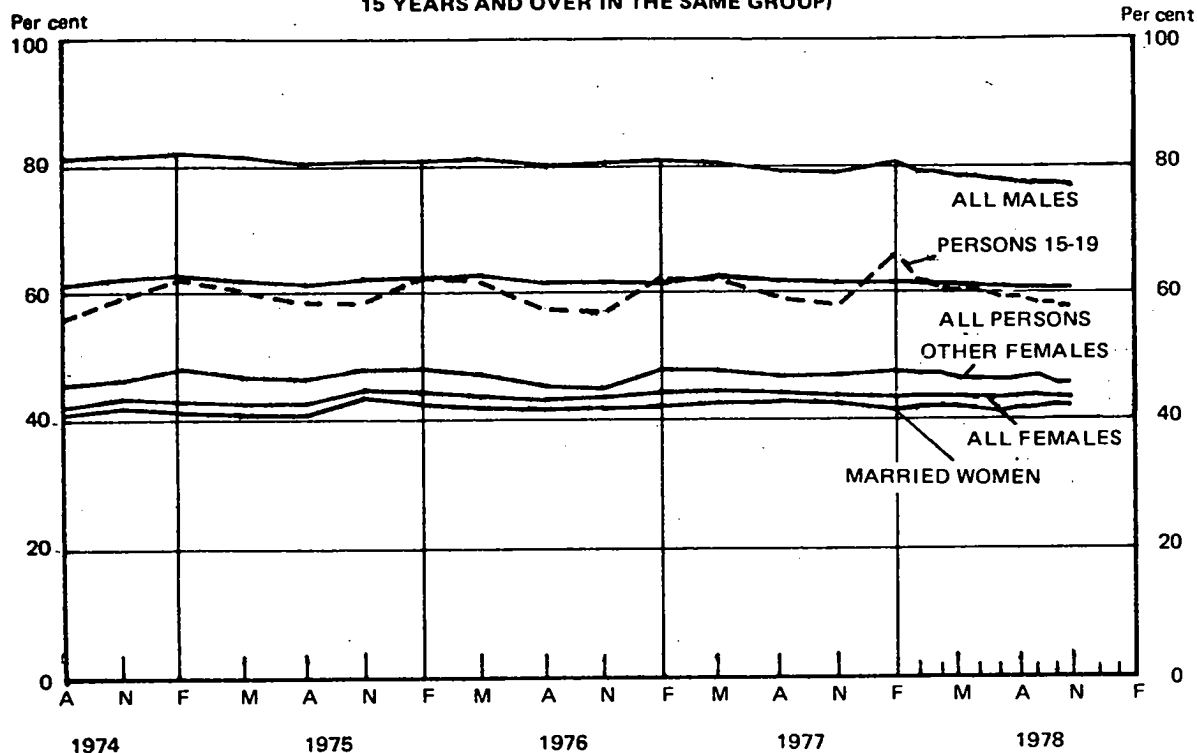
- * Subject to sampling variability too high for most practical uses. See paragraph 5, page 25.
- n.a. Not available.
- .. Not applicable.
- n.e.c. Not elsewhere classified.

Where figures have been rounded, discrepancies may occur between sums of the component items and totals.

R. J. CAMERON
Australian Statistician

LABOUR FORCE PARTICIPATION RATES

(THE LABOUR FORCE IN EACH GROUP AS A PERCENTAGE OF THE CIVILIAN POPULATION AGED 15 YEARS AND OVER IN THE SAME GROUP)



NOTE. From February 1978 the population survey has been conducted monthly. Previously, surveys were conducted in February, May, August and November each year.

UNEMPLOYMENT RATES

(THE UNEMPLOYED IN EACH GROUP AS A PERCENTAGE OF THE CIVILIAN LABOUR FORCE IN THE SAME GROUP)

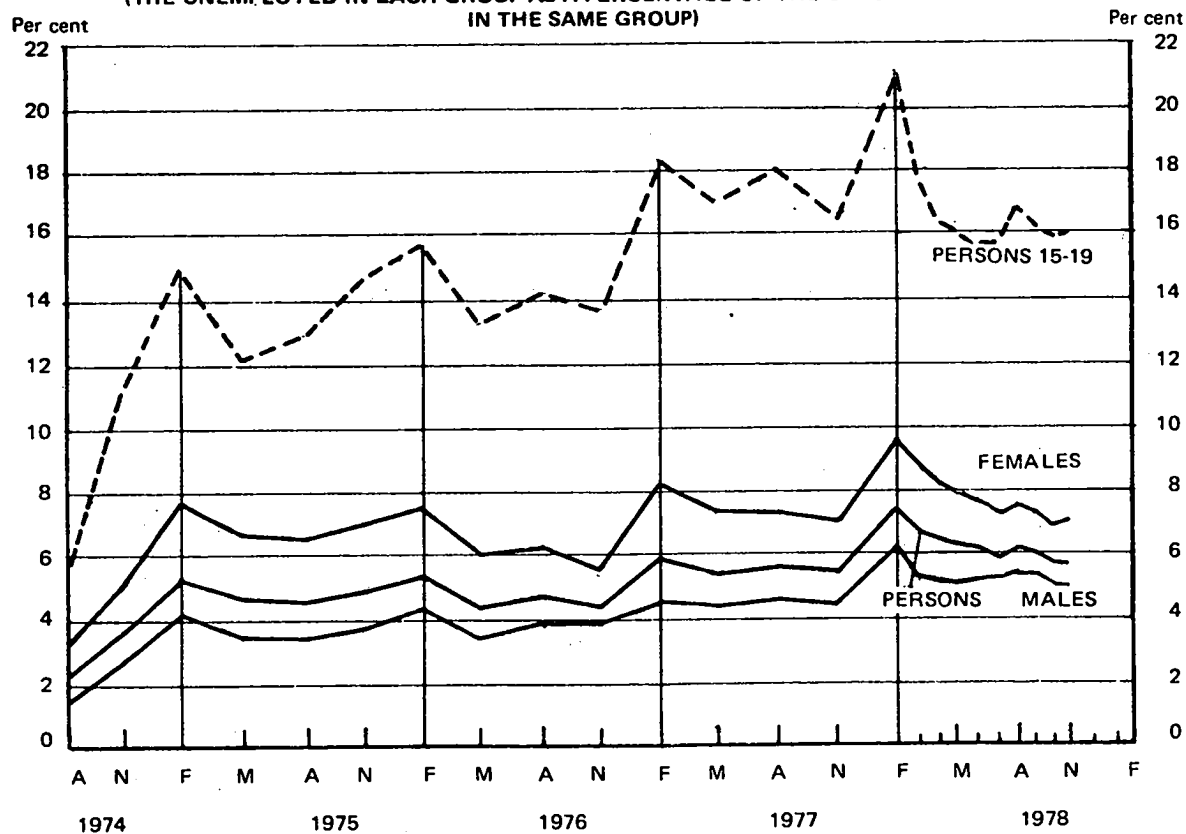


TABLE 1. CIVILIAN POPULATION AGED 15 YEARS AND OVER, BY EMPLOYMENT STATUS (a)

Month	Unemployed									
	Employed	Looking for full-time work		Looking for part-time work	Total	Labour force	Not in labour force	Civilian population aged 15 years and over	Unemployment rate	Participation rate
		Aged 15-19 years looking for first job	Total							
- '000 -										
- per cent -										
MALES										
1977 -										
August	3,866.8	12.6	168.5	21.6	190.1	4,056.9	1,024.9	5,081.8	4.7	79.8
November	3,867.3	16.2	165.1	18.0	183.1	4,050.4	1,055.7	5,106.1	4.5	79.3
1978 -										
August	3,832.3	18.1	207.3	14.2	221.5	4,053.8	1,126.6	5,180.4	5.5	78.3
September	3,840.9	19.9	204.7	13.4	218.1	4,059.0	1,126.9	5,186.0	5.4	78.3
October	3,854.7	19.1	194.0	13.9	207.9	4,062.7	1,128.5	5,191.1	5.1	78.3
November	3,846.1	18.0	191.0	15.4	206.4	4,052.4	1,147.5	5,199.9	5.1	77.9
Standard error of -										
November estimates	13.7	1.9	5.0	1.8	5.2	14.0	9.5	..	0.1	0.3
October to November movement	9.6	1.9	4.3	1.8	4.3	9.8	7.1	..	0.1	0.2
MARRIED WOMEN										
1977 -										
August	1,374.5	*	42.0	34.7	76.8	1,451.2	1,953.5	3,404.7	5.3	42.6
November	1,368.9	*	34.4	33.4	67.7	1,436.6	1,963.7	3,400.3	4.7	42.3
1978 -										
August	1,357.7	*	46.9	30.3	77.2	1,434.9	1,977.5	3,412.4	5.4	42.1
September	1,358.9	*	40.5	29.9	70.4	1,429.3	1,979.2	3,408.5	4.9	41.9
October	1,368.7	*	38.7	28.2	66.9	1,435.6	1,971.3	3,406.9	4.7	42.1
November	1,373.4	*	34.9	28.5	63.4	1,436.8	1,983.6	3,420.5	4.4	42.0
Standard error of -										
November estimates	10.0	..	2.5	2.3	3.2	10.2	11.3	..	0.2	0.3
October to November movement	7.5	..	2.5	2.2	3.0	7.5	8.2	..	0.2	0.2
ALL FEMALES										
1977 -										
August	2,128.6	17.5	114.8	54.4	169.2	2,297.8	2,904.3	5,202.1	7.4	44.2
November	2,128.2	16.8	112.4	51.4	163.7	2,291.9	2,935.3	5,227.2	7.1	43.8
1978 -										
August	2,137.2	20.8	125.3	48.9	174.2	2,311.5	2,997.3	5,308.7	7.5	43.5
September	2,144.1	19.3	120.1	46.3	166.4	2,310.5	3,003.4	5,313.9	7.2	43.5
October	2,151.9	17.4	111.9	47.7	159.6	2,311.5	3,007.6	5,319.0	6.9	43.5
November	2,151.2	20.3	117.9	45.5	163.3	2,314.6	3,014.5	5,329.1	7.1	43.4
Standard error of -										
November estimates	11.6	2.0	4.2	2.8	4.7	11.8	12.8	..	0.2	0.2
October to November movement	8.4	2.0	3.6	2.7	4.0	8.5	9.1	..	0.2	0.2
PERSONS										
1977 -										
August	5,995.4	30.1	283.3	76.0	359.3	6,354.7	3,929.2	10,283.9	5.7	61.8
November	5,995.4	33.0	277.4	69.4	346.8	6,342.2	3,991.0	10,333.2	5.5	61.4
1978 -										
August	5,969.6	38.9	332.6	63.1	395.7	6,365.3	4,123.8	10,489.1	6.2	60.7
September	5,985.1	39.2	324.8	59.7	384.5	6,369.6	4,130.3	10,499.9	6.0	60.7
October	6,006.6	36.5	305.9	61.6	367.5	6,374.1	4,136.1	10,510.2	5.8	60.6
November	5,997.3	38.3	308.8	60.9	369.7	6,367.0	4,162.0	10,529.1	5.8	60.5
Standard error of -										
November estimates	15.6	2.6	6.0	3.2	6.4	15.8	14.1	..	0.1	0.2
October to November movement	10.7	2.5	4.9	2.9	5.2	10.8	9.8	..	0.1	0.1

(a) For scope of estimates see paragraph 5. For definitions see paragraphs 6 to 17. See paragraph 4 for details of change in timing of survey from February 1978. For information on standard errors see Technical Note, page 25.

TABLE 2. CIVILIAN POPULATION AGED 15 YEARS AND OVER, BY EMPLOYMENT STATUS AND MARITAL STATUS, NOVEMBER 1978 (a)

	Employed	Unemployed		Total	Labour force	Not in labour force	Civilian population aged 15 years and over	Unemployment rate	Participation rate
		Looking for full-time work	Looking for part-time work						
				- '000 -				- per cent -	
Males -									
Married	2,713.8	72.1	*	75.2	2,789.0	594.6	3,383.6	2.7	82.4
Other (b)	1,132.3	118.9	12.3	131.2	1,263.5	552.9	1,816.3	10.4	69.6
Total	3,846.1	191.0	15.4	206.4	4,052.4	1,147.5	5,199.9	5.1	77.9
Females -									
Married	1,373.4	34.9	28.5	63.4	1,436.8	1,983.6	3,420.5	4.4	42.0
Other (b)	777.8	83.0	17.0	100.0	877.8	1,030.9	1,908.7	11.4	46.0
Total	2,151.2	117.9	45.5	163.3	2,314.6	3,014.5	5,329.1	7.1	43.4
Persons	5,997.3	308.8	60.9	369.7	6,367.0	4,162.0	10,529.1	5.8	60.5

For footnotes see below.

TABLE 3. CIVILIAN POPULATION AGED 15 YEARS AND OVER, BY EMPLOYMENT STATUS, STATES AND TERRITORIES, NOVEMBER 1978 (a)

State or Territory	Employed	Unemployed		Total	Labour force	Not in labour force	Civilian population aged 15 years and over	Unemployment rate	Participation rate
		Looking for full-time work	Looking for part-time work						
				- '000 -				- per cent -	
MALES									
N.S.W.	1,336.0	67.0	6.6	73.7	1,409.6	420.1	1,829.7	5.2	77.0
Vic.	1,033.5	41.2	*	44.8	1,078.3	303.1	1,381.4	4.2	78.1
Qld	584.9	30.7	*	32.5	617.4	177.2	794.6	5.3	77.7
S.A.	349.4	24.6	*	26.2	375.6	101.9	477.5	7.0	78.7
W.A.	338.3	18.2	*	19.1	357.3	95.8	453.2	5.3	78.9
Tas.	111.4	5.9	*	6.0	117.4	32.2	149.6	5.1	78.5
N.T.	35.1	*	*	*	36.6	5.7	42.3	*	86.6
A.C.T.	57.4	2.1	*	2.7	60.1	11.5	71.6	4.5	84.0
Australia	3,846.1	191.0	15.4	206.4	4,052.4	1,147.5	5,199.9	5.1	77.9
FEMALES									
N.S.W.	752.4	41.1	15.8	56.8	809.2	1,085.9	1,895.1	7.0	42.7
Vic.	593.4	27.3	10.6	38.0	631.4	799.0	1,430.4	6.0	44.1
Qld	303.2	17.9	7.0	25.0	328.1	479.7	807.8	7.6	40.6
S.A.	206.7	14.2	3.8	18.0	224.7	267.9	492.7	8.0	45.6
W.A.	183.3	11.2	4.6	15.8	199.1	244.9	444.0	8.0	44.8
Tas.	55.8	3.3	*	4.5	60.3	91.7	152.1	7.5	39.7
N.T.	16.3	*	*	*	17.9	15.4	33.3	*	53.7
A.C.T.	40.2	*	2.1	3.7	43.9	29.9	73.8	8.5	59.5
Australia	2,151.2	117.9	45.5	163.3	2,314.6	3,014.5	5,329.1	7.1	43.4
PERSONS									
N.S.W.	2,088.3	108.1	22.4	130.5	2,218.8	1,506.0	3,724.8	5.9	59.6
Vic.	1,627.0	68.5	14.3	82.7	1,709.7	1,102.1	2,811.8	4.8	60.8
Qld	888.1	48.7	8.8	57.4	945.5	656.9	1,602.5	6.1	59.0
S.A.	556.1	38.8	5.4	44.2	600.3	369.9	970.2	7.4	61.9
W.A.	521.6	29.4	5.6	34.9	556.5	340.7	897.2	6.3	62.0
Tas.	167.2	9.2	*	10.5	177.7	123.9	301.6	5.9	58.9
N.T.	51.5	2.7	*	3.0	54.5	21.1	75.6	5.5	72.1
A.C.T.	97.6	3.7	2.7	6.4	104.0	41.4	145.4	6.2	71.5
Australia	5,997.3	308.8	60.9	369.7	6,367.0	4,162.0	10,529.1	5.8	60.5

(a) For scope of estimates see paragraph 5. For definitions see paragraphs 6 to 17. (b) Never married, widowed and divorced.

TABLE 4. CIVILIAN POPULATION AGED 15 YEARS AND OVER, BY EMPLOYMENT STATUS,
STATE CAPITAL CITIES, NOVEMBER 1978 (a)

Capital City	Employed	Unemployed		Total	Labour force	Not in labour force	Civilian population aged 15 years and over	Unemployment rate	Participation rate
		Looking for full-time work	Looking for part-time work						
		— '000 —							
MALES									
Sydney	849.5	37.7	*	41.4	891.0	266.0	1,157.0	4.7	77.0
Melbourne	732.4	31.2	*	34.2	766.5	220.0	986.5	4.5	77.7
Brisbane	269.4	13.6	*	14.4	283.8	82.3	366.1	5.1	77.5
Adelaide	242.6	21.0	*	22.0	264.6	79.3	343.9	8.3	76.9
Perth	224.6	14.0	*	14.7	239.2	71.6	310.9	6.1	77.0
Hobart	44.0	2.5	*	2.6	46.6	13.7	60.3	5.6	77.3
Total	2,362.4	120.0	9.3	129.3	2,491.7	733.0	3,224.7	5.2	77.3
FEMALES									
Sydney	526.5	21.9	10.9	32.8	559.4	672.1	1,231.5	5.9	45.4
Melbourne	444.5	17.8	8.3	26.1	470.6	564.1	1,034.7	5.5	45.5
Brisbane	152.3	8.5	3.8	12.3	164.6	227.7	392.3	7.5	42.0
Adelaide	155.4	10.8	3.3	14.1	169.5	196.6	366.1	8.3	46.3
Perth	136.5	8.8	3.3	12.1	148.6	178.1	326.7	8.1	45.5
Hobart	25.6	*	*	1.9	27.5	34.7	62.2	6.9	44.2
Total	1,440.8	68.9	30.4	99.3	1,540.1	1,873.5	3,413.6	6.4	45.1
PERSONS									
Sydney	1,376.0	59.6	14.7	74.3	1,450.3	938.2	2,388.5	5.1	60.7
Melbourne	1,176.9	49.0	11.2	60.2	1,237.1	784.1	2,021.2	4.9	61.2
Brisbane	421.7	22.1	4.7	26.7	448.4	310.1	758.5	6.0	59.1
Adelaide	398.0	31.8	4.3	36.1	434.1	275.9	710.1	8.3	61.1
Perth	361.1	22.8	4.0	26.7	387.8	249.8	637.6	6.9	60.8
Hobart	69.6	3.8	*	4.5	74.1	48.4	122.5	6.1	60.5
Total	3,803.3	188.9	39.7	228.6	4,031.8	2,606.5	6,638.3	5.7	60.7

(a) For scope of estimates see paragraph 5. For definitions see paragraphs 6 to 17.

TABLE 5. CIVILIAN POPULATION AGED 15 YEARS AND OVER, BY EMPLOYMENT STATUS, STATES AND TERRITORIES (a)

August -	Employed	Unemployed		Total	Labour force	Not in labour force	Civilian population aged 15 years and over	Unemployment rate	Participation rate
		Looking for full-time work	Looking for part-time work						
- '000 -									
- per cent -									
NEW SOUTH WALES - MALES									
1971	1,356.6	15.2	*	16.1	1,372.7	295.2	1,667.9	1.2	82.3
1972	1,373.6	22.1	*	24.2	1,397.8	293.9	1,691.7	1.7	82.6
1973	1,382.6	14.1	*	17.8	1,400.4	312.8	1,713.2	1.3	81.7
1974	1,376.2	19.2	*	23.4	1,399.7	335.6	1,735.3	1.6	80.7
1975	1,345.6	51.0	5.3	56.2	1,401.9	355.1	1,757.0	4.0	79.8
1976	1,340.2	61.2	*	64.1	1,404.3	370.3	1,774.7	4.6	79.1
1977	1,345.3	68.4	7.2	75.6	1,420.9	379.5	1,800.4	5.3	78.9
1978	1,333.0	67.3	5.6	72.8	1,405.9	421.9	1,827.8	5.2	76.9
NEW SOUTH WALES - FEMALES									
1971	665.9	10.3	5.7	15.9	681.8	1,025.3	1,707.2	2.3	39.9
1972	679.1	15.0	10.5	25.5	704.6	1,031.8	1,736.4	3.6	40.6
1973	696.9	8.5	7.8	16.3	713.2	1,044.3	1,757.5	2.3	40.6
1974	713.8	13.7	7.7	21.3	735.1	1,050.8	1,785.9	2.9	41.2
1975	712.7	32.6	14.4	47.0	759.7	1,051.6	1,811.4	6.2	41.9
1976	717.3	33.5	12.8	46.3	763.6	1,070.4	1,834.0	6.1	41.6
1977	737.4	39.1	16.8	55.9	793.4	1,068.3	1,861.6	7.1	42.6
1978	749.8	42.7	17.5	60.2	810.0	1,082.3	1,892.3	7.4	42.8
NEW SOUTH WALES - PERSONS									
1971	2,022.5	25.4	6.7	32.1	2,054.6	1,320.5	3,375.1	1.6	60.9
1972	2,052.6	37.1	12.6	49.8	2,102.4	1,325.7	3,428.1	2.4	61.3
1973	2,079.5	22.5	11.5	34.0	2,113.6	1,357.1	3,470.7	1.6	60.9
1974	2,090.1	32.9	11.9	44.7	2,134.8	1,386.4	3,521.2	2.1	60.6
1975	2,058.4	83.5	19.7	103.2	2,161.6	1,406.8	3,568.3	4.8	60.6
1976	2,057.5	94.7	15.7	110.5	2,168.0	1,440.8	3,608.7	5.1	60.1
1977	2,082.7	107.5	24.0	131.5	2,214.2	1,447.8	3,662.0	5.9	60.5
1978	2,082.8	110.0	23.0	133.0	2,215.8	1,504.2	3,720.0	6.0	59.6
VICTORIA - MALES									
1971	994.4	10.2	*	11.9	1,006.3	225.8	1,232.1	1.2	81.7
1972	1,008.1	17.5	*	20.0	1,028.0	227.4	1,255.4	1.9	81.9
1973	1,040.3	7.8	7.2	15.0	1,055.2	223.9	1,279.1	1.4	82.5
1974	1,028.1	15.9	*	18.0	1,046.1	252.9	1,299.0	1.7	80.5
1975	1,028.0	29.9	7.1	37.0	1,065.0	256.2	1,321.2	3.5	80.6
1976	1,029.9	27.9	7.3	35.2	1,065.1	270.7	1,335.9	3.3	79.7
1977	1,036.2	34.4	7.5	41.9	1,078.2	277.0	1,355.2	3.9	79.6
1978	1,035.8	47.6	*	51.6	1,087.4	290.7	1,378.1	4.7	78.9
VICTORIA - FEMALES									
1971	518.1	6.1	*	9.5	527.6	746.9	1,274.5	1.8	41.4
1972	526.8	10.8	6.6	17.5	544.3	752.7	1,297.0	3.2	42.0
1973	553.4	8.8	5.3	14.1	567.5	751.7	1,319.1	2.5	43.0
1974	571.9	17.3	6.0	23.3	595.1	746.9	1,342.0	3.9	44.3
1975	562.4	27.3	13.7	40.9	603.3	759.6	1,362.9	6.8	44.3
1976	582.4	23.3	12.1	35.4	617.8	763.0	1,380.8	5.7	44.7
1977	597.8	30.4	17.7	48.1	645.8	755.7	1,401.5	7.4	46.1
1978	588.0	33.7	14.7	48.4	636.4	790.4	1,426.8	7.6	44.6
VICTORIA - PERSONS									
1972	1,512.5	16.3	5.2	21.4	1,533.9	972.7	2,506.6	1.4	61.2
1973	1,534.8	28.4	9.1	37.5	1,572.3	980.1	2,552.4	2.4	61.6
1974	1,593.7	16.6	12.4	29.0	1,622.7	975.5	2,598.2	1.8	62.5
1975	1,600.0	33.2	8.1	41.3	1,641.3	999.8	2,641.0	2.5	62.1
1976	1,590.4	57.2	20.8	77.9	1,668.3	1,015.8	2,684.1	4.7	62.2
1977	1,612.3	51.2	19.4	70.6	1,682.9	1,033.7	2,716.6	4.2	61.9
1978	1,634.0	64.8	25.2	90.0	1,724.0	1,032.7	2,756.7	5.2	62.5
1978	1,623.8	81.3	18.7	100.0	1,723.8	1,081.1	2,804.9	5.8	61.5

For footnotes see page 13.

TABLE 5. CIVILIAN POPULATION AGED 15 YEARS AND OVER, BY EMPLOYMENT STATUS, STATES AND TERRITORIES (a) - continued

STATES AND TERRITORIES (a) - continued									
August -	Employed	Unemployed		Total	Labour force	Not in labour force	Civilian population aged 15 years and over	Unemployment rate	Participation rate
		Looking for full-time work	Looking for part-time work						
				- '000 -					
- per cent -									
QUEENSLAND - MALES									
1971	515.4	4.8	*	5.5	520.8	123.8	644.6	1.0	80.8
1972	527.2	8.3	*	9.4	536.6	127.9	664.5	1.8	80.8
1973	545.1	6.3	*	6.8	551.9	136.9	688.8	1.2	80.1
1974	557.3	9.6	*	10.1	567.4	144.8	712.2	1.8	79.7
1975	561.7	18.6	*	20.7	582.4	149.8	732.2	3.6	79.5
1976	568.7	24.9	*	25.7	594.4	156.3	750.7	4.3	79.2
1977	579.5	28.0	*	30.2	609.7	159.0	768.6	5.0	79.3
1978	574.2	35.9	*	37.6	611.8	176.0	787.8	6.2	77.7
QUEENSLAND - FEMALES									
1971	227.4	4.9	4.9	9.9	237.3	419.2	656.5	4.2	36.1
1972	238.0	5.4	*	8.8	246.8	429.2	676.0	3.6	36.5
1973	250.8	*	5.4	8.2	259.0	439.5	698.5	3.2	37.1
1974	264.0	5.5	6.1	11.7	275.7	447.8	723.5	4.2	38.1
1975	278.3	14.8	6.8	21.6	299.9	442.7	742.6	7.2	40.4
1976	278.6	15.9	6.5	22.4	301.0	460.5	761.5	7.4	39.5
1977	296.5	19.0	8.2	27.2	323.8	456.9	780.7	8.4	41.5
1978	305.5	18.7	6.2	24.9	330.4	470.6	801.0	7.5	41.3
QUEENSLAND - PERSONS									
1971	742.8	9.8	5.6	15.3	758.1	543.1	1,301.2	2.0	58.3
1972	765.2	13.8	4.5	18.2	783.4	557.1	1,340.5	2.3	58.4
1973	795.9	9.0	6.0	15.0	810.9	576.4	1,387.3	1.9	58.5
1974	821.3	15.1	6.7	21.8	843.1	592.6	1,435.7	2.6	58.7
1975	840.0	33.4	8.9	42.3	882.3	592.5	1,474.8	4.8	59.8
1976	847.3	40.8	7.3	48.1	895.4	616.7	1,512.2	5.4	59.2
1977	876.0	47.0	10.4	57.4	933.4	615.9	1,549.3	6.2	60.2
1978	879.8	54.6	7.9	62.5	942.3	646.6	1,588.9	6.6	59.3
SOUTH AUSTRALIA - MALES									
1971	338.0	4.8	*	5.1	343.2	69.8	413.0	1.5	83.1
1972	341.5	6.7	*	7.5	348.9	72.0	421.0	2.1	82.9
1973	352.9	4.2	*	5.3	358.3	72.7	430.9	1.5	83.1
1974	358.5	5.2	*	5.8	364.3	75.9	440.2	1.6	82.8
1975	355.0	10.3	*	11.5	366.5	81.7	448.2	3.1	81.8
1976	361.0	9.4	*	11.0	372.0	85.3	457.3	3.0	81.3
1977	359.2	17.3	3.3	20.6	379.8	86.5	466.3	5.4	81.5
1978	350.2	27.5	*	28.4	378.7	96.7	475.3	7.5	79.7
SOUTH AUSTRALIA - FEMALES									
1971	162.1	5.6	*	7.9	170.1	255.6	425.7	4.7	40.0
1972	172.6	6.1	3.5	9.6	182.2	252.1	434.4	5.3	42.0
1973	188.0	4.4	4.1	8.4	196.5	247.4	443.9	4.3	44.3
1974	190.9	5.9	4.1	10.0	200.9	252.0	452.9	5.0	44.4
1975	194.3	11.5	5.6	17.0	211.3	251.9	463.2	8.0	45.6
1976	203.2	9.1	4.6	13.7	217.0	254.3	471.3	6.3	46.0
1977	208.7	13.1	4.7	17.8	226.6	254.1	480.7	7.9	47.1
1978	203.2	12.4	3.4	15.8	219.0	271.5	490.4	7.2	44.6
SOUTH AUSTRALIA - PERSONS									
1971	500.2	10.4	2.6	13.1	513.2	325.4	838.7	2.5	61.2
1972	514.1	12.8	4.3	17.1	531.2	324.2	855.3	3.2	62.1
1973	541.0	8.6	5.2	13.7	554.7	320.1	874.8	2.5	63.4
1974	549.4	11.0	4.8	15.8	565.2	327.9	893.1	2.8	63.3
1975	549.3	21.7	6.8	28.5	577.8	333.7	911.4	4.9	63.4
1976	564.2	18.5	6.2	24.7	589.0	339.6	928.6	4.2	63.4
1977	568.0	30.5	8.0	38.5	606.4	340.6	947.0	6.3	64.0
1978	553.4	39.8	4.4	44.2	597.6	368.1	965.8	7.4	61.9

For footnotes see page 13.

TABLE 5. CIVILIAN POPULATION AGED 15 YEARS AND OVER, BY EMPLOYMENT STATUS, STATES AND TERRITORIES (a) - *continued*

August -	Employed	Unemployed		Total	Labour force	Not in labour force	Civilian population aged 15 years and over	Unemployment rate	Participation rate
		Looking for full-time work	Looking for part-time work						
- '000 -									
- per cent -									
WESTERN AUSTRALIA - MALES									
1971	315.5	3.8	*	3.8	319.3	54.7	374.0	1.2	85.4
1972	316.0	10.9	*	11.2	327.2	56.5	383.6	3.4	85.3
1973	325.9	4.3	*	4.4	330.3	61.8	392.1	1.3	84.2
1974	328.3	7.9	*	8.3	336.6	70.0	406.6	2.5	82.8
1975	338.1	8.5	*	8.9	347.1	68.2	415.2	2.6	83.6
1976	343.1	10.3	*	11.3	354.4	71.1	425.5	3.2	83.3
1977	347.3	12.6	*	13.6	361.0	75.7	436.7	3.8	82.7
1978	335.8	19.7	*	20.8	356.6	93.1	449.7	5.8	79.3
WESTERN AUSTRALIA - FEMALES									
1971	143.6	*	*	3.7	147.3	211.0	358.2	2.5	41.1
1972	144.3	3.3	*	4.6	148.9	220.6	369.5	3.1	40.3
1973	154.7	2.5	*	4.0	158.7	220.2	378.9	2.5	41.9
1974	159.4	2.5	*	4.4	163.8	230.5	394.2	2.7	41.5
1975	166.0	3.7	4.3	8.1	174.1	229.7	403.7	4.6	43.1
1976	175.0	7.3	4.0	11.2	186.3	228.2	414.5	6.0	44.9
1977	178.7	8.2	4.6	12.8	191.5	235.3	426.8	6.7	44.9
1978	182.5	12.3	4.0	16.3	198.8	241.8	440.6	8.2	45.1
WESTERN AUSTRALIA - PERSONS									
1971	459.1	5.7	*	7.4	466.6	265.7	732.3	1.6	63.7
1972	460.2	14.2	*	15.8	476.1	277.1	753.1	3.3	63.2
1973	480.6	6.8	*	8.5	489.0	282.0	771.0	1.7	63.4
1974	487.7	10.4	*	12.7	500.4	300.4	800.8	2.5	62.5
1975	504.1	12.3	4.7	17.0	521.1	297.8	818.9	3.3	63.6
1976	518.1	17.6	5.0	22.5	540.6	299.3	840.0	4.2	64.4
1977	526.0	20.8	5.6	26.4	552.5	311.1	863.5	4.8	64.0
1978	518.3	32.0	5.1	37.1	555.4	334.9	890.3	6.7	62.4
TASMANIA - MALES									
1971	112.5	*	*	*	113.8	21.2	135.0	*	84.3
1972	109.8	1.7	*	1.8	111.6	23.9	135.5	1.6	82.4
1973	111.4	*	*	*	112.5	25.0	137.5	*	81.8
1974	113.0	1.9	*	2.0	115.0	25.6	140.7	1.7	81.8
1975	112.1	3.3	*	3.5	115.5	26.8	142.3	3.0	81.2
1976	111.2	4.2	*	4.2	115.4	29.5	144.9	3.6	79.6
1977	112.7	4.3	*	4.4	117.1	30.1	147.2	3.7	79.6
1978	111.2	6.0	*	6.3	117.5	31.8	149.3	5.3	78.7
TASMANIA - FEMALES									
1971	44.8	*	*	1.6	46.5	88.7	135.2	3.5	34.4
1972	47.3	1.8	*	2.0	49.3	87.1	136.4	4.1	36.2
1973	50.2	*	*	1.9	52.1	86.7	138.8	3.7	37.5
1974	52.9	*	*	1.9	54.8	86.5	141.3	3.5	38.8
1975	52.9	2.3	1.6	3.9	56.8	87.5	144.3	6.8	39.4
1976	53.1	2.8	*	3.9	56.9	89.7	146.6	6.8	38.8
1977	56.0	4.1	*	5.5	61.5	87.7	149.2	8.9	41.2
1978	54.7	3.6	*	4.7	59.4	92.4	151.8	7.9	39.1
TASMANIA - PERSONS									
1971	157.4	2.0	*	2.9	160.3	109.9	270.1	1.8	59.3
1972	157.1	3.5	*	3.8	160.9	111.0	271.9	2.4	59.2
1973	161.6	2.1	*	3.0	164.6	111.6	276.3	1.8	59.6
1974	165.9	2.9	*	3.9	169.9	112.1	281.9	2.3	60.2
1975	165.0	5.6	1.8	7.4	172.4	114.2	286.6	4.3	60.1
1976	164.2	7.0	*	8.1	172.3	119.2	291.5	4.7	59.1
1977	168.7	8.4	1.5	9.9	178.6	117.8	296.4	5.5	60.3
1978	165.9	9.6	*	10.9	176.8	124.3	301.1	6.2	58.7

For footnotes see page 13.

TABLE 5. CIVILIAN POPULATION AGED 15 YEARS AND OVER, BY EMPLOYMENT STATUS, STATES AND TERRITORIES (a) - *continued*

August -	Employed	Unemployed		Total	Labour force	Not in labour force	Civilian population aged 15 years and over	Unemployment rate	Participation rate
		Looking for full-time work	Looking for part-time work						
		- '000 -							
NORTHERN TERRITORY - MALES									
1971	37.8	*	*	*	37.8	2.1	40.0	*	94.7
1972	35.0	*	*	*	35.4	5.3	40.8	*	86.9
1973	32.1	*	*	*	32.7	7.8	40.5	*	80.7
1974	34.0	*	*	*	34.1	7.2	41.3	*	82.6
1975	27.7	*	*	*	28.0	8.9	36.9	*	75.9
1976	28.3	*	*	*	29.0	8.4	37.3	*	77.6
1977	29.5	*	*	*	30.4	8.5	38.9	*	78.2
1978	34.3	*	*	*	35.3	6.1	41.4	*	85.2
NORTHERN TERRITORY - FEMALES									
1971	13.7	*	*	*	14.0	13.1	27.1	*	51.6
1972	15.3	*	*	*	15.3	12.9	28.2	*	54.1
1973	15.1	*	*	*	15.9	13.9	29.7	*	53.3
1974	16.2	*	*	*	16.4	14.4	30.8	*	53.2
1975	13.5	*	*	*	14.0	12.5	26.4	*	52.8
1976	15.2	*	*	*	15.9	13.8	29.6	*	53.5
1977	14.7	*	*	*	15.1	15.5	30.7	*	49.4
1978	14.2	*	*	*	14.9	17.7	32.6	*	45.8
NORTHERN TERRITORY - PERSONS									
1971	51.5	*	*	*	51.8	15.3	67.1	*	77.2
1972	50.3	*	*	*	50.7	18.3	69.0	*	73.5
1973	47.2	*	*	*	48.6	21.7	70.2	*	69.1
1974	50.2	*	*	*	50.5	21.6	72.1	*	70.0
1975	41.2	*	*	*	42.0	21.4	63.3	*	66.2
1976	43.4	*	*	*	44.8	22.1	67.0	*	66.9
1977	44.2	*	*	*	45.5	24.0	69.6	*	65.5
1978	48.5	*	*	*	50.3	23.8	74.1	*	67.9
AUSTRALIAN CAPITAL TERRITORY - MALES									
1971	42.4	*	*	*	42.6	7.0	49.5	*	85.9
1972	46.6	*	*	*	46.9	6.7	53.7	*	87.2
1973	49.4	*	*	*	49.7	7.1	56.7	*	87.5
1974	51.6	*	*	*	51.7	8.4	60.1	*	86.0
1975	52.5	*	*	*	53.1	9.9	63.0	*	84.3
1976	54.0	4.0	*	4.4	58.3	8.4	66.7	7.5	87.4
1977	57.1	2.5	*	2.8	59.9	8.6	68.5	4.6	87.4
1978	57.7	2.3	*	2.9	60.6	10.3	70.9	4.8	85.5
AUSTRALIAN CAPITAL TERRITORY - FEMALES									
1971	27.4	*	*	*	27.4	23.3	50.6	*	54.1
1972	28.8	*	*	*	30.0	25.1	55.1	*	54.5
1973	34.1	*	*	*	35.0	23.1	58.1	*	60.2
1974	39.1	*	*	*	39.3	23.1	62.4	*	63.0
1975	40.5	*	*	*	41.3	24.1	65.4	*	63.1
1976	36.7	*	*	2.5	39.2	29.9	69.1	6.2	56.7
1977	38.7	*	*	*	40.2	30.7	70.8	*	56.7
1978	39.4	*	2.0	3.3	42.6	30.6	73.2	7.7	58.2
AUSTRALIAN CAPITAL TERRITORY - PERSONS									
1971	69.8	*	*	*	69.9	30.2	100.2	*	69.8
1972	75.5	*	*	*	76.9	31.9	108.8	*	70.7
1973	83.5	*	*	*	84.7	30.2	114.9	*	73.7
1974	90.7	*	*	*	91.0	31.5	122.5	*	74.3
1975	93.0	*	*	*	94.4	34.0	128.4	*	73.5
1976	90.7	5.6	*	6.8	97.5	38.3	135.8	7.0	71.8
1977	95.8	2.9	*	4.2	100.1	39.3	139.4	4.2	71.8
1978	97.1	3.6	2.6	6.2	103.2	40.9	144.1	6.0	71.6

(a) For scope of estimates see paragraph 5. For definitions see paragraphs 6 to 17. Because of limitations of space, figures for months other than August are not shown but are available from State and Central offices of ABS.

TABLE 6. CIVILIAN POPULATION AGED 15 TO 19 YEARS, BY EMPLOYMENT STATUS, NOVEMBER 1978 (a)

	Employed	Unemployed		Total	Labour force	Not in labour force	Civilian population	Unemployment rate	Participation rate
		Looking for full-time work	Looking for part-time work						
				- '000 -				- per cent -	
NOT ATTENDING SCHOOL									
Males	294.7	40.5	*	42.4	337.2	45.9	383.1	12.6	88.0
Females	244.9	44.5	*	46.1	291.0	67.6	358.6	15.8	81.1
Persons	539.6	85.0	*	88.5	628.1	113.6	741.7	14.1	84.7
Left school -									
Before 1976	152.6	23.7	*	24.4	176.9	32.4	209.3	13.8	84.5
1976	164.6	20.7	*	21.3	185.9	25.8	211.6	11.4	87.8
1977 to survey date	222.5	40.5	*	42.9	265.3	55.4	320.8	16.2	82.7
Age (years) -									
15	17.2	5.9	*	6.2	23.4	6.3	29.7	26.6	78.7
16	63.7	17.9	*	18.1	81.8	9.8	91.6	22.1	89.3
17	116.3	20.7	*	21.2	137.6	18.3	155.9	15.4	88.2
18	164.3	19.9	*	21.2	185.5	34.3	219.8	11.4	84.4
19	178.1	20.5	*	21.8	199.9	44.8	244.7	10.9	81.7
ATTENDING SCHOOL									
Males	35.6	7.3	6.7	14.0	49.6	219.6	269.2	28.2	18.4
Females	42.4	5.6	9.7	15.3	57.7	209.7	267.4	26.5	21.6
Persons	78.0	12.9	16.4	29.3	107.3	429.3	536.7	27.3	20.0
Age (years) -									
15	24.2	*	8.0	12.1	36.3	190.9	227.2	33.4	16.0
16	26.0	4.7	6.2	10.9	36.9	130.9	167.8	29.4	22.0
17	19.9	*	*	*	24.3	75.7	100.0	*	24.3
18 and 19	7.9	*	*	*	9.8	31.9	41.7	*	23.5

(a) For scope of estimates see paragraph 5. For definitions see paragraphs 6 to 17.

TABLE 7. CIVILIAN LABOUR FORCE, BY EMPLOYMENT STATUS, BIRTHPLACE AND PERIOD OF ARRIVAL IN AUSTRALIA, NOVEMBER 1978 (a)

	Employed		Unemployed		Labour force	Unemployment rate	Participation rate (b)
	Full-time	Total	Looking for full-time work	Total			
	- '000 -						
- per cent -							
MALES							
Born in Australia	2,642.7	2,802.0	137.6	150.2	2,952.2	5.1	78.3
Born outside Australia	1,003.8	1,044.1	53.4	56.2	1,100.2	5.1	80.9
Italy	n.a.	124.8	n.a.	4.5	129.2	3.5	83.0
Greece	n.a.	64.0	n.a.	5.0	69.0	7.2	81.1
Yugoslavia	n.a.	55.4	*	*	58.4	*	83.5
U.K. and Ireland	n.a.	387.6	n.a.	20.8	408.3	5.1	78.0
New Zealand	n.a.	42.6	*	*	46.0	*	88.6
Other	n.a.	369.7	n.a.	19.5	389.3	5.0	82.0
Arrived before 1961	430.4	447.0	15.7	16.6	463.6	3.6	73.5
1961-1965	156.2	163.4	9.9	10.2	173.6	5.9	87.5
1966-1970	209.8	219.3	13.0	13.6	232.9	5.8	87.9
1971-1976	158.8	164.6	8.8	9.5	174.1	5.5	87.3
1977 to survey date	48.6	49.8	6.0	6.2	56.0	11.1	84.0
MARRIED WOMEN							
Born in Australia	516.9	960.0	19.8	38.4	998.4	3.8	40.1
Born outside Australia	268.3	413.4	15.0	25.0	438.4	5.7	47.7
Italy	n.a.	41.3	*	*	43.3	*	40.1
Greece	n.a.	35.8	*	*	38.0	*	57.7
Yugoslavia	n.a.	27.1	*	*	28.1	*	58.2
U.K. and Ireland	n.a.	155.2	n.a.	8.8	164.0	5.4	47.1
New Zealand	n.a.	14.7	*	*	15.8	*	50.1
Other	n.a.	139.4	n.a.	9.8	149.1	6.5	46.9
Arrived before 1961	94.0	159.4	*	6.4	165.8	3.9	40.1
1961-1965	45.1	71.9	*	*	75.6	*	51.5
1966-1970	63.0	92.1	*	*	96.4	*	54.6
1971-1976	54.9	74.7	*	6.5	81.2	8.0	57.5
1977 to survey date	11.3	15.4	*	*	19.4	*	45.8
ALL FEMALES							
Born in Australia	1,026.3	1,603.4	82.8	115.1	1,718.5	6.7	43.3
Born outside Australia	377.7	547.8	35.1	48.3	596.1	8.1	46.9
Italy	n.a.	50.5	*	*	53.8	*	41.4
Greece	n.a.	39.1	*	*	42.3	*	55.0
Yugoslavia	n.a.	31.0	*	*	32.3	*	55.5
U.K. and Ireland	n.a.	215.6	n.a.	20.3	235.9	8.6	45.7
New Zealand	n.a.	23.6	*	*	26.0	*	53.0
Other	n.a.	188.1	n.a.	17.7	205.9	8.6	46.7
Arrived before 1961	122.2	195.9	5.5	10.4	206.3	5.0	36.8
1961-1965	65.7	97.3	6.3	8.5	105.8	8.0	53.9
1966-1970	89.6	123.9	9.0	11.3	135.2	8.4	55.3
1971-1976	80.0	105.5	8.4	11.3	116.8	9.6	57.7
1977 to survey date	20.2	25.3	5.8	6.7	32.0	21.0	47.8
PERSONS							
Born in Australia	3,669.0	4,405.4	220.4	265.3	4,670.7	5.7	60.3
Born outside Australia	1,381.5	1,591.9	88.4	104.4	1,696.4	6.2	64.5
Italy	n.a.	175.2	n.a.	7.8	183.1	4.3	64.0
Greece	n.a.	103.1	n.a.	8.2	111.3	7.4	68.7
Yugoslavia	n.a.	86.4	*	*	90.7	*	70.8
U.K. and Ireland	n.a.	603.1	n.a.	41.1	644.2	6.4	62.0
New Zealand	n.a.	66.2	n.a.	5.7	72.0	8.0	71.3
Other	n.a.	557.8	n.a.	37.3	595.1	6.3	65.0
Arrived before 1961	552.6	642.9	21.2	27.0	669.9	4.0	56.2
1961-1965	221.9	260.6	16.2	18.7	279.4	6.7	70.8
1966-1970	299.4	343.2	22.0	25.0	368.2	6.8	72.3
1971-1976	238.8	270.1	17.1	20.8	290.9	7.1	72.4
1977 to survey date	68.8	75.1	11.8	13.0	88.1	14.7	65.8

(a) For scope of estimates see paragraph 5. For definitions see paragraphs 6 to 17. (b) Excludes persons in institutions. See definition, paragraph 12.

TABLE 8. SEASONALLY ADJUSTED SERIES (a)(b)

Month	Males		Married women		All females		Persons	
	Original	Seasonally adjusted	Original	Seasonally adjusted	Original	Seasonally adjusted	Original	Seasonally adjusted
EMPLOYED (b) ('000)								
1976 -								
February	3,863.3	3,857.5	1,343.3	1,357.3	2,085.5	2,096.1	5,948.8	5,953.2
May	3,886.9	3,872.9	1,346.6	1,347.2	2,095.5	2,093.7	5,982.3	5,964.0
August (c)	3,836.3	3,850.8	1,337.8	1,341.9	2,061.5	2,072.3	5,897.8	5,926.1
November	3,866.0	3,871.3	1,361.6	1,343.3	2,089.0	2,069.1	5,955.0	5,939.9
1977 -								
February	3,890.2	3,884.6	1,355.5	1,370.1	2,095.1	2,108.6	5,985.2	5,992.8
May	3,891.5	3,877.0	1,382.0	1,381.8	2,132.7	2,128.2	6,024.2	6,002.4
August	3,866.8	3,881.6	1,374.5	1,378.2	2,128.6	2,138.8	5,995.4	6,024.1
November	3,867.3	3,872.7	1,368.9	1,351.2	2,128.2	2,108.7	5,995.4	5,980.6
1978 -								
February (d)	3,857.4	3,851.9	1,320.9	1,335.3	2,074.8	2,089.6	5,932.3	5,941.3
May	3,863.5	3,849.1	1,356.5	1,356.0	2,135.3	2,129.7	5,998.7	5,975.9
August	3,832.3	3,846.8	1,357.7	1,360.8	2,137.2	2,146.5	5,969.6	5,997.5
November	3,846.1	3,851.5	1,373.4	1,356.0	2,151.2	2,131.9	5,997.3	5,982.6
LABOUR FORCE (b) ('000)								
1976 -								
February	4,035.0	4,010.0	1,429.6	1,431.7	2,255.9	2,241.6	6,290.9	6,249.5
May	4,028.6	4,020.8	1,409.6	1,413.3	2,229.6	2,234.2	6,258.2	6,255.3
August (c)	3,992.9	4,016.4	1,400.9	1,408.6	2,197.6	2,217.4	6,190.5	6,236.7
November	4,021.2	4,031.3	1,412.9	1,399.7	2,215.3	2,205.6	6,236.5	6,236.1
1977 -								
February	4,076.2	4,050.2	1,438.3	1,441.4	2,281.3	2,269.1	6,357.5	6,316.5
May	4,076.2	4,068.1	1,456.6	1,459.2	2,301.8	2,303.4	6,378.0	6,371.6
August	4,056.9	4,080.9	1,451.2	1,458.3	2,297.8	2,316.9	6,354.7	6,401.4
November	4,050.4	4,061.0	1,436.6	1,424.1	2,291.9	2,283.8	6,342.2	6,343.7
1978 -								
February (d)	4,112.4	4,086.0	1,413.6	1,417.2	2,296.9	2,285.9	6,409.3	6,368.7
May	4,072.6	4,064.3	1,440.4	1,442.6	2,321.4	2,321.7	6,394.0	6,386.4
August	4,053.8	4,077.7	1,434.9	1,441.1	2,311.5	2,329.5	6,365.3	6,410.8
November	4,052.4	4,063.2	1,436.8	1,424.7	2,314.6	2,307.4	6,367.0	6,369.5
PARTICIPATION RATE (b) (per cent)								
1976 -								
February	81.4	80.9	42.5	42.5	44.5	44.2	62.7	62.3
May	81.0	80.8	41.9	42.1	43.8	43.9	62.2	62.2
August (c)	80.0	80.4	41.5	41.7	43.0	43.4	61.3	61.7
November	80.2	80.4	41.8	41.5	43.2	43.0	61.5	61.5
1977 -								
February	80.9	80.4	42.3	42.4	44.3	44.0	62.4	62.0
May	80.5	80.4	42.8	42.9	44.4	44.5	62.3	62.2
August	79.8	80.3	42.6	42.7	44.2	44.5	61.8	62.2
November	79.3	79.5	42.3	42.0	43.8	43.7	61.4	61.4
1978 -								
February (d)	80.1	79.6	41.5	41.6	43.7	43.5	61.7	61.3
May	78.9	78.8	42.4	42.5	43.9	43.9	61.2	61.1
August	78.3	78.7	42.1	42.2	43.5	43.9	60.7	61.1
November	77.9	78.1	42.0	41.7	43.4	43.3	60.5	60.5

(a) The methods used to seasonally adjust these figures are explained in *Seasonally Adjusted Indicators, 1978* (1308.0). See also paragraphs 33 and 34. (b) For scope of estimates see paragraph 5. For definitions see paragraphs 6 to 17. (c) Affected by industrial dispute. (d) First of monthly series. See paragraph 4 for details of change in timing of the survey.

TABLE 9. CIVILIAN LABOUR FORCE, BY AGE, NOVEMBER 1978 (a)

Age group (years)	Number ('000)					Participation rate (per cent)				
	Males	Married women	Other females (b)	All females	Persons	Males	Married women	Other females (b)	All females	Persons
15-19	386.8	16.7	332.0	348.7	735.5	59.3	52.4	55.9	55.7	57.5
20-24	530.6	168.9	237.1	406.0	936.6	89.0	55.6	81.3	68.2	78.6
25-34	1,089.3	447.1	130.6	577.7	1,666.9	96.3	47.2	74.5	51.5	74.0
35-44	820.6	407.7	61.5	469.2	1,289.8	96.0	56.1	67.6	57.3	77.1
45-54	720.7	290.8	57.8	348.6	1,069.3	92.1	45.4	55.4	46.8	70.0
55-59	280.3	69.4	33.3	102.7	383.0	80.8	25.6	41.6	29.3	54.9
60-64	158.8	25.1	13.4	38.6	197.3	56.8	12.0	14.5	12.8	33.9
65 and over	65.5	11.0	12.2	23.2	88.7	11.7	3.8	2.5	3.0	6.7
Total	4,052.4	1,436.8	877.8	2,314.6	6,367.0	77.9	42.0	46.0	43.4	60.5

(a) For scope of estimates see paragraph 5. For definitions see paragraphs 6 to 17. (b) Never married, widowed and divorced.

TABLE 10. LABOUR FORCE PARTICIPATION RATES, BY AGE AND BIRTHPLACE, NOVEMBER 1978 (a)
(Per cent)

Age group (years)	Born in Australia			Born outside Australia		
	Males	Females	Persons	Males	Females	Persons
15-19	59.5	56.3	57.9	60.8	53.2	56.9
20-24	90.1	69.3	79.7	88.1	64.6	76.1
25-34	97.3	50.0	73.5	96.1	55.9	76.4
35-44	96.9	55.2	76.1	95.8	62.4	80.0
45-54	93.2	44.7	68.5	92.4	52.8	74.8
55-59	80.0	27.8	52.5	86.0	34.1	62.8
60-64	56.5	12.7	33.2	62.2	13.9	38.9
65 and over	14.1	3.3	7.8	8.3	3.3	5.6
Total	78.3	43.3	60.3	80.9	46.9	64.5

(a) Excludes persons in institutions. See definition, paragraph 12.

TABLE 11. EMPLOYED PERSONS : FULL-TIME AND PART-TIME STATUS, BY AGE, NOVEMBER 1978 (a)
('000)

	Age group (years)						
	15-19	20-24	25-34	35-44	45-54	55 and over	Total
MALES							
Full-time workers	277.2	458.2	1,017.8	778.0	673.7	441.7	3,646.5
Part-time workers	53.2	29.7	31.7	17.3	20.9	46.8	199.6
Total	330.3	487.9	1,049.5	795.3	694.6	488.5	3,846.1
MARRIED WOMEN							
Full-time workers	11.9	126.0	233.5	203.6	162.6	47.7	785.2
Part-time workers	*	33.5	188.9	187.9	119.0	56.9	588.3
Total	13.9	159.5	422.4	391.5	281.7	104.5	1,373.4
ALL FEMALES							
Full-time workers	217.0	311.4	339.3	247.3	205.1	84.0	1,404.0
Part-time workers	70.3	62.9	204.7	201.3	130.3	77.8	747.2
Total	287.3	374.3	544.0	448.6	335.3	161.8	2,151.2
PERSONS							
Full-time workers	494.2	769.6	1,357.1	1,025.3	878.7	525.7	5,050.6
Part-time workers	123.5	92.6	236.4	218.6	151.2	124.6	946.8
Total	617.7	862.2	1,593.5	1,243.8	1,029.9	650.2	5,997.3

(a) For scope of estimates see paragraph 5. For definitions see paragraphs 6 to 17.

TABLE 12. EMPLOYED PERSONS, BY HOURS WORKED, NOVEMBER 1978 (a)

	<i>Males</i>	<i>Married women</i>	<i>Other females (b)</i>	<i>All females</i>	<i>Persons</i>
NUMBER EMPLOYED ('000)					
Weekly hours worked –					
0(c)	187.6	63.9	35.7	99.6	287.1
1–15	116.2	272.5	93.0	365.4	481.6
16–29	236.6	280.0	77.4	357.3	594.0
30–34	296.6	137.4	69.1	206.5	503.2
35–39	417.1	180.2	154.4	334.6	751.7
40	1,288.7	285.0	251.3	536.4	1,825.1
41–44	235.9	38.8	38.2	76.9	312.8
45–48	323.4	35.0	25.6	60.6	384.0
49 and over	744.0	80.7	33.1	113.9	857.9
Total	3,846.1	1,373.4	777.8	2,151.2	5,997.3
WEEKLY HOURS WORKED (a)					
Aggregate weekly hours worked (million)	153.7	39.2	25.0	64.3	217.9
By full-time workers	150.4	29.8	22.9	52.7	203.1
By part-time workers	3.3	9.4	2.2	11.6	14.9
Average weekly hours worked	40.0	28.6	32.2	29.9	36.3
By full-time workers	41.2	38.0	36.9	37.5	40.2
By part-time workers	16.3	16.0	13.7	15.5	15.7
By wage and salary earners	38.0	28.4	32.1	29.9	35.0
By others (d)	49.0	29.4	34.5	30.0	43.5

(a) For scope of estimates see paragraph 5. For definitions see paragraphs 6 to 17. The figures relate to hours worked, not hours paid for. See paragraph 14. (b) Never married, widowed and divorced. (c) Persons who had a job but were not at work. See definition, paragraph 14. (d) Employers; self-employed persons; unpaid family helpers who worked 15 hours or more in the survey week.

TABLE 13. FULL-TIME WORKERS WHO WORKED LESS THAN 35 HOURS, BY REASON, NOVEMBER 1978 (a) ('000)

<i>Reason for working less than 35 hours</i>	<i>Males</i>	<i>Married women</i>	<i>Other females (b)</i>	<i>All females</i>	<i>Persons</i>
Leave, holiday or flextime	404.3	109.3	79.9	189.3	593.6
Own illness or injury	132.2	39.2	28.3	67.6	199.8
Bad weather, plant breakdown, etc.	31.3	*	*	*	32.1
Began or left job in the survey week	9.3	*	*	6.8	16.1
Stood down, on short time, insufficient work	23.6	6.9	*	8.5	32.1
Other reasons	36.7	5.9	*	8.7	45.4
Total	637.4	165.4	116.2	281.7	919.1

(a) For scope of estimates see paragraph 5. For definitions see paragraphs 6 to 17. (b) Never married, widowed and divorced.

TABLE 14. EMPLOYED MARRIED WOMEN, BY INDUSTRY (a) AND HOURS WORKED (b), NOVEMBER 1978
(⁰⁰⁰)

Industry division or sub-division	Part-time workers (a)			Total	Full-time workers (a)	Total
	Hours worked (b)					
	Under 16	16-29	30-34			
Agriculture and services to agriculture	20.3	13.7	*	37.4	33.2	70.7
Manufacturing	14.7	22.5	8.8	46.0	173.3	219.3
Construction	15.0	6.6	*	22.9	11.6	34.6
Wholesale and retail trade	75.5	59.8	15.6	150.9	165.8	316.8
Transport and storage	8.5	*	*	12.5	15.9	28.4
Finance, insurance, real estate and business services	26.0	14.9	8.3	49.2	67.4	116.6
Community services	67.7	68.6	25.8	162.1	202.3	364.4
Entertainment, recreation, restaurants, hotels and personal services	51.0	30.3	5.7	87.0	55.1	142.1
Other industries	8.8	9.1	*	20.1	60.6	80.7
Total	287.5	228.9	71.9	588.3	785.2	1,373.4

(a) For scope of estimates see paragraph 5. For definitions see paragraphs 6 to 17. (b) Hours worked in the survey week. See definition, paragraph 14.

TABLE 15. AVERAGE WEEKLY HOURS WORKED BY EMPLOYED PERSONS, BY INDUSTRY AND OCCUPATION (a), NOVEMBER 1978

	Males	Married women	Other females (b)	All females	Persons
INDUSTRY					
Agriculture and services to agriculture	53.0	30.7	37.8	31.8	48.2
Forestry, fishing and hunting	41.6	18.5	20.8	19.3	39.3
Mining	38.3	28.7	32.8	29.8	37.7
Manufacturing	38.5	32.5	35.4	33.3	37.2
Food, beverages and tobacco	37.9	33.8	31.2	33.0	36.6
Metal products, machinery and equipment	38.0	29.9	36.6	32.1	37.2
Other manufacturing	38.9	32.4	36.2	33.5	37.3
Construction	38.4	20.7	35.1	23.6	37.1
Wholesale and retail trade	41.2	29.3	29.3	29.3	36.2
Transport and storage	39.6	25.6	35.1	29.3	38.1
Finance, insurance, real estate and business services	38.6	26.5	34.5	30.2	34.7
Community services	38.8	28.0	33.9	30.2	33.4
Entertainment, recreation, restaurants, hotels and personal services	39.9	25.4	25.7	25.5	31.3
Other industries	35.6	28.8	32.4	30.3	34.3
Total employed	40.0	28.6	32.2	29.9	36.3
OCCUPATION					
Professional, technical, etc.	39.3	28.8	35.1	31.4	35.7
Administrative, executive and managerial	46.3	38.3	40.6	38.8	45.3
Clerical	35.0	27.5	33.7	30.0	31.6
Sales	41.3	29.9	27.7	29.0	35.0
Farmers, fishermen, timber-getters, etc.	49.7	30.8	37.6	31.8	46.2
Transport and communication	39.6	29.8	33.0	30.7	38.4
Tradesmen, production-process workers and labourers, n.e.c.; and miners, quarrymen, etc.	38.0	32.7	35.4	33.3	37.4
Service, sport and recreation	36.4	23.9	25.5	24.4	28.8
Total employed	40.0	28.6	32.2	29.9	36.3

(a) For scope of estimates see paragraph 5. For definitions see paragraphs 6 to 17. Figures of hours relate to average weekly hours worked, not hours paid for. See paragraph 14. (b) Never married, widowed and divorced.

TABLE 16. PART-TIME WORKERS : WHETHER PREFERRED TO WORK MORE HOURS AND WHETHER LOOKING FOR FULL-TIME WORK, BY AGE, NOVEMBER 1978 (a)
(000)

	Age group (years)						Total
	15-19	20-24	25-34	35-44	45-54	55 and over	
MALES							
Total	53.2	29.7	31.7	17.3	20.9	46.8	199.6
Preferred not to work more hours	41.6	21.2	23.5	12.4	15.9	44.7	159.3
Preferred to work more hours	11.6	8.4	8.2	— 9.9	—	*	40.3
Had actively looked for full-time work (b)	5.5	5.1	4.6	— 5.4	—	*	21.4
MARRIED WOMEN							
Total	*	33.5	188.9	187.9	119.0	56.9	588.3
Preferred not to work more hours	*	27.2	170.1	169.7	111.0	55.1	534.7
Preferred to work more hours	— 6.8	—	18.8	18.2	8.0	*	53.6
Had actively looked for full-time work (b)	*	— 5.9	—	*	*	*	10.1
ALL FEMALES							
Total	70.3	62.9	204.7	201.3	130.3	77.8	747.2
Preferred not to work more hours	53.7	48.6	182.0	180.3	120.5	75.1	660.1
Preferred to work more hours	16.7	14.3	22.7	21.0	9.8	*	87.1
Had actively looked for full-time work (b)	8.8	7.0	— 8.6	—	*	*	26.0
PERSONS							
Total	123.5	92.6	236.4	218.6	151.2	124.6	946.8
Preferred not to work more hours	95.3	69.8	205.5	192.7	136.4	119.7	819.4
Preferred to work more hours	28.2	22.7	30.9	25.8	14.8	4.8	127.4
Had actively looked for full-time work (b)	14.3	12.1	9.3	7.0	*	*	47.4

(a) For scope of estimates see paragraph 5. For definitions see paragraphs 6 to 17. (b) Had actively looked for full-time work in the four weeks up to the end of the survey week.

TABLE 17. UNEMPLOYED PERSONS, BY AGE, STATES, NOVEMBER 1978 (a)
(000)

Age group (years)	New South Wales	Victoria	Queensland	South Australia	Western Australia	Tasmania	Australia (b)
MALES							
15-19	20.4	11.9	7.4	8.9	3.9	2.1	56.4
20-34	28.3	17.7	12.2	9.8	10.6	2.3	82.4
35 and over	25.0	15.2	12.9	7.4	4.6	1.6	67.5
Total	73.7	44.8	32.5	26.2	19.1	6.0	206.4
FEMALES							
15-19	23.8	13.5	8.4	6.0	5.9	1.7	61.4
20-34	17.7	16.8	11.7	8.0	6.5	2.2	65.4
35 and over	15.3	7.6	4.9	4.0	3.4	*	36.6
Total	56.8	38.0	25.0	18.0	15.8	4.5	163.3
PERSONS							
15-19	44.2	25.3	15.8	14.9	9.8	3.9	117.8
20-34	46.0	34.6	23.9	17.9	17.1	4.5	147.8
35 and over	40.3	22.8	17.8	11.4	8.0	2.1	104.1
Total	130.5	82.7	57.4	44.2	34.9	10.5	369.7

(a) For scope of estimates see paragraph 5. For definitions see paragraphs 6 to 17. (b) Includes the Northern Territory and the Australian Capital Territory.

TABLE 18. UNEMPLOYED PERSONS, BY AGE AND WHETHER LOOKING FOR FULL-TIME OR PART-TIME WORK, NOVEMBER 1978 (a)

	Number unemployed ('000)					Unemployment rate (per cent)				
	Married males	All males	Married women	All females	All persons	Married males	All males	Married women	All females	All persons
LOOKING FOR FULL-TIME WORK										
Total	72.1	191.0	34.9	117.9	308.8	2.7	5.0	4.3	7.7	5.8
Aged 15-19 years	*	47.8	*	50.1	97.9	*	14.7	*	18.8	16.5
Looking for first job	*	18.0	*	20.3	38.3
Not looking for first job	*	29.8	*	29.8	59.6
Attending school	*	7.3	*	5.6	12.9	*	n.a.	*	n.a.	n.a.
Aged 20 years and over	71.9	143.2	32.6	67.8	210.9	2.7	4.1	4.0	5.4	4.4
20-24 years	6.6	39.9	6.7	27.6	67.5	4.6	8.0	5.0	8.1	8.1
25-34 years	19.9	38.1	11.6	18.4	56.6	2.5	3.6	4.7	5.2	4.0
35-44 years	45.3	25.0	8.7	11.7	36.8	2.6	3.1	4.1	4.5	3.5
45-54 years		25.0	5.0	8.5	33.5		3.6	3.0	4.0	3.7
55 years and over		15.1	*	*	16.6		3.3	*	*	3.1
LOOKING FOR PART-TIME WORK										
Total	*	15.4	28.5	45.5	60.9	*	7.2	4.6	5.7	6.0
Aged 15-19 years	*	8.6	*	11.3	19.9	*	14.0	*	13.8	13.9
Attending school	*	6.7	*	9.7	16.4	*	16.3	*	18.7	17.6
Aged 20 years and over	*	6.8	28.0	34.2	41.0	*	4.4	4.6	4.8	4.7
20-24 years	*	*	*	*	6.8	*	*	*	*	6.9
25-34 years	*	*	13.1	15.3	16.9	*	*	6.5	6.9	6.7
35-44 years	*	*	7.5	8.9	9.3	*	*	3.8	4.2	4.1
45-54 years	*	*	*	4.7	5.8	*	*	*	3.5	3.7
55 years and over	*	*	*	*	*	*	*	*	*	*
TOTAL										
Total	75.2	206.4	63.4	163.3	369.7	2.7	5.1	4.4	7.1	5.8
Aged 15-19 years	*	56.4	*	61.4	117.8	*	14.6	*	17.6	16.0
Attending school	*	14.0	*	15.4	29.4	*	28.2	*	26.5	27.3
Aged 20 years and over	74.9	149.9	60.6	102.0	251.9	2.7	4.1	4.3	5.2	4.5
20-24 years	6.6	42.7	9.5	31.7	74.4	4.4	8.0	5.6	7.8	7.9
25-34 years	20.9	39.7	24.7	33.7	73.5	2.5	3.6	5.5	5.8	4.4
35-44 years	17.4	25.4	16.2	20.6	46.0	2.4	3.1	4.0	4.4	3.6
45-54 years	17.3	26.1	9.2	13.2	39.3	2.7	3.6	3.2	3.8	3.7
55 years and over	12.7	16.1	*	*	18.8	2.9	3.2	*	*	2.8

(a) For scope of estimates see paragraph 5. For definitions see paragraphs 6 to 17.

TABLE 19. UNEMPLOYED PERSONS, BY AGE AND BIRTHPLACE, NOVEMBER 1978 (a)

Age group (years)	Number unemployed ('000)			Unemployment rate (per cent)		
	Males	Females	Persons	Males	Females	Persons
BORN IN AUSTRALIA						
15-19	48.7	50.4	99.1	14.6	16.8	15.6
20 and over	101.5	64.7	166.2	3.9	4.6	4.1
20-24	35.9	23.8	59.7	8.1	7.0	7.6
25-34	25.7	21.6	47.3	3.3	5.3	4.0
35 and over	39.9	19.2	59.1	2.9	2.9	2.9
Total	150.2	115.1	265.3	5.1	6.7	5.7
BORN OUTSIDE AUSTRALIA						
15-19	7.7	11.0	18.7	14.3	22.8	18.3
20 and over	48.4	37.3	85.7	4.6	6.8	5.4
20-24	6.7	7.9	14.6	7.7	11.8	9.5
25-34	14.1	12.1	26.2	4.7	7.2	5.6
35 and over	27.6	17.4	44.9	4.2	5.5	4.6
Total	56.2	48.3	104.4	5.1	8.1	6.2

(a) For scope of estimates see paragraph 5. For definitions see paragraphs 6 to 17.

TABLE 20. UNEMPLOYED PERSONS, BY DURATION OF UNEMPLOYMENT (a) AND AGE, ETC., NOVEMBER 1978 (b)

Duration of unemployment (weeks) (a)	Age (years)			Married	Not married (c)	Looking for -		Total
	15-19	20-24	25 and over			Full-time work	Part-time work	
MALES								
Number unemployed ('000) -								
Under 2	4.7	*	5.6	*	10.0	10.5	5.6	13.5
2 and under 4	7.2	*	10.4	8.1	13.4	18.8		21.4
4 and under 8	8.1	8.3	15.1	11.4	20.2	29.4	5.4	31.5
8 and under 13	8.4	*	10.9	7.3	16.1	21.7		23.5
13 and under 26	11.6	8.1	16.5	12.1	24.1	34.7		36.2
26 and under 39	6.7	5.1	13.5	9.7	15.6	24.0	*	25.3
39 and under 52	4.7	*	7.5	5.2	10.3	14.5	*	15.6
52 and under 65	5.1	6.6	10.7	6.2	9.1	14.6	*	15.3
65 and over			17.1	11.8	12.3	22.8	*	24.1
Total	56.4	42.7	107.3	75.2	131.2	191.0	15.4	206.4
Average duration of unemployment								
	21.1	25.4	33.6	32.3	26.3	29.0	21.3	28.5
FEMALES								
Number unemployed ('000) -								
Under 2	5.4	*	10.6	11.4	7.8	9.2	9.9	19.1
2 and under 4	8.1	5.0	11.1	11.1	13.1	16.4	7.8	24.2
4 and under 8	9.1	5.3	7.9	6.9	15.4	17.2	5.2	22.3
8 and under 13	8.6	7.8	7.8	6.6	13.9	15.1	5.4	20.5
13 and under 26	8.8		8.5	7.6	13.3	15.9	5.0	20.8
26 and under 39	5.8	*	8.0	8.4	9.1	13.2	*	17.5
39 and under 52	6.4	6.8	8.4	6.0	10.1	10.8	7.9	13.3
52 and under 65	*				5.7	6.4		8.5
65 and over	5.2		8.1	5.4	11.6	13.7		16.9
Total	61.4	31.7	70.3	63.4	100.0	117.9	45.5	163.3
Average duration of unemployment								
	24.7	28.2	27.5	22.1	29.4	28.8	20.6	26.6
PERSONS								
Number unemployed ('000) -								
Under 2	10.1	6.4	16.2	14.9	17.7	19.8	12.9	32.6
2 and under 4	15.3	8.9	21.5	19.2	26.5	35.1	10.5	45.7
4 and under 8	17.2	13.6	23.0	18.3	35.6	46.5	7.3	53.9
8 and under 13	17.0	8.3	18.7	13.9	30.1	36.8	7.2	44.0
13 and under 26	20.4	11.7	25.0	19.6	37.4	50.6	6.4	57.0
26 and under 39	12.6	8.8	21.5	18.1	24.7	37.2	5.6	42.8
39 and under 52	11.1	6.0	11.7	8.4	20.5	25.3	6.4	28.9
52 and under 65	5.7	*	14.8	9.1	14.8	21.0		23.8
65 and over	8.5	7.4	25.2	17.1	23.9	36.5	4.5	41.0
Total	117.8	74.4	177.5	138.5	231.2	308.8	60.9	369.7
Average duration of unemployment								
	23.0	26.6	31.1	27.6	27.6	29.0	20.8	27.6

(a) Period from the time the person began looking for work, or was laid off, to the end of the survey week. Periods of unemployment are recorded in complete weeks and this results in a slight understatement of duration. (b) For scope of estimates see paragraph 5. For definitions see paragraphs 6 to 17. (c) Never married, widowed and divorced.

TABLE 21. UNEMPLOYED PERSONS, BY INDUSTRY AND OCCUPATION OF LAST
FULL-TIME JOB AND DURATION OF UNEMPLOYMENT, NOVEMBER 1978 (a)
('000)

	Duration of unemployment (weeks)							Total
	Under 4	4 and under 8	8 and under 13	13 and under 26	26 and under 39	39 and under 65	65 and over	
Had worked for two weeks or more in a full-time job in the last two years	53.1	41.7	30.2	41.9	30.0	34.3	12.0	243.3
Industry division –								
Manufacturing	10.2	8.0	6.4	10.3	7.0	8.8	*	54.0
Construction	8.3	6.4	*	6.5	*	5.7	*	37.0
Wholesale and retail trade	14.5	9.1	8.0	10.3	7.7	8.0	*	60.8
Finance, insurance, real estate and business services	—	5.4	—	*	*	*	*	11.3
Community services	—	8.1	—	6.7	—	*	*	18.9
Entertainment, recreation, restaurants, hotels and personal services	6.1	—	7.2	—	5.1	—	*	22.5
Other industries	6.2	7.2	5.3	6.4	6.1	6.3	*	38.8
Occupation group (b) –								
Professional, technical, etc.	—	9.4	—	—	5.2	—	*	15.1
Clerical	8.6	5.6	4.5	*	—	6.8	*	30.0
Sales	6.5	—	6.9	4.5	—	7.1	*	26.4
Farmers, fishermen, etc.	—	5.3	—	6.7	—	*	*	15.0
Transport and communication	—	5.7	—	—	5.8	—	*	12.1
Tradesmen, production-process workers and labourers, n.e.c.	21.5	17.6	12.5	20.6	14.4	17.5	6.0	110.1
Service, sport and recreation	6.2	—	8.9	—	7.2	—	*	26.7
Other (c)	25.2	12.1	13.8	15.1	12.8	18.4	29.0	126.5
Total	78.3	53.9	44.0	57.0	42.8	52.7	41.0	369.7

(a) For scope of estimates see paragraph 5. For definitions see paragraphs 6 to 18. See footnote (a) to Table 20. Duration of unemployment is not available for all industry divisions or occupational groups because of the high standard error of the estimates. (b) Excludes administrative, executive and managerial workers; and miners, quarrymen and related workers. (c) Had never worked for two weeks or more in a full-time job or had not done so in the last two years. Industry and occupation were not obtained for these persons.

TABLE 22. UNEMPLOYED PERSONS AGED 15 TO 19 YEARS, BY DURATION OF UNEMPLOYMENT (a), AND WHETHER ATTENDING SCHOOL, NOVEMBER 1978

AND WHETHER ATTENDING SCHOOL, NOVEMBER 1978				
Duration of unemployment (weeks)	Attending school	Not attending school		Total
		Left school before 1977	Left school in 1977 or 1978	
NUMBER ('000)				
Under 4	9.1	7.0	9.2	25.3
4 and under 13	8.8	12.3	13.1	34.2
13 and under 26	5.8	7.7	6.9	20.4
26 and over	5.5	18.7	13.7	37.9
Total	29.3	45.6	42.9	117.8
AVERAGE DURATION OF UNEMPLOYMENT (weeks)				
Males	13.8	26.0	21.3	21.1
Females	16.8	34.4	18.4	24.7
Persons	15.4	30.7	19.9	23.0
Looking for –				
Full-time work	13.5	30.6	20.5	24.2
Part-time work	16.8	33.2	10.1	17.0

(a) See footnote (a) to Table 20.

TABLE 23. PERSONS NOT IN THE LABOUR FORCE, BY AGE AND MARITAL STATUS, ETC., NOVEMBER 1978 (a)

	Married males	Other males (b)	All males	Married women	Other females (b)	All females	Persons	Per cent of population (c)
	– '000 –						– per cent –	
Age (years)								
15-19	*	265.1	265.5	15.2	262.2	277.4	542.9	42.5
20-24	5.5	60.4	65.8	134.9	54.5	189.4	255.2	21.4
25-34	19.3	22.4	41.6	499.8	44.7	544.5	586.1	26.0
35-44	22.5	11.3	33.8	319.6	29.5	349.1	382.9	22.9
45-54	42.2	19.4	61.6	349.4	46.5	395.9	457.4	30.0
55-59	49.9	16.8	66.7	201.3	46.6	247.9	314.6	45.1
60-64	96.0	24.7	120.6	184.5	78.9	263.4	384.1	66.1
65 and over	358.9	132.9	491.8	279.1	468.0	747.1	1,238.8	93.3
Total	594.6	552.9	1,147.5	1,983.6	1,030.9	3,014.5	4,162.0	39.5
Permanently unable to work	n.a.	n.a.	25.1	n.a.	n.a.	15.4	40.5	..
In institutions	n.a.	n.a.	70.0	n.a.	n.a.	86.7	156.7	..
Aged 15-20 years attending school	n.a.	n.a.	221.3	n.a.	n.a.	211.0	432.2	..

(a) For scope of estimates see paragraph 5. For definitions see paragraphs 6 to 17. (b) Never married, widowed and divorced. (c) Persons not in the labour force as a percentage of the civilian population in the same group.

TECHNICAL NOTE

Estimation procedure

The labour force estimates are derived from the population survey by use of a complex ratio estimation procedure, which ensures that the survey estimates conform to an independently estimated distribution of the population by age and sex, rather than to the age and sex distribution within the sample itself.

Reliability of the estimates

2. Since the estimates in this section are based on information obtained from occupants of a sample of dwellings the estimates and the movements derived from them are subject to sampling variability; that is, they may differ from the figures that would have been produced if all dwellings had been included in the surveys. One measure of the likely difference is given by the *standard error*, which indicates the extent to which an estimate might have varied by chance because only a sample of dwellings was included. There are about two chances in three that a sample estimate will differ by less than one standard error from the figure that would have been obtained if all dwellings had been included, and about nineteen chances in twenty that the difference will be less than two standard errors.

3. Space does not allow for the separate indication of the standard errors of all estimates in this section. Standard errors of estimates for the latest month and of estimates of movements since the previous month are shown in Table 1. Standard errors of other estimates and other monthly movements should be determined by using Tables A and B on page 26. Because of the reduction in the sample size for November 1975 and November 1977 surveys (see November 1975 and February 1978 issues of this bulletin for details), the standard errors for all estimates from these surveys except those for unemployed persons looking for full-time work in November 1977 are approximately 15 per cent higher than those shown. The standard errors in Table A apply to estimates for all other surveys.

4. The size of the standard error increases with the level of the estimate, so that the larger the estimate the larger the standard error. However, it should be noted that the larger the sample estimate the smaller will be the standard error in percentage terms. Thus, larger sample estimates will be relatively more reliable than smaller estimates.

5. Very small estimates are subject to such high standard errors (relative to the size of the estimate) as to detract seriously from their value for most reasonable uses. In the tables in this section, estimates below the levels shown in Table A have not been included. Although figures for these small components can in some cases be derived by subtraction, they should not be regarded as reliable.

6. The movement in the level of an estimate is also subject to sampling variability. The standard error of the movement depends on the levels of the estimates from which the movement is obtained rather than the size of the movement. An indication of the magnitude of

standard errors of monthly movements is given in Table B on page 26. The estimates of standard error of monthly movements apply only to estimates of movements between two consecutive months. Movements between corresponding months of consecutive years, or between two other non-consecutive months, will generally be subject to somewhat greater sampling variability than is indicated in Table B. A guide to the standard errors, of *quarterly* movements for periods from February 1978 can be obtained by multiplying the figures in the table of standard errors of monthly movements (Table B) by 1.4. Standard errors of quarterly movements for periods up to February 1978 were published in the Technical Note in the February 1978 issue of this bulletin.

7. Examples of the calculation and use of standard errors are given below :

- (a) The estimated number of employed females in November 1978 is 2,151,200. From Table A it will be seen that the estimate has a standard error of about 11,600 and therefore there are about two chances in three that the value that would have been produced if all dwellings had been included in the survey will fall within the range 2,139,600 to 2,162,800 and about nineteen chances in twenty that the value will fall within the range 2,128,000 to 2,174,400.
- (b) The estimate of movement in the number of employed females from October to November 1978 is a decrease of 700. Table B relates the standard error of the monthly movement to the size of the larger of the two estimates from which the movement is derived. In this case the October 1978 estimate (2,151,900) is the larger. From Table B it will be seen that the standard error of the monthly movement is about 8,400. Therefore there are about two chances in three that if all dwellings had been included in the surveys the movement would have been within the range -9,100 to +7,700 and about nineteen chances in twenty that it would have been within the range -17,500 to +16,100.

8. The standard errors of estimates relating to agricultural employment are generally somewhat higher than the standard errors of other estimates of the same magnitude. Estimates for females also tend to have higher standard errors than estimates of equivalent size for males in similar categories. Standard errors for capital cities are approximately the same as those for relevant States.

9. The reliability of an estimated percentage, computed by using sample data for both numerator and denominator, depends upon both the size of the numerator and the size of the denominator. However, the per cent standard error of the estimated percentage will generally be lower than the per cent standard error of the estimate of the numerator. The per cent standard errors of the numerators can be obtained from Table A.

10. The imprecision due to sampling variability, which is measured by the standard error, should not be confused with inaccuracies that may occur because of imperfections in reporting by interviewers and respondents. Inaccuracies of this kind are referred to as the *non-sampling error*, and they may occur in any

enumeration, whether it be a full count or only a sample. Every effort is made to reduce the non-sampling error to a minimum by careful design of questionnaires, intensive training and supervision of interviewers and efficient operating procedures.

TABLE A – STANDARD ERRORS OF ESTIMATES

[illegible]

TABLE B – STANDARD ERRORS OF ESTIMATES OF MONTHLY MOVEMENTS

[illegible]

POPULATION SURVEY REPORTS

Although emphasis in the population survey is placed on the regular collection of data on demographic and labour force characteristics, supplementary surveys of particular aspects of the labour force or of other subjects are carried out from time to time. The results of these surveys are published separately. Copies of the following publications are available free on request.

<i>Title</i>	<i>Catalogue No.</i>
Alcohol and Tobacco Consumption Patterns, February 1977	4312.0
Annual Leave, August 1974	6317.0
Assisted and Unassisted Migrants, August 1972	3406.0
Birth Expectations of Married Women, November 1976 (Preliminary)	3213.0
Child Care – May 1969; May 1973; May 1977	4402.0
Chronic Illnesses, Injuries and Impairments – May 1968; May 1974	4305.0
Employment Status of Teenagers, August 1978	6234.0
Evening and Night Work, November 1976	6329.0
Ex-service Personnel, November 1966; November 1971	4403.0
Family Status and Employment Status of the Population, November 1974 and 1975	6223.0
Frequency of Pay – August 1974, 1976 and 1977	6320.0
Income Distribution, 1968-69 (Consolidated and Revised Edition)	6505.0
Income Distribution, 1973-74 –	
Part 1	6502.0
Part 2	6503.0
Part 3 (Supplementary Tables)	6504.0
Internal Migration –	
1969-70 to 1972-73 (annually); Twelve months ended April 1972, 1973 and 1974;	
December 1974; January 1977	3408.0
Job Tenure – February 1974; February 1975; August 1976	6211.0
Journey to Work and Journey to School – May 1970; August 1974	9205.0
Labour Force Experience –	
During 1968; During 1972; During 1974; During 1975; During 1976	6206.0
Labour Force Status and Other Characteristics of Families, November 1974	6224.0
Labour Mobility – November 1972; February 1975 and 1976	6209.0
Leavers from Schools, Universities and Other Educational Institutions, Survey of –	
February 1964, 1965, 1966 and 1967; 1968, 1969 and 1970;	
February 1971 to February 1974 (Annually); May 1975; May 1976; August 1977; August 1978	6227.0
Migrants in the Labour Force, 1972 to 1976	6230.0
Multiple Jobholding –	
November 1965, August 1966 and 1967, May 1971, August 1973, 1975 and 1977	6216.0
Non-School Study Courses, Survey of, August 1968	Not listed
Persons Covered by Hospital and Medical Expenditure Assistance Schemes, August 1972	4303.0
Persons Aged 15 to 64 Years : Employment Status and Period Since Leaving School, May 1976	6225.0
Persons Not in the Labour Force – November 1975; May 1977	6220.0
Persons Looking for Work – May 1976; November 1976; May 1977; July 1978	6222.0
School Leavers, 1970 to 1974 : Their Employment Status and Education Experience in May 1975	6226.0
Superannuation, Survey of –	
Victoria, May 1968	Not listed
February 1974	6319.0
The Labour Force : Country of Birth and Period of Residence, February 1972	6207.0
Trade Union Members, November 1976	6325.0
Weekly Earnings of Employees (Distribution) – August 1975; August 1976; August 1977	6310.0
Weekly Earnings of Employees (Distribution), August 1978 (Preliminary)	6309.0
Work Patterns of Employees, November 1976	6328.0

2. REGISTERED UNEMPLOYED, REGISTERED VACANCIES AND UNEMPLOYMENT BENEFIT RECIPIENTS

TABLE 24. REGISTERED UNEMPLOYED AND VACANCIES REGISTERED WITH THE
COMMONWEALTH EMPLOYMENT SERVICE
(Source : Department of Employment and Youth Affairs)

Month	Registered unemployed (a)				Registered vacancies (b)					
	Males	Females	Persons		Original			Seasonally adjusted (c)		
			Excluding school leavers	Total	For adults	For juniors (d)	Total	For adults	For juniors (d)	Total
1976 -										
November	181,969	90,549	255,746	272,518	17,533	7,966	25,499	18,482	5,852	24,334
1977 -										
October	261,829	108,506	354,810	370,335	15,723	5,376	21,099	15,795	5,406	21,201
November	240,408	116,549	327,969	356,957	14,129	6,127	20,256	14,829	4,452	19,281
December	270,109	133,976	344,274	404,085	12,208	7,755	19,963	14,390	4,171	18,561
1978 -										
January	295,090	150,210	375,515	445,300	15,474	9,394	24,868	13,559	5,512	19,071
February	281,848	149,408	370,413	431,256	15,589	6,668	22,257	13,530	5,525	19,055
March	268,362	141,632	360,236	409,994	14,030	5,493	19,523	13,304	6,823	20,127
April	265,180	137,354	362,868	402,534	13,045	5,523	18,568	13,083	7,705	20,788
May	261,755	130,408	360,785	392,163	12,923	4,981	17,904	13,033	7,756	20,789
June	265,232	128,610	367,282	393,842	12,449	4,754	17,203	13,354	8,158	21,512
July	268,230	125,148	370,293	393,378	13,113	5,187	18,300	13,941	8,248	22,189
August	266,395	122,221	368,559	388,616	13,040	5,015	18,055	13,224	7,352	20,576
September	262,255	120,406	363,912	382,661	13,825	5,357	19,182	13,823	6,894	20,717
October	258,291	121,867	362,608	380,158	14,893	5,821	20,714	14,987	5,822	20,809
November	265,293	133,919	368,521	399,212	13,585	5,729	19,314	14,221	4,208	18,429

(a) Comprises all persons who were still registered with the Commonwealth Employment Service (CES) at the Friday nearest the end of the month and who claimed when registering that they were not employed, and who were seeking full-time employment, i.e. 35 hours or more per week. They include persons referred to employers but whose employment was still unconfirmed, and persons who had recently obtained employment without notifying the CES. All recipients of unemployment benefit are included. For an explanation of the differences between this series and unemployment estimates from labour force surveys see *Unemployment (Preliminary)* (6201.0). (b) Vacancies notified to the CES, which were still unfilled at the Friday nearest the end of the month and which employers claimed could be filled if labour were supplied immediately or within the following month. Vacancies for full-time, part-time, permanent, temporary and seasonal positions are included. (c) For details of the methods used see *Seasonally Adjusted Indicators, 1978* (1308.0). (d) Juniors comprise all persons under 21 years of age, including school leavers.

TABLE 25. PERSONS RECEIVING UNEMPLOYMENT BENEFIT (a)
(Source : Department of Social Security)

Date	Males	Females	Persons	Date	Males	Females	Persons
1976 -				1978 -			
November 19	136,957	55,909	192,866	March 24	192,350	87,893	280,243
1977 -				April 21	195,981	87,327	283,308
July 19	176,414	77,395	253,809	June 2	190,786	81,598	272,384
August 26	179,604	75,259	254,863	June 30	203,328	82,763	286,091
September 23	177,668	71,883	249,551	July 28	208,432	82,286	290,718
October 21	182,923	71,162	254,085	August 25	205,831	79,593	285,424
December 2	172,028	66,304	238,332	September 22	206,174	78,468	284,642
December 30	185,211	71,012	256,223	October 27	201,747	78,127	279,874
1978 -				December 1	199,204	79,625	278,829
January 27	192,871	77,025	269,896				
February 24	206,991	91,464	298,455				

(a) Number on benefit at the dates indicated.