

# LABOUR FORCE AUSTRALIA PRELIMINARY

EMBARGOED UNTIL 11:30AM THURS 7 NOVEMBER 1996

## OCTOBER KEY ESTIMATES

### TREND ESTIMATES

	Sep 96	Oct 96	monthly change
Employed persons (no. in '000s)	8 366.0	8 371.9	0.1 %
Unemployed persons (no. in '000s)	796.2	801.5	0.7 %
Unemployment rate (%)	8.7	8.7	0.0 pts
Participation rate (%)	63.6	63.6	0.0 pts

### SEASONALLY ADJUSTED

	Sep 96	Oct 96	monthly change
Employed persons (no. in '000s)	8 347.0	8 372.5	25.5
Unemployed persons (no. in '000s)	799.1	806.9	7.8
Unemployment rate (%)	8.7	8.8	0.1 pts
Participation rate (%)	63.5	63.6	0.1 pts

## OCTOBER KEY POINTS

### TREND ESTIMATES

#### EMPLOYMENT

- has been rising since April 1996 and reached 8,371,900 in October 1996.

#### UNEMPLOYMENT

- has been rising steadily since June 1995, to stand at 801,500 in October 1996.

#### UNEMPLOYMENT RATE

- has been rising slowly since late 1995, to reach 8.7% in October 1996.

#### PARTICIPATION RATE

- remained steady at 63.6% in October 1996.

### SEASONALLY ADJUSTED ESTIMATES

#### EMPLOYMENT

- increased by 25,500 to 8,372,500. Female employment increased by 27,500 to 3,624,400 with female part-time employment increasing by 21,100.

#### UNEMPLOYMENT

- increased by 7,800 to 806,900. Persons seeking part-time work increased by 16,200 with the number of males looking for part-time work rising 10,800 to 63,600.

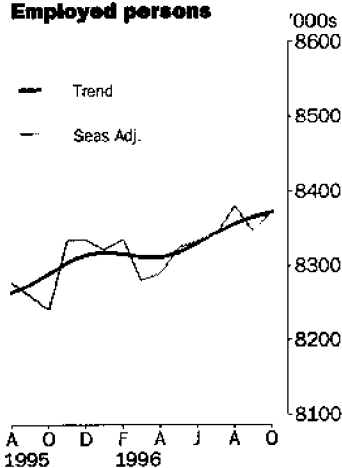
#### UNEMPLOYMENT RATE

- rose by 0.1 percentage points to 8.8%. The male rate increased by 0.1 points to 9.1%, while the female rate was steady at 8.4%.
- NSW 7.9% (8.1% last month); Vic. 9.5% (9.4%); Qld 10.1% (9.4%); SA 9.4% (9.8%); WA 7.6% (7.5%); Tas. 10.7% (10.7%).

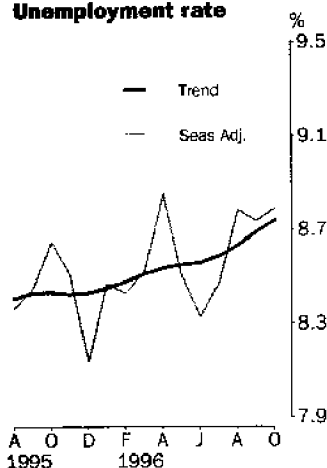
#### PARTICIPATION RATE

- increased by 0.1 percentage points to 63.6%, with the male rate remaining steady at 73.6% and the female rate increasing by 0.3 percentage points to 54.0%.

### Employed persons



### Unemployment rate



## INQUIRIES

- For further information about these and related statistics, contact Audrey Graviou on 06 252 6525 or any ABS office.

# LABOUR FORCE NOTES

## FORTHCOMING ISSUES

ISSUE	RELEASE DATE
November 1996	12 December 1996
December 1996	16 January 1997
January 1997	13 February 1997
February 1997	13 March 1997
March 1997	10 April 1997
April 1997	08 May 1997

.....

## CHANGES THIS MONTH

*Introduction of telephone interviewing:* The ABS is progressively introducing the use of telephone interviewing into the Labour Force Survey (LFS). Households selected for the LFS are interviewed each month for 8 months, with one eighth of the sample being replaced each month. The first interview continues to be conducted face-to-face with subsequent interviews conducted by telephone (if acceptable to the respondent). Telephone interviewing is being phased in for each new sample group from August 1996 and will be fully implemented by February 1997. The ABS is confident that the adoption of this method will result in no noticeable impact on the estimates.

.....

## ROUNDING

Estimates of monthly change shown on page 1 have been calculated using unrounded estimates, and may be different from, but are more accurate than, movements obtained from the rounded estimates. The graphs on page 1 also depict movements calculated from unrounded estimates.

.....

## SAMPLING ERRORS

The estimates in this publication are based on a sample survey. Because the entire population is not enumerated, the published estimates and the movements derived from them are subject to sampling variability. Standard errors give a measure of this variability and appear on pages 30 and 31.

SEASONALLY ADJUSTED DATA SERIES	MOVEMENTS		
	SEPTEMBER 1996 TO OCTOBER 1996		
	Monthly change	95% Confidence interval	
Total employment	25 500	-13 700	to 64 700
Total unemployment	7 800	-8 400	to 24 000
Unemployment rate	0.1 pts	-0.1 pts	to 0.3 pts
Participation rate	0.1 pts	-0.1 pts	to 0.3 pts

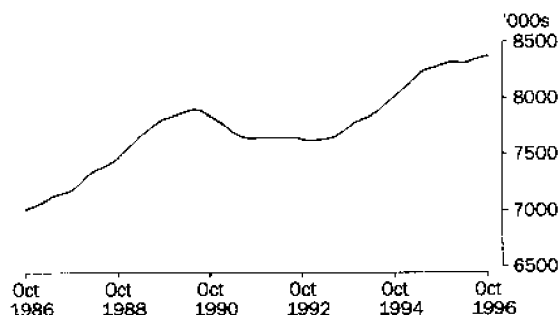
.....

W. McLennan  
Australian Statistician

# PRINCIPAL LABOUR FORCE SERIES: Trend estimates

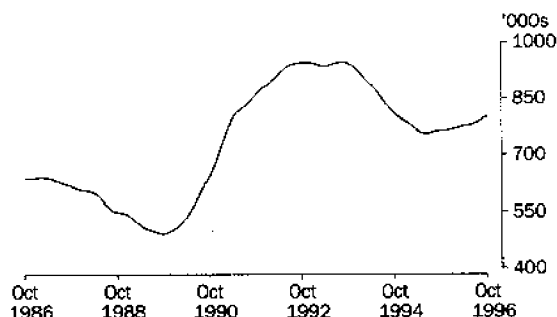
## EMPLOYED PERSONS

After reaching a high of 7,894,000 in June 1990, trend estimates of employment fell by 3.5% to 7,617,200 in January 1993. Trend estimates rose over the next three years, and reached 8,318,200 in January 1996. After small falls in early 1996, the trend estimate continued to rise and was 8,371,900 in October 1996.



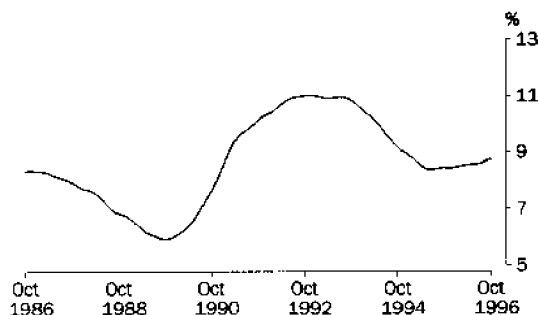
## UNEMPLOYED PERSONS

Trend estimates of unemployment rose from 491,400 in October 1989, to a high of 946,800 in September 1993. The trend then fell steadily, to a low of 754,600 in June 1995. The trend has been rising steadily since then and reached 801,500 in October 1996.



## UNEMPLOYMENT RATE

From a low of 5.9% in late 1989, the trend unemployment rate rose to a peak of 11.0% in late 1992 and early 1993, and remained high for the rest of 1993. The rate then fell steadily to reach 8.4% by mid 1995 and remained relatively steady until late 1995. The trend has been rising slowly since then and stood at 8.7% in October 1996.

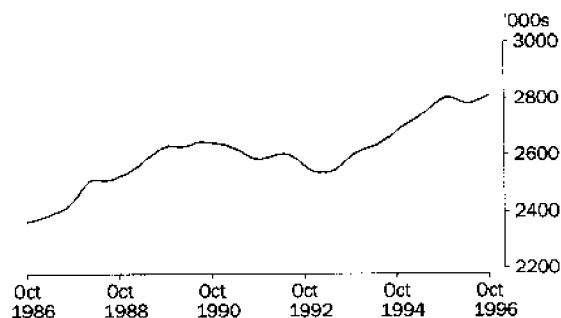


# STATES: Trend estimates

## EMPLOYED PERSONS

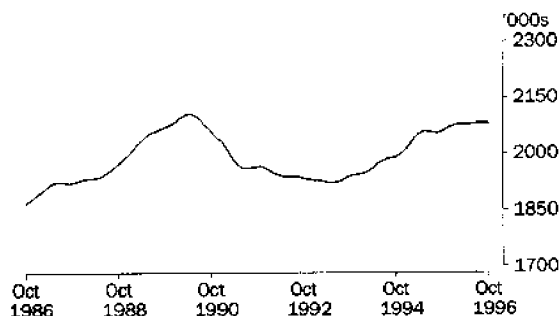
### NEW SOUTH WALES

Trend estimates of employment for New South Wales fell by 4.0% from a peak of 2,643,300 in July and August 1990, to 2,536,700 in March 1993. Trend estimates of employment then rose steadily to a high of 2,801,900 in December 1995. After falling to 2,780,700 in May 1996, the trend estimate had risen to 2,806,800 in October 1996.



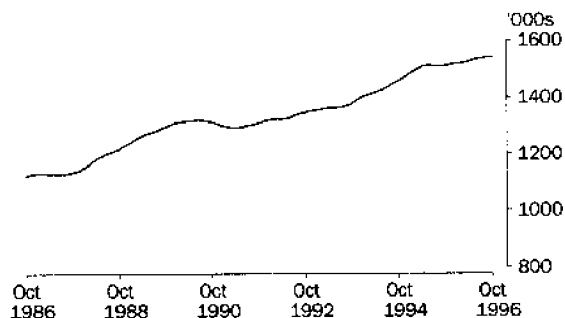
### VICTORIA

The trend employment estimate for Victoria rose to a peak of 2,104,600 in May 1990 before falling to a low of 1,921,700 in June 1993. The trend then continued to rise, apart from small falls between June and September 1995, to 2,080,000 in October 1996.



### QUEENSLAND

For Queensland, trend estimates of employment fell from 1,321,300 in July 1990, to 1,293,600 in April 1991. Trend estimates then began to rise slowly and by June 1995 had reached 1,512,300. After falling slightly over the next few months, trend estimates continued to rise, reaching 1,540,000 in October 1996.

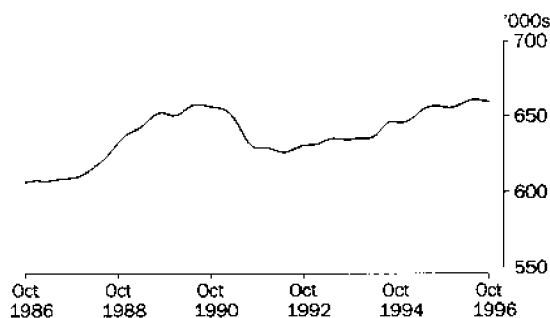


# STATES: Trend estimates

## EMPLOYED PERSONS

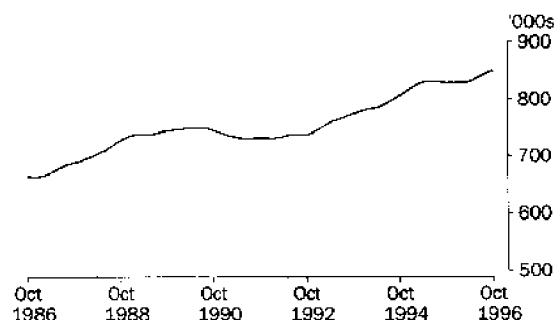
### SOUTH AUSTRALIA

Trend employment in South Australia rose to a high of 657,500 in July 1990, before falling to 626,100 in May 1992. Trend estimates have been generally rising since then, although have fallen slightly in recent months, to reach 659,300 in October 1996.



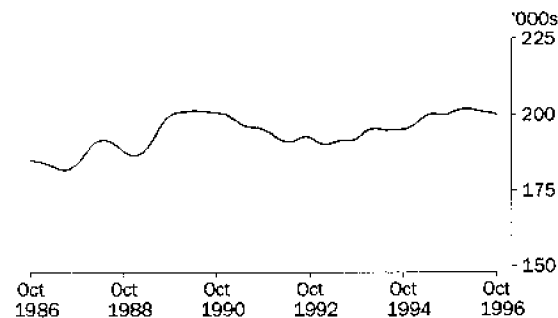
### WESTERN AUSTRALIA

The trend estimate of employment in Western Australia fell to 730,100 in mid 1991, then remained steady for the next six months, before rising. The trend estimate peaked at 831,800 in June 1995, before falling slightly for the rest of the year. Since March 1996, the trend estimate has increased steadily to 848,900 in October 1996.



### TASMANIA

Trend estimates of employment in Tasmania fell from a peak of 201,400 in May 1990, to 190,300 in February 1993. Subsequently, trend estimates generally rose, peaking at 202,000 earlier this year. Since then, trend estimates have fallen slightly, to 200,100 in October 1996.





LABOUR FORCE STATUS (AGED 15 AND OVER): Original

Month	EMPLOYED.....			UNEMPLOYED.....							Unemp- loyment rate %	Partic- ipation rate %
	Employed full time '000s	Employed part time '000s	Total employed '000s	Unemp. looking for f/t work '000s	Unemp. looking for p/t work '000s	Total unemployed '000s	Labour force '000s	Not in labour force '000s	Civilian population aged 15 and over '000s			
<b>MALES</b>												
<b>1995</b>												
August	4 151.8	520.6	4 672.5	388.3	45.7	434.0	5 106.5	1 863.3	6 969.8	8.5	73.3	
September	4 210.8	523.4	4 734.2	400.8	62.8	463.7	5 197.8	1 779.8	6 977.7	8.9	74.5	
October	4 175.7	517.4	4 693.1	392.8	49.1	441.8	5 134.9	1 850.8	6 985.7	8.6	73.5	
November	4 190.5	527.2	4 717.7	388.1	44.4	432.5	5 150.2	1 843.7	6 993.8	8.4	73.6	
December	4 272.4	513.0	4 785.4	399.4	49.8	449.3	5 234.7	1 767.2	7 001.9	8.6	74.8	
<b>1996</b>												
January	4 208.0	478.8	4 686.9	447.8	59.1	506.9	5 193.7	1 817.8	7 011.6	9.8	74.1	
February	4 223.2	502.7	4 725.9	437.4	54.6	492.0	5 217.9	1 803.2	7 021.2	9.4	74.3	
March	4 180.6	534.4	4 715.0	410.6	63.5	474.1	5 189.1	1 841.7	7 030.8	9.1	73.8	
April	4 187.4	535.4	4 722.9	405.1	57.7	462.8	5 185.7	1 855.2	7 040.9	8.9	73.7	
May	4 210.3	537.6	4 748.0	389.6	52.4	442.0	5 190.0	1 861.0	7 051.0	8.5	73.6	
June	4 201.3	550.4	4 751.6	380.3	51.9	432.1	5 183.8	1 877.4	7 061.1	8.3	73.4	
July	4 237.1	535.5	4 772.6	371.7	50.4	422.1	5 194.7	1 876.2	7 070.9	8.1	73.5	
August	4 176.4	553.9	4 730.3	406.1	54.1	460.2	5 190.5	1 890.2	7 080.7	8.9	73.3	
September	4 212.9	565.4	4 778.3	408.4	57.3	465.8	5 244.0	1 846.4	7 090.5	8.9	74.0	
October	4 215.3	549.5	4 764.8	387.3	58.9	446.3	5 211.1	1 888.2	7 099.3	8.6	73.4	
<b>FEMALES</b>												
<b>1995</b>												
August	2 031.7	1 513.6	3 545.3	195.1	92.8	287.9	3 833.1	3 353.5	7 186.6	7.5	53.3	
September	2 072.7	1 533.7	3 606.4	202.1	97.5	299.6	3 906.0	3 288.8	7 194.8	7.7	54.3	
October	2 065.9	1 503.8	3 569.7	203.7	93.4	297.1	3 866.8	3 336.6	7 203.3	7.7	53.7	
November	2 088.5	1 543.6	3 612.1	211.5	92.8	304.3	3 916.4	3 295.4	7 211.8	7.8	54.3	
December	2 105.3	1 539.9	3 645.3	211.2	88.1	299.3	3 944.6	3 275.7	7 220.3	7.6	54.6	
<b>1996</b>												
January	2 066.9	1 431.2	3 498.1	228.4	96.4	324.8	3 823.0	3 407.1	7 230.1	8.5	52.9	
February	2 049.1	1 489.3	3 538.4	248.5	116.1	364.6	3 903.0	3 336.9	7 239.9	9.3	53.9	
March	2 057.2	1 530.5	3 587.7	219.3	117.5	336.9	3 924.5	3 325.1	7 249.7	8.6	54.1	
April	2 042.8	1 512.1	3 555.0	217.7	112.4	330.1	3 885.1	3 375.2	7 260.2	8.5	53.5	
May	2 042.2	1 546.9	3 589.1	207.7	108.5	316.1	3 905.2	3 365.5	7 270.8	8.1	53.7	
June	2 042.2	1 560.2	3 602.4	194.9	103.5	298.4	3 900.9	3 380.5	7 281.4	7.7	53.6	
July	2 092.0	1 515.4	3 607.3	207.8	101.7	309.5	3 916.8	3 375.7	7 292.5	7.9	53.7	
August	2 059.8	1 529.6	3 589.4	210.1	100.9	310.9	3 900.3	3 403.3	7 303.6	8.0	53.4	
September	2 087.4	1 564.0	3 651.3	220.6	113.9	334.5	3 985.8	3 328.9	7 314.8	8.4	54.5	
October	2 089.2	1 538.5	3 627.7	211.1	107.5	318.6	3 946.3	3 378.2	7 324.5	8.1	53.9	
<b>PERSONS</b>												
<b>1995</b>												
August	6 183.5	2 034.2	8 217.7	583.4	138.5	721.9	8 939.6	5 216.9	14 156.5	8.1	63.1	
September	6 283.5	2 057.1	8 340.6	603.0	160.3	763.3	9 103.9	5 068.6	14 172.5	8.4	64.2	
October	6 241.6	2 021.2	8 262.8	596.4	142.4	738.9	9 001.7	5 187.4	14 189.1	8.2	63.4	
November	6 259.1	2 070.8	8 329.8	599.6	137.2	736.8	9 066.6	5 139.0	14 205.7	8.1	63.8	
December	6 377.8	2 052.9	8 430.7	610.7	137.9	748.6	9 179.3	5 042.9	14 222.2	8.2	64.5	
<b>1996</b>												
January	6 275.0	1 910.0	8 185.0	676.2	155.5	831.7	9 018.7	5 225.0	14 241.7	9.2	63.3	
February	6 272.3	1 992.0	8 264.3	686.0	170.7	856.6	9 120.9	5 140.1	14 261.0	9.4	64.0	
March	6 237.7	2 064.9	8 302.7	629.9	181.0	810.9	9 113.6	5 166.8	14 280.5	8.9	63.8	
April	6 230.3	2 047.6	8 277.8	622.8	170.2	793.0	9 070.8	5 230.4	14 301.1	8.7	63.4	
May	6 252.5	2 084.5	8 337.1	597.3	160.9	758.2	9 095.2	5 226.6	14 321.8	8.3	63.5	
June	6 243.5	2 110.6	8 354.1	575.2	155.4	730.5	9 084.6	5 257.9	14 342.5	8.0	63.3	
July	6 329.0	2 050.9	8 379.9	579.5	152.1	731.6	9 111.5	5 251.9	14 363.4	8.0	63.4	
August	6 236.2	2 083.5	8 319.7	616.1	155.0	771.1	9 090.8	5 293.5	14 384.3	8.5	63.2	
September	6 300.3	2 129.3	8 429.6	629.0	171.2	800.2	9 229.8	5 175.4	14 405.2	8.7	64.1	
October	6 304.5	2 088.0	8 392.5	598.4	166.4	764.9	9 157.4	5 266.4	14 423.8	8.4	63.5	



LABOUR FORCE STATUS (AGED 15 AND OVER): Seasonally adjusted

Month	EMPLOYED.....			UNEMPLOYED.....					
	Employed full time '000s	Employed part time '000s	Total employed '000s	Unemp. looking for f/t work '000s	Unemp. looking for p/t work '000s	Total unemployed '000s	Labour force '000s	Unemp-loyment rate %	Partic-ipation rate %
MALES									
<b>1995</b>									
August	4 189.4	515.0	4 704.4	396.8	51.8	448.6	5 152.9	8.7	73.9
September	4 200.3	507.2	4 707.5	407.3	57.9	465.2	5 172.7	9.0	74.1
October	4 165.4	511.0	4 676.4	416.7	52.9	469.6	5 146.0	9.1	73.7
November	4 203.5	534.8	4 738.2	403.5	51.6	455.1	5 193.3	8.8	74.3
December	4 212.6	519.2	4 731.8	395.9	47.2	443.1	5 174.9	8.6	73.9
<b>1996</b>									
January	4 223.9	503.9	4 727.8	406.5	52.1	458.5	5 186.3	8.8	74.0
February	4 228.0	523.6	4 751.6	403.7	48.3	452.0	5 203.6	8.7	74.1
March	4 192.0	521.0	4 713.0	407.6	54.1	461.7	5 174.7	8.9	73.6
April	4 197.3	528.0	4 725.3	410.7	59.2	470.0	5 195.2	9.0	73.8
May	4 217.2	534.5	4 751.7	389.2	53.6	442.8	5 194.5	8.5	73.7
June	4 201.7	543.9	4 745.5	386.9	57.5	444.4	5 189.9	8.6	73.5
July	4 217.1	534.3	4 751.4	386.8	56.5	443.3	5 194.8	8.5	73.5
August	4 214.7	547.7	4 762.4	415.1	61.2	476.3	5 238.7	9.1	74.0
September	4 202.3	547.9	4 750.1	415.2	52.7	467.9	5 218.0	9.0	73.6
October	4 205.6	542.6	4 748.2	411.1	63.6	474.7	5 222.8	9.1	73.6
FEMALES									
<b>1995</b>									
August	2 068.9	1 504.8	3 573.7	206.8	100.1	306.9	3 880.6	7.9	54.0
September	2 064.9	1 488.1	3 553.1	208.6	88.8	297.4	3 850.4	7.7	53.5
October	2 062.8	1 503.2	3 566.0	215.7	95.0	310.7	3 876.7	8.0	53.8
November	2 069.8	1 526.6	3 596.4	224.1	96.3	320.3	3 916.7	8.2	54.3
December	2 062.8	1 540.7	3 603.5	205.3	89.9	295.2	3 898.7	7.6	54.0
<b>1996</b>									
January	2 057.7	1 536.5	3 594.2	209.3	102.1	311.4	3 905.6	8.0	54.0
February	2 046.9	1 537.8	3 584.7	215.0	100.4	315.4	3 900.1	8.1	53.9
March	2 051.5	1 516.5	3 568.0	209.6	99.8	309.4	3 877.4	8.0	53.5
April	2 066.3	1 499.3	3 565.6	221.7	113.5	335.3	3 900.8	8.6	53.7
May	2 050.6	1 522.5	3 573.1	216.1	115.2	331.3	3 904.4	8.5	53.7
June	2 049.2	1 538.7	3 587.9	201.3	111.4	312.7	3 900.6	8.0	53.6
July	2 084.0	1 507.8	3 591.8	217.0	112.1	329.1	3 920.9	8.4	53.8
August	2 097.6	1 521.0	3 618.7	222.1	108.8	330.9	3 949.5	8.4	54.1
September	2 079.7	1 517.2	3 596.9	227.4	103.8	331.2	3 928.1	8.4	53.7
October	2 086.1	1 538.3	3 624.4	223.1	109.1	332.2	3 956.6	8.4	54.0
PERSONS									
<b>1995</b>									
August	6 258.3	2 019.8	8 278.1	603.6	151.8	755.4	9 033.5	8.4	63.8
September	6 265.2	1 995.3	8 260.5	615.9	146.7	762.6	9 023.1	8.5	63.7
October	6 228.2	2 014.2	8 242.4	632.4	147.9	780.3	9 022.7	8.6	63.6
November	6 273.2	2 061.4	8 334.6	627.6	147.9	775.5	9 110.1	8.5	64.1
December	6 275.4	2 059.9	8 335.3	601.2	137.1	738.3	9 073.6	8.1	63.8
<b>1996</b>									
January	6 281.5	2 040.4	8 321.9	615.7	154.2	770.0	9 091.9	8.5	63.8
February	6 274.9	2 061.4	8 336.3	618.7	148.8	767.4	9 103.7	8.4	63.8
March	6 243.5	2 037.5	8 281.0	617.2	153.9	771.1	9 052.1	8.5	63.4
April	6 263.6	2 027.2	8 290.8	632.5	172.8	805.2	9 095.0	8.9	63.6
May	6 267.7	2 057.1	8 324.8	605.3	168.8	774.1	9 098.9	8.5	63.5
June	6 250.9	2 082.6	8 333.5	588.1	168.9	757.1	9 090.5	8.3	63.4
July	6 301.1	2 042.1	8 343.2	603.9	168.6	772.5	9 115.7	8.5	63.5
August	6 312.3	2 068.8	8 381.1	637.2	169.9	807.1	9 188.2	8.8	63.9
September	6 281.9	2 065.1	8 347.0	642.6	156.5	799.1	9 146.2	8.7	63.5
October	6 291.7	2 080.9	8 372.5	634.2	172.7	806.9	9 179.4	8.8	63.6

LABOUR FORCE STATUS (AGED 15 AND OVER): Trend<sup>1</sup>

Month	EMPLOYED.....			UNEMPLOYED.....					
	Employed full time	Employed part time	Total employed	Unemp. looking for ft work	Unemp. looking for p/t work	Total unemployed	Labour force	Unemp. loyment rate	Participation rate
	'000s	'000s	'000s	'000s	'000s	'000s	'000s	%	%
MALES									
<b>1995</b>									
August	4 183.3	510.2	4 693.5	402.7	54.1	456.8	5 150.2	8.9	73.9
September	4 188.4	512.5	4 700.9	404.4	53.8	458.2	5 159.1	8.9	73.9
October	4 195.1	515.1	4 710.1	405.1	52.7	457.8	5 168.0	8.9	74.0
November	4 202.1	517.0	4 719.1	405.5	51.5	457.0	5 176.1	8.8	74.0
December	4 207.9	517.9	4 725.8	405.8	50.7	456.4	5 182.2	8.8	74.0
<b>1996</b>									
January	4 211.5	518.6	4 730.1	405.6	50.7	456.3	5 186.5	8.8	74.0
February	4 212.4	520.1	4 732.5	404.3	51.6	455.9	5 188.4	8.8	73.9
March	4 211.0	523.2	4 734.2	401.8	53.2	455.0	5 189.1	8.8	73.8
April	4 208.8	527.7	4 736.5	399.0	54.8	453.8	5 190.3	8.7	73.7
May	4 207.3	533.2	4 740.5	396.9	56.1	453.0	5 193.5	8.7	73.7
June	4 208.0	538.0	4 746.0	396.6	56.9	453.4	5 199.4	8.7	73.6
July	4 209.3	541.2	4 750.4	398.8	57.4	456.2	5 206.7	8.8	73.6
August	4 209.7	543.6	4 753.3	402.8	58.0	460.8	5 214.2	8.8	73.6
September	4 209.6	545.6	4 755.1	407.3	58.6	465.9	5 221.0	8.9	73.6
October	4 208.1	546.5	4 754.6	411.6	59.2	470.8	5 225.4	9.0	73.6
FEMALES									
<b>1995</b>									
August	2 065.3	1 506.1	3 571.4	209.3	92.3	301.6	3 873.0	7.8	53.9
September	2 067.1	1 507.8	3 574.8	210.9	92.7	303.6	3 878.4	7.8	53.9
October	2 066.2	1 513.6	3 579.8	212.2	93.4	305.6	3 885.3	7.9	53.9
November	2 064.2	1 521.2	3 585.4	212.8	94.2	307.1	3 892.5	7.9	54.0
December	2 061.2	1 527.3	3 588.6	213.3	95.7	309.0	3 897.5	7.9	54.0
<b>1996</b>									
January	2 057.7	1 530.4	3 588.0	213.3	98.1	311.4	3 899.5	8.0	53.9
February	2 054.2	1 529.1	3 583.3	213.0	101.6	314.6	3 897.9	8.1	53.8
March	2 052.6	1 525.0	3 577.7	212.6	105.6	318.2	3 895.9	8.2	53.7
April	2 054.2	1 520.3	3 574.5	212.7	109.1	321.7	3 896.2	8.3	53.7
May	2 059.2	1 517.9	3 577.1	213.5	111.2	324.7	3 901.8	8.3	53.7
June	2 066.4	1 518.3	3 584.7	214.8	111.6	326.3	3 911.1	8.3	53.7
July	2 073.9	1 520.2	3 594.1	216.6	110.9	327.5	3 921.6	8.4	53.8
August	2 080.5	1 522.4	3 603.0	219.2	109.7	328.9	3 931.9	8.4	53.8
September	2 086.0	1 524.9	3 610.9	221.9	108.4	330.3	3 941.2	8.4	53.9
October	2 089.8	1 527.5	3 617.3	223.9	106.8	330.7	3 948.0	8.4	53.9
PERSONS									
<b>1995</b>									
August	6 248.6	2 016.3	8 264.9	612.0	146.4	758.3	9 023.2	8.4	63.7
September	6 255.5	2 020.3	8 275.8	615.3	146.5	761.8	9 037.6	8.4	63.8
October	6 261.3	2 028.7	8 289.9	617.3	146.1	763.4	9 053.3	8.4	63.8
November	6 266.3	2 038.2	8 304.5	618.3	145.7	764.0	9 068.5	8.4	63.8
December	6 269.1	2 045.2	8 314.3	619.1	146.3	765.4	9 079.7	8.4	63.8
<b>1996</b>									
January	6 269.2	2 049.0	8 318.2	619.0	148.8	767.7	9 085.9	8.4	63.8
February	6 266.6	2 049.3	8 315.8	617.3	153.2	770.5	9 086.3	8.5	63.7
March	6 263.6	2 048.2	8 311.8	614.4	158.8	773.2	9 085.0	8.5	63.6
April	6 263.0	2 048.1	8 311.0	611.6	163.9	775.6	9 086.6	8.5	63.5
May	6 266.5	2 051.1	8 317.6	610.4	167.3	777.7	9 095.3	8.6	63.5
June	6 274.4	2 056.3	8 330.7	611.3	168.4	779.8	9 110.5	8.6	63.5
July	6 283.1	2 061.4	8 344.5	615.4	168.3	783.8	9 128.3	8.6	63.6
August	6 290.3	2 066.1	8 356.3	622.0	167.7	789.7	9 146.0	8.6	63.6
September	6 295.6	2 070.5	8 366.0	629.2	167.1	796.2	9 162.2	8.7	63.6
October	6 297.9	2 074.0	8 371.9	635.5	166.0	801.5	9 173.5	8.7	63.6

<sup>1</sup> Estimates for April 1996 to September 1996 have been revised.



# UNEMPLOYED PERSONS: Original

NUMBER OF UNEMPLOYED PERSONS..... UNEMPLOYMENT RATE..... UNEMPLOYMENT TO POPULATION RATIO

Month	NUMBER OF UNEMPLOYED PERSONS.....					UNEMPLOYMENT RATE.....					UNEMPLOYMENT TO POPULATION RATIO	
	Aged 15-19 looking for fit work '000s	Aged 20 and over looking for fit work '000s	Total looking for fit work '000s	Looking for p/t work '000s	Total unemployed '000s	Aged 15-19 looking for fit work %	Aged 20 and over looking for fit work %	Total looking for fit work %	Looking for p/t work %	Total unemployed %	Aged 15-19 looking for fit work %	Aged 20 and over looking for fit work %
<b>MALES</b>												
<b>1995</b>												
August	46.8	341.6	388.3	45.7	434.0	24.3	7.9	8.6	8.1	8.5	7.2	5.4
September	46.0	354.8	400.8	62.8	463.7	23.1	8.0	8.7	10.7	8.9	7.1	5.6
October	46.4	346.4	392.8	49.1	441.8	23.6	7.9	8.6	8.7	8.6	7.1	5.5
November	48.0	340.1	388.1	44.4	432.5	24.9	7.8	8.5	7.8	8.4	7.4	5.4
December	59.6	339.8	399.4	49.8	449.3	26.3	7.6	8.5	8.9	8.6	9.2	5.3
<b>1996</b>												
January	69.4	378.4	447.8	59.1	506.9	28.9	8.6	9.6	11.0	9.8	10.7	5.9
February	58.4	379.0	437.4	54.6	492.0	26.5	8.5	9.4	9.8	9.4	9.0	6.0
March	53.7	356.8	410.6	63.5	474.1	25.5	8.1	8.9	10.6	9.1	8.2	5.6
April	55.0	350.1	405.1	57.7	462.8	25.7	8.0	8.8	9.7	8.9	8.4	5.5
May	55.5	334.2	389.6	52.4	442.0	27.4	7.6	8.5	8.9	8.5	8.5	5.2
June	55.8	324.5	380.3	51.9	432.1	28.0	7.4	8.3	8.6	8.3	8.5	5.1
July	46.6	325.1	371.7	50.4	422.1	22.8	7.4	8.1	8.6	8.1	7.1	5.1
August	49.3	356.8	406.1	54.1	460.2	25.4	8.1	8.9	8.9	8.9	7.5	5.6
September	48.7	359.7	408.4	57.3	465.8	24.6	8.1	8.8	9.2	8.9	7.4	5.6
October	49.7	337.7	387.3	58.9	446.3	25.0	7.7	8.4	9.7	8.6	7.6	5.2
<b>FEMALES</b>												
<b>1995</b>												
August	38.4	156.7	195.1	92.8	287.9	33.1	7.4	8.8	5.8	7.5	6.2	2.4
September	35.9	166.3	202.1	97.5	299.6	30.0	7.7	8.9	6.0	7.7	5.8	2.5
October	33.9	169.8	203.7	93.4	297.1	29.0	7.9	9.0	5.8	7.7	5.5	2.6
November	41.1	170.4	211.5	92.8	304.3	34.4	7.9	9.3	5.7	7.8	6.7	2.6
December	47.2	164.0	211.2	88.1	299.3	32.6	7.6	9.1	5.4	7.6	7.6	2.5
<b>1996</b>												
January	47.2	181.2	228.4	96.4	324.8	32.2	8.4	10.0	6.3	8.5	7.6	2.7
February	45.9	202.6	248.5	116.1	364.6	33.4	9.4	10.8	7.2	9.3	7.4	3.1
March	37.7	181.6	219.3	117.5	336.9	31.9	8.4	9.6	7.1	8.6	6.1	2.7
April	35.0	182.7	217.7	112.4	330.1	29.9	8.5	9.6	6.9	8.5	5.6	2.8
May	35.1	172.6	207.7	108.5	316.1	30.0	8.1	9.2	6.6	8.1	5.7	2.6
June	30.3	164.6	194.9	103.5	298.4	27.8	7.7	8.7	6.2	7.7	4.9	2.5
July	29.9	177.9	207.8	101.7	309.5	25.2	8.2	9.0	6.3	7.9	4.8	2.7
August	33.2	176.9	210.1	100.9	310.9	30.4	8.2	9.3	6.2	8.0	5.3	2.6
September	35.5	185.1	220.6	113.9	334.5	30.3	8.4	9.6	6.8	8.4	5.7	2.8
October	34.8	176.3	211.1	107.5	318.6	29.0	8.1	9.2	6.5	8.1	5.6	2.6
<b>PERSONS</b>												
<b>1995</b>												
August	85.2	498.2	583.4	138.5	721.9	27.7	7.7	8.6	6.4	8.1	6.7	3.9
September	81.9	521.1	603.0	160.3	763.3	25.7	7.9	8.8	7.2	8.4	6.5	4.0
October	80.3	516.2	596.4	142.4	738.9	25.6	7.9	8.7	6.6	8.2	6.3	4.0
November	89.0	510.5	599.6	137.2	736.8	28.5	7.8	8.7	6.2	8.1	7.0	3.9
December	106.9	503.8	610.7	137.9	748.6	28.8	7.6	8.7	6.3	8.2	8.4	3.9
<b>1996</b>												
January	116.6	559.6	676.2	155.5	831.7	30.2	8.5	9.7	7.5	9.2	9.2	4.3
February	104.3	581.7	686.0	170.7	856.6	29.2	8.8	9.9	7.9	9.4	8.2	4.5
March	91.4	538.5	629.9	181.0	810.9	27.8	8.2	9.2	8.1	8.9	7.2	4.1
April	90.0	532.8	622.8	170.2	793.0	27.2	8.2	9.1	7.7	8.7	7.1	4.1
May	90.5	506.8	597.3	160.9	758.2	28.3	7.8	8.7	7.2	8.3	7.1	3.9
June	86.1	489.1	575.2	155.4	730.5	27.9	7.5	8.4	6.9	8.0	6.8	3.7
July	76.5	503.0	579.5	152.1	731.6	23.7	7.6	8.4	6.9	8.0	6.0	3.8
August	82.5	533.7	616.1	155.0	771.1	27.2	8.1	9.0	6.9	8.5	6.5	4.1
September	84.2	544.8	629.0	171.2	800.2	26.7	8.2	9.1	7.4	8.7	6.6	4.2
October	84.4	514.0	598.4	166.4	764.9	26.5	7.8	8.7	7.4	8.4	6.6	3.9

## UNEMPLOYED PERSONS: Seasonally adjusted

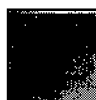
Month	NUMBER OF UNEMPLOYED PERSONS.....					UNEMPLOYMENT RATE.....					UNEMPLOYMENT TO POPULATION RATIO	
	Aged 15-19 looking for f/t work	Aged 20 and over looking for f/t work	Total looking for f/t work	Looking for p/t work	Total unemployed	Aged 15-19 looking for f/t work	Aged 20 and over looking for f/t work	Total looking for f/t work	Looking for p/t work	Total unemployed	Aged 15-19 looking for f/t work	Aged 20 and over looking for f/t work
	'000s	'000s	'000s	'000s	'000s	%	%	%	%	%	%	%
<b>MALES</b>												
<b>1995</b>												
August	50.7	346.1	396.8	51.8	448.6	24.8	7.9	8.7	9.1	8.7	7.8	5.5
September	50.5	356.7	407.3	57.9	465.2	24.2	8.1	8.8	10.3	9.0	7.8	5.6
October	53.0	363.7	416.7	52.9	469.6	25.5	8.3	9.1	9.4	9.1	8.2	5.7
November	53.9	349.6	403.5	51.6	455.1	26.0	7.9	8.8	8.8	8.8	8.3	5.5
December	51.3	344.7	395.9	47.2	443.1	25.0	7.8	8.6	8.3	8.6	7.9	5.4
<b>1996</b>												
January	56.2	350.3	406.5	52.1	458.5	26.3	7.9	8.8	9.4	8.8	8.6	5.5
February	49.5	354.1	403.7	48.3	452.0	24.5	8.0	8.7	8.5	8.7	7.6	5.6
March	55.0	352.6	407.6	54.1	461.7	25.8	8.0	8.9	9.4	8.9	8.4	5.5
April	55.9	354.9	410.7	59.2	470.0	26.0	8.1	8.9	10.1	9.0	8.6	5.6
May	55.7	333.4	389.2	53.6	442.8	26.7	7.6	8.4	9.1	8.5	8.5	5.2
June	58.7	328.2	386.9	57.5	444.4	28.7	7.5	8.4	9.6	8.6	9.0	5.1
July	50.5	336.3	386.8	56.5	443.3	24.5	7.6	8.4	9.6	8.5	7.7	5.2
August	53.5	361.6	415.1	61.2	476.3	25.9	8.2	9.0	10.0	9.1	8.2	5.6
September	53.5	361.6	415.2	52.7	467.9	25.7	8.2	9.0	8.8	9.0	8.2	5.6
October	56.6	354.4	411.1	63.6	474.7	27.0	8.0	8.9	10.5	9.1	8.6	5.5
<b>FEMALES</b>												
<b>1995</b>												
August	41.8	165.0	206.8	100.1	306.9	33.4	7.7	9.1	6.2	7.9	6.8	2.5
September	39.3	169.3	208.6	88.8	297.4	31.8	7.9	9.2	5.6	7.7	6.4	2.6
October	41.8	173.9	215.7	95.0	310.7	33.9	8.1	9.5	5.9	8.0	6.8	2.6
November	47.6	176.5	224.1	96.3	320.3	36.5	8.2	9.8	5.9	8.2	7.7	2.7
December	38.4	166.9	205.3	89.9	295.2	30.5	7.8	9.1	5.5	7.6	6.2	2.5
<b>1996</b>												
January	38.1	171.1	209.3	102.1	311.4	30.2	8.0	9.2	6.2	8.0	6.2	2.6
February	37.4	177.5	215.0	100.4	315.4	29.5	8.3	9.5	6.1	8.1	6.0	2.7
March	37.2	172.4	209.6	99.8	309.4	30.4	8.1	9.3	6.2	8.0	6.0	2.6
April	38.0	183.8	221.7	113.5	335.3	30.9	8.5	9.7	7.0	8.6	6.1	2.8
May	37.4	178.7	216.1	115.2	331.3	30.5	8.3	9.5	7.0	8.5	6.0	2.7
June	31.4	169.8	201.3	111.4	312.7	27.5	8.0	8.9	6.8	8.0	5.1	2.5
July	31.1	186.0	217.0	112.1	329.1	26.2	8.5	9.4	6.9	8.4	5.0	2.8
August	36.1	186.0	222.1	108.8	330.9	30.7	8.4	9.6	6.7	8.4	5.8	2.8
September	38.9	188.6	227.4	103.8	331.2	32.2	8.6	9.9	6.4	8.4	6.2	2.8
October	43.0	180.1	223.1	109.1	332.2	34.0	8.3	9.7	6.6	8.4	6.9	2.7
<b>PERSONS</b>												
<b>1995</b>												
August	92.6	511.0	603.6	151.8	755.4	28.1	7.8	8.8	7.0	8.4	7.3	4.0
September	89.8	526.1	615.9	146.7	762.6	27.0	8.0	9.0	6.8	8.5	7.1	4.1
October	94.8	537.6	632.4	147.9	780.3	28.7	8.2	9.2	6.8	8.6	7.5	4.2
November	101.5	526.1	627.6	147.9	775.5	30.0	8.0	9.1	6.7	8.5	8.0	4.1
December	89.7	511.5	601.2	137.1	738.3	27.1	7.8	8.7	6.2	8.1	7.1	3.9
<b>1996</b>												
January	94.3	521.4	615.7	154.2	770.0	27.8	8.0	8.9	7.0	8.5	7.4	4.0
February	87.0	531.7	618.7	148.8	767.4	26.4	8.1	9.0	6.7	8.4	6.8	4.1
March	92.2	525.0	617.2	153.9	771.1	27.5	8.0	9.0	7.0	8.5	7.3	4.0
April	93.8	538.6	632.5	172.8	805.2	27.8	8.2	9.2	7.9	8.9	7.4	4.1
May	93.1	512.2	605.3	168.8	774.1	28.1	7.8	8.8	7.6	8.5	7.3	3.9
June	90.1	498.0	588.1	168.9	757.1	28.2	7.6	8.6	7.5	8.3	7.1	3.8
July	81.6	522.3	603.9	168.6	772.5	25.1	7.9	8.7	7.6	8.5	6.4	4.0
August	89.6	547.6	637.2	169.9	807.1	27.6	8.3	9.2	7.6	8.8	7.0	4.2
September	92.4	550.2	642.6	156.5	799.1	28.1	8.3	9.3	7.0	8.7	7.2	4.2
October	99.6	534.6	634.2	172.7	806.9	29.6	8.1	9.2	7.7	8.8	7.8	4.1

UNEMPLOYED PERSONS: Trend<sup>1</sup>

Month	NUMBER OF UNEMPLOYED PERSONS.....					UNEMPLOYMENT RATE.....					UNEMPLOYMENT TO POPULATION RATIO	
	Aged 15-19 looking for f/t work	Aged 20 and over looking for f/t work	Total looking for f/t work	Looking for p/t work	Total unemployed	Aged 15-19 looking for f/t work	Aged 20 and over looking for f/t work	Total looking for f/t work	Looking for p/t work	Total unemployed	Aged 15-19 looking for f/t work	Aged 20 and over looking for f/t work
	'000s	'000s	'000s	'000s	'000s	%	%	%	%	%	%	%
MALES												
<b>1995</b>												
August	52.3	350.4	402.7	54.1	456.8	25.3	8.0	8.8	9.6	8.9	8.0	5.5
September	52.4	352.0	404.4	53.8	458.2	25.3	8.0	8.8	9.5	8.9	8.1	5.6
October	52.4	352.7	405.1	52.7	457.8	25.3	8.0	8.8	9.3	8.9	8.1	5.6
November	52.5	353.0	405.5	51.5	457.0	25.3	8.0	8.8	9.1	8.8	8.1	5.6
December	52.7	353.0	405.8	50.7	456.4	25.4	8.0	8.8	8.9	8.8	8.1	5.6
<b>1996</b>												
January	53.2	352.5	405.6	50.7	456.3	25.5	8.0	8.8	8.9	8.8	8.2	5.5
February	53.9	350.5	404.3	51.6	455.9	25.7	8.0	8.8	9.0	8.8	8.3	5.5
March	54.5	347.3	401.8	53.2	455.0	26.0	7.9	8.7	9.2	8.8	8.4	5.4
April	55.0	344.0	399.0	54.8	453.8	26.2	7.8	8.7	9.4	8.7	8.4	5.4
May	55.1	341.8	396.9	56.1	453.0	26.4	7.8	8.6	9.5	8.7	8.4	5.3
June	54.9	341.7	396.6	56.9	453.4	26.4	7.8	8.6	9.6	8.7	8.4	5.3
July	54.6	344.2	398.8	57.4	456.2	26.3	7.8	8.7	9.6	8.8	8.3	5.4
August	54.3	348.5	402.8	58.0	460.8	26.2	7.9	8.7	9.6	8.8	8.3	5.4
September	54.1	353.1	407.3	58.6	465.9	26.1	8.0	8.8	9.7	8.9	8.3	5.5
October	54.2	357.4	411.6	59.2	470.8	26.1	8.1	8.9	9.8	9.0	8.3	5.5
FEMALES												
<b>1995</b>												
August	41.0	168.2	209.3	92.3	301.6	33.1	7.8	9.2	5.8	7.8	6.7	2.6
September	41.3	169.6	210.9	92.7	303.6	33.3	7.9	9.3	5.8	7.8	6.7	2.6
October	41.5	170.7	212.2	93.4	305.6	33.2	7.9	9.3	5.8	7.9	6.7	2.6
November	41.4	171.5	212.8	94.2	307.1	32.8	8.0	9.3	5.8	7.9	6.7	2.6
December	40.8	172.5	213.3	95.7	309.0	32.2	8.0	9.4	5.9	7.9	6.6	2.6
<b>1996</b>												
January	39.8	173.6	213.3	98.1	311.4	31.4	8.1	9.4	6.0	8.0	6.4	2.6
February	38.5	174.5	213.0	101.6	314.6	30.7	8.1	9.4	6.2	8.1	6.2	2.6
March	37.1	175.5	212.6	105.6	318.2	30.0	8.2	9.4	6.5	8.2	6.0	2.6
April	35.7	176.9	212.7	109.1	321.7	29.4	8.2	9.4	6.7	8.3	5.8	2.7
May	34.8	178.6	213.5	111.2	324.7	29.1	8.3	9.4	6.8	8.3	5.6	2.7
June	34.5	180.2	214.8	111.6	326.3	29.0	8.3	9.4	6.8	8.3	5.6	2.7
July	34.9	181.7	216.6	110.9	327.5	29.4	8.4	9.5	6.8	8.4	5.6	2.7
August	36.0	183.2	219.2	109.7	328.9	30.1	8.4	9.5	6.7	8.4	5.8	2.7
September	37.5	184.5	221.9	108.4	330.3	31.1	8.4	9.6	6.6	8.4	6.0	2.8
October	39.1	184.9	223.9	106.8	330.7	32.1	8.4	9.7	6.5	8.4	6.3	2.8
PERSONS												
<b>1995</b>												
August	93.3	518.7	612.0	146.4	758.3	28.2	7.9	8.9	6.8	8.4	7.4	4.0
September	93.7	521.6	615.3	146.5	761.8	28.3	8.0	9.0	6.8	8.4	7.4	4.0
October	94.0	523.4	617.3	146.1	763.4	28.3	8.0	9.0	6.7	8.4	7.4	4.1
November	93.9	524.5	618.3	145.7	764.0	28.2	8.0	9.0	6.7	8.4	7.4	4.1
December	93.5	525.6	619.1	146.3	765.4	27.9	8.0	9.0	6.7	8.4	7.4	4.1
<b>1996</b>												
January	93.0	526.0	619.0	148.8	767.7	27.7	8.0	9.0	6.8	8.4	7.3	4.1
February	92.3	525.0	617.3	153.2	770.5	27.6	8.0	9.0	7.0	8.5	7.3	4.0
March	91.6	522.8	614.4	158.8	773.2	27.4	8.0	8.9	7.2	8.5	7.2	4.0
April	90.7	521.0	611.6	163.9	775.6	27.4	8.0	8.9	7.4	8.5	7.1	4.0
May	90.0	520.4	610.4	167.3	777.7	27.3	7.9	8.9	7.5	8.6	7.1	4.0
June	89.5	521.9	611.3	168.4	779.8	27.4	8.0	8.9	7.6	8.6	7.0	4.0
July	89.5	525.9	615.4	168.3	783.8	27.4	8.0	8.9	7.5	8.6	7.0	4.0
August	90.3	531.7	622.0	167.7	789.7	27.6	8.1	9.0	7.5	8.6	7.1	4.1
September	91.6	537.6	629.2	167.1	796.2	27.9	8.1	9.1	7.5	8.7	7.2	4.1
October	93.3	542.3	635.5	166.0	801.5	28.3	8.2	9.2	7.4	8.7	7.3	4.1

<sup>1</sup> Estimates for April 1996 to September 1996 have been revised.

PERSONS AGED 15 TO 19—Education and Labour Force: Original—October 1996



	EMPLOYED.....			UNEMPLOYED.....							Unemp- loyment rate %	Partic- ipation rate %
	Employed full time '000s	Employed part time '000s	Total employed '000s	Unemp. looking for full work '000s	Unemp. looking for part time work '000s	Total unemployed '000s	Labour force '000s	Not in labour force '000s	Civilian population aged 15-19 '000s			
.....												
ATTENDING NEITHER SCHOOL NOR A TERTIARY EDUCATIONAL INSTITUTION FULL TIME												
Males	138.9	26.1	165.0	44.3	* 3.7	48.1	213.0	19.1	232.2	22.6	91.8	
Females	78.1	38.2	116.3	28.9	* 2.7	31.7	148.0	24.6	172.6	21.4	85.7	
Persons	217.0	64.3	281.3	73.2	6.5	79.7	361.0	43.7	404.7	22.1	89.2	
.....												
ATTENDING A TERTIARY EDUCATIONAL INSTITUTION FULL TIME												
Males	* 2.6	29.5	32.1	* 2.4	5.9	8.2	40.4	34.5	74.9	20.4	53.9	
Females	* 3.2	49.5	52.7	* 2.7	7.2	9.8	62.5	34.9	97.4	15.8	64.1	
Persons	5.7	79.0	84.8	5.1	13.0	18.1	102.9	69.4	172.3	17.6	59.7	
.....												
ATTENDING SCHOOL												
Males	7.7	100.9	108.7	* 3.0	22.2	25.2	133.8	214.5	348.3	18.8	38.4	
Females	* 3.9	129.7	133.6	* 3.2	21.0	24.2	157.8	195.3	353.1	15.3	44.7	
Persons	11.7	230.6	242.3	6.1	43.2	49.3	291.6	409.8	701.4	16.9	41.6	
.....												
TOTAL												
Males	149.2	156.5	305.8	49.7	31.8	81.4	387.2	268.1	655.3	21.0	59.1	
Females	85.2	217.4	302.6	34.8	30.9	65.7	368.2	254.8	623.0	17.8	59.1	
Persons	234.4	373.9	608.3	84.4	62.7	147.1	755.4	522.9	1 278.4	19.5	59.1	
.....												

LABOUR FORCE STATUS (AGED 15 & OVER)-States & Territories: Original-October 1996



EMPLOYED.....

UNEMPLOYED.....

	<i>Employed full time</i>	<i>Employed part time</i>	<i>Total employed</i>	<i>Unemp. looking for f/t work</i>	<i>Unemp. looking for p/t work</i>	<i>Total unemployed</i>	<i>Labour force</i>	<i>Not in labour force</i>	<i>Civilian population aged 15 and over</i>	<i>Unemp. loyment rate</i>	<i>Partic- ipation rate</i>
	'000s	'000s	'000s	'000s	'000s	'000s	'000s	'000s	'000s	%	%
MALES											
New South Wales	1 422.4	181.6	1 604.1	116.4	18.5	134.9	1 738.9	662.9	2 401.8	7.8	72.4
Victoria	1 047.5	138.4	1 185.9	101.5	15.7	117.2	1 303.1	462.5	1 765.5	9.0	73.8
Queensland	784.0	96.9	880.9	78.3	13.0	91.4	972.2	333.0	1 305.2	9.4	74.5
South Australia	321.0	45.9	366.9	36.3	4.3	40.7	407.6	171.6	579.1	10.0	70.4
Western Australia	429.7	54.3	484.0	34.4	4.7	39.0	523.0	164.3	687.3	7.5	76.1
Tasmania	99.1	14.6	113.7	12.3	1.3	13.7	127.3	54.2	181.5	10.7	70.2
Northern Territory	40.3	6.8	47.0	2.0	* 0.1	2.1	49.2	15.0	64.2	4.3	76.6
Australian Capital Territory	71.2	11.2	82.4	6.1	1.3	7.4	89.8	24.8	114.6	8.2	78.3
<b>Australia</b>	<b>4 215.3</b>	<b>549.5</b>	<b>4 764.8</b>	<b>387.3</b>	<b>58.9</b>	<b>446.3</b>	<b>5 211.1</b>	<b>1 888.2</b>	<b>7 099.3</b>	<b>8.6</b>	<b>73.4</b>
FEMALES											
New South Wales	736.5	478.6	1 215.1	63.2	34.9	98.1	1 313.3	1 176.2	2 489.4	7.5	52.8
Victoria	514.1	391.9	906.1	59.8	27.7	87.5	993.6	849.4	1 842.9	8.8	53.9
Queensland	382.9	278.8	661.6	41.6	21.2	62.8	724.4	604.3	1 328.7	8.7	54.5
South Australia	151.8	140.5	292.3	18.8	8.2	27.0	319.4	280.5	599.9	8.5	53.2
Western Australia	195.6	163.2	358.8	15.8	10.2	26.0	384.9	309.3	694.2	6.8	55.4
Tasmania	41.8	43.3	85.2	6.7	3.1	9.8	95.0	92.6	187.6	10.4	50.6
Northern Territory	24.3	13.5	37.8	* 1.1	* 0.7	1.8	39.6	23.0	62.6	4.6	63.3
Australian Capital Territory	42.2	28.5	70.7	4.0	1.5	5.5	76.2	42.9	119.1	7.2	64.0
<b>Australia</b>	<b>2 089.2</b>	<b>1 538.5</b>	<b>3 627.7</b>	<b>211.1</b>	<b>107.5</b>	<b>318.6</b>	<b>3 946.3</b>	<b>3 378.2</b>	<b>7 324.5</b>	<b>8.1</b>	<b>53.9</b>
PERSONS											
New South Wales	2 158.9	660.3	2 819.2	179.6	53.4	233.0	3 052.2	1 839.1	4 891.3	7.6	62.4
Victoria	1 561.6	530.3	2 091.9	161.3	43.4	204.7	2 296.6	1 311.8	3 608.5	8.9	63.6
Queensland	1 166.9	375.7	1 542.5	120.0	34.2	154.2	1 696.7	937.3	2 634.0	9.1	64.4
South Australia	472.8	186.4	659.2	55.2	12.5	67.7	726.9	452.1	1 179.0	9.3	61.7
Western Australia	625.3	217.5	842.8	50.2	14.9	65.1	907.9	473.6	1 381.5	7.2	65.7
Tasmania	140.9	57.9	198.8	19.0	4.5	23.5	222.3	146.8	369.1	10.6	60.2
Northern Territory	64.6	20.2	84.9	3.1	* 0.9	3.9	88.8	38.0	126.8	4.4	70.0
Australian Capital Territory	113.4	39.7	153.2	10.2	2.7	12.9	166.0	67.7	233.7	7.8	71.0
<b>Australia</b>	<b>6 304.5</b>	<b>2 088.0</b>	<b>8 392.5</b>	<b>598.4</b>	<b>166.4</b>	<b>764.9</b>	<b>9 157.4</b>	<b>5 266.4</b>	<b>14 423.8</b>	<b>8.4</b>	<b>63.5</b>



## UNEMPLOYED PERSONS—New South Wales, Victoria and Queensland: Original

Month	NUMBER OF UNEMPLOYED PERSONS.....						UNEMPLOYMENT RATE.....				
	Aged 15-19 seeking first f/t job	Aged 15-19 looking for f/t work	Aged 20 and over looking for f/t work	Total looking for work	Looking for p/t work	Total unemployed	Aged 15-19 looking for f/t work	Aged 20 and over looking for f/t work	Total looking for work	Looking for p/t work	Total unem-ployed
	'000s	'000s	'000s	'000s	'000s	'000s	%	%	%	%	%
<b>NEW SOUTH WALES</b>											
<b>1995</b>											
August	18.6	28.9	153.2	182.1	44.6	226.6	28.1	7.0	7.9	6.5	7.6
September	15.5	27.5	157.2	184.7	45.6	230.3	26.0	7.0	7.9	6.5	7.6
October	11.1	19.6	158.7	178.4	43.6	222.0	19.6	7.2	7.7	6.2	7.4
November	18.8	27.5	158.7	186.2	42.4	228.6	26.0	7.1	8.0	6.0	7.5
December	24.1	33.3	152.9	186.2	39.3	225.5	27.0	6.8	7.9	5.7	7.4
<b>1996</b>											
January	23.3	35.4	171.4	206.7	47.9	254.7	27.1	7.7	8.7	7.6	8.5
February	19.4	30.3	180.5	210.8	49.6	260.4	26.1	8.1	9.0	7.3	8.6
March	17.8	28.4	171.8	200.1	56.2	256.4	26.2	7.7	8.6	7.9	8.4
April	16.2	29.2	165.5	194.7	51.3	246.0	26.9	7.5	8.4	7.4	8.2
May	15.3	26.5	153.9	180.5	51.4	231.9	25.5	7.0	7.9	7.1	7.7
June	14.4	25.9	148.8	174.7	50.7	225.4	26.3	6.8	7.6	6.9	7.5
July	12.0	23.2	155.1	178.4	45.3	223.7	22.6	7.0	7.7	6.5	7.4
August	11.1	24.8	163.9	188.7	49.4	238.1	25.2	7.4	8.2	7.0	7.9
September	12.8	23.9	168.2	192.1	57.0	249.2	23.7	7.5	8.2	7.9	8.1
October	13.8	23.7	155.8	179.6	53.4	233.0	22.2	7.0	7.7	7.5	7.6
<b>VICTORIA</b>											
<b>1995</b>											
August	12.3	17.7	131.9	149.5	35.3	184.8	29.7	8.1	8.9	6.4	8.3
September	12.0	15.9	144.6	160.5	47.0	207.5	25.8	8.8	9.4	8.3	9.1
October	11.3	18.7	146.0	164.6	37.7	202.4	28.6	8.8	9.6	7.1	9.0
November	12.7	19.8	132.8	152.6	34.7	187.2	31.4	8.1	8.9	6.3	8.3
December	13.5	21.3	133.0	154.4	36.2	190.6	28.1	8.0	8.8	6.6	8.3
<b>1996</b>											
January	13.5	21.2	147.2	168.4	40.2	208.6	29.8	9.0	9.8	7.4	9.2
February	17.2	26.9	155.6	182.5	47.9	230.4	36.4	9.4	10.5	8.6	10.1
March	15.0	21.8	135.5	157.3	45.1	202.4	32.5	8.3	9.2	8.0	8.9
April	13.6	20.3	139.2	159.5	47.8	207.3	30.6	8.5	9.3	8.4	9.1
May	14.5	19.9	133.3	153.2	38.3	191.5	30.0	8.0	8.9	6.9	8.4
June	11.8	18.5	118.4	136.9	41.0	177.8	28.6	7.2	8.1	7.3	7.9
July	10.4	14.6	129.8	144.4	42.6	187.0	21.6	7.8	8.4	7.8	8.2
August	12.3	18.3	141.0	159.3	38.8	198.2	28.8	8.6	9.3	6.9	8.7
September	12.9	20.5	149.8	170.3	44.5	214.8	30.2	9.0	9.9	7.6	9.3
October	15.0	19.1	142.2	161.3	43.4	204.7	30.1	8.6	9.4	7.6	8.9
<b>QUEENSLAND</b>											
<b>1995</b>											
August	6.0	18.4	96.8	115.1	26.8	141.9	28.2	8.2	9.2	6.8	8.6
September	8.5	19.1	102.0	121.1	28.8	149.9	27.9	8.5	9.5	7.1	8.9
October	7.9	19.6	102.1	121.7	27.7	149.4	29.6	8.6	9.7	7.0	9.0
November	8.0	19.8	103.9	123.8	27.5	151.3	29.4	8.7	9.8	6.8	9.0
December	12.4	23.4	102.8	126.1	29.5	155.7	29.1	8.5	9.8	7.1	9.2
<b>1996</b>											
January	18.1	29.5	115.2	144.7	26.8	171.5	32.8	9.6	11.2	7.3	10.3
February	9.4	20.7	115.9	136.6	28.9	165.5	26.3	9.6	10.6	7.5	9.9
March	8.5	18.6	111.4	130.0	33.0	163.0	26.3	9.3	10.2	8.1	9.7
April	11.2	20.4	110.6	130.9	31.7	162.7	27.3	9.2	10.3	7.8	9.7
May	11.7	21.4	102.8	124.2	32.5	156.7	30.7	8.5	9.8	8.0	9.3
June	9.5	20.9	104.4	125.3	29.7	155.0	30.8	8.7	9.8	7.1	9.2
July	5.2	16.1	101.1	117.3	31.3	148.6	23.8	8.4	9.2	7.5	8.8
August	8.0	19.1	106.3	125.4	31.1	156.4	28.7	8.8	9.8	7.6	9.3
September	8.5	18.5	103.2	121.7	33.0	154.7	26.8	8.4	9.4	7.8	9.0
October	9.6	20.9	99.0	120.0	34.2	154.2	30.0	8.1	9.3	8.3	9.1



UNEMPLOYED PERSONS—South Australia, Western Australia and Tasmania: Original

NUMBER OF UNEMPLOYED PERSONS.....

UNEMPLOYMENT RATE.....

Month	NUMBER OF UNEMPLOYED PERSONS.....						UNEMPLOYMENT RATE.....				
	Aged 15-19 seeking f/t job '000s	Aged 15-19 looking for f/t work '000s	Aged 20 and over looking for f/t work '000s	Total looking for f/t work '000s	Looking for p/t work '000s	Total unemployed '000s	Aged 15-19 looking for f/t work %	Aged 20 and over looking for f/t work %	Total looking for f/t work %	Looking for p/t work %	Total unemployed %
<b>SOUTH AUSTRALIA</b>											
<b>1995</b>											
August	4.5	7.8	48.2	56.1	11.4	67.5	34.1	9.5	10.6	5.8	9.3
September	5.3	8.2	48.0	56.2	14.5	70.7	35.3	9.4	10.6	7.3	9.7
October	6.8	10.0	45.1	55.1	13.1	68.2	40.2	9.0	10.4	6.9	9.5
November	6.0	9.1	45.5	54.6	9.4	64.0	39.8	8.9	10.2	5.0	8.9
December	6.6	10.2	45.6	55.8	10.7	66.5	36.2	8.8	10.2	5.8	9.1
<b>1996</b>											
January	8.3	12.3	48.8	61.1	13.7	74.8	42.3	9.6	11.4	7.3	10.4
February	6.9	10.3	51.2	61.5	15.0	76.4	37.8	10.0	11.4	7.8	10.5
March	5.1	8.4	45.1	53.5	15.5	69.0	34.7	9.0	10.2	7.7	9.5
April	4.4	7.1	47.7	54.8	14.5	69.3	30.3	9.5	10.5	7.0	9.5
May	5.6	9.6	44.7	54.3	13.9	68.2	39.7	8.9	10.3	7.0	9.4
June	5.0	8.0	43.4	51.4	10.4	61.8	37.1	8.7	9.9	5.1	8.5
July	5.7	9.2	43.0	52.2	11.8	64.1	36.9	8.6	9.9	5.9	8.8
August	5.1	7.8	48.0	55.8	12.2	68.0	35.5	9.6	10.7	6.0	9.4
September	4.5	8.9	47.9	56.8	13.6	70.5	38.9	9.5	10.8	6.7	9.7
October	4.2	7.5	47.6	55.2	12.5	67.7	32.8	9.4	10.4	6.3	9.3
<b>WESTERN AUSTRALIA</b>											
<b>1995</b>											
August	* 2.1	7.3	40.4	47.7	12.6	60.3	17.5	6.5	7.2	5.6	6.8
September	3.7	6.7	44.8	51.5	16.4	67.9	15.7	7.1	7.6	7.2	7.5
October	4.2	7.9	41.1	49.0	12.8	61.8	19.3	6.6	7.3	5.7	6.9
November	4.3	7.9	41.9	49.8	14.8	64.6	21.4	6.7	7.5	6.5	7.2
December	5.6	10.6	43.2	53.8	14.0	67.8	24.4	6.9	8.0	6.1	7.5
<b>1996</b>											
January	4.1	10.3	48.8	59.1	17.7	76.8	23.0	7.8	8.8	8.0	8.6
February	3.8	9.2	51.2	60.3	18.6	78.9	21.7	8.0	8.8	8.3	8.7
March	* 2.6	8.4	45.6	54.0	20.0	74.0	20.4	7.2	8.1	8.5	8.2
April	3.5	7.8	41.6	49.5	14.5	64.0	19.4	6.6	7.4	6.5	7.2
May	3.0	7.8	44.2	52.0	16.9	68.9	20.4	7.0	7.7	7.2	7.6
June	3.8	7.9	47.0	54.9	15.6	70.5	20.8	7.4	8.1	6.8	7.8
July	3.8	8.4	44.2	52.5	12.6	65.1	20.4	6.9	7.7	5.5	7.1
August	3.2	7.8	45.8	53.6	15.3	68.8	21.1	7.2	7.9	6.4	7.5
September	3.1	7.7	46.3	54.1	15.1	69.1	20.4	7.2	7.9	6.4	7.5
October	3.3	8.6	41.6	50.2	14.9	65.1	21.9	6.5	7.4	6.4	7.2
<b>TASMANIA</b>											
<b>1995</b>											
August	1.4	2.9	16.0	18.9	3.2	22.1	31.8	10.5	11.7	5.7	10.2
September	* 1.0	2.3	14.9	17.2	3.2	20.4	24.8	9.7	10.6	5.5	9.2
October	* 1.1	2.1	13.6	15.7	3.4	19.1	23.6	9.0	9.8	5.8	8.7
November	1.6	2.3	16.7	19.0	3.9	22.9	25.1	11.0	11.8	6.4	10.3
December	3.1	4.9	15.9	20.8	3.3	24.1	39.3	10.2	12.3	5.4	10.5
<b>1996</b>											
January	2.8	4.6	15.5	20.2	4.0	24.2	38.9	10.1	12.1	7.1	10.8
February	2.6	4.2	14.7	18.9	4.7	23.6	34.1	9.4	11.2	8.0	10.4
March	2.3	3.3	15.8	19.1	4.3	23.4	31.8	10.4	11.7	7.0	10.4
April	1.5	2.4	15.2	17.6	4.3	21.9	22.7	10.0	10.8	6.9	9.7
May	1.6	2.9	15.8	18.8	3.5	22.2	29.2	10.4	11.6	5.7	10.0
June	1.4	2.9	17.1	20.0	3.7	23.7	28.4	11.1	12.2	6.1	10.5
July	* 1.1	3.0	16.7	19.7	4.5	24.2	30.8	11.0	12.2	7.0	10.7
August	* 0.6	2.2	16.6	18.8	3.9	22.7	24.7	10.9	11.6	6.4	10.2
September	* 0.8	2.3	17.6	19.9	3.9	23.8	24.9	11.4	12.2	6.3	10.6
October	* 1.0	2.0	17.0	19.0	4.5	23.5	21.8	11.3	11.9	7.1	10.6

UNEMPLOYED PERSONS—Northern Territory and Australian Capital Territory: Original

Month	NUMBER OF UNEMPLOYED PERSONS.....						UNEMPLOYMENT RATE.....				
	Aged 15-19 seeking first f/t job '000s	Aged 15-19 looking for f/t work '000s	Aged 20 and over looking for f/t work '000s	Total looking for f/t work '000s	Looking for p/t work '000s	Total unemployed '000s	Aged 15-19 looking for f/t work %	Aged 20 and over looking for f/t work %	Total looking for f/t work %	Looking for p/t work %	Total unemployed %
<b>NORTHERN TERRITORY</b>											
<b>1995</b>											
August	* 0.3	* 0.7	4.5	5.2	1.3	6.5	* 21.6	7.0	7.7	7.6	7.6
September	* 0.4	* 0.7	4.2	4.8	* 1.2	6.1	* 17.8	6.7	7.4	* 6.2	7.1
October	* 0.3	* 1.2	4.6	5.8	* 0.4	6.2	* 30.6	7.2	8.5	* 2.5	7.2
November	* 0.2	* 0.5	4.3	4.8	1.5	6.3	* 18.6	6.7	7.2	6.7	7.1
December	* 0.3	* 0.9	3.7	4.7	1.3	6.0	* 34.3	5.9	7.0	6.0	6.8
<b>1996</b>											
January	* 0.5	* 1.0	4.1	5.1	1.3	6.4	* 30.1	6.2	7.4	6.4	7.2
February	* 0.2	* 0.8	4.6	5.4	* 0.9	6.3	* 30.8	7.0	7.8	* 4.8	7.2
March	* 0.1	* 0.8	4.7	5.5	1.6	7.1	* 29.5	6.8	7.7	8.5	7.9
April	* 0.7	* 1.2	4.4	5.5	1.5	7.0	* 41.6	6.7	8.2	7.4	8.0
May	* 0.2	* 0.7	3.9	4.6	* 0.7	5.3	* 24.3	5.9	6.7	* 3.9	6.1
June	* 0.1	* 0.3	2.8	3.1	* 0.8	3.9	* 8.4	4.3	4.5	* 4.3	4.4
July	* 0.2	* 0.4	4.2	4.6	* 1.1	5.7	* 8.6	6.1	6.3	* 6.5	6.3
August	* 0.3	* 0.6	2.8	3.4	1.3	4.6	* 17.1	4.3	4.9	6.8	5.3
September	* 0.2	* 0.2	3.5	3.7	1.3	5.0	* 6.0	5.2	5.2	6.1	5.4
October	* 0.2	* 0.3	2.7	3.1	* 0.9	3.9	* 11.0	4.2	4.5	* 4.1	4.4
<b>AUSTRALIAN CAPITAL TERRITORY</b>											
<b>1995</b>											
August	* 0.6	1.6	7.2	8.9	3.3	12.1	39.3	6.0	7.1	7.1	7.1
September	* 0.9	1.5	5.4	7.0	3.6	10.6	42.6	4.4	5.5	7.8	6.2
October	* 0.7	1.1	5.1	6.1	3.6	9.7	33.4	4.2	5.0	7.9	5.8
November	* 0.9	2.1	6.7	8.8	3.1	11.9	47.2	5.5	6.9	6.9	6.9
December	1.2	2.3	6.7	9.0	3.6	12.6	43.4	5.3	6.8	8.4	7.2
<b>1996</b>											
January	1.3	2.2	8.6	10.8	3.8	14.6	43.0	6.8	8.2	9.9	8.6
February	1.2	2.0	8.0	10.0	5.1	15.1	42.9	6.5	7.8	11.8	8.8
March	1.3	1.8	8.6	10.4	5.3	15.7	40.7	7.0	8.2	11.8	9.1
April	1.1	1.6	8.6	10.2	4.6	14.8	35.9	7.1	8.1	10.8	8.8
May	1.3	1.7	8.1	9.8	3.6	13.5	42.6	6.6	7.8	8.4	7.9
June	1.3	1.8	7.2	9.0	3.4	12.4	43.9	5.9	7.2	7.8	7.3
July	1.2	1.5	8.9	10.4	2.9	13.2	38.0	7.2	8.2	6.9	7.9
August	1.3	1.9	9.3	11.2	3.2	14.4	50.0	7.6	8.9	7.7	8.6
September	1.4	2.1	8.4	10.5	2.7	13.1	54.2	6.8	8.3	6.2	7.8
October	1.6	2.1	8.0	10.2	2.7	12.9	53.5	6.7	8.2	6.4	7.8



LABOUR FORCE STATUS (AGED 15 AND OVER)—New South Wales<sup>1</sup>

SEASONALLY ADJUSTED.....

TREND.....

Month	Employed	Total	Total	Unemp-	Partic-	Employed	Total	Total	Unemp-	Partic-	Civilian
	full time	employed	unemployed	loyment	ipation		full time	employed	unemployed	loyment	
	'000s	'000s	'000s	rate	rate	'000s	'000s	'000s	rate	rate	population
				%	%				%	%	aged 15
											and over
											'000s
<b>MALES</b>											
<b>1995</b>											
August	1 416.5	1 580.1	138.8	8.1	72.8	1 415.0	1 580.5	139.4	8.1	72.8	2 361.6
September	1 417.1	1 587.7	142.6	8.2	73.2	1 416.2	1 583.9	139.5	8.1	72.9	2 363.7
October	1 405.4	1 578.5	140.8	8.2	72.7	1 417.7	1 587.4	139.3	8.1	73.0	2 366.2
November	1 415.6	1 594.0	142.8	8.2	73.3	1 419.4	1 590.1	139.2	8.1	73.0	2 368.7
December	1 426.2	1 595.2	129.1	7.5	72.7	1 420.5	1 591.1	139.8	8.1	73.0	2 371.1
<b>1996</b>											
January	1 434.8	1 591.2	144.7	8.3	73.1	1 420.1	1 590.5	141.1	8.1	72.9	2 374.1
February	1 417.7	1 592.9	139.3	8.0	72.9	1 417.7	1 588.7	142.6	8.2	72.8	2 377.1
March	1 402.9	1 582.9	148.4	8.6	72.7	1 413.8	1 586.8	143.9	8.3	72.7	2 380.0
April	1 409.1	1 576.7	151.0	8.7	72.5	1 410.0	1 585.6	144.8	8.4	72.6	2 383.1
May	1 409.1	1 591.0	140.8	8.1	72.6	1 408.3	1 586.2	144.9	8.4	72.5	2 386.2
June	1 408.4	1 590.3	141.2	8.2	72.5	1 409.5	1 588.7	144.4	8.3	72.5	2 389.3
July	1 411.2	1 588.6	139.8	8.1	72.2	1 412.6	1 591.9	144.0	8.3	72.6	2 392.5
August	1 415.9	1 597.1	152.8	8.7	73.0	1 415.8	1 595.1	143.8	8.3	72.6	2 395.8
September	1 421.3	1 598.1	142.2	8.2	72.5	1 418.8	1 598.1	143.5	8.2	72.6	2 399.1
October	1 422.7	1 602.1	141.2	8.1	72.6	1 421.1	1 600.7	143.3	8.2	72.6	2 401.8
<b>FEMALES</b>											
<b>1995</b>											
August	723.5	1 189.6	97.2	7.6	52.6	723.5	1 194.8	89.7	7.0	52.5	2 444.7
September	735.1	1 200.3	85.5	6.7	52.5	729.0	1 201.7	90.2	7.0	52.8	2 447.0
October	730.3	1 211.7	88.6	6.8	53.1	732.2	1 207.1	90.7	7.0	53.0	2 449.4
November	737.3	1 214.1	98.4	7.5	53.5	733.6	1 210.5	91.2	7.0	53.1	2 451.9
December	731.4	1 212.0	89.2	6.9	53.0	732.9	1 210.8	92.2	7.1	53.1	2 454.4
<b>1996</b>											
January	732.0	1 207.1	90.9	7.0	52.8	730.1	1 208.0	93.6	7.2	53.0	2 457.5
February	714.8	1 198.3	95.1	7.4	52.6	726.0	1 203.2	95.3	7.3	52.8	2 460.7
March	737.4	1 212.0	95.6	7.3	53.1	722.2	1 198.7	96.6	7.5	52.6	2 463.8
April	720.9	1 184.7	102.7	8.0	52.2	719.6	1 195.5	97.4	7.5	52.4	2 467.3
May	704.8	1 183.7	101.0	7.9	52.0	718.8	1 194.5	97.8	7.6	52.3	2 470.9
June	714.6	1 204.3	91.2	7.0	52.4	720.0	1 195.4	97.9	7.6	52.3	2 474.4
July	728.6	1 199.5	98.6	7.6	52.4	722.4	1 197.5	97.9	7.6	52.3	2 478.3
August	735.9	1 202.0	95.1	7.3	52.3	725.2	1 200.1	98.4	7.6	52.3	2 482.3
September	718.1	1 193.0	104.9	8.1	52.2	727.7	1 202.6	99.1	7.6	52.4	2 486.2
October	734.3	1 213.8	99.1	7.5	52.7	731.0	1 206.2	99.6	7.6	52.5	2 489.4
<b>PERSONS</b>											
<b>1995</b>											
August	2 140.0	2 769.7	236.0	7.9	62.5	2 138.5	2 775.4	229.1	7.6	62.5	4 806.3
September	2 152.3	2 788.0	228.1	7.6	62.7	2 145.2	2 785.7	229.8	7.6	62.7	4 810.7
October	2 135.7	2 790.2	229.5	7.6	62.7	2 150.0	2 794.5	230.0	7.6	62.8	4 815.6
November	2 152.8	2 808.1	241.2	7.9	63.3	2 153.0	2 800.5	230.4	7.6	62.9	4 820.6
December	2 157.6	2 807.3	218.3	7.2	62.7	2 153.4	2 801.9	232.0	7.6	62.9	4 825.5
<b>1996</b>											
January	2 166.9	2 798.3	235.7	7.8	62.8	2 150.3	2 798.6	234.7	7.7	62.8	4 831.6
February	2 132.5	2 791.2	234.4	7.7	62.5	2 143.7	2 791.9	237.9	7.9	62.6	4 837.7
March	2 140.3	2 794.9	244.0	8.0	62.7	2 136.0	2 785.4	240.6	7.9	62.5	4 843.9
April	2 129.9	2 761.3	253.7	8.4	62.2	2 129.6	2 781.1	242.2	8.0	62.3	4 850.5
May	2 113.9	2 774.6	241.8	8.0	62.1	2 127.1	2 780.7	242.7	8.0	62.2	4 857.0
June	2 122.9	2 794.6	232.4	7.7	62.2	2 129.5	2 784.1	242.3	8.0	62.2	4 863.7
July	2 139.9	2 788.1	238.5	7.9	62.1	2 135.0	2 789.5	241.9	8.0	62.2	4 870.9
August	2 151.8	2 799.1	247.9	8.1	62.5	2 141.0	2 795.3	242.2	8.0	62.3	4 878.1
September	2 139.4	2 791.1	247.1	8.1	62.2	2 146.5	2 800.7	242.6	8.0	62.3	4 885.3
October	2 157.0	2 815.9	240.3	7.9	62.5	2 152.1	2 806.8	242.9	8.0	62.4	4 891.3

<sup>1</sup> Trend estimates for April 1996 to September 1996 have been revised.

LABOUR FORCE STATUS (AGED 15 AND OVER)-Victoria<sup>1</sup>

SEASONALLY ADJUSTED.....

TREND.....

Month	Employed	Total	Total	Unemp-	Partic-	Civilian	Employed	Total	Total	Unemp-	Partic-	Civilian
	full time	employed	unemployed	loyment	ipation		population	full time	employed	unemployed	loyment	
	'000s	'000s	'000s	%	%	aged 15	'000s	'000s	'000s	%	%	and over
						'000s						'000s
<b>MALES</b>												
<b>1995</b>												
August	1 041.0	1 171.8	115.0	8.9	73.9		1 040.4	1 164.2	118.5	9.2	73.7	1 741.0
September	1 043.8	1 161.1	122.1	9.5	73.7		1 042.4	1 165.7	118.1	9.2	73.7	1 742.1
October	1 041.5	1 162.1	122.2	9.5	73.7		1 045.0	1 168.7	116.9	9.1	73.7	1 743.4
November	1 048.0	1 175.2	108.3	8.4	73.6		1 047.0	1 171.9	115.8	9.0	73.8	1 744.8
December	1 051.1	1 177.1	114.1	8.8	73.9		1 047.9	1 174.7	115.3	8.9	73.9	1 746.1
<b>1996</b>												
January	1 051.0	1 179.8	113.2	8.8	74.0		1 048.2	1 176.8	115.4	8.9	73.9	1 748.0
February	1 049.1	1 183.7	120.1	9.2	74.5		1 048.6	1 178.2	115.3	8.9	73.9	1 749.9
March	1 043.5	1 170.1	113.2	8.8	73.3		1 050.0	1 179.4	114.4	8.8	73.9	1 751.8
April	1 043.8	1 173.6	121.0	9.3	73.8		1 052.2	1 180.6	112.8	8.7	73.8	1 753.8
May	1 063.2	1 191.5	108.3	8.3	74.0		1 054.0	1 182.3	111.2	8.6	73.7	1 755.8
June	1 057.6	1 185.3	104.6	8.1	73.4		1 054.8	1 183.9	110.6	8.5	73.6	1 757.8
July	1 056.3	1 181.2	107.1	8.3	73.2		1 053.8	1 185.0	111.8	8.6	73.7	1 759.8
August	1 057.0	1 192.8	115.0	8.8	74.2		1 051.3	1 185.2	114.3	8.8	73.8	1 761.9
September	1 035.4	1 178.0	123.6	9.5	73.8		1 048.2	1 185.0	117.4	9.0	73.8	1 763.9
October	1 044.3	1 183.5	123.3	9.4	74.0		1 044.8	1 184.0	120.3	9.2	73.9	1 765.5
<b>FEMALES</b>												
<b>1995</b>												
August	510.0	891.2	81.6	8.4	53.6		508.4	890.4	83.2	8.5	53.6	1 816.5
September	491.4	886.3	85.3	8.8	53.4		506.9	888.8	84.7	8.7	53.5	1 817.8
October	506.8	872.7	94.0	9.7	53.1		505.0	889.0	85.2	8.7	53.6	1 819.1
November	506.2	892.2	87.0	8.9	53.8		503.4	890.9	84.8	8.7	53.6	1 820.4
December	509.2	898.5	72.6	7.5	53.3		502.8	894.0	84.1	8.6	53.7	1 821.7
<b>1996</b>												
January	503.8	911.5	84.3	8.5	54.6		503.2	897.0	83.3	8.5	53.8	1 823.6
February	496.4	894.9	87.5	8.9	53.8		504.7	898.6	82.6	8.4	53.8	1 825.4
March	501.2	887.0	79.3	8.2	52.9		507.3	896.2	82.5	8.4	53.7	1 827.2
April	515.3	897.8	88.4	9.0	53.9		510.7	896.5	83.1	8.5	53.5	1 829.4
May	521.1	903.9	82.4	8.4	53.9		514.1	895.0	84.3	8.6	53.5	1 831.6
June	511.1	893.5	79.3	8.2	53.1		516.2	894.7	85.7	8.7	53.5	1 833.8
July	525.3	887.1	88.1	9.0	53.1		516.3	895.1	87.8	8.9	53.5	1 836.2
August	512.4	895.8	96.5	9.7	54.0		515.2	895.4	90.3	9.2	53.6	1 838.6
September	507.9	899.9	90.9	9.2	53.8		513.8	895.9	92.7	9.4	53.7	1 841.0
October	513.0	896.7	95.2	9.6	53.8		511.8	895.9	94.4	9.5	53.7	1 842.9
<b>PERSONS</b>												
<b>1995</b>												
August	1 551.0	2 063.0	196.6	8.7	63.5		1 548.7	2 054.6	201.7	8.9	63.4	3 557.4
September	1 535.2	2 047.4	207.4	9.2	63.3		1 549.3	2 054.5	202.7	9.0	63.4	3 559.9
October	1 548.3	2 034.7	216.2	9.6	63.2		1 550.1	2 057.7	202.1	8.9	63.4	3 562.6
November	1 554.1	2 067.4	195.3	8.6	63.5		1 550.4	2 062.9	200.6	8.9	63.5	3 565.2
December	1 560.3	2 075.6	186.7	8.3	63.4		1 550.7	2 068.7	199.4	8.8	63.6	3 567.8
<b>1996</b>												
January	1 554.7	2 091.3	197.5	8.6	64.1		1 551.4	2 073.8	198.7	8.7	63.6	3 571.6
February	1 545.5	2 078.5	207.6	9.1	63.9		1 553.3	2 076.8	198.0	8.7	63.6	3 575.3
March	1 544.8	2 057.1	192.4	8.6	62.9		1 557.3	2 077.6	197.0	8.7	63.6	3 579.0
April	1 559.1	2 071.4	209.3	9.2	63.6		1 562.8	2 077.2	195.9	8.6	63.4	3 583.2
May	1 584.2	2 095.4	190.7	8.3	63.7		1 568.2	2 077.3	195.5	8.6	63.4	3 587.4
June	1 568.7	2 078.8	183.9	8.1	63.0		1 571.0	2 078.6	196.4	8.6	63.3	3 591.6
July	1 581.6	2 068.3	195.1	8.6	62.9		1 570.1	2 080.0	199.7	8.8	63.4	3 596.0
August	1 569.4	2 088.7	211.5	9.2	63.9		1 566.5	2 080.6	204.6	9.0	63.5	3 600.4
September	1 543.3	2 078.0	214.6	9.4	63.6		1 561.9	2 080.9	210.2	9.2	63.6	3 604.9
October	1 557.2	2 080.3	218.5	9.5	63.7		1 556.6	2 080.0	214.7	9.4	63.6	3 608.5

<sup>1</sup> Trend estimates for April 1996 to September 1996 have been revised.

LABOUR FORCE STATUS (AGED 15 AND OVER)—Queensland<sup>1</sup>

SEASONALLY ADJUSTED.....

TREND.....

Month	Employed	Total	Total	Unemp-	Partic-		Employed	Total	Total	Unemp-	Partic-	Civilian population aged 15 and over
	full time	employed	unemployed	loyment rate	ipation rate		full time	employed	unemployed	loyment rate	ipation rate	
	'000s	'000s	'000s	%	%		'000s	'000s	'000s	%	%	'000s
<b>MALES</b>												
<b>1995</b>												
August	762.5	861.0	90.1	9.5	75.1		761.4	858.3	93.3	9.8	75.2	1 265.7
September	763.6	862.3	96.0	10.0	75.5		760.9	858.2	96.3	10.1	75.2	1 268.7
October	755.4	850.6	104.5	10.9	75.1		762.0	859.0	98.2	10.3	75.3	1 271.5
November	764.1	862.7	98.0	10.2	75.4		764.9	860.8	98.6	10.3	75.3	1 274.2
December	769.6	864.8	97.0	10.1	75.3		769.4	863.8	97.2	10.1	75.3	1 276.9
<b>1996</b>												
January	771.9	864.6	97.9	10.2	75.2		774.7	867.9	94.4	9.8	75.2	1 279.8
February	786.5	876.1	85.3	8.9	74.9		779.4	872.8	90.9	9.4	75.1	1 282.7
March	781.2	873.9	89.4	9.3	74.9		782.5	877.3	88.1	9.1	75.1	1 285.6
April	784.9	883.5	88.2	9.1	75.4		783.5	880.7	86.6	9.0	75.1	1 288.8
May	786.7	886.5	82.3	8.5	75.0		782.8	882.4	86.9	9.0	75.0	1 292.1
June	774.6	878.8	90.7	9.4	74.8		781.5	882.4	88.6	9.1	75.0	1 295.4
July	782.3	886.2	86.7	8.9	75.0		780.3	881.3	91.2	9.4	74.9	1 297.8
August	777.6	875.1	99.8	10.2	75.0		779.6	879.7	94.1	9.7	74.9	1 300.3
September	780.9	880.4	93.9	9.6	74.8		779.2	878.0	96.8	9.9	74.8	1 302.7
October	779.4	872.8	102.8	10.5	74.7		778.9	875.9	99.4	10.2	74.7	1 305.2
<b>FEMALES</b>												
<b>1995</b>												
August	377.4	648.9	61.1	8.6	55.1		379.6	651.4	60.0	8.4	55.2	1 288.5
September	381.7	646.6	60.0	8.5	54.7		379.0	651.2	60.7	8.5	55.1	1 291.5
October	376.5	646.4	62.8	8.9	54.8		378.1	651.8	61.4	8.6	55.1	1 294.5
November	378.7	654.0	63.4	8.8	55.3		377.0	652.6	61.9	8.7	55.1	1 297.4
December	373.3	658.6	61.2	8.5	55.4		375.5	652.3	62.3	8.7	55.0	1 300.4
<b>1996</b>												
January	372.8	656.1	63.6	8.8	55.2		373.6	650.6	62.8	8.8	54.7	1 303.3
February	376.8	648.2	62.7	8.8	54.4		371.4	647.6	63.7	9.0	54.5	1 306.2
March	367.8	640.0	60.4	8.6	53.5		369.4	644.6	65.0	9.2	54.2	1 309.2
April	366.1	636.0	70.0	9.9	53.8		368.4	643.6	66.2	9.3	54.1	1 312.2
May	369.1	645.2	70.1	9.8	54.4		369.2	645.5	67.2	9.4	54.2	1 315.2
June	367.9	650.9	67.2	9.4	54.5		371.6	649.8	67.6	9.4	54.4	1 318.2
July	373.3	657.1	66.3	9.2	54.8		375.2	654.6	67.7	9.4	54.7	1 320.8
August	383.8	661.6	66.8	9.2	55.0		379.0	658.7	67.7	9.3	54.9	1 323.4
September	385.6	662.9	66.9	9.2	55.0		382.5	661.8	67.8	9.3	55.0	1 326.1
October	383.5	660.2	69.8	9.6	54.9		385.3	664.1	67.5	9.2	55.1	1 328.7
<b>PERSONS</b>												
<b>1995</b>												
August	1 139.9	1 510.0	151.2	9.1	65.0		1 141.1	1 509.7	153.3	9.2	65.1	2 554.2
September	1 145.3	1 508.9	156.0	9.4	65.0		1 139.9	1 509.4	157.0	9.4	65.1	2 560.2
October	1 131.9	1 497.0	167.3	10.1	64.9		1 140.1	1 510.8	159.6	9.6	65.1	2 565.9
November	1 142.8	1 516.7	161.3	9.6	65.3		1 141.9	1 513.4	160.5	9.6	65.1	2 571.6
December	1 142.8	1 523.4	158.1	9.4	65.2		1 144.8	1 516.1	159.5	9.5	65.0	2 577.4
<b>1996</b>												
January	1 144.8	1 520.7	161.5	9.6	65.1		1 148.2	1 518.5	157.2	9.4	64.9	2 583.2
February	1 163.3	1 524.4	148.0	8.8	64.6		1 150.8	1 520.4	154.7	9.2	64.7	2 588.9
March	1 149.0	1 513.9	149.8	9.0	64.1		1 151.9	1 522.0	153.1	9.1	64.6	2 594.8
April	1 150.9	1 519.4	158.2	9.4	64.5		1 152.0	1 524.3	152.9	9.1	64.5	2 601.0
May	1 155.8	1 531.7	152.4	9.0	64.6		1 152.0	1 527.9	154.1	9.2	64.5	2 607.3
June	1 142.5	1 529.7	158.0	9.4	64.6		1 153.1	1 532.2	156.2	9.3	64.6	2 613.5
July	1 155.6	1 543.3	153.0	9.0	64.8		1 155.4	1 535.9	158.9	9.4	64.7	2 618.6
August	1 161.4	1 536.7	166.5	9.8	64.9		1 158.5	1 538.3	161.7	9.5	64.8	2 623.7
September	1 166.5	1 543.3	160.8	9.4	64.8		1 161.7	1 539.8	164.5	9.7	64.8	2 628.8
October	1 163.0	1 532.9	172.6	10.1	64.8		1 164.2	1 540.0	166.9	9.8	64.8	2 634.0

<sup>1</sup> Trend estimates for April 1996 to September 1996 have been revised.

LABOUR FORCE STATUS (AGED 15 AND OVER)—South Australia<sup>1</sup>

SEASONALLY ADJUSTED.....

TREND.....

Month	SEASONALLY ADJUSTED.....					TREND.....					Civilian population aged 15 and over '000s
	Employed full time '000s	Total employed '000s	Total unemployed '000s	Unemployment rate %	Participation rate %	Employed full time '000s	Total employed '000s	Total unemployed '000s	Unemployment rate %	Participation rate %	
<b>MALES</b>											
<b>1995</b>											
August	326.0	372.0	43.9	10.6	72.3	323.6	370.2	44.6	10.7	72.1	575.1
September	327.0	372.9	44.9	10.7	72.6	325.3	371.3	43.8	10.6	72.2	575.3
October	322.6	369.0	43.9	10.6	71.8	326.6	371.8	43.0	10.4	72.1	575.5
November	329.1	372.1	42.2	10.2	72.0	327.4	372.1	42.4	10.2	72.0	575.7
December	329.0	373.1	40.4	9.8	71.8	327.5	371.9	42.1	10.2	71.9	575.9
<b>1996</b>											
January	326.6	372.1	40.7	9.9	71.7	327.0	371.3	42.2	10.2	71.8	576.2
February	326.3	370.7	44.2	10.6	72.0	326.2	370.6	42.3	10.3	71.6	576.5
March	325.5	368.6	42.6	10.4	71.3	325.2	370.1	42.4	10.3	71.5	576.7
April	322.3	370.5	43.4	10.5	71.7	324.1	369.7	42.2	10.2	71.4	577.0
May	323.3	365.9	42.5	10.4	70.8	323.0	369.5	41.7	10.1	71.2	577.3
June	321.9	371.9	39.1	9.5	71.2	322.0	369.4	41.2	10.0	71.1	577.6
July	323.8	371.2	39.5	9.6	71.1	321.0	369.1	41.0	10.0	70.9	578.0
August	318.5	368.7	41.8	10.2	71.0	320.0	368.5	41.0	10.0	70.8	578.4
September	317.2	365.5	43.0	10.5	70.6	319.0	367.8	41.2	10.1	70.7	578.8
October	319.0	366.6	41.0	10.1	70.4	318.3	367.0	41.4	10.1	70.5	579.1
<b>FEMALES</b>											
<b>1995</b>											
August	151.0	288.3	25.9	8.2	52.7	150.5	286.5	26.0	8.3	52.4	596.1
September	148.1	282.6	26.2	8.5	51.8	149.9	285.4	25.7	8.3	52.2	596.2
October	149.3	283.5	25.4	8.2	51.8	149.6	284.3	25.5	8.2	51.9	596.5
November	149.8	284.8	24.6	7.9	51.8	149.5	283.5	25.5	8.2	51.8	596.7
December	152.0	284.6	25.1	8.1	51.9	149.5	283.5	25.6	8.3	51.8	596.9
<b>1996</b>											
January	149.3	283.2	26.8	8.7	51.9	149.4	284.3	25.8	8.3	51.9	597.2
February	147.5	282.9	26.8	8.6	51.8	149.5	285.8	26.0	8.4	52.2	597.5
March	149.1	287.8	25.6	8.2	52.4	149.7	287.6	26.2	8.4	52.5	597.7
April	148.8	291.6	26.1	8.2	53.1	150.1	289.4	26.4	8.4	52.8	598.0
May	154.9	291.8	27.4	8.6	53.3	150.5	290.7	26.6	8.4	53.0	598.2
June	149.4	291.9	25.3	8.0	53.0	151.0	291.5	27.0	8.5	53.2	598.5
July	151.3	292.1	28.0	8.7	53.4	151.2	291.8	27.4	8.6	53.3	598.9
August	150.1	290.1	28.8	9.0	53.2	151.2	291.9	27.8	8.7	53.3	599.2
September	151.4	290.9	28.0	8.8	53.2	151.3	292.1	28.1	8.8	53.4	599.6
October	152.2	294.6	27.7	8.6	53.7	151.4	292.3	28.2	8.8	53.4	599.9
<b>PERSONS</b>											
<b>1995</b>											
August	477.0	660.3	69.8	9.6	62.3	474.1	656.7	70.6	9.7	62.1	1 171.2
September	475.1	655.4	71.1	9.8	62.0	475.2	656.7	69.5	9.6	62.0	1 171.5
October	471.9	652.4	69.3	9.6	61.6	476.3	656.1	68.5	9.5	61.8	1 172.0
November	478.8	656.9	66.8	9.2	61.7	476.9	655.6	67.8	9.4	61.7	1 172.4
December	481.0	657.7	65.5	9.1	61.7	477.0	655.4	67.7	9.4	61.7	1 172.9
<b>1996</b>											
January	475.9	655.4	67.6	9.3	61.6	476.4	655.6	68.0	9.4	61.7	1 173.4
February	473.8	653.6	70.9	9.8	61.7	475.7	656.4	68.4	9.4	61.7	1 173.9
March	474.6	656.4	68.2	9.4	61.7	474.9	657.7	68.6	9.4	61.8	1 174.4
April	471.0	662.1	69.4	9.5	62.3	474.2	659.1	68.5	9.4	61.9	1 175.0
May	478.2	657.7	69.9	9.6	61.9	473.6	660.2	68.3	9.4	62.0	1 175.6
June	471.3	663.8	64.3	8.8	61.9	473.0	660.9	68.2	9.4	62.0	1 176.1
July	475.1	663.4	67.5	9.2	62.1	472.2	660.9	68.4	9.4	62.0	1 176.9
August	468.6	658.8	70.6	9.7	61.9	471.2	660.4	68.8	9.4	61.9	1 177.6
September	468.6	656.4	71.0	9.8	61.7	470.3	659.9	69.3	9.5	61.9	1 178.4
October	471.2	661.2	68.7	9.4	61.9	469.7	659.3	69.6	9.6	61.8	1 179.0

<sup>1</sup> Trend estimates for April 1996 to September 1996 have been revised.

LABOUR FORCE STATUS (AGED 15 AND OVER)—Western Australia<sup>1</sup>

SEASONALLY ADJUSTED.....

TREND.....

Month	SEASONALLY ADJUSTED					TREND					Civilian population aged 15 and over '000s
	Employed full time '000s	Total employed '000s	Total unemployed '000s	Unemployment rate %	Participation rate %	Employed full time '000s	Total employed '000s	Total unemployed '000s	Unemployment rate %	Participation rate %	
<b>MALES</b>											
<b>1995</b>											
August	427.0	475.7	34.8	6.8	76.2	429.6	477.9	35.6	6.9	76.7	669.9
September	430.8	478.0	37.1	7.2	76.8	429.5	478.0	35.9	7.0	76.6	671.0
October	429.5	478.5	36.8	7.1	76.7	428.9	478.0	36.7	7.1	76.6	672.2
November	429.6	479.6	37.4	7.2	76.8	428.2	477.8	38.0	7.4	76.6	673.5
December	425.2	477.2	38.2	7.4	76.4	427.4	477.5	39.2	7.6	76.6	674.7
<b>1996</b>											
January	424.9	476.0	40.9	7.9	76.5	426.7	477.1	40.2	7.8	76.5	675.9
February	428.5	475.8	42.4	8.2	76.5	426.2	476.8	41.0	7.9	76.5	677.2
March	426.9	477.9	42.6	8.2	76.7	426.1	476.8	41.4	8.0	76.4	678.4
April	424.9	477.1	39.3	7.6	76.0	426.4	477.3	41.6	8.0	76.3	679.6
May	426.4	478.8	40.9	7.9	76.3	426.8	478.1	41.6	8.0	76.3	680.8
June	425.4	476.2	43.7	8.4	76.2	427.2	479.0	41.6	8.0	76.3	682.1
July	432.9	482.5	39.9	7.6	76.4	427.6	480.0	41.7	8.0	76.3	683.4
August	425.5	481.2	43.1	8.2	76.6	428.1	481.0	41.9	8.0	76.4	684.7
September	426.3	480.1	41.4	7.9	76.0	428.6	481.9	42.1	8.0	76.4	686.0
October	431.3	484.5	42.5	8.1	76.7	429.1	482.8	42.4	8.1	76.4	687.3
<b>FEMALES</b>											
<b>1995</b>											
August	192.7	355.4	27.7	7.2	56.7	189.5	353.0	29.8	7.8	56.6	675.9
September	191.0	350.7	30.2	7.9	56.3	188.8	352.0	30.1	7.9	56.4	677.1
October	187.8	351.5	29.1	7.6	56.1	188.2	351.4	30.2	7.9	56.3	678.3
November	189.4	352.7	31.3	8.1	56.5	188.0	351.2	30.1	7.9	56.1	679.5
December	185.2	349.9	29.6	7.8	55.8	188.4	351.3	29.8	7.8	56.0	680.7
<b>1996</b>											
January	185.2	346.2	29.7	7.9	55.1	189.5	351.5	29.1	7.6	55.8	682.0
February	194.3	359.1	29.6	7.6	56.9	191.0	351.7	28.3	7.5	55.6	683.2
March	194.9	355.1	27.1	7.1	55.8	192.7	352.2	27.7	7.3	55.5	684.5
April	197.0	346.2	24.2	6.5	54.0	194.3	353.4	27.6	7.2	55.6	685.8
May	192.2	356.7	27.8	7.2	56.0	195.7	355.5	27.8	7.3	55.8	687.1
June	194.6	354.4	30.4	7.9	55.9	196.6	358.1	28.2	7.3	56.1	688.4
July	196.3	361.9	29.5	7.5	56.7	197.4	360.7	28.4	7.3	56.4	689.9
August	203.3	369.8	28.3	7.1	57.6	198.1	363.0	28.4	7.3	56.6	691.4
September	200.9	365.5	27.2	6.9	56.7	198.4	364.8	28.2	7.2	56.7	692.8
October	193.2	360.2	27.1	7.0	55.8	198.5	366.0	28.0	7.1	56.8	694.2
<b>PERSONS</b>											
<b>1995</b>											
August	619.7	831.2	62.6	7.0	66.4	619.1	831.0	65.4	7.3	66.6	1 345.7
September	621.8	828.6	67.3	7.5	66.5	618.3	829.9	66.0	7.4	66.5	1 348.1
October	617.4	830.0	65.9	7.4	66.3	617.1	829.4	66.9	7.5	66.4	1 350.5
November	618.9	832.3	68.6	7.6	66.6	616.2	829.0	68.1	7.6	66.3	1 353.0
December	610.5	827.1	67.8	7.6	66.0	615.8	828.8	68.9	7.7	66.2	1 355.4
<b>1996</b>											
January	610.1	822.2	70.6	7.9	65.7	616.1	828.6	69.3	7.7	66.1	1 357.9
February	622.8	834.9	71.9	7.9	66.7	617.2	828.5	69.3	7.7	66.0	1 360.4
March	621.8	833.1	69.7	7.7	66.2	618.8	829.0	69.1	7.7	65.9	1 362.9
April	621.9	823.3	63.4	7.2	64.9	620.7	830.7	69.1	7.7	65.9	1 365.4
May	618.5	835.4	68.7	7.6	66.1	622.4	833.6	69.4	7.7	66.0	1 368.0
June	620.0	830.6	74.2	8.2	66.0	623.8	837.1	69.8	7.7	66.2	1 370.5
July	629.3	844.4	69.5	7.6	66.5	625.0	840.7	70.2	7.7	66.3	1 373.3
August	628.8	851.1	71.4	7.7	67.0	626.2	844.0	70.3	7.7	66.4	1 376.1
September	627.2	845.5	68.6	7.5	66.3	627.1	846.7	70.3	7.7	66.5	1 378.9
October	624.5	844.7	69.6	7.6	66.2	627.6	848.9	70.3	7.7	66.5	1 381.5

<sup>1</sup> Trend estimates for April 1996 to September 1996 have been revised.

LABOUR FORCE STATUS (AGED 15 AND OVER)-Tasmania<sup>1</sup>

SEASONALLY ADJUSTED.....

TREND.....

Month	SEASONALLY ADJUSTED.....					TREND.....					Civilian population aged 15 and over '000s
	Employed full time '000s	Total employed '000s	Total unemployed '000s	Unemployment rate %	Participation rate %	Employed full time '000s	Total employed '000s	Total unemployed '000s	Unemployment rate %	Participation rate %	
MALES											
<b>1995</b>											
August	99.5	112.6	14.4	11.3	70.3	99.7	113.1	13.4	10.6	70.1	180.6
September	99.0	112.9	13.4	10.6	69.9	99.8	112.9	13.2	10.5	69.8	180.7
October	100.0	113.2	11.7	9.3	69.1	100.2	113.0	13.2	10.5	69.9	180.7
November	100.5	112.8	13.6	10.8	70.0	100.8	113.5	13.4	10.6	70.2	180.8
December	101.4	113.8	14.7	11.4	71.0	101.4	114.1	13.8	10.8	70.7	180.8
<b>1996</b>											
January	102.4	114.7	14.0	10.9	71.1	101.8	114.9	14.1	11.0	71.3	180.9
February	103.5	117.0	14.0	10.7	72.4	101.9	115.4	14.5	11.2	71.8	181.0
March	100.4	115.5	15.0	11.5	72.1	101.7	115.7	14.9	11.4	72.1	181.1
April	101.6	116.3	15.3	11.6	72.6	101.4	115.8	15.1	11.5	72.3	181.1
May	100.6	114.5	15.0	11.6	71.5	101.2	115.8	15.1	11.5	72.3	181.1
June	101.3	116.2	15.2	11.6	72.5	101.1	115.8	15.0	11.5	72.2	181.1
July	100.4	114.9	15.5	11.9	71.9	101.1	115.7	14.8	11.3	72.0	181.2
August	102.6	117.5	13.7	10.5	72.4	101.1	115.7	14.6	11.2	71.8	181.3
September	101.1	115.6	14.4	11.1	71.7	101.0	115.6	14.3	11.0	71.6	181.4
October	99.5	114.1	13.9	10.9	70.6	100.7	115.4	14.1	10.9	71.3	181.5
FEMALES											
<b>1995</b>											
August	45.2	86.2	7.7	8.2	50.3	45.6	86.8	7.5	7.9	50.5	186.8
September	46.9	87.5	7.1	7.5	50.7	45.5	87.1	7.7	8.1	50.7	186.8
October	45.8	87.9	7.9	8.2	51.2	45.2	87.3	8.0	8.4	51.0	186.9
November	44.2	86.7	9.4	9.8	51.4	44.7	87.4	8.2	8.6	51.1	187.0
December	43.9	88.2	8.2	8.5	51.5	44.1	87.3	8.4	8.7	51.1	187.0
<b>1996</b>											
January	43.0	86.5	7.8	8.2	50.4	43.7	87.0	8.4	8.8	51.0	187.1
February	43.3	86.9	8.4	8.9	50.9	43.5	86.6	8.4	8.8	50.7	187.2
March	42.9	85.3	9.1	9.7	50.4	43.4	86.2	8.4	8.9	50.5	187.2
April	45.1	87.0	7.6	8.0	50.5	43.2	85.9	8.5	9.0	50.4	187.3
May	42.7	84.6	8.7	9.3	49.8	42.9	85.6	8.7	9.2	50.4	187.3
June	42.9	86.0	8.9	9.3	50.6	42.5	85.4	8.9	9.4	50.3	187.3
July	40.4	85.0	9.7	10.3	50.5	42.2	85.2	9.1	9.7	50.3	187.4
August	42.2	85.5	9.0	9.5	50.4	42.0	85.0	9.4	9.9	50.3	187.5
September	41.9	83.8	9.4	10.1	49.7	42.0	84.9	9.6	10.1	50.4	187.6
October	43.1	85.5	10.0	10.5	50.9	42.0	84.8	9.8	10.4	50.4	187.6
PERSONS											
<b>1995</b>											
August	144.8	198.8	22.1	10.0	60.1	145.3	200.0	20.9	9.5	60.1	367.4
September	145.9	200.4	20.5	9.3	60.1	145.3	200.0	20.9	9.5	60.1	367.5
October	145.8	201.0	19.5	8.9	60.0	145.4	200.3	21.2	9.6	60.3	367.6
November	144.7	199.6	23.0	10.3	60.5	145.4	200.9	21.6	9.7	60.5	367.8
December	145.3	201.9	22.9	10.2	61.1	145.5	201.4	22.1	9.9	60.8	367.9
<b>1996</b>											
January	145.5	201.2	21.8	9.8	60.6	145.5	201.8	22.5	10.0	61.0	368.0
February	146.9	203.9	22.5	9.9	61.5	145.4	202.0	22.9	10.2	61.1	368.2
March	143.3	200.8	24.2	10.7	61.1	145.1	201.9	23.3	10.3	61.1	368.3
April	146.7	203.2	22.9	10.1	61.4	144.7	201.7	23.5	10.5	61.2	368.4
May	143.2	199.2	23.7	10.6	60.5	144.1	201.5	23.8	10.6	61.1	368.4
June	144.2	202.2	24.1	10.6	61.4	143.6	201.2	23.9	10.6	61.1	368.4
July	140.8	199.8	25.2	11.2	61.1	143.3	200.9	23.9	10.6	61.0	368.6
August	144.8	203.0	22.7	10.0	61.2	143.0	200.7	23.9	10.6	60.9	368.8
September	143.0	199.5	23.9	10.7	60.5	142.9	200.5	23.9	10.6	60.8	369.0
October	142.6	199.6	23.9	10.7	60.6	142.7	200.1	23.9	10.7	60.7	369.1

<sup>1</sup> Trend estimates for April 1996 to September 1996 have been revised.

LABOUR FORCE STATUS (AGED 15 AND OVER)–Northern Territory<sup>1</sup>

TREND.....

Month	Employed full time '000s	Total employed '000s	Total unemployed '000s	Unemp- loyment rate %	Partic- ipation rate %	Civilian population aged 15 and over '000s
<b>MALES</b>						
<b>1995</b>						
August	39.0	44.1	4.0	8.3	76.4	62.9
September	38.9	44.3	3.9	8.1	76.5	63.0
October	39.1	44.8	3.8	7.8	77.2	63.0
November	39.5	45.5	3.7	7.5	78.1	63.0
December	39.8	46.0	3.6	7.2	78.8	62.9
<b>1996</b>						
January	40.0	46.2	3.5	7.1	78.8	63.1
February	40.1	46.1	3.5	7.0	78.3	63.3
March	40.0	45.8	3.4	6.9	77.4	63.5
April	39.9	45.4	3.3	6.7	76.5	63.6
May	39.9	45.2	3.1	6.5	75.8	63.8
June	40.1	45.3	3.0	6.1	75.4	64.0
July	40.2	45.6	2.8	5.7	75.6	64.0
August	40.3	46.0	2.6	5.3	75.9	64.0
September	40.3	46.4	2.4	4.9	76.1	64.0
October	40.3	46.8	2.2	4.6	76.4	64.2
<b>FEMALES</b>						
<b>1995</b>						
August	22.9	34.7	2.5	6.7	61.5	60.6
September	22.5	34.7	2.4	6.5	61.2	60.7
October	22.3	35.0	2.3	6.0	61.3	60.8
November	22.6	35.7	2.2	5.7	62.0	61.0
December	23.3	36.4	2.3	5.9	63.2	61.1
<b>1996</b>						
January	23.9	36.9	2.5	6.3	64.3	61.3
February	24.4	37.2	2.8	7.0	65.0	61.6
March	24.7	37.3	3.1	7.6	65.3	61.8
April	24.9	37.3	3.2	7.9	65.3	62.0
May	25.0	37.3	3.2	7.8	65.2	62.1
June	25.2	37.5	2.9	7.3	65.0	62.3
July	25.3	37.7	2.6	6.6	64.7	62.3
August	25.4	37.8	2.4	5.9	64.4	62.4
September	25.3	37.9	2.2	5.4	64.1	62.4
October	25.3	37.9	2.0	5.0	63.7	62.6
<b>PERSONS</b>						
<b>1995</b>						
August	62.0	78.8	6.5	7.6	69.1	123.5
September	61.3	79.0	6.3	7.4	69.0	123.6
October	61.4	79.8	6.1	7.0	69.4	123.8
November	62.1	81.1	5.9	6.7	70.2	123.9
December	63.1	82.4	5.8	6.6	71.1	124.1
<b>1996</b>						
January	63.9	83.1	6.0	6.8	71.6	124.5
February	64.5	83.3	6.3	7.0	71.8	124.9
March	64.7	83.0	6.5	7.2	71.4	125.3
April	64.8	82.7	6.5	7.3	71.0	125.6
May	65.0	82.6	6.3	7.1	70.6	125.9
June	65.2	82.8	5.9	6.6	70.3	126.3
July	65.5	83.3	5.4	6.1	70.2	126.3
August	65.7	83.8	5.0	5.6	70.2	126.4
September	65.6	84.2	4.6	5.1	70.2	126.5
October	65.6	84.7	4.2	4.8	70.1	126.8

<sup>1</sup> Trend estimates for April 1996 to September 1996 have been revised. Estimates for the most recent three months may be subject to significant revisions as data for later months become available.

LABOUR FORCE STATUS (AGED 15 AND OVER)—Australian Capital Territory<sup>1</sup>

## TREND.....

Month	Employed	Total	Total	Unemp-	Partic-	Civilian
	full time	employed	unemployed	loyment	ipation	population
	'000s	'000s	'000s	%	%	aged 15
						and over
	'000s	'000s	'000s	%	%	'000s
MALES						
<b>1995</b>						
August	73.3	85.2	7.3	7.9	81.7	113.1
September	73.5	85.5	7.1	7.7	81.8	113.2
October	73.7	85.5	7.0	7.5	81.7	113.2
November	73.7	85.2	6.9	7.5	81.3	113.3
December	73.5	84.7	6.9	7.6	80.8	113.3
<b>1996</b>						
January	73.3	84.2	7.1	7.8	80.4	113.5
February	73.1	83.8	7.3	8.0	80.2	113.6
March	73.0	83.6	7.4	8.2	80.0	113.7
April	73.0	83.5	7.5	8.3	80.0	113.8
May	73.0	83.5	7.6	8.4	80.0	113.8
June	72.9	83.5	7.7	8.4	80.0	113.9
July	72.8	83.5	7.7	8.5	79.9	114.1
August	72.6	83.4	7.7	8.5	79.7	114.3
September	72.3	83.2	7.7	8.5	79.4	114.5
October	72.1	83.1	7.8	8.5	79.2	114.6
FEMALES						
<b>1995</b>						
August	44.7	73.7	4.7	6.0	66.7	117.6
September	45.0	74.0	4.8	6.1	67.0	117.7
October	45.1	74.1	5.0	6.3	67.2	117.8
November	45.2	74.1	5.2	6.6	67.3	117.9
December	45.2	73.9	5.4	6.8	67.2	118.0
<b>1996</b>						
January	44.9	73.5	5.7	7.2	67.1	118.1
February	44.6	73.0	5.9	7.5	66.8	118.1
March	44.2	72.6	6.1	7.8	66.6	118.2
April	43.9	72.2	6.4	8.1	66.4	118.3
May	43.7	71.9	6.6	8.4	66.3	118.4
June	43.6	71.7	6.7	8.6	66.2	118.5
July	43.6	71.6	6.8	8.6	66.0	118.7
August	43.6	71.4	6.7	8.6	65.7	118.9
September	43.5	71.2	6.6	8.5	65.4	119.0
October	43.5	71.1	6.5	8.4	65.1	119.1
PERSONS						
<b>1995</b>						
August	118.0	158.9	12.0	7.0	74.1	230.7
September	118.5	159.5	11.9	7.0	74.3	230.9
October	118.8	159.7	12.0	7.0	74.3	231.0
November	118.9	159.3	12.1	7.0	74.1	231.2
December	118.7	158.6	12.4	7.2	73.9	231.3
<b>1996</b>						
January	118.3	157.7	12.8	7.5	73.6	231.5
February	117.7	156.8	13.2	7.7	73.4	231.7
March	117.2	156.1	13.6	8.0	73.2	231.9
April	116.9	155.7	13.9	8.2	73.1	232.1
May	116.7	155.4	14.2	8.4	73.0	232.3
June	116.6	155.2	14.4	8.5	73.0	232.4
July	116.4	155.1	14.5	8.5	72.8	232.8
August	116.2	154.8	14.4	8.5	72.6	233.2
September	115.9	154.5	14.4	8.5	72.3	233.6
October	115.6	154.1	14.3	8.5	72.1	233.7

<sup>1</sup> Trend estimates for April 1996 to September 1996 have been revised. Estimates for the most recent three months may be subject to significant revisions as data for later months become available.





**10** Two types of error are possible in an estimate based on a sample survey: sampling error and non-sampling error.

*Sampling error* occurs because a sample, rather than the entire population, is surveyed. One measure of the likely difference resulting from not including all dwellings in the survey is given by the standard error. There are about two chances in three that a sample estimate will differ by less than one standard error from the figure that would have been obtained if all dwellings had been included in the survey, and about nineteen chances in twenty that the difference will be less than two standard errors. Standard errors of estimates for the latest month and of estimates of movements since the previous month are shown on pages 30 and 31. Standard errors of other estimates and other movements may be determined by using information in the Technical Notes in *Labour Force, Australia* (6203.0).

*Non sampling error* arises from inaccuracies in collecting, recording and processing the data. Every effort is made to minimise reporting error by the careful design of questionnaires, intensive training and supervision of interviewers, and efficient data processing procedures.

**11** Seasonally adjusted series are published in Tables 2, 5 and 12 to 17. Seasonal factors are reviewed annually to take account of each additional year's original data. The results of the latest review were used to compile the revised seasonally adjusted and trend estimates given in this publication. Information about the method of adjustment and revised seasonally adjusted and trend estimates for all months from January 1991 were published in an appendix to the February 1996 issue of *Labour Force, Australia* (6203.0).

**12** Seasonal adjustment is a means of removing the estimated effects of normal seasonal variation from the series so that the effects of other influences on the series can be more clearly recognised. Seasonal adjustment does not aim to remove the irregular or non-seasonal influences which may be present in any particular month. This means that month-to-month movements of the seasonally adjusted estimates may not be reliable indicators of trend behaviour. For example, irregular factors unrelated to the trend account for more than half the seasonally adjusted movement with the following frequency:

- Employment: 5 in 10 monthly movements
- Unemployment: 7 in 10 monthly movements
- Unemployment rate: 7 in 10 monthly movements
- Participation rate: 9 in 10 monthly movements

**13** The smoothing of seasonally adjusted series reduces the impact of the irregular component of the seasonally adjusted series, and creates trend estimates. These trend estimates are derived by applying a 13-term Henderson-weighted moving average to all months except the last six. The last six monthly trend estimates are obtained by applying surrogates of the Henderson average to the seasonally adjusted series. Trend series are used to analyse the underlying behaviour of the series over time. These are published in Tables 3, 6 and 12 to 19.

**14** While this smoothing technique enables estimates to be produced for the latest month, it does result in revisions to the most recent months as additional observations become available. Generally, subsequent revisions become smaller, and after three months have a negligible impact on the series. There will also be revisions as a result of the annual review of seasonal factors.

SEASONAL ADJUSTMENT AND  
TREND ESTIMATION (continued)

**15** Trend estimates are published for the Northern Territory in Table 18 and for the Australian Capital Territory in Table 19. Unadjusted series for the two Territories have shown, historically, a high degree of variability, which can lead to considerable revisions to the seasonally adjusted estimates after each annual seasonal factor re-analysis. Seasonally adjusted estimates are not currently published for the two Territories. The most recent six months trend estimates are subject to revision. For the three most recent months, the revision may be relatively large. Inferences about trends drawn from smoothed seasonally adjusted (trend) estimates for months earlier than the latest three months are unlikely to be affected by month to month revisions. They may be affected by revision resulting from the annual re-analysis of seasonal factors.

**16** For further information, see *A Guide to Interpreting Time Series — Monitoring 'Trends': an Overview* (1348.0) or contact the Assistant Director, Time Series Analysis on (06) 252 6345.

RELATED PUBLICATIONS

**17** Users may also wish to refer to *Labour Force, Australia* (6203.0). This publication contains a detailed list of related publications which are available from ABS Bookshops.

**18** Current publications produced by the ABS are listed in the *Catalogue of Publications and Products, Australia* (1101.0). The ABS also issues, on Tuesdays and Fridays, a *Release Advice* (1105.0) which lists publications to be released in the next few days. The Catalogue and Release Advice are available from any ABS office.

UNPUBLISHED STATISTICS

**19** As well as the statistics included in this and related publications, the ABS may have other relevant unpublished data available. Inquiries should be made to Audrey Graviou on 06 252 6525 or to any ABS office.

EFFECTS OF ROUNDING

**20** Estimates have been rounded and discrepancies may occur between sums of the component items and totals.

**21** Estimates of movement shown in this publication are obtained by taking the difference of unrounded estimates. The movement estimate is then rounded to one decimal place. Therefore where a discrepancy occurs between the reported movement and the difference of the rounded estimates, the reported movement will be more accurate.

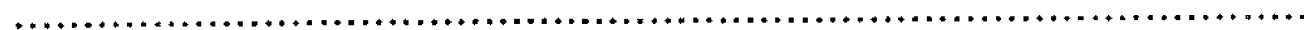
SYMBOLS AND OTHER USAGES

- \* subject to sampling variability too high for most practical uses. See the Technical Notes in 6203.0 for more details.
- .. not applicable
- r revised
- pts percentage points

## GLOSSARY



<b>Actively looking for work</b>	Includes writing, telephoning or applying in person to an employer for work; answering a newspaper advertisement for a job; checking factory or Commonwealth Employment Service noticeboards; being registered with the Commonwealth Employment Service; checking or registering with any other employment agency; advertising or tendering for work; and contacting friends or relatives.
<b>Attending school</b>	Persons aged 15 to 19 enrolled full time at secondary or high schools in the reference week.
<b>Attending tertiary educational institution full time</b>	Persons aged 15 to 24 enrolled full time at a TAFE college, university, or other educational institution in the reference week.
<b>Employed</b>	Persons aged 15 and over who, during the reference week: <ul style="list-style-type: none"> <li>■ worked for one hour or more for pay, profit, commission or payment in kind in a job or business, or on a farm (comprising employees, employers and self-employed persons); or</li> <li>■ worked for one hour or more without pay in a family business or on a farm (i.e. contributing family workers); or</li> <li>■ were employees who had a job but were not at work and were: <ul style="list-style-type: none"> <li>■ on paid leave, on leave without pay for less than four weeks up to the end of the reference week,</li> <li>■ stood down without pay because of bad weather or plant breakdown at their place of employment for less than four weeks up to the end of the reference week,</li> <li>■ on strike or locked out,</li> <li>■ on workers' compensation and expected to be returning to their job, or</li> <li>■ receiving wages or salary while undertaking full-time study; or</li> </ul> </li> <li>■ were employers, own account workers or contributing family workers who had a job, business or farm, but were not at work.</li> </ul>
<b>Full-time workers</b>	Employed persons who usually worked 35 hours or more a week (in all jobs) and those who, although usually working less than 35 hours a week, worked 35 hours or more during the reference week
<b>Labour force</b>	For any group, persons who were employed or unemployed, as defined.
<b>Labour force status</b>	A classification of the civilian population aged 15 and over into employed, unemployed or not in the labour force, as defined. The definitions conform closely to the international standard definitions adopted by the International Conferences of Labour Statisticians.
<b>Not in the labour force</b>	Persons who were not in the categories employed or unemployed as defined.
<b>Participation rate</b>	For any group, the labour force expressed as a percentage of the civilian population aged 15 and over in the same group.
<b>Part-time workers</b>	Employed persons who usually worked less than 35 hours a week and who did so during the reference week.
<b>Seasonally adjusted series</b>	A time series of estimates with the estimated effects of normal seasonal variation removed. See Explanatory Note 11 to 12 for more detail.
<b>Trend series</b>	A smoothed seasonally adjusted series of estimates. See Explanatory Notes 13 to 15 for more detail.



.....

<b>Unemployed</b>	Persons aged 15 and over who were not employed during the reference week, and: <ul style="list-style-type: none"> <li>■ had actively looked for full-time or part-time work at any time in the four weeks up to the end of the reference week and:           <ul style="list-style-type: none"> <li>■ were available for work in the reference week, or would have been available except for temporary illness (i.e. lasting for less than four weeks to the end of the reference week), or</li> <li>■ were waiting to start a new job within four weeks from the end of the reference week and would have started in the reference week if the job had been available then; or</li> </ul> </li> <li>■ were waiting to be called back to a full-time or part-time job from which they had been stood down without pay for less than four weeks up to the end of the reference week (including the whole of the reference week) for reasons other than bad weather or plant breakdown.</li> </ul>
<b>Unemployed looking for first full-time job</b>	Unemployed persons looking for full-time work (as defined above) who had never worked full time for two weeks or more
<b>Unemployed looking for full-time work</b>	Unemployed persons who actively looked for full-time work, or were to resume a full-time job from which they had been stood down.
<b>Unemployed looking for part-time work</b>	Unemployed persons who had actively looked for part-time work only, or were to resume a part-time job from which they had been stood down.
<b>Unemployment rate</b>	For any group, the number of unemployed persons expressed as a percentage of the labour force in the same group.
<b>Unemployment to population ratio</b>	For any group, the number of unemployed persons expressed as a percentage of the civilian population in the same group.

## STANDARD ERRORS

The estimates in this publication are based on information gained from the occupants of a sample survey of dwellings. Because the entire population is not surveyed, the published estimates are subject to sampling error. The most common way of quantifying such sampling error is to calculate the standard error for the published estimate or statistic.

### LEVEL ESTIMATES

To illustrate, let us say the published level estimate for employed persons aged 15 to 19 is 500,000. The calculated standard error in this case is 9,000. The standard error is then used to interpret the level estimate of 500,000. For instance, the standard error of 9,000 indicates that:

- There are approximately two chances in three that the real value falls within the range 491,000 to 509,000 ( $500,000 \pm 9,000$ )
- There are approximately nineteen chances in twenty that the real value falls within the range 482,000 to 518,000 ( $500,000 \pm 18,000$ )

The real value in this case is the result we would obtain if we could enumerate the total population.

The following tables show the standard errors for this month's level estimates.

	EMPLOYED.....			UNEMPLOYED.....							
	Employed full time	Employed part time	Total employed	Unemp. looking for f/t work	Unemp. looking for p/t work	Total unemployed	Labour force	Not in labour force	Unemployment rate	Participation rate	
	'000s	'000s	'000s	'000s	'000s	'000s	'000s	'000s	pts	pts	
NSW	14.7	9.7	16.0	6.0	3.7	6.6	16.4	13.9	0.2	0.3	
Vic.	12.1	8.3	13.3	5.3	3.1	5.8	13.7	11.4	0.3	0.4	
Qld	9.4	6.3	10.4	4.1	2.4	4.5	10.7	8.7	0.3	0.4	
SA	5.1	3.7	5.7	2.3	1.3	2.5	5.9	5.0	0.3	0.5	
WA	6.3	4.3	7.0	2.4	1.5	2.7	7.2	5.7	0.3	0.5	
Tas.	1.7	1.3	1.8	0.9	0.6	1.0	1.9	1.7	0.5	0.5	
NT	2.0	1.1	2.3	0.5	0.3	0.5	2.3	1.5	0.6	1.8	
ACT	1.6	1.1	1.8	0.6	0.4	0.7	1.8	1.3	0.4	0.8	
Males	19.8	9.3	20.7	8.1	3.6	8.6	21.3	14.9	0.2	0.3	
Females	15.5	13.8	18.8	6.3	4.8	7.5	19.4	18.4	0.2	0.3	
Persons	22.7	15.5	25.0	9.7	5.7	10.6	25.7	21.4	0.1	0.2	

	NUMBER OF UNEMPLOYED PERSONS.....						UNEMPLOYMENT RATE.....				
	Aged 15-19 seeking first f/t job	Aged 15-19 looking for f/t work	Aged 20 and over looking for f/t work	Total looking for f/t work	Looking for p/t work	Total unemployed	Aged 15-19 looking for f/t work	Aged 20 and over looking for f/t work	Total looking for f/t work	Looking for p/t work	Total unemployed
	'000s	'000s	'000s	'000s	'000s	'000s	pts	pts	pts	pts	pts
NSW	2.0	2.6	5.6	6.0	3.7	6.6	2.4	0.3	0.3	0.5	0.2
Vic.	2.0	2.2	5.1	5.3	3.1	5.8	3.5	0.3	0.3	0.5	0.3
Qld	1.4	2.0	3.8	4.1	2.4	4.5	2.8	0.3	0.3	0.6	0.3
SA	0.8	1.0	2.2	2.3	1.3	2.5	4.4	0.4	0.4	0.6	0.3
WA	0.8	1.2	2.3	2.4	1.5	2.7	3.0	0.4	0.4	0.6	0.3
Tas.	0.3	0.4	0.9	0.9	0.6	1.0	4.3	0.6	0.6	0.9	0.5
NT	0.1	0.2	0.5	0.5	0.3	0.5	5.7	0.7	0.7	1.3	0.6
ACT	0.3	0.3	0.6	0.6	0.4	0.7	8.5	0.5	0.5	0.9	0.4
Males	2.6	3.4	7.7	8.1	3.6	8.6	1.7	0.2	0.2	0.6	0.2
Females	2.3	2.9	5.9	6.3	4.8	7.5	2.4	0.3	0.3	0.3	0.2
Persons	3.3	4.3	9.1	9.7	5.7	10.6	1.3	0.1	0.1	0.3	0.1

# STANDARD ERRORS *continued*

## MOVEMENT ESTIMATES

The following example illustrates how to use the standard error to interpret a movement estimate. Let us say that one month the published level estimate for females employed part time in Australia is 1,387,000; the next month the published level estimate is 1,400,000. The calculated standard error for the movement estimate is 10,400. The standard error is then used to interpret the published movement estimate of 13,000. For instance, the standard error of 10,400 indicates that:

- There are approximately two chances in three that the real movement over the two month period falls within the range 2,600 to 23,400 (13,000 + or - 10,400)
- There are approximately nineteen chances in twenty that the real movement falls within the range -7,800 to 33,800 (13,000 + or - 20,800).

The following tables show the standard errors for this month's movement estimates.

	EMPLOYED.....			UNEMPLOYED.....			Labour force	Not in labour force	Unemp-loyment rate	Partic-ipation rate
	Employed full time	Employed part time	Total employed	Unemp. looking for f/t work	Unemp. looking for p/t work	Total unemployed				
	'000s	'000s	'000s	'000s	'000s	'000s				
NSW	11.4	7.4	12.5	4.7	3.0	5.2	12.9	10.7	0.2	0.3
Vic.	8.8	5.9	9.8	3.9	2.4	4.2	10.1	8.2	0.2	0.3
Qld	6.5	4.5	7.2	3.0	1.9	3.3	7.4	6.0	0.2	0.3
SA	3.5	2.5	3.9	1.6	1.0	1.7	4.1	3.4	0.2	0.3
WA	4.5	3.1	5.1	1.9	1.2	2.1	5.2	4.1	0.2	0.4
Tas.	1.5	1.1	1.7	0.7	0.4	0.8	1.8	1.5	0.3	0.5
NT	1.3	0.8	1.4	0.4	0.2	0.4	1.5	1.0	0.4	1.2
ACT	1.2	0.8	1.4	0.5	0.3	0.6	1.4	1.0	0.3	0.6
Males	15.1	7.1	15.8	6.3	3.1	6.6	16.4	11.2	0.1	0.2
Females	11.6	10.4	14.3	5.0	3.9	5.8	14.8	13.9	0.1	0.2
Persons	17.6	11.7	19.6	7.4	4.6	8.1	20.3	16.4	0.1	0.1

	NUMBER OF UNEMPLOYED PERSONS.....						UNEMPLOYMENT RATE.....				
	Aged 15-19 seeking first f/t job	Aged 15-19 looking for f/t work	Aged 20 and over looking for f/t work	Total looking for f/t work	Looking for p/t work	Total unemployed	Aged 15-19 looking for f/t work	Aged 20 and over looking for f/t work	Total looking for f/t work	Looking for p/t work	Total unemp-loyed
	'000s	'000s	'000s	'000s	'000s	'000s	pts	pts	pts	pts	pts
NSW	1.8	2.2	4.5	4.7	3.0	5.2	2.2	0.2	0.2	0.4	0.2
Vic.	1.6	1.8	3.7	3.9	2.4	4.2	2.6	0.2	0.2	0.4	0.2
Qld	1.3	1.6	2.8	3.0	1.9	3.3	2.3	0.2	0.2	0.5	0.2
SA	0.6	0.8	1.5	1.6	1.0	1.7	3.6	0.3	0.3	0.5	0.2
WA	0.7	1.0	1.8	1.9	1.2	2.1	2.5	0.3	0.3	0.5	0.2
Tas.	0.2	0.3	0.7	0.7	0.4	0.8	3.6	0.5	0.4	0.7	0.3
NT	0.1	0.1	0.4	0.4	0.2	0.4	4.1	0.5	0.5	1.1	0.4
ACT	0.3	0.3	0.5	0.5	0.3	0.6	7.2	0.4	0.4	0.7	0.3
Males	2.3	2.9	6.0	6.3	3.1	6.6	1.4	0.1	0.1	0.5	0.1
Females	2.1	2.5	4.7	5.0	3.9	5.8	2.2	0.2	0.2	0.2	0.1
Persons	2.8	3.5	7.0	7.4	4.6	8.1	1.1	0.1	0.1	0.2	0.1

# WHAT IF...? REVISIONS TO TREND ESTIMATES

## EFFECT OF NEW SEASONALLY ADJUSTED ESTIMATES ON TREND ESTIMATES

Each time new seasonally adjusted estimates become available, trend estimates are revised (see paragraphs 13 and 14 of Explanatory Notes).

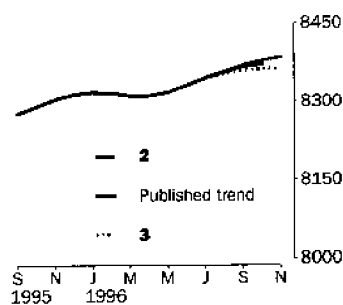
### TREND REVISIONS

The examples in the tables below show four illustrative scenarios and the consequent revisions to previous trend estimates of employment and unemployment rate.

- 1** The November seasonally adjusted estimate is the same as the October estimate.
- 2** The November seasonally adjusted estimate is higher than the October estimate by:
  - +0.33% for employment
  - +2.2% for the unemployment rate
- 3** The November seasonally adjusted estimate is lower than the October estimate by:
  - -0.33% for employment
  - -2.2% for the unemployment rate
- 4** The November seasonally adjusted estimate results in a revised October trend estimate which is identical to the new November trend estimate.

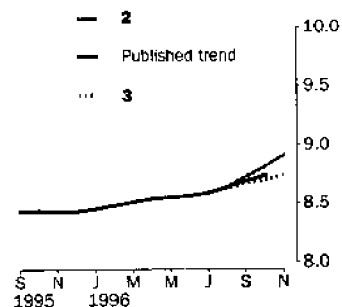
The percentage changes of 0.33% and 2.2% were chosen because they represent the average absolute monthly percentage changes in employment and the unemployment rate respectively.

### EMPLOYMENT ('000)



		WHAT IF NEXT MONTH'S SEASONALLY ADJUSTED ESTIMATE IS:			
		<b>1</b>	<b>2</b>	<b>3</b>	<b>4</b>
TREND as PUBLISHED		8 372.5 <i>i.e. the same as Oct 1996</i>	8 400.6 <i>i.e. rises by 0.33%</i>	8 344.5 <i>i.e. falls by 0.33%</i>	8 350.2 <i>i.e. same trend for Oct &amp; Nov</i>
1996	August	8 356.3	8 357.6	8 355.0	8 355.3
	September	8 366.0	8 368.7	8 360.4	8 361.3
	October	8 371.9	8 378.3	8 362.6	8 364.2
	November (new)	—	8 373.6	8 385.4	8 361.8

### UNEMPLOYMENT RATE (%)



		WHAT IF NEXT MONTH'S SEASONALLY ADJUSTED ESTIMATE IS:			
		<b>1</b>	<b>2</b>	<b>3</b>	<b>4</b>
TREND as PUBLISHED		8.8 <i>i.e. the same as Oct 1996</i>	9.0 <i>i.e. rises by 2.2%</i>	8.6 <i>i.e. falls by 2.2%</i>	8.3 <i>i.e. same trend for Oct &amp; Nov</i>
1996	August	8.6	8.6	8.6	8.6
	September	8.7	8.7	8.7	8.6
	October	8.7	8.8	8.7	8.6
	November (new)	—	8.8	8.9	8.7





## FOR MORE INFORMATION . . .

The ABS publishes a wide range of information on Australia's economic and social conditions. A catalogue of publications and products is available from any of our offices (see below).

### INFORMATION CONSULTANCY SERVICES

Information tailored to special needs of clients can be obtained from the Information Consultancy Service available at ABS Offices (see below).

### ABS PRODUCTS

A large number of ABS products is available from the ABS Bookshops (see below). The ABS also provides a subscription service – you can telephone the ABS Subscription Service Australia wide toll free on 1800 0206 08.

### ELECTRONIC SERVICES

A large range of data is available via on-line services, diskette, magnetic tape, tape cartridge and CD ROM. For more details about our electronic data services, contact any ABS office (see below) or e-mail us at:

X.400 (C:Australia,PUB:Telememo,O:ABS,FN:STAT,SN:INFO)  
Internet Stat.info@abs.telememo.au  
Keylink STAT.INFO/ABS

You can visit us on the Internet at: <http://www.abs.gov.au>

### GENERAL SALES AND INQUIRIES

- Sydney 02 9268 4611
  - Melbourne 03 9615 7755
  - Brisbane 07 3222 6351
  - Perth 09 360 5140
  - Adelaide 08 8237 7100
  - Hobart 03 6220 5800
  - Darwin 08 8943 2111
  - Canberra 06 252 6627
- Information Services, ABS  
PO Box 10, Belconnen ACT 2616



2620200010968  
ISSN 1031-038X

RRP \$15.50