



# LABOUR FORCE

AUSTRALIA  
PRELIMINARY

EMBARGOED UNTIL 11:30AM THURS 11 JULY 1996

## JUNE KEY ESTIMATES

### TREND ESTIMATES

	May 96	Jun 96	monthly change
Employed persons (no. in '000s)	8 311.0	8 314.3	0.0 %
Unemployed persons (no. in '000s)	777.5	777.6	0.0 %
Unemployment rate (%)	8.6	8.6	0.0 pts
Participation rate (%)	63.5	63.4	-0.1 pts

### SEASONALLY ADJUSTED

	May 96	Jun 96	monthly change
Employed persons (no. in '000s)	8 324.8	8 333.5	8.7
Unemployed persons (no. in '000s)	774.1	757.1	-17.0
Unemployment rate (%)	8.5	8.3	-0.2 pts
Participation rate (%)	63.5	63.4	-0.2 pts

## JUNE KEY POINTS

### TREND ESTIMATES

#### EMPLOYMENT

- rose slightly to 8,314,300, after falling in recent months. Full-time employment continues to fall slowly, while part-time employment has resumed rising.

#### UNEMPLOYMENT

- remained relatively steady at 777,600 after a period of slight increases.

#### UNEMPLOYMENT RATE

- steady at 8.6%, with the male rate also steady at 8.7% and the female rate rising slightly to 8.4%.

#### PARTICIPATION RATE

- continues a series of falls from February 1996, to 63.4% in June 1996.

### SEASONALLY ADJUSTED ESTIMATES

#### EMPLOYMENT

- rose by 8,700 to 8,333,500 with part-time employment rising by 25,500 to 2,082,600. Male and female part-time employment rose by 9,300 and 16,200 respectively. Full-time employment fell by 16,900 to 6,250,900.

#### UNEMPLOYMENT

- fell by 17,000 to 757,100, with female unemployment falling by 18,700 to 312,700.

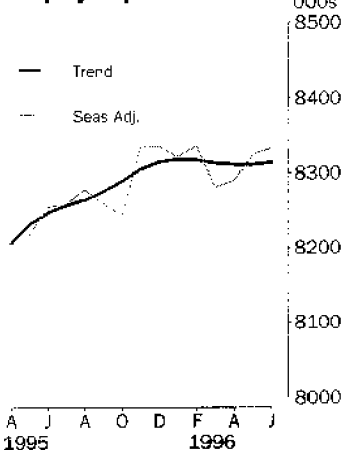
#### UNEMPLOYMENT RATE

- fell by 0.2 percentage points to 8.3%, with the rate for females falling to 8.0%.
- NSW 7.7% (8.0% last month); Vic. 8.1% (8.3%); Qld 9.4% (9.0%); SA 8.8% (9.6%); WA 8.2% (7.6%); Tas. 10.6% (10.6%).

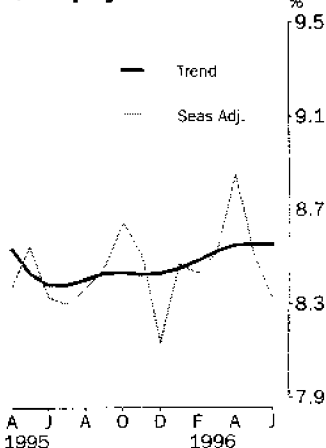
#### PARTICIPATION RATE

- actually fell by 0.2 percentage points but due to rounding stands at 63.4%.

Employed persons



Unemployment rate



## INQUIRIES

- For further information about these and related statistics, contact Don Clark on 06 252 6525 or any ABS office.

FORTHCOMING ISSUES	ISSUE	RELEASE DATE
	July 1996	8 August 1996
	August 1996	12 September 1996
	September 1996	10 October 1996
	October 1996	7 November 1996
	November 1996	12 December 1996
	December 1996	16 January 1997

**CHANGES IN THIS ISSUE** Changes have been made to the content of Tables 4, 5 and 6. Data on persons 'Aged 15-19 seeking first f/t job' have been removed. Additional columns now show unemployment to population ratios for persons 'Aged 15-19 looking for f/t work' and persons 'Aged 20 and over looking for f/t work'. For definitions, see the Glossary.

**FORTHCOMING CHANGES** From August this year the ABS will progressively introduce the use of telephone interviewing into the Labour Force Survey. Households selected for the Labour Force Survey are interviewed each month for 8 months, with one eighth of the sample being replaced each month. The first interview will continue to be conducted face-to-face. Subsequent interviews will then be conducted by telephone (if feasible and acceptable to the respondent). Telephone interviewing will be phased in for each new sample group from August 1996 and will be fully implemented by February 1997. The ABS is confident that the adoption of this method will result in no noticeable impact on key estimates of employment or unemployment.

The introduction of telephone interviewing is the first of a number of changes being implemented in the Labour Force Survey. Other major changes include a redesign of the survey questionnaire and the introduction of computer assisted interviewing methods, both of which will occur at a later date. Details of telephone interviewing and other planned changes were published in the article Upcoming Changes to the Labour Force Survey published in the October 1995 issue of Labour Force, Australia (6203.0). For further details contact Geoff Neideck on (06) 252 6753.

**ROUNDING** Estimates of monthly change shown on page 1 have been calculated using unrounded estimates, and may be different from, but are more accurate than, movements obtained from the rounded estimates. The graphs on page 1 also depict movements calculated from unrounded estimates.

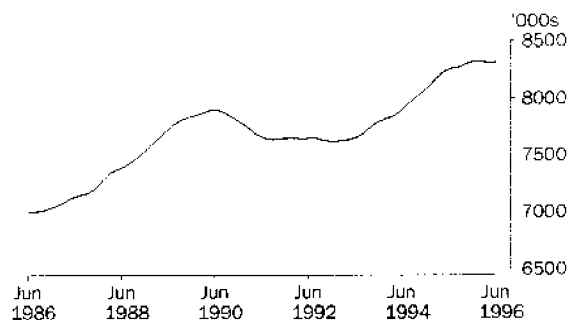
**SAMPLING ERRORS** The estimates in this publication are based on a sample survey. Because the entire population is not enumerated, the published estimates and the movements derived from them are subject to sampling variability. Standard errors give a measure of this variability and appear on pages 30 and 31.

W. McLennan  
Australian Statistician

# PRINCIPAL LABOUR FORCE SERIES: Trend estimates

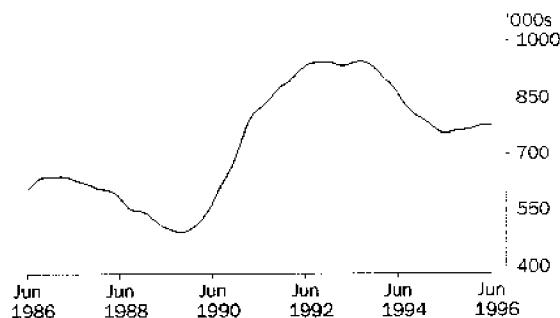
## EMPLOYED PERSONS

After reaching a high of 7,894,000 in June 1990, trend estimates of employment fell by 3.5 per cent, to 7,617,200 in January 1993. The trend rose over the next three years to peak at 8,318,300 in January 1996, but fell slightly over the next few months. In June 1996, the trend estimate has risen slightly to 8,314,300.



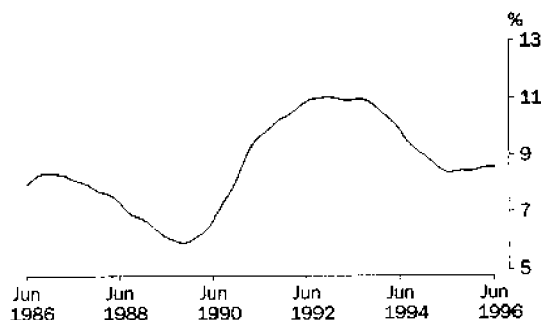
## UNEMPLOYED PERSONS

Trend estimates of unemployment rose from 491,400 in October 1989, to a high of 946,800 in September 1993. Trend estimates then began to fall, to a low of 754,600 in June 1995, but have since risen to stand at 777,600 in June 1996 with the rate of increase slowing in recent months.



## UNEMPLOYMENT RATE

From a low of 5.9 per cent in late 1989, the trend unemployment rate rose to a peak of 11.0 per cent in late 1992 and early 1993. The rate then fell steadily to 8.4 per cent in mid 1995 and remained relatively steady for the rest of the year. Since December 1996, the rate has been rising slowly to stand at 8.6 per cent in June 1996.

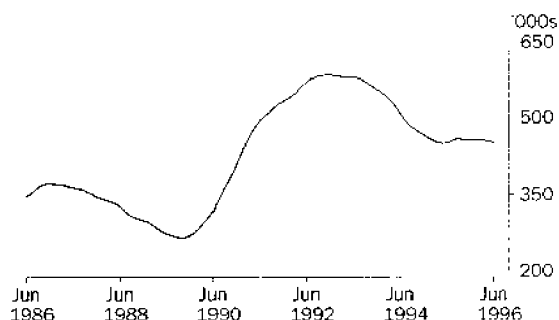


# UNEMPLOYED PERSONS: Trend estimates

## UNEMPLOYED MALES

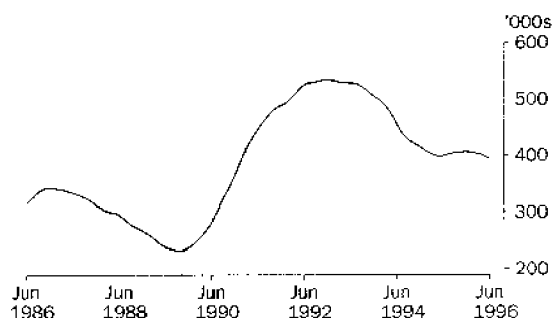
### TOTAL

After reaching a peak of 584,300 in December 1992, trend unemployment estimates for males fell to 449,800 in May 1995. The trend then rose over the next four months to 458,200 in September 1995, and then commenced falling again, reaching 451,500 in June 1996.



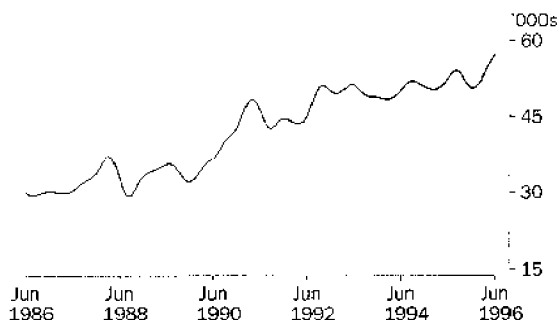
### MALES LOOKING FOR FULL TIME WORK

Trend estimates of the number of males looking for full-time work rose from 231,500 in October 1989, to a peak of 534,100 in December 1992. The trend then fell to a low of 398,300 in May 1995, before rising slightly for the rest of the year. In 1996, trend estimates began to decline and stood at 394,200 in June 1996.



### MALES LOOKING FOR PART TIME WORK

Trend estimates of the number of males looking for part-time work have been generally rising over the last ten years, from 29,800 in June 1986 to 54,100 in August 1995. The trend estimate fell slightly for the rest of 1995, but has since risen to a peak of 57,300 in June 1996.

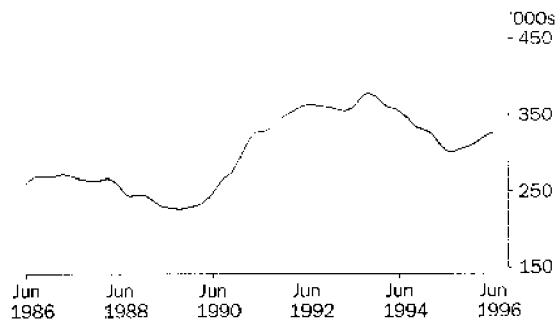


# UNEMPLOYED PERSONS: Trend estimates

## UNEMPLOYED FEMALES

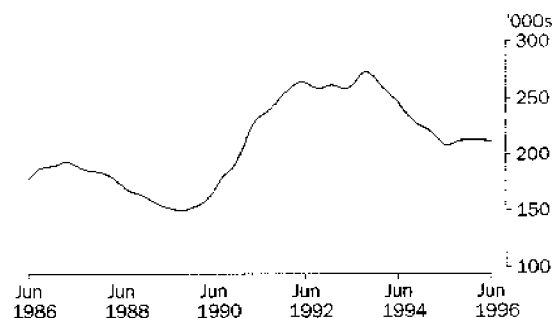
### TOTAL

Trend estimates of female unemployment rose from 226,700 in late 1989 to peak at 378,000 in October 1993. The trend then began to fall, and by July 1995 had reached 301,200. Since then, the trend has been rising to stand at 326,100 in June 1996.



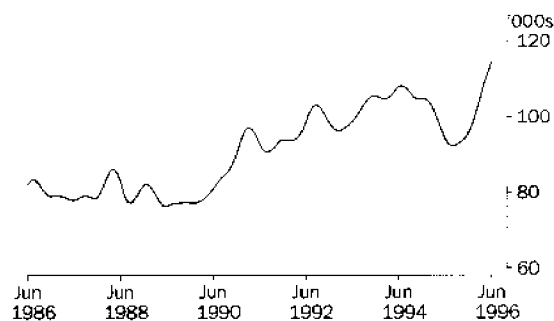
### FEMALES LOOKING FOR FULL TIME WORK

After reaching a peak of 273,400 in October 1993, trend estimates of unemployed females looking for full-time work fell steadily to 208,400 in mid 1995. Trend estimates rose for the rest of 1995, and then began to fall in early 1996. In June 1996, the trend estimate stood at 211,800.



### FEMALES LOOKING FOR PART TIME WORK

Trend estimates of the number of females looking for part-time work rose from 77,000 in January 1990, to 108,200 in July 1994. Trend estimates then began to fall, to 92,300 in August 1995, before rising rapidly for the rest of 1995 and into 1996. In June 1996, the trend estimate has risen to a peak of 114,300.





# LABOUR FORCE STATUS (AGED 15 AND OVER): Original

Month	EMPLOYED.....			UNEMPLOYED.....							Unemp- loyment rate %	Partic- ipation rate %
	Employed full time '000s	Employed part time '000s	Total employed '000s	Unemp. looking for full work '000s	Unemp. looking for part work '000s	Total unemployed '000s	Labour force '000s	Not in labour force '000s	Civilian population aged 15 and over '000s			
<b>MALES</b>												
<b>1995</b>												
April	4 165.8	525.0	4 690.7	391.0	48.0	439.0	5 129.7	1 806.5	6 936.2	8.6	74.0	
May	4 158.0	515.1	4 673.1	403.0	52.6	455.6	5 128.7	1 816.5	6 945.2	8.9	73.8	
June	4 169.1	516.6	4 685.8	391.8	45.7	437.3	5 123.1	1 831.1	6 954.2	8.5	73.7	
July	4 204.5	499.7	4 704.2	383.1	49.3	432.4	5 136.6	1 825.4	6 962.0	8.4	73.8	
August	4 151.8	520.6	4 672.5	388.3	45.7	434.0	5 106.5	1 863.3	6 969.8	8.5	73.3	
September	4 210.8	523.4	4 734.2	400.8	62.8	463.7	5 197.8	1 779.8	6 977.7	8.9	74.5	
October	4 175.7	517.4	4 693.1	392.8	49.1	441.8	5 134.9	1 850.8	6 985.7	8.6	73.5	
November	4 190.5	527.2	4 717.7	388.1	44.4	432.5	5 150.2	1 843.7	6 993.8	8.4	73.6	
December	4 272.4	513.0	4 785.4	399.4	49.8	449.3	5 234.7	1 767.2	7 001.9	8.6	74.8	
<b>1996</b>												
January	4 208.0	478.8	4 686.9	447.8	59.1	506.9	5 193.7	1 817.8	7 011.6	9.8	74.1	
February	4 223.2	502.7	4 725.9	437.4	54.6	492.0	5 217.9	1 803.2	7 021.2	9.4	74.3	
March	4 180.6	534.4	4 715.0	410.6	63.5	474.1	5 189.1	1 841.7	7 030.8	9.1	73.8	
April	4 187.4	535.4	4 722.9	405.1	57.7	462.8	5 185.7	1 855.2	7 040.9	8.9	73.7	
May	4 210.3	537.6	4 748.0	389.6	52.4	442.0	5 190.0	1 861.0	7 051.0	8.5	73.6	
June	4 201.3	550.4	4 751.6	380.3	51.9	432.1	5 183.8	1 877.4	7 061.1	8.3	73.4	
<b>FEMALES</b>												
<b>1995</b>												
April	2 017.9	1 522.0	3 539.9	204.7	99.3	304.0	3 843.9	3 309.0	7 152.9	7.9	53.7	
May	2 034.1	1 523.6	3 557.7	207.7	90.3	298.0	3 855.7	3 305.9	7 161.6	7.7	53.8	
June	2 044.6	1 543.2	3 587.8	202.9	84.7	287.5	3 875.3	3 295.0	7 170.3	7.4	54.0	
July	2 064.9	1 524.4	3 589.3	196.8	80.4	277.2	3 866.5	3 312.0	7 178.5	7.2	53.9	
August	2 031.7	1 513.6	3 545.3	195.1	92.8	287.9	3 833.1	3 353.5	7 186.6	7.5	53.3	
September	2 072.7	1 533.7	3 606.4	202.1	97.5	299.6	3 906.0	3 288.8	7 194.8	7.7	54.3	
October	2 065.9	1 503.8	3 569.7	203.7	93.4	297.1	3 866.8	3 336.6	7 203.3	7.7	53.7	
November	2 068.5	1 543.6	3 612.1	211.5	92.8	304.3	3 916.4	3 295.4	7 211.8	7.8	54.3	
December	2 105.3	1 539.9	3 645.3	211.2	88.1	299.3	3 944.6	3 275.7	7 220.3	7.6	54.6	
<b>1996</b>												
January	2 066.9	1 431.2	3 498.1	228.4	96.4	324.8	3 823.0	3 407.1	7 230.1	8.5	52.9	
February	2 049.1	1 489.3	3 538.4	248.5	116.1	364.6	3 903.0	3 336.9	7 239.9	9.3	53.9	
March	2 057.2	1 530.5	3 587.7	219.3	117.5	336.9	3 924.5	3 325.1	7 249.7	8.6	54.1	
April	2 042.8	1 512.1	3 555.0	217.7	112.4	330.1	3 885.1	3 375.2	7 260.2	8.5	53.5	
May	2 042.2	1 546.9	3 589.1	207.7	108.5	316.1	3 905.2	3 365.5	7 270.8	8.1	53.7	
June	2 042.2	1 560.2	3 602.4	194.9	103.5	298.4	3 900.9	3 380.5	7 281.4	7.7	53.6	
<b>PERSONS</b>												
<b>1995</b>												
April	6 183.6	2 047.0	8 230.6	595.7	147.3	743.0	8 973.7	5 115.4	14 089.1	8.3	63.7	
May	6 192.1	2 038.7	8 230.8	610.7	142.9	753.6	8 984.4	5 122.4	14 106.7	8.4	63.7	
June	6 213.7	2 059.8	8 273.6	594.5	130.4	724.8	8 998.4	5 126.0	14 124.5	8.1	63.7	
July	6 269.5	2 024.1	8 293.6	579.9	129.7	709.6	9 003.1	5 137.4	14 140.5	7.9	63.7	
August	6 183.5	2 034.2	8 217.7	583.4	138.5	721.9	8 939.6	5 216.9	14 156.5	8.1	63.1	
September	6 283.5	2 057.1	8 340.6	603.0	160.3	763.3	9 103.9	5 068.6	14 172.5	8.4	64.2	
October	6 241.6	2 021.2	8 262.8	596.4	142.4	738.9	9 001.7	5 187.4	14 189.1	8.2	63.4	
November	6 259.1	2 070.8	8 329.8	599.6	137.2	736.8	9 066.6	5 139.0	14 205.7	8.1	63.8	
December	6 377.8	2 052.9	8 430.7	610.7	137.9	748.6	9 179.3	5 042.9	14 222.2	8.2	64.5	
<b>1996</b>												
January	6 275.0	1 910.0	8 185.0	676.2	155.5	831.7	9 016.7	5 225.0	14 241.7	9.2	63.3	
February	6 272.3	1 992.0	8 264.3	686.0	170.7	856.6	9 120.9	5 140.1	14 261.0	9.4	64.0	
March	6 237.7	2 064.9	8 302.7	629.9	181.0	810.9	9 113.6	5 166.8	14 280.5	8.9	63.8	
April	6 230.3	2 047.6	8 277.8	622.8	170.2	793.0	9 070.8	5 230.4	14 301.1	8.7	63.4	
May	6 252.5	2 084.5	8 337.1	597.3	160.9	758.2	9 095.2	5 226.6	14 321.8	8.3	63.5	
June	6 243.5	2 110.6	8 354.1	575.2	155.4	730.5	9 084.6	5 257.9	14 342.5	8.0	63.3	

LABOUR FORCE STATUS (AGED 15 AND OVER): Seasonally adjusted

Month	EMPLOYED.....			UNEMPLOYED.....			Labour force	Unemp- loyment rate	Partic- ipation rate
	Employed full time	Employed part time	Total employed	Unemp. looking for f/t work	Unemp. looking for p/t work	Total unemployed			
	'000s	'000s	'000s	'000s	'000s	'000s	'000s	%	%
MALES									
<b>1995</b>									
April	4 176.0	517.3	4 693.2	396.2	49.0	445.2	5 138.5	8.7	74.1
May	4 164.9	511.8	4 676.7	402.5	53.7	456.2	5 132.9	8.9	73.9
June	4 170.2	510.1	4 680.3	398.5	50.9	449.4	5 129.7	8.8	73.8
July	4 184.9	499.0	4 683.9	398.4	55.2	453.6	5 137.5	8.8	73.8
August	4 189.4	515.0	4 704.4	396.8	51.8	448.6	5 152.9	8.7	73.9
September	4 200.3	507.2	4 707.5	407.3	57.9	465.2	5 172.7	9.0	74.1
October	4 165.4	511.0	4 676.4	416.7	52.9	469.6	5 146.0	9.1	73.7
November	4 203.5	534.8	4 738.2	403.5	51.6	455.1	5 193.3	8.8	74.3
December	4 212.6	519.2	4 731.8	395.9	47.2	443.1	5 174.9	8.6	73.9
<b>1996</b>									
January	4 223.9	503.9	4 727.8	406.5	52.1	458.5	5 186.3	8.8	74.0
February	4 228.0	523.6	4 751.6	403.7	48.3	452.0	5 203.6	8.7	74.1
March	4 192.0	521.0	4 713.0	407.6	54.1	461.7	5 174.7	8.9	73.6
April	4 197.3	528.0	4 725.3	410.7	59.2	470.0	5 195.2	9.0	73.8
May	4 217.2	534.5	4 751.7	389.2	53.6	442.8	5 194.5	8.5	73.7
June	4 201.7	543.9	4 745.5	386.9	57.5	444.4	5 189.9	8.6	73.5
FEMALES									
<b>1995</b>									
April	2 040.5	1 508.5	3 549.0	208.6	100.0	308.6	3 857.6	8.0	53.9
May	2 042.5	1 499.4	3 541.9	215.7	95.9	311.6	3 853.5	8.1	53.8
June	2 052.4	1 521.7	3 574.2	209.6	91.1	300.7	3 874.9	7.8	54.0
July	2 057.0	1 517.7	3 574.7	205.2	88.7	293.9	3 868.6	7.6	53.9
August	2 068.9	1 504.8	3 573.7	206.8	100.1	306.9	3 880.6	7.9	54.0
September	2 064.9	1 488.1	3 553.1	208.6	88.8	297.4	3 850.4	7.7	53.5
October	2 062.8	1 503.2	3 566.0	215.7	95.0	310.7	3 876.7	8.0	53.8
November	2 069.8	1 526.6	3 596.4	224.1	96.3	320.3	3 916.7	8.2	54.3
December	2 062.8	1 540.7	3 603.5	205.3	89.9	295.2	3 898.7	7.6	54.0
<b>1996</b>									
January	2 057.7	1 536.5	3 594.2	209.3	102.1	311.4	3 905.6	8.0	54.0
February	2 046.9	1 537.8	3 584.7	215.0	100.4	315.4	3 900.1	8.1	53.9
March	2 051.5	1 516.5	3 568.0	209.6	99.8	309.4	3 877.4	8.0	53.5
April	2 066.3	1 499.3	3 565.6	221.7	113.5	335.3	3 900.8	8.6	53.7
May	2 050.6	1 522.5	3 573.1	216.1	115.2	331.3	3 904.4	8.5	53.7
June	2 049.2	1 538.7	3 587.9	201.3	111.4	312.7	3 900.6	8.0	53.6
PERSONS									
<b>1995</b>									
April	6 216.5	2 025.8	8 242.3	604.8	149.0	753.8	8 996.1	8.4	63.9
May	6 207.4	2 011.2	8 218.6	618.3	149.6	767.8	8 986.4	8.5	63.7
June	6 222.7	2 031.8	8 254.5	608.2	142.0	750.1	9 004.6	8.3	63.8
July	6 241.9	2 016.7	8 258.6	603.5	143.9	747.4	9 006.0	8.3	63.7
August	6 258.3	2 019.8	8 278.1	603.6	151.8	755.4	9 033.5	8.4	63.8
September	6 265.2	1 995.3	8 260.5	615.9	146.7	762.6	9 023.1	8.5	63.7
October	6 228.2	2 014.2	8 242.4	632.4	147.9	780.3	9 022.7	8.6	63.6
November	6 273.2	2 061.4	8 334.6	627.6	147.9	775.5	9 110.1	8.5	64.1
December	6 275.4	2 059.9	8 335.3	601.2	137.1	738.3	9 073.6	8.1	63.8
<b>1996</b>									
January	6 281.5	2 040.4	8 321.9	615.7	154.2	770.0	9 091.9	8.5	63.8
February	6 274.9	2 061.4	8 336.3	618.7	148.8	767.4	9 103.7	8.4	63.8
March	6 243.5	2 037.5	8 281.0	617.2	153.9	771.1	9 052.1	8.5	63.4
April	6 263.6	2 027.2	8 290.8	632.5	172.8	805.2	9 096.0	8.9	63.6
May	6 267.7	2 057.1	8 324.8	605.3	168.8	774.1	9 098.9	8.5	63.5
June	6 250.9	2 082.6	8 333.5	588.1	168.9	757.1	9 090.5	8.3	63.4



## LABOUR FORCE STATUS (AGED 15 AND OVER): Trend<sup>1</sup>

Month	EMPLOYED.....			UNEMPLOYED.....					
	Employed full time '000s	Employed part time '000s	Total employed '000s	Unemp. looking for fit work '000s	Unemp. looking for p/t work '000s	Total unemployed '000s	Labour force '000s	Unemp-loyment rate %	Partic-ipation rate %
<b>MALES</b>									
<b>1995</b>									
April	4 168.3	510.7	4 679.1	399.9	50.7	450.7	5 129.7	8.8	74.0
May	4 174.2	509.6	4 683.7	398.3	51.5	449.8	5 133.5	8.8	73.9
June	4 177.7	508.4	4 686.2	398.7	52.6	451.3	5 137.5	8.8	73.9
July	4 180.2	508.7	4 688.9	400.4	53.6	454.0	5 142.9	8.8	73.9
August	4 183.3	510.2	4 693.5	402.7	54.1	456.8	5 150.2	8.9	73.9
September	4 188.4	512.5	4 700.9	404.4	53.8	458.2	5 159.1	8.9	73.9
October	4 195.1	515.1	4 710.1	405.1	52.7	457.8	5 168.0	8.9	74.0
November	4 202.1	517.0	4 719.1	405.5	51.5	457.0	5 176.1	8.8	74.0
December	4 207.9	517.9	4 725.8	405.8	50.7	456.4	5 182.2	8.8	74.0
<b>1996</b>									
January	4 211.6	518.5	4 730.1	405.4	50.7	456.2	5 186.3	8.8	74.0
February	4 212.4	520.3	4 732.7	404.5	51.7	456.2	5 188.9	8.8	73.9
March	4 210.7	523.5	4 734.2	402.9	53.3	456.2	5 190.4	8.8	73.8
April	4 207.9	528.0	4 735.9	400.6	54.8	455.4	5 191.3	8.8	73.7
May	4 205.0	532.8	4 737.8	397.5	56.1	453.6	5 191.5	8.7	73.6
June	4 202.9	538.3	4 741.2	394.2	57.3	451.5	5 192.7	8.7	73.5
<b>FEMALES</b>									
<b>1995</b>									
April	2 019.3	1 508.1	3 527.4	215.4	99.6	315.0	3 842.4	8.2	53.7
May	2 037.1	1 510.6	3 547.7	211.6	96.6	308.2	3 855.9	8.0	53.8
June	2 051.3	1 509.7	3 561.0	209.0	94.3	303.3	3 864.3	7.8	53.9
July	2 060.5	1 507.5	3 568.0	208.4	92.8	301.2	3 869.2	7.8	53.9
August	2 065.3	1 506.1	3 571.4	209.3	92.3	301.6	3 873.0	7.8	53.9
September	2 067.1	1 507.8	3 574.8	210.9	92.7	303.6	3 878.4	7.8	53.9
October	2 066.2	1 513.6	3 579.8	212.2	93.4	305.6	3 885.3	7.9	53.9
November	2 064.2	1 521.2	3 585.4	212.8	94.2	307.1	3 892.5	7.9	54.0
December	2 061.2	1 527.3	3 588.6	213.3	95.7	309.0	3 897.5	7.9	54.0
<b>1996</b>									
January	2 058.3	1 529.9	3 588.2	213.4	98.1	311.5	3 899.7	8.0	53.9
February	2 056.1	1 528.2	3 584.3	213.3	101.5	314.7	3 899.0	8.1	53.9
March	2 054.7	1 524.3	3 578.9	213.2	105.1	318.3	3 897.3	8.2	53.8
April	2 053.7	1 521.5	3 575.1	213.0	108.6	321.6	3 896.7	8.3	53.7
May	2 052.8	1 520.5	3 573.2	212.2	111.6	323.9	3 897.1	8.3	53.6
June	2 052.4	1 520.7	3 573.0	211.8	114.3	326.1	3 899.1	8.4	53.5
<b>PERSONS</b>									
<b>1995</b>									
April	6 187.7	2 018.8	8 206.5	615.3	150.4	765.7	8 972.2	8.5	63.7
May	6 211.2	2 020.2	8 231.4	609.8	148.1	758.0	8 989.4	8.4	63.7
June	6 229.0	2 018.1	8 247.1	607.7	146.9	754.6	9 001.7	8.4	63.7
July	6 240.7	2 016.2	8 256.9	608.9	146.4	755.2	9 012.1	8.4	63.7
August	6 248.6	2 016.3	8 264.9	612.0	146.4	758.3	9 023.2	8.4	63.7
September	6 255.5	2 020.3	8 275.8	615.3	146.5	761.8	9 037.6	8.4	63.8
October	6 261.3	2 028.7	8 289.9	617.3	146.1	763.4	9 053.3	8.4	63.8
November	6 266.3	2 038.2	8 304.5	618.3	145.7	764.0	9 068.5	8.4	63.8
December	6 269.1	2 045.2	8 314.3	619.1	146.3	765.4	9 079.7	8.4	63.8
<b>1996</b>									
January	6 269.9	2 048.5	8 318.3	618.8	148.8	767.6	9 086.0	8.4	63.8
February	6 268.6	2 048.4	8 317.0	617.8	153.2	770.9	9 087.9	8.5	63.7
March	6 265.4	2 047.8	8 313.2	616.2	158.3	774.5	9 087.7	8.5	63.6
April	6 261.5	2 049.5	8 311.0	613.6	163.4	776.9	9 088.0	8.5	63.5
May	6 257.8	2 053.2	8 311.0	609.8	167.7	777.5	9 088.5	8.6	63.5
June	6 255.3	2 059.0	8 314.3	606.0	171.6	777.6	9 091.9	8.6	63.4

<sup>1</sup> Estimates for December 1995 to May 1996 have been revised.



## UNEMPLOYED PERSONS: Original

Month	NUMBER OF UNEMPLOYED PERSONS.....					UNEMPLOYMENT RATE.....					UNEMPLOYMENT TO POPULATION RATIO	
	Aged 15-19 looking for f/t work	Aged 20 and over looking for f/t work	Total looking for f/t work	Looking for p/t work	Total unemployed	Aged 15-19 looking for f/t work	Aged 20 and over looking for f/t work	Total looking for f/t work	Looking for p/t work	Total unemployed	Aged 15-19 looking for f/t work	Aged 20 and over looking for f/t work
	'000s	'000s	'000s	'000s	'000s	%	%	%	%	%	%	%
<b>MALES</b>												
<b>1995</b>												
April	46.9	344.1	391.0	48.0	439.0	22.5	7.9	8.6	8.4	8.6	7.2	5.5
May	51.3	351.6	403.0	52.6	455.6	25.0	8.1	8.8	9.3	8.9	7.9	5.6
June	48.8	342.8	391.6	45.7	437.3	24.8	7.9	8.6	8.1	8.5	7.5	5.4
July	50.4	332.7	383.1	49.3	432.4	24.3	7.6	8.4	9.0	8.4	7.7	5.3
August	46.8	341.6	388.3	45.7	434.0	24.3	7.9	8.6	8.1	8.5	7.2	5.4
September	46.0	354.8	400.8	62.8	463.7	23.1	8.0	8.7	10.7	8.9	7.1	5.6
October	46.4	346.4	392.8	49.1	441.8	23.6	7.9	8.6	8.7	8.6	7.1	5.5
November	48.0	340.1	388.1	44.4	432.5	24.9	7.8	8.5	7.8	8.4	7.4	5.4
December	59.6	339.8	399.4	49.8	449.3	26.3	7.6	8.5	8.9	8.6	9.2	5.3
<b>1996</b>												
January	69.4	378.4	447.8	59.1	506.9	28.9	8.6	9.6	11.0	9.8	10.7	5.9
February	58.4	379.0	437.4	54.6	492.0	26.5	8.5	9.4	9.8	9.4	9.0	6.0
March	53.7	356.8	410.6	63.5	474.1	25.5	8.1	8.9	10.6	9.1	8.2	5.6
April	55.0	350.1	405.1	57.7	462.8	25.7	8.0	8.8	9.7	8.9	8.4	5.5
May	55.5	334.2	389.6	52.4	442.0	27.4	7.6	8.5	8.9	8.5	8.5	5.2
June	55.8	324.5	380.3	51.9	432.1	28.0	7.4	8.3	8.6	8.3	8.5	5.1
<b>FEMALES</b>												
<b>1995</b>												
April	38.2	166.5	204.7	99.3	304.0	31.9	7.9	9.2	6.1	7.9	6.2	2.5
May	43.6	164.0	207.7	90.3	298.0	34.4	7.8	9.3	5.6	7.7	7.1	2.5
June	40.5	162.3	202.9	84.7	287.5	33.2	7.6	9.0	5.2	7.4	6.6	2.5
July	35.9	160.9	196.8	80.4	277.2	30.3	7.5	8.7	5.0	7.2	5.8	2.5
August	38.4	156.7	195.1	92.8	287.9	33.1	7.4	8.8	5.8	7.5	6.2	2.4
September	35.9	166.3	202.1	97.5	299.6	30.0	7.7	8.9	6.0	7.7	5.8	2.5
October	33.9	169.8	203.7	93.4	297.1	29.0	7.9	9.0	5.8	7.7	5.5	2.6
November	41.1	170.4	211.5	92.8	304.3	34.4	7.9	9.3	5.7	7.8	6.7	2.6
December	47.2	164.0	211.2	88.1	299.3	32.6	7.6	9.1	5.4	7.6	7.6	2.5
<b>1996</b>												
January	47.2	181.2	228.4	96.4	324.8	32.2	8.4	10.0	6.3	8.5	7.6	2.7
February	45.9	202.6	248.5	116.1	364.6	33.4	9.4	10.8	7.2	9.3	7.4	3.1
March	37.7	181.6	219.3	117.5	336.9	31.9	8.4	9.6	7.1	8.6	6.1	2.7
April	35.0	182.7	217.7	112.4	330.1	29.9	8.5	9.6	6.9	8.5	5.6	2.8
May	35.1	172.6	207.7	108.5	316.1	30.0	8.1	9.2	6.6	8.1	5.7	2.6
June	30.3	164.6	194.9	103.5	298.4	27.8	7.7	8.7	6.2	7.7	4.9	2.5
<b>PERSONS</b>												
<b>1995</b>												
April	85.1	510.6	595.7	147.3	743.0	25.9	7.9	8.8	6.7	8.3	6.7	4.0
May	95.0	515.7	610.7	142.9	753.6	28.6	8.0	9.0	6.6	8.4	7.5	4.0
June	89.4	505.1	594.5	130.4	724.8	28.0	7.8	8.7	6.0	8.1	7.1	3.9
July	86.2	493.6	579.9	129.7	709.6	26.5	7.6	8.5	6.0	7.9	6.8	3.8
August	85.2	498.2	583.4	138.5	721.9	27.7	7.7	8.6	6.4	8.1	6.7	3.9
September	81.9	521.1	603.0	160.3	763.3	25.7	7.9	8.8	7.2	8.4	6.5	4.0
October	80.3	516.2	596.4	142.4	738.9	25.6	7.9	8.7	6.6	8.2	6.3	4.0
November	89.0	510.5	599.6	137.2	736.8	28.5	7.8	8.7	6.2	8.1	7.0	3.9
December	106.9	503.8	610.7	137.9	748.6	28.8	7.6	8.7	6.3	8.2	8.4	3.9
<b>1996</b>												
January	116.6	559.6	676.2	155.5	831.7	30.2	8.5	9.7	7.5	9.2	9.2	4.3
February	104.3	581.7	686.0	170.7	856.6	29.2	8.8	9.9	7.9	9.4	8.2	4.5
March	91.4	538.5	629.9	181.0	810.9	27.8	8.2	9.2	8.1	8.9	7.2	4.1
April	90.0	532.8	622.8	170.2	793.0	27.2	8.2	9.1	7.7	8.7	7.1	4.1
May	90.5	506.8	597.3	160.9	758.2	28.3	7.8	8.7	7.2	8.3	7.1	3.9
June	86.1	489.1	575.2	155.4	730.5	27.9	7.5	8.4	6.9	8.0	6.8	3.7

## UNEMPLOYED PERSONS: Seasonally adjusted

Month	NUMBER OF UNEMPLOYED PERSONS.....					UNEMPLOYMENT RATE.....					UNEMPLOYMENT TO POPULATION RATIO	
	Aged 15-19 looking for f/t work	Aged 20 and over looking for f/t work	Total looking for f/t work	Looking for p/t work	Total unemployed	Aged 15-19 looking for f/t work	Aged 20 and over looking for f/t work	Total looking for f/t work	Looking for p/t work	Total unemployed	Aged 15-19 looking for f/t work	Aged 20 and over looking for f/t work
	'000s	'000s	'000s	'000s	'000s	%	%	%	%	%	%	%
<b>MALES</b>												
<b>1995</b>												
April	47.7	348.6	396.2	49.0	445.2	22.7	8.0	8.7	8.7	8.7	7.3	5.5
May	51.7	350.8	402.5	53.7	456.2	24.4	8.1	8.8	9.5	8.9	8.0	5.6
June	51.5	347.0	398.5	50.9	449.4	25.4	7.9	8.7	9.1	8.8	7.9	5.5
July	54.5	343.8	398.4	55.2	453.6	26.0	7.9	8.7	10.0	8.8	8.4	5.4
August	50.7	346.1	396.8	51.8	448.6	24.8	7.9	8.7	9.1	8.7	7.8	5.5
September	50.5	356.7	407.3	57.9	465.2	24.2	8.1	8.8	10.3	9.0	7.8	5.6
October	53.0	363.7	416.7	52.9	469.6	25.5	8.3	9.1	9.4	9.1	8.2	5.7
November	53.9	349.6	403.5	51.6	455.1	26.0	7.9	8.8	8.8	8.8	8.3	5.5
December	51.3	344.7	395.9	47.2	443.1	25.0	7.8	8.6	8.3	8.6	7.9	5.4
<b>1996</b>												
January	56.2	350.3	406.5	52.1	458.5	26.3	7.9	8.8	9.4	8.8	8.6	5.5
February	49.5	354.1	403.7	48.3	452.0	24.5	8.0	8.7	8.5	8.7	7.6	5.6
March	55.0	352.6	407.6	54.1	461.7	25.8	8.0	8.9	9.4	8.9	8.4	5.5
April	55.9	354.9	410.7	59.2	470.0	26.0	8.1	8.9	10.1	9.0	8.6	5.6
May	55.7	333.4	389.2	53.6	442.8	26.7	7.6	8.4	9.1	8.5	8.5	5.2
June	58.7	328.2	386.9	57.5	444.4	28.7	7.5	8.4	9.6	8.6	9.0	5.1
<b>FEMALES</b>												
<b>1995</b>												
April	41.4	167.2	208.6	100.0	308.6	33.0	7.9	9.3	6.2	8.0	6.7	2.6
May	46.4	169.3	215.7	95.9	311.6	35.0	8.0	9.6	6.0	8.1	7.5	2.6
June	42.1	167.6	209.6	91.1	300.7	32.9	7.9	9.3	5.6	7.8	6.8	2.6
July	37.2	168.0	205.2	88.7	293.9	31.4	7.8	9.1	5.5	7.6	6.0	2.6
August	41.8	165.0	206.8	100.1	306.9	33.4	7.7	9.1	6.2	7.9	6.8	2.5
September	39.3	169.3	208.6	88.8	297.4	31.8	7.9	9.2	5.6	7.7	6.4	2.6
October	41.8	173.9	215.7	95.0	310.7	33.9	8.1	9.5	5.9	8.0	6.8	2.6
November	47.6	176.5	224.1	96.3	320.3	36.5	8.2	9.8	5.9	8.2	7.7	2.7
December	38.4	166.9	205.3	89.9	295.2	30.5	7.8	9.1	5.5	7.6	6.2	2.5
<b>1996</b>												
January	38.1	171.1	209.3	102.1	311.4	30.2	8.0	9.2	6.2	8.0	6.2	2.6
February	37.4	177.5	215.0	100.4	315.4	29.5	8.3	9.5	6.1	8.1	6.0	2.7
March	37.2	172.4	209.6	99.8	309.4	30.4	8.1	9.3	6.2	8.0	6.0	2.6
April	38.0	183.8	221.7	113.5	335.3	30.9	8.5	9.7	7.0	8.6	6.1	2.8
May	37.4	178.7	216.1	115.2	331.3	30.5	8.3	9.5	7.0	8.5	6.0	2.7
June	31.4	169.8	201.3	111.4	312.7	27.5	8.0	8.9	6.8	8.0	5.1	2.5
<b>PERSONS</b>												
<b>1995</b>												
April	89.1	515.8	604.8	149.0	753.8	26.5	8.0	8.9	6.8	8.4	7.0	4.0
May	98.2	520.1	618.3	149.6	767.8	28.5	8.0	9.1	6.9	8.5	7.8	4.1
June	93.6	514.6	608.2	142.0	750.1	28.3	7.9	8.9	6.5	8.3	7.4	4.0
July	91.7	511.8	603.5	143.9	747.4	28.0	7.9	8.8	6.7	8.3	7.2	4.0
August	92.6	511.0	603.6	151.8	755.4	28.1	7.8	8.8	7.0	8.4	7.3	4.0
September	89.8	526.1	615.9	146.7	762.6	27.0	8.0	9.0	6.8	8.5	7.1	4.1
October	94.8	537.6	632.4	147.9	780.3	28.7	8.2	9.2	6.8	8.6	7.5	4.2
November	101.5	526.1	627.6	147.9	775.5	30.0	8.0	9.1	6.7	8.5	8.0	4.1
December	89.7	511.5	601.2	137.1	738.3	27.1	7.8	8.7	6.2	8.1	7.1	3.9
<b>1996</b>												
January	94.3	521.4	615.7	154.2	770.0	27.8	8.0	8.9	7.0	8.5	7.4	4.0
February	87.0	531.7	618.7	148.8	767.4	26.4	8.1	9.0	6.7	8.4	6.8	4.1
March	92.2	525.0	617.2	153.9	771.1	27.5	8.0	9.0	7.0	8.5	7.3	4.0
April	93.8	538.6	632.5	172.8	805.2	27.8	8.2	9.2	7.9	8.9	7.4	4.1
May	93.1	512.2	605.3	168.8	774.1	28.1	7.8	8.8	7.6	8.5	7.3	3.9
June	90.1	498.0	588.1	168.9	757.1	28.2	7.6	8.6	7.5	8.3	7.1	3.8

UNEMPLOYED PERSONS: Trend<sup>1</sup>

Month	NUMBER OF UNEMPLOYED PERSONS.....					UNEMPLOYMENT RATE.....					UNEMPLOYMENT TO POPULATION RATIO	
	Aged 15-19 looking for fit work	Aged 20 and over looking for fit work	Total looking for fit work	Looking for p/t work	Total unemployed	Aged 15-19 looking for fit work	Aged 20 and over looking for fit work	Total looking for fit work	Looking for p/t work	Total unemployed	Aged 15-19 looking for fit work	Aged 20 and over looking for fit work
	'000s	'000s	'000s	'000s	'000s	%	%	%	%	%	%	%
<b>MALES</b>												
<b>1995</b>												
April	49.2	350.7	399.9	50.7	450.7	23.5	8.0	8.8	9.0	8.8	7.6	5.6
May	50.0	348.3	398.3	51.5	449.8	24.0	8.0	8.7	9.2	8.8	7.7	5.5
June	51.0	347.6	398.7	52.6	451.3	24.5	8.0	8.7	9.4	8.8	7.9	5.5
July	51.8	348.6	400.4	53.6	454.0	25.0	8.0	8.7	9.5	8.8	8.0	5.5
August	52.3	350.4	402.7	54.1	456.8	25.3	8.0	8.8	9.6	8.9	8.0	5.5
September	52.4	352.0	404.4	53.8	458.2	25.3	8.0	8.8	9.5	8.9	8.1	5.6
October	52.4	352.7	405.1	52.7	457.8	25.3	8.0	8.8	9.3	8.9	8.1	5.6
November	52.5	353.0	405.5	51.5	457.0	25.3	8.0	8.8	9.1	8.8	8.1	5.6
December	52.7	353.0	405.8	50.7	456.4	25.4	8.0	8.8	8.9	8.8	8.1	5.6
<b>1996</b>												
January	53.1	352.4	405.4	50.7	456.2	25.4	8.0	8.8	8.9	8.8	8.2	5.5
February	53.6	350.9	404.5	51.7	456.2	25.6	8.0	8.8	9.0	8.8	8.2	5.5
March	54.3	348.7	402.9	53.3	456.2	25.9	7.9	8.7	9.2	8.8	8.3	5.5
April	55.2	345.4	400.6	54.8	455.4	26.3	7.9	8.7	9.4	8.8	8.5	5.4
May	56.2	341.3	397.5	56.1	453.6	26.8	7.8	8.6	9.5	8.7	8.6	5.3
June	57.2	337.0	394.2	57.3	451.5	27.4	7.7	8.6	9.6	8.7	8.8	5.3
<b>FEMALES</b>												
<b>1995</b>												
April	43.6	171.8	215.4	99.6	315.0	33.7	8.2	9.6	6.2	8.2	7.1	2.6
May	42.8	168.8	211.6	96.6	308.2	33.5	8.0	9.4	6.0	8.0	6.9	2.6
June	41.7	167.3	209.0	94.3	303.3	33.2	7.8	9.2	5.9	7.8	6.8	2.6
July	41.1	167.3	208.4	92.8	301.2	33.1	7.8	9.2	5.8	7.8	6.7	2.6
August	41.0	168.2	209.3	92.3	301.6	33.1	7.8	9.2	5.8	7.8	6.7	2.6
September	41.3	169.6	210.9	92.7	303.6	33.3	7.9	9.3	5.8	7.8	6.7	2.6
October	41.5	170.7	212.2	93.4	305.6	33.2	7.9	9.3	5.8	7.9	6.7	2.6
November	41.4	171.5	212.8	94.2	307.1	32.8	8.0	9.3	5.8	7.9	6.7	2.6
December	40.8	172.5	213.3	95.7	309.0	32.2	8.0	9.4	5.9	7.9	6.6	2.6
<b>1996</b>												
January	39.7	173.7	213.4	98.1	311.5	31.4	8.1	9.4	6.0	8.0	6.4	2.6
February	38.4	174.9	213.3	101.5	314.7	30.7	8.2	9.4	6.2	8.1	6.2	2.6
March	37.3	175.9	213.2	105.1	318.3	30.1	8.2	9.4	6.4	8.2	6.0	2.7
April	36.3	176.7	213.0	108.6	321.6	29.8	8.2	9.4	6.7	8.3	5.9	2.7
May	35.4	176.9	212.2	111.6	323.9	29.4	8.2	9.4	6.8	8.3	5.7	2.7
June	34.8	177.0	211.8	114.3	326.1	29.4	8.2	9.4	7.0	8.4	5.6	2.7
<b>PERSONS</b>												
<b>1995</b>												
April	92.8	522.5	615.3	150.4	765.7	27.4	8.1	9.0	6.9	8.5	7.3	4.1
May	92.8	517.1	609.8	148.1	758.0	27.6	8.0	8.9	6.8	8.4	7.3	4.0
June	92.8	514.9	607.7	146.9	754.6	27.8	7.9	8.9	6.8	8.4	7.3	4.0
July	92.9	515.9	608.9	146.4	755.2	28.0	7.9	8.9	6.8	8.4	7.3	4.0
August	93.3	518.7	612.0	146.4	758.3	28.2	7.9	8.9	6.8	8.4	7.4	4.0
September	93.7	521.6	615.3	146.5	761.8	28.3	8.0	9.0	6.8	8.4	7.4	4.0
October	94.0	523.4	617.3	146.1	763.4	28.3	8.0	9.0	6.7	8.4	7.4	4.1
November	93.9	524.5	618.3	145.7	764.0	28.2	8.0	9.0	6.7	8.4	7.4	4.1
December	93.5	525.6	619.1	146.3	765.4	27.9	8.0	9.0	6.7	8.4	7.4	4.1
<b>1996</b>												
January	92.8	526.1	618.8	148.8	767.6	27.7	8.0	9.0	6.8	8.4	7.3	4.1
February	92.0	525.7	617.8	153.2	770.9	27.5	8.0	9.0	7.0	8.5	7.2	4.0
March	91.6	524.6	616.2	158.3	774.5	27.5	8.0	9.0	7.2	8.5	7.2	4.0
April	91.6	522.0	613.6	163.4	776.9	27.6	8.0	8.9	7.4	8.5	7.2	4.0
May	91.6	518.2	609.8	167.7	777.5	27.8	7.9	8.9	7.6	8.6	7.2	4.0
June	92.1	514.0	606.0	171.6	777.6	28.1	7.9	8.8	7.7	8.6	7.2	3.9

<sup>1</sup> Estimates for December 1995 to May 1996 have been revised.

PERSONS AGED 15 TO 19—Education and Labour Force: Original—June 1996

	EMPLOYED.....			UNEMPLOYED.....							
	<i>Employed full time</i>	<i>Employed part time</i>	<i>Total employed</i>	<i>Unemp. looking for f/t work</i>	<i>Unemp. looking for p/t work</i>	<i>Total unemployed</i>	<i>Labour force</i>	<i>Not in labour force</i>	<i>Civilian population aged 15-19</i>	<i>Unemp-loyment rate</i>	<i>Partic-ipation rate</i>
	'000s	'000s	'000s	'000s	'000s	'000s	'000s	'000s	'000s	%	%
ATTENDING NEITHER SCHOOL NOR A TERTIARY EDUCATIONAL INSTITUTION FULL TIME											
Males	139.1	30.6	169.8	51.3	* 1.5	52.8	222.6	17.9	240.4	23.7	92.6
Females	76.8	50.5	127.3	26.9	* 2.8	29.7	157.1	26.5	183.5	18.9	85.6
Persons	216.0	81.1	297.1	78.2	4.3	82.5	379.6	44.3	424.0	21.7	89.5
ATTENDING A TERTIARY EDUCATIONAL INSTITUTION FULL TIME											
Males	* 3.0	38.4	41.4	* 1.9	4.9	6.8	48.2	44.1	92.3	14.2	52.2
Females	* 1.9	49.4	51.2	* 1.8	7.6	9.5	60.7	50.6	111.3	15.6	54.5
Persons	4.8	87.8	92.6	* 3.7	12.6	16.3	108.9	94.7	203.6	15.0	53.5
ATTENDING SCHOOL											
Males	* 1.2	80.2	81.4	* 2.6	19.6	22.2	103.6	217.3	320.8	21.4	32.3
Females	* 0	117.8	117.8	* 1.6	20.1	21.6	139.5	186.5	326.0	15.5	42.8
Persons	* 1.2	198.1	199.2	4.1	39.7	43.8	243.0	403.8	646.8	18.0	37.6
TOTAL											
Males	143.3	149.3	292.6	55.8	26.0	81.8	374.4	279.2	653.6	21.8	57.3
Females	78.7	217.7	296.4	30.3	30.5	60.8	357.2	263.6	620.8	17.0	57.5
Persons	222.0	367.0	589.0	86.1	56.5	142.6	731.6	542.8	1 274.4	19.5	57.4

LABOUR FORCE STATUS (AGED 15 & OVER)—States & Territories: Original—June 1996

	EMPLOYED.....			UNEMPLOYED.....			Labour force	Not in labour force	Civilian population aged 15 and over	Unemp-loyment rate	Partic-ipation rate
	Employed full time	Employed part time	Total employed	Unemp. looking for f/t work	Unemp. looking for p/t work	Total unemployed					
	'000s	'000s	'000s	'000s	'000s	'000s	'000s	'000s	'000s	%	%
MALES											
New South Wales	1 404.2	184.5	1 588.7	119.5	19.1	138.6	1 727.4	661.9	2 389.3	8.0	72.3
Victoria	1 057.0	130.1	1 187.1	88.5	12.7	101.2	1 288.3	469.5	1 757.8	7.9	73.3
Queensland	776.6	105.9	882.6	79.0	10.4	89.4	972.0	323.4	1 295.4	9.2	75.0
South Australia	322.2	47.7	369.9	34.6	3.5	38.1	407.9	169.7	577.6	9.3	70.6
Western Australia	426.4	51.6	478.0	36.9	4.0	40.9	518.9	163.2	682.1	7.9	76.1
Tasmania	101.0	14.5	115.4	14.2	* 1.0	15.2	130.6	50.5	181.1	11.6	72.1
Northern Territory	41.2	5.2	46.4	1.7	* 0.4	2.1	48.5	15.5	64.0	4.3	75.8
Australian Capital Territory	72.7	10.9	83.6	5.9	* 0.8	6.7	90.2	23.7	113.9	7.4	79.2
<b>Australia</b>	<b>4 201.3</b>	<b>550.4</b>	<b>4 751.6</b>	<b>380.3</b>	<b>51.9</b>	<b>432.1</b>	<b>5 183.8</b>	<b>1 877.4</b>	<b>7 061.1</b>	<b>8.3</b>	<b>73.4</b>
FEMALES											
New South Wales	712.0	496.0	1 208.0	55.2	31.6	86.8	1 294.8	1 179.6	2 474.4	6.7	52.3
Victoria	505.0	390.7	895.6	48.4	28.2	76.7	972.3	861.5	1 833.8	7.9	53.0
Queensland	371.9	280.8	652.7	46.3	19.4	65.6	718.3	599.8	1 318.2	9.1	54.5
South Australia	148.2	145.4	293.6	16.9	6.9	23.7	317.3	281.2	598.5	7.5	53.0
Western Australia	193.8	162.8	356.6	17.9	11.7	29.6	386.2	302.3	688.4	7.7	56.1
Tasmania	42.6	43.2	85.8	5.8	2.8	8.5	94.4	92.9	187.3	9.1	50.4
Northern Territory	25.1	12.2	37.3	1.4	* 0.4	1.8	39.1	23.2	62.3	4.5	62.8
Australian Capital Territory	43.6	29.1	72.8	3.1	2.6	5.7	78.5	40.1	118.5	7.3	66.2
<b>Australia</b>	<b>2 042.2</b>	<b>1 560.2</b>	<b>3 602.4</b>	<b>194.9</b>	<b>103.5</b>	<b>298.4</b>	<b>3 900.9</b>	<b>3 380.5</b>	<b>7 281.4</b>	<b>7.7</b>	<b>53.6</b>
PERSONS											
New South Wales	2 116.3	680.5	2 796.8	174.7	50.7	225.4	3 022.2	1 841.5	4 863.7	7.5	62.1
Victoria	1 562.0	520.8	2 082.8	136.9	41.0	177.8	2 260.6	1 331.0	3 591.6	7.9	62.9
Queensland	1 148.5	386.8	1 535.3	125.3	29.7	155.0	1 690.3	923.2	2 613.5	9.2	64.7
South Australia	470.4	193.0	663.4	51.4	10.4	61.8	725.2	450.9	1 176.1	8.5	61.7
Western Australia	620.2	214.4	834.6	54.9	15.6	70.5	905.0	465.5	1 370.5	7.8	66.0
Tasmania	143.6	57.6	201.2	20.0	3.7	23.7	224.9	143.5	368.4	10.5	61.1
Northern Territory	66.3	17.5	83.7	3.1	* 0.8	3.9	87.6	38.7	126.3	4.4	69.4
Australian Capital Territory	116.3	40.0	156.3	9.0	3.4	12.4	168.7	63.8	232.4	7.3	72.6
<b>Australia</b>	<b>6 243.5</b>	<b>2 110.6</b>	<b>8 354.1</b>	<b>575.2</b>	<b>155.4</b>	<b>730.5</b>	<b>9 084.6</b>	<b>5 257.9</b>	<b>14 342.5</b>	<b>8.0</b>	<b>63.3</b>

## UNEMPLOYED PERSONS—New South Wales, Victoria and Queensland: Original

Month	NUMBER OF UNEMPLOYED PERSONS.....						UNEMPLOYMENT RATE.....				
	Aged 15-19 seeking first f/t job	Aged 15-19 looking for f/t work	Aged 20 and over looking for f/t work	Total looking for f/t work	Looking for p/t work	Total unemployed	Aged 15-19 looking for f/t work	Aged 20 and over looking for f/t work	Total looking for f/t work	Looking for p/t work	Total unemp-loyed
	'000s	'000s	'000s	'000s	'000s	'000s	%	%	%	%	%
<b>NEW SOUTH WALES</b>											
<b>1995</b>											
April	15.6	23.6	156.6	180.2	45.7	225.9	22.0	7.2	7.9	6.6	7.6
May	17.5	27.9	153.3	181.2	45.4	226.6	26.7	7.0	7.9	6.6	7.6
June	14.5	26.6	154.4	181.0	38.0	219.0	26.4	7.0	7.9	5.5	7.3
July	15.2	26.2	150.2	176.4	34.7	211.1	24.1	6.8	7.6	5.3	7.1
August	18.6	28.9	153.2	182.1	44.6	226.6	28.1	7.0	7.9	6.5	7.6
September	15.5	27.5	157.2	184.7	45.6	230.3	26.0	7.0	7.9	6.5	7.6
October	11.1	19.6	158.7	178.4	43.6	222.0	19.6	7.2	7.7	6.2	7.4
November	18.8	27.5	158.7	186.2	42.4	228.6	26.0	7.1	8.0	6.0	7.5
December	24.1	33.3	152.9	186.2	39.3	225.5	27.0	6.8	7.9	5.7	7.4
<b>1996</b>											
January	23.3	35.4	171.4	206.7	47.9	254.7	27.1	7.7	8.7	7.6	8.5
February	19.4	30.3	180.5	210.8	49.6	260.4	26.1	8.1	9.0	7.3	8.6
March	17.8	28.4	171.8	200.1	56.2	256.4	26.2	7.7	8.6	7.9	8.4
April	16.2	29.2	165.5	194.7	51.3	246.0	26.9	7.5	8.4	7.4	8.2
May	15.3	26.5	153.9	180.5	51.4	231.9	25.5	7.0	7.9	7.1	7.7
June	14.4	25.9	148.8	174.7	50.7	225.4	26.3	6.8	7.6	6.9	7.5
<b>VICTORIA</b>											
<b>1995</b>											
April	11.6	18.8	136.8	155.6	39.1	194.8	29.5	8.4	9.2	7.0	8.7
May	14.3	21.8	140.7	162.5	34.4	196.9	33.1	8.6	9.6	6.2	8.7
June	12.0	18.2	136.9	155.2	34.5	189.7	30.1	8.4	9.2	6.2	8.4
July	10.3	16.2	139.9	156.1	36.0	192.1	25.8	8.5	9.1	6.5	8.5
August	12.3	17.7	131.9	149.5	35.3	184.8	29.7	8.1	8.9	6.4	8.3
September	12.0	15.9	144.6	160.5	47.0	207.5	25.8	8.8	9.4	8.3	9.1
October	11.3	18.7	146.0	164.6	37.7	202.4	28.6	8.8	9.6	7.1	9.0
November	12.7	19.8	132.8	152.6	34.7	187.2	31.4	8.1	8.9	6.3	8.3
December	13.5	21.3	133.0	154.4	36.2	190.6	28.1	8.0	8.8	6.6	8.3
<b>1996</b>											
January	13.5	21.2	147.2	168.4	40.2	208.6	29.8	9.0	9.8	7.4	9.2
February	17.2	26.9	155.6	182.5	47.9	230.4	36.4	9.4	10.5	8.6	10.1
March	15.0	21.8	135.5	157.3	45.1	202.4	32.5	8.3	9.2	8.0	8.9
April	13.6	20.3	139.2	159.5	47.8	207.3	30.6	8.5	9.3	8.4	9.1
May	14.5	19.9	133.3	153.2	38.3	191.5	30.0	8.0	8.9	6.9	8.4
June	11.8	18.5	118.4	136.9	41.0	177.8	28.6	7.2	8.1	7.3	7.9
<b>QUEENSLAND</b>											
<b>1995</b>											
April	10.6	21.7	94.4	116.0	29.7	145.8	29.6	8.0	9.2	7.3	8.8
May	10.8	24.4	100.9	125.3	30.4	155.7	32.2	8.6	10.0	7.6	9.4
June	10.0	22.4	92.9	115.3	29.6	144.9	30.7	7.8	9.1	7.4	8.7
July	9.3	19.9	90.7	110.7	29.0	139.7	29.5	7.6	8.8	7.2	8.4
August	6.0	18.4	96.8	115.1	26.8	141.9	28.2	8.2	9.2	6.8	8.6
September	8.5	19.1	102.0	121.1	28.8	149.9	27.9	8.5	9.5	7.1	8.9
October	7.9	19.6	102.1	121.7	27.7	149.4	29.6	8.6	9.7	7.0	9.0
November	8.0	19.8	103.9	123.8	27.5	151.3	29.4	8.7	9.8	6.8	9.0
December	12.4	23.4	102.8	126.1	29.5	155.7	29.1	8.5	9.8	7.1	9.2
<b>1996</b>											
January	18.1	29.5	115.2	144.7	26.8	171.5	32.8	9.6	11.2	7.3	10.3
February	9.4	20.7	115.9	136.6	28.9	165.5	26.3	9.6	10.6	7.5	9.9
March	8.5	18.6	111.4	130.0	33.0	163.0	26.3	9.3	10.2	8.1	9.7
April	11.2	20.4	110.6	130.9	31.7	162.7	27.3	9.2	10.3	7.8	9.7
May	11.7	21.4	102.8	124.2	32.5	156.7	30.7	8.5	9.8	8.0	9.3
June	9.5	20.9	104.4	125.3	29.7	155.0	30.8	8.7	9.8	7.1	9.2



UNEMPLOYED PERSONS—South Australia, Western Australia and Tasmania: Original

NUMBER OF UNEMPLOYED PERSONS.....

UNEMPLOYMENT RATE.....

Month	NUMBER OF UNEMPLOYED PERSONS.....						UNEMPLOYMENT RATE.....				
	Aged 15-19 seeking f/t job '000s	Aged 15-19 looking for f/t work '000s	Aged 20 and over looking for f/t work '000s	Total looking for f/t work '000s	Looking for p/t work '000s	Total unemployed '000s	Aged 15-19 looking for f/t work %	Aged 20 and over looking for f/t work %	Total looking for f/t work %	Looking for p/t work %	Total unemp-loyed %
<b>SOUTH AUSTRALIA</b>											
<b>1995</b>											
April	3.9	8.6	52.7	61.2	10.2	71.4	33.7	10.4	11.5	5.4	9.9
May	4.5	8.0	51.2	59.2	10.1	69.3	30.9	10.1	11.1	5.3	9.6
June	4.7	8.5	51.9	60.4	11.7	72.0	34.8	10.4	11.5	5.8	9.9
July	6.2	9.0	47.2	56.2	10.3	66.5	38.0	9.3	10.6	5.3	9.2
August	4.5	7.8	48.2	56.1	11.4	67.5	34.1	9.5	10.6	5.8	9.3
September	5.3	8.2	48.0	56.2	14.5	70.7	35.3	9.4	10.6	7.3	9.7
October	6.8	10.0	45.1	55.1	13.1	68.2	40.2	9.0	10.4	6.9	9.5
November	6.0	9.1	45.5	54.6	9.4	64.0	39.8	8.9	10.2	5.0	8.9
December	6.6	10.2	45.6	55.8	10.7	66.5	36.2	8.8	10.2	5.8	9.1
<b>1996</b>											
January	8.3	12.3	48.8	61.1	13.7	74.8	42.3	9.6	11.4	7.3	10.4
February	6.9	10.3	51.2	61.5	15.0	76.4	37.8	10.0	11.4	7.8	10.5
March	5.1	8.4	45.1	53.5	15.5	69.0	34.7	9.0	10.2	7.7	9.5
April	4.4	7.1	47.7	54.8	14.5	69.3	30.3	9.5	10.5	7.0	9.5
May	5.6	9.6	44.7	54.3	13.9	68.2	39.7	8.9	10.3	7.0	9.4
June	5.0	8.0	43.4	51.4	10.4	61.8	37.1	8.7	9.9	5.1	8.5
<b>WESTERN AUSTRALIA</b>											
<b>1995</b>											
April	3.0	7.6	43.5	51.1	15.0	66.1	18.1	6.9	7.6	6.4	7.3
May	* 2.2	7.2	44.6	51.8	14.1	65.8	17.0	7.1	7.7	6.2	7.3
June	3.5	8.9	43.1	52.1	10.0	62.0	21.1	6.9	7.8	4.4	6.9
July	3.4	9.8	41.0	50.8	12.0	62.8	21.7	6.6	7.6	5.3	7.0
August	* 2.1	7.3	40.4	47.7	12.6	60.3	17.5	6.5	7.2	5.6	6.8
September	3.7	6.7	44.8	51.5	16.4	67.9	15.7	7.1	7.6	7.2	7.5
October	4.2	7.9	41.1	49.0	12.8	61.8	19.3	6.6	7.3	5.7	6.9
November	4.3	7.9	41.9	49.8	14.8	64.6	21.4	6.7	7.5	6.5	7.2
December	5.6	10.6	43.2	53.8	14.0	67.8	24.4	6.9	8.0	6.1	7.5
<b>1996</b>											
January	4.1	10.3	48.8	59.1	17.7	76.8	23.0	7.8	8.8	8.0	8.6
February	3.8	9.2	51.2	60.3	18.6	78.9	21.7	8.0	8.8	8.3	8.7
March	* 2.6	8.4	45.6	54.0	20.0	74.0	20.4	7.2	8.1	8.5	8.2
April	3.5	7.8	41.6	49.5	14.5	64.0	19.4	6.6	7.4	6.5	7.2
May	3.0	7.8	44.2	52.0	16.9	68.9	20.4	7.0	7.7	7.2	7.6
June	3.8	7.9	47.0	54.9	15.6	70.5	20.8	7.4	8.1	6.8	7.8
<b>TASMANIA</b>											
<b>1995</b>											
April	2.1	2.9	15.8	18.7	2.9	21.6	29.5	10.3	11.5	4.8	9.7
May	2.5	3.6	13.7	17.4	4.2	21.6	36.9	9.0	10.7	6.9	9.7
June	1.9	3.3	14.7	18.0	3.1	21.1	31.1	9.7	11.1	5.5	9.6
July	1.8	2.7	13.3	16.0	3.3	19.3	30.1	8.7	9.9	5.6	8.7
August	1.4	2.9	16.0	18.9	3.2	22.1	31.8	10.5	11.7	5.7	10.2
September	* 1.0	2.3	14.9	17.2	3.2	20.4	24.8	9.7	10.6	5.5	9.2
October	* 1.1	2.1	13.6	15.7	3.4	19.1	23.6	9.0	9.8	5.8	8.7
November	1.6	2.3	16.7	19.0	3.9	22.9	25.1	11.0	11.8	6.4	10.3
December	3.1	4.9	15.9	20.8	3.3	24.1	39.3	10.2	12.3	5.4	10.5
<b>1996</b>											
January	2.8	4.6	15.5	20.2	4.0	24.2	38.9	10.1	12.1	7.1	10.8
February	2.6	4.2	14.7	18.9	4.7	23.6	34.1	9.4	11.2	8.0	10.4
March	2.3	3.3	15.8	19.1	4.3	23.4	31.8	10.4	11.7	7.0	10.4
April	1.5	2.4	15.2	17.6	4.3	21.9	22.7	10.0	10.8	6.9	9.7
May	1.6	2.9	15.8	18.8	3.5	22.2	29.2	10.4	11.6	5.7	10.0
June	1.4	2.9	17.1	20.0	3.7	23.7	28.4	11.1	12.2	6.1	10.5

## UNEMPLOYED PERSONS—Northern Territory and Australian Capital Territory: Original

## NUMBER OF UNEMPLOYED PERSONS.....

## UNEMPLOYMENT RATE.....

Month	Aged 15-19 seeking first f/t job	Aged 15-19 looking for f/t work	Aged 20 and over looking for f/t work	Total looking for f/t work	Looking for p/t work	Total unemployed	Aged 15-19 looking for f/t work	Aged 20 and over looking for f/t work	Total looking for f/t work	Looking for p/t work	Total unemp-loyed
	'000s	'000s	'000s	'000s	'000s	'000s	%	%	%	%	%
<b>NORTHERN TERRITORY</b>											
<b>1995</b>											
April	* 0.2	* 0.8	3.8	4.6	1.3	5.9	* 28.2	5.5	6.4	7.4	6.6
May	* 0.3	* 0.9	3.7	4.6	* 0.9	5.5	* 25.0	5.6	6.6	* 5.2	6.4
June	* 0.4	* 0.7	3.5	4.2	* 1.1	5.3	* 19.7	5.3	6.1	* 6.4	6.1
July	* 0.5	* 1.0	4.7	5.7	1.3	7.0	* 27.6	7.1	8.2	7.1	8.0
August	* 0.3	* 0.7	4.5	5.2	1.3	6.5	* 21.6	7.0	7.7	7.6	7.6
September	* 0.4	* 0.7	4.2	4.8	* 1.2	6.1	* 17.8	6.7	7.4	* 6.2	7.1
October	* 0.3	* 1.2	4.6	5.8	* 0.4	6.2	* 30.6	7.2	8.5	* 2.5	7.2
November	* 0.2	* 0.5	4.3	4.8	1.5	6.3	* 18.6	6.7	7.2	6.7	7.1
December	* 0.3	* 0.9	3.7	4.7	1.3	6.0	* 34.3	5.9	7.0	6.0	6.8
<b>1996</b>											
January	* 0.5	* 1.0	4.1	5.1	1.3	6.4	* 30.1	6.2	7.4	6.4	7.2
February	* 0.2	* 0.8	4.6	5.4	* 0.9	6.3	* 30.8	7.0	7.8	* 4.8	7.2
March	* 0.1	* 0.8	4.7	5.5	1.6	7.1	* 29.5	6.8	7.7	8.5	7.9
April	* 0.7	* 1.2	4.4	5.5	1.5	7.0	* 41.6	6.7	8.2	7.4	8.0
May	* 0.2	* 0.7	3.9	4.6	* 0.7	5.3	* 24.3	5.9	6.7	* 3.9	6.1
June	* 0.1	* 0.3	2.8	3.1	* 0.8	3.9	* 8.4	4.3	4.5	* 4.3	4.4
<b>AUSTRALIAN CAPITAL TERRITORY</b>											
<b>1995</b>											
April	* 0.7	1.1	7.1	8.3	3.4	11.7	26.5	6.0	6.7	8.0	7.0
May	* 0.7	1.2	7.5	8.7	3.4	12.2	28.9	6.2	6.9	8.5	7.3
June	* 0.3	* 0.6	7.6	8.3	2.5	10.8	* 17.1	6.3	6.6	5.7	6.4
July	* 0.5	1.3	6.6	7.9	3.2	11.1	28.7	5.4	6.3	7.4	6.5
August	* 0.6	1.6	7.2	8.9	3.3	12.1	39.3	6.0	7.1	7.1	7.1
September	* 0.9	1.5	5.4	7.0	3.6	10.6	42.6	4.4	5.5	7.8	6.2
October	* 0.7	1.1	5.1	6.1	3.6	9.7	33.4	4.2	5.0	7.9	5.8
November	* 0.9	2.1	6.7	8.8	3.1	11.9	47.2	5.5	6.9	6.9	6.9
December	1.2	2.3	6.7	9.0	3.6	12.6	43.4	5.3	6.8	8.4	7.2
<b>1996</b>											
January	1.3	2.2	8.6	10.8	3.8	14.6	43.0	6.8	8.2	9.9	8.6
February	1.2	2.0	8.0	10.0	5.1	15.1	42.9	6.5	7.8	11.8	8.8
March	1.3	1.8	8.6	10.4	5.3	15.7	40.7	7.0	8.2	11.8	9.1
April	1.1	1.6	8.6	10.2	4.6	14.8	35.9	7.1	8.1	10.8	8.8
May	1.3	1.7	8.1	9.8	3.6	13.5	42.6	6.6	7.8	8.4	7.9
June	1.3	1.8	7.2	9.0	3.4	12.4	43.9	5.9	7.2	7.8	7.3



# LABOUR FORCE STATUS (AGED 15 AND OVER)-New South Wales<sup>1</sup>

SEASONALLY ADJUSTED.....

TREND.....

Month	SEASONALLY ADJUSTED					TREND					Civilian population aged 15 and over '000s
	Employed full time '000s	Total employed '000s	Total unemployed '000s	Unemp- loyment rate %	Partic- ipation rate %	Employed full time '000s	Total employed '000s	Total unemployed '000s	Unemp- loyment rate %	Partic- ipation rate %	
<b>MALES</b>											
<b>1995</b>											
April	1 402.8	1 570.2	138.5	8.1	72.7	1 406.8	1 570.0	141.2	8.3	72.8	2 351.9
May	1 406.1	1 571.6	141.2	8.2	72.7	1 410.5	1 572.6	139.3	8.1	72.7	2 354.6
June	1 415.6	1 577.0	136.8	8.0	72.7	1 413.1	1 574.8	138.7	8.1	72.7	2 357.2
July	1 420.3	1 575.1	137.9	8.1	72.6	1 414.3	1 577.4	138.9	8.1	72.7	2 359.4
August	1 416.5	1 580.1	138.8	8.1	72.8	1 415.0	1 580.5	139.4	8.1	72.8	2 361.6
September	1 417.1	1 587.7	142.6	8.2	73.2	1 416.2	1 583.9	139.5	8.1	72.9	2 363.7
October	1 405.4	1 578.5	140.8	8.2	72.7	1 417.7	1 587.4	139.3	8.1	73.0	2 366.2
November	1 415.6	1 594.0	142.8	8.2	73.3	1 419.4	1 590.1	139.2	8.1	73.0	2 368.7
December	1 426.2	1 595.2	129.1	7.5	72.7	1 420.5	1 591.1	139.8	8.1	73.0	2 371.1
<b>1996</b>											
January	1 434.8	1 591.2	144.7	8.3	73.1	1 420.2	1 590.5	141.0	8.1	72.9	2 374.1
February	1 417.7	1 592.9	139.3	8.0	72.9	1 417.9	1 588.9	142.6	8.2	72.8	2 377.1
March	1 402.9	1 582.9	148.4	8.6	72.7	1 414.3	1 587.2	144.1	8.3	72.7	2 380.0
April	1 409.1	1 576.7	151.0	8.7	72.5	1 410.6	1 586.1	144.9	8.4	72.6	2 383.1
May	1 409.1	1 591.0	140.8	8.1	72.6	1 407.6	1 585.6	145.1	8.4	72.5	2 386.2
June	1 408.4	1 590.3	141.2	8.2	72.5	1 405.1	1 585.8	145.2	8.4	72.4	2 389.3
<b>FEMALES</b>											
<b>1995</b>											
April	699.3	1 165.3	93.9	7.5	51.7	694.2	1 163.0	97.9	7.8	51.8	2 435.5
May	701.0	1 163.9	94.7	7.5	51.6	700.1	1 169.6	94.1	7.4	51.8	2 437.8
June	709.4	1 189.9	89.2	7.0	52.4	707.8	1 177.6	91.3	7.2	52.0	2 440.2
July	711.0	1 182.5	86.8	6.8	52.0	715.9	1 186.4	89.9	7.0	52.3	2 442.5
August	723.5	1 189.6	97.2	7.6	52.6	723.5	1 194.8	89.7	7.0	52.5	2 444.7
September	735.1	1 200.3	85.5	6.7	52.5	729.0	1 201.7	90.2	7.0	52.8	2 447.0
October	730.3	1 211.7	88.6	6.8	53.1	732.2	1 207.1	90.7	7.0	53.0	2 449.4
November	737.3	1 214.1	98.4	7.5	53.5	733.6	1 210.5	91.2	7.0	53.1	2 451.9
December	731.4	1 212.0	89.2	6.9	53.0	732.9	1 210.8	92.2	7.1	53.1	2 454.4
<b>1996</b>											
January	732.0	1 207.1	90.9	7.0	52.8	730.3	1 208.0	93.6	7.2	53.0	2 457.5
February	714.8	1 198.3	95.1	7.4	52.6	726.8	1 203.4	95.2	7.3	52.8	2 460.7
March	737.4	1 212.0	95.6	7.3	53.1	723.1	1 199.0	96.5	7.5	52.6	2 463.8
April	720.9	1 184.7	102.7	8.0	52.2	719.4	1 195.7	97.4	7.5	52.4	2 467.3
May	704.8	1 183.7	101.0	7.9	52.0	715.7	1 193.4	97.8	7.6	52.3	2 470.9
June	714.6	1 204.3	91.2	7.0	52.4	712.8	1 192.2	98.2	7.6	52.2	2 474.4
<b>PERSONS</b>											
<b>1995</b>											
April	2 102.2	2 735.5	232.3	7.8	62.0	2 101.0	2 733.0	239.1	8.0	62.1	4 787.4
May	2 107.1	2 735.5	235.8	7.9	62.0	2 110.6	2 742.1	233.4	7.8	62.1	4 792.4
June	2 124.9	2 767.0	226.1	7.6	62.4	2 120.9	2 752.4	229.9	7.7	62.2	4 797.4
July	2 131.3	2 757.7	224.7	7.5	62.1	2 130.3	2 763.8	228.8	7.6	62.3	4 801.8
August	2 140.0	2 769.7	236.0	7.9	62.5	2 138.5	2 775.4	229.1	7.6	62.5	4 806.3
September	2 152.3	2 788.0	228.1	7.6	62.7	2 145.2	2 785.7	229.8	7.6	62.7	4 810.7
October	2 135.7	2 790.2	229.5	7.6	62.7	2 150.0	2 794.5	230.0	7.6	62.8	4 815.6
November	2 152.8	2 808.1	241.2	7.9	63.3	2 153.0	2 800.5	230.4	7.6	62.9	4 820.6
December	2 157.6	2 807.3	218.3	7.2	62.7	2 153.4	2 801.9	232.0	7.6	62.9	4 825.5
<b>1996</b>											
January	2 166.9	2 798.3	235.7	7.8	62.8	2 150.5	2 798.5	234.6	7.7	62.8	4 831.6
February	2 132.5	2 791.2	234.4	7.7	62.5	2 144.7	2 792.3	237.9	7.8	62.6	4 837.7
March	2 140.3	2 794.9	244.0	8.0	62.7	2 137.4	2 786.2	240.6	8.0	62.5	4 843.9
April	2 129.9	2 761.3	253.7	8.4	62.2	2 130.0	2 781.8	242.4	8.0	62.3	4 850.5
May	2 113.9	2 774.6	241.8	8.0	62.1	2 123.3	2 779.0	242.9	8.0	62.2	4 857.0
June	2 122.9	2 794.6	232.4	7.7	62.2	2 117.9	2 778.0	243.4	8.1	62.1	4 863.7

<sup>1</sup> Trend estimates for December 1995 to May 1996 have been revised.

LABOUR FORCE STATUS (AGED 15 AND OVER)--Victoria<sup>1</sup>

SEASONALLY ADJUSTED.....

TREND.....

Month	SEASONALLY ADJUSTED					TREND					Civilian population aged 15 and over '000s
	Employed full time '000s	Total employed '000s	Total unemployed '000s	Unemp-loyment rate %	Partic-ipation rate %	Employed full time '000s	Total employed '000s	Total unemployed '000s	Unemp-loyment rate %	Partic-ipation rate %	
<b>MALES</b>											
<b>1995</b>											
April	1 041.6	1 168.5	115.0	9.0	74.0	1 039.3	1 169.1	116.3	9.0	74.1	1 735.6
May	1 041.1	1 169.7	115.7	9.0	74.0	1 040.0	1 168.3	116.0	9.0	73.9	1 737.1
June	1 035.2	1 162.4	116.5	9.1	73.6	1 039.7	1 166.3	116.9	9.1	73.8	1 738.7
July	1 038.4	1 161.7	120.9	9.4	73.7	1 039.5	1 164.6	118.0	9.2	73.7	1 739.8
August	1 041.0	1 171.8	115.0	8.9	73.9	1 040.4	1 164.2	118.5	9.2	73.7	1 741.0
September	1 043.8	1 161.1	122.1	9.5	73.7	1 042.4	1 165.7	118.1	9.2	73.7	1 742.1
October	1 041.5	1 162.1	122.2	9.5	73.7	1 045.0	1 168.7	116.9	9.1	73.7	1 743.4
November	1 048.0	1 175.2	108.3	8.4	73.6	1 047.0	1 171.9	115.8	9.0	73.8	1 744.8
December	1 051.1	1 177.1	114.1	8.8	73.9	1 047.9	1 174.7	115.3	8.9	73.9	1 746.1
<b>1996</b>											
January	1 051.0	1 179.8	113.2	8.8	74.0	1 048.2	1 176.7	115.4	8.9	73.9	1 748.0
February	1 049.1	1 183.7	120.1	9.2	74.5	1 048.6	1 178.1	115.4	8.9	73.9	1 749.9
March	1 043.5	1 170.1	113.2	8.8	73.3	1 049.6	1 179.2	115.0	8.9	73.9	1 751.8
April	1 043.8	1 173.6	121.0	9.3	73.8	1 051.2	1 180.5	113.7	8.8	73.8	1 753.8
May	1 063.2	1 191.5	108.3	8.3	74.0	1 053.3	1 182.1	112.0	8.7	73.7	1 755.8
June	1 057.6	1 185.3	104.6	8.1	73.4	1 055.4	1 183.8	109.7	8.5	73.6	1 757.8
<b>FEMALES</b>											
<b>1995</b>											
April	497.2	881.3	81.5	8.5	53.2	499.0	881.8	83.2	8.6	53.3	1 810.6
May	503.8	891.9	80.4	8.3	53.7	504.8	889.5	80.8	8.3	53.5	1 812.1
June	511.2	896.4	79.7	8.2	53.8	508.2	893.1	80.3	8.2	53.7	1 813.7
July	518.7	898.9	79.1	8.1	53.9	509.1	892.7	81.5	8.4	53.7	1 815.1
August	510.0	891.2	81.6	8.4	53.6	508.4	890.4	83.2	8.5	53.6	1 816.5
September	491.4	886.3	85.3	8.8	53.4	506.9	888.8	84.7	8.7	53.5	1 817.8
October	506.8	872.7	94.0	9.7	53.1	505.0	889.0	85.2	8.7	53.6	1 819.1
November	506.2	892.2	87.0	8.9	53.8	503.4	890.9	84.8	8.7	53.6	1 820.4
December	509.2	898.5	72.6	7.5	53.3	502.8	894.0	84.1	8.6	53.7	1 821.7
<b>1996</b>											
January	503.8	911.5	84.3	8.5	54.6	503.5	896.8	83.4	8.5	53.8	1 823.6
February	496.4	894.9	87.5	8.9	53.8	505.0	898.1	83.1	8.5	53.8	1 825.4
March	501.2	887.0	79.3	8.2	52.9	506.9	897.9	83.2	8.5	53.7	1 827.2
April	515.3	897.8	88.4	9.0	53.9	509.6	897.2	83.3	8.5	53.6	1 829.4
May	521.1	903.9	82.4	8.4	53.9	512.4	896.5	83.1	8.5	53.5	1 831.6
June	511.1	893.5	79.3	8.2	53.1	514.9	896.0	83.0	8.5	53.4	1 833.8
<b>PERSONS</b>											
<b>1995</b>											
April	1 538.8	2 049.8	196.6	8.7	63.3	1 538.3	2 050.9	199.5	8.9	63.5	3 546.2
May	1 544.9	2 061.6	196.0	8.7	63.6	1 544.8	2 057.8	196.8	8.7	63.5	3 549.3
June	1 546.4	2 058.9	196.2	8.7	63.5	1 547.9	2 059.4	197.2	8.7	63.5	3 552.4
July	1 957.1	2 060.6	200.0	8.8	63.6	1 548.6	2 057.3	199.5	8.8	63.5	3 554.9
August	1 551.0	2 063.0	196.6	8.7	63.5	1 548.7	2 054.6	201.7	8.9	63.4	3 557.4
September	1 535.2	2 047.4	207.4	9.2	63.3	1 549.3	2 054.5	202.7	9.0	63.4	3 559.9
October	1 548.3	2 034.7	216.2	9.6	63.2	1 550.1	2 057.7	202.1	8.9	63.4	3 562.6
November	1 554.1	2 067.4	195.3	8.6	63.5	1 550.4	2 062.9	200.6	8.9	63.5	3 565.2
December	1 560.3	2 075.6	186.7	8.3	63.4	1 550.7	2 068.7	199.4	8.8	63.6	3 567.8
<b>1996</b>											
January	1 554.7	2 091.3	197.5	8.6	64.1	1 551.7	2 073.5	198.7	8.7	63.6	3 571.6
February	1 545.5	2 078.5	207.6	9.1	63.9	1 553.6	2 076.2	198.5	8.7	63.6	3 575.3
March	1 544.8	2 057.1	192.4	8.6	62.9	1 556.5	2 077.1	198.1	8.7	63.6	3 579.0
April	1 559.1	2 071.4	209.3	9.2	63.6	1 560.8	2 077.7	197.0	8.7	63.5	3 583.2
May	1 584.2	2 095.4	190.7	8.3	63.7	1 565.7	2 078.6	195.2	8.6	63.4	3 587.4
June	1 568.7	2 078.8	183.9	8.1	63.0	1 570.3	2 079.8	192.8	8.5	63.3	3 591.6

<sup>1</sup> Trend estimates for December 1995 to May 1996 have been revised.

## LABOUR FORCE STATUS (AGED 15 AND OVER)-Queensland<sup>1</sup>

Month	SEASONALLY ADJUSTED.....					TREND.....					Civilian population aged 15 and over '000s
	Employed full time '000s	Total employed '000s	Total unemployed '000s	Unemp-loyment rate %	Partic-ipation rate %	Employed full time '000s	Total employed '000s	Total unemployed '000s	Unemp-loyment rate %	Partic-ipation rate %	
<b>MALES</b>											
<b>1995</b>											
April	770.0	863.8	82.5	8.7	75.5	765.5	857.0	83.7	8.9	75.1	1 253.5
May	762.8	856.6	88.1	9.3	75.2	765.4	858.6	85.3	9.0	75.1	1 256.6
June	763.7	857.3	86.3	9.2	74.9	764.3	859.1	87.5	9.2	75.1	1 259.6
July	763.6	857.4	88.8	9.4	74.9	762.8	858.8	90.1	9.5	75.2	1 262.7
August	762.5	861.0	90.1	9.5	75.1	761.4	858.3	93.3	9.8	75.2	1 265.7
September	763.6	862.3	96.0	10.0	75.5	760.9	858.2	96.3	10.1	75.2	1 268.7
October	755.4	850.6	104.5	10.9	75.1	762.0	859.0	98.2	10.3	75.3	1 271.5
November	764.1	862.7	98.0	10.2	75.4	764.9	860.8	98.6	10.3	75.3	1 274.2
December	769.6	864.8	97.0	10.1	75.3	769.4	863.8	97.2	10.1	75.3	1 276.9
<b>1996</b>											
January	771.9	864.6	97.9	10.2	75.2	774.6	868.0	94.3	9.8	75.2	1 279.8
February	786.5	876.1	85.3	8.9	74.9	779.0	872.6	91.2	9.5	75.1	1 282.7
March	781.2	873.9	89.4	9.3	74.9	781.9	876.7	88.8	9.2	75.1	1 285.6
April	784.9	883.5	88.2	9.1	75.4	783.3	880.0	87.3	9.0	75.0	1 288.8
May	786.7	886.5	82.3	8.5	75.0	783.5	882.4	86.4	8.9	75.0	1 292.1
June	774.6	878.8	90.7	9.4	74.8	782.9	884.2	85.9	8.9	74.9	1 295.4
<b>FEMALES</b>											
<b>1995</b>											
April	378.5	653.8	58.8	8.3	55.8	368.7	649.1	60.8	8.6	55.6	1 276.9
May	373.7	648.1	62.7	8.8	55.5	374.5	652.3	60.5	8.5	55.7	1 279.8
June	379.1	655.6	61.3	8.5	55.9	378.3	653.3	60.0	8.4	55.6	1 282.7
July	379.0	658.1	55.2	7.7	55.5	379.8	652.5	59.8	8.4	55.4	1 285.6
August	377.4	648.9	61.1	8.6	55.1	379.6	651.4	60.0	8.4	55.2	1 288.5
September	381.7	646.6	60.0	8.5	54.7	379.0	651.2	60.7	8.5	55.1	1 291.5
October	376.5	646.4	62.8	8.9	54.8	378.1	651.8	61.4	8.6	55.1	1 294.5
November	378.7	654.0	63.4	8.8	55.3	377.0	652.6	61.9	8.7	55.1	1 297.4
December	373.3	658.6	61.2	8.5	55.4	375.5	652.3	62.3	8.7	55.0	1 300.4
<b>1996</b>											
January	372.8	656.1	63.6	8.8	55.2	373.7	650.9	62.8	8.8	54.8	1 303.3
February	376.8	648.2	62.7	8.8	54.4	371.9	648.3	53.6	8.9	54.5	1 306.2
March	367.8	640.0	60.4	8.6	53.5	370.4	645.5	64.9	9.1	54.3	1 309.2
April	366.1	636.0	70.0	9.9	53.8	369.0	643.7	66.3	9.3	54.1	1 312.2
May	369.1	645.2	70.1	9.8	54.4	367.8	642.9	67.6	9.5	54.0	1 315.2
June	367.9	650.9	67.2	9.4	54.5	367.2	642.9	68.8	9.7	54.0	1 318.2
<b>PERSONS</b>											
<b>1995</b>											
April	1 148.4	1 517.6	141.4	8.5	65.6	1 134.2	1 506.1	144.5	8.8	65.2	2 530.4
May	1 136.4	1 504.6	150.8	9.1	65.3	1 139.9	1 510.9	145.8	8.8	65.3	2 536.4
June	1 142.8	1 513.0	147.6	8.9	65.3	1 142.6	1 512.3	147.5	8.9	65.3	2 542.3
July	1 142.6	1 515.6	144.0	8.7	65.1	1 142.7	1 511.3	149.9	9.0	65.2	2 548.3
August	1 139.9	1 510.0	151.2	9.1	65.0	1 141.1	1 509.7	153.3	9.2	65.1	2 554.2
September	1 145.3	1 508.9	156.0	9.4	65.0	1 139.9	1 509.4	157.0	9.4	65.1	2 560.2
October	1 131.9	1 497.0	167.3	10.1	64.9	1 140.1	1 510.8	159.6	9.6	65.1	2 565.9
November	1 142.8	1 516.7	161.3	9.6	65.3	1 141.9	1 513.4	160.5	9.6	65.1	2 571.6
December	1 142.8	1 523.4	158.1	9.4	65.2	1 144.8	1 516.1	159.5	9.5	65.0	2 577.4
<b>1996</b>											
January	1 144.8	1 520.7	161.5	9.6	65.1	1 148.3	1 518.8	157.1	9.4	64.9	2 583.2
February	1 163.3	1 524.4	148.0	8.8	64.6	1 151.0	1 520.8	154.9	9.2	64.7	2 588.9
March	1 149.0	1 513.9	149.8	9.0	64.1	1 152.3	1 522.2	153.7	9.2	64.6	2 594.8
April	1 150.9	1 519.4	158.2	9.4	64.5	1 152.2	1 523.7	153.6	9.2	64.5	2 601.0
May	1 155.8	1 531.7	152.4	9.0	64.6	1 151.3	1 525.3	154.0	9.2	64.4	2 607.3
June	1 142.5	1 529.7	158.0	9.4	64.6	1 150.1	1 527.1	154.7	9.2	64.3	2 613.5

<sup>1</sup> Trend estimates for December 1995 to May 1996 have been revised.

LABOUR FORCE STATUS (AGED 15 AND OVER)—South Australia<sup>1</sup>

SEASONALLY ADJUSTED.....

TREND.....

Month	SEASONALLY ADJUSTED					TREND					Civilian population aged 15 and over '000s
	Employed full time '000s	Total employed '000s	Total unemployed '000s	Unemp- loyment rate %	Partic- ipation rate %	Employed full time '000s	Total employed '000s	Total unemployed '000s	Unemp- loyment rate %	Partic- ipation rate %	
<b>MALES</b>											
<b>1995</b>											
April	321.1	367.5	43.7	10.6	71.6	320.8	367.0	44.5	10.8	71.6	574.6
May	322.2	367.3	44.3	10.8	71.6	320.7	367.7	44.8	10.9	71.8	574.7
June	315.3	366.2	48.3	11.7	72.1	321.0	368.3	45.0	10.9	71.9	574.9
July	323.1	369.3	42.8	10.4	71.7	322.0	369.2	45.0	10.9	72.0	575.0
August	326.0	372.0	43.9	10.6	72.3	323.6	370.2	44.6	10.7	72.1	575.1
September	327.0	372.9	44.9	10.7	72.6	325.3	371.3	43.8	10.6	72.2	575.3
October	322.6	369.0	43.9	10.6	71.8	326.6	371.8	43.0	10.4	72.1	575.5
November	329.1	372.1	42.2	10.2	72.0	327.4	372.1	42.4	10.2	72.0	575.7
December	329.0	373.1	40.4	9.8	71.8	327.5	371.9	42.1	10.2	71.9	575.9
<b>1996</b>											
January	326.6	372.1	40.7	9.9	71.7	327.0	371.3	42.2	10.2	71.8	576.2
February	326.3	370.7	44.2	10.6	72.0	326.1	370.7	42.3	10.2	71.6	576.5
March	325.5	368.6	42.6	10.4	71.3	325.0	370.0	42.4	10.3	71.5	576.7
April	322.3	370.5	43.4	10.5	71.7	323.9	369.5	42.3	10.3	71.4	577.0
May	323.3	365.9	42.5	10.4	70.8	322.8	369.1	42.0	10.2	71.2	577.3
June	321.9	371.9	39.1	9.5	71.2	322.0	368.9	41.6	10.1	71.1	577.6
<b>FEMALES</b>											
<b>1995</b>											
April	151.1	283.4	27.9	9.0	52.3	153.2	285.0	27.3	8.7	52.5	595.4
May	158.5	288.4	26.6	8.4	52.9	153.1	286.4	27.3	8.7	52.7	595.6
June	150.6	287.6	26.7	8.5	52.8	152.4	287.1	27.1	8.6	52.7	595.8
July	150.7	287.9	27.0	8.6	52.8	151.4	287.1	26.6	8.5	52.6	595.9
August	151.0	288.3	25.9	8.2	52.7	150.5	286.5	26.0	8.3	52.4	596.1
September	148.1	282.6	26.2	8.5	51.8	149.9	285.4	25.7	8.3	52.2	596.2
October	149.3	283.5	25.4	8.2	51.8	149.6	284.3	25.5	8.2	51.9	596.5
November	149.8	284.8	24.6	7.9	51.8	149.5	283.5	25.5	8.2	51.8	596.7
December	152.0	284.6	25.1	8.1	51.9	149.5	283.5	25.6	8.3	51.8	596.9
<b>1996</b>											
January	149.3	283.2	26.8	8.7	51.9	149.4	284.3	25.9	8.3	51.9	597.2
February	147.5	282.9	26.8	8.6	51.8	149.5	285.8	26.1	8.4	52.2	597.5
March	149.1	287.8	25.6	8.2	52.4	149.7	287.5	26.3	8.4	52.5	597.7
April	148.8	291.6	26.1	8.2	53.1	150.1	289.3	26.3	8.3	52.8	598.0
May	154.9	291.8	27.4	8.6	53.3	150.5	290.9	26.3	8.3	53.0	598.2
June	149.4	291.9	25.3	8.0	53.0	150.9	292.3	26.2	8.2	53.2	598.5
<b>PERSONS</b>											
<b>1995</b>											
April	472.2	650.9	71.6	9.9	61.8	474.0	652.0	71.8	9.9	61.9	1 169.9
May	480.7	655.7	70.9	9.8	62.1	473.8	654.0	72.0	9.9	62.0	1 170.3
June	465.9	653.8	75.0	10.3	62.3	473.4	655.4	72.0	9.9	62.1	1 170.7
July	473.9	657.2	69.8	9.6	62.1	473.4	656.3	71.5	9.8	62.2	1 170.9
August	477.0	660.3	69.8	9.6	62.3	474.1	656.7	70.6	9.7	62.1	1 171.2
September	475.1	655.4	71.1	9.8	62.0	475.2	656.7	69.5	9.6	62.0	1 171.5
October	471.9	652.4	69.3	9.6	61.6	476.3	656.1	68.5	9.5	61.8	1 172.0
November	478.8	656.9	66.8	9.2	61.7	476.9	655.6	67.8	9.4	61.7	1 172.4
December	481.0	657.7	65.5	9.1	61.7	477.0	655.4	67.7	9.4	61.7	1 172.9
<b>1996</b>											
January	475.9	655.4	67.6	9.3	61.6	476.4	655.6	68.0	9.4	61.7	1 173.4
February	473.8	653.6	70.9	9.8	61.7	475.6	656.4	68.5	9.4	61.8	1 173.9
March	474.6	656.4	68.2	9.4	61.7	474.7	657.5	68.7	9.5	61.8	1 174.4
April	471.0	662.1	69.4	9.5	62.3	473.9	658.7	68.7	9.4	61.9	1 175.0
May	478.2	657.7	69.9	9.6	61.9	473.3	660.0	68.3	9.4	62.0	1 175.6
June	471.3	663.8	64.3	8.8	61.9	472.9	661.3	67.8	9.3	62.0	1 176.1

<sup>1</sup> Trend estimates for December 1995 to May 1996 have been revised.

LABOUR FORCE STATUS (AGED 15 AND OVER)—Western Australia<sup>1</sup>

SEASONALLY ADJUSTED.....

TREND.....

Month	SEASONALLY ADJUSTED					TREND					Civilian population aged 15 and over '000s
	Employed full time '000s	Total employed '000s	Total unemployed '000s	Unemployment rate %	Participation rate %	Employed full time '000s	Total employed '000s	Total unemployed '000s	Unemployment rate %	Participation rate %	
<b>MALES</b>											
<b>1995</b>											
April	425.0	478.0	40.4	7.8	78.0	424.6	475.7	39.4	7.6	77.5	665.0
May	425.9	476.3	38.1	7.4	77.2	426.5	476.7	38.0	7.4	77.3	666.2
June	428.8	477.3	36.4	7.1	77.0	428.0	477.4	36.7	7.1	77.0	667.5
July	430.5	478.7	34.7	6.8	76.8	429.2	477.8	35.8	7.0	76.8	668.7
August	427.0	475.7	34.8	6.8	76.2	429.6	477.9	35.6	6.9	76.7	669.9
September	430.8	478.0	37.1	7.2	76.8	429.5	478.0	35.9	7.0	76.6	671.0
October	429.5	478.5	36.8	7.1	76.7	428.9	478.0	36.7	7.1	76.6	672.2
November	429.6	479.6	37.4	7.2	76.8	428.2	477.8	38.0	7.4	76.6	673.5
December	425.2	477.2	38.2	7.4	76.4	427.4	477.5	39.2	7.6	76.6	674.7
<b>1996</b>											
January	424.9	476.0	40.9	7.9	76.5	426.8	477.2	40.1	7.8	76.5	675.9
February	428.5	475.8	42.4	8.2	76.5	426.4	477.0	40.8	7.9	76.5	677.2
March	426.9	477.9	42.6	8.2	76.7	426.2	477.0	41.3	8.0	76.4	678.4
April	424.9	477.1	39.3	7.6	76.0	426.1	477.2	41.6	8.0	76.3	679.6
May	426.4	478.8	40.9	7.9	76.3	425.9	477.3	41.9	8.1	76.3	680.8
June	425.4	476.2	43.7	8.4	76.2	425.9	477.5	42.1	8.1	76.2	682.1
<b>FEMALES</b>											
<b>1995</b>											
April	196.5	356.7	25.1	6.6	56.9	191.0	353.6	27.0	7.1	56.7	670.9
May	193.0	357.2	27.7	7.2	57.3	191.2	354.4	27.8	7.3	56.9	672.2
June	187.2	351.7	28.8	7.6	56.5	190.8	354.4	28.6	7.5	56.9	673.5
July	186.0	352.4	32.5	8.4	57.1	190.2	354.0	29.3	7.7	56.8	674.7
August	192.7	355.4	27.7	7.2	56.7	189.5	353.0	29.8	7.8	56.6	675.9
September	191.0	350.7	30.2	7.9	56.3	188.8	352.0	30.1	7.9	56.4	677.1
October	187.8	351.5	29.1	7.6	56.1	188.2	351.4	30.2	7.9	56.3	678.3
November	189.4	352.7	31.3	8.1	56.5	188.0	351.2	30.1	7.9	56.1	679.5
December	185.2	349.9	29.6	7.8	55.8	188.4	351.3	29.8	7.8	56.0	680.7
<b>1996</b>											
January	185.2	346.2	29.7	7.9	55.1	189.5	351.6	29.1	7.7	55.8	682.0
February	194.3	359.1	29.6	7.6	56.9	191.2	352.2	28.4	7.5	55.7	683.2
March	194.9	355.1	27.1	7.1	55.8	192.9	352.8	27.8	7.3	55.6	684.5
April	197.0	346.2	24.2	6.5	54.0	194.3	353.3	27.5	7.2	55.5	685.8
May	192.2	356.7	27.8	7.2	56.0	195.1	353.7	27.4	7.2	55.5	687.1
June	194.6	354.4	30.4	7.9	55.9	195.8	354.2	27.7	7.3	55.5	688.4
<b>PERSONS</b>											
<b>1995</b>											
April	621.6	834.8	65.5	7.3	67.4	615.7	829.3	66.4	7.4	67.1	1 335.8
May	618.9	833.5	65.8	7.3	67.2	617.6	831.1	65.9	7.3	67.0	1 338.4
June	616.0	829.0	65.2	7.3	66.7	618.8	831.8	65.4	7.3	66.9	1 341.0
July	616.5	831.1	67.2	7.5	66.9	619.4	831.7	65.2	7.3	66.8	1 343.4
August	619.7	831.2	62.6	7.0	66.4	619.1	831.0	65.4	7.3	66.6	1 345.7
September	621.8	828.6	67.3	7.5	66.5	618.3	829.9	66.0	7.4	66.5	1 348.1
October	617.4	830.0	65.9	7.4	66.3	617.1	829.4	66.9	7.5	66.4	1 350.5
November	618.9	832.3	68.6	7.6	66.6	616.2	829.0	68.1	7.6	66.3	1 353.0
December	610.5	827.1	67.8	7.6	66.0	615.8	828.8	68.9	7.7	66.2	1 355.4
<b>1996</b>											
January	610.1	822.2	70.6	7.9	65.7	616.3	828.8	69.3	7.7	66.1	1 357.9
February	622.8	834.9	71.9	7.9	66.7	617.6	829.2	69.2	7.7	66.0	1 360.4
March	621.8	833.1	69.7	7.7	66.2	619.2	829.8	69.1	7.7	66.0	1 362.9
April	621.9	823.3	63.4	7.2	64.9	620.3	830.4	69.1	7.7	65.9	1 365.4
May	618.5	835.4	68.7	7.6	66.1	621.0	831.0	69.4	7.7	65.8	1 368.0
June	620.0	830.6	74.2	8.2	66.0	621.7	831.7	69.8	7.7	65.8	1 370.5

<sup>1</sup> Trend estimates for December 1995 to May 1996 have been revised.

LABOUR FORCE STATUS (AGED 15 AND OVER)-Tasmania<sup>1</sup>

SEASONALLY ADJUSTED.....

TREND.....

Month	Employed	Total	Total	Unemp-	Partic-	Employed	Total	Total	Unemp-	Partic-	Civilian
	full time	employed	unemployed	loyment	ipation		full time	employed	unemployed	loyment	
	'000s	'000s	'000s	%	%	'000s	'000s	'000s	%	%	'000s
<b>MALES</b>											
<b>1995</b>											
April	99.7	114.5	14.8	11.4	71.6	99.9	113.8	14.8	11.5	71.3	180.4
May	99.7	113.9	14.9	11.6	71.4	99.8	113.9	14.5	11.3	71.1	180.5
June	99.9	113.5	14.4	11.3	70.9	99.8	113.7	14.2	11.1	70.8	180.5
July	100.6	114.1	12.9	10.1	70.3	99.7	113.5	13.7	10.8	70.5	180.6
August	99.5	112.6	14.4	11.3	70.3	99.7	113.1	13.4	10.6	70.1	180.6
September	99.0	112.9	13.4	10.6	69.9	99.8	112.9	13.2	10.5	69.8	180.7
October	100.0	113.2	11.7	9.3	69.1	100.2	113.0	13.2	10.5	69.9	180.7
November	100.5	112.8	13.6	10.8	70.0	100.8	113.5	13.4	10.6	70.2	180.8
December	101.4	113.8	14.7	11.4	71.0	101.4	114.1	13.8	10.8	70.7	180.8
<b>1996</b>											
January	102.4	114.7	14.0	10.9	71.1	101.8	114.8	14.1	11.0	71.3	180.9
February	103.5	117.0	14.0	10.7	72.4	101.9	115.4	14.5	11.2	71.8	181.0
March	100.4	115.5	15.0	11.5	72.1	101.7	115.7	14.8	11.3	72.1	181.1
April	101.6	116.3	15.3	11.6	72.6	101.5	115.8	15.0	11.5	72.2	181.1
May	100.6	114.5	15.0	11.6	71.5	101.2	115.9	15.1	11.5	72.3	181.1
June	101.3	116.2	15.2	11.6	72.5	101.0	115.8	15.2	11.6	72.4	181.1
<b>FEMALES</b>											
<b>1995</b>											
April	45.9	87.9	7.7	8.1	51.3	45.2	85.7	8.2	8.8	50.4	186.6
May	44.6	85.9	8.2	8.7	50.4	45.3	86.2	7.8	8.3	50.4	186.6
June	45.7	85.9	7.0	7.5	49.7	45.4	86.5	7.4	7.9	50.3	186.7
July	44.8	86.5	7.2	7.7	50.2	45.6	86.6	7.3	7.8	50.3	186.7
August	45.2	86.2	7.7	8.2	50.3	45.6	86.8	7.5	7.9	50.5	186.8
September	46.9	87.5	7.1	7.5	50.7	45.5	87.1	7.7	8.1	50.7	186.8
October	45.8	87.9	7.9	8.2	51.2	45.2	87.3	8.0	8.4	51.0	186.9
November	44.2	86.7	9.4	9.8	51.4	44.7	87.4	8.2	8.6	51.1	187.0
December	43.9	88.2	8.2	8.5	51.5	44.1	87.3	8.4	8.7	51.1	187.0
<b>1996</b>											
January	43.0	86.5	7.8	8.2	50.4	43.7	86.9	8.4	8.8	51.0	187.1
February	43.3	86.9	8.4	8.9	50.9	43.4	86.6	8.4	8.8	50.7	187.2
March	42.9	85.3	9.1	9.7	50.4	43.4	86.2	8.4	8.9	50.5	187.2
April	45.1	87.0	7.6	8.0	50.5	43.4	85.9	8.5	9.0	50.4	187.3
May	42.7	84.6	8.7	9.3	49.8	43.3	85.7	8.5	9.0	50.3	187.3
June	42.9	86.0	8.9	9.3	50.6	43.3	85.5	8.7	9.2	50.2	187.3
<b>PERSONS</b>											
<b>1995</b>											
April	145.6	202.4	22.5	10.0	61.3	145.0	199.5	23.1	10.4	60.6	367.0
May	144.3	199.8	23.1	10.4	60.7	145.1	200.1	22.3	10.0	60.6	367.1
June	145.6	199.4	21.4	9.7	60.1	145.2	200.2	21.6	9.7	60.4	367.2
July	145.3	200.6	20.1	9.1	60.1	145.3	200.1	21.1	9.5	60.2	367.3
August	144.8	198.8	22.1	10.0	60.1	145.3	200.0	20.9	9.5	60.1	367.4
September	145.9	200.4	20.5	9.3	60.1	145.3	200.0	20.9	9.5	60.1	367.5
October	145.8	201.0	19.5	8.9	60.0	145.4	200.3	21.2	9.6	60.3	367.6
November	144.7	199.6	23.0	10.3	60.5	145.4	200.9	21.6	9.7	60.5	367.8
December	145.3	201.9	22.9	10.2	61.1	145.5	201.4	22.1	9.9	60.8	367.9
<b>1996</b>											
January	145.5	201.2	21.8	9.8	60.6	145.5	201.8	22.5	10.0	61.0	368.0
February	146.9	203.9	22.5	9.9	61.5	145.3	201.9	22.9	10.2	61.1	368.2
March	143.3	200.8	24.2	10.7	61.1	145.1	201.9	23.2	10.3	61.1	368.3
April	146.7	203.2	22.9	10.1	61.4	144.9	201.8	23.4	10.4	61.1	368.4
May	143.2	199.2	23.7	10.6	60.5	144.5	201.6	23.6	10.5	61.1	368.4
June	144.2	202.2	24.1	10.6	61.4	144.2	201.3	23.9	10.6	61.1	368.4

<sup>1</sup> Trend estimates for December 1995 to May 1996 have been revised.

## TREND.....

Month	Employed full time '000s	Total employed '000s	Total unemployed '000s	Unemp- loyment rate %	Partic- ipation rate %	Civilian population aged 15 and over '000s
<b>MALES</b>						
<b>1995</b>						
April	40.8	45.8	3.8	7.6	79.1	62.6
May	40.4	45.3	3.9	7.9	78.4	62.7
June	39.9	44.7	4.0	8.2	77.6	62.8
July	39.4	44.3	4.0	8.3	76.9	62.9
August	39.0	44.1	4.0	8.3	76.4	62.9
September	38.9	44.3	3.9	8.1	76.5	63.0
October	39.1	44.8	3.8	7.8	77.2	63.0
November	39.5	45.5	3.7	7.5	78.1	63.0
December	39.8	46.0	3.6	7.2	78.8	62.9
<b>1996</b>						
January	40.0	46.2	3.5	7.1	78.8	63.1
February	40.1	46.1	3.5	7.0	78.3	63.3
March	40.0	45.8	3.4	6.8	77.4	63.5
April	39.9	45.5	3.3	6.7	76.6	63.6
May	39.9	45.2	3.1	6.5	75.8	63.8
June	39.9	45.0	3.0	6.3	75.1	64.0
<b>FEMALES</b>						
<b>1995</b>						
April	25.2	36.6	2.8	7.1	65.7	60.0
May	24.7	36.1	2.7	7.0	64.5	60.2
June	24.2	35.6	2.6	6.9	63.3	60.4
July	23.5	35.1	2.6	6.8	62.2	60.5
August	22.9	34.7	2.5	6.7	61.5	60.6
September	22.5	34.7	2.4	6.5	61.2	60.7
October	22.3	35.0	2.3	6.0	61.3	60.8
November	22.6	35.7	2.2	5.7	62.0	61.0
December	23.3	36.4	2.3	5.9	63.2	61.1
<b>1996</b>						
January	23.9	36.9	2.5	6.3	64.3	61.3
February	24.4	37.2	2.8	7.0	65.0	61.6
March	24.7	37.2	3.0	7.5	65.1	61.8
April	24.7	37.2	3.2	7.9	65.1	62.0
May	24.7	37.1	3.2	7.9	64.9	62.1
June	24.6	37.0	3.1	7.8	64.5	62.3
<b>PERSONS</b>						
<b>1995</b>						
April	66.0	82.4	6.6	7.4	72.5	122.6
May	65.1	81.4	6.6	7.5	71.6	122.9
June	64.1	80.3	6.6	7.6	70.6	123.1
July	63.0	79.4	6.6	7.7	69.7	123.3
August	62.0	78.8	6.5	7.6	69.1	123.5
September	61.3	79.0	6.3	7.4	69.0	123.6
October	61.4	79.8	6.1	7.0	69.4	123.8
November	62.1	81.1	5.9	6.7	70.2	123.9
December	63.1	82.4	5.8	6.6	71.1	124.1
<b>1996</b>						
January	64.0	83.2	6.0	6.7	71.6	124.5
February	64.5	83.3	6.2	7.0	71.7	124.9
March	64.6	83.0	6.4	7.1	71.4	125.3
April	64.6	82.6	6.4	7.2	70.9	125.6
May	64.6	82.3	6.3	7.2	70.4	125.9
June	64.5	82.0	6.2	7.0	69.9	126.3

<sup>1</sup> Trend estimates for December 1995 to May 1996 have been revised. Estimates for the most recent three months may be subject to significant revisions as data for later months become available.

LABOUR FORCE STATUS (AGED 15 AND OVER)—Australian Capital Territory<sup>1</sup>

## TREND.....

Month	Employed full time '000s	Total employed '000s	Total unemployed '000s	Unemp- loyment rate %	Partic- ipation rate %	Civilian population aged 15 and over '000s
<b>MALES</b>						
<b>1995</b>						
April	72.4	82.7	7.0	7.8	79.7	112.6
May	72.5	83.2	7.2	7.9	80.2	112.8
June	72.8	83.9	7.3	8.0	80.8	112.9
July	73.0	84.6	7.4	8.0	81.4	113.0
August	73.3	85.2	7.3	7.9	81.7	113.1
September	73.5	85.5	7.1	7.7	81.8	113.2
October	73.7	85.5	7.0	7.5	81.7	113.2
November	73.7	85.2	6.9	7.5	81.3	113.3
December	73.5	84.7	6.9	7.6	80.8	113.3
<b>1996</b>						
January	73.3	84.2	7.1	7.8	80.4	113.5
February	73.2	83.8	7.3	8.0	80.2	113.6
March	73.0	83.6	7.4	8.2	80.1	113.7
April	73.0	83.5	7.5	8.2	80.0	113.8
May	72.9	83.4	7.5	8.2	79.9	113.8
June	72.9	83.5	7.4	8.2	79.8	113.9
<b>FEMALES</b>						
<b>1995</b>						
April	43.6	71.7	5.0	6.5	65.5	117.1
May	43.8	72.2	4.9	6.4	65.8	117.3
June	44.2	72.8	4.8	6.2	66.1	117.4
July	44.5	73.3	4.7	6.0	66.4	117.5
August	44.7	73.7	4.7	6.0	66.7	117.6
September	45.0	74.0	4.8	6.1	67.0	117.7
October	45.1	74.1	5.0	6.3	67.2	117.8
November	45.2	74.1	5.2	6.6	67.3	117.9
December	45.2	73.9	5.4	6.8	67.2	118.0
<b>1996</b>						
January	44.9	73.5	5.7	7.1	67.0	118.1
February	44.6	73.0	5.9	7.5	66.8	118.1
March	44.2	72.6	6.1	7.8	66.6	118.2
April	43.9	72.2	6.4	8.1	66.4	118.3
May	43.6	72.0	6.6	8.4	66.3	118.4
June	43.4	71.8	6.8	8.7	66.4	118.5
<b>PERSONS</b>						
<b>1995</b>						
April	115.9	154.4	11.9	7.2	72.4	229.7
May	116.4	155.4	12.1	7.2	72.8	230.0
June	116.9	156.7	12.1	7.2	73.3	230.3
July	117.5	157.9	12.1	7.1	73.7	230.5
August	118.0	158.9	12.0	7.0	74.1	230.7
September	118.5	159.5	11.9	7.0	74.3	230.9
October	118.8	159.7	12.0	7.0	74.3	231.0
November	118.9	159.3	12.1	7.0	74.1	231.2
December	118.7	158.6	12.4	7.2	73.9	231.3
<b>1996</b>						
January	118.3	157.7	12.8	7.5	73.6	231.5
February	117.7	156.8	13.2	7.8	73.4	231.7
March	117.3	156.2	13.6	8.0	73.2	231.9
April	116.8	155.7	13.9	8.2	73.1	232.1
May	116.5	155.4	14.1	8.3	73.0	232.3
June	116.3	155.3	14.3	8.4	72.9	232.4

<sup>1</sup> Trend estimates for December 1995 to May 1996 have been revised. Estimates for the most recent three months may be subject to significant revisions as data for later months become available.



# EXPLANATORY NOTES

## INTRODUCTION

**1** This publication contains preliminary estimates of the civilian labour force derived from the labour force survey component of the monthly population survey. Estimates for the current month are preliminary and subject to revision. Revised estimates for the current month and more detailed estimates will be published in *Labour Force, Australia* (6203.0).

## MONTHLY POPULATION SURVEY

**2** The population survey is based on a multi-stage area sample of private dwellings (currently about 30,000 houses, flats, etc.) and a list sample of non-private dwellings (hotels, motels, etc.), and covers about 0.5% of the population of Australia. The information is obtained from the occupants of selected dwellings by specially trained interviewers. The interviews are generally conducted during the two weeks beginning on the Monday between the 6th and 12th of each month. The information obtained relates to the week before the interview (i.e. the reference week).

## SCOPE OF SURVEY

**3** The Labour Force Survey includes all persons aged 15 and over except members of the permanent defence forces, certain diplomatic personnel of overseas governments customarily excluded from census and estimated populations, overseas residents in Australia, and members of non-Australian defence forces (and their dependants) stationed in Australia.

## COVERAGE

**4** In the Labour Force Survey, coverage rules are applied which aim to ensure that each person is associated with only one dwelling, and hence has only one chance of selection. The coverage rules are necessarily a balance between theoretical and operational considerations. Nevertheless, the chance of a person being enumerated at two separate dwellings in the survey is considered to be negligible.

## POPULATION BENCHMARKS

**5** Labour Force Survey estimates are calculated in such a way as to add up to independent estimates of the civilian population aged 15 and over (population benchmarks). From February 1994, labour force estimates have been compiled using benchmarks based on the results of the 1991 Census of Population and Housing. Small revisions were made to many of the historical estimates from January 1989 to January 1994.

## REVISION OF SERIES

**6** From April 1986, the definition of employed persons was changed to include persons who worked without pay between 1 and 14 hours per week in a family business or on a farm (i.e. unpaid family helpers). For further information, see paragraphs 36 and 37 of the Explanatory Notes to the February 1987 issue of *The Labour Force, Australia* (6203.0).

## SURVEY SAMPLE REDESIGN

**7** The Labour Force Survey sample was redesigned and reselected using information collected in the 1991 Census of Population and Housing. The new sample was phased in over the period September to December 1992. For details, see *Information Paper: Labour Force Survey Sample Design* (6269.0).

**8** For the most part, one quarter of the new sample was introduced each month so that, by December 1992, the entire new sample was in place. Replacement generally occurred at the rotation group level with two groups being substituted each month. Such a pattern of implementation meant that any changes to labour force estimates due to differences between the two samples, or any other influences, were spread over the four months rather than being concentrated in one inter-month period.

**9** This phase-in scheme applied to the private dwelling sample in urban areas. The new sample for non-private dwellings and private dwellings in rural areas was introduced in a single stage in November 1992.

**10** Two types of error are possible in an estimate based on a sample survey: sampling error and non-sampling error.

*Sampling error* occurs because a sample, rather than the entire population, is surveyed. One measure of the likely difference resulting from not including all dwellings in the survey is given by the standard error. There are about two chances in three that a sample estimate will differ by less than one standard error from the figure that would have been obtained if all dwellings had been included in the survey, and about nineteen chances in twenty that the difference will be less than two standard errors. Standard errors of estimates for the latest month and of estimates of movements since the previous month are shown on pages 30 and 31. Standard errors of other estimates and other movements may be determined by using information in the Technical Notes in *Labour Force, Australia* (6203.0).

*Non sampling error* arises from inaccuracies in collecting, recording and processing the data. Every effort is made to minimise reporting error by the careful design of questionnaires, intensive training and supervision of interviewers, and efficient data processing procedures.

**11** Seasonally adjusted series are published in Tables 2, 5 and 12 to 17. Seasonal factors are reviewed annually to take account of each additional year's original data. The results of the latest review were used to compile the revised seasonally adjusted and trend estimates given in this publication. Information about the method of adjustment and revised seasonally adjusted and trend estimates for all months from January 1991 were published in an appendix to the February 1996 issue of *Labour Force, Australia* (6203.0).

**12** Seasonal adjustment is a means of removing the estimated effects of normal seasonal variation from the series so that the effects of other influences on the series can be more clearly recognised. Seasonal adjustment does not aim to remove the irregular or non-seasonal influences which may be present in any particular month. This means that month-to-month movements of the seasonally adjusted estimates may not be reliable indicators of trend behaviour. For example, irregular factors unrelated to the trend account for more than half the seasonally adjusted movement with the following frequency:

- Employment: 5 in 10 monthly movements
- Unemployment: 7 in 10 monthly movements
- Unemployment rate: 7 in 10 monthly movements
- Participation rate: 9 in 10 monthly movements

**13** The smoothing of seasonally adjusted series reduces the impact of the irregular component of the seasonally adjusted series, and creates trend estimates. These trend estimates are derived by applying a 13-term Henderson-weighted moving average to all months except the last six. The last six monthly trend estimates are obtained by applying surrogates of the Henderson average to the seasonally adjusted series. Trend series are used to analyse the underlying behaviour of the series over time. These are published in Tables 3, 6 and 12 to 19.

**14** While this smoothing technique enables estimates to be produced for the latest month, it does result in revisions to the most recent months as additional observations become available. Generally, subsequent revisions become smaller, and after three months have a negligible impact on the series. There will also be revisions as a result of the annual review of seasonal factors.

SEASONAL ADJUSTMENT AND  
TREND ESTIMATION (continued)

**15** Trend estimates are published for the Northern Territory in Table 18 and for the Australian Capital Territory in Table 19. Unadjusted series for the two Territories have shown, historically, a high degree of variability, which can lead to considerable revisions to the seasonally adjusted estimates after each annual seasonal factor re-analysis. Seasonally adjusted estimates are not currently published for the two Territories. The most recent six months trend estimates are subject to revision. For the three most recent months, the revision may be relatively large. Inferences about trends drawn from smoothed seasonally adjusted (trend) estimates for months earlier than the latest three months are unlikely to be affected by month to month revisions. They may be affected by revision resulting from the annual re-analysis of seasonal factors.

**16** For further information, see *A Guide to Interpreting Time Series — Monitoring 'Trends': an Overview* (1348.0) or contact the Assistant Director, Time Series Analysis on (06) 252 6345.

RELATED PUBLICATIONS

**17** Users may also wish to refer to *Labour Force, Australia* (6203.0). This publication contains a detailed list of related publications which are available from ABS Bookshops.

**18** Current publications produced by the ABS are listed in the *Catalogue of Publications and Products, Australia* (1101.0). The ABS also issues, on Tuesdays and Fridays, a *Release Advice* (1105.0) which lists publications to be released in the next few days. The Catalogue and Release Advice are available from any ABS office.

UNPUBLISHED STATISTICS

**19** As well as the statistics included in this and related publications, the ABS may have other relevant unpublished data available. Inquiries should be made to Don Clark on 06 252 6525 or to any ABS office.

EFFECTS OF ROUNDING

**20** Estimates have been rounded and discrepancies may occur between sums of the component items and totals.

**21** Estimates of movement shown in this publication are obtained by taking the difference of unrounded estimates. The movement estimate is then rounded to one decimal place. Therefore where a discrepancy occurs between the reported movement and the difference of the rounded estimates, the reported movement will be more accurate.

SYMBOLS AND OTHER USAGES

- \* subject to sampling variability too high for most practical uses. See the Technical Notes in 6203.0 for more details.
- .. not applicable
- r revised
- pts percentage points

## GLOSSARY

<b>Actively looking for work</b>	Includes writing, telephoning or applying in person to an employer for work; answering a newspaper advertisement for a job; checking factory or Commonwealth Employment Service noticeboards; being registered with the Commonwealth Employment Service; checking or registering with any other employment agency; advertising or tendering for work; and contacting friends or relatives.
<b>Attending school</b>	Persons aged 15 to 19 enrolled full time at secondary or high schools in the reference week.
<b>Attending tertiary educational institution full time</b>	Persons aged 15 to 24 enrolled full time at a TAFE college, university, or other educational institution in the reference week.
<b>Employed</b>	Persons aged 15 and over who, during the reference week: <ul style="list-style-type: none"> <li>■ worked for one hour or more for pay, profit, commission or payment in kind in a job or business, or on a farm (comprising employees, employers and own account workers); or</li> <li>■ worked for one hour or more without pay in a family business or on a farm (i.e. contributing family workers); or</li> <li>■ were employees who had a job but were not at work and were: <ul style="list-style-type: none"> <li>• on paid leave; on leave without pay for less than four weeks up to the end of the reference week,</li> <li>■ stood down without pay because of bad weather or plant breakdown at their place of employment for less than four weeks up to the end of the reference week,</li> <li>■ on strike or locked out,</li> <li>• on workers' compensation and expected to be returning to their job, or</li> <li>• receiving wages or salary while undertaking full-time study; or</li> </ul> </li> <li>■ were employers, own account workers or contributing family workers who had a job, business or farm, but were not at work.</li> </ul>
<b>Full-time workers</b>	Employed persons who usually worked 35 hours or more a week (in all jobs) and those who, although usually working less than 35 hours a week, worked 35 hours or more during the reference week
<b>Labour force</b>	For any group, persons who were employed or unemployed, as defined.
<b>Labour force status</b>	A classification of the civilian population aged 15 and over into employed, unemployed or not in the labour force, as defined. The definitions conform closely to the international standard definitions adopted by the International Conferences of Labour Statisticians.
<b>Not in the labour force</b>	Persons who were not in the categories employed or unemployed as defined.
<b>Participation rate</b>	For any group, the labour force expressed as a percentage of the civilian population aged 15 and over in the same group.
<b>Part-time workers</b>	Employed persons who usually worked less than 35 hours a week and who did so during the reference week.
<b>Seasonally adjusted series</b>	A time series of estimates with the estimated effects of normal seasonal variation removed. See Explanatory Note 11 to 12 for more detail.
<b>Trend series</b>	A smoothed seasonally adjusted series of estimates. See Explanatory Notes 13 to 15 for more detail.

<b>Unemployed</b>	Persons aged 15 and over who were not employed during the reference week, and: <ul style="list-style-type: none"> <li>■ had actively looked for full-time or part-time work at any time in the four weeks up to the end of the reference week and:           <ul style="list-style-type: none"> <li>⌘ were available for work in the reference week, or would have been available except for temporary illness (i.e. lasting for less than four weeks to the end of the reference week), or</li> <li>⤵ were waiting to start a new job within four weeks from the end of the reference week and would have started in the reference week if the job had been available then; or</li> </ul> </li> <li>■ were waiting to be called back to a full-time or part-time job from which they had been stood down without pay for less than four weeks up to the end of the reference week (including the whole of the reference week) for reasons other than bad weather or plant breakdown.</li> </ul>
<b>Unemployed looking for first full-time job</b>	Unemployed persons looking for full-time work (as defined above) who had never worked full time for two weeks or more
<b>Unemployed looking for full-time work</b>	Unemployed persons who actively looked for full-time work, or were to resume a full-time job from which they had been stood down.
<b>Unemployed looking for part-time work</b>	Unemployed persons who had actively looked for part-time work only, or were to resume a part-time job from which they had been stood down.
<b>Unemployment rate</b>	For any group, the number of unemployed persons expressed as a percentage of the labour force in the same group.
<b>Unemployment to population ratio</b>	For any group, the number of unemployed persons expressed as a percentage of the civilian population in the same group.

## STANDARD ERRORS

The estimates in this publication are based on information gained from the occupants of a sample survey of dwellings. Because the entire population is not surveyed, the published estimates are subject to sampling error. The most common way of quantifying such sampling error is to calculate the standard error for the published estimate or statistic.

### LEVEL ESTIMATES

To illustrate, let us say the published level estimate for employed persons aged 15 to 19 is 500,000. The calculated standard error in this case is 9,000. The standard error is then used to interpret the level estimate of 500,000. For instance, the standard error of 9,000 indicates that:

- There are approximately two chances in three that the real value falls within the range 491,000 to 509,000 ( $500,000 \pm 9,000$ )
- There are approximately nineteen chances in twenty that the real value falls within the range 482,000 to 518,000 ( $500,000 \pm 18,000$ )

The real value in this case is the result we would obtain if we could enumerate the total population.

The following tables show the standard errors for this month's level estimates.

	EMPLOYED.....			UNEMPLOYED.....							
	<i>Employed full time</i>	<i>Employed part time</i>	<i>Total employed</i>	<i>Unemp. looking for f/t work</i>	<i>Unemp. looking for p/t work</i>	<i>Total unemployed</i>	<i>Labour force</i>	<i>Not in labour force</i>	<i>Unemployment rate</i>	<i>Participation rate</i>	
	'000s	'000s	'000s	'000s	'000s	'000s	'000s	'000s	pts	pts	
NSW	14.6	9.8	16.0	5.9	3.6	6.5	16.4	13.9	0.2	0.3	
Vic.	12.1	8.2	13.3	5.0	3.1	5.5	13.7	11.5	0.2	0.4	
Qld	9.4	6.3	10.4	4.1	2.3	4.5	10.7	8.7	0.3	0.4	
SA	5.1	3.7	5.7	2.3	1.2	2.4	5.9	5.0	0.3	0.5	
WA	6.3	4.3	7.0	2.5	1.5	2.8	7.2	5.7	0.3	0.5	
Tas.	1.7	1.3	1.8	1.0	0.5	1.0	1.9	1.7	0.4	0.5	
NT	2.0	1.1	2.2	0.5	0.3	0.5	2.3	1.6	0.6	1.8	
ACT	1.6	1.1	1.8	0.6	0.4	0.7	1.8	1.3	0.4	0.8	
Males	19.8	9.4	20.7	8.1	3.4	8.5	21.3	14.9	0.2	0.3	
Females	15.4	13.9	18.8	6.1	4.7	7.3	19.3	18.4	0.2	0.3	
Persons	22.7	15.5	25.0	9.5	5.6	10.4	25.7	21.4	0.1	0.2	

	NUMBER OF UNEMPLOYED PERSONS.....						UNEMPLOYMENT RATE.....				
	<i>Aged 15-19 seeking first f/t job</i>	<i>Aged 15-19 looking for f/t work</i>	<i>Aged 20 and over looking for f/t work</i>	<i>Total looking for f/t work</i>	<i>Looking for p/t work</i>	<i>Total unemployed</i>	<i>Aged 15-19 looking for f/t work</i>	<i>Aged 20 and over looking for f/t work</i>	<i>Total looking for f/t work</i>	<i>Looking for p/t work</i>	<i>Total unemployed</i>
	'000s	'000s	'000s	'000s	'000s	'000s	pts	pts	pts	pts	pts
NSW	2.1	2.7	5.5	5.9	3.6	6.5	2.7	0.3	0.3	0.5	0.2
Vic.	1.8	2.2	4.7	5.0	3.1	5.5	3.4	0.3	0.3	0.5	0.2
Qld	1.4	2.0	3.8	4.1	2.3	4.5	2.9	0.3	0.3	0.5	0.3
SA	0.8	1.0	2.1	2.3	1.2	2.4	4.8	0.4	0.4	0.6	0.3
WA	0.8	1.1	2.4	2.5	1.5	2.8	3.0	0.4	0.4	0.7	0.3
Tas.	0.3	0.5	0.9	1.0	0.5	1.0	4.5	0.6	0.6	0.8	0.4
NT	0.1	0.2	0.5	0.5	0.3	0.5	4.9	0.7	0.7	1.4	0.6
ACT	0.3	0.3	0.6	0.6	0.4	0.7	7.8	0.5	0.5	1.0	0.4
Males	2.7	3.6	7.6	8.1	3.4	8.5	1.8	0.2	0.2	0.6	0.2
Females	2.1	2.7	5.7	6.1	4.7	7.3	2.5	0.3	0.3	0.3	0.2
Persons	3.3	4.3	8.9	9.5	5.6	10.4	1.4	0.1	0.1	0.2	0.1

# STANDARD ERRORS continued

## MOVEMENT ESTIMATES

The following example illustrates how to use the standard error to interpret a movement estimate. Let us say that one month the published level estimate for females employed part time in Australia is 1,387,000; the next month the published level estimate is 1,400,000. The calculated standard error for the movement estimate is 10,400. The standard error is then used to interpret the published movement estimate of 13,000. For instance, the standard error of 10,400 indicates that:

- There are approximately two chances in three that the real movement over the two month period falls within the range 2,600 to 23,400 (13,000 + or - 10,400)
- There are approximately nineteen chances in twenty that the real movement falls within the range -7,800 to 33,800 (13,000 + or - 20,800).

The following tables show the standard errors for this month's movement estimates.

	EMPLOYED.....			UNEMPLOYED.....						
	Employed full time	Employed part time	Total employed	Unemp.	Unemp.	Total unemployed	Labour force	Not in labour force	Unemp- loyment rate	Partic- ipation rate
				looking for f/t work	looking for p/t work					
'000s	'000s	'000s	'000s	'000s	'000s	'000s	'000s	'000s	pts	pts
NSW	11.3	7.5	12.5	4.6	2.9	5.0	12.9	10.7	0.2	0.3
Vic.	8.8	5.9	9.8	3.7	2.3	4.1	10.1	8.3	0.2	0.3
Qld	6.5	4.5	7.2	3.0	1.9	3.3	7.4	6.0	0.2	0.3
SA	3.5	2.5	3.9	1.6	1.0	1.7	4.1	3.4	0.2	0.3
WA	4.5	3.1	5.0	1.9	1.3	2.1	5.2	4.1	0.2	0.4
Tas.	1.5	1.1	1.7	0.7	0.4	0.8	1.8	1.5	0.3	0.5
NT	1.3	0.7	1.4	0.4	0.2	0.4	1.4	1.0	0.5	1.1
ACT	1.2	0.8	1.4	0.5	0.3	0.6	1.4	1.0	0.3	0.6
Males	15.1	7.0	15.8	6.2	2.9	6.5	16.3	11.2	0.1	0.2
Females	11.5	10.4	14.2	4.9	3.8	5.7	14.7	13.9	0.1	0.2
Persons	17.5	11.7	19.5	7.3	4.4	7.9	20.1	16.4	0.1	0.1

	NUMBER OF UNEMPLOYED PERSONS.....						UNEMPLOYMENT RATE.....				
	Aged 15-19 seeking first f/t job	Aged 15-19 looking for f/t work	Aged 20 and over looking for f/t work	Total looking for f/t work	Looking for p/t work	Total unemployed	Aged 15-19 looking for f/t work	Aged 20 and over looking for f/t work	Total looking for f/t work	Looking for p/t work	Total unemp- loyed
	'000s	'000s	'000s	'000s	'000s	'000s	pts	pts	pts	pts	pts
NSW	1.9	2.3	4.3	4.6	2.9	5.0	2.3	0.2	0.2	0.4	0.2
Vic.	1.6	1.8	3.5	3.7	2.3	4.1	2.7	0.2	0.2	0.4	0.2
Qld	1.3	1.7	2.8	3.0	1.9	3.3	2.4	0.2	0.2	0.5	0.2
SA	0.7	0.8	1.5	1.6	1.0	1.7	3.5	0.3	0.3	0.5	0.2
WA	0.7	1.0	1.8	1.9	1.3	2.1	2.5	0.3	0.3	0.5	0.2
Tas.	0.3	0.4	0.7	0.7	0.4	0.8	3.6	0.4	0.4	0.6	0.3
NT	0.1	0.2	0.4	0.4	0.2	0.4	6.1	0.6	0.6	1.0	0.5
ACT	0.2	0.3	0.5	0.5	0.3	0.6	6.7	0.4	0.4	0.8	0.3
Males	2.4	3.0	5.8	6.2	2.9	6.5	1.5	0.1	0.1	0.5	0.1
Females	2.1	2.5	4.6	4.9	3.8	5.7	2.1	0.2	0.2	0.2	0.1
Persons	2.9	3.6	6.8	7.3	4.4	7.9	1.1	0.1	0.1	0.2	0.1

# WHAT IF...? REVISIONS TO TREND ESTIMATES

## EFFECT OF NEW SEASONALLY ADJUSTED ESTIMATES ON TREND ESTIMATES

Each time new seasonally adjusted estimates become available, trend estimates are revised (see paragraphs 13 and 14 of Explanatory Notes).

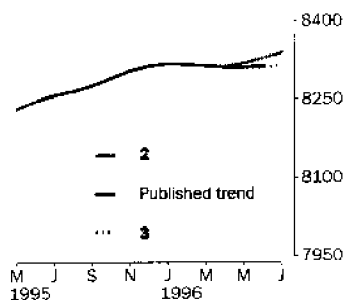
### TREND REVISIONS

The examples in the tables below show four illustrative scenarios and the consequent revisions to previous trend estimates of employment and unemployment rate.

- 1** The July seasonally adjusted estimate is the same as the June estimate.
- 2** The July seasonally adjusted estimate is higher than the June estimate by:
  - +0.34% for employment
  - +2.2% for the unemployment rate
- 3** The July seasonally adjusted estimate is lower than the June estimate by:
  - -0.34% for employment
  - -2.2% for the unemployment rate
- 4** The July seasonally adjusted estimate results in a revised June trend estimate which is identical to the new July trend estimate.

The percentage changes of 0.34% and 2.2% were chosen because they represent the average absolute monthly percentage changes in employment and the unemployment rate respectively.

### EMPLOYMENT ('000)



1996  
April  
May  
June  
July  
(new)

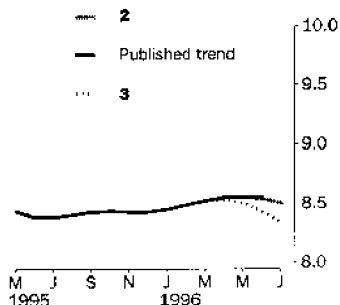
#### WHAT IF NEXT MONTH'S SEASONALLY ADJUSTED ESTIMATE IS:

	<b>1</b>	<b>2</b>	<b>3</b>	<b>4</b>
	8 333.5	8 361.4	8 305.5	8 287.7
	<i>i.e. the same as Jun 1996</i>	<i>i.e. rises by 0.34%</i>	<i>i.e. falls by 0.34%</i>	<i>i.e. same trend for Jun &amp; Jul</i>

TREND as PUBLISHED

April	8 311.0	8 311.4	8 312.6	8 310.1	8 309.3
May	8 311.0	8 314.4	8 318.5	8 310.3	8 307.6
June	8 314.3	8 320.0	8 327.8	8 312.2	8 307.2
July (new)	—	8 326.5	8 338.3	8 314.7	8 307.2

### UNEMPLOYMENT RATE (%)



1996  
April  
May  
June  
July  
(new)

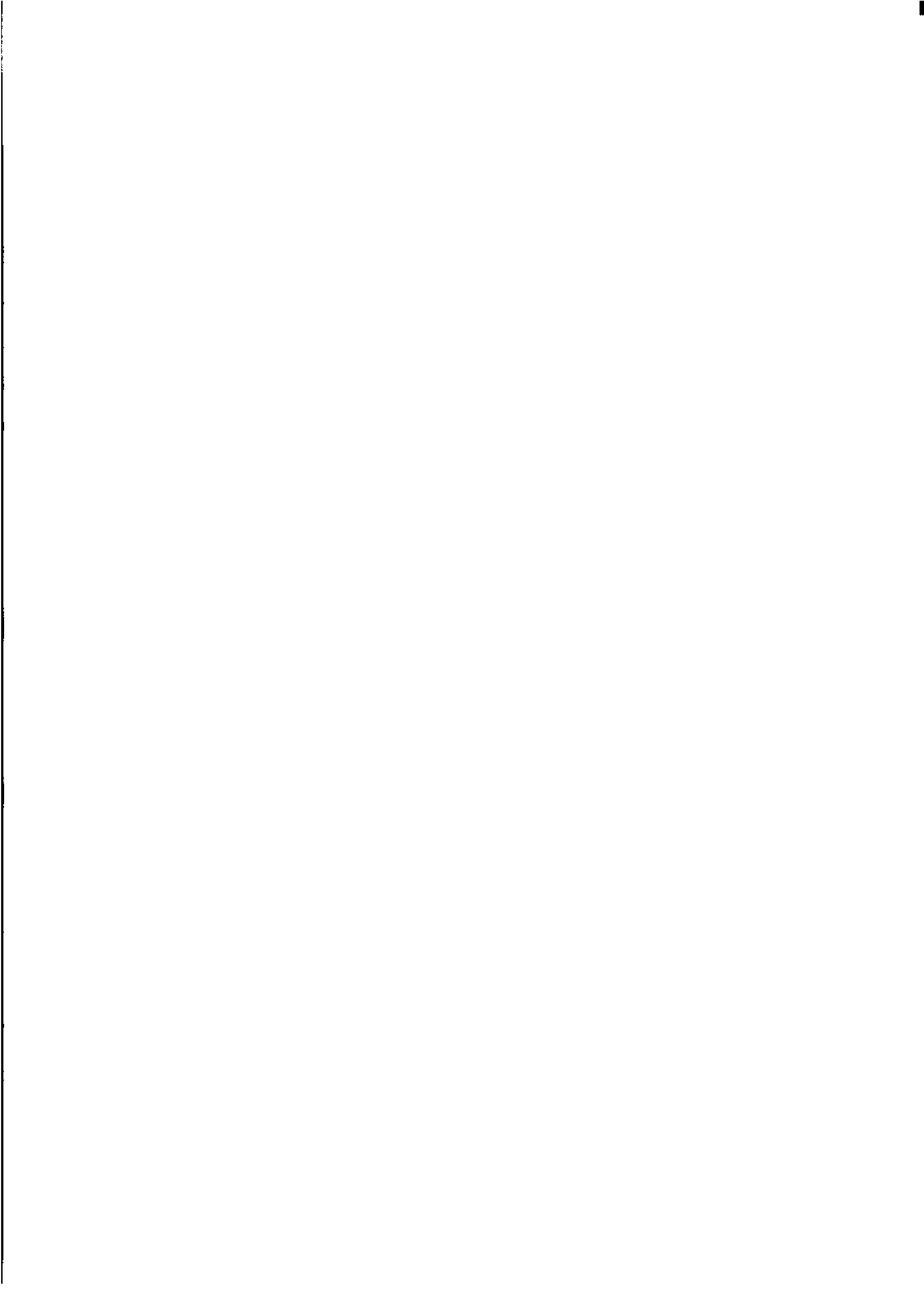
#### WHAT IF NEXT MONTH'S SEASONALLY ADJUSTED ESTIMATE IS:

	<b>1</b>	<b>2</b>	<b>3</b>	<b>4</b>
	8.3	8.5	8.1	8.8
	<i>i.e. the same as Jun 1996</i>	<i>i.e. rises by 2.2%</i>	<i>i.e. falls by 2.2%</i>	<i>i.e. same trend for Jun &amp; Jul</i>

TREND as PUBLISHED

April	8.5	8.5	8.6	8.5	8.6
May	8.6	8.5	8.6	8.5	8.6
June	8.6	8.5	8.5	8.4	8.6
July (new)	—	8.4	8.5	8.3	8.6





## FOR MORE INFORMATION . . .

The ABS publishes a wide range of information on Australia's economic and social conditions. A catalogue of publications and products is available from any of our offices (see below).

### INFORMATION CONSULTANCY SERVICES

Information tailored to special needs of clients can be obtained from the Information Consultancy Service available at ABS Offices (see below).

### ABS PRODUCTS

A large number of ABS products is available from the ABS Bookshops (see below). The ABS also provides a subscription service – you can telephone the ABS Subscription Service Australia wide toll free on 1800 0206 08.

### ELECTRONIC SERVICES

A large range of data is available via on-line services, diskette, magnetic tape, tape cartridge and CD ROM. For more details about our electronic data services, contact any ABS office (see below) or e-mail us at:

X.400 (C:Australia,PUB:Telememo,O:ABS,FN:STAT,SN:INFO)  
Internet Stat.info@abs.telememo.au  
Keylink STAT.INFO/ABS

You can visit us on the Internet at: <http://www.statistics.gov.au>

### GENERAL SALES AND INQUIRIES

■ Sydney 02 268 4611	■ Adelaide 08 237 7100
■ Melbourne 03 9615 7755	■ Hobart 002 20 5800
■ Brisbane 07 3222 6351	■ Darwin 089 43 2111
■ Perth 09 360 5140	■ Canberra 06 252 6627

■ Information Services, ABS  
PO Box 10, Belconnen ACT 2616



2620200006961  
ISSN 1031-038X

RRP \$15.50