

LABOUR FORCE

AUSTRALIA
PRELIMINARY

EMBARGOED UNTIL 11:30AM THURS 13 JULY 1995

JUNE KEY ESTIMATES

TREND ESTIMATES

	May 95	Jun 95	monthly change
Employed persons (no. in '000s)	8 232.8	8 255.5	0.3 %
Unemployed persons (no. in '000s)	757.3	751.4	-0.8 %
Unemployment rate (%)	8.4	8.3	-0.1 pts
Participation rate (%)	63.7	63.8	0.0 pts

SEASONALLY ADJUSTED

	May 95	Jun 95	monthly change
Employed persons (no. in '000s)	8 216.4	8 268.1	51.7
Unemployed persons (no. in '000s)	766.7	750.2	-16.4
Unemployment rate (%)	8.5	8.3	-0.2 pts
Participation rate (%)	63.7	63.8	0.2 pts

JUNE KEY POINTS

TREND ESTIMATES

EMPLOYMENT

- rose to 8,255,500 in June 1995, 4.5% higher than a year ago. Full-time and part-time employment rose by 3.7% and 6.8% respectively in that period.

UNEMPLOYMENT

- fell to 751,400, 20.7% lower than the peak of 947,200 recorded in September 1993.

UNEMPLOYMENT RATE

- fell to 8.3% in June 1995, compared with 9.8% recorded in June 1994.

PARTICIPATION RATE

- actually rose by less than 0.1 pts, but due to rounding stands at 63.8%. The male and female rates stood at 73.9% and 54.0% respectively.

SEASONALLY ADJUSTED ESTIMATES

EMPLOYMENT

- rose by 51,700 to 8,268,100, with a rise of 30,200 in part-time employment. Total female employment rose by 45,200, of which 32,800 was in part-time work.

UNEMPLOYMENT

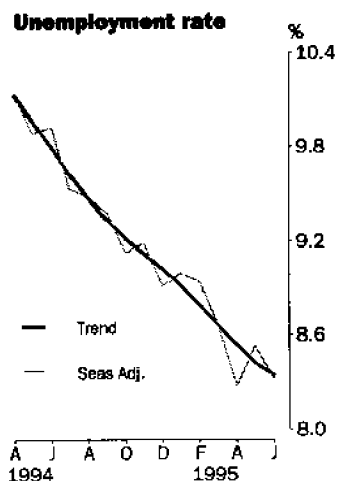
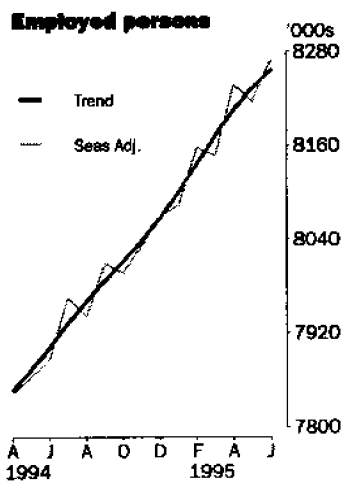
- fell by 16,400 to 750,200, with a fall of 9,000 in persons seeking part-time work.

UNEMPLOYMENT RATE

- fell by 0.2pts to 8.3%. The female rate fell by 0.3 pts to 7.7%.
- NSW 7.5% (7.9% last month); Vic. 8.7% (8.6%); Qld 8.9% (9.3%); SA 10.3% (9.7%); WA 7.3% (7.4%); Tas. 9.4% (10.4%).

PARTICIPATION RATE

- actually rose by 0.2 pts but due to rounding stands at 63.8%. For females, the rate rose by 0.4 pts to 54.2%, the highest rate recorded by the survey.



INQUIRIES

- For further information about these and related statistics, contact Sylvia Sajler on 06 252 6525 or any ABS office.

LABOUR FORCE NOTES

FORTHCOMING ISSUES

<i>ISSUE</i>	<i>RELEASE DATE</i>
July 1995	10 August 1995
August 1995	7 September 1995
September 1995	12 October 1995
October 1995	9 November 1995
November 1995	7 December 1995
December 1995	11 January 1996

* * * * *

ROUNDING

Estimates of monthly change shown on page 1 have been calculated using unrounded estimates, and may be different from, but are more accurate than, movements obtained from the rounded estimates. The graphs on page 1 also depict movements calculated from unrounded estimates.

* * * * *

SAMPLING ERRORS

The estimates in this publication are based on a sample survey. Because the entire population is not enumerated, the published estimates and the movements derived from them are subject to sampling variability. Standard errors give a measure of this variability and appear on pages 30 and 31.

The 95% confidence intervals below provide another way of looking at the variability inherent in estimates from sample surveys. The interval bounded by the two limits is the 95% confidence interval. A 95% confidence interval indicates that we are 95% confident that the upper and lower limits enclose the true value of the estimate.

<i>SEASONALLY ADJUSTED DATA SERIES</i>	<i>MOVEMENTS MAY 1995 TO JUNE 1995</i>		
	<i>Monthly change</i>	<i>95% Confidence interval</i>	
Total employment	51 700	12 900	to 90 500
Total unemployment	-16 400	-32 200	to -600
Unemployment rate	-0.2 pts	-0.4 pts	to 0.0 pts
Participation rate	0.2 pts	0.0 pts	to 0.4 pts

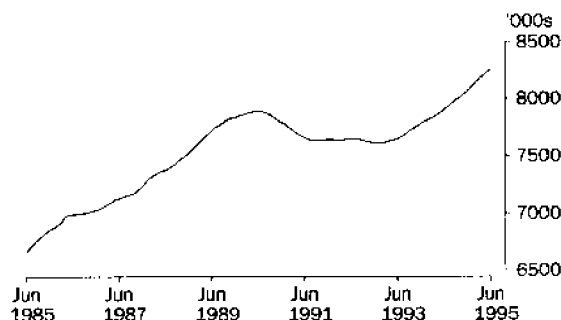
* * * * *

W. McLennan
Australian Statistician

PRINCIPAL LABOUR FORCE SERIES: Trend estimates

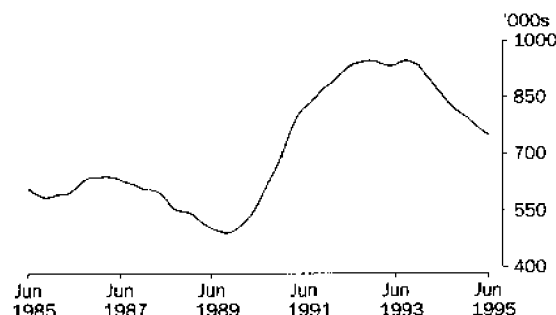
EMPLOYED PERSONS

After reaching a peak of 7,894,700 in June 1990, trend employment fell by 3.5% to a low of 7,615,400 in January 1993. The trend has been rising since then, and in June 1995 stood at 8,255,500, 4.6% higher than the June 1990 peak.



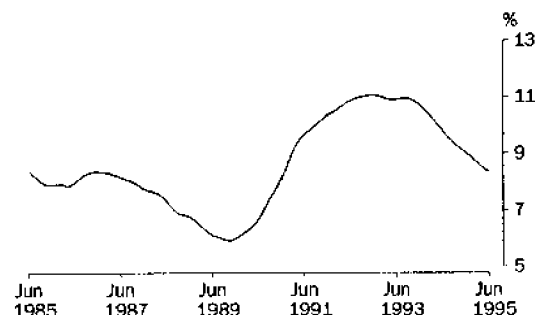
UNEMPLOYED PERSONS

From a low of 491,500 in October 1989, trend estimates of unemployment rose continuously over the next four years (apart from slight falls in the first half of 1993) to reach 947,200 in September 1993. The trend has been falling since September 1993, and in June 1995 stood at 751,400.



UNEMPLOYMENT RATE

The trend unemployment rate reached a peak of 11.1% in December 1992 (rising from a low of 5.9% in late 1989), before falling slightly and remaining flat at 10.9% for most of 1993. The trend unemployment rate has been falling since then, and in June 1995 was 8.3%, the lowest level since December 1990.

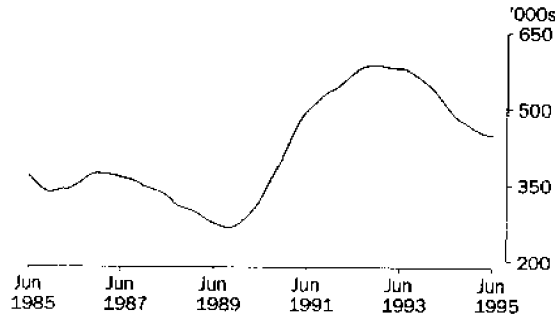


UNEMPLOYED PERSONS: Trend estimates

UNEMPLOYED MALES

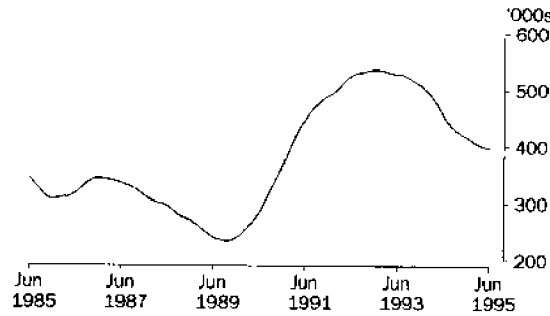
TOTAL

Trend unemployment estimates for males fell to 264,800 in October 1989 before rising to a high of 585,100 in December 1992. Since then, the trend has been falling although the rate of decline has slowed in recent months. In June 1995, the trend stood at 448,700, 23.3% lower than the December 1992 peak.



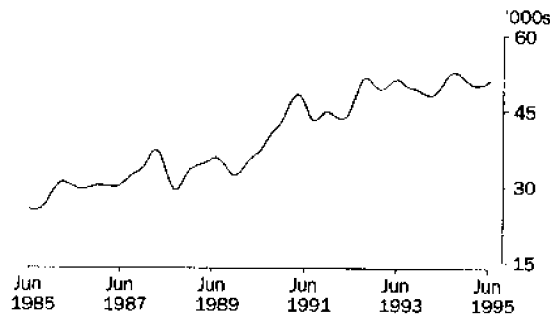
MALES LOOKING FOR FULL TIME WORK

Trend estimates of the number of males looking for full-time work rose from 231,600 in October 1989, to a peak of 534,900 in December 1992. The trend has been falling since then, and in June 1995 stood at 397,800, the lowest level since early 1991.



MALES LOOKING FOR PART TIME WORK

After falling between June 1993 and April 1994, trend estimates of the number of males looking for part-time work rose to a peak of 52,700 in September 1994. For the rest of 1994 and early 1995, the trend began to fall, before rising in each of the last three months. In June 1995, the trend stood at 50,900.

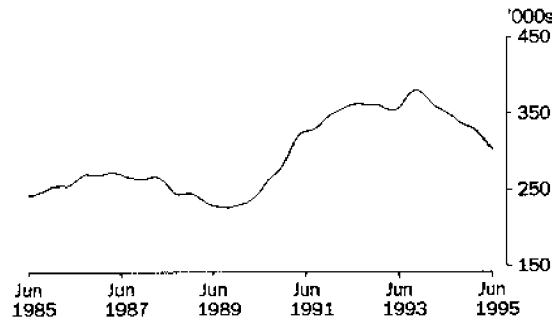


UNEMPLOYED PERSONS: Trend estimates

UNEMPLOYED FEMALES

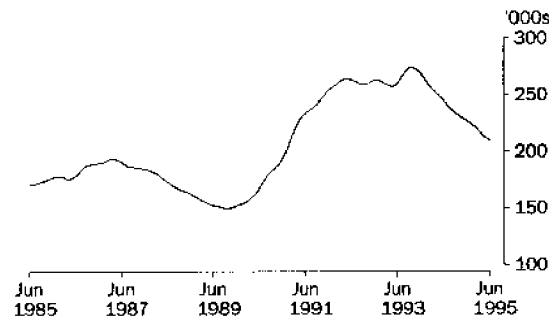
TOTAL

Trend estimates of female unemployment rose from 226,800 in late 1989 to 362,500 in July 1992. After falling slightly, the trend continued to rise, peaking at 379,200 in October 1993. The trend has been falling since then, and in June 1995 stood at 302,700, the lowest level since early 1991.



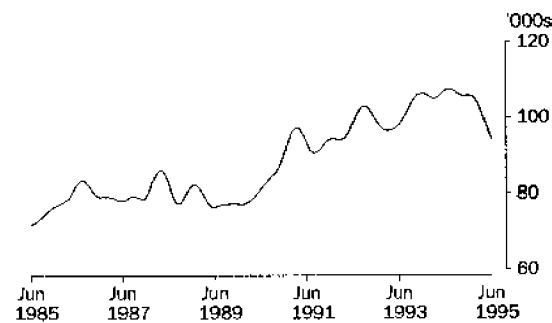
FEMALES LOOKING FOR FULL TIME WORK

Trend estimates of unemployed females looking for full-time work rose from 149,500 in October 1989 to a peak of 274,400 four years later. The trend has been falling since October 1993, and in June 1995 was 208,700, the lowest level since early 1991.



FEMALES LOOKING FOR PART TIME WORK

Trend estimates of the number of females looking for part-time work began to increase rapidly in 1990, rising from 77,000 in January 1990, to a peak of 107,400 in July 1994. The trend has been generally falling since then and in June 1995 was 94,100.



LABOUR FORCE STATUS (AGED 15 AND OVER): Original

Month	EMPLOYED.....			UNEMPLOYED.....							
	Employed full time	Employed part time	Total employed	Unemp. looking for f/t work	Unemp. looking for p/t work	Total unemployed	Labour force	Not in labour force	Civilian population aged 15 and over	Unemp-loyment rate	Partic-ipation rate
	'000s	'000s	'000s	'000s	'000s	'000s	'000s	'000s	'000s	%	%
MALES											
1994											
April	4 022.4	478.2	4 500.6	478.7	44.7	523.4	5 024.0	1 818.5	6 842.5	10.4	73.4
May	4 041.4	473.0	4 514.4	465.5	45.3	510.9	5 025.3	1 823.8	6 849.1	10.2	73.4
June	4 053.4	481.4	4 534.8	450.5	48.2	498.7	5 033.5	1 822.2	6 855.7	9.9	73.4
July	4 095.4	490.4	4 585.7	422.0	45.8	467.8	5 053.5	1 809.5	6 863.1	9.3	73.6
August	4 039.6	496.2	4 535.8	427.8	45.0	472.8	5 008.6	1 861.8	6 870.5	9.4	72.9
September	4 117.2	489.4	4 606.6	425.9	58.3	484.2	5 090.8	1 787.1	6 877.9	9.5	74.0
October	4 094.1	516.2	4 610.3	395.5	44.6	440.2	5 050.5	1 834.8	6 885.3	8.7	73.4
November	4 092.5	493.9	4 586.4	405.5	47.6	453.1	5 039.5	1 853.2	6 892.8	9.0	73.1
December	4 162.0	510.3	4 672.3	418.5	51.1	469.7	5 142.0	1 758.2	6 900.2	9.1	74.5
1995											
January	4 111.6	484.2	4 595.8	454.8	57.8	512.6	5 108.4	1 800.8	6 909.2	10.0	73.9
February	4 165.9	488.4	4 654.3	440.4	60.2	500.6	5 154.9	1 763.3	6 918.2	9.7	74.5
March	4 145.0	519.3	4 664.3	404.6	56.3	460.9	5 125.2	1 802.0	6 927.2	9.0	74.0
April	4 165.8	525.0	4 690.7	391.0	48.0	439.0	5 129.7	1 806.5	6 936.2	8.6	74.0
May	4 158.0	515.1	4 673.1	403.0	52.6	455.6	5 128.7	1 816.5	6 945.2	8.9	73.8
June	4 169.1	516.6	4 685.8	391.6	45.7	437.3	5 123.1	1 831.1	6 954.2	8.5	73.7
FEMALES											
1994											
April	1 909.1	1 425.8	3 334.9	252.0	107.8	359.8	3 694.7	3 365.0	7 059.7	9.7	52.3
May	1 922.6	1 442.2	3 364.8	238.6	100.4	339.0	3 703.8	3 363.0	7 066.8	9.2	52.4
June	1 937.1	1 420.9	3 357.9	240.2	100.3	340.5	3 698.4	3 375.4	7 073.9	9.2	52.3
July	1 962.7	1 436.5	3 399.2	234.2	101.8	336.1	3 735.3	3 346.1	7 081.5	9.0	52.7
August	1 922.2	1 427.7	3 349.9	228.4	96.6	325.0	3 674.9	3 414.2	7 089.1	8.8	51.8
September	1 998.9	1 481.9	3 480.8	226.1	120.4	346.5	3 827.3	3 269.3	7 096.7	9.1	53.9
October	1 984.1	1 440.4	3 424.5	213.1	100.0	313.1	3 737.6	3 366.5	7 104.1	8.4	52.6
November	1 984.2	1 454.6	3 438.7	210.5	100.5	311.0	3 749.7	3 361.7	7 111.5	8.3	52.7
December	2 017.1	1 466.8	3 483.9	234.9	103.0	337.9	3 821.8	3 297.0	7 118.9	8.8	53.7
1995											
January	1 969.9	1 387.8	3 357.6	244.9	96.2	341.1	3 698.7	3 428.6	7 127.3	9.2	51.9
February	1 993.6	1 442.2	3 435.9	260.8	124.8	385.6	3 821.4	3 314.3	7 135.7	10.1	53.6
March	1 982.4	1 517.9	3 500.3	231.3	123.5	354.8	3 855.1	3 289.1	7 144.2	9.2	54.0
April	2 017.9	1 522.0	3 539.9	204.7	99.3	304.0	3 843.9	3 309.0	7 152.9	7.9	53.7
May	2 034.1	1 523.6	3 557.7	207.7	90.3	298.0	3 855.7	3 305.9	7 161.6	7.7	53.8
June	2 044.6	1 543.2	3 587.8	202.9	84.7	287.5	3 875.3	3 295.0	7 170.3	7.4	54.0
PERSONS											
1994											
April	5 931.5	1 904.0	7 835.5	730.7	152.5	883.2	8 718.7	5 183.5	13 902.2	10.1	62.7
May	5 964.0	1 915.2	7 879.2	704.2	145.7	849.9	8 729.1	5 186.8	13 915.9	9.7	62.7
June	5 990.4	1 902.3	7 892.7	690.7	148.5	839.2	8 731.9	5 197.7	13 929.6	9.6	62.7
July	6 058.1	1 926.9	7 985.0	656.2	147.7	803.9	8 788.9	5 155.7	13 944.5	9.1	63.0
August	5 961.7	1 923.9	7 885.7	656.3	141.6	797.9	8 683.5	5 276.0	13 959.5	9.2	62.2
September	6 116.1	1 971.3	8 087.4	652.1	178.7	830.8	8 918.1	5 056.4	13 974.6	9.3	63.8
October	6 078.2	1 956.6	8 034.8	608.7	144.6	753.3	8 788.1	5 201.3	13 989.4	8.6	62.8
November	6 076.7	1 948.5	8 025.1	616.0	148.1	764.1	8 789.3	5 214.9	14 004.2	8.7	62.8
December	6 179.2	1 977.1	8 156.2	653.5	154.1	807.6	8 963.8	5 055.2	14 019.1	9.0	63.9
1995											
January	6 081.4	1 872.0	7 953.4	699.7	154.0	853.7	8 807.1	5 229.4	14 036.5	9.7	62.7
February	6 159.5	1 930.7	8 090.1	701.2	184.9	886.2	8 976.3	5 077.6	14 053.9	9.9	63.9
March	6 127.4	2 037.2	8 164.6	635.8	179.9	815.7	8 980.3	5 091.1	14 071.4	9.1	63.8
April	6 183.6	2 047.0	8 230.6	595.7	147.3	743.0	8 973.7	5 115.4	14 089.1	8.3	63.7
May	6 192.1	2 038.7	8 230.8	610.7	142.9	753.6	8 984.4	5 122.4	14 106.7	8.4	63.7
June	6 213.7	2 059.8	8 273.6	594.5	130.4	724.8	8 998.4	5 126.0	14 124.5	8.1	63.7

LABOUR FORCE STATUS (AGED 15 AND OVER): Seasonally adjusted

Month	EMPLOYED.....			UNEMPLOYED.....					
	Employed full time	Employed part time	Total employed	Unemp. looking for f/t work	Unemp. looking for p/t work	Total unemployed	Labour force	Unemp- loyment rate	Partic- ipation rate
	'000s	'000s	'000s	'000s	'000s	'000s	'000s	%	%
MALES									
1994									
April	4 035.8	469.9	4 505.7	482.2	43.0	525.2	5 030.9	10.4	73.5
May	4 049.0	467.5	4 516.5	466.6	46.4	513.0	5 029.4	10.2	73.4
June	4 059.3	472.3	4 531.7	461.2	54.0	515.2	5 046.9	10.2	73.6
July	4 078.5	488.0	4 566.5	433.7	52.1	485.8	5 052.3	9.6	73.6
August	4 073.6	493.0	4 566.6	433.7	51.4	485.1	5 051.7	9.6	73.5
September	4 107.9	472.7	4 580.6	433.6	55.9	489.5	5 070.1	9.7	73.7
October	4 073.4	512.1	4 585.4	421.4	48.5	469.9	5 055.3	9.3	73.4
November	4 103.2	503.5	4 606.8	422.9	56.1	479.0	5 085.8	9.4	73.8
December	4 106.0	521.5	4 627.5	412.7	46.5	459.2	5 086.8	9.0	73.7
1995									
January	4 121.3	512.0	4 633.4	418.2	51.8	470.1	5 103.4	9.2	73.9
February	4 171.7	506.5	4 678.2	408.2	54.0	462.2	5 140.5	9.0	74.3
March	4 159.6	504.6	4 664.2	398.6	47.1	445.8	5 110.0	8.7	73.8
April	4 179.8	516.4	4 696.2	393.9	46.2	440.1	5 136.4	8.6	74.1
May	4 166.3	509.5	4 675.8	404.0	54.1	458.1	5 133.9	8.9	73.9
June	4 175.4	506.9	4 682.3	400.4	51.0	451.3	5 133.6	8.8	73.8
FEMALES									
1994									
April	1 927.1	1 408.9	3 336.0	252.1	106.6	358.7	3 694.7	9.7	52.3
May	1 933.3	1 415.1	3 348.4	243.8	106.1	349.8	3 698.2	9.5	52.3
June	1 950.5	1 405.8	3 356.3	247.6	106.5	354.1	3 710.4	9.5	52.5
July	1 956.0	1 442.9	3 398.9	241.9	111.7	353.6	3 752.6	9.4	53.0
August	1 960.2	1 413.9	3 374.1	242.0	104.7	346.7	3 720.8	9.3	52.5
September	1 992.1	1 435.7	3 427.8	232.5	107.4	339.9	3 767.7	9.0	53.1
October	1 980.7	1 431.8	3 412.5	229.2	103.8	333.0	3 745.6	8.9	52.7
November	1 986.8	1 438.5	3 425.3	226.5	106.8	333.4	3 758.7	8.9	52.9
December	1 973.4	1 467.8	3 441.2	227.2	103.0	330.1	3 771.3	8.8	53.0
1995									
January	1 952.3	1 497.3	3 449.6	225.2	103.3	328.5	3 778.1	8.7	53.0
February	1 993.0	1 487.0	3 480.0	228.3	110.5	338.8	3 818.8	8.9	53.5
March	1 976.6	1 506.5	3 483.1	222.0	104.8	326.8	3 809.9	8.6	53.3
April	2 037.1	1 504.5	3 541.6	205.1	98.5	303.7	3 845.2	7.9	53.8
May	2 045.9	1 494.8	3 540.6	212.8	95.8	308.6	3 849.2	8.0	53.7
June	2 058.2	1 527.6	3 585.8	209.1	89.8	298.9	3 884.7	7.7	54.2
PERSONS									
1994									
April	5 962.8	1 878.8	7 841.7	734.3	149.6	883.9	8 725.5	10.1	62.8
May	5 982.3	1 882.6	7 864.8	710.3	152.5	862.8	8 727.6	9.9	62.7
June	6 009.8	1 878.1	7 887.9	708.9	160.5	869.4	8 757.3	9.9	62.9
July	6 034.5	1 930.9	7 965.4	675.6	163.8	839.4	8 804.8	9.5	63.1
August	6 033.8	1 906.9	7 940.7	675.7	156.1	831.7	8 772.5	9.5	62.8
September	6 100.0	1 908.4	8 008.4	666.1	163.2	829.3	8 837.7	9.4	63.2
October	6 054.1	1 943.9	7 998.0	650.6	152.3	802.9	8 800.9	9.1	62.9
November	6 090.1	1 942.0	8 032.1	649.4	163.0	812.4	8 844.5	9.2	63.2
December	6 079.4	1 989.4	8 068.7	639.9	149.5	789.4	8 858.1	8.9	63.2
1995									
January	6 073.6	2 009.4	8 083.0	643.4	155.1	798.6	8 881.5	9.0	63.3
February	6 164.7	1 993.6	8 158.2	636.6	164.5	801.1	8 959.3	8.9	63.7
March	6 136.3	2 011.1	8 147.4	620.7	151.9	772.6	8 919.9	8.7	63.4
April	6 216.9	2 020.9	8 237.8	599.0	144.8	743.8	8 981.6	8.3	63.7
May	6 212.2	2 004.3	8 216.4	616.9	149.8	766.7	8 983.1	8.5	63.7
June	6 233.6	2 034.5	8 268.1	609.5	140.8	750.2	9 018.4	8.3	63.8

LABOUR FORCE STATUS (AGED 15 AND OVER): Trend¹

Month	EMPLOYED.....			UNEMPLOYED.....					
	Employed full time	Employed part time	Total employed	Unemp. looking for f/t work	Unemp. looking for p/t work	Total unemployed	Labour force	Unemp- loyment rate	Partic- ipation rate
	'000s	'000s	'000s	'000s	'000s	'000s	'000s	%	%
MALES									
1994									
April	4 034.6	471.5	4 506.1	478.7	48.4	527.1	5 033.2	10.5	73.6
May	4 047.3	472.9	4 520.2	467.6	49.2	516.8	5 037.0	10.3	73.5
June	4 060.5	475.6	4 536.1	455.8	50.3	506.2	5 042.2	10.0	73.5
July	4 071.8	480.1	4 551.9	444.7	51.5	496.2	5 048.1	9.8	73.6
August	4 079.7	486.6	4 566.3	435.4	52.4	487.8	5 054.1	9.7	73.6
September	4 085.8	494.0	4 579.8	428.8	52.7	481.5	5 061.3	9.5	73.6
October	4 092.4	501.0	4 593.4	424.2	52.5	476.7	5 070.2	9.4	73.6
November	4 102.2	506.5	4 608.8	420.3	51.9	472.2	5 080.9	9.3	73.7
December	4 115.8	510.2	4 626.1	416.1	51.2	467.3	5 093.3	9.2	73.8
1995									
January	4 131.8	511.9	4 643.7	411.6	50.6	462.2	5 105.8	9.1	73.9
February	4 147.5	511.7	4 659.1	407.2	50.2	457.3	5 116.5	8.9	74.0
March	4 160.6	510.4	4 671.0	403.6	50.0	453.6	5 124.6	8.9	74.0
April	4 170.1	509.6	4 679.7	400.8	50.1	450.8	5 130.5	8.8	74.0
May	4 176.5	509.2	4 685.6	398.7	50.2	448.9	5 134.6	8.7	73.9
June	4 180.8	508.1	4 689.0	397.8	50.9	448.7	5 137.7	8.7	73.9
FEMALES									
1994									
April	1 933.6	1 407.5	3 341.0	252.0	105.2	357.2	3 698.2	9.7	52.4
May	1 939.2	1 412.7	3 351.9	248.8	106.1	354.9	3 706.8	9.6	52.5
June	1 947.5	1 417.5	3 365.0	245.4	107.0	352.4	3 717.4	9.5	52.6
July	1 958.3	1 421.1	3 379.4	241.7	107.4	349.1	3 728.5	9.4	52.7
August	1 968.5	1 424.9	3 393.4	237.9	107.2	345.1	3 738.5	9.2	52.7
September	1 976.0	1 430.4	3 406.5	234.2	106.4	340.6	3 747.1	9.1	52.8
October	1 978.3	1 439.2	3 417.5	231.3	105.7	337.0	3 754.4	9.0	52.8
November	1 976.5	1 451.6	3 428.1	229.0	105.5	334.5	3 762.6	8.9	52.9
December	1 974.4	1 465.8	3 440.2	227.0	105.7	332.7	3 772.9	8.8	53.0
1995									
January	1 976.7	1 479.6	3 456.3	225.0	105.6	330.5	3 786.8	8.7	53.1
February	1 985.7	1 491.0	3 476.7	222.2	104.6	326.8	3 803.5	8.6	53.3
March	2 000.9	1 499.4	3 500.3	218.8	102.5	321.3	3 821.6	8.4	53.5
April	2 018.7	1 505.8	3 524.5	215.0	99.8	314.8	3 839.3	8.2	53.7
May	2 036.0	1 511.2	3 547.1	211.6	96.8	308.4	3 855.5	8.0	53.8
June	2 052.1	1 514.5	3 566.6	208.7	94.1	302.7	3 869.3	7.8	54.0
PERSONS									
1994									
April	5 968.2	1 879.0	7 847.2	730.7	153.6	884.3	8 731.4	10.1	62.8
May	5 986.5	1 885.7	7 872.1	716.4	155.3	871.7	8 743.8	10.0	62.8
June	6 007.9	1 893.1	7 901.0	701.2	157.3	858.6	8 759.6	9.8	62.9
July	6 030.1	1 901.2	7 931.3	686.4	159.0	845.4	8 776.7	9.6	62.9
August	6 048.2	1 911.6	7 959.7	673.3	159.6	832.9	8 792.6	9.5	63.0
September	6 061.8	1 924.4	7 986.3	663.0	159.1	822.1	8 808.4	9.3	63.0
October	6 070.7	1 940.2	8 010.9	655.5	158.2	813.7	8 824.6	9.2	63.1
November	6 078.7	1 958.1	8 036.9	649.3	157.3	806.6	8 843.5	9.1	63.1
December	6 090.2	1 976.1	8 066.3	643.1	156.8	800.0	8 866.3	9.0	63.2
1995									
January	6 108.5	1 991.5	8 100.0	636.6	156.1	792.7	8 892.7	8.9	63.4
February	6 133.2	2 002.7	8 135.9	629.4	154.7	784.1	8 920.0	8.8	63.5
March	6 161.6	2 009.8	8 171.3	622.3	152.6	774.9	8 946.2	8.7	63.6
April	6 188.8	2 015.4	8 204.2	615.8	149.9	765.7	8 969.9	8.5	63.7
May	6 212.4	2 020.4	8 232.8	610.3	147.0	757.3	8 990.1	8.4	63.7
June	6 233.0	2 022.6	8 255.5	606.5	144.9	751.4	9 007.0	8.3	63.8

¹ Estimates for December 1994 to May 1995 have been revised.



UNEMPLOYED PERSONS: Original

NUMBER OF UNEMPLOYED PERSONS.....

UNEMPLOYMENT RATE.....

Month	NUMBER OF UNEMPLOYED PERSONS.....						UNEMPLOYMENT RATE.....				
	Aged 15-19 seeking first f/t job '000s	Aged 15-19 looking for f/t work '000s	Aged 20 and over looking for f/t work '000s	Total looking for f/t work '000s	Looking for p/t work '000s	Total unemployed '000s	Aged 15-19 looking for f/t work %	Aged 20 and over looking for f/t work %	Total looking for f/t work %	Looking for p/t work %	Total unemp-loyed %
MALES											
1994											
April	34.1	62.3	416.4	478.7	44.7	523.4	29.8	9.7	10.6	8.6	10.4
May	29.7	60.7	404.8	465.5	45.3	510.9	30.0	9.4	10.3	8.7	10.2
June	30.3	56.5	394.0	450.5	48.2	498.7	27.8	9.2	10.0	9.1	9.9
July	24.9	45.7	376.3	422.0	45.8	467.8	22.3	8.7	9.3	8.5	9.3
August	23.4	44.4	383.4	427.8	45.0	472.8	23.6	9.0	9.6	8.3	9.4
September	25.5	47.0	378.9	425.9	58.3	484.2	24.7	8.7	9.4	10.6	9.5
October	23.9	45.2	350.4	395.5	44.6	440.2	23.9	8.1	8.8	8.0	8.7
November	25.2	46.9	358.6	405.5	47.6	453.1	24.9	8.3	9.0	8.8	9.0
December	39.4	62.4	356.2	418.5	51.1	469.7	26.8	8.2	9.1	9.1	9.1
1995											
January	39.6	63.1	391.7	454.8	57.8	512.6	27.1	9.0	10.0	10.7	10.0
February	30.7	57.2	383.2	440.4	60.2	500.6	25.4	8.7	9.6	11.0	9.7
March	24.2	45.1	359.4	404.6	56.3	460.9	21.8	8.3	8.9	9.8	9.0
April	27.7	46.9	344.1	391.0	48.0	439.0	22.5	7.9	8.6	8.4	8.6
May	26.7	51.3	351.6	403.0	52.6	455.6	25.0	8.1	8.8	9.3	8.9
June	24.9	48.8	342.8	391.6	45.7	437.3	24.8	7.9	8.6	8.1	8.5
FEMALES											
1994											
April	27.8	44.1	207.9	252.0	107.8	359.8	35.2	10.2	11.7	7.0	9.7
May	28.3	43.6	195.0	238.6	100.4	339.0	36.7	9.5	11.0	6.5	9.2
June	25.8	44.9	195.3	240.2	100.3	340.5	35.8	9.5	11.0	6.6	9.2
July	23.3	45.1	189.2	234.2	101.8	336.1	33.1	9.2	10.7	6.6	9.0
August	26.5	43.2	185.3	228.4	96.6	325.0	33.6	9.2	10.6	6.3	8.8
September	24.6	41.0	185.2	226.1	120.4	346.5	31.0	8.8	10.2	7.5	9.1
October	21.4	34.8	178.3	213.1	100.0	313.1	26.5	8.6	9.7	6.5	8.4
November	23.1	35.7	174.8	210.5	100.5	311.0	27.5	8.5	9.6	6.5	8.3
December	33.6	50.7	184.2	234.9	103.0	337.9	33.3	8.8	10.4	6.6	8.8
1995											
January	34.2	51.8	193.1	244.9	96.2	341.1	33.6	9.4	11.1	6.5	9.2
February	36.9	55.7	205.1	260.8	124.8	385.6	37.8	9.7	11.6	8.0	10.1
March	25.3	45.1	186.2	231.3	123.5	354.8	35.3	8.9	10.4	7.5	9.2
April	20.0	38.2	166.5	204.7	99.3	304.0	31.9	7.9	9.2	6.1	7.9
May	26.1	43.6	164.0	207.7	90.3	298.0	34.4	7.8	9.3	5.6	7.7
June	22.4	40.5	162.3	202.9	84.7	287.5	33.2	7.6	9.0	5.2	7.4
PERSONS											
1994											
April	61.8	106.4	624.3	730.7	152.5	883.2	31.8	9.9	11.0	7.4	10.1
May	58.0	104.3	599.9	704.2	145.7	849.9	32.5	9.5	10.6	7.1	9.7
June	56.1	101.4	589.3	690.7	148.5	839.2	30.9	9.3	10.3	7.2	9.6
July	48.2	90.8	565.5	656.2	147.7	803.9	26.6	8.9	9.8	7.1	9.1
August	50.0	87.6	568.7	656.3	141.6	797.9	27.7	9.0	9.9	6.9	9.2
September	50.1	88.0	564.1	652.1	178.7	830.8	27.3	8.8	9.6	8.3	9.3
October	45.3	80.0	528.7	608.7	144.6	753.3	24.9	8.3	9.1	6.9	8.6
November	48.3	82.6	533.5	616.0	148.1	764.1	25.9	8.4	9.2	7.1	8.7
December	73.1	113.1	540.4	653.5	154.1	807.6	29.4	8.4	9.6	7.2	9.0
1995											
January	73.8	114.9	584.8	699.7	154.0	853.7	29.7	9.1	10.3	7.6	9.7
February	67.5	112.9	588.3	701.2	184.9	886.2	30.3	9.1	10.2	8.7	9.9
March	49.5	90.2	545.6	635.8	179.9	815.7	27.0	8.5	9.4	8.1	9.1
April	47.6	85.1	510.6	595.7	147.3	743.0	25.9	7.9	8.8	6.7	8.3
May	52.8	95.0	515.7	610.7	142.9	753.6	28.6	8.0	9.0	6.6	8.4
June	47.3	89.4	505.1	594.5	130.4	724.8	28.0	7.8	8.7	6.0	8.1

UNEMPLOYED PERSONS: Seasonally adjusted

NUMBER OF UNEMPLOYED PERSONS.....

UNEMPLOYMENT RATE.....

Month	Aged 15-19 seeking first f/t job	Aged 15-19 looking for f/t work	Aged 20 and over looking for f/t work	Total looking for f/t work	Looking for p/t work	Total unemployed	Aged 15-19 looking for f/t work	Aged 20 and over looking for f/t work	Total looking for f/t work	Looking for p/t work	Total unemp- loyed
	'000s	'000s	'000s	'000s	'000s	'000s	%	%	%	%	%
MALES											
1994											
April	36.2	62.4	419.8	482.2	43.0	525.2	29.4	9.8	10.7	8.4	10.4
May	33.6	62.8	403.8	466.6	46.4	513.0	29.8	9.4	10.3	9.0	10.2
June	38.7	60.7	400.6	461.2	54.0	515.2	28.7	9.3	10.2	10.3	10.2
July	30.9	49.9	383.7	433.7	52.1	485.8	24.1	8.9	9.6	9.6	9.6
August	27.3	46.7	387.0	433.7	51.4	485.1	23.7	9.0	9.6	9.4	9.6
September	28.8	50.9	382.7	433.6	55.9	489.5	25.5	8.8	9.5	10.6	9.7
October	29.1	52.4	369.0	421.4	48.5	469.9	26.4	8.6	9.4	8.6	9.3
November	27.9	52.8	370.1	422.9	56.1	479.0	26.4	8.6	9.3	10.0	9.4
December	27.9	53.0	359.8	412.7	46.5	459.2	25.3	8.3	9.1	8.2	9.0
1995											
January	27.8	51.9	366.3	418.2	51.8	470.1	25.1	8.5	9.2	9.2	9.2
February	24.2	48.8	359.4	408.2	54.0	462.2	23.2	8.2	8.9	9.6	9.0
March	24.2	45.3	353.3	398.6	47.1	445.8	21.5	8.1	8.7	8.5	8.7
April	29.4	46.9	347.0	393.9	46.2	440.1	22.1	8.0	8.6	8.2	8.6
May	30.1	53.0	351.0	404.0	54.1	458.1	24.9	8.1	8.8	9.6	8.9
June	31.7	52.3	348.0	400.4	51.0	451.3	25.5	8.0	8.7	9.1	8.8
FEMALES											
1994											
April	30.3	47.4	204.7	252.1	106.6	358.7	36.5	10.0	11.6	7.0	9.7
May	30.3	46.4	197.4	243.8	106.1	349.8	37.3	9.6	11.2	7.0	9.5
June	28.6	47.1	200.5	247.6	106.5	354.1	35.7	9.7	11.3	7.0	9.5
July	28.1	46.8	195.1	241.9	111.7	353.6	34.6	9.5	11.0	7.2	9.4
August	32.0	47.4	194.6	242.0	104.7	346.7	34.1	9.4	11.0	6.9	9.3
September	31.2	44.2	188.4	232.5	107.4	339.9	32.4	9.0	10.5	7.0	9.0
October	27.8	42.9	186.3	229.2	103.8	333.0	31.1	9.0	10.4	6.8	8.9
November	27.5	41.5	185.0	226.5	106.8	333.4	29.5	8.9	10.2	6.9	8.9
December	24.1	40.2	186.9	227.2	103.0	330.1	30.3	9.0	10.3	6.6	8.8
1995											
January	24.0	41.0	184.2	225.2	103.3	328.5	30.6	9.0	10.3	6.5	8.7
February	28.2	46.5	181.9	228.3	110.5	338.8	34.0	8.7	10.3	6.9	8.9
March	23.8	45.7	176.3	222.0	104.8	326.8	34.8	8.5	10.1	6.5	8.6
April	21.8	41.1	164.0	205.1	98.5	303.7	33.3	7.7	9.1	6.1	7.9
May	27.9	46.5	166.4	212.8	95.8	308.6	35.0	7.8	9.4	6.0	8.0
June	24.8	42.4	166.7	209.1	89.8	298.9	33.1	7.8	9.2	5.6	7.7
PERSONS											
1994											
April	66.6	109.8	624.6	734.3	149.6	883.9	32.1	9.8	11.0	7.4	10.1
May	63.9	109.2	601.2	710.3	152.5	862.8	32.6	9.5	10.6	7.5	9.9
June	67.3	107.8	601.1	708.9	160.5	869.4	31.4	9.4	10.6	7.9	9.9
July	58.9	96.7	578.9	675.6	163.8	839.4	28.3	9.1	10.1	7.8	9.5
August	59.3	94.1	581.5	675.7	156.1	831.7	28.0	9.1	10.1	7.6	9.5
September	60.0	95.0	571.1	666.1	163.2	829.3	28.3	8.9	9.8	7.9	9.4
October	56.9	95.4	555.2	650.6	152.3	802.9	28.3	8.7	9.7	7.3	9.1
November	55.4	94.3	555.1	649.4	163.0	812.4	27.7	8.7	9.6	7.7	9.2
December	51.9	93.2	546.7	639.9	149.5	789.4	27.2	8.6	9.5	7.0	8.9
1995											
January	51.8	92.9	550.5	643.4	155.1	798.6	27.3	8.6	9.6	7.2	9.0
February	52.4	95.3	541.3	636.6	164.5	801.1	27.5	8.4	9.4	7.6	8.9
March	48.0	91.0	529.6	620.7	151.9	772.6	26.6	8.3	9.2	7.0	8.7
April	51.2	88.0	511.0	599.0	144.8	743.8	26.2	7.9	8.8	6.7	8.3
May	58.1	99.5	517.4	616.9	149.8	766.7	28.8	8.0	9.0	7.0	8.5
June	56.5	94.7	514.7	609.5	140.8	750.2	28.4	7.9	8.9	6.5	8.3



UNEMPLOYED PERSONS: Trend¹

NUMBER OF UNEMPLOYED PERSONS.....

UNEMPLOYMENT RATE.....

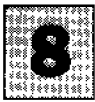
Month	Aged 15-19 seeking first f/t job	Aged 15-19 looking for f/t work	Aged 20 and over looking for f/t work	Total looking for f/t work	Looking for p/t work	Total unemployed	Aged 15-19 looking for f/t work	Aged 20 and over looking for f/t work	Total looking for f/t work	Looking for p/t work	Total unemp-loyed
	'000s	'000s	'000s	'000s	'000s	'000s	%	%	%	%	%
MALES											
1994											
April	35.1	62.9	415.8	478.7	48.4	527.1	29.6	9.7	10.6	9.3	10.5
May	34.9	60.5	407.2	467.6	49.2	516.8	28.7	9.5	10.4	9.4	10.3
June	33.8	57.1	398.8	455.8	50.3	506.2	27.4	9.3	10.1	9.6	10.0
July	32.2	53.8	390.8	444.7	51.5	496.2	26.3	9.1	9.8	9.7	9.8
August	30.5	51.6	383.8	435.4	52.4	487.8	25.6	8.9	9.6	9.7	9.7
September	29.2	50.8	378.0	428.8	52.7	481.5	25.4	8.8	9.5	9.6	9.5
October	28.2	51.0	373.2	424.2	52.5	476.7	25.5	8.6	9.4	9.5	9.4
November	27.5	51.4	368.9	420.3	51.9	472.2	25.5	8.5	9.3	9.3	9.3
December	26.9	51.3	364.8	416.1	51.2	467.3	25.1	8.4	9.2	9.1	9.2
1995											
January	26.5	50.5	361.0	411.6	50.6	462.2	24.3	8.3	9.1	9.0	9.1
February	26.5	49.5	357.7	407.2	50.2	457.3	23.6	8.2	8.9	8.9	8.9
March	27.0	49.0	354.6	403.6	50.0	453.6	23.3	8.1	8.8	8.9	8.9
April	27.9	49.1	351.7	400.8	50.1	450.8	23.3	8.1	8.8	8.9	8.8
May	29.0	49.6	349.1	398.7	50.2	448.9	23.6	8.0	8.7	9.0	8.7
June	30.2	50.3	347.5	397.8	50.9	448.7	24.0	8.0	8.7	9.1	8.7
FEMALES											
1994											
April	30.0	48.3	203.7	252.0	105.2	357.2	37.3	9.9	11.5	7.0	9.7
May	29.9	47.7	201.0	248.8	106.1	354.9	36.7	9.8	11.4	7.0	9.6
June	30.0	47.2	198.2	245.4	107.0	352.4	35.8	9.6	11.2	7.0	9.5
July	30.1	46.5	195.2	241.7	107.4	349.1	34.7	9.4	11.0	7.0	9.4
August	29.8	45.5	192.4	237.9	107.2	345.1	33.4	9.3	10.8	7.0	9.2
September	29.2	44.2	190.0	234.2	106.4	340.6	32.1	9.2	10.6	6.9	9.1
October	28.4	43.1	188.3	231.3	105.7	337.0	31.2	9.1	10.5	6.8	9.0
November	27.3	42.2	186.8	229.0	105.5	334.5	30.7	9.0	10.4	6.8	8.9
December	26.1	42.1	185.0	227.0	105.7	332.7	30.9	9.0	10.3	6.7	8.8
1995											
January	25.2	42.5	182.4	225.0	105.6	330.5	31.6	8.8	10.2	6.7	8.7
February	24.8	43.3	178.9	222.2	104.6	326.8	32.6	8.6	10.1	6.6	8.6
March	24.8	43.9	174.9	218.8	102.5	321.3	33.5	8.4	9.9	6.4	8.4
April	24.9	44.2	170.8	215.0	99.8	314.8	34.0	8.1	9.6	6.2	8.2
May	25.0	44.3	167.3	211.6	96.8	308.4	34.4	7.9	9.4	6.0	8.0
June	25.2	44.3	164.4	208.7	94.1	302.7	34.5	7.7	9.2	5.8	7.8
PERSONS											
1994											
April	65.1	111.2	619.5	730.7	153.6	884.3	32.5	9.7	10.9	7.6	10.1
May	64.8	108.2	608.2	716.4	155.3	871.7	31.7	9.6	10.7	7.6	10.0
June	63.8	104.2	597.0	701.2	157.3	858.6	30.7	9.4	10.5	7.7	9.8
July	62.2	100.3	586.1	686.4	159.0	845.4	29.6	9.2	10.2	7.7	9.6
August	60.3	97.1	576.2	673.3	159.6	832.9	28.7	9.0	10.0	7.7	9.5
September	58.4	95.0	568.0	663.0	159.1	822.1	28.1	8.9	9.9	7.6	9.3
October	56.6	94.1	561.4	655.5	158.2	813.7	27.8	8.8	9.7	7.5	9.2
November	54.7	93.7	555.6	649.3	157.3	806.6	27.6	8.7	9.7	7.4	9.1
December	52.9	93.4	549.7	643.1	156.8	800.0	27.4	8.6	9.6	7.4	9.0
1995											
January	51.7	93.1	543.5	636.6	156.1	792.7	27.2	8.5	9.4	7.3	8.9
February	51.3	92.8	536.6	629.4	154.7	784.1	27.1	8.4	9.3	7.2	8.8
March	51.8	92.9	529.5	622.3	152.6	774.9	27.2	8.2	9.2	7.1	8.7
April	52.8	93.3	522.5	615.8	149.9	765.7	27.4	8.1	9.0	6.9	8.5
May	54.0	93.9	516.4	610.3	147.0	757.3	27.7	8.0	8.9	6.8	8.4
June	55.4	94.6	511.9	606.5	144.9	751.4	28.0	7.9	8.9	6.7	8.3

¹ Estimates for December 1994 to May 1995 have been revised.



PERSONS AGED 15 TO 19—Education and Labour Force: Original—June 1995

	EMPLOYED.....			UNEMPLOYED.....							
	<i>Employed full time</i>	<i>Employed part time</i>	<i>Total employed</i>	<i>Unemp. looking for f/t work</i>	<i>Unemp. looking for p/t work</i>	<i>Total unemployed</i>	<i>Labour force</i>	<i>Not in labour force</i>	<i>Civilian population aged 15-19</i>	<i>Unemp-loyment rate</i>	<i>Partic-ipation rate</i>
	'000s	'000s	'000s	'000s	'000s	'000s	'000s	'000s	'000s	%	%
ATTENDING NEITHER SCHOOL NOR A TERTIARY EDUCATIONAL INSTITUTION FULL TIME											
Males	146.2	29.8	175.9	43.4	* 2.6	45.9	221.8	17.4	239.3	20.7	92.7
Females	79.2	48.8	128.0	35.0	* 2.8	37.8	165.7	26.3	192.0	22.8	86.3
Persons	225.3	78.5	303.9	78.3	5.3	83.7	387.5	43.7	431.2	21.6	89.9
ATTENDING A TERTIARY EDUCATIONAL INSTITUTION FULL TIME											
Males	* 2.0	29.9	31.9	* 1.8	4.0	5.8	37.8	47.1	84.9	15.4	44.5
Females	* 1.5	61.6	63.1	* 2.4	6.8	9.2	72.3	41.5	113.8	12.8	63.5
Persons	* 3.5	91.5	95.0	4.2	10.8	15.1	110.1	88.6	198.7	13.7	55.4
ATTENDING SCHOOL											
Males	* 0.2	76.3	76.5	* 3.7	21.1	24.7	101.2	223.6	324.8	24.4	31.2
Females	* 0.7	108.9	109.6	* 3.2	20.2	23.4	133.0	177.7	310.7	17.6	42.8
Persons	* 0.9	185.2	186.1	6.8	41.2	48.1	234.2	401.3	635.5	20.5	36.9
TOTAL											
Males	148.4	136.0	284.4	48.8	27.6	76.4	360.8	288.1	649.0	21.2	55.6
Females	81.4	219.2	300.6	40.5	29.8	70.3	371.0	245.5	616.5	19.0	60.2
Persons	229.8	355.3	585.0	89.4	57.4	146.8	731.8	533.6	1 265.4	20.1	57.8



LABOUR FORCE STATUS (AGED 15 & OVER)—States & Territories: Original—June 1995

	EMPLOYED.....			UNEMPLOYED.....							Unemp- loyment rate %	Partic- ipation rate %
	Employed full time '000s	Employed part time '000s	Total employed '000s	Unemp. looking for f/t work '000s	Unemp. looking for p/t work '000s	Total unemployed '000s	Labour force '000s	Not in labour force '000s	Civilian population aged 15 and over '000s			
MALES												
New South Wales	1 411.4	164.0	1 575.4	122.1	12.0	134.2	1 709.6	647.6	2 357.2	7.8	72.5	
Victoria	1 034.5	129.8	1 164.3	101.9	10.8	112.6	1 276.9	461.8	1 738.7	8.8	73.4	
Queensland	765.6	95.1	860.8	73.3	11.9	85.2	945.9	313.7	1 259.6	9.0	75.1	
South Australia	315.6	48.7	364.2	42.2	4.8	47.0	411.2	163.7	574.9	11.4	71.5	
Western Australia	429.7	49.4	479.1	30.8	3.3	34.1	513.2	154.3	667.5	6.6	76.9	
Tasmania	99.5	13.3	112.8	12.9	1.5	14.4	127.2	53.3	180.5	11.3	70.5	
Northern Territory	40.7	5.0	45.7	2.9	* 0.3	3.1	48.9	13.9	62.8	6.4	77.8	
Australian Capital Territory	72.1	11.3	83.5	5.6	1.1	6.7	90.2	22.7	112.9	7.4	79.9	
Australia	4 169.1	516.6	4 685.8	391.6	45.7	437.3	5 123.1	1 831.1	6 954.2	8.5	73.7	
FEMALES												
New South Wales	706.8	486.7	1 193.5	58.9	25.9	84.8	1 278.3	1 161.9	2 440.2	6.6	52.4	
Victoria	504.9	393.4	898.3	53.3	23.7	77.0	975.4	838.3	1 813.7	7.9	53.8	
Queensland	383.0	274.6	657.6	42.0	17.7	59.7	717.3	565.4	1 282.7	8.3	55.9	
South Australia	149.3	140.0	289.3	18.2	6.8	25.1	314.3	281.4	595.8	8.0	52.8	
Western Australia	186.5	167.3	353.8	21.3	6.6	27.9	381.7	291.8	673.5	7.3	56.7	
Tasmania	45.4	40.2	85.6	5.2	1.6	6.7	92.4	94.3	186.7	7.3	49.5	
Northern Territory	24.8	11.2	36.1	1.4	* 0.8	2.2	38.3	22.0	60.4	5.8	63.5	
Australian Capital Territory	43.9	29.6	73.5	2.6	1.4	4.1	77.5	39.9	117.4	5.2	66.0	
Australia	2 044.6	1 543.2	3 587.8	202.9	84.7	287.5	3 875.3	3 295.0	7 170.3	7.4	54.0	
PERSONS												
New South Wales	2 118.3	650.7	2 769.0	181.0	38.0	219.0	2 988.0	1 809.5	4 797.4	7.3	62.3	
Victoria	1 539.3	523.2	2 062.6	155.2	34.5	189.7	2 252.3	1 300.1	3 552.4	8.4	63.4	
Queensland	1 148.6	369.8	1 518.4	115.3	29.6	144.9	1 663.3	879.1	2 542.3	8.7	65.4	
South Australia	464.8	188.7	653.5	60.4	11.7	72.0	725.6	445.1	1 170.7	9.9	62.0	
Western Australia	616.2	216.7	832.9	52.1	10.0	62.0	894.9	446.1	1 341.0	6.9	66.7	
Tasmania	144.9	53.5	198.4	18.0	3.1	21.1	219.6	147.6	367.2	9.6	59.8	
Northern Territory	65.6	16.2	81.8	4.2	* 1.1	5.3	87.2	36.0	123.1	6.1	70.8	
Australian Capital Territory	116.0	41.0	157.0	8.3	2.5	10.8	167.7	62.6	230.3	6.4	72.8	
Australia	6 213.7	2 059.8	8 273.6	594.5	130.4	724.8	8 998.4	5 126.0	14 124.5	8.1	63.7	

UNEMPLOYED PERSONS—New South Wales, Victoria and Queensland: Original

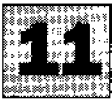
NUMBER OF UNEMPLOYED PERSONS.....

UNEMPLOYMENT RATE.....

Month	Aged 15-19 seeking first f/t job	Aged 15-19 looking for f/t work	Aged 20 and over looking for f/t work	Total looking for f/t work	Looking for p/t work	Total unemployed	Aged 15-19 looking for f/t work	Aged 20 and over looking for f/t work	Total looking for f/t work	Looking for p/t work	Total unemp-loyed
	'000s	'000s	'000s	'000s	'000s	'000s	%	%	%	%	%
NEW SOUTH WALES											
1994											
April	21.0	35.7	212.4	248.1	42.5	290.5	32.6	9.8	10.9	6.6	9.9
May	18.8	34.5	199.8	234.3	41.9	276.2	32.6	9.2	10.3	6.4	9.5
June	18.9	32.5	203.3	235.8	45.3	281.1	30.7	9.4	10.4	7.0	9.6
July	16.9	29.2	194.3	223.5	43.2	266.7	27.1	8.9	9.8	6.7	9.1
August	18.3	30.6	185.6	216.2	38.9	255.1	28.9	8.7	9.7	6.0	8.8
September	16.1	30.2	184.7	214.9	59.1	274.0	28.9	8.4	9.4	8.6	9.2
October	14.4	25.8	174.2	200.0	46.7	246.7	25.7	8.0	8.8	7.1	8.4
November	13.1	24.9	170.7	195.7	46.4	242.0	24.1	7.9	8.7	7.0	8.3
December	23.5	37.5	176.1	213.6	55.3	268.9	30.1	8.0	9.2	8.2	9.0
1995											
January	26.7	38.7	183.5	222.2	52.0	274.2	30.9	8.4	9.7	8.1	9.3
February	22.0	35.8	191.3	227.2	62.5	289.7	29.7	8.7	9.8	9.4	9.7
March	13.0	24.8	173.7	198.5	60.2	258.7	23.6	8.0	8.7	8.7	8.7
April	15.6	23.6	156.6	180.2	45.7	225.9	22.0	7.2	7.9	6.6	7.6
May	17.5	27.9	153.3	181.2	45.4	226.6	26.7	7.0	7.9	6.6	7.6
June	14.5	26.6	154.4	181.0	38.0	219.0	26.4	7.0	7.9	5.5	7.3
VICTORIA											
1994											
April	18.4	26.5	175.6	202.1	45.1	247.2	37.2	11.0	12.1	8.4	11.2
May	17.0	25.2	176.1	201.3	39.7	240.9	38.2	10.9	12.0	7.5	10.9
June	16.2	25.4	160.4	185.8	43.1	228.9	37.9	10.0	11.2	8.0	10.4
July	13.3	23.0	151.9	174.9	43.2	218.0	30.5	9.5	10.4	7.9	9.8
August	13.4	21.7	163.4	185.1	43.5	228.7	34.8	10.3	11.2	8.0	10.4
September	12.0	18.3	158.7	177.0	51.0	228.0	27.9	9.7	10.4	9.2	10.1
October	13.8	21.3	144.4	165.7	36.4	202.1	31.6	9.1	10.0	6.6	9.1
November	12.9	21.6	153.4	175.0	37.1	212.1	33.2	9.6	10.5	7.1	9.7
December	19.6	28.7	153.3	182.0	40.8	222.8	34.9	9.5	10.7	7.5	9.9
1995											
January	17.9	27.5	169.5	197.0	38.6	235.6	34.2	10.5	11.6	7.6	10.7
February	16.8	26.3	158.9	185.1	47.8	233.0	34.2	9.7	10.8	8.9	10.4
March	12.9	21.2	144.0	165.2	46.4	211.6	31.8	8.8	9.8	8.2	9.4
April	11.6	18.8	136.8	155.6	39.1	194.8	29.5	8.4	9.2	7.0	8.7
May	14.3	21.8	140.7	162.5	34.4	196.9	33.1	8.6	9.6	6.2	8.7
June	12.0	18.2	136.9	155.2	34.5	189.7	30.1	8.4	9.2	6.2	8.4
QUEENSLAND											
1994											
April	9.7	19.0	109.1	128.1	30.6	158.8	28.0	9.7	10.8	8.2	10.2
May	7.5	18.6	98.9	117.5	29.5	147.0	28.3	8.8	9.8	7.9	9.4
June	6.0	17.3	98.1	115.3	28.1	143.5	24.8	8.6	9.5	7.8	9.1
July	6.4	15.5	96.8	112.3	27.4	139.7	22.0	8.5	9.3	7.5	8.9
August	5.8	12.8	97.5	110.3	25.2	135.5	19.2	8.5	9.1	7.0	8.6
September	7.6	17.3	94.6	111.9	28.2	140.1	24.2	8.2	9.1	7.4	8.7
October	5.4	11.5	89.2	100.6	26.6	127.3	16.7	7.8	8.3	7.1	8.0
November	9.4	15.5	90.3	105.8	27.7	133.5	22.8	7.8	8.7	7.2	8.3
December	13.1	20.8	89.4	110.3	24.3	134.5	25.4	7.8	8.9	6.3	8.3
1995											
January	12.2	22.2	98.1	120.3	26.2	146.5	26.6	8.6	9.8	7.1	9.2
February	12.2	23.1	104.2	127.3	32.6	159.9	29.3	9.0	10.3	8.2	9.7
March	12.1	22.0	102.3	124.3	34.9	159.2	28.5	8.8	10.0	8.4	9.6
April	10.6	21.7	94.4	116.0	29.7	145.8	29.6	8.0	9.2	7.3	8.8
May	10.8	24.4	100.9	125.3	30.4	155.7	32.2	8.6	10.0	7.6	9.4
June	10.0	22.4	92.9	115.3	29.6	144.9	30.7	7.8	9.1	7.4	8.7

UNEMPLOYED PERSONS—South Australia, Western Australia and Tasmania: Original

Month	NUMBER OF UNEMPLOYED PERSONS.....						UNEMPLOYMENT RATE.....				
	Aged 15-19 seeking first fit job '000s	Aged 15-19 looking for f/t work '000s	Aged 20 and over looking for f/t work '000s	Total looking for f/t work '000s	Looking for p/t work '000s	Total unemployed '000s	Aged 15-19 looking for f/t work %	Aged 20 and over looking for f/t work %	Total looking for f/t work %	Looking for p/t work %	Total unemp-loyed %
SOUTH AUSTRALIA											
1994											
April	5.4	9.9	51.1	60.9	11.0	71.9	37.1	10.2	11.6	6.1	10.2
May	6.4	11.3	51.3	62.6	12.2	74.8	40.6	10.3	11.9	6.6	10.5
June	6.5	11.0	52.4	63.4	12.3	75.7	38.2	10.4	11.9	7.0	10.6
July	4.9	9.3	51.4	60.8	12.1	72.8	34.6	10.2	11.4	6.4	10.1
August	6.3	9.5	51.3	60.8	12.4	73.2	36.1	10.1	11.4	6.8	10.2
September	6.5	8.9	51.2	60.1	14.7	74.8	36.0	9.9	11.1	8.0	10.3
October	6.8	10.8	48.3	59.1	14.1	73.1	37.2	9.5	10.9	7.8	10.2
November	6.1	8.5	50.1	58.6	13.3	71.9	32.8	9.8	10.9	7.4	10.0
December	6.1	9.3	51.2	60.4	13.5	74.0	32.4	10.1	11.3	7.2	10.2
1995											
January	5.1	8.0	55.2	63.2	13.3	76.5	27.9	10.9	11.8	7.5	10.7
February	5.8	9.1	52.1	61.2	15.1	76.3	32.1	10.1	11.3	8.1	10.4
March	4.0	7.4	53.0	60.4	13.6	74.0	29.0	10.5	11.4	7.1	10.3
April	3.9	8.6	52.7	61.2	10.2	71.4	33.7	10.4	11.5	5.4	9.9
May	4.5	8.0	51.2	59.2	10.1	69.3	30.9	10.1	11.1	5.3	9.6
June	4.7	8.5	51.9	60.4	11.7	72.0	34.8	10.4	11.5	5.8	9.9
WESTERN AUSTRALIA											
1994											
April	4.2	10.1	47.1	57.2	15.2	72.4	24.7	7.9	8.9	6.9	8.4
May	5.6	10.1	48.2	58.3	13.6	71.9	25.9	7.9	9.0	6.5	8.4
June	5.5	10.7	49.0	59.7	12.8	72.5	26.5	8.1	9.2	6.0	8.4
July	2.9	8.1	44.8	52.9	14.5	67.5	19.4	7.4	8.1	6.6	7.8
August	3.3	7.8	45.0	52.8	14.2	67.0	20.3	7.4	8.2	6.5	7.8
September	4.0	7.1	47.4	54.5	16.1	70.5	18.2	7.7	8.3	7.2	8.1
October	1.5	4.9	44.6	49.6	12.5	62.1	12.8	7.4	7.7	5.7	7.2
November	3.0	6.2	42.4	48.6	15.3	63.9	16.1	7.0	7.5	6.8	7.3
December	5.8	9.2	41.4	50.6	13.1	63.7	20.5	6.7	7.6	5.8	7.1
1995											
January	6.4	10.4	47.9	58.3	13.7	71.9	21.6	7.8	8.8	6.1	8.1
February	5.7	10.8	51.7	62.5	16.4	78.9	23.1	8.3	9.3	7.6	8.9
March	3.7	9.1	45.2	54.4	15.2	69.5	21.6	7.3	8.2	6.5	7.8
April	3.0	7.6	43.5	51.1	15.0	66.1	18.1	6.9	7.6	6.4	7.3
May	2.2	7.2	44.6	51.8	14.1	65.8	17.0	7.1	7.7	6.2	7.3
June	3.5	8.9	43.1	52.1	10.0	62.0	21.1	6.9	7.8	4.4	6.9
TASMANIA											
1994											
April	2.0	3.1	17.6	20.7	4.0	24.7	29.0	11.7	12.9	6.9	11.3
May	1.8	2.6	16.7	19.3	4.1	23.4	24.7	11.0	11.9	7.0	10.6
June	1.6	2.3	17.0	19.4	2.8	22.2	23.5	11.3	12.1	4.9	10.2
July	1.7	2.7	16.9	19.7	3.5	23.2	25.7	11.2	12.2	6.1	10.6
August	1.3	2.7	16.0	18.8	3.3	22.0	28.1	10.9	11.9	5.9	10.3
September	2.2	3.5	16.3	19.9	4.5	24.3	35.6	10.8	12.3	7.6	11.0
October	1.7	2.9	15.9	18.9	4.0	22.9	32.1	10.7	11.9	6.7	10.5
November	2.6	3.5	16.6	20.0	4.2	24.3	38.1	10.8	12.3	7.4	11.1
December	3.6	4.9	17.2	22.2	2.9	25.1	39.3	11.0	13.2	5.2	11.2
1995											
January	4.0	5.6	17.7	23.4	4.7	28.0	43.5	11.4	13.9	8.5	12.6
February	3.6	5.0	17.5	22.5	4.0	26.5	40.2	11.2	13.4	7.6	12.0
March	2.7	3.6	14.8	18.4	4.0	22.4	34.2	9.6	11.2	6.9	10.1
April	2.1	2.9	15.8	18.7	2.9	21.6	29.5	10.3	11.5	4.8	9.7
May	2.5	3.6	13.7	17.4	4.2	21.6	36.9	9.0	10.7	6.9	9.7
June	1.9	3.3	14.7	18.0	3.1	21.1	31.1	9.7	11.1	5.5	9.6



UNEMPLOYED PERSONS—Northern Territory and Australian Capital Territory: Original

NUMBER OF UNEMPLOYED PERSONS.....

UNEMPLOYMENT RATE.....

Month	Aged 15-19 seeking first f/t job	Aged 15-19 looking for f/t work	Aged 20 and over looking for f/t work	Total looking for f/t work	Looking for p/t work	Total unemployed	Aged 15-19 looking for f/t work	Aged 20 and over looking for f/t work	Total looking for f/t work	Looking for p/t work	Total unemp-loyed
	'000s	'000s	'000s	'000s	'000s	'000s	%	%	%	%	%
NORTHERN TERRITORY											
1994											
April	* 0.4	* 0.7	4.4	5.0	* 0.9	6.0	* 24.9	7.1	7.9	* 7.0	7.7
May	* 0	* 0.5	3.6	4.1	* 0.6	4.7	* 22.6	5.9	6.4	* 4.6	6.1
June	* 0.4	* 0.6	2.9	3.5	1.4	4.9	* 22.8	4.6	5.3	9.1	6.0
July	* 0.8	1.3	3.6	4.9	* 0.7	5.6	44.6	5.5	7.2	* 5.1	6.8
August	* 0.6	* 1.2	3.5	4.7	* 1.2	5.9	* 48.8	5.5	7.1	* 7.5	7.2
September	* 0.5	* 1.1	5.0	6.0	* 1.2	7.2	* 35.1	7.2	8.3	* 6.7	8.0
October	* 0.5	* 0.9	4.9	5.8	* 0.8	6.6	* 30.2	7.3	8.3	* 4.5	7.5
November	* 0.4	* 0.9	4.6	5.6	* 0.9	6.5	* 26.8	6.9	7.8	* 4.9	7.2
December	* 0.4	* 1.1	4.1	5.2	1.4	6.5	* 27.3	5.9	7.0	7.5	7.1
1995											
January	* 0.3	* 0.6	5.7	6.3	1.8	8.1	* 20.6	8.2	8.7	10.8	9.1
February	* 0.4	* 0.9	5.1	6.0	1.7	7.8	* 31.5	7.5	8.5	9.7	8.7
March	* 0.5	* 1.0	4.2	5.2	1.3	6.5	* 30.2	6.2	7.3	7.2	7.3
April	* 0.2	* 0.8	3.8	4.6	1.3	5.9	* 28.2	5.5	6.4	7.4	6.6
May	* 0.3	* 0.9	3.7	4.6	* 0.9	5.5	* 25.0	5.6	6.6	* 5.2	6.4
June	* 0.4	* 0.7	3.5	4.2	* 1.1	5.3	* 19.7	5.3	6.1	* 6.4	6.1
AUSTRALIAN CAPITAL TERRITORY											
1994											
April	* 0.7	1.5	7.0	8.5	3.2	11.7	29.7	5.8	6.8	8.4	7.2
May	1.0	1.5	5.2	6.7	4.2	10.9	34.6	4.3	5.4	10.6	6.6
June	1.0	1.6	6.2	7.8	2.6	10.4	37.1	5.0	6.1	7.2	6.3
July	1.3	1.7	5.7	7.4	3.1	10.5	29.6	4.7	5.8	8.3	6.3
August	* 0.9	1.3	6.3	7.6	3.0	10.6	27.3	5.3	6.1	7.4	6.4
September	1.1	1.6	6.3	7.9	3.9	11.8	37.4	5.2	6.3	9.5	7.1
October	1.2	1.9	7.2	9.0	3.6	12.6	40.6	5.9	7.2	9.1	7.6
November	* 0.8	1.4	5.4	6.8	3.1	9.9	31.1	4.4	5.4	7.7	5.9
December	1.0	1.6	7.7	9.3	2.9	12.2	27.0	6.2	7.1	7.4	7.2
1995											
January	1.2	1.8	7.3	9.1	3.7	12.9	34.4	6.1	7.3	10.1	7.9
February	1.0	1.8	7.6	9.4	4.7	14.1	32.4	6.3	7.4	11.5	8.4
March	* 0.4	1.1	8.3	9.4	4.3	13.7	27.3	6.9	7.6	9.9	8.2
April	* 0.7	1.1	7.1	8.3	3.4	11.7	26.5	6.0	6.7	8.0	7.0
May	* 0.7	1.2	7.5	8.7	3.4	12.2	28.9	6.2	6.9	8.5	7.3
June	* 0.3	* 0.6	7.6	8.3	2.5	10.8	* 17.1	6.3	6.6	5.7	6.4

LABOUR FORCE STATUS (AGED 15 AND OVER)-New South Wales¹

SEASONALLY ADJUSTED.....

TREND.....

Month	SEASONALLY ADJUSTED					TREND					Civilian population aged 15 and over '000s
	Employed full time '000s	Total employed '000s	Total unemployed '000s	Unemployment rate %	Participation rate %	Employed full time '000s	Total employed '000s	Total unemployed '000s	Unemployment rate %	Participation rate %	
MALES											
1994											
April	1 349.0	1 502.6	178.9	10.6	72.3	1 348.0	1 502.6	179.0	10.6	72.3	2 324.9
May	1 352.1	1 501.9	177.5	10.6	72.2	1 350.8	1 507.3	175.1	10.4	72.3	2 326.9
June	1 350.9	1 512.5	172.9	10.3	72.4	1 354.0	1 513.1	170.6	10.1	72.3	2 329.0
July	1 360.7	1 520.9	162.1	9.6	72.2	1 357.2	1 519.3	165.6	9.8	72.3	2 331.0
August	1 358.1	1 527.9	157.2	9.3	72.2	1 360.2	1 525.2	161.0	9.5	72.3	2 333.0
September	1 370.7	1 534.1	163.0	9.6	72.7	1 363.8	1 531.1	157.3	9.3	72.3	2 335.1
October	1 361.3	1 536.4	150.4	8.9	72.2	1 368.9	1 537.1	154.9	9.2	72.4	2 337.1
November	1 373.0	1 536.3	153.1	9.1	72.2	1 375.7	1 543.3	153.0	9.0	72.5	2 339.1
December	1 382.8	1 547.3	150.5	8.9	72.5	1 383.2	1 549.7	151.3	8.9	72.7	2 341.0
1995											
January	1 389.8	1 559.6	154.7	9.0	73.1	1 390.6	1 556.0	149.1	8.7	72.7	2 343.8
February	1 408.3	1 572.1	144.4	8.4	73.2	1 397.2	1 561.7	146.4	8.6	72.8	2 346.5
March	1 402.3	1 559.6	144.4	8.5	72.5	1 402.4	1 566.5	143.7	8.4	72.8	2 349.3
April	1 401.7	1 570.6	136.6	8.0	72.6	1 406.5	1 570.3	141.0	8.2	72.8	2 351.9
May	1 405.5	1 570.8	141.1	8.2	72.7	1 409.8	1 573.6	138.6	8.1	72.7	2 354.6
June	1 417.4	1 579.2	136.2	7.9	72.8	1 412.2	1 575.7	136.7	8.0	72.6	2 357.2
FEMALES											
1994											
April	684.3	1 123.2	115.1	9.3	51.4	684.3	1 124.4	113.1	9.1	51.4	2 408.7
May	683.6	1 129.5	108.5	8.8	51.3	686.0	1 125.6	113.5	9.2	51.4	2 411.1
June	688.2	1 124.0	116.9	9.4	51.4	688.6	1 127.4	113.2	9.1	51.4	2 413.5
July	691.0	1 131.0	116.2	9.3	51.6	692.0	1 130.4	112.3	9.0	51.4	2 415.8
August	691.0	1 120.8	107.4	8.7	50.8	696.1	1 135.0	110.8	8.9	51.5	2 418.0
September	706.0	1 156.6	110.0	8.7	52.3	699.9	1 140.8	109.3	8.7	51.6	2 420.3
October	703.8	1 143.3	106.7	8.5	51.6	701.5	1 146.2	108.2	8.6	51.8	2 422.3
November	700.6	1 147.5	106.4	8.5	51.7	700.2	1 150.1	107.9	8.6	51.9	2 424.3
December	700.2	1 156.4	108.5	8.6	52.1	696.5	1 152.0	107.8	8.6	51.9	2 426.3
1995											
January	694.6	1 159.9	102.7	8.1	52.0	692.5	1 152.8	107.2	8.5	51.9	2 428.6
February	685.7	1 147.7	116.3	9.2	52.0	690.3	1 154.2	105.2	8.3	51.8	2 430.9
March	675.1	1 147.5	102.9	8.2	51.4	690.8	1 157.7	102.0	8.1	51.8	2 433.1
April	699.8	1 167.7	92.2	7.3	51.7	693.3	1 162.8	98.2	7.8	51.8	2 435.5
May	699.9	1 161.3	93.9	7.5	51.5	697.0	1 168.5	94.4	7.5	51.8	2 437.8
June	709.3	1 191.1	89.1	7.0	52.5	701.0	1 174.1	90.9	7.2	51.8	2 440.2
PERSONS											
1994											
April	2 033.3	2 625.8	294.0	10.1	61.7	2 032.3	2 627.1	292.1	10.0	61.7	4 733.6
May	2 035.7	2 631.4	286.0	9.8	61.6	2 036.8	2 632.9	288.6	9.9	61.7	4 738.0
June	2 039.0	2 636.5	289.9	9.9	61.7	2 042.6	2 640.5	283.8	9.7	61.7	4 742.4
July	2 051.7	2 652.0	278.3	9.5	61.7	2 049.2	2 649.7	277.9	9.5	61.7	4 746.8
August	2 049.2	2 648.7	264.6	9.1	61.3	2 056.3	2 660.2	271.8	9.3	61.7	4 751.1
September	2 076.7	2 690.7	273.1	9.2	62.3	2 063.7	2 671.9	266.6	9.1	61.8	4 755.4
October	2 065.1	2 679.8	257.1	8.8	61.7	2 070.5	2 683.2	263.1	8.9	61.9	4 759.4
November	2 073.6	2 683.8	259.5	8.8	61.8	2 075.9	2 693.4	261.0	8.8	62.0	4 763.4
December	2 083.0	2 703.7	259.0	8.7	62.1	2 079.7	2 701.7	259.1	8.8	62.1	4 767.4
1995											
January	2 084.4	2 719.4	257.5	8.6	62.4	2 083.2	2 708.8	256.2	8.6	62.1	4 772.4
February	2 094.0	2 719.8	260.7	8.7	62.4	2 087.4	2 716.0	251.6	8.5	62.1	4 777.4
March	2 077.4	2 707.1	247.3	8.4	61.8	2 093.1	2 724.2	245.7	8.3	62.1	4 782.4
April	2 101.5	2 738.2	228.8	7.7	62.0	2 099.8	2 733.1	239.2	8.0	62.1	4 787.4
May	2 105.4	2 732.0	235.0	7.9	61.9	2 106.7	2 742.1	233.0	7.8	62.1	4 792.4
June	2 126.7	2 770.3	225.4	7.5	62.4	2 113.2	2 749.8	227.7	7.6	62.1	4 797.4

¹ Trend estimates for December 1994 to May 1995 have been revised.

LABOUR FORCE STATUS (AGED 15 AND OVER)-Victoria¹

SEASONALLY ADJUSTED.....

TREND.....

Month	Employed	Total	Total	Unemp-	Partic-	Employed	Total	Total	Unemp-	Partic-	Civilian
	full time	employed	unemployed	loyment	ipation		full time	employed	unemployed	loyment	
	'000s	'000s	'000s	%	%	'000s	'000s	'000s	%	%	'000s
MALES											
1994											
April	1 013.4	1 129.1	145.5	11.4	73.9	1 009.2	1 126.0	146.7	11.5	73.8	1 723.9
May	1 012.5	1 129.6	143.1	11.2	73.8	1 012.7	1 130.4	144.0	11.3	73.9	1 724.3
June	1 014.8	1 132.2	143.8	11.3	74.0	1 015.6	1 134.5	140.7	11.0	73.9	1 724.8
July	1 027.8	1 147.7	131.8	10.3	74.1	1 017.3	1 137.6	137.4	10.8	73.9	1 725.5
August	1 004.9	1 132.8	136.5	10.8	73.5	1 017.5	1 139.8	134.5	10.6	73.8	1 726.3
September	1 022.8	1 141.1	133.9	10.5	73.8	1 017.0	1 141.7	132.3	10.4	73.8	1 727.1
October	1 017.5	1 146.9	127.3	10.0	73.7	1 017.2	1 144.4	130.3	10.2	73.8	1 727.8
November	1 019.4	1 145.7	130.3	10.2	73.8	1 019.0	1 148.3	128.1	10.0	73.8	1 728.6
December	1 017.7	1 154.2	123.7	9.7	73.9	1 022.8	1 153.7	125.4	9.8	74.0	1 729.4
1995											
January	1 022.1	1 152.5	126.5	9.9	73.9	1 028.1	1 159.7	122.5	9.6	74.1	1 730.9
February	1 039.2	1 170.1	119.9	9.3	74.5	1 033.4	1 164.7	119.7	9.3	74.1	1 732.5
March	1 042.0	1 174.9	113.2	8.8	74.3	1 037.8	1 168.0	117.4	9.1	74.1	1 734.0
April	1 045.2	1 170.8	113.9	8.9	74.0	1 040.9	1 169.9	115.6	9.0	74.1	1 735.6
May	1 042.1	1 170.8	115.5	9.0	74.0	1 042.6	1 170.6	114.3	8.9	74.0	1 737.1
June	1 035.3	1 161.6	116.3	9.1	73.5	1 043.3	1 170.0	113.8	8.9	73.8	1 738.7
FEMALES											
1994											
April	468.3	838.8	101.7	10.8	52.3	473.2	837.7	100.3	10.7	52.2	1 798.1
May	475.8	843.0	95.2	10.1	52.2	474.0	842.3	98.4	10.5	52.3	1 798.7
June	473.4	844.7	92.3	9.9	52.1	474.5	845.4	97.4	10.3	52.4	1 799.4
July	477.4	850.7	97.0	10.2	52.6	474.7	846.7	96.9	10.3	52.4	1 800.3
August	470.4	840.4	104.8	11.1	52.5	474.2	846.3	96.5	10.2	52.3	1 801.2
September	481.6	849.9	96.7	10.2	52.5	473.3	844.5	96.1	10.2	52.2	1 802.1
October	467.6	847.6	90.6	9.7	52.0	472.3	842.3	95.6	10.2	52.0	1 803.0
November	473.6	836.8	92.2	9.9	51.5	472.2	841.4	94.8	10.1	51.9	1 803.8
December	470.0	841.0	94.0	10.1	51.8	474.0	843.4	93.5	10.0	51.9	1 804.7
1995											
January	475.0	840.6	97.1	10.4	51.9	478.1	849.6	91.7	9.7	52.1	1 806.1
February	486.4	860.1	89.5	9.4	52.5	484.2	859.4	89.5	9.4	52.5	1 807.6
March	492.6	874.0	86.5	9.0	53.1	491.5	871.0	86.7	9.0	52.9	1 809.0
April	497.0	884.2	81.1	8.4	53.3	498.8	882.6	83.5	8.6	53.4	1 810.6
May	506.9	897.5	79.2	8.1	53.9	505.4	892.9	80.7	8.3	53.7	1 812.1
June	515.5	901.7	79.2	8.1	54.1	511.4	901.3	78.3	8.0	54.0	1 813.7
PERSONS											
1994											
April	1 481.7	1 967.8	247.3	11.2	62.9	1 482.4	1 963.6	246.9	11.2	62.8	3 521.9
May	1 488.3	1 972.7	238.3	10.8	62.8	1 486.6	1 972.7	242.3	10.9	62.9	3 523.0
June	1 488.2	1 977.0	236.1	10.7	62.8	1 490.0	1 979.9	238.1	10.7	62.9	3 524.2
July	1 505.2	1 998.4	228.8	10.3	63.2	1 491.9	1 984.4	234.2	10.6	62.9	3 525.8
August	1 475.3	1 973.2	241.3	10.9	62.8	1 491.7	1 986.1	231.0	10.4	62.9	3 527.5
September	1 504.3	1 991.0	230.6	10.4	63.0	1 490.3	1 986.2	228.4	10.3	62.8	3 529.2
October	1 485.2	1 994.5	217.9	9.9	62.7	1 489.5	1 986.7	225.9	10.2	62.7	3 530.8
November	1 493.1	1 982.5	222.5	10.1	62.4	1 491.2	1 989.8	222.8	10.1	62.6	3 532.4
December	1 487.7	1 995.1	217.7	9.8	62.6	1 496.8	1 997.2	218.9	9.9	62.7	3 534.1
1995											
January	1 497.1	1 993.0	223.6	10.1	62.7	1 506.2	2 009.3	214.2	9.6	62.9	3 537.1
February	1 525.6	2 030.2	209.4	9.3	63.3	1 517.7	2 024.1	209.2	9.4	63.1	3 540.1
March	1 534.6	2 048.9	199.7	8.9	63.5	1 529.4	2 039.1	204.0	9.1	63.3	3 543.0
April	1 542.2	2 055.0	195.0	8.7	63.4	1 539.7	2 052.5	199.1	8.8	63.5	3 546.2
May	1 549.0	2 068.3	194.7	8.6	63.8	1 548.0	2 063.5	195.0	8.6	63.6	3 549.3
June	1 550.8	2 063.3	195.5	8.7	63.6	1 554.7	2 071.3	192.1	8.5	63.7	3 552.4

¹ Trend estimates for December 1994 to May 1995 have been revised.

LABOUR FORCE STATUS (AGED 15 AND OVER)-Queensland¹

SEASONALLY ADJUSTED.....

TREND.....

Month	SEASONALLY ADJUSTED					TREND					Civilian population aged 15 and over '000s
	Employed full time '000s	Total employed '000s	Total unemployed '000s	Unemployment rate %	Participation rate %	Employed full time '000s	Total employed '000s	Total unemployed '000s	Unemployment rate %	Participation rate %	
MALES											
1994											
April	732.0	817.9	87.7	9.7	74.4	733.4	822.5	86.5	9.5	74.7	1 217.0
May	740.5	832.0	81.1	8.9	74.9	738.1	826.2	84.5	9.3	74.7	1 219.8
June	743.2	830.2	82.5	9.0	74.7	742.8	829.5	83.2	9.1	74.6	1 222.7
July	745.2	831.7	81.9	9.0	74.5	746.6	832.4	82.7	9.0	74.7	1 225.7
August	751.9	835.3	83.2	9.1	74.7	749.3	834.6	82.8	9.0	74.7	1 228.8
September	753.1	835.7	84.2	9.2	74.7	751.1	836.0	82.8	9.0	74.6	1 231.8
October	750.9	837.1	83.7	9.1	74.6	752.5	837.4	82.6	9.0	74.5	1 234.9
November	753.0	839.9	83.4	9.0	74.6	754.4	839.6	81.8	8.9	74.4	1 237.9
December	752.9	841.7	78.8	8.6	74.2	757.0	842.9	81.0	8.8	74.5	1 241.0
1995											
January	761.8	844.2	78.9	8.5	74.2	759.9	846.8	80.8	8.7	74.6	1 244.1
February	765.5	852.2	82.2	8.8	74.9	762.7	850.9	81.4	8.7	74.8	1 247.3
March	762.6	854.9	82.9	8.8	75.0	764.8	854.6	82.6	8.8	75.0	1 250.4
April	773.1	864.0	81.2	8.6	75.4	766.0	857.7	84.1	8.9	75.1	1 253.5
May	762.2	856.6	90.4	9.5	75.4	766.5	860.0	85.4	9.0	75.2	1 256.6
June	763.7	859.6	85.5	9.0	75.0	766.5	861.5	86.8	9.2	75.3	1 259.6
FEMALES											
1994											
April	341.1	591.2	62.9	9.6	52.7	344.1	595.1	63.3	9.6	53.0	1 241.7
May	342.8	596.7	64.1	9.7	53.1	345.8	596.7	63.0	9.5	53.0	1 244.5
June	352.3	598.8	63.4	9.6	53.1	348.8	599.7	62.7	9.5	53.1	1 247.3
July	350.1	604.6	60.8	9.1	53.2	353.0	604.0	62.2	9.3	53.3	1 250.1
August	356.8	606.8	61.2	9.2	53.3	356.5	608.8	61.6	9.2	53.5	1 253.1
September	359.4	616.6	62.5	9.2	54.1	358.3	613.5	60.7	9.0	53.7	1 256.0
October	360.2	617.9	59.5	8.8	53.8	357.4	617.8	59.8	8.8	53.8	1 258.9
November	363.8	625.1	61.1	8.9	54.4	354.9	622.2	59.3	8.7	54.0	1 261.8
December	352.5	624.3	55.5	8.2	53.8	352.7	627.1	59.1	8.6	54.3	1 264.8
1995											
January	335.8	626.5	57.9	8.5	54.0	352.6	632.5	59.4	8.6	54.6	1 267.9
February	354.6	641.0	61.9	8.8	55.3	355.6	638.1	59.9	8.6	54.9	1 271.0
March	360.5	644.8	64.0	9.0	55.6	361.2	643.7	60.7	8.6	55.3	1 274.1
April	377.4	655.7	57.2	8.0	55.8	367.9	648.7	61.3	8.6	55.6	1 276.9
May	373.5	647.1	63.3	8.9	55.5	374.2	652.8	61.7	8.6	55.8	1 279.8
June	382.0	656.4	61.7	8.6	56.0	380.3	656.0	62.3	8.7	56.0	1 282.7
PERSONS											
1994											
April	1 073.1	1 409.1	150.6	9.7	63.4	1 077.5	1 417.6	149.8	9.6	63.8	2 458.7
May	1 083.2	1 428.7	145.3	9.2	63.9	1 083.9	1 423.0	147.4	9.4	63.7	2 464.3
June	1 095.5	1 429.0	146.0	9.3	63.8	1 091.6	1 429.2	145.9	9.3	63.8	2 470.0
July	1 095.2	1 436.3	142.7	9.0	63.8	1 099.6	1 436.4	145.0	9.2	63.9	2 475.9
August	1 108.8	1 442.1	144.4	9.1	63.9	1 105.8	1 443.4	144.4	9.1	64.0	2 481.8
September	1 112.5	1 452.3	146.7	9.2	64.3	1 109.4	1 449.5	143.5	9.0	64.0	2 487.8
October	1 111.1	1 455.0	143.2	9.0	64.1	1 110.0	1 455.2	142.4	8.9	64.1	2 493.8
November	1 116.9	1 464.9	144.5	9.0	64.4	1 109.3	1 461.8	141.1	8.8	64.1	2 499.8
December	1 105.3	1 466.0	134.3	8.4	63.9	1 109.7	1 470.0	140.2	8.7	64.3	2 505.8
1995											
January	1 097.6	1 470.7	136.8	8.5	64.0	1 112.5	1 479.3	140.2	8.7	64.5	2 512.0
February	1 120.1	1 493.2	144.1	8.8	65.0	1 118.4	1 489.1	141.3	8.7	64.7	2 518.2
March	1 123.1	1 499.7	146.8	8.9	65.2	1 126.1	1 498.4	143.3	8.7	65.0	2 524.5
April	1 150.5	1 519.7	138.4	8.3	65.5	1 133.9	1 506.4	145.3	8.8	65.3	2 530.4
May	1 135.6	1 503.7	153.7	9.3	65.3	1 140.7	1 512.7	147.2	8.9	65.4	2 536.4
June	1 145.7	1 516.0	147.2	8.9	65.4	1 146.8	1 517.6	149.1	8.9	65.6	2 542.3

¹ Trend estimates for December 1994 to May 1995 have been revised.

LABOUR FORCE STATUS (AGED 15 AND OVER)-South Australia¹

SEASONALLY ADJUSTED.....

TREND.....

Month	SEASONALLY ADJUSTED					TREND					Civilian population aged 15 and over '000s
	Employed full time '000s	Total employed '000s	Total unemployed '000s	Unemployment rate %	Participation rate %	Employed full time '000s	Total employed '000s	Total unemployed '000s	Unemployment rate %	Participation rate %	
MALES											
1994											
April	322.7	361.7	45.5	11.2	71.2	323.2	362.2	46.2	11.3	71.4	571.7
May	325.4	363.4	44.9	11.0	71.4	324.5	363.0	45.6	11.2	71.4	571.9
June	325.2	362.2	46.3	11.3	71.4	326.0	364.2	45.1	11.0	71.5	572.1
July	325.4	366.7	43.5	10.6	71.7	327.4	365.2	44.7	10.9	71.6	572.4
August	329.5	366.5	44.8	10.9	71.8	327.8	365.5	44.6	10.9	71.6	572.7
September	329.9	365.7	44.7	10.9	71.6	327.3	365.3	44.5	10.9	71.5	572.9
October	327.6	366.0	44.5	10.8	71.6	326.2	364.8	44.5	10.9	71.4	573.2
November	323.8	363.9	44.1	10.8	71.1	324.5	364.3	44.4	10.9	71.3	573.4
December	318.0	360.8	44.4	11.0	70.6	322.9	364.2	44.2	10.8	71.2	573.6
1995											
January	320.9	361.9	45.4	11.2	71.0	321.8	364.7	43.9	10.8	71.2	573.9
February	327.3	372.7	42.1	10.2	72.3	321.2	365.6	43.9	10.7	71.3	574.2
March	316.5	363.3	44.6	10.9	71.0	320.8	366.4	44.2	10.8	71.5	574.4
April	320.9	367.9	43.6	10.6	71.6	320.2	366.8	44.6	10.9	71.6	574.6
May	322.7	367.4	44.4	10.8	71.7	319.5	367.1	45.3	11.0	71.8	574.7
June	314.9	365.3	48.7	11.8	72.0	318.8	367.1	46.0	11.1	71.9	574.9
FEMALES											
1994											
April	145.2	273.9	26.9	8.9	50.7	145.2	273.6	30.5	10.0	51.3	592.9
May	144.5	274.8	31.3	10.2	51.6	145.4	275.1	30.9	10.1	51.6	593.1
June	146.8	273.0	33.1	10.8	51.6	146.2	277.2	31.3	10.2	52.0	593.3
July	147.9	285.0	32.8	10.3	53.5	147.5	279.3	31.7	10.2	52.4	593.6
August	148.2	280.7	30.6	9.8	52.4	148.8	280.8	31.7	10.1	52.6	593.8
September	149.7	281.7	30.7	9.8	52.6	150.1	281.6	31.1	10.0	52.6	594.0
October	151.2	280.8	30.2	9.7	52.3	151.2	281.8	30.1	9.7	52.5	594.2
November	154.3	281.4	30.9	9.9	52.5	151.7	281.5	29.0	9.4	52.2	594.4
December	150.8	282.0	28.2	9.1	52.2	152.0	281.0	28.2	9.1	52.0	594.6
1995											
January	151.9	280.1	24.2	8.0	51.2	152.1	281.0	27.7	9.0	51.9	594.8
February	151.9	282.5	27.6	8.9	52.1	152.2	281.6	27.4	8.9	51.9	595.0
March	151.9	280.5	29.0	9.4	52.0	152.4	282.7	27.3	8.8	52.1	595.2
April	150.6	281.8	28.1	9.1	52.1	152.8	284.0	27.3	8.8	52.3	595.4
May	158.5	289.0	26.4	8.4	53.0	153.1	285.5	27.2	8.7	52.5	595.6
June	150.6	288.2	26.7	8.5	52.9	153.5	287.0	27.2	8.7	52.7	595.8
PERSONS											
1994											
April	467.9	635.6	72.4	10.2	60.8	468.4	635.8	76.6	10.8	61.2	1 164.6
May	469.9	638.2	76.2	10.7	61.3	469.9	638.1	76.5	10.7	61.3	1 165.0
June	471.9	635.2	79.4	11.1	61.3	472.2	641.4	76.5	10.7	61.6	1 165.5
July	473.4	651.7	76.3	10.5	62.4	474.8	644.5	76.5	10.6	61.8	1 166.0
August	477.6	647.3	75.5	10.4	62.0	476.6	646.3	76.3	10.6	61.9	1 166.5
September	479.7	647.4	75.4	10.4	61.9	477.5	646.9	75.6	10.5	61.9	1 167.0
October	478.8	646.7	74.7	10.4	61.8	477.3	646.5	74.6	10.3	61.8	1 167.4
November	478.1	645.3	75.0	10.4	61.7	476.2	645.7	73.4	10.2	61.6	1 167.8
December	468.8	642.8	72.6	10.2	61.2	474.9	645.2	72.4	10.1	61.4	1 168.2
1995											
January	472.7	641.9	69.6	9.8	60.9	473.8	645.7	71.7	10.0	61.4	1 168.7
February	479.2	655.2	69.7	9.6	62.0	473.4	647.2	71.3	9.9	61.5	1 169.1
March	468.4	643.8	73.6	10.3	61.3	473.2	649.0	71.5	9.9	61.6	1 169.6
April	471.5	649.7	71.8	9.9	61.7	473.0	650.9	71.9	10.0	61.8	1 169.9
May	481.2	656.5	70.8	9.7	62.1	472.5	652.6	72.5	10.0	62.0	1 170.3
June	465.5	653.5	75.4	10.3	62.3	472.3	654.1	73.3	10.1	62.1	1 170.7

¹ Trend estimates for December 1994 to May 1995 have been revised.

LABOUR FORCE STATUS (AGED 15 AND OVER)-Western Australia¹

SEASONALLY ADJUSTED.....

TREND.....

Month	SEASONALLY ADJUSTED.....					TREND.....					Civilian population aged 15 and over '000s
	Employed full time '000s	Total employed '000s	Total unemployed '000s	Unemployment rate %	Participation rate %	Employed full time '000s	Total employed '000s	Total unemployed '000s	Unemployment rate %	Participation rate %	
MALES											
1994											
April	411.1	459.5	41.8	8.3	76.9	411.9	459.2	42.2	8.4	76.9	651.9
May	411.3	460.0	40.8	8.2	76.7	412.7	460.0	41.7	8.3	76.9	652.8
June	411.2	458.3	42.5	8.5	76.6	413.4	460.8	41.4	8.2	76.8	653.7
July	416.0	463.8	41.8	8.3	77.2	413.9	461.5	41.0	8.2	76.8	654.8
August	416.2	462.6	40.5	8.0	76.7	414.1	462.8	40.3	8.0	76.7	655.8
September	416.1	464.1	39.8	7.9	76.7	414.0	464.3	39.7	7.9	76.7	656.8
October	410.4	463.9	38.1	7.6	76.3	413.7	465.8	39.4	7.8	76.8	658.0
November	412.0	468.3	40.1	7.9	77.1	413.8	467.4	39.4	7.8	76.9	659.1
December	415.8	471.0	37.6	7.4	77.0	414.6	469.1	39.9	7.8	77.1	660.2
1995											
January	416.8	472.5	39.9	7.8	77.5	416.5	470.9	40.4	7.9	77.3	661.4
February	417.1	466.6	46.0	9.0	77.4	419.2	472.7	40.7	7.9	77.5	662.5
March	423.2	476.4	37.3	7.3	77.4	422.1	474.4	40.4	7.8	77.6	663.7
April	426.1	479.3	41.2	7.9	78.3	424.7	476.0	39.8	7.7	77.6	665.0
May	426.3	476.6	38.7	7.5	77.3	427.1	477.4	38.9	7.5	77.5	666.2
June	430.3	477.8	36.1	7.0	77.0	429.0	478.4	38.2	7.4	77.4	667.5
FEMALES											
1994											
April	177.1	328.2	30.4	8.5	54.5	176.9	326.9	31.0	8.7	54.4	657.6
May	178.4	325.4	31.7	8.9	54.2	177.7	328.3	31.0	8.6	54.5	658.6
June	178.2	327.3	33.8	9.4	54.7	178.6	330.0	30.9	8.6	54.7	659.6
July	180.0	336.9	29.2	8.0	55.4	179.6	332.1	30.6	8.4	54.9	660.6
August	180.2	335.3	28.3	7.8	54.9	180.8	334.6	30.0	8.2	55.1	661.6
September	180.8	333.4	31.0	8.5	55.0	182.0	337.0	29.2	8.0	55.3	662.6
October	184.3	341.4	27.8	7.5	55.6	183.1	339.2	28.4	7.7	55.4	663.8
November	186.2	340.2	28.4	7.7	55.4	184.3	341.3	27.6	7.5	55.5	664.9
December	185.5	345.7	26.3	7.1	55.8	185.8	343.8	27.0	7.3	55.7	666.1
1995											
January	183.2	344.4	26.4	7.1	55.6	187.6	346.6	26.5	7.1	55.9	667.2
February	192.1	349.2	26.0	6.9	56.1	189.3	349.5	26.2	7.0	56.2	668.4
March	188.3	350.3	26.9	7.1	56.3	190.7	352.0	26.3	7.0	56.5	669.6
April	196.7	359.0	24.8	6.5	57.2	191.7	354.1	26.7	7.0	56.8	670.9
May	194.8	358.5	27.7	7.2	57.5	192.2	355.7	27.1	7.1	56.9	672.2
June	186.0	351.2	29.2	7.7	56.5	192.3	356.4	27.7	7.2	57.0	673.5
PERSONS											
1994											
April	588.2	787.7	72.2	8.4	65.7	588.8	786.1	73.2	8.5	65.6	1 309.5
May	589.7	785.4	72.5	8.5	65.4	590.4	788.3	72.7	8.4	65.7	1 311.4
June	589.3	785.6	76.2	8.8	65.6	591.9	790.7	72.3	8.4	65.7	1 313.3
July	596.1	800.6	70.9	8.1	66.3	593.5	793.7	71.6	8.3	65.8	1 315.4
August	596.5	797.9	68.7	7.9	65.8	594.9	797.3	70.4	8.1	65.9	1 317.4
September	596.9	797.5	70.9	8.2	65.8	596.0	801.3	69.0	7.9	66.0	1 319.5
October	594.7	805.3	65.9	7.6	65.9	596.8	805.0	67.7	7.8	66.0	1 321.7
November	598.2	808.5	68.5	7.8	66.2	598.1	808.7	67.0	7.7	66.1	1 324.0
December	601.3	816.7	63.9	7.3	66.4	600.5	812.9	66.8	7.6	66.3	1 326.3
1995											
January	600.0	816.9	66.4	7.5	66.5	604.1	817.6	66.9	7.6	66.6	1 328.6
February	609.2	815.8	72.0	8.1	66.7	608.5	822.3	66.9	7.5	66.8	1 330.9
March	611.5	826.7	64.2	7.2	66.8	612.8	826.5	66.8	7.5	67.0	1 333.3
April	622.8	838.3	66.1	7.3	67.7	616.4	830.1	66.5	7.4	67.1	1 335.8
May	621.0	835.1	66.4	7.4	67.4	619.2	833.0	66.1	7.4	67.2	1 338.4
June	616.3	829.0	65.3	7.3	66.7	621.2	834.8	65.9	7.3	67.2	1 341.0

¹ Trend estimates for December 1994 to May 1995 have been revised.

LABOUR FORCE STATUS (AGED 15 AND OVER)-Tasmania¹

SEASONALLY ADJUSTED.....

TREND.....

Month	SEASONALLY ADJUSTED.....					TREND.....					Civilian population aged 15 and over '000s
	Employed full time '000s	Total employed '000s	Total unemployed '000s	Unemp- loyment rate %	Partic- ipation rate %	Employed full time '000s	Total employed '000s	Total unemployed '000s	Unemp- loyment rate %	Partic- ipation rate %	
MALES											
1994											
April	100.2	112.4	16.8	13.0	71.8	100.1	112.4	16.5	12.8	71.7	179.8
May	100.1	112.5	16.2	12.6	71.6	100.3	112.3	15.9	12.4	71.3	179.8
June	101.5	112.4	14.2	11.2	70.4	100.3	112.4	15.3	12.0	71.0	179.9
July	100.7	112.5	14.7	11.5	70.7	100.3	112.6	14.8	11.6	70.8	179.9
August	99.5	112.4	14.5	11.4	70.5	100.1	113.0	14.5	11.4	70.9	179.9
September	99.3	112.9	15.0	11.7	71.0	100.0	113.5	14.5	11.3	71.1	180.0
October	99.6	115.3	14.2	11.0	72.0	100.0	113.8	14.7	11.4	71.4	180.0
November	100.5	113.5	15.0	11.7	71.4	100.1	113.9	14.9	11.6	71.5	180.1
December	100.7	114.6	14.9	11.5	71.9	100.2	113.9	15.1	11.7	71.6	180.2
1995											
January	100.6	113.8	15.4	11.9	71.6	100.2	113.8	15.2	11.8	71.6	180.3
February	99.0	112.2	16.3	12.7	71.3	100.1	113.8	15.2	11.8	71.5	180.3
March	100.8	114.2	14.0	10.9	71.1	99.9	113.7	15.1	11.7	71.4	180.4
April	99.4	114.5	14.9	11.5	71.7	99.8	113.8	14.9	11.6	71.3	180.4
May	99.6	114.1	15.0	11.6	71.6	99.8	113.9	14.7	11.4	71.3	180.5
June	100.2	113.4	14.3	11.2	70.8	99.8	113.9	14.6	11.3	71.2	180.5
FEMALES											
1994											
April	40.7	82.2	8.8	9.6	48.9	41.6	83.1	8.7	9.4	49.3	186.1
May	42.1	83.4	9.1	9.8	49.7	41.2	82.9	8.5	9.3	49.1	186.1
June	40.6	83.2	7.5	8.2	48.7	41.0	82.7	8.4	9.2	49.0	186.1
July	41.2	82.9	9.2	10.0	49.4	40.9	82.3	8.4	9.3	48.7	186.2
August	40.6	80.9	7.9	8.9	47.7	41.1	81.8	8.5	9.5	48.5	186.2
September	41.6	82.2	8.8	9.7	48.9	41.4	81.4	8.8	9.8	48.4	186.2
October	41.0	80.3	9.3	10.3	48.1	42.0	81.1	9.1	10.1	48.4	186.3
November	43.8	81.4	9.6	10.6	48.9	42.6	81.1	9.5	10.4	48.6	186.3
December	43.2	80.7	9.2	10.2	48.2	43.4	81.7	9.6	10.5	49.0	186.4
1995											
January	44.2	83.5	10.3	11.0	50.3	44.0	82.7	9.5	10.3	49.5	186.5
February	43.9	82.5	9.4	10.2	49.3	44.6	83.8	9.2	9.9	49.9	186.5
March	45.6	85.0	8.8	9.4	50.2	45.0	85.0	8.7	9.3	50.2	186.6
April	46.4	88.3	7.5	7.8	51.4	45.4	85.9	8.2	8.7	50.4	186.6
May	44.4	86.6	8.4	8.8	50.9	45.6	86.6	7.7	8.1	50.5	186.6
June	46.1	85.8	6.4	6.9	49.4	45.9	87.2	7.2	7.6	50.5	186.7
PERSONS											
1994											
April	140.9	194.6	25.6	11.6	60.2	141.7	195.5	25.2	11.4	60.3	365.9
May	142.2	195.9	25.3	11.4	60.4	141.5	195.3	24.4	11.1	60.0	365.9
June	142.1	195.7	21.7	10.0	59.4	141.3	195.1	23.7	10.8	59.8	366.0
July	141.8	195.1	23.8	10.9	59.9	141.2	195.0	23.2	10.6	59.6	366.1
August	140.0	193.3	22.3	10.4	58.9	141.2	194.9	23.0	10.6	59.5	366.2
September	141.0	195.1	23.8	10.9	59.8	141.4	194.9	23.3	10.7	59.6	366.2
October	140.6	195.6	23.5	10.7	59.8	141.9	194.8	23.8	10.9	59.7	366.3
November	144.4	194.9	24.6	11.2	59.9	142.7	195.0	24.4	11.1	59.9	366.5
December	143.9	195.3	24.1	11.0	59.9	143.5	195.6	24.7	11.2	60.1	366.6
1995											
January	144.7	197.2	25.7	11.5	60.8	144.2	196.5	24.7	11.2	60.3	366.7
February	142.9	194.7	25.7	11.7	60.1	144.7	197.6	24.4	11.0	60.5	366.8
March	146.3	199.2	22.8	10.3	60.5	145.0	198.7	23.8	10.7	60.6	367.0
April	145.8	202.8	22.4	9.9	61.4	145.2	199.7	23.1	10.4	60.7	367.0
May	144.0	200.7	23.4	10.4	61.0	145.4	200.5	22.4	10.0	60.7	367.1
June	146.3	199.2	20.7	9.4	59.9	145.6	201.0	21.8	9.8	60.7	367.2

¹ Trend estimates for December 1994 to May 1995 have been revised.

LABOUR FORCE STATUS (AGED 15 AND OVER)-Northern Territory¹

TREND.....

Month	Employed full time '000s	Total employed '000s	Total unemployed '000s	Unemp- loyment rate %	Partic- ipation rate %	Civilian population aged 15 and over '000s
MALES						
1994						
April	37.6	41.1	3.4	7.7	71.9	61.9
May	37.8	41.4	3.5	7.7	72.6	61.9
June	38.0	41.9	3.5	7.7	73.4	61.8
July	38.3	42.5	3.5	7.6	74.4	61.9
August	38.7	43.2	3.5	7.6	75.4	61.9
September	39.3	43.8	3.6	7.6	76.5	62.0
October	39.8	44.5	3.6	7.6	77.6	62.1
November	40.4	45.1	3.7	7.5	78.5	62.1
December	41.0	45.7	3.6	7.4	79.4	62.2
1995						
January	41.3	46.1	3.6	7.3	79.7	62.3
February	41.4	46.1	3.6	7.3	79.7	62.4
March	41.2	46.0	3.6	7.3	79.4	62.6
April	40.9	45.8	3.7	7.5	79.0	62.6
May	40.6	45.5	3.7	7.6	78.5	62.7
June	40.3	45.2	3.8	7.8	78.1	62.8
FEMALES						
1994						
April	22.5	31.5	2.4	7.1	58.1	58.4
May	22.8	31.9	2.4	7.0	58.8	58.5
June	23.0	32.5	2.5	7.1	59.8	58.5
July	23.2	33.3	2.6	7.3	61.2	58.6
August	23.5	34.2	2.8	7.5	62.9	58.8
September	24.1	35.4	2.9	7.6	65.0	58.9
October	24.8	36.6	3.0	7.5	67.0	59.1
November	25.4	37.6	3.0	7.4	68.5	59.2
December	25.9	38.1	3.0	7.3	69.2	59.4
1995						
January	26.1	38.1	2.9	7.1	69.0	59.5
February	25.9	37.7	2.8	7.0	68.0	59.6
March	25.5	37.1	2.8	6.9	66.7	59.8
April	25.1	36.5	2.7	6.9	65.4	60.0
May	24.8	36.0	2.6	6.8	64.2	60.2
June	24.4	35.6	2.6	6.8	63.2	60.4
PERSONS						
1994						
April	60.2	72.6	5.8	7.5	65.2	120.3
May	60.6	73.4	5.9	7.4	65.9	120.3
June	61.0	74.4	6.0	7.4	66.8	120.3
July	61.5	75.8	6.1	7.5	67.9	120.5
August	62.3	77.4	6.3	7.5	69.3	120.7
September	63.3	79.2	6.5	7.6	70.9	120.9
October	64.6	81.1	6.6	7.6	72.4	121.2
November	65.9	82.7	6.7	7.5	73.6	121.4
December	66.9	83.8	6.6	7.3	74.4	121.6
1995						
January	67.4	84.2	6.5	7.2	74.5	121.8
February	67.3	83.8	6.4	7.1	74.0	122.1
March	66.7	83.1	6.4	7.2	73.2	122.3
April	66.1	82.3	6.4	7.2	72.3	122.6
May	65.4	81.5	6.4	7.3	71.5	122.9
June	64.8	80.8	6.4	7.3	70.8	123.1

¹ Trend estimates for December 1994 to May 1995 have been revised. Estimates for the most recent three months may be subject to significant revisions as data for later months become available.

TREND.....

Month	Employed full time '000s	Total employed '000s	Total unemployed '000s	Unemp- loyment rate %	Partic- ipation rate %	Civilian population aged 15 and over '000s
MALES						
1994						
April	73.0	83.2	6.4	7.1	80.3	111.5
May	72.9	83.3	6.2	7.0	80.2	111.6
June	72.7	83.2	6.2	6.9	80.0	111.8
July	72.5	83.0	6.4	7.1	79.9	111.9
August	72.3	82.9	6.6	7.4	79.9	112.0
September	72.2	82.8	6.9	7.7	79.9	112.2
October	72.2	82.7	7.1	7.9	79.9	112.3
November	72.3	82.7	7.1	7.9	79.8	112.4
December	72.3	82.6	7.0	7.8	79.6	112.5
1995						
January	72.4	82.6	6.9	7.7	79.6	112.5
February	72.4	82.6	6.8	7.6	79.5	112.5
March	72.4	82.6	6.8	7.7	79.6	112.5
April	72.4	82.7	6.9	7.7	79.6	112.6
May	72.4	82.8	7.0	7.8	79.6	112.8
June	72.5	83.0	7.1	7.9	79.8	112.9
FEMALES						
1994						
April	45.2	69.9	5.1	6.9	64.7	116.1
May	46.0	70.1	5.1	6.8	64.8	116.2
June	46.6	70.5	5.2	6.9	65.2	116.2
July	47.1	71.1	5.3	6.9	65.7	116.3
August	47.3	71.6	5.3	6.9	66.1	116.4
September	47.2	71.9	5.2	6.8	66.2	116.4
October	46.8	71.9	5.1	6.6	66.1	116.5
November	46.0	71.8	5.0	6.5	65.9	116.6
December	45.1	71.6	4.9	6.4	65.6	116.6
1995						
January	44.2	71.3	4.9	6.4	65.3	116.7
February	43.6	71.2	4.9	6.4	65.2	116.8
March	43.3	71.3	5.0	6.5	65.2	116.9
April	43.3	71.5	5.0	6.5	65.3	117.1
May	43.4	71.8	5.0	6.5	65.5	117.3
June	43.6	72.2	5.0	6.5	65.7	117.4
PERSONS						
1994						
April	118.2	153.2	11.5	7.0	72.3	227.6
May	118.9	153.4	11.4	6.9	72.3	227.8
June	119.3	153.7	11.4	6.9	72.4	227.9
July	119.6	154.1	11.6	7.0	72.6	228.2
August	119.6	154.5	11.9	7.2	72.8	228.4
September	119.4	154.6	12.1	7.3	72.9	228.6
October	119.0	154.6	12.2	7.3	72.9	228.8
November	118.3	154.5	12.1	7.3	72.7	229.0
December	117.4	154.2	11.9	7.2	72.5	229.2
1995						
January	116.6	153.9	11.8	7.1	72.3	229.2
February	116.0	153.8	11.7	7.1	72.2	229.3
March	115.7	153.9	11.8	7.1	72.2	229.4
April	115.7	154.2	11.9	7.2	72.3	229.7
May	115.8	154.6	12.0	7.2	72.4	230.0
June	116.1	155.1	12.1	7.2	72.6	230.3

¹ Trend estimates for December 1994 to May 1995 have been revised. Estimates for the most recent three months may be subject to significant revisions as data for later months become available.

EXPLANATORY NOTES

INTRODUCTION

1 This publication contains preliminary estimates of the civilian labour force derived from the labour force survey component of the monthly population survey. Estimates for the current month are preliminary and subject to revision. Revised estimates for the current month and more detailed estimates will be published in *The Labour Force, Australia* (6203.0).

MONTHLY POPULATION SURVEY

2 The population survey is based on a multi-stage area sample of private dwellings (currently about 30,000 houses, flats, etc.) and a list sample of non-private dwellings (hotels, motels, etc.), and covers about 0.5% of the population of Australia. The information is obtained from the occupants of selected dwellings by specially trained interviewers. The interviews are generally conducted during the two weeks beginning on the Monday between the 6th and 12th of each month. The information obtained relates to the week before the interview (i.e. the reference week).

SCOPE OF SURVEY

3 The Labour Force Survey includes all persons aged 15 and over except members of the permanent defence forces, certain diplomatic personnel of overseas governments customarily excluded from census and estimated populations, overseas residents in Australia, and members of non-Australian defence forces (and their dependants) stationed in Australia.

COVERAGE

4 In the Labour Force Survey, coverage rules are applied which aim to ensure that each person is associated with only one dwelling, and hence has only one chance of selection. The coverage rules are necessarily a balance between theoretical and operational considerations. Nevertheless, the chance of a person being enumerated at two separate dwellings in the survey is considered to be negligible.

POPULATION BENCHMARKS

5 Labour Force Survey estimates are calculated in such a way as to add up to independent estimates of the civilian population aged 15 and over (population benchmarks). From February 1994, labour force estimates have been compiled using benchmarks based on the results of the 1991 Census of Population and Housing. Small revisions were made to many of the historical estimates from January 1989 to January 1994.

REVISION OF SERIES

6 From April 1986, the definition of employed persons was changed to include persons who worked without pay between 1 and 14 hours per week in a family business or on a farm (i.e. unpaid family helpers). For further information, see paragraphs 36 and 37 of the Explanatory Notes to the February 1987 issue of *The Labour Force, Australia* (6203.0).

SURVEY SAMPLE REDESIGN

7 The Labour Force Survey sample was redesigned and reselected using information collected in the 1991 Census of Population and Housing. The new sample was phased in over the period September to December 1992. For details, see *Information Paper: Labour Force Survey Sample Design* (6269.0).

8 For the most part, one quarter of the new sample was introduced each month so that, by December 1992, the entire new sample was in place. Replacement generally occurred at the rotation group level with two groups being substituted each month. Such a pattern of implementation meant that any changes to labour force estimates due to differences between the two samples, or any other influences, were spread over the four months rather than being concentrated in one inter-month period.

9 This phase-in scheme applied to the private dwelling sample in urban areas. The new sample for non-private dwellings and private dwellings in rural areas was introduced in a single stage in November 1992.

RELIABILITY OF ESTIMATES

10 Two types of error are possible in an estimate based on a sample survey: sampling error and non-sampling error.

Sampling error occurs because a sample, rather than the entire population, is surveyed. One measure of the likely difference resulting from not including all dwellings in the survey is given by the standard error. There are about two chances in three that a sample estimate will differ by less than one standard error from the figure that would have been obtained if all dwellings had been included in the survey, and about nineteen chances in twenty that the difference will be less than two standard errors. Standard errors of estimates for the latest month and of estimates of movements since the previous month are shown on pages 30 and 31. Standard errors of other estimates and other movements may be determined by using information in the Technical Notes in *The Labour Force, Australia* (6203.0).

Non sampling error arises from inaccuracies in collecting, recording and processing the data. Every effort is made to minimise reporting error by the careful design of questionnaires, intensive training and supervision of interviewers, and efficient data processing procedures.

SEASONAL ADJUSTMENT AND TREND ESTIMATION

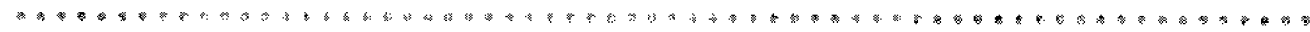
11 Seasonally adjusted series are published in Tables 2, 5 and 12 to 17. Seasonal factors are reviewed annually to take account of each additional year's original data. The results of the latest review were used to compile the revised seasonally adjusted and trend estimates given in this publication. Information about the method of adjustment and revised seasonally adjusted and trend estimates for all months from January 1990 were published in an appendix to the February 1995 issue of *The Labour Force, Australia* (6203.0).

12 Seasonal adjustment is a means of removing the estimated effects of normal seasonal variation from the series so that the effects of other influences on the series can be more clearly recognised. Seasonal adjustment does not aim to remove the irregular or non-seasonal influences which may be present in any particular month. This means that month-to-month movements of the seasonally adjusted estimates may not be reliable indicators of trend behaviour. For example, irregular factors unrelated to the trend account for more than half the seasonally adjusted movement with the following frequency:

- Employment: 5 in 10 monthly movements
- Unemployment: 7 in 10 monthly movements
- Unemployment rate: 7 in 10 monthly movements
- Participation rate: 9 in 10 monthly movements

13 The smoothing of seasonally adjusted series reduces the impact of the irregular component of the seasonally adjusted series, and creates trend estimates. These trend estimates are derived by applying a 13-term Henderson-weighted moving average to all months except the last six. The last six monthly trend estimates are obtained by applying surrogates of the Henderson average to the seasonally adjusted series. Trend series are used to analyse the underlying behaviour of the series over time. These are published in Tables 3, 6 and 12 to 19.

14 While this smoothing technique enables estimates to be produced for the latest month, it does result in revisions to the most recent months as additional observations become available. Generally, subsequent revisions become smaller, and after three months have a negligible impact on the series. There will also be revisions as a result of the annual review of seasonal factors.



SEASONAL ADJUSTMENT AND
TREND ESTIMATION (continued)

15 Trend estimates are published for the Northern Territory in Table 18 and for the Australian Capital Territory in Table 19. Unadjusted series for the two Territories have shown, historically, a high degree of variability, which can lead to considerable revisions to the seasonally adjusted estimates after each annual seasonal factor re-analysis. Seasonally adjusted estimates are not currently published for the two Territories. The most recent six months trend estimates are subject to revision. For the three most recent months, the revision may be relatively large. Inferences about trends drawn from smoothed seasonally adjusted (trend) estimates for months earlier than the latest three months are unlikely to be affected by month to month revisions. They may be affected by revision resulting from the annual re-analysis of seasonal factors.

16 For further information, see *A Guide to Interpreting Time Series — Monitoring Trends: an Overview* (1348.0) or contact the Assistant Director, Time Series Analysis on (06) 252 6345.

RELATED PUBLICATIONS

17 Users may also wish to refer to *The Labour Force, Australia* (6203.0). This publication contains a detailed list of related publications which are available from ABS Bookshops.

18 Current publications produced by the ABS are listed in the *Catalogue of Publications and Products, Australia* (1101.0). The ABS also issues, on Tuesdays and Fridays, a *Release Advice* (1105.0) which lists publications to be released in the next few days. The Catalogue and Release Advice are available from any ABS office.

UNPUBLISHED STATISTICS

19 As well as the statistics included in this and related publications, the ABS may have other relevant unpublished data available. Inquiries should be made to Sylvia Sajler on 06 252 6525 or to any ABS office.

EFFECTS OF ROUNDING

20 Estimates have been rounded and discrepancies may occur between sums of the component items and totals.

21 Estimates of movement shown in this publication are obtained by taking the difference of unrounded estimates. The movement estimate is then rounded to one decimal place. Therefore where a discrepancy occurs between the reported movement and the difference of the rounded estimates, the reported movement will be more accurate.

SYMBOLS AND OTHER USAGES

- * subject to sampling variability too high for most practical uses. See the Technical Notes in 6203.0 for more details.
- .. not applicable
- r revised
- pts percentage points



GLOSSARY

Actively looking for work	Includes writing, telephoning or applying in person to an employer for work; answering a newspaper advertisement for a job; checking factory or Commonwealth Employment Service noticeboards; being registered with the Commonwealth Employment Service; checking or registering with any other employment agency; advertising or tendering for work; and contacting friends or relatives.
Attending school	Persons aged 15 to 19 enrolled full time at secondary or high schools in the reference week.
Attending tertiary educational institution full time	Persons aged 15 to 24 enrolled full time at a TAFE college, university, or other educational institution in the reference week.
Employed	Persons aged 15 and over who, during the reference week: <ul style="list-style-type: none">■ worked for one hour or more for pay, profit, commission or payment in kind in a job or business, or on a farm (comprising employees, employers and self-employed persons); or■ worked for one hour or more without pay in a family business or on a farm (i.e. unpaid family helpers); or■ were employees who had a job but were not at work and were:<ul style="list-style-type: none">■ on paid leave, on leave without pay for less than four weeks up to the end of the reference week,■ stood down without pay because of bad weather or plant breakdown at their place of employment for less than four weeks up to the end of the reference week,■ on strike or locked out,■ on workers' compensation and expected to be returning to their job, or■ receiving wages or salary while undertaking full-time study; or■ were employers, self-employed persons or unpaid family helpers who had a job, business or farm, but were not at work.
Full-time workers	Employed persons who usually worked 35 hours or more a week (in all jobs) and those who, although usually working less than 35 hours a week, worked 35 hours or more during the reference week
Labour force	For any group, persons who were employed or unemployed, as defined.
Labour force status	A classification of the civilian population aged 15 and over into employed, unemployed or not in the labour force, as defined. The definitions conform closely to the international standard definitions adopted by the International Conferences of Labour Statisticians.
Not in the labour force	Persons who were not in the categories employed or unemployed as defined.
Participation rate	For any group, the labour force expressed as a percentage of the civilian population aged 15 and over in the same group.
Part-time workers	Employed persons who usually worked less than 35 hours a week and who did so during the reference week.
Seasonally adjusted series	A time series of estimates with the estimated effects of normal seasonal variation removed. See Explanatory Note 11 to 12 for more detail.
Trend series	A smoothed seasonally adjusted series of estimates. See Explanatory Notes 13 to 15 for more detail.



Unemployed	Persons aged 15 and over who were not employed during the reference week, and: <ul style="list-style-type: none">■ had actively looked for full-time or part-time work at any time in the four weeks up to the end of the reference week and:<ul style="list-style-type: none">⌘ were available for work in the reference week, or would have been available except for temporary illness (i.e. lasting for less than four weeks to the end of the reference week), or⌘ were waiting to start a new job within four weeks from the end of the reference week and would have started in the reference week if the job had been available then; or■ were waiting to be called back to a full-time or part-time job from which they had been stood down without pay for less than four weeks up to the end of the reference week (including the whole of the reference week) for reasons other than bad weather or plant breakdown.
Unemployed looking for first full-time job	Unemployed persons looking for full-time work (as defined above) who had never worked full time for two weeks or more
Unemployed looking for full-time work	Unemployed persons who actively looked for full-time work, or were to resume a full-time job from which they had been stood down.
Unemployed looking for part-time work	Unemployed persons who had actively looked for part-time work only, or were to resume a part-time job from which they had been stood down.
Unemployment rate	For any group, the number of unemployed persons expressed as a percentage of the labour force in the same group.



STANDARD ERRORS

The estimates in this publication are based on information gained from the occupants of a sample survey of dwellings. Because the entire population is not surveyed, the published estimates are subject to sampling error. The most common way of quantifying such sampling error is to calculate the standard error for the published estimate or statistic.

LEVEL ESTIMATES

To illustrate, let us say the published level estimate for employed persons aged 15 to 19 is 500,000. The calculated standard error in this case is 9,000. The standard error is then used to interpret the level estimate of 500,000. For instance, the standard error of 9,000 indicates that:

- There are approximately two chances in three that the real value falls within the range 491,000 to 509,000 (500,000 + or - 9,000)
- There are approximately nineteen chances in twenty that the real value falls within the range 482,000 to 518,000 (500,000 + or - 18,000)

The real value in this case is the result we would obtain if we could enumerate the total population.

The following tables show the standard errors for this month's level estimates.

	EMPLOYED.....			UNEMPLOYED.....				Labour force	Not in labour force	Unemployment rate	Participation rate
	Employed full time	Employed part time	Total employed	Unemp. looking for f/t work	Unemp. looking for p/t work	Total unemployed					
	'000s	'000s	'000s	'000s	'000s	'000s					
NSW	14.6	9.7	15.9	6.0	3.2	6.4	16.3	13.8	0.2	0.3	
Vic.	12.0	8.3	13.3	5.2	2.8	5.7	13.6	11.4	0.3	0.4	
Qld	9.4	6.2	10.3	4.0	2.3	4.4	10.7	8.5	0.3	0.4	
SA	5.1	3.7	5.7	2.4	1.2	2.6	5.9	5.0	0.4	0.5	
WA	6.3	4.3	7.0	2.5	1.2	2.6	7.2	5.6	0.3	0.5	
Tas.	1.7	1.3	1.8	0.9	0.5	1.0	1.8	1.7	0.4	0.5	
NT	2.0	1.0	2.2	0.6	0.3	0.6	2.3	1.5	0.7	1.9	
ACT	1.6	1.1	1.8	0.6	0.4	0.7	1.8	1.3	0.4	0.8	
Males	19.8	9.1	20.6	8.2	3.2	8.5	21.2	14.8	0.2	0.3	
Females	15.4	13.9	18.8	6.2	4.3	7.2	19.3	18.2	0.2	0.3	
Persons	22.6	15.4	24.9	9.6	5.2	10.4	25.6	21.2	0.1	0.2	

	NUMBER OF UNEMPLOYED PERSONS.....						UNEMPLOYMENT RATE.....				
	Aged 15-19 seeking first f/t job	Aged 15-19 looking for f/t work	Aged 20 and over looking for f/t work	Total looking for f/t work	Looking for p/t work	Total unemployed	Aged 15-19 looking for f/t work	Aged 20 and over looking for f/t work	Total looking for f/t work	Looking for p/t work	Total unemployed
	'000s	'000s	'000s	'000s	'000s	'000s	pts	pts	pts	pts	pts
NSW	2.1	2.7	5.6	6.0	3.2	6.4	2.7	0.3	0.3	0.5	0.2
Vic.	1.8	2.2	5.0	5.2	2.8	5.7	3.6	0.3	0.3	0.5	0.3
Qld	1.4	2.0	3.7	4.0	2.3	4.4	2.8	0.3	0.3	0.6	0.3
SA	0.8	1.1	2.3	2.4	1.2	2.6	4.4	0.5	0.5	0.6	0.4
WA	0.8	1.2	2.3	2.5	1.2	2.6	2.8	0.4	0.4	0.5	0.3
Tas.	0.4	0.5	0.9	0.9	0.5	1.0	4.6	0.6	0.6	0.8	0.4
NT	0.2	0.2	0.5	0.6	0.3	0.6	6.8	0.8	0.8	1.7	0.7
ACT	0.1	0.2	0.6	0.6	0.4	0.7	5.4	0.5	0.5	0.8	0.4
Males	2.4	3.3	7.7	8.2	3.2	8.5	1.7	0.2	0.2	0.6	0.2
Females	2.3	3.1	5.7	6.2	4.3	7.2	2.5	0.3	0.3	0.3	0.2
Persons	3.3	4.4	9.0	9.6	5.2	10.4	1.4	0.1	0.1	0.2	0.1

STANDARD ERRORS *continued*

MOVEMENT ESTIMATES

The following example illustrates how to use the standard error to interpret a movement estimate. Let us say that one month the published level estimate for females employed part time in Australia is 1,387,000; the next month the published level estimate is 1,400,000. The calculated standard error for the movement estimate is 9,800. The standard error is then used to interpret the published movement estimate of 13,000. For instance, the standard error of 9,800 indicates that:

- * There are approximately two chances in three that the real movement over the two month period falls within the range 3,200 to 22,800 (13,000 + or - 9,800)
- * There are approximately nineteen chances in twenty that the real movement falls within the range -6,400 to 32,600 (13,000 + or - 19,600).

The following tables show the standard errors for this month's movement estimates.

	EMPLOYED.....			UNEMPLOYED.....			Labour force	Not in labour force	Unemp- loyment rate	Partic- ipation rate
	Employed full time	Employed part time	Total employed	Unemp. looking for fit work	Unemp. looking for p/t work	Total unemployed				
	'000s	'000s	'000s	'000s	'000s	'000s	'000s	'000s	pts	pts
NSW	11.3	7.3	12.5	4.6	2.8	5.0	12.8	10.7	0.2	0.3
Vic.	8.7	5.9	9.7	3.8	2.2	4.1	10.0	8.2	0.2	0.3
Qld	6.5	4.4	7.1	3.0	1.9	3.3	7.4	5.9	0.2	0.3
SA	3.5	2.5	3.9	1.7	0.9	1.8	4.1	3.4	0.2	0.3
WA	4.5	3.1	5.0	1.9	1.2	2.0	5.2	4.0	0.2	0.4
Tas.	1.5	1.1	1.7	0.7	0.4	0.8	1.8	1.5	0.3	0.5
NT	1.3	0.7	1.4	0.4	0.2	0.4	1.4	1.0	0.5	1.2
ACT	1.2	0.8	1.4	0.5	0.3	0.5	1.4	1.0	0.3	0.6
Males	15.0	6.9	15.7	6.3	2.9	6.6	16.3	11.1	0.1	0.2
Females	11.5	10.4	14.2	4.9	3.6	5.6	14.6	13.8	0.1	0.2
Persons	17.5	11.6	19.4	7.3	4.3	7.9	20.1	16.3	0.1	0.1

	NUMBER OF UNEMPLOYED PERSONS.....						UNEMPLOYMENT RATE.....				
	Aged 15-19 seeking first fit job	Aged 15-19 looking for fit work	Aged 20 and over looking for fit work	Total looking for fit work	Looking for p/t work	Total unemployed	Aged 15-19 looking for fit work	Aged 20 and over looking for fit work	Total looking for fit work	Looking for p/t work	Total unemp- loyed
	'000s	'000s	'000s	'000s	'000s	'000s	pts	pts	pts	pts	pts
NSW	2.0	2.3	4.3	4.6	2.8	5.0	2.2	0.2	0.2	0.4	0.2
Vic.	1.6	1.8	3.6	3.8	2.2	4.1	2.8	0.2	0.2	0.4	0.2
Qld	1.3	1.7	2.8	3.0	1.9	3.3	2.3	0.2	0.2	0.5	0.2
SA	0.7	0.8	1.6	1.7	0.9	1.8	3.3	0.3	0.3	0.5	0.2
WA	0.7	1.0	1.8	1.9	1.2	2.0	2.4	0.3	0.3	0.5	0.2
Tas.	0.3	0.4	0.7	0.7	0.4	0.8	4.0	0.4	0.4	0.7	0.3
NT	0.1	0.2	0.4	0.4	0.2	0.4	5.6	0.6	0.6	1.2	0.5
ACT	0.2	0.2	0.5	0.5	0.3	0.5	5.6	0.4	0.4	0.8	0.3
Males	2.3	2.9	6.0	6.3	2.9	6.6	1.4	0.1	0.1	0.5	0.1
Females	2.2	2.7	4.5	4.9	3.6	5.6	2.2	0.2	0.2	0.2	0.1
Persons	2.9	3.7	6.9	7.3	4.3	7.9	1.1	0.1	0.1	0.2	0.1

WHAT IF...? REVISIONS TO TREND ESTIMATES

EFFECT OF NEW SEASONALLY ADJUSTED ESTIMATES ON TREND ESTIMATES

Each time new seasonally adjusted estimates become available, trend estimates are revised (see paragraphs 13 and 14 of Explanatory Notes).

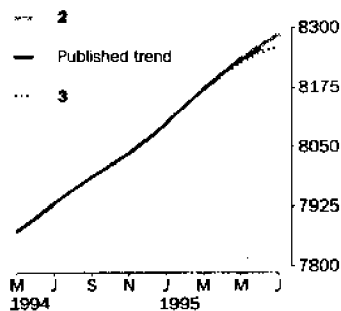
TREND REVISIONS

The examples in the tables below show four illustrative scenarios and the consequent revisions to previous trend estimates of employment and unemployment rate.

- 1** The July seasonally adjusted estimate is the same as the June estimate.
- 2** The July seasonally adjusted estimate is higher than the June estimate by:
 - ⌘ +0.34% for employment
 - ⌘ +2.3% for the unemployment rate
- 3** The July seasonally adjusted estimate is lower than the June estimate by:
 - ⌘ -0.34% for employment
 - ⌘ -2.3% for the unemployment rate
- 4** The July seasonally adjusted estimate results in a revised June trend estimate which is identical to the new July trend estimate.

The percentage changes of 0.34% and 2.3% were chosen because they represent the average absolute monthly percentage changes in employment and the unemployment rate respectively.

EMPLOYMENT ('000)



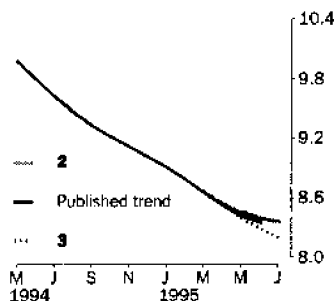
1995
April
May
June
July
(new)

TREND as
PUBLISHED

WHAT IF NEXT MONTH'S SEASONALLY ADJUSTED ESTIMATE IS:

	1	2	3	4
8 268.1	8 296.2	8 240.0	8 139.2	
<i>i.e. the same as Jun 1995</i>	<i>i.e. rises by 0.34%</i>	<i>i.e. falls by 0.34%</i>	<i>i.e. same trend for Jun & Jul</i>	
8 204.2	8 203.7	8 205.0	8 202.4	8 197.9
8 232.8	8 231.8	8 236.0	8 227.7	8 212.7
8 255.5	8 255.5	8 263.3	8 247.7	8 219.5
—	8 273.8	8 285.6	8 262.0	8 219.5

UNEMPLOYMENT RATE (%)



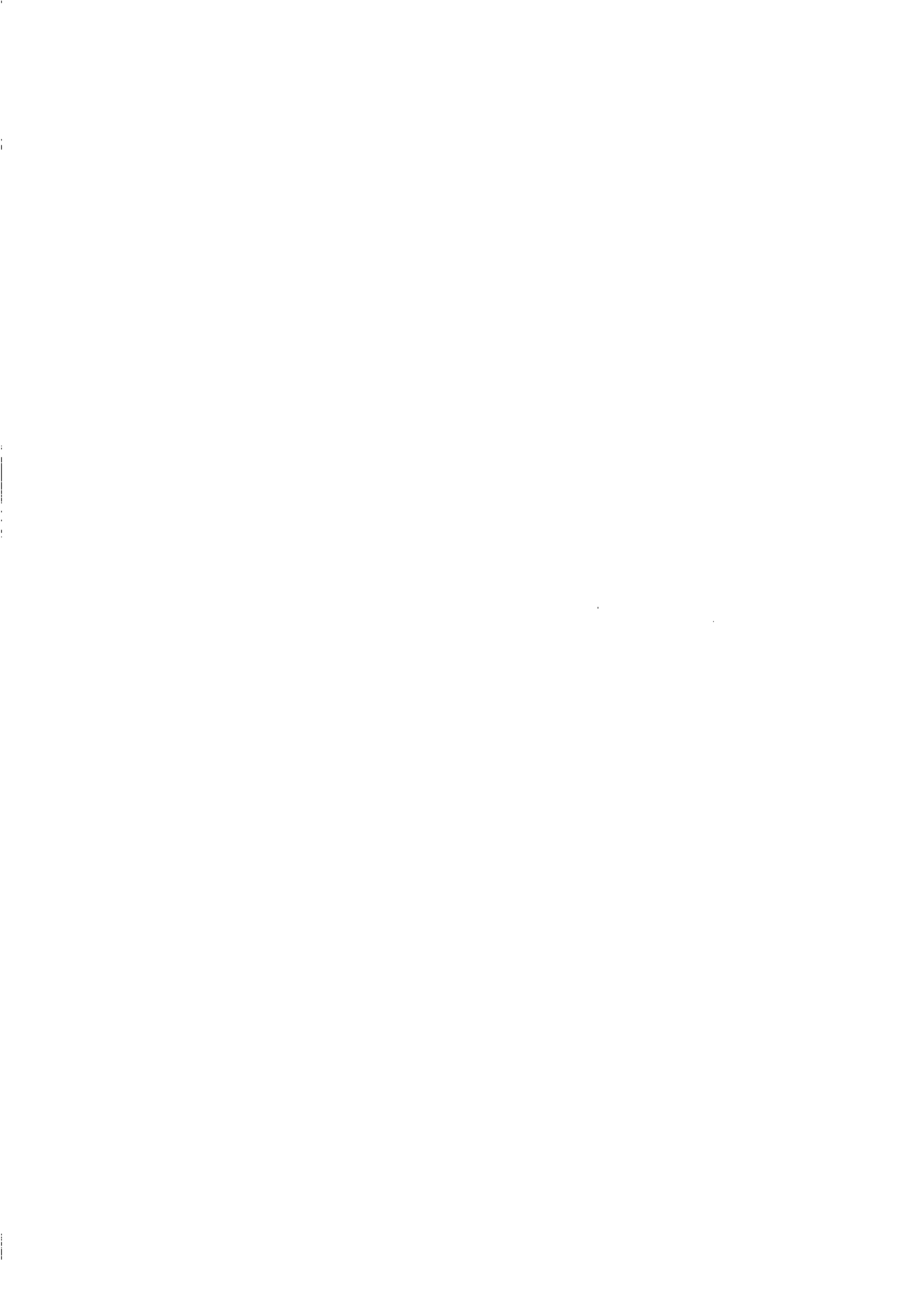
1995
April
May
June
July
(new)

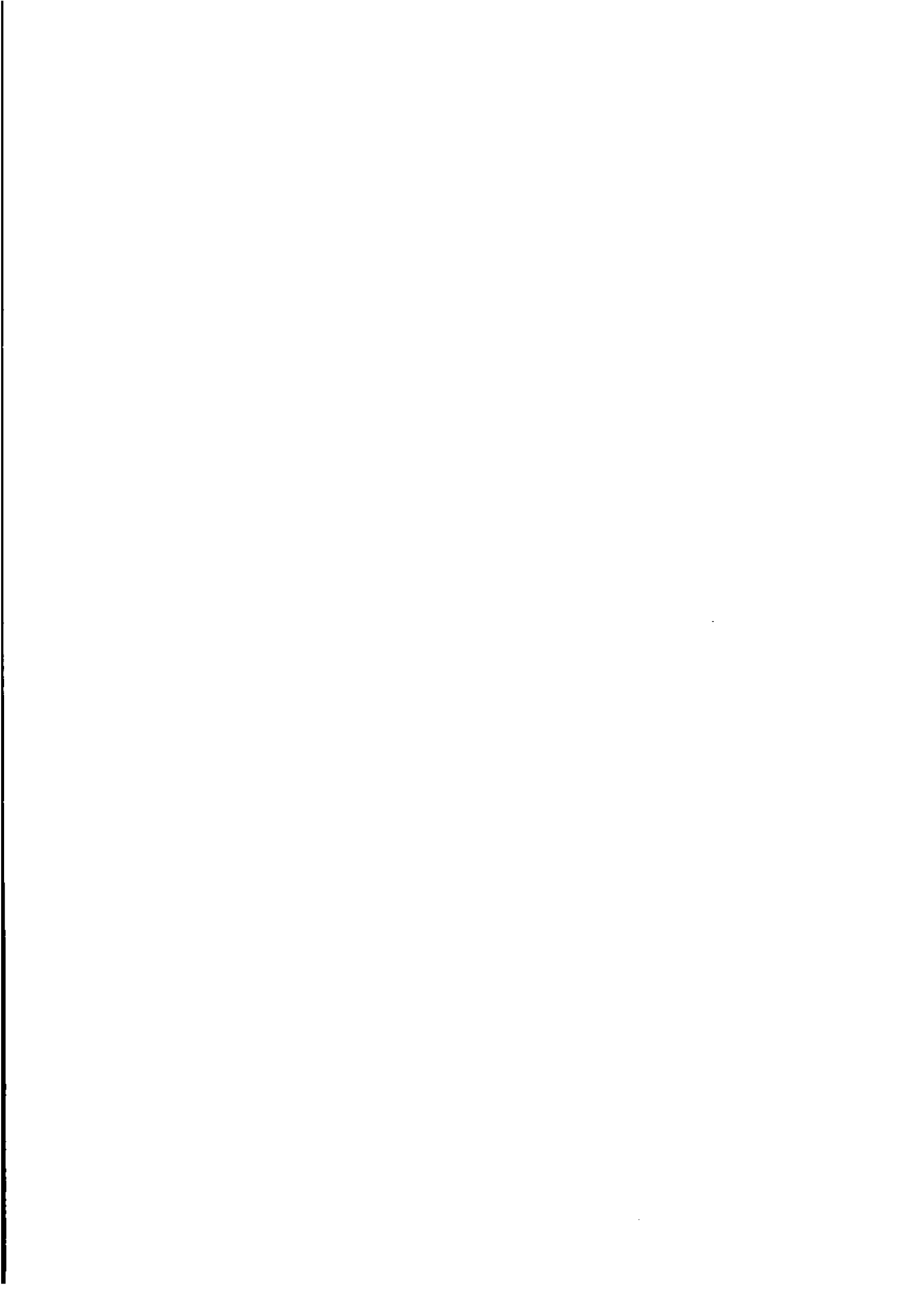
TREND as
PUBLISHED

WHAT IF NEXT MONTH'S SEASONALLY ADJUSTED ESTIMATE IS:

	1	2	3	4
8.3	8.5	8.1	8.8	
<i>i.e. the same as Jun 1995</i>	<i>i.e. rises by 2.3%</i>	<i>i.e. falls by 2.3%</i>	<i>i.e. same trend for Jun & Jul</i>	
8.5	8.5	8.5	8.6	8.6
8.4	8.4	8.5	8.4	8.5
8.3	8.3	8.4	8.3	8.5
—	8.3	8.4	8.2	8.5









FOR MORE INFORMATION

The ABS publishes a wide range of information on Australia's economic and social conditions. A catalogue of publications and products is available from any of our offices (see below).

INFORMATION CONSULTANCY SERVICES

Special tables or in-depth data investigations are provided by the ABS Information Consultancy Service in each of our offices (see below).

ELECTRONIC DATA SERVICES

A large range of data is available via on-line services, diskette, magnetic tape, tape cartridge and CD ROM. For more details about our electronic data services, contact any ABS office (see below).

BOOKSHOP AND SUBSCRIPTIONS

There is a large number of ABS publications available from the ABS Bookshops in each of our offices. You can also receive any of our publications on a regular basis. Join our subscription mailing service and have your publications mailed to you in Australia at no additional cost. Telephone our Publications Subscription Service toll free Australia wide on 008 0206 08.

ABS EMAIL ADDRESSES

Keylink STAT.INFO/ABS
X.400 (C:AU,A:TELMEMO,O:ABS,SN:INFO,FN:STAT)
Internet STAT.INFO@ABS. TELEMEMO.AU

GENERAL SALES AND INQUIRIES

☎ Sydney 02 268 4611 ☎ Adelaide 08 237 7100
☎ Melbourne 03 615 7000 ☎ Hobart 002 20 5800
☎ Brisbane 07 222 6351 ☎ Darwin 089 43 2111
☎ Perth 09 360 5140 ☎ Canberra 06 252 6007

■ Information Services, ABS
PO Box 10, Belconnen ACT 2616



2620200006954
ISSN 1031-038X

RRP \$15.00