

LABOUR FORCE

AUSTRALIA
PRELIMINARY

EMBARGOED UNTIL 11:30AM THURS 9 MAY 1996

APRIL KEY ESTIMATES

TREND ESTIMATES

	Mar 96	Apr 96	monthly change
Employed persons (no. in '000s)	8 311.7	8 304.6	-0.1 %
Unemployed persons (no. in '000s)	776.9	783.0	0.8 %
Unemployment rate (%)	8.5	8.6	0.1 pts
Participation rate (%)	63.6	63.5	-0.1 pts

SEASONALLY ADJUSTED

	Mar 96	Apr 96	monthly change
Employed persons (no. in '000s)	8 281.0	8 290.8	9.8
Unemployed persons (no. in '000s)	771.1	805.2	34.1
Unemployment rate (%)	8.5	8.9	0.3 pts
Participation rate (%)	63.4	63.6	0.2 pts

APRIL KEY POINTS

TREND ESTIMATES

EMPLOYMENT

- fell 7,100 to 8,304,600, with part-time employment falling 5,400 to 2,040,400. Full-time employment fell slightly to 6,264,200.

UNEMPLOYMENT

- increased slightly to stand at 783,000, continuing the small rises since the low in June 1995.

UNEMPLOYMENT RATE

- rose by less than 0.1 percentage points, but due to rounding stands at 8.6%.

PARTICIPATION RATE

- fell by 0.1 pts to 63.5%, with the rates for males steady at 73.8% and females falling to 53.6%.

SEASONALLY ADJUSTED ESTIMATES

EMPLOYMENT

- rose by 9,800 to 8,290,800, with a rise of 20,100 in full-time employment.

UNEMPLOYMENT

- rose by 34,100 to 805,200, with an increase of 25,800 females unemployed.

UNEMPLOYMENT RATE

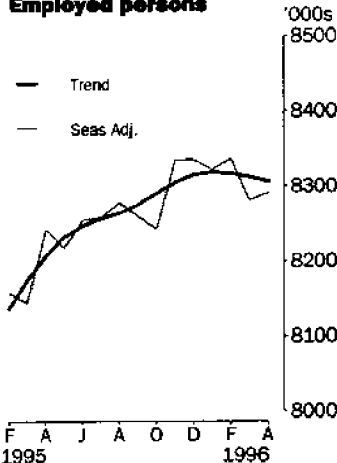
- actually rose by 0.3 pts but due to rounding now stands at 8.9%. The rate for males and females both rose, to 9.0% and 8.6% respectively.
- NSW 8.4% (8.0% last month); Vic. 9.2% (8.6%); Qld 9.4% (9.0%); SA 9.5% (9.4%); WA 7.2% (7.7%); Tas. 10.1% (10.7%).

PARTICIPATION RATE

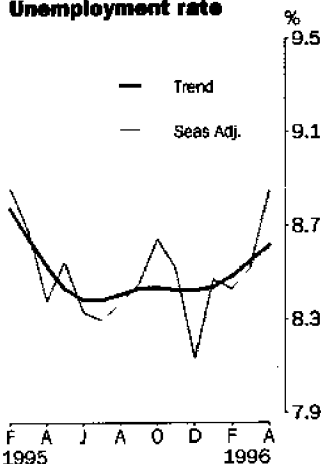
- for males and females both

Australian
Bureau of
Statistics

Employed persons



Unemployment rate



INQUIRIES

- For further information about these and related statistics, contact Sylvia Sajler on 06 252 6525 or any ABS office.

LABOUR FORCE NOTES

FORTHCOMING ISSUES

<i>ISSUE</i>	<i>RELEASE DATE</i>
May 1996	6 June 1996
June 1996	11 July 1996
July 1996	8 August 1996
August 1996	12 September 1996
September 1996	10 October 1996
October 1996	7 November 1996

.....

ROUNDING

Estimates of monthly change shown on page 1 have been calculated using unrounded estimates, and may be different from, but are more accurate than, movements obtained from the rounded estimates. The graphs on page 1 also depict movements calculated from unrounded estimates.

.....

SAMPLING ERRORS

The estimates in this publication are based on a sample survey. Because the entire population is not enumerated, the published estimates and the movements derived from them are subject to sampling variability. Standard errors give a measure of this variability and appear on pages 30 and 31.

The 95% confidence intervals below provide another way of looking at the variability inherent in estimates from sample surveys. The interval bounded by the two limits is the 95% confidence interval. A 95% confidence interval indicates that we are 95% confident that the upper and lower limits enclose the true value of the estimate.

<i>SEASONALLY ADJUSTED DATA SERIES</i>	<i>MOVEMENTS MARCH 1996 TO APRIL 1996</i>	
	<i>Monthly change</i>	<i>95% Confidence interval</i>
Total employment	9 800	-29 200 to 48 800
Total unemployment	34 100	17 900 to 50 300
Unemployment rate	0.3 pts	0.1 pts to 0.5 pts
Participation rate	0.2 pts	0.0 pts to 0.4 pts

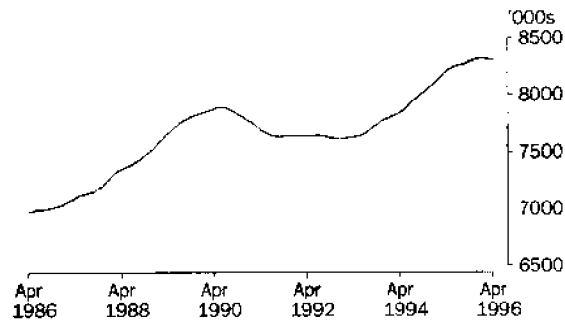
.....

W. McLennan
Australian Statistician

PRINCIPAL LABOUR FORCE SERIES: Trend estimates

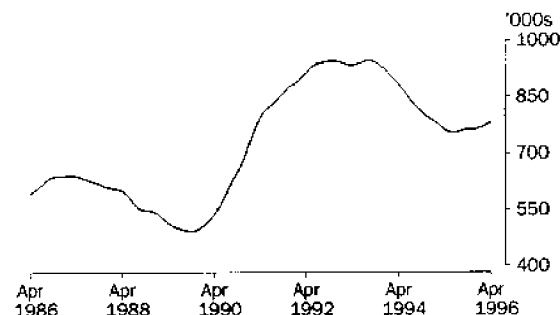
EMPLOYED PERSONS

Trend estimates of total employment rose to 7,894,000 in June 1990, before falling by 3.5 per cent to 7,617,200 in January 1993. The trend rose over the next three years, peaking at 8,318,600 in January 1996, before falling to stand at 8,304,600 in April 1996.



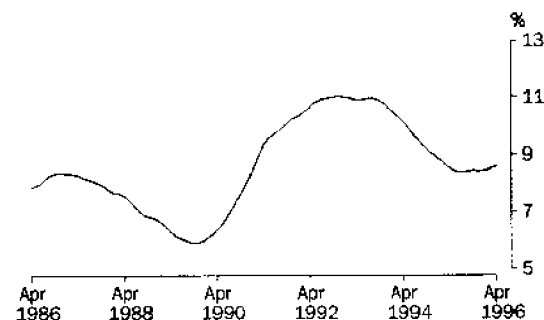
UNEMPLOYED PERSONS

Trend estimates of unemployment rose from a low of 491,400 in October 1989, to peak at 946,800 in September 1993. Trend estimates then fell to a low of 754,600 in June 1995, and have since been rising to stand at 783,000 in April 1996.



UNEMPLOYMENT RATE

From a low point of 5.9 per cent in late 1989, the trend unemployment rate rose to a peak of 11.0 per cent in December 1992. The rate then fell steadily to a low of 8.4 per cent in mid 1995, and remained relatively steady for the rest of the year. Since February 1996 the trend rate has been increasing to stand at 8.6 per cent in April 1996.

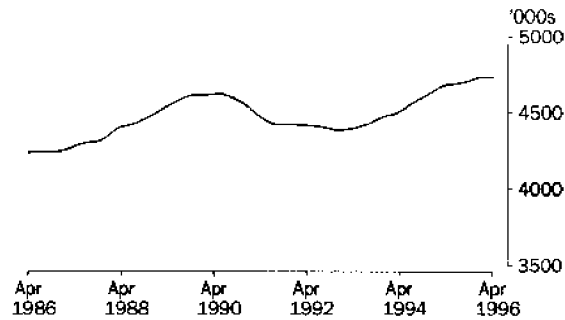


EMPLOYED PERSONS: Trend estimates

EMPLOYED MALES

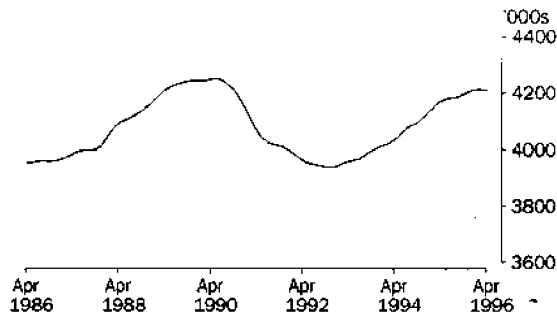
TOTAL

The trend estimate of male employment rose to 4,620,700 in May 1990, before falling by 5.1 per cent to a low of 4,384,800 in January 1993. The trend has been rising since, and in April 1996 stands at 4,731,500, 2.4 per cent higher than the May 1990 peak.



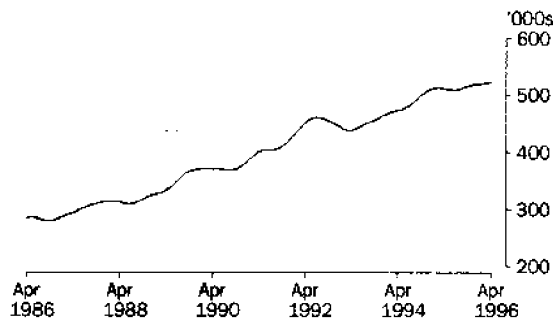
MALES EMPLOYED FULL TIME

The trend estimate of males employed full time fell markedly from a peak of 4,249,500 in May 1990 to 3,936,700 in November 1992. Since then, the trend has been rising and in April 1996 stood at 4,208,800, 1.0 per cent lower than the May 1990 peak.



MALES EMPLOYED PART TIME

After rising for almost two years the trend estimate for males employed part-time peaked at 460,300 in July 1992. The trend estimate of male part-time employment then fell to 438,000 in April 1993. The trend has been rising since then, and in April 1996 was 522,600, 13.5 per cent higher than the peak in mid 1992.

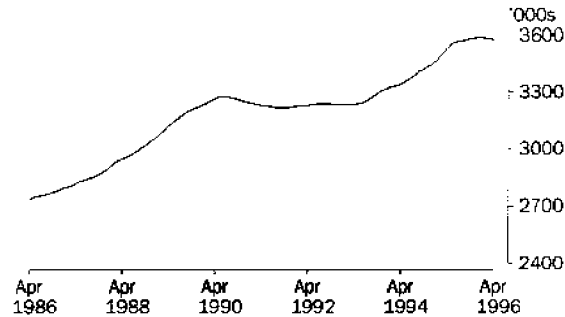


EMPLOYED PERSONS: Trend estimates

EMPLOYED FEMALES

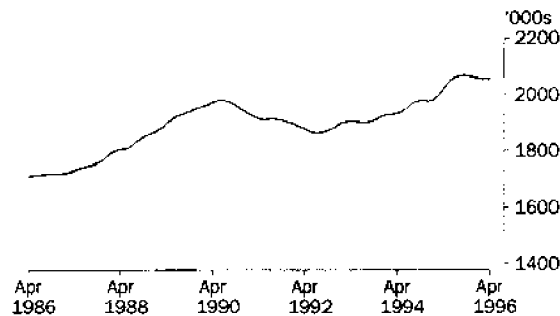
TOTAL

Trend estimates of female employment fell from a peak of 3,274,800 in July 1990, to 3,214,800 in September 1991. The trend then rose steadily, apart from small falls in late 1992, to peak at 3,588,400 in late 1995. The trend estimate has fallen over the last three months to stand at 3,573,100 in April 1996.



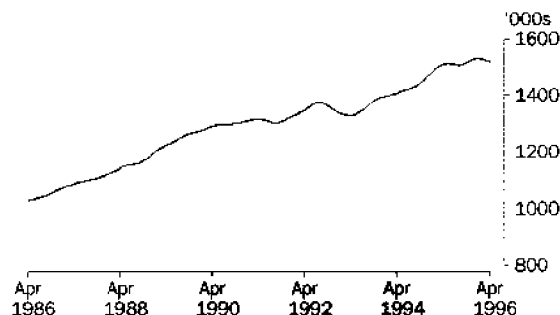
FEMALES EMPLOYED FULL TIME

After reaching a high of 1,979,900 in June 1990, trend estimates of female full-time employment fell steadily to a low of 1,864,600 in August 1992. The trend then generally increased, to peak at 2,067,100 in September 1995, but has fallen since, to stand at 2,055,400 in April 1996.



FEMALES EMPLOYED PART TIME

Trend estimates of female part-time employment reached a high of 1,373,600 in August 1992 before falling to 1,329,200 in April 1993. The trend then began to rise, peaking at 1,530,300 in January 1996. In recent months, the trend has fallen, and stands at 1,517,700 in April 1996.



LABOUR FORCE STATUS (AGED 15 AND OVER): Original

Month	EMPLOYED.....			UNEMPLOYED.....							Participation rate	
	Employed full time	Employed part time	Total employed	Unemp. looking for f/t work	Unemp. looking for p/t work	Total unemployed	Labour force	Not in labour force	Civilian population aged 15 and over	Unemployment rate		
	'000s	'000s	'000s	'000s	'000s	'000s	'000s	'000s	'000s	'000s	%	%
MALES												
1995												
February	4 165.9	488.4	4 654.3	440.4	60.2	500.6	5 154.9	1 763.3	6 918.2	9.7	74.5	
March	4 145.0	519.3	4 664.3	404.6	56.3	460.9	5 125.2	1 802.0	6 927.2	9.0	74.0	
April	4 165.8	525.0	4 690.7	391.0	48.0	439.0	5 129.7	1 806.5	6 936.2	8.6	74.0	
May	4 158.0	515.1	4 673.1	403.0	52.6	455.6	5 128.7	1 816.5	6 945.2	8.9	73.8	
June	4 169.1	516.6	4 685.8	391.6	45.7	437.3	5 123.1	1 831.1	6 954.2	8.5	73.7	
July	4 204.5	499.7	4 704.2	383.1	49.3	432.4	5 136.6	1 825.4	6 962.0	8.4	73.8	
August	4 151.8	520.6	4 672.5	388.3	45.7	434.0	5 106.5	1 863.3	6 969.8	8.5	73.3	
September	4 210.8	523.4	4 734.2	400.8	62.8	463.7	5 197.8	1 779.8	6 977.7	8.9	74.5	
October	4 175.7	517.4	4 693.1	392.8	49.1	441.8	5 134.9	1 850.8	6 985.7	8.6	73.5	
November	4 190.5	527.2	4 717.7	388.1	44.4	432.5	5 150.2	1 843.7	6 993.8	8.4	73.6	
December	4 272.4	513.0	4 785.4	399.4	49.8	449.3	5 234.7	1 767.2	7 001.9	8.6	74.8	
1996												
January	4 208.0	478.8	4 686.9	447.8	59.1	506.9	5 193.7	1 817.8	7 011.6	9.8	74.1	
February	4 223.2	502.7	4 725.9	437.4	54.6	492.0	5 217.9	1 803.2	7 021.2	9.4	74.3	
March	4 180.6	534.4	4 715.0	410.6	63.5	474.1	5 189.1	1 841.7	7 030.8	9.1	73.8	
April	4 187.4	535.4	4 722.9	405.1	57.7	462.8	5 185.7	1 855.2	7 040.9	8.9	73.7	
FEMALES												
1995												
February	1 993.6	1 442.2	3 435.9	260.8	124.8	385.6	3 821.4	3 314.3	7 135.7	10.1	53.6	
March	1 982.4	1 517.9	3 500.3	231.3	123.5	354.8	3 855.1	3 289.1	7 144.2	9.2	54.0	
April	2 017.9	1 522.0	3 539.9	204.7	99.3	304.0	3 843.9	3 309.0	7 152.9	7.9	53.7	
May	2 034.1	1 523.6	3 557.7	207.7	90.3	298.0	3 855.7	3 305.9	7 161.6	7.7	53.8	
June	2 044.6	1 543.2	3 587.8	202.9	84.7	287.5	3 875.3	3 295.0	7 170.3	7.4	54.0	
July	2 064.9	1 524.4	3 589.3	196.8	80.4	277.2	3 866.5	3 312.0	7 178.5	7.2	53.9	
August	2 031.7	1 513.6	3 545.3	195.1	92.8	287.9	3 833.1	3 353.5	7 186.6	7.5	53.3	
September	2 072.7	1 533.7	3 606.4	202.1	97.5	299.6	3 906.0	3 288.8	7 194.8	7.7	54.3	
October	2 065.9	1 503.8	3 569.7	203.7	93.4	297.1	3 866.8	3 336.6	7 203.3	7.7	53.7	
November	2 068.5	1 543.6	3 612.1	211.5	92.8	304.3	3 916.4	3 295.4	7 211.8	7.8	54.3	
December	2 105.3	1 539.9	3 645.3	211.2	88.1	299.3	3 944.6	3 275.7	7 220.3	7.6	54.6	
1996												
January	2 066.9	1 431.2	3 498.1	228.4	96.4	324.8	3 823.0	3 407.1	7 230.1	8.5	52.9	
February	2 049.1	1 489.3	3 538.4	248.5	116.1	364.6	3 903.0	3 336.9	7 239.9	9.3	53.9	
March	2 057.2	1 530.5	3 587.7	219.3	117.5	336.9	3 924.5	3 325.1	7 249.7	8.6	54.1	
April	2 042.8	1 512.1	3 555.0	217.7	112.4	330.1	3 885.1	3 375.2	7 260.2	8.5	53.5	
PERSONS												
1995												
February	6 159.5	1 930.7	8 090.1	701.2	184.9	886.2	8 976.3	5 077.6	14 053.9	9.9	63.9	
March	6 127.4	2 037.2	8 164.6	635.8	179.9	815.7	8 980.3	5 091.1	14 071.4	9.1	63.8	
April	6 183.6	2 047.0	8 230.6	595.7	147.3	743.0	8 973.7	5 115.4	14 089.1	8.3	63.7	
May	6 192.1	2 038.7	8 230.8	610.7	142.9	753.6	8 984.4	5 122.4	14 106.7	8.4	63.7	
June	6 213.7	2 059.8	8 273.6	594.5	130.4	724.8	8 998.4	5 126.0	14 124.5	8.1	63.7	
July	6 269.5	2 024.1	8 293.6	579.9	129.7	709.6	9 003.1	5 137.4	14 140.5	7.9	63.7	
August	6 183.5	2 034.2	8 217.7	583.4	138.5	721.9	8 939.6	5 216.9	14 156.5	8.1	63.1	
September	6 283.5	2 057.1	8 340.6	603.0	160.3	763.3	9 103.9	5 068.6	14 172.5	8.4	64.2	
October	6 241.6	2 021.2	8 262.8	596.4	142.4	738.9	9 001.7	5 187.4	14 189.1	8.2	63.4	
November	6 259.1	2 070.8	8 329.8	599.6	137.2	736.8	9 066.6	5 139.0	14 205.7	8.1	63.8	
December	6 377.8	2 052.9	8 430.7	610.7	137.9	748.6	9 179.3	5 042.9	14 222.2	8.2	64.5	
1996												
January	6 275.0	1 910.0	8 185.0	676.2	155.5	831.7	9 016.7	5 225.0	14 241.7	9.2	63.3	
February	6 272.3	1 992.0	8 264.3	686.0	170.7	856.6	9 120.9	5 140.1	14 261.0	9.4	64.0	
March	6 237.7	2 064.9	8 302.7	629.9	181.0	810.9	9 113.6	5 166.8	14 280.5	8.9	63.8	
April	6 230.3	2 047.6	8 277.8	622.8	170.2	793.0	9 070.8	5 230.4	14 301.1	8.7	63.4	

LABOUR FORCE STATUS (AGED 15 AND OVER): Seasonally adjusted

Month	EMPLOYED.....			UNEMPLOYED.....			Labour force	Unemp- loyment rate	Partic- ipation rate
	Employed full time	Employed part time	Total employed	Unemp. looking for f/t work	Unemp. looking for p/t work	Total unemployed			
	'000s	'000s	'000s	'000s	'000s	'000s	'000s	%	%
MALES									
1995									
February	4 170.0	508.4	4 678.4	406.8	53.3	460.1	5 138.4	9.0	74.3
March	4 156.6	506.4	4 663.0	400.9	48.0	448.9	5 111.9	8.8	73.8
April	4 176.0	517.3	4 693.2	396.2	49.0	445.2	5 138.5	8.7	74.1
May	4 164.9	511.8	4 676.7	402.5	53.7	456.2	5 132.9	8.9	73.9
June	4 170.2	510.1	4 680.3	398.5	50.9	449.4	5 129.7	8.8	73.8
July	4 184.9	499.0	4 683.9	398.4	55.2	453.6	5 137.5	8.8	73.8
August	4 189.4	515.0	4 704.4	396.8	51.8	448.6	5 152.9	8.7	73.9
September	4 200.3	507.2	4 707.5	407.3	57.9	465.2	5 172.7	9.0	74.1
October	4 165.4	511.0	4 676.4	416.7	52.9	469.6	5 146.0	9.1	73.7
November	4 203.5	534.8	4 738.2	403.5	51.6	455.1	5 193.3	8.8	74.3
December	4 212.6	519.2	4 731.8	395.9	47.2	443.1	5 174.9	8.6	73.9
1996									
January	4 223.9	503.9	4 727.8	406.5	52.1	458.5	5 186.3	8.8	74.0
February	4 228.0	523.6	4 751.6	403.7	48.3	452.0	5 203.6	8.7	74.1
March	4 192.0	521.0	4 713.0	407.6	54.1	461.7	5 174.7	8.9	73.6
April	4 197.3	528.0	4 725.3	410.7	59.2	470.0	5 195.2	9.0	73.8
FEMALES									
1995									
February	1 991.6	1 488.7	3 480.4	225.3	108.1	333.4	3 813.8	8.7	53.4
March	1 977.9	1 504.1	3 482.0	221.3	104.7	326.0	3 808.0	8.6	53.3
April	2 040.5	1 508.5	3 549.0	208.6	100.0	308.6	3 857.6	8.0	53.9
May	2 042.5	1 499.4	3 541.9	215.7	95.9	311.6	3 853.5	8.1	53.8
June	2 052.4	1 521.7	3 574.2	209.6	91.1	300.7	3 874.9	7.8	54.0
July	2 057.0	1 517.7	3 574.7	205.2	88.7	293.9	3 868.6	7.6	53.9
August	2 068.9	1 504.8	3 573.7	206.8	100.1	306.9	3 880.6	7.9	54.0
September	2 064.9	1 488.1	3 553.1	208.6	88.8	297.4	3 850.4	7.7	53.5
October	2 062.8	1 503.2	3 566.0	215.7	95.0	310.7	3 876.7	8.0	53.8
November	2 069.8	1 526.6	3 596.4	224.1	96.3	320.3	3 916.7	8.2	54.3
December	2 062.8	1 540.7	3 603.5	205.3	89.9	295.2	3 898.7	7.6	54.0
1996									
January	2 057.7	1 536.5	3 594.2	209.3	102.1	311.4	3 905.6	8.0	54.0
February	2 046.9	1 537.8	3 584.7	215.0	100.4	315.4	3 900.1	8.1	53.9
March	2 051.5	1 516.5	3 568.0	209.6	99.8	309.4	3 877.4	8.0	53.5
April	2 066.3	1 499.3	3 565.6	221.7	113.5	335.3	3 900.8	8.6	53.7
PERSONS									
1995									
February	6 161.6	1 997.2	8 158.8	632.1	161.4	793.5	8 952.3	8.9	63.7
March	6 134.5	2 010.5	8 145.0	622.3	152.7	774.9	8 919.9	8.7	63.4
April	6 216.5	2 025.8	8 242.3	604.8	149.0	753.8	8 996.1	8.4	63.9
May	6 207.4	2 011.2	8 218.6	618.3	149.6	767.8	8 986.4	8.5	63.7
June	6 222.7	2 031.8	8 254.5	608.2	142.0	750.1	9 004.6	8.3	63.8
July	6 241.9	2 016.7	8 258.6	603.5	143.9	747.4	9 006.0	8.3	63.7
August	6 258.3	2 019.8	8 278.1	603.6	151.8	755.4	9 033.5	8.4	63.8
September	6 265.2	1 995.3	8 260.5	615.9	146.7	762.6	9 023.1	8.5	63.7
October	6 228.2	2 014.2	8 242.4	632.4	147.9	780.3	9 022.7	8.6	63.6
November	6 273.2	2 061.4	8 334.6	627.6	147.9	775.5	9 110.1	8.5	64.1
December	6 275.4	2 059.9	8 335.3	601.2	137.1	738.3	9 073.6	8.1	63.8
1996									
January	6 281.5	2 040.4	8 321.9	615.7	154.2	770.0	9 091.9	8.5	63.8
February	6 274.9	2 061.4	8 336.3	618.7	148.8	767.4	9 103.7	8.4	63.8
March	6 243.5	2 037.5	8 281.0	617.2	153.9	771.1	9 052.1	8.5	63.4
April	6 263.6	2 027.2	8 290.8	632.5	172.8	805.2	9 096.0	8.9	63.6

LABOUR FORCE STATUS (AGED 15 AND OVER): Trend¹

Month	EMPLOYED.....			UNEMPLOYED.....			Labour force	Unemp- loyment rate	Partic- ipation rate
	Employed full time	Employed part time	Total employed	Unemp. looking for f/t work	Unemp. looking for p/t work	Total unemployed			
	'000s	'000s	'000s	'000s	'000s	'000s	'000s	%	%
MALES									
1995									
February	4 147.2	512.0	4 659.2	406.5	50.4	456.9	5 116.2	8.9	74.0
March	4 159.1	511.7	4 670.8	402.9	50.4	453.3	5 124.1	8.8	74.0
April	4 168.3	510.7	4 679.1	399.9	50.7	450.7	5 129.7	8.8	74.0
May	4 174.2	509.6	4 683.7	398.3	51.5	449.8	5 133.5	8.8	73.9
June	4 177.7	508.4	4 686.2	398.7	52.6	451.3	5 137.5	8.8	73.9
July	4 180.2	508.7	4 688.9	400.4	53.6	454.0	5 142.9	8.8	73.9
August	4 183.3	510.2	4 693.5	402.7	54.1	456.8	5 150.2	8.9	73.9
September	4 188.4	512.5	4 700.9	404.4	53.8	458.2	5 159.1	8.9	73.9
October	4 195.1	515.1	4 710.1	405.1	52.7	457.8	5 168.0	8.9	74.0
November	4 202.1	517.2	4 719.3	405.1	51.5	456.6	5 175.9	8.8	74.0
December	4 207.6	518.4	4 726.0	404.8	50.8	455.5	5 181.5	8.8	74.0
1996									
January	4 211.1	519.1	4 730.2	404.6	50.9	455.5	5 185.7	8.8	74.0
February	4 212.0	520.0	4 732.0	405.1	51.8	456.8	5 188.8	8.8	73.9
March	4 210.5	521.5	4 732.0	406.0	53.0	459.0	5 191.0	8.8	73.8
April	4 208.8	522.6	4 731.5	407.1	54.8	461.9	5 193.3	8.9	73.8
FEMALES									
1995									
February	1 986.9	1 491.4	3 478.3	221.7	104.1	325.8	3 804.1	8.6	53.3
March	2 001.2	1 501.3	3 502.5	219.0	102.2	321.2	3 823.7	8.4	53.5
April	2 019.3	1 508.1	3 527.4	215.4	99.6	315.0	3 842.4	8.2	53.7
May	2 037.1	1 510.6	3 547.7	211.6	96.6	308.2	3 855.9	8.0	53.8
June	2 051.3	1 509.7	3 561.0	209.0	94.3	303.3	3 864.3	7.8	53.9
July	2 060.5	1 507.5	3 568.0	208.4	92.8	301.2	3 869.2	7.8	53.9
August	2 065.3	1 506.1	3 571.4	209.3	92.3	301.6	3 873.0	7.8	53.9
September	2 067.1	1 507.8	3 574.8	210.9	92.7	303.6	3 878.4	7.8	53.9
October	2 066.2	1 513.6	3 579.8	212.2	93.4	305.6	3 885.3	7.9	53.9
November	2 064.0	1 521.1	3 585.2	212.9	94.4	307.3	3 892.4	7.9	54.0
December	2 060.8	1 527.6	3 588.4	213.0	96.0	309.0	3 897.4	7.9	54.0
1996									
January	2 058.1	1 530.3	3 588.4	212.8	98.2	311.1	3 899.4	8.0	53.9
February	2 056.3	1 528.6	3 584.8	213.0	101.0	314.1	3 898.9	8.1	53.9
March	2 055.5	1 524.2	3 579.7	213.8	104.1	317.8	3 897.6	8.2	53.8
April	2 055.4	1 517.7	3 573.1	214.5	106.6	321.1	3 894.2	8.2	53.6
PERSONS									
1995									
February	6 134.1	2 003.5	8 137.6	628.3	154.5	782.8	8 920.3	8.8	63.5
March	6 160.3	2 013.0	8 173.3	621.9	152.6	774.6	8 947.9	8.7	63.6
April	6 187.7	2 018.8	8 206.5	615.3	150.4	765.7	8 972.2	8.5	63.7
May	6 211.2	2 020.2	8 231.4	609.8	148.1	758.0	8 989.4	8.4	63.7
June	6 229.0	2 018.1	8 247.1	607.7	146.9	754.6	9 001.7	8.4	63.7
July	6 240.7	2 016.2	8 256.9	608.9	146.4	755.2	9 012.1	8.4	63.7
August	6 248.6	2 016.3	8 264.9	612.0	146.4	758.3	9 023.2	8.4	63.7
September	6 255.5	2 020.3	8 275.8	615.3	146.5	761.8	9 037.6	8.4	63.8
October	6 261.3	2 028.7	8 289.9	617.3	146.1	763.4	9 053.3	8.4	63.8
November	6 266.1	2 038.4	8 304.4	618.0	145.9	763.9	9 068.3	8.4	63.8
December	6 268.4	2 046.0	8 314.4	617.8	146.8	764.5	9 079.0	8.4	63.8
1996									
January	6 269.2	2 049.4	8 318.6	617.4	149.1	766.5	9 085.1	8.4	63.8
February	6 268.2	2 048.6	8 316.8	618.1	152.8	770.9	9 087.7	8.5	63.7
March	6 266.0	2 045.7	8 311.7	619.8	157.1	776.9	9 088.6	8.5	63.6
April	6 264.2	2 040.4	8 304.6	621.6	161.3	783.0	9 087.5	8.6	63.5

¹ Estimates for October 1995 to March 1996 have been revised.

UNEMPLOYED PERSONS: Original

NUMBER OF UNEMPLOYED PERSONS.....

UNEMPLOYMENT RATE.....

Month	Aged 15-19 seeking first f/t job	Aged 15-19 looking for f/t work	Aged 20 and over looking for f/t work	Total looking for f/t work	Looking for p/t work	Total unemployed	Aged 15-19 looking for f/t work	Aged 20 and over looking for f/t work	Total looking for f/t work	Looking for p/t work	Total unemp- loyed
	'000s	'000s	'000s	'000s	'000s	'000s	%	%	%	%	%
MALES											
1995											
February	30.7	57.2	383.2	440.4	60.2	500.6	25.4	8.7	9.6	11.0	9.7
March	24.2	45.1	359.4	404.6	56.3	460.9	21.8	8.3	8.9	9.8	9.0
April	27.7	46.9	344.1	391.0	48.0	439.0	22.5	7.9	8.6	8.4	8.6
May	26.7	51.3	351.6	403.0	52.6	455.6	25.0	8.1	8.8	9.3	8.9
June	24.9	48.8	342.8	391.6	45.7	437.3	24.8	7.9	8.6	8.1	8.5
July	26.5	50.4	332.7	383.1	49.3	432.4	24.3	7.6	8.4	9.0	8.4
August	24.3	46.8	341.6	388.3	45.7	434.0	24.3	7.9	8.6	8.1	8.5
September	24.6	46.0	354.8	400.8	62.8	463.7	23.1	8.0	8.7	10.7	8.9
October	22.5	46.4	346.4	392.8	49.1	441.8	23.6	7.9	8.6	8.7	8.6
November	25.1	48.0	340.1	388.1	44.4	432.5	24.9	7.8	8.5	7.8	8.4
December	37.4	59.6	339.8	399.4	49.8	449.3	26.3	7.6	8.5	8.9	8.6
1996											
January	42.3	69.4	378.4	447.8	59.1	506.9	28.9	8.6	9.6	11.0	9.8
February	32.8	58.4	379.0	437.4	54.6	492.0	26.5	8.5	9.4	9.8	9.4
March	28.7	53.7	356.8	410.6	63.5	474.1	25.5	8.1	8.9	10.6	9.1
April	31.6	55.0	350.1	405.1	57.7	462.8	25.7	8.0	8.8	9.7	8.9
FEMALES											
1995											
February	36.9	55.7	205.1	260.8	124.8	385.6	37.8	9.7	11.6	8.0	10.1
March	25.3	45.1	186.2	231.3	123.5	354.8	35.3	8.9	10.4	7.5	9.2
April	20.0	38.2	166.5	204.7	99.3	304.0	31.9	7.9	9.2	6.1	7.9
May	26.1	43.6	164.0	207.7	90.3	298.0	34.4	7.8	9.3	5.6	7.7
June	22.4	40.5	162.3	202.9	84.7	287.5	33.2	7.6	9.0	5.2	7.4
July	20.7	35.9	160.9	196.8	80.4	277.2	30.3	7.5	8.7	5.0	7.2
August	21.6	38.4	156.7	195.1	92.8	287.9	33.1	7.4	8.8	5.8	7.5
September	22.7	35.9	166.3	202.1	97.5	299.6	30.0	7.7	8.9	6.0	7.7
October	20.8	33.9	169.8	203.7	93.4	297.1	29.0	7.9	9.0	5.8	7.7
November	27.4	41.1	170.4	211.5	92.8	304.3	34.4	7.9	9.3	5.7	7.8
December	29.4	47.2	164.0	211.2	88.1	299.3	32.6	7.6	9.1	5.4	7.6
1996											
January	29.6	47.2	181.2	228.4	96.4	324.8	32.2	8.4	10.0	6.3	8.5
February	27.9	45.9	202.6	248.5	116.1	364.6	33.4	9.4	10.8	7.2	9.3
March	24.1	37.7	181.6	219.3	117.5	336.9	31.9	8.4	9.6	7.1	8.6
April	20.6	35.0	182.7	217.7	112.4	330.1	29.9	8.5	9.6	6.9	8.5
PERSONS											
1995											
February	67.5	112.9	588.3	701.2	184.9	886.2	30.3	9.1	10.2	8.7	9.9
March	49.5	90.2	545.6	635.8	179.9	815.7	27.0	8.5	9.4	8.1	9.1
April	47.6	85.1	510.6	595.7	147.3	743.0	25.9	7.9	8.8	6.7	8.3
May	52.8	95.0	515.7	610.7	142.9	753.6	28.6	8.0	9.0	6.6	8.4
June	47.3	89.4	505.1	594.5	130.4	724.8	28.0	7.8	8.7	6.0	8.1
July	47.1	86.2	493.6	579.9	129.7	709.6	26.5	7.6	8.5	6.0	7.9
August	45.9	85.2	498.2	583.4	138.5	721.9	27.7	7.7	8.6	6.4	8.1
September	47.2	81.9	521.1	603.0	160.3	763.3	25.7	7.9	8.8	7.2	8.4
October	43.3	80.3	516.2	596.4	142.4	738.9	25.6	7.9	8.7	6.6	8.2
November	52.5	89.0	510.5	599.6	137.2	736.8	28.5	7.8	8.7	6.2	8.1
December	66.8	106.9	503.8	610.7	137.9	748.6	28.8	7.6	8.7	6.3	8.2
1996											
January	72.0	116.6	559.6	676.2	155.5	831.7	30.2	8.5	9.7	7.5	9.2
February	60.7	104.3	581.7	686.0	170.7	856.6	29.2	8.8	9.9	7.9	9.4
March	52.8	91.4	538.5	629.9	181.0	810.9	27.8	8.2	9.2	8.1	8.9
April	52.2	90.0	532.8	622.8	170.2	793.0	27.2	8.2	9.1	7.7	8.7



UNEMPLOYED PERSONS: Seasonally adjusted

Month	NUMBER OF UNEMPLOYED PERSONS.....						UNEMPLOYMENT RATE.....				
	Aged 15-19 seeking first f/t job '000s	Aged 15-19 looking for f/t work '000s	Aged 20 and over looking for f/t work '000s	Total looking for work '000s	Looking for p/t work '000s	Total unemployed '000s	Aged 15-19 looking for f/t work %	Aged 20 and over looking for f/t work %	Total looking for work %	Looking for p/t work %	Total unemp-loyed %
MALES											
1995											
February	25.4	48.7	358.1	406.8	53.3	460.1	23.4	8.2	8.9	9.5	9.0
March	24.9	46.2	354.7	400.9	48.0	448.9	22.1	8.2	8.8	8.7	8.8
April	28.5	47.7	348.6	396.2	49.0	445.2	22.7	8.0	8.7	8.7	8.7
May	29.4	51.7	350.8	402.5	53.7	456.2	24.4	8.1	8.8	9.5	8.9
June	30.3	51.5	347.0	398.5	50.9	449.4	25.4	7.9	8.7	9.1	8.8
July	32.2	54.5	343.8	398.4	55.2	453.6	26.0	7.9	8.7	10.0	8.8
August	28.3	50.7	346.1	396.8	51.8	448.6	24.8	7.9	8.7	9.1	8.7
September	27.8	50.5	356.7	407.3	57.9	465.2	24.2	8.1	8.8	10.3	9.0
October	27.2	53.0	363.7	416.7	52.9	469.6	25.5	8.3	9.1	9.4	9.1
November	27.9	53.9	349.6	403.5	51.6	455.1	26.0	7.9	8.8	8.8	8.8
December	27.0	51.3	344.7	395.9	47.2	443.1	25.0	7.8	8.6	8.3	8.6
1996											
January	29.3	56.2	350.3	406.5	52.1	458.5	26.3	7.9	8.8	9.4	8.8
February	27.1	49.5	354.1	403.7	48.3	452.0	24.5	8.0	8.7	8.5	8.7
March	29.6	55.0	352.6	407.6	54.1	461.7	25.8	8.0	8.9	9.4	8.9
April	32.4	55.9	354.9	410.7	59.2	470.0	26.0	8.1	8.9	10.1	9.0
FEMALES											
1995											
February	28.0	45.5	179.8	225.3	108.1	333.4	33.7	8.6	10.2	6.8	8.7
March	23.9	44.5	176.8	221.3	104.7	326.0	33.8	8.6	10.1	6.5	8.6
April	22.7	41.4	167.2	208.6	100.0	308.6	33.0	7.9	9.3	6.2	8.0
May	27.7	46.4	169.3	215.7	95.9	311.6	35.0	8.0	9.6	6.0	8.1
June	24.8	42.1	167.6	209.6	91.1	300.7	32.9	7.9	9.3	5.6	7.8
July	24.9	37.2	168.0	205.2	88.7	293.9	31.4	7.8	9.1	5.5	7.6
August	26.2	41.8	165.0	206.8	100.1	306.9	33.4	7.7	9.1	6.2	7.9
September	27.1	39.3	169.3	208.6	88.8	297.4	31.8	7.9	9.2	5.6	7.7
October	26.5	41.8	173.9	215.7	95.0	310.7	33.9	8.1	9.5	5.9	8.0
November	31.8	47.6	176.5	224.1	96.3	320.3	36.5	8.2	9.8	5.9	8.2
December	21.2	38.4	166.9	205.3	89.9	295.2	30.5	7.8	9.1	5.5	7.6
1996											
January	21.5	38.1	171.1	209.3	102.1	311.4	30.2	8.0	9.2	6.2	8.0
February	21.2	37.4	177.5	215.0	100.4	315.4	29.5	8.3	9.5	6.1	8.1
March	22.7	37.2	172.4	209.6	99.8	309.4	30.4	8.1	9.3	6.2	8.0
April	23.5	38.0	183.8	221.7	113.5	335.3	30.9	8.5	9.7	7.0	8.6
PERSONS											
1995											
February	53.4	94.1	538.0	632.1	161.4	793.5	27.4	8.3	9.3	7.5	8.9
March	48.8	90.7	531.5	622.3	152.7	774.9	26.6	8.3	9.2	7.1	8.7
April	51.2	89.1	515.8	604.8	149.0	753.8	26.5	8.0	8.9	6.8	8.4
May	57.1	98.2	520.1	618.3	149.6	767.8	28.5	8.0	9.1	6.9	8.5
June	55.1	93.6	514.6	608.2	142.0	750.1	28.3	7.9	8.9	6.5	8.3
July	57.2	91.7	511.8	603.5	143.9	747.4	28.0	7.9	8.8	6.7	8.3
August	54.6	92.6	511.0	603.6	151.8	755.4	28.1	7.8	8.8	7.0	8.4
September	54.9	89.8	526.1	615.9	146.7	762.6	27.0	8.0	9.0	6.8	8.5
October	53.8	94.8	537.6	632.4	147.9	780.3	28.7	8.2	9.2	6.8	8.6
November	59.7	101.5	526.1	627.6	147.9	775.5	30.0	8.0	9.1	6.7	8.5
December	48.3	89.7	511.5	601.2	137.1	738.3	27.1	7.8	8.7	6.2	8.1
1996											
January	50.8	94.3	521.4	615.7	154.2	770.0	27.8	8.0	8.9	7.0	8.5
February	48.3	87.0	531.7	618.7	148.8	767.4	26.4	8.1	9.0	6.7	8.4
March	52.3	92.2	525.0	617.2	153.9	771.1	27.5	8.0	9.0	7.0	8.5
April	55.9	93.8	538.6	632.5	172.8	805.2	27.8	8.2	9.2	7.9	8.9

UNEMPLOYED PERSONS: Trend¹

NUMBER OF UNEMPLOYED PERSONS.....

UNEMPLOYMENT RATE.....

Month	Aged 15-19 seeking first f/t job	Aged 15-19 looking for f/t work	Aged 20 and over looking for f/t work	Total looking for f/t work	Looking for p/t work	Total unemployed	Aged 15-19 looking for f/t work	Aged 20 and over looking for f/t work	Total looking for f/t work	Looking for p/t work	Total unemp- loyed
	'000s	'000s	'000s	'000s	'000s	'000s	%	%	%	%	%
MALES											
1995											
February	26.7	49.4	357.1	406.5	50.4	456.9	23.6	8.2	8.9	9.0	8.9
March	27.0	48.9	354.0	402.9	50.4	453.3	23.4	8.1	8.8	9.0	8.8
April	27.9	49.2	350.7	399.9	50.7	450.7	23.5	8.0	8.8	9.0	8.8
May	29.0	50.0	348.3	398.3	51.5	449.8	24.0	8.0	8.7	9.2	8.8
June	29.7	51.0	347.6	398.7	52.6	451.3	24.5	8.0	8.7	9.4	8.8
July	29.8	51.8	348.6	400.4	53.6	454.0	25.0	8.0	8.7	9.5	8.8
August	29.4	52.3	350.4	402.7	54.1	456.8	25.3	8.0	8.8	9.6	8.9
September	28.6	52.4	352.0	404.4	53.8	458.2	25.3	8.0	8.8	9.5	8.9
October	27.9	52.4	352.7	405.1	52.7	457.8	25.3	8.0	8.8	9.3	8.9
November	27.5	52.5	352.6	405.1	51.5	456.6	25.4	8.0	8.8	9.1	8.8
December	27.7	52.8	351.9	404.8	50.8	455.5	25.5	8.0	8.8	8.9	8.8
1996											
January	28.2	53.2	351.3	404.6	50.9	455.5	25.5	8.0	8.8	8.9	8.8
February	28.9	53.6	351.4	405.1	51.8	456.8	25.6	8.0	8.8	9.1	8.8
March	29.7	54.0	352.0	406.0	53.0	459.0	25.7	8.0	8.8	9.2	8.8
April	30.4	54.4	352.7	407.1	54.8	461.9	25.6	8.0	8.8	9.5	8.9
FEMALES											
1995											
February	25.0	43.3	178.4	221.7	104.1	325.8	32.6	8.6	10.0	6.5	8.6
March	24.9	43.8	175.2	219.0	102.2	321.2	33.4	8.4	9.9	6.4	8.4
April	25.0	43.6	171.8	215.4	99.6	315.0	33.7	8.2	9.6	6.2	8.2
May	25.0	42.8	168.8	211.6	96.6	308.2	33.5	8.0	9.4	6.0	8.0
June	25.3	41.7	167.3	209.0	94.3	303.3	33.2	7.8	9.2	5.9	7.8
July	26.0	41.1	167.3	208.4	92.8	301.2	33.1	7.8	9.2	5.8	7.8
August	26.7	41.0	168.2	209.3	92.3	301.6	33.1	7.8	9.2	5.8	7.8
September	27.1	41.3	169.6	210.9	92.7	303.6	33.3	7.9	9.3	5.8	7.8
October	26.7	41.5	170.7	212.2	93.4	305.6	33.2	7.9	9.3	5.8	7.9
November	25.8	41.4	171.5	212.9	94.4	307.3	32.8	8.0	9.3	5.8	7.9
December	24.6	40.6	172.3	213.0	96.0	309.0	32.1	8.0	9.4	5.9	7.9
1996											
January	23.3	39.5	173.4	212.8	98.2	311.1	31.3	8.1	9.4	6.0	8.0
February	22.4	38.3	174.7	213.0	101.0	314.1	30.6	8.1	9.4	6.2	8.1
March	21.9	37.5	176.3	213.8	104.1	317.8	30.1	8.2	9.4	6.4	8.2
April	21.6	36.7	177.8	214.5	106.6	321.1	29.7	8.3	9.5	6.6	8.2
PERSONS											
1995											
February	51.6	92.8	535.5	628.3	154.5	782.8	27.1	8.3	9.3	7.2	8.8
March	52.0	92.7	529.2	621.9	152.6	774.6	27.2	8.2	9.2	7.0	8.7
April	52.9	92.8	522.5	615.3	150.4	765.7	27.4	8.1	9.0	6.9	8.5
May	54.0	92.8	517.1	609.8	148.1	758.0	27.6	8.0	8.9	6.8	8.4
June	55.0	92.8	514.9	607.7	146.9	754.6	27.8	7.9	8.9	6.8	8.4
July	55.8	92.9	515.9	608.9	146.4	755.2	28.0	7.9	8.9	6.8	8.4
August	56.1	93.3	518.7	612.0	146.4	758.3	28.2	7.9	8.9	6.8	8.4
September	55.7	93.7	521.6	615.3	146.5	761.8	28.3	8.0	9.0	6.8	8.4
October	54.6	94.0	523.4	617.3	146.1	763.4	28.3	8.0	9.0	6.7	8.4
November	53.3	93.9	524.1	618.0	145.9	763.9	28.2	8.0	9.0	6.7	8.4
December	52.3	93.5	524.3	617.8	146.8	764.5	28.0	8.0	9.0	6.7	8.4
1996											
January	51.6	92.7	524.7	617.4	149.1	766.5	27.7	8.0	9.0	6.8	8.4
February	51.3	92.0	526.1	618.1	152.8	770.9	27.5	8.0	9.0	6.9	8.5
March	51.5	91.5	528.3	619.8	157.1	776.9	27.3	8.1	9.0	7.1	8.5
April	52.0	91.1	530.5	621.6	161.3	783.0	27.1	8.1	9.0	7.3	8.6

¹ Estimates for October 1995 to March 1996 have been revised.

PERSONS AGED 15 TO 19—Education and Labour Force: Original—April 1996

	EMPLOYED.....			UNEMPLOYED.....							
	<i>Employed full time</i>	<i>Employed part time</i>	<i>Total employed</i>	<i>Unemp. looking for f/t work</i>	<i>Unemp. looking for p/t work</i>	<i>Total unemployed</i>	<i>Labour force</i>	<i>Not in labour force</i>	<i>Civilian population aged 15-19</i>	<i>Unemp. rate</i>	<i>Participation rate</i>
	'000s	'000s	'000s	'000s	'000s	'000s	'000s	'000s	'000s	%	%
ATTENDING NEITHER SCHOOL NOR A TERTIARY EDUCATIONAL INSTITUTION FULL TIME											
Males	153.3	26.0	179.2	49.7	* 2.7	52.4	231.6	21.0	252.6	22.6	91.7
Females	77.8	46.1	123.9	31.6	* 3.7	35.3	159.2	32.5	191.7	22.2	83.1
Persons	231.1	72.1	303.2	81.3	6.4	87.7	390.8	53.4	444.2	22.4	88.0
ATTENDING A TERTIARY EDUCATIONAL INSTITUTION FULL TIME											
Males	* 2.8	36.3	39.1	* 2.4	7.3	9.8	48.9	42.9	91.8	20.0	53.3
Females	* 2.3	58.1	60.4	* 2.5	13.2	15.7	76.2	52.3	128.4	20.6	59.3
Persons	5.1	94.5	99.6	5.0	20.5	25.5	125.1	95.1	220.2	20.4	56.8
ATTENDING SCHOOL											
Males	* 2.7	84.1	86.8	* 2.9	16.0	18.9	105.7	202.3	308.0	17.9	34.3
Females	* 2.1	104.3	106.4	* 0.9	24.9	25.8	132.2	167.6	299.8	19.5	44.1
Persons	4.8	188.4	193.3	* 3.7	41.0	44.7	238.0	369.8	607.8	18.8	39.2
TOTAL											
Males	158.8	146.4	305.2	55.0	26.1	81.1	386.2	266.1	652.3	21.0	59.2
Females	82.2	208.6	290.8	35.0	41.8	76.8	367.6	252.3	619.9	20.9	59.3
Persons	241.0	355.0	596.0	90.0	67.9	157.9	753.8	518.4	1 272.2	20.9	59.3

LABOUR FORCE STATUS (AGED 15 & OVER)—States & Territories: Original—April 1996

	EMPLOYED.....			UNEMPLOYED.....			Labour force '000s	Not in labour force '000s	Civilian population aged 15 and over '000s	Unemployment rate %	Participation rate %
	Employed full time '000s	Employed part time '000s	Total employed '000s	Unemp. looking for f/t work '000s	Unemp. looking for p/t work '000s	Total unemployed '000s					
MALES											
New South Wales	1 407.4	174.1	1 581.5	126.6	19.2	145.7	1 727.2	655.9	2 383.1	8.4	72.5
Victoria	1 043.5	130.9	1 174.3	101.7	15.5	117.2	1 291.6	462.3	1 753.8	9.1	73.6
Queensland	778.6	97.6	876.2	82.1	10.7	92.9	969.1	319.8	1 288.8	9.6	75.2
South Australia	321.5	49.6	371.1	37.9	4.5	42.3	413.4	163.6	577.0	10.2	71.7
Western Australia	424.8	51.9	476.7	34.9	4.6	39.5	516.2	163.4	679.6	7.7	76.0
Tasmania	101.2	14.9	116.1	12.7	1.4	14.2	130.2	50.8	181.1	10.9	71.9
Northern Territory	38.4	5.8	44.1	2.6	* 0.4	3.0	47.1	16.5	63.6	6.4	74.1
Australian Capital Territory	72.1	10.7	82.9	6.6	1.4	8.0	90.8	22.9	113.8	8.8	79.9
Australia	4 187.4	535.4	4 722.9	405.1	57.7	462.8	5 185.7	1 855.2	7 040.9	8.9	73.7
FEMALES											
New South Wales	721.2	466.3	1 187.5	68.1	32.1	100.3	1 287.8	1 179.6	2 467.3	7.8	52.2
Victoria	507.4	386.9	894.3	57.8	32.2	90.1	984.4	845.0	1 829.4	9.1	53.8
Queensland	362.4	276.6	639.0	48.8	21.0	69.8	708.8	603.3	1 312.2	9.8	54.0
South Australia	147.1	143.2	290.2	16.9	10.0	27.0	317.2	280.8	598.0	8.5	53.0
Western Australia	193.0	156.5	349.6	14.5	9.9	24.4	374.0	311.8	685.8	6.5	54.5
Tasmania	44.5	42.2	86.7	4.9	2.8	7.7	94.4	92.9	187.3	8.1	50.4
Northern Territory	23.8	13.0	36.8	3.0	* 1.0	4.0	40.8	21.2	62.0	9.8	65.9
Australian Capital Territory	43.4	27.5	70.9	3.6	3.3	6.9	77.8	40.6	118.3	8.9	65.7
Australia	2 042.8	1 512.1	3 555.0	217.7	112.4	330.1	3 885.1	3 375.2	7 260.2	8.5	53.5
PERSONS											
New South Wales	2 128.6	640.4	2 769.0	194.7	51.3	246.0	3 015.0	1 835.5	4 850.5	8.2	62.2
Victoria	1 550.9	517.7	2 068.7	159.5	47.8	207.3	2 276.0	1 307.2	3 583.2	9.1	63.5
Queensland	1 141.0	374.2	1 515.2	130.9	31.7	162.7	1 677.9	923.1	2 601.0	9.7	64.5
South Australia	468.6	192.8	661.3	54.8	14.5	69.3	730.6	444.4	1 175.0	9.5	62.2
Western Australia	617.8	208.4	826.2	49.5	14.5	64.0	890.2	475.2	1 365.4	7.2	65.2
Tasmania	145.7	57.1	202.7	17.6	4.3	21.9	224.6	143.8	368.4	9.7	61.0
Northern Territory	62.2	18.8	80.9	5.5	1.5	7.0	87.9	37.7	125.6	8.0	70.0
Australian Capital Territory	115.5	38.2	153.7	10.2	4.6	14.8	168.6	63.5	232.1	8.8	72.6
Australia	6 230.3	2 047.6	8 277.8	622.8	170.2	793.0	9 070.8	5 230.4	14 301.1	8.7	63.4

UNEMPLOYED PERSONS—New South Wales, Victoria and Queensland: Original

Month	NUMBER OF UNEMPLOYED PERSONS.....						UNEMPLOYMENT RATE.....				
	Aged 15-19 seeking first fit job	Aged 15-19 looking for fit work	Aged 20 and over looking for fit work	Total looking for fit work	Looking for p/t work	Total unemployed	Aged 15-19 looking for fit work	Aged 20 and over looking for fit work	Total looking for fit work	Looking for p/t work	Total unemployed
	'000s	'000s	'000s	'000s	'000s	'000s	%	%	%	%	%
NEW SOUTH WALES											
1995											
February	22.0	35.8	191.3	227.2	62.5	289.7	29.7	8.7	9.8	9.4	9.7
March	13.0	24.8	173.7	198.5	60.2	258.7	23.6	8.0	8.7	8.7	8.7
April	15.6	23.6	156.6	180.2	45.7	225.9	22.0	7.2	7.9	6.6	7.6
May	17.5	27.9	153.3	181.2	45.4	226.6	26.7	7.0	7.9	6.6	7.6
June	14.5	26.6	154.4	181.0	38.0	219.0	26.4	7.0	7.9	5.5	7.3
July	15.2	26.2	150.2	176.4	34.7	211.1	24.1	6.8	7.6	5.3	7.1
August	18.6	28.9	153.2	182.1	44.6	226.6	28.1	7.0	7.9	6.5	7.6
September	15.5	27.5	157.2	184.7	45.6	230.3	26.0	7.0	7.9	6.5	7.6
October	11.1	19.6	158.7	178.4	43.6	222.0	19.6	7.2	7.7	6.2	7.4
November	18.8	27.5	158.7	186.2	42.4	228.6	26.0	7.1	8.0	6.0	7.5
December	24.1	33.3	152.9	186.2	39.3	225.5	27.0	6.8	7.9	5.7	7.4
1996											
January	23.3	35.4	171.4	206.7	47.9	254.7	27.1	7.7	8.7	7.6	8.5
February	19.4	30.3	180.5	210.8	49.6	260.4	26.1	8.1	9.0	7.3	8.6
March	17.8	28.4	171.8	200.1	56.2	256.4	26.2	7.7	8.6	7.9	8.4
April	16.2	29.2	165.5	194.7	51.3	246.0	26.9	7.5	8.4	7.4	8.2
VICTORIA											
1995											
February	16.8	26.3	158.9	185.1	47.8	233.0	34.2	9.7	10.8	8.9	10.4
March	12.9	21.2	144.0	165.2	46.4	211.6	31.8	8.8	9.8	8.2	9.4
April	11.6	18.8	136.8	155.6	39.1	194.8	29.5	8.4	9.2	7.0	8.7
May	14.3	21.8	140.7	162.5	34.4	196.9	33.1	8.6	9.6	6.2	8.7
June	12.0	18.2	136.9	155.2	34.5	189.7	30.1	8.4	9.2	6.2	8.4
July	10.3	16.2	139.9	156.1	36.0	192.1	25.8	8.5	9.1	6.5	8.5
August	12.3	17.7	131.9	149.5	35.3	184.8	29.7	8.1	8.9	6.4	8.3
September	12.0	15.9	144.6	160.5	47.0	207.5	25.8	8.8	9.4	8.3	9.1
October	11.3	18.7	146.0	164.6	37.7	202.4	28.6	8.8	9.6	7.1	9.0
November	12.7	19.8	132.8	152.6	34.7	187.2	31.4	8.1	8.9	6.3	8.3
December	13.5	21.3	133.0	154.4	36.2	190.6	28.1	8.0	8.8	6.6	8.3
1996											
January	13.5	21.2	147.2	168.4	40.2	208.6	29.8	9.0	9.8	7.4	9.2
February	17.2	26.9	155.6	182.5	47.9	230.4	36.4	9.4	10.5	8.6	10.1
March	15.0	21.8	135.5	157.3	45.1	202.4	32.5	8.3	9.2	8.0	8.9
April	13.6	20.3	139.2	159.5	47.8	207.3	30.6	8.5	9.3	8.4	9.1
QUEENSLAND											
1995											
February	12.2	23.1	104.2	127.3	32.6	159.9	29.3	9.0	10.3	8.2	9.7
March	12.1	22.0	102.3	124.3	34.9	159.2	28.5	8.8	10.0	8.4	9.6
April	10.6	21.7	94.4	116.0	29.7	145.8	29.6	8.0	9.2	7.3	8.8
May	10.8	24.4	100.9	125.3	30.4	155.7	32.2	8.6	10.0	7.6	9.4
June	10.0	22.4	92.9	115.3	29.6	144.9	30.7	7.8	9.1	7.4	8.7
July	9.3	19.9	90.7	110.7	29.0	139.7	29.5	7.6	8.8	7.2	8.4
August	6.0	18.4	96.8	115.1	26.8	141.9	28.2	8.2	9.2	6.8	8.6
September	8.5	19.1	102.0	121.1	28.8	149.9	27.9	8.5	9.5	7.1	8.9
October	7.9	19.6	102.1	121.7	27.7	149.4	29.6	8.6	9.7	7.0	9.0
November	8.0	19.8	103.9	123.8	27.5	151.3	29.4	8.7	9.8	6.8	9.0
December	12.4	23.4	102.8	126.1	29.5	155.7	29.1	8.5	9.8	7.1	9.2
1996											
January	18.1	29.5	115.2	144.7	26.8	171.5	32.8	9.6	11.2	7.3	10.3
February	9.4	20.7	115.9	136.6	28.9	165.5	26.3	9.6	10.6	7.5	9.9
March	8.5	18.6	111.4	130.0	33.0	163.0	26.3	9.3	10.2	8.1	9.7
April	11.2	20.4	110.6	130.9	31.7	162.7	27.3	9.2	10.3	7.8	9.7

UNEMPLOYED PERSONS—South Australia, Western Australia and Tasmania: Original

NUMBER OF UNEMPLOYED PERSONS.....

UNEMPLOYMENT RATE.....

Month	Aged 15-19 seeking first fit job	Aged 15-19 looking for f/t work	Aged 20 and over looking for f/t work	Total looking for f/t work	Looking for p/t work	Total unemployed	Aged 15-19 looking for f/t work	Aged 20 and over looking for f/t work	Total looking for f/t work	Looking for p/t work	Total unemp-loyed
	'000s	'000s	'000s	'000s	'000s	'000s	%	%	%	%	%
SOUTH AUSTRALIA											
1995											
February	5.8	9.1	52.1	61.2	15.1	76.3	32.1	10.1	11.3	8.1	10.4
March	4.0	7.4	53.0	60.4	13.6	74.0	29.0	10.5	11.4	7.1	10.3
April	3.9	8.6	52.7	61.2	10.2	71.4	33.7	10.4	11.5	5.4	9.9
May	4.5	8.0	51.2	59.2	10.1	69.3	30.9	10.1	11.1	5.3	9.6
June	4.7	8.5	51.9	60.4	11.7	72.0	34.8	10.4	11.5	5.8	9.9
July	6.2	9.0	47.2	56.2	10.3	66.5	38.0	9.3	10.6	5.3	9.2
August	4.5	7.8	48.2	56.1	11.4	67.5	34.1	9.5	10.6	5.8	9.3
September	5.3	8.2	48.0	56.2	14.5	70.7	35.3	9.4	10.6	7.3	9.7
October	6.8	10.0	45.1	55.1	13.1	68.2	40.2	9.0	10.4	6.9	9.5
November	6.0	9.1	45.5	54.6	9.4	64.0	39.8	8.9	10.2	5.0	8.9
December	6.6	10.2	45.6	55.8	10.7	66.5	36.2	8.8	10.2	5.8	9.1
1996											
January	8.3	12.3	48.8	61.1	13.7	74.8	42.3	9.6	11.4	7.3	10.4
February	6.9	10.3	51.2	61.5	15.0	76.4	37.8	10.0	11.4	7.8	10.5
March	5.1	8.4	45.1	53.5	15.5	69.0	34.7	9.0	10.2	7.7	9.5
April	4.4	7.1	47.7	54.8	14.5	69.3	30.3	9.5	10.5	7.0	9.5
WESTERN AUSTRALIA											
1995											
February	5.7	10.8	51.7	62.5	16.4	78.9	23.1	8.3	9.3	7.6	8.9
March	3.7	9.1	45.2	54.4	15.2	69.5	21.6	7.3	8.2	6.5	7.8
April	3.0	7.6	43.5	51.1	15.0	66.1	18.1	6.9	7.6	6.4	7.3
May	* 2.2	7.2	44.6	51.8	14.1	65.8	17.0	7.1	7.7	6.2	7.3
June	3.5	8.9	43.1	52.1	10.0	62.0	21.1	6.9	7.8	4.4	6.9
July	3.4	9.8	41.0	50.8	12.0	62.8	21.7	6.6	7.6	5.3	7.0
August	* 2.1	7.3	40.4	47.7	12.6	60.3	17.5	6.5	7.2	5.6	6.8
September	3.7	6.7	44.8	51.5	16.4	67.9	15.7	7.1	7.6	7.2	7.5
October	4.2	7.9	41.1	49.0	12.8	61.8	19.3	6.6	7.3	5.7	6.9
November	4.3	7.9	41.9	49.8	14.8	64.6	21.4	6.7	7.5	6.5	7.2
December	5.6	10.6	43.2	53.8	14.0	67.8	24.4	6.9	8.0	6.1	7.5
1996											
January	4.1	10.3	48.8	59.1	17.7	76.8	23.0	7.8	8.8	8.0	8.6
February	3.8	9.2	51.2	60.3	18.6	78.9	21.7	8.0	8.8	8.3	8.7
March	* 2.6	8.4	45.6	54.0	20.0	74.0	20.4	7.2	8.1	8.5	8.2
April	3.5	7.8	41.6	49.5	14.5	64.0	19.4	6.6	7.4	6.5	7.2
TASMANIA											
1995											
February	3.6	5.0	17.5	22.5	4.0	26.5	40.2	11.2	13.4	7.6	12.0
March	2.7	3.6	14.8	18.4	4.0	22.4	34.2	9.6	11.2	6.9	10.1
April	2.1	2.9	15.8	18.7	2.9	21.6	29.5	10.3	11.5	4.8	9.7
May	2.5	3.6	13.7	17.4	4.2	21.6	36.9	9.0	10.7	6.9	9.7
June	1.9	3.3	14.7	18.0	3.1	21.1	31.1	9.7	11.1	5.5	9.6
July	1.8	2.7	13.3	16.0	3.3	19.3	30.1	8.7	9.9	5.6	8.7
August	1.4	2.9	16.0	18.9	3.2	22.1	31.8	10.5	11.7	5.7	10.2
September	* 1.0	2.3	14.9	17.2	3.2	20.4	24.8	9.7	10.6	5.5	9.2
October	* 1.1	2.1	13.6	15.7	3.4	19.1	23.6	9.0	9.8	5.8	8.7
November	1.6	2.3	16.7	19.0	3.9	22.9	25.1	11.0	11.8	6.4	10.3
December	3.1	4.9	15.9	20.8	3.3	24.1	39.3	10.2	12.3	5.4	10.5
1996											
January	2.8	4.6	15.5	20.2	4.0	24.2	38.9	10.1	12.1	7.1	10.8
February	2.6	4.2	14.7	18.9	4.7	23.6	34.1	9.4	11.2	8.0	10.4
March	2.3	3.3	15.8	19.1	4.3	23.4	31.8	10.4	11.7	7.0	10.4
April	1.5	2.4	15.2	17.6	4.3	21.9	22.7	10.0	10.8	6.9	9.7



UNEMPLOYED PERSONS—Northern Territory and Australian Capital Territory: Original

Month	NUMBER OF UNEMPLOYED PERSONS.....						UNEMPLOYMENT RATE.....				
	Aged 15-19 seeking first fit job	Aged 15-19 looking for fit work	Aged 20 and over looking for fit work	Total looking for fit work	Looking for p/t work	Total unemployed	Aged 15-19 looking for fit work	Aged 20 and over looking for fit work	Total looking for fit work	Looking for p/t work	Total unemp-loyed
	'000s	'000s	'000s	'000s	'000s	'000s	%	%	%	%	%
NORTHERN TERRITORY											
1995											
February	* 0.4	* 0.9	5.1	6.0	1.7	7.8	* 31.5	7.5	8.5	9.7	8.7
March	* 0.5	* 1.0	4.2	5.2	1.3	6.5	* 30.2	6.2	7.3	7.2	7.3
April	* 0.2	* 0.8	3.8	4.6	1.3	5.9	* 28.2	5.5	6.4	7.4	6.6
May	* 0.3	* 0.9	3.7	4.6	* 0.9	5.5	* 25.0	5.6	6.6	* 5.2	6.4
June	* 0.4	* 0.7	3.5	4.2	* 1.1	5.3	* 19.7	5.3	6.1	* 6.4	6.1
July	* 0.5	* 1.0	4.7	5.7	1.3	7.0	* 27.6	7.1	8.2	7.1	8.0
August	* 0.3	* 0.7	4.5	5.2	1.3	6.5	* 21.6	7.0	7.7	7.6	7.6
September	* 0.4	* 0.7	4.2	4.8	* 1.2	6.1	* 17.8	6.7	7.4	* 6.2	7.1
October	* 0.3	* 1.2	4.6	5.8	* 0.4	6.2	* 30.6	7.2	8.5	* 2.5	7.2
November	* 0.2	* 0.5	4.3	4.8	1.5	6.3	* 18.6	6.7	7.2	6.7	7.1
December	* 0.3	* 0.9	3.7	4.7	1.3	6.0	* 34.3	5.9	7.0	6.0	6.8
1996											
January	* 0.5	* 1.0	4.1	5.1	1.3	6.4	* 30.1	6.2	7.4	6.4	7.2
February	* 0.2	* 0.8	4.6	5.4	* 0.9	6.3	* 30.8	7.0	7.8	* 4.8	7.2
March	* 0.1	* 0.8	4.7	5.5	1.6	7.1	* 29.4	6.8	7.7	8.5	7.9
April	* 0.7	* 1.2	4.4	5.5	1.5	7.0	* 41.6	6.7	8.2	7.4	8.0
AUSTRALIAN CAPITAL TERRITORY											
1995											
February	1.0	1.8	7.6	9.4	4.7	14.1	32.4	6.3	7.4	11.5	8.4
March	* 0.4	1.1	8.3	9.4	4.3	13.7	27.3	6.9	7.6	9.9	8.2
April	* 0.7	1.1	7.1	8.3	3.4	11.7	26.5	6.0	6.7	8.0	7.0
May	* 0.7	1.2	7.5	8.7	3.4	12.2	28.9	6.2	6.9	8.5	7.3
June	* 0.3	* 0.6	7.6	8.3	2.5	10.8	* 17.1	6.3	6.6	5.7	6.4
July	* 0.5	1.3	6.6	7.9	3.2	11.1	28.7	5.4	6.3	7.4	6.5
August	* 0.6	1.6	7.2	8.9	3.3	12.1	39.3	6.0	7.1	7.1	7.1
September	* 0.9	1.5	5.4	7.0	3.6	10.6	42.6	4.4	5.5	7.8	6.2
October	* 0.7	1.1	5.1	6.1	3.6	9.7	33.4	4.2	5.0	7.9	5.8
November	* 0.9	2.1	6.7	8.8	3.1	11.9	47.2	5.5	6.9	6.9	6.9
December	1.2	2.3	6.7	9.0	3.6	12.6	43.4	5.3	6.8	8.4	7.2
1996											
January	1.3	2.2	8.6	10.8	3.8	14.6	43.0	6.8	8.2	9.9	8.6
February	1.2	2.0	8.0	10.0	5.1	15.1	42.9	6.5	7.8	11.8	8.8
March	1.3	1.8	8.6	10.4	5.3	15.7	40.7	7.0	8.2	11.8	9.1
April	1.1	1.6	8.6	10.2	4.6	14.8	35.9	7.1	8.1	10.8	8.8

LABOUR FORCE STATUS (AGED 15 AND OVER)-New South Wales¹

SEASONALLY ADJUSTED.....

TREND.....

Month	SEASONALLY ADJUSTED.....					TREND.....					Civilian population aged 15 and over '000s
	Employed full time '000s	Total employed '000s	Total unemployed '000s	Unemployment rate %	Participation rate %	Employed full time '000s	Total employed '000s	Total unemployed '000s	Unemployment rate %	Participation rate %	
MALES											
1995											
February	1 405.3	1 569.0	145.8	8.5	73.1	1 396.7	1 561.9	146.2	8.6	72.8	2 346.5
March	1 401.4	1 560.9	144.3	8.5	72.6	1 402.0	1 566.5	143.7	8.4	72.8	2 349.3
April	1 402.8	1 570.2	138.5	8.1	72.7	1 406.8	1 570.0	141.2	8.3	72.8	2 351.9
May	1 406.1	1 571.6	141.2	8.2	72.7	1 410.5	1 572.6	139.3	8.1	72.7	2 354.6
June	1 415.6	1 577.0	136.8	8.0	72.7	1 413.1	1 574.8	138.7	8.1	72.7	2 357.2
July	1 420.3	1 575.1	137.9	8.1	72.6	1 414.3	1 577.4	138.9	8.1	72.7	2 359.4
August	1 416.5	1 580.1	138.8	8.1	72.8	1 415.0	1 580.5	139.4	8.1	72.8	2 361.6
September	1 417.1	1 587.7	142.6	8.2	73.2	1 416.2	1 583.9	139.5	8.1	72.9	2 363.7
October	1 405.4	1 578.5	140.8	8.2	72.7	1 417.7	1 587.4	139.3	8.1	73.0	2 366.2
November	1 415.6	1 594.0	142.8	8.2	73.3	1 419.3	1 590.1	139.1	8.0	73.0	2 368.7
December	1 426.2	1 595.2	129.1	7.5	72.7	1 420.3	1 591.2	139.5	8.1	73.0	2 371.1
1996											
January	1 434.8	1 591.2	144.7	8.3	73.1	1 420.0	1 590.5	140.8	8.1	72.9	2 374.1
February	1 417.7	1 592.9	139.3	8.0	72.9	1 418.1	1 588.7	142.8	8.2	72.8	2 377.1
March	1 402.9	1 582.9	148.4	8.6	72.7	1 415.1	1 586.1	145.2	8.4	72.7	2 380.0
April	1 409.1	1 576.7	151.0	8.7	72.5	1 412.2	1 583.6	147.6	8.5	72.6	2 383.1
FEMALES											
1995											
February	687.4	1 149.8	114.5	9.1	52.0	690.6	1 154.3	104.6	8.3	51.8	2 430.9
March	680.9	1 150.3	101.4	8.1	51.4	690.9	1 157.7	101.6	8.1	51.8	2 433.1
April	699.3	1 165.3	93.9	7.5	51.7	694.2	1 163.0	97.9	7.8	51.8	2 435.5
May	701.0	1 163.9	94.7	7.5	51.6	700.1	1 169.6	94.1	7.4	51.8	2 437.8
June	709.4	1 189.9	89.2	7.0	52.4	707.8	1 177.6	91.3	7.2	52.0	2 440.2
July	711.0	1 182.5	86.8	6.8	52.0	715.9	1 186.4	89.9	7.0	52.3	2 442.5
August	723.5	1 189.6	97.2	7.6	52.6	723.5	1 194.8	89.7	7.0	52.5	2 444.7
September	735.1	1 200.3	85.5	6.7	52.5	729.0	1 201.7	90.2	7.0	52.8	2 447.0
October	730.3	1 211.7	88.6	6.8	53.1	732.2	1 207.1	90.7	7.0	53.0	2 449.4
November	737.3	1 214.1	98.4	7.5	53.5	733.0	1 210.0	91.3	7.0	53.1	2 451.9
December	731.4	1 212.0	89.2	6.9	53.0	731.7	1 210.0	92.1	7.1	53.1	2 454.4
1996											
January	732.0	1 207.1	90.9	7.0	52.8	729.6	1 207.8	93.3	7.2	52.9	2 457.5
February	714.8	1 198.3	95.1	7.4	52.6	727.7	1 204.4	94.9	7.3	52.8	2 460.7
March	737.4	1 212.0	95.6	7.3	53.1	726.0	1 200.5	96.8	7.5	52.7	2 463.8
April	720.9	1 184.7	102.7	8.0	52.2	724.9	1 196.5	98.3	7.6	52.5	2 467.3
PERSONS											
1995											
February	2 092.8	2 718.7	260.3	8.7	62.4	2 087.3	2 716.2	250.9	8.5	62.1	4 777.4
March	2 082.3	2 711.3	245.7	8.3	61.8	2 092.9	2 724.2	245.3	8.3	62.1	4 782.4
April	2 102.2	2 735.5	232.3	7.8	62.0	2 101.0	2 733.0	239.1	8.0	62.1	4 787.4
May	2 107.1	2 735.5	235.8	7.9	62.0	2 110.6	2 742.1	233.4	7.8	62.1	4 792.4
June	2 124.9	2 767.0	226.1	7.6	62.4	2 120.9	2 752.4	229.9	7.7	62.2	4 797.4
July	2 131.3	2 757.7	224.7	7.5	62.1	2 130.3	2 763.8	228.8	7.6	62.3	4 801.8
August	2 140.0	2 769.7	236.0	7.9	62.5	2 138.5	2 775.4	229.1	7.6	62.5	4 806.3
September	2 152.3	2 788.0	228.1	7.6	62.7	2 145.2	2 785.7	229.8	7.6	62.7	4 810.7
October	2 135.7	2 790.2	229.5	7.6	62.7	2 150.0	2 794.5	230.0	7.6	62.8	4 815.6
November	2 152.8	2 808.1	241.2	7.9	63.3	2 152.3	2 800.0	230.4	7.6	62.9	4 820.6
December	2 157.6	2 807.3	218.3	7.2	62.7	2 152.0	2 801.2	231.7	7.6	62.9	4 825.5
1996											
January	2 166.9	2 798.3	235.7	7.8	62.8	2 149.6	2 798.4	234.1	7.7	62.8	4 831.6
February	2 132.5	2 791.2	234.4	7.7	62.5	2 145.7	2 793.1	237.8	7.8	62.6	4 837.7
March	2 140.3	2 794.9	244.0	8.0	62.7	2 141.1	2 786.7	242.0	8.0	62.5	4 843.9
April	2 129.9	2 761.3	253.7	8.4	62.2	2 137.1	2 780.1	245.9	8.1	62.4	4 850.5

¹ Trend estimates for October 1995 to March 1996 have been revised.

LABOUR FORCE STATUS (AGED 15 AND OVER)-Victoria¹

SEASONALLY ADJUSTED.....

TREND.....

Month	SEASONALLY ADJUSTED					TREND					Civilian population aged 15 and over '000s
	Employed full time '000s	Total employed '000s	Total unemployed '000s	Unemp- loyment rate %	Partic- ipation rate %	Employed full time '000s	Total employed '000s	Total unemployed '000s	Unemp- loyment rate %	Partic- ipation rate %	
MALES											
1995											
February	1 038.6	1 173.6	120.6	9.3	74.7	1 033.6	1 165.0	120.0	9.3	74.2	1 732.5
March	1 039.4	1 170.9	114.6	8.9	74.1	1 037.1	1 167.9	117.8	9.2	74.1	1 734.0
April	1 041.6	1 168.5	115.0	9.0	74.0	1 039.3	1 169.1	116.3	9.0	74.1	1 735.6
May	1 041.1	1 169.7	115.7	9.0	74.0	1 040.0	1 168.3	116.0	9.0	73.9	1 737.1
June	1 035.2	1 162.4	116.5	9.1	73.6	1 039.7	1 166.3	116.9	9.1	73.8	1 738.7
July	1 038.4	1 161.7	120.9	9.4	73.7	1 039.5	1 164.6	118.0	9.2	73.7	1 739.8
August	1 041.0	1 171.8	115.0	8.9	73.9	1 040.4	1 164.2	118.5	9.2	73.7	1 741.0
September	1 043.8	1 161.1	122.1	9.5	73.7	1 042.4	1 165.7	118.1	9.2	73.7	1 742.1
October	1 041.5	1 162.1	122.2	9.5	73.7	1 045.0	1 168.7	116.9	9.1	73.7	1 743.4
November	1 048.0	1 175.2	108.3	8.4	73.6	1 047.3	1 172.2	115.6	9.0	73.8	1 744.8
December	1 051.1	1 177.1	114.1	8.8	73.9	1 048.4	1 175.1	114.9	8.9	73.9	1 746.1
1996											
January	1 051.0	1 179.8	113.2	8.8	74.0	1 048.6	1 176.9	114.9	8.9	73.9	1 748.0
February	1 049.1	1 183.7	120.1	9.2	74.5	1 048.0	1 177.5	115.6	8.9	73.9	1 749.9
March	1 043.5	1 170.1	113.2	8.8	73.3	1 047.0	1 177.5	116.5	9.0	73.9	1 751.8
April	1 043.8	1 173.6	121.0	9.3	73.8	1 045.9	1 176.6	117.6	9.1	73.8	1 753.8
FEMALES											
1995											
February	485.3	861.6	89.1	9.4	52.6	484.7	861.3	89.1	9.4	52.6	1 807.6
March	491.2	871.6	86.3	9.0	53.0	491.7	871.4	86.4	9.0	53.0	1 809.0
April	497.2	881.3	81.5	8.5	53.2	499.0	881.8	83.2	8.6	53.3	1 810.6
May	503.8	891.9	80.4	8.3	53.7	504.8	889.5	80.8	8.3	53.5	1 812.1
June	511.2	896.4	79.7	8.2	53.8	508.2	893.1	80.3	8.2	53.7	1 813.7
July	518.7	898.9	79.1	8.1	53.9	509.1	892.7	81.5	8.4	53.7	1 815.1
August	510.0	891.2	81.6	8.4	53.6	508.4	890.4	83.2	8.5	53.6	1 816.5
September	491.4	886.3	85.3	8.8	53.4	506.9	888.8	84.7	8.7	53.5	1 817.8
October	506.8	872.7	94.0	9.7	53.1	505.0	889.0	85.2	8.7	53.6	1 819.1
November	506.2	892.2	87.0	8.9	53.8	503.7	891.1	84.8	8.7	53.6	1 820.4
December	509.2	898.5	72.6	7.5	53.3	503.4	894.2	83.9	8.6	53.7	1 821.7
1996											
January	503.8	911.5	84.3	8.5	54.6	503.8	896.7	83.2	8.5	53.7	1 823.6
February	496.4	894.9	87.5	8.9	53.8	504.3	897.8	83.1	8.5	53.7	1 825.4
March	501.2	887.0	79.3	8.2	52.9	505.2	897.8	83.4	8.5	53.7	1 827.2
April	515.3	897.8	88.4	9.0	53.9	505.6	897.5	83.8	8.5	53.6	1 829.4
PERSONS											
1995											
February	1 523.9	2 035.2	209.7	9.3	63.4	1 518.3	2 026.3	209.1	9.4	63.1	3 540.1
March	1 530.6	2 042.5	201.0	9.0	63.3	1 528.7	2 039.4	204.2	9.1	63.3	3 543.0
April	1 538.8	2 049.8	196.6	8.7	63.3	1 538.3	2 050.9	199.5	8.9	63.5	3 546.2
May	1 544.9	2 061.6	196.0	8.7	63.6	1 544.8	2 057.8	196.8	8.7	63.5	3 549.3
June	1 546.4	2 058.9	196.2	8.7	63.5	1 547.9	2 059.4	197.2	8.7	63.5	3 552.4
July	1 557.1	2 060.6	200.0	8.8	63.6	1 548.6	2 057.3	199.5	8.8	63.5	3 554.9
August	1 551.0	2 063.0	196.6	8.7	63.5	1 548.7	2 054.6	201.7	8.9	63.4	3 557.4
September	1 535.2	2 047.4	207.4	9.2	63.3	1 549.3	2 054.5	202.7	9.0	63.4	3 559.9
October	1 548.3	2 034.7	216.2	9.6	63.2	1 550.1	2 057.7	202.1	8.9	63.4	3 562.6
November	1 554.1	2 067.4	195.3	8.6	63.5	1 551.0	2 063.3	200.4	8.9	63.5	3 565.2
December	1 560.3	2 075.6	186.7	8.3	63.4	1 551.9	2 069.3	198.8	8.8	63.6	3 567.8
1996											
January	1 554.7	2 091.3	197.5	8.6	64.1	1 552.4	2 073.6	198.1	8.7	63.6	3 571.6
February	1 545.5	2 078.5	207.6	9.1	63.9	1 552.3	2 075.3	198.7	8.7	63.6	3 575.3
March	1 544.8	2 057.1	192.4	8.6	62.9	1 552.2	2 075.2	199.9	8.8	63.6	3 579.0
April	1 559.1	2 071.4	209.3	9.2	63.6	1 551.5	2 074.1	201.4	8.9	63.5	3 583.2

¹ Trend estimates for October 1995 to March 1996 have been revised.

LABOUR FORCE STATUS (AGED 15 AND OVER)—Queensland¹

SEASONALLY ADJUSTED.....

TREND.....

Month	SEASONALLY ADJUSTED					TREND					Civilian population aged 15 and over '000s
	Employed full time '000s	Total employed '000s	Total unemployed '000s	Unemp- loyment rate %	Partic- ipation rate %	Employed full time '000s	Total employed '000s	Total unemployed '000s	Unemp- loyment rate %	Partic- ipation rate %	
MALES											
1995											
February	764.8	850.9	81.9	8.8	74.8	762.7	851.3	81.5	8.7	74.8	1 247.3
March	762.8	853.7	83.1	8.9	74.9	764.5	854.5	82.5	8.8	74.9	1 250.4
April	770.0	863.8	82.5	8.7	75.5	765.5	857.0	83.7	8.9	75.1	1 253.5
May	762.8	856.6	88.1	9.3	75.2	765.4	858.6	85.3	9.0	75.1	1 256.6
June	763.7	857.3	86.3	9.2	74.9	764.3	859.1	87.5	9.2	75.1	1 259.6
July	763.6	857.4	88.8	9.4	74.9	762.8	858.8	90.1	9.5	75.2	1 262.7
August	762.5	861.0	90.1	9.5	75.1	761.4	858.3	93.3	9.8	75.2	1 265.7
September	763.6	862.3	96.0	10.0	75.5	760.9	858.2	96.3	10.1	75.2	1 268.7
October	755.4	850.6	104.5	10.9	75.1	762.0	859.0	98.2	10.3	75.3	1 271.5
November	764.1	862.7	98.0	10.2	75.4	764.9	861.0	98.4	10.3	75.3	1 274.2
December	769.6	864.8	97.0	10.1	75.3	769.2	864.0	96.9	10.1	75.2	1 276.9
1996											
January	771.9	864.6	97.9	10.2	75.2	774.1	867.9	94.3	9.8	75.2	1 279.8
February	786.5	876.1	85.3	8.9	74.9	778.8	872.1	91.6	9.5	75.1	1 282.7
March	781.2	873.9	89.4	9.3	74.9	782.7	876.1	89.3	9.2	75.1	1 285.6
April	784.9	883.5	88.2	9.1	75.4	786.1	880.0	87.1	9.0	75.0	1 288.8
FEMALES											
1995											
February	356.3	640.3	61.1	8.7	55.2	356.7	638.0	60.1	8.6	54.9	1 271.0
March	361.2	643.6	63.0	8.9	55.5	362.2	643.9	60.6	8.6	55.3	1 274.1
April	378.5	653.8	58.8	8.3	55.8	368.7	649.1	60.8	8.6	55.6	1 276.9
May	373.7	648.1	62.7	8.8	55.5	374.5	652.3	60.5	8.5	55.7	1 279.8
June	379.1	655.6	61.3	8.5	55.9	378.3	653.3	60.0	8.4	55.6	1 282.7
July	379.0	658.1	55.2	7.7	55.5	379.8	652.5	59.8	8.4	55.4	1 285.6
August	377.4	648.9	61.1	8.6	55.1	379.6	651.4	60.0	8.4	55.2	1 288.5
September	381.7	646.6	60.0	8.5	54.7	379.0	651.2	60.7	8.5	55.1	1 291.5
October	376.5	646.4	62.8	8.9	54.8	378.1	651.8	61.4	8.6	55.1	1 294.5
November	378.7	654.0	63.4	8.8	55.3	377.0	652.6	62.0	8.7	55.1	1 297.4
December	373.3	658.6	61.2	8.5	55.4	375.5	652.6	62.4	8.7	55.0	1 300.4
1996											
January	372.8	656.1	63.6	8.8	55.2	373.7	651.2	62.8	8.8	54.8	1 303.3
February	376.8	648.2	62.7	8.8	54.4	371.9	648.3	63.4	8.9	54.5	1 306.2
March	367.8	640.0	60.4	8.6	53.5	370.0	644.8	64.2	9.1	54.2	1 309.2
April	366.1	636.0	70.0	9.9	53.8	368.5	641.1	65.0	9.2	53.8	1 312.2
PERSONS											
1995											
February	1 121.0	1 491.2	143.0	8.8	64.9	1 119.4	1 489.4	141.6	8.7	64.8	2 518.2
March	1 124.0	1 497.3	146.1	8.9	65.1	1 126.7	1 498.4	143.1	8.7	65.0	2 524.5
April	1 148.4	1 517.6	141.4	8.5	65.6	1 134.2	1 506.1	144.5	8.8	65.2	2 530.4
May	1 136.4	1 504.6	150.8	9.1	65.3	1 139.9	1 510.9	145.8	8.8	65.3	2 536.4
June	1 142.8	1 513.0	147.6	8.9	65.3	1 142.6	1 512.3	147.5	8.9	65.3	2 542.3
July	1 142.6	1 515.6	144.0	8.7	65.1	1 142.7	1 511.3	149.9	9.0	65.2	2 548.3
August	1 139.9	1 510.0	151.2	9.1	65.0	1 141.1	1 509.7	153.3	9.2	65.1	2 554.2
September	1 145.3	1 508.9	156.0	9.4	65.0	1 139.9	1 509.4	157.0	9.4	65.1	2 560.2
October	1 131.9	1 497.0	167.3	10.1	64.9	1 140.1	1 510.8	159.6	9.6	65.1	2 565.9
November	1 142.8	1 516.7	161.3	9.6	65.3	1 142.0	1 513.6	160.4	9.6	65.1	2 571.6
December	1 142.8	1 523.4	158.1	9.4	65.2	1 144.7	1 516.6	159.3	9.5	65.0	2 577.4
1996											
January	1 144.8	1 520.7	161.5	9.6	65.1	1 147.9	1 519.1	157.1	9.4	64.9	2 583.2
February	1 163.3	1 524.4	148.0	8.8	64.6	1 150.7	1 520.5	155.0	9.3	64.7	2 588.9
March	1 149.0	1 513.9	149.8	9.0	64.1	1 152.7	1 520.9	153.5	9.2	64.5	2 594.8
April	1 150.9	1 519.4	158.2	9.4	64.5	1 154.7	1 521.1	152.1	9.1	64.3	2 601.0

¹ Trend estimates for October 1995 to March 1996 have been revised.

LABOUR FORCE STATUS (AGED 15 AND OVER)-South Australia¹

SEASONALLY ADJUSTED.....

TREND.....

Month	SEASONALLY ADJUSTED					TREND					Civilian population aged 15 and over '000s
	Employed full time '000s	Total employed '000s	Total unemployed '000s	Unemp-loyment rate %	Partic-ipation rate %	Employed full time '000s	Total employed '000s	Total unemployed '000s	Unemp-loyment rate %	Partic-ipation rate %	
MALES											
1995											
February	327.9	372.6	42.8	10.3	72.4	321.6	365.5	44.2	10.8	71.4	574.2
March	318.6	363.8	44.4	10.9	71.1	321.1	366.2	44.3	10.8	71.5	574.4
April	321.1	367.5	43.7	10.6	71.6	320.8	367.0	44.5	10.8	71.6	574.6
May	322.2	367.3	44.3	10.8	71.6	320.7	367.7	44.8	10.9	71.8	574.7
June	315.3	366.2	48.3	11.7	72.1	321.0	368.3	45.0	10.9	71.9	574.9
July	323.1	369.3	42.8	10.4	71.7	322.0	369.2	45.0	10.9	72.0	575.0
August	326.0	372.0	43.9	10.6	72.3	323.6	370.2	44.6	10.7	72.1	575.1
September	327.0	372.9	44.9	10.7	72.6	325.3	371.3	43.8	10.6	72.2	575.3
October	322.6	369.0	43.9	10.6	71.8	326.6	371.8	43.0	10.4	72.1	575.5
November	329.1	372.1	42.2	10.2	72.0	327.3	372.0	42.4	10.2	72.0	575.7
December	329.0	373.1	40.4	9.8	71.8	327.3	371.7	42.1	10.2	71.9	575.9
1996											
January	326.6	372.1	40.7	9.9	71.7	326.8	371.3	42.1	10.2	71.7	576.2
February	326.3	370.7	44.2	10.6	72.0	326.2	370.9	42.3	10.2	71.7	576.5
March	325.5	368.6	42.6	10.4	71.3	325.3	370.5	42.6	10.3	71.6	576.7
April	322.3	370.5	43.4	10.5	71.7	324.6	370.2	43.0	10.4	71.6	577.0
FEMALES											
1995											
February	152.0	282.9	27.8	9.0	52.2	152.4	282.2	27.3	8.8	52.0	595.0
March	152.5	282.2	28.8	9.3	52.3	152.8	283.5	27.2	8.8	52.2	595.2
April	151.1	283.4	27.9	9.0	52.3	153.2	285.0	27.3	8.7	52.5	595.4
May	158.5	288.4	26.6	8.4	52.9	153.1	286.4	27.3	8.7	52.7	595.6
June	150.6	287.6	26.7	8.5	52.8	152.4	287.1	27.1	8.6	52.7	595.8
July	150.7	287.9	27.0	8.6	52.8	151.4	287.1	26.6	8.5	52.6	595.9
August	151.0	288.3	25.9	8.2	52.7	150.5	286.5	26.0	8.3	52.4	596.1
September	148.1	282.6	26.2	8.5	51.8	149.9	285.4	25.7	8.3	52.2	596.2
October	149.3	283.5	25.4	8.2	51.8	149.6	284.3	25.5	8.2	51.9	596.5
November	149.8	284.8	24.6	7.9	51.8	149.7	283.6	25.5	8.2	51.8	596.7
December	152.0	284.6	25.1	8.1	51.9	149.7	283.8	25.6	8.3	51.8	596.9
1996											
January	149.3	283.2	26.8	8.7	51.9	149.5	284.5	25.9	8.3	52.0	597.2
February	147.5	282.9	26.8	8.6	51.8	149.2	285.6	26.1	8.4	52.2	597.5
March	149.1	287.8	25.6	8.2	52.4	148.9	286.9	26.2	8.4	52.4	597.7
April	148.8	291.6	26.1	8.2	53.1	148.6	288.2	26.3	8.4	52.6	598.0
PERSONS											
1995											
February	479.9	655.5	70.6	9.7	62.1	473.9	647.7	71.5	9.9	61.5	1 169.1
March	471.2	645.9	73.2	10.2	61.5	473.9	649.7	71.5	9.9	61.7	1 169.6
April	472.2	650.9	71.6	9.9	61.8	474.0	652.0	71.8	9.9	61.9	1 169.9
May	480.7	655.7	70.9	9.8	62.1	473.8	654.0	72.0	9.9	62.0	1 170.3
June	465.9	653.8	75.0	10.3	62.3	473.4	655.4	72.0	9.9	62.1	1 170.7
July	473.9	657.2	69.8	9.6	62.1	473.4	656.3	71.5	9.8	62.2	1 170.9
August	477.0	660.3	69.8	9.6	62.3	474.1	656.7	70.6	9.7	62.1	1 171.2
September	475.1	655.4	71.1	9.8	62.0	475.2	656.7	69.5	9.6	62.0	1 171.5
October	471.9	652.4	69.3	9.6	61.6	476.3	656.1	68.5	9.5	61.8	1 172.0
November	478.8	656.9	66.8	9.2	61.7	477.0	656.6	67.9	9.4	61.7	1 172.4
December	481.0	657.7	65.5	9.1	61.7	477.0	655.5	67.7	9.4	61.7	1 172.9
1996											
January	475.9	655.4	67.6	9.3	61.6	476.3	655.9	67.9	9.4	61.7	1 173.4
February	473.8	653.6	70.9	9.8	61.7	475.3	656.5	68.3	9.4	61.7	1 173.9
March	474.6	656.4	68.2	9.4	61.7	474.2	657.4	68.8	9.5	61.8	1 174.4
April	471.0	662.1	69.4	9.5	62.3	473.1	658.4	69.3	9.5	61.9	1 175.0

¹ Trend estimates for October 1995 to March 1996 have been revised.

LABOUR FORCE STATUS (AGED 15 AND OVER)-Western Australia¹

SEASONALLY ADJUSTED.....

TREND.....

Month	SEASONALLY ADJUSTED					TREND					Civilian population aged 15 and over '000s
	Employed full time '000s	Total employed '000s	Total unemployed '000s	Unemployment rate %	Participation rate %	Employed full time '000s	Total employed '000s	Total unemployed '000s	Unemployment rate %	Participation rate %	
MALES											
1995											
February	418.9	467.1	45.8	8.9	77.4	420.0	472.9	40.7	7.9	77.5	662.5
March	422.5	475.7	38.2	7.4	77.4	422.5	474.5	40.4	7.8	77.6	663.7
April	425.0	478.0	40.4	7.8	78.0	424.6	475.7	39.4	7.6	77.5	665.0
May	425.9	476.3	38.1	7.4	77.2	426.5	476.7	38.0	7.4	77.3	666.2
June	428.8	477.3	36.4	7.1	77.0	428.0	477.4	36.7	7.1	77.0	667.5
July	430.5	478.7	34.7	6.8	76.8	429.2	477.8	35.8	7.0	76.8	668.7
August	427.0	475.7	34.8	6.8	76.2	429.6	477.9	35.6	6.9	76.7	669.9
September	430.8	478.0	37.1	7.2	76.8	429.5	478.0	35.9	7.0	76.6	671.0
October	429.5	478.5	36.8	7.1	76.7	428.9	478.0	36.7	7.1	76.6	672.2
November	429.6	479.6	37.4	7.2	76.8	428.2	477.8	37.9	7.4	76.6	673.5
December	425.2	477.2	38.2	7.4	76.4	427.5	477.5	39.2	7.6	76.6	674.7
1996											
January	424.9	476.0	40.9	7.9	76.5	426.9	477.2	40.2	7.8	76.5	675.9
February	428.5	475.8	42.4	8.2	76.5	426.4	476.9	40.9	7.9	76.5	677.2
March	426.9	477.9	42.6	8.2	76.7	426.0	476.7	41.4	8.0	76.4	678.4
April	424.9	477.1	39.3	7.6	76.0	425.8	476.7	41.7	8.0	76.3	679.6
FEMALES											
1995											
February	190.8	349.0	26.2	7.0	56.1	189.1	349.7	26.2	7.0	56.2	668.4
March	188.5	350.0	27.1	7.2	56.3	190.3	352.0	26.4	7.0	56.5	669.6
April	196.5	356.7	25.1	6.6	56.9	191.0	353.6	27.0	7.1	56.7	670.9
May	193.0	357.2	27.7	7.2	57.3	191.2	354.4	27.8	7.3	56.9	672.2
June	187.2	351.7	28.8	7.6	56.5	190.8	354.4	28.6	7.5	56.9	673.5
July	186.0	352.4	32.5	8.4	57.1	190.2	354.0	29.3	7.7	56.8	674.7
August	192.7	355.4	27.7	7.2	56.7	189.5	353.0	29.8	7.8	56.6	675.9
September	191.0	350.7	30.2	7.9	56.3	188.8	352.0	30.1	7.9	56.4	677.1
October	187.8	351.5	29.1	7.6	56.1	188.2	351.4	30.2	7.9	56.3	678.3
November	189.4	352.7	31.3	8.1	56.5	188.0	351.3	30.1	7.9	56.1	679.5
December	185.2	349.9	29.6	7.8	55.8	188.4	351.5	29.8	7.8	56.0	680.7
1996											
January	185.2	346.2	29.7	7.9	55.1	189.5	351.8	29.3	7.7	55.9	682.0
February	194.3	359.1	29.6	7.6	56.9	191.3	352.0	28.4	7.5	55.7	683.2
March	194.9	355.1	27.1	7.1	55.8	193.3	352.0	27.4	7.2	55.4	684.5
April	197.0	346.2	24.2	6.5	54.0	195.4	351.7	26.4	7.0	55.1	685.8
PERSONS											
1995											
February	609.7	816.1	72.0	8.1	66.7	609.2	822.6	66.9	7.5	66.8	1 330.9
March	611.0	825.8	65.3	7.3	66.8	612.8	826.4	66.8	7.6	67.0	1 333.3
April	621.6	834.8	65.5	7.3	67.4	615.7	829.3	66.4	7.4	67.1	1 335.8
May	618.9	833.5	65.8	7.3	67.2	617.6	831.1	65.9	7.3	67.0	1 338.4
June	616.0	829.0	65.2	7.3	66.7	618.8	831.8	65.4	7.3	66.9	1 341.0
July	616.5	831.1	67.2	7.5	66.9	619.4	831.7	65.2	7.3	66.8	1 343.4
August	619.7	831.2	62.6	7.0	66.4	619.1	831.0	65.4	7.3	66.6	1 345.7
September	621.8	828.6	67.3	7.5	66.5	618.3	829.9	66.0	7.4	66.5	1 348.1
October	617.4	830.0	65.9	7.4	66.3	617.1	829.4	66.9	7.5	66.4	1 350.5
November	618.9	832.3	68.6	7.6	66.6	616.2	829.2	68.1	7.6	66.3	1 353.0
December	610.5	827.1	67.8	7.6	66.0	615.8	829.0	69.0	7.7	66.3	1 355.4
1996											
January	610.1	822.2	70.6	7.9	65.7	616.3	829.0	69.4	7.7	66.2	1 357.9
February	622.8	834.9	71.9	7.9	66.7	617.7	828.9	69.3	7.7	66.0	1 360.4
March	621.8	833.1	69.7	7.7	66.2	619.3	828.7	68.8	7.7	65.9	1 362.9
April	621.9	823.3	63.4	7.2	64.9	621.1	828.3	68.1	7.6	65.7	1 365.4

¹ Trend estimates for October 1995 to March 1996 have been revised.

LABOUR FORCE STATUS (AGED 15 AND OVER)-Tasmania¹

SEASONALLY ADJUSTED.....

TREND.....

Month	SEASONALLY ADJUSTED.....					TREND.....					Civilian population aged 15 and over '000s
	Employed full time '000s	Total employed '000s	Total unemployed '000s	Unemp- loyment rate %	Partic- ipation rate %	Employed full time '000s	Total employed '000s	Total unemployed '000s	Unemp- loyment rate %	Partic- ipation rate %	
MALES											
1995											
February	99.3	112.2	16.1	12.6	71.1	100.0	113.6	15.1	11.7	71.4	180.3
March	100.3	114.2	14.2	11.1	71.2	99.9	113.7	15.0	11.7	71.4	180.4
April	99.7	114.5	14.8	11.4	71.6	99.9	113.8	14.8	11.5	71.3	180.4
May	99.7	113.9	14.9	11.6	71.4	99.8	113.9	14.5	11.3	71.1	180.5
June	99.9	113.5	14.4	11.3	70.9	99.8	113.7	14.2	11.1	70.8	180.5
July	100.6	114.1	12.9	10.1	70.3	99.7	113.5	13.7	10.8	70.5	180.6
August	99.5	112.6	14.4	11.3	70.3	99.7	113.1	13.4	10.6	70.1	180.6
September	99.0	112.9	13.4	10.6	69.9	99.8	112.9	13.2	10.5	69.8	180.7
October	100.0	113.2	11.7	9.3	69.1	100.2	113.0	13.2	10.5	69.9	180.7
November	100.5	112.8	13.6	10.8	70.0	100.8	113.5	13.4	10.6	70.2	180.8
December	101.4	113.8	14.7	11.4	71.0	101.3	114.1	13.8	10.8	70.7	180.8
1996											
January	102.4	114.7	14.0	10.9	71.1	101.8	114.8	14.1	11.0	71.3	180.9
February	103.5	117.0	14.0	10.7	72.4	102.0	115.5	14.5	11.2	71.8	181.0
March	100.4	115.5	15.0	11.5	72.1	102.0	116.0	14.8	11.3	72.3	181.1
April	101.6	116.3	15.3	11.6	72.6	101.9	116.4	15.2	11.5	72.7	181.1
FEMALES											
1995											
February	44.0	82.8	9.2	10.0	49.3	44.7	83.9	9.1	9.8	49.9	186.5
March	45.4	84.8	8.8	9.4	50.2	45.0	84.9	8.7	9.3	50.2	186.6
April	45.9	87.9	7.7	8.1	51.3	45.2	85.7	8.2	8.8	50.4	186.6
May	44.6	85.9	8.2	8.7	50.4	45.3	86.2	7.8	8.3	50.4	186.6
June	45.7	85.9	7.0	7.5	49.7	45.4	86.5	7.4	7.9	50.3	186.7
July	44.8	86.5	7.2	7.7	50.2	45.6	86.6	7.3	7.8	50.3	186.7
August	45.2	86.2	7.7	8.2	50.3	45.6	86.8	7.5	7.9	50.5	186.8
September	46.9	87.5	7.1	7.5	50.7	45.5	87.1	7.7	8.1	50.7	186.8
October	45.8	87.9	7.9	8.2	51.2	45.2	87.3	8.0	8.4	51.0	186.9
November	44.2	86.7	9.4	9.8	51.4	44.6	87.4	8.2	8.6	51.1	187.0
December	43.9	88.2	8.2	8.5	51.5	44.1	87.2	8.4	8.8	51.1	187.0
1996											
January	43.0	86.5	7.8	8.2	50.4	43.7	86.9	8.4	8.8	50.9	187.1
February	43.3	86.9	8.4	8.9	50.9	43.5	86.6	8.4	8.8	50.8	187.2
March	42.9	85.3	9.1	9.7	50.4	43.5	86.4	8.4	8.8	50.6	187.2
April	45.1	87.0	7.6	8.0	50.5	43.6	86.3	8.3	8.7	50.5	187.3
PERSONS											
1995											
February	143.3	195.0	25.3	11.5	60.1	144.7	197.6	24.3	10.9	60.5	366.8
March	145.6	199.0	23.1	10.4	60.5	144.9	198.6	23.7	10.7	60.6	367.0
April	145.6	202.4	22.5	10.0	61.3	145.0	199.5	23.1	10.4	60.6	367.0
May	144.3	199.8	23.1	10.4	60.7	145.1	200.1	22.3	10.0	60.6	367.1
June	145.6	199.4	21.4	9.7	60.1	145.2	200.2	21.6	9.7	60.4	367.2
July	145.3	200.6	20.1	9.1	60.1	145.3	200.1	21.1	9.5	60.2	367.3
August	144.8	198.8	22.1	10.0	60.1	145.3	200.0	20.9	9.5	60.1	367.4
September	145.9	200.4	20.5	9.3	60.1	145.3	200.0	20.9	9.5	60.1	367.5
October	145.8	201.0	19.5	8.9	60.0	145.4	200.3	21.2	9.6	60.3	367.6
November	144.7	199.6	23.0	10.3	60.5	145.4	200.8	21.6	9.7	60.5	367.8
December	145.3	201.9	22.9	10.2	61.1	145.4	201.3	22.1	9.9	60.7	367.9
1996											
January	145.5	201.2	21.8	9.8	60.6	145.4	201.7	22.5	10.1	60.9	368.0
February	146.9	203.9	22.5	9.9	61.5	145.4	202.1	22.9	10.2	61.1	368.2
March	143.3	200.8	24.2	10.7	61.1	145.5	202.4	23.2	10.3	61.3	368.3
April	146.7	203.2	22.9	10.1	61.4	145.6	202.7	23.4	10.4	61.4	368.4

¹ Trend estimates for October 1995 to March 1996 have been revised.

LABOUR FORCE STATUS (AGED 15 AND OVER)—Northern Territory¹

TREND.....

Month	Employed full time '000s	Total employed '000s	Total unemployed '000s	Unemp- loyment rate %	Partic- ipation rate %	Civilian population aged 15 and over '000s
MALES						
1995						
February	41.3	46.2	3.6	7.3	79.7	62.4
March	41.2	46.1	3.7	7.4	79.5	62.6
April	40.8	45.8	3.8	7.6	79.1	62.6
May	40.4	45.3	3.9	7.9	78.4	62.7
June	39.9	44.7	4.0	8.2	77.6	62.8
July	39.4	44.3	4.0	8.3	76.9	62.9
August	39.0	44.1	4.0	8.3	76.4	62.9
September	38.9	44.3	3.9	8.1	76.5	63.0
October	39.1	44.8	3.8	7.8	77.2	63.0
November	39.5	45.5	3.7	7.5	78.1	63.0
December	39.9	46.0	3.6	7.2	78.7	62.9
1996						
January	40.1	46.2	3.5	7.1	78.7	63.1
February	40.0	46.1	3.4	6.9	78.2	63.3
March	39.8	45.8	3.4	6.9	77.6	63.5
April	39.4	45.5	3.3	6.8	76.6	63.6
FEMALES						
1995						
February	25.8	37.5	2.9	7.2	67.7	59.6
March	25.5	37.1	2.9	7.1	66.8	59.8
April	25.2	36.6	2.8	7.1	65.7	60.0
May	24.7	36.1	2.7	7.0	64.5	60.2
June	24.2	35.6	2.6	6.9	63.3	60.4
July	23.5	35.1	2.6	6.8	62.2	60.5
August	22.9	34.7	2.5	6.7	61.5	60.6
September	22.5	34.7	2.4	6.5	61.2	60.7
October	22.3	35.0	2.3	6.0	61.3	60.8
November	22.6	35.7	2.2	5.7	62.0	61.0
December	23.3	36.4	2.2	5.8	63.1	61.1
1996						
January	23.9	36.9	2.5	6.2	64.2	61.3
February	24.5	37.2	2.8	7.0	65.0	61.6
March	24.9	37.4	3.2	7.9	65.7	61.8
April	25.1	37.4	3.6	8.8	66.2	62.0
PERSONS						
1995						
February	67.0	83.7	6.5	7.2	73.9	122.1
March	66.7	83.1	6.5	7.3	73.3	122.3
April	66.0	82.4	6.6	7.4	72.5	122.6
May	65.1	81.4	6.6	7.5	71.6	122.9
June	64.1	80.3	6.6	7.6	70.6	123.1
July	63.0	79.4	6.6	7.7	69.7	123.3
August	62.0	78.8	6.5	7.6	69.1	123.5
September	61.3	79.0	6.3	7.4	69.0	123.6
October	61.4	79.8	6.1	7.0	69.4	123.8
November	62.1	81.1	5.9	6.7	70.2	123.9
December	63.1	82.3	5.8	6.6	71.0	124.1
1996						
January	64.0	83.1	6.0	6.7	71.5	124.5
February	64.5	83.3	6.2	7.0	71.7	124.9
March	64.7	83.3	6.6	7.3	71.7	125.3
April	64.5	82.9	6.9	7.7	71.5	125.6

¹ Trend estimates for October 1995 to March 1996 have been revised. Estimates for the most recent three months may be subject to significant revisions as data for later months become available.

LABOUR FORCE STATUS (AGED 15 AND OVER)—Australian Capital Territory¹

TREND.....

Month	Employed full time '000s	Total employed '000s	Total unemployed '000s	Unemployment rate %	Participation rate %	Civilian population aged 15 and over '000s
MALES						
1995						
February	72.4	82.6	6.8	7.6	79.4	112.5
March	72.3	82.5	6.8	7.6	79.4	112.5
April	72.4	82.7	7.0	7.8	79.7	112.6
May	72.5	83.2	7.2	7.9	80.2	112.8
June	72.8	83.9	7.3	8.0	80.8	112.9
July	73.0	84.6	7.4	8.0	81.4	113.0
August	73.3	85.2	7.3	7.9	81.7	113.1
September	73.5	85.5	7.1	7.7	81.8	113.2
October	73.7	85.5	7.0	7.5	81.7	113.2
November	73.7	85.2	6.9	7.5	81.3	113.3
December	73.5	84.7	6.9	7.5	80.8	113.3
1996						
January	73.3	84.2	7.1	7.7	80.5	113.5
February	73.1	83.8	7.3	8.0	80.2	113.6
March	72.9	83.4	7.6	8.3	80.0	113.7
April	72.8	83.2	7.8	8.6	80.0	113.8
FEMALES						
1995						
February	43.7	71.3	4.8	6.4	65.1	116.8
March	43.5	71.4	4.9	6.4	65.2	116.9
April	43.6	71.7	5.0	6.5	65.5	117.1
May	43.8	72.2	4.9	6.4	65.8	117.3
June	44.2	72.8	4.8	6.2	66.1	117.4
July	44.5	73.3	4.7	6.0	66.4	117.5
August	44.7	73.7	4.7	6.0	66.7	117.6
September	45.0	74.0	4.8	6.1	67.0	117.7
October	45.1	74.1	5.0	6.3	67.2	117.8
November	45.2	74.1	5.2	6.6	67.3	117.9
December	45.1	73.9	5.4	6.9	67.2	118.0
1996						
January	44.9	73.5	5.7	7.2	67.1	118.1
February	44.6	73.1	5.9	7.4	66.8	118.1
March	44.4	72.6	6.1	7.7	66.5	118.2
April	44.1	72.2	6.2	7.9	66.2	118.3
PERSONS						
1995						
February	116.1	153.8	11.6	7.0	72.1	229.3
March	115.9	153.9	11.7	7.1	72.2	229.4
April	115.9	154.4	11.9	7.2	72.4	229.7
May	116.4	155.4	12.1	7.2	72.8	230.0
June	116.9	156.7	12.1	7.2	73.3	230.3
July	117.5	157.9	12.1	7.1	73.7	230.5
August	118.0	158.9	12.0	7.0	74.1	230.7
September	118.5	159.5	11.9	7.0	74.3	230.9
October	118.8	159.7	12.0	7.0	74.3	231.0
November	118.9	159.3	12.1	7.1	74.1	231.2
December	118.6	158.5	12.4	7.2	73.9	231.3
1996						
January	118.2	157.7	12.7	7.5	73.6	231.5
February	117.8	156.8	13.2	7.7	73.4	231.7
March	117.3	156.0	13.6	8.0	73.1	231.9
April	116.9	155.4	14.0	8.3	73.0	232.1

¹ Trend estimates for October 1995 to March 1996 have been revised. Estimates for the most recent three months may be subject to significant revisions as data for later months become available.

EXPLANATORY NOTES

.....

INTRODUCTION

1 This publication contains preliminary estimates of the civilian labour force derived from the labour force survey component of the monthly population survey. Estimates for the current month are preliminary and subject to revision. Revised estimates for the current month and more detailed estimates will be published in *Labour Force, Australia* (6203.0).

MONTHLY POPULATION SURVEY

2 The population survey is based on a multi-stage area sample of private dwellings (currently about 30,000 houses, flats, etc.) and a list sample of non-private dwellings (hotels, motels, etc.), and covers about 0.5% of the population of Australia. The information is obtained from the occupants of selected dwellings by specially trained interviewers. The interviews are generally conducted during the two weeks beginning on the Monday between the 6th and 12th of each month. The information obtained relates to the week before the interview (i.e. the reference week).

SCOPE OF SURVEY

3 The Labour Force Survey includes all persons aged 15 and over except members of the permanent defence forces, certain diplomatic personnel of overseas governments customarily excluded from census and estimated populations, overseas residents in Australia, and members of non-Australian defence forces (and their dependants) stationed in Australia.

COVERAGE

4 In the Labour Force Survey, coverage rules are applied which aim to ensure that each person is associated with only one dwelling, and hence has only one chance of selection. The coverage rules are necessarily a balance between theoretical and operational considerations. Nevertheless, the chance of a person being enumerated at two separate dwellings in the survey is considered to be negligible.

POPULATION BENCHMARKS

5 Labour Force Survey estimates are calculated in such a way as to add up to independent estimates of the civilian population aged 15 and over (population benchmarks). From February 1994, labour force estimates have been compiled using benchmarks based on the results of the 1991 Census of Population and Housing. Small revisions were made to many of the historical estimates from January 1989 to January 1994.

REVISION OF SERIES

6 From April 1986, the definition of employed persons was changed to include persons who worked without pay between 1 and 14 hours per week in a family business or on a farm (i.e. unpaid family helpers). For further information, see paragraphs 36 and 37 of the Explanatory Notes to the February 1987 issue of *The Labour Force, Australia* (6203.0).

SURVEY SAMPLE REDESIGN

7 The Labour Force Survey sample was redesigned and reselected using information collected in the 1991 Census of Population and Housing. The new sample was phased in over the period September to December 1992. For details, see *Information Paper: Labour Force Survey Sample Design* (6269.0).

8 For the most part, one quarter of the new sample was introduced each month so that, by December 1992, the entire new sample was in place. Replacement generally occurred at the rotation group level with two groups being substituted each month. Such a pattern of implementation meant that any changes to labour force estimates due to differences between the two samples, or any other influences, were spread over the four months rather than being concentrated in one inter-month period.

9 This phase-in scheme applied to the private dwelling sample in urban areas. The new sample for non-private dwellings and private dwellings in rural areas was introduced in a single stage in November 1992.

RELIABILITY OF ESTIMATES

10 Two types of error are possible in an estimate based on a sample survey: sampling error and non-sampling error.

Sampling error occurs because a sample, rather than the entire population, is surveyed. One measure of the likely difference resulting from not including all dwellings in the survey is given by the standard error. There are about two chances in three that a sample estimate will differ by less than one standard error from the figure that would have been obtained if all dwellings had been included in the survey, and about nineteen chances in twenty that the difference will be less than two standard errors. Standard errors of estimates for the latest month and of estimates of movements since the previous month are shown on pages 30 and 31. Standard errors of other estimates and other movements may be determined by using information in the Technical Notes in *Labour Force, Australia* (6203.0).

Non sampling error arises from inaccuracies in collecting, recording and processing the data. Every effort is made to minimise reporting error by the careful design of questionnaires, intensive training and supervision of interviewers, and efficient data processing procedures.

SEASONAL ADJUSTMENT AND
TREND ESTIMATION

11 Seasonally adjusted series are published in Tables 2, 5 and 12 to 17. Seasonal factors are reviewed annually to take account of each additional year's original data. The results of the latest review were used to compile the revised seasonally adjusted and trend estimates given in this publication. Information about the method of adjustment and revised seasonally adjusted and trend estimates for all months from January 1991 were published in an appendix to the February 1996 issue of *Labour Force, Australia* (6203.0).

12 Seasonal adjustment is a means of removing the estimated effects of normal seasonal variation from the series so that the effects of other influences on the series can be more clearly recognised. Seasonal adjustment does not aim to remove the irregular or non-seasonal influences which may be present in any particular month. This means that month-to-month movements of the seasonally adjusted estimates may not be reliable indicators of trend behaviour. For example, irregular factors unrelated to the trend account for more than half the seasonally adjusted movement with the following frequency:

- Employment: 5 in 10 monthly movements
- Unemployment: 7 in 10 monthly movements
- Unemployment rate: 7 in 10 monthly movements
- Participation rate: 9 in 10 monthly movements

13 The smoothing of seasonally adjusted series reduces the impact of the irregular component of the seasonally adjusted series, and creates trend estimates. These trend estimates are derived by applying a 13-term Henderson-weighted moving average to all months except the last six. The last six monthly trend estimates are obtained by applying surrogates of the Henderson average to the seasonally adjusted series. Trend series are used to analyse the underlying behaviour of the series over time. These are published in Tables 3, 6 and 12 to 19.

14 While this smoothing technique enables estimates to be produced for the latest month, it does result in revisions to the most recent months as additional observations become available. Generally, subsequent revisions become smaller, and after three months have a negligible impact on the series. There will also be revisions as a result of the annual review of seasonal factors.

SEASONAL ADJUSTMENT AND
TREND ESTIMATION (continued)

15 Trend estimates are published for the Northern Territory in Table 18 and for the Australian Capital Territory in Table 19. Unadjusted series for the two Territories have shown, historically, a high degree of variability, which can lead to considerable revisions to the seasonally adjusted estimates after each annual seasonal factor re-analysis. Seasonally adjusted estimates are not currently published for the two Territories. The most recent six months trend estimates are subject to revision. For the three most recent months, the revision may be relatively large. Inferences about trends drawn from smoothed seasonally adjusted (trend) estimates for months earlier than the latest three months are unlikely to be affected by month to month revisions. They may be affected by revision resulting from the annual re-analysis of seasonal factors.

16 For further information, see *A Guide to Interpreting Time Series — Monitoring 'Trends': an Overview* (1348.0) or contact the Assistant Director, Time Series Analysis on (06) 252 6345.

RELATED PUBLICATIONS

17 Users may also wish to refer to *Labour Force, Australia* (6203.0). This publication contains a detailed list of related publications which are available from ABS Bookshops.

18 Current publications produced by the ABS are listed in the *Catalogue of Publications and Products, Australia* (1101.0). The ABS also issues, on Tuesdays and Fridays, a *Release Advice* (1105.0) which lists publications to be released in the next few days. The Catalogue and Release Advice are available from any ABS office.

UNPUBLISHED STATISTICS

19 As well as the statistics included in this and related publications, the ABS may have other relevant unpublished data available. Inquiries should be made to Sylvia Sajler on 06 252 6525 or to any ABS office.

EFFECTS OF ROUNDING

20 Estimates have been rounded and discrepancies may occur between sums of the component items and totals.

21 Estimates of movement shown in this publication are obtained by taking the difference of unrounded estimates. The movement estimate is then rounded to one decimal place. Therefore where a discrepancy occurs between the reported movement and the difference of the rounded estimates, the reported movement will be more accurate.

SYMBOLS AND OTHER USAGES

- * subject to sampling variability too high for most practical uses. See the Technical Notes in 6203.0 for more details.
- .. not applicable
- r revised
- pts percentage points

GLOSSARY

Actively looking for work Includes writing, telephoning or applying in person to an employer for work; answering a newspaper advertisement for a job; checking factory or Commonwealth Employment Service noticeboards; being registered with the Commonwealth Employment Service; checking or registering with any other employment agency; advertising or tendering for work; and contacting friends or relatives.

Attending school Persons aged 15 to 19 enrolled full time at secondary or high schools in the reference week.

Attending tertiary educational institution full time Persons aged 15 to 24 enrolled full time at a TAFE college, university, or other educational institution in the reference week.

Employed Persons aged 15 and over who, during the reference week:

- worked for one hour or more for pay, profit, commission or payment in kind in a job or business, or on a farm (comprising employees, employers and self-employed persons); or
- worked for one hour or more without pay in a family business or on a farm (i.e. unpaid family helpers); or
- were employees who had a job but were not at work and were:
 - on paid leave, on leave without pay for less than four weeks up to the end of the reference week,
 - stood down without pay because of bad weather or plant breakdown at their place of employment for less than four weeks up to the end of the reference week,
 - on strike or locked out,
 - on workers' compensation and expected to be returning to their job, or
 - receiving wages or salary while undertaking full-time study; or
- were employers, self-employed persons or unpaid family helpers who had a job, business or farm, but were not at work.

Full-time workers Employed persons who usually worked 35 hours or more a week (in all jobs) and those who, although usually working less than 35 hours a week, worked 35 hours or more during the reference week

Labour force For any group, persons who were employed or unemployed, as defined.

Labour force status A classification of the civilian population aged 15 and over into employed, unemployed or not in the labour force, as defined. The definitions conform closely to the international standard definitions adopted by the International Conferences of Labour Statisticians.

Not in the labour force Persons who were not in the categories employed or unemployed as defined.

Participation rate For any group, the labour force expressed as a percentage of the civilian population aged 15 and over in the same group.

Part-time workers Employed persons who usually worked less than 35 hours a week and who did so during the reference week.

Seasonally adjusted series A time series of estimates with the estimated effects of normal seasonal variation removed. See Explanatory Note 11 to 12 for more detail.

Trend series A smoothed seasonally adjusted series of estimates. See Explanatory Notes 13 to 15 for more detail.

Unemployed	Persons aged 15 and over who were not employed during the reference week, and: <ul style="list-style-type: none"> ■ had actively looked for full-time or part-time work at any time in the four weeks up to the end of the reference week and: <ul style="list-style-type: none"> ■ were available for work in the reference week, or would have been available except for temporary illness (i.e. lasting for less than four weeks to the end of the reference week), or ■ were waiting to start a new job within four weeks from the end of the reference week and would have started in the reference week if the job had been available then; or ■ were waiting to be called back to a full-time or part-time job from which they had been stood down without pay for less than four weeks up to the end of the reference week (including the whole of the reference week) for reasons other than bad weather or plant breakdown.
Unemployed looking for first full-time job	Unemployed persons looking for full-time work (as defined above) who had never worked full time for two weeks or more
Unemployed looking for full-time work	Unemployed persons who actively looked for full-time work, or were to resume a full-time job from which they had been stood down.
Unemployed looking for part-time work	Unemployed persons who had actively looked for part-time work only, or were to resume a part-time job from which they had been stood down.
Unemployment rate	For any group, the number of unemployed persons expressed as a percentage of the labour force in the same group.

STANDARD ERRORS

The estimates in this publication are based on information gained from the occupants of a sample survey of dwellings. Because the entire population is not surveyed, the published estimates are subject to sampling error. The most common way of quantifying such sampling error is to calculate the standard error for the published estimate or statistic.

LEVEL ESTIMATES

To illustrate, let us say the published level estimate for employed persons aged 15 to 19 is 500,000. The calculated standard error in this case is 9,000. The standard error is then used to interpret the level estimate of 500,000. For instance, the standard error of 9,000 indicates that:

- There are approximately two chances in three that the real value falls within the range 491,000 to 509,000 (500,000 + or - 9,000)
- There are approximately nineteen chances in twenty that the real value falls within the range 482,000 to 518,000 (500,000 + or - 18,000)

The real value in this case is the result we would obtain if we could enumerate the total population.

The following tables show the standard errors for this month's level estimates.

	EMPLOYED.....			UNEMPLOYED.....				Labour force	Not in labour force	Unemployment rate	Participation rate
	Employed full time	Employed part time	Total employed	Unemp. looking for f/t work	Unemp. looking for p/t work	Total unemployed					
	'000s	'000s	'000s	'000s	'000s	'000s					
NSW	14.6	9.6	15.9	6.2	3.6	6.7	16.4	13.9	0.2	0.3	
Vic.	12.1	8.2	13.3	5.3	3.3	5.9	13.7	11.4	0.3	0.4	
Qld	9.4	6.3	10.3	4.2	2.4	4.6	10.7	8.7	0.3	0.4	
SA	5.1	3.7	5.7	2.3	1.3	2.5	5.9	5.0	0.3	0.5	
WA	6.3	4.2	7.0	2.4	1.5	2.7	7.1	5.7	0.3	0.5	
Tas.	1.7	1.3	1.8	0.9	0.5	1.0	1.9	1.7	0.4	0.5	
NT	1.9	1.1	2.2	0.6	0.3	0.7	2.3	1.5	0.8	1.8	
ACT	1.6	1.1	1.8	0.6	0.5	0.8	1.8	1.3	0.4	0.8	
Males	19.8	9.3	20.6	8.3	3.6	8.7	21.3	14.8	0.2	0.3	
Females	15.4	13.8	18.7	6.4	4.8	7.6	19.3	18.4	0.2	0.3	
Persons	22.7	15.4	24.9	9.8	5.8	10.8	25.6	21.4	0.1	0.2	

	NUMBER OF UNEMPLOYED PERSONS.....						UNEMPLOYMENT RATE.....				
	Aged 15-19 seeking first f/t job	Aged 15-19 looking for f/t work	Aged 20 and over looking for f/t work	Total looking for f/t work	Looking for p/t work	Total unemployed	Aged 15-19 looking for f/t work	Aged 20 and over looking for f/t work	Total looking for f/t work	Looking for p/t work	Total unemployed
	'000s	'000s	'000s	'000s	'000s	'000s	pts	pts	pts	pts	pts
NSW	2.2	2.8	5.8	6.2	3.6	6.7	2.6	0.3	0.3	0.5	0.2
Vic.	1.9	2.3	5.0	5.3	3.3	5.9	3.4	0.3	0.3	0.6	0.3
Qld	1.5	1.9	3.9	4.2	2.4	4.6	2.6	0.3	0.3	0.6	0.3
SA	0.8	1.0	2.2	2.3	1.3	2.5	4.2	0.4	0.4	0.6	0.3
WA	0.8	1.1	2.3	2.4	1.5	2.7	2.8	0.4	0.4	0.7	0.3
Tas.	0.3	0.4	0.9	0.9	0.5	1.0	4.1	0.6	0.6	0.9	0.4
NT	0.2	0.3	0.6	0.6	0.3	0.7	11.0	0.9	0.9	1.7	0.8
ACT	0.3	0.3	0.6	0.6	0.5	0.8	6.8	0.5	0.5	1.1	0.4
Males	2.7	3.5	7.8	8.3	3.6	8.7	1.7	0.2	0.2	0.6	0.2
Females	2.2	2.9	6.0	6.4	4.8	7.6	2.5	0.3	0.3	0.3	0.2
Persons	3.5	4.4	9.2	9.8	5.8	10.8	1.3	0.1	0.1	0.3	0.1

STANDARD ERRORS continued

MOVEMENT ESTIMATES

The following example illustrates how to use the standard error to interpret a movement estimate. Let us say that one month the published level estimate for females employed part time in Australia is 1,387,000; the next month the published level estimate is 1,400,000. The calculated standard error for the movement estimate is 10,300. The standard error is then used to interpret the published movement estimate of 13,000. For instance, the standard error of 10,300 indicates that:

- There are approximately two chances in three that the real movement over the two month period falls within the range 2,700 to 23,300 (13,000 + or - 10,300)
- There are approximately nineteen chances in twenty that the real movement falls within the range -7,600 to 33,600 (13,000 + or - 20,600).

The following tables show the standard errors for this month's movement estimates.

	EMPLOYED.....			UNEMPLOYED.....			Labour force	Not in labour force	Unemp- loyment rate	Partic- ipation rate
	Employed full time	Employed part time	Total employed	Unemp. looking for f/t work	Unemp. looking for p/t work	Total unemployed				
	'000s	'000s	'000s	'000s	'000s	'000s				
NSW	11.3	7.4	12.5	4.8	3.0	5.2	12.9	10.7	0.2	0.3
Vic.	8.7	5.8	9.7	3.8	2.4	4.2	10.1	8.2	0.2	0.3
Qld	6.5	4.4	7.1	3.1	1.9	3.3	7.4	6.0	0.2	0.3
SA	3.5	2.5	3.9	1.6	1.0	1.7	4.1	3.4	0.2	0.3
WA	4.5	3.1	5.0	1.9	1.3	2.1	5.2	4.1	0.2	0.4
Tas.	1.5	1.1	1.7	0.7	0.4	0.8	1.8	1.5	0.3	0.5
NT	1.3	0.7	1.4	0.4	0.3	0.5	1.4	1.0	0.5	1.2
ACT	1.2	0.8	1.4	0.5	0.4	0.6	1.4	1.0	0.3	0.6
Males	15.1	7.0	15.8	6.3	3.1	6.7	16.3	11.1	0.1	0.2
Females	11.5	10.3	14.2	5.0	4.0	5.9	14.7	13.9	0.1	0.2
Persons	17.5	11.6	19.5	7.4	4.6	8.1	20.2	16.4	0.1	0.1

	NUMBER OF UNEMPLOYED PERSONS.....						UNEMPLOYMENT RATE.....				
	Aged 15-19 seeking first f/t job	Aged 15-19 looking for f/t work	Aged 20 and over looking for f/t work	Total looking for f/t work	Looking for p/t work	Total unemployed	Aged 15-19 looking for f/t work	Aged 20 and over looking for f/t work	Total looking for f/t work	Looking for p/t work	Total unemp- loyed
	'000s	'000s	'000s	'000s	'000s	'000s	pts	pts	pts	pts	pts
NSW	2.0	2.4	4.5	4.8	3.0	5.2	2.2	0.2	0.2	0.4	0.2
Vic.	1.6	1.8	3.6	3.8	2.4	4.2	2.7	0.2	0.2	0.4	0.2
Qld	1.3	1.6	2.9	3.1	1.9	3.3	2.2	0.2	0.2	0.5	0.2
SA	0.7	0.8	1.5	1.6	1.0	1.7	3.3	0.3	0.3	0.5	0.2
WA	0.7	1.0	1.8	1.9	1.3	2.1	2.4	0.3	0.3	0.6	0.2
Tas.	0.3	0.4	0.7	0.7	0.4	0.8	3.6	0.4	0.4	0.7	0.3
NT	0.2	0.2	0.4	0.4	0.3	0.5	7.8	0.6	0.6	1.3	0.5
ACT	0.2	0.3	0.5	0.5	0.4	0.6	6.1	0.4	0.4	0.9	0.3
Males	2.4	3.0	6.0	6.3	3.1	6.7	1.4	0.1	0.1	0.5	0.1
Females	2.2	2.6	4.7	5.0	4.0	5.9	2.2	0.2	0.2	0.2	0.1
Persons	2.9	3.6	7.0	7.4	4.6	8.1	1.1	0.1	0.1	0.2	0.1

WHAT IF...? REVISIONS TO TREND ESTIMATES

EFFECT OF NEW SEASONALLY ADJUSTED ESTIMATES ON TREND ESTIMATES

Each time new seasonally adjusted estimates become available, trend estimates are revised (see paragraphs 13 and 14 of Explanatory Notes).

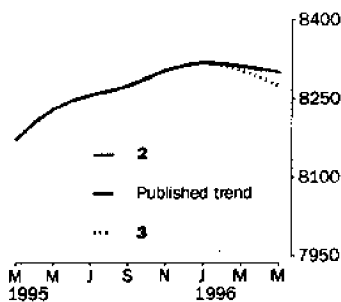
TREND REVISIONS

The examples in the tables below show four illustrative scenarios and the consequent revisions to previous trend estimates of employment and unemployment rate.

- 1** The May seasonally adjusted estimate is the same as the April estimate.
- 2** The May seasonally adjusted estimate is higher than the April estimate by:
 - +0.34% for employment
 - +2.2% for the unemployment rate
- 3** The May seasonally adjusted estimate is lower than the April estimate by:
 - -0.34% for employment
 - -2.2% for the unemployment rate
- 4** The May seasonally adjusted estimate results in a revised April trend estimate which is identical to the new May trend estimate.

The percentage changes of 0.34% and 2.2% were chosen because they represent the average absolute monthly percentage changes in employment and the unemployment rate respectively.

EMPLOYMENT ('000)



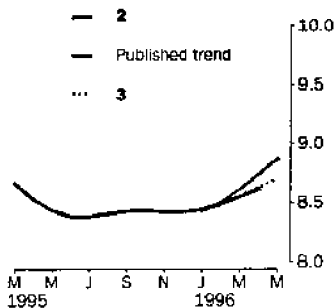
1996
February
March
April

May
(new)

WHAT IF NEXT MONTH'S SEASONALLY ADJUSTED ESTIMATE IS:

	1	2	3	4
<i>TREND as PUBLISHED</i>	8 290.8	8 318.6	8 263.0	8 372.2
	<i>i.e. the same as Apr 1996</i>	<i>i.e. rises by 0.34%</i>	<i>i.e. falls by 0.34%</i>	<i>i.e. same trend for Apr & May</i>
February	8 316.8	8 315.6	8 316.8	8 319.2
March	8 311.7	8 307.7	8 311.8	8 319.8
April	8 304.6	8 299.2	8 306.9	8 321.9
May (new)	—	8 287.6	8 299.3	8 321.9

UNEMPLOYMENT RATE (%)

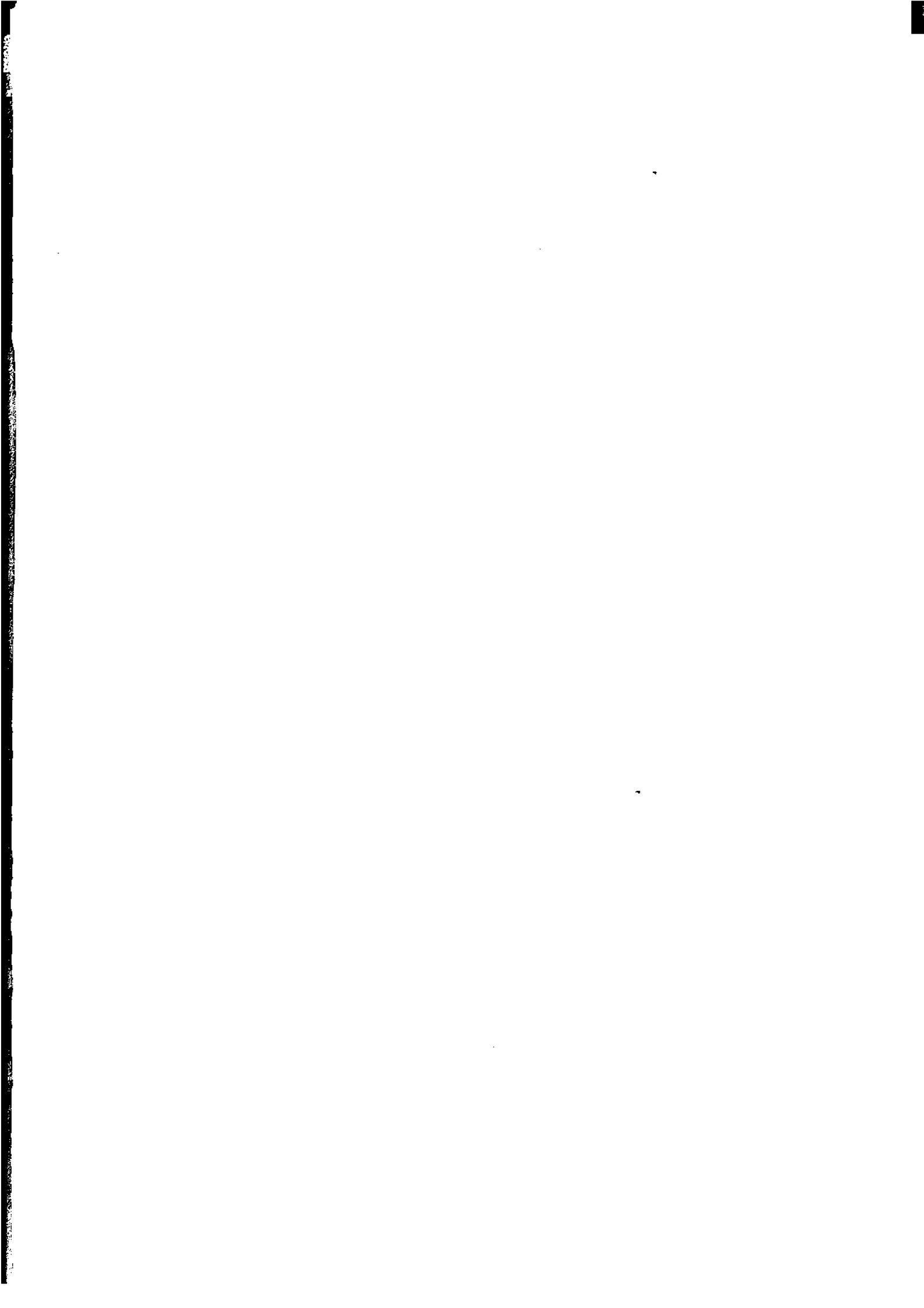


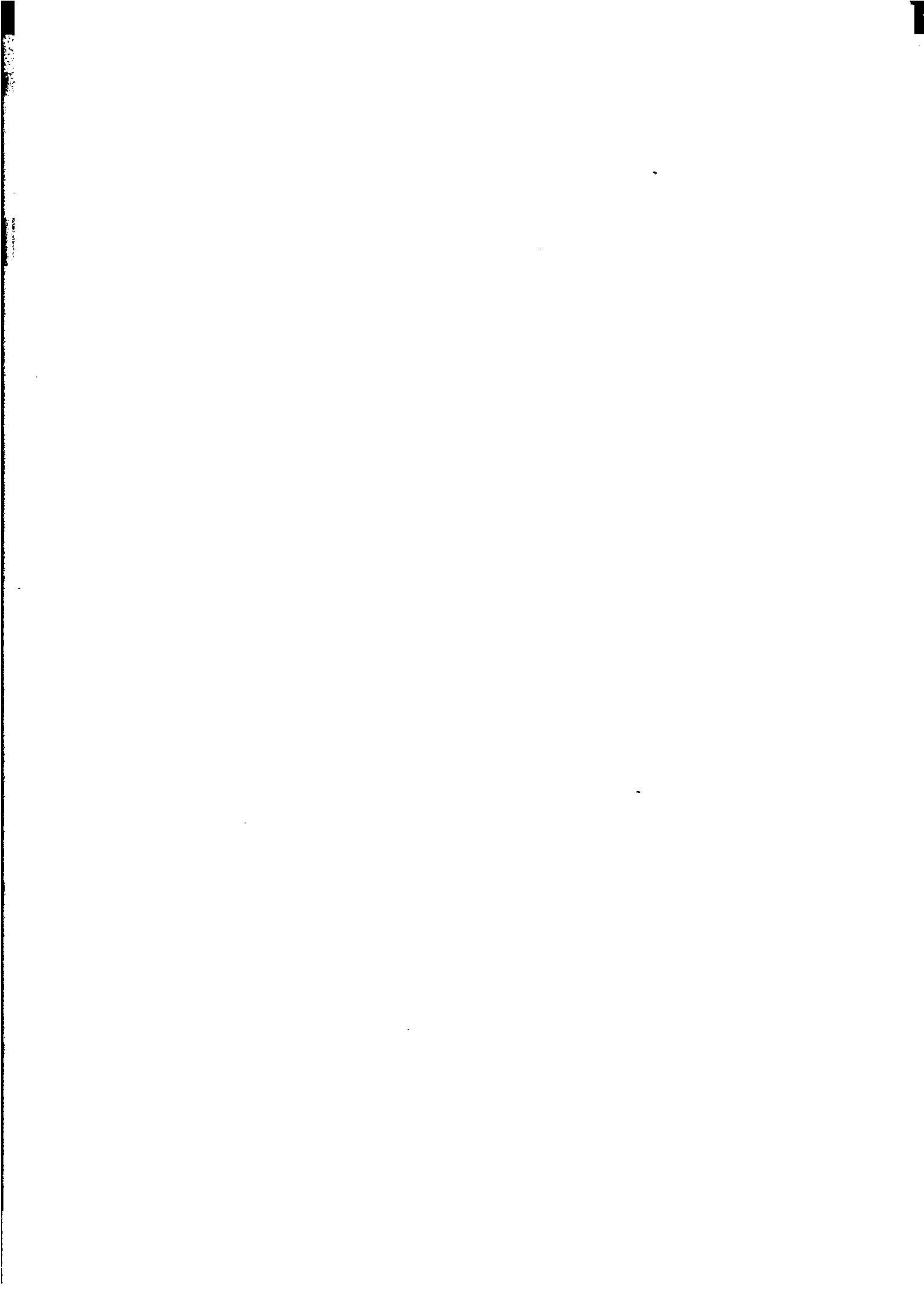
1996
February
March
April

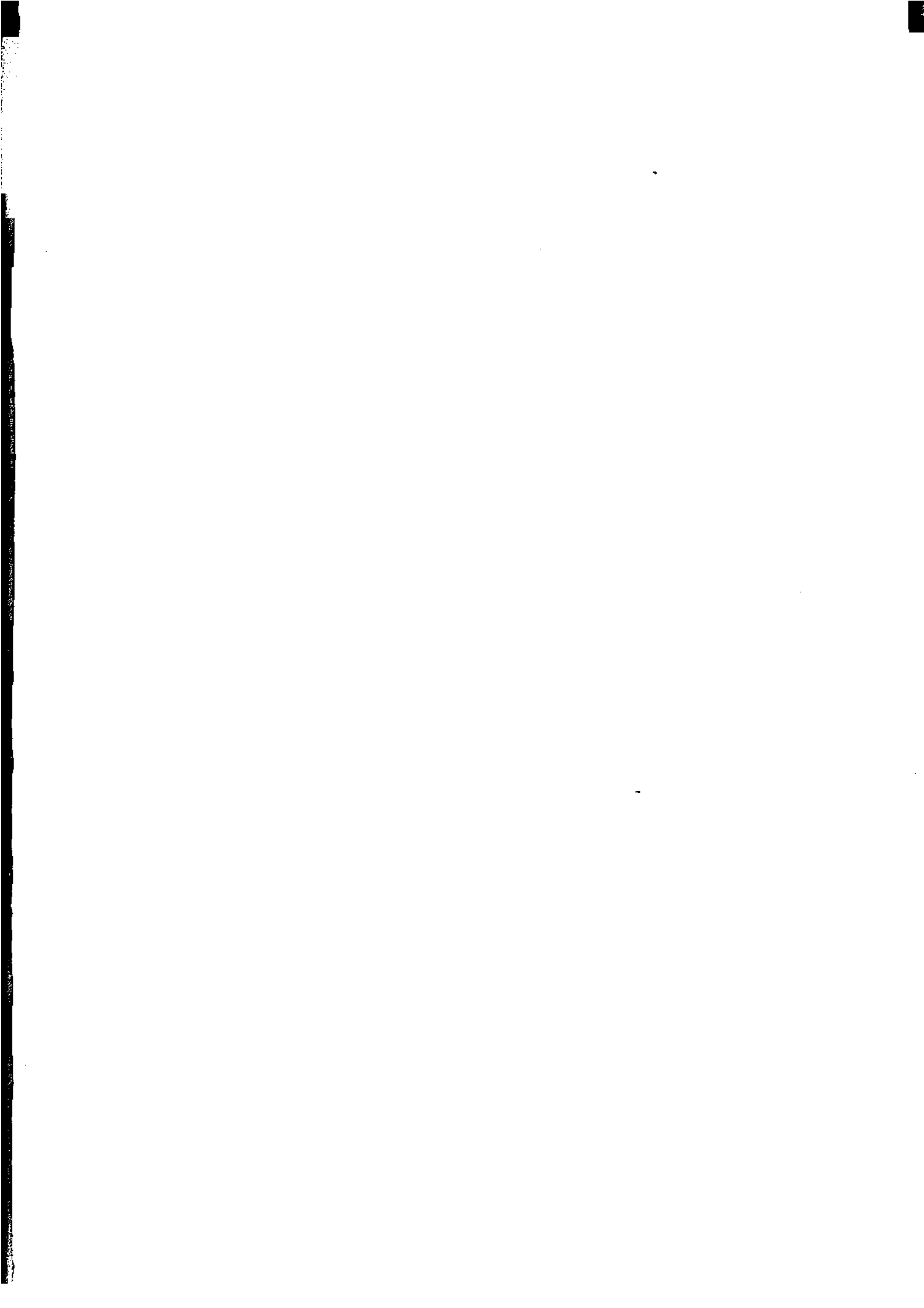
May
(new)

WHAT IF NEXT MONTH'S SEASONALLY ADJUSTED ESTIMATE IS:

	1	2	3	4
<i>TREND as PUBLISHED</i>	8.9	9.1	8.7	8.1
	<i>i.e. the same as Apr 1996</i>	<i>i.e. rises by 2.2%</i>	<i>i.e. falls by 2.2%</i>	<i>i.e. same trend for Apr & May</i>
February	8.5	8.5	8.5	8.5
March	8.6	8.6	8.6	8.5
April	8.6	8.7	8.6	8.5
May (new)	—	8.8	8.9	8.5







FOR MORE INFORMATION

The ABS publishes a wide range of information on Australia's economic and social conditions. A catalogue of publications and products is available from any of our offices (see below).

INFORMATION CONSULTANCY SERVICES

Information tailored to special needs of clients can be obtained from the Information Consultancy Service available at ABS Offices (see below).

ABS PRODUCTS

A large number of ABS products is available from the ABS Bookshops (see below). The ABS also provides a subscription service – you can telephone the ABS Subscription Service Australia wide toll free on 1800 0206 08.

ELECTRONIC SERVICES

A large range of data is available via on-line services, diskette, magnetic tape, tape cartridge and CD ROM. For more details about our electronic data services, contact any ABS office (see below) or e-mail us at:

X.400 (C:Australia,PUB:Telememo,O:ABS,FN:STAT,SN:INFO)
Internet Stat.info@abs.telememo.au
Keylink STAT.INFO/ABS

You can visit us on the Internet at: <http://www.statistics.gov.au>

GENERAL SALES AND INQUIRIES

- Sydney 02 268 4611
 - Melbourne 03 9615 7755
 - Brisbane 07 3222 6351
 - Perth 09 360 5140
 - Adelaide 08 237 7100
 - Hobart 002 20 5800
 - Darwin 089 43 2111
 - Canberra 06 252 6627
- Information Services, ABS
PO Box 10, Belconnen ACT 2616



2620200004967

ISSN 1031-038X

RRP \$15.50