



# LABOUR FORCE

AUSTRALIA  
PRELIMINARY

EMBARGOED UNTIL 11:30AM THURS 9 FEBRUARY 1995

## JANUARY KEY ESTIMATES

### TREND ESTIMATES

	Dec 94	Jan 95	monthly change
Employed persons (no. in '000s)	8 060.5	8 077.2	0.2 %
Unemployed persons (no. in '000s)	801.9	798.3	-0.5 %
Unemployment rate (%)	9.0	9.0	-0.1 pts
Participation rate (%)	63.2	63.2	0.0 pts

### SEASONALLY ADJUSTED

	Dec 94	Jan 95	monthly change
Employed persons (no. in '000s)	8 073.3	8 089.9	16.6
Unemployed persons (no. in '000s)	790.1	801.5	11.4
Unemployment rate (%)	8.9	9.0	0.1 pts
Participation rate (%)	63.2	63.3	0.1 pts

## JANUARY KEY POINTS

### TREND ESTIMATES

#### FULL TIME EMPLOYMENT

- Rose to 8,077,200 in January, 6.0% higher than the January 1993 low point.

#### UNEMPLOYMENT RATE

- Remained unchanged at 9.0% in January 1995.

#### PARTICIPATION RATE

- Unchanged at 63.2%.

### SEASONALLY ADJUSTED ESTIMATES

#### EMPLOYMENT

- Rose by 16,600 to 8,089,900 in January 1995. Part-time employment rose by 17,700, due to an increase of 30,800 in female part-time employment, and a decrease in male part-time employment of 13,100.

#### UNEMPLOYMENT

- Rose by 11,400 to 801,500 in January 1995, mainly due to an increase of 15,100 in male unemployment.

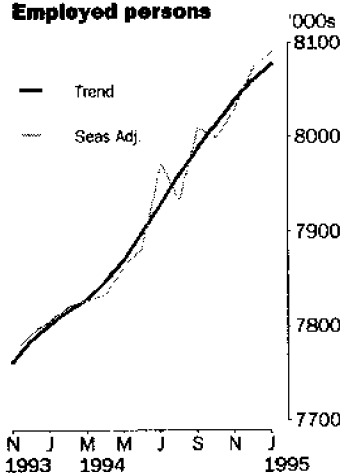
#### UNEMPLOYMENT RATE

- Rose slightly to 9.0%. The rate for males rose to 9.2% (0.3 pts); for females, the rate fell slightly to 8.7%.
- NSW 8.7% (8.8% last month); Vic. 10.1% (9.8%); Qld 8.6% (8.3%); SA 9.8% (10.1%); WA 7.6% (7.2%); Tas. 11.6% (10.8%).

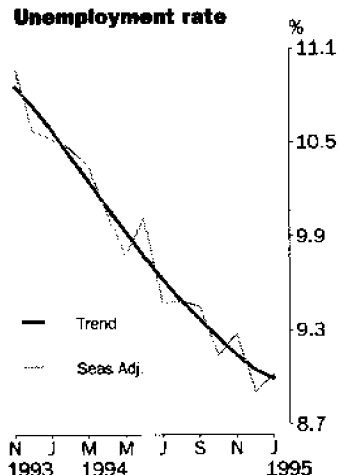
#### PARTICIPATION RATE

- Increased slightly to 63.3% in January 1995.

Employed persons



Unemployment rate



## INQUIRIES

- For further information about these and related statistics, contact Sylvia Sajler on 06 252 6525 or any ABS office.

# LABOUR FORCE NOTES

## FORTHCOMING ISSUES

<i>ISSUE</i>	<i>RELEASE DATE</i>
February 1995	9 March 1995
March 1995	6 April 1995
April 1995	11 May 1995
May 1995	8 June 1995
June 1995	13 July 1995
July 1995	10 August 1995

\*\*\*\*\*

## ROUNDING

Estimates of monthly change shown on page 1 have been calculated using unrounded estimates, and may be different from, but are more accurate than, movements obtained from the rounded estimates. The graphs on page 1 also depict movements calculated from unrounded estimates.

\*\*\*\*\*

## SAMPLING ERRORS

The estimates in this publication are based on a sample survey. Because the entire population is not enumerated, the published estimates and the movements derived from them are subject to sampling variability. Standard errors give a measure of this variability and appear on pages 30 and 31.

The 95% confidence intervals below provide another way of looking at the variability inherent in estimates from sample surveys. The interval bounded by the two limits is the 95% confidence interval. A 95% confidence interval indicates that we are 95% confident that the upper and lower limits enclose the true value of the estimate.

<i>SEASONALLY ADJUSTED DATA SERIES</i>	<i>MOVEMENTS DECEMBER 1994 TO JANUARY 1995</i>		
	<i>Monthly change</i>	<i>95% Confidence interval</i>	
Total employment	16 600	-32 600	to 65 800
Total unemployment	11 400	-10 800	to 33 600
Unemployment rate	0.1 pts	-0.20pts	to 0.20pts
Participation rate	0.1 pts	-0.28 pts	to 0.52 pts

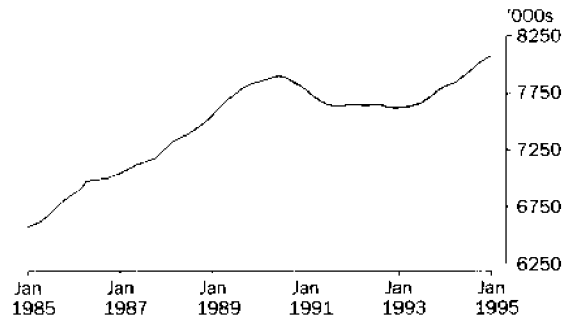
\*\*\*\*\*

RICHARD MADDEN  
ACTING AUSTRALIAN STATISTICIAN

# PRINCIPAL LABOUR FORCE SERIES: Trend estimates

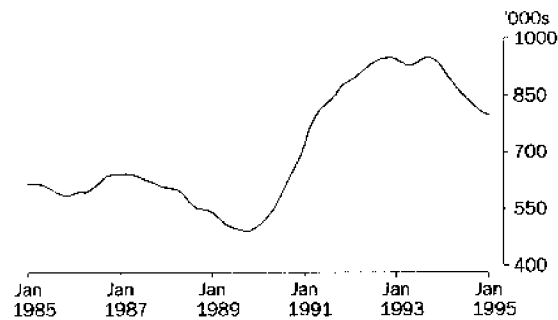
## EMPLOYED PERSONS

The trend in employment continued to increase and in January 1995 stood at 8,077,200, 16,700 higher than last month.



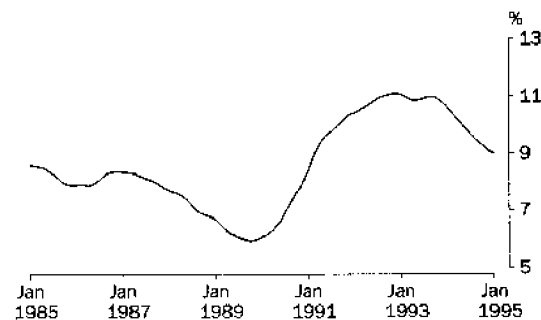
## UNEMPLOYED PERSONS

Trend estimates of unemployment have been falling since September 1993 and in January 1995 stood at 798,300, the lowest level recorded since March 1991.



## UNEMPLOYMENT RATE

The trend unemployment rate has remained unchanged from last month and stood at 9.0% for January 1995.

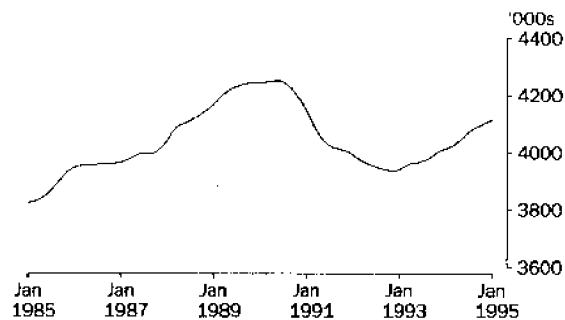


# EMPLOYED PERSONS: Trend estimates

## MALES EMPLOYED FULL TIME

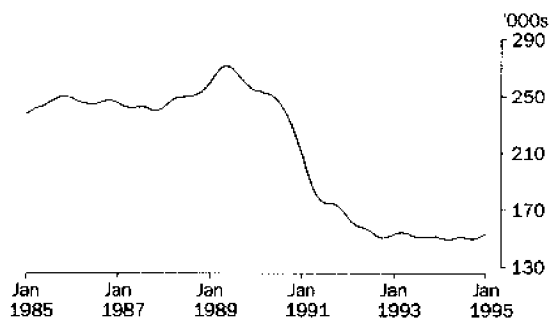
TOTAL

The trend estimate of male full-time employment has been increasing since November 1992. In January 1995 the trend stood at 4,115,200, 3.3 per cent lower than the May 1990 peak.



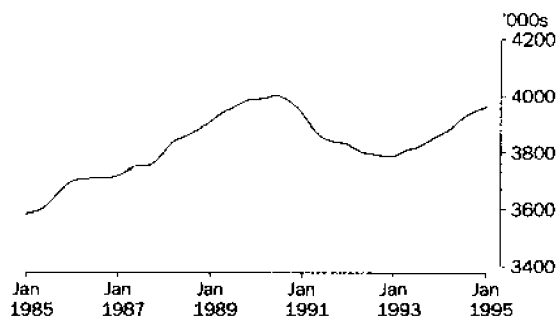
MALES AGED 15-19

The trend estimate of males aged 15 to 19 employed full time rose slightly to 153,800 in January 1995, after remaining relatively flat for most of 1993 and 1994. This level remains markedly different to the peak of 271,300 experienced in May 1989.



MALES AGED  
20 AND OVER

After falling from a peak of 4,000,900 in June 1990 to 3,784,400 in December 1992, the full-time employment trend for males aged 20 and over has been steadily increasing and now stands at 3,961,400.

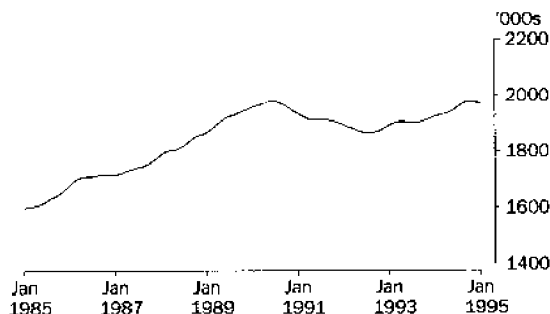


# EMPLOYED PERSONS: Trend estimates

## FEMALES EMPLOYED FULL TIME

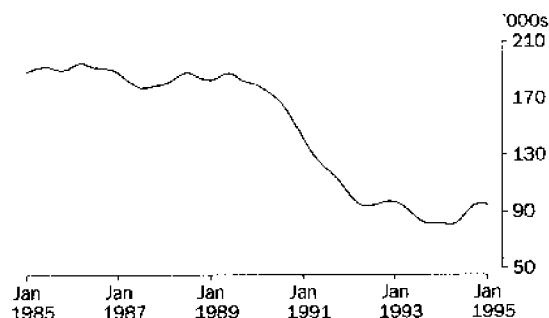
TOTAL

The female full-time employment trend rose from a recent low point of 1,865,200 in August 1992 to peak at 1,978,100 in October 1994. Since then, the trend has fallen slightly to 1,969,200 in January 1995.



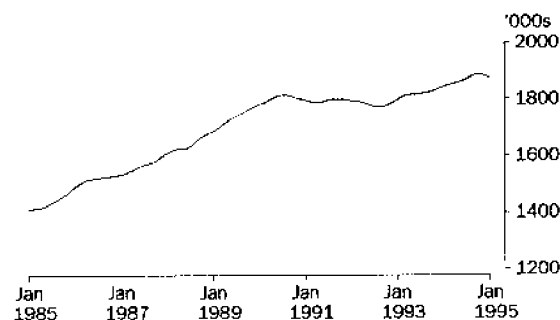
FEMALES AGED 15-19

After increasing to 95,300 in November 1994, the trend estimate for females aged 15 to 19 has fallen to 94,600 in January 1995.



FEMALES AGED  
20 AND OVER

After increasing to the highest level recorded, 1,883,300 in October 1994, the trend estimate of full-time employment for females aged 20 and over has been falling slightly and in January 1995 was 1,874,600.



LABOUR FORCE STATUS (AGED 15 AND OVER): Original

Month	EMPLOYED.....			UNEMPLOYED.....			Labour force	Not in labour force	Civilian population aged 15 and over	Unemp-loyment rate	Partic-ipation rate
	Employed full time	Employed part time	Total employed	Unemp. looking for f/t work	Unemp. looking for p/t work	Total unemployed					
	'000s	'000s	'000s	'000s	'000s	'000s	'000s	'000s	'000s	%	%
<b>MALES</b>											
<b>1993</b>											
November	4 000.2	454.1	4 454.3	488.8	41.1	530.0	4 984.3	1 823.3	6 807.6	10.6	73.2
December	4 071.6	448.7	4 520.3	513.2	51.1	564.3	5 084.6	1 729.7	6 814.3	11.1	74.6
<b>1994</b>											
January	3 995.3	453.5	4 448.8	537.6	55.8	593.4	5 042.2	1 779.3	6 821.5	11.8	73.9
February	4 009.4	451.2	4 460.6	538.7	53.2	591.9	5 052.5	1 776.2	6 828.7	11.7	74.0
March	4 003.3	485.7	4 488.9	497.9	63.0	560.9	5 049.9	1 786.0	6 835.9	11.1	73.9
April	4 022.4	478.2	4 500.6	478.7	44.7	523.4	5 024.0	1 818.5	6 842.5	10.4	73.4
May	4 041.4	473.0	4 514.4	465.5	45.3	510.9	5 025.3	1 823.8	6 849.1	10.2	73.4
June	4 053.4	481.4	4 534.8	450.5	48.2	498.7	5 033.5	1 822.2	6 855.7	9.9	73.4
July	4 095.4	490.4	4 585.7	422.0	45.8	467.8	5 053.5	1 809.5	6 863.1	9.3	73.6
August	4 039.6	496.2	4 535.8	427.8	45.0	472.8	5 008.6	1 861.8	6 870.5	9.4	72.9
September	4 117.2	489.4	4 606.6	425.9	58.3	484.2	5 090.8	1 787.1	6 877.9	9.5	74.0
October	4 094.1	516.2	4 610.3	395.5	44.6	440.2	5 050.5	1 834.8	6 885.3	8.7	73.4
November	4 092.5	493.9	4 586.4	405.5	47.6	453.1	5 039.5	1 853.2	6 892.8	9.0	73.1
December	4 162.0	510.3	4 672.3	418.5	51.1	469.7	5 142.0	1 758.2	6 900.2	9.1	74.5
<b>1995</b>											
January	4 111.6	484.2	4 595.8	454.8	57.8	512.6	5 108.4	1 800.8	6 909.2	10.0	73.9
<b>FEMALES</b>											
<b>1993</b>											
November	1 907.9	1 406.8	3 314.7	259.8	103.9	363.7	3 678.4	3 346.4	7 024.8	9.9	52.4
December	1 970.0	1 384.9	3 354.9	272.6	104.5	377.1	3 732.0	3 299.9	7 031.9	10.1	53.1
<b>1994</b>											
January	1 929.9	1 297.2	3 227.1	286.3	100.4	386.7	3 613.8	3 425.1	7 038.9	10.7	51.3
February	1 940.3	1 351.2	3 291.5	296.5	118.5	415.0	3 706.6	3 339.2	7 045.7	11.2	52.6
March	1 936.9	1 412.4	3 349.3	269.7	118.6	388.3	3 737.6	3 315.1	7 052.7	10.4	53.0
April	1 909.1	1 425.8	3 334.9	252.0	107.8	359.8	3 694.7	3 365.0	7 059.7	9.7	52.3
May	1 922.6	1 442.2	3 364.8	238.6	100.4	339.0	3 703.8	3 363.0	7 066.8	9.2	52.4
June	1 937.1	1 420.9	3 357.9	240.2	100.3	340.5	3 698.4	3 375.4	7 073.9	9.2	52.3
July	1 962.7	1 436.5	3 399.2	234.2	101.8	336.1	3 735.3	3 346.1	7 081.5	9.0	52.7
August	1 922.2	1 427.7	3 349.9	228.4	96.6	325.0	3 674.9	3 414.2	7 089.1	8.8	51.8
September	1 998.9	1 481.9	3 480.8	226.1	120.4	346.5	3 827.3	3 269.3	7 096.7	9.1	53.9
October	1 984.1	1 440.4	3 424.5	213.1	100.0	313.1	3 737.6	3 366.5	7 104.1	8.4	52.6
November	1 984.2	1 454.6	3 438.7	210.5	100.5	311.0	3 749.7	3 361.7	7 111.5	8.3	52.7
December	2 017.1	1 466.8	3 483.9	234.9	103.0	337.9	3 821.8	3 297.0	7 118.9	8.8	53.7
<b>1995</b>											
January	1 969.9	1 387.8	3 357.6	244.9	96.2	341.1	3 698.7	3 428.6	7 127.3	9.2	51.9
<b>PERSONS</b>											
<b>1993</b>											
November	5 908.1	1 860.9	7 769.0	748.7	145.0	893.7	8 662.7	5 169.7	13 832.4	10.3	62.6
December	6 041.5	1 833.6	7 875.2	785.8	155.6	941.5	8 816.7	5 029.6	13 846.3	10.7	63.7
<b>1994</b>											
January	5 925.2	1 750.7	7 675.9	823.9	156.2	980.1	8 656.0	5 204.4	13 860.4	11.3	62.5
February	5 949.7	1 802.4	7 752.1	835.2	171.7	1 006.9	8 759.0	5 115.4	13 874.4	11.5	63.1
March	5 940.1	1 898.1	7 838.2	767.6	181.6	949.2	8 787.4	5 101.1	13 888.5	10.8	63.3
April	5 931.5	1 904.0	7 835.5	730.7	152.5	883.2	8 718.7	5 183.5	13 902.2	10.1	62.7
May	5 964.0	1 915.2	7 879.2	704.2	145.7	849.9	8 729.1	5 186.8	13 915.9	9.7	62.7
June	5 990.4	1 902.3	7 892.7	690.7	148.5	839.2	8 731.9	5 197.7	13 929.6	9.6	62.7
July	6 058.1	1 926.9	7 985.0	656.2	147.7	803.9	8 788.9	5 155.7	13 944.5	9.1	63.0
August	5 961.7	1 923.9	7 885.7	656.3	141.6	797.9	8 683.5	5 276.0	13 959.5	9.2	62.2
September	6 116.1	1 971.3	8 087.4	652.1	178.7	830.8	8 918.1	5 056.4	13 974.6	9.3	63.8
October	6 078.2	1 956.6	8 034.8	608.7	144.6	753.3	8 788.1	5 201.3	13 989.4	8.6	62.8
November	6 076.7	1 948.5	8 025.1	616.0	148.1	764.1	8 789.3	5 214.9	14 004.2	8.7	62.8
December	6 179.2	1 977.1	8 156.2	653.5	154.1	807.6	8 963.8	5 055.2	14 019.1	9.0	63.9
<b>1995</b>											
January	6 081.4	1 872.0	7 953.4	699.7	154.0	853.7	8 807.1	5 229.4	14 036.5	9.7	62.7

LABOUR FORCE STATUS (AGED 15 AND OVER): Seasonally adjusted

Month	EMPLOYED.....			UNEMPLOYED.....					
	Employed full time '000s	Employed part time '000s	Total employed '000s	Unemp. looking for f/t work '000s	Unemp. looking for p/t work '000s	Total unemployed '000s	Labour force '000s	Unemp- loyment rate %	Partic- ipation rate %
<b>MALES</b>									
<b>1993</b>									
November	4 013.3	458.1	4 471.5	512.5	50.0	562.6	5 034.0	11.2	73.9
December	4 016.1	460.9	4 477.0	504.8	44.8	549.6	5 026.6	10.9	73.8
<b>1994</b>									
January	4 011.5	479.5	4 491.0	495.1	50.3	545.4	5 036.5	10.8	73.8
February	4 012.5	470.1	4 482.6	501.4	47.4	548.9	5 031.5	10.9	73.7
March	4 013.8	474.0	4 487.8	491.1	54.0	545.1	5 033.0	10.8	73.6
April	4 036.5	466.4	4 502.9	481.9	41.9	523.8	5 026.8	10.4	73.5
May	4 051.1	463.5	4 514.6	463.8	45.2	509.0	5 023.6	10.1	73.3
June	4 059.1	469.9	4 528.9	467.5	56.3	523.7	5 052.7	10.4	73.7
July	4 080.4	493.6	4 574.0	427.2	52.4	479.6	5 053.6	9.5	73.6
August	4 070.0	494.6	4 564.6	433.1	52.0	485.0	5 049.6	9.6	73.5
September	4 105.5	472.4	4 577.9	434.5	57.6	492.1	5 070.0	9.7	73.7
October	4 072.8	513.8	4 586.6	422.2	46.4	468.5	5 055.1	9.3	73.4
November	4 105.8	498.8	4 604.6	425.2	57.8	483.0	5 087.6	9.5	73.8
December	4 105.0	524.9	4 629.8	411.2	44.8	456.0	5 085.8	9.0	73.7
<b>1995</b>									
January	4 127.8	511.7	4 639.5	418.9	52.1	471.1	5 110.6	9.2	74.0
<b>FEMALES</b>									
<b>1993</b>									
November	1 910.9	1 389.0	3 299.9	281.1	114.0	395.1	3 695.0	10.7	52.6
December	1 925.4	1 389.6	3 315.0	265.7	106.2	371.9	3 686.9	10.1	52.4
<b>1994</b>									
January	1 909.0	1 405.2	3 314.2	263.6	108.6	372.3	3 686.5	10.1	52.4
February	1 917.8	1 389.3	3 307.1	260.0	105.1	365.1	3 702.1	9.9	52.5
March	1 937.6	1 401.3	3 339.0	259.7	97.9	357.6	3 696.6	9.7	52.4
April	1 923.7	1 405.9	3 329.6	250.6	100.6	351.3	3 680.9	9.5	52.1
May	1 930.6	1 417.8	3 348.4	238.5	104.3	342.8	3 691.2	9.3	52.2
June	1 953.0	1 400.1	3 353.1	247.4	106.6	353.9	3 707.0	9.5	52.4
July	1 954.3	1 443.9	3 398.2	240.6	113.7	354.3	3 752.5	9.4	53.0
August	1 957.2	1 412.4	3 369.6	241.8	104.7	346.5	3 716.1	9.3	52.4
September	1 991.1	1 440.9	3 432.0	233.8	110.2	344.0	3 776.0	9.1	53.2
October	1 981.6	1 430.8	3 412.4	231.3	104.9	336.2	3 748.6	9.0	52.8
November	1 988.5	1 436.2	3 424.7	227.6	110.2	337.8	3 762.6	9.0	52.9
December	1 971.2	1 472.2	3 443.5	229.7	104.4	334.1	3 777.6	8.8	53.1
<b>1995</b>									
January	1 947.3	1 503.1	3 450.3	226.3	104.1	330.4	3 780.7	8.7	53.0
<b>PERSONS</b>									
<b>1993</b>									
November	5 924.2	1 847.1	7 771.3	793.6	164.0	957.7	8 729.0	11.0	63.1
December	5 941.5	1 850.5	7 792.0	770.6	150.9	921.5	8 713.5	10.6	62.9
<b>1994</b>									
January	5 920.5	1 884.7	7 805.3	758.7	159.0	917.7	8 723.0	10.5	62.9
February	5 960.3	1 859.4	7 819.7	761.4	152.5	913.9	8 733.6	10.5	62.9
March	5 951.4	1 875.3	7 826.8	750.8	151.9	902.7	8 729.5	10.3	62.9
April	5 960.2	1 872.3	7 832.5	732.6	142.6	875.1	8 707.7	10.1	62.6
May	5 981.7	1 881.3	7 863.0	702.3	149.5	851.8	8 714.8	9.8	62.6
June	6 012.1	1 869.9	7 882.0	714.8	162.9	877.7	8 759.7	10.0	62.9
July	6 034.7	1 937.5	7 972.2	667.8	166.1	833.9	8 806.1	9.5	63.2
August	6 027.2	1 907.0	7 934.2	674.8	156.7	831.5	8 765.7	9.5	62.8
September	6 096.6	1 913.3	8 009.9	668.3	167.8	836.1	8 846.0	9.5	63.3
October	6 054.4	1 944.6	7 998.9	653.5	151.2	804.7	8 803.6	9.1	62.9
November	6 094.3	1 935.0	8 029.3	652.8	168.0	820.8	8 850.2	9.3	63.2
December	6 076.2	1 997.1	8 073.3	640.9	149.2	790.1	8 863.4	8.9	63.2
<b>1995</b>									
January	6 075.1	2 014.8	8 089.9	645.3	156.2	801.5	8 891.3	9.0	63.3

LABOUR FORCE STATUS (AGED 15 AND OVER): Trend<sup>1</sup>

Month	EMPLOYED.....			UNEMPLOYED.....					
	Employed full time	Employed part time	Total employed	Unemp. looking for full time work	Unemp. looking for part time work	Total unemployed	Labour force	Unemp- loyment rate	Partic- ipation rate
	'000s	'000s	'000s	'000s	'000s	'000s	'000s	%	%
<b>MALES</b>									
<b>1993</b>									
November	4 000.0	462.0	4 462.0	512.7	49.2	561.8	5 023.8	11.2	73.8
December	4 007.4	465.7	4 473.1	507.7	48.7	556.4	5 029.6	11.1	73.8
<b>1994</b>									
January	4 013.0	468.3	4 481.4	502.5	48.2	550.7	5 032.0	10.9	73.8
February	4 018.2	469.4	4 487.6	496.2	47.9	544.1	5 031.7	10.8	73.7
March	4 024.8	470.0	4 494.7	488.5	47.9	536.4	5 031.2	10.7	73.6
April	4 034.7	470.5	4 505.2	478.8	48.5	527.3	5 032.6	10.5	73.5
May	4 047.3	472.0	4 519.3	467.4	49.5	516.8	5 036.1	10.3	73.5
June	4 060.3	475.2	4 535.5	455.3	50.8	506.1	5 041.6	10.0	73.5
July	4 071.2	480.4	4 551.6	444.0	52.2	496.2	5 047.8	9.8	73.6
August	4 079.7	487.2	4 566.8	435.2	53.0	488.2	5 055.0	9.7	73.6
September	4 086.6	494.1	4 580.7	429.0	53.1	482.1	5 062.8	9.5	73.6
October	4 093.6	500.6	4 594.3	424.5	52.4	476.9	5 071.2	9.4	73.7
November	4 101.2	506.6	4 607.8	420.9	51.5	472.4	5 080.2	9.3	73.7
December	4 108.8	512.0	4 620.8	417.7	50.7	468.4	5 089.2	9.2	73.8
<b>1995</b>									
January	4 115.2	515.6	4 630.9	416.7	50.3	467.0	5 097.9	9.2	73.8
<b>FEMALES</b>									
<b>1993</b>									
November	1 913.0	1 386.5	3 299.5	275.2	107.9	383.1	3 682.6	10.4	52.4
December	1 919.4	1 392.1	3 311.4	271.7	107.8	379.4	3 690.8	10.3	52.5
<b>1994</b>									
January	1 924.9	1 395.5	3 320.5	266.4	106.3	372.7	3 693.2	10.1	52.5
February	1 929.0	1 398.6	3 327.6	260.4	104.4	364.8	3 692.3	9.9	52.4
March	1 931.7	1 402.0	3 333.7	254.9	103.0	357.9	3 691.6	9.7	52.3
April	1 934.6	1 406.2	3 340.8	250.5	102.9	353.3	3 694.2	9.6	52.3
May	1 939.3	1 411.3	3 350.6	246.9	104.2	351.0	3 701.6	9.5	52.4
June	1 946.7	1 416.4	3 363.0	243.7	106.0	349.7	3 712.7	9.4	52.5
July	1 957.1	1 420.5	3 377.5	240.6	107.7	348.3	3 725.9	9.3	52.6
August	1 967.7	1 425.0	3 392.7	237.9	108.6	346.5	3 739.2	9.3	52.7
September	1 975.4	1 431.6	3 407.0	235.3	108.3	343.7	3 750.7	9.2	52.9
October	1 978.1	1 441.2	3 419.3	232.6	107.6	340.1	3 759.4	9.0	52.9
November	1 977.2	1 453.0	3 430.2	229.9	106.7	336.6	3 766.8	8.9	53.0
December	1 973.7	1 466.0	3 439.8	227.7	105.9	333.6	3 773.3	8.8	53.0
<b>1995</b>									
January	1 969.2	1 477.2	3 446.4	226.3	104.9	331.2	3 777.6	8.8	53.0
<b>PERSONS</b>									
<b>1993</b>									
November	5 912.9	1 848.5	7 761.4	787.9	157.0	944.9	8 706.3	10.9	62.9
December	5 926.8	1 857.8	7 784.6	779.4	156.5	935.8	8 720.4	10.7	63.0
<b>1994</b>									
January	5 938.0	1 863.9	7 801.8	768.9	154.5	923.4	8 725.2	10.6	63.0
February	5 947.2	1 868.1	7 815.2	756.6	152.3	908.9	8 724.1	10.4	62.9
March	5 956.5	1 871.9	7 828.4	743.5	150.9	894.3	8 722.7	10.3	62.8
April	5 969.4	1 876.7	7 846.1	729.3	151.4	880.7	8 726.7	10.1	62.8
May	5 986.6	1 883.3	7 869.9	714.3	153.6	867.9	8 737.8	9.9	62.8
June	6 006.9	1 891.6	7 898.5	699.0	156.9	855.8	8 754.3	9.8	62.8
July	6 028.3	1 900.9	7 929.2	684.7	159.8	844.5	8 773.7	9.6	62.9
August	6 047.3	1 912.2	7 959.5	673.1	161.6	834.7	8 794.3	9.5	63.0
September	6 062.0	1 925.7	7 987.7	664.3	161.4	825.8	8 813.5	9.4	63.1
October	6 071.8	1 941.8	8 013.6	657.1	159.9	817.0	8 830.6	9.3	63.1
November	6 078.4	1 959.6	8 038.0	650.8	158.2	809.0	8 847.0	9.1	63.2
December	6 082.6	1 978.0	8 060.5	645.4	156.5	801.9	8 862.5	9.0	63.2
<b>1995</b>									
January	6 084.4	1 992.8	8 077.2	643.0	155.2	798.3	8 875.5	9.0	63.2

<sup>1</sup> Estimates for July 1994 to December 1994 have been revised.



## UNEMPLOYED PERSONS: Original

NUMBER OF UNEMPLOYED PERSONS.....

UNEMPLOYMENT RATE.....

Month	Aged 15-19 seeking first fit job	Aged 15-19 looking for fit work	Aged 20 and over looking for fit work	Total looking for fit work	Looking for p/t work	Total unemployed	Aged 15-19 looking for fit work	Aged 20 and over looking for fit work	Total looking for fit work	Looking for p/t work	Total unemp-loyed
	'000s	'000s	'000s	'000s	'000s	'000s	%	%	%	%	%

## MALES

Month	'000s	'000s	'000s	'000s	'000s	'000s	%	%	%	%	%
<b>1993</b>											
November	29.2	51.2	437.6	488.8	41.1	530.0	25.7	10.2	10.9	8.3	10.6
December	45.1	72.0	441.3	513.2	51.1	564.3	30.7	10.1	11.2	10.2	11.1
<b>1994</b>											
January	45.7	72.9	464.6	537.6	55.8	593.4	31.1	10.8	11.9	11.0	11.8
February	41.9	75.4	463.3	538.7	53.2	591.9	32.3	10.7	11.8	10.6	11.7
March	34.6	65.2	432.7	497.9	63.0	560.9	31.1	10.1	11.1	11.5	11.1
April	34.1	62.3	416.4	478.7	44.7	523.4	29.8	9.7	10.6	8.6	10.4
May	29.7	60.7	404.8	465.5	45.3	510.9	30.0	9.4	10.3	8.7	10.2
June	30.3	56.5	394.0	450.5	48.2	498.7	27.8	9.2	10.0	9.1	9.9
July	24.9	45.7	376.3	422.0	45.8	467.8	22.3	8.7	9.3	8.5	9.3
August	23.4	44.4	383.4	427.8	45.0	472.8	23.6	9.0	9.6	8.3	9.4
September	25.5	47.0	378.9	425.9	58.3	484.2	24.7	8.7	9.4	10.6	9.5
October	23.9	45.2	350.4	395.5	44.6	440.2	23.9	8.1	8.8	8.0	8.7
November	25.2	46.9	358.6	405.5	47.6	453.1	24.9	8.3	9.0	8.8	9.0
December	39.4	62.4	356.2	418.5	51.1	469.7	26.8	8.2	9.1	9.1	9.1
<b>1995</b>											
January	39.6	63.1	391.7	454.8	57.8	512.6	27.1	9.0	10.0	10.7	10.0

## FEMALES

Month	'000s	'000s	'000s	'000s	'000s	'000s	%	%	%	%	%
<b>1993</b>											
November	26.1	43.7	216.1	259.8	103.9	363.7	36.6	10.6	12.0	6.9	9.9
December	44.8	62.9	209.7	272.6	104.5	377.1	39.6	10.1	12.2	7.0	10.1
<b>1994</b>											
January	44.1	63.9	222.4	286.3	100.4	386.7	41.8	10.8	12.9	7.2	10.7
February	37.8	58.5	238.0	296.5	118.5	415.0	41.2	11.4	13.3	8.1	11.2
March	33.3	50.3	219.4	269.7	118.6	388.3	39.1	10.6	12.2	7.7	10.4
April	27.8	44.1	207.9	252.0	107.8	359.8	35.2	10.2	11.7	7.0	9.7
May	28.3	43.6	195.0	238.6	100.4	339.0	36.7	9.5	11.0	6.5	9.2
June	25.8	44.9	195.3	240.2	100.3	340.5	35.8	9.5	11.0	6.6	9.2
July	23.3	45.1	189.2	234.2	101.8	336.1	33.1	9.2	10.7	6.6	9.0
August	26.5	43.2	185.3	228.4	96.6	325.0	33.6	9.2	10.6	6.3	8.8
September	24.6	41.0	185.2	226.1	120.4	346.5	31.0	8.8	10.2	7.5	9.1
October	21.4	34.8	178.3	213.1	100.0	313.1	26.5	8.6	9.7	6.5	8.4
November	23.1	35.7	174.8	210.5	100.5	311.0	27.5	8.5	9.6	6.5	8.3
December	33.6	50.7	184.2	234.9	103.0	337.9	33.3	8.8	10.4	6.6	8.8
<b>1995</b>											
January	34.2	51.8	193.1	244.9	96.2	341.1	33.6	9.4	11.1	6.5	9.2

## PERSONS

Month	'000s	'000s	'000s	'000s	'000s	'000s	%	%	%	%	%
<b>1993</b>											
November	55.4	94.9	653.8	748.7	145.0	893.7	29.8	10.3	11.2	7.2	10.3
December	89.9	134.9	651.0	785.8	155.6	941.5	34.3	10.1	11.5	7.8	10.7
<b>1994</b>											
January	89.8	136.9	687.0	823.9	156.2	980.1	35.3	10.8	12.2	8.2	11.3
February	79.7	133.9	701.3	835.2	171.7	1 006.9	35.6	10.9	12.3	8.7	11.5
March	67.9	115.5	652.2	767.6	181.6	949.2	34.1	10.2	11.4	8.7	10.8
April	61.8	106.4	624.3	730.7	152.5	883.2	31.8	9.9	11.0	7.4	10.1
May	58.0	104.3	599.9	704.2	145.7	849.9	32.5	9.5	10.6	7.1	9.7
June	56.1	101.4	589.3	690.7	148.5	839.2	30.9	9.3	10.3	7.2	9.6
July	48.2	90.8	565.5	656.2	147.7	803.9	26.6	8.9	9.8	7.1	9.1
August	50.0	87.6	568.7	656.3	141.6	797.9	27.7	9.0	9.9	6.9	9.2
September	50.1	88.0	564.1	652.1	178.7	830.8	27.3	8.8	9.6	8.3	9.3
October	45.3	80.0	528.7	608.7	144.6	753.3	24.9	8.3	9.1	6.9	8.6
November	48.3	82.6	533.5	615.0	148.1	764.1	25.9	8.4	9.2	7.1	8.7
December	73.1	113.1	540.4	653.5	154.1	807.6	29.4	8.4	9.6	7.2	9.0
<b>1995</b>											
January	73.8	114.9	584.8	699.7	154.0	853.7	29.7	9.1	10.3	7.6	9.7

## UNEMPLOYED PERSONS: Seasonally adjusted

Month	NUMBER OF UNEMPLOYED PERSONS.....						UNEMPLOYMENT RATE.....				
	Aged 15-19 seeking first f/t job '000s	Aged 15-19 looking for f/t work '000s	Aged 20 and over looking for f/t work '000s	Total looking for f/t work '000s	Looking for p/t work '000s	Total unemployed '000s	Aged 15-19 looking for f/t work %	Aged 20 and over looking for f/t work %	Total looking for f/t work %	Looking for p/t work %	Total unemployed %
<b>MALES</b>											
<b>1993</b>											
November	31.7	56.9	455.7	512.5	50.0	562.6	27.0	10.6	11.3	9.8	11.2
December	31.1	59.8	445.1	504.8	44.8	549.6	28.5	10.3	11.2	8.9	10.9
<b>1994</b>											
January	30.5	58.1	437.0	495.1	50.3	545.4	27.8	10.2	11.0	9.5	10.8
February	33.2	66.8	434.6	501.4	47.4	548.9	30.5	10.1	11.1	9.2	10.9
March	34.9	67.4	423.8	491.1	54.0	545.1	31.5	9.9	10.9	10.2	10.8
April	37.5	63.3	418.6	481.9	41.9	523.8	29.8	9.7	10.7	8.3	10.4
May	34.3	63.6	400.2	463.8	45.2	509.0	30.2	9.3	10.3	8.9	10.1
June	39.5	61.9	405.6	467.5	56.3	523.7	29.0	9.4	10.3	10.7	10.4
July	31.3	49.3	378.0	427.2	52.4	479.6	23.9	8.8	9.5	9.6	9.5
August	27.2	46.3	386.8	433.1	52.0	485.0	23.5	9.0	9.6	9.5	9.6
September	28.8	50.0	384.5	434.5	57.6	492.1	25.3	8.9	9.6	10.9	9.7
October	30.2	52.4	369.7	422.2	46.4	468.5	26.5	8.6	9.4	8.3	9.3
November	27.2	52.1	373.1	425.2	57.8	483.0	26.1	8.6	9.4	10.4	9.5
December	27.2	51.8	359.3	411.2	44.8	456.0	24.9	8.3	9.1	7.9	9.0
<b>1995</b>											
January	26.6	50.4	368.5	418.9	52.1	471.1	24.2	8.5	9.2	9.2	9.2
<b>FEMALES</b>											
<b>1993</b>											
November	32.1	51.1	230.0	281.1	114.0	395.1	39.0	11.2	12.8	7.6	10.7
December	31.1	49.8	215.9	265.7	106.2	371.9	36.4	10.5	12.1	7.1	10.1
<b>1994</b>											
January	31.2	51.7	211.9	263.6	108.6	372.3	39.2	10.4	12.1	7.2	10.1
February	28.2	48.5	211.4	260.0	105.1	365.1	36.9	10.2	11.8	7.0	9.9
March	32.3	51.4	208.3	259.7	97.9	357.6	39.0	10.1	11.8	6.5	9.7
April	30.6	46.8	203.9	250.6	100.6	351.3	36.2	10.0	11.5	6.7	9.5
May	30.5	45.8	192.7	238.5	104.3	342.8	37.2	9.4	11.0	6.9	9.3
June	28.3	47.9	199.4	247.4	106.6	353.9	36.2	9.6	11.2	7.1	9.5
July	27.4	46.8	193.8	240.6	113.7	354.3	34.5	9.4	11.0	7.3	9.4
August	32.9	47.7	194.0	241.8	104.7	346.5	33.9	9.4	11.0	6.9	9.3
September	31.5	43.6	190.2	233.8	110.2	344.0	32.1	9.1	10.5	7.1	9.1
October	27.4	42.4	188.9	231.3	104.9	336.2	30.6	9.1	10.5	6.8	9.0
November	28.2	41.6	186.0	227.6	110.2	337.8	29.5	9.0	10.3	7.1	9.0
December	23.5	40.1	189.6	229.7	104.4	334.1	30.3	9.2	10.4	6.6	8.8
<b>1995</b>											
January	24.2	41.9	184.4	226.3	104.1	330.4	31.3	9.0	10.4	6.5	8.7
<b>PERSONS</b>											
<b>1993</b>											
November	63.8	107.9	685.7	793.6	164.0	957.7	31.6	10.8	11.8	8.2	11.0
December	62.3	109.6	661.0	770.6	150.9	921.5	31.6	10.4	11.5	7.5	10.6
<b>1994</b>											
January	61.7	109.8	649.0	758.7	159.0	917.7	32.2	10.2	11.4	7.8	10.5
February	61.4	115.3	646.1	761.4	152.5	913.9	32.9	10.1	11.3	7.6	10.5
March	67.2	118.7	632.1	750.8	151.9	902.7	34.4	9.9	11.2	7.5	10.3
April	68.2	110.0	622.5	732.6	142.6	875.1	32.2	9.8	10.9	7.1	10.1
May	64.8	109.4	592.9	702.3	149.5	851.8	32.8	9.3	10.5	7.4	9.8
June	67.8	109.8	605.0	714.8	162.9	877.7	31.8	9.5	10.6	8.0	10.0
July	58.7	96.1	571.7	667.8	166.1	833.9	28.1	9.0	10.0	7.9	9.5
August	60.1	94.0	580.8	674.8	156.7	831.5	27.9	9.1	10.1	7.6	9.5
September	60.4	93.6	574.7	668.3	167.8	836.1	28.0	8.9	9.9	8.1	9.5
October	57.6	94.9	558.6	653.5	151.2	804.7	28.2	8.8	9.7	7.2	9.1
November	55.5	93.6	559.2	652.8	168.0	820.8	27.5	8.7	9.7	8.0	9.3
December	50.7	92.0	549.0	640.9	149.2	790.1	27.0	8.6	9.5	7.0	8.9
<b>1995</b>											
January	50.8	92.3	552.9	645.3	156.2	801.5	27.0	8.7	9.6	7.2	9.0

UNEMPLOYED PERSONS: Trend<sup>1</sup>

## NUMBER OF UNEMPLOYED PERSONS.....

## UNEMPLOYMENT RATE.....

Month	Aged 15-19 seeking first f/t job	Aged 15-19 looking for f/t work	Aged 20 and over looking for f/t work	Total looking for f/t work	Looking for p/t work	Total unemployed	Aged 15-19 looking for f/t work	Aged 20 and over looking for f/t work	Total looking for f/t work	Looking for p/t work	Total unemp- loyed
	'000s	'000s	'000s	'000s	'000s	'000s	%	%	%	%	%
<b>MALES</b>											
<b>1993</b>											
November	32.4	60.2	452.5	512.7	49.2	561.8	28.5	10.5	11.4	9.6	11.2
December	32.0	60.8	447.0	507.7	48.7	556.4	28.7	10.4	11.2	9.5	11.1
<b>1994</b>											
January	32.3	62.1	440.4	502.5	48.2	550.7	29.2	10.2	11.1	9.3	10.9
February	33.4	63.7	432.5	496.2	47.9	544.1	29.9	10.1	11.0	9.3	10.8
March	34.8	64.7	423.8	488.5	47.9	536.4	30.3	9.9	10.8	9.3	10.7
April	35.6	64.0	414.8	478.8	48.5	527.3	30.0	9.6	10.6	9.3	10.5
May	35.6	61.5	405.9	467.4	49.5	516.8	29.0	9.4	10.4	9.5	10.3
June	34.5	57.7	397.6	455.3	50.8	506.1	27.7	9.2	10.1	9.7	10.0
July	32.8	53.9	390.1	444.0	52.2	496.2	26.4	9.0	9.8	9.8	9.8
August	30.9	51.3	383.9	435.2	53.0	488.2	25.5	8.9	9.6	9.8	9.7
September	29.3	50.3	378.7	429.0	53.1	482.1	25.2	8.8	9.5	9.7	9.5
October	28.3	50.3	374.2	424.5	52.4	476.9	25.2	8.7	9.4	9.5	9.4
November	27.6	50.7	370.1	420.9	51.5	472.4	25.2	8.6	9.3	9.2	9.3
December	27.0	51.1	366.6	417.7	50.7	468.4	25.1	8.5	9.2	9.0	9.2
<b>1995</b>											
January	27.0	51.9	364.8	416.7	50.3	467.0	25.2	8.4	9.2	8.9	9.2
<b>FEMALES</b>											
<b>1993</b>											
November	31.0	49.7	225.5	275.2	107.9	383.1	37.9	11.0	12.6	7.2	10.4
December	31.1	50.2	221.4	271.7	107.8	379.4	38.0	10.8	12.4	7.2	10.3
<b>1994</b>											
January	31.1	50.4	216.0	266.4	106.3	372.7	38.1	10.5	12.2	7.1	10.1
February	30.8	49.8	210.5	260.4	104.4	364.8	38.0	10.2	11.9	6.9	9.9
March	30.4	49.1	205.9	254.9	103.0	357.9	37.8	10.0	11.7	6.8	9.7
April	30.1	48.3	202.1	250.5	102.9	353.3	37.4	9.8	11.5	6.8	9.6
May	30.0	47.7	199.2	246.9	104.2	351.0	36.8	9.7	11.3	6.9	9.5
June	30.0	47.2	196.5	243.7	106.0	349.7	35.8	9.5	11.1	7.0	9.4
July	30.1	46.5	194.2	240.6	107.7	348.3	34.6	9.4	10.9	7.0	9.3
August	30.0	45.6	192.4	237.9	108.6	346.5	33.4	9.3	10.8	7.1	9.3
September	29.4	44.4	190.9	235.3	108.3	343.7	32.2	9.2	10.6	7.0	9.2
October	28.5	43.2	189.4	232.6	107.6	340.1	31.3	9.1	10.5	6.9	9.0
November	27.2	42.0	187.9	229.9	106.7	336.6	30.6	9.1	10.4	6.8	8.9
December	25.9	41.1	186.6	227.7	105.9	333.6	30.2	9.0	10.3	6.7	8.8
<b>1995</b>											
January	24.6	40.5	185.8	226.3	104.9	331.2	30.0	9.0	10.3	6.6	8.8
<b>PERSONS</b>											
<b>1993</b>											
November	63.5	109.9	678.0	787.9	157.0	944.9	32.1	10.7	11.8	7.8	10.9
December	63.1	111.0	668.4	779.4	156.5	935.8	32.3	10.5	11.6	7.8	10.7
<b>1994</b>											
January	63.4	112.4	656.4	768.9	154.5	923.4	32.6	10.3	11.5	7.7	10.6
February	64.2	113.6	643.0	756.6	152.3	908.9	33.0	10.1	11.3	7.5	10.4
March	65.1	113.8	629.7	743.5	150.9	894.3	33.1	9.9	11.1	7.5	10.3
April	65.7	112.4	616.9	729.3	151.4	880.7	32.8	9.7	10.9	7.5	10.1
May	65.6	109.2	605.1	714.3	153.6	867.9	32.0	9.5	10.7	7.5	9.9
June	64.6	104.8	594.1	699.0	156.9	855.8	30.8	9.3	10.4	7.7	9.8
July	62.9	100.4	584.3	684.7	159.8	844.5	29.6	9.2	10.2	7.8	9.6
August	60.8	96.9	576.2	673.1	161.6	834.7	28.7	9.0	10.0	7.8	9.5
September	58.8	94.7	569.6	664.3	161.4	825.8	28.0	8.9	9.9	7.7	9.4
October	56.8	93.5	563.6	657.1	159.9	817.0	27.7	8.8	9.8	7.6	9.3
November	54.8	92.7	558.1	650.8	158.2	809.0	27.4	8.7	9.7	7.5	9.1
December	52.9	92.2	553.2	645.4	156.5	801.9	27.2	8.7	9.6	7.3	9.0
<b>1995</b>											
January	51.6	92.4	550.7	643.0	155.2	798.3	27.1	8.6	9.6	7.2	9.0

<sup>1</sup> Estimates for July 1994 to December 1994 have been revised.

PERSONS AGED 15 TO 19—Education and Labour Force: **Original**—January 1995

	EMPLOYED.....			UNEMPLOYED.....							Participation rate
	Employed full time '000s	Employed part time '000s	Total employed '000s	Unemp. looking for f/t work '000s	Unemp. looking for p/t work '000s	Total unemployed '000s	Labour force '000s	Not in labour force '000s	Civilian population aged 15-19 '000s	Unemployment rate %	
ATTENDING NEITHER SCHOOL NOR A TERTIARY EDUCATIONAL INSTITUTION FULL TIME											
Males	152.5	45.5	197.9	53.9	6.2	60.2	258.1	53.0	311.1	23.3	83.0
Females	86.9	79.4	166.4	47.6	7.9	55.5	221.9	53.2	275.1	25.0	80.7
Persons	239.4	124.9	364.3	101.5	14.1	115.7	480.0	106.2	586.1	24.1	81.9
ATTENDING A TERTIARY EDUCATIONAL INSTITUTION FULL TIME											
Males	9.0	22.4	31.4	* 2.5	5.9	8.5	39.9	21.0	60.9	21.3	65.5
Females	9.7	31.5	41.1	* 2.4	5.9	8.3	49.5	24.2	73.6	16.8	67.2
Persons	18.7	53.8	72.6	4.9	11.9	16.8	89.4	45.2	134.5	18.8	66.4
ATTENDING SCHOOL											
Males	8.1	73.5	81.6	6.6	18.7	25.3	107.0	171.0	278.0	23.7	38.5
Females	5.9	90.3	96.2	* 1.8	22.3	24.1	120.3	149.6	269.9	20.0	44.6
Persons	14.0	163.8	177.8	8.4	41.0	49.4	227.2	320.6	547.9	21.7	41.5
TOTAL											
Males	169.6	141.3	311.0	63.1	30.9	94.0	404.9	245.1	650.0	23.2	62.3
Females	102.5	201.2	303.7	51.8	36.1	87.9	391.6	226.9	618.5	22.4	63.3
Persons	272.1	342.6	614.7	114.9	67.0	181.9	796.6	472.0	1 268.6	22.8	62.8

**LABOUR FORCE STATUS (AGED 15 & OVER)—States & Territories: Original—January 1995**

	EMPLOYED.....			UNEMPLOYED.....							
	Employed full time	Employed part time	Total employed	Unemp. looking for f/t work	Unemp. looking for p/t work	Total unemployed	Labour force	Not in labour force	Civilian population aged 15 and over	Unemp- loyment rate	Partic- ipation rate
	'000s	'000s	'000s	'000s	'000s	'000s	'000s	'000s	'000s	%	%
<b>MALES</b>											
New South Wales	1 384.8	159.2	1 544.0	147.4	18.8	166.2	1 710.2	633.6	2 343.8	9.7	73.0
Victoria	1 018.5	127.0	1 145.5	121.4	13.5	134.9	1 280.5	450.5	1 730.9	10.5	74.0
Queensland	759.8	77.1	837.0	77.0	10.7	87.6	924.6	319.5	1 244.1	9.5	74.3
South Australia	320.2	40.9	361.1	45.0	5.4	50.4	411.5	162.4	573.9	12.3	71.7
Western Australia	416.0	53.1	469.0	39.9	5.0	45.0	514.0	147.4	661.4	8.8	77.7
Tasmania	100.6	13.1	113.7	14.6	2.2	16.8	130.5	49.8	180.3	12.9	72.4
Northern Territory	39.3	5.1	44.4	3.6	* 0.8	4.3	48.8	13.6	62.3	8.9	78.2
Australian Capital Territory	72.3	8.7	81.0	5.9	1.4	7.3	88.4	24.1	112.5	8.3	78.6
<b>Australia</b>	<b>4 111.6</b>	<b>484.2</b>	<b>4 595.8</b>	<b>454.8</b>	<b>57.8</b>	<b>512.6</b>	<b>5 108.4</b>	<b>1 800.8</b>	<b>6 909.2</b>	<b>10.0</b>	<b>73.9</b>
<b>FEMALES</b>											
New South Wales	692.7	433.5	1 126.2	74.8	33.3	108.1	1 234.3	1 194.3	2 428.6	8.8	50.8
Victoria	478.1	340.1	818.2	75.6	25.0	100.7	918.9	887.3	1 806.1	11.0	50.9
Queensland	344.9	263.7	608.6	43.3	15.5	58.8	667.5	600.4	1 267.9	8.8	52.6
South Australia	153.0	122.3	275.3	18.2	7.9	26.0	301.4	293.4	594.8	8.6	50.7
Western Australia	186.4	156.4	342.8	18.3	8.6	26.9	369.7	297.5	667.2	7.3	55.4
Tasmania	41.8	36.9	81.7	8.8	2.5	11.2	92.9	93.5	186.5	12.1	49.8
Northern Territory	26.1	10.2	36.3	2.7	* 1.1	3.8	40.1	19.5	59.5	9.4	67.3
Australian Capital Territory	43.9	24.6	68.5	3.2	2.3	5.5	74.0	42.7	116.7	7.4	63.4
<b>Australia</b>	<b>1 969.9</b>	<b>1 387.8</b>	<b>3 357.6</b>	<b>244.9</b>	<b>96.2</b>	<b>341.1</b>	<b>3 698.7</b>	<b>3 428.6</b>	<b>7 127.3</b>	<b>9.2</b>	<b>51.9</b>
<b>PERSONS</b>											
New South Wales	2 077.5	592.8	2 670.2	222.2	52.0	274.2	2 944.4	1 827.9	4 772.4	9.3	61.7
Victoria	1 496.6	467.1	1 963.8	197.0	38.6	235.6	2 199.3	1 337.7	3 537.1	10.7	62.2
Queensland	1 104.7	340.9	1 445.6	120.3	26.2	146.5	1 592.1	919.9	2 512.0	9.2	63.4
South Australia	473.2	163.2	636.5	63.2	13.3	76.5	712.9	455.7	1 168.7	10.7	61.0
Western Australia	602.3	209.5	811.8	58.3	13.7	71.9	883.7	444.9	1 328.6	8.1	66.5
Tasmania	145.4	49.9	195.4	23.4	4.7	28.0	223.4	143.3	366.7	12.6	60.9
Northern Territory	65.4	15.3	80.7	6.3	1.8	8.1	88.8	33.0	121.8	9.1	72.9
Australian Capital Territory	116.2	33.3	149.5	9.1	3.7	12.9	162.4	66.9	229.2	7.9	70.8
<b>Australia</b>	<b>6 081.4</b>	<b>1 872.0</b>	<b>7 953.4</b>	<b>699.7</b>	<b>154.0</b>	<b>853.7</b>	<b>8 807.1</b>	<b>5 229.4</b>	<b>14 036.5</b>	<b>9.7</b>	<b>62.7</b>

## UNEMPLOYED PERSONS--New South Wales, Victoria and Queensland: Original

Month	NUMBER OF UNEMPLOYED PERSONS.....						UNEMPLOYMENT RATE.....				
	Aged 15-19 seeking first f/t job '000s	Aged 15-19 looking for f/t work '000s	Aged 20 and over looking for f/t work '000s	Total looking for f/t work '000s	Looking for p/t work '000s	Total unemployed '000s	Aged 15-19 looking for f/t work %	Aged 20 and over looking for f/t work %	Total looking for f/t work %	Looking for p/t work %	Total unemp-loyed %
<b>NEW SOUTH WALES</b>											
<b>1993</b>											
November	18.0	26.4	219.1	245.6	45.5	291.1	25.8	10.1	10.8	7.2	10.0
December	28.0	39.4	221.2	260.6	49.6	310.3	32.1	10.1	11.3	7.8	10.6
<b>1994</b>											
January	31.9	42.7	229.7	272.4	47.7	320.1	34.6	10.6	11.9	8.0	11.1
February	28.8	39.6	235.5	275.1	51.4	326.5	32.9	10.8	11.9	8.3	11.2
March	23.6	37.8	221.4	259.2	50.9	310.1	33.2	10.2	11.3	7.8	10.5
April	21.0	35.7	212.4	248.1	42.5	290.5	32.6	9.8	10.9	6.6	9.9
May	18.8	34.5	199.8	234.3	41.9	276.2	32.6	9.2	10.3	6.4	9.5
June	18.9	32.5	203.3	235.8	45.3	281.1	30.7	9.4	10.4	7.0	9.6
July	16.9	29.2	194.3	223.5	43.2	266.7	27.1	8.9	9.8	6.7	9.1
August	18.3	30.6	185.6	216.2	38.9	255.1	28.9	8.7	9.7	6.0	8.8
September	16.1	30.2	184.7	214.9	59.1	274.0	28.9	8.4	9.4	8.6	9.2
October	14.4	25.8	174.2	200.0	46.7	246.7	25.7	8.0	8.8	7.1	8.4
November	13.1	24.9	170.7	195.7	46.4	242.0	24.1	7.9	8.7	7.0	8.3
December	23.5	37.5	176.1	213.6	55.3	268.9	30.1	8.0	9.2	8.2	9.0
<b>1995</b>											
January	26.7	38.7	183.5	222.2	52.0	274.2	30.9	8.4	9.7	8.1	9.3
<b>VICTORIA</b>											
<b>1993</b>											
November	15.4	24.3	189.4	213.7	42.7	256.3	36.9	11.7	12.6	8.3	11.6
December	22.9	33.7	190.5	224.2	44.1	268.3	39.3	11.6	12.9	8.8	12.0
<b>1994</b>											
January	19.6	29.9	195.1	225.0	46.9	271.9	38.6	12.1	13.3	9.7	12.5
February	20.3	36.2	204.8	241.0	47.4	288.4	43.7	12.6	14.1	9.5	13.0
March	18.0	27.7	190.0	217.7	54.5	272.3	39.5	11.7	12.9	10.2	12.2
April	18.4	26.5	175.6	202.1	45.1	247.2	37.2	11.0	12.1	8.4	11.2
May	17.0	25.2	176.1	201.3	39.7	240.9	38.2	10.9	12.0	7.5	10.9
June	16.2	25.4	160.4	185.8	43.1	228.9	37.9	10.0	11.2	8.0	10.4
July	13.3	23.0	151.9	174.9	43.2	218.0	30.5	9.5	10.4	7.9	9.8
August	13.4	21.7	163.4	185.1	43.5	228.7	34.8	10.3	11.2	8.0	10.4
September	12.0	18.3	158.7	177.0	51.0	228.0	27.9	9.7	10.4	9.2	10.1
October	13.8	21.3	144.4	165.7	36.4	202.1	31.6	9.1	10.0	6.6	9.1
November	12.9	21.6	153.4	175.0	37.1	212.1	33.2	9.6	10.5	7.1	9.7
December	19.6	28.7	153.3	182.0	40.8	222.8	34.9	9.5	10.7	7.5	9.9
<b>1995</b>											
January	17.9	27.5	169.5	197.0	38.6	235.6	34.2	10.5	11.6	7.6	10.7
<b>QUEENSLAND</b>											
<b>1993</b>											
November	7.8	18.5	111.7	130.2	24.3	154.5	26.4	10.0	11.0	6.9	10.0
December	17.4	27.2	103.2	130.4	28.3	158.7	31.2	9.1	10.7	7.9	10.1
<b>1994</b>											
January	15.0	27.7	113.0	140.7	27.9	168.6	31.5	10.0	11.6	8.1	10.8
February	12.0	25.9	113.6	139.5	33.1	172.6	34.3	10.1	11.6	9.0	11.0
March	10.5	23.5	106.5	130.1	37.1	167.2	34.8	9.4	10.9	9.8	10.6
April	9.7	19.0	109.1	128.1	30.6	158.8	28.0	9.7	10.8	8.2	10.2
May	7.5	18.6	98.9	117.5	29.5	147.0	28.3	8.8	9.8	7.9	9.4
June	6.0	17.3	98.1	115.3	28.1	143.5	24.8	8.6	9.5	7.8	9.1
July	6.4	15.5	96.8	112.3	27.4	139.7	22.0	8.5	9.3	7.5	8.9
August	5.8	12.8	97.5	110.3	25.2	135.5	19.2	8.5	9.1	7.0	8.6
September	7.6	17.3	94.6	111.9	28.2	140.1	24.2	8.2	9.1	7.4	8.7
October	5.4	11.5	89.2	100.6	26.6	127.3	16.7	7.8	8.3	7.1	8.0
November	9.4	15.5	90.3	105.8	27.7	133.5	22.8	7.8	8.7	7.2	8.3
December	13.1	20.8	89.4	110.3	24.3	134.5	25.4	7.8	8.9	6.3	8.3
<b>1995</b>											
January	12.2	22.2	98.1	120.3	26.2	146.5	26.6	8.6	9.8	7.1	9.2

## UNEMPLOYED PERSONS—South Australia, Western Australia and Tasmania: Original

Month	NUMBER OF UNEMPLOYED PERSONS.....						UNEMPLOYMENT RATE.....				
	Aged 15-19 seeking first fit job	Aged 15-19 looking for f/t work	Aged 20 and over looking for f/t work	Total looking for f/t work	Looking for p/t work	Total unemployed	Aged 15-19 looking for f/t work	Aged 20 and over looking for f/t work	Total looking for f/t work	Looking for p/t work	Total unemp-loyed
	'000s	'000s	'000s	'000s	'000s	'000s	%	%	%	%	%
<b>SOUTH AUSTRALIA</b>											
<b>1993</b>											
November	5.8	10.2	53.2	63.3	13.1	76.4	39.7	10.5	12.0	7.1	10.7
December	8.9	11.7	55.1	66.8	13.3	80.1	36.9	10.7	12.2	7.3	11.0
<b>1994</b>											
January	9.2	13.4	61.2	74.5	13.2	87.8	42.7	12.0	13.8	7.5	12.2
February	7.6	12.6	57.2	69.8	13.9	83.6	40.3	11.2	12.9	8.0	11.7
March	7.6	10.4	54.1	64.5	15.5	80.0	37.1	10.7	12.1	8.3	11.2
April	5.4	9.9	51.1	60.9	11.0	71.9	37.1	10.2	11.6	6.1	10.2
May	6.4	11.3	51.3	62.6	12.2	74.8	40.6	10.3	11.9	6.6	10.5
June	6.5	11.0	52.4	63.4	12.3	75.7	38.2	10.4	11.9	7.0	10.6
July	4.9	9.3	51.4	60.8	12.1	72.8	34.6	10.2	11.4	6.4	10.1
August	6.3	9.5	51.3	60.8	12.4	73.2	36.1	10.1	11.4	6.8	10.2
September	6.5	8.9	51.2	60.1	14.7	74.8	36.0	9.9	11.1	8.0	10.3
October	6.8	10.8	48.3	59.1	14.1	73.1	37.2	9.5	10.9	7.8	10.2
November	6.1	8.5	50.1	58.6	13.3	71.9	32.8	9.8	10.9	7.4	10.0
December	6.1	9.3	51.2	60.4	13.5	74.0	32.4	10.1	11.3	7.2	10.2
<b>1995</b>											
January	5.1	8.0	55.2	63.2	13.3	76.5	27.9	10.9	11.8	7.5	10.7
<b>WESTERN AUSTRALIA</b>											
<b>1993</b>											
November	5.8	10.9	48.4	59.2	12.7	71.9	28.1	8.1	9.3	6.1	8.5
December	7.2	14.7	50.7	65.3	13.7	79.0	33.0	8.2	9.9	6.7	9.2
<b>1994</b>											
January	8.0	15.1	53.6	68.7	13.6	82.3	32.8	8.8	10.5	6.6	9.6
February	5.1	11.8	56.6	68.4	15.8	84.2	27.2	9.2	10.4	7.7	9.8
March	4.1	10.0	51.1	61.1	15.1	76.3	24.9	8.5	9.5	7.0	8.9
April	4.2	10.1	47.1	57.2	15.2	72.4	24.7	7.9	8.9	6.9	8.4
May	5.6	10.1	48.2	58.3	13.6	71.9	25.9	7.9	9.0	6.5	8.4
June	5.5	10.7	49.0	59.7	12.8	72.5	26.5	8.1	9.2	6.0	8.4
July	2.9	8.1	44.8	52.9	14.5	67.5	19.4	7.4	8.1	6.6	7.8
August	3.3	7.8	45.0	52.8	14.2	67.0	20.3	7.4	8.2	6.5	7.8
September	4.0	7.1	47.4	54.5	16.1	70.5	18.2	7.7	8.3	7.2	8.1
October	1.5	4.9	44.6	49.6	12.5	62.1	12.8	7.4	7.7	5.7	7.2
November	3.0	6.2	42.4	48.6	15.3	63.9	16.1	7.0	7.5	6.8	7.3
December	5.8	9.2	41.4	50.6	13.1	63.7	20.5	6.7	7.6	5.8	7.1
<b>1995</b>											
January	6.4	10.4	47.9	58.3	13.7	71.9	21.6	7.8	8.8	6.1	8.1
<b>TASMANIA</b>											
<b>1993</b>											
November	2.0	3.7	20.3	24.0	3.1	27.0	36.8	13.3	14.8	5.5	12.4
December	3.9	5.8	18.7	24.4	3.0	27.4	44.2	11.8	14.2	5.3	12.1
<b>1994</b>											
January	4.3	5.6	19.5	25.1	3.0	28.1	43.3	12.7	15.0	5.6	12.7
February	3.9	4.9	18.4	23.3	4.4	27.7	36.5	11.9	13.8	8.0	12.4
March	2.8	4.0	17.6	21.5	4.4	26.0	35.5	11.6	13.3	7.5	11.7
April	2.0	3.1	17.6	20.7	4.0	24.7	29.0	11.7	12.9	6.9	11.3
May	1.8	2.6	16.7	19.3	4.1	23.4	24.7	11.0	11.9	7.0	10.6
June	1.6	2.3	17.0	19.4	2.8	22.2	23.5	11.3	12.1	4.9	10.2
July	1.7	2.7	16.9	19.7	3.5	23.2	25.7	11.2	12.2	6.1	10.6
August	1.3	2.7	16.0	18.8	3.3	22.0	28.1	10.9	11.9	5.9	10.3
September	2.2	3.5	16.3	19.9	4.5	24.3	35.6	10.8	12.3	7.6	11.0
October	1.7	2.9	15.9	18.9	4.0	22.9	32.1	10.7	11.9	6.7	10.5
November	2.6	3.5	16.6	20.0	4.2	24.3	38.1	10.8	12.3	7.4	11.1
December	3.6	4.9	17.2	22.2	2.9	25.1	39.3	11.0	13.2	5.2	11.2
<b>1995</b>											
January	4.0	5.6	17.7	23.4	4.7	28.0	43.5	11.4	13.9	8.5	12.6

## UNEMPLOYED PERSONS—Northern Territory and Australian Capital Territory: Original

### NUMBER OF UNEMPLOYED PERSONS.....

### UNEMPLOYMENT RATE.....

Month	Aged 15-19 seeking first f/t job	Aged 15-19 looking for f/t work	Aged 20 and over looking for f/t work	Total looking for f/t work	Looking for p/t work	Total unemployed	Aged 15-19 looking for f/t work	Aged 20 and over looking for f/t work	Total looking for f/t work	Looking for p/t work	Total unemp-loyed
	'000s	'000s	'000s	'000s	'000s	'000s	%	%	%	%	%
<b>NORTHERN TERRITORY</b>											
<b>1993</b>											
November	* 0.2	* 0.4	4.4	4.8	* 1.0	5.8	* 12.9	7.3	7.5	* 6.1	7.2
December	* 0.3	* 0.8	4.1	4.9	* 0.8	5.7	* 26.2	6.6	7.6	* 5.0	7.1
<b>1994</b>											
January	* 0.2	* 0.2	5.4	5.6	* 0.9	6.5	* 8.5	9.4	9.4	* 5.9	8.7
February	* 0.4	* 0.8	5.4	6.2	1.6	7.8	* 23.9	8.6	9.4	12.5	9.9
March	* 0.3	* 0.9	4.3	5.2	* 0.4	5.6	* 30.7	6.9	8.0	* 3.2	7.2
April	* 0.4	* 0.7	4.4	5.0	* 0.9	6.0	* 24.9	7.1	7.9	* 7.0	7.7
May	* 0	* 0.5	3.6	4.1	* 0.6	4.7	* 22.6	5.9	6.4	* 4.6	6.1
June	* 0.4	* 0.6	2.9	3.5	1.4	4.9	* 22.8	4.6	5.3	9.1	6.0
July	* 0.8	1.3	3.6	4.9	* 0.7	5.6	44.6	5.5	7.2	* 5.1	6.8
August	* 0.6	* 1.2	3.5	4.7	* 1.2	5.9	* 48.8	5.5	7.1	* 7.5	7.2
September	* 0.5	* 1.1	5.0	6.0	* 1.2	7.2	* 35.1	7.2	8.3	* 6.7	8.0
October	* 0.5	* 0.9	4.9	5.8	* 0.8	6.6	* 30.2	7.3	8.3	* 4.5	7.5
November	* 0.4	* 0.9	4.6	5.6	* 0.9	6.5	* 26.8	6.9	7.8	* 4.9	7.2
December	* 0.4	* 1.1	4.1	5.2	1.4	6.5	* 27.3	5.9	7.0	7.5	7.1
<b>1995</b>											
January	* 0.3	* 0.6	5.7	6.3	1.8	8.1	* 20.6	8.2	8.7	10.8	9.1
<b>AUSTRALIAN CAPITAL TERRITORY</b>											
<b>1993</b>											
November	* 0.5	* 0.7	7.2	7.9	2.7	10.6	* 18.5	6.1	6.5	6.5	6.5
December	1.3	1.6	7.5	9.2	2.9	12.0	30.1	6.2	7.2	7.0	7.2
<b>1994</b>											
January	1.5	2.3	9.4	11.7	3.1	14.8	35.9	7.7	9.1	8.5	8.9
February	1.6	2.0	9.8	11.9	4.3	16.1	36.5	7.9	9.1	11.0	9.5
March	1.0	1.1	7.0	8.2	3.6	11.7	26.2	5.8	6.5	9.1	7.1
April	* 0.7	1.5	7.0	8.5	3.2	11.7	29.7	5.8	6.8	8.4	7.2
May	1.0	1.5	5.2	6.7	4.2	10.9	34.6	4.3	5.4	10.6	6.6
June	1.0	1.6	6.2	7.8	2.6	10.4	37.1	5.0	6.1	7.2	6.3
July	1.3	1.7	5.7	7.4	3.1	10.5	29.6	4.7	5.8	8.3	6.3
August	* 0.9	1.3	6.3	7.6	3.0	10.6	27.3	5.3	6.1	7.4	6.4
September	1.1	1.6	6.3	7.9	3.9	11.8	37.4	5.2	6.3	9.5	7.1
October	1.2	1.9	7.2	9.0	3.6	12.6	40.6	5.9	7.2	9.1	7.6
November	* 0.8	1.4	5.4	6.8	3.1	9.9	31.1	4.4	5.4	7.7	5.9
December	1.0	1.6	7.7	9.3	2.9	12.2	27.0	6.2	7.1	7.4	7.2
<b>1995</b>											
January	1.2	1.8	7.3	9.1	3.7	12.9	34.4	6.1	7.3	10.1	7.9



LABOUR FORCE STATUS (AGED 15 AND OVER)—New South Wales<sup>1</sup>

SEASONALLY ADJUSTED.....

TREND.....

Month	Employed	Total	Total	Unemp-	Partic-	Employed	Total	Total	Unemp-	Partic-	Civilian
	full time	employed	unemployed	loyment	ipation		full time	employed	unemployed	loyment	
	'000s	'000s	'000s	rate	rate	'000s	'000s	'000s	rate	rate	aged 15
				%	%				%	%	and over
											'000s
<b>MALES</b>											
<b>1993</b>											
November	1 339.9	1 485.3	188.4	11.3	72.3	1 337.7	1 485.6	190.5	11.4	72.4	2 315.7
December	1 343.5	1 491.8	192.2	11.4	72.7	1 341.3	1 491.1	188.5	11.2	72.5	2 317.6
<b>1994</b>											
January	1 346.8	1 494.1	186.8	11.1	72.5	1 344.0	1 495.3	186.3	11.1	72.5	2 319.4
February	1 344.9	1 501.8	178.3	10.6	72.4	1 345.8	1 497.8	184.0	10.9	72.5	2 321.1
March	1 342.5	1 501.1	183.4	10.9	72.5	1 346.9	1 499.8	181.5	10.8	72.4	2 322.9
April	1 350.8	1 503.0	177.3	10.6	72.3	1 348.5	1 502.5	178.5	10.6	72.3	2 324.9
May	1 352.1	1 499.2	178.1	10.6	72.1	1 350.7	1 506.7	174.9	10.4	72.3	2 326.9
June	1 349.1	1 509.4	176.4	10.5	72.4	1 353.6	1 512.4	170.7	10.1	72.3	2 329.0
July	1 360.8	1 520.5	160.3	9.5	72.1	1 356.5	1 518.7	165.9	9.8	72.3	2 331.0
August	1 356.4	1 532.1	155.7	9.2	72.3	1 359.9	1 525.2	161.3	9.6	72.3	2 333.0
September	1 372.6	1 533.2	165.3	9.7	72.7	1 363.9	1 531.3	157.6	9.3	72.3	2 335.1
October	1 359.2	1 536.8	150.5	8.9	72.2	1 369.0	1 536.9	155.2	9.2	72.4	2 337.1
November	1 371.9	1 532.9	153.1	9.1	72.1	1 374.5	1 542.4	153.6	9.1	72.5	2 339.1
December	1 382.3	1 546.9	151.2	8.9	72.5	1 380.3	1 547.7	152.6	9.0	72.6	2 341.0
<b>1995</b>											
January	1 393.8	1 563.5	156.0	9.1	73.4	1 385.2	1 552.4	152.7	9.0	72.7	2 343.8
<b>FEMALES</b>											
<b>1993</b>											
November	695.2	1 118.3	123.4	9.9	51.8	679.1	1 114.4	118.4	9.6	51.4	2 398.7
December	677.7	1 115.3	109.8	9.0	51.0	681.4	1 118.4	117.2	9.5	51.5	2 400.7
<b>1994</b>											
January	669.0	1 122.7	115.6	9.3	51.5	682.5	1 120.9	115.1	9.3	51.4	2 402.6
February	685.5	1 119.0	114.3	9.3	51.3	682.9	1 122.7	113.0	9.1	51.4	2 404.5
March	690.4	1 127.4	110.5	8.9	51.4	683.1	1 123.6	112.0	9.1	51.3	2 406.4
April	684.2	1 121.3	113.8	9.2	51.3	683.8	1 124.1	111.9	9.1	51.3	2 408.7
May	682.0	1 131.2	104.9	8.5	51.3	685.4	1 125.1	112.3	9.1	51.3	2 411.1
June	687.1	1 122.2	117.1	9.4	51.3	687.9	1 127.0	112.5	9.1	51.4	2 413.5
July	691.1	1 131.2	118.2	9.5	51.7	691.6	1 130.1	112.1	9.0	51.4	2 415.8
August	688.0	1 119.7	107.0	8.7	50.7	696.0	1 134.6	111.5	8.9	51.5	2 418.0
September	707.3	1 157.5	109.7	8.7	52.4	700.0	1 140.2	110.3	8.8	51.7	2 420.3
October	705.7	1 144.2	109.1	8.7	51.7	701.9	1 146.0	109.0	8.7	51.8	2 422.3
November	707.9	1 146.8	106.1	8.5	51.7	701.8	1 151.3	107.7	8.6	51.9	2 424.3
December	701.1	1 157.4	110.7	8.7	52.3	700.2	1 156.1	106.6	8.4	52.0	2 426.3
<b>1995</b>											
January	683.4	1 161.7	103.5	8.2	52.1	697.6	1 159.7	105.9	8.4	52.1	2 428.6
<b>PERSONS</b>											
<b>1993</b>											
November	2 035.1	2 603.6	311.8	10.7	61.8	2 016.8	2 600.1	308.9	10.6	61.7	4 714.4
December	2 021.2	2 607.1	302.1	10.4	61.7	2 022.7	2 609.5	305.7	10.5	61.8	4 718.3
<b>1994</b>											
January	2 015.8	2 616.8	302.3	10.4	61.8	2 026.5	2 616.2	301.4	10.3	61.8	4 722.0
February	2 030.3	2 620.8	292.6	10.0	61.7	2 028.7	2 620.5	297.1	10.2	61.7	4 725.6
March	2 032.9	2 628.4	293.9	10.1	61.8	2 030.1	2 623.4	293.4	10.1	61.7	4 729.2
April	2 035.0	2 624.4	291.1	10.0	61.6	2 032.3	2 626.6	290.4	10.0	61.6	4 733.6
May	2 034.1	2 630.4	283.0	9.7	61.5	2 036.2	2 631.8	287.3	9.8	61.6	4 738.0
June	2 036.2	2 631.6	293.5	10.0	61.7	2 041.5	2 639.4	283.1	9.7	61.6	4 742.4
July	2 051.9	2 651.7	278.5	9.5	61.7	2 048.1	2 648.8	278.0	9.5	61.7	4 746.8
August	2 044.3	2 651.8	262.7	9.0	61.3	2 055.9	2 659.8	272.7	9.3	61.7	4 751.1
September	2 079.9	2 690.6	275.0	9.3	62.4	2 064.0	2 671.5	267.9	9.1	61.8	4 755.4
October	2 065.0	2 681.0	259.6	8.8	61.8	2 070.9	2 682.9	264.1	9.0	61.9	4 759.4
November	2 079.8	2 679.7	259.2	8.8	61.7	2 076.3	2 693.7	261.3	8.8	62.0	4 763.4
December	2 083.4	2 704.3	261.9	8.8	62.2	2 080.4	2 703.8	259.2	8.7	62.2	4 767.4
<b>1995</b>											
January	2 077.2	2 725.2	259.5	8.7	62.5	2 082.8	2 712.1	258.6	8.7	62.2	4 772.4

<sup>1</sup> Trend estimates for July 1994 to December 1994 have been revised.

LABOUR FORCE STATUS (AGED 15 AND OVER)-Victoria<sup>1</sup>

Month	SEASONALLY ADJUSTED.....					TREND.....					Civilian population aged 15 and over '000s
	Employed full time '000s	Total employed '000s	Total unemployed '000s	Unemp-loyment rate %	Partic-ipation rate %	Employed full time '000s	Total employed '000s	Total unemployed '000s	Unemp-loyment rate %	Partic-ipation rate %	
<b>MALES</b>											
<b>1993</b>											
November	1 006.8	1 122.8	153.0	12.0	74.1	1 004.5	1 117.3	153.2	12.1	73.8	1 720.7
December	1 006.4	1 120.2	144.9	11.5	73.5	1 004.0	1 117.4	151.2	11.9	73.7	1 721.3
<b>1994</b>											
January	1 005.2	1 118.3	147.9	11.7	73.5	1 003.3	1 117.3	150.2	11.9	73.6	1 722.0
February	994.2	1 105.7	154.2	12.2	73.1	1 003.7	1 118.3	149.7	11.8	73.6	1 722.7
March	1 002.7	1 123.0	153.0	12.0	74.0	1 005.4	1 121.0	148.8	11.7	73.7	1 723.4
April	1 014.3	1 129.6	144.6	11.3	73.9	1 008.6	1 125.2	147.0	11.6	73.8	1 723.9
May	1 011.3	1 128.4	143.1	11.3	73.7	1 012.1	1 129.9	144.4	11.3	73.9	1 724.3
June	1 014.7	1 132.9	145.5	11.4	74.1	1 015.3	1 134.4	141.1	11.1	73.9	1 724.8
July	1 028.5	1 149.3	130.2	10.2	74.2	1 017.3	1 137.9	137.7	10.8	73.9	1 725.5
August	1 003.3	1 129.6	138.0	10.9	73.4	1 018.1	1 140.6	134.8	10.6	73.9	1 726.3
September	1 025.2	1 143.6	134.5	10.5	74.0	1 018.3	1 143.2	132.3	10.4	73.9	1 727.1
October	1 017.7	1 149.2	126.4	9.9	73.8	1 018.9	1 146.0	129.8	10.2	73.8	1 727.8
November	1 020.9	1 145.4	130.8	10.2	73.8	1 019.6	1 148.8	127.6	10.0	73.8	1 728.6
December	1 017.5	1 156.8	121.6	9.5	73.9	1 020.3	1 151.3	125.6	9.8	73.8	1 729.4
<b>1995</b>											
January	1 023.2	1 151.5	125.6	9.8	73.8	1 020.7	1 153.0	124.5	9.7	73.8	1 730.9
<b>FEMALES</b>											
<b>1993</b>											
November	468.6	823.0	118.2	12.6	52.4	470.6	821.3	117.0	12.5	52.3	1 794.4
December	467.6	817.6	115.4	12.4	52.0	469.8	821.8	114.9	12.3	52.2	1 795.2
<b>1994</b>											
January	466.2	814.1	111.0	12.0	51.5	470.1	823.4	111.5	11.9	52.1	1 795.9
February	477.8	828.4	104.8	11.2	51.9	471.2	826.9	107.2	11.5	52.0	1 796.7
March	476.4	837.3	105.6	11.2	52.5	472.4	831.9	102.9	11.0	52.0	1 797.4
April	466.0	836.8	102.6	10.9	52.2	473.7	837.3	99.5	10.6	52.1	1 798.1
May	476.5	842.2	93.0	9.9	52.0	474.6	842.4	97.5	10.4	52.3	1 798.7
June	473.8	844.4	90.3	9.7	51.9	475.2	846.1	96.7	10.3	52.4	1 799.4
July	480.2	854.5	97.2	10.2	52.9	475.4	848.0	96.5	10.2	52.5	1 800.3
August	469.3	837.7	105.2	11.2	52.4	475.0	848.1	96.5	10.2	52.4	1 801.2
September	483.7	856.5	98.5	10.3	53.0	474.2	846.9	96.4	10.2	52.3	1 802.1
October	465.4	850.1	90.5	9.6	52.2	472.8	844.7	96.0	10.2	52.2	1 803.0
November	473.6	833.1	92.8	10.0	51.3	471.7	842.1	95.4	10.2	52.0	1 803.8
December	467.6	837.7	94.9	10.2	51.7	470.9	839.8	95.1	10.2	51.8	1 804.7
<b>1995</b>											
January	473.6	839.5	99.0	10.5	52.0	470.2	837.5	94.8	10.2	51.6	1 806.1
<b>PERSONS</b>											
<b>1993</b>											
November	1 475.3	1 945.7	271.1	12.2	63.1	1 475.1	1 938.6	270.2	12.2	62.8	3 515.1
December	1 474.0	1 937.7	260.3	11.8	62.5	1 473.8	1 939.3	266.1	12.1	62.7	3 516.5
<b>1994</b>											
January	1 471.4	1 932.4	258.9	11.8	62.3	1 473.4	1 940.7	261.8	11.9	62.6	3 518.0
February	1 472.0	1 934.1	259.0	11.8	62.3	1 474.8	1 945.2	257.0	11.7	62.6	3 519.4
March	1 479.1	1 960.3	258.6	11.7	63.0	1 477.8	1 952.9	251.7	11.4	62.6	3 520.8
April	1 480.3	1 966.4	247.2	11.2	62.9	1 482.3	1 962.5	246.6	11.2	62.7	3 521.9
May	1 487.8	1 970.6	236.2	10.7	62.6	1 486.7	1 972.3	241.9	10.9	62.8	3 523.0
June	1 488.5	1 977.3	235.8	10.7	62.8	1 490.5	1 980.5	237.8	10.7	62.9	3 524.2
July	1 508.6	2 003.7	227.5	10.2	63.3	1 492.6	1 985.9	234.2	10.5	63.0	3 525.8
August	1 472.6	1 967.3	243.2	11.0	62.7	1 493.1	1 988.8	231.3	10.4	62.9	3 527.5
September	1 508.9	2 000.1	233.0	10.4	63.3	1 492.5	1 990.1	228.7	10.3	62.9	3 529.2
October	1 483.1	1 999.3	216.9	9.8	62.8	1 491.7	1 990.7	225.8	10.2	62.8	3 530.8
November	1 494.5	1 978.4	223.5	10.2	62.3	1 491.3	1 991.0	223.0	10.1	62.7	3 532.4
December	1 485.0	1 994.4	216.5	9.8	62.6	1 491.2	1 991.0	220.7	10.0	62.6	3 534.1
<b>1995</b>											
January	1 496.8	1 991.0	224.6	10.1	62.6	1 490.9	1 990.5	219.3	9.9	62.5	3 537.1

<sup>1</sup> Trend estimates for July 1994 to December 1994 have been revised.

LABOUR FORCE STATUS (AGED 15 AND OVER)-Queensland<sup>1</sup>

Month	SEASONALLY ADJUSTED.....					TREND.....					Civilian population aged 15 and over '000s
	Employed full time '000s	Total employed '000s	Total unemployed '000s	Unemployment rate %	Participation rate %	Employed full time '000s	Total employed '000s	Total unemployed '000s	Unemployment rate %	Participation rate %	
<b>MALES</b>											
<b>1993</b>											
November	724.7	803.5	96.3	10.7	74.8	719.1	803.1	97.2	10.8	74.9	1 202.3
December	719.8	802.4	92.3	10.3	74.2	721.1	806.9	95.3	10.6	74.9	1 205.1
<b>1994</b>											
January	725.2	820.0	91.7	10.1	75.5	723.2	811.0	93.0	10.3	74.8	1 208.1
February	724.1	815.1	93.6	10.3	75.0	725.5	815.0	90.8	10.0	74.8	1 211.1
March	725.5	813.6	90.7	10.0	74.5	728.5	818.9	88.5	9.8	74.7	1 214.1
April	729.4	817.1	87.6	9.7	74.3	732.9	822.9	86.2	9.5	74.7	1 217.0
May	741.5	834.3	79.7	8.7	74.9	738.1	826.8	84.0	9.2	74.7	1 219.8
June	746.0	831.5	81.8	9.0	74.7	743.4	830.1	82.6	9.1	74.6	1 222.7
July	745.4	832.3	81.3	8.9	74.5	747.6	832.8	82.3	9.0	74.7	1 225.7
August	753.2	835.1	83.1	9.0	74.7	750.3	834.7	82.8	9.0	74.7	1 228.8
September	753.4	833.8	85.3	9.3	74.6	751.8	836.0	83.2	9.1	74.6	1 231.8
October	750.3	837.2	83.9	9.1	74.6	753.0	837.5	83.1	9.0	74.5	1 234.9
November	754.8	839.7	84.7	9.2	74.7	754.3	839.3	82.3	8.9	74.5	1 237.9
December	751.5	842.1	77.6	8.4	74.1	755.8	841.2	81.2	8.8	74.3	1 241.0
<b>1995</b>											
January	762.4	843.7	79.1	8.6	74.2	757.2	842.8	80.2	8.7	74.2	1 244.1
<b>FEMALES</b>											
<b>1993</b>											
November	336.5	575.7	74.4	11.4	52.9	338.3	583.3	67.8	10.4	53.0	1 228.0
December	348.0	596.0	63.8	9.7	53.6	341.5	587.8	66.8	10.2	53.2	1 230.7
<b>1994</b>											
January	343.0	590.0	66.4	10.1	53.2	343.5	591.2	65.5	10.0	53.2	1 233.5
February	344.4	594.8	62.1	9.5	53.1	344.2	593.2	64.4	9.8	53.2	1 236.2
March	347.5	597.4	63.4	9.6	53.3	343.9	594.1	63.5	9.7	53.1	1 238.9
April	339.7	590.1	62.5	9.6	52.6	343.9	594.8	63.0	9.6	53.0	1 241.7
May	338.5	595.7	64.3	9.7	53.0	345.0	596.0	62.8	9.5	52.9	1 244.5
June	353.2	597.5	63.9	9.7	53.0	347.7	598.7	62.8	9.5	53.0	1 247.3
July	349.0	603.8	61.0	9.2	53.2	351.9	603.1	62.6	9.4	53.2	1 250.1
August	356.4	605.4	61.4	9.2	53.2	355.8	608.4	62.1	9.3	53.5	1 253.1
September	358.2	617.0	63.2	9.3	54.2	358.0	614.0	61.4	9.1	53.8	1 256.0
October	361.2	617.8	59.5	8.8	53.8	358.0	618.7	60.5	8.9	54.0	1 258.9
November	363.8	627.5	62.7	9.1	54.7	356.2	622.6	59.6	8.7	54.1	1 261.8
December	352.0	625.0	54.8	8.1	53.7	353.3	625.7	58.7	8.6	54.1	1 264.8
<b>1995</b>											
January	338.0	625.1	58.3	8.5	53.9	350.2	627.8	57.9	8.4	54.1	1 267.9
<b>PERSONS</b>											
<b>1993</b>											
November	1 061.3	1 379.2	170.7	11.0	63.8	1 057.4	1 386.4	165.0	10.6	63.8	2 430.4
December	1 067.9	1 398.4	156.1	10.0	63.8	1 062.5	1 394.7	162.0	10.4	63.9	2 435.8
<b>1994</b>											
January	1 068.2	1 410.0	158.1	10.1	64.2	1 066.7	1 402.2	158.6	10.2	63.9	2 441.5
February	1 068.5	1 409.8	155.8	9.9	64.0	1 069.6	1 408.2	155.2	9.9	63.9	2 447.3
March	1 073.0	1 410.9	154.2	9.8	63.8	1 072.4	1 413.0	152.0	9.7	63.8	2 453.0
April	1 069.1	1 407.2	150.0	9.6	63.3	1 076.8	1 417.7	149.2	9.5	63.7	2 458.7
May	1 080.0	1 430.0	144.0	9.1	63.9	1 083.1	1 422.8	146.8	9.4	63.7	2 464.3
June	1 099.2	1 429.0	145.7	9.3	63.8	1 091.1	1 428.8	145.5	9.2	63.7	2 470.0
July	1 094.4	1 436.2	142.3	9.0	63.8	1 099.4	1 435.9	144.9	9.2	63.8	2 475.9
August	1 109.6	1 440.5	144.5	9.1	63.9	1 106.0	1 443.2	144.9	9.1	64.0	2 481.8
September	1 111.6	1 450.8	148.5	9.3	64.3	1 109.8	1 450.0	144.6	9.1	64.1	2 487.8
October	1 111.5	1 455.0	143.4	9.0	64.1	1 110.9	1 456.2	143.6	9.0	64.2	2 493.8
November	1 118.7	1 467.2	147.4	9.1	64.6	1 110.5	1 462.0	141.9	8.8	64.2	2 499.8
December	1 103.4	1 467.1	132.3	8.3	63.8	1 109.0	1 467.0	139.9	8.7	64.1	2 505.8
<b>1995</b>											
January	1 100.3	1 468.8	137.4	8.6	63.9	1 107.4	1 470.6	138.1	8.6	64.0	2 512.0

<sup>1</sup> Trend estimates for July 1994 to December 1994 have been revised.

LABOUR FORCE STATUS (AGED 15 AND OVER)—South Australia<sup>1</sup>

Month	SEASONALLY ADJUSTED.....					TREND.....					Civilian population aged 15 and over '000s
	Employed full time '000s	Total employed '000s	Total unemployed '000s	Unemployment rate %	Participation rate %	Employed full time '000s	Total employed '000s	Total unemployed '000s	Unemployment rate %	Participation rate %	
<b>MALES</b>											
<b>1993</b>											
November	321.2	362.4	49.7	12.0	72.3	320.7	362.1	48.6	11.8	72.0	570.2
December	321.8	364.2	47.7	11.6	72.2	320.9	362.2	48.7	11.9	72.0	570.5
<b>1994</b>											
January	320.4	362.5	49.1	11.9	72.1	321.2	362.0	48.5	11.8	71.9	570.8
February	321.7	359.8	46.6	11.5	71.2	321.7	361.8	47.8	11.7	71.7	571.1
March	322.5	362.3	48.9	11.9	72.0	322.2	361.7	46.9	11.5	71.5	571.4
April	321.7	361.5	45.2	11.1	71.1	323.0	362.0	46.1	11.3	71.4	571.7
May	325.9	363.7	44.3	10.9	71.3	324.3	362.9	45.4	11.1	71.4	571.9
June	324.7	361.0	46.5	11.4	71.2	326.0	364.1	44.8	11.0	71.5	572.1
July	324.8	367.3	42.6	10.4	71.6	327.5	365.3	44.5	10.9	71.6	572.4
August	330.5	367.0	45.1	10.9	72.0	328.1	365.9	44.4	10.8	71.6	572.7
September	330.4	365.7	44.4	10.8	71.6	327.6	365.7	44.4	10.8	71.6	572.9
October	328.1	366.5	44.9	10.9	71.8	326.2	365.0	44.5	10.9	71.5	573.2
November	323.5	364.0	44.1	10.8	71.2	324.3	364.0	44.7	10.9	71.3	573.4
December	318.0	360.4	44.5	11.0	70.6	322.2	363.0	44.8	11.0	71.1	573.6
<b>1995</b>											
January	320.1	362.3	45.9	11.2	71.1	320.3	361.8	45.2	11.1	70.9	573.9
<b>FEMALES</b>											
<b>1993</b>											
November	144.9	273.5	30.6	10.1	51.4	146.4	273.4	30.2	10.0	51.3	591.6
December	150.5	276.4	30.8	10.0	51.9	146.1	273.1	30.5	10.0	51.3	591.9
<b>1994</b>											
January	144.3	273.3	31.1	10.2	51.4	145.8	272.7	30.4	10.0	51.2	592.2
February	147.2	271.6	29.3	9.7	50.8	145.4	272.2	30.2	10.0	51.0	592.4
March	143.0	269.9	31.3	10.4	50.8	145.0	272.1	30.2	10.0	51.0	592.7
April	145.2	273.4	27.1	9.0	50.7	144.9	272.9	30.5	10.1	51.2	592.9
May	143.7	274.0	31.3	10.3	51.5	145.2	274.7	31.1	10.2	51.5	593.1
June	147.1	272.7	33.5	10.9	51.6	146.2	277.1	31.6	10.2	52.0	593.3
July	148.2	286.0	33.4	10.5	53.8	147.7	279.6	32.0	10.3	52.5	593.6
August	148.3	281.2	30.5	9.8	52.5	149.2	281.3	31.9	10.2	52.7	593.8
September	150.5	282.9	30.6	9.7	52.8	150.4	282.0	31.2	10.0	52.7	594.0
October	151.6	280.8	30.2	9.7	52.3	151.3	282.2	30.2	9.7	52.6	594.2
November	154.5	281.6	31.4	10.0	52.7	151.9	282.0	29.0	9.3	52.3	594.4
December	150.6	282.5	27.9	9.0	52.2	152.2	281.7	27.9	9.0	52.1	594.6
<b>1995</b>											
January	151.3	280.5	24.0	7.9	51.2	152.3	281.0	26.8	8.7	51.7	594.8
<b>PERSONS</b>											
<b>1993</b>											
November	466.0	636.0	80.3	11.2	61.7	467.1	635.5	78.8	11.0	61.5	1 161.8
December	472.3	640.6	78.4	10.9	61.9	467.0	635.3	79.2	11.1	61.5	1 162.4
<b>1994</b>											
January	464.7	635.8	80.3	11.2	61.6	467.0	634.7	78.8	11.0	61.4	1 163.0
February	468.8	631.4	75.9	10.7	60.8	467.0	634.0	78.0	11.0	61.2	1 163.6
March	465.5	632.2	80.2	11.3	61.2	467.2	633.8	77.1	10.8	61.1	1 164.2
April	466.8	634.9	72.3	10.2	60.7	467.9	634.9	76.6	10.8	61.1	1 164.6
May	469.6	637.7	75.7	10.6	61.2	469.5	637.5	76.5	10.7	61.3	1 165.0
June	471.9	633.8	80.1	11.2	61.2	472.2	641.2	76.4	10.7	61.6	1 165.5
July	473.0	653.3	76.1	10.4	62.6	475.1	644.8	76.4	10.6	61.9	1 166.0
August	478.8	648.1	75.5	10.4	62.0	477.3	647.1	76.2	10.5	62.0	1 166.5
September	480.9	648.6	75.0	10.4	62.0	478.1	647.8	75.6	10.5	62.0	1 167.0
October	479.7	647.3	75.1	10.4	61.9	477.5	647.2	74.7	10.4	61.8	1 167.4
November	478.1	645.6	75.5	10.5	61.7	476.1	646.0	73.7	10.2	61.6	1 167.8
December	468.6	642.9	72.4	10.1	61.2	474.4	644.8	72.7	10.1	61.4	1 168.2
<b>1995</b>											
January	471.5	642.7	69.9	9.8	61.0	472.6	642.8	71.9	10.1	61.2	1 168.7

<sup>1</sup> Trend estimates for July 1994 to December 1994 have been revised.

LABOUR FORCE STATUS (AGED 15 AND OVER)-Western Australia<sup>1</sup>

SEASONALLY ADJUSTED.....

TREND.....

Month	SEASONALLY ADJUSTED.....					TREND.....					Civilian population aged 15 and over '000s
	Employed full time '000s	Total employed '000s	Total unemployed '000s	Unemployment rate %	Participation rate %	Employed full time '000s	Total employed '000s	Total unemployed '000s	Unemployment rate %	Participation rate %	
<b>MALES</b>											
<b>1993</b>											
November	406.2	455.3	46.6	9.3	77.5	407.5	454.3	46.1	9.2	77.3	647.2
December	409.0	453.5	47.1	9.4	77.3	408.6	455.1	45.8	9.2	77.3	648.0
<b>1994</b>											
January	407.7	455.1	45.5	9.1	77.1	409.7	456.1	45.0	9.0	77.2	649.0
February	414.3	457.9	43.5	8.7	77.2	410.6	457.2	43.7	8.7	77.1	650.0
March	411.9	459.8	42.5	8.5	77.2	411.3	458.3	42.5	8.5	76.9	651.0
April	411.1	459.5	40.0	8.0	76.6	412.0	459.4	41.7	8.3	76.9	651.9
May	411.2	460.3	39.9	8.0	76.6	412.8	460.3	41.2	8.2	76.8	652.8
June	410.5	457.5	42.6	8.5	76.5	413.6	461.1	41.0	8.2	76.8	653.7
July	417.0	465.2	41.8	8.2	77.4	414.1	461.8	40.8	8.1	76.8	654.8
August	417.1	463.1	40.8	8.1	76.8	414.3	462.9	40.6	8.1	76.8	655.8
September	416.6	464.1	40.0	7.9	76.7	414.1	464.2	40.2	8.0	76.8	656.8
October	409.1	462.6	37.9	7.6	76.1	413.8	465.9	39.8	7.9	76.8	658.0
November	410.4	468.4	41.6	8.2	77.4	413.7	467.6	39.5	7.8	76.9	659.1
December	416.1	470.6	37.4	7.4	76.9	413.9	469.3	39.4	7.7	77.0	660.2
<b>1995</b>											
January	416.8	472.0	41.2	8.0	77.6	414.1	470.5	39.5	7.7	77.1	661.4
<b>FEMALES</b>											
<b>1993</b>											
November	171.0	321.0	32.7	9.2	54.2	172.0	321.0	32.0	9.1	54.1	653.0
December	173.1	320.3	31.8	9.0	53.9	172.9	322.8	31.8	9.0	54.2	653.9
<b>1994</b>											
January	174.4	328.9	31.8	8.8	55.1	173.7	324.1	31.5	8.9	54.3	654.8
February	173.4	323.9	33.1	9.3	54.4	174.6	324.9	31.2	8.8	54.3	655.8
March	175.3	323.8	28.3	8.0	53.6	175.7	325.6	31.0	8.7	54.3	656.7
April	176.8	329.0	29.5	8.2	54.5	176.8	326.6	30.9	8.6	54.4	657.6
May	179.7	325.1	31.8	8.9	54.2	177.8	328.0	30.8	8.6	54.5	658.6
June	178.3	327.1	33.7	9.3	54.7	178.7	329.7	30.7	8.5	54.7	659.6
July	180.3	337.1	29.1	8.0	55.4	179.8	331.9	30.5	8.4	54.9	660.6
August	179.8	335.2	28.3	7.8	54.9	181.1	334.4	30.1	8.2	55.1	661.6
September	179.6	331.9	31.2	8.6	54.8	182.4	336.9	29.3	8.0	55.3	662.6
October	186.1	342.5	27.8	7.5	55.8	183.6	339.5	28.5	7.7	55.4	663.8
November	187.2	340.2	28.8	7.8	55.5	184.5	342.1	27.8	7.5	55.6	664.9
December	185.5	346.3	26.2	7.0	55.9	185.2	344.4	27.2	7.3	55.8	666.1
<b>1995</b>											
January	182.2	347.4	26.4	7.1	56.0	185.4	346.2	26.8	7.2	55.9	667.2
<b>PERSONS</b>											
<b>1993</b>											
November	577.2	776.3	79.2	9.3	65.8	579.5	775.3	78.2	9.2	65.6	1 300.2
December	582.1	773.9	78.9	9.3	65.5	581.5	777.9	77.7	9.1	65.7	1 301.9
<b>1994</b>											
January	582.1	784.0	77.4	9.0	66.1	583.5	780.2	76.5	8.9	65.7	1 303.8
February	587.7	781.9	76.7	8.9	65.8	585.3	782.1	75.0	8.7	65.6	1 305.7
March	587.2	783.6	70.8	8.3	65.3	587.0	783.9	73.6	8.6	65.6	1 307.6
April	587.9	788.5	69.5	8.1	65.5	588.8	786.0	72.5	8.5	65.6	1 309.5
May	590.9	785.5	71.8	8.4	65.4	590.6	788.3	72.0	8.4	65.6	1 311.4
June	588.8	784.7	76.2	8.9	65.6	592.3	790.8	71.7	8.3	65.7	1 313.3
July	597.2	802.3	70.9	8.1	66.4	593.9	793.7	71.4	8.3	65.8	1 315.4
August	596.9	798.3	69.1	8.0	65.8	595.3	797.2	70.6	8.1	65.9	1 317.4
September	596.2	796.0	71.1	8.2	65.7	596.5	801.2	69.5	8.0	66.0	1 319.5
October	595.3	805.0	65.6	7.5	65.9	597.4	805.4	68.3	7.8	66.1	1 321.7
November	597.6	808.7	70.4	8.0	66.4	598.3	809.6	67.3	7.7	66.2	1 324.0
December	601.6	816.9	63.6	7.2	66.4	599.1	813.7	66.6	7.6	66.4	1 326.3
<b>1995</b>											
January	599.1	819.4	67.6	7.6	66.8	599.4	816.7	66.3	7.5	66.5	1 328.6

<sup>1</sup> Trend estimates for July 1994 to December 1994 have been revised.

LABOUR FORCE STATUS (AGED 15 AND OVER)-Tasmania<sup>1</sup>

SEASONALLY ADJUSTED.....

TREND.....

Month	SEASONALLY ADJUSTED					TREND					Civilian population aged 15 and over '000s
	Employed full time '000s	Total employed '000s	Total unemployed '000s	Unemployment rate %	Participation rate %	Employed full time '000s	Total employed '000s	Total unemployed '000s	Unemployment rate %	Participation rate %	
<b>MALES</b>											
<b>1993</b>											
November	98.0	109.0	17.8	14.1	70.7	99.3	110.9	17.4	13.6	71.5	179.4
December	101.7	113.4	16.6	12.8	72.4	99.6	111.6	17.4	13.5	71.9	179.6
<b>1994</b>											
January	99.3	112.3	16.9	13.1	71.9	99.7	112.2	17.5	13.5	72.2	179.6
February	100.5	113.3	17.9	13.6	73.0	99.8	112.4	17.4	13.4	72.3	179.7
March	98.7	112.2	18.0	13.9	72.4	99.9	112.5	17.1	13.2	72.1	179.8
April	99.9	111.2	16.8	13.1	71.2	100.1	112.3	16.6	12.8	71.7	179.8
May	99.8	112.4	16.0	12.5	71.4	100.1	112.1	15.9	12.4	71.2	179.8
June	101.4	112.5	14.1	11.1	70.4	100.2	112.1	15.2	11.9	70.8	179.9
July	101.0	112.6	14.5	11.4	70.7	100.1	112.4	14.6	11.5	70.6	179.9
August	99.1	112.0	14.3	11.3	70.2	100.0	112.8	14.4	11.3	70.7	179.9
September	99.1	112.7	15.1	11.8	71.0	99.9	113.3	14.5	11.4	71.0	180.0
October	99.5	115.3	14.1	10.9	71.9	100.0	113.8	14.7	11.4	71.4	180.0
November	100.9	113.6	15.3	11.9	71.6	100.2	114.2	14.9	11.5	71.6	180.1
December	100.9	115.1	14.8	11.4	72.1	100.4	114.5	15.1	11.6	71.9	180.2
<b>1995</b>											
January	100.8	114.0	15.4	11.9	71.8	100.8	114.7	15.2	11.7	72.0	180.3
<b>FEMALES</b>											
<b>1993</b>											
November	42.5	82.2	9.9	10.8	49.6	42.6	81.8	10.0	10.9	49.5	185.7
December	43.3	83.4	9.4	10.1	49.9	42.7	82.3	9.6	10.4	49.5	185.8
<b>1994</b>											
January	42.7	83.0	9.0	9.8	49.5	42.7	82.8	9.2	10.0	49.5	185.9
February	43.2	84.2	9.1	9.8	50.2	42.5	83.1	8.9	9.7	49.5	186.0
March	42.0	82.4	8.4	9.2	48.8	42.1	83.2	8.7	9.5	49.4	186.0
April	40.4	81.5	8.7	9.6	48.4	41.6	83.2	8.6	9.4	49.4	186.1
May	42.4	83.8	9.2	9.9	50.0	41.2	83.2	8.5	9.3	49.3	186.1
June	40.1	84.1	7.5	8.2	49.2	40.9	83.0	8.5	9.3	49.1	186.1
July	41.3	83.4	9.4	10.1	49.9	40.8	82.5	8.5	9.4	48.9	186.2
August	40.5	80.6	7.8	8.8	47.5	41.0	81.9	8.6	9.5	48.6	186.2
September	41.8	82.5	8.9	9.7	49.1	41.4	81.3	8.8	9.8	48.4	186.2
October	40.2	78.6	9.4	10.7	47.2	42.0	81.0	9.1	10.1	48.4	186.3
November	44.2	81.6	9.7	10.6	49.0	42.7	81.1	9.4	10.4	48.5	186.3
December	43.1	80.7	8.9	10.0	48.1	43.4	81.4	9.7	10.6	48.9	186.4
<b>1995</b>											
January	44.7	84.1	10.5	11.1	50.7	44.0	81.8	9.9	10.7	49.2	186.5
<b>PERSONS</b>											
<b>1993</b>											
November	140.6	191.2	27.8	12.7	60.0	141.9	192.7	27.4	12.5	60.3	365.2
December	145.0	196.8	26.0	11.7	61.0	142.2	194.0	27.0	12.2	60.5	365.4
<b>1994</b>											
January	142.0	195.3	25.9	11.7	60.5	142.4	195.0	26.7	12.0	60.6	365.5
February	143.7	197.5	27.0	12.0	61.4	142.3	195.5	26.3	11.9	60.7	365.7
March	140.7	194.6	26.4	11.9	60.4	142.0	195.7	25.8	11.7	60.6	365.8
April	140.3	192.6	25.4	11.7	59.6	141.7	195.5	25.2	11.4	60.3	365.9
May	142.2	196.3	25.2	11.4	60.5	141.3	195.3	24.4	11.1	60.0	365.9
June	141.5	196.6	21.6	9.9	59.6	141.0	195.1	23.7	10.8	59.8	366.0
July	142.3	196.1	23.9	10.9	60.1	140.9	194.9	23.2	10.6	59.6	366.1
August	139.7	192.6	22.1	10.3	58.6	140.9	194.7	23.1	10.6	59.5	366.2
September	140.9	195.1	24.0	10.9	59.8	141.3	194.6	23.4	10.7	59.5	366.2
October	139.7	193.9	23.5	10.8	59.4	142.0	194.8	23.8	10.9	59.7	366.3
November	145.1	195.2	25.0	11.3	60.1	142.9	195.2	24.3	11.1	59.9	366.5
December	144.0	195.7	23.8	10.8	59.9	143.8	195.8	24.7	11.2	60.2	366.6
<b>1995</b>											
January	145.4	198.1	26.0	11.6	61.1	144.7	196.5	25.0	11.3	60.4	366.7

<sup>1</sup> Trend estimates for July 1994 to December 1994 have been revised.

## TREND.....

Month	Employed full time	Total employed	Total unemployed	Unemp- loyment rate	Partic- ipation rate	Civilian population aged 15 and over
	'000s	'000s	'000s	%	%	'000s
<b>MALES</b>						
<b>1993</b>						
November	37.5	43.0	3.2	6.9	74.9	61.7
December	37.3	42.3	3.2	7.0	73.7	61.8
<b>1994</b>						
January	37.1	41.5	3.3	7.3	72.4	61.8
February	36.9	40.9	3.4	7.6	71.5	61.9
March	37.0	40.6	3.4	7.8	71.1	61.9
April	37.3	40.8	3.5	7.8	71.5	61.9
May	37.7	41.3	3.5	7.8	72.3	61.9
June	38.2	41.9	3.5	7.7	73.4	61.8
July	38.7	42.6	3.5	7.6	74.5	61.9
August	39.2	43.3	3.5	7.6	75.7	61.9
September	39.7	44.0	3.6	7.6	76.8	62.0
October	40.1	44.7	3.6	7.5	77.9	62.1
November	40.6	45.4	3.7	7.5	79.0	62.1
December	41.0	46.1	3.7	7.4	80.0	62.2
<b>1995</b>						
January	41.3	46.7	3.7	7.3	80.8	62.3
<b>FEMALES</b>						
<b>1993</b>						
November	22.2	33.5	2.4	6.7	61.8	58.1
December	22.1	32.7	2.4	6.9	60.4	58.1
<b>1994</b>						
January	22.1	31.9	2.5	7.2	59.0	58.2
February	22.3	31.4	2.5	7.4	58.1	58.3
March	22.5	31.2	2.5	7.4	57.7	58.4
April	22.7	31.3	2.4	7.2	57.8	58.4
May	22.9	31.8	2.4	7.1	58.5	58.5
June	23.0	32.4	2.5	7.1	59.6	58.5
July	23.2	33.2	2.6	7.3	61.1	58.6
August	23.5	34.3	2.8	7.5	63.0	58.8
September	24.0	35.5	2.9	7.5	65.1	58.9
October	24.5	36.6	3.0	7.6	67.0	59.1
November	25.1	37.6	3.1	7.5	68.6	59.2
December	25.8	38.4	3.1	7.4	69.9	59.4
<b>1995</b>						
January	26.5	39.1	3.1	7.4	70.9	59.5
<b>PERSONS</b>						
<b>1993</b>						
November	59.7	76.5	5.6	6.8	68.6	119.8
December	59.4	75.0	5.6	7.0	67.2	119.9
<b>1994</b>						
January	59.2	73.4	5.8	7.3	65.9	120.1
February	59.2	72.3	5.9	7.5	65.0	120.2
March	59.5	71.8	5.9	7.6	64.6	120.4
April	60.0	72.1	5.9	7.5	64.8	120.3
May	60.6	73.0	5.9	7.4	65.6	120.3
June	61.2	74.3	6.0	7.4	66.7	120.3
July	61.9	75.8	6.1	7.5	68.0	120.5
August	62.7	77.6	6.3	7.5	69.5	120.7
September	63.6	79.5	6.5	7.6	71.1	120.9
October	64.6	81.3	6.6	7.6	72.6	121.2
November	65.7	83.0	6.7	7.5	73.9	121.4
December	66.8	84.5	6.8	7.4	75.1	121.6
<b>1995</b>						
January	67.8	85.7	6.8	7.4	76.0	121.8

<sup>1</sup> Trend estimates for July 1994 to December 1994 have been revised. Estimates for the most recent three months may be subject to significant revisions as data for later months become available.

LABOUR FORCE STATUS (AGED 15 AND OVER)—Australian Capital Territory<sup>1</sup>

TREND

Month	Employed full time '000s	Total employed '000s	Total unemployed '000s	Unemployment rate %	Participation rate %	Civilian population aged 15 and over '000s
<b>MALES</b>						
<b>1993</b>						
November	71.8	82.0	6.8	7.6	80.5	110.3
December	72.1	82.3	6.8	7.6	80.6	110.5
<b>1994</b>						
January	72.3	82.5	6.8	7.6	80.6	110.8
February	72.6	82.8	6.7	7.5	80.5	111.1
March	72.9	83.1	6.5	7.3	80.4	111.4
April	73.1	83.3	6.3	7.0	80.4	111.5
May	73.0	83.3	6.2	6.9	80.2	111.6
June	72.8	83.2	6.1	6.9	80.0	111.8
July	72.5	83.1	6.3	7.1	79.9	111.9
August	72.3	82.9	6.6	7.4	79.9	112.0
September	72.2	82.8	6.9	7.7	79.9	112.2
October	72.2	82.7	7.1	7.9	79.9	112.3
November	72.2	82.6	7.2	8.0	79.8	112.4
December	72.3	82.5	7.2	8.0	79.7	112.5
<b>1995</b>						
January	72.4	82.4	7.1	7.9	79.5	112.5
<b>FEMALES</b>						
<b>1993</b>						
November	43.2	71.0	5.8	7.6	66.6	115.4
December	43.2	70.9	5.7	7.5	66.3	115.6
<b>1994</b>						
January	43.4	70.6	5.6	7.3	65.8	115.7
February	43.9	70.2	5.3	7.1	65.2	115.9
March	44.6	69.8	5.2	6.9	64.6	116.1
April	45.4	69.7	5.1	6.8	64.4	116.1
May	46.2	69.9	5.1	6.8	64.5	116.2
June	46.8	70.4	5.1	6.8	65.0	116.2
July	47.3	71.1	5.3	6.9	65.7	116.3
August	47.4	71.7	5.3	6.9	66.2	116.4
September	47.1	72.0	5.3	6.9	66.4	116.4
October	46.5	72.1	5.2	6.8	66.3	116.5
November	45.8	72.0	5.1	6.6	66.1	116.6
December	45.0	71.9	5.0	6.5	65.9	116.6
<b>1995</b>						
January	44.2	71.6	4.8	6.3	65.5	116.7
<b>PERSONS</b>						
<b>1993</b>						
November	115.0	153.0	12.6	7.6	73.4	225.6
December	115.3	153.2	12.5	7.5	73.3	226.1
<b>1994</b>						
January	115.7	153.1	12.3	7.4	73.0	226.5
February	116.4	153.0	12.0	7.3	72.7	227.0
March	117.5	152.9	11.7	7.1	72.4	227.5
April	118.5	153.0	11.4	6.9	72.2	227.6
May	119.3	153.2	11.2	6.8	72.2	227.8
June	119.6	153.6	11.3	6.8	72.4	227.9
July	119.8	154.1	11.6	7.0	72.6	228.2
August	119.6	154.6	12.0	7.2	72.9	228.4
September	119.2	154.7	12.2	7.3	73.0	228.6
October	118.7	154.7	12.3	7.4	73.0	228.8
November	118.0	154.6	12.3	7.4	72.9	229.0
December	117.3	154.4	12.2	7.3	72.7	229.2
<b>1995</b>						
January	116.6	154.0	11.9	7.2	72.4	229.2

<sup>1</sup> Trend estimates for July 1994 to December 1994 have been revised. Estimates for the most recent three months may be subject to significant revisions as data for later months become available.



# EXPLANATORY NOTES

## INTRODUCTION

**1** This publication contains preliminary estimates of the civilian labour force derived from the labour force survey component of the monthly population survey. Estimates for the current month are preliminary and subject to revision. Revised estimates for the current month and more detailed estimates will be published in *The Labour Force, Australia* (6203.0).

## MONTHLY POPULATION SURVEY

**2** The population survey is based on a multi-stage area sample of private dwellings (currently about 29,000 houses, flats, etc.) and a list sample of non-private dwellings (hotels, motels, etc.), and covers about 0.5% of the population of Australia. The information is obtained from the occupants of selected dwellings by specially trained interviewers. The interviews are generally conducted during the two weeks beginning on the Monday between the 6th and 12th of each month. The information obtained relates to the week before the interview (i.e. the reference week).

## SCOPE OF SURVEY

**3** The Labour Force Survey includes all persons aged 15 and over except members of the permanent defence forces, certain diplomatic personnel of overseas governments customarily excluded from census and estimated populations, overseas residents in Australia, and members of non-Australian defence forces (and their dependants) stationed in Australia.

## COVERAGE

**4** In the Labour Force Survey, coverage rules are applied which aim to ensure that each person is associated with only one dwelling, and hence has only one chance of selection. The coverage rules are necessarily a balance between theoretical and operational considerations. Nevertheless, the chance of a person being enumerated at two separate dwellings in the survey is considered to be negligible.

## POPULATION BENCHMARKS

**5** Labour Force Survey estimates are calculated in such a way as to add up to independent estimates of the civilian population aged 15 and over (population benchmarks). From February 1994, labour force estimates have been compiled using benchmarks based on the results of the 1991 Census of Population and Housing. Small revisions were made to many of the historical estimates from January 1989 to January 1994.

## REVISION OF SERIES

**6** From April 1986, the definition of employed persons was changed to include persons who worked without pay between 1 and 14 hours per week in a family business or on a farm (i.e. unpaid family helpers). For further information, see paragraphs 36 and 37 of the Explanatory Notes to the February 1987 issue of *The Labour Force, Australia* (6203.0).

## SURVEY SAMPLE REDESIGN

**7** The Labour Force Survey sample was redesigned and reselected using information collected in the 1991 Census of Population and Housing. The new sample was phased in over the period September to December 1992. For details, see *Information Paper: Labour Force Survey Sample Design* (6269.0).

**8** For the most part, one quarter of the new sample was introduced each month so that, by December 1992, the entire new sample was in place. Replacement generally occurred at the rotation group level with two groups being substituted each month. Such a pattern of implementation meant that any changes to labour force estimates due to differences between the two samples, or any other influences, were spread over the four months rather than being concentrated in one inter-month period.

**9** This phase-in scheme applied to the private dwelling sample in urban areas. The new sample for non-private dwellings and private dwellings in rural areas was introduced in a single stage in November 1992.

RELIABILITY OF ESTIMATES

**10** Two types of error are possible in an estimate based on a sample survey: sampling error and non-sampling error.

*Sampling error* occurs because a sample, rather than the entire population, is surveyed. One measure of the likely difference resulting from not including all dwellings in the survey is given by the standard error. There are about two chances in three that a sample estimate will differ by less than one standard error from the figure that would have been obtained if all dwellings had been included in the survey, and about nineteen chances in twenty that the difference will be less than two standard errors. Standard errors of estimates for the latest month and of estimates of movements since the previous month are shown on pages 30 and 31. Standard errors of other estimates and other movements may be determined by using information in the Technical Notes in *The Labour Force, Australia* (6203.0).

*Non sampling error* arises from inaccuracies in collecting, recording and processing the data. Every effort is made to minimise reporting error by the careful design of questionnaires, intensive training and supervision of interviewers, and efficient data processing procedures.

SEASONAL ADJUSTMENT AND  
TREND ESTIMATION

**11** Seasonally adjusted series are published in Tables 2, 5 and 12 to 17. Seasonal factors are reviewed annually to take account of each additional year's original data. The results of the latest review were used to compile the revised seasonally adjusted and trend estimates given in this publication. Information about the method of adjustment and revised seasonally adjusted and trend estimates for all months from January 1989 were published in an appendix to the February 1994 issue of *The Labour Force, Australia* (6203.0).

**12** Seasonal adjustment is a means of removing the estimated effects of normal seasonal variation from the series so that the effects of other influences on the series can be more clearly recognised. Seasonal adjustment does not aim to remove the irregular or non-seasonal influences which may be present in any particular month. This means that month-to-month movements of the seasonally adjusted estimates may not be reliable indicators of trend behaviour. For example, irregular factors unrelated to the trend account for more than half the seasonally adjusted movement with the following frequency:

- Employment: 5 in 10 monthly movements
- Unemployment: 7 in 10 monthly movements
- Unemployment rate: 7 in 10 monthly movements
- Participation rate: 9 in 10 monthly movements

**13** The smoothing of seasonally adjusted series reduces the impact of the irregular component of the seasonally adjusted series, and creates trend estimates. These trend estimates are derived by applying a 13-term Henderson-weighted moving average to all months except the last six. The last six monthly trend estimates are obtained by applying surrogates of the Henderson average to the seasonally adjusted series. Trend series are used to analyse the underlying behaviour of the series over time. These are published in Tables 3, 6 and 12 to 19.

**14** While this smoothing technique enables estimates to be produced for the latest month, it does result in revisions to the most recent months as additional observations become available. Generally, subsequent revisions become smaller, and after three months have a negligible impact on the series. There will also be revisions as a result of the annual review of seasonal factors.



SEASONAL ADJUSTMENT AND  
TREND ESTIMATION (continued)

**15** Trend estimates are published for the Northern Territory in Table 18 and for the Australian Capital Territory in Table 19. Unadjusted series for the two Territories have shown, historically, a high degree of variability, which can lead to considerable revisions to the seasonally adjusted estimates after each annual seasonal factor re-analysis. Seasonally adjusted estimates are not currently published for the two Territories. The most recent six months trend estimates are subject to revision. For the three most recent months, the revision may be relatively large. Inferences about trends drawn from smoothed seasonally adjusted (trend) estimates for months earlier than the latest three months are unlikely to be affected by month to month revisions. They may be affected by revision resulting from the annual re-analysis of seasonal factors.

**16** For further information, see *A Guide to Interpreting Time Series — Monitoring Trends: an Overview* (1348.0) or contact the Assistant Director, Time Series Analysis on (06) 252 6345.

RELATED PUBLICATIONS

**17** Users may also wish to refer to *The Labour Force, Australia* (6203.0). This publication contains a detailed list of related publications which are available from ABS Bookshops.

**18** Current publications produced by the ABS are listed in the *Catalogue of Publications and Products, Australia* (1101.0). The ABS also issues, on Tuesdays and Fridays, a *Publications Advice* (1105.0) which lists publications to be released in the next few days. The Catalogue and Publications Advice are available from any ABS office.

UNPUBLISHED STATISTICS

**19** As well as the statistics included in this and related publications, the ABS may have other relevant unpublished data available. Inquiries should be made to Sylvia Sajler on 06 252 6525 or to any ABS office.

EFFECTS OF ROUNDING

**20** Estimates have been rounded and discrepancies may occur between sums of the component items and totals.

**21** Estimates of movement shown in this publication are obtained by taking the difference of unrounded estimates. The movement estimate is then rounded to one decimal place. Therefore where a discrepancy occurs between the reported movement and the difference of the rounded estimates, the reported movement will be more accurate.

SYMBOLS AND OTHER USAGES

- \* subject to sampling variability too high for most practical uses. See the Technical Notes in 6203.0 for more details.
- .. not applicable
- r revised
- pts percentage points



## GLOSSARY

<b>Actively looking for work</b>	Includes writing, telephoning or applying in person to an employer for work; answering a newspaper advertisement for a job; checking factory or Commonwealth Employment Service noticeboards; being registered with the Commonwealth Employment Service; checking or registering with any other employment agency; advertising or tendering for work; and contacting friends or relatives.
<b>Attending school</b>	Persons aged 15 to 19 enrolled full time at secondary or high schools in the reference week.
<b>Attending tertiary educational institution full time</b>	Persons aged 15 to 24 enrolled full time at a TAFE college, university, or other educational institution in the reference week.
<b>Employed</b>	Persons aged 15 and over who, during the reference week: <ul style="list-style-type: none"><li>■ worked for one hour or more for pay, profit, commission or payment in kind in a job or business, or on a farm (comprising employees, employers and self-employed persons); or</li><li>■ worked for one hour or more without pay in a family business or on a farm (i.e. unpaid family helpers); or</li><li>■ were employees who had a job but were not at work and were:<ul style="list-style-type: none"><li>⌘ on paid leave, on leave without pay for less than four weeks up to the end of the reference week,</li><li>⌘ stood down without pay because of bad weather or plant breakdown at their place of employment for less than four weeks up to the end of the reference week,</li><li>⌘ on strike or locked out,</li><li>⌘ on workers' compensation and expected to be returning to their job, or</li><li>⌘ receiving wages or salary while undertaking full-time study; or</li></ul></li><li>■ were employers, self-employed persons or unpaid family helpers who had a job, business or farm, but were not at work.</li></ul>
<b>Full-time workers</b>	Employed persons who usually worked 35 hours or more a week (in all jobs) and those who, although usually working less than 35 hours a week, worked 35 hours or more during the reference week
<b>Labour force</b>	For any group, persons who were employed or unemployed, as defined.
<b>Labour force status</b>	A classification of the civilian population aged 15 and over into employed, unemployed or not in the labour force, as defined. The definitions conform closely to the international standard definitions adopted by the International Conferences of Labour Statisticians.
<b>Not in the labour force</b>	Persons who were not in the categories employed or unemployed as defined.
<b>Participation rate</b>	For any group, the labour force expressed as a percentage of the civilian population aged 15 and over in the same group.
<b>Part-time workers</b>	Employed persons who usually worked less than 35 hours a week and who did so during the reference week.
<b>Seasonally adjusted series</b>	A time series of estimates with the estimated effects of normal seasonal variation removed. See Explanatory Note 11 to 12 for more detail.
<b>Trend series</b>	A smoothed seasonally adjusted series of estimates. See Explanatory Notes 13 to 15 for more detail.

<b>Unemployed</b>	Persons aged 15 and over who were not employed during the reference week, and: <ul style="list-style-type: none"><li>■ had actively looked for full-time or part-time work at any time in the four weeks up to the end of the reference week and:<ul style="list-style-type: none"><li>* were available for work in the reference week, or would have been available except for temporary illness (i.e. lasting for less than four weeks to the end of the reference week), or</li><li>* were waiting to start a new job within four weeks from the end of the reference week and would have started in the reference week if the job had been available then; or</li></ul></li><li>■ were waiting to be called back to a full-time or part-time job from which they had been stood down without pay for less than four weeks up to the end of the reference week (including the whole of the reference week) for reasons other than bad weather or plant breakdown.</li></ul>
<b>Unemployed looking for first full-time job</b>	Unemployed persons looking for full-time work (as defined above) who had never worked full time for two weeks or more
<b>Unemployed looking for full-time work</b>	Unemployed persons who actively looked for full-time work, or were to resume a full-time job from which they had been stood down.
<b>Unemployed looking for part-time work</b>	Unemployed persons who had actively looked for part-time work only, or were to resume a part-time job from which they had been stood down.
<b>Unemployment rate</b>	For any group, the number of unemployed persons expressed as a percentage of the labour force in the same group.

## STANDARD ERRORS

The estimates in this publication are based on information gained from the occupants of a sample survey of dwellings. Because the entire population is not surveyed, the published estimates are subject to sampling error. The most common way of quantifying such sampling error is to calculate the standard error for the published estimate or statistic.

### LEVEL ESTIMATES

To illustrate, let us say the published level estimate for employed persons aged 15 to 19 is 500,000. The calculated standard error in this case is 9,000. The standard error is then used to interpret the level estimate of 500,000. For instance, the standard error of 9,000 indicates that:

- \* There are approximately two chances in three that the real value falls within the range 491,000 to 509,000 ( $500,000 \pm 9,000$ )
- \* There are approximately nineteen chances in twenty that the real value falls within the range 482,000 to 518,000 ( $500,000 \pm 18,000$ )

The real value in this case is the result we would obtain if we could enumerate the total population.

The following tables show the standard errors for this month's level estimates.

	EMPLOYED.....			UNEMPLOYED.....			Labour force	Not in labour force	Unemployment rate	Participation rate
	Employed full time	Employed part time	Total employed	Unemp. looking for f/t work	Unemp. looking for p/t work	Total unemployed				
	'000s	'000s	'000s	'000s	'000s	'000s				
NSW	14.5	9.3	15.7	6.5	3.6	7.0	16.3	13.9	0.2	0.3
Vic.	11.9	7.9	13.0	5.7	3.0	6.1	13.5	11.5	0.3	0.4
Qld	9.3	6.1	10.2	4.1	2.2	4.4	10.5	8.7	0.3	0.4
SA	5.1	3.5	5.7	2.4	1.3	2.6	5.9	5.0	0.4	0.5
WA	6.2	4.2	6.9	2.6	1.4	2.8	7.1	5.6	0.3	0.5
Tas.	1.7	1.3	1.8	1.0	0.6	1.1	1.9	1.7	0.5	0.5
NT	2.0	1.0	2.2	0.7	0.4	0.8	2.3	1.4	0.8	1.9
ACT	1.6	1.0	1.8	0.6	0.4	0.7	1.8	1.3	0.4	0.8
Males	19.7	8.9	20.4	8.7	3.6	9.1	21.2	14.7	0.2	0.3
Females	15.2	13.3	18.3	6.7	4.5	7.7	19.0	18.5	0.2	0.3
Persons	22.5	14.9	24.6	10.3	5.5	11.1	25.4	21.4	0.1	0.2

	NUMBER OF UNEMPLOYED PERSONS.....						UNEMPLOYMENT RATE.....				
	Aged 15-19 seeking first f/t job	Aged 15-19 looking for f/t work	Aged 20 and over looking for f/t work	Total looking for f/t work	Looking for p/t work	Total unemployed	Aged 15-19 looking for f/t work	Aged 20 and over looking for f/t work	Total looking for f/t work	Looking for p/t work	Total unemployed
	'000s	'000s	'000s	'000s	'000s	'000s	pts	pts	pts	pts	pts
NSW	2.7	3.2	6.0	6.5	3.6	7.0	2.6	0.3	0.3	0.6	0.2
Vic.	2.1	2.6	5.4	5.7	3.0	6.1	3.2	0.3	0.3	0.6	0.3
Qld	1.6	2.0	3.7	4.1	2.2	4.4	2.4	0.3	0.3	0.6	0.3
SA	0.9	1.0	2.3	2.4	1.3	2.6	3.6	0.5	0.5	0.7	0.4
WA	1.0	1.3	2.4	2.6	1.4	2.8	2.6	0.4	0.4	0.6	0.3
Tas.	0.5	0.6	0.9	1.0	0.6	1.1	4.7	0.6	0.6	1.0	0.5
NT	0.2	0.2	0.6	0.7	0.4	0.8	8.0	0.9	0.9	2.2	0.8
ACT	0.3	0.3	0.6	0.6	0.4	0.7	6.0	0.5	0.5	1.2	0.4
Males	3.0	3.8	8.2	8.7	3.6	9.1	1.6	0.2	0.2	0.7	0.2
Females	2.8	3.4	6.1	6.7	4.5	7.7	2.2	0.3	0.3	0.3	0.2
Persons	4.0	4.9	9.6	10.3	5.5	11.1	1.3	0.1	0.2	0.3	0.1

# STANDARD ERRORS continued

## MOVEMENT ESTIMATES

The following example illustrates how to use the standard error to interpret a movement estimate. Let us say that one month the published level estimate for females employed part time in Australia is 1,387,000; the next month the published level estimate is 1,400,000. The calculated standard error for the movement estimate is 9,800. The standard error is then used to interpret the published movement estimate of 13,000. For instance, the standard error of 9,800 indicates that:

- \* There are approximately two chances in three that the real movement over the two month period falls within the range 3,200 to 22,800 (13,000 + or - 9,800)
- \* There are approximately nineteen chances in twenty that the real movement falls within the range -6,400 to 32,600 (13,000 + or - 19,600).

The following tables show the standard errors for this month's movement estimates.

	EMPLOYED.....			UNEMPLOYED.....				Labour force	Not in labour force	Unemployment rate	Participation rate
	Employed full time	Employed part time	Total employed	Unemp. looking for f/t work	Unemp. looking for p/t work	Total unemployed					
	'000s	'000s	'000s	'000s	'000s	'000s					
NSW	11.3	7.2	12.4	5.0	3.0	5.4	12.8	10.7	0.2	0.3	
Vic.	8.7	5.8	9.6	4.1	2.3	4.4	10.0	8.3	0.2	0.3	
Qld	6.4	4.4	7.1	3.0	1.8	3.2	7.3	6.0	0.2	0.3	
SA	3.5	2.4	3.9	1.7	1.0	1.8	4.0	3.4	0.3	0.3	
WA	4.5	3.1	5.0	1.9	1.2	2.1	5.1	4.0	0.2	0.4	
Tas.	1.5	1.0	1.7	0.8	0.4	0.8	1.8	1.5	0.4	0.5	
NT	1.3	0.7	1.4	0.5	0.3	0.5	1.5	0.9	0.6	1.2	
ACT	1.2	0.8	1.4	0.5	0.4	0.5	1.4	1.0	0.3	0.6	
Males	15.0	6.9	15.7	6.6	3.0	6.9	16.3	11.0	0.1	0.2	
Females	11.5	10.2	14.1	5.2	3.8	5.9	14.6	14.0	0.2	0.2	
Persons	17.4	11.4	19.3	7.7	4.4	8.3	20.0	16.4	0.1	0.1	

	NUMBER OF UNEMPLOYED PERSONS.....						UNEMPLOYMENT RATE.....				
	Aged 15-19 seeking first f/t job	Aged 15-19 looking for f/t work	Aged 20 and over looking for f/t work	Total looking for f/t work	Looking for p/t work	Total unemployed	Aged 15-19 looking for f/t work	Aged 20 and over looking for f/t work	Total looking for f/t work	Looking for p/t work	Total unemployed
	'000s	'000s	'000s	'000s	'000s	'000s	pts	pts	pts	pts	pts
NSW	2.3	2.6	4.6	5.0	3.0	5.4	2.1	0.2	0.2	0.4	0.2
Vic.	1.8	2.0	3.9	4.1	2.3	4.4	2.5	0.2	0.2	0.4	0.2
Qld	1.4	1.7	2.8	3.0	1.8	3.2	2.0	0.2	0.2	0.5	0.2
SA	0.7	0.8	1.6	1.7	1.0	1.8	2.9	0.3	0.3	0.5	0.3
WA	0.9	1.1	1.8	1.9	1.2	2.1	2.2	0.3	0.3	0.5	0.2
Tas.	0.4	0.5	0.7	0.8	0.4	0.8	3.6	0.4	0.5	0.8	0.4
NT	0.1	0.2	0.4	0.5	0.3	0.5	5.5	0.6	0.6	1.6	0.6
ACT	0.2	0.3	0.5	0.5	0.4	0.5	5.1	0.4	0.4	0.9	0.3
Males	2.6	3.1	6.2	6.6	3.0	6.9	1.3	0.1	0.1	0.6	0.1
Females	2.5	2.9	4.8	5.2	3.8	5.9	1.9	0.2	0.2	0.2	0.2
Persons	3.3	3.9	7.2	7.7	4.4	8.3	1.0	0.1	0.1	0.2	0.1

# WHAT IF...? REVISIONS TO TREND ESTIMATES

## EFFECT OF NEW SEASONALLY ADJUSTED ESTIMATES ON TREND ESTIMATES

Each time new seasonally adjusted estimates become available, trend estimates are revised (see paragraphs 13 and 14 of Explanatory Notes).

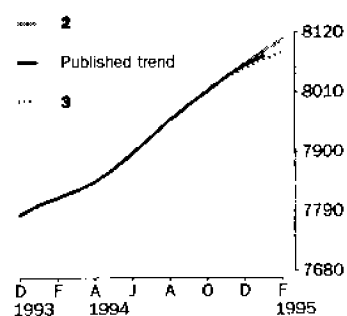
### TREND REVISIONS

The examples in the tables below show four illustrative scenarios and the consequent revisions to previous trend estimates of employment and unemployment rate.

- 1** The February seasonally adjusted estimate is the same as the January estimate.
- 2** The February seasonally adjusted estimate is higher than the January estimate by:
  - \* +0.33% for employment
  - \* +2.3% for the unemployment rate
- 3** The February seasonally adjusted estimate is lower than the January estimate by:
  - \* -0.33% for employment
  - \* -2.3% for the unemployment rate
- 4** The February seasonally adjusted estimate results in a revised January trend estimate which is identical to the new February trend estimate.

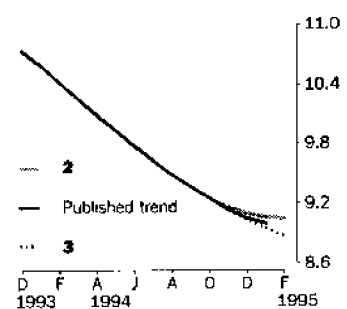
The percentage changes of 0.33% and 2.3% were chosen because they represent the average absolute monthly percentage changes in employment and the unemployment rate respectively.

### EMPLOYMENT ('000)



		WHAT IF NEXT MONTH'S SEASONALLY ADJUSTED ESTIMATE IS:			
		<b>1</b>	<b>2</b>	<b>3</b>	<b>4</b>
		8 089.9	8 116.9	8 062.8	7 965.3
		<i>i.e. the same as Jan 1995</i>	<i>i.e. rises by 0.33%</i>	<i>i.e. falls by 0.33%</i>	<i>i.e. same trend for Jan &amp; Feb</i>
Trend as PUBLISHED					
1994	November	8 038.0	8 037.4	8 038.6	8 036.2
	December	8 060.5	8 059.6	8 063.6	8 055.6
	January	8 077.2	8 078.7	8 086.3	8 071.1
	February (new)	—	8 096.4	8 107.8	8 085.0

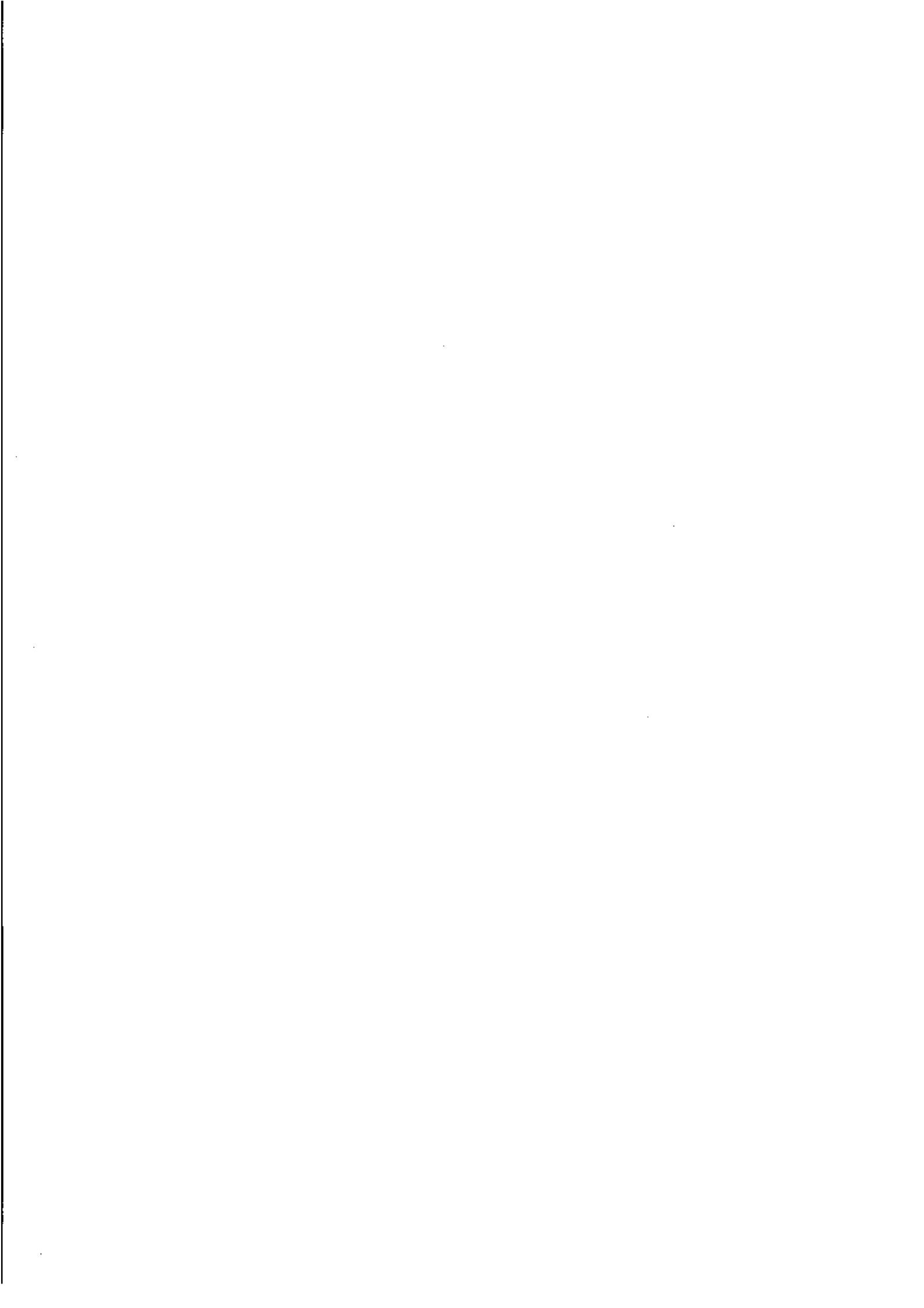
### UNEMPLOYMENT RATE (%)



		WHAT IF NEXT MONTH'S SEASONALLY ADJUSTED ESTIMATE IS:			
		<b>1</b>	<b>2</b>	<b>3</b>	<b>4</b>
		9.0	9.2	8.8	9.4
		<i>i.e. the same as Jan 1995</i>	<i>i.e. rises by 2.3%</i>	<i>i.e. falls by 2.3%</i>	<i>i.e. same trend for Jan &amp; Feb</i>
Trend as PUBLISHED					
1994	November	9.1	9.2	9.2	9.1
	December	9.0	9.1	9.1	9.0
	January	9.0	9.0	9.1	9.0
	February (new)	—	9.0	9.0	8.9









## FOR MORE INFORMATION . . .

The ABS publishes a wide range of information on Australia's economic and social conditions. A catalogue of publications and products is available from any of our offices (see below).

### INFORMATION CONSULTANCY SERVICES

Special tables or in-depth data investigations are provided by the ABS Information Consultancy Service in each of our offices (see below).

### ELECTRONIC DATA SERVICES

A large range of data is available via on-line services, diskette, magnetic tape, tape cartridge and CD ROM. For more details about our electronic data services, contact any ABS office (see below).

### BOOKSHOP AND SUBSCRIPTIONS

There is a large number of ABS publications available from the ABS Bookshops in each of our offices. You can also receive any of our publications on a regular basis. Join our subscription mailing service and have your publications mailed to you in Australia at no additional cost. Telephone our Publications Subscription Service toll free Australia wide on 008 0206 08.

### ABS EMAIL ADDRESSES

Keylink      STAT.INFO/ABS  
X.400        (C:AU,A:TELEMEMO,O:ABS,SN:INFO,FN:STAT)  
Internet     STAT.INFO@ABS.TELEMEMO.AU

### GENERAL SALES AND INQUIRIES

\* Sydney 02 268 4611      \* Adelaide 08 237 7100  
\* Melbourne 03 615 7000   \* Hobart 002 20 5800  
\* Brisbane 07 222 6351    \* Darwin 089 43 2111  
\* Perth 09 360 5140       \* Canberra 06 252 6007

■ Information Services, ABS  
PO Box 10, Belconnen ACT 2616



2620200001959

ISSN 1031-038X

RRP \$15.00