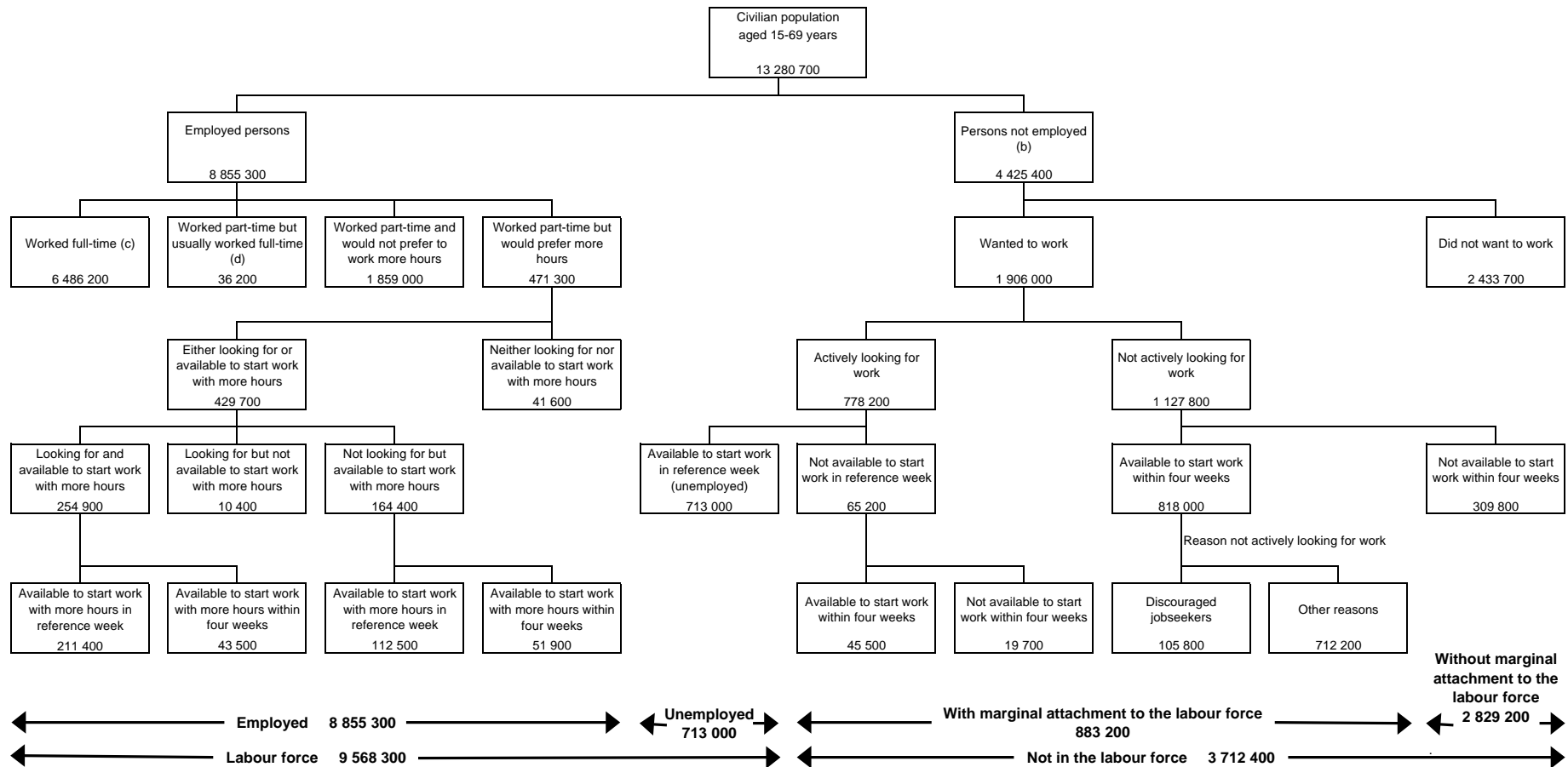


LABOUR FORCE FRAMEWORK
STATISTICAL MEASURES, SEPTEMBER 1999(a)



Source: Labour Force, Australia (Cat. no. 6203.0), Underemployed Workers, Australia, September 1999 (Cat. no. 6265.0), Persons Not in the Labour Force, Australia, September 1999 (Cat. no. 6220.0)

(a) Due to differences in scope and estimation for components of this diagram, estimates presented may vary slightly from figures published in the above sources, and totals may not equal the sum of their components.

(b) Includes persons permanently unable to work (85,700).

(c) Includes persons who usually work full time but were absent from work in the reference week; and persons who usually work part time but worked full time in the reference week.

(d) Stood down, on short time, insufficient work only.