

The Australian Statistical Geography Standard (ASGS): Structure and Summary for Census



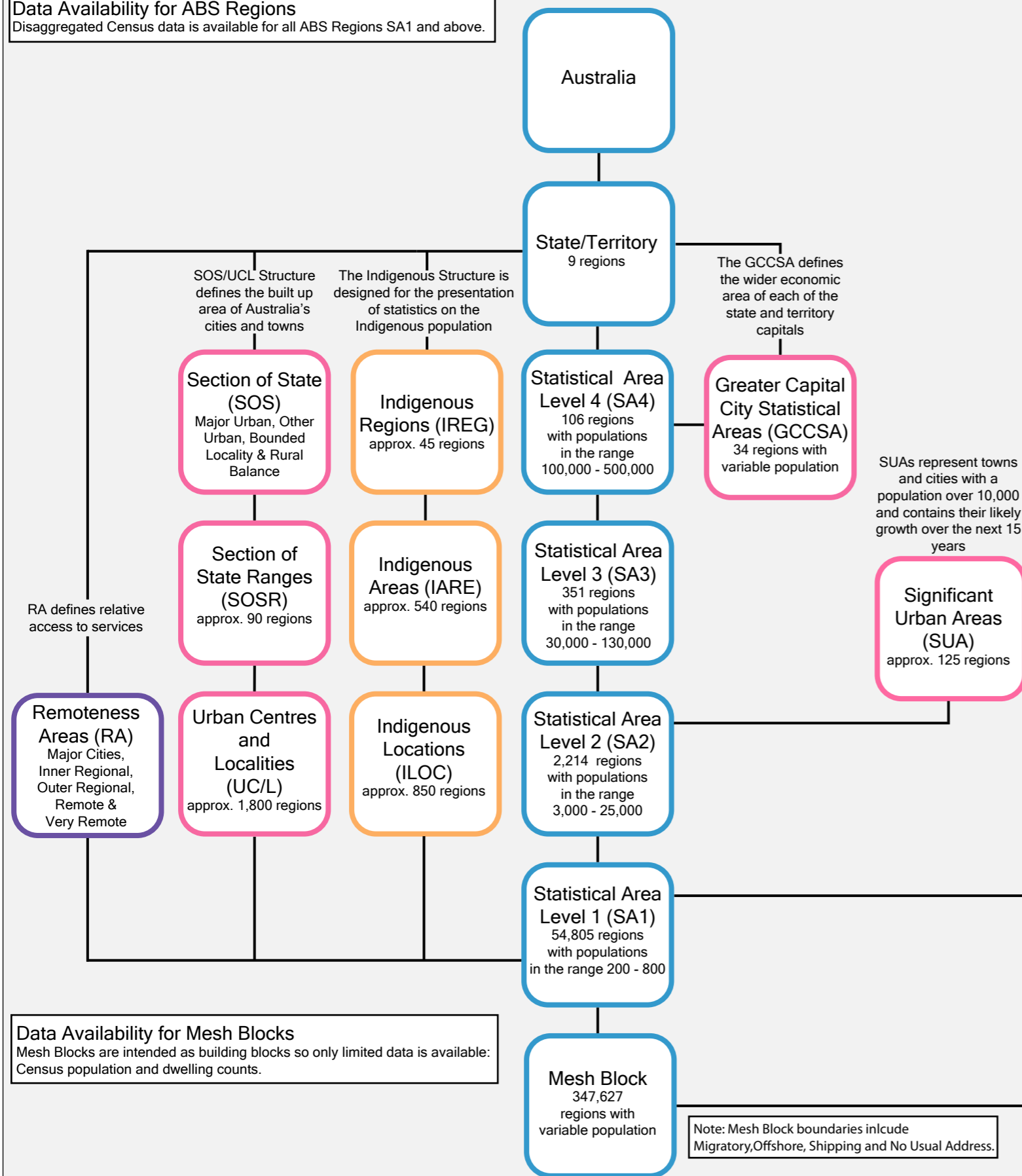
ABS Structures

These structures are defined by the ABS and remain stable between Censuses.

Data Availability for ABS Regions

Disaggregated Census data is available for all ABS Regions SA1 and above.

The Main (SA) Structure is based on the functional area of major cities and towns and gazetted suburbs and localities



Data Availability for Mesh Blocks

Mesh Blocks are intended as building blocks so only limited data is available: Census population and dwelling counts.

Note: Mesh Block boundaries include Migratory, Offshore, Shipping and No Usual Address.

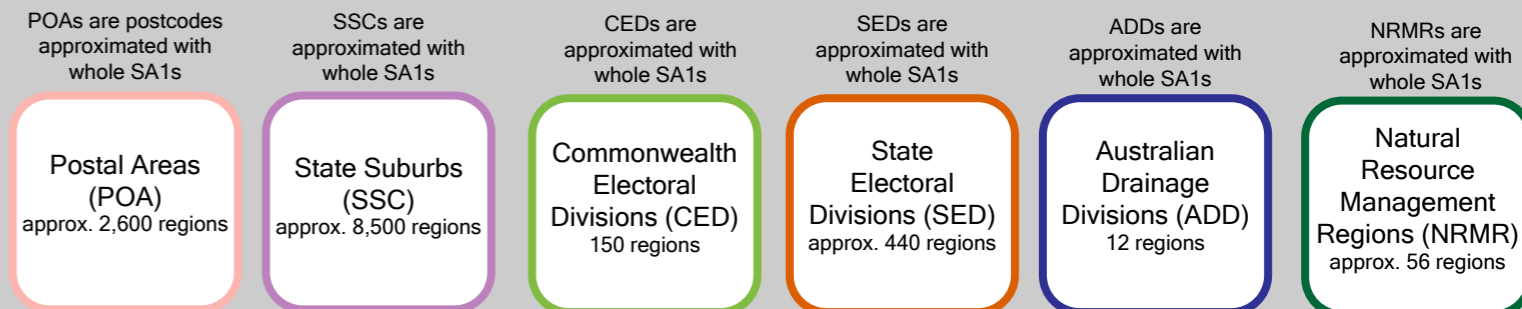
Non - ABS Structures

Structures not defined by the ABS. They are updated annually.

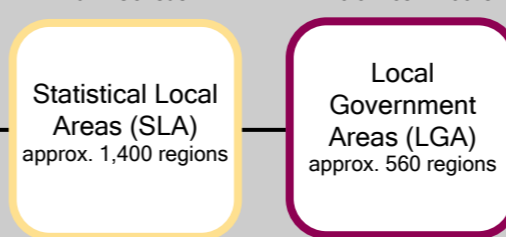
Data Availability for Non-ABS Regions

Disaggregated Census data is available for all non-ABS Regions. Additional data is available for the following:

- NRMRS: Agricultural and environment data
- LGAs: Finance, Agriculture, Building Approvals and Estimated Resident Population.



Non-ASGS transitional unit for 2011 Census



SLAs are not part of the ASGS. They are supported for the 2011 Census to assist with transition from ASGC to ASGS.

Note: Address 1 and 5 years ago is available at SA2 and LGA
Place of work is available at SA2 and LGA