

## THE LABOUR FORCE, AUSTRALIA, SEPTEMBER 1992, PRELIMINARY

Care should be taken in the interpretation of month to month movements in estimates. During the period September to December 1992 a new sample for the Labour Force Survey will be introduced, which will increase the variability of estimates of month-to-month movements. See paragraph 10 of the Explanatory Notes.

### MAIN FEATURES

The September 1992 seasonally adjusted estimate of **employed persons** was 7,687,700, a fall of 43,800 since August 1992. Full-time employment was relatively steady at 5,861,200. The number of males employed full time fell slightly to 3,991,100, while the number of females employed full time rose slightly to 1,870,100. Part-time employment fell for the first time in ten months, decreasing by 43,400 to 1,826,500. Males employed part time fell by 17,900 and females employed part time fell by 25,600. Trend estimates of employment have shown small increases in each of the last six months. For full-time employment the trend continues to decline, although the rate of decrease has slowed markedly in the last four

months. For males employed full time, the trend has been relatively flat for the last four months, while for females, the rate of decrease is slowing. For males and females employed part time, the trend continues to rise although at a slower rate in recent months (see graphs on page 2).

The seasonally adjusted estimate of **unemployed persons** for September 1992 was 927,700, a fall of 19,800 since August 1992 and the third successive monthly decline. Male unemployment fell by 13,900 to 565,900 with decreases of 6,300 and 7,500 respectively in the number of males seeking full-time and part-time work. Female unemployment fell by 6,000 to 361,800, with a fall of 5,000 in the number of females seeking part-time work being the main component. Trend estimates of unemployed persons continue to increase, although the rate of increase has slowed in the last three months.

The seasonally adjusted estimate of the **unemployment rate** for September 1992 was 10.8%, compared with 10.9% in August 1992. For males, the unemployment rate fell by 0.2 percentage points to 11.3% while for females, the rate fell by 0.1 percentage points to 10.0%. For 15 to 19 year olds, the seasonally adjusted full-time unemployment rate fell for the third consecutive month and now stands at 31.8% compared with 34.0% in August 1992. This rate is the proportion of 15 to 19 year olds in the full-time labour force unable to find employment.

The trend estimate of the unemployment rate continues to increase and now stands at 11.0%. For males and females seeking full-time work, the trend unemployment rate has steadied while for males and females seeking part-time work, the trend unemployment rate has increased in each of the last five months (see graphs on page 3).

The September 1992 seasonally adjusted estimates of the unemployment rate for the States were (with August 1992 estimates shown in brackets): New South Wales 10.4% (10.8%), Victoria 11.3% (11.6%), Queensland 10.6% (10.1%), South Australia 11.4% (11.7%), Western Australia 11.1% (11.5%), and Tasmania 11.7% (11.9%).

The seasonally adjusted estimate of the **labour force participation rate** for September 1992 was 62.7%, a fall of 0.5 percentage points compared with August 1992. For males, the participation rate fell by 0.6 percentage points to 73.9% while for females the rate fell by 0.5 percentage points to 51.8%. Trend estimates of the participation rate have stood at 63.1% since May 1992.

EMPLOYED PERSONS: TREND SERIES



UNEMPLOYMENT RATE: TREND SERIES



| Indicates break in series — see paragraph 6 of the Explanatory Notes.

### INQUIRIES

- for further information about statistics in this publication and the availability of related unpublished statistics, contact Don Clark on Canberra (06) 252 6525 or any ABS State office.
- for information about other ABS statistics and services please refer to the back page of this publication.

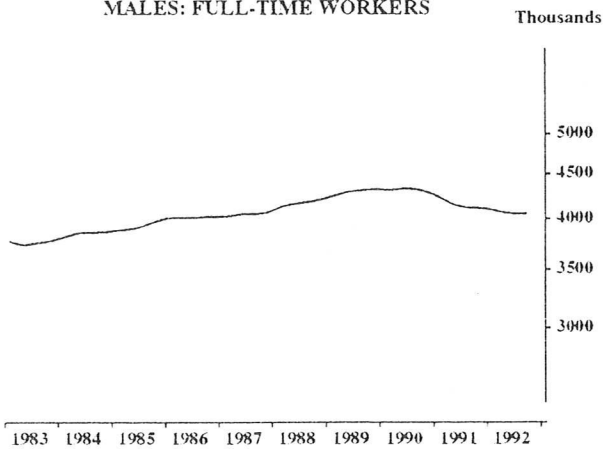
# EMPLOYED PERSONS: TREND SERIES

The graphs on this page have been drawn to a semi-logarithmic scale to enable comparisons to be made of rates of change — See paragraph 22 of the Explanatory Notes.

PERSONS



MALES: FULL-TIME WORKERS



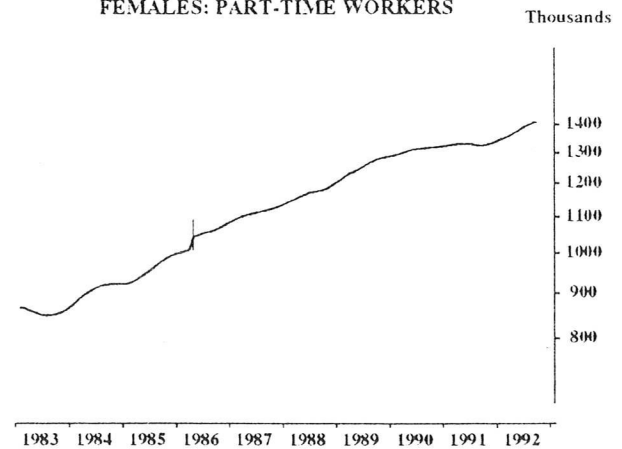
FEMALES: FULL-TIME WORKERS



MALES: PART-TIME WORKERS



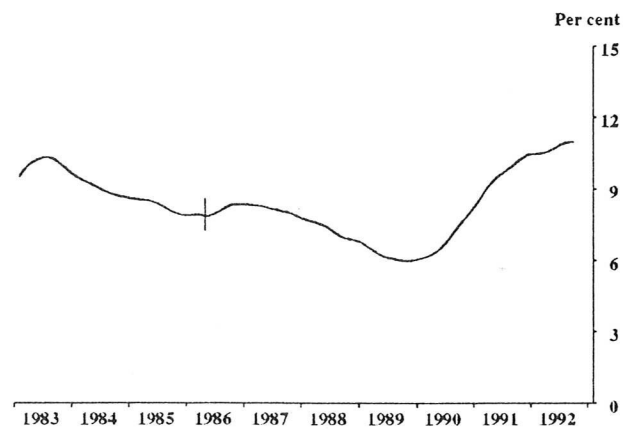
FEMALES: PART-TIME WORKERS



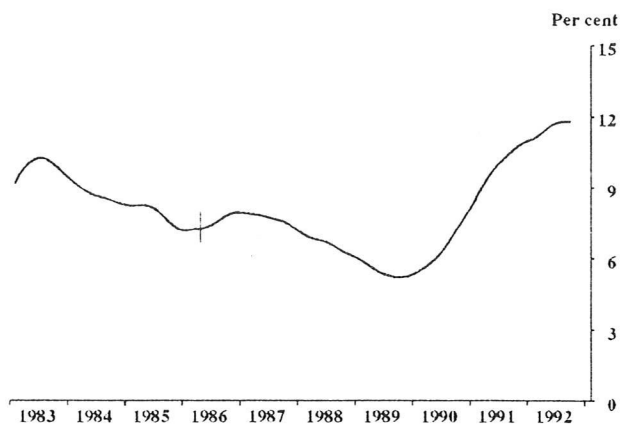
Indicates break in series — see paragraph 6 of the Explanatory Notes.

# UNEMPLOYMENT RATE: TREND SERIES

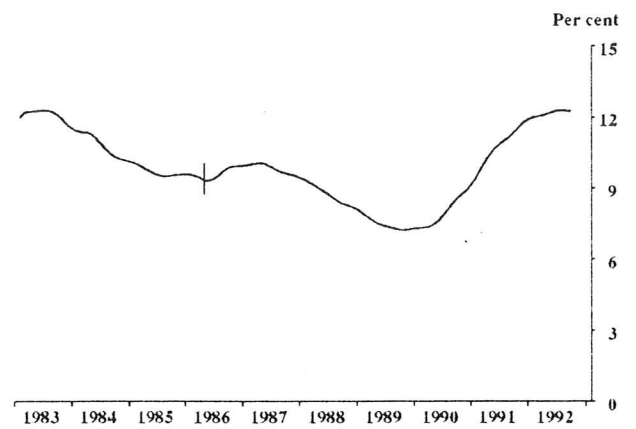
## PERSONS



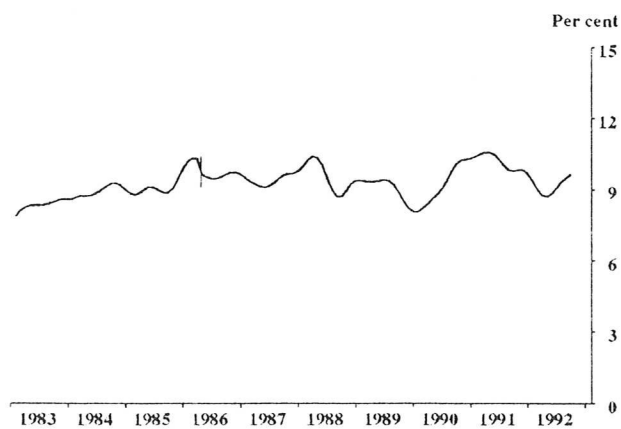
## MALES: LOOKING FOR FULL-TIME WORK



## FEMALES: LOOKING FOR FULL-TIME WORK



## MALES: LOOKING FOR PART-TIME WORK



## FEMALES: LOOKING FOR PART-TIME WORK

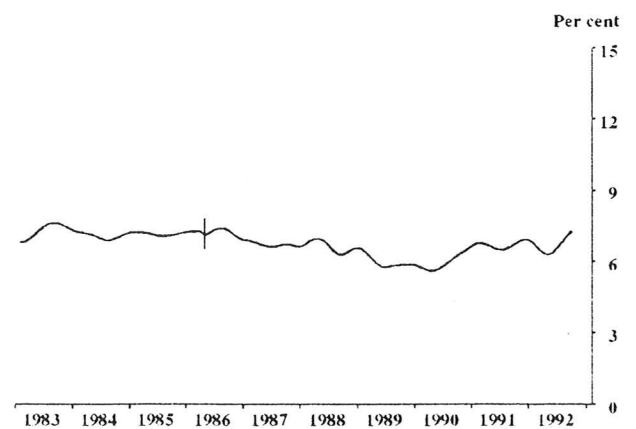


TABLE 1. LABOUR FORCE STATUS OF CIVILIAN POPULATION AGED 15 AND OVER

| Month  | Unemployed        |         |                                  |       |                            |       |              |                     |                                      |                                |                    |
|--|-------------------|---------|----------------------------------|-------|----------------------------|-------|--------------|---------------------|--------------------------------------|--------------------------------|--------------------|
|  | Employed          |         | Looking for full-time work       |       | Looking for part-time work |       | Labour force | Not in labour force | Civilian population aged 15 and over | Unemployment rate - per cent - | Participation rate |
|  |                   |         | Aged 15-19 looking for first job | Total | Total                      | Total |              |                     |                                      |                                |                    |
|  | Full-time workers | Total   |                                  |       |                            |       |              |                     |                                      |                                |                    |
| MALES  |                   |         |                                  |       |                            |       |              |                     |                                      |                                |                    |
| 1991 —   |                   |         |                                  |       |                            |       |              |                     |                                      |                                |                    |
| July   | 4,046.4           | 4,440.3 | 24.0                             | 448.6 | 39.6                       | 488.2 | 4,928.4      | 1,738.1             | 6,666.6                              | 9.9                            | 73.9               |
| August   | 4,035.4           | 4,443.7 | 25.0                             | 465.4 | 37.2                       | 502.6 | 4,946.3      | 1,728.3             | 6,674.6                              | 10.2                           | 74.1               |
| September  | 4,065.3           | 4,492.0 | 28.6                             | 476.1 | 47.2                       | 523.3 | 5,015.3      | 1,667.3             | 6,682.6                              | 10.4                           | 75.1               |
| October  | 4,075.4           | 4,473.4 | 22.4                             | 453.9 | 40.5                       | 494.5 | 4,967.9      | 1,723.4             | 6,691.2                              | 10.0                           | 74.2               |
| November   | 4,021.3           | 4,456.3 | 31.4                             | 466.8 | 33.3                       | 500.1 | 4,956.3      | 1,743.5             | 6,699.8                              | 10.1                           | 74.0               |
| December   | 4,098.1           | 4,508.6 | 49.2                             | 503.2 | 54.5                       | 557.7 | 5,066.2      | 1,642.2             | 6,708.4                              | 11.0                           | 75.5               |
| 1992 —   |                   |         |                                  |       |                            |       |              |                     |                                      |                                |                    |
| January  | 4,024.1           | 4,424.7 | 50.6                             | 540.9 | 50.1                       | 591.0 | 5,015.7      | 1,700.9             | 6,716.6                              | 11.8                           | 74.7               |
| February   | 4,015.1           | 4,448.3 | 43.9                             | 542.9 | 52.2                       | 595.1 | 5,043.4      | 1,681.3             | 6,724.7                              | 11.8                           | 75.0               |
| March  | 4,003.5           | 4,459.2 | 36.6                             | 520.7 | 49.1                       | 569.8 | 5,029.0      | 1,703.9             | 6,732.8                              | 11.3                           | 74.7               |
| April  | 4,002.1           | 4,459.0 | 31.9                             | 506.7 | 42.3                       | 549.0 | 5,007.9      | 1,732.1             | 6,740.1                              | 11.0                           | 74.3               |
| May  | 3,982.8           | 4,449.7 | 35.7                             | 527.3 | 41.7                       | 569.0 | 5,018.7      | 1,728.6             | 6,747.3                              | 11.3                           | 74.4               |
| June   | 3,982.4           | 4,455.0 | 32.6                             | 517.8 | 42.7                       | 560.5 | 5,015.5      | 1,739.1             | 6,754.5                              | 11.2                           | 74.3               |
| July   | 4,018.0           | 4,477.6 | 32.1                             | 534.1 | 42.1                       | 576.3 | 5,053.8      | 1,708.3             | 6,762.1                              | 11.4                           | 74.7               |
| August   | 3,966.5           | 4,433.4 | 33.6                             | 521.0 | 43.4                       | 564.4 | 4,997.8      | 1,771.9             | 6,769.7                              | 11.3                           | 73.8               |
| September  | 3,999.9           | 4,469.8 | 33.2                             | 520.4 | 46.4                       | 566.8 | 5,036.6      | 1,740.8             | 6,777.3                              | 11.3                           | 74.3               |
| Standard error of —<br>September 1992<br>estimates | 19.5              | 20.2    | 2.8                              | 9.1   | 3.3                        | 9.5   | 21.1         | 14.5                | ..                                   | 0.2                            | 0.3                |
| Aug 92 to Sep 92<br>movements                      | 16.6              | 17.3    | 2.8                              | 7.7   | 3.1                        | 8.0   | 18.1         | 12.2                | ..                                   | 0.2                            | 0.3                |
| FEMALES  |                   |         |                                  |       |                            |       |              |                     |                                      |                                |                    |
| 1991 —   |                   |         |                                  |       |                            |       |              |                     |                                      |                                |                    |
| July   | 1,889.7           | 3,183.7 | 18.4                             | 232.1 | 81.5                       | 313.6 | 3,497.3      | 3,339.8             | 6,837.1                              | 9.0                            | 51.2               |
| August   | 1,907.6           | 3,225.5 | 18.0                             | 221.6 | 81.8                       | 303.4 | 3,528.9      | 3,317.0             | 6,845.9                              | 8.6                            | 51.5               |
| September  | 1,924.8           | 3,270.8 | 17.3                             | 238.8 | 105.1                      | 343.9 | 3,614.7      | 3,240.1             | 6,854.8                              | 9.5                            | 52.7               |
| October  | 1,926.9           | 3,214.4 | 19.5                             | 223.0 | 84.1                       | 307.1 | 3,521.5      | 3,342.6             | 6,864.2                              | 8.7                            | 51.3               |
| November   | 1,879.8           | 3,217.9 | 18.2                             | 232.5 | 84.9                       | 317.4 | 3,535.3      | 3,338.2             | 6,873.5                              | 9.0                            | 51.4               |
| December   | 1,942.8           | 3,270.9 | 38.2                             | 264.8 | 97.9                       | 362.7 | 3,633.6      | 3,249.3             | 6,882.9                              | 10.0                           | 52.8               |
| 1992 —   |                   |         |                                  |       |                            |       |              |                     |                                      |                                |                    |
| January  | 1,919.3           | 3,146.2 | 40.1                             | 280.4 | 88.3                       | 368.7 | 3,514.8      | 3,377.0             | 6,891.8                              | 10.5                           | 51.0               |
| February   | 1,904.8           | 3,202.6 | 40.3                             | 297.9 | 104.7                      | 402.6 | 3,605.2      | 3,295.5             | 6,900.7                              | 11.2                           | 52.2               |
| March  | 1,889.7           | 3,245.3 | 30.4                             | 265.2 | 114.2                      | 379.3 | 3,624.6      | 3,285.1             | 6,909.7                              | 10.5                           | 52.5               |
| April  | 1,864.4           | 3,237.5 | 30.2                             | 267.2 | 94.7                       | 361.9 | 3,599.4      | 3,318.7             | 6,918.1                              | 10.1                           | 52.0               |
| May  | 1,872.0           | 3,237.7 | 30.6                             | 262.2 | 89.3                       | 351.5 | 3,589.2      | 3,337.2             | 6,926.4                              | 9.8                            | 51.8               |
| June   | 1,854.6           | 3,246.3 | 30.9                             | 259.0 | 94.7                       | 353.7 | 3,600.1      | 3,334.7             | 6,934.8                              | 9.8                            | 51.9               |
| July   | 1,887.4           | 3,264.0 | 31.0                             | 259.2 | 90.8                       | 350.1 | 3,614.1      | 3,329.6             | 6,943.6                              | 9.7                            | 52.0               |
| August   | 1,839.5           | 3,245.8 | 29.3                             | 244.0 | 97.9                       | 342.0 | 3,587.8      | 3,364.6             | 6,952.4                              | 9.5                            | 51.6               |
| September  | 1,880.5           | 3,290.2 | 25.8                             | 245.3 | 114.1                      | 359.4 | 3,649.6      | 3,311.7             | 6,961.3                              | 9.8                            | 52.4               |
| Standard error of —<br>September 1992<br>estimates | 14.9              | 18.2    | 2.5                              | 6.7   | 4.9                        | 7.9   | 18.9         | 18.2                | ..                                   | 0.2                            | 0.3                |
| Aug 92 to Sep 92<br>movements                      | 12.5              | 15.4    | 2.6                              | 5.8   | 4.4                        | 6.7   | 16.0         | 15.6                | ..                                   | 0.2                            | 0.2                |
| PERSONS  |                   |         |                                  |       |                            |       |              |                     |                                      |                                |                    |
| 1991 —   |                   |         |                                  |       |                            |       |              |                     |                                      |                                |                    |
| July   | 5,936.0           | 7,624.0 | 42.4                             | 680.7 | 121.1                      | 801.7 | 8,425.7      | 5,078.0             | 13,503.7                             | 9.5                            | 62.4               |
| August   | 5,943.0           | 7,669.2 | 43.0                             | 687.0 | 119.1                      | 806.0 | 8,475.2      | 5,045.3             | 13,520.5                             | 9.5                            | 62.7               |
| September  | 5,990.1           | 7,762.8 | 45.8                             | 714.9 | 152.3                      | 867.2 | 8,630.0      | 4,907.4             | 13,537.5                             | 10.0                           | 63.7               |
| October  | 6,002.3           | 7,687.8 | 41.9                             | 676.9 | 124.6                      | 801.6 | 8,489.4      | 5,066.0             | 13,555.4                             | 9.4                            | 62.6               |
| November   | 5,901.0           | 7,674.1 | 49.6                             | 699.3 | 118.2                      | 817.5 | 8,491.6      | 5,081.7             | 13,573.3                             | 9.6                            | 62.6               |
| December   | 6,041.0           | 7,779.5 | 87.3                             | 767.9 | 152.4                      | 920.4 | 8,699.8      | 4,891.5             | 13,591.3                             | 10.6                           | 64.0               |
| 1992 —   |                   |         |                                  |       |                            |       |              |                     |                                      |                                |                    |
| January  | 5,943.4           | 7,570.9 | 90.7                             | 821.3 | 138.4                      | 959.7 | 8,530.5      | 5,077.9             | 13,608.4                             | 11.2                           | 62.7               |
| February   | 5,919.9           | 7,650.9 | 84.2                             | 840.8 | 156.9                      | 997.7 | 8,648.6      | 4,976.8             | 13,625.4                             | 11.5                           | 63.5               |
| March  | 5,893.2           | 7,704.4 | 67.0                             | 785.8 | 163.3                      | 949.1 | 8,653.6      | 4,988.9             | 13,642.5                             | 11.0                           | 63.4               |
| April  | 5,866.5           | 7,696.4 | 62.2                             | 773.8 | 137.0                      | 910.9 | 8,607.3      | 5,050.8             | 13,658.1                             | 10.6                           | 63.0               |
| May  | 5,854.8           | 7,687.5 | 66.2                             | 789.5 | 130.9                      | 920.4 | 8,607.9      | 5,065.8             | 13,673.7                             | 10.7                           | 63.0               |
| June   | 5,837.0           | 7,701.3 | 63.4                             | 776.8 | 137.4                      | 914.2 | 8,615.5      | 5,073.8             | 13,689.3                             | 10.6                           | 62.9               |
| July   | 5,905.4           | 7,741.6 | 63.0                             | 793.4 | 133.0                      | 926.3 | 8,667.9      | 5,037.9             | 13,705.8                             | 10.7                           | 63.2               |
| August   | 5,806.0           | 7,679.3 | 63.0                             | 765.1 | 141.3                      | 906.4 | 8,585.7      | 5,136.5             | 13,722.2                             | 10.6                           | 62.6               |
| September  | 5,880.3           | 7,759.9 | 59.1                             | 765.7 | 160.5                      | 926.2 | 8,686.1      | 5,052.5             | 13,738.6                             | 10.7                           | 63.2               |
| Standard error of —<br>September 1992<br>estimates | 22.2              | 24.4    | 3.6                              | 10.6  | 5.6                        | 11.4  | 25.3         | 21.1                | ..                                   | 0.1                            | 0.2                |
| Aug 92 to Sep 92<br>movements                      | 19.2              | 21.3    | 3.5                              | 8.9   | 5.0                        | 9.6   | 22.2         | 18.2                | ..                                   | 0.1                            | 0.2                |



TABLE 2. CIVILIAN LABOUR FORCE: SEASONALLY ADJUSTED SERIES

| Month     | Employed |         | Unemployed                       |       |                            |       | Labour force | Unemployment rate<br>- per cent - | Participation rate |
|-----------|----------|---------|----------------------------------|-------|----------------------------|-------|--------------|-----------------------------------|--------------------|
|           |          |         | Looking for full-time work       |       | Looking for part-time work | Total |              |                                   |                    |
|           |          |         | Aged 15-19 looking for first job | Total |                            |       |              |                                   |                    |
|           |          |         |                                  |       |                            |       |              |                                   |                    |
|           | MALES    |         |                                  |       |                            |       |              |                                   |                    |
| 1991 —    |          |         |                                  |       |                            |       |              |                                   |                    |
| July      | 4,036.3  | 4,438.9 | 30.5                             | 457.4 | 43.9                       | 501.3 | 4,940.2      | 10.1                              | 74.1               |
| August    | 4,064.8  | 4,478.1 | 29.9                             | 471.3 | 44.9                       | 516.2 | 4,994.3      | 10.3                              | 74.8               |
| September | 4,057.2  | 4,470.2 | 32.4                             | 477.1 | 45.9                       | 523.0 | 4,993.2      | 10.5                              | 74.7               |
| October   | 4,062.4  | 4,463.4 | 29.4                             | 489.9 | 44.2                       | 534.1 | 4,997.5      | 10.7                              | 74.7               |
| November  | 4,032.2  | 4,457.7 | 35.9                             | 498.7 | 42.2                       | 540.8 | 4,998.5      | 10.8                              | 74.6               |
| December  | 4,050.4  | 4,461.6 | 32.4                             | 498.0 | 47.2                       | 545.2 | 5,006.8      | 10.9                              | 74.6               |
| 1992 —    |          |         |                                  |       |                            |       |              |                                   |                    |
| January   | 4,046.1  | 4,468.0 | 30.8                             | 492.8 | 45.9                       | 538.7 | 5,006.7      | 10.8                              | 74.5               |
| February  | 4,010.5  | 4,470.0 | 34.5                             | 500.2 | 46.3                       | 546.5 | 5,016.5      | 10.9                              | 74.6               |
| March     | 4,011.8  | 4,458.3 | 37.4                             | 511.4 | 40.5                       | 551.9 | 5,010.2      | 11.0                              | 74.4               |
| April     | 4,008.3  | 4,449.3 | 36.9                             | 513.4 | 38.2                       | 551.6 | 5,000.9      | 11.0                              | 74.2               |
| May       | 3,986.1  | 4,442.8 | 42.4                             | 524.2 | 40.0                       | 564.2 | 5,006.9      | 11.3                              | 74.2               |
| June      | 3,986.7  | 4,451.9 | 44.4                             | 537.6 | 53.3                       | 590.9 | 5,042.8      | 11.7                              | 74.7               |
| July      | 4,008.6  | 4,478.3 | 40.8                             | 544.3 | 46.6                       | 590.9 | 5,069.2      | 11.7                              | 75.0               |
| August    | 3,994.4  | 4,467.0 | 40.2                             | 527.3 | 52.5                       | 579.8 | 5,046.8      | 11.5                              | 74.5               |
| September | 3,991.1  | 4,445.8 | 37.5                             | 521.0 | 45.0                       | 565.9 | 5,011.8      | 11.3                              | 73.9               |
| FEMALES   |          |         |                                  |       |                            |       |              |                                   |                    |
| 1991 —    |          |         |                                  |       |                            |       |              |                                   |                    |
| July      | 1,885.0  | 3,189.0 | 22.9                             | 239.0 | 91.1                       | 330.1 | 3,519.2      | 9.4                               | 51.5               |
| August    | 1,937.1  | 3,246.6 | 22.5                             | 233.2 | 92.8                       | 326.0 | 3,572.6      | 9.1                               | 52.2               |
| September | 1,915.5  | 3,225.8 | 21.5                             | 249.2 | 97.7                       | 346.9 | 3,572.6      | 9.7                               | 52.1               |
| October   | 1,925.3  | 3,214.5 | 24.5                             | 246.3 | 90.0                       | 336.3 | 3,550.8      | 9.5                               | 51.7               |
| November  | 1,876.1  | 3,197.5 | 25.0                             | 256.9 | 96.4                       | 353.3 | 3,550.9      | 10.0                              | 51.7               |
| December  | 1,901.9  | 3,225.7 | 25.2                             | 259.6 | 102.9                      | 362.5 | 3,588.2      | 10.1                              | 52.1               |
| 1992 —    |          |         |                                  |       |                            |       |              |                                   |                    |
| January   | 1,917.2  | 3,249.9 | 25.1                             | 256.4 | 99.0                       | 355.4 | 3,605.3      | 9.9                               | 52.3               |
| February  | 1,909.2  | 3,235.5 | 31.3                             | 266.0 | 95.3                       | 361.3 | 3,596.7      | 10.0                              | 52.1               |
| March     | 1,891.3  | 3,232.5 | 30.4                             | 254.8 | 93.3                       | 348.2 | 3,580.6      | 9.7                               | 51.8               |
| April     | 1,871.7  | 3,223.0 | 33.4                             | 255.6 | 79.5                       | 335.1 | 3,558.2      | 9.4                               | 51.4               |
| May       | 1,877.6  | 3,220.2 | 34.6                             | 256.8 | 84.9                       | 341.7 | 3,561.9      | 9.6                               | 51.4               |
| June      | 1,870.0  | 3,239.2 | 34.9                             | 270.1 | 102.4                      | 372.5 | 3,611.7      | 10.3                              | 52.1               |
| July      | 1,883.3  | 3,270.9 | 38.5                             | 266.9 | 101.9                      | 368.7 | 3,639.6      | 10.1                              | 52.4               |
| August    | 1,867.2  | 3,264.6 | 36.7                             | 256.8 | 110.9                      | 367.7 | 3,632.3      | 10.1                              | 52.2               |
| September | 1,870.1  | 3,241.9 | 32.3                             | 255.9 | 105.9                      | 361.8 | 3,603.7      | 10.0                              | 51.8               |
| PERSONS   |          |         |                                  |       |                            |       |              |                                   |                    |
| 1991 —    |          |         |                                  |       |                            |       |              |                                   |                    |
| July      | 5,921.3  | 7,628.0 | 53.4                             | 696.4 | 135.0                      | 831.4 | 8,459.4      | 9.8                               | 62.6               |
| August    | 6,001.9  | 7,724.7 | 52.4                             | 704.5 | 137.7                      | 842.2 | 8,566.9      | 9.8                               | 63.4               |
| September | 5,972.7  | 7,696.0 | 53.9                             | 726.3 | 143.6                      | 869.8 | 8,565.8      | 10.2                              | 63.3               |
| October   | 5,987.7  | 7,678.0 | 53.9                             | 736.2 | 134.2                      | 870.3 | 8,548.3      | 10.2                              | 63.1               |
| November  | 5,908.4  | 7,655.2 | 60.9                             | 755.6 | 138.6                      | 894.2 | 8,549.4      | 10.5                              | 63.0               |
| December  | 5,952.3  | 7,687.3 | 57.6                             | 757.6 | 150.1                      | 907.6 | 8,595.0      | 10.6                              | 63.2               |
| 1992 —    |          |         |                                  |       |                            |       |              |                                   |                    |
| January   | 5,963.3  | 7,717.9 | 55.9                             | 749.2 | 144.9                      | 894.1 | 8,612.0      | 10.4                              | 63.3               |
| February  | 5,919.7  | 7,705.5 | 65.8                             | 766.1 | 141.6                      | 907.8 | 8,613.2      | 10.5                              | 63.2               |
| March     | 5,903.1  | 7,690.8 | 67.8                             | 766.2 | 133.9                      | 900.1 | 8,590.9      | 10.5                              | 63.0               |
| April     | 5,880.0  | 7,672.3 | 70.3                             | 769.0 | 117.7                      | 886.7 | 8,559.0      | 10.4                              | 62.7               |
| May       | 5,863.7  | 7,663.0 | 77.0                             | 780.9 | 125.0                      | 905.9 | 8,568.8      | 10.6                              | 62.7               |
| June      | 5,856.8  | 7,691.1 | 79.3                             | 807.7 | 155.7                      | 963.4 | 8,654.6      | 11.1                              | 63.2               |
| July      | 5,891.9  | 7,749.2 | 79.3                             | 811.1 | 148.5                      | 959.6 | 8,708.8      | 11.0                              | 63.5               |
| August    | 5,861.6  | 7,731.6 | 76.9                             | 784.1 | 163.4                      | 947.5 | 8,679.1      | 10.9                              | 63.2               |
| September | 5,861.2  | 7,687.7 | 69.8                             | 776.8 | 150.9                      | 927.7 | 8,615.5      | 10.8                              | 62.7               |

TABLE 3. CIVILIAN LABOUR FORCE: TREND SERIES

| Month     | Employed          |         | Unemployed                       |        |                            |       | Labour force | Unemployment rate<br>- per cent - | Participation rate |
|-----------|-------------------|---------|----------------------------------|--------|----------------------------|-------|--------------|-----------------------------------|--------------------|
|           |                   |         | Looking for full-time work       |        | Looking for part-time work | Total |              |                                   |                    |
|           |                   |         | Aged 15-19 looking for first job | Total  |                            |       |              |                                   |                    |
|           |                   |         |                                  |        |                            |       |              |                                   |                    |
|           | Full-time workers | Total   |                                  | '000 - |                            |       |              |                                   |                    |
| MALES     |                   |         |                                  |        |                            |       |              |                                   |                    |
| 1991 —    |                   |         |                                  |        |                            |       |              |                                   |                    |
| July      | 4,060.6           | 4,468.5 | 29.1                             | 460.3  | 45.2                       | 505.5 | 4,974.0      | 10.2                              | 74.6               |
| August    | 4,056.3           | 4,464.6 | 30.3                             | 469.5  | 44.3                       | 513.8 | 4,978.5      | 10.3                              | 74.6               |
| September | 4,054.0           | 4,463.1 | 31.2                             | 478.6  | 44.2                       | 522.8 | 4,985.9      | 10.5                              | 74.6               |
| October   | 4,051.7           | 4,463.2 | 31.9                             | 486.8  | 44.7                       | 531.5 | 4,994.7      | 10.6                              | 74.6               |
| November  | 4,048.3           | 4,464.4 | 32.3                             | 492.8  | 45.3                       | 538.0 | 5,002.4      | 10.8                              | 74.7               |
| December  | 4,042.3           | 4,464.9 | 32.7                             | 496.3  | 45.0                       | 541.4 | 5,006.2      | 10.8                              | 74.6               |
| 1992 —    |                   |         |                                  |        |                            |       |              |                                   |                    |
| January   | 4,032.9           | 4,463.1 | 33.4                             | 499.3  | 44.2                       | 543.4 | 5,006.6      | 10.9                              | 74.5               |
| February  | 4,021.8           | 4,459.8 | 34.8                             | 503.5  | 43.1                       | 546.7 | 5,006.5      | 10.9                              | 74.5               |
| March r   | 4,011.5           | 4,457.4 | 36.8                             | 510.0  | 42.6                       | 552.7 | 5,010.1      | 11.0                              | 74.4               |
| April r   | 4,003.3           | 4,455.9 | 38.8                             | 517.7  | 43.0                       | 560.7 | 5,016.5      | 11.2                              | 74.4               |
| May r     | 3,997.9           | 4,455.6 | 40.4                             | 524.9  | 44.1                       | 569.0 | 5,024.6      | 11.3                              | 74.5               |
| June r    | 3,995.3           | 4,456.7 | 41.2                             | 529.9  | 45.9                       | 575.8 | 5,032.5      | 11.4                              | 74.5               |
| July r    | 3,994.2           | 4,458.4 | 41.2                             | 532.4  | 47.5                       | 580.0 | 5,038.4      | 11.5                              | 74.5               |
| August r  | 3,993.8           | 4,459.6 | 40.9                             | 533.1  | 48.8                       | 581.9 | 5,041.5      | 11.5                              | 74.5               |
| September | 3,993.0           | 4,460.6 | 40.2                             | 532.2  | 49.8                       | 582.0 | 5,042.6      | 11.5                              | 74.4               |
| FEMALES   |                   |         |                                  |        |                            |       |              |                                   |                    |
| 1991 —    |                   |         |                                  |        |                            |       |              |                                   |                    |
| July      | 1,911.8           | 3,219.5 | 23.5                             | 236.1  | 91.0                       | 327.1 | 3,546.6      | 9.2                               | 51.9               |
| August    | 1,912.6           | 3,218.2 | 23.0                             | 240.0  | 92.3                       | 332.2 | 3,550.4      | 9.4                               | 51.9               |
| September | 1,911.6           | 3,217.7 | 22.9                             | 244.6  | 94.1                       | 338.7 | 3,556.3      | 9.5                               | 51.9               |
| October   | 1,910.3           | 3,219.0 | 23.3                             | 249.7  | 96.2                       | 345.9 | 3,564.9      | 9.7                               | 51.9               |
| November  | 1,908.6           | 3,222.4 | 24.3                             | 254.4  | 97.7                       | 352.1 | 3,574.5      | 9.9                               | 52.0               |
| December  | 1,905.9           | 3,226.1 | 25.7                             | 257.4  | 97.7                       | 355.1 | 3,581.2      | 9.9                               | 52.0               |
| 1992 —    |                   |         |                                  |        |                            |       |              |                                   |                    |
| January   | 1,901.9           | 3,228.4 | 27.3                             | 258.7  | 96.1                       | 354.8 | 3,583.2      | 9.9                               | 52.0               |
| February  | 1,897.1           | 3,229.7 | 29.2                             | 259.1  | 93.3                       | 352.5 | 3,582.1      | 9.8                               | 51.9               |
| March r   | 1,891.7           | 3,231.4 | 31.2                             | 259.5  | 90.9                       | 350.4 | 3,581.8      | 9.8                               | 51.8               |
| April r   | 1,885.2           | 3,233.2 | 33.1                             | 260.2  | 90.2                       | 350.4 | 3,583.6      | 9.8                               | 51.8               |
| May r     | 1,878.9           | 3,236.5 | 34.5                             | 260.9  | 92.1                       | 353.0 | 3,589.5      | 9.8                               | 51.8               |
| June r    | 1,874.5           | 3,242.1 | 35.4                             | 261.6  | 96.1                       | 357.6 | 3,599.8      | 9.9                               | 51.9               |
| July r    | 1,872.2           | 3,248.7 | 35.8                             | 261.7  | 100.7                      | 362.3 | 3,611.0      | 10.0                              | 52.0               |
| August r  | 1,870.7           | 3,254.3 | 35.9                             | 261.1  | 105.0                      | 366.1 | 3,620.3      | 10.1                              | 52.1               |
| September | 1,870.4           | 3,258.3 | 35.8                             | 260.7  | 108.7                      | 369.4 | 3,627.8      | 10.2                              | 52.1               |
| PERSONS   |                   |         |                                  |        |                            |       |              |                                   |                    |
| 1991 —    |                   |         |                                  |        |                            |       |              |                                   |                    |
| July      | 5,972.3           | 7,688.0 | 52.6                             | 696.4  | 136.2                      | 832.6 | 8,520.6      | 9.8                               | 63.1               |
| August    | 5,968.8           | 7,682.8 | 53.2                             | 709.5  | 136.6                      | 846.1 | 8,528.9      | 9.9                               | 63.1               |
| September | 5,965.6           | 7,680.8 | 54.1                             | 723.2  | 138.3                      | 861.4 | 8,542.2      | 10.1                              | 63.1               |
| October   | 5,962.0           | 7,682.2 | 55.2                             | 736.5  | 140.9                      | 877.3 | 8,559.6      | 10.2                              | 63.1               |
| November  | 5,956.8           | 7,686.7 | 56.6                             | 747.2  | 143.0                      | 890.1 | 8,576.9      | 10.4                              | 63.2               |
| December  | 5,948.3           | 7,690.9 | 58.3                             | 753.8  | 142.7                      | 896.5 | 8,587.4      | 10.4                              | 63.2               |
| 1992 —    |                   |         |                                  |        |                            |       |              |                                   |                    |
| January   | 5,934.8           | 7,691.5 | 60.7                             | 758.0  | 140.3                      | 898.2 | 8,589.8      | 10.5                              | 63.1               |
| February  | 5,918.8           | 7,689.5 | 64.0                             | 762.7  | 136.5                      | 899.2 | 8,588.7      | 10.5                              | 63.0               |
| March r   | 5,903.2           | 7,688.8 | 68.0                             | 769.5  | 133.5                      | 903.0 | 8,591.9      | 10.5                              | 63.0               |
| April r   | 5,888.5           | 7,689.1 | 71.9                             | 777.9  | 133.2                      | 911.0 | 8,600.1      | 10.6                              | 63.0               |
| May r     | 5,876.8           | 7,692.1 | 74.9                             | 785.8  | 136.2                      | 922.0 | 8,614.1      | 10.7                              | 63.0               |
| June r    | 5,869.8           | 7,698.9 | 76.6                             | 791.5  | 141.9                      | 933.4 | 8,632.3      | 10.8                              | 63.1               |
| July r    | 5,866.4           | 7,707.1 | 77.1                             | 794.1  | 148.2                      | 942.3 | 8,649.4      | 10.9                              | 63.1               |
| August r  | 5,864.5           | 7,713.9 | 76.8                             | 794.2  | 153.7                      | 947.9 | 8,661.8      | 10.9                              | 63.1               |
| September | 5,863.4           | 7,718.9 | 76.0                             | 792.9  | 158.5                      | 951.4 | 8,670.4      | 11.0                              | 63.1               |

TABLE 4. UNEMPLOYED PERSONS: AUSTRALIA

| TABLE 4. UNEMPLOYED PERSONS: AUSTRALIA             |                                   |       |                  |       |                                   |       |                            |                  |       |                            |       |
|--|-----------------------------------|-------|------------------|-------|-----------------------------------|-------|----------------------------|------------------|-------|----------------------------|-------|
| Month  | Number looking for full-time work |       |                  |       | Number looking for part-time work | Total | Unemployment rate          |                  |       |                            | Total |
|  | Aged 15-19                        |       | Aged 20 and over | Total |                                   |       | Looking for full-time work |                  |       | Looking for part-time work |       |
|  | Looking for first job             | Total |                  |       |                                   |       | Aged 15-19                 | Aged 20 and over | Total |                            |       |
|  |                                   |       |                  |       |                                   |       |                            |                  |       |                            |       |
| MALES  |                                   |       |                  |       |                                   |       |                            |                  |       |                            |       |
| 1991 —   |                                   |       |                  |       |                                   |       |                            |                  |       |                            |       |
| July   | 24.0                              | 62.0  | 386.6            | 448.6 | 39.6                              | 488.2 | 25.8                       | 9.1              | 10.0  | 9.1                        | 9.9   |
| August   | 25.0                              | 62.0  | 403.3            | 465.4 | 37.2                              | 502.6 | 27.0                       | 9.4              | 10.3  | 8.4                        | 10.2  |
| September  | 28.6                              | 62.9  | 413.2            | 476.1 | 47.2                              | 523.3 | 27.0                       | 9.6              | 10.5  | 10.0                       | 10.4  |
| October  | 22.4                              | 56.5  | 397.5            | 453.9 | 40.5                              | 494.5 | 24.4                       | 9.2              | 10.0  | 9.2                        | 10.0  |
| November   | 31.4                              | 62.5  | 404.3            | 466.8 | 33.3                              | 500.1 | 27.3                       | 9.5              | 10.4  | 7.1                        | 10.1  |
| December   | 49.2                              | 80.6  | 422.6            | 503.2 | 54.5                              | 557.7 | 30.3                       | 9.7              | 10.9  | 11.7                       | 11.0  |
| 1992 —   |                                   |       |                  |       |                                   |       |                            |                  |       |                            |       |
| January  | 50.6                              | 88.6  | 452.3            | 540.9 | 50.1                              | 591.0 | 33.4                       | 10.5             | 11.8  | 11.1                       | 11.8  |
| February   | 43.9                              | 79.1  | 463.8            | 542.9 | 52.2                              | 595.1 | 32.5                       | 10.7             | 11.9  | 10.7                       | 11.8  |
| March  | 36.6                              | 70.5  | 450.1            | 520.7 | 49.1                              | 569.8 | 30.9                       | 10.5             | 11.5  | 9.7                        | 11.3  |
| April  | 31.9                              | 61.9  | 444.8            | 506.7 | 42.3                              | 549.0 | 28.2                       | 10.4             | 11.2  | 8.5                        | 11.0  |
| May  | 35.7                              | 67.8  | 459.5            | 527.3 | 41.7                              | 569.0 | 30.0                       | 10.7             | 11.7  | 8.2                        | 11.3  |
| June   | 32.6                              | 66.4  | 451.4            | 517.8 | 42.7                              | 560.5 | 30.8                       | 10.5             | 11.5  | 8.3                        | 11.2  |
| July   | 32.1                              | 69.1  | 465.1            | 534.1 | 42.1                              | 576.3 | 30.3                       | 10.8             | 11.7  | 8.4                        | 11.4  |
| August   | 33.6                              | 67.4  | 453.7            | 521.0 | 43.4                              | 564.4 | 31.2                       | 10.6             | 11.6  | 8.5                        | 11.3  |
| September  | 33.2                              | 65.7  | 454.6            | 520.4 | 46.4                              | 566.8 | 31.2                       | 10.5             | 11.5  | 9.0                        | 11.3  |
| Standard error of —<br>September 1992<br>estimates | 2.8                               | 3.8   | 8.7              | 9.1   | 3.3                               | 9.5   | 1.8                        | 0.2              | 0.2   | 0.6                        | 0.2   |
| Aug 92 to Sep 92<br>movements                      | 2.8                               | 3.6   | 7.4              | 7.7   | 3.1                               | 8.0   | 1.7                        | 0.2              | 0.2   | 0.6                        | 0.2   |
| FEMALES  |                                   |       |                  |       |                                   |       |                            |                  |       |                            |       |
| 1991 —   |                                   |       |                  |       |                                   |       |                            |                  |       |                            |       |
| July   | 18.4                              | 46.5  | 185.6            | 232.1 | 81.5                              | 313.6 | 27.4                       | 9.5              | 10.9  | 5.9                        | 9.0   |
| August   | 18.0                              | 45.8  | 175.8            | 221.6 | 81.8                              | 303.4 | 29.3                       | 8.9              | 10.4  | 5.8                        | 8.6   |
| September  | 17.3                              | 47.0  | 191.8            | 238.8 | 105.1                             | 343.9 | 28.9                       | 9.6              | 11.0  | 7.2                        | 9.5   |
| October  | 19.5                              | 44.8  | 178.2            | 223.0 | 84.1                              | 307.1 | 27.8                       | 9.0              | 10.4  | 6.1                        | 8.7   |
| November   | 18.2                              | 43.7  | 188.8            | 232.5 | 84.9                              | 317.4 | 29.8                       | 9.6              | 11.0  | 6.0                        | 9.0   |
| December   | 38.2                              | 66.3  | 198.5            | 264.8 | 97.9                              | 362.7 | 35.7                       | 9.8              | 12.0  | 6.9                        | 10.0  |
| 1992 —   |                                   |       |                  |       |                                   |       |                            |                  |       |                            |       |
| January  | 40.1                              | 66.2  | 214.2            | 280.4 | 88.3                              | 368.7 | 36.8                       | 10.6             | 12.7  | 6.7                        | 10.5  |
| February   | 40.3                              | 67.9  | 230.0            | 297.9 | 104.7                             | 402.6 | 40.3                       | 11.3             | 13.5  | 7.5                        | 11.2  |
| March  | 30.4                              | 54.5  | 210.6            | 265.2 | 114.2                             | 379.3 | 36.2                       | 10.5             | 12.3  | 7.8                        | 10.5  |
| April  | 30.2                              | 54.7  | 212.4            | 267.2 | 94.7                              | 361.9 | 36.6                       | 10.7             | 12.5  | 6.5                        | 10.1  |
| May  | 30.6                              | 57.1  | 205.1            | 262.2 | 89.3                              | 351.5 | 38.8                       | 10.3             | 12.3  | 6.1                        | 9.8   |
| June   | 30.9                              | 57.2  | 201.9            | 259.0 | 94.7                              | 353.7 | 38.7                       | 10.3             | 12.3  | 6.4                        | 9.8   |
| July   | 31.0                              | 57.0  | 202.3            | 259.2 | 90.8                              | 350.1 | 36.4                       | 10.2             | 12.1  | 6.2                        | 9.7   |
| August   | 29.3                              | 50.6  | 193.4            | 244.0 | 97.9                              | 342.0 | 36.5                       | 9.9              | 11.7  | 6.5                        | 9.5   |
| September  | 25.8                              | 43.1  | 202.2            | 245.3 | 114.1                             | 359.4 | 31.2                       | 10.2             | 11.5  | 7.5                        | 9.8   |
| Standard error of —<br>September 1992<br>estimates | 2.5                               | 3.2   | 6.2              | 6.7   | 4.9                               | 7.9   | 2.3                        | 0.3              | 0.3   | 0.3                        | 0.2   |
| Aug 92 to Sep 92<br>movements                      | 2.6                               | 3.2   | 5.4              | 5.8   | 4.4                               | 6.7   | 2.3                        | 0.3              | 0.3   | 0.3                        | 0.2   |
| PERSONS  |                                   |       |                  |       |                                   |       |                            |                  |       |                            |       |
| 1991 —   |                                   |       |                  |       |                                   |       |                            |                  |       |                            |       |
| July   | 42.4                              | 108.5 | 572.2            | 680.7 | 121.1                             | 801.7 | 26.5                       | 9.2              | 10.3  | 6.7                        | 9.5   |
| August   | 43.0                              | 107.8 | 579.1            | 687.0 | 119.1                             | 806.0 | 28.0                       | 9.3              | 10.4  | 6.5                        | 9.5   |
| September  | 45.8                              | 109.9 | 605.1            | 714.9 | 152.3                             | 867.2 | 27.7                       | 9.6              | 10.7  | 7.9                        | 10.0  |
| October  | 41.9                              | 101.3 | 575.6            | 676.9 | 124.6                             | 801.6 | 25.8                       | 9.2              | 10.1  | 6.9                        | 9.4   |
| November   | 49.6                              | 106.2 | 593.2            | 699.3 | 118.2                             | 817.5 | 28.3                       | 9.5              | 10.6  | 6.2                        | 9.6   |
| December   | 87.3                              | 146.9 | 621.0            | 767.9 | 152.4                             | 920.4 | 32.5                       | 9.8              | 11.3  | 8.1                        | 10.6  |
| 1992 —   |                                   |       |                  |       |                                   |       |                            |                  |       |                            |       |
| January  | 90.7                              | 154.8 | 666.5            | 821.3 | 138.4                             | 959.7 | 34.8                       | 10.5             | 12.1  | 7.8                        | 11.2  |
| February   | 84.2                              | 147.0 | 693.7            | 840.8 | 156.9                             | 997.7 | 35.7                       | 10.9             | 12.4  | 8.3                        | 11.5  |
| March  | 67.0                              | 125.0 | 660.8            | 785.8 | 163.3                             | 949.1 | 33.0                       | 10.5             | 11.8  | 8.3                        | 11.0  |
| April  | 62.2                              | 116.7 | 657.2            | 773.8 | 137.0                             | 910.9 | 31.6                       | 10.5             | 11.7  | 7.0                        | 10.6  |
| May  | 66.2                              | 124.9 | 664.6            | 789.5 | 130.9                             | 920.4 | 33.5                       | 10.6             | 11.9  | 6.7                        | 10.7  |
| June   | 63.4                              | 123.6 | 653.3            | 776.8 | 137.4                             | 914.2 | 34.0                       | 10.5             | 11.7  | 6.9                        | 10.6  |
| July   | 63.0                              | 126.0 | 667.4            | 793.4 | 133.0                             | 926.3 | 32.8                       | 10.6             | 11.8  | 6.8                        | 10.7  |
| August   | 63.0                              | 118.0 | 647.1            | 765.1 | 141.3                             | 906.4 | 33.3                       | 10.4             | 11.6  | 7.0                        | 10.6  |
| September  | 59.1                              | 108.8 | 656.9            | 765.7 | 160.5                             | 926.2 | 31.2                       | 10.4             | 11.5  | 7.9                        | 10.7  |
| Standard error of —<br>September 1992<br>estimates | 3.6                               | 4.8   | 10.0             | 10.6  | 5.6                               | 11.4  | 1.4                        | 0.2              | 0.2   | 0.3                        | 0.1   |
| Aug 92 to Sep 92<br>movements                      | 3.5                               | 4.4   | 8.4              | 8.9   | 5.0                               | 9.6   | 1.3                        | 0.1              | 0.1   | 0.2                        | 0.1   |

TABLE 5. UNEMPLOYED PERSONS: SEASONALLY ADJUSTED SERIES

| TABLE 3. UNEMPLOYED PERSONS: SEASONALLY ADJUSTED SERIES |                                   |       |                  |       |                                   |                            |                  |       |                            |      |      |
|---|-----------------------------------|-------|------------------|-------|-----------------------------------|----------------------------|------------------|-------|----------------------------|------|------|
| Month   | Number looking for full-time work |       |                  |       | Number looking for part-time work | Unemployment rate          |                  |       |                            |      |      |
|   | Aged 15-19                        |       | Aged 20 and over | Total |                                   | Looking for full-time work |                  |       | Looking for part-time work |      |      |
|   | Looking for first job             | Total |                  |       |                                   | Aged 15-19                 | Aged 20 and over | Total |                            |      |      |
|   |                                   |       |                  |       |                                   |                            |                  |       |                            |      |      |
|   |                                   |       |                  |       |                                   |                            |                  |       |                            |      |      |
| - '000 -  |                                   |       |                  |       |                                   |                            |                  |       |                            |      |      |
| - per cent -  |                                   |       |                  |       |                                   |                            |                  |       |                            |      |      |
| MALES   |                                   |       |                  |       |                                   |                            |                  |       |                            |      |      |
| 1991 —  |                                   |       |                  |       |                                   |                            |                  |       |                            |      |      |
| July  | 30.5                              | 67.4  | 390.0            | 457.4 | 43.9                              | 501.3                      | 27.8             | 9.2   | 10.2                       | 9.8  | 10.1 |
| August  | 29.9                              | 65.7  | 405.5            | 471.3 | 44.9                              | 516.2                      | 27.2             | 9.4   | 10.4                       | 9.8  | 10.3 |
| September   | 32.4                              | 67.3  | 409.8            | 477.1 | 45.9                              | 523.0                      | 27.7             | 9.5   | 10.5                       | 10.0 | 10.5 |
| October   | 29.4                              | 66.0  | 423.9            | 489.9 | 44.2                              | 534.1                      | 27.1             | 9.8   | 10.8                       | 9.9  | 10.7 |
| November  | 35.9                              | 70.2  | 428.5            | 498.7 | 42.2                              | 540.8                      | 28.5             | 10.0  | 11.0                       | 9.0  | 10.8 |
| December  | 32.4                              | 66.0  | 432.0            | 498.0 | 47.2                              | 545.2                      | 27.4             | 10.0  | 10.9                       | 10.3 | 10.9 |
| 1992 —  |                                   |       |                  |       |                                   |                            |                  |       |                            |      |      |
| January   | 30.8                              | 66.1  | 426.7            | 492.8 | 45.9                              | 538.7                      | 28.6             | 9.9   | 10.9                       | 9.8  | 10.8 |
| February  | 34.5                              | 68.5  | 431.6            | 500.2 | 46.3                              | 546.5                      | 30.4             | 10.1  | 11.1                       | 9.2  | 10.9 |
| March   | 37.4                              | 73.5  | 437.9            | 511.4 | 40.5                              | 551.9                      | 31.9             | 10.2  | 11.3                       | 8.3  | 11.0 |
| April   | 36.9                              | 66.1  | 447.3            | 513.4 | 38.2                              | 551.6                      | 29.4             | 10.4  | 11.4                       | 8.0  | 11.0 |
| May   | 42.4                              | 72.5  | 451.6            | 524.2 | 40.0                              | 564.2                      | 30.8             | 10.6  | 11.6                       | 8.1  | 11.3 |
| June  | 44.4                              | 73.5  | 464.1            | 537.6 | 53.3                              | 590.9                      | 32.5             | 10.8  | 11.9                       | 10.3 | 11.7 |
| July  | 40.8                              | 75.2  | 469.1            | 544.3 | 46.6                              | 590.9                      | 32.5             | 10.9  | 12.0                       | 9.0  | 11.7 |
| August  | 40.2                              | 71.2  | 456.1            | 527.3 | 52.5                              | 579.8                      | 31.4             | 10.6  | 11.7                       | 10.0 | 11.5 |
| September   | 37.5                              | 70.2  | 450.7            | 521.0 | 45.0                              | 565.9                      | 32.0             | 10.5  | 11.5                       | 9.0  | 11.3 |
| FEMALES   |                                   |       |                  |       |                                   |                            |                  |       |                            |      |      |
| 1991 —  |                                   |       |                  |       |                                   |                            |                  |       |                            |      |      |
| July  | 22.9                              | 50.0  | 189.0            | 239.0 | 91.1                              | 330.1                      | 29.3             | 9.7   | 11.3                       | 6.5  | 9.4  |
| August  | 22.5                              | 51.4  | 181.8            | 233.2 | 92.8                              | 326.0                      | 30.8             | 9.1   | 10.7                       | 6.6  | 9.1  |
| September   | 21.5                              | 50.0  | 199.2            | 249.2 | 97.7                              | 346.9                      | 29.2             | 10.0  | 11.5                       | 6.9  | 9.7  |
| October   | 24.5                              | 52.4  | 193.9            | 246.3 | 90.0                              | 336.3                      | 30.2             | 9.7   | 11.3                       | 6.5  | 9.5  |
| November  | 25.0                              | 53.5  | 203.4            | 256.9 | 96.4                              | 353.3                      | 33.5             | 10.3  | 12.0                       | 6.8  | 10.0 |
| December  | 25.2                              | 52.7  | 206.8            | 259.6 | 102.9                             | 362.5                      | 32.3             | 10.4  | 12.0                       | 7.2  | 10.1 |
| 1992 —  |                                   |       |                  |       |                                   |                            |                  |       |                            |      |      |
| January   | 25.1                              | 52.5  | 203.9            | 256.4 | 99.0                              | 355.4                      | 33.3             | 10.1  | 11.8                       | 6.9  | 9.9  |
| February  | 31.3                              | 56.2  | 209.8            | 266.0 | 95.3                              | 361.3                      | 36.0             | 10.4  | 12.2                       | 6.7  | 10.0 |
| March   | 30.4                              | 55.0  | 199.8            | 254.8 | 93.3                              | 348.2                      | 36.1             | 10.0  | 11.9                       | 6.5  | 9.7  |
| April   | 33.4                              | 57.3  | 198.3            | 255.6 | 79.5                              | 335.1                      | 37.7             | 10.0  | 12.0                       | 5.6  | 9.4  |
| May   | 34.6                              | 58.6  | 198.2            | 256.8 | 84.9                              | 341.7                      | 39.3             | 10.0  | 12.0                       | 5.9  | 9.6  |
| June  | 34.9                              | 62.8  | 207.3            | 270.1 | 102.4                             | 372.5                      | 40.5             | 10.4  | 12.6                       | 7.0  | 10.3 |
| July  | 38.5                              | 61.1  | 205.8            | 266.9 | 101.9                             | 368.7                      | 38.6             | 10.3  | 12.4                       | 6.8  | 10.1 |
| August  | 36.7                              | 56.7  | 200.1            | 256.8 | 110.9                             | 367.7                      | 38.0             | 10.1  | 12.1                       | 7.4  | 10.1 |
| September   | 32.3                              | 45.8  | 210.0            | 255.9 | 105.9                             | 361.8                      | 31.5             | 10.6  | 12.0                       | 7.2  | 10.0 |
| PERSONS   |                                   |       |                  |       |                                   |                            |                  |       |                            |      |      |
| 1991 —  |                                   |       |                  |       |                                   |                            |                  |       |                            |      |      |
| July  | 53.4                              | 117.4 | 579.1            | 696.4 | 135.0                             | 831.4                      | 28.4             | 9.3   | 10.5                       | 7.3  | 9.8  |
| August  | 52.4                              | 117.1 | 587.4            | 704.5 | 137.7                             | 842.2                      | 28.7             | 9.3   | 10.5                       | 7.4  | 9.8  |
| September   | 53.9                              | 117.3 | 609.0            | 726.3 | 143.6                             | 869.8                      | 28.3             | 9.7   | 10.8                       | 7.7  | 10.2 |
| October   | 53.9                              | 118.3 | 617.9            | 736.2 | 134.2                             | 870.3                      | 28.4             | 9.8   | 10.9                       | 7.4  | 10.2 |
| November  | 60.9                              | 123.6 | 631.9            | 755.6 | 138.6                             | 894.2                      | 30.5             | 10.1  | 11.3                       | 7.4  | 10.5 |
| December  | 57.6                              | 118.7 | 638.8            | 757.6 | 150.1                             | 907.6                      | 29.4             | 10.1  | 11.3                       | 8.0  | 10.6 |
| 1992 —  |                                   |       |                  |       |                                   |                            |                  |       |                            |      |      |
| January   | 55.9                              | 118.6 | 630.6            | 749.2 | 144.9                             | 894.1                      | 30.5             | 10.0  | 11.2                       | 7.6  | 10.4 |
| February  | 65.8                              | 124.7 | 641.4            | 766.1 | 141.6                             | 907.8                      | 32.7             | 10.2  | 11.5                       | 7.3  | 10.5 |
| March   | 67.8                              | 128.5 | 637.7            | 766.2 | 133.9                             | 900.1                      | 33.6             | 10.1  | 11.5                       | 7.0  | 10.5 |
| April   | 70.3                              | 123.4 | 645.7            | 769.0 | 117.7                             | 886.7                      | 32.7             | 10.3  | 11.6                       | 6.2  | 10.4 |
| May   | 77.0                              | 131.1 | 649.8            | 780.9 | 125.0                             | 905.9                      | 34.1             | 10.4  | 11.8                       | 6.5  | 10.6 |
| June  | 79.3                              | 136.3 | 671.4            | 807.7 | 155.7                             | 963.4                      | 35.8             | 10.7  | 12.1                       | 7.8  | 11.1 |
| July  | 79.3                              | 136.3 | 674.9            | 811.1 | 148.5                             | 959.6                      | 34.9             | 10.7  | 12.1                       | 7.4  | 11.0 |
| August  | 76.9                              | 127.9 | 656.2            | 784.1 | 163.4                             | 947.5                      | 34.0             | 10.5  | 11.8                       | 8.0  | 10.9 |
| September   | 69.8                              | 116.1 | 660.8            | 776.8 | 150.9                             | 927.7                      | 31.8             | 10.5  | 11.7                       | 7.6  | 10.8 |



TABLE 6. UNEMPLOYED PERSONS: TREND SERIES

| Month     | Number looking for full-time work |       |                  |       | Number looking for part-time work | Total | Unemployment rate          |                  |       |              | Looking for part-time work | Total |
|-----------|-----------------------------------|-------|------------------|-------|-----------------------------------|-------|----------------------------|------------------|-------|--------------|----------------------------|-------|
|           | Aged 15-19                        |       | Aged 20 and over | Total |                                   |       | Looking for full-time work |                  |       |              |                            |       |
|           | Looking for first job             | Total |                  |       |                                   |       | Aged 15-19                 | Aged 20 and over | Total |              |                            |       |
|           |                                   |       |                  |       |                                   |       |                            |                  |       | - per cent - |                            |       |
| MALES     |                                   |       |                  |       |                                   |       |                            |                  |       |              |                            |       |
| 1991 —    |                                   |       |                  |       |                                   |       |                            |                  |       |              |                            |       |
| July      | 29.1                              | 67.1  | 393.3            | 460.3 | 45.2                              | 505.5 | 27.7                       | 9.2              | 10.2  | 10.0         | 10.2                       |       |
| August    | 30.3                              | 67.0  | 402.6            | 469.5 | 44.3                              | 513.8 | 27.6                       | 9.4              | 10.4  | 9.8          | 10.3                       |       |
| September | 31.2                              | 66.8  | 411.8            | 478.6 | 44.2                              | 522.8 | 27.5                       | 9.6              | 10.6  | 9.7          | 10.5                       |       |
| October   | 31.9                              | 67.0  | 419.8            | 486.8 | 44.7                              | 531.5 | 27.6                       | 9.8              | 10.7  | 9.8          | 10.6                       |       |
| November  | 32.3                              | 67.2  | 425.5            | 492.8 | 45.3                              | 538.0 | 27.9                       | 9.9              | 10.9  | 9.8          | 10.8                       |       |
| December  | 32.7                              | 67.5  | 428.8            | 496.3 | 45.0                              | 541.4 | 28.4                       | 10.0             | 10.9  | 9.6          | 10.8                       |       |
| 1992 —    |                                   |       |                  |       |                                   |       |                            |                  |       |              |                            |       |
| January   | 33.4                              | 67.9  | 431.4            | 499.3 | 44.2                              | 543.4 | 29.0                       | 10.0             | 11.0  | 9.3          | 10.9                       |       |
| February  | 34.8                              | 68.6  | 435.0            | 503.5 | 43.1                              | 546.7 | 29.7                       | 10.1             | 11.1  | 9.0          | 10.9                       |       |
| March r   | 36.8                              | 69.6  | 440.4            | 510.0 | 42.6                              | 552.7 | 30.4                       | 10.3             | 11.3  | 8.7          | 11.0                       |       |
| April r   | 38.8                              | 70.7  | 447.0            | 517.7 | 43.0                              | 560.7 | 30.9                       | 10.4             | 11.5  | 8.7          | 11.2                       |       |
| May r     | 40.4                              | 71.7  | 453.2            | 524.9 | 44.1                              | 569.0 | 31.3                       | 10.6             | 11.6  | 8.8          | 11.3                       |       |
| June r    | 41.2                              | 72.3  | 457.6            | 529.9 | 45.9                              | 575.8 | 31.6                       | 10.7             | 11.7  | 9.0          | 11.4                       |       |
| July r    | 41.2                              | 72.5  | 459.9            | 532.4 | 47.5                              | 580.0 | 31.8                       | 10.7             | 11.8  | 9.3          | 11.5                       |       |
| August r  | 40.9                              | 72.5  | 460.7            | 533.1 | 48.8                              | 581.9 | 32.0                       | 10.7             | 11.8  | 9.5          | 11.5                       |       |
| September | 40.2                              | 72.1  | 460.1            | 532.2 | 49.8                              | 582.0 | 32.1                       | 10.7             | 11.8  | 9.6          | 11.5                       |       |
| FEMALES   |                                   |       |                  |       |                                   |       |                            |                  |       |              |                            |       |
| 1991 —    |                                   |       |                  |       |                                   |       |                            |                  |       |              |                            |       |
| July      | 23.5                              | 50.2  | 185.9            | 236.1 | 91.0                              | 327.1 | 29.3                       | 9.4              | 11.0  | 6.5          | 9.2                        |       |
| August    | 23.0                              | 50.7  | 189.2            | 240.0 | 92.3                              | 332.2 | 29.8                       | 9.5              | 11.1  | 6.6          | 9.4                        |       |
| September | 22.9                              | 51.3  | 193.3            | 244.6 | 94.1                              | 338.7 | 30.4                       | 9.7              | 11.3  | 6.7          | 9.5                        |       |
| October   | 23.3                              | 51.8  | 197.9            | 249.7 | 96.2                              | 345.9 | 31.0                       | 9.9              | 11.6  | 6.8          | 9.7                        |       |
| November  | 24.3                              | 52.4  | 202.0            | 254.4 | 97.7                              | 352.1 | 31.8                       | 10.1             | 11.8  | 6.9          | 9.9                        |       |
| December  | 25.7                              | 53.1  | 204.4            | 257.4 | 97.7                              | 355.1 | 32.8                       | 10.2             | 11.9  | 6.9          | 9.9                        |       |
| 1992 —    |                                   |       |                  |       |                                   |       |                            |                  |       |              |                            |       |
| January   | 27.3                              | 53.8  | 204.9            | 258.7 | 96.1                              | 354.8 | 34.0                       | 10.2             | 12.0  | 6.8          | 9.9                        |       |
| February  | 29.2                              | 54.9  | 204.2            | 259.1 | 93.3                              | 352.5 | 35.4                       | 10.2             | 12.0  | 6.5          | 9.8                        |       |
| March r   | 31.2                              | 56.6  | 202.9            | 259.5 | 90.9                              | 350.4 | 36.8                       | 10.2             | 12.1  | 6.4          | 9.8                        |       |
| April r   | 33.1                              | 58.2  | 202.0            | 260.2 | 90.2                              | 350.4 | 38.0                       | 10.1             | 12.1  | 6.3          | 9.8                        |       |
| May r     | 34.5                              | 59.1  | 201.8            | 260.9 | 92.1                              | 353.0 | 38.7                       | 10.2             | 12.2  | 6.4          | 9.8                        |       |
| June r    | 35.4                              | 59.0  | 202.6            | 261.6 | 96.1                              | 357.6 | 38.7                       | 10.2             | 12.2  | 6.6          | 9.9                        |       |
| July r    | 35.8                              | 57.9  | 203.8            | 261.7 | 100.7                             | 362.3 | 38.1                       | 10.3             | 12.3  | 6.8          | 10.0                       |       |
| August r  | 35.9                              | 56.1  | 205.0            | 261.1 | 105.0                             | 366.1 | 37.1                       | 10.4             | 12.2  | 7.1          | 10.1                       |       |
| September | 35.8                              | 54.1  | 206.6            | 260.7 | 108.7                             | 369.4 | 36.1                       | 10.4             | 12.2  | 7.3          | 10.2                       |       |
| PERSONS   |                                   |       |                  |       |                                   |       |                            |                  |       |              |                            |       |
| 1991 —    |                                   |       |                  |       |                                   |       |                            |                  |       |              |                            |       |
| July      | 52.6                              | 117.2 | 579.2            | 696.4 | 136.2                             | 832.6 | 28.3                       | 9.3              | 10.4  | 7.4          | 9.8                        |       |
| August    | 53.2                              | 117.7 | 591.8            | 709.5 | 136.6                             | 846.1 | 28.5                       | 9.4              | 10.6  | 7.4          | 9.9                        |       |
| September | 54.1                              | 118.1 | 605.1            | 723.2 | 138.3                             | 861.4 | 28.7                       | 9.6              | 10.8  | 7.5          | 10.1                       |       |
| October   | 55.2                              | 118.8 | 617.7            | 736.5 | 140.9                             | 877.3 | 29.0                       | 9.8              | 11.0  | 7.6          | 10.2                       |       |
| November  | 56.6                              | 119.7 | 627.5            | 747.2 | 143.0                             | 890.1 | 29.5                       | 10.0             | 11.1  | 7.6          | 10.4                       |       |
| December  | 58.3                              | 120.6 | 633.2            | 753.8 | 142.7                             | 896.5 | 30.2                       | 10.0             | 11.2  | 7.6          | 10.4                       |       |
| 1992 —    |                                   |       |                  |       |                                   |       |                            |                  |       |              |                            |       |
| January   | 60.7                              | 121.7 | 636.3            | 758.0 | 140.3                             | 898.2 | 31.0                       | 10.1             | 11.3  | 7.4          | 10.5                       |       |
| February  | 64.0                              | 123.5 | 639.2            | 762.7 | 136.5                             | 899.2 | 32.0                       | 10.2             | 11.4  | 7.2          | 10.5                       |       |
| March r   | 68.0                              | 126.2 | 643.4            | 769.5 | 133.5                             | 903.0 | 33.0                       | 10.2             | 11.5  | 7.0          | 10.5                       |       |
| April r   | 71.9                              | 128.9 | 648.9            | 777.9 | 133.2                             | 911.0 | 33.8                       | 10.3             | 11.7  | 6.9          | 10.6                       |       |
| May r     | 74.9                              | 130.8 | 655.0            | 785.8 | 136.2                             | 922.0 | 34.3                       | 10.4             | 11.8  | 7.0          | 10.7                       |       |
| June r    | 76.6                              | 131.3 | 660.2            | 791.5 | 141.9                             | 933.4 | 34.4                       | 10.5             | 11.9  | 7.2          | 10.8                       |       |
| July r    | 77.1                              | 130.4 | 663.7            | 794.1 | 148.2                             | 942.3 | 34.3                       | 10.6             | 11.9  | 7.5          | 10.9                       |       |
| August r  | 76.8                              | 128.5 | 665.7            | 794.2 | 153.7                             | 947.9 | 34.1                       | 10.6             | 11.9  | 7.7          | 10.9                       |       |
| September | 76.0                              | 126.2 | 666.7            | 792.9 | 158.5                             | 951.4 | 33.7                       | 10.6             | 11.9  | 7.9          | 11.0                       |       |

TABLE 7. LABOUR FORCE STATUS OF CIVILIAN POPULATION AGED 15 TO 19: FULL -TIME ATTENDANCE AT SCHOOL OR A TERTIARY EDUCATIONAL INSTITUTION, SEPTEMBER 1992

| AT SCHOOL OR A TERTIARY EDUCATIONAL INSTITUTION, SEPTEMBER 1972           |                          |              |                                   |  |              |                     |                            |                                       |                               |                                  |
|---|--------------------------|--------------|-----------------------------------|--|--------------|---------------------|----------------------------|---------------------------------------|-------------------------------|----------------------------------|
|   | <i>Employed</i>          |              | <i>Unemployed</i>                 |  |              | <i>Labour force</i> | <i>Not in labour force</i> | <i>Civilian population aged 15-19</i> | <i>Unemployment rate -per</i> | <i>Participation rate -cent-</i> |
|   | <i>Full-time workers</i> | <i>Total</i> | <i>Looking for full-time work</i> | <i>Looking for part-time work - '000</i> | <i>Total</i> |                     |                            |                                       |                               |                                  |
| ATTENDING NEITHER SCHOOL NOR A TERTIARY EDUCATIONAL INSTITUTION FULL TIME |                          |              |                                   |  |              |                     |                            |                                       |                               |                                  |
| Males   | 141.4                    | 170.3        | 58.2                              | * 1.1                                    | 59.3         | 229.6               | 15.0                       | 244.6                                 | 25.8                          | 93.9                             |
| Females   | 92.6                     | 132.6        | 38.9                              | * 1.7                                    | 40.7         | 173.3               | 26.0                       | 199.3                                 | 23.5                          | 86.9                             |
| <i>Persons</i>  | <i>234.0</i>             | <i>303.0</i> | <i>97.1</i>                       | <i>* 2.9</i>                             | <i>100.0</i> | <i>402.9</i>        | <i>41.1</i>                | <i>444.0</i>                          | <i>24.8</i>                   | <i>90.8</i>                      |
| ATTENDING A TERTIARY EDUCATIONAL INSTITUTION FULL TIME                    |                          |              |                                   |  |              |                     |                            |                                       |                               |                                  |
| Males   | * 3.4                    | 23.8         | * 2.9                             | 5.6                                      | 8.4          | 32.2                | 43.4                       | 75.7                                  | 26.2                          | 42.6                             |
| Females   | * 2.0                    | 43.8         | * 1.5                             | 7.3                                      | 8.8          | 52.6                | 42.9                       | 95.5                                  | 16.7                          | 55.1                             |
| <i>Persons</i>  | <i>5.5</i>               | <i>67.6</i>  | <i>4.4</i>                        | <i>12.8</i>                              | <i>17.2</i>  | <i>84.8</i>         | <i>86.3</i>                | <i>171.2</i>                          | <i>20.3</i>                   | <i>49.5</i>                      |
| ATTENDING SCHOOL  |                          |              |                                   |  |              |                     |                            |                                       |                               |                                  |
| Males   | * 0.2                    | 80.4         | 4.7                               | 19.5                                     | 24.2         | 104.6               | 244.5                      | 349.1                                 | 23.2                          | 30.0                             |
| Females   | * 0.3                    | 102.5        | * 2.7                             | 27.3                                     | 30.0         | 132.5               | 213.2                      | 345.7                                 | 22.6                          | 38.3                             |
| <i>Persons</i>  | <i>* 0.5</i>             | <i>182.9</i> | <i>7.4</i>                        | <i>46.9</i>                              | <i>54.2</i>  | <i>237.1</i>        | <i>457.7</i>               | <i>694.8</i>                          | <i>22.9</i>                   | <i>34.1</i>                      |
| TOTAL   |                          |              |                                   |  |              |                     |                            |                                       |                               |                                  |
| Males   | 145.1                    | 274.5        | 65.7                              | 26.2                                     | 92.0         | 366.5               | 302.9                      | 669.4                                 | 25.1                          | 54.7                             |
| Females   | 95.0                     | 278.9        | 43.1                              | 36.3                                     | 79.5         | 358.4               | 282.2                      | 640.5                                 | 22.2                          | 55.9                             |
| <i>Persons</i>  | <i>240.0</i>             | <i>553.4</i> | <i>108.8</i>                      | <i>62.6</i>                              | <i>171.4</i> | <i>724.9</i>        | <i>585.1</i>               | <i>1,309.9</i>                        | <i>23.6</i>                   | <i>55.3</i>                      |

TABLE 8. LABOUR FORCE STATUS OF CIVILIAN POPULATION AGED 15 AND OVER, STATES AND TERRITORIES, SEPTEMBER 1992

| STATES AND TERRITORIES, SEPTEMBER 1992 |                          |              |                                   |                                   |              |              |                     |                                      |                                |                    |
|--|--------------------------|--------------|-----------------------------------|-----------------------------------|--------------|--------------|---------------------|--------------------------------------|--------------------------------|--------------------|
| State or Territory                     | <i>Employed</i>          |              | <i>Unemployed</i>                 |                                   |              | Labour force | Not in labour force | Civilian population aged 15 and over | Unemployment rate - per cent - | Participation rate |
|  | <i>Full-time workers</i> | <i>Total</i> | <i>Looking for full-time work</i> | <i>Looking for part-time work</i> | <i>Total</i> |              |                     |                                      |                                |                    |
|  |                          |              |                                   | '000 -                            |              |              |                     |                                      |                                |                    |
| MALES                                  |                          |              |                                   |                                   |              |              |                     |                                      |                                |                    |
| New South Wales                        | 1,349.8                  | 1,490.6      | 174.4                             | 12.5                              | 186.9        | 1,677.5      | 618.6               | 2,296.1                              | 11.1                           | 73.1               |
| Victoria                               | 1,005.7                  | 1,134.1      | 137.3                             | 12.4                              | 149.7        | 1,283.8      | 442.7               | 1,726.5                              | 11.7                           | 74.4               |
| Queensland                             | 703.6                    | 789.0        | 80.1                              | 10.4                              | 90.5         | 879.5        | 293.5               | 1,173.0                              | 10.3                           | 75.0               |
| South Australia                        | 328.4                    | 369.3        | 50.4                              | 3.2                               | 53.6         | 422.9        | 153.8               | 576.7                                | 12.7                           | 73.3               |
| Western Australia                      | 401.7                    | 450.3        | 51.8                              | 4.4                               | 56.2         | 506.5        | 151.1               | 657.6                                | 11.1                           | 77.0               |
| Tasmania                               | 99.1                     | 110.2        | 15.9                              | 1.3                               | 17.2         | 127.5        | 49.2                | 176.7                                | 13.5                           | 72.1               |
| Northern Territory                     | 35.6                     | 41.3         | 3.9                               | * 0.6                             | 4.5          | 45.8         | 12.6                | 58.5                                 | 9.9                            | 78.4               |
| Australian Capital Territory           | 76.0                     | 84.9         | 6.4                               | 1.7                               | 8.2          | 93.1         | 19.3                | 112.3                                | 8.8                            | 82.9               |
| Australia                              | 3,999.9                  | 4,469.8      | 520.4                             | 46.4                              | 566.8        | 5,036.6      | 1,740.8             | 6,777.3                              | 11.3                           | 74.3               |
| FEMALES                                |                          |              |                                   |                                   |              |              |                     |                                      |                                |                    |
| New South Wales                        | 652.5                    | 1,105.5      | 81.1                              | 35.9                              | 117.0        | 1,222.6      | 1,149.3             | 2,371.9                              | 9.6                            | 51.5               |
| Victoria                               | 486.4                    | 830.2        | 66.0                              | 28.6                              | 94.6         | 924.7        | 867.1               | 1,791.8                              | 10.2                           | 51.6               |
| Queensland                             | 321.0                    | 581.0        | 40.0                              | 22.8                              | 62.8         | 643.8        | 551.9               | 1,195.6                              | 9.8                            | 53.8               |
| South Australia                        | 148.0                    | 275.0        | 21.4                              | 9.6                               | 31.0         | 306.0        | 286.8               | 592.8                                | 10.1                           | 51.6               |
| Western Australia                      | 172.4                    | 316.8        | 26.5                              | 11.5                              | 38.1         | 354.9        | 301.8               | 656.7                                | 10.7                           | 54.0               |
| Tasmania                               | 40.5                     | 79.5         | 5.3                               | 2.8                               | 8.1          | 87.6         | 94.7                | 182.3                                | 9.2                            | 48.1               |
| Northern Territory                     | 21.2                     | 33.6         | 1.4                               | * 0.6                             | 2.0          | 35.6         | 19.7                | 55.4                                 | 5.7                            | 64.4               |
| Australian Capital Territory           | 38.4                     | 68.5         | 3.5                               | 2.2                               | 5.7          | 74.3         | 40.6                | 114.8                                | 7.7                            | 64.7               |
| Australia                              | 1,880.5                  | 3,290.2      | 245.3                             | 114.1                             | 359.4        | 3,649.6      | 3,311.7             | 6,961.3                              | 9.8                            | 52.4               |
| PERSONS                                |                          |              |                                   |                                   |              |              |                     |                                      |                                |                    |
| New South Wales                        | 2,002.3                  | 2,596.1      | 255.5                             | 48.4                              | 303.9        | 2,900.0      | 1,767.9             | 4,668.0                              | 10.5                           | 62.1               |
| Victoria                               | 1,492.1                  | 1,964.3      | 203.3                             | 40.9                              | 244.3        | 2,208.6      | 1,309.7             | 3,518.3                              | 11.1                           | 62.8               |
| Queensland                             | 1,024.6                  | 1,369.9      | 120.2                             | 33.2                              | 153.3        | 1,523.2      | 845.4               | 2,368.6                              | 10.1                           | 64.3               |
| South Australia                        | 476.5                    | 644.3        | 71.8                              | 12.8                              | 84.6         | 729.0        | 440.6               | 1,169.5                              | 11.6                           | 62.3               |
| Western Australia                      | 574.2                    | 767.2        | 78.4                              | 15.9                              | 94.3         | 861.4        | 452.8               | 1,314.3                              | 10.9                           | 65.5               |
| Tasmania                               | 139.6                    | 189.8        | 21.3                              | 4.1                               | 25.3         | 215.1        | 143.9               | 359.0                                | 11.8                           | 59.9               |
| Northern Territory                     | 56.8                     | 74.9         | 5.3                               | 1.3                               | 6.6          | 81.5         | 32.4                | 113.8                                | 8.1                            | 71.6               |
| Australian Capital Territory           | 114.4                    | 153.4        | 10.0                              | 3.9                               | 13.9         | 167.3        | 59.8                | 227.1                                | 8.3                            | 73.7               |
| Australia                              | 5,880.3                  | 7,759.9      | 765.7                             | 160.5                             | 926.2        | 8,686.1      | 5,052.5             | 13,738.6                             | 10.7                           | 63.2               |

TABLE 9. UNEMPLOYED PERSONS, STATES AND TERRITORIES

| TABLE 9. UNEMPLOYED PERSONS, STATES AND TERRITORIES |                                   |       |                  |       |                                   |       |                            |                  |       |                            |          |
|---|-----------------------------------|-------|------------------|-------|-----------------------------------|-------|----------------------------|------------------|-------|----------------------------|----------|
| Month   | Number looking for full-time work |       |                  |       | Number looking for part-time work | Total | Unemployment rate          |                  |       |                            |          |
|   | Aged 15-19                        |       |                  | Total |                                   |       | Looking for full-time work |                  |       | Looking for part-time work |          |
|   | Looking for first job             | Total | Aged 20 and over |       |                                   |       | Aged 15-19                 | Aged 20 and over | Total |                            |          |
|   |                                   |       |                  |       |                                   |       |                            |                  |       |                            | - '000 - |
| NEW SOUTH WALES                                     |                                   |       |                  |       |                                   |       |                            |                  |       |                            |          |
| 1991 — September                                    | 14.8                              | 35.0  | 194.9            | 230.0 | 50.8                              | 280.8 | 26.6                       | 9.1              | 10.1  | 8.5                        | 9.7      |
| 1992 — August                                       | 19.7                              | 37.3  | 220.8            | 258.1 | 45.3                              | 303.3 | 29.8                       | 10.5             | 11.6  | 7.0                        | 10.6     |
| September   | 19.4                              | 33.7  | 221.8            | 255.5 | 48.4                              | 303.9 | 28.5                       | 10.4             | 11.3  | 7.5                        | 10.5     |
| Standard error of —                                 |                                   |       |                  |       |                                   |       |                            |                  |       |                            |          |
| Sep 92 estimates                                    | 2.4                               | 3.0   | 6.5              | 6.8   | 3.5                               | 7.3   | 2.6                        | 0.3              | 0.3   | 0.5                        | 0.3      |
| Aug 92 to Sep 92 movements                          | 2.3                               | 2.9   | 5.5              | 5.9   | 3.2                               | 6.2   | 2.3                        | 0.3              | 0.3   | 0.5                        | 0.2      |
| VICTORIA  |                                   |       |                  |       |                                   |       |                            |                  |       |                            |          |
| 1991 — September                                    | 11.6                              | 28.7  | 168.9            | 197.6 | 40.5                              | 238.2 | 32.3                       | 10.3             | 11.4  | 8.0                        | 10.6     |
| 1992 — August                                       | 18.2                              | 30.2  | 173.9            | 204.1 | 36.0                              | 240.0 | 42.8                       | 10.8             | 12.2  | 7.0                        | 10.9     |
| September   | 13.4                              | 22.3  | 181.0            | 203.3 | 40.9                              | 244.3 | 32.1                       | 11.1             | 12.0  | 8.0                        | 11.1     |
| Standard error of —                                 |                                   |       |                  |       |                                   |       |                            |                  |       |                            |          |
| Sep 92 estimates                                    | 1.9                               | 2.4   | 5.6              | 5.8   | 3.1                               | 6.2   | 3.4                        | 0.3              | 0.3   | 0.6                        | 0.3      |
| Aug 92 to Sep 92 movements                          | 1.9                               | 2.3   | 4.5              | 4.7   | 2.6                               | 5.0   | 3.3                        | 0.3              | 0.3   | 0.5                        | 0.2      |
| QUEENSLAND  |                                   |       |                  |       |                                   |       |                            |                  |       |                            |          |
| 1991 — September                                    | 8.7                               | 20.1  | 91.3             | 111.4 | 26.0                              | 137.5 | 26.0                       | 8.7              | 9.8   | 7.7                        | 9.3      |
| 1992 — August                                       | 8.6                               | 19.7  | 100.5            | 120.2 | 23.8                              | 144.0 | 27.0                       | 9.5              | 10.6  | 6.7                        | 9.7      |
| September   | 8.1                               | 18.8  | 101.4            | 120.2 | 33.2                              | 153.3 | 26.2                       | 9.4              | 10.5  | 8.8                        | 10.1     |
| Standard error of —                                 |                                   |       |                  |       |                                   |       |                            |                  |       |                            |          |
| Sep 92 estimates                                    | 1.3                               | 1.9   | 3.8              | 4.1   | 2.4                               | 4.5   | 2.6                        | 0.4              | 0.4   | 0.6                        | 0.3      |
| Aug 92 to Sep 92 movements                          | 1.3                               | 1.8   | 3.2              | 3.3   | 2.1                               | 3.6   | 2.5                        | 0.3              | 0.3   | 0.6                        | 0.2      |
| SOUTH AUSTRALIA                                     |                                   |       |                  |       |                                   |       |                            |                  |       |                            |          |
| 1991 — September                                    | 3.7                               | 9.0   | 55.5             | 64.5  | 12.8                              | 77.3  | 26.4                       | 10.8             | 11.7  | 7.6                        | 10.8     |
| 1992 — August                                       | 6.3                               | 11.3  | 61.6             | 72.9  | 11.4                              | 84.3  | 40.0                       | 12.0             | 13.5  | 6.4                        | 11.7     |
| September   | 7.2                               | 11.9  | 59.9             | 71.8  | 12.8                              | 84.6  | 40.3                       | 11.6             | 13.1  | 7.1                        | 11.6     |
| Standard error of —                                 |                                   |       |                  |       |                                   |       |                            |                  |       |                            |          |
| Sep 92 estimates                                    | 1.0                               | 1.2   | 2.4              | 2.6   | 1.3                               | 2.7   | 4.2                        | 0.5              | 0.5   | 0.7                        | 0.4      |
| Aug 92 to Sep 92 movements                          | 0.8                               | 1.0   | 1.8              | 2.0   | 1.0                               | 2.1   | 3.4                        | 0.4              | 0.4   | 0.6                        | 0.3      |
| WESTERN AUSTRALIA                                   |                                   |       |                  |       |                                   |       |                            |                  |       |                            |          |
| 1991 — September                                    | 4.8                               | 11.8  | 66.3             | 78.1  | 13.0                              | 91.1  | 27.6                       | 11.0             | 12.1  | 6.3                        | 10.7     |
| 1992 — August                                       | 6.7                               | 13.5  | 63.8             | 77.3  | 15.8                              | 93.0  | 33.4                       | 10.5             | 12.0  | 7.7                        | 10.9     |
| September   | 6.6                               | 14.2  | 64.2             | 78.4  | 15.9                              | 94.3  | 34.4                       | 10.5             | 12.0  | 7.6                        | 10.9     |
| Standard error of —                                 |                                   |       |                  |       |                                   |       |                            |                  |       |                            |          |
| Sep 92 estimates                                    | 1.0                               | 1.4   | 2.7              | 2.9   | 1.5                               | 3.1   | 3.5                        | 0.4              | 0.4   | 0.7                        | 0.4      |
| Aug 92 to Sep 92 movements                          | 1.0                               | 1.3   | 2.2              | 2.4   | 1.4                               | 2.5   | 3.1                        | 0.4              | 0.4   | 0.7                        | 0.3      |
| TASMANIA  |                                   |       |                  |       |                                   |       |                            |                  |       |                            |          |
| 1991 — September                                    | 1.9                               | 4.1   | 17.3             | 21.4  | 3.5                               | 24.9  | 31.0                       | 11.2             | 12.8  | 6.7                        | 11.3     |
| 1992 — August                                       | 2.5                               | 4.4   | 16.5             | 20.9  | 3.9                               | 24.8  | 39.9                       | 11.0             | 13.0  | 7.0                        | 11.5     |
| September   | 2.1                               | 4.1   | 17.1             | 21.3  | 4.1                               | 25.3  | 35.9                       | 11.5             | 13.2  | 7.5                        | 11.8     |
| Standard error of —                                 |                                   |       |                  |       |                                   |       |                            |                  |       |                            |          |
| Sep 92 estimates                                    | 0.4                               | 0.5   | 0.9              | 1.0   | 0.5                               | 1.0   | 4.7                        | 0.6              | 0.6   | 1.0                        | 0.5      |
| Aug 92 to Sep 92 movements                          | 0.4                               | 0.5   | 0.8              | 0.8   | 0.4                               | 0.9   | 4.2                        | 0.5              | 0.5   | 0.8                        | 0.4      |
| NORTHERN TERRITORY                                  |                                   |       |                  |       |                                   |       |                            |                  |       |                            |          |
| 1991 — September                                    | *0.1                              | *0.5  | 5.5              | 6.0   | *1.5                              | 7.5   | *11.0                      | 8.3              | 8.5   | *11.2                      | 8.9      |
| 1992 — August                                       | *0.3                              | *0.4  | 3.3              | 3.8   | *0.4                              | 4.2   | *16.5                      | 5.7              | 6.2   | *2.2                       | 5.2      |
| September   | *0.7                              | *1.2  | 4.1              | 5.3   | 1.3                               | 6.6   | *44.1                      | 7.0              | 8.6   | 6.5                        | 8.1      |
| Standard error of —                                 |                                   |       |                  |       |                                   |       |                            |                  |       |                            |          |
| Sep 92 estimates                                    | 0.3                               | 0.3   | 0.6              | 0.6   | 0.3                               | 0.7   | 11.7                       | 0.9              | 1.0   | 1.7                        | 0.8      |
| Aug 92 to Sep 92 movements                          | 0.2                               | 0.2   | 0.4              | 0.4   | 0.2                               | 0.5   | 8.6                        | 0.7              | 0.7   | 1.2                        | 0.6      |
| AUSTRALIAN CAPITAL TERRITORY                        |                                   |       |                  |       |                                   |       |                            |                  |       |                            |          |
| 1991 — September                                    | *0.2                              | *0.7  | 5.3              | 5.9   | 4.1                               | 10.0  | *17.2                      | 4.4              | 4.8   | 11.1                       | 6.2      |
| 1992 — August                                       | *0.6                              | *1.2  | 6.6              | 7.8   | 4.9                               | 12.7  | *28.7                      | 5.5              | 6.3   | 12.1                       | 7.8      |
| September   | 1.5                               | *2.7  | 7.2              | 10.0  | 3.9                               | 13.9  | *56.1                      | 6.0              | 8.0   | 9.2                        | 8.3      |
| Standard error of —                                 |                                   |       |                  |       |                                   |       |                            |                  |       |                            |          |
| Sep 92 estimates                                    | 0.3                               | 0.4   | 0.6              | 0.6   | 0.4                               | 0.7   | 7.7                        | 0.5              | 0.5   | 1.0                        | 0.4      |
| Aug 92 to Sep 92 movements                          | 0.3                               | 0.3   | 0.5              | 0.5   | 0.4                               | 0.6   | 7.0                        | 0.4              | 0.4   | 1.1                        | 0.4      |

TABLE 10. CIVILIAN LABOUR FORCE, STATES: SEASONALLY ADJUSTED SERIES

| Month           | Males    |                             |                 |  |   | Females  |                             |                 |  |   | Persons  |                             |                 |  |   |
|-----------------|----------|-----------------------------|-----------------|--|---|----------|-----------------------------|-----------------|--|---|----------|-----------------------------|-----------------|--|---|
|                 | Employed | Unemp-<br>loyed<br>- '000 - | Labour<br>force | Unemp-<br>loyment<br>rate<br>- per<br>cent - | Partic-<br>ipation<br>rate<br>- per<br>cent - | Employed | Unemp-<br>loyed<br>- '000 - | Labour<br>force | Unemp-<br>loyment<br>rate<br>- per<br>cent - | Partic-<br>ipation<br>rate<br>- per<br>cent - | Employed | Unemp-<br>loyed<br>- '000 - | Labour<br>force | Unemp-<br>loyment<br>rate<br>- per<br>cent - | Partic-<br>ipation<br>rate<br>- per<br>cent - |
| NEW SOUTH WALES |          |                             |                 |  |   |          |                             |                 |  |   |          |                             |                 |  |   |
| 1991 —          |          |                             |                 |  |   |          |                             |                 |  |   |          |                             |                 |  |   |
| July            | 1,511.8  | 150.8                       | 1,662.6         | 9.1  | 73.4  | 1,053.7  | 97.4                        | 1,151.2         | 8.5  | 49.3  | 2,565.5  | 248.3                       | 2,813.8         | 8.8  | 61.2  |
| August          | 1,524.1  | 162.2                       | 1,686.3         | 9.6  | 74.4  | 1,079.1  | 103.0                       | 1,182.1         | 8.7  | 50.6  | 2,603.2  | 265.2                       | 2,868.4         | 9.2  | 62.3  |
| September       | 1,516.2  | 164.2                       | 1,680.4         | 9.8  | 74.1  | 1,071.3  | 113.5                       | 1,184.8         | 9.6  | 50.6  | 2,587.6  | 277.7                       | 2,865.3         | 9.7  | 62.2  |
| October         | 1,507.7  | 170.2                       | 1,677.9         | 10.1   | 73.9  | 1,065.6  | 109.7                       | 1,175.3         | 9.3  | 50.2  | 2,573.2  | 279.9                       | 2,853.2         | 9.8  | 61.8  |
| November        | 1,512.0  | 169.7                       | 1,681.7         | 10.1   | 73.9  | 1,059.3  | 118.0                       | 1,177.2         | 10.0   | 50.2  | 2,571.3  | 287.6                       | 2,858.9         | 10.1   | 61.9  |
| December        | 1,505.9  | 175.4                       | 1,681.3         | 10.4   | 73.8  | 1,066.9  | 119.9                       | 1,186.8         | 10.1   | 50.5  | 2,572.8  | 295.3                       | 2,868.1         | 10.3   | 62.0  |
| 1992 —          |          |                             |                 |  |   |          |                             |                 |  |   |          |                             |                 |  |   |
| January         | 1,504.8  | 170.9                       | 1,675.7         | 10.2   | 73.5  | 1,079.5  | 112.0                       | 1,191.5         | 9.4  | 50.7  | 2,584.3  | 282.9                       | 2,867.2         | 9.9  | 61.9  |
| February        | 1,511.1  | 170.9                       | 1,682.0         | 10.2   | 73.7  | 1,078.9  | 115.4                       | 1,194.2         | 9.7  | 50.7  | 2,590.0  | 286.2                       | 2,876.3         | 10.0   | 62.0  |
| March           | 1,517.5  | 163.6                       | 1,681.0         | 9.7  | 73.6  | 1,084.8  | 106.2                       | 1,191.0         | 8.9  | 50.5  | 2,602.2  | 269.8                       | 2,872.0         | 9.4  | 61.9  |
| April           | 1,509.3  | 171.0                       | 1,680.4         | 10.2   | 73.5  | 1,090.2  | 107.4                       | 1,197.6         | 9.0  | 50.8  | 2,599.5  | 278.4                       | 2,877.9         | 9.7  | 62.0  |
| May             | 1,502.9  | 174.2                       | 1,677.1         | 10.4   | 73.3  | 1,087.5  | 104.7                       | 1,192.2         | 8.8  | 50.5  | 2,590.4  | 278.9                       | 2,869.3         | 9.7  | 61.7  |
| June            | 1,497.4  | 187.3                       | 1,684.7         | 11.1   | 73.6  | 1,090.4  | 113.8                       | 1,204.2         | 9.4  | 50.9  | 2,587.8  | 301.1                       | 2,888.9         | 10.4   | 62.1  |
| July            | 1,502.8  | 188.1                       | 1,690.8         | 11.1   | 73.8  | 1,095.3  | 113.0                       | 1,208.3         | 9.4  | 51.0  | 2,598.0  | 301.0                       | 2,899.1         | 10.4   | 62.2  |
| August          | 1,493.4  | 194.1                       | 1,687.4         | 11.5   | 73.6  | 1,098.5  | 120.7                       | 1,219.2         | 9.9  | 51.5  | 2,591.8  | 314.8                       | 2,906.6         | 10.8   | 62.3  |
| September       | 1,484.9  | 185.6                       | 1,670.5         | 11.1   | 72.8  | 1,094.3  | 114.6                       | 1,208.9         | 9.5  | 51.0  | 2,579.2  | 300.3                       | 2,879.4         | 10.4   | 61.7  |
| VICTORIA        |          |                             |                 |  |   |          |                             |                 |  |   |          |                             |                 |  |   |
| 1991 —          |          |                             |                 |  |   |          |                             |                 |  |   |          |                             |                 |  |   |
| July            | 1,121.5  | 135.5                       | 1,256.9         | 10.8   | 73.6  | 834.3    | 88.8                        | 923.1           | 9.6  | 52.2  | 1,955.7  | 224.3                       | 2,180.0         | 10.3   | 62.7  |
| August          | 1,127.9  | 142.7                       | 1,270.6         | 11.2   | 74.3  | 853.8    | 84.0                        | 937.8           | 9.0  | 53.0  | 1,981.7  | 226.6                       | 2,208.3         | 10.3   | 63.4  |
| September       | 1,131.0  | 145.6                       | 1,276.7         | 11.4   | 74.6  | 850.7    | 95.5                        | 946.3           | 10.1   | 53.4  | 1,981.8  | 241.2                       | 2,222.9         | 10.8   | 63.8  |
| October         | 1,137.1  | 140.0                       | 1,277.0         | 11.0   | 74.6  | 847.2    | 91.4                        | 938.7           | 9.7  | 52.9  | 1,984.3  | 231.4                       | 2,215.7         | 10.4   | 63.5  |
| November        | 1,126.6  | 146.2                       | 1,272.8         | 11.5   | 74.3  | 841.0    | 94.9                        | 935.9           | 10.1   | 52.7  | 1,967.6  | 241.1                       | 2,208.7         | 10.9   | 63.3  |
| December        | 1,132.9  | 143.5                       | 1,276.4         | 11.2   | 74.4  | 844.6    | 101.4                       | 946.0           | 10.7   | 53.2  | 1,977.5  | 244.9                       | 2,222.4         | 11.0   | 63.6  |
| 1992 —          |          |                             |                 |  |   |          |                             |                 |  |   |          |                             |                 |  |   |
| January         | 1,136.8  | 143.8                       | 1,280.6         | 11.2   | 74.6  | 846.4    | 100.9                       | 947.4           | 10.7   | 53.2  | 1,983.3  | 244.8                       | 2,228.0         | 11.0   | 63.7  |
| February        | 1,124.2  | 147.8                       | 1,272.0         | 11.6   | 74.0  | 833.9    | 96.7                        | 930.6           | 10.4   | 52.3  | 1,958.1  | 244.5                       | 2,202.6         | 11.1   | 63.0  |
| March           | 1,124.7  | 157.9                       | 1,282.6         | 12.3   | 74.6  | 826.5    | 98.0                        | 924.5           | 10.6   | 51.9  | 1,951.2  | 255.9                       | 2,207.0         | 11.6   | 63.0  |
| April           | 1,121.0  | 148.0                       | 1,269.0         | 11.7   | 73.8  | 818.1    | 95.9                        | 914.0           | 10.5   | 51.2  | 1,939.1  | 243.9                       | 2,183.0         | 11.2   | 62.3  |
| May             | 1,120.8  | 157.1                       | 1,277.9         | 12.3   | 74.2  | 817.6    | 101.8                       | 919.4           | 11.1   | 51.5  | 1,938.4  | 258.9                       | 2,197.3         | 11.8   | 62.7  |
| June            | 1,134.9  | 157.9                       | 1,292.8         | 12.2   | 75.1  | 827.4    | 107.2                       | 934.5           | 11.5   | 52.3  | 1,962.3  | 265.1                       | 2,227.3         | 11.9   | 63.5  |
| July            | 1,134.9  | 165.0                       | 1,299.9         | 12.7   | 75.4  | 838.4    | 102.7                       | 941.0           | 10.9   | 52.6  | 1,973.3  | 267.7                       | 2,241.0         | 11.9   | 63.8  |
| August          | 1,132.8  | 157.3                       | 1,290.0         | 12.2   | 74.8  | 829.1    | 99.4                        | 928.6           | 10.7   | 51.9  | 1,961.9  | 256.7                       | 2,218.6         | 11.6   | 63.1  |
| September       | 1,134.1  | 149.3                       | 1,283.5         | 11.6   | 74.3  | 812.4    | 98.0                        | 910.4           | 10.8   | 50.8  | 1,946.5  | 247.3                       | 2,193.8         | 11.3   | 62.4  |



TABLE 10. CIVILIAN LABOUR FORCE, STATES: SEASONALLY ADJUSTED SERIES—continued

| TABLE 10. CIVILIAN LABOUR FORCE, STATES, SEASONALLY ADJUSTED SERIES—continued |            |                             |                 |  |                            |          |                             |                 |  |                            |          |                             |                 |  |                            |
|---|------------|-----------------------------|-----------------|--|----------------------------|----------|-----------------------------|-----------------|--|----------------------------|----------|-----------------------------|-----------------|--|----------------------------|
| Month   | Males      |                             |                 |  |                            | Females  |                             |                 |  |                            | Persons  |                             |                 |  |                            |
|   | Employed   | Unemp-<br>loyed<br>- '000 - | Labour<br>force | Unemp-<br>loyment<br>rate<br>- per<br>cent - | Partic-<br>ipation<br>rate | Employed | Unemp-<br>loyed<br>- '000 - | Labour<br>force | Unemp-<br>loyment<br>rate<br>- per<br>cent - | Partic-<br>ipation<br>rate | Employed | Unemp-<br>loyed<br>- '000 - | Labour<br>force | Unemp-<br>loyment<br>rate<br>- per<br>cent - | Partic-<br>ipation<br>rate |
|   | QUEENSLAND |                             |                 |  |                            |          |                             |                 |  |                            |          |                             |                 |  |                            |
| 1991 —  |            |                             |                 |  |                            |          |                             |                 |  |                            |          |                             |                 |  |                            |
| July  | 764.5      | 88.4                        | 852.9           | 10.4   | 74.8                       | 538.9    | 62.2                        | 601.1           | 10.3   | 51.8                       | 1,303.3  | 150.6                       | 1,453.9         | 10.4   | 63.2                       |
| August  | 772.7      | 84.6                        | 857.3           | 9.9  | 75.1                       | 542.8    | 59.3                        | 602.1           | 9.9  | 51.8                       | 1,315.5  | 143.9                       | 1,459.4         | 9.9  | 63.3                       |
| September   | 778.8      | 86.4                        | 865.1           | 10.0   | 75.6                       | 541.3    | 57.8                        | 599.0           | 9.6  | 51.4                       | 1,320.0  | 144.2                       | 1,464.2         | 9.8  | 63.4                       |
| October   | 777.9      | 86.4                        | 864.3           | 10.0   | 75.4                       | 543.2    | 56.1                        | 599.4           | 9.4  | 51.4                       | 1,321.1  | 142.6                       | 1,463.7         | 9.7  | 63.3                       |
| November  | 775.4      | 87.7                        | 863.1           | 10.2   | 75.2                       | 542.0    | 58.1                        | 600.2           | 9.7  | 51.3                       | 1,317.4  | 145.9                       | 1,463.3         | 10.0   | 63.1                       |
| December  | 776.1      | 92.4                        | 868.6           | 10.6   | 75.5                       | 554.8    | 54.9                        | 609.7           | 9.0  | 52.0                       | 1,330.9  | 147.4                       | 1,478.3         | 10.0   | 63.7                       |
| 1992 —  |            |                             |                 |  |                            |          |                             |                 |  |                            |          |                             |                 |  |                            |
| January   | 772.1      | 90.6                        | 862.7           | 10.5   | 74.8                       | 559.7    | 59.9                        | 619.6           | 9.7  | 52.8                       | 1,331.9  | 150.5                       | 1,482.4         | 10.2   | 63.7                       |
| February  | 776.1      | 90.7                        | 866.7           | 10.5   | 75.0                       | 562.0    | 65.0                        | 627.0           | 10.4   | 53.3                       | 1,338.1  | 155.6                       | 1,493.7         | 10.4   | 64.0                       |
| March   | 772.3      | 89.1                        | 861.5           | 10.3   | 74.4                       | 556.2    | 58.8                        | 615.0           | 9.6  | 52.1                       | 1,328.5  | 147.9                       | 1,476.4         | 10.0   | 63.2                       |
| April   | 774.9      | 86.3                        | 861.2           | 10.0   | 74.2                       | 558.7    | 57.5                        | 616.2           | 9.3  | 52.1                       | 1,333.6  | 143.8                       | 1,477.3         | 9.7  | 63.1                       |
| May   | 766.5      | 95.6                        | 862.0           | 11.1   | 74.1                       | 556.2    | 57.8                        | 613.9           | 9.4  | 51.8                       | 1,322.7  | 153.3                       | 1,476.0         | 10.4   | 62.9                       |
| June  | 771.2      | 101.4                       | 872.6           | 11.6   | 74.8                       | 557.7    | 64.4                        | 622.1           | 10.4   | 52.4                       | 1,328.9  | 165.8                       | 1,494.7         | 11.1   | 63.5                       |
| July  | 782.1      | 104.2                       | 886.3           | 11.8   | 75.9                       | 564.3    | 65.3                        | 629.6           | 10.4   | 52.9                       | 1,346.4  | 169.5                       | 1,515.9         | 11.2   | 64.3                       |
| August  | 782.9      | 92.0                        | 874.9           | 10.5   | 74.7                       | 569.4    | 59.7                        | 629.0           | 9.5  | 52.7                       | 1,352.3  | 151.7                       | 1,503.9         | 10.1   | 63.6                       |
| September   | 782.2      | 97.6                        | 879.7           | 11.1   | 75.0                       | 573.6    | 63.3                        | 636.9           | 9.9  | 53.3                       | 1,355.8  | 160.8                       | 1,516.6         | 10.6   | 64.0                       |
| SOUTH AUSTRALIA   |            |                             |                 |  |                            |          |                             |                 |  |                            |          |                             |                 |  |                            |
| 1991 —  |            |                             |                 |  |                            |          |                             |                 |  |                            |          |                             |                 |  |                            |
| July  | 366.2      | 45.5                        | 411.7           | 11.1   | 72.3                       | 271.5    | 27.9                        | 299.4           | 9.3  | 51.2                       | 637.7    | 73.4                        | 711.1           | 10.3   | 61.6                       |
| August  | 370.8      | 46.4                        | 417.2           | 11.1   | 73.2                       | 271.9    | 27.2                        | 299.0           | 9.1  | 51.0                       | 642.7    | 73.5                        | 716.2           | 10.3   | 62.0                       |
| September   | 368.1      | 47.4                        | 415.6           | 11.4   | 72.8                       | 272.7    | 27.9                        | 300.6           | 9.3  | 51.3                       | 640.8    | 75.3                        | 716.2           | 10.5   | 61.9                       |
| October   | 368.2      | 49.5                        | 417.7           | 11.8   | 73.1                       | 272.3    | 27.3                        | 299.5           | 9.1  | 51.0                       | 640.5    | 76.8                        | 717.2           | 10.7   | 61.9                       |
| November  | 368.6      | 49.6                        | 418.2           | 11.9   | 73.1                       | 272.4    | 29.7                        | 302.1           | 9.8  | 51.4                       | 641.0    | 79.3                        | 720.3           | 11.0   | 62.1                       |
| December  | 370.2      | 51.0                        | 421.2           | 12.1   | 73.5                       | 269.4    | 31.2                        | 300.6           | 10.4   | 51.1                       | 639.6    | 82.2                        | 721.8           | 11.4   | 62.2                       |
| 1992 —  |            |                             |                 |  |                            |          |                             |                 |  |                            |          |                             |                 |  |                            |
| January   | 371.5      | 50.0                        | 421.5           | 11.9   | 73.5                       | 270.3    | 29.8                        | 300.1           | 9.9  | 51.0                       | 641.9    | 79.7                        | 721.6           | 11.1   | 62.1                       |
| February  | 368.3      | 53.9                        | 422.2           | 12.8   | 73.6                       | 268.3    | 29.2                        | 297.5           | 9.8  | 50.5                       | 636.6    | 83.1                        | 719.6           | 11.5   | 61.9                       |
| March   | 370.9      | 53.8                        | 424.7           | 12.7   | 73.9                       | 265.6    | 28.0                        | 293.6           | 9.6  | 49.8                       | 636.4    | 81.8                        | 718.3           | 11.4   | 61.7                       |
| April   | 369.5      | 54.3                        | 423.8           | 12.8   | 73.7                       | 265.3    | 31.9                        | 297.3           | 10.7   | 50.3                       | 634.8    | 86.3                        | 721.0           | 12.0   | 61.9                       |
| May   | 369.0      | 56.4                        | 425.4           | 13.3   | 73.9                       | 264.6    | 33.0                        | 297.6           | 11.1   | 50.4                       | 633.7    | 89.3                        | 723.0           | 12.4   | 62.0                       |
| June  | 366.3      | 58.4                        | 424.6           | 13.7   | 73.7                       | 271.6    | 32.5                        | 304.1           | 10.7   | 51.4                       | 637.8    | 90.9                        | 728.7           | 12.5   | 62.4                       |
| July  | 368.7      | 54.8                        | 423.4           | 12.9   | 73.5                       | 274.1    | 28.4                        | 302.5           | 9.4  | 51.1                       | 642.8    | 83.1                        | 725.9           | 11.5   | 62.1                       |
| August  | 368.2      | 55.6                        | 423.7           | 13.1   | 73.5                       | 273.4    | 29.2                        | 302.6           | 9.6  | 51.1                       | 641.5    | 84.7                        | 726.3           | 11.7   | 62.1                       |
| September   | 368.1      | 51.9                        | 420.0           | 12.4   | 72.8                       | 275.7    | 30.6                        | 306.3           | 10.0   | 51.7                       | 643.8    | 82.5                        | 726.3           | 11.4   | 62.1                       |

TABLE 10. CIVILIAN LABOUR FORCE, STATES: SEASONALLY ADJUSTED SERIES—continued

| Month             | Males    |                             |                 |  |                                      | Females  |                             |                 |  |                                      | Persons  |                             |                 |  |                                      |
|-------------------|----------|-----------------------------|-----------------|--|--------------------------------------|----------|-----------------------------|-----------------|--|--------------------------------------|----------|-----------------------------|-----------------|--|--------------------------------------|
|                   | Employed | Unemp-<br>loyed<br>- '000 - | Labour<br>force | Unemp-<br>loyment<br>rate<br>- per<br>cent - | Partic-<br>ipation<br>rate<br>cent - | Employed | Unemp-<br>loyed<br>- '000 - | Labour<br>force | Unemp-<br>loyment<br>rate<br>- per<br>cent - | Partic-<br>ipation<br>rate<br>cent - | Employed | Unemp-<br>loyed<br>- '000 - | Labour<br>force | Unemp-<br>loyment<br>rate<br>- per<br>cent - | Partic-<br>ipation<br>rate<br>cent - |
| WESTERN AUSTRALIA |          |                             |                 |  |                                      |          |                             |                 |  |                                      |          |                             |                 |  |                                      |
| 1991 —            |          |                             |                 |  |                                      |          |                             |                 |  |                                      |          |                             |                 |  |                                      |
| July              | 434.5    | 59.6                        | 494.1           | 12.1   | 76.8                                 | 311.4    | 34.5                        | 345.9           | 10.0   | 53.9                                 | 745.9    | 94.1                        | 840.0           | 11.2   | 65.3                                 |
| August            | 441.1    | 57.3                        | 498.4           | 11.5   | 77.3                                 | 316.6    | 36.1                        | 352.7           | 10.2   | 54.9                                 | 757.8    | 93.4                        | 851.2           | 11.0   | 66.1                                 |
| September         | 440.9    | 57.0                        | 497.9           | 11.5   | 77.1                                 | 311.9    | 34.9                        | 346.9           | 10.1   | 53.8                                 | 752.9    | 91.9                        | 844.8           | 10.9   | 65.5                                 |
| October           | 439.9    | 59.5                        | 499.3           | 11.9   | 77.2                                 | 309.1    | 37.3                        | 346.4           | 10.8   | 53.7                                 | 749.0    | 96.7                        | 845.7           | 11.4   | 65.4                                 |
| November          | 446.1    | 57.8                        | 503.9           | 11.5   | 77.8                                 | 311.1    | 36.4                        | 347.5           | 10.5   | 53.8                                 | 757.2    | 94.2                        | 851.5           | 11.1   | 65.8                                 |
| December          | 441.6    | 55.8                        | 497.4           | 11.2   | 76.6                                 | 312.0    | 35.1                        | 347.1           | 10.1   | 53.6                                 | 753.6    | 90.9                        | 844.5           | 10.8   | 65.1                                 |
| 1992 —            |          |                             |                 |  |                                      |          |                             |                 |  |                                      |          |                             |                 |  |                                      |
| January           | 440.0    | 57.0                        | 496.9           | 11.5   | 76.4                                 | 309.3    | 38.4                        | 347.7           | 11.1   | 53.6                                 | 749.2    | 95.4                        | 844.6           | 11.3   | 65.0                                 |
| February          | 442.8    | 58.5                        | 501.3           | 11.7   | 77.0                                 | 310.0    | 34.9                        | 344.9           | 10.1   | 53.1                                 | 752.8    | 93.4                        | 846.1           | 11.0   | 65.0                                 |
| March             | 441.3    | 60.1                        | 501.4           | 12.0   | 76.9                                 | 310.5    | 35.1                        | 345.6           | 10.2   | 53.1                                 | 751.7    | 95.2                        | 846.9           | 11.2   | 65.0                                 |
| April             | 444.9    | 57.7                        | 502.6           | 11.5   | 76.9                                 | 314.3    | 31.7                        | 346.0           | 9.2  | 53.0                                 | 759.2    | 89.4                        | 848.6           | 10.5   | 65.0                                 |
| May               | 449.3    | 58.0                        | 507.4           | 11.4   | 77.5                                 | 318.1    | 32.8                        | 350.8           | 9.3  | 53.7                                 | 767.4    | 90.8                        | 858.2           | 10.6   | 65.6                                 |
| June              | 447.0    | 54.9                        | 501.9           | 10.9   | 76.6                                 | 320.3    | 34.2                        | 354.5           | 9.6  | 54.2                                 | 767.3    | 89.0                        | 856.4           | 10.4   | 65.4                                 |
| July              | 447.2    | 56.4                        | 503.6           | 11.2   | 76.8                                 | 319.4    | 36.8                        | 356.2           | 10.3   | 54.4                                 | 766.6    | 93.2                        | 859.8           | 10.8   | 65.6                                 |
| August            | 448.4    | 58.4                        | 506.8           | 11.5   | 77.2                                 | 312.8    | 40.5                        | 353.3           | 11.5   | 53.9                                 | 761.2    | 98.9                        | 860.1           | 11.5   | 65.5                                 |
| September         | 446.7    | 56.9                        | 503.7           | 11.3   | 76.6                                 | 312.9    | 38.0                        | 351.0           | 10.8   | 53.4                                 | 759.7    | 95.0                        | 854.6           | 11.1   | 65.0                                 |
| TASMANIA          |          |                             |                 |  |                                      |          |                             |                 |  |                                      |          |                             |                 |  |                                      |
| 1991 —            |          |                             |                 |  |                                      |          |                             |                 |  |                                      |          |                             |                 |  |                                      |
| July              | 113.1    | 14.4                        | 127.5           | 11.3   | 73.0                                 | 80.1     | 9.7                         | 89.8            | 10.8   | 49.8                                 | 193.3    | 24.1                        | 217.3           | 11.1   | 61.3                                 |
| August            | 112.7    | 15.3                        | 128.0           | 12.0   | 73.3                                 | 80.9     | 9.9                         | 90.8            | 10.9   | 50.4                                 | 193.6    | 25.2                        | 218.8           | 11.5   | 61.6                                 |
| September         | 113.2    | 15.4                        | 128.6           | 12.0   | 73.5                                 | 81.6     | 9.4                         | 91.0            | 10.3   | 50.4                                 | 194.9    | 24.8                        | 219.6           | 11.3   | 61.8                                 |
| October           | 112.6    | 14.9                        | 127.5           | 11.7   | 72.9                                 | 81.5     | 8.7                         | 90.1            | 9.6  | 49.9                                 | 194.1    | 23.6                        | 217.7           | 10.8   | 61.2                                 |
| November          | 111.9    | 15.5                        | 127.4           | 12.2   | 72.8                                 | 79.8     | 9.5                         | 89.3            | 10.6   | 49.4                                 | 191.7    | 25.0                        | 216.7           | 11.5   | 60.9                                 |
| December          | 112.2    | 15.0                        | 127.2           | 11.8   | 72.6                                 | 78.8     | 8.7                         | 87.5            | 9.9  | 48.4                                 | 191.1    | 23.7                        | 214.7           | 11.0   | 60.3                                 |
| 1992 —            |          |                             |                 |  |                                      |          |                             |                 |  |                                      |          |                             |                 |  |                                      |
| January           | 112.0    | 14.9                        | 126.9           | 11.7   | 72.3                                 | 78.7     | 8.4                         | 87.1            | 9.7  | 48.1                                 | 190.6    | 23.3                        | 214.0           | 10.9   | 60.0                                 |
| February          | 112.0    | 14.4                        | 126.5           | 11.4   | 72.0                                 | 80.5     | 8.8                         | 89.2            | 9.8  | 49.3                                 | 192.5    | 23.2                        | 215.7           | 10.8   | 60.5                                 |
| March             | 110.8    | 15.3                        | 126.1           | 12.1   | 71.8                                 | 78.7     | 8.4                         | 87.1            | 9.6  | 48.0                                 | 189.5    | 23.6                        | 213.2           | 11.1   | 59.7                                 |
| April             | 109.0    | 15.5                        | 124.5           | 12.4   | 70.9                                 | 79.7     | 7.8                         | 87.5            | 8.9  | 48.3                                 | 188.7    | 23.3                        | 212.0           | 11.0   | 59.4                                 |
| May               | 109.9    | 15.3                        | 125.2           | 12.2   | 71.2                                 | 75.1     | 9.4                         | 84.5            | 11.2   | 46.6                                 | 185.0    | 24.7                        | 209.7           | 11.8   | 58.7                                 |
| June              | 111.0    | 15.9                        | 126.9           | 12.5   | 72.1                                 | 76.9     | 10.3                        | 87.2            | 11.8   | 48.0                                 | 187.8    | 26.2                        | 214.0           | 12.2   | 59.9                                 |
| July              | 111.8    | 17.0                        | 128.8           | 13.2   | 73.1                                 | 79.2     | 9.6                         | 88.7            | 10.8   | 48.8                                 | 191.0    | 26.6                        | 217.5           | 12.2   | 60.8                                 |
| August            | 112.1    | 16.9                        | 128.9           | 13.1   | 73.1                                 | 81.2     | 9.1                         | 90.3            | 10.1   | 49.6                                 | 193.3    | 26.0                        | 219.2           | 11.9   | 61.2                                 |
| September         | 110.1    | 16.8                        | 126.9           | 13.2   | 71.8                                 | 79.2     | 8.3                         | 87.4            | 9.5  | 47.9                                 | 189.3    | 25.1                        | 214.3           | 11.7   | 59.7                                 |

TABLE 11. CIVILIAN LABOUR FORCE, STATES: TREND SERIES

| Month           | Males    |                             |                 |  |   | Females  |                             |                 |  |   | Persons  |                             |                 |  |   |
|-----------------|----------|-----------------------------|-----------------|--|---|----------|-----------------------------|-----------------|--|---|----------|-----------------------------|-----------------|--|---|
|                 | Employed | Unemp-<br>loyed<br>- '000 - | Labour<br>force | Unemp-<br>loyment<br>rate<br>- per<br>cent - | Partic-<br>ipation<br>rate<br>- per<br>cent - | Employed | Unemp-<br>loyed<br>- '000 - | Labour<br>force | Unemp-<br>loyment<br>rate<br>- per<br>cent - | Partic-<br>ipation<br>rate<br>- per<br>cent - | Employed | Unemp-<br>loyed<br>- '000 - | Labour<br>force | Unemp-<br>loyment<br>rate<br>- per<br>cent - | Partic-<br>ipation<br>rate<br>- per<br>cent - |
| NEW SOUTH WALES |          |                             |                 |  |   |          |                             |                 |  |   |          |                             |                 |  |   |
| 1991 —          |          |                             |                 |  |   |          |                             |                 |  |   |          |                             |                 |  |   |
| July            | 1,523.2  | 153.9                       | 1,677.1         | 9.2  | 74.1  | 1,071.3  | 99.1                        | 1,170.4         | 8.5  | 50.1  | 2,594.5  | 253.0                       | 2,847.4         | 8.9  | 61.9  |
| August          | 1,518.4  | 158.7                       | 1,677.1         | 9.5  | 74.0  | 1,068.7  | 103.8                       | 1,172.5         | 8.9  | 50.2  | 2,587.1  | 262.5                       | 2,849.6         | 9.2  | 61.9  |
| September       | 1,514.1  | 163.9                       | 1,678.0         | 9.8  | 74.0  | 1,066.6  | 108.9                       | 1,175.5         | 9.3  | 50.2  | 2,580.7  | 272.8                       | 2,853.5         | 9.6  | 61.9  |
| October         | 1,510.9  | 168.4                       | 1,679.3         | 10.0   | 73.9  | 1,065.9  | 113.1                       | 1,179.1         | 9.6  | 50.3  | 2,576.8  | 281.5                       | 2,858.4         | 9.8  | 61.9  |
| November        | 1,509.3  | 171.1                       | 1,680.4         | 10.2   | 73.9  | 1,067.3  | 115.7                       | 1,183.0         | 9.8  | 50.4  | 2,576.6  | 286.8                       | 2,863.4         | 10.0   | 62.0  |
| December        | 1,509.1  | 171.4                       | 1,680.4         | 10.2   | 73.8  | 1,070.2  | 116.0                       | 1,186.2         | 9.8  | 50.5  | 2,579.3  | 287.4                       | 2,866.7         | 10.0   | 62.0  |
| 1992 —          |          |                             |                 |  |   |          |                             |                 |  |   |          |                             |                 |  |   |
| January         | 1,509.4  | 170.4                       | 1,679.8         | 10.1   | 73.7  | 1,074.2  | 114.5                       | 1,188.6         | 9.6  | 50.5  | 2,583.5  | 284.9                       | 2,868.4         | 9.9  | 61.9  |
| February        | 1,509.8  | 169.6                       | 1,679.4         | 10.1   | 73.6  | 1,078.8  | 111.9                       | 1,190.7         | 9.4  | 50.6  | 2,588.6  | 281.5                       | 2,870.1         | 9.8  | 61.9  |
| March r         | 1,509.9  | 170.2                       | 1,680.1         | 10.1   | 73.6  | 1,083.7  | 109.6                       | 1,193.4         | 9.2  | 50.6  | 2,593.6  | 279.9                       | 2,873.5         | 9.7  | 61.9  |
| April r         | 1,508.4  | 172.9                       | 1,681.3         | 10.3   | 73.6  | 1,087.4  | 108.7                       | 1,196.1         | 9.1  | 50.7  | 2,595.8  | 281.6                       | 2,877.4         | 9.8  | 61.9  |
| May r           | 1,505.4  | 177.2                       | 1,682.6         | 10.5   | 73.6  | 1,089.9  | 109.4                       | 1,199.3         | 9.1  | 50.8  | 2,595.3  | 286.5                       | 2,881.9         | 9.9  | 62.0  |
| June r          | 1,501.4  | 182.0                       | 1,683.4         | 10.8   | 73.5  | 1,092.0  | 111.2                       | 1,203.2         | 9.2  | 50.9  | 2,593.4  | 293.2                       | 2,886.6         | 10.2   | 62.0  |
| July r          | 1,497.2  | 186.2                       | 1,683.4         | 11.1   | 73.5  | 1,093.9  | 113.4                       | 1,207.3         | 9.4  | 51.0  | 2,591.1  | 299.6                       | 2,890.7         | 10.4   | 62.1  |
| August r        | 1,493.2  | 189.5                       | 1,682.7         | 11.3   | 73.4  | 1,095.6  | 115.3                       | 1,210.9         | 9.5  | 51.1  | 2,588.7  | 304.9                       | 2,893.6         | 10.5   | 62.1  |
| September       | 1,489.5  | 192.1                       | 1,681.7         | 11.4   | 73.2  | 1,096.6  | 117.4                       | 1,213.9         | 9.7  | 51.2  | 2,586.1  | 309.5                       | 2,895.6         | 10.7   | 62.0  |
| VICTORIA        |          |                             |                 |  |   |          |                             |                 |  |   |          |                             |                 |  |   |
| 1991 —          |          |                             |                 |  |   |          |                             |                 |  |   |          |                             |                 |  |   |
| July            | 1,125.2  | 138.6                       | 1,263.8         | 11.0   | 74.0  | 844.9    | 89.3                        | 934.3           | 9.6  | 52.8  | 1,970.1  | 227.9                       | 2,198.1         | 10.4   | 63.2  |
| August          | 1,126.7  | 141.0                       | 1,267.6         | 11.1   | 74.2  | 846.1    | 89.7                        | 935.8           | 9.6  | 52.8  | 1,972.8  | 230.7                       | 2,203.5         | 10.5   | 63.3  |
| September       | 1,129.2  | 142.3                       | 1,271.5         | 11.2   | 74.3  | 847.2    | 91.1                        | 938.4           | 9.7  | 52.9  | 1,976.4  | 233.4                       | 2,209.8         | 10.6   | 63.4  |
| October         | 1,131.4  | 143.3                       | 1,274.6         | 11.2   | 74.4  | 847.6    | 93.5                        | 941.1           | 9.9  | 53.0  | 1,978.9  | 236.8                       | 2,215.7         | 10.7   | 63.5  |
| November        | 1,132.5  | 144.1                       | 1,276.6         | 11.3   | 74.5  | 846.6    | 96.0                        | 942.6           | 10.2   | 53.1  | 1,979.1  | 240.1                       | 2,219.2         | 10.8   | 63.6  |
| December        | 1,131.8  | 145.1                       | 1,276.9         | 11.4   | 74.4  | 843.6    | 97.6                        | 941.2           | 10.4   | 52.9  | 1,975.4  | 242.7                       | 2,218.1         | 10.9   | 63.5  |
| 1992 —          |          |                             |                 |  |   |          |                             |                 |  |   |          |                             |                 |  |   |
| January         | 1,129.6  | 146.5                       | 1,276.0         | 11.5   | 74.3  | 838.5    | 98.3                        | 936.9           | 10.5   | 52.7  | 1,968.1  | 244.8                       | 2,212.9         | 11.1   | 63.3  |
| February        | 1,127.0  | 148.5                       | 1,275.5         | 11.6   | 74.2  | 832.8    | 98.7                        | 931.5           | 10.6   | 52.3  | 1,959.8  | 247.2                       | 2,207.0         | 11.2   | 63.1  |
| March r         | 1,125.3  | 151.4                       | 1,276.7         | 11.9   | 74.3  | 828.3    | 99.3                        | 927.6           | 10.7   | 52.0  | 1,953.6  | 250.7                       | 2,204.3         | 11.4   | 63.0  |
| April r         | 1,125.2  | 154.3                       | 1,279.5         | 12.1   | 74.4  | 825.6    | 100.1                       | 925.7           | 10.8   | 51.9  | 1,950.8  | 254.4                       | 2,205.2         | 11.5   | 62.9  |
| May r           | 1,126.6  | 156.4                       | 1,283.0         | 12.2   | 74.5  | 824.8    | 100.9                       | 925.7           | 10.9   | 51.9  | 1,951.4  | 257.3                       | 2,208.7         | 11.7   | 63.0  |
| June r          | 1,128.9  | 157.6                       | 1,286.5         | 12.3   | 74.7  | 825.2    | 101.6                       | 926.8           | 11.0   | 51.9  | 1,954.1  | 259.2                       | 2,213.4         | 11.7   | 63.1  |
| July r          | 1,131.5  | 157.9                       | 1,289.4         | 12.2   | 74.8  | 825.6    | 101.8                       | 927.5           | 11.0   | 51.9  | 1,957.1  | 259.7                       | 2,216.8         | 11.7   | 63.1  |
| August r        | 1,133.8  | 157.5                       | 1,291.2         | 12.2   | 74.8  | 825.5    | 101.6                       | 927.0           | 11.0   | 51.8  | 1,959.2  | 259.0                       | 2,218.2         | 11.7   | 63.1  |
| September       | 1,135.4  | 156.4                       | 1,291.8         | 12.1   | 74.8  | 824.9    | 100.9                       | 925.8           | 10.9   | 51.7  | 1,960.3  | 257.3                       | 2,217.5         | 11.6   | 63.0  |

TABLE 11. CIVILIAN LABOUR FORCE, STATES: TREND SERIES—continued

| Month     | Males           |                             |                 |  |   | Females  |                             |                 |  |   | Persons  |                             |                 |  |   |
|-----------|-----------------|-----------------------------|-----------------|--|---|----------|-----------------------------|-----------------|--|---|----------|-----------------------------|-----------------|--|---|
|           | Employed        | Unemp-<br>loyed<br>- '000 - | Labour<br>force | Unemp-<br>loyment<br>rate<br>- per<br>cent - | Partic-<br>ipation<br>rate<br>- per<br>cent - | Employed | Unemp-<br>loyed<br>- '000 - | Labour<br>force | Unemp-<br>loyment<br>rate<br>- per<br>cent - | Partic-<br>ipation<br>rate<br>- per<br>cent - | Employed | Unemp-<br>loyed<br>- '000 - | Labour<br>force | Unemp-<br>loyment<br>rate<br>- per<br>cent - | Partic-<br>ipation<br>rate<br>- per<br>cent - |
|           | QUEENSLAND      |                             |                 |  |   |          |                             |                 |  |   |          |                             |                 |  |   |
| 1991 —    |                 |                             |                 |  |   |          |                             |                 |  |   |          |                             |                 |  |   |
| July      | 769.2           | 85.6                        | 854.8           | 10.0   | 75.0  | 538.8    | 60.4                        | 599.2           | 10.1   | 51.6  | 1,308.0  | 146.0                       | 1,454.0         | 10.0   | 63.2  |
| August    | 772.6           | 85.4                        | 857.9           | 10.0   | 75.1  | 539.8    | 59.1                        | 598.9           | 9.9  | 51.5  | 1,312.3  | 144.5                       | 1,456.9         | 9.9  | 63.2  |
| September | 775.1           | 86.1                        | 861.2           | 10.0   | 75.3  | 541.6    | 58.0                        | 599.6           | 9.7  | 51.5  | 1,316.7  | 144.1                       | 1,460.8         | 9.9  | 63.3  |
| October   | 776.4           | 87.5                        | 863.9           | 10.1   | 75.4  | 544.6    | 57.5                        | 602.1           | 9.5  | 51.6  | 1,321.0  | 144.9                       | 1,465.9         | 9.9  | 63.4  |
| November  | 776.6           | 88.8                        | 865.4           | 10.3   | 75.4  | 548.4    | 57.7                        | 606.1           | 9.5  | 51.8  | 1,325.0  | 146.5                       | 1,471.4         | 10.0   | 63.5  |
| December  | 776.0           | 89.4                        | 865.4           | 10.3   | 75.2  | 552.3    | 58.2                        | 610.6           | 9.5  | 52.1  | 1,328.4  | 147.6                       | 1,476.0         | 10.0   | 63.6  |
| 1992 —    |                 |                             |                 |  |   |          |                             |                 |  |   |          |                             |                 |  |   |
| January   | 774.9           | 89.5                        | 864.3           | 10.4   | 75.0  | 555.7    | 58.8                        | 614.6           | 9.6  | 52.3  | 1,330.6  | 148.3                       | 1,478.9         | 10.0   | 63.5  |
| February  | 773.3           | 89.9                        | 863.2           | 10.4   | 74.7  | 557.8    | 59.5                        | 617.2           | 9.6  | 52.4  | 1,331.0  | 149.4                       | 1,480.4         | 10.1   | 63.5  |
| March r   | 772.2           | 90.9                        | 863.1           | 10.5   | 74.5  | 558.4    | 59.9                        | 618.4           | 9.7  | 52.4  | 1,330.6  | 150.9                       | 1,481.5         | 10.2   | 63.4  |
| April r   | 772.1           | 92.6                        | 864.7           | 10.7   | 74.5  | 558.5    | 60.3                        | 618.8           | 9.8  | 52.3  | 1,330.6  | 152.9                       | 1,483.5         | 10.3   | 63.3  |
| May r     | 773.1           | 94.6                        | 867.7           | 10.9   | 74.6  | 559.1    | 60.8                        | 619.9           | 9.8  | 52.3  | 1,332.2  | 155.4                       | 1,487.6         | 10.4   | 63.3  |
| June r    | 775.0           | 96.6                        | 871.6           | 11.1   | 74.7  | 561.0    | 61.3                        | 622.3           | 9.9  | 52.4  | 1,336.0  | 157.9                       | 1,493.9         | 10.6   | 63.5  |
| July r    | 777.4           | 98.0                        | 875.4           | 11.2   | 74.9  | 563.9    | 62.0                        | 625.9           | 9.9  | 52.6  | 1,341.2  | 160.0                       | 1,501.3         | 10.7   | 63.6  |
| August r  | 779.8           | 98.7                        | 878.6           | 11.2   | 75.0  | 567.0    | 62.6                        | 629.6           | 9.9  | 52.8  | 1,346.8  | 161.3                       | 1,508.1         | 10.7   | 63.8  |
| September | 782.2           | 99.1                        | 881.3           | 11.2   | 75.1  | 570.2    | 63.3                        | 633.5           | 10.0   | 53.0  | 1,352.4  | 162.4                       | 1,514.8         | 10.7   | 64.0  |
|           | SOUTH AUSTRALIA |                             |                 |  |   |          |                             |                 |  |   |          |                             |                 |  |   |
| 1991 —    |                 |                             |                 |  |   |          |                             |                 |  |   |          |                             |                 |  |   |
| July      | 372.3           | 45.4                        | 417.7           | 10.9   | 73.4  | 273.5    | 27.3                        | 300.9           | 9.1  | 51.4  | 645.9    | 72.7                        | 718.6           | 10.1   | 62.2  |
| August    | 369.8           | 46.5                        | 416.4           | 11.2   | 73.0  | 273.2    | 27.5                        | 300.6           | 9.1  | 51.3  | 643.0    | 74.0                        | 717.0           | 10.3   | 62.0  |
| September | 368.5           | 47.6                        | 416.1           | 11.4   | 72.9  | 272.6    | 27.9                        | 300.5           | 9.3  | 51.2  | 641.1    | 75.5                        | 716.7           | 10.5   | 61.9  |
| October   | 368.3           | 48.7                        | 417.0           | 11.7   | 73.0  | 272.0    | 28.5                        | 300.5           | 9.5  | 51.2  | 640.3    | 77.2                        | 717.5           | 10.8   | 61.9  |
| November  | 368.8           | 49.7                        | 418.5           | 11.9   | 73.1  | 271.3    | 29.1                        | 300.4           | 9.7  | 51.1  | 640.1    | 78.8                        | 718.9           | 11.0   | 62.0  |
| December  | 369.6           | 50.6                        | 420.2           | 12.0   | 73.3  | 270.3    | 29.4                        | 299.7           | 9.8  | 50.9  | 639.9    | 80.0                        | 719.9           | 11.1   | 62.0  |
| 1992 —    |                 |                             |                 |  |   |          |                             |                 |  |   |          |                             |                 |  |   |
| January   | 370.0           | 51.6                        | 421.7           | 12.2   | 73.5  | 268.9    | 29.7                        | 298.6           | 10.0   | 50.7  | 638.9    | 81.4                        | 720.3           | 11.3   | 62.0  |
| February  | 370.0           | 52.8                        | 422.8           | 12.5   | 73.7  | 267.4    | 30.2                        | 297.6           | 10.1   | 50.5  | 637.5    | 83.0                        | 720.4           | 11.5   | 61.9  |
| March r   | 369.8           | 54.1                        | 423.8           | 12.8   | 73.8  | 266.6    | 30.6                        | 297.1           | 10.3   | 50.4  | 636.3    | 84.6                        | 721.0           | 11.7   | 61.9  |
| April r   | 369.2           | 55.2                        | 424.4           | 13.0   | 73.8  | 266.7    | 30.8                        | 297.6           | 10.4   | 50.4  | 636.0    | 86.0                        | 722.0           | 11.9   | 61.9  |
| May r     | 368.7           | 55.8                        | 424.5           | 13.1   | 73.8  | 267.9    | 31.0                        | 298.9           | 10.4   | 50.6  | 636.6    | 86.8                        | 723.4           | 12.0   | 62.0  |
| June r    | 368.3           | 55.9                        | 424.2           | 13.2   | 73.6  | 269.8    | 30.9                        | 300.7           | 10.3   | 50.8  | 638.1    | 86.8                        | 724.9           | 12.0   | 62.1  |
| July r    | 368.0           | 55.6                        | 423.6           | 13.1   | 73.5  | 271.8    | 30.7                        | 302.5           | 10.1   | 51.1  | 639.8    | 86.3                        | 726.1           | 11.9   | 62.2  |
| August r  | 367.9           | 55.0                        | 422.9           | 13.0   | 73.4  | 273.7    | 30.3                        | 304.0           | 10.0   | 51.3  | 641.6    | 85.3                        | 726.9           | 11.7   | 62.2  |
| September | 367.7           | 54.4                        | 422.1           | 12.9   | 73.2  | 275.4    | 30.0                        | 305.4           | 9.8  | 51.5  | 643.1    | 84.4                        | 727.5           | 11.6   | 62.2  |



TABLE 11. CIVILIAN LABOUR FORCE, STATES: TREND SERIES—continued

| Month     | Males             |                             |                 |  |   | Females  |                             |                 |  |   | Persons  |                             |                 |  |   |
|-----------|-------------------|-----------------------------|-----------------|--|---|----------|-----------------------------|-----------------|--|---|----------|-----------------------------|-----------------|--|---|
|           | Employed          | Unemp-<br>loyed<br>- '000 - | Labour<br>force | Unemp-<br>loyment<br>rate<br>- per<br>cent - | Partic-<br>ipation<br>rate<br>- per<br>cent - | Employed | Unemp-<br>loyed<br>- '000 - | Labour<br>force | Unemp-<br>loyment<br>rate<br>- per<br>cent - | Partic-<br>ipation<br>rate<br>- per<br>cent - | Employed | Unemp-<br>loyed<br>- '000 - | Labour<br>force | Unemp-<br>loyment<br>rate<br>- per<br>cent - | Partic-<br>ipation<br>rate<br>- per<br>cent - |
|           | WESTERN AUSTRALIA |                             |                 |  |   |          |                             |                 |  |   |          |                             |                 |  |   |
| 1991 —    |                   |                             |                 |  |   |          |                             |                 |  |   |          |                             |                 |  |   |
| July      | 440.6             | 57.3                        | 498.0           | 11.5   | 77.4  | 312.1    | 34.8                        | 346.8           | 10.0   | 54.0  | 752.7    | 92.1                        | 844.8           | 10.9   | 65.7  |
| August    | 440.4             | 57.7                        | 498.0           | 11.6   | 77.3  | 312.4    | 35.3                        | 347.7           | 10.2   | 54.1  | 752.8    | 93.0                        | 845.8           | 11.0   | 65.7  |
| September | 440.6             | 57.8                        | 498.4           | 11.6   | 77.2  | 312.2    | 35.9                        | 348.1           | 10.3   | 54.0  | 752.8    | 93.7                        | 846.4           | 11.1   | 65.6  |
| October   | 441.1             | 57.8                        | 498.9           | 11.6   | 77.1  | 311.6    | 36.4                        | 348.0           | 10.4   | 53.9  | 752.7    | 94.1                        | 846.9           | 11.1   | 65.5  |
| November  | 441.6             | 57.7                        | 499.3           | 11.6   | 77.1  | 310.8    | 36.6                        | 347.4           | 10.5   | 53.7  | 752.4    | 94.3                        | 846.7           | 11.1   | 65.4  |
| December  | 441.9             | 57.6                        | 499.6           | 11.5   | 77.0  | 310.1    | 36.5                        | 346.6           | 10.5   | 53.5  | 752.1    | 94.1                        | 846.2           | 11.1   | 65.3  |
| 1992 —    |                   |                             |                 |  |   |          |                             |                 |  |   |          |                             |                 |  |   |
| January   | 442.1             | 57.9                        | 499.9           | 11.6   | 76.9  | 310.0    | 35.9                        | 346.0           | 10.4   | 53.3  | 752.1    | 93.8                        | 845.9           | 11.1   | 65.1  |
| February  | 442.5             | 58.1                        | 500.6           | 11.6   | 76.9  | 311.0    | 35.0                        | 346.0           | 10.1   | 53.2  | 753.5    | 93.1                        | 846.5           | 11.0   | 65.1  |
| March r   | 443.5             | 58.0                        | 501.6           | 11.6   | 76.9  | 312.8    | 34.1                        | 346.9           | 9.8  | 53.3  | 756.3    | 92.2                        | 848.5           | 10.9   | 65.1  |
| April r   | 444.8             | 57.9                        | 502.7           | 11.5   | 76.9  | 314.7    | 33.8                        | 348.5           | 9.7  | 53.4  | 759.5    | 91.6                        | 851.2           | 10.8   | 65.2  |
| May r     | 446.2             | 57.5                        | 503.7           | 11.4   | 77.0  | 316.3    | 34.1                        | 350.4           | 9.7  | 53.6  | 762.5    | 91.6                        | 854.1           | 10.7   | 65.3  |
| June r    | 447.2             | 57.1                        | 504.3           | 11.3   | 76.9  | 317.1    | 35.0                        | 352.1           | 9.9  | 53.8  | 764.3    | 92.1                        | 856.4           | 10.8   | 65.4  |
| July r    | 447.7             | 56.9                        | 504.6           | 11.3   | 76.9  | 317.1    | 36.3                        | 353.3           | 10.3   | 53.9  | 764.8    | 93.1                        | 857.9           | 10.9   | 65.4  |
| August r  | 448.0             | 56.8                        | 504.7           | 11.2   | 76.8  | 316.5    | 37.6                        | 354.1           | 10.6   | 54.0  | 764.4    | 94.3                        | 858.8           | 11.0   | 65.4  |
| September | 448.1             | 56.7                        | 504.9           | 11.2   | 76.8  | 315.6    | 38.7                        | 354.3           | 10.9   | 54.0  | 763.7    | 95.5                        | 859.1           | 11.1   | 65.4  |
|           | TASMANIA          |                             |                 |  |   |          |                             |                 |  |   |          |                             |                 |  |   |
| 1991 —    |                   |                             |                 |  |   |          |                             |                 |  |   |          |                             |                 |  |   |
| July      | 112.7             | 15.0                        | 127.7           | 11.7   | 73.1  | 80.4     | 9.7                         | 90.1            | 10.7   | 50.0  | 193.1    | 24.7                        | 217.8           | 11.3   | 61.4  |
| August    | 112.6             | 15.1                        | 127.7           | 11.9   | 73.1  | 80.7     | 9.6                         | 90.4            | 10.6   | 50.1  | 193.3    | 24.8                        | 218.1           | 11.4   | 61.4  |
| September | 112.6             | 15.2                        | 127.8           | 11.9   | 73.1  | 80.8     | 9.4                         | 90.3            | 10.5   | 50.0  | 193.4    | 24.7                        | 218.1           | 11.3   | 61.4  |
| October   | 112.6             | 15.2                        | 127.8           | 11.9   | 73.0  | 80.6     | 9.2                         | 89.9            | 10.3   | 49.8  | 193.2    | 24.4                        | 217.7           | 11.2   | 61.2  |
| November  | 112.5             | 15.1                        | 127.6           | 11.8   | 72.9  | 80.3     | 9.0                         | 89.3            | 10.1   | 49.4  | 192.8    | 24.1                        | 216.9           | 11.1   | 60.9  |
| December  | 112.2             | 15.0                        | 127.2           | 11.8   | 72.6  | 79.9     | 8.7                         | 88.6            | 9.9  | 49.0  | 192.1    | 23.8                        | 215.8           | 11.0   | 60.6  |
| 1992 —    |                   |                             |                 |  |   |          |                             |                 |  |   |          |                             |                 |  |   |
| January   | 111.7             | 14.9                        | 126.6           | 11.8   | 72.2  | 79.5     | 8.5                         | 88.0            | 9.7  | 48.6  | 191.2    | 23.5                        | 214.6           | 10.9   | 60.2  |
| February  | 111.2             | 14.9                        | 126.1           | 11.8   | 71.8  | 78.9     | 8.5                         | 87.4            | 9.7  | 48.3  | 190.1    | 23.4                        | 213.5           | 11.0   | 59.9  |
| March r   | 110.7             | 15.0                        | 125.8           | 12.0   | 71.6  | 78.4     | 8.6                         | 87.0            | 9.9  | 48.0  | 189.1    | 23.6                        | 212.8           | 11.1   | 59.6  |
| April r   | 110.5             | 15.3                        | 125.8           | 12.2   | 71.6  | 78.1     | 8.8                         | 86.9            | 10.2   | 47.9  | 188.6    | 24.1                        | 212.7           | 11.3   | 59.6  |
| May r     | 110.5             | 15.7                        | 126.2           | 12.4   | 71.8  | 78.0     | 9.1                         | 87.1            | 10.5   | 48.0  | 188.5    | 24.8                        | 213.3           | 11.6   | 59.7  |
| June r    | 110.7             | 16.1                        | 126.8           | 12.7   | 72.1  | 78.1     | 9.3                         | 87.4            | 10.6   | 48.2  | 188.8    | 25.4                        | 214.2           | 11.8   | 59.9  |
| July r    | 111.0             | 16.4                        | 127.4           | 12.9   | 72.3  | 78.5     | 9.3                         | 87.8            | 10.6   | 48.3  | 189.5    | 25.8                        | 215.2           | 12.0   | 60.1  |
| August r  | 111.1             | 16.7                        | 127.9           | 13.1   | 72.5  | 79.0     | 9.3                         | 88.3            | 10.5   | 48.5  | 190.1    | 26.0                        | 216.1           | 12.0   | 60.3  |
| September | 111.3             | 16.9                        | 128.3           | 13.2   | 72.6  | 79.6     | 9.2                         | 88.7            | 10.3   | 48.7  | 190.9    | 26.1                        | 217.0           | 12.0   | 60.4  |

TABLE 11. CIVILIAN LABOUR FORCE, STATES: TREND SERIES—continued

| Month                        | Males    |                             |                 |  |   | Females  |                             |                 |  |   | Persons  |                             |                 |  |   |
|------------------------------|----------|-----------------------------|-----------------|--|---|----------|-----------------------------|-----------------|--|---|----------|-----------------------------|-----------------|--|---|
|                              | Employed | Unemp-<br>loyed<br>- '000 - | Labour<br>force | Unemp-<br>loyment<br>rate<br>- per<br>cent - | Partic-<br>ipation<br>rate<br>- per<br>cent - | Employed | Unemp-<br>loyed<br>- '000 - | Labour<br>force | Unemp-<br>loyment<br>rate<br>- per<br>cent - | Partic-<br>ipation<br>rate<br>- per<br>cent - | Employed | Unemp-<br>loyed<br>- '000 - | Labour<br>force | Unemp-<br>loyment<br>rate<br>- per<br>cent - | Partic-<br>ipation<br>rate<br>- per<br>cent - |
| NORTHERN TERRITORY           |          |                             |                 |  |   |          |                             |                 |  |   |          |                             |                 |  |   |
| 1991 —                       |          |                             |                 |  |   |          |                             |                 |  |   |          |                             |                 |  |   |
| July                         | 42.8     | 4.8                         | 47.5            | 10.0   | 81.5  | 31.7     | 2.8                         | 34.5            | 8.2  | 63.0  | 74.5     | 7.6                         | 82.1            | 9.2  | 72.5  |
| August                       | 42.8     | 5.0                         | 47.7            | 10.4   | 81.8  | 31.7     | 2.8                         | 34.5            | 8.2  | 62.9  | 74.4     | 7.8                         | 82.2            | 9.5  | 72.7  |
| September                    | 42.5     | 5.1                         | 47.6            | 10.8   | 81.7  | 31.6     | 2.9                         | 34.5            | 8.3  | 62.8  | 74.1     | 8.0                         | 82.1            | 9.7  | 72.5  |
| October                      | 42.0     | 5.3                         | 47.3            | 11.2   | 81.1  | 31.6     | 2.9                         | 34.4            | 8.4  | 62.7  | 73.5     | 8.2                         | 81.7            | 10.0   | 72.2  |
| November                     | 41.4     | 5.4                         | 46.8            | 11.5   | 80.3  | 31.7     | 2.9                         | 34.5            | 8.3  | 62.8  | 73.1     | 8.2                         | 81.3            | 10.1   | 71.8  |
| December                     | 41.0     | 5.3                         | 46.3            | 11.4   | 79.5  | 32.0     | 2.7                         | 34.8            | 7.9  | 63.2  | 73.0     | 8.0                         | 81.0            | 9.9  | 71.6  |
| 1992 —                       |          |                             |                 |  |   |          |                             |                 |  |   |          |                             |                 |  |   |
| January                      | 40.9     | 5.0                         | 45.9            | 10.9   | 78.9  | 32.7     | 2.5                         | 35.2            | 7.1  | 63.9  | 73.5     | 7.5                         | 81.1            | 9.3  | 71.6  |
| February                     | 41.1     | 4.6                         | 45.7            | 10.2   | 78.6  | 33.4     | 2.3                         | 35.7            | 6.3  | 64.7  | 74.5     | 6.9                         | 81.4            | 8.5  | 71.8  |
| March r                      | 41.6     | 4.2                         | 45.8            | 9.2  | 78.8  | 33.9     | 2.1                         | 36.0            | 5.8  | 65.3  | 75.5     | 6.3                         | 81.8            | 7.7  | 72.2  |
| April r                      | 42.1     | 3.9                         | 46.0            | 8.4  | 79.2  | 34.0     | 2.1                         | 36.1            | 5.8  | 65.4  | 76.2     | 6.0                         | 82.1            | 7.3  | 72.5  |
| May r                        | 42.5     | 3.7                         | 46.2            | 7.9  | 79.5  | 33.7     | 2.2                         | 35.9            | 6.0  | 65.0  | 76.3     | 5.8                         | 82.1            | 7.1  | 72.4  |
| June r                       | 42.7     | 3.6                         | 46.2            | 7.8  | 79.6  | 33.2     | 2.3                         | 35.5            | 6.4  | 64.1  | 75.9     | 5.8                         | 81.7            | 7.2  | 72.1  |
| July r (a)                   | 42.6     | 3.6                         | 46.2            | 7.8  | 79.3  | 32.7     | 2.3                         | 35.0            | 6.6  | 63.2  | 75.3     | 5.9                         | 81.2            | 7.3  | 71.5  |
| August r (a)                 | 42.4     | 3.7                         | 46.0            | 8.0  | 78.9  | 32.3     | 2.3                         | 34.5            | 6.6  | 62.4  | 74.6     | 6.0                         | 80.6            | 7.4  | 70.9  |
| September (a)                | 42.1     | 3.8                         | 45.9            | 8.2  | 78.4  | 31.9     | 2.2                         | 34.2            | 6.6  | 61.7  | 74.0     | 6.0                         | 80.0            | 7.5  | 70.3  |
| AUSTRALIAN CAPITAL TERRITORY |          |                             |                 |  |   |          |                             |                 |  |   |          |                             |                 |  |   |
| 1991 —                       |          |                             |                 |  |   |          |                             |                 |  |   |          |                             |                 |  |   |
| July                         | 82.8     | 6.2                         | 89.0            | 7.0  | 82.1  | 67.2     | 4.4                         | 71.6            | 6.2  | 64.6  | 149.9    | 10.7                        | 160.6           | 6.6  | 73.2  |
| August                       | 82.7     | 6.2                         | 88.9            | 6.9  | 81.8  | 67.2     | 4.8                         | 72.0            | 6.7  | 64.8  | 149.9    | 11.0                        | 160.9           | 6.8  | 73.2  |
| September                    | 82.7     | 6.1                         | 88.7            | 6.8  | 81.4  | 67.4     | 5.0                         | 72.4            | 6.9  | 64.9  | 150.0    | 11.1                        | 161.1           | 6.9  | 73.1  |
| October                      | 82.6     | 5.9                         | 88.5            | 6.7  | 81.0  | 67.5     | 5.2                         | 72.7            | 7.1  | 65.0  | 150.1    | 11.1                        | 161.2           | 6.9  | 72.9  |
| November                     | 82.5     | 5.9                         | 88.4            | 6.7  | 80.5  | 67.6     | 5.3                         | 72.9            | 7.2  | 65.0  | 150.1    | 11.2                        | 161.3           | 6.9  | 72.7  |
| December                     | 82.4     | 6.0                         | 88.4            | 6.8  | 80.2  | 67.6     | 5.3                         | 72.8            | 7.2  | 64.7  | 149.9    | 11.3                        | 161.2           | 7.0  | 72.4  |
| 1992 —                       |          |                             |                 |  |   |          |                             |                 |  |   |          |                             |                 |  |   |
| January                      | 82.4     | 6.2                         | 88.6            | 7.0  | 80.2  | 67.3     | 5.1                         | 72.5            | 7.1  | 64.3  | 149.7    | 11.4                        | 161.0           | 7.1  | 72.2  |
| February                     | 82.4     | 6.5                         | 88.9            | 7.3  | 80.4  | 67.0     | 4.9                         | 71.9            | 6.8  | 63.7  | 149.4    | 11.4                        | 160.8           | 7.1  | 71.9  |
| March r                      | 82.5     | 6.8                         | 89.3            | 7.6  | 80.5  | 66.6     | 4.7                         | 71.3            | 6.6  | 63.0  | 149.0    | 11.5                        | 160.6           | 7.2  | 71.7  |
| April r                      | 82.7     | 7.0                         | 89.6            | 7.8  | 80.6  | 66.2     | 4.8                         | 71.1            | 6.8  | 62.7  | 148.9    | 11.8                        | 160.7           | 7.4  | 71.6  |
| May r                        | 83.0     | 7.0                         | 90.0            | 7.8  | 80.8  | 66.1     | 5.3                         | 71.4            | 7.4  | 62.8  | 149.1    | 12.3                        | 161.4           | 7.6  | 71.7  |
| June r                       | 83.4     | 7.0                         | 90.4            | 7.8  | 81.0  | 66.2     | 5.9                         | 72.1            | 8.2  | 63.4  | 149.6    | 13.0                        | 162.5           | 8.0  | 72.1  |
| July r (a)                   | 83.8     | 7.1                         | 90.9            | 7.8  | 81.2  | 66.5     | 6.6                         | 73.2            | 9.1  | 64.1  | 150.3    | 13.7                        | 164.0           | 8.4  | 72.6  |
| August r (a)                 | 84.2     | 7.2                         | 91.4            | 7.9  | 81.5  | 67.0     | 7.3                         | 74.3            | 9.8  | 64.9  | 151.2    | 14.5                        | 165.6           | 8.7  | 73.1  |
| September (a)                | 84.6     | 7.3                         | 91.9            | 8.0  | 81.8  | 67.5     | 7.8                         | 75.3            | 10.4   | 65.6  | 152.0    | 15.1                        | 167.2           | 9.0  | 73.6  |

(a) These estimates are subject to significant revisions as data for later months become available

## EXPLANATORY NOTES

### Introduction

This publication contains preliminary estimates of the civilian labour force derived from the labour force survey component of the monthly population survey. Estimates for the current month are preliminary and subject to revision. Revised estimates for the current month and more detailed estimates will be published in *The Labour Force, Australia* (6203.0).

### The population survey

2. The population survey is based on a multi-stage area sample of private dwellings (currently about 33,000 houses, flats, etc.) and a list sample of non-private dwellings (hotels, motels, etc.), and covers about three-fifths of one per cent of the population of Australia. The information is obtained from the occupants of selected dwellings by carefully chosen and specially trained interviewers. The interviews are generally conducted during the two weeks beginning on the Monday between the 6th and 12th of each month. The information obtained relates to the week before the interview (i.e. the reference week).

### Scope

3. The Labour Force Survey (LFS) includes all persons aged 15 and over except: members of the permanent defence forces; certain diplomatic personnel of overseas governments, customarily excluded from census and estimated populations; overseas residents in Australia; and members of non-Australian defence forces (and their dependents) stationed in Australia.

### Coverage

4. In the Labour Force Survey, coverage rules are applied which aim to ensure that each person is associated with only one dwelling, and hence has only one chance of selection. The coverage rules are, necessarily, a balance between theoretical and operational considerations. Nevertheless, the chance of a person being enumerated at two separate dwellings in the survey is considered to be negligible.

### Population benchmarks

5. New benchmarks based on the results of the 1986 Census of Population and Housing were introduced in the February 1989 issue of this publication. Labour force estimates were revised for the period January 1984 to January 1989. All estimates produced after January 1989 are based on the new benchmarks.

### Revision of series

6. From April 1986, the definition of employed persons was changed to include persons who worked without pay between 1 and 14 hours per week in a family business or on a farm (i.e. unpaid family helpers). For further information, see paragraphs 36 and 37 of the Explanatory Notes to the February 1987 issue of *The Labour Force, Australia* (6203.0).

7. Following each Population Census, the ABS redesigns and reselects the LFS to take into account the new information which is obtained from the Census. The sample used in the LFS from September 1987 to August 1992, which was designed and selected using data from the 1986 Census, has been updated and reselected using information collected in the 1991 Census. The new sample will be phased in over the period September 1992 to December 1992.

### Survey sample redesign

8. For the most part, one quarter of the new sample will be introduced each month so that, by December 1992, the entire new sample will be in place. Replacement will occur generally at the rotation group level with two groups being substituted each month. Such a pattern of implementation means that any changes to labour force estimates due to differences between the two samples, or any other influences, will be spread over the four months rather than being concentrated in one inter-month period.

9. This phase-in scheme will apply to the private dwelling sample in urban areas. The new sample for non-private dwellings and private dwellings in rural areas will be introduced in a single stage in November 1992.

10. Implications for estimates produced from the LFS due to sample redesign and its implementation are as follows:

### Potential effects on labour force survey estimates

(a) the sampling error overall will increase initially by about 7 per cent over the current level but will decline gradually during the life of the new sample. For State estimates, the initial increase will be about 8 per cent, while for the Territories, there will be a decrease of 19 per cent. There will also be higher standard errors for the estimates of month-to-month movements produced over the period September 1992 to December 1992 compared with those for the corresponding series produced prior to this period and from January 1993 onwards. Overall, these are estimated to be up to 20 per cent higher than the normal standard errors on monthly movements.

(b) analysis has shown that the unemployment rate is marginally higher (less than 0.5 percentage points) for those persons in sample for the first time. Normally, this will not affect the overall estimates of

month-to-month movements because the number of persons in sample does not change significantly. However, during the transition period, there will be twice as many people as usual in sample for the first time. This may cause a small upward movement (of less than 0.1 percentage points) in the unemployment rate from August 1992 to September 1992 and a compensating decrease from December 1992 to January 1993.

11. For further information, see *Information Paper: Labour Force Survey Sample Design* (6269.0).

#### Reliability of the estimates

12. Two types of error are possible in an estimate based on a sample survey: sampling error and non-sampling error. The *sampling error* is a measure of the variability that occurs by chance because a sample, rather than the entire population, is surveyed. One measure of the likely difference resulting from not including all dwellings in the survey is given by the *standard error*. There are about two chances in three that a sample estimate will differ by less than one standard error from the figure that would have been obtained if all dwellings had been included in the survey, and about nineteen chances in twenty that the difference will be less than two standard errors.

13. Standard errors of estimates for the latest month and of estimates of movements since the previous month are shown in the tables. Standard errors of other estimates and other movements may be determined by using information in the Technical Note in *The Labour Force, Australia* (6203.0). The August 1992 issue of that publication will contain detailed tables of standard errors. These tables can be made available separately on request.

14. The smaller the estimate the higher is the relative standard error. Very small estimates are subject to high standard errors (relative to the size of the estimate) which detract seriously from their value for most reasonable uses. In the tables in this publication, only estimates with relative standard errors of 25 per cent or less, and percentages based on such estimates, are considered sufficiently reliable for most purposes. However, estimates and percentages with larger relative standard errors have been included and are preceded by an asterisk (eg. \* 3.4) to indicate they are subject to high standard errors and should be used with caution.

15. Examples of the calculation and use of standard errors are given below:

- (a) An estimate of 500,000 employed persons aged 15 to 19 has a standard error of about 9,000. Therefore there are about two chances in three that the number that would have been produced if all dwellings had been included in the survey will be within the

range 491,000 to 509,000 and about nineteen chances in twenty that the number will be within the range 482,000 to 518,000.

- (b) Consider estimates for females employed part time in Australia of 1,326,300 in one month and 1,341,200 in the next month. This represents an upward movement of 14,900 with a standard error of 11,100. Therefore, there are about two chances in three that if all dwellings had been included in the surveys, the movement would have been in the range +3,800 to +26,000, and about nineteen chances in twenty that it would have been within the range -7,300 to +37,100.

16. The imprecision due to sampling variability, which is measured by the standard error, should not be confused with inaccuracies that may occur because of imperfections in reporting by respondents, errors made in collection such as in recording and coding of data, and errors made in processing the data. Inaccuracies of this kind are referred to as the *non-sampling error*, and they may occur in any enumeration, whether it be a full count or a sample. Every effort is made to reduce the non-sampling error to a minimum by careful design of questionnaires, intensive training and supervision of interviewers and efficient operating procedures.

#### Seasonal adjustment and trend estimation

17. Seasonally adjusted series are published in Tables 2, 5 and 10. Seasonal adjustment is a means of removing the estimated effects of normal seasonal variation from the series so that the effects of other influences on the series can be more clearly recognised. Seasonal adjustment does not aim to remove the irregular or non-seasonal influences which may be present in any particular month. Influences that are volatile can still make it difficult to interpret the movement of the series even after adjustment for seasonal variation.

18. Smoothing seasonally adjusted series produces a measure of trend by reducing the impact of the irregular component of the series. The trend estimates have been derived by applying a 13-term Henderson-weighted moving average to the series. Trend series are used to analyse the underlying behaviour of the series over time. These are published in Tables 3, 6 and 11.

19. While this smoothing technique enables estimates to be produced for the latest month, it does result in revisions to the most recent months as additional observations become available. Generally, subsequent revisions become smaller, and after three months have a negligible impact on the series. There will also be revisions as a result of the annual review of seasonal factors.

20. Trend estimates for the Australian Capital Territory and the Northern Territory are published in Table 11 for



the first time. Unadjusted series for the two Territories have shown, historically, a high degree of variability, which can lead to considerable revisions to the seasonally adjusted estimates after each annual seasonal factor re-analysis. Seasonally adjusted estimates are not currently published for the two Territories. The most recent six months trend estimates are subject to revision. For the three most recent months, the revision may be relatively large. Inferences about trends drawn from smoothed seasonally adjusted (trend) estimates for months earlier than the latest three months are unlikely to be affected by month to month revisions. They may be affected by revision resulting from the annual re-analysis of seasonal factors.

21. Users may wish to refer to the ABS Information Papers *A Guide to Smoothing Time Series - Estimates of 'Trend'* (1316.0), and *Time Series Decomposition - an Overview* (1317.0) for more detailed information on smoothing of seasonally adjusted time series data.

#### Semi-logarithmic graphs

22. Graphs on page 2 have been drawn using a logarithmic vertical scale to aid comparison of rates of growth in series of differing magnitude. Equal distances on the vertical scale (over equal time periods) indicate equal rates of growth for graphs on the same page.

#### Related publications

23. Users may also wish to refer to *The Labour Force, Australia* (6203.0). This publication contains a detailed list of related publications which are available on request.

24. Current publications produced by the ABS are listed in the *Catalogue of Publications and Products, Australia*

(1101.0). The ABS also issues, on Tuesdays and Fridays, a *Publications Advice* (1105.0) which lists publications to be released in the next few days. The Catalogue and Publications Advice are available from any ABS office.

#### Unpublished statistics

25. As well as the statistics included in this and related publications, the ABS may have other relevant unpublished data available. Inquiries should be made to Don Clark on Canberra (06) 252 6525 or any ABS State office.

#### Symbols and other usages

- \* subject to sampling variability too high for most practical uses. See the Technical Notes in 6203.0 for more details.
- . . not applicable
- r revised

26. Estimates have been rounded and discrepancies may occur between sums of the component items and totals.

#### Forthcoming issues

27. The following table shows the dates on which *The Labour Force, Australia, Preliminary*, (6202.0) publication is scheduled to be released.

| Issue        | Release Date     |
|--------------|------------------|
| 1992 October | 12 November 1992 |
| November     | 10 December 1992 |
| December     | 14 January 1993  |
| 1993 January | 11 February 1993 |
| February     | 11 March 1993    |
| March        | 8 April 1993     |

IAN CASTLES  
Australian Statistician

## GLOSSARY

*Attending school:* Persons aged 15 to 19 who, during the reference week, were enrolled full time at secondary or high schools.

*Attending tertiary educational institution full time:* Persons aged 15 to 24 who, during the reference week, were enrolled full time at universities, technical colleges, colleges of technical and further education and theological colleges.

*Employed:* Persons aged 15 and over who, during the reference week:

- (a) worked for one hour or more for pay, profit, commission or payment in kind in a job or business, or on a farm (comprising employees, employers and self-employed persons); or
- (b) worked for one hour or more without pay in a family business or on a farm (i.e. unpaid family helpers); or
- (c) were employees who had a job but were not at work and were: on paid leave; on leave without pay for less than four weeks up to the end of the reference week; stood down without pay because of bad weather or plant breakdown at their place of employment for less than four weeks up to the end of the reference week; on strike or locked out; on workers' compensation and expected to be returning to their job; or receiving wages or salary while undertaking full-time study; or
- (d) were employers, self-employed persons or unpaid family helpers who had a job, business or farm, but were not at work.

*Full-time workers:* Employed persons who usually worked 35 hours or more a week (in all jobs) and others who, although usually working less than 35 hours a week, worked 35 hours or more during the reference week.

*Labour force:* For any group, persons who were employed or unemployed, as defined.

*Labour force status:* A classification of the civilian population aged 15 and over into employed, unemployed or not in the labour force, as defined. The definitions conform closely to the international standard definitions adopted by the International Conferences of Labour Statisticians.

*Not in the labour force:* Persons who were not in the categories employed or unemployed as defined.

*Participation rate:* For any group, the labour force expressed as a percentage of the civilian population aged 15 and over in the same group.

*Part-time workers:* Employed persons who usually worked less than 35 hours a week and who did so during the reference week.

*Seasonally adjusted series:* A time series of estimates with the estimated effects of normal seasonal variation removed. See paragraph 17 of the Explanatory Notes for more detail.

*Trend series:* A smoothed seasonally adjusted series of estimates. See paragraphs 18 to 21 of the Explanatory Notes for more detail.

*Unemployed:* Persons aged 15 and over who were not employed during the reference week, and:

- (a) had actively looked for full-time or part-time work at any time in the four weeks up to the end of the reference week and:
  - (i) were available for work in the reference week, or would have been available except for temporary illness (i.e. lasting for less than four weeks to the end of the reference week); or
  - (ii) were waiting to start a new job within four weeks from the end of the reference week and would have started in the reference week if the job had been available then; or
- (b) were waiting to be called back to a full-time or part-time job from which they had been stood down without pay for less than four weeks up to the end of the reference week (including the whole of the reference week) for reasons other than bad weather or plant breakdown.

*Unemployed looking for first full-time job:* Unemployed persons looking for full-time work (as defined) who had never worked full time for two weeks or more.

*Unemployed looking for full-time work:* Unemployed persons who actively looked for full-time work or were to resume a full-time job, from which they had been stood down.

*Unemployed looking for part-time work:* Unemployed persons who had actively looked for part-time work only, or were to resume a part-time job, from which they had been stood down.

*Unemployment rate:* For any group, the number of unemployed persons expressed as a percentage of the labour force in the same group.





## *For more information ...*

The ABS publishes a wide range of information on Australia's economic and social conditions. A catalogue of publications and products is available from any of our Offices (see below for contact details).

### **Information Consultancy Service**

Special tables or in-depth data investigations are provided by the ABS Information Consultancy Service in each of our Offices (see below for contact details).

### **Electronic Data Services**

A growing range of our data is available on electronic media. Selections of the most frequently requested data are available, updated daily, on DISCOVERY (Key \*656#). Our TELESTATS service delivers major economic indicator publications ready to download into your computer on the day of release. Our PC-AUSSTATS service enables on-line access to a data base of thousands of up-to-date time series. Selected datasets are also available on diskette or CD-ROM. For more details on our electronic data services, contact Information Services in any of our Offices on the numbers below.

### **Bookshops and Subscriptions**

There are over 500 titles available from the ABS Bookshops in each of our Offices. You can also receive any of our publications on a regular basis. Join our subscription mailing service and have your publications mailed to you in Australia at no additional cost. Telephone our Publications Subscription Service toll free on 008 02 06 08 Australia wide.

## *Sales and Inquiries*



SYDNEY (02) 268 4611  
MELBOURNE (03) 615 7000  
BRISBANE (07) 222 6351  
PERTH (09) 323 5140

ADELAIDE (08) 237 7100  
HOBART (002) 20 5800  
DARWIN (089) 43 2111  
CANBERRA (06) 252 6627



Information Services, ABS, PO Box 10, Belconnen ACT 2616  
or any ABS State office.

