

THE LABOUR FORCE, AUSTRALIA, JUNE 1992, PRELIMINARY

Care should be taken in the interpretation of month-to-month movements in the original and seasonally adjusted data. See paragraphs 13 to 16 of the Explanatory Notes.

MAIN FEATURES

The June 1992 seasonally adjusted estimate of **employed persons** was 7,691,300, an increase of 28,300 since May 1992. Full-time employment fell for the fifth consecutive month, declining by 6,800 to 5,857,000. The number of males employed full time was relatively steady at 3,986,900, while females employed full time fell by 7,500. Part-time employment rose by 35,100 to 1,834,300, the main component being an increase of 26,500 in the number of females employed part time.

Trend estimates of total employment have decreased in each of the last five months. The trend for male full-time employment has been one of decline since July 1990,

EMPLOYED PERSONS: TREND SERIES



UNEMPLOYMENT RATE: TREND SERIES



Indicates break in series — see paragraph 6 of the Explanatory Notes.

while for females, trend estimates have been falling since September 1991. The trend for male and female part-time employment continues to increase strongly (see graphs on page 2).

The seasonally adjusted estimate of **unemployed persons** rose by 57,600 to 963,500 in June 1992. Male unemployment rose by 26,700 to 590,900, with increases of 13,400 and 13,300 in the number of males seeking full-time and part-time work respectively. Female unemployment rose by 30,900 to 372,600. The number of females seeking full-time work increased by 13,400 and the number of females seeking part-time work increased by 17,500. Trend estimates of total unemployment have been increasing again in recent months after steadying at the start of 1992.

The seasonally adjusted estimate of the **unemployment rate** was 11.1% in June 1992, an increase of 0.6 percentage points since May 1992 and the highest rate recorded by the survey. For males, the unemployment rate rose by 0.4 percentage points to 11.7%, also the highest rate recorded by the survey. For females, the unemployment rate rose by 0.7 percentage points to 10.3%. Trend estimates of the total unemployment rate have been increasing in recent months and now stand at 10.8%. For males and females seeking full-time work, the trend unemployment rate continues to increase steadily, while for males and females seeking part-time work the trend is relatively steady (see graphs on page 3).

For 15 to 19 year olds, the seasonally adjusted full-time unemployment rate was 35.8% in June 1992 compared with 34.1% in May 1992. This is the proportion of 15 to 19 year olds in the full-time labour force unable to find employment.

The June 1992 seasonally adjusted estimates of the unemployment rate for the States were: New South Wales 10.4%, Victoria 11.9%, Queensland 11.1%, South Australia 12.5%, Western Australia 10.4% and Tasmania 12.2%.

The seasonally adjusted estimate of the **labour force participation rate** for June 1992 was 63.2%, an increase of 0.6 percentage points since May 1992. The male participation rate rose by 0.5 percentage points to 74.7% and for females, the participation rate rose by 0.7 percentage points to 52.1%. Trend estimates of the participation rate continue to fall and now stand at 62.8%.

INQUIRIES

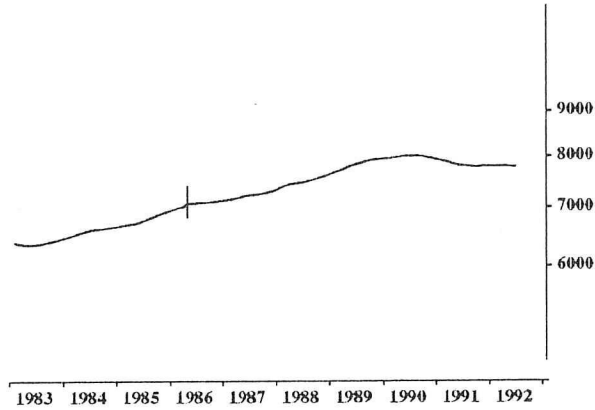
- for further information about statistics in this publication and the availability of related unpublished statistics, contact Don Clark on Canberra (06) 252 6525 or any ABS State office.
- for information about other ABS statistics and services please refer to the back page of this publication.

EMPLOYED PERSONS : TREND SERIES

The graphs on this page have been drawn to a semi-logarithmic scale to enable comparisons to be made of rates of change — See paragraph 17 of the Explanatory Notes.

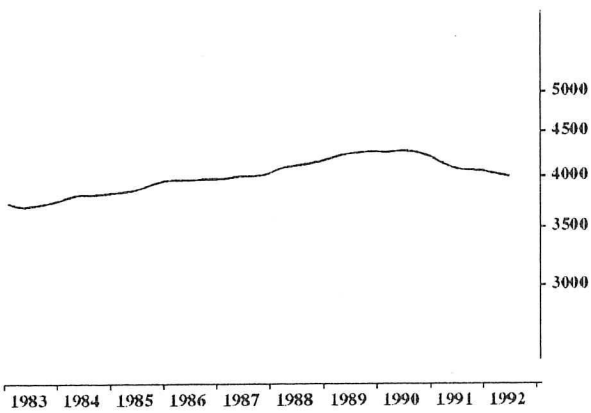
PERSONS

Thousands



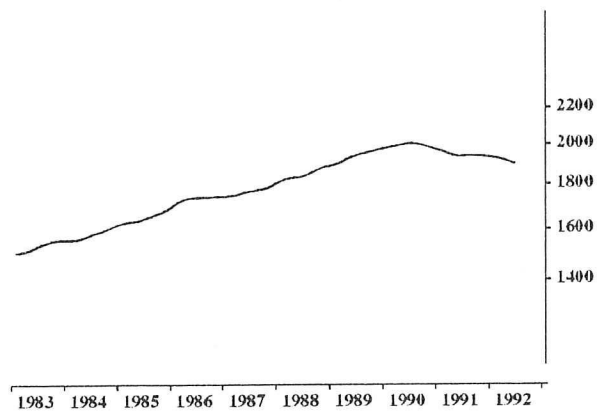
MALES: FULL-TIME WORKERS

Thousands



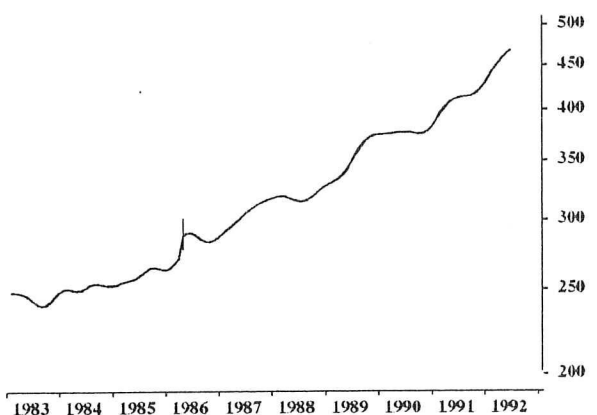
FEMALES: FULL-TIME WORKERS

Thousands



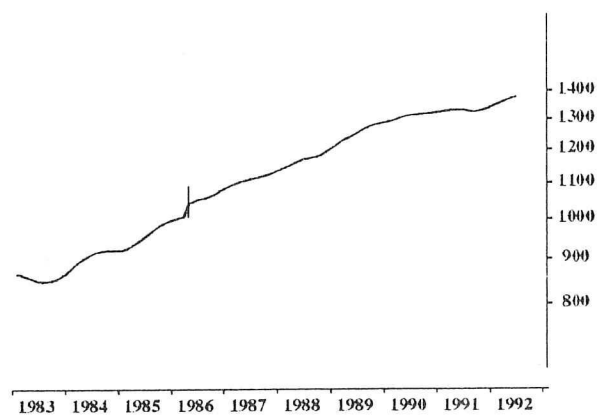
MALES: PART-TIME WORKERS

Thousands



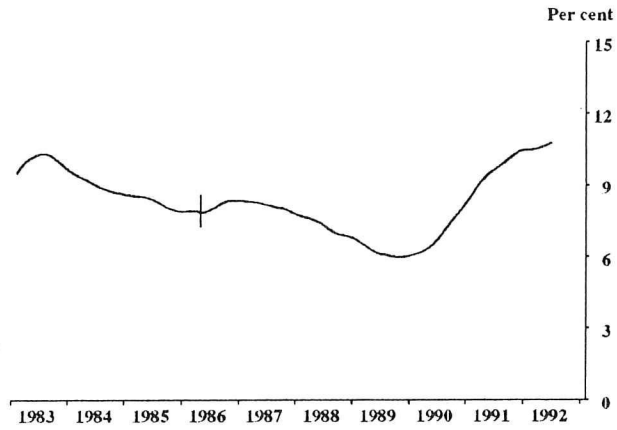
FEMALES: PART-TIME WORKERS

Thousands

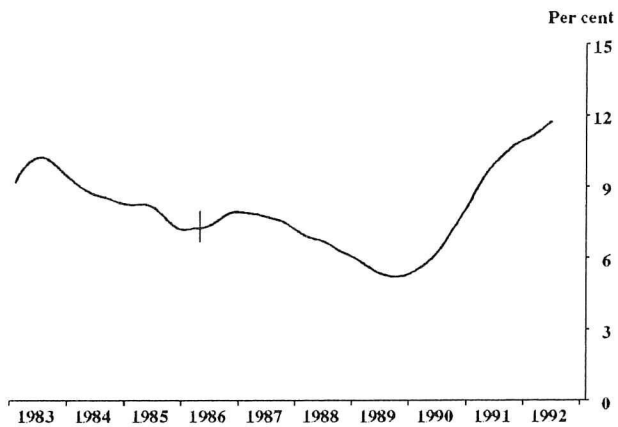


UNEMPLOYMENT RATE : TREND SERIES

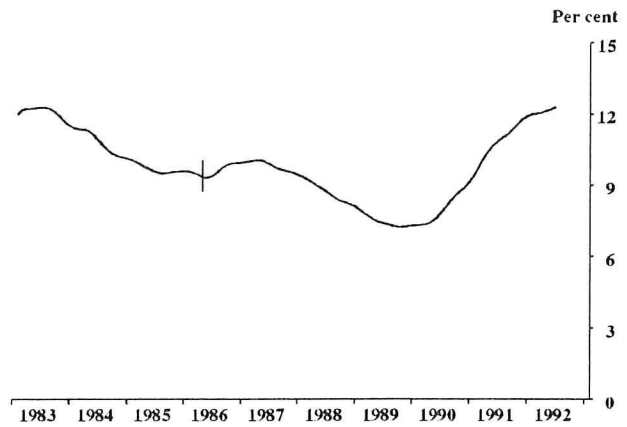
PERSONS



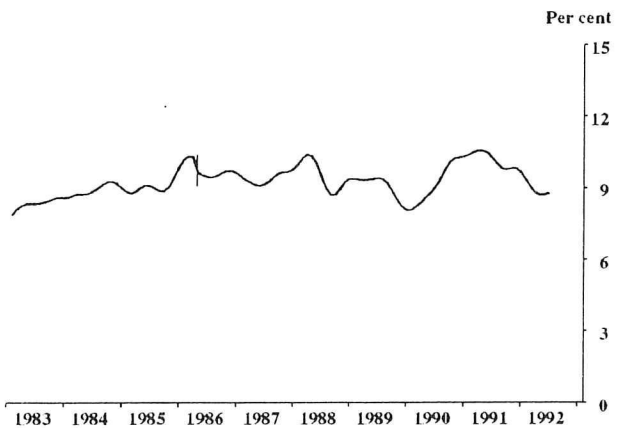
MALES: LOOKING FOR FULL-TIME WORK



FEMALES: LOOKING FOR FULL-TIME WORK



MALES: LOOKING FOR PART-TIME WORK



FEMALES: LOOKING FOR PART-TIME WORK

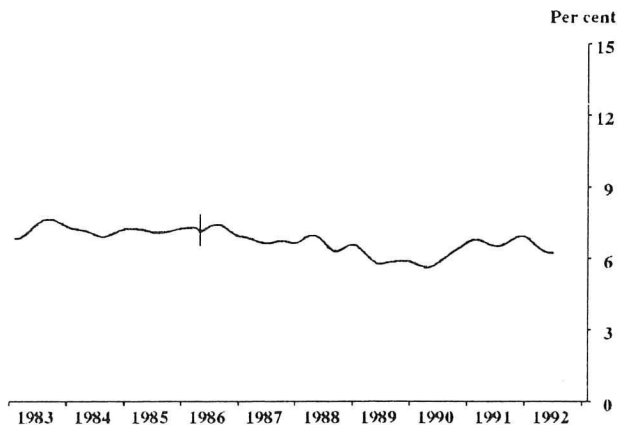


TABLE 1. LABOUR FORCE STATUS OF CIVILIAN POPULATION AGED 15 AND OVER

Month	Unemployed										Civilian population aged 15 and over	Unemployment rate - per cent -
	Employed		Looking for full-time work		Looking for part-time work		Labour force	Not in labour force				
			Aged 15-19 looking for first job	Total								
									Full-time workers	Total		
- '000 -												
MALES												
1991 —												
April	4,084.4	4,504.9	23.7	445.3	58.5	503.8	5,008.7	1,632.2	6,640.9	10.1	75.4	
May	4,086.9	4,496.2	21.9	436.7	49.8	486.5	4,982.7	1,667.0	6,649.7	9.8	74.9	
June	4,069.9	4,487.5	19.4	427.5	34.2	461.7	4,949.2	1,709.4	6,658.6	9.3	74.3	
July	4,046.4	4,440.3	24.0	448.6	39.6	488.2	4,928.4	1,738.1	6,666.6	9.9	73.9	
August	4,035.4	4,443.7	25.0	465.4	37.2	502.6	4,946.3	1,728.3	6,674.6	10.2	74.1	
September	4,065.3	4,492.0	28.6	476.1	47.2	523.3	5,015.3	1,667.3	6,682.6	10.4	75.1	
October	4,075.4	4,473.4	22.4	453.9	40.5	494.5	4,967.9	1,723.4	6,691.2	10.0	74.2	
November	4,021.3	4,456.3	31.4	466.8	33.3	500.1	4,956.3	1,743.5	6,699.8	10.1	74.0	
December	4,098.1	4,508.6	49.2	503.2	54.5	557.7	5,066.2	1,642.2	6,708.4	11.0	75.5	
1992 —												
January	4,024.1	4,424.7	50.6	540.9	50.1	591.0	5,015.7	1,700.9	6,716.6	11.8	74.7	
February	4,015.1	4,448.3	43.9	542.9	52.2	595.1	5,043.4	1,681.3	6,724.7	11.8	75.0	
March	4,003.5	4,459.2	36.6	520.7	49.1	569.8	5,029.0	1,703.9	6,732.8	11.3	74.7	
April	4,002.1	4,459.0	31.9	506.7	42.3	549.0	5,007.9	1,732.1	6,740.1	11.0	74.3	
May	3,982.8	4,449.7	35.7	527.3	41.7	569.0	5,018.7	1,728.6	6,747.3	11.3	74.4	
June	3,982.5	4,455.1	32.6	517.8	42.7	560.5	5,015.6	1,738.9	6,754.5	11.2	74.3	
Standard error of —												
June 1992 estimates	18.2	19.0	2.6	8.6	3.0	8.8	19.7	13.6	..	0.2	0.3	
May 92 to June 92 movements	13.9	14.5	2.4	6.5	2.5	6.7	15.1	10.2	..	0.1	0.2	
FEMALES												
1991 —												
April	1,910.7	3,245.6	22.7	238.6	113.9	352.5	3,598.2	3,212.2	6,810.3	9.8	52.8	
May	1,905.7	3,242.7	22.6	238.0	87.7	325.7	3,568.4	3,250.9	6,819.3	9.1	52.3	
June	1,896.6	3,229.1	21.1	216.8	85.7	302.5	3,531.6	3,296.7	6,828.3	8.6	51.7	
July	1,889.7	3,183.7	18.4	232.1	81.5	313.6	3,497.3	3,339.8	6,837.1	9.0	51.2	
August	1,907.6	3,225.5	18.0	221.6	81.8	303.4	3,528.9	3,317.0	6,845.9	8.6	51.5	
September	1,924.8	3,270.8	17.3	238.8	105.1	343.9	3,614.7	3,240.1	6,854.8	9.5	52.7	
October	1,926.9	3,214.4	19.5	223.0	84.1	307.1	3,521.5	3,342.6	6,864.2	8.7	51.3	
November	1,879.8	3,217.9	18.2	232.5	84.9	317.4	3,535.3	3,338.2	6,873.5	9.0	51.4	
December	1,942.8	3,270.9	38.2	264.8	97.9	362.7	3,633.6	3,249.3	6,882.9	10.0	52.8	
1992 —												
January	1,919.3	3,146.2	40.1	280.4	88.3	368.7	3,514.8	3,377.0	6,891.8	10.5	51.0	
February	1,904.8	3,202.6	40.3	297.9	104.7	402.6	3,605.2	3,295.5	6,900.7	11.2	52.2	
March	1,889.7	3,245.3	30.4	265.2	114.2	379.3	3,624.6	3,285.1	6,909.7	10.5	52.5	
April	1,864.4	3,237.5	30.2	267.2	94.7	361.9	3,599.4	3,318.7	6,918.1	10.1	52.0	
May	1,872.0	3,237.7	30.6	262.2	89.3	351.5	3,589.2	3,337.2	6,926.4	9.8	51.8	
June	1,854.6	3,246.3	30.9	259.0	94.7	353.7	3,600.1	3,334.8	6,934.8	9.8	51.9	
Standard error of —												
June 1992 estimates	13.9	17.0	2.5	6.5	4.2	7.4	17.6	17.2	..	0.2	0.3	
May 92 to June 92 movements	10.5	12.8	2.2	5.0	3.4	5.6	13.4	13.0	..	0.2	0.2	
PERSONS												
1991 —												
April	5,995.0	7,750.5	46.4	683.9	172.4	856.3	8,606.8	4,844.4	13,451.2	9.9	64.0	
May	5,992.6	7,738.9	44.5	674.7	137.5	812.2	8,551.1	4,917.9	13,469.0	9.5	63.5	
June	5,966.5	7,716.7	40.6	644.3	119.8	764.1	8,480.8	5,006.0	13,486.8	9.0	62.9	
July	5,936.0	7,624.0	42.4	680.7	121.1	801.7	8,425.7	5,078.0	13,503.7	9.5	62.4	
August	5,943.0	7,669.2	43.0	687.0	119.1	806.0	8,475.2	5,045.3	13,520.5	9.5	62.7	
September	5,990.1	7,762.8	45.8	714.9	152.3	867.2	8,630.0	4,907.4	13,537.5	10.0	63.7	
October	6,002.3	7,687.8	41.9	676.9	124.6	801.6	8,489.4	5,066.0	13,555.4	9.4	62.6	
November	5,901.0	7,674.1	49.6	699.3	118.2	817.5	8,491.6	5,081.7	13,573.3	9.6	62.6	
December	6,041.0	7,779.5	87.3	767.9	152.4	920.4	8,699.8	4,891.5	13,591.3	10.6	64.0	
1992 —												
January	5,943.4	7,570.9	90.7	821.3	138.4	959.7	8,530.5	5,077.9	13,608.4	11.2	62.7	
February	5,919.9	7,650.9	84.2	840.8	156.9	997.7	8,648.6	4,976.8	13,625.4	11.5	63.5	
March	5,893.2	7,704.4	67.0	785.8	163.3	949.1	8,653.6	4,988.9	13,642.5	11.0	63.4	
April	5,866.5	7,696.4	62.2	773.8	137.0	910.9	8,607.3	5,050.8	13,658.1	10.6	63.0	
May	5,854.8	7,687.5	66.2	789.5	130.9	920.4	8,607.9	5,065.8	13,673.7	10.7	63.0	
June	5,837.1	7,701.4	63.4	776.8	137.4	914.2	8,615.7	5,073.7	13,689.3	10.6	62.9	
Standard error of —												
June 1992 estimates	20.8	22.8	3.5	10.0	5.0	10.7	23.6	19.8	..	0.1	0.2	
May 92 to June 92 movements	16.0	17.8	3.0	7.6	3.9	8.0	18.5	15.2	..	0.1	0.1	

TABLE 2. CIVILIAN LABOUR FORCE: SEASONALLY ADJUSTED SERIES

Month	Employed		Unemployed				Labour force	Unemployment rate - per cent -	Participation rate
			Looking for full-time work		Looking for part-time work	Total			
			Aged 15-19 looking for first job	Total					
	Full-time workers	Total		'000 -					
MALES									
1991 —									
April	4,090.5	4,496.4	27.3	452.0	52.9	505.0	5,001.4	10.1	75.3
May	4,091.3	4,492.0	25.9	434.7	47.9	482.6	4,974.5	9.7	74.8
June	4,074.7	4,485.5	26.5	443.7	42.4	486.1	4,971.6	9.8	74.7
July	4,036.3	4,438.9	30.5	457.4	43.9	501.3	4,940.2	10.1	74.1
August	4,064.8	4,478.1	29.9	471.3	44.9	516.2	4,994.3	10.3	74.8
September	4,057.2	4,470.2	32.4	477.1	45.9	523.0	4,993.2	10.5	74.7
October	4,062.4	4,463.4	29.4	489.9	44.2	534.1	4,997.5	10.7	74.7
November	4,032.2	4,457.7	35.9	498.7	42.2	540.8	4,998.5	10.8	74.6
December	4,050.4	4,461.6	32.4	498.0	47.2	545.2	5,006.8	10.9	74.6
1992 —									
January	4,046.1	4,468.0	30.8	492.8	45.9	538.7	5,006.7	10.8	74.5
February	4,010.5	4,470.0	34.5	500.2	46.3	546.5	5,016.5	10.9	74.6
March	4,011.8	4,458.3	37.4	511.4	40.5	551.9	5,010.2	11.0	74.4
April	4,008.3	4,449.3	36.9	513.4	38.2	551.6	5,000.9	11.0	74.2
May	3,986.1	4,442.8	42.4	524.2	40.0	564.2	5,006.9	11.3	74.2
June	3,986.9	4,452.1	44.4	537.6	53.3	590.9	5,043.0	11.7	74.7
FEMALES									
1991 —									
April	1,917.6	3,231.7	25.0	227.9	95.5	323.5	3,555.1	9.1	52.2
May	1,911.7	3,226.2	25.7	233.2	83.6	316.7	3,542.9	8.9	52.0
June	1,913.1	3,223.6	23.9	225.6	92.5	318.1	3,541.8	9.0	51.9
July	1,885.0	3,189.0	22.9	239.0	91.1	330.1	3,519.2	9.4	51.5
August	1,937.1	3,246.6	22.5	233.2	92.8	326.0	3,572.6	9.1	52.2
September	1,915.5	3,225.8	21.5	249.2	97.7	346.9	3,572.6	9.7	52.1
October	1,925.3	3,214.5	24.5	246.3	90.0	336.3	3,550.8	9.5	51.7
November	1,876.1	3,197.5	25.0	256.9	96.4	353.3	3,550.9	10.0	51.7
December	1,901.9	3,225.7	25.2	259.6	102.9	362.5	3,588.2	10.1	52.1
1992 —									
January	1,917.2	3,249.9	25.1	256.4	99.0	355.4	3,605.3	9.9	52.3
February	1,909.2	3,235.5	31.3	266.0	95.3	361.3	3,596.7	10.0	52.1
March	1,891.3	3,232.5	30.4	254.8	93.3	348.2	3,580.6	9.7	51.8
April	1,871.7	3,223.0	33.4	255.6	79.5	335.1	3,558.2	9.4	51.4
May	1,877.6	3,220.2	34.6	256.8	84.9	341.7	3,561.9	9.6	51.4
June	1,870.1	3,239.2	34.9	270.1	102.4	372.6	3,611.7	10.3	52.1
PERSONS									
1991 —									
April	6,008.1	7,728.1	52.3	679.9	148.5	828.4	8,556.5	9.7	63.6
May	6,003.1	7,718.2	51.6	667.8	131.5	799.3	8,517.5	9.4	63.2
June	5,987.8	7,709.1	50.4	669.3	134.9	804.2	8,513.3	9.4	63.1
July	5,921.3	7,628.0	53.4	696.4	135.0	831.4	8,459.4	9.8	62.6
August	6,001.9	7,724.7	52.4	704.5	137.7	842.2	8,566.9	9.8	63.4
September	5,972.7	7,696.0	53.9	726.3	143.6	869.8	8,565.8	10.2	63.3
October	5,987.7	7,678.0	53.9	736.2	134.2	870.3	8,548.3	10.2	63.1
November	5,908.4	7,655.2	60.9	755.6	138.6	894.2	8,549.4	10.5	63.0
December	5,952.3	7,687.3	57.6	757.6	150.1	907.6	8,595.0	10.6	63.2
1992 —									
January	5,963.3	7,717.9	55.9	749.2	144.9	894.1	8,612.0	10.4	63.3
February	5,919.7	7,705.5	65.8	766.1	141.6	907.8	8,613.2	10.5	63.2
March	5,903.1	7,690.8	67.8	766.2	133.9	900.1	8,590.9	10.5	63.0
April	5,880.0	7,672.3	70.3	769.0	117.7	886.7	8,559.0	10.4	62.7
May	5,863.7	7,663.0	77.0	780.9	125.0	905.9	8,568.8	10.6	62.7
June	5,857.0	7,691.3	79.3	807.7	155.7	963.5	8,654.7	11.1	63.2

TABLE 3. CIVILIAN LABOUR FORCE: TREND SERIES

Month	Employed		Unemployed				Labour force	Unemployment rate - per cent -	Participation rate
			Looking for full-time work		Looking for part-time work	Total			
			Aged 15-19 looking for first job	Total					
	Full-time workers	Total		'000 -					
MALES									
1991 —									
April	4,100.5	4,502.4	25.8	429.3	47.3	476.6	4,979.0	9.6	75.0
May	4,081.6	4,486.7	26.7	441.2	47.2	488.4	4,975.1	9.8	74.8
June	4,068.6	4,475.4	27.8	451.3	46.4	497.7	4,973.0	10.0	74.7
July	4,060.6	4,468.5	29.1	460.3	45.2	505.5	4,974.0	10.2	74.6
August	4,056.3	4,464.6	30.3	469.5	44.3	513.8	4,978.5	10.3	74.6
September	4,054.0	4,463.1	31.2	478.6	44.2	522.8	4,985.9	10.5	74.6
October	4,051.7	4,463.2	31.9	486.8	44.7	531.5	4,994.7	10.6	74.6
November	4,048.3	4,464.4	32.3	492.8	45.3	538.0	5,002.4	10.8	74.7
December r	4,042.3	4,464.9	32.7	496.3	45.0	541.4	5,006.2	10.8	74.6
1992 —									
January r	4,033.3	4,463.6	33.4	499.5	44.2	543.7	5,007.3	10.9	74.6
February r	4,022.9	4,461.1	34.7	503.7	43.4	547.0	5,008.2	10.9	74.5
March r	4,012.6	4,458.0	36.6	509.4	42.9	552.3	5,010.3	11.0	74.4
April r	4,002.6	4,454.2	38.6	516.2	42.9	559.1	5,013.3	11.2	74.4
May r	3,994.0	4,450.6	40.7	523.1	43.5	566.6	5,017.2	11.3	74.4
June	3,985.8	4,447.3	42.8	529.6	44.3	573.9	5,021.2	11.4	74.3
FEMALES									
1991 —									
April	1,913.6	3,225.1	24.1	222.5	93.1	315.5	3,540.6	8.9	52.0
May	1,909.8	3,222.0	24.3	227.9	91.7	319.7	3,541.7	9.0	51.9
June	1,910.0	3,220.7	24.0	232.2	90.9	323.1	3,543.8	9.1	51.9
July	1,911.8	3,219.5	23.5	236.1	91.0	327.1	3,546.6	9.2	51.9
August	1,912.6	3,218.2	23.0	240.0	92.3	332.2	3,550.4	9.4	51.9
September	1,911.6	3,217.7	22.9	244.6	94.1	338.7	3,556.3	9.5	51.9
October	1,910.3	3,219.0	23.3	249.7	96.2	345.9	3,564.9	9.7	51.9
November	1,908.6	3,222.4	24.3	254.4	97.7	352.1	3,574.5	9.9	52.0
December r	1,905.9	3,226.1	25.7	257.4	97.7	355.1	3,581.2	9.9	52.0
1992 —									
January r	1,902.1	3,229.1	27.4	258.6	96.3	354.9	3,584.1	9.9	52.0
February r	1,897.5	3,231.5	29.2	258.9	94.0	352.9	3,584.3	9.8	51.9
March r	1,891.8	3,232.2	31.0	259.0	91.8	350.8	3,583.0	9.8	51.9
April r	1,884.8	3,231.3	32.7	259.6	90.2	349.8	3,581.1	9.8	51.8
May r	1,878.1	3,230.4	34.2	260.5	89.6	350.1	3,580.4	9.8	51.7
June	1,870.5	3,228.3	35.3	261.8	89.6	351.4	3,579.7	9.8	51.6
PERSONS									
1991 —									
April	6,014.1	7,727.5	49.8	651.7	140.4	792.2	8,519.6	9.3	63.3
May	5,991.3	7,708.7	50.9	669.1	139.0	808.1	8,516.7	9.5	63.2
June	5,978.6	7,696.1	51.9	683.5	137.3	820.8	8,516.8	9.6	63.1
July	5,972.3	7,688.0	52.6	696.4	136.2	832.6	8,520.6	9.8	63.1
August	5,968.8	7,682.8	53.2	709.5	136.6	846.1	8,528.9	9.9	63.1
September	5,965.6	7,680.8	54.1	723.2	138.3	861.4	8,542.2	10.1	63.1
October	5,962.0	7,682.2	55.2	736.5	140.9	877.3	8,559.6	10.2	63.1
November	5,956.8	7,686.7	56.6	747.2	143.0	890.1	8,576.9	10.4	63.2
December r	5,948.3	7,690.9	58.3	753.8	142.7	896.5	8,587.4	10.4	63.2
1992 —									
January r	5,935.4	7,692.7	60.8	758.1	140.5	898.6	8,591.3	10.5	63.1
February r	5,920.4	7,692.6	63.9	762.5	137.4	899.9	8,592.5	10.5	63.1
March r	5,904.4	7,690.3	67.6	768.4	134.6	903.0	8,593.3	10.5	63.0
April r	5,887.4	7,685.5	71.4	775.8	133.1	908.9	8,594.4	10.6	62.9
May r	5,872.1	7,681.0	74.8	783.6	133.1	916.6	8,597.6	10.7	62.9
June	5,856.3	7,675.6	78.1	791.4	134.0	925.3	8,600.9	10.8	62.8

TABLE 4. UNEMPLOYED PERSONS: AUSTRALIA

Month	Number looking for full-time work				Number looking for part-time work	Total	Unemployment rate				Total
	Aged 15-19		Aged 20 and over	Total			Looking for full-time work			Looking for part-time work	
	Looking for first job	Total					Aged 15-19	Aged 20 and over	Total		
MALES											
1991 —											
April	23.7	65.2	380.1	445.3	58.5	503.8	26.2	8.9	9.8	12.2	10.1
May	21.9	61.4	375.3	436.7	49.8	486.5	25.9	8.8	9.7	10.8	9.8
June	19.4	59.4	368.1	427.5	34.2	461.7	25.8	8.6	9.5	7.6	9.3
July	24.0	62.0	386.6	448.6	39.6	488.2	25.8	9.1	10.0	9.1	9.9
August	25.0	62.0	403.3	465.4	37.2	502.6	27.0	9.4	10.3	8.4	10.2
September	28.6	62.9	413.2	476.1	47.2	523.3	27.0	9.6	10.5	10.0	10.4
October	22.4	56.5	397.5	453.9	40.5	494.5	24.4	9.2	10.0	9.2	10.0
November	31.4	62.5	404.3	466.8	33.3	500.1	27.3	9.5	10.4	7.1	10.1
December	49.2	80.6	422.6	503.2	54.5	557.7	30.3	9.7	10.9	11.7	11.0
1992 —											
January	50.6	88.6	452.3	540.9	50.1	591.0	33.4	10.5	11.8	11.1	11.8
February	43.9	79.1	463.8	542.9	52.2	595.1	32.5	10.7	11.9	10.7	11.8
March	36.6	70.5	450.1	520.7	49.1	569.8	30.9	10.5	11.5	9.7	11.3
April	31.9	61.9	444.8	506.7	42.3	549.0	28.2	10.4	11.2	8.5	11.0
May	35.7	67.8	459.5	527.3	41.7	569.0	30.0	10.7	11.7	8.2	11.3
June	32.6	66.4	451.4	517.8	42.7	560.5	30.8	10.5	11.5	8.3	11.2
Standard error of —											
June 1992 estimates	2.6	3.6	8.1	8.6	3.0	8.8	1.7	0.2	0.2	0.6	0.2
May 92 to June 92 movements	2.4	3.0	6.2	6.5	2.5	6.7	1.4	0.1	0.1	0.5	0.1
FEMALES											
1991 —											
April	22.7	44.2	194.4	238.6	113.9	352.5	25.2	9.8	11.1	7.9	9.8
May	22.6	49.7	188.3	238.0	87.7	325.7	28.1	9.6	11.1	6.2	9.1
June	21.1	44.6	172.2	216.8	85.7	302.5	27.2	8.8	10.3	6.0	8.6
July	18.4	46.5	185.6	232.1	81.5	313.6	27.4	9.5	10.9	5.9	9.0
August	18.0	45.8	175.8	221.6	81.8	303.4	29.3	8.9	10.4	5.8	8.6
September	17.3	47.0	191.8	238.8	105.1	343.9	28.9	9.6	11.0	7.2	9.5
October	19.5	44.8	178.2	223.0	84.1	307.1	27.8	9.0	10.4	6.1	8.7
November	18.2	43.7	188.8	232.5	84.9	317.4	29.8	9.6	11.0	6.0	9.0
December	38.2	66.3	198.5	264.8	97.9	362.7	35.7	9.8	12.0	6.9	10.0
1992 —											
January	40.1	66.2	214.2	280.4	88.3	368.7	36.8	10.6	12.7	6.7	10.5
February	40.3	67.9	230.0	297.9	104.7	402.6	40.3	11.3	13.5	7.5	11.2
March	30.4	54.5	210.6	265.2	114.2	379.3	36.2	10.5	12.3	7.8	10.5
April	30.2	54.7	212.4	267.2	94.7	361.9	36.6	10.7	12.5	6.5	10.1
May	30.6	57.1	205.1	262.2	89.3	351.5	38.8	10.3	12.3	6.1	9.8
June	30.9	57.2	201.9	259.0	94.7	353.7	38.7	10.3	12.3	6.4	9.8
Standard error of —											
June 1992 estimates	2.5	3.4	5.8	6.5	4.2	7.4	2.3	0.3	0.3	0.3	0.2
May 92 to June 92 movements	2.2	2.8	4.6	5.0	3.4	5.6	1.9	0.2	0.2	0.2	0.2
PERSONS											
1991 —											
April	46.4	109.5	574.5	683.9	172.4	856.3	25.8	9.2	10.2	8.9	9.9
May	44.5	111.1	563.6	674.7	137.5	812.2	26.8	9.0	10.1	7.3	9.5
June	40.6	104.0	540.3	644.3	119.8	764.1	26.4	8.7	9.7	6.4	9.0
July	42.4	108.5	572.2	680.7	121.1	801.7	26.5	9.2	10.3	6.7	9.5
August	43.0	107.8	579.1	687.0	119.1	806.0	28.0	9.3	10.4	6.5	9.5
September	45.8	109.9	605.1	714.9	152.3	867.2	27.7	9.6	10.7	7.9	10.0
October	41.9	101.3	575.6	676.9	124.6	801.6	25.8	9.2	10.1	6.9	9.4
November	49.6	106.2	593.2	699.3	118.2	817.5	28.3	9.5	10.6	6.2	9.6
December	87.3	146.9	621.0	767.9	152.4	920.4	32.5	9.8	11.3	8.1	10.6
1992 —											
January	90.7	154.8	666.5	821.3	138.4	959.7	34.8	10.5	12.1	7.8	11.2
February	84.2	147.0	693.7	840.8	156.9	997.7	35.7	10.9	12.4	8.3	11.5
March	67.0	125.0	660.8	785.8	163.3	949.1	33.0	10.5	11.8	8.3	11.0
April	62.2	116.7	657.2	773.8	137.0	910.9	31.6	10.5	11.7	7.0	10.6
May	66.2	124.9	664.6	789.5	130.9	920.4	33.5	10.6	11.9	6.7	10.7
June	63.4	123.6	653.3	776.8	137.4	914.2	34.0	10.5	11.7	6.9	10.6
Standard error of —											
June 1992 estimates	3.5	4.7	9.4	10.0	5.0	10.7	1.3	0.2	0.2	0.2	0.1
May 92 to June 92 movements	3.0	3.8	7.1	7.6	3.9	8.0	1.0	0.1	0.1	0.2	0.1

TABLE 5. UNEMPLOYED PERSONS: SEASONALLY ADJUSTED SERIES

Month	Number looking for full-time work				Number looking for part-time work	Total	Unemployment rate				Total
	Aged 15-19		Aged 20 and over	Looking for full-time work			Looking for part-time work				
	Looking for first job	Total		Aged 15-19				Aged 20 and over	Total		
- '000 - per cent -											
MALES											
1991 —											
April	27.3	69.6	382.4	452.0	52.9	505.0	27.3	8.9	10.0	11.5	10.1
May	25.9	65.6	369.1	434.7	47.9	482.6	26.7	8.6	9.6	10.7	9.7
June	26.5	65.8	377.9	443.7	42.4	486.1	27.4	8.8	9.8	9.4	9.8
July	30.5	67.4	390.0	457.4	43.9	501.3	27.8	9.2	10.2	9.8	10.1
August	29.9	65.7	405.5	471.3	44.9	516.2	27.2	9.4	10.4	9.8	10.3
September	32.4	67.3	409.8	477.1	45.9	523.0	27.7	9.5	10.5	10.0	10.5
October	29.4	66.0	423.9	489.9	44.2	534.1	27.1	9.8	10.8	9.9	10.7
November	35.9	70.2	428.5	498.7	42.2	540.8	28.5	10.0	11.0	9.0	10.8
December	32.4	66.0	432.0	498.0	47.2	545.2	27.4	10.0	10.9	10.3	10.9
1992 —											
January	30.8	66.1	426.7	492.8	45.9	538.7	28.6	9.9	10.9	9.8	10.8
February	34.5	68.5	431.6	500.2	46.3	546.5	30.4	10.1	11.1	9.2	10.9
March	37.4	73.5	437.9	511.4	40.5	551.9	31.9	10.2	11.3	8.3	11.0
April	36.9	66.1	447.3	513.4	38.2	551.6	29.4	10.4	11.4	8.0	11.0
May	42.4	72.5	451.6	524.2	40.0	564.2	30.8	10.6	11.6	8.1	11.3
June	44.4	73.5	464.1	537.6	53.3	590.9	32.5	10.8	11.9	10.3	11.7
FEMALES											
1991 —											
April	25.0	46.3	181.7	227.9	95.5	323.5	26.1	9.2	10.6	6.8	9.1
May	25.7	51.1	182.1	233.2	83.6	316.7	28.6	9.3	10.9	6.0	8.9
June	23.9	48.9	176.7	225.6	92.5	318.1	28.7	9.0	10.6	6.6	9.0
July	22.9	50.0	189.0	239.0	91.1	330.1	29.3	9.7	11.3	6.5	9.4
August	22.5	51.4	181.8	233.2	92.8	326.0	30.8	9.1	10.7	6.6	9.1
September	21.5	50.0	199.2	249.2	97.7	346.9	29.2	10.0	11.5	6.9	9.7
October	24.5	52.4	193.9	246.3	90.0	336.3	30.2	9.7	11.3	6.5	9.5
November	25.0	53.5	203.4	256.9	96.4	353.3	33.5	10.3	12.0	6.8	10.0
December	25.2	52.7	206.8	259.6	102.9	362.5	32.3	10.4	12.0	7.2	10.1
1992 —											
January	25.1	52.5	203.9	256.4	99.0	355.4	33.3	10.1	11.8	6.9	9.9
February	31.3	56.2	209.8	266.0	95.3	361.3	36.0	10.4	12.2	6.7	10.0
March	30.4	55.0	199.8	254.8	93.3	348.2	36.1	10.0	11.9	6.5	9.7
April	33.4	57.3	198.3	255.6	79.5	335.1	37.7	10.0	12.0	5.6	9.4
May	34.6	58.6	198.2	256.8	84.9	341.7	39.3	10.0	12.0	5.9	9.6
June	34.9	62.8	207.3	270.1	102.4	372.6	40.5	10.4	12.6	7.0	10.3
PERSONS											
1991 —											
April	52.3	115.8	564.1	679.9	148.5	828.4	26.8	9.0	10.2	7.9	9.7
May	51.6	116.7	551.2	667.8	131.5	799.3	27.5	8.8	10.0	7.1	9.4
June	50.4	114.7	554.6	669.3	134.9	804.2	27.9	8.9	10.1	7.3	9.4
July	53.4	117.4	579.1	696.4	135.0	831.4	28.4	9.3	10.5	7.3	9.8
August	52.4	117.1	587.4	704.5	137.7	842.2	28.7	9.3	10.5	7.4	9.8
September	53.9	117.3	609.0	726.3	143.6	869.8	28.3	9.7	10.8	7.7	10.2
October	53.9	118.3	617.9	736.2	134.2	870.3	28.4	9.8	10.9	7.4	10.2
November	60.9	123.6	631.9	755.6	138.6	894.2	30.5	10.1	11.3	7.4	10.5
December	57.6	118.7	638.8	757.6	150.1	907.6	29.4	10.1	11.3	8.0	10.6
1992 —											
January	55.9	118.6	630.6	749.2	144.9	894.1	30.5	10.0	11.2	7.6	10.4
February	65.8	124.7	641.4	766.1	141.6	907.8	32.7	10.2	11.5	7.3	10.5
March	67.8	128.5	637.7	766.2	133.9	900.1	33.6	10.1	11.5	7.0	10.5
April	70.3	123.4	645.7	769.0	117.7	886.7	32.7	10.3	11.6	6.2	10.4
May	77.0	131.1	649.8	780.9	125.0	905.9	34.1	10.4	11.8	6.5	10.6
June	79.3	136.3	671.4	807.7	155.7	963.5	35.8	10.7	12.1	7.8	11.1

TABLE 6. UNEMPLOYED PERSONS: TREND SERIES

TABLE 6. UNEMPLOYED PERSONS: TREND SERIES											
Month	Number looking for full-time work				Number looking for part-time work	Total	Unemployment rate				Total
	Aged 15-19		Aged 20 and over	Total - '000 -			Looking for full-time work			Looking for part-time work	
	Looking for first job	Total					Aged 15-19	Aged 20 and over	Total - per cent -		
MALES											
1991 —											
April	25.8	64.2	365.1	429.3	47.3	476.6	25.7	8.5	9.5	10.5	9.6
May	26.7	65.7	375.5	441.2	47.2	488.4	26.7	8.8	9.8	10.4	9.8
June	27.8	66.7	384.6	451.3	46.4	497.7	27.4	9.0	10.0	10.2	10.0
July	29.1	67.1	393.3	460.3	45.2	505.5	27.7	9.2	10.2	10.0	10.2
August	30.3	67.0	402.6	469.5	44.3	513.8	27.6	9.4	10.4	9.8	10.3
September	31.2	66.8	411.8	478.6	44.2	522.8	27.5	9.6	10.6	9.7	10.5
October	31.9	67.0	419.8	486.8	44.7	531.5	27.6	9.8	10.7	9.8	10.6
November	32.3	67.2	425.5	492.8	45.3	538.0	27.9	9.9	10.9	9.8	10.8
December r	32.7	67.5	428.8	496.3	45.0	541.4	28.4	10.0	10.9	9.6	10.8
1992 —											
January r	33.4	68.0	431.5	499.5	44.2	543.7	29.0	10.0	11.0	9.3	10.9
February r	34.7	68.6	435.1	503.7	43.4	547.0	29.7	10.1	11.1	9.0	10.9
March r	36.6	69.5	439.9	509.4	42.9	552.3	30.3	10.2	11.3	8.8	11.0
April r	38.6	70.4	445.8	516.2	42.9	559.1	30.9	10.4	11.4	8.7	11.2
May r	40.7	71.3	451.7	523.1	43.5	566.6	31.3	10.5	11.6	8.7	11.3
June	42.8	72.4	457.2	529.6	44.3	573.9	31.8	10.7	11.7	8.8	11.4
FEMALES											
1991 —											
April	24.1	48.1	174.4	222.5	93.1	315.5	27.1	8.9	10.4	6.6	8.9
May	24.3	48.7	179.2	227.9	91.7	319.7	27.9	9.1	10.7	6.5	9.0
June	24.0	49.5	182.8	232.2	90.9	323.1	28.7	9.3	10.8	6.5	9.1
July	23.5	50.2	185.9	236.1	91.0	327.1	29.3	9.4	11.0	6.5	9.2
August	23.0	50.7	189.2	240.0	92.3	332.2	29.8	9.5	11.1	6.6	9.4
September	22.9	51.3	193.3	244.6	94.1	338.7	30.4	9.7	11.3	6.7	9.5
October	23.3	51.8	197.9	249.7	96.2	345.9	31.0	9.9	11.6	6.8	9.7
November	24.3	52.4	202.0	254.4	97.7	352.1	31.8	10.1	11.8	6.9	9.9
December r	25.7	53.1	204.4	257.4	97.7	355.1	32.8	10.2	11.9	6.9	9.9
1992 —											
January r	27.4	53.8	204.8	258.6	96.3	354.9	34.0	10.2	12.0	6.8	9.9
February r	29.2	54.8	204.0	258.9	94.0	352.9	35.2	10.2	12.0	6.6	9.8
March r	31.0	56.1	202.9	259.0	91.8	350.8	36.5	10.2	12.0	6.4	9.8
April r	32.7	57.6	202.0	259.6	90.2	349.8	37.8	10.1	12.1	6.3	9.8
May r	34.2	59.1	201.4	260.5	89.6	350.1	38.9	10.1	12.2	6.2	9.8
June	35.3	60.5	201.3	261.8	89.6	351.4	40.0	10.2	12.3	6.2	9.8
PERSONS											
1991 —											
April	49.8	112.3	539.5	651.7	140.4	792.2	26.3	8.6	9.8	7.6	9.3
May	50.9	114.4	554.7	669.1	139.0	808.1	27.2	8.9	10.0	7.5	9.5
June	51.9	116.2	567.3	683.5	137.3	820.8	27.9	9.1	10.3	7.4	9.6
July	52.6	117.2	579.2	696.4	136.2	832.6	28.3	9.3	10.4	7.4	9.8
August	53.2	117.7	591.8	709.5	136.6	846.1	28.5	9.4	10.6	7.4	9.9
September	54.1	118.1	605.1	723.2	138.3	861.4	28.7	9.6	10.8	7.5	10.1
October	55.2	118.8	617.7	736.5	140.9	877.3	29.0	9.8	11.0	7.6	10.2
November	56.6	119.7	627.5	747.2	143.0	890.1	29.5	10.0	11.1	7.6	10.4
December r	58.3	120.6	633.2	753.8	142.7	896.5	30.2	10.0	11.2	7.6	10.4
1992 —											
January r	60.8	121.8	636.4	758.1	140.5	898.6	31.0	10.1	11.3	7.4	10.5
February r	63.9	123.5	639.1	762.5	137.4	899.9	31.9	10.2	11.4	7.2	10.5
March r	67.6	125.6	642.8	768.4	134.6	903.0	32.8	10.2	11.5	7.0	10.5
April r	71.4	128.0	647.8	775.8	133.1	908.9	33.6	10.3	11.6	6.9	10.6
May r	74.8	130.4	653.2	783.6	133.1	916.6	34.4	10.4	11.8	6.9	10.7
June	78.1	132.9	658.5	791.4	134.0	925.3	35.1	10.5	11.9	6.9	10.8

TABLE 7. LABOUR FORCE STATUS OF CIVILIAN POPULATION AGED 15 TO 19: FULL -TIME ATTENDANCE
AT SCHOOL OR A TERTIARY EDUCATIONAL INSTITUTION, JUNE 1992

AT SCHOOL OR A TERTIARY EDUCATIONAL INSTITUTION, JUNE 1992										
	<i>Employed</i>		<i>Unemployed</i>					<i>Civilian popula- tion aged 15-19</i>	<i>Unemp- loyment rate</i>	<i>Partic- ipation rate</i>
	<i>Full-time workers</i>	<i>Total</i>	<i>Looking for full- time work</i>	<i>Looking for part- time work - '000 -</i>	<i>Total</i>	<i>Labour force</i>	<i>Not in labour force</i>		<i>-per cent -</i>	
ATTENDING NEITHER SCHOOL NOR A TERTIARY EDUCATIONAL INSTITUTION FULL TIME										
Males	145.8	174.1	60.2	* 1.7	61.9	236.0	16.4	252.3	26.2	93.5
Females	89.3	127.5	52.0	* 2.1	54.1	181.6	26.3	207.9	29.8	87.3
<i>Persons</i>	235.2	301.6	112.1	3.8	116.0	417.6	42.7	460.3	27.8	90.7
ATTENDING A TERTIARY EDUCATIONAL INSTITUTION FULL TIME										
Males	* 2.7	30.9	* 3.0	5.4	8.4	39.3	55.7	95.1	21.4	41.4
Females	* 1.1	45.9	* 3.1	6.6	9.7	55.6	56.4	112.1	17.5	49.6
<i>Persons</i>	3.8	76.8	6.1	12.0	18.2	95.0	112.2	207.1	19.1	45.8
ATTENDING SCHOOL										
Males	* 0.7	72.9	* 3.2	15.9	19.1	92.1	233.3	325.3	20.8	28.3
Females	* 0.1	92.1	* 2.1	19.0	21.1	113.3	211.0	324.2	18.7	34.9
<i>Persons</i>	* 0.9	165.1	5.3	35.0	40.3	205.3	444.2	649.6	19.6	31.6
TOTAL										
Males	149.2	277.9	66.4	23.0	89.4	367.4	305.4	672.7	24.3	54.6
Females	90.6	265.5	57.2	27.8	85.0	350.5	293.7	644.2	24.2	54.4
<i>Persons</i>	239.8	543.5	123.6	50.8	174.4	717.9	599.1	1,317.0	24.3	54.5

TABLE 8. LABOUR FORCE STATUS OF CIVILIAN POPULATION AGED 15 AND OVER,
STATES AND TERRITORIES, JUNE 1992

State or Territory	Employed		Unemployed			Labour force	Not in labour force	Civilian population aged 15 and over	Unemployment rate - per cent -	Participation rate
	Full-time workers	Total	Looking for full-time work	Looking for part-time work	Total					
MALES										
New South Wales	1,348.9	1,495.8	163.5	14.0	177.5	1,673.4	615.5	2,288.9	10.6	73.1
Victoria	1,009.4	1,137.1	138.9	9.9	148.9	1,286.0	436.5	1,722.6	11.6	74.7
Queensland	684.5	770.4	91.9	7.5	99.4	869.7	296.3	1,166.0	11.4	74.6
South Australia	327.3	367.1	51.1	3.5	54.6	421.7	154.3	576.0	12.9	73.2
Western Australia	401.9	447.1	50.3	4.1	54.3	501.5	154.0	655.4	10.8	76.5
Tasmania	98.0	110.4	15.1	* 0.8	15.9	126.3	49.6	175.9	12.6	71.8
Northern Territory	36.2	43.7	2.6	* 0.2	2.8	46.5	11.6	58.1	6.1	80.1
Australian Capital Territory	76.3	83.4	4.5	2.6	7.0	90.5	21.2	111.6	7.8	81.0
Australia	3,982.5	4,455.1	517.8	42.7	560.5	5,015.6	1,738.9	6,754.5	11.2	74.3
FEMALES										
New South Wales	654.7	1,091.7	76.9	31.6	108.4	1,200.1	1,164.5	2,364.6	9.0	50.8
Victoria	468.7	824.4	79.4	24.2	103.6	928.0	858.2	1,786.2	11.2	52.0
Queensland	320.1	563.4	43.3	18.0	61.3	624.7	563.0	1,187.7	9.8	52.6
South Australia	139.7	270.5	23.8	6.7	30.5	301.0	290.5	591.5	10.1	50.9
Western Australia	171.5	319.9	24.8	8.5	33.2	353.2	301.1	654.2	9.4	54.0
Tasmania	38.8	76.9	6.9	2.8	9.7	86.6	94.8	181.5	11.2	47.7
Northern Territory	20.3	33.0	* 1.5	* 0.6	2.1	35.1	20.2	55.3	6.1	63.5
Australian Capital Territory	40.8	66.6	2.5	2.3	4.8	71.4	42.4	113.8	6.8	62.7
Australia	1,854.6	3,246.3	259.0	94.7	353.7	3,600.1	3,334.8	6,934.8	9.8	51.9
PERSONS										
New South Wales	2,003.7	2,587.5	240.4	45.6	286.0	2,873.4	1,780.0	4,653.5	10.0	61.7
Victoria	1,478.1	1,961.5	218.3	34.2	252.5	2,214.0	1,294.8	3,508.8	11.4	63.1
Queensland	1,004.6	1,333.8	135.2	25.5	160.7	1,494.5	859.3	2,353.7	10.8	63.5
South Australia	467.1	637.6	74.9	10.2	85.1	722.7	444.8	1,167.5	11.8	61.9
Western Australia	573.4	767.0	75.0	12.6	87.6	854.6	455.1	1,309.7	10.2	65.3
Tasmania	136.8	187.3	22.0	3.7	25.6	213.0	144.4	357.4	12.0	59.6
Northern Territory	56.5	76.6	4.1	* 0.9	5.0	81.6	31.8	113.4	6.1	72.0
Australian Capital Territory	117.0	150.0	7.0	4.9	11.9	161.9	63.6	225.5	7.3	71.8
Australia	5,837.1	7,701.4	776.8	137.4	914.2	8,615.7	5,073.7	13,689.3	10.6	62.9

TABLE 9. UNEMPLOYED PERSONS, STATES AND TERRITORIES

Month	Number looking for full-time work					Number looking for part-time work	Unemployment rate				
	Aged 15-19			Total	Looking for full-time work			Looking for part-time work			
	Looking for first job	Total	Aged 20 and over		Aged 15-19		Aged 20 and over		Total		
- '000 - - per cent -											
NEW SOUTH WALES											
1991 — June	13.9	32.3	159.5	191.8	32.1	223.9	24.7	7.5	8.5	5.6	7.9
1992 — May	18.6	37.1	204.3	241.4	42.3	283.7	29.4	9.6	10.7	6.8	9.8
June	17.7	35.6	204.7	240.4	45.6	286.0	29.7	9.6	10.7	7.2	10.0
Standard error of —											
June 92 estimates	2.1	2.8	5.7	6.1	3.1	6.5	2.3	0.3	0.3	0.5	0.2
May 92 to June 92 movements	1.8	2.4	4.4	4.7	2.5	5.0	1.9	0.2	0.2	0.4	0.2
VICTORIA											
1991 — June	10.5	27.0	152.4	179.4	34.5	213.9	30.1	9.5	10.6	7.0	9.8
1992 — May	21.9	37.3	190.2	227.5	33.5	261.0	46.1	11.7	13.4	6.7	11.8
June	19.8	35.2	183.1	218.3	34.2	252.5	43.6	11.3	12.9	6.6	11.4
Standard error of —											
June 92 estimates	2.2	2.8	5.4	5.8	2.8	6.2	3.5	0.3	0.3	0.5	0.3
May 92 to June 92 movements	1.8	2.2	3.9	4.2	2.1	4.4	2.7	0.2	0.2	0.4	0.2
QUEENSLAND											
1991 — June	6.7	20.0	91.5	111.5	22.0	133.5	26.3	8.8	10.0	6.7	9.2
1992 — May	11.1	20.2	113.7	133.9	23.4	157.3	26.4	10.7	11.8	6.7	10.6
June	9.8	21.6	113.6	135.2	25.5	160.7	29.5	10.7	11.9	7.2	10.8
Standard error of —											
June 92 estimates	1.3	1.8	3.6	3.8	1.9	4.1	2.5	0.3	0.3	0.5	0.3
May 92 to June 92 movements	1.2	1.5	2.7	2.8	1.6	3.0	2.0	0.2	0.2	0.4	0.2
SOUTH AUSTRALIA											
1991 — June	3.1	7.3	48.1	55.4	10.3	65.7	23.1	9.4	10.2	5.7	9.1
1992 — May	5.3	12.9	64.8	77.7	10.4	88.0	45.0	12.5	14.2	5.8	12.2
June	5.8	12.2	62.7	74.9	10.2	85.1	42.4	12.2	13.8	5.6	11.8
Standard error of —											
June 92 estimates	0.8	1.1	2.2	2.4	1.1	2.5	4.0	0.4	0.4	0.6	0.3
May 92 to June 92 movements	0.6	0.9	1.5	1.6	0.8	1.7	3.0	0.3	0.3	0.4	0.2
WESTERN AUSTRALIA											
1991 — June	4.1	11.7	63.8	75.5	12.2	87.7	27.2	10.7	11.8	6.2	10.5
1992 — May	6.7	12.7	65.4	78.2	13.6	91.7	29.3	10.7	11.9	6.8	10.7
June	7.2	13.2	61.8	75.0	12.6	87.6	31.2	10.2	11.6	6.1	10.2
Standard error of —											
June 92 estimates	1.0	1.2	2.3	2.5	1.2	2.7	2.9	0.4	0.4	0.6	0.3
May 92 to June 92 movements	0.8	1.0	1.8	1.9	1.0	2.0	2.4	0.3	0.3	0.5	0.2
TASMANIA											
1991 — June	1.9	3.9	16.4	20.3	4.1	24.4	29.5	10.9	12.5	7.8	11.3
1992 — May	2.4	4.0	15.2	19.2	3.6	22.8	33.9	10.4	12.2	6.9	10.9
June	2.7	4.5	17.4	22.0	3.7	25.6	40.9	11.8	13.8	6.7	12.0
Standard error of —											
June 92 estimates	0.4	0.5	0.9	1.0	0.5	1.0	4.8	0.6	0.6	0.9	0.5
May 92 to June 92 movements	0.3	0.4	0.7	0.7	0.4	0.8	3.7	0.5	0.5	0.7	0.4
NORTHERN TERRITORY											
1991 — June	*0.2	*0.5	4.2	4.7	*0.9	5.6	*11.5	6.4	6.8	*6.8	6.8
1992 — May	*0.1	*0.3	4.0	4.3	*1.0	5.3	*13.0	6.7	6.9	*4.9	6.4
June	*0.2	*0.5	3.6	4.1	*0.9	5.0	*18.4	6.2	6.8	*4.1	6.1
Standard error of —											
June 92 estimates	0.2	0.3	0.6	0.7	0.3	0.7	9.2	1.1	1.1	1.6	0.9
May 92 to June 92 movements	0.1	0.2	0.5	0.5	0.3	0.5	6.7	0.8	0.8	1.2	0.6
AUSTRALIAN CAPITAL TERRITORY											
1991 — June	*0.2	*1.2	4.5	5.7	3.7	9.4	*23.8	3.8	4.6	10.1	5.9
1992 — May	*0.1	*0.4	7.0	7.4	3.2	10.6	*11.7	5.9	6.0	8.3	6.6
June	*0.3	*0.7	6.3	7.0	4.9	11.9	*16.4	5.3	5.6	12.8	7.3
Standard error of —											
June 92 estimates	0.2	0.3	0.7	0.7	0.6	0.9	6.1	0.6	0.6	1.6	0.5
May 92 to June 92 movements	0.2	0.2	0.5	0.6	0.5	0.7	5.6	0.5	0.5	1.3	0.4

TABLE 10. CIVILIAN LABOUR FORCE, STATES: SEASONALLY ADJUSTED SERIES

Month	Males					Females					Persons				
	Employed	Unemp- loyed - '000 -	Labour force	Unemp- loyment rate - per cent -	Partic- ipation rate cent -	Employed	Unemp- loyed - '000 -	Labour force	Unemp- loyment rate - per cent -	Partic- ipation rate cent -	Employed	Unemp- loyed - '000 -	Labour force	Unemp- loyment rate - per cent -	Partic- ipation rate cent -
	NEW SOUTH WALES														
1991 —															
April	1,539.4	149.5	1,688.9	8.9	74.8	1,081.6	93.3	1,174.8	7.9	50.5	2,621.0	242.7	2,863.7	8.5	62.5
May	1,537.9	146.1	1,684.0	8.7	74.5	1,084.5	91.1	1,175.6	7.8	50.5	2,622.4	237.3	2,859.6	8.3	62.3
June	1,530.0	142.7	1,672.7	8.5	73.9	1,073.6	92.7	1,166.3	7.9	50.0	2,603.6	235.4	2,839.0	8.3	61.8
July	1,511.8	150.8	1,662.6	9.1	73.4	1,053.7	97.4	1,151.2	8.5	49.3	2,565.5	248.3	2,813.8	8.8	61.2
August	1,524.1	162.2	1,686.3	9.6	74.4	1,079.1	103.0	1,182.1	8.7	50.6	2,603.2	265.2	2,868.4	9.2	62.3
September	1,516.2	164.2	1,680.4	9.8	74.1	1,071.3	113.5	1,184.8	9.6	50.6	2,587.6	277.7	2,865.3	9.7	62.2
October	1,507.7	170.2	1,677.9	10.1	73.9	1,065.6	109.7	1,175.3	9.3	50.2	2,573.2	279.9	2,853.2	9.8	61.8
November	1,512.0	169.7	1,681.7	10.1	73.9	1,059.3	118.0	1,177.2	10.0	50.2	2,571.3	287.6	2,858.9	10.1	61.9
December	1,505.9	175.4	1,681.3	10.4	73.8	1,066.9	119.9	1,186.8	10.1	50.5	2,572.8	295.3	2,868.1	10.3	62.0
1992 —															
January	1,504.8	170.9	1,675.7	10.2	73.5	1,079.5	112.0	1,191.5	9.4	50.7	2,584.3	282.9	2,867.2	9.9	61.9
February	1,511.1	170.9	1,682.0	10.2	73.7	1,078.9	115.4	1,194.2	9.7	50.7	2,590.0	286.2	2,876.3	10.0	62.0
March	1,517.5	163.6	1,681.0	9.7	73.6	1,084.8	106.2	1,191.0	8.9	50.5	2,602.2	269.8	2,872.0	9.4	61.9
April	1,509.3	171.0	1,680.4	10.2	73.5	1,090.2	107.4	1,197.6	9.0	50.8	2,599.5	278.4	2,877.9	9.7	62.0
May	1,502.9	174.2	1,677.1	10.4	73.3	1,087.5	104.7	1,192.2	8.8	50.5	2,590.4	278.9	2,869.3	9.7	61.7
June	1,497.4	187.3	1,684.7	11.1	73.6	1,090.4	113.8	1,204.2	9.4	50.9	2,587.8	301.1	2,888.9	10.4	62.1
VICTORIA															
1991 —															
April	1,133.6	130.5	1,264.2	10.3	74.2	847.0	94.4	941.4	10.0	53.4	1,980.7	224.9	2,205.6	10.2	63.6
May	1,132.2	127.8	1,260.0	10.1	73.9	844.0	91.9	936.0	9.8	53.0	1,976.2	219.8	2,196.0	10.0	63.3
June	1,123.7	136.7	1,260.4	10.8	73.9	847.2	88.0	935.2	9.4	52.9	1,971.0	224.6	2,195.6	10.2	63.2
July	1,121.5	135.5	1,256.9	10.8	73.6	834.3	88.8	923.1	9.6	52.2	1,955.7	224.3	2,180.0	10.3	62.7
August	1,127.9	142.7	1,270.6	11.2	74.3	853.8	84.0	937.8	9.0	53.0	1,981.7	226.6	2,208.3	10.3	63.4
September	1,131.0	145.6	1,276.7	11.4	74.6	850.7	95.5	946.3	10.1	53.4	1,981.8	241.2	2,222.9	10.8	63.8
October	1,137.1	140.0	1,277.0	11.0	74.6	847.2	91.4	938.7	9.7	52.9	1,984.3	231.4	2,215.7	10.4	63.5
November	1,126.6	146.2	1,272.8	11.5	74.3	841.0	94.9	935.9	10.1	52.7	1,967.6	241.1	2,208.7	10.9	63.3
December	1,132.9	143.5	1,276.4	11.2	74.4	844.6	101.4	946.0	10.7	53.2	1,977.5	244.9	2,222.4	11.0	63.6
1992 —															
January	1,136.8	143.8	1,280.6	11.2	74.6	846.4	100.9	947.4	10.7	53.2	1,983.3	244.8	2,228.0	11.0	63.7
February	1,124.2	147.8	1,272.0	11.6	74.0	833.9	96.7	930.6	10.4	52.3	1,958.1	244.5	2,202.6	11.1	63.0
March	1,124.7	157.9	1,282.6	12.3	74.6	826.5	98.0	924.5	10.6	51.9	1,951.2	255.9	2,207.0	11.6	63.0
April	1,121.0	148.0	1,269.0	11.7	73.8	818.1	95.9	914.0	10.5	51.2	1,939.1	243.9	2,183.0	11.2	62.3
May	1,120.8	157.1	1,277.9	12.3	74.2	817.6	101.8	919.4	11.1	51.5	1,938.4	258.9	2,197.3	11.8	62.7
June	1,134.9	157.9	1,292.8	12.2	75.1	827.4	107.2	934.5	11.5	52.3	1,962.3	265.1	2,227.3	11.9	63.5

TABLE 10. CIVILIAN LABOUR FORCE, STATES: SEASONALLY ADJUSTED SERIES—continued

TABLE 10. CIVILIAN LABOUR FORCE, STATES: SEASONALLY ADJUSTED SERIES—continued															
Month	Males					Females					Persons				
	Employed	Unemp- loyed - '000 -	Labour force	Unemp- loyment rate - per cent -	Partic- ipation rate - per cent -	Employed	Unemp- loyed - '000 -	Labour force	Unemp- loyment rate - per cent -	Partic- ipation rate - per cent -	Employed	Unemp- loyed - '000 -	Labour force	Unemp- loyment rate - per cent -	Partic- ipation rate - per cent -
	QUEENSLAND														
1991 —															
April	762.7	89.3	852.1	10.5	75.2	540.0	63.5	603.5	10.5	52.3	1,302.8	152.8	1,455.6	10.5	63.7
May	755.4	90.6	846.0	10.7	74.5	535.5	61.1	596.5	10.2	51.6	1,290.8	151.7	1,442.5	10.5	63.0
June	773.1	78.7	851.8	9.2	74.9	538.2	59.2	597.4	9.9	51.6	1,311.4	137.9	1,449.2	9.5	63.1
July	764.5	88.4	852.9	10.4	74.8	538.9	62.2	601.1	10.3	51.8	1,303.3	150.6	1,453.9	10.4	63.2
August	772.7	84.6	857.3	9.9	75.1	542.8	59.3	602.1	9.9	51.8	1,315.5	143.9	1,459.4	9.9	63.3
September	778.8	86.4	865.1	10.0	75.6	541.3	57.8	599.0	9.6	51.4	1,320.0	144.2	1,464.2	9.8	63.4
October	777.9	86.4	864.3	10.0	75.4	543.2	56.1	599.4	9.4	51.4	1,321.1	142.6	1,463.7	9.7	63.3
November	775.4	87.7	863.1	10.2	75.2	542.0	58.1	600.2	9.7	51.3	1,317.4	145.9	1,463.3	10.0	63.1
December	776.1	92.4	868.6	10.6	75.5	554.8	54.9	609.7	9.0	52.0	1,330.9	147.4	1,478.3	10.0	63.7
1992 —															
January	772.1	90.6	862.7	10.5	74.8	559.7	59.9	619.6	9.7	52.8	1,331.9	150.5	1,482.4	10.2	63.7
February	776.1	90.7	866.7	10.5	75.0	562.0	65.0	627.0	10.4	53.3	1,338.1	155.6	1,493.7	10.4	64.0
March	772.3	89.1	861.5	10.3	74.4	556.2	58.8	615.0	9.6	52.1	1,328.5	147.9	1,476.4	10.0	63.2
April	774.9	86.3	861.2	10.0	74.2	558.7	57.5	616.2	9.3	52.1	1,333.6	143.8	1,477.3	9.7	63.1
May	766.5	95.6	862.0	11.1	74.1	556.2	57.8	613.9	9.4	51.8	1,322.7	153.3	1,476.0	10.4	62.9
June	771.2	101.4	872.6	11.6	74.8	557.7	64.4	622.1	10.4	52.4	1,328.9	165.8	1,494.7	11.1	63.5
SOUTH AUSTRALIA															
1991 —															
April	382.5	44.1	426.6	10.3	75.2	273.7	29.2	302.8	9.6	51.9	656.2	73.3	729.4	10.0	63.4
May	381.1	42.3	423.3	10.0	74.5	274.2	27.9	302.1	9.2	51.7	655.3	70.2	725.5	9.7	63.0
June	378.5	44.0	422.5	10.4	74.3	277.5	26.1	303.6	8.6	51.9	656.0	70.1	726.1	9.7	62.9
July	366.2	45.5	411.7	11.1	72.3	271.5	27.9	299.4	9.3	51.2	637.7	73.4	711.1	10.3	61.6
August	370.8	46.4	417.2	11.1	73.2	271.9	27.2	299.0	9.1	51.0	642.7	73.5	716.2	10.3	62.0
September	368.1	47.4	415.6	11.4	72.8	272.7	27.9	300.6	9.3	51.3	640.8	75.3	716.2	10.5	61.9
October	368.2	49.5	417.7	11.8	73.1	272.3	27.3	299.5	9.1	51.0	640.5	76.8	717.2	10.7	61.9
November	368.6	49.6	418.2	11.9	73.1	272.4	29.7	302.1	9.8	51.4	641.0	79.3	720.3	11.0	62.1
December	370.2	51.0	421.2	12.1	73.5	269.4	31.2	300.6	10.4	51.1	639.6	82.2	721.8	11.4	62.2
1992 —															
January	371.5	50.0	421.5	11.9	73.5	270.3	29.8	300.1	9.9	51.0	641.9	79.7	721.6	11.1	62.1
February	368.3	53.9	422.2	12.8	73.6	268.3	29.2	297.5	9.8	50.5	636.6	83.1	719.6	11.5	61.9
March	370.9	53.8	424.7	12.7	73.9	265.6	28.0	293.6	9.6	49.8	636.4	81.8	718.3	11.4	61.7
April	369.5	54.3	423.8	12.8	73.7	265.3	31.9	297.3	10.7	50.3	634.8	86.3	721.0	12.0	61.9
May	369.0	56.4	425.4	13.3	73.9	264.6	33.0	297.6	11.1	50.4	633.7	89.3	723.0	12.4	62.0
June	366.3	58.4	424.6	13.7	73.7	271.6	32.5	304.1	10.7	51.4	637.8	90.9	728.7	12.5	62.4

TABLE 10. CIVILIAN LABOUR FORCE, STATES: SEASONALLY ADJUSTED SERIES—continued

Month	Males					Females					Persons				
	Employed	Unemp- loyed - '000 -	Labour force	Unemp- loyment rate - per cent -	Partic- ipation rate cent -	Employed	Unemp- loyed - '000 -	Labour force	Unemp- loyment rate - per cent -	Partic- ipation rate cent -	Employed	Unemp- loyed - '000 -	Labour force	Unemp- loyment rate - per cent -	Partic- ipation rate cent -
	WESTERN AUSTRALIA														
1991 —															
April	441.3	59.8	501.1	11.9	78.2	311.2	33.3	344.5	9.7	53.9	752.5	93.0	845.5	11.0	66.1
May	449.3	52.0	501.2	10.4	78.1	311.0	32.9	343.9	9.6	53.8	760.3	84.9	845.1	10.0	66.0
June	442.1	55.2	497.3	11.1	77.4	309.6	33.9	343.5	9.9	53.6	751.6	89.2	840.8	10.6	65.5
July	434.5	59.6	494.1	12.1	76.8	311.4	34.5	345.9	10.0	53.9	745.9	94.1	840.0	11.2	65.3
August	441.1	57.3	498.4	11.5	77.3	316.6	36.1	352.7	10.2	54.9	757.8	93.4	851.2	11.0	66.1
September	440.9	57.0	497.9	11.5	77.1	311.9	34.9	346.9	10.1	53.8	752.9	91.9	844.8	10.9	65.5
October	439.9	59.5	499.3	11.9	77.2	309.1	37.3	346.4	10.8	53.7	749.0	96.7	845.7	11.4	65.4
November	446.1	57.8	503.9	11.5	77.8	311.1	36.4	347.5	10.5	53.8	757.2	94.2	851.5	11.1	65.8
December	441.6	55.8	497.4	11.2	76.6	312.0	35.1	347.1	10.1	53.6	753.6	90.9	844.5	10.8	65.1
1992 —															
January	440.0	57.0	496.9	11.5	76.4	309.3	38.4	347.7	11.1	53.6	749.2	95.4	844.6	11.3	65.0
February	442.8	58.5	501.3	11.7	77.0	310.0	34.9	344.9	10.1	53.1	752.8	93.4	846.1	11.0	65.0
March	441.3	60.1	501.4	12.0	76.9	310.5	35.1	345.6	10.2	53.1	751.7	95.2	846.9	11.2	65.0
April	444.9	57.7	502.6	11.5	76.9	314.3	31.7	346.0	9.2	53.0	759.2	89.4	848.6	10.5	65.0
May	449.3	58.0	507.4	11.4	77.5	318.1	32.8	350.8	9.3	53.7	767.4	90.8	858.2	10.6	65.6
June	447.0	54.9	501.9	10.9	76.6	320.3	34.2	354.5	9.6	54.2	767.3	89.0	856.4	10.4	65.4
	TASMANIA														
1991 —															
April	115.0	14.1	129.1	10.9	74.1	80.2	9.3	89.5	10.4	49.8	195.2	23.4	218.7	10.7	61.7
May	112.8	14.4	127.2	11.3	73.0	78.5	9.2	87.7	10.5	48.7	191.3	23.6	214.9	11.0	60.7
June	111.8	15.1	126.9	11.9	72.8	80.3	9.8	90.1	10.9	50.0	192.1	24.9	217.0	11.5	61.2
July	113.1	14.4	127.5	11.3	73.0	80.1	9.7	89.8	10.8	49.8	193.3	24.1	217.3	11.1	61.3
August	112.7	15.3	128.0	12.0	73.3	80.9	9.9	90.8	10.9	50.4	193.6	25.2	218.8	11.5	61.6
September	113.2	15.4	128.6	12.0	73.5	81.6	9.4	91.0	10.3	50.4	194.9	24.8	219.6	11.3	61.8
October	112.6	14.9	127.5	11.7	72.9	81.5	8.7	90.1	9.6	49.9	194.1	23.6	217.7	10.8	61.2
November	111.9	15.5	127.4	12.2	72.8	79.8	9.5	89.3	10.6	49.4	191.7	25.0	216.7	11.5	60.9
December	112.2	15.0	127.2	11.8	72.6	78.8	8.7	87.5	9.9	48.4	191.1	23.7	214.7	11.0	60.3
1992 —															
January	112.0	14.9	126.9	11.7	72.3	78.7	8.4	87.1	9.7	48.1	190.6	23.3	214.0	10.9	60.0
February	112.0	14.4	126.5	11.4	72.0	80.5	8.8	89.2	9.8	49.3	192.5	23.2	215.7	10.8	60.5
March	110.8	15.3	126.1	12.1	71.8	78.7	8.4	87.1	9.6	48.0	189.5	23.6	213.2	11.1	59.7
April	109.0	15.5	124.5	12.4	70.9	79.7	7.8	87.5	8.9	48.3	188.7	23.3	212.0	11.0	59.4
May	109.9	15.3	125.2	12.2	71.2	75.1	9.4	84.5	11.2	46.6	185.0	24.7	209.7	11.8	58.7
June	111.0	15.9	126.9	12.5	72.1	76.9	10.3	87.2	11.8	48.0	187.8	26.2	214.0	12.2	59.9

TABLE 11. CIVILIAN LABOUR FORCE, STATES: TREND SERIES

Month	Males					Females					Persons				
	Employed	Unemp- loyed - '000 -	Labour force	Unemp- loyment rate - per cent -	Partic- ipation rate cent -	Employed	Unemp- loyed - '000 -	Labour force	Unemp- loyment rate - per cent -	Partic- ipation rate cent -	Employed	Unemp- loyed - '000 -	Labour force	Unemp- loyment rate - per cent -	Partic- ipation rate cent -
	NEW SOUTH WALES														
1991 —															
April	1,536.9	142.9	1,679.8	8.5	74.4	1,075.3	91.7	1,167.0	7.9	50.2	2,612.2	234.6	2,846.8	8.2	62.1
May	1,532.5	146.3	1,678.7	8.7	74.3	1,074.4	93.1	1,167.5	8.0	50.1	2,606.9	239.4	2,846.3	8.4	62.0
June	1,527.8	149.8	1,677.7	8.9	74.2	1,073.3	95.4	1,168.7	8.2	50.1	2,601.1	245.2	2,846.3	8.6	62.0
July	1,523.2	153.9	1,677.1	9.2	74.1	1,071.3	99.1	1,170.4	8.5	50.1	2,594.5	253.0	2,847.4	8.9	61.9
August	1,518.4	158.7	1,677.1	9.5	74.0	1,068.7	103.8	1,172.5	8.9	50.2	2,587.1	262.5	2,849.6	9.2	61.9
September	1,514.1	163.9	1,678.0	9.8	74.0	1,066.6	108.9	1,175.5	9.3	50.2	2,580.7	272.8	2,853.5	9.6	61.9
October	1,510.9	168.4	1,679.3	10.0	73.9	1,065.9	113.1	1,179.1	9.6	50.3	2,576.8	281.5	2,858.4	9.8	61.9
November	1,509.3	171.1	1,680.4	10.2	73.9	1,067.3	115.7	1,183.0	9.8	50.4	2,576.6	286.8	2,863.4	10.0	62.0
December r	1,509.1	171.4	1,680.4	10.2	73.8	1,070.2	116.0	1,186.2	9.8	50.5	2,579.3	287.4	2,866.7	10.0	62.0
1992 —															
January r	1,509.4	170.6	1,679.9	10.2	73.7	1,074.2	114.5	1,188.7	9.6	50.5	2,583.6	285.0	2,868.6	9.9	61.9
February r	1,509.7	170.1	1,679.8	10.1	73.6	1,079.1	112.2	1,191.2	9.4	50.6	2,588.8	282.3	2,871.1	9.8	61.9
March r	1,509.3	170.8	1,680.1	10.2	73.6	1,083.7	110.1	1,193.8	9.2	50.6	2,593.0	280.9	2,873.9	9.8	61.9
April r	1,507.8	172.5	1,680.4	10.3	73.5	1,087.2	108.7	1,195.9	9.1	50.7	2,595.0	281.3	2,876.3	9.8	61.9
May r	1,505.7	175.1	1,680.8	10.4	73.5	1,089.8	107.9	1,197.7	9.0	50.7	2,595.5	283.0	2,878.5	9.8	61.9
June	1,503.6	177.7	1,681.3	10.6	73.5	1,091.3	107.7	1,199.0	9.0	50.7	2,594.9	285.4	2,880.3	9.9	61.9
VICTORIA															
1991 —															
April	1,138.6	124.5	1,263.0	9.9	74.1	847.9	88.5	936.4	9.5	53.1	1,986.4	213.0	2,199.5	9.7	63.4
May	1,130.5	130.3	1,260.8	10.3	73.9	845.2	89.5	934.7	9.6	52.9	1,975.8	219.8	2,195.5	10.0	63.3
June	1,126.2	135.1	1,261.3	10.7	73.9	844.5	89.6	934.0	9.6	52.8	1,970.6	224.7	2,195.3	10.2	63.2
July	1,125.2	138.6	1,263.8	11.0	74.0	844.9	89.3	934.3	9.6	52.8	1,970.1	227.9	2,198.1	10.4	63.2
August	1,126.7	141.0	1,267.6	11.1	74.2	846.1	89.7	935.8	9.6	52.8	1,972.8	230.7	2,203.5	10.5	63.3
September	1,129.2	142.3	1,271.5	11.2	74.3	847.2	91.1	938.4	9.7	52.9	1,976.4	233.4	2,209.8	10.6	63.4
October	1,131.4	143.3	1,274.6	11.2	74.4	847.6	93.5	941.1	9.9	53.0	1,978.9	236.8	2,215.7	10.7	63.5
November	1,132.5	144.1	1,276.6	11.3	74.5	846.6	96.0	942.6	10.2	53.1	1,979.1	240.1	2,219.2	10.8	63.6
December r	1,131.8	145.1	1,276.9	11.4	74.4	843.6	97.6	941.2	10.4	52.9	1,975.4	242.7	2,218.1	10.9	63.5
1992 —															
January r	1,129.7	146.6	1,276.3	11.5	74.3	838.9	98.3	937.2	10.5	52.7	1,968.6	244.9	2,213.5	11.1	63.3
February r	1,127.4	148.7	1,276.2	11.7	74.3	833.6	98.5	932.2	10.6	52.3	1,961.1	247.3	2,208.3	11.2	63.1
March r	1,125.8	151.1	1,276.9	11.8	74.3	828.7	99.0	927.7	10.7	52.1	1,954.5	250.1	2,204.7	11.3	63.0
April r	1,125.0	153.4	1,278.4	12.0	74.3	824.5	99.9	924.3	10.8	51.8	1,949.5	253.3	2,202.8	11.5	62.9
May r	1,125.1	155.4	1,280.4	12.1	74.4	821.3	101.0	922.3	11.0	51.7	1,946.4	256.4	2,202.8	11.6	62.8
June	1,125.3	157.2	1,282.5	12.3	74.5	818.9	102.2	921.1	11.1	51.6	1,944.2	259.4	2,203.6	11.8	62.8

TABLE 11. CIVILIAN LABOUR FORCE, STATES: TREND SERIES—continued

Month	Males					Females					Persons				
	Employed	Unemp- loyed - '000 -	Labour force	Unemp- loyment rate - per cent -	Partic- ipation rate - per cent -	Employed	Unemp- loyed - '000 -	Labour force	Unemp- loyment rate - per cent -	Partic- ipation rate - per cent -	Employed	Unemp- loyed - '000 -	Labour force	Unemp- loyment rate - per cent -	Partic- ipation rate - per cent -
QUEENSLAND															
1991 —															
April	761.4	87.1	848.6	10.3	74.9	538.5	60.1	598.5	10.0	51.9	1,299.9	147.2	1,447.1	10.2	63.3
May	762.8	87.1	850.0	10.3	74.9	538.4	60.9	599.2	10.2	51.8	1,301.2	148.0	1,449.2	10.2	63.3
June	765.6	86.5	852.1	10.1	74.9	538.5	61.0	599.5	10.2	51.8	1,304.1	147.5	1,451.5	10.2	63.2
July	769.2	85.6	854.8	10.0	75.0	538.8	60.4	599.2	10.1	51.6	1,308.0	146.0	1,454.0	10.0	63.2
August	772.6	85.4	857.9	10.0	75.1	539.8	59.1	598.9	9.9	51.5	1,312.3	144.5	1,456.9	9.9	63.2
September	775.1	86.1	861.2	10.0	75.3	541.6	58.0	599.6	9.7	51.5	1,316.7	144.1	1,460.8	9.9	63.3
October	776.4	87.5	863.9	10.1	75.4	544.6	57.5	602.1	9.5	51.6	1,321.0	144.9	1,465.9	9.9	63.4
November	776.6	88.8	865.4	10.3	75.4	548.4	57.7	606.1	9.5	51.8	1,325.0	146.5	1,471.4	10.0	63.5
December r	776.0	89.4	865.4	10.3	75.2	552.3	58.2	610.6	9.5	52.1	1,328.4	147.6	1,476.0	10.0	63.6
1992 —															
January r	775.0	89.6	864.7	10.4	75.0	555.7	58.9	614.7	9.6	52.3	1,330.8	148.6	1,479.3	10.0	63.6
February r	773.8	90.0	863.9	10.4	74.8	557.9	59.5	617.4	9.6	52.5	1,331.7	149.6	1,481.3	10.1	63.5
March r	772.9	90.8	863.6	10.5	74.6	558.7	59.9	618.6	9.7	52.4	1,331.6	150.7	1,482.2	10.2	63.4
April r	771.9	92.1	864.0	10.7	74.4	558.7	60.1	618.8	9.7	52.3	1,330.6	152.2	1,482.8	10.3	63.3
May r	771.0	93.8	864.7	10.8	74.3	558.4	60.4	618.8	9.8	52.2	1,329.4	154.2	1,483.5	10.4	63.2
June	770.1	95.5	865.6	11.0	74.2	557.4	60.8	618.3	9.8	52.1	1,327.6	156.3	1,483.9	10.5	63.0
SOUTH AUSTRALIA															
1991 —															
April	382.6	42.1	424.7	9.9	74.9	273.3	27.8	301.1	9.2	51.6	655.9	70.0	725.9	9.6	63.1
May	379.4	43.2	422.5	10.2	74.4	273.3	27.8	301.1	9.2	51.5	652.7	70.9	723.6	9.8	62.8
June	375.7	44.2	419.9	10.5	73.8	273.5	27.5	301.0	9.1	51.5	649.2	71.7	720.9	9.9	62.5
July	372.3	45.4	417.7	10.9	73.4	273.5	27.3	300.9	9.1	51.4	645.9	72.7	718.6	10.1	62.2
August	369.8	46.5	416.4	11.2	73.0	273.2	27.5	300.6	9.1	51.3	643.0	74.0	717.0	10.3	62.0
September	368.5	47.6	416.1	11.4	72.9	272.6	27.9	300.5	9.3	51.2	641.1	75.5	716.7	10.5	61.9
October	368.3	48.7	417.0	11.7	73.0	272.0	28.5	300.5	9.5	51.2	640.3	77.2	717.5	10.8	61.9
November	368.8	49.7	418.5	11.9	73.1	271.3	29.1	300.4	9.7	51.1	640.1	78.8	718.9	11.0	62.0
December r	369.6	50.6	420.2	12.0	73.3	270.3	29.4	299.7	9.8	50.9	639.9	80.0	719.9	11.1	62.0
1992 —															
January r	370.0	51.6	421.6	12.2	73.5	269.1	29.6	298.7	9.9	50.7	639.1	81.2	720.3	11.3	62.0
February r	370.0	52.7	422.7	12.5	73.6	267.8	30.0	297.8	10.1	50.5	637.8	82.6	720.4	11.5	61.9
March r	369.7	53.8	423.6	12.7	73.7	267.0	30.4	297.4	10.2	50.4	636.7	84.2	721.0	11.7	61.9
April r	369.2	55.1	424.3	13.0	73.8	266.7	31.0	297.6	10.4	50.4	635.9	86.1	721.9	11.9	61.9
May r	368.6	56.3	424.9	13.2	73.8	266.7	31.6	298.3	10.6	50.5	635.3	87.9	723.2	12.2	62.0
June	367.9	57.2	425.2	13.5	73.8	267.1	32.2	299.4	10.8	50.6	635.0	89.5	724.5	12.4	62.1

TABLE 11. CIVILIAN LABOUR FORCE, STATES: TREND SERIES—continued

Month	Males					Females					Persons				
	Employed	Unemp- loyed - '000 -	Labour force	Unemp- loyment rate - per cent -	Partic- ipation rate cent -	Employed	Unemp- loyed - '000 -	Labour force	Unemp- loyment rate - per cent -	Partic- ipation rate cent -	Employed	Unemp- loyed - '000 -	Labour force	Unemp- loyment rate - per cent -	Partic- ipation rate cent -
WESTERN AUSTRALIA															
1991 —															
April	443.6	54.5	498.2	10.9	77.8	309.5	32.6	342.1	9.5	53.6	753.1	87.1	840.3	10.4	65.7
May	442.5	55.9	498.4	11.2	77.7	310.3	33.5	343.8	9.7	53.7	752.9	89.3	842.2	10.6	65.7
June	441.4	56.8	498.1	11.4	77.5	311.3	34.2	345.5	9.9	53.9	752.7	90.9	843.6	10.8	65.7
July	440.6	57.3	498.0	11.5	77.4	312.1	34.8	346.8	10.0	54.0	752.7	92.1	844.8	10.9	65.7
August	440.4	57.7	498.0	11.6	77.3	312.4	35.3	347.7	10.2	54.1	752.8	93.0	845.8	11.0	65.7
September	440.6	57.8	498.4	11.6	77.2	312.2	35.9	348.1	10.3	54.0	752.8	93.7	846.4	11.1	65.6
October	441.1	57.8	498.9	11.6	77.1	311.6	36.4	348.0	10.4	53.9	752.7	94.1	846.9	11.1	65.5
November	441.6	57.7	499.3	11.6	77.1	310.8	36.6	347.4	10.5	53.7	752.4	94.3	846.7	11.1	65.4
December r	441.9	57.6	499.6	11.5	77.0	310.1	36.5	346.6	10.5	53.5	752.1	94.1	846.2	11.1	65.3
1992 —															
January r	442.1	57.8	499.9	11.6	76.9	310.1	36.0	346.1	10.4	53.3	752.2	93.9	846.0	11.1	65.1
February r	442.5	58.1	500.6	11.6	76.9	311.0	35.3	346.3	10.2	53.3	753.5	93.3	846.9	11.0	65.1
March r	443.5	58.1	501.6	11.6	76.9	312.5	34.5	347.0	9.9	53.3	756.0	92.6	848.6	10.9	65.1
April r	444.8	57.9	502.7	11.5	76.9	314.3	33.8	348.1	9.7	53.4	759.1	91.7	850.8	10.8	65.2
May r	446.1	57.6	503.6	11.4	77.0	316.3	33.2	349.5	9.5	53.5	762.3	90.8	853.1	10.6	65.2
June	447.5	57.1	504.6	11.3	77.0	318.2	32.9	351.0	9.4	53.7	765.6	90.0	855.6	10.5	65.3
TASMANIA															
1991 —															
April	114.4	14.0	128.4	10.9	73.7	80.0	9.0	89.0	10.1	49.5	194.4	22.9	217.4	10.5	61.4
May	113.6	14.4	128.0	11.2	73.4	79.9	9.3	89.3	10.4	49.6	193.6	23.7	217.3	10.9	61.3
June	113.1	14.7	127.8	11.5	73.2	80.1	9.6	89.7	10.7	49.8	193.2	24.3	217.5	11.2	61.3
July	112.7	15.0	127.7	11.7	73.1	80.4	9.7	90.1	10.7	50.0	193.1	24.7	217.8	11.3	61.4
August	112.6	15.1	127.7	11.9	73.1	80.7	9.6	90.4	10.6	50.1	193.3	24.8	218.1	11.4	61.4
September	112.6	15.2	127.8	11.9	73.1	80.8	9.4	90.3	10.5	50.0	193.4	24.7	218.1	11.3	61.4
October	112.6	15.2	127.8	11.9	73.0	80.6	9.2	89.9	10.3	49.8	193.2	24.4	217.7	11.2	61.2
November	112.5	15.1	127.6	11.8	72.9	80.3	9.0	89.3	10.1	49.4	192.8	24.1	216.9	11.1	60.9
December r	112.2	15.0	127.2	11.8	72.6	79.9	8.7	88.6	9.9	49.0	192.1	23.8	215.8	11.0	60.6
1992 —															
January r	111.7	15.0	126.7	11.8	72.2	79.5	8.6	88.1	9.7	48.7	191.2	23.5	214.8	10.9	60.3
February r	111.3	15.0	126.2	11.9	71.9	79.1	8.5	87.6	9.7	48.4	190.4	23.5	213.8	11.0	60.0
March r	110.8	15.1	125.9	12.0	71.7	78.6	8.6	87.2	9.8	48.1	189.5	23.7	213.1	11.1	59.7
April r	110.4	15.3	125.7	12.1	71.5	78.1	8.8	86.9	10.1	47.9	188.5	24.0	212.5	11.3	59.5
May r	110.1	15.4	125.6	12.3	71.4	77.5	9.0	86.5	10.5	47.7	187.6	24.5	212.1	11.5	59.4
June	110.0	15.6	125.6	12.4	71.4	76.9	9.4	86.3	10.9	47.6	186.9	25.0	211.9	11.8	59.3

EXPLANATORY NOTES

Introduction

This publication contains preliminary estimates of the civilian labour force derived from the labour force survey component of the monthly population survey. Estimates for the current month are preliminary and subject to revision. Revised estimates for the current month and more detailed estimates will be published in *The Labour Force, Australia* (6203.0).

The population survey

2. The population survey is based on a multi-stage area sample of private dwellings (currently about 34,000 houses, flats, etc.) and a list sample of non-private dwellings (hotels, motels, etc.), and covers about three-fifths of one per cent of the population of Australia. The information is obtained from the occupants of selected dwellings by carefully chosen and specially trained interviewers. The interviews are generally conducted during the two weeks beginning on the Monday between the 6th and 12th of each month. The information obtained relates to the week before the interview (i.e. the reference week).

Scope

3. The labour force survey includes all persons aged 15 and over except: members of the permanent defence forces; certain diplomatic personnel of overseas governments, customarily excluded from census and estimated populations; overseas residents in Australia; and members of non-Australian defence forces (and their dependents) stationed in Australia.

Coverage

4. In the labour force survey, coverage rules are applied which aim to ensure that each person is associated with only one dwelling, and hence has only one chance of selection. The coverage rules are, necessarily, a balance between theoretical and operational considerations. Nevertheless, the chance of a person being enumerated at two separate dwellings in the survey is considered to be negligible.

Population benchmarks

5. New benchmarks based on the results of the 1986 Census of Population and Housing were introduced in the February 1989 issue of this publication. Labour force estimates were revised for the period January 1984 to January 1989. All estimates produced after January 1989 are based on the new benchmarks.

Revision of series

6. From April 1986, the definition of employed persons was changed to include persons who worked without pay between 1 and 14 hours per week in a family business or on a farm (i.e. unpaid family helpers). For further information, see paragraphs 36 and 37 of the Explanatory Notes to the February 1987 issue of *The Labour Force, Australia* (6203.0).

7. The LFS sample was redesigned and reselected using information collected in the 1986 Census of Population and Housing. The new sample was phased in over the period September 1987 to December 1987. For details, see *Information Paper - Labour Force Survey - Sample Design* (6269.0).

Survey sample redesign

8. Two types of error are possible in an estimate based on a sample survey: sampling error and non-sampling error. The *sampling error* is a measure of the variability that occurs by chance because a sample, rather than the entire population, is surveyed. One measure of the likely difference resulting from not including all dwellings in the survey is given by the *standard error*. There are about two chances in three that a sample estimate will differ by less than one standard error from the figure that would have been obtained if all dwellings had been included in the survey, and about nineteen chances in twenty that the difference will be less than two standard errors.

Reliability of the estimates

9. Standard errors of estimates for the latest month and of estimates of movements since the previous month are shown in the tables. Standard errors of other estimates and other movements may be determined by using information in the Technical Note in *The Labour Force, Australia* (6203.0).

10. The smaller the estimate the higher is the relative standard error. Very small estimates are subject to high standard errors (relative to the size of the estimate) which detract seriously from their value for most reasonable uses. In the tables in this publication, only estimates with relative standard errors of 25 per cent or less, and percentages based on such estimates, are considered sufficiently reliable for most purposes. However, estimates and percentages with larger relative standard errors have been included and are preceded by an asterisk (eg. * 3.4) to indicate they are subject to high standard errors and should be used with caution.

11. Examples of the calculation and use of standard errors are given below:

- (a) An estimate of 300,000 unemployed males looking for full-time work has a standard error of about 6,900. Therefore there are about two chances in three that the number that would have been produced if all dwellings had been included in the

survey will be within the range 293,100 to 306,900 and about nineteen chances in twenty that the number will be within the range 286,200 to 313,800.

- (b) On an estimate of movement of +28,300 in the number of unemployed males looking for full-time work from one month to the next (with the highest of the two monthly level estimates being 300,000) the standard error is about 5,300. Therefore, there are about two chances in three that if all dwellings had been included in the surveys the movement would have been within the range +23,000 to +33,600, and about nineteen chances in twenty that it would have been within the range +17,700 to +38,900.

12. The imprecision due to sampling variability, which is measured by the standard error, should not be confused with inaccuracies that may occur because of imperfections in reporting by respondents, errors made in collection such as in recording and coding of data, and errors made in processing the data. Inaccuracies of this kind are referred to as the *non-sampling error*, and they may occur in any enumeration, whether it be a full count or a sample. Every effort is made to reduce the non-sampling error to a minimum by careful design of questionnaires, intensive training and supervision of interviewers and efficient operating procedures.

Seasonal adjustment and trend estimation

13. Seasonally adjusted series are published in Tables 2, 5 and 10. Seasonal adjustment is a means of removing the estimated effects of normal seasonal variation from the series so that the effects of other influences on the series can be more clearly recognised. Seasonal adjustment does not aim to remove the irregular or non-seasonal influences which may be present in any particular month. Influences that are volatile can still make it difficult to interpret the movement of the series even after adjustment for seasonal variation.

14. Smoothing seasonally adjusted series produces a measure of trend by reducing the impact of the irregular component of the series. The trend estimates have been derived by applying a 13-term Henderson-weighted moving average to the series. Trend series are used to analyse the underlying behaviour of the series over time. These are published in Tables 3, 6 and 11.

15. While this smoothing technique enables estimates to be produced for the latest month, it does result in revisions to the most recent months as additional observations become available. Generally, subsequent revisions become smaller, and after three months have a negligible impact on the series. There will also be revisions as a result of the annual review of seasonal factors.

16. Users may wish to refer to the ABS Information Papers *A Guide to Smoothing Time Series - Estimates of 'Trend'* (1316.0), and *Time Series Decomposition - an Overview* (1317.0) for more detailed information on smoothing of seasonally adjusted time series data.

Semi-logarithmic graphs

17. Graphs on page 2 have been drawn using a logarithmic vertical scale to aid comparison of rates of growth in series of differing magnitude. Equal distances on the vertical scale (over equal time periods) indicate equal rates of growth for graphs on the same page.

Related publications

18. Users may also wish to refer to *The Labour Force, Australia* (6203.0). This publication contains a detailed list of related publications which are available on request.

19. Current publications produced by the ABS are listed in the *Catalogue of Publications and Products, Australia* (1101.0). The ABS also issues, on Tuesdays and Fridays, a *Publications Advice* (1105.0) which lists publications to be released in the next few days. The Catalogue and Publications Advice are available from any ABS office.

Unpublished statistics

20. As well as the statistics included in this and related publications, the ABS may have other relevant unpublished data available. Inquiries should be made to Don Clark on Canberra (06) 252 6525 or any ABS State office.

Symbols and other usages

* subject to sampling variability too high for most practical uses. See the Technical Notes in 6203.0 for more details.

. . not applicable

r revised

21. Estimates have been rounded and discrepancies may occur between sums of the component items and totals.

Forthcoming issues

22. The following table shows the dates on which *The Labour Force, Australia, Preliminary*, (6202.0) publication is scheduled to be released.

Issue	Release Date
1992 July	6 August 1992
August	10 September 1992
September	8 October 1992
October	12 November 1992
November	10 December 1992
December	14 January 1993

GLOSSARY

Attending school: Persons aged 15 to 19 who, during the reference week, were enrolled full time at secondary or high schools.

Attending tertiary educational institution full time: Persons aged 15 to 24 who, during the reference week, were enrolled full time at universities, technical colleges, colleges of technical and further education and theological colleges.

Employed: Persons aged 15 and over who, during the reference week:

- (a) worked for one hour or more for pay, profit, commission or payment in kind in a job or business, or on a farm (comprising employees, employers and self-employed persons); or
- (b) worked for one hour or more without pay in a family business or on a farm (i.e. unpaid family helpers); or
- (c) were employees who had a job but were not at work and were: on paid leave; on leave without pay for less than four weeks up to the end of the reference week; stood down without pay because of bad weather or plant breakdown at their place of employment for less than four weeks up to the end of the reference week; on strike or locked out; on workers' compensation and expected to be returning to their job; or receiving wages or salary while undertaking full-time study; or
- (d) were employers, self-employed persons or unpaid family helpers who had a job, business or farm, but were not at work.

Full-time workers: Employed persons who usually worked 35 hours or more a week (in all jobs) and others who, although usually working less than 35 hours a week, worked 35 hours or more during the reference week.

Labour force: For any group, persons who were employed or unemployed, as defined.

Labour force status: A classification of the civilian population aged 15 and over into employed, unemployed or not in the labour force, as defined. The definitions conform closely to the international standard definitions adopted by the International Conferences of Labour Statisticians.

Not in the labour force: Persons who were not in the categories employed or unemployed as defined.

Participation rate: For any group, the labour force expressed as a percentage of the civilian population aged 15 and over in the same group.

Part-time workers: Employed persons who usually worked less than 35 hours a week and who did so during the reference week.

Seasonally adjusted series: A time series of estimates with the estimated effects of normal seasonal variation removed. See paragraph 13 of the Explanatory Notes for more detail.

Trend series: A smoothed seasonally adjusted series of estimates. See paragraphs 14 to 16 of the Explanatory Notes for more detail.

Unemployed: Persons aged 15 and over who were not employed during the reference week, and:

- (a) had actively looked for full-time or part-time work at any time in the four weeks up to the end of the reference week and:
 - (i) were available for work in the reference week, or would have been available except for temporary illness (i.e. lasting for less than four weeks to the end of the reference week); or
 - (ii) were waiting to start a new job within four weeks from the end of the reference week and would have started in the reference week if the job had been available then; or
- (b) were waiting to be called back to a full-time or part-time job from which they had been stood down without pay for less than four weeks up to the end of the reference week (including the whole of the reference week) for reasons other than bad weather or plant breakdown.

Unemployed looking for first full-time job: Unemployed persons looking for full-time work (as defined) who had never worked full time for two weeks or more.

Unemployed looking for full-time work: Unemployed persons who actively looked for full-time work or were to resume a full-time job, from which they had been stood down.

Unemployed looking for part-time work: Unemployed persons who had actively looked for part-time work only, or were to resume a part-time job, from which they had been stood down.

Unemployment rate: For any group, the number of unemployed persons expressed as a percentage of the labour force in the same group.

LABOUR MOBILITY, FEBRUARY 1992

This recently released publication provides information about persons who had worked at some time during the year ending February 1992. It provides information on job mobility and job tenure. The survey is the only source of data on labour mobility over a 12 month period and is a major source of data for analysing the dynamic nature of the labour force.

The publication features information on:

- Socio-demographic characteristics, including family status
- Number of employers/businesses and changes of locality
- Reason for ceasing last job
- Details on current job, last job and job 12 months ago including:
 - duration of job
 - industry
 - occupation

Labour Mobility, Australia, During the Year Ending February 1992
(Catalogue No. 6209.0)
\$12.50

Contact an ABS Bookshop in your State

**For more information about the availability of detailed data services, please
contact Mr Michael Jones on (06) 252 6503.**

ABS Bookshops

Sydney (02) 268 4654 Melbourne (03) 615 7829 Brisbane (07) 222 6350 Adelaide (08) 237 7582
Perth (09) 323 5143 Hobart (002) 20 5800 Darwin (089) 81 3456 Canberra (06) 252 5249



For more information ...

The ABS publishes a wide range of information on Australia's economic and social conditions. A catalogue of publications and products is available from any of our Offices (see below for contact details).

Information Consultancy Service

Special tables or in-depth data investigations are provided by the ABS Information Consultancy Service in each of our Offices (see below for contact details).

Electronic Data Services

A growing range of our data is available on electronic media. Selections of the most frequently requested data are available, updated daily, on DISCOVERY (Key *656#). Our TELESTATS service delivers major economic indicator publications ready to download into your computer on the day of release. Our PC-AUSSTATS service enables on-line access to a data base of thousands of up-to-date time series. Selected datasets are also available on diskette or CD-ROM. For more details on our electronic data services, contact Information Services in any of our Offices on the numbers below.

Bookshops and Subscriptions

There are over 500 titles available from the ABS Bookshops in each of our Offices. You can also receive any of our publications on a regular basis. Join our subscription mailing service and have your publications mailed to you in Australia at no additional cost. Telephone our Publications Subscription Service toll free on 008 02 06 08 Australia wide.

Sales and Inquiries



SYDNEY (02) 268 4611
MELBOURNE (03) 615 7000
BRISBANE (07) 222 6351
PERTH (09) 323 5140

ADELAIDE (08) 237 7100
HOBART (002) 20 5800
DARWIN (089) 43 2111
CANBERRA (06) 252 6627



Information Services, ABS, PO Box 10, Belconnen ACT 2616
or any ABS State office.

