

THE LABOUR FORCE, AUSTRALIA, SEPTEMBER 1991, PRELIMINARY

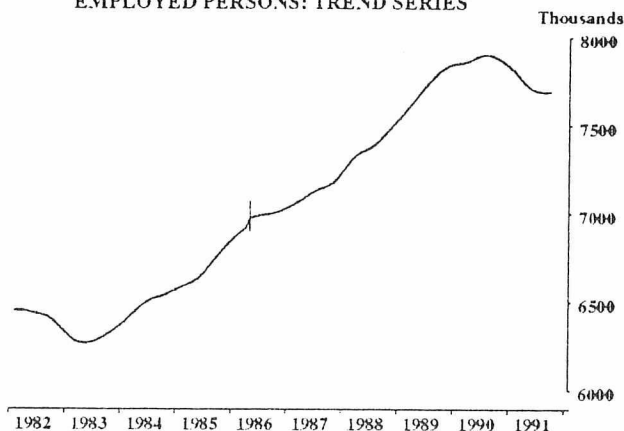
Care should be taken in the interpretation of month-to-month movements in the original and seasonally adjusted data. See paragraphs 13 to 16 of the Explanatory Notes.

MAIN FEATURES

The September 1991 seasonally adjusted estimate of **employed persons** was 7,705,200, a fall of 23,400 since August 1991. After the large rise in August 1991, full-time employment fell by 29,700 and now stands at

5,976,400. Male full-time employment fell by 8,800 and for females, full-time employment fell by 20,800. Male part-time employment was relatively steady while female part-time employment rose by 7,600.

EMPLOYED PERSONS: TREND SERIES



Trend estimates of males employed full time continue to decrease, although the rate of decline has slowed in recent months. For females employed full time, trend estimates have been increasing since June 1991. The trend for male part-time employment continues to increase, while for females it remains relatively steady (see graphs on page 2).

UNEMPLOYMENT RATE: TREND SERIES



The September 1991 seasonally adjusted estimate of **unemployed persons** was 872,100, an increase of 31,600 since August 1991. The main component of this increase was a rise of 19,300 in the number of females looking for full-time work. There were also small increases in the number of females looking for part-time work and male full-time and part-time unemployment.

The seasonally adjusted estimate of the **unemployment rate** for September 1991 was 10.2%, a rise of 0.4 percentage points since August 1991 and the highest level recorded by the survey since September 1983. For males, the unemployment rate was 10.5% and for females, the rate rose by 0.7 percentage points to 9.8%. Trend estimates of the unemployment rate continue to increase except for males seeking part-time work (see graphs on page 3).

The September 1991 seasonally adjusted estimates of the unemployment rate for the States were: New South Wales 9.8%, Victoria 10.9%, Queensland 9.8%, South Australia 10.5%, Western Australia 11.0% and Tasmania 11.4%.

The seasonally adjusted estimate of the **labour force participation rate** for September 1991 was unchanged at 63.4%. The male and female participation rates were relatively steady at 74.7% and 52.3% respectively. The trend estimate of the participation rate was also unchanged at 63.1%.

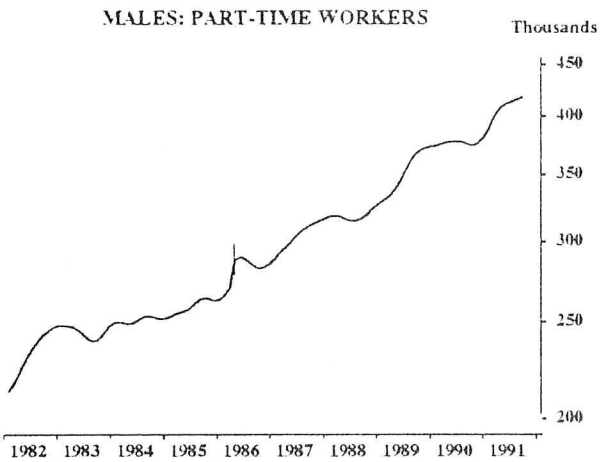
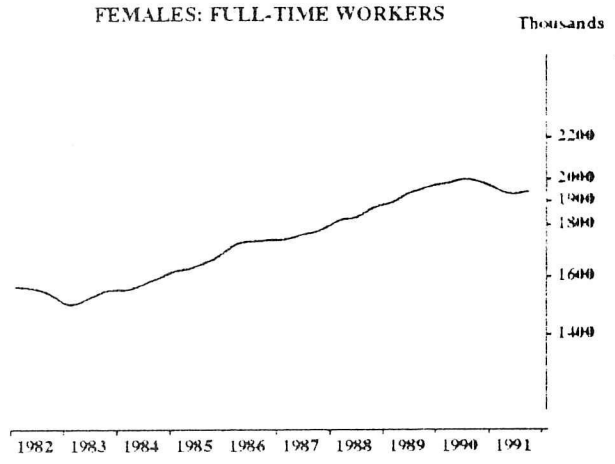
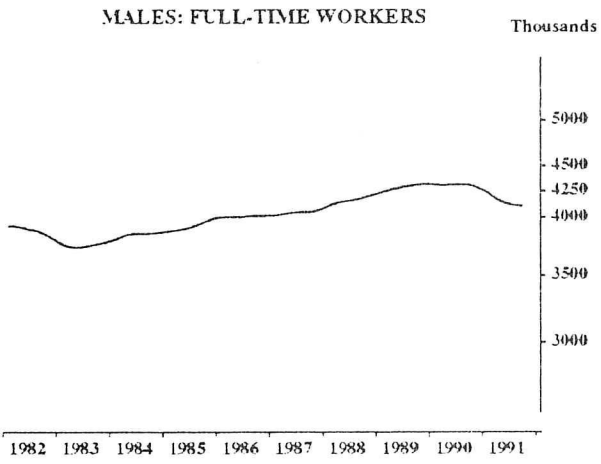
| Indicates break in series — see paragraph 6 of the Explanatory Notes.

INQUIRIES

- for further information about statistics in this publication and the availability of related unpublished statistics, contact Don Clark on Canberra (06) 252 6525 or any ABS State office.
- for information about other ABS statistics and services please refer to the back page of this publication.

EMPLOYED PERSONS: TREND SERIES

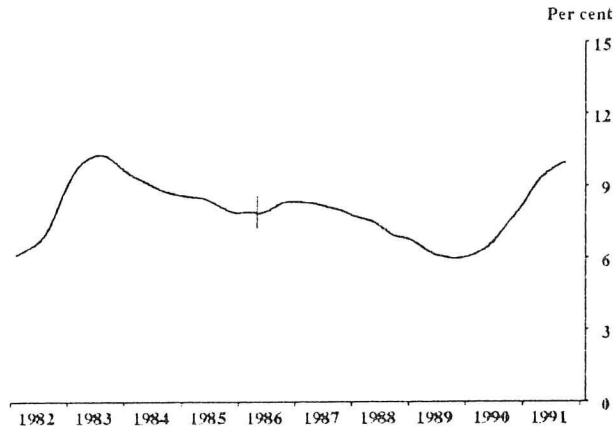
The graphs on this page have been drawn to a semi-logarithmic scale to enable comparisons to be made of rates of change — See paragraph 17 of the Explanatory Notes.



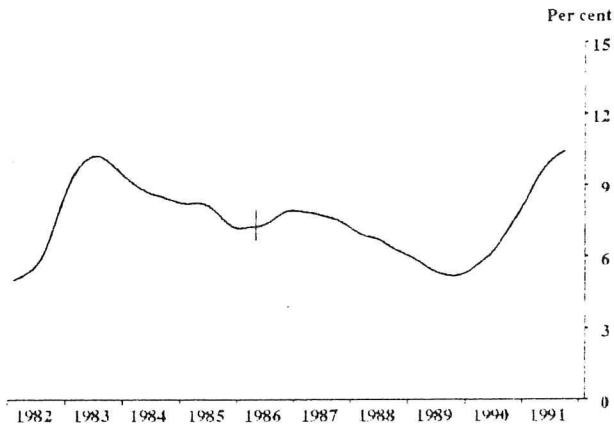
| Indicates break in series — see paragraph 6 of the Explanatory Notes.

UNEMPLOYMENT RATE: TREND SERIES

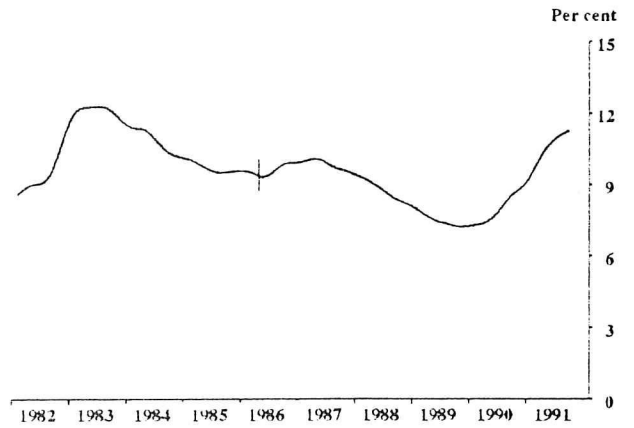
PERSONS



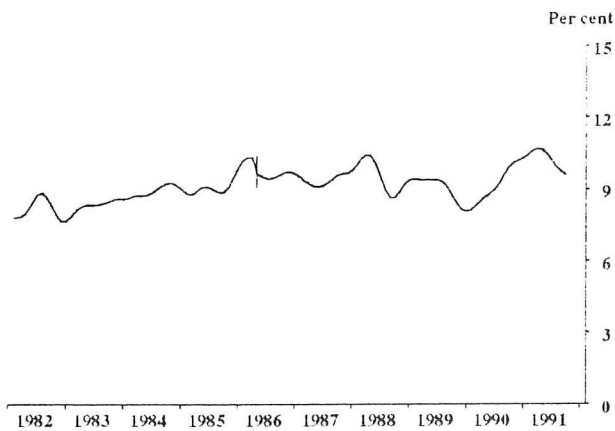
MALES: LOOKING FOR FULL-TIME WORK



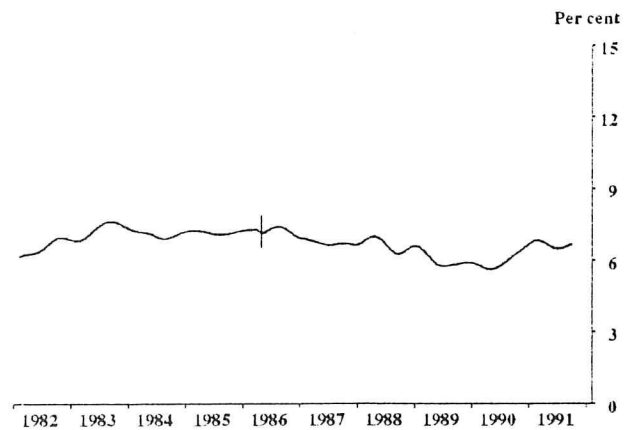
FEMALES: LOOKING FOR FULL-TIME WORK



MALES: LOOKING FOR PART-TIME WORK



FEMALES: LOOKING FOR PART-TIME WORK



| Indicates break in series — see paragraph 6 of the Explanatory Notes.

TABLE 1. LABOUR FORCE STATUS OF CIVILIAN POPULATION AGED 15 AND OVER

Month	Unemployed										
	Employed		Looking for full-time work		Looking for part-time work		Labour force	Not in labour force	Civilian population aged 15 and over	Unemployment rate - per	Participation rate - cent -
	Full-time workers	Total	Aged 15-19 looking for first job	Total	Total	Total					
	- '000 -										
MALES											
1990 —											
July	4,279.6	4,648.2	13.5	292.8	34.3	327.1	4,975.4	1,577.6	6,553.0	6.6	75.9
August	4,218.5	4,583.8	16.5	305.1	32.8	338.0	4,921.8	1,641.0	6,562.8	6.9	75.0
September	4,259.1	4,638.2	13.7	320.3	43.0	363.3	5,001.5	1,571.2	6,572.7	7.3	76.1
October	4,239.6	4,614.2	15.9	315.5	38.9	354.5	4,968.6	1,614.1	6,582.8	7.1	75.5
November	4,200.9	4,576.5	20.1	344.2	36.3	380.5	4,957.1	1,635.8	6,592.8	7.7	75.2
December	4,263.2	4,635.6	40.3	368.9	48.6	417.5	5,053.1	1,549.8	6,602.9	8.3	76.5
1991 —											
January	4,163.0	4,523.1	38.8	419.7	43.0	462.7	4,985.8	1,626.9	6,612.6	9.3	75.4
February	4,153.9	4,532.7	28.9	421.2	51.6	472.8	5,005.5	1,616.8	6,622.3	9.4	75.6
March	4,111.1	4,513.5	24.5	426.3	57.3	483.5	4,997.0	1,635.1	6,632.1	9.7	75.3
April	4,084.4	4,504.9	23.7	445.3	58.5	503.8	5,008.7	1,632.2	6,640.9	10.1	75.4
May	4,086.9	4,496.2	21.9	436.7	49.8	486.5	4,982.7	1,667.0	6,649.7	9.8	74.9
June	4,069.9	4,487.5	19.4	427.5	34.2	461.7	4,949.2	1,709.4	6,658.6	9.3	74.3
July	4,046.4	4,440.3	24.0	448.6	39.6	488.2	4,928.4	1,738.1	6,666.6	9.9	73.9
August	4,035.4	4,443.7	25.0	465.4	37.2	502.6	4,946.3	1,728.3	6,674.6	10.2	74.1
September	4,065.3	4,492.0	28.6	476.1	47.2	523.3	5,015.3	1,667.3	6,682.6	10.4	75.1
Standard error of —											
September 1991 estimates	18.4	19.0	2.5	8.3	3.1	8.6	19.7	13.4	..	0.2	0.3
Aug 91 to Sep 91 movements	14.0	14.5	2.2	6.3	2.6	6.5	15.1	10.1	..	0.1	0.2
FEMALES											
1990 —											
July	1,993.5	3,284.7	17.0	167.7	74.5	242.2	3,526.9	3,196.4	6,723.3	6.9	52.5
August	1,941.3	3,241.2	17.3	173.2	76.3	249.5	3,490.7	3,242.7	6,733.4	7.1	51.8
September	1,972.2	3,287.3	19.5	173.1	91.2	264.4	3,551.7	3,191.9	6,743.5	7.4	52.7
October	1,948.1	3,256.3	16.9	169.1	83.4	252.5	3,508.9	3,244.5	6,753.3	7.2	52.0
November	1,946.8	3,273.4	18.9	171.0	78.0	249.0	3,522.4	3,240.8	6,763.2	7.1	52.1
December	1,991.1	3,305.5	34.3	203.6	83.5	287.1	3,592.6	3,180.3	6,773.0	8.0	53.0
1991 —											
January	1,967.7	3,145.7	31.4	216.3	88.7	305.0	3,450.6	3,331.8	6,782.5	8.8	50.9
February	1,919.2	3,206.6	27.5	233.2	106.3	339.4	3,546.1	3,245.8	6,791.9	9.6	52.2
March	1,906.1	3,233.1	25.0	224.0	117.1	341.1	3,574.1	3,227.2	6,801.4	9.5	52.6
April	1,910.7	3,245.6	22.7	238.6	113.9	352.5	3,598.2	3,212.2	6,810.3	9.8	52.8
May	1,905.7	3,242.7	22.6	238.0	87.7	325.7	3,568.4	3,250.9	6,819.3	9.1	52.3
June	1,896.6	3,229.1	21.1	216.8	85.7	302.5	3,531.6	3,296.7	6,828.3	8.6	51.7
July	1,889.7	3,183.7	18.4	232.1	81.5	313.6	3,497.3	3,339.8	6,837.1	9.0	51.2
August	1,907.6	3,225.5	18.0	221.6	81.8	303.4	3,528.9	3,317.0	6,845.9	8.6	51.5
September	1,924.8	3,270.8	17.3	238.8	105.1	343.9	3,614.7	3,240.1	6,854.8	9.5	52.7
Standard error of —											
September 1991 estimates	14.1	17.0	1.9	6.3	4.4	7.3	17.6	17.0	..	0.2	0.3
Aug 91 to Sep 91 movements	10.6	12.9	1.8	4.8	3.6	5.5	13.4	12.9	..	0.2	0.2
PERSONS											
1990 —											
July	6,273.1	7,932.9	30.5	460.5	108.9	569.3	8,502.3	4,774.1	13,276.3	6.7	64.0
August	6,159.8	7,825.0	33.8	478.3	109.1	587.4	8,412.5	4,883.7	13,296.2	7.0	63.3
September	6,231.3	7,925.5	33.2	493.4	134.3	627.7	8,553.2	4,763.1	13,316.2	7.3	64.2
October	6,187.7	7,870.5	32.9	484.6	122.3	607.0	8,477.5	4,858.6	13,336.1	7.2	63.6
November	6,147.6	7,849.9	39.0	515.2	114.3	629.5	8,479.4	4,876.5	13,356.0	7.4	63.5
December	6,254.3	7,941.2	74.7	572.5	132.1	704.6	8,645.7	4,730.1	13,375.9	8.1	64.6
1991 —											
January	6,130.7	7,668.8	70.1	635.9	131.7	767.7	8,436.4	4,958.7	13,395.1	9.1	63.0
February	6,073.1	7,739.3	56.4	654.4	157.9	812.2	8,551.6	4,862.7	13,414.2	9.5	63.8
March	6,017.3	7,746.5	49.5	650.2	174.4	824.6	8,571.1	4,862.3	13,433.5	9.6	63.8
April	5,995.0	7,750.5	46.4	683.9	172.4	856.3	8,606.8	4,844.4	13,451.2	9.9	64.0
May	5,992.6	7,738.9	44.5	674.7	137.5	812.2	8,551.1	4,917.9	13,469.0	9.5	63.5
June	5,966.5	7,716.7	40.6	644.3	119.8	764.1	8,480.8	5,006.0	13,486.8	9.0	62.9
July	5,936.0	7,624.0	42.4	680.7	121.1	801.7	8,425.7	5,078.0	13,503.7	9.5	62.4
August	5,943.0	7,669.2	43.0	687.0	119.1	806.0	8,475.2	5,045.3	13,520.5	9.5	62.7
September	5,990.1	7,762.8	45.8	714.9	152.3	867.2	8,630.0	4,907.4	13,537.5	10.0	63.7
Standard error of —											
September 1991 estimates	21.0	22.9	3.0	9.7	5.2	10.5	23.7	19.6	..	0.1	0.2
Aug 91 to Sep 91 movements	16.2	17.8	2.6	7.3	4.1	7.8	18.5	15.2	..	0.1	0.1

TABLE 2. CIVILIAN LABOUR FORCE: SEASONALLY ADJUSTED SERIES

Month	Employed		Unemployed				Labour force	Unemployment rate - per cent -	Participation rate
	Full-time workers	Total	Looking for full-time work		Looking for part-time work	Total			
			Aged 15-19 looking for first job	Total					
MALES									
1990 —									
July	4,263.9	4,640.1	17.0	298.7	38.0	336.7	4,976.8	6.8	75.9
August	4,254.8	4,625.7	19.6	310.0	38.6	348.6	4,974.3	7.0	75.8
September	4,253.4	4,621.0	16.1	320.8	42.5	363.3	4,984.3	7.3	75.8
October	4,234.6	4,611.6	20.5	336.2	41.7	377.9	4,989.6	7.6	75.8
November	4,215.0	4,581.3	23.8	374.0	44.3	418.3	4,999.6	8.4	75.8
December	4,220.7	4,589.3	26.6	362.7	41.9	404.6	4,993.9	8.1	75.6
1991 —									
January	4,193.6	4,570.9	24.2	376.7	39.7	416.4	4,987.3	8.3	75.4
February	4,145.5	4,549.7	22.1	388.0	46.2	434.2	4,983.9	8.7	75.3
March	4,109.0	4,501.7	25.1	420.9	48.1	469.0	4,970.6	9.4	74.9
April	4,080.9	4,490.2	27.7	459.5	54.7	514.3	5,004.5	10.3	75.4
May	4,090.5	4,492.9	25.0	434.6	48.7	483.3	4,976.2	9.7	74.8
June	4,070.5	4,482.2	26.0	440.7	40.7	481.4	4,963.6	9.7	74.5
July	4,032.3	4,434.4	30.2	457.2	43.6	500.8	4,935.2	10.1	74.0
August	4,067.8	4,482.5	29.6	471.4	44.1	515.5	4,998.0	10.3	74.9
September	4,058.9	4,472.3	33.4	475.7	46.5	522.2	4,994.5	10.5	74.7
FEMALES									
1990 —									
July	1,990.6	3,287.8	21.3	175.6	81.1	256.8	3,544.6	7.2	52.7
August	1,973.7	3,264.0	21.5	182.3	86.2	268.5	3,532.5	7.6	52.5
September	1,966.5	3,252.3	23.5	182.6	85.5	268.0	3,520.4	7.6	52.2
October	1,952.5	3,259.7	21.7	186.7	87.7	274.4	3,534.1	7.8	52.3
November	1,945.0	3,250.7	25.7	190.9	88.2	279.1	3,529.8	7.9	52.2
December	1,948.5	3,256.7	22.8	196.5	89.2	285.6	3,542.4	8.1	52.3
1991 —									
January	1,963.8	3,252.3	19.6	193.9	101.8	295.7	3,548.0	8.3	52.3
February	1,919.7	3,242.8	20.9	205.8	98.3	304.1	3,546.9	8.6	52.2
March	1,898.5	3,208.5	24.8	213.1	95.1	308.1	3,516.6	8.8	51.7
April	1,915.5	3,230.7	25.0	234.2	95.5	329.7	3,560.4	9.3	52.3
May	1,911.5	3,222.2	26.7	236.4	83.9	320.3	3,542.5	9.0	51.9
June	1,915.1	3,223.5	24.1	220.3	91.3	311.6	3,535.1	8.8	51.8
July	1,887.2	3,188.2	23.2	242.1	89.0	331.1	3,519.2	9.4	51.5
August	1,938.3	3,246.1	22.4	232.3	92.6	325.0	3,571.0	9.1	52.2
September	1,917.5	3,232.9	20.8	251.6	98.3	350.0	3,582.8	9.8	52.3
PERSONS									
1990 —									
July	6,254.5	7,928.0	38.3	474.3	119.1	593.5	8,521.4	7.0	64.2
August	6,228.5	7,889.8	41.1	492.3	124.8	617.1	8,506.9	7.3	64.0
September	6,219.9	7,873.3	39.6	503.4	128.0	631.3	8,504.6	7.4	63.9
October	6,187.1	7,871.3	42.2	522.9	129.5	652.4	8,523.7	7.7	63.9
November	6,160.0	7,832.0	49.6	564.9	132.5	697.4	8,529.4	8.2	63.9
December	6,169.2	7,846.0	49.4	559.2	131.1	690.3	8,536.3	8.1	63.8
1991 —									
January	6,157.4	7,823.2	43.8	570.6	141.5	712.1	8,535.3	8.3	63.7
February	6,065.2	7,792.5	43.0	593.8	144.4	738.3	8,530.8	8.7	63.6
March	6,007.5	7,710.1	49.9	633.9	143.2	777.1	8,487.2	9.2	63.2
April	5,996.4	7,721.0	52.7	693.7	150.2	844.0	8,564.9	9.9	63.7
May	6,001.9	7,715.0	51.7	671.0	132.6	803.6	8,518.6	9.4	63.2
June	5,985.6	7,705.7	50.2	661.0	132.0	793.0	8,498.7	9.3	63.0
July	5,919.5	7,622.6	53.4	699.3	132.5	831.9	8,454.4	9.8	62.6
August	6,006.1	7,728.6	52.0	703.8	136.7	840.5	8,569.1	9.8	63.4
September	5,976.4	7,705.2	54.2	727.3	144.8	872.1	8,577.3	10.2	63.4

TABLE 3. CIVILIAN LABOUR FORCE: TREND SERIES

Month	Employed		Unemployed				Labour force	Unemployment rate - per cent -	Participation rate
	Full-time workers	Total	Looking for full-time work		Looking for part-time work	Total			
			Aged 15-19 looking for first job	Total					
MALES									
1990 —									
July	4,260.6	4,633.2	17.7	295.8	37.9	333.7	4,966.9	6.7	75.8
August	4,257.3	4,628.5	18.4	310.3	39.4	349.6	4,978.2	7.0	75.9
September	4,250.5	4,620.3	19.6	325.3	40.6	366.0	4,986.3	7.3	75.9
October	4,240.1	4,609.6	20.9	339.6	41.5	381.0	4,990.7	7.6	75.8
November	4,224.8	4,596.3	22.4	353.8	42.1	395.9	4,992.2	7.9	75.7
December	4,203.9	4,579.9	23.6	368.9	43.1	412.0	4,991.9	8.3	75.6
1991 —									
January	4,178.6	4,561.3	24.4	385.0	44.5	429.6	4,990.8	8.6	75.5
February	4,150.0	4,540.4	24.8	401.4	46.2	447.6	4,988.1	9.0	75.3
March r	4,121.2	4,518.6	25.0	416.9	47.5	464.4	4,983.1	9.3	75.1
April r	4,096.4	4,499.2	25.4	430.7	47.9	478.6	4,977.8	9.6	75.0
May r	4,078.3	4,484.2	26.4	442.3	47.3	489.6	4,973.9	9.8	74.8
June r	4,066.8	4,474.5	27.6	451.4	46.2	497.6	4,972.1	10.0	74.7
July r	4,058.9	4,468.4	29.0	459.1	45.0	504.2	4,972.5	10.1	74.6
August r	4,053.7	4,464.6	30.3	466.2	44.2	510.4	4,975.0	10.3	74.5
September	4,051.4	4,464.4	31.4	470.9	43.7	514.6	4,979.0	10.3	74.5
FEMALES									
1990 —									
July	1,974.8	3,267.9	20.5	173.3	81.2	254.5	3,522.4	7.2	52.4
August	1,972.4	3,267.3	21.9	179.2	83.6	262.8	3,530.1	7.4	52.4
September	1,967.7	3,264.4	22.7	183.9	86.0	269.9	3,534.3	7.6	52.4
October	1,961.3	3,260.1	23.0	187.1	88.1	275.2	3,535.3	7.8	52.3
November	1,953.8	3,255.3	22.8	190.0	90.7	280.7	3,536.0	7.9	52.3
December	1,945.3	3,250.0	22.5	194.3	93.4	287.8	3,537.8	8.1	52.2
1991 —									
January	1,936.8	3,244.6	22.4	200.6	95.4	295.9	3,540.6	8.4	52.2
February	1,927.5	3,237.7	22.9	208.2	95.9	304.2	3,541.9	8.6	52.1
March r	1,918.3	3,229.4	23.6	216.1	94.9	311.0	3,540.5	8.8	52.1
April r	1,911.5	3,222.6	24.3	223.1	93.0	316.1	3,538.7	8.9	52.0
May r	1,908.7	3,219.1	24.6	228.8	91.2	320.0	3,539.1	9.0	51.9
June r	1,909.6	3,218.8	24.4	233.2	90.5	323.7	3,542.4	9.1	51.9
July r	1,912.3	3,220.5	23.6	236.9	90.9	327.8	3,548.4	9.2	51.9
August r	1,915.6	3,223.4	22.8	240.3	92.0	332.3	3,555.7	9.3	51.9
September	1,918.9	3,227.7	21.8	243.1	93.5	336.6	3,564.3	9.4	52.0
PERSONS									
1990 —									
July	6,235.3	7,901.1	38.2	469.1	119.1	588.2	8,489.3	6.9	63.9
August	6,229.7	7,895.9	40.3	489.5	123.0	612.4	8,508.3	7.2	64.0
September	6,218.2	7,884.8	42.3	509.2	126.6	635.8	8,520.6	7.5	64.0
October	6,201.4	7,869.7	43.9	526.6	129.6	656.2	8,525.9	7.7	63.9
November	6,178.5	7,851.6	45.1	543.8	132.8	676.6	8,528.2	7.9	63.9
December	6,149.2	7,829.9	46.1	563.3	136.5	699.8	8,529.6	8.2	63.8
1991 —									
January	6,115.4	7,805.9	46.9	585.6	139.9	725.5	8,531.4	8.5	63.7
February	6,077.6	7,778.1	47.7	609.7	142.2	751.8	8,530.0	8.8	63.6
March r	6,039.4	7,748.0	48.6	633.0	142.4	775.5	8,523.5	9.1	63.4
April r	6,007.9	7,721.8	49.7	653.8	140.9	794.7	8,516.5	9.3	63.3
May r	5,987.0	7,703.3	51.0	671.1	138.6	809.6	8,512.9	9.5	63.2
June r	5,976.3	7,693.3	52.0	684.6	136.7	821.3	8,514.5	9.6	63.1
July r	5,971.2	7,688.9	52.6	696.0	135.9	832.0	8,520.9	9.8	63.1
August r	5,969.3	7,688.0	53.1	706.5	136.2	842.7	8,530.8	9.9	63.1
September	5,970.4	7,692.1	53.2	714.1	137.1	851.2	8,543.3	10.0	63.1

TABLE 4. UNEMPLOYED PERSONS: AUSTRALIA

Month	Number looking for full-time work				Number looking for part-time work	Total	Unemployment rate				
	Aged 15-19			Total			Looking for full-time work			Looking for part-time work	Total
	Looking for first job	Total	Aged 20 and over				Aged 15-19	Aged 20 and over	Total		
							- '000 -	- per cent -			
MALES											
1990 —											
July	13.5	46.3	246.5	292.8	34.3	327.1	15.5	5.8	6.4	8.5	6.6
August	16.5	50.7	254.5	305.1	32.8	338.0	18.0	6.0	6.7	8.2	6.9
September	13.7	49.4	270.9	320.3	43.0	363.3	17.5	6.3	7.0	10.2	7.3
October	15.9	46.4	269.2	315.5	38.9	354.5	16.9	6.3	6.9	9.4	7.1
November	20.1	54.4	289.8	344.2	36.3	380.5	20.3	6.8	7.6	8.8	7.7
December	40.3	77.2	291.7	368.9	48.6	417.5	24.8	6.8	8.0	11.6	8.3
1991 —											
January	38.8	75.6	344.1	419.7	43.0	462.7	25.0	8.0	9.2	10.7	9.3
February	28.9	63.4	357.8	421.2	51.6	472.8	23.2	8.3	9.2	12.0	9.4
March	24.5	60.2	366.1	426.3	57.3	483.5	23.9	8.5	9.4	12.5	9.7
April	23.7	65.2	380.1	445.3	58.5	503.8	26.2	8.9	9.8	12.2	10.1
May	21.9	61.4	375.3	436.7	49.8	486.5	25.9	8.8	9.7	10.8	9.8
June	19.4	59.4	368.1	427.5	34.2	461.7	25.8	8.6	9.5	7.6	9.3
July	24.0	62.0	386.6	448.6	39.6	488.2	25.8	9.1	10.0	9.1	9.9
August	25.0	62.0	403.3	465.4	37.2	502.6	27.0	9.4	10.3	8.4	10.2
September	28.6	62.9	413.2	476.1	47.2	523.3	27.0	9.6	10.5	10.0	10.4
Standard error of — September 1991 estimates	2.5	3.5	7.8	8.3	3.1	8.6	1.5	0.2	0.2	0.7	0.2
Aug 91 to Sep 91 movements	2.2	2.9	5.9	6.3	2.6	6.5	1.3	0.1	0.1	0.6	0.1
FEMALES											
1990 —											
July	17.0	43.1	124.6	167.7	74.5	242.2	19.5	6.4	7.8	5.5	6.9
August	17.3	41.4	131.7	173.2	76.3	249.5	20.7	6.9	8.2	5.5	7.1
September	19.5	45.6	127.5	173.1	91.2	264.4	23.0	6.6	8.1	6.5	7.4
October	16.9	39.3	129.8	169.1	83.4	252.5	20.6	6.7	8.0	6.0	7.2
November	18.9	40.9	130.1	171.0	78.0	249.0	21.5	6.8	8.1	5.6	7.1
December	34.3	61.5	142.1	203.6	83.5	287.1	27.5	7.2	9.3	6.0	8.0
1991 —											
January	31.4	58.7	157.5	216.3	88.7	305.0	26.8	8.0	9.9	7.0	8.8
February	27.5	56.5	176.7	233.2	106.3	339.4	28.7	9.0	10.8	7.6	9.6
March	25.0	47.9	176.1	224.0	117.1	341.1	27.1	9.0	10.5	8.1	9.5
April	22.7	44.2	194.4	238.6	113.9	352.5	25.2	9.8	11.1	7.9	9.8
May	22.6	49.7	188.3	238.0	87.7	325.7	28.1	9.6	11.1	6.2	9.1
June	21.1	44.6	172.2	216.8	85.7	302.5	27.2	8.8	10.3	6.0	8.6
July	18.4	46.5	185.6	232.1	81.5	313.6	27.4	9.5	10.9	5.9	9.0
August	18.0	45.8	175.8	221.6	81.8	303.4	29.3	8.9	10.4	5.8	8.6
September	17.3	47.0	191.8	238.8	105.1	343.9	28.9	9.6	11.0	7.2	9.5
Standard error of — September 1991 estimates	1.9	3.1	5.7	6.3	4.4	7.3	1.9	0.3	0.3	0.3	0.2
Aug 91 to Sep 91 movements	1.8	2.6	4.5	4.8	3.6	5.5	1.6	0.2	0.2	0.2	0.2
PERSONS											
1990 —											
July	30.5	89.4	371.1	460.5	108.9	569.3	17.2	6.0	6.8	6.2	6.7
August	33.8	92.1	386.2	478.3	109.1	587.4	19.1	6.3	7.2	6.2	7.0
September	33.2	95.0	398.4	493.4	134.3	627.7	19.7	6.4	7.3	7.3	7.3
October	32.9	85.6	399.0	484.6	122.3	607.0	18.4	6.4	7.3	6.8	7.2
November	39.0	95.3	420.0	515.2	114.3	629.5	20.8	6.8	7.7	6.3	7.4
December	74.7	138.7	433.8	572.5	132.1	704.6	25.9	6.9	8.4	7.3	8.1
1991 —											
January	70.1	134.3	501.6	635.9	131.7	767.7	25.8	8.0	9.4	7.9	9.1
February	56.4	120.0	534.4	654.4	157.9	812.2	25.5	8.5	9.7	8.7	9.5
March	49.5	108.1	542.2	650.2	174.4	824.6	25.2	8.7	9.8	9.2	9.6
April	46.4	109.5	574.5	683.9	172.4	856.3	25.8	9.2	10.2	8.9	9.9
May	44.5	111.1	563.6	674.7	137.5	812.2	26.8	9.0	10.1	7.3	9.5
June	40.6	104.0	540.3	644.3	119.8	764.1	26.4	8.7	9.7	6.4	9.0
July	42.4	108.5	572.2	680.7	121.1	801.7	26.5	9.2	10.3	6.7	9.5
August	43.0	107.8	579.1	687.0	119.1	806.0	28.0	9.3	10.4	6.5	9.5
September	45.8	109.9	605.1	714.9	152.3	867.2	27.7	9.6	10.7	7.9	10.0
Standard error of — September 1991 estimates	3.0	4.5	9.1	9.7	5.2	10.5	1.1	0.1	0.1	0.3	0.1
Aug 91 to Sep 91 movements	2.6	3.6	6.8	7.3	4.1	7.8	0.9	0.1	0.1	0.2	0.1

TABLE 5. UNEMPLOYED PERSONS: SEASONALLY ADJUSTED SERIES

Month	Number looking for full-time work				Number looking for part-time work	Total	Unemployment rate				
	Aged 15-19			Total			Looking for full-time work			Looking for part-time work	Total
	Looking for first job	Total	Aged 20 and over				Aged 15-19	Aged 20 and over	Total		
							- per cent -				
MALES											
1990 —											
July	17.0	50.6	248.2	298.7	38.0	336.7	16.9	5.8	6.5	9.2	6.8
August	19.6	54.5	255.5	310.0	38.6	348.6	18.4	6.0	6.8	9.4	7.0
September	16.1	53.8	267.0	320.8	42.5	363.3	18.4	6.2	7.0	10.4	7.3
October	20.5	54.4	281.8	336.2	41.7	377.9	18.8	6.6	7.4	10.0	7.6
November	23.8	64.2	309.8	374.0	44.3	418.3	21.9	7.2	8.1	10.8	8.4
December	26.6	62.1	300.6	362.7	41.9	404.6	21.7	7.0	7.9	10.2	8.1
1991 —											
January	24.2	55.5	321.2	376.7	39.7	416.4	20.6	7.5	8.2	9.5	8.3
February	22.1	53.2	334.8	388.0	46.2	434.2	21.1	7.8	8.6	10.2	8.7
March	25.1	62.5	358.4	420.9	48.1	469.0	24.9	8.4	9.3	10.9	9.4
April	27.7	70.1	389.4	459.5	54.7	514.3	27.7	9.1	10.1	11.8	10.3
May	25.0	64.5	370.1	434.6	48.7	483.3	26.5	8.6	9.6	10.8	9.7
June	26.0	66.6	374.1	440.7	40.7	481.4	27.8	8.8	9.8	9.0	9.7
July	30.2	67.8	389.4	457.2	43.6	500.8	28.0	9.2	10.2	9.8	10.1
August	29.6	66.6	404.8	471.4	44.1	515.5	27.5	9.4	10.4	9.6	10.3
September	33.4	68.4	407.2	475.7	46.5	522.2	28.2	9.5	10.5	10.1	10.5
FEMALES											
1990 —											
July	21.3	46.8	128.8	175.6	81.1	256.8	20.9	6.6	8.1	5.9	7.2
August	21.5	47.1	135.2	182.3	86.2	268.5	22.2	7.0	8.5	6.3	7.6
September	23.5	48.9	133.7	182.6	85.5	268.0	23.6	6.9	8.5	6.2	7.6
October	21.7	46.4	140.3	186.7	87.7	274.4	22.6	7.3	8.7	6.3	7.8
November	25.7	50.8	140.1	190.9	88.2	279.1	24.6	7.3	8.9	6.3	7.9
December	22.8	49.4	147.1	196.5	89.2	285.6	24.5	7.6	9.2	6.4	8.1
1991 —											
January	19.6	46.1	147.8	193.9	101.8	295.7	23.6	7.5	9.0	7.3	8.3
February	20.9	45.9	159.9	205.8	98.3	304.1	25.0	8.2	9.7	6.9	8.6
March	24.8	47.5	165.6	213.1	95.1	308.1	27.0	8.6	10.1	6.8	8.8
April	25.0	45.4	188.8	234.2	95.5	329.7	25.9	9.6	10.9	6.8	9.3
May	26.7	51.9	184.5	236.4	83.9	320.3	29.0	9.4	11.0	6.0	9.0
June	24.1	48.1	172.2	220.3	91.3	311.6	28.4	8.8	10.3	6.5	8.8
July	23.2	50.5	191.6	242.1	89.0	331.1	29.2	9.8	11.4	6.4	9.4
August	22.4	52.0	180.3	232.3	92.6	325.0	31.3	9.0	10.7	6.6	9.1
September	20.8	50.3	201.3	251.6	98.3	350.0	29.5	10.1	11.6	7.0	9.8
PERSONS											
1990 —											
July	38.3	97.4	377.0	474.3	119.1	593.5	18.6	6.1	7.0	6.6	7.0
August	41.1	101.6	390.7	492.3	124.8	617.1	20.0	6.3	7.3	7.0	7.3
September	39.6	102.7	400.7	503.4	128.0	631.3	20.5	6.4	7.5	7.2	7.4
October	42.2	100.8	422.1	522.9	129.5	652.4	20.4	6.8	7.8	7.1	7.7
November	49.6	115.0	450.0	564.9	132.5	697.4	23.0	7.2	8.4	7.3	8.2
December	49.4	111.5	447.6	559.2	131.1	690.3	22.8	7.2	8.3	7.2	8.1
1991 —											
January	43.8	101.6	469.0	570.6	141.5	712.1	21.9	7.5	8.5	7.8	8.3
February	43.0	99.1	494.7	593.8	144.4	738.3	22.7	8.0	8.9	7.7	8.7
March	49.9	110.0	523.9	633.9	143.2	777.1	25.8	8.4	9.5	7.8	9.2
April	52.7	115.5	578.2	693.7	150.2	844.0	27.0	9.2	10.4	8.0	9.9
May	51.7	116.4	554.7	671.0	132.6	803.6	27.5	8.9	10.1	7.2	9.4
June	50.2	114.7	546.3	661.0	132.0	793.0	28.1	8.8	9.9	7.1	9.3
July	53.4	118.3	581.0	699.3	132.5	831.9	28.5	9.4	10.6	7.2	9.8
August	52.0	118.6	585.1	703.8	136.7	840.5	29.0	9.3	10.5	7.4	9.8
September	54.2	118.7	608.6	727.3	144.8	872.1	28.7	9.7	10.8	7.7	10.2

TABLE 6. UNEMPLOYED PERSONS: TREND SERIES

Month	Number looking for full-time work				Number looking for part-time work	Unemployment rate						
	Aged 15-19			Total		Looking for full-time work			Looking for part-time work	Total		
	Looking for first job	Total	Aged 20 and over			Aged 15-19	Aged 20 and over	Total			- per	cent -
MALES												
1990 —												
July	17.7	51.6	244.2	295.8	37.9	333.7	17.4	5.7	6.5	9.2	6.7	
August	18.4	53.7	256.5	310.3	39.4	349.6	18.1	6.0	6.8	9.6	7.0	
September	19.6	55.7	269.6	325.3	40.6	366.0	18.8	6.3	7.1	9.9	7.3	
October	20.9	57.1	282.4	339.6	41.5	381.0	19.5	6.6	7.4	10.1	7.6	
November	22.4	58.0	295.8	353.8	42.1	395.9	20.2	6.9	7.7	10.2	7.9	
December	23.6	58.6	310.4	368.9	43.1	412.0	21.0	7.2	8.1	10.3	8.3	
1991 —												
January	24.4	59.2	325.8	385.0	44.5	429.6	21.9	7.6	8.4	10.4	8.6	
February	24.8	60.2	341.2	401.4	46.2	447.6	23.0	8.0	8.8	10.6	9.0	
March r	25.0	61.8	355.1	416.9	47.5	464.4	24.4	8.3	9.2	10.7	9.3	
April r	25.4	63.7	367.0	430.7	47.9	478.6	25.7	8.6	9.5	10.6	9.6	
May r	26.4	65.6	376.7	442.3	47.3	489.6	26.8	8.8	9.8	10.4	9.8	
June r	27.6	66.9	384.5	451.4	46.2	497.6	27.5	9.0	10.0	10.2	10.0	
July r	29.0	67.6	391.5	459.1	45.0	504.2	27.9	9.2	10.2	9.9	10.1	
August r	30.3	68.0	398.2	466.2	44.2	510.4	28.2	9.3	10.3	9.7	10.3	
September	31.4	67.8	403.1	470.9	43.7	514.6	28.1	9.4	10.4	9.6	10.3	
FEMALES												
1990 —												
July	20.5	45.2	128.1	173.3	81.2	254.5	21.2	6.6	8.1	5.9	7.2	
August	21.9	46.9	132.3	179.2	83.6	262.8	22.1	6.8	8.3	6.1	7.4	
September	22.7	48.1	135.8	183.9	86.0	269.9	22.8	7.0	8.5	6.2	7.6	
October	23.0	48.7	138.4	187.1	88.1	275.2	23.4	7.1	8.7	6.4	7.8	
November	22.8	48.6	141.4	190.0	90.7	280.7	23.9	7.3	8.9	6.5	7.9	
December	22.5	48.1	146.3	194.3	93.4	287.8	24.2	7.5	9.1	6.7	8.1	
1991 —												
January	22.4	47.5	153.1	200.6	95.4	295.9	24.7	7.9	9.4	6.8	8.4	
February	22.9	47.1	161.1	208.2	95.9	304.2	25.2	8.3	9.7	6.8	8.6	
March r	23.6	47.1	169.0	216.1	94.9	311.0	26.0	8.6	10.1	6.8	8.8	
April r	24.3	47.7	175.4	223.1	93.0	316.1	27.0	9.0	10.5	6.6	8.9	
May r	24.6	48.6	180.2	228.8	91.2	320.0	27.9	9.2	10.7	6.5	9.0	
June r	24.4	49.6	183.6	233.2	90.5	323.7	28.8	9.3	10.9	6.5	9.1	
July r	23.6	50.3	186.6	236.9	90.9	327.8	29.5	9.4	11.0	6.5	9.2	
August r	22.8	50.9	189.4	240.3	92.0	332.3	30.0	9.5	11.1	6.6	9.3	
September	21.8	51.3	191.8	243.1	93.5	336.6	30.4	9.6	11.2	6.7	9.4	
PERSONS												
1990 —												
July	38.2	96.8	372.3	469.1	119.1	588.2	19.0	6.0	7.0	6.7	6.9	
August	40.3	100.6	388.8	489.5	123.0	612.4	19.8	6.3	7.3	6.9	7.2	
September	42.3	103.8	405.4	509.2	126.6	635.8	20.5	6.5	7.6	7.1	7.5	
October	43.9	105.8	420.8	526.6	129.6	656.2	21.1	6.8	7.8	7.2	7.7	
November	45.1	106.6	437.2	543.8	132.8	676.6	21.7	7.0	8.1	7.4	7.9	
December	46.1	106.6	456.7	563.3	136.5	699.8	22.3	7.3	8.4	7.5	8.2	
1991 —												
January	46.9	106.7	479.0	585.6	139.9	725.5	23.0	7.7	8.7	7.6	8.5	
February	47.7	107.3	502.3	609.7	142.2	751.8	24.0	8.1	9.1	7.7	8.8	
March r	48.6	108.9	524.1	633.0	142.4	775.5	25.1	8.4	9.5	7.7	9.1	
April r	49.7	111.4	542.4	653.8	140.9	794.7	26.2	8.7	9.8	7.6	9.3	
May r	51.0	114.2	556.9	671.1	138.6	809.6	27.3	8.9	10.1	7.5	9.5	
June r	52.0	116.5	568.1	684.6	136.7	821.3	28.0	9.1	10.3	7.4	9.6	
July r	52.6	117.9	578.1	696.0	135.9	832.0	28.6	9.2	10.4	7.3	9.8	
August r	53.1	118.9	587.6	706.5	136.2	842.7	28.9	9.4	10.6	7.3	9.9	
September	53.2	119.1	595.0	714.1	137.1	851.2	29.1	9.5	10.7	7.4	10.0	

TABLE 7. LABOUR FORCE STATUS OF CIVILIAN POPULATION AGED 15 TO 19: FULL -TIME ATTENDANCE AT SCHOOL OR A TERTIARY EDUCATIONAL INSTITUTION, SEPTEMBER 1991

	Employed		Unemployed			Labour force	Not in labour force	Civilian population aged 15-19	Unemployment rate -per cent-	Participation rate
	Full-time workers	Total	Looking for full-time work	Looking for part-time work - '000 -	Total					
ATTENDING NEITHER SCHOOL NOR A TERTIARY EDUCATIONAL INSTITUTION FULL TIME										
Males	166.5	195.1	54.8	* 2.1	56.9	251.9	12.9	264.9	22.6	95.1
Females	114.5	148.3	43.3	3.5	46.8	195.1	28.7	223.8	24.0	87.2
Persons	281.0	343.4	98.1	5.6	103.7	447.1	41.6	488.7	23.2	91.5
ATTENDING A TERTIARY EDUCATIONAL INSTITUTION FULL TIME										
Males	* 3.0	27.8	* 1.8	4.7	6.5	34.3	39.1	73.4	19.0	46.8
Females	* 1.2	40.0	* 0.9	8.5	9.4	49.4	41.1	90.6	19.1	54.6
Persons	4.2	67.8	* 2.7	13.2	15.9	83.7	80.2	163.9	19.0	51.1
ATTENDING SCHOOL										
Males	* 0.9	72.1	6.3	19.8	26.1	98.2	251.5	349.7	26.6	28.1
Females	* 0.1	93.1	* 2.8	22.1	24.9	118.0	227.0	345.0	21.1	34.2
Persons	* 0.9	165.2	9.1	41.9	51.0	216.3	478.5	694.8	23.6	31.1
TOTAL										
Males	170.3	295.0	62.9	26.5	89.4	384.4	303.5	688.0	23.3	55.9
Females	115.8	281.4	47.0	34.2	81.2	362.6	296.8	659.4	22.4	55.0
Persons	286.1	576.4	109.9	60.7	170.6	747.0	600.3	1,347.4	22.8	55.4

TABLE 8. LABOUR FORCE STATUS OF CIVILIAN POPULATION AGED 15 AND OVER, STATES AND TERRITORIES, SEPTEMBER 1991

State or Territory	Employed		Unemployed			Labour force	Not in labour force	Civilian population aged 15 and over	Unemployment rate -per cent-	Participation rate
	Full-time workers	Total	Looking for full-time work	Looking for part-time work - '000 -	Total					
MALES										
New South Wales	1,386.7	1,522.1	149.7	15.5	165.2	1,687.2	581.8	2,269.1	9.8	74.4
Victoria	1,024.3	1,131.2	133.1	12.8	145.9	1,277.1	433.9	1,710.9	11.4	74.6
Queensland	705.4	785.4	72.3	7.9	80.2	865.6	278.5	1,144.0	9.3	75.7
South Australia	333.6	369.4	45.0	4.0	49.0	418.4	152.4	570.8	11.7	73.3
Western Australia	399.3	444.4	52.5	3.7	56.2	500.6	145.1	645.7	11.2	77.5
Tasmania	102.3	113.3	15.0	* 0.7	15.8	129.1	45.8	174.9	12.2	73.8
Northern Territory	41.2	44.0	4.0	* 0.7	4.7	48.7	9.6	58.3	9.6	83.5
Australian Capital Territory	72.5	82.3	4.5	2.0	6.5	88.7	20.2	108.9	7.3	81.5
Australia	4,065.3	4,492.0	476.1	47.2	523.3	5,015.3	1,667.3	6,682.6	10.4	75.1
FEMALES										
New South Wales	667.7	1,082.4	80.3	35.4	115.6	1,198.0	1,141.8	2,339.7	9.7	51.2
Victoria	508.6	868.8	64.5	27.7	92.3	961.1	811.5	1,772.6	9.6	54.2
Queensland	314.9	548.2	39.1	18.2	57.3	605.5	559.4	1,164.9	9.5	52.0
South Australia	151.6	271.9	19.5	8.8	28.3	300.2	286.2	586.4	9.4	51.2
Western Australia	168.9	315.9	25.5	9.3	34.9	350.8	293.4	644.1	9.9	54.5
Tasmania	43.7	82.0	6.4	2.8	9.2	91.2	89.3	180.5	10.1	50.5
Northern Territory	23.4	32.5	2.0	* 0.8	2.8	35.3	19.5	54.9	8.0	64.4
Australian Capital Territory	45.9	69.1	1.4	2.1	3.6	72.7	38.9	111.6	4.9	65.1
Australia	1,924.8	3,270.8	238.8	105.1	343.9	3,614.7	3,240.1	6,854.8	9.5	52.7
PERSONS										
New South Wales	2,054.4	2,604.4	230.0	50.8	280.8	2,885.2	1,723.6	4,608.8	9.7	62.6
Victoria	1,532.8	2,000.0	197.6	40.5	238.2	2,238.1	1,245.4	3,483.5	10.6	64.2
Queensland	1,020.3	1,333.6	111.4	26.0	137.5	1,471.1	837.9	2,309.0	9.3	63.7
South Australia	485.2	641.3	64.5	12.8	77.3	718.6	438.6	1,157.2	10.8	62.1
Western Australia	568.3	760.3	78.1	13.0	91.1	851.4	438.5	1,289.9	10.7	66.0
Tasmania	146.1	195.3	21.4	3.5	24.9	220.2	135.1	355.4	11.3	62.0
Northern Territory	64.6	76.5	6.0	* 1.5	7.5	84.0	29.2	113.2	8.9	74.2
Australian Capital Territory	118.4	151.4	5.9	4.1	10.0	161.4	59.1	220.5	6.2	73.2
Australia	5,990.1	7,762.8	714.9	152.3	867.2	8,630.0	4,907.4	13,537.5	10.0	63.7

TABLE 9. UNEMPLOYED PERSONS, STATES AND TERRITORIES

Month	Number looking for full-time work				Number looking for part-time work	Unemployment rate					
	Aged 15-19			Total		Looking for full-time work			Looking for part-time work		Total
	Looking for first job	Total	Aged 20 and over			Aged 15-19	Aged 20 and over	Total	Total	work	
	- '000 -										
- per cent -											
NEW SOUTH WALES											
1990 — September	7.3	23.7	129.1	152.8	41.2	194.0	15.7	6.1	6.7	7.2	6.8
1991 — August	15.4	36.8	179.8	216.6	38.8	255.4	27.6	8.4	9.6	6.8	9.0
September	14.8	35.0	194.9	230.0	50.8	280.8	26.6	9.1	10.1	8.5	9.7
Standard error of —											
Sep 91 estimates	1.9	2.8	5.6	6.0	3.3	6.4	2.1	0.3	0.3	0.5	0.2
Aug 91 to Sep 91 movements	1.7	2.3	4.3	4.6	2.6	4.9	1.8	0.2	0.2	0.4	0.2
VICTORIA											
1990 — September	10.8	23.8	91.4	115.2	37.3	152.4	21.7	5.6	6.6	7.8	6.8
1991 — August	9.2	24.8	157.4	182.2	30.0	212.2	30.4	9.7	10.7	6.3	9.7
September	11.6	28.7	168.9	197.6	40.5	238.2	32.3	10.3	11.4	8.0	10.6
Standard error of —											
Sep 91 estimates	1.7	2.6	5.3	5.6	3.0	6.0	2.9	0.3	0.3	0.6	0.3
Aug 91 to Sep 91 movements	1.4	2.0	3.8	4.0	2.2	4.3	2.2	0.2	0.2	0.4	0.2
QUEENSLAND											
1990 — September	6.3	21.5	72.4	93.9	22.7	116.6	22.6	7.0	8.3	7.0	8.0
1991 — August	7.4	20.8	96.6	117.3	19.2	136.6	27.4	9.2	10.5	5.9	9.5
September	8.7	20.1	91.3	111.4	26.0	137.5	26.0	8.7	9.8	7.7	9.3
Standard error of —											
Sep 91 estimates	1.2	1.8	3.3	3.6	2.0	3.9	2.3	0.3	0.3	0.6	0.3
Aug 91 to Sep 91 movements	1.1	1.5	2.5	2.7	1.6	2.8	2.0	0.2	0.2	0.5	0.2
SOUTH AUSTRALIA											
1990 — September	3.3	8.9	40.8	49.7	11.0	60.8	22.7	8.0	9.1	6.4	8.4
1991 — August	4.4	8.8	52.9	61.7	11.5	73.2	27.8	10.4	11.4	6.9	10.3
September	3.7	9.0	55.5	64.5	12.8	77.3	26.4	10.8	11.7	7.6	10.8
Standard error of —											
Sep 91 estimates	0.7	1.0	2.1	2.2	1.2	2.4	2.9	0.4	0.4	0.7	0.3
Aug 91 to Sep 91 movements	0.6	0.8	1.5	1.5	0.9	1.6	2.3	0.3	0.3	0.5	0.2
WESTERN AUSTRALIA											
1990 — September	3.0	10.7	44.6	55.3	14.4	69.7	18.1	7.5	8.4	7.7	8.3
1991 — August	4.0	11.2	64.3	75.6	12.4	88.0	26.7	10.8	11.8	6.1	10.4
September	4.8	11.8	66.3	78.1	13.0	91.1	27.6	11.0	12.1	6.3	10.7
Standard error of —											
Sep 91 estimates	0.8	1.2	2.4	2.6	1.2	2.7	2.8	0.4	0.4	0.6	0.3
Aug 91 to Sep 91 movements	0.7	1.0	1.8	1.9	1.0	2.0	2.3	0.3	0.3	0.5	0.2
TASMANIA											
1990 — September	1.8	3.9	13.5	17.4	3.0	20.5	24.5	8.8	10.3	6.1	9.3
1991 — August	1.9	3.8	17.5	21.3	2.7	23.9	30.7	11.5	12.9	5.2	11.1
September	1.9	4.1	17.3	21.4	3.5	24.9	31.0	11.2	12.8	6.7	11.3
Standard error of —											
Sep 91 estimates	0.4	0.5	0.9	0.9	0.5	1.0	3.9	0.6	0.6	0.9	0.5
Aug 91 to Sep 91 movements	0.3	0.4	0.7	0.7	0.4	0.8	3.0	0.4	0.4	0.7	0.3
NORTHERN TERRITORY											
1990 — September	*0.3	*1.5	3.9	5.4	*1.6	7.0	*31.8	6.3	8.1	*10.3	8.5
1991 — August	*0.0	*0.6	5.9	6.5	*0.9	7.4	*14.8	8.9	9.3	*7.5	9.0
September	*0.1	*0.5	5.5	6.0	*1.5	7.5	*11.0	8.3	8.5	*11.2	8.9
Standard error of —											
Sep 91 estimates	0.1	0.3	0.8	0.8	0.4	0.9	6.0	1.2	1.1	3.2	1.1
Aug 91 to Sep 91 movements	0.0	0.2	0.6	0.6	0.3	0.6	5.0	0.8	0.8	2.3	0.7
AUSTRALIAN CAPITAL TERRITORY											
1990 — September	*0.5	*1.0	2.8	3.8	3.1	6.9	*16.8	2.3	3.0	10.1	4.4
1991 — August	*0.7	*1.1	4.7	5.8	3.6	9.4	*22.8	4.0	4.7	10.1	5.9
September	*0.2	*0.7	5.3	5.9	4.1	10.0	*17.2	4.4	4.8	11.1	6.2
Standard error of —											
Sep 91 estimates	0.2	0.3	0.6	0.6	0.6	0.8	6.5	0.5	0.5	1.5	0.5
Aug 91 to Sep 91 movements	0.2	0.3	0.5	0.5	0.4	0.6	5.9	0.4	0.4	1.2	0.4

TABLE 10. CIVILIAN LABOUR FORCE, STATES: SEASONALLY ADJUSTED SERIES

Month	Males					Females					Persons				
	Employed	Unemp- loyed - '000 -	Labour force	Unemp- loyment rate - per cent -	Partic- ipation rate - per cent -	Employed	Unemp- loyed - '000 -	Labour force	Unemp- loyment rate - per cent -	Partic- ipation rate - per cent -	Employed	Unemp- loyed - '000 -	Labour force	Unemp- loyment rate - per cent -	Partic- ipation rate - per cent -
NEW SOUTH WALES															
1990 —															
July	1,559.1	106.4	1,665.6	6.4	74.7	1,081.4	77.8	1,159.2	6.7	50.4	2,640.6	184.2	2,824.8	6.5	62.3
August	1,553.0	108.9	1,661.9	6.6	74.4	1,077.8	76.4	1,154.2	6.6	50.1	2,630.8	185.3	2,816.1	6.6	62.1
September	1,563.2	112.3	1,675.4	6.7	74.9	1,071.1	81.4	1,152.5	7.1	50.0	2,634.3	193.7	2,828.0	6.8	62.3
October	1,555.8	109.5	1,665.3	6.6	74.4	1,066.9	80.5	1,147.4	7.0	49.7	2,622.7	190.0	2,812.7	6.8	61.8
November	1,551.7	121.4	1,673.1	7.3	74.6	1,072.0	80.6	1,152.6	7.0	49.8	2,623.7	202.0	2,825.7	7.1	62.0
December	1,559.5	125.8	1,685.3	7.5	75.1	1,080.2	84.8	1,165.0	7.3	50.3	2,639.7	210.6	2,850.3	7.4	62.5
1991 —															
January	1,546.4	124.9	1,671.2	7.5	74.3	1,078.8	86.2	1,165.0	7.4	50.3	2,625.1	211.1	2,836.2	7.4	62.1
February	1,539.8	131.6	1,671.4	7.9	74.3	1,073.8	93.1	1,167.0	8.0	50.3	2,613.7	224.7	2,838.4	7.9	62.1
March	1,529.3	143.7	1,673.1	8.6	74.2	1,063.0	92.1	1,155.1	8.0	49.7	2,592.3	235.8	2,828.2	8.3	61.8
April	1,538.1	152.7	1,690.8	9.0	74.9	1,084.0	93.5	1,177.5	7.9	50.6	2,622.0	246.2	2,868.3	8.6	62.6
May	1,540.0	146.2	1,686.2	8.7	74.6	1,087.6	90.9	1,178.5	7.7	50.6	2,627.6	237.2	2,864.7	8.3	62.4
June	1,529.2	140.3	1,669.4	8.4	73.8	1,072.9	91.0	1,164.0	7.8	49.9	2,602.1	231.3	2,833.4	8.2	61.7
July	1,512.0	150.2	1,662.2	9.0	73.4	1,053.1	97.1	1,150.2	8.4	49.3	2,565.1	247.3	2,812.4	8.8	61.2
August	1,530.4	163.1	1,693.5	9.6	74.7	1,081.3	102.5	1,183.8	8.7	50.7	2,611.7	265.5	2,877.3	9.2	62.5
September	1,517.4	164.8	1,682.2	9.8	74.1	1,071.3	115.7	1,186.9	9.7	50.7	2,588.7	280.4	2,869.1	9.8	62.3
VICTORIA															
1990 —															
July	1,213.2	76.5	1,289.7	5.9	76.6	884.8	64.8	949.6	6.8	54.4	2,098.1	141.3	2,239.3	6.3	65.3
August	1,205.6	77.2	1,282.8	6.0	76.0	877.2	69.9	947.1	7.4	54.2	2,082.8	147.1	2,229.9	6.6	64.9
September	1,197.6	88.5	1,286.1	6.9	76.1	869.7	67.7	937.4	7.2	53.6	2,067.3	156.2	2,223.6	7.0	64.6
October	1,198.1	93.0	1,291.1	7.2	76.3	872.1	73.7	945.8	7.8	54.0	2,070.2	166.7	2,236.9	7.5	64.9
November	1,188.7	104.4	1,293.1	8.1	76.3	869.0	80.0	948.9	8.4	54.1	2,057.6	184.4	2,242.0	8.2	65.0
December	1,184.9	98.1	1,283.0	7.6	75.6	867.3	76.9	944.2	8.1	53.7	2,052.2	175.0	2,227.2	7.9	64.5
1991 —															
January	1,181.4	105.4	1,286.9	8.2	75.8	867.9	82.2	950.1	8.7	54.0	2,049.3	187.7	2,237.0	8.4	64.7
February	1,170.4	104.1	1,274.5	8.2	75.0	864.2	79.6	943.8	8.4	53.6	2,034.7	183.7	2,218.4	8.3	64.1
March	1,140.6	118.8	1,259.3	9.4	74.0	845.0	83.4	928.4	9.0	52.7	1,985.6	202.1	2,187.7	9.2	63.1
April	1,132.2	132.9	1,265.0	10.5	74.3	844.2	97.9	942.1	10.4	53.4	1,976.4	230.8	2,207.2	10.5	63.6
May	1,131.6	127.1	1,258.7	10.1	73.8	841.6	93.4	935.0	10.0	52.9	1,973.2	220.5	2,193.7	10.1	63.2
June	1,121.0	141.1	1,262.0	11.2	73.9	846.1	87.6	933.7	9.4	52.8	1,967.0	228.7	2,195.7	10.4	63.2
July	1,117.7	134.3	1,252.0	10.7	73.3	832.2	89.1	921.3	9.7	52.1	1,949.9	223.4	2,173.3	10.3	62.5
August	1,125.8	143.3	1,269.1	11.3	74.2	855.4	81.0	936.4	8.7	52.9	1,981.2	224.3	2,205.5	10.2	63.4
September	1,131.1	147.2	1,278.4	11.5	74.7	856.8	96.9	953.7	10.2	53.8	1,987.9	244.1	2,232.0	10.9	64.1

TABLE 10. CIVILIAN LABOUR FORCE, STATES: SEASONALLY ADJUSTED SERIES—continued

Month	Males					Females					Persons				
	Employed	Unemp- loyed - '000 -	Labour force	Unemp- loyment rate - per cent -	Partic- ipation rate cent -	Employed	Unemp- loyed - '000 -	Labour force	Unemp- loyment rate - per cent -	Partic- ipation rate cent -	Employed	Unemp- loyed - '000 -	Labour force	Unemp- loyment rate - per cent -	Partic- ipation rate cent -
QUEENSLAND															
1990 —															
July	780.8	68.0	848.8	8.0	76.3	545.2	51.5	596.7	8.6	52.7	1,326.0	119.5	1,445.5	8.3	64.4
August	783.5	69.3	852.8	8.1	76.5	547.3	54.6	601.8	9.1	53.0	1,330.8	123.8	1,454.6	8.5	64.7
September	783.1	71.0	854.1	8.3	76.4	546.2	50.3	596.6	8.4	52.5	1,329.3	121.3	1,450.6	8.4	64.3
October	779.5	75.4	854.9	8.8	76.4	549.2	53.1	602.2	8.8	52.9	1,328.7	128.5	1,457.1	8.8	64.5
November	772.5	80.5	853.0	9.4	76.1	543.3	52.1	595.4	8.8	52.2	1,315.8	132.7	1,448.4	9.2	64.0
December	771.0	78.9	849.9	9.3	75.7	542.2	55.8	598.0	9.3	52.3	1,313.2	134.7	1,447.9	9.3	63.9
1991 —															
January	767.4	78.2	845.6	9.2	75.1	545.1	54.0	599.1	9.0	52.3	1,312.6	132.1	1,444.7	9.1	63.6
February	759.7	82.2	841.9	9.8	74.6	538.3	55.6	593.9	9.4	51.7	1,298.0	137.8	1,435.8	9.6	63.1
March	760.1	90.5	850.6	10.6	75.2	539.4	56.7	596.1	9.5	51.8	1,299.5	147.2	1,446.8	10.2	63.4
April	761.4	90.8	852.2	10.7	75.2	539.8	64.5	604.2	10.7	52.4	1,301.1	155.3	1,456.4	10.7	63.7
May	754.3	92.8	847.1	11.0	74.6	534.5	61.9	596.4	10.4	51.6	1,288.8	154.7	1,443.5	10.7	63.0
June	772.8	79.2	852.0	9.3	74.9	539.2	59.2	598.4	9.9	51.7	1,312.0	138.4	1,450.4	9.5	63.2
July	763.9	89.3	853.2	10.5	74.9	538.7	64.1	602.7	10.6	51.9	1,302.6	153.3	1,455.9	10.5	63.3
August	773.4	83.8	857.1	9.8	75.1	543.9	60.1	604.1	10.0	52.0	1,317.3	143.9	1,461.2	9.8	63.4
September	781.3	85.8	867.2	9.9	75.8	540.3	57.2	597.6	9.6	51.3	1,321.6	143.1	1,464.7	9.8	63.4
SOUTH AUSTRALIA															
1990 —															
July	391.6	29.1	420.8	6.9	75.0	273.8	22.6	296.4	7.6	51.3	665.4	51.7	717.1	7.2	63.0
August	389.0	34.6	423.6	8.2	75.4	276.6	23.7	300.2	7.9	51.9	665.6	58.3	723.8	8.0	63.5
September	382.3	35.3	417.6	8.4	74.2	275.7	23.9	299.6	8.0	51.8	658.0	59.1	717.2	8.2	62.8
October	388.8	37.7	426.5	8.8	75.7	277.6	22.3	300.0	7.4	51.8	666.4	60.1	726.5	8.3	63.6
November	384.5	38.5	423.1	9.1	75.0	277.7	23.3	301.1	7.8	51.9	662.2	61.9	724.1	8.5	63.3
December	386.7	38.6	425.3	9.1	75.3	279.6	23.4	303.0	7.7	52.2	666.3	62.0	728.3	8.5	63.6
1991 —															
January	388.0	39.5	427.5	9.2	75.6	272.8	28.6	301.4	9.5	51.8	660.8	68.1	728.9	9.3	63.6
February	385.3	40.6	425.9	9.5	75.2	277.8	24.2	301.9	8.0	51.9	663.0	64.8	727.9	8.9	63.4
March	386.8	39.2	426.0	9.2	75.2	267.8	28.5	296.3	9.6	50.8	654.6	67.7	722.3	9.4	62.8
April	382.4	44.7	427.1	10.5	75.3	273.4	30.2	303.6	9.9	52.0	655.8	74.9	730.7	10.3	63.5
May	381.2	41.6	422.8	9.8	74.4	274.4	28.2	302.6	9.3	51.8	655.6	69.8	725.4	9.6	63.0
June	379.7	44.0	423.7	10.4	74.5	276.9	25.8	302.7	8.5	51.8	656.6	69.8	726.4	9.6	63.0
July	365.4	46.0	411.4	11.2	72.2	271.1	28.2	299.3	9.4	51.1	636.5	74.3	710.7	10.4	61.5
August	370.8	46.3	417.1	11.1	73.2	272.2	27.2	299.4	9.1	51.1	643.0	73.5	716.5	10.3	62.0
September	367.5	47.4	414.8	11.4	72.7	273.3	27.9	301.2	9.3	51.4	640.7	75.2	716.0	10.5	61.9

TABLE 10. CIVILIAN LABOUR FORCE, STATES: SEASONALLY ADJUSTED SERIES—continued

Month	Males					Females					Persons				
	Employed	Unemp- loyed - '000 -	Labour force	Unemp- loyment rate - per cent -	Partic- ipation rate cent -	Employed	Unemp- loyed - '000 -	Labour force	Unemp- loyment rate - per cent -	Partic- ipation rate cent -	Employed	Unemp- loyed - '000 -	Labour force	Unemp- loyment rate - per cent -	Partic- ipation rate cent -
	WESTERN AUSTRALIA														
1990 —															
July	449.4	38.8	488.2	8.0	77.5	321.9	24.6	346.4	7.1	55.2	771.2	63.4	834.6	7.6	66.4
August	449.4	38.9	488.3	8.0	77.4	314.9	28.3	343.2	8.2	54.6	764.3	67.1	831.4	8.1	66.0
September	451.5	41.7	493.2	8.5	78.0	312.7	29.1	341.9	8.5	54.2	764.2	70.8	835.0	8.5	66.1
October	450.8	43.3	494.1	8.8	78.0	311.8	30.5	342.3	8.9	54.2	762.6	73.8	836.4	8.8	66.1
November	448.2	43.0	491.2	8.8	77.3	311.0	29.3	340.3	8.6	53.8	759.2	72.3	831.5	8.7	65.6
December	447.6	43.3	490.9	8.8	77.2	312.8	27.2	340.1	8.0	53.6	760.5	70.5	831.0	8.5	65.4
1991 —															
January	447.2	46.6	493.9	9.4	77.5	312.3	28.9	341.2	8.5	53.7	759.5	75.6	835.1	9.0	65.6
February	445.1	50.4	495.5	10.2	77.6	308.4	31.5	339.9	9.3	53.4	753.4	81.9	835.3	9.8	65.5
March	441.5	53.9	495.4	10.9	77.5	305.0	32.1	337.1	9.5	52.9	746.5	86.1	832.6	10.3	65.2
April	440.5	60.7	501.2	12.1	78.2	312.4	33.4	345.8	9.7	54.1	752.9	94.2	847.0	11.1	66.2
May	449.1	51.7	500.8	10.3	78.1	311.8	32.8	344.5	9.5	53.8	760.9	84.5	845.4	10.0	66.0
June	442.2	54.3	496.5	10.9	77.3	307.7	34.1	341.8	10.0	53.3	749.9	88.4	838.2	10.5	65.3
July	434.0	60.3	494.3	12.2	76.8	310.9	33.3	344.2	9.7	53.6	744.9	93.6	838.5	11.2	65.2
August	440.8	57.0	497.9	11.5	77.2	317.9	36.8	354.7	10.4	55.2	758.7	93.9	852.5	11.0	66.2
September	441.2	57.6	498.7	11.5	77.2	311.9	35.1	347.0	10.1	53.9	753.0	92.6	845.7	11.0	65.6
TASMANIA															
1990 —															
July	119.5	12.7	132.2	9.6	76.6	78.9	7.3	86.2	8.5	48.3	198.4	20.0	218.4	9.2	62.3
August	117.8	13.4	131.3	10.2	76.0	79.3	7.8	87.1	8.9	48.8	197.2	21.2	218.4	9.7	62.2
September	118.8	12.8	131.7	9.8	76.1	80.7	7.8	88.5	8.8	49.5	199.5	20.7	220.2	9.4	62.6
October	117.9	13.0	130.8	9.9	75.5	81.1	7.8	88.9	8.8	49.6	198.9	20.8	219.7	9.5	62.4
November	119.7	11.2	130.8	8.5	75.4	81.4	8.0	89.4	8.9	49.9	201.1	19.1	220.2	8.7	62.4
December	117.0	12.5	129.5	9.7	74.6	80.5	7.9	88.3	8.9	49.2	197.4	20.4	217.8	9.3	61.7
1991 —															
January	116.2	12.0	128.2	9.4	73.8	79.6	7.8	87.5	8.9	48.7	195.9	19.8	215.7	9.2	61.0
February	116.7	12.7	129.4	9.8	74.4	81.2	8.3	89.6	9.3	49.9	197.9	21.0	218.9	9.6	61.9
March	116.4	13.2	129.6	10.2	74.4	80.9	7.6	88.5	8.6	49.2	197.2	20.8	218.1	9.6	61.6
April	115.1	14.3	129.3	11.0	74.2	79.9	9.4	89.4	10.6	49.7	195.0	23.7	218.7	10.8	61.8
May	112.5	14.5	127.1	11.4	72.9	78.5	9.2	87.6	10.5	48.7	191.0	23.7	214.7	11.0	60.6
June	111.5	15.5	127.1	12.2	72.8	80.3	9.9	90.2	11.0	50.1	191.8	25.4	217.2	11.7	61.3
July	113.1	14.4	127.5	11.3	73.0	79.9	9.7	89.6	10.9	49.7	192.9	24.1	217.1	11.1	61.2
August	112.5	15.8	128.3	12.3	73.4	81.0	10.1	91.1	11.0	50.5	193.5	25.9	219.4	11.8	61.8
September	113.5	15.6	129.1	12.1	73.8	82.2	9.5	91.7	10.3	50.8	195.7	25.1	220.8	11.4	62.1

TABLE 11. CIVILIAN LABOUR FORCE, STATES: TREND SERIES

Month	Males					Females					Persons				
	Employed	Unemp- loyed - '000 -	Labour force	Unemp- loyment rate - per cent -	Partic- ipation rate	Employed	Unemp- loyed - '000 -	Labour force	Unemp- loyment rate - per cent -	Partic- ipation rate	Employed	Unemp- loyed - '000 -	Labour force	Unemp- loyment rate - per cent -	Partic- ipation rate
NEW SOUTH WALES															
1990 —															
July	1,555.0	103.4	1,658.4	6.2	74.3	1,077.7	77.5	1,155.2	6.7	50.2	2,632.7	180.8	2,813.6	6.4	62.1
August	1,557.5	106.9	1,664.4	6.4	74.5	1,076.5	78.4	1,154.9	6.8	50.1	2,633.9	185.4	2,819.3	6.6	62.1
September	1,558.4	110.8	1,669.2	6.6	74.7	1,075.0	79.5	1,154.4	6.9	50.1	2,633.4	190.3	2,823.7	6.7	62.2
October	1,557.7	114.6	1,672.3	6.9	74.7	1,073.7	80.6	1,154.4	7.0	50.0	2,631.4	195.2	2,826.6	6.9	62.1
November	1,555.1	118.6	1,673.7	7.1	74.7	1,073.1	82.5	1,155.6	7.1	50.0	2,628.1	201.2	2,829.3	7.1	62.1
December	1,551.1	123.6	1,674.8	7.4	74.6	1,073.4	85.1	1,158.5	7.3	50.0	2,624.5	208.7	2,833.2	7.4	62.1
1991 —															
January	1,546.8	129.5	1,676.3	7.7	74.6	1,074.9	87.6	1,162.5	7.5	50.1	2,621.7	217.1	2,838.8	7.6	62.2
February	1,542.5	135.1	1,677.6	8.1	74.5	1,076.2	89.7	1,165.9	7.7	50.2	2,618.7	224.8	2,843.5	7.9	62.2
March r	1,538.3	139.8	1,678.1	8.3	74.5	1,076.6	90.8	1,167.4	7.8	50.2	2,614.9	230.7	2,845.6	8.1	62.2
April r	1,534.7	143.6	1,678.2	8.6	74.4	1,076.0	91.7	1,167.7	7.9	50.2	2,610.7	235.3	2,845.9	8.3	62.1
May r	1,531.4	146.8	1,678.1	8.7	74.3	1,074.9	93.1	1,168.0	8.0	50.2	2,606.3	239.8	2,846.1	8.4	62.0
June r	1,528.3	150.0	1,678.3	8.9	74.2	1,073.8	95.4	1,169.2	8.2	50.1	2,602.1	245.4	2,847.5	8.6	62.0
July r	1,525.2	153.4	1,678.6	9.1	74.1	1,072.5	98.8	1,171.3	8.4	50.2	2,597.7	252.2	2,849.9	8.8	62.0
August r	1,522.3	157.0	1,679.3	9.4	74.1	1,071.4	102.7	1,174.1	8.7	50.2	2,593.7	259.7	2,853.4	9.1	62.0
September	1,520.1	160.1	1,680.2	9.5	74.0	1,070.8	106.7	1,177.5	9.1	50.3	2,590.9	266.8	2,857.6	9.3	62.0
VICTORIA															
1990 —															
July	1,211.4	73.3	1,284.7	5.7	76.3	879.3	63.0	942.3	6.7	54.0	2,090.7	136.3	2,227.0	6.1	64.9
August	1,206.6	80.4	1,286.9	6.2	76.3	877.6	67.2	944.8	7.1	54.1	2,084.1	147.6	2,231.7	6.6	65.0
September	1,201.6	87.1	1,288.7	6.8	76.3	875.0	71.1	946.1	7.5	54.0	2,076.6	158.2	2,234.8	7.1	65.0
October	1,196.9	92.7	1,289.6	7.2	76.2	872.4	73.9	946.4	7.8	54.0	2,069.3	166.6	2,236.0	7.5	64.9
November	1,191.4	97.4	1,288.8	7.6	76.1	870.1	76.1	946.3	8.0	53.9	2,061.5	173.5	2,235.0	7.8	64.8
December	1,184.0	101.6	1,285.6	7.9	75.8	867.1	78.5	945.6	8.3	53.8	2,051.1	180.0	2,231.1	8.1	64.6
1991 —															
January	1,174.3	106.2	1,280.5	8.3	75.4	863.2	81.2	944.4	8.6	53.7	2,037.6	187.4	2,225.0	8.4	64.4
February	1,162.4	111.8	1,274.2	8.8	75.0	857.9	84.4	942.3	9.0	53.5	2,020.3	196.2	2,216.5	8.9	64.0
March r	1,149.4	118.1	1,267.5	9.3	74.5	851.6	87.2	938.8	9.3	53.3	2,001.0	205.3	2,206.3	9.3	63.7
April r	1,137.8	124.7	1,262.5	9.9	74.1	846.3	89.1	935.4	9.5	53.0	1,984.1	213.8	2,197.9	9.7	63.4
May r	1,129.6	130.7	1,260.3	10.4	73.9	843.5	90.0	933.4	9.6	52.9	1,973.1	220.7	2,193.8	10.1	63.2
June r	1,125.0	135.6	1,260.6	10.8	73.9	843.2	90.0	933.2	9.6	52.8	1,968.1	225.7	2,193.8	10.3	63.1
July r	1,122.9	139.6	1,262.5	11.1	73.9	844.7	89.8	934.5	9.6	52.8	1,967.6	229.4	2,197.0	10.4	63.2
August r	1,122.4	143.0	1,265.4	11.3	74.0	847.2	89.6	936.8	9.6	52.9	1,969.5	232.7	2,202.2	10.6	63.3
September	1,123.8	145.2	1,269.0	11.4	74.2	850.6	89.4	940.1	9.5	53.0	1,974.5	234.6	2,209.0	10.6	63.4

TABLE 11. CIVILIAN LABOUR FORCE, STATES: TREND SERIES—continued

Month	Males					Females					Persons				
	Employed	Unemp- loyed - '000 -	Labour force	Unemp- loyment rate - per cent -	Partic- ipation rate cent -	Employed	Unemp- loyed - '000 -	Labour force	Unemp- loyment rate - per cent -	Partic- ipation rate cent -	Employed	Unemp- loyed - '000 -	Labour force	Unemp- loyment rate - per cent -	Partic- ipation rate cent -
	QUEENSLAND														
1990 —															
July	781.8	68.4	850.2	8.1	76.4	546.2	50.7	596.9	8.5	52.7	1,327.9	119.1	1,447.1	8.2	64.4
August	781.8	70.6	852.3	8.3	76.4	546.9	51.8	598.8	8.7	52.8	1,328.7	122.4	1,451.1	8.4	64.5
September	780.8	72.6	853.3	8.5	76.4	546.9	52.6	599.5	8.8	52.7	1,327.7	125.2	1,452.8	8.6	64.4
October	778.3	74.7	852.9	8.8	76.2	546.3	52.9	599.1	8.8	52.6	1,324.5	127.5	1,452.0	8.8	64.3
November	774.6	76.8	851.5	9.0	75.9	545.2	53.1	598.3	8.9	52.4	1,319.8	130.0	1,449.8	9.0	64.1
December	770.2	79.5	849.6	9.4	75.6	543.7	53.9	597.6	9.0	52.3	1,313.9	133.3	1,447.2	9.2	63.9
1991 —															
January	765.8	82.2	848.0	9.7	75.3	542.1	55.2	597.2	9.2	52.1	1,307.9	137.4	1,445.2	9.5	63.6
February	762.3	84.8	847.2	10.0	75.1	540.4	56.9	597.2	9.5	52.0	1,302.7	141.7	1,444.4	9.8	63.4
March r	760.3	86.9	847.2	10.3	74.9	539.0	58.7	597.7	9.8	51.9	1,299.3	145.6	1,444.9	10.1	63.3
April r	760.3	88.0	848.3	10.4	74.9	538.3	60.3	598.5	10.1	51.9	1,298.5	148.3	1,446.8	10.2	63.3
May r	762.1	88.1	850.2	10.4	74.9	538.2	61.2	599.5	10.2	51.9	1,300.3	149.3	1,449.7	10.3	63.3
June r	765.2	87.4	852.6	10.2	75.0	538.7	61.5	600.2	10.2	51.8	1,303.9	148.9	1,452.8	10.2	63.3
July r	768.9	86.4	855.3	10.1	75.0	539.5	61.2	600.7	10.2	51.8	1,308.4	147.6	1,456.0	10.1	63.3
August r	772.7	85.5	858.1	10.0	75.2	540.4	60.6	601.0	10.1	51.7	1,313.1	146.1	1,459.2	10.0	63.3
September	776.0	84.5	860.5	9.8	75.2	541.1	59.8	600.9	10.0	51.6	1,317.1	144.3	1,461.5	9.9	63.3
SOUTH AUSTRALIA															
1990 —															
July	390.4	31.8	422.2	7.5	75.2	273.4	22.4	295.7	7.6	51.2	663.8	54.1	717.9	7.5	63.0
August	389.1	33.4	422.4	7.9	75.2	275.1	22.8	297.9	7.7	51.5	664.1	56.2	720.3	7.8	63.2
September	387.5	35.2	422.7	8.3	75.2	276.6	23.1	299.7	7.7	51.8	664.1	58.3	722.4	8.1	63.3
October	386.4	36.8	423.2	8.7	75.1	277.5	23.4	300.9	7.8	51.9	664.0	60.2	724.1	8.3	63.4
November	386.1	38.1	424.2	9.0	75.2	277.6	23.9	301.4	7.9	51.9	663.7	61.9	725.6	8.5	63.4
December	386.3	39.0	425.3	9.2	75.3	276.7	24.7	301.4	8.2	51.9	663.0	63.7	726.7	8.8	63.4
1991 —															
January	386.7	39.7	426.4	9.3	75.4	275.5	25.8	301.2	8.6	51.8	662.2	65.5	727.6	9.0	63.4
February	386.5	40.3	426.8	9.4	75.4	274.3	26.9	301.2	8.9	51.7	660.8	67.2	728.0	9.2	63.4
March r	385.3	41.1	426.4	9.6	75.2	273.5	27.7	301.3	9.2	51.7	658.8	68.8	727.6	9.5	63.3
April r	382.9	42.1	424.9	9.9	74.9	273.2	28.1	301.3	9.3	51.6	656.1	70.1	726.2	9.7	63.1
May r	379.7	43.2	422.8	10.2	74.4	273.2	28.0	301.3	9.3	51.6	652.9	71.2	724.1	9.8	62.8
June r	376.1	44.3	420.4	10.5	73.9	273.4	27.8	301.2	9.2	51.5	649.5	72.1	721.6	10.0	62.6
July r	372.7	45.3	418.0	10.8	73.4	273.3	27.7	301.0	9.2	51.4	646.0	73.0	719.0	10.1	62.3
August r	369.7	46.3	415.9	11.1	73.0	273.1	27.6	300.7	9.2	51.3	642.8	73.8	716.6	10.3	62.0
September	367.1	47.1	414.2	11.4	72.6	273.3	27.3	300.6	9.1	51.3	640.4	74.4	714.8	10.4	61.8

TABLE 11. CIVILIAN LABOUR FORCE, STATES: TREND SERIES—continued

Month	Males					Females					Persons				
	Employed	Unemp- loyed - '000 -	Labour force	Unemp- loyment rate - per cent -	Partic- ipation rate - per cent -	Employed	Unemp- loyed - '000 -	Labour force	Unemp- loyment rate - per cent -	Partic- ipation rate - per cent -	Employed	Unemp- loyed - '000 -	Labour force	Unemp- loyment rate - per cent -	Partic- ipation rate - per cent -
WESTERN AUSTRALIA															
1990 —															
July	450.8	38.1	489.0	7.8	77.6	314.7	27.1	341.8	7.9	54.5	765.5	65.2	830.8	7.9	66.1
August	450.7	39.5	490.2	8.1	77.7	314.5	27.9	342.4	8.1	54.4	765.2	67.4	832.6	8.1	66.1
September	450.4	40.8	491.2	8.3	77.7	314.1	28.4	342.5	8.3	54.3	764.5	69.2	833.7	8.3	66.0
October	449.9	41.9	491.8	8.5	77.6	313.2	28.8	342.0	8.4	54.1	763.1	70.7	833.8	8.5	65.9
November	448.9	43.4	492.2	8.8	77.5	312.1	29.0	341.1	8.5	53.9	760.9	72.4	833.3	8.7	65.7
December	447.5	45.4	492.9	9.2	77.5	311.0	29.4	340.3	8.6	53.7	758.5	74.8	833.3	9.0	65.6
1991 —															
January	446.2	47.8	494.1	9.7	77.5	310.2	29.9	340.1	8.8	53.5	756.4	77.8	834.2	9.3	65.5
February	445.1	50.5	495.5	10.2	77.6	309.6	30.7	340.3	9.0	53.5	754.7	81.1	835.8	9.7	65.6
March r	444.0	52.9	497.0	10.6	77.7	309.2	31.6	340.9	9.3	53.5	753.3	84.6	837.8	10.1	65.6
April r	443.1	54.8	497.9	11.0	77.7	309.3	32.6	341.9	9.5	53.5	752.5	87.4	839.9	10.4	65.6
May r	442.2	56.0	498.2	11.2	77.6	310.0	33.4	343.4	9.7	53.7	752.2	89.4	841.6	10.6	65.7
June r	441.3	56.6	497.9	11.4	77.5	311.1	34.0	345.0	9.8	53.8	752.4	90.6	843.0	10.7	65.7
July r	440.5	57.1	497.6	11.5	77.3	312.1	34.5	346.6	10.0	54.0	752.6	91.6	844.2	10.9	65.7
August r	439.9	57.5	497.4	11.6	77.2	313.1	35.0	348.1	10.1	54.1	752.9	92.6	845.5	10.9	65.7
September	439.5	57.7	497.3	11.6	77.0	313.9	35.5	349.3	10.2	54.2	753.4	93.2	846.6	11.0	65.6
TASMANIA															
1990 —															
July	118.9	12.7	131.6	9.7	76.3	79.3	7.7	87.1	8.9	48.8	198.3	20.4	218.7	9.3	62.3
August	118.8	12.8	131.7	9.8	76.2	79.7	7.8	87.5	8.9	49.0	198.5	20.7	219.2	9.4	62.4
September	118.6	12.7	131.4	9.7	75.9	80.2	7.8	88.0	8.9	49.2	198.8	20.6	219.4	9.4	62.4
October	118.4	12.5	130.9	9.6	75.5	80.6	7.8	88.4	8.8	49.4	198.9	20.3	219.2	9.3	62.2
November	118.0	12.3	130.3	9.4	75.1	80.8	7.8	88.6	8.8	49.5	198.9	20.1	218.9	9.2	62.1
December	117.7	12.2	129.8	9.4	74.8	80.9	7.8	88.7	8.8	49.5	198.6	20.0	218.5	9.1	61.9
1991 —															
January	117.1	12.3	129.4	9.5	74.5	80.7	7.9	88.7	9.0	49.4	197.8	20.3	218.1	9.3	61.7
February	116.3	12.8	129.1	9.9	74.2	80.4	8.1	88.6	9.2	49.3	196.8	20.9	217.7	9.6	61.6
March r	115.4	13.3	128.7	10.4	73.9	80.1	8.5	88.6	9.6	49.3	195.5	21.8	217.3	10.0	61.4
April r	114.4	13.9	128.3	10.9	73.7	79.9	8.9	88.8	10.0	49.3	194.3	22.8	217.1	10.5	61.3
May r	113.6	14.5	128.1	11.3	73.4	79.9	9.3	89.1	10.4	49.5	193.4	23.7	217.2	10.9	61.3
June r	113.0	14.9	127.9	11.6	73.3	80.0	9.6	89.6	10.7	49.7	193.0	24.4	217.4	11.2	61.3
July r	112.6	15.2	127.8	11.9	73.2	80.3	9.8	90.1	10.8	50.0	192.9	25.0	217.9	11.5	61.4
August r	112.4	15.5	127.9	12.1	73.2	80.7	9.9	90.6	10.9	50.2	193.1	25.4	218.5	11.6	61.5
September	112.4	15.7	128.1	12.2	73.2	81.2	10.0	91.2	10.9	50.5	193.6	25.6	219.3	11.7	61.7

EXPLANATORY NOTES

Introduction

This publication contains preliminary estimates of the civilian labour force derived from the labour force survey part of the monthly population survey. Estimates for the current month are preliminary and subject to revision. Revised estimates for the current month and more detailed estimates will be published in *The Labour Force, Australia* (6203.0).

The population survey

2. The population survey is based on a multi-stage area sample of private dwellings (about 31,000 houses, flats, etc.) and a list sample of non-private dwellings (hotels, motels, etc.), and covers about three-fifths of one per cent of the population of Australia. The information is obtained from the occupants of selected dwellings by carefully chosen and specially trained interviewers. The interviews are generally conducted during the two weeks beginning on the Monday between the 6th and 12th of each month. The information obtained relates to the week before the interview (i.e. the reference week).

Scope

3. The labour force survey includes all persons aged 15 and over except: members of the permanent defence forces; certain diplomatic personnel of overseas governments, customarily excluded from census and estimated populations; overseas residents in Australia; and members of non-Australian defence forces (and their dependents) stationed in Australia.

Coverage

4. In the labour force survey, coverage rules are applied which aim to ensure that each person is associated with only one dwelling, and hence has only one chance of selection. The coverage rules are, necessarily, a balance between theoretical and operational considerations. Nevertheless, the chance of a person being enumerated at two separate dwellings in the survey is considered to be negligible.

Population benchmarks

5. New benchmarks based on the results of the 1986 Census of Population and Housing were introduced in the February 1989 issue of this publication. Labour force estimates were revised for the period January 1984 to January 1989. All estimates produced after January 1989 are based on the new benchmarks.

Revision of series

6. From April 1986, the definition of employed persons was changed to include persons who worked without pay between 1 and 14 hours per week in a family business or on a farm (i.e. unpaid family helpers). For further information, see paragraphs 36 and 37 of the Explanatory Notes to the February 1987 issue of *The Labour Force, Australia* (6203.0).

7. The LFS sample was redesigned and reselected using information collected in the 1986 Census of Population and Housing. The new sample was phased in over the period September 1987 to December 1987. For details, see *Information Paper - Labour Force Survey - Sample Design* (6269.0).

Survey sample redesign

8. Two types of error are possible in an estimate based on a sample survey: sampling error and non-sampling error. The *sampling error* is a measure of the variability that occurs by chance because a sample, rather than the entire population, is surveyed. One measure of the likely difference resulting from not including all dwellings in the survey is given by the *standard error*. There are about two chances in three that a sample estimate will differ by less than one standard error from the figure that would have been obtained if all dwellings had been included in the survey, and about nineteen chances in twenty that the difference will be less than two standard errors.

Reliability of the estimates

9. Standard errors of estimates for the latest month and of estimates of movements since the previous month are shown in the tables. Standard errors of other estimates and other movements may be determined by using information in the Technical Note in *The Labour Force, Australia* (6203.0).

10. The smaller the estimate the higher is the relative standard error. Very small estimates are subject to high standard errors (relative to the size of the estimate) which detract seriously from their value for most reasonable uses. In the tables in this publication, only estimates with relative standard errors of 25 per cent or less, and percentages based on such estimates, are considered sufficiently reliable for most purposes. However, estimates and percentages with larger relative standard errors have been included and are preceded by an asterisk (eg. * 3.4) to indicate they are subject to high standard errors and should be used with caution.

11. Examples of the calculation and use of standard errors are given below:

(a) An estimate of 300,000 unemployed males looking for full-time work has a standard error of about 6,900. Therefore there are about two chances in three that the number that would have been produced if all dwellings had been included in the

(a) An estimate of 300,000 unemployed males looking for full-time work has a standard error of about 6,900. Therefore there are about two chances in three that the number that would have been produced if all dwellings had been included in the

survey will be within the range 293,100 to 306,900 and about nineteen chances in twenty that the number will be within the range 286,200 to 313,800.

- (b) On an estimate of movement of +28,300 in the number of unemployed males looking for full-time work from one month to the next (with the highest of the two monthly level estimates being 300,000) the standard error is about 5,300. Therefore, there are about two chances in three that if all dwellings had been included in the surveys the movement would have been within the range +23,000 to +33,600, and about nineteen chances in twenty that it would have been within the range +17,700 to +38,900.

12. The imprecision due to sampling variability, which is measured by the standard error, should not be confused with inaccuracies that may occur because of imperfections in reporting by respondents, errors made in collection such as in recording and coding of data, and errors made in processing the data. Inaccuracies of this kind are referred to as the *non-sampling error*, and they may occur in any enumeration, whether it be a full count or a sample. Every effort is made to reduce the non-sampling error to a minimum by careful design of questionnaires, intensive training and supervision of interviewers and efficient operating procedures.

Seasonal adjustment and trend estimation

13. Seasonally adjusted series are published in Tables 2, 5 and 10. Seasonal adjustment is a means of removing the estimated effects of normal seasonal variation from the series so that the effects of other influences on the series can be more clearly recognised. Seasonal adjustment does not aim to remove the irregular or non-seasonal influences which may be present in any particular month. Influences that are volatile can still make it difficult to interpret the movement of the series even after adjustment for seasonal variation.

14. Smoothing seasonally adjusted series produces a measure of trend by reducing the impact of the irregular component of the series. The trend estimates have been derived by applying a 13-term Henderson-weighted moving average to the series. Trend series are used to analyse the underlying behaviour of the series over time. These are published in Tables 3, 6 and 11.

15. While this smoothing technique enables estimates to be produced for the latest month, it does result in revisions to the most recent months as additional observations become available. Generally, subsequent revisions become smaller, and after three months have a negligible impact on the series. There will also be revisions as a result of the annual review of seasonal factors.

16. Users may wish to refer to the ABS Information Papers *A Guide to Smoothing Time Series - Estimates of*

'Trend' (1316.0), and *Time Series Decomposition - an Overview* (1317.0) for more detailed information on smoothing of seasonally adjusted time series data.

Semi-logarithmic graphs

17. Graphs on page 2 have been drawn using a logarithmic vertical scale to aid comparison of rates of growth in series of differing magnitude. Equal distances on the vertical scale (over equal time periods) indicate equal rates of growth for graphs on the same page.

Related publications

18. Users may also wish to refer to *The Labour Force, Australia* (6203.0). This publication contains a detailed list of related publications which are available on request.

19. Current publications produced by the ABS are listed in the *Catalogue of Publications and Products, Australia* (1101.0). The ABS also issues, on Tuesdays and Fridays, a *Publications Advice* (1105.0) which lists publications to be released in the next few days. The Catalogue and Publications Advice are available from any ABS office.

Unpublished statistics

20. As well as the statistics included in this and related publications, the ABS may have other relevant unpublished data available. Inquiries should be made to Don Clark on Canberra (06) 252 6525 or any ABS State office.

Symbols and other usages

* subject to sampling variability too high for most practical uses. See the Technical Note in 6203.0 for more details.

. . not applicable

r revised

21. Estimates have been rounded and discrepancies may occur between sums of the component items and totals.

Forthcoming issues

22. The following table shows the dates on which *The Labour Force, Australia, Preliminary*, (6202.0) publication is scheduled to be released.

Issue	Release Date
1991 October	7 November 1991
November	12 December 1991
December	16 January 1992
1992 January	13 February 1992
February	12 March 1992
March	9 April 1992

J. L. CARROLL
Acting Australian Statistician

GLOSSARY

Attending school: Persons aged 15 to 19 who, during the reference week, were enrolled full time at secondary or high schools.

Attending tertiary educational institution full time: Persons aged 15 to 24 who, during the reference week, were enrolled full time at universities, colleges of advanced education, technical colleges, colleges of technical and further education and theological colleges.

Employed: Persons aged 15 and over who, during the reference week:

- (a) worked for one hour or more for pay, profit, commission or payment in kind in a job or business, or on a farm (comprising employees, employers and self-employed persons); or
- (b) worked for one hour or more without pay in a family business or on a farm (i.e. unpaid family helpers); or
- (c) were employees who had a job but were not at work and were: on paid leave; on leave without pay for less than four weeks up to the end of the reference week; stood down without pay because of bad weather or plant breakdown at their place of employment for less than four weeks up to the end of the reference week; on strike or locked out; on workers' compensation and expected to be returning to their job; or receiving wages or salary while undertaking full-time study; or
- (d) were employers, self-employed persons or unpaid family helpers who had a job, business or farm, but were not at work.

Full-time workers: Employed persons who usually worked 35 hours or more a week (in all jobs) and others who, although usually working less than 35 hours a week, worked 35 hours or more during the reference week.

Labour force: For any group, persons who were employed or unemployed, as defined.

Labour force status: A classification of the civilian population aged 15 and over into employed, unemployed or not in the labour force, as defined. The definitions conform closely to the international standard definitions adopted by the International Conferences of Labour Statisticians.

Not in the labour force: Persons who were not in the categories employed or unemployed as defined.

Participation rate: For any group, the labour force expressed as a percentage of the civilian population aged 15 and over in the same group.

Part-time workers: Employed persons who usually worked less than 35 hours a week and who did so during the reference week.

Seasonally adjusted series: A time series of estimates with the estimated effects of normal seasonal variation removed. See paragraph 13 of the Explanatory Notes for more detail.

Trend series: A smoothed seasonally adjusted series of estimates. See paragraphs 14 to 16 of the Explanatory Notes for more detail.

Unemployed: Persons aged 15 and over who were not employed during the reference week, and:

- (a) had actively looked for full-time or part-time work at any time in the four weeks up to the end of the reference week and:
 - (i) were available for work in the reference week, or would have been available except for temporary illness (i.e. lasting for less than four weeks to the end of the reference week); or
 - (ii) were waiting to start a new job within four weeks from the end of the reference week and would have started in the reference week if the job had been available then; or
- (b) were waiting to be called back to a full-time or part-time job from which they had been stood down without pay for less than four weeks up to the end of the reference week (including the whole of the reference week) for reasons other than bad weather or plant breakdown.

Unemployed looking for first full-time job: Unemployed persons looking for full-time work (as defined) who had never worked full time for two weeks or more.

Unemployed looking for full-time work: Unemployed persons who actively looked for full-time work or were to resume a full-time job, from which they had been stood down.

Unemployed looking for part-time work: Unemployed persons who had actively looked for part-time work only, or were to resume a part-time job, from which they had been stood down.

Unemployment rate: For any group, the number of unemployed persons expressed as a percentage of the labour force in the same group.

JOB SEARCH EXPERIENCE OF UNEMPLOYED PERSONS AUSTRALIA, JUNE 1991

This recently released publication provides additional information on the characteristics of unemployed persons aged 15 years or more (excluding those stood down without pay) to that collected in the June 1991 monthly labour force survey.

The publication features information on:

- socio-demographic characteristics of persons such as gender, age and birthplace
- duration of current period of unemployment
- active steps taken to find work
- difficulties in finding work
- whether would move intrastate or interstate (if offered a suitable job)
- number of offers of employment
- time spent looking for work in the last twelve months
- whether looking for full-time or part-time work
- educational attainment

Job Search Experience of Unemployed Persons, Australia, June 1991
(Catalogue No. 6222.0), \$11.50.

To obtain a copy, contact an ABS Bookshop in your State.

For more information about the survey, and the availability of detailed data services contact Ms Sue Doyle on (06) 252 7204.

ABS Bookshops

Sydney (02) 268 4654 Melbourne (03) 615 7829 Brisbane (07) 222 6350 Adelaide (08) 237 7582
Perth (09) 323 5143 Hobart (002) 20 5800 Darwin (089) 81 3456 Canberra (06) 252 5249



For more information ...

The ABS publishes a wide range of information on Australia's economic and social conditions. A catalogue of publications and products is available from any of our Offices (see below for contact details).

Information Consultancy Service

Special tables or in-depth data investigations are provided by the ABS Information Consultancy Service in each of our Offices (see below for contact details).

Electronic Data Services

A growing range of our data are available on electronic media. Selections of the most frequently requested data are available, updated daily, on DISCOVERY (Key *656#). Our TELESTATS service delivers major economic indicator publications ready to download into your computer on the day of release. Our PC-AUSSTATS service enables on-line access to a data base of thousands of up-to-date time series. Selected datasets are also available on diskette or CD-ROM. For more details on our electronic data services, contact Information Services in any of our Offices on the numbers below.

Bookshops and Subscriptions

There are over 500 titles available from the ABS Bookshops in each of our Offices. You can also receive any of our publications on a regular basis. Join our subscription mailing service and have your publications mailed to you in Australia at no additional cost. Telephone our Publications Subscription Service toll free on 008 02 06 08 Australia wide.

Sales and Inquiries



SYDNEY (02) 268 4611
MELBOURNE (03) 615 7000
BRISBANE (07) 222 6351
PERTH (09) 323 5140

ADELAIDE (08) 237 7100
HOBART (002) 20 5800
DARWIN (089) 81 3456
CANBERRA (06) 252 6627



Information Services, ABS, PO Box 10, Belconnen ACT 2616
or any ABS State office.

