

Bean

This Commonwealth Electoral Division profile has been produced using information from 2017 Estimated Resident Population and the 2016 Census of Population and Housing.

POPULATION

	Electorate	Australia
<i>2017 Estimated Resident Population</i>		
Population	138,303	24,597,528

AGE GROUPS

	Electorate	Australia
<i>2017 Estimated Resident Population</i>		
0 to 17 years old	23.1%	22.4%
18 to 34 years old	22.5%	24.5%
35 to 49 years old	20.9%	20.0%
50 to 64 years old	19.2%	17.8%
65 to 79 years old	11.3%	11.5%
80 years old and over	3.1%	3.9%

FAMILIES

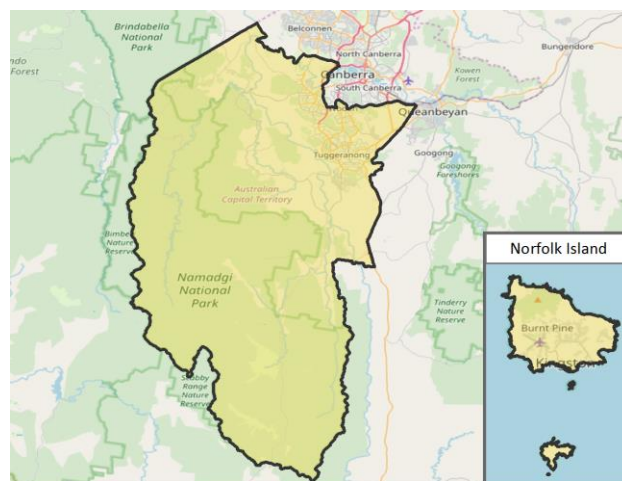
	Electorate	Australia
<i>2016 Census, families in occupied private dwellings</i>		
Couple families without children	36.2%	37.8%
Couple families with children	47.1%	44.7%
One parent families	15.4%	15.8%

HOUSING

	Electorate	Australia
<i>2016 Census, occupied private dwellings</i>		
Owned outright	31.2%	31.0%
Owned with mortgage	42.2%	34.5%
Rented	23.9%	30.9%
Median household income (\$/week)	\$2,036	\$1,438
Median rent (\$/week)	\$370	\$335
Median mortgage repayments (\$/month)	\$2,000	\$1,755

CULTURAL DIVERSITY

	Electorate	Australia
<i>2016 Census, all usual residents</i>		
Aboriginal and Torres Strait Islander peoples	2.1%	2.8%
Born overseas	22.1%	26.3%
Recent migrants (arrived 2006-2016)	6.6%	9.9%
Language other than English spoken at home	16.8%	20.8%



Sources: ASGS, 2018. © OpenStreetMap (and) contributors, CC-BY-SA.

ENGAGEMENT

	Electorate	Australia
<i>2016 Census, people aged 18 to 64</i>		
Fully engaged in work or study	60.3%	53.1%
Partially engaged in work or study	16.0%	17.6%
At least partially engaged	4.0%	3.3%
Not engaged	14.6%	19.1%

OCCUPATION

	Electorate	Australia
<i>2016 Census, employed people aged 15 and over</i>		
Managers	15.0%	13.0%
Professionals	26.7%	22.2%
Technicians & trade workers	11.1%	13.5%
Community & personal service workers	10.5%	10.8%
Clerical & administrative workers	18.7%	13.6%
Sales workers	7.0%	9.4%
Machinery operators & drivers	3.0%	6.3%
Labourers	5.4%	9.5%

EDUCATION

	Electorate	Australia
<i>2016 Census, all usual residents</i>		
Year 12 or equivalent completion (people aged 20 to 24)	78.3%	73.7%
Certificate III or higher qualification (people aged 15 and over)	53.8%	46.6%

Canberra

This Commonwealth Electoral Division profile has been produced using information from 2017 Estimated Resident Population and the 2016 Census of Population and Housing.

POPULATION

	Electorate	Australia
<i>2017 Estimated Resident Population</i>		
Population	133,077	24,597,528

AGE GROUPS

	Electorate	Australia
<i>2017 Estimated Resident Population</i>		
0 to 17 years old	17.8%	22.4%
18 to 34 years old	32.5%	24.5%
35 to 49 years old	19.6%	20.0%
50 to 64 years old	15.9%	17.8%
65 to 79 years old	10.1%	11.5%
80 years old and over	4.1%	3.9%

FAMILIES

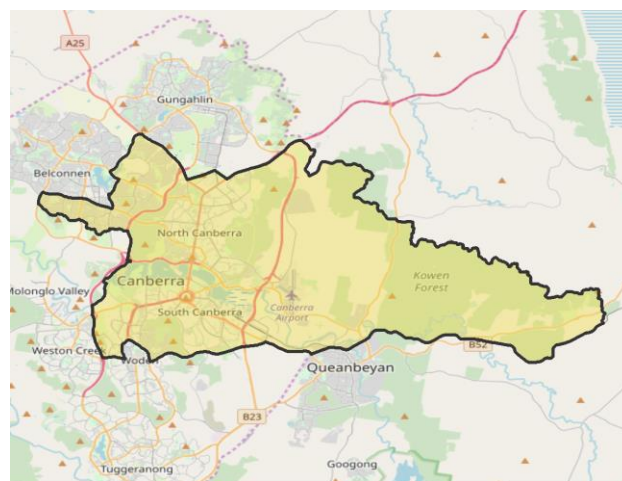
	Electorate	Australia
<i>2016 Census, families in occupied private dwellings</i>		
Couple families without children	44.4%	37.8%
Couple families with children	41.8%	44.7%
One parent families	12.2%	15.8%

HOUSING

	Electorate	Australia
<i>2016 Census, occupied private dwellings</i>		
Owned outright	28.6%	31.0%
Owned with mortgage	27.3%	34.5%
Rented	41.0%	30.9%
Median household income (\$/week)	\$2,091	\$1,438
Median rent (\$/week)	\$395	\$335
Median mortgage repayments (\$/month)	\$2,167	\$1,755

CULTURAL DIVERSITY

	Electorate	Australia
<i>2016 Census, all usual residents</i>		
Aboriginal and Torres Strait Islander peoples	1.2%	2.8%
Born overseas	28.3%	26.3%
Recent migrants (arrived 2006-2016)	12.4%	9.9%
Language other than English spoken at home	21.7%	20.8%



Sources: ASGS, 2018. © OpenStreetMap (and) contributors, CC-BY-SA.

ENGAGEMENT

	Electorate	Australia
<i>2016 Census, people aged 18 to 64</i>		
Fully engaged in work or study	66.0%	53.1%
Partially engaged in work or study	12.6%	17.6%
At least partially engaged	3.0%	3.3%
Not engaged	11.7%	19.1%

OCCUPATION

	Electorate	Australia
<i>2016 Census, employed people aged 15 and over</i>		
Managers	18.7%	13.0%
Professionals	37.6%	22.2%
Technicians & trade workers	6.4%	13.5%
Community & personal service workers	9.8%	10.8%
Clerical & administrative workers	13.7%	13.6%
Sales workers	5.9%	9.4%
Machinery operators & drivers	1.2%	6.3%
Labourers	4.2%	9.5%

EDUCATION

	Electorate	Australia
<i>2016 Census, all usual residents</i>		
Year 12 or equivalent completion (people aged 20 to 24)	87.6%	73.7%
Certificate III or higher qualification (people aged 15 and over)	60.9%	46.6%

Fenner

This Commonwealth Electoral Division profile has been produced using information from 2017 Estimated Resident Population and the 2016 Census of Population and Housing.

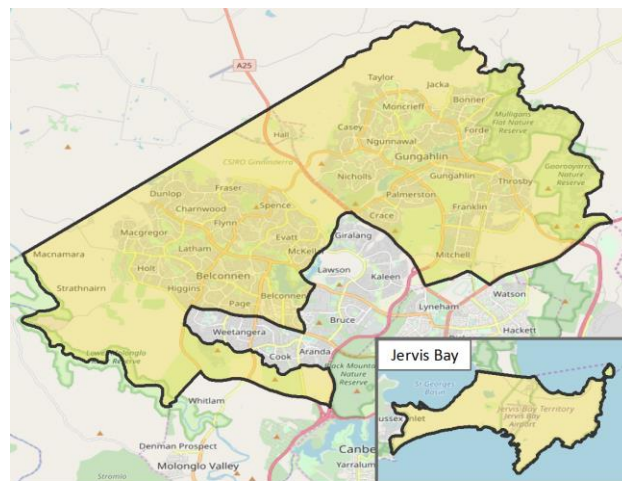
POPULATION	Electorate	Australia
<i>2017 Estimated Resident Population</i>		
Population	142,439	24,597,528

AGE GROUPS	Electorate	Australia
<i>2017 Estimated Resident Population</i>		
0 to 17 years old	25.5%	22.4%
18 to 34 years old	28.2%	24.5%
35 to 49 years old	23.4%	20.0%
50 to 64 years old	13.7%	17.8%
65 to 79 years old	7.5%	11.5%
80 years old and over	1.7%	3.9%

FAMILIES	Electorate	Australia
<i>2016 Census, families in occupied private dwellings</i>		
Couple families without children	33.9%	37.8%
Couple families with children	51.0%	44.7%
One parent families	13.6%	15.8%

HOUSING	Electorate	Australia
<i>2016 Census, occupied private dwellings</i>		
Owned outright	21.3%	31.0%
Owned with mortgage	45.5%	34.5%
Rented	30.8%	30.9%
Median household income (\$/week)	\$2,066	\$1,438
Median rent (\$/week)	\$380	\$335
Median mortgage repayments (\$/month)	\$2,037	\$1,755

CULTURAL DIVERSITY	Electorate	Australia
<i>2016 Census, all usual residents</i>		
Aboriginal and Torres Strait Islander peoples	1.8%	2.8%
Born overseas	29.1%	26.3%
Recent migrants (arrived 2006-2016)	12.8%	9.9%
Language other than English spoken at home	27.2%	20.8%



Sources: ASGS, 2018. © OpenStreetMap (and) contributors, CC-BY-SA.

ENGAGEMENT	Electorate	Australia
<i>2016 Census, people aged 18 to 64</i>		
Fully engaged in work or study	63.6%	53.1%
Partially engaged in work or study	14.7%	17.6%
At least partially engaged	3.6%	3.3%
Not engaged	13.2%	19.1%

OCCUPATION	Electorate	Australia
<i>2016 Census, employed people aged 15 and over</i>		
Managers	14.4%	13.0%
Professionals	27.5%	22.2%
Technicians & trade workers	11.0%	13.5%
Community & personal service workers	11.3%	10.8%
Clerical & administrative workers	17.8%	13.6%
Sales workers	7.4%	9.4%
Machinery operators & drivers	2.5%	6.3%
Labourers	5.5%	9.5%

EDUCATION	Electorate	Australia
<i>2016 Census, all usual residents</i>		
Year 12 or equivalent completion (people aged 20 to 24)	81.3%	73.7%
Certificate III or higher qualification (people aged 15 and over)	56.9%	46.6%

Percentages may not add to 100% due to categories not listed. Percentages are provided for indicative purposes only. See the [2082.0 Discover Your Commonwealth Electoral Division, Australia, 2019](#) publication for more information. Details for each data item are included in the Explanatory Notes.