

Directory of Mining Statistics

1999

W. McLennan
Australian Statistician

AUSTRALIAN BUREAU OF STATISTICS
EMBARGO: 11:30AM (CANBERRA TIME) FRI 29 OCT 1999

ABS Catalogue No. 8416.0
ISBN 0 642 27488 6

© Commonwealth of Australia 1999

This work is copyright. Apart from any use as permitted under the *Copyright Act 1968*, no part may be reproduced by any process without permission from AusInfo. Requests and inquiries concerning reproduction and rights should be addressed to the Manager, Legislative Services, AusInfo, GPO Box 84, Canberra, ACT, 2601.

In all cases the ABS must be acknowledged as the source when reproducing or quoting any part of an ABS publication or other product.

Produced by the Australian Bureau of Statistics

INQUIRES

- For information about other ABS statistics and services, please refer to the back page of this publication

CONTENTS

	Page
Preface	v
Introduction	vi
How to use this directory	viii
Data sources—Mining	
General	1
Education and training	8
Employment	26
Environment	70
Exploration	73
Financial performance	83
Innovation and technology	105
International investment and trade	114
Mineral resources	122
National accounts	130
Prices	136
Production	142
Research and experimental development	169
Small business	171
Titles	173
Usage	176
Data sources—Downstream processing of minerals	
Production	178
Prices	186
List of abbreviations, acronyms and other usages	189
Australian Bureau of Statistics services	191
Subject index	196
Contributor and data sources index	205



PREFACE

Australia is one of the world's leading producers of minerals. It is the world's largest producer of bauxite, diamonds, lead, tantalum and the mineral sand concentrates ilmenite, rutile and zircon. Mining is an important industry in the Australian economy, with mining products accounting for nearly a quarter of Australian exports. The mining industry contributed nearly 5% of Australia's gross domestic product in 1997–98.

This directory contains comprehensive information on Australian sources of mining statistics from both the public and private sectors. It lists Australian Bureau of Statistics (ABS) collections which contain data related to mining, and includes other sources of mining-related data. The indexes provide a quick reference by data source and subject. The directory will be released on the ABS web site (at <http://www.abs.gov.au>).

The ABS is not responsible for the accuracy of the information supplied by non-ABS organisations, or the quality of statistics produced by these organisations. The inclusion of a particular source in the directory does not represent ABS endorsement of that collection or its methodology.

An attempt has been made to find all likely sources of mining-related data in Australia, but we would be grateful if readers could provide details of any omissions. These can be added to the electronic version of the directory. If you have information or wish to comment on any other aspect of the directory please contact:

Assistant Director
Agriculture and Mining Section
Australian Bureau of Statistics
PO Box 10
BELCONNEN ACT 2616

Telephone: Canberra 02 6252 7238
Facsimile: Canberra 02 6252 8016
Email: client.services@abs.gov.au

I would like to thank the many organisations which have contributed to this directory.

W. McLennan
Australian Statistician

INTRODUCTION

This directory provides researchers with a ready reference to Australian sources of statistical information related to mining.

A number of entries related to downstream processing of minerals, i.e. the first stage of processing of minerals including petroleum, has also been included.

The Data Sources section of the directory presents details of mining-related data sources by broad subject heading. Each data source entry contains sections entitled:

- name of collection
- contact
- purpose
- description
- main data detail
- geographic coverage
- frequency of data availability
- reference period
- historical data
- products and services

Some entries also contain an 'Example of information available', which illustrates some of the data which are available from that data source. It should be noted that these examples:

- are included for illustrative purposes only and should not be relied upon (for example, more recent data may be available from the collection); and
- constitute only a small amount of the information available—more detailed data are available from the contact for each data source.

Further information about each of the collections presented in this directory may be obtained from the contact for that entry. There may be a charge for obtaining data from an organisation.

INTRODUCTION *continued*

There are a number of references to the Australian and New Zealand Standard Industrial Classification (ANZSIC) in this directory.

Mining as defined in the 1993 edition of the Australian and New Zealand Standard Industrial Classification (ANZSIC) broadly relates to the extraction of minerals occurring naturally as solids such as coals and ores, liquids such as crude petroleum or gases such as natural gas.

Downstream mining activities such as smelting of minerals or ores (other than preliminary smelting of gold) or refining are classified as manufacturing activities in ANZSIC. In addition, products of mineral origin, e.g. coke and alumina, are included in manufacturing although these operations are dependent on output from mining. More detailed information about ANZSIC can be obtained from the publication *Australian and New Zealand Standard Industrial Classification (ANZSIC), 1993* (ABS Cat. no. 1292.0). Information on data related to manufacturing can be found in *Information Paper: Availability of Statistics Related to Manufacturing, 1997* (ABS Cat. no. 8205.0).

Following are the ANZSIC Subdivisions and Groups of ANZSIC Division B (Mining):

Subdivision	Group	Title
11		Coal mining
	110	Coal mining
12		Oil and gas extraction
	120	Oil and gas extraction
13		Metal ore mining
	131	Metal ore mining
14		Other mining
	141	Construction material mining
	142	Mining n.e.c.
15		Services to mining
	151	Exploration
	152	Other mining services

This directory will be available on the Australian Bureau of Statistics web site (at <http://www.abs.gov.au>).

HOW TO USE THIS DIRECTORY

To find your topic of interest in this directory, you can choose any of the methods below.

BROAD SUBJECT HEADING

All entries are categorised under broad subject headings which are listed on the Contents page. You may find the broad subject headings useful if you are interested in sources of data about a particular topic. It should be noted that where the content of a collection is appropriate to a number of headings, the collection has been included under the most appropriate heading.

SUBJECT INDEXES

Use the Subject Index near the back of the directory to find your topic of interest or data source from a listing of key words, and turn to its page reference.

CONTRIBUTORS AND DATA SOURCES INDEX

If you know the name of the organisation, look in the Contributors and Data Sources Index, which is located after the Subject Index.

DATA SOURCES—MINING

GENERAL

NAME OF COLLECTION

Mining Collection

Contact

Supervisor
Mining National Project Centre
Australian Bureau of Statistics
GPO Box 2272
ADELAIDE SA 5001

Telephone: Adelaide 08 8237 7621
Facsimile: Adelaide 08 8237 7366
Email: client.services@abs.gov.au
Internet: <http://www.abs.gov.au>

Purpose

The Mining Collection is an annual survey which collects information about the operation and financial performance of employing businesses classified to the mining industry on the ABS register of businesses. The data are incorporated in the Economic Activity Survey and the Environment Protection Expenditure series as well as National Accounts.

Description

The Mining Collection is conducted as a component of the Australian Bureau of Statistics (ABS) integrated economic statistics system. Data from each industry sector conform to the same basic conceptual standards, allowing comparative analysis between and across different industry sectors.

A full census is conducted in respect of the businesses in the following industries which are classified to Australian and New Zealand Standard Industrial Classification (ANZSIC) Division B (Mining):

- Coal mining (ANZSIC Subdivision 11);
- Oil and gas extraction (ANZSIC Subdivision 12);
- Metal ore mining (ANZSIC Subdivision 13); and
- Mining n.e.c. (ANZSIC Group 142).

DATA SOURCES—MINING: GENERAL

Description *continued*

A sample of businesses in the Construction material mining (ANZSIC Group 141) and Services to mining (ANZSIC Subdivision 15) industries is surveyed for 1997–98. Sampling is based on a probability-based design. There are approximately 1,600 businesses in ANZSIC Division B.

Data are collected by mail questionnaire.

Main data detail

A range of financial data items are available, including:

- income and expenditure
- profit
- assets and liabilities
- capital acquisition and disposal

Employment and mineral production data are also available.

Geographic coverage

Australia. Some data are also available at the State and Territory level.

Frequency of data availability

Annual.

Reference period

Year ended 30 June.

Historical data

Data are available from 1968 for financial data and 1952 for mineral production.

Products and services

Publications

- *Australian Mining Industry* (Cat. no. 8414.0)
- *Mining, Electricity and Gas Operations, Australia, Preliminary* (Cat. no. 8401.0)
- *Mining Operations, Australia* (Cat. no. 8415.0) (expected to be released in October 1999)

Other

- Special data services are available on request.

Example of information available

AUSTRALIAN MINING INDUSTRY, SUMMARY DETAILS—1996–97

<i>Items</i>	<i>Total coal mining, oil and gas extraction and metal ore mining</i>	<i>Other mining</i>	<i>Services to mining(a)</i>	<i>Total mining</i>
	<i>\$m</i>	<i>\$m</i>	<i>\$m</i>	<i>\$m</i>
Income and expenditure				
Turnover	35 198.6	2 110.7	3 187.0	40 496.3
Industry gross product	19 047.9	852.4	951.8	20 852.1
Trading profit	18 535.6	833.1	824.7	20 193.4
Earnings before interest and tax	9 190.4	295.9	*-217.9	9 268.4
Operating profit before tax	7 550.1	229.9	-314.2	7 465.8
Assets and liabilities				
Total assets	73 730.6	3 311.6	8 539.3	85 581.5
Total liabilities	41 095.2	1 737.5	5 989.6	48 822.3
Net worth	32 635.4	1 574.0	**2 549.7	34 209.4
Capital expenditure				
Total acquisitions	5 744.9	187.1	*1 496.7	5 932.0
Net capital expenditure	5 088.2	155.5	*1 436.8	5 243.7

(a) Please note that estimates highlighted with an asterisk (*) indicate they are subject to sampling variability between 25% and 50%. Those estimates highlighted with ** are subject to sampling variability greater than 50%. Detailed estimates of relative standard errors can be made available on request.

NAME OF COLLECTION

Business Register Counts

Contact

Business Register Statistical Output
Business Register Branch
Australian Bureau of Statistics
GPO Box 2796Y
MELBOURNE VIC 3001

Telephone: Melbourne 03 9615 7755
Facsimile: Melbourne 03 9615 7387
Email: client.services@abs.gov.au
Internet: <http://www.abs.gov.au>

Purpose

The prime purpose of the ABS Business Register is to provide a comprehensive source of business names and addresses from which businesses can be selected for inclusion in Australian Bureau of Statistics (ABS) economic censuses and sample surveys.

Besides business names and addresses, data recorded on the register for each business include items such as main economic activity, geographic location and employment size. These data items are aggregated and made available to ABS clients. Note that business names and addresses are not provided to ABS clients.

Description

The ABS Business Register includes those businesses that employ wage and salary earners, including businesses that temporarily have no employees, and businesses with no employment, but which are linked by common ownership or control to another business that does.

The term 'business' is taken to mean a legal entity such as a registered company, partnership, trust, sole proprietor, religious organisation, government department, or any other legally recognised organisation which provides goods and services.

Various sources are used to update information on the ABS Business Register, which is updated continually. Most new employing businesses are identified and included on the register within one to six months of commencing employment of staff. However, daily fluctuations in the size and number of businesses, and the problems inherent in detecting these fluctuations in a timely manner, make it difficult to keep the register up to date.

Main data detail

The business units about which statistical output is available from the ABS Business Register are the management unit and the location.

The management unit is the largest unit within a business for which detailed accounts are kept on at least a quarterly basis. For most businesses, particularly the smaller ones, it will equate with the legal entity owning the business (i.e. the sole proprietor, partnership, incorporated company, etc.). For larger businesses, there may be a management unit for each 'line of business' or 'division' that the business operates.

Structurally, management units consist of one or more locations, so their industry code will reflect the predominant activity of their locations, and their employment will be the sum of the employment of their locations.

The location is the physical site from which a business engages in productive activity on a relatively permanent basis (e.g. a shop, a factory, or a suite of offices in a multi-occupancy building). The location is the lowest-level business unit recorded on the register.

Counts of management units and locations are available classified by employment size and/or industry class.

Geographic coverage

Australia, States and Territories and Statistical Local Areas (SLAs). Data are also available for postcodes and aggregates of SLAs.

Frequency of data availability

Annual.

Reference period

The ABS Business Register extract is a 'snapshot' of the register at a particular point in time.

Historical data

The ABS Business Register provides broad, indicative data at a point in time. Detailed comparisons with other ABS statistics should be made with caution. Detailed comparisons should not be made with register data from other time periods. Use of Register data for time series analyses may result in inaccurate and misleading conclusions being drawn due to changes in the classifications, definitions and register updating practices.

Products and services

Special data services are available on request.

NAME OF COLLECTION

Quarterly Minerals and Energy Statistics

Contact

Manager
Minerals Economics Section
ABARE
PO Box 1563
CANBERRA ACT 2601

Telephone: Canberra 02 6272 2056
Facsimile: Canberra 02 6272 2328
Email: jhogan@ABARE.gov.au
Internet: <http://www.ABARE.gov.au>

Purpose

To provide up-to-date quarterly and annual information on production, exports and prices for major minerals and energy commodities; indexes and graphs of Australian mine production and export prices; and graphical summary of quarterly trends in indicative world prices and value of mineral exports.

Description

Production data are collected from State and Northern Territory Mines and Energy Departments and from company reports to the Australian Stock Exchange. Export data are from the Australian Bureau of Statistics (ABS). Price data are from the London Metal Exchange (LME), and derived export unit values are from the ABS.

Data are on a commodity by commodity basis. Production data are published by State, the Northern Territory and Australia. Export data include value, volume and major destination.

Main data detail

- production— Australia, State and the Northern Territory;
- exports—value, volume and major destination;
- prices—indicative world prices, either LME or export unit value;
- export price indexes;
- volume of production indexes; and
- exploration data by commodity from the ABS.

Geographic coverage

Australia, State and the Northern Territory.

Frequency of data availability

Quarterly and annual.

Reference period

Quarters ended 31 March, 30 June, 30 September and 31 December. Year ended 30 June.

Historical data

Data are available from the March quarter 1989.

Products and services

Publication

- *Australian Mineral Statistics* (can be purchased from ABARE Client Services, telephone Melbourne 03 9251 6261, facsimile 03 9251 6266, or write to ABARE Publications, PO Box 5132, Heidelberg West, Victoria, 3081)

Other

- Special data services are available on request.

Example of information available

ALUMINIUM PRODUCTION					
	1997–98 preliminary				
	1996–97	Sep Qtr	Dec Qtr	Mar Qtr	Jun Qtr
	'000 tonnes	'000 tonnes	'000 tonnes	'000 tonnes	'000 tonnes
Mine					
Bauxite					
Queensland	9 141	2 576	2 613	2 075	2 375
Western Australia	27 466	7 148	7 038	7 175	7 312
Northern Territory	6 383	1 743	1 710	1 556	1 558
Australia	42 990	11 467	11 361	10 806	11 245
Alumina content	16 041	4 326	4 296	3 965	4 169
Smelter and refinery					
Alumina	13 252	3 429	3 385	3 319	3 405
Aluminium (ingot metal)	1 395	391	410	390	398

EDUCATION AND TRAINING

NAME OF COLLECTION

Aspects of Literacy, Survey of

Contact

Assistant Director
Education and Training Section
Australian Bureau of Statistics
PO Box 10
BELCONNEN ACT 2616

Telephone: Canberra 02 6252 6660
Facsimile: Canberra 02 6252 8013
Email: client.services@abs.gov.au
Internet: <http://www.abs.gov.au>

Purpose

To measure some elements of Australians' literacy and numeracy skills. The literacy and numeracy skills covered by the survey were the information processing skills necessary to use printed material found at work, at home, and in the community.

Description

The sample survey covered all persons aged 15–74 years who were usual residents of private dwellings, excluding overseas residents in Australia; certain diplomatic personnel of overseas governments; and members of non-Australian defence forces (and their dependants) stationed in Australia. The survey was conducted in both urban and rural areas in all States and Territories, but excluded persons living in certain remote and sparsely settled parts of Australia.

The initial sample for the survey consisted of around 13,008 dwellings. Dwellings were selected at random using a multistage area sample of private dwellings. One person per dwelling was selected at random to participate in the survey. After allowing for sample loss (e.g. derelict buildings, buildings under construction) the sample yielded 9,302 (87%) completed survey interviews.

Data were collected by face-to-face interview.

Main data detail

The Survey of Aspects of Literacy objectively assessed three types of literacy:

- Prose literacy, that is, the ability to understand and use information from various kinds of prose texts, including texts from newspapers, magazines and brochures.
- Document literacy, that is, the ability to locate and use information contained in materials such as tables, schedules, charts, graphs and maps.
- Quantitative literacy, that is, the ability to perform arithmetic operations using numbers contained in printed texts or documents.

The survey linked these assessments with a wide range of data items, for example:

- education and training;
- language and literacy;
- disability status;
- reading and writing usage;
- occupation of mother's/father's main job;
- level of mother's/father's educational attainment;
- personal income from wages, salary or self-employment; and
- industry of current job (based on the Australian and New Zealand Standard Industrial Classification (ANZSIC)).

So, for example, data are available for the above items for persons whose current job (i.e. at the survey date) was in the mining industry. Data are available down to the three-digit (i.e. ANZSIC Group) level, although at that level some cross-classifications may be subject to high standard errors.

Geographic coverage

Australia, States and Territories.

Frequency of data availability

Irregular.

Reference period

The survey was conducted between May and July 1996.

Historical data

Historical data are not available from this collection.

Products and services

Publications

- *Aspects of Literacy: Assessed Skill Levels, Australia, 1996*
(Cat. no. 4228.0)
- *Aspects of Literacy: Profiles and Perceptions, Australia, 1996*
(Cat. no. 4226.0)

Other

- A special data service, which allows users to specify their own tables, is available on request.

Example of information available

MEDIAN SCORE(a), AUSTRALIA—1996			
<i>Industry</i>	<i>Prose scale</i>	<i>Document scale</i>	<i>Quantitative scale</i>
Mining	305	294	303
Total employed, all industries	291	291	293

(a) A higher score represents a greater level of literacy.

NAME OF COLLECTION

Education and Training, Survey of

Contact

Assistant Director
 Education and Training Section
 Australian Bureau of Statistics
 PO Box 10
 BELCONNEN ACT 2616

Telephone: Canberra 02 6252 6660
 Facsimile: Canberra 02 6252 8013
 Email: client.services@abs.gov.au
 Internet: <http://www.abs.gov.au>

Purpose

To determine how much education and training is being undertaken, by whom and with how much employer or non-employer support. Data were also collected about access to education and training, the extent of multiple qualifications (with details of the three highest level qualifications), recent study, intended future study, and non-completed qualifications. Details were also sought on the (up to) four most recent training courses completed in the last 12 months.

Description

This survey provides details of the education and training experiences of persons aged 15–64 years who had worked as wage or salary earners in the previous 12 months, as well persons in that age group who, at the time of the survey, were employed; unemployed; marginally attached to the labour force; aged 15–20 years and still at secondary school; or not in the labour force, but who were studying, or had studied in 1997.

The survey had an initial sample of around 18,600 dwellings. After allowing for sample loss (e.g. dwelling selected in the sample had no residents in scope for the survey, derelict buildings, buildings under construction etc.), the effective sample for the survey was some 13,800 dwellings, yielding approximately 22,700 completed interviews for the survey.

Data were collected in face-to-face interviews.

DATA SOURCES—MINING: EDUCATION AND TRAINING

Main data detail

- socio-demographic characteristics;
- labour force characteristics (including industry of current job or business);
- work history details (including industry of main period employer);
- educational qualifications held;
- recent study for educational qualifications;
- intended future study;
- non-completed qualifications;
- details of training courses completed in the last 12 months;
- training outcomes;
- access to education and training; and
- training provision.

Industry of employment was classified according to both the Australian and New Zealand Standard Industrial Classification and the Australian Standard Industrial Classification.

Geographic coverage

Australia, States and Territories. Information is also available for labour force dissemination regions throughout Australia, but may be subject to high standard errors.

Frequency of data availability

Irregular.

Reference period

The 12 months prior to the survey (which was conducted in March, April and May 1997).

Historical data

Data are available from surveys conducted in 1989, 1993 and 1997. However, each survey had a different methodology, and the data items available from the surveys vary.

Products and services

Publications

- *Education and Training Experience, Australia, 1997* (Cat. no. 6278.0)
- *Information Paper: Education and Training Experience, Australia, 1997—Confidentialised Unit Record File* (Cat. no. 6274.0)

Other

- A confidentialised unit record file is available from the surveys conducted in 1989, 1993 and 1997.
- A special data service, which allows users to specify their own tables, is available on request.

Example of information available

EMPLOYED PERSONS, TRAINING UNDERTAKEN(a) IN THE LAST 12 MONTHS(b)—AUSTRALIA

Selected industry of employment	Study or training courses undertaken(c)							
	Studied in 1996 '000	External training			Total '000	On-the-job '000	Total '000	Some training under-taken(c) %
		In-house '000	Employer supported '000	Total(d) '000				
Agriculture, forestry and fishing	18.1	22.9	15.6	88.1	120.0	222.4	372.0	68.0
Mining	8.2	52.2	19.8	24.5	64.0	65.5	90.0	88.8
Manufacturing	115.4	297.7	101.9	160.7	471.8	793.3	1 184.2	74.7
Electricity, gas and water supply	15.0	37.8	9.7	11.6	49.4	51.4	61.9	94.2
Construction	63.9	58.0	30.3	95.1	185.7	357.0	588.3	67.9

(a) Multi-response categories collected. Therefore, components may not add to totals. (b) Refers to the 12 months prior to the survey period (March to May 1997). (c) Includes persons whose only form of training in the last 12 months was studying in 1997. (d) Includes persons who attended external training courses while working that were either not employer supported, or not as a wage or salary earner, and persons who attended external training courses while not working.

NAME OF COLLECTION

Employer Satisfaction with Vocational Education and Training Survey

Contact

Manager
Surveys
National Centre for Vocational Education Research
Unit 1, Ground Floor
99 Northbourne Avenue
TURNER ACT 2612

Telephone: Canberra 02 6230 0699
Facsimile: Canberra 02 6230 0799
Email: actncver@act.ncver.edu.au
Internet: <http://www.ncver.edu.au>

Purpose

Key performance measures are administered and monitored by the Australian National Training Authority on behalf of the Commonwealth Government. The survey provides information for the national key performance measure—employers' views on the relevance of skills acquired through Vocational Education and Training (VET).

Description

Sample survey of employers (including employers in the mining industry) of recent graduates (people who graduated in the last two years) of Australian VET programs of more than 200 hours in length. In 1997 information was collected from approximately 2,600 employers, selected from all industries and across all business sizes.

Data are collected by telephone interview.

Main data detail

Employers' perceptions of and satisfaction with a range of areas in VET, including the availability, quality and relevance of it.

Geographic coverage

Australia, States and Territories.

Frequency of data availability

Two-yearly.

Reference period

The two years prior to the survey.

Historical data

In 1995 and 1997, sample surveys were undertaken of employers of recent graduates of Australian VET programs of more than 200 hours in length.

Products and services

Publications

- *Employer Satisfaction with VET 1997 At A Glance*
- *Employer Satisfaction with VET 1997 National Report*

Other

- Data relevant to the mining industry are available on request.

NAME OF COLLECTION

Employer Training Practices Survey

Contact

Assistant Director
Education and Training Section
Australian Bureau of Statistics
PO Box 10
BELCONNEN ACT 2616

Telephone: Canberra 02 6252 6660
Facsimile: Canberra 02 6252 8013
Email: client.services@abs.gov.au
Internet: <http://www.abs.gov.au>

Purpose

To provide statistical information about the type of training employers provided to their employees.

Description

The sample survey covered employers in all States and Territories and all industries except for those primarily engaged in agriculture, forestry and fishing; private households employing staff; overseas embassies, consulates etc.; and the Australian permanent defence forces.

A sample of approximately 6,000 employers was selected from the Australian Bureau of Statistics register of businesses. The sample was stratified by sector, industry and employer size, and optimally allocated to ensure adequate representation in each of these areas. The survey was designed to produce accurate estimates of total training expenditure at the national and the industry level.

Data were collected by mail questionnaire.

Main data detail

Some of the data items available for the mining industry are:

- change in the overall level of expenditure on structured training provided;
- proportion of employers providing structured training;
- change in the overall level of unstructured training;
- proportion of employers providing unstructured training;
- proportion of employers providing training;
- selected factors limiting expenditure on structured training; and
- type of external providers used for structured training.

Geographic coverage

Australia. Some State and Territory data relevant to the mining industry may also be available.

Frequency of data availability

Irregular.

Reference period

12-month period ending February 1997.

Historical data

The Training Practices Survey (TPS) questionnaire was revised between the 1994 and 1997 surveys to obtain a broader view of training provided by employers, and to target current statistical needs related to employer training. Some additional questions were included, particularly on unstructured training, and some previous questions were removed or updated. These changes to the questionnaire limit comparability with the 1994 TPS in some cases.

Products and services

Publication

- *Employer Training Practices, Australia, February 1997* (Cat. no. 6356.0)

Other

- A special data service, which allows users to specify their own tables, is available on request.

Example of information available

USE OF EXTERNAL PROVIDERS FOR STRUCTURED TRAINING(a), AUSTRALIA—YEAR ENDED FEB 1997(b)

	TAFE	Univer- sity	Private training provider	Profes- sional associ- ation	Industry association	Equip- ment manu- facturer	Other	Used external training providers	Total
<i>Industry</i>	%	%	%	%	%	%	%	%	%
Mining	*40	*29	59	*32	*42	*52	0	99	100
Education	37	38	53	47	23	15	*12	95	100
Health and community services	17	20	54	42	26	20	5	93	100

(a) Refers to the use of external providers for structured training in the 12 months ended February 1997. An employer may use more than one type of provider. (b) The estimates highlighted with an asterisk (*) have a relative standard error of between 25% and 40% and should be used with caution.

NAME OF COLLECTION

New Apprenticeships Collection

Contact

Manager
Data Reporting and Analysis
National Centre for Vocational Education Research
252 Kensington Road
LEABROOK SA 5068

Telephone: Adelaide 08 8333 8437
Facsimile: Adelaide 08 8331 9211

Purpose

To provide data on apprentices and trainees in Australia.

Description

The collection contains data derived from vocational education and training unit record data collected under the Australian Vocational Education and Training Management Information Statistical Standard by electronic data submissions. Data are collected from State and Territory training authorities which are primarily responsible for the collection of information from training agreements.

Main data detail

Information about apprentices and trainees is available by type of employer and occupational groups classified according to the Australian Standard Classification of Occupations.

Geographic coverage

Australia, States, Territories and rural, remote and metropolitan areas.

Frequency of data availability

Quarterly and annual.

Reference period

Quarters ended 31 March, 30 June, 30 September and 31 December. Year ended 30 June.

Historical data

Quarterly data are available from the quarter ended 30 September 1994. Annual data are available from 1994–95. Previous years information was collected by the Department of Employment, Education and Training.

Products and services

Data relevant to apprentices and trainees in the mining industry occupational groups are available on request.

NAME OF COLLECTION

Technical and Further Education Graduate Destination Survey

Contact

Manager
Surveys
National Centre for Vocational Education Research
Unit 1, Ground Floor
99 Northbourne Avenue
TURNER ACT 2612

Telephone: Canberra 02 6230 0699
Facsimile: Canberra 02 6230 0799
Email: actncver@act.ncver.edu.au
Internet: <http://www.ncver.edu.au>

Purpose

The survey sought information on Technical and Further Education (TAFE) graduates employment outcomes, further study destinations and opinions of courses completed. It also collected information about general characteristics, field of study, occupation and industry of employment, and overall satisfaction.

Description

A mail questionnaire is sent to graduates from Australian TAFE institutes who have graduated in the previous year with a qualification from a course of at least 200 hours or one semester in length. In 1998, survey forms were sent to approximately 121,000 Australian TAFE graduates in scope. About 66,500 completed survey forms were returned.

Main data detail

- general characteristics
- course details
- industry
- occupation
- average weekly earnings
- employment status
- employment outcomes
- course satisfaction
- further study plans

Data on graduates working in the mining industry are available.

DATA SOURCES—MINING: EDUCATION AND TRAINING

Geographic coverage

Australia, States and Territories.

Frequency of data availability

Annual.

Reference period

As at the end of May in the year following completion of the qualification.

Historical data

Surveys have been conducted of Australian TAFE graduates who completed a course and graduated in 1994, 1996 and 1997 with a qualification from a course of at least 200 hours or one semester in length.

Products and services

Publications

- *TAFE Graduate Destination Survey 1998 At A Glance*
- *TAFE Graduate Destination Survey 1998 National Report*

Other

- Data on graduates working in the mining industry are available on request.

NAME OF COLLECTION

Training Expenditure Survey

Contact

Assistant Director
 Education and Training Section
 Australian Bureau of Statistics
 PO Box 10
 BELCONNEN ACT 2616

Telephone: Canberra 02 6252 6660
 Facsimile: Canberra 02 6252 8013
 Email: client.services@abs.gov.au
 Internet: <http://www.abs.gov.au>

Purpose

To provide statistical input to the development of training policy. Results were also used to provide estimates of the costs to employers of providing structured training to their employees.

Description

The sample survey covered employers in all States and Territories and all industries except for those primarily engaged in agriculture, forestry, fishing and hunting; private households employing staff; overseas embassies, consulates etc.; and the Australian permanent defence forces.

A sample of approximately 6,000 employers was selected from the Australian Bureau of Statistics register of businesses. The sample was stratified by sector, industry and employer size, and optimally allocated to ensure adequate representation in each of these areas. The survey was designed to produce accurate estimates of total training expenditure at the national and the industry level.

Data were collected by mail questionnaire.

Main data detail

The key measures produced from the survey for the mining industry include:

- training expenditure as a percentage of gross wages and salaries;
- average training expenditure per employee;
- average training hours per employee; and
- proportion of employers providing training.

Main data detail *continued*

To produce these measures the following data items were collected (for the mining industry) and can be made available subject to acceptable levels of sampling error:

- number of employees by sex and full-time/part-time/casual;
- number of trainers and support staff;
- total training expenditure;
- expenditure on structured in-house training;
- field of training—employee costs for time receiving training and training hours;
- employers' trainers and support staff gross wages and salaries;
- fees paid to consultants and institutions for conducting in-house courses;
- fees paid to consultants and institutions for conducting external courses;
- other training expenditure for in-house and external training including equipment, travel and accommodation, meals for trainers and trainees to attend courses, cost of training rooms, payments to industry training bodies and other expenditure;
- training subsidies received from government sources; and
- payment received for employees of other organisations attending training.

Geographic coverage

Australia. Some State and Territory mining industry data may also be available.

Frequency of data availability

Irregular.

Reference period

1 July to 30 September 1996.

Historical data

The 1996 survey collected expenditure data from only those employers who actually provided training in the period July to September 1996. As a result, the expenditure data from the survey is not directly comparable with earlier surveys. However, a selection of results from the 1993 survey have been recalculated on the same basis as the 1996 survey, and are included in *Employer Training Expenditure, Australia, July to September 1996* (Cat. no. 6353.0).

Products and services

Publications

- *Employer Training Expenditure, Australia, July to September 1996* (Cat. no. 6353.0)

Other

- A special data service, which allows users to specify their own tables, is available on request.

Example of information available

MEASURES OF TRAINING EXPENDITURE, AUSTRALIA—JULY TO SEPTEMBER 1996

<i>Industry</i>	<i>Training expenditure as proportion of gross wages and salaries</i>	<i>Expenditure per employee</i>	<i>Training per employee</i>	<i>Total training expenditure</i>	<i>Employers providing training</i>
	<i>%</i>	<i>\$</i>	<i>h</i>	<i>\$m</i>	<i>%</i>
Mining	5.82	896.49	17.12	65.3	26.00
All industries	2.54	185.49	4.91	1 178.8	17.77

NAME OF COLLECTION

Vocational Education and Training Provider Collection

Contact

Manager
Data Reporting and Analysis
National Centre for Vocational Education Research
252 Kensington Road
LEABROOK SA 5068

Telephone: Adelaide 08 8333 8437

Facsimile: Adelaide 08 8331 9211

Purpose

To provide data on vocational education and training programs in Australia.

Description

The collection contains data derived from vocational education and training unit record data collected under the Australian Vocational Education and Training Management Information Statistical Standard (AVETMISS) via electronic data submissions. Data are collected from TAFE (Technical and Further Education) and other government providers, adult and community education providers, private providers in receipt of government funding and some schools delivering vocational education and training.

Data detail

The following data items are available by curriculum information, including occupation classified according to the Australian Standard Classification of Occupations:

- students;
- courses undertaken (enrolments and hours);
- subjects undertaken (enrolments and hours); and
- results.

Geographic coverage

Australia, States and Territories and rural, remote and metropolitan areas.

Frequency of data availability

Annual.

DATA SOURCES—MINING: EDUCATION AND TRAINING

Reference period

Year ended 31 December.

Historical data

Data are available from 1994 under AVETMISS.

Products and services

Data relevant to training in the mining industry occupational groups are available on request.

EMPLOYMENT

NAME OF COLLECTION

Accident and Injury Statistics and Employment (Northern Territory)

Contact

Project Officer—Safety
Mines Division
Northern Territory Department of Mines and Energy
GPO Box 2901
DARWIN NT 0801

Telephone: Darwin 08 8999 5324
Facsimile: Darwin 08 8999 6527
Email: dom@dme.nt.gov.au
Internet: <http://www.dme.nt.gov.au>

Purpose

To collect employment data from all minerals, oil and gas operations in the Northern Territory (NT) and the offshore waters that the NT administers, including the Ashmore and Cartier Islands adjacent area. Data from this collection are used by the department in publications including the annual report and by other government agencies.

The Accident and Injury Statistics and Employment Collection compiled by the Northern Territory Department of Mines and Energy (NT DME) is broken into two parts, minerals operations employment (including uranium) collected by the Mines Division, and oil and gas operations employment collected by the Energy Division.

Description

Minerals operations accident and injury statistics and employment

Minerals operations employment data are collected as part of the monthly employment and injury summary. Accident and injury data are collected and processed in accordance with Australian Standard AS1885.1.

Forms are mailed to all organisations in the NT and the offshore waters that the NT administers undertaking mineral exploration and mining activities to collect employment data. Data are collected about both company and contract employees, and 'non-mining' activities (e.g. engineering and construction). Single operators rarely complete forms unless an accident or injury has occurred. Overall, there is close to, but not 100% coverage of the target group (more than 95% of the population is covered).

Description *continued*

Employment data are available by a broad breakdown of job description.

Minerals operations employment data which show a summary of employment and accident statistics are published annually. Employment data are also published by commodity type. It is also possible to extract data on a regional basis.

Oil and gas accident and injury statistics and employment

Under the *Petroleum Act* (NT), the *Petroleum (Submerged Lands) Act 1967* (Cwth), and the *Petroleum (Submerged Lands) Act* (NT), all oil and gas producers are required to complete accident and injury returns (which are mailed to them), and follow-up action is instigated if the oil and gas producers fail to comply with regulations.

The reporting period is monthly and data are collected by a broad breakdown of the job description. Data are also collected by sex. Data are published annually.

Main data detail

Company employees by:

- sex
- operations and processing
- second-stage processing
- exploration
- construction

Contract/third party employees by:

- sex
- operations and processing
- second-stage processing
- exploration
- construction

Injury summary data are also available.

Geographic coverage

NT and the offshore waters that the NT administers, including the Ashmore and Cartier Islands adjacent area which the NT administers on behalf of the Commonwealth.

DATA SOURCES—MINING: EMPLOYMENT

Frequency of data availability

Monthly (may change to quarterly with the introduction of an operations-based information system (OBIS)).

Reference period

Month.

Historical data

Data are available from July 1990. With OBIS, data will become available approximately one month in arrears.

Products and services

Publications

- *Mining Accident and Injury Summary (Financial Year)*
- *Northern Territory Department of Mines and Energy Annual Report*

Other

- Data are also available at the NT DME's Internet web site at <http://www.dme.nt.gov.au>.

NAME OF COLLECTION

Accident/Incident Reporting System (New South Wales Coal Mines)

Contact

Systems Officer
 Statistics
 Joint Coal Board
 GPO Box 3842
 SYDNEY NSW 1042

Telephone: Sydney 02 9291 5689
 Facsimile: Sydney 02 9262 6090
 Email: statistics@jcb.org.au
 Internet: <http://www.jcb.org.au>

Purpose

To provide a range of data to the coal industry and organisations with responsibility for safety within the coal industry to facilitate accident analysis.

Description

All workers' compensation insurance cover for the coal industry in New South Wales (covering approximately 10,000 workers) is provided by the Joint Coal Board through its wholly owned subsidiary Coal Mines Insurance (CMI). CMI policy holders submit workers' compensation claims and incident reports for processing at CMI district offices. Copies of the claims and the incident reports are forwarded to the Board's Statistics Group for coding and further data entry.

Main data detail

- employee's occupation;
- date of birth;
- sex;
- work experience;
- shift details;
- hours worked prior to the day of the incident;
- pay classification;
- mechanism of injury/disease;
- agency of accident/injury;
- nature of injury/disease;
- bodily location;

DATA SOURCES—MINING: EMPLOYMENT

Main data detail *continued*

- job/task being done;
- equipment involved;
- place of accident; and
- outcome data—duration of absence, cost (payments made) and extent of disability.

Geographic coverage

New South Wales.

Frequency of data availability

Ongoing.

Reference period

Reports can be generated for various periods.

Historical data

Data are available from 1 July 1986.

Products and services

Publications

- *1997–98 Lost-time Injuries and Fatalities in the NSW Coal Industry*
- *NSW Coal Industry Injury and Disease Claims 1997–98*
- *Quarterly Lost-time Frequency Rates*
- *Quarterly Lost-time Incidence Rates*

Other

- Special data services are available on request.

NAME OF COLLECTION

Annual Mining Accident Statistics (Queensland)

Contact

Statistician
 Safety and Health Division
 Department of Mines and Energy (Queensland)
 GPO Box 194
 BRISBANE QLD 4000

Telephone: Brisbane 07 3404 3143
 Facsimile: Brisbane 07 3237 1242
 Email: mwiggins@dme.qld.gov.au
 Internet: <http://www.dme.qld.gov.au>

Purpose

To provide annual mining accident statistics for Queensland.

Description

A report form is submitted for every lost time injury in all coal mining operations (approximately 60), metalliferous mining operations (approximately 80) and quarrying operations (approximately 80) in Queensland. The two-page report forms are sent to the Department of Mines and Energy (Queensland) for coding and input to a database.

Main data detail

- nature of injury
- body part of injury
- mechanism of injury
- breakdown agency
- work site location
- experience of worker
- age of worker
- description of accident
- date/time of injury

Geographic coverage

Queensland.

Frequency of data availability

Annual.

Reference period

Year ended 30 June.

DATA SOURCES—MINING: EMPLOYMENT

Historical data

Data are available from 1983.

Products and services

Publication

- *Lost Time and Fatal Injuries Queensland Mines and Quarries Statistical Report*

Other

Internet web site of the Department of Mines and Energy (Queensland) at <http://www.dme.qld.gov.au>.

Example of information available

NUMBER OF LOST TIME INJURIES IN QUEENSLAND MINES AND QUARRIES(a)					
	1993-94	1994-95	1995-96	1996-97	1997-98
Coal—open cut	408	386	312	237	133
Coal—underground	278	295	301	334	236
Metalliferous—surface	136	150	166	151	140
Metalliferous—underground	199	130	142	175	185
Quarries	50	42	21	22	26
All operations	1 071	1 003	942	919	720

(a) Number of lost time injuries in Queensland mines and quarries which were subject to the *Coal Mining Act 1995* and the *Mines Regulation Act 1964*.

NAME OF COLLECTION

Average Weekly Earnings Survey

Contact

Manager
 Labour Statistics Centre Output Group
 Australian Bureau of Statistics
 GPO Box K881
 PERTH WA 6001

Telephone: Perth 08 9360 2876
 Facsimile: Perth 08 9360 6421
 Email: kenworth@central.murdoch.edu.au
 Internet: <http://www.wistp.murdoch.edu.au>

Purpose

To estimate the average weekly earnings of employees (excluding those employed in private agriculture) in Australia.

Description

Employment and earnings data are collected quarterly (by mail questionnaire) from a sample of approximately 5,000 employer units selected from the Australian Bureau of Statistics register of businesses. The statistical unit for the survey comprises all activities of an employer in a particular State or Territory. Each statistical unit is classified to an industry which reflects the predominant activity of the business in the State or Territory. The statistical units are stratified by State, sector, industry and employment size, and an equal probability sample is selected from each stratum.

Certain categories of persons who are not regarded as employees for the purposes of this survey are excluded (e.g. directors or office holders who are not paid a salary and proprietors/partners of unincorporated businesses).

Main data detail

Some of the data items available about persons employed in the mining industry are:

- full-time adult ordinary time earnings—males, females and persons;
- full-time adult total earnings—males, females and persons; and
- total earnings—males, females and persons.

Geographic coverage

Australia. Some State and Territory data relevant to the mining industry are available on request.

DATA SOURCES—MINING: EMPLOYMENT

Frequency of data availability

Quarterly.

Reference period

Last pay period ending on or before the third Friday in the middle month of the quarter.

Historical data

Data are available from November 1983.

Products and services

Publications

- *Average Weekly Earnings, Australia, Preliminary*
(Cat. no. 6301.0)

- *Average Weekly Earnings, States and Australia*
(Cat. no. 6302.0)

Other

- Special data services are available on request.

Example of information available

AVERAGE WEEKLY EARNINGS, AUSTRALIA—NOVEMBER 1998:
ORIGINAL

	<i>Mining</i>	<i>All industries</i>
	\$	\$
Males		
Full-time adult ordinary time earnings	1 216.30	788.30
Full-time adult total earnings	1 333.60	848.60
All males total earnings	1 309.00	722.80
Females		
Full-time adult ordinary time earnings	881.30	661.40
Full-time adult total earnings	905.60	676.70
All females total earnings	823.30	476.00
Persons		
Full-time adult ordinary time earnings	1 185.00	741.30
Full-time adult total earnings	1 293.70	784.90
All employees total earnings	1 257.60	603.70

NAME OF COLLECTION

Census of Population and Housing

Contact

Manager
 Social Statistics
 Client Services Statistical Support Section
 Australian Bureau of Statistics
 PO Box 10
 BELCONNEN ACT 2616

Telephone: Canberra 02 6252 5848
 Facsimile: Canberra 02 6252 7102
 Email: client.services@abs.gov.au
 Internet: <http://www.abs.gov.au>

Purpose

To measure the number and key characteristics of persons and dwellings in Australia on census night. Among other things, the information is used for forward planning by government, industry and community groups.

Description

The Census is conducted every five years and is an enumeration of the entire population. Information is collected from all Australian households by self-completion questionnaires.

Main data detail

- labour force, including:
 - industry (e.g. Coal mining, Oil and gas extraction, Metal ore mining, Other mining, Services to mining);
 - occupation (e.g. Managerial, Professional, or Other workers classifications); and
 - labour force status/status in employment;
- demography (e.g. age, sex, marital status);
- dwellings (e.g. number of bedrooms, rent, mortgage);
- education;
- ethnicity (e.g. birthplace, year of arrival);
- income; and
- transport.

Specific data are available for numbers and sex of people employed, occupation classifications and hours worked in relation to the mining industry.

Geographic coverage

Australia, States and Territories. Data are classified according to the Australian Standard Geographical Classification and are available for small areas down to Collection District. For analytical purposes, Collection Districts can be aggregated to create regions with boundaries close to those of areas of interest on the mining industry.

Frequency of data availability

Every five years.

Reference period

Various.

Historical data

The first Census conducted by the Commonwealth of Australia was held in 1911 and Censuses have been held at irregular intervals to 1961. Since 1961 a Census has been conducted every five years, with the latest being undertaken in 1996.

Products and services

Publications

- Various publications are available and are listed in the *1996 Directory of Census Statistics* (Cat. no. 2910.0)

Other

- Community profiles are available in hard copy and all standard electronic formats. Customers with personal computers are supplied with simple data selection, viewing and aggregation software.
- CDATA96 is a CD-ROM product which contains census and digital map data, and data manipulation and mapping software.
- Customised tables. Customers with personal computers are supplied with simple data selection, viewing and aggregation software.
- Map data are available in hard copy and all common digital forms.

Example of information available

NUMBER OF PERSONS EMPLOYED, AUSTRALIA—1996
CENSUS

<i>Industry</i>	<i>Males</i>	<i>Females</i>	<i>Persons</i>
Mining	75 497	10 764	86 261
All industries	4 272 051	3 364 268	7 636 319

NAME OF COLLECTION

Employee Earnings and Hours, Survey of

Contact

Manager
 Labour Statistics Centre Output Group
 Australian Bureau of Statistics
 GPO Box K881
 PERTH WA 6842

Telephone: Perth 08 9360 5305
 Facsimile: Perth 08 9360 5954
 Email: client.services@abs.gov.au
 Internet: <http://www.abs.gov.au>

Purpose

The Survey of Employee Earnings and Hours is a sample survey of employers conducted in May of each second year (from May 1996). The survey is designed to provide statistics on the distribution of employees according to weekly earnings and hours, and on the composition of weekly earnings and hours for various categories of employees, industry and principal occupations.

Results from the survey are used by Commonwealth and State government departments, employer associations, and trade unions in developing and reviewing wages and labour market policies and in the wage negotiating process.

Description

Data are collected from a sample of businesses taken from the Australian Bureau of Statistics register of businesses using a mail questionnaire. A two-stage sampling procedure is used to generate the sample of employees: (i) a random sample of employers; and (ii) a random sample of employee jobs within selected employers (for those employers with fewer than 10 employees details were required for all employees). In the May 1998 survey around 7,000 employers and 68,000 employees were selected.

All wage and salary earners who received pay for the Reference period are represented in the survey, except certain categories of employees (e.g. members of the Australian permanent defence forces and employees of enterprises primarily engaged in agriculture, forestry and fishing).

In addition, certain categories of persons who are not regarded as employees for the purposes of this survey are excluded (e.g. directors who are not paid a salary and proprietors/partners of unincorporated businesses).

DATA SOURCES—MINING: EMPLOYMENT

Main data detail

Subject to the reliability of the estimates, some of the data items which may be available about various categories of mining industry employees are:

- sex;
- average weekly ordinary time base pay;
- average weekly ordinary time payment by measured result;
- average weekly ordinary time overaward and overagreement pay;
- average weekly ordinary time earnings;
- average weekly overtime earnings;
- average weekly total earnings;
- average weekly ordinary time hours paid for;
- average weekly overtime hours paid for;
- average weekly total hours paid for;
- distribution of employees by levels of weekly total earnings; and
- sector.

Geographic coverage

Australia. Some State and Territory data relevant to the mining industry may also be available.

Frequency of data availability

Two-yearly.

Reference period

May.

Historical data

The collection began in 1974 and was conducted annually until 1981, when a decision was made to continue the survey on a two-yearly basis. As a result, no survey was run in 1982 or 1984. However, the survey was conducted annually from 1986 to 1996, when it reverted to a two-yearly collection. Consequently, a survey was undertaken in 1998. Data in electronic form are available from 1983, while data for the surveys conducted prior to 1983 are only available from publications. A break in the series exists between 1985 and 1986 due to the introduction of the Australian Standard Classification of Occupations to replace the Classification and Classified List of Occupations.

Products and services

Publications

- *Employee Earnings and Hours, Australia* (Cat. no. 6306.0)
- *Employee Earnings and Hours, Australia, Preliminary* (Cat. no. 6305.0)

Other

- Special data services are available on request.

Example of information available

AUSTRALIAN MINING INDUSTRY, AVERAGE WEEKLY TOTAL
EARNINGS—MAY 1998

	<i>Males</i>	<i>Females</i>	<i>Persons</i>
	\$	\$	\$
Full-time employees			
Managerial adult	1 940.70	1 074.90	1 900.90
Non-managerial adult	1 313.10	878.00	1 260.00
Non-managerial junior	576.20	397.80	539.60
Total non-managerial	1 297.90	860.00	1 243.70
Total adult	1 367.70	884.30	1 311.70
All full-time employees	1 352.80	866.60	1 295.50
Part-time employees	435.00	360.70	399.90
All employees	1 338.80	819.10	1 272.90

NAME OF COLLECTION

Employment and Earnings, Survey of

Contact

Manager
Labour Statistics Centre Output Group
Australian Bureau of Statistics
GPO Box K881
PERTH WA 6842

Telephone: Perth 08 9360 5141
Facsimile: Perth 08 9360 5954
Email: client.services@abs.gov.au
Internet: <http://www.abs.gov.au>

Purpose

The quarterly Survey of Employment and Earnings measures the number of, and gross earnings of, wage and salary earners (excluding those employed in private agriculture) in Australia.

Description

Employment and earnings data are collected by mail questionnaire from a sample of approximately 10,000 employer units selected from the Australian Bureau of Statistics register of businesses. The statistical unit for the survey comprises all activities of an employer in a particular State or Territory. Each statistical unit is classified to an industry which reflects the predominant activity of the business in the State or Territory.

Public sector statistical units are stratified by State, industry and number of employees. Private sector units are further stratified by institutional sector classification. An equal probability sample is selected from each stratum.

All wage and salary earners who received pay for the Reference period ending within the quarter are represented in the survey except certain categories of employees (e.g. members of the Australian permanent defence forces and employees in private households employing staff).

In addition, certain categories of persons who are not regarded as employees for the purposes of this survey are excluded (e.g. directors or office holders who are not paid a salary and proprietors/partners of unincorporated businesses).

Main data detail

Some of the data items available about wage and salary earners in the mining industry are:

- number of wage and salary earners;
- full-time/part-time;
- sector;
- employer size; and
- gross earnings.

Geographic coverage

Australia. Some State and Territory data relevant to the mining industry are also available.

Frequency of data availability

Quarterly.

Reference period

For employment—the last pay period ending on or before the third Friday in each month of the reference quarter. For gross earnings—all pay periods ending within the reference quarter.

Historical data

Data are available from July 1983.

Products and services

Publications

- *Wage and Salary Earners, Australia* (Cat. no. 6248.0)

Other

- Special data services are available on request.

Example of information available

	Feb 1998	May 1998	Aug 1998	Nov 1998
<i>Industry</i>	'000	'000	'000	'000
Mining	78.1	79.4	76.6	71.4
All industries	6 790.1	6 934.4	7 057.5	7 162.1

NAME OF COLLECTION

Industrial Disputes Collection

Contact

Manager
Dissemination Support (Victoria) Branch
Economic and Social Statistics Unit
Australian Bureau of Statistics
GPO Box 2796Y
MELBOURNE VIC 3001

Telephone: Melbourne 03 9615 7329
Facsimile: Melbourne 03 9615 7631
Email: client.services@abs.gov.au
Internet: <http://www.abs.gov.au>

Purpose

To collect and provide data on statistics of industrial disputes in Australia which involve stoppages of 10 working days or more at the establishments where the stoppages occurred.

Description

An industrial dispute is defined as a strike or lockout over any issue. It includes unauthorised stopcock meetings, unofficial strikes, sympathetic strikes, political or protest strikes, general strikes, work stoppages initiated by employers (e.g. lockouts) and rotating or revolving strikes. Excluded are work-to-rules, go-slows, bans and sit-ins.

Statistics are compiled mainly from data obtained from employers (both private and public sector) by mail questionnaire. Additional reports are obtained from trade unions and government authorities.

Main data detail

Data are published monthly and annually. Statistics are cross-classified by State and Territory, industry, duration of dispute, cause and method of settlement. Monthly data are also available cross-classified by eight industry groupings (including Coal mining and Other mining). Annual data are available cross-classified by 28 industry groupings (including Coal mining, Iron ore mining and Other mining).

Main data detail *continued*

Some of the data items available for the mining industry on:

- an annual basis are:
 - total number of disputes which occurred during the period;
 - total number of disputes which ended during the period;
 - total number of employees involved;
 - working days lost;
 - working days lost per thousand employees;
 - cause of dispute by number of disputes, employees involved, working days lost; and
 - method of settlement by number of disputes, employees involved, working days lost; and
- a monthly basis are:
 - total number of disputes which occurred during the period;
 - total number of employees involved;
 - working days lost; and
 - working days lost per thousand employees.

Geographic coverage

Some tables in the publication are cross-classified by State and Territory. Additional unpublished State and Territory data are available.

Frequency of data availability

Monthly publication with a more comprehensive annual publication.

Reference period

Calendar month and year ended 31 December.

Historical data

Industrial disputes data were collected annually from 1913 and monthly from 1959.

Products and services

Publications

- *Industrial Disputes, Australia* (Cat. no. 6321.0)
- *Industrial Disputes, Australia* (Cat. no. 6322.0)

Other

- PC AUSSTATS.
- Acrobat files.
- A small amount of data and text from the monthly publication are available on the Australian Bureau of Statistics, web site at www.abs.gov.au.
- Historical data and a range of unpublished data are available on request. Data are available cross-classified by State and Territory and industry. Considerable time series exist for most variables.

WORKING DAYS LOST PER THOUSAND EMPLOYEES, BY INDUSTRY

	Year ended			
	Oct 1998	Nov 1998	Dec 1998	Jan 1999
Mining				
Coal	2 132	1 995	2 732	2 961
Other	7	21	23	22
Manufacturing				
Metal product; Machinery and equipment	99	77	71	75
Other	105	105	105	105
Construction	536	521	524	515
Transport and storage; Communication services	128	124	114	112
Education; Health and community services	51	48	57	56
Other industries(a)	6	7	7	8
All industries	71	68	72	72

(a) Comprises Agriculture, forestry and fishing; Electricity, gas and water supply; Wholesale trade; Retail trade; Accommodation, cafes and restaurants; Finance and insurance; Property and business services; Government administration and defence; Cultural and recreational services; and Personal and other services.

NAME OF COLLECTION

Industry Briefs (South Australia)

Contact

Analyst
Scheme Regulation
WorkCover Corporation SA
GPO Box 2668
ADELAIDE SA 5001

Telephone: Adelaide 08 8233 2961
Facsimile: Adelaide 08 8233 2051
Email: rau@workcover.sa.gov.au
Internet: <http://www.workcover.sa.gov.au>

Purpose

To provide broad remuneration and workers' compensation claim data for selected industries in South Australia, including Australian Standard Industrial Classification (ASIC) Subdivision 11 Metallic minerals of ASIC Division B Mining.

Description

Data are derived from workers' compensation claim forms submitted by employees of employers covered by WorkCover Corporation SA. The data are classified in various ways, including using the South Australian WorkCover Industry Classification system and ASIC, and entered into a database.

Data detail

- remuneration
- location numbers
- employer size
- claim numbers
- claim costs
- claim payments
- claims paid
- severe accidents

Geographic coverage

South Australia.

Frequency of data availability

Annual.

Reference period

Year ended 30 June.

DATA SOURCES—MINING: EMPLOYMENT

Historical data

Data are available from 1991–92.

Products and services

Publications

- **Industry Brief 1. Metallic Minerals—Mining ASIC Industry Subdivision 11 (Non-exempts Only)** (available in hard copy from WorkCover SA's Bookstore, Resource Centre and Research and Analysis Unit)

Other

- **Word for Windows 97 document can be sent via email** (requests can be sent to rauin@workcover.sa.gov.au).

Example of information available

NUMBER OF NON-EXEMPT(a) CLAIMS IN ASIC SUBDIVISION 11 (METALLIC MINERALS)—SOUTH AUSTRALIA						
	1991–92	1992–93	1993–94	1994–95	1995–96	1996–97
Income claims for injuries in(b)	18	36	73	55	32	15
No-income claims for injuries in(c)	136	151	197	211	176	187

(a) Non-exempts are employers covered by WorkCover Corporation SA. (b) Income claims are claims that have received any income maintenance payments from WorkCover Corporation SA; essentially the major claims. (c) No-income claims are claims with no income maintenance paid; essentially the minor claims.

NAME OF COLLECTION

Job Vacancies Survey

Contact

Manager
 Labour Statistics Centre Output Group
 Australian Bureau of Statistics
 GPO Box K881
 PERTH WA 6001

Telephone: Perth 08 9360 5304
 Facsimile: Perth 08 9360 5954
 Email: client.services@abs.gov.au
 Internet: <http://www.abs.gov.au>

Purpose

To estimate the number of job vacancies in Australia.

Description

On a quarterly basis job vacancies data are collected (by telephone interview) from a sample of approximately 4,900 employers selected from the Australian Bureau of Statistics' register of businesses. The statistical unit for the survey comprises all activities of an employer in a particular State or Territory. Each statistical unit is classified to an industry which reflects the predominant activity of the business in the State or Territory. The statistical units are stratified by State, public/private sector, industry and size of employment, and an equal probability sample is selected from each stratum.

Main data detail

In relation to the mining industry, data are available about the number of job vacancies for that industry.

Geographic coverage

Australia. Some State and Territory data relevant to the mining industry may also be available.

Frequency of data availability

Quarterly.

Reference period

The third Friday in the middle month of the quarter.

Historical data

Data are available from November 1983.

DATA SOURCES—MINING: EMPLOYMENT

Products and services

Publications

- *Job Vacancies and Overtime, Australia* (Cat. no. 6354.0)

Other

- Special data services are available on request.

Example of information available

	May 1998	Aug 1998	Nov 1998	Feb 1999
<i>Industry</i>	'000	'000	'000	'000
Mining	0.8	1.0	0.9	1.0
All industries	73.3	73.0	77.4	66.6

NAME OF COLLECTION

Labour Costs Survey

Contact

Manager
 Labour Statistics Centre Output Group
 Australian Bureau of Statistics
 GPO Box K881
 PERTH WA 6842

Telephone: Perth 08 9360 5141
 Facsimile: Perth 08 9360 5954
 Email: client.services@abs.gov.au
 Internet: <http://www.abs.gov.au>

Purpose

The Labour Costs Survey aims to collect data about the costs incurred by employers as a consequence of employing labour.

Description

Employment and labour costs data are collected by mail questionnaire from a sample of businesses taken from the Australian Bureau of Statistics, register of businesses. The sample size for the 1996–97 Labour Costs Survey was approximately 8,200.

Main data detail

Some of the data items available about labour costs of mining industry businesses are:

- employee earnings
- superannuation costs
- payroll tax paid
- workers' compensation costs
- fringe benefits tax paid

Geographic coverage

Australia. Some State and Territory data relevant to the mining industry may also be available.

Frequency of data availability

Irregular.

Reference period

Year ended 30 June.

DATA SOURCES—MINING: EMPLOYMENT

Historical data

The survey was conducted annually from 1985–86 to 1991–92, then in 1993–94 and 1996–97. The next survey is scheduled to be conducted for the 2001–02 financial year.

Products and services

Publications

- *Labour Costs, Australia* (Cat. no. 6348.0)

Other

- Special data services are available on request.

Example of information available

LABOUR COSTS FOR THE PRIVATE AND PUBLIC SECTORS, AUSTRALIA—1996–97

	<i>Mining</i>	<i>All industries</i>
	%	%
Employee earnings	85.2	87.1
Other labour costs		
Superannuation	5.5	6.5
Payroll tax	4.7	3.3
Workers' compensation	2.5	2.0
Fringe benefits tax	2.0	1.1
Total other labour costs	14.8	12.9
Total labour costs	100.0	100.0

NAME OF COLLECTION

Labour Force Survey

Contact

Contact Officer
 Labour Force Estimates
 Australian Bureau of Statistics
 PO Box 10
 BELCONNEN ACT 2616

Telephone: Canberra 02 6252 6525
 Facsimile: Canberra 02 6252 7784
 Email: client.services@abs.gov.au
 Internet: <http://www.abs.gov.au>

Purpose

The Labour Force Survey (LFS) is a monthly survey which collects information about the labour force status and other characteristics of the usually resident civilian population aged 15 and over. Estimates of employment, unemployment, unemployment rate and labour force participation rate are published.

LFS data are a key element of labour market and other economic information provided by the Australian Bureau of Statistics. The principal objective is to facilitate the analysis and monitoring of social and economic aspects of the Australian labour market and working age population. This objective is achieved by providing timely statistics of the size and characteristics of the civilian labour force gained from the LFS and associated supplementary surveys.

Description

The LFS provides a measure of the currently economically active population (i.e. the labour force). The labour force is so defined as to be conceptually equivalent to the pool of labour available for the production of economic goods and services as defined for System of National Accounts measures of economic output.

The labour force framework classifies the population into three mutually exclusive and exhaustive categories: employed, unemployed and not in the labour force. The employed and unemployed categories together make up the labour force, or the currently active population. The third category (not in the labour force) represents the population not currently economically active.

Description *continued*

The survey is based on a multistage area sample of private dwellings (currently about 30,000 houses, flats, etc.) and a list sample of non-private dwellings (hotels, motels, etc.), and covers about 0.5% of the population of Australia. The information is obtained from the occupants of selected dwellings by specially trained interviewers.

Main data detail

Data items available include:

- civilian population aged 15 and over by sex;
- labour force status;
- age (single years for persons aged 15 to 24 years);
- marital status;
- hours worked;
- average hours worked;
- full-time/part-time workers;
- participation rates;
- attendance at school or tertiary education institution;
- country of birth;
- year of arrival in Australia; and
- duration of unemployment.

Some estimates are available in original, seasonally adjusted and trend terms.

Estimates for employed persons classified by Australian and New Zealand Standard Industrial Classification (ANZSIC) Division (ANZSIC Division B is Mining), occupation and status in employment are available for each February, May, August and November.

Geographic coverage

While the LFS is designed primarily to produce reliable estimates at the national, State and Territory levels, it also delivers estimates for a number of regions within States—there are 77 such regions across Australia. However, some estimates for regions within States may not be available due to confidentiality restrictions and the reliability of the estimates.

Frequency of data availability

Monthly.

Reference period

The reference period is the week starting on the Monday and ending on the Sunday preceding the interview week. Interviews generally commence on the first Monday between the sixth and the twelfth of each month. Interviews are conducted over two consecutive one week periods. Consequently there are two reference weeks for each survey.

Historical data

Data are available on a monthly basis from February 1978.

Products and services

Publications

- *Labour Force, Australia* (Cat. no. 6203.0)
- *Labour Force, Australia, Preliminary* (Cat. no. 6202.0)
- *Labour Force, New South Wales and Australian Capital Territory* (Cat. no. 6201.1)
- *Labour Force, Selected Summary Tables, Australia* (Cat. no. 6291.0.40.001)
- *Labour Force, Victoria* (Cat. no. 6202.2)
- *Labour Force, Queensland* (Cat. no. 6201.3)

Other

- Special data services are available on request.

DATA SOURCES—MINING: EMPLOYMENT

Example of information available

EMPLOYED PERSONS—AUSTRALIA				
	May 1998	Aug 1998	Nov 1998	Feb 1999
<i>Industry Division</i>	'000	'000	'000	'000
Agriculture, forestry and fishing	417.4	412.5	412.7	429.5
Mining	86.5	86.6	81.7	74.4
Manufacturing	1 095.0	1 104.4	1 083.6	1 074.5
Electricity, gas and water supply	65.7	69.0	64.2	58.8
Construction	619.2	624.3	639.9	624.5
Wholesale trade	528.3	507.9	497.1	507.8
Retail trade	1 243.3	1 254.0	1 301.4	1 315.6
Accommodation, cafes and restaurants	422.8	402.0	410.6	413.8
Transport and storage	395.8	380.0	403.4	435.2
Communication services	146.0	151.1	154.3	144.5
Finance and insurance	324.6	322.3	332.5	322.2
Property and business services	921.3	939.9	944.4	942.0
Government administration and defence	328.7	329.0	339.8	351.9
Education	608.1	602.9	606.4	580.5
Health and community services	819.6	808.5	816.8	833.4
Cultural and recreational services	204.8	200.2	213.0	206.6
Personal and other services	339.4	342.6	349.1	333.4
Total	8 566.6	8 537.2	8 651.0	8 648.7

NAME OF COLLECTION

Labour Force Survey—Supplementary Surveys

Contact

Assistant Director
 Supplementary Surveys
 Labour Force Section
 Australian Bureau of Statistics
 PO Box 10
 BELCONNEN ACT 2616

Telephone: Canberra 02 6252 6504
 Facsimile: Canberra 02 6252 7784
 Email: client.services@abs.gov.au
 Internet: <http://www.abs.gov.au>

Purpose

To identify various aspects of and changes in the labour force. The supplementary surveys provide additional data not collected in the Labour Force Survey (LFS). The specific purpose of each supplementary survey varies according to the topic.

Description

Labour force supplementary surveys are conducted as supplements to the LFS. The supplementary surveys cover a wide variety of topics. The survey samples are a subset of the monthly LFS, and sample sizes of the supplementary surveys may vary from topic to topic. The collection is a household-based sample survey conducted by personal interview.

Main data detail

Supplementary surveys are carried out on various aspects of the labour force. Data are available for mining industries for particular surveys. For a list of the supplementary surveys, see 'Products and services'.

Geographic coverage

Australia, States and Territories.

Frequency of data availability

Various—annual to three-yearly; most are irregular. See *Catalogue of Publications and Products* (Cat. no. 1101.0).

Reference period

Varies according to the individual survey.

Historical data

Various. See *Catalogue of Publications and Products* (Cat. no. 1101.0).

Products and services

Publications

- *Expenditure Career Experience, Australia* (Cat. no. 6254.0)
- *Employee Earnings, Benefits and Trade Union Membership, Australia* (Cat. no. 6310.0)
- *Employment Benefits, Australia* (Cat. no. 6334.0)
- *Job Search Experience of Unemployed Persons, Australia* (Cat. no. 6222.0)
- *Labour Force Experience, Australia* (Cat. no. 6206.0)
- *Labour Force Status and Educational Attainment, Australia* (Cat. no. 6235.0)
- *Labour Force Status and Other Characteristics of Families, Australia* (Cat. no. 6224.0)
- *Labour Force Status and Other Characteristics of Migrants, Australia* (Cat. no. 6250.0)
- *Labour Mobility, Australia* (Cat. no. 6209.0)
- *Multiple Jobholding, Australia* (Cat. no. 6216.0)
- *Participation in Education, Australia* (Cat. no. 6272.0)
- *Persons Employed at Home, Australia* (Cat. no. 6275.0)
- *Persons Not in the Labour Force, Australia* (Cat. no. 6220.0)
- *Retirement and Retirement Intentions, Australia* (Cat. no. 6238.0)
- *Successful and Unsuccessful Job Search Experience, Australia* (Cat. no. 6245.0)
- *Superannuation, Australia* (Cat. no. 6319.0)
- *Trade Union Members, Australia* (Cat. no. 6325.0)
- *Transition from Education to Work, Australia* (Cat. no. 6227.0)
- *Underemployed Workers, Australia* (Cat. no. 6265.0)
- *Working Arrangements, Australia* (Cat. no. 6342.0)

Other

- Special data services are available on request.

Example of information available

STANDARD BENEFITS RECEIVED BY EMPLOYEES IN MAIN JOB, AUSTRALIA—AUGUST 1998(a)

<i>Industry</i>	Type of standard benefit received					<i>Total(b)</i>	<i>Proportion receiving a benefit</i>
	<i>No standard benefit received</i>	<i>Super-annuation</i>	<i>Holiday leave</i>	<i>Sick leave</i>	<i>Long service leave</i>		
	'000	'000	'000	'000	'000	'000	%
Agriculture, forestry and fishing	26.1	131.7	70.4	69.7	42.4	164.2	84.1
Mining	*2.4	72.1	67.0	66.3	58.8	75.6	96.8
Manufacturing	44.6	968.8	855.7	855.0	747.0	1 027.4	95.7
Electricity, gas and water supply	*0.0	68.4	65.2	65.2	63.0	68.4	100.0
Construction	43.8	345.2	256.8	260.0	217.9	399.0	89.0
Wholesale trade	22.2	429.3	380.7	378.7	304.5	462.2	95.2
Retail trade	216.3	794.5	550.9	550.2	438.1	1 042.8	79.3
Accommodation, cafes and restaurants	70.5	282.0	145.2	147.0	108.2	359.6	80.4
Transport and storage	19.0	291.9	251.1	248.5	218.7	315.4	94.0
Communication services	7.4	129.3	122.0	121.9	110.6	138.7	94.7
Finance and insurance	5.1	304.3	283.0	284.7	265.1	313.3	98.4
Property and business services	73.8	681.4	528.5	526.6	409.9	774.3	90.5
Government administration and defence	7.9	319.6	298.0	298.8	288.7	330.1	97.6
Education	30.0	541.6	469.2	478.9	441.2	583.1	94.9
Health and community services	37.4	715.8	596.3	596.3	534.1	772.6	95.2
Cultural and recreational services	25.6	134.1	91.9	92.6	78.8	162.2	84.2
Personal and other services	30.9	218.8	193.0	191.2	162.6	255.8	87.9

(a) Estimates highlighted with an asterisk (*) are subject to sampling variability too high for most practical uses. (b) Includes persons receiving more than one standard benefit.

NAME OF COLLECTION

Wage Cost Index

Contact

Assistant Director
Labour Cost Index
Labour Statistics Centre
Australian Bureau of Statistics
GPO Box K881
PERTH WA 6842

Telephone: Perth 08 9360 5151
Facsimile: Perth 08 9360 5954
Email: client.services@abs.gov.au
Internet: <http://www.abs.gov.au>

Purpose

Since the early 1990s there has been a move away from an award-based centralised wage fixing environment in Australia in favour of agreements at the enterprise, workplace and individual employee levels. The Wage Cost Index (WCI) was developed as a more reliable indicator of changes in the underlying price of labour in this environment than other earnings series such as the Award Rates of Pay Indexes and the Survey of Average Weekly Earnings. The first issue of *Wage Cost Index, Australia* (Cat. no. 6345.0) was published for the December quarter 1997.

The WCI measures changes in wage and salary costs for employee jobs unaffected by changes in the quality and quantity of work performed. 'Quality' in the WCI relates only to the inherent productivity of employees, and this is dependent on a range of personal attributes including age, experience, qualifications, skill level, motivation and fitness.

Description

The WCI is an integrated set of quarterly indexes which measure changes in wage and salary costs for employee jobs. Index numbers for the WCI are compiled from hourly wage and salary costs for a representative sample of employee jobs within a sample of employing organisations. Approximately 19,000 jobs are selected in the sample from 3,500 private and public sector employers.

Information for the WCI is collected each quarter by mail questionnaires from employers included in the sample. In the first quarter that they participate in the survey, employers provide information for the sample of jobs they have selected, including job descriptions and wage and salary payments. In subsequent quarters they are asked to provide updated wage and salary information about the same jobs, using tailored forms containing the preprinted job descriptions previously provided.

Description *continued*

There are four sets of quarterly Laspeyres (i.e. base-period weighted) indexes compiled:

- ordinary time hourly rates of pay—excluding bonuses;
- ordinary time hourly rates of pay—including bonuses;
- total hourly rates of pay—excluding bonuses; and
- total hourly rates of pay—including bonuses.

The four component sets of indexes together comprise the WCI.

The indexes that exclude bonuses are 'pure' price indexes (i.e. they aim to measure changes over time in the wage and salary cost of a representative 'basket' of jobs, unaffected by changes in the quality (defined as inherent productivity of employees) or the quantity of work performed). This is referred to as 'pricing to constant quality'. By following a 'basket' of jobs over time, and by maintaining a fixed weighting pattern, these indexes will be unaffected by, for example, shifts in the distribution of employees across occupations and industries, and between full-time and part-time jobs. Thus, unlike other Australian Bureau of Statistics, earnings measures such as the quarterly Average Weekly Earnings series, the WCI will not measure changes in average (per employee) wage payments.

The indexes that include bonuses reflect the changes in wage and salary rates shown in the pure price indexes (described above), as well as changes in bonus payments; hence they tend to be more volatile than the pure price indexes.

The WCI is the first stage in the development of the Labour Cost Index (LCI). The LCI will measure the combined effect of changes in wages costs and selected non-wage costs.

The target population of employers for the WCI is all employing organisations in Australia (private and public sector) except:

- enterprises primarily engaged in agriculture, forestry or fishing;
- private households employing staff; and
- overseas embassies, consulates, etc.

Description *continued*

All employees jobs in the target population of employers are in scope of the WCI except the following:

- Australian permanent defence force jobs;
- 'non-maintainable' jobs (i.e. jobs that are expected to be occupied for less than six months of the year); and
- jobs for which wages and salaries are not determined by the Australian labour market, e.g. working proprietors of small incorporated enterprises; most employees of Community Development Employment Programs; and jobs where the remuneration is set in a foreign country.

As such, full-time and part-time, permanent and casual, and managerial and non-managerial jobs are in scope of the WCI. Costs incurred by employers for work undertaken by self-employed persons such as consultants and subcontractors are out of scope of the WCI, as they do not relate to employee jobs. Workers paid commission without a retainer are also excluded.

Main data detail

For each of the four component indexes of the WCI, separate indexes will be released for various combinations of State and Territory, sector (private/public), broad industry including mining and broad occupation groups.

Geographic coverage

Australia, States and Territories.

Frequency of data availability

Quarterly.

Reference period

The last pay period ending on or before the third Friday of the middle month of the quarter.

Historical data

Data are available from the December quarter 1997.

Products and services available

Publications

- *Information Paper: Wage Cost Index, Australia* (Cat. no. 6346.0)
- *Wage Cost Index, Australia* (Cat. no. 6345.0)

Other

- Special data services available on request.

Example of information available

TOTAL HOURLY RATES OF PAY EXCLUDING BONUSES,
MINING INDUSTRY—AUSTRALIA: ALL SECTORS

<i>Quarter</i>	<i>Index numbers(a)</i>	<i>Percentage changes from previous quarter</i>
March 1998	101.4	0.7
June 1998	101.8	0.4
September 1998	102.6	0.8
December 1998	103.0	0.4

(a) Base of index: September quarter 1997 = 100.0.

NAME OF COLLECTION

**Workers' Compensation and Rehabilitation Data,
Western Australia**

Contact

Executive Director
WorkCover Western Australia
2 Bedbrook Place
SHENTON PARK WA 6008

Telephone: Perth 08 9388 5502
Facsimile: Perth 08 9388 5550
Email: Harryn@workcover.wa.gov.au

Purpose

The workers' compensation system in Western Australia is regulated by WorkCover Western Australia. Seventeen approved insurers and 14 self-insurers actively participate in the system. Statistics are collected from approved, former approved and self-insurers on workers' compensation claims following a work-related injury. These statistics provide valuable information to effectively administer the *Workers' Compensation and Rehabilitation Act 1981* (WA), advise government on appropriate policy and monitor the cost of the scheme and claim payments trends in the scheme.

Description

Every employer in Western Australia, with some exceptions, should obtain from an approved insurance office a policy of insurance. If an injury occurs in the workplace and the worker has time off, or incurs any costs because of a work-related injury or disease, the worker must complete a Workers' Compensation Claim Form (Employee's Report). The claim form is submitted by the worker to the employer, who forwards it to the relevant insurance company. A claim form contains characteristics of the injury and demographics of the injured worker. Approved insurers are required to provide details of the claim form to WorkCover Western Australia, which are then recorded on to a statistical database.

Industry data items are coded using the Australian and New Zealand Standard Industrial Classification. Consequently, mining statistics are available from the collection. Occupation data items are coded using the Australian Standard Classification of Occupations, and WorkSafe Australia's classification of injury manual is used to code nature of injury, bodily location, agency of occurrence and mechanism of injury.

Description *continued*

Statistics are derived from over 60,000 claims lodged with the insurers or self-insurers in Western Australia each year and comprise claims involving a fatal injury or at least one full day or shift of lost time from work (lost time claims—each year around 28,000 lost time claims are lodged with insurers in Western Australia).

Main data detail

- age
- sex
- industry
- occupation
- mechanism of injury
- agency of occurrence
- nature of injury
- bodily location
- duration of claims
- claim costs

Geographic coverage

Western Australia.

Frequency of data availability

Annual.

Reference period

Year ended 30 June.

Historical data

All of the data items listed above are available from 1994–95. Claim costs data are available from 1988–89.

Products and services

The statistics can be obtained on request, subject to a release agreement by WorkCover Western Australia's Executive Director, on a 'fee-for-service' or free basis depending on the nature of the information and the Executive Director's decision.

NAME OF COLLECTION

Workers' Compensation Statistical Collection—Workplace Safety Board of Tasmania

Contact

Senior Statistician
Rehabilitation and Compensation Branch
Employer and Employee Services Division
Workplace Standards Tasmania
Department of Infrastructure, Energy and Resources
PO Box 56
ROSNY PARK TAS 7018

Telephone: Hobart 03 6233 2024
Facsimile: Hobart 03 6233 8338
Email: mmchugh@wsa.tas.gov.au or info@wsa.tas.gov.au
Internet: <http://www.wsa.tas.gov.au>

Purpose

The Tasmanian workers' compensation statistical collection is an ongoing collection incorporating data processed from workers' compensation claims received by the Workplace Safety Board of Tasmania from licensed insurers, self-insurers, and exempt employers. Records are classified to the Australian and New Zealand Standard Industrial Classification (ANZSIC) Class level, which facilitates extraction of data specific to the mining industry.

Its main objectives are to:

- assist the Workplace Safety Board of Tasmania in the effective administration of the Tasmanian workers' compensation scheme by keeping up-to-date information on workers' compensation claims and workers' compensation insurance policies;
- provide a timely and reliable tool, from a quantitative perspective, for monitoring the Tasmanian workers' compensation scheme performance in the areas of occupational health and safety, workers' compensation, return to work and development of workplace standards; and
- provide advice, based on sound measurable outcomes, on issues of strategic significance to users of workers' compensation data.

Description

Data are derived from statutory claim forms received by the Workplace Safety Board of Tasmania from licensed insurers, self-insurers and exempt employers which operate under the Tasmanian workers' compensation arrangements. Statutory claim forms are required to be forwarded to the Workplace Safety Board of Tasmania within five days after receipt by the insurer. The claims are determined under the *Workers' Rehabilitation and Compensation Act 1988* (Tas.). Data are processed by Workplace Standards Tasmania for the Workplace Safety Board of Tasmania as soon as statutory claim forms are received from insurers.

There are approximately 155,000 workers covered by Tasmanian workers' compensation arrangements. There was an average of approximately 20,000 claims each year from 1989–90 to 1994–95. From 1996–97 to 1997–98, there was an average of approximately 14,000 claims each year.

Main data detail

Some of the data items available for the mining industry are:

- claims lodged;
- fatalities;
- all claims frequency rate (the number of claims lodged per million hours worked); and
- lost time injury frequency rate (the number of lost time injuries per million hours worked).

Some of the additional data items available for the mines/quarry/energy sector are:

- nature of injury;
- part of body injured;
- location; and
- mechanism of injury.

Geographic coverage

Tasmania.

Frequency of data availability

Mining industry data are published on an annual basis, while mines/quarries/energy sector data are published quarterly and annually.

DATA SOURCES—MINING: EMPLOYMENT

Reference period

The collection is ongoing. Statistical reports are produced mainly on the basis of lodgement period, either quarterly (e.g. quarter ended 30 September 1998) or annually (e.g. year ended 30 June 1998).

Historical data

Data are available from 15 November 1988, when the original *Workers' Rehabilitation and Compensation Act 1988* (Tas.) was introduced.

Products and services

Publications

The following reports may be obtained from Workplace Standards Tasmania, Department of Infrastructure, Energy and Resources, PO Box 56, Rosny Park Tasmania 7018, or telephone 1300 366 322:

- *Workers' Compensation Quarterly Statistical Report*
- *Workplace Issues*
- *Workplace Safety Board of Tasmania Annual Report*
- *Workplace Standards Tasmania Annual Report*

Other

- The above publications may also be found on Workplace Standards Tasmania's Internet web site at <http://www.wsa.tas.gov.au>.
- Special data services may be available on request on a fee-for-service basis, but are subject to confidentiality restrictions.

NAME OF COLLECTION

Work-related Traumatic Fatalities in Australia, 1989 to 1992

Contact

Head
Epidemiology Unit
National Occupational Health and Safety Commission
GPO Box 58
SYDNEY NSW 2001

Telephone: Sydney 02 9577 9295
Facsimile: Sydney 02 9577 9300
Email: driscolt@worksafe.gov.au
Internet: <http://www.worksafe.gov.au>

Purpose

To identify and describe all work-related traumatic fatalities that occurred in Australia during the study period, in order to make a significant contribution to the effectiveness of activity designed to prevent work-related traumatic death (including mining fatalities).

Description

This study included all people who died as a result of work-related trauma which occurred anywhere in Australia in the four-year period 1989 to 1992.

The study excluded all persons who:

- died of diseases (such as cancers and heart attacks);
- committed suicide, even if there appeared to be some direct connection with work; or
- did not die as a result of their injuries.

A broad definition of work was used and the cases were divided into two main groups—workers and bystanders. Workers were defined as persons who were fatally injured while performing some kind of activity for pay, profit or kind (persons driving to or from work were included as a separate group). Bystanders were persons who were not working, but who were killed directly as a result of someone else's work activity.

The study also included a number of other groups whose death was related to work in a more indirect way. These groups were volunteers, students, persons performing home duties and persons fatally injured on farms but not due to obvious farm work.

DATA SOURCES—MINING: EMPLOYMENT

Description *continued*

The information was collected from the coroner's files in each of the States and Territories. The files were read and deaths classified as cases (i.e. work-related), non-cases (i.e. not work-related) or indeterminate (usually when there was not enough information to confidently classify the file as a case or a non-case). File information for the deaths that was found to be work-related was photocopied, coded into a computerised database and analysed.

Files were found for 99.7% of relevant coronial files. Of the original 22,957 people who died of external causes during the study period, 3,627 (15.8%) were confirmed as cases, 17,808 were excluded as non-work-related (77.6%), and 1,522 were excluded as indeterminate (6.6%).

Main data detail

Some of the data items available related to the mining industry are:

- occupation
- industry
- age
- gender
- mechanism of the fatal incident
- agencies involved
- place of the fatal incident
- activity at the time of the fatal incident
- cause of death
- contributing factors

Geographic coverage

Australia, States and Territories.

Frequency of data availability

This was the second study of work-related traumatic fatalities undertaken by the Commission. The previous study was conducted for 1982 to 1984 inclusive. No further data collection of this type is planned.

Reference period

January 1989 to December 1992.

Historical data

Data are available from 1989 to 1992.

Products and services

Publications

The following publications are available from AusInfo, the Commission and its Internet web site at <http://www.worksafe.gov.au>:

- *Mining Industry Fact Sheet*;
- *Work-related Traumatic Fatalities in Australia, 1989 to 1992*
- *Work-related Traumatic Fatalities in Australia, 1989 to 1992, Summary Report*

ENVIRONMENT

NAME OF COLLECTION

Environment Protection Expenditure, Australia

Contact

Assistant Director
Environment and Energy Statistics Section
Australian Bureau of Statistics
PO Box 10
BELCONNEN ACT 2616

Telephone: Canberra 02 6252 5643
Facsimile: Canberra 02 6252 5335
Email: client.services@abs.gov.au
Internet: <http://www.abs.gov.au>

Purpose

To provide data on environmental protection expenditure for use by decision-makers in assessing, developing and integrating economic and environmental policies. The information collected in this series is also used to satisfy international reporting obligations, such as the Organisation for Economic Co-operation and Development Environmental questionnaire and the United Nations Commission on Sustainable Development indicator project. The data also form part of environment 'satellite' accounts designed to augment the core system of National Accounts. These environment protection expenditure initiatives are in keeping with Australia's commitment to ecologically sustainable development, as outlined in the Intergovernmental Agreement on the Environment and international agreements.

Description

Data are collected using economic collections covering agriculture, mining, manufacturing and service industries. See the entry on Mining Collection for more details. Information is also collected from a number of other sources including annual reports, government budget papers and local government.

In relation to the mining industry, the series provides an indication of:

- the expenditure on environment protection services;
- the financing of environment protection activities; and
- the impact of environmental measures such as taxes and regulations.

Description *continued*

This information may assist sectors of the mining industry which have developed expertise in environmental management to better understand the scope, nature and potential of commercial operations in the Australian market.

Main data detail

Data items available about selected Australian and New Zealand Standard Industrial Classification (ANZSIC) Mining (Division B) Groups and Classes are:

- consumption of environment protection goods and services;
- gross capital formation for environment protection services; and
- provision of labour, goods and services as inputs into production of environment protection measures.

Data are distributed by environmental domain, these domains are:

- solid waste management;
- waste water and water protection;
- protection of ambient air and climate;
- protection of biodiversity and landscape;
- protection of soil and groundwater; and
- other environment protection (including noise and vibration abatement and research and development).

Additional data items available about selected ANZSIC Mining (Division B) Groups are:

- pollution abatement and control expenditures;
- capital expenditure on environment protection;
- current expenditure on environment protection;
- components of current expenditure on environment protection;
- capital expenditure on environment protection by technique;
- capital expenditure on environment protection by environment domain; and
- total expenditure on environment protection.

DATA SOURCES—MINING: ENVIRONMENT

Geographic coverage

Australia.

Frequency of data availability

Two-yearly.

Reference period

Year ended 30 June.

Historical data

Data are available from 1990–91.

Products and services

Publication

- *Environment Protection Expenditure, Australia*
(Cat. no. 4603.0)

Other

- Special data services are available on request.

Example of information available

ENVIRONMENT PROTECTION EXPENDITURE, MINING INDUSTRY,
AUSTRALIA—1996–97

	Capital	Current	Total
	<i>National EPE</i>	<i>National EPE</i>	<i>National EPE</i>
	\$m	\$m	\$m
Solid waste management	21.2	22.9	44.1
Waste water & water protection	44.7	44.9	89.6
Protection of ambient air & climate	10.1	12.3	22.4
Protection of biodiversity & landscape	14.1	85.2	99.3
Protection of soil & groundwater	25.0	16.6	41.6
Other environment protection(a)	25.7	34.2	59.9
Total	140.8	216.1	356.9

(a) Contains expenditures for noise and vibration abatement and research and development.

EXPLORATION

NAME OF COLLECTION

Mineral Exploration, Drilling Methods

Contact

The Manager
 Mineral and Petroleum Exploration National Project Centre
 Australian Bureau of Statistics
 GPO Box 3796
 DARWIN NT 0801

Telephone: Darwin 08 8943 2171
 Facsimile: Darwin 08 8941 0715
 Email: client.services@abs.gov.au
 Internet: <http://www.abs.gov.au>

Purpose

To provide data about mineral exploration drilling methods in Australia.

Description

An annual survey of all private sector companies with licences to explore in Australia and a minimum exploration expenditure of \$20,000 per annum. In the 1997–98 survey, approximately 700 companies were surveyed.

Data are collected by mail questionnaire.

Main data detail

- expenditure on mineral exploration by drilling method, State and the Northern Territory; and
- metres drilled during mineral exploration by drilling method, State and the Northern Territory.

Geographic coverage

Australia, States and the Northern Territory.

Frequency of data availability

Annual.

Reference period

Year ended 30 June.

Historical data

Data are available from 1993–94.

DATA SOURCES—MINING: EXPLORATION

Products and services

Publication

- September quarter issue only of *Actual and Expected Private Mineral Exploration, Australia* (Cat. no. 8412.0)

Other

- Limited special data services are available on request.

Example of information available

MINERAL EXPLORATION DRILLING METHODS, AUSTRALIA—1997–98

	<i>Units</i>	<i>Diamond</i>	<i>Reverse circulation</i>	<i>Percussion</i>	<i>Rotary air blast</i>	<i>Aircore/ vacuum(a)</i>	<i>Other</i>	<i>Total</i>
Expenditure	\$ million	132.5	148.6	9.1	42.2	35.4	11.0	378.7
Metres drilled	'000 m	1 468.4	4 167.3	210.3	3 410.6	1 603.1	199.4	11 059.1

(a) Prior to 1997–98, aircore/vacuum was included in Other.

NAME OF COLLECTION

Overseas Mineral Exploration Expenditure

Contact

The Manager
 Mineral and Petroleum Exploration National Project Centre
 Australian Bureau of Statistics
 GPO Box 3796
 DARWIN NT 0801

Telephone: Darwin 08 8943 2171
 Facsimile: Darwin 08 8941 0715
 Email: client.services@abs.gov.au
 Internet: <http://www.abs.gov.au>

Purpose

To provide data about overseas mineral exploration expenditure of companies which are Australian-owned and/or have the majority of their operations based in Australia.

Description

An annual survey of all companies which are Australian-owned and/or have the majority of their operations based in Australia. In the 1997–98 survey, approximately 700 companies were surveyed.

Data are collected by mail questionnaire.

Main data detail

Data are available about overseas mineral exploration expenditure by country and mineral sought.

Geographic coverage

Australia.

Frequency of data availability

Annual.

Reference period

Year ended 30 June.

Historical data

Data are available from 1993–94.

DATA SOURCES—MINING: EXPLORATION

Products and services

Publication

- September quarter issue only of *Actual and Expected Private Mineral Exploration, Australia* (Cat. no. 8412.0)

Example of information available

OVERSEAS MINERAL EXPLORATION EXPENDITURE, AUSTRALIAN RESIDENT COMPANIES			
	1995-96(a)	1996-97(a)	1997-98(b)
	\$m	\$m	\$m
North America(c)	222.0	254.1	60.4
Latin America(d)	90.8	120.3	84.5
Papua New Guinea	44.5	10.7	4.0
Indonesia	67.0	109.0	46.3
China	2.4	8.7	12.1
Other Asia	66.0	65.6	55.4
Africa	93.9	118.2	76.3
Other	82.4	72.9	39.9
Total	669.0	759.6	379.0

(a) Includes expenditure on petroleum exploration. (b) Excludes expenditure on petroleum exploration. (c) Includes Canada. (d) Comprises Mexico, South America and the Caribbean.

NAME OF COLLECTION

Petroleum Exploration, Development and Production Statistics

Contact

Manager
 Industry Assessment
 Petroleum Resources Branch
 Australian Geological Survey Organisation
 Department of Industry, Science and Resources
 GPO Box 378
 CANBERRA ACT 2601

Telephone: Canberra 02 6272 4837
 Facsimile: Canberra 02 6272 4696

Purpose

To provide upstream petroleum statistics including wells and metres drilled, expenditure, origin of funds and seismic survey activity.

Description

Each year all operators, owners and interest holders of exploration and development petroleum titles both onshore and offshore Australia are requested to respond to a mail questionnaire (mailing list approximately 250). There is no legislative requirement to respond, and approximately 75 completed questionnaires from title operators, who include joint venture partners, were returned in 1997.

Main data detail

- onshore and offshore petroleum exploration and development activities; and
- onshore and offshore petroleum exploration, development and production expenditure and the estimated origin of these funds.

Geographic coverage

Onshore and offshore Australia including the Territory of the Ashmore and Cartier Islands and Zone of Cooperation between Australia and Indonesia.

Frequency of data availability

Petroleum exploration and development activity data are available on a quarterly basis. Petroleum exploration, development and production expenditure data are available on an annual basis.

DATA SOURCES—MINING: EXPLORATION

Reference period

For petroleum exploration and development activity data—quarters ended 31 March, 30 June, 30 September and 31 December. For petroleum exploration, development and production expenditure data—years ended 31 December.

Historical data

Data are available from 1961.

Products and services

Publications

- *Australian Petroleum Exploration and Development Activity*
- *Oil and Gas Resources of Australia, 1998*

Example of information available

ONSHORE AND OFFSHORE WELLS AND METRES DRILLED OR DRILLING—JUNE QUARTER 1998(a)

State and Territory	Exploration				Development				Total	
	Onshore		Offshore		Onshore		Offshore			
	Wells	Metres	Wells	Metres	Wells	Metres	Wells	Metres	Wells	Metres
NSW	(b)2	1 675	—	—	—	—	—	—	2	1 675
Vic.	1	552	1	3 667	—	—	9	23 030	11	27 249
Qld	17	32 626	—	—	5	(c)7 238	—	—	22	39 864
WA	4	7 867	14	20 445	4	2 658	3	9 777	25	40 747
SA	12	28 771	1	1 350	11	(c)22 495	—	—	24	52 616
Tas.	—	—	2	5 385	—	—	—	—	2	5 385
NT	1	909	4	9 151	—	—	3	3 543	8	13 603
ZOCA(d)	—	—	1	2 505	—	—	—	—	1	2 505
Total	37	72 400	23	42 503	20	32 391	15	36 350	95	183 644

(a) Includes wells that had reached total depth and those drilling ahead at the end of the quarter. (b) Drilled as both conventional petroleum and coalbed methane wells. (c) Includes re-entry well metres. (d) Zone of Cooperation Area 'A'.

NAME OF COLLECTION

Private Mineral Exploration

Contact

The Manager
 Mineral and Petroleum Exploration National Project Centre
 Australian Bureau of Statistics
 GPO Box 3796
 DARWIN NT 0801

Telephone: Darwin 08 8943 2171
 Facsimile: Darwin 08 8941 0715
 Email: client.services@abs.gov.au
 Internet: <http://www.abs.gov.au>

Purpose

To provide data about private mineral exploration in Australia.

Description

A quarterly survey of all private sector companies with licences to explore in Australia and a minimum exploration expenditure of \$20,000 per annum. In the December quarter 1998 survey, approximately 570 companies were surveyed.

Data are collected by mail questionnaire.

Main data detail

- actual and expected expenditure on private mineral exploration (other than for petroleum);
- expenditure on private mineral exploration (other than for petroleum) on production leases and on all other areas;
- metres drilled during private mineral exploration (other than for petroleum) on production leases and on all other areas;
- expenditure on private mineral exploration (other than for petroleum) by State and the Northern Territory; and
- expenditure on private mineral exploration (other than for petroleum) by mineral sought.

Geographic coverage

Australia, and some data are classified by State and the Northern Territory.

Frequency of data availability

Quarterly.

Reference period

Quarters ended 31 March, 30 June, 30 September and 31 December.

DATA SOURCES—MINING: EXPLORATION

Historical data

Data (for some series) are available from the June quarter 1976 to the June quarter 1980 (see *Mineral Exploration (Other Than for Petroleum) by Principle Enterprises* (Cat. no. 8408.0)) and from the September quarter 1980 (see *Actual and Expected Private Mineral Exploration, Australia* (Cat. no. 8412.0)).

Products and services

Publication

- *Actual and Expected Private Mineral Exploration, Australia* (Cat. no. 8412.0)

Other

- Limited special data services are available on request.

Example of information available

MINERAL EXPLORATION (OTHER THAN FOR PETROLEUM), EXPENDITURE AND METRES DRILLED—AUSTRALIA

Period	Expenditure			Metres drilled		
	On production leases	On all other areas	Total	On production leases	On all other areas	Total
	\$m	\$m	\$m	'000 m	'000 m	'000 m
1995–96	208.8	751.5	960.3	3 520	6 995	10 514
1996–97	306.1	842.4	1 148.6	4 453	8 378	12 831
1997–98	253.2	813.6	1 066.8	3 365	7 843	11 209
1998						
Mar Qtr	52.0	168.4	220.4	699	1 308	2 007
Jun Qtr	53.3	209.3	262.6	843	1 885	2 728
Sep Qtr	51.5	184.3	235.9	690	1 494	2 183
Dec Qtr	60.0	179.7	239.6	786	1 833	2 619

NAME OF COLLECTION

Private Petroleum Exploration

Contact

The Manager
 Mineral and Petroleum Exploration National Project Centre
 Australian Bureau of Statistics
 GPO Box 3796
 DARWIN NT 0801

Telephone: Darwin 08 8943 2171
 Facsimile: Darwin 08 8941 0715
 Email: client.services@abs.gov.au
 Internet: <http://www.abs.gov.au>

Purpose

To provide data about private petroleum exploration onshore and offshore Australia.

Description

A quarterly survey of all private sector companies with licences to explore onshore and offshore Australia and a minimum exploration expenditure of \$20,000 per annum. In the December quarter 1998 survey, approximately 80 companies were surveyed.

Data are collected by mail questionnaire.

Main data detail

- actual and expected expenditure on private petroleum exploration by onshore/offshore;
- expenditure on onshore private petroleum exploration by drilling/other;
- expenditure on offshore private petroleum exploration by drilling/other;
- expenditure on private petroleum exploration on production leases/all other areas; and
- expenditure on private petroleum exploration by region.

Geographic coverage

Onshore and offshore Australia, and some data are available by onshore/offshore Australia and region.

Frequency of data availability

Quarterly.

DATA SOURCES—MINING: EXPLORATION

Reference period

Quarters ended 31 March, 30 June, 30 September and 31 December.

Historical data

Data available from September 1974.

Products and services

Publication

- *Actual and Expected Private Mineral Exploration, Australia* (Cat. no. 8412.0)

Other

- Limited special data services are available request.

Example of information available

PETROLEUM EXPLORATION EXPENDITURE—AUSTRALIA			
	<i>On production leases</i>	<i>On all other leases</i>	Total
<i>Period</i>	<i>\$m</i>	<i>\$m</i>	<i>\$m</i>
1995–96	78.8	646.5	725.1
1996–97	137.7	715.3	853.0
1997–98	68.8	912.4	981.2
1998			
Mar Qtr	22.5	241.8	264.3
Jun Qtr	27.3	306.9	334.2
Sep Qtr	24.3	169.0	193.3
Dec Qtr	35.1	219.8	254.9

FINANCIAL PERFORMANCE

NAME OF COLLECTION

ASX FinData Products

Contact

Senior Account Manager
Market Data
Australian Stock Exchange
PO Box H224 Australia Square
SYDNEY NSW 2001

Telephone: Sydney 02 9227 0038
Facsimile: Sydney 02 9232 7428
Email: marketdata@asx.com.au
Internet: <http://www.asx.com.au>

Purpose

To provide a broad range of financial data covering all companies listed on the Australian Stock Exchange (ASX), which include mining/resource companies.

Description

Detailed financial data are taken from announcements lodged with the ASX (including all periodic reports) by listed companies (pursuant to requirements of ASX's listing rules), and entered into the ASX's various databases.

There are up to nine separate financial data sets covering approximately 1,200 listed companies, of which approximately 400 are mining companies.

Main data detail

- annual report financials
- interim report financials
- preliminary final report financials
- quarterly report data
- dividend data
- dilution factors
- share price data
- traded securities data
- market comparative analysis

Geographic coverage

Australia.

DATA SOURCES—MINING: FINANCIAL PERFORMANCE

Frequency of data availability

Data are captured and stored as they are reported by companies and are available for delivery weekly, monthly or quarterly.

Reference period

Various.

Historical data

Most data are available from 1987.

Products and services

FinData products are available in CSV format from the ASX Sydney—history delivered by CD-ROM and updates delivered via the Internet (ASXtra).

NAME OF COLLECTION

Business Expectations Survey

Contact

Assistant Director
 Data Management and Dissemination
 Economy Wide Statistics Section
 Australian Bureau of Statistics
 PO Box 10
 BELCONNEN ACT 2616

Telephone: Canberra 1800 020 580
 Facsimile: Canberra 1800 246 303
 Email: client.services@abs.gov.au
 Internet: <http://www.abs.gov.au>

Purpose

The Business Expectations Survey (BES) is a quarterly survey which provides data on the expectations of businesses in both the short (next three months) and medium terms (the current quarter of the following year) for a range of indicators.

Description

The BES samples businesses in all industries except agriculture, forestry and fishing; general government; and private households. Expectations are provided by respondents as percentage changes between a constant period and two future periods. Expectations are published at an aggregate level as weighted net balances or expected aggregate changes, with the expected aggregate change being the preferred expectations measure. These data are classified by industry, business size and State or Territory.

To collect the data, a mail questionnaire is used. The survey conducted for the March quarter 1999 was based on a stratified random sample of approximately 3,000 businesses.

Main data detail

Data items available for the mining industry are expectations for:

- operating income
- selling prices
- profit
- capital expenditure
- stocks
- employment

DATA SOURCES—MINING: FINANCIAL PERFORMANCE

Main data detail *continued*

- wage and salary expenses
- other labour expenses
- other operating expenses
- total operating expenses

Geographic coverage

Most data are published at the Australian total level. Some data are published at a State level.

Frequency of data availability

Quarterly.

Reference period

Quarters ended 31 March, 30 June, 30 September and 31 December.

Historical data

Data are available from the December quarter 1993.

Products and services

Publication

- *Australian Business Expectations* (Cat. no. 5250.0)

Other

- Special data services are available on request.

Example of information available

MINING INDUSTRY EXPECTATIONS, SHORT-TERM OUTLOOK—AUSTRALIA					
	Expected aggregate change over the previous quarter				
	<i>Jun Qtr</i> 1998	<i>Sep Qtr</i> 1998	<i>Dec Qtr</i> 1998	<i>Mar Qtr</i> 1999	<i>Jun Qtr</i> 1999
<i>Business performance indicators</i>	%	%	%	%	%
Trading performance					
Operating income	0.4	1.3	-2.4	-0.2	1.6
Selling prices	-1.6	-0.8	0.4	0.3	-2.8
Profit	1.7	6.2	2.4	-0.4	12.3
Investment					
Capital expenditure	11.1	2.5	-4.5	3.4	-2.0
Stocks	-1.3	1.4	4.6	3.0	-2.1
Employment					
Full-time equivalent	-0.7	-1.7	-1.2	-0.7	-1.7
Operating expenses					
Wages	0.2	-1.6	-1.3	-0.4	-1.7
Non-wage labour	-0.2	-0.9	-1.5	-1.0	-2.2
Other	0.1	0.2	-4.4	1.1	-0.5
Total	0.1	-0.1	-3.8	0.8	-0.7

The same list of data items is also available for medium-term expectations.

NAME OF COLLECTION

Company Profits, Survey of

Contact

Assistant Director
Survey of Company Profits
Business Surveys National Project Centre
Australian Bureau of Statistics
GPO Box 796
SYDNEY NSW 1041

Telephone: Sydney 02 9268 4357
Facsimile: Sydney 02 9268 4789
Email: client.services@abs.gov.au
Internet: <http://www.abs.gov.au>

Purpose

The Survey of Company Profits (SCP) is a quarterly survey which collects information about profits and selected income and expenses from incorporated private sector businesses.

The data are used extensively by financial and economic analysts as a leading economic performance measure. SCP data can also be used as an indicator of the effectiveness of both broad monetary policy and specific industry initiatives.

Users of SCP data include government departments, industry associations, unions, investment houses, and stock market analysts.

Description

The SCP is a sample survey of private sector incorporated businesses with more than 30 employees, including businesses in the mining industry. In the December quarter 1998 survey, approximately 3,800 business units were surveyed.

The scope of the survey excludes public sector business units (i.e. all departments, authorities and other organisations owned and/or controlled by the Commonwealth Government, State and local governments). Primary producer marketing boards are classified as public sector and are also excluded from the scope of the survey.

Original data by broad industry and detailed manufacturing industry, and trend and seasonally adjusted estimates by broad industry derived from the SCP are published for businesses with more than 30 employees.

Data are collected by mail questionnaire.

Main data detail

Some of the data items available about the mining industry are:

- company profits before income tax;
- company profits before income tax and net interest paid; and
- company profits before income tax, net interest paid and depreciation.

Geographic coverage

Australia.

Frequency of data availability

Quarterly.

Reference period

Quarters ended 31 March, 30 June, 30 September and 31 December.

Historical data

Data are available from 1985.

Products and services

Publication

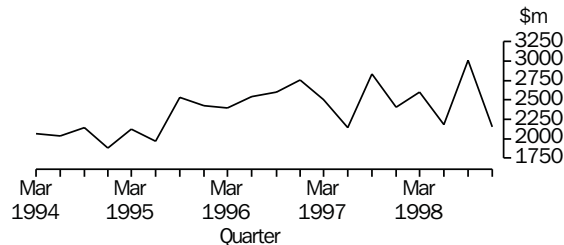
- *Company Profits, Australia* (Cat. no. 5651.0)

Other

- Floppy disk.
- Some data are available at the Australian Bureau of Statistics web site at <http://www.abs.gov.au>.
- Special data services are available on request.

Example of information available

AUSTRALIAN MINING INDUSTRY, Company Profits(a):
Original



(a) Company profits before income tax, net interest paid and depreciation.

NAME OF COLLECTION

Economic Activity Survey

Contact

Assistant Director
Data Management and Dissemination
Economy Wide Statistics Section
Australian Bureau of Statistics
PO Box 10
BELCONNEN ACT 2616

Telephone: Canberra 1800 020 580
Facsimile: Canberra 1800 246 303
Email: client.services@abs.gov.au
Internet: <http://www.abs.gov.au>

Purpose

To provide key measures on the performance of Australian industry, to be used by analysts in both the private and public sectors.

Description

The scope of the Economic Activity Survey consists of all business units in the Australian economy except for:

- agricultural businesses with an estimated value of agricultural operations less than \$22,500;
- non-employed businesses, i.e. businesses which have not registered as group employers with the Australian Taxation Office; and
- businesses classified to the general government sector (note: government-owned public trading enterprises are included).

In the 1996–97 survey, approximately 23,000 business units were surveyed. Some Economic Activity Survey data are derived from the Australian Bureau of Statistics' Mining Collection. A separate entry is provided on the Mining Collection in this directory.

Data are collected by mail questionnaire and telephone interview.

Main data detail

Some of the data items which are available about the mining industry are:

- number of operating businesses
- employment
- sales of goods and services
- cost of sales
- interest income
- labour costs
- depreciation
- interest expenses
- earnings before interest and tax
- operating profit before tax
- current assets
- non-current assets
- current liabilities
- non-current liabilities
- net worth
- capital expenditure
- gross operating surplus
- industry gross product

Selected business averages and industry ratios are also available.

Geographic coverage

Australia.

Frequency of data availability

Annual.

Reference period

Year ended 30 June.

Historical data

Data are available from 1990–91.

Products and services

Publications

- *Business Operations and Industry Performance, Australia* (Cat. no. 8140.0)
- *Business Operations and Industry Performance, Australia, Preliminary* (Cat. no. 8142.0)
- *Summary of Industry Performance* (Cat. no. 8140.40.002)

Other

- Special data services are available on request.

Example of information available

AUSTRALIAN MINING INDUSTRY PERFORMANCE, SELECTED INDICATORS				
	<i>Unit</i>	1994-95	1995-96	1996-97
Operating businesses	no.	2 506	2 264	2 079
Employment	'000	82	85	86
Total operating income	\$m	35 350	39 093	42 214
Total operating expenses	\$m	29 433	32 510	35 300
Operating profit before tax	\$m	5 946	6 866	7 465
Total assets	\$m	71 050	75 857	85 281
Total liabilities	\$m	34 943	45 219	48 761
Capital expenditure	\$m	7 147	6 763	7 690
Industry gross product	\$m	17 212	19 896	20 836

NAME OF COLLECTION

Inventories and Sales, Survey of

Contact

Assistant Director
 Survey of Inventories and Sales
 Business Surveys National Project Centre
 Australian Bureau of Statistics
 GPO Box 796
 SYDNEY NSW 1041

Telephone: Sydney 02 9268 4241
 Facsimile: Sydney 02 9268 4703
 Email: client.services@abs.gov.au
 Internet: <http://www.abs.gov.au>

Purpose

This survey aims to measure the value of inventories and sales for private businesses in Australia.

Description

Data are collected by mail questionnaire in a quarterly survey of private businesses, including businesses in the mining industry. Each quarter, approximately 7,500 business units are surveyed.

The scope of the survey excludes private households and public sector business units (i.e. all departments, authorities and other organisations owned and/or controlled by the Commonwealth Government, State and local governments). Primary producer marketing boards are classified as public sector and are also excluded. In addition, non-employers are not included in the survey.

Main data detail

Some of the data items available about the mining industry are:

- inventories (current prices and chain volume measures); and
- percentage changes in inventories (chain volume measures).

Geographic coverage

Australia.

Frequency of data availability

Quarterly.

Reference period

Value of inventories held at the end of the quarter, i.e. on 31 March, 30 June, 30 September and 31 December.

Historical data

Data are available from 1984.

Products and services

Publication

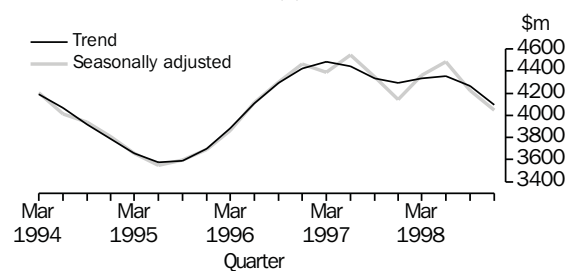
- *Inventories and Sales, Selected Industries, Australia* (Cat. no. 5629.0)

Other

- Floppy disk.
- Some data are available at the Australian Bureau of Statistics web site at www.abs.gov.au.
- Special data services are available on request.

Example of information available

AUSTRALIAN MINING INDUSTRY, INVENTORIES—
CHAIN VOLUME MEASURES(a)



(a) Reference year for chain volume measures is 1996-97.

NAME OF COLLECTION

Minerals Council of Australia Annual Minerals Industry Survey

Contact

Minerals Council of Australia
PO Box 363
DICKSON ACT 2602

Telephone: Canberra 02 6279 3600
Facsimile: Canberra 02 6279 3699
Internet: <http://www.minerals.org.au>

Purpose

The Minerals Industry Survey collects information about the financial performance of the minerals industry. In addition, information on overseas exploration activity by respondents, taxation payments, production, rehabilitation expenditure, employment, labour costs, and price movements is provided.

Description

The collection is conducted on behalf of the Council by an independent consultant with expertise in accounting and economic surveys. Data from each company conform to the same basic conceptual standards allowing presentation of an aggregate balance sheet and aggregate profit and loss statement.

Additional information included in the survey covers profitability, cash flows, borrowings and various rates of return ratios. A 10-year historical summary of data is also provided.

The coverage of the survey related to the year ended 30 June 1998 accounted for:

- all Australian bauxite, diamond, uranium and alumina production;
- over 90% of Australian iron ore, nickel, ilmenite, rutile, lead, zinc and tin production;
- some 80% of Australian silver, copper, black coal and gold production; and
- approximately 60% of Australian aluminium production.

For the survey for the year ended 30 June 1998, the respondent companies ranged from the largest companies to small exploration ventures. The survey did not capture some of the smaller mining, prospecting and exploration companies, some overseas-controlled companies and a portion of some joint venture operations.

DATA SOURCES—MINING: FINANCIAL PERFORMANCE

Main data detail

- production of respondents
- aggregate balance sheet
- aggregate profit and loss statement
- profitability
- cash flows
- borrowings
- distribution of assets by activity
- government and taxation
- rehabilitation expenditure
- employment and labour costs
- overseas exploration
- outlook for the year ahead

Geographic coverage

Australia. For the exploration survey only, overseas exploration by respondents is reported.

Frequency of data availability

Annual.

Reference period

Year ended 30 June.

Historical data

Data are available from 1977–78 for financial data and from 1994–95 for overseas exploration expenditure. Data going back to 1987–88 for a constant group of major Australian overseas explorers are also available.

Products and services

Publication

- *Minerals Industry Survey Report* (available in hard copy form from the Council or from the Council's Internet page)

Example of information available

SUMMARY OF KEY STATISTICS PRESENTED—1997-98		
	<i>Units</i>	
Operating revenue	\$m	30 111
Total assets at year end	\$m	55 911
Borrowings at year end	\$m	12 056
Interest expense	\$m	1 528
Direct taxes	\$m	1 258
Operating profit before abnormal items	\$m	2 220
Net profit	\$m	567
Net capital expenditure (investment) on		
Mining fixed assets	\$m	6 127
Smelting and refining assets	\$m	2 239
<i>Net capital expenditure (investment) on mining, smelting and refining assets</i>	<i>\$m</i>	<i>8 367</i>
Employees at year end	no.	61 675
Contractors considered as substitute for full-time employees	no.	14 427

NAME OF COLLECTION

New Capital Expenditure, Survey of

Contact

Assistant Director
Survey of New Capital Expenditure
Business Surveys National Project Centre
Australian Bureau of Statistics
GPO Box 796
SYDNEY NSW 1041

Telephone: Sydney 02 9268 4357
Facsimile: Sydney 02 9268 4101
Email: client.services@abs.gov.au
Internet: <http://www.abs.gov.au>

Purpose

This survey aims to measure the value of new capital expenditure by private businesses in Australia.

Description

This collection contains estimates of actual and expected new capital expenditure by private businesses in Australia. The series have been compiled from data collected in a quarterly sample survey of private businesses, including businesses in the mining industry. In the December quarter 1998 survey, approximately 7,700 business units were surveyed.

Private households and public sector businesses (i.e. all departments, authorities and other organisations owned or controlled by the Commonwealth Government, State or local governments) are outside the scope of the survey.

Data are collected by mail questionnaire.

Main data detail

Some of the data items available about the mining industry are:

- actual private new capital expenditure on buildings and structures;
- expected private new capital expenditure on buildings and structures;
- actual private new capital expenditure on equipment, plant and machinery;
- expected private new capital expenditure on equipment, plant and machinery;
- total actual private new capital expenditure (current prices and chain volume measures);

Main data detail *continued*

- total expected private new capital expenditure;
- actual private new capital expenditure by State; and
- expected private new capital expenditure by State (only collected in the December quarter).

Geographic coverage

Australia. Some data are available by State and Territory.

Frequency of data availability

Most data are available quarterly.

Reference period

Quarters ended 31 March, 30 June, 30 September and 31 December.

Historical data

Data are available from 1987.

Products and services

Publications

- *Private New Capital Expenditure and Expected Expenditure, Australia* (Cat. no. 5625.0)
- *State Estimates of Private New Capital Expenditure* (Cat. no. 5646.0)

Other

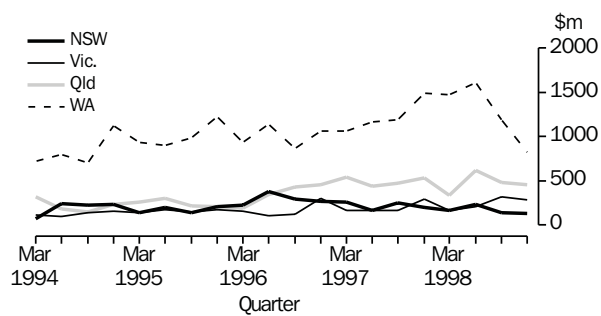
- Floppy disk.
- Some data are available at the Australian Bureau of Statistics' web site at www.abs.gov.au.
- Special data services are available on request.

Examples of information available

MINING INDUSTRY, ACTUAL PRIVATE NEW CAPITAL EXPENDITURE—AUSTRALIA: CURRENT PRICES

	<i>Buildings and structures</i>	<i>Equipment, plant and machinery</i>	Total capital expenditure
<i>Period</i>	\$m	\$m	\$m
1996–97	4 296	4 485	8 781
1997–98	4 408	6 622	11 029

MINING INDUSTRY, PRIVATE NEW CAPITAL EXPENDITURE—CURRENT PRICES: ORIGINAL



NAME OF COLLECTION

Petroleum Exploration and Production Industry—Financial Survey

Contact

Assistant Director
Commercial
Australian Petroleum Production and Exploration Association
(APPEA) Limited
PO Box 2201
CANBERRA ACT 2601

Telephone: Canberra 02 6247 0960
Facsimile: Canberra 02 6247 0548
Email: nmullen@appea.com.au
Internet: <http://www.appea.com.au>

Purpose

To provide information on the financial performance of the petroleum exploration and production industry.

Description

A survey of the largest companies in the petroleum exploration and production industry (approximately 45), which account for in excess of 95% of exploration and production activity in Australia.

A mail questionnaire is used to collect the data, and telephone follow-up is undertaken when required.

Main data detail

- gross revenue
- assets/liabilities
- expenditures
- taxes paid
- net profit
- industry returns
- borrowings
- overseas investment
- employment
- salaries/wages

Geographic coverage

Australia.

Frequency of data availability

Annual.

DATA SOURCES—MINING: FINANCIAL PERFORMANCE

Reference period

Year ended 30 June.

Historical data

Data are available from 1987–88.

Products and services

Publication

- *APPEA Petroleum Exploration and Production Industry Financial Survey*

Other

- Hard copy.
- Internet.

Example of information available

KEY FINANCIAL STATISTICS—AUSTRALIA

	1992–93	1993–94	1994–95	1995–96	1996–97	Five-year average
	\$m	\$m	\$m	\$m	\$m	\$m
Operating revenue	8 523	7 803	8 626	8 034	8 691	8 335
Total assets at year end	23 083	24 443	23 437	25 712	24 206	24 176
Borrowings at year end	9 028	7 157	6 904	8 181	6 363	7 527
Net profit (after tax)	1 666	1 820	1 525	1 934	2 155	1 820
Direct taxes	2 686	2 324	2 319	2 402	2 799	2 506
Capital expenditure in Australia						
Exploration/development assets	960	1 077	841	904	961	949
Production assets	1 835	1 754	1 660	1 446	1 498	1 639
<i>Total</i>	2 795	2 831	2 501	2 350	2 459	2 587
Overseas capital expenditure	1 388	875	1 306	827	765	1 032
<i>Total capital expenditure</i>	4 183	3 706	3 807	3 177	3 224	3 619
	%	%	%	%	%	%
Effective after-tax return on funds employed	13.7	11.6	12.1	11.9	12.3	12.3
Effective after-tax return on assets employed	10.5	9.0	9.4	9.2	9.3	9.5

NAME OF COLLECTION

Taxation Statistics

Contact

Director
 Taxation Statistics Section
 Australian Taxation Office
 PO Box 900
 CIVIC SQUARE ACT 2608

Telephone: 1800 806 214
 Facsimile: Canberra 02 6216 5875
 Email: taxstats@ato.gov.au
 Internet: <http://www.ato.gov.au>

Purpose

To provide an annual overview of statistics available from the Australian Taxation Office regarding the income and taxation status of Australian individuals, companies, funds, partnerships and trusts.

Data regarding mining can be found in industry tables located throughout the *Taxation Statistics* publication and CD-ROM for all individuals, companies, funds, partnerships and trusts who/which lodged an income tax return with the Australian Taxation Office in the relevant income year.

Description

The data are derived from all income tax returns lodged with the Australian Taxation Office by individuals, companies, funds, partnerships and trusts. In 1996–97 there were 11.5 million taxpayers for all entities.

Main data detail

Below are some data items that are available for 1996–97. The Australian Taxation Office has data for all items that appear on a tax return.

- taxable income
- net tax
- business income
- total income
- total expenses
- total rebates

Main data detail *continued*

- total credits
- capital gains
- total assets
- total liabilities

The above are some data items that are available for 1996–97. The Australian Taxation Office has data for all items that appear on a tax return.

Geographic coverage

Australia, State, Territory and postcode.

Frequency of data availability

Annual.

Reference period

Year ended 30 June.

Historical data

Data are available from 1959–60.

Products and services

Publication

- *Taxation Statistics* (available through AusInfo, the Australian Taxation Office's Internet web site or by contacting the Australian Taxation Office. There is a CD-ROM placed in the back of the publication which contains the information in the publication as well as a series of detailed tables.)

Other

- The publication and detailed tables can be accessed from the Australian Taxation Office's Internet web site at <http://www.ato.gov.au>.
- Ad hoc data requests are available but are subject to the confidentiality restrictions under the secrecy provisions of the *Income Tax Assessment Act 1936* (Cwlth).

INNOVATION AND TECHNOLOGY

NAME OF COLLECTION

Information Technology Survey—Business Enterprises

Contact

Assistant Director
 Technology Statistics Project
 Small Business and Science and Technology Section
 Australian Bureau of Statistics
 PO Box 10
 BELCONNEN ACT 2616

Telephone: Canberra 02 6252 5000
 Facsimile: Canberra 02 6252 7004
 Email: client.services@abs.gov.au
 Internet: <http://www.abs.gov.au>

Purpose

To provide data on the use of information technology (IT) by Australian business enterprises, including those engaged in the mining sector.

Description

A survey of a sample of all businesses except those without employees, and those engaged in agriculture, forestry or fishing. In the 1997–98 survey, approximately 7,000 businesses (including approximately 400 engaged in mining activities) were surveyed.

Data are collected by mail questionnaire.

Main data detail

- IT penetration by industry;
- IT penetration by size of business;
- employment including number of IT professional staff used;
- IT expenditure by industry; includes IT operating expenses, IT capital expenditure and IT in-house support costs;
- IT expenditure by size of business; includes IT operating expenses, IT capital expenditure and IT in-house support costs;
- numbers of authorised users of IT;
- IT professional staff usage by type of work;
- measures of computer connectivity; and
- use of the Internet: benefits, barriers and intentions.

DATA SOURCES—MINING: INNOVATION AND TECHNOLOGY

Geographic coverage

Australia.

Frequency of data availability

Under review.

Reference period

Year ended 30 June.

Historical data

Data are available for 1993–94 and 1997–98.

Products and services

Publications

- *Business Use of Information Technology* (Cat. no. 8129.0)
(expected to be released in October 1999)
- *Business Use of Information Technology, Preliminary*
(Cat. no. 8133.0)

Other

- Special data services are available on request.

NAME OF COLLECTION

Innovation in Mining

Contact

Director
 Small Business and Science and Technology Section
 Australian Bureau of Statistics
 PO Box 10
 BELCONNEN ACT 2616

Telephone: Canberra 02 6252 5019
 Facsimile: Canberra 02 6252 7004
 Email: client.services@abs.gov.au
 Internet: <http://www.abs.gov.au>

Purpose

To measure the extent to which technological innovation occurs within mining businesses.

Description

The sample survey included businesses of all sizes operating in the mining sector, regardless of whether they had undertaken any innovative activities during the period 1 July 1994 to 30 June 1997. Approximately 425 business units were surveyed.

Data were collected by mail questionnaire.

Main data detail

- proportion of businesses undertaking technological innovation;
- type of technological innovation;
- objective of technological innovation;
- sources of ideas and information;
- barriers to technological innovation;
- impacts of technological innovation;
- expenditure on technological innovation; and
- use of advanced mining technologies.

Geographic coverage

Australia.

Frequency of data availability

The survey has been conducted once. There are no plans to undertake this survey again.

Reference period

Data were collected about businesses' innovative activities during the period 1 July 1994 to 30 June 1997.

DATA SOURCES—MINING: INNOVATION AND TECHNOLOGY

Historical data

Historical data are not available from this collection.

Products and services

Publication

- *Innovation in Mining, Australia, 1996–97 (Cat. no. 8121.0)*

Example of information available

BUSINESSES UNDERTAKING TECHNOLOGICAL INNOVATION,
AUSTRALIA(a)—1 JULY 1994 TO 30 JUNE 1997

ANZSIC code	Industry Subdivision	Type of technological innovation		
		Product	Process	Total
		%	%	%
11	Coal mining	11.0	68.0	68.0
12	Oil and gas extraction	44.9	88.0	96.0
13	Metal ore mining	35.3	67.7	78.1
14	Other mining	**3.8	30.3	30.7
15	Services to mining	*7.4	33.0	35.1
11–15	All mining	10.5	39.2	41.8

(a) The estimate highlighted with an asterisk (*) has a relative standard error greater than 25%, while the estimate highlighted with two asterisks (**) has a relative standard error greater than 50%. These estimates should be used with caution.

NAME OF COLLECTION

Mining Technology Survey

Contact

Assistant Director
 Industry Census and Surveys (SA) Section
 Australian Bureau of Statistics
 GPO Box 2272
 ADELAIDE SA 5001

Telephone: Adelaide 08 8237 7560
 Facsimile: Adelaide 08 8237 7366
 Email: client.services@abs.gov.au
 Internet: <http://www.abs.gov.au>

Purpose

The Mining Technology Survey collected information about the use of advanced mining technology in the Australian mining industry. Information was collected about future plans to utilise advanced technology as well as details on the current usage of mining technologies. The information provided from the survey was intended to enable analysis and planning of technology in the mining industry to be undertaken by a variety of government and private sector users, and assist in the determination and monitoring of relevant government policy initiatives.

Description

Details were collected from selected mining and exploration establishments about their acquisition or future intentions regarding a variety of mining technologies within the broad ranges of exploration, mining, mineral processing, engineering and environment technologies. The scope of the survey was establishments classified to the Coal mining (Australian and New Zealand Standard Industrial Classification (ANZSIC) Subdivision 11), Oil and gas extraction (ANZSIC Subdivision 12), Metal ore mining (ANZSIC Subdivision 13), Other mining (ANZSIC Subdivision 14) and Services to mining (ANZSIC Subdivision 15) industries and with an employment of 10 or more persons. Approximately 550 establishments were within the scope of the 1993–94 survey.

Data were collected by mail questionnaire, and letter and telephone follow-up was undertaken.

Main data detail

- proportion using technology;
- common technologies;
- adoption of technology;
- mining technologies most acquired;
- planning to acquire technology;
- planned expenditure;
- acquisition by state;
- source of technology;
- ownership of establishments;
- employment;
- strategies used to ensure staff are skilled;
- reasons for introduction of technology;
- effect of technology on production;
- reasons for introducing control techniques; and
- use of pollution abatement and control techniques.

Geographic coverage

Australia, and some data are classified by State and Territory.

Frequency of data availability

Data are available for 1990–91 and 1993–94. There are no plans to conduct the survey again.

Reference period

Year ended 30 June.

Historical data

Data are available for 1990–91 and 1993–94. The 1993–94 survey of mining technology included an expanded coverage from the 1990–91 collection. Care should therefore be taken when comparing data for the 'Other mining' and 'Services to mining' categories between 1990–91 and 1993–94. In addition, the range of technologies collected in the 1993–94 survey was different to the range of technologies collected in the 1990–91 survey.

Products and services

Publication

- *Mining Technology Statistics, Australia* (Cat. no. 8413.0)

Example of information available

OWNERSHIP, BY EMPLOYMENT AND TECHNOLOGY—30 JUNE 1994

<i>Employment size (persons)</i>	Establishments with technology		Establishments without technology	
	<i>Australian</i>	<i>Overseas</i>	<i>Australian</i>	<i>Overseas</i>
	%	%	%	%
10–49	94	6	95	5
50–99	89	11	83	17
100–199	82	18	67	33
200+	75	25	(a)–	(a)–
All mining	88	12	92	8

(a) Nil or rounded to zero.

NAME OF COLLECTION

Year 2000 Problem

Contact

Director
Small Business and Science and Technology Section
Australian Bureau of Statistics
PO Box 10
BELCONNEN ACT 2616

Telephone: Canberra 02 6252 5019
Facsimile: Canberra 02 6252 7004
Email: client.services@abs.gov.au
Internet: <http://www.abs.gov.au>

Purpose

To provide information on the status of Australian industry in addressing the Year 2000 problem.

Description

The sample survey included businesses in all Australian industries excluding Government administration and defence and religious organisations. Approximately 10,000 business units in all industries (of which around 430 were in the mining industry) were surveyed.

Data were collected by mail questionnaire.

Main data detail

Some of the data items available for the mining industry are:

- proportion of businesses that have heard of the year 2000 problem;
- proportion of businesses that have already experienced operational problems due to the Year 2000 problem;
- proportion of businesses that are taking action to identify or avoid Year 2000 problems;
- stages businesses are at in ensuring that they are Year 2000 ready;
- timing of undertaking Year 2000 work;
- approximate cost of becoming Year 2000 ready;
- proportion of businesses that have approached suppliers, service providers or customers;
- proportion of businesses that have contingency plans; and
- proportion of broad technology types used by businesses and the state of Year 2000 readiness.

Geographic coverage

State breakdowns are available for the larger States.

Frequency of data availability

This survey has been conducted once.

Reference period

Status at the end of October 1998.

Historical data

Historical data are not available from this collection.

Products and services

Publications

- *Year 2000 Problem, Australia* (Cat. no. 8152.0)
- *Year 2000 Problem, Australia, Preliminary* (Cat. no. 8151.0)

Other

- Special data services are available on request.

Example of information available

YEAR 2000 AWARENESS AND INTENTIONS, ALL AUSTRALIAN
BUSINESSES—END OF OCTOBER 1998

<i>Industry(b)</i>	%	<i>Don't intend</i>	<i>Intend to take</i>
		<i>Aware of the</i> <i>Year 2000</i> <i>problem</i>	<i>to take action</i> <i>on the</i> <i>Year 2000</i> <i>problem</i>
		%	%
Agriculture	91	59	41
Mining	94	27	73
Manufacturing	92	38	62
Electricity, gas and water supply	100	3	97
Construction	92	50	50
Wholesale trade	98	19	81
Retail trade	90	47	53
Accommodation, cafes and restaurants	92	47	53
Transport and storage	92	53	47
Communication services	94	34	66
Finance and insurance	98	28	72
Property and business services	92	34	66
Education	95	34	66
Health and community services	96	31	69
Cultural and recreational services	93	40	60
Personal and other services	93	44	56

(a) Includes businesses which have completed their Year 2000 work. (b) See *Australian and New Zealand Standard Industrial Classification (ANZSIC), 1993* (Cat. no. 1292.0).

INTERNATIONAL INVESTMENT AND TRADE

NAME OF COLLECTION

Balance of Payments and International Investment Position

Contact

For balance of payments (BOP) statistics:

Assistant Director
Balance of Payments Section
Australian Bureau of Statistics
PO Box 10
BELCONNEN ACT 2616

Telephone: Canberra 02 6252 5336
Facsimile: Canberra 02 6252 7219
Email: client.services@abs.gov.au
Internet: <http://www.abs.gov.au>

For international investment position (IIP) statistics:

Assistant Director
International Investment Section
Australian Bureau of Statistics
PO Box 10
BELCONNEN ACT 2616

Telephone: Canberra 02 6252 5364
Facsimile: Canberra 02 6252 6164
Email: client.services@abs.gov.au
Internet: <http://www.abs.gov.au>

Purpose

To provide a systematic record of Australia's transactions with the rest of the world, including international transactions in mining services and Australia's stock of foreign financial assets and liabilities.

Description

The scope of BOP and IIP statistics is all resident enterprises in Australia that engage in cross-border activity. The collections provide estimates of Australia's BOP and IIP statistics, including significant detail for its constituent transactions.

The Australian Bureau of Statistics (ABS) conducts a number of surveys of businesses, individuals and organisations with international transactions and uses a variety of administrative by-product records in the compilation of BOP and IIP statistics.

Description *continued*

ABS and other collections that are used in estimating the mining-related components of the BOP and IIP statistics include the:

- International Merchandise Trade Statistics Collection which supplies data on a wide range of mining products exported from and imported into Australia (for more details refer to the International Merchandise Trade Statistics entry in this directory);
- Survey of International Trade in Services which collects data on a wide range of services including mining services; and
- Survey of International Investment which collects data on a wide range of financial stocks and transactions, including those of the mining industry.

Both surveys are conducted as a sample survey covering all Australian and New Zealand Standard Industrial Classification Subdivisions. The Survey of International Trade in Services approaches 2,400 business units from a population of 4,300. The Survey of International Investment approaches 1,100 units from a population of 3,500.

To collect the data, mail questionnaires are used.

Main data detail

Following is a summary of the BOP statistics available:

- current account, includes mining products exported abroad;
- seasonally adjusted and trend estimates for current account aggregates;
- capital account;
- financial account (includes official reserve assets); and
- exchange rates.

Data are available about current account credits and debits for mining services. Mining services covers services rendered at oil and gas fields; drilling, derrick building, repair and dismantling services; and oil and gas well casings cementing services which are incidental to mining prospecting and exploration, and geological surveying.

Please note that royalties for mining processes/technology are covered but not separately available and are included in royalties and licence fees. Subsoil royalties are excluded from the scope of mining services, and any net flows are captured indistinguishably in international investment statistics.

Main data detail *continued*

IIP statistics about transactions and end of period levels on foreign assets and liabilities for the Australian mining industry are available.

Geographic coverage

Australia.

Frequency of data availability

Only goods and summary services data are released monthly. BOP and IIP statistics are available quarterly and annually for comprehensive and more detailed data.

Reference period

Quarters ended 31 March, 30 June, 30 September and 31 December.

Historical data

BOP data are available from September quarter 1959; monthly data are available from July 1971. Mining services data are available from 1991–92 onwards.

Foreign liabilities data for the mining industry are available from September quarter 1988, while annual data are available from 1991–92. Foreign assets data for the mining industry are available on an annual basis only, from 1991–92 onwards.

Products and services

Publications

- *Balance of Payments and International Investment Position, Australia: Concepts, Sources and Methods* (Cat. no. 5331.0)
- *Balance of Payments and International Investment Position, Australia* (Cat. no. 5302.0)—quarterly
- *Balance of Payments and International Investment Position, Australia* (Cat. no. 5363.0)—annual
- *A Guide to Australian Balance of Payments Statistics* (Cat. no. 5362.0)
- *Information Paper: Quality of Australian Balance of Payments Statistics* (Cat. no. 5342.0)
- *International Trade in Goods and Services, Australia* (Cat. no. 5368.0)

Other

- PC AUSSTATS—telephone Canberra 02 6252 6017.
- Dial-a-statistic—telephone 0055 86 400.
- Special data services are available on request.

Example of information available

GOODS CREDITS—AUSTRALIA			
	1994–95	1995–96	1996–97
	\$m	\$m	\$m
GOODS CREDITS	67 101	76 146	80 934
General merchandise	61 539	69 609	73 379
Rural goods			
Meat and meat preparations	3 654	3 292	2 957
Cereal grains and cereal preparations	2 523	4 926	5 954
Wool and sheepskins	4 216	3 664	3 744
Other rural	6 922	7 706	8 390
<i>Total rural goods</i>	<i>17 315</i>	<i>19 588</i>	<i>21 045</i>
Non-rural goods			
Metal ores and minerals	7 968	9 088	9 407
Coal, coke and briquettes	6 936	7 843	8 005
Other mineral fuels	3 794	4 165	5 154
Metals (excluding non-monetary gold)	6 097	6 799	6 054
Machinery	6 035	7 119	7 001
Transport equipment	2 047	2 500	3 649
Other manufactures	7 907	8 755	9 108
Other non-rural (including sugar)			
Sugar, sugar preparations and honey	1 730	1 712	1 694
Other	1 710	2 040	2 262
<i>Total other non-rural</i>	<i>3 440</i>	<i>3 752</i>	<i>3 956</i>
<i>Total non-rural goods</i>	<i>44 224</i>	<i>50 021</i>	<i>52 334</i>
Goods for processing	86	71	77
Repairs on goods	18	19	27
Goods procured in ports by carriers	551	597	573
Non-monetary gold	4 907	5 850	6 878

NAME OF COLLECTION

International Merchandise Trade Statistics

Contact

Assistant Director
International Trade Section
Australian Bureau of Statistics
PO Box 10
BELCONNEN ACT 2616

For queries on international trade statistics:
Telephone: Canberra 02 6252 5411 (exports) or
02 6252 5313 (imports)
Facsimile: Canberra 02 6252 7438

For data requests and client services:
Telephone: Canberra 02 6252 5400
Facsimile: Canberra 02 6252 7102
Email: client.services@abs.gov.au
Internet: <http://www.abs.gov.au>

Purpose

International merchandise trade statistics measure Australian exports and imports of goods. These statistics are inputs to major economic statistics such as balance of payments and national accounts statistics. They are also used to: analyse changes in the commodity composition of exports and imports; examine regional trading patterns and directions; formulate and review trade policy; undertake trade negotiations (e.g. General Agreement on Tariffs and Trade); and evaluate the domestic market implications of export and import activity, including opportunities for expanded production for export markets or import replacement.

Description

Data are compiled from information submitted by exporters and importers or their agents to the Australian Customs Service.

Merchandise trade covers all moveable goods which add to (imports) or subtract from (exports) Australia's stock of material resources, as a result of their movement into or out of Australia.

Main data detail

Data are available for exports, imports (goods which cross the Customs' frontier into Australia in a particular period) and imports cleared for home consumption (goods which enter the Australian domestic market in a particular period).

Unless affected by confidentiality restrictions, the following data items are available:

- detailed commodity classification of the goods;

Main data detail *continued*

- Value of goods;
- quantity of goods;
- gross weight of goods:
 - for exports by commodity; and
 - For total imports (from 1 July 1992 onwards);
- overseas country:
 - country of origin for imports and import clearances; and
 - country of final destination for exports;
- overseas port (from 1 July 1992 onwards):
 - port of loading for imports; and
 - port of discharge for exports;
- Australian State and port:
 - State/port of discharge and State of final destination for imports;
 - State of final destination for import clearances; and
 - State of origin and State/port of loading for exports;
- mode of transport;
- nature of entry details (imports and import clearances); and
- import duty rates, amount of duty paid on goods cleared for Australian consumption and other duty information (import clearances).

International merchandise trade statistics can be provided on a commodity basis classified according to the third revision of the United Nations' Standard International Trade Classification or the World Customs Organisation's Harmonized Commodity Description and Coding System; by Australian and New Zealand Standard Industrial Classification industry of origin; and by broad economic categories.

Geographic coverage

Covers imports into Australia, and exports out of Australia. Data by overseas country and port and by Australian State and port are available.

Frequency of data availability

Monthly. Any aggregation of months can also be provided.

Reference period

Calendar month: for exports, goods are included in the month in which they left Australia; for imports, goods are included in the month in which the entries are processed by Customs.

Historical data

Detailed statistics for Reference periods from January 1988 are readily available. Statistics for earlier periods are also available, though not at the same level of detail.

Products and services

Publications

For exports and imports statistics:

- *International Merchandise Trade, Australia* (Cat. no. 5422.0) (a quarterly publication available 35 working days after the end of the quarter to which it refers)

For imports statistics only:

- *International Merchandise Imports, Australia* (Cat. no. 5439.0) (a monthly publication available 12 working days after the end of the month to which it refers)

Other

- The international merchandise trade statistics consultancy service provides a wide range of information specifically tailored to clients' needs. Information is available on an ad hoc or subscription basis and can be provided on a range of media.
- Time series data in publication format are available from January 1988 onwards. Publications covering earlier periods are available for reference in Australian Bureau of Statistics libraries.
- International Trade Information Kit—outlines concepts and definitions, classifications, confidentiality, data availability, and Products and services.

Example of information available

AUSTRALIAN EXPORTS, BY INDUSTRY OF ORIGIN(a)			
	1995–96	1996–97	1997–98
<i>ANZSIC Division/Subdivision</i>	<i>\$m</i>	<i>\$m</i>	<i>\$m</i>
Agriculture, forestry and fishing	9 135	10 776	10 397
Mining			
Coal mining	7 783	7 964	9 560
Oil and gas extraction	3 109	3 771	3 941
Metal ore mining	5 334	5 988	7 748
Other mining	251	214	209
<i>Total mining</i>	<i>16 476</i>	<i>17 937</i>	<i>21 458</i>
Manufacturing	48 787	48 494	53 302
Other industries(a)	1 607	1 725	2 612
Total exports	76 005	78 932	87 768

(a) Includes commodities subject to a 'No Commodity Details' confidentiality restriction.

MINERAL RESOURCES

NAME OF COLLECTION

Australia's Identified Mineral Resources

Contact

Manager
Mineral and Energy Resources and Mining

or

Principal Resource Geologist
Mineral Resources and Energy Program
Australian Geological Survey Organisation
Department of Industry, Science and Resources
PO Box 378
CANBERRA ACT 2601

Telephone: Canberra 02 6249 9111

Facsimile: Canberra 02 6249 9999

Email: bill.mckay@agso.gov.au or mike.huleatt@agso.gov.au

Purpose

To provide quantitative information on Australia's resources of major minerals and fuels.

Description

Estimates of Australia's identified resources are reported for all major and several minor mineral commodities. The resources are classified according to the Australian Geological Survey Organisation (AGSO) classification system for identified mineral resources. The estimates and commodity commentaries are prepared by AGSO's Mineral Resources, and Energy and Petroleum Resources Branches. Graphs show long-term trends in economic demonstrated resources for selected major commodities.

The series is derived from analyses of available published and unpublished resource data acquired from mining and mineral exploration companies and other sources.

Main data detail

- commodity name;
- units of measure;
- Australia's total demonstrated economic resources, by commodity;
- Australia's total subeconomic paramarginal resources, by commodity;
- Australia's total subeconomic submarginal resources, by commodity;
- Australia's total inferred economic resources, by commodity;
- Australia's total inferred subeconomic resources, by commodity;
- Australia's total inferred undifferentiated resources, by commodity;
- Australian mine production (from the Australian Bureau of Agricultural and Resource Economics);
- world economic demonstrated resources; and
- world mine production.

Geographic coverage

Australia.

Frequency of data availability

Annual.

Reference period

Year ended 31 December.

Historical data

Data are available from 1975.

Products and services

Publication

- *Australia's Identified Mineral Resources, 1998*

NAME OF COLLECTION

Mineral Account and Energy Account

Contact

Assistant Director
Environment and Energy Statistics Section
Australian Bureau of Statistics
PO Box 10
BELCONNEN ACT 2616

Telephone: Canberra 02 6252 7889

Facsimile: Canberra 02 6252 5335

Email: client.services@abs.gov.au

Internet: <http://www.abs.gov.au>

Purpose

The Mineral Account and the Energy Account are physical environment accounts. The purpose of a physical environment account is to measure the stock of resources, flow of resources through the economy as commodities, and the release of waste and pollutants which result from the economic use of these resources.

Description

The Mineral Account and the Energy Account are compiled from a wide range of statistics, from sources both internal and external to the Australian Bureau of Statistics, to produce accounts which track the use of minerals or energy through the economy. The methodology used to produce the Mineral Account and the Energy Account is based on guidelines in the United Nations' *System of National Accounts 1993 (SNA93)*; and its complement, *System for Integrated Environmental and Economic Accounting*.

Main data detail

Data items available in the Mineral Account and the Energy Account which are relevant to the mining industry are:

- mineral and energy stock levels;
- mineral volume change tables;
- supply of minerals and energy, including imports and production data;
- use of minerals and energy as intermediate consumption by industry, or as final demand by households, government, and exports; and
- output of related waste products by industry and industry sectors—greenhouse gas emissions data will be available in the edition of *Energy Accounts for Australia* (Cat. no. 4604.0) which is expected to be released in December 1999.

Geographic coverage

All data items listed above are available for Australia only, except for the following:

- stock levels of selected minerals from 1985 to 1996, in the Mineral Account, are available by State and Territory; and
- volume change tables are available for minerals by State and Territory; and identified petroleum resources and undiscovered petroleum resources by petroleum basin (inquiries about these tables should be directed to the contact officer).

Frequency of data availability

At present these accounts are produced irregularly. The Energy Account which is expected to be released in December 1999 will be a revised edition of its predecessor, in order to align this account with the format of the Australian System of National Accounts, i.e. stocks and stock volume change tables, and input-output flow tables will be compiled as per guidelines in SNA93. The accounts may be updated on an annual or two-yearly basis in the future.

Reference period

Due to data constraints, stocks are measured in years ended 31 December, whereas the flow tables contain data for years ended 30 June.

Historical data

For the Mineral Account—stock data are available from 1985–96, while flow data are available for 1992–93 to 1993–94.

The Energy Account, which is expected to be released in December 1999, will contain stock data from 1985–97 and flow data from 1992–93 to 1996–97.

Products and services

Publications

- *Energy Accounts for Australia* (Cat. no. 4604.0)
- *Mineral Account, Australia* (Cat. no. 4608.0)

Other

- *Mineral Account—Detailed Other Volume Change Tables on Hardcopy* (Cat. no. 4608.0.40.001)

NAME OF COLLECTION

Mineral Occurrence Locations Database (MINLOC)

Contact

Mineral Resources and Energy Program Data Administrator and
Manager, National Minerals and Energy Databases

or

Senior Computer Geologist
Mineral Resources and Energy Program
Australian Geological Survey Organisation
Department of Industry, Science and Resources
PO Box 378
CANBERRA ACT 2601

Telephone: Canberra 02 6249 9111

Facsimile: Canberra 02 6249 9999

Email: brian.elliott@agso.gov.au or neal.evans@agso.gov.au

Purpose

To provide information on the locations of Australia's mineral occurrences.

Description

Data are sourced mainly from digital sources, maps, field studies, technical literature, correspondence, and contact with industry and standardised. The database is part of the Australian Geological Survey Organisation's Minerals and Energy Resource and Locations Information System (MINERALIS) and is expanded periodically as new data are acquired. As at November 1998 information was available for about 73,000 occurrences.

It is estimated that the total number of occurrences exceeds 100,000. Based on State and Commonwealth estimates and data already captured, it is likely that all important point data could be captured in fewer than 100,000 records.

Data are mainly collected through regular telephone contact with colleagues in State and Commonwealth geoscience organisations and departments of mines, and telephone contact and correspondence with industry.

Main data detail

- occurrence name or names;
- geographic location coordinates;
- State;
- commodities of economic interest at the site;
- estimated positional accuracy;

Main data detail *continued*

- 1:100,000 map sheet number;
- 1:100,000 map sheet name;
- full bibliographic reference; and
- site description.

Geographic coverage

Australia.

Frequency of data availability

Released at least twice a year as substantial quantities of additional records are added to the database.

Reference period

Released at least twice a year.

Historical data

Not applicable.

Products and services

CD-ROM.

NAME OF COLLECTION

Mineral Resources Database (MINRES)

Contact

Mineral Resources and Energy Program Data Administrator and
Manager, National Minerals and Energy Databases

or

Senior Resource Geologist
Mineral Resources and Energy Program
Australian Geological Survey Organisation
Department of Industry, Science and Resources
PO Box 378
CANBERRA ACT 2601

Telephone: Canberra 02 6249 9111

Facsimile: Canberra 02 6249 9999

Email: lloyd.david@agso.gov.au or mike.huleatt@agso.gov.au

Purpose

To provide information on the quantity and grade of mineral
resources at Australian mineral deposits.

Description

The MINRES database underpins the Australian Geological
Survey Organisations (AGSO) resource assessment work and
provides input to annual national assessments that are published
in *Australia's Identified Mineral Resources*. Entry of resource
data for calendar year 1998 began in January 1999. Data for prior
years are available separately in MINRES 95 (please see the
'Products and services' section of this entry).

MINRES data are acquired mainly from digital sources, company
reports and technical literature, and through contact with
colleagues in State and Commonwealth organisations and
industry.

Main data detail

- deposit name or names;
- site description;
- geographic location coordinates;
- State;
- resource tonnage;
- resource grade;
- resource classification; and
- full bibliographic reference.

Geographic coverage

Australia.

Frequency of data availability

Data are available for 1996 and prior years in MINRES 95 which was released in 1997. AGSO plans to release a new version of MINRES each year, commencing 1999.

Reference period

Various.

Historical data

In MINRES 95 years for which resource data are available vary from deposit to deposit, but data are usually available for the years 1990 to 1996. For some deposits data are available for years prior to 1990.

Products and services

MINRES 95—a set of four 3.5 inch floppy disks (released 1997) containing data files in comma separated variable format suitable for Microsoft Excel. Contains non-confidential entries for over 1,500 deposits.

NATIONAL ACCOUNTS

NAME OF COLLECTION

Australian National Accounts: Input-Output Tables

Contact

Assistant Director
Input-Output Section
Australian Bureau of Statistics
PO Box 10
BELCONNEN ACT 2616

Telephone: Canberra 02 6252 6723
Facsimile: Canberra 02 6252 6583
Email: client.services@abs.gov.au
Internet: <http://www.abs.gov.au>

Purpose

Input-Output tables are an integral component of the Australian National Accounts. They serve two main purposes. Firstly they provide a detailed disaggregation of production on an annual basis, which is used as the benchmark for the annual National Income, Expenditure and Product accounts. Secondly, they provide a detailed and comprehensive picture of the Australian economy which facilitates analysis of the impacts of policy or other change on the level of economic activity.

Description

Input-Output tables provide a comprehensive view of the economic activity of Australia. In particular they show in some detail the components of gross domestic product for a given period. They also show the links between the various industries within the Australian economy.

The Input-Output tables record the disposition of the output of each industry and they also record the inputs required by each industry to achieve the level of output observed. Disposition of output refers to how the output of a particular industry is disposed of, i.e. as intermediate input into other industries production processes or as a final use through household consumption, capital formation, change in inventories or exports.

A total of 107 industries are shown in the Input-Output tables, five of which relate to the mining sector.

Statistics on the value of Australian production, imports and exports for approximately 1,000 separate commodities are also available.

Main data detail

- gross output, by industry;
- Australian production, import and total supply, by commodity group;
- compensation of employees, by industry;
- gross operating surplus, by industry; and
- components of final demand by commodity group.

Geographic coverage

Australia.

Frequency of data availability

Annual.

Reference period

Year ended 30 June.

Historical data

Data are available for various years from 1968–69. Details are available upon request.

Products and services

Publications

- *Australian National Accounts: Input-Output Tables* (Cat. no. 5209.0)
- *Australian National Accounts: Input-Output Tables (Product Details)* (Cat. no. 5215.0)

Other

- Special data services are available on request.

NAME OF COLLECTION

Australian National Accounts: Quarterly National Income, Expenditure and Product

Contacts

For current price data:

Director
National Income and Expenditure Section
Australian Bureau of Statistics
PO Box 10
BELCONNEN ACT 2616

Telephone: Canberra 02 6252 6713
Facsimile: Canberra 02 6252 5327
Email: client.services@abs.gov.au
Internet: <http://www.abs.gov.au>

For chain volume measures:

Director
Constant Price Estimates Section
Australian Bureau of Statistics
PO Box 10
BELCONNEN ACT 2616

Telephone: Canberra 02 6252 6711
Facsimile: Canberra 02 6252 5327
Email: client.services@abs.gov.au
Internet: <http://www.abs.gov.au>

Purpose

To provide a detailed view of the structure and performance of the Australian economy.

Description

The Australian National Accounts summarise, in a systematic and comprehensive way, the economic transactions that take place within the Australian economy and between Australia and the rest of the world. The usefulness of the accounts derives largely from the way in which data from a number of sources are brought together and presented in a conceptually consistent way, both for a given period and over time. Australia's National Accounts are in accordance with the recommendations contained in *System of National Accounts, 1993*, which is the international conceptual standard for the development of National Accounts. The National Accounts are compiled from a wide range of statistical data, including virtually all Australian Bureau of Statistics economic collections and various administrative by-product statistics.

Main data detail

In relation to the mining industry, data are available about industry gross value added at basic values (chain volume measures).

Geographic coverage

Data relating to the mining industry are available for Australia.

Frequency of data availability

Quarterly.

Reference period

Quarters ended 31 March, 30 June, 30 September and 31 December.

Historical data

Generally, quarterly data are available from the September quarter 1959. Data for mining industry gross value added are available from the September quarter 1974.

Products and services

Publication

- *Australian National Accounts: National Income, Expenditure and Product* (Cat. no. 5206.0)

NAME OF COLLECTION

Australian System of National Accounts

Contacts

For current price data:

Director
National Income and Expenditure Section
Australian Bureau of Statistics
PO Box 10
BELCONNEN ACT 2616

Telephone: Canberra 02 6252 6713
Facsimile: Canberra 02 6252 5327
Email: client.services@abs.gov.au
Internet: <http://www.abs.gov.au>

For chain volume measures:

Director
Constant Price Estimates Section
Australian Bureau of Statistics
PO Box 10
BELCONNEN ACT 2616

Telephone: Canberra 02 6252 6711
Facsimile: Canberra 02 6252 5327
Email: client.services@abs.gov.au
Internet: <http://www.abs.gov.au>

Purpose

To provide a detailed view of the structure and performance of the Australian economy.

Description

The National Accounts summarise, in a systematic and comprehensive way, the economic transactions that take place within the Australian economy and between Australia and the rest of the world. The usefulness of the accounts derives largely from the way in which data from a number of sources are brought together and presented in a conceptually consistent way, both for a given period and over time. Australia's National Accounts are in accordance with the recommendations contained in *System of National Accounts, 1993*, which is the international conceptual standard for the development of National Accounts. The national accounts are compiled from a wide range of statistical data, including virtually all Australian Bureau of Statistics economic collections and various administrative by-product statistics.

Main data detail

Data items available about the mining industry are:

- compensation of employees;
- gross operating surplus and gross mixed income;
- industry gross factor income;
- industry gross value added at basic values (current prices and chain volume measures);
- gross fixed capital formation (current prices and chain volume measures);
- capital stock (current prices and chain volume measures);
- index of hours worked; and
- index of industry gross value added per hour worked (chain volume measures).

Geographic coverage

All items above are available for Australia. Only the first three items above are available by State and Territory.

Frequency of data availability

Annual.

Reference period

Year ended 30 June.

Historical data

Data are available from 1989–90.

Products and services

Publications

- *Australian National Accounts: State Accounts* (Cat. no. 5220.0)
- *Australian System of National Accounts* (Cat. no. 5204.0)

Other

- Some additional Historical data are available on request.

PRICES

NAME OF COLLECTION

Export Price Index

Contact

Manager
Export Price Index
Producer Price Indexes Section
Australian Bureau of Statistics
PO Box 10
BELCONNEN ACT 2616

Telephone: Canberra 02 6252 5348
Facsimile: Canberra 02 6252 7060
Email: client.services@abs.gov.au
Internet: <http://www.abs.gov.au>

Purpose

To produce index numbers which measure changes in the prices of exports of merchandise from Australia.

Description

The Export Price Index numbers for each quarter relate to prices of those exports of merchandise that are physically shipped from Australia during that quarter. The Index includes re-exports of merchandise (that is, goods which are imported into Australia and exported at a later date without physical transformation).

The commodities directly represented in the Export Price Index (the index items) were selected on the basis of their export values in 1988–89. They constituted approximately 95% of the total value of exports of merchandise from Australia that year.

In general, prices are obtained from major exporters of the selected items included in the index. The point of pricing for the Export Price Index is the point at which the goods physically leave Australia, i.e. prices are on a 'free on board' basis at main Australian ports of export.

Main data detail

Some of the data items available are:

- Export Price Index by selected Australian and New Zealand Standard Industrial Classification (ANZSIC) industry of origin Divisions (including ANZSIC Division B Mining) and Subdivisions (including ANZSIC Subdivisions 11 Coal mining and 13 Metallic ore mining);

Main data detail *continued*

- contribution of selected Australian Harmonised Export Commodity Classification (AHECC) Sections (including AHECC Section 05 Mineral products) to the All Groups Export Price Index;
- contribution of Selected ANZSIC Subdivisions (including ANZSIC Subdivisions 11 Coal mining and 13 Metallic ore mining) to the All Groups Export Price Index;
- Export Price Index by selected AHECC Sections (including AHECC Section 05 Mineral products); and
- Export Price Index by selected Standard International Trade Classification (SITC) Sections (including SITC Section 3 Mineral fuels).

Geographic coverage

Australia.

Frequency of data availability

Quarterly.

Reference period

Quarters ended 31 March, 30 June, 30 September and 31 December.

Historical data

Data are available from 1974-75.

Products and services

Publication

- *Export Price Index, Australia* (Cat. no. 6405.0)

Example of information available

EXPORT PRICE INDEX(a), SELECTED ANZSIC INDUSTRY OF ORIGIN-AUSTRALIA

	ANZSIC Division/ Subdivision	1994-95	1995-96	1996-97	1997-98
ANZSIC Division					
Agriculture, forestry and fishing	A	83.4	85.1	80.6	84.8
Mining	B	94.2	100.0	101.3	112.7
Manufacturing	C	98.6	98.0	92.5	97.7
ANZSIC Subdivision					
Coal mining	11	96.1	103.6	102.9	116.9
Metallic ore mining	13	88.6	93.5	94.9	105.2
Food, beverages and tobacco	21	99.5	94.3	90.2	98.7
Petroleum, coal, chemical and associated products	25	101.4	107.0	107.1	114.0

(a) Base of each index: 1989-90 = 100.0.

NAME OF COLLECTION

Import Price Index

Contact

Manager
Import Price Index
Producer Price Indexes Section
Australian Bureau of Statistics
PO Box 10
BELCONNEN ACT 2616

Telephone: Canberra 02 6252 5348
Facsimile: Canberra 02 6252 7060
Email: client.services@abs.gov.au
Internet: <http://www.abs.gov.au>

Purpose

To produce index numbers which measure changes in the prices of imports of merchandise landed in Australia.

Description

The Import Price Index numbers for each quarter relate to prices of those imports of merchandise that are physically landed in Australia during that quarter.

The commodities directly or indirectly represented in the Import Price Index (the index items) were selected on the basis of their import values during 1988–89 and 1989–90. They constituted approximately 95% of the total value of imports of merchandise into Australia during those years. The remaining imports are not represented because of the inherent difficulties in pricing the items to a constant quality. The items which are not represented include live animals (not for food) and military equipment.

Prices of individual shipments are obtained from importers of the selected items, and relate to the quarter in which the goods arrive in Australia. Imports are priced on a 'free on board' country of origin basis. Freight and insurance charges involved in shipping the goods from foreign to Australian ports are therefore excluded from the prices used in the index, as are Australian import duties.

Main data detail

Some of the data items available are:

- Import Price Index by selected Australian and New Zealand Standard Industrial Classification (ANZSIC) industry of origin Divisions (including ANZSIC Division B Mining);

Main data detail *continued*

- contribution of Standard International Trade Classification (SITC) Sections (including SITC Section 3 Mineral fuels, lubricants and other related materials) to the All Groups Import Price Index;
- contribution of SITC Divisions (including SITC Division 33 Petroleum, petroleum products and related materials) to the All Groups Import Price Index;
- Import Price Index by SITC Section;
- Import Price Index by selected SITC Divisions (including SITC Division 33 Petroleum, petroleum products and related materials); and
- Import Price Index by selected Combined Australian Tariff and Statistical Nomenclature (ATSN) Sections (including ATSN Section 5 Mineral Products).

Geographic coverage

Australia.

Frequency of data availability

Quarterly.

Reference period

Quarters ended 31 March, 30 June, 30 September and 31 December.

Historical data

Data are available from 1981–82.

Products and services

Publication

- *Import Price Index, Australia* (Cat. no. 6414.0)

Other

- Special data services may be available on request.

Example of information available

IMPORT PRICE INDEX(a), SELECTED ANZSIC INDUSTRY OF ORIGIN—AUSTRALIA					
	ANZSIC Division	1995–95	1995–96	1996–97	1997–98
Agriculture, forestry and fishing	A	141.7	136.3	128.0	154.9
Mining	B	102.5	104.5	115.6	110.0
Manufacturing	C	113.8	113.5	106.8	113.5

(a) Base of each index: 1989–90 = 100.0.

NAME OF COLLECTION

Price Indexes of Materials Used in Coal Mining

Contact

Manager
Price Indexes of Materials Used in Coal Mining
Producer Price Indexes Section
Australian Bureau of Statistics
PO Box 10
BELCONNEN ACT 2616

Telephone: Canberra 02 6252 5348
Facsimile: Canberra 02 6252 7060
Email: client.services@abs.gov.au
Internet: <http://www.abs.gov.au>

Purpose

To provide an indication of price movements of materials used in coal mining.

Description

Samples of representative materials are priced each quarter from companies supplying materials to mine sites. Both underground and open cut mining operations are covered. The point of pricing is delivered on mine site or to the primary storage area for a group of mines.

As far as possible, actual transactions prices are used—that is, the prices actually paid by coal mines to suppliers for materials delivered on mine sites.

Data are collected by mail questionnaire.

Main data detail

- price index of materials used in open cut coal mining; and
- price index of materials used in underground coal mining.

Geographic coverage

Australia.

Frequency of data availability

Quarterly.

Reference period

Quarters ended 31 March, 30 June, 30 September and 31 December.

Historical data

Data are available from 1987–88.

Products and services

Publication

- *Price Indexes of Materials Used in Coal Mining, Australia*
(Cat. no. 6415.0)

Example of information available

PRICE INDEXES OF MATERIALS USED IN COAL MINING—AUSTRALIA

<i>Period</i>	<i>Open cut</i>		<i>Underground</i>	
	<i>Index numbers(a)</i>	<i>% change from previous period</i>	<i>Index numbers(a)</i>	<i>% change from previous period</i>
1994–95	116.8	0.5	122.7	1.0
1995–96	119.8	2.6	126.4	3.0
1996–97	121.9	1.8	129.6	2.5
1997–98	120.4	-1.2	129.8	0.2

(a) Base of each index: 1987–88 = 100.0.

PRODUCTION

NAME OF COLLECTION

Australian Petroleum Production and Exploration Association Limited (APPEA Ltd) Production Statistics

Contact

Assistant Director
Resource Access and Development
Australian Petroleum Production and Exploration Association
Limited
GPO Box 2201
CANBERRA ACT 2601

Telephone: Canberra 02 6247 0960
Facsimile: Canberra 02 6247 0548
Email: pgniel@appea.com.au
Internet: <http://www.appea.com.au>

Purpose

To provide production figures for the oil and gas exploration and production industry.

Description

Companies operating in the oil and gas exploration and production industry in Australia submit production data to APPEA Ltd on a monthly basis. These companies produce approximately 98% of the oil and gas produced in Australia. Telephone follow-up is undertaken when required.

Main data detail

Production figures for:

- crude oil
- condensate
- liquefied petroleum gas (LPG)
- liquefied natural gas (LNG)
- sales gas

Geographic coverage

Australia. Statistics are also available by onshore/offshore Australia, State, Territory and basin.

Frequency of data availability

Quarterly.

Reference period

Quarters ended 31 March, 30 June, 30 September and 31 December.

Historical data

Data are available from the 1960s.

Products and services

Publications

- *APPEA Reports* (in the future will be available on APPEA Ltd's Internet web site)

Example of information available

PRODUCTION STATISTICS, AUSTRALIA—THIRD QUARTER 1998

	<i>Crude oil</i>	<i>Condensate</i>	<i>LPG</i>	<i>LNG</i>	<i>Sales gas</i>
<i>Basin</i>	<i>barrels</i>	<i>barrels</i>	<i>barrels</i>	<i>mmcf(a)(b)</i>	<i>mmcf(b)</i>
Adavale	0	0	0	0	231
Amadeus	184 500	0	0	0	4 101
Browse/Bonaparte	1 173 682	0	0	0	0
Canning	13 087	0	0	0	0
Carnarvon	17 517 476	11 510 527	1 926 204	93 369	54 377
Cooper/Eromanga	1 715 526	1 159 000	1 564 844	0	62 316
Gippsland	18 561 045	1 541 127	3 833 638	0	55 814
Otway	0	13 451	0	0	1 616
Perth	16 165	2 044	0	0	1 773
Surat/Bowen	144 390	33 489	54 113	0	5 411
Timor Gap	1 699 804	0	0	0	0
Total	41 025 675	14 259 638	7 378 799	93 369	185 639

(a) LNG is shown as uncompressed gas volume at standard conditions. (b) Million cubic feet.

NAME OF COLLECTION

Australian Petroleum Statistics

Contact

Database Manager
Downstream Petroleum Section
Petroleum Industry Policy Branch
Petroleum Division
Department of Industry, Science and Resources
GPO Box 9839
CANBERRA ACT 2601

Telephone: Canberra 02 6272 4495

Facsimile: Canberra 02 6272 4137

Email: bruce.harrison@isr.gov.au

Internet:

<http://www.dpie.gov.au/resources.energy/petroleum/statistics.html>

Purpose

To provide the Government with current, objective, reliable and timely petroleum data for use in policy formation, administration, analysis and effective monitoring. To provide public information on the downstream industry. To fulfil Australia's obligations with the International Energy Agency (IEA).

Description

Monthly survey which collects information about the production, refining, sales and stock of petroleum in Australia. A mail questionnaire is sent to all (approximately 40) Australian petroleum companies to collect the data. Other indirect information is obtained from trade statistics in Australian Bureau of Statistics (ABS) and IEA publications.

Main data detail

- production by basin/sub-basin;
- refinery input by type;
- refinery output by type;
- sales by type and/or State;
- stock by product and/or State;
- trade (import/export) data from the ABS; and
- prices and taxes data from the IEA.

Geographic coverage

Australia.

Frequency of data availability

Monthly.

Reference period

For all data except stocks—month. For stock data—end of month.

Historical data

Data are available from 1988.

Products and services

Publication

- *Australian Petroleum Statistics*

Other

- Electronic delivery (Internet).
- Floppy disk.
- Special data services are available on request.

Example of information available

PETROLEUM PRODUCTION—AUSTRALIA

	Total crude oil and condensate						
	Crude oil megalitres	Condensate megalitres	Total crude oil and condensate		LPG (naturally occurring) megalitres	Ethane million cubic metres	Natural gas(a) million cubic metres
			megalitres	bbls/day(b)			
1995–96	24 058.1	6 193.3	30 251.3	521.3	3 649.4	202.1	29 984.9
1996–97	24 163.5	6 885.0	31 048.5	535.1	3 789.4	434.7	29 317.2
1997–98	25 778.6	8 182.6	33 961.2	585.2	4 287.6	566.1	30 619.4

(a) Commercial sales plus field and plant usage. (b) Barrels a day.

DATA SOURCES—MINING: PRODUCTION

NAME OF COLLECTION

**Extractive Industries (Construction Materials) Production
(New South Wales)**

Contact

Statistics Officer
Royalty and Statistics
Department of Mineral Resources (New South Wales)
PO Box 536
ST LEONARDS NSW 1590

Telephone: Sydney 02 9901 8721
Facsimile: Sydney 02 9901 8427
Email: nswroyal@minerals.nsw.gov.au
Internet: <http://www.minerals.nsw.gov.au>

Purpose

To provide information for land use decision making for government and market assessment for industry.

Description

Annual census forms are mailed to (800 to 1,000) quarry operations in New South Wales.

Main data detail

- quantity of construction materials recovered;
- value of construction materials recovered on an ex mine basis;
- value of construction materials recovered at average annual market prices; and
- employment.

Geographic coverage

New South Wales and local government areas in New South Wales.

Frequency of data availability

Annual.

Reference period

Year ended 30 June.

Historical data

Data are available from 1987–88.

Products and services

Publication

- *New South Wales Minerals Industry Annual* (available at 29–57 Christie Street, St Leonards NSW 2065)

Other

- Ad hoc requests are met on a commercial basis—information can be supplied on floppy disk, by email or as hard copy.

DATA SOURCES—MINING: PRODUCTION

NAME OF COLLECTION

Gas Statistics Australia Annual Collection

Contact

Research Officer
The Australian Gas Association
GPO Box 323
CANBERRA ACT 2601

Telephone: Canberra 02 6247 3955
Facsimile: Canberra 02 6249 7402
Email: canberra@gas.asn.au
Internet: <http://www.gas.asn.au>

Purpose

To provide an overview of gas industry activity.

Description

A questionnaire is mailed to all (approximately 40) operators of gas production, transmission and distribution facilities, and gas retailers to collect the data.

Main data detail

Items related to production are:

- capital expenditure on:
 - gas field development;
 - gas gathering pipelines and associated facilities;
 - gas processing and separation facilities;
 - liquefied natural gas facilities;
 - buildings, community facilities and miscellaneous;
- total gas produced;
- gas used in production, processing, compression and other own use;
- gas reinjected and stored; and
- gas sales volumes.

Additional items related to retail sales and pipeline operations are collected.

Geographic coverage

Varies—some statistics are produced for Australia only, while others are available at State and Territory level.

Frequency of data availability

Annual.

Reference period

Year ended 30 June.

Historical data

Some data are available from 1977.

Products and services

Publication

- *Gas Statistics Australia* (published annually and is available for purchase from The Australian Gas Association. Collection results are available only as published.)

NAME OF COLLECTION

Mineral and Petroleum Production Collection (Northern Territory)

Contact

Project Officer—Minerals
Mines Division
Northern Territory Department of Mines and Energy
GPO Box 2901
DARWIN NT 0801

Telephone: Darwin 08 8999 5314
Facsimile: Darwin 08 8999 6527
Email: richard.inglis@dme.nt.gov.au
Internet: <http://www.dme.nt.gov.au>

Purpose

To collect production data from all minerals, oil and gas operations in the Northern Territory (NT) and the offshore waters that the NT administers, including the Ashmore and Cartier Islands adjacent area. Data from this collection are used by the Northern Territory Department of Mines and Energy (NT DME) in publications including the NT DME's annual report and other government agencies.

The Mineral and Petroleum Production Collection compiled by the NT DME is broken into two parts, mineral production (including uranium) collected by the Mines Division, and oil and gas production collected by the Energy Division. The Mines and Energy Divisions have different collection methodologies.

Description

Mineral Production

Mineral production data are submitted by mine operators in the NT on a quarterly basis as required by Regulation 23 of the Mining Regulations. Commodity classifications are provided on the questionnaire that operators complete. There are approximately 20 metallic mineral mining operations and 20 non-metallic mineral mining operations in the NT, and approximately 360 mining titleholders on five different types of title.

The NT DME and the Australian Bureau of Statistics (ABS) differ in their classification of alumina. NT DME classifies and reports alumina production under the mining sector, while the ABS classifies alumina as a manufactured commodity and therefore reports production of it in the manufacturing sector. However, bauxite production is not included in the ABS' manufacturing data and is separately recorded in the mining sector.

Aggregated data are published twice a year.

Description *continued**Oil and Gas Production*

Oil and gas production data are submitted by all oil and gas producers in the NT and the offshore waters that the NT administers (including the Ashmore and Cartier Islands adjacent area) on a monthly and quarterly basis as required by the *Petroleum Act* (NT), *Petroleum (Submerged Lands) Act* (NT) and *Petroleum (Submerged Lands) Act* (Cwlth). Data are collected using a faxed questionnaire. There are three producing oil and gas onshore production licences and three oil and gas production licences in the NT and the offshore waters that the NT administers.

Production data are forwarded to the Mines Division for inclusion in the *Northern Territory Mineral and Petroleum Production Table* that is published twice a year. Uranium is reported as an energy product.

Main data detail

- title details;
- type of product;
- production—quantity;
- processed product—quantity;
- sales transfers—value and volume; and
- stock on hand—value and volume.

Geographic coverage

NT and the offshore waters that the NT administers, including the Ashmore and Cartier Islands adjacent area which the NT administers on behalf of the Commonwealth Government. Data are regionalised.

Frequency of data availability

Twice a year.

Reference period

Data are disseminated for both years ended 31 December and years ended 30 June.

Historical data

Data are available from 1872.

DATA SOURCES—MINING: PRODUCTION

Products and services

Publications

- *Northern Territory Department of Mines and Energy Annual Report*
- *Northern Territory Mineral and Petroleum Production Table*

Other

- Data are also available at the NT DME's Internet web site at <http://www.dme.nt.gov.au>.

NAME OF COLLECTION

Mineral Production in Tasmania

Contact

Registrar of Mines
 Tenement Management
 Mineral Resources Tasmania
 Department of Infrastructure, Energy and Resources (Tasmania)
 PO Box 56
 ROSNY PARK TAS 7018

Telephone: Hobart 03 6233 8341
 Facsimile: Hobart 03 6233 8338
 Email: info@mrt.tas.gov.au
 Internet: <http://www.mrt.tas.gov.au>

Purpose

To provide mining commodity production data for Tasmania.

Description

Production figures and values are requested from all holders of mining leases operating in Tasmania (approximately 700) on a quarterly basis in accordance with the *Mineral Resources Development Act 1995* (Tas.).

A mail questionnaire is used to collect the data.

Main data detail

- production of metallic minerals;
- value of metallic minerals;
- production of non-metallic and fuel minerals;
- value of non-metallic and fuel minerals;
- production of construction materials;
- value of construction materials;
- value of metallurgical production from other than tasmanian ores;
- total value of mining and metallurgical production; and
- reported average number of employees.

Geographic coverage

Tasmania.

Frequency of data availability

Annual.

Reference period

Year ended 30 June.

DATA SOURCES—MINING: PRODUCTION

Historical data

Data are available from 1880.

Products and services

Publication

- *Mineral Resources Tasmania Annual Review*

Other

- Internet—PDF download.

Example of information available

SUMMARY DETAILS OF THE VALUE OF THE TASMANIAN MINERAL INDUSTRY		
	<i>Year ended 30 June 1996</i>	<i>Year ended 30 June 1997</i>
	\$	\$
Value of metallic minerals	338 056 036	460 907 344
Value of non-metallic and fuel minerals	44 596 149	48 451 637
Value of construction materials	28 958 886	27 796 967
Value of metallurgical production from other than Tasmanian ores	572 810 954	706 686 390
Total value of mining and metallurgical production	984 422 025	1 243 842 338

NAME OF COLLECTION

Mineral Royalties in New South Wales

Contact

Statistics Officer
 Royalty and Statistics
 Department of Mineral Resources (New South Wales)
 PO Box 536
 ST LEONARDS NSW 1590

Telephone: Sydney 02 9901 8721
 Facsimile: Sydney 02 9901 8427
 Email: nswroyal@minerals.nsw.gov.au
 Internet: <http://www.minerals.nsw.gov.au>

Purpose

To provide information for royalty assessment and land use planning. Data are collected annually from holders of mining titles.

Description

Annual royalty returns are mailed to all holders of mining titles in New South Wales (80–90 coal mining title holders, six mineral sands mining title holders and 600–650 other minerals mining title holders).

Main data detail

- quantity of mineral product recovered;
- value of mineral product recovered on an ex mine basis;
- value of mineral product recovered at average annual market prices;
- quantity of coal produced; and
- employment.

Geographic coverage

New South Wales. Redevelopment of the collection may allow aggregation of data for 1999–2000 by local government areas in New South Wales or New South Wales geographical mining divisions.

Frequency of data availability

Annual.

Reference period

Year ended 30 June.

Historical data

Data are available from 1989–90.

DATA SOURCES—MINING: PRODUCTION

Products and services

Publication

- *New South Wales Minerals Industry Annual* (available at 29–57 Christie Street, St Leonards NSW 2065.)

Other

- Ad hoc requests are met on a commercial basis—information can be supplied on floppy disk, by email or as hard copy.

NAME OF COLLECTION

Minerals and Petroleum Victoria—Mining and Extractive Collection

Contact

Manager
 Industry Assessment and Statistics
 Minerals and Petroleum Regulation
 Minerals and Petroleum Victoria
 Department of Natural Resources and Environment (Victoria)
 PO Box 500
 EAST MELBOURNE VIC 3002

Telephone: Melbourne 03 9412 5060

Facsimile: Melbourne 03 9412 5150

Email: Kemal.Inan@nre.vic.gov.au

Purpose

To collect mining and extractive industries information on expenditure, production, royalty, employment, hours worked, and health and safety.

Description

A questionnaire is mailed to all (1,267) mining, extractive and exploration operations in Victoria to collect the data. Frequency of data collection:

- health and safety—six-monthly;
- mining production and royalty—six-monthly;
- mining expenditure—six-monthly;
- exploration expenditure—six-monthly;
- extractive health and safety—six-monthly; and
- extractive production and royalty—annually.

Main data detail

- mineral production;
- stone production;
- mineral and stone royalty;
- employment—mining, exploration, extractive;
- hours worked—mining, exploration, extractive;
- mining expenditure;
- exploration expenditure; and
- health and safety—mining, exploration, extractive.

DATA SOURCES—MINING: PRODUCTION

Geographic coverage

Victoria.

Frequency of data availability

Annual.

Reference period

Year ended 30 June.

Historical data

Data are available from 1970 for extractive production and 1981 for mining production.

Products and services

Publication

- *Minerals and Petroleum Victoria Annual Statistical Review*

Other

- Some data may be available on request.

Example of information available

METALLIC MINERALS PRODUCTION—VICTORIA(a)					
	<i>Units</i>	<i>1993–94</i>	<i>1994–95</i>	<i>1995–96</i>	<i>1996–97</i>
Gold	kilograms	3 917	4 319	4 838	4 710
Gold	ounces	125 960	138 876	155 550	151 229
Copper concentrate	tonnes	16 287	13 163	1 338	nil
Zinc concentrate	tonnes	1 012	5 947	6 384	nil

(a) From statutory returns under the *Mineral Resources Development Act 1990* (Vic.).

NAME OF COLLECTION

Petroleum Production Data (South Australia)

Contact

Manager
Administration/Royalty
Petroleum Branch
Primary Industries and Resources South Australia
GPO Box 1671
ADELAIDE SA 5001

Telephone: Adelaide 08 8463 3203

Facsimile: Adelaide 08 8463 3229

Purpose

To provide petroleum production data and values for South Australia to government, industry and the public.

Description

All (three) producers of petroleum components in South Australia report data about the quantity and value of six petroleum components produced in South Australia, as part of obligations under the *Petroleum Act 1940* (SA) associated with royalty payments. Royalty payments and production statistics are reported on a monthly or quarterly basis. Details are sent by mail to the Royalty Officer, Petroleum Group, Primary Industries and Resources South Australia (PIRSA).

Main data detail

- sales gas
- carbon dioxide
- ethane
- condensate
- crude oil
- liquefied petroleum gas (LPG)

Geographic coverage

South Australia.

Frequency of data availability

Monthly and quarterly; reported in Mines and Energy SA (MESA) now PIRSA annual report on a calendar year basis.

Reference period

Year ended 31 December.

Historical data

Data are available from 1970.

DATA SOURCES—MINING: PRODUCTION

Products and services

Publication

MESA now PIRSA annual reports:

- *South Australian Mineral and Petroleum Production*
(calendar year)

Other

- CD-ROM of data could be available.

Example of information available

VALUE OF SOUTH AUSTRALIAN PETROLEUM PRODUCTION		
	1994	1995
	\$	\$
Sales gas	334 283 988	345 280 393
Carbon dioxide	4 214 805	4 207 788
Ethane	2 674 130	2 494 401
Condensate	85 744 588	85 121 597
Crude oil	116 297 364	119 238 668
LPG	88 028 045	103 182 768

NAME OF COLLECTION

Quantity and Value of Minerals and Petroleum by Local Government Area (Western Australia)

Contact

Principal Policy Officer
 Policy Branch
 Corporate Policy, Planning and Finance Division
 Department of Minerals and Energy (Western Australia)
 Mineral House, 100 Plain Street
 EAST PERTH WA 6004

Telephone: Perth 08 9222 3661
 Facsimile: Perth 08 9222 3069
 Email: m.bryan@dme.wa.gov.au
 Internet: <http://www.dme.wa.gov.au>

Purpose

Minerals and petroleum production data for local government areas in Western Australia are a by-product of the royalties collection process.

Description

Under legislation, mining lease holders in Western Australia who have recorded production are required to submit a production report to the Department of Minerals and Energy (Western Australia) each month, and a royalty return to the Department each quarter.

The same applies to petroleum production licence holders, except that both production reports and royalty returns are submitted monthly.

Main data detail

- minerals
- petroleum
- local government area
- quantity
- value
- metallic content of selected minerals

Geographic coverage

All local government areas in Western Australia.

Frequency of data availability

Six-monthly with annual data.

Reference period

Years ended 30 June and 31 December.

DATA SOURCES—MINING: PRODUCTION

Historical data

Data are available from 1985.

Products and services

Publication

- *Statistics Digest*

Other

- Data are available as an Acrobat file on the Internet web site of the Department of Minerals and Energy (Western Australia).

Example of information available

SUMMARY DETAILS OF THE VALUE OF PRODUCTION OF SELECTED MAJOR COMMODITIES—WA

		1993-94	1994-95	1995-96	1996-97	1997-98
	<i>Units</i>	<i>\$m</i>	<i>\$m</i>	<i>\$m</i>	<i>\$m</i>	<i>\$m</i>
Alumina	\$m	1 784.32	1 684.6	1 918.34	1 955.77	2 260.54
Total base metals	\$m	124.78	181.58	153.38	140.19	189.49
Coal	\$m	236.29	274.75	270.36	257.30	257.28
Diamond	\$m	476.75	480.03	525.21	395.79	537.87
Gold	\$m	3 420.06	3 132.87	3 404.65	3 409.61	3 496.03
Total heavy mineral sands	\$m	359.04	474.74	585.52	604.72	663.11
Iron ore	\$m	2 865.16	2 794.31	2 924.06	3 159.65	3 930.77
Manganese ore	\$m	42.01	8.84	41.34	37.62	9.39
Nickel metal	\$m	458.62	897.12	1 097.30	1 051.11	1 146.64
Total petroleum products	\$m	2 593.09	3 666.21	4 069.53	5 037.83	4 932.19
Salt	\$m	151.31	155.14	154.22	153.62	188.70
Other	\$m	119.68	164.52	193.13	192.18	232.88
Total	\$m	12 631.11	13 914.71	15 337.04	16 395.39	17 844.90

NAME OF COLLECTION

Quarterly Coal Mining Return

Contact

Manager
Statistics
Joint Coal Board
GPO Box 3842
SYDNEY NSW 1042

Telephone: Sydney 02 9291 5686
Facsimile: Sydney 02 9262 6090
Email: statistics@jcb.org.au
Internet: <http://www.jcb.org.au>

Purpose

Quarterly survey to collect black coal industry information on production, distribution and employment at black coal mines in New South Wales, Western Australia, South Australia and Tasmania.

Description

A survey of all (116) black coal mines operating in New South Wales, Western Australia, South Australia and Tasmania.

A mail questionnaire is used to collect the data.

Main data detail

- coal production;
- opening stock of coal;
- deliveries of coal to other mines/coal preparation plants;
- deliveries of coal to port;
- deliveries of coal to other consumers;
- rejects;
- closing stock of coal;
- employment;
- hours worked, ordinary and overtime;
- shifts lost;
- shift arrangements;
- days worked; and
- days lost.

DATA SOURCES—MINING: PRODUCTION

Geographic coverage

New South Wales, Western Australia, South Australia and Tasmania.

Frequency of data availability

Quarterly.

Reference period

Quarters ended 31 March, 30 June, 30 September and 31 December.

Historical data

Data are available from 1947.

Products and services

Publications

- *1997 Australian Black Coal Statistics*
- *1997–98 NSW Coal Statistics*

Other

- Special data services are available on request.

NAME OF COLLECTION

Queensland Mineral Production and Coal Industry Statistics

Contact

The Statistical Officer
 Resource Development Division
 Department of Mines and Energy (Queensland)
 GPO Box 194
 BRISBANE QLD 4001

Telephone: Brisbane 07 3237 1569
 Facsimile: Brisbane 07 3237 0470
 Email: eabott@dme.qld.gov.au
 Internet: <http://www.dme.qld.gov.au>

Purpose

To provide statistical information about the Queensland mining industry, particularly mineral and coal production. This information is used by various government departments, industry and is published in various reports.

Description

On a monthly basis coal industry statistics are collected from all (43) coal mines in Queensland. A coal mining return is used to collect the data, and a supply of these is retained by the coal mines. Upon completion these forms are either mailed, faxed or emailed to the Resource Development Division of the Department of Mines and Energy (Queensland).

Mineral production statistics are collected on a quarterly basis from a selection of the largest mineral producers in Queensland, with the exception of fuel minerals producers. Forms are mailed to the selected mineral producers and returned by mail. Approximately 35 mineral producers complete this return.

On a yearly basis mineral production statistics are collected from all (approximately 1,600) mineral producers in Queensland. Forms are mailed to all mineral producers in Queensland and returned by either mail or facsimile.

Main data detail

The following information about the Queensland mining industry is collected on an annual basis:

- production;
- value of production;
- employment; and
- area disturbed and area rehabilitated.

DATA SOURCES—MINING: PRODUCTION

Main data detail *continued*

Additional information is collected about the Queensland coal mining industry. This information was previously collected by the Queensland Coal Board. This information contains details about:

- production;
- employment;
- productivity;
- sales—export and domestic; and
- export details—including value, destination and port details.

Geographic coverage

Queensland.

Frequency of data availability

Coal industry statistics are available monthly, quarterly and annually. Mineral production statistics are available annually.

Reference period

For coal industry statistics:

- calendar months;
- Quarters ended 31 March, 30 June, 30 September and 31 December; and
- years ended 30 June and 31 December.

For mineral production statistics—year ended 30 June.

Historical data

Historical data are available on a financial year basis from the *Queensland Minerals and Energy Review* and the *Queensland Coal Industry Review*. In *Australian Black Coal Statistics* historical data are available on both a calendar year and financial year basis.

At the time of compilation of this directory, methods of electronic delivery and query were being investigated, and it was hoped to have some method available by the end of 1999.

Products and services

Publications

- *Australian Black Coal Statistics*
- *Australian Monthly Statistical Service*
- *Queensland Coal Industry Review*
- *Queensland Government Mining Journal*
- *Queensland Minerals and Energy Review*
- *Queensland Monthly/Quarterly Statistical Service*

Other

- Special data about the coal industry are available on request. This information is provided on a fee-for-service basis.

Example of information available

VALUE OF FUEL MINERALS PRODUCED IN QUEENSLAND		
	1994–95	1995–96
	\$	\$
Coal—black	3 339 401 564	3 688 384 926
Crude oil	91 235 845	86 720 854
Natural gas condensate	28 140 526	35 929 501
Natural gas(a)	144 666 005	174 528 886
Liquefied petroleum gases(b)		
Propane	23 123 205	28 329 261
Butane	14 171 312	16 839 840
Total fuel minerals(a)	3 640 738 457	4 030 733 269

(a) 1994–95 figure has been revised since it was published in the Queensland Minerals and Energy Review 1995–96. (b) Excludes refinery production.

DATA SOURCES—MINING: PRODUCTION

NAME OF COLLECTION

Six Monthly Mining Returns (South Australia)

Contact

Deputy Mining Registrar
Mineral Registration
Primary Industries and Resources South Australia
GPO Box 1671
ADELAIDE SA 5000

Telephone: Adelaide 08 8463 3103
Facsimile: Adelaide 08 8463 3101
Internet: <http://www.mines.sa.gov.au>

Purpose

Section 76 of the *Mining Act 1971 (SA)* provides that the holder of a mining tenement in South Australia must furnish the Director of Mines in the months of January and July with a mining return. The return must contain information relating to the conduct of mining operations and the minerals recovered.

Description

Every six months approximately 1,100 mining return forms (which are prescribed by legislation) are mailed to all holders of mining tenements in South Australia. Under the *Mining Act 1971 (SA)* the forms must be returned.

Main data detail

- employment;
- mineral production—value and tonnage; and
- exploration expenditure.

Geographic coverage

South Australia.

Frequency of data availability

Six-monthly.

Reference period

Six months ended 30 June and 31 December.

Historical data

Data are available from 1971.

Products and services

Publication

- *Six Monthly Mineral Production Statistics Report*

RESEARCH AND EXPERIMENTAL DEVELOPMENT

NAME OF COLLECTION

Research and Experimental Development, Survey of Businesses

Contact

Assistant Director
 Research and Development Statistics
 Small Business and Science and Technology Section
 Australian Bureau of Statistics
 PO Box 10
 BELCONNEN ACT 2616

Telephone: Canberra 02 6252 5627
 Facsimile: Canberra 02 6252 7004
 Email: client.services@abs.gov.au
 Internet: <http://www.abs.gov.au>

Purpose

The Research and Experimental Development Surveys provide comprehensive data on Australia's research and development (R&D) effort. Business R&D data are published by industry.

Description

The scope of the survey is all businesses in Australia which have undertaken R&D. The 1996–97 R&D survey comprised a complete enumeration of businesses identified by the Australian Bureau of Statistics as likely to have carried out R&D activity. There are approximately 3,500 businesses undertaking R&D in Australia each year.

Data are collected by mail questionnaire and approximately 7,000 forms were despatched in the 1996–97 survey.

Main data detail

Data items available about the mining industry are:

- expenditure on R&D;
- human resources devoted to R&D;
- type of R&D expenditure;
- type of employee undertaking R&D;
- source of funds for R&D;
- location of R&D expenditure;
- R&D expenditure by type of activity (collected every second year);
- extramural R&D expenditure (collected every second year);

DATA SOURCES—MINING: RESEARCH AND EXPERIMENTAL DEVELOPMENT

Main data detail *continued*

- payments and receipts for technical know-how (collected every second year); and
- patent activity (collected every second year).

The following data items are also available:

- R&D expenditure classified by field of research; and
- R&D expenditure classified by socio-economic objective.

Geographic coverage

Australia—although location of R&D expenditure is collected (see Main data detail above).

Frequency of data availability

Annual.

Reference period

Year ended 30 June.

Historical data

Data are available for 1976–77, 1978–79, 1981–82 and from 1983–84.

Products and services

Publication

- *Research and Experimental Development, Businesses, Australia* (Cat. no. 8104.0)

Other

- More detailed R&D statistics are available on request.

Example of information available

AUSTRALIAN MINING INDUSTRY R&D				
	<i>Units</i>	1994–95	1995–96	1996–97
Businesses	no.	102	135	117
Expenditure on R&D	\$m	303	524	546
Human resources devoted to R&D	person years	1 017	1 107	1 099

SMALL BUSINESS

NAME OF COLLECTION

Small Business in Australia

Contact

Small Business Statistics Unit
 Small Business and Science and Technology Section
 Australian Bureau of Statistics
 PO Box 10
 BELCONNEN ACT 2616

Telephone: Canberra 02 6252 5746

Facsimile: Canberra 02 6252 7004

Email: client.services@abs.gov.au

Internet: <http://www.abs.gov.au>

Purpose

To provide a compendium of small business statistics.

Description

The data are collated from outputs from a number of surveys, including the Labour Force Survey, Survey of Employment and Earnings, Economic Activity Survey and the Mining Collection.

Main data detail

The following data items are available for selected industries (including the mining industry):

- size of business
- number of businesses
- employment
- wages and salaries
- sales of goods and services
- profit
- industry gross product
- profit margin
- return on assets
- return on net worth
- long-term debt to equity

Geographic coverage

Australia, and some State mining industry data are available.

Frequency of data availability

Twice-yearly.

DATA SOURCES—MINING: SMALL BUSINESS

Reference period

Year ended 30 June.

Historical data

Some data are available from 1983–84.

Products and services

Publication

- *Small Business in Australia* (Cat. no. 1321.0)

Other

- Special data services are available on request.

Example of information available

MICRO BUSINESS(a), AUSTRALIA—1996–97

<i>Industry division</i>	<i>Employing(a)</i>	<i>Non-employed</i>	<i>Total</i>	<i>Proportion of small businesses(b)</i>	<i>Proportion of all businesses</i>
	'000	'000	'000	%	%
Mining	0.9	1.6	2.5	92.6	89.3
Manufacturing	25.7	30.5	56.3	72.4	71.2
Construction	48.6	95.5	144.1	90.8	89.8
Wholesale trade	20.5	16.0	36.5	69.1	63.8
Retail trade	60.5	64.7	125.2	78.9	76.8
Accommodation, cafes and restaurants	11.7	6.5	18.1	64.6	57.5
Transport and storage	16.9	28.9	45.8	90.5	88.4
Finance and insurance	10.3	5.3	15.6	86.2	82.1
Property and business services	79.6	66.3	145.9	87.9	85.6
Education	5.7	9.7	15.3	85.5	79.3
Health and community services	33.8	20.1	53.9	79.4	75.5
Cultural and recreational services	9.0	19.6	28.6	92.3	89.7
Personal and other services	16.8	36.8	53.6	91.6	90.5
Total(c)	342.3	409.1	751.5	83.5	80.8

(a) Consists of businesses with less than five employees. (b) Number of micro businesses as a proportion of all small businesses (i.e. businesses with less than 20 employees). (c) Includes the Electricity, gas and water supply, and Communication services industries.

TITLES

NAME OF COLLECTION

Titles Collection (Northern Territory)

Contact

Customer Service Manager
Titles Division
Northern Territory Department of Mines and Energy
GPO Box 2901
DARWIN NT 0801

Telephone: Darwin 08 8999 5367
Facsimile: Darwin 08 8999 7106
Email: craig.bradley@dme.nt.gov.au
Internet: <http://www.dme.nt.gov.au>

Purpose

The Northern Territory Department of Mines and Energy (NT DME) Titles Collection contains exploration, mining and petroleum titles data, including data for the Northern Territory (NT) administered Ashmore and Cartier Islands adjacent area of the Timor Sea. The NT DME does not collect data in the Zone of Cooperation. The collection is in compliance with legislation and is a record for administrative purposes.

The Titles database forms the basis for identifying operators required to provide production and injury and accident statistics. Reports are produced from this database to monitor exploration activity in the NT and track land and tenure issues.

Data in this collection are used by the NT DME in publications including the department's annual report, other government agencies and industry. Data have also been extracted from this database for inclusion in the Australian Bureau of Statistics' regional statistics database.

Description

Exploration licences for minerals and mining tenements

Holders of exploration licences are obliged to furnish the NT DME, within one month after the anniversary of the granting of the title, with a report which includes:

- estimates of proposed expenditure on exploration activities for the ensuing 12 months; and
- an outline of activities carried out on the licence area during the previous year, including expenditure incurred.

All mining tenement holders are obliged to furnish the NT DME, within three months after the anniversary of the granting of the title, with a report detailing activities carried out on the tenement area.

Aggregated titles data are available from the NT DME.

Holders of both exploration licences and mining tenements are required to lodge reports on relinquished areas of land. These reports are classified as 'open files' for the use of potential explorers/miners, unless the relinquished licence area is retained under separate tenure.

Petroleum titles

Information about exploration and development expenditure is collected on a calendar year basis. Oil and gas operators are required to notify the Director of Energy of their intent to drill or conduct seismic surveys, including financial costings.

Information about exploration and development activities are collected as an activity occurs. These data are published on a yearly basis.

Main data detail

- title by type;
- title by holder;
- exploration expenditure;
- title by location;
- title rents;
- titles on aboriginal freehold land; and
- production commodity.

Geographic coverage

NT and the offshore waters that the NT administers, including the Ashmore and Cartier Islands adjacent area which the NT administers on behalf of the Commonwealth.

Frequency of data availability

Reports can be generated for any period after 1988.

Reference period

Reports can be generated for any period after 1988.

Historical data

Data are available from 1988.

Products and services

Publication

- *Northern Territory Department of Mines and Energy Annual Report*

Other

- Data are also available at the NT DME's Internet web site at <http://www.dme.nt.gov.au>
- Reports can be generated for any period after 1988.

USAGE

NAME OF COLLECTION

Coal Consumption Return

Contact

Manager
Statistics
Joint Coal Board
GPO Box 3842
SYDNEY NSW 1042

Telephone: Sydney 02 9291 5686
Facsimile: Sydney 02 9262 6090
Email: statistics@jcb.org.au
Internet: <http://www.jcb.org.au>

Purpose

Six-monthly survey to collect black coal industry information on consumer usage of black coal in New South Wales, Western Australia, South Australia and Tasmania.

Description

A survey of all (approximately 90) black coal users operating in New South Wales, Western Australia, South Australia and Tasmania.

A mail questionnaire is used to collect the data.

Main data detail

- coal received
- opening stock of coal
- coal usage
- closing stock of coal

Geographic coverage

New South Wales, Western Australia, South Australia and Tasmania.

Frequency of data availability

Six-monthly.

Reference period

Six months ended 30 June and 31 December.

Historical data

Data are available from 1947.

Products and services

Publications

- *1997 Australian Black Coal Statistics*
- *1997–98 NSW Coal Statistics*

Other

- Special data services are available on request.

DATA SOURCES—DOWNSTREAM PROCESSING OF MINERALS

PRODUCTION

NAME OF COLLECTION

Aluminium Production, Consumption and Trade

Contact

Research Officer
Australian Aluminium Council
PO Box 3761
MANUKA ACT 2603

Telephone: Canberra 02 6295 7300
Facsimile: Canberra 02 6295 7514
Email: aac@aluminium.org.au
Internet: <http://www.aluminium.org.au>

Purpose

To provide aluminium production, consumption and trade data.

Description

All six aluminium smelters and the two aluminium-rolled products producers in Australia provide figures to the Australian Aluminium Council (AAC). In addition, three of the four aluminium extrusions producers in Australia provide figures to the AAC (production by non-contributing extruders is calculated from the supply of metal).

Main data detail

- Aluminium metal production;
- Per capita metal consumption (this figure is obtained from a combination of Australian Bureau of Statistics (ABS) and AAC statistics);
- domestic consumption—ingot;
- domestic consumption—rolled products; and
- domestic consumption—extrusions.

Geographic coverage

Australia.

Frequency of data availability

Annual.

Reference period

Year ended 31 December.

Historical data

Data are available from 1972.

Products and services

Publication

- *Aluminium Industry General Statistics Sheet* (available from the AAC's Internet web site at <http://www.aluminium.org.au> or telephone Canberra 02 6295 7300)

Examples of information available

AUSTRALIAN ALUMINIUM INDUSTRY, SELECTED STATISTICS—1997

	<i>Units</i>		<i>Source</i>
Aluminium (hot metal) production	tonnes	1 490 098	AAC
Primary metal stocks	tonnes	93 030	AAC
Exports—primary metal	tonnes	1 107 725	AAC
Secondary metal production	tonnes	101 128	AAC
Primary metal consumption	tonnes	351 976	ABS and AAC
Total Australian consumption	tonnes	366 236	ABS and AAC
Per capita consumption	kilograms	19.8	ABS and AAC

AUSTRALIAN ALUMINIUM INDUSTRY, DOMESTIC SHIPMENT SUMMARY—1997

	<i>tonnes</i>	<i>Source</i>
Ingot	76 143	AAC
Rolled products (sheet, plate, foil)	83 757	AAC
Extrusions	87 856	AAC

NAME OF COLLECTION

Annual Manufacturing Survey

Contact

Supervisor
Output and Dissemination Group
Manufacturing Section
Australian Bureau of Statistics
GPO Box 796
SYDNEY NSW 2001

Telephone: Sydney 02 9268 4541
Facsimile: Sydney 02 9268 4599
Email: client.services@abs.gov.au
Internet: <http://www.abs.gov.au>

Purpose

To provide structure and performance information about manufacturing establishments and commodity sales data. Included among the industries and commodities covered by the collection are those which cover downstream manufacturing processes and processed minerals.

Description

For four years in five a survey of a sample of manufacturing establishments in Australia (around 20,000) is conducted. Every fifth year all (approximately 65,000) manufacturing establishments are surveyed.

Data are collected by mail questionnaire.

Main data detail

- employment;
- wages and salaries;
- turnover;
- industry gross product (value added)—from 1997–98 will be replaced by the variable ‘industry value added’;
- direct exports (i.e. exports undertaken directly by the manufacturer); and
- commodities including processed and refined minerals.

Geographic coverage

Australia. Some State and Territory data are available.

Frequency of data availability

Annual.

Reference period

Year ended 30 June.

Historical data

Data are available for 1968–69, 1969–70, from 1971–72 to 1984–85, and from 1986–87.

Products and services

Publications

- *Manufacturing, Australia* (Cat. no. 8225.0)
- *Manufacturing Industry, Australia* (Cat. no. 8221.0)
- *Manufacturing Industry, New South Wales and the Australian Capital Territory* (Cat. no. 8221.1)
- *Manufacturing Industry, Queensland* (Cat. no. 8221.3)
- *Manufacturing Industry, South Australia* (Cat. no. 8221.4)
- *Manufacturing Industry, Tasmania* (Cat. no. 8221.6)
- *Manufacturing Industry, Victoria* (Cat. no. 8221.2)
- *Manufacturing Industry, Western Australia* (Cat. no. 8221.5)
- *Manufacturing Production, Commodities Produced, Australia* (Cat. no. 8365.0)

Other

Special data services are available on request—data which can be obtained include operating expenses, capital expenditure and profits data. From 1997–98, some of this data may be published in the above publications.

Example of information available

SELECTED MINERAL PROCESSING INDUSTRIES, AUSTRALIA—1996–97

ANZSIC code	Industry descriptor	Employment	Wages and	Turnover	Industry
		at 30 June	salaries		gross
		'000	paid	\$m	product
			\$m		\$m
2510	Petroleum refining	3.7	252	7 647	1 245
2631	Cement and lime manufacturing	2.4	123	1 100	440
2711	Basic iron and steel manufacturing	20.4	1 090	8 980	2 476
2721	Alumina production	5.8	321	3 013	1 011

NAME OF COLLECTION

Australian Petroleum in Facts and Figures: Forecasts

Contact

Information Officer
AIP Information Service
Australian Institute of Petroleum
Level 23, 500 Collins Street
MELBOURNE VIC 3000

Telephone: Melbourne 03 9614 1767
Facsimile: Melbourne 03 9614 1416
Email: mfrewin@aip.com.au
Internet: <http://www.aip.com.au>

Purpose

To provide forecast data on the likely demand for petroleum products over a 10-year period.

Description

Representatives of four major oil marketing companies are surveyed annually on projected demand trends for various petroleum products. Results are collated to reveal average/highest/lowest projections.

Main data detail

- total product forecast;
- demand forecast—petrols;
- demand forecast—liquefied petroleum gas;
- demand forecast—diesel fuels;
- demand forecast—aviation fuels; and
- demand forecast—other products.

Geographic coverage

Australia.

Frequency of data availability

Annual.

Reference period

Year ended 31 December for each year from 1998–2007.

Historical data

First forecast covers period 1988–98. Conducted annually since.

Products and services

Publication

- *Australian Petroleum in Facts and Figures: Forecasts 1998–2007*

NAME OF COLLECTION

Manufacturing Production Collections

Contact

Supervisor
Output and Dissemination Group
Manufacturing Section
Australian Bureau of Statistics
GPO Box 796
SYDNEY NSW 2001

Telephone: Sydney 02 9268 4541
Facsimile: Sydney 02 9268 4599
Email: client.services@abs.gov.au
Internet: <http://www.abs.gov.au>

Purpose

To collect production quantities of selected manufacturing commodities for Australia.

Description

Data are collected from a number of different sources. The prime sources are the Australian Bureau of Statistics (ABS) surveys of manufacturing production. Data are also obtained from surveys undertaken by the Australian Bureau of Agricultural and Resource Economics (ABARE), the Department of Industry, Science and Resources, the Australian Dairy Corporation and from ABS agriculture collections. Scope and coverage vary slightly depending on the source of the information.

Where production statistics are collected by the ABS manufacturing production surveys, they are not collected from single establishment manufacturing businesses with less than four persons employed, or from establishments predominantly engaged in non-manufacturing activities but which may carry out some manufacturing.

For mining-related products, most of the production data originate from surveys conducted by ABARE. The balance come from the ABS surveys of manufacturing production.

Main data detail

Production quantities of manufacturing commodities, including the following which are relevant to the mining industry:

- automotive gasoline
- fuel oil
- aviation turbine fuel
- automotive diesel oil
- basic iron, spiegeleisen and sponge iron

Main data detail *continued*

- blooms and slabs of iron or steel
- alumina
- zinc
- silver
- copper
- lead
- tin
- gold
- gas

Geographic coverage

Australia.

Frequency of data availability

Quarterly.

Reference period

Quarters ended 31 March, 30 June, 30 September and 31 December.

Historical data

Data are available for different periods for various products—at least 25 years for most.

Products and services

Publication

- *Manufacturing Production, Australia* (Cat. no. 8301.0)

Other

- Special data services are available on request.

Example of information available

PRODUCTION OF SELECTED MANUFACTURING
COMMODITIES—AUSTRALIA: ORIGINAL

<i>Item</i>	<i>Units</i>	<i>Mar Qtr 1998</i>	<i>Jun Qtr 1998</i>	<i>Sep Qtr 1998</i>	<i>Dec Qtr 1998</i>
Alumina	'000 tonnes	3 319	3 405	3 405	3 430
Zinc	'000 tonnes	74	79	81	78
Silver	tonnes	49	69	101	100
Copper	'000 tonnes	71	80	61	73
Lead	'000 tonnes	46	43	39	45
Tin	tonnes	175	205	150	125
Gold	tonnes	83	89	131	106

PRICES

NAME OF COLLECTION

Price Indexes of Materials Used in Manufacturing Industries

Contact

Manager
Price Indexes of Materials Used in Manufacturing Industries
Producer Price Indexes Section
Australian Bureau of Statistics
PO Box 10
BELCONNEN ACT 2616

Telephone: Canberra 02 6252 5348

Facsimile: Canberra 02 6252 7060

Email: client.services@abs.gov.au

Internet: <http://www.abs.gov.au>

Purpose

To provide an indication of price movements of materials used by establishments classified to designated 'sectors' of Australian manufacturing industry.

Description

The price indexes of materials used in manufacturing industries are on a 'net sector' basis; that is, each relates only to those materials which are used in the defined 'sector' of Australian manufacturing industry and which have been produced by establishments outside that 'sector'. These establishments are either Australian manufacturing establishments classified to other manufacturing 'sectors', or to other divisions of Australian industry (e.g. 'Agriculture, forestry and fishing' or 'Mining'), or are overseas producers (including overseas manufacturing establishments).

Prices of these materials are generally obtained from suppliers (producers and wholesalers). Prices of imported materials are generally obtained from importers and relate to shipments arriving in Australia that quarter.

In concept, pricing for these indexes is at the point at which the material physically enters the defined manufacturing 'sector'. Therefore, as far as possible prices are on a 'delivered in store' basis.

The items included in the indexes were selected on the basis of the values of materials used in 1989–90.

Main data detail

Some of the data items available are:

- contribution of materials classified by Australian and New Zealand Standard Industrial Classification (ANZSIC) industry of origin (including Coal mining, Oil and gas extraction, Metal ore mining and Other mining) to the total Manufacturing Division Index;
- Manufacturing ANZSIC Subdivision and Group Indexes (including Petroleum and coal products (251, 252) and Basic metal products (271–273)); and
- indexes of metallic minerals used in the fabricated metal products industry.

Geographic coverage

Australia.

Frequency of data availability

Quarterly.

Reference period

Quarters ended 31 March, 30 June, 30 September and 31 December.

Historical data

Data are available from 1968–69.

Products and services

Publication

- *Price Indexes of Materials Used in Manufacturing Industries, Australia* (Cat. no. 6411.0)

Other

- Special data services may be available on request.

Example of information available

MANUFACTURING DIVISION INDEX, CONTRIBUTION OF MATERIALS—ANZSIC
INDUSTRY OF ORIGIN(a)

<i>Industry of origin</i>	<i>Dec Qtr 1998</i>	<i>Mar Qtr 1999</i>	<i>Change</i>
Manufacturing Division	105.8	104.2	-1.6
Agriculture	28.93	29.79	0.86
Forestry and logging	1.54	1.52	-0.02
Coal mining	1.05	1.05	0.00
Oil and gas extraction	10.87	9.41	-1.46
Metal ore mining	8.71	8.38	-0.33
Other mining	4.52	4.50	-0.02
Textile, clothing, footwear and leather manufacturing	5.82	5.71	-0.11
Wood and paper product manufacturing	5.13	5.09	-0.04
Petroleum, coal, chemical and associated product manufacturing	10.42	10.19	-0.23
Non-metallic mineral product manufacturing	0.82	0.80	-0.02
Metal product manufacturing	5.42	5.39	-0.03
Machinery and equipment manufacturing	11.80	11.74	-0.06
Electricity and gas supply	10.77	10.59	-0.18

(a) This table provides an analysis of the contributions materials (classified by ANZSIC industry of origin) make to the total Manufacturing Division index.

LIST OF ABBREVIATIONS, ACRONYMS AND OTHER USAGES

AAC	Australian Aluminium Council
ABARE	Australian Bureau of Agricultural and Resource Economics
ABS	Australian Bureau of Statistics
AGSO	Australian Geological Survey Organisation
AHECC	Australian Harmonised Export Commodity Classification
AIP	Australian Institute of Petroleum
ANZSIC	Australian and New Zealand Standard Industrial Classification
APPEA Ltd	Australian Petroleum Production and Exploration Association Limited
AS	Australian Standard
ASIC	Australian Standard Industrial Classification
ASX	Australian Stock Exchange
ATSN	Combined Australian Tariff and Statistical Nomenclature
AVETMISS	Australian Vocational Education and Training Management Information Statistical Standard
bbls/day	barrels a day
BOP	Balance of Payments
BES	Business Expectations Survey
CMI	Coal Mines Insurance
CPI	Consumer Price Index
CSV	Comma Separated Value
DME	Department of Mines and Energy
EPE	Environment Protection Expenditure
EST	Eastern Standard Time
h	hours
IEA	International Energy Agency
IIP	International Investment Position
IT	Information Technology
LCI	Labour Cost Index

LIST OF ABBREVIATIONS, ACRONYMS AND OTHER USAGES

LFS	Labour Force Survey
LME	London Metal Exchange
LNG	Liquefied Natural Gas
LPG	Liquefied Petroleum Gas
MESA	Mines and Energy South Australia
MINERALIS	Minerals and Energy Resource and Locations Information System
MINLOC	Mineral Occurrence Locations Database
MINRES	Mineral Resources Database
mmcf	million cubic feet
n.e.c.	not elsewhere classified
NT	Northern Territory
NT DME	Northern Territory Department of Mines and Energy
OBIS	Operations Based Information System
p	preliminary
PDF	Page Definition Format
PIRSA	Primary Industries and Resources South Australia
R&D	Research and Development
PC AUSSTATS	On-line Time Series Data Service (ABS)
SCP	Survey of Company Profits
SITC	Standard International Trade Classification
SLA	Statistical Local Area
SNA93	System of National Accounts 1993
TAFE	Technical and Further Education
TPS	Training Practices Survey
VET	Vocational Education and Training
WCI	Wage Cost Index
—	nil or rounded to zero

AUSTRALIAN BUREAU OF STATISTICS SERVICES

INTRODUCTION

The Australian Bureau of Statistics (ABS) is Australia's official statistical organisation. The Bureau assists and encourages informed decision-making, research and discussion within governments and the community, by providing a high quality, objective and responsive national statistical service.

Some of the services provided by the ABS include:

- ABS subscriptions;
- ABS bookshops;
- mail order service;
- library access to ABS information;
- CPI Infoline;
- Dial-a-statistic;
- on-line access via PC AUSSTATS;
- consultancy services; and
- ABS web site.

ABS SUBSCRIPTIONS

Clients who would like to receive information from the ABS on a regular basis, or who need to amend their existing subscription details, should contact the ABS Subscription Service on 1300 366 323. (Note that calls are charged at local call rates, apart from calls from mobile phones which are charged at the applicable mobile rates.)

ABS BOOKSHOPS

ABS bookshops in each capital city carry a wide range of ABS products. The address, telephone number and facsimile number for bookshops in all ABS offices can be found under 'ABS Offices and Contact Numbers' near the end of this section.

MAIL ORDER SERVICE

ABS products can be mailed directly to you. Orders may be placed by either telephone, email, or facsimile. The National Mail Order Service contact number is Canberra 02 6252 5249. The address and facsimile number for the Mail Order Service can be found under 'ABS Offices and Contact Numbers' near the end of this section.

ABS SERVICES

LIBRARY ACCESS TO ABS INFORMATION

ABS publications are available for reference at many public and tertiary libraries, the National Library and State libraries. More information is available on the ABS web site at www.abs.gov.au. Public access to ABS libraries in each capital city is available on a self-help basis.

CPI INFOLINE—1902 981 074

This recorded message service provides current and historical Consumer Price Index data. (Call cost is 75c per minute. Calls from mobile phones are charged at the applicable mobile rates.)

DIAL-A-STATISTIC—1900 986 400

This recorded message service provides the latest statistics for the Consumer Price Index, National Accounts, Balance of Payments, Labour Force, Average Weekly Earnings and other topics. (Call cost is 75c per minute. Calls from mobile phones are charged at the applicable mobile rates.)

ON-LINE ACCESS VIA PC AUSSTATS

Subscribe to *PC AUSSTATS* (Cat. no. 1401.0) and have 24-hour on-line access to the latest time series information from the ABS. Over 90,000 series are available, often with 15 years or more historical data. PC AUSSTATS is also updated daily at 11.30 a.m. EST.

CONSULTANCY SERVICES

When you need to engage professional, timely and objective statistical consultancy services, first consider the range of services available from the ABS. The ABS houses Australia's largest and most comprehensive range of statistical data and has a wide range of specialist experts on hand to help you with your information and statistical needs.

This expertise can be found in the form of:

- demographers;
- mathematical statisticians;
- national and international accountants;
- geographers;
- professional librarians;
- survey designers;
- time series and seasonal adjustment analysts; and
- experts in all ABS social and economic statistics.

CONSULTANCY SERVICES *continued*

Our consultants will assist you by accessing the full range of ABS information including published and unpublished statistics on industry and business, agriculture, international trade, finance, population census, health, welfare and much more.

In addition, our consultants can analyse data for you as well as model or massage it to help meet your information needs. And, if the data does not exist, we can provide methodological advice on how you can obtain it.

A limited amount of ABS information that is readily and quickly available can be provided free. However, most consultancies are provided on a fee-for-service basis.

Phone or fax your local ABS office to talk to a consultant (see the contact details under 'ABS Offices and Contact Numbers' near the end of this section), or visit the ABS web site (www.abs.gov.au) where you will be able to find a range of ABS information. You can email client.services@abs.gov.au with your consultancy requests.

ABS WEB SITE

For more information on the ABS and the Products and services available visit our web site at www.abs.gov.au

Have you visited the ABS web site yet? With around 1 million hits per month the ABS web site is proving to be a very popular Australian site.

Updated daily, the ABS web site provides statistics on many aspects of Australia and Australians. Free information available includes Australia Now: a statistical profile of Australia, information papers, news, publication release advices, summary data from the 1996 Census, key economic and social statistics, links to other agencies and much more!

What's hot on the ABS web site

- Australia Now
- Census 1996 data
- main findings from many ABS surveys
- catalogue of publications and products
- media releases

Queensland	18th FloorInquiries 07 3222 6351 313 Adelaide StreetBookshop 07 3222 6350 BRISBANE QLD 4000Facsimile 07 3222 6283 GPO Box 9817 BRISBANE QLD 4001
Western Australia	Level 16, Exchange Plaza.....Inquiries 08 9360 5140 2 The Esplanade.....Bookshop 08 9360 5307 PERTH WA 6000Facsimile 08 9360 5955 GPO Box K881 PERTH WA 6842
South Australia	7th FloorInquiries 08 8237 7400 Commonwealth Centre.....Bookshop 08 8237 7582 55 Currie StreetFacsimile 08 8237 7566 ADELAIDE SA 5000 GPO Box 2272 ADELAIDE SA 5001
Tasmania	Ground FloorInquiries 03 6222 5800 200 Collins StreetBookshop 03 6222 5800 HOBART TAS 7000Facsimile 03 6222 5995 GPO Box 66A HOBART TAS 7001
Northern Territory	7th FloorInquiries 08 8943 2111 AANT BuildingBookshop 08 8943 2110 81 Smith Street.....Facsimile 08 8981 1218 DARWIN NT 0800 GPO Box 3796 DARWIN NT 0801
Australian Capital Territory	9th FloorInquiries 02 6252 6627 FAI HouseBookshop 02 6207 0326 197 London CircuitFacsimile 02 6207 0282 CANBERRA CITY ACT 2601 PO Box 10 BELCONNEN ACT 2616

SUBJECT INDEX

SUBJECT	ITEM	PAGE
accidents and injuries	26-32, 45-6, 49-50, 62-9, 157-8	
age of employees	35-6, 51-3	
	accidents and injuries	29-32, 62-3, 67-9
air, protection of	70-2	
aluminium and alumina	7, 162, 178-9, 181, 184-5	
annual report financials	83-4	
apprenticeships	18	
Ashmore and Cartier Islands		
adjacent area	77-8, 150-2	
	accidents and injuries	26-8
	titles	173-5
assets and liabilities	1-3, 90-2, 95-7, 103-4	
	foreign	116
	petroleum exploration and production industry	101-2
	small business	171-2
Australia-Indonesia Zone of Cooperation	77-8	
Australian National Accounts	130-5	
Australian Stock Exchange (ASX)	83-4	
Australian System of National Accounts	134-5	
automotive fuels	182-5	
average weekly earnings	19-20, 33-4, 37-9	
aviation fuels	182-5	
balance of payments	114-17	
biodiversity	70-2	
birthplaces of employees	35-6, 51-3	
black coal	<i>see coal and coal mining</i>	
borrowings	95-7, 101-2	
business expectations	85-8	
businesses	4-5, 90-2, 112-13, 169-72	
capital expenditure	1-3, 90-2, 95-100	
	business expectations	85-8
	environment protection	70-2
	gas industry	148-9
	information technology	105-6
carbon dioxide	159-60	
climate	70-2	
	greenhouse gases	124-5, 159-60
coal and coal mining	1-3, 35-6, 155-6, 162, 163-7	
	accidents and injuries	29-32
	consumption	176-7
	exports	136-7, 166
	industrial disputes	42-4
	innovation and technology	107-10
	materials used	140-1

SUBJECT	ITEM	PAGE
company profits	<i>see profit</i>	
computers	105-6, 112-13
condensate	142-5, 159-60, 167
construction materials		
mining	31-2, 146-7, 153-4, 157-8
consumption	124-5
	aluminium.....	178-9
	coal.....	176-7
	environment protection goods and services.....	70-2
copper	184-5
cost indexes	58-61
cost of sales	90-2
country of birth of employees	35-6, 51-3
crude oil	142-5, 159-60, 167
deaths	64-9
demography	<i>see employees</i>	
depreciation	90-2
diesel fuels	182-5
dilution factors	83-4
dividends	83-4
drilling methods	73-4
downstream mining	178-88
dwellings	35-6
earnings (business)	1-3, 85-7, 90-2, 101-4, 134-5
	<i>see also profit</i>	
earnings (employees)	19-20, 33-41, 56, 130-1, 134-5
	labour costs.....	49-50
	technical and further education graduates.....	19-20
	<i>see also wages and salaries</i>	
economic activity	90-2, 130-5
	<i>see also financial performance</i>	
education and training	8-25, 35-6, 51-3, 56
	employers and.....	14-17, 21-3, 109-10
employees	35-6, 51-7, 95-7
	accidents and injuries.....	26-32, 45-6, 49-50, 62-9, 157-8
	education and training.....	11-23, 109-10
	in industrial disputes.....	42-4
	information technology and.....	105-6, 109-10
	in research and development.....	169-70
	<i>see also age of employees; earnings; sex of employees; working hours</i>	
employers	14-17, 21-3, 109-11
employment	1-3, 26-69, 90-2, 95-7, 153-8, 163-8
	business expectations.....	85-8
	construction materials mining.....	146-7
	downstream mining.....	180-1
	petroleum exploration and production industry.....	101-2
	small business.....	171-2
	technical and further education graduates.....	19-20

SUBJECT INDEX

SUBJECT	ITEM	PAGE
	technology and	109-10
employment benefits	56, 57
employment costs	49-50, 85-8, 90-2, 95-7
employment status	11-13, 19-20, 35-6, 51-3, 56
Energy Account	124-5
energy commodities	6-7, 124-5
	<i>see also</i> coal and coal mining; gas; petroleum and petroleum products	
environment	70-2, 109-10, 124-5
ethane	145, 159-60
ethnicity of employees	35-6, 51-3
expenditure	1-3, 95-7, 103-4, 157-8
	business expectations	85-7
	employment costs	49-50, 85-8, 90-2, 95-7
	environment protection.....	70-2
	exploration and development.....	73-82, 101-2, 157-8, 168, 173-5
	innovation and technology	105-10
	research and development	169-70
	training.....	16-17, 21-3
	<i>see also</i> capital expenditure	
experimental development	169-70
exploration	6-7, 73-82, 101-2, 157-8, 168
	accidents and injuries	26-8
	overseas	75-6, 95-7
	titles.....	173-5
export price indexes	6-7, 136-7
exports	6-7, 114-21, 124-5, 130-1
	coal.....	136-7, 166
	downstream mining.....	178-81
	petroleum	144-5
extractive industries	<i>see</i> construction materials mining	
fatalities	64-9
females	<i>see</i> sex of employees	
financial performance	1-3, 83-104, 130-5
	downstream mining.....	180-1
	small business	171-2
	<i>see also</i> expenditure;prices; profit; sales	
foreign investment	101-2, 114-16
foreign trade	<i>see</i> international trade	
fringe benefits tax	49-50
fuels	182-5
full-time employees	33-4, 40-1, 51-3
gas	142-5, 148-9, 159-60, 167
	downstream mining.....	182-5
	emissions.....	124-5
	<i>see also</i> petroleum and petroleum products	

SUBJECT	ITEM	PAGE
gender	<i>see sex of population</i>	
geographic locations of resources	126-9
gold	162, 184-5
graduates of VET programs	14-15, 19-20
greenhouse gas emissions	124-5
gross product	1-3, 90-2, 171-2, 180-1
groundwater protection	70-2
health and safety	26-32, 45-6, 49-50, 62-9, 157-8
home employment	56
hours worked	<i>see working hours</i>	
housing	35-6
immigrant employees	8-10, 35-6, 51-3, 56
Import Price Index	138-9
imports	118-20, 124-5, 130-1, 138-9
	petroleum	144-5
income (business)	1-3, 85-7, 90-2, 101-4, 134-5
	<i>see also expenditure; profit; taxes and taxation</i>	
income (personal)	35-6
	literacy and.....	9
Indonesia-Australia Zone of Cooperation	77-8
industrial disputes	42-4
industry gross product	1-3, 90-2, 171-2, 180-1
information technology	105-6, 112-13
injuries and accidents	26-32, 45-6, 49-50, 62-9, 157-8
innovation and technology	105-13, 169-70
Input-Output tables	130-1
interest	90-2, 95-7
international investment	101-2, 114-16
international trade	114-21, 130-1, 136-9
	<i>see also exports; imports</i>	
Internet use	105-6
inventories	93-4
investment	83-6, 101-2, 114-16
	<i>see also capital expenditure</i>	
iron	42-4, 162, 181, 184-5
IT	105-6, 112-13
job vacancies	47-8
labour	<i>see employees; employment</i>	
landscape, protection of	70-2
lead	184-5
liabilities	<i>see assets and liabilities</i>	
liquefied natural gas (LNG)	142-3, 148-9
liquefied petroleum gas (LPG)	142-5, 159-60, 167, 182-3

SUBJECT INDEX

SUBJECT	ITEM	PAGE
literacy	8-10
location of resources	126-9
lockouts	42-4
losses	<i>see profits</i>	
males	<i>see sex of population</i>	
manufacturing	178-88
marital status of employees	35-6, 51-3
market comparative analysis	83-4
materials used	140-1, 186-8
	for construction.....	31-2, 146-7, 153-4, 157-8
merchandise trade	<i>see international trade</i>	
metal ore mining	1-3, 35-6, 153-4
	accidents and injuries.....	31-2
	exports.....	136-7
	innovation and technology.....	107-10
migrant employees	8-10, 51-3, 56
Mineral Account	124-5
mineral exploration	<i>see exploration</i>	
Mineral Occurrence Locations		
Database (MINLOC)	126-7
mineral production	<i>see production</i>	
mineral resources	122-9
	<i>see also stocks</i>	
Mineral Resources Database		
(MINRES)	128-9
mineral royalties	155-62
mineral sands	155-6, 162
national accounts	130-5
natural gas	<i>see gas</i>	
net worth	1-3, 90-2, 171-2
New South Wales	<i>see States and Territories</i>	
noise abatement	70-2
Northern Territory	<i>see States and Territories</i>	
numeracy	8-10
occupational health and		
safety	26-32, 45-6, 49-50, 62-9, 157-8
occupational training	16-17, 21-3, 109-10
occupations	35-6, 51-3
	accidents and injuries.....	29-30, 62-3, 67-9
	education and training.....	18-20
occurrence locations	126-9

SUBJECT	ITEM	PAGE
offshore waters	77-8, 81-2, 142-3, 150-2
	<i>see also</i> Ashmore and Cartier Islands adjacent area	
oil		<i>see</i> petroleum and petroleum products
operating expenses		<i>see</i> expenditure
Other mining	1-3, 35-6, 42-4, 107-10
overseas exploration	75-6, 95-7
overseas investment	101-2, 114-16
overseas trade		<i>see</i> international trade
overtime	37-9, 163-4
part-time employees	40-1, 51-3
pay		<i>see</i> wages and salaries
payroll tax	49-50
petroleum and petroleum products	1-3, 35-6, 142-5, 148-52, 150-2, 157-62
	accidents and injuries	26-8
	downstream mining	181, 182-3
	exploration	77-8, 81-2
	financial performance	101-2
	innovation and technology	107-10
	titles	173-5
	volume change tables	125
physical environment		
accounts	124-5
pipelines	148-9
pollution control	70-2, 109-10, 124-5
population		<i>see</i> employees
prices	6-7, 136-41
	business expectations	85-7
	downstream mining	186-8
	petroleum	144-5
	of shares	83-4
private exploration	73-6, 79-82
production	1-3, 6-7, 95-7, 122-3, 130-5, 142-68, 173-5
	downstream mining	178-85
	effects of technology on	109-10
profit	1-3, 85-9, 95-7, 130-1, 134-5
	petroleum exploration and production industry	101-2
	small business	171-2
qualifications	11-13, 14-15, 19-20
quarrying		<i>see</i> construction materials mining
Queensland		<i>see</i> States and Territories

SUBJECT INDEX

SUBJECT	ITEM	PAGE
reading ability	8-10
rehabilitation	95-7, 165-7
report financials	83-4
research and experimental		
development	169-70
resources	122-9
	<i>see also</i> stocks	
retirement of employees	56
royalties	155-62
safety	26-32, 45-6, 49-50, 62-9, 157-8
salaries	<i>see</i> wages and salaries	
sales	90-4, 150-2
	coal.....	166
	downstream mining.....	180-1
	gas.....	148-9
	petroleum.....	144-5, 150-2
	small business.....	171-2
	<i>see also</i> prices	
sales gas production	142-3, 159-60
satisfaction surveys	14-15, 19-20
securities	83-4
services to mining	35-6, 107-10
sex of employees	35-6, 51-3
	accidents and injuries.....	26-30, 62-3, 67-9
	earnings.....	33-9
	working hours.....	37-9
share prices	83-4
silver	184-5
skills development	<i>see</i> education and training	
small business		
(size of business)	4-5, 40-1, 171-2
	accidents and injuries.....	45-6
	Information technology.....	105-6
	70-2
soil, protection of	70-2
solid waste management	70-2
States and Territories	2, 4-5, 6-7
	coal mining.....	29-30, 163-7, 176-7
	downstream mining.....	180-1
	education and training.....	8-25
	employment.....	26-69
	exploration and development.....	73-4, 77-9
	financial performance.....	86, 99, 103-4
	innovation and technology.....	110, 113, 169-70
	international trade.....	119
	national accounts.....	135
	production.....	142-68, 180-1
	resources.....	125-9
	small business.....	171
	stocks.....	125, 150-2
	titles.....	173-5

SUBJECT	ITEM	PAGE
steel	181, 184-5
stocks	124-5, 150-2
	business expectations	85-7
	coal	163-4, 176-7
	petroleum	144-5, 150-2
stone	<i>see construction materials mining</i>	
strikes	42-4
superannuation	49-50, 56, 57
Tasmania	<i>see States and Territories</i>	
taxes and taxation	95-7, 103-4
	impact on environment protection expenditure	70-2
	labour costs	49-50
	petroleum	101-2, 144-5
technical and further education (TAFE)	14-15, 18-20, 24-5
technology and innovation	105-13, 169-70
Territories	<i>see States and Territories</i>	
tin	184-5
titles	173-5
trade	<i>see international trade</i>	
trade union membership	56
traded securities	83-4
trainees	18
training	<i>see education and training</i>	
transport	35-6, 119
traumatic fatalities	67-9
turnover	1-3, 180-1
underemployment	56
unemployment	11-13, 51-3, 56
union membership	56
vibration abatement	70-2
Victoria	<i>see States and Territories</i>	
vocational education and training (VET)	14-15, 18-20, 24-5
volume change tables	124-5
volume of production indexes	6-7
Wage Cost Index (WCI)	58-61
wages and salaries	58-61
	accidents and injuries and	29-30
	business expectations	85-7
	downstream mining	180-1
	petroleum exploration and production industry	101-2
	small business	171-2
waste products	70-2, 124-5
water, protection of	70-2
Western Australia	<i>see States and Territories</i>	

SUBJECT INDEX

SUBJECT	ITEM	PAGE
work experience	56
	accidents and injuries and	29-32
work stoppages	42-4
workers' compensation	29-30, 45-6, 62-9
working hours	37-9, 51-3, 134-5
	coal mining industry	163-4
	lost due to accidents and injuries	29-30, 64-6
	lost due to industrial disputes	42-4
workplace safety	26-32, 45-6, 49-50, 62-9, 157-8
workplace training	16-17, 21-3, 109-10
Year 2000 problem	112-13
zinc	184-5
Zone of Cooperation	77-8

CONTRIBUTOR AND DATA SOURCES INDEX

CONTRIBUTOR	DATA SOURCES	PAGE
Australian Aluminium Council	Aluminium Production, Consumption and Trade	178
Australian Bureau of Agricultural and Resource Economics	Quarterly Minerals and Energy Statistics	6
Australian Bureau of Statistics	Annual Manufacturing Survey	180
	Aspects of Literacy, Survey of	8
	Australian National Accounts: Input-Output Tables	130
	Australian National Accounts: Quarterly National Income, Expenditure and Product	132
	Australian System of National Accounts	134
	Average Weekly Earnings Survey	33
	Balance of Payments and International Investment Position	114
	Business Expectations Survey	85
	Business Register Counts	4
	Census of Population and Housing	35
	Company Profits, Survey of	88
	Economic Activity Survey	90
	Education and Training, Survey of	11
	Employee Earnings and Hours, Survey of	37
	Employer Training Practices Survey	16
	Employment and Earnings, Survey of	40
	Environment Protection Expenditure, Australia	70
	Export Price Index	136
	Import Price Index	138

CONTRIBUTOR AND DATA SOURCES INDEX

CONTRIBUTOR	DATA SOURCES	PAGE
Australian Bureau of Statistics <i>continued</i>	Industrial Disputes Collection	42
	Information Technology Survey—Business Enterprises	105
	Innovation in Mining	107
	International Merchandise Trade Statistics	118
	Inventories and Sales, Survey of	93
	Job Vacancies Survey	47
	Labour Costs Survey	49
	Labour Force Survey—Supplementary Surveys	55
	Labour Force Survey	51
	Manufacturing Production Collections	184
	Mineral Account and Energy Account	124
	Mineral Exploration, Drilling Methods	73
	Mining Collection	1
	Mining Technology Survey	109
	New Capital Expenditure, Survey of	98
	Overseas Mineral Exploration Expenditure	75
	Price Indexes of Materials Used in Coal Mining	140
	Price Indexes of Materials Used in Manufacturing Industries	186
	Private Mineral Exploration	79
	Private Petroleum Exploration	81
	Research and Experimental Development, Survey of Businesses	169
	Small Business in Australia	171
	Training Expenditure Survey	21
Wage Cost Index	58	
Year 2000 Problem	112	
The Australian Gas Association	Gas Statistics Australia Annual Collection	148
Australian Geological Survey Organisation	(<i>see</i> Department of Industry, Science and Resources)	
Australian Institute of Petroleum	Australian Petroleum in Facts and Figures: Forecasts	182

CONTRIBUTOR AND DATA SOURCES INDEX

CONTRIBUTOR	DATA SOURCES	PAGE
Australian Petroleum Production and Exploration Association Limited	Australian Petroleum Production and Exploration Association Limited Production Statistics	142
	Petroleum Exploration and Production Industry—Financial Survey	101
Australian Stock Exchange	ASX FinData Products	83
Australian Taxation Office	Taxation Statistics	103
Department of Industry, Science and Resources	Australian Petroleum Statistics	144
	Australia's Identified Mineral Resources	122
	Mineral Occurrence Locations Database (MINLOC)	126
	Mineral Resources Database (MINRES)	128
	Petroleum Exploration, Development and Production Statistics	77
Department of Infrastructure, Energy and Resources (Tasmania)	Mineral Production in Tasmania	153
	Workers' Compensation Statistical Collection— Workplace Safety Board of Tasmania	64
Department of Mineral Resources (New South Wales)	Extractive Industries (Construction Materials) Production (New South Wales)	146
	Mineral Royalties in New South Wales	155
Department of Minerals and Energy (Western Australia)	Quantity and Value of Minerals and Petroleum by Local Government Area (Western Australia)	161
Department of Mines and Energy (Queensland)	Annual Mining Accident Statistics (Queensland)	31
	Queensland Mineral Production and Coal Industry Statistics	165
Department of Natural Resources and Environment (Victoria)	Minerals and Petroleum Victoria—Mining and Extractive Collection	157
Joint Coal Board	Accident/Incident Reporting System (New South Wales Coal Mines)	29
	Coal Consumption Return	176
	Quarterly Coal Mining Return	163
Minerals Council of Australia	Minerals Council of Australia Annual Minerals Industry Survey	95

CONTRIBUTOR AND DATA SOURCES INDEX

CONTRIBUTOR	DATA SOURCES	PAGE
National Centre for Vocational Education Research	Employer Satisfaction with Vocational Education and Training Survey	14
	New Apprenticeships Collection	18
	Technical and Further Education Graduate Destination Survey	19
	Vocational Education and Training Provider Collection	24
National Occupational Health and Safety Commission	Work-related Traumatic Fatalities in Australia, 1989 to 1992	67
Northern Territory Department of Mines and Energy	Accident and Injury Statistics and Employment (Northern Territory)	26
	Mineral and Petroleum Production Collection (Northern Territory)	150
	Titles Collection (Northern Territory)	173
Primary Industries and Resources South Australia	Petroleum Production Data (South Australia)	159
	Six Monthly Mining Returns (South Australia)	168
WorkCover Corporation SA	Industry Briefs (South Australia)	45
WorkCover Western Australia	Workers' Compensation and Rehabilitation Data, Western Australia	62

FOR MORE INFORMATION ...

SELF-HELP ACCESS TO STATISTICS

<i>CPI INFOLINE</i>	For current and historical Consumer Price Index data, call 1902 981 074 (call cost 75c per minute).
<i>DIAL-A-STATISTIC</i>	For the latest figures for National Accounts, Balance of Payments, Labour Force, Average Weekly Earnings, Estimated Resident Population and the Consumer Price Index call 1900 986 400 (call cost 75c per minute).
<i>INTERNET</i>	www.abs.gov.au
<i>LIBRARY</i>	A range of ABS publications is available from public and tertiary libraries Australia-wide. Contact your nearest library to determine whether it has the ABS statistics you require.

WHY NOT SUBSCRIBE?

<i>PHONE</i>	+61 1300 366 323
<i>FAX</i>	+61 03 9615 7848

CONSULTANCY SERVICES

ABS offers consultancy services on a user pays basis to help you access published and unpublished data. Data that is already published and can be provided within 5 minutes is free of charge. Statistical methodological services are also available. Please contact:

<i>INQUIRIES</i>	<i>City</i>	<i>By phone</i>	<i>By fax</i>
	Canberra	02 6252 6627	02 6207 0282
	Sydney	02 9268 4611	02 9268 4668
	Melbourne	03 9615 7755	03 9615 7798
	Brisbane	07 3222 6351	07 3222 6283
	Perth	08 9360 5140	08 9360 5955
	Adelaide	08 8237 7400	08 8237 7566
	Hobart	03 6222 5800	03 6222 5995
	Darwin	08 8943 2111	08 8981 1218

POST Client Services, ABS, PO Box 10, Belconnen ACT 2616

EMAIL client.services@abs.gov.au