



1996-97

Final
Issue

7113.3

AGRICULTURE

QUEENSLAND

EMBARGO: 11:30AM (CANBERRA TIME) THU 10 SEP 1998

CONTENTS

Notes	2
Summary of findings	3
List of tables	16
Structure of agricultural industry	18
Land management	26
Crops and pasture	30
Horticulture	40
Livestock and livestock products	56
Farm finances	69
Explanatory Notes	75
Map	80

INQUIRIES

- For further information about these and related statistics, contact Information Services on Brisbane (07) 3222 6351, or any ABS office shown on the back cover of this publication.

NOTES

SYMBOLS AND OTHER USAGES

EVAO	estimated value of agricultural operations
ha	hectares
kg	kilograms
km	kilometres
m	million
n.a.	not available
n.c.	not collected
n.e.c.	not elsewhere classified
n.p.	not published
p	preliminary
r	figure or series revised since previous issue
SE%	percentage standard error
t	tonnes
*	SE% greater than 100. Estimate included for completeness. Sampling variability too high for most practical purposes.
**	Where an estimate is small compared to previous years, the relative standard error may be a misleading indicator of the reliability of the estimate.
—	nil or rounded to zero

INQUIRIES

For further information about statistics in this publication and the availability of related unpublished statistics, contact Information Services on Brisbane (07) 3222 6351 or any ABS State office.

For information about other ABS statistics and services, please refer to the back of this publication.

Brian Doyle
Regional Director, Queensland

SUMMARY OF FINDINGS

.....

INTRODUCTION

Despite drought still being declared in approximately 22% of the total land area in Queensland at the beginning of 1997, conditions generally improved during the 1996-97 season. With the exception of grain sorghum, significant increases in cereal grain production were experienced in the main cereal grain growing areas. The most notable increase was in the production of wheat, resulting in a harvest of almost two million tonnes. The Queensland cotton harvest was the largest on record, while sugar cane production continued to rise. In the horticultural sector, both the mango and avocado industries experienced increases in production, while banana, pear and apple production fell. There was a general decrease in the number of establishments classified to most livestock industries. However, it appeared that many livestock establishments diversified into a combination of livestock farming and grain growing during the 1996-97 season.

STRUCTURE OF AGRICULTURAL INDUSTRY

The number of establishments with agricultural activity decreased 3.7% from 32,186 at 31 March 1996 to 30,987 at 31 March 1997, continuing the downward trend over the past few years.

The main industries of the establishments with agricultural activity were:

	<i>Number</i>	<i>% of establishments with agricultural activity</i>
Beef cattle farming	10 924	35.3
Sugar cane growing	4 555	14.7

The number of establishments classified to beef cattle farming fell by 7.0% from 11,751 at 31 March 1996 to 10,924 at 31 March 1997, while those establishments classified to a combination of grain-sheep/beef cattle farming rose by 13.9% to 2,165. Also, the number of establishments classified to pig farming fell from 428 to 376 (down 12.1%). Establishments classified to grain growing rose 27% from 1,764 at 31 March 1996 to 2,240 at 31 March 1997. Establishments classified to cotton growing fell from 508 to 469 (down 7.7%) and the number classified to sugar cane growing fell slightly to 4,555 establishments.

At 31 March 1997, 26.1% of establishments with agricultural activity had an estimated value of agricultural operations (EVAO) of \$200,000 or more, while only 7.5% had an EVAO of \$500,000 or more (see table 5).

At 31 March 1997, there were 6,324 or 57.9% of establishments classified to beef cattle farming with an EVAO between \$5,000 and \$49,999. Conversely, 3,722 or 81.7% of establishments classified to sugar cane growing had an EVAO of \$100,000 or more. Of the 469 establishments classified to the cotton industry, 70.1% had an EVAO of \$500,000 or more (see table 5).

In terms of area, 20,423 (65.9%) establishments had an area of less than 500 hectares at 31 March 1997. There were 236 establishments that had an area of 100,000 hectares or more, with 200 of these being classified as beef cattle farming establishments (see table 6).

LAND MANAGEMENT

In 1996-97, the area of land used for agricultural activity in Queensland was 151,066,700 hectares or 86.1% of Queensland's total land area. In terms of land used for agricultural activity, Queensland was the largest agricultural State, followed by Western Australia.

A total of 734,600 tree seedlings were planted during the 1996-97 season of which 200,300 were for timber/pulp and 534,300 were planted for other purposes, an increase of 44.1% from the 1995-96 season. The Far North Statistical Division (SD) recorded the highest number of seedlings planted for timber/pulp (51,886 or 25.9%). The number of tree seedlings planted for other purposes increased by 243,800 or 83.9% in 1996-97 to 534,300 (see table 8).

In 1996-97, a total of 19,000 tonnes of hardwood timber was harvested from land held by establishments with agricultural activity and 4,800 tonnes of softwood timber. The main harvesting areas were the Brisbane and Moreton and Wide Bay-Burnett SD's (see table 8).

There were 6,200 kilometres of fencing erected in 1996-97 of which 2,400 kilometres or 39.1% were erected to isolate remnant vegetation (see table 9).

In 1996-97, a total of 403,800 hectares were irrigated, with sugar cane accounting for 42.7% of the irrigated area (see table 10).

CROPS AND PASTURES

GRAIN SORGHUM

During the year ended 31 March 1997, the area sown to grain sorghum decreased 29.0% to 423,900 hectares. Production of grain sorghum decreased 10.1% to 1,003,300 tonnes, but there was an increase in yield from 1995-96 (up from 1.9 to 2.4 tonnes per hectare). The major contributor in terms of both area planted and production was the Darling Downs SD, which accounted for 50.8% of the area planted and 58.4% of the State's production (see table 11).

During the 1996-97 season, 62.9% of establishments growing grain sorghum had an area sown of less than 100 hectares, while only 4.6% of establishments had an area sown of 500 hectares or more. These larger grain sorghum growing establishments accounted for 32.3% of the State's area planted to grain sorghum and 29.9% of the State's production (see table 17).

GRAIN SORGHUM, YEARS ENDED 31 MARCH



SUMMARY OF FINDINGS *continued*

WHEAT

The easing of drought conditions and substantial rain in the Queensland wheat belt prior to wheat planting season saw significant increases in areas planted to wheat in the year ended 31 March 1997. Many farming establishments ploughed up pastures and planted wheat, resulting in the area sown to wheat increasing from 626,500 hectares to 979,800 hectares in the year ended 31 March 1997 (up 56.4%). The large planting of wheat coupled with good conditions over the season resulted in a quality crop. Production of wheat increased 281.0% in the year ended 31 March 1997, from 519,500 tonnes to 1,979,500 tonnes. This was the largest crop sown since 1990-91 when 1,058,900 hectares were planted and 1,971,300 tonnes were produced.

Wheat was predominantly grown in the Darling Downs SD. This SD accounted for 57.3% of the total area sown and 66.2% of total production. However, significant plantings and production of wheat also occurred in the South West and Fitzroy SD's, reflecting the decision of many farmers to switch to wheat production (see table 11).

In the year ended 31 March 1997, 14.4% of establishments growing wheat had an area sown of 500 hectares or more. These large establishments accounted for 59.5% of the State's area of wheat sown and 59.8% of the State's production (see table 17).

WHEAT, YEARS ENDED 31 MARCH

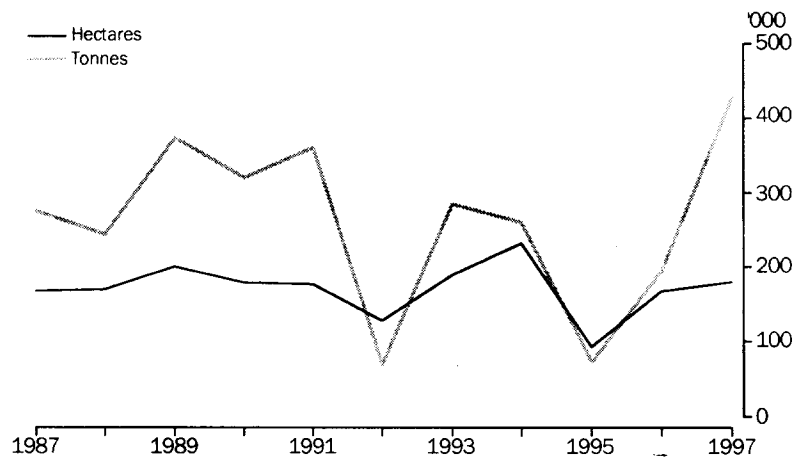


SUMMARY OF FINDINGS *continued*

BARLEY

Although the area sown to barley increased moderately (6.8%) over the year ended 31 March 1997, improved conditions saw a significant increase in production. Production more than doubled to 428,600 tonnes in the year ended 31 March 1997, with yield increasing from 1.2 tonnes per hectare to 2.4 tonnes per hectare. Barley was primarily grown in the Darling Downs SD, accounting for 86.3% of area sown and 88.5% of total production (see table 11).

BARLEY, YEARS ENDED 31 MARCH



PASTURES FOR HAY

The area of pastures cut for hay (lucerne and other pastures) decreased by 29.8% to 40,000 hectares in the year ended 31 March 1997. Production also decreased, by 20.3% to 245,700 tonnes.

The area and production of lucerne cut for hay decreased slightly in the year ended 31 March 1997 to 179,500 tonnes from 22,000 hectares. The area of other (non-lucerne) pastures for hay decreased by 44.4% to 18,000 hectares and production decreased by 47.1% to 66,300 tonnes (see table 13).

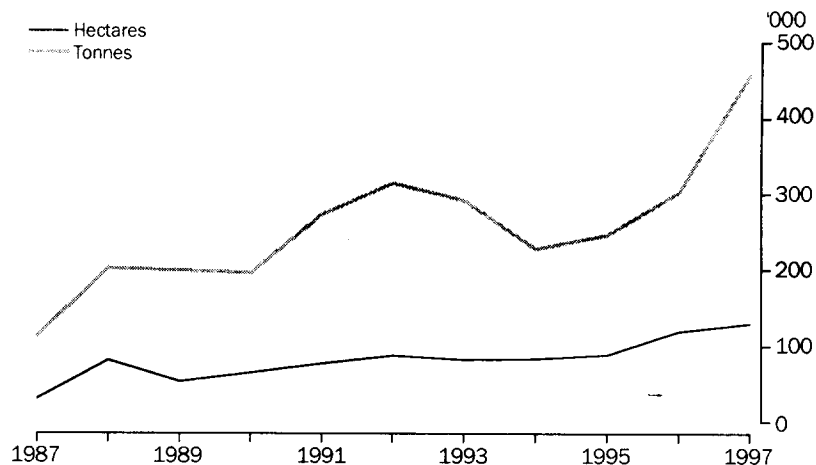
SUMMARY OF FINDINGS *continued*

COTTON

The area planted to cotton in the 1996-97 season increased by 8.0% to 129,300 hectares. Seed cotton production rose to 457,700 tonnes, 30.8% of the Australian crop.

The Darling Downs SD was the primary cotton growing region in Queensland, with 86,000 hectares sown and a production of 273,900 tonnes. This accounted for 59.8% of the State's production (see table 15).

COTTON PRODUCTION, YEARS ENDED 31 MARCH

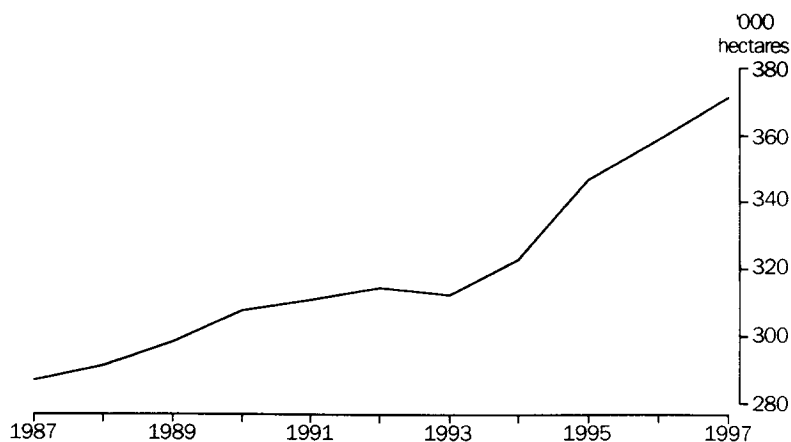


SUGAR CANE

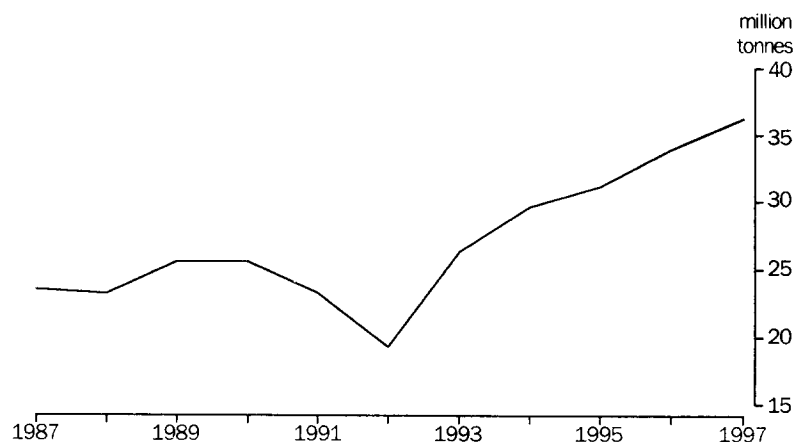
Sugar cane was Queensland's most valuable crop, with a gross value of production of \$1,112.0 million in the 1996-97 season. The area planted to sugar cane continued to rise, increasing 3.5% from 358,500 hectares in 1995-96 to 371,200 hectares in 1996-97. In 1996-97, the State's production of sugar cane cut for crushing was 36,231,800 tonnes. This was an increase of 6.9% from 1995-96, reflecting an increase in yield from 94.6 tonnes per hectare to 97.6 tonnes per hectare.

The Northern SD and Mackay SD together accounted for 64.8% of the State's total production. However, significant amounts of sugar cane are grown in South-East Queensland, Wide Bay-Burnett SD and Far North SD (see table 15).

SUGAR CANE, AREA, YEARS ENDED 31 MARCH



SUGAR CANE, PRODUCTION, YEARS ENDED 31 MARCH



HORTICULTURE

MANDARINS

The number of mandarin trees in the year ended 31 March 1997 increased by 28.0% to 1,096,809, with the main increase occurring in trees six years and over. The area with the most change in tree numbers over the year ended 31 March 1997 was Fitzroy SD, where a large number of trees were newly planted and there was a significant increase in the number of trees six years and over. However, the Wide Bay-Burnett SD was still the major mandarin growing area in the State, accounting for 62.2% of tree numbers and 76.7% of the State's production (see table 19).

APPLES

Despite a 4.9% increase in the number of apple trees in Queensland in the year ended 31 March 1997, difficult conditions led to a slight drop (1.1%) in the production of apples, due to a lower yield per tree than the previous season. The Darling Downs SD is virtually the only region in Queensland that grows apples (see table 19).

MANGOES

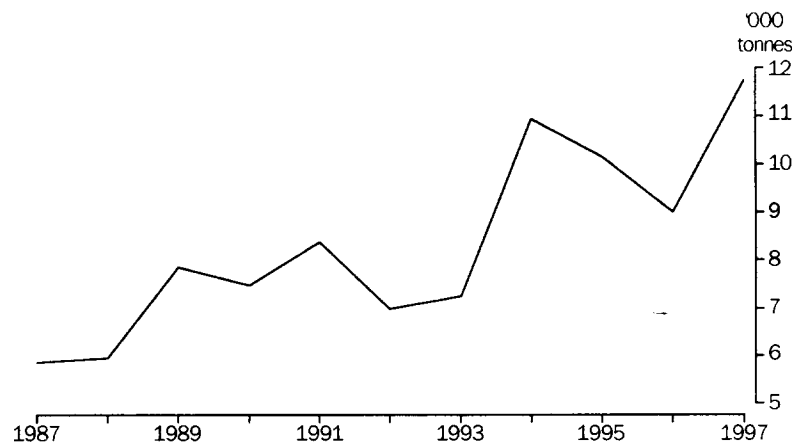
In terms of mango production and yields, the year ended 31 March 1997 showed improvement compared with 1995-96. While the total number of mango trees increased by 10.3% over the year, production increased 21.9%, due to a rise in yield from 46.1 kilograms per tree in 1995-96 to 50.7 kilograms per tree in 1996-97. The Northern SD and Far North SD together accounted for 84.1% of the State's total production (see table 21).

SUMMARY OF FINDINGS *continued*

AVOCADOS

The year ended 31 March 1997 resulted in a 30.4% increase in avocado production to 11,744 tonnes. Following a decrease of avocado production and lower yields in Queensland in 1995-96, yields increased from 38.3 kilograms per tree in 1995-96 to 47.6 kilograms per tree in 1996-97, with the highest yield being recorded in the Far North SD (84.6 kilograms per tree). The major avocado growing areas were the Moreton and Brisbane SDs, the Far North SD and the Wide Bay-Burnett SD, which together contributed 86.6% towards the total state production (see table 21).

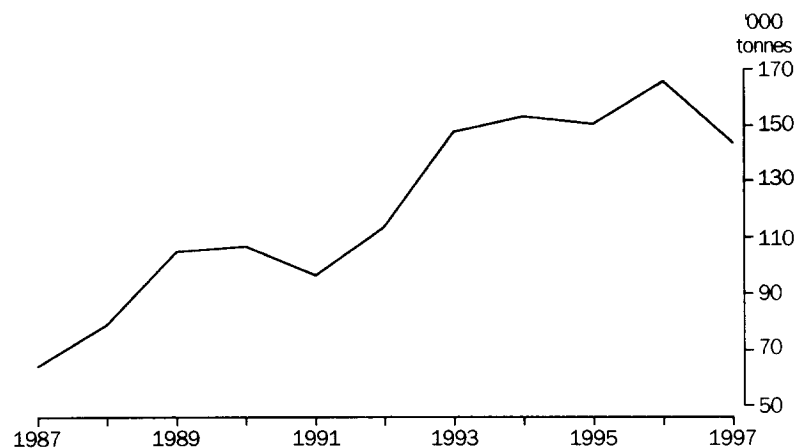
AVOCADO PRODUCTION, YEARS ENDED 31 MARCH



BANANAS

In the year ended 31 March 1997, the total area of banana plantations that were of bearing age increased by 12.4% to 5,957 hectares. Despite this increase in bearing age area, banana production decreased 13.2% to 143,748 tonnes, with a corresponding drop in yield from 31.3 tonnes per hectare in 1995-96 to 24.1 tonnes per hectare in 1996-97. This drop in production is attributed to the widespread floods, rain and high winds that were experienced in March 1996 in Northern Queensland. Despite this setback, the Far North SD still accounted for 94.6% of Queensland's production (see table 22).

BANANA PRODUCTION, YEARS ENDED 31 MARCH



SUMMARY OF FINDINGS *continued*

PINEAPPLES

In the year ended 31 March 1997, the production of pineapples decreased by 3.8% to 122,980 tonnes. The total area of bearing age pineapples also decreased by 5.4% to 2,667 hectares. There was however, a slight rise in the yield, from 45.3 tonnes per hectare to 46.1 tonnes per hectare. The Moreton and Brisbane SDs accounted for 59.5% of Queensland's production (see table 22).

Generally, pineapple production has been decreasing slowly over the past few years. However, in the year ended 31 March 1997, the area of pineapples that were not yet bearing increased 5.1% to 1,966 hectares, which may reflect renewed confidence in the pineapple industry.

PINEAPPLE PRODUCTION, YEARS ENDED 31 MARCH



GRAPES

In the year ended 31 March 1997, the total area of bearing grapes rose by 8.3% to 1,047.6 hectares, while production increased by 13.7% to 4,529.9 tonnes. Plantings of vines during the 1996-97 collection year increased by 36.9% to 154.3 hectares (see table 24).

VEGETABLES

In value terms, the four main vegetable crops in Queensland were tomatoes, potatoes, lettuce, and capsicum, chillies and peppers (see table 27).

POTATOES

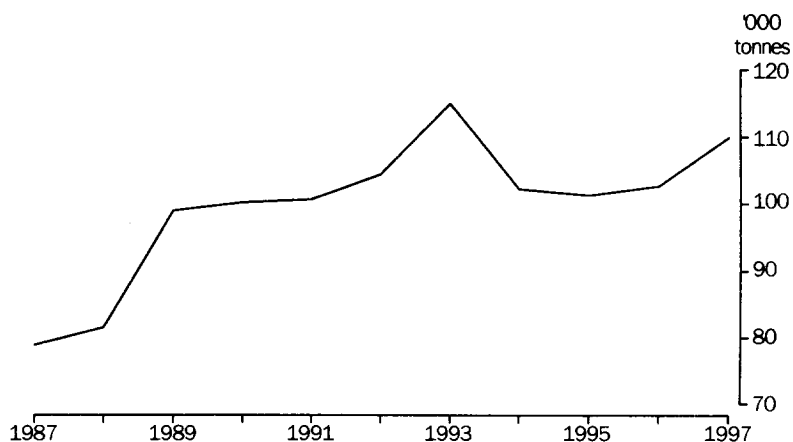
In the year ended 31 March 1997, the total area planted to potatoes increased slightly to 4,697 hectares, while production increased by 11.2% to 115,400 tonnes. The Moreton and Brisbane SDs accounted for 48.2% of the State's production (see tables 25 and 26).

TOMATOES

The total area planted to tomatoes in the year ended 31 March 1997 increased by 10.6% to 3,753 hectares. Production increased by 7.1% to 109,911 tonnes, while the average yield decreased from 30.2 tonnes per hectare to 29.3 tonnes per hectare.

The major contributors in terms of production were the Northern SD and Wide Bay-Burnett SD, accounting for 57.6% and 24.4% respectively of the State's production (see table 25 and 26).

TOMATO PRODUCTION, YEARS ENDED 31 MARCH



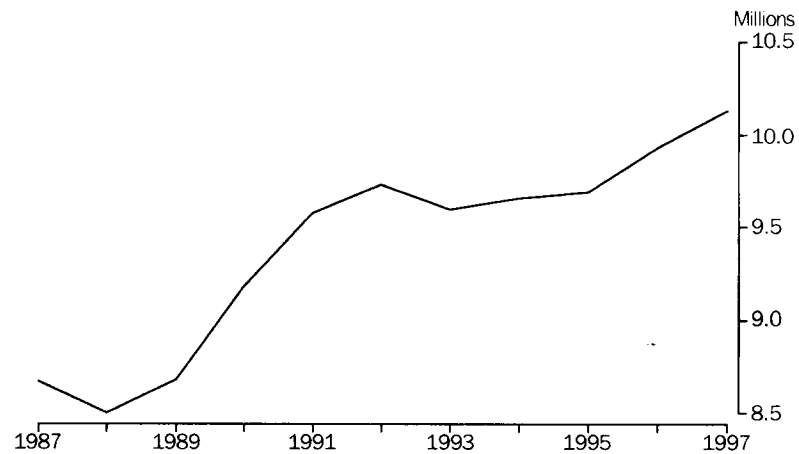
SUMMARY OF FINDINGS *continued*

LIVESTOCK AND LIVESTOCK PRODUCTS

MEAT CATTLE

At 31 March 1997, the number of meat cattle in Queensland was 10,129,700, a 2.0% increase over the previous year. The number of establishments with meat cattle fell by 3.7% to 19,507. The median herd size was 141 in 1996-97. The major regions in terms of cattle numbers were the Fitzroy SD, the North West SD and the Darling Downs SD with 17.6%, 14.3% and 13.4% respectively of the State's meat cattle herd (see tables 29, 30 and 31).

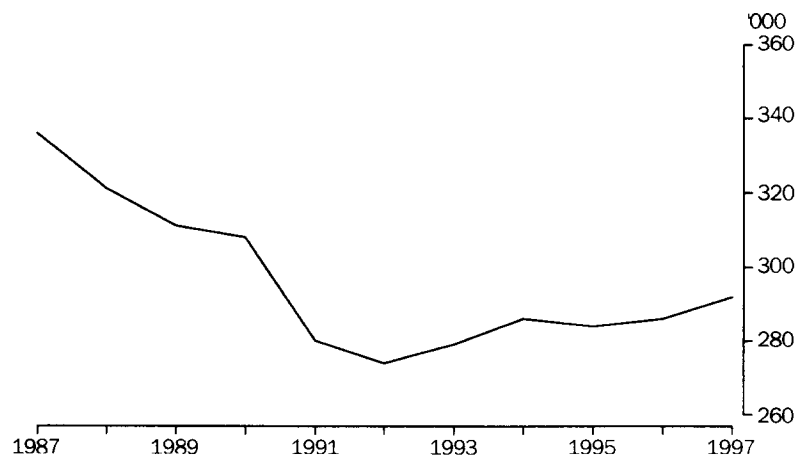
MEAT CATTLE, AT 31 MARCH



MILK CATTLE

The milk cattle herd was 292,000 at 31 March 1997, an increase of 2.1% from the previous year. The number of establishments with milk cattle fell by 3.9% to 2,194 in the same period. The median herd size in 1996-97 was 121 compared with 114 in 1995-96 (see tables 32, 33 and 34).

MILK CATTLE, AT 31 MARCH



SUMMARY OF FINDINGS *continued*

SHEEP AND LAMBS

Sheep and lamb numbers in Queensland at 31 March 1997 decreased 1.7% to 10.5 million. The number of establishments with sheep and lambs decreased 5.5%, from 2,770 at 31 March 1996 to 2,618 at 31 March 1997. The South West SD and the Central West SD together accounted for 77.8% of the State's total number of sheep and lambs (see tables 35, 36, 37 and 38).

SHEEP AND LAMBS, AT 31 MARCH



PIGS

The number of pigs in Queensland at 31 March 1997 decreased slightly (0.5%) to 599,900. At the same time, there were 821 establishments with pigs, a decrease of 13.9% from the previous year. In terms of pig numbers, Darlings Downs SD was the major contributor, accounting for 50.9% of the State's herd (see tables 39 and 40).

PIGS, AT 31 MARCH



VALUE OF AGRICULTURAL COMMODITIES PRODUCED

At the time of publication, preliminary figures only were available for the **gross value of agricultural commodities** produced for the 1996-97 season.

These figures showed that wheat was the leading cereal crop for grain in terms of value of production (\$421.6m) and accounted for 59.9% of the value of all cereals for grain. The other main cereal crop, grain sorghum decreased in value by 20.7% to \$179.0m for the 1996-97 season (see table 16).

Preliminary figures for sugar cane (cut for crushing) showed that the gross value decreased slightly (0.4%) to \$1,112.0m for the 1996-97 season. Sugar cane was the single most valuable crop in Queensland (see table 16).

Preliminary figures showed that bananas remained the leading individual fruit in value terms at \$140.6m, followed by mandarins with a value of production of \$56.7m, and mangoes with \$54.9m (see table 23).

In the 1996-97 season, the major contributor to the gross value of vegetable production was tomatoes with a value of production of \$111.9m, followed by potatoes with \$52.3m. The value of production of tomatoes decreased by 8.7% from the previous year, while the value of production of potatoes increased by 23.1% (see table 27).

The gross value of livestock slaughterings decreased by 1.8% to \$1,613.9m for the 1996-97 season. Cattle and calf slaughterings represented 76.4% of this value, followed by poultry and pigs, which represented 10.3% and 9.9% respectively (see table 46).

The value of wool production decreased by 1.9% to \$180.8m for the 1996-97 season. In the same period, the value of milk production increased by 7.0% to \$329.5m, and the value of egg production decreased by 27.2% to \$36.7m (see table 46).

LIST OF TABLES

	Page
Structure of agricultural industry	
1	Establishments by industry, EVAO \$5,000 and over, at 31 March 18
2	Establishments by industry, EVAO \$22,500 and over, at 31 March 19
3	Establishments with agricultural activity, Statistical Divisions, EVAO \$5,000 & over 20
4	Establishments with agricultural activity, Statistical Divisions, EVAO \$22,500 & over 20
5	Establishments by industry, by EVAO range, at 31 March 1997 21
6	Establishments by industry, by area range, at 31 March 1997 23
Land management	
7	Area and land use of establishments with agricultural activity, at 31 March 1997 26
8	Planting of trees, year ended 31 March 1997 27
9	Fencing, year ended 31 March 1997 28
10	Irrigation area, year ended 31 March 1997 29
Crops and pastures	
11	Cereals for grain, year ended 31 March 1997 30
12	Legumes for grain, year ended 31 March 1997 32
13	Crops and pastures for hay, year ended 31 March 1997 33
14	Oilseeds, year ended 31 March 1997 35
15	Other crops, year ended 31 March 1997 36
16	Gross value of principal crops and pastures, at 30 June 37
17	Establishments by area of principal grains sown and production 38
18	Establishments growing cereals for grain, year ended 31 March 1997 39
Horticulture	
19	Citrus and pome fruit, year ended 31 March 1997 40
20	Stone fruit, year ended 31 March 1997 42
21	Other fruit and nuts, year ended 31 March 1997 44
22	Tropical and berry fruit, year ended 31 March 1997 45
23	Gross value of citrus, pome and other fruit, at 30 June 47
24	Grapes, year ended 31 March 1997 47
25	Vegetables for human consumption, years ended 31 March 48
26	Vegetables for human consumption, Statistical Divisions, year ended 31 March 1997 50
27	Gross value of vegetables for human consumption, at 30 June 54
28	Area of nurseries, cut flowers and cultivated turf, year ended 31 March 1997 55

LIST OF TABLES *continued*

Page

Livestock and livestock products

29	Meat cattle numbers, at 31 March 1997	56
30	Establishments with meat cattle, at 31 March 1997	56
31	Number of establishments and meat cattle by herd size, at 31 March	57
32	Milk cattle numbers, at 31 March 1997	58
33	Establishments with milk cattle, at 31 March 1997	58
34	Number of establishments and milk cattle by herd size, at 31 March	59
35	Number of sheep and lambs, at 31 March 1997	60
36	Establishments with sheep and lambs, at 31 March 1997	60
37	Number of establishments and sheep and lambs by flock size, at 31 March	61
38	Lambing, year ended 31 March 1997	62
39	Pig numbers and number of establishments, at 31 March 1997	62
40	Number of establishments and pigs by herd size, at 31 March	63
41	Poultry, number on holding, at 31 March 1997	64
42	Poultry, number disposed of, at 31 March 1997	64
43	Establishments with and number of other livestock, at 31 March 1997	65
44	Sales of livestock, year ended 31 March 1997	66
45	Livestock slaughterings and products, years ended 31 March	67
46	Gross value of livestock products and other disposals, at 30 June	68
47	Beekeeping, summary statistics, years ended 30 June	68

Farm finances

48	Selected financial statistics, farm businesses, by industry, aggregates	69
49	Selected financial statistics, farm businesses, aggregates	73
50	Selected financial statistics, farm businesses, averages	74

1

ESTABLISHMENTS BY INDUSTRY, EVAO \$5,000 and over, At 31 MARCH (a)

Industry class		1995	1996	1997
ANZSIC code	Industry of establishment	no.	no.	no.
0111	Plant nurseries	727	696	685
0112	Cut flower and flower seed growing	184	189	192
0113	Vegetable growing	1 296	1 376	1 367
0114	Grape growing	78	88	98
0115	Apple and pear growing	117	109	106
0116	Stone fruit growing	107	89	99
0117	Kiwi fruit growing	3	5	7
0119	Fruit growing n.e.c.	2 118	2 127	2 097
0121	Grain growing	1 529	1 764	2 240
0122	Grain-sheep/beef cattle farming	1 494	1 900	2 165
0123	Sheep-beef cattle farming	1 046	1 022	925
0124	Sheep farming	743	771	748
0125	Beef cattle farming	11 998	11 751	10 924
0130	Dairy cattle farming	1 916	1 912	1 825
0141	Poultry farming (meat)	104	98	110
0142	Poultry farming (eggs)	110	103	98
0151	Pig farming	450	428	376
0152	Horse farming	495	524	509
0153	Deer farming	57	55	39
0159	Livestock farming n.e.c.	659	668	317
0161	Sugar cane growing	4 653	4 603	4 555
0162	Cotton growing	419	508	469
0169	Crop and plant growing n.e.c.	1 626	585	474
Total (ANZSIC Code 01)		31 929	31 371	30 425
02	Services to agriculture; hunting and trapping	26	39	36
03	Forestry and logging	6	8	8
04	Commercial fishing	2	3	2
Total (ANZSIC Division A)		31 963	31 421	30 471
All other ANZSIC Divisions		200	242	236
Unclassified		686	523	280
Total all industries		32 849	32 186	30 987

(a) Number of establishments with an EVAO of \$5,000 or more at the time of selection in the agricultural census. See explanatory note 4 on page 75.

ESTABLISHMENTS BY INDUSTRY, EVAO \$22,500 and over, At 31 March

Industry class		1995	1996	1997
ANZSIC code	Industry of establishment	no.	no.	no.
0111	Plant nurseries	602	622	573
0112	Cut flower and flower seed growing	133	142	150
0113	Vegetable growing	1 117	1 177	1 188
0114	Grape growing	56	52	56
0115	Apple and pear growing	106	96	96
0116	Stone fruit growing	61	59	75
0117	Kiwi fruit growing	2	3	3
0119	Fruit growing n.e.c.	1 540	1 593	1 544
0121	Grain growing	1 292	1 559	2 066
0122	Grain-sheep/beef cattle farming	1 252	1 676	1 888
0123	Sheep-beef cattle farming	984	967	864
0124	Sheep farming	664	693	688
0125	Beef cattle farming	7 307	6 939	6 189
0130	Dairy cattle farming	1 852	1 836	1 758
0141	Poultry farming (meat)	103	96	107
0142	Poultry farming (eggs)	101	98	89
0151	Pig farming	423	395	352
0152	Horse farming	214	233	253
0153	Deer farming	38	38	7
0159	Livestock farming n.e.c.	275	353	129
0161	Sugar cane growing	4 600	4 552	4 514
0162	Cotton growing	416	507	469
0169	Crop and plant growing n.e.c.	1 471	460	400
Total (ANZSIC Code 01)		24 609	24 146	23 458
02	Services to agriculture; hunting and trapping	23	28	25
03	Forestry and logging	1	5	5
04	Commercial fishing	2	—	—
Total (ANZSIC Division A)		24 635	24 179	23 488
All other ANZSIC Divisions		126	138	134
Unclassified		1	—	—
Total all industries		24 762	24 317	23 622

3

ESTABLISHMENTS WITH AGRICULTURAL ACTIVITY, Statistical divisions, EVAO \$5,000 & over(a)(b)

Statistical division	1995	1996	1997
	no.	no.	no.
Moreton and Brisbane	5 961	5 733	5 433
Wide Bay-Burnett	5 828	5 687	5 416
Darling Downs	7 346	7 148	6 853
South West	1 769	1 749	1 739
Fitzroy	3 263	3 197	3 064
Central West	712	709	707
Mackay	2 241	2 217	2 162
Northern	2 122	2 132	2 073
Far North	3 102	3 105	3 040
North West	505	509	500
Queensland	32 849	32 186	30 987

(a) See explanatory note 4 on page 75.

(b) Figures are at 31 March.

4

ESTABLISHMENTS WITH AGRICULTURAL ACTIVITY, Statistical divisions, EVAO \$22,500 & over(a)

Statistical division	1995	1996	1997
	no.	no.	no.
Moreton and Brisbane	3 691	3 542	3 392
Wide Bay-Burnett	4 047	3 897	3 702
Darling Downs	5 415	5 341	5 239
South West	1 567	1 577	1 565
Fitzroy	2 385	2 347	2 229
Central West	682	674	669
Mackay	1 934	1 924	1 899
Northern	1 889	1 907	1 863
Far North	2 669	2 628	2 590
North West	483	480	474
Queensland	24 762	24 317	23 622

(a) Figures are at 31 March.

ESTIMATED VALUE OF AGRICULTURAL OPERATIONS (\$).....

Industry class		Less than 5,000(a)	5,000 to 22,499	22,500 to 49,999	50,000 to 99,999
ANZSIC code	Industry of establishment	no.	no.	no.	no.
0111	Plant nurseries	1	111	131	138
0112	Cut flower and flower seed growing	6	36	39	43
0113	Vegetable growing	17	162	232	235
0114	Grape growing	3	39	34	10
0115	Apple and pear growing	—	10	13	11
0116	Stone fruit growing	4	20	29	18
0117	Kiwi fruit growing	2	2	2	1
0119	Fruit growing n.e.c.	93	460	422	343
0121	Grain growing	12	162	320	483
0122	Grain-sheep/beef cattle farming	7	270	375	454
0123	Sheep-beef cattle farming	6	55	82	152
0124	Sheep farming	11	49	83	149
0125	Beef cattle farming	563	4 172	2 152	1 468
0130	Dairy cattle farming	8	59	103	271
0141	Poultry farming (meat)	—	3	2	2
0142	Poultry farming (eggs)	2	7	4	6
0151	Pig farming	1	23	39	51
0152	Horse farming	35	221	142	66
0153	Deer farming	12	20	4	2
0159	Livestock farming n.e.c.	45	143	72	30
0161	Sugar cane growing	4	37	151	641
0162	Cotton growing	—	—	—	5
0169	Crop and plant growing n.e.c.	12	62	81	97
Total (ANZSIC Code 01)		844	6 123	4 512	4 676
02	Services to agriculture; hunting and trapping	—	11	6	8
03	Forestry and logging	2	1	3	1
04	Commercial fishing	—	2	—	—
Total (ANZSIC Division A)		846	6 137	4 521	4 685
All other ANZSIC Divisions		16	86	55	27
Unclassified		280	—	—	—
Total all industries		1 142	6 223	4 576	4 712

(a) See explanatory note 4 on page 75.

ESTIMATED VALUE OF AGRICULTURAL OPERATIONS (\$)

Industry class		100,000 to 199,999	200,000 to 499,999	500,000 or more	Total establishments
ANZSIC code	Industry of establishment	no.	no.	no.	no.
0111	Plant nurseries	141	117	46	685
0112	Cut flower and flower seed growing	30	27	11	192
0113	Vegetable growing	244	246	231	1 367
0114	Grape growing	7	4	1	98
0115	Apple and pear growing	35	25	12	106
0116	Stone fruit growing	11	14	3	99
0117	Kiwi fruit growing	—	—	—	7
0119	Fruit growing n.e.c.	299	295	185	2 097
0121	Grain growing	568	466	229	2 240
0122	Grain-sheep/beef cattle farming	471	451	137	2 165
0123	Sheep-beef cattle farming	266	314	50	925
0124	Sheep farming	251	175	30	748
0125	Beef cattle farming	1 220	975	374	10 924
0130	Dairy cattle farming	735	607	42	1 825
0141	Poultry farming (meat)	15	45	43	110
0142	Poultry farming (eggs)	17	31	31	98
0151	Pig farming	82	113	67	376
0152	Horse farming	31	12	2	509
0153	Deer farming	—	1	—	39
0159	Livestock farming n.e.c.	13	8	6	317
0161	Sugar cane growing	1 610	1 640	472	4 555
0162	Cotton growing	22	113	329	469
0169	Crop and plant growing n.e.c.	136	76	10	474
Total (ANZSIC Code 01)		6 204	5 755	2 311	30 425
02	Services to agriculture; hunting and trapping	5	5	1	36
03	Forestry and logging	1	—	—	8
04	Commercial fishing	—	—	—	2
Total (ANZSIC Division A)		6 210	5 760	2 312	30 471
All other ANZSIC Divisions		22	18	12	236
Unclassified		—	—	—	280
Total all industries		6 232	5 778	2 324	30 987

ESTABLISHMENTS BY INDUSTRY, By area range, At 31 March 1997

		AREA OF ESTABLISHMENT (HECTARES).....				
Industry class		0 to 49	50 to 99	100 to 499	500 to 999	1,000 to 2,499
ANZSIC code	Industry of establishment	no.	no.	no.	no.	no.
0111	Plant nurseries	585	47	46	3	3
0112	Cut flower and flower seed growing	148	17	18	4	3
0113	Vegetable growing	667	304	331	34	25
0114	Grape growing	58	20	19	1	—
0115	Apple and pear growing	62	27	15	2	—
0116	Stone fruit growing	52	25	20	2	—
0117	Kiwi fruit growing	6	—	1	—	—
0119	Fruit growing n.e.c.	1 304	420	312	35	21
0121	Grain growing	72	227	1 082	317	299
0122	Grain-sheep/beef cattle farming	18	105	688	301	436
0123	Sheep-beef cattle farming	4	8	38	44	93
0124	Sheep farming	4	4	34	29	84
0125	Beef cattle farming	593	1 120	3 511	1 202	1 376
0130	Dairy cattle farming	88	320	1 248	127	32
0141	Poultry farming (meat)	82	14	13	1	—
0142	Poultry farming (eggs)	60	12	16	5	3
0151	Pig farming	93	54	173	28	20
0152	Horse farming	199	109	159	20	11
0153	Deer farming	16	8	11	1	2
0159	Livestock farming n.e.c.	256	21	29	4	4
0161	Sugar cane growing	961	1 506	1 863	138	56
0162	Cotton growing	4	10	185	119	91
0169	Crop and plant growing n.e.c.	181	143	132	12	5
Total (ANZSIC Code 01)		5 513	4 521	9 944	2 429	2 564
02	Services to agriculture; hunting and trapping	7	10	10	5	2
03	Forestry and logging	1	—	2	1	2
04	Commercial fishing	—	—	1	1	—
Total (ANZSIC Division A)		5 521	4 531	9 957	2 436	2 568
All other ANZSIC Divisions		85	40	64	18	12
Unclassified		101	47	77	12	15
Total all industries		5 707	4 618	10 098	2 466	2 595

AREA OF ESTABLISHMENT (HECTARES).....

Industry class		2,500 to 4,999	5,000 to 9,999	10,000 to 24,999	25,000 to 49,999	50,000 to 99,999
ANZSIC code	Industry of establishment	no.	no.	no.	no.	no.
0111	Plant nurseries	—	1	—	—	—
0112	Cut flower and flower seed growing	2	—	—	—	—
0113	Vegetable growing	2	2	1	1	—
0114	Grape growing	—	—	—	—	—
0115	Apple and pear growing	—	—	—	—	—
0116	Stone fruit growing	—	—	—	—	—
0117	Kiwi fruit growing	—	—	—	—	—
0119	Fruit growing n.e.c.	3	1	—	1	—
0121	Grain growing	164	65	12	2	—
0122	Grain-sheep/beef cattle farming	329	186	89	11	1
0123	Sheep-beef cattle farming	65	125	314	156	57
0124	Sheep farming	81	121	245	101	33
0125	Beef cattle farming	891	747	796	320	168
0130	Dairy cattle farming	6	1	1	1	—
0141	Poultry farming (meat)	—	—	—	—	—
0142	Poultry farming (eggs)	1	1	—	—	—
0151	Pig farming	4	2	1	1	—
0152	Horse farming	4	5	1	1	—
0153	Deer farming	—	—	1	—	—
0159	Livestock farming n.e.c.	—	2	1	—	—
0161	Sugar cane growing	15	12	4	—	—
0162	Cotton growing	29	22	7	1	1
0169	Crop and plant growing n.e.c.	—	—	1	—	—
Total (ANZSIC Code 01)		1 596	1 293	1 474	596	260
02	Services to agriculture; hunting and trapping	—	—	2	—	—
03	Forestry and logging	2	—	—	—	—
04	Commercial fishing	—	—	—	—	—
Total (ANZSIC Division A)		1 598	1 293	1 476	596	260
All other ANZSIC Divisions		5	6	3	2	1
Unclassified		4	6	13	3	1
Total all industries		1 607	1 305	1 492	601	262

		AREA OF ESTABLISHMENT (HECTARES)			
Industry class		100,000 to , 199,999	200,000 to 499,999	500,000 or more	Total establishments
ANZSIC code	Industry of establishment	no.	no.	no.	no.
0111	Plant nurseries	—	—	—	685
0112	Cut flower and flower seed growing	—	—	—	192
0113	Vegetable growing	—	—	—	1 367
0114	Grape growing	—	—	—	98
0115	Apple and pear growing	—	—	—	106
0116	Stone fruit growing	—	—	—	99
0117	Kiwi fruit growing	—	—	—	7
0119	Fruit growing n.e.c.	—	—	—	2 097
0121	Grain growing	—	—	—	2 240
0122	Grain-sheep/beef cattle farming	1	—	—	2 165
0123	Sheep-beef cattle farming	16	5	—	925
0124	Sheep farming	9	2	1	748
0125	Beef cattle farming	100	72	28	10 924
0130	Dairy cattle farming	1	—	—	1 825
0141	Poultry farming (meat)	—	—	—	110
0142	Poultry farming (eggs)	—	—	—	98
0151	Pig farming	—	—	—	376
0152	Horse farming	—	—	—	509
0153	Deer farming	—	—	—	39
0159	Livestock farming n.e.c.	—	—	—	317
0161	Sugar cane growing	—	—	—	4 555
0162	Cotton growing	—	—	—	469
0169	Crop and plant growing n.e.c.	—	—	—	474
Total (ANZSIC Code 01)		127	79	29	30 425
02	Services to agriculture; hunting and trapping	—	—	—	36
03	Forestry and logging	—	—	—	8
04	Commercial fishing	—	—	—	2
Total (ANZSIC Division A)		127	79	29	30 471
All other ANZSIC Divisions		—	—	—	236
Unclassified		—	1	—	280
Total all industries		127	80	29	30 987

7

AREA AND LAND USE OF ESTABLISHMENTS WITH AGRICULTURAL ACTIVITY, At 31 March 1997

Statistical division	Area of cereal crops(a)	Area of other crops	Area of orchard trees	Area of vegetables
	'000 ha	'000 ha	'000 ha	'000 ha
Moreton and Brisbane	15.4	27.7	5.3	12.7
Wide Bay-Burnett	56.9	95.3	7.9	5.4
Darling Downs	1 051.1	154.1	4.3	5.1
South West	240.1	33.5	—	0.2
Fitzroy	321.2	107.8	1.8	0.8
Central West	1.3	0.3	—	—
Mackay	107.2	153.2	0.2	0.1
Northern	1.4	137.8	3.5	8.6
Far North	8.0	107.8	5.8	1.9
North West	0.2	0.1	—	—
Queensland				
1997	1 802.6	817.6	28.7	34.7
1996	1 586.8	848.6	27.3	32.8
1995	1 182.9	639.4	27.3	31.2

Statistical division	Area of agricultural holdings	Area of non-agricultural land(b)	Total area (agricultural and non-agricultural land)
	'000 ha	'000 ha	'000 ha
Moreton and Brisbane	1 032.4	1 330.2	2 362.6
Wide Bay-Burnett	3 786.2	1 525.2	5 311.4
Darling Downs	7 810.6	1 232.5	9 043.1
South West	30 412.3	1 954.0	32 366.3
Fitzroy	10 627.0	2 505.2	13 132.2
Central West	32 618.3	4 571.6	37 189.9
Mackay	6 230.4	710.7	6 941.1
Northern	9 482.2	1 417.7	10 899.9
Far North	18 940.8	8 037.0	26 977.8
North West	30 126.6	1 177.1	31 303.7
Queensland			
1997	151 066.7	24 461.2	175 527.9
1996	149 748.0	25 779.9	175 527.9
1995	149 688.3	25 839.7	175 527.9

(a) Excludes pastures and grasses harvested for hay and seed.

(b) Comprises conserved land, forestry, urban and unused land such as vacant Crown land, commercially unused land on Aboriginal and other Crown reserves and waste land, ephemeral lakes, mangrove swamps, etc.

SEEDLINGS PLANTED.....

Statistical division	For timber/pulp		Other purposes	
	no.	ha	no.	ha
Moreton and Brisbane	32 607	28.0	54 816	516.7
Wide Bay-Burnett	38 331	56.0	144 455	343.9
Darling Downs	30 923	43.8	34 684	338.4
South West	1 015	3.6	124 551	140.5
Fitzroy	4 740	5.4	58 608	449.7
Central West	100	—	1 015	11.9
Mackay	33 075	41.0	13 268	63.6
Northern	7 480	9.9	3 975	18.9
Far North	51 886	64.0	98 388	195.0
North West	100	1.0	587	4.9
Queensland				
1997	200 257	252.7	534 349	2 083.5
1996	219 322	223.8	290 522	787.9

SEED SOWN.....

TIMBER HARVESTED.....

Statistical division	kg.	ha	Hardwood		Softwood	
			t	t	t	t
Moreton and Brisbane	785	—	6 630	—	2 658	—
Wide Bay-Burnett	76	21	7 163	—	742	—
Darling Downs	325	5	2 136	—	770	—
South West	500	217	—	—	230	—
Fitzroy	1 616	1 156	2 411	—	2	—
Central West	500	500	—	—	1	—
Mackay	1 785	749	56	—	—	—
Northern	—	—	350	—	—	—
Far North	62	40	247	—	420	—
North West	400	—	—	—	—	—
Queensland						
1997	6 049	2 688	18 992	—	4 823	—
1996	12 923	2 702	1 782	—	5 240	—

(a) Data in this table are an aggregation from responding establishments. No imputation has been made for non-responding establishments.

KILOMETRES ERECTED TO ISOLATE.....

Statistical division	Saline areas	Other degraded areas	Creeks and rivers	Remnant native vegetation	Planted trees and shrubs
	km	km	km	km	km
Moreton and Brisbane	24.6	71.1	150.5	206.6	123.9
Wide Bay-Burnett	39.9	859.7	160.5	362.4	93.1
Darling Downs	30.5	181.2	207.5	470.5	122.9
South West	8.0	72.2	82.0	284.8	17.0
Fitzroy	28.0	123.0	297.6	323.0	41.3
Central West	—	8.0	7.4	140.0	20.0
Mackay	37.0	99.0	69.4	59.5	37.0
Northern	34.1	172.1	39.5	67.6	12.7
Far North	33.1	63.5	133.1	155.0	161.4
North West	—	53.0	71.7	368.0	7.3
Queensland					
1997	235.2	1 702.8	1 219.2	2 437.4	636.6
1996	410.0	1 064.1	2 067.4	4 531.4	1 840.3

(a) Data in this table are an aggregation from responding establishments. No imputation has been made for non-responding establishments.

<i>Statistical division</i>	<i>Cereals</i>	<i>Fruit and nuts</i>	<i>Grapevines</i>	<i>Pastures</i>	<i>Sugar cane</i>	<i>Vegetables</i>	<i>Other crops</i>	<i>Total area</i>
	'000 ha	'000 ha	'000 ha	'000 ha	'000 ha	'000 ha	'000 ha	'000 ha
Moreton and Brisbane	3.3	2.7	0.1	15.9	0.2	9.2	5.9	37.2
Wide Bay-Burnett	3.5	5.7	0.2	12.0	47.6	3.4	2.9	75.3
Darling Downs	13.3	2.4	0.2	6.9	—	2.7	48.3	73.9
South West	2.4	—	0.2	0.4	—	0.1	20.1	23.2
Fitzroy	7.1	1.1	0.2	4.8	—	0.5	21.2	34.7
Central West	0.1	—	—	0.1	—	—	0.1	0.3
Mackay	0.2	0.1	—	1.6	54.8	—	1.5	58.3
Northern	—	2.3	—	2.5	65.3	6.3	1.8	78.3
Far North	0.8	8.2	—	3.5	4.3	1.2	4.3	22.4
North West	—	—	—	0.1	—	—	0.1	0.2
Queensland								
1997	30.8	22.5	0.8	47.7	172.3	23.4	106.3	403.8
1996	n.c	n.c	n.c	n.c	n.c	n.c	n.c	237.9

(a) Data in this table are an aggregation from responding establishments. No imputation has been made for non-responding establishments.

BARLEY

GRAIN SORGHUM

Statistical division	Area	Production	Yield	Area	Production	Yield
	'000 ha	'000 t	t/ha	'000 ha	'000 t	t/ha
Moreton and Brisbane	4.3	12.5	2.9	2.5	8.9	3.6
Wide Bay-Burnett	5.9	12.7	2.2	15.9	38.8	2.4
Darling Downs	155.5	379.1	2.4	215.4	585.9	2.7
South West	10.1	17.9	1.8	20.1	31.0	1.5
Fitzroy	4.1	5.7	1.4	107.2	212.2	2.0
Central West	0.1	0.1	1.1	—	—	—
Mackay	0.3	0.6	2.1	62.1	125.1	2.0
Northern	—	—	—	—	—	—
Far North	—	—	—	0.6	1.2	2.1
North West	—	—	—	0.1	0.1	2.3
Queensland						
1997	180.2	428.6	2.4	423.9	1 003.3	2.4
1996	168.8	195.0	1.2	596.8	1 115.6	1.9
1995	93.5	72.8	0.8	519.2	916.5	1.8

MAIZE

OATS

Statistical division	Area	Production	Yield	Area	Production	Yield
	'000 ha	'000 t	t/ha	'000 ha	'000 t	t/ha
Moreton and Brisbane	1.8	10.3	5.6	0.7	0.4	0.6
Wide Bay-Burnett	12.1	30.6	2.5	2.6	1.7	0.6
Darling Downs	11.3	46.3	4.1	25.1	17.6	0.7
South West	0.0	0.2	4.9	5.6	2.8	0.5
Fitzroy	1.9	9.2	4.9	5.1	2.9	0.6
Central West	—	—	—	—	—	—
Mackay	0.2	0.3	1.3	0.3	0.2	0.7
Northern	0.1	0.3	5.6	—	—	—
Far North	6.8	32.8	4.8	—	—	—
North West	—	—	—	—	—	—
Queensland						
1997	34.2	129.9	3.8	39.4	25.7	0.7
1996	31.0	113.6	3.7	14.1	6.9	0.5
1995	27.2	79.9	2.9	13.7	3.2	0.2

PANICUM AND MILLET.....

TRITICALE.....

Statistical division	Area	Production	Yield	Area	Production	Yield
	'000 ha	'000 t	t/ha	'000 ha	'000 t	t/ha
Moreton and Brisbane	0.2	0.2	1.1	—	0.1	3.0
Wide Bay-Burnett	0.8	0.9	1.1	0.2	0.4	2.5
Darling Downs	13.4	13.6	1.0	1.9	5.5	2.9
South West	0.2	0.1	0.5	—	—	—
Fitzroy	1.6	1.2	0.8	—	—	—
Central West	—	—	—	—	—	—
Mackay	—	—	—	—	—	—
Northern	—	—	—	—	—	—
Far North	—	—	—	0.1	0.1	2.5
North West	—	—	—	—	—	—
Queensland						
1997	16.1	16.0	1.0	2.2	6.2	2.8
1996	18.6	23.1	1.2	5.8	8.4	1.4
1995	34.8	33.2	1.0	1.1	1.3	1.5

WHEAT

Statistical division	Area	Production	Yield
	'000 ha	'000 t	t/ha
Moreton and Brisbane	2.1	6.4	3.1
Wide Bay-Burnett	11.9	28.2	2.4
Darling Downs	561.5	1 310.1	2.3
South West	189.4	336.8	1.8
Fitzroy	175.5	252.7	1.4
Central West	0.6	1.1	1.7
Mackay	37.8	42.7	1.1
Northern	0.9	1.4	1.6
Far North	0.1	0.2	2.5
North West	—	0.1	2.0
Queensland			
1997	979.8	1 979.5	2.0
1996	626.5	519.5	0.8
1995	400.7	225.1	0.6

Statistical division	CHICK PEAS.....			MUNG BEANS		
	Area '000 ha	Production '000 t	Yield t/ha	Area '000 ha	Production '000 t	Yield t/ha
Moreton and Brisbane	0.1	0.1	1.7	0.2	0.2	1.1
Wide Bay-Burnett	0.1	0.1	1.6	0.6	0.4	0.6
Darling Downs	13.6	21.2	1.6	18.5	12.2	0.7
South West	1.3	0.9	0.6	4.7	2.8	0.6
Fitzroy	4.9	3.8	0.8	9.0	5.4	0.6
Central West	—	—	—	—	—	—
Mackay	0.9	0.3	0.3	1.7	0.7	0.4
Northern	—	—	—	—	—	—
Far North	—	—	—	0.4	0.3	0.8
North West	—	—	—	—	—	—
Queensland						
1997	20.8	26.4	1.3	35.1	21.9	0.6
1996	26.3	13.1	0.5	23.5	9.8	0.4
1995	18.9	7.8	0.4	21.7	9.7	0.4

Statistical division	LUCERNE			OTHER PASTURES		
	Area '000 ha	Production '000 t	Yield t/ha	Area '000 ha	Production '000 t	Yield t/ha
Moreton and Brisbane	8.1	76.0	9.3	3.4	17.0	4.9
Wide Bay-Burnett	4.5	36.7	8.2	2.2	8.3	3.8
Darling Downs	6.4	40.9	6.4	3.4	11.1	3.3
South West	0.4	2.0	5.2	0.2	0.8	3.8
Fitzroy	2.3	21.4	9.2	3.1	10.8	3.5
Central West	—	—	—	1.2	0.7	0.6
Mackay	0.1	0.6	9.9	0.9	4.8	5.4
Northern	0.1	1.0	8.1	1.2	4.5	3.7
Far North	0.1	0.9	6.6	1.7	7.7	4.6
North West	—	—	—	0.7	0.6	0.9
Queensland						
1997	22.0	179.5	8.2	18.0	66.3	3.7
1996	24.5	183.1	7.5	32.4	125.3	3.9
1995	24.8	188.1	7.6	50.8	160.6	3.2

TOTAL PASTURES

Statistical division	Area	Production	Yield
	'000 ha	'000 t	t/ha
Moreton and Brisbane	11.6	93.0	8.0
Wide Bay-Burnett	6.6	45.0	6.8
Darling Downs	9.8	52.0	5.3
South West	0.6	2.8	4.7
Fitzroy	5.4	32.1	6.0
Central West	1.2	0.8	0.6
Mackay	0.9	5.4	5.7
Northern	1.3	5.6	4.1
Far North	1.8	8.6	4.8
North West	0.7	0.6	0.9
Queensland			
1997	40.0	245.7	6.1
1996	57.0	308.4	5.4
1995	75.6	348.7	4.6

CEREAL CROPS

OTHER CROPS

Statistical division	Area	Production	Yield	Area	Production	Yield
	'000 ha	'000 t	t/ha	'000 ha	'000 t	t/ha
Moreton and Brisbane	1.0	4.9	4.7	0.7	2.8	4.0
Wide Bay-Burnett	1.2	5.3	4.3	1.2	3.2	2.6
Darling Downs	7.8	22.6	2.9	2.2	7.5	3.4
South West	1.8	5.6	3.0	0.3	0.8	3.0
Fitzroy	3.0	8.0	2.7	0.9	2.7	2.9
Central West	0.1	0.8	11.0	0.3	0.1	0.5
Mackay	0.5	2.6	4.7	0.5	2.0	4.3
Northern	0.2	1.1	6.2	0.1	0.5	3.9
Far North	0.1	0.3	2.9	0.3	0.9	3.5
North West	0.1	0.8	7.4	0.1	—	—
Queensland						
1997	15.9	52.1	3.3	6.6	20.6	3.1
1996	20.1	59.0	2.9	n.c.	n.c.	n.c.
1995	n.c.	n.c.	n.c.	n.c.	n.c.	n.c.

TOTAL CROPS

Statistical division	Area	Production	Yield
	'000 ha	'000 t	t/ha
Moreton and Brisbane	1.7	7.7	4.5
Wide Bay-Burnett	2.4	8.4	3.5
Darling Downs	10.0	30.1	3.0
South West	2.1	6.4	3.0
Fitzroy	3.9	10.7	2.7
Central West	0.4	0.9	2.6
Mackay	1.0	4.6	4.5
Northern	0.3	1.7	5.2
Far North	0.4	1.2	3.3
North West	0.2	0.8	4.0
Queensland			
1997	22.4	72.7	3.2
1996	n.c.	n.c.	n.c.
1995	n.c.	n.c.	n.c.

SAFFLOWER

SOYBEANS

Statistical division	Area	Production	Yield	Area	Production	Yield
	ha	t	t/ha	ha	t	t/ha
Moreton and Brisbane	—	—	—	4 091.2	7 288.7	1.8
Wide Bay-Burnett	—	—	—	4 043.3	4 249.6	1.1
Darling Downs	279.1	195.5	0.7	5 204.9	8 408.1	1.6
South West	—	—	—	86.0	176.0	2.0
Fitzroy	410.0	45.0	0.1	2 061.0	4 198.8	2.0
Central West	—	—	—	—	—	—
Mackay	—	—	—	—	—	—
Northern	—	—	—	—	—	—
Far North	—	—	—	12.9	25.4	2.0
North West	—	—	—	—	—	—
Queensland						
1997	689.1	240.5	0.3	15 499.3	24 346.6	1.6
1996	24.8	30.7	1.2	10 072.5	18 598.2	1.8
1995	254.5	104.0	0.4	6 592.2	7 765.3	1.2

SUNFLOWER

Statistical division	Area	Production	Yield
	ha	t	t/ha
Moreton and Brisbane	217.4	234.0	1.1
Wide Bay-Burnett	388.6	385.5	1.0
Darling Downs	15 160.4	20 349.4	1.3
South West	1 075.0	778.0	0.7
Fitzroy	62 481.5	59 922.3	1.0
Central West	—	—	—
Mackay	16 173.0	13 326.0	0.8
Northern	254.4	179.0	0.7
Far North	—	—	—
North West	—	—	—
Queensland			
1997	95 750.3	95 174.2	1.0
1996	46 049.2	27 427.1	0.6
1995	84 640.2	55 956.2	0.7

SEED COTTON

PEANUTS

Statistical division	Area	Production	Yield	Area	Production	Yield
	'000 ha	'000 t	t/ha	'000 ha	'000 t	t/ha
Moreton and Brisbane	0.1	1.2	9.4	0.2	1.0	4.0
Wide Bay-Burnett	—	0.1	3.3	15.2	23.4	1.5
Darling Downs	86.0	273.9	3.2	1.5	2.6	1.7
South West	22.9	103.8	4.5	0.4	0.8	2.4
Fitzroy	19.9	76.7	3.8	1.8	5.2	2.9
Central West	—	—	—	—	—	—
Mackay	—	—	—	0.2	0.4	2.5
Northern	0.2	1.8	7.4	0.3	1.0	3.7
Far North	—	—	—	3.6	11.5	3.2
North West	—	—	—	—	—	—
Queensland						
1997	129.3	457.7	3.5	23.2	45.9	2.0
1996	119.7	302.8	2.5	19.8	37.6	1.9
1995	88.6	246.3	2.8	12.9	22.5	1.7

SUGAR CANE (CUT FOR CRUSHING).....

Statistical division	Area	Production	Yield
	'000 ha	'000 t	t/ha
Moreton and Brisbane	11.5	945.3	82.2
Wide Bay-Burnett	54.9	4 636.2	84.5
Darling Downs	—	—	—
South West	—	—	—
Fitzroy	—	—	—
Central West	—	—	—
Mackay	112.1	10 872.7	97.0
Northern	114.6	12 589.8	109.9
Far North	78.2	7 187.7	91.9
North West	—	—	—
Queensland			
1997	371.2	36 231.8	97.6
1996	358.5	33 897.6	94.6
1995	346.7	31 145.5	89.8

	1994-95	1995-96r	1996-97p
	\$m	\$m	\$m
Cereals for grain			
Barley	16.3	38.8	66.7
Grain sorghum	173.2	225.6	179.0
Maize	19.7	24.0	25.4
Oats	0.7	1.2	4.6
Panicum and millet	10.7	7.6	5.6
Triticale	0.3	1.5	1.0
Wheat	61.1	142.2	421.6
Other	2.2	2.1	0.1
Total	284.2	443.0	704.0
Crops for hay	9.2	21.2	8.5
Pastures and grasses for hay	83.1	50.0	41.8
Pastures and grasses harvested for seed	3.8	4.2	2.6
Other crops			
Cotton	256.0	337.4	409.1
Peanuts	16.8	27.6	34.1
Sugar cane (cut for crushing)	1 157.4	1 116.9	1 112.0
Tobacco (dried leaf)	23.1	26.6	28.8

	AREA SOWN (HECTARES)					
	0 to 49	50 to 99	100 to 149	150 to 199	200 to 299	300 to 399
Barley for grain						
establishments (number)	1 659	594	255	112	88	32
percentage of total establishments	59.8	21.4	9.2	4.0	3.2	1.2
area (hectares)	36 415	40 833	29 785	18 786	20 206	10 843
percentage of total area of barley planted	20.2	22.7	16.5	10.4	11.2	6.0
production (tonnes)	85 023	101 758	73 872	48 901	45 159	27 653
percentage of total barley production	19.8	23.7	17.2	11.4	10.5	6.5
Grain sorghum for grain						
establishments (number)	1 367	668	412	219	245	99
percentage of total establishments	42.2	20.6	12.7	6.8	7.6	3.1
area (hectares)	31 644	47 295	48 735	36 724	56 808	32 763
percentage of total area of grain sorghum planted	7.5	11.2	11.5	8.7	13.4	7.7
production (tonnes)	84 337	125 017	121 807	92 188	130 819	75 648
percentage of total grain sorghum production	8.4	12.5	12.1	9.2	13.0	7.5
Wheat for grain						
establishments (number)	1 033	617	460	263	373	195
percentage of total establishments	28.4	16.9	12.6	7.2	10.2	5.4
area (hectares)	25 820	43 491	54 857	44 066	87 609	64 773
percentage of total area of wheat planted	2.6	4.4	5.6	4.5	8.9	6.6
production (tonnes)	60 382	98 944	121 796	90 496	165 243	122 032
percentage of total wheat production	3.1	5.0	6.2	4.6	8.3	6.2

	AREA SOWN (HECTARES)					
	400 to 499	500 to 999	1,000 to 1,499	1,500 to 1,999	2,000 and over	Total
Barley for grain						
establishments (number)	14	11	6	2	—	2 773
percentage of total establishments	0.5	0.4	0.2	0.1	—	100.0
area (hectares)	6 008	7 083	6 937	3 318	—	180 214
percentage of total area of barley planted	3.3	3.9	3.8	1.8	—	100.0
production (tonnes)	14 603	11 525	11 633	8 471	—	428 597
percentage of total barley production	3.4	2.7	2.7	2.0	—	100.0
Grain sorghum for grain						
establishments (number)	77	113	21	4	11	3 236
percentage of total establishments	2.4	3.5	0.6	0.1	0.3	100.0
area (hectares)	33 019	73 952	23 710	6 742	32 499	423 891
percentage of total area of grain sorghum planted	7.8	17.4	5.6	1.6	7.7	100.0
production (tonnes)	73 170	147 939	52 686	13 999	85 724	1 003 334
percentage of total grain sorghum production	7.3	14.7	5.3	1.4	8.5	100.0
Wheat for grain						
establishments (number)	177	311	114	50	50	3 643
percentage of total establishments	4.9	8.5	3.1	1.4	1.4	100.0
area (hectares)	76 572	215 972	133 609	85 028	147 956	979 755
percentage of total area of wheat planted	7.8	22.0	13.6	8.7	15.1	100.0
production (tonnes)	135 955	410 014	268 187	193 063	313 438	1 979 550
percentage of total wheat production	6.9	20.7	13.5	9.8	15.8	100.0

(a) Year ended 31 March 1997.

	<i>Barley</i>	<i>Grain sorghum</i>	<i>Maize</i>	<i>Millet</i>	<i>Oats</i>	<i>Triticale</i>	<i>Wheat</i>
<i>Statistical division</i>	no.	no.	no.	no.	no.	no.	no.
Moreton and Brisbane	296	186	133	14	95	7	88
Wide Bay-Burnett	244	381	244	33	125	9	245
Darling Downs	2 050	1 969	218	345	743	40	2 153
South West	97	121	2	3	87	1	471
Fitzroy	78	467	17	31	66	—	585
Central West	1	—	—	—	—	—	6
Mackay	5	95	4	—	8	—	85
Northern	—	2	3	—	—	—	3
Far North	2	14	136	—	1	3	5
North West	—	1	—	—	—	—	2
Queensland							
1997	2 773	3 236	757	426	1 125	60	3 643
1996	2 280	3 677	708	466	487	73	2 677
1995	1 318	3 315	599	704	376	38	1 706

APPLES.....

NASHI

Statistical division	Trees under 6 years	Trees 6 years and over	Production	Yield	Trees under 6 years	Trees 6 years and over	Production	Yield
	no.	no.	t	kg/tree	no.	no.	t	kg/tree
Moreton and Brisbane	—	—	—	—	—	—	—	—
Wide Bay-Burnett	—	—	—	—	—	—	—	—
Darling Downs	379 478	544 536	28 045.1	51.5	2 952	2 390	52.6	22.0
South West	—	—	—	—	—	—	—	—
Fitzroy	—	—	—	—	—	—	—	—
Central West	—	—	—	—	—	—	—	—
Mackay	—	—	—	—	—	—	—	—
Northern	—	—	—	—	—	—	—	—
Far North	—	—	—	—	—	—	—	—
North West	—	—	—	—	—	—	—	—
Queensland								
1997	379 478	544 536	28 045.1	51.5	2 952	2 390	53.0	22.0
1996	379 452	501 165	28 361.7	56.6	3 268	2 180	58.0	26.5
1995	343 595	491 749	27 873.1	56.7	2 245	1 930	38.0	19.7

PEARS (EXCLUDING NASHI)

Statistical division	Trees under 6 years	Trees 6 years and over	Production	Yield
	no.	no.	t	kg/tree
Moreton and Brisbane	—	—	—	—
Wide Bay-Burnett	—	—	—	—
Darling Downs	2 493	27 345	1 496.0	54.7
South West	—	—	—	—
Fitzroy	—	—	—	—
Central West	—	—	—	—
Mackay	—	—	—	—
Northern	—	—	—	—
Far North	—	—	—	—
North West	—	—	—	—
Queensland				
1997	2 493	27 345	1 496.0	54.7
1996	4 235	27 897	1 676.5	60.1
1995	5 820	23 895	1 372.3	57.4

(a) Yield is calculated for trees 6 years and over only. However, the production figure used to calculate yield includes any contribution by trees under 6 years. In most cases this contribution is relatively insignificant, but in some instances it can distort yield figures.

GRAPEFRUIT.....

LEMONS AND LIMES.....

Statistical division	Trees under 6 years	Trees 6 years and over	Production	Yield	Trees under 6 years	Trees 6 years and over	Production	Yield
	no.	no.	t	kg/tree	no.	no.	t	kg/tree
Moreton and Brisbane	493	113	14.4	127.0	12 934	35 612	2 566.3	72.1
Wide Bay-Burnett	3 856	2 726	624.2	229.0	25 192	27 119	3 218.6	118.7
Darling Downs	16	12	1.2	98.3	126	2	0.1	28.0
South West	—	—	—	—	50	10	0.5	50.0
Fitzroy	85	190	5.6	29.7	22 028	1 489	241.3	162.1
Central West	—	3	0.1	46.7	—	10	0.4	42.0
Mackay	118	—	0.4	—	1 124	503	12.2	24.2
Northern	20	30	2.9	96.7	527	1 125	30.5	27.1
Far North	398	200	8.4	41.9	12 616	5 310	358.2	67.5
North West	—	—	—	—	—	—	—	—
Queensland								
1997	4 986	3 274	657.3	200.8	74 597	71 180	6 428.0	90.3
1996	n.c.	n.c.	n.c.	n.c.	66 601	72 935	5 830.0	79.9
1995	n.c.	n.c.	n.c.	n.c.	70 389	67 385	6 593.4	97.8

MANDARINS.....

ORANGES.....

Statistical division	Trees under 6 years	Trees 6 years and over	Production	Yield	Trees under 6 years	Trees 6 years and over	Production	Yield
	no.	no.	t	kg/tree	no.	no.	t	kg/tree
Moreton and Brisbane	10 341	16 105	798.5	49.6	9 584	53 645	4 941.8	92.1
Wide Bay-Burnett	294 745	387 585	34 181.3	88.2	33 683	135 050	10 628.0	78.7
Darling Downs	261	21	2.8	134.5	165	1 422	35.1	24.7
South West	—	30	—	—	—	403	9.4	23.3
Fitzroy	119 748	201 750	8 486.2	42.1	2 059	7 213	97.1	13.5
Central West	—	51	2.1	40.4	—	46	1.9	41.7
Mackay	1 415	220	10.9	49.4	313	107	1.7	16.2
Northern	556	7 292	195.9	26.9	1 250	3 173	164.3	51.8
Far North	40 145	16 544	888.2	53.7	460	7 053	246.1	34.9
North West	—	—	—	—	—	—	—	—
Queensland								
1997	467 211	629 598	44 565.9	70.8	47 514	208 112	16 125.5	77.5
1996	438 396	418 583	40 254.7	96.2	96 398	192 720	16 169.5	83.9
1995	457 321	358 203	37 838.2	105.6	72 842	194 847	18 076.5	92.8

(a) Yield is calculated for trees 6 years and over only. However, the production figure used to calculate yield includes any contribution by trees under 6 years. In most cases this contribution is relatively insignificant, but in some instances it can distort yield figures.

Statistical division	APRICOTS				CHERRIES.....			
	Trees under 6 years no.	Trees 6 years and over no.	Production t	Yield kg/tree	Trees under 6 years no.	Trees 6 years and over no.	Production t	Yield kg/tree
Moreton and Brisbane	175	585	0.9	1.5	—	—	—	—
Wide Bay-Burnett	53	—	—	—	—	—	—	—
Darling Downs	12 950	22 392	275.8	12.3	4 030	193	2.0	10.3
South West	—	—	—	—	—	—	—	—
Fitzroy	13	—	—	—	10	—	—	—
Central West	—	—	—	—	—	—	—	—
Mackay	—	—	—	—	—	—	—	—
Northern	—	—	—	—	—	—	—	—
Far North	—	—	—	—	—	—	—	—
North West	—	—	—	—	—	—	—	—
Queensland								
1997	13 191	22 977	276.8	12.0	4 040	193	2.0	10.4
1996	17 484	21 372	148.6	7.0	4 906	114	0.2	1.4
1995	18 318	21 490	212.6	9.9	429	108	0.5	5.0

Statistical division	NECTARINES				PEACHES			
	Trees under 6 years no.	Trees 6 years and over no.	Production t	Yield kg/tree	Trees under 6 years no.	Trees 6 years and over no.	Production t	Yield kg/tree
Moreton and Brisbane	18 931	12 066	335.9	27.8	20 673	9 379	321.6	34.3
Wide Bay-Burnett	71 967	13 382	252.0	18.8	82 628	25 647	619.0	24.1
Darling Downs	110 857	123 126	1 958.6	15.9	161 838	125 569	2 328.1	18.5
South West	—	—	—	—	—	—	—	—
Fitzroy	333	1 180	0.9	0.8	523	1 500	3.3	2.2
Central West	—	—	—	—	—	—	—	—
Mackay	—	—	—	—	—	—	—	—
Northern	—	—	—	—	—	—	—	—
Far North	634	545	8.4	15.4	3 024	5 475	24.9	4.5
North West	—	—	—	—	—	—	—	—
Queensland								
1997	202 722	150 299	2 555.7	17.0	268 686	167 570	3 296.9	19.7
1996	142 546	140 667	1 374.4	9.8	205 764	143 504	1 752.8	12.2
1995	144 483	121 720	1 455.8	12.0	171 339	130 245	1 749.0	13.4

(a) Yield is calculated for trees 6 years and over only. However, the production figure used to calculate yield includes any contribution by trees under 6 years. In most cases this contribution is relatively insignificant, but in some instances it can distort yield figures.

PLUMS

PRUNES

Statistical division	Trees under 6 years	Trees 6 years and over	Production	Yield	Trees under 6 years	Trees 6 years and over	Production	Yield
	no.	no.	t	kg/tree	no.	no.	t	kg/tree
Moreton and Brisbane	2 831	290	31.4	108.2	—	—	—	—
Wide Bay-Burnett	142 985	1 575	34.7	22.1	—	—	—	—
Darling Downs	80 936	125 816	1 891.5	15.0	1 090	1 605	13.7	8.5
South West	—	—	—	—	—	—	—	—
Fitzroy	33	—	0.1	—	—	—	—	—
Central West	—	—	—	—	—	—	—	—
Mackay	—	—	—	—	—	—	—	—
Northern	—	—	—	—	—	—	—	—
Far North	111	—	0.6	—	—	—	—	—
North West	—	—	—	—	—	—	—	—
Queensland								
1997	226 896	127 681	1 958.4	15.3	1 090	1 605	13.7	8.5
1996	n.c.	n.c.	n.c.	n.c.	n.c.	n.c.	n.c.	n.c.
1995	n.c.	n.c.	n.c.	n.c.	n.c.	n.c.	n.c.	n.c.

OLIVES

Statistical division	Trees under 6 years	Trees 6 years and over	Production	Yield
	no.	no.	t	kg/tree
Moreton and Brisbane	4 390	665	4.2	6.4
Wide Bay-Burnett	8 045	870	14.0	16.0
Darling Downs	12 238	550	22.1	40.2
South West	200	—	—	—
Fitzroy	—	—	—	—
Central West	—	—	—	—
Mackay	630	—	—	—
Northern	—	—	—	—
Far North	20	80	—	—
North West	—	—	—	—
Queensland				
1997	25 523	2 165	40.3	18.6
1996	n.c.	n.c.	n.c.	n.c.
1995	n.c.	n.c.	n.c.	n.c.

(a) Yield is calculated for trees 6 years and over only. However, the production figure used to calculate yield includes any contribution by trees under 6 years. In most cases this contribution is relatively insignificant, but in some instances it can distort yield figures.

AVOCADOS

Statistical division	Trees under	Trees 6 years	Production	Yield
	6 years	and over		
	no.	no.	t	kg/tree
Moreton and Brisbane	47 798	110 142	3 670.3	33.3
Wide Bay-Burnett	67 826	59 682	2 647.2	44.4
Darling Downs	14 354	23 774	1 438.1	60.5
South West	—	—	—	—
Fitzroy	651	5 069	97.1	19.2
Central West	—	—	—	—
Mackay	83	579	6.3	10.9
Northern	1 162	1 886	36.7	19.4
Far North	47 230	45 510	3 848.1	84.6
North West	—	—	—	—
Queensland				
1997	179 104	246 642	11 743.8	47.6
1996	154 190	234 966	9 006.2	38.3
1995	134 524	227 836	10 157.0	44.6

MACADAMIA NUTS

Statistical division	Trees under	Trees 6 years	Production	Yield
	6 years	and over		
	no.	no.	t	kg/tree
Moreton and Brisbane	237 792	277 824	2 667.7	9.6
Wide Bay-Burnett	315 095	356 290	2 791.4	7.8
Darling Downs	4 502	3 400	14.6	4.3
South West	—	—	—	—
Fitzroy	34 391	13 486	173.7	12.9
Central West	—	—	—	—
Mackay	3	10	—	4.3
Northern	2	2	—	5.0
Far North	16 010	117 309	727.0	6.2
North West	—	—	—	—
Queensland				
1997	607 795	768 321	6 374.5	8.3
1996	525 371	669 799	5 579.8	8.3
1995	654 512	544 771	4 796.3	8.8

MANGOES

Statistical division	Trees under	Trees 6 years	Production	Yield
	6 years	and over		
	no.	no.	t	kg/tree
Moreton and Brisbane	40 555	29 891	517.6	17.3
Wide Bay-Burnett	67 924	67 435	2 086.1	30.9
Darling Downs	23	6	0.2	39.2
South West	—	—	—	—
Fitzroy	50 305	48 414	1 863.4	38.5
Central West	—	4	0.1	30.0
Mackay	3 088	3 250	44.4	13.7
Northern	135 942	234 315	14 016.0	59.8
Far North	281 040	175 528	9 832.1	56.0
North West	—	300	6.0	20.0
Queensland				
1997	578 877	559 143	28 366.0	50.7
1996	527 159	504 432	23 274.3	46.1
1995	465 531	425 428	24 415.8	57.5

PECANS.....

Statistical division	Trees under	Trees 6 years	Production	Yield
	6 years	and over		
	no.	no.	t	kg/tree
Moreton and Brisbane	1 921	4 756	57.0	12.0
Wide Bay-Burnett	2 494	2 813	8.0	3.0
Darling Downs	173	5 551	8.0	1.0
South West	—	—	—	—
Fitzroy	49	—	—	—
Central West	—	—	—	—
Mackay	—	—	—	—
Northern	—	—	—	—
Far North	30	1 200	5.0	4.0
North West	—	—	—	—
Queensland				
1997	4 667	14 320	77.0	5.4
1996	n.c.	n.c.	n.c.	n.c.
1995	n.c.	n.c.	n.c.	n.c.

(a) Yield is calculated for trees 6 years and over only. However, the production figure used to calculate yield includes any contribution by trees under 6 years. In most cases this contribution is relatively insignificant, but in some instances it can distort yield figures.

BANANAS

Statistical division	Area not yet bearing	Area of bearing age	Production	Yield
	ha	ha	t	t/ha
Moreton and Brisbane	90.3	394.4	4 395.4	11.1
Wide Bay-Burnett	41.3	118.4	1 411.5	11.9
Darling Downs	—	—	—	—
South West	—	—	—	—
Fitzroy	1.8	3.3	39.0	11.8
Central West	—	—	—	—
Mackay	7.2	17.0	294.8	17.3
Northern	15.2	45.6	1 623.1	35.6
Far North	1 208.2	5 378.0	135 983.9	25.3
North West	—	—	—	—
Queensland				
1997	1 364.0	5 956.7	143 747.7	24.1
1996	1 276.8	5 298.6	165 639.6	31.3
1995	1 066.2	4 929.8	150 345.4	30.5

KIWI FRUIT

Statistical division	Area not yet bearing	Area of bearing age	Production	Yield
	ha	ha	t	t/ha
Moreton and Brisbane	3.1	22.0	202.9	9.2
Wide Bay-Burnett	1.0	1.5	—	—
Darling Downs	—	10.0	46.8	4.7
South West	—	—	—	—
Fitzroy	—	—	—	—
Central West	—	—	—	—
Mackay	—	—	—	—
Northern	—	—	—	—
Far North	—	1.0	5.0	5.0
North West	—	—	—	—
Queensland				
1997	4.1	34.5	254.7	7.4
1996	6.5	33.1	243.0	7.3
1995	8.0	34.7	277.9	8.0

PAPAWS

Statistical division	Area not yet bearing	Area of bearing age	Production	Yield
	ha	ha	t	t/ha
Moreton and Brisbane	28.5	62.4	765.1	12.3
Wide Bay-Burnett	34.1	81.8	944.7	11.5
Darling Downs	—	—	—	—
South West	—	—	—	—
Fitzroy	11.0	22.0	342.7	15.6
Central West	—	—	—	—
Mackay	1.5	1.0	12.7	12.7
Northern	1.0	6.3	44.5	7.1
Far North	92.3	126.5	3 682.9	29.1
North West	—	—	—	—
Queensland				
1997	168.4	300.0	5 792.6	19.3
1996	181.1	295.0	5 512.9	18.7
1995	193.9	297.7	6 050.3	20.3

PINEAPPLES

Statistical division	Area not yet bearing	Area of bearing age	Production	Yield
	ha	ha	t	t/ha
Moreton and Brisbane	1 131.3	1 375.9	73 178.2	53.2
Wide Bay-Burnett	569.3	772.6	30 148.6	39.0
Darling Downs	—	—	—	—
South West	—	—	—	—
Fitzroy	179.0	376.1	13 929.0	37.0
Central West	—	—	—	—
Mackay	12.6	21.1	1 112.4	52.7
Northern	51.0	94.8	3 741.0	39.5
Far North	22.4	26.6	870.6	32.7
North West	—	—	—	—
Queensland				
1997	1 965.6	2 667.1	122 979.8	46.1
1996	1 870.4	2 820.6	127 835.0	45.3
1995	2 016.3	3 205.6	138 465.2	43.2

STRAWBERRIES.....

<i>Statistical division</i>	<i>Area not yet bearing</i> ha	<i>Area of bearing age</i> ha	<i>Production</i> t	<i>Yield</i> t/ha
Moreton and Brisbane	82.9	220.7	3 550.2	16.1
Wide Bay-Burnett	3.2	12.2	135.6	11.1
Darling Downs	—	1.4	9.7	6.9
South West	—	—	—	—
Fitzroy	—	1.0	2.4	2.4
Central West	—	—	—	—
Mackay	0.5	0.9	4.2	4.7
Northern	—	—	—	—
Far North	1.0	5.4	52.7	9.8
North West	—	—	—	—
Queensland				
1997	87.9	241.6	3 754.7	15.5
1996	62.7	194.9	3 130.7	16.3
1995	41.7	152.1	2 157.4	14.2

23

GROSS VALUE OF CITRUS, POME AND OTHER FRUIT, At 30 June

	1994-95	1995-96 ^r	1996-97 ^p
	\$m	\$m	\$m
Apples	21.4	29.0	26.8
Apricots	0.4	0.2	0.5
Avocados	23.9	21.8	24.7
Bananas	182.7	163.3	140.6
Grapes	8.8	6.3	14.4
Lemons and limes	5.4	6.2	7.3
Mandarins	50.3	47.4	56.7
Mangoes	56.1	59.6	54.9
Nectarines	2.9	2.9	4.8
Oranges	10.2	11.0	11.0
Peaches	2.8	2.5	5.2
Pears	0.8	0.9	1.0
Pineapples	43.3	36.4	39.3
Plums and prunes	3.1	2.5	3.1
Strawberries	11.0	16.8	22.0
Other, including nuts	37.1	31.7	38.5
Total	460.1	438.5	450.8

24

GRAPES, Year ended 31 March 1997

AREA OF VINES AT HARVEST

Not yet bearing (planted or grafted)

GRAPE PRODUCTION

Statistical division	Prior to collection year	During collection year	Bearing	Winemaking	Table and other	Total
	ha	ha	ha	t	t	t
Moreton and Brisbane	3.3	6.7	61.3	1.4	218.7	220.1
Wide Bay-Burnett	31.7	80.2	237.5	47.0	1 070.3	1 117.3
Darling Downs	28.8	31.5	374.8	593.2	735.1	1 328.3
South West	30.0	1.1	160.9	98.8	1 061.0	1 159.8
Fitzroy	14.7	26.5	152.0	4.6	613.0	617.6
Central West	—	—	—	—	—	—
Mackay	—	—	—	—	—	—
Northern	6.6	5.4	34.0	0.7	61.5	62.2
Far North	7.6	2.9	27.1	—	24.6	24.6
North West	—	—	—	—	—	—
Queensland						
1997	122.7	154.3	1 047.6	745.7	3 784.2	4 529.9
1996	91.9	112.7	966.9	618.3	3 366.1	3 984.4
1995	85.2	70.9	893.9	379.8	3 522.8	3 902.6

	Units	1995	1996	1997
Asparagus(a)				
area	ha	144.9	244.8	278.5
production	t	626.6	847.8	820.6
yield	t/ha	4.3	3.5	2.9
Beans — French and runner				
area	ha	3 488.0	3 924.4	4 522.8
production	t	15 640.0	17 176.4	18 391.4
yield	t/ha	4.5	4.4	4.1
Beetroot				
area	ha	755.1	756.2	707.7
production	t	26 205.5	25 448.0	25 524.1
yield	t/ha	34.7	33.7	36.1
Broccoli				
area	ha	1 190.1	1 627.7	1 619.4
production	t	7 074.3	7 657.7	9 116.3
yield	t/ha	5.9	4.7	5.6
Brussel sprouts				
area	ha	3.3	5.3	16.2
production	t	29.3	48.1	80.1
yield	t/ha	8.9	9.1	4.9
Cabbages				
area	ha	505.6	430.6	418.8
production	t	15 326.8	14 540.5	13 839.7
yield	t/ha	30.3	33.8	33.0
Capsicum, chillies and peppers				
area	ha	1 022.2	1 104.6	1 324.9
production	t	19 576.0	23 104.5	24 402.8
yield	t/ha	19.2	20.9	18.4
Carrots				
area	ha	1 080.6	1 073.1	1 033.2
production	t	34 940.3	29 426.3	28 521.5
yield	t/ha	32.3	27.4	27.6
Cauliflower				
area	ha	335.2	395.3	518.9
production	t	8 249.7	9 290.5	10 518.4
yield	t/ha	24.6	23.5	20.3
Celery				
area	ha	226.7	210.5	243.4
production	t	11 198.7	13 228.9	11 717.4
yield	t/ha	49.4	62.8	48.1
Chinese cabbages				
area	ha	85.7	131.9	192.3
production	t	2 402.3	3 171.4	5 792.4
yield	t/ha	28.0	24.0	30.1
Cucumber				
area	ha	444.7	446.1	423.1
production	t	5 854.9	6 642.1	6 778.0
yield	t/ha	13.2	14.9	16.0
Green peas (pod weight)				
area	ha	607.8	280.0	657.4
production	t	1 716.6	2 360.9	7 645.9
yield	t/ha	2.8	8.4	11.6
Leeks				
area	ha	73.0	59.2	90.1
production	t	355.5	281.0	484.1
yield	t/ha	4.9	4.7	5.4
Lettuces				
area	ha	1 097.9	1 311.1	1 352.1
production	t	29 051.0	34 287.4	42 251.2
yield	t/ha	26.5	26.2	31.2
Marrows and squashes				
area	ha	237.6	226.3	268.2
production	t	1 234.6	914.0	1 229.0
yield	t/ha	5.2	4.0	4.6

	Units	1995	1996	1997
Melons — rock and cantaloupe				
area	ha	1 501.0	1 328.5	1 368.5
production	t	36 416.2	37 964.0	36 890.0
yield	t/ha	24.3	28.6	27.0
Melons — water				
area	ha	2 931.2	3 196.5	3 036.5
production	t	50 049.8	56 347.5	55 261.5
yield	t/ha	17.1	17.6	18.2
Melons — other				
area	ha	n.c.	103.4	167.5
production	t	n.c.	872.2	4 412.4
yield	t/ha	n.c.	8.4	26.3
Mushrooms				
area	ha	16.1	18.0	14.5
production	t	3 819.9	4 398.4	4 164.7
yield	t/ha	237.3	244.4	287.2
Onions — white and brown				
area	ha	827.6	710.4	650.7
production	t	25 372.5	24 933.6	21 789.1
yield	t/ha	30.7	35.1	33.5
Parsley				
area	ha	18.7	24.8	24.7
production	t	445.0	447.5	323.3
yield	t/ha	23.8	18.0	13.1
Parsnip				
area	ha	n.c.	n.c.	8.2
production	t	n.c.	n.c.	83.9
yield	t/ha	n.c.	n.c.	10.2
Potatoes				
area	ha	4 781.6	4 672.0	4 697.2
production	t	109 004.0	103 845.1	115 434.5
yield	t/ha	22.8	22.2	24.6
Pumpkins				
area	ha	2 731.5	3 334.4	3 352.3
production	t	32 561.6	43 265.8	38 687.8
yield	t/ha	11.9	13.0	11.5
Snow peas				
area	ha	n.c.	n.c.	220.0
production	t	n.c.	n.c.	688.3
yield	t/ha	n.c.	n.c.	3.1
Spring onions				
area	ha	n.c.	129.4	117.5
production	t	n.c.	1 747.1	1 736.8
yield	t/ha	n.c.	13.5	14.8
Swedes				
area	ha	n.c.	n.c.	18.9
production	t	n.c.	n.c.	229.6
yield	t/ha	n.c.	n.c.	12.1
Sweet corn				
area	ha	1 251.3	1 493.0	1 697.0
production	t	14 423.2	15 893.7	14 821.9
yield	t/ha	11.5	10.6	8.7
Sweet potatoes				
area	ha	347.9	354.6	338.2
production	t	5 240.7	6 051.1	5 577.5
yield	t/ha	15.1	17.1	16.5
Tomatoes				
area	ha	3 424.3	3 394.3	3 752.9
production	t	101 291.5	102 643.3	109 910.7
yield	t/ha	29.6	30.2	29.3
Zucchini				
area	ha	950.2	1 050.5	1 118.4
production	t	8 733.8	8 813.0	7 713.4
yield	t/ha	9.2	8.4	6.9

	Units	Moreton and Brisbane	Wide Bay-Burnett	Darling Downs	South West	Fitzroy
Asparagus(a)						
area	ha	9.7	156.5	112.3	—	—
production	t	14.0	301.8	504.8	—	—
yield	t/ha	1.4	1.9	4.5	—	—
Beans — French and runner						
area	ha	1 009.3	915.9	132.5	—	—
production	t	3 655.3	4 190.5	336.5	—	—
yield	t/ha	3.6	4.6	2.5	—	—
Beetroot						
area	ha	706.3	0.3	0.7	—	—
production	t	25 510.5	2.5	6.9	—	1.5
yield	t/ha	36.1	8.3	9.9	—	5.0
Broccoli						
area	ha	681.2	7.4	923.2	—	2.0
production	t	4 079.5	22.2	4 998.0	—	4.0
yield	t/ha	6.0	3.0	5.4	—	2.0
Brussel sprouts						
area	ha	—	—	16.2	—	—
production	t	—	—	80.1	—	—
yield	t/ha	—	—	4.9	—	—
Cabbages						
area	ha	267.1	8.6	122.3	—	5.5
production	t	9 750.3	55.0	3 791.7	—	45.0
yield	t/ha	36.5	6.4	31.0	—	8.2
Capsicum, chillies and peppers						
area	ha	129.4	315.1	156.7	—	7.4
production	t	1 572.1	6 060.3	2 000.3	—	96.6
yield	t/ha	12.1	19.2	12.8	—	13.1
Carrots						
area	ha	911.5	1.1	108.4	—	12.0
production	t	24 427.2	5.2	3 990.5	—	96.0
yield	t/ha	26.8	4.7	36.8	—	8.0
Cauliflower						
area	ha	220.7	7.4	281.1	—	5.5
production	t	3 989.1	30.8	6 361.2	—	69.9
yield	t/ha	18.1	4.2	22.6	—	12.7
Celery						
area	ha	103.9	5.8	133.2	—	0.5
production	t	5 278.5	264.0	6 171.9	—	3.0
yield	t/ha	50.8	45.5	46.3	—	6.0
Chinese cabbages						
area	ha	78.6	8.3	97.4	—	—
production	t	1 661.3	252.4	3 718.7	—	—
yield	t/ha	21.1	30.4	38.2	—	—
Cucumber						
area	ha	152.7	75.7	21.1	—	17.8
production	t	1 710.1	2 191.4	136.4	—	283.6
yield	t/ha	11.2	28.9	6.5	—	15.9
Green peas (pod weight)						
area	ha	605.5	41.7	5.2	—	5.0
production	t	7 491.5	147.9	6.5	—	—
yield	t/ha	12.4	3.5	1.3	—	—
Leeks						
area	ha	0.6	1.6	87.9	—	—
production	t	7.6	13.4	463.1	—	—
yield	t/ha	12.7	8.4	5.3	—	—
Lettuces						
area	ha	999.9	20.8	301.7	—	10.4
production	t	30 336.3	297.5	10 752.8	—	211.4
yield	t/ha	30.3	14.3	35.6	—	20.3
Marrows and squashes						
area	ha	13.0	186.6	6.1	—	9.8
production	t	57.5	872.5	16.0	—	51.2
yield	t/ha	4.4	4.7	2.6	—	5.2

	Units	Central West	Mackay	Northern	Far North	North West
Asparagus(a)						
area	ha	—	—	—	—	—
production	t	—	—	—	—	—
yield	t/ha	—	—	—	—	—
Beans — French and runner						
area	ha	—	0.4	2 405.6	59.1	—
production	t	—	1.8	10 051.9	155.4	—
yield	t/ha	—	4.5	4.2	2.6	—
Beetroot						
area	ha	—	—	—	0.1	—
production	t	—	—	—	2.7	—
yield	t/ha	—	—	—	27.0	—
Broccoli						
area	ha	—	—	5.0	0.6	—
production	t	—	—	10.2	2.3	—
yield	t/ha	—	—	2.0	3.8	—
Brussel sprouts						
area	ha	—	—	—	—	—
production	t	—	—	—	—	—
yield	t/ha	—	—	—	—	—
Cabbages						
area	ha	—	—	1.9	13.4	—
production	t	—	—	50.2	147.5	—
yield	t/ha	—	—	26.4	11.0	—
Capsicum, chillies and peppers						
area	ha	—	1.0	708.6	6.7	—
production	t	—	1.0	14 543.3	129.2	—
yield	t/ha	—	1.0	20.5	19.3	—
Carrots						
area	ha	—	—	—	0.2	—
production	t	—	—	—	2.6	—
yield	t/ha	—	—	—	13.0	—
Cauliflower						
area	ha	—	2.0	1.7	0.5	—
production	t	—	30.0	28.9	8.5	—
yield	t/ha	—	15.0	17.0	17.0	—
Celery						
area	ha	—	—	—	—	—
production	t	—	—	—	—	—
yield	t/ha	—	—	—	—	—
Chinese cabbages						
area	ha	—	—	8.0	—	—
production	t	—	—	160.0	—	—
yield	t/ha	—	—	20.0	—	—
Cucumber						
area	ha	—	5.3	140.8	9.7	—
production	t	—	51.0	2 326.0	79.6	—
yield	t/ha	—	9.6	16.5	8.2	—
Green peas (pod weight)						
area	ha	—	—	—	—	—
production	t	—	—	—	—	—
yield	t/ha	—	—	—	—	—
Leeks						
area	ha	—	—	—	—	—
production	t	—	—	—	—	—
yield	t/ha	—	—	—	—	—
Lettuces						
area	ha	—	—	3.6	15.7	—
production	t	—	—	365.0	288.2	—
yield	t/ha	—	—	101.4	18.4	—
Marrows and squashes						
area	ha	—	0.8	48.9	3.0	—
production	t	—	1.7	223.3	6.8	—
yield	t/ha	—	2.1	4.6	2.3	—

Units	Moreton and Brisbane	Wide Bay-Burnett	Darling Downs	South West	Fitzroy	
Melons — rock and cantaloupe						
area	ha	76.3	250.7	223.7	127.0	33.0
production	t	810.7	8 084.1	6 256.7	4 030.0	395.8
yield	t/ha	10.6	32.2	28.0	31.7	12.0
Melons — water						
area	ha	672.1	585.8	802.5	34.3	294.9
production	t	12 468.0	9 552.3	12 169.3	364.5	7 575.4
yield	t/ha	18.6	16.3	15.2	10.6	25.7
Melons — other						
area	ha	1.3	27.7	10.0	—	—
production	t	32.0	518.8	0.6	—	—
yield	t/ha	24.6	18.7	0.1	—	—
Mushrooms						
area	ha	10.8	0.5	2.8	—	—
production	t	3 181.9	168.9	677.4	—	—
yield	t/ha	294.6	337.8	241.9	—	—
Onions — white and brown						
area	ha	507.0	10.9	101.5	—	11.2
production	t	16 204.7	301.5	4 528.9	—	410.0
yield	t/ha	31.5	27.7	44.6	—	36.6
Parsley						
area	ha	9.7	1.1	13.5	—	0.1
production	t	173.7	5.3	141.6	—	0.2
yield	t/ha	17.9	4.8	10.5	—	2.0
parsnip						
area	ha	8.0	—	0.1	—	—
production	t	83.9	—	—	—	—
yield	t/ha	10.5	—	—	—	—
Potatoes						
area	ha	2 382.7	296.9	654.9	—	14.1
production	t	55 593.1	7 210.4	18 892.2	—	222.0
yield	t/ha	23.3	24.3	28.8	—	15.7
Pumpkins						
area	ha	1 405.8	501.6	182.9	0.8	253.4
production	t	14 484.9	5 341.2	1 851.1	10.0	2 849.0
yield	t/ha	10.3	10.6	10.1	12.5	11.2
Snow peas						
area	ha	14.2	156.7	37.0	—	—
production	t	40.9	566.6	80.7	—	—
yield	t/ha	2.9	3.6	2.2	—	—
Spring onions						
area	ha	107.4	2.2	1.3	—	0.1
production	t	1 647.1	17.3	9.3	—	1.0
yield	t/ha	15.3	7.9	7.2	—	10.0
Swedes						
area	ha	17.0	1.1	0.7	—	0.1
production	t	211.0	10.8	6.8	—	1.0
yield	t/ha	12.4	9.8	9.7	—	10.0
Sweet corn						
area	ha	693.3	76.5	151.4	—	2.5
production	t	8 065.8	396.8	2 501.0	—	6.5
yield	t/ha	11.6	5.2	16.5	—	2.6
Sweet potatoes						
area	ha	105.5	144.7	1.0	—	23.8
production	t	2 122.5	2 046.1	14.0	—	410.2
yield	t/ha	20.1	14.1	14.0	—	17.2
Tomatoes						
area	ha	419.2	762.8	277.8	—	25.8
production	t	12 425.9	26 768.6	6 351.5	—	382.5
yield	t/ha	29.6	35.1	22.9	—	14.8
Zucchini						
area	ha	135.3	745.3	93.6	—	19.8
production	t	688.0	5 149.2	712.3	—	153.8
yield	t/ha	5.1	6.9	7.6	—	7.8

	Units	Central West	Moree	Northern	Far North	North West
Melons — rock and cantaloupe						
area	ha	—	—	622.7	35.1	—
production	t	—	—	16 676.7	636.0	—
yield	t/ha	—	—	26.8	18.1	—
Melons — water						
area	ha	—	10.2	455.2	181.5	—
production	t	—	119.5	10 287.5	2 725.0	—
yield	t/ha	—	11.7	22.6	15.0	—
Melons — other						
area	ha	—	—	128.5	—	—
production	t	—	—	3 861.0	—	—
yield	t/ha	—	—	30.0	—	—
Mushrooms						
area	ha	—	—	0.3	0.1	—
production	t	—	—	104.0	32.5	—
yield	t/ha	—	—	346.7	325.0	—
Onions — white and brown						
area	ha	—	—	1.0	12.1	—
production	t	—	—	15.0	329.0	—
yield	t/ha	—	—	15.0	27.2	—
Parsley						
area	ha	—	0.2	0.1	—	—
production	t	—	2.6	0.1	—	—
yield	t/ha	—	13.0	1.0	—	—
Parsnips						
area	ha	—	—	—	0.1	—
production	t	—	—	—	—	—
yield	t/ha	—	—	—	—	—
Potatoes						
area	ha	—	1.0	290.9	1 056.7	—
production	t	—	4.0	7 511.0	26 001.8	—
yield	t/ha	—	4.0	25.8	24.6	—
Pumpkins						
area	ha	—	16.0	636.5	355.3	—
production	t	—	84.0	8 327.9	5 739.7	—
yield	t/ha	—	5.3	13.1	16.2	—
Snow peas						
area	ha	—	—	12.0	0.1	—
production	t	—	—	—	0.1	—
yield	t/ha	—	—	—	1.0	—
Spring onions						
area	ha	—	0.2	6.0	0.3	—
production	t	—	2.6	53.3	6.3	—
yield	t/ha	—	13.0	8.9	21.0	—
Swedes						
area	ha	—	—	—	—	—
production	t	—	—	—	—	—
yield	t/ha	—	—	—	—	—
Sweet corn						
area	ha	—	5.3	734.7	33.3	—
production	t	—	50.5	3 736.5	64.8	—
yield	t/ha	—	9.5	5.1	1.9	—
Sweet potatoes						
area	ha	—	—	5.0	58.2	—
production	t	—	—	100.0	884.7	—
yield	t/ha	—	—	20.0	15.2	—
Tomatoes						
area	ha	—	4.4	2 213.7	49.2	—
production	t	—	66.3	63 261.0	654.9	—
yield	t/ha	—	15.1	28.6	13.3	—
Zucchini						
area	ha	—	26.9	81.8	15.7	—
production	t	—	248.2	711.7	40.1	—
yield	t/ha	—	9.2	8.7	2.6	—

	1994-95	1995-96 ^r	1996-97 ^p
	\$m	\$m	\$m
Asparagus	4.1	5.5	4.9
Beans — French and runner	25.4	28.4	27.8
Beetroot	3.7	3.7	3.5
Broccoli	12.8	11.6	15.1
Cabbages and brussel sprouts	6.5	5.1	5.7
Capsicum, chillies and peppers	27.2	31.5	28.6
Carrots	16.1	11.8	14.5
Cauliflower	4.4	4.4	4.8
Celery	5.3	6.4	6.2
Cucumbers	6.7	7.6	7.2
Green peas (pod weight)	0.6	0.8	1.7
Leeks	0.6	0.5	0.7
Lettuces	22.8	24.7	29.5
Marrows and squashes	2.5	1.7	2.1
Melons — rock and cantaloupe	26.0	25.2	25.4
Melons — water	14.8	11.0	18.0
Mushrooms	13.7	15.9	15.0
Onions — white and brown	13.7	18.5	12.8
Parsley	0.9	1.1	0.5
Potatoes	47.3	42.5	52.3
Pumpkins	11.5	11.7	15.6
Sweet corn	11.0	9.9	6.7
Sweet potatoes	7.7	4.8	4.2
Tomatoes	102.5	122.6	111.9
Zucchini	9.6	11.9	8.6
Other vegetables	17.0	17.8	25.1
Total	414.4	436.6	448.2

Statistical division	Nurseries	Cut flowers	Cultivated turf
	ha	ha	ha
Moreton and Brisbane	757.9	284.7	1 721.6
Wide Bay-Burnett	120.1	59.1	160.0
Darling Downs	35.0	343.5	48.0
South West	0.5	17.3	25.0
Fitzroy	27.6	30.3	50.0
Central West	—	—	1.6
Mackay	48.5	7.9	50.0
Northern	26.2	2.0	48.2
Far North	227.2	58.8	71.8
North West	—	7.0	—
Queensland			
1997	1 243.0	810.6	2 176.2
1996	1 233.9	682.2	2 210.0
1995	1 309.9	769.8	2 167.1

29

MEAT CATTLE NUMBERS, At 31 March 1997

<i>Statistical division</i>	<i>Bulls and bull calves intended for service</i>	<i>Cows and heifers one year and over</i>	<i>Heifers and other calves under one year</i>	<i>Other cattle one year and over</i>	<i>Total meat cattle</i>	<i>Percentage of total meat cattle herd</i>
	'000	'000	'000	'000	'000	%
Moreton and Brisbane	8.3	173.7	81.0	112.4	375.4	3.7
Wide Bay-Burnett	18.4	418.4	201.1	229.5	867.4	8.6
Darling Downs	27.4	570.7	331.9	428.8	1 358.8	13.4
South West	21.5	553.3	284.2	263.1	1 122.1	11.1
Fitzroy	40.4	822.2	402.1	519.5	1 784.2	17.6
Central West	15.0	356.9	142.3	206.1	720.3	7.1
Mackay	19.1	412.4	181.8	245.9	859.2	8.5
Northern	20.3	431.8	175.2	212.6	839.8	8.3
Far North	19.2	412.3	146.0	177.1	754.6	7.4
North West	35.4	810.2	290.5	311.6	1 447.7	14.3
Queensland						
1997	224.9	4 962.0	2 236.3	2 706.5	10 129.7	100.0
1996	221.8	4 775.0	2 173.5	2 758.0	9 928.3	100.0
1995	220.2	4 522.1	2 107.3	2 839.5	9 689.1	100.0

30

ESTABLISHMENTS WITH MEAT CATTLE, At 31 March 1997

<i>Statistical division</i>	<i>Bulls and bull calves intended for service</i>	<i>Cows and heifers one year and over</i>	<i>Heifers and other calves under one year</i>	<i>Other cattle one year and over</i>	<i>Total establishments with meat cattle</i>	<i>Percentage of total meat cattle establishments</i>
	no.	no.	no.	no.	no.	%
Moreton and Brisbane	2 246	2 525	2 320	2 072	2 910	14.9
Wide Bay-Burnett	3 009	3 346	3 078	2 803	3 746	19.2
Darling Downs	3 910	4 370	4 088	3 714	4 957	25.4
South West	1 375	1 459	1 345	1 280	1 531	7.8
Fitzroy	2 202	2 412	2 228	2 049	2 565	13.1
Central West	554	596	535	496	617	3.2
Mackay	906	1 000	927	883	1 077	5.5
Northern	582	619	586	574	655	3.4
Far North	746	843	759	831	982	5.0
North West	409	442	389	409	467	2.4
Queensland						
1997	15 939	17 612	16 255	15 111	19 507	100.0
1996	16 246	18 007	16 880	15 691	20 251	100.0
1995	16 702	18 461	17 426	15 591	20 902	100.0

Herd size	1996		1997	
	Establishments	Percentage of establishments with meat cattle	Establishments	Percentage of establishments with meat cattle
	no.	%	no.	%
1-29	2 620	12.9	2 307	11.8
30-49	2 056	10.2	1 878	9.6
50-69	1 900	9.4	1 762	9.0
70-99	2 050	10.1	1 952	10.0
100-149	2 221	11.0	2 150	11.0
150-199	1 408	7.0	1 399	7.2
200-299	1 765	8.7	1 745	8.9
300-399	1 079	5.3	1 069	5.5
400-499	785	3.9	804	4.1
500-699	1 075	5.3	1 082	5.5
700-999	965	4.8	992	5.1
1 000-1 499	902	4.5	899	4.6
1 500-1 999	484	2.4	494	2.5
2 000-4 999	709	3.5	721	3.7
5 000-9 999	151	0.7	169	0.9
10 000 and over	81	0.4	84	0.4
Total	20 251	100.0	19 507	100.0

Herd size	1996		1997	
	Number of meat cattle	Percentage of total meat cattle	Number of meat cattle	Percentage of total meat cattle
	'000	%	'000	%
1-29	41.3	0.4	35.8	0.7
30-49	79.8	0.8	73.2	0.7
50-69	111.7	1.1	103.4	1.0
70-99	170.0	1.7	162.3	1.6
100-149	269.5	2.7	260.7	2.6
150-199	242.2	2.4	241.4	2.4
200-299	428.9	4.3	423.9	4.2
300-399	371.9	3.7	367.2	3.6
400-499	348.9	3.5	356.0	3.5
500-699	631.7	6.4	636.0	6.3
700-999	806.3	8.1	823.7	8.1
1 000-1 499	1 097.5	11.1	1 084.5	10.7
1 500-1 999	832.9	8.4	852.8	8.4
2 000-4 999	2 076.9	20.9	2 109.9	20.8
5 000-9 999	1 000.8	10.1	1 133.4	11.2
10 000 and over	1 417.9	14.3	1 465.5	14.5
Total	9 928.3	100.0	10 129.7	100.0

32

MILK CATTLE NUMBERS, At 31 March 1997

Statistical division	Cows in milk and dry	Other milk cattle	Total milk cattle(a)	Percentage of total milk cattle herd
	'000	'000	'000	%
Moreton and Brisbane	64.7	31.5	96.2	32.9
Wide Bay-Burnett	42.0	21.8	63.8	21.8
Darling Downs	47.2	24.6	71.8	24.6
South West	1.2	0.5	1.7	0.6
Fitzroy	6.8	3.0	9.8	3.4
Central West	—	—	—	—
Mackay	3.5	1.9	5.4	1.8
Northern	0.3	0.0	0.3	0.1
Far North	28.7	14.1	42.8	14.7
North West	—	—	—	—
Queensland				
1997	194.5	97.5	292.0	100.0
1996	189.4	96.7	286.1	100.0
1995	188.6	95.9	284.5	100.0

(a) Excludes house cows.

33

ESTABLISHMENTS WITH MILK CATTLE, At 31 March 1997(a)

Statistical division	Cows in milk and dry	Other milk cattle	Total establishments with milk cattle	Percentage of milk cattle establishments
	no.	no.	no.	%
Moreton and Brisbane	593	565	626	29
Wide Bay-Burnett	424	398	454	21
Darling Downs	628	594	694	32
South West	24	14	27	1
Fitzroy	97	76	107	5
Central West	1	3	3	—
Mackay	37	35	44	2
Northern	10	2	10	1
Far North	214	211	225	10
North West	4	1	4	—
Queensland				
1997	2 032	1 899	2 194	100
1996	2 079	1 967	2 282	100
1995	2 022	1 974	2 148	100

(a) Excludes establishments with house cows only.

NUMBER OF ESTABLISHMENTS AND MILK CATTLE BY HERD SIZE, At 31 March(a)

Herd size	1996		1997	
	<i>Establishments</i>	<i>Percentage of establishments with milk cattle</i>	<i>Establishments</i>	<i>Percentage of establishments with milk cattle</i>
	no.	%	no.	%
1-49	598	26.2	532	24.2
50-99	404	17.7	376	17.1
100-149	493	21.6	461	21.0
150-199	341	14.9	343	15.6
200-249	190	8.3	203	9.3
250-299	109	4.8	115	5.2
300-349	67	2.9	71	3.2
350-399	34	1.5	36	1.6
400-499	31	1.4	34	1.5
500 and over	15	0.7	23	1.0
Total	2 282	100.0	2 194	100.0

Herd size	1996.....		1997.....	
	<i>Number of milk cattle</i>	<i>Percentage of total milk cattle</i>	<i>Number of milk cattle</i>	<i>Percentage of total milk cattle</i>
	'000	%	'000	%
1-49	9.4	3.3	7.8	2.7
50-99	30.1	10.5	28.2	9.7
100-149	60.6	21.2	56.8	19.5
150-199	58.2	20.3	58.8	20.1
200-249	41.9	14.6	44.8	15.3
250-299	29.3	10.2	30.8	10.5
300-349	21.2	7.4	22.4	7.7
350-399	12.5	4.4	13.1	4.5
400-499	13.2	4.6	14.9	5.1
500 and over	9.9	3.5	14.4	4.9
Total	286.1	100.0	292.0	100.0

(a) Excludes establishments with house cows only.

35

NUMBER OF SHEEP AND LAMBS, At 31 March 1997

Statistical division	Breeding ewes (1 year and over)	Lambs and hoggets (under 1 year)	All other sheep	Total sheep and lambs	Percentage of total sheep flock
	'000	'000	'000	'000	%
Moreton and Brisbane	1.4	0.3	2.4	4.0	—
Wide Bay-Burnett	1.2	0.6	0.3	2.2	—
Darling Downs	527.2	305.6	701.9	1 534.6	14.6
South West	1 903.2	1 092.0	1 577.0	4 572.2	43.4
Fitzroy	18.8	12.9	11.4	43.1	0.4
Central West	1 775.0	727.4	1 111.0	3 613.4	34.3
Mackay	3.3	1.3	4.1	8.6	0.1
Northern	—	—	5.0	5.0	—
Far North	0.1	—	—	0.1	—
North West	364.5	96.4	283.9	744.8	7.1
Queensland					
1997	4 594.7	2 236.4	3 696.9	10 528.0	100.0
1996	4 556.6	2 134.2	4 016.4	10 707.2	100.0
1995	n.c.	2 059.9	n.c.	11 577.2	100.0

(a) Sheep one year and over including rams, ewes and wethers.

36

ESTABLISHMENTS WITH SHEEP AND LAMBS, At 31 March 1997

Statistical division	Breeding ewes (1 year and over)	Lambs and hoggets (under 1 year)	All other sheep	Total sheep and lambs	Percentage of establishments with sheep and lambs
	no.	no.	no.	no.	%
Moreton and Brisbane	27	19	27	32	1.2
Wide Bay-Burnett	33	31	35	37	1.4
Darling Downs	793	714	888	961	36.7
South West	784	729	847	887	33.9
Fitzroy	27	22	27	32	1.2
Central West	464	403	496	516	19.7
Mackay	5	5	4	5	0.2
Northern	—	—	2	2	0.1
Far North	5	3	3	5	0.2
North West	127	96	135	141	5.4
Queensland					
1997	2 265	2 022	2 464	2 618	100.0
1996	2 357	2 067	2 614	2 770	100.0
1995	n.c.	2 040	n.c.	2 868	100.0

(a) Sheep one year and over including rams, ewes and wethers.

Flock size	1996		1997	
	Establishments	Percentage of establishments with sheep and lambs	Establishments	Percentage of establishments with sheep and lambs
	no.	%	no.	%
1-499	690	24.9	617	23.6
500-999	226	8.2	216	8.3
1 000-1 499	192	6.9	168	6.4
1 500-1 999	167	6.0	147	5.6
2 000-2 499	139	5.0	142	5.4
2 500-2 999	130	4.7	120	4.6
3 000-3 999	229	8.3	233	8.9
4 000-4 999	208	7.5	233	8.9
5 000-5 999	202	7.3	153	5.8
6 000-6 999	145	5.2	144	3.6
7 000-7 999	88	3.2	95	3.6
8 000-8 999	75	2.7	71	2.7
9 000-9 999	56	2.0	51	1.9
10 000 and over	223	8.1	228	8.7
Total	2 770	100.0	2 618	100.0

Flock size	1996.....		1997	
	Number of sheep and lambs	Percentage of total sheep and lambs	Number of sheep and lambs	Percentage of total sheep and lambs
	'000	%	'000	%
1-499	98.3	0.9	83.4	0.8
500-999	170.3	1.6	159.2	1.5
1 000-1 499	236.5	2.2	208.1	2.0
1 500-1 999	288.8	2.7	257.6	2.4
2 000-2 499	308.5	2.9	314.9	3.0
2 500-2 999	351.7	3.3	328.9	3.1
3 000-3 999	782.4	7.3	801.3	7.6
4 000-4 999	920.5	8.6	1 047.2	9.9
5 000-5 999	1 094.8	10.2	834.0	7.9
6 000-6 999	928.3	8.7	928.0	8.8
7 000-7 999	651.9	6.1	710.5	6.7
8 000-8 999	628.8	5.9	598.0	5.7
9 000-9 999	530.4	5.0	480.8	4.6
10 000 and over	3 716.0	34.7	3 775.9	35.9
Total	10 707.2	100.0	10 528.0	100.0

EWES TO BE MATED YEAR ENDING 31 MARCH 1998 (c)

<i>Statistical division</i>	<i>Ewes mated</i> '000	<i>Lambs marked</i> '000	<i>Lamb marking ratio</i> %	<i>joined to merino rams</i> '000	<i>joined to short wool rams</i> '000	<i>joined to other rams</i> '000	<i>Total expected joinings</i> '000
Moreton and Brisbane	1.2	0.7	58.3	0.8	0.2	0.3	1.3
Wide Bay-Burnett	0.9	0.7	77.8	0.1	0.5	0.5	1.1
Darling Downs	432.7	327.4	75.7	328.4	62.4	51.2	442.1
South West	1 567.6	1 153.6	73.6	1 554.4	20.5	69.3	1 644.2
Fitzroy	15.2	12.4	81.6	12.5	0.1	0.2	12.8
Central West	1 365.4	753.4	55.2	1 650.7	15.1	14.3	1 680.0
Mackay	3.1	2.7	87.1	3.5	0.2	—	3.6
Northern	—	—	—	—	—	—	—
Far North	—	—	—	—	—	—	—
North West	282.9	113.7	40.2	287.3	5.0	1.7	293.9
Queensland							
1997	3 669.2	2 364.6	64.4	3 837.6	103.9	137.4	4 079.0
1996	4 024.8	2 284.9	56.8	3 830.0	n.c.	n.c.	3 830.0
1995	4 137.9	2 238.9	54.1	4 186.5	n.c.	n.c.	4 186.5

(a) Ewes mated to produce lambs marked in the season shown.

(b) Lambs marked as a proportion of ewes mated to produce lambs.

(c) Forecast made at the end of the 1996-97 season.

PIG NUMBERS(a) AND NUMBER OF ESTABLISHMENTS, At 31 March 1997

<i>Statistical division</i>	<i>Total pigs</i>	<i>Percentage of total pigs</i>	<i>Total establishments</i>	<i>Percentage of total establishments with pigs</i>
	'000	%	no.	%
Moreton and Brisbane	36.5	6.1	103	12.5
Wide Bay-Burnett	186.4	31.1	238	29.0
Darling Downs	305.5	50.9	348	42.4
South West	3.9	0.7	26	3.2
Fitzroy	42.4	7.1	53	6.5
Central West	0.0	0.0	1	0.1
Mackay	11.3	1.9	15	1.8
Northern	4.9	0.8	16	1.9
Far North	8.3	1.4	18	2.2
North West	0.8	0.1	3	0.4
Queensland				
1997	599.9	100.0	821	100.0
1996	603.0	100.0	953	100.0
1995	643.6	100.0	1 040	100.0

(a) Includes suckers, weaners, growers etc.

NUMBER OF ESTABLISHMENTS AND PIGS BY HERD SIZE(a), At 31 March

Herd size	1996.....		1997	
	Establishments	Percentage of establishments with pigs	Establishments	Percentage of establishments with pigs
	no.	%	no.	%
1-9	152	15.9	68	8.3
10-19	105	11.0	88	10.7
20-29	65	6.8	58	7.1
30-39	42	4.4	38	4.6
40-49	24	2.5	29	3.5
50-69	47	4.9	43	5.2
70-99	47	4.9	42	5.1
100-149	49	5.1	54	6.6
150-199	37	3.9	31	3.8
200-299	64	6.7	61	7.4
300-499	78	8.2	80	9.7
500-699	51	5.4	46	5.6
700-999	58	6.1	53	6.5
1 000 and over	134	14.1	130	15.8
Total	953	100.0	821	100.0

Herd size	1996		1997	
	Number of pigs	Percentage of total pigs	Number of pigs	Percentage of total pigs
	'000	%	'000	%
1-9	0.7	0.1	0.3	0.1
10-19	1.4	0.2	1.2	0.2
20-29	1.5	0.3	1.4	0.2
30-39	1.4	0.2	1.3	0.2
40-49	1.0	0.2	1.3	0.2
50-69	2.7	0.5	2.5	0.4
70-99	3.8	0.6	3.5	0.6
100-149	6.1	1.0	6.9	1.1
150-199	6.2	1.0	5.4	0.9
200-299	15.3	2.5	14.7	2.5
300-499	30.6	5.1	32.6	5.4
500-699	29.1	4.8	27.2	4.5
700-999	49.4	8.2	45.3	7.5
1 000 and over	453.8	75.3	456.3	76.1
Total	603.0	100.0	599.9	100.0

(a) Includes suckers, weaners, growers etc.

41

POULTRY, NUMBER ON HOLDING, At 31 March 1997

Statistical division	LAYERS		MEAT CHICKENS
	<i>Hens for egg production for human consumption</i>		<i>Breeding stock</i>
	'000		'000
Moreton and Brisbane	817.8		9 803.6
Wide Bay-Burnett	27.3		10.7
Darling Downs	1 175.1		360.0
South West	3.2		—
Fitzroy	189.5		0.3
Central West	0.1		0.2
Mackay	84.0		—
Northern	190.0		—
Far North	151.8		257.0
North West	—		—
Queensland			
1997	2 638.7		10 431.7
1996	2 614.8		8 770.7

42

POULTRY, NUMBER DISPOSED OF, At 31 March 1997

Statistical division	LAYERS		MEAT CHICKENS
	<i>Hens for egg production for human consumption</i>		<i>Breeding stock</i>
	'000		'000
Moreton and Brisbane	925.7		88 202.6
Wide Bay-Burnett	26.5		40.4
Darling Downs	810.5		286.0
South West	0.8		—
Fitzroy	56.1		0.4
Central West	—		0.5
Mackay	56.6		—
Northern	101.3		—
Far North	64.6		1 217.4
North West	—		—
Queensland			
1997	2 042.2		89 747.2
1996	1 650.1		96 038.1

ESTABLISHMENTS

Statistical division	Deer	Emus	Goats	Horses for breeding (a)	Ostriches
	no.	no.	no.	no.	no.
Moreton and Brisbane	37	6	28	337	22
Wide Bay-Burnett	18	7	44	276	33
Darling Downs	20	7	52	379	29
South West	2	1	19	77	6
Fitzroy	5	1	17	214	15
Central West	—	—	7	39	—
Mackay	2	—	3	96	4
Northern	3	—	4	80	2
Far North	4	—	8	72	5
North West	—	—	3	47	1
Queensland					
1997	91	22	185	1 617	117
1996	110	n.c.	n.c.	2 870	n.c.
1995	121	n.c.	n.c.	1 903	n.c.

LIVESTOCK

Statistical division	Deer	Emus	Goats	Horses for breeding (a)	Ostriches
	no.	no.	no.	no.	no.
Moreton and Brisbane	5 756	3 734	2 018	4 156	1 581
Wide Bay-Burnett	7 332	4 893	4 423	2 026	1 589
Darling Downs	2 921	2 124	4 454	5 771	3 336
South West	53	730	13 378	599	147
Fitzroy	1 899	7	2 341	1 815	491
Central West	—	—	3 579	362	—
Mackay	626	—	62	561	117
Northern	101	—	115	941	70
Far North	995	—	273	657	327
North West	—	—	85	849	13
Queensland					
1997	19 683	11 488	30 728	17 737	7 671
1996	16 355	n.c.	n.c.	27 545	n.c.
1995	17 153	n.c.	n.c.	16 553	n.c.

(a) Comprises horses on establishments with agricultural activity.

Statistical division	Steers, bullocks and bulls	Cows and heifers	Calves	Pigs
	'000	'000	'000	'000
Moreton and Brisbane	67.6	38.4	52.1	66.1
Wide Bay-Burnett	115.3	78.6	80.4	297.3
Darling Downs	430.1	152.9	70.5	486.2
South West	167.0	91.1	39.3	4.6
Fitzroy	279.7	169.0	48.8	75.9
Central West	144.6	72.4	17.1	—
Mackay	120.0	86.4	15.2	15.1
Northern	80.7	48.9	10.4	9.1
Far North	77.9	36.3	6.3	17.7
North West	186.5	122.0	15.5	1.6
Queensland				
1997	1 669.5	896.2	355.7	973.6
1996	n.c.	n.c.	n.c.	1 094.5

Statistical division	Lambs and hoggets	All other sheep	Horses	Deer
	'000	'000	'000	'000
Moreton and Brisbane	0.3	0.2	0.9	0.9
Wide Bay-Burnett	0.4	0.3	0.8	1.4
Darling Downs	144.5	278.1	2.5	0.4
South West	235.9	742.0	0.4	—
Fitzroy	5.2	6.1	1.1	—
Central West	120.8	699.3	0.5	—
Mackay	0.2	0.9	0.5	0.4
Northern	—	1.6	0.4	—
Far North	—	—	0.3	0.1
North West	13.5	127.4	0.3	—
Queensland				
1997	520.8	1 855.9	7.6	3.1
1996	421.0	2 062.5	3.2	3.0

	Units	1995	1996r	1997p
Number of livestock slaughtered(a)(b)				
Cattle	'000	2 595.2	2 406.9	2 517.9
Calves	'000	126.6	91.2	120.9
Chickens	'000	57.0	55.3	61.1
Lambs	'000	625.4	695.3	785.1
Pigs	'000	1 169.7	1 080.0	1 002.3
Sheep	'000	840.2	727.5	977.3
Meat produced(a)(c)				
Beef	tonnes	711 005	655 664	687 802
Chicken	tonnes	77 853	71 607	80 485
Lamb	tonnes	10 948	12 584	14 348
Mutton	tonnes	16 888	14 161	19 646
Pig	tonnes	83 396	77 696	73 809
Veal	tonnes	5 013	3 854	5 579
Whole milk intake by factories(d)	million litres	741	751	797
Wool(e)				
Brokers and dealers receivals of taxable wool	tonnes	54 510	44 639	45 850
Eggs produced	'000 dozen	n.c.	28 509.7	22 225.1

(a) Source: ABS "Monthly Livestock Products" publication, Catalogue No. 7215.0.

(b) Includes estimates of animals slaughtered on farms and country butchers.

(c) Dressed carcass weight, excluding offal.

(d) Source: Australian Dairy Corporation.

(e) Sources: National Council of Wool Selling Brokers of Australia and ABS Wool Brokers and Dealers Collection.

	1994-95	1995-96 ^r	1996-97 ^p
	\$m	\$m	\$m
Livestock slaughterings(a)			
Cattle and calves	1 592.6	1 304.5	1 232.9
Pigs	160.3	156.7	160.3
Poultry	141.6	143.3	166.5
Sheep and lambs(b)	24.0	38.1	53.2
Other	0.1	0.2	0.9
Total	1 918.7	1 642.8	1 613.9
Wool			
Shorn and crutched	235.8	180.3	175.9
Other(c)	4.4	4.0	5.0
Total	240.2	184.3	180.8
Production of milk			
Human consumption	84.9	219.9	222.2
Manufacturing	205.0	88.0	107.3
Total	289.9	307.9	329.5
Eggs	48.0	50.4	36.7
Honey and beeswax	3.7	5.0	7.4

(a) Includes net exports of livestock.

(b) Excludes value of wool on skins.

(c) Includes dead and fellmongered wool and wool on skins.

	Units	1995	1996	1997 ^p
Number of apiarists	no.	269	267	218
Beehives				
Productive(a)	no.	47 410	52 998	82 912
Unproductive	no.	37 100	31 913	13 523
Total	no.	84 510	84 911	96 435
Honey produced				
Quantity	kg	2 743 416	3 212 358	4 189 655
Average production(b)	kg/hive	58.0	48.0	50.5
Beeswax produced	kg	50 425.0	64 741.0	67 744.1

(a) Beehives from which honey was taken.

(b) Average production per productive beehive.

FRUIT 0114-0119 VEGETABLES 0113

Items	1994-95		1995-96		1994-95		1995-96	
	\$m	SE %	\$m	SE %	\$m	SE %	\$m	SE %
Sales from crops	375.5	19	469.6	14	439.8	16	407.0	16
Sales from livestock	1.9	57	12.4	56	16.4	75	8.1	38
Sales from livestock products	—	—	0.1	91	4.7	*	4.1	87
Turnover	423.5	18	499.6	14	481.1	17	435.8	15
Purchases and selected expenses	221.0	20	256.1	13	277.2	23	238.0	14
Value added(a)	203.9	17	234.1	16	210.3	16	196.4	18
Adjusted value added(a)	179.9	17	214.0	17	193.8	16	180.8	19
Gross operating surplus(a)	103.4	19	138.0	20	102.0	23	102.7	23
Interest paid	20.3	23	24.3	22	11.3	43	19.6	22
Cash operating surplus(b)	84.0	24	127.4	21	81.4	33	86.9	27
Gross indebtedness	266.5	19	260.6	19	183.8	33	250.9	18
Total net capital expenditure	36.9	24	60.3	31	39.9	32	69.7	25

GRAIN 0121 GRAIN-SHEEP/BEEF CATTLE 0122

Items	1994-95		1995-96		1995-96		1995-96	
	\$m	SE %	\$m	SE %	\$m	SE %	\$m	SE %
Sales from crops	226.9	16	334.1	12	84.3	21	138.1	16
Sales from livestock	27.0	32	50.8	32	88.9	20	135.5	22
Sales from livestock products	3.3	39	1.0	82	8.2	39	8.2	38
Turnover	297.3	16	425.4	12	227.9	22	323.9	15
Purchases and selected expenses	151.4	17	195.4	13	130.1	21	199.8	17
Value added(a)	158.7	16	221.0	13	118.2	22	101.0	21
Adjusted value added(a)	143.1	17	199.3	13	103.8	23	78.5	24
Gross operating surplus(a)	128.3	18	171.8	14	92.9	23	63.4	27
Interest paid	16.8	21	28.8	19	22.7	24	44.2	18
Cash operating surplus(b)	101.3	18	161.0	14	49.5	44	43.5	36
Gross indebtedness	354.3	21	267.1	21	238.5	22	528.5	21
Total net capital expenditure	40.6	30	35.1	50	32.6	39	28.2	30

(a) Includes an estimate for the value of the increase in livestock.

(b) Excludes an estimate for the value of the increase in livestock.

NOTE: Standard error of change between two successive years is 1.3 times the standard error of the estimate (except for the all industries estimate where it is equal to the standard error of the estimate). Standard error of change between estimates two years apart could be as high as 1.8 times the standard error of the estimate (except for the all industries estimate where it could be 1.5 times the standard error of the estimate).

Items	SHEEP-BEEF CATTLE 0123				SHEEP 0124			
	1994-95	SE	1995-96	SE	1994-95	SE	1995-96	SE
	\$m	%	\$m	%	\$m	%	\$m	%
Sales from crops	12.9	86	0.4	73	0.4	57	1.0	—
Sales from livestock	48.6	17	68.4	18	20.5	64	41.0	29
Sales from livestock products	108.8	16	65.9	24	72.8	42	70.9	19
Turnover	196.1	15	152.1	18	98.5	36	124.0	15
Purchases and selected expenses	122.1	16	91.0	18	50.6	33	68.0	21
Value added(a)	112.5	21	62.8	31	49.5	40	55.9	42
Adjusted value added(a)	96.6	22	47.9	37	41.6	43	45.2	51
Gross operating surplus(a)	83.7	24	29.5	52	34.1	51	31.7	74
Interest paid	17.9	31	11.9	28	7.6	61	14.6	32
Cash operating surplus(b)	27.2	26	16.5	87	25.2	55	18.6	42
Gross indebtedness	185.0	26	181.9	36	110.9	56	175.6	44
Total net capital expenditure	16.8	31	3.7	43	8.0	56	14.3	68

Items	BEEF CATTLE 0125				DAIRY CATTLE 0130			
	1994-95	SE	1995-96	SE	1994-95	SE	1995-96	SE
	\$m	%	\$m	%	\$m	%	\$m	%
Sales from crops	54.0	24	45.7	26	15.6	67	10.3	89
Sales from livestock	1 288.1	6	1 193.1	6	24.7	20	24.2	21
Sales from livestock products	11.9	49	10.0	57	299.1	13	288.7	11
Turnover	1 487.1	6	1 475.8	7	353.6	12	342.3	10
Purchases and selected expenses	930.6	6	862.9	7	253.4	11	216.7	11
Value added(a)	301.3	22	-76.6	94	144.8	17	127.3	15
Adjusted value added(a)	195.6	33	-186.8	40	127.5	19	112.3	17
Gross operating surplus(a)	83.2	76	-309.8	25	111.4	21	93.4	19
Interest paid	140.3	17	137.9	10	26.1	16	32.3	22
Cash operating surplus(b)	205.7	22	264.5	18	42.9	40	63.6	26
Gross indebtedness	1 808.0	13	1 733.9	11	279.9	21	296.5	27
Total net capital expenditure	161.0	13	78.6	14	48.0	29	29.7	25

(a) Includes an estimate for the value of the increase in livestock.

(b) Excludes an estimate for the value of the increase in livestock.

NOTE: Standard error of change between two successive years is 1.3 times the standard error of the estimate (except for the all industries estimate where it is equal to the standard error of the estimate). Standard error of change between estimates two years apart could be as high as 1.8 times the standard error of the estimate (except for the all industries estimate where it could be 1.5 times the standard error of the estimate).

Items	PIGS 0151				SUGAR 0161			
	1994-95		1995-96		1994-95		1995-96	
	\$m	SE %	\$m	SE %	\$m	SE %	\$m	SE %
Sales from crops	24.7	18	10.0	14	1 184.1	5	1 142.8	8
Sales from livestock	173.7	6	191.2	10	10.7	38	11.7	43
Sales from livestock products	11.8	63	7.4	—	—	—	—	—
Turnover	232.2	6	227.8	9	1 309.9	6	1 263.6	9
Purchases and selected expenses	179.6	7	157.8	9	581.5	6	589.5	8
Value added(a)	62.8	16	52.2	24	729.5	6	671.0	9
Adjusted value added(a)	51.9	20	43.2	28	663.6	6	601.0	10
Gross operating surplus(a)	34.5	30	27.4	43	547.4	6	475.2	11
Interest paid	12.6	15	11.3	16	35.1	21	41.1	21
Cash operating surplus(b)	11.7	79	34.4	12	520.3	8	465.1	12
Gross indebtedness	162.8	14	115.5	15	694.1	20	701.1	17
Total net capital expenditure	16.1	12	7.7	24	131.7	17	148.9	30

Items	COTTON 0162				OTHER AGRICULTURE 0111-0112, 0141-0142, 0152-0159, 0169.....			
	1994-95		1995-96		1994-95		1995-96	
	\$m	SE %	\$m	SE %	\$m	SE %	\$m	SE %
Sales from crops	269.6	11	347.4	29	340.6	16	173.4	*
Sales from livestock	2.9	26	19.4	39	171.4	41	72.9	27
Sales from livestock products	0.6	29	0.3	*	34.3	39	29.6	58
Turnover	304.4	13	393.9	28	593.2	15	318.7	75
Purchases and selected expenses	176.6	14	219.6	26	332.2	20	178.4	66
Value added(a)	134.0	13	170.8	30	293.3	14	114.8	*
Adjusted value added(a)	120.2	13	157.4	31	258.4	15	96.8	*
Gross operating surplus(a)	100.7	15	137.0	37	177.4	18	40.3	*
Interest paid	16.4	12	22.7	42	32.3	32	18.2	60
Cash operating surplus(b)	79.7	16	120.8	37	122.8	26	53.6	*
Gross indebtedness	269.3	16	319.6	40	371.0	27	224.8	90
Total net capital expenditure	38.8	27	40.6	22	37.0	18	15.8	82

(a) Includes an estimate for the value of the increase in livestock.

(b) Excludes an estimate for the value of the increase in livestock.

NOTE: Standard error of change between two successive years is 1.3 times the standard error of the estimate (except for the all industries estimate where it is equal to the standard error of the estimate). Standard error of change between estimates two years apart could be as high as 1.8 times the standard error of the estimate (except for the all industries estimate where it could be 1.5 times the standard error of the estimate).

AGRICULTURE ALL INDUSTRIES

Items	1994-95	SE	1995-96(c)	SE
	\$m	%	\$m	%
Sales from crops	3 028.4	4	3 079.8	9
Sales from livestock	1 874.7	5	1 828.7	4
Sales from livestock products	555.5	9	486.2	8
Turnover	6 004.9	3	5 982.9	5
Purchases and selected expenses	3 406.3	4	3 273.3	5
Value added(a)	2 518.7	4	1 930.6	10
Adjusted value added(a)	2 176.0	5	1 589.4	11
Gross operating surplus(a)	1 599.0	6	1 000.4	15
Interest paid	359.5	8	406.7	6
Cash operating surplus(b)	1 351.6	6	1 455.7	8
Gross indebtedness	4 924.3	6	5 055.9	7
Total net capital expenditure	607.5	7	532.6	11

(a) Includes an estimate for the value of the increase in livestock.

(b) Excludes an estimate for the value of the increase in livestock.

(c) Includes Poultry 0141-0142.

NOTE: Standard error of change between two successive years is 1.3 times the standard error of the estimate (except for the all industries estimate where it is equal to the standard error of the estimate). Standard error of change between estimates two years apart could be as high as 1.8 times the standard error of the estimate (except for the all industries estimate where it could be 1.5 times the standard error of the estimate).

Items	1991-92		1992-93		1993-94	
	\$m	SE %	\$m	SE %	\$m	SE %
Sales from crops	1 817.5	5	2 090.5	4	2 441.4	4
Sales from livestock	1 478.1	5	1 678.3	4	1 866.4	6
Sales from livestock products	582.9	7	471.4	7	451.5	9
Turnover	4 183.1	3	4 595.3	3	5 179.3	3
Purchases and selected expenses	2 451.7	3	2 598.2	3	3 046.7	4
Value added(a)	1 611.1	5	1 942.1	4	2 099.1	5
Adjusted value added(a)	1 342.7	5	1 661.6	5	1 786.5	6
Gross operating surplus(a)	902.6	8	1 237.5	6	1 278.5	8
Interest paid	399.3	6	340.8	6	324.4	7
Cash operating surplus(b)	695.5	8	987.1	6	1 024.4	9
Gross indebtedness	3 508.9	6	3 606.9	5	4 201.1	6
Total net capital expenditure	298.4	11	358.2	8	487.5	7

Items	1994-95		1995-96		1996-97 ^p	
	\$m	SE %	\$m	SE %	\$m	SE %
Sales from crops	3 028.4	4	3 079.8	9	3 430.1	6
Sales from livestock	1 874.7	5	1 828.7	4	1 734.4	6
Sales from livestock products	555.5	9	486.2	8	490.0	13
Turnover	6 004.9	3	5 982.9	5	6 273.1	4
Purchases and selected expenses	3 406.3	4	3 273.3	5	3 542.7	4
Value added(a)	2 518.7	4	1 930.6	10	2 212.6	6
Adjusted value added(a)	2 176.0	5	1 589.4	11	1 837.5	7
Gross operating surplus(a)	1 599.0	6	1 000.4	15	1 143.3	9
Interest paid	359.5	8	406.7	6	414.9	7
Cash operating surplus(b)	1 351.6	6	1 455.7	8	1 313.9	6
Gross indebtedness	4 924.3	6	5 055.9	7	5 160.9	7
Total net capital expenditure	607.5	7	532.6	11	581.5	9

(a) Includes an estimate for the value of the increase in livestock.

(b) Excludes an estimate for the value of the increase in livestock.

NOTE: Standard error of change between two successive years is 1.3 times the standard error of the estimate (except for the all industries estimate where it is equal to the standard error of the estimate). Standard error of change between estimates two years apart could be as high as 1.8 times the standard error of the estimate (except for the all industries estimate where it could be 1.5 times the standard error of the estimate).

	1991-92	1992-93	1993-94	1994-95	1995-96	1996-97 ^p
Items	\$'000	\$'000	\$'000	\$'000	\$'000	\$'000
Sales from crops	81.5	97.8	108.6	134.0	136.6	152.0
Sales from livestock	66.3	78.5	83.0	83.0	81.1	77.0
Sales from livestock products	26.1	22.1	20.1	24.6	21.6	22.0
Turnover	187.5	215.0	230.4	265.8	265.4	277.0
Purchases and selected expenses	109.9	121.6	135.5	150.8	145.2	157.0
Value added(a)	72.2	90.9	93.4	111.5	85.6	98.0
Adjusted value added(a)	60.2	77.8	79.5	96.3	70.5	81.0
Gross operating surplus(a)	40.5	57.9	56.9	70.8	44.4	51.0
Interest paid	17.9	15.9	14.4	15.9	18.0	18.0
Cash operating surplus(b)	31.2	46.2	45.6	59.8	64.6	58.0
Gross indebtedness	157.3	168.8	186.9	217.9	224.3	228.0
Total net capital expenditure	13.4	16.8	21.7	26.9	23.6	26.0

(a) Includes an estimate for the value of the increase in livestock.

(b) Excludes an estimate for the value of the increase in livestock.

NOTE: Standard error of change between two successive years is 1.3 times the standard error of the estimate (except for the all industries estimate where it is equal to the standard error of the estimate). Standard error of change between estimates two years apart could be as high as 1.8 times the standard error of the estimate (except for the all industries estimate where it could be 1.5 times the standard error of the estimate).

EXPLANATORY NOTES

INTRODUCTION

1 This publication contains statistics on crops, livestock and livestock products and characteristics of farms; it includes some summary information on the financial performance of agricultural industries and the value of agricultural commodities produced.

SCOPE AND COVERAGE

2 The statistics on crops (including horticulture), livestock numbers, structure of agricultural industries, land management and farm inputs are derived from the annual agricultural census conducted throughout Australia at 31 March, which collects data from establishments with agricultural activity.

3 Establishments which make only a small contribution to overall agricultural production are excluded from the scope of the census. Information is collected from establishments when their estimated value of agricultural operations (EVAO) is above a certain level. These levels have varied in past agricultural censuses, as follows:

- | | |
|----------------------|-----------------------------|
| ■ 1993-94 to present | EVAO \$5,000 and over; |
| ■ 1991-92 to 1992-93 | EVAO \$22,500 and over; |
| ■ 1986-87 to 1990-91 | EVAO \$20,000 and over; and |
| ■ 1982-83 to 1985-86 | EVAO \$2,500 and over. |

4 Table 1 shows the number of agricultural establishments having an EVAO of \$5,000 and over according to the population frame selected for the agricultural census. Once data on these units are collected and processed a small number of them are found to have an EVAO of less than \$5,000. These are shown in the first column in table 5. Some units are found to have an EVAO of zero; these are shown as 'unclassified' in tables 1, 5 and 6.

5 The effect of the lower EVAO cut off of \$5,000 and over from 1993-94 onwards is to include smaller agricultural establishments that have been excluded in previous years. However, because of their small size they are not expected to change greatly the overall commodity totals. Nevertheless, the changes in scope between years mean that care must be taken in comparing census results over time.

6 Information covering commodities such as livestock slaughtering, dairy produce and beekeeping is obtained from separate ABS collections and from organisations such as the Australian Dairy Corporation.

REFERENCE PERIOD

7 Statistics about crops, pastures, vegetables and fruit relate, in general, to the season ended 31 March. Where harvesting was not completed by 31 March 1997 (for example, maize, rice, apples, grapes and late planted potatoes), the production statistics relate to the completed harvest.

EXPLANATORY NOTES *continued*

ESTABLISHMENTS WITH AGRICULTURAL ACTIVITY

8 An establishment with agricultural activity is a single physical location which is used for the production of crops (including fruit and vegetables) and/or for the raising of livestock and the production of livestock products.

INDUSTRY AND SIZE CLASSIFICATION

9 Establishments in the agricultural sector were classified in accordance with the methodology described in the 1993 *Australian and New Zealand Standard Industrial Classification (ANZSIC)* (1292.0).

10 The process of determining the industry class for ANZSIC is the 'step by step' method of classification described in Chapter 4 of the *Australian Standard Industrial Classification* (1201.0). This method requires that the Division code of the unit be determined first. The Subdivision code within the major Division of the unit is then determined, followed by the Group code and finally the Class code of the unit.

11 The Group and Class codes of agricultural units are determined annually by valuing physical crop and livestock information collected in the agricultural census. The valuation procedure allows for the industry classification of individual units to be changed to reflect significant or long term changes in their activities.

12 However, the valuation procedure provides for a dampening or resistance effect to offset instability in allocation to particular classes of the classification which would arise from short-term factors such as floods and drought. To obviate such effects, the valuation procedure takes into account (without double counting) the area of crops sown and numbers of livestock on holdings at a point in time as well as the crops produced and livestock turnoff during the year. The resultant aggregation of these commodity values is termed the estimated value of agricultural operations (EVAO). It should be noted that EVAO is applicable *only for industry coding and size valuation purposes*. It is not an indicator of receipts obtained by units or of the value of agricultural commodities produced by these units.

DEFINITIONS OF TERMS USED

13 The following are definitions of terms used in the tables of this publication:

- *agricultural establishment* is an establishment which is engaged *mainly* in agricultural activities; and
- *establishment with agricultural activity* is a land-based establishment which is engaged in agricultural activity, regardless of the unit's predominant activity.

CROPS, PASTURES AND HORTICULTURE

14 Statistics of areas and production of crops relate, in the main, to crops sown during the year ended 31 March. Statistics of perennial crops relate to the position as at 31 March and the production during the year ended on that date, or of fruit set by that date. For example, particulars of area, production and yield per hectare of wheat in Australia refer to wheat sown during the period from April to September and harvested between October and the following February, i.e. the 1996-97 season relates to the harvesting period October 1996 to February 1997.

EXPLANATORY NOTES *continued*

Statistics of other crops which in some States are harvested after 31 March 1997 (e.g. maize, potatoes, apples and pears) are collected by supplementary census returns and are included in this publication.

LIVESTOCK SLAUGHTERING AND LIVESTOCK PRODUCTS

15 The statistics on slaughtering and meat production are based on a monthly collection from abattoirs and other major slaughtering establishments and include estimates of animals slaughtered on farms and by country butchers and other small slaughtering establishments. Care should be taken when using this information as the figures only relate to slaughtering for human consumption and do not include animals condemned or those killed for boiling down. Also, definitions of livestock categories may differ between States and within States, particularly with regard to calves.

WOOL

16 Wool receivals statistics show the amount of taxable wool received by brokers and dealers from wool producers. They exclude wool received by brokers on which wool tax has already been paid by other dealers (private buyers) or brokers. The information shown is on the basis of the State in which the wool has actually been received and does not necessarily reflect the production of wool in that State.

17 The wool estimates contained in table 45 are obtained from these major sources:

(i) A monthly collection of National Council of Wool Selling Brokers of Australia in each State and incorporated in this publication with reference to the twelve months to 30 June. The data are compiled in terms of bales received into stores and converted to wool receivals in tonnes.

(ii) A monthly ABS collection of other wool brokers and dealers in each State, also incorporated with reference to the twelve months to 30 June. Data are reported in tonnes, or converted to tonnes as required.

MILK

18 These statistics have been collected by the Australian Dairy Corporation (ADC).

POULTRY

19 Poultry slaughtering statistics have been compiled from returns supplied by commercial poultry slaughtering establishments.

BEEKEEPING

20 Beekeepers are included in this collection if they have a minimum EVAO of \$5,000, whether for beekeeping alone or in conjunction with other agricultural activities.

AGRICULTURAL FINANCE SURVEY

21 The financial estimates in this publication have been derived from estimates from the Agricultural Finance Survey (AFS). The survey aims to meet demands of users who require annual financial statistics on a consistent basis across all agricultural industries in each State and Australia.

EXPLANATORY NOTES *continued*

22 More detailed information including an outline of the reliability of the estimates and their standard errors is published in *Agricultural Industries Financial Statistics, Australia* (7507.0).

SCOPE AND COVERAGE OF THE AFS

23 The population of the AFS consisted of all economic units (management units) the principal activity of which resulted in their being classified within Sub-division 01 'Agriculture' of the ANZSIC and which had an EVAO of \$22,500 or more.

VALUE OF AGRICULTURAL COMMODITIES PRODUCED

24 This publication contains summary information on the value of agricultural commodities produced (VACP) compiled annually for all States and Australia. The summary information contains gross values of production for selected agricultural commodities. More detailed information is available in *Value of Agricultural Commodities Produced, Australia* (7503.0).

SCOPE AND COVERAGE OF VACP STATISTICS

25 The statistics are derived by multiplying quantity data by price (or unit value) data. The quantity data are collected in the agricultural censuses and other ABS collections with some information from external sources. All price information is obtained from non-ABS sources.

PRICE AND MARKETING COSTS DATA

26 The method of collection of relevant prices for, and the costs of marketing of agricultural commodities vary considerably amongst States and commodities. Where a statutory authority handles marketing of the whole or portion of a product (e.g. Australian Wheat Board, Australian Barley Board) data are usually obtained from this source. Information is also obtained from marketing reports, wholesalers, brokers and auctioneers. For all commodities, values are in respect of production during the year (or season) irrespective of whether or when payments are made. For that portion of production not marketed (e.g. hay grown on farm for own use, milk used in farm household, etc.) estimates are made from the best available information and, in general, are valued on a local value basis.

DEFINITION OF GROSS VALUE

27 Gross value of commodities produced is the value placed on recorded production at the wholesale prices realised in the market place.

OTHER FORMS OF RELEASE

28 The ABS also has more detailed agricultural statistics on microfiche, floppy disk and CD ROM. AgStats on CD ROM offers a wider range of data aggregated at smaller geographic areas than those generally available in printed publications, together with an easy-to-use interrogation facility.

29 Current publications produced by the ABS are listed in the *Catalogue of Publications and Products, Australia* (1101.0). The ABS also issues, on Tuesdays and Fridays, a *Publications Advice* (1105.0) which lists publications to be released in the next few days. The Catalogue and Publications Advice are available from any ABS office.

EXPLANATORY NOTES *continued*

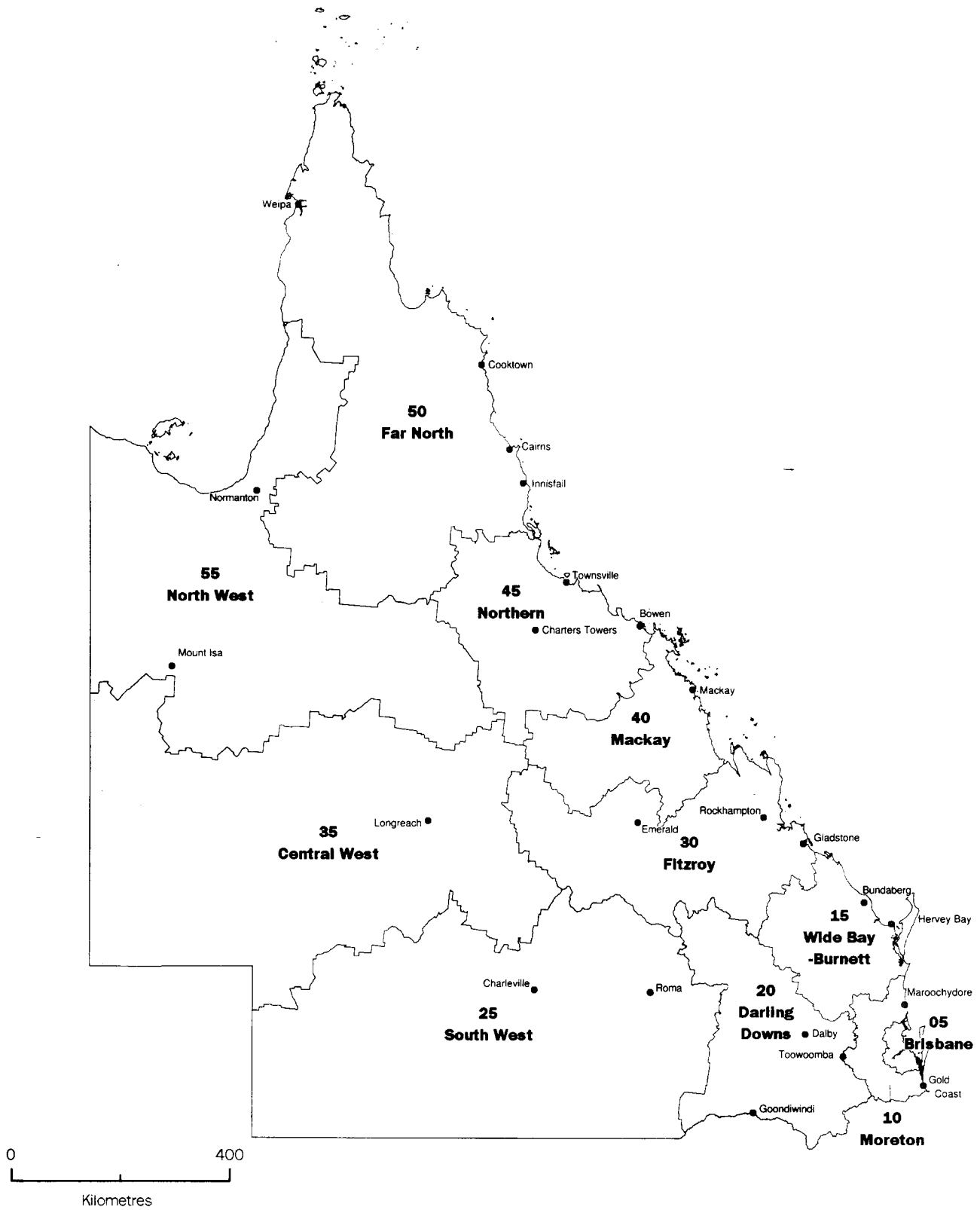
UNPUBLISHED STATISTICS

30 As well as the statistics in this and related publications, the ABS may have other unpublished data available. Inquiries should be directed to Information Services on Brisbane (07) 3222 6351.

31 The figures shown in this publication have been revised where necessary and as a consequence may not agree with similar data shown in previous publications.

32 Where the figures have been rounded, discrepancies may occur between sums of the component items and totals.

STATISTICAL DIVISIONS OF QUEENSLAND AT 1 JULY 1996







FOR MORE INFORMATION...

SELF-HELP ACCESS TO STATISTICS

PHONE Call 1900 986 400 for the latest statistics on CPI, Labour Force, Earnings, National Accounts, Balance of Payments and other topics. (Call cost is 75c per minute)

INTERNET <http://www.abs.gov.au>

LIBRARY A range of ABS publications is available from public and tertiary libraries Australia wide. Contact your nearest library to determine whether it has the ABS statistics you require.

WHY NOT SUBSCRIBE?

PHONE +61 1300 366 323

FAX +61 3 9615 7848

CONTACTING THE ABS

ABS provides a range of services, including: a telephone inquiry service; information consultancy tailored to your needs; survey, sample and questionnaire design; survey evaluation and methodological reviews; and statistical training.

<i>INQUIRIES</i>	<i>By phone</i>	<i>By fax</i>
Canberra	02 6252 6627	02 6253 1404
Sydney	02 9268 4611	02 9268 4668
Melbourne	03 9615 7755	03 9615 7798
Brisbane	07 3222 6351	07 3222 6283
Perth	08 9360 5140	08 9360 5955
Adelaide	08 8237 7400	08 8237 7566
Hobart	03 6222 5800	03 6222 5995
Darwin	08 8943 2111	08 8981 1218

POST Client Services, ABS, PO Box 10, Belconnen, ACT 2616

EMAIL client.services@abs.gov.au



2711330007963

ISSN 1322-8668

RRP \$23.00