

# LABOUR FORCE

AUSTRALIA  
PRELIMINARY

EMBARGO: 11:30AM (CANBERRA TIME) THURS 9 APR 1998

## MARCH KEY FIGURES

### TREND ESTIMATES

	Feb 98	Mar 98	monthly change
Employed persons ('000)	8 525.9	8 528.7	0.0 %
Unemployed persons ('000)	755.3	752.9	-0.3 %
Unemployment rate (%)	8.1	8.1	0.0 pts
Participation rate (%)	63.2	63.1	-0.1 pts

### SEASONALLY ADJUSTED

	Feb 98	Mar 98	monthly change
Employed persons ('000)	8 529.4	8 513.9	-15.5
Unemployed persons ('000)	751.0	760.4	9.5
Unemployment rate (%)	8.1	8.2	0.1 pts
Participation rate (%)	63.2	63.0	-0.1 pts

## MARCH KEY POINTS

### TREND ESTIMATES

#### EMPLOYMENT

- remained relatively steady at 8,528,700 in March 1998.

#### UNEMPLOYMENT

- continued to fall steadily, and was 752,900 in March 1998.

#### UNEMPLOYMENT RATE

- remained at 8.1% in March 1998.

#### PARTICIPATION RATE

- fell slightly to 63.1% in March 1998.

### SEASONALLY ADJUSTED ESTIMATES

#### EMPLOYMENT

- fell by 15,500 in March 1998 to 8,513,900, due to a fall in part-time employment of 15,500.

#### UNEMPLOYMENT

- rose by 9,500 to 760,400 with the number of people looking for full-time work rising by 20,700 and the number looking for part-time work falling by 11,200.

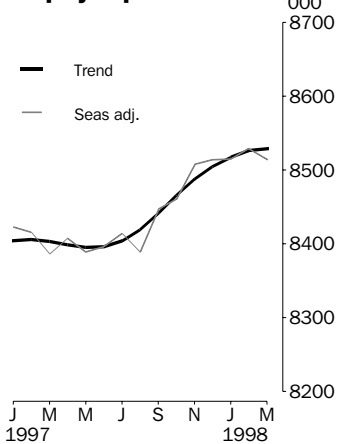
#### UNEMPLOYMENT RATE

- rose by 0.1 percentage points to 8.2%. The male rate remained steady at 8.4% and the female rate rose by 0.3 points to 8.0%.
- NSW 7.5% (7.7% last month); Vic. 8.7% (8.0%); Qld 8.3% (8.9%); SA 10.1% (9.9%); WA 7.0% (7.0%); Tas. 11.1% (10.3%).

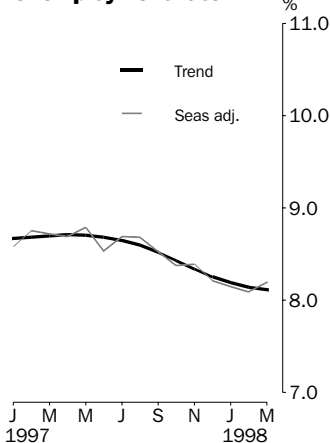
#### PARTICIPATION RATE

- fell by 0.1 percentage points to 63.0%.

### Employed persons



### Unemployment rate



- For further information about these and related statistics, contact Matthew Paull on 02 6252 6525 or any ABS office shown on the back cover of this publication.

# NOTES

## FORTHCOMING ISSUES

ISSUE	RELEASE DATE
April 1998	7 May 1998
May 1998	11 June 1998
June 1998	9 July 1998
July 1998	6 August 1998
August 1998	10 September 1998
September 1998	8 October 1998



## CHANGES THIS MONTH

Following each Census of Population and Housing, the ABS selects a new sample for the Labour Force Survey. This is done to ensure that the sample continues to accurately represent the distribution of the Australian population. A new sample has recently been selected based on the 1996 Census. The bulk of the new sample is being phased in over the period September 1997 to April 1998, with one eighth of this portion of the sample being introduced each month. The remainder of the sample (about 15% of the total), which covers less settled areas of Australia and non-private dwellings, was rotated in fully in September 1997 for New South Wales, Victoria, Tasmania, Northern Territory and Australian Capital Territory and in October 1997 for Queensland, South Australia and Western Australia.

Detailed information about the new sample is provided in *Information Paper: Labour Force Survey Sample Design* (cat. no. 6269.0), which was released on 2 September 1997.



## ROUNDING

Estimates of monthly change shown on page 1 have been calculated using unrounded estimates, and may be different from, but are more accurate than, movements obtained from the rounded estimates. The graphs on page 1 also depict movements calculated from unrounded estimates.



## SAMPLING ERRORS

The estimates in this publication are based on a sample survey. Because the entire population is not enumerated, the published estimates and the movements derived from them are subject to sampling variability. Standard errors give a measure of this variability and appear on pages 30 and 31.

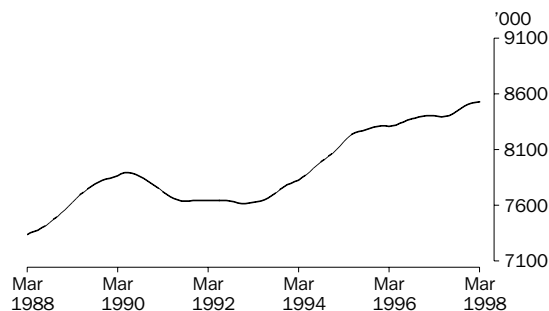


W. McLennan  
Australian Statistician

## PRINCIPAL LABOUR FORCE SERIES: Trend estimates

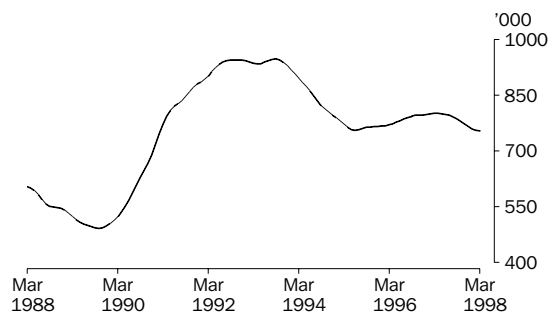
### EMPLOYED PERSONS

The trend estimate of employed persons rose strongly from 7,616,000 in January 1993, until early 1996. Apart from some small periods of decline in early 1996 and early 1997, the trend then continued to rise slowly. In recent months the trend estimate has risen more strongly, to 8,528,700 in March 1998.



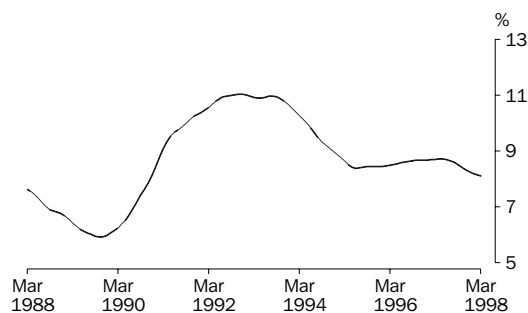
### UNEMPLOYED PERSONS

The trend estimate of unemployment peaked at 947,800 in September 1993, before falling rapidly to 755,200 in June 1995. The trend then rose slowly for almost two years, reaching 801,400 in April 1997. Since then, the trend has been falling steadily, and was 752,900 in March 1998.



### UNEMPLOYMENT RATE

From a high of 11.0% in late 1992 and again in mid 1993, the trend unemployment rate fell steadily to 8.4% in May 1995. The trend then rose slowly to measure 8.7% between September 1996 and June 1997. Recently, the trend estimate has been falling steadily and stood at 8.1% in March 1998.

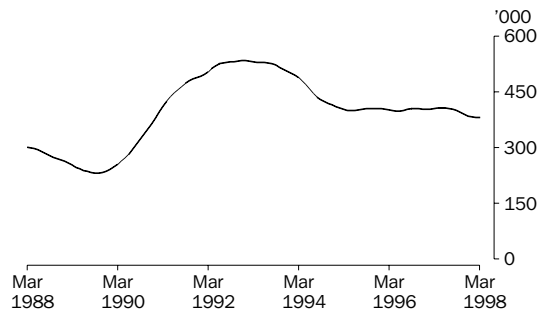


# UNEMPLOYED PERSONS: Trend estimates

## UNEMPLOYED MALES LOOKING FOR FULL TIME WORK

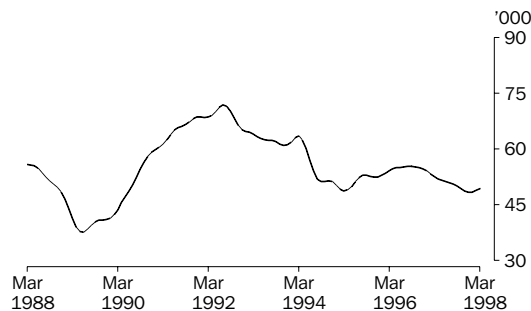
### TOTAL

From a high of 533,700 in December 1992, the trend estimate of unemployed males looking for full-time work fell to 399,400 in May 1995. The trend estimate then remained relatively flat until May 1997. Since then, the trend estimate has been falling slowly, and was 380,700 in March 1998.



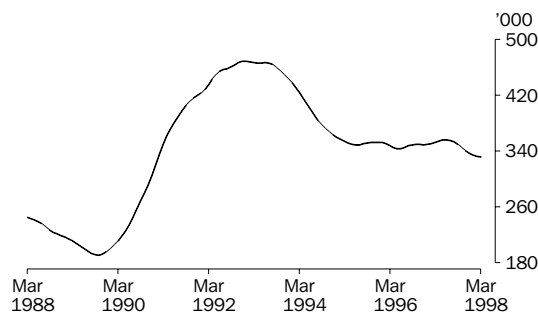
### MALES AGED 15-19

From a peak of 71,900 in July 1992, the trend estimate of junior males looking for full-time work fell to 48,600 in March 1995. The trend then rose to reach 55,300 in August 1996, before falling to 48,400 in December 1997. In recent months the trend has risen slightly, to 49,400 in March 1998.



### MALES AGED 20 AND OVER

The trend estimate of the number of adult males looking for full-time work fell rapidly from a peak of 468,800 in January 1993 to 348,700 in June 1995. The trend estimate remained relatively steady for the next two years before falling steadily to 331,300 in March 1998.

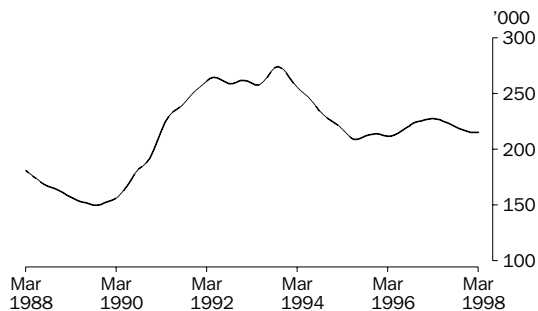


# UNEMPLOYED PERSONS: Trend estimates

## UNEMPLOYED FEMALES LOOKING FOR FULL TIME WORK

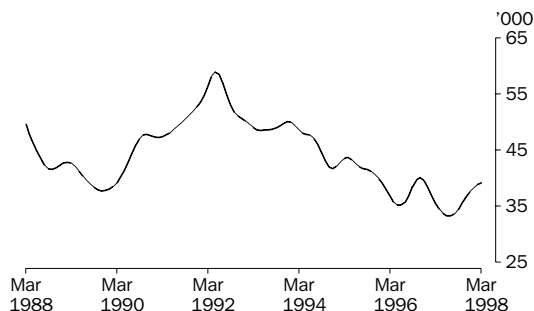
### TOTAL

After peaking at 274,100 in October 1993, the trend estimate of unemployed females looking for full-time work fell rapidly to 208,700 in July 1995. Apart from a small fall in early 1996 the trend rose steadily to 227,500 in March 1997. The trend estimate has been falling throughout the past year, and was 215,300 in March 1998.



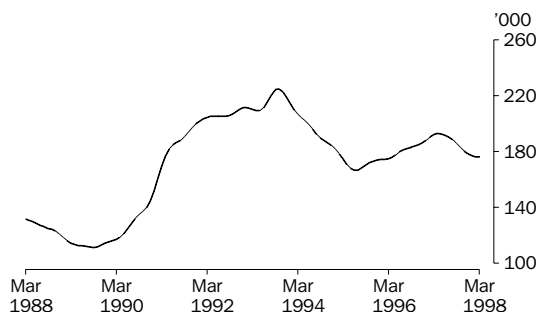
### FEMALES AGED 15-19

From a peak of 58,900 in May 1992, the trend estimate of junior females looking for full-time work fell to 35,200 in May 1996. The trend estimate then rose for 6 months before falling rapidly until July 1997 when it stood at 33,200. Since then, the trend estimate has risen, to 39,200 in March 1998.



### FEMALES AGED 20 AND OVER

From a peak of 224,900 in October 1993, the trend estimate of adult females looking for full-time work fell rapidly to 166,400 in June 1995. The trend estimate then increased steadily to 192,800 in April 1997. Since then, the trend has again been falling rapidly, and was 176,100 in March 1998.



## LABOUR FORCE STATUS (AGED 15 AND OVER): Original

Month	EMPLOYED.....			UNEMPLOYED.....			Labour force	Not in labour force	Civilian population aged 15 and over	Unemployment rate	Participation rate
	Full time	Part time	Total	Looking for f/t work	Looking for p/t work	Total					
	'000	'000	'000	'000	'000	'000					
<b>MALES</b>											
<b>1997</b>											
January	4 221.2	531.2	4 752.4	435.0	65.3	500.3	5 252.6	1 871.5	7 124.2	9.5	73.7
February	4 210.6	527.3	4 737.9	451.7	61.9	513.6	5 251.4	1 880.0	7 131.4	9.8	73.6
March	4 186.6	568.9	4 755.6	418.4	69.5	487.9	5 243.5	1 895.2	7 138.7	9.3	73.5
April	4 189.4	578.1	4 767.5	396.9	63.3	460.2	5 227.7	1 919.5	7 147.1	8.8	73.1
May	4 183.6	577.1	4 760.7	402.9	55.2	458.1	5 218.8	1 936.8	7 155.6	8.8	72.9
June	4 191.0	591.4	4 782.4	384.4	52.0	436.4	5 218.8	1 945.3	7 164.1	8.4	72.8
July	4 231.3	562.9	4 794.2	397.5	50.1	447.6	5 241.8	1 930.9	7 172.8	8.5	73.1
August	4 153.3	575.9	4 729.2	398.5	49.4	447.8	5 177.0	2 004.4	7 181.4	8.7	72.1
September	4 235.5	581.0	4 816.6	399.5	70.0	469.5	5 286.1	1 904.0	7 190.1	8.9	73.5
October	4 234.5	577.3	4 811.8	370.2	56.5	426.7	5 238.5	1 961.2	7 199.7	8.1	72.8
November	4 238.8	582.6	4 821.4	378.3	59.0	437.2	5 258.7	1 950.6	7 209.3	8.3	72.9
December	4 309.7	586.8	4 896.5	380.0	66.5	446.5	5 343.0	1 875.9	7 218.9	8.4	74.0
<b>1998</b>											
January	4 270.0	541.9	4 811.9	417.8	59.9	477.8	5 289.7	1 936.9	7 226.6	9.0	73.2
February	4 261.2	554.5	4 815.7	412.9	70.0	482.9	5 298.7	1 935.6	7 234.3	9.1	73.2
March	4 246.0	587.4	4 833.4	396.2	63.3	459.5	5 292.9	1 949.1	7 242.0	8.7	73.1
<b>FEMALES</b>											
<b>1997</b>											
January	2 071.8	1 472.1	3 543.9	251.2	102.3	353.5	3 897.5	3 454.5	7 352.0	9.1	53.0
February	2 067.3	1 544.8	3 612.1	262.8	129.8	392.5	4 004.6	3 355.3	7 359.9	9.8	54.4
March	2 044.9	1 592.8	3 637.7	234.8	122.7	357.4	3 995.2	3 372.6	7 367.8	8.9	54.2
April	2 054.1	1 589.6	3 643.7	230.6	108.8	339.4	3 983.1	3 393.4	7 376.5	8.5	54.0
May	2 051.9	1 576.7	3 628.6	220.8	113.0	333.8	3 962.4	3 422.8	7 385.2	8.4	53.7
June	2 031.6	1 604.1	3 635.8	215.6	98.7	314.4	3 950.1	3 443.8	7 393.9	8.0	53.4
July	2 092.2	1 565.7	3 657.9	207.2	96.1	303.3	3 961.2	3 441.4	7 402.6	7.7	53.5
August	2 025.0	1 561.3	3 586.3	213.9	102.9	316.8	3 903.1	3 508.3	7 411.4	8.1	52.7
September	2 084.6	1 625.2	3 709.8	213.3	110.2	323.5	4 033.3	3 386.8	7 420.1	8.0	54.4
October	2 072.2	1 579.8	3 652.1	208.1	101.7	309.8	3 961.8	3 467.4	7 429.2	7.8	53.3
November	2 081.6	1 618.5	3 700.0	204.2	95.3	299.6	3 999.6	3 438.7	7 438.3	7.5	53.8
December	2 133.9	1 584.9	3 718.8	218.0	99.1	317.1	4 035.9	3 411.5	7 447.4	7.9	54.2
<b>1998</b>											
January	2 085.9	1 488.5	3 574.4	236.0	103.1	339.1	3 913.6	3 540.8	7 454.3	8.7	52.5
February	2 086.7	1 559.7	3 646.4	244.8	114.7	359.5	4 005.9	3 455.3	7 461.2	9.0	53.7
March	2 083.9	1 603.1	3 687.0	230.5	112.0	342.5	4 029.5	3 438.6	7 468.2	8.5	54.0
<b>PERSONS</b>											
<b>1997</b>											
January	6 293.0	2 003.3	8 296.3	686.2	167.6	853.8	9 150.1	5 326.0	14 476.2	9.3	63.2
February	6 277.9	2 072.0	8 349.9	714.5	191.6	906.1	9 256.1	5 235.2	14 491.3	9.8	63.9
March	6 231.5	2 161.8	8 393.3	653.2	192.2	845.4	9 238.7	5 267.8	14 506.5	9.2	63.7
April	6 243.5	2 167.6	8 411.2	627.5	172.2	799.6	9 210.8	5 312.8	14 523.6	8.7	63.4
May	6 235.5	2 153.8	8 389.3	623.7	168.2	791.9	9 181.2	5 359.6	14 540.8	8.6	63.1
June	6 222.6	2 195.5	8 418.1	600.1	150.7	750.8	9 168.9	5 389.1	14 558.0	8.2	63.0
July	6 323.5	2 128.6	8 452.1	604.7	146.2	750.9	9 203.0	5 372.4	14 575.4	8.2	63.1
August	6 178.4	2 137.1	8 315.5	612.4	152.2	764.6	9 080.1	5 512.7	14 592.8	8.4	62.2
September	6 320.2	2 206.2	8 526.4	612.8	180.2	793.0	9 319.4	5 290.9	14 610.3	8.5	63.8
October	6 306.7	2 157.2	8 463.9	578.3	158.1	736.4	9 200.3	5 428.6	14 628.9	8.0	62.9
November	6 320.4	2 201.1	8 521.5	582.5	154.3	736.8	9 258.3	5 389.3	14 647.6	8.0	63.2
December	6 443.6	2 171.7	8 615.2	598.0	165.7	763.6	9 378.9	5 287.4	14 666.3	8.1	63.9
<b>1998</b>											
January	6 355.9	2 030.4	8 386.3	653.9	163.0	816.9	9 203.2	5 477.7	14 680.9	8.9	62.7
February	6 347.9	2 114.2	8 462.1	657.7	184.8	842.5	9 304.6	5 390.9	14 695.5	9.1	63.3
March	6 329.9	2 190.5	8 520.4	626.7	175.3	802.0	9 322.4	5 387.7	14 710.1	8.6	63.4

LABOUR FORCE STATUS (AGED 15 AND OVER): **Seasonally adjusted**

Month	EMPLOYED.....			UNEMPLOYED.....			Labour force '000	Unemp- loyment rate %	Partic- ipation rate %
	Full time '000	Part time '000	Total '000	Looking for f/t work '000	Looking for p/t work '000	Total '000			
MALES									
<b>1997</b>									
January	4 223.8	560.0	4 783.7	394.8	59.5	454.3	5 238.1	8.7	73.5
February	4 207.1	551.8	4 758.9	414.6	57.1	471.8	5 230.6	9.0	73.3
March	4 203.4	559.3	4 762.7	409.8	59.3	469.1	5 231.8	9.0	73.3
April	4 201.6	567.5	4 769.1	404.2	60.7	464.8	5 233.9	8.9	73.2
May	4 193.5	572.4	4 765.9	405.6	57.7	463.3	5 229.2	8.9	73.1
June	4 199.9	578.6	4 778.5	394.5	57.5	452.0	5 230.6	8.6	73.0
July	4 207.8	568.7	4 776.6	417.7	56.7	474.4	5 251.0	9.0	73.2
August	4 195.4	567.0	4 762.4	406.5	55.8	462.4	5 224.7	8.8	72.8
September	4 224.2	566.7	4 790.9	399.5	64.7	464.3	5 255.2	8.8	73.1
October	4 233.3	574.3	4 807.6	391.4	59.6	451.0	5 258.6	8.6	73.0
November	4 247.0	584.5	4 831.5	391.5	66.4	457.9	5 289.4	8.7	73.4
December	4 248.4	587.8	4 836.3	382.5	62.6	445.1	5 281.4	8.4	73.2
<b>1998</b>									
January	4 271.4	572.1	4 843.5	378.6	54.9	433.5	5 277.0	8.2	73.0
February	4 257.3	580.6	4 837.8	379.2	64.8	444.0	5 281.9	8.4	73.0
March	4 263.3	577.8	4 841.1	387.9	54.0	441.8	5 282.9	8.4	72.9
FEMALES									
<b>1997</b>									
January	2 070.7	1 568.5	3 639.1	229.6	106.4	336.0	3 975.1	8.5	54.1
February	2 073.7	1 583.3	3 657.1	225.4	110.3	335.7	3 992.8	8.4	54.3
March	2 047.8	1 575.3	3 623.1	225.5	106.2	331.6	3 954.8	8.4	53.7
April	2 067.8	1 570.9	3 638.7	229.3	106.2	335.5	3 974.2	8.4	53.9
May	2 064.4	1 558.3	3 622.7	228.2	116.7	344.9	3 967.7	8.7	53.7
June	2 047.8	1 569.7	3 617.5	224.3	106.7	331.0	3 948.6	8.4	53.4
July	2 072.1	1 565.5	3 637.6	219.8	106.2	326.0	3 963.6	8.2	53.5
August	2 060.2	1 566.2	3 626.5	224.9	110.2	335.1	3 961.6	8.5	53.5
September	2 071.6	1 584.5	3 656.1	218.3	104.6	322.9	3 979.0	8.1	53.6
October	2 066.0	1 586.7	3 652.7	218.7	103.8	322.6	3 975.2	8.1	53.5
November	2 077.3	1 598.4	3 675.7	219.0	101.8	320.8	3 996.5	8.0	53.7
December	2 089.3	1 588.4	3 677.7	215.2	101.2	316.4	3 994.1	7.9	53.6
<b>1998</b>									
January	2 086.1	1 585.0	3 671.1	214.5	106.9	321.3	3 992.5	8.0	53.6
February	2 093.3	1 598.2	3 691.5	209.5	97.4	306.9	3 998.5	7.7	53.6
March	2 087.3	1 585.5	3 672.8	221.6	97.0	318.6	3 991.4	8.0	53.4
PERSONS									
<b>1997</b>									
January	6 294.4	2 128.4	8 422.9	624.4	165.9	790.4	9 213.2	8.6	63.6
February	6 280.8	2 135.1	8 416.0	640.0	167.4	807.5	9 223.4	8.8	63.6
March	6 251.2	2 134.6	8 385.8	635.3	165.5	800.8	9 186.6	8.7	63.3
April	6 269.4	2 138.4	8 407.8	633.4	166.9	800.3	9 208.1	8.7	63.4
May	6 257.9	2 130.7	8 388.6	633.8	174.5	808.2	9 196.8	8.8	63.2
June	6 247.7	2 148.4	8 396.1	618.8	164.3	783.1	9 179.2	8.5	63.1
July	6 280.0	2 134.2	8 414.2	637.5	162.9	800.4	9 214.6	8.7	63.2
August	6 255.6	2 133.2	8 388.8	631.4	166.1	797.5	9 186.3	8.7	63.0
September	6 295.8	2 151.2	8 447.0	617.8	169.3	787.1	9 234.2	8.5	63.2
October	6 299.3	2 161.0	8 460.3	610.1	163.4	773.5	9 233.8	8.4	63.1
November	6 324.3	2 182.9	8 507.2	610.5	168.2	778.7	9 285.9	8.4	63.4
December	6 337.8	2 176.2	8 514.0	597.7	163.8	761.5	9 275.5	8.2	63.2
<b>1998</b>									
January	6 357.5	2 157.1	8 514.6	593.1	161.8	754.8	9 269.5	8.1	63.1
February	6 350.6	2 178.8	8 529.4	588.7	162.2	751.0	9 280.3	8.1	63.2
March	6 350.5	2 163.3	8 513.9	609.4	151.0	760.4	9 274.3	8.2	63.0

## LABOUR FORCE STATUS (AGED 15 AND OVER): Trend(a)

Month	EMPLOYED.....			UNEMPLOYED.....			Labour force '000	Unemp- loyment rate %	Partic- ipation rate %
	Full time '000	Part time '000	Total '000	Looking for f/t work '000	Looking for p/t work '000	Total '000			
MALES									
<b>1997</b>									
January	4 213.6	553.7	4 767.4	403.2	59.0	462.2	5 229.6	8.8	73.4
February	4 210.2	557.4	4 767.7	403.9	59.2	463.1	5 230.7	8.9	73.3
March	4 205.5	562.1	4 767.6	405.3	58.9	464.2	5 231.8	8.9	73.3
April	4 200.8	566.5	4 767.2	406.5	58.4	464.9	5 232.1	8.9	73.2
May	4 198.0	569.3	4 767.3	407.0	58.0	464.9	5 232.3	8.9	73.1
June	4 198.4	570.6	4 769.0	406.6	57.7	464.4	5 233.3	8.9	73.1
July	4 202.4	571.0	4 773.4	405.5	58.3	463.8	5 237.2	8.9	73.0
August	4 210.0	571.7	4 781.7	403.4	59.3	462.7	5 244.4	8.8	73.0
September	4 220.3	573.0	4 793.3	399.8	60.6	460.4	5 253.7	8.8	73.1
October	4 231.9	575.2	4 807.1	394.7	61.7	456.4	5 263.5	8.7	73.1
November	4 242.7	577.7	4 820.5	389.3	62.1	451.4	5 271.9	8.6	73.1
December	4 251.8	579.6	4 831.4	385.1	61.6	446.7	5 278.1	8.5	73.1
<b>1998</b>									
January	4 258.7	580.3	4 839.1	382.5	60.6	443.1	5 282.1	8.4	73.1
February	4 264.0	580.3	4 844.4	381.1	59.4	440.5	5 284.9	8.3	73.1
March	4 266.5	579.9	4 846.4	380.7	57.9	438.6	5 285.0	8.3	73.0
FEMALES									
<b>1997</b>									
January	2 070.1	1 566.3	3 636.5	226.3	108.8	335.1	3 971.6	8.4	54.0
February	2 066.4	1 571.5	3 637.8	227.1	108.9	336.0	3 973.9	8.5	54.0
March	2 063.1	1 572.8	3 635.9	227.5	109.0	336.6	3 972.5	8.5	53.9
April	2 060.7	1 571.0	3 631.7	227.2	109.2	336.5	3 968.1	8.5	53.8
May	2 059.8	1 568.0	3 627.8	226.2	109.3	335.5	3 963.4	8.5	53.7
June	2 060.1	1 566.5	3 626.6	224.8	109.1	333.9	3 960.5	8.4	53.6
July	2 061.7	1 568.5	3 630.2	223.3	108.3	331.7	3 961.8	8.4	53.5
August	2 064.4	1 573.4	3 637.7	221.8	107.0	328.8	3 966.5	8.3	53.5
September	2 068.1	1 579.8	3 647.9	220.1	105.6	325.7	3 973.6	8.2	53.6
October	2 072.8	1 585.4	3 658.2	218.4	104.4	322.8	3 981.0	8.1	53.6
November	2 078.0	1 589.1	3 667.2	217.1	103.3	320.4	3 987.6	8.0	53.6
December	2 082.6	1 591.0	3 673.6	216.0	102.3	318.2	3 991.9	8.0	53.6
<b>1998</b>									
January	2 086.7	1 591.6	3 678.2	215.2	101.1	316.3	3 994.6	7.9	53.6
February	2 090.0	1 591.5	3 681.5	214.9	99.9	314.8	3 996.3	7.9	53.6
March	2 091.9	1 590.4	3 682.3	215.3	99.0	314.3	3 996.6	7.9	53.5
PERSONS									
<b>1997</b>									
January	6 283.8	2 120.1	8 403.8	629.5	167.8	797.3	9 201.2	8.7	63.6
February	6 276.6	2 128.9	8 405.5	631.0	168.1	799.1	9 204.6	8.7	63.5
March	6 268.7	2 134.9	8 403.5	632.8	168.0	800.8	9 204.3	8.7	63.4
April	6 261.5	2 137.4	8 398.9	633.7	167.7	801.4	9 200.3	8.7	63.3
May	6 257.8	2 137.4	8 395.1	633.2	167.3	800.5	9 195.6	8.7	63.2
June	6 258.5	2 137.1	8 395.6	631.4	166.9	798.3	9 193.8	8.7	63.2
July	6 264.1	2 139.5	8 403.6	628.8	166.6	795.5	9 199.1	8.6	63.1
August	6 274.3	2 145.1	8 419.4	625.2	166.3	791.5	9 210.9	8.6	63.1
September	6 288.4	2 152.7	8 441.2	619.8	166.3	786.1	9 227.3	8.5	63.2
October	6 304.7	2 160.6	8 465.3	613.1	166.1	779.2	9 244.5	8.4	63.2
November	6 320.8	2 166.8	8 487.6	606.4	165.4	771.9	9 259.5	8.3	63.2
December	6 334.4	2 170.6	8 505.0	601.1	163.9	764.9	9 269.9	8.3	63.2
<b>1998</b>									
January	6 345.4	2 171.9	8 517.3	597.7	161.7	759.4	9 276.7	8.2	63.2
February	6 354.1	2 171.8	8 525.9	596.0	159.3	755.3	9 281.2	8.1	63.2
March	6 358.4	2 170.3	8 528.7	595.9	156.9	752.9	9 281.6	8.1	63.1

(a) Estimates for September 1997 to February 1998 have been revised.



## UNEMPLOYED PERSONS: Original

Month	NUMBER OF UNEMPLOYED PERSONS.....					UNEMPLOYMENT RATE.....					UNEMPLOYMENT TO POPULATION RATIO	
	Aged 15-19 looking for f/t work	Aged 20 and over looking for f/t work	Total looking for f/t work	Looking for p/t work	Total	Aged 15-19 looking for f/t work	Aged 20 and over looking for f/t work	Total looking for f/t work	Looking for p/t work	Total	Aged 15-19 looking for f/t work	Aged 20 and over looking for f/t work
	'000	'000	'000	'000	'000	%	%	%	%	%	%	%
MALES												
<b>1997</b>												
January	60.5	374.5	435.0	65.3	500.3	26.7	8.5	9.3	10.9	9.5	9.2	5.8
February	62.6	389.1	451.7	61.9	513.6	29.1	8.7	9.7	10.5	9.8	9.5	6.0
March	55.2	363.2	418.4	69.5	487.9	28.4	8.2	9.1	10.9	9.3	8.4	5.6
April	50.2	346.7	396.9	63.3	460.2	25.3	7.9	8.7	9.9	8.8	7.6	5.3
May	51.8	351.1	402.9	55.2	458.1	27.7	8.0	8.8	8.7	8.8	7.9	5.4
June	47.9	336.5	384.4	52.0	436.4	26.7	7.7	8.4	8.1	8.4	7.3	5.2
July	47.1	350.5	397.5	50.1	447.6	24.5	7.9	8.6	8.2	8.5	7.1	5.4
August	44.4	354.1	398.5	49.4	447.8	25.1	8.1	8.8	7.9	8.7	6.7	5.4
September	44.7	354.8	399.5	70.0	469.5	24.0	8.0	8.6	10.8	8.9	6.8	5.4
October	44.7	325.5	370.2	56.5	426.7	23.3	7.4	8.0	8.9	8.1	6.8	5.0
November	43.7	334.5	378.3	59.0	437.2	23.9	7.5	8.2	9.2	8.3	6.6	5.1
December	56.9	323.1	380.0	66.5	446.5	27.2	7.2	8.1	10.2	8.4	8.6	4.9
<b>1998</b>												
January	59.2	358.6	417.8	59.9	477.8	26.9	8.0	8.9	10.0	9.0	8.9	5.5
February	52.3	360.7	412.9	70.0	482.9	25.3	8.1	8.8	11.2	9.1	7.8	5.5
March	54.5	341.7	396.2	63.3	459.5	26.8	7.7	8.5	9.7	8.7	8.2	5.2
FEMALES												
<b>1997</b>												
January	48.8	202.4	251.2	102.3	353.5	34.1	9.3	10.8	6.5	9.1	7.8	3.0
February	40.6	222.2	262.8	129.8	392.5	32.7	10.1	11.3	7.8	9.8	6.5	3.3
March	36.5	198.3	234.8	122.7	357.4	32.3	9.2	10.3	7.1	8.9	5.8	2.9
April	35.3	195.3	230.6	108.8	339.4	32.3	9.0	10.1	6.4	8.5	5.6	2.9
May	30.3	190.5	220.8	113.0	333.8	29.3	8.8	9.7	6.7	8.4	4.8	2.8
June	31.6	184.1	215.6	98.7	314.4	31.5	8.6	9.6	5.8	8.0	5.0	2.7
July	28.4	178.8	207.2	96.1	303.3	25.5	8.2	9.0	5.8	7.7	4.5	2.6
August	30.5	183.4	213.9	102.9	316.8	29.7	8.6	9.6	6.2	8.1	4.9	2.7
September	29.7	183.6	213.3	110.2	323.5	28.0	8.4	9.3	6.3	8.0	4.7	2.7
October	30.9	177.2	208.1	101.7	309.8	28.6	8.2	9.1	6.0	7.8	4.9	2.6
November	34.1	170.2	204.2	95.3	299.6	33.6	7.8	8.9	5.6	7.5	5.4	2.5
December	45.1	172.9	218.0	99.1	317.1	34.5	7.8	9.3	5.9	7.9	7.1	2.5
<b>1998</b>												
January	52.3	183.8	236.0	103.1	339.1	36.9	8.4	10.2	6.5	8.7	8.3	2.7
February	43.3	201.5	244.8	114.7	359.5	34.2	9.1	10.5	6.9	9.0	6.8	3.0
March	41.1	189.4	230.5	112.0	342.5	35.1	8.6	10.0	6.5	8.5	6.5	2.8
PERSONS												
<b>1997</b>												
January	109.3	576.9	686.2	167.6	853.8	29.6	8.7	9.8	7.7	9.3	8.5	4.4
February	103.2	611.2	714.5	191.6	906.1	30.4	9.2	10.2	8.5	9.8	8.1	4.6
March	91.7	561.5	653.2	192.2	845.4	29.8	8.5	9.5	8.2	9.2	7.1	4.2
April	85.5	542.0	627.5	172.2	799.6	27.8	8.3	9.1	7.4	8.7	6.7	4.1
May	82.0	541.7	623.7	168.2	791.9	28.3	8.2	9.1	7.2	8.6	6.4	4.1
June	79.5	520.6	600.1	150.7	750.8	28.4	8.0	8.8	6.4	8.2	6.2	3.9
July	75.4	529.3	604.7	146.2	750.9	24.9	8.0	8.7	6.4	8.2	5.9	4.0
August	74.9	537.5	612.4	152.2	764.6	26.8	8.3	9.0	6.6	8.4	5.8	4.0
September	74.5	538.4	612.8	180.2	793.0	25.4	8.1	8.8	7.6	8.5	5.8	4.0
October	75.6	502.7	578.3	158.1	736.4	25.2	7.6	8.4	6.8	8.0	5.9	3.8
November	77.8	504.7	582.5	154.3	736.8	27.4	7.6	8.4	6.6	8.0	6.0	3.8
December	102.0	496.0	598.0	165.7	763.6	30.0	7.4	8.5	7.1	8.1	7.9	3.7
<b>1998</b>												
January	111.5	542.4	653.9	163.0	816.9	30.8	8.2	9.3	7.4	8.9	8.6	4.1
February	95.5	562.2	657.7	184.8	842.5	28.7	8.4	9.4	8.0	9.1	7.4	4.2
March	95.6	531.1	626.7	175.3	802.0	29.8	8.0	9.0	7.4	8.6	7.3	4.0

## UNEMPLOYED PERSONS: Seasonally adjusted

Month	NUMBER OF UNEMPLOYED PERSONS....					UNEMPLOYMENT RATE.....					UNEMPLOYMENT TO POPULATION RATIO	
	Aged 15-19 looking for f/t work '000	Aged 20 and over looking for f/t work '000	Total looking for f/t work '000	Looking for p/t work '000	Total '000	Aged 15-19 looking for f/t work %	Aged 20 and over looking for f/t work %	Total looking for f/t work %	Looking for p/t work %	Total %	Aged 15-19 looking for f/t work %	Aged 20 and over looking for f/t work %
MALES												
<b>1997</b>												
January	48.6	346.2	394.8	59.5	454.3	24.4	7.8	8.5	9.6	8.7	7.4	5.4
February	54.8	359.9	414.6	57.1	471.8	27.5	8.1	9.0	9.4	9.0	8.3	5.6
March	54.9	354.9	409.8	59.3	469.1	28.4	8.0	8.9	9.6	9.0	8.4	5.5
April	51.4	352.8	404.2	60.7	464.8	26.1	8.0	8.8	9.7	8.9	7.8	5.4
May	51.1	354.4	405.6	57.7	463.3	26.6	8.0	8.8	9.2	8.9	7.8	5.5
June	49.3	345.2	394.5	57.5	452.0	26.0	7.8	8.6	9.0	8.6	7.5	5.3
July	52.2	365.4	417.7	56.7	474.4	26.8	8.2	9.0	9.1	9.0	7.9	5.6
August	50.4	356.2	406.5	55.8	462.4	26.3	8.1	8.8	9.0	8.8	7.6	5.5
September	50.5	349.0	399.5	64.7	464.3	25.8	7.9	8.6	10.3	8.8	7.6	5.3
October	50.2	341.1	391.4	59.6	451.0	24.9	7.7	8.5	9.4	8.6	7.6	5.2
November	48.2	343.3	391.5	66.4	457.9	24.6	7.7	8.4	10.2	8.7	7.3	5.2
December	48.2	334.3	382.5	62.6	445.1	25.6	7.5	8.3	9.6	8.4	7.2	5.1
<b>1998</b>												
January	47.4	331.2	378.6	54.9	433.5	24.5	7.4	8.1	8.8	8.2	7.1	5.0
February	45.8	333.4	379.2	64.8	444.0	23.8	7.5	8.2	10.0	8.4	6.9	5.1
March	54.2	333.7	387.9	54.0	441.8	26.7	7.5	8.3	8.5	8.4	8.1	5.1
FEMALES												
<b>1997</b>												
January	38.4	191.2	229.6	106.4	336.0	31.9	8.8	10.0	6.4	8.5	6.1	2.8
February	33.2	192.2	225.4	110.3	335.7	29.2	8.8	9.8	6.5	8.4	5.3	2.9
March	35.6	189.8	225.5	106.2	331.6	30.6	8.8	9.9	6.3	8.4	5.7	2.8
April	37.4	191.9	229.3	106.2	335.5	32.3	8.8	10.0	6.3	8.4	6.0	2.8
May	31.7	196.5	228.2	116.7	344.9	29.2	9.0	10.0	7.0	8.7	5.1	2.9
June	33.7	190.6	224.3	106.7	331.0	31.4	8.8	9.9	6.4	8.4	5.4	2.8
July	33.2	186.6	219.8	106.2	326.0	29.6	8.6	9.6	6.4	8.2	5.3	2.8
August	33.4	191.5	224.9	110.2	335.1	29.9	8.8	9.8	6.6	8.5	5.3	2.8
September	33.1	185.1	218.3	104.6	322.9	30.0	8.5	9.5	6.2	8.1	5.3	2.7
October	35.9	182.9	218.7	103.8	322.6	32.0	8.4	9.6	6.1	8.1	5.7	2.7
November	37.9	181.1	219.0	101.8	320.8	34.6	8.3	9.5	6.0	8.0	6.0	2.7
December	36.9	178.3	215.2	101.2	316.4	32.5	8.1	9.3	6.0	7.9	5.8	2.6
<b>1998</b>												
January	41.1	173.4	214.5	106.9	321.3	34.7	7.9	9.3	6.3	8.0	6.5	2.5
February	35.4	174.2	209.5	97.4	306.9	30.7	8.0	9.1	5.7	7.7	5.6	2.6
March	40.1	181.4	221.6	97.0	318.6	33.3	8.3	9.6	5.8	8.0	6.3	2.7
PERSONS												
<b>1997</b>												
January	87.0	537.4	624.4	165.9	790.4	27.2	8.1	9.0	7.2	8.6	6.8	4.1
February	88.0	552.0	640.0	167.4	807.5	28.1	8.4	9.2	7.3	8.8	6.9	4.2
March	90.6	544.7	635.3	165.5	800.8	29.2	8.3	9.2	7.2	8.7	7.1	4.1
April	88.7	544.7	633.4	166.9	800.3	28.4	8.3	9.2	7.2	8.7	6.9	4.1
May	82.9	550.9	633.8	174.5	808.2	27.5	8.4	9.2	7.6	8.8	6.4	4.2
June	83.0	535.8	618.8	164.3	783.1	28.0	8.2	9.0	7.1	8.5	6.5	4.0
July	85.4	552.1	637.5	162.9	800.4	27.8	8.4	9.2	7.1	8.7	6.6	4.2
August	83.8	547.7	631.4	166.1	797.5	27.6	8.3	9.2	7.2	8.7	6.5	4.1
September	83.6	534.2	617.8	169.3	787.1	27.3	8.1	8.9	7.3	8.5	6.5	4.0
October	86.1	524.0	610.1	163.4	773.5	27.4	7.9	8.8	7.0	8.4	6.7	3.9
November	86.1	524.4	610.5	168.2	778.7	28.1	7.9	8.8	7.2	8.4	6.7	3.9
December	85.1	512.6	597.7	163.8	761.5	28.2	7.7	8.6	7.0	8.2	6.6	3.8
<b>1998</b>												
January	88.5	504.6	593.1	161.8	754.8	28.4	7.6	8.5	7.0	8.1	6.8	3.8
February	81.2	507.6	588.7	162.2	751.0	26.4	7.7	8.5	6.9	8.1	6.2	3.8
March	94.3	515.1	609.4	151.0	760.4	29.2	7.8	8.8	6.5	8.2	7.3	3.8

## UNEMPLOYED PERSONS: Trend(a)

Month	NUMBER OF UNEMPLOYED PERSONS.....					UNEMPLOYMENT RATE.....					UNEMPLOYMENT TO POPULATION RATIO	
	<i>Aged 15-19 looking for f/t work</i>	<i>Aged 20 and over looking for f/t work</i>	<i>Total looking for f/t work</i>	<i>Looking for p/t work</i>	<i>Total</i>	<i>Aged 15-19 looking for f/t work</i>	<i>Aged 20 and over looking for f/t work</i>	<i>Total looking for f/t work</i>	<i>Looking for p/t work</i>	<i>Total</i>	<i>Aged 15-19 looking for f/t work</i>	<i>Aged 20 and over looking for f/t work</i>
	'000	'000	'000	'000	'000	%	%	%	%	%	%	%
<b>MALES</b>												
<b>1997</b>												
January	54.0	349.1	403.2	59.0	462.2	26.8	7.9	8.7	9.6	8.8	8.2	5.4
February	53.3	350.6	403.9	59.2	463.1	26.8	7.9	8.8	9.6	8.9	8.1	5.4
March	52.6	352.7	405.3	58.9	464.2	26.8	8.0	8.8	9.5	8.9	8.0	5.4
April	52.0	354.5	406.5	58.4	464.9	26.8	8.0	8.8	9.4	8.9	7.9	5.5
May	51.5	355.5	407.0	58.0	464.9	26.7	8.1	8.8	9.2	8.9	7.8	5.5
June	51.2	355.5	406.6	57.7	464.4	26.6	8.1	8.8	9.2	8.9	7.8	5.5
July	50.8	354.7	405.5	58.3	463.8	26.3	8.0	8.8	9.3	8.9	7.7	5.4
August	50.5	352.9	403.4	59.3	462.7	26.0	8.0	8.7	9.4	8.8	7.6	5.4
September	50.1	349.7	399.8	60.6	460.4	25.6	7.9	8.7	9.6	8.8	7.6	5.4
October	49.4	345.3	394.7	61.7	456.4	25.3	7.8	8.5	9.7	8.7	7.5	5.3
November	48.7	340.6	389.3	62.1	451.4	25.0	7.7	8.4	9.7	8.6	7.3	5.2
December	48.4	336.7	385.1	61.6	446.7	24.9	7.6	8.3	9.6	8.5	7.3	5.1
<b>1998</b>												
January	48.4	334.1	382.5	60.6	443.1	24.9	7.5	8.2	9.5	8.4	7.3	5.1
February	48.8	332.3	381.1	59.4	440.5	25.0	7.5	8.2	9.3	8.3	7.3	5.1
March	49.4	331.3	380.7	57.9	438.6	25.2	7.4	8.2	9.1	8.3	7.4	5.0
<b>FEMALES</b>												
<b>1997</b>												
January	38.4	187.9	226.3	108.8	335.1	32.1	8.6	9.9	6.5	8.4	6.1	2.8
February	36.9	190.2	227.1	108.9	336.0	31.5	8.7	9.9	6.5	8.5	5.9	2.8
March	35.5	192.0	227.5	109.0	336.6	31.0	8.8	9.9	6.5	8.5	5.7	2.8
April	34.4	192.8	227.2	109.2	336.5	30.6	8.9	9.9	6.5	8.5	5.5	2.9
May	33.7	192.5	226.2	109.3	335.5	30.3	8.9	9.9	6.5	8.5	5.4	2.8
June	33.3	191.5	224.8	109.1	333.9	30.1	8.8	9.8	6.5	8.4	5.3	2.8
July	33.2	190.1	223.3	108.3	331.7	30.1	8.7	9.8	6.5	8.4	5.3	2.8
August	33.6	188.2	221.8	107.0	328.8	30.5	8.7	9.7	6.4	8.3	5.3	2.8
September	34.4	185.7	220.1	105.6	325.7	31.1	8.5	9.6	6.3	8.2	5.5	2.7
October	35.6	182.9	218.4	104.4	322.8	31.9	8.4	9.5	6.2	8.1	5.6	2.7
November	36.7	180.4	217.1	103.3	320.4	32.6	8.3	9.5	6.1	8.0	5.8	2.7
December	37.6	178.4	216.0	102.3	318.2	33.0	8.2	9.4	6.0	8.0	5.9	2.6
<b>1998</b>												
January	38.3	177.0	215.2	101.1	316.3	33.2	8.1	9.4	6.0	7.9	6.1	2.6
February	38.8	176.1	214.9	99.9	314.8	33.1	8.0	9.3	5.9	7.9	6.1	2.6
March	39.2	176.1	215.3	99.0	314.3	33.0	8.0	9.3	5.9	7.9	6.2	2.6
<b>PERSONS</b>												
<b>1997</b>												
January	92.4	537.1	629.5	167.8	797.3	28.8	8.1	9.1	7.3	8.7	7.2	4.1
February	90.2	540.9	631.0	168.1	799.1	28.6	8.2	9.1	7.3	8.7	7.0	4.1
March	88.1	544.7	632.8	168.0	800.8	28.4	8.3	9.2	7.3	8.7	6.9	4.1
April	86.4	547.3	633.7	167.7	801.4	28.2	8.3	9.2	7.3	8.7	6.7	4.1
May	85.2	548.0	633.2	167.3	800.5	28.0	8.3	9.2	7.3	8.7	6.6	4.1
June	84.4	547.0	631.4	166.9	798.3	27.9	8.3	9.2	7.2	8.7	6.6	4.1
July	84.0	544.8	628.8	166.6	795.5	27.7	8.3	9.1	7.2	8.6	6.5	4.1
August	84.1	541.1	625.2	166.3	791.5	27.6	8.2	9.1	7.2	8.6	6.5	4.1
September	84.5	535.4	619.8	166.3	786.1	27.6	8.1	9.0	7.2	8.5	6.5	4.0
October	85.0	528.1	613.1	166.1	779.2	27.7	8.0	8.9	7.1	8.4	6.6	4.0
November	85.4	521.0	606.4	165.4	771.9	27.8	7.9	8.8	7.1	8.3	6.6	3.9
December	85.9	515.1	601.1	163.9	764.9	27.9	7.8	8.7	7.0	8.3	6.6	3.9
<b>1998</b>												
January	86.7	511.0	597.7	161.7	759.4	28.0	7.7	8.6	6.9	8.2	6.7	3.8
February	87.6	508.4	596.0	159.3	755.3	28.1	7.7	8.6	6.8	8.1	6.7	3.8
March	88.5	507.4	595.9	156.9	752.9	28.2	7.6	8.6	6.7	8.1	6.8	3.8

(a) Estimates for September 1997 to February 1998 have been revised.

PERSONS AGED 15 TO 19—Education and Labour Force: **Original**—March 1998

	EMPLOYED.....			UNEMPLOYED.....			Labour force	Not in labour force	Civilian population aged 15-19	Unemployment rate	Participation rate
	Full time	Part time	Total	Looking for f/t work	Looking for p/t work	Total					
	'000	'000	'000	'000	'000	'000	'000	'000	'000	%	%
ATTENDING NEITHER SCHOOL NOR A TERTIARY EDUCATIONAL INSTITUTION FULL TIME											
Males	146.6	30.1	176.6	47.7	* 1.2	48.9	225.5	14.6	240.2	21.7	93.9
Females	75.1	45.8	120.9	37.8	* 1.8	39.6	160.5	27.2	187.7	24.7	85.5
Persons	221.7	75.9	297.6	85.5	* 2.9	88.4	386.0	41.9	427.9	22.9	90.2
ATTENDING A TERTIARY EDUCATIONAL INSTITUTION FULL TIME											
Males	* 2.3	46.1	48.4	* 3.8	10.6	14.4	62.8	50.5	113.3	22.9	55.4
Females	* 0.9	61.4	62.3	* 1.4	16.1	17.5	79.8	52.7	132.5	21.9	60.2
Persons	* 3.1	107.5	110.7	5.2	26.7	31.9	142.6	103.2	245.8	22.4	58.0
ATTENDING SCHOOL											
Males	* 0.3	79.0	79.4	* 2.9	20.3	23.2	102.6	211.5	314.1	22.6	32.7
Females	* 0.0	106.8	106.8	* 1.9	23.9	25.8	132.6	180.8	313.4	19.5	42.3
Persons	* 0.3	185.8	186.1	4.9	44.2	49.0	235.2	392.4	627.5	20.9	37.5
TOTAL											
Males	149.1	155.2	304.4	54.5	32.0	86.5	390.9	276.7	667.5	22.1	58.6
Females	76.0	214.0	290.0	41.1	41.8	82.9	372.9	260.8	633.7	22.2	58.8
<b>Persons</b>	<b>225.1</b>	<b>369.2</b>	<b>594.4</b>	<b>95.6</b>	<b>73.8</b>	<b>169.4</b>	<b>763.7</b>	<b>537.4</b>	<b>1 301.2</b>	<b>22.2</b>	<b>58.7</b>

LABOUR FORCE STATUS (AGED 15 & OVER)—States & Territories: **Original**—March 1998

	EMPLOYED.....			UNEMPLOYED.....			Labour force '000	Not in labour force '000	Civilian population aged 15 and over '000	Unemployment rate %	Participation rate %
	Full time	Part time	Total	Looking for f/t work	Looking for p/t work	Total					
	'000	'000	'000	'000	'000	'000					
MALES											
New South Wales	1 432.2	180.9	1 613.1	123.5	17.1	140.6	1 753.7	690.9	2 444.6	8.0	71.7
Victoria	1 055.8	150.4	1 206.2	97.6	19.3	116.9	1 323.1	472.7	1 795.8	8.8	73.7
Queensland	789.0	116.5	905.5	79.2	13.1	92.4	997.9	346.6	1 344.4	9.3	74.2
South Australia	317.2	50.4	367.6	37.5	4.2	41.7	409.3	175.5	584.8	10.2	70.0
Western Australia	439.4	58.1	497.5	33.8	5.9	39.7	537.2	170.9	708.1	7.4	75.9
Tasmania	96.8	15.4	112.2	14.6	* 1.1	15.7	127.9	53.6	181.5	12.3	70.5
Northern Territory	43.0	4.0	46.9	3.6	* 0.5	4.2	51.1	15.3	66.4	8.1	76.9
Australian Capital Territory	72.7	11.5	84.3	6.3	2.0	8.4	92.6	23.7	116.3	9.0	79.7
<b>Australia</b>	<b>4 246.0</b>	<b>587.4</b>	<b>4 833.4</b>	<b>396.2</b>	<b>63.3</b>	<b>459.5</b>	<b>5 292.9</b>	<b>1 949.1</b>	<b>7 242.0</b>	<b>8.7</b>	<b>73.1</b>
FEMALES											
New South Wales	715.8	502.0	1 217.8	73.7	31.6	105.3	1 323.1	1 209.9	2 533.0	8.0	52.2
Victoria	520.0	405.3	925.3	61.0	32.6	93.5	1 018.9	855.0	1 873.9	9.2	54.4
Queensland	382.3	314.0	696.2	43.8	21.4	65.1	761.3	607.4	1 368.7	8.6	55.6
South Australia	148.7	129.6	278.2	21.8	10.2	31.9	310.2	295.1	605.3	10.3	51.2
Western Australia	199.5	172.3	371.8	21.4	9.5	30.9	402.6	312.0	714.7	7.7	56.3
Tasmania	43.6	41.3	84.9	5.4	3.2	8.6	93.5	94.2	187.7	9.2	49.8
Northern Territory	26.9	12.1	39.0	* 0.9	* 1.0	1.9	40.9	24.0	64.8	4.6	63.0
Australian Capital Territory	47.1	26.7	73.8	2.7	2.6	5.3	79.0	41.0	120.0	6.6	65.8
<b>Australia</b>	<b>2 083.9</b>	<b>1 603.1</b>	<b>3 687.0</b>	<b>230.5</b>	<b>112.0</b>	<b>342.5</b>	<b>4 029.5</b>	<b>3 438.6</b>	<b>7 468.2</b>	<b>8.5</b>	<b>54.0</b>
PERSONS											
New South Wales	2 148.0	683.0	2 830.9	197.1	48.7	245.8	3 076.8	1 900.8	4 977.5	8.0	61.8
Victoria	1 575.8	555.7	2 131.6	158.5	51.9	210.4	2 342.0	1 327.7	3 669.7	9.0	63.8
Queensland	1 171.2	430.5	1 601.7	123.0	34.5	157.5	1 759.2	953.9	2 713.1	9.0	64.8
South Australia	465.9	180.0	645.8	59.3	14.4	73.6	719.5	470.6	1 190.1	10.2	60.5
Western Australia	638.9	230.4	869.3	55.2	15.4	70.6	939.9	482.9	1 422.8	7.5	66.1
Tasmania	140.4	56.7	197.1	20.1	4.3	24.4	221.5	147.8	369.2	11.0	60.0
Northern Territory	69.9	16.1	85.9	4.5	1.5	6.0	92.0	39.3	131.3	6.6	70.1
Australian Capital Territory	119.8	38.2	158.0	9.0	4.6	13.6	171.6	64.7	236.3	7.9	72.6
<b>Australia</b>	<b>6 329.9</b>	<b>2 190.5</b>	<b>8 520.4</b>	<b>626.7</b>	<b>175.3</b>	<b>802.0</b>	<b>9 322.4</b>	<b>5 387.7</b>	<b>14 710.1</b>	<b>8.6</b>	<b>63.4</b>

UNEMPLOYED PERSONS—New South Wales, Victoria and Queensland: **Original**

Month	NUMBER OF UNEMPLOYED PERSONS.....					UNEMPLOYMENT RATE.....					UNEMPLOYMENT TO POPULATION RATIO	
	Aged 15-19 looking for f/t work	Aged 20 and over looking for f/t work	Total looking for f/t work	Looking for p/t work	Total	Aged 15-19 looking for f/t work	Aged 20 and over looking for f/t work	Total looking for f/t work	Looking for p/t work	Total	Aged 15-19 looking for f/t work	Aged 20 and over looking for f/t work
	'000	'000	'000	'000	'000	%	%	%	%	%	%	%
NEW SOUTH WALES												
<b>1997</b>												
January	35.0	173.2	208.1	49.9	258.0	27.7	7.7	8.8	7.4	8.5	8.3	3.9
February	35.9	186.8	222.7	64.5	287.2	30.5	8.3	9.4	9.2	9.4	8.5	4.2
March	27.7	171.8	199.4	57.7	257.1	26.0	7.6	8.5	8.0	8.4	6.5	3.8
April	29.2	160.5	189.8	53.9	243.6	26.9	7.2	8.1	7.4	7.9	6.9	3.6
May	28.2	166.7	194.9	50.4	245.3	27.8	7.5	8.4	6.9	8.0	6.6	3.7
June	28.7	152.2	181.0	40.5	221.4	31.0	6.9	7.9	5.7	7.3	6.8	3.4
July	24.1	167.9	192.1	46.0	238.1	24.3	7.5	8.2	6.5	7.8	5.7	3.7
August	23.0	162.6	185.6	42.4	228.0	24.8	7.4	8.1	6.1	7.7	5.4	3.6
September	20.1	169.4	189.5	54.2	243.7	21.6	7.5	8.1	7.3	7.9	4.7	3.7
October	24.7	164.6	189.3	46.9	236.2	24.9	7.4	8.1	6.8	7.8	5.8	3.6
November	22.0	159.0	181.1	44.8	225.9	23.2	7.1	7.7	6.1	7.4	5.2	3.5
December	27.5	155.6	183.1	47.6	230.8	25.6	6.9	7.7	6.5	7.4	6.4	3.4
<b>1998</b>												
January	35.2	163.3	198.5	45.8	244.3	29.0	7.3	8.4	6.7	8.0	8.2	3.6
February	28.3	173.1	201.4	61.1	262.4	26.2	7.8	8.6	8.6	8.6	6.6	3.8
March	27.9	169.2	197.1	48.7	245.8	25.6	7.6	8.4	6.7	8.0	6.5	3.7
VICTORIA												
<b>1997</b>												
January	21.9	150.6	172.5	40.7	213.2	29.4	9.1	9.9	7.4	9.3	7.0	4.6
February	19.9	165.3	185.2	48.9	234.1	30.4	9.8	10.6	8.5	10.1	6.3	5.0
March	19.8	148.3	168.1	52.5	220.6	33.0	9.0	9.9	8.7	9.6	6.3	4.5
April	16.7	143.4	160.2	49.7	209.9	28.9	8.7	9.4	8.3	9.1	5.3	4.3
May	17.3	146.5	163.8	44.7	208.4	31.1	8.9	9.6	7.6	9.1	5.5	4.4
June	15.3	149.4	164.6	42.9	207.5	27.1	9.0	9.6	7.1	9.0	4.8	4.5
July	15.1	139.5	154.6	39.7	194.3	24.0	8.4	9.0	6.8	8.5	4.8	4.2
August	16.3	141.6	157.9	44.2	202.1	29.8	8.7	9.4	7.6	8.9	5.2	4.3
September	14.7	145.2	159.9	51.7	211.6	24.5	8.8	9.3	8.4	9.1	4.6	4.4
October	16.7	124.7	141.4	42.5	183.9	26.1	7.6	8.3	7.1	8.0	5.3	3.7
November	18.0	124.7	142.7	41.8	184.5	33.2	7.6	8.4	6.9	8.0	5.7	3.7
December	26.4	115.9	142.3	49.3	191.7	34.8	7.0	8.2	8.1	8.2	8.3	3.5
<b>1998</b>												
January	26.2	136.6	162.8	48.9	211.8	35.9	8.2	9.4	8.7	9.2	8.3	4.1
February	23.1	135.9	159.0	48.5	207.5	32.1	8.1	9.1	8.5	8.9	7.3	4.1
March	25.1	133.4	158.5	51.9	210.4	37.3	8.0	9.1	8.5	9.0	7.9	4.0
QUEENSLAND												
<b>1997</b>												
January	27.4	121.2	148.6	37.8	186.4	35.5	10.0	11.5	9.3	11.0	11.1	5.0
February	23.5	128.1	151.5	32.9	184.5	32.5	10.4	11.6	7.8	10.7	9.5	5.3
March	21.1	123.1	144.2	37.6	181.8	34.1	10.1	11.3	8.5	10.6	8.6	5.1
April	16.1	120.7	136.8	31.1	167.9	27.0	10.0	10.8	7.0	9.8	6.5	5.0
May	16.7	115.3	132.0	34.9	166.9	29.6	9.5	10.4	8.0	9.8	6.7	4.8
June	15.8	102.5	118.3	31.2	149.5	28.1	8.5	9.4	6.7	8.7	6.4	4.2
July	18.7	104.8	123.5	26.5	150.0	28.6	8.5	9.5	6.1	8.7	7.6	4.3
August	16.9	114.6	131.5	29.3	160.8	29.9	9.3	10.2	6.8	9.4	6.8	4.7
September	18.2	102.3	120.5	37.0	157.4	29.6	8.4	9.4	8.0	9.0	7.3	4.2
October	16.1	99.6	115.7	34.9	150.6	27.0	8.1	9.0	7.5	8.6	6.5	4.1
November	18.3	103.9	122.2	33.6	155.9	31.8	8.4	9.5	7.4	8.9	7.3	4.2
December	23.1	102.0	125.0	31.3	156.3	32.4	8.1	9.4	7.1	8.9	9.2	4.2
<b>1998</b>												
January	22.6	111.8	134.4	30.8	165.2	30.5	9.0	10.2	7.3	9.5	9.0	4.6
February	18.0	122.9	140.9	35.5	176.5	26.7	9.8	10.6	7.8	9.9	7.1	5.0
March	17.9	105.1	123.0	34.5	157.5	28.0	8.5	9.5	7.4	9.0	7.1	4.3

UNEMPLOYED PERSONS—South Australia, Western Australia and Tasmania: **Original**

Month	NUMBER OF UNEMPLOYED PERSONS.....					UNEMPLOYMENT RATE.....					UNEMPLOYMENT TO POPULATION RATIO	
	Aged 15-19 looking for f/t work	Aged 20 and over looking for f/t work	Total looking for f/t work	Looking for p/t work	Total	Aged 15-19 looking for f/t work	Aged 20 and over looking for f/t work	Total looking for f/t work	Looking for p/t work	Total	Aged 15-19 looking for f/t work	Aged 20 and over looking for f/t work
	'000	'000	'000	'000	'000	%	%	%	%	%	%	%
SOUTH AUSTRALIA												
<b>1997</b>												
January	8.2	51.4	59.6	14.1	73.6	32.5	10.1	11.2	7.3	10.2	8.4	4.7
February	8.6	51.3	59.9	14.4	74.4	34.7	10.1	11.2	7.2	10.1	8.8	4.7
March	7.6	48.3	55.9	15.2	71.1	34.0	9.7	10.7	7.0	9.6	7.7	4.5
April	10.6	46.8	57.4	13.8	71.1	42.1	9.4	10.9	6.7	9.7	10.8	4.3
May	8.4	49.0	57.4	12.4	69.8	37.1	9.8	10.9	6.1	9.6	8.6	4.5
June	7.6	47.6	55.2	13.0	68.2	36.2	9.3	10.4	6.4	9.3	7.7	4.4
July	7.7	48.0	55.7	12.3	68.0	34.9	9.4	10.5	6.2	9.3	7.8	4.4
August	6.5	48.7	55.2	12.4	67.6	28.7	9.8	10.6	6.1	9.3	6.6	4.5
September	7.2	51.2	58.4	13.8	72.2	31.9	10.1	11.1	6.6	9.8	7.3	4.7
October	7.4	49.8	57.1	12.7	69.8	32.3	9.9	10.9	6.2	9.5	7.5	4.6
November	6.5	50.8	57.4	11.9	69.3	28.8	10.0	10.8	5.8	9.5	6.6	4.7
December	8.9	49.7	58.5	12.5	71.0	35.0	9.6	10.8	6.4	9.7	9.0	4.6
<b>1998</b>												
January	9.2	55.0	64.2	14.7	78.9	32.5	10.8	12.0	7.9	10.9	9.3	5.0
February	8.5	52.9	61.4	15.5	76.9	34.4	10.5	11.6	7.9	10.6	8.6	4.9
March	8.8	50.5	59.3	14.4	73.6	37.6	10.1	11.3	7.4	10.2	8.9	4.6
WESTERN AUSTRALIA												
<b>1997</b>												
January	10.2	50.3	60.4	15.7	76.1	22.0	7.8	8.8	6.7	8.3	7.8	4.0
February	9.6	48.6	58.2	20.8	79.1	23.3	7.5	8.5	8.5	8.5	7.4	3.9
March	9.3	45.6	54.9	18.5	73.4	24.0	7.2	8.2	7.4	8.0	7.2	3.6
April	7.5	44.4	51.9	14.8	66.8	18.7	7.0	7.7	6.1	7.3	5.8	3.5
May	6.7	39.8	46.5	16.7	63.2	17.3	6.2	6.9	7.1	6.9	5.2	3.1
June	6.9	42.4	49.3	14.9	64.2	17.7	6.7	7.3	6.1	7.0	5.3	3.3
July	4.9	43.4	48.3	13.3	61.6	12.9	6.7	7.0	5.8	6.7	3.7	3.4
August	6.4	43.1	49.5	14.8	64.3	16.9	6.7	7.3	6.1	7.0	4.9	3.4
September	8.6	42.9	51.5	13.7	65.2	21.5	6.5	7.4	5.7	6.9	6.6	3.4
October	5.9	36.9	42.8	12.6	55.4	15.3	5.8	6.3	5.2	6.0	4.5	2.9
November	8.4	39.2	47.6	13.7	61.4	21.5	6.1	6.9	5.7	6.6	6.4	3.1
December	10.9	43.3	54.1	14.1	68.2	26.0	6.5	7.7	5.8	7.2	8.2	3.4
<b>1998</b>												
January	11.7	47.9	59.5	13.4	73.0	26.2	7.2	8.4	5.9	7.8	8.8	3.7
February	11.9	47.5	59.5	14.5	74.0	27.9	7.3	8.5	5.9	7.9	9.0	3.7
March	10.1	45.0	55.2	15.4	70.6	25.2	6.9	7.9	6.3	7.5	7.7	3.5
TASMANIA												
<b>1997</b>												
January	4.0	16.5	20.5	4.4	24.9	35.1	11.1	12.8	7.3	11.3	11.7	4.9
February	3.7	17.9	21.6	4.0	25.6	32.8	11.6	13.1	7.1	11.6	10.9	5.3
March	3.8	15.1	18.9	4.6	23.5	35.1	10.3	12.0	7.4	10.7	11.0	4.5
April	3.5	15.9	19.4	3.4	22.8	34.4	10.7	12.3	5.7	10.5	10.2	4.7
May	3.1	14.2	17.3	4.2	21.5	34.3	9.6	11.0	6.9	9.9	9.1	4.2
June	3.3	15.8	19.1	3.6	22.8	37.7	10.9	12.4	6.3	10.7	9.7	4.7
July	3.4	15.4	18.9	4.5	23.4	38.6	10.7	12.3	7.3	10.9	9.9	4.6
August	4.0	15.6	19.6	4.0	23.6	43.3	10.8	12.8	6.5	11.0	11.7	4.6
September	4.0	16.4	20.4	4.2	24.6	42.5	11.1	13.0	7.0	11.4	11.7	4.9
October	3.3	17.1	20.4	4.3	24.7	36.0	11.4	12.8	7.4	11.4	9.5	5.1
November	2.9	16.3	19.2	4.6	23.8	32.1	11.0	12.2	7.6	10.9	8.3	4.9
December	3.0	18.7	21.7	6.1	27.9	30.5	12.3	13.4	10.0	12.5	8.8	5.6
<b>1998</b>												
January	3.7	16.5	20.2	4.9	25.1	34.7	11.0	12.6	8.5	11.5	10.7	4.9
February	3.5	17.2	20.7	3.9	24.6	35.1	11.3	12.7	6.7	11.1	10.0	5.1
March	3.9	16.1	20.1	4.3	24.4	40.3	10.7	12.5	7.0	11.0	11.4	4.8

UNEMPLOYED PERSONS—Northern Territory and Australian Capital Territory: **Original**

Month	NUMBER OF UNEMPLOYED PERSONS.....					UNEMPLOYMENT RATE.....					UNEMPLOYMENT TO POPULATION RATIO	
	Aged 15-19 looking for f/t work	Aged 20 and over looking for f/t work	Total looking for f/t work	Looking for p/t work	Total	Aged 15-19 looking for f/t work	Aged 20 and over looking for f/t work	Total looking for f/t work	Looking for p/t work	Total	Aged 15-19 looking for f/t work	Aged 20 and over looking for f/t work
	'000	'000	'000	'000	'000	%	%	%	%	%	%	%
<b>NORTHERN TERRITORY</b>												
<b>1997</b>												
January	* 0.9	4.2	5.1	* 1.1	6.2	* 23.7	6.8	7.7	* 6.3	7.4	* 6.7	3.7
February	* 0.7	4.1	4.9	* 1.0	5.9	* 24.8	6.5	7.3	* 4.8	6.7	* 5.6	3.6
March	* 0.8	2.6	3.4	1.6	5.0	* 25.4	4.0	5.0	7.8	5.6	* 5.8	2.3
April	* 0.7	3.6	4.3	* 1.2	5.5	* 26.2	5.6	6.4	* 5.8	6.2	* 5.5	3.1
May	* 0.8	3.6	4.4	* 0.7	5.1	* 25.9	5.4	6.4	* 3.3	5.6	* 6.4	3.1
June	* 0.6	3.6	4.2	* 0.6	4.8	* 23.4	5.4	6.0	* 2.8	5.3	* 4.5	3.1
July	* 0.6	3.0	3.6	* 0.9	4.4	* 18.6	4.5	5.1	* 3.9	4.8	* 4.7	2.5
August	* 0.4	3.3	3.7	* 1.0	4.8	* 16.2	5.4	5.8	* 4.3	5.4	* 3.3	2.9
September	* 0.4	3.4	3.8	* 0.9	4.7	* 14.3	4.9	5.3	* 5.0	5.3	* 3.4	2.9
October	* 0.4	1.5	1.8	* 0.9	2.7	* 11.9	2.1	2.5	* 4.7	3.0	* 2.9	1.3
November	* 0.1	3.2	3.2	* 0.3	3.5	* 2.9	4.4	4.3	* 1.6	3.8	* 0.6	2.7
December	* 0.3	2.8	3.1	* 1.1	4.3	* 8.9	3.9	4.2	* 6.3	4.6	* 2.6	2.4
<b>1998</b>												
January	* 0.6	2.6	3.2	1.3	4.5	* 12.3	3.9	4.5	7.2	5.0	* 4.2	2.2
February	* 0.6	3.5	4.1	1.8	5.9	* 17.2	5.1	5.7	10.8	6.6	* 4.3	3.0
March	* 0.6	3.9	4.5	1.5	6.0	* 16.6	5.5	6.0	8.8	6.6	* 4.3	3.3
<b>AUSTRALIAN CAPITAL TERRITORY</b>												
<b>1997</b>												
January	1.8	9.5	11.3	3.9	15.2	38.3	7.7	8.8	10.3	9.2	7.7	4.5
February	1.3	9.1	10.4	5.0	15.4	35.8	7.4	8.2	11.6	9.0	5.7	4.3
March	1.6	6.7	8.3	4.6	12.9	43.6	5.5	6.6	10.7	7.6	7.3	3.2
April	1.0	6.7	7.7	4.3	11.9	31.0	5.4	6.1	9.7	7.0	4.5	3.1
May	* 0.9	6.6	7.5	4.2	11.7	* 26.3	5.3	5.8	9.5	6.8	* 3.8	3.1
June	1.3	7.0	8.3	4.0	12.3	42.5	5.6	6.5	9.4	7.2	5.9	3.3
July	* 0.8	7.3	8.1	3.0	11.1	* 25.1	5.8	6.3	7.3	6.6	* 3.7	3.4
August	1.3	8.0	9.3	4.1	13.4	43.0	6.5	7.3	9.7	7.9	5.9	3.8
September	1.2	7.7	8.8	4.7	13.6	36.7	6.0	6.8	11.3	7.9	5.2	3.6
October	1.2	8.5	9.7	3.4	13.1	32.2	6.8	7.5	8.4	7.7	5.3	4.0
November	1.5	7.5	9.1	3.5	12.5	37.4	6.0	7.0	8.9	7.4	7.0	3.5
December	1.9	8.1	10.0	3.5	13.5	43.3	6.5	7.7	8.8	8.0	8.5	3.8
<b>1998</b>												
January	2.4	8.7	11.1	3.1	14.2	51.7	7.1	8.7	8.3	8.6	10.7	4.1
February	1.7	9.0	10.8	3.9	14.7	33.0	7.2	8.2	9.6	8.5	7.8	4.2
March	1.1	7.9	9.0	4.6	13.6	34.9	6.3	7.0	10.8	7.9	4.9	3.7



## LABOUR FORCE STATUS (AGED 15 AND OVER)—New South Wales(a)

SEASONALLY ADJUSTED.....

TREND.....

Month	SEASONALLY ADJUSTED.....					TREND.....					Civilian population aged 15 and over '000
	Employed full time '000	Total employed '000	Total unemployed '000	Unemp- loyment rate %	Partic- ipation rate %	Employed full time '000	Total employed '000	Total unemployed '000	Unemp- loyment rate %	Partic- ipation rate %	
<b>MALES</b>											
<b>1997</b>											
January	1 435.1	1 616.8	139.0	7.9	72.9	1 428.2	1 603.5	141.8	8.1	72.4	2 409.2
February	1 413.5	1 587.4	151.1	8.7	72.1	1 427.8	1 604.3	142.6	8.2	72.5	2 411.1
March	1 437.8	1 607.1	141.5	8.1	72.5	1 426.0	1 604.2	143.2	8.2	72.4	2 413.0
April	1 424.3	1 608.7	142.3	8.1	72.5	1 423.0	1 602.9	143.3	8.2	72.3	2 415.6
May	1 414.0	1 599.1	145.7	8.4	72.2	1 419.6	1 600.3	143.3	8.2	72.1	2 418.1
June	1 422.5	1 602.1	132.3	7.6	71.6	1 417.1	1 597.3	143.5	8.2	71.9	2 420.7
July	1 414.8	1 598.2	154.9	8.8	72.3	1 416.7	1 595.2	144.2	8.3	71.8	2 423.6
August	1 406.2	1 577.9	141.7	8.2	70.9	1 419.0	1 595.5	144.5	8.3	71.7	2 426.5
September	1 428.1	1 603.8	143.2	8.2	71.9	1 423.4	1 598.6	143.9	8.3	71.7	2 429.3
October	1 430.7	1 598.9	145.0	8.3	71.7	1 428.5	1 604.0	142.2	8.1	71.8	2 432.3
November	1 437.7	1 614.8	143.6	8.2	72.2	1 432.3	1 609.4	139.9	8.0	71.8	2 435.2
December	1 435.0	1 618.6	132.8	7.6	71.8	1 434.4	1 613.3	137.7	7.9	71.8	2 438.1
<b>1998</b>											
January	1 438.5	1 627.1	129.8	7.4	72.0	1 435.2	1 615.3	136.1	7.8	71.8	2 440.3
February	1 425.9	1 597.8	141.0	8.1	71.2	1 435.2	1 616.1	135.2	7.7	71.7	2 442.4
March	1 436.0	1 616.6	135.0	7.7	71.7	1 434.0	1 614.9	134.4	7.7	71.6	2 444.6
<b>FEMALES</b>											
<b>1997</b>											
January	728.5	1 212.9	100.9	7.7	52.6	728.9	1 210.9	100.4	7.7	52.5	2 498.1
February	726.7	1 211.5	105.4	8.0	52.7	728.2	1 211.2	101.7	7.7	52.5	2 500.3
March	724.5	1 208.3	99.9	7.6	52.3	726.8	1 209.6	102.8	7.8	52.4	2 502.5
April	730.4	1 214.1	103.1	7.8	52.6	725.0	1 207.0	103.1	7.9	52.3	2 505.3
May	725.7	1 204.3	104.9	8.0	52.2	723.2	1 204.1	102.6	7.9	52.1	2 508.0
June	712.1	1 188.4	100.3	7.8	51.3	721.5	1 201.2	101.7	7.8	51.9	2 510.7
July	725.6	1 207.5	100.5	7.7	52.0	720.1	1 199.7	100.8	7.7	51.7	2 513.6
August	717.5	1 196.5	100.5	7.8	51.5	719.4	1 200.2	99.6	7.7	51.7	2 516.5
September	719.8	1 211.4	97.1	7.4	51.9	719.0	1 202.6	98.5	7.6	51.6	2 519.4
October	716.5	1 188.8	99.1	7.7	51.1	718.8	1 206.1	97.4	7.5	51.7	2 522.1
November	722.4	1 217.1	95.1	7.2	52.0	718.4	1 209.3	96.6	7.4	51.7	2 524.7
December	715.8	1 218.0	95.2	7.2	52.0	717.4	1 211.6	96.0	7.3	51.7	2 527.4
<b>1998</b>											
January	720.2	1 216.2	97.3	7.4	51.9	716.4	1 213.3	95.5	7.3	51.7	2 529.3
February	708.5	1 207.6	93.5	7.2	51.4	715.6	1 214.4	95.1	7.3	51.7	2 531.1
March	717.7	1 213.7	95.7	7.3	51.7	714.8	1 214.4	94.9	7.2	51.7	2 533.0
<b>PERSONS</b>											
<b>1997</b>											
January	2 163.6	2 829.7	239.8	7.8	62.6	2 157.0	2 814.5	242.2	7.9	62.3	4 907.3
February	2 140.3	2 798.9	256.4	8.4	62.2	2 156.0	2 815.5	244.3	8.0	62.3	4 911.4
March	2 162.2	2 815.4	241.3	7.9	62.2	2 152.9	2 813.8	246.0	8.0	62.2	4 915.5
April	2 154.7	2 822.9	245.5	8.0	62.4	2 148.0	2 809.9	246.4	8.1	62.1	4 920.8
May	2 139.6	2 803.3	250.6	8.2	62.0	2 142.8	2 804.4	245.9	8.1	61.9	4 926.1
June	2 134.6	2 790.4	232.6	7.7	61.3	2 138.6	2 798.5	245.3	8.1	61.7	4 931.4
July	2 140.4	2 805.7	255.4	8.3	62.0	2 136.9	2 794.9	244.9	8.1	61.6	4 937.2
August	2 123.7	2 774.4	242.2	8.0	61.0	2 138.4	2 795.7	244.1	8.0	61.5	4 942.9
September	2 147.9	2 815.2	240.2	7.9	61.7	2 142.4	2 801.2	242.4	8.0	61.5	4 948.7
October	2 147.2	2 787.7	244.1	8.1	61.2	2 147.3	2 810.1	239.5	7.9	61.6	4 954.3
November	2 160.1	2 831.9	238.7	7.8	61.9	2 150.6	2 818.7	236.5	7.7	61.6	4 959.9
December	2 150.7	2 836.6	228.0	7.4	61.7	2 151.8	2 824.9	233.6	7.6	61.6	4 965.6
<b>1998</b>											
January	2 158.7	2 843.3	227.1	7.4	61.8	2 151.6	2 828.5	231.5	7.6	61.6	4 969.5
February	2 134.4	2 805.4	234.5	7.7	61.1	2 150.8	2 830.4	230.2	7.5	61.5	4 973.5
March	2 153.7	2 830.3	230.7	7.5	61.5	2 148.7	2 829.3	229.3	7.5	61.4	4 977.5

(a) Trend estimates for September 1997 to February 1998 have been revised.

## LABOUR FORCE STATUS (AGED 15 AND OVER)–Victoria(a)

SEASONALLY ADJUSTED.....

TREND.....

Month	SEASONALLY ADJUSTED.....					TREND.....					Civilian population aged 15 and over '000
	Employed full time '000	Total employed '000	Total unemployed '000	Unemp-loyment rate %	Partic-ipation rate %	Employed full time '000	Total employed '000	Total unemployed '000	Unemp-loyment rate %	Partic-ipation rate %	
<b>MALES</b>											
<b>1997</b>											
January	1 053.2	1 192.7	116.6	8.9	74.0	1 047.2	1 187.2	120.2	9.2	73.9	1 770.2
February	1 046.4	1 182.2	119.9	9.2	73.5	1 046.6	1 186.6	120.0	9.2	73.8	1 771.5
March	1 042.7	1 186.0	122.2	9.3	73.8	1 044.9	1 185.7	120.1	9.2	73.7	1 772.9
April	1 042.9	1 186.8	120.9	9.2	73.7	1 042.4	1 184.4	120.6	9.2	73.5	1 774.8
May	1 041.6	1 182.8	117.2	9.0	73.2	1 039.8	1 183.3	120.8	9.3	73.4	1 776.7
June	1 035.4	1 182.7	123.5	9.5	73.4	1 037.7	1 182.8	120.4	9.2	73.3	1 778.6
July	1 039.7	1 185.2	118.6	9.1	73.2	1 036.5	1 183.3	118.9	9.1	73.1	1 780.6
August	1 034.0	1 177.7	117.8	9.1	72.7	1 036.8	1 185.1	116.7	9.0	73.0	1 782.5
September	1 034.8	1 188.2	118.9	9.1	73.3	1 038.6	1 187.7	114.3	8.8	73.0	1 784.5
October	1 043.5	1 195.6	105.0	8.1	72.8	1 042.0	1 191.0	112.0	8.6	72.9	1 786.5
November	1 048.5	1 194.4	109.0	8.4	72.9	1 046.6	1 194.4	110.5	8.5	73.0	1 788.4
December	1 049.6	1 200.6	110.5	8.4	73.2	1 051.2	1 197.4	109.9	8.4	73.0	1 790.4
<b>1998</b>											
January	1 056.5	1 193.3	114.0	8.7	72.9	1 055.4	1 200.1	110.0	8.4	73.1	1 792.2
February	1 061.3	1 203.5	105.5	8.1	73.0	1 059.2	1 202.7	110.3	8.4	73.2	1 794.0
March	1 061.3	1 208.2	114.5	8.7	73.7	1 062.1	1 204.4	110.8	8.4	73.2	1 795.8
<b>FEMALES</b>											
<b>1997</b>											
January	516.1	918.8	84.3	8.4	54.3	512.4	912.8	89.3	8.9	54.2	1 848.3
February	512.2	914.9	88.8	8.8	54.3	511.4	913.0	89.2	8.9	54.2	1 849.7
March	506.1	904.9	89.7	9.0	53.7	510.3	912.1	89.9	9.0	54.1	1 851.1
April	510.0	913.8	91.3	9.1	54.2	509.6	910.5	90.9	9.1	54.0	1 853.1
May	506.8	904.9	94.3	9.4	53.9	509.4	908.8	91.8	9.2	53.9	1 855.1
June	515.3	914.9	92.4	9.2	54.2	509.3	907.7	92.3	9.2	53.8	1 857.1
July	510.0	908.5	88.9	8.9	53.7	509.3	907.6	91.7	9.2	53.8	1 859.0
August	504.4	896.3	93.4	9.4	53.2	509.4	909.0	90.3	9.0	53.7	1 861.0
September	512.4	917.9	87.2	8.7	54.0	509.8	911.6	88.4	8.8	53.7	1 862.9
October	512.1	913.2	87.9	8.8	53.7	511.1	915.1	86.3	8.6	53.7	1 864.8
November	508.3	921.0	84.4	8.4	53.9	513.6	918.8	84.6	8.4	53.8	1 866.8
December	519.6	924.9	79.1	7.9	53.7	516.8	922.1	83.4	8.3	53.8	1 868.7
<b>1998</b>											
January	517.6	923.5	85.3	8.5	53.9	520.1	924.5	82.8	8.2	53.9	1 870.5
February	527.7	925.7	79.3	7.9	53.7	523.1	926.4	82.6	8.2	53.9	1 872.2
March	525.5	926.4	87.7	8.6	54.1	525.4	926.8	83.1	8.2	53.9	1 873.9
<b>PERSONS</b>											
<b>1997</b>											
January	1 569.3	2 111.5	200.9	8.7	63.9	1 559.7	2 100.0	209.5	9.1	63.8	3 618.4
February	1 558.6	2 097.2	208.7	9.1	63.7	1 557.9	2 099.6	209.3	9.1	63.8	3 621.2
March	1 548.8	2 090.9	211.9	9.2	63.5	1 555.2	2 097.8	210.0	9.1	63.7	3 624.0
April	1 552.9	2 100.7	212.3	9.2	63.8	1 552.0	2 094.9	211.4	9.2	63.6	3 627.9
May	1 548.4	2 087.7	211.6	9.2	63.3	1 549.2	2 092.1	212.7	9.2	63.5	3 631.8
June	1 550.7	2 097.6	215.9	9.3	63.6	1 547.0	2 090.4	212.7	9.2	63.3	3 635.7
July	1 549.7	2 093.7	207.5	9.0	63.2	1 545.8	2 090.9	210.6	9.1	63.2	3 639.6
August	1 538.4	2 074.1	211.2	9.2	62.7	1 546.2	2 094.2	207.0	9.0	63.2	3 643.5
September	1 547.1	2 106.2	206.2	8.9	63.4	1 548.4	2 099.3	202.6	8.8	63.1	3 647.4
October	1 555.5	2 108.7	192.8	8.4	63.0	1 553.2	2 106.1	198.3	8.6	63.1	3 651.3
November	1 556.8	2 115.4	193.4	8.4	63.2	1 560.1	2 113.2	195.1	8.5	63.1	3 655.2
December	1 569.2	2 125.5	189.6	8.2	63.3	1 568.0	2 119.5	193.3	8.4	63.2	3 659.2
<b>1998</b>											
January	1 574.1	2 116.8	199.3	8.6	63.2	1 575.5	2 124.7	192.8	8.3	63.3	3 662.7
February	1 589.0	2 129.2	184.8	8.0	63.1	1 582.3	2 129.0	192.9	8.3	63.3	3 666.2
March	1 586.8	2 134.6	202.2	8.7	63.7	1 587.5	2 131.2	193.9	8.3	63.4	3 669.7

(a) Trend estimates for September 1997 to February 1998 have been revised.

## LABOUR FORCE STATUS (AGED 15 AND OVER)–Queensland(a)

SEASONALLY ADJUSTED.....

TREND.....

Month	SEASONALLY ADJUSTED.....					TREND.....					Civilian population aged 15 and over '000
	Employed full time '000	Total employed '000	Total unemployed '000	Unemployment rate %	Participation rate %	Employed full time '000	Total employed '000	Total unemployed '000	Unemployment rate %	Participation rate %	
<b>MALES</b>											
<b>1997</b>											
January	773.6	879.7	98.2	10.0	74.5	775.3	878.3	96.1	9.9	74.2	1 312.6
February	774.5	874.9	97.1	10.0	73.9	772.0	876.5	97.4	10.0	74.1	1 315.0
March	764.5	871.0	102.8	10.6	73.9	769.9	875.7	98.0	10.1	73.9	1 317.4
April	767.2	875.2	97.2	10.0	73.7	769.6	876.3	97.6	10.0	73.8	1 319.7
May	771.9	879.3	96.7	9.9	73.8	771.1	878.5	96.4	9.9	73.8	1 321.9
June	769.7	883.9	89.4	9.2	73.5	773.7	881.8	95.1	9.7	73.8	1 324.1
July	787.6	887.9	95.7	9.7	74.2	776.2	885.2	94.5	9.6	73.9	1 326.2
August	775.7	887.3	96.3	9.8	74.1	778.1	888.3	94.3	9.6	74.0	1 328.2
September	776.4	886.6	94.6	9.6	73.8	779.6	891.4	94.5	9.6	74.1	1 330.3
October	782.9	900.4	92.8	9.3	74.5	781.1	894.7	94.5	9.6	74.2	1 332.8
November	780.9	895.4	95.2	9.6	74.2	783.5	898.5	93.9	9.5	74.3	1 335.4
December	783.2	899.8	94.6	9.5	74.3	786.5	902.4	92.8	9.3	74.4	1 338.0
<b>1998</b>											
January	795.7	910.8	89.2	8.9	74.6	790.0	906.0	91.6	9.2	74.4	1 340.1
February	792.4	909.1	93.2	9.3	74.7	793.4	909.2	90.4	9.0	74.5	1 342.3
March	797.5	911.3	85.9	8.6	74.2	796.1	911.8	89.2	8.9	74.5	1 344.4
<b>FEMALES</b>											
<b>1997</b>											
January	372.8	661.6	76.0	10.3	55.2	377.7	665.1	70.0	9.5	55.0	1 336.7
February	378.4	673.5	68.4	9.2	55.4	376.6	667.5	69.6	9.4	55.0	1 339.3
March	377.4	669.4	66.0	9.0	54.8	375.7	670.0	68.7	9.3	55.1	1 341.9
April	377.2	671.9	66.5	9.0	54.9	375.2	672.2	67.7	9.1	55.0	1 344.1
May	375.5	670.6	70.4	9.5	55.0	375.0	674.3	67.0	9.0	55.1	1 346.4
June	366.2	678.6	65.2	8.8	55.1	375.3	676.7	66.9	9.0	55.1	1 348.6
July	380.6	681.7	64.5	8.6	55.2	376.5	679.5	67.3	9.0	55.3	1 350.8
August	383.1	679.5	69.7	9.3	55.4	378.6	682.3	67.7	9.0	55.4	1 352.9
September	379.0	683.8	68.4	9.1	55.5	381.6	685.0	67.8	9.0	55.6	1 355.1
October	381.0	691.7	68.4	9.0	56.0	384.6	687.3	67.6	9.0	55.6	1 357.6
November	386.2	690.3	67.5	8.9	55.7	386.9	689.4	67.0	8.9	55.6	1 360.1
December	397.7	688.0	64.4	8.6	55.2	388.4	691.5	65.9	8.7	55.6	1 362.7
<b>1998</b>											
January	384.9	690.5	64.9	8.6	55.4	389.4	693.6	64.7	8.5	55.6	1 364.7
February	392.4	702.0	65.2	8.5	56.1	389.9	695.5	63.5	8.4	55.5	1 366.7
March	385.4	695.5	60.4	8.0	55.2	390.1	696.9	62.6	8.2	55.5	1 368.7
<b>PERSONS</b>											
<b>1997</b>											
January	1 146.4	1 541.3	174.2	10.2	64.8	1 153.0	1 543.4	166.1	9.7	64.5	2 649.3
February	1 152.9	1 548.4	165.4	9.7	64.6	1 148.6	1 544.0	167.0	9.8	64.5	2 654.3
March	1 141.9	1 540.3	168.8	9.9	64.3	1 145.6	1 545.7	166.7	9.7	64.4	2 659.3
April	1 144.4	1 547.2	163.8	9.6	64.2	1 144.8	1 548.6	165.3	9.6	64.3	2 663.8
May	1 147.4	1 549.9	167.1	9.7	64.4	1 146.1	1 552.8	163.4	9.5	64.3	2 668.3
June	1 135.9	1 562.4	154.6	9.0	64.2	1 149.0	1 558.5	162.0	9.4	64.4	2 672.8
July	1 168.2	1 569.6	160.2	9.3	64.6	1 152.7	1 564.7	161.7	9.4	64.5	2 676.9
August	1 158.8	1 566.8	166.0	9.6	64.6	1 156.7	1 570.6	162.0	9.4	64.6	2 681.1
September	1 155.3	1 570.4	163.0	9.4	64.6	1 161.1	1 576.4	162.3	9.3	64.7	2 685.3
October	1 163.9	1 592.1	161.2	9.2	65.2	1 165.7	1 582.0	162.1	9.3	64.8	2 690.4
November	1 167.1	1 585.6	162.8	9.3	64.9	1 170.4	1 587.9	160.9	9.2	64.9	2 695.5
December	1 180.9	1 587.8	159.0	9.1	64.7	1 174.9	1 593.9	158.8	9.1	64.9	2 700.6
<b>1998</b>											
January	1 180.6	1 601.3	154.2	8.8	64.9	1 179.4	1 599.6	156.3	8.9	64.9	2 704.8
February	1 184.8	1 611.1	158.3	8.9	65.3	1 183.3	1 604.8	153.9	8.8	64.9	2 709.0
March	1 182.9	1 606.9	146.4	8.3	64.6	1 186.2	1 608.7	151.8	8.6	64.9	2 713.1

(a) Trend estimates for September 1997 to February 1998 have been revised.

## LABOUR FORCE STATUS (AGED 15 AND OVER)--South Australia(a)

SEASONALLY ADJUSTED.....

TREND.....

Month	SEASONALLY ADJUSTED.....					TREND.....					Civilian population aged 15 and over '000
	Employed full time '000	Total employed '000	Total unemployed '000	Unemployment rate %	Participation rate %	Employed full time '000	Total employed '000	Total unemployed '000	Unemployment rate %	Participation rate %	
<b>MALES</b>											
<b>1997</b>											
January	322.2	368.5	41.1	10.0	70.6	321.1	368.9	41.8	10.2	70.8	580.0
February	320.9	369.3	42.0	10.2	70.9	321.2	369.5	42.1	10.2	70.9	580.3
March	320.8	371.9	41.9	10.1	71.3	321.2	370.2	42.6	10.3	71.1	580.5
April	322.1	369.2	44.0	10.7	71.1	321.6	370.9	43.0	10.4	71.3	580.8
May	319.0	370.8	44.5	10.7	71.5	322.3	371.9	43.3	10.4	71.4	581.1
June	324.8	374.4	42.6	10.2	71.7	323.3	373.0	43.4	10.4	71.6	581.5
July	325.0	373.2	43.3	10.4	71.6	324.1	373.9	43.4	10.4	71.7	581.9
August	325.6	375.3	42.6	10.2	71.8	324.6	374.5	43.4	10.4	71.8	582.3
September	324.8	375.4	43.8	10.4	71.9	324.8	374.7	43.4	10.4	71.7	582.7
October	323.3	374.0	43.6	10.4	71.6	324.6	374.1	43.4	10.4	71.6	583.1
November	323.6	372.8	43.8	10.5	71.4	324.0	373.1	43.3	10.4	71.4	583.6
December	323.5	371.9	43.0	10.4	71.1	323.2	371.8	43.2	10.4	71.1	584.0
<b>1998</b>											
January	325.9	370.8	42.3	10.2	70.7	322.4	370.4	43.0	10.4	70.8	584.3
February	318.6	369.4	43.6	10.6	70.6	321.4	369.1	42.8	10.4	70.5	584.5
March	319.5	366.1	42.0	10.3	69.8	320.6	367.9	42.5	10.4	70.2	584.8
<b>FEMALES</b>											
<b>1997</b>											
January	150.8	293.2	26.4	8.3	53.2	150.0	292.1	27.2	8.5	53.2	600.7
February	150.4	293.4	27.2	8.5	53.4	150.2	292.5	27.2	8.5	53.2	601.0
March	150.1	294.2	28.0	8.7	53.6	150.5	292.3	27.2	8.5	53.2	601.2
April	150.5	291.7	27.0	8.5	53.0	150.7	291.5	27.4	8.6	53.0	601.5
May	149.1	288.4	26.6	8.5	52.3	150.3	290.3	27.5	8.7	52.8	601.8
June	152.8	289.4	28.2	8.9	52.7	149.4	289.1	27.6	8.7	52.6	602.2
July	148.9	287.8	28.5	9.0	52.5	148.3	288.4	27.7	8.8	52.5	602.6
August	145.4	287.1	27.4	8.7	52.2	147.1	288.3	27.8	8.8	52.4	602.9
September	144.8	288.1	28.0	8.9	52.4	146.2	288.3	27.8	8.8	52.4	603.3
October	145.2	289.5	27.3	8.6	52.5	145.9	288.0	27.9	8.8	52.3	603.7
November	146.5	288.8	28.2	8.9	52.5	146.1	287.0	28.0	8.9	52.2	604.1
December	148.2	285.3	27.6	8.8	51.8	146.7	285.5	28.4	9.0	51.9	604.5
<b>1998</b>											
January	147.1	283.2	30.1	9.6	51.8	147.4	283.6	28.8	9.2	51.7	604.8
February	146.2	281.3	28.1	9.1	51.1	148.0	281.8	29.2	9.4	51.4	605.1
March	150.1	278.3	30.3	9.8	51.0	148.5	280.0	29.5	9.5	51.1	605.3
<b>PERSONS</b>											
<b>1997</b>											
January	473.0	661.7	67.5	9.3	61.8	471.2	661.0	69.0	9.5	61.8	1 180.8
February	471.3	662.7	69.3	9.5	62.0	471.4	662.0	69.3	9.5	61.9	1 181.2
March	470.9	666.1	69.9	9.5	62.3	471.7	662.5	69.9	9.5	62.0	1 181.7
April	472.7	660.8	71.0	9.7	61.9	472.2	662.4	70.4	9.6	62.0	1 182.3
May	468.2	659.2	71.1	9.7	61.7	472.6	662.2	70.8	9.7	62.0	1 183.0
June	477.6	663.8	70.8	9.6	62.1	472.7	662.0	71.1	9.7	61.9	1 183.6
July	473.9	661.1	71.8	9.8	61.9	472.3	662.3	71.2	9.7	61.9	1 184.4
August	471.0	662.4	70.0	9.6	61.8	471.7	662.8	71.1	9.7	61.9	1 185.2
September	469.5	663.5	71.8	9.8	62.0	471.0	663.0	71.1	9.7	61.9	1 186.0
October	468.5	663.5	70.9	9.6	61.9	470.5	662.2	71.2	9.7	61.8	1 186.9
November	470.2	661.6	72.0	9.8	61.8	470.1	660.1	71.4	9.8	61.6	1 187.7
December	471.7	657.3	70.6	9.7	61.2	470.0	657.3	71.6	9.8	61.3	1 188.5
<b>1998</b>											
January	473.0	654.0	72.4	10.0	61.1	469.8	654.1	71.8	9.9	61.0	1 189.1
February	464.9	650.7	71.7	9.9	60.7	469.4	650.8	71.9	10.0	60.8	1 189.6
March	469.6	644.4	72.3	10.1	60.2	469.1	647.8	72.0	10.0	60.5	1 190.1

(a) Trend estimates for September 1997 to February 1998 have been revised.

## LABOUR FORCE STATUS (AGED 15 AND OVER)–Western Australia(a)

SEASONALLY ADJUSTED.....

TREND.....

Month	SEASONALLY ADJUSTED.....					TREND.....					Civilian population aged 15 and over '000
	Employed full time '000	Total employed '000	Total unemployed '000	Unemp-loyment rate %	Partic-ipation rate %	Employed full time '000	Total employed '000	Total unemployed '000	Unemp-loyment rate %	Partic-ipation rate %	
<b>MALES</b>											
<b>1997</b>											
January	434.2	491.8	37.2	7.0	76.6	432.3	487.5	38.9	7.4	76.2	691.0
February	435.1	490.3	38.0	7.2	76.3	433.5	489.3	37.9	7.2	76.2	692.1
March	433.4	490.0	37.4	7.1	76.1	434.4	490.7	37.3	7.1	76.2	693.2
April	434.8	490.4	36.7	7.0	75.9	435.4	491.6	37.4	7.1	76.2	694.5
May	436.2	492.1	37.6	7.1	76.1	436.4	492.4	37.8	7.1	76.2	695.9
June	437.5	495.3	38.2	7.2	76.5	437.5	493.2	38.2	7.2	76.2	697.1
July	438.4	491.7	39.4	7.4	76.0	438.6	494.4	38.4	7.2	76.3	698.4
August	440.5	497.4	38.9	7.3	76.6	439.9	496.1	38.4	7.2	76.4	699.8
September	442.2	497.1	39.9	7.4	76.6	441.3	497.8	38.1	7.1	76.4	701.1
October	439.9	498.7	33.6	6.3	75.8	442.5	499.4	37.7	7.0	76.5	702.4
November	443.7	501.7	38.2	7.1	76.7	443.4	500.7	37.4	7.0	76.5	703.8
December	445.5	502.7	38.7	7.1	76.8	443.9	501.4	37.3	6.9	76.4	705.1
<b>1998</b>											
January	447.0	503.0	37.2	6.9	76.5	444.1	501.7	37.3	6.9	76.3	706.1
February	441.0	500.2	36.3	6.8	75.9	444.1	501.6	37.3	6.9	76.2	707.1
March	443.0	499.9	37.9	7.0	75.9	443.8	501.4	37.3	6.9	76.1	708.1
<b>FEMALES</b>											
<b>1997</b>											
January	193.4	363.7	32.3	8.1	56.7	193.8	363.5	30.9	7.8	56.5	698.0
February	190.3	364.1	31.8	8.0	56.6	192.2	362.2	31.1	7.9	56.3	699.1
March	189.2	360.3	31.1	7.9	55.9	190.8	360.5	30.7	7.9	55.9	700.3
April	190.8	358.0	31.3	8.0	55.5	190.2	359.1	29.9	7.7	55.4	701.6
May	192.0	356.9	26.2	6.8	54.5	190.7	358.8	28.8	7.4	55.1	702.9
June	188.0	358.2	27.7	7.2	54.8	192.2	360.2	27.8	7.2	55.1	704.2
July	196.7	362.7	26.9	6.9	55.2	194.0	362.5	27.0	6.9	55.2	705.5
August	195.7	363.2	28.6	7.3	55.4	195.7	364.8	26.7	6.8	55.4	706.8
September	199.4	374.3	25.4	6.3	56.4	197.0	366.5	26.7	6.8	55.5	708.0
October	196.6	367.1	26.6	6.7	55.5	197.8	367.4	27.1	6.9	55.6	709.3
November	197.7	365.7	26.7	6.8	55.2	198.2	367.6	27.5	7.0	55.6	710.6
December	197.6	364.5	29.1	7.4	55.3	198.5	367.7	28.0	7.1	55.6	711.8
<b>1998</b>											
January	201.8	367.5	29.2	7.4	55.7	198.9	368.3	28.4	7.2	55.7	712.8
February	195.4	372.1	28.9	7.2	56.2	199.5	369.1	28.7	7.2	55.7	713.7
March	202.7	371.0	28.0	7.0	55.8	199.9	369.6	29.1	7.3	55.8	714.7
<b>PERSONS</b>											
<b>1997</b>											
January	627.6	855.4	69.5	7.5	66.6	626.2	851.0	69.7	7.6	66.3	1 389.0
February	625.4	854.4	69.8	7.5	66.4	625.6	851.5	69.0	7.5	66.2	1 391.2
March	622.6	850.4	68.5	7.5	65.9	625.2	851.1	68.1	7.4	66.0	1 393.5
April	625.7	848.4	68.0	7.4	65.6	625.6	850.7	67.3	7.3	65.8	1 396.1
May	628.2	849.0	63.8	7.0	65.3	627.1	851.2	66.6	7.3	65.6	1 398.8
June	625.5	853.5	65.9	7.2	65.6	629.7	853.3	66.0	7.2	65.6	1 401.4
July	635.1	854.4	66.3	7.2	65.6	632.6	856.9	65.5	7.1	65.7	1 403.9
August	636.3	860.6	67.5	7.3	66.0	635.7	860.9	65.0	7.0	65.8	1 406.5
September	641.6	871.4	65.3	7.0	66.5	638.3	864.4	64.8	7.0	65.9	1 409.1
October	636.5	865.8	60.2	6.5	65.6	640.3	866.8	64.8	7.0	66.0	1 411.7
November	641.4	867.4	64.9	7.0	65.9	641.6	868.2	64.9	7.0	66.0	1 414.3
December	643.1	867.2	67.8	7.2	66.0	642.4	869.2	65.3	7.0	65.9	1 416.9
<b>1998</b>											
January	648.8	870.5	66.4	7.1	66.0	643.0	870.0	65.7	7.0	65.9	1 418.9
February	636.4	872.3	65.2	7.0	66.0	643.5	870.7	66.0	7.0	65.9	1 420.8
March	645.7	870.8	65.9	7.0	65.8	643.7	871.1	66.4	7.1	65.9	1 422.8

(a) Trend estimates for September 1997 to February 1998 have been revised.

## LABOUR FORCE STATUS (AGED 15 AND OVER)--Tasmania(a)

SEASONALLY ADJUSTED.....

TREND.....

Month	SEASONALLY ADJUSTED.....					TREND.....					Civilian population aged 15 and over '000
	Employed full time '000	Total employed '000	Total unemployed '000	Unemployment rate %	Participation rate %	Employed full time '000	Total employed '000	Total unemployed '000	Unemployment rate %	Participation rate %	
<b>MALES</b>											
<b>1997</b>											
January	98.5	113.2	13.9	10.9	70.0	99.0	113.2	14.0	11.0	70.0	181.6
February	99.1	112.4	14.2	11.2	69.7	98.6	112.7	14.1	11.1	69.8	181.6
March	98.5	113.1	14.1	11.1	70.0	98.2	112.3	14.2	11.2	69.6	181.6
April	97.4	111.5	14.9	11.8	69.6	97.7	111.9	14.2	11.3	69.4	181.6
May	97.8	112.2	13.5	10.7	69.2	97.3	111.7	14.2	11.3	69.3	181.7
June	96.8	110.9	13.8	11.1	68.6	97.2	111.7	14.2	11.3	69.2	181.7
July	96.3	110.9	15.2	12.1	69.4	97.2	111.8	14.2	11.3	69.3	181.7
August	97.4	112.5	14.5	11.4	69.8	97.4	111.9	14.5	11.5	69.5	181.8
September	97.8	112.7	13.5	10.7	69.4	97.5	112.0	14.8	11.7	69.7	181.8
October	99.3	112.4	15.6	12.2	70.4	97.5	112.0	15.2	11.9	69.9	181.8
November	96.6	111.9	15.6	12.3	70.2	97.2	111.8	15.4	12.1	70.0	181.8
December	96.2	109.9	16.9	13.3	69.7	96.8	111.6	15.6	12.3	70.0	181.8
<b>1998</b>											
January	96.6	112.2	15.2	11.9	70.1	96.4	111.5	15.7	12.3	70.0	181.7
February	95.4	112.0	14.7	11.6	69.8	96.1	111.4	15.7	12.4	70.0	181.6
March	96.4	111.2	16.1	12.6	70.1	95.8	111.4	15.8	12.4	70.0	181.5
<b>FEMALES</b>											
<b>1997</b>											
January	41.0	84.5	9.4	10.0	50.0	41.4	83.5	9.3	10.0	49.4	187.8
February	40.7	83.3	9.4	10.1	49.3	41.2	83.1	9.3	10.0	49.2	187.8
March	40.7	82.6	9.5	10.3	49.0	41.0	82.7	9.2	10.0	49.0	187.8
April	41.2	82.4	8.9	9.8	48.6	40.7	82.2	9.2	10.1	48.7	187.8
May	42.1	82.2	9.4	10.2	48.7	40.2	81.6	9.3	10.3	48.4	187.9
June	39.2	80.0	9.9	11.0	47.8	39.7	81.0	9.5	10.5	48.2	187.9
July	38.2	80.5	8.7	9.7	47.4	39.3	80.5	9.8	10.8	48.0	187.9
August	38.6	81.7	10.0	10.9	48.8	39.2	80.3	9.9	11.0	48.0	187.9
September	39.1	78.5	11.4	12.7	47.8	39.5	80.4	9.9	10.9	48.0	188.0
October	40.7	80.9	9.5	10.5	48.1	40.3	80.9	9.6	10.6	48.2	188.0
November	42.0	82.5	8.8	9.6	48.6	41.2	81.6	9.2	10.1	48.3	188.0
December	41.8	82.5	8.6	9.4	48.4	42.0	82.4	8.8	9.6	48.5	188.0
<b>1998</b>											
January	42.9	82.3	8.2	9.1	48.2	42.7	83.2	8.4	9.2	48.8	187.9
February	42.8	84.8	7.9	8.5	49.4	43.2	84.0	8.1	8.8	49.0	187.8
March	43.9	84.8	8.4	9.0	49.7	43.6	84.7	7.9	8.5	49.3	187.7
<b>PERSONS</b>											
<b>1997</b>											
January	139.5	197.7	23.3	10.5	59.8	140.5	196.6	23.3	10.6	59.5	369.4
February	139.8	195.7	23.6	10.8	59.4	139.8	195.8	23.4	10.7	59.3	369.4
March	139.2	195.7	23.6	10.7	59.4	139.2	195.0	23.4	10.7	59.1	369.4
April	138.6	193.9	23.8	10.9	58.9	138.4	194.1	23.4	10.8	58.9	369.5
May	139.9	194.4	22.8	10.5	58.8	137.5	193.3	23.5	10.9	58.7	369.5
June	136.0	190.9	23.7	11.0	58.1	136.9	192.6	23.7	11.0	58.5	369.6
July	134.6	191.3	23.9	11.1	58.2	136.5	192.2	24.0	11.1	58.5	369.7
August	136.0	194.2	24.5	11.2	59.1	136.6	192.2	24.4	11.3	58.6	369.7
September	136.9	191.2	24.9	11.5	58.4	137.1	192.4	24.7	11.4	58.7	369.8
October	140.1	193.3	25.1	11.5	59.1	137.8	192.9	24.8	11.4	58.9	369.8
November	138.6	194.4	24.4	11.2	59.2	138.5	193.4	24.7	11.3	59.0	369.8
December	138.0	192.3	25.5	11.7	58.9	138.9	194.1	24.4	11.2	59.1	369.8
<b>1998</b>											
January	139.6	194.5	23.4	10.8	59.0	139.1	194.7	24.1	11.0	59.2	369.6
February	138.3	196.9	22.6	10.3	59.4	139.3	195.4	23.8	10.9	59.3	369.4
March	140.2	196.0	24.5	11.1	59.7	139.4	196.1	23.6	10.8	59.5	369.2

(a) Trend estimates for September 1997 to February 1998 have been revised.

## LABOUR FORCE STATUS (AGED 15 AND OVER)–Northern Territory(a)

TREND.....

Month	Employed full time '000	Total employed '000	Total unemployed '000	Unemployment rate %	Participation rate %	Civilian population aged 15 and over '000
MALES						
<b>1997</b>						
January	39.6	45.4	2.7	5.6	74.5	64.5
February	39.8	45.6	2.8	5.9	74.9	64.7
March	40.0	46.0	2.9	6.0	75.5	64.8
April	40.0	46.3	3.0	6.1	76.1	64.8
May	39.8	46.5	3.0	6.0	76.2	64.9
June	39.5	46.4	3.0	6.0	76.0	64.9
July	39.5	46.2	2.9	5.9	75.6	65.0
August	39.9	46.3	2.7	5.5	75.4	65.0
September	40.7	46.6	2.4	5.0	75.5	65.0
October	41.7	47.1	2.2	4.5	75.6	65.2
November	42.6	47.7	2.1	4.3	76.1	65.4
December	43.2	48.1	2.2	4.4	76.7	65.6
<b>1998</b>						
January	43.6	48.3	2.5	4.9	77.0	65.9
February	43.7	48.2	2.8	5.4	77.1	66.1
March	43.6	48.1	3.1	6.1	77.2	66.4
FEMALES						
<b>1997</b>						
January	23.4	37.0	2.1	5.3	61.9	63.1
February	23.5	37.3	2.2	5.5	62.3	63.3
March	23.6	37.7	2.3	5.8	63.0	63.5
April	23.8	38.2	2.4	5.9	63.8	63.6
May	24.0	38.5	2.4	5.9	64.2	63.7
June	24.2	38.7	2.3	5.6	64.2	63.8
July	24.8	38.8	2.1	5.0	63.9	63.9
August	25.5	38.9	1.8	4.5	63.6	64.0
September	26.4	39.0	1.7	4.1	63.6	64.1
October	27.1	39.2	1.7	4.1	63.7	64.2
November	27.5	39.4	1.7	4.2	63.9	64.4
December	27.4	39.4	1.8	4.5	63.9	64.5
<b>1998</b>						
January	27.0	39.2	1.9	4.7	63.7	64.6
February	26.5	39.0	2.0	4.8	63.3	64.7
March	25.9	38.8	2.0	4.9	62.9	64.8
PERSONS						
<b>1997</b>						
January	63.0	82.4	4.8	5.5	68.3	127.7
February	63.2	82.8	5.0	5.7	68.7	128.0
March	63.6	83.7	5.2	5.9	69.3	128.2
April	63.8	84.5	5.4	6.0	70.0	128.4
May	63.7	85.0	5.4	6.0	70.3	128.6
June	63.8	85.1	5.2	5.8	70.2	128.7
July	64.3	85.0	4.9	5.5	69.8	128.9
August	65.4	85.2	4.5	5.1	69.6	129.0
September	67.1	85.7	4.1	4.6	69.6	129.1
October	68.8	86.3	3.9	4.3	69.7	129.4
November	70.1	87.0	3.9	4.3	70.0	129.8
December	70.6	87.5	4.1	4.5	70.3	130.1
<b>1998</b>						
January	70.5	87.5	4.4	4.8	70.4	130.5
February	70.2	87.3	4.7	5.1	70.3	130.9
March	69.5	87.0	5.1	5.6	70.1	131.3

(a) Trend estimates for September 1997 to February 1998 have been revised. Estimates for the most recent three months may be subject to significant revisions as data for later months become available.

## LABOUR FORCE STATUS (AGED 15 AND OVER)—Australian Capital Territory(a)

TREND.....

Month	Employed full time '000	Total employed '000	Total unemployed '000	Unemp- loyment rate %	Partic- ipation rate %	Civilian population aged 15 and over '000
MALES						
<b>1997</b>						
January	71.5	82.2	7.7	8.6	78.2	115.0
February	71.5	82.4	7.6	8.4	78.2	115.1
March	71.7	82.9	7.3	8.1	78.3	115.3
April	72.0	83.5	7.1	7.8	78.5	115.3
May	72.4	84.1	6.9	7.6	78.9	115.3
June	72.9	84.6	6.9	7.5	79.3	115.3
July	73.2	84.8	7.0	7.7	79.6	115.4
August	73.3	84.9	7.3	7.9	79.8	115.4
September	73.2	84.7	7.5	8.1	79.8	115.5
October	72.9	84.4	7.6	8.3	79.5	115.6
November	72.6	84.1	7.6	8.3	79.3	115.7
December	72.4	84.0	7.5	8.2	79.0	115.8
<b>1998</b>						
January	72.4	83.9	7.4	8.1	78.7	116.0
February	72.4	83.9	7.3	8.1	78.6	116.1
March	72.5	84.0	7.3	8.0	78.5	116.3
FEMALES						
<b>1997</b>						
January	44.2	71.7	5.4	7.0	64.7	119.3
February	45.3	72.9	5.1	6.6	65.4	119.4
March	46.3	73.9	5.0	6.4	66.1	119.4
April	46.9	74.4	5.1	6.5	66.6	119.4
May	47.1	74.4	5.5	6.8	66.9	119.4
June	47.0	73.9	5.8	7.3	66.7	119.4
July	46.9	73.2	6.1	7.7	66.4	119.4
August	46.9	72.4	6.3	8.0	65.9	119.4
September	46.9	71.7	6.3	8.1	65.4	119.3
October	46.8	71.3	6.3	8.1	64.9	119.5
November	46.6	71.2	6.1	7.9	64.7	119.6
December	46.4	71.5	5.8	7.5	64.6	119.7
<b>1998</b>						
January	46.3	71.9	5.5	7.1	64.6	119.8
February	46.4	72.5	5.2	6.6	64.7	119.9
March	46.5	73.1	4.8	6.2	64.9	120.0
PERSONS						
<b>1997</b>						
January	115.7	153.9	13.2	7.9	71.3	234.3
February	116.8	155.3	12.7	7.6	71.7	234.5
March	117.9	156.8	12.4	7.3	72.1	234.7
April	118.9	157.9	12.2	7.2	72.5	234.7
May	119.5	158.4	12.3	7.2	72.7	234.7
June	119.9	158.4	12.7	7.4	72.9	234.8
July	120.1	158.0	13.1	7.7	72.9	234.8
August	120.2	157.3	13.6	7.9	72.8	234.8
September	120.0	156.4	13.8	8.1	72.5	234.8
October	119.6	155.7	13.9	8.2	72.1	235.1
November	119.2	155.3	13.7	8.1	71.8	235.3
December	118.8	155.4	13.3	7.9	71.6	235.6
<b>1998</b>						
January	118.7	155.8	12.9	7.7	71.6	235.8
February	118.8	156.4	12.5	7.4	71.6	236.1
March	119.0	157.1	12.1	7.2	71.6	236.3

(a) Trend estimates for September 1997 to February 1998 have been revised. Estimates for the most recent three months may be subject to significant revisions as data for later months become available.



## EXPLANATORY NOTES

### INTRODUCTION

**1** This publication contains preliminary estimates of the civilian labour force derived from the Labour Force Survey component of the monthly population survey. Estimates for the current month are preliminary and subject to revision. Revised estimates for the current month and more detailed estimates will be published in *Labour Force, Australia* (6203.0).

### MONTHLY POPULATION SURVEY

**2** The population survey is based on a multi-stage area sample of private dwellings (currently about 30,000 houses, flats, etc.) and a list sample of non-private dwellings (hotels, motels, etc.), and covers about 0.5% of the population of Australia. The information is obtained from the occupants of selected dwellings by specially trained interviewers. The interviews are generally conducted during the two weeks beginning on the Monday between the 6th and 12th of each month. The information obtained relates to the week before the interview (i.e. the reference week).

### TELEPHONE INTERVIEWING

**3** The ABS has introduced the use of telephone interviewing into the Labour Force Survey. Households selected for the Labour Force Survey are interviewed each month for 8 months, with one eighth of the sample being replaced each month. The first interview is conducted face-to-face. Subsequent interviews are conducted by telephone (if acceptable to the respondent). Telephone interviewing was phased in for each new sample group from August 1996 to February 1997.

**4** During the period of implementation, the new method produced different estimates than would have been obtained under the old methodology. The effect peaked in November 1996, when it is estimated that the published estimate of total employment was about 36,000 to 48,000 lower than would have been measured under the old methodology. The effect dissipated over the final months of implementation and was no longer discernible from February 1997. Therefore, the estimates for February 1997 and onwards are directly comparable to estimates for periods prior to August 1996.

### SCOPE OF SURVEY

**5** The Labour Force Survey includes all persons aged 15 and over except members of the permanent defence forces, certain diplomatic personnel of overseas governments customarily excluded from census and estimated populations, overseas residents in Australia, and members of non-Australian defence forces (and their dependants) stationed in Australia.

### COVERAGE

**6** In the Labour Force Survey, coverage rules are applied which aim to ensure that each person is associated with only one dwelling, and hence has only one chance of selection. The coverage rules are necessarily a balance between theoretical and operational considerations. Nevertheless, the chance of a person being enumerated at two separate dwellings in the survey is considered to be negligible.

### POPULATION BENCHMARKS

**7** Labour Force Survey estimates are calculated in such a way as to add up to independent estimates of the civilian population aged 15 and over (population benchmarks). From February 1994, labour force estimates have been compiled using benchmarks based on the results of the 1991 Census of Population and Housing. Small revisions were made to many of the historical estimates from January 1989 to January 1994.

### REVISION OF SERIES

**8** From April 1986, the definition of employed persons was changed to include persons who worked without pay between 1 and 14 hours per week in a family business or on a farm (i.e. contributing family workers). For further information, see paragraphs 36 and 37 of the Explanatory Notes to the February 1987 issue of *Labour Force, Australia* (6203.0).

## EXPLANATORY NOTES

### SURVEY SAMPLE REDESIGN

**9** The Labour Force Survey sample has been reselected using information collected in the 1996 Census of Population and Housing.

**10** The bulk of the new sample will be phased in over the period September 1997 to April 1998, with one eighth of this portion of the sample being introduced every month. The remainder of the sample (about 15% of the total), which covers less settled areas of Australia and non-private dwellings was rotated in full for New South Wales, Victoria, Tasmania, Northern Territory and Australian Capital Territory in September 1997, and for Queensland, South Australia and Western Australia in October 1997. Such a pattern of implementation means that any changes to labour force estimates due to differences between the two samples, or any other influences, will be spread over the eight months.

**11** For further details, see *Information Paper: Labour Force Survey Sample Design* (6269.0).

### RELIABILITY OF ESTIMATES

**12** Two types of error are possible in an estimate based on a sample survey: sampling error and non-sampling error.

*Sampling error* occurs because a sample, rather than the entire population, is surveyed. One measure of the likely difference resulting from not including all dwellings in the survey is given by the standard error. There are about two chances in three that a sample estimate will differ by less than one standard error from the figure that would have been obtained if all dwellings had been included in the survey, and about nineteen chances in twenty that the difference will be less than two standard errors. Standard errors of estimates for the latest month and of estimates of movements since the previous month are shown on pages 30 and 31. Standard errors of other estimates and other movements may be determined by using information in the Technical Notes in *Labour Force, Australia* (6203.0).

*Non sampling error* arises from inaccuracies in collecting, recording and processing the data. Every effort is made to minimise reporting error by the careful design of questionnaires, intensive training and supervision of interviewers, and efficient data processing procedures.

### SEASONAL ADJUSTMENT AND TREND ESTIMATION

**13** Seasonally adjusted series are published in Tables 2, 5 and 12 to 17. Seasonal factors are reviewed annually to take account of each additional year's original data. The results of the latest review were used to compile the revised seasonally adjusted and trend estimates given in this publication. Information about the method of adjustment and revised seasonally adjusted and trend estimates for all months from January 1991 were published in an appendix to the February 1996 issue of *Labour Force, Australia* (6203.0).

**14** Seasonal adjustment is a means of removing the estimated effects of normal seasonal variation from the series so that the effects of other influences on the series can be more clearly recognised. Seasonal adjustment does not aim to remove the irregular or non-seasonal influences which may be present in any particular month. This means that month-to-month movements of the seasonally adjusted estimates may not be reliable indicators of trend behaviour. For example, irregular factors unrelated to the trend account for more than half the seasonally adjusted movement with the following frequency:

- Employment: 5 in 10 monthly movements
- Unemployment: 7 in 10 monthly movements
- Unemployment rate: 7 in 10 monthly movements
- Participation rate: 9 in 10 monthly movements.

## EXPLANATORY NOTES

### SEASONAL ADJUSTMENT AND TREND ESTIMATION *continued*

**15** The smoothing of seasonally adjusted series reduces the impact of the irregular component of the seasonally adjusted series, and creates trend estimates. These trend estimates are derived by applying a 13-term Henderson-weighted moving average to all months except the last six. The last six monthly trend estimates are obtained by applying surrogates of the Henderson average to the seasonally adjusted series. Trend series are used to analyse the underlying behaviour of the series over time. These are published in tables 3, 6 and 12 to 19.

**16** While this smoothing technique enables estimates to be produced for the latest month, it does result in revisions to the most recent months as additional observations become available. Generally, subsequent revisions become smaller, and after three months have a negligible impact on the series. There will also be revisions as a result of the annual review of seasonal factors.

**17** Trend estimates are published for the Northern Territory in table 18 and for the Australian Capital Territory in table 19. Unadjusted series for the two Territories have shown, historically, a high degree of variability, which can lead to considerable revisions to the seasonally adjusted estimates after each annual seasonal factor re-analysis. Seasonally adjusted estimates are not currently published for the two Territories. The most recent six months trend estimates are subject to revision. For the three most recent months, the revision may be relatively large. Inferences about trends drawn from smoothed seasonally adjusted (trend) estimates for months earlier than the latest three months are unlikely to be affected by month to month revisions. They may be affected by revision resulting from the annual re-analysis of seasonal factors.

**18** For further information, see *A Guide to Interpreting Time Series — Monitoring 'Trends': an Overview* (1348.0) or contact the Assistant Director, Time Series Analysis on (02) 6252 6345.

### RELATED PUBLICATIONS

**19** Users may also wish to refer to *Labour Force, Australia* (6203.0). This publication contains a detailed list of related publications which are available from ABS Bookshops.

**20** Current publications produced by the ABS are listed in the *Catalogue of Publications and Products* (1101.0). The ABS also issues, on Tuesdays and Fridays, a *Release Advice* (1105.0) which lists publications to be released in the next few days. The Catalogue and Release Advice are available from any ABS office.

### UNPUBLISHED STATISTICS

**21** As well as the statistics included in this and related publications, the ABS may have other relevant unpublished data available. Inquiries should be made to Matthew Paull on 02 6252 6525 or to any ABS office.

### EFFECTS OF ROUNDING

**22** Estimates have been rounded and discrepancies may occur between sums of the component items and totals.

**23** Estimates of movement shown in this publication are obtained by taking the difference of unrounded estimates. The movement estimate is then rounded to one decimal place. Therefore where a discrepancy occurs between the reported movement and the difference of the rounded estimates, the reported movement will be more accurate.

### SYMBOLS AND OTHER USAGES

- \* subject to sampling variability too high for most practical uses. See the Technical Notes in 6203.0 for more details.
- .. not applicable
- r revised
- pts percentage points

## GLOSSARY

<b>Actively looking for work</b>	Includes writing, telephoning or applying in person to an employer for work; answering a newspaper advertisement for a job; checking factory or Commonwealth Employment Service noticeboards; being registered with the Commonwealth Employment Service; checking or registering with any other employment agency; advertising or tendering for work; and contacting friends or relatives.
<b>Attending school</b>	Persons aged 15 to 19 enrolled full time at secondary or high schools in the reference week.
<b>Attending tertiary educational institution full time</b>	Persons aged 15 to 24 enrolled full time at a TAFE college, university, or other educational institution in the reference week.
<b>Employed</b>	Persons aged 15 and over who, during the reference week: <ul style="list-style-type: none"><li>■ worked for one hour or more for pay, profit, commission or payment in kind in a job or business, or on a farm (comprising employees, employers and own account workers); or</li><li>■ worked for one hour or more without pay in a family business or on a farm (i.e. contributing family workers); or</li><li>■ were employees who had a job but were not at work and were:<ul style="list-style-type: none"><li>■ on paid leave, on leave without pay for less than four weeks up to the end of the reference week,</li><li>■ stood down without pay because of bad weather or plant breakdown at their place of employment for less than four weeks up to the end of the reference week,</li><li>■ on strike or locked out,</li><li>■ on workers' compensation and expected to be returning to their job, or</li><li>■ receiving wages or salary while undertaking full-time study; or</li></ul></li><li>■ were employers, own account workers or contributing family workers who had a job, business or farm, but were not at work.</li></ul>
<b>Full-time workers</b>	Employed persons who usually worked 35 hours or more a week (in all jobs) and those who, although usually working less than 35 hours a week, worked 35 hours or more during the reference week
<b>Labour force</b>	For any group, persons who were employed or unemployed, as defined.
<b>Labour force status</b>	A classification of the civilian population aged 15 and over into employed, unemployed or not in the labour force, as defined. The definitions conform closely to the international standard definitions adopted by the International Conferences of Labour Statisticians.
<b>Not in the labour force</b>	Persons who were not in the categories employed or unemployed as defined.
<b>Participation rate</b>	For any group, the labour force expressed as a percentage of the civilian population aged 15 and over in the same group.
<b>Part-time workers</b>	Employed persons who usually worked less than 35 hours a week and who did so during the reference week.
<b>Seasonally adjusted series</b>	A time series of estimates with the estimated effects of normal seasonal variation removed. See Explanatory Note 13 to 14 for more detail.
<b>Trend series</b>	A smoothed seasonally adjusted series of estimates. See Explanatory Notes 15 to 17 for more detail.

## GLOSSARY

<b>Unemployed</b>	Persons aged 15 and over who were not employed during the reference week, and: <ul style="list-style-type: none"><li>■ had actively looked for full-time or part-time work at any time in the four weeks up to the end of the reference week and:<ul style="list-style-type: none"><li>■ were available for work in the reference week, or would have been available except for temporary illness (i.e. lasting for less than four weeks to the end of the reference week), or</li><li>■ were waiting to start a new job within four weeks from the end of the reference week and would have started in the reference week if the job had been available then; or</li></ul></li><li>■ were waiting to be called back to a full-time or part-time job from which they had been stood down without pay for less than four weeks up to the end of the reference week (including the whole of the reference week) for reasons other than bad weather or plant breakdown.</li></ul>
<b>Unemployed looking for first full-time job</b>	Unemployed persons looking for full-time work (as defined above) who had never worked full time for two weeks or more
<b>Unemployed looking for full-time work</b>	Unemployed persons who actively looked for full-time work, or were to resume a full-time job from which they had been stood down.
<b>Unemployed looking for part-time work</b>	Unemployed persons who had actively looked for part-time work only, or were to resume a part-time job from which they had been stood down.
<b>Unemployment rate</b>	For any group, the number of unemployed persons expressed as a percentage of the labour force in the same group.
<b>Unemployment to population ratio</b>	For any group, the number of unemployed persons expressed as a percentage of the civilian population in the same group.

## STANDARD ERRORS

The estimates in this publication are based on information gained from the occupants of a sample survey of dwellings. Because the entire population is not surveyed, the published estimates are subject to sampling error. The most common way of quantifying such sampling error is to calculate the standard error for the published estimate or statistic.

### LEVEL ESTIMATES

To illustrate, let us say the published level estimate for employed persons aged 15 to 19 is 500,000. The calculated standard error in this case is 9,000. The standard error is then used to interpret the level estimate of 500,000. For instance, the standard error of 9,000 indicates that:

- There are approximately two chances in three that the real value falls within the range 491,000 to 509,000 ( $500,000 \pm 9,000$ )
- There are approximately nineteen chances in twenty that the real value falls within the range 482,000 to 518,000 ( $500,000 \pm 18,000$ ).

The real value in this case is the result we would obtain if we could enumerate the total population.

The following tables show the standard errors for this month's level estimates.

	EMPLOYED.....			UNEMPLOYED.....			Labour force	Not in labour force	Unemployment rate	Participation rate
	Full time	Part time	Total	Looking for f/t work	Looking for p/t work	Total				
	'000	'000	'000	'000	'000	'000				
NSW	14.6	9.8	16.0	6.2	3.5	6.7	16.5	14.1	0.2	0.3
Vic.	12.1	8.4	13.4	5.3	3.4	5.9	13.8	11.4	0.3	0.4
Qld	9.4	6.6	10.5	4.1	2.4	4.5	10.9	8.8	0.3	0.4
SA	5.1	3.6	5.7	2.4	1.3	2.6	5.9	5.1	0.4	0.5
WA	6.4	4.4	7.1	2.5	1.5	2.8	7.3	5.8	0.3	0.5
Tas.	1.7	1.3	1.8	1.0	0.5	1.0	1.9	1.7	0.5	0.5
NT	2.1	1.0	2.3	0.6	0.4	0.7	2.3	1.6	0.7	1.8
ACT	1.6	1.1	1.8	0.6	0.5	0.7	1.9	1.3	0.4	0.8
Males	19.9	9.6	20.8	8.2	3.8	8.7	21.4	15.1	0.2	0.3
Females	15.5	14.1	18.9	6.6	4.8	7.7	19.5	18.5	0.2	0.3
Persons	22.8	15.8	25.1	9.8	5.9	10.8	25.9	21.6	0.1	0.2

	NUMBER OF UNEMPLOYED PERSONS.....					UNEMPLOYMENT RATE.....				
	Aged 15-19 looking for f/t work	Aged 20 and over looking for f/t work	Total looking for f/t work	Looking for p/t work	Total	Aged 15-19 looking for f/t work	Aged 20 and over looking for f/t work	Total looking for f/t work	Looking for p/t work	Total
	'000	'000	'000	'000	'000	pts	pts	pts	pts	pts
NSW	2.8	5.8	6.2	3.5	6.7	2.6	0.3	0.3	0.5	0.2
Vic.	2.5	4.9	5.3	3.4	5.9	3.7	0.3	0.3	0.6	0.3
Qld	1.8	3.8	4.1	2.4	4.5	2.9	0.3	0.3	0.5	0.3
SA	1.1	2.2	2.4	1.3	2.6	4.6	0.4	0.5	0.7	0.4
WA	1.3	2.3	2.5	1.5	2.8	3.1	0.4	0.4	0.6	0.3
Tas.	0.5	0.9	1.0	0.5	1.0	5.4	0.6	0.6	0.9	0.5
NT	0.2	0.5	0.6	0.4	0.7	6.5	0.8	0.8	2.0	0.7
ACT	0.3	0.6	0.6	0.5	0.7	8.0	0.5	0.5	1.1	0.4
Males	3.5	7.7	8.2	3.8	8.7	1.7	0.2	0.2	0.6	0.2
Females	3.1	6.1	6.6	4.8	7.7	2.6	0.3	0.3	0.3	0.2
Persons	4.5	9.2	9.8	5.9	10.8	1.4	0.1	0.1	0.2	0.1

## STANDARD ERRORS *continued*

### MOVEMENT ESTIMATES

The following example illustrates how to use the standard error to interpret a movement estimate. Let us say that one month the published level estimate for females employed part time in Australia is 1,387,000; the next month the published level estimate is 1,400,000. The calculated standard error for the movement estimate is 10,500. The standard error is then used to interpret the published movement estimate of 13,000. For instance, the standard error of 10,500 indicates that:

- There are approximately two chances in three that the real movement over the two month period falls within the range 2,500 to 23,500 (13,000 + or - 10,500)
- There are approximately nineteen chances in twenty that the real movement falls within the range -8,000 to 34,000 (13,000 + or - 21,000).

The following tables show the standard errors for this month's movement estimates.

	EMPLOYED.....			UNEMPLOYED.....			Labour force	Not in labour force	Unemployment rate	Participation rate
	Full time	Part time	Total	Looking for f/t work	Looking for p/t work	Total				
	'000	'000	'000	'000	'000	'000				
NSW	11.4	7.5	12.6	4.8	3.1	5.3	13.0	10.9	0.2	0.3
Vic.	8.8	6.0	9.8	3.8	2.5	4.2	10.2	8.3	0.2	0.3
Qld	6.5	4.6	7.3	3.2	2.0	3.4	7.5	6.1	0.2	0.3
SA	3.5	2.5	3.9	1.7	1.0	1.8	4.1	3.5	0.2	0.3
WA	4.6	3.2	5.1	2.0	1.2	2.1	5.2	4.1	0.2	0.4
Tas.	1.5	1.1	1.7	0.7	0.4	0.8	1.8	1.5	0.4	0.5
NT	1.3	0.7	1.4	0.4	0.3	0.4	1.5	1.0	0.5	1.1
ACT	1.2	0.8	1.4	0.5	0.4	0.6	1.4	1.0	0.3	0.6
Males	15.2	7.2	15.9	6.3	3.3	6.7	16.5	11.3	0.1	0.2
Females	11.6	10.5	14.4	5.2	3.9	6.0	14.9	14.0	0.2	0.2
Persons	17.6	11.8	19.7	7.5	4.7	8.3	20.3	16.6	0.1	0.1

	NUMBER OF UNEMPLOYED PERSONS.....					UNEMPLOYMENT RATE.....				
	Aged 15-19 looking for f/t work	Aged 20 and over looking for f/t work	Total looking for f/t work	Looking for p/t work	Total	Aged 15-19 looking for f/t work	Aged 20 and over looking for f/t work	Total looking for f/t work	Looking for p/t work	Total
	'000	'000	'000	'000	'000	pts	pts	pts	pts	pts
NSW	2.3	4.5	4.8	3.1	5.3	2.2	0.2	0.2	0.4	0.2
Vic.	1.9	3.6	3.8	2.5	4.2	2.8	0.2	0.2	0.4	0.2
Qld	1.6	3.0	3.2	2.0	3.4	2.4	0.2	0.2	0.4	0.2
SA	0.8	1.6	1.7	1.0	1.8	3.5	0.3	0.3	0.5	0.2
WA	1.1	1.8	2.0	1.2	2.1	2.6	0.3	0.3	0.5	0.2
Tas.	0.4	0.7	0.7	0.4	0.8	4.1	0.5	0.5	0.7	0.4
NT	0.2	0.4	0.4	0.3	0.4	4.8	0.5	0.5	1.6	0.5
ACT	0.3	0.5	0.5	0.4	0.6	5.3	0.4	0.4	0.9	0.3
Males	3.0	6.0	6.3	3.3	6.7	1.5	0.1	0.1	0.5	0.1
Females	2.7	4.8	5.2	3.9	6.0	2.2	0.2	0.2	0.2	0.2
Persons	3.7	7.1	7.5	4.7	8.3	1.1	0.1	0.1	0.2	0.1

# WHAT IF...? REVISIONS TO TREND ESTIMATES

## EFFECT OF NEW SEASONALLY ADJUSTED ESTIMATES ON TREND ESTIMATES

Each time new seasonally adjusted estimates become available, trend estimates are revised (see paragraphs 13 and 14 of Explanatory Notes).

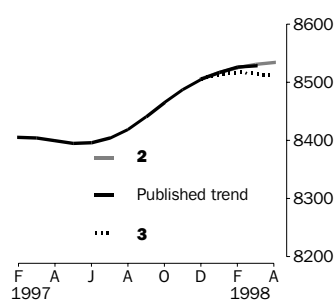
### TREND REVISIONS

The examples in the tables below show four illustrative scenarios and the consequent revisions to previous trend estimates of employment and unemployment rate.

- 1** The April seasonally adjusted estimate is the same as the March estimate.
- 2** The April seasonally adjusted estimate is higher than the March estimate by:
  - +0.33% for employment
  - +2.1% for the unemployment rate
- 3** The April seasonally adjusted estimate is lower than the March estimate by:
  - -0.33% for employment
  - -2.1% for the unemployment rate
- 4** The April seasonally adjusted estimate results in a revised March trend estimate which is identical to the new April trend estimate.

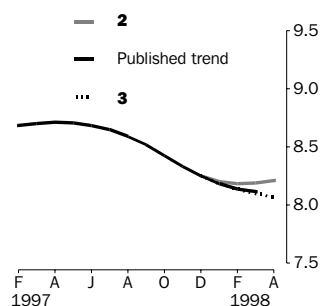
The percentage changes of 0.33% and 2.1% were chosen because they represent the average absolute monthly percentage changes in employment and the unemployment rate respectively.

### EMPLOYMENT ('000)



		WHAT IF NEXT MONTH'S SEASONALLY ADJUSTED ESTIMATE IS:				
		<b>1</b>	<b>2</b>	<b>3</b>	<b>4</b>	
		8 513.9	8 542.1	8 485.7	8 512.5	
		<i>i.e. the same as Mar 1998</i>	<i>i.e. rises by 0.33%</i>	<i>i.e. falls by 0.33%</i>	<i>i.e. same trend for Mar &amp; Apr</i>	
TREND as PUBLISHED						
1998	January	8 517.3	8 515.7	8 517.0	8 514.5	8 515.7
	February	8 525.9	8 520.9	8 525.0	8 516.7	8 520.7
	March	8 528.7	8 522.9	8 530.7	8 515.0	8 522.5
	April (new)	—	8 523.0	8 534.9	8 511.2	8 522.5

### UNEMPLOYMENT RATE (%)



		WHAT IF NEXT MONTH'S SEASONALLY ADJUSTED ESTIMATE IS:				
		<b>1</b>	<b>2</b>	<b>3</b>	<b>4</b>	
		8.2	8.4	8.0	8.2	
		<i>i.e. the same as Mar 1998</i>	<i>i.e. rises by 2.1%</i>	<i>i.e. falls by 2.1%</i>	<i>i.e. same trend for Mar &amp; Apr</i>	
TREND as PUBLISHED						
1998	January	8.2	8.2	8.2	8.2	8.2
	February	8.1	8.2	8.2	8.1	8.2
	March	8.1	8.1	8.2	8.1	8.2
	April (new)	—	8.1	8.2	8.1	8.2









The ABS publishes a wide range of information on Australia's economic and social conditions. A catalogue of publications and products is available from any of our offices (see below).

#### INFORMATION CONSULTANCY SERVICES

Information tailored to special needs of clients can be obtained from the Information Consultancy Service available at ABS Offices (see below).

#### ABS PRODUCTS

A large number of ABS products is available from the ABS Bookshops (see below). The ABS also provides a subscription service – you can telephone the ABS Subscription Service Australia wide toll free on 1300 3663 23.

#### ELECTRONIC SERVICES

A large range of data is available via on-line services, diskette, magnetic tape, tape cartridge and CD ROM. For more details about our electronic data services, contact any ABS office (see below) or e-mail us at:

- [client.services@abs.gov.au](mailto:client.services@abs.gov.au)

#### GENERAL SALES AND INQUIRIES

- Sydney 02 9268 4611
  - Melbourne 03 9615 7755
  - Brisbane 07 3222 6351
  - Perth 08 9360 5140
  - Adelaide 08 8237 7100
  - Hobart 03 6222 5800
  - Darwin 08 8943 2111
  - Canberra 02 6252 6627
- Information Services, ABS  
PO Box 10, Belconnen ACT 2616



2620200003984

ISSN 1031-038X

RRP \$17.50