



## AUSTRALIAN NATIONAL ACCOUNTS

**STATE ACCOUNTS**

EMBARGO: 11.30AM (CANBERRA TIME) THURS 23 NOV 2000

**C O N T E N T S**

	<i>page</i>
Notes .....	2
Analysis of results .....	3

**TABLES**

List of tables .....	7
Gross state product .....	9
Expenditure components of gross state product .....	16
Income components of gross state product .....	25
Total factor income .....	27
Household income .....	45
Agricultural income .....	55

**ADDITIONAL INFORMATION**

Explanatory notes .....	58
-------------------------	----

**NOTE:**  
Release of new National  
Accounts concepts, sources  
and methods manual.  
See page 6 for details

- For further information about these and related statistics, contact Ross Harvey on Canberra 02 6252 6713 for current price estimates, and Patricia Mahony on Canberra 02 6252 6711 for volume estimates.

## NOTES

**ABOUT THIS PUBLICATION** This publication contains State and Territory estimates of gross domestic product (referred to as gross state product (GSP)) and its components, in current price and chain volume terms, for the years 1991–92 to 1999–2000.

**REVISIONS IN THIS ISSUE** Estimates in this publication have been revised in accordance with revised annual benchmarks for Australia published in the 1999–2000 issue of *Australian System of National Accounts* (Cat. no. 5204.0). State distributions of national aggregates for recent years have been revised using the latest available information. In addition, current price and chain volume estimates of international exports and imports of goods have been revised for all years.

**DATA VALUES AND ROUNDING** All values, unless otherwise indicated, are shown in Australian dollars rounded to the nearest million.

Where figures have been rounded, discrepancies may occur between the sums of the component items and totals.

**NEXT ISSUE** The 2000–01 issue of this publication is expected to be released in November 2001.

### ABBREVIATIONS

..	not applicable
ABS	Australian Bureau of Statistics
GMI	gross mixed income
GOS	gross operating surplus
GSP	gross state product
n.a.	not available
SFD	state final demand
SITC Rev3	Standard Industrial Trade Classification, Revision 3
SNA93	System of National Accounts, 1993

Dennis Trewin  
Australian Statistician

## ANALYSIS OF RESULTS

### GROWTH IN EXPERIMENTAL ESTIMATES OF GSP CHAIN VOLUME MEASURES

The estimates of gross state product (GSP) chain volume measures included in this publication are regarded as 'experimental'. The reasons are set out in the explanatory notes. Users should therefore exercise caution when using these estimates for economic analyses.

The table below compares annual rates of growth in experimental estimates of GSP chain volume measures and GSP chain volume measures per head of mean population over the nine years 1990–91 to 1999–2000.

### AVERAGE ANNUAL COMPOUND GROWTH RATES OF GSP CHAIN VOLUME MEASURES, 1990–91 TO 1999–2000 (a)

	<i>GSP chain volume measures</i>	<i>GSP chain volume measures per head of population</i>
	%	%
New South Wales	3.6	2.5
Victoria	3.6	2.7
Queensland	5.2	3.0
South Australia	2.5	2.1
Western Australia	4.7	3.1
Tasmania	1.7	1.6
Northern Territory	2.9	1.0
Australian Capital Territory	3.4	2.5
Australia	3.9	2.7

(a) Experimental series. See paragraphs 27 to 31 of Explanatory Notes.

Over the period 1990–91 to 1999–2000, growth in GSP chain volume measures varied considerably between the States, with growth being strongest in Queensland and Western Australia and weakest in Tasmania and South Australia. The dispersion of growth rates was less, but still significant, in terms of GSP chain volume measures per head of mean population.

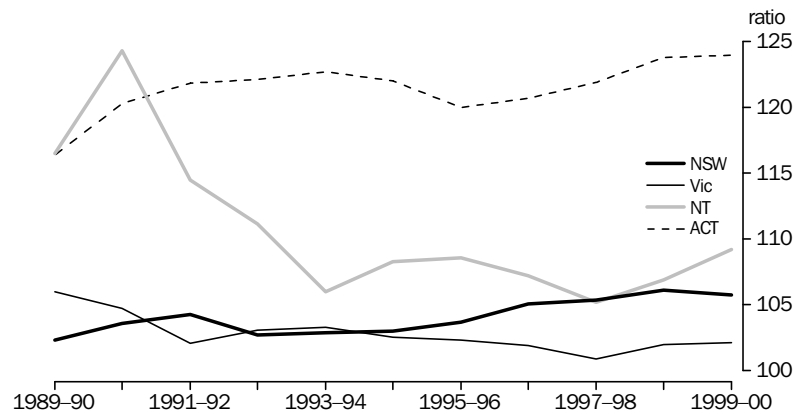
### GSP PER HEAD OF MEAN POPULATION (RATIO TO AUSTRALIA)

The graphs below show an index of GSP, in current prices, per head of mean population for each State and Territory divided by the Australian estimate for total gross domestic product (GDP) per head of mean population, for the period 1989–90 to 1999–2000. It should be noted that GSP per head of mean population cannot be equated with the income of households in a particular State—see comments on gross household disposable income below.

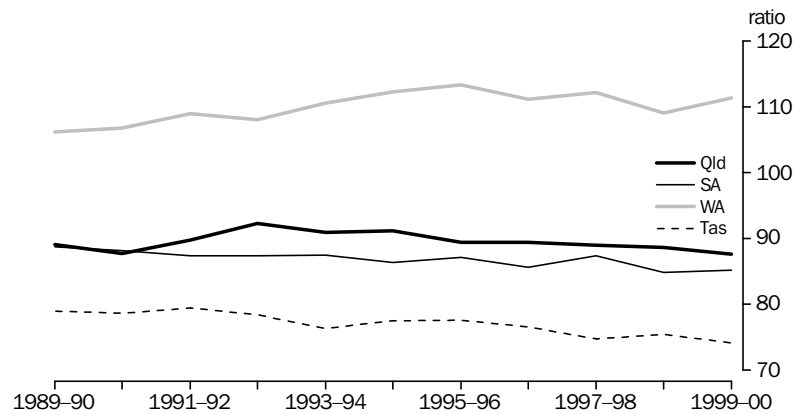
## ANALYSIS OF RESULTS *continued*

GSP PER HEAD OF MEAN POPULATION (RATIO TO AUSTRALIA) *continued*

GSP PER HEAD OF MEAN POPULATION: ratio (Australia = 100)



GSP PER HEAD OF MEAN POPULATION: ratio (Australia = 100)



GSP per head of mean population in 1999–2000 was above the national average in New South Wales, Victoria, Western Australia, the Northern Territory and the Australian Capital Territory. The Australian Capital Territory had the highest level in each of the years from 1991–92, while the Northern Territory had the highest level in 1989–90 and 1990–91. GSP per head of mean population in Queensland, South Australia and Tasmania has not exceeded the national average during this period. All States except New South Wales, Queensland and Tasmania experienced an increase in this ratio in 1999–2000.

INDUSTRY COMPOSITION OF TOTAL FACTOR INCOME

Individual industry contributions to total factor income for 1999–2000 are shown below. In line with long term trends, there has been a shift from goods producing industries to service providing industries over the period 1989–90 to 1999–2000.

The main industries contributing to the relative decline in goods producing industries have been: agriculture, forestry and fishing; manufacturing; and electricity, gas and water supply. Service industries, except for wholesale and retail trade, have increased in relative importance in most States.

## ANALYSIS OF RESULTS *continued*

### INDUSTRY COMPOSITION OF TOTAL FACTOR INCOME *continued*

### INDUSTRY CONTRIBUTION TO TOTAL FACTOR INCOME(a)—1999–2000

	NSW	Vic	Qld	SA	WA	Tas	NT	ACT	Aust
	%	%	%	%	%	%	%	%	%
Agriculture, forestry and fishing	2	3	5	5	4	5	3	—	3
Mining	2	2	6	2	20	2	18	—	5
Manufacturing	13	16	11	16	9	16	4	2	13
Electricity, gas and water supply	2	2	2	3	2	6	2	2	2
Construction	7	5	7	6	7	5	6	7	6
Wholesale trade	6	6	6	5	4	4	3	2	5
Retail trade	5	5	7	6	5	6	5	4	5
Accommodation, cafes and restaurants	2	2	3	2	2	3	3	2	2
Transport and storage	5	5	6	5	6	5	6	3	5
Communication	3	4	3	3	3	3	3	3	3
Finance and insurance	8	7	4	5	4	5	3	4	6
Property and business services	15	14	10	10	10	5	9	14	13
Government administration and defence	3	2	4	3	2	5	9	26	4
Education	4	5	5	5	4	5	5	6	5
Health and community services	5	6	6	7	6	8	6	6	6
Culture and recreational services	2	2	2	2	1	1	3	3	2
Personal and other services	2	2	3	3	2	3	3	3	3
Ownership of dwellings	11	9	8	9	7	9	6	8	9
General government(b)	2	2	3	2	2	3	3	5	2
Total	100	100	100	100	100	100	100	100	100

— nil or rounded to zero (including null cells)

(a) Industries may not add to total due to rounding differences.

(b) State details for general government gross operating surplus by industry are not available.

### GROSS HOUSEHOLD DISPOSABLE INCOME

The analysis of GSP per head of mean population above concentrates on the level of economic production (GSP) and its growth in current price terms. It does not provide a measure of incomes received by residents of a particular State, because a proportion of income generated in the production process may be transferred to other States or overseas (and conversely income may be received from other States or overseas). Gross household disposable income per head of mean population in 1999–2000 is shown below.

### GROSS HOUSEHOLD DISPOSABLE INCOME PER HEAD OF MEAN POPULATION—1999–2000

	\$
New South Wales	23 009
Victoria	22 486
Queensland	19 899
South Australia	19 951
Western Australia	21 741
Tasmania	17 972
Northern Territory	21 751
Australian Capital Territory	29 364
Australia	21 904

Gross household disposable income per head of mean population was highest in the Australian Capital Territory and lowest in Tasmania. Differences between the States reflect differences, from State to State, in the impact of a range of factors including the average level of compensation of employees received per employee, the proportion of the population in employment, the age distribution of the population, and differences in the level of dwelling rent (including that imputed to owner occupiers). For example, a

## ANALYSIS OF RESULTS *continued*

---

### GROSS HOUSEHOLD

#### DISPOSABLE

#### INCOME *continued*

significant reason for the high level of gross household disposable income per head of mean population in the Australian Capital Territory compared with other States is that the labour force participation rate is much higher there than in the rest of Australia.

### NEW CONCEPTS,

#### SOURCES AND METHODS

#### MANUAL

A new, and completely revised, issue of *Australian National Accounts: Concepts, Sources and Methods* (Cat. no. 5216.0) is available on the ABS website [www.abs.gov.au](http://www.abs.gov.au) (starting at the home page select: Statistics—Statistical Concepts Library—ABS concepts, sources, methods and statistical frameworks—5216.0).

The new manual gives an up-to-date and comprehensive description of the concepts, sources and methods used to compile Australia's national and State accounts, including the input-output tables, chain volume estimates, capital stock and productivity statistics.

The manual will be released in printed form on 21 December 2000.

## LIST OF TABLES

*page*

### GROSS STATE PRODUCT

<b>1</b>	Gross State Product, Chain Volume Measures . . . . .	9
<b>2</b>	Gross State Product per head of mean population, Chain Volume Measures . . . . .	10
<b>3</b>	Components of Gross State Product, Chain Volume Measures . . . . .	11
<b>4</b>	Gross State Product at Market Prices . . . . .	14
<b>5</b>	Gross State Product at Market Prices per head of mean population . . . . .	15

### EXPENDITURE COMPONENTS OF GROSS STATE PRODUCT

<b>6</b>	Expenditure Components of Gross State Product, New South Wales—Current Prices . . . . .	16
<b>7</b>	Expenditure Components of Gross State Product, Victoria—Current Prices . . . . .	17
<b>8</b>	Expenditure Components of Gross State Product, Queensland—Current Prices . . . . .	18
<b>9</b>	Expenditure Components of Gross State Product, South Australia—Current Prices . . . . .	19
<b>10</b>	Expenditure Components of Gross State Product, Western Australia—Current Prices . . . . .	20
<b>11</b>	Expenditure Components of Gross State Product, Tasmania—Current Prices . . . . .	21
<b>12</b>	Expenditure Components of Gross State Product, Northern Territory—Current Prices . . . . .	22
<b>13</b>	Expenditure Components of Gross State Product, Australian Capital Territory—Current Prices . . . . .	23
<b>14</b>	Expenditure Components of Gross Domestic Product, Australia—Current Prices . . . . .	24

### INCOME COMPONENTS OF GROSS STATE PRODUCT—CURRENT PRICES

<b>15</b>	Income Components of Gross State Product—Current Prices . . . . .	25
-----------	---	----

### TOTAL FACTOR INCOME

<b>16</b>	Total Factor Income by Industry and Principal Components, New South Wales—Current Prices . . . . .	27
<b>17</b>	Total Factor Income by Industry and Principal Components, Victoria—Current Prices . . . . .	29
<b>18</b>	Total Factor Income by Industry and Principal Components, Queensland—Current Prices . . . . .	31
<b>19</b>	Total Factor Income by Industry and Principal Components, South Australia—Current Prices . . . . .	33
<b>20</b>	Total Factor Income by Industry and Principal Components, Western Australia—Current Prices . . . . .	35
<b>21</b>	Total Factor Income by Industry and Principal Components, Tasmania—Current Prices . . . . .	37

## LIST OF TABLES *continued*

<b>22</b>	Total Factor Income by Industry and Principal Components, Northern Territory—Current Prices . . . . .	39
<b>23</b>	Total Factor Income by Industry and Principal Components, Australian Capital Territory—Current Prices . . . . .	41
<b>24</b>	Total Factor Income by Industry and Principal Components, Australia—Current Prices . . . . .	43

### HOUSEHOLD INCOME

<b>25</b>	Gross Household Income and Gross Household Disposable Income, Values and per head of mean population—Current Prices . . . . .	45
<b>26</b>	Household Income Account, New South Wales—Current Prices . . . . .	46
<b>27</b>	Household Income Account, Victoria—Current Prices . . . . .	47
<b>28</b>	Household Income Account, Queensland—Current Prices . . . . .	48
<b>29</b>	Household Income Account, South Australia—Current Prices . . . . .	49
<b>30</b>	Household Income Account, Western Australia—Current Prices . . . . .	50
<b>31</b>	Household Income Account, Tasmania—Current Prices . . . . .	51
<b>32</b>	Household Income Account, Northern Territory—Current Prices . . . . .	52
<b>33</b>	Household Income Account, Australian Capital Territory—Current Prices . . . . .	53
<b>34</b>	Household Income Account, Australia—Current Prices . . . . .	54

### AGRICULTURAL INCOME

<b>35</b>	Agricultural Income, Current Prices . . . . .	55
-----------	---	----



## GROSS STATE PRODUCT, Chain Volume Measures(a)

1991-92 1992-93 1993-94 1994-95 1995-96 1996-97 1997-98 1998-99 1999-00

## VALUES

New South Wales (\$m)	161 507	165 890	172 811	178 964	186 417	193 529	202 664	213 494	221 375
Victoria (\$m)	112 774	117 449	122 307	126 141	130 734	134 463	141 084	151 006	157 915
Queensland (\$m)	67 980	73 352	76 395	80 482	83 719	88 022	91 789	97 555	103 691
South Australia (\$m)	32 260	33 216	34 144	34 227	36 034	36 632	39 087	39 966	41 381
Western Australia (\$m)	45 778	47 047	49 853	53 216	56 252	57 931	61 374	63 611	66 525
Tasmania (\$m)	9 775	9 970	10 008	10 270	10 615	10 660	10 704	11 243	11 367
Northern Territory (\$m)	4 821	4 823	4 898	5 262	5 582	5 715	5 979	6 468	6 466
Australian Capital Territory (\$m)	9 355	9 678	10 075	10 484	10 791	10 966	11 618	12 075	12 669
<b>Australia (GDP) (\$m)</b>	<b>442 022</b>	<b>457 984</b>	<b>476 986</b>	<b>498 550</b>	<b>520 261</b>	<b>539 088</b>	<b>565 126</b>	<b>595 417</b>	<b>620 963</b>

## PERCENTAGE CHANGES FROM PREVIOUS YEAR

New South Wales (%)	0.1	2.7	4.2	3.6	4.2	3.8	4.7	5.3	3.7
Victoria (%)	-2.0	4.1	4.1	3.1	3.6	2.9	4.9	7.0	4.6
Queensland (%)	3.6	7.9	4.1	5.3	4.0	5.1	4.3	6.3	6.3
South Australia (%)	-2.6	3.0	2.8	0.2	5.3	1.7	6.7	2.2	3.5
Western Australia (%)	4.1	2.8	6.0	6.7	5.7	3.0	5.9	3.6	4.6
Tasmania (%)	0.4	2.0	0.4	2.6	3.4	0.4	0.4	5.0	1.1
Northern Territory (%)	-3.7	—	1.5	7.4	6.1	2.4	4.6	8.2	—
Australian Capital Territory (%)	—	3.5	4.1	4.1	2.9	1.6	5.9	3.9	4.9
<b>Australia (GDP) (%)</b>	<b>0.4</b>	<b>3.6</b>	<b>4.1</b>	<b>4.5</b>	<b>4.4</b>	<b>3.6</b>	<b>4.8</b>	<b>5.4</b>	<b>4.3</b>

## INDEX (1991-92 = 100.0)

New South Wales	100.0	102.7	107.0	110.8	115.4	119.8	125.5	132.2	137.1
Victoria	100.0	104.1	108.5	111.9	115.9	119.2	125.1	133.9	140.0
Queensland	100.0	107.9	112.4	118.4	123.2	129.5	135.0	143.5	152.5
South Australia	100.0	103.0	105.8	106.1	111.7	113.6	121.2	123.9	128.3
Western Australia	100.0	102.8	108.9	116.2	122.9	126.5	134.1	139.0	145.3
Tasmania	100.0	102.0	102.4	105.1	108.6	109.1	109.5	115.0	116.3
Northern Territory	100.0	100.0	101.6	109.1	115.8	118.5	124.0	134.2	134.1
Australian Capital Territory	100.0	103.5	107.7	112.1	115.4	117.2	124.2	129.1	135.4
<b>Australia (GDP)</b>	<b>100.0</b>	<b>103.6</b>	<b>107.9</b>	<b>112.8</b>	<b>117.7</b>	<b>122.0</b>	<b>127.9</b>	<b>134.7</b>	<b>140.5</b>

— nil or rounded to zero (including null cells)

- (a) Experimental series. Users are cautioned these estimates are derived indirectly by calculating a deflator from the expenditure components of the state series concerned. Therefore, in general, the sum of the state estimates does not equal the estimates for Australia. It is emphasised that, at times, there may be movements that cannot be fully explained in the chain volume estimates of GSP through the use of this proxy deflator (see Technical Note on page vi of the 1993-94 issue of Australian National Accounts: State Accounts (Cat. no. 5220.0)). Reference year for chain volume measures is 1998-99.

## GROSS STATE PRODUCT PER HEAD OF MEAN POPULATION, Chain Volume Measures(a)

1991-92 1992-93 1993-94 1994-95 1995-96 1996-97 1997-98 1998-99 1999-00

## VALUES

New South Wales (\$)	27 223	27 710	28 635	29 371	30 227	31 005	32 151	33 530	34 417
Victoria (\$)	25 405	26 300	27 302	28 018	28 800	29 329	30 470	32 246	33 333
Queensland (\$)	22 691	23 889	24 253	24 955	25 343	26 124	26 793	28 030	29 336
South Australia (\$)	22 219	22 772	23 325	23 320	24 488	24 803	26 355	26 830	27 679
Western Australia (\$)	27 780	28 199	29 496	30 969	32 148	32 496	33 847	34 486	35 556
Tasmania (\$)	20 867	21 172	21 184	21 693	22 389	22 479	22 647	23 852	24 162
Northern Territory (\$)	28 860	28 450	28 431	30 018	31 013	30 981	31 730	33 802	33 342
Australian Capital Territory (\$)	32 055	32 578	33 573	34 580	35 221	35 539	37 767	39 142	40 810
<b>Australia (GDP) (\$)</b>	<b>25 411</b>	<b>26 040</b>	<b>26 848</b>	<b>27 757</b>	<b>28 594</b>	<b>29 257</b>	<b>30 342</b>	<b>31 611</b>	<b>32 605</b>

## PERCENTAGE CHANGES FROM PREVIOUS YEAR

New South Wales (%)	-1.1	1.8	3.3	2.6	2.9	2.6	3.7	4.3	2.6
Victoria (%)	-2.8	3.5	3.8	2.6	2.8	1.8	3.9	5.8	3.4
Queensland (%)	1.3	5.3	1.5	2.9	1.6	3.1	2.6	4.6	4.7
South Australia (%)	-3.5	2.5	2.4	—	5.0	1.3	6.3	1.8	3.2
Western Australia (%)	2.7	1.5	4.6	5.0	3.8	1.1	4.2	1.9	3.1
Tasmania (%)	-0.4	1.5	0.1	2.4	3.2	0.4	0.7	5.3	1.3
Northern Territory (%)	-5.0	-1.4	-0.1	5.6	3.3	-0.1	2.4	6.5	-1.4
Australian Capital Territory (%)	-2.2	1.6	3.1	3.0	1.9	0.9	6.3	3.6	4.3
<b>Australia (GDP) (%)</b>	<b>-0.9</b>	<b>2.5</b>	<b>3.1</b>	<b>3.4</b>	<b>3.0</b>	<b>2.3</b>	<b>3.7</b>	<b>4.2</b>	<b>3.1</b>

## INDEX (1991-92 = 100.0)

New South Wales	100.0	101.8	105.2	107.9	111.0	113.9	118.1	123.2	126.4
Victoria	100.0	103.5	107.5	110.3	113.4	115.4	119.9	126.9	131.2
Queensland	100.0	105.3	106.9	110.0	111.7	115.1	118.1	123.5	129.3
South Australia	100.0	102.5	105.0	105.0	110.2	111.6	118.6	120.8	124.6
Western Australia	100.0	101.5	106.2	111.5	115.7	117.0	121.8	124.1	128.0
Tasmania	100.0	101.5	101.5	104.0	107.3	107.7	108.5	114.3	115.8
Northern Territory	100.0	98.6	98.5	104.0	107.5	107.3	109.9	117.1	115.5
Australian Capital Territory	100.0	101.6	104.7	107.9	109.9	110.9	117.8	122.1	127.3
<b>Australia (GDP)</b>	<b>100.0</b>	<b>102.5</b>	<b>105.7</b>	<b>109.2</b>	<b>112.5</b>	<b>115.1</b>	<b>119.4</b>	<b>124.4</b>	<b>128.3</b>

— nil or rounded to zero (including null cells)

- (a) Experimental series. Users are cautioned these estimates are derived indirectly by calculating a deflator from the expenditure components of the state series concerned. Therefore, in general, the sum of the state estimates does not equal the estimates for Australia. It is emphasised that, at times, there may be movements that cannot be fully explained in the chain volume estimates of GSP through the use of this proxy deflator (see Technical Note on page vi of the 1993-94 issue of Australian National Accounts: State Accounts (Cat. no. 5220.0)). Reference year for chain volume measures is 1998-99.

## COMPONENTS OF GROSS STATE PRODUCT, Chain Volume Measures(a)

	1991-92	1992-93	1993-94	1994-95	1995-96	1996-97	1997-98	1998-99	1999-00
	\$m	\$m	\$m	\$m	\$m	\$m	\$m	\$m	\$m
<b>NEW SOUTH WALES</b>									
Government final consumption expenditure	30 038	30 795	31 005	32 491	32 828	32 533	33 439	35 504	36 303
Household final consumption expenditure	100 494	100 883	102 332	107 514	112 260	115 095	119 584	125 309	130 753
Private gross fixed capital formation	23 768	24 408	25 996	30 203	30 576	31 737	37 144	39 707	44 436
Public corporations gross fixed capital formation	4 703	4 739	4 101	4 406	4 192	3 185	3 509	3 439	3 929
General government gross fixed capital formation	3 257	3 495	3 729	3 938	3 800	4 439	4 178	4 638	5 037
State final demand	161 961	164 096	166 977	178 552	183 571	186 945	197 866	208 597	220 458
International trade—exports of goods	11 250	12 469	14 992	15 423	16 943	19 215	20 671	20 501	21 996
less International trade—imports of goods	20 937	22 457	24 138	29 353	31 820	34 649	38 063	42 142	49 970
Balancing item(b)	9 233	11 783	14 980	14 343	17 722	22 018	22 189	26 537	28 890
<b>Gross state product(c)</b>	<b>161 507</b>	<b>165 890</b>	<b>172 811</b>	<b>178 964</b>	<b>186 417</b>	<b>193 529</b>	<b>202 664</b>	<b>213 494</b>	<b>221 375</b>
<b>VICTORIA</b>									
Government final consumption expenditure	22 078	21 836	21 492	21 898	22 427	22 046	21 920	23 757	26 016
Household final consumption expenditure	68 880	70 742	71 747	75 543	78 267	81 072	85 709	90 312	94 806
Private gross fixed capital formation	13 320	15 561	17 040	17 625	20 176	25 172	26 982	30 258	32 470
Public corporations gross fixed capital formation	2 652	1 526	2 173	2 919	2 467	985	2 071	2 706	2 238
General government gross fixed capital formation	1 777	2 074	2 109	2 355	2 174	2 407	2 360	2 727	2 718
State final demand	107 988	111 157	114 144	119 934	125 198	131 629	139 055	149 760	158 248
International trade—exports of goods	10 056	11 282	12 936	13 157	15 581	17 460	16 401	17 736	20 139
less International trade—imports of goods	16 635	18 227	20 360	23 882	24 564	26 917	29 527	31 015	33 922
Balancing item(b)	11 365	13 237	15 587	16 931	14 519	12 291	15 155	14 525	13 450
<b>Gross state product(c)</b>	<b>112 774</b>	<b>117 449</b>	<b>122 307</b>	<b>126 141</b>	<b>130 734</b>	<b>134 463</b>	<b>141 084</b>	<b>151 006</b>	<b>157 915</b>
<b>QUEENSLAND</b>									
Government final consumption expenditure	13 099	13 425	13 774	14 039	15 336	16 241	17 339	17 694	18 940
Household final consumption expenditure	44 524	46 771	48 730	51 820	53 834	55 405	58 554	62 404	65 358
Private gross fixed capital formation	11 476	12 977	15 126	17 018	16 191	18 441	18 916	20 607	21 221
Public corporations gross fixed capital formation	2 534	2 333	1 904	2 993	2 613	2 984	2 581	2 967	2 552
General government gross fixed capital formation	2 229	2 297	2 150	2 207	2 528	2 869	3 028	3 406	4 184
State final demand	73 739	77 690	81 589	88 035	90 379	95 927	100 408	107 077	112 256
International trade—exports of goods	11 605	12 147	12 228	12 679	13 480	14 084	15 644	16 317	17 764
less International trade—imports of goods	6 585	6 749	7 153	8 077	8 226	9 183	10 016	10 811	12 129
Balancing item(b)	-10 779	-9 736	-10 268	-12 155	-11 915	-12 806	-14 247	-15 029	-14 201
<b>Gross state product(c)</b>	<b>67 980</b>	<b>73 352</b>	<b>76 395</b>	<b>80 482</b>	<b>83 719</b>	<b>88 022</b>	<b>91 789</b>	<b>97 555</b>	<b>103 691</b>
<b>SOUTH AUSTRALIA</b>									
Government final consumption expenditure	6 969	6 991	7 431	7 533	7 588	7 451	7 991	7 969	8 224
Household final consumption expenditure	21 357	21 140	21 649	22 658	23 398	23 447	24 572	25 341	26 218
Private gross fixed capital formation	4 408	4 400	4 377	5 369	5 069	5 816	6 773	6 036	10 013
Public corporations gross fixed capital formation	875	753	596	596	514	551	454	632	-2 271
General government gross fixed capital formation	713	749	736	810	772	880	849	704	815
State final demand	34 290	34 003	34 727	36 955	37 292	38 144	40 637	40 682	42 999
International trade—exports of goods	3 786	4 044	4 296	3 967	4 478	5 223	4 798	5 399	6 079
less International trade—imports of goods	2 800	3 256	2 891	3 189	3 170	3 651	4 059	3 717	4 173
Balancing item(b)	-3 017	-1 575	-1 988	-3 506	-2 567	-3 083	-2 288	-2 398	-3 524
<b>Gross state product(c)</b>	<b>32 260</b>	<b>33 216</b>	<b>34 144</b>	<b>34 227</b>	<b>36 034</b>	<b>36 632</b>	<b>39 087</b>	<b>39 966</b>	<b>41 381</b>

(a) Reference year for chain volume measures is 1998-99.

(b) Calculated as the residual of GSP less state final demand less international trade in exports of goods plus international trade in imports of goods for each state in Australia. The balancing item implicitly comprises changes in inventories, net international trade in services, total net interstate trade and statistical discrepancy (E).

(c) Experimental series. Users are cautioned these estimates are derived indirectly by calculating a deflator from the expenditure components of the state series concerned. Therefore, in general, the sum of the state estimates does not equal the estimates for Australia. It is emphasised that, at times, there may be movements that cannot be fully explained in the chain volume estimates of GSP through the use of this proxy deflator (see Technical Note on page vi of the 1993-94 issue of Australian National Accounts: State Accounts (Cat. No. 5220.0)).

COMPONENTS OF GROSS STATE PRODUCT, Chain Volume Measures(a) *continued*

	1991-92	1992-93	1993-94	1994-95	1995-96	1996-97	1997-98	1998-99	1999-00
	\$m	\$m	\$m	\$m	\$m	\$m	\$m	\$m	\$m
WESTERN AUSTRALIA									
Government final consumption expenditure	7 539	7 605	7 769	7 767	8 699	8 886	10 057	9 988	10 643
Household final consumption expenditure	24 555	25 695	27 093	28 299	29 499	30 077	31 633	33 014	34 174
Private gross fixed capital formation	8 353	10 128	11 032	12 519	13 170	13 984	18 632	15 725	14 530
Public corporations gross fixed capital formation	1 231	1 301	1 061	913	1 342	1 682	-698	1 296	1 443
General government gross fixed capital formation	914	1 001	899	950	1 130	1 100	1 296	837	1 362
State final demand	42 477	45 630	47 735	50 351	53 733	55 626	60 858	60 860	62 152
International trade—exports of goods	16 129	16 628	16 468	17 242	18 827	19 756	22 458	22 580	24 674
less International trade—imports of goods	3 757	4 810	4 688	5 680	6 085	7 016	8 675	9 013	9 372
Balancing item(b)	-9 071	-10 401	-9 662	-8 698	-10 222	-10 435	-13 267	-10 816	-10 930
<b>Gross state product(c)</b>	<b>45 778</b>	<b>47 047</b>	<b>49 853</b>	<b>53 216</b>	<b>56 252</b>	<b>57 931</b>	<b>61 374</b>	<b>63 611</b>	<b>66 525</b>
TASMANIA									
Government final consumption expenditure	2 277	2 317	2 262	2 338	2 467	2 494	2 497	2 639	2 858
Household final consumption expenditure	6 585	6 683	6 836	6 952	7 170	7 280	7 538	7 674	7 953
Private gross fixed capital formation	1 300	1 306	1 344	1 619	1 545	1 578	1 503	1 283	1 477
Public corporations gross fixed capital formation	244	240	379	228	287	271	273	292	254
General government gross fixed capital formation	213	272	241	251	282	273	239	201	234
State final demand	10 603	10 811	11 054	11 395	11 751	11 899	12 050	12 088	12 777
International trade—exports of goods	1 681	1 748	1 845	1 680	1 655	1 850	2 221	2 081	2 143
less International trade—imports of goods	348	377	500	361	352	432	389	407	445
Balancing item(b)	-2 160	-2 213	-2 392	-2 444	-2 439	-2 657	-3 178	-2 520	-3 108
<b>Gross state product(c)</b>	<b>9 775</b>	<b>9 970</b>	<b>10 008</b>	<b>10 270</b>	<b>10 615</b>	<b>10 660</b>	<b>10 704</b>	<b>11 243</b>	<b>11 367</b>
NORTHERN TERRITORY									
Government final consumption expenditure	1 685	1 779	1 819	1 861	2 182	2 213	2 462	2 590	2 830
Household final consumption expenditure	2 323	2 429	2 447	2 685	2 919	2 866	3 085	3 283	3 473
Private gross fixed capital formation	735	809	1 092	1 089	1 339	1 295	1 541	2 568	1 562
Public corporations gross fixed capital formation	112	95	91	138	79	76	69	7	102
General government gross fixed capital formation	206	180	181	230	244	281	331	184	257
State final demand	5 081	5 305	5 634	6 018	6 769	6 740	7 495	8 632	8 223
International trade—exports of goods	1 624	1 356	1 216	1 184	1 245	1 316	1 347	1 346	2 027
less International trade—imports of goods	479	291	308	376	408	441	684	495	1 376
Balancing item(b)	-1 404	-1 547	-1 644	-1 564	-2 024	-1 901	-2 179	-3 015	-2 408
<b>Gross state product(c)</b>	<b>4 821</b>	<b>4 823</b>	<b>4 898</b>	<b>5 262</b>	<b>5 582</b>	<b>5 715</b>	<b>5 979</b>	<b>6 468</b>	<b>6 466</b>
AUSTRALIAN CAPITAL TERRITORY									
Government final consumption expenditure	5 915	5 962	6 594	6 913	6 939	7 972	7 942	8 593	9 741
Household final consumption expenditure	5 061	5 244	5 448	5 597	5 716	5 848	6 156	6 420	6 789
Private gross fixed capital formation	1 153	1 181	1 205	945	918	953	1 323	1 351	1 567
Public corporations gross fixed capital formation	123	134	119	148	165	145	123	114	137
General government gross fixed capital formation	582	539	563	492	423	419	13	549	839
State final demand	12 986	13 210	14 067	14 178	14 237	15 407	15 652	17 027	19 072
International trade—exports of goods	11	8	13	21	21	14	20	32	35
less International trade—imports of goods	17	12	13	8	7	10	8	10	8
Balancing item(b)	-3 625	-3 528	-3 992	-3 708	-3 460	-4 447	-4 045	-4 974	-6 430
<b>Gross state product(c)</b>	<b>9 355</b>	<b>9 678</b>	<b>10 075</b>	<b>10 484</b>	<b>10 791</b>	<b>10 966</b>	<b>11 618</b>	<b>12 075</b>	<b>12 669</b>

(a) Reference year for chain volume measures is 1998-99.

(b) Calculated as the residual of GSP less state final demand less international trade in exports of goods plus international trade in imports of goods for each state in Australia. The balancing item implicitly comprises changes in inventories, net international trade in services, total net interstate trade and statistical discrepancy (E).

(c) Experimental series. Users are cautioned these estimates are derived indirectly by calculating a deflator from the expenditure components of the state series concerned. Therefore, in general, the sum of the state estimates does not equal the estimates for Australia. It is emphasised that, at times, there may be movements that cannot be fully explained in the chain volume estimates of GSP through the use of this proxy deflator (see Technical Note on page vi of the 1993-94 issue of Australian National Accounts: State Accounts (Cat. No. 5220.0)).

COMPONENTS OF GROSS STATE PRODUCT, Chain Volume Measures(a) *continued*

	1991-92	1992-93	1993-94	1994-95	1995-96	1996-97	1997-98	1998-99	1999-00
	\$m	\$m	\$m	\$m	\$m	\$m	\$m	\$m	\$m
AUSTRALIA									
Government final consumption expenditure	90 026	91 144	92 554	95 243	99 061	100 286	103 644	108 733	115 556
Household final consumption expenditure	273 059	278 871	285 547	300 310	312 909	321 383	336 880	353 757	369 517
Private gross fixed capital formation	64 512	70 770	77 213	86 388	88 984	98 977	112 814	117 535	127 282
Public corporations gross fixed capital formation	12 475	11 121	10 424	12 341	11 660	9 879	8 382	11 450	8 384
General government gross fixed capital formation	9 891	10 607	10 609	11 233	11 355	12 667	12 294	13 245	15 446
Domestic final demand	448 913	461 674	475 688	505 274	523 579	543 187	574 049	604 720	636 185
International trade—exports of goods	56 143	59 682	63 993	65 355	72 229	78 918	83 561	85 992	94 858
less International trade—imports of goods	51 558	56 180	60 052	70 926	74 630	82 299	91 422	97 610	111 395
Balancing item(b)	-11 477	-7 193	-2 643	-1 153	-917	-718	-1 063	2 315	1 315
<b>Gross domestic product</b>	<b>442 022</b>	<b>457 984</b>	<b>476 986</b>	<b>498 550</b>	<b>520 261</b>	<b>539 088</b>	<b>565 126</b>	<b>595 417</b>	<b>620 963</b>

(a) Reference year for chain volume measures is 1998-99.

(b) Calculated as the residual of GDP less domestic final demand less international trade in exports of goods plus international trade in imports of goods. The balancing item implicitly comprises changes in inventories, net international trade in services and statistical discrepancy (E).

## GROSS STATE PRODUCT AT MARKET PRICES

1991-92 1992-93 1993-94 1994-95 1995-96 1996-97 1997-98 1998-99 1999-00

## VALUES

New South Wales (\$m)	144 405	149 236	157 115	165 485	178 255	189 494	201 485	213 494	225 745
Victoria (\$m)	105 787	111 696	117 028	121 699	129 392	134 936	141 697	151 006	160 496
Queensland (\$m)	62 792	68 776	72 485	77 469	82 331	87 005	92 406	97 555	102 754
South Australia (\$m)	29 612	30 942	32 422	33 430	35 744	36 541	39 290	39 966	42 282
Western Australia (\$m)	41 913	43 750	47 303	50 865	55 300	57 239	61 673	63 611	69 153
Tasmania (\$m)	8 687	8 970	9 129	9 678	10 263	10 487	10 721	11 243	11 583
Northern Territory (\$m)	4 465	4 573	4 619	5 003	5 446	5 712	6 011	6 468	7 027
Australian Capital Territory (\$m)	8 301	8 803	9 315	9 752	10 244	10 757	11 371	12 075	12 772
<b>Australia (GDP) (\$m)</b>	<b>405 961</b>	<b>426 746</b>	<b>449 416</b>	<b>473 381</b>	<b>506 975</b>	<b>532 170</b>	<b>564 653</b>	<b>595 417</b>	<b>631 810</b>

## RATIO (AUSTRALIA = 100.0)

New South Wales	35.6	35.0	35.0	35.0	35.2	35.6	35.7	35.9	35.7
Victoria	26.1	26.2	26.0	25.7	25.5	25.4	25.1	25.4	25.4
Queensland	15.5	16.1	16.1	16.4	16.2	16.3	16.4	16.4	16.3
South Australia	7.3	7.3	7.2	7.1	7.1	6.9	7.0	6.7	6.7
Western Australia	10.3	10.3	10.5	10.7	10.9	10.8	10.9	10.7	10.9
Tasmania	2.1	2.1	2.0	2.0	2.0	2.0	1.9	1.9	1.8
Northern Territory	1.1	1.1	1.0	1.1	1.1	1.1	1.1	1.1	1.1
Australian Capital Territory	2.0	2.1	2.1	2.1	2.0	2.0	2.0	2.0	2.0
<b>Australia (GDP)</b>	<b>100.0</b>	<b>100.0</b>	<b>100.0</b>	<b>100.0</b>	<b>100.0</b>	<b>100.0</b>	<b>100.0</b>	<b>100.0</b>	<b>100.0</b>

## PERCENTAGE CHANGES FROM PREVIOUS YEAR

New South Wales (%)	2.9	3.3	5.3	5.3	7.7	6.3	6.3	6.0	5.7
Victoria (%)	-0.6	5.6	4.8	4.0	6.3	4.3	5.0	6.6	6.3
Queensland (%)	5.7	9.5	5.4	6.9	6.3	5.7	6.2	5.6	5.3
South Australia (%)	1.0	4.5	4.8	3.1	6.9	2.2	7.5	1.7	5.8
Western Australia (%)	4.5	4.4	8.1	7.5	8.7	3.5	7.7	3.1	8.7
Tasmania (%)	2.9	3.3	1.8	6.0	6.0	2.2	2.2	4.9	3.0
Northern Territory (%)	-5.7	2.4	1.0	8.3	8.9	4.9	5.2	7.6	8.6
Australian Capital Territory (%)	4.7	6.0	5.8	4.7	5.0	5.0	5.7	6.2	5.8
<b>Australia (GDP) (%)</b>	<b>2.3</b>	<b>5.1</b>	<b>5.3</b>	<b>5.3</b>	<b>7.1</b>	<b>5.0</b>	<b>6.1</b>	<b>5.4</b>	<b>6.1</b>

## GROSS STATE PRODUCT AT MARKET PRICES PER HEAD OF MEAN POPULATION

1991-92 1992-93 1993-94 1994-95 1995-96 1996-97 1997-98 1998-99 1999-00

## VALUES

New South Wales (\$)	24 340	24 928	26 035	27 159	28 904	30 358	31 964	33 530	35 097
Victoria (\$)	23 831	25 012	26 124	27 031	28 504	29 432	30 602	32 246	33 878
Queensland (\$)	20 959	22 399	23 012	24 021	24 922	25 823	26 973	28 030	29 071
South Australia (\$)	20 396	21 213	22 149	22 776	24 291	24 741	26 492	26 830	28 281
Western Australia (\$)	25 435	26 222	27 987	29 602	31 603	32 108	34 012	34 486	36 961
Tasmania (\$)	18 542	19 049	19 323	20 441	21 647	22 113	22 682	23 852	24 620
Northern Territory (\$)	26 726	26 976	26 815	28 543	30 261	30 962	31 901	33 802	36 237
Australian Capital Territory (\$)	28 443	29 632	31 039	32 165	33 434	34 863	36 965	39 142	41 141
<b>Australia (GDP) (\$)</b>	<b>23 338</b>	<b>24 264</b>	<b>25 296</b>	<b>26 355</b>	<b>27 864</b>	<b>28 882</b>	<b>30 317</b>	<b>31 611</b>	<b>33 175</b>

## RATIO (AUSTRALIA = 100.0)

New South Wales	104.3	102.7	102.9	103.0	103.7	105.1	105.4	106.1	105.8
Victoria	102.1	103.1	103.3	102.6	102.3	101.9	100.9	102.0	102.1
Queensland	89.8	92.3	91.0	91.1	89.4	89.4	89.0	88.7	87.6
South Australia	87.4	87.4	87.6	86.4	87.2	85.7	87.4	84.9	85.2
Western Australia	109.0	108.1	110.6	112.3	113.4	111.2	112.2	109.1	111.4
Tasmania	79.5	78.5	76.4	77.6	77.7	76.6	74.8	75.5	74.2
Northern Territory	114.5	111.2	106.0	108.3	108.6	107.2	105.2	106.9	109.2
Australian Capital Territory	121.9	122.1	122.7	122.0	120.0	120.7	121.9	123.8	124.0
<b>Australia (GDP)</b>	<b>100.0</b>	<b>100.0</b>	<b>100.0</b>	<b>100.0</b>	<b>100.0</b>	<b>100.0</b>	<b>100.0</b>	<b>100.0</b>	<b>100.0</b>

## PERCENTAGE CHANGES FROM PREVIOUS YEAR

New South Wales (%)	1.8	2.4	4.4	4.3	6.4	5.0	5.3	4.9	4.7
Victoria (%)	-1.5	5.0	4.4	3.5	5.4	3.3	4.0	5.4	5.1
Queensland (%)	3.4	6.9	2.7	4.4	3.8	3.6	4.5	3.9	3.7
South Australia (%)	0.1	4.0	4.4	2.8	6.7	1.9	7.1	1.3	5.4
Western Australia (%)	3.1	3.1	6.7	5.8	6.8	1.6	5.9	1.4	7.2
Tasmania (%)	2.0	2.7	1.4	5.8	5.9	2.2	2.6	5.2	3.2
Northern Territory (%)	-6.9	0.9	-0.6	6.4	6.0	2.3	3.0	6.0	7.2
Australian Capital Territory (%)	2.4	4.2	4.8	3.6	3.9	4.3	6.0	5.9	5.1
<b>Australia (GDP) (%)</b>	<b>1.1</b>	<b>4.0</b>	<b>4.3</b>	<b>4.2</b>	<b>5.7</b>	<b>3.7</b>	<b>5.0</b>	<b>4.3</b>	<b>4.9</b>

## EXPENDITURE COMPONENTS OF GROSS STATE PRODUCT, New South Wales—Current Prices

	1991-92	1992-93	1993-94	1994-95	1995-96	1996-97	1997-98	1998-99	1999-00
	\$m	\$m	\$m	\$m	\$m	\$m	\$m	\$m	\$m
Final consumption expenditure									
General government									
National	11 018	11 619	11 646	12 433	12 052	11 370	12 313	12 774	14 018
State and local	15 887	16 371	16 518	17 471	18 767	19 688	20 259	22 730	23 018
<i>Total general government final consumption</i>	26 905	27 989	28 164	29 903	30 819	31 058	32 571	35 504	37 036
Households									
Food	9 663	9 922	10 324	11 128	12 360	12 769	13 421	14 030	14 448
Alcoholic beverages and tobacco	3 420	3 566	3 602	3 767	4 217	4 259	4 348	4 500	4 690
Clothing and footwear	4 190	4 071	4 069	4 215	4 487	4 413	4 415	4 681	4 970
Housing, water, electricity, gas and other fuels	20 014	20 935	21 777	22 886	24 465	25 833	27 254	28 873	30 345
Furnishings and other household equipment	5 288	5 269	5 469	6 017	6 369	6 322	6 289	6 334	7 082
Health	3 544	3 486	3 634	3 776	3 851	3 845	3 760	4 005	4 377
Transport	10 984	11 385	11 682	12 871	13 427	14 047	14 972	15 533	16 456
Communications	1 378	1 539	1 693	1 874	2 129	2 329	2 535	2 733	2 861
Recreation and culture	9 678	9 968	10 273	11 054	12 118	12 698	13 608	14 339	15 062
Education services	1 583	1 653	1 728	1 843	1 973	2 196	2 450	2 651	2 796
Hotels, cafes and restaurants	6 227	6 327	6 619	7 263	7 972	8 083	8 551	9 257	9 799
Miscellaneous goods and services	12 642	13 013	13 068	13 125	14 201	15 590	16 801	18 335	19 577
Net expenditure interstate	29	29	33	34	37	38	34	35	38
<i>Total household final consumption expenditure</i>	88 634	91 163	93 971	99 855	107 607	112 423	118 480	125 309	132 506
<i>Total final consumption expenditure</i>	115 539	119 152	122 135	129 759	138 426	143 481	151 052	160 813	169 542
Gross fixed capital formation									
Private									
Dwellings	6 394	7 069	7 762	8 610	8 554	8 492	10 100	11 842	13 092
Other buildings and structures	4 871	3 664	3 535	4 430	5 469	5 726	6 472	7 218	7 604
Machinery and equipment	8 549	9 709	10 638	13 016	12 592	12 056	14 338	14 004	15 693
Livestock	54	192	236	200	342	295	384	443	470
Intangible fixed assets	1 339	1 651	1 715	1 761	1 762	2 193	2 593	3 214	3 825
Ownership transfer costs	1 693	1 724	2 051	2 035	1 978	2 440	2 891	2 986	3 721
<i>Total private gross fixed capital formation</i>	22 899	24 009	25 937	30 050	30 696	31 201	36 779	39 707	44 405
Public									
Public corporations									
Commonwealth	1 735	1 502	1 279	1 640	1 736	1 722	1 375	1 563	1 749
State and local	2 815	3 035	2 833	2 838	2 528	1 477	2 120	1 876	2 263
<i>Total public corporations gross fixed capital formation</i>	4 550	4 537	4 112	4 478	4 264	3 199	3 495	3 439	4 013
General government									
National	994	1 022	1 048	1 121	1 247	1 274	1 069	976	1 323
State and local	2 412	2 593	2 804	2 904	2 641	3 175	3 137	3 662	3 619
<i>Total general government gross fixed capital formation</i>	3 406	3 615	3 852	4 025	3 888	4 449	4 206	4 638	4 941
<i>Total public gross fixed capital formation</i>	7 956	8 152	7 964	8 503	8 152	7 648	7 701	8 077	8 954
<i>Total gross fixed capital formation</i>	30 856	32 161	33 901	38 553	38 848	38 849	44 479	47 784	53 359
State final demand									
International trade—exports of goods	146 395	151 313	156 036	168 312	177 274	182 330	195 531	208 597	222 901
less International trade—imports of goods	12 257	13 865	16 097	16 735	18 522	19 484	22 040	20 501	21 497
less International trade—imports of goods	23 317	26 437	28 495	33 298	34 917	34 227	38 481	42 142	47 945
Balancing item(a)	9 069	10 494	13 477	13 737	17 377	21 907	22 396	26 538	29 291
<b>Gross state product</b>	<b>144 405</b>	<b>149 236</b>	<b>157 115</b>	<b>165 485</b>	<b>178 255</b>	<b>189 494</b>	<b>201 485</b>	<b>213 494</b>	<b>225 745</b>

(a) Calculated as the residual of GSP less state final demand less international trade in exports of goods plus international trade in imports of goods. The balancing item implicitly comprises changes in inventories, net international trade in services, total net interstate trade and statistical discrepancy (E).



## EXPENDITURE COMPONENTS OF GROSS STATE PRODUCT, Victoria—Current Prices

	1991-92	1992-93	1993-94	1994-95	1995-96	1996-97	1997-98	1998-99	1999-00
	\$m	\$m	\$m	\$m	\$m	\$m	\$m	\$m	\$m
<b>Final consumption expenditure</b>									
General government									
National	7 702	8 118	8 212	8 261	8 916	8 442	8 584	9 293	10 345
State and local	11 895	12 277	11 858	12 025	12 344	12 828	12 871	14 464	16 184
<i>Total general government final consumption</i>	19 597	20 395	20 070	20 287	21 260	21 270	21 454	23 757	26 529
Households									
Food	7 194	7 458	7 740	8 343	8 970	9 399	9 758	10 610	11 351
Alcoholic beverages and tobacco	2 405	2 455	2 589	2 694	2 983	3 112	3 171	3 377	3 583
Clothing and footwear	3 036	3 148	3 033	3 037	3 034	2 986	3 242	3 704	4 225
Housing, water, electricity, gas and other fuels	13 171	13 486	13 896	14 419	15 058	15 853	16 759	17 222	17 928
Furnishings and other household equipment	3 627	3 768	3 818	3 916	4 066	4 307	4 661	5 059	5 525
Health	2 674	2 976	3 112	3 187	3 259	3 310	3 275	3 431	3 690
Transport	7 428	7 871	8 155	8 777	9 257	9 703	10 368	10 881	11 354
Communications	1 001	1 133	1 255	1 383	1 564	1 710	1 855	1 997	2 094
Recreation and culture	6 128	6 545	7 125	8 304	9 127	9 664	10 343	10 984	11 591
Education services	1 409	1 527	1 613	1 674	1 814	1 994	2 222	2 413	2 522
Hotels, cafes and restaurants	4 245	4 381	4 597	5 047	5 440	5 631	5 892	6 546	7 058
Miscellaneous goods and services	9 310	9 615	9 480	9 552	10 080	11 091	12 917	13 120	13 931
Net expenditure interstate	782	811	825	891	985	1 067	1 032	968	994
<i>Total household final consumption expenditure</i>	62 411	65 174	67 238	71 225	75 637	79 827	85 496	90 312	95 847
<i>Total final consumption expenditure</i>	82 008	85 569	87 308	91 512	96 897	101 097	106 950	114 069	122 376
<b>Gross fixed capital formation</b>									
Private									
Dwellings	3 591	4 180	4 946	5 246	5 006	5 567	6 849	8 123	10 331
Other buildings and structures	2 473	2 519	2 462	2 163	3 190	4 757	4 408	5 977	5 124
Machinery and equipment	5 390	6 975	7 723	8 281	10 071	11 667	11 667	11 884	11 951
Livestock	78	177	205	168	224	268	294	294	337
Intangible fixed assets	941	1 160	1 274	1 272	1 285	1 549	1 825	2 265	2 724
Ownership transfer costs	1 059	1 025	1 230	1 100	1 294	1 309	1 702	1 715	2 024
<i>Total private gross fixed capital formation</i>	13 534	16 035	17 840	18 230	21 070	25 117	26 746	30 258	32 491
Public									
Public corporations									
Commonwealth	1 295	1 116	946	1 209	1 275	1 262	1 007	1 145	1 282
State and local	1 547	622	1 416	1 799	1 205	-267	1 047	1 560	960
<i>Total public corporations gross fixed capital formation</i>	2 841	1 739	2 362	3 008	2 480	995	2 054	2 706	2 242
General government									
National	717	689	850	786	842	840	849	599	818
State and local	1 219	1 537	1 412	1 701	1 453	1 634	1 542	2 128	1 819
<i>Total general government gross fixed capital formation</i>	1 936	2 226	2 262	2 487	2 295	2 474	2 391	2 727	2 637
<i>Total public gross fixed capital formation</i>	4 777	3 965	4 624	5 494	4 776	3 469	4 445	5 433	4 879
<i>Total gross fixed capital formation</i>	18 311	20 000	22 463	23 724	25 846	28 586	31 191	35 691	37 370
<b>State final demand</b>	100 319	105 569	109 771	115 236	122 743	129 683	138 142	149 760	159 747
International trade—exports of goods	10 000	11 649	13 274	13 978	16 568	17 466	17 040	17 736	20 410
less International trade—imports of goods	15 353	18 147	20 769	23 966	24 664	25 092	28 850	31 015	33 754
Balancing item(a)	10 821	12 625	14 752	16 451	14 745	12 879	15 365	14 525	14 093
<b>Gross state product</b>	<b>105 787</b>	<b>111 696</b>	<b>117 028</b>	<b>121 699</b>	<b>129 392</b>	<b>134 936</b>	<b>141 697</b>	<b>151 006</b>	<b>160 496</b>

(a) Calculated as the residual of GSP less state final demand less international trade in exports of goods plus international trade in imports of goods. The balancing item implicitly comprises changes in inventories, net international trade in services, total net interstate trade and statistical discrepancy (E).

## EXPENDITURE COMPONENTS OF GROSS STATE PRODUCT, Queensland—Current Prices

	1991-92	1992-93	1993-94	1994-95	1995-96	1996-97	1997-98	1998-99	1999-00
	\$m	\$m	\$m	\$m	\$m	\$m	\$m	\$m	\$m
<b>Final consumption expenditure</b>									
General government									
National	4 552	4 849	5 130	5 211	5 660	5 785	6 145	6 493	7 712
State and local	7 087	7 333	7 579	7 930	8 952	9 905	10 815	11 201	11 590
<i>Total general government final consumption</i>	11 640	12 182	12 709	13 141	14 612	15 690	16 960	17 694	19 303
Households									
Food	5 075	5 471	5 806	6 559	7 174	7 428	7 814	8 361	8 853
Alcoholic beverages and tobacco	1 591	1 925	2 085	2 222	2 351	2 633	2 875	2 997	3 156
Clothing and footwear	1 998	2 050	2 178	2 355	2 300	2 254	2 483	2 660	2 568
Housing, water, electricity, gas and other fuels	7 857	8 366	8 964	9 549	10 109	10 622	11 228	11 520	11 847
Furnishings and other household equipment	2 712	2 916	3 166	3 322	3 285	3 257	3 425	3 814	4 166
Health	1 506	1 586	1 702	1 808	1 925	2 112	2 083	2 168	2 324
Transport	5 129	5 459	5 672	6 145	6 463	6 705	7 099	7 303	7 523
Communications	689	798	894	985	1 120	1 227	1 333	1 437	1 504
Recreation and culture	4 261	4 638	5 098	5 542	5 952	5 975	6 465	7 028	7 503
Education services	709	742	825	902	1 004	1 139	1 266	1 382	1 452
Hotels, cafes and restaurants	3 079	3 374	3 662	4 142	4 543	4 738	5 138	5 599	6 009
Miscellaneous goods and services	5 761	6 212	6 291	6 402	6 902	7 607	8 304	9 082	9 696
Net expenditure interstate	-814	-849	-881	-945	-1 031	-1 101	-1 044	-947	-963
<i>Total household final consumption expenditure</i>	39 553	42 688	45 462	48 989	52 097	54 595	58 470	62 404	65 638
<i>Total final consumption expenditure</i>	51 193	54 870	58 171	62 130	66 709	70 285	75 430	80 098	84 941
<b>Gross fixed capital formation</b>									
Private									
Dwellings	3 951	4 990	5 704	6 069	4 959	5 282	5 926	5 765	6 673
Other buildings and structures	2 056	2 192	2 381	3 014	3 232	4 071	3 742	4 554	4 152
Machinery and equipment	3 353	3 736	5 048	6 116	6 269	6 699	6 612	7 581	7 198
Livestock	20	105	128	143	261	269	397	494	525
Intangible fixed assets	453	524	558	630	701	781	825	894	1 021
Ownership transfer costs	939	1 025	1 139	1 106	996	1 098	1 215	1 318	1 441
<i>Total private gross fixed capital formation</i>	10 771	12 572	14 957	17 078	16 417	18 200	18 717	20 607	21 009
Public									
Public corporations									
Commonwealth	845	731	625	824	882	879	699	804	894
State and local	1 562	1 570	1 091	1 891	1 718	2 092	1 861	2 162	1 730
<i>Total public corporations gross fixed capital formation</i>	2 407	2 301	1 716	2 715	2 600	2 970	2 560	2 967	2 624
General government									
National	400	385	442	481	499	486	358	241	337
State and local	1 837	1 960	1 778	1 807	2 118	2 394	2 700	3 164	3 800
<i>Total general government gross fixed capital formation</i>	2 237	2 345	2 220	2 288	2 617	2 880	3 058	3 406	4 137
<i>Total public gross fixed capital formation</i>	4 644	4 646	3 936	5 004	5 217	5 851	5 617	6 372	6 761
<i>Total gross fixed capital formation</i>	15 415	17 218	18 893	22 082	21 635	24 050	24 334	26 979	27 770
State final demand	66 608	72 088	77 065	84 212	88 344	94 336	99 765	107 077	112 711
International trade—exports of goods	11 383	12 446	12 273	12 802	14 035	13 934	16 662	16 317	17 124
less International trade—imports of goods	5 627	6 334	6 868	7 771	8 053	8 636	9 751	10 811	12 775
Balancing item(a)	-9 572	-9 423	-9 984	-11 774	-11 995	-12 629	-14 270	-15 028	-14 305
<b>Gross state product</b>	<b>62 792</b>	<b>68 776</b>	<b>72 485</b>	<b>77 469</b>	<b>82 331</b>	<b>87 005</b>	<b>92 406</b>	<b>97 555</b>	<b>102 754</b>

(a) Calculated as the residual of GSP less state final demand less international trade in exports of goods plus international trade in imports of goods. The balancing item implicitly comprises changes in inventories, net international trade in services, total net interstate trade and statistical discrepancy (E).

	1991-92	1992-93	1993-94	1994-95	1995-96	1996-97	1997-98	1998-99	1999-00
	\$m	\$m	\$m	\$m	\$m	\$m	\$m	\$m	\$m
<b>Final consumption expenditure</b>									
General government									
National	2 333	2 355	2 491	2 509	2 746	2 695	2 893	2 735	3 053
State and local	3 846	3 964	4 535	4 596	4 529	4 522	4 915	5 234	5 307
<i>Total general government final consumption</i>	6 179	6 318	7 026	7 105	7 275	7 216	7 808	7 969	8 360
Households									
Food	2 246	2 221	2 391	2 571	2 804	2 967	3 206	3 407	3 508
Alcoholic beverages and tobacco	770	805	904	947	940	897	848	908	962
Clothing and footwear	941	929	952	1 005	1 012	941	993	994	1 042
Housing, water, electricity, gas and other fuels	3 814	3 964	4 082	4 222	4 330	4 463	4 651	4 794	4 958
Furnishings and other household equipment	1 202	1 234	1 292	1 370	1 425	1 358	1 495	1 450	1 549
Health	897	868	916	944	993	936	929	955	1 065
Transport	2 364	2 444	2 500	2 638	2 770	2 845	3 013	3 058	3 167
Communications	323	356	385	413	466	510	555	597	623
Recreation and culture	1 874	1 902	1 989	2 194	2 408	2 457	2 627	2 723	2 812
Education services	362	379	400	432	465	513	566	603	645
Hotels, cafes and restaurants	1 230	1 223	1 350	1 498	1 566	1 535	1 567	1 743	1 841
Miscellaneous goods and services	3 007	3 112	3 130	3 126	3 302	3 492	3 824	3 970	4 187
Net expenditure interstate	115	115	125	139	150	154	149	138	144
<i>Total household final consumption expenditure</i>	19 143	19 552	20 417	21 499	22 631	23 067	24 424	25 341	26 503
<i>Total final consumption expenditure</i>	25 322	25 870	27 443	28 604	29 906	30 283	32 232	33 310	34 863
<b>Gross fixed capital formation</b>									
Private									
Dwellings	1 312	1 371	1 556	1 450	1 286	1 269	1 382	1 597	2 048
Other buildings and structures	716	580	535	528	704	921	1 381	911	4 270
Machinery and equipment	1 719	1 775	1 679	2 879	2 554	2 764	3 049	2 568	2 794
Livestock	20	49	53	48	75	83	98	111	118
Intangible fixed assets	200	279	273	250	262	364	410	471	505
Ownership transfer costs	293	344	363	380	311	311	363	377	502
<i>Total private gross fixed capital formation</i>	4 260	4 399	4 459	5 536	5 192	5 712	6 684	6 036	10 237
Public									
Public corporations									
Commonwealth	409	347	290	375	394	386	304	345	381
State and local	524	451	306	248	113	163	146	286	-2 731
<i>Total public corporations gross fixed capital formation</i>	933	797	596	623	507	549	450	632	-2 351
General government									
National	222	203	221	230	223	234	197	131	179
State and local	518	581	550	609	575	656	659	573	625
<i>Total general government gross fixed capital formation</i>	740	784	771	839	798	890	856	704	804
<i>Total public gross fixed capital formation</i>	1 674	1 582	1 366	1 462	1 305	1 439	1 306	1 335	-1 547
<i>Total gross fixed capital formation</i>	5 934	5 981	5 825	6 998	6 497	7 151	7 990	7 372	8 691
State final demand									
International trade—exports of goods	3 595	3 966	4 110	4 047	4 730	5 275	5 112	5 399	6 310
less International trade—imports of goods	2 397	3 068	2 805	3 099	3 114	3 412	3 941	3 717	4 319
Balancing item(a)	-2 841	-1 807	-2 152	-3 121	-2 276	-2 756	-2 103	-2 398	-3 263
<b>Gross state product</b>	<b>29 612</b>	<b>30 942</b>	<b>32 422</b>	<b>33 430</b>	<b>35 744</b>	<b>36 541</b>	<b>39 290</b>	<b>39 966</b>	<b>42 282</b>

(a) Calculated as the residual of GSP less state final demand less international trade in exports of goods plus international trade in imports of goods. The balancing item implicitly comprises changes in inventories, net international trade in services, total net interstate trade and statistical discrepancy (E).

	1991-92	1992-93	1993-94	1994-95	1995-96	1996-97	1997-98	1998-99	1999-00
	\$m	\$m	\$m	\$m	\$m	\$m	\$m	\$m	\$m
<b>Final consumption expenditure</b>									
<b>General government</b>									
National	2 074	2 173	2 243	2 375	2 557	2 632	2 984	3 230	3 628
State and local	4 683	4 754	4 992	4 899	5 776	5 986	6 841	6 758	7 255
<i>Total general government final consumption</i>	6 756	6 927	7 235	7 274	8 334	8 618	9 825	9 988	10 883
<b>Households</b>									
Food	2 680	2 910	3 148	3 370	3 600	3 573	3 841	4 218	4 364
Alcoholic beverages and tobacco	834	867	1 033	1 111	1 182	1 156	1 172	1 203	1 243
Clothing and footwear	1 023	1 136	1 209	1 281	1 329	1 294	1 245	1 329	1 412
Housing, water, electricity, gas and other fuels	4 137	4 310	4 580	4 921	5 212	5 512	5 824	6 089	6 400
Furnishings and other household equipment	1 433	1 568	1 779	1 814	1 938	2 008	2 125	2 183	2 358
Health	875	870	919	995	1 022	1 111	1 101	1 160	1 266
Transport	2 905	3 101	3 211	3 413	3 573	3 763	4 007	4 062	4 118
Communications	371	419	461	522	587	644	698	751	786
Recreation and culture	2 458	2 767	3 162	3 296	3 536	3 630	3 778	3 752	3 914
Education services	412	451	505	555	612	701	799	861	905
Hotels, cafes and restaurants	1 491	1 599	1 739	1 926	2 090	2 041	2 177	2 375	2 485
Miscellaneous goods and services	3 393	3 549	3 578	3 576	3 851	4 163	4 719	5 038	5 263
Net expenditure interstate	-5	-5	-5	-8	-8	-8	-8	-8	-8
<i>Total household final consumption expenditure</i>	22 006	23 541	25 317	26 773	28 525	29 587	31 480	33 014	34 507
<i>Total final consumption expenditure</i>	28 762	30 468	32 552	34 047	36 859	38 205	41 305	43 002	45 390
<b>Gross fixed capital formation</b>									
<b>Private</b>									
Dwellings	1 670	2 105	2 654	2 986	2 693	2 676	2 937	3 483	4 254
Other buildings and structures	1 375	1 430	1 943	1 874	2 501	2 784	5 722	3 424	2 677
Machinery and equipment	3 307	4 540	4 278	5 498	5 862	5 702	7 042	6 272	5 303
Livestock	34	93	85	106	153	156	179	204	214
Intangible fixed assets	738	850	908	1 036	1 114	1 449	1 492	1 459	1 347
Ownership transfer costs	465	557	773	709	694	750	948	884	993
<i>Total private gross fixed capital formation</i>	7 589	9 574	10 642	12 209	13 017	13 516	18 320	15 725	14 788
<b>Public</b>									
<b>Public corporations</b>									
Commonwealth	465	398	336	440	468	466	371	427	470
State and local	659	828	643	418	783	1 117	-1 052	870	1 007
<i>Total public corporations gross fixed capital formation</i>	1 124	1 226	979	858	1 251	1 582	-681	1 296	1 478
<b>General government</b>									
National	225	213	232	249	264	259	273	133	187
State and local	745	859	728	752	921	867	1 047	704	1 155
<i>Total general government gross fixed capital formation</i>	970	1 072	960	1 001	1 185	1 126	1 320	837	1 342
<i>Total public gross fixed capital formation</i>	2 094	2 298	1 939	1 859	2 437	2 709	640	2 133	2 820
<i>Total gross fixed capital formation</i>	9 683	11 872	12 581	14 067	15 454	16 225	18 959	17 858	17 608
<b>State final demand</b>									
International trade—exports of goods	38 446	42 339	45 133	48 114	52 312	54 430	60 265	60 860	62 998
less International trade—imports of goods	14 722	15 812	15 968	16 701	19 204	19 710	23 196	22 580	26 992
less International trade—imports of goods	3 548	4 966	4 793	5 800	6 289	6 816	8 609	9 013	9 519
Balancing item(a)	-7 706	-9 436	-9 005	-8 150	-9 928	-10 085	-13 179	-10 816	-11 318
<b>Gross state product</b>	<b>41 913</b>	<b>43 750</b>	<b>47 303</b>	<b>50 865</b>	<b>55 300</b>	<b>57 239</b>	<b>61 673</b>	<b>63 611</b>	<b>69 153</b>

(a) Calculated as the residual of GSP less state final demand less international trade in exports of goods plus international trade in imports of goods. The balancing item implicitly comprises changes in inventories, net international trade in services, total net interstate trade and statistical discrepancy (E).

	1991-92	1992-93	1993-94	1994-95	1995-96	1996-97	1997-98	1998-99	1999-00
	\$m	\$m	\$m	\$m	\$m	\$m	\$m	\$m	\$m
<b>Final consumption expenditure</b>									
<b>General government</b>									
National	640	651	649	682	737	779	786	886	928
State and local	1 423	1 490	1 465	1 515	1 627	1 650	1 665	1 752	1 982
<i>Total general government final consumption</i>	2 063	2 141	2 114	2 197	2 364	2 429	2 451	2 639	2 910
<b>Households</b>									
Food	749	809	878	881	944	950	975	956	987
Alcoholic beverages and tobacco	225	218	261	271	271	278	285	301	324
Clothing and footwear	276	274	290	281	286	283	290	292	283
Housing, water, electricity, gas and other fuels	1 092	1 169	1 227	1 268	1 332	1 403	1 476	1 504	1 509
Furnishings and other household equipment	383	397	416	438	450	461	466	479	499
Health	262	240	265	280	306	318	319	322	331
Transport	728	755	777	808	846	906	929	945	1 001
Communications	96	108	118	132	149	162	177	188	197
Recreation and culture	628	665	696	730	762	753	825	847	889
Education services	105	109	117	121	128	142	152	157	167
Hotels, cafes and restaurants	397	411	445	474	504	506	530	567	608
Miscellaneous goods and services	908	959	936	920	981	1 053	1 144	1 185	1 251
Net expenditure interstate	-49	-49	-50	-56	-62	-64	-69	-68	-67
<i>Total household final consumption expenditure</i>	5 801	6 064	6 375	6 548	6 896	7 152	7 497	7 674	7 979
<i>Total final consumption expenditure</i>	7 864	8 205	8 489	8 745	9 260	9 581	9 948	10 313	10 889
<b>Gross fixed capital formation</b>									
<b>Private</b>									
Dwellings	395	454	511	514	453	424	396	339	453
Other buildings and structures	272	178	149	168	224	246	214	214	209
Machinery and equipment	446	504	544	803	741	722	649	508	541
Livestock	6	20	24	18	34	38	48	51	57
Intangible fixed assets	44	53	51	56	57	72	120	96	100
Ownership transfer costs	83	88	91	99	88	69	63	76	88
<i>Total private gross fixed capital formation</i>	1 246	1 297	1 370	1 657	1 597	1 571	1 491	1 283	1 449
<b>Public</b>									
<b>Public corporations</b>									
Commonwealth	130	110	92	119	125	122	95	107	118
State and local	171	143	282	117	165	149	177	185	146
<i>Total public corporations gross fixed capital formation</i>	302	253	374	236	290	271	272	292	264
<b>General government</b>									
National	72	64	71	73	69	68	52	35	51
State and local	160	233	192	195	228	209	188	165	178
<i>Total general government gross fixed capital formation</i>	232	297	263	268	297	277	240	201	228
<i>Total public gross fixed capital formation</i>	534	550	637	504	587	548	512	493	492
<i>Total gross fixed capital formation</i>	1 780	1 848	2 006	2 162	2 184	2 119	2 003	1 776	1 941
<b>State final demand</b>									
International trade—exports of goods	1 508	1 606	1 674	1 678	1 700	1 790	2 332	2 081	2 251
less International trade—imports of goods	287	334	448	342	351	395	385	407	440
Balancing item(a)	-2 178	-2 353	-2 592	-2 565	-2 530	-2 608	-3 177	-2 520	-3 058
<b>Gross state product</b>	<b>8 687</b>	<b>8 970</b>	<b>9 129</b>	<b>9 678</b>	<b>10 263</b>	<b>10 487</b>	<b>10 721</b>	<b>11 243</b>	<b>11 583</b>

(a) Calculated as the residual of GSP less state final demand less international trade in exports of goods plus international trade in imports of goods. The balancing item implicitly comprises changes in inventories, net international trade in services, total net interstate trade and statistical discrepancy (E).

	1991-92	1992-93	1993-94	1994-95	1995-96	1996-97	1997-98	1998-99	1999-00
	\$m	\$m	\$m	\$m	\$m	\$m	\$m	\$m	\$m
Final consumption expenditure									
General government									
National	466	522	584	600	750	706	847	1 019	1 196
State and local	1 014	1 082	1 083	1 128	1 323	1 433	1 562	1 571	1 688
<i>Total general government final consumption</i>	<i>1 480</i>	<i>1 604</i>	<i>1 667</i>	<i>1 728</i>	<i>2 074</i>	<i>2 140</i>	<i>2 410</i>	<i>2 590</i>	<i>2 884</i>
Households									
Food	368	392	406	463	523	490	483	514	559
Alcoholic beverages and tobacco	118	122	126	132	149	149	155	164	165
Clothing and footwear	79	84	88	99	115	101	101	113	119
Housing, water, electricity, gas and other fuels	359	378	399	426	458	499	532	570	601
Furnishings and other household equipment	112	120	128	145	156	148	162	178	192
Health	67	64	68	71	75	85	85	88	91
Transport	262	278	287	325	337	343	380	370	380
Communications	33	39	45	52	58	65	70	76	84
Recreation and culture	228	247	252	294	334	335	385	407	426
Education services	18	22	19	19	23	29	34	39	41
Hotels, cafes and restaurants	248	256	269	306	349	341	358	394	420
Miscellaneous goods and services	334	373	371	392	434	459	531	558	605
Net expenditure interstate	-119	-117	-130	-151	-169	-192	-187	-188	-206
<i>Total household final consumption expenditure</i>	<i>2 106</i>	<i>2 260</i>	<i>2 329</i>	<i>2 572</i>	<i>2 841</i>	<i>2 851</i>	<i>3 089</i>	<i>3 283</i>	<i>3 476</i>
<i>Total final consumption expenditure</i>	<i>3 586</i>	<i>3 864</i>	<i>3 996</i>	<i>4 300</i>	<i>4 915</i>	<i>4 991</i>	<i>5 499</i>	<i>5 873</i>	<i>6 360</i>
Gross fixed capital formation									
Private									
Dwellings	159	180	210	261	297	315	357	519	400
Other buildings and structures	82	114	190	167	248	264	450	1 264	449
Machinery and equipment	197	185	302	225	416	376	288	403	392
Livestock	-5	22	36	30	41	35	49	65	69
Intangible fixed assets	154	177	209	297	246	201	311	247	203
Ownership transfer costs	33	34	35	39	44	61	73	70	43
<i>Total private gross fixed capital formation</i>	<i>621</i>	<i>711</i>	<i>981</i>	<i>1 019</i>	<i>1 292</i>	<i>1 253</i>	<i>1 528</i>	<i>2 568</i>	<i>1 557</i>
Public									
Public corporations									
Commonwealth	47	40	34	45	48	48	38	44	48
State and local	32	42	41	75	32	29	32	-37	58
<i>Total public corporations gross fixed capital formation</i>	<i>79</i>	<i>82</i>	<i>75</i>	<i>120</i>	<i>80</i>	<i>77</i>	<i>70</i>	<i>7</i>	<i>106</i>
General government									
National	40	36	37	36	43	39	30	37	54
State and local	170	149	151	203	213	250	308	147	192
<i>Total general government gross fixed capital formation</i>	<i>210</i>	<i>185</i>	<i>188</i>	<i>239</i>	<i>256</i>	<i>289</i>	<i>338</i>	<i>184</i>	<i>246</i>
<i>Total public gross fixed capital formation</i>	<i>289</i>	<i>267</i>	<i>263</i>	<i>359</i>	<i>336</i>	<i>366</i>	<i>408</i>	<i>191</i>	<i>353</i>
<i>Total gross fixed capital formation</i>	<i>910</i>	<i>978</i>	<i>1 244</i>	<i>1 378</i>	<i>1 628</i>	<i>1 619</i>	<i>1 936</i>	<i>2 759</i>	<i>1 910</i>
State final demand									
International trade—exports of goods	1 551	1 351	1 139	1 088	1 224	1 261	1 366	1 346	2 654
less International trade—imports of goods	430	273	269	333	395	404	656	495	1 398
Balancing item(a)	-1 152	-1 347	-1 491	-1 430	-1 926	-1 754	-2 134	-3 015	-2 498
<b>Gross state product</b>	<b>4 465</b>	<b>4 573</b>	<b>4 619</b>	<b>5 003</b>	<b>5 446</b>	<b>5 712</b>	<b>6 011</b>	<b>6 468</b>	<b>7 027</b>

(a) Calculated as the residual of GSP less state final demand less international trade in exports of goods plus international trade in imports of goods. The balancing item implicitly comprises changes in inventories, net international trade in services, total net interstate trade and statistical discrepancy (E).

EXPENDITURE COMPONENTS OF GROSS STATE PRODUCT, Australian Capital Territory—Current Prices

	1991-92	1992-93	1993-94	1994-95	1995-96	1996-97	1997-98	1998-99	1999-00
	\$m	\$m	\$m	\$m	\$m	\$m	\$m	\$m	\$m
<b>Final consumption expenditure</b>									
<b>General government</b>									
National	4 222	4 368	5 106	5 438	5 630	6 648	6 643	7 347	8 638
State and local	888	954	921	946	994	1 157	1 168	1 246	1 232
<i>Total general government final consumption</i>	<i>5 110</i>	<i>5 322</i>	<i>6 027</i>	<i>6 385</i>	<i>6 624</i>	<i>7 805</i>	<i>7 811</i>	<i>8 593</i>	<i>9 870</i>
<b>Households</b>									
Food	468	509	560	600	639	650	672	694	754
Alcoholic beverages and tobacco	141	151	153	154	172	180	191	197	206
Clothing and footwear	236	249	251	242	259	257	259	270	290
Housing, water, electricity, gas and other fuels	984	1 084	1 132	1 160	1 176	1 197	1 251	1 315	1 381
Furnishings and other household equipment	283	301	303	314	308	325	345	354	419
Health	160	162	162	162	165	173	176	181	196
Transport	567	576	612	645	661	673	732	755	773
Communications	76	87	93	101	116	127	136	149	159
Recreation and culture	542	605	668	688	700	715	780	851	940
Education services	112	122	133	132	137	149	163	166	183
Hotels, cafes and restaurants	241	251	266	281	305	310	337	364	393
Miscellaneous goods and services	686	727	754	763	805	871	979	1 054	1 093
Net expenditure interstate	61	65	83	96	98	106	92	70	68
<i>Total household final consumption expenditure</i>	<i>4 557</i>	<i>4 888</i>	<i>5 169</i>	<i>5 339</i>	<i>5 542</i>	<i>5 733</i>	<i>6 113</i>	<i>6 420</i>	<i>6 857</i>
<i>Total final consumption expenditure</i>	<i>9 667</i>	<i>10 210</i>	<i>11 196</i>	<i>11 724</i>	<i>12 166</i>	<i>13 538</i>	<i>13 924</i>	<i>15 013</i>	<i>16 727</i>
<b>Gross fixed capital formation</b>									
<b>Private</b>									
Dwellings	464	529	550	490	372	348	318	380	515
Other buildings and structures	240	231	204	201	198	233	448	437	279
Machinery and equipment	295	285	330	120	220	189	327	254	384
Livestock	—	—	—	—	—	—	—	—	—
Intangible fixed assets	80	97	103	104	104	127	154	193	233
Ownership transfer costs	101	113	104	101	78	77	82	87	144
<i>Total private gross fixed capital formation</i>	<i>1 179</i>	<i>1 254</i>	<i>1 291</i>	<i>1 016</i>	<i>973</i>	<i>974</i>	<i>1 329</i>	<i>1 351</i>	<i>1 556</i>
<b>Public</b>									
<b>Public corporations</b>									
Commonwealth	87	77	66	84	89	88	70	78	88
State and local	59	73	68	79	78	60	54	35	51
<i>Total public corporations gross fixed capital formation</i>	<i>146</i>	<i>150</i>	<i>134</i>	<i>163</i>	<i>167</i>	<i>147</i>	<i>124</i>	<i>114</i>	<i>139</i>
<b>General government</b>									
National	487	404	461	357	332	276	-117	426	634
State and local	146	179	141	152	95	123	133	124	126
<i>Total general government gross fixed capital formation</i>	<i>633</i>	<i>583</i>	<i>602</i>	<i>509</i>	<i>427</i>	<i>399</i>	<i>16</i>	<i>549</i>	<i>760</i>
<i>Total public gross fixed capital formation</i>	<i>779</i>	<i>733</i>	<i>736</i>	<i>671</i>	<i>594</i>	<i>546</i>	<i>140</i>	<i>663</i>	<i>899</i>
<i>Total gross fixed capital formation</i>	<i>1 958</i>	<i>1 987</i>	<i>2 026</i>	<i>1 687</i>	<i>1 567</i>	<i>1 520</i>	<i>1 469</i>	<i>2 014</i>	<i>2 455</i>
<b>State final demand</b>									
International trade—exports of goods	11	8	13	21	20	12	20	32	35
less International trade—imports of goods	26	19	22	12	10	13	11	10	8
Balancing item(a)	-3 310	-3 384	-3 898	-3 669	-3 499	-4 300	-4 030	-4 974	-6 437
<b>Gross state product</b>	<b>8 301</b>	<b>8 803</b>	<b>9 315</b>	<b>9 752</b>	<b>10 244</b>	<b>10 757</b>	<b>11 371</b>	<b>12 075</b>	<b>12 772</b>

— nil or rounded to zero (including null cells)

(a) Calculated as the residual of GSP less state final demand less international trade in exports of goods plus international trade in imports of goods. The balancing item implicitly comprises changes in inventories, net international trade in services, total net interstate trade and statistical discrepancy (E).

	1991-92	1992-93	1993-94	1994-95	1995-96	1996-97	1997-98	1998-99	1999-00
	\$m	\$m	\$m	\$m	\$m	\$m	\$m	\$m	\$m
<b>Final consumption expenditure</b>									
General government									
National	33 007	34 654	36 060	37 509	39 049	39 057	41 195	43 776	49 707
State and local	46 722	48 223	48 951	50 513	54 313	57 169	60 096	64 957	68 066
<i>Total general government final consumption</i>	79 729	82 877	85 010	88 021	93 362	96 226	101 291	108 733	117 773
Households									
Food	28 444	29 690	31 253	33 916	37 015	38 225	40 172	42 790	44 823
Alcoholic beverages and tobacco	9 501	10 109	10 753	11 297	12 263	12 665	13 049	13 647	14 330
Clothing and footwear	11 779	11 942	12 071	12 516	12 822	12 528	13 031	14 043	14 910
Housing, water, electricity, gas and other fuels	51 428	53 692	56 056	58 851	62 142	65 382	68 976	71 886	74 968
Furnishings and other household equipment	15 038	15 571	16 370	17 338	17 997	18 186	18 970	19 852	21 791
Health	9 986	10 252	10 776	11 221	11 595	11 891	11 731	12 309	13 341
Transport	30 365	31 869	32 896	35 623	37 335	38 985	41 508	42 907	44 772
Communications	3 968	4 480	4 943	5 463	6 189	6 773	7 359	7 929	8 309
Recreation and culture	25 797	27 337	29 263	32 101	34 939	36 228	38 816	40 933	43 141
Education services	4 708	5 006	5 341	5 679	6 156	6 864	7 653	8 271	8 712
Hotels, cafes and restaurants	17 156	17 821	18 948	20 938	22 769	23 183	24 560	26 845	28 613
Miscellaneous goods and services	36 041	37 562	37 609	37 856	40 557	44 325	49 224	52 341	55 604
<i>Total household final consumption expenditure</i>	244 211	255 330	266 278	282 800	301 776	315 235	335 049	353 757	373 313
<i>Total final consumption expenditure</i>	323 940	338 207	351 288	370 821	395 138	411 461	436 340	462 490	491 086
<b>Gross fixed capital formation</b>									
Private									
Dwellings	17 936	20 878	23 893	25 626	23 620	24 372	28 266	32 047	37 768
Other buildings and structures	12 085	10 908	11 399	12 545	15 766	19 002	22 839	24 000	24 763
Machinery and equipment	23 256	27 710	30 542	36 938	38 725	40 175	43 973	43 474	44 256
Livestock	208	657	765	711	1 130	1 143	1 448	1 661	1 789
Intangible fixed assets	3 949	4 789	5 090	5 406	5 530	6 738	7 728	8 840	9 959
Ownership transfer costs	4 666	4 908	5 787	5 568	5 483	6 114	7 338	7 513	8 957
<i>Total private gross fixed capital formation</i>	62 100	69 850	77 476	86 794	90 254	97 544	111 592	117 535	127 493
Public									
Public corporations									
Commonwealth	5 012	4 321	3 668	4 737	5 017	4 973	3 958	4 515	5 031
State and local	7 370	6 765	6 678	7 466	6 621	4 819	4 384	6 935	3 483
<i>Total public corporations gross fixed capital formation</i>	12 382	11 086	10 346	12 202	11 638	9 792	8 342	11 450	8 514
General government									
National	3 157	3 016	3 362	3 333	3 520	3 476	2 712	2 577	3 583
State and local	7 208	8 091	7 757	8 323	8 245	9 307	9 715	10 668	11 514
<i>Total general government gross fixed capital formation</i>	10 365	11 107	11 119	11 656	11 765	12 783	12 427	13 245	15 097
<i>Total public gross fixed capital formation</i>	22 747	22 193	21 465	23 858	23 403	22 575	20 769	24 695	23 611
<i>Total gross fixed capital formation</i>	84 847	92 044	98 941	110 652	113 657	120 119	132 361	142 230	151 103
<i>Domestic final demand</i>	408 786	430 250	450 229	481 473	508 795	531 580	568 701	604 720	642 189
International trade—exports of goods	55 027	60 702	64 549	67 051	76 004	78 932	87 768	85 992	97 274
less International trade—imports of goods	50 984	59 577	64 469	74 621	77 793	78 995	90 684	97 610	110 158
Balancing item(a)	-6 870	-4 632	-894	-520	-31	654	-1 133	2 312	2 504
<b>Gross domestic product</b>	<b>405 961</b>	<b>426 746</b>	<b>449 416</b>	<b>473 381</b>	<b>506 975</b>	<b>532 170</b>	<b>564 653</b>	<b>595 417</b>	<b>631 810</b>

(a) Calculated as the residual of GDP less domestic final demand less international trade in exports of goods plus international trade in imports of goods. The balancing item implicitly comprises changes in inventories, net international trade in services and statistical discrepancy (E).



	1991-92	1992-93	1993-94	1994-95	1995-96	1996-97	1997-98	1998-99	1999-00
	\$m	\$m	\$m	\$m	\$m	\$m	\$m	\$m	\$m
NEW SOUTH WALES									
Compensation of employees	70 679	71 441	74 939	80 043	86 240	92 338	96 583	103 063	108 839
Gross operating surplus	43 485	46 353	49 663	52 062	56 019	59 038	64 174	66 925	71 823
Gross mixed income	12 917	13 500	13 388	13 453	14 259	15 070	15 627	16 287	17 359
Total factor income	127 081	131 294	137 990	145 558	156 518	166 446	176 384	186 275	198 021
Taxes less subsidies on production and imports	16 087	16 389	18 004	19 927	21 737	23 048	25 101	27 219	27 842
Statistical discrepancy (I)	1 237	1 553	1 121	—	—	—	—	—	-118
<b>Gross state product at market prices</b>	<b>144 405</b>	<b>149 236</b>	<b>157 115</b>	<b>165 485</b>	<b>178 255</b>	<b>189 494</b>	<b>201 485</b>	<b>213 494</b>	<b>225 745</b>
VICTORIA									
Compensation of employees	50 657	53 030	54 762	58 051	61 501	65 135	68 034	73 567	78 303
Gross operating surplus	32 027	34 464	36 672	37 193	38 772	39 936	42 545	43 698	47 126
Gross mixed income	10 397	10 914	11 049	11 162	12 641	12 247	13 535	14 195	15 140
Total factor income	93 081	98 408	102 483	106 406	112 914	117 318	124 114	131 460	140 569
Taxes less subsidies on production and imports	11 801	12 126	13 710	15 293	16 478	17 618	17 583	19 546	20 011
Statistical discrepancy (I)	905	1 162	835	—	—	—	—	—	-84
<b>Gross state product at market prices</b>	<b>105 787</b>	<b>111 696</b>	<b>117 028</b>	<b>121 699</b>	<b>129 392</b>	<b>134 936</b>	<b>141 697</b>	<b>151 006</b>	<b>160 496</b>
QUEENSLAND									
Compensation of employees	29 331	31 566	32 691	36 150	38 994	42 746	44 477	47 395	49 562
Gross operating surplus	18 586	21 169	22 720	23 786	25 701	26 293	28 930	29 222	31 498
Gross mixed income	7 866	8 443	8 718	8 814	8 713	8 931	9 500	10 714	11 533
Total factor income	55 783	61 178	64 129	68 750	73 408	77 970	82 907	87 331	92 593
Taxes less subsidies on production and imports	6 472	6 882	7 839	8 719	8 923	9 035	9 499	10 224	10 215
Statistical discrepancy (I)	537	716	517	—	—	—	—	—	-54
<b>Gross state product at market prices</b>	<b>62 792</b>	<b>68 776</b>	<b>72 485</b>	<b>77 469</b>	<b>82 331</b>	<b>87 005</b>	<b>92 406</b>	<b>97 555</b>	<b>102 754</b>
SOUTH AUSTRALIA									
Compensation of employees	14 594	15 037	16 011	16 433	17 362	17 994	18 760	19 153	19 951
Gross operating surplus	8 499	9 050	9 337	9 726	9 864	10 279	11 597	11 531	12 466
Gross mixed income	3 315	3 469	3 519	3 620	4 543	4 265	4 655	4 771	5 066
Total factor income	26 408	27 556	28 867	29 779	31 769	32 538	35 012	35 455	37 483
Taxes less subsidies on production and imports	2 951	3 064	3 324	3 651	3 975	4 003	4 278	4 511	4 821
Statistical discrepancy (I)	253	322	231	—	—	—	—	—	-22
<b>Gross state product at market prices</b>	<b>29 612</b>	<b>30 942</b>	<b>32 422</b>	<b>33 430</b>	<b>35 744</b>	<b>36 541</b>	<b>39 290</b>	<b>39 966</b>	<b>42 282</b>
WESTERN AUSTRALIA									
Compensation of employees	17 927	18 298	20 013	21 469	22 652	24 128	25 348	27 101	29 606
Gross operating surplus	15 474	15 680	16 798	18 214	20 086	20 684	22 511	22 587	24 802
Gross mixed income	4 162	5 181	5 424	6 025	7 054	6 820	7 635	7 518	8 004
Total factor income	37 563	39 159	42 235	45 708	49 792	51 632	55 494	57 206	62 412
Taxes less subsidies on production and imports	3 991	4 136	4 731	5 157	5 508	5 607	6 179	6 405	6 777
Statistical discrepancy (I)	359	455	337	—	—	—	—	—	-36
<b>Gross state product at market prices</b>	<b>41 913</b>	<b>43 750</b>	<b>47 303</b>	<b>50 865</b>	<b>55 300</b>	<b>57 239</b>	<b>61 673</b>	<b>63 611</b>	<b>69 153</b>
TASMANIA									
Compensation of employees	4 396	4 418	4 410	4 746	5 021	5 161	5 291	5 465	5 520
Gross operating surplus	2 468	2 588	2 660	2 878	3 140	3 198	3 266	3 453	3 648
Gross mixed income	974	1 077	1 123	1 118	1 111	1 142	1 158	1 267	1 346
Total factor income	7 838	8 083	8 193	8 742	9 272	9 501	9 715	10 185	10 514
Taxes less subsidies on production and imports	775	794	871	936	991	986	1 006	1 058	1 075
Statistical discrepancy (I)	74	93	65	—	—	—	—	—	-6
<b>Gross state product at market prices</b>	<b>8 687</b>	<b>8 970</b>	<b>9 129</b>	<b>9 678</b>	<b>10 263</b>	<b>10 487</b>	<b>10 721</b>	<b>11 243</b>	<b>11 583</b>

— nil or rounded to zero (including null cells)

	1991-92	1992-93	1993-94	1994-95	1995-96	1996-97	1997-98	1998-99	1999-00
	\$m	\$m	\$m	\$m	\$m	\$m	\$m	\$m	\$m
<b>NORTHERN TERRITORY</b>									
Compensation of employees	2 095	2 027	2 201	2 493	2 636	2 871	3 056	3 479	3 578
Gross operating surplus	1 902	1 976	1 709	1 755	1 962	2 024	2 115	2 072	2 574
Gross mixed income	267	302	376	389	432	450	419	450	486
Total factor income	4 264	4 305	4 286	4 637	5 030	5 345	5 590	6 001	6 638
Taxes less subsidies on production and imports	163	220	300	366	416	367	421	467	393
Statistical discrepancy (I)	38	48	33	—	—	—	—	—	-4
<b>Gross state product at market prices</b>	<b>4 465</b>	<b>4 573</b>	<b>4 619</b>	<b>5 003</b>	<b>5 446</b>	<b>5 712</b>	<b>6 011</b>	<b>6 468</b>	<b>7 027</b>
<b>AUSTRALIAN CAPITAL TERRITORY</b>									
Compensation of employees	5 039	5 268	5 717	6 077	6 429	6 820	7 097	7 538	7 775
Gross operating surplus	2 096	2 322	2 390	2 452	2 617	2 699	2 954	3 098	3 494
Gross mixed income	584	551	497	523	475	459	487	513	551
Total factor income	7 719	8 141	8 604	9 052	9 521	9 978	10 538	11 149	11 820
Taxes less subsidies on production and imports	511	570	645	700	723	779	833	926	959
Statistical discrepancy (I)	71	92	66	—	—	—	—	—	-7
<b>Gross state product at market prices</b>	<b>8 301</b>	<b>8 803</b>	<b>9 315</b>	<b>9 752</b>	<b>10 244</b>	<b>10 757</b>	<b>11 371</b>	<b>12 075</b>	<b>12 772</b>
<b>AUSTRALIA</b>									
Compensation of employees	194 718	201 085	210 744	225 462	240 835	257 193	268 646	286 761	303 134
Gross operating surplus	124 536	133 602	141 949	148 067	158 161	164 150	178 091	182 585	197 430
Gross mixed income	40 482	43 437	44 094	45 104	49 228	49 384	53 016	55 715	59 485
Total factor income	359 736	378 124	396 787	418 632	448 224	470 727	499 753	525 061	560 048
Taxes less subsidies on production and imports	42 751	44 181	49 424	54 749	58 751	61 443	64 900	70 356	72 093
Statistical discrepancy (I)	3 474	4 441	3 205	—	—	—	—	—	-331
<b>Gross domestic product at market prices</b>	<b>405 961</b>	<b>426 746</b>	<b>449 416</b>	<b>473 381</b>	<b>506 975</b>	<b>532 170</b>	<b>564 653</b>	<b>595 417</b>	<b>631 810</b>

— nil or rounded to zero (including null cells)

	1991-92	1992-93	1993-94	1994-95	1995-96	1996-97	1997-98	1998-99	1999-00
	\$m	\$m	\$m	\$m	\$m	\$m	\$m	\$m	\$m
<b>Agriculture</b>									
Compensation of employees	957	1 066	1 115	1 250	1 330	1 249	1 257	1 308	1 271
Gross operating surplus and gross mixed income	1 779	2 221	2 558	1 658	2 650	3 476	3 056	2 946	3 035
<i>Total</i>	2 736	3 287	3 673	2 908	3 980	4 725	4 313	4 254	4 306
<b>Mining</b>									
Compensation of employees	1 413	1 379	1 386	1 349	1 582	1 590	1 691	1 512	1 311
Gross operating surplus and gross mixed income	1 123	1 006	1 233	1 413	1 536	1 555	1 566	2 005	2 233
<i>Total</i>	2 536	2 385	2 619	2 762	3 118	3 145	3 257	3 517	3 544
<b>Manufacturing</b>									
Compensation of employees	10 406	10 611	11 147	11 632	12 568	12 558	12 943	13 283	13 842
Gross operating surplus and gross mixed income	6 879	7 832	8 827	9 282	9 459	10 004	11 213	12 726	12 704
<i>Total</i>	17 285	18 443	19 974	20 914	22 027	22 562	24 156	26 009	26 546
<b>Electricity, gas and water</b>									
Compensation of employees	1 692	1 608	1 507	1 450	1 464	1 280	1 166	1 140	1 243
Gross operating surplus and gross mixed income	2 942	3 101	3 146	3 030	2 860	2 870	3 095	1 821	2 270
<i>Total</i>	4 634	4 709	4 653	4 480	4 324	4 150	4 261	2 961	3 513
<b>Construction</b>									
Compensation of employees	3 452	3 466	3 935	4 569	4 581	4 745	4 966	5 448	6 440
Gross operating surplus and gross mixed income	3 430	3 137	3 368	3 865	4 647	5 128	5 734	6 263	6 700
<i>Total</i>	6 882	6 603	7 303	8 434	9 228	9 873	10 700	11 711	13 140
<b>Wholesale trade</b>									
Compensation of employees	6 004	6 232	6 458	6 366	6 747	7 336	7 515	7 955	8 238
Gross operating surplus and gross mixed income	2 850	2 844	3 049	3 084	3 079	2 604	2 828	2 993	3 045
<i>Total</i>	8 854	9 076	9 507	9 450	9 826	9 940	10 343	10 948	11 283
<b>Retail trade</b>									
Compensation of employees	4 945	5 119	5 574	5 826	6 320	6 852	7 310	7 652	7 707
Gross operating surplus and gross mixed income	2 258	2 315	2 457	2 571	2 658	2 175	2 254	2 432	2 320
<i>Total</i>	7 203	7 434	8 031	8 397	8 978	9 027	9 564	10 084	10 027
<b>Accommodation, cafes and restaurants</b>									
Compensation of employees	2 058	2 052	2 187	2 513	2 622	2 905	3 023	2 718	2 953
Gross operating surplus and gross mixed income	1 096	1 092	1 145	1 362	1 684	1 673	1 701	1 760	1 890
<i>Total</i>	3 154	3 144	3 332	3 875	4 306	4 578	4 724	4 478	4 843
<b>Transport and storage</b>									
Compensation of employees	4 847	4 601	5 002	5 571	5 563	6 336	6 153	6 693	6 836
Gross operating surplus and gross mixed income	2 351	2 492	2 630	2 780	2 974	2 975	3 197	3 154	3 452
<i>Total</i>	7 198	7 093	7 632	8 351	8 537	9 311	9 350	9 847	10 288
<b>Communication services</b>									
Compensation of employees	2 029	2 081	2 024	2 182	2 492	2 594	2 830	2 652	2 767
Gross operating surplus and gross mixed income	1 866	1 892	1 864	2 061	2 281	2 659	3 003	3 189	3 589
<i>Total</i>	3 895	3 973	3 888	4 243	4 773	5 253	5 833	5 841	6 356
<b>Finance and insurance</b>									
Compensation of employees	5 595	5 453	5 493	5 939	6 601	7 043	7 531	8 145	9 028
Gross operating surplus and gross mixed income	3 926	4 599	4 854	4 449	4 892	5 091	5 922	6 216	7 594
<i>Total</i>	9 521	10 052	10 347	10 388	11 493	12 134	13 453	14 361	16 622
<b>Property and business services</b>									
Compensation of employees	8 007	8 380	8 990	10 367	11 627	12 767	14 636	17 422	18 641
Gross operating surplus and gross mixed income	6 496	6 986	6 779	7 610	7 578	8 316	8 656	8 832	10 137
<i>Total</i>	14 503	15 366	15 769	17 977	19 205	21 083	23 292	26 254	28 778
<b>Government administration and defence</b>									
Compensation of employees	3 908	4 105	4 338	4 510	5 047	5 798	5 776	5 935	5 987
<b>Education</b>									
Compensation of employees	5 289	5 589	5 961	6 179	6 311	6 865	7 219	7 694	8 044
Gross operating surplus and gross mixed income	67	73	81	95	45	145	149	174	180
<i>Total</i>	5 356	5 662	6 042	6 274	6 356	7 010	7 368	7 868	8 224

TOTAL FACTOR INCOME BY INDUSTRY AND PRINCIPAL COMPONENTS, New South  
Wales—Current prices *continued*

	1991-92	1992-93	1993-94	1994-95	1995-96	1996-97	1997-98	1998-99	1999-00
	\$m	\$m	\$m	\$m	\$m	\$m	\$m	\$m	\$m
<b>Health and community services</b>									
Compensation of employees	6 463	6 254	6 184	6 394	7 075	7 796	7 978	8 506	9 061
Gross operating surplus and gross mixed income	953	1 038	1 121	1 214	1 233	1 236	1 328	1 385	1 467
<i>Total</i>	7 416	7 292	7 305	7 608	8 308	9 032	9 306	9 891	10 528
<b>Cultural and recreational services</b>									
Compensation of employees	1 209	1 072	1 136	1 366	1 592	1 756	1 827	1 882	2 064
Gross operating surplus and gross mixed income	911	1 141	1 194	1 246	1 222	1 224	1 543	1 512	1 557
<i>Total</i>	2 120	2 213	2 330	2 612	2 814	2 980	3 370	3 394	3 621
<b>Personal and other services</b>									
Compensation of employees	2 405	2 373	2 502	2 580	2 718	2 868	2 762	3 118	3 406
Gross operating surplus and gross mixed income	379	434	381	502	682	749	826	850	1 116
<i>Total</i>	2 784	2 807	2 883	3 082	3 400	3 617	3 588	3 968	4 522
<b>Ownership of dwellings</b>									
Gross operating surplus	14 290	14 725	15 296	16 096	17 463	18 830	20 215	21 277	22 042
<b>General government</b>									
Gross operating surplus <sup>(a)</sup>	2 806	2 925	3 068	3 197	3 335	3 398	3 515	3 677	3 851
<b>All industries</b>									
Compensation of employees	70 679	71 441	74 939	80 043	86 240	92 338	96 583	103 063	108 839
Gross operating surplus and gross mixed income	56 402	59 853	63 051	65 515	70 278	74 108	79 801	83 212	89 182
<b>Total</b>	<b>127 081</b>	<b>131 294</b>	<b>137 990</b>	<b>145 558</b>	<b>156 518</b>	<b>166 446</b>	<b>176 384</b>	<b>186 275</b>	<b>198 021</b>

(a) State details for general government gross operating surplus by industry are not available.

	1991-92	1992-93	1993-94	1994-95	1995-96	1996-97	1997-98	1998-99	1999-00
	\$m	\$m	\$m	\$m	\$m	\$m	\$m	\$m	\$m
<b>Agriculture</b>									
Compensation of employees	468	477	531	563	568	663	663	787	867
Gross operating surplus and gross mixed income	2 311	2 733	3 057	2 290	3 350	3 076	3 135	3 251	3 390
<i>Total</i>	2 779	3 210	3 588	2 853	3 918	3 739	3 798	4 038	4 257
<b>Mining</b>									
Compensation of employees	369	337	324	338	348	310	356	405	459
Gross operating surplus and gross mixed income	3 350	3 641	3 356	2 985	2 920	2 653	2 544	1 610	2 466
<i>Total</i>	3 719	3 978	3 680	3 323	3 268	2 963	2 900	2 015	2 925
<b>Manufacturing</b>									
Compensation of employees	9 545	9 989	9 942	10 463	11 080	11 352	11 905	12 321	13 145
Gross operating surplus and gross mixed income	6 122	6 954	7 832	8 264	8 628	8 883	9 297	9 899	9 880
<i>Total</i>	15 667	16 943	17 774	18 727	19 708	20 235	21 202	22 220	23 025
<b>Electricity, gas and water</b>									
Compensation of employees	1 393	1 345	1 196	1 037	977	812	742	780	743
Gross operating surplus and gross mixed income	2 165	2 291	2 437	2 477	2 299	2 381	2 359	1 538	1 720
<i>Total</i>	3 558	3 636	3 633	3 514	3 276	3 193	3 101	2 318	2 463
<b>Construction</b>									
Compensation of employees	2 336	2 407	2 382	2 512	2 539	2 657	3 133	3 493	3 531
Gross operating surplus and gross mixed income	2 139	2 004	2 157	2 509	2 877	3 080	3 235	3 737	4 172
<i>Total</i>	4 475	4 411	4 539	5 021	5 416	5 737	6 368	7 230	7 703
<b>Wholesale trade</b>									
Compensation of employees	3 642	3 683	4 041	4 354	4 559	4 949	5 272	5 885	5 962
Gross operating surplus and gross mixed income	2 380	2 418	2 634	2 540	2 440	2 122	2 246	2 561	2 692
<i>Total</i>	6 022	6 101	6 675	6 894	6 999	7 071	7 518	8 446	8 654
<b>Retail trade</b>									
Compensation of employees	3 355	3 726	3 843	3 937	4 523	5 233	5 103	5 273	5 719
Gross operating surplus and gross mixed income	1 659	1 730	1 864	1 860	1 850	1 557	1 572	1 830	1 804
<i>Total</i>	5 014	5 456	5 707	5 797	6 373	6 790	6 675	7 103	7 523
<b>Accommodation, cafes and restaurants</b>									
Compensation of employees	901	1 062	1 118	1 242	1 292	1 384	1 442	1 326	1 524
Gross operating surplus and gross mixed income	519	500	499	565	651	689	728	780	852
<i>Total</i>	1 420	1 562	1 617	1 807	1 943	2 073	2 170	2 106	2 376
<b>Transport and storage</b>									
Compensation of employees	2 954	3 043	3 198	3 435	3 619	4 045	3 903	4 456	4 658
Gross operating surplus and gross mixed income	1 468	1 628	1 683	1 769	2 290	1 727	2 009	2 336	2 554
<i>Total</i>	4 422	4 671	4 881	5 204	5 909	5 772	5 912	6 792	7 212
<b>Communication services</b>									
Compensation of employees	1 618	1 757	1 792	1 908	2 075	2 046	2 151	2 008	2 300
Gross operating surplus and gross mixed income	1 452	1 448	1 675	1 766	1 915	2 243	2 426	2 610	2 938
<i>Total</i>	3 070	3 205	3 467	3 674	3 990	4 289	4 577	4 618	5 238
<b>Finance and insurance</b>									
Compensation of employees	3 168	3 036	3 494	3 663	4 216	4 515	4 872	5 235	5 410
Gross operating surplus and gross mixed income	2 429	3 191	3 499	3 051	2 983	3 087	3 986	4 293	4 686
<i>Total</i>	5 597	6 227	6 993	6 714	7 199	7 602	8 858	9 528	10 096
<b>Property and business services</b>									
Compensation of employees	5 161	5 438	5 853	6 876	7 599	8 029	9 039	11 131	12 514
Gross operating surplus and gross mixed income	4 150	4 334	4 227	4 897	4 999	5 502	5 870	6 302	7 051
<i>Total</i>	9 311	9 772	10 080	11 773	12 598	13 531	14 909	17 433	19 565
<b>Government administration and defence</b>									
Compensation of employees	3 453	3 425	3 511	3 636	3 529	3 737	3 725	3 574	3 489
<b>Education</b>									
Compensation of employees	4 562	5 013	5 159	5 325	5 289	5 531	5 845	6 289	6 727
Gross operating surplus and gross mixed income	58	65	71	82	38	125	129	151	156
<i>Total</i>	4 620	5 078	5 230	5 407	5 327	5 656	5 974	6 440	6 883

	1991-92	1992-93	1993-94	1994-95	1995-96	1996-97	1997-98	1998-99	1999-00
	\$m	\$m	\$m	\$m	\$m	\$m	\$m	\$m	\$m
<b>Health and community services</b>									
Compensation of employees	5 389	5 741	5 850	5 937	6 190	6 581	6 608	7 069	7 259
Gross operating surplus and gross mixed income	739	887	952	1 022	1 055	1 047	1 136	1 181	1 239
<i>Total</i>	6 128	6 628	6 802	6 959	7 245	7 628	7 744	8 250	8 498
<b>Cultural and recreational services</b>									
Compensation of employees	752	836	867	1 032	1 215	1 252	1 293	1 413	1 561
Gross operating surplus and gross mixed income	664	762	902	842	978	884	1 268	1 145	1 179
<i>Total</i>	1 416	1 598	1 769	1 874	2 193	2 136	2 561	2 558	2 740
<b>Personal and other services</b>									
Compensation of employees	1 591	1 715	1 661	1 793	1 883	2 039	1 982	2 122	2 435
Gross operating surplus and gross mixed income	338	389	336	456	609	662	756	776	1 034
<i>Total</i>	1 929	2 104	1 997	2 249	2 492	2 701	2 738	2 898	3 469
<b>Ownership of dwellings</b>									
Gross operating surplus	8 629	8 482	8 540	8 903	9 378	10 295	11 154	11 571	12 046
<b>General government</b>									
Gross operating surplus <sup>(a)</sup>	1 852	1 921	2 000	2 077	2 153	2 170	2 230	2 322	2 407
<b>All industries</b>									
Compensation of employees	50 657	53 030	54 762	58 051	61 501	65 135	68 034	73 567	78 303
Gross operating surplus and gross mixed income	42 424	45 378	47 721	48 355	51 413	52 183	56 080	57 893	62 266
<b>Total</b>	<b>93 081</b>	<b>98 408</b>	<b>102 483</b>	<b>106 406</b>	<b>112 914</b>	<b>117 318</b>	<b>124 114</b>	<b>131 460</b>	<b>140 569</b>

(a) State details for general government gross operating surplus by industry are not available.

	1991-92	1992-93	1993-94	1994-95	1995-96	1996-97	1997-98	1998-99	1999-00
	\$m	\$m	\$m	\$m	\$m	\$m	\$m	\$m	\$m
<b>Agriculture</b>									
Compensation of employees	676	625	666	750	776	942	922	1 011	1 055
Gross operating surplus and gross mixed income	1 894	2 205	2 644	2 299	2 288	2 082	2 280	2 994	3 239
<i>Total</i>	2 570	2 830	3 310	3 049	3 064	3 024	3 202	4 005	4 294
<b>Mining</b>									
Compensation of employees	1 217	1 339	1 275	1 232	1 506	1 580	1 521	1 529	1 408
Gross operating surplus and gross mixed income	2 129	2 846	2 460	2 377	2 833	2 938	3 391	3 375	3 861
<i>Total</i>	3 346	4 185	3 735	3 609	4 339	4 518	4 912	4 904	5 269
<b>Manufacturing</b>									
Compensation of employees	3 730	4 026	4 349	4 916	5 258	5 389	5 532	5 708	5 833
Gross operating surplus and gross mixed income	2 262	2 417	2 903	2 881	3 006	3 089	3 767	4 195	4 187
<i>Total</i>	5 992	6 443	7 252	7 797	8 264	8 478	9 299	9 903	10 020
<b>Electricity, gas and water</b>									
Compensation of employees	491	486	481	484	547	543	496	495	482
Gross operating surplus and gross mixed income	1 459	1 550	1 632	1 646	1 646	1 632	1 922	1 535	1 828
<i>Total</i>	1 950	2 036	2 113	2 130	2 193	2 175	2 418	2 030	2 310
<b>Construction</b>									
Compensation of employees	1 878	1 958	1 949	2 109	2 196	2 412	2 497	2 782	3 086
Gross operating surplus and gross mixed income	1 903	2 047	2 275	2 502	2 827	3 171	3 128	3 095	3 395
<i>Total</i>	3 781	4 005	4 224	4 611	5 023	5 583	5 625	5 877	6 481
<b>Wholesale trade</b>									
Compensation of employees	2 086	2 101	2 168	2 504	2 469	2 870	3 062	3 760	3 832
Gross operating surplus and gross mixed income	1 264	1 329	1 451	1 520	1 457	1 239	1 379	1 500	1 531
<i>Total</i>	3 350	3 430	3 619	4 024	3 926	4 109	4 441	5 260	5 363
<b>Retail trade</b>									
Compensation of employees	2 797	2 963	2 918	3 206	3 636	4 299	4 296	4 452	4 910
Gross operating surplus and gross mixed income	1 246	1 349	1 456	1 577	1 563	1 287	1 369	1 519	1 454
<i>Total</i>	4 043	4 312	4 374	4 783	5 199	5 586	5 665	5 971	6 364
<b>Accommodation, cafes and restaurants</b>									
Compensation of employees	1 094	1 131	1 229	1 446	1 482	1 715	1 797	1 652	1 833
Gross operating surplus and gross mixed income	535	537	566	676	806	861	918	890	967
<i>Total</i>	1 629	1 668	1 795	2 122	2 288	2 576	2 715	2 542	2 800
<b>Transport and storage</b>									
Compensation of employees	2 021	2 058	2 066	2 413	2 536	2 897	2 754	2 978	3 059
Gross operating surplus and gross mixed income	1 597	1 823	2 190	2 452	2 981	2 619	2 542	2 614	2 879
<i>Total</i>	3 618	3 881	4 256	4 865	5 517	5 516	5 296	5 592	5 938
<b>Communication services</b>									
Compensation of employees	754	859	855	937	1 003	1 024	1 131	1 097	1 144
Gross operating surplus and gross mixed income	882	916	951	1 106	1 113	1 276	1 465	1 603	1 806
<i>Total</i>	1 636	1 775	1 806	2 043	2 116	2 300	2 596	2 700	2 950
<b>Finance and insurance</b>									
Compensation of employees	1 332	1 405	1 469	1 625	1 804	2 002	2 018	2 002	1 945
Gross operating surplus and gross mixed income	1 246	1 761	1 763	1 687	1 556	1 671	2 051	1 807	2 072
<i>Total</i>	2 578	3 166	3 232	3 312	3 360	3 673	4 069	3 809	4 017
<b>Property and business services</b>									
Compensation of employees	2 665	3 054	3 021	3 527	3 777	3 959	4 560	5 345	5 733
Gross operating surplus and gross mixed income	2 347	2 549	2 308	2 458	2 371	2 651	2 748	3 023	3 554
<i>Total</i>	5 012	5 603	5 329	5 985	6 148	6 610	7 308	8 368	9 287
<b>Government administration and defence</b>									
Compensation of employees	2 047	2 319	2 555	2 734	3 020	3 277	3 493	3 513	3 658
<b>Education</b>									
Compensation of employees	2 434	2 849	2 988	3 122	3 384	3 643	3 892	3 975	4 288
Gross operating surplus and gross mixed income	32	35	41	49	23	78	79	93	96
<i>Total</i>	2 466	2 884	3 029	3 171	3 407	3 721	3 971	4 068	4 384

	1991-92	1992-93	1993-94	1994-95	1995-96	1996-97	1997-98	1998-99	1999-00
	\$m	\$m	\$m	\$m	\$m	\$m	\$m	\$m	\$m
<b>Health and community services</b>									
Compensation of employees	2 775	2 930	3 220	3 371	3 607	4 022	4 251	4 619	4 571
Gross operating surplus and gross mixed income	421	492	556	616	656	673	729	761	799
<i>Total</i>	3 196	3 422	3 776	3 987	4 263	4 695	4 980	5 380	5 370
<b>Cultural and recreational services</b>									
Compensation of employees	426	444	439	500	634	671	643	706	717
Gross operating surplus and gross mixed income	351	482	537	541	554	578	670	677	713
<i>Total</i>	777	926	976	1 041	1 188	1 249	1 313	1 383	1 430
<b>Personal and other services</b>									
Compensation of employees	908	1 019	1 043	1 274	1 359	1 501	1 612	1 771	2 008
Gross operating surplus and gross mixed income	185	212	195	245	314	395	450	458	534
<i>Total</i>	1 093	1 231	1 238	1 519	1 673	1 896	2 062	2 229	2 542
<b>Ownership of dwellings</b>									
Gross operating surplus	5 102	5 381	5 749	6 135	6 484	6 990	7 450	7 577	7 732
<b>General government</b>									
Gross operating surplus <sup>(a)</sup>	1 597	1 681	1 761	1 833	1 936	1 994	2 092	2 220	2 384
<b>All industries</b>									
Compensation of employees	29 331	31 566	32 691	36 150	38 994	42 746	44 477	47 395	49 562
Gross operating surplus and gross mixed income	26 452	29 612	31 438	32 600	34 414	35 224	38 430	39 936	43 031
<b>Total</b>	<b>55 783</b>	<b>61 178</b>	<b>64 129</b>	<b>68 750</b>	<b>73 408</b>	<b>77 970</b>	<b>82 907</b>	<b>87 331</b>	<b>92 593</b>

(a) State details for general government gross operating surplus by industry are not available.



	1991-92	1992-93	1993-94	1994-95	1995-96	1996-97	1997-98	1998-99	1999-00
	\$m	\$m	\$m	\$m	\$m	\$m	\$m	\$m	\$m
<b>Agriculture</b>									
Compensation of employees	234	246	262	276	292	334	337	349	380
Gross operating surplus and gross mixed income	853	967	1 087	998	1 674	1 456	1 715	1 606	1 666
<i>Total</i>	1 087	1 213	1 349	1 274	1 966	1 790	2 052	1 955	2 046
<b>Mining</b>									
Compensation of employees	143	147	147	155	189	188	182	180	174
Gross operating surplus and gross mixed income	613	744	659	657	804	608	738	611	726
<i>Total</i>	756	891	806	812	993	796	920	791	900
<b>Manufacturing</b>									
Compensation of employees	2 656	2 770	2 799	2 833	3 069	3 087	3 101	3 162	3 440
Gross operating surplus and gross mixed income	1 851	1 835	2 166	2 190	2 245	2 345	2 870	2 598	2 593
<i>Total</i>	4 507	4 605	4 965	5 023	5 314	5 432	5 971	5 760	6 033
<b>Electricity, gas and water</b>									
Compensation of employees	348	340	310	304	295	261	274	275	298
Gross operating surplus and gross mixed income	480	585	412	546	563	787	908	874	823
<i>Total</i>	828	925	722	850	858	1 048	1 182	1 149	1 121
<b>Construction</b>									
Compensation of employees	752	709	761	812	843	871	960	940	1 051
Gross operating surplus and gross mixed income	699	620	636	727	807	875	1 037	975	1 236
<i>Total</i>	1 451	1 329	1 397	1 539	1 650	1 746	1 997	1 915	2 287
<b>Wholesale trade</b>									
Compensation of employees	985	1 062	1 064	1 036	1 093	1 122	1 237	1 209	1 257
Gross operating surplus and gross mixed income	462	447	493	493	481	398	439	468	476
<i>Total</i>	1 447	1 509	1 557	1 529	1 574	1 520	1 676	1 677	1 733
<b>Retail trade</b>									
Compensation of employees	1 038	1 049	1 078	1 161	1 248	1 404	1 515	1 467	1 455
Gross operating surplus and gross mixed income	631	629	685	709	715	572	604	657	626
<i>Total</i>	1 669	1 678	1 763	1 870	1 963	1 976	2 119	2 124	2 081
<b>Accommodation, cafes and restaurants</b>									
Compensation of employees	310	352	351	373	398	426	457	426	473
Gross operating surplus and gross mixed income	174	175	186	223	307	345	347	347	372
<i>Total</i>	484	527	537	596	705	771	804	773	845
<b>Transport and storage</b>									
Compensation of employees	1 004	1 030	1 020	1 011	1 037	1 086	925	1 038	1 079
Gross operating surplus and gross mixed income	480	559	588	658	704	617	581	789	863
<i>Total</i>	1 484	1 589	1 608	1 669	1 741	1 703	1 506	1 827	1 942
<b>Communication services</b>									
Compensation of employees	394	370	419	418	433	459	524	467	474
Gross operating surplus and gross mixed income	311	302	319	346	390	443	492	489	552
<i>Total</i>	705	672	738	764	823	902	1 016	956	1 026
<b>Finance and insurance</b>									
Compensation of employees	755	812	855	809	790	830	917	930	949
Gross operating surplus and gross mixed income	690	858	793	807	719	789	867	816	1 106
<i>Total</i>	1 445	1 670	1 648	1 616	1 509	1 619	1 784	1 746	2 055
<b>Property and business services</b>									
Compensation of employees	1 147	1 221	1 527	1 736	1 793	1 838	2 161	2 414	2 318
Gross operating surplus and gross mixed income	926	987	910	947	844	944	1 017	1 223	1 434
<i>Total</i>	2 073	2 208	2 437	2 683	2 637	2 782	3 178	3 637	3 752
<b>Government administration and defence</b>									
Compensation of employees	799	809	961	863	952	1 043	1 138	1 118	1 183
<b>Education</b>									
Compensation of employees	1 393	1 430	1 539	1 521	1 586	1 726	1 754	1 777	1 884
Gross operating surplus and gross mixed income	15	16	18	21	10	32	33	38	40
<i>Total</i>	1 408	1 446	1 557	1 542	1 596	1 758	1 787	1 815	1 924

	1991-92	1992-93	1993-94	1994-95	1995-96	1996-97	1997-98	1998-99	1999-00
	\$m	\$m	\$m	\$m	\$m	\$m	\$m	\$m	\$m
<b>Health and community services</b>									
Compensation of employees	1 768	1 813	1 949	2 085	2 274	2 242	2 215	2 308	2 306
Gross operating surplus and gross mixed income	229	237	253	263	264	259	277	287	308
<i>Total</i>	1 997	2 050	2 202	2 348	2 538	2 501	2 492	2 595	2 614
<b>Cultural and recreational services</b>									
Compensation of employees	217	209	255	280	332	343	346	376	402
Gross operating surplus and gross mixed income	147	176	184	182	165	141	180	234	247
<i>Total</i>	364	385	439	462	497	484	526	610	649
<b>Personal and other services</b>									
Compensation of employees	651	668	714	760	738	734	717	717	828
Gross operating surplus and gross mixed income	106	125	110	154	210	218	246	248	348
<i>Total</i>	757	793	824	914	948	952	963	965	1 176
<b>Ownership of dwellings</b>									
Gross operating surplus	2 499	2 584	2 658	2 701	2 755	2 957	3 121	3 243	3 293
<b>General government</b>									
Gross operating surplus <sup>(a)</sup>	648	673	699	724	750	758	780	799	823
<b>All industries</b>									
Compensation of employees	14 594	15 037	16 011	16 433	17 362	17 994	18 760	19 153	19 951
Gross operating surplus and gross mixed income	11 814	12 519	12 856	13 346	14 407	14 544	16 252	16 302	17 532
<b>Total</b>	<b>26 408</b>	<b>27 556</b>	<b>28 867</b>	<b>29 779</b>	<b>31 769</b>	<b>32 538</b>	<b>35 012</b>	<b>35 455</b>	<b>37 483</b>

(a) State details for general government gross operating surplus by industry are not available.

	1991-92	1992-93	1993-94	1994-95	1995-96	1996-97	1997-98	1998-99	1999-00
	\$m	\$m	\$m	\$m	\$m	\$m	\$m	\$m	\$m
<b>Agriculture</b>									
Compensation of employees	383	349	397	433	490	544	574	611	615
Gross operating surplus and gross mixed income	1 039	1 460	1 544	1 664	2 284	1 941	2 124	1 626	1 674
<i>Total</i>	1 422	1 809	1 941	2 097	2 774	2 485	2 698	2 237	2 289
<b>Mining</b>									
Compensation of employees	1 257	1 254	1 459	1 569	1 739	1 911	1 881	1 832	2 033
Gross operating surplus and gross mixed income	5 659	5 590	5 726	6 856	8 031	8 136	8 642	8 834	10 501
<i>Total</i>	6 916	6 844	7 185	8 425	9 770	10 047	10 523	10 666	12 534
<b>Manufacturing</b>									
Compensation of employees	2 004	1 985	2 144	2 256	2 575	2 696	2 708	3 016	3 374
Gross operating surplus and gross mixed income	1 542	1 626	1 772	1 946	2 030	2 082	2 490	2 353	2 348
<i>Total</i>	3 546	3 611	3 916	4 202	4 605	4 778	5 198	5 369	5 722
<b>Electricity, gas and water</b>									
Compensation of employees	397	352	358	341	351	312	321	316	345
Gross operating surplus and gross mixed income	772	821	901	815	1 020	1 257	1 392	996	917
<i>Total</i>	1 169	1 173	1 259	1 156	1 371	1 569	1 713	1 312	1 262
<b>Construction</b>									
Compensation of employees	1 256	1 349	1 449	1 480	1 468	1 620	1 796	1 960	2 270
Gross operating surplus and gross mixed income	1 120	1 200	1 460	1 555	1 912	2 149	2 376	2 370	2 386
<i>Total</i>	2 376	2 549	2 909	3 035	3 380	3 769	4 172	4 330	4 656
<b>Wholesale trade</b>									
Compensation of employees	1 269	1 336	1 517	1 634	1 619	1 687	1 711	1 719	1 686
Gross operating surplus and gross mixed income	859	926	1 060	1 059	1 036	869	959	1 044	1 074
<i>Total</i>	2 128	2 262	2 577	2 693	2 655	2 556	2 670	2 763	2 760
<b>Retail trade</b>									
Compensation of employees	1 266	1 345	1 506	1 600	1 790	1 966	2 022	2 079	2 280
Gross operating surplus and gross mixed income	722	801	908	936	947	768	811	902	871
<i>Total</i>	1 988	2 146	2 414	2 536	2 737	2 734	2 833	2 981	3 151
<b>Accommodation, cafes and restaurants</b>									
Compensation of employees	415	408	434	481	489	534	576	574	673
Gross operating surplus and gross mixed income	203	202	214	256	319	304	309	295	312
<i>Total</i>	618	610	648	737	808	838	885	869	985
<b>Transport and storage</b>									
Compensation of employees	1 341	1 195	1 222	1 363	1 359	1 543	1 520	1 830	2 031
Gross operating surplus and gross mixed income	821	916	943	1 017	1 269	1 118	1 239	1 446	1 586
<i>Total</i>	2 162	2 111	2 165	2 380	2 628	2 661	2 759	3 276	3 617
<b>Communication services</b>									
Compensation of employees	417	412	427	434	431	429	472	446	438
Gross operating surplus and gross mixed income	618	595	623	734	793	903	1 082	1 143	1 288
<i>Total</i>	1 035	1 007	1 050	1 168	1 224	1 332	1 554	1 589	1 726
<b>Finance and insurance</b>									
Compensation of employees	809	796	857	850	804	799	907	983	1 009
Gross operating surplus and gross mixed income	863	1 013	1 176	979	871	848	1 080	1 164	1 327
<i>Total</i>	1 672	1 809	2 033	1 829	1 675	1 647	1 987	2 147	2 336
<b>Property and business services</b>									
Compensation of employees	1 702	2 005	2 240	2 621	2 713	2 991	3 593	3 890	4 409
Gross operating surplus and gross mixed income	1 405	1 493	1 463	1 639	1 592	1 678	1 757	1 860	2 049
<i>Total</i>	3 107	3 498	3 703	4 260	4 305	4 669	5 350	5 750	6 458
<b>Government administration and defence</b>									
Compensation of employees	1 107	1 093	1 180	1 255	1 319	1 358	1 451	1 439	1 549
<b>Education</b>									
Compensation of employees	1 483	1 503	1 690	1 744	1 739	1 794	1 931	2 034	2 154
Gross operating surplus and gross mixed income	18	20	24	29	14	47	48	56	58
<i>Total</i>	1 501	1 523	1 714	1 773	1 753	1 841	1 979	2 090	2 212

	1991-92	1992-93	1993-94	1994-95	1995-96	1996-97	1997-98	1998-99	1999-00
	\$m	\$m	\$m	\$m	\$m	\$m	\$m	\$m	\$m
<b>Health and community services</b>									
Compensation of employees	1 832	1 902	2 046	2 216	2 529	2 672	2 590	2 949	3 124
Gross operating surplus and gross mixed income	231	255	277	310	323	321	344	365	395
<i>Total</i>	2 063	2 157	2 323	2 526	2 852	2 993	2 934	3 314	3 519
<b>Cultural and recreational services</b>									
Compensation of employees	208	220	254	278	340	357	377	422	464
Gross operating surplus and gross mixed income	244	288	320	339	298	349	403	383	403
<i>Total</i>	452	508	574	617	638	706	780	805	867
<b>Personal and other services</b>									
Compensation of employees	781	794	833	914	897	915	918	1 001	1 152
Gross operating surplus and gross mixed income	114	135	119	163	219	239	269	271	360
<i>Total</i>	895	929	952	1 077	1 116	1 154	1 187	1 272	1 512
<b>Ownership of dwellings</b>									
Gross operating surplus	2 555	2 635	2 778	3 002	3 198	3 502	3 789	3 946	4 159
<b>General government</b>									
Gross operating surplus <sup>(a)</sup>	851	885	914	940	984	993	1 032	1 051	1 098
<b>All industries</b>									
Compensation of employees	17 927	18 298	20 013	21 469	22 652	24 128	25 348	27 101	29 606
Gross operating surplus and gross mixed income	19 636	20 861	22 222	24 239	27 140	27 504	30 146	30 105	32 806
<b>Total</b>	<b>37 563</b>	<b>39 159</b>	<b>42 235</b>	<b>45 708</b>	<b>49 792</b>	<b>51 632</b>	<b>55 494</b>	<b>57 206</b>	<b>62 412</b>

(a) State details for general government gross operating surplus by industry are not available.

	1991-92	1992-93	1993-94	1994-95	1995-96	1996-97	1997-98	1998-99	1999-00
	\$m	\$m	\$m	\$m	\$m	\$m	\$m	\$m	\$m
<b>Agriculture</b>									
Compensation of employees	115	117	122	143	160	186	192	217	154
Gross operating surplus and gross mixed income	229	287	344	290	268	330	360	351	360
<i>Total</i>	344	404	466	433	428	516	552	568	514
<b>Mining</b>									
Compensation of employees	103	109	119	130	149	147	113	116	105
Gross operating surplus and gross mixed income	84	58	59	129	152	121	91	109	130
<i>Total</i>	187	167	178	259	301	268	204	225	235
<b>Manufacturing</b>									
Compensation of employees	731	723	679	742	762	779	812	868	912
Gross operating surplus and gross mixed income	440	471	521	559	627	601	605	741	740
<i>Total</i>	1 171	1 194	1 200	1 301	1 389	1 380	1 417	1 609	1 652
<b>Electricity, gas and water</b>									
Compensation of employees	166	157	141	128	124	107	101	103	102
Gross operating surplus and gross mixed income	262	285	264	306	335	402	406	383	492
<i>Total</i>	428	442	405	434	459	509	507	486	594
<b>Construction</b>									
Compensation of employees	218	221	216	256	237	238	231	241	218
Gross operating surplus and gross mixed income	275	245	246	276	333	368	311	287	321
<i>Total</i>	493	466	462	532	570	606	542	528	539
<b>Wholesale trade</b>									
Compensation of employees	234	225	246	256	254	238	242	261	251
Gross operating surplus and gross mixed income	159	163	175	172	163	137	151	156	154
<i>Total</i>	393	388	421	428	417	375	393	417	405
<b>Retail trade</b>									
Compensation of employees	347	385	379	384	430	436	467	472	450
Gross operating surplus and gross mixed income	243	258	274	276	272	222	232	245	229
<i>Total</i>	590	643	653	660	702	658	699	717	679
<b>Accommodation, cafes and restaurants</b>									
Compensation of employees	143	155	139	162	179	186	199	166	178
Gross operating surplus and gross mixed income	56	58	67	82	88	90	85	79	86
<i>Total</i>	199	213	206	244	267	276	284	245	264
<b>Transport and storage</b>									
Compensation of employees	256	246	233	237	246	251	225	262	299
Gross operating surplus and gross mixed income	185	186	185	204	274	204	200	249	275
<i>Total</i>	441	432	418	441	520	455	425	511	574
<b>Communication services</b>									
Compensation of employees	103	115	107	110	108	114	125	121	128
Gross operating surplus and gross mixed income	87	85	86	103	100	115	135	151	171
<i>Total</i>	190	200	193	213	208	229	260	272	299
<b>Finance and insurance</b>									
Compensation of employees	199	172	172	198	207	227	245	223	240
Gross operating surplus and gross mixed income	192	267	240	199	173	181	203	250	273
<i>Total</i>	391	439	412	397	380	408	448	473	513
<b>Property and business services</b>									
Compensation of employees	280	283	271	283	309	320	336	319	307
Gross operating surplus and gross mixed income	176	178	163	182	204	203	195	238	269
<i>Total</i>	456	461	434	465	513	523	531	557	576
<b>Government administration and defence</b>									
Compensation of employees	419	365	397	439	472	470	506	529	557
<b>Education</b>									
Compensation of employees	393	404	432	453	470	492	512	541	536
Gross operating surplus and gross mixed income	4	5	5	6	3	9	9	10	11
<i>Total</i>	397	409	437	459	473	501	521	551	547

	1991-92	1992-93	1993-94	1994-95	1995-96	1996-97	1997-98	1998-99	1999-00
	\$m	\$m	\$m	\$m	\$m	\$m	\$m	\$m	\$m
<b>Health and community services</b>									
Compensation of employees	481	522	543	593	666	703	704	746	783
Gross operating surplus and gross mixed income	70	73	81	91	98	98	105	107	110
<i>Total</i>	551	595	624	684	764	801	809	853	893
<b>Cultural and recreational services</b>									
Compensation of employees	57	66	56	60	69	79	80	82	87
Gross operating surplus and gross mixed income	56	72	62	71	59	63	61	65	68
<i>Total</i>	113	138	118	131	128	142	141	147	155
<b>Personal and other services</b>									
Compensation of employees	151	153	158	172	179	188	201	198	213
Gross operating surplus and gross mixed income	21	22	20	26	33	42	47	47	55
<i>Total</i>	172	175	178	198	212	230	248	245	268
<b>Ownership of dwellings</b>									
Gross operating surplus	623	665	697	725	761	847	918	939	932
<b>General government</b>									
Gross operating surplus <sup>(a)</sup>	280	287	294	299	308	307	310	313	318
<b>All industries</b>									
Compensation of employees	4 396	4 418	4 410	4 746	5 021	5 161	5 291	5 465	5 520
Gross operating surplus and gross mixed income	3 442	3 665	3 783	3 996	4 251	4 340	4 424	4 720	4 994
<b>Total</b>	<b>7 838</b>	<b>8 083</b>	<b>8 193</b>	<b>8 742</b>	<b>9 272</b>	<b>9 501</b>	<b>9 715</b>	<b>10 185</b>	<b>10 514</b>

(a) State details for general government gross operating surplus by industry are not available.

	1991-92	1992-93	1993-94	1994-95	1995-96	1996-97	1997-98	1998-99	1999-00
	\$m	\$m	\$m	\$m	\$m	\$m	\$m	\$m	\$m
<b>Agriculture</b>									
Compensation of employees	31	27	29	43	46	46	47	56	63
Gross operating surplus and gross mixed income	84	90	156	140	169	178	116	130	142
<i>Total</i>	115	117	185	183	215	224	163	186	205
<b>Mining</b>									
Compensation of employees	95	119	119	132	140	159	170	191	191
Gross operating surplus and gross mixed income	956	975	635	641	736	756	693	575	983
<i>Total</i>	1 051	1 094	754	773	876	915	863	766	1 174
<b>Manufacturing</b>									
Compensation of employees	136	124	129	141	142	145	149	153	178
Gross operating surplus and gross mixed income	71	71	93	79	102	90	105	92	92
<i>Total</i>	207	195	222	220	244	235	254	245	270
<b>Electricity, gas and water</b>									
Compensation of employees	42	42	41	42	48	37	37	41	39
Gross operating surplus and gross mixed income	69	53	50	47	50	68	67	79	89
<i>Total</i>	111	95	91	89	98	105	104	120	128
<b>Construction</b>									
Compensation of employees	188	155	169	197	194	178	170	193	180
Gross operating surplus and gross mixed income	104	97	130	126	141	150	195	185	189
<i>Total</i>	292	252	299	323	335	328	365	378	369
<b>Wholesale trade</b>									
Compensation of employees	92	74	80	92	96	121	119	125	121
Gross operating surplus and gross mixed income	64	70	75	77	77	61	66	71	73
<i>Total</i>	156	144	155	169	173	182	185	196	194
<b>Retail trade</b>									
Compensation of employees	168	155	180	191	208	226	231	251	239
Gross operating surplus and gross mixed income	88	99	106	112	116	89	91	100	97
<i>Total</i>	256	254	286	303	324	315	322	351	336
<b>Accommodation, cafes and restaurants</b>									
Compensation of employees	90	97	95	107	108	119	125	117	124
Gross operating surplus and gross mixed income	43	43	44	56	64	66	63	64	69
<i>Total</i>	133	140	139	163	172	185	188	181	193
<b>Transport and storage</b>									
Compensation of employees	112	97	101	114	113	149	149	155	155
Gross operating surplus and gross mixed income	78	103	112	124	132	138	174	210	232
<i>Total</i>	190	200	213	238	245	287	323	365	387
<b>Communication services</b>									
Compensation of employees	41	57	64	72	66	76	83	91	93
Gross operating surplus and gross mixed income	53	51	54	74	66	81	104	118	133
<i>Total</i>	94	108	118	146	132	157	187	209	226
<b>Finance and insurance</b>									
Compensation of employees	50	52	50	55	60	72	83	83	92
Gross operating surplus and gross mixed income	54	87	73	55	62	60	86	73	95
<i>Total</i>	104	139	123	110	122	132	169	156	187
<b>Property and business services</b>									
Compensation of employees	254	203	214	269	271	274	307	437	442
Gross operating surplus and gross mixed income	80	85	81	109	133	128	117	136	150
<i>Total</i>	334	288	295	378	404	402	424	573	592
<b>Government administration and defence</b>									
Compensation of employees	276	298	341	366	388	431	510	579	621
<b>Education</b>									
Compensation of employees	204	203	220	235	255	277	303	355	354
Gross operating surplus and gross mixed income	1	2	2	2	1	3	3	4	4
<i>Total</i>	205	205	222	237	256	280	306	359	358

TOTAL FACTOR INCOME BY INDUSTRY AND PRINCIPAL COMPONENTS, Northern Territory—Current prices *continued*

	1991-92	1992-93	1993-94	1994-95	1995-96	1996-97	1997-98	1998-99	1999-00
	\$m	\$m	\$m	\$m	\$m	\$m	\$m	\$m	\$m
<b>Health and community services</b>									
Compensation of employees	183	172	211	242	281	311	307	364	396
Gross operating surplus and gross mixed income	19	20	23	25	27	27	30	32	32
<i>Total</i>	202	192	234	267	308	338	337	396	428
<b>Cultural and recreational services</b>									
Compensation of employees	42	51	58	75	90	103	108	113	107
Gross operating surplus and gross mixed income	27	41	46	46	52	49	67	72	75
<i>Total</i>	69	92	104	121	142	152	175	185	182
<b>Personal and other services</b>									
Compensation of employees	91	101	100	120	130	147	158	175	183
Gross operating surplus and gross mixed income	3	4	3	4	5	10	11	11	13
<i>Total</i>	94	105	103	124	135	157	169	186	196
<b>Ownership of dwellings</b>									
Gross operating surplus	219	226	235	252	276	328	343	362	376
<b>General government</b>									
Gross operating surplus(a)	156	161	167	175	185	192	203	208	216
<b>All industries</b>									
Compensation of employees	2 095	2 027	2 201	2 493	2 636	2 871	3 056	3 479	3 578
Gross operating surplus and gross mixed income	2 169	2 278	2 085	2 144	2 394	2 474	2 534	2 522	3 060
<b>Total</b>	<b>4 264</b>	<b>4 305</b>	<b>4 286</b>	<b>4 637</b>	<b>5 030</b>	<b>5 345</b>	<b>5 590</b>	<b>6 001</b>	<b>6 638</b>

(a) State details for general government gross operating surplus by industry are not available.



	1991-92	1992-93	1993-94	1994-95	1995-96	1996-97	1997-98	1998-99	1999-00
	\$m	\$m	\$m	\$m	\$m	\$m	\$m	\$m	\$m
<b>Agriculture</b>									
Compensation of employees	3	2	2	2	4	3	4	4	4
Gross operating surplus and gross mixed income	8	19	16	15	11	15	10	9	9
<i>Total</i>	11	21	18	17	15	18	14	13	13
<b>Mining</b>									
Compensation of employees	4	5	5	4	3	2	2	2	2
Gross operating surplus and gross mixed income	2	2	2	—	—	—	—	—	—
<i>Total</i>	6	7	7	4	3	2	2	2	2
<b>Manufacturing</b>									
Compensation of employees	121	126	121	140	154	141	128	118	139
Gross operating surplus and gross mixed income	54	59	68	68	68	76	67	86	85
<i>Total</i>	175	185	189	208	222	217	195	204	224
<b>Electricity, gas and water</b>									
Compensation of employees	63	64	76	71	78	83	78	82	77
Gross operating surplus and gross mixed income	91	90	90	106	105	106	151	135	164
<i>Total</i>	154	154	166	177	183	189	229	217	241
<b>Construction</b>									
Compensation of employees	226	248	275	300	337	363	333	378	443
Gross operating surplus and gross mixed income	233	231	222	241	255	274	254	290	358
<i>Total</i>	459	479	497	541	592	637	587	668	801
<b>Wholesale trade</b>									
Compensation of employees	151	140	151	153	153	152	152	177	192
Gross operating surplus and gross mixed income	56	59	65	62	59	51	57	60	63
<i>Total</i>	207	199	216	215	212	203	209	237	255
<b>Retail trade</b>									
Compensation of employees	198	246	239	267	288	326	322	329	356
Gross operating surplus and gross mixed income	154	168	182	180	176	148	158	170	168
<i>Total</i>	352	414	421	447	464	474	480	499	524
<b>Accommodation, cafes and restaurants</b>									
Compensation of employees	88	105	126	122	131	126	146	148	150
Gross operating surplus and gross mixed income	51	50	53	62	72	74	80	80	87
<i>Total</i>	139	155	179	184	203	200	226	228	237
<b>Transport and storage</b>									
Compensation of employees	161	149	163	164	173	193	177	207	205
Gross operating surplus and gross mixed income	105	97	94	92	118	99	124	145	163
<i>Total</i>	266	246	257	256	291	292	301	352	368
<b>Communication services</b>									
Compensation of employees	89	81	106	113	106	101	113	107	102
Gross operating surplus and gross mixed income	108	111	140	146	138	159	194	210	237
<i>Total</i>	197	192	246	259	244	260	307	317	339
<b>Finance and insurance</b>									
Compensation of employees	134	146	174	167	192	185	212	232	270
Gross operating surplus and gross mixed income	148	173	170	136	147	101	162	136	224
<i>Total</i>	282	319	344	303	339	286	374	368	494
<b>Property and business services</b>									
Compensation of employees	622	644	716	692	693	684	833	918	911
Gross operating surplus and gross mixed income	383	418	325	364	430	527	604	664	775
<i>Total</i>	1 005	1 062	1 041	1 056	1 123	1 211	1 437	1 582	1 686
<b>Government administration and defence</b>									
Compensation of employees	2 021	2 067	2 310	2 556	2 666	2 871	2 940	3 060	3 065

— nil or rounded to zero (including null cells)

	1991-92	1992-93	1993-94	1994-95	1995-96	1996-97	1997-98	1998-99	1999-00
	\$m	\$m	\$m	\$m	\$m	\$m	\$m	\$m	\$m
<b>Education</b>									
Compensation of employees	504	562	511	515	566	617	630	662	662
Gross operating surplus and gross mixed income	5	6	7	7	3	11	11	12	13
<i>Total</i>	509	568	518	522	569	628	641	674	675
<b>Health and community services</b>									
Compensation of employees	286	292	326	373	403	441	472	534	592
Gross operating surplus and gross mixed income	48	51	54	59	60	59	64	66	69
<i>Total</i>	334	343	380	432	463	500	536	600	661
<b>Cultural and recreational services</b>									
Compensation of employees	169	159	168	193	230	238	233	236	260
Gross operating surplus and gross mixed income	30	38	48	49	52	47	61	64	66
<i>Total</i>	199	197	216	242	282	285	294	300	326
<b>Personal and other services</b>									
Compensation of employees	199	232	248	245	252	294	322	344	345
Gross operating surplus and gross mixed income	17	20	18	26	34	39	43	44	60
<i>Total</i>	216	252	266	271	286	333	365	388	405
<b>Ownership of dwellings</b>									
Gross operating surplus	697	768	795	811	806	831	873	894	933
<b>General government</b>									
Gross operating surplus(a)	490	513	538	551	558	541	528	546	571
<b>All industries</b>									
Compensation of employees	5 039	5 268	5 717	6 077	6 429	6 820	7 097	7 538	7 775
Gross operating surplus and gross mixed income	2 680	2 873	2 887	2 975	3 092	3 158	3 441	3 611	4 045
<b>Total</b>	<b>7 719</b>	<b>8 141</b>	<b>8 604</b>	<b>9 052</b>	<b>9 521</b>	<b>9 978</b>	<b>10 538</b>	<b>11 149</b>	<b>11 820</b>

(a) State details for general government gross operating surplus by industry are not available.

	1991-92	1992-93	1993-94	1994-95	1995-96	1996-97	1997-98	1998-99	1999-00
	\$m	\$m	\$m	\$m	\$m	\$m	\$m	\$m	\$m
<b>Agriculture</b>									
Compensation of employees	2 867	2 909	3 124	3 460	3 666	3 967	3 996	4 343	4 409
Gross operating surplus and gross mixed income	8 197	9 982	11 406	9 354	12 694	12 554	12 796	12 913	13 515
<i>Total</i>	11 064	12 891	14 530	12 814	16 360	16 521	16 792	17 256	17 924
<b>Mining</b>									
Compensation of employees	4 601	4 689	4 834	4 909	5 656	5 887	5 916	5 767	5 683
Gross operating surplus and gross mixed income	13 916	14 862	14 130	15 058	17 012	16 767	17 665	17 119	20 900
<i>Total</i>	18 517	19 551	18 964	19 967	22 668	22 654	23 581	22 886	26 583
<b>Manufacturing</b>									
Compensation of employees	29 329	30 354	31 310	33 123	35 608	36 147	37 278	38 629	40 863
Gross operating surplus and gross mixed income	19 221	21 265	24 182	25 269	26 165	27 170	30 414	32 690	32 629
<i>Total</i>	48 550	51 619	55 492	58 392	61 773	63 317	67 692	71 319	73 492
<b>Electricity, gas and water</b>									
Compensation of employees	4 592	4 394	4 110	3 857	3 884	3 435	3 215	3 232	3 329
Gross operating surplus and gross mixed income	8 240	8 776	8 932	8 973	8 878	9 503	10 300	7 361	8 303
<i>Total</i>	12 832	13 170	13 042	12 830	12 762	12 938	13 515	10 593	11 632
<b>Construction</b>									
Compensation of employees	10 306	10 513	11 136	12 235	12 395	13 084	14 086	15 435	17 219
Gross operating surplus and gross mixed income	9 903	9 581	10 494	11 801	13 799	15 195	16 270	17 202	18 757
<i>Total</i>	20 209	20 094	21 630	24 036	26 194	28 279	30 356	32 637	35 976
<b>Wholesale trade</b>									
Compensation of employees	14 463	14 853	15 725	16 395	16 990	18 475	19 310	21 091	21 539
Gross operating surplus and gross mixed income	8 094	8 256	9 002	9 007	8 792	7 481	8 125	8 853	9 108
<i>Total</i>	22 557	23 109	24 727	25 402	25 782	25 956	27 435	29 944	30 647
<b>Retail trade</b>									
Compensation of employees	14 114	14 988	15 717	16 572	18 443	20 742	21 266	21 975	23 116
Gross operating surplus and gross mixed income	7 001	7 349	7 932	8 221	8 297	6 818	7 091	7 855	7 569
<i>Total</i>	21 115	22 337	23 649	24 793	26 740	27 560	28 357	29 830	30 685
<b>Accommodation, cafes and restaurants</b>									
Compensation of employees	5 099	5 362	5 679	6 446	6 701	7 395	7 765	7 127	7 908
Gross operating surplus and gross mixed income	2 677	2 657	2 774	3 282	3 991	4 102	4 231	4 295	4 635
<i>Total</i>	7 776	8 019	8 453	9 728	10 692	11 497	11 996	11 422	12 543
<b>Transport and storage</b>									
Compensation of employees	12 696	12 419	13 005	14 308	14 646	16 500	15 806	17 619	18 322
Gross operating surplus and gross mixed income	7 085	7 804	8 425	9 096	10 742	9 497	10 066	10 943	12 004
<i>Total</i>	19 781	20 223	21 430	23 404	25 388	25 997	25 872	28 562	30 326
<b>Communication services</b>									
Compensation of employees	5 445	5 732	5 794	6 174	6 714	6 843	7 429	6 989	7 446
Gross operating surplus and gross mixed income	5 377	5 400	5 712	6 336	6 796	7 879	8 901	9 513	10 714
<i>Total</i>	10 822	11 132	11 506	12 510	13 510	14 722	16 330	16 502	18 160
<b>Finance and insurance</b>									
Compensation of employees	12 042	11 872	12 564	13 306	14 674	15 673	16 785	17 833	18 943
Gross operating surplus and gross mixed income	9 548	11 949	12 568	11 363	11 403	11 828	14 357	14 755	17 377
<i>Total</i>	21 590	23 821	25 132	24 669	26 077	27 501	31 142	32 588	36 320
<b>Property and business services</b>									
Compensation of employees	19 838	21 228	22 832	26 371	28 782	30 862	35 465	41 876	45 275
Gross operating surplus and gross mixed income	15 963	17 030	16 256	18 206	18 151	19 949	20 964	22 278	25 419
<i>Total</i>	35 801	38 258	39 088	44 577	46 933	50 811	56 429	64 154	70 694
<b>Government administration and defence</b>									
Compensation of employees	14 030	14 481	15 593	16 359	17 393	18 985	19 539	19 747	20 109
<b>Education</b>									
Compensation of employees	16 262	17 553	18 500	19 094	19 600	20 945	22 086	23 327	24 649
Gross operating surplus and gross mixed income	200	222	249	291	137	450	461	538	558
<i>Total</i>	16 462	17 775	18 749	19 385	19 737	21 395	22 547	23 865	25 207

	1991-92	1992-93	1993-94	1994-95	1995-96	1996-97	1997-98	1998-99	1999-00
	\$m	\$m	\$m	\$m	\$m	\$m	\$m	\$m	\$m
<b>Health and community services</b>									
Compensation of employees	19 177	19 626	20 329	21 211	23 025	24 768	25 125	27 095	28 091
Gross operating surplus and gross mixed income	2 710	3 053	3 317	3 600	3 716	3 720	4 013	4 184	4 419
<i>Total</i>	21 887	22 679	23 646	24 811	26 741	28 488	29 138	31 279	32 511
<b>Cultural and recreational services</b>									
Compensation of employees	3 080	3 057	3 233	3 784	4 502	4 799	4 907	5 230	5 663
Gross operating surplus and gross mixed income	2 430	3 000	3 293	3 316	3 380	3 335	4 253	4 152	4 308
<i>Total</i>	5 510	6 057	6 526	7 100	7 882	8 134	9 160	9 382	9 970
<b>Personal and other services</b>									
Compensation of employees	6 777	7 055	7 259	7 858	8 156	8 686	8 672	9 446	10 570
Gross operating surplus and gross mixed income	1 163	1 341	1 182	1 576	2 106	2 354	2 648	2 705	3 520
<i>Total</i>	7 940	8 396	8 441	9 434	10 262	11 040	11 320	12 151	14 090
<b>Ownership of dwellings</b>									
Gross operating surplus	34 614	35 466	36 748	38 625	41 121	44 580	47 863	49 809	51 513
<b>General government</b>									
Gross operating surplus <sup>(a)</sup>	8 679	9 046	9 441	9 796	10 209	10 352	10 689	11 135	11 666
<b>All industries</b>									
Compensation of employees	194 718	201 085	210 744	225 462	240 835	257 193	268 646	286 761	303 134
Gross operating surplus and gross mixed income	165 018	177 039	186 043	193 171	207 389	213 534	231 107	238 300	256 915
<b>Total</b>	<b>359 736</b>	<b>378 124</b>	<b>396 787</b>	<b>418 632</b>	<b>448 224</b>	<b>470 727</b>	<b>499 753</b>	<b>525 061</b>	<b>560 048</b>

(a) State details for general government gross operating surplus by industry are not available.

1991-92 1992-93 1993-94 1994-95 1995-96 1996-97 1997-98 1998-99 1999-00

GROSS HOUSEHOLD INCOME

New South Wales (\$m)	131 945	133 105	137 808	147 731	158 729	167 778	174 229	184 393	196 164
Victoria (\$m)	96 437	98 085	100 177	106 545	113 204	116 855	122 724	130 279	139 489
Queensland (\$m)	57 008	59 885	62 220	67 862	72 576	78 000	80 826	86 646	91 913
South Australia (\$m)	28 472	28 762	29 937	31 434	34 001	34 540	35 851	36 840	38 846
Western Australia (\$m)	33 024	34 330	36 583	39 968	43 281	45 011	47 401	49 892	54 228
Tasmania (\$m)	8 456	8 630	8 701	9 303	9 810	10 045	10 216	10 637	11 020
Northern Territory (\$m)	3 229	3 202	3 504	3 935	4 234	4 542	4 685	5 134	5 401
Australian Capital Territory (\$m)	8 284	8 514	9 068	9 808	10 235	10 269	10 687	11 379	11 899
<b>Australia (\$m)</b>	<b>366 854</b>	<b>374 512</b>	<b>387 999</b>	<b>416 585</b>	<b>446 070</b>	<b>467 040</b>	<b>486 618</b>	<b>515 203</b>	<b>548 960</b>

GROSS HOUSEHOLD INCOME PER HEAD OF MEAN POPULATION

New South Wales (\$)	22 240	22 233	22 835	24 245	25 738	26 879	27 640	28 959	30 498
Victoria (\$)	21 725	21 964	22 362	23 665	24 938	25 488	26 505	27 820	29 444
Queensland (\$)	19 029	19 503	19 753	21 042	21 969	23 150	23 592	24 896	26 004
South Australia (\$)	19 610	19 718	20 451	21 416	23 106	23 387	24 173	24 732	25 983
Western Australia (\$)	20 040	20 576	21 645	23 260	24 735	25 249	26 141	27 048	28 984
Tasmania (\$)	18 050	18 326	18 418	19 649	20 692	21 182	21 614	22 566	23 424
Northern Territory (\$)	19 329	18 889	20 341	22 449	23 525	24 622	24 863	26 830	27 851
Australian Capital Territory (\$)	28 386	28 659	30 216	32 351	33 405	33 282	34 741	36 887	38 329
<b>Australia (\$)</b>	<b>21 090</b>	<b>21 294</b>	<b>21 839</b>	<b>23 193</b>	<b>24 516</b>	<b>25 347</b>	<b>26 128</b>	<b>27 352</b>	<b>28 824</b>

GROSS HOUSEHOLD DISPOSABLE INCOME

New South Wales (\$m)	101 377	103 500	107 845	114 318	121 456	127 731	132 469	139 908	147 997
Victoria (\$m)	73 905	76 267	78 481	82 925	87 094	90 056	94 403	99 980	106 527
Queensland (\$m)	44 152	47 084	48 535	52 448	55 165	60 182	61 963	66 613	70 337
South Australia (\$m)	22 021	22 499	23 640	24 642	26 349	26 793	27 695	28 417	29 828
Western Australia (\$m)	25 170	26 548	28 281	30 876	32 932	34 228	35 831	37 624	40 676
Tasmania (\$m)	6 550	6 743	6 778	7 233	7 483	7 707	7 840	8 180	8 455
Northern Territory (\$m)	2 561	2 546	2 806	3 169	3 375	3 592	3 679	4 019	4 218
Australian Capital Territory (\$m)	6 427	6 675	7 110	7 710	7 888	7 883	8 210	8 758	9 116
<b>Australia (\$m)</b>	<b>282 162</b>	<b>291 861</b>	<b>303 477</b>	<b>323 320</b>	<b>341 743</b>	<b>358 172</b>	<b>372 090</b>	<b>393 500</b>	<b>417 155</b>

GROSS HOUSEHOLD DISPOSABLE INCOME PER HEAD OF MEAN POPULATION

New South Wales (\$)	17 088	17 288	17 870	18 762	19 694	20 463	21 015	21 973	23 009
Victoria (\$)	16 649	17 078	17 519	18 419	19 186	19 643	20 388	21 350	22 486
Queensland (\$)	14 737	15 334	15 409	16 262	16 699	17 862	18 087	19 140	19 899
South Australia (\$)	15 167	15 425	16 150	16 789	17 906	18 141	18 674	19 077	19 951
Western Australia (\$)	15 274	15 912	16 733	17 969	18 820	19 200	19 760	20 397	21 741
Tasmania (\$)	13 982	14 319	14 347	15 277	15 784	16 252	16 587	17 354	17 972
Northern Territory (\$)	15 330	15 019	16 289	18 079	18 752	19 472	19 524	21 003	21 751
Australian Capital Territory (\$)	22 023	22 469	23 692	25 431	25 745	25 549	26 689	28 390	29 364
<b>Australia (\$)</b>	<b>16 221</b>	<b>16 595</b>	<b>17 082</b>	<b>18 001</b>	<b>18 782</b>	<b>19 439</b>	<b>19 978</b>	<b>20 891</b>	<b>21 904</b>

	1991-92	1992-93	1993-94	1994-95	1995-96	1996-97	1997-98	1998-99	1999-00
	\$m	\$m	\$m	\$m	\$m	\$m	\$m	\$m	\$m
<b>Income</b>									
Primary income receivable									
Compensation of employees	70 726	71 507	75 021	80 101	86 295	92 388	96 542	103 060	108 808
Gross operating surplus—dwellings owned by persons	13 998	14 460	15 008	15 788	17 158	18 521	19 907	20 970	21 722
Gross mixed income	12 917	13 500	13 388	13 453	14 259	15 070	15 627	16 287	17 359
Property income receivable	16 409	14 622	13 775	16 306	17 093	16 360	16 534	17 336	19 598
<i>Total primary income receivable</i>	<i>114 050</i>	<i>114 089</i>	<i>117 192</i>	<i>125 648</i>	<i>134 805</i>	<i>142 339</i>	<i>148 610</i>	<i>157 653</i>	<i>167 487</i>
Secondary income receivable									
Social benefits receivable									
Workers' compensation	1 267	1 373	1 418	1 698	1 898	2 530	2 244	1 999	2 060
Social assistance benefits	11 406	12 433	13 375	13 737	14 844	15 687	15 946	17 159	18 194
Current transfers to non-profit institutions	1 734	1 904	2 161	2 433	2 728	2 879	2 984	3 046	3 528
<i>Other secondary income</i>	<i>3 488</i>	<i>3 305</i>	<i>3 662</i>	<i>4 215</i>	<i>4 454</i>	<i>4 342</i>	<i>4 445</i>	<i>4 536</i>	<i>4 894</i>
<i>Total secondary income</i>	<i>17 895</i>	<i>19 016</i>	<i>20 616</i>	<i>22 083</i>	<i>23 924</i>	<i>25 439</i>	<i>25 619</i>	<i>26 740</i>	<i>28 677</i>
<b>Total gross income</b>	<b>131 945</b>	<b>133 105</b>	<b>137 808</b>	<b>147 731</b>	<b>158 729</b>	<b>167 778</b>	<b>174 229</b>	<b>184 393</b>	<b>196 164</b>
<b>Uses of income</b>									
Primary income payable									
Property income payable									
Dwellings and unincorporated enterprises	7 101	6 323	5 230	6 372	7 075	7 174	6 911	7 314	8 690
Consumer debt interest	1 377	864	864	1 122	1 351	1 232	1 314	1 399	1 624
<i>Total property income payable</i>	<i>8 477</i>	<i>7 187</i>	<i>6 094</i>	<i>7 494</i>	<i>8 425</i>	<i>8 406</i>	<i>8 225</i>	<i>8 713</i>	<i>10 314</i>
<i>Total primary income payable</i>	<i>8 477</i>	<i>7 187</i>	<i>6 094</i>	<i>7 494</i>	<i>8 425</i>	<i>8 406</i>	<i>8 225</i>	<i>8 713</i>	<i>10 314</i>
Secondary income payable									
Income tax payable	17 196	17 152	18 311	19 919	22 231	24 459	26 072	27 938	29 782
Other current taxes on income, wealth, etc	458	509	560	589	605	653	704	802	788
Social contributions for workers' compensation	1 166	1 298	1 290	1 649	1 853	2 188	2 216	2 197	2 201
Other secondary income payable	3 272	3 458	3 709	3 762	4 159	4 341	4 543	4 836	5 082
<i>Total secondary income payable</i>	<i>22 092</i>	<i>22 417</i>	<i>23 870</i>	<i>25 919</i>	<i>28 848</i>	<i>31 641</i>	<i>33 535</i>	<i>35 773</i>	<i>37 853</i>
<b>Total income payable</b>	<b>30 569</b>	<b>29 604</b>	<b>29 963</b>	<b>33 413</b>	<b>37 273</b>	<b>40 046</b>	<b>41 760</b>	<b>44 485</b>	<b>48 167</b>
<b>Gross disposable income</b>	<b>101 377</b>	<b>103 500</b>	<b>107 845</b>	<b>114 318</b>	<b>121 456</b>	<b>127 731</b>	<b>132 469</b>	<b>139 908</b>	<b>147 997</b>
Final consumption expenditure	88 634	91 163	93 971	99 855	107 607	112 423	118 480	125 309	132 506
Net saving plus consumption of fixed capital(a)	12 743	12 337	13 874	14 463	13 849	15 308	13 989	14 599	15 491
<b>Total use of gross income</b>	<b>131 945</b>	<b>133 105</b>	<b>137 808</b>	<b>147 731</b>	<b>158 729</b>	<b>167 778</b>	<b>174 229</b>	<b>184 393</b>	<b>196 164</b>

(a) Net saving plus consumption of fixed capital is derived as a balancing item.

	1991-92	1992-93	1993-94	1994-95	1995-96	1996-97	1997-98	1998-99	1999-00
	\$m	\$m	\$m	\$m	\$m	\$m	\$m	\$m	\$m
<b>Income</b>									
Primary income receivable									
Compensation of employees	50 691	53 079	54 821	58 094	61 539	65 170	68 007	73 553	78 274
Gross operating surplus—dwellings owned by persons	8 453	8 330	8 379	8 733	9 214	10 127	10 984	11 404	11 870
Gross mixed income	10 397	10 914	11 049	11 162	12 641	12 247	13 535	14 195	15 140
Property income receivable	12 875	11 151	10 390	12 361	12 919	11 733	12 045	12 636	14 325
<i>Total primary income receivable</i>	<i>82 416</i>	<i>83 474</i>	<i>84 639</i>	<i>90 350</i>	<i>96 313</i>	<i>99 277</i>	<i>104 571</i>	<i>111 788</i>	<i>119 609</i>
Secondary income receivable									
Social benefits receivable									
Workers' compensation	1 488	1 383	1 229	1 191	1 107	1 251	1 111	1 001	1 040
Social assistance benefits	8 647	9 356	10 115	10 294	10 800	11 375	11 428	12 326	12 968
Current transfers to non-profit institutions	1 305	1 446	1 537	1 654	1 775	1 833	2 413	1 908	2 352
<i>Other secondary income</i>	<i>2 581</i>	<i>2 426</i>	<i>2 658</i>	<i>3 056</i>	<i>3 209</i>	<i>3 119</i>	<i>3 201</i>	<i>3 257</i>	<i>3 520</i>
<i>Total secondary income</i>	<i>14 021</i>	<i>14 611</i>	<i>15 538</i>	<i>16 195</i>	<i>16 891</i>	<i>17 578</i>	<i>18 153</i>	<i>18 491</i>	<i>19 880</i>
<b>Total gross income</b>	<b>96 437</b>	<b>98 085</b>	<b>100 177</b>	<b>106 545</b>	<b>113 204</b>	<b>116 855</b>	<b>122 724</b>	<b>130 279</b>	<b>139 489</b>
<b>Uses of income</b>									
Primary income payable									
Property income payable									
Dwellings and unincorporated enterprises	5 448	4 855	4 264	4 968	5 374	4 656	5 016	5 219	6 095
Consumer debt interest	914	586	581	746	912	880	965	1 044	1 235
<i>Total property income payable</i>	<i>6 363</i>	<i>5 441</i>	<i>4 846</i>	<i>5 714</i>	<i>6 286</i>	<i>5 535</i>	<i>5 981</i>	<i>6 263</i>	<i>7 330</i>
<i>Total primary income payable</i>	<i>6 363</i>	<i>5 441</i>	<i>4 846</i>	<i>5 714</i>	<i>6 286</i>	<i>5 535</i>	<i>5 981</i>	<i>6 263</i>	<i>7 330</i>
Secondary income payable									
Income tax payable	12 139	12 219	12 658	13 626	15 325	16 628	17 514	18 989	20 391
Other current taxes on income, wealth, etc	237	298	359	377	394	411	445	466	475
Social contributions for workers' compensation	1 369	1 307	1 118	1 157	1 081	1 082	1 097	1 099	1 111
Other secondary income payable	2 423	2 554	2 715	2 746	3 025	3 143	3 284	3 482	3 655
<i>Total secondary income payable</i>	<i>16 168</i>	<i>16 378</i>	<i>16 850</i>	<i>17 906</i>	<i>19 825</i>	<i>21 264</i>	<i>22 340</i>	<i>24 036</i>	<i>25 632</i>
<b>Total income payable</b>	<b>22 531</b>	<b>21 819</b>	<b>21 696</b>	<b>23 620</b>	<b>26 110</b>	<b>26 799</b>	<b>28 321</b>	<b>30 299</b>	<b>32 962</b>
<b>Gross disposable income</b>	<b>73 905</b>	<b>76 267</b>	<b>78 481</b>	<b>82 925</b>	<b>87 094</b>	<b>90 056</b>	<b>94 403</b>	<b>99 980</b>	<b>106 527</b>
Final consumption expenditure	62 411	65 174	67 238	71 225	75 637	79 827	85 496	90 312	95 847
Net saving plus consumption of fixed capital(a)	11 494	11 093	11 243	11 700	11 457	10 229	8 907	9 668	10 680
<b>Total use of gross income</b>	<b>96 437</b>	<b>98 085</b>	<b>100 177</b>	<b>106 545</b>	<b>113 204</b>	<b>116 855</b>	<b>122 724</b>	<b>130 279</b>	<b>139 489</b>

(a) Net saving plus consumption of fixed capital is derived as a balancing item.

	1991-92	1992-93	1993-94	1994-95	1995-96	1996-97	1997-98	1998-99	1999-00
	\$ Millions	\$ Millions	\$ Millions	\$ Millions	\$ Millions	\$ Millions	\$ Millions	\$ Millions	\$ Millions
<b>Income</b>									
Primary income receivable									
Compensation of employees	29 350	31 595	32 726	36 174	39 018	42 769	44 463	47 345	49 501
Gross operating surplus—dwellings owned by persons	4 998	5 284	5 641	6 018	6 371	6 876	7 337	7 468	7 619
Gross mixed income	7 866	8 443	8 718	8 814	8 713	8 931	9 500	10 714	11 533
Property income receivable	6 057	5 136	4 640	5 507	6 019	6 246	6 266	6 629	7 510
<i>Total primary income receivable</i>	<i>48 271</i>	<i>50 458</i>	<i>51 725</i>	<i>56 513</i>	<i>60 121</i>	<i>64 822</i>	<i>67 566</i>	<i>72 156</i>	<i>76 163</i>
Secondary income receivable									
Social benefits receivable									
Workers' compensation	333	405	456	571	659	898	800	710	724
Social assistance benefits	5 764	6 321	7 013	7 293	7 949	8 372	8 401	9 085	9 554
Current transfers to non-profit institutions	917	1 050	1 165	1 304	1 518	1 606	1 662	2 245	2 822
<i>Other secondary income</i>	<i>1 723</i>	<i>1 651</i>	<i>1 861</i>	<i>2 181</i>	<i>2 329</i>	<i>2 302</i>	<i>2 397</i>	<i>2 449</i>	<i>2 651</i>
<i>Total secondary income</i>	<i>8 737</i>	<i>9 427</i>	<i>10 495</i>	<i>11 349</i>	<i>12 455</i>	<i>13 178</i>	<i>13 260</i>	<i>14 490</i>	<i>15 750</i>
<b>Total gross income</b>	<b>57 008</b>	<b>59 885</b>	<b>62 220</b>	<b>67 862</b>	<b>72 576</b>	<b>78 000</b>	<b>80 826</b>	<b>86 646</b>	<b>91 913</b>
<b>Uses of income</b>									
Primary income payable									
Property income payable									
Dwellings and unincorporated enterprises	3 031	2 571	2 643	3 206	3 719	2 948	3 144	3 302	3 847
Consumer debt interest	643	451	467	630	776	784	830	868	1 018
<i>Total property income payable</i>	<i>3 674</i>	<i>3 022</i>	<i>3 110</i>	<i>3 836</i>	<i>4 495</i>	<i>3 732</i>	<i>3 974</i>	<i>4 169</i>	<i>4 865</i>
<i>Total primary income payable</i>	<i>3 674</i>	<i>3 022</i>	<i>3 110</i>	<i>3 836</i>	<i>4 495</i>	<i>3 732</i>	<i>3 974</i>	<i>4 169</i>	<i>4 865</i>
Secondary income payable									
Income tax payable	6 987	7 359	7 934	8 736	9 722	10 618	11 278	12 108	12 812
Other current taxes on income, wealth, etc	243	269	296	297	319	346	360	367	373
Social contributions for workers' compensation	306	383	415	555	644	776	790	781	773
Other secondary income payable	1 646	1 769	1 930	1 990	2 231	2 345	2 460	2 610	2 752
<i>Total secondary income payable</i>	<i>9 182</i>	<i>9 780</i>	<i>10 575</i>	<i>11 578</i>	<i>12 916</i>	<i>14 085</i>	<i>14 888</i>	<i>15 866</i>	<i>16 710</i>
<b>Total income payable</b>	<b>12 856</b>	<b>12 802</b>	<b>13 685</b>	<b>15 414</b>	<b>17 411</b>	<b>17 818</b>	<b>18 863</b>	<b>20 034</b>	<b>21 576</b>
<b>Gross disposable income</b>	<b>44 152</b>	<b>47 084</b>	<b>48 535</b>	<b>52 448</b>	<b>55 165</b>	<b>60 182</b>	<b>61 963</b>	<b>66 613</b>	<b>70 337</b>
Final consumption expenditure	39 553	42 688	45 462	48 989	52 097	54 595	58 470	62 404	65 638
Net saving plus consumption of fixed capital(a)	4 599	4 396	3 073	3 459	3 068	5 587	3 493	4 209	4 699
<b>Total use of gross income</b>	<b>57 008</b>	<b>59 885</b>	<b>62 220</b>	<b>67 862</b>	<b>72 576</b>	<b>78 000</b>	<b>80 826</b>	<b>86 646</b>	<b>91 913</b>

(a) Net saving plus consumption of fixed capital is derived as a balancing item.



	1991-92	1992-93	1993-94	1994-95	1995-96	1996-97	1997-98	1998-99	1999-00
	\$m	\$m	\$m	\$m	\$m	\$m	\$m	\$m	\$m
<b>Income</b>									
Primary income receivable									
Compensation of employees	14 604	15 051	16 028	16 445	17 373	18 004	18 751	19 163	19 955
Gross operating surplus—dwellings owned by persons	2 448	2 538	2 608	2 649	2 707	2 909	3 074	3 196	3 245
Gross mixed income	3 315	3 469	3 519	3 620	4 543	4 265	4 655	4 771	5 066
Property income receivable	3 348	2 778	2 549	3 093	3 426	3 065	3 055	3 198	3 623
<i>Total primary income receivable</i>	23 715	23 836	24 704	25 807	28 049	28 243	29 535	30 328	31 889
Secondary income receivable									
Social benefits receivable									
Workers' compensation	447	422	382	430	459	588	524	449	457
Social assistance benefits	3 058	3 267	3 460	3 621	3 805	4 016	4 033	4 268	4 537
Current transfers to non-profit institutions	431	466	539	599	670	708	753	780	879
<i>Other secondary income</i>	821	771	851	976	1 017	985	1 006	1 016	1 084
<i>Total secondary income</i>	4 757	4 926	5 233	5 627	5 952	6 297	6 316	6 512	6 957
<b>Total gross income</b>	<b>28 472</b>	<b>28 762</b>	<b>29 937</b>	<b>31 434</b>	<b>34 001</b>	<b>34 540</b>	<b>35 851</b>	<b>36 840</b>	<b>38 846</b>
<b>Uses of income</b>									
Primary income payable									
Property income payable									
Dwellings and unincorporated enterprises	1 398	1 208	1 036	1 208	1 423	1 249	1 316	1 362	1 589
Consumer debt interest	285	194	201	258	314	253	261	270	300
<i>Total property income payable</i>	1 683	1 402	1 236	1 466	1 737	1 502	1 576	1 632	1 889
<i>Total primary income payable</i>	1 683	1 402	1 236	1 466	1 737	1 502	1 576	1 632	1 889
Secondary income payable									
Income tax payable	3 480	3 529	3 717	3 901	4 369	4 603	4 882	5 053	5 331
Other current taxes on income, wealth, etc	97	108	117	121	125	129	140	147	169
Social contributions for workers' compensation	411	399	348	418	448	509	518	493	488
Other secondary income payable	780	825	879	886	973	1 003	1 040	1 098	1 141
<i>Total secondary income payable</i>	4 768	4 861	5 061	5 326	5 915	6 244	6 580	6 791	7 129
<b>Total income payable</b>	<b>6 451</b>	<b>6 263</b>	<b>6 296</b>	<b>6 791</b>	<b>7 651</b>	<b>7 747</b>	<b>8 156</b>	<b>8 423</b>	<b>9 018</b>
<b>Gross disposable income</b>	<b>22 021</b>	<b>22 499</b>	<b>23 640</b>	<b>24 642</b>	<b>26 349</b>	<b>26 793</b>	<b>27 695</b>	<b>28 417</b>	<b>29 828</b>
Final consumption expenditure	19 143	19 552	20 417	21 499	22 631	23 067	24 424	25 341	26 503
Net saving plus consumption of fixed capital(a)	2 878	2 947	3 223	3 143	3 718	3 726	3 271	3 076	3 325
<b>Total use of gross income</b>	<b>28 472</b>	<b>28 762</b>	<b>29 937</b>	<b>31 434</b>	<b>34 001</b>	<b>34 540</b>	<b>35 851</b>	<b>36 840</b>	<b>38 846</b>

(a) Net saving plus consumption of fixed capital is derived as a balancing item.

	1991-92	1992-93	1993-94	1994-95	1995-96	1996-97	1997-98	1998-99	1999-00
	\$m	\$m	\$m	\$m	\$m	\$m	\$m	\$m	\$m
<b>Income</b>									
Primary income receivable									
Compensation of employees	17 939	18 315	20 035	21 486	22 668	24 141	25 331	27 069	29 567
Gross operating surplus—dwellings owned by persons	2 503	2 588	2 726	2 945	3 142	3 445	3 731	3 889	4 098
Gross mixed income	4 162	5 181	5 424	6 025	7 054	6 820	7 635	7 518	8 004
Property income receivable	3 507	3 084	2 841	3 443	3 807	3 645	3 659	3 870	4 437
<i>Total primary income receivable</i>	<i>28 111</i>	<i>29 168</i>	<i>31 026</i>	<i>33 899</i>	<i>36 671</i>	<i>38 051</i>	<i>40 356</i>	<i>42 346</i>	<i>46 106</i>
Secondary income receivable									
Social benefits receivable									
Workers' compensation	262	314	350	389	411	523	463	414	441
Social assistance benefits	3 123	3 302	3 503	3 650	3 959	4 138	4 177	4 574	4 875
Current transfers to non-profit institutions	562	632	687	844	985	1 060	1 120	1 240	1 382
<i>Other secondary income</i>	<i>966</i>	<i>913</i>	<i>1 018</i>	<i>1 186</i>	<i>1 255</i>	<i>1 239</i>	<i>1 284</i>	<i>1 319</i>	<i>1 424</i>
<i>Total secondary income</i>	<i>4 913</i>	<i>5 162</i>	<i>5 557</i>	<i>6 069</i>	<i>6 610</i>	<i>6 960</i>	<i>7 045</i>	<i>7 546</i>	<i>8 122</i>
<b>Total gross income</b>	<b>33 024</b>	<b>34 330</b>	<b>36 583</b>	<b>39 968</b>	<b>43 281</b>	<b>45 011</b>	<b>47 401</b>	<b>49 892</b>	<b>54 228</b>
<b>Uses of income</b>									
Primary income payable									
Property income payable									
Dwellings and unincorporated enterprises	1 959	1 628	1 519	1 783	2 067	1 855	1 986	2 096	2 475
Consumer debt interest	322	242	253	324	396	450	498	517	598
<i>Total property income payable</i>	<i>2 281</i>	<i>1 870</i>	<i>1 772</i>	<i>2 107</i>	<i>2 463</i>	<i>2 305</i>	<i>2 484</i>	<i>2 613</i>	<i>3 072</i>
<i>Total primary income payable</i>	<i>2 281</i>	<i>1 870</i>	<i>1 772</i>	<i>2 107</i>	<i>2 463</i>	<i>2 305</i>	<i>2 484</i>	<i>2 613</i>	<i>3 072</i>
Secondary income payable									
Income tax payable	4 312	4 524	5 032	5 398	6 149	6 630	7 144	7 583	8 321
Other current taxes on income, wealth, etc	107	119	134	134	140	151	172	224	221
Social contributions for workers' compensation	241	297	318	378	401	452	458	455	471
Other secondary income payable	912	971	1 047	1 075	1 196	1 246	1 313	1 394	1 466
<i>Total secondary income payable</i>	<i>5 572</i>	<i>5 911</i>	<i>6 531</i>	<i>6 985</i>	<i>7 886</i>	<i>8 479</i>	<i>9 087</i>	<i>9 656</i>	<i>10 479</i>
<b>Total income payable</b>	<b>7 854</b>	<b>7 782</b>	<b>8 302</b>	<b>9 092</b>	<b>10 350</b>	<b>10 783</b>	<b>11 570</b>	<b>12 268</b>	<b>13 552</b>
<b>Gross disposable income</b>	<b>25 170</b>	<b>26 548</b>	<b>28 281</b>	<b>30 876</b>	<b>32 932</b>	<b>34 228</b>	<b>35 831</b>	<b>37 624</b>	<b>40 676</b>
Final consumption expenditure	22 006	23 541	25 317	26 773	28 525	29 587	31 480	33 014	34 507
Net saving plus consumption of fixed capital(a)	3 164	3 007	2 964	4 103	4 407	4 641	4 351	4 610	6 169
<b>Total use of gross income</b>	<b>33 024</b>	<b>34 330</b>	<b>36 583</b>	<b>39 968</b>	<b>43 281</b>	<b>45 011</b>	<b>47 401</b>	<b>49 892</b>	<b>54 228</b>

(a) Net saving plus consumption of fixed capital is derived as a balancing item.

	1991-92	1992-93	1993-94	1994-95	1995-96	1996-97	1997-98	1998-99	1999-00
	\$m	\$m	\$m	\$m	\$m	\$m	\$m	\$m	\$m
<b>Income</b>									
Primary income receivable									
Compensation of employees	4 399	4 422	4 415	4 749	5 024	5 164	5 290	5 464	5 518
Gross operating surplus—dwellings owned by persons	610	653	684	711	748	833	904	925	918
Gross mixed income	974	1 077	1 123	1 118	1 111	1 142	1 158	1 267	1 346
Property income receivable	1 014	909	781	906	959	863	834	875	988
<i>Total primary income receivable</i>	6 997	7 061	7 003	7 484	7 842	8 002	8 186	8 531	8 770
Secondary income receivable									
Social benefits receivable									
Workers' compensation	74	94	109	126	136	176	159	135	133
Social assistance benefits	988	1 071	1 152	1 192	1 303	1 354	1 355	1 444	1 531
Current transfers to non-profit institutions	137	160	167	191	206	202	201	212	249
<i>Other secondary income</i>	260	243	270	310	323	311	315	315	336
<i>Total secondary income</i>	1 459	1 569	1 698	1 819	1 968	2 043	2 030	2 106	2 250
<b>Total gross income</b>	<b>8 456</b>	<b>8 630</b>	<b>8 701</b>	<b>9 303</b>	<b>9 810</b>	<b>10 045</b>	<b>10 216</b>	<b>10 637</b>	<b>11 020</b>
<b>Uses of income</b>									
Primary income payable									
Property income payable									
Dwellings and unincorporated enterprises	413	363	321	368	451	365	366	376	430
Consumer debt interest	80	53	53	75	96	87	88	94	103
<i>Total property income payable</i>	493	416	373	443	547	453	453	470	534
<i>Total primary income payable</i>	493	416	373	443	547	453	453	470	534
Secondary income payable									
Income tax payable	1 063	1 086	1 133	1 180	1 291	1 365	1 385	1 445	1 483
Other current taxes on income, wealth, etc	32	32	36	40	45	47	49	49	49
Social contributions for workers' compensation	68	89	99	122	132	152	157	148	142
Other secondary income payable	250	263	281	285	311	321	331	345	358
<i>Total secondary income payable</i>	1 413	1 470	1 549	1 627	1 779	1 885	1 922	1 987	2 032
<b>Total income payable</b>	<b>1 907</b>	<b>1 886</b>	<b>1 923</b>	<b>2 070</b>	<b>2 326</b>	<b>2 337</b>	<b>2 376</b>	<b>2 457</b>	<b>2 565</b>
<b>Gross disposable income</b>	<b>6 550</b>	<b>6 743</b>	<b>6 778</b>	<b>7 233</b>	<b>7 483</b>	<b>7 707</b>	<b>7 840</b>	<b>8 180</b>	<b>8 455</b>
Final consumption expenditure	5 801	6 064	6 375	6 548	6 896	7 152	7 497	7 674	7 979
Net saving plus consumption of fixed capital(a)	749	679	403	685	587	555	343	506	476
<b>Total use of gross income</b>	<b>8 456</b>	<b>8 630</b>	<b>8 701</b>	<b>9 303</b>	<b>9 810</b>	<b>10 045</b>	<b>10 216</b>	<b>10 637</b>	<b>11 020</b>

(a) Net saving plus consumption of fixed capital is derived as a balancing item.

	1991-92	1992-93	1993-94	1994-95	1995-96	1996-97	1997-98	1998-99	1999-00
	\$m	\$m	\$m	\$m	\$m	\$m	\$m	\$m	\$m
<b>Income</b>									
Primary income receivable									
Compensation of employees	2 096	2 029	2 203	2 494	2 638	2 873	3 026	3 389	3 489
Gross operating surplus—dwellings owned by persons	215	222	231	247	271	323	338	357	371
Gross mixed income	267	302	376	389	432	450	419	450	486
Property income receivable	217	185	180	238	263	253	242	266	310
<i>Total primary income receivable</i>	2 795	2 738	2 990	3 368	3 604	3 899	4 025	4 462	4 656
Secondary income receivable									
Social benefits receivable									
Workers' compensation	29	34	36	37	36	42	36	33	35
Social assistance benefits	217	229	250	276	303	312	316	338	358
Current transfers to non-profit institutions	93	112	128	137	166	166	180	170	211
<i>Other secondary income</i>	94	89	100	117	125	123	128	131	142
<i>Total secondary income</i>	434	464	514	567	630	643	660	672	745
<b>Total gross income</b>	<b>3 229</b>	<b>3 202</b>	<b>3 504</b>	<b>3 935</b>	<b>4 234</b>	<b>4 542</b>	<b>4 685</b>	<b>5 134</b>	<b>5 401</b>
<b>Uses of income</b>									
Primary income payable									
Property income payable									
Dwellings and unincorporated enterprises	99	75	79	98	129	105	119	129	154
Consumer debt interest	21	14	16	22	26	34	33	35	40
<i>Total property income payable</i>	119	89	94	119	155	139	151	164	194
<i>Total primary income payable</i>	119	89	94	119	155	139	151	164	194
Secondary income payable									
Income tax payable	421	429	455	492	535	637	672	758	792
Other current taxes on income, wealth, etc	9	10	11	11	12	11	12	15	12
Social contributions for workers' compensation	27	32	33	36	35	36	36	36	37
Other secondary income payable	91	96	104	107	121	127	135	141	149
<i>Total secondary income payable</i>	548	567	603	646	703	811	855	950	990
<b>Total income payable</b>	<b>668</b>	<b>657</b>	<b>698</b>	<b>766</b>	<b>858</b>	<b>950</b>	<b>1 006</b>	<b>1 115</b>	<b>1 184</b>
<b>Gross disposable income</b>	<b>2 561</b>	<b>2 546</b>	<b>2 806</b>	<b>3 169</b>	<b>3 375</b>	<b>3 592</b>	<b>3 679</b>	<b>4 019</b>	<b>4 218</b>
Final consumption expenditure	2 106	2 260	2 329	2 572	2 841	2 851	3 089	3 283	3 476
Net saving plus consumption of fixed capital(a)	455	286	477	597	534	741	590	736	742
<b>Total use of gross income</b>	<b>3 229</b>	<b>3 202</b>	<b>3 504</b>	<b>3 935</b>	<b>4 234</b>	<b>4 542</b>	<b>4 685</b>	<b>5 134</b>	<b>5 401</b>

(a) Net saving plus consumption of fixed capital is derived as a balancing item.

	1991-92	1992-93	1993-94	1994-95	1995-96	1996-97	1997-98	1998-99	1999-00
	\$m	\$m	\$m	\$m	\$m	\$m	\$m	\$m	\$m
<b>Income</b>									
Primary income receivable									
Compensation of employees	5 042	5 273	5 723	6 081	6 432	6 823	7 191	7 661	7 898
Gross operating surplus—dwellings owned by persons	683	754	780	795	792	817	860	881	919
Gross mixed income	584	551	497	523	475	459	487	513	551
Property income receivable	1 180	1 068	1 126	1 378	1 403	980	965	1 028	1 201
<i>Total primary income receivable</i>	7 489	7 646	8 126	8 777	9 102	9 079	9 503	10 083	10 569
Secondary income receivable									
Social benefits receivable									
Workers' compensation	82	89	91	102	107	134	121	110	110
Social assistance benefits	397	461	506	539	606	619	625	669	710
Current transfers to non-profit institutions	150	159	169	186	207	231	229	306	283
<i>Other secondary income</i>	166	159	176	204	213	206	209	211	226
<i>Total secondary income</i>	795	868	942	1 031	1 133	1 190	1 184	1 296	1 330
<b>Total gross income</b>	<b>8 284</b>	<b>8 514</b>	<b>9 068</b>	<b>9 808</b>	<b>10 235</b>	<b>10 269</b>	<b>10 687</b>	<b>11 379</b>	<b>11 899</b>
<b>Uses of income</b>									
Primary income payable									
Property income payable									
Dwellings and unincorporated enterprises	292	282	282	332	397	338	351	358	422
Consumer debt interest	70	47	50	67	80	76	82	86	101
<i>Total property income payable</i>	362	328	332	399	478	414	433	444	523
<i>Total primary income payable</i>	362	328	332	399	478	414	433	444	523
Secondary income payable									
Income tax payable	1 232	1 229	1 330	1 382	1 528	1 610	1 668	1 785	1 859
Other current taxes on income, wealth, etc	25	27	30	31	32	34	35	39	40
Social contributions for workers' compensation	75	84	83	99	105	116	119	121	118
Other secondary income payable	163	170	183	186	205	213	222	232	242
<i>Total secondary income payable</i>	1 495	1 510	1 626	1 698	1 870	1 973	2 044	2 177	2 259
<b>Total income payable</b>	<b>1 857</b>	<b>1 839</b>	<b>1 958</b>	<b>2 097</b>	<b>2 348</b>	<b>2 387</b>	<b>2 476</b>	<b>2 621</b>	<b>2 783</b>
<b>Gross disposable income</b>	<b>6 427</b>	<b>6 675</b>	<b>7 110</b>	<b>7 710</b>	<b>7 888</b>	<b>7 883</b>	<b>8 210</b>	<b>8 758</b>	<b>9 116</b>
Final consumption expenditure	4 557	4 888	5 169	5 339	5 542	5 733	6 113	6 420	6 857
Net saving plus consumption of fixed capital(a)	1 870	1 787	1 941	2 371	2 346	2 150	2 097	2 338	2 259
<b>Total use of gross income</b>	<b>8 284</b>	<b>8 514</b>	<b>9 068</b>	<b>9 808</b>	<b>10 235</b>	<b>10 269</b>	<b>10 687</b>	<b>11 379</b>	<b>11 899</b>

(a) Net saving plus consumption of fixed capital is derived as a balancing item.

	1991-92	1992-93	1993-94	1994-95	1995-96	1996-97	1997-98	1998-99	1999-00
	\$m	\$m	\$m	\$m	\$m	\$m	\$m	\$m	\$m
<b>Income</b>									
Primary income receivable									
Compensation of employees	194 847	201 271	210 972	225 624	240 987	257 332	268 601	286 704	303 010
Gross operating surplus—dwellings owned by persons	33 908	34 829	36 057	37 886	40 403	43 851	47 135	49 090	50 762
Gross mixed income	40 482	43 437	44 094	45 104	49 228	49 384	53 016	55 715	59 485
Property income receivable	44 607	38 933	36 282	43 232	45 889	43 145	43 600	45 838	51 992
<i>Total primary income receivable</i>	<i>313 844</i>	<i>318 470</i>	<i>327 405</i>	<i>351 846</i>	<i>376 507</i>	<i>393 712</i>	<i>412 352</i>	<i>437 347</i>	<i>465 249</i>
Secondary income receivable									
Social benefits receivable									
Workers' compensation	3 981	4 115	4 071	4 544	4 814	6 142	5 458	4 851	5 000
Social assistance benefits	33 600	36 440	39 374	40 602	43 569	45 873	46 281	49 863	52 727
Current transfers to non-profit institutions	5 329	5 929	6 553	7 348	8 255	8 685	9 542	9 907	11 706
<i>Other secondary income</i>	<i>10 100</i>	<i>9 558</i>	<i>10 596</i>	<i>12 245</i>	<i>12 925</i>	<i>12 628</i>	<i>12 985</i>	<i>13 235</i>	<i>14 278</i>
<i>Total secondary income</i>	<i>53 010</i>	<i>56 042</i>	<i>60 594</i>	<i>64 739</i>	<i>69 563</i>	<i>73 328</i>	<i>74 266</i>	<i>77 856</i>	<i>83 711</i>
<b>Total gross income</b>	<b>366 854</b>	<b>374 512</b>	<b>387 999</b>	<b>416 585</b>	<b>446 070</b>	<b>467 040</b>	<b>486 618</b>	<b>515 203</b>	<b>548 960</b>
<b>Uses of income</b>									
Primary income payable									
Property income payable									
Dwellings and unincorporated enterprises	19 740	17 305	15 373	18 335	20 634	18 689	19 208	20 155	23 702
Consumer debt interest	3 712	2 451	2 484	3 244	3 952	3 796	4 070	4 314	5 019
<i>Total property income payable</i>	<i>23 452</i>	<i>19 756</i>	<i>17 857</i>	<i>21 579</i>	<i>24 586</i>	<i>22 485</i>	<i>23 278</i>	<i>24 469</i>	<i>28 721</i>
<i>Total primary income payable</i>	<i>23 452</i>	<i>19 756</i>	<i>17 857</i>	<i>21 579</i>	<i>24 586</i>	<i>22 485</i>	<i>23 278</i>	<i>24 469</i>	<i>28 721</i>
Secondary income payable									
Income tax payable	46 830	47 527	50 570	54 634	61 150	66 550	70 615	75 658	80 770
Other current taxes on income, wealth, etc	1 208	1 372	1 543	1 600	1 672	1 782	1 917	2 109	2 127
Social contributions for workers' compensation	3 663	3 889	3 704	4 414	4 699	5 311	5 390	5 330	5 342
Other secondary income payable	9 539	10 107	10 848	11 038	12 220	12 740	13 328	14 137	14 845
<i>Total secondary income payable</i>	<i>61 240</i>	<i>62 895</i>	<i>66 665</i>	<i>71 686</i>	<i>79 741</i>	<i>86 383</i>	<i>91 250</i>	<i>97 234</i>	<i>103 084</i>
<b>Total income payable</b>	<b>84 692</b>	<b>82 651</b>	<b>84 522</b>	<b>93 265</b>	<b>104 327</b>	<b>108 868</b>	<b>114 528</b>	<b>121 703</b>	<b>131 805</b>
<b>Gross disposable income</b>	<b>282 162</b>	<b>291 861</b>	<b>303 477</b>	<b>323 320</b>	<b>341 743</b>	<b>358 172</b>	<b>372 090</b>	<b>393 500</b>	<b>417 155</b>
Final consumption expenditure	244 211	255 330	266 278	282 800	301 776	315 235	335 049	353 757	373 313
Net saving plus consumption of fixed capital(a)	37 951	36 531	37 199	40 520	39 967	42 937	37 041	39 743	43 842
<b>Total use of gross income</b>	<b>366 854</b>	<b>374 512</b>	<b>387 999</b>	<b>416 585</b>	<b>446 070</b>	<b>467 040</b>	<b>486 618</b>	<b>515 203</b>	<b>548 960</b>

(a) Net saving plus consumption of fixed capital is derived as a balancing item.

	1991-92	1992-93	1993-94	1994-95	1995-96	1996-97	1997-98	1998-99	1999-00
	\$m	\$m	\$m	\$m	\$m	\$m	\$m	\$m	\$m
NEW SOUTH WALES									
Gross value of agricultural production	6 142	6 256	6 993	6 461	7 687	8 839	8 438	8 424	8 679
Subsidies not included in GVP	135	124	149	154	219	227	236	237	237
less Production valuation adjustment	16	-83	-5	45	-97	-135	-216	-255	-125
less Production costs other than wages and consumption of fixed capital	3 776	3 588	3 968	4 115	4 490	4 955	5 094	5 054	5 081
<i>Total agricultural factor income</i>	<i>2 485</i>	<i>2 875</i>	<i>3 179</i>	<i>2 455</i>	<i>3 513</i>	<i>4 244</i>	<i>3 796</i>	<i>3 862</i>	<i>3 959</i>
Taxes less subsidies on production and imports	302	265	268	261	167	179	197	180	188
Gross agricultural product at market prices	2 787	3 140	3 447	2 716	3 680	4 423	3 994	4 042	4 147
less Compensation of employees, consumption of fixed capital, net rent and interest paid	2 403	2 221	2 273	2 585	2 657	2 688	2 751	2 535	2 424
less Taxes less subsidies on production and imports	302	265	268	261	167	179	197	180	188
<b>Agricultural income</b>	<b>82</b>	<b>654</b>	<b>906</b>	<b>-130</b>	<b>856</b>	<b>1 556</b>	<b>1 045</b>	<b>1 327</b>	<b>1 535</b>
VICTORIA									
Gross value of agricultural production	5 102	5 595	6 066	5 495	6 724	6 537	6 708	6 903	7 107
Subsidies not included in GVP	79	83	92	99	109	111	115	116	119
less Production valuation adjustment	8	-45	—	34	-47	-30	-63	-79	-33
less Production costs other than wages and consumption of fixed capital	2 477	2 604	2 680	2 845	3 056	3 068	3 156	3 219	3 237
<i>Total agricultural factor income</i>	<i>2 696</i>	<i>3 119</i>	<i>3 478</i>	<i>2 715</i>	<i>3 824</i>	<i>3 610</i>	<i>3 730</i>	<i>3 879</i>	<i>4 022</i>
Taxes less subsidies on production and imports	186	196	207	197	182	176	194	177	185
Gross agricultural product at market prices	2 882	3 315	3 685	2 912	4 006	3 786	3 924	4 056	4 207
less Compensation of employees, consumption of fixed capital, net rent and interest paid	1 587	1 670	1 639	1 755	1 894	1 869	1 861	2 067	2 146
less Taxes less subsidies on production and imports	186	196	207	197	182	176	194	177	185
<b>Agricultural income</b>	<b>1 109</b>	<b>1 449</b>	<b>1 839</b>	<b>960</b>	<b>1 930</b>	<b>1 741</b>	<b>1 869</b>	<b>1 812</b>	<b>1 876</b>
QUEENSLAND									
Gross value of agricultural production	4 672	5 009	5 699	5 778	5 738	6 031	6 311	7 070	7 391
Subsidies not included in GVP	95	95	114	139	134	166	172	175	176
less Production valuation adjustment	2	-17	1	11	-16	-34	-51	-60	-26
less Production costs other than wages and consumption of fixed capital	2 424	2 489	2 709	3 043	2 952	3 429	3 522	3 408	3 435
<i>Total agricultural factor income</i>	<i>2 341</i>	<i>2 632</i>	<i>3 103</i>	<i>2 863</i>	<i>2 936</i>	<i>2 802</i>	<i>3 012</i>	<i>3 897</i>	<i>4 158</i>
Taxes less subsidies on production and imports	38	48	29	-12	35	15	17	15	16
Gross agricultural product at market prices	2 379	2 680	3 132	2 851	2 971	2 817	3 029	3 912	4 174
less Compensation of employees, consumption of fixed capital, net rent and interest paid	1 816	1 833	1 939	2 164	2 226	2 224	2 215	2 425	2 517
less Taxes less subsidies on production and imports	38	48	29	-12	35	15	17	15	16
<b>Agricultural income</b>	<b>525</b>	<b>799</b>	<b>1 164</b>	<b>699</b>	<b>710</b>	<b>578</b>	<b>797</b>	<b>1 472</b>	<b>1 641</b>

— nil or rounded to zero (including null cells)

	1991-92	1992-93	1993-94	1994-95	1995-96	1996-97	1997-98	1998-99	1999-00
	\$m	\$m	\$m	\$m	\$m	\$m	\$m	\$m	\$m
<b>SOUTH AUSTRALIA</b>									
Gross value of agricultural production	2 305	2 359	2 449	2 626	3 408	3 181	3 425	3 547	3 661
Subsidies not included in GVP	66	54	57	67	71	72	74	75	75
less Production valuation adjustment	22	-51	-4	42	-52	-48	-73	-85	-43
less Production costs other than wages and consumption of fixed capital	1 334	1 355	1 301	1 526	1 680	1 669	1 716	1 879	1 890
<i>Total agricultural factor income</i>	<i>1 015</i>	<i>1 109</i>	<i>1 209</i>	<i>1 125</i>	<i>1 851</i>	<i>1 632</i>	<i>1 856</i>	<i>1 828</i>	<i>1 889</i>
Taxes less subsidies on production and imports	26	27	21	6	32	11	12	11	12
Gross agricultural product at market prices	1 041	1 136	1 230	1 131	1 883	1 643	1 868	1 839	1 901
less Compensation of employees, consumption of fixed capital, net rent and interest paid	765	785	707	810	919	925	914	1 014	1 057
less Taxes less subsidies on production and imports	26	27	21	6	32	11	12	11	12
<b>Agricultural income</b>	<b>250</b>	<b>324</b>	<b>502</b>	<b>315</b>	<b>932</b>	<b>707</b>	<b>942</b>	<b>814</b>	<b>832</b>
<b>WESTERN AUSTRALIA</b>									
Gross value of agricultural production	2 972	3 282	3 557	4 060	4 745	4 522	4 698	4 526	4 637
Subsidies not included in GVP	101	86	98	127	108	131	133	135	143
less Production valuation adjustment	51	-124	-17	149	-125	-134	-195	-220	-159
less Production costs other than wages and consumption of fixed capital	1 828	1 923	2 009	2 239	2 461	2 618	2 691	2 939	2 945
<i>Total agricultural factor income</i>	<i>1 194</i>	<i>1 569</i>	<i>1 663</i>	<i>1 799</i>	<i>2 517</i>	<i>2 169</i>	<i>2 335</i>	<i>1 942</i>	<i>1 994</i>
Taxes less subsidies on production and imports	40	42	58	40	59	20	22	20	21
Gross agricultural product at market prices	1 234	1 611	1 721	1 839	2 576	2 189	2 357	1 962	2 015
less Compensation of employees, consumption of fixed capital, net rent and interest paid	1 005	1 013	1 007	1 133	1 187	1 193	1 189	1 333	1 384
less Taxes less subsidies on production and imports	40	42	58	40	59	20	22	20	21
<b>Agricultural income</b>	<b>189</b>	<b>556</b>	<b>656</b>	<b>666</b>	<b>1 330</b>	<b>976</b>	<b>1 146</b>	<b>609</b>	<b>610</b>
<b>TASMANIA</b>									
Gross value of agricultural production	520	567	637	609	629	733	759	791	812
Subsidies not included in GVP	10	10	10	11	12	14	15	15	15
less Production valuation adjustment	-1	-1	1	2	-3	3	-1	-4	2
less Production costs other than wages and consumption of fixed capital	273	272	290	307	319	355	365	329	331
<i>Total agricultural factor income</i>	<i>258</i>	<i>306</i>	<i>356</i>	<i>311</i>	<i>325</i>	<i>389</i>	<i>410</i>	<i>481</i>	<i>494</i>
Taxes less subsidies on production and imports	16	13	14	15	13	11	12	11	12
Gross agricultural product at market prices	274	319	370	326	338	400	422	492	506
less Compensation of employees, consumption of fixed capital, net rent and interest paid	248	260	240	248	268	316	315	345	359
less Taxes less subsidies on production and imports	16	13	14	15	13	11	12	11	12
<b>Agricultural income</b>	<b>10</b>	<b>46</b>	<b>116</b>	<b>63</b>	<b>57</b>	<b>73</b>	<b>95</b>	<b>136</b>	<b>135</b>

— nil or rounded to zero (including null cells)



	1991-92	1992-93	1993-94	1994-95	1995-96	1996-97	1997-98	1998-99	1999-00
	\$m	\$m	\$m	\$m	\$m	\$m	\$m	\$m	\$m
NORTHERN TERRITORY									
Gross value of agricultural production	140	159	272	246	287	291	234	265	284
Subsidies not included in GVP	4	3	7	5	5	5	5	5	5
less Production valuation adjustment	—	—	—	—	—	—	—	—	—
less Production costs other than wages and consumption of fixed capital	40	51	96	83	89	89	92	106	112
<i>Total agricultural factor income</i>	<i>104</i>	<i>111</i>	<i>183</i>	<i>168</i>	<i>203</i>	<i>207</i>	<i>147</i>	<i>164</i>	<i>177</i>
Taxes less subsidies on production and imports	1	3	-3	1	1	1	1	1	1
Gross agricultural product at market prices	105	114	180	169	204	208	148	165	178
less Compensation of employees, consumption of fixed capital, net rent and interest paid	48	49	51	50	54	56	57	64	66
less Taxes less subsidies on production and imports	1	3	-3	1	1	1	1	1	1
<b>Agricultural income</b>	<b>56</b>	<b>62</b>	<b>132</b>	<b>118</b>	<b>149</b>	<b>151</b>	<b>90</b>	<b>100</b>	<b>111</b>
AUSTRALIA									
Gross value of agricultural production	21 853	23 227	25 673	25 275	29 218	30 131	30 573	31 525	32 571
Subsidies not included in GVP	490	455	527	602	658	726	750	758	770
less Production valuation adjustment	98	-321	-24	283	-340	-378	-599	-703	-384
less Production costs other than wages and consumption of fixed capital	12 152	12 282	13 053	14 158	15 047	16 183	16 636	16 934	17 032
<i>Total agricultural factor income</i>	<i>10 093</i>	<i>11 721</i>	<i>13 171</i>	<i>11 436</i>	<i>15 169</i>	<i>15 052</i>	<i>15 286</i>	<i>16 052</i>	<i>16 693</i>
Taxes less subsidies on production and imports	609	594	594	508	489	413	455	415	435
Gross agricultural product at market prices	10 702	12 315	13 765	11 944	15 658	15 465	15 741	16 467	17 128
less Compensation of employees, consumption of fixed capital, net rent and interest paid	7 872	7 831	7 856	8 745	9 205	9 271	9 302	9 783	9 953
less Taxes less subsidies on production and imports	609	594	594	508	489	413	455	415	435
<b>Agricultural income</b>	<b>2 221</b>	<b>3 890</b>	<b>5 315</b>	<b>2 691</b>	<b>5 964</b>	<b>5 781</b>	<b>5 984</b>	<b>6 269</b>	<b>6 740</b>

— nil or rounded to zero (including null cells)

## EXPLANATORY NOTES

### INTRODUCTION

**1** This publication contains State and Territory estimates of gross domestic product (referred to as gross state product (GSP)) and its components, in current price and chain volume terms, for the years 1991–92 to 1999–2000. Where ‘State’, is referred to in the text, it also encompasses the two Territories. The estimates in this publication are consistent with those published for Australia in the 1999–2000 issue of *Australian System of National Accounts* (Cat. no. 5204.0). For further details of the concepts, sources and methods used in compiling the estimates in this publication refer to *Australian National Accounts: Concepts, Sources and Methods* (Cat. no. 5216.0) accessible on the ABS website [www.abs.gov.au](http://www.abs.gov.au).

**2** State estimates are essentially a dissection of the Australian estimates contained in 5204.0. While it is possible in some cases to build up estimates using the same data sources as those used for the Australian estimates, it is quite often necessary to derive dissections using a variety of allocators. These may be directly related to the aggregate being allocated (for example, economic survey data) or only indirectly related (for example, population and household income distributions).

### CONCEPTUAL BASIS

**3** Australia’s national accounts statistics are based on the latest international standard for national accounting—the *System of National Accounts, 1993* (SNA93). SNA93 was produced by five international organisations involved in the use of economic statistics and the promotion of international statistical standards—United Nations, Organisation for Economic Co-operation and Development, International Monetary Fund, World Bank and Commission of the European Communities.

**4** While national estimates are based on the concepts and conventions embodied in SNA93, no such detailed standard is available for sub-national (regional/State) accounts. In the main, the national concepts are applicable to State accounts, but there remain a number of conceptual and measurement issues that either do not apply or are insignificant at the national level. Most problems arise for the Transport and storage, Communication services, and Finance and insurance industries, and in the treatment of central government. In such cases, conventions need to be established which reflect data availability and/or the needs of users.

### CONCEPTS, DEFINITIONS, SOURCES AND METHODS

**5** A revised version of *Australian National Accounts: Concepts, Sources and Methods* (Cat. no. 5216.0) is available on the ABS website. Extensive revisions were required to reflect the implementation of SNA93 in the Australian national accounts and other changes to sources and methods which have occurred over recent years. The corresponding printed version of 5216.0 is expected to be available in late 2000 or early 2001. 5216.0 outlines major concepts and definitions, describes sources of data and methods used to derive annual and quarterly estimates for major aggregates at current prices and in chain volume terms, and discusses the accuracy and reliability of the national accounts. In addition, it includes documentation on input-output tables, financial accounts, capital stock, productivity measures, balance sheets, and state accounts. For detailed information about the nature and extent of the conceptual changes introduced with the implementation of SNA93 reference should be made to the following information papers: *Implementation of Revised International Standards in the Australian National Accounts* (Cat. no. 5251.0), *Introduction of Chain Volume Measures in the Australian National Accounts* (Cat. no. 5248.0), and *Upgraded Australian National Accounts, 1998* (Cat. no. 5253.0).

## EXPLANATORY NOTES *continued*

### ESTIMATES OF GSP AND ITS COMPONENTS

**6** Estimates of GSP in current prices are produced by summing factor incomes, i.e. compensation of employees, gross operating surplus (GOS) and gross mixed income (GMI), plus taxes less subsidies on production and imports. While wages and salaries can be readily collected by State, this is not always the case for other components of compensation of employees or for GOS plus GMI, which often cannot be measured satisfactorily within business accounting systems at the individual location. Most of the ABS economic collections which provide data for the estimates in this publication have used the 'management unit' as their basic collection unit. A management unit is the largest unit within an enterprise group (a group of legal entities under common ownership and control) which controls its productive activities and for which accounts are kept. The operations of some management units cut across State borders, and conventions have to be adopted in order to allocate GOS plus GMI to States.

**7** For the Transport and storage and Communication services industries, estimates of GOS plus GMI by State can be substantially affected by the conceptual basis adopted for allocation. For example, in the case of the modal transport industries (i.e. all transport industries except Services to transport), possible ways of attributing production could include tonne (or person) kilometres traveled in a State; economic activity attributed to the base of operations only; or a mixture of both. As State economic activity for interstate modal transport activities cannot be uniquely defined, it may even be preferable that they should be regarded as extra-territorial and excluded entirely from State production. However, the approach adopted in this publication is to use activity indicators to allocate interstate transport services to States.

**8** Numerous data sources are used to apportion Australia level GOS plus GMI to States. Where available, economic survey data are used to apportion GOS for corporations. For those industries for which economic survey data are not available, a variety of allocators is used to extrapolate or estimate State dissections of GOS. Indicators include State details of wages and salaries, employment, household final consumption expenditure, movements in unincorporated enterprises' GMI, freight shipped from Australian ports, and airport passenger embarkations/disembarkations (the latter two indicators are specific to the transport industry). Taxation statistics are used to apportion GMI for non-agricultural unincorporated enterprises in some industries, and economic survey data are used for other industries. Production-based estimates of agricultural GOS plus GMI are derived using the same data sources and methodology as are used for the Australian estimates. Although the GOS of State and local government non-financial corporations is directly available from the ABS public finance system, GOS for Commonwealth Government non-financial corporations is allocated mainly using indirect indicators.

**9** While State by industry estimates of wages and salaries are obtained from the same data sources as those used for the Australian estimates, the estimates of the other components of compensation of employees are essentially allocations of the Australian total. State by industry estimates of employers' superannuation contributions are derived using wages and salaries by State by industry as an allocator. State by industry estimates of workers compensation premiums are based on labour costs data collected by the ABS. It should be noted that there is a minor difference between compensation of employees as published in the total factor income tables and as published in the household income accounts for both the Australian and State estimates. The difference arises in situations where a household supplies labour to a production establishment that is in a different domestic territory (State/county) from the household.

## EXPLANATORY NOTES *continued*

### ESTIMATES OF GSP AND ITS COMPONENTS *continued*

**10** Estimates of taxes less subsidies on production and imports are derived by adding values for taxes received and subsidies paid by State and local governments and the Commonwealth Government. Data are available from the ABS public finance system, although Commonwealth Government values are not generally available by State. Indicators are used to allocate sales tax, excise tax, customs duties and major subsidies to the State where the economic activity took place.

### STATE EXPENDITURE ESTIMATES

**11** In addition to estimates of GSP and their income components, this publication contains State estimates for a number of expenditure components and international exports and imports of goods in both current prices and chain volume terms. The difference between the sum of these components and GSP is known as the balancing item. The balancing item reflects: changes in inventories; international trade in services; interstate trade in goods and services; and the expenditure statistical discrepancy.

#### *Current price estimates*

**12** State estimates of household final consumption expenditure and private gross fixed capital formation are derived largely from the same sources used for the Australia-level estimates. In the case of household final consumption expenditure, data sources for major components such as household goods, dwelling rent, purchase of motor vehicles, fares, and purchases of gas, electricity and fuel are available by State. Some components of expenditure on recreation and culture rely on the extrapolation and interpolation of less frequent Household Expenditure Survey data. Where actual data are not available, indirect indicators such as household disposable income are used to allocate the Australia-level estimate.

**13** State estimates of private gross fixed capital formation in dwellings and other buildings and structures are derived using data from the ABS Building Activity Survey and the Engineering Construction Survey, while expenditure on equipment is derived from the Survey of Private New Fixed Capital Expenditure. Ownership transfer costs are derived from stamp duty data supplied by the various States, ABS surveys of real estate agents and lawyers, and various other data such as the number of real estate property transfers by State. Essentially, these are the same data sources used to prepare the Australia-level estimates.

**14** State estimates of gross fixed capital formation in livestock are based on data from the ABS Agricultural Census, the Survey of Livestock Slaughtering and Australian Bureau of Agricultural and Resource Economics surveys. State estimates of exploration expenditure are derived from the ABS Survey of Actual and Expected Private Mineral Exploration. State estimates of capital expenditure on software and artistic originals are based on a variety of allocators, including some indirect ones.

**15** Final expenditures of State and local governments can be readily allocated by State, and the same public finance source that is used to derive Australian estimates is also used to derive State estimates.

**16** The treatment of national government final expenditures in regional accounting is rather problematic. National government includes the Commonwealth Government and the universities, with the major allocation difficulties arising from the Commonwealth Government component. Alternative treatments are to attribute final expenditures to the region in which the expenditure was incurred, or to the region in which the beneficiaries reside, or even to consider the Commonwealth Government as a consumer unit is extraterritorial and therefore to exclude it from all regions. For practical reasons the first approach has been adopted in this publication, although it still requires

## EXPLANATORY NOTES *continued*

### STATE EXPENDITURE ESTIMATES *continued*

extensive use of indirect indicators. An implication is that a large proportion of the consumption of Commonwealth Government services is included in State final demand (SFD) for the Australian Capital Territory, increasing the balancing item for that Territory. If data had been available to allocate Commonwealth final consumption expenditure to end users, the balancing item for the Australian Capital Territory would be a much smaller negative (or even a positive value) because the provision of much of the services produced would be regarded as an interstate export instead. Estimates for Commonwealth Government expenditures in the States on both an annual and quarterly basis therefore have to be treated with considerable caution.

**17** The non-defence component of Commonwealth Government final consumption expenditure is apportioned to States using data on gross earnings from the ABS Survey of Employment and Earnings. Defence salaries and recurrent expenditure are allocated using defence employment by State, while defence weapons and their delivery platforms are allocated according to population.

**18** For Commonwealth general government gross fixed capital formation, Australia-level estimates are first subdivided into expenditure on other buildings and structures, and expenditure on machinery and equipment. The Australia-level other buildings and structures component is generally allocated to the States based on Commonwealth Government construction expenditures by State as an indicator. Expenditure on machinery and equipment is allocated using Commonwealth general government employment by State. State estimates of capital expenditure on intangible assets are based on a variety of allocators, including some indirect indicators.

**19** For Commonwealth public corporation gross fixed capital formation, a variety of allocators is applied at the individual corporation level. Direct allocation is possible in a few cases where corporations operate wholly in one State. For some corporations State-level direct indicators are available from either the ABS Engineering Construction Survey or from published accounts. For other corporations, indirect allocations are used—for example, purchases of ships are allocated using general freight activity through ports in each State.

**20** State estimates of international exports and imports of goods are on a recorded trade basis. Exports are on a State of origin basis, that is the State in which the final stage of manufacture or production occurs. For most exports this should correspond to the required basis for State allocation, that is, the State of final resident ownership. The estimates differ from those published in *International Merchandise Trade, Australia* (Cat no. 5422.0) because re-exports, which are not published on a State basis in 5422.0, are allocated to the States by commodity and included in the State figures in this publication. Those commodities subject to a confidentiality restriction, which are not available by State in 5422.0 are allocated to the States by commodity in proportion to each State's total exports and re-exports and included in the State export figures in this publication.

**21** State estimates of international imports of goods are on the basis of the State in which the imports were released from Australian Customs Service control. In most cases this corresponds to the State of initial resident ownership, which is the required basis of State allocation. No information is available on which to base an adjustment for goods released from Customs' control in a State other than that in which their owner resides.

*Chain volume estimates*

**22** Chain volume estimates of government and household final consumption

## EXPLANATORY NOTES *continued*

### STATE EXPENDITURE ESTIMATES *continued*

expenditure for Australia are derived by aggregating the volume estimates for the States using a bottom-up approach. The State volume estimates are derived using State-specific price indexes. Much use is made of components of the capital city consumer price indexes and State wage cost indexes.

**23** Chain volume estimates of private gross fixed capital formation for Australia are derived by aggregating the volume estimates for the States using a bottom-up approach. State-specific price indexes are used to derive the volume estimates for capital formation in dwelling and non-dwelling construction. National price indexes are used to derive the volume estimates for capital formation in machinery and equipment and intangibles, although account is taken of the different industry compositions within each State—industry patterns of capital formation by asset type vary.

**24** Quarterly chain volume estimates of public gross fixed capital formation for Australia are derived by aggregating the volume estimates for the States using a bottom-up approach. State-specific price indexes are used for gross fixed capital formation in non-dwelling construction, but national price indexes are used to derive the volume estimates for the remainder. Annual chain volume estimates of public gross fixed capital formation by State are derived by aggregating the quarterly estimates and then constraining these estimates to be consistent with the national estimates.

**25** Detailed estimates of current price exports of goods on a recorded trade basis at the two-digit level of the *Standard International Trade Classification Revision 3* (SITC Rev 3) are revalued, generally using national rather than State-specific deflators, to produce volume estimates of these components. There is an assumption that the national deflators will usually provide a reasonable measure of change in price at the State level. Revaluation at the two-digit (division) level of SITC Rev 3 is a compromise giving a reasonable level of disaggregation by commodity type without increasing the magnitude of the revaluation exercise too significantly. In a very limited number of cases more specific deflators are used to replace the national deflator at the SITC Rev 3 division level. This occurs in those cases where the composition of a particular division is known to be variable between States and the division includes commodities with price movements which deviate significantly from the division average. Mineral and agricultural commodities are the most significant in this regard. The State estimates are benchmarked to the national estimates.

**26** A similar approach is adopted for imports of goods, with national deflators being used. The level of revaluation corresponds broadly to the commodity subgroup level of the balance of payments merchandise imports end-use classification of imports, i.e. two-digit Broad Economic Classification (BEC) by three-digit level of the SITC Rev 3. The State estimates are benchmarked to the national estimates.

### CHAIN VOLUME MEASURES OF GSP

**27** The chain volume measures of GSP presented in this publication are derived by revaluing current price, income-based estimates of GSP, using deflators which are compiled using the available data on the composition of expenditures on State production and movements in associated prices. For a more complete description of why this approach has been adopted, and details of the data sources and the methods used, see Chapter 28, *Australian National Accounts: Concepts, Sources and Methods* (Cat. no. 5216.0).

**28** A lack of data means that it is not possible to derive estimates at the State level equivalent to the aggregate Australian expenditure-based estimates of gross domestic product. While the components of State final demand (SFD) and

## EXPLANATORY NOTES *continued*

### CHAIN VOLUME MEASURES OF GSP *continued*

estimates of international merchandise trade by State are available, there are no complete interstate trade in goods and services; or changes in inventories. Hence, an expenditure-based GSP volume measure cannot be derived by a similar methodology to that adopted at the Australian level.

**29** In order to make maximum use of the incomplete expenditure data and limited price data available at the State level, an approach is adopted which essentially involves deriving the best possible current price and chain volume estimates of expenditure that encompass as much as possible of GSP. For each State, current price estimates of identified components of international and interstate trade and changes in inventories are combined with the current price estimates of SFD and, similarly, the chain volume measures of those components are combined with the chain volume measures of SFD. The quotient derived by dividing the aggregate chain volume measure into the aggregate current price estimates is a Paasche (current-weighted) price index. It is this price index which is used to revalue the current price estimates of GSP.

**30** It is crucial to identify separately those components for which the deflators deviate significantly from the average, since the method adopted effectively attributes the weighted average deflator to the unidentified components. There is an assumption underlying the approach adopted in deriving the aggregate State deflators that, because of price competition, the available national price indicators are reasonably indicative at the State level. This is a less distorting assumption if the price indicators are weighted together at a reasonable level of commodity disaggregation, and implies deriving the current price and chain volume estimates at as fine a level as possible.

**31** Despite the fact that as broad a range of information as possible is used in this estimation procedure, the aggregate current price and chain volume estimates of expenditures used in the derivation of the State deflator are not considered to be complete measures. They merely serve to produce the best deflators and therefore the most reliable chain volume measures of GSP that the available data and resources allow. For this reason, they are regarded as experimental estimates.

### ACCURACY OF ESTIMATES

**32** The estimates in this publication represent allocations of Australian estimates published in 5204.0. Therefore, they will reflect any inaccuracies in those estimates as well as inaccuracies introduced by any particular conceptual, methodological and data problems inherent in the allocation of Australian estimates to States. The degree of accuracy and reliability will necessarily be lower than that for the Australian estimates.

**33** Uniform methodologies and consistent data sources have been used for all States. Although there is no reason to expect that there would be any bias in the methods used, there is some variation in both the quality of data between States (particularly where sample surveys are used) and the sensitivity of estimates to alternative concepts.

**34** Detailed industry estimates for the two Territories are likely to be less accurate than those for the States. For example, for the Communication services industry, data for the Australian Capital Territory are available only in combination with New South Wales; a similar problem exists for Communication services data relating to the Northern Territory, which are combined with data for South Australia. The use of indirect allocators to separate the Territories has a far more significant effect on the relative errors for the Australian Capital Territory and for the Northern Territory than for New South Wales and South Australia.

## EXPLANATORY NOTES *continued*

### ACCURACY OF ESTIMATES

*continued*

Where sample surveys are used to collect data, standard errors are often higher for the Territories than for the States.

**35** The limitations of ABS sample surveys in producing State estimates are particularly relevant for estimates of private gross fixed capital formation—machinery and equipment. Estimates for each State are derived largely from a quarterly national survey of business. The survey design aims to achieve a high degree of statistical accuracy in the samples in the larger States. However, as the accuracy of the estimates from this survey (in percentage terms) is roughly proportional to the size of the sample, the estimates for the smaller States are generally less accurate than those for the larger States. Hence, the estimates for the Northern Territory, Australian Capital Territory, Tasmania and South Australia are particularly prone to volatile movements.

**36** Estimates of GOS plus GMI for the latest year rely on a range of broad activity indicators such as retail turnover, construction work done and persons employed. Therefore, they are subject to revision as more suitable sources, such as taxation statistics and ABS economic survey data, become available.

**37** Estimates of taxes less subsidies on production and imports, government final consumption expenditure, and general government and public corporation gross fixed capital formation can be substantially affected by the indicators chosen to apportion the Commonwealth Government component to States. Again, care is required when interpreting these estimates.

**38** The incomplete nature of the price and expenditure data available at the State level for the derivation of the GSP deflators, and the generally lower level of accuracy of State data, referred to earlier, mean that there is greater scope for inaccuracy than in comparable estimates at the Australian level. The chain volume measures of GSP are derived measures, calculated by adjusting the current price estimates using specially constructed State deflators. This means that the chain volume measures incorporate the combined effects of the inaccuracies in the current price estimates and those in the deflators. These inaccuracies reflect a number of factors, including higher relative sampling errors; the ‘fuzziness’ of some State data arising from difficulties that businesses and government agencies operating across the country have in allocating their activities by State; and the limited availability of source data on a State basis in a number of areas. The inaccuracies in the component value and price estimates may be compounded or offset in the process of deriving the chain volume measures.

**39** In analysing the chain volume measures it is important to recognise the data limitations at the State level and to be aware that the accuracy of the estimates will not be as high as that of the corresponding national estimates.

### OCCASIONAL PAPERS

**40** Occasional papers produced by the officers of the ABS report on various aspects of research being undertaken on national accounts. They are not used for



## EXPLANATORY NOTES *continued*

### OCCASIONAL PAPERS *continued*

the release of official statistics and do not necessarily reflect the views of the ABS. The following occasional papers are available at all ABS offices:

*Studies in National Accounting: Current Cost Depreciation and Net Capital Stock*—C. Bailey(1981/1)

*The Accuracy and Reliability of the Quarterly Australian National Accounts*—A. Johnson(1982/2)

*State Accounts, Australia: Issues and Experimental Estimates*—S. Burrell, J. Daniel, A. Johnson and R. Walters (1984/4)

*The Effects of Rebasings the Constant Price Estimates of the Australian National Accounts*—R. Dippelsman (1985/3)

*Estimates of Depreciation and Capital Stock, Australia*—R. Walters, and R. Dippelsman (1985/3)

*Estimates of Multifactor Productivity, Australia*—C. Aspden (Cat. no. 5233.0)

*Productivity, Prices, Profits and Pay, 1964–65 to 1989–90*—I. Castles (Cat. no. 5239.0)

*Unpaid Work and the Australian Economy, 1997* (Cat. no. 5240.0)

*National Balance Sheets for Australia: Issues and Experimental Estimates, 1989–1992* (Cat. no. 5241.0)

### INFORMATION PAPERS

**41** Information papers are published by the ABS to provide information on topical issues and developments. The following information papers relating to national accounting issues are available at all ABS offices:

*Measuring Unpaid Household Work—Issues and Experimental Estimates* (Cat. no. 5236.0)

*Introduction of Revised International Statistical Standards in ABS Macro-economic Statistics* (Cat. no. 5245.0)

*Implementation of Revised International Standards in the Australian National Accounts* (Cat. no. 5251.0)

*Introduction of Chain Volume Measures in the Australian National Accounts* (Cat. no. 5248.0)

*Upgraded Australian National Accounts* (Cat. no. 5253.0)

### RELATED PUBLICATIONS

**42** As well as the publications previously referred to, other national accounts publications produced which may be of interest are:

*Australian National Accounts: Input-Output Tables (Commodity Details)* (Cat. no. 5215.0)

*A Guide to the Australian National Accounts* (Cat. no. 5235.0)

*Australian National Accounts: Tourism Satellite Account* (Cat. no. 5249.0)

**43** Current publications produced by the ABS are listed in the *Catalogue of Publications and Products* (Cat. no. 1101.0). The ABS also issues, on Tuesdays and Fridays, a *Release Advice* (Cat. no. 1105.0) which lists publications to be released in the next few days. The Catalogue and Release Advice are available from any ABS office.





## FOR MORE INFORMATION...

- INTERNET* **www.abs.gov.au** the ABS web site is the best place to start for access to summary data from our latest publications, information about the ABS, advice about upcoming releases, our catalogue, and Australia Now—a statistical profile.
- LIBRARY* A range of ABS publications is available from public and tertiary libraries Australia-wide. Contact your nearest library to determine whether it has the ABS statistics you require, or visit our web site for a list of libraries.
- CPI INFOLINE* For current and historical Consumer Price Index data, call 1902 981 074 (call cost 77c per minute).
- DIAL-A-STATISTIC* For the latest figures for National Accounts, Balance of Payments, Labour Force, Average Weekly Earnings, Estimated Resident Population and the Consumer Price Index call 1900 986 400 (call cost 77c per minute).

## INFORMATION SERVICE

Data which have been published and can be provided within five minutes are free of charge. Our information consultants can also help you to access the full range of ABS information—ABS user-pays services can be tailored to your needs, time frame and budget. Publications may be purchased. Specialists are on hand to help you with analytical or methodological advice.

- PHONE* **1300 135 070**
- EMAIL* **client.services@abs.gov.au**
- FAX* 1300 135 211
- POST* Client Services, ABS, GPO Box 796, Sydney 1041

## WHY NOT SUBSCRIBE?

ABS subscription services provide regular, convenient and prompt deliveries of ABS publications and products as they are released. Email delivery of monthly and quarterly publications is available.

- PHONE* 1300 366 323
- EMAIL* subscriptions@abs.gov.au
- FAX* 03 9615 7848
- POST* Subscription Services, ABS, GPO Box 2796Y, Melbourne 3001



2522000007998  
ISSN 0819-7423

RRP \$23.00