

STATE ACCOUNTS

EMBARGO: 11.30AM (CANBERRA TIME) THURS 2 DEC 1999

CONTENTS

	<i>page</i>
Notes	2
Analysis of results	3
 TABLES	
List of tables	7
Gross state product	9
Expenditure components of gross state product	16
Income components of gross state product	25
Total factor income	27
Household income	45
Agricultural income	55
 ADDITIONAL INFORMATION	
Explanatory notes	58

- For further information about these and related statistics, contact Ross Harvey on Canberra 02 6252 6713 for current price estimates, and Charles Aspden on Canberra 02 6252 6711 for volume estimates.

NOTES

ABOUT THIS PUBLICATION This publication contains State and Territory estimates of gross domestic product (referred to as gross State product (GSP)) and its components, in current price and chain volume terms, for the years 1990–91 to 1998–99.

REVISIONS IN THIS ISSUE Estimates in this publication have been revised in accordance with revised annual benchmarks for Australia published in the 1998–99 issue of *Australian System of National Accounts* (ABS Cat. no. 5204.0). State distributions of national aggregates for recent years have been revised using the latest available information. In addition, State estimates for gross operating surplus plus gross mixed income for the finance and insurance industry have been revised for all years, following a review of the compilation methodology for this industry.

DATA VALUES AND ROUNDING All values, unless otherwise indicated, are shown in Australian dollars rounded to the nearest million.

Where figures have been rounded, discrepancies may occur between the sums of the component items and totals.

NEXT ISSUE The 1999–2000 issue of this publication is expected to be released in November 2000.



ABBREVIATIONS

- . . . not applicable
- ABS Australian Bureau of Statistics
- GMI gross mixed income
- GOS gross operating surplus
- GSP gross state product
- n.a. not available
- SFD state final demand
- SITC Standard Industrial Trade Classification, Revision 3
Rev3
- SNA93 System of National Accounts, 1993

Dennis Trewin
Acting Australian Statistician

ANALYSIS OF RESULTS

GROWTH IN EXPERIMENTAL ESTIMATES OF GSP CHAIN VOLUME MEASURES

The estimates of gross state product (GSP) chain volume measures included in this publication are regarded as 'experimental'. The reasons are set out in the explanatory notes. Users should therefore exercise caution when using these estimates for economic analyses.

The table below compares annual rates of growth in experimental estimates of GSP chain volume measures and GSP chain volume measures per head of mean population over the eight years 1990–91 to 1998–99.

AVERAGE ANNUAL COMPOUND GROWTH RATES OF GSP CHAIN VOLUME MEASURES, 1990-91 TO 1998-99 (a)

	<i>GSP chain volume measures</i>	<i>GSP chain volume measures per head of population</i>
	%	%
New South Wales	3.4	2.3
Victoria	3.4	2.6
Queensland	4.9	2.7
South Australia	2.6	2.1
Western Australia	4.7	3.0
Tasmania	1.6	1.4
Northern Territory	3.2	1.2
Australian Capital Territory	3.0	2.0
Australia	3.8	2.6

(a) Experimental series. See paragraphs 22 to 26 of Explanatory Notes.

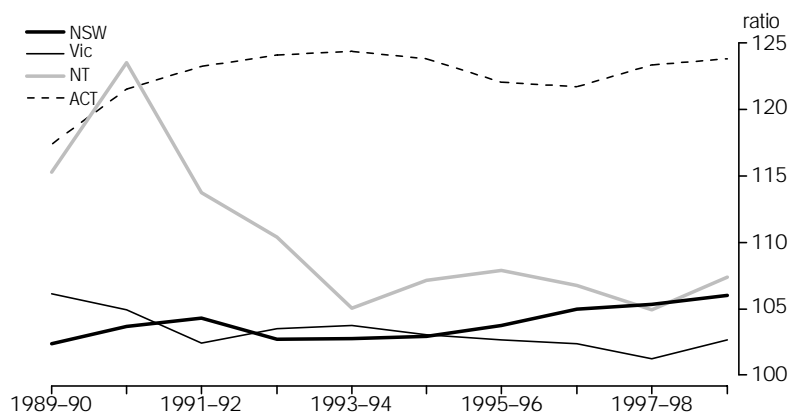
Over the period 1990–91 to 1998–99, growth in GSP chain volume measures varied considerably between the States, with growth being strongest in Western Australia and Queensland and weakest in Tasmania and South Australia. The dispersion of growth rates was less, but still significant, in terms of GSP chain volume measures per head of mean population.

ANALYSIS OF RESULTS *continued*

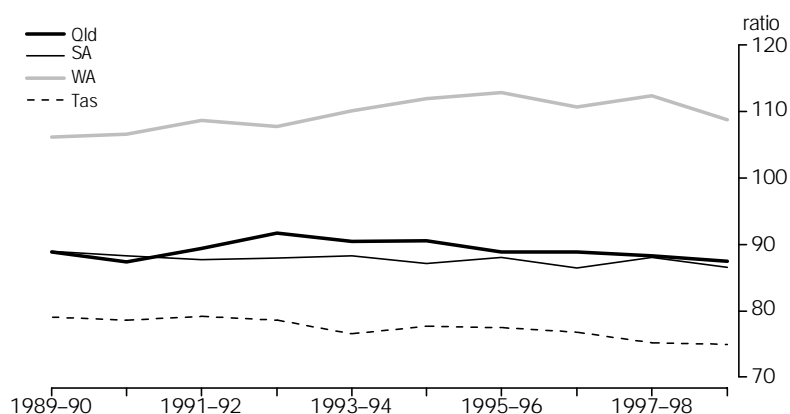
GSP PER HEAD OF MEAN POPULATION (RATIO TO AUSTRALIA)

The graphs below show an index of GSP, in current prices, per head of mean population for each State and Territory divided by the Australian estimate for total gross domestic product (GDP) per head of mean population, for the period 1989–90 to 1998–99. It should be noted that GSP per head of mean population cannot be equated with the income of households in a particular State—see comments on gross household disposable income below.

GSP PER HEAD OF MEAN POPULATION: ratio (Australia = 100)



GSP PER HEAD OF MEAN POPULATION: ratio (Australia = 100)



GSP per head of mean population in 1998–99 was above the national average in New South Wales, Victoria, Western Australia, the Northern Territory and the Australian Capital Territory. The Australian Capital Territory had the highest level in each of the years from 1989–90, except for 1990–91 when the Northern Territory had the highest level. GSP per head of mean population in Queensland, South Australia and Tasmania has not exceeded the national average during this period. New South Wales, Victoria, the Northern Territory and the Australian Capital Territory were the only States to experience an increase in this ratio in 1998–99.

INDUSTRY COMPOSITION OF TOTAL FACTOR INCOME

Individual industry contributions to total factor income for 1998–99 are shown below. In line with long term trends, there has been a shift from goods producing industries to service providing industries over the period 1989–90 to 1998–99.

ANALYSIS OF RESULTS *continued*

The main industries contributing to the relative decline in goods producing industries have been: agriculture, forestry and fishing; manufacturing; and electricity, gas and water. Service industries, except for wholesale and retail trade, have increased in relative importance in most States.

INDUSTRY CONTRIBUTION TO TOTAL FACTOR INCOME, 1998-99 (a)

	NSW	Vic	Qld	SA	WA	Tas	NT	ACT	Aust
	%	%	%	%	%	%	%	%	%
Agriculture, forestry and fishing	3	3	4	6	4	6	4	—	3
Mining	2	2	5	2	17	2	14	—	4
Manufacturing	13	17	11	17	10	15	4	2	13
Electricity, gas & water	2	2	3	3	3	5	2	2	3
Construction	7	6	7	6	8	5	7	6	7
Wholesale trade	6	6	6	5	5	4	3	2	6
Retail trade	6	6	7	6	6	7	6	5	6
Accommodation, cafes and restaurants	3	2	3	2	2	3	3	2	2
Transport and storage	5	5	6	5	5	5	6	3	5
Communication	3	3	3	3	3	3	3	3	3
Finance & insurance	8	8	5	5	4	5	3	3	6
Property & business services	13	12	9	9	9	5	9	11	11
Government administration and defence	3	3	4	3	3	6	8	30	4
Education	4	5	5	5	4	5	6	6	5
Health and community services	6	6	6	8	6	9	7	6	6
Culture and recreational services	2	2	2	2	2	2	3	3	2
Personal and other services	2	2	3	3	2	3	3	4	2
Ownership of dwellings	11	8	9	9	7	9	6	8	9
General government(b)	2	2	2	2	2	3	3	5	2
Total	100	100	100	100	100	100	100	100	100

— nil or rounded to zero (including null cells)

(a) Industries may not add to total due to rounding differences.

(b) State details for general government gross operating surplus by industry are not available.

GROSS HOUSEHOLD DISPOSABLE INCOME

The analysis of GSP per head of mean population above concentrates on the level of economic production (GSP) and its growth in current price terms. It does not provide a measure of incomes received by residents of a particular State, because a proportion of income generated in the production process may be transferred to other States or overseas (and conversely income may be received from other States or overseas). Gross household disposable income per head of mean population in 1998-99 is shown below.

GROSS HOUSEHOLD DISPOSABLE INCOME PER HEAD OF MEAN POPULATION, 1998-99

	\$
New South Wales	21 191
Victoria	20 419
Queensland	18 285
South Australia	18 748
Western Australia	19 807
Tasmania	16 686
Northern Territory	19 720
Australian Capital Territory	27 626
Australia	20 109

ANALYSIS OF RESULTS *continued*

Gross household disposable income per head of mean population was highest in the Australian Capital Territory and lowest in Tasmania. Differences between the States reflect differences, from State to State, in the impact of a range of factors including the average level of compensation of employees received per employee, the proportion of the population in employment, the age distribution of the population, and differences in the level of dwelling rent (including that imputed to owner occupiers). For example, a significant reason for the high level of gross household disposable income per head of mean population in the Australian Capital Territory compared with other States is that the labour force participation rate is much higher there than in the rest of Australia.

LIST OF TABLES

page

GROSS STATE PRODUCT

1	Gross state product, chain volume measures	9
2	Gross state product per head of mean population, chain volume measures . . .	10
3	Components of gross state product, chain volume measures	12
4	Gross state product at market prices	14
5	Gross state product at market prices per head of mean population	15

EXPENDITURE COMPONENTS OF GROSS STATE PRODUCT

6	Expenditure components of gross state product, New South Wales—current prices	16
7	Expenditure components of gross state product, Victoria—current prices . . .	17
8	Expenditure components of gross state product, Queensland—current prices	18
9	Expenditure components of gross state product, South Australia—current prices	19
10	Expenditure components of gross state product, Western Australia—current prices	20
11	Expenditure components of gross state product, Tasmania—current prices . . .	21
12	Expenditure components of gross state product, Northern Territory—current prices	22
13	Expenditure components of gross state product, Australian Capital Territory—current prices	23
14	Expenditure components of gross state product, Australia—current prices	24

INCOME COMPONENTS OF GROSS STATE PRODUCT

15	Income components of gross state product—current prices	25
-----------	-------------------------------------------------------------------	----

TOTAL FACTOR INCOME

16	Total factor income by industry and principal components, New South Wales—current prices	27
17	Total factor income by industry and principal components, Victoria—current prices	29
18	Total factor income by industry and principal components, Queensland—current prices	31
19	Total factor income by industry and principal components, South Australia—current prices	33
20	Total factor income by industry and principal components, Western Australia—current prices	35
21	Total factor income by industry and principal components, Tasmania—current prices	37
22	Total factor income by industry and principal components, Northern Territory—current prices	39
23	Total factor income by industry and principal components, Australian Capital Territory—current prices	41
24	Total factor income by industry and principal components, Australia—current prices	43

LIST OF TABLES *continued*

HOUSEHOLD INCOME

25	Gross household income and gross household disposable income, value and per head of mean population—current prices	45
26	Household income account, New South Wales—current prices	46
27	Household income account, Victoria—current prices	47
28	Household income account, Queensland—current prices	48
29	Household income account, South Australia—current prices	49
30	Household income account, Western Australia—current prices	50
31	Household income account, Tasmania—current prices	51
32	Household income account, Northern Territory—current prices	52
33	Household income account, Australian Capital Territory—current prices	53
34	Household income account, Australia—current prices	54

AGRICULTURAL INCOME

35	Agricultural income, current prices	55
-----------	-----------------------------------------------	----

GROSS STATE PRODUCT, Chain Volume Measures(a)

	1990-91	1991-92	1992-93	1993-94	1994-95	1995-96	1996-97	1997-98	1998-99
VALUES									
New South Wales (\$m)	160 522	160 716	164 804	171 364	178 148	185 717	192 875	201 660	209 937
Victoria (\$m)	115 740	113 688	118 390	123 261	127 703	132 104	136 231	142 422	151 213
Queensland (\$m)	65 323	67 775	72 972	76 052	80 361	83 568	88 330	91 910	96 000
South Australia (\$m)	33 096	32 371	33 399	34 429	34 641	36 606	37 264	39 652	40 493
Western Australia (\$m)	43 873	45 814	47 031	49 854	53 406	56 310	58 112	61 917	63 198
Tasmania (\$m)	9 726	9 762	9 993	10 050	10 321	10 613	10 739	10 792	11 059
Northern Territory (\$m)	5 031	4 853	4 854	4 922	5 288	5 612	5 758	6 002	6 460
Australian Capital Territory (\$m)	9 345	9 364	9 709	10 065	10 467	10 754	10 874	11 527	11 822
Australia (GDP) (\$m)	439 783	441 458	457 735	476 556	498 113	520 669	540 379	565 881	591 546

	PERCENTAGE CHANGES FROM PREVIOUS YEAR								
New South Wales (%)	0.4	0.1	2.5	4.0	4.0	4.2	3.9	4.6	4.1
Victoria (%)	-2.2	-1.8	4.1	4.1	3.6	3.4	3.1	4.5	6.2
Queensland (%)	-0.5	3.8	7.7	4.2	5.7	4.0	5.7	4.1	4.5
South Australia (%)	-1.0	-2.2	3.2	3.1	0.6	5.7	1.8	6.4	2.1
Western Australia (%)	1.7	4.4	2.7	6.0	7.1	5.4	3.2	6.5	2.1
Tasmania (%)	1.2	0.4	2.4	0.6	2.7	2.8	1.2	0.5	2.5
Northern Territory (%)	2.4	-3.5	—	1.4	7.4	6.1	2.6	4.2	7.6
Australian Capital Territory (%)	2.3	0.2	3.7	3.7	4.0	2.7	1.1	6.0	2.6
Australia (GDP) (%)	-0.2	0.4	3.7	4.1	4.5	4.5	3.8	4.7	4.5

	INDEX (1990-91 = 100.0)								
New South Wales	100.0	100.1	102.7	106.8	111.0	115.7	120.2	125.6	130.8
Victoria	100.0	98.2	102.3	106.5	110.3	114.1	117.7	123.1	130.6
Queensland	100.0	103.8	111.7	116.4	123.0	127.9	135.2	140.7	147.0
South Australia	100.0	97.8	100.9	104.0	104.7	110.6	112.6	119.8	122.4
Western Australia	100.0	104.4	107.2	113.6	121.7	128.3	132.5	141.1	144.0
Tasmania	100.0	100.4	102.7	103.3	106.1	109.1	110.4	111.0	113.7
Northern Territory	100.0	96.5	96.5	97.8	105.1	111.5	114.4	119.3	128.4
Australian Capital Territory	100.0	100.2	103.9	107.7	112.0	115.1	116.4	123.3	126.5
Australia (GDP)	100.0	100.4	104.1	108.4	113.3	118.4	122.9	128.7	134.5

— nil or rounded to zero (including null cells)

- (a) Experimental series. Users are cautioned these estimates are derived indirectly by calculating a deflator from the expenditure components of the state series concerned. Therefore, in general, the sum of the state estimates does not equal the estimates for Australia. It is emphasised that, at times, there may be movements that cannot be fully explained in the chain volume estimates of GSP through the use of this proxy deflator (see Technical Note on page vi of the 1993-94 issue of Australian National Accounts: State Accounts (ABS Catalogue No. 5220.0)). Reference year for chain volume measures is 1997-98.

GROSS STATE PRODUCT PER HEAD OF MEAN POPULATION, Chain Volume Measures(a)

1990-91 1991-92 1992-93 1993-94 1994-95 1995-96 1996-97 1997-98 1998-99

VALUES

New South Wales (\$)	27 366	27 089	27 528	28 396	29 237	30 114	30 900	31 973	32 911
Victoria (\$)	26 295	25 611	26 511	27 515	28 365	29 102	29 715	30 739	32 270
Queensland (\$)	22 293	22 623	23 766	24 144	24 917	25 297	26 216	26 817	27 538
South Australia (\$)	22 994	22 296	22 898	23 520	23 601	24 876	25 231	26 730	27 169
Western Australia (\$)	26 995	27 802	28 189	29 497	31 080	32 181	32 598	34 127	34 202
Tasmania (\$)	20 933	20 839	21 221	21 273	21 799	22 385	22 645	22 829	23 465
Northern Territory (\$)	30 518	29 050	28 633	28 574	30 170	31 179	31 214	31 861	33 663
Australian Capital Territory (\$)	32 739	32 085	32 680	33 539	34 525	35 098	35 242	37 456	38 246
Australia (GDP) (\$)	25 603	25 379	26 026	26 824	27 732	28 616	29 327	30 363	31 363

PERCENTAGE CHANGES FROM PREVIOUS YEAR

New South Wales (%)	-0.6	-1.0	1.6	3.2	3.0	3.0	2.6	3.5	2.9
Victoria (%)	-3.4	-2.6	3.5	3.8	3.1	2.6	2.1	3.4	5.0
Queensland (%)	-2.7	1.5	5.1	1.6	3.2	1.5	3.6	2.3	2.7
South Australia (%)	-2.0	-3.0	2.7	2.7	0.3	5.4	1.4	5.9	1.6
Western Australia (%)	-0.1	3.0	1.4	4.6	5.4	3.5	1.3	4.7	0.2
Tasmania (%)	-0.1	-0.5	1.8	0.2	2.5	2.7	1.2	0.8	2.8
Northern Territory (%)	0.8	-4.8	-1.4	-0.2	5.6	3.3	0.1	2.1	5.7
Australian Capital Territory (%)	—	-2.0	1.9	2.6	2.9	1.7	0.4	6.3	2.1
Australia (GDP) (%)	-1.6	-0.9	2.6	3.1	3.4	3.2	2.5	3.5	3.3

INDEX (1990-91 = 100.0)

New South Wales	100.0	99.0	100.6	103.8	106.8	110.0	112.9	116.8	120.3
Victoria	100.0	97.4	100.8	104.6	107.9	110.7	113.0	116.9	122.7
Queensland	100.0	101.5	106.6	108.3	111.8	113.5	117.6	120.3	123.5
South Australia	100.0	97.0	99.6	102.3	102.6	108.2	109.7	116.2	118.2
Western Australia	100.0	103.0	104.4	109.3	115.1	119.2	120.8	126.4	126.7
Tasmania	100.0	99.5	101.4	101.6	104.1	106.9	108.2	109.1	112.1
Northern Territory	100.0	95.2	93.8	93.6	98.9	102.2	102.3	104.4	110.3
Australian Capital Territory	100.0	98.0	99.8	102.4	105.5	107.2	107.6	114.4	116.8
Australia (GDP)	100.0	99.1	101.7	104.8	108.3	111.8	114.5	118.6	122.5

— nil or rounded to zero (including null cells)

- (a) Experimental series. Users are cautioned these estimates are derived indirectly by calculating a deflator from the expenditure components of the state series concerned. Therefore, in general, the sum of the state estimates does not equal the estimates for Australia. It is emphasised that, at times, there may be movements that cannot be fully explained in the chain volume estimates of GSP through the use of this proxy deflator (see Technical Note on page vi of the 1993-94 issue of Australian National Accounts: State Accounts (ABS Catalogue No. 5220.0)). Reference year for chain volume measures is 1997-98.

COMPONENTS OF GROSS STATE PRODUCT, Chain Volume Measures(a)

	1990-91	1991-92	1992-93	1993-94	1994-95	1995-96	1996-97	1997-98	1998-99
	\$m	\$m	\$m	\$m	\$m	\$m	\$m	\$m	\$m
NEW SOUTH WALES									
Government final consumption expenditure	27 472	27 695	28 506	28 667	29 845	31 058	31 681	32 465	33 388
Household final consumption expenditure	97 353	98 903	99 323	100 784	105 928	110 729	113 614	117 994	123 149
Private gross fixed capital formation	24 956	23 790	24 421	25 986	30 171	30 625	31 954	37 115	39 388
Public corporations gross fixed capital formation	4 811	5 013	5 040	4 380	4 673	4 295	3 265	3 519	3 862
General government gross fixed capital formation	3 287	3 225	3 451	3 693	3 867	3 757	4 443	4 206	4 477
State final demand	157 771	158 355	160 528	163 379	174 537	180 458	184 933	195 298	204 264
International trade—exports of goods	11 537	11 697	13 006	15 915	16 394	18 073	20 450	21 677	21 460
less International trade—imports of goods	19 765	20 721	22 153	24 013	29 169	31 848	34 636	37 811	41 950
Balancing item(b)	10 979	11 385	13 424	16 084	16 386	19 034	22 127	22 496	26 163
Gross state product(c)	160 522	160 716	164 804	171 364	178 148	185 717	192 875	201 660	209 937
VICTORIA									
Government final consumption expenditure	20 815	21 323	21 273	20 667	21 213	21 398	21 524	22 144	22 578
Household final consumption expenditure	67 420	68 384	70 242	71 271	75 080	77 829	80 447	84 961	88 874
Private gross fixed capital formation	14 229	13 304	15 544	17 018	17 605	20 232	25 426	26 956	29 168
Public corporations gross fixed capital formation	3 055	2 724	1 566	2 218	2 996	2 423	1 022	2 069	1 837
General government gross fixed capital formation	1 739	1 726	2 009	2 039	2 302	2 138	2 443	2 391	2 572
State final demand	106 904	106 876	110 193	112 904	118 910	123 845	130 873	138 521	145 028
International trade—exports of goods	8 982	10 197	11 478	13 397	13 641	16 214	18 123	17 246	18 818
less International trade—imports of goods	15 608	15 916	17 382	19 584	23 128	23 752	26 121	28 355	29 770
Balancing item(b)	15 461	12 530	14 101	16 545	18 280	15 797	13 356	15 011	17 136
Gross state product(c)	115 740	113 688	118 390	123 261	127 703	132 104	136 231	142 422	151 213
QUEENSLAND									
Government final consumption expenditure	12 189	12 995	13 390	13 664	13 949	14 978	15 132	16 058	16 758
Household final consumption expenditure	42 277	43 906	46 165	48 112	51 179	53 269	54 966	58 179	61 676
Private gross fixed capital formation	11 809	11 344	12 836	14 969	16 854	16 119	18 476	18 695	19 565
Public corporations gross fixed capital formation	2 397	2 658	2 444	1 983	3 110	2 620	3 009	2 566	2 904
General government gross fixed capital formation	1 957	2 162	2 244	2 107	2 162	2 514	2 867	3 058	3 650
State final demand	70 545	72 928	76 959	80 768	87 223	89 432	94 441	98 555	104 553
International trade—exports of goods	11 372	12 049	12 651	12 971	13 472	14 374	14 986	16 680	17 430
less International trade—imports of goods	5 373	6 277	6 414	6 858	7 821	7 923	8 803	9 584	10 332
Balancing item(b)	-11 220	-10 925	-10 225	-10 829	-12 514	-12 315	-12 294	-13 741	-15 651
Gross state product(c)	65 323	67 775	72 972	76 052	80 361	83 568	88 330	91 910	96 000
SOUTH AUSTRALIA									
Government final consumption expenditure	6 994	6 978	7 091	7 485	7 594	7 568	7 513	7 907	7 841
Household final consumption expenditure	20 869	20 983	20 789	21 308	22 327	23 115	23 248	24 390	25 200
Private gross fixed capital formation	4 724	4 341	4 335	4 313	5 294	5 020	5 824	6 714	6 066
Public corporations gross fixed capital formation	869	879	758	602	596	499	554	453	613
General government gross fixed capital formation	801	694	728	713	786	764	885	856	773
State final demand	34 276	33 843	33 667	34 365	36 598	36 927	38 020	40 320	40 493
International trade—exports of goods	3 398	3 938	4 220	4 563	4 218	4 778	5 560	5 260	5 985
less International trade—imports of goods	2 401	2 661	3 085	2 760	3 084	3 041	3 498	3 871	3 544
Balancing item(b)	-2 177	-2 749	-1 402	-1 740	-3 092	-2 057	-2 818	-2 056	-2 441
Gross state product(c)	33 096	32 371	33 399	34 429	34 641	36 606	37 264	39 652	40 493

(a) Reference year for chain volume measures is 1997-98.

(b) Calculated as the residual of GSP less state final demand less international trade in exports of goods plus international trade in imports of goods for each state in Australia. The balancing item implicitly comprises changes in inventories, net international trade in services, total net interstate trade and statistical discrepancy (E).

(c) Experimental series. Users are cautioned these estimates are derived indirectly by calculating a deflator from the expenditure components of the state series concerned. Therefore, in general, the sum of the state estimates does not equal the estimates for Australia. It is emphasised that, at times, there may be movements that cannot be fully explained in the chain volume estimates of GSP through the use of this proxy deflator (see Technical Note on page vi of the 1993-94 issue of Australian National Accounts: State Accounts (ABS Catalogue No. 5220.0)).

COMPONENTS OF GROSS STATE PRODUCT, Chain Volume Measures(a) *continued*

	1990-91	1991-92	1992-93	1993-94	1994-95	1995-96	1996-97	1997-98	1998-99
	\$m	\$m	\$m	\$m	\$m	\$m	\$m	\$m	\$m
WESTERN AUSTRALIA									
Government final consumption expenditure	7 563	7 776	7 892	7 870	7 862	8 760	8 909	9 680	9 700
Household final consumption expenditure	23 544	24 404	25 542	26 911	28 074	29 214	29 665	31 157	32 271
Private gross fixed capital formation	8 432	8 183	9 930	10 821	12 290	13 003	13 919	18 487	15 734
Public corporations gross fixed capital formation	1 376	1 132	1 204	982	841	1 204	1 542	-674	1 432
General government gross fixed capital formation	912	903	987	884	943	1 133	1 117	1 320	1 486
State final demand	41 883	42 396	45 577	47 464	50 040	53 373	55 228	59 970	60 623
International trade—exports of goods	13 816	16 229	16 793	16 940	17 758	19 460	20 372	23 160	22 898
less International trade—imports of goods	3 624	3 645	4 653	4 571	5 588	5 973	6 822	8 458	8 801
Balancing item(b)	-8 203	-9 165	-10 686	-9 980	-8 804	-10 550	-10 665	-12 755	-11 522
Gross state product(c)	43 873	45 814	47 031	49 854	53 406	56 310	58 112	61 917	63 198
TASMANIA									
Government final consumption expenditure	2 367	2 335	2 394	2 429	2 511	2 542	2 578	2 602	2 717
Household final consumption expenditure	6 387	6 499	6 601	6 757	6 875	7 100	7 227	7 477	7 617
Private gross fixed capital formation	1 300	1 292	1 299	1 338	1 612	1 546	1 592	1 493	1 331
Public corporations gross fixed capital formation	326	245	242	387	233	283	273	273	278
General government gross fixed capital formation	217	213	272	239	248	280	272	240	205
State final demand	10 589	10 565	10 799	11 139	11 488	11 755	11 945	12 085	12 148
International trade—exports of goods	1 522	1 720	1 795	1 927	1 759	1 740	1 939	2 334	2 238
less International trade—imports of goods	342	335	361	484	358	345	424	379	395
Balancing item(b)	-2 043	-2 188	-2 240	-2 533	-2 569	-2 537	-2 721	-3 248	-2 931
Gross state product(c)	9 726	9 762	9 993	10 050	10 321	10 613	10 739	10 792	11 059
NORTHERN TERRITORY									
Government final consumption expenditure	1 588	1 642	1 700	1 773	1 848	2 027	2 080	2 225	2 249
Household final consumption expenditure	2 270	2 337	2 441	2 454	2 692	2 916	2 878	3 120	3 330
Private gross fixed capital formation	923	731	806	1 090	1 089	1 345	1 301	1 583	2 406
Public corporations gross fixed capital formation	164	110	94	91	141	79	79	71	52
General government gross fixed capital formation	236	210	184	185	233	250	288	338	355
State final demand	5 196	5 048	5 235	5 593	6 014	6 621	6 628	7 337	8 391
International trade—exports of goods	1 744	1 600	1 341	1 226	1 197	1 263	1 332	1 212	1 274
less International trade—imports of goods	594	449	272	291	362	386	401	646	466
Balancing item(b)	-1 314	-1 347	-1 450	-1 607	-1 561	-1 886	-1 802	-1 901	-2 739
Gross state product(c)	5 031	4 853	4 854	4 922	5 288	5 612	5 758	6 002	6 460
AUSTRALIAN CAPITAL TERRITORY									
Government final consumption expenditure	8 212	8 177	8 292	9 215	9 653	9 727	9 521	9 964	10 366
Household final consumption expenditure	4 774	4 983	5 166	5 369	5 518	5 644	5 794	6 129	6 371
Private gross fixed capital formation	874	1 162	1 191	1 217	957	934	968	1 348	1 304
Public corporations gross fixed capital formation	161	126	137	123	150	163	147	124	187
General government gross fixed capital formation	534	552	511	529	459	397	390	16	107
State final demand	14 605	15 098	15 388	16 528	16 760	16 870	16 825	17 581	18 335
International trade—exports of goods	7	11	8	13	22	21	14	21	31
less International trade—imports of goods	24	23	16	18	15	8	12	10	16
Balancing item(b)	-5 242	-5 722	-5 672	-6 458	-6 299	-6 129	-5 953	-6 064	-6 528
Gross state product(c)	9 345	9 364	9 709	10 065	10 467	10 754	10 874	11 527	11 822

(a) Reference year for chain volume measures is 1997-98.

(b) Calculated as the residual of GSP less state final demand less international trade in exports of goods plus international trade in imports of goods for each state in Australia. The balancing item implicitly comprises changes in inventories, net international trade in services, total net interstate trade and statistical discrepancy (E).

(c) Experimental series. Users are cautioned these estimates are derived indirectly by calculating a deflator from the expenditure components of the state series concerned. Therefore, in general, the sum of the state estimates does not equal the estimates for Australia. It is emphasised that, at times, there may be movements that cannot be fully explained in the chain volume estimates of GSP through the use of this proxy deflator (see Technical Note on page vi of the 1993-94 issue of Australian National Accounts: State Accounts (ABS Catalogue No. 5220.0)).

COMPONENTS OF GROSS STATE PRODUCT, Chain Volume Measures(a) *continued*

	1990-91	1991-92	1992-93	1993-94	1994-95	1995-96	1996-97	1997-98	1998-99
	\$m	\$m	\$m	\$m	\$m	\$m	\$m	\$m	\$m
AUSTRALIA									
Government final consumption expenditure	87 179	88 906	90 530	91 710	94 400	98 177	98 931	103 044	105 596
Household final consumption expenditure	264 209	269 695	275 556	282 225	296 905	309 804	317 842	333 407	348 475
Private gross fixed capital formation	67 248	64 148	70 362	76 751	85 871	88 824	99 461	112 390	114 961
Public corporations gross fixed capital formation	13 158	12 887	11 484	10 766	12 741	11 567	9 892	8 400	11 165
General government gross fixed capital formation	9 682	9 685	10 385	10 387	10 998	11 234	12 705	12 426	13 625
State final demand	440 949	444 308	457 549	471 265	500 640	519 279	538 839	569 666	593 823
International trade—exports of goods	52 378	57 442	61 292	66 953	68 461	75 922	82 777	87 590	90 135
less International trade—imports of goods	47 621	49 874	54 136	58 389	69 423	73 288	80 703	89 115	95 275
Balancing item(b)	-5 923	-10 418	-6 969	-3 273	-1 565	-1 244	- 534	-2 260	2 863
Gross domestic product	439 783	441 458	457 735	476 556	498 113	520 669	540 379	565 881	591 546

(a) Reference year for chain volume measures is 1997-98.

(b) Calculated as the residual of GDP less state final demand less international trade in exports of goods plus international trade in imports of goods. The balancing item implicitly comprises changes in inventories, net international trade in services and statistical discrepancy (E).

GROSS STATE PRODUCT AT MARKET PRICES

1990-91 1991-92 1992-93 1993-94 1994-95 1995-96 1996-97 1997-98 1998-99

VALUES

New South Wales (\$m)	140 595	144 557	149 369	156 973	165 661	178 607	189 766	201 660	212 635
Victoria (\$m)	106 789	106 190	112 285	117 656	122 556	130 141	135 876	142 422	151 306
Queensland (\$m)	59 183	62 589	68 445	72 128	77 147	81 909	86 733	91 910	95 935
South Australia (\$m)	29 370	29 739	31 148	32 712	33 777	36 190	36 967	39 652	40 573
Western Australia (\$m)	40 072	41 844	43 664	47 130	50 814	55 158	57 168	61 917	63 226
Tasmania (\$m)	8 439	8 666	8 988	9 155	9 712	10 249	10 542	10 792	11 115
Northern Territory (\$m)	4 709	4 440	4 548	4 582	4 962	5 422	5 703	6 002	6 481
Australian Capital Territory (\$m)	8 024	8 403	8 958	9 449	9 918	10 441	10 876	11 527	12 040
Australia (GDP) (\$m)	397 180	406 427	427 404	449 785	474 546	508 113	533 632	565 881	593 311

RATIO (AUSTRALIA = 100.0)

New South Wales	35.4	35.6	34.9	34.9	34.9	35.2	35.6	35.6	35.8
Victoria	26.9	26.1	26.3	26.2	25.8	25.6	25.5	25.2	25.5
Queensland	14.9	15.4	16.0	16.0	16.3	16.1	16.3	16.2	16.2
South Australia	7.4	7.3	7.3	7.3	7.1	7.1	6.9	7.0	6.8
Western Australia	10.1	10.3	10.2	10.5	10.7	10.9	10.7	10.9	10.7
Tasmania	2.1	2.1	2.1	2.0	2.0	2.0	2.0	1.9	1.9
Northern Territory	1.2	1.1	1.1	1.0	1.0	1.1	1.1	1.1	1.1
Australian Capital Territory	2.0	2.1	2.1	2.1	2.1	2.1	2.0	2.0	2.0
Australia (GDP)	100.0	100.0	100.0	100.0	100.0	100.0	100.0	100.0	100.0

PERCENTAGE CHANGES FROM PREVIOUS YEAR

New South Wales (%)	4.2	2.8	3.3	5.1	5.5	7.8	6.2	6.3	5.4
Victoria (%)	1.9	-0.6	5.7	4.8	4.2	6.2	4.4	4.8	6.2
Queensland (%)	2.3	5.8	9.4	5.4	7.0	6.2	5.9	6.0	4.4
South Australia (%)	2.0	1.3	4.7	5.0	3.3	7.1	2.1	7.3	2.3
Western Australia (%)	4.2	4.4	4.3	7.9	7.8	8.5	3.6	8.3	2.1
Tasmania (%)	2.5	2.7	3.7	1.9	6.1	5.5	2.9	2.4	3.0
Northern Territory (%)	10.9	-5.7	2.4	0.7	8.3	9.3	5.2	5.2	8.0
Australian Capital Territory (%)	7.8	4.7	6.6	5.5	5.0	5.3	4.2	6.0	4.5
Australia (GDP) (%)	3.2	2.3	5.2	5.2	5.5	7.1	5.0	6.0	4.8

GROSS STATE PRODUCT AT MARKET PRICES PER HEAD OF MEAN POPULATION

1990-91 1991-92 1992-93 1993-94 1994-95 1995-96 1996-97 1997-98 1998-99

VALUES

New South Wales (\$)	23 969	24 366	24 950	26 011	27 188	28 961	30 402	31 973	33 334
Victoria (\$)	24 262	23 922	25 144	26 264	27 222	28 669	29 637	30 739	32 290
Queensland (\$)	20 198	20 892	22 291	22 899	23 921	24 795	25 742	26 817	27 519
South Australia (\$)	20 406	20 483	21 354	22 347	23 013	24 594	25 030	26 730	27 223
Western Australia (\$)	24 656	25 393	26 171	27 885	29 572	31 522	32 068	34 127	34 217
Tasmania (\$)	18 163	18 499	19 087	19 379	20 513	21 618	22 230	22 829	23 584
Northern Territory (\$)	28 564	26 578	26 829	26 599	28 308	30 126	30 916	31 861	33 773
Australian Capital Territory (\$)	28 110	28 794	30 154	31 485	32 713	34 078	35 249	37 456	38 952
Australia (GDP) (\$)	23 123	23 365	24 302	25 317	26 420	27 926	28 961	30 363	31 456

RATIO (AUSTRALIA = 100.0)

New South Wales	103.7	104.3	102.7	102.7	102.9	103.7	105.0	105.3	106.0
Victoria	104.9	102.4	103.5	103.7	103.0	102.7	102.3	101.2	102.6
Queensland	87.4	89.4	91.7	90.4	90.5	88.8	88.9	88.3	87.5
South Australia	88.2	87.7	87.9	88.3	87.1	88.1	86.4	88.0	86.5
Western Australia	106.6	108.7	107.7	110.1	111.9	112.9	110.7	112.4	108.8
Tasmania	78.6	79.2	78.5	76.5	77.6	77.4	76.8	75.2	75.0
Northern Territory	123.5	113.8	110.4	105.1	107.1	107.9	106.7	104.9	107.4
Australian Capital Territory	121.6	123.2	124.1	124.4	123.8	122.0	121.7	123.4	123.8
Australia (GDP)	100.0	100.0	100.0	100.0	100.0	100.0	100.0	100.0	100.0

PERCENTAGE CHANGES FROM PREVIOUS YEAR

New South Wales (%)	3.1	1.7	2.4	4.3	4.5	6.5	5.0	5.2	4.3
Victoria (%)	0.7	-1.4	5.1	4.5	3.6	5.3	3.4	3.7	5.0
Queensland (%)	0.1	3.4	6.7	2.7	4.5	3.7	3.8	4.2	2.6
South Australia (%)	1.0	0.4	4.3	4.6	3.0	6.9	1.8	6.8	1.8
Western Australia (%)	2.3	3.0	3.1	6.5	6.0	6.6	1.7	6.4	0.3
Tasmania (%)	1.2	1.8	3.2	1.5	5.9	5.4	2.8	2.7	3.3
Northern Territory (%)	9.1	-7.0	0.9	-0.9	6.4	6.4	2.6	3.1	6.0
Australian Capital Territory (%)	5.4	2.4	4.7	4.4	3.9	4.2	3.4	6.3	4.0
Australia (GDP) (%)	1.8	1.0	4.0	4.2	4.4	5.7	3.7	4.8	3.6

	1990-91	1991-92	1992-93	1993-94	1994-95	1995-96	1996-97	1997-98	1998-99
	\$m	\$m	\$m	\$m	\$m	\$m	\$m	\$m	\$m
Final consumption expenditure									
General government									
National	8 794	9 392	9 868	9 865	10 314	10 718	10 630	11 239	11 915
State and local	15 072	16 147	16 761	16 863	17 852	19 156	20 377	21 226	22 338
<i>Total general government final consumption</i>	<i>23 866</i>	<i>25 539</i>	<i>26 629</i>	<i>26 728</i>	<i>28 166</i>	<i>29 874</i>	<i>31 008</i>	<i>32 465</i>	<i>34 254</i>
Households									
Food	9 345	9 663	9 922	10 324	11 128	12 360	12 770	13 372	13 940
Alcoholic beverages and tobacco	2 665	2 718	2 892	2 882	2 997	3 387	3 461	3 532	3 633
Clothing and footwear	3 950	4 190	4 070	4 068	4 214	4 487	4 391	4 370	4 595
Housing, water, electricity, gas and other fuels	19 094	20 014	20 935	21 776	22 887	24 465	25 832	27 255	28 900
Furnishings and other household equipment	4 947	5 287	5 268	5 470	6 018	6 369	6 302	6 263	6 304
Health	3 308	3 544	3 486	3 633	3 776	3 850	3 927	3 922	4 346
Transport	10 823	10 984	11 385	11 682	12 871	13 427	14 047	14 945	15 444
Communications	1 211	1 379	1 539	1 693	1 873	2 129	2 330	2 535	2 713
Recreation and culture	9 044	9 679	9 968	10 272	11 054	12 117	12 705	13 646	14 059
Education services	1 485	1 582	1 653	1 728	1 843	1 973	2 171	2 419	2 618
Hotels, cafes and restaurants	6 803	6 843	6 896	7 211	7 873	8 608	8 658	9 107	9 771
Miscellaneous goods and services	12 093	12 642	13 012	13 068	13 125	14 201	15 311	16 593	18 776
Net expenditure interstate	29	29	29	33	34	37	38	34	34
<i>Total household final consumption expenditure</i>	<i>84 797</i>	<i>88 553</i>	<i>91 058</i>	<i>93 842</i>	<i>99 694</i>	<i>107 413</i>	<i>111 944</i>	<i>117 994</i>	<i>125 134</i>
<i>Total final consumption expenditure</i>	<i>108 663</i>	<i>114 092</i>	<i>117 688</i>	<i>120 570</i>	<i>127 860</i>	<i>137 287</i>	<i>142 952</i>	<i>150 459</i>	<i>159 388</i>
Gross fixed capital formation									
Private									
Dwellings	6 246	6 394	7 069	7 762	8 610	8 554	8 492	10 101	11 669
Other buildings and structures	6 404	4 871	3 664	3 535	4 430	5 469	5 726	6 471	7 621
Machinery and equipment	8 852	8 549	9 709	10 638	13 016	12 591	12 391	14 400	13 772
Livestock	113	54	192	236	200	342	283	342	382
Intangible fixed assets	1 237	1 339	1 651	1 715	1 762	1 757	2 174	2 911	3 548
Ownership transfer costs	1 583	1 693	1 724	2 051	2 035	1 978	2 440	2 891	2 986
<i>Total private gross fixed capital formation</i>	<i>24 434</i>	<i>22 900</i>	<i>24 009</i>	<i>25 937</i>	<i>30 052</i>	<i>30 690</i>	<i>31 506</i>	<i>37 116</i>	<i>39 978</i>
Public									
Public corporations									
Commonwealth	1 808	1 735	1 502	1 279	1 640	1 736	1 732	1 387	1 456
State and local	2 773	2 815	3 035	2 833	2 838	2 528	1 471	2 126	2 403
<i>Total public corporations gross fixed capital formation</i>	<i>4 582</i>	<i>4 550</i>	<i>4 537</i>	<i>4 112</i>	<i>4 478</i>	<i>4 264</i>	<i>3 203</i>	<i>3 512</i>	<i>3 859</i>
General government									
National	963	994	1 022	1 048	1 121	1 247	1 274	1 069	1 149
State and local	2 517	2 412	2 593	2 804	2 904	2 641	3 175	3 137	3 314
<i>Total general government gross fixed capital formation</i>	<i>3 480</i>	<i>3 406</i>	<i>3 615</i>	<i>3 852</i>	<i>4 025</i>	<i>3 888</i>	<i>4 449</i>	<i>4 206</i>	<i>4 463</i>
<i>Total public gross fixed capital formation</i>	<i>8 062</i>	<i>7 956</i>	<i>8 152</i>	<i>7 964</i>	<i>8 503</i>	<i>8 152</i>	<i>7 651</i>	<i>7 718</i>	<i>8 322</i>
<i>Total gross fixed capital formation</i>	<i>32 496</i>	<i>30 856</i>	<i>32 161</i>	<i>33 901</i>	<i>38 555</i>	<i>38 842</i>	<i>39 158</i>	<i>44 835</i>	<i>48 300</i>
State final demand									
International trade—exports of goods	12 426	12 179	13 790	16 046	16 678	18 494	19 440	21 677	20 152
less International trade—imports of goods	22 305	23 242	26 343	28 350	32 900	34 716	33 872	37 811	41 078
Balancing item(a)	9 315	10 672	12 074	14 807	15 468	18 700	22 089	22 501	25 873
Gross state product	140 595	144 557	149 369	156 973	165 661	178 607	189 766	201 660	212 635

(a) Calculated as the residual of GSP less state final demand less international trade in exports of goods plus international trade in imports of goods. The balancing item implicitly comprises changes in inventories, net international trade in services, total net interstate trade and statistical discrepancy (E).

EXPENDITURE COMPONENTS OF GROSS STATE PRODUCT, Victoria—Current Prices

	1990-91	1991-92	1992-93	1993-94	1994-95	1995-96	1996-97	1997-98	1998-99
	\$m	\$m	\$m	\$m	\$m	\$m	\$m	\$m	\$m
Final consumption expenditure									
General government									
National	6 460	6 968	7 315	7 224	7 399	7 702	7 636	8 083	8 579
State and local	11 613	12 399	12 997	12 490	12 656	12 983	13 561	14 061	14 466
<i>Total general government final consumption</i>	<i>18 073</i>	<i>19 367</i>	<i>20 312</i>	<i>19 714</i>	<i>20 055</i>	<i>20 685</i>	<i>21 196</i>	<i>22 144</i>	<i>23 045</i>
Households									
Food	6 887	7 194	7 458	7 740	8 343	8 970	9 369	9 681	10 473
Alcoholic beverages and tobacco	1 875	1 937	1 995	2 107	2 167	2 436	2 545	2 580	2 703
Clothing and footwear	2 901	3 037	3 148	3 034	3 037	3 033	2 981	3 224	3 654
Housing, water, electricity, gas and other fuels	12 671	13 171	13 487	13 896	14 420	15 058	15 854	16 760	17 190
Furnishings and other household equipment	3 487	3 626	3 768	3 819	3 915	4 066	4 307	4 601	4 951
Health	2 417	2 673	2 976	3 111	3 187	3 259	3 330	3 335	3 653
Transport	7 408	7 428	7 871	8 155	8 777	9 257	9 703	10 348	10 868
Communications	873	1 003	1 133	1 254	1 382	1 564	1 709	1 856	1 984
Recreation and culture	5 897	6 128	6 545	7 125	8 304	9 127	9 662	10 334	10 970
Education services	1 269	1 408	1 526	1 612	1 673	1 813	1 975	2 186	2 361
Hotels, cafes and restaurants	4 383	4 662	4 779	5 002	5 481	5 871	6 040	6 269	6 888
Miscellaneous goods and services	8 991	9 310	9 615	9 480	9 552	10 080	10 833	12 754	12 973
Net expenditure interstate	764	782	811	825	891	985	1 067	1 032	961
<i>Total household final consumption expenditure</i>	<i>59 824</i>	<i>62 359</i>	<i>65 113</i>	<i>67 162</i>	<i>71 131</i>	<i>75 524</i>	<i>79 377</i>	<i>84 961</i>	<i>89 629</i>
<i>Total final consumption expenditure</i>	<i>77 897</i>	<i>81 726</i>	<i>85 425</i>	<i>86 876</i>	<i>91 186</i>	<i>96 209</i>	<i>100 573</i>	<i>107 105</i>	<i>112 674</i>
Gross fixed capital formation									
Private									
Dwellings	3 755	3 591	4 180	4 946	5 246	5 006	5 567	6 848	7 893
Other buildings and structures	3 573	2 473	2 519	2 462	2 163	3 190	4 757	4 326	5 343
Machinery and equipment	5 429	5 390	6 975	7 723	8 282	10 074	11 978	11 723	11 633
Livestock	92	78	177	205	168	224	264	302	316
Intangible fixed assets	932	942	1 160	1 274	1 272	1 288	1 537	2 052	2 531
Ownership transfer costs	1 119	1 059	1 025	1 230	1 100	1 294	1 309	1 702	1 715
<i>Total private gross fixed capital formation</i>	<i>14 900</i>	<i>13 534</i>	<i>16 035</i>	<i>17 840</i>	<i>18 230</i>	<i>21 076</i>	<i>25 413</i>	<i>26 955</i>	<i>29 431</i>
Public									
Public corporations									
Commonwealth	1 353	1 295	1 116	946	1 209	1 275	1 269	1 016	1 067
State and local	1 681	1 547	622	1 416	1 799	1 205	- 265	1 049	770
<i>Total public corporations gross fixed capital formation</i>	<i>3 035</i>	<i>2 841</i>	<i>1 739</i>	<i>2 362</i>	<i>3 008</i>	<i>2 480</i>	<i>1 004</i>	<i>2 065</i>	<i>1 837</i>
General government									
National	690	717	689	850	786	842	840	849	841
State and local	1 308	1 219	1 537	1 412	1 701	1 453	1 634	1 542	1 683
<i>Total general government gross fixed capital formation</i>	<i>1 998</i>	<i>1 936</i>	<i>2 226</i>	<i>2 262</i>	<i>2 487</i>	<i>2 295</i>	<i>2 474</i>	<i>2 391</i>	<i>2 524</i>
<i>Total public gross fixed capital formation</i>	<i>5 033</i>	<i>4 777</i>	<i>3 965</i>	<i>4 624</i>	<i>5 494</i>	<i>4 776</i>	<i>3 478</i>	<i>4 456</i>	<i>4 361</i>
<i>Total gross fixed capital formation</i>	<i>19 934</i>	<i>18 311</i>	<i>20 000</i>	<i>22 463</i>	<i>23 725</i>	<i>25 852</i>	<i>28 891</i>	<i>31 411</i>	<i>33 792</i>
State final demand	97 830	100 037	105 425	109 340	114 910	122 061	129 464	138 516	146 467
International trade—exports of goods	9 121	9 935	11 586	13 232	13 930	16 544	17 425	17 246	18 211
less International trade—imports of goods	14 850	15 304	18 082	20 667	23 874	24 511	24 946	28 355	30 236
Balancing item(a)	14 687	11 521	13 356	15 752	17 590	16 047	13 932	15 015	16 864
Gross state product	106 789	106 190	112 285	117 656	122 556	130 141	135 876	142 422	151 306

(a) Calculated as the residual of GSP less state final demand less international trade in exports of goods plus international trade in imports of goods. The balancing item implicitly comprises changes in inventories, net international trade in services, total net interstate trade and statistical discrepancy (E).

	1990-91	1991-92	1992-93	1993-94	1994-95	1995-96	1996-97	1997-98	1998-99
	\$m	\$m	\$m	\$m	\$m	\$m	\$m	\$m	\$m
Final consumption expenditure									
General government									
National	4 117	4 616	4 852	5 137	5 223	5 420	5 372	5 671	6 007
State and local	6 529	7 193	7 569	7 745	8 111	9 151	9 564	10 387	11 100
<i>Total general government final consumption</i>	<i>10 646</i>	<i>11 809</i>	<i>12 421</i>	<i>12 883</i>	<i>13 334</i>	<i>14 571</i>	<i>14 936</i>	<i>16 058</i>	<i>17 107</i>
Households									
Food	4 794	5 075	5 471	5 806	6 559	7 174	7 429	7 805	8 335
Alcoholic beverages and tobacco	1 224	1 240	1 507	1 616	1 701	1 795	2 037	2 205	2 274
Clothing and footwear	1 870	1 998	2 050	2 178	2 355	2 300	2 252	2 455	2 619
Housing, water, electricity, gas and other fuels	7 250	7 858	8 365	8 964	9 549	10 109	10 621	11 228	11 535
Furnishings and other household equipment	2 449	2 712	2 916	3 166	3 322	3 285	3 243	3 399	3 760
Health	1 399	1 506	1 587	1 702	1 808	1 924	2 037	2 082	2 288
Transport	5 030	5 129	5 459	5 672	6 145	6 463	6 705	7 099	7 271
Communications	590	689	798	895	986	1 120	1 227	1 333	1 428
Recreation and culture	3 885	4 261	4 639	5 098	5 543	5 951	5 975	6 453	6 991
Education services	649	708	741	826	903	1 004	1 132	1 261	1 374
Hotels, cafes and restaurants	3 147	3 388	3 739	4 066	4 581	5 000	5 202	5 640	6 089
Miscellaneous goods and services	5 378	5 761	6 212	6 291	6 402	6 902	7 481	8 262	9 187
Net expenditure interstate	- 802	- 814	- 849	- 881	- 945	-1 031	-1 101	-1 044	- 935
<i>Total household final consumption expenditure</i>	<i>36 862</i>	<i>39 509</i>	<i>42 636</i>	<i>45 396</i>	<i>48 908</i>	<i>51 999</i>	<i>54 243</i>	<i>58 179</i>	<i>62 212</i>
<i>Total final consumption expenditure</i>	<i>47 508</i>	<i>51 318</i>	<i>55 057</i>	<i>58 279</i>	<i>62 242</i>	<i>66 570</i>	<i>69 179</i>	<i>74 237</i>	<i>79 319</i>
Gross fixed capital formation									
Private									
Dwellings	3 630	3 951	4 990	5 704	6 069	4 959	5 282	5 926	5 503
Other buildings and structures	2 370	2 056	2 192	2 381	3 014	3 232	4 071	3 712	4 070
Machinery and equipment	3 849	3 353	3 736	5 048	6 115	6 269	6 892	6 645	7 516
Livestock	42	20	105	128	143	261	236	298	404
Intangible fixed assets	459	453	524	558	630	694	777	901	980
Ownership transfer costs	925	939	1 025	1 139	1 106	996	1 098	1 215	1 318
<i>Total private gross fixed capital formation</i>	<i>11 276</i>	<i>10 771</i>	<i>12 572</i>	<i>14 957</i>	<i>17 077</i>	<i>16 411</i>	<i>18 357</i>	<i>18 696</i>	<i>19 790</i>
Public									
Public corporations									
Commonwealth	874	845	731	625	824	882	884	706	746
State and local	1 365	1 562	1 570	1 091	1 891	1 718	2 094	1 861	2 167
<i>Total public corporations gross fixed capital formation</i>	<i>2 240</i>	<i>2 407</i>	<i>2 301</i>	<i>1 716</i>	<i>2 715</i>	<i>2 600</i>	<i>2 978</i>	<i>2 567</i>	<i>2 913</i>
General government									
National	329	400	385	442	481	499	486	358	462
State and local	1 660	1 837	1 960	1 778	1 807	2 118	2 394	2 700	3 174
<i>Total general government gross fixed capital formation</i>	<i>1 989</i>	<i>2 237</i>	<i>2 345</i>	<i>2 220</i>	<i>2 288</i>	<i>2 617</i>	<i>2 880</i>	<i>3 058</i>	<i>3 636</i>
<i>Total public gross fixed capital formation</i>	<i>4 229</i>	<i>4 644</i>	<i>4 646</i>	<i>3 936</i>	<i>5 004</i>	<i>5 217</i>	<i>5 858</i>	<i>5 625</i>	<i>6 550</i>
<i>Total gross fixed capital formation</i>	<i>15 504</i>	<i>15 415</i>	<i>17 218</i>	<i>18 893</i>	<i>22 080</i>	<i>21 628</i>	<i>24 215</i>	<i>24 320</i>	<i>26 340</i>
State final demand									
International trade—exports of goods	63 013	66 733	72 275	77 172	84 322	88 198	93 394	98 557	105 659
less International trade—imports of goods	11 116	11 313	12 378	12 234	12 758	14 014	13 903	16 680	16 448
less International trade—imports of goods	4 886	5 609	6 312	6 837	7 768	8 001	8 512	9 584	10 535
Balancing item(a)	-10 060	-9 848	-9 896	-10 440	-12 166	-12 301	-12 052	-13 743	-15 637
Gross state product	59 183	62 589	68 445	72 128	77 147	81 909	86 733	91 910	95 935

(a) Calculated as the residual of GSP less state final demand less international trade in exports of goods plus international trade in imports of goods. The balancing item implicitly comprises changes in inventories, net international trade in services, total net interstate trade and statistical discrepancy (E).

	1990-91	1991-92	1992-93	1993-94	1994-95	1995-96	1996-97	1997-98	1998-99
	\$m	\$m	\$m	\$m	\$m	\$m	\$m	\$m	\$m
Final consumption expenditure									
General government									
National	2 227	2 292	2 406	2 506	2 546	2 654	2 633	2 785	2 946
State and local	3 850	4 045	4 155	4 729	4 775	4 759	4 807	5 122	5 071
<i>Total general government final consumption</i>	<i>6 077</i>	<i>6 337</i>	<i>6 561</i>	<i>7 235</i>	<i>7 321</i>	<i>7 413</i>	<i>7 439</i>	<i>7 907</i>	<i>8 017</i>
Households									
Food	2 183	2 246	2 222	2 391	2 571	2 804	2 949	3 222	3 421
Alcoholic beverages and tobacco	613	628	674	750	780	782	764	733	755
Clothing and footwear	972	941	929	952	1 005	1 012	945	989	991
Housing, water, electricity, gas and other fuels	3 570	3 814	3 964	4 082	4 222	4 331	4 463	4 652	4 805
Furnishings and other household equipment	1 182	1 202	1 234	1 292	1 370	1 423	1 364	1 488	1 448
Health	804	897	868	915	944	993	977	980	1 056
Transport	2 372	2 364	2 444	2 500	2 638	2 770	2 845	3 010	3 052
Communications	289	323	357	386	414	466	510	554	593
Recreation and culture	1 787	1 874	1 902	1 989	2 195	2 409	2 462	2 625	2 835
Education services	314	362	379	400	432	465	513	567	608
Hotels, cafes and restaurants	1 291	1 360	1 341	1 486	1 643	1 696	1 617	1 612	1 779
Miscellaneous goods and services	2 883	3 007	3 112	3 130	3 125	3 301	3 436	3 808	4 055
Net expenditure interstate	119	115	115	125	139	150	154	149	135
<i>Total household final consumption expenditure</i>	<i>18 379</i>	<i>19 132</i>	<i>19 539</i>	<i>20 400</i>	<i>21 477</i>	<i>22 603</i>	<i>22 996</i>	<i>24 390</i>	<i>25 534</i>
<i>Total final consumption expenditure</i>	<i>24 456</i>	<i>25 469</i>	<i>26 100</i>	<i>27 635</i>	<i>28 798</i>	<i>30 016</i>	<i>30 435</i>	<i>32 297</i>	<i>33 551</i>
Gross fixed capital formation									
Private									
Dwellings	1 322	1 312	1 371	1 556	1 450	1 286	1 269	1 383	1 551
Other buildings and structures	1 157	716	580	535	528	704	921	1 372	1 009
Machinery and equipment	1 543	1 719	1 775	1 679	2 880	2 552	2 838	3 057	2 633
Livestock	32	20	49	53	48	75	83	95	96
Intangible fixed assets	251	200	279	273	250	257	333	436	507
Ownership transfer costs	301	293	344	363	380	311	311	363	377
<i>Total private gross fixed capital formation</i>	<i>4 606</i>	<i>4 260</i>	<i>4 399</i>	<i>4 459</i>	<i>5 536</i>	<i>5 185</i>	<i>5 755</i>	<i>6 705</i>	<i>6 173</i>
Public									
Public corporations									
Commonwealth	429	409	347	290	375	394	388	307	320
State and local	437	524	451	306	248	113	166	147	293
<i>Total public corporations gross fixed capital formation</i>	<i>866</i>	<i>933</i>	<i>797</i>	<i>596</i>	<i>623</i>	<i>507</i>	<i>554</i>	<i>454</i>	<i>613</i>
General government									
National	248	222	203	221	230	223	234	197	194
State and local	588	518	581	550	609	575	656	659	566
<i>Total general government gross fixed capital formation</i>	<i>836</i>	<i>740</i>	<i>784</i>	<i>771</i>	<i>839</i>	<i>798</i>	<i>890</i>	<i>856</i>	<i>760</i>
<i>Total public gross fixed capital formation</i>	<i>1 702</i>	<i>1 674</i>	<i>1 582</i>	<i>1 366</i>	<i>1 462</i>	<i>1 305</i>	<i>1 444</i>	<i>1 310</i>	<i>1 374</i>
<i>Total gross fixed capital formation</i>	<i>6 308</i>	<i>5 934</i>	<i>5 981</i>	<i>5 825</i>	<i>6 998</i>	<i>6 490</i>	<i>7 198</i>	<i>8 015</i>	<i>7 547</i>
State final demand									
International trade—exports of goods	3 116	3 571	3 944	4 097	4 033	4 723	5 263	5 260	5 666
less International trade—imports of goods	2 186	2 389	3 057	2 789	3 103	3 090	3 370	3 871	3 623
Balancing item(a)	-2 324	-2 846	-1 819	-2 057	-2 950	-1 949	-2 560	-2 048	-2 568
Gross state product	29 370	29 739	31 148	32 712	33 777	36 190	36 967	39 652	40 573

(a) Calculated as the residual of GSP less state final demand less international trade in exports of goods plus international trade in imports of goods. The balancing item implicitly comprises changes in inventories, net international trade in services, total net interstate trade and statistical discrepancy (E).

	1990-91	1991-92	1992-93	1993-94	1994-95	1995-96	1996-97	1997-98	1998-99
	\$m	\$m	\$m	\$m	\$m	\$m	\$m	\$m	\$m
Final consumption expenditure									
General government									
National	2 076	2 299	2 417	2 379	2 487	2 594	2 568	2 717	2 881
State and local	4 586	4 829	4 938	5 115	5 041	5 985	6 269	6 963	7 040
<i>Total general government final consumption</i>	<i>6 662</i>	<i>7 128</i>	<i>7 355</i>	<i>7 494</i>	<i>7 528</i>	<i>8 579</i>	<i>8 836</i>	<i>9 680</i>	<i>9 921</i>
Households									
Food	2 475	2 680	2 910	3 148	3 371	3 601	3 557	3 788	4 130
Alcoholic beverages and tobacco	658	651	668	809	859	905	899	911	936
Clothing and footwear	954	1 023	1 136	1 209	1 282	1 330	1 291	1 242	1 321
Housing, water, electricity, gas and other fuels	4 045	4 137	4 309	4 580	4 921	5 213	5 511	5 824	6 104
Furnishings and other household equipment	1 300	1 432	1 568	1 778	1 814	1 938	1 991	2 086	2 115
Health	781	876	870	918	995	1 022	1 042	1 050	1 153
Transport	2 770	2 905	3 101	3 211	3 413	3 573	3 763	4 000	4 065
Communications	326	370	419	461	522	588	643	699	747
Recreation and culture	2 285	2 458	2 767	3 162	3 296	3 535	3 618	3 747	3 689
Education services	361	412	451	504	555	612	699	801	874
Hotels, cafes and restaurants	1 564	1 660	1 780	1 942	2 151	2 333	2 253	2 370	2 556
Miscellaneous goods and services	3 188	3 393	3 549	3 578	3 577	3 850	4 062	4 648	4 935
Net expenditure interstate	-4	-5	-5	-5	-8	-8	-8	-8	-8
<i>Total household final consumption expenditure</i>	<i>20 702</i>	<i>21 991</i>	<i>23 523</i>	<i>25 296</i>	<i>26 746</i>	<i>28 491</i>	<i>29 321</i>	<i>31 157</i>	<i>32 617</i>
<i>Total final consumption expenditure</i>	<i>27 364</i>	<i>29 119</i>	<i>30 878</i>	<i>32 790</i>	<i>34 274</i>	<i>37 070</i>	<i>38 157</i>	<i>40 837</i>	<i>42 538</i>
Gross fixed capital formation									
Private									
Dwellings	1 737	1 670	2 105	2 654	2 986	2 693	2 676	3 037	3 344
Other buildings and structures	1 416	1 375	1 430	1 943	1 874	2 501	2 784	5 707	3 348
Machinery and equipment	3 475	3 307	4 540	4 278	5 498	5 862	5 859	7 081	6 619
Livestock	49	34	93	85	106	153	155	181	182
Intangible fixed assets	761	738	850	909	1 040	1 088	1 398	1 486	1 610
Ownership transfer costs	418	465	557	773	709	694	750	948	884
<i>Total private gross fixed capital formation</i>	<i>7 856</i>	<i>7 589</i>	<i>9 574</i>	<i>10 643</i>	<i>12 212</i>	<i>12 992</i>	<i>13 622</i>	<i>18 441</i>	<i>15 987</i>
Public									
Public corporations									
Commonwealth	485	465	398	336	440	468	469	374	396
State and local	911	659	828	643	418	783	1 119	-1 050	1 054
<i>Total public corporations gross fixed capital formation</i>	<i>1 396</i>	<i>1 124</i>	<i>1 226</i>	<i>979</i>	<i>858</i>	<i>1 251</i>	<i>1 588</i>	<i>- 675</i>	<i>1 451</i>
General government									
National	185	225	213	232	249	264	259	273	312
State and local	779	745	859	728	752	921	867	1 047	1 149
<i>Total general government gross fixed capital formation</i>	<i>964</i>	<i>970</i>	<i>1 072</i>	<i>960</i>	<i>1 001</i>	<i>1 185</i>	<i>1 126</i>	<i>1 320</i>	<i>1 461</i>
<i>Total public gross fixed capital formation</i>	<i>2 359</i>	<i>2 094</i>	<i>2 298</i>	<i>1 939</i>	<i>1 859</i>	<i>2 437</i>	<i>2 714</i>	<i>645</i>	<i>2 912</i>
<i>Total gross fixed capital formation</i>	<i>10 215</i>	<i>9 683</i>	<i>11 872</i>	<i>12 582</i>	<i>14 071</i>	<i>15 428</i>	<i>16 335</i>	<i>19 086</i>	<i>18 898</i>
State final demand									
International trade—exports of goods	13 116	14 628	15 726	15 918	16 645	19 175	19 665	23 160	22 296
less International trade—imports of goods	3 623	3 537	4 949	4 767	5 779	6 247	6 685	8 458	8 792
Balancing item(a)	-7 000	-8 049	-9 863	-9 394	-8 397	-10 268	-10 305	-12 708	-11 714
Gross state product	40 072	41 844	43 664	47 130	50 814	55 158	57 168	61 917	63 226

(a) Calculated as the residual of GSP less state final demand less international trade in exports of goods plus international trade in imports of goods. The balancing item implicitly comprises changes in inventories, net international trade in services, total net interstate trade and statistical discrepancy (E).

	1990-91	1991-92	1992-93	1993-94	1994-95	1995-96	1996-97	1997-98	1998-99
	\$m	\$m	\$m	\$m	\$m	\$m	\$m	\$m	\$m
Final consumption expenditure									
General government									
National	660	702	734	747	785	820	814	861	910
State and local	1 469	1 448	1 514	1 560	1 614	1 658	1 741	1 741	1 857
<i>Total general government final consumption</i>	<i>2 129</i>	<i>2 150</i>	<i>2 248</i>	<i>2 307</i>	<i>2 399</i>	<i>2 478</i>	<i>2 555</i>	<i>2 602</i>	<i>2 767</i>
Households									
Food	721	749	810	877	881	944	955	978	958
Alcoholic beverages and tobacco	198	190	185	225	230	236	244	247	256
Clothing and footwear	270	275	275	290	280	285	283	289	294
Housing, water, electricity, gas and other fuels	1 010	1 093	1 170	1 227	1 267	1 332	1 402	1 475	1 508
Furnishings and other household equipment	358	383	397	416	438	450	456	462	467
Health	232	263	239	265	281	306	321	323	338
Transport	723	728	755	777	808	846	906	929	938
Communications	84	97	109	119	133	151	164	178	187
Recreation and culture	572	629	665	696	730	762	752	824	834
Education services	98	105	109	117	121	128	143	155	164
Hotels, cafes and restaurants	429	429	439	474	506	528	527	549	584
Miscellaneous goods and services	854	907	959	937	920	981	1 044	1 138	1 243
Net expenditure interstate	-51	-49	-49	-50	-56	-62	-64	-69	-72
<i>Total household final consumption expenditure</i>	<i>5 498</i>	<i>5 797</i>	<i>6 058</i>	<i>6 369</i>	<i>6 541</i>	<i>6 886</i>	<i>7 130</i>	<i>7 477</i>	<i>7 698</i>
<i>Total final consumption expenditure</i>	<i>7 627</i>	<i>7 947</i>	<i>8 306</i>	<i>8 676</i>	<i>8 940</i>	<i>9 364</i>	<i>9 685</i>	<i>10 079</i>	<i>10 465</i>
Gross fixed capital formation									
Private									
Dwellings	351	395	454	511	514	453	424	396	363
Other buildings and structures	150	272	178	149	168	224	246	211	214
Machinery and equipment	599	446	504	544	803	740	742	653	549
Livestock	13	6	20	24	18	34	37	42	44
Intangible fixed assets	40	44	53	51	56	58	74	134	99
Ownership transfer costs	86	83	88	91	99	88	69	63	76
<i>Total private gross fixed capital formation</i>	<i>1 239</i>	<i>1 246</i>	<i>1 297</i>	<i>1 370</i>	<i>1 657</i>	<i>1 598</i>	<i>1 592</i>	<i>1 499</i>	<i>1 345</i>
Public									
Public corporations									
Commonwealth	137	130	110	92	119	125	123	96	99
State and local	209	171	143	282	117	165	157	182	176
<i>Total public corporations gross fixed capital formation</i>	<i>346</i>	<i>302</i>	<i>253</i>	<i>374</i>	<i>236</i>	<i>290</i>	<i>280</i>	<i>278</i>	<i>275</i>
General government									
National	59	72	64	71	73	69	68	52	48
State and local	171	160	233	192	195	228	209	188	152
<i>Total general government gross fixed capital formation</i>	<i>230</i>	<i>232</i>	<i>297</i>	<i>263</i>	<i>268</i>	<i>297</i>	<i>277</i>	<i>240</i>	<i>200</i>
<i>Total public gross fixed capital formation</i>	<i>576</i>	<i>534</i>	<i>550</i>	<i>637</i>	<i>504</i>	<i>587</i>	<i>557</i>	<i>518</i>	<i>475</i>
<i>Total gross fixed capital formation</i>	<i>1 815</i>	<i>1 780</i>	<i>1 848</i>	<i>2 006</i>	<i>2 162</i>	<i>2 184</i>	<i>2 149</i>	<i>2 018</i>	<i>1 821</i>
State final demand									
International trade—exports of goods	1 390	1 498	1 597	1 668	1 673	1 698	1 786	2 334	2 151
less International trade—imports of goods	298	286	333	444	345	350	392	379	397
Balancing item(a)	-2 095	-2 273	-2 429	-2 752	-2 718	-2 648	-2 685	-3 259	-2 926
Gross state product	8 439	8 666	8 988	9 155	9 712	10 249	10 542	10 792	11 115

(a) Calculated as the residual of GSP less state final demand less international trade in exports of goods plus international trade in imports of goods. The balancing item implicitly comprises changes in inventories, net international trade in services, total net interstate trade and statistical discrepancy (E).

	1990-91	1991-92	1992-93	1993-94	1994-95	1995-96	1996-97	1997-98	1998-99
	\$m	\$m	\$m	\$m	\$m	\$m	\$m	\$m	\$m
Final consumption expenditure									
General government									
National	453	509	535	625	674	702	699	740	777
State and local	928	963	1 030	1 031	1 075	1 264	1 355	1 485	1 516
<i>Total general government final consumption</i>	<i>1 381</i>	<i>1 472</i>	<i>1 565</i>	<i>1 656</i>	<i>1 749</i>	<i>1 966</i>	<i>2 054</i>	<i>2 225</i>	<i>2 293</i>
Households									
Food	333	369	391	407	463	524	494	486	520
Alcoholic beverages and tobacco	87	89	91	94	98	111	112	118	123
Clothing and footwear	74	79	85	88	100	115	100	101	112
Housing, water, electricity, gas and other fuels	324	358	378	399	426	458	498	533	572
Furnishings and other household equipment	109	112	120	128	145	156	147	162	174
Health	63	67	64	67	71	74	76	80	85
Transport	271	262	278	287	325	337	343	379	371
Communications	30	34	40	45	52	57	64	70	76
Recreation and culture	214	228	248	252	293	334	335	388	412
Education services	18	18	22	19	19	23	29	32	36
Hotels, cafes and restaurants	245	273	281	295	332	377	367	381	416
Miscellaneous goods and services	324	334	373	372	393	435	471	576	648
Net expenditure interstate	-114	-119	-117	-130	-151	-169	-192	-187	-180
<i>Total household final consumption expenditure</i>	<i>1 978</i>	<i>2 102</i>	<i>2 254</i>	<i>2 322</i>	<i>2 564</i>	<i>2 830</i>	<i>2 844</i>	<i>3 120</i>	<i>3 365</i>
<i>Total final consumption expenditure</i>	<i>3 359</i>	<i>3 574</i>	<i>3 819</i>	<i>3 978</i>	<i>4 313</i>	<i>4 796</i>	<i>4 898</i>	<i>5 345</i>	<i>5 658</i>
Gross fixed capital formation									
Private									
Dwellings	123	159	180	210	261	297	315	423	517
Other buildings and structures	96	82	114	190	167	248	264	445	1 145
Machinery and equipment	334	197	185	302	225	417	386	289	402
Livestock	2	-5	22	36	30	41	29	39	58
Intangible fixed assets	200	154	177	209	297	283	278	363	232
Ownership transfer costs	28	33	34	35	39	44	61	73	70
<i>Total private gross fixed capital formation</i>	<i>784</i>	<i>621</i>	<i>711</i>	<i>981</i>	<i>1 019</i>	<i>1 330</i>	<i>1 333</i>	<i>1 631</i>	<i>2 424</i>
Public									
Public corporations									
Commonwealth	49	47	40	34	45	48	48	39	41
State and local	39	32	42	41	75	32	29	33	13
<i>Total public corporations gross fixed capital formation</i>	<i>88</i>	<i>79</i>	<i>82</i>	<i>75</i>	<i>120</i>	<i>80</i>	<i>78</i>	<i>71</i>	<i>54</i>
General government									
National	41	40	36	37	36	43	39	30	15
State and local	180	170	149	151	203	213	250	308	340
<i>Total general government gross fixed capital formation</i>	<i>221</i>	<i>210</i>	<i>185</i>	<i>188</i>	<i>239</i>	<i>256</i>	<i>289</i>	<i>338</i>	<i>355</i>
<i>Total public gross fixed capital formation</i>	<i>310</i>	<i>289</i>	<i>267</i>	<i>263</i>	<i>359</i>	<i>336</i>	<i>366</i>	<i>409</i>	<i>409</i>
<i>Total gross fixed capital formation</i>	<i>1 094</i>	<i>910</i>	<i>978</i>	<i>1 244</i>	<i>1 378</i>	<i>1 666</i>	<i>1 700</i>	<i>2 040</i>	<i>2 833</i>
State final demand									
International trade—exports of goods	1 848	1 541	1 343	1 135	1 085	1 222	1 258	1 212	1 259
less International trade—imports of goods	565	428	272	268	336	392	384	646	483
Balancing item(a)	-1 026	-1 157	-1 321	-1 507	-1 478	-1 870	-1 768	-1 950	-2 786
Gross state product	4 709	4 440	4 548	4 582	4 962	5 422	5 703	6 002	6 481

(a) Calculated as the residual of GSP less state final demand less international trade in exports of goods plus international trade in imports of goods. The balancing item implicitly comprises changes in inventories, net international trade in services, total net interstate trade and statistical discrepancy (E).

	1990-91	1991-92	1992-93	1993-94	1994-95	1995-96	1996-97	1997-98	1998-99
	\$m	\$m	\$m	\$m	\$m	\$m	\$m	\$m	\$m
Final consumption expenditure									
General government									
National	5 982	6 208	6 505	7 562	8 065	8 409	8 388	8 883	9 402
State and local	949	926	987	950	972	1 018	1 069	1 081	1 139
<i>Total general government final consumption</i>	<i>6 931</i>	<i>7 134</i>	<i>7 492</i>	<i>8 512</i>	<i>9 037</i>	<i>9 427</i>	<i>9 457</i>	<i>9 964</i>	<i>10 541</i>
Households									
Food	418	468	509	561	601	639	649	670	698
Alcoholic beverages and tobacco	109	112	123	122	122	137	144	151	157
Clothing and footwear	215	236	249	252	242	259	256	259	268
Housing, water, electricity, gas and other fuels	891	984	1 084	1 132	1 161	1 177	1 197	1 251	1 315
Furnishings and other household equipment	259	284	301	303	314	308	323	344	349
Health	149	160	162	163	162	165	171	173	188
Transport	563	567	576	612	645	661	673	729	749
Communications	69	76	87	94	101	115	126	135	145
Recreation and culture	476	543	604	668	687	701	712	776	861
Education services	103	113	122	133	132	137	149	166	159
Hotels, cafes and restaurants	255	267	277	293	310	337	341	369	398
Miscellaneous goods and services	633	687	727	755	763	805	875	1 012	1 108
Net expenditure interstate	59	61	65	83	96	98	106	92	65
<i>Total household final consumption expenditure</i>	<i>4 198</i>	<i>4 553</i>	<i>4 885</i>	<i>5 165</i>	<i>5 334</i>	<i>5 536</i>	<i>5 720</i>	<i>6 129</i>	<i>6 461</i>
<i>Total final consumption expenditure</i>	<i>11 129</i>	<i>11 687</i>	<i>12 377</i>	<i>13 677</i>	<i>14 371</i>	<i>14 963</i>	<i>15 177</i>	<i>16 093</i>	<i>17 002</i>
Gross fixed capital formation									
Private									
Dwellings	320	464	529	550	490	372	348	318	369
Other buildings and structures	206	240	231	204	201	198	233	445	380
Machinery and equipment	172	295	285	330	120	220	194	329	249
Livestock	—	—	—	—	—	—	—	—	—
Intangible fixed assets	79	80	97	103	104	104	126	174	216
Ownership transfer costs	79	101	113	104	101	78	77	82	87
<i>Total private gross fixed capital formation</i>	<i>856</i>	<i>1 179</i>	<i>1 254</i>	<i>1 291</i>	<i>1 016</i>	<i>973</i>	<i>978</i>	<i>1 348</i>	<i>1 301</i>
Public									
Public corporations									
Commonwealth	90	87	77	66	84	89	88	70	73
State and local	89	59	73	68	79	78	60	54	115
<i>Total public corporations gross fixed capital formation</i>	<i>178</i>	<i>146</i>	<i>150</i>	<i>134</i>	<i>163</i>	<i>167</i>	<i>148</i>	<i>124</i>	<i>188</i>
General government									
National	427	487	404	461	357	332	276	-117	-8
State and local	164	146	179	141	152	95	123	133	113
<i>Total general government gross fixed capital formation</i>	<i>591</i>	<i>633</i>	<i>583</i>	<i>602</i>	<i>509</i>	<i>427</i>	<i>399</i>	<i>16</i>	<i>105</i>
<i>Total public gross fixed capital formation</i>	<i>770</i>	<i>779</i>	<i>733</i>	<i>736</i>	<i>671</i>	<i>594</i>	<i>547</i>	<i>140</i>	<i>293</i>
<i>Total gross fixed capital formation</i>	<i>1 626</i>	<i>1 958</i>	<i>1 987</i>	<i>2 026</i>	<i>1 687</i>	<i>1 567</i>	<i>1 524</i>	<i>1 488</i>	<i>1 594</i>
State final demand									
International trade—exports of goods	7	11	8	13	21	20	12	21	31
less International trade—imports of goods	28	26	19	22	17	9	12	10	12
Balancing item(a)	-4 710	-5 228	-5 396	-6 246	-6 144	-6 098	-5 826	-6 065	-6 575
Gross state product	8 024	8 403	8 958	9 449	9 918	10 441	10 876	11 527	12 040

— nil or rounded to zero (including null cells)

(a) Calculated as the residual of GSP less state final demand less international trade in exports of goods plus international trade in imports of goods. The balancing item implicitly comprises changes in inventories, net international trade in services, total net interstate trade and statistical discrepancy (E).

	1990-91	1991-92	1992-93	1993-94	1994-95	1995-96	1996-97	1997-98	1998-99
	\$m	\$m	\$m	\$m	\$m	\$m	\$m	\$m	\$m
Final consumption expenditure									
General government									
National	30 768	32 986	34 631	36 045	37 495	39 018	38 740	40 980	43 418
State and local	44 998	47 950	49 951	50 483	52 096	55 975	58 741	62 065	64 527
<i>Total general government final consumption</i>	<i>75 766</i>	<i>80 936</i>	<i>84 582</i>	<i>86 528</i>	<i>89 591</i>	<i>94 993</i>	<i>97 481</i>	<i>103 045</i>	<i>107 945</i>
Households									
Food	27 157	28 444	29 690	31 253	33 916	37 015	38 173	40 001	42 474
Alcoholic beverages and tobacco	7 431	7 562	8 133	8 605	8 953	9 786	10 206	10 478	10 836
Clothing and footwear	11 206	11 779	11 942	12 071	12 516	12 822	12 499	12 931	13 853
Housing, water, electricity, gas and other fuels	48 856	51 428	53 692	56 056	58 851	62 142	65 382	68 975	71 931
Furnishings and other household equipment	14 092	15 038	15 571	16 370	17 338	17 997	18 132	18 807	19 568
Health	9 153	9 986	10 252	10 776	11 221	11 595	11 878	11 946	13 105
Transport	29 960	30 365	31 869	32 896	35 623	37 335	38 985	41 440	42 759
Communications	3 468	3 968	4 480	4 943	5 463	6 189	6 773	7 358	7 874
Recreation and culture	24 156	25 797	27 337	29 263	32 101	34 939	36 226	38 796	40 657
Education services	4 296	4 708	5 006	5 341	5 679	6 156	6 809	7 588	8 190
Hotels, cafes and restaurants	18 118	18 880	19 532	20 769	22 878	24 749	25 007	26 295	28 480
Miscellaneous goods and services	34 345	36 041	37 562	37 609	37 856	40 557	43 505	48 792	52 923
<i>Total household final consumption expenditure</i>	<i>232 238</i>	<i>243 996</i>	<i>255 066</i>	<i>265 952</i>	<i>282 395</i>	<i>301 282</i>	<i>313 575</i>	<i>333 407</i>	<i>352 650</i>
<i>Total final consumption expenditure</i>	<i>308 004</i>	<i>324 932</i>	<i>339 648</i>	<i>352 480</i>	<i>371 986</i>	<i>396 275</i>	<i>411 056</i>	<i>436 452</i>	<i>460 595</i>
Gross fixed capital formation									
Private									
Dwellings	17 484	17 936	20 878	23 893	25 626	23 620	24 372	28 431	31 209
Other buildings and structures	15 372	12 084	10 908	11 399	12 545	15 766	19 002	22 689	23 129
Machinery and equipment	24 252	23 256	27 710	30 542	36 938	38 725	41 282	44 178	43 374
Livestock	343	208	657	765	711	1 130	1 088	1 300	1 482
Intangible fixed assets	3 959	3 950	4 789	5 090	5 406	5 530	6 698	8 455	9 722
Ownership transfer costs	4 540	4 666	4 908	5 787	5 568	5 483	6 114	7 338	7 513
<i>Total private gross fixed capital formation</i>	<i>65 950</i>	<i>62 100</i>	<i>69 850</i>	<i>77 476</i>	<i>86 794</i>	<i>90 254</i>	<i>98 556</i>	<i>112 391</i>	<i>116 429</i>
Public									
Public corporations									
Commonwealth	5 226	5 012	4 321	3 668	4 737	5 016	4 999	3 992	4 200
State and local	7 506	7 369	6 765	6 678	7 465	6 623	4 832	4 406	6 993
<i>Total public corporations gross fixed capital formation</i>	<i>12 732</i>	<i>12 381</i>	<i>11 086</i>	<i>10 346</i>	<i>12 202</i>	<i>11 639</i>	<i>9 831</i>	<i>8 398</i>	<i>11 193</i>
General government									
National	2 942	3 157	3 016	3 362	3 333	3 520	3 476	2 712	3 012
State and local	7 368	7 208	8 091	7 757	8 323	8 245	9 307	9 714	10 492
<i>Total general government gross fixed capital formation</i>	<i>10 310</i>	<i>10 365</i>	<i>11 107</i>	<i>11 119</i>	<i>11 656</i>	<i>11 765</i>	<i>12 783</i>	<i>12 426</i>	<i>13 504</i>
<i>Total public gross fixed capital formation</i>	<i>23 042</i>	<i>22 746</i>	<i>22 193</i>	<i>21 465</i>	<i>23 858</i>	<i>23 404</i>	<i>22 614</i>	<i>20 824</i>	<i>24 697</i>
<i>Total gross fixed capital formation</i>	<i>88 992</i>	<i>84 846</i>	<i>92 043</i>	<i>98 941</i>	<i>110 652</i>	<i>113 658</i>	<i>121 170</i>	<i>133 215</i>	<i>141 126</i>
Domestic final demand									
International trade—exports of goods	52 140	54 677	60 371	64 343	66 824	75 890	78 751	87 590	86 214
less International trade—imports of goods	48 741	50 821	59 366	64 143	74 122	77 317	78 172	89 115	95 154
Balancing item(a)	-3 212	-7 207	-5 294	-1 837	- 795	- 388	824	-2 257	531
Gross domestic product	397 180	406 427	427 404	449 785	474 546	508 113	533 632	565 881	593 311

(a) Calculated as the residual of GDP less domestic final demand less international trade in exports of goods plus international trade in imports of goods. The balancing item implicitly comprises changes in inventories, net international trade in services and statistical discrepancy (E).

	1990-91	1991-92	1992-93	1993-94	1994-95	1995-96	1996-97	1997-98	1998-99
	\$m	\$m	\$m	\$m	\$m	\$m	\$m	\$m	\$m
NEW SOUTH WALES									
Compensation of employees	69 337	71 049	71 942	75 349	80 463	86 701	92 857	97 076	103 707
Gross operating surplus	40 677	43 514	46 269	49 279	51 478	55 389	58 115	63 211	66 804
Gross mixed income	14 084	12 886	13 566	13 672	13 921	14 924	15 985	16 727	17 601
Total factor income	124 098	127 449	131 777	138 300	145 862	157 014	166 957	177 014	188 112
Taxes less subsidies on production and imports	15 867	16 060	16 314	17 841	19 799	21 593	22 809	24 646	25 873
Statistical discrepancy (I)	630	1 048	1 278	832	—	—	—	—	-1 350
Gross state product at market prices	140 595	144 557	149 369	156 973	165 661	178 607	189 766	201 660	212 635
VICTORIA									
Compensation of employees	52 043	50 984	53 581	55 250	58 541	61 947	65 600	68 515	73 800
Gross operating surplus	31 429	32 240	34 597	36 634	37 011	38 366	39 648	42 393	45 291
Gross mixed income	10 347	10 374	10 959	11 258	11 516	13 173	12 798	13 681	14 425
Total factor income	93 819	93 598	99 137	103 142	107 068	113 486	118 046	124 589	133 516
Taxes less subsidies on production and imports	12 492	11 822	12 187	13 891	15 488	16 655	17 830	17 833	18 751
Statistical discrepancy (I)	478	770	961	623	—	—	—	—	-961
Gross state product at market prices	106 789	106 190	112 285	117 656	122 556	130 141	135 876	142 422	151 306
QUEENSLAND									
Compensation of employees	27 651	29 421	31 697	32 807	36 247	39 120	42 865	44 570	47 406
Gross operating surplus	17 400	18 388	20 840	22 240	23 149	24 817	25 286	27 586	27 990
Gross mixed income	7 584	7 850	8 478	8 879	9 076	9 083	9 539	10 135	10 906
Total factor income	52 635	55 659	61 015	63 926	68 472	73 020	77 690	82 291	86 302
Taxes less subsidies on production and imports	6 283	6 476	6 844	7 820	8 675	8 889	9 043	9 619	10 243
Statistical discrepancy (I)	265	454	586	382	—	—	—	—	-610
Gross state product at market prices	59 183	62 589	68 445	72 128	77 147	81 909	86 733	91 910	95 935
SOUTH AUSTRALIA									
Compensation of employees	14 770	14 660	15 131	16 145	16 587	17 528	18 139	18 905	19 284
Gross operating surplus	8 321	8 595	9 175	9 470	9 809	9 979	10 391	11 586	11 869
Gross mixed income	3 098	3 304	3 480	3 581	3 723	4 705	4 429	4 897	5 188
Total factor income	26 189	26 559	27 786	29 196	30 119	32 212	32 959	35 388	36 341
Taxes less subsidies on production and imports	3 049	2 964	3 095	3 343	3 658	3 978	4 008	4 264	4 490
Statistical discrepancy (I)	132	216	267	173	—	—	—	—	-258
Gross state product at market prices	29 370	29 739	31 148	32 712	33 777	36 190	36 967	39 652	40 573
WESTERN AUSTRALIA									
Compensation of employees	17 144	18 017	18 402	20 095	21 569	22 759	24 245	25 451	27 160
Gross operating surplus	14 772	15 388	15 532	16 536	17 894	19 555	20 222	22 590	22 356
Gross mixed income	3 840	4 157	5 202	5 532	6 206	7 333	7 079	7 605	7 660
Total factor income	35 756	37 562	39 136	42 163	45 669	49 647	51 546	55 646	57 176
Taxes less subsidies on production and imports	4 137	3 979	4 154	4 718	5 145	5 511	5 622	6 271	6 452
Statistical discrepancy (I)	179	303	374	249	—	—	—	—	-402
Gross state product at market prices	40 072	41 844	43 664	47 130	50 814	55 158	57 168	61 917	63 226
TASMANIA									
Compensation of employees	4 383	4 421	4 458	4 444	4 784	5 064	5 205	5 335	5 513
Gross operating surplus	2 290	2 435	2 575	2 647	2 840	3 033	3 152	3 154	3 296
Gross mixed income	989	972	1 082	1 145	1 154	1 162	1 199	1 297	1 376
Total factor income	7 662	7 828	8 115	8 236	8 778	9 259	9 556	9 786	10 185
Taxes less subsidies on production and imports	739	775	796	871	934	990	986	1 006	1 001
Statistical discrepancy (I)	38	63	77	48	—	—	—	—	-71
Gross state product at market prices	8 439	8 666	8 988	9 155	9 712	10 249	10 542	10 792	11 115

— nil or rounded to zero (including null cells)

	1990-91	1991-92	1992-93	1993-94	1994-95	1995-96	1996-97	1997-98	1998-99
	\$m	\$m	\$m	\$m	\$m	\$m	\$m	\$m	\$m
NORTHERN TERRITORY									
Compensation of employees	1 989	2 102	2 039	2 210	2 507	2 650	2 888	3 048	3 404
Gross operating surplus	2 092	1 875	1 947	1 671	1 703	1 912	1 982	2 075	2 154
Gross mixed income	276	266	303	382	399	447	467	442	497
Total factor income	4 357	4 243	4 289	4 263	4 609	5 009	5 337	5 565	6 055
Taxes less subsidies on production and imports	331	165	220	295	353	413	366	437	467
Statistical discrepancy (I)	21	32	39	24	—	—	—	—	-41
Gross state product at market prices	4 709	4 440	4 548	4 582	4 962	5 422	5 703	6 002	6 481
AUSTRALIAN CAPITAL TERRITORY									
Compensation of employees	4 983	5 120	5 406	5 831	6 206	6 578	6 998	7 367	7 836
Gross operating surplus	1 992	2 131	2 351	2 413	2 471	2 638	2 606	2 805	2 863
Gross mixed income	554	582	554	510	544	502	492	531	563
Total factor income	7 529	7 833	8 311	8 754	9 221	9 718	10 096	10 703	11 262
Taxes less subsidies on production and imports	459	509	570	645	697	723	780	824	855
Statistical discrepancy (I)	36	61	77	50	—	—	—	—	-77
Gross state product at market prices	8 024	8 403	8 958	9 449	9 918	10 441	10 876	11 527	12 040
AUSTRALIA									
Compensation of employees	192 300	195 774	202 656	212 131	226 904	242 347	258 797	270 267	288 110
Gross operating surplus	118 973	124 566	133 286	140 890	146 355	155 689	161 402	175 400	182 623
Gross mixed income	40 772	40 391	43 624	44 959	46 539	51 329	51 988	55 315	58 216
Total factor income	352 044	360 730	379 565	397 980	419 797	449 362	472 187	500 981	528 949
Taxes less subsidies on production and imports	43 357	42 750	44 180	49 424	54 749	58 751	61 445	64 900	68 132
Statistical discrepancy (I)	1 779	2 947	3 659	2 381	—	—	—	—	-3 770
Gross domestic product at market prices	397 180	406 427	427 404	449 785	474 546	508 113	533 632	565 881	593 311

— nil or rounded to zero (including null cells)

	1990-91	1991-92	1992-93	1993-94	1994-95	1995-96	1996-97	1997-98	1998-99
	\$m	\$m	\$m	\$m	\$m	\$m	\$m	\$m	\$m
Agriculture									
Compensation of employees	987	960	1 069	1 120	1 254	1 335	1 282	1 332	1 310
Gross operating surplus and gross mixed income	2 538	1 783	2 232	2 569	1 673	2 655	3 566	3 342	3 406
<i>Total</i>	3 525	2 743	3 301	3 689	2 927	3 990	4 848	4 674	4 716
Mining									
Compensation of employees	1 573	1 414	1 382	1 389	1 350	1 583	1 599	1 851	1 630
Gross operating surplus and gross mixed income	1 103	1 123	1 006	1 233	1 413	1 536	1 737	1 721	1 582
<i>Total</i>	2 676	2 537	2 388	2 622	2 763	3 119	3 336	3 572	3 212
Manufacturing									
Compensation of employees	10 525	10 414	10 615	11 144	11 627	12 568	12 400	12 898	12 848
Gross operating surplus and gross mixed income	6 239	6 879	7 832	8 827	9 282	9 459	10 405	11 744	12 433
<i>Total</i>	16 764	17 293	18 447	19 971	20 909	22 027	22 805	24 642	25 281
Electricity, gas and water									
Compensation of employees	1 579	1 692	1 609	1 507	1 450	1 465	1 263	1 195	1 150
Gross operating surplus and gross mixed income	2 620	2 942	3 101	3 146	3 030	2 860	2 897	3 002	3 017
<i>Total</i>	4 199	4 634	4 710	4 653	4 480	4 325	4 160	4 197	4 167
Construction									
Compensation of employees	3 974	3 463	3 478	3 943	4 576	4 590	4 756	5 032	5 760
Gross operating surplus and gross mixed income	3 515	3 431	3 137	3 369	3 865	4 647	5 125	6 184	6 934
<i>Total</i>	7 489	6 894	6 615	7 312	8 441	9 237	9 881	11 216	12 694
Wholesale trade									
Compensation of employees	5 696	6 008	6 232	6 455	6 364	6 745	7 259	7 590	8 078
Gross operating surplus and gross mixed income	2 824	2 850	2 844	3 049	3 084	3 079	2 633	2 518	2 700
<i>Total</i>	8 520	8 858	9 076	9 504	9 448	9 824	9 892	10 108	10 778
Retail trade									
Compensation of employees	4 916	4 948	5 121	5 573	5 826	6 321	6 896	7 438	8 139
Gross operating surplus and gross mixed income	2 176	2 258	2 315	2 457	2 571	2 658	2 102	2 252	2 610
<i>Total</i>	7 092	7 206	7 436	8 030	8 397	8 979	8 998	9 690	10 749
Accommodation, cafes and restaurants									
Compensation of employees	1 972	2 059	2 054	2 188	2 515	2 622	2 918	3 179	3 238
Gross operating surplus and gross mixed income	1 149	1 007	983	1 011	1 193	1 478	1 391	1 509	1 635
<i>Total</i>	3 121	3 066	3 037	3 199	3 708	4 100	4 309	4 688	4 873
Transport and storage									
Compensation of employees	4 688	4 851	4 605	5 003	5 572	5 564	6 115	6 258	6 461
Gross operating surplus and gross mixed income	2 316	2 429	2 564	2 661	2 832	3 221	3 165	3 180	3 689
<i>Total</i>	7 004	7 280	7 169	7 664	8 404	8 785	9 280	9 438	10 150
Communication services									
Compensation of employees	1 919	2 030	2 082	2 023	2 182	2 491	2 584	2 604	2 630
Gross operating surplus and gross mixed income	1 664	1 866	1 892	1 863	2 060	2 287	2 658	3 317	3 243
<i>Total</i>	3 583	3 896	3 974	3 886	4 242	4 778	5 242	5 921	5 873
Finance and insurance									
Compensation of employees	5 522	5 596	5 453	5 490	5 936	6 600	7 048	7 439	8 554
Gross operating surplus and gross mixed income	3 493	3 926	4 599	4 854	4 449	4 894	4 994	5 500	6 016
<i>Total</i>	9 015	9 522	10 052	10 344	10 385	11 494	12 042	12 939	14 570
Property and business services									
Compensation of employees	7 651	8 009	8 381	8 988	10 364	11 626	13 165	13 253	15 534
Gross operating surplus and gross mixed income	6 438	6 496	6 986	6 779	7 610	7 578	7 773	8 121	8 495
<i>Total</i>	14 089	14 505	15 367	15 767	17 974	19 204	20 938	21 374	24 029
Government administration and defence									
Compensation of employees	3 687	4 003	4 260	4 483	4 660	5 211	5 980	6 030	6 342
Education									
Compensation of employees	5 138	5 408	5 751	6 101	6 324	6 463	7 050	7 491	7 792
Gross operating surplus and gross mixed income	60	67	73	81	95	45	124	141	156
<i>Total</i>	5 198	5 475	5 824	6 182	6 419	6 508	7 174	7 632	7 948

TOTAL FACTOR INCOME BY INDUSTRY AND PRINCIPAL COMPONENTS, New South
Wales—Current prices *continued*

	1990-91	1991-92	1992-93	1993-94	1994-95	1995-96	1996-97	1997-98	1998-99
	\$m	\$m	\$m	\$m	\$m	\$m	\$m	\$m	\$m
Health and community services									
Compensation of employees	6 111	6 531	6 347	6 260	6 471	7 159	7 878	8 570	8 895
Gross operating surplus and gross mixed income	919	953	1 039	1 125	1 224	1 246	1 258	1 336	1 415
<i>Total</i>	7 030	7 484	7 386	7 385	7 695	8 405	9 136	9 906	10 310
Cultural and recreational services									
Compensation of employees	1 157	1 225	1 088	1 147	1 379	1 604	1 761	2 004	2 089
Gross operating surplus and gross mixed income	938	917	1 152	1 198	1 241	1 216	1 242	1 539	1 577
<i>Total</i>	2 095	2 142	2 240	2 345	2 620	2 820	3 003	3 543	3 666
Personal and other services									
Compensation of employees	2 242	2 438	2 415	2 535	2 613	2 754	2 903	2 912	3 257
Gross operating surplus and gross mixed income	351	377	433	378	501	678	752	827	888
<i>Total</i>	2 593	2 815	2 848	2 913	3 114	3 432	3 655	3 739	4 145
Ownership of dwellings									
Gross operating surplus	13 721	14 290	14 725	15 296	16 096	17 458	18 890	20 192	20 955
General government									
Gross operating surplus(a)	2 697	2 806	2 922	3 055	3 180	3 318	3 388	3 513	3 654
All industries									
Compensation of employees	69 337	71 049	71 942	75 349	80 463	86 701	92 857	97 076	103 707
Gross operating surplus and gross mixed income	54 761	56 400	59 835	62 951	65 399	70 313	74 100	79 938	84 405
Total	124 098	127 449	131 777	138 300	145 862	157 014	166 957	177 014	188 112

(a) State details for general government gross operating surplus by industry are not available.

	1990-91	1991-92	1992-93	1993-94	1994-95	1995-96	1996-97	1997-98	1998-99
	\$m	\$m	\$m	\$m	\$m	\$m	\$m	\$m	\$m
Agriculture									
Compensation of employees	510	470	480	534	566	571	682	703	787
Gross operating surplus and gross mixed income	2 117	2 303	2 723	3 051	2 283	3 347	2 959	3 040	3 144
<i>Total</i>	<i>2 627</i>	<i>2 773</i>	<i>3 203</i>	<i>3 585</i>	<i>2 849</i>	<i>3 918</i>	<i>3 641</i>	<i>3 743</i>	<i>3 931</i>
Mining									
Compensation of employees	396	370	338	325	339	349	313	390	437
Gross operating surplus and gross mixed income	3 580	3 350	3 641	3 356	2 985	2 920	2 664	2 583	2 376
<i>Total</i>	<i>3 976</i>	<i>3 720</i>	<i>3 979</i>	<i>3 681</i>	<i>3 324</i>	<i>3 269</i>	<i>2 977</i>	<i>2 973</i>	<i>2 813</i>
Manufacturing									
Compensation of employees	9 948	9 557	10 016	9 966	10 486	11 096	11 231	11 878	11 910
Gross operating surplus and gross mixed income	5 799	6 122	6 954	7 832	8 264	8 628	9 241	9 735	10 306
<i>Total</i>	<i>15 747</i>	<i>15 679</i>	<i>16 970</i>	<i>17 798</i>	<i>18 750</i>	<i>19 724</i>	<i>20 472</i>	<i>21 613</i>	<i>22 216</i>
Electricity, gas and water									
Compensation of employees	1 472	1 394	1 348	1 199	1 039	978	803	761	785
Gross operating surplus and gross mixed income	1 955	2 165	2 291	2 437	2 477	2 299	2 490	2 204	2 181
<i>Total</i>	<i>3 427</i>	<i>3 559</i>	<i>3 639</i>	<i>3 636</i>	<i>3 516</i>	<i>3 277</i>	<i>3 293</i>	<i>2 965</i>	<i>2 966</i>
Construction									
Compensation of employees	2 834	2 344	2 420	2 393	2 522	2 547	2 669	3 178	3 690
Gross operating surplus and gross mixed income	2 455	2 139	2 004	2 157	2 509	2 878	3 079	3 464	3 870
<i>Total</i>	<i>5 289</i>	<i>4 483</i>	<i>4 424</i>	<i>4 550</i>	<i>5 031</i>	<i>5 425</i>	<i>5 748</i>	<i>6 642</i>	<i>7 560</i>
Wholesale trade									
Compensation of employees	4 118	3 645	3 693	4 051	4 364	4 566	4 906	5 332	5 971
Gross operating surplus and gross mixed income	2 363	2 380	2 418	2 634	2 540	2 440	2 146	2 000	2 298
<i>Total</i>	<i>6 481</i>	<i>6 025</i>	<i>6 111</i>	<i>6 685</i>	<i>6 904</i>	<i>7 006</i>	<i>7 052</i>	<i>7 332</i>	<i>8 269</i>
Retail trade									
Compensation of employees	3 458	3 359	3 737	3 853	3 946	4 530	5 278	5 198	5 603
Gross operating surplus and gross mixed income	1 632	1 659	1 730	1 864	1 860	1 850	1 505	1 571	1 952
<i>Total</i>	<i>5 090</i>	<i>5 018</i>	<i>5 467</i>	<i>5 717</i>	<i>5 806</i>	<i>6 380</i>	<i>6 783</i>	<i>6 769</i>	<i>7 555</i>
Accommodation, cafes and restaurants									
Compensation of employees	777	902	1 065	1 121	1 245	1 294	1 393	1 519	1 578
Gross operating surplus and gross mixed income	545	478	450	441	495	570	573	646	725
<i>Total</i>	<i>1 322</i>	<i>1 380</i>	<i>1 515</i>	<i>1 562</i>	<i>1 740</i>	<i>1 864</i>	<i>1 966</i>	<i>2 165</i>	<i>2 303</i>
Transport and storage									
Compensation of employees	2 838	2 959	3 053	3 207	3 444	3 626	3 912	3 975	4 299
Gross operating surplus and gross mixed income	1 581	1 507	1 664	1 705	1 784	2 303	1 971	2 135	2 446
<i>Total</i>	<i>4 419</i>	<i>4 466</i>	<i>4 717</i>	<i>4 912</i>	<i>5 228</i>	<i>5 929</i>	<i>5 883</i>	<i>6 110</i>	<i>6 745</i>
Communication services									
Compensation of employees	1 625	1 619	1 761	1 796	1 912	2 078	2 042	1 981	1 990
Gross operating surplus and gross mixed income	1 145	1 452	1 448	1 675	1 766	1 879	2 190	2 624	2 598
<i>Total</i>	<i>2 770</i>	<i>3 071</i>	<i>3 209</i>	<i>3 471</i>	<i>3 678</i>	<i>3 957</i>	<i>4 232</i>	<i>4 605</i>	<i>4 588</i>
Finance and insurance									
Compensation of employees	3 164	3 171	3 043	3 502	3 670	4 221	4 528	4 818	5 493
Gross operating surplus and gross mixed income	2 155	2 429	3 191	3 499	3 052	2 982	3 071	3 755	4 620
<i>Total</i>	<i>5 319</i>	<i>5 600</i>	<i>6 234</i>	<i>7 001</i>	<i>6 722</i>	<i>7 203</i>	<i>7 599</i>	<i>8 573</i>	<i>10 113</i>
Property and business services									
Compensation of employees	5 756	5 166	5 452	5 867	6 891	7 609	8 297	8 195	9 918
Gross operating surplus and gross mixed income	4 223	4 150	4 334	4 227	4 897	4 999	5 052	5 443	5 748
<i>Total</i>	<i>9 979</i>	<i>9 316</i>	<i>9 786</i>	<i>10 094</i>	<i>11 788</i>	<i>12 608</i>	<i>13 349</i>	<i>13 638</i>	<i>15 666</i>
Government administration and defence									
Compensation of employees	3 405	3 539	3 565	3 639	3 766	3 647	3 862	3 895	3 806
Education									
Compensation of employees	4 469	4 667	5 172	5 293	5 463	5 425	5 692	6 074	6 364
Gross operating surplus and gross mixed income	49	58	65	71	82	38	106	122	134
<i>Total</i>	<i>4 518</i>	<i>4 725</i>	<i>5 237</i>	<i>5 364</i>	<i>5 545</i>	<i>5 463</i>	<i>5 798</i>	<i>6 196</i>	<i>6 498</i>

	1990-91	1991-92	1992-93	1993-94	1994-95	1995-96	1996-97	1997-98	1998-99
	\$m	\$m	\$m	\$m	\$m	\$m	\$m	\$m	\$m
Health and community services									
Compensation of employees	5 173	5 447	5 839	5 938	6 024	6 273	6 665	7 107	7 387
Gross operating surplus and gross mixed income	706	739	888	955	1 026	1 061	1 061	1 124	1 195
<i>Total</i>	5 879	6 186	6 727	6 893	7 050	7 334	7 726	8 231	8 582
Cultural and recreational services									
Compensation of employees	615	762	850	878	1 043	1 226	1 259	1 419	1 567
Gross operating surplus and gross mixed income	591	660	755	898	858	984	927	1 265	1 417
<i>Total</i>	1 206	1 422	1 605	1 776	1 901	2 210	2 186	2 684	2 984
Personal and other services									
Compensation of employees	1 485	1 613	1 749	1 688	1 821	1 911	2 068	2 092	2 215
Gross operating surplus and gross mixed income	294	338	389	335	454	605	664	747	803
<i>Total</i>	1 779	1 951	2 138	2 023	2 275	2 516	2 732	2 839	3 018
Ownership of dwellings									
Gross operating surplus	8 595	8 629	8 482	8 540	8 903	9 378	10 341	11 135	11 339
General government									
Gross operating surplus(a)	1 991	2 056	2 129	2 215	2 292	2 378	2 406	2 481	2 564
All industries									
Compensation of employees	52 043	50 984	53 581	55 250	58 541	61 947	65 600	68 515	73 800
Gross operating surplus and gross mixed income	41 776	42 614	45 556	47 892	48 527	51 539	52 446	56 074	59 716
Total	93 819	93 598	99 137	103 142	107 068	113 486	118 046	124 589	133 516

(a) State details for general government gross operating surplus by industry are not available.

	1990-91	1991-92	1992-93	1993-94	1994-95	1995-96	1996-97	1997-98	1998-99
	\$m	\$m	\$m	\$m	\$m	\$m	\$m	\$m	\$m
Agriculture									
Compensation of employees	738	676	625	666	749	776	963	963	996
Gross operating surplus and gross mixed income	2 039	1 889	2 203	2 637	2 293	2 286	2 188	2 216	2 508
<i>Total</i>	<i>2 777</i>	<i>2 565</i>	<i>2 828</i>	<i>3 303</i>	<i>3 042</i>	<i>3 062</i>	<i>3 151</i>	<i>3 179</i>	<i>3 504</i>
Mining									
Compensation of employees	1 205	1 215	1 336	1 273	1 229	1 503	1 585	1 643	1 623
Gross operating surplus and gross mixed income	2 190	2 129	2 846	2 460	2 377	2 833	2 931	3 112	2 861
<i>Total</i>	<i>3 395</i>	<i>3 344</i>	<i>4 182</i>	<i>3 733</i>	<i>3 606</i>	<i>4 336</i>	<i>4 516</i>	<i>4 755</i>	<i>4 484</i>
Manufacturing									
Compensation of employees	3 510	3 723	4 011	4 334	4 897	5 241	5 304	5 439	5 435
Gross operating surplus and gross mixed income	2 211	2 262	2 417	2 903	2 881	3 006	3 214	3 945	4 176
<i>Total</i>	<i>5 721</i>	<i>5 985</i>	<i>6 428</i>	<i>7 237</i>	<i>7 778</i>	<i>8 247</i>	<i>8 518</i>	<i>9 384</i>	<i>9 611</i>
Electricity, gas and water									
Compensation of employees	503	490	484	479	482	545	534	501	491
Gross operating surplus and gross mixed income	1 378	1 459	1 550	1 632	1 646	1 646	1 638	1 835	1 665
<i>Total</i>	<i>1 881</i>	<i>1 949</i>	<i>2 034</i>	<i>2 111</i>	<i>2 128</i>	<i>2 191</i>	<i>2 172</i>	<i>2 336</i>	<i>2 156</i>
Construction									
Compensation of employees	2 009	1 878	1 956	1 947	2 105	2 193	2 410	2 496	2 894
Gross operating surplus and gross mixed income	1 574	1 902	2 047	2 275	2 502	2 827	3 170	3 368	3 318
<i>Total</i>	<i>3 583</i>	<i>3 780</i>	<i>4 003</i>	<i>4 222</i>	<i>4 607</i>	<i>5 020</i>	<i>5 580</i>	<i>5 864</i>	<i>6 212</i>
Wholesale trade									
Compensation of employees	2 137	2 081	2 093	2 161	2 495	2 461	2 830	3 051	3 758
Gross operating surplus and gross mixed income	1 233	1 264	1 329	1 451	1 520	1 457	1 254	1 228	1 350
<i>Total</i>	<i>3 370</i>	<i>3 345</i>	<i>3 422</i>	<i>3 612</i>	<i>4 015</i>	<i>3 918</i>	<i>4 084</i>	<i>4 279</i>	<i>5 108</i>
Retail trade									
Compensation of employees	2 623	2 791	2 953	2 909	3 195	3 625	4 314	4 312	4 660
Gross operating surplus and gross mixed income	1 173	1 246	1 349	1 456	1 577	1 563	1 244	1 368	1 626
<i>Total</i>	<i>3 796</i>	<i>4 037</i>	<i>4 302</i>	<i>4 365</i>	<i>4 772</i>	<i>5 188</i>	<i>5 558</i>	<i>5 680</i>	<i>6 286</i>
Accommodation, cafes and restaurants									
Compensation of employees	909	1 092	1 127	1 226	1 441	1 478	1 717	1 865	1 937
Gross operating surplus and gross mixed income	562	493	483	499	593	706	716	814	824
<i>Total</i>	<i>1 471</i>	<i>1 585</i>	<i>1 610</i>	<i>1 725</i>	<i>2 034</i>	<i>2 184</i>	<i>2 433</i>	<i>2 679</i>	<i>2 761</i>
Transport and storage									
Compensation of employees	2 027	2 018	2 052	2 060	2 405	2 529	2 788	2 764	2 830
Gross operating surplus and gross mixed income	1 401	1 532	1 701	2 071	2 305	2 682	2 378	2 304	2 538
<i>Total</i>	<i>3 428</i>	<i>3 550</i>	<i>3 753</i>	<i>4 131</i>	<i>4 710</i>	<i>5 211</i>	<i>5 166</i>	<i>5 068</i>	<i>5 368</i>
Communication services									
Compensation of employees	749	752	856	852	933	1 000	1 017	1 026	1 071
Gross operating surplus and gross mixed income	689	882	916	952	1 106	1 150	1 321	1 669	1 672
<i>Total</i>	<i>1 438</i>	<i>1 634</i>	<i>1 772</i>	<i>1 804</i>	<i>2 039</i>	<i>2 150</i>	<i>2 338</i>	<i>2 695</i>	<i>2 743</i>
Finance and insurance									
Compensation of employees	1 297	1 329	1 400	1 464	1 619	1 798	1 997	1 967	2 070
Gross operating surplus and gross mixed income	1 080	1 246	1 761	1 763	1 687	1 556	1 737	1 977	2 093
<i>Total</i>	<i>2 377</i>	<i>2 575</i>	<i>3 161</i>	<i>3 227</i>	<i>3 306</i>	<i>3 354</i>	<i>3 734</i>	<i>3 944</i>	<i>4 163</i>
Property and business services									
Compensation of employees	2 270	2 659	3 042	3 011	3 513	3 764	4 070	4 074	4 691
Gross operating surplus and gross mixed income	2 310	2 347	2 549	2 308	2 458	2 371	2 502	2 627	2 819
<i>Total</i>	<i>4 580</i>	<i>5 006</i>	<i>5 591</i>	<i>5 319</i>	<i>5 971</i>	<i>6 135</i>	<i>6 572</i>	<i>6 701</i>	<i>7 510</i>
Government administration and defence									
Compensation of employees	1 727	2 091	2 399	2 632	2 812	3 106	3 369	3 607	3 641
Education									
Compensation of employees	2 222	2 482	2 921	3 048	3 184	3 454	3 730	3 985	3 962
Gross operating surplus and gross mixed income	28	32	35	41	49	23	66	76	84
<i>Total</i>	<i>2 250</i>	<i>2 514</i>	<i>2 956</i>	<i>3 089</i>	<i>3 233</i>	<i>3 477</i>	<i>3 796</i>	<i>4 061</i>	<i>4 046</i>

	1990-91	1991-92	1992-93	1993-94	1994-95	1995-96	1996-97	1997-98	1998-99
	\$m	\$m	\$m	\$m	\$m	\$m	\$m	\$m	\$m
Health and community services									
Compensation of employees	2 621	2 796	2 961	3 249	3 400	3 638	4 052	4 505	4 755
Gross operating surplus and gross mixed income	400	421	489	544	594	626	642	692	743
<i>Total</i>	3 021	3 217	3 450	3 793	3 994	4 264	4 694	5 197	5 498
Cultural and recreational services									
Compensation of employees	341	430	449	442	502	637	671	695	771
Gross operating surplus and gross mixed income	348	353	484	540	541	556	549	665	702
<i>Total</i>	689	783	933	982	1 043	1 193	1 220	1 360	1 473
Personal and other services									
Compensation of employees	763	918	1 032	1 054	1 286	1 372	1 514	1 677	1 821
Gross operating surplus and gross mixed income	169	184	212	197	250	325	397	451	485
<i>Total</i>	932	1 102	1 244	1 251	1 536	1 697	1 911	2 128	2 306
Ownership of dwellings									
Gross operating surplus	4 775	5 102	5 381	5 749	6 135	6 486	7 025	7 436	7 384
General government									
Gross operating surplus(a)	1 424	1 495	1 566	1 641	1 711	1 801	1 853	1 938	2 048
All industries									
Compensation of employees	27 651	29 421	31 697	32 807	36 247	39 120	42 865	44 570	47 406
Gross operating surplus and gross mixed income	24 984	26 238	29 318	31 119	32 225	33 900	34 825	37 721	38 896
Total	52 635	55 659	61 015	63 926	68 472	73 020	77 690	82 291	86 302

(a) State details for general government gross operating surplus by industry are not available.

	1990-91	1991-92	1992-93	1993-94	1994-95	1995-96	1996-97	1997-98	1998-99
	\$m	\$m	\$m	\$m	\$m	\$m	\$m	\$m	\$m
Agriculture									
Compensation of employees	256	234	246	263	278	294	343	355	348
Gross operating surplus and gross mixed income	639	847	961	1 075	982	1 670	1 400	1 652	1 744
<i>Total</i>	<i>895</i>	<i>1 081</i>	<i>1 207</i>	<i>1 338</i>	<i>1 260</i>	<i>1 964</i>	<i>1 743</i>	<i>2 007</i>	<i>2 092</i>
Mining									
Compensation of employees	181	143	147	147	156	190	190	199	194
Gross operating surplus and gross mixed income	632	613	744	659	657	804	693	713	656
<i>Total</i>	<i>813</i>	<i>756</i>	<i>891</i>	<i>806</i>	<i>813</i>	<i>994</i>	<i>883</i>	<i>912</i>	<i>850</i>
Manufacturing									
Compensation of employees	2 679	2 654	2 766	2 803	2 842	3 077	3 055	3 078	3 049
Gross operating surplus and gross mixed income	1 862	1 851	1 835	2 166	2 190	2 245	2 440	2 978	3 153
<i>Total</i>	<i>4 541</i>	<i>4 505</i>	<i>4 601</i>	<i>4 969</i>	<i>5 032</i>	<i>5 322</i>	<i>5 495</i>	<i>6 056</i>	<i>6 202</i>
Electricity, gas and water									
Compensation of employees	361	348	339	310	305	296	258	280	276
Gross operating surplus and gross mixed income	466	480	585	412	546	563	796	887	993
<i>Total</i>	<i>827</i>	<i>828</i>	<i>924</i>	<i>722</i>	<i>851</i>	<i>859</i>	<i>1 054</i>	<i>1 167</i>	<i>1 269</i>
Construction									
Compensation of employees	927	753	710	764	816	847	875	969	990
Gross operating surplus and gross mixed income	751	699	620	636	727	807	875	1 115	1 040
<i>Total</i>	<i>1 678</i>	<i>1 452</i>	<i>1 330</i>	<i>1 400</i>	<i>1 543</i>	<i>1 654</i>	<i>1 750</i>	<i>2 084</i>	<i>2 030</i>
Wholesale trade									
Compensation of employees	1 027	984	1 061	1 066	1 039	1 097	1 113	1 245	1 223
Gross operating surplus and gross mixed income	473	462	447	493	493	481	403	391	421
<i>Total</i>	<i>1 500</i>	<i>1 446</i>	<i>1 508</i>	<i>1 559</i>	<i>1 532</i>	<i>1 578</i>	<i>1 516</i>	<i>1 636</i>	<i>1 644</i>
Retail trade									
Compensation of employees	995	1 037	1 048	1 081	1 165	1 252	1 417	1 535	1 555
Gross operating surplus and gross mixed income	615	631	629	685	709	715	553	604	702
<i>Total</i>	<i>1 610</i>	<i>1 668</i>	<i>1 677</i>	<i>1 766</i>	<i>1 874</i>	<i>1 967</i>	<i>1 970</i>	<i>2 139</i>	<i>2 257</i>
Accommodation, cafes and restaurants									
Compensation of employees	315	310	352	352	374	400	429	479	506
Gross operating surplus and gross mixed income	183	160	158	164	196	269	286	308	323
<i>Total</i>	<i>498</i>	<i>470</i>	<i>510</i>	<i>516</i>	<i>570</i>	<i>669</i>	<i>715</i>	<i>787</i>	<i>829</i>
Transport and storage									
Compensation of employees	821	1 003	1 029	1 022	1 014	1 041	1 051	937	999
Gross operating surplus and gross mixed income	534	540	673	764	835	966	811	801	928
<i>Total</i>	<i>1 355</i>	<i>1 543</i>	<i>1 702</i>	<i>1 786</i>	<i>1 849</i>	<i>2 007</i>	<i>1 862</i>	<i>1 738</i>	<i>1 927</i>
Communication services									
Compensation of employees	396	394	369	420	419	434	458	480	462
Gross operating surplus and gross mixed income	260	311	302	319	347	388	444	550	514
<i>Total</i>	<i>656</i>	<i>705</i>	<i>671</i>	<i>739</i>	<i>766</i>	<i>822</i>	<i>902</i>	<i>1 030</i>	<i>976</i>
Finance and insurance									
Compensation of employees	744	754	811	856	811	792	833	902	973
Gross operating surplus and gross mixed income	574	690	858	793	806	719	813	855	850
<i>Total</i>	<i>1 318</i>	<i>1 444</i>	<i>1 669</i>	<i>1 649</i>	<i>1 617</i>	<i>1 511</i>	<i>1 646</i>	<i>1 757</i>	<i>1 823</i>
Property and business services									
Compensation of employees	1 176	1 146	1 219	1 529	1 741	1 798	1 900	1 949	2 145
Gross operating surplus and gross mixed income	924	926	987	910	947	844	861	935	953
<i>Total</i>	<i>2 100</i>	<i>2 072</i>	<i>2 206</i>	<i>2 439</i>	<i>2 688</i>	<i>2 642</i>	<i>2 761</i>	<i>2 884</i>	<i>3 098</i>
Government administration and defence									
Compensation of employees	874	817	839	995	894	986	1 078	1 183	1 202
Education									
Compensation of employees	1 408	1 422	1 469	1 578	1 561	1 630	1 777	1 813	1 793
Gross operating surplus and gross mixed income	12	15	16	18	21	10	27	31	34
<i>Total</i>	<i>1 420</i>	<i>1 437</i>	<i>1 485</i>	<i>1 596</i>	<i>1 582</i>	<i>1 640</i>	<i>1 804</i>	<i>1 844</i>	<i>1 827</i>

TOTAL FACTOR INCOME BY INDUSTRY AND PRINCIPAL COMPONENTS, South
Australia—Current prices *continued*

	1990-91	1991-92	1992-93	1993-94	1994-95	1995-96	1996-97	1997-98	1998-99
	\$m	\$m	\$m	\$m	\$m	\$m	\$m	\$m	\$m
Health and community services									
Compensation of employees	1 787	1 783	1 836	1 976	2 117	2 308	2 272	2 370	2 406
Gross operating surplus and gross mixed income	216	229	239	260	273	278	278	291	308
<i>Total</i>	2 003	2 012	2 075	2 236	2 390	2 586	2 550	2 661	2 714
Cultural and recreational services									
Compensation of employees	206	219	212	258	283	336	345	378	416
Gross operating surplus and gross mixed income	156	147	176	184	180	166	139	180	195
<i>Total</i>	362	366	388	442	463	502	484	558	611
Personal and other services									
Compensation of employees	617	659	678	725	772	750	745	753	747
Gross operating surplus and gross mixed income	90	107	125	110	152	206	218	244	261
<i>Total</i>	707	766	803	835	924	956	963	997	1 008
Ownership of dwellings									
Gross operating surplus	2 365	2 499	2 584	2 658	2 701	2 755	2 974	3 113	3 122
General government									
Gross operating surplus(a)	667	692	716	745	770	798	809	835	860
All industries									
Compensation of employees	14 770	14 660	15 131	16 145	16 587	17 528	18 139	18 905	19 284
Gross operating surplus and gross mixed income	11 419	11 899	12 655	13 051	13 532	14 684	14 820	16 483	17 057
Total	26 189	26 559	27 786	29 196	30 119	32 212	32 959	35 388	36 341

(a) State details for general government gross operating surplus by industry are not available.

	1990-91	1991-92	1992-93	1993-94	1994-95	1995-96	1996-97	1997-98	1998-99
	\$m	\$m	\$m	\$m	\$m	\$m	\$m	\$m	\$m
Agriculture									
Compensation of employees	399	384	350	397	434	491	557	602	606
Gross operating surplus and gross mixed income	795	1 034	1 425	1 508	1 634	2 274	1 819	1 940	1 656
<i>Total</i>	<i>1 194</i>	<i>1 418</i>	<i>1 775</i>	<i>1 905</i>	<i>2 068</i>	<i>2 765</i>	<i>2 376</i>	<i>2 542</i>	<i>2 262</i>
Mining									
Compensation of employees	1 274	1 257	1 254	1 458	1 569	1 739	1 920	2 038	1 958
Gross operating surplus and gross mixed income	5 324	5 659	5 590	5 726	6 856	8 031	8 139	8 715	8 013
<i>Total</i>	<i>6 598</i>	<i>6 916</i>	<i>6 844</i>	<i>7 184</i>	<i>8 425</i>	<i>9 770</i>	<i>10 059</i>	<i>10 753</i>	<i>9 971</i>
Manufacturing									
Compensation of employees	2 073	2 004	1 981	2 139	2 252	2 571	2 657	2 671	2 891
Gross operating surplus and gross mixed income	1 552	1 542	1 626	1 772	1 946	2 030	2 166	2 607	2 760
<i>Total</i>	<i>3 625</i>	<i>3 546</i>	<i>3 607</i>	<i>3 911</i>	<i>4 198</i>	<i>4 601</i>	<i>4 823</i>	<i>5 278</i>	<i>5 651</i>
Electricity, gas and water									
Compensation of employees	379	397	351	357	340	350	307	325	316
Gross operating surplus and gross mixed income	836	772	821	901	815	1 020	1 261	1 328	1 220
<i>Total</i>	<i>1 215</i>	<i>1 169</i>	<i>1 172</i>	<i>1 258</i>	<i>1 155</i>	<i>1 370</i>	<i>1 568</i>	<i>1 653</i>	<i>1 536</i>
Construction									
Compensation of employees	1 269	1 259	1 350	1 449	1 481	1 469	1 621	1 801	2 053
Gross operating surplus and gross mixed income	1 047	1 120	1 200	1 460	1 555	1 912	2 148	2 557	2 516
<i>Total</i>	<i>2 316</i>	<i>2 379</i>	<i>2 550</i>	<i>2 909</i>	<i>3 036</i>	<i>3 381</i>	<i>3 769</i>	<i>4 358</i>	<i>4 569</i>
Wholesale trade									
Compensation of employees	1 295	1 268	1 334	1 514	1 631	1 617	1 666	1 711	1 730
Gross operating surplus and gross mixed income	817	859	926	1 060	1 059	1 036	878	854	932
<i>Total</i>	<i>2 112</i>	<i>2 127</i>	<i>2 260</i>	<i>2 574</i>	<i>2 690</i>	<i>2 653</i>	<i>2 544</i>	<i>2 565</i>	<i>2 662</i>
Retail trade									
Compensation of employees	1 204	1 266	1 343	1 503	1 598	1 788	1 976	2 037	2 191
Gross operating surplus and gross mixed income	670	722	801	908	936	947	743	811	957
<i>Total</i>	<i>1 874</i>	<i>1 988</i>	<i>2 144</i>	<i>2 411</i>	<i>2 534</i>	<i>2 735</i>	<i>2 719</i>	<i>2 848</i>	<i>3 148</i>
Accommodation, cafes and restaurants									
Compensation of employees	385	415	407	433	480	488	535	600	677
Gross operating surplus and gross mixed income	214	187	182	188	224	280	252	274	271
<i>Total</i>	<i>599</i>	<i>602</i>	<i>589</i>	<i>621</i>	<i>704</i>	<i>768</i>	<i>787</i>	<i>874</i>	<i>948</i>
Transport and storage									
Compensation of employees	1 216	1 342	1 194	1 220	1 361	1 358	1 487	1 530	1 751
Gross operating surplus and gross mixed income	747	728	822	825	912	1 045	1 010	1 092	1 256
<i>Total</i>	<i>1 963</i>	<i>2 070</i>	<i>2 016</i>	<i>2 045</i>	<i>2 273</i>	<i>2 403</i>	<i>2 497</i>	<i>2 622</i>	<i>3 007</i>
Communication services									
Compensation of employees	393	417	411	426	433	430	427	430	439
Gross operating surplus and gross mixed income	495	618	595	623	734	782	888	1 178	1 149
<i>Total</i>	<i>888</i>	<i>1 035</i>	<i>1 006</i>	<i>1 049</i>	<i>1 167</i>	<i>1 212</i>	<i>1 315</i>	<i>1 608</i>	<i>1 588</i>
Finance and insurance									
Compensation of employees	733	809	794	855	849	803	798	887	1 023
Gross operating surplus and gross mixed income	676	863	1 013	1 176	978	871	874	1 084	1 316
<i>Total</i>	<i>1 409</i>	<i>1 672</i>	<i>1 807</i>	<i>2 031</i>	<i>1 827</i>	<i>1 674</i>	<i>1 672</i>	<i>1 971</i>	<i>2 339</i>
Property and business services									
Compensation of employees	1 638	1 701	2 001	2 235	2 617	2 709	3 079	3 221	3 437
Gross operating surplus and gross mixed income	1 418	1 405	1 493	1 463	1 639	1 592	1 628	1 838	1 861
<i>Total</i>	<i>3 056</i>	<i>3 106</i>	<i>3 494</i>	<i>3 698</i>	<i>4 256</i>	<i>4 301</i>	<i>4 707</i>	<i>5 059</i>	<i>5 298</i>
Government administration and defence									
Compensation of employees	977	1 133	1 133	1 217	1 297	1 362	1 398	1 493	1 491
Education									
Compensation of employees	1 385	1 515	1 544	1 726	1 782	1 778	1 839	1 984	2 041
Gross operating surplus and gross mixed income	15	18	20	24	29	14	40	47	51
<i>Total</i>	<i>1 400</i>	<i>1 533</i>	<i>1 564</i>	<i>1 750</i>	<i>1 811</i>	<i>1 792</i>	<i>1 879</i>	<i>2 031</i>	<i>2 092</i>

TOTAL FACTOR INCOME BY INDUSTRY AND PRINCIPAL COMPONENTS, Western
Australia—Current Prices *continued*

	1990-91	1991-92	1992-93	1993-94	1994-95	1995-96	1996-97	1997-98	1998-99
	\$m	\$m	\$m	\$m	\$m	\$m	\$m	\$m	\$m
Health and community services									
Compensation of employees	1 743	1 849	1 926	2 067	2 240	2 556	2 696	2 754	3 056
Gross operating surplus and gross mixed income	220	231	255	277	310	323	323	345	370
<i>Total</i>	1 963	2 080	2 181	2 344	2 550	2 879	3 019	3 099	3 426
Cultural and recreational services									
Compensation of employees	165	210	223	256	280	342	358	409	464
Gross operating surplus and gross mixed income	245	240	283	315	332	295	337	402	452
<i>Total</i>	410	450	506	571	612	637	695	811	916
Personal and other services									
Compensation of employees	616	791	806	843	925	908	924	958	1 036
Gross operating surplus and gross mixed income	102	114	135	119	162	217	239	267	287
<i>Total</i>	718	905	941	962	1 087	1 125	1 163	1 225	1 323
Ownership of dwellings									
Gross operating surplus	2 592	2 555	2 635	2 778	3 002	3 200	3 522	3 782	3 827
General government									
Gross operating surplus(a)	847	878	912	945	977	1 019	1 034	1 074	1 122
All industries									
Compensation of employees	17 144	18 017	18 402	20 095	21 569	22 759	24 245	25 451	27 160
Gross operating surplus and gross mixed income	18 612	19 545	20 734	22 068	24 100	26 888	27 301	30 195	30 016
Total	35 756	37 562	39 136	42 163	45 669	49 647	51 546	55 646	57 176

(a) State details for general government gross operating surplus by industry are not available.

	1990-91	1991-92	1992-93	1993-94	1994-95	1995-96	1996-97	1997-98	1998-99
	\$m	\$m	\$m	\$m	\$m	\$m	\$m	\$m	\$m
Agriculture									
Compensation of employees	124	115	118	122	143	161	191	200	214
Gross operating surplus and gross mixed income	309	248	320	386	327	279	342	386	411
<i>Total</i>	<i>433</i>	<i>363</i>	<i>438</i>	<i>508</i>	<i>470</i>	<i>440</i>	<i>533</i>	<i>586</i>	<i>625</i>
Mining									
Compensation of employees	146	103	109	119	130	149	148	122	124
Gross operating surplus and gross mixed income	47	84	58	59	129	152	119	89	82
<i>Total</i>	<i>193</i>	<i>187</i>	<i>167</i>	<i>178</i>	<i>259</i>	<i>301</i>	<i>267</i>	<i>211</i>	<i>206</i>
Manufacturing									
Compensation of employees	741	731	723	679	743	763	770	798	829
Gross operating surplus and gross mixed income	441	440	471	521	559	627	625	633	670
<i>Total</i>	<i>1 182</i>	<i>1 171</i>	<i>1 194</i>	<i>1 200</i>	<i>1 302</i>	<i>1 390</i>	<i>1 395</i>	<i>1 431</i>	<i>1 499</i>
Electricity, gas and water									
Compensation of employees	155	166	157	141	128	124	106	102	102
Gross operating surplus and gross mixed income	223	262	285	264	306	335	404	373	430
<i>Total</i>	<i>378</i>	<i>428</i>	<i>442</i>	<i>405</i>	<i>434</i>	<i>459</i>	<i>510</i>	<i>475</i>	<i>532</i>
Construction									
Compensation of employees	217	218	222	217	257	238	239	231	251
Gross operating surplus and gross mixed income	193	275	245	246	276	333	368	334	300
<i>Total</i>	<i>410</i>	<i>493</i>	<i>467</i>	<i>463</i>	<i>533</i>	<i>571</i>	<i>607</i>	<i>565</i>	<i>551</i>
Wholesale trade									
Compensation of employees	252	234	225	246	256	254	236	241	262
Gross operating surplus and gross mixed income	157	159	163	175	172	163	139	134	140
<i>Total</i>	<i>409</i>	<i>393</i>	<i>388</i>	<i>421</i>	<i>428</i>	<i>417</i>	<i>375</i>	<i>375</i>	<i>402</i>
Retail trade									
Compensation of employees	303	347	385	379	384	430	440	469	495
Gross operating surplus and gross mixed income	236	243	258	274	276	272	215	232	263
<i>Total</i>	<i>539</i>	<i>590</i>	<i>643</i>	<i>653</i>	<i>660</i>	<i>702</i>	<i>655</i>	<i>701</i>	<i>758</i>
Accommodation, cafes and restaurants									
Compensation of employees	139	143	155	139	162	179	187	206	195
Gross operating surplus and gross mixed income	59	52	53	59	72	77	75	75	72
<i>Total</i>	<i>198</i>	<i>195</i>	<i>208</i>	<i>198</i>	<i>234</i>	<i>256</i>	<i>262</i>	<i>281</i>	<i>267</i>
Transport and storage									
Compensation of employees	217	256	246	233	237	246	243	226	250
Gross operating surplus and gross mixed income	156	137	151	158	172	204	180	182	211
<i>Total</i>	<i>373</i>	<i>393</i>	<i>397</i>	<i>391</i>	<i>409</i>	<i>450</i>	<i>423</i>	<i>408</i>	<i>461</i>
Communication services									
Compensation of employees	110	103	115	107	110	108	114	113	118
Gross operating surplus and gross mixed income	70	87	85	86	103	106	123	160	165
<i>Total</i>	<i>180</i>	<i>190</i>	<i>200</i>	<i>193</i>	<i>213</i>	<i>214</i>	<i>237</i>	<i>273</i>	<i>283</i>
Finance and insurance									
Compensation of employees	191	199	172	172	198	207	228	239	231
Gross operating surplus and gross mixed income	204	192	267	240	199	172	194	205	254
<i>Total</i>	<i>395</i>	<i>391</i>	<i>439</i>	<i>412</i>	<i>397</i>	<i>379</i>	<i>422</i>	<i>444</i>	<i>485</i>
Property and business services									
Compensation of employees	283	280	283	271	283	309	330	300	281
Gross operating surplus and gross mixed income	175	176	178	163	182	204	191	190	203
<i>Total</i>	<i>458</i>	<i>456</i>	<i>461</i>	<i>434</i>	<i>465</i>	<i>513</i>	<i>521</i>	<i>490</i>	<i>484</i>
Government administration and defence									
Compensation of employees	367	429	379	410	454	488	485	523	556
Education									
Compensation of employees	413	401	416	442	464	482	506	524	541
Gross operating surplus and gross mixed income	4	4	5	5	6	3	8	9	9
<i>Total</i>	<i>417</i>	<i>405</i>	<i>421</i>	<i>447</i>	<i>470</i>	<i>485</i>	<i>514</i>	<i>533</i>	<i>550</i>

21

TOTAL FACTOR INCOME BY INDUSTRY AND PRINCIPAL COMPONENTS, Tasmania—Current prices *continued*

	1990-91	1991-92	1992-93	1993-94	1994-95	1995-96	1996-97	1997-98	1998-99
	\$m	\$m	\$m	\$m	\$m	\$m	\$m	\$m	\$m
Health and community services									
Compensation of employees	514	485	530	550	600	675	712	746	770
Gross operating surplus and gross mixed income	66	70	73	82	92	100	100	104	108
<i>Total</i>	<i>580</i>	<i>555</i>	<i>603</i>	<i>632</i>	<i>692</i>	<i>775</i>	<i>812</i>	<i>850</i>	<i>878</i>
Cultural and recreational services									
Compensation of employees	50	58	67	57	61	70	79	86	90
Gross operating surplus and gross mixed income	60	54	70	61	69	59	58	60	66
<i>Total</i>	<i>110</i>	<i>112</i>	<i>137</i>	<i>118</i>	<i>130</i>	<i>129</i>	<i>137</i>	<i>146</i>	<i>156</i>
Personal and other services									
Compensation of employees	161	153	156	160	174	181	191	209	204
Gross operating surplus and gross mixed income	20	21	22	20	25	34	41	46	50
<i>Total</i>	<i>181</i>	<i>174</i>	<i>178</i>	<i>180</i>	<i>199</i>	<i>215</i>	<i>232</i>	<i>255</i>	<i>254</i>
Ownership of dwellings									
Gross operating surplus	587	623	665	697	725	761	852	915	908
General government									
Gross operating surplus(a)	272	280	288	296	304	314	317	324	330
All industries									
Compensation of employees	4 383	4 421	4 458	4 444	4 784	5 064	5 205	5 335	5 513
Gross operating surplus and gross mixed income	3 279	3 407	3 657	3 792	3 994	4 195	4 351	4 451	4 672
Total	7 662	7 828	8 115	8 236	8 778	9 259	9 556	9 786	10 185

(a) State details for general government gross operating surplus by industry are not available.

	1990-91	1991-92	1992-93	1993-94	1994-95	1995-96	1996-97	1997-98	1998-99
	\$m	\$m	\$m	\$m	\$m	\$m	\$m	\$m	\$m
Agriculture									
Compensation of employees	30	31	27	29	43	46	47	49	55
Gross operating surplus and gross mixed income	105	88	109	173	154	174	185	141	177
<i>Total</i>	<i>135</i>	<i>119</i>	<i>136</i>	<i>202</i>	<i>197</i>	<i>220</i>	<i>232</i>	<i>190</i>	<i>232</i>
Mining									
Compensation of employees	101	95	118	118	132	140	159	183	202
Gross operating surplus and gross mixed income	1 155	956	975	635	641	736	752	691	635
<i>Total</i>	<i>1 256</i>	<i>1 051</i>	<i>1 093</i>	<i>753</i>	<i>773</i>	<i>876</i>	<i>911</i>	<i>874</i>	<i>837</i>
Manufacturing									
Compensation of employees	108	135	123	128	140	141	143	146	145
Gross operating surplus and gross mixed income	69	71	71	93	79	102	94	110	116
<i>Total</i>	<i>177</i>	<i>206</i>	<i>194</i>	<i>221</i>	<i>219</i>	<i>243</i>	<i>237</i>	<i>256</i>	<i>261</i>
Electricity, gas and water									
Compensation of employees	48	42	42	41	42	48	36	37	40
Gross operating surplus and gross mixed income	66	69	53	50	47	50	68	61	59
<i>Total</i>	<i>114</i>	<i>111</i>	<i>95</i>	<i>91</i>	<i>89</i>	<i>98</i>	<i>104</i>	<i>98</i>	<i>99</i>
Construction									
Compensation of employees	201	188	155	168	197	193	178	169	200
Gross operating surplus and gross mixed income	130	104	97	130	126	141	150	171	212
<i>Total</i>	<i>331</i>	<i>292</i>	<i>252</i>	<i>298</i>	<i>323</i>	<i>334</i>	<i>328</i>	<i>340</i>	<i>412</i>
Wholesale trade									
Compensation of employees	83	92	74	80	92	96	119	118	124
Gross operating surplus and gross mixed income	62	64	70	75	77	77	62	59	64
<i>Total</i>	<i>145</i>	<i>156</i>	<i>144</i>	<i>155</i>	<i>169</i>	<i>173</i>	<i>181</i>	<i>177</i>	<i>188</i>
Retail trade									
Compensation of employees	139	167	154	179	190	207	226	231	261
Gross operating surplus and gross mixed income	84	88	99	106	112	116	86	91	108
<i>Total</i>	<i>223</i>	<i>255</i>	<i>253</i>	<i>285</i>	<i>302</i>	<i>323</i>	<i>312</i>	<i>322</i>	<i>369</i>
Accommodation, cafes and restaurants									
Compensation of employees	70	90	96	94	107	108	119	129	137
Gross operating surplus and gross mixed income	45	39	38	39	49	56	55	56	60
<i>Total</i>	<i>115</i>	<i>129</i>	<i>134</i>	<i>133</i>	<i>156</i>	<i>164</i>	<i>174</i>	<i>185</i>	<i>197</i>
Transport and storage									
Compensation of employees	90	111	96	100	114	112	143	149	147
Gross operating surplus and gross mixed income	107	102	114	120	131	164	151	169	200
<i>Total</i>	<i>197</i>	<i>213</i>	<i>210</i>	<i>220</i>	<i>245</i>	<i>276</i>	<i>294</i>	<i>318</i>	<i>347</i>
Communication services									
Compensation of employees	44	41	57	64	72	66	76	75	88
Gross operating surplus and gross mixed income	43	53	51	54	74	65	81	114	119
<i>Total</i>	<i>87</i>	<i>94</i>	<i>108</i>	<i>118</i>	<i>146</i>	<i>131</i>	<i>157</i>	<i>189</i>	<i>207</i>
Finance and insurance									
Compensation of employees	49	50	52	50	55	60	72	80	85
Gross operating surplus and gross mixed income	68	54	87	73	56	62	63	93	94
<i>Total</i>	<i>117</i>	<i>104</i>	<i>139</i>	<i>123</i>	<i>111</i>	<i>122</i>	<i>135</i>	<i>173</i>	<i>179</i>
Property and business services									
Compensation of employees	224	253	202	213	268	270	281	273	382
Gross operating surplus and gross mixed income	80	80	85	81	109	133	152	168	184
<i>Total</i>	<i>304</i>	<i>333</i>	<i>287</i>	<i>294</i>	<i>377</i>	<i>403</i>	<i>433</i>	<i>441</i>	<i>566</i>
Government administration and defence									
Compensation of employees	313	281	308	351	375	399	442	496	511
Education									
Compensation of employees	194	208	208	224	240	260	283	309	352
Gross operating surplus and gross mixed income	1	1	2	2	2	1	3	3	3
<i>Total</i>	<i>195</i>	<i>209</i>	<i>210</i>	<i>226</i>	<i>242</i>	<i>261</i>	<i>286</i>	<i>312</i>	<i>355</i>

TOTAL FACTOR INCOME BY INDUSTRY AND PRINCIPAL COMPONENTS, Northern Territory—Current prices *continued*

	1990-91	1991-92	1992-93	1993-94	1994-95	1995-96	1996-97	1997-98	1998-99
	\$m	\$m	\$m	\$m	\$m	\$m	\$m	\$m	\$m
Health and community services									
Compensation of employees	182	184	174	212	244	283	313	324	373
Gross operating surplus and gross mixed income	18	19	19	21	23	23	24	26	28
<i>Total</i>	200	203	193	233	267	306	337	350	401
Cultural and recreational services									
Compensation of employees	35	42	51	58	75	90	103	116	123
Gross operating surplus and gross mixed income	32	28	41	48	46	52	53	68	70
<i>Total</i>	67	70	92	106	121	142	156	184	193
Personal and other services									
Compensation of employees	78	92	102	101	121	131	148	164	179
Gross operating surplus and gross mixed income	3	3	4	3	4	5	9	11	12
<i>Total</i>	81	95	106	104	125	136	157	175	191
Ownership of dwellings									
Gross operating surplus	203	219	226	235	252	276	329	344	360
General government									
Gross operating surplus(a)	97	103	109	115	120	126	132	141	150
All industries									
Compensation of employees	1 989	2 102	2 039	2 210	2 507	2 650	2 888	3 048	3 404
Gross operating surplus and gross mixed income	2 368	2 141	2 250	2 053	2 102	2 359	2 449	2 517	2 651
Total	4 357	4 243	4 289	4 263	4 609	5 009	5 337	5 565	6 055

(a) State details for general government gross operating surplus by industry are not available.

	1990-91	1991-92	1992-93	1993-94	1994-95	1995-96	1996-97	1997-98	1998-99
	\$m	\$m	\$m	\$m	\$m	\$m	\$m	\$m	\$m
Agriculture									
Compensation of employees	5	3	2	2	2	4	3	4	4
Gross operating surplus and gross mixed income	8	5	9	7	8	9	9	12	12
Total	13	8	11	9	10	13	12	16	16
Mining									
Compensation of employees	5	4	5	5	4	3	2	2	2
Gross operating surplus and gross mixed income	2	2	2	2	—	—	—	—	—
Total	7	6	7	7	4	3	2	2	2
Manufacturing									
Compensation of employees	111	121	127	121	140	155	140	128	113
Gross operating surplus and gross mixed income	51	54	59	68	68	68	79	70	74
Total	162	175	186	189	208	223	219	198	187
Electricity, gas and water									
Compensation of employees	62	63	64	76	71	78	82	80	82
Gross operating surplus and gross mixed income	70	91	90	90	106	105	108	145	153
Total	132	154	154	166	177	183	190	225	235
Construction									
Compensation of employees	195	227	250	276	302	340	367	337	395
Gross operating surplus and gross mixed income	206	233	231	221	241	254	273	272	285
Total	401	460	481	497	543	594	640	609	680
Wholesale trade									
Compensation of employees	169	151	141	152	154	154	151	153	178
Gross operating surplus and gross mixed income	51	56	59	65	62	59	52	51	54
Total	220	207	200	217	216	213	203	204	232
Retail trade									
Compensation of employees	212	199	247	240	268	290	331	327	346
Gross operating surplus and gross mixed income	139	154	168	182	180	176	143	157	182
Total	351	353	415	422	448	466	474	484	528
Accommodation, cafes and restaurants									
Compensation of employees	90	88	106	126	122	132	127	154	174
Gross operating surplus and gross mixed income	53	47	45	47	55	63	61	71	72
Total	143	135	151	173	177	195	188	225	246
Transport and storage									
Compensation of employees	140	162	150	163	165	174	188	180	198
Gross operating surplus and gross mixed income	106	112	117	123	128	159	131	146	168
Total	246	274	267	286	293	333	319	326	366
Communication services									
Compensation of employees	78	89	81	106	113	107	101	104	105
Gross operating surplus and gross mixed income	86	108	111	140	146	139	159	213	210
Total	164	197	192	246	259	246	260	317	315
Finance and insurance									
Compensation of employees	146	134	147	175	168	193	186	209	241
Gross operating surplus and gross mixed income	168	148	173	170	136	147	102	152	127
Total	314	282	320	345	304	340	288	361	368
Property and business services									
Compensation of employees	545	624	648	718	694	697	711	754	810
Gross operating surplus and gross mixed income	366	383	418	325	364	430	429	443	464
Total	911	1 007	1 066	1 043	1 058	1 127	1 140	1 197	1 274
Government administration and defence									
Compensation of employees	2 106	2 075	2 159	2 394	2 651	2 768	2 981	3 181	3 357
Education									
Compensation of employees	478	516	582	524	529	583	638	653	663
Gross operating surplus and gross mixed income	4	5	6	7	7	3	9	10	10
Total	482	521	588	531	536	586	647	663	673

— nil or rounded to zero (including null cells)

	1990-91	1991-92	1992-93	1993-94	1994-95	1995-96	1996-97	1997-98	1998-99
	\$m	\$m	\$m	\$m	\$m	\$m	\$m	\$m	\$m
Health and community services									
Compensation of employees	299	290	298	331	379	410	449	507	553
Gross operating surplus and gross mixed income	45	48	51	53	58	59	58	62	65
Total	344	338	349	384	437	469	507	569	618
Cultural and recreational services									
Compensation of employees	156	172	162	170	195	233	241	255	259
Gross operating surplus and gross mixed income	30	31	39	49	49	52	49	62	67
Total	186	203	201	219	244	285	290	317	326
Personal and other services									
Compensation of employees	186	202	237	252	249	257	300	339	356
Gross operating surplus and gross mixed income	15	17	20	18	25	34	40	44	47
Total	201	219	257	270	274	291	340	383	403
Ownership of dwellings									
Gross operating surplus	633	697	768	795	811	807	834	872	886
General government									
Gross operating surplus(a)	513	522	539	561	571	576	562	554	550
All industries									
Compensation of employees	4 983	5 120	5 406	5 831	6 206	6 578	6 998	7 367	7 836
Gross operating surplus and gross mixed income	2 546	2 713	2 905	2 923	3 015	3 140	3 098	3 336	3 426
Total	7 529	7 833	8 311	8 754	9 221	9 718	10 096	10 703	11 262

(a) State details for general government gross operating surplus by industry are not available.

	1990-91	1991-92	1992-93	1993-94	1994-95	1995-96	1996-97	1997-98	1998-99
	\$m	\$m	\$m	\$m	\$m	\$m	\$m	\$m	\$m
Agriculture									
Compensation of employees	3 049	2 873	2 917	3 133	3 469	3 678	4 068	4 208	4 320
Gross operating surplus and gross mixed income	8 550	8 197	9 982	11 406	9 354	12 694	12 468	12 729	13 058
<i>Total</i>	<i>11 599</i>	<i>11 070</i>	<i>12 899</i>	<i>14 539</i>	<i>12 823</i>	<i>16 372</i>	<i>16 536</i>	<i>16 937</i>	<i>17 378</i>
Mining									
Compensation of employees	4 881	4 601	4 689	4 834	4 909	5 656	5 916	6 428	6 170
Gross operating surplus and gross mixed income	14 033	13 916	14 862	14 130	15 058	17 012	17 035	17 624	16 205
<i>Total</i>	<i>18 914</i>	<i>18 517</i>	<i>19 551</i>	<i>18 964</i>	<i>19 967</i>	<i>22 668</i>	<i>22 951</i>	<i>24 052</i>	<i>22 375</i>
Manufacturing									
Compensation of employees	29 695	29 339	30 362	31 314	33 127	35 612	35 700	37 036	37 220
Gross operating surplus and gross mixed income	18 224	19 221	21 265	24 182	25 269	26 165	28 264	31 822	33 688
<i>Total</i>	<i>47 919</i>	<i>48 560</i>	<i>51 627</i>	<i>55 496</i>	<i>58 396</i>	<i>61 777</i>	<i>63 964</i>	<i>68 858</i>	<i>70 908</i>
Electricity, gas and water									
Compensation of employees	4 559	4 592	4 394	4 110	3 857	3 884	3 389	3 281	3 242
Gross operating surplus and gross mixed income	7 614	8 240	8 776	8 932	8 973	8 878	9 662	9 835	9 718
<i>Total</i>	<i>12 173</i>	<i>12 832</i>	<i>13 170</i>	<i>13 042</i>	<i>12 830</i>	<i>12 762</i>	<i>13 051</i>	<i>13 116</i>	<i>12 960</i>
Construction									
Compensation of employees	11 626	10 330	10 541	11 157	12 256	12 417	13 115	14 213	16 233
Gross operating surplus and gross mixed income	9 871	9 903	9 581	10 494	11 801	13 799	15 188	17 465	18 475
<i>Total</i>	<i>21 497</i>	<i>20 233</i>	<i>20 122</i>	<i>21 651</i>	<i>24 057</i>	<i>26 216</i>	<i>28 303</i>	<i>31 678</i>	<i>34 708</i>
Wholesale trade									
Compensation of employees	14 777	14 463	14 853	15 725	16 395	16 990	18 280	19 441	21 324
Gross operating surplus and gross mixed income	7 980	8 094	8 256	9 002	9 007	8 792	7 567	7 235	7 959
<i>Total</i>	<i>22 757</i>	<i>22 557</i>	<i>23 109</i>	<i>24 727</i>	<i>25 402</i>	<i>25 782</i>	<i>25 847</i>	<i>26 676</i>	<i>29 283</i>
Retail trade									
Compensation of employees	13 850	14 114	14 988	15 717	16 572	18 443	20 878	21 547	23 250
Gross operating surplus and gross mixed income	6 725	7 001	7 349	7 932	8 221	8 297	6 591	7 086	8 400
<i>Total</i>	<i>20 575</i>	<i>21 115</i>	<i>22 337</i>	<i>23 649</i>	<i>24 793</i>	<i>26 740</i>	<i>27 469</i>	<i>28 633</i>	<i>31 650</i>
Accommodation, cafes and restaurants									
Compensation of employees	4 657	5 099	5 362	5 679	6 446	6 701	7 425	8 131	8 442
Gross operating surplus and gross mixed income	2 810	2 463	2 392	2 448	2 877	3 499	3 409	3 753	3 982
<i>Total</i>	<i>7 467</i>	<i>7 562</i>	<i>7 754</i>	<i>8 127</i>	<i>9 323</i>	<i>10 200</i>	<i>10 834</i>	<i>11 884</i>	<i>12 424</i>
Transport and storage									
Compensation of employees	12 037	12 702	12 425	13 008	14 312	14 650	15 927	16 019	16 935
Gross operating surplus and gross mixed income	6 948	7 087	7 806	8 427	9 099	10 744	9 797	10 009	11 436
<i>Total</i>	<i>18 985</i>	<i>19 789</i>	<i>20 231</i>	<i>21 435</i>	<i>23 411</i>	<i>25 394</i>	<i>25 724</i>	<i>26 028</i>	<i>28 371</i>
Communication services									
Compensation of employees	5 314	5 445	5 732	5 794	6 174	6 714	6 819	6 813	6 903
Gross operating surplus and gross mixed income	4 452	5 377	5 400	5 712	6 336	6 796	7 864	9 825	9 670
<i>Total</i>	<i>9 766</i>	<i>10 822</i>	<i>11 132</i>	<i>11 506</i>	<i>12 510</i>	<i>13 510</i>	<i>14 683</i>	<i>16 638</i>	<i>16 573</i>
Finance and insurance									
Compensation of employees	11 846	12 042	11 872	12 564	13 306	14 674	15 690	16 541	18 670
Gross operating surplus and gross mixed income	8 418	9 548	11 949	12 568	11 363	11 403	11 848	13 621	15 370
<i>Total</i>	<i>20 264</i>	<i>21 590</i>	<i>23 821</i>	<i>25 132</i>	<i>24 669</i>	<i>26 077</i>	<i>27 538</i>	<i>30 162</i>	<i>34 040</i>
Property and business services									
Compensation of employees	19 543	19 838	21 228	22 832	26 371	28 782	31 833	32 019	37 198
Gross operating surplus and gross mixed income	15 934	15 963	17 030	16 256	18 206	18 151	18 588	19 765	20 727
<i>Total</i>	<i>35 477</i>	<i>35 801</i>	<i>38 258</i>	<i>39 088</i>	<i>44 577</i>	<i>46 933</i>	<i>50 421</i>	<i>51 784</i>	<i>57 925</i>
Government administration and defence									
Compensation of employees	13 456	14 368	15 042	16 121	16 909	17 967	19 595	20 408	20 906
Education									
Compensation of employees	15 707	16 619	18 063	18 936	19 547	20 075	21 515	22 833	23 508
Gross operating surplus and gross mixed income	173	200	222	249	291	137	383	439	481
<i>Total</i>	<i>15 880</i>	<i>16 819</i>	<i>18 285</i>	<i>19 185</i>	<i>19 838</i>	<i>20 212</i>	<i>21 898</i>	<i>23 272</i>	<i>23 989</i>

	1990-91	1991-92	1992-93	1993-94	1994-95	1995-96	1996-97	1997-98	1998-99
	\$m	\$m	\$m	\$m	\$m	\$m	\$m	\$m	\$m
Health and community services									
Compensation of employees	18 430	19 365	19 911	20 583	21 475	23 302	25 037	26 883	28 195
Gross operating surplus and gross mixed income	2 590	2 710	3 053	3 317	3 600	3 716	3 744	3 980	4 232
<i>Total</i>	21 020	22 075	22 964	23 900	25 075	27 018	28 781	30 863	32 427
Cultural and recreational services									
Compensation of employees	2 725	3 118	3 102	3 266	3 818	4 538	4 817	5 362	5 779
Gross operating surplus and gross mixed income	2 400	2 430	3 000	3 293	3 316	3 380	3 354	4 241	4 546
<i>Total</i>	5 125	5 548	6 102	6 559	7 134	7 918	8 171	9 603	10 325
Personal and other services									
Compensation of employees	6 148	6 866	7 175	7 358	7 961	8 264	8 793	9 104	9 815
Gross operating surplus and gross mixed income	1 044	1 161	1 340	1 180	1 573	2 104	2 360	2 637	2 833
<i>Total</i>	7 192	8 027	8 515	8 538	9 534	10 368	11 153	11 741	12 648
Ownership of dwellings									
Gross operating surplus	33 471	34 614	35 466	36 748	38 625	41 121	44 767	47 789	48 781
General government									
Gross operating surplus(a)	8 507	8 831	9 181	9 573	9 924	10 329	10 501	10 859	11 278
All industries									
Compensation of employees	192 300	195 774	202 656	212 131	226 904	242 347	258 797	270 267	288 110
Gross operating surplus and gross mixed income	159 745	164 957	176 910	185 849	192 894	207 018	213 390	230 715	240 839
Total	352 044	360 730	379 565	397 980	419 797	449 362	472 187	500 981	528 949

(a) State details for general government gross operating surplus by industry are not available.

GROSS HOUSEHOLD INCOME AND GROSS HOUSEHOLD DISPOSABLE INCOME, Values and per Head of Mean Population—Current Prices

	1990-91	1991-92	1992-93	1993-94	1994-95	1995-96	1996-97	1997-98	1998-99
GROSS HOUSEHOLD INCOME									
New South Wales (\$m)	132 523	131 941	133 600	138 707	149 228	160 796	170 066	176 820	186 077
Victoria (\$m)	98 594	96 470	98 608	100 962	107 748	114 769	118 909	124 155	130 676
Queensland (\$m)	54 870	57 013	60 070	62 616	68 469	73 452	78 945	81 866	86 346
South Australia (\$m)	28 385	28 467	28 859	30 161	31 783	34 486	35 084	36 529	37 467
Western Australia (\$m)	32 198	33 034	34 423	36 802	40 353	43 856	45 604	47 741	49 960
Tasmania (\$m)	8 500	8 456	8 669	8 759	9 396	9 939	10 211	10 500	10 816
Northern Territory (\$m)	3 103	3 230	3 210	3 516	3 960	4 266	4 588	4 759	5 221
Australian Capital Territory (\$m)	8 198	8 293	8 600	9 132	9 900	10 368	10 757	11 179	11 793
Australia (\$m)	366 370	366 903	376 039	390 656	420 836	451 932	474 164	493 549	518 355

	1990-91	1991-92	1992-93	1993-94	1994-95	1995-96	1996-97	1997-98	1998-99
GROSS HOUSEHOLD INCOME PER HEAD OF MEAN POPULATION									
New South Wales (\$)	22 593	22 239	22 316	22 984	24 491	26 073	27 246	28 035	29 171
Victoria (\$)	22 400	21 732	22 081	22 537	23 933	25 283	25 936	26 796	27 887
Queensland (\$)	18 726	19 030	19 564	19 879	21 230	22 235	23 430	23 886	24 769
South Australia (\$)	19 721	19 607	19 785	20 604	21 654	23 436	23 755	24 625	25 139
Western Australia (\$)	19 811	20 046	20 632	21 774	23 484	25 063	25 581	26 314	27 038
Tasmania (\$)	18 295	18 050	18 409	18 541	19 846	20 964	21 532	22 211	22 949
Northern Territory (\$)	18 822	19 335	18 936	20 411	22 592	23 703	24 871	25 262	27 207
Australian Capital Territory (\$)	28 719	28 417	28 949	30 429	32 654	33 839	34 863	36 325	38 153
Australia (\$)	21 329	21 093	21 381	21 989	23 430	24 838	25 734	26 482	27 482

	1990-91	1991-92	1992-93	1993-94	1994-95	1995-96	1996-97	1997-98	1998-99
GROSS HOUSEHOLD DISPOSABLE INCOME									
New South Wales (\$m)	98 593	101 373	103 831	108 324	115 094	122 510	129 279	133 552	140 440
Victoria (\$m)	72 999	73 938	76 643	78 872	83 503	87 775	91 025	94 451	99 278
Queensland (\$m)	40 781	44 157	47 182	48 669	52 596	55 347	60 290	62 019	65 522
South Australia (\$m)	21 025	22 016	22 560	23 760	24 831	26 571	27 031	27 942	28 662
Western Australia (\$m)	23 494	25 180	26 596	28 341	31 012	33 120	34 387	35 697	37 328
Tasmania (\$m)	6 374	6 550	6 770	6 802	7 271	7 522	7 774	7 948	8 190
Northern Territory (\$m)	2 394	2 562	2 552	2 812	3 180	3 389	3 616	3 726	4 086
Australian Capital Territory (\$m)	6 071	6 436	6 754	7 154	7 784	7 970	8 313	8 568	9 054
Australia (\$m)	271 730	282 211	292 888	304 733	325 271	344 204	361 716	373 902	392 560

	1990-91	1991-92	1992-93	1993-94	1994-95	1995-96	1996-97	1997-98	1998-99
GROSS HOUSEHOLD DISPOSABLE INCOME PER HEAD OF MEAN POPULATION									
New South Wales (\$)	16 808	17 087	17 344	17 950	18 889	19 865	20 711	21 175	22 016
Victoria (\$)	16 585	16 657	17 163	17 606	18 547	19 336	19 854	20 385	21 187
Queensland (\$)	13 918	14 739	15 366	15 451	16 308	16 754	17 894	18 095	18 795
South Australia (\$)	14 608	15 164	15 467	16 232	16 918	18 057	18 302	18 836	19 231
Western Australia (\$)	14 456	15 280	15 941	16 768	18 048	18 928	19 289	19 675	20 201
Tasmania (\$)	13 719	13 982	14 377	14 398	15 357	15 866	16 393	16 813	17 377
Northern Territory (\$)	14 522	15 336	15 054	16 324	18 142	18 830	19 602	19 779	21 292
Australian Capital Territory (\$)	21 268	22 054	22 735	23 838	25 675	26 013	26 942	27 841	29 291
Australia (\$)	15 819	16 224	16 653	17 152	18 109	18 918	19 631	20 062	20 813

	1990-91	1991-92	1992-93	1993-94	1994-95	1995-96	1996-97	1997-98	1998-99
	\$m	\$m	\$m	\$m	\$m	\$m	\$m	\$m	\$m
Income									
Primary income receivable									
Compensation of employees	69 339	71 096	72 008	75 431	80 521	86 755	92 906	97 079	103 703
Gross operating surplus—dwellings owned by persons	13 437	13 998	14 460	15 008	15 788	17 153	18 581	19 883	20 643
Gross mixed income	14 084	12 886	13 566	13 672	13 921	14 924	15 985	16 727	17 601
Property income receivable	19 600	16 065	14 547	13 981	16 911	18 040	17 118	17 116	17 136
<i>Total primary income receivable</i>	<i>116 460</i>	<i>114 045</i>	<i>114 581</i>	<i>118 092</i>	<i>127 141</i>	<i>136 872</i>	<i>144 590</i>	<i>150 805</i>	<i>159 083</i>
Secondary income receivable									
Social benefits receivable									
Workers' compensation	1 166	1 267	1 377	1 418	1 701	1 898	2 045	2 098	2 149
Social assistance benefits	9 882	11 407	12 433	13 374	13 737	14 844	15 687	15 946	16 387
Current transfers to non-profit institutions	1 465	1 734	1 904	2 161	2 433	2 728	2 879	2 984	3 167
Other secondary income	3 549	3 488	3 305	3 662	4 215	4 454	4 865	4 987	5 291
<i>Total secondary income</i>	<i>16 063</i>	<i>17 896</i>	<i>19 019</i>	<i>20 615</i>	<i>22 087</i>	<i>23 924</i>	<i>25 476</i>	<i>26 015</i>	<i>26 994</i>
Total gross income	132 523	131 941	133 600	138 707	149 228	160 796	170 066	176 820	186 077
Uses of income									
Primary income payable									
Property income payable									
Dwellings and unincorporated enterprises	8 801	7 101	6 450	5 579	6 951	7 882	7 717	8 143	8 186
Consumer debt interest	2 118	1 377	899	934	1 260	1 556	1 492	1 683	1 599
<i>Total property income payable</i>	<i>10 919</i>	<i>8 477</i>	<i>7 349</i>	<i>6 512</i>	<i>8 211</i>	<i>9 437</i>	<i>9 208</i>	<i>9 825</i>	<i>9 785</i>
<i>Total primary income payable</i>	<i>10 919</i>	<i>8 477</i>	<i>7 349</i>	<i>6 512</i>	<i>8 211</i>	<i>9 437</i>	<i>9 208</i>	<i>9 825</i>	<i>9 785</i>
Secondary income payable									
Income tax payable	18 412	17 196	17 152	18 311	19 919	22 231	24 459	25 911	27 983
Other current taxes on income, wealth, etc	358	458	509	561	589	606	654	705	735
Social contributions for workers' compensation	1 241	1 166	1 301	1 290	1 653	1 853	2 029	2 084	2 142
Other secondary income payable	3 000	3 272	3 458	3 709	3 762	4 159	4 437	4 742	4 991
<i>Total secondary income payable</i>	<i>23 011</i>	<i>22 092</i>	<i>22 420</i>	<i>23 871</i>	<i>25 923</i>	<i>28 849</i>	<i>31 579</i>	<i>33 442</i>	<i>35 851</i>
Total income payable	33 930	30 569	29 769	30 383	34 134	38 286	40 787	43 268	45 637
Gross disposable income	98 593	101 373	103 831	108 324	115 094	122 510	129 279	133 552	140 440
Final consumption expenditure	84 797	88 553	91 058	93 842	99 694	107 413	111 944	117 994	125 134
Net saving plus consumption of fixed capital(a)	13 796	12 820	12 773	14 482	15 400	15 097	17 335	15 558	15 306
Total use of gross income	132 523	131 941	133 600	138 707	149 228	160 796	170 066	176 820	186 077

(a) Net saving plus consumption of fixed capital is derived as a balancing item.

	1990-91	1991-92	1992-93	1993-94	1994-95	1995-96	1996-97	1997-98	1998-99
	\$m	\$m	\$m	\$m	\$m	\$m	\$m	\$m	\$m
Income									
Primary income receivable									
Compensation of employees	52 044	51 018	53 630	55 309	58 583	61 986	65 635	68 516	73 798
Gross operating surplus—dwellings owned by persons	8 418	8 453	8 330	8 379	8 733	9 214	10 171	10 964	11 170
Gross mixed income	10 347	10 374	10 959	11 258	11 516	13 173	12 798	13 681	14 425
Property income receivable	15 233	12 604	11 074	10 478	12 718	13 505	12 583	12 515	12 583
<i>Total primary income receivable</i>	<i>86 042</i>	<i>82 449</i>	<i>83 993</i>	<i>85 424</i>	<i>91 550</i>	<i>97 878</i>	<i>101 187</i>	<i>105 676</i>	<i>111 976</i>
Secondary income receivable									
Social benefits receivable									
Workers' compensation	1 360	1 488	1 387	1 229	1 194	1 107	1 012	1 039	1 073
Social assistance benefits	7 347	8 647	9 356	10 115	10 294	10 800	11 375	11 428	11 753
Current transfers to non-profit institutions	1 199	1 305	1 446	1 537	1 654	1 775	1 833	2 413	2 061
Other secondary income	2 646	2 581	2 426	2 658	3 056	3 209	3 503	3 599	3 813
<i>Total secondary income</i>	<i>12 552</i>	<i>14 021</i>	<i>14 615</i>	<i>15 538</i>	<i>16 198</i>	<i>16 891</i>	<i>17 722</i>	<i>18 479</i>	<i>18 700</i>
Total gross income	98 594	96 470	98 608	100 962	107 748	114 769	118 909	124 155	130 676
Uses of income									
Primary income payable									
Property income payable									
Dwellings and unincorporated enterprises	7 127	5 448	4 974	4 612	5 498	6 120	5 625	5 968	5 939
Consumer debt interest	1 458	914	610	628	838	1 051	1 002	1 174	1 126
<i>Total property income payable</i>	<i>8 585</i>	<i>6 363</i>	<i>5 584</i>	<i>5 240</i>	<i>6 337</i>	<i>7 170</i>	<i>6 628</i>	<i>7 142</i>	<i>7 065</i>
<i>Total primary income payable</i>	<i>8 585</i>	<i>6 363</i>	<i>5 584</i>	<i>5 240</i>	<i>6 337</i>	<i>7 170</i>	<i>6 628</i>	<i>7 142</i>	<i>7 065</i>
Secondary income payable									
Income tax payable	13 174	12 139	12 219	12 658	13 626	15 325	16 628	17 655	19 215
Other current taxes on income, wealth, etc	151	237	298	359	377	394	411	445	449
Social contributions for workers' compensation	1 447	1 369	1 310	1 118	1 160	1 081	1 004	1 032	1 069
Other secondary income payable	2 239	2 423	2 554	2 715	2 746	3 025	3 214	3 430	3 599
<i>Total secondary income payable</i>	<i>17 011</i>	<i>16 168</i>	<i>16 381</i>	<i>16 850</i>	<i>17 909</i>	<i>19 825</i>	<i>21 257</i>	<i>22 562</i>	<i>24 332</i>
Total income payable	25 595	22 531	21 965	22 091	24 245	26 994	27 884	29 704	31 398
Gross disposable income	72 999	73 938	76 643	78 872	83 503	87 775	91 025	94 451	99 278
Final consumption expenditure	59 824	62 359	65 113	67 162	71 131	75 524	79 377	84 961	89 629
Net saving plus consumption of fixed capital(a)	13 175	11 579	11 530	11 710	12 372	12 251	11 648	9 490	9 649
Total use of gross income	98 594	96 470	98 608	100 962	107 748	114 769	118 909	124 155	130 676

(a) Net saving plus consumption of fixed capital is derived as a balancing item.

	1990-91	1991-92	1992-93	1993-94	1994-95	1995-96	1996-97	1997-98	1998-99
	\$m	\$m	\$m	\$m	\$m	\$m	\$m	\$m	\$m
Income									
Primary income receivable									
Compensation of employees	27 651	29 440	31 726	32 842	36 273	39 145	42 888	44 571	47 405
Gross operating surplus—dwellings owned by persons	4 677	4 998	5 284	5 641	6 018	6 373	6 910	7 322	7 274
Gross mixed income	7 584	7 850	8 478	8 879	9 076	9 083	9 539	10 135	10 906
Property income receivable	7 132	5 988	5 153	4 759	5 752	6 396	6 320	6 338	6 374
<i>Total primary income receivable</i>	<i>47 044</i>	<i>48 276</i>	<i>50 641</i>	<i>52 121</i>	<i>57 119</i>	<i>60 997</i>	<i>65 657</i>	<i>68 366</i>	<i>71 959</i>
Secondary income receivable									
Social benefits receivable									
Workers' compensation	295	333	406	456	573	659	726	746	751
Social assistance benefits	5 040	5 764	6 322	7 013	7 293	7 949	8 372	8 401	8 660
Current transfers to non-profit institutions	753	917	1 050	1 165	1 304	1 518	1 606	1 662	2 113
Other secondary income	1 738	1 723	1 651	1 861	2 181	2 329	2 584	2 692	2 863
<i>Total secondary income</i>	<i>7 826</i>	<i>8 737</i>	<i>9 429</i>	<i>10 495</i>	<i>11 350</i>	<i>12 455</i>	<i>13 288</i>	<i>13 500</i>	<i>14 387</i>
Total gross income	54 870	57 013	60 070	62 616	68 469	73 452	78 945	81 866	86 346
Uses of income									
Primary income payable									
Property income payable									
Dwellings and unincorporated enterprises	3 797	3 031	2 638	2 868	3 586	4 296	3 721	3 982	3 975
Consumer debt interest	999	643	469	504	708	894	852	973	910
<i>Total property income payable</i>	<i>4 795</i>	<i>3 674</i>	<i>3 107</i>	<i>3 372</i>	<i>4 294</i>	<i>5 189</i>	<i>4 573</i>	<i>4 954</i>	<i>4 885</i>
<i>Total primary income payable</i>	<i>4 795</i>	<i>3 674</i>	<i>3 107</i>	<i>3 372</i>	<i>4 294</i>	<i>5 189</i>	<i>4 573</i>	<i>4 954</i>	<i>4 885</i>
Secondary income payable									
Income tax payable	7 289	6 987	7 359	7 934	8 736	9 722	10 618	11 224	12 129
Other current taxes on income, wealth, etc	188	243	269	296	297	319	346	360	366
Social contributions for workers' compensation	314	306	384	415	556	644	720	741	748
Other secondary income payable	1 503	1 646	1 769	1 930	1 990	2 231	2 397	2 568	2 695
<i>Total secondary income payable</i>	<i>9 294</i>	<i>9 182</i>	<i>9 781</i>	<i>10 575</i>	<i>11 579</i>	<i>12 916</i>	<i>14 081</i>	<i>14 893</i>	<i>15 938</i>
Total income payable	14 089	12 856	12 888	13 947	15 873	18 105	18 654	19 848	20 823
Gross disposable income	40 781	44 157	47 182	48 669	52 596	55 347	60 290	62 019	65 522
Final consumption expenditure	36 862	39 509	42 636	45 396	48 908	51 999	54 243	58 179	62 212
Net saving plus consumption of fixed capital(a)	3 919	4 648	4 546	3 273	3 688	3 348	6 047	3 840	3 310
Total use of gross income	54 870	57 013	60 070	62 616	68 469	73 452	78 945	81 866	86 346

(a) Net saving plus consumption of fixed capital is derived as a balancing item.

	1990-91	1991-92	1992-93	1993-94	1994-95	1995-96	1996-97	1997-98	1998-99
	\$m	\$m	\$m	\$m	\$m	\$m	\$m	\$m	\$m
Income									
Primary income receivable									
Compensation of employees	14 770	14 670	15 145	16 162	16 599	17 539	18 149	18 905	19 283
Gross operating surplus—dwellings owned by persons	2 316	2 448	2 538	2 608	2 649	2 707	2 925	3 065	3 076
Gross mixed income	3 098	3 304	3 480	3 581	3 723	4 705	4 429	4 897	5 188
Property income receivable	3 941	3 288	2 769	2 577	3 184	3 583	3 273	3 254	3 266
<i>Total primary income receivable</i>	24 125	23 710	23 932	24 928	26 155	28 534	28 776	30 121	30 813
Secondary income receivable									
Social benefits receivable									
Workers' compensation	404	447	423	382	431	459	476	489	485
Social assistance benefits	2 634	3 058	3 267	3 460	3 621	3 805	4 016	4 033	4 149
Current transfers to non-profit institutions	378	431	466	539	599	670	708	753	826
Other secondary income	844	821	771	851	976	1 017	1 108	1 134	1 195
<i>Total secondary income</i>	4 260	4 757	4 927	5 233	5 628	5 952	6 308	6 408	6 654
Total gross income	28 385	28 467	28 859	30 161	31 783	34 486	35 084	36 529	37 467
Uses of income									
Primary income payable									
Property income payable									
Dwellings and unincorporated enterprises	1 936	1 398	1 234	1 124	1 335	1 638	1 472	1 576	1 566
Consumer debt interest	462	285	202	217	290	362	351	380	352
<i>Total property income payable</i>	2 398	1 683	1 437	1 340	1 625	2 000	1 823	1 957	1 918
<i>Total primary income payable</i>	2 398	1 683	1 437	1 340	1 625	2 000	1 823	1 957	1 918
Secondary income payable									
Income tax payable	3 737	3 480	3 529	3 717	3 901	4 369	4 603	4 918	5 113
Other current taxes on income, wealth, etc	76	97	108	117	121	125	129	140	156
Social contributions for workers' compensation	430	411	400	348	419	448	472	485	483
Other secondary income payable	719	780	825	879	886	973	1 026	1 086	1 136
<i>Total secondary income payable</i>	4 962	4 768	4 862	5 061	5 327	5 915	6 230	6 629	6 888
Total income payable	7 360	6 451	6 299	6 401	6 952	7 915	8 053	8 587	8 806
Gross disposable income	21 025	22 016	22 560	23 760	24 831	26 571	27 031	27 942	28 662
Final consumption expenditure	18 379	19 132	19 539	20 400	21 477	22 603	22 996	24 390	25 534
Net saving plus consumption of fixed capital(a)	2 646	2 884	3 021	3 360	3 354	3 968	4 035	3 552	3 128
Total use of gross income	28 385	28 467	28 859	30 161	31 783	34 486	35 084	36 529	37 467

(a) Net saving plus consumption of fixed capital is derived as a balancing item.

	1990-91	1991-92	1992-93	1993-94	1994-95	1995-96	1996-97	1997-98	1998-99
	\$m	\$m	\$m	\$m	\$m	\$m	\$m	\$m	\$m
Income									
Primary income receivable									
Compensation of employees	17 144	18 029	18 419	20 117	21 584	22 773	24 258	25 451	27 159
Gross operating surplus—dwellings owned by persons	2 539	2 503	2 588	2 726	2 945	3 144	3 464	3 724	3 770
Gross mixed income	3 840	4 157	5 202	5 532	6 206	7 333	7 079	7 605	7 660
Property income receivable	4 253	3 432	3 062	2 870	3 548	3 996	3 794	3 789	3 797
<i>Total primary income receivable</i>	27 776	28 121	29 271	31 245	34 283	37 246	38 595	40 569	42 386
Secondary income receivable									
Social benefits receivable									
Workers' compensation	247	262	304	350	390	411	423	435	444
Social assistance benefits	2 686	3 123	3 302	3 503	3 650	3 959	4 138	4 177	4 302
Current transfers to non-profit institutions	493	562	632	687	844	985	1 060	1 120	1 292
Other secondary income	996	966	913	1 018	1 186	1 255	1 388	1 440	1 536
<i>Total secondary income</i>	4 422	4 913	5 152	5 557	6 070	6 610	7 009	7 172	7 574
Total gross income	32 198	33 034	34 423	36 802	40 353	43 856	45 604	47 741	49 960
Uses of income									
Primary income payable									
Property income payable									
Dwellings and unincorporated enterprises	2 463	1 959	1 673	1 657	1 990	2 393	2 290	2 441	2 465
Consumer debt interest	489	322	252	273	364	456	453	544	519
<i>Total property income payable</i>	2 951	2 281	1 924	1 931	2 354	2 849	2 743	2 985	2 984
<i>Total primary income payable</i>	2 951	2 281	1 924	1 931	2 354	2 849	2 743	2 985	2 984
Secondary income payable									
Income tax payable	4 570	4 312	4 524	5 032	5 398	6 149	6 630	7 085	7 572
Other current taxes on income, wealth, etc	81	107	119	134	134	140	151	172	195
Social contributions for workers' compensation	263	241	288	318	379	401	420	432	442
Other secondary income payable	838	912	971	1 047	1 075	1 196	1 273	1 370	1 438
<i>Total secondary income payable</i>	5 752	5 572	5 902	6 531	6 986	7 886	8 474	9 059	9 647
Total income payable	8 704	7 854	7 827	8 461	9 340	10 736	11 217	12 044	12 631
Gross disposable income	23 494	25 180	26 596	28 341	31 012	33 120	34 387	35 697	37 328
Final consumption expenditure	20 702	21 991	23 523	25 296	26 746	28 491	29 321	31 157	32 617
Net saving plus consumption of fixed capital(a)	2 792	3 189	3 073	3 045	4 266	4 629	5 066	4 540	4 711
Total use of gross income	32 198	33 034	34 423	36 802	40 353	43 856	45 604	47 741	49 960

(a) Net saving plus consumption of fixed capital is derived as a balancing item.

	1990-91	1991-92	1992-93	1993-94	1994-95	1995-96	1996-97	1997-98	1998-99
	\$m	\$m	\$m	\$m	\$m	\$m	\$m	\$m	\$m
Income									
Primary income receivable									
Compensation of employees	4 383	4 424	4 462	4 449	4 787	5 067	5 208	5 335	5 513
Gross operating surplus—dwellings owned by persons	575	610	653	684	711	748	838	901	894
Gross mixed income	989	972	1 082	1 145	1 154	1 162	1 199	1 297	1 376
Property income receivable	1 228	991	903	783	925	994	917	909	912
<i>Total primary income receivable</i>	<i>7 175</i>	<i>6 997</i>	<i>7 100</i>	<i>7 061</i>	<i>7 577</i>	<i>7 971</i>	<i>8 162</i>	<i>8 442</i>	<i>8 695</i>
Secondary income receivable									
Social benefits receivable									
Workers' compensation	62	74	94	109	126	136	142	146	146
Social assistance benefits	879	988	1 071	1 152	1 192	1 303	1 354	1 355	1 388
Current transfers to non-profit institutions	118	137	160	167	191	206	202	201	215
Other secondary income	266	260	243	270	310	323	351	356	372
<i>Total secondary income</i>	<i>1 325</i>	<i>1 459</i>	<i>1 569</i>	<i>1 698</i>	<i>1 819</i>	<i>1 968</i>	<i>2 049</i>	<i>2 058</i>	<i>2 121</i>
Total gross income	8 500	8 456	8 669	8 759	9 396	9 939	10 211	10 500	10 816
Uses of income									
Primary income payable									
Property income payable									
Dwellings and unincorporated enterprises	544	413	373	351	414	526	448	466	463
Consumer debt interest	118	80	55	57	84	111	107	117	111
<i>Total property income payable</i>	<i>661</i>	<i>493</i>	<i>428</i>	<i>408</i>	<i>498</i>	<i>637</i>	<i>555</i>	<i>583</i>	<i>574</i>
<i>Total primary income payable</i>	<i>661</i>	<i>493</i>	<i>428</i>	<i>408</i>	<i>498</i>	<i>637</i>	<i>555</i>	<i>583</i>	<i>574</i>
Secondary income payable									
Income tax payable	1 146	1 063	1 086	1 133	1 180	1 291	1 365	1 429	1 501
Other current taxes on income, wealth, etc	23	32	32	36	40	45	47	49	49
Social contributions for workers' compensation	66	68	89	99	122	132	141	145	146
Other secondary income payable	230	250	263	281	285	311	328	346	357
<i>Total secondary income payable</i>	<i>1 465</i>	<i>1 413</i>	<i>1 470</i>	<i>1 549</i>	<i>1 627</i>	<i>1 779</i>	<i>1 881</i>	<i>1 969</i>	<i>2 053</i>
Total income payable	2 127	1 907	1 899	1 957	2 125	2 417	2 436	2 552	2 627
Gross disposable income	6 374	6 550	6 770	6 802	7 271	7 522	7 774	7 948	8 190
Final consumption expenditure	5 498	5 797	6 058	6 369	6 541	6 886	7 130	7 477	7 698
Net saving plus consumption of fixed capital(a)	876	753	712	433	730	636	644	471	492
Total use of gross income	8 500	8 456	8 669	8 759	9 396	9 939	10 211	10 500	10 816

(a) Net saving plus consumption of fixed capital is derived as a balancing item.

	1990-91	1991-92	1992-93	1993-94	1994-95	1995-96	1996-97	1997-98	1998-99
	\$m	\$m	\$m	\$m	\$m	\$m	\$m	\$m	\$m
Income									
Primary income receivable									
Compensation of employees	1 989	2 103	2 041	2 212	2 509	2 652	2 890	3 048	3 404
Gross operating surplus—dwellings owned by persons	199	215	222	231	247	271	324	339	355
Gross mixed income	276	266	303	382	399	447	467	442	497
Property income receivable	249	212	180	177	238	266	256	255	266
<i>Total primary income receivable</i>	<i>2 713</i>	<i>2 796</i>	<i>2 746</i>	<i>3 002</i>	<i>3 393</i>	<i>3 636</i>	<i>3 937</i>	<i>4 084</i>	<i>4 522</i>
Secondary income receivable									
Social benefits receivable									
Workers' compensation	23	29	34	36	37	36	34	35	37
Social assistance benefits	185	217	229	250	276	303	312	316	325
Current transfers to non-profit institutions	85	93	112	128	137	166	166	180	183
Other secondary income	97	94	89	100	117	125	138	144	154
<i>Total secondary income</i>	<i>390</i>	<i>434</i>	<i>464</i>	<i>514</i>	<i>567</i>	<i>630</i>	<i>651</i>	<i>675</i>	<i>699</i>
Total gross income	3 103	3 230	3 210	3 516	3 960	4 266	4 588	4 759	5 221
Uses of income									
Primary income payable									
Property income payable									
Dwellings and unincorporated enterprises	117	99	76	84	108	143	128	141	146
Consumer debt interest	30	21	15	17	24	30	31	32	31
<i>Total property income payable</i>	<i>147</i>	<i>119</i>	<i>91</i>	<i>101</i>	<i>133</i>	<i>173</i>	<i>159</i>	<i>173</i>	<i>177</i>
<i>Total primary income payable</i>	<i>147</i>	<i>119</i>	<i>91</i>	<i>101</i>	<i>133</i>	<i>173</i>	<i>159</i>	<i>173</i>	<i>177</i>
Secondary income payable									
Income tax payable	448	421	429	455	492	535	637	673	762
Other current taxes on income, wealth, etc	6	9	10	11	11	12	11	12	12
Social contributions for workers' compensation	24	27	32	33	36	35	33	34	37
Other secondary income payable	84	91	96	104	107	121	130	140	146
<i>Total secondary income payable</i>	<i>562</i>	<i>548</i>	<i>567</i>	<i>603</i>	<i>646</i>	<i>703</i>	<i>811</i>	<i>859</i>	<i>957</i>
Total income payable	709	668	659	704	780	876	971	1 033	1 135
Gross disposable income	2 394	2 562	2 552	2 812	3 180	3 389	3 616	3 726	4 086
Final consumption expenditure	1 978	2 102	2 254	2 322	2 564	2 830	2 844	3 120	3 365
Net saving plus consumption of fixed capital(a)	416	460	298	490	616	559	772	606	721
Total use of gross income	3 103	3 230	3 210	3 516	3 960	4 266	4 588	4 759	5 221

(a) Net saving plus consumption of fixed capital is derived as a balancing item.

	1990-91	1991-92	1992-93	1993-94	1994-95	1995-96	1996-97	1997-98	1998-99
	\$m	\$m	\$m	\$m	\$m	\$m	\$m	\$m	\$m
Income									
Primary income receivable									
Compensation of employees	4 983	5 123	5 411	5 837	6 210	6 582	7 002	7 367	7 836
Gross operating surplus—dwellings owned by persons	620	683	754	780	795	793	820	859	873
Gross mixed income	554	582	554	510	544	502	492	531	563
Property income receivable	1 336	1 110	1 013	1 063	1 330	1 358	1 253	1 220	1 262
<i>Total primary income receivable</i>	7 493	7 498	7 732	8 190	8 879	9 235	9 567	9 977	10 534
Secondary income receivable									
Social benefits receivable									
Workers' compensation	70	82	89	91	92	107	108	113	116
Social assistance benefits	350	397	461	506	539	606	619	625	643
Current transfers to non-profit institutions	116	150	159	169	186	207	231	229	252
Other secondary income	169	166	159	176	204	213	232	236	248
<i>Total secondary income</i>	705	795	868	942	1 021	1 133	1 190	1 202	1 259
Total gross income	8 198	8 293	8 600	9 132	9 900	10 368	10 757	11 179	11 793
Uses of income									
Primary income payable									
Property income payable									
Dwellings and unincorporated enterprises	419	292	287	299	352	436	388	413	405
Consumer debt interest	88	70	48	54	75	93	87	100	94
<i>Total property income payable</i>	507	362	335	353	427	529	475	512	499
<i>Total primary income payable</i>	507	362	335	353	427	529	475	512	499
Secondary income payable									
Income tax payable	1 380	1 232	1 229	1 330	1 382	1 528	1 610	1 721	1 850
Other current taxes on income, wealth, etc	17	25	27	30	31	32	34	35	34
Social contributions for workers' compensation	74	75	84	83	89	105	107	112	115
Other secondary income payable	148	163	170	183	186	205	218	231	240
<i>Total secondary income payable</i>	1 619	1 495	1 510	1 626	1 688	1 870	1 969	2 099	2 239
Total income payable	2 127	1 857	1 846	1 979	2 115	2 399	2 445	2 612	2 739
Gross disposable income	6 071	6 436	6 754	7 154	7 784	7 970	8 313	8 568	9 054
Final consumption expenditure	4 198	4 553	4 885	5 165	5 334	5 536	5 720	6 129	6 461
Net saving plus consumption of fixed capital(a)	1 873	1 883	1 869	1 989	2 450	2 434	2 593	2 439	2 593
Total use of gross income	8 198	8 293	8 600	9 132	9 900	10 368	10 757	11 179	11 793

(a) Net saving plus consumption of fixed capital is derived as a balancing item.

	1990-91	1991-92	1992-93	1993-94	1994-95	1995-96	1996-97	1997-98	1998-99
	\$m	\$m	\$m	\$m	\$m	\$m	\$m	\$m	\$m
Income									
Primary income receivable									
Compensation of employees	192 303	195 903	202 842	212 359	227 066	242 499	258 936	270 272	288 101
Gross operating surplus—dwellings owned by persons	32 781	33 908	34 829	36 057	37 886	40 403	44 033	47 057	48 055
Gross mixed income	40 772	40 391	43 624	44 959	46 539	51 329	51 988	55 315	58 216
Property income receivable	52 972	43 690	38 701	36 688	44 606	48 138	45 514	45 396	45 596
<i>Total primary income receivable</i>	<i>318 828</i>	<i>313 892</i>	<i>319 996</i>	<i>330 063</i>	<i>356 097</i>	<i>382 369</i>	<i>400 471</i>	<i>418 040</i>	<i>439 968</i>
Secondary income receivable									
Social benefits receivable									
Workers' compensation	3 626	3 981	4 115	4 071	4 544	4 814	4 965	5 100	5 200
Social assistance benefits	29 003	33 601	36 441	39 373	40 602	43 569	45 873	46 281	47 607
Current transfers to non-profit institutions	4 607	5 329	5 929	6 553	7 348	8 255	8 685	9 542	10 109
Other secondary income	10 306	10 100	9 558	10 596	12 245	12 925	14 170	14 586	15 471
<i>Total secondary income</i>	<i>47 542</i>	<i>53 011</i>	<i>56 043</i>	<i>60 593</i>	<i>64 739</i>	<i>69 563</i>	<i>73 693</i>	<i>75 509</i>	<i>78 387</i>
Total gross income	366 370	366 903	376 039	390 656	420 836	451 932	474 164	493 549	518 355
Uses of income									
Primary income payable									
Property income payable									
Dwellings and unincorporated enterprises	25 203	19 740	17 705	16 573	20 235	23 434	21 791	23 130	23 145
Consumer debt interest	5 761	3 712	2 551	2 684	3 644	4 552	4 374	5 002	4 742
<i>Total property income payable</i>	<i>30 964</i>	<i>23 452</i>	<i>20 256</i>	<i>19 257</i>	<i>23 879</i>	<i>27 986</i>	<i>26 165</i>	<i>28 132</i>	<i>27 887</i>
<i>Total primary income payable</i>	<i>30 964</i>	<i>23 452</i>	<i>20 256</i>	<i>19 257</i>	<i>23 879</i>	<i>27 986</i>	<i>26 165</i>	<i>28 132</i>	<i>27 887</i>
Secondary income payable									
Income tax payable	50 156	46 830	47 527	50 570	54 634	61 150	66 550	70 615	76 127
Other current taxes on income, wealth, etc	900	1 208	1 372	1 544	1 600	1 673	1 783	1 918	1 996
Social contributions for workers' compensation	3 859	3 663	3 889	3 704	4 414	4 699	4 925	5 066	5 183
Other secondary income payable	8 761	9 539	10 107	10 848	11 038	12 220	13 025	13 916	14 602
<i>Total secondary income payable</i>	<i>63 676</i>	<i>61 240</i>	<i>62 895</i>	<i>66 666</i>	<i>71 686</i>	<i>79 742</i>	<i>86 283</i>	<i>91 515</i>	<i>97 908</i>
Total income payable	94 640	84 692	83 151	85 923	95 565	107 728	112 448	119 647	125 795
Gross disposable income	271 730	282 211	292 888	304 733	325 271	344 204	361 716	373 902	392 560
Final consumption expenditure	232 238	243 996	255 066	265 952	282 395	301 282	313 575	333 407	352 650
Net saving plus consumption of fixed capital(a)	39 492	38 215	37 822	38 781	42 876	42 922	48 141	40 495	39 910
Total use of gross income	366 370	366 903	376 039	390 656	420 836	451 932	474 164	493 549	518 355

(a) Net saving plus consumption of fixed capital is derived as a balancing item.

	1990-91	1991-92	1992-93	1993-94	1994-95	1995-96	1996-97	1997-98	1998-99
	\$m	\$m	\$m	\$m	\$m	\$m	\$m	\$m	\$m
NEW SOUTH WALES									
Gross value of agricultural production	6 894	6 143	6 258	6 996	6 462	7 688	8 790	8 540	8 641
Subsidies not included in GVP	109	135	124	149	154	219	227	227	227
less production valuation adjustment	-14	16	-83	-5	45	-97	-135	-177	-159
less Production costs other than wages and consumption of fixed capital	3 784	3 776	3 588	3 968	4 115	4 490	4 827	4 873	4 891
<i>Total agricultural factor income</i>	<i>3 233</i>	<i>2 486</i>	<i>2 877</i>	<i>3 182</i>	<i>2 456</i>	<i>3 514</i>	<i>4 325</i>	<i>4 071</i>	<i>4 138</i>
Taxes less subsidies on production and imports	563	302	265	268	261	167	179	213	216
Gross agricultural product at market prices	3 796	2 789	3 142	3 450	2 717	3 681	4 504	4 284	4 354
less Compensation of employees, consumption of fixed capital, net rent and interest paid	2 457	2 403	2 221	2 273	2 585	2 657	2 514	2 517	2 568
less Taxes less subsidies on production and imports	563	302	265	268	261	167	179	213	216
Agricultural income	776	84	656	908	-129	857	1 811	1 554	1 570
VICTORIA									
Gross value of agricultural production	5 000	5 102	5 595	6 066	5 495	6 724	6 515	6 724	6 848
Subsidies not included in GVP	76	79	83	92	99	109	111	112	112
less production valuation adjustment	-5	8	-45	—	34	-47	-30	-51	-40
less Production costs other than wages and consumption of fixed capital	2 552	2 477	2 604	2 680	2 845	3 056	3 154	3 290	3 300
<i>Total agricultural factor income</i>	<i>2 529</i>	<i>2 696</i>	<i>3 119</i>	<i>3 478</i>	<i>2 715</i>	<i>3 824</i>	<i>3 502</i>	<i>3 597</i>	<i>3 700</i>
Taxes less subsidies on production and imports	329	186	196	207	197	182	176	193	196
Gross agricultural product at market prices	2 858	2 882	3 315	3 685	2 912	4 006	3 678	3 790	3 896
less Compensation of employees, consumption of fixed capital, net rent and interest paid	1 607	1 587	1 670	1 639	1 755	1 894	1 919	1 927	1 963
less Taxes less subsidies on production and imports	329	186	196	207	197	182	176	193	196
Agricultural income	922	1 109	1 449	1 839	960	1 930	1 583	1 670	1 737
QUEENSLAND									
Gross value of agricultural production	5 006	4 672	5 009	5 699	5 778	5 738	6 087	6 073	6 371
Subsidies not included in GVP	90	95	95	114	139	134	166	171	176
less production valuation adjustment	-3	2	-17	1	11	-16	-34	-43	-55
less Production costs other than wages and consumption of fixed capital	2 487	2 424	2 489	2 709	3 043	2 952	3 371	3 368	3 391
<i>Total agricultural factor income</i>	<i>2 612</i>	<i>2 341</i>	<i>2 632</i>	<i>3 103</i>	<i>2 863</i>	<i>2 936</i>	<i>2 916</i>	<i>2 919</i>	<i>3 211</i>
Taxes less subsidies on production and imports	108	38	48	29	-12	35	15	21	21
Gross agricultural product at market prices	2 720	2 379	2 680	3 132	2 851	2 971	2 931	2 940	3 232
less Compensation of employees, consumption of fixed capital, net rent and interest paid	1 946	1 816	1 833	1 939	2 164	2 226	2 254	2 260	2 301
less Taxes less subsidies on production and imports	108	38	48	29	-12	35	15	21	21
Agricultural income	666	525	799	1 164	699	710	662	659	910

— nil or rounded to zero (including null cells)

	1990-91	1991-92	1992-93	1993-94	1994-95	1995-96	1996-97	1997-98	1998-99
	\$m	\$m	\$m	\$m	\$m	\$m	\$m	\$m	\$m
SOUTH AUSTRALIA									
Gross value of agricultural production	2 036	2 305	2 359	2 449	2 626	3 408	3 159	3 490	3 586
Subsidies not included in GVP	43	66	54	57	67	71	72	77	79
less production valuation adjustment	-4	22	-51	-4	42	-52	-48	-85	-85
less Production costs other than wages and consumption of fixed capital	1 270	1 334	1 355	1 301	1 526	1 680	1 685	1 837	1 844
<i>Total agricultural factor income</i>	<i>813</i>	<i>1 015</i>	<i>1 109</i>	<i>1 209</i>	<i>1 125</i>	<i>1 851</i>	<i>1 594</i>	<i>1 815</i>	<i>1 906</i>
Taxes less subsidies on production and imports	107	26	27	21	6	32	11	5	5
Gross agricultural product at market prices	920	1 041	1 136	1 230	1 131	1 883	1 605	1 820	1 911
less Compensation of employees, consumption of fixed capital, net rent and interest paid	831	765	785	707	810	919	937	939	956
less Taxes less subsidies on production and imports	107	26	27	21	6	32	11	5	5
Agricultural income	-18	250	324	502	315	932	657	876	950
WESTERN AUSTRALIA									
Gross value of agricultural production	2 849	2 972	3 282	3 557	4 060	4 745	4 501	4 602	4 382
Subsidies not included in GVP	58	101	86	98	127	108	131	143	141
less production valuation adjustment	-8	51	-124	-17	149	-125	-134	-242	-202
less Production costs other than wages and consumption of fixed capital	1 950	1 828	1 923	2 009	2 239	2 461	2 694	2 814	2 843
<i>Total agricultural factor income</i>	<i>965</i>	<i>1 194</i>	<i>1 569</i>	<i>1 663</i>	<i>1 799</i>	<i>2 517</i>	<i>2 072</i>	<i>2 173</i>	<i>1 882</i>
Taxes less subsidies on production and imports	193	40	42	58	40	59	20	13	13
Gross agricultural product at market prices	1 158	1 234	1 611	1 721	1 839	2 576	2 092	2 186	1 895
less Compensation of employees, consumption of fixed capital, net rent and interest paid	1 056	1 005	1 013	1 007	1 133	1 187	1 226	1 236	1 260
less Taxes less subsidies on production and imports	193	40	42	58	40	59	20	13	13
Agricultural income	-91	189	556	656	666	1 330	846	937	622
TASMANIA									
Gross value of agricultural production	566	520	567	637	609	629	732	754	774
Subsidies not included in GVP	9	10	10	10	11	12	14	15	15
less production valuation adjustment	-1	-1	-1	1	2	-3	3	-1	-1
less Production costs other than wages and consumption of fixed capital	285	273	272	290	307	319	359	363	364
<i>Total agricultural factor income</i>	<i>291</i>	<i>258</i>	<i>306</i>	<i>356</i>	<i>311</i>	<i>325</i>	<i>384</i>	<i>407</i>	<i>426</i>
Taxes less subsidies on production and imports	31	16	13	14	15	13	11	9	9
Gross agricultural product at market prices	322	274	319	370	326	338	395	416	435
less Compensation of employees, consumption of fixed capital, net rent and interest paid	246	248	260	240	248	268	288	288	294
less Taxes less subsidies on production and imports	31	16	13	14	15	13	11	9	9
Agricultural income	45	10	46	116	63	57	96	119	132

— nil or rounded to zero (including null cells)

	1990-91	1991-92	1992-93	1993-94	1994-95	1995-96	1996-97	1997-98	1998-99
	\$m	\$m	\$m	\$m	\$m	\$m	\$m	\$m	\$m
NORTHERN TERRITORY									
Gross value of agricultural production	146	140	159	272	246	287	292	242	277
Subsidies not included in GVP	2	4	3	7	5	5	5	5	5
less production valuation adjustment	—	—	—	—	—	—	—	—	—
less Production costs other than wages and consumption of fixed capital	43	40	51	96	83	89	93	91	91
<i>Total agricultural factor income</i>	<i>105</i>	<i>104</i>	<i>111</i>	<i>183</i>	<i>168</i>	<i>203</i>	<i>204</i>	<i>156</i>	<i>191</i>
Taxes less subsidies on production and imports	2	1	3	-3	1	1	1	1	1
Gross agricultural product at market prices	107	105	114	180	169	204	205	157	192
less Compensation of employees, consumption of fixed capital, net rent and interest paid	36	48	49	51	50	54	61	61	61
less Taxes less subsidies on production and imports	2	1	3	-3	1	1	1	1	1
Agricultural income	69	56	62	132	118	149	143	95	130
AUSTRALIA									
Gross value of agricultural production	22 497	21 854	23 229	25 676	25 276	29 219	30 076	30 425	30 879
Subsidies not included in GVP	387	490	455	527	602	658	726	750	757
less production valuation adjustment	-35	98	-321	-24	283	-340	-378	-599	-542
less Production costs other than wages and consumption of fixed capital	12 371	12 152	12 282	13 053	14 158	15 047	16 183	16 636	16 724
<i>Total agricultural factor income</i>	<i>10 548</i>	<i>10 094</i>	<i>11 723</i>	<i>13 174</i>	<i>11 437</i>	<i>15 170</i>	<i>14 997</i>	<i>15 138</i>	<i>15 454</i>
Taxes less subsidies on production and imports	1 333	609	594	594	508	489	413	455	462
Gross agricultural product at market prices	11 881	10 704	12 317	13 768	11 945	15 659	15 410	15 593	15 916
less Compensation of employees, consumption of fixed capital, net rent and interest paid	8 179	7 872	7 831	7 856	8 745	9 205	9 199	9 228	9 403
less Taxes less subsidies on production and imports	1 333	609	594	594	508	489	413	455	462
Agricultural income	2 369	2 223	3 892	5 317	2 692	5 965	5 798	5 910	6 051

— nil or rounded to zero (including null cells)

EXPLANATORY NOTES

INTRODUCTION

1 This publication contains State and Territory estimates of gross domestic product (referred to as gross state product (GSP)) and its components, in current price and chain volume terms, for the years 1990–91 to 1998–99. Where ‘State’, is referred to in the text, it also encompasses the two Territories. State estimates are also provided for many other national accounting aggregates. The estimates in this publication are consistent with those published for Australia in the 1998–99 issue of *Australian System of National Accounts* (ABS Cat. no. 5204.0).

2 State estimates are essentially a dissection of the Australian estimates contained in ABS Cat. no. 5204.0. While it is possible in some cases to build up estimates using the same data sources as those used for the Australian estimates, it is quite often necessary to derive dissections using a variety of allocators. These may be directly related to the aggregate being allocated (for example, economic survey data) or only indirectly related (for example, population and household income distributions).

CONCEPTUAL BASIS

3 Australia’s national accounts statistics are based on the latest international standard for national accounting—the *System of National Accounts, 1993* (SNA93). SNA93 was produced by five international organisations involved in the use of economic statistics and the promotion of international statistical standards—United Nations, Organisation for Economic Co-operation and Development, International Monetary Fund, World Bank and Commission of the European Communities.

4 While national estimates are based on the concepts and conventions embodied in SNA93, no such detailed standard is available for sub-national (regional/State) accounts. In the main, the national concepts are applicable to State accounts, but there remain a number of conceptual and measurement issues that either do not apply or are insignificant at the national level. Most problems arise for the Transport and storage, Communication services, and Finance and insurance industries, and in the treatment of central government. In such cases, conventions need to be established which reflect data availability and/or the needs of users.

ESTIMATES OF GSP AND ITS COMPONENTS

5 Estimates of GSP in current prices are produced by summing factor incomes, i.e. compensation of employees, gross operating surplus (GOS) and gross mixed income (GMI), plus taxes less subsidies on production and imports. While wages and salaries can be readily collected by State, this is not always the case for other components of compensation of employees or for GOS plus GMI, which often cannot be measured satisfactorily within business accounting systems at the individual location. Most of the ABS economic collections which provide data for the estimates in this publication have used the ‘management unit’ as their basic collection unit. A management unit is the largest unit within an enterprise group (a group of legal entities under common ownership and control) which controls its productive activities and for which accounts are kept. The operations of some management units cut across State borders, and conventions have to be adopted in order to allocate GOS plus GMI to States.

6 For the Transport and storage and Communication services industries, estimates of GOS plus GMI by State can be substantially affected by the conceptual basis adopted for allocation. For example, in the case of the modal transport industries (i.e. all transport industries except Services to transport), possible ways of attributing production could include tonne (or person) kilometres travelled in a State; economic activity attributed to the base of operations only; or a mixture of both. As State economic activity for interstate modal transport activities cannot be uniquely defined, it may even be preferable

EXPLANATORY NOTES *continued*

that they should be regarded as extra-territorial and excluded entirely from State production. However, the approach adopted in this publication is to use activity indicators to allocate interstate transport services to States.

7 Numerous data sources are used to apportion Australia level GOS plus GMI to States. Where available, economic survey data are used to apportion GOS for corporations. For those industries for which economic survey data are not available, a variety of allocators is used to extrapolate or estimate State dissections of GOS. Indicators include State details of wages and salaries, employment, household final consumption expenditure, movements in unincorporated enterprises' GMI, freight shipped from Australian ports, and airport passenger embarkations/disembarkations (the latter two indicators are specific to the transport industry). Taxation statistics are used to apportion GMI for non-agricultural unincorporated enterprises in some industries, and economic survey data are used for other industries. Production-based estimates of agricultural GOS plus GMI are derived using the same data sources and methodology as are used for the Australian estimates. Although the GOS of State and local government non-financial corporations is directly available from the ABS public finance system, GOS for Commonwealth Government non-financial corporations is allocated mainly using indirect indicators.

8 While State by industry estimates of wages and salaries are obtained from the same data sources as those used for the Australian estimates, the estimates of the other components of compensation of employees are essentially allocations of the Australian total. State by industry estimates of employers' superannuation contributions are derived using wages and salaries by State by industry as an allocator. State by industry estimates of workers compensation premiums are based on labour costs data collected by the ABS. It should be noted that there is a minor difference between compensation of employees as published in the total factor income tables and as published in the total household income accounts for both Australian and State estimates. The difference arises in situations where a household supplies labour to a production establishment that is in a different domestic territory (State/county) from the household.

9 Estimates of taxes less subsidies on production and imports are derived by adding values for taxes received and subsidies paid by State and local governments and Commonwealth Government. Data are available from the ABS public finance system, although Commonwealth Government values are not generally available by State. Indicators are used to allocate sales tax, excise tax, customs duties and major subsidies to the State where the economic activity took place.

10 In addition to estimates of GSP and their income components, this publication contains State estimates for a number of expenditure components. The difference between the sum of these components and GSP is known as the balancing item. The balancing item reflects: changes in inventories; international trade in services; interstate trade in goods and services; and the expenditure statistical discrepancy.

11 State estimates of household final consumption expenditure and private gross fixed capital formation are derived largely from the same sources used for the Australia-level estimates. In the case of household final consumption expenditure, data sources for major components such as household goods, dwelling rent, purchase of motor vehicles, fares, and purchases of gas, electricity and fuel are available by State. Some components of expenditure on recreation and culture rely on the extrapolation and interpolation of less frequent

STATE EXPENDITURE
ESTIMATES

EXPLANATORY NOTES *continued*

Household Expenditure Survey data. Where actual data are not available, indirect indicators such as household disposable income are used to allocate the Australia-level estimate.

12 State estimates of private gross fixed capital formation on dwellings and other buildings and structures are derived using data from the ABS Building Activity Survey and the Engineering Construction Survey, while expenditure on equipment is derived from the Survey of Private New Fixed Capital Expenditure. Ownership transfer costs are derived from data supplied by the various State Stamp Duty Offices, ABS surveys of real estate agents and lawyers, and various other data such as the number of real property transfers by State. Essentially, these are the same data sources used to prepare the Australia-level estimates.

13 State estimates for capital formation on livestock are based on data from the ABS Agricultural Census, the Survey of Livestock Slaughtering and Australian Bureau of Agriculture and Resource Economics surveys. State estimates of exploration expenditure are derived from the ABS Survey of Actual and Expected Private Mineral Exploration. State estimates of capital expenditure on software and artistic originals are based on a variety of allocators, including some indirect indicators.

14 Final expenditures of State and local governments can be readily allocated by State, and the same public finance source that is used to derive Australian estimates is also used to derive State estimates.

15 The treatment of national government final expenditures in regional accounting is rather problematic. National government includes the Commonwealth Government and the universities, with the major allocation difficulties arising from the Commonwealth Government component. Alternative treatments are to attribute final expenditures to the region in which the expenditure was incurred, or to the region in which the beneficiaries reside, or even to consider the Commonwealth Government consumer unit as extraterritorial and therefore to exclude it from all regions. For practical reasons the first approach has been adopted in this publication, although it still requires extensive use of indirect indicators. An implication is that a large proportion of the consumption of Commonwealth Government services is included in State final demand (SFD) for the Australian Capital Territory, increasing the balancing item for that Territory. If data had been available to allocate Commonwealth final consumption expenditure to end users, the balancing item for the Australian Capital Territory would be a much smaller negative because the provision of the services would be regarded as an interstate export instead. Estimates for Commonwealth Government expenditures in the States on both an annual and quarterly basis therefore have to be treated with considerable caution. The wages and salaries component of Commonwealth Government final consumption expenditure was directly apportioned to States using data from the ABS Survey of Employment and Earnings and information supplied by the Department of Defence. Expenditure on goods and services classified to defence were allocated according to population, while non-defence purchases were allocated according to Commonwealth general government employment by State.

16 For Commonwealth general government gross fixed capital formation, Australia-level estimates were first subdivided into expenditure on other buildings and structures, and expenditure on machinery and equipment. The Australia-level other buildings and structures component has generally been allocated to States, based on Commonwealth Government construction expenditures by State as an indicator. Expenditure on machinery and equipment has been allocated using Commonwealth general government employment by

EXPLANATORY NOTES *continued*

State. State estimates of capital expenditure on intangible assets are based on a variety of allocators, including some indirect indicators. The current method used for the allocation of Commonwealth expenditures to States is presently under review. This is because some sources of indicator data are no longer available and because the use of some indicators no longer appears appropriate. Consideration is also being given to incorporating the allocation of some expenditures to the region in which the beneficiaries reside (e.g. personal benefit payments).

17 For Commonwealth public corporation gross fixed capital formation, a variety of allocators has been applied at the individual corporation level. Direct allocation was possible in a few cases where corporations operated wholly in one State. For some corporations State-level direct indicators were available from either the ABS Engineering Construction Survey or from published accounts. For other corporations, indirect allocations were used—for example, purchases of ships were allocated using general freight activity through ports in each State.

18 Separate State details of exports and imports (international trade) of goods, in both current prices and chain volume terms, are provided in this publication. Detailed current price estimates of goods on a recorded trade basis at the two-digit level of the Standard Industrial Trade Classification, Revision 3 (SITC Rev3) are used to produce chain volume measures of this component. The exports data are on the basis of State of origin, that is, the State in which the final stage of manufacture or production occurs. For most exports this should correspond to the required basis for State allocation, that is, the State of final resident ownership. There is an assumption that the national deflators will provide a reasonable measure of change in price at the State level. Revaluation at the two-digit (division) level of the SITC Rev3 is a compromise giving a reasonable level of disaggregation by commodity type without increasing the magnitude of the revaluation exercise too significantly. There are a very limited number of cases where more specific deflators have been used to replace the national deflator at the SITC Rev3 division level. This is true in cases where the composition of a particular division is known to vary between States, and the division includes commodities with price movements which deviate significantly from the divisional average. Mineral and agricultural commodities are likely to be significant in this regard.

19 The current price exports estimates differ from those published in *International Merchandise Trade, Australia* (ABS Cat. no. 5422.0). Re-exports, which are not available on a State basis in the latter publication, have been allocated to the States, by commodity, in proportion to each State's exports of each commodity and included in the State figures in this publication. However, those commodities subject to a confidentiality restriction, and which are not available by State in the trade publication, are also excluded from the State export figures here.

20 For imports, a similar approach has been adopted to that employed in the derivation of current price and chain volume measures for exports (see paragraph 19 above). The level of revaluation corresponds broadly to the commodity sub-group level of the balance of payments merchandise imports end-use classification of imports, that is, two-digit Broad Economic Category by three-digit level of the SITC Rev3. These data are on the basis of the State in which the imports were released from Australian Customs Service control. In most cases this will correspond to the State of initial resident ownership, which is the required basis of State allocation. No information is available on which to

EXPLANATORY NOTES *continued*

base an adjustment for goods released from Customs' control in a State other than that in which their owner resides.

21 The State estimates of exports and imports of goods are benchmarked to the national estimates.

CHAIN VOLUME MEASURES OF GSP

22 The chain volume measures of GSP presented in this publication are derived by revaluing current price, income-based estimates of GSP, using deflators which are compiled using the available data on the composition of expenditures on State production and movements in associated prices. For a more complete description of why this approach has been adopted, and details of the data sources and the methods used, see the Technical Note on page iv of the 1993–94 issue of this publication. References to 'constant price estimates' in the Technical Note should be replaced by 'chain volume measures'.

23 A lack of data means that it is not possible to derive estimates at the State level equivalent to the aggregate Australian expenditure-based estimates of gross domestic product. While the components of SFD and estimates of international merchandise trade by State are available, there are no complete estimates of international trade in services; interstate trade in goods and services; or changes in inventories. Hence, an expenditure-based GSP volume measure cannot be derived by a similar methodology to that adopted at the Australian level.

24 In order to make maximum use of the incomplete expenditure data and limited price data available at the State level, an approach is adopted which essentially involves deriving the best possible current price and chain volume estimates of subsets of expenditure that encompass most, if not all, of GSP. For each State, current price estimates of identified components of international and interstate trade and changes in inventories are combined with the current price estimates of SFD and, similarly, the chain volume measures of those components are combined with the chain volume measures of SFD. The quotient derived by dividing the aggregate chain volume measure into the aggregate current price estimates is a Paasche (current-weighted) price index. It is this price index which is used to revalue the current price estimates of GSP.

25 It is crucial to identify separately those components for which the deflators deviate significantly from the average, since the method adopted effectively attributes the weighted average deflator to the unidentified components. There is an assumption underlying the approach adopted in deriving the aggregate State deflators that, because of price competition, the available national price indicators are reasonably indicative at the State level. This is a less distorting assumption if the price indicators are weighted together at a reasonable level of commodity disaggregation, and implies deriving the current price and chain volume estimates at as fine a level as possible.

26 Despite the fact that as broad a range of information as possible is used in this estimation procedure, the aggregate current price and chain volume estimates of expenditures used in the derivation of the State deflator are not considered to be complete measures. They merely serve to produce the best deflators and therefore the most reliable chain volume measures of GSP that the available data and resources allow. For this reason, they are regarded as experimental estimates.

ACCURACY OF ESTIMATES

27 The estimates in this publication represent allocations of Australian estimates published in ABS Cat. no. 5204.0. Therefore, they will reflect any inaccuracies in those estimates as well as inaccuracies introduced by any particular conceptual methodological and data problems inherent in the

EXPLANATORY NOTES *continued*

allocation of Australian estimates to States. The degree of accuracy and reliability will necessarily be lower than that for the Australian estimates.

28 Uniform methodologies and consistent data sources have been used for all States. Although there is no reason to expect that there would be any bias in the methodology used, there is some variation in both the quality of data between States (particularly where sample surveys are used) and the sensitivity of estimates to alternative concepts.

29 Detailed industry estimates for the two Territories are likely to be less accurate than those for the States. For example, for the Communication services industry, data for the Australian Capital Territory are available only in combination with New South Wales; a similar problem exists for Communication services data relating to the Northern Territory, which are combined with data for South Australia. The use of indirect allocators to separate the Territories has a far more significant effect on the relative errors for the Australian Capital Territory and for the Northern Territory than for New South Wales and South Australia. Where sample surveys are used to collect data, standard errors are often higher for the Territories than for the States.

30 The limitations of ABS sample surveys in producing State estimates are particularly relevant for estimates of private gross fixed capital formation—machinery and equipment. Estimates for each State are derived largely from a quarterly national survey of business. The survey design aims to achieve a high degree of statistical accuracy in the samples in the larger States. However, as the accuracy of the estimates from this survey (in percentage terms) is roughly proportional to the size of the sample, the estimates for the smaller States are generally less accurate than those for the larger States. Hence, the estimates for the Northern Territory, Australian Capital Territory, Tasmania and South Australia are particularly prone to volatile movements.

31 Estimates of GOS for the latest year rely on a range of broad activity indicators such as retail turnover, construction work done and persons employed. Therefore, they are subject to revision as more suitable sources, such as taxation statistics and ABS economic survey data, become available.

32 Estimates of taxes less subsidies on production and imports, government final consumption expenditure, and general government and public corporation gross fixed capital formation can be substantially affected by the indicators chosen to apportion the Commonwealth Government component to States. Again, care is required when interpreting these estimates.

33 The incomplete nature of the price and expenditure data available at the State level for the derivation of the GSP deflators, and the generally lower level of accuracy of State data, referred to earlier, mean that there is greater scope for inaccuracy than in comparable estimates at the Australian level. The chain volume measures of GSP are derived measures, calculated by adjusting the current price estimates using specially constructed State deflators. This means that the chain volume measures incorporate the combined effects of the inaccuracies in the current price estimates and those in the deflators. These inaccuracies reflect a number of factors, including higher relative sampling errors; the 'fuzziness' of some State data arising from difficulties that businesses and government agencies operating across the country have in allocating their activities by State; and the limited availability of source data on a State basis in a number of areas. The inaccuracies in the component value and price estimates may be compounded or offset in the process of deriving the chain volume measures.

EXPLANATORY NOTES *continued*

34 In analysing the chain volume measures it is important to recognise the data limitations at the State level and to be aware that the accuracy of the estimates will not be as high as that of the corresponding national estimates.

OCCASIONAL PAPERS

35 Occasional papers produced by the officers of the ABS report on various aspects of research being undertaken on national accounts. They are not used for the release of official statistics and do not necessarily reflect the views of the ABS. The following occasional papers are available at all ABS offices:

- *Studies in National Accounting: Current Cost Depreciation and Net Capital Stock*—C. Bailey (1981/1)
- *The Accuracy and Reliability of the Quarterly Australian National Accounts*—A. Johnson (1982/2)
- *State Accounts, Australia: Issues and Experimental Estimates*—S. Burrell, J. Daniel, A. Johnson and R. Walters (1984/4)
- *The Effects of Rebasings the Constant Price Estimates of the Australian National Accounts*—R. Dippelsman (1985/3)
- *Estimates of Depreciation and Capital Stock, Australia*—R. Walters, and R. Dippelsman (1985/3)
- *Estimates of Multifactor Productivity, Australia*—C. Aspden (ABS Cat. no. 5233.0)
- *Productivity, Prices, Profits and Pay, 1964–65 to 1989–90*—I. Castles (ABS Cat. no. 5239.0)
- *Unpaid Work and the Australian Economy, 1992* (ABS Cat. no. 5240.0)
- *National Balance Sheets for Australia: Issues and Experimental Estimates, 1989–1992* (ABS Cat. no. 5241.0)

INFORMATION PAPERS

36 Information papers are published by the ABS to provide information on topical issues and developments. The following information papers relating to national accounting issues are available at all ABS offices:

- *Measuring Unpaid Household Work—Issues and Experimental Estimates* (ABS Cat. no. 5236.0)
- *Introduction of Revised International Statistical Standards in ABS Macro-economic Statistics* (ABS Cat. no. 5245.0)
- *Implementation of Revised International Standards in the Australian National Accounts* (ABS Cat. no. 5251.0)
- *Introduction of Chain Volume Measures in the Australian National Accounts* (ABS Cat. no. 5248.0)
- *Upgraded Australian National Accounts* (ABS Cat. no. 5253.0)

RELATED PUBLICATIONS

37 As well as the publications previously referred to, other national accounts publications produced which may be of interest are:

- *Australian National Accounts: Input-Output Tables (Commodity Details)* (ABS Cat. no. 5215.0)
- *A Guide to the Australian National Accounts* (ABS Cat. no. 5235.0)

38 Current publications produced by the ABS are listed in the *Catalogue of Publications and Products* (ABS Cat. no. 1101.0). The ABS also issues, on Tuesdays and Fridays, a *Release Advice* (ABS Cat. no. 1105.0) which lists publications to be released in the next few days. The Catalogue and Release Advice are available from any ABS office.

SELF-HELP ACCESS TO STATISTICS

- CPI INFOLINE* For current and historical Consumer Price Index data, call 1902 981 074 (call cost 75c per minute).
- DIAL-A-STATISTIC* For the latest figures for National Accounts, Balance of Payments, Labour Force, Average Weekly Earnings, Estimated Resident Population and the Consumer Price Index call 1900 986 400 (call cost 75c per minute).
- INTERNET* www.abs.gov.au
- LIBRARY* A range of ABS publications is available from public and tertiary libraries Australia-wide. Contact your nearest library to determine whether it has the ABS statistics you require.

WHY NOT SUBSCRIBE?

- PHONE* +61 1300 366 323
- FAX* +61 03 9615 7848

CONSULTANCY SERVICES

ABS offers consultancy services on a user pays basis to help you access published and unpublished data. Data that is already published and can be provided within 5 minutes is free of charge. Statistical methodological services are also available. Please contact:

<i>INQUIRIES</i>	<i>City</i>	<i>By phone</i>	<i>By fax</i>
	Canberra	02 6252 6627	02 6207 0282
	Sydney	02 9268 4611	02 9268 4668
	Melbourne	03 9615 7755	03 9615 7798
	Brisbane	07 3222 6351	07 3222 6283
	Perth	08 9360 5140	08 9360 5955
	Adelaide	08 8237 7400	08 8237 7566
	Hobart	03 6222 5800	03 6222 5995
	Darwin	08 8943 2111	08 8981 1218

- POST* Client Services, ABS, PO Box 10, Belconnen, ACT 2616
- EMAIL* client.services@abs.gov.au



2522000007981

ISSN 0819-7423

RRP \$28.00