



DEMOGRAPHY

NEW SOUTH WALES

EMBARGO: 11:30AM (CANBERRA TIME) FRI 5 MAR 1999

CONTENTS

	<i>page</i>
Notes	2
Main features	3
List of tables	5
DETAILED INFORMATION	
1 Demographic summary	7
2 Population	19
3 Births – year of registration	24
4 Deaths – year of registration	37
5 Marriages registered	55
6 Divorces granted	68
ADDITIONAL INFORMATION	
Explanatory notes	79
Appendixes	
1 Characteristics available	85
2 Historical summary	86
3 1996 Census	87
Glossary	89

- For more information about these and related statistics, contact Serrie Kamara on Sydney 02 9268 4492 or refer to the back cover of this publication.

NOTES

ABOUT THIS PUBLICATION

Because of the complexity and variety of concepts included in this publication, users are advised to consult both the Explanatory Notes and Glossary for clarification.

Final figures for births and deaths may differ slightly from those used to compile natural increase for population estimates because it is necessary to use preliminary births and deaths data when finalising population estimates.

Australia details for population, births and deaths include Other Territories (see paragraph 2 of the Explanatory Notes).

This issue contains rates calculated using preliminary estimates of Australia, States and Territories as at 30 June 1997.



SYMBOLS AND OTHER USAGES

ABS	Australian Bureau of Statistics
ASGC	Australian Standard Geographical Classification
ERP	Estimated Resident Population
ICD	International Classification of Diseases
n.a.	not available
n.p.	not available for publication but included in totals where applicable
n.y.a.	not yet available
p	preliminary
r	figure or series revised since previous issue
SD	Statistical division
SLA	Statistical local area
SSD	Statistical subdivision
..	not applicable
—	nil or rounded to zero



Gregory W. Bray
Regional Director
New South Wales

MAIN FEATURES

KEY FIGURES

	NEW SOUTH WALES.....			AUSTRALIA.....		
	1987	1997	Change	1987	1997	Change
	'000	'000	%	'000	'000	%
Estimated resident population	5 662.2	6 306.3	11.4	16 394.6	18 631.1	13.6
Net overseas migration	58.3	34.3	-41.2	136.1	83.7	-38.5
Net interstate migration	-10.8	-10.8	0.0
Births						
Registration basis	86.1	87.2	1.3	244.0	251.8	3.2
Deaths						
Registration basis	42.2	45.6	8.1	117.3	129.4	10.3
Marriages	40.7	36.7	-9.8	114.1	106.7	-6.5
Divorces	12.0	14.7	22.5	39.7	51.3	29.2

ESTIMATED RESIDENT POPULATION

- The estimated resident population of NSW at 31 December 1997 was 6,306,300. This represents an increase of 11.4% over the last 10 years.
- The proportion of persons aged 65 years and over increased to 12.7%, compared to 10.7% in 1987. On the other hand, the proportion of children (less than 15 years of age) decreased to 21.0%, compared to 31.0% in 1987.
- As in 1996, the city of Blacktown was the most populated SLA in NSW, with an estimated resident population of 244,200 in 1997.

OVERSEAS MIGRATION

- In 1997, NSW experienced a net gain of 34,300 from overseas migration (permanent and long-term). This represented 41.0% of the total number of overseas migrants to Australia during the year.

INTERSTATE MIGRATION

- The interstate migration component of population change resulted in a net loss to NSW of almost 10,800 in 1997. Only Queensland, Western Australia and the Northern Territory achieved a net gain from interstate migration in the 12 months to December 1997.

BIRTHS

- In 1997 there were 87,156 registered births in NSW, an increase of 1.2% from 1987 (86,093). The birth rate of 13.9 births per 1,000 population was the lowest rate ever recorded in NSW.
- Mothers in the 25–29 years age group had more births than any other age group, contributing 32.5% of the total NSW births in 1997. Mothers in the 30–34 years age group contributed 30.0% of the total annual births.
- Ex-nuptial births represented 26.7% of all NSW births in 1997, compared to 18.0% in 1987. About 86.0% of all ex-nuptial births were paternity acknowledged.

DEATHS

- The number of deaths of NSW residents in 1997 was 45,641, representing a crude death rate of 7.3 deaths per 1,000 population and a standardised rate of 6.3 per 1,000.
- The median age at death was 74.3 years for men and 81.1 years for women. By comparison, the 1987 medians were 71.2 years and 78.1 years respectively.
- The infant mortality rate was 5.2 per 1,000 live births, compared to 8.5 in 1987. The number of infant deaths decreased from 731 to 451 over the past decade.

MARRIAGES

- There were 36,679 marriages registered in NSW in 1997, a crude rate of 5.8 per 1,000 population, the same rate as in 1996.
- The median age at first marriage was 27.8 years for men and 25.9 years for women, compared with 26.1 years and 24.0 years respectively in 1987.
- Of all the marriages 55.0% were celebrated by ministers of religion in 1997, while 45.0% were celebrated by civil celebrants.

DIVORCES

- In 1997 there were 14,655 divorces granted in NSW, compared to 12,044 in 1987, the second highest number since the introduction of the Family Law Act in 1976 which resulted in 22,147 divorces. More than one-half (51.0%) of all divorces involved at least one child under 18 years.
- The median age at divorce in 1997 was 39.6 years for men and 36.8 years for women. The comparative medians in 1987 were 37.7 years and 34.9 years respectively.

LIST OF TABLES

Page

DEMOGRAPHIC SUMMARY

1.1	States and Territories—31 December 1997	10
1.2	Statistical Areas	12

POPULATION

2.1	Summary, selected years—1987, 1992 to 1997	21
2.2	Estimated resident population, age and sex—at 30 June 1997	22
2.3	Projected population —1997 to 2051	23

BIRTHS – YEAR OF REGISTRATION

3.1	Summary, selected years—1987, 1992 to 1997	28
3.2	Confinements, nuptiality, plurality, age of mother	30
3.3	Confinements, age of parents	31
3.4	Nuptial confinements, birthplace of parents	33
3.5	Nuptial confinements, age of mother, previous issue, average issue	35
3.6	First nuptial confinements, age of mother, duration of current marriage	36

DEATHS – YEAR OF REGISTRATION

4.1	Summary, selected years—1987, 1992 to 1997	42
4.2	Age at death, sex	44
4.3	Age at death, marital status	45
4.4	Expectation of life, NSW and Australia, selected ages, selected years	46
4.5	Expectation of life, NSW and Australia—1995 to 1997	47
4.6	Birthplace, duration of residence	48
4.7	State or Territory of usual residence, State or Territory of registration	50
4.8	Selected causes of death, sex	51
4.9	Selected causes of death, summary	52
4.10	Perinatal deaths, numbers, rates, selected years—1987 to 1997	53
4.11	Perinatal deaths, selected details, selected years—1987 to 1997	54

MARRIAGES REGISTERED

5.1	Summary — 1987 to 1997	58
5.2	Age-specific first marriage and remarriage rates, census years—1971 to 1997	59
5.3	Previous marital status of parties	60
5.4	Previous marital status of parties by age at marriage	61
5.5	Age of parties	62
5.6	Birthplace of parties	63
5.7	Category of rite, previous marital status of parties	65
5.8	Remarriages, previous marriages, number of children under 16	66
5.9	Remarriages, interval to remarriage, reason for termination of last marriage	67

DIVORCES GRANTED

6.1	Summary, selected years—1987 to 1997	71
6.2	Age of parties at marriage, duration of marriage	73
6.3	Age of parties at final separation, duration of marriage to separation	74
6.4	Age of parties at divorce	75
6.5	Children of the marriage, duration of marriage	76
6.6	Birthplace of parties	77

SECTION 1

DEMOGRAPHIC SUMMARY

POPULATION

The estimated resident population of NSW at 31 December 1997 was 6,306,300, an increase of 65,400 for the calendar year. This represents an annual growth of 1.0%, which was slightly lower than the growth rate for Australia (1.1%), the Northern Territory (2.1%), Queensland (1.7%), and Western Australia (1.6%), but higher than South Australia (0.5%), ACT (0.2%), and Tasmania (-0.5%). Victoria experienced a similar growth rate of 1.0%.

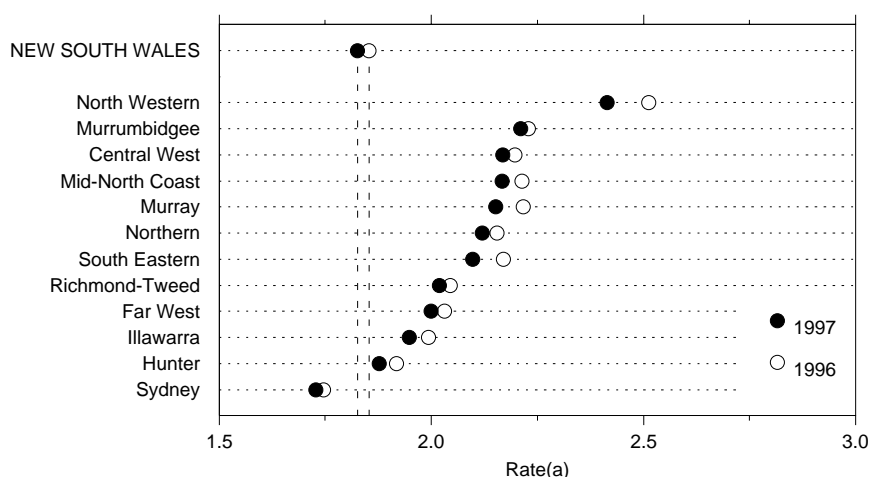
COMPONENTS OF POPULATION CHANGE

The increase in the population of NSW experienced in 1996-1997 comprised a natural increase (births minus deaths) of 41,941, a net overseas migration gain of 34,302, and a net interstate migration loss of (-10,782). The net overseas migration gain in NSW represented 41% of the total Australian increase from this component. Although NSW had the highest net interstate migration loss of all States and Territories during 1997, this figure was substantially lower than the loss of (-15,620) recorded in 1996 or (-15,756) in 1992. The majority of these internal migrants went to Queensland.

BIRTHS AND CONFINEMENTS

There were 87,156 births recorded in NSW in 1997, representing 34.6% of all Australian births during the year. The majority of these births (55,803 or 64.0%) occurred in the Sydney Statistical Division (SD), with the highest number of births recorded in the Statistical Local Areas (SLA) of Blacktown (4,505), Fairfield (3,093) and Penrith (2,803). Outside of Sydney, a high number of births were recorded in Wollongong (2,437), Lake Macquarie (2,189) and Newcastle (1,632).

TOTAL FERTILITY RATES BY STATISTICAL DIVISION—1996 AND 1997



(a) See Glossary for definition of total fertility rate.

BIRTHS AND CONFINEMENTS *continued*

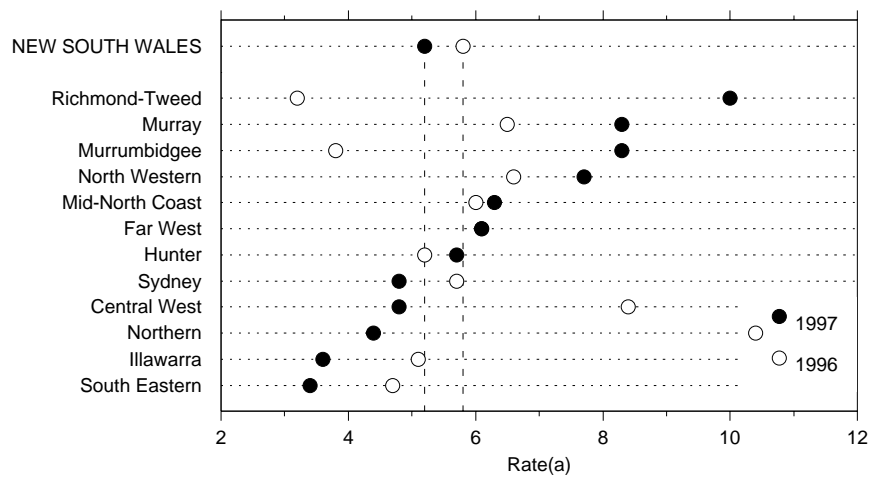
The average total fertility rate for NSW over the three-year period 1995 to 1997 was 1.826 compared with 1.886 for the period 1993 to 1995. The highest total fertility rate occurred in the SDs of North Western SD (2.415), Murrumbidgee SD (2.211), Central West SD (2.169), and the Mid-North Coast SD (2.167). Sydney SD (1.729), Hunter SD (1.878), and Illawarra SD (1.948) recorded the lowest fertility rates. At the SLA level, high fertility rates were recorded in Windouran (4.611), Urana (3.436), Carrathool (3.204), and Lachlan (3.008). Fertility rates were lowest in the SLA of South Sydney (0.847), Evans (0.847) and North Sydney (0.877).

DEATHS

In 1997 there were 45,641 recorded deaths in NSW, which represents a standardised death rate of 6.3 per 1,000 population. The highest death rates occurred in the inland SD of Far West SD (7.5), North Western SD (7.3) and Central West SD (7.1), while the lowest rates of 6.2 per 1,000 population occurred in the coastal SDs of Sydney, Richmond-Tweed and Mid-North Coast. At the SLA level, death rates were highest in Central Darling (12.2), Brewarrina (11.2) and Bourke (9.3).

The number of infant deaths (children aged under 1 year) declined from 499 in 1996 to 451 in 1997. This was reflected in the infant death rate which declined from 5.8 to 5.2 infant deaths per 1,000 live births. The highest infant death rates were recorded in Richmond-Tweed SD (10.0), Murrumbidgee SD (8.3) and Murray SD (8.3). South Eastern and Illawarra SDs recorded the lowest infant death rates, 3.4 and 3.6 per 1,000 respectively.

INFANT DEATH RATES BY STATISTICAL DIVISION—1996 AND 1997



(a) Per 1,000 live births.

MARRIAGES

NSW recorded 36,679 marriages in 1997, representing a crude marriage rate of 5.8 per 1,000 population which was equal to Western Australia, but lower than Queensland (6.1), and ACT (6.0). The median age at marriage for both bridegrooms (29.6 years) and brides (27.3 years) were the highest ever recorded in NSW.

DIVORCES

There were 14,655 divorces granted in NSW in 1997. The crude divorce rate of 2.3 divorces per 1,000 population was the second lowest of any State or Territory in Australia.

1.1 DEMOGRAPHIC SUMMARY(a)—STATE AND TERRITORIES, 31 December 1997

	NSW	Vic.	Qld	SA	WA	Tas.	NT	ACT	Aust.(b)
POPULATION									
Estimated resident population ('000)	6 306.3	4 627.3	3 430.4	1 482.9	1 811.1	471.8	189.2	309.0	18 631.1
Components of population change(c)									
Natural increase(d)	41 941	28 978	24 990	6 769	14 041	2 240	2 699	3 034	124 692
Net overseas migration(e)	34 302	19 774	13 745	3 297	12 115	70	532	-122	83 713
Net interstate migration	-10 782	-2 700	20 202	-3 399	3 038	-4 593	670	2 436	..
Total increase(f)	65 461	46 052	58 937	6 667	29 194	-2 283	3 901	5 348	208 431
Growth rate (%)	1.0	1.0	1.7	0.5	1.6	-0.5	2.1	0.2	1.1
BIRTHS AND CONFINEMENTS									
Live births									
Number	87 156	60 732	46 965	18 362	24 776	6 007	3 588	4 208	251 842
Total fertility rate	1.832	1.688	1.801	1.703	1.787	1.799	2.171	1.601	1.775
Crude birth rate	13.9	13.2	13.8	12.4	13.8	12.7	19.2	13.6	13.6
Female net reproduction rate	0.882	0.809	0.868	0.822	0.853	0.859	1.043	0.783	0.852
All confinements									
Number	85 967	59 804	46 279	18 095	24 407	5 935	3 552	4 161	248 246
Median age of mother (years)	29.4	30.0	28.6	29.7	29.2	28.2	27.0	29.8	29.4
Nuptial confinements									
Median age (years)									
Mother	30.3	30.7	29.9	30.8	30.3	29.7	29.8	30.6	30.4
Father	32.9	33.0	32.3	33.0	32.8	32.2	32.5	32.7	32.8
First nuptial confinements									
Number	26 275	19 264	12 313	5 174	6 737	1 733	559	1 285	73 356
Median age of mother	28.9	29.3	28.6	29.4	29.0	28.3	28.6	29.2	29.0
DEATHS									
Number	45 641	33 261	21 945	11 658	10 807	3 809	891	1 334	129 350
Standardised death rate	6.3	6.2	6.2	6.1	6.0	6.8	9.8	6.0	6.2
Crude death rate	7.3	7.3	6.4	7.9	6.0	8.1	4.9	4.3	7.0
Median age at death (years)									
Males	74.3	74.7	73.3	75.2	73.6	75.2	56.3	72.6	74.2
Females	81.1	81.4	80.4	81.5	80.8	80.2	57.6	78.8	81.0
Infant deaths									
Number	451	300	272	87	131	39	45	16	1 341
Rate	5.2	4.9	5.8	4.7	5.3	6.5	12.5	3.8	5.3
Perinatal deaths									
Number	861	522	430	152	202	70	56	28	2 321
Rate	9.8	8.6	9.1	8.2	8.1	11.6	15.5	6.6	9.2

(a) See Glossary for definitions of terms used.

(b) Population, births and deaths include Jervis Bay Territory, Christmas Island and Cocos (Keeling) Islands. Divorces include Jervis Bay Territory, Christmas Island and Cocos (Keeling) Islands, and usual residence overseas and not stated.

(c) Components of population change from previous year.

(d) Final figures for births and deaths may differ slightly from those used to compile natural increase for population estimates because it is necessary to use preliminary births and deaths when finalising population estimates.

(e) Net overseas migration includes an estimate of those persons who changed category from short-term visitor to long-term visitor or resident of Australia.

(f) Takes into account intercensal discrepancy not accounted for by natural increase and net migration.

1.1 DEMOGRAPHIC SUMMARY(a)—STATE AND TERRITORIES, 31 December 1997 *continued*

	NSW	<i>Vic.</i>	<i>Qld</i>	<i>SA</i>	<i>WA</i>	<i>Tas.</i>	<i>NT</i>	<i>ACT</i>	<i>Aust.(b)</i>
MARRIAGES									
Number registered	36 679	25 456	20 868	7 945	10 456	2 672	786	1 873	106 735
Crude marriage rate	5.8	5.5	6.1	5.4	5.8	5.6	4.2	6.0	5.8
Median age at marriage (years)									
Bridegroom	29.6	29.6	29.7	29.8	30.4	29.7	31.6	29.6	29.7
Bride	27.3	27.5	27.5	27.4	27.9	27.3	28.8	27.3	27.5
DIVORCES									
Number granted	14 655	12 463	11 744	4 115	5 046	1 321	416	1 528	51 288
Crude divorce rate	2.3	2.7	3.5	2.8	2.8	2.8	2.2	(c)	2.8
Median duration of marriage (years)	10.0	11.0	11.7	11.8	12.0	12.0	11.6	11.4	11.1
Median interval between marriage and final separation (years)	6.7	7.7	8.1	8.6	8.3	8.7	7.8	8.2	7.7

(a) See Glossary for definitions of terms used.

(b) Population, births and deaths include Jervis Bay Territory, Christmas Island and Cocos (Keeling) Islands. Divorces include Jervis Bay Territory, Christmas Island and Cocos (Keeling) Islands, and usual residence overseas and not stated.

(c) See paragraph 18 in Explanatory Notes.

1.2 DEMOGRAPHIC SUMMARY, Statistical Areas(a)

STATISTICAL DIVISION (SD), Statistical subdivision (SSD) and Statistical Local Area (SLA)	<i>Estimated mid-year resident population(b)</i>	<i>Births(c)</i>	<i>Total fertility rate(d)</i>	<i>Deaths(c)</i>	<i>Indirect standardised death rate(e)</i>
SYDNEY (SD)					
Inner Sydney (SSD)					
Botany (C)	36 347	522	1.741	292	6.8
Leichhardt (A)	61 259	721	1.097	450	7.5
Marrickville (A)	80 084	1 168	1.476	578	7.6
South Sydney (C)	82 029	673	0.847	654	8.4
Sydney (C)	15 869	134	0.953	63	6.8
<i>Total Inner Sydney (SSD)</i>	<i>275 588</i>	<i>3 218</i>	<i>1.177</i>	<i>2 037</i>	<i>7.6</i>
Eastern Suburbs (SSD)					
Randwick (C)	124 697	1 449	1.256	914	6.5
Waverley (A)	65 448	719	1.106	502	5.9
Woollahra (A)	53 536	497	0.939	386	5.1
<i>Total Eastern Suburbs (SSD)</i>	<i>243 681</i>	<i>2 665</i>	<i>1.142</i>	<i>1 802</i>	<i>6.0</i>
St George—Sutherland (SSD)					
Hurstville (C)	69 867	899	1.688	538	5.6
Kogarah (A)	50 649	670	1.659	363	5.3
Rockdale (C)	89 895	1 358	1.820	854	6.2
Sutherland (A)	206 483	2 688	1.719	1 173	5.4
<i>Total St George—Sutherland (SSD)</i>	<i>416 894</i>	<i>5 615</i>	<i>1.726</i>	<i>2 928</i>	<i>5.6</i>
Canterbury—Bankstown (SSD)					
Bankstown (C)	166 270	2 496	1.999	1 218	6.3
Canterbury (C)	139 698	2 470	2.126	916	6.0
<i>Total Canterbury—Bankstown (SSD)</i>	<i>305 968</i>	<i>4 966</i>	<i>2.058</i>	<i>2 134</i>	<i>6.2</i>
Fairfield—Liverpool (SSD)					
Fairfield (C)	190 132	3 093	2.015	911	6.2
Liverpool (C)	130 523	2 555	2.162	620	7.0
<i>Total Fairfield—Liverpool (SSD)</i>	<i>320 655</i>	<i>5 648</i>	<i>2.079</i>	<i>1 531</i>	<i>6.5</i>
Outer South Western Sydney (SSD)					
Camden (A)	35 249	598	2.108	167	6.4
Campbelltown (C)	148 815	2 597	2.141	536	7.0
Wollondilly (A)	34 952	500	2.061	171	6.1
<i>Total Outer Western Sydney (SSD)</i>	<i>219 016</i>	<i>3 695</i>	<i>2.125</i>	<i>874</i>	<i>6.7</i>
Inner Western Sydney (SSD)					
Ashfield (A)	41 896	549	1.469	479	7.7
Burwood (A)	29 887	364	1.602	263	7.0
Concord (A)	24 842	294	1.541	177	5.6
Drummoyne (A)	32 384	426	1.335	256	5.5
Strathfield (A)	27 586	294	1.496	266	6.6
<i>Total Inner Western Sydney (SSD)</i>	<i>156 595</i>	<i>1 927</i>	<i>1.471</i>	<i>1 441</i>	<i>6.6</i>
Central Western Sydney (SSD)					
Auburn (A)	54 319	1 022	2.317	333	6.7
Holroyd (C)	84 617	1 356	1.972	582	6.9
Parramatta (C)	144 093	2 225	1.857	1 064	6.7
<i>Total Central Western Sydney (SSD)</i>	<i>283 029</i>	<i>4 603</i>	<i>1.979</i>	<i>1 979</i>	<i>6.8</i>
Outer Western Sydney (SSD)					
Blue Mountains (C)	75 433	965	1.970	612	6.7
Hawkesbury (C)	60 042	1 055	2.054	284	5.9
Penrith (C)	169 709	2 803	2.021	690	6.5
<i>Total Outer Western Sydney (SSD)</i>	<i>305 184</i>	<i>4 823</i>	<i>2.025</i>	<i>1 586</i>	<i>6.5</i>

(a) The statistical area boundaries used in the compilation of these statistics are those in existence at 1 July 1997.

(b) As at 30 June 1997.

(c) Data is for calendar year 1997.

(A) Area (C) City

(d) The average total fertility rate over the three years 1995 to 1997.

(e) The average indirect standardised death rate over three years 1995 to 1997.

1.2 DEMOGRAPHIC SUMMARY, Statistical Areas(a) *continued*

STATISTICAL DIVISION (SD), Statistical subdivision (SSD) and Statistical Local Area (SLA)	<i>Estimated mid-year resident population(b)</i>	<i>Births(c)</i>	<i>Total fertility rate(d)</i>	<i>Deaths(c)</i>	<i>Indirect standardised death rate(e)</i>
SYDNEY (SD) <i>continued</i>					
Blacktown—Baulkham Hills (SSD)					
Baulkham Hills (A)	127 272	1 360	1.633	451	5.1
Blacktown (C)	244 176	4 505	2.197	1 182	7.3
<i>Total Blacktown—Baulkham Hills</i>	<i>371 448</i>	<i>5 865</i>	<i>2.009</i>	<i>1 633</i>	<i>6.4</i>
Lower Northern Sydney (SSD)					
Hunter's Hill (A)	12 733	129	1.487	159	7.1
Lane Cove (A)	31 423	381	1.384	224	5.7
Mosman (A)	27 624	305	1.214	230	5.8
North Sydney (A)	56 961	554	0.877	350	5.1
Ryde (C)	97 329	1 343	1.518	775	6.1
Willoughby (C)	57 104	793	1.505	438	5.6
<i>Total Lower North Sydney (SSD)</i>	<i>283 174</i>	<i>3 505</i>	<i>1.298</i>	<i>2 176</i>	<i>5.8</i>
Hornsby—Ku-ring-gai (SSD)					
Hornsby (A)	145 868	1 739	1.704	978	5.8
Ku-ring-gai (A)	106 262	866	1.477	727	5.0
<i>Total Hornsby—Ku-ring-gai (SSD)</i>	<i>252 130</i>	<i>2 605</i>	<i>1.616</i>	<i>1 705</i>	<i>5.4</i>
Northern Beaches (SSD)					
Manly (A)	37 895	517	1.446	296	5.8
Pittwater (A)	55 338	676	1.761	444	5.9
Warringah (A)	131 920	1 758	1.685	1 073	5.8
<i>Total Northern Beaches (SSD)</i>	<i>225 153</i>	<i>2 951</i>	<i>1.650</i>	<i>1 813</i>	<i>5.9</i>
Gosford—Wyong (SSD)					
Gosford (C)	153 063	1 980	1.984	1 429	6.3
Wyong (A)	123 139	1 737	2.198	1 258	6.7
<i>Total Gosford—Wyong (SSD)</i>	<i>276 202</i>	<i>3 717</i>	<i>2.078</i>	<i>2 687</i>	<i>6.5</i>
TOTAL SYDNEY (SD)	3 934 717	55 803	1.729	26 326	6.2
HUNTER (SD)					
Newcastle (SSD)					
Cessnock (C)	46 006	683	2.136	436	8.1
Lake Macquarie (C)	178 947	2 189	1.920	1 444	6.3
Maitland (C)	52 153	790	2.008	342	6.6
Newcastle (C)	138 250	1 632	1.531	1 278	6.5
Port Stephens (A)	53 506	748	2.082	354	5.9
<i>Total Newcastle (SSD)</i>	<i>468 862</i>	<i>6 042</i>	<i>1.835</i>	<i>3 854</i>	<i>6.5</i>
Hunter SD Balance (SSD)					
Dungog (A)	7 893	93	2.062	61	6.4
Gloucester (A)	4 974	45	2.139	61	7.7
Great Lakes (A)	29 551	267	2.067	316	5.8
Merriwa (A)	2 349	42	2.663	31	7.0
Murrurundi (A)	2 245	33	2.390	23	6.8
Muswellbrook (A)	15 631	257	2.256	89	7.4
Scone (A)	9 845	137	2.088	94	7.5
Singleton (A)	20 479	324	2.205	94	6.2
<i>Total Hunter SD Balance (SSD)</i>	<i>92 967</i>	<i>1 198</i>	<i>2.169</i>	<i>769</i>	<i>6.4</i>
TOTAL HUNTER (SD)	561 829	7 240	1.878	4 623	6.5

(a) The statistical area boundaries used in the compilation of these statistics are those in existence at 1 July 1997.

(b) As at 30 June 1997.

(c) Data is for calendar year 1997.

(A) Area (C) City

(d) The average total fertility rate over the three years 1995 to 1997.

(e) The average indirect standardised death rate over three years 1995 to 1997.

1.2 DEMOGRAPHIC SUMMARY, Statistical Areas(a) *continued*

STATISTICAL DIVISION (SD), Statistical subdivision (SSD) and Statistical Local Area (SLA)	<i>Estimated mid-year resident population(b)</i>	<i>Births(c)</i>	<i>Total fertility rate(d)</i>	<i>Deaths(c)</i>	<i>Indirect standardised death rate(e)</i>
ILLAWARRA (SD)					
Wollongong (SSD)					
Kiama (A)	18 604	185	1.984	160	5.8
Shellharbour (C)	54 978	861	2.095	282	6.7
Wollongong (C)	184 478	2 437	1.792	1 271	6.5
<i>Total Wollongong (SSD)</i>	<i>258 060</i>	<i>3 483</i>	<i>1.862</i>	<i>1 713</i>	<i>6.4</i>
Illawarra SD Balance (SSD)					
Shoalhaven (C)	80 355	989	2.254	762	6.5
Wingecarribee (A)	38 702	516	2.166	304	6.2
<i>Total Illawarra SD Balance (SSD)</i>	<i>119 057</i>	<i>1 505</i>	<i>2.219</i>	<i>1 066</i>	<i>6.4</i>
TOTAL ILLAWARRA SD	377 117	4 988	1.948	2 779	6.4
RICHMOND—TWEED (SD)					
Tweed Heads (SSD)					
Tweed (A) Part A	40 644	433	1.984	413	5.8
Richmond—Tweed SD Balance (SSD)					
Ballina (A)	35 095	388	1.995	326	6.1
Byron (A)	27 304	362	1.890	178	6.2
Casino (A)	10 832	177	2.456	143	7.9
Kyogle (A)	9 919	113	2.291	64	6.0
Lismore (C)	43 489	573	1.919	325	6.7
Richmond River (A)	9 990	112	2.163	76	5.6
Tweed (A)—Part B	26 438	342	2.211	201	6.1
<i>Total Richmond—Tweed SD Balance (SSD)</i>	<i>163 067</i>	<i>2 067</i>	<i>2.030</i>	<i>1 313</i>	<i>6.4</i>
TOTAL RICHMOND—TWEED (SD)	203 711	2 500	2.019	1 726	6.2
MID—NORTH COAST (SD)					
Clarence (SSD)					
Bellingen (A)	12 532	156	2.481	94	5.6
Coffs Harbour (C)	58 294	737	2.014	420	5.5
Copmanhurst (A)	4 104	48	2.234	18	4.4
Grafton (C)	17 424	219	2.120	196	7.3
Macleay (A)	15 767	167	2.348	162	6.2
Nambucca (A)	17 738	241	2.382	152	6.1
Nymboida (A)	4 491	61	2.507	13	4.7
Ulmarra (A)	6 219	71	2.485	43	6.4
<i>Total Clarence (SSD)</i>	<i>136 569</i>	<i>1 700</i>	<i>2.171</i>	<i>1 098</i>	<i>6.0</i>
Hastings (SSD)					
Greater Taree (C)	43 530	501	2.150	369	6.5
Hastings (A)	58 243	628	2.020	623	6.0
Kempsey (A)	26 535	346	2.475	246	7.5
Lord Howe Island	335	8	2.561	—	1.0
<i>Total Hastings (SSD)</i>	<i>128 643</i>	<i>1 483</i>	<i>2.163</i>	<i>1 239</i>	<i>6.4</i>
TOTAL MID—NORTH COAST (SD)	265 212	3 183	2.167	2 337	6.2

(a) The statistical area boundaries used in the compilation of these statistics are those in existence at 1 July 1997.

(b) As at 30 June 1997.

(c) Data is for calendar year 1997.

(A) Area (C) City

(d) The average total fertility rate over the three years 1995 to 1997.

(e) The average indirect standardised death rate over three years 1995 to 1997.

1.2 DEMOGRAPHIC SUMMARY, Statistical Areas(a) *continued*

STATISTICAL DIVISION (SD), Statistical subdivision (SSD) and Statistical Local Area (SLA)	<i>Estimated mid-year resident population(b)</i>	<i>Births(c)</i>	<i>Total fertility rate(d)</i>	<i>Deaths(c)</i>	<i>Indirect standardised death rate(e)</i>
NORTHERN (SD)					
Northern Slopes (SSD)					
Barraba (A)	2 339	33	2.577	45	6.7
Bingara (A)	2 109	18	2.219	18	5.9
Gunnedah (A)	13 040	196	2.403	126	7.7
Inverell (A)—Part A	4 577	45	2.064	30	5.2
Manilla (A)	3 299	47	2.476	49	8.0
Nundle (A)	1 386	14	2.464	15	5.8
Parry (A)	12 119	136	1.939	63	5.3
Quirindi (A)	4 965	54	2.120	49	7.4
Tamworth (C)	35 236	479	2.100	285	6.8
Yallaroi (A)	3 290	53	2.098	28	8.2
<i>Total Northern Slopes (SSD)</i>	<i>82 360</i>	<i>1 075</i>	<i>2.149</i>	<i>708</i>	<i>6.8</i>
Northern Tablelands (SSD)					
Armidale (C)	21 372	289	1.737	126	6.4
Dumaresq (A)	3 824	34	1.935	14	3.9
Glen Innes (A)	6 148	88	2.181	64	6.7
Guyra (A)	4 358	58	2.481	41	7.0
Inverell (A)—Part B	10 758	148	2.408	117	7.4
Severn (A)	3 023	45	2.854	30	7.9
Tenterfield (A)	6 621	90	2.291	51	6.0
Uralla (A)	5 954	81	2.175	52	6.9
Walcha (A)	3 355	51	2.381	32	6.5
<i>Total Northern Tablelands (SSD)</i>	<i>65 413</i>	<i>884</i>	<i>2.020</i>	<i>527</i>	<i>6.6</i>
North Central Plain (SSD)					
Moree Plains (A)	15 305	277	2.511	91	8.4
Narrabri (A)	14 118	234	2.218	118	7.7
<i>Total North Central Plain (SSD)</i>	<i>29 423</i>	<i>511</i>	<i>2.362</i>	<i>209</i>	<i>8.0</i>
TOTAL NORTHERN (SD)	177 196	2 470	2.121	1 444	6.9
NORTH WESTERN (SD)					
Central Macquarie (SSD)					
Coolah (A)	3 850	52	2.461	28	5.4
Coonabarabran (A)	6 891	83	2.465	78	7.2
Dubbo (C)	36 726	596	2.234	249	6.9
Gilgandra (A)	4 862	62	2.461	41	7.0
Mudgee (A)	17 660	225	2.387	158	6.8
Narromine (A)	6 714	95	2.638	68	8.5
Wellington (A)	8 879	139	2.610	80	7.7
<i>Total Central Macquarie (SSD)</i>	<i>85 582</i>	<i>1 252</i>	<i>2.360</i>	<i>702</i>	<i>7.1</i>
Macquarie—Barwon (SSD)					
Bogan (A)	3 310	57	2.813	32	8.0
Coonamble (A)	4 970	94	2.923	47	7.8
Walgett (A)	8 283	150	2.585	57	8.9
Warren (A)	3 409	53	2.453	27	7.4
<i>Total Macquarie —Barwon (SSD)</i>	<i>19 972</i>	<i>354</i>	<i>2.692</i>	<i>163</i>	<i>8.2</i>
Upper Darling (SSD)					
Bourke (A)	3 882	75	2.713	41	9.3
Brewarrina (A)	2 231	43	2.526	18	11.2
Cobar (A)	5 740	92	2.135	29	7.1
<i>Total Upper Darling (SSD)</i>	<i>11 853</i>	<i>210</i>	<i>2.406</i>	<i>88</i>	<i>8.6</i>
TOTAL NORTH WESTERN (SD)	117 407	1 816	2.415	953	7.3

(a) The statistical area boundaries used in the compilation of these statistics are those in existence at 1 July 1997.

(b) As at 30 June 1997.

(c) Data is for calendar year 1997.

(A) Area (C) City

(d) The average total fertility rate over the three years 1995 to 1997.

(e) The average indirect standardised death rate over three years 1995 to 1997.

1.2 DEMOGRAPHIC SUMMARY, Statistical Areas(a) *continued*

STATISTICAL DIVISION (SD), Statistical subdivision (SSD) and Statistical Local Area (SLA)	<i>Estimated mid-year resident population(b)</i>	<i>Births(c)</i>	<i>Total fertility rate(d)</i>	<i>Deaths(c)</i>	<i>Indirect standardised death rate(e)</i>
CENTRAL WEST (SD)					
Bathurst—Orange (SSD)					
Bathurst (C)	29 355	399	1.816	204	7.0
Blayney (A)—Part A	4 632	90	2.697	33	8.6
Cabonne (A)—Part A	1 996	7	1.049	3	3.0
Evans (A)—Part A	1 091	4	0.847	3	1.7
Orange (C)	35 050	560	2.143	301	7.2
<i>Total Bathurst—Orange (SSD)</i>	<i>72 124</i>	<i>1 060</i>	<i>1.979</i>	<i>544</i>	<i>7.0</i>
Central Tablelands (excluding Bathurst—Orange) (SSD)					
Blayney (A)—Part B	1 769	18	1.824	10	5.1
Cabonne (A)—Part B	821	11	1.963	3	3.7
Evans (A)—Part B	4 063	44	2.240	20	5.1
Greater Lithgow (C)	19 893	266	2.097	183	8.1
Oberon (A)	4 602	63	2.289	26	4.7
Rylstone (A)	3 836	43	1.897	34	6.6
<i>Total Central Tablelands (excluding Bathurst—Orange) (SSD)</i>	<i>34 984</i>	<i>445</i>	<i>2.101</i>	<i>276</i>	<i>6.9</i>
Lachlan (SSD)					
Bland (A)	6 582	83	2.445	58	6.7
Cabonne (A)—Part C	9 402	128	2.505	106	8.4
Cowra (A)	12 524	187	2.490	103	6.5
Forbes (A)	10 331	162	2.396	72	6.9
Lachlan (A)	7 483	141	3.008	67	7.3
Parkes (A)	15 286	231	2.448	159	7.5
Weddin (A)	3 825	48	2.228	42	7.2
<i>Total Lachlan (SSD)</i>	<i>65 433</i>	<i>980</i>	<i>2.505</i>	<i>607</i>	<i>7.2</i>
TOTAL CENTRAL WEST (SD)	172 541	2 485	2.169	1 427	7.1
SOUTH EASTERN (SD)					
Queanbeyan (SSD)					
Queanbeyan (C)	28 584	473	1.943	153	7.7
Yarrowlumla (A)—Part A	9 098	118	1.751	23	4.0
<i>Total Queanbeyan (SSD)</i>	<i>37 682</i>	<i>591</i>	<i>1.923</i>	<i>176</i>	<i>7.0</i>
Southern Tablelands (excluding Queanbeyan) (SSD)					
Boorowa (A)	2 522	34	2.524	34	8.6
Crookwell (A)	4 436	58	2.277	47	7.7
Goulburn (C)	21 310	291	1.988	196	8.1
Gunning (A)	2 312	30	2.154	14	7.4
Harden (A)	3 891	46	2.223	36	6.6
Mulwaree (A)	5 863	52	1.770	16	4.6
Tallaganda (A)	2 593	26	1.991	15	5.8
Yarrowlumla (A)—Part B	262	—	1.587	—	2.2
Yass (A)	9 400	133	2.040	73	7.6
Young (A)	11 385	166	2.578	122	8.0
<i>Total Southern Tablelands (excluding Queanbeyan) (SSD)</i>	<i>63 974</i>	<i>837</i>	<i>2.136</i>	<i>553</i>	<i>7.5</i>
Lower South Coast (SSD)					
Bega Valley (A)	28 523	370	2.359	239	6.2
Eurobodalla (A)	30 755	336	2.246	331	6.2
<i>Total Lower South Coast (SSD)</i>	<i>59 278</i>	<i>706</i>	<i>2.304</i>	<i>570</i>	<i>6.2</i>

(a) The statistical area boundaries used in the compilation of these statistics are those in existence at 1 July 1997.

(b) As at 30 June 1997.

(c) Data is for calendar year 1997.

(A) Area (C) City

(d) The average total fertility rate over the three years 1995 to 1997.

(e) The average indirect standardised death rate over three years 1995 to 1997.

1.2 DEMOGRAPHIC SUMMARY, Statistical Areas(a) *continued*

STATISTICAL DIVISION (SD), Statistical subdivision (SSD) and Statistical Local Area (SLA)	<i>Estimated mid-year resident population(b)</i>	<i>Births(c)</i>	<i>Total fertility rate(d)</i>	<i>Deaths(c)</i>	<i>Indirect standardised death rate(e)</i>
SOUTH EASTERN (SD) <i>continued</i>					
Snowy (SSD)					
Bombala (A)	2 991	34	2.314	20	7.0
Cooma—Monaro (A)	9 641	131	2.415	79	5.6
Snowy River (A)	6 282	66	1.451	26	4.9
<i>Total</i>	<i>18 914</i>	<i>231</i>	<i>2.027</i>	<i>125</i>	<i>5.7</i>
TOTAL SOUTH EASTERN SD	179 848	2 365	2.098	1 424	6.7
MURRUMBIDGEE (SD)					
Central Murrumbidgee (SSD)					
Coolamon (A)	4 017	54	2.590	43	6.4
Cootamundra (A)	7 702	119	2.497	85	7.4
Gundagai (A)	3 787	52	2.440	28	5.7
Junee (A)	5 924	52	2.246	38	7.4
Lockhart (A)	3 585	57	2.495	26	5.8
Narrandera (A)	7 074	102	2.603	87	8.6
Temora (A)	6 082	92	2.493	89	7.7
Tumut (A)	11 318	159	2.221	117	7.3
Wagga Wagga (C)	56 188	868	2.024	356	6.6
<i>Total Central Murrumbidgee (SSD)</i>	<i>105 677</i>	<i>1 555</i>	<i>2.162</i>	<i>869</i>	<i>7.0</i>
Lower Murrumbidgee (SSD)					
Carrathool (A)	3 187	76	3.204	16	5.5
Griffith (C)	22 462	384	2.237	133	6.6
Hay (A)	3 795	63	2.626	53	8.9
Leeton (A)	11 394	159	2.196	98	6.7
Murrumbidgee (A)	2 570	40	2.614	18	7.9
<i>Total Lower Murrumbidgee (SSD)</i>	<i>43 408</i>	<i>722</i>	<i>2.330</i>	<i>318</i>	<i>6.8</i>
TOTAL MURRUMBIDGEE (SD)	149 085	2 277	2.211	1 187	6.9
MURRAY (SD)					
Albury (SSD)					
Albury (C)	42 382	616	1.942	367	7.4
Hume (A)	7 056	81	2.037	38	6.0
<i>Total Albury (SSD)</i>	<i>49 438</i>	<i>697</i>	<i>1.954</i>	<i>405</i>	<i>7.2</i>
Upper Murray (excluding Albury) (SSD)					
Corowa (A)	8 433	133	2.591	99	6.4
Culcairn (A)	4 212	66	2.985	35	5.9
Holbrook (A)	2 574	40	2.334	29	6.4
Tumbarumba (A)	3 772	45	2.278	31	7.1
Urana (A)	1 575	32	3.436	19	7.7
<i>Total Upper Murray (excluding Albury) (SSD)</i>	<i>20 566</i>	<i>316</i>	<i>2.632</i>	<i>213</i>	<i>6.5</i>

(a) The statistical area boundaries used in the compilation of these statistics are those in existence at 1 July 1997.

(b) As at 30 June 1997.

(c) Data is for calendar year 1997.

(A) Area (C) City

(d) The average total fertility rate over the three years 1995 to 1997.

(e) The average indirect standardised death rate over three years 1995 to 1997.

1.2 DEMOGRAPHIC SUMMARY, Statistical Areas(a) *continued*

STATISTICAL DIVISION (SD), Statistical subdivision (SSD) and Statistical Local Area (SLA)	<i>Estimated mid-year resident population(b)</i>	<i>Births(c)</i>	<i>Total fertility rate(d)</i>	<i>Deaths(c)</i>	<i>Indirect standardised death rate(e)</i>
MURRAY (SD) <i>continued</i>					
Central Murray (SSD)					
Berrigan (A)	8 306	103	2.220	74	6.5
Conargo (A)	1 517	13	1.498	3	4.0
Deniliquin (A)	8 212	125	2.522	77	7.8
Jerilderie (A)	1 940	25	2.097	9	5.5
Murray (A)	5 442	69	1.985	50	6.4
Wakool (A)	4 882	55	1.997	39	5.8
Windouran (A)	398	5	4.611	—	2.6
<i>Total Central Murray (SSD)</i>	<i>30 697</i>	<i>395</i>	<i>2.196</i>	<i>254</i>	<i>6.6</i>
Murray—Darling (SSD)					
Balranald (A)	2 923	54	2.451	20	8.2
Wentworth (A)	7 189	99	2.454	69	7.5
<i>Total Murray—Darling (SSD)</i>	<i>10 112</i>	<i>153</i>	<i>2.448</i>	<i>89</i>	<i>7.7</i>
TOTAL MURRAY (SD)	110 813	1 561	2.153	961	6.9
FAR WEST (SD)					
Far West (SSD)					
Broken Hill (C)	21 605	284	1.978	239	7.1
Central Darling (A)	2 391	35	2.360	25	12.2
Unincorporated Far West	898	11	1.693	7	8.3
TOTAL FAR WEST SD	24 894	330	2.000	271	7.5
NEW SOUTH WALES(f)	6 274 370	87 018	1.826	45 458	6.4

(a) The statistical area boundaries used in the compilation of these statistics are those in existence at 1 July 1997.

(b) As at 30 June 1997.

(c) Data is for calendar year 1997.

(d) The average total fertility rate over the three years 1995 to 1997.

(A) Area (C) City

(e) The average indirect standardised death rate over three years 1995 to 1997.

(f) Includes births and deaths where usual residence was overseas, no fixed abode and New South Wales undefined.

SECTION 2

POPULATION

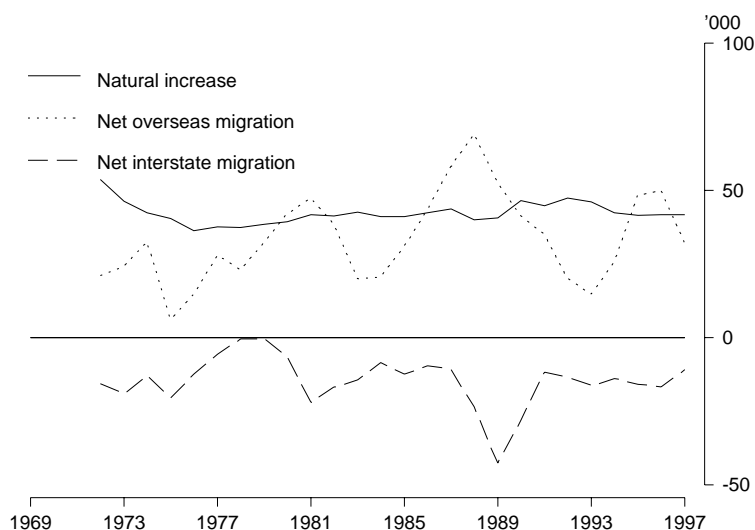
POPULATION

The estimated resident population of NSW at 31 December 1997 was 6,306,300, comprising 3,131,500 males and 3,174,800 females. This represents 33.8% of the total Australian population of 18,631,100.

POPULATION CHANGE

The population of NSW passed the one million mark in 1887, two million in 1919, three million in 1947, four million in 1962, five million in 1977 and six million in 1993. During 1997, the State's population increased by 65,400 (or 1.0%). This was due to gains of 41,900 from natural increase and 34,300 from net overseas migration, and a loss of (-10,800) from net interstate migration. The following graph shows the contribution of the three components of change to the total population of NSW since 1972.

COMPONENTS OF POPULATION INCREASE IN NSW



AGE DISTRIBUTION

The established trend of an ageing population in NSW continued in 1997. The proportion of aged persons (those aged 65 years and over) was 12.7% compared to 9.2% in 1976. In contrast, the proportion of children (persons aged less than 15 years) decreased to 21.0% in 1997 from 26.0% in 1976.

POPULATION PROJECTIONS

Population projections vary depending on different assumptions about fertility, mortality and migration (both overseas and interstate). Under Series II (which is based on an assumption of high fertility, low overseas migration and medium internal migration gains) the population of NSW is projected to increase from 6.3 million in 1997 to 7.3 million in 2020, and 7.9 million in 2050.

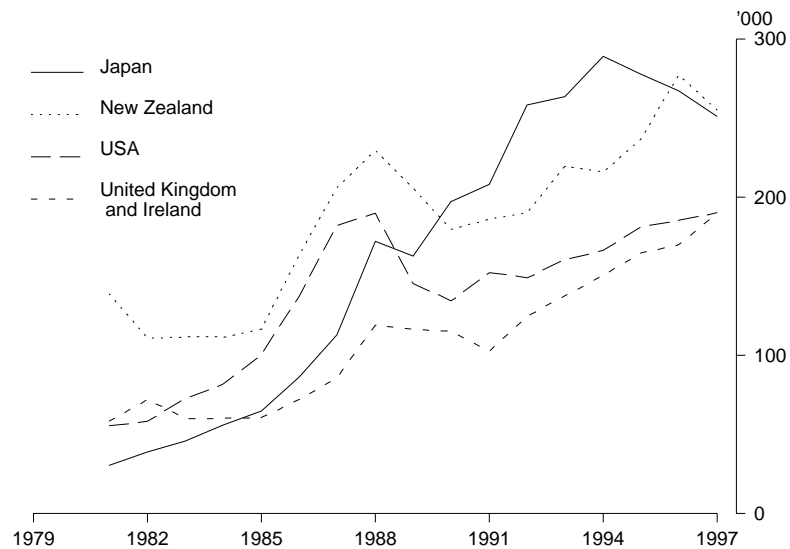
SHORT-TERM MOVEMENTS

The impact of tourism on Australia's population is reflected in the statistics of short-term movement (i.e. overseas arrivals and departures for less than 12 months). In 1997, there were 1,769,900 short-term overseas visitors to NSW, a decrease of 5,700 from 1996.

On the other hand there were 1,841,800 short-term overseas visitors who departed from NSW during the year. In addition, the number of NSW residents who travelled overseas on a short-term basis for less than 12 months continued to increase, and reached 1,175,700 in 1997, from 1,118,400 in 1996 and 925,500 in 1992.

In 1997 the major source countries of short-term overseas visitors to NSW were New Zealand (14.4%), Japan (14.2%), the United States of America (10.8%) and the United Kingdom, including Ireland (10.7%).

SHORT-TERM OVERSEAS VISITOR ARRIVALS, Major Source Countries



2.1 POPULATION, Summary(a) Selected Years, 1987, 1992 to 1997

	1987	1992	1993	1994	1995	1996	1997
Estimated resident population							
at 31 December ('000)							
Males	2 822.3	2 976.7	2 998.6	3 026.8	3 064.0	3 098.2	3 131.5
Females	2 844.0	3 008.4	3 034.1	3 063.5	3 104.8	3 142.7	3 174.8
Persons	5 666.2	5 985.1	6 032.8	6 090.3	6 168.8	6 240.9	6 306.3
Components of population change(b)							
Net natural increase(c)							
Number	43 904	46 246	45 635	42 782	41 958	40 647	41 941
% of total annual growth	47.7	84.7	95.7	74.4	53.4	56.4	64.1
Net overseas migration(d)							
Number	58 319	23 144	15 636	25 579	48 162	44 966	34 302
% of total annual growth	63.4	42.4	32.8	44.5	61.3	62.4	52.4
Net interstate migration							
Number	-10795	-15756	-14 771	-12357	-14441	-15620	-10782
% of total annual growth	-11.7	-28.8	-31.0	-21.5	-18.4	-21.7	-16.5
Total population growth(e)							
Number	91 968	54 628	47 702	57 478	78 562	72 053	65 461
Annual growth rate (%)	1.6	0.9	0.8	0.9	1.3	1.2	1.0
Overseas arrivals and departures(f)							
Permanent movement							
Arrivals	52 140	39 700	28 360	34 060	42 860	41 210	32 760
Departures	7 490	10 310	10 720	10 470	10 430	10 720	11 840
Former settlers	3 830	4 930	4 840	4 840	4 780	4 870	5 510
Other Australian residents	3 650	5 380	5 880	5 880	5 650	5 850	6 330
Long-term movement							
Arrivals	38 000	51 750	53 890	59 180	63 110	67 870	73 060
Australian residents returning	20 830	25 300	28 750	30 960	30 600	31 320	31 810
Overseas visitors arriving	17 170	26 450	25 140	28 230	32 510	36 550	41 250
Departures	29 110	48 080	46 580	46 780	48 630	51 910	59 760
Australian residents departing	17 840	24 212	23 080	24 640	24 970	25 510	28 310
Overseas visitors departing	11 270	23 870	23 500	22 150	23 660	26 400	31 450
Short-term movement							
Arrivals	153 950	2 016 800	2 243 600	2 430 400	2 630 800	2 884 900	2 942 200
Australian residents returning	651 400	884 500	932 000	962 400	1 018 400	1 109 300	1 172 300
Overseas visitors arriving	888 000	1 132 300	1 311 600	1 468 000	1 612 400	1 775 600	1 769 900
Departures	1 542 800	2 109 600	2 272 000	2 487 400	2 681 000	2 924 400	3 017 500
Australian residents departing	667 900	925 500	925 800	975 700	1 034 400	1 118 400	1 175 700
Overseas visitors departing	875 000	1 184 200	1 346 200	1 511 700	1 646 600	1 805 900	1 841 800

(a) See Glossary for definitions of terms used.

(b) From previous year.

(c) Final figures for births and deaths may differ from those used to compile natural increase for population estimates, which are compiled at a preliminary stage.

(d) Includes an estimate of those persons who changed category from short-term visitor to long-term visitor or resident of Australia.

(e) Figures for 1992 to 1996 include intercensal discrepancy not accounted for by natural increase and net migration.

(f) Statistics have been rounded to the nearest 100 for short-term movement, and to the nearest 10 for permanent and long-term movement.

2.2 ESTIMATED RESIDENT POPULATION, Age and Sex—at 30 June 1997

Age(years)	Males	Females	Persons	Age(years)	Males	Females	Persons
Under 1	44 358.0	42 175	86 533	50	45 168	43 084	88 252
1	44 746.0	42 146	86 892	51	38 002	36 689	74 691
2	45 024.0	42 873	87 897	52	37 388	35 879	73 267
3	45 248.0	43 015	88 263	53	36 251	34 760	71 011
4	45 406.0	43 393	88 799	54	32 584	31 597	64 181
0-4	224 782.0	213 602	438 384	50-54	189 393	182 009	371 402
5	45 318	42 990	88 308	55	31 636	30 575	62 211
6	45 955	43 686	89 641	56	30 531	30 003	60 534
7	45 995	43 594	89 589	57	29 775	28 505	58 280
8	44 668	42 781	87 449	58	28 277	27 708	55 975
9	44 436	42 401	86 837	59	27 725	27 598	55 323
5-9	226 372	215 452	441 824	55-59	147 934	144 389	292 323
10	44 050	42 324	86 374	60	27 430	26 920	54 350
11	44 659	42 461	87 120	61	25 684	25 999	51 683
12	44 550	42 605	87 155	62	24 296	25 092	49 388
13	44 449	42 676	87 125	63	24 269	24 457	48 726
14	44 873	42 891	87 764	64	23 907	24 573	48 480
10-14	222 581	212 957	435 538	60-64	125 586	127 041	252 627
15	44 766	42 245	87 011	65	23 925	24 498	48 423
16	44 536	42 238	86 774	66	24 777	25 980	50 757
17	43 907	41 422	85 329	67	23 634	25 049	48 683
18	43 556	41 254	84 810	68	23 407	24 894	48 301
19	43 152	41 454	84 606	69	22 721	24 826	47 547
15-19	219 917	208 613	428 530	65-69	118 464	125 247	243 711
20	43 436	42 039	85 475	70	21 829	24 212	46 041
21	44 188	42 936	87 124	71	21 259	24 344	45 603
22	45 862	44 462	90 324	72	19 553	22 983	42 536
23	46 798	45 667	92 465	73	18 915	23 411	42 326
24	48 410	47 891	96 301	74	17 801	22 289	40 090
20-24	228 694	222 995	451 689	70-74	99 357	117 239	216 596
25	50 410	50 574	100 984	75	17 112	21 709	38 821
26	51 141	51 450	102 591	76	15 888	20 656	36 544
27	47 015	47 711	94 726	77	13 743	18 672	32 415
28	46 673	47 099	93 772	78	10 962	15 380	26 342
29	45 851	46 402	92 253	79	10 154	15 137	25 291
25-29	241 090	243 236	484 326	75-79	67 859	91 554	159 413
30	45 874	46 116	91 990	80	9 497	14 512	24 009
31	46 984	46 857	93 841	81	8 527	13 708	22 235
32	47 758	47 551	95 309	82	7 659	12 647	20 306
33	50 329	49 941	100 270	83	6 789	12 190	18 979
34	51 304	51 062	102 366	84	5 766	10 641	16 407
30-34	242 249	241 527	483 776	80-84	38 238	63 698	101 936
35	51 532	50 830	102 362	85	4 892	9 614	14 506
36	51 558	51 526	103 084	86	3 981	8 426	12 407
37	50 342	50 374	100 716	87	3 312	7 379	10 691
38	48 848	48 716	97 564	88	2 428	5 557	7 985
39	48 561	49 106	97 667	89	1 923	4 745	6 668
35-39	250 841	250 552	501 393	85-89	16 536	35 721	52 257
40	47 813	47 520	95 333	90	1 495	3 961	5 456
41	46 942	46 768	93 710	91	1 170	3 321	4 491
42	45 925	46 096	92 021	92	806	2 569	3 375
43	46 145	46 120	92 265	93	637	2 055	2 692
44	45 218	45 468	90 686	94	467	1 504	1 971
40-44	232 043	231 972	464 015	90-94	4 575	13 410	17 985
45	43 131	43 128	86 259	95 and over	1 037	4 090	5 127
46	44 178	43 684	87 862	Total	3 115 341	3 159 029	6 274 370
47	43 856	42 853	86 709				
48	42 539	41 589	84 128				
49	44 089	42 471	86 560				
45-49	217 793	213 725	431 518				

2.3 PROJECTED POPULATION—1999–2051

At 30 June	SERIES I(a).....			SERIES II(a).....			SERIES III(a).....		
	Males	Females	Persons	Males	Females	Persons	Males	Females	Persons
1999	1 777 253	3 222 575	6 400 300	3 172 042	3 216 441	6 388 483	3 169 766	3 214 308	6 384 074
2000	3 210 109	3 255 502	6 465 611	3 198 621	3 243 156	6 441 777	3 193 984	3 238 820	6 432 804
2001	3 242 234	3 288 025	6 530 259	3 224 795	3 269 345	6 494 140	3 217 421	3 262 432	6 479 853
2002	3 274 078	3 320 149	6 594 227	3 250 565	3 294 998	6 545 563	3 240 070	3 285 142	6 525 212
2003	3 305 630	3 351 883	6 657 513	3 275 912	3 320 141	6 596 053	3 261 906	3 306 986	6 568 892
2004	3 336 874	3 383 247	6 720 121	3 300 817	3 344 807	6 645 624	3 282 935	3 327 980	6 610 915
2005	3 367 815	3 414 253	6 782 068	3 325 313	3 368 988	6 694 301	3 303 165	3 348 143	6 651 308
2006	3 398 446	3 444 917	6 843 363	3 349 386	3 392 719	6 742 105	3 322 610	3 367 486	6 690 096
2007	3 428 619	3 475 198	6 903 817	3 372 885	3 415 973	6 788 858	3 341 287	3 386 173	6 727 460
2008	3 458 365	3 505 140	6 963 505	3 395 860	3 438 786	6 834 646	3 359 429	3 404 419	6 763 848
2009	3 487 690	3 534 761	7 022 451	3 418 325	3 461 180	6 879 505	3 377 047	3 422 243	6 799 290
2010	3 516 607	3 564 081	7 080 688	3 440 289	3 483 196	6 923 485	3 394 177	3 439 657	6 833 834
2011	3 545 128	3 593 132	7 138 260	3 461 779	3 504 860	6 966 639	3 410 819	3 456 714	6 867 533
2012	3 573 299	3 621 923	7 195 222	3 482 849	3 526 189	7 009 038	3 427 024	3 473 429	6 900 453
2013	3 601 137	3 650 486	7 251 623	3 503 515	3 547 225	7 050 740	3 442 809	3 489 837	6 932 646
2014	3 628 649	3 678 853	7 307 502	3 523 784	3 568 009	7 091 793	3 458 190	3 505 966	6 964 156
2015	3 655 863	3 707 023	7 362 886	3 543 702	3 588 531	7 132 233	3 473 193	3 521 818	6 995 011
2016	3 682 778	3 735 003	7 417 781	3 563 247	3 608 827	7 172 074	3 487 813	3 537 408	7 025 221
2017	3 709 373	3 762 797	7 472 170	3 582 424	3 628 882	7 211 306	3 502 034	3 552 730	7 054 764
2018	3 735 625	3 790 392	7 526 017	3 601 218	3 648 677	7 249 895	3 515 830	3 567 771	7 083 601
2019	3 761 509	3 817 759	7 579 268	3 619 592	3 668 194	7 287 786	3 529 172	3 582 495	7 111 667
2020	3 786 975	3 844 870	7 631 845	3 637 499	3 687 410	7 324 909	3 542 006	3 596 873	7 138 879
2021	3 811 983	3 871 675	7 683 658	3 654 897	3 706 276	7 361 173	3 554 287	3 610 846	7 165 133
2022	3 836 477	3 898 139	7 734 616	3 671 745	3 724 741	7 396 486	3 565 954	3 624 370	7 190 324
2023	3 860 417	3 924 207	7 784 624	3 687 993	3 742 762	7 430 755	3 576 958	3 637 377	7 214 335
2024	3 883 760	3 949 828	7 833 588	3 703 580	3 760 306	7 463 886	3 587 239	3 649 816	7 237 055
2025	3 906 457	3 974 955	7 881 412	3 718 485	3 777 298	7 495 783	3 596 750	3 661 613	7 258 363
2026	3 928 474	3 999 531	7 928 005	3 732 668	3 793 685	7 526 353	3 605 425	3 672 724	7 278 149
2027	3 949 767	4 023 515	7 973 282	3 746 084	3 809 431	7 555 515	3 613 228	3 683 081	7 296 309
2028	3 970 311	4 046 857	8 017 168	3 758 699	3 824 498	7 583 197	3 620 110	3 692 641	7 312 751
2029	3 990 085	4 069 519	8 059 604	3 770 492	3 838 845	7 609 337	3 626 058	3 701 345	7 327 403
2030	4 009 080	4 091 467	8 100 547	3 781 468	3 852 430	7 633 898	3 631 055	3 709 151	7 340 206
2031	4 027 308	4 112 668	8 139 976	3 791 631	3 865 226	7 656 857	3 635 093	3 716 037	7 351 130
2032	4 044 789	4 133 095	8 177 884	3 801 001	3 877 215	7 678 216	3 638 188	3 721 979	7 360 167
2033	4 061 535	4 152 754	8 214 289	3 809 607	3 888 387	7 697 994	3 640 374	3 726 966	7 367 340
2034	4 077 591	4 171 629	8 249 220	3 817 490	3 898 736	7 716 226	3 641 683	3 731 000	7 372 683
2035	4 092 988	4 189 736	8 282 724	3 824 685	3 908 278	7 732 963	3 642 162	3 734 102	7 376 264
2036	4 107 781	4 207 077	8 314 858	3 831 242	3 917 027	7 748 269	3 641 889	3 736 272	7 378 161
2037	4 122 005	4 223 680	8 345 685	3 837 213	3 925 000	7 762 213	3 640 900	3 737 566	7 378 466
2038	4 135 710	4 239 565	8 375 275	3 842 639	3 932 233	7 774 872	3 639 257	3 738 023	7 377 280
2039	4 148 939	4 254 764	8 403 703	3 847 563	3 938 766	7 786 329	3 637 025	3 737 686	7 374 711
2040	4 161 738	4 269 310	8 431 048	3 852 032	3 944 640	7 796 672	3 634 260	3 736 612	7 370 872
2041	4 174 132	4 283 253	8 457 385	3 856 089	3 949 896	7 805 985	3 631 023	3 734 847	7 365 870
2042	4 186 175	4 296 619	8 482 794	3 859 798	3 954 561	7 814 359	3 627 379	3 732 436	7 359 815
2043	4 197 894	4 309 464	8 507 358	3 863 181	3 958 699	7 821 880	3 623 354	3 729 465	7 352 819
2044	4 209 330	4 321 826	8 531 156	3 866 286	3 962 350	7 828 636	3 619 014	3 725 972	7 344 986
2045	4 220 517	4 333 748	8 554 265	3 869 150	3 965 564	7 834 714	3 614 399	3 722 009	7 336 408
2046	4 231 497	4 345 266	8 576 763	3 871 810	3 968 385	7 840 195	3 609 562	3 717 615	7 327 177
2047	4 242 293	4 356 423	8 598 716	3 874 299	3 970 856	7 845 155	3 604 529	3 712 843	7 317 372
2048	4 252 934	4 367 241	8 620 175	3 876 650	3 972 998	7 849 648	3 599 331	3 707 714	7 307 045
2049	4 263 448	4 377 754	8 641 202	3 878 887	3 974 858	7 853 745	3 593 975	3 702 289	7 296 264
2050	4 273 851	4 387 996	8 661 847	3 881 023	3 976 474	7 857 497	3 588 492	3 696 586	7 285 078
2051	4 284 142	4 398 000	8 682 142	3 883 062	3 977 882	7 860 944	3 582 895	3 690 623	7 273 518

(a) See paragraphs 6 to 8 of the Explanatory Notes.

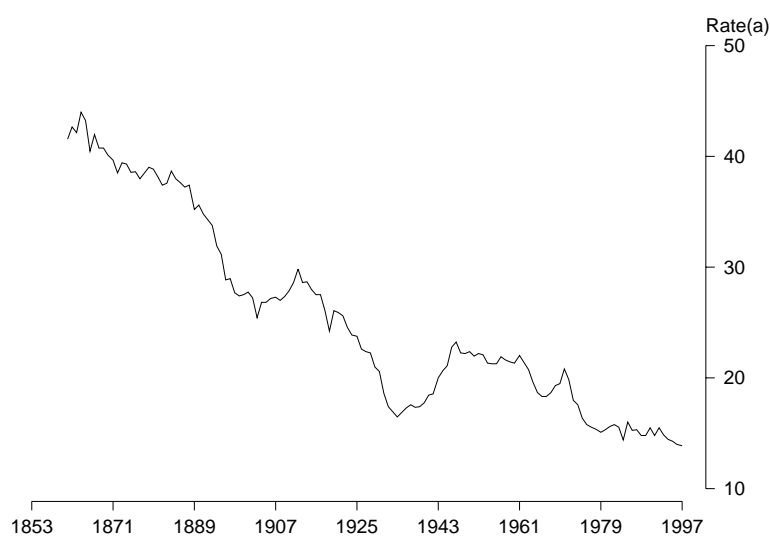
SECTION 3

BIRTHS—YEAR OF REGISTRATION

BIRTHS

In 1997, there were 87,156 registered live births involving mothers whose usual residence was in NSW, including 50 cases for mothers whose usual residence was overseas. The crude birth rate was 13.9 births per 1,000 of total population, the lowest birth rate ever recorded in NSW. The sex ratio was 105 males born for every 100 females.

CRUDE BIRTH RATE



(a) Per 1,000 population.

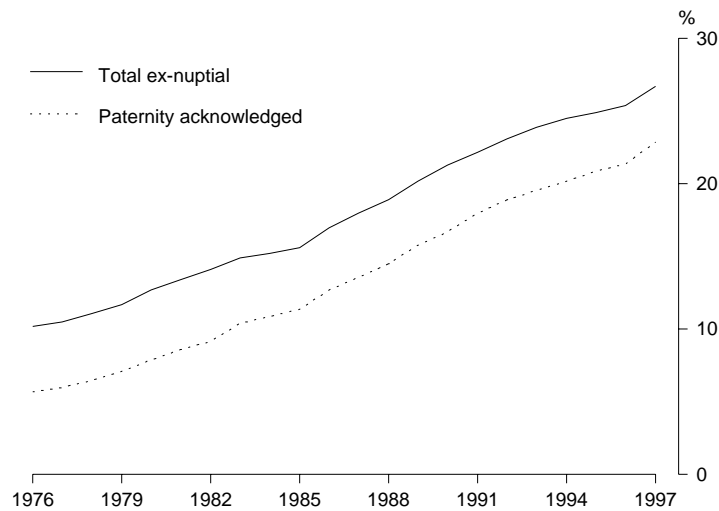
EX-NUPTIAL BIRTHS

The proportion of ex-nuptial births to total births continued to increase to 26.7% in 1997, from 25.4% in 1996 and 18.0% in 1987. This proportion varied considerably between Sydney Statistical Division (SD) (22.0%) and the remainder of NSW (35.0%). The highest ex-nuptial percentage was found in the Far West SD (49.7%), followed by the Richmond-Tweed SD (42.0%).

PATERNITY ACKNOWLEDGMENT

The proportion of ex-nuptial births where the father is acknowledged has continued to increase steadily to 85.9% in 1997 from 75.6% in 1987 and 56.0% in 1976 (when paternity acknowledgment was first introduced). In cases where paternity was not acknowledged, the most common age of the mother in 1997 was 21 years (231 out of 3,243 confinements or 7.1%).

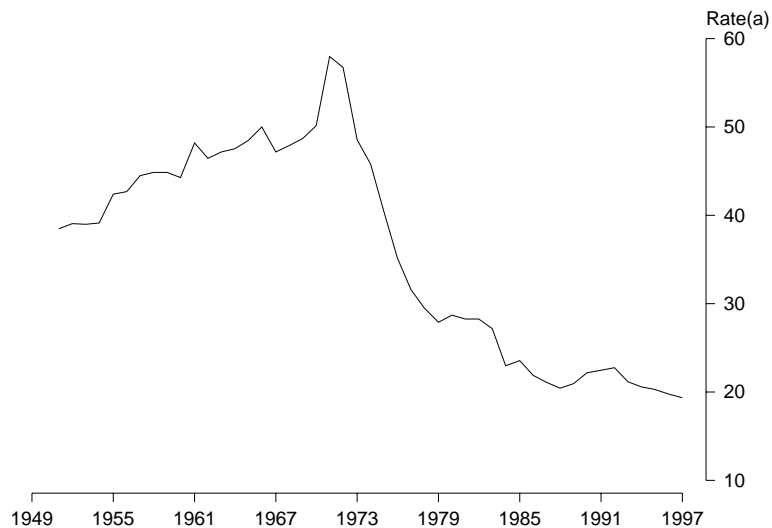
EX-NUPTIAL BIRTHS, Proportion of Total Births



TEENAGE MOTHERS

There were 4,043 teenage mothers in NSW in 1997, which represents 19.5 confinements per 1,000 of the teenage female population. Only one in eight teenage mothers in 1997 were married. As shown in the following graph, teenage birth rates continue to decline after reaching a peak of 58.0 in 1971.

BIRTH RATES TO TEENAGE MOTHERS

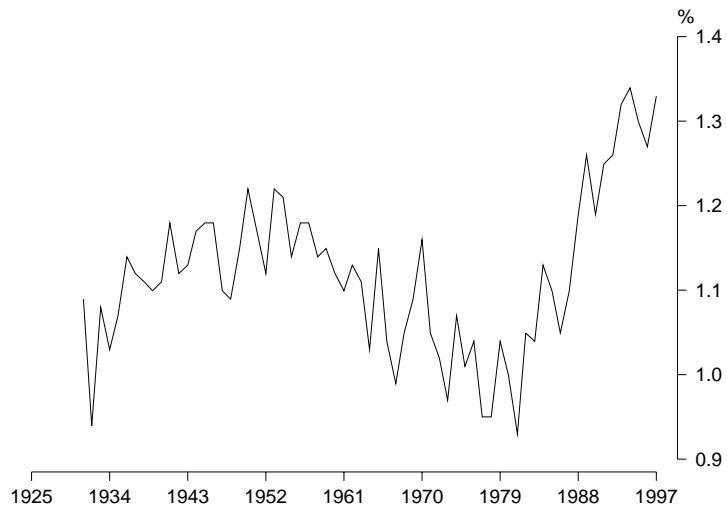


(a) Per 1,000 females aged 15–19 years.

MULTIPLE BIRTHS

There were 85,967 confinements in 1997, resulting in 87,156 births, of which 1,178 were multiple confinements (1 in every 73 confinements). The number of twins increased to 1,142 from 1,088 in 1996. The proportion of twin confinements to total confinements increased to 1.3%, from a low figure of 0.9% in 1981.

TWIN CONFINEMENTS, Proportion of Total Confinements

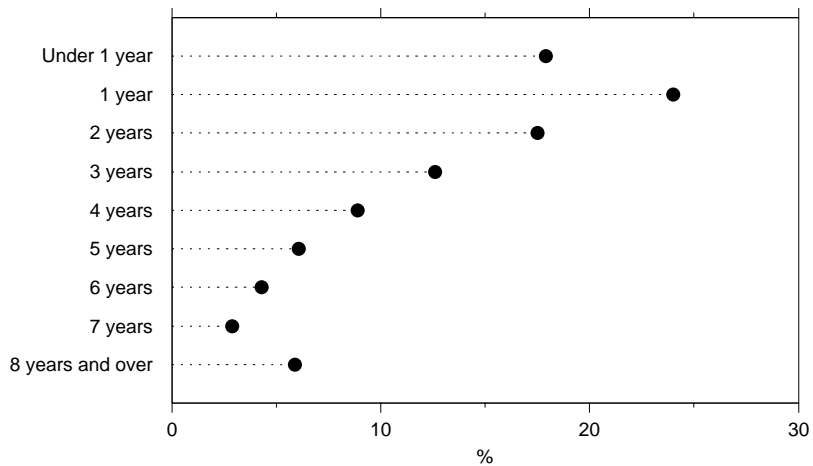


There were also 35 sets of triplets and one set of quadruplets. The highest number of confinements resulting in triplets ever recorded in NSW (36) occurred in 1991.

NUPTIAL FIRST BIRTHS (TO CURRENT MARRIAGE)

In NSW, nuptial first confinements numbered 26,275 which was 30.6% of total confinements in NSW in 1997. The highest proportion of nuptial first births occurred during the second year of marriage (24.0%), while 17.9% occurred within the first year and 17.5% occurred within the third year. Only 5.9% of mothers had their first child after eight years or more of marriage. The median age of mothers at the birth of the first child of their current marriage continues to increase steadily, and reached 28.9 years in 1997 from 26.8 in 1987. Mothers aged 25–29 years contributed 40.9% of the NSW first nuptial confinements followed by 29.1% contribution by mothers aged 30–34 years.

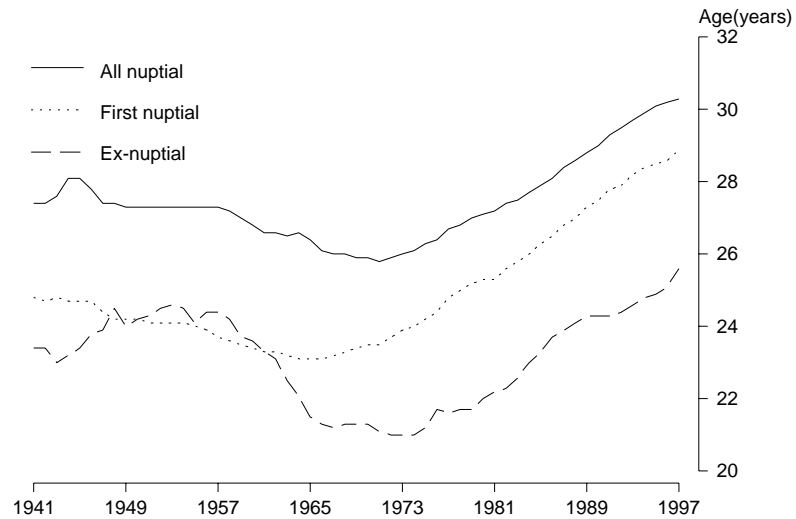
NUPTIAL FIRST CONFINEMENTS, Duration of Marriage



MEDIAN AGES OF PARENTS (NUPTIAL CONFINEMENTS)

Median ages of both parents in nuptial confinements continued the upward trend which has been evident throughout the past two decades. In 1997, the median age at birth of child was 30.3 years for married mothers and 32.9 years for married fathers. Both figures are the highest ever recorded in NSW.

MEDIAN AGE OF MOTHER



COUNTRY OF BIRTH OF PARENTS

Of the nuptial confinements registered in 1997, 57.4% were to parents who were both born in Australia, 18.3% to parents who were born in the same overseas country, and 19.0% where one parent was born in Australia and the other parent overseas. The remaining 5.3% related to parents who were born in different overseas countries. By comparison, in 1967, 68.8% of nuptial confinements were to parents who were both born in Australia and 12.9% where one parent was born in Australia and the other overseas.

3.1 BIRTHS, Summary(a), Selected Years—1987, 1992 to 1997

	1987	1992	1993	1994	1995	1996	1997
BIRTHS							
Total births	86 093	92 585	89 354	87 977	87 849	86 595	87 156
Males	44 035	47 710	45 906	45 187	44 884	44 448	44 647
Females	42 058	44 875	43 448	42 790	42 965	42 147	42 509
Sex ratio	104.7	106.3	105.7	105.6	104.5	105.5	105.0
Nuptial births	70 590	71 173	68 003	66 429	65 939	64 595	63 918
Ex-nuptial births							
Number	15 503	21 412	21 351	21 548	21 910	22 000	23 238
Percentage of total live births	18.0	23.1	23.9	24.5	24.9	25.4	26.7
Paternity acknowledged births							
Number	11 727	17 494	17 504	17 777	18 359	18 545	19 958
Percentage of total ex-nuptial births	75.6	81.7	82.0	82.5	83.8	84.3	85.9
Crude birth rate	15.3	15.5	14.9	14.5	14.3	14.0	13.9
Age-specific birth rate							
Age group (years)							
15–19	21.1	22.8	21.2	20.5	20.2	19.8	19.5
20–24	88.2	79.8	75.3	72.3	70.2	67.4	65.9
25–29	142.0	136.2	130.8	126.7	123.2	118.1	116.4
30–34	94.8	107.7	106.6	105.6	107.5	105.7	108.7
35–39	31.9	41.3	41.1	43.0	44.3	45.9	47.4
40–44	5.5	6.7	6.9	7.2	7.8	8.1	8.1
45–49	0.3	0.3	0.3	0.3	0.3	0.2	0.3
Total fertility rate	1.919	1.974	1.910	1.878	1.867	1.827	1.832
Female net reproduction rate	0.931	0.944	0.918	0.898	0.901	0.877	0.882

(a) See Glossary for definitions of terms used.

3.1 BIRTHS, Summary(a) Selected Years—1987, 1992 to 1997 *continued*

	1987	1992	1993	1994	1995	1996	1997
CONFINEMENTS							
Total confinements	85 123	91 374	88 163	86 785	86 691	85 496	85 967
First nuptial	27 655	28 262	26 805	26 267	26 199	26 125	26 275
All nuptial	69 773	70 199	67 049	65 483	65 016	63 705	62 974
Paternity acknowledged	11 609	17 299	17 313	17 572	18 155	18 374	19 750
All ex-nuptial	15 350	21 175	21 114	21 302	21 675	21 791	22 993
Median age of mother (years)							
First nuptial	26.8	27.9	28.2	28.4	28.5	28.6	28.9
All nuptial	28.4	29.5	29.7	29.9	30.1	30.2	30.3
Paternity acknowledged	24.4	24.6	24.9	25.0	25.2	25.3	25.8
All ex-nuptial	23.9	24.4	24.6	24.8	24.9	25.1	25.6
Total	27.8	28.7	28.9	29.0	29.2	29.3	29.4
Median age of father (years)							
Nuptial	31.0	31.9	32.2	32.4	32.6	32.8	32.9
Paternity acknowledged	27.2	27.5	27.6	27.7	27.9	28.0	28.3
All fathers where age is known	30.6	31.3	31.5	31.7	31.9	32.0	32.2
Median duration of marriage (years)							
First nuptial	2.3	2.3	2.3	2.4	2.4	2.4	2.5
Nuptial	4.6	4.5	4.5	4.5	4.5	4.5	4.5
Nuptial confinements							
Previous births							
0	27 655	28 262	26 805	26 267	26 199	26 125	26 275
1	24 240	24 618	23 665	23 032	23 089	22 475	22 534
2	11 988	11 654	11 270	11 080	10 671	10 173	9 717
3	4 096	3 903	3 618	3 484	3 495	3 373	3 059
4	1 105	1 093	1 031	967	945	989	863
5 and over	689	669	660	653	617	570	526
Average number of births	2.0	2.0	2.0	2.0	2.0	2.0	1.9

(a) See Glossary for definitions of terms used.

3.2 CONFINEMENTS: Nuptiality, Plurality, Age of Mother

AGE GROUP OF MOTHER (YEARS).....

<i>Confinements</i>	<i>19 and under</i>	<i>20–24</i>	<i>25–29</i>	<i>30–34</i>	<i>35–39</i>	<i>40 and over</i>	<i>Not stated</i>	<i>Total</i>
	no.	no.	no.	no.	no.	no.	no.	no.
Nuptial								
Single	526	7 316	21 799	21 616	9 356	1 431	4	62 048
Twins	5	71	290	329	173	26	—	894
Triplets or higher order	—	—	7	21	4	—	—	32
<i>Total</i>	531	7 387	22 096	21 966	9 533	1 457	4	62 974
Ex-nuptial								
Single	3 488	7 110	5 793	3 800	2 095	442	13	22 741
Twins	24	66	59	61	30	7	—	248
Triplets or higher order	—	—	—	—	—	—	—	4
<i>Total</i>	3 512	7 177	5 853	3 863	2 125	449	14	22 993
Total confinements	4 043	14 564	27 949	25 829	11 658	1 906	18	85 967
	%	%	%	%	%	%	%	%
Nuptial	13.1	50.7	79.1	85.0	81.8	76.4	22.2	73.3
Ex-nuptial	86.9	49.3	20.9	15.0	18.2	23.6	77.8	26.7

3.3 CONFINEMENTS, Age of Parents

AGE OF MOTHER (YEARS).....

Age of father (years)	16 and under	17	18	19	20	21	22	23	24	25	26	27	28	29
19 and under	197	209	263	205	102	44	32	15	15	16	—	5	—	—
20	29	86	130	181	170	102	55	26	20	10	14	14	7	4
21	25	61	126	188	205	160	110	81	45	37	21	20	8	8
22	11	52	97	181	214	253	241	133	84	60	43	32	13	14
23	10	42	73	157	210	286	303	273	190	120	80	38	42	35
24	9	33	60	119	178	243	359	411	368	249	158	98	75	49
25	6	29	41	99	151	215	272	384	480	487	339	173	121	70
26	3	16	30	80	113	164	276	348	477	633	584	385	234	132
27	6	15	33	71	106	143	194	301	435	585	662	613	377	226
28	3	5	19	51	82	117	147	239	332	491	602	708	670	397
29	—	6	14	40	62	107	120	163	269	410	549	623	734	703
30	4	3	15	33	57	60	116	167	246	297	472	605	666	809
31	—	—	3	23	37	51	88	124	179	276	378	512	614	670
32	—	3	5	22	29	35	71	111	132	230	312	400	510	607
33	—	3	5	20	27	43	59	85	140	199	223	328	397	510
34	—	—	8	5	25	26	51	67	88	150	210	251	328	398
35	—	—	4	11	16	25	40	43	79	99	148	200	270	337
36	—	3	3	3	11	11	30	32	38	80	105	134	184	231
37	—	—	4	5	3	6	21	30	42	46	77	95	141	161
38	—	—	3	—	10	—	13	21	30	50	65	78	105	132
39	—	—	—	—	—	5	6	15	28	23	47	56	90	104
40–44	—	—	3	4	16	20	27	34	60	69	108	154	186	221
45–49	—	—	—	—	3	7	8	9	18	29	28	47	43	52
50 and over	—	—	—	3	5	3	4	6	8	14	17	16	17	29
Not stated	—	—	—	—	—	—	—	—	—	—	—	—	—	—
Not applicable(a)	32	161	217	203	214	231	207	190	196	156	168	142	155	106
Nuptial	—	21	137	373	605	897	1 374	1 862	2 649	3 477	4 091	4 595	4 875	5 058
Ex-nuptial	441	714	1 024	1 333	1 443	1 462	1 476	1 446	1 350	1 339	1 321	1 132	1 112	949
Total	441	735	1 161	1 706	2 048	2 359	2 850	3 308	3 999	4 816	5 412	5 727	5 987	6 007

(a) Confinements where paternity was not acknowledged.

3.3 CONFINEMENTS, Age of Parents *continued*

AGE OF MOTHER (YEARS).....									TOTAL.....			
	Age of father (years)	30	31	32	33	34	35–39	40 and over	Not stated	Nuptial	Ex-nuptial	Total
19 and under	3	—	3	—	—	—	—	—	—	60	1 057	1 117
20	3	—	—	3	—	3	—	—	—	126	736	862
21	9	4	3	3	—	3	—	—	—	237	882	1 119
22	3	5	9	3	—	8	4	—	—	475	988	1 463
23	14	5	6	7	5	7	—	—	—	792	1 112	1 904
24	34	23	22	9	5	26	3	—	—	1 331	1 200	2 531
25	61	35	35	19	16	37	3	—	—	1 895	1 178	3 073
26	99	59	66	36	21	59	5	—	—	2 623	1 197	3 820
27	148	102	80	56	33	63	7	—	—	3 045	1 211	4 256
28	234	158	104	83	49	110	9	—	—	3 569	1 041	4 610
29	406	232	159	114	87	149	17	—	—	3 994	972	4 966
30	683	360	228	145	126	182	13	—	—	4 391	896	5 287
31	783	660	373	223	172	265	29	—	—	4 649	814	5 463
32	671	696	602	385	233	381	31	—	—	4 706	761	5 467
33	628	622	698	593	365	508	66	—	—	4 725	796	5 521
34	523	566	636	632	513	704	40	—	—	4 491	732	5 223
35	354	431	508	557	538	927	53	—	—	4 005	636	4 641
36	305	354	394	447	508	1 096	88	—	—	3 471	587	4 058
37	211	259	299	348	351	1 067	85	—	—	2 823	430	3 253
38	161	197	192	251	308	1 061	124	—	—	2 378	427	2 805
39	129	129	168	212	230	1 010	115	—	—	2 021	349	2 370
40–44	259	352	422	479	498	2 654	637	—	—	5 110	1 096	6 206
45–49	80	92	109	114	138	731	363	—	—	1 431	443	1 874
50 and over	20	42	42	49	59	337	159	—	—	624	207	831
Not stated	—	—	—	—	—	—	—	—	—	—	—	4
Not applicable(a)	102	101	81	77	71	268	54	11	—	—	3 243	3 243
Nuptial	4 986	4 656	4 463	4 164	3 697	9 533	1 457	4	—	62 974	—	62 974
Ex-nuptial	937	831	778	682	635	2 125	449	14	—	—	22 993	22 993
Total	5 923	5 487	5 241	4 846	4 332	11 658	1 906	18	—	62 974	22 993	85 967

(a) Confinements where paternity was not acknowledged.

3.4 NUPTIAL CONFINEMENTS, Birthplace of Parents

	FATHER BORN IN COUNTRY SHOWN AND MOTHER BORN IN.....				MOTHER BORN IN COUNTRY SHOWN AND FATHER BORN IN.....			
	<i>Australia</i>	Same overseas country	Different overseas country	<i>Total</i>	<i>Australia</i>	Same overseas country	Different overseas country	<i>Total</i>
OCEANIA AND ANTARCTICA								
Australia	36 177	—	5 344	41 521	36 177	—	6 628	42 805
Fiji	80	361	48	489	67	361	64	492
New Zealand	686	278	223	1 187	587	278	252	1 117
Other	159	413	100	672	135	413	102	650
<i>Total</i>	37 102	1 052	5 715	43 869	36 966	1 052	7 046	45 064
EUROPE AND THE FORMER USSR								
Austria	24	—	16	40	26	—	14	40
Former USSR & Baltic States	15	69	10	94	20	69	37	126
Former Yugoslav Republics	306	469	65	840	148	469	48	665
Germany	146	26	51	223	109	26	49	184
Greece	195	34	30	259	86	34	21	141
Hungary	14	19	6	39	8	19	7	34
Ireland	97	78	56	231	101	78	42	221
Italy	278	64	70	412	142	64	48	254
Malta	66	19	16	101	47	19	15	81
Netherlands	78	—	30	110	78	—	20	100
Poland	15	59	26	100	18	59	15	92
United Kingdom	2 095	592	471	3 158	1 606	592	304	2 502
Other	292	198	163	653	231	198	146	575
<i>Total</i>	3 621	1 629	1 010	6 260	2 620	1 629	766	5 015
MIDDLE EAST AND NORTH AFRICA								
Egypt	78	183	61	322	42	183	22	247
Lebanon	656	1 418	147	2 221	220	1 418	141	1 779
Turkey	56	258	32	346	30	258	20	308
Other	164	614	281	1 059	58	614	233	905
<i>Total</i>	954	2 473	521	3 948	350	2 473	416	3 239
SOUTHEAST ASIA								
Indonesia	39	241	48	328	53	241	86	380
Malaysia	79	121	101	301	102	121	108	331
Philippines	52	594	18	664	297	594	162	1 053
Singapore	29	9	28	66	35	9	37	81
Thailand	3	27	18	48	53	27	53	133
Viet Nam	21	1 254	143	1 418	25	1 254	108	1 387
Other	9	264	81	354	19	264	101	384
<i>Total</i>	232	2 510	437	3 179	584	2 510	655	3 749

3.4 NUPTIAL CONFINEMENTS, Birthplace of Parents *continued*

	FATHER BORN IN COUNTRY SHOWN AND MOTHER BORN IN.....				MOTHER BORN IN COUNTRY SHOWN AND FATHER BORN IN.....			
	<i>Australia</i>	Same overseas country	Different overseas country	<i>Total</i>	<i>Australia</i>	Same overseas country	Different overseas country	<i>Total</i>
NORTHEAST ASIA								
China	19	1 535	149	1 703	75	1 535	256	1 866
Hong Kong	36	336	167	539	48	336	114	498
Other	20	411	65	496	104	411	113	628
<i>Total</i>	75	2 282	381	2 738	227	2 282	483	2 992
SOUTHERN ASIA								
India	73	494	78	645	72	494	64	630
Sri Lanka	27	235	19	281	21	235	11	267
Other	43	383	58	484	17	383	21	421
<i>Total</i>	143	1 112	155	1 410	110	1 112	96	1 318
THE AMERICAS								
Canada	84	14	35	133	102	14	33	149
Chile	57	78	35	170	46	78	48	172
United States of America	164	51	59	274	197	51	72	320
Other	116	128	102	346	120	128	130	378
<i>Total</i>	421	271	231	923	465	271	283	1 019
AFRICA (EXCLUDING NORTH AFRICA)								
South Africa	117	133	67	317	114	133	57	304
Other	134	89	99	322	82	89	93	264
<i>Total</i>	251	222	166	639	196	222	150	568
OTHER AND NOT STATED								
Other and not stated	6	—	—	8	3	—	6	10
ALL REGIONS								
Total	42 805	11 552	8 617	62 974	41 521	11 552	9 901	62 974

3.5 NUPTIAL CONFINEMENTS: Age of Mother, Previous Issue, Average Issue

PREVIOUS ISSUE OF THE CURRENT MARRIAGE.....

Age of mother (years)	0	1	2	3	4	5 and over	Not stated	All mothers	Total issue	Average issue
16 and under	—	—	—	—	—	—	—	—	—	—
17	16	5	—	—	—	—	—	21	26	1.2
18	116	20	—	—	—	—	—	137	161	1.2
19	307	59	7	—	—	—	—	373	449	1.2
20	422	167	12	4	—	—	—	605	813	1.3
21	579	254	57	6	—	—	—	897	1 294	1.4
22	829	424	104	15	—	—	—	1 374	2 078	1.5
23	1 067	596	166	31	—	—	—	1 862	2 906	1.6
24	1 513	823	240	64	8	—	—	2 649	4 203	1.6
25	1 907	1 140	346	72	10	—	—	3 477	5 614	1.6
26	2 168	1 362	433	104	19	5	—	4 091	6 785	1.7
27	2 316	1 570	504	167	30	8	—	4 595	7 901	1.7
28	2 219	1 773	661	167	38	17	—	4 875	8 785	1.8
29	2 135	1 920	734	208	47	14	—	5 058	9 405	1.9
30	2 003	1 881	835	203	48	16	—	4 986	9 500	1.9
31	1 711	1 801	801	259	55	29	—	4 656	9 283	2.0
32	1 542	1 691	892	233	68	37	—	4 463	9 196	2.1
33	1 308	1 594	850	287	84	41	—	4 164	8 954	2.2
34	1 072	1 446	773	272	79	55	—	3 697	8 184	2.2
35–39	2 577	3 554	2 043	842	311	206	—	9 533	22 308	2.3
40 and over	466	454	258	124	60	95	—	1 457	3 681	2.5
Not stated	—	—	—	—	—	—	—	4	11	2.8
Total	26 275	22 534	9 717	3 059	863	526	—	62 974	121 537	1.9

3.6 FIRST NUPTIAL CONFINEMENTS: Age of Mother, Duration of Current Marriage

AGE GROUP OF MOTHER (YEARS).....

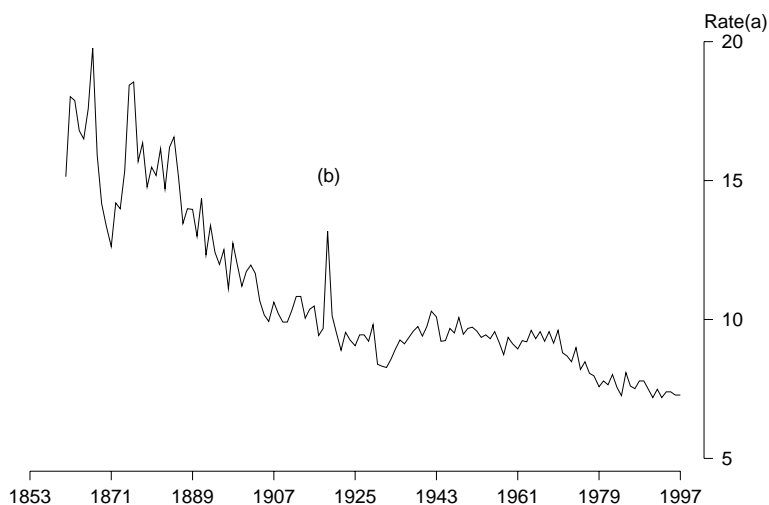
<i>Duration of marriage (years)</i>	<i>19 and under</i>	<i>20–24</i>	<i>25–29</i>	<i>30–34</i>	<i>35–39</i>	<i>40 and over</i>	<i>Not stated</i>	<i>Total</i>
Under 1	291	1 256	1 557	1 037	458	99	—	4 698
1	129	1 586	2 504	1 495	521	73	—	6 308
2	17	906	2 121	1 156	341	50	—	4 592
3	—	430	1 692	909	220	53	—	3 305
4	—	153	1 249	748	164	28	—	2 343
5	—	52	769	596	151	29	—	1 597
6	—	22	452	518	110	24	—	1 127
7	—	5	240	386	117	19	—	767
8 and over	—	—	161	791	495	91	—	1 538
Not stated	—	—	—	—	—	—	—	—
Total	439	4 410	10 745	7 636	2 577	466	—	26 275

SECTION 4

DEATHS—YEAR OF REGISTRATION

In 1997 there were 45,641 deaths registered for usual residents in NSW (including 130 registered cases where the usual residence of the deceased was overseas). The crude death rate was 7.3 deaths per 1,000 of total population. The 1997 total comprised 23,746 males and 21,895 females, a sex ratio of 109 males per 100 females.

CRUDE DEATH RATE



(a) Per 1,000 population. (b) Increase in death rate in 1919 was due mainly to the influenza epidemic.

AGE AT DEATH

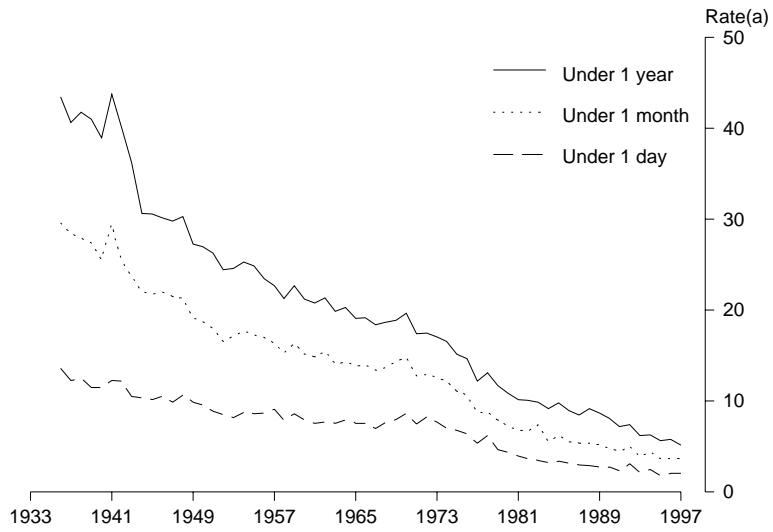
Male deaths generally outnumbered female deaths until age 81, as can be seen in table 4.2. The highest sex ratio at death in 1997 was 315 males per 100 females in the 20–24 age group. The age group 80 years and over accounted for 53.6% of all female deaths, but only 31.9% of all male deaths. There were 180 females and 27 males who died at age 100 years or older. The age at which the least number of NSW residents died was 8 years with only 9 deaths registered in 1997.

INFANT DEATHS

There were 451 infant deaths registered in 1997, a rate of 5.2 deaths per 1,000 live births. The infant death rate dropped below 100 in 1904, below 50 in 1930, below 20 in 1965 and below 10 in 1983. Over two in five (41.0%) infant deaths occurred during the first day of life and 72.1% occurred within the first month. The sex ratio of infant deaths was 116 males for every 100 females compared with the sex ratio at birth of 105.

The major cause of infant death in 1997 was *Certain conditions originating in the perinatal period* (234 infant deaths). The second major cause was *Congenital anomalies* (123 infant deaths) followed by *Symptoms, signs and ill-defined conditions* (39 infant deaths).

INFANT DEATH RATES

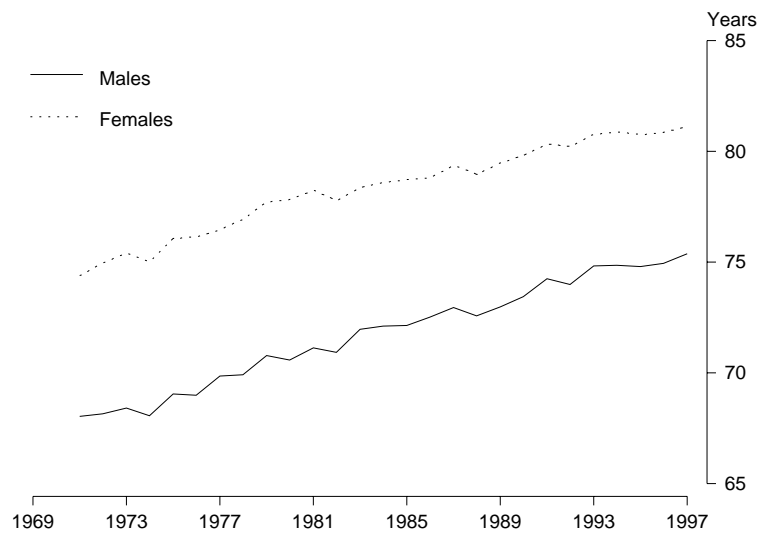


(a) Per 1,000 live births.

LIFE EXPECTANCY

The life expectancy at birth in NSW in 1995–97 was 81.2 years for females and 75.4 years for males. The corresponding figures in 1971 were 74.4 years and 68.0 years respectively. The seven-year increase in life expectancy since 1971 is mainly due to decreasing mortality rates from degenerative diseases (other than cancer) and the dramatic decline in the infant death rate, particularly during the perinatal period.

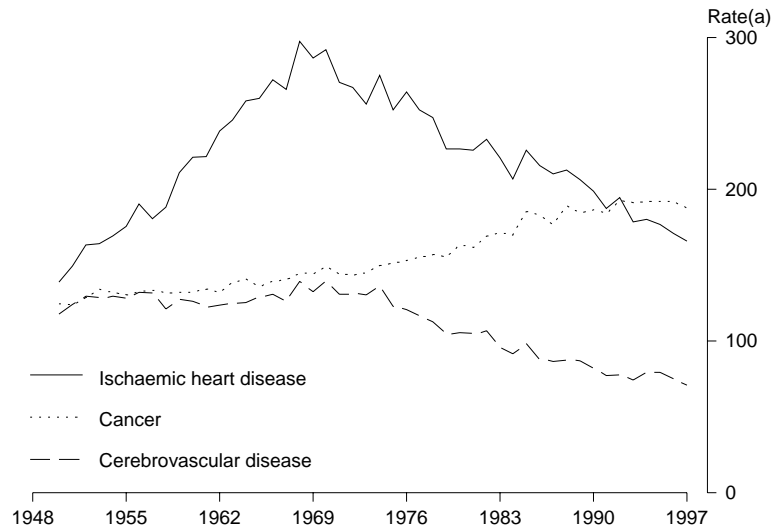
EXPECTATION OF LIFE AT BIRTH



MAJOR CAUSES OF DEATH

The leading cause of death in NSW in 1997 was cancer (*Malignant neoplasms*) which accounted for 28.2% of male deaths and 23.4% of female deaths. Heart attack (*Ischaemic heart disease*) accounted for 23.1% of male deaths and 22.8% of female deaths. Deaths due to *Cerebrovascular disease* (including stroke) resulted in 7.4% of male deaths and 12.5% of female deaths.

LEADING CAUSES OF DEATH

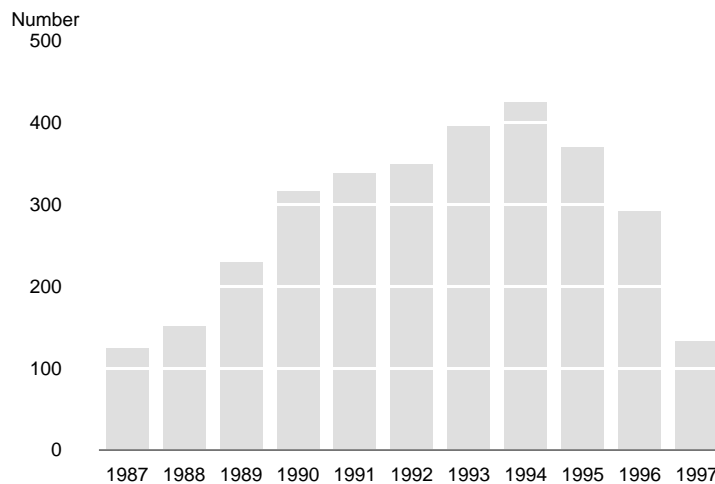


(a) Per 100,000 population.

ACQUIRED IMMUNE DEFICIENCY SYNDROME (AIDS)

There were 133 AIDS-related deaths of NSW residents registered in 1997, comprising 124 males and 9 females. This represents a decrease of 54.5% from the number of AIDS related deaths of 292 (282 male deaths and 10 female deaths) in 1996. Of the 124 male AIDS-related deaths in 1997, 82 deaths (66.1%) were in the age group 25–44 years.

DEATHS DUE TO AIDS



ACQUIRED IMMUNE DEFICIENCY SYNDROME (AIDS) *continued*

The ABS introduced the use of International Classification of Diseases Version 9 Clinically Modified (ICD-9 CM) codes for the classification of deaths attributed to AIDS/HIV in 1997. While the change has meant that a more detailed classification can be applied to AIDS-related deaths in Australia, strict comparisons with previously published figures detailing the break up of deaths directly attributed to AIDS, and deaths where AIDS is a contributing factor, can no longer be undertaken. However, comparisons for AIDS-related deaths are still possible.

SUICIDE

There were 935 suicide deaths of NSW residents in 1997 (713 males and 222 females). This compares with 815 deaths (660 males and 155 females) in 1996. The most frequent method of suicide for males was *Hanging, strangulation and suffocation* (281 deaths) followed by *Poisoning by other gases and vapours, including motor vehicle exhaust gas* (163 deaths). Deaths by *Firearms and explosives* accounted for 96 deaths, a slight decrease from the 1996 number of 102 deaths. The most frequent method of suicide for females was *Hanging, strangulation and suffocation* (66 deaths) followed by *Poisoning by solid or liquid substances* (60 deaths).

MOTOR VEHICLE TRAFFIC ACCIDENTS

Motor vehicle traffic accidents accounted for 548 deaths (374 males and 174 females) of NSW residents in 1997, compared with 583 deaths (419 males and 164 females) in 1996. The most common motor vehicle traffic accident deaths involved a *Collision with another motor vehicle* (204 deaths). There were also 113 deaths involving a *Collision with a pedestrian* and 148 deaths involving *Other collisions on the highway*. The age group 15–29 years accounted for 39.8% (149 deaths) of male deaths and 28.2% (49 deaths) of female deaths from motor vehicle traffic accidents.

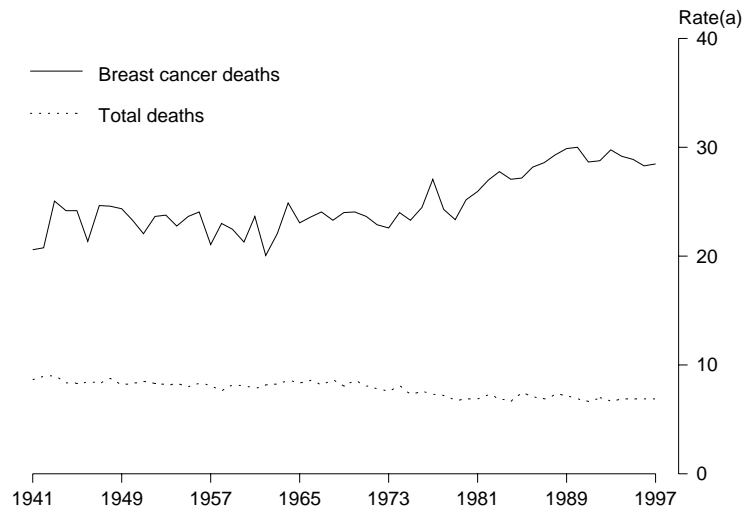
OTHER ACCIDENTAL DEATHS

Other accidental deaths in 1997 included 425 deaths due to *Accidental falls* (188 males and 237 females), 101 deaths due to *Accidental poisoning by drugs, medicaments and biologicals* (64 males and 37 females), 91 deaths due to *Accidental drowning and submersion* (70 males and 21 females) and 31 accidental deaths caused by *Fire and flames* (24 males and 7 females).

FEMALE BREAST CANCER

Although deaths due to breast cancer in females increased steadily over the last 50 years, lately the trend has stabilised, with 902 breast cancer deaths recorded in 1997, corresponding to 28.5 deaths per 100,000 female population. Women were more likely to die from breast cancer in the age group 65–84 years (44.5%), followed by the age group 45–64 years (36.5%). The remaining breast cancer deaths occurred in women under 45 years of age (11.1%) and women over 85 years of age (7.9%).

FEMALE DEATHS DUE TO BREAST CANCER

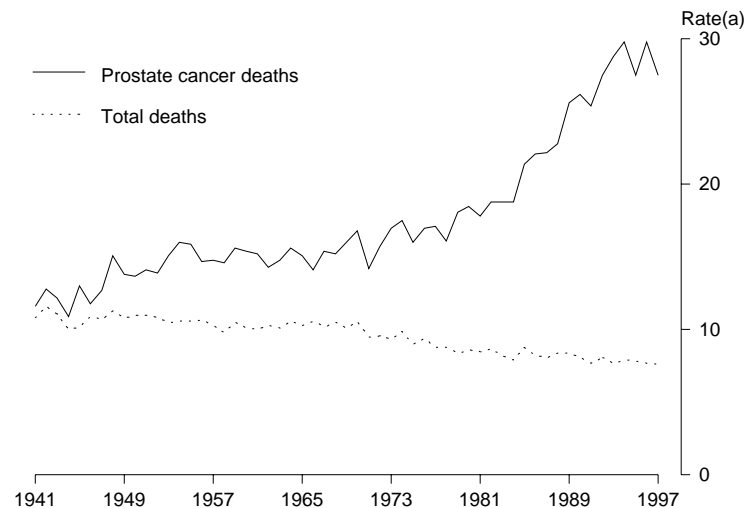


(a) Total female deaths per 1,000 female population. Cancer deaths per 100,000 female population.

PROSTATE CANCER

Deaths due to prostate cancer in males have increased steadily over the last 50 years, such that there are five times as many deaths from this cause than there were 50 years ago. The number of prostate cancer deaths in 1997 was 857, a fairly significant decrease on the 1996 figure of 916. The death rate from prostate cancer in 1997 was 27.5 deaths per 100,000 male population. Over 98.6% of the deaths occurred in men 55 years of age and over, and 83.5% of the deaths were in men 70 years of age and over.

DEATHS DUE TO PROSTATE CANCER



(a) Total male deaths per 1,000 male population. Cancer deaths per 100,000 male population.

4.1 DEATHS, Summary(a), Selected Years—1987, 1992 to 1997

	1987	1992	1993	1994(b)	1995(b)	1996(b)	1997(b)
DEATHS							
Total deaths	42 189	44 801	43 069	44 763	44 773	45 141	45 641
Males	22 611	23 969	22 925	23 690	23 612	23 765	23 746
Females	19 578	20 832	20 144	21 073	21 161	21 376	21 895
Sex ratio	115.5	115.1	113.8	112.4	111.6	111.2	108.5
Standardised death rate	7.6	7.1	6.7	6.8	6.6	6.4	6.3
Males	9.9	9.3	8.7	8.8	8.5	8.3	8.0
Females	5.9	5.5	5.2	5.2	5.1	5.0	4.9
Crude death rate	7.5	7.5	7.2	7.4	7.3	7.3	7.3
Males	8.1	8.1	7.7	7.9	7.8	7.7	7.6
Females	6.9	7.0	6.7	6.9	6.9	6.8	6.9
Median age at death							
Males	71.2	72.5	72.8	73.5	73.7	74.1	74.3
Females	78.1	79.3	79.5	80.1	80.2	80.6	81.1
Age-specific death rate							
Age group (years)							
Males							
0	9.2	8.6	6.9	6.9	6.1	6.5	5.4
1–4	0.5	0.4	0.4	0.4	0.3	0.4	0.3
5–14	0.3	0.2	0.2	0.2	0.1	0.2	0.2
15–24	1.3	1.0	0.9	0.9	1.0	1.0	1.0
25–34	1.3	1.4	1.4	1.4	1.4	1.4	1.3
35–44	1.8	1.9	1.9	2.0	1.8	1.7	1.7
45–54	4.7	4.0	3.8	3.6	3.6	3.4	3.5
55–64	14.3	12.6	11.3	11.0	10.7	10.0	9.4
65–74	36.3	32.4	30.4	29.7	29.2	28.3	27.9
75–84	85.0	81.7	76.6	80.0	75.4	74.8	70.6
85 and over	189.0	189.1	177.0	184.9	184.4	181.0	175.1
Females							
0	7.7	6.2	5.4	5.6	5.3	5.0	4.9
1–4	0.2	0.3	0.3	0.3	0.3	0.3	0.2
5–14	0.2	0.1	0.1	0.2	0.2	0.1	0.1
15–24	0.4	0.3	0.3	0.3	0.4	0.3	0.4
25–34	0.5	0.5	0.4	0.4	0.4	0.4	0.5
35–44	1.0	0.9	0.9	1.0	0.9	0.9	0.9
45–54	2.9	2.6	2.4	2.3	2.3	2.2	2.1
55–64	7.3	6.6	6.2	5.9	5.9	5.8	5.7
65–74	18.5	17.1	16.4	16.3	16.1	15.2	15.3
75–84	53.8	50.4	48.1	49.1	48.3	46.7	44.4
85 and over	154.2	153.0	140.4	149.3	142.7	144.9	145.7
Expectation of life							
Males							
Age 0	73.0	74.0	74.9	74.9	74.9	75.0	75.4
Age 1	72.6	73.7	74.4	74.4	74.4	74.5	74.8
Age 25	49.6	50.4	51.1	51.2	51.2	51.2	51.6
Age 45	30.9	31.8	32.4	32.5	32.5	32.6	33.0
Age 65	14.6	15.2	15.6	15.7	15.6	15.7	16.0
Females							
Age 0	79.4	80.2	80.8	80.8	80.9	80.9	81.2
Age 1	79.0	79.7	80.2	80.3	80.3	80.3	80.6
Age 25	55.5	56.1	56.6	57.1	56.1	56.7	57.0
Age 45	36.1	36.7	37.2	37.7	37.7	37.3	37.6
Age 65	18.6	19.1	19.4	19.7	19.7	19.5	19.7

(a) See Glossary for definitions of terms used.

(b) From 1994 onwards life expectation data will be calculated over three years surrounding the year in the table heading.

4.1 DEATHS, Summary(a), Selected Years—1987, 1992 to 1997 *continued*

	1987	1992	1993	1994	1995	1996	1997
DEATHS							
Principal causes of death (SDR per 100,000 population)-							
Males							
Neoplasms	239	248	241	240	233	229	222
Diseases of the circulatory system	469	402	370	372	355	340	312
Diseases of the respiratory system	87	87	71	73	73	72	89
Diseases of the digestive system	34	29	27	25	24	25	23
All other diseases	92	102	102	108	105	103	94
External causes	70	61	56	58	55	58	58
Females							
Neoplasms	138	140	140	138	140	139	133
Diseases of the circulatory system	303	261	240	240	228	217	207
Diseases of the respiratory system	35	39	34	37	35	39	48
Diseases of the digestive system	21	18	17	15	17	15	15
All other diseases	68	71	68	72	70	71	68
External causes	25	22	19	21	22	18	22
INFANT DEATHS							
Total infant deaths	731	688	552	551	498	499	451
Males	407	408	318	312	272	287	242
Females	324	280	234	239	226	212	209
Infant mortality rate	8.5	7.4	6.2	6.3	5.7	5.8	5.2
Males	9.2	8.6	6.9	6.9	6.1	6.5	5.4
Females	7.7	6.2	5.4	5.6	5.3	5.0	4.9
Age at death							
Males							
Under 1 day	137	152	106	126	100	99	91
1 day to under 1 week	61	71	48	70	45	45	49
1 week to under 4 weeks	53	46	39	36	34	31	28
4 weeks to under 1 year	156	139	125	80	93	112	74
Females							
Under 1 day	123	131	90	96	71	83	94
1 day to under 1 week	48	38	37	44	45	33	36
1 week to under 4 weeks	40	26	29	26	31	31	27
4 weeks to under 1 year	113	85	78	73	79	65	52

(a) See Glossary for definitions of terms used.

4.2 DEATHS, Age and Sex

Age at death (years)	Males	Females	Persons	Age at death (years)	Males	Females	Persons
Under 1	242	209	451	50	162	119	281
1	25	16	41	51	148	85	233
2	18	10	28	52	169	92	261
3	10	6	16	53	167	95	262
4	9	6	15	54	168	98	266
0–4	304	247	551	50–54	814	489	1 303
5	8	9	17	55	182	133	315
6	7	6	13	56	177	109	286
7	11	5	16	57	200	115	315
8	5	4	9	58	215	142	357
9	6	5	11	59	238	143	381
5–9	37	29	66	55–59	1 012	642	1 654
10	14	5	19	60	277	161	438
11	6	8	14	61	313	178	491
12	11	3	14	62	312	184	496
13	7	4	11	63	323	172	495
14	10	—	12	64	346	205	551
10–14	48	22	70	60–64	1 571	900	2 471
15	17	9	26	65	367	220	587
16	25	19	44	66	449	274	723
17	39	14	53	67	532	270	802
18	44	16	60	68	563	333	896
19	45	14	59	69	593	330	923
15–19	170	72	242	65–69	2 504	1 427	3 931
20	64	15	79	70	622	350	972
21	56	19	75	71	715	437	1 152
22	53	22	75	72	729	453	1 182
23	66	16	82	73	743	489	1 232
24	51	20	71	74	758	558	1 316
20–24	290	92	382	70–74	3 567	2 287	5 854
25	65	17	82	75	811	528	1 339
26	69	17	86	76	789	570	1 359
27	72	22	94	77	747	616	1 363
28	53	24	77	78	708	603	1 311
29	59	21	80	79	727	594	1 321
25–29	318	101	419	75–79	3 782	2 911	6 693
30	54	25	79	80	764	726	1 490
31	72	26	98	81	785	721	1 506
32	65	22	87	82	753	858	1 611
33	62	36	98	83	710	820	1 530
34	79	51	130	84	690	860	1 550
30–34	332	160	492	80–84	3 702	3 985	7 687
35	59	27	86	85	659	866	1 525
36	77	39	116	86	584	898	1 482
37	70	31	101	87	492	804	1 296
38	61	37	98	88	406	776	1 182
39	85	36	121	89	389	717	1 106
35–39	352	170	522	85–89	2 530	4 061	6 591
40	79	46	125	90	297	672	969
41	77	46	123	91	279	608	887
42	114	52	166	92	215	528	743
43	99	47	146	93	168	397	565
44	99	61	160	94	133	363	496
40–44	468	252	720	90–94	1 092	2 568	3 660
45	121	59	180	95–99	229	941	1 170
46	96	60	156	100 and over	27	180	207
47	118	63	181				
48	138	83	221	Not stated	4	3	7
49	120	91	211				
45–49	593	356	949	Total	23 746	21 895	45 641

4.3 DEATHS, Age and Marital Status

Age at death (years)	MALES.....						FEMALES.....					
	Never married	Married	Widowed	Divorced	Not stated	Total	Never married	Married	Widowed	Divorced	Not stated	Total
Under 1	242	—	—	—	—	242	209	—	—	—	—	209
1–4	62	—	—	—	—	62	38	—	—	—	—	38
5–9	37	—	—	—	—	37	29	—	—	—	—	29
10–14	38	—	—	—	10	48	20	—	—	—	—	22
15–19	69	—	—	—	99	170	22	—	—	—	49	72
20–24	270	7	—	—	13	290	78	7	—	—	6	92
25–29	242	42	—	5	29	318	66	25	—	—	8	101
30–34	210	62	—	29	31	332	64	74	—	15	6	160
35–39	163	126	—	28	34	352	47	87	—	16	19	170
40–44	173	202	3	42	48	468	49	148	3	35	17	252
45–49	154	303	5	82	49	593	49	218	14	55	20	356
50–54	179	476	8	94	57	814	69	282	29	82	27	489
55–59	164	607	34	150	57	1 012	89	365	83	86	19	642
60–64	219	1 019	76	178	79	1 571	70	540	187	74	29	900
65–69	349	1 627	212	218	98	2 504	123	720	414	122	48	1 427
70–74	406	2 331	453	260	117	3 567	157	942	982	144	62	2 287
75–79	343	2 375	784	195	85	3 782	191	920	1 611	145	44	2 911
80–84	293	2 116	1 083	132	78	3 702	290	743	2 768	128	56	3 985
85–89	172	1 245	1 004	65	44	2 530	337	414	3 153	105	52	4 061
90–94	73	410	576	19	14	1 092	226	144	2 123	49	26	2 568
95–99	9	60	153	6	—	229	99	14	815	8	5	941
100 and over	—	4	21	—	—	27	13	—	161	—	4	180
Not stated	—	—	—	—	4	4	—	—	—	—	—	3
Total	3 869	13 014	4 413	1 503	947	23 746	2 335	5 644	12 346	1 069	501	21 895

4.4 DEATHS, Expectation of Life(a), NSW and Australia, Selected Ages, Selected Years

Age (years)	NSW.....						AUST.....			
	1971.....		1981.....		1991.....		1995-97.....		1995-97.....	
	Males	Females	Males	Females	Males	Females	Males	Females	Males	Females
0	68.04	74.41	71.14	78.00	74.26	80.34	75.39	81.15	75.57	81.27
5	64.66	70.78	67.13	74.10	69.97	75.95	70.94	76.64	71.15	76.77
10	59.79	65.90	62.24	69.15	65.04	71.00	65.99	71.69	66.20	71.81
15	54.94	60.98	57.33	64.22	60.13	66.06	61.05	66.74	61.26	66.87
20	50.33	56.15	52.66	59.35	55.35	61.16	56.29	61.84	56.50	61.97
25	45.77	51.31	48.08	54.49	50.65	56.29	51.63	56.95	51.83	57.08
30	41.08	46.46	43.39	49.63	45.95	51.42	46.96	52.06	47.15	52.20
35	36.37	41.67	38.64	44.78	41.26	46.55	42.28	47.19	42.46	47.33
40	31.73	36.96	33.93	39.97	36.60	41.71	37.61	42.36	37.77	42.50
45	27.23	32.38	29.32	35.26	31.97	36.94	32.96	37.58	33.11	37.72
50	22.98	27.96	24.96	30.69	27.46	32.26	28.39	32.88	28.53	33.01
55	19.05	23.72	20.88	26.25	23.12	27.68	23.97	28.32	24.11	28.44
60	15.51	19.70	17.12	21.98	19.05	23.30	19.79	23.92	19.93	24.03
65	12.41	15.87	13.72	17.95	15.40	19.15	15.97	19.71	16.10	19.81
70	9.74	12.34	10.74	14.23	12.15	15.28	12.56	15.76	12.69	15.84
75	7.52	9.38	8.26	10.87	9.25	11.78	9.60	12.14	9.71	12.20
80	5.72	6.96	6.22	7.97	6.93	8.77	7.11	8.98	7.20	9.02
85	4.37	5.22	4.60	5.66	5.12	6.27	5.21	6.41	5.29	6.44
90	3.47	4.03	3.47	4.03	3.81	4.38	3.96	4.54	4.01	4.55
95	2.97	3.14	2.97	3.14	3.14	3.29	3.29	3.36	3.33	3.36

(a) Based on Annual Life Tables calculated by the Australian Statistician until 1994. In 1995 the life tables were produced as a joint venture between the Australian Bureau of Statistics and the Australian Government Actuary. See paragraph 18 of the Explanatory Notes.

4.5 DEATHS, Expectation of Life(a)—1995 to 1997

Age(years)	NSW.....		AUST.....		Age(years)	NSW.....		AUST.....	
	Males	Females	Males	Females		Males	Females	Males	Females
0	75.39	81.15	75.57	81.27	50	28.39	32.88	28.53	33.01
1	74.84	80.56	75.04	80.68	51	27.49	31.96	27.63	32.09
2	73.88	79.59	74.08	79.71	52	26.60	31.04	26.74	31.17
3	72.91	78.61	73.11	78.74	53	25.71	30.12	25.85	30.25
4	71.93	77.63	72.13	77.75	54	24.83	29.22	24.98	29.34
5	70.94	76.64	71.15	76.77	55	23.97	28.32	24.11	28.44
6	69.95	75.65	70.16	75.78	56	23.11	27.42	23.25	27.55
7	68.97	74.66	69.17	74.79	57	22.26	26.53	22.40	26.66
8	67.97	73.67	68.18	73.80	58	21.43	25.65	21.57	25.77
9	66.98	72.68	67.19	72.81	59	20.60	24.78	20.74	24.90
10	65.99	71.69	66.20	71.81	60	19.79	23.92	19.93	24.03
11	65.00	70.70	65.21	70.82	61	19.00	23.06	19.14	23.17
12	64.01	69.71	64.22	69.83	62	18.22	22.21	18.36	22.32
13	63.02	68.72	63.23	68.84	63	17.45	21.37	17.59	21.47
14	62.04	67.73	62.25	67.86	64	16.70	20.54	16.84	20.64
15	61.05	66.74	61.26	66.87	65	15.97	19.71	16.10	19.81
16	60.08	65.75	60.29	65.88	66	15.25	18.90	15.39	18.99
17	59.11	64.77	59.32	64.90	67	14.55	18.09	14.69	18.19
18	58.16	63.79	58.37	63.92	68	13.87	17.30	14.00	17.39
19	57.22	62.81	57.43	62.95	69	13.21	16.52	13.34	16.61
20	56.29	61.84	56.50	61.97	70	12.56	15.76	12.69	15.84
21	55.36	60.86	55.57	61.00	71	11.94	15.00	12.06	15.08
22	54.43	59.88	54.63	60.02	72	11.33	14.26	11.45	14.34
23	53.50	58.90	53.70	59.04	73	10.73	13.54	10.85	13.61
24	52.57	57.93	52.77	58.06	74	10.16	12.83	10.27	12.89
25	51.63	56.95	51.83	57.08	75	9.60	12.14	9.71	12.20
26	50.70	55.97	50.90	56.11	76	9.06	11.46	9.17	11.52
27	49.77	54.99	49.96	55.13	77	8.54	10.81	8.65	10.86
28	48.83	54.01	49.02	54.15	78	8.04	10.18	8.14	10.23
29	47.90	53.03	48.09	53.17	79	7.56	9.57	7.66	9.61
30	46.96	52.06	47.15	52.20	80	7.11	8.98	7.20	9.02
31	46.03	51.08	46.21	51.22	81	6.68	8.42	6.77	8.46
32	45.09	50.11	45.27	50.25	82	6.27	7.88	6.36	7.91
33	44.16	49.14	44.33	49.28	83	5.89	7.36	5.98	7.40
34	43.22	48.16	43.40	48.31	84	5.54	6.87	5.62	6.90
35	42.28	47.19	42.46	47.33	85	5.21	6.41	5.29	6.44
36	41.35	46.22	41.52	46.37	86	4.91	5.98	4.98	6.00
37	40.41	45.26	40.58	45.40	87	4.63	5.57	4.70	5.59
38	39.48	44.29	39.64	44.43	88	4.38	5.20	4.45	5.22
39	38.54	43.32	38.70	43.47	89	4.16	4.85	4.22	4.87
40	37.61	42.36	37.77	42.50	90	3.96	4.54	4.01	4.55
41	36.67	41.40	36.83	41.54	91	3.79	4.25	3.84	4.26
42	35.74	40.44	35.90	40.58	92	3.64	4.00	3.69	4.00
43	34.81	39.48	34.97	39.62	93	3.51	3.76	3.56	3.77
44	33.88	38.53	34.00	38.67	94	3.40	3.55	3.44	3.55
45	32.96	37.58	33.11	37.72	95	3.29	3.36	3.33	3.36
46	32.04	36.63	32.19	36.77	96	3.18	3.18	3.22	3.18
47	31.12	35.69	31.27	35.82	97	3.08	3.02	3.11	3.02
48	30.20	34.75	30.35	34.88	98	2.99	2.87	3.01	2.87
49	29.29	33.81	29.44	33.95	99	2.90	2.72	2.92	2.72

(a) Based on Annual Life Tables calculated by the Australian Statistician until 1994. In 1995 the life tables were produced as a joint venture between the ABS and the Australian Government Actuary. See paragraph 15 of the Explanatory Notes.

4.6 DEATHS, Birthplace, Duration of Residence

DURATION OF RESIDENCE (YEARS).....

	4 and under	5-9	10-19	20-29	30-39	40 and over	Not stated	Not applicable	Males	Females	Persons
OCEANIA AND ANTARCTICA											
Australia	—	—	—	—	—	—	—	33 427	16 981	16 446	33 427
Fiji	18	17	21	17	3	12	14	—	59	43	102
New Zealand	33	33	77	52	49	194	90	—	301	227	528
Other	12	16	26	11	4	13	39	—	59	62	121
<i>Total</i>	63	66	124	80	56	219	143	33 427	17 400	16 778	34 178
EUROPE AND THE FORMER USSR											
Austria	2	1	1	4	11	83	10	—	46	66	112
Former USSR & Baltic States	14	13	20	8	36	303	40	—	236	198	434
Former Yugoslav Republics	22	11	11	136	118	156	39	—	335	158	493
Germany	13	5	7	22	79	240	36	—	192	210	402
Greece	3	7	9	34	111	166	19	—	212	137	349
Hungary	6	1	6	6	23	151	19	—	120	92	212
Ireland	7	6	7	28	37	120	25	—	125	105	230
Italy	8	2	11	77	203	566	44	—	570	341	911
Malta	3	—	3	7	35	127	14	—	111	78	189
Netherlands	4	1	6	7	63	202	24	—	202	105	307
Poland	8	5	14	15	30	304	41	—	267	150	417
United Kingdom	97	64	247	439	729	2 369	400	—	2 210	2 135	4 345
Other	15	8	44	88	87	197	44	—	308	175	483
<i>Total</i>	202	124	386	871	1 562	4 984	755	—	4 934	3 950	8 884
MIDDLE EAST AND NORTH AFRICA											
Egypt	5	3	4	34	42	60	21	—	78	91	169
Lebanon	15	11	29	89	24	34	26	—	146	82	228
Turkey	3	4	10	28	9	10	11	—	47	28	75
Other	21	18	25	52	18	10	16	—	88	72	160
<i>Total</i>	44	36	68	203	93	114	74	—	359	273	632
SOUTHEAST ASIA											
Indonesia	5	4	14	5	2	14	9	—	26	27	53
Malaysia	4	3	10	9	5	5	6	—	22	20	42
Philippines	13	21	41	16	3	—	22	—	57	59	116
Singapore	1	—	1	2	1	5	—	—	7	3	10
Thailand	1	4	—	—	—	1	1	—	5	2	7
Viet Nam	5	34	57	2	—	2	5	—	59	46	105
Other	1	6	30	2	8	5	2	—	26	28	54
<i>Total</i>	30	72	153	36	19	32	45	—	202	185	387

4.6 DEATHS, Birthplace, Duration of Residence *continued*

DURATION OF RESIDENCE (YEARS).....

	4 and under	5-9	10-19	20-29	30-39	40 and over	Not stated	Not applicable	Males	Females	Persons
NORTHEAST ASIA											
China	50	68	115	32	25	75	33	—	208	190	398
Hong Kong	7	9	11	7	6	11	8	—	36	23	59
Other	18	10	23	9	2	7	12	—	39	42	81
<i>Total</i>	75	87	149	48	33	93	53	—	283	255	538
SOUTHERN ASIA											
India	14	9	28	36	15	38	13	—	90	63	153
Sri Lanka	4	10	10	11	3	6	2	—	23	23	46
Other	5	6	1	—	—	—	3	—	6	9	15
<i>Total</i>	23	25	39	47	18	44	18	—	119	95	214
THE AMERICAS											
Canada	3	2	1	8	6	27	6	—	33	20	53
Chile	4	2	9	19	1	—	2	—	16	21	37
United States of America	5	2	13	18	8	32	15	—	53	40	93
Other	8	1	19	35	6	8	6	—	55	28	83
<i>Total</i>	20	7	42	80	21	67	29	—	157	109	266
AFRICA (EXCLUDING NORTH AFRICA)											
South Africa	9	6	29	16	12	27	6	—	52	53	105
Other	—	7	9	24	4	3	2	—	24	25	49
<i>Total</i>	9	13	38	40	16	30	8	—	76	78	154
OTHER AND NOT STATED											
Other and not stated	46	1	3	1	1	8	328	—	216	172	388
ALL REGIONS											
Total	512	431	1 002	1 406	1 819	5 591	1 453	33 427	23 746	21 895	45 641

4.7 DEATHS, State or Territory of Usual Residence—State or Territory of Registration

State or Territory of registration.....

State or Territory of usual residence	NSW	Vic.	Qld	SA	WA	Tas.	NT	ACT	Aust.
NSW	44 842	233	305	38	10	10	7	196	45 641
Vic.	203	32 916	67	36	17	6	11	5	33 261
Qld	202	32	21 682	7	6	5	8	3	21 945
SA	35	39	14	11 539	7	—	21	3	11 658
WA	12	12	8	—	10 759	6	7	—	10 807
Tas.	7	28	12	—	—	3 757	—	—	3 809
NT	4	3	6	29	3	—	846	—	891
ACT	60	6	4	3	—	—	—	1 261	1 334
Other Territories	—	—	—	—	3	—	—	—	4
Aust.	45 366	33 269	22 098	11 655	10 807	3 784	900	1 471	129 350

4.8 DEATHS, Selected Causes of Death, Sex

Cause of death(a)	NUMBER.....			Percentage of all deaths	Rate(b)
	Males	Females	Persons		
Infectious and parasitic diseases (001–139)	345	252	597	1.3	9.5
Neoplasms (140–239)	6 804	5 210	12 014	26.3	190.5
Malignant neoplasms (140–208)	6 705	5 117	11 822	25.9	187.5
Endocrine, nutritional and metabolic diseases and immunity disorders (240–279)	509	543	1 052	2.3	16.7
Diseases of the blood and blood forming organs (280–289)	57	76	133	0.3	2.1
Mental disorders (290–319)	586	578	1 164	2.6	18.5
Diseases of the nervous system and sense organs (320–389)	468	518	986	2.2	15.6
Diseases of the circulatory system (390–459)	9 148	9 977	19 125	41.9	303.3
Ischaemic heart disease (410–414)	5 488	4 984	10 472	22.9	166.1
Cerebrovascular disease (430–438)	1 747	2 738	4 485	9.8	71.1
Diseases of the respiratory system (460–519)	2 560	2 253	4 813	10.5	76.3
Diseases of the digestive system (520–579)	706	684	1 390	3.0	22.0
Diseases of the genito-urinary system (580–629)	389	493	882	1.9	14.0
Complications of pregnancy, childbirth and the puerperium (630–676)	—	6	6	—	0.1
Diseases of the skin and subcutaneous tissue (680–709)	37	43	80	0.2	1.3
Diseases of the musculoskeletal system and connective tissue (710–739)	66	162	228	0.5	3.6
Congenital anomalies (740–759)	126	114	240	0.5	3.8
Certain conditions originating in the perinatal period (760–779)	117	121	238	0.5	3.8
Symptoms, signs and ill-defined conditions (780–799)	69	61	130	0.3	2.1
Accidents, poisonings and violence (E800–E999)	1 759	804	2 563	5.6	40.6
Motor vehicle traffic accidents (E810–E819)	374	174	548	1.2	8.7
All causes of death	23 746	21 895	45 641	100.0	723.7

(a) Classified according to the ninth revision of the World Health Organisation's International Classification of Diseases (ICD).

(b) Rates are calculated on the number of deaths per 100,000 population.

4.9 DEATHS, Selected Causes of Death(a)—Summary

<i>Particulars</i>	<i>Heart disease</i>	<i>Malignant neoplasms (cancer)</i>	<i>Cerebrovascular disease (incl. stroke)</i>	<i>Respiratory system diseases</i>	<i>Motor vehicle traffic accidents</i>	<i>Suicide</i>	<i>All causes</i>
Numbers							
Males	6 735	6 705	1 747	2 560	374	713	23 746
Females	6 596	5 117	2 738	2 253	174	222	21 895
Persons	13 331	11 822	4 485	4 813	548	935	45 641
Proportions by sex (%)							
Males	50.5	56.7	39.0	53.2	68.2	76.3	52.0
Females	49.5	43.3	61.0	46.8	31.8	23.7	48.0
Persons	100.0	100.0	100.0	100.0	100.0	100.0	100.0
Proportions by cause of death (%)							
Males	28.4	28.2	7.4	10.8	1.6	3.0	100.0
Females	30.1	23.4	12.5	10.3	0.8	1.0	100.0
Persons	29.2	25.9	9.8	10.5	1.2	2.0	100.0
Crude death rate(b)							
Males	216.2	215.2	56.1	82.2	12.0	22.9	762.2
Females	208.8	162.0	86.7	71.3	5.5	7.0	693.1
Persons	212.5	188.4	71.5	76.7	8.7	14.9	727.4
Standardised death rate(c)							
NSW	178.5	167.4	58.5	64.1	8.8	14.8	626.9
Australia	173.0	170.7	55.8	62.1	9.9	14.6	623.1

(a) Comprising the following: heart disease (ICD codes 393–398, 402, 404, 410–416, 420–429; malignant neoplasms (cancer) (ICD codes 140–208); cerebrovascular disease (ICD codes 430–438); respiratory system diseases (ICD codes 460–519); motor vehicle traffic accidents (ICD codes E810–E819); and suicide (ICD codes E950–E959).

(b) Number of deaths per 100,000 population.

(c) Deaths per 100,000 population, standardised for age and sex using the 1991 Australian population as the standard population.

4.10 PERINATAL DEATHS: Numbers, Rates, Selected Years—1987, 1992 to 1997

Year	FETAL DEATHS.....			NEONATAL DEATHS....			PERINATAL DEATHS.....		
	Males	Females	Persons	Males	Females	Persons	Males	Females	Persons
NUMBER									
1987	310	256	566	250	207	457	560	463	1 023
1992	341	311	652	261	184	445	602	495	1 097
1993	252	260	512	186	154	340	438	414	852
1994	248	185	433	225	157	382	473	342	815
1995	236	231	467	175	143	318	411	374	785
1996(a)	364	292	656	165	138	303	529	430	959
1997	317	251	568	155	138	293	472	389	861
RATE(b)									
1987	7.0	6.1	6.5	5.7	4.9	5.3	12.6	10.9	11.8
1992	7.1	6.9	7.0	5.5	4.1	4.8	12.5	11.0	11.8
1993	5.5	5.9	5.7	4.1	3.5	3.8	9.5	9.5	9.5
1994	5.5	4.3	4.9	5.0	3.7	4.3	10.4	8.0	9.2
1995	5.2	5.3	5.3	3.9	3.3	3.6	9.1	8.7	8.9
1996(a)	8.1	6.9	7.5	3.7	3.3	3.5	11.8	10.1	11.0
1997	7.1	5.9	6.5	3.5	3.2	3.4	10.5	9.1	9.8

(a) The increase in fetal death registrations in 1996 is partly due to the introduction of compulsory registration of fetal deaths as births and the availability of birth certificates for stillborn children.

(b) See Glossary for definitions of rates used.

4.11 PERINATAL DEATHS: Selected Details, Selected Years—1987 and 1997

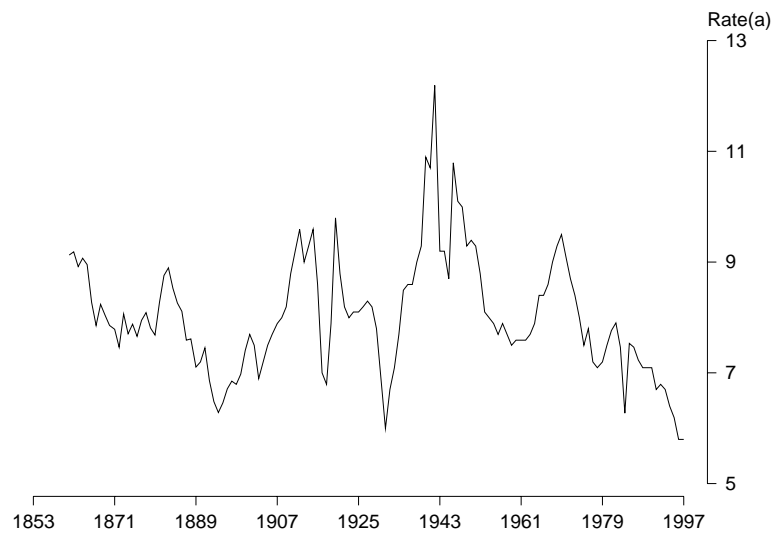
Particulars	1997 PERINATAL DEATHS.....					1987..
	Fetal deaths	Neonatal deaths	Males	Females	Persons	Perinatal deaths
AGE AT DEATH						
Less than 1 hour	—	61	30	31	61	116
1 hour to under 1 day	—	104	54	50	104	139
1 day to under 1 week	—	76	44	32	76	109
1 week to under 4 weeks	—	52	27	25	52	93
Total	—	293	155	138	293	457
WEIGHT AT DELIVERY (grams)						
400–999	216	142	197	161	358	386
1 000–1 999	96	44	77	63	140	212
2 000–2 999	123	36	77	82	159	217
3 000 or more	123	62	105	80	185	184
Not stated	10	9	16	3	19	24
Total	568	293	472	389	861	1 023
PERIOD OF GESTATION (weeks)						
Less than 28	188	139	182	145	327	365
28–36	184	65	142	107	249	310
37–41	180	71	130	121	251	295
42 or more	6	3	5	4	9	21
Not stated	10	15	13	12	25	32
Total	568	293	472	389	861	1 023
AGE GROUP OF MOTHER (years)						
Less than 20	35	24	32	27	59	71
20–24	102	46	81	67	148	214
25–29	179	83	143	119	262	352
30–34	133	65	113	85	198	276
35–39	101	53	85	69	154	85
40 or more	13	10	12	11	23	10
Not stated	5	12	6	11	17	15
Total	568	293	472	389	861	1 023

SECTION **5**

MARRIAGES REGISTERED

There were 36,679 registered marriages in NSW in 1997, compared to 35,716 in 1996. This represents an increase of 2.7%. However, since 1992, the number of registered marriages has declined by 10.0%. As in 1996, the crude marriage rate in 1997 was 5.8 marriages registered per 1,000 population, the lowest rate ever recorded in NSW. The previous lowest rate ever recorded was 6.0 per 1,000 in 1931 during the Great Depression, while the highest rate ever recorded was 12.2 per 1,000 in 1942 during World War II.

CRUDE MARRIAGE RATE

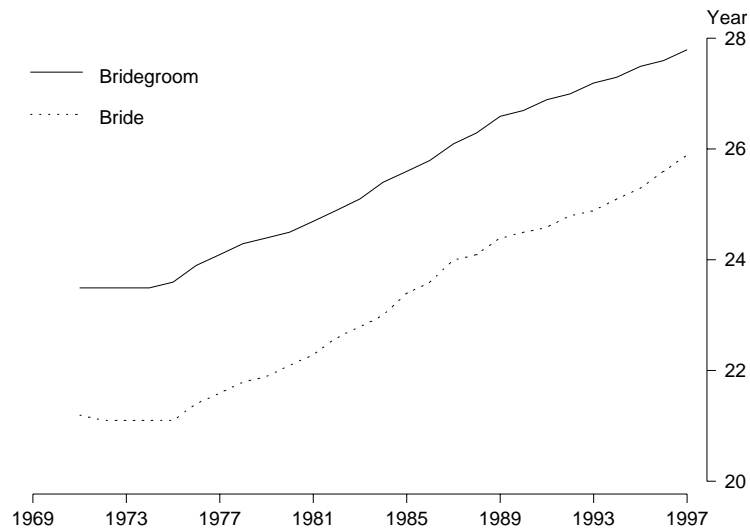


(a) Per 1,000 population.

AGE AT FIRST MARRIAGE

The age at first marriage in NSW continues to increase steadily. The median ages at first marriage for brides and bridegrooms in 1997 were the highest ever recorded, at 25.9 years and 27.8 years respectively. The lowest median ages at first marriage were recorded in the early seventies, being 21.1 years for brides and 23.5 years for bridegrooms. However, the trend for brides to marry bridegrooms who are about two years older has remained constant throughout the past two decades. In 1997, 34.0% of all marriages were by men aged 30 years or more, compared to 21.5% in 1986. The equivalent percentages for women were 20.0% and 11.0% respectively.

MEDIAN AGE AT FIRST MARRIAGE



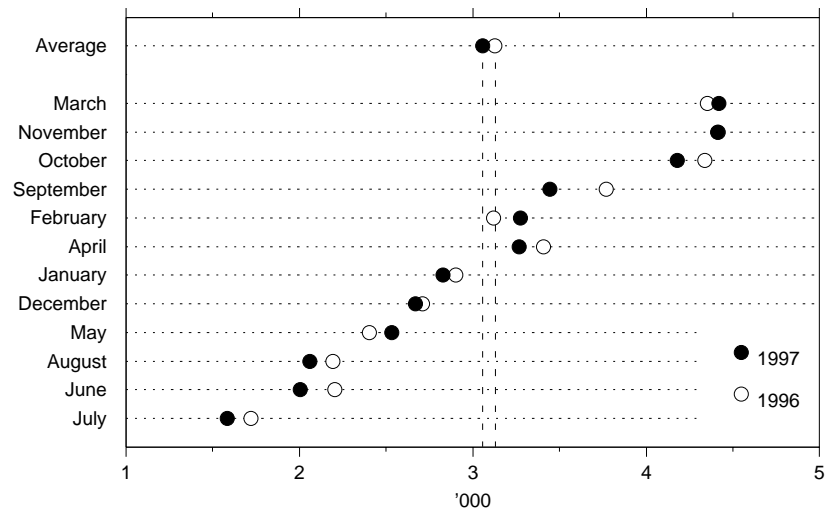
AGE-SPECIFIC MARRIAGE RATES

Age-specific marriage rates show persons in a specific age group marrying as a proportion of the population in that age group. Rates for older age groups have remained steady over the years, but there have been significant falls in the younger age groups. Between 1987 and 1997, the age-specific rate for females aged 19 years and under fell from 14.1 to 5.9. For females aged 20–24, the rates fell from 74.3 to 47.7 over the same period. For men aged 20–24, the age-specific marriage rates also fell from 50.3 to 29.0.

DAY AND MONTH OF MARRIAGE

Saturday is traditionally the most popular day of the week for marriage ceremonies. In 1997 the proportion of marriages were 7.3% on Fridays, 70.5% on Saturdays, and 13.6% on Sundays. March was the most popular month for marriage with 4,416 (12.1%) marriages celebrated, closely followed by November with 12.0%, and October with 11.4%. The least popular month was July with 1,584 (4.3%) marriages celebrated.

MONTH OF MARRIAGE—1996 AND 1997



PREVIOUS MARITAL STATUS

In 1997, two out of three (67.7%) marriages celebrated in NSW were the first marriage for both partners. More than 18.0% of the marriages were between partners one of whom was previously divorced. A further 10.5% involved parties both of whom were divorcees, while 3.8% were marriages between divorcees and widowed partners (including a small proportion of 0.9% of which one of the partners was never married).

MARRIAGE RITES

The proportion of marriage ceremonies celebrated by ministries of religion continued to decline. In 1997, 55.3% of all marriages were performed by ministers of religion, compared to 60% in 1991, and 71.0% in 1976. For marriages performed by ministries of religion, the highest proportion were Catholic (35.3%), followed by Anglican (25.6%), and Uniting Church (11.2%). The remaining 45.0% of marriage rites were performed by official registrars (8.5%) and other civil celebrants (36.2%).

BIRTHPLACE OF PARTIES

In 1997, 62.3% of registered marriages in NSW were between Australian-born partners. A further 12.1% involved parties, one of whom was overseas-born. The percentage of marriages between an Australia-born bridegroom and an overseas-born bride (12.1%) was slightly higher than the percentage between an Australian-born bride and an overseas-born bridegroom (9.8%).

5.1 MARRIAGES, Summary(a), Selected Years—1987, 1992 to 1997

	1987	1992	1993	1994	1995	1996	1997
ALL MARRIAGES							
Marriages registered	40 650	40 734	39 993	38 814	37 828	35 716	36 679
Crude marriage rate	7.2	6.8	6.7	6.4	6.2	5.8	5.8
Previous marital status							
First marriage both partners	27 627	27 705	26 976	26 445	25 838	23 937	24 829
First marriage one partner	7 514	7 638	7 689	7 160	7 012	6 766	6 928
Remarriage both partners	5 509	5 391	5 328	5 209	4 978	5 013	4 922
Marriages performed by							
Ministers of religion							
Number	25 126	24 320	24 093	23 123	n.a.	20 101	20 288
Proportion (%)	61.8	59.7	60.2	59.6	n.a.	56.3	55.3
Civil celebrants							
Number	15 524	16 414	15 900	15 691	n.a.	15 615	16 391
Proportion (%)	38.2	40.3	39.8	40.4	n.a.	43.7	44.7
BRIDEGROOM							
Age-specific marriage rate							
Age group (years)							
19 and under	2.2	1.6	1.5	1.3	1.2	1.0	1.1
20–24	50.3	40.1	38.2	35.6	33.2	28.8	29.0
25–29	55.4	56.9	55.7	54.7	52.7	49.7	50.5
30–34	29.0	30.5	30.8	30.6	30.5	28.4	30.1
35–39	15.0	15.7	16.0	15.5	15.8	15.6	15.7
40–44	10.3	10.2	10.0	9.5	9.5	9.1	9.5
45–49	8.0	7.8	7.3	7.4	7.0	7.0	7.0
50 and over	3.7	3.4	3.5	3.4	3.2	3.3	3.3
Marital status of bridegroom							
Never married	31 119	31 331	30 598	29 800	29 202	27 132	28 084
Widowed	1 040	880	995	863	773	789	777
Divorced	8 491	8 523	8 400	8 151	7 853	7 795	7 818
Total	40 650	40 734	39 993	38 814	37 828	35 716	36 679
Median age of bridegroom (years)							
Never married	26.1	27.0	27.2	27.3	27.5	27.6	27.8
Widowed	60.1	61.7	62.3	62.7	62.2	62.6	62.6
Divorced	38.8	40.1	40.1	40.7	40.8	41.3	41.6
Total	27.8	28.7	28.9	29.1	29.3	29.5	29.6
BRIDE							
Age-specific marriage rate							
Age group (years)							
19 and under	14.1	9.1	8.4	7.4	7.1	6.3	5.9
20–24	74.3	63.6	61.5	57.5	53.9	47.7	47.7
25–29	44.7	49.5	48.6	48.9	48.6	46.2	47.9
30–34	20.3	22.4	23.1	22.8	22.6	22.0	23.8
35–39	11.6	12.1	11.9	11.7	11.5	11.3	11.6
40–44	8.0	7.9	7.4	7.3	7.3	7.5	7.3
45–49	6.1	5.7	5.8	5.7	5.7	5.3	5.6
50 and over	1.8	1.8	1.8	1.8	1.7	1.8	1.8
Marital status of bride							
Never married	31 649	31 717	31 043	30 250	29 486	27 508	28 502
Widowed	1 172	1 023	1 074	1 038	902	898	867
Divorced	7 829	7 994	7 876	7 526	7 440	7 310	7 310
Total	40 650	40 734	39 993	38 814	37 828	35 716	36 679
Median age of bride (years)							
Never married	24.0	24.8	24.9	25.1	25.3	25.6	25.9
Widowed	52.3	52.7	52.5	52.9	52.8	53.6	53.4
Divorced	35.4	36.3	36.4	36.8	37.3	37.5	37.9
Total	25.3	26.3	26.4	26.6	26.7	27.1	27.3

(a) See Glossary for definitions of terms used.

5.2 MARRIAGES, Age-specific First Marriage, Remarriage Rates(a)—Census Years

Age at marriage (years)	1971	1976	1981	1986	1991	1996
FIRST MARRIAGES						
Age of bridegroom						
15–19	17.2	9.4	5.4	2.6	2.1	1.1
20–24	170.5	125.2	89.5	67.0	49.4	33.5
25–29	176.9	143.4	127.5	114.7	100.9	81.7
30–34	100.0	86.8	85.4	86.0	78.0	68.3
35–39	50.4	50.1	47.8	48.2	45.9	42.6
40–44	30.4	27.3	26.1	24.6	23.7	21.7
45 and over	9.5	8.7	7.4	6.5	6.6	6.6
Age of bride						
15–19	73.9	48.3	31.2	16.4	11.0	6.5
20–24	283.7	191.6	146.0	122.4	89.4	61.1
25–29	179.9	145.4	125.7	131.0	118.5	97.3
30–34	94.9	89.3	77.3	79.5	76.5	67.1
35–39	47.9	51.8	43.9	41.7	39.6	36.6
40–44	28.7	27.0	22.1	25.0	19.1	19.0
45 and over	5.4	5.8	5.0	4.0	4.2	4.6
REMARRIAGES						
Age of bridegroom						
15–19	—	—	—	—	—	—
20–24	160.6	233.4	194.4	111.8	34.4	50.4
25–29	290.0	341.1	236.9	200.4	146.5	134.5
30–34	271.9	308.3	207.6	173.9	138.1	126.2
35–39	188.8	243.7	167.4	136.4	114.1	96.5
40–44	127.4	186.8	118.7	104.8	84.5	65.5
45–49	90.8	135.1	98.2	88.2	67.5	53.1
50–54	66.8	100.3	71.9	57.5	50.5	44.7
55–59	49.8	66.2	52.6	43.1	41.3	32.7
60 and over	16.5	21.2	16.1	16.1	13.9	11.3
Age of bride						
15–19	64.1	137.1	90.9	42.5	11.0	4.3
20–24	306.5	286.0	226.1	185.1	110.7	114.1
25–29	264.6	254.9	193.9	182.1	150.1	131.9
30–34	157.3	194.9	136.8	123.0	112.6	100.5
35–39	100.4	136.1	96.1	84.1	73.2	62.2
40–44	65.1	87.8	71.0	61.8	49.2	43.8
45–49	42.4	60.2	44.4	41.8	35.9	29.6
50–54	23.5	29.2	24.2	23.3	21.9	21.9
55–59	11.6	15.3	12.4	12.1	12.5	10.6
60 and over	2.4	3.2	2.6	2.3	2.2	2.0

(a) Per 1,000 of the appropriate population. See Glossary.

5.3 MARRIAGES, Previous Marital Status of Parties

Previous marital status of bride.....

<i>Previous marital status of bridegroom</i>	<i>Never married</i>	<i>Widowed</i>	<i>Divorced</i>	<i>Total</i>
--	--------------------------	----------------	-----------------	--------------

NUMBER

Never married	24 829	167	3 088	28 084
Widowed	132	289	356	777
Divorced	3 541	411	3 866	7 818
Total	28 502	867	7 310	36 679

PROPORTION (%)

Never married	67.7	0.5	8.4	76.6
Widowed	0.4	0.8	1.0	2.1
Divorced	9.7	1.1	10.5	21.3
Total	77.7	2.4	19.9	100.0

5.4 MARRIAGES, Previous Marital Status of Parties by Age

Age at marriage (years)	PREVIOUS MARITAL STATUS OF BRIDEGROOM.....				PREVIOUS MARITAL STATUS OF BRIDE.....			
	<i>Never married</i>	<i>Widowed</i>	<i>Divorced</i>	<i>Total</i>	<i>Never married</i>	<i>Widowed</i>	<i>Divorced</i>	<i>Total</i>
17 and under	—	—	—	—	34	—	—	34
18	75	—	—	76	491	—	—	491
19	166	—	—	166	712	—	—	712
20	364	—	—	364	1 080	—	6	1 086
21	740	—	—	741	1 619	—	14	1 633
22	1 284	—	5	1 289	2 269	—	29	2 298
23	1 881	—	9	1 890	2 607	—	40	2 647
24	2 333	—	20	2 353	2 909	—	61	2 972
25	2 702	—	34	2 737	2 930	8	105	3 043
26	2 688	—	75	2 764	2 559	4	165	2 728
27	2 359	—	97	2 456	2 043	11	176	2 230
28	2 112	—	145	2 259	1 744	6	252	2 002
29	1 813	—	138	1 952	1 387	3	269	1 659
30–34	5 975	19	1 298	7 292	4 051	59	1 644	5 754
35–39	2 302	35	1 611	3 948	1 334	72	1 495	2 901
40–44	803	49	1 363	2 215	446	84	1 159	1 689
45–49	261	62	1 196	1 519	170	95	934	1 199
50–54	110	81	900	1 091	53	119	544	716
55–59	55	92	447	594	23	88	225	336
60 and over	60	434	478	972	41	316	192	549
Total	28 084	777	7 818	36 679	28 502	867	7 310	36 679

5.5 MARRIAGES, Age of Parties

AGE GROUP OF BRIDE (YEARS).....

Age group of bridegroom (years)	17	18	19	20-24	25-29	30-34	35-39	40-44	45-49	50-54	55-59	60 and	Total
	and under											over	
17 and under	—	—	—	—	—	—	—	—	—	—	—	—	—
18	—	23	20	25	6	—	—	—	—	—	—	—	76
19	—	46	42	68	5	3	—	—	—	—	—	—	166
20-24	20	233	388	4 565	1 209	160	43	13	5	—	—	—	6 637
25-29	10	142	198	4 525	5 834	1 173	219	49	16	—	—	—	12 168
30-34	—	37	46	1 057	3 143	2 215	624	137	24	5	—	—	7 292
35-39	—	7	11	270	1 035	1 341	894	277	91	18	3	—	3 948
40-44	—	—	5	86	278	535	637	436	182	46	8	—	2 215
45-49	—	—	—	22	92	216	271	424	338	124	22	9	1 519
50-54	—	—	—	14	40	74	139	212	304	227	66	13	1 091
55-59	—	—	—	—	13	23	49	78	139	160	79	50	594
60 and over	—	—	—	—	7	12	25	63	100	134	156	473	972
Total	34	491	712	10 636	11 662	5 754	2 901	1 689	1 199	716	336	549	36 679

5.6 MARRIAGES, Birthplace of Parties

	BRIDEGROOM BORN IN COUNTRY SHOWN AND BRIDE BORN IN.....				BRIDE BORN IN COUNTRY SHOWN AND BRIDEGROOM BORN IN.....			
	<i>Australia</i>	<i>Same overseas country</i>	<i>Different overseas country</i>	<i>Total</i>	<i>Australia</i>	<i>Same overseas country</i>	<i>Different overseas country</i>	<i>Total</i>
OCEANIA AND ANTARCTICA								
Australia	22 839	—	3 601	26 440	22 839	—	4 421	27 260
Fiji	37	119	33	189	59	119	57	235
New Zealand	542	103	152	797	383	103	172	658
Other	124	114	53	291	81	114	58	253
<i>Total</i>	<i>23 542</i>	<i>336</i>	<i>3 839</i>	<i>27 717</i>	<i>23 362</i>	<i>336</i>	<i>4 708</i>	<i>28 406</i>
EUROPE AND THE FORMER USSR								
Austria	27	6	12	45	17	6	11	34
Former USSR & Baltic States	9	61	14	84	35	61	35	131
Former Yugoslav Republics	146	111	48	305	79	111	33	223
Germany	115	62	51	228	87	62	44	193
Greece	64	18	23	105	26	18	12	56
Hungary	11	10	14	35	11	10	6	27
Ireland	76	13	40	129	43	13	18	74
Italy	106	26	48	180	42	26	26	94
Malta	53	5	26	84	16	5	6	27
Netherlands	58	12	39	109	65	12	17	94
Poland	24	38	15	77	30	38	19	87
United Kingdom	1 459	328	337	2 124	984	328	169	1 481
Other	198	90	123	411	175	90	97	362
<i>Total</i>	<i>2 346</i>	<i>780</i>	<i>790</i>	<i>3 916</i>	<i>1 610</i>	<i>780</i>	<i>493</i>	<i>2 883</i>
MIDDLE EAST AND NORTH AFRICA								
Egypt	31	34	31	96	18	34	16	68
Lebanon	272	182	61	515	81	182	60	323
Turkey	44	35	14	93	14	35	15	64
Other	102	150	122	374	37	150	91	278
<i>Total</i>	<i>449</i>	<i>401</i>	<i>228</i>	<i>1 078</i>	<i>150</i>	<i>401</i>	<i>182</i>	<i>733</i>
SOUTHEAST ASIA								
Indonesia	25	106	32	163	55	106	58	219
Malaysia	45	17	56	118	75	17	61	153
Philippines	53	280	27	360	244	280	149	673
Singapore	23	8	22	53	35	8	32	75
Thailand	6	34	9	49	71	34	61	166
Viet Nam	12	422	64	498	36	422	91	549
Other	6	114	54	174	22	114	60	196
<i>Total</i>	<i>170</i>	<i>981</i>	<i>264</i>	<i>1 415</i>	<i>538</i>	<i>981</i>	<i>512</i>	<i>2 031</i>

5.6 MARRIAGES, Birthplace of Parties *continued*

	BRIDEGROOM BORN IN COUNTRY SHOWN AND BRIDE BORN IN.....				BRIDE BORN IN COUNTRY SHOWN AND BRIDEGROOM BORN IN.....			
	<i>Australia</i>	<i>Same overseas country</i>	<i>Different overseas country</i>	<i>Total</i>	<i>Australia</i>	<i>Same overseas country</i>	<i>Different overseas country</i>	<i>Total</i>
NORTHEAST ASIA								
China	15	461	113	589	101	461	175	737
Hong Kong	19	128	87	234	52	128	81	261
Other	15	185	51	251	119	185	110	414
<i>Total</i>	<i>49</i>	<i>774</i>	<i>251</i>	<i>1 074</i>	<i>272</i>	<i>774</i>	<i>366</i>	<i>1 412</i>
SOUTHERN ASIA								
India	49	48	43	140	26	48	27	101
Sri Lanka	24	45	14	83	15	45	17	77
Other	30	53	64	147	5	53	13	71
<i>Total</i>	<i>103</i>	<i>146</i>	<i>121</i>	<i>370</i>	<i>46</i>	<i>146</i>	<i>57</i>	<i>249</i>
THE AMERICAS								
Canada	80	11	22	113	60	11	27	98
Chile	45	33	41	119	43	33	43	119
United States of America	158	22	66	246	127	22	40	189
Other	112	70	87	269	99	70	112	281
<i>Total</i>	<i>395</i>	<i>136</i>	<i>216</i>	<i>747</i>	<i>329</i>	<i>136</i>	<i>222</i>	<i>687</i>
AFRICA (EXCLUDING NORTH AFRICA)								
South Africa	123	27	46	196	76	27	45	148
Other	82	34	49	165	57	34	38	129
<i>Total</i>	<i>205</i>	<i>61</i>	<i>95</i>	<i>361</i>	<i>133</i>	<i>61</i>	<i>83</i>	<i>277</i>
OTHER AND NOT STATED								
Other and not stated	—	—	—	—	—	—	—	—
ALL REGIONS								
Total	27 260	3 615	5 804	36 679	26 440	3 615	6 624	36 679

5.7 MARRIAGES, Category of Rite, Previous Marital Status of Parties

	PREVIOUS MARITAL STATUS OF BRIDEGROOM			PREVIOUS MARITAL STATUS OF BRIDE.....			All marriages	Proportion of all marriages
	<i>Never married</i>	<i>Widowed</i>	<i>Divorced</i>	<i>Never married</i>	<i>Widowed</i>	<i>Divorced</i>		
RELIGIOUS(a)								
	no.	no.	no.	no.	no.	no.	no.	%
Anglican	4 427	92	671	4 598	87	505	5 190	14.1
Baptist	412	15	139	435	18	113	566	1.5
Catholic	6 851	86	218	6 855	108	192	7 155	19.5
Churches of Christ	155	4	45	148	10	46	204	0.6
Lutheran	54	—	11	52	—	14	67	0.2
Orthodox	985	5	110	1 006	7	87	1 100	3.0
Presbyterian	604	19	156	658	11	110	779	2.1
Uniting Church	1 670	56	551	1 781	60	436	2 277	6.2
Other denominations	2 297	71	582	2 304	75	571	2 950	8.0
<i>All religious rites</i>	<i>17 455</i>	<i>350</i>	<i>2 483</i>	<i>17 837</i>	<i>377</i>	<i>2 074</i>	<i>20 288</i>	<i>55.3</i>
CIVIL								
	no.	no.	no.	no.	no.	no.	no.	%
Official registrars	2 053	104	961	2 077	103	938	3 118	8.5
Other civil celebrants	8 576	323	4 374	8 588	387	4 298	13 273	36.2
<i>All civil rites</i>	<i>10 629</i>	<i>427</i>	<i>5 335</i>	<i>10 665</i>	<i>490</i>	<i>5 236</i>	<i>16 391</i>	<i>44.7</i>
TOTAL								
	no.	no.	no.	no.	no.	no.	no.	%
All marriages	28 084	777	7 818	28 502	867	7 310	36 679	100.0
	%	%	%	%	%	%	%	
Proportion	76.6	2.1	21.3	77.7	2.4	19.9	100.0	..

(a) Recognised denominations under the authority of the Australian Marriage Act 1961.

5.8 REMARRIAGES, Previous Marriages, Number of Children Under 16

Number of Children Under 16.....

Number of previous marriages	Nil	One	Two	Three	Four or more	Not stated	Total
BRIDEGROOM							
One	4 611	1 330	964	270	70	10	7 255
Two	661	239	137	49	14	—	1 102
Three or more	72	20	14	—	—	—	109
Not stated	129	—	—	—	—	—	129
Total	5 473	1 589	1 115	321	85	12	8 595
BRIDE							
One	4 246	1 423	910	293	64	5	6 941
Two	627	165	131	37	14	—	974
Three or more	87	15	11	—	—	—	116
Not stated	146	—	—	—	—	—	146
Total	5 106	1 603	1 052	331	80	5	8 177

5.9 REMARRIAGES, Interval to Remarriage, Reason for Termination of Last Marriage

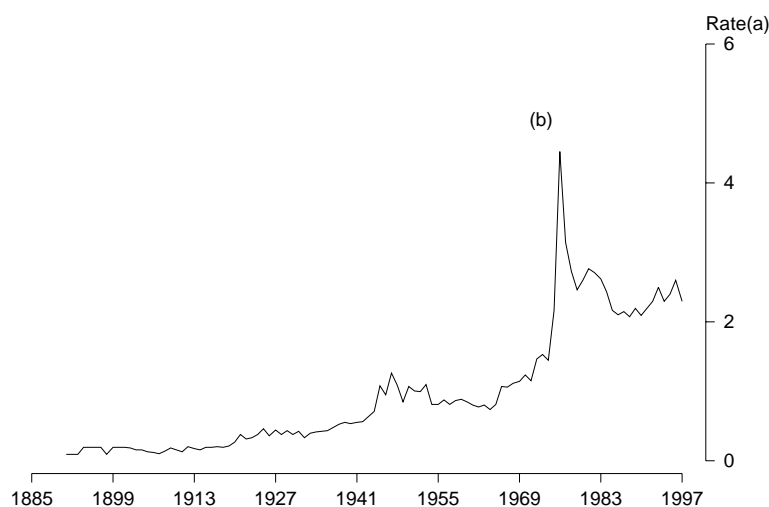
<i>Interval between termination of last marriage and remarriage (years)</i>	BRIDEGROOM'S LAST MARRIAGE TERMINATED BY..			BRIDE'S LAST MARRIAGE TERMINATED BY.....		
	<i>Death of spouse</i>	<i>Divorce</i>	<i>Total</i>	<i>Death of spouse</i>	<i>Divorce</i>	<i>Total</i>
Under 1	10	966	976	5	792	797
1	117	1 685	1 802	61	1 421	1 482
2	135	1 073	1 208	86	989	1 075
3	101	681	782	85	649	734
4	84	550	634	101	566	667
0-4	447	4 955	5 402	338	4 417	4 755
5	68	479	547	74	425	499
6	48	379	427	50	347	397
7	27	287	314	52	302	354
8	33	206	239	49	251	300
9	16	193	209	44	175	219
5-9	192	1 544	1 736	269	1 500	1 769
10-14	75	599	674	126	648	774
15-19	26	302	328	65	318	383
20 and over	24	159	183	45	185	230
Not stated	13	259	272	24	242	266
All remarriages	777	7 818	8 595	867	7 310	8 177

SECTION 6

DIVORCES GRANTED

In 1997, there were 14,655 divorces registered in NSW, a decrease of 1,329 from 1996. This figure is significantly lower than the number of registered divorces (22,147) immediately after the introduction of the *Family Law Act (1975)* in January 1976. As a result, the crude divorce rate declined from 4.5 divorces per 1,000 of total population in 1976 to 2.3 in 1997.

CRUDE DIVORCE RATE



(a) Per 1,000 population. (b) Introduction of the *Family Law Act 1975*.

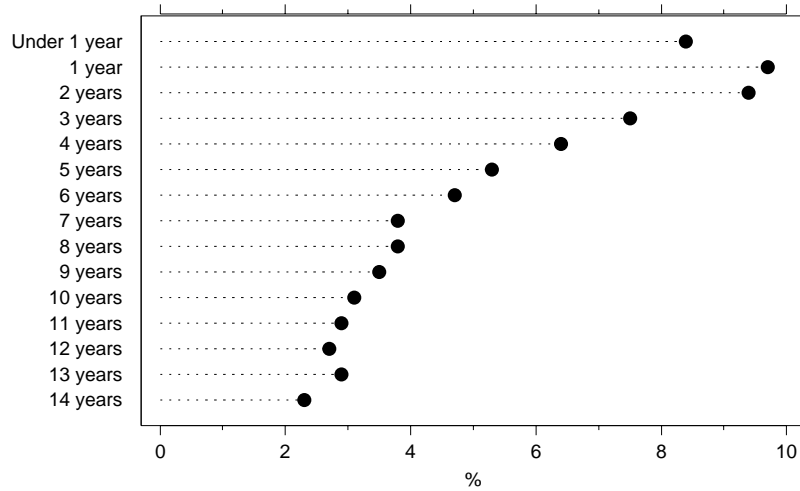
DURATION OF MARRIAGE

As in previous years, most divorces in 1997 occurred within a few years after marriage. About 41% of all divorces involved couples who had separated within five years of marriage, of whom 27.5% had separated within three years of marriages. The median interval between marriage and final separation was 6.7 years, and that between marriage and divorce was 10.0 years. Both these median intervals were lower than the national average or those recorded in any other State or Territory.

AGE AT DIVORCE AND FINAL SEPARATION

The median age at divorce increased slightly in 1997 to 36.8 years for women and 39.6 years for men, compared to the corresponding median ages of 35.4 years and 38.3 years in 1992. The median ages at final separation also increased from 32.6 years in 1992 to 33.8 in 1997 for females, and from 35.4 to 36.4 years for males. In 11.0% of the divorces both the husband and wife were under 30 years at the date of separation.

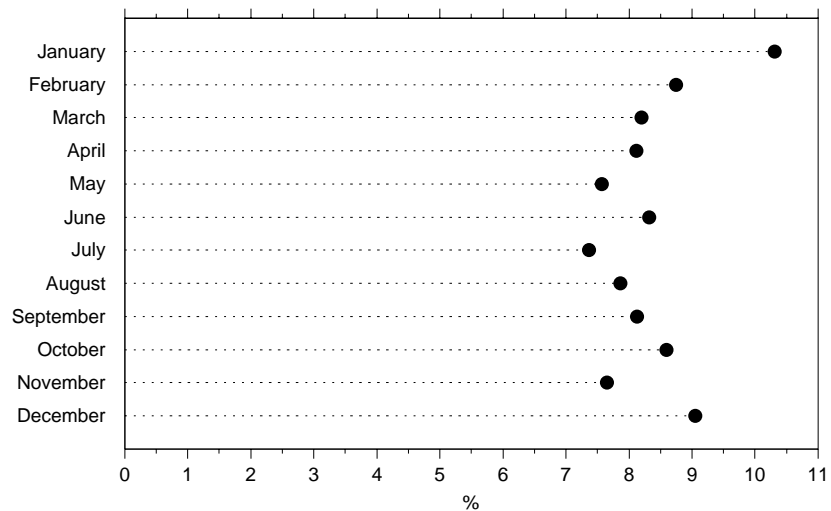
INTERVAL BETWEEN MARRIAGE AND FINAL SEPARATION



MONTH OF SEPARATION

In 1997, there were more separations during the month of January (10.3% or 1511 cases) than in any other month. This percentage was also comparable to those in 1993 (10.5%), 1994 (10.5%), and 1995 (10.4%).

MONTH OF SEPARATION



SEX OF APPLICANT

Traditionally, the proportion of divorce applications from females has outnumbered those from males. This was the case in 1997 when 48.0% of all divorce applications were made by the wife, while applications by husbands accounted for 32.0%. The remaining proportion was the result of a joint application by both husband and wife.

DIVORCES INVOLVING CHILDREN UNDER EIGHTEEN

More than 51.0% (7,520) of all divorces granted in NSW in 1997 involved at least one child under 18 years. The total number of children involved in divorce cases were 13,722, most of whom were three years of age.

AGE-SPECIFIC DIVORCE RATE

Age-specific divorce rates for both males and females decreased slightly for all age groups in 1997. The highest divorce rates for males were in the 30–34 years (11.6) and the 35–39 years (11.2) age groups. For females, the highest divorce rates were also in the 30–34 years (12.2) and the 35–39 years (10.9) age groups.

BIRTHPLACE OF APPLICANTS

More than 50.0% (7,434) of all divorces granted in NSW in 1997 involved partners who were both born in Australia. Divorces by couples born from the same overseas country accounted for 18.0% of the 1997 total. There was a slightly higher percentage of divorces (12.8%) among couples with an overseas-born husband married to an Australian-born wife, than couples with an overseas-born wife and an Australian-born husband (10.1%).

6.1 DIVORCES, Summary(a), Selected Years —1987, 1992–97

	1987	1992	1993	1994	1995	1996	1997
ALL DIVORCES							
Divorces granted	12 044	13 949	14 753	13 999	14 945	15 984	14 655
Crude divorce rate	2.1	2.3	2.5	2.3	2.4	2.6	2.3
Median duration of marriage (years)	9.9	9.7	9.9	10.0	10.1	10.1	10.0
Median interval between marriage and final separation (years)	7.0	6.6	6.7	6.8	6.7	6.8	6.7
Divorces involving children							
Number	6 730	6 586	7 180	6 752	n.a.	8 120	7 520
Percentage of total divorces	55.9	47.2	48.7	48.2	n.a.	50.8	51.3
Average number of children	1.8	1.9	1.8	1.8	n.a.	1.8	1.8
Applicant							
Husband	4 895	5 140	5 345	5 208	5 237	5 436	4 654
Wife	6 322	6 651	7 144	6 988	7 143	7 262	7 045
Joint	827	2 158	2 264	1 803	2 565	3 286	2 956

(a) See Glossary for definitions of terms used.

6.1 DIVORCES, Summary(a), Selected Years—1987, 1992–97 *continued*

	1987	1992	1993	1994	1995	1996	1997
HUSBAND							
Age group (years)							
24 and under	1.2	1.1	1.1	0.9	0.9	0.9	0.8
25–29	8.0	8.2	8.2	7.3	7.5	7.8	7.0
30–34	11.0	11.4	11.9	11.1	11.7	12.2	11.6
35–39	10.8	12.1	11.8	11.3	11.8	12.5	11.2
40–44	9.4	10.1	11.1	10.2	10.9	11.2	10.0
45–49	7.8	8.9	9.4	9.0	9.8	10.2	9.0
50–54	6.1	6.6	7.5	7.4	7.2	8.0	7.2
55 and over	2.1	2.0	2.3	2.3	2.5	2.7	2.4
Marital status at marriage (number)							
Never married	10 050	11 457	12 153	11 408	n.a.	n.a.	n.a.
Widowed	151	158	146	160	n.a.	n.a.	n.a.
Divorced	1 843	2 334	2 454	2 431	n.a.	n.a.	n.a.
Total	12 044	13 949	14 753	13 999	n.a.	n.a.	n.a.
Median age (years)							
At marriage	24.7	25.4	25.6	25.9	26.1	26.2	26.2
At final separation	35.0	35.4	35.8	36.3	36.4	36.4	36.4
At decree made absolute	37.7	38.3	38.9	39.3	39.5	39.7	39.6
WIFE							
Age-specific divorce rate							
Age group (years)							
24 and under	2.8	2.6	2.4	2.0	2.1	2.1	1.9
25–29	10.9	11.4	11.7	10.7	10.9	11.6	10.5
30–34	10.9	12.3	12.9	12.0	12.7	13.3	12.2
35–39	10.2	10.8	11.4	10.8	11.8	12.0	10.9
40–44	8.9	9.6	10.2	9.7	10.1	10.5	9.6
45–49	6.7	7.4	8.1	8.1	8.1	8.8	7.7
50–54	4.1	4.6	5.2	5.3	5.8	6.1	5.3
55 and over	1.0	1.0	1.1	1.0	1.2	1.3	1.1
Marital status at marriage (number)							
Never married	10 194	11 608	12 233	11 465	n.a.	n.a.	n.a.
Widowed	177	160	183	166	n.a.	n.a.	n.a.
Divorced	1 673	2 181	2 337	2 368	n.a.	n.a.	n.a.
Total	12 044	13 949	14 753	13 999	n.a.	n.a.	n.a.
Median age (years)							
At marriage	22.0	22.8	23.0	23.2	23.4	23.5	23.6
At final separation	32.2	32.6	32.9	33.5	33.5	33.6	33.8
At decree made absolute	34.9	35.4	35.9	36.5	36.6	36.8	36.8

(a) See Glossary for definitions of terms used.

6.2 DIVORCES, Age of Parties at Marriage—Duration of Marriage

AGE GROUP (YEARS).....

Duration of marriage (years)	19 and under	20–24	25–29	30–34	35–39	40–44	45–49	50 and over	Not stated	Total
HUSBAND										
1	3	46	67	43	23	14	11	21	7	235
2	17	232	264	191	107	74	44	52	11	992
3	17	306	344	191	103	51	46	50	5	1 113
4	29	317	314	173	81	44	42	48	8	1 056
5	21	266	293	163	84	54	23	35	17	956
6	14	283	297	123	63	42	22	40	9	893
7	21	242	247	134	53	41	24	21	8	791
8	13	215	231	105	58	45	19	20	6	712
9	21	206	178	93	43	24	13	22	4	604
10–14	62	879	758	339	202	97	47	59	15	2 458
15–19	75	732	549	227	98	42	31	22	12	1 788
20–24	106	666	326	113	36	24	13	8	4	1 296
25–29	84	528	251	60	17	6	4	—	5	955
30 and over	86	461	187	42	19	4	2	—	5	806
Total	569	5 379	4 306	1 997	987	562	341	398	116	14 655
WIFE										
1	21	73	53	33	17	23	5	8	2	235
2	77	336	235	144	86	48	34	25	7	992
3	99	412	276	147	81	48	25	17	8	1 113
4	94	451	228	119	77	34	22	21	10	1 056
5	86	392	231	118	57	33	24	10	5	956
6	98	359	220	110	48	33	10	9	6	893
7	99	310	204	73	45	26	10	13	11	791
8	68	303	171	89	30	21	10	13	7	712
9	81	266	119	63	34	22	8	7	4	604
10–14	309	1 095	605	222	115	42	33	22	15	2 458
15–19	363	823	364	132	47	30	10	7	12	1 788
20–24	428	565	202	59	19	10	4	2	7	1 296
25–29	331	494	91	20	6	5	1	—	7	955
30 and over	281	426	73	14	8	1	—	—	3	806
Total	2 435	6 305	3 072	1 343	670	376	196	154	104	14 655

6.3 DIVORCES, Age of Parties at Final Separation, Duration of Marriage to Separation

AGE GROUP (YEARS).....

<i>Duration of marriage (years)</i>	<i>19 and under</i>	<i>20-24</i>	<i>25-29</i>	<i>30-34</i>	<i>35-39</i>	<i>40-44</i>	<i>45-49</i>	<i>50-54</i>	<i>55 and over</i>	<i>Not stated</i>	<i>Total</i>
HUSBAND											
Under 1	20	240	348	247	128	89	57	37	45	25	1 236
1	7	250	453	327	160	75	59	37	35	13	1 416
2	—	206	475	324	152	76	65	35	33	9	1 375
3	—	97	371	283	134	76	55	23	44	18	1 101
4	—	38	340	271	116	67	36	32	25	10	935
5	—	8	205	274	125	60	45	25	23	5	770
6	—	7	136	238	149	71	42	19	21	3	686
7	—	—	109	208	113	55	36	22	18	3	564
8	—	—	48	221	134	66	38	18	25	—	553
9	—	—	18	209	155	63	34	19	19	—	517
10-14	—	—	10	491	829	411	156	66	71	12	2 046
15-19	—	—	—	13	396	551	275	72	90	6	1 403
20-24	—	—	—	—	22	385	471	130	67	4	1 079
25-29	—	—	—	—	—	21	225	237	92	3	578
30 and over	—	—	—	—	—	—	9	104	272	—	385
Not stated	—	—	—	—	—	—	—	—	—	11	11
Total	27	847	2 513	3 106	2 613	2 066	1 603	876	880	124	14 655
WIFE											
Under 1	85	386	295	180	110	73	50	18	20	19	1 236
1	30	474	403	230	131	76	32	14	11	15	1 416
2	4	407	466	227	108	72	43	17	16	15	1 375
3	—	240	414	212	102	60	35	20	13	4	1 101
4	—	147	394	207	82	49	28	13	8	7	935
5	—	51	320	219	95	39	23	4	14	5	770
6	—	30	243	213	110	44	24	11	8	3	686
7	—	15	179	198	94	39	17	14	7	—	564
8	—	—	139	233	91	47	24	9	8	—	553
9	—	—	93	227	115	42	19	5	10	4	517
10-14	—	—	80	876	672	244	88	37	39	10	2 046
15-19	—	—	—	115	669	383	143	55	30	8	1 403
20-24	—	—	—	—	131	579	276	61	24	7	1 079
25-29	—	—	—	—	—	69	346	135	24	3	578
30 and over	—	—	—	—	—	—	41	156	188	—	385
Not stated	—	—	—	—	—	—	—	—	—	11	11
Total	120	1 754	3 026	3 138	2 511	1 816	1 189	569	420	112	14 655

6.4 DIVORCES, Age of Parties at Divorce

AGE GROUP OF WIFE (YEARS).....

Age group of husband (years)	24 and under	25-29	30-34	35-39	40-44	45-49	50-54	55-59	60 and over	Not stated	Total
24 and under	164	73	10	5	—	—	—	—	—	—	256
25-29	367	993	239	54	12	—	—	—	—	12	1 681
30-34	138	1 053	1 164	305	74	20	6	3	—	13	2 776
35-39	49	276	1 022	1 119	240	48	15	4	—	7	2 780
40-44	16	75	318	798	870	165	34	—	4	11	2 291
45-49	—	29	97	269	703	686	117	18	6	9	1 934
50-54	—	10	40	108	202	493	417	65	13	8	1 356
55-59	—	6	23	30	60	131	251	173	35	4	714
60 and over	—	3	10	20	37	73	115	172	313	8	751
Not stated	9	19	12	14	13	10	5	—	—	31	116
Total	744	2 537	2 935	2 722	2 213	1 629	960	438	373	104	14 655

6.5 DIVORCES, Children of the Marriage(a), Duration of Marriage

NUMBER OF CHILDREN.....

<i>Duration of marriage (years)</i>	0	1	2	3	4 or more	All divorces	All children	Average number of children(b)
1	202	23	7	—	—	235	47	1.4
2	765	161	47	16	3	992	315	1.4
3	828	185	73	21	6	1 113	422	1.5
4	706	204	117	21	8	1 056	535	1.5
5	542	214	158	31	11	956	668	1.6
6	443	239	164	38	9	893	719	1.6
7	357	196	187	36	15	791	740	1.7
8	285	183	191	49	4	712	729	1.7
9	185	126	225	65	3	604	783	1.9
10–14	616	545	844	347	106	2 458	3 721	2.0
15–19	322	333	691	326	116	1 788	3 183	2.2
20–24	444	412	325	92	23	1 296	1 439	1.7
25–29	681	205	55	9	5	955	362	1.3
30 and over	759	39	5	—	—	806	59	1.3
Total	7 135	3 065	3 089	1 055	311	14 655	13 722	1.8

(a) See Glossary for definitions of terms used.

(b) Included in divorces where there were one or more children under the age of 18.

6.6 DIVORCES, Birthplace of Parties

	HUSBAND BORN IN COUNTRY SHOWN AND WIFE BORN IN.....				WIFE BORN IN COUNTRY SHOWN AND HUSBAND BORN IN.....			
	<i>Australia</i>	<i>Same overseas country</i>	<i>Different overseas country</i>	<i>Total</i>	<i>Australia</i>	<i>Same overseas country</i>	<i>Different overseas country</i>	<i>Total</i>
OCEANIA AND ANTARCTICA								
Australia	7 434	—	1 487	8 921	7 434	—	1 879	9 313
Fiji	29	80	22	131	40	80	37	157
New Zealand	163	96	68	327	144	96	85	325
Other	35	28	14	77	25	28	21	74
<i>Total</i>	<i>7 661</i>	<i>204</i>	<i>1 591</i>	<i>9 456</i>	<i>7 643</i>	<i>204</i>	<i>2 022</i>	<i>9 869</i>
EUROPE AND THE FORMER USSR								
Austria	21	5	8	34	9	5	6	20
Former USSR & Baltic States	—	39	5	46	11	39	18	68
Former Yugoslav Republics	66	110	34	210	25	110	23	158
Germany	73	25	43	141	58	25	35	118
Greece	37	42	16	95	8	42	18	68
Hungary	6	19	7	32	4	19	14	37
Ireland	26	11	18	55	16	11	13	40
Italy	76	50	35	161	26	50	12	88
Malta	31	26	10	67	14	26	9	49
Netherlands	38	6	26	70	25	6	17	48
Poland	10	61	15	86	11	61	10	82
United Kingdom	649	275	154	1 078	501	275	144	920
Other	79	83	79	241	55	83	60	198
<i>Total</i>	<i>1 114</i>	<i>752</i>	<i>450</i>	<i>2 316</i>	<i>763</i>	<i>752</i>	<i>379</i>	<i>1 894</i>
MIDDLE EAST AND NORTH AFRICA								
Egypt	27	24	19	70	5	24	18	47
Lebanon	91	162	53	306	12	162	35	209
Turkey	11	42	14	67	4	42	10	56
Other	48	65	66	179	14	65	45	124
<i>Total</i>	<i>177</i>	<i>293</i>	<i>152</i>	<i>622</i>	<i>35</i>	<i>293</i>	<i>108</i>	<i>436</i>
SOUTHEAST ASIA								
Indonesia	22	20	17	59	21	20	24	65
Malaysia	16	10	30	56	28	10	26	64
Philippines	11	132	7	150	99	132	63	294
Singapore	7	6	11	24	14	6	13	33
Thailand	5	17	11	33	44	17	25	86
Viet Nam	4	341	67	412	4	341	34	379
Other	3	61	19	83	—	61	26	89
<i>Total</i>	<i>68</i>	<i>587</i>	<i>162</i>	<i>817</i>	<i>212</i>	<i>587</i>	<i>211</i>	<i>1 010</i>

6.6 DIVORCES, Birthplace of Parties *continued*

	HUSBAND BORN IN COUNTRY SHOWN AND WIFE BORN IN.....				WIFE BORN IN COUNTRY SHOWN AND HUSBAND BORN IN.....			
	<i>Australia</i>	<i>Same overseas country</i>	<i>Different overseas country</i>	<i>Total</i>	<i>Australia</i>	<i>Same overseas country</i>	<i>Different overseas country</i>	<i>Total</i>
NORTHEAST ASIA								
China	24	467	64	555	46	467	98	611
Hong Kong	7	38	38	83	9	38	35	82
Other	12	53	17	82	22	53	22	97
<i>Total</i>	43	558	119	720	77	558	155	790
SOUTHERN ASIA								
India	20	25	28	73	12	25	21	58
Sri Lanka	8	20	4	32	4	20	5	29
Other	21	18	33	72	—	18	3	22
<i>Total</i>	49	63	65	177	17	63	29	109
THE AMERICAS								
Canada	25	5	7	37	20	5	14	39
Chile	6	43	16	65	12	43	17	72
United States of America	58	8	21	87	46	8	18	72
Other	34	72	56	162	29	72	52	153
<i>Total</i>	123	128	100	351	107	128	101	336
AFRICA (EXCLUDING NORTH AFRICA)								
South Africa	21	16	15	52	20	16	27	63
Other	25	34	20	79	15	34	29	78
<i>Total</i>	46	50	35	131	35	50	56	141
OTHER AND NOT STATED								
Other and not stated	32	24	9	65	32	24	14	70
ALL REGIONS								
Total	9 313	2 659	2 683	14 655	8 921	2 659	3 075	14 655

EXPLANATORY NOTES

INTRODUCTION

1 This publication brings together a number of closely related series of statistics on demography including births, deaths, marriages and divorces. It also includes information on the estimated resident population (ERP) and migration. For details of publication of other data related to demography, see Related Publications, at the end of these notes.

2 As a result of an amendment, made in 1992 to the *Acts Interpretation Act*, the Indian Ocean Territories of Christmas Island and the Cocos (Keeling) Islands have been included as part of geographic Australia, hence another category of the State and Territory classification has been created. This category, known as Other Territories, includes Christmas Island, the Cocos (Keeling) Islands and Jervis Bay Territory. Australia details for population, births and deaths include Other Territories.

3 Details of persons who were usually resident, or were born or died while being usually resident in Jervis Bay Territory have been, where possible, excluded from this publication from 1991 onwards (although they are included in table 1.1). These numbers are not statistically significant.

POPULATION ESTIMATES

4 This section consists of estimates of the resident population (ERP), with information on overseas arrivals and departures and net interstate migration.

5 Estimates of the population of NSW are made to varying degrees of accuracy throughout the year, and this publication has used preliminary 1997 based estimates. Final 1997 based estimates for NSW are published in *Australian Demographic Statistics* (Cat. no. 3101.0), and final 1997 based estimates for statistical areas are published in *Population, NSW* (Cat. no. 3234.1) and *Population by Age and Sex, NSW* (Cat. no. 3235.1). Further details are available in *Information Paper: Population Estimates — Concepts, Sources and Methods* (Cat. no. 3228.0).

POPULATION PROJECTIONS

6 Population projections are published twice in each intercensal period. The latest projections are based on the results of the 1996 Census of Population and Housing and relate to the period 1997 to 2051.

7 The population projections are not intended as predictions of forecasts; they are illustrations of growth and change in the population which would occur if certain specific assumption about future demographic trends were realised. The projections are based on a combination of assumptions in future levels of births, deaths and migrations to arrive at the size, structure and distribution of the Australia's population into the next century.

POPULATION PROJECTIONS *continued*

8 Series I assumes an annual net overseas migration gain of 90,000, small net internal migration gain and losses for States and Territories, and that the total fertility rates fall to 1.75 births per woman by 2005–06, and then remain constant. Series II assumes an annual net overseas migration of 70,000, medium net internal migration gains and losses for States and Territories, and that the total fertility rates fall to 1.75 births per woman by 2005–06, and then remain constant. Series III assumes an annual net overseas migration gain of 70,000, large net internal migration gains and losses for States and Territories, and that the total fertility rate declines to 1.6 births per woman in 2005–06 and then remain constant. All series assume that the decline in mortality experienced between 1987–91 and 1992–96 would continue to 2005–06. From 2005–06 onwards, the average rates of decline experienced in successive 5-year periods from 1967–71 to 1992–96 would be experienced. By 2051, life expectancy of males is assumed to be 82.0 years and of females 86.1 years.

MIGRATION

9 Data on overseas arrivals and departures relate to the number of movements of travellers rather than to the number of travellers. However, the statistics exclude the movements of operational air crew and ships' crew, transit passengers who pass through Australia but are not cleared for entry, and passengers on pleasure cruises commencing and finishing in Australia.

10 Data on interstate migration have been derived from aggregated statistical information on interstate changes of address advised to the Health Insurance Commission in the process of administering Medicare. The Australian Bureau of Statistics (ABS) adjusts the Health Insurance Commission data to make allowance for the number of persons who do not inform the Commission of their change of residence.

BIRTHS

11 Birth statistics are presented on the basis of the State or Territory of usual residence of the mother, regardless of where in Australia the birth occurred or was registered.

12 Births to mothers usually resident in Australia which took place overseas are excluded. Births to mothers usually resident overseas which occurred in Australia are included in the State or Territory where the birth occurred.

13 Data presented in section 3 of this publication refer to births registered during the calendar year shown. There is usually an interval between the occurrence and registration of a birth. As a result of delay in registration, some births occurring in one year are not registered until the following year, or even later. However, most births are registered soon after they occur. More than 99% of births occurring in one year are registered by 30 June of the following year.

14 Data on stillbirths (fetal deaths) is published in section 4 of the publication.

BIRTHS *continued*

15 The live birth statistics used to calculate the fetal and neonatal death rates have been adjusted (in accordance with the World Health Organisation definition of perinatal death) to exclude cases where the birthweight was known to be less than 400 grams. However, infant death rates are calculated using all live births registered because figures are not available for infants who weighed less than 400 grams at birth and who lived for 28 days, but died before they were one year old.

DEATHS

16 Death statistics are presented on the basis of the State or Territory of usual residence of the deceased, regardless of where in Australia the death occurred or was registered.

17 Data presented in section 4 of this publication refer to deaths registered during the year shown. There is usually an interval between the occurrence and registration of a death. As a result of delay in registration, some deaths are not registered in the year in which they occur. However, most deaths are registered within six months of occurrence. More than 99% of deaths occurring in one year have been registered by 30 June of the following year.

18 Life tables are shown in tables 4.4 and 4.5 and summarise expectation of life. From 1995 these life tables are based on three years of population and deaths data surrounding the reference year. They are produced at the Australian and State and Territory level as a joint venture between the ABS and the Australian Government Actuary. These life tables are known as the Australian Actuary/Australian Bureau of Statistics Life Tables. Before 1995 life tables shown in this publication were prepared by the ABS. The Australian Government Actuary also constructed life tables based on deaths occurring during the three years around and including the census year. The latest life tables prepared by the Australian Government Actuary were based on deaths during 1995 to 1997. These were released in 1998 and copies are available from the Commonwealth Government Bookshops or the Mail Order Sales Service.

19 Perinatal deaths comprise stillbirths (fetal deaths) and deaths of infants within the first 28 days of life (neonatal death). In previous editions of this publication data relating to perinatal deaths have been based upon World Health Organisation (WHO) recommended definition for compiling national perinatal statistics. This recommendation states that perinatal statistics should include all fetuses and infants delivered weighing at least 500g (or when birthweight of at least 400g or having a gestational age (22 weeks) or body length (25cm crown-heel)), whether alive or dead. From 1997, ABS has increased the coverage of perinatal deaths by including fetal and neonatal deaths with a birthweight of at least 400g or having a gestational age of at least 20 weeks. This change recognises the availability of reliable 400g/20 weeks data from all States and Territories Registrars of Births, Deaths and Marriages and recommendations from major users that ABS adopt the legal requirement from registration of perinatal death as the statistical standard. For further information please see *Causes of Deaths, Australia, 1997* (Cat. no. 3303.0).

MARRIAGES

20 Marriage statistics refer to marriages registered by the NSW Registrar of Births, Deaths and Marriages during the years shown. There is usually an interval between the celebration and the registration of a marriage. As a result of the delay in registration, some marriages celebrated in one year are not registered until the following year. Under the *Australian Marriage Act 1961*, marriages may be celebrated by a minister of religion registered as an authorised celebrant, by a district registrar or by other persons authorised by the Attorney-General. Notice of the intended marriage must be given to the celebrant at least one calendar month, and within six calendar months, before the marriage. A celebrant must transmit an official certificate of the marriage for registration to a District Registrar in the State in which the marriage took place.

21 In 1973, the minimum age at which a person may marry without parental consent was reduced from 21 to 18 years, although women were legally free to marry from 16 years with parental consent. Further amendment to the Marriage Act in 1991 designated the minimum age at which both sexes are legally free to marry to be 18 years. Persons between the ages of 16 and 18 years may marry with parental or guardian consent and an order from a judge or magistrate. Any two persons under the age of 18 years may not marry each other.

DIVORCES

22 All divorce data in this publication are based on the location of the Family Court where the divorce was granted and registered. The number of divorces shown for NSW is dependent on the number of cases heard by Family Law Courts in NSW. As there is no residential requirement under Family Law, applicants may be resident anywhere in Australia. Cases from most of south eastern NSW are heard by the ACT Family Court.

23 Under the *Family Law Act 1975*, the only ground on which a divorce may be granted is that of irretrievable breakdown of the marriage. This ground is established by the husband and wife having lived apart for 12 months or more, and there being no reasonable likelihood of reconciliation. Application for nullity of marriage under Family Law legislation must be on the ground that there was a failure to meet a legal requirement, such as that neither party be already lawfully married to another person. There is no provision for judicial separation under Family Law legislation.

24 Successful applicants for a divorce are initially granted a decree nisi. This becomes absolute after one month, unless it is rescinded or appealed against, or the Court is not satisfied that proper arrangements have been made for the welfare of any children involved.

25 The statistics shown in this publication are compiled by the ABS from information supplied by the Family Court in respect of each application which resulted in the granting of a decree absolute.

26 In the interpretation of data, it is important to bear in mind that the availability of judges and the complexity of the cases brought before them can affect the number of decrees granted or made absolute in any one year. A rise in numbers may reflect only the clearing of a backlog of cases from an earlier period.

DIVORCES *continued*

27 The Family Court of Australia introduced new divorce application forms in February 1995. With the introduction of these forms some data items that had been collected ceased to be available. The data items that are no longer available are:

- Characteristics of the divorce:
 - postcode (providing State or Territory) at separation;
 - rite of marriage; and
 - number of children aged over 18 years.
- Characteristics of the husband and wife:
 - previous marital status at marriage;
 - number of previous marriages;
 - occupation at separation;
 - date of first arrival in Australia; and
 - duration of residence.

GEOGRAPHIC BOUNDARIES

28 The geographic boundaries for small area data are defined in the *Australian Standard Geographical Classification, (ASGC), Edition 6* (Cat. no. 1216.0).

29 The boundaries used for births and deaths statistics are the Statistical Local Area boundaries at 1 July 1997.

30 The classification of countries in this publication is the Australian Standard Classification of Countries for Social Statistics (ASCCSS). For more detailed information refer to the ABS publication *Australian Standard Classification of Countries for Social Statistics (ASCCSS)* (Cat. no. 1269.0).

31 Political developments in Europe, the Former USSR and Africa have resulted in a number of changes to the ASCCSS. These changes have affected some of the categories in this publication and are detailed in Revisions 1.01, 1.02 and 1.03 of the ASCCSS.

GENERAL ACKNOWLEDGMENTS

32 ABS publications draw extensively on information provided freely by individuals, businesses, governments and other organisations. Their continued cooperation is very much appreciated: without it, the wide range of statistics published by the ABS would not be available. Information received by the ABS is treated in strict confidence as required by the *Census and Statistics Act 1905*.

RELATED PUBLICATIONS

33 Other ABS publications which may be of interest include:

Australian Demographic Statistics (Cat. no. 3101.0) (quarterly)
Australian Demographic Trends (Cat. no. 3102.0)
Australian Social Trends (Cat. no. 4102.0)
Births, Australia (Cat. no. 3301.0)
Causes of Death, Australia (Cat. no. 3303.0)
Deaths, Australia (Cat. no. 3302.0)
Demography (Cat. nos 3311.1–8) (State and Territory specific publications)
Family Characteristics, Australia (Cat. no. 4442.0)
Marriages and Divorces, Australia (Cat. no. 3310.0)
Migration, Australia (Cat. no. 3412.0)
NSW Year Book (Cat. no. 1301.1)
Overseas Arrivals and Departures (Cat. no. 3401.0)
Population by Age and Sex, NSW (Cat. no. 3235.1)
Population by Age and Sex, Australian States and Territories (Cat. no. 3201.0)
Population, NSW (Cat. no. 3234.1)
Population Projections, 1997 to 2051 (Cat. no. 3222.0)
Regional Population Growth, Australia (Cat. no. 3218.0)
Regional Statistics, NSW (Cat. no. 1304.1)
Suicides, Australia (Cat. no. 3309.0)

ADDITIONAL STATISTICS AVAILABLE

34 Current publications produced by the ABS are listed in the *Catalogue of Publications and Products* (Cat. no. 1101.0). The ABS also issues, on Tuesdays and Fridays, a *Release Advice* (Cat. no. 1105.0) which lists publications to be released in the next few days. These publications are available from any ABS office.

35 In most cases, the ABS can also make available information which is not published. Appendix A lists characteristics processed by the ABS for births, deaths, marriages and divorces. This information may be made available in one or more of the following forms: microfiche, photocopy, data tape, floppy disk, computer printout, or clerically-extracted tabulation.

APPENDIX **1** CHARACTERISTICS AVAILABLE

Data items relating to vital statistics which are collected in New South Wales, but not published in this bulletin.

BIRTHS

Aboriginal and Torres Strait Islander origin of mother
Aboriginal and Torres Strait Islander origin of father (if paternity acknowledged)
Birthweight
Hospital/non-hospital birth
Place of marriage
State of registration

DEATHS

Aboriginal and Torres Strait Islander Origin
Age at marriage
Number of children of deceased
Occupation at time of death (or previous occupation, if retired)

MARRIAGES

Birthplace of parents of bridegroom
Birthplace of parents of bride
Duration of residence in Australia, if born overseas
Number of children of previous marriages
Year of birth of youngest child
Year of celebration of last marriage
Year of first previous marriage

DIVORCES

Age of youngest child of marriage
Month of divorce

APPENDIX 2 HISTORICAL SUMMARY

ESTIMATED RESIDENT POPULATION AND VITAL STATISTICS

Year	Population(a)	Births	Deaths	Infant deaths	Marriages	Divorces	Crude birth rate(b)	Crude death rate(b)	Infant mortality rate(c)	Crude marriage rate(b)	Crude divorce rate(b)
1911(d)	1 663 200	47 677	17 179	3 313	15 267	222	28.7	10.3	69.5	9.2	0.1
1916	1 891 800	52 075	(e)19 854	3 533	16 320	372	27.5	10.5	67.8	8.6	0.2
1921	2 108 500	54 634	20 034	3 436	18 518	807	25.9	9.5	62.9	8.8	0.4
1926	2 346 900	53 126	22 188	3 060	19 219	846	22.6	9.5	57.4	8.2	0.4
1931	2 555 900	47 724	21 284	2 077	15 377	1 087	18.7	8.3	43.5	6.0	0.4
1936	2 668 300	46 193	24 376	2 008	22 873	1 172	17.3	9.1	43.5	8.6	0.4
1941	2 800 500	51 729	(f)27 300	2 264	29 983	1 577	18.5	9.7	43.8	10.7	0.6
1946	2 945 200	67 247	(f)28 579	2 032	31 684	(g)2 798	22.8	9.7	30.2	10.8	1.0
1951	3 279 400	72 069	31 932	1 895	30 341	3 303	22.0	9.7	26.3	9.3	1.0
1956	3 556 700	75 714	34 064	1 777	27 313	3 125	21.3	9.6	23.5	7.7	0.9
1961	3 914 000	86 392	35 048	1 800	29 773	3 156	22.1	9.0	20.8	7.6	0.8
1966(h)	4 238 800	77 776	40 564	1 492	35 575	4 515	18.3	9.6	19.2	8.4	1.1
1971(i)	4 725 400	98 736	41 826	1 728	43 038	5 467	20.9	8.9	17.5	9.1	1.2
1976	4 960 800	78 749	42 214	1 177	38 487	(j)22 147	15.9	8.5	14.9	7.8	4.5
1981	5 236 900	81 971	40 114	840	40 679	14 532	15.7	7.7	10.2	7.8	2.8
1986	5 533 100	84 531	42 167	759	41 319	11 661	15.3	7.6	9.0	7.5	2.1
1991	5 899 200	87 367	42 467	632	39 594	13 151	14.8	7.2	7.2	6.7	2.2
1992	5 958 300	92 585	44 801	688	40 734	13 949	15.5	7.5	7.4	6.8	2.3
1993	6 001 400	89 354	43 069	552	39 993	14 753	14.9	7.2	6.2	6.7	2.5
1994	6 049 200	87 977	44 763	551	38 814	13 999	14.5	7.4	6.3	6.4	2.3
1995	6 112 200	87 849	44 773	498	37 828	14 945	14.4	7.3	5.7	6.2	2.4
1996	6 190 200	86 595	45 141	499	35 716	15 984	14.4	7.3	5.8	5.8	2.6
1997	6 306 334	87 156	45 641	451	36 679	14 655	13.9	7.3	5.2	5.8	2.3

(a) Prior to 1994, the population is the mean population for the year ended 31 December. From 1994, the population is the estimated resident population at 30 June (based on the 1991 Census of Population and Housing).

(b) Crude rate per 1,000 population.

(c) Infant mortality rate per 1,000 live births.

(d) Australian Capital Territory separated from New South Wales on 1 January 1911.

(e) Excludes deaths of members of the Defence Forces serving overseas.

(f) Excludes deaths of defence personnel.

(g) Includes nullities and judicial separations prior to 1947.

(h) Vital events of full-blood Aborigines, where identified in registrations, were excluded before 1966.

(i) From 1971 births, deaths and infant deaths are on a State of usual residence basis, while data for earlier years are on a State of registration basis.

(j) The *Family Law Act (1975)*, repealing State legislation, came into operation throughout Australia in 1976.

APPENDIX **3** CENSUS 1996

SUMMARY, Census of Population and Housing—1996

<i>Characteristics of persons counted</i>	<i>Males</i>	<i>Females</i>	<i>Persons</i>	<i>Proportion of total persons</i>
	no.	no.	no.	%
Total persons counted(a)				
	2 983 447	3 055 249	6 038 696	100.0
Persons counted in private dwellings	2 879 260	2 962 216	5 841 476	96.7
Persons counted in non-private dwellings	102 002	92 581	194 583	3.2
Usual residence				
Persons counted at home	2 829 733	2 918 972	5 748 705	95.2
Visitors counted from				
Same statistical local area	26 951	24 938	51 889	0.9
Elsewhere within NSW	76 705	64 774	141 479	2.3
Interstate	29 373	24 097	53 470	0.9
Overseas	20 683	22 468	43 151	0.7
Total visitors	153 712	136 277	289 989	4.8
Usual residence 5 years ago(b)				
Same address	1 436 241	1 492 911	2 929 152	48.5
Different address				
Same statistical local area	410 960	431 125	842 085	13.9
Elsewhere within NSW	462 296	476 805	939 101	15.6
Interstate	89 460	89 582	165 862	2.7
Overseas	110 639	120 890	231 529	3.8
Not stated(c)	2 080	1 895	17 155	0.3
Not stated	105 230	103 588	208 818	3.5
Age of persons counted (years)				
0–14	658 494	627 098	1 285 592	21.3
15–54	1 718 995	1 715 841	3 434 836	56.9
55–64	256 520	255 695	512 215	8.5
65 or more	328 755	434 147	762 902	12.6
Marital status of persons counted(d)				
Never married	796 132	650 637	1 446 769	24.0
Married	1 261 075	1 260 499	2 521 574	41.8
Separated but not divorced	70 826	85 182	156 008	2.6
Divorced	133 484	171 696	305 180	5.1
Widowed	61 264	257 983	319 247	5.3
Birthplace of persons counted				
Australia	2 163 741	2 230 477	4 394 218	72.8
Other Oceania and Antarctica	63 941	66 441	130 382	2.2
Europe and the former USSR	339 689	322 094	661 783	11.0
Middle East and North Africa	60 500	54 832	115 332	1.9
Southeast Asia	82 343	96 602	178 945	3.0
Northeast Asia	68 614	76 022	144 636	2.4
Southern Asia	29 031	25 699	54 730	0.9
Northern America	12 978	13 124	26 102	0.4
South America, Central America & the Caribbean	18 952	20 565	39 517	0.7
Africa (excl. North Africa)	17 657	17 644	35 301	0.6
Other(e)	1 178	1 051	2 229	—
Not stated	104 141	108 229	212 370	3.5

For footnotes see end of table.

SUMMARY, Census of Population and Housing—1996 *continued*

<i>Characteristics of persons counted</i>	<i>Males</i>	<i>Females</i>	<i>Persons</i>	<i>Proportion of total persons</i>
	<i>no.</i>	<i>no.</i>	<i>no.</i>	<i>%</i>
<i>Australian citizens</i>	2 633 814	2 701 446	5 335 260	88.4
Aged 18 years or more	1 910 239	2 012 903	3 923 142	65.0
Persons identifying themselves as being of Aboriginal or Torres Strait Islander origin	50 065	51 420	101 485	1.7
Labour force status(d)				
<i>Employed persons</i>	1 431 553	1 127 322	2 558 875	42.4
Full-time(f)	1 151 954	608 742	1 760 696	29.2
Part-time	247 707	493 504	741 211	12.3
Hours worked not stated	31 892	25 076	56 968	0.9
<i>Unemployed persons</i>	150 858	96 811	247 669	4.1
Looking for full-time work	131 339	62 420	193 759	3.2
Looking for part-time work	19 519	34 391	53 910	0.9
<i>Total in the labour force</i>	1 582 411	1 224 133	2 806 544	46.5
Total not in the labour force	658 592	1 127 375	1 785 967	29.6
Not stated	63 267	54 175	117 442	1.9

(a) Place of enumeration.

(b) Persons aged 5 years or more counted at home on census night.

(c) Comprises persons who stated they lived at a different address, in Australia, 5 years ago but did not state the actual address.

(d) Persons aged 15 years or more.

(e) Comprises inadequately described, at sea and not elsewhere classified.

(f) Defined as having worked 35 hours or more in the main job held in the week before the census.

GLOSSARY

Age-specific birth rates	Age-specific birth rates are the number of live births registered during the calendar year, according to age of mother, per 1,000 of the female estimated resident population of the same age at 30 June. For calculating these rates, births to mothers under 15 are included in the 15–19 age group, and births to mothers aged 50 and over are included in the 45–49 age group. Pro rata adjustment is made in respect of births for which age of mother is not given.
Age-specific death rates	Age-specific death rates are the number of deaths at a specified age per 1,000 of the estimated resident population of that age and sex at 30 June. The infant mortality rate is used for the age-specific rate for children under one year of age. Pro rata adjustment is made in respect of deaths for which the age of deceased is not given.
Age-specific divorce rates	Age-specific divorce rates in this publication are the number of divorces, by age at decree made absolute, per 1,000 estimated resident population at 30 June, in specific age groups. Males under 18 and females under 16 are excluded from the population.
Age-specific marriage rates	Age-specific marriage rates in this publication are the number of marriages, by age at marriage, per 1,000 estimated resident population at 30 June, in specific age groups. Males and females under 15 are excluded from the population.
Birth	The delivery of a child, irrespective of the duration of the pregnancy, who after being born, breathes or shows any other evidence of life such as a heartbeat.
Category of movement	Overseas arrivals and departures are classified according to length of stay (in Australia or overseas), recorded in months and days by travellers on passenger cards.

There are three main categories of movement:

- permanent movements
- long-term movements (one year or more)
- short-term movements (less than one year).

A significant number of travellers (i.e. overseas visitors to Australia on arrival and Australian residents going abroad) state exactly 12 months or one year as their intended period of stay. Many of them stay for less than that period and on their departure from, or return to, Australia are therefore classified as short-term.

Accordingly in an attempt to maintain consistency between arrivals and departures, movements of travellers who report their actual or intended period of stay as being one year exactly are randomly allocated to long-term or short-term in proportion to the number of movements of travellers who report their actual length of stay as up to one month more, or one month less, than one year.

Children (divorce collection)	Children in the divorce collection are unmarried children of the marriage who were aged under 18 years at the time of application for divorce. Under the <i>Family Law Act 1975</i> , these may include (in certain cases) adopted and ex-nuptial children and children from a former marriage. Children who are married or aged 18 years or more are not subject to custody and guardianship orders and are excluded.
Children (marriage collection)	Children in the marriage collection refer to persons under 16 years of age born from previous marriages.
Confinement	A pregnancy which results in at least one live birth.
Crude birth rate	The crude birth rate is the number of live births registered during the calendar year, per 1,000 estimated resident population at 30 June of that year. For years prior to 1994, the crude birth rate is based on the mean estimated resident population for the calendar year.
Crude death rate	The crude death rate is the number of deaths registered during the calendar year, per 1,000 estimated resident population at 30 June of that year. For years prior to 1994, the crude death rate is based on the mean estimated resident population for the calendar year.
Crude divorce rate	The crude divorce rate is the number of decrees absolute granted during the calendar year, per 1,000 estimated resident population at 30 June of that year. For years prior to 1994, the crude divorce rate is based on the mean estimated resident population for the calendar year. In the interpretation of this rate, it must be kept in mind that a large and varying proportion of the population used in the denominator is unmarried or below the minimum age of marriage.
Crude marriage rate	The crude marriage rate is the number of marriages registered during the calendar year, per 1,000 estimated resident population at 30 June of that year. For years prior to 1994, the crude marriage rate is based on the mean estimated resident population for the calendar year. In the interpretation of this rate, it must be kept in mind that a large and varying proportion of the population used in the denominator is below the minimum age of marriage or is already married.
Date of final separation	The date of final separation is that date, given on the application for divorce, from which the period of living apart is calculated for the purpose of establishing grounds for divorce. In determining the date of final separation, a single period of resumed cohabitation of less than three months may be ignored, provided the periods of living apart before and after resumed cohabitation amount to a total of 12 months or more.
Divorce	Decree absolute of dissolution of marriage.
Duration of marriage	Duration of marriage is the interval measured in completed years between the date of marriage and the date of divorce.
Duration of marriage until separation	Duration of marriage until separation is the interval measured in completed years between the date of marriage and the date of separation.

Estimated resident population Estimated resident population data are quarterly estimates of the Australian population obtained by adding to the estimated population at the beginning of each period, the components of natural increase (on a usual residence basis) and net overseas migration. For the States and Territories, account is also taken of estimated interstate movements involving a change of usual residence. After each census, estimates for the preceding intercensal period are revised by incorporating an additional quarterly adjustment (intercensal discrepancy) to ensure that the total intercensal increase agrees with the difference between the estimated resident populations at the two respective census dates.

Estimates of the resident population are based on adjusted (for under-enumeration) census counts by place of usual residence, to which are added the number of Australian residents estimated to have been temporarily overseas at the time of the Census.

The concept of estimated resident population links people to a place of usual residence within Australia. Usual residence is that place where each person has lived or intends to live for six months or more in a reference year.

Rates shown in this publication for the years since 1974 are calculated using estimates of resident population. A description of the conceptual basis of the estimated resident population is contained in *Information Paper: Demographic Estimates — Concepts, Sources and Methods* (Cat. no. 3228.0). Revised population estimates are published in *Australian Demographic Statistics* (Cat. no. 3101.0) (issued quarterly).

Female net reproduction rate The female net reproduction rate represents the average number of daughters born to a group of women who are subject to the fertility rates of that year and to the mortality rates of the life table. It indicates the extent to which the population would reproduce itself. It makes an allowance for all women not surviving until the end of the reproductive period. The net reproduction rate is obtained by multiplying the female age-specific birth rates by the proportion of survivors at corresponding ages in a life table and adding the products.

Fetal death The delivery of a child weighing at least 500 grams at delivery (or of at least 22 weeks gestation, if birthweight is unavailable) which did not, at any time after delivery, breathe or show any other evidence of life such as heartbeat.

Fetal death rate The fetal death rate is the number of fetal deaths per 1,000 live births and fetal deaths combined, who weighed at least 500 grams at birth/delivery (or of at least 22 weeks gestation, if birthweight was unavailable).

First marriage rates First marriage rates are the number of men and women, in an age group, marrying for the first time per 1,000 (mid-year) population of never married men and women in the same age group.

Indigenous origin Persons who identify as being of Aboriginal or Torres Strait Islander origin.

An Indigenous birth refers to the birth of a live-born child where either the mother or the father has identified as being of Aboriginal or Torres Strait Islander origin.

An Indigenous death refers to a death where the deceased was identified as being of Aboriginal or Torres Strait Islander origin.

Infant death	An infant death is the death of a live-born child who died when less than one year old.
Infant mortality rate	The number of deaths of children under one year of age in a calendar year per 1,000 live births in the same calendar year.
Life expectancy	Life expectancy refers to the average number of additional years a person of a given age and sex might expect to live if the age-specific death rates of the given period continued throughout his or her lifetime.
Long-term arrivals	Long-term arrivals comprise overseas visitors who intend to stay in Australia for 12 months or more (but not permanently) and Australian residents returning after an absence of 12 months or more overseas.
Long-term departures	Long-term departures comprise Australian residents who intend to stay abroad for 12 months or more (but not permanently) and overseas visitors departing who stayed 12 months or more in Australia.
Marital status	Two separate concepts are measured by the ABS. These are registered marital status and social marital status. They are different personal characteristics and are independent variables with separate classifications. Marital status in this publication relates to registered marital status which refers to formally registered marriages or divorces for which the partners hold a certificate.
Marriage	Under the <i>Australian Marriage Act 1961</i> (Cwlth), a marriage may be celebrated by a minister of religion registered as an authorised celebrant, by a district registrar or by other persons authorised by the Attorney-General. Notice of the intended marriage must be given to the celebrant at least one calendar month but within six calendar months before the marriage. A celebrant must transmit an official certificate of the marriage for registration to a district registrar in the State or Territory in which the marriage took place.
Median value	The median value (age, duration, interval) is that value which divides the relevant population into two equal parts, half falling below this value, and half exceeding it. Where the value for a particular record has not been stated, that record is excluded from the calculation.
Multiple birth	A multiple birth is a confinement which results in two or more issue, at least one of which is live-born.
Neonatal death	A neonatal death is the death within 28 days of birth of any child weighing at least 500 grams at delivery (or of at least 22 weeks gestation, if birthweight was unavailable) who after delivery, breathes or shows any other evidence of life such as a heartbeat.
Neonatal death rate	The neonatal death rate is the number of neonatal deaths per 1,000 live births who weighed at least 500 grams at birth (or at least 22 weeks gestation, if birthweight was unavailable).
Nuptial first confinement	A nuptial first confinement is the first confinement in the current marriage and therefore does not necessarily represent the woman's first ever confinement resulting in a live birth.

Nuptiality	Nuptiality relates to the relative marital status of parents. Confinements and births are identified as being nuptial where the father registered was married to the mother at the time of birth, or where the husband died during the pregnancy.
Paternity-acknowledged birth	A paternity-acknowledged birth refers to an ex-nuptial birth where paternity was acknowledged by the child's father.
Perinatal death	A perinatal death is either a fetal or a neonatal death, as elsewhere defined.
Perinatal death rate	The perinatal death rate is the number of perinatal deaths per 1,000 live births and fetal deaths combined, who weighed at least 500 grams at birth/delivery (or at least 22 weeks gestation, if birthweight was unavailable).
Permanent arrivals (settlers)	Permanent arrivals (settlers) comprise travellers who hold migrant visas (regardless of stated intended period of stay), New Zealand citizens who indicate an intention to settle and those who are otherwise eligible to settle (e.g. overseas-born children of Australian citizens).
Permanent departures	Permanent departures are Australian residents (including former settlers) who on departure state that they do not intend to return to Australia.
Previous births	<p>Previous births refer to children born alive (who may be still living or now dead) to a mother prior to the registration of the current birth. In some States and both Territories, legitimated and legally adopted children are included.</p> <p>Previous births of the current marriage relates to nuptial births to the same parents prior to the current nuptial confinement.</p> <p>All previous births of the mother includes all births prior to the current confinement, regardless of nuptiality and paternity.</p>
Previous issue	See Previous births.
Remarriage rates	Remarriage rates are the number of remarrying men and women, of a certain age, per 1,000 (mid-year) population of widowed or divorced men and women of the same age.
Sex ratio	The sex ratio relates to the number of male events (births and deaths) per 100 female events.
Short-term arrivals	Short-term arrivals comprise overseas visitors whose intended stay in Australia is less than 12 months and Australian residents returning after an absence of less than 12 months overseas.
Short-term departures	Short-term departures comprise Australian residents whose intended period of stay abroad is less than 12 months and overseas visitors departing who stayed less than 12 months in Australia.

Standardised death rates	<p>Standardised death rates enable the comparison of death rates between populations with different age structures by relating them to a standard population, in this case all persons in the 1991 Australian population. They are expressed per 1,000 persons. There are two methods of calculating standardised death rates:</p> <ul style="list-style-type: none"> ▪ The <i>direct method</i> — this is used when the populations under study are large and the age-specific death rates are reliable. It is the overall death rate that would have prevailed in the standard population if it had experienced at each age the death rates of the population under study. The direct method is used for comparing State and Territory and Australia rates. ▪ The <i>indirect method</i> — this is used when the populations under study are small and the age-specific death rates are unreliable or not known. It is an adjustment to the crude death rate of the standard population to account for the variation between the actual number of deaths in the population under study and the number of deaths which would have occurred if the population under study had experienced the age-specific death rates of the standard population. The indirect method is used for comparison of the Aboriginal and Torres Strait Islander rates and Statistical Local Area rates.
State or Territory of registration	<p>State or Territory of registration refers to the State or Territory in which the birth, death, or marriage was registered or the State or Territory in which the divorce was granted. For further information about how this affects divorce see paragraph 18 of the Explanatory Notes.</p>
State or Territory of usual residence	<p>State or Territory of usual residence refers to the State or Territory of usual residence of:</p> <ul style="list-style-type: none"> ▪ the population (estimated resident population); ▪ the mother (birth collection); ▪ the deceased (death collection). <p>In the case of overseas movements State or Territory of usual residence refers to the State or Territory regarded by the traveller as the one in which he/she lives or has lived. State or Territory of intended residence is derived from the intended address given by settlers, and by Australian residents returning after a journey abroad. Particularly in the case of the former, this information does not necessarily relate to the State or Territory in which the person will eventually establish a permanent residence.</p>
Total fertility rate	<p>The total fertility rate represents the number of children one woman would bear if the age-specific birth rates of the year shown continued during her child-bearing lifetime. It is obtained by summing the five-year age-specific birth rates, multiplying by five and dividing by 1,000.</p>

SELF-HELP ACCESS TO STATISTICS

DIAL-A-STATISTIC For current and historical Consumer Price Index data, call 1902 981 074.
For the latest figures for National Accounts, Balance of Payments, Labour Force, Average Weekly Earnings, Estimated Resident Population and the Consumer Price Index call 1900 986 400.
These calls cost 75c per minute.

INTERNET www.abs.gov.au

LIBRARY A range of ABS publications is available from public and tertiary libraries Australia wide. Contact your nearest library to determine whether it has the ABS statistics you require.

WHY NOT SUBSCRIBE?

PHONE +61 1300 366 323

FAX +61 3 9615 7848

CONSULTANCY SERVICES

ABS offers consultancy services on a user pays basis to help you access published and unpublished data. Data that are already published and can be provided within 5 minutes is free of charge. Statistical methodological services are also available. Please contact:

<i>City</i>	<i>By phone</i>	<i>By fax</i>
Canberra	02 6252 6627	02 6207 0282
Sydney	02 9268 4611	02 9268 4668
Melbourne	03 9615 7755	03 9615 7798
Brisbane	07 3222 6351	07 3222 6283
Perth	08 9360 5140	08 9360 5955
Adelaide	08 8237 7400	08 8237 7566
Hobart	03 6222 5800	03 6222 5995
Darwin	08 8943 2111	08 8981 1218

POST Client Services, ABS, PO Box 10, Belconnen ACT 2616

EMAIL client.services@abs.gov.au



2331110001976
ISSN 1036-2614

RRP \$26.00