



Australian Capital Territory at a Glance

2005

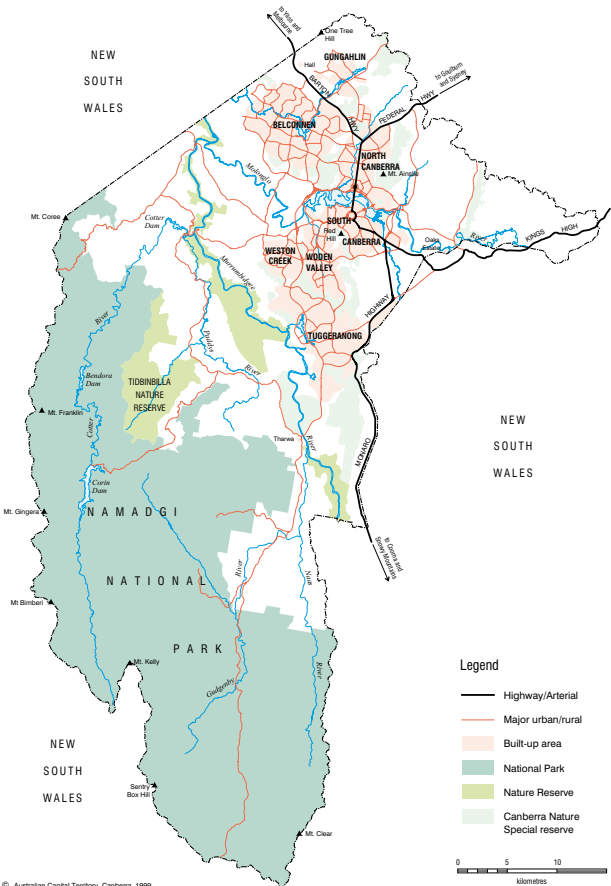


'ACT at a Glance' is a supporting document to the ACT's annual publication 'ACT in Focus' (cat. no. 1307.8). 'ACT at a Glance' has been designed to provide a snapshot of data about the ACT, whilst 'ACT in Focus' presents a broader range of information which includes tables, graphs and commentary. Both products are available from the ABS Website <www.abs.gov.au> or for more information please contact Victoria Allen on 02 6207 0277 or <victoria.allen@abs.gov.au>.

In 1911, an area of approximately 2,360 km² was transferred to the Commonwealth of Australia by the state of New South Wales to become the Australian Capital Territory (ACT). The city of Canberra, Australia's national capital, is located in the northern part of this area, 300 km south-west of Sydney and 650 km north-east of Melbourne by road.

On 11 May 1989, self-government for the Territory was proclaimed. The ACT is the smallest of Australia's six states and two territories, but has the highest population density and is the only state or territory without a sea border.

AUSTRALIAN CAPITAL TERRITORY



CLIMATE OF THE ACT

(Latitude 35° 19'S, Longitude 149° 11'E, Height above Mean Sea Level 571 metres).

The weather in the ACT in 2004 was warmer and drier than the long-term average. The ACT also recorded more thunderstorms and fewer frosts in 2004.

	During 2004	Long-term average
Annual rainfall	435.2 mm	625.2 mm
Days of rain	84	105
Thunderstorms	30	23
Average daily temperature	14.0 °C	13.0 °C
Days temperature exceeded 30°C	45	30
Days of frost	89	99
Days of fog	20	44
Average hours of sunshine per day	8.3	7.6
Extremes	During 2004	Recorded extremes
Air temperature — hottest	38.7 °C (14 Feb)	42.2 °C (1.2.68)
Air temperature — coldest	-7.3 °C (21 July)	-10.0 °C (11.7.71)
Rainfall — highest month	85.8 mm (Nov)	312 mm (Mar 1950)
Rainfall — lowest month	2.4 mm (April)	0.0 mm (multiple)

Source: Bureau of Meteorology, Canberra Meteorological Office.

ACT IN COMPARISON TO AUSTRALIA

Area	Unit	Period	ACT	Australia
	'000 km ²		2.4	7 692.0

DEMOGRAPHY

Estimated resident population	'000	Dec 2004	324.3	20 229.8
Annual population growth rate	%	2003–04	0.2	1.2
Births (per 1,000 persons)	crude rate	2003	12.8	12.6
Deaths (per 1,000 persons)	standardised rate	2003	5.8	6.4
Marriages (per 1,000 persons)	crude rate	2003	4.8	5.4

ECONOMY

Gross State Product

Current prices	\$m	2003–04	16 246	813 225
Chain volume measures	\$m	2003–04	15 245	786 754
Percentage change from previous year	%	2003–04	1.5	3.8

Final consumption expenditure (chain volume)

General government	\$m	2003–04	10 449	140 252
Household	\$m	2003–04	9 144	478 429

Consumer price index

	% change	2003–04	2.6	2.4
--	----------	---------	-----	-----

Note: The CPI data refers to Canberra instead of the ACT, and the Australian data is the weighted average of the eight capital cities.

LABOUR FORCE (trend)

Total labour force	'000	Feb 2005	189.7	10 407.5
Employed people	'000	Feb 2005	183.0	9 881.3
Unemployed people	'000	Feb 2005	6.7	526.2
Unemployment rate	%	Feb 2005	3.5	5.1
Participation rate	%	Feb 2005	73.7	64.1

AVERAGE WEEKLY EARNINGS (trend)

All males – full-time adult ordinary time earnings	\$	Feb 2005	1 233.5	1 046.7
All females – full-time adult ordinary time earnings	\$	Feb 2005	1 043.3	889.5

TRANSPORT (trend)

New motor vehicle sales	'000	2004–05	14 820	982 691
-------------------------	------	---------	--------	---------

ACT HISTORICAL DATA

AGRICULTURE (at 30 Jun)

	Unit	2002	2003	2004
Number of establishments	no.	96	91	88
Total area of establishments	ha	52 000	50 000	50 000
Livestock				
Cattle and calves	no.	np	np	8 000
Sheep and lambs	no.	88 000	98 000	95 000
Poultry	no.	220 000	220 000	220 000
Gross value of production				
Crops (incl. pasture and grasses)	\$m	2.6	3.4	p 3.5
Livestock slaughterings	\$m	4.6	5.7	p 6.5
Livestock products (incl. wool and milk)	\$m	12.4	9.9	p 8.9
Total agriculture	\$m	19.6	19.0	p 18.9

BUILDING AND CONSTRUCTION (original)

Building commencements		2001-02	2002-03	2003-04
Residential building	\$m	454.1	629.8	697.4
Non-residential building	\$m	258.7	374.4	315.1
Engineering construction	\$m	207.9	223.5	267.4
Total	\$m	920.7	1 227.7	1 279.9
New residential building approvals				
Houses	no.	1 214	1 889	1 373
Other residential	no.	1 018	1 281	1 763
Total	no.	2 232	3 170	3 136
Moving annual median house prices (at Dec qtr)				
Established house	\$'000	234.2	323.8	359.7
Established unit/townhouse	\$'000	197.8	264.8	283.6

Source: Real Estate Institute of Australia, Market Facts, December quarter 2004.

CRIME

Offences reported or becoming known to police		2001-02	2002-03	2003-04
Offences against the person	no.	2 765	3 350	2 707
Robbery and extortion	no.	252	210	268
Burglary, fraud and theft	no.	22 937	25 632	24 379
Property damage and environment offences	no.	7 467	8 070	7 942
Offences against good order	no.	3 212	3 781	3 546
All other offences not elsewhere classified	no.	5 198	6 332	5 722
Total	no.	41 831	47 375	44 564

Source: Australian Federal Police, PROMIS database as at July 2004, 2003, 2002.

DEMOGRAPHY

		2002	2003	2004
Estimated resident population (at 31 Dec)	'000	322.4	323.1	324.3
Statistical subdivisions (ERP at 30 Jun)				
North Canberra	'000	39.2	r 40.1	p 40.8
Belconnen	'000	86.1	r 86.2	p 85.6
Woden Valley	'000	32.4	r 32.3	p 31.8
Weston Creek-Stromlo	'000	23.6	r 22.9	p 22.5
Tuggeranong	'000	90.6	r 90.4	p 89.8
South Canberra	'000	23.4	r 23.5	p 23.6
Gungahlin-Hall	'000	25.8	r 27.6	p 29.6
Remainder of ACT	'000	0.4	r 0.4	p 0.4
Vital events registered				
Births	no.	3 959	4 014	4 228
Deaths	no.	1 418	1 404	1 393
Total Fertility Rate (births per woman)	rate	1.532	1.554	1.653
Deaths (per 1,000 persons)	standardised rate	6.18	5.58	p 5.59

DEMOGRAPHY *continued*

		2001	2002	2003
Births (per 1,000 persons)	crude rate	12.2	12.8	12.8
Marriages	no.	1 572	1 583	1 558
Marriages (per 1,000 persons)	crude rate	4.9	4.9	4.8
Divorces	no.	1 684	1 577	1 652

EDUCATION

Establishments		2003	2004	2005
Preschools (Feb)	no.	80	80	82
Schools				
Government (Feb)	no.	95	96	100
Non-government (Feb)	no.	44	43	45
Higher education	no.	4	4	4
Student enrolments				
Government preschools (Feb)	no.	3 565	3 461	3 370
Schools				
Government (Feb)	no.	37 192	36 333	36 061
Non-government (Feb)	no.	23 758	24 166	24 578
Higher education	no.	24 887	27 349	26 031

Source: Government Preschool Census Bulletin, Government Schools Census Bulletin, Non-government Schools Census Bulletin, 2003, 2004, 2005. Selected Higher Education Statistics, 2002, 2003, 2004. Australian Catholic University.

GOVERNMENT FINANCE

		2001-02	2002-03	2003-04
Revenue				
Taxation	\$m	579	684	753
Current grants and subsidies	\$m	947	982	1 033
Other	\$m	607	694	577
Total	\$m	2 134	2 360	2 363
Expenses				
Operating	\$m	1 609	1 736	1 971
Other	\$m	518	613	594
Total	\$m	2 126	2 348	2 566
Net operating balance	\$m	8	12	-203

LABOUR FORCE (Feb trend series)

		2003	2004	2005
Employed persons	'000	175.7	177.2	183.0
Males	'000	90.9	92.6	94.4
Females	'000	84.8	84.6	88.6
Unemployed persons	'000	8.0	6.9	6.7
Males	'000	4.8	3.9	4.2
Females	'000	3.2	3.0	2.5
Unemployment rate	%	4.3	3.8	3.5
Males	%	5.0	4.1	4.3
Females	%	3.6	3.4	2.7
Participation rate	%	72.4	71.9	73.7
Males	%	77.9	77.7	78.9
Females	%	67.2	66.3	68.7
Employment by Industry (Feb qtr)		2003	2004	2005
Agriculture, forestry and fishing	'000	*0.6	*0.4	1.0
Mining	'000	**—	**—	0.1
Manufacturing	'000	4.3	5.5	5.2
Electricity, gas and water supply	'000	1.3	*1.1	0.8
Construction	'000	10.2	10.2	11.2
Wholesale trade	'000	3.7	2.2	2.9

Employment by Industry (Feb qtr) <i>continued</i>		2003	2004	2005
Retail trade	'000	20.8	21.5	23.0
Accommodation, cafes and restaurants	'000	8.2	9.0	8.7
Transport and storage	'000	4.0	5.2	4.5
Communication services	'000	4.1	1.9	2.7
Finance and insurance	'000	3.4	2.7	3.9
Property and business services	'000	23.6	24.6	26.1
Government administration and defence	'000	43.5	46.4	44.6
Education	'000	14.2	15.5	13.6
Health and community services	'000	16.4	14.5	19.1
Cultural and recreational services	'000	6.1	6.9	7.2
Personal and other services	'000	9.5	7.2	6.9
Average weekly earnings (Feb trend series)		2003	2004	2005
Male – full-time adult ordinary time earnings	\$	1 125.7	1 142.2	1 233.5
Female – full-time adult ordinary time earnings	\$	926.0	965.6	1 043.3
All employees	\$	1 037.7	1 064.9	1 148.5
Industrial disputes (year ending Dec)		2002	2003	2004
Industrial disputes (reported stoppage of work)	no.	9	7	7
Working days lost	no.	1 000	1 000	500
Wage and Salary Earners (Feb qtr trend series)		2003	2004	2005
Commonwealth Government	'000	57.1	58.4	60.1
State Government	'000	17.6	18.4	18.8
Total	'000	74.7	76.8	78.9

MEDICARE SERVICES

Average number of services (per person)		2001-02	2002-03	2003-04
Males	no.	7	7	7
Females	no.	11	11	11
Persons	no.	9	9	9
Average value of benefits (per person)				
Males	\$	258	263	273
Females	\$	392	402	413
Persons	\$	326	333	344

Source: Department of Health and Ageing, Medicare Statistics

CONSUMER PRICE INDEX

% change from previous period		2001-02	2002-03	2003-04
All groups	% change	2.5	3.3	2.6
Food	% change	5.9	3.4	3.4
Alcohol and Tobacco	% change	3.6	2.5	3.8
Clothing and footwear	% change	1.2	1.6	-1.2
Housing	% change	4.4	4.4	7.3
Household furnishings, supplies and services	% change	1.4	1.1	0.2
Health	% change	4.1	7.0	7.6
Transportation	% change	-1.6	2.0	0.3
Communication	% change	-0.2	3.1	1.4
Recreation	% change	2.6	3.5	-1.9
Education	% change	3.3	3.6	4.9
Miscellaneous	% change	0.3	4.7	5.1

PRIVATE FINANCE

Lending commitments		2002-03	2003-04	2004-05
Housing finance for owner occupation	\$m	1 786	1 813	1 632
Personal	\$m	1 020	1 158	998

RETAIL TRADE TURNOVER (trend)

		2002-03	2003-04	2004-05
Food retailing	\$m	1 377.2	1 417.8	1 508.8
Department stores	\$m	344.8	350.4	344.9
Clothing and soft good retailing	\$m	210.3	211.9	225.9
Household good retailing	\$m	621.5	682.0	681.5
Recreational good retailing	\$m	182.8	180.6	179.8
Other retailing	\$m	301.7	316.3	297.8
Hospitality and service industries	\$m	548.7	524.9	488.2
Total	\$m	3 600.3	3 685.3	3 727.2

STATE ACCOUNTS

Gross State Product		2001-02	2002-03	2003-04
At current prices	\$m	13 946	15 023	16 246

TOURIST ACCOMMODATION (Mar qtr)

Hotels, motels and guest houses		2003	2004	2005
Establishments	no.	59	57	58
Guest rooms	no.	5 112	4 941	4 938
Bed spaces	no.	15 165	13 488	13 552
Room occupancy rates	%	62	66	66
Takings from accommodation	\$'000	32 794	34 268	34 347

TRANSPORT

New motor vehicle sales (trend)		2002-03	2003-04	2004-05
Passenger vehicles	no.	10 462	10 505	10 408
Other vehicles	no.	4 043	4 349	4 412
Total	no.	15 505	14 854	14 820

SYMBOLS AND ABBREVIATIONS USED

ACT — Australian Capital Territory	p — preliminary
ERP — estimated resident population	qtr — quarter
Feb — February	r — revised
ha — hectare	°C — degrees Celsius
incl. — including	'000 — thousand
Jun — June	\$'000 — dollars thousand
km — kilometre	\$m — dollars million
km² — square kilometre	% — percent
Mar — March	* — subject to sampling variability between 25% and 50%. Caution should be exercised when using data
mm — millimetres	** — subject to sampling variability of 50% and over which is too high for most practical purposes
no. — number	— — nil or rounded to zero (including null cells)
Nov — November	
np — not available for publication but included in totals where applicable, unless otherwise stated	
Dec — December	

FOR MORE INFORMATION...

- INTERNET** www.abs.gov.au The ABS web site is the best place to start for access to summary data from our latest publications, information about the ABS, advice about upcoming releases, our catalogue, and *Australia Now*—a statistical profile.
- LIBRARY** A range of ABS publications is available from public and tertiary libraries Australia-wide. Contact your nearest library to determine whether it has the ABS statistics you require, or visit our web site for a list of libraries.
- CPI INFOLINE** For current and historical Consumer Price Index data, call 1902 981 074 (call cost 77c per minute).
- DIAL-A-STATISTIC** This service now provides only current Consumer Price Index statistics call 1900 986 400 (call cost 77c per minute).

INFORMATION SERVICE

Data which have been published and can be provided within five minutes are free of charge. Our information consultants can also help you to access the full range of ABS information—ABS user pays services can be tailored to your needs, time frame and budget. Publications may be purchased. Specialists are on hand to help you with analytical or methodological advice.

- PHONE** **1300 135 070**
- EMAIL** **client.services@abs.gov.au**
- FAX** 1300 135 211
- POST** Client Services, ABS, GPO Box 796, Sydney 2001

FREE ACCESS TO PUBLICATIONS

All ABS publications can be downloaded free of charge from the ABS web site.

- WEB ADDRESS** www.abs.gov.au



2131480001053

ISSN 0815-3523

© Commonwealth of Australia 2005

.....
Produced by the Australian Bureau of Statistics