



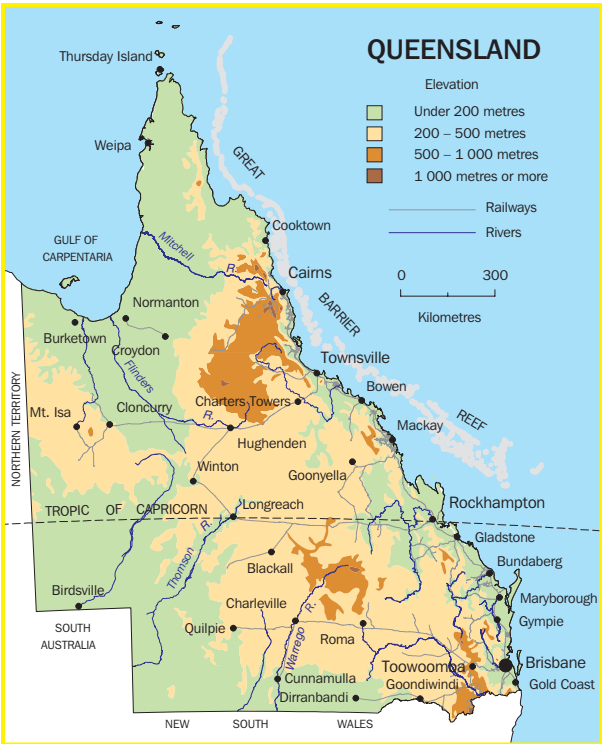
2006 QUEENSLAND AT A GLANCE



Situated generally between 10° and 29° south latitude and between 138° and 154° east longitude, Queensland occupies the north-eastern portion of the Australian continent. Of the total area — 1,734,157 square kilometres — just over half is north of the Tropic of Capricorn. Of the six states of Australia, Queensland ranks second in area and third in population.

Queensland is a constituent state of the Commonwealth of Australia, and observes the Australian Constitution. While returning elected members to both upper and lower houses of the Federal Parliament, Queensland is unique in that its own State Parliament has only one house — the House of Representatives. Local government derives its powers from Acts passed by the State Parliament. The capital city is Brisbane.

Figures in this publication are subject to revision.



Source: AUSLIG 1996.

QUEENSLAND AND PROPORTION OF AUSTRALIA

Area		Date or period	Queensland	%
Area	sq km	July 2005	1 734 157	22.5
Population(p)	'000	30 June 2005	3 964.0	19.5
Births	'000	2004-05	51.6	20.0
Natural increase	'000	2004-05	27.3	21.5
Cause of death — melanoma of skin	no.	2003	269	23.8
Agricultural production				
Beef and veal	tonnes	2004-05	1 049 861	48.6
Mutton and lamb	tonnes	2004-05	24 463	4.1
Sugar cane(a)	'000 tonnes	2003-04	33 553	90.7
Cotton	'000 tonnes	2003-04	145	45.7
Mining, value added(b)	\$m	2002-03	^ 6 525.0	18.5
Manufacturing sales and service income	\$m	2002-03	50 310.3	16.3
New houses completed	no.	2004-05	26 996	25.9
Foreign merchandise imports	\$m	2004-05	21 694	14.5
Foreign merchandise exports	\$m	2004-05	26 368	20.8
New motor vehicle sales(c)	'000	2004-05	212.4	21.7
Retail trade, turnover(d)	\$m	2004-05	39 876	19.8
Takings from accommodation(e)	\$m	2004-05	1 631.5	27.6
Industrial disputes	no.	2004-05	100	17.6
Working days lost	'000	2004-05	31.3	12.9

(a) Cut for crushing. (b) Excluding ANZSIC subdivision 15 (Services to Mining).

(c) Excluding motor cycles, plant, equipment and unpowered vehicles.

(d) Excluding motor vehicles, parts, petrol, etc. (e) Hotels, motels and guest houses with facilities and serviced apartments, with 15 or more rooms/units.

AVERAGE EARNINGS(a)

		2004	2005
Average weekly earnings of employees			
	Males	\$856.10	\$891.10
	Females	\$562.30	\$591.20

(a) August quarter.

CLIMATIC DATA, BRISBANE

Month		2004		2005	
		Dec	Mar	Jun	Sep
Mean daily maximum	°C	28.1	28.1	21.3	24.1
Mean daily minimum	°C	19.8	17.9	11.8	12.4
Rainfall, total	mm	253.4	19.8	166.2	22.0
Rain days	no.	15	6	11	5
Mean daily sunshine	hours	8.5	8.8	5.3	8.9
Windy days, over 63 km/h	days	3	—	—	1

Source: Bureau of Meteorology.

AGRICULTURE(a)		2002-03	2003-04
Agricultural establishments(b)	no.	27 503	26 627
Area of farms	'000 ha	139 042	144 288
Total area of crops(c)	'000 ha	2 263	2 745
Agricultural production			
Sugar cane cut for crushing	'000 tonnes	34 231	33 553
Wheat	'000 tonnes	601	1 110
Barley	'000 tonnes	148	263
Grain sorghum	'000 tonnes	930	1 296
Sunflower seed	'000 tonnes	^ 12	^ 29
Cotton	'000 tonnes	^ 82	145
Peanuts	'000 tonnes	^ 27	^ 42
Pineapples	'000 tonnes	105	110
Bananas	'000 tonnes	232	226
Citrus fruit	'000 tonnes	97	102
Avocados	'000 tonnes	21	^ 20
Mangoes	'000 tonnes	29	29
Livestock			
Meat cattle	'000	10 507	11 245
Milk cattle	'000	233	255
Sheep and lambs	'000	4 815	4 824
Pigs	'000	663	691
Brokers and dealers receipts of taxable wool	'000 kg	22 901	20 278
Value of agricultural production(c)			
	\$m	7 156	7 534
Crops(c)	\$m	3 361	3 582
Livestock disposals	\$m	3 357	3 553
Livestock products	\$m	438	399

(a) Establishments with an estimated value of agricultural operations of \$5,000 or more. (b) At 30 June. (c) Excluding hay and seed, pasture and grasses.

BUILDING		2003-04	2004-05
Dwelling units completed(a)	no.	37 263	38 675
New houses	no.	26 345	26 996
New other residential buildings	no.	10 756	11 585
Value of building work completed	\$m	10 100	11 874
New houses	\$m	4 627	5 385
New other residential buildings	\$m	1 796	2 273
Alterations and additions to residential buildings	\$m	867	971
Non-residential building	\$m	2 809	3 224
Value of work done during year	\$m	11 387	13 149

(a) Including conversions.

CONSUMER PRICE INDEX, BRISBANE(a)		2003-04	2004-5
Food	no.	153.1	155.7
Alcohol and tobacco	no.	214.1	221.7
Clothing and footwear	no.	105.7	104.5
Housing	no.	129.6	135.2
Household furnishings, supplies and services	no.	122.4	123.4
Health	no.	195.5	206.7
Transportation	no.	140.2	145.0
Communication	no.	113.5	114.6
Recreation	no.	128.0	126.8
Education	no.	242.6	257.4
Miscellaneous	no.	193.5	199.5
All groups	no.	144.8	148.5

(a) Base of each index: Year 1989-90 = 100.0.

CRIME AND JUSTICE

		2002-03	2003-04
Total police strength at 30 June(a)	no.	8 704	9 003
Proven offences in Children's Courts	no.	21 797	20 334
Summary convictions in Magistrates Courts	no.	112 922	113 694
Convictions in higher courts	no.	5 272	5 305

(a) Including recruits in training.

Source: Queensland Police Service; Department of Communities.

DEMOGRAPHY

		2003	2004
Estimated resident population at 30 June			
Queensland	'000	3 801	3 888
Brisbane Statistical Division	'000	1 735	1 775
Bundaberg Statistical District	'000	59	60
Gladstone Statistical District	'000	41	42
Gold Coast-Tweed Statistical District (Queensland component)	'000	407	419
Rockhampton Statistical District	'000	68	68
Sunshine Coast Statistical District	'000	200	207
Townsville Statistical District	'000	141	144
Major centres — ERP(a)			
Brisbane City (state capital)	'000	939	957
Cairns City	'000	122	125
Gold Coast City	'000	456	469
Hervey Bay City	'000	47	49
Ipswich City	'000	132	136
Logan City	'000	171	173
Mackay City	'000	78	80
Redcliffe City	'000	52	52
Toowoomba City	'000	93	94
Age groups (proportion of Queensland ERP at 30 June)			
0-14 years	%	20.8	20.6
15-19 years	%	7.0	7.0
20-64 years	%	60.3	60.4
65 years and over	%	11.9	12.0

(a) Local government areas.

VITAL STATISTICS

		2003	2004
Births	no.	48 350	50 260
Deaths	no.	23 215	24 264
Marriages	no.	22 273	24 312

EDUCATION

		2003	2004
Schools, August	no.	1 728	1 733
Government	no.	1 283	1 284
Non-government	no.	445	449
Students, August(a)	'000	634.5	643.8
Government	'000	449.6	453.4
Non-government	'000	185.0	190.4

(a) Including full-time and part-time primary and secondary students.

EXTERNAL MERCHANDISE TRADE

		2003-04	2004-05
Exports			
Foreign, total	\$m	20 128	26 368
Interstate, total	\$m	8 429	8 846
Imports			
Foreign, total	\$m	18 051	21 694
Interstate, total	\$m	22 658	24 649

RETAIL TRADE

		2003-04	2004-05
Turnover, total(a)	\$m	38 184	39 876

(a) Excluding motor vehicles, parts, petrol, etc.

STATE GOVERNMENT FINANCE

		2002-03	2003-04
Total GFS revenue	\$m	26 607	31 841
Total GFS expenses	\$m	26 446	28 323

LABOUR FORCE

		2004	2005
Civilian labour force, November	'000	2 027.2	2 086.7
Employed	'000	1 937.2	1 997.4
Males	'000	1 061.9	1 096.1
Females	'000	875.3	901.3
Unemployed	'000	90.0	89.3
Unemployment rate	%	4.4	4.3
Participation rate	%	65.3	65.8

MANUFACTURING

		2001-02	2002-03
Wages and salaries(a)	\$m	6 324.3	6 862.5
Sales and service income(b)	\$m	49 107.5	50 310.3

(a) Excluding working proprietors. (b) Including rent, leasing and hiring income.

MINING

		2002-03	2003-04
Employment at 30 June	no.	19 602	23 150
Value at mine	\$m	11 876	12 130
Black coal (saleable)	'000 tonnes	153 602	160 062
Bauxite(a)	'000 tonnes	11 251	12 071
Copper (content)	'000 tonnes	405	356
Gold (content)	kg	24 731	24 865

(a) Including beneficiated and calcined bauxite.

Source: Department of Natural Resources and Mines.

TOURIST ACCOMMODATION(a)

		2004	2005
Licensed hotels with facilities(b)			
Establishments	no.	171	178
Number of guest rooms	'000	20.5	20.5
Motels and guest houses with facilities(b)			
Establishments	no.	512	532
Number of guest rooms	'000	18.4	19.1
Serviced apartments(b)			
Establishments	no.	332	353
Number of guest rooms	'000	16.0	17.1
Licensed hotels with facilities(c)			
Takings from accommodation	\$m	711.5	752.4
Room nights occupied	'000	5 004	5 067
Room occupancy rate	%	66.6	67.6
Motels and guest houses with facilities(c)			
Takings from accommodation	\$m	363.5	395.6
Room nights occupied	'000	4 167	4 322
Room occupancy rate	%	61.7	63.4
Serviced apartments(c)			
Takings from accommodation	\$m	440.1	483.5
Room nights occupied	'000	3 885	4 062
Room occupancy rate	%	66.6	66.9

(a) With 15 or more rooms/units. (b) At 30 June. (c) Twelve months ended 30 June.

TRANSPORT

		2003–04	2004–05
New motor vehicle sales(a)	'000	193.2	212.4
State railways			
Passenger journeys(b)	'000	49 133	(c)49 555
Freight carried(b)	'000 tonnes	161 895	175 557
Total earnings	\$m	2 305.1	2 502.7

(a) Excluding motor cycles, plant, equipment and unpowered vehicles.

(b) Excluding freight and passengers carried by operators other than Queensland Rail. (c) Conservatively estimated due to the introduction of integrated ticketing.

Source: Queensland Rail.

SYMBOLS AND ABBREVIATIONS USED

ANZSIC	— Australian and New Zealand Standard Industrial Classification	p	— preliminary
°C	— degrees Celsius	RSE	— relative standard error
ERP	— estimated resident population	^	— RSE 10%–25%
GFS	— government finance statistics	—	— nil or rounded to zero
ha	— hectares	\$m	— million dollars
kg	— kilograms	sq km	— square kilometres
km/h	— kilometres per hour	no.	— number
mm	— millimetres	%	— per cent
		'000	— thousands

ACKNOWLEDGMENTS

ABS publications draw extensively on information provided freely by individuals, businesses, governments and other organisations. Their continued cooperation is very much appreciated; without it the wide range of statistics published by the ABS would not be available for general use by the community. Information received by the ABS is treated in strict confidence as required by the *Census and Statistics Act 1905*.

Cover: Lily Hole, Winton, Queensland, Australia

Photo: Tourism Queensland

FOR MORE INFORMATION...

INTERNET **www.abs.gov.au** The ABS web site is the best place to start for access to summary data from our latest publications, information about the ABS, advice about upcoming releases and our catalogue.

LIBRARY A range of ABS publications is available from public and tertiary libraries Australia-wide. Contact your nearest library to determine whether it has the ABS statistics you require, or visit our web site for a list of libraries.

INFORMATION SERVICE

Data that is already published and can be provided within five minutes is free of charge. Our information consultants can also help you to access the full range of ABS information — ABS user pays services can be tailored to your needs, time frame and budget. Publications may be purchased. Specialists are on hand to help you with analytical or methodological advice.

PHONE 1300 135 070

EMAIL client.services@abs.gov.au

FAX 1300 135 211

POST Client Services, ABS, GPO Box 796, Sydney 2001

FREE ACCESS TO PUBLICATIONS

All ABS statistics can be downloaded free of charge from the ABS web site.

WEB ADDRESS www.abs.gov.au



2131230001067

ISSN 0157-3713

© Commonwealth of Australia 2006

Produced by the Australian Bureau of Statistics