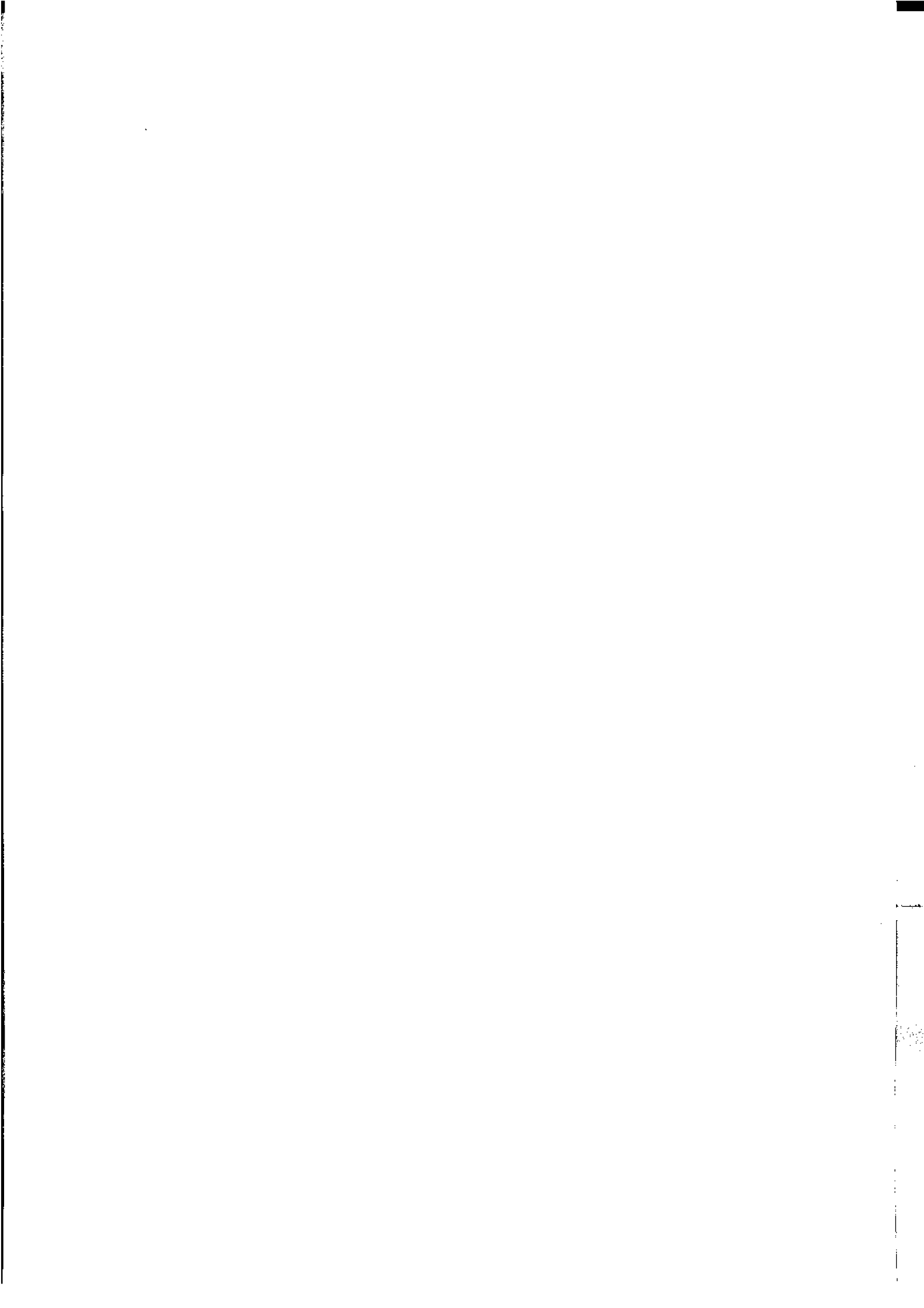




1994-95

Agriculture New South Wales



EMBARGOED UNTIL 11.30 A.M. 7 JUNE 1996

**AGRICULTURE
NEW SOUTH WALES
1994-95**

**GREGORY W. BRAY
Deputy Commonwealth Statistician**

AUSTRALIAN BUREAU OF STATISTICS

CATALOGUE NO. 7113.1

© Commonwealth of Australia 1996

Produced by the Australian Government Publishing Service

CONTENTS

	Page
	1
SECTION A	Structure of Agricultural Industry
TABLES	1 Number of Establishments with Agricultural Activity by Industry, having EVAO \$5,000 and over, at 31 March 1993 to 1995 13
	2 Number of Establishments with Agricultural Activity by Industry, having EVAO \$22,500 and over, at 31 March 1993 to 1995 14
	3 Number of Establishments with Agricultural Activity by Statistical Division, having EVAO \$5,000 and over, at 31 March 1993 to 1995 15
	4 Number of Establishments with Agricultural Activity by Statistical Division, having EVAO \$22,500 and over, at 31 March 1993 to 1995 15
	5 Number of Establishments with Agricultural Activity by Industry of Establishment and EVAO, at 31 March 1995 16
	6 Number of Establishments with Agricultural Activity by Industry and Area of Establishment, at 31 March 1995 18
SECTION B	Land Management
TABLES	7 Area and Land Use of Establishments with Agricultural Activity by Statistical Division, at 31 March 1995 21
	8 Crop Stubble Disposal by Statistical Division, Year ended 31 March 1995 22
	9 Planting of Trees by Statistical Division, Year ended 31 March 1995 22
SECTION C	Crops and Pastures
TABLES	10 Area, Production and Yield of Cereals for Grain by Statistical Division, Year ended 31 March 1995 23
	11 Area, Production and Yield of Legumes for Grain by Statistical Division, Year ended 31 March 1995 25
	12 Area, Production and Yield of Crops and Pastures for Hay by Statistical Division, Year ended 31 March 1995 26

-
- INQUIRIES:
- *for further information about statistics in this publication and the availability of related unpublished statistics, contact Helen Gardiner on Sydney (02) 268 4562 or any ABS State office.*
 - *for information about other ABS statistics and services, please refer to the last page of this publication.*
-

		Page
SECTION C- <i>continued</i>	13 Area, Production and Yield of Oilseeds by Statistical Division, Year ended 31 March 1995	28
	14 Area, Production and Yield of Other Crops by Statistical Division, Year ended 31 March 1995	29
	15 Gross Value of Principal Crops and Pastures, Years ended 31 March 1993 to 1995p	30
	16 Number of Establishments by Area of Principal Grains Sown and Production, Year ended 31 March 1995	31
	17 Number of Establishments Growing Cereals for Grain by Statistical Division, Year ended 31 March 1995	32
	18 Cereal Crop Forecast for all Purposes by Statistical Division, Season 1995-96	32
SECTION D	Horticulture	
TABLES	19 Number of Trees, Production and Yield for Citrus and Pome Fruit by Statistical Division, Year ended 31 March 1995	33
	20 Number of Trees, Production and Yield for Stone Fruit by Statistical Division, Year ended 31 March 1995	35
	21 Number of Trees, Production and Yield for Other Fruit and Nuts by Statistical Division, Year ended 31 March 1995	37
	22 Area, Production and Yield for Tropical and Berry Fruit by Statistical Division, Year ended 31 March 1995	38
	23 Gross Value of Citrus, Pome and Other Fruit, Years ended 31 March 1993 to 1995p	39
	24 Area of Vines and Production of Grapes by Statistical Division, Year ended 31 March 1995	39
	25 Area, Production and Yield of Vegetables for Human Consumption, Years ended 31 March 1993 to 1995	40
	26 Area, Production and Yield of Vegetables for Human Consumption by Statistical Division, Year ended 31 March 1995	42
	27 Gross Value of Vegetables for Human Consumption, Years ended 31 March 1993 to 1995p	46
	28 Area of Nurseries, Cut Flowers and Cultivated Turf by Statistical Division, Year ended 31 March 1995	46
SECTION E	Livestock and Livestock Products	
TABLES	29 Meat Cattle Numbers by Statistical Division, at 31 March 1995	47
	30 Number of Establishments with Meat Cattle by Statistical Division, at 31 March 1995	47

SECTION E—
continued

	Page
31 Number of Establishments by Size of Meat Cattle Herd, at 31 March 1994 and 1995	48
32 Milk Cattle Numbers by Statistical Division, at 31 March 1995	49
33 Number of Establishments with Milk Cattle by Type by Statistical Division, at 31 March 1995	49
34 Number of Establishments by Size of Milk Cattle Herd, at 31 March 1994 and 1995	50
35 Number of Sheep and Lambs by Statistical Division, at 31 March 1995	51
36 Number of Establishments with Sheep and Lambs by Statistical Division, at 31 March 1995	51
37 Number of Establishments by Size of Flock, at 31 March 1994 and 1995	52
38 Lambing by Statistical Division, Year Ended 31 March 1995	53
39 Pig Numbers and Number of Establishments by Statistical Division, at 31 March 1995	53
40 Number of Establishments by Size of Pig Herd, at 31 March 1994 and 1995	54
41 Poultry Numbers by Statistical Division, at 31 March 1995	55
42 Number of Establishments with and Number of Deer and Horses by Statistical Division, at 31 March 1995	55
43 Livestock Slaughterings and Livestock Products, Years Ended 30 June 1993 to 1995	56
44 Gross Value of Livestock Products and Other Disposals, Years Ended 31 March 1993 to 1995p	57
45 Beekeeping, Summary Statistics, Years Ended 30 June 1994 and 1995	57
46 Selected Financial Statistics, Farm Businesses by Industry, Aggregates 1992-93 to 1993-94	58
47 Selected Financial Statistics, Farm Businesses, Aggregates and Averages 1989-90 to 1994-95p	61
Explanatory Notes	62
Map: Statistical Divisions of New South Wales	68

	Page
GRAPHS	
Wheat, NSW, Years ended 31 March	2
Barley, NSW, Years ended 31 March	3
Rice Production, NSW, Years ended 31 March	3
Canola, NSW, Years ended 31 March	4
Safflower, NSW, Years ended 31 March	4
Soybeans, NSW, Years ended 31 March	5
Sunflower, NSW, Years ended 31 March	5
Cotton Area, NSW, Years ended 31 March	6
Cotton Production, NSW, Years ended 31 March	6
Orange Production, NSW, Years ended 31 March	7
Apple Production, NSW, Years ended 31 March	7
Potato Area, NSW, Years ended 31 March	8
Potato Production, NSW, Years ended 31 March	8
Meat Cattle, NSW, at 31 March	9
Milk Cattle, NSW, at 31 March	9
Sheep and Lambs, NSW, at 31 March	10
Pigs, NSW, at 31 March	10

SUMMARY OF FINDINGS

A. STRUCTURE OF AGRICULTURAL INDUSTRY

The number of establishments with agricultural activity declined from 42,817 at 31 March 1994 to 42,288 at 31 March 1995. This is a decrease of 1.2%. This total, at 31 March 1995, included 326 establishments with some agricultural activity, but whose main activity was in some other industry, and 693 establishments which were not classified to any industry.

The main industries of the agricultural establishments were:

	Number	% of establishments with agricultural activity
Beef cattle farming	11,195	26.5
Sheep farming	6,281	14.9
Grain-sheep/beef cattle farming	6,091	14.4

There was a substantial fall from 31 March 1994 to 31 March 1995 in the number of establishments classified to grain growing. The number fell from 2,854 to 1,979 (30.7%). Establishments classified to grain-sheep/beef cattle farming also fell, from 6,669 to 6,091 (8.7%). However, establishments in the beef cattle industry increased from 10,543 to 11,195 (6.2%).

At 31 March 1995 only 3.6% of establishments with agricultural activity had an Estimated Value of Agricultural Operations (EVAO) of \$500,000 or more. In contrast, some 38.8% of establishments had an EVAO between \$5,000 and \$49,999. The cotton growing industry accounted for 16.8% of establishments with an EVAO of \$500,000 or more, but only accounted for 1.0% of all establishments with agricultural activity.

In terms of area, 20 establishments had an area of 100,000 hectares or more at 31 March 1995; most were in the sheep farming industry.

B. LAND MANAGEMENT

At 31 March 1995 establishments with agricultural activity occupied 60,299,849 hectares or 75.2% of New South Wales' total area. The area of cereal crops was 2,725,259 hectares (4.5% of the total area of holding of establishments with agricultural activity). This is a decrease of 21.0% on the previous year when 3,448,159 hectares were used (see Table 7).

The main method of handling crop stubble in 1994-95 was by ploughing it into the soil. This method was used on 921,578 hectares. The next most popular method was to leave it intact; that is, no cultivation, and to sow crops by direct drilling. This method was used on 360,855 hectares. Burning was used on 236,431 hectares and mulching on 153,132 hectares (see Table 8).

A total of 5,814,120 trees were planted from seedlings during the 1994-95 season. The Richmond-Tweed Statistical Division had by far the highest percentage of trees planted (54.2%); the next highest was Murray Statistical Division (14.1%; see Table 9).

C. CROPS AND PASTURES

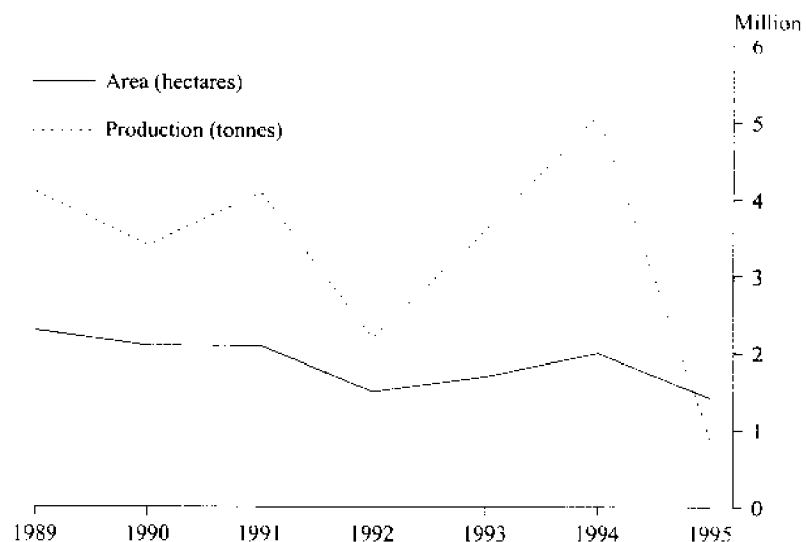
In terms of area, the two main cereal crops grown for grain were wheat (1,423,800 hectares) and barley (409,800 hectares). In the year ended 31 March 1995 the area sown to wheat for grain decreased from nearly 2.0 million hectares to just under 1.5 million hectares, a fall of 28.0%. The number of establishments growing wheat fell from 9,091 in 1994 to 7,825 in 1995, a fall of 13.9%. The decreases in area sown and the number of establishments reporting wheat were mainly due to the effects of widespread drought in New South Wales.

Wheat

Production of wheat fell by 82.8% from the previous season to 874,600 tonnes. This fall contributed to a decrease in yield from 2.6 to 0.6 tonnes per hectare (see Table 10); the drought was again the major reason for these decreases. Wheat for grain was sown in all Statistical Divisions, the major contributors in terms of production being Murray, Murrumbidgee and Central West which together accounted for 69.3% of the State's production (see Table 10).

In the 1994-95 season 18.3% of all establishments sowing wheat for grain had an area sown of 2,000 hectares or more. These establishments accounted for 48.6% of total area sown and 42.4% of total production.

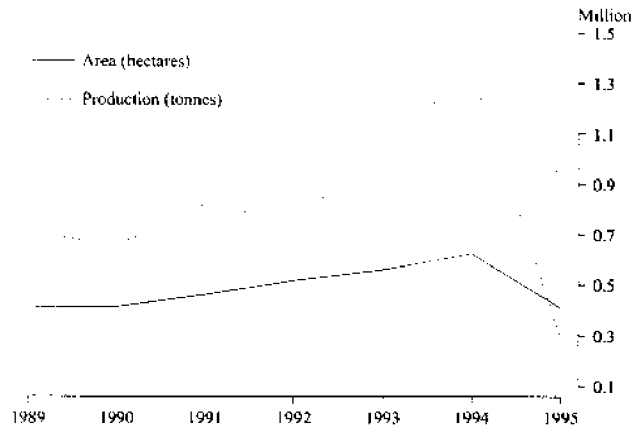
WHEAT, NSW, YEARS ENDED 31 MARCH



Barley

The area sown to barley for grain decreased by 34.2% over the 1993-94 season to 409,800 hectares. Production during the same period decreased by 78.5% to 291,500 tonnes and the yield fell by 68.2% to 0.7 tonnes per hectare (see Table 10). These decreases were also mainly caused by the effects of the drought. Barley was grown in all Statistical Divisions except Sydney, Illawarra and the Mid-North Coast, the major contributors to production being Murrumbidgee, Northern, and Murray which together accounted for 64.8% of the State's production (see Table 10).

BARLEY, NSW, YEARS ENDED 31 MARCH



Rice

The number of establishments growing rice (1,402) remained virtually unchanged from the previous year. The area planted fell by 4.7% to 118,800 hectares. In the same period, the production of rice decreased by 2.5% to just over 1.0 million tonnes, with a slight increase in yield to 8.6 tonnes per hectare (see Table 10). Rice was grown in only two Statistical Divisions, Murray and Murrumbidgee. These two SDs accounted for 53.0% and 47.0% of rice production respectively.

RICE PRODUCTION, NSW, YEARS ENDED 31 MARCH



Oilseeds

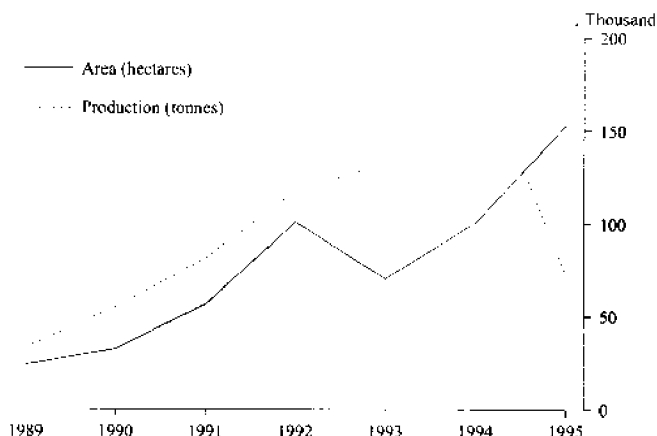
There was an increase of 23.4% in the area planted to oilseeds (canola, safflower, soybeans and sunflower) in the 1994-95 season, up from 175,600 hectares in 1993-94 to 216,700 hectares. However, production decreased significantly by 50.9% to 146,500 tonnes. This decrease can again be attributed mainly to the effects of the drought.

The area planted to canola (previously rapeseed) increased by 52.0% to 152,900 hectares. However, production of canola was significantly affected by the drought and decreased by 62.0% to 73,200 tonnes. The area planted to safflower fell by 68.5% to 4,500 hectares. The production of safflower fell by 78.5% to 2,300 tonnes.

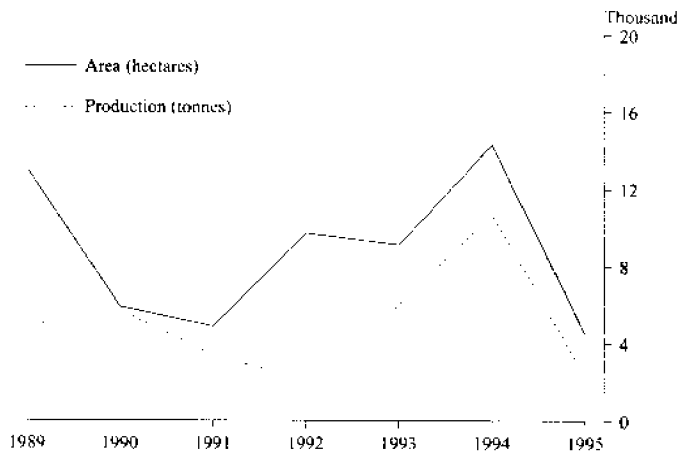
The area planted to soybeans fell by 57.5% to 9,400 hectares. The production of soybeans fell by 64.2% to 17,100 tonnes. The area planted to sunflower rose by 29.3% to 49,900 hectares. The production of sunflower rose by 13.5% to 53,900 tonnes. This rise was attributable to favorable rain as a result of the late planting of sunflower.

Excluding linseed, the Northern Statistical Division accounted for 31.7% of total oilseed production in NSW and 79.4% of sunflower production (see Table 13).

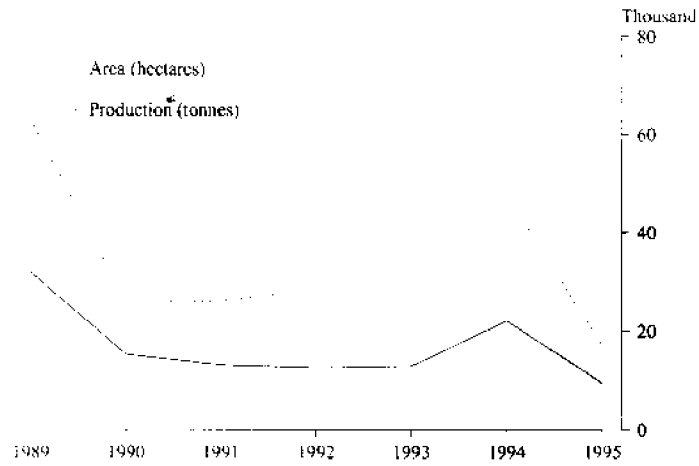
CANOLA, NSW, YEARS ENDED 31 MARCH



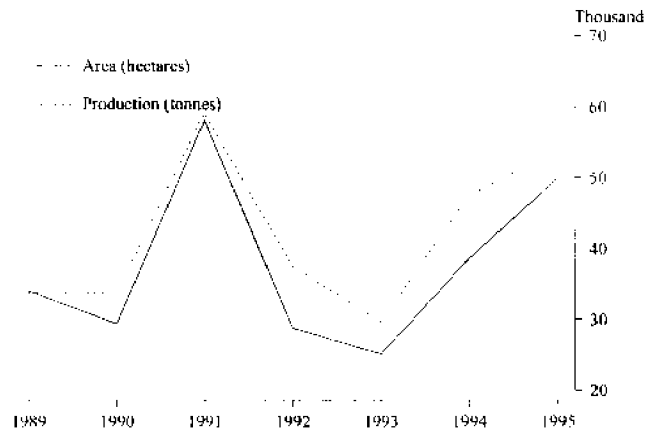
SAFFLOWER, NSW, YEARS ENDED 31 MARCH



SOYBEANS, NSW, YEARS ENDED 31 MARCH



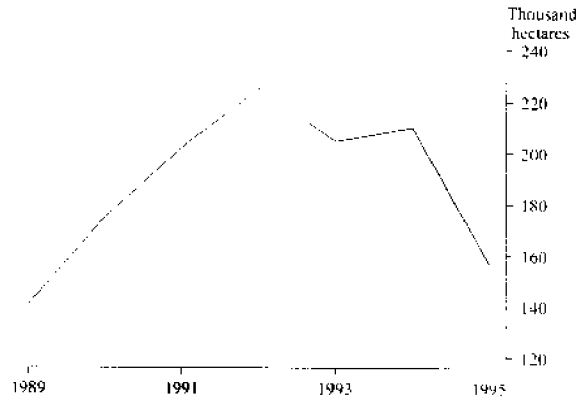
SUNFLOWER, NSW, YEARS ENDED 31 MARCH



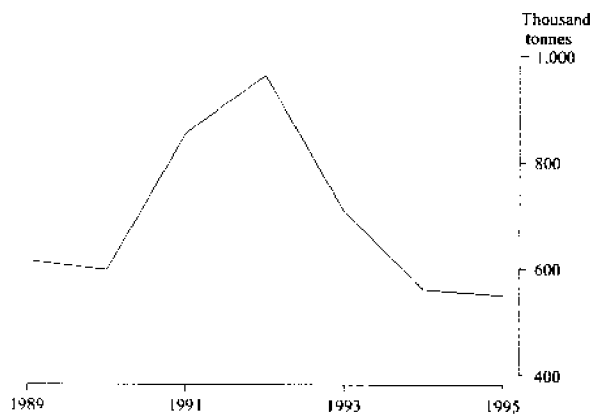
Cotton

For the 1994-95 season, the area planted to seed cotton decreased to 156,800 hectares, a fall of 25.3% from 1993-94. Production of seed cotton fell by 1.9% from the 1993-94 season to 550,100 tonnes; however, yield increased by 29.6% to 3.5 tonnes per hectare (see Table 14).

COTTON AREA, NSW, YEARS ENDED 31 MARCH



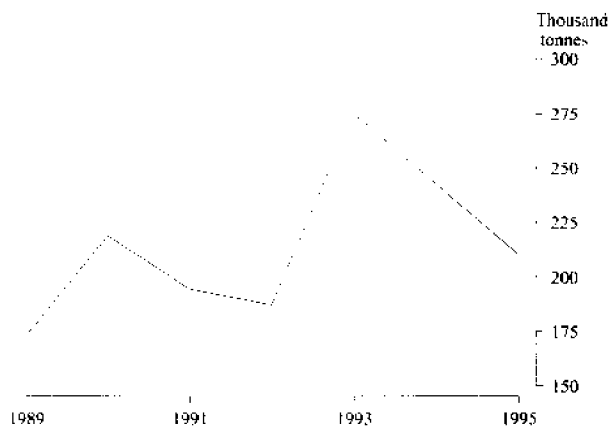
COTTON PRODUCTION, NSW, YEARS ENDED 31 MARCH



D. HORTICULTURE Oranges

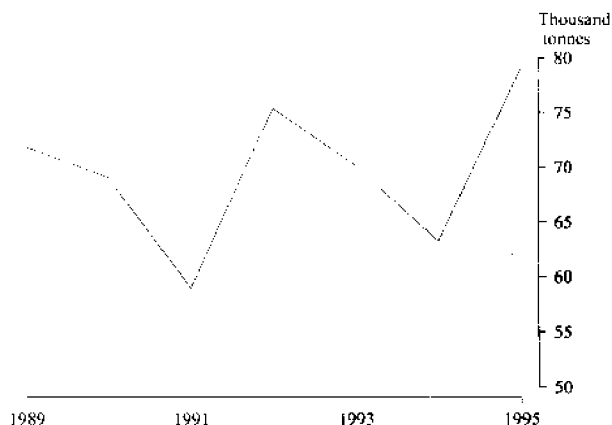
During the 1994-95 season total orange production fell to 210,000 tonnes, a decrease of 13.4% from 1993-94; total tree numbers decreased by 7.2% to 3.6 million. The major Statistical Divisions in terms of tree numbers and production were Murrumbidgee and Murray, with Murrumbidgee SD accounting for 61.6% of the State's production (see Table 19).

ORANGE PRODUCTION, NSW, YEARS ENDED 31 MARCH



Apples The number of apple trees at 31 March 1995 stood at 1.83 million, an increase of 4.3% from 31 March 1994. Production increased by 24.9% to 79,100 tonnes. The major apple growing areas in NSW were Central West and Murrumbidgee Statistical Divisions which together accounted for 86.3% of the State's trees and 88.0% of the State's production (see Table 19).

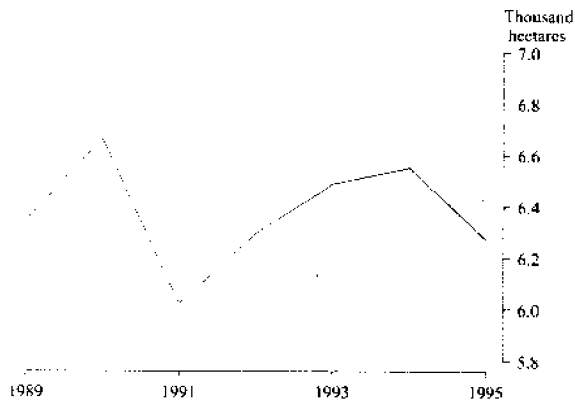
APPLE PRODUCTION, NSW, YEARS ENDED 31 MARCH



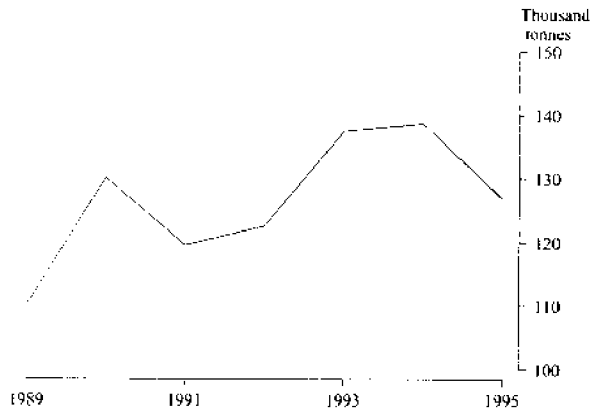
Grapes The total area of vines at harvest in 1994-95 increased marginally by 0.8% over the previous year to 14,400 hectares; however, total grape production fell by 25.9% to 139,000 tonnes. Production of wine grapes decreased by 25.8% to 104,700 tonnes while grape production for drying decreased by 31.5% to 25,800 tonnes. The major wine grape growing area was Murrumbidgee Statistical Division with 56.5% of the total NSW wine grape production followed by Murray and Hunter SDs with 21.2% and 11.5% respectively (see Table 24).

Potatoes The total area planted to potatoes in the 1994-95 season was 6,274 hectares, a decrease of 4.2% over 1993-94. Production also decreased, to 126,812 tonnes, a fall of 8.6%.

POTATO AREA, NSW, YEARS ENDED 31 MARCH



POTATO PRODUCTION, NSW, YEARS ENDED 31 MARCH



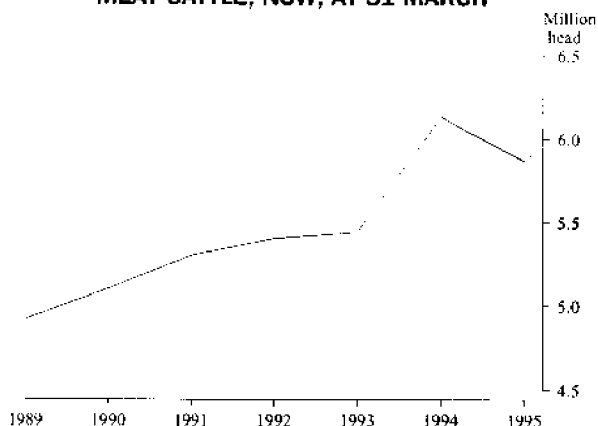
E. LIVESTOCK AND LIVESTOCK PRODUCTS

The meat cattle herd was 5.9 million at 31 March 1995, a decrease of 4.2% from the previous year. The number of establishments with meat cattle increased only marginally from the previous year to 28,115. The major Statistical Divisions in terms of numbers were Northern and North Western with 27.9% and 14.4%, respectively, of the State's meat cattle (see Table 29).

Meat cattle

At 31 March 1995, 8.9% of all establishments with meat cattle had a herd size of 500 and over. These establishments accounted for 44.6% of the number of meat cattle.

MEAT CATTLE, NSW, AT 31 MARCH

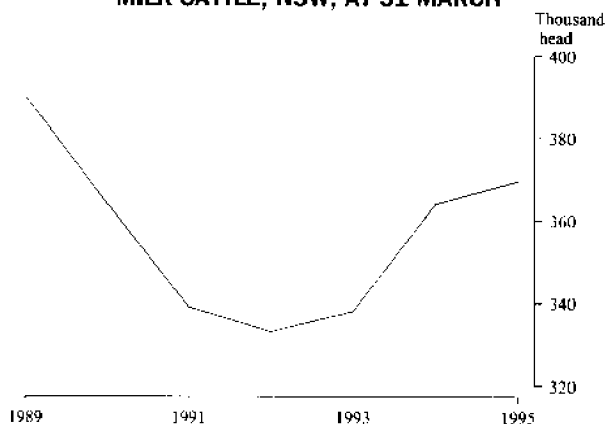


Milk cattle

The milk cattle herd increased to 369,600 at 31 March 1995, a rise of 1.6% from the previous year. The number of establishments with milk cattle rose by 2.9% to 2,462. The major Statistical Divisions in terms of numbers were still Hunter and Mid-North Coast which together accounted for 37.3% of the State's milk cattle (see Table 32).

At 31 March 1995 26.2% of all establishments with milk cattle had a herd size of 200 and over. These establishments accounted for 56.2% of the number of milk cattle.

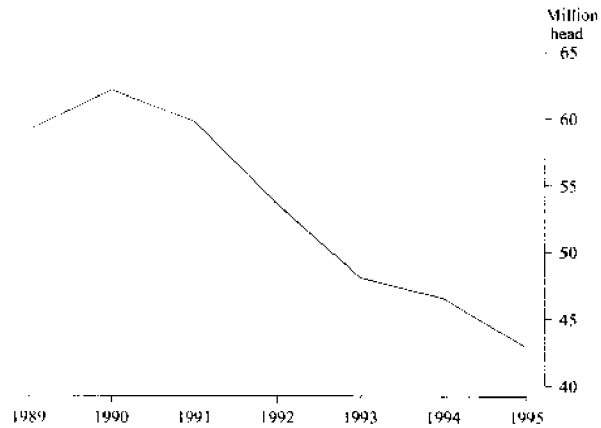
MILK CATTLE, NSW, AT 31 MARCH



Sheeps and lambs

The number of establishments with sheep and lambs at 31 March 1995 stood at 19,623, a decrease of 3.2% from the previous year. Sheep and lamb numbers at 31 March 1995 were 42.9 million, a decrease of 7.9% from the previous year (see Table 35). The number of lambs marked decreased by 12.7% to 13.2 million (see Table 38). The major Statistical Divisions in terms of sheep and lamb numbers were North Western and Central West which together accounted for 37.5% of the State's flock.

SHEEP AND LAMBS, NSW, AT 31 MARCH



Pigs

Pig numbers at 31 March 1995 were 790,500, a decrease of 5.2% from the previous year. The number of establishments with pigs stood at 1,322, a decrease of 16.6% from the previous year. The major Statistical Division in terms of pig numbers was Murray which accounted for 39.6% of the State's herd (see Table 39).

PIGS, NSW, AT 31 MARCH



VALUE OF AGRICULTURAL
COMMODITIES PRODUCED

At the time of publication preliminary figures only were available for the gross value of agricultural commodities produced in the year ending 31 March 1995. These figures show that cotton replaced wheat as the leading crop in terms of value of production (\$528.8m). The effects of the drought can be gauged by the decrease in the value of wheat production from \$893.1m in 1993-94 to \$241.2m in 1994-95. This is a decrease of 73.0%. However, wheat remained the principal contributor to the value of cereal grain production accounting for 35.7% of the total.

In relation to fruit, preliminary figures show that grapes remained the leading individual fruit in value terms at \$107.3m, followed by oranges with a value of production of \$80.2m. Next highest were bananas contributing \$57.2m followed by apple production valued at \$43.7m.

The gross value of livestock slaughterings increased only marginally from the previous year to \$1,922.5m. Cattle and calf slaughterings represented 55.6% of this value followed by poultry, sheep and lambs and pigs which represented 21.9%, 12.0% and 10.0% respectively. Preliminary figures show the most significant change in livestock slaughterings was the gross value of sheep and lambs slaughterings. This value increased by 14.1% to \$230.0m in 1994-95.

For the first time in five years the gross value of wool production increased. The figure for 1994-95 was \$1,177.6m representing an increase of 34.2% over the previous year's figure (\$877.4m). The value of milk production increased by 7.0% to \$431.9m. This is the ninth consecutive annual increase in the value of NSW milk production. The value of eggs decreased marginally to \$77.1m in 1994-95.



A. STRUCTURE OF AGRICULTURAL INDUSTRY

1

NUMBER OF ESTABLISHMENTS WITH AGRICULTURAL ACTIVITY BY INDUSTRY, HAVING EVAO \$5,000 AND OVER,¹
AT 31 MARCH 1993 TO 1995

ANZSIC code	Industry of establishment	1993	1994	1995
0111	Plant nurseries	702	681	591
0112	Cut flower and flower seed growing	231	245	200
0113	Vegetable growing	784	755	678
0114	Grape growing	655	709	659
0115	Apple and pear growing	237	233	219
0116	Stonefruit growing	435	446	476
0117	Kiwi fruit growing	36	26	26
0119	Fruit growing n.e.c.	1 930	1 900	1 628
0121	Grain growing	2 123	2 854	1 979
0122	Grain-sheep/beef cattle farming	7 023	6 669	6 091
0123	Sheep-beef cattle farming	4 038	5 380	5 547
0124	Sheep farming	8 174	5 617	6 281
0125	Beef cattle farming	9 559	10 543	11 195
0130	Dairy cattle farming	2 010	2 128	2 167
0141	Poultry farming (meat)	338	329	316
0142	Poultry farming (eggs)	174	151	144
0151	Pig farming	478	425	442
0152	Horse farming	742	638	556
0153	Deer farming	127	119	111
0159	Livestock farming n.e.c.	346	876	816
0161	Sugar cane growing	464	458	438
0162	Cotton growing	446	425	405
0169	Crop and plant growing n.e.c.	300	254	304
Total (ANZSIC Code 01)		41 352	41 861	41 269
02	Services to agriculture; hunting and trapping	39	33	37
03	Forestry and logging	6	7	5
04	Commercial fishing	1	1	1
Total (ANZSIC Division A)		41 398	41 902	41 312
All other ANZSIC Divisions		325	289	283
Unclassified		1 505	626	693
Total all industries		43 228	42 817	42 288

¹ Number of establishments with an EVAO of \$5,000 or more at the time of selection in the Agricultural Census. See Explanatory Note 4 on page 62.

2

NUMBER OF ESTABLISHMENTS WITH AGRICULTURAL ACTIVITY BY INDUSTRY, HAVING EVAO \$22,500 AND OVER, AT 31 MARCH 1993 TO 1995

ANZSIC code	Industry of establishment	1993	1994	1995
0111	Plant nurseries	613	608	519
0112	Cut flower and flower seed growing	213	234	168
0113	Vegetable growing	644	607	535
0114	Grape growing	541	584	551
0115	Apple and pear growing	222	208	191
0116	Stonefruit growing	352	335	353
0117	Kiwi fruit growing	18	14	12
0119	Fruit growing n.e.c.	1 646	1 463	1 309
0121	Grain growing	2 060	2 774	1 837
0122	Grain-sheep/beef cattle farming	6 843	6 442	5 784
0123	Sheep-beef cattle farming	3 584	4 692	4 894
0124	Sheep farming	7 216	4 143	4 998
0125	Beef cattle farming	5 615	5 474	6 012
0130	Dairy cattle farming	1 965	2 086	2 098
0141	Poultry farming (meat)	331	321	311
0142	Poultry farming (eggs)	170	144	134
0151	Pig farming	442	378	396
0152	Horse farming	494	370	280
0153	Deer farming	125	115	101
0159	Livestock farming n.e.c.	237	419	424
0161	Sugar cane growing	461	449	426
0162	Cotton growing	445	417	405
0169	Crop and plant growing n.e.c.	219	203	239
Total (ANZSIC Code 01)		34 456	32 480	31 977
02	Services to agriculture; hunting and trapping	25	18	19
03	Forestry and logging	4	2	2
04	Commercial fishing	1	1	1
Total (ANZSIC Division A)		34 486	32 501	31 999
All other ANZSIC Divisions		214	168	165
Unclassified		586	3	—
Total all industries		35 286	32 672	32 164

3

NUMBER OF ESTABLISHMENTS WITH AGRICULTURAL ACTIVITY BY STATISTICAL DIVISION, HAVING EVAO \$5,000 AND OVER, AT 31 MARCH 1993 TO 1995

<i>Statistical division</i>	1993	1994	1995
Sydney	1 974	1 928	1 862
Hunter	3 054	2 996	2 961
Illawarra	976	955	922
Richmond-Tweed	3 277	3 222	3 070
Mid-North Coast	3 440	3 354	3 270
Northern	6 865	6 802	6 732
North Western	4 457	4 420	4 402
Central West	5 793	5 750	5 703
South Eastern	4 496	4 455	4 461
Murrumbidgee	4 669	4 673	4 660
Murray	3 925	3 963	3 953
Far West	302	299	292
New South Wales	43 228	42 817	42 288

4

NUMBER OF ESTABLISHMENTS WITH AGRICULTURAL ACTIVITY BY STATISTICAL DIVISION, HAVING EVAO \$22,500 AND OVER, AT 31 MARCH 1993 TO 1995

<i>Statistical division</i>	1993	1994	1995
Sydney	1 474	1 376	1 251
Hunter	2 106	1 908	1 884
Illawarra	617	546	536
Richmond-Tweed	2 255	2 007	1 938
Mid-North Coast	2 270	2 004	1 915
Northern	5 901	5 391	5 293
North Western	4 018	3 776	3 748
Central West	5 033	4 633	4 589
South Eastern	3 505	3 133	3 196
Murrumbidgee	4 295	4 141	4 094
Murray	3 520	3 465	3 437
Far West	292	292	283
New South Wales	35 286	32 672	32 164

5

NUMBER OF ESTABLISHMENTS WITH AGRICULTURAL ACTIVITY BY INDUSTRY OF ESTABLISHMENT AND EVAO,
AT 31 MARCH 1995

ANZSIC code	Industry of establishment	Estimated value of agricultural operations (\$)			
		Less than 5,000 ¹	5,000 to 22,499	22,500 to 49,999	50,000 to 99,999
0111	Plant nurseries	—	72	111	149
0112	Cut flower and flower seed growing	4	28	49	70
0113	Vegetable growing	27	116	117	111
0114	Grape growing	19	89	90	175
0115	Apple and pear growing	4	24	26	37
0116	Stonefruit growing	13	110	110	89
0117	Kiwi fruit growing	1	13	6	5
0119	Fruit growing n.e.c.	43	276	359	435
0121	Grain growing	32	110	161	288
0122	Grain-sheep/beef cattle farming	18	289	848	1 656
0123	Sheep-beef cattle farming	49	604	1 144	1 514
0124	Sheep farming	144	1 139	1 450	1 648
0125	Beef cattle farming	644	4 539	2 902	1 721
0130	Dairy cattle farming	2	67	158	317
0141	Poultry farming (meat)	1	4	6	10
0142	Poultry farming (eggs)	2	8	5	15
0151	Pig farming	6	40	57	88
0152	Horse farming	36	240	128	84
0153	Deer farming	1	9	15	28
0159	Livestock farming n.e.c.	70	322	184	96
0161	Sugar cane growing	—	12	68	142
0162	Cotton growing	—	—	1	8
0169	Crop and plant growing n.e.c.	19	46	68	70
Total (ANZSIC Code 01)		1 135	8 157	8 063	8 756
02	Services to agriculture; hunting and trapping	4	14	12	3
03	Forestry and logging	—	3	—	2
04	Commercial fishing	—	—	—	—
Total (ANZSIC Division A)		1 139	8 174	8 075	8 761
All other ANZSIC Divisions		18	100	53	42
Unclassified		693	—	—	—
Total all industries		1 850	8 274	8 128	8 803

¹ See Explanatory Note 4 on page 62.

5

NUMBER OF ESTABLISHMENTS WITH AGRICULTURAL ACTIVITY BY INDUSTRY OF ESTABLISHMENT AND EVAO,
AT 31 MARCH 1995 - *continued*

ANZSIC code	Industry of establishment	Estimated value of agricultural operations (\$)			Total establishments
		100,000 to 199,999	200,000 to 499,999	500,000 or more	
0111	Plant nurseries	125	96	38	591
0112	Cut flower and flower seed growing	34	7	8	200
0113	Vegetable growing	119	107	81	678
0114	Grape growing	191	71	24	659
0115	Apple and pear growing	47	48	33	219
0116	Stonefruit growing	84	58	12	476
0117	Kiwi fruit growing	—	1	—	26
0119	Fruit growing n.e.c.	330	156	29	1 628
0121	Grain growing	705	544	139	1 979
0122	Grain-sheep/beef cattle farming	2 005	1 096	179	6 091
0123	Sheep-beef cattle farming	1 371	734	131	5 547
0124	Sheep farming	1 260	567	73	6 281
0125	Beef cattle farming	921	383	85	11 195
0130	Dairy cattle farming	770	760	93	2 167
0141	Poultry farming (meat)	22	108	165	316
0142	Poultry farming (eggs)	35	36	43	144
0151	Pig farming	102	97	52	442
0152	Horse farming	45	16	7	556
0153	Deer farming	24	23	11	111
0159	Livestock farming n.e.c.	79	50	15	816
0161	Sugar cane growing	160	53	3	438
0162	Cotton growing	27	115	254	405
0169	Crop and plant growing n.e.c.	50	30	21	304
Total (ANZSIC Code 01)		8 506	5 156	1 496	41 269
02	Services to agriculture; hunting and trapping	—	2	2	37
03	Forestry and logging	—	—	—	5
04	Commercial fishing	1	—	—	1
Total (ANZSIC Division A)		8 507	5 158	1 498	41 312
All other ANZSIC Divisions		34	24	12	283
Unclassified		—	—	—	693
Total all industries		8 541	5 182	1 510	42 288

6

NUMBER OF ESTABLISHMENTS WITH AGRICULTURAL ACTIVITY BY INDUSTRY AND AREA OF ESTABLISHMENT,
AT 31 MARCH 1995

ANZSIC code	Industry of establishment	Area of establishment (hectares)					
		0 to 49	50 to 99	100 to 499	500 to 999	1,000 to 2,499	2,500 to 4,999
0111	Plant nurseries	513	39	34	3	2	—
0112	Cut flower and flower seed growing	182	9	7	2	—	—
0113	Vegetable growing	402	66	156	27	22	5
0114	Grape growing	539	50	56	8	5	—
0115	Apple and pear growing	131	49	36	2	—	—
0116	Stonefruit growing	371	56	40	3	5	1
0117	Kiwi fruit growing	21	2	3	—	—	—
0119	Fruit growing n.e.c.	1 326	165	121	6	8	—
0121	Grain growing	32	51	854	456	393	128
0122	Grain-sheep/beef cattle farming	43	70	1 624	1 892	1 718	454
0123	Sheep-beef cattle farming	65	182	1 670	1 478	1 331	373
0124	Sheep farming	147	264	2 275	1 504	1 060	291
0125	Beef cattle farming	1 320	1 672	4 893	1 662	1 212	281
0130	Dairy cattle farming	229	437	1 303	139	49	7
0141	Poultry farming (meat)	249	27	32	6	2	—
0142	Poultry farming (eggs)	114	10	14	5	1	—
0151	Pig farming	123	45	190	51	26	5
0152	Horse farming	277	95	148	17	12	7
0153	Deer farming	29	23	41	15	3	—
0159	Livestock farming n.e.c.	568	54	90	53	43	3
0161	Sugar cane growing	127	144	157	7	1	2
0162	Cotton growing	6	7	75	72	130	71
0169	Crop and plant growing n.e.c.	103	59	99	20	20	3
Total (ANZSIC Code 01)		6 917	3 576	13 918	7 428	6 043	1 631
02	Services to agriculture; hunting and trapping	12	6	15	1	2	1
03	Forestry and logging	—	1	2	—	—	1
04	Commercial fishing	—	—	1	—	—	—
Total (ANZSIC Division A)		6 929	3 583	13 936	7 429	6 045	1 633
All other ANZSIC Divisions		102	40	100	17	14	7
Unclassified		318	74	196	60	30	7
Total all industries		7 349	3 697	14 232	7 506	6 089	1 647

6

NUMBER OF ESTABLISHMENTS WITH AGRICULTURAL ACTIVITY BY INDUSTRY AND AREA OF ESTABLISHMENT,
AT 31 MARCH 1995 - *continued*

ANZSIC code	Industry of establishment	Area of establishment (hectares)			
		5,000 to 9,999	10,000 to 24,999	25,000 to 49,999	50,000 to 99,999
0111	Plant nurseries	—	—	—	—
0112	Cut flower and flower seed growing	—	—	—	—
0113	Vegetable growing	—	—	—	—
0114	Grape growing	—	1	—	—
0115	Apple and pear growing	1	—	—	—
0116	Stonefruit growing	—	—	—	—
0117	Kiwi fruit growing	—	—	—	—
0119	Fruit growing n.e.c.	1	1	—	—
0121	Grain growing	42	17	5	1
0122	Grain-sheep/beef cattle farming	170	90	24	6
0123	Sheep-beef cattle farming	179	133	95	36
0124	Sheep farming	179	308	180	61
0125	Beef cattle farming	98	40	13	2
0130	Dairy cattle farming	1	2	—	—
0141	Poultry farming (meat)	—	—	—	—
0142	Poultry farming (eggs)	—	—	—	—
0151	Pig farming	2	—	—	—
0152	Horse farming	—	—	—	—
0153	Deer farming	—	—	—	—
0159	Livestock farming n.e.c.	1	1	2	1
0161	Sugar cane growing	—	—	—	—
0162	Cotton growing	25	14	3	2
0169	Crop and plant growing n.e.c.	—	—	—	—
Total (ANZSIC Code 01)		699	607	322	109
02	Services to agriculture; hunting and trapping	—	—	—	—
03	Forestry and logging	1	—	—	—
04	Commercial fishing	—	—	—	—
Total (ANZSIC Division A)		700	607	322	109
All other ANZSIC Divisions		1	2	—	—
Unclassified		4	1	1	1
Total all industries		705	610	323	110

6

NUMBER OF ESTABLISHMENTS WITH AGRICULTURAL ACTIVITY BY INDUSTRY AND AREA OF ESTABLISHMENT,
AT 31 MARCH 1995 - *continued*

ANZSIC code	Industry of establishment	Area of establishment (hectares)			Total establishments
		100,000 to 199,999	200,000 to 499,999	500,000 or more	
0111	Plant nurseries	—	—	—	591
0112	Cut flower and flower seed growing	—	—	—	200
0113	Vegetable growing	—	—	—	678
0114	Grape growing	—	—	—	659
0115	Apple and pear growing	—	—	—	219
0116	Stonefruit growing	—	—	—	476
0117	Kiwi fruit growing	—	—	—	26
0119	Fruit growing n.e.c.	—	—	—	1 628
0121	Grain growing	—	—	—	1 979
0122	Grain-sheep/beef cattle farming	—	—	—	6 091
0123	Sheep-beef cattle farming	3	2	—	5 547
0124	Sheep farming	11	1	—	6 281
0125	Beef cattle farming	2	—	—	11 195
0130	Dairy cattle farming	—	—	—	2 167
0141	Poultry farming (meat)	—	—	—	316
0142	Poultry farming (eggs)	—	—	—	144
0151	Pig farming	—	—	—	442
0152	Horse farming	—	—	—	556
0153	Deer farming	—	—	—	111
0159	Livestock farming n.e.c.	—	—	—	816
0161	Sugar cane growing	—	—	—	438
0162	Cotton growing	—	—	—	405
0169	Crop and plant growing n.e.c.	—	—	—	304
Total (ANZSIC Code 01)		16	3	—	41 269
02	Services to agriculture; hunting and trapping	—	—	—	37
03	Forestry and logging	—	—	—	5
04	Commercial fishing	—	—	—	1
Total (ANZSIC Division A)		16	3	—	41 312
All other ANZSIC Divisions		—	—	—	283
Unclassified		1	—	—	693
Total all industries		17	3	—	42 288

B. LAND MANAGEMENT

7

AREA AND LAND USE OF ESTABLISHMENTS WITH AGRICULTURAL ACTIVITY BY STATISTICAL DIVISION,
AT 31 MARCH 1995

Statistical division	Area of cereal crops ¹	Area of other crops	Area of orchard trees	Area of vegetables
	ha	ha	ha	ha
Sydney	846.1	1 995.0	2 688.0	1 811.2
Hunter	34 563.5	3 978.2	322.6	584.1
Illawarra	446.8	485.3	158.3	319.6
Richmond-Tweed	3 086.1	14 011.5	6 056.3	366.9
Mid-North Coast	1 808.0	5 949.7	771.8	962.9
Northern	483 400.0	180 983.6	970.9	930.3
North Western	602 216.7	77 668.4	474.5	1 909.9
Central West	562 077.1	72 916.4	3 090.9	2 428.9
South Eastern	80 976.3	21 690.8	2 996.6	323.3
Murrumbidgee	537 601.5	138 371.5	9 826.7	6 166.9
Murray	415 908.5	57 621.0	4 130.3	4 642.7
Far West	2 328.6	3 895.0	13.8	16.8
New South Wales				
1995	2 725 259.0	579 566.4	31 500.7	20 463.5
1994	3 448 158.6	912 488.0	33 977.9	22 843.8
1993 ²	3 213 634.3	878 994.0	30 463.7	22 067.3

Statistical division	Area of holding	Area of non-agricultural land ³	Total area (Agricultural and non-agricultural land)
	ha	ha	ha
Sydney	100 784.4	1 139 916.6	1 240 701.0
Hunter	1 485 273.6	1 615 825.4	3 101 099.0
Illawarra	126 442.9	722 044.1	848 487.0
Richmond-Tweed	462 313.8	513 428.2	975 742.0
Mid-North Coast	975 632.6	1 619 277.4	2 594 910.0
Northern	7 255 384.7	2 605 228.3	9 860 613.0
North Western	16 391 722.3	3 516 021.7	19 907 744.0
Central West	4 720 384.6	1 605 791.4	6 326 176.0
South Eastern	2 719 190.0	2 494 364.0	5 213 554.0
Murrumbidgee	5 393 140.9	959 056.1	6 352 197.0
Murray	7 975 239.0	1 025 109.0	9 000 348.0
Far West	12 694 340.4	2 019 883.6	14 714 224.0
New South Wales			
1995	60 299 849.2	19 843 000.8	80 142 850.0
1994	61 165 131.2	18 977 718.8	80 142 850.0
1993 ²	59 415 866.2	20 726 983.8	80 142 850.0

¹ Excludes pastures and grasses harvested for hay or seed.

² Figures have been collected on the basis of EVA0 \$22,500 and over.

³ Comprises conserved land, forestry, urban and unused land such as vacant Crown land, commercially unused land on Aboriginal and other Crown reserves and waste land, ephemeral lakes, mangrove swamps, etc.

8

CROP STUBBLE DISPOSAL BY STATISTICAL DIVISION, YEAR ENDED 31 MARCH 1995

Statistical division	Area of holding on which the following crop stubble techniques were used			
	Stubble was burnt	Stubble was incorporated ¹	Stubble was mulched ²	Stubble was left intact ³
	ha	ha	ha	ha
Sydney	—	532.6	48.0	87.5
Hunter	494.0	17 148.2	1 899.4	5 022.4
Illawarra	40.0	106.0	67.0	106.0
Richmond-Tweed	1 374.4	2 430.5	599.9	230.5
Mid-North Coast	253.1	1 365.0	630.0	268.6
Northern	26 515.7	250 461.3	59 921.1	69 840.3
North Western	32 420.2	186 099.3	20 586.0	63 725.8
Central West	26 163.5	187 371.9	18 503.5	49 238.1
South Eastern	8 673.7	22 851.2	5 431.0	16 883.0
Murrumbidgee	82 234.5	144 278.3	30 088.5	80 527.8
Murray	57 406.9	108 933.4	15 357.3	74 822.1
Far West	855.0	—	—	103.0
New South Wales	236 431.0	921 577.7	153 131.7	360 855.1

¹ Farm machinery used to plough stubble into soil.
² Farm machinery used to chop or slash stubble into smaller lengths.
³ No cultivation; crops sown by direct drilling.

9

PLANTING OF TREES¹ BY STATISTICAL DIVISION, YEAR ENDED 31 MARCH 1995

Statistical division	Planted from seedlings	Planted with seed
	number	ha
Sydney	85 704	13
Hunter	282 220	394
Illawarra	51 685	38
Richmond-Tweed	3 153 278	186
Mid-North Coast	172 883	152
Northern	189 669	592
North Western	143 019	82
Central West	408 379	457
South Eastern	287 102	178
Murrumbidgee	220 170	438
Murray	819 216	389
Far West	795	—
New South Wales	5 814 120	2 919

¹ Includes tea-trees.

C. CROPS AND PASTURES

10

AREA, PRODUCTION AND YIELD OF CEREALS FOR GRAIN BY STATISTICAL DIVISION,
YEAR ENDED 31 MARCH 1995

Statistical division	Barley			Grain Sorghum		
	Area	Production	Yield	Area	Production	Yield
	'000 ha	'000 t	t/ha	'000 ha	'000 t	t/ha
Sydney	—	—	—	—	—	—
Hunter	4.6	3.7	0.8	10.6	34.2	3.2
Illawarra	—	—	—	—	—	—
Richmond-Tweed	0.5	0.4	0.8	0.2	0.3	1.2
Mid-North Coast	—	—	—	0.2	0.4	1.7
Northern	85.8	62.9	0.7	120.8	246.8	2.0
North Western	74.3	39.1	0.5	22.0	36.8	1.7
Central West	88.7	54.8	0.6	2.4	6.2	2.6
South Eastern	2.5	2.2	0.9	0.2	0.2	1.2
Murrumbidgee	93.1	67.8	0.7	2.9	15.2	5.3
Murray	59.1	58.3	1.0	1.5	6.6	4.5
Far West	1.1	2.6	2.4	—	—	—
New South Wales						
1995	409.8	291.5	0.7	160.7	346.6	2.2
1994	623.0	1 357.0	2.2	99.0	228.3	2.3
1993¹	559.7	1 043.8	1.9	117.7	229.1	1.9

Statistical division	Maize			Millet		
	Area	Production	Yield	Area	Production	Yield
	'000 ha	'000 t	t/ha	'000 ha	'000 t	t/ha
Sydney	—	0.1	2.1	—	—	0.4
Hunter	1.3	3.9	3.0	0.1	0.1	1.2
Illawarra	—	—	—	—	—	—
Richmond-Tweed	0.7	4.4	6.2	0.2	0.2	0.9
Mid-North Coast	0.3	1.6	4.8	0.1	0.2	2.7
Northern	4.8	28.7	6.0	2.3	2.8	1.2
North Western	1.3	7.3	5.6	1.8	0.7	0.4
Central West	1.1	7.2	6.7	1.2	0.9	0.8
South Eastern	—	—	—	0.1	—	—
Murrumbidgee	9.1	78.1	8.6	0.2	0.3	1.3
Murray	1.9	14.1	7.4	1.4	2.6	1.9
Far West	—	—	—	—	—	—
New South Wales						
1995	20.5	145.3	7.1	7.2	7.7	1.1
1994	14.2	100.0	7.0	3.5	5.8	1.7
1993¹	15.6	107.9	6.9	3.0	6.0	2.0

¹ Figures have been collected on the basis of EVAO \$22,500 and over.

AREA, PRODUCTION AND YIELD OF CEREALS FOR GRAIN BY STATISTICAL DIVISION,
YEAR ENDED 31 MARCH 1995 - *continued*

<i>Statistical division</i>	<i>Oats</i>			<i>Rice</i>		
	<i>Area</i>	<i>Production</i>	<i>Yield</i>	<i>Area</i>	<i>Production</i>	<i>Yield</i>
	'000 ha	'000 t	t/ha	'000 ha	'000 t	t/ha
Sydney	—	—	1.5	—	—	—
Hunter	2.9	0.8	0.3	—	—	—
Illawarra	0.1	0.1	1.5	—	—	—
Richmond-Tweed	—	0.1	1.4	—	—	—
Mid-North Coast	0.1	0.1	0.8	—	—	—
Northern	28.5	10.6	0.4	—	—	—
North Western	91.7	27.5	0.3	—	—	—
Central West	122.6	52.3	0.4	—	—	—
South Eastern	25.2	17.4	0.7	—	—	—
Murrumbidgee	66.1	50.3	0.8	54.5	477.3	8.8
Murray	38.2	38.3	1.0	64.3	538.5	8.4
Far West	—	—	—	—	—	—
New South Wales						
1995	375.5	197.3	0.5	118.8	1 015.8	8.6
1994	369.0	617.8	1.7	124.6	1 042.1	8.4
1993 ¹	447.7	761.5	1.7	104.6	845.9	8.1

<i>Statistical division</i>	<i>Triticale</i>			<i>Wheat</i>		
	<i>Area</i>	<i>Production</i>	<i>Yield</i>	<i>Area</i>	<i>Production</i>	<i>Yield</i>
	'000 ha	'000 t	t/ha	'000 ha	'000 t	t/ha
Sydney	—	—	—	—	—	0.1
Hunter	—	—	1.0	10.9	11.5	1.1
Illawarra	0.1	0.1	1.5	—	—	0.6
Richmond-Tweed	—	—	—	—	—	1.4
Mid-North Coast	—	—	—	0.1	—	—
Northern	0.6	0.3	0.6	198.1	101.6	0.5
North Western	0.4	0.5	1.1	381.4	116.8	0.3
Central West	6.9	6.7	1.0	310.3	156.7	0.5
South Eastern	8.2	10.5	1.3	35.9	34.9	1.0
Murrumbidgee	21.4	21.5	1.0	262.8	223.7	0.9
Murray	11.3	14.4	1.3	222.9	225.9	1.0
Far West	—	—	—	1.1	3.4	3.1
New South Wales						
1995	48.8	54.0	1.1	1 423.8	874.6	0.6
1994	42.6	110.1	2.6	1 977.7	5 086.1	2.6
1993 ¹	48.5	146.1	3.0	1 694.0	3 582.7	2.1

¹ Figures have been collected on the basis of EVAO \$22,500 and over.

AREA, PRODUCTION AND YIELD OF LEGUMES FOR GRAIN BY STATISTICAL DIVISION,
YEAR ENDED 31 MARCH 1995

Statistical division	Chick peas			Faba Beans		
	Area	Production	Yield	Area	Production	Yield
	'000 ha	'000 t	t/ha	'000 ha	'000 t	t/ha
Sydney	—	—	—	—	—	—
Hunter	—	—	—	—	—	1.2
Illawarra	—	—	—	—	—	—
Richmond-Tweed	—	—	—	—	—	—
Mid-North Coast	—	—	—	—	—	—
Northern	14.2	6.3	0.4	4.2	2.7	0.6
North Western	2.5	0.5	0.2	1.4	0.9	0.7
Central West	2.0	0.4	0.2	0.1	0.1	1.1
South Eastern	0.1	—	—	—	—	—
Murrumbidgee	0.8	0.2	0.2	0.9	2.1	2.2
Murray	0.7	0.2	0.4	1.0	0.8	0.8
Far West	—	—	—	—	—	—
New South Wales						
1995	20.2	7.6	0.4	7.6	6.6	0.9
1994	26.4	28.6	1.1	10.4	21.8	2.1
1993¹	28.1	24.7	0.9	11.4	21.8	1.9

Statistical division	Field peas			Lupins		
	Area	Production	Yield	Area	Production	Yield
	'000 ha	'000 t	t/ha	'000 ha	'000 t	t/ha
Sydney	—	—	—	—	—	0.3
Hunter	—	—	—	0.1	—	0.2
Illawarra	—	—	—	0.1	—	0.2
Richmond-Tweed	—	—	—	—	—	—
Mid-North Coast	—	—	0.3	—	—	—
Northern	1.4	0.3	0.2	0.6	0.1	0.1
North Western	2.1	0.4	0.2	2.8	0.4	0.1
Central West	3.5	0.8	0.2	20.3	2.0	0.1
South Eastern	0.4	0.1	0.3	8.3	2.6	0.3
Murrumbidgee	12.3	2.5	0.2	48.7	5.2	0.1
Murray	7.6	1.1	0.1	26.1	4.0	0.2
Far West	—	—	—	—	—	—
New South Wales						
1995	27.3	5.3	0.2	107.0	14.3	0.1
1994	27.1	36.4	1.3	96.2	156.0	1.6
1993¹	31.5	34.7	1.1	98.8	187.7	1.9

¹ Figures have been collected on the basis of EVA0 \$22,500 and over.

AREA, PRODUCTION AND YIELD OF CROPS AND PASTURES FOR HAY BY STATISTICAL DIVISION,
YEAR ENDED 31 MARCH 1995

Statistical division	Lucerne			Other pastures	
	Area	Production	Yield	Area	Production
	'000 ha *	'000 t	t/ha	'000 ha	'000 t
Sydney	0.3	1.4	4.8	0.8	1.4
Hunter	8.6	48.7	5.7	4.3	12.1
Illawarra	0.2	0.8	3.3	2.4	8.5
Richmond-Tweed	0.2	0.7	4.0	1.2	4.7
Mid-North Coast	0.7	2.6	4.0	1.8	7.0
Northern	15.8	59.2	3.7	13.5	37.6
North Western	16.3	48.5	3.0	14.9	30.1
Central West	24.2	102.8	4.2	13.8	30.4
South Eastern	5.9	19.1	3.3	4.6	11.0
Murrumbidgee	9.5	35.5	3.8	15.6	43.2
Murray	8.4	36.2	4.3	24.2	65.6
Far West	—	0.3	15.0	—	—
New South Wales					
1995	90.0	355.8	4.0	97.0	251.5
1994	96.1	487.7	5.1	139.4	450.3
1993¹	87.6	446.8	5.1	163.2	536.2

Statistical division	Total pastures	
	Area	Production
	'000 ha	'000 t
Sydney	1.1	2.9
Hunter	12.9	60.8
Illawarra	2.6	9.3
Richmond-Tweed	1.4	5.3
Mid-North Coast	2.5	9.6
Northern	29.4	96.8
North Western	31.2	78.6
Central West	37.9	133.2
South Eastern	10.4	30.2
Murrumbidgee	25.0	78.6
Murray	32.6	101.9
Far West	—	0.3
New South Wales		
1995	187.0	607.4
1994	235.5	938.0
1993¹	250.8	983.0

¹ Figures have been collected on the basis of EVAO \$22,500 and over.

AREA, PRODUCTION AND YIELD OF CROPS AND PASTURES FOR HAY BY STATISTICAL DIVISION,
YEAR ENDED 31 MARCH 1995 - *continued*

Statistical division	Oats			Wheat		
	Area	Production	Yield	Area	Production	Yield
	'000 ha	'000 t	t/ha	'000 ha	'000 t	t/ha
Sydney	0.1	0.3	2.2	—	—	1.6
Hunter	0.8	1.2	1.5	0.7	2.1	2.8
Illawarra	0.1	0.2	2.3	—	—	2.5
Richmond-Tweed	0.1	0.3	3.7	—	64.0	5.0
Mid-North Coast	0.1	0.6	6.0	—	26.0	2.1
Northern	6.9	9.0	1.3	7.9	13.8	1.7
North Western	6.4	6.0	0.9	8.0	11.8	1.5
Central West	11.9	17.2	1.4	7.3	11.6	1.6
South Eastern	3.3	5.0	1.5	1.1	2.7	2.6
Murrumbidgee	12.1	27.8	2.3	7.7	14.4	1.9
Murray	8.4	22.5	2.7	3.2	7.2	2.2
Far West	—	—	—	—	—	—
New South Wales						
1995	50.3	90.0	1.8	35.9	63.6	1.8
1994	61.5	226.5	3.7	17.2	64.6	3.8
1993¹	64.7	225.0	3.5	21.4	59.6	2.8

¹ Figures have been collected on the basis of EVAO \$22,500 and over.

Statistical division	Canola			Safflower		
	Area	Production	Yield	Area	Production	Yield
	'000 ha	'000 t	t/ha	'000 ha	'000 t	t/ha
Sydney	—	—	0.4	—	—	—
Hunter	0.1	—	0.4	—	—	—
Illawarra	0.1	—	0.4	—	—	—
Richmond-Tweed	—	—	—	—	—	0.7
Mid-North Coast	—	—	—	—	—	—
Northern	1.3	0.6	0.4	1.4	0.4	0.3
North Western	4.2	0.8	0.2	0.7	0.1	0.2
Central West	46.7	16.0	0.3	—	—	—
South Eastern	12.8	6.9	0.5	—	—	—
Murrumbidgee	70.1	34.2	0.5	0.7	0.6	0.9
Murray	17.2	13.8	0.8	1.6	1.2	0.7
Far West	0.4	0.7	1.6	—	—	—
New South Wales						
1995	152.9	73.2	0.5	4.5	2.3	0.5
1994	100.6	192.6	1.9	14.3	10.7	0.8
1993¹	70.5	133.0	1.9	9.1	5.6	0.6

Statistical division	Soybeans			Sunflower		
	Area	Production	Yield	Area	Production	Yield
	'000 ha	'000 t	t/ha	'000 ha	'000 t	t/ha
Sydney	—	—	—	—	—	—
Hunter	0.1	0.1	1.1	3.4	5.0	1.5
Illawarra	—	—	—	—	—	—
Richmond-Tweed	2.5	5.8	2.3	—	—	—
Mid-North Coast	0.3	0.5	2.0	0.1	—	0.5
Northern	2.6	2.7	1.1	41.2	42.8	1.0
North Western	0.4	0.6	1.7	4.0	3.9	1.0
Central West	0.1	0.2	1.6	—	—	0.5
South Eastern	—	—	—	—	—	—
Murrumbidgee	1.5	3.8	2.4	0.3	0.7	2.0
Murray	2.0	3.4	1.8	0.2	0.5	2.2
Far West	—	—	—	0.6	1.0	1.6
New South Wales						
1995	9.4	17.1	1.8	49.9	53.9	1.1
1994	22.1	47.7	2.2	38.6	47.5	1.2
1993¹	12.7	28.1	2.2	25.1	29.7	1.2

¹ Figures have been collected on the basis of EVAD \$22,500 and over.

Statistical division	Cotton (seed cotton)			Sugarcane (cut for crushing)		
	Area '000 ha	Production '000 t	Yield t/ha	Area '000 ha	Production '000 t	Yield t/ha
Sydney	—	—	—	—	—	—
Hunter	—	—	—	—	0.1	104.4
Illawarra	—	—	—	—	—	—
Richmond-Tweed	—	—	—	11.1	1 206.9	108.7
Mid-North Coast	—	—	—	5.2	605.9	117.2
Northern	95.7	293.8	3.1	0.1	12.5	92.1
North Western	56.0	238.7	4.3	—	—	—
Central West	—	—	—	—	—	—
South Eastern	—	—	—	—	—	—
Murrumbidgee	2.3	4.7	2.0	—	—	—
Murray	—	—	—	—	—	—
Far West	2.8	12.8	4.5	—	—	—
New South Wales						
1995	156.8	550.1	3.5	16.5	1 825.4	110.6
1994	209.9	560.9	2.7	14.9	1 674.2	112.4
1993 ¹	204.5	707.2	3.5	15.5	1 668.6	107.5

¹ Figures have been collected on the basis of EVAO \$22,500 and over.

	1993 ¹	1994	1995p
	\$m	\$m	\$m
Cereals for grain			
Barley	148.4	161.7	61.8
Canary seed	2.7	2.2	n.a.
Maize	21.1	19.0	32.3
Oats	61.1	55.4	43.0
Panicum and millet	1.2	3.0	4.5
Rice	160.6	261.4	215.9
Rye	—	—	n.a.
Sorghum	37.9	37.7	59.1
Triticale	19.7	14.8	11.9
Wheat	653.8	893.1	241.2
Other	1.8	2.1	5.0
Total	1 108.3	1 450.3	674.7
Cereals for hay			
Barley and rye	—	—	—
Grass and other	60.7	54.1	64.2
Lucerne	61.8	66.1	89.3
Oats	21.7	22.6	15.0
Wheat	5.9	6.3	12.7
Total	150.1	149.1	181.2
Broom millet	0.1	0.6	n.a.
Cotton	498.1	483.3	528.8
Peanuts	1.1	1.4	0.7
Sugarcane (cut for crushing)	46.8	43.5	49.6
Tobacco	2.2	1.5	0.5

¹ Figures have been collected on the basis of EVAO \$22,500 and over.

NUMBER OF ESTABLISHMENTS BY AREA OF PRINCIPAL GRAINS SOWN AND PRODUCTION,
 YEAR ENDED 31 MARCH 1995

	Area sown (hectares)					
	0 to 49	50 to 99	100 to 149	150 to 199	200 to 299	300 to 399
Barley for grain						
establishments	1 614	1 017	528	213	295	107
percentage of total establishments	41.1	25.9	13.4	5.4	7.5	2.7
area (hectares)	44 635	69 020	60 805	34 973	66 407	34 684
production (tonnes)	40 392	57 603	44 653	24 801	42 808	22 784
percentage of total wheat production	13.9	19.8	15.3	8.5	14.7	7.8
Grain sorghum for grain						
establishments	393	237	148	83	105	59
percentage of total establishments	35.6	21.5	13.4	7.5	9.5	5.3
area (hectares)	11 141	16 300	17 457	13 860	23 954	19 665
production (tonnes)	27 174	34 666	32 213	27 602	58 225	45 215
percentage of total wheat production	7.8	10.0	9.3	8.0	16.8	13.0
Wheat for grain						
establishments	2 358	1 575	1 135	600	873	397
percentage of total establishments	30.1	20.1	14.5	7.7	11.2	5.1
area (hectares)	63 541	110 150	132 597	99 646	200 808	129 835
production (tonnes)	69 772	97 212	100 742	65 281	126 892	76 429
percentage of total wheat production	8.0	11.1	11.5	7.5	14.5	8.7

	Area sown (hectares)					Total
	400 to 499	500 to 999	1,000 to 1,499	1,500 to 1,999	2,000 and over	
Barley for grain						
establishments	67	68	16	2	2	3 929
percentage of total establishments	1.7	1.7	0.4	0.1	0.1	100.0
area (hectares)	28 390	44 290	18 764	3 488	4 329	409 785
production (tonnes)	18 930	24 963	7 386	5 377	1 800	291 499
percentage of total wheat production	6.5	8.6	2.5	1.8	0.6	100.0
Grain sorghum for grain						
establishments	29	34	7	4	4	1 103
percentage of total establishments	2.6	3.1	0.6	0.4	0.4	100.0
area (hectares)	12 761	21 953	7 452	6 920	9 200	160 662
production (tonnes)	24 771	46 958	22 270	13 600	13 940	346 633
percentage of total wheat production	7.1	13.5	6.4	3.9	4.0	100.0
Wheat for grain						
establishments	311	388	117	32	39	7 825
percentage of total establishments	4.0	5.0	1.5	0.4	0.5	100.0
area (hectares)	131 654	254 900	134 094	52 445	114 135	1 423 804
production (tonnes)	75 306	125 181	61 477	23 047	53 309	874 648
percentage of total wheat production	8.6	14.3	7.0	2.6	6.1	100.0

17

NUMBER OF ESTABLISHMENTS GROWING CEREALS FOR GRAIN BY STATISTICAL DIVISION, YEAR ENDED 31 MARCH 1995

Statistical division	Barley	Grain Sorghum	Maize	Oats	Rice	Triticale	Wheat
Sydney	—	—	4	1	—	—	2
Hunter	57	74	35	63	—	3	85
Illawarra	—	—	—	3	—	1	1
Richmond-Tweed	12	8	36	3	—	—	1
Mid-North Coast	1	4	54	10	—	—	1
Northern	712	727	76	568	—	11	948
North Western	635	163	26	1 262	—	12	1 385
Central West	957	44	16	1 994	—	147	1 956
South Eastern	60	1	—	575	—	154	306
Murrumbidgee	917	49	47	1 319	580	399	1 882
Murray	576	33	19	899	822	209	1 255
Far West	2	—	—	—	—	—	3
New South Wales							
1995	3 929	1 103	313	6 697	1 402	936	7 825
1994	5 071	689	225	7 179	1 403	844	9 091
1993 ¹	4 773	805	246	7 721	1 229	876	8 562

¹ Figures have been collected on the basis of EVAO \$22,500 and over.

18

CEREAL CROP FORECAST FOR ALL PURPOSES BY STATISTICAL DIVISION, SEASON 1995-96

Statistical division	Area sown or intended to be sown in 1995-96		
	Barley	Oats	Wheat
	'000 ha	'000 ha	'000 ha
Sydney	0.1	0.5	0.1
Hunter	4.8	10.0	15.3
Illawarra	—	0.3	0.3
Richmond-Tweed	0.8	0.9	0.1
Mid-North Coast	0.4	0.8	—
Northern	162.0	94.2	445.8
North Western	96.6	146.4	573.1
Central West	112.0	214.2	367.2
South Eastern	4.2	34.8	40.4
Murrumbidgee	113.2	122.4	310.1
Murray	73.2	71.7	225.5
Far West	1.2	0.1	1.1
New South Wales	568.6	696.2	1 979.0

D. HORTICULTURE

19

NUMBER OF TREES, PRODUCTION AND YIELD¹ FOR CITRUS AND POME FRUIT BY STATISTICAL DIVISION,
YEAR ENDED 31 MARCH 1995

Statistical division	Apples				Lemons and limes			
	Trees under 6 years	Trees 6 years and over	Production	Yield	Trees under 6 years	Trees 6 years and over	Production	Yield
			tonnes	kg/tree			tonnes	kg/tree
Sydney	25 601	49 012	2 166.3	44.2	32 196	77 876	2 374.5	30.5
Hunter	1 195	2 050	88.2	43.0	73	250	11.7	46.8
Illawarra	4 314	13 037	620.7	47.6	45	80	2.5	31.0
Richmond-Tweed	50	—	—	—	2 383	3 084	55.7	18.1
Mid-North Coast	170	40	0.1	2.4	140	524	4.4	8.5
Northern	4 109	30 555	799.4	26.2	300	2	2.1	¹ 1 025.0
North Western	2 236	2 970	41.3	13.9	—	9 645	204.8	21.2
Central West	184 180	590 841	41 302.6	69.9	2	21	0.4	20.5
South Eastern	7 602	11 747	217.2	18.5	44	15	0.6	42.3
Murrumbidgee	301 264	500 083	28 286.1	56.6	3 708	24 518	2 188.4	89.3
Murray	29 471	66 136	5 547.1	83.9	956	19 984	1 383.8	69.2
Far West	—	—	—	—	—	—	—	—
New South Wales								
1995	560 192	1 266 471	79 069.0	62.4	39 847	135 999	6 228.9	45.8
1994	530 716	1 221 073	63 294.8	51.8	45 170	130 233	6 170.0	47.4
1993 ²	536 969	1 126 476	70 226.5	62.3	n.a.	119 062	6 320.9	53.1

Statistical division	Mandarins				Nashi			
	Trees under 6 years	Trees 6 years and over	Production	Yield	Trees under 6 years	Trees 6 years and over	Production	Yield
			tonnes	kg/tree			tonnes	kg/tree
Sydney	5 671	12 321	433.2	35.2	1 198	793	34.1	43.0
Hunter	1 345	4 790	110.5	23.1	—	—	—	—
Illawarra	—	—	—	—	—	755	1.8	2.4
Richmond-Tweed	12 644	6 765	177.2	26.2	—	—	—	—
Mid-North Coast	2 544	1 409	39.8	28.2	15	—	—	—
Northern	—	146	—	0.3	120	95	2.5	26.3
North Western	4 750	2 300	362.0	157.4	—	—	—	—
Central West	—	62	6.8	109.7	3 280	103	79.0	767.0
South Eastern	136	20	2.5	124.2	20 728	10	227.7	¹ 22 770.0
Murrumbidgee	11 962	13 028	541.4	41.6	1 113	4 681	21.8	4.7
Murray	23 456	54 606	2 564.2	47.0	380	2 370	24.1	10.2
Far West	—	20	0.9	46.0	—	—	—	—
New South Wales								
1995	62 508	95 467	4 238.5	44.4	26 834	8 807	391.1	44.4
1994	69 113	99 769	4 386.8	44.0	23 247	5 410	279.1	51.6
1993 ²	83 121	89 586	4 113.2	45.9	45 172	3 064	682.6	222.8

¹ Yield is calculated for trees 6 years and over only. However, the production figure used to calculate yield includes any contribution by trees 6 years and under. In most cases this contribution is relatively insignificant, but in some instances it can distort yield figures.

² Figures have been collected on the basis of EVAO \$22,500 and over.

NUMBER OF TREES, PRODUCTION AND YIELD¹ FOR CITRUS AND POME FRUIT BY STATISTICAL DIVISION.
YEAR ENDED 31 MARCH 1995 - *continued*

Statistical division	Oranges				Pears (excluding nashi)			
	Trees under 6 years	Trees 6 years and over	Production tonnes	Yield kg/tree	Trees under 6 years	Trees 6 years and over	Production tonnes	Yield kg/tree
Sydney	43 384	285 565	12 589.3	44.1	118	580	34.9	60.2
Hunter	912	8 660	221.8	87.5	100	—	—	—
Illawarra	—	1 100	13.0	11.8	35	543	16.7	30.8
Richmond-Tweed	1 439	4 812	26.3	5.5	—	—	—	—
Mid-North Coast	1 686	11 123	658.9	59.2	12	—	—	—
Northern	—	135	—	0.3	616	1 836	37.7	20.5
North Western	58 354	43 827	4 960.8	113.2	—	141	—	2.3
Central West	10	2 740	213.2	77.8	16 191	43 026	2 296.3	53.4
South Eastern	59	8 994	630.5	70.1	1 549	624	36.6	58.7
Murrumbidgee	330 247	1 823 358	129 390.0	70.8	1 650	6 952	288.5	41.5
Murray	183 696	826 028	61 072.9	73.9	400	720	63.1	87.6
Far West	—	2 000	183.0	91.5	—	—	—	—
New South Wales								
1995	619 787	3 018 342	209 959.7	69.6	20 671	54 422	2 774.1	51.0
1994	670 892	3 248 372	242 542.9	74.7	15 621	63 357	3 441.1	54.3
1993 ²	646 519	3 049 701	275 060.8	90.2	28 005	70 007	4 606.7	65.8

¹ Yield is calculated for trees 6 years and over only. However, the production figure used to calculate yield includes any contribution by trees 6 years and under. In most cases this contribution is relatively insignificant, but in some instances it can distort yield figures.

² Figures have been collected on the basis of EVAO \$22,500 and over.

NUMBER OF TREES, PRODUCTION AND YIELD¹ FOR STONE FRUIT BY STATISTICAL DIVISION,
YEAR ENDED 31 MARCH 1995

Statistical division	Apricots				Cherries			
	Trees under 6 years	Trees 6 years and over	Production	Yield	Trees under 6 years	Trees 6 years and over	Production	Yield
			tonnes	kg/tree			tonnes	kg/tree
Sydney	738	552	7.3	13.2	620	1 966	7.9	4.0
Hunter	—	20	0.3	15.0	—	300	—	—
Illawarra	—	20	0.2	10.0	—	477	—	0.1
Richmond-Tweed	—	688	13.3	19.3	—	171	8.2	48.0
Mid-North Coast	—	390	4.1	10.5	25	—	—	—
Northern	1 447	739	8.0	10.8	1 355	3 283	10.1	3.0
North Western	4 210	724	12.0	16.6	4 008	1 585	8.6	5.4
Central West	996	554	11.6	20.9	36 261	42 893	628.9	14.7
South Eastern	5 619	1 819	50.4	27.7	165 560	207 905	1 866.3	9.0
Murrumbidgee	13 557	17 086	554.4	32.4	9 564	9 487	151.3	15.9
Murray	2 633	5 894	124.1	21.0	15 240	1 203	12.2	10.1
Far West	—	456	7.6	16.7	—	—	—	—
New South Wales								
1995	29 200	28 942	793.5	27.4	232 633	269 270	2 695.7	10.0
1994	31 754	28 624	670.5	23.4	252 834	292 260	3 807.1	13.0
1993 ²	27 231	25 606	1 194.4	46.6	240 113	295 394	3 046.4	10.3

Statistical division	Nectarines				Peaches			
	Trees under 6 years	Trees 6 years and over	Production	Yield	Trees under 6 years	Trees 6 years and over	Production	Yield
			tonnes	kg/tree			tonnes	kg/tree
Sydney	39 747	49 096	1 278.4	26.0	64 998	100 067	2 423.2	24.2
Hunter	1 258	3 046	57.6	18.9	3 510	5 411	122.6	22.7
Illawarra	1 443	4 349	84.0	19.3	5 991	11 929	411.4	34.4
Richmond-Tweed	27 587	35 789	660.9	18.5	18 192	27 321	516.0	18.9
Mid-North Coast	1 735	6 895	35.7	5.2	5 217	5 367	56.9	10.6
Northern	1 256	1 164	14.5	12.5	3 186	4 140	81.3	19.6
North Western	6 573	6 851	94.9	13.9	9 246	22 296	355.9	16.0
Central West	51 618	41 052	890.2	21.7	49 168	73 038	1 884.5	25.8
South Eastern	19 880	23 380	322.9	13.8	31 196	42 299	821.8	19.4
Murrumbidgee	63 326	77 152	2 169.4	28.1	46 385	92 876	4 863.7	52.4
Murray	3 850	2 309	91.8	39.8	6 700	9 225	370.6	40.2
Far West	—	—	—	—	—	—	—	—
New South Wales								
1995	218 273	251 083	5 700.2	22.7	243 789	393 969	11 907.8	30.2
1994	246 580	207 663	5 115.7	24.6	281 238	464 607	12 712.1	27.4
1993 ²	268 885	175 554	5 545.6	31.6	308 987	347 479	12 894.0	37.1

¹ Yield is calculated for trees 6 years and over only. However, the production figure used to calculate yield includes any contribution by trees 6 years and under. In most cases this contribution is relatively insignificant, but in some instances it can distort yield figures.

² Figures have been collected on the basis of EVAO \$22,500 and over.

<i>Plums and prunes</i>				
<i>Statistical division</i>	<i>Trees under</i>	<i>Trees 6 years</i>	<i>Production</i>	<i>Yield</i>
	<i>6 years</i>	<i>and over</i>		
			<i>tonnes</i>	<i>kg/tree</i>
Sydney	7 782	35 217	574.0	16.3
Hunter	202	1 032	11.7	11.4
Illawarra	15	1 817	13.8	7.6
Richmond-Tweed	1 304	251	7.7	30.6
Mid-North Coast	100	—	0.7	—
Northern	1 240	1 258	12.3	9.8
North Western	4 556	2 313	49.5	21.4
Central West	51 663	34 880	744.9	21.4
South Eastern	108 588	184 497	2 989.6	16.2
Murrumbidgee	32 893	107 993	3 700.7	34.3
Murray	4 845	2 248	47.3	21.0
Far West	—	—	—	—
New South Wales				
1995	213 188	371 506	8 152.3	21.9
1994	207 095	363 123	13 093.5	36.0
1993²	192 064	322 181	11 924.7	37.0

¹ Yield is calculated for trees 6 years and over only. However, the production figure used to calculate yield includes any contribution by trees 6 years and under. In most cases this contribution is relatively insignificant, but in some instances it can distort yield figures.

² Figures have been collected on the basis of EVAO \$22,500 and over.

NUMBER OF TREES, PRODUCTION AND YIELD¹ FOR OTHER FRUIT AND NUTS BY STATISTICAL DIVISION,
YEAR ENDED 31 MARCH 1995

Statistical division	Almonds				Avocados			
	Trees under 6 years	Trees 6 years and over	Production	Yield	Trees under 6 years	Trees 6 years and over	Production	Yield
			* tonnes	kg/tree			tonnes	kg/tree
Sydney	12	24	0.1	4.5	3 150	1 095	56.2	51.3
Hunter	—	—	—	—	907	1 843	54.5	29.6
Illawarra	—	—	—	—	—	—	—	—
Richmond-Tweed	—	—	—	—	16 896	51 057	1 946.9	38.1
Mid-North Coast	—	—	—	—	15 322	14 903	726.9	48.8
Northern	—	2	—	4.0	—	—	—	—
North Western	152	5	0.2	30.0	6	—	—	—
Central West	—	18	—	2.2	—	—	—	—
South Eastern	100	100	—	—	4	—	—	—
Murrumbidgee	6	7 720	80.2	10.4	27	346	2.9	8.4
Murray	16 012	48	3.7	77.2	5 415	8 180	228.2	27.9
Far West	—	—	—	—	—	—	—	—
New South Wales								
1995	16 282	7 917	84.0	10.6	41 727	77 424	3 015.7	39.0
1994	3 544	8 508	60.6	7.1	47 436	90 528	3 486.8	38.5
1993 ²	5 725	6 129	50.8	8.3	29 925	69 578	2 705.8	38.9

Statistical division	Macadamia nuts				Mangoes			
	Trees under 6 years	Trees 6 years and over	Production	Yield	Trees under 6 years	Trees 6 years and over	Production	Yield
			tonnes	kg/tree			tonnes	kg/tree
Sydney	23 300	4 350	30.3	7.0	—	—	—	—
Hunter	170	1	—	8.4	—	—	—	—
Illawarra	—	80	—	0.5	—	—	—	—
Richmond-Tweed	409 050	578 099	6 421.9	11.1	18 942	14 440	319.9	22.2
Mid-North Coast	12 158	30 399	166.7	5.5	1 757	1 001	20.3	20.3
Northern	—	—	—	—	—	—	—	—
North Western	—	—	—	—	—	—	—	—
Central West	—	—	—	—	—	—	—	—
South Eastern	3	—	—	—	—	—	—	—
Murrumbidgee	55	9 516	87.5	9.2	—	—	—	—
Murray	—	—	—	—	—	12	0.2	16.0
Far West	—	—	—	—	—	—	—	—
New South Wales								
1995	444 736	622 445	6 708.4	10.8	20 699	15 453	340.4	22.0
1994	491 107	498 995	5 363.8	10.7	30 938	14 661	116.9	8.0
1993 ²	446 066	525 767	5 298.0	10.1	23 413	12 156	138.9	11.4

¹ Yield is calculated for trees 6 years and over only. However, the production figure used to calculate yield includes any contribution by trees 6 years and under. In most cases this contribution is relatively insignificant, but in some instances it can distort yield figures.

² Figures have been collected on the basis of EVAO \$22,500 and over.

Statistical division	Bananas				Kiwifruit			
	Area not yet bearing	Area of bearing age	Production	Yield	Area not yet bearing	Area of bearing age	Production	Yield
	ha	ha	* tonnes	t/ha	ha	ha	tonnes	t/ha
Sydney	—	—	—	—	4	36	455.1	12.8
Hunter	2	2	4.6	2.3	—	3	4.5	1.5
Illawarra	—	—	—	—	—	1	3.5	3.5
Richmond-Tweed	197	1 285	17 232.4	13.4	—	3	6.5	2.6
Mid-North Coast	163	1 572	24 667.2	15.6	2	45	268.6	5.9
Northern	—	—	—	—	—	5	18.7	3.7
North Western	—	—	—	—	—	—	—	—
Central West	—	—	—	—	—	—	—	—
South Eastern	—	—	—	—	—	6	30.0	5.0
Murrumbidgee	—	1	2.0	2.0	—	—	—	—
Murray	—	—	—	—	—	—	—	—
Far West	—	—	—	—	—	—	—	—
New South Wales								
1995	365	2 860	41 906.2	14.7	6	98	786.9	8.0
1994	867	2 992	44 704.0	14.9	14	88	849.5	9.6
1993 ¹	788	3 178	45 409.2	14.3	12	109	1 286.8	11.8

Statistical division	Papaws				Strawberries			
	Area not yet bearing	Area of bearing age	Production	Yield	Area not yet bearing	Area of bearing age	Production	Yield
	ha	ha	tonnes	t/ha	ha	ha	tonnes	t/ha
Sydney	—	—	—	—	8	13	115.3	8.9
Hunter	—	—	—	—	—	1	13.6	11.4
Illawarra	—	—	—	—	1	4	11.0	2.8
Richmond-Tweed	4	9	70.3	8.3	—	3	14.6	5.8
Mid-North Coast	1	—	—	—	1	—	4.0	10.0
Northern	—	—	—	—	—	4	9.5	2.3
North Western	—	—	—	—	1	—	1.2	6.0
Central West	—	—	—	—	—	2	7.0	4.7
South Eastern	—	—	—	—	—	2	2.3	1.1
Murrumbidgee	—	—	—	—	—	2	5.4	3.6
Murray	—	—	—	—	—	2	7.2	4.8
Far West	—	—	—	—	—	—	—	—
New South Wales								
1995	5	9	70.3	8.3	10	32	191.1	6.0
1994	9	5	19.5	3.9	40	34	237.6	6.9
1993 ¹	12	8	31.7	4.1	16	42	430.2	10.4

¹ Figures have been collected on the basis of EVAO \$22,500 and over.

23

GROSS VALUE OF CITRUS, POME AND OTHER FRUIT, YEARS ENDED 31 MARCH 1993 TO 1995p

	1993 ¹	1994	1995p
	\$m	\$m	\$m
Apples	47.0	38.8	43.7
Apricots	0.9	1.9	2.0
Avocados	4.8	5.7	9.3
Bananas	56.1	47.3	57.2
Cherries	11.5	15.7	17.5
Grapefruit	2.6	2.3	n.a.
Grapes	79.3	90.5	107.3
Lemons and limes	7.4	7.6	5.1
Mandarins	3.9	5.4	7.2
Mangoes	0.6	0.5	0.4
Nectarines	12.1	12.8	14.9
Oranges	75.9	79.0	80.2
Passionfruit	1.4	1.6	n.a.
Peaches	14.5	16.5	17.4
Pears	2.4	1.7	1.3
Plums and prunes	18.8	20.3	20.7
Strawberries	2.6	1.4	1.4
Other, including nuts	28.9	21.5	42.7
Total	371.1	369.9	428.3

¹ Figures have been collected on the basis of EVAO \$22,500 and over.

24

AREA OF VINES AND PRODUCTION OF GRAPES¹ BY STATISTICAL DIVISION, YEAR ENDED 31 MARCH 1995

Statistical division	Area of vines at harvest			Grape production			
	Not yet bearing (planted or grafted)		Bearing	Wine- making	Drying	Table and other	Total
	Planted or grafted prior to collection year	During collection year					
	ha	ha	ha	tonnes	tonnes	tonnes	tonnes
Sydney	—	6.2	39.1	58.6	—	31.5	90.1
Hunter	98.3	181.2	2 667.0	12 067.3	—	8.4	12 075.7
Illawarra	—	—	8.5	23.0	—	—	23.0
Richmond-Tweed	0.5	—	1.4	—	—	0.6	0.6
Mid-North Coast	3.0	2.0	71.5	451.5	—	—	451.5
Northern	0.9	—	75.0	194.0	—	3.1	197.1
North Western	52.6	62.2	798.3	4 132.6	—	443.4	4 576.0
Central West	22.0	30.2	426.6	5 298.1	—	52.9	5 351.0
South Eastern	11.1	6.0	170.4	656.3	—	0.2	656.5
Murrumbidgee	332.4	471.5	4 545.3	59 107.4	—	80.5	59 187.9
Murray	203.2	318.0	3 568.0	22 220.5	25 823.4	5 939.8	53 983.7
Far West	4.7	4.8	255.3	478.0	—	1 879.0	2 357.0
New South Wales							
1995	728.7	1 082.1	12 626.4	104 687.3	25 823.4	8 439.4	138 950.1
1994	487.4	545.9	13 288.4	141 145.1	37 671.0	8 668.7	187 484.8
1993 ²	362.4	326.4	11 992.0	139 336.0	28 081.6	7 195.3	174 612.9

¹ Varietal information is available in *Australian Wine and Grape Industry*, ABS Cat. No. 1329.0.

² Figures have been collected on the basis of EVAO \$22,500 and over.

	Units	1993 ¹	1994	1995
Asparagus²				
area	ha	387.8	424.2	361.7
production	t	2 038.7	2 524.5	2 300.9
Beans - French and runner				
area	ha	506.0	424.7	414.9
production	t	1 463.9	1 198.3	1 245.3
yield	t/ha	2.9	2.8	3.0
Beetroot				
area	ha	36.0	42.8	27.1
production	t	1 280.3	1 373.8	498.6
yield	t/ha	35.6	32.1	18.4
Broccoli				
area	ha	322.7	310.6	408.3
production	t	1 577.6	1 444.1	2 159.0
yield	t/ha	4.9	4.6	5.3
Brussel sprouts				
area	ha	9.5	12.0	10.1
production	t	156.4	168.5	142.2
yield	t/ha	16.5	14.0	14.1
Cabbages				
area	ha	531.3	484.4	431.1
production	t	13 071.4	14 675.0	12 534.6
yield	t/ha	24.6	30.3	29.1
Capsicum, chillies and peppers				
area	ha	71.3	98.5	87.9
production	t	816.5	1 055.2	927.7
yield	t/ha	11.5	10.7	10.6
Carrots				
area	ha	586.4	666.6	1 448.2
production	t	13 572.0	16 457.9	26 137.4
yield	t/ha	23.1	24.7	18.0
Cauliflower				
area	ha	662.6	539.3	535.2
production	t	12 841.4	12 851.7	10 524.2
yield	t/ha	19.4	23.8	19.7
Celery				
area	ha	7.0	7.2	12.1
production	t	190.0	285.5	381.7
yield	t/ha	27.1	39.7	31.5
Chinese cabbages				
area	ha	9.7	5.5	15.5
production	t	344.0	64.0	480.3
yield	t/ha	35.5	11.6	31.0
Cucumber				
area	ha	87.4	98.0	385.6
production	t	658.2	777.8	3 961.5
yield	t/ha	7.5	7.9	10.3
Green peas (pod weight)				
area	ha	592.4	715.0	752.7
production	t	3 379.3	3 194.0	2 374.4
yield	t/ha	5.7	4.5	3.2
Leeks				
area	ha	7.9	3.2	6.5
production	t	115.2	19.8	35.3
yield	t/ha	14.6	6.2	5.4
Lettuces				
area	ha	488.2	481.7	443.5
production	t	6 530.2	7 590.7	7 641.9
yield	t/ha	13.4	15.8	17.2
Marrows and squashes				
area	ha	28.7	n.a.	35.8
production	t	175.1	356.0	151.5
yield	t/ha	6.1	n.a.	4.2

¹ Figures have been collected on the basis of EVAO \$22,500 and over.² Asparagus is a perennial crop and as such yield cannot be calculated meaningfully.

	Units	1993 ¹	1994	1995
Melons - water				
area	ha	331.7	509.5	329.3
production	t	5 740.9	13 935.1	5 147.9
yield	t/ha	17.3	27.4	15.6
Melons - rock and cantaloupe				
area	ha	715.0	872.0	538.9
production	t	13 366.9	18 932.7	11 640.9
yield	t/ha	18.7	21.7	21.6
Mushrooms				
area	ha	47.4	59.8	57.9
production	t	10 020.4	10 740.1	12 508.3
yield	t/ha	211.4	179.6	216.0
Onions - white and brown				
area	ha	944.1	1 067.6	750.7
production	t	24 125.7	24 806.0	12 010.0
yield	t/ha	25.6	23.2	16.0
Parsley				
area	ha	26.2	33.1	29.4
production	t	1 026.1	1 034.0	1 068.2
yield	t/ha	39.2	31.2	36.3
Parsnips				
area	ha	45.0	63.1	50.6
production	t	n.a.	1 284.2	1 065.6
yield	t/ha	n.a.	20.4	21.1
Potatoes				
area	ha	6 486.9	6 552.1	6 274.0
production	t	137 444.2	138 675.5	126 812.0
yield	t/ha	21.2	21.2	20.2
Pumpkins				
area	ha	1 238.1	1 558.0	1 228.4
production	t	14 847.2	22 750.9	18 152.9
yield	t/ha	12.0	14.6	14.8
Snow peas				
area	ha	24.1	33.0	36.5
production	t	59.4	68.9	56.3
yield	t/ha	2.5	2.1	1.5
Spring onions				
area	ha	27.8	32.8	32.1
production	t	925.5	995.7	840.7
yield	t/ha	33.3	30.4	26.2
Swedes				
area	ha	73.0	93.9	80.9
production	t	1 585.7	839.5	969.8
yield	t/ha	21.7	8.9	12.0
Sweet corn				
area	ha	2 153.7	3 191.0	3 137.2
production	t	27 875.4	46 470.9	44 134.3
yield	t/ha	12.9	14.6	14.1
Sweet potatoes				
area	ha	122.8	131.2	145.6
production	t	1 674.4	1 876.5	2 468.3
yield	t/ha	13.6	14.3	17.0
Tomatoes				
area	ha	1 422.5	2 119.9	2 053.4
production	t	54 640.3	89 570.3	85 323.2
yield	t/ha	37.9	42.3	41.6
Zucchini				
area	ha	195.5	224.0	196.9
production	t	1 397.9	1 596.6	1 509.9
yield	t/ha	7.2	7.1	7.7

¹ Figures have been collected on the basis of EVAO \$22,500 and over.

	Units	Sydney	Hunter	Illawarra	Richmond-Tweed	Mid-North Coast	Northern
Asparagus ¹							
area	ha	5.0	—	5.2	—	—	—
production	t	3.5	—	0.2	—	—	—
Beans - French and runner							
area	ha	29.6	7.8	18.1	22.0	171.2	12.1
production	t	49.4	12.6	9.4	107.9	551.5	16.6
yield	t/ha	1.7	1.6	0.5	4.9	3.2	1.4
Beetroot							
area	ha	6.3	2.5	—	—	0.3	—
production	t	144.4	—	—	—	4.2	—
yield	t/ha	22.9	—	—	—	14.0	—
Broccoli							
area	ha	102.7	8.1	—	0.1	10.5	52.1
production	t	466.6	26.6	—	0.6	13.4	135.2
yield	t/ha	4.5	3.3	—	6.0	1.3	2.6
Brussel sprouts							
area	ha	—	0.1	—	—	—	—
production	t	—	0.2	—	—	—	—
yield	t/ha	—	2.0	—	—	—	—
Cabbages							
area	ha	217.5	51.4	0.5	0.1	9.3	27.4
production	t	6 421.9	1 232.4	10.0	1.0	173.5	1 007.4
yield	t/ha	29.5	24.0	20.0	10.0	18.7	36.8
Capsicum, chillies and peppers							
area	ha	41.2	2.9	0.2	6.3	0.9	0.5
production	t	389.4	19.3	0.1	49.8	3.9	—
yield	t/ha	9.4	6.7	0.5	7.9	4.3	—
Carrots							
area	ha	64.6	66.0	9.0	0.1	0.3	31.0
production	t	1 383.6	2 006.3	205.0	0.2	3.0	500.5
yield	t/ha	21.4	30.4	22.8	2.0	10.0	16.1
Cauliflower							
area	ha	183.4	74.6	0.5	0.1	12.1	30.6
production	t	3 888.6	1 681.0	6.0	0.6	277.0	593.5
yield	t/ha	21.2	22.5	12.0	6.0	22.9	19.4
Celery							
area	ha	10.0	—	—	—	2.0	—
production	t	320.0	—	—	—	58.5	—
yield	t/ha	32.0	—	—	—	29.3	—
Chinese cabbages							
area	ha	15.5	—	—	—	—	—
production	t	480.3	—	—	—	—	—
yield	t/ha	31.0	—	—	—	—	—
Cucumber							
area	ha	45.7	9.1	—	1.1	14.4	2.6
production	t	342.2	33.4	—	3.4	145.9	9.3
yield	t/ha	7.5	3.7	—	3.1	10.1	3.6
Green peas (pod weight)							
area	ha	7.9	0.1	25.0	23.4	30.2	5.5
production	t	9.0	0.3	10.4	50.6	34.7	11.5
yield	t/ha	1.1	3.0	0.4	2.2	1.1	2.1
Leeks							
area	ha	5.5	—	—	—	—	1.0
production	t	26.6	—	—	—	—	8.7
yield	t/ha	4.8	—	—	—	—	8.7
Lettuces							
area	ha	229.4	24.5	—	7.6	10.2	—
production	t	4 193.9	341.3	—	340.8	335.2	—
yield	t/ha	18.3	13.9	—	44.8	32.9	—
Marrows and squashes							
area	ha	13.7	0.9	0.1	2.4	4.3	3.4
production	t	36.1	3.4	0.1	7.0	9.8	12.3
yield	t/ha	2.6	3.8	1.0	2.9	2.3	3.6

¹ Asparagus is a perennial crop and as such yield cannot be calculated meaningfully.

	Units	North Western	Central West	South Eastern	Murrumbidgee	Murray	Far West
Asparagus ¹							
area	ha	16.0	174.2	105.3	36.5	19.5	—
production	t	47.0	762.7	1 300.9	176.0	10.6	—
Beans - French and runner							
area	ha	0.3	25.0	23.0	0.1	105.7	—
production	t	0.9	30.0	55.4	0.1	411.4	—
yield	t/ha	3.0	1.2	2.4	1.0	3.9	—
Beetroot							
area	ha	—	18.0	—	—	—	—
production	t	—	350.0	—	—	—	—
yield	t/ha	—	19.4	—	—	—	—
Broccoli							
area	ha	13.0	104.1	10.2	58.0	48.3	1.2
production	t	84.7	629.7	55.2	315.4	426.0	5.5
yield	t/ha	6.5	6.0	5.4	5.4	8.8	4.6
Brussel sprouts							
area	ha	—	10.0	—	—	—	—
production	t	—	142.0	—	—	—	—
yield	t/ha	—	14.2	—	—	—	—
Cabbages							
area	ha	8.7	102.0	2.1	7.5	3.0	1.6
production	t	69.8	3 184.2	82.0	249.5	44.0	58.9
yield	t/ha	8.0	31.2	39.0	33.3	14.7	36.8
Capsicum, chillies and peppers							
area	ha	5.7	0.2	0.4	4.5	25.1	—
production	t	60.9	2.6	10.6	15.6	375.5	—
yield	t/ha	10.7	13.0	26.5	3.5	15.0	—
Carrots							
area	ha	0.6	1.0	22.1	1 040.1	213.0	0.4
production	t	8.0	40.0	94.6	19 745.2	2 142.0	9.0
yield	t/ha	13.3	40.0	4.3	19.0	10.1	22.5
Cauliflower							
area	ha	9.0	203.4	4.1	15.3	0.5	1.6
production	t	63.0	3 771.3	151.0	46.7	11.5	34.0
yield	t/ha	7.0	18.5	36.8	3.1	23.0	21.3
Celery							
area	ha	—	—	—	—	0.1	—
production	t	—	—	—	—	3.2	—
yield	t/ha	—	—	—	—	32.0	—
Chinese cabbages							
area	ha	—	—	—	—	—	—
production	t	—	—	—	—	—	—
yield	t/ha	—	—	—	—	—	—
Cucumber							
area	ha	2.3	2.1	0.2	301.1	6.7	0.3
production	t	11.0	20.8	0.7	3 308.8	83.5	2.4
yield	t/ha	4.8	9.9	3.5	11.0	12.5	8.0
Green peas (pod weight)							
area	ha	96.0	199.0	7.1	356.3	2.2	—
production	t	403.0	694.4	2.8	1 150.7	7.1	—
yield	t/ha	4.2	3.5	0.4	3.2	3.2	—
Leeks							
area	ha	—	—	—	—	—	—
production	t	—	—	—	—	—	—
yield	t/ha	—	—	—	—	—	—
Lettuces							
area	ha	53.3	16.5	3.0	83.3	13.3	2.4
production	t	1 042.1	147.0	50.0	1 041.2	117.0	33.4
yield	t/ha	19.6	8.9	16.7	12.5	8.8	13.9
Marrows and squashes							
area	ha	0.2	6.7	0.2	1.0	2.7	0.2
production	t	1.3	60.5	2.5	3.2	14.7	0.6
yield	t/ha	6.5	9.0	12.5	3.2	5.4	3.0

¹ Asparagus is a perennial crop and as such yield cannot be calculated meaningfully.

	Units	Sydney	Hunter	Illawarra	Richmond-Tweed	Mid-North Coast	Northern
Melons - water							
area	ha	65.1	18.2	—	7.0	22.4	36.8
production	t	826.7	226.7	—	112.9	408.8	309.2
yield	t/ha	12.7	12.5	—	16.1	18.3	8.4
Melons - rock and cantaloupe							
area	ha	4.0	4.5	—	0.7	2.1	30.1
production	t	47.5	15.1	—	5.0	10.0	1.7
yield	t/ha	11.9	3.4	—	7.1	4.8	0.1
Mushrooms							
area	ha	50.3	1.0	4.9	0.2	0.8	—
production	t	10 505.8	250.0	1 120.4	103.8	256.0	—
yield	t/ha	208.9	250.0	228.7	519.0	320.0	—
Onions - white and brown							
area	ha	—	0.9	—	2.5	0.1	13.0
production	t	—	6.9	—	15.0	—	250.0
yield	t/ha	—	7.7	—	6.0	—	19.2
Parsley							
area	ha	28.2	0.3	—	0.3	0.4	—
production	t	1 055.9	9.5	—	0.7	0.9	—
yield	t/ha	37.4	31.7	—	2.3	2.3	—
Parsnips							
area	ha	2.2	—	—	0.4	—	1.0
production	t	10.5	—	—	8.5	—	41.1
yield	t/ha	4.8	—	—	21.3	—	41.1
Potatoes							
area	ha	231.2	176.9	232.6	23.5	599.8	304.9
production	t	4 998.8	4 099.5	5 757.1	575.0	13 477.0	5 978.3
yield	t/ha	21.6	23.2	24.8	24.5	22.5	19.6
Pumpkins							
area	ha	88.6	110.3	3.0	15.7	22.9	104.6
production	t	983.2	1 272.9	20.4	89.5	137.7	1 339.0
yield	t/ha	11.1	11.5	6.8	5.7	6.0	12.8
Snow peas							
area	ha	11.0	—	—	—	6.2	9.1
production	t	14.9	—	—	—	9.0	7.9
yield	t/ha	1.4	—	—	—	1.5	0.9
Spring onions							
area	ha	18.2	1.8	—	—	0.1	1.0
production	t	798.1	1.6	—	—	0.3	7.5
yield	t/ha	43.9	0.9	—	—	3.0	7.5
Swedes							
area	ha	5.6	0.5	12.7	—	0.1	39.0
production	t	65.0	0.3	273.5	—	2.0	180.0
yield	t/ha	11.6	0.6	21.5	—	20.0	4.6
Sweet corn							
area	ha	69.8	5.9	1.0	4.2	12.2	128.0
production	t	263.7	9.0	3.0	33.6	155.6	1 830.4
yield	t/ha	3.8	1.5	3.0	8.0	12.8	14.3
Sweet potatoes							
area	ha	6.0	—	—	135.6	—	—
production	t	30.0	—	—	2 381.1	—	—
yield	t/ha	5.0	—	—	17.6	—	—
Tomatoes							
area	ha	129.2	10.0	5.3	34.0	16.9	81.8
production	t	2 210.5	365.5	21.6	944.5	284.6	3 414.0
yield	t/ha	17.1	36.6	4.1	27.8	16.8	41.7
Zucchini							
area	ha	44.9	2.5	0.5	73.5	10.5	9.4
production	t	267.1	7.6	—	664.6	28.4	43.7
yield	t/ha	5.9	3.0	—	9.0	2.7	4.6

	Units	North Western	Central West	South Eastern	Murrumbidgee	Murray	Far West
Melons - water							
area	ha	8.6	29.1	0.1	115.2	26.5	0.3
production	t	103.0	478.2	2.1	2 128.6	545.5	6.2
yield	t/ha	12.0	16.4	21.0	18.5	20.6	20.7
Melons - rock and cantaloupe							
area	ha	31.7	1.0	—	371.0	93.4	0.4
production	t	470.7	8.7	—	8 575.0	2 500.3	6.9
yield	t/ha	14.8	8.7	—	23.1	26.8	17.3
Mushrooms							
area	ha	0.2	0.4	0.1	—	—	—
production	t	55.3	66.0	151.1	—	—	—
yield	t/ha	276.5	165.0	1 511.0	—	—	—
Onions - white and brown							
area	ha	55.0	1.4	0.2	433.6	242.5	1.5
production	t	845.0	34.9	5.6	9 165.1	1 650.0	37.4
yield	t/ha	15.4	24.9	28.0	21.1	6.8	24.9
Parsley							
area	ha	—	—	0.2	—	—	—
production	t	—	—	1.2	—	—	—
yield	t/ha	—	—	6.0	—	—	—
Parsnips							
area	ha	—	—	—	47.0	—	—
production	t	—	—	—	1 005.5	—	—
yield	t/ha	—	—	—	21.4	—	—
Potatoes							
area	ha	16.5	198.8	121.4	1 895.9	2 472.1	—
production	t	420.0	4 502.0	2 893.1	35 503.0	48 609.0	—
yield	t/ha	25.5	22.6	23.8	18.7	19.7	—
Pumpkins							
area	ha	26.2	52.5	5.6	507.7	289.7	1.6
production	t	340.5	686.0	25.5	8 049.4	5 188.0	20.8
yield	t/ha	13.0	13.1	4.6	15.9	17.9	13.0
Snow peas							
area	ha	3.0	6.0	0.2	—	1.0	—
production	t	15.0	7.0	1.0	—	1.6	—
yield	t/ha	5.0	1.2	5.0	—	1.6	—
Spring onions							
area	ha	1.1	1.0	—	—	8.6	0.3
production	t	5.2	1.0	—	—	19.0	7.9
yield	t/ha	4.7	1.0	—	—	2.2	26.3
Swedes							
area	ha	—	6.0	—	17.0	—	—
production	t	—	54.0	—	395.0	—	—
yield	t/ha	—	9.0	—	23.2	—	—
Sweet corn							
area	ha	1 447.0	1 066.0	1.0	317.4	84.7	—
production	t	20 333.0	17 004.2	1.0	4 400.3	100.5	—
yield	t/ha	14.1	16.0	1.0	13.9	1.2	—
Sweet potatoes							
area	ha	—	—	—	—	—	4.0
production	t	—	—	—	—	—	57.2
yield	t/ha	—	—	—	—	—	14.3
Tomatoes							
area	ha	115.0	193.1	0.6	543.4	923.8	0.3
production	t	3 380.0	7 163.5	12.0	26 765.2	40 749.6	12.2
yield	t/ha	29.4	37.1	20.0	49.3	44.1	40.7
Zucchini							
area	ha	0.4	11.8	16.0	—	27.0	0.4
production	t	6.2	77.4	205.1	—	207.2	2.8
yield	t/ha	15.5	6.6	12.8	—	7.7	7.0

27

GROSS VALUE OF VEGETABLES FOR HUMAN CONSUMPTION, YEARS ENDED 31 MARCH 1993 TO 1995p

	1993 ¹	1994	1995p
	\$m	\$m	\$m
Asparagus	9.7	14.7	17.4
Beans - French and runner	2.2	1.7	2.3
Beetroot	0.2	0.2	0.4
Broccoli	1.9	2.2	4.5
Cabbages and brussels sprouts	2.4	2.8	3.9
Capsicum, chillies and peppers	1.1	1.0	1.1
Carrots	4.5	3.2	7.9
Cauliflower	4.6	4.2	6.0
Celery	0.1	0.1	0.2
Cucumbers	0.3	0.4	0.5
Green peas (pod weight)	0.9	1.5	1.2
Leeks	0.1	—	—
Lettuces	4.8	4.9	8.2
Marrows and squashes	0.1	0.3	0.2
Melons - water	1.5	3.9	2.5
Melons - rock and cantaloupe	8.1	11.0	9.6
Mushrooms	30.0	33.3	38.2
Onions - white and brown	8.0	11.6	6.7
Parsley	2.7	3.7	1.7
Parsnips	3.7	1.1	0.8
Potatoes	42.4	36.6	40.8
Pumpkins	3.3	6.2	4.0
Swedes	0.5	0.3	0.3
Sweet corn	6.4	8.7	6.6
Sweet potatoes	1.4	1.0	3.4
Tomatoes	16.9	19.9	12.1
Zucchini	1.3	1.7	1.7
Other vegetables	5.0	5.6	4.6
Total	164.3	181.9	186.8

¹ Figures have been collected on the basis of EVAD \$22,500 and over.

28

AREA OF NURSERIES, CUT FLOWERS AND CULTIVATED TURF BY STATISTICAL DIVISION, YEAR ENDED 31 MARCH 1995

	Nurseries	Cut flowers	Cultivated turf	Total
Statistical division	ha	ha	ha	ha
Sydney	479.3	366.9	999.8	1 846.0
Hunter	44.0	41.6	127.6	213.2
Illawarra	90.1	29.2	154.0	273.3
Richmond-Tweed	153.9	26.9	139.8	320.6
Mid-North Coast	80.3	145.8	115.0	341.1
Northern	19.1	2.0	58.3	79.4
North Western	62.6	3.0	4.0	69.6
Central West	28.6	7.5	41.8	77.9
South Eastern	41.5	17.3	27.0	85.8
Murrumbidgee	32.6	6.1	20.0	58.7
Murray	50.7	17.8	30.0	98.5
Far West	—	—	—	—
New South Wales	1 082.7	664.1	1 717.3	3 464.1

E. LIVESTOCK AND LIVESTOCK PRODUCTS

29

MEAT CATTLE NUMBERS BY STATISTICAL DIVISION, AT 31 MARCH 1995

<i>Statistical division</i>	<i>Bulls and bull calves intended for service</i>	<i>Cows and heifers one year and over</i>	<i>Heifer and other calves under one year</i>	<i>Other cattle one year and over</i>	<i>Total meat cattle</i>	<i>Percentage of total meat cattle herd</i>
	'000	'000	'000	'000	'000	%
Sydney	1.0	16.9	9.2	6.7	33.8	0.6
Hunter	11.7	251.6	146.3	112.5	522.1	8.9
Illawarra	1.6	31.3	20.1	11.3	64.3	1.1
Richmond-Tweed	6.8	166.9	74.7	27.9	276.4	4.7
Mid-North Coast	8.4	177.4	97.9	69.8	353.5	6.0
Northern	35.0	797.7	475.9	329.0	1 637.5	27.9
North Western	15.6	396.3	248.2	183.4	843.6	14.4
Central West	12.0	267.5	181.7	114.0	575.2	9.8
South Eastern	13.0	249.4	157.7	59.1	479.2	8.2
Murrumbidgee	9.8	265.6	144.0	92.4	511.8	8.7
Murray	10.8	243.6	149.6	84.1	488.1	8.3
Far West	1.5	45.4	22.3	12.1	81.4	1.4
New South Wales						
1995	127.2	2 909.7	1 727.6	1 102.3	5 866.8	100.0
1994	135.2	3 242.7	1 688.8	1 060.5	6 127.1	100.0

30

NUMBER OF ESTABLISHMENTS WITH MEAT CATTLE BY STATISTICAL DIVISION, AT 31 MARCH 1995

<i>Statistical division</i>	<i>Bulls and bull calves intended for service</i>	<i>Cows and heifers one year and over</i>	<i>Heifer and other calves under one year</i>	<i>Other cattle one year and over</i>	<i>Total establishments with meat cattle</i>	<i>Percentage of total meat cattle establishments</i>
Sydney	351	420	396	233	512	1.8
Hunter	1 980	2 092	2 024	1 485	2 397	8.5
Illawarra	502	550	532	299	652	2.3
Richmond-Tweed	1 870	1 915	1 819	744	2 121	7.5
Mid-North Coast	1 907	1 992	1 917	1 289	2 294	8.2
Northern	4 492	4 939	4 702	3 584	5 441	19.4
North Western	2 670	2 953	2 825	2 153	3 209	11.4
Central West	2 738	3 121	2 962	2 193	3 532	12.6
South Eastern	2 337	2 710	2 577	1 627	3 009	10.7
Murrumbidgee	1 898	2 120	1 996	1 352	2 347	8.3
Murray	1 837	2 093	1 966	1 485	2 403	8.5
Far West	183	189	182	130	198	0.7
New South Wales						
1995	22 765	25 094	23 898	16 574	28 115	100.0
1994	22 638	25 390	23 020	14 218	28 073	100.0

<i>Herd size</i>	<i>1994r</i>		<i>1995</i>	
	<i>Number of establishments</i>	<i>Percentage of meat cattle establishments</i>	<i>Number of establishments</i>	<i>Percentage of meat cattle establishments</i>
		<i>%</i>		<i>%</i>
1 to 29	4 590	16.4	4 582	16.3
30 to 49	2 941	10.5	3 050	10.8
50 to 69	2 581	9.2	2 799	10.0
70 to 99	3 215	11.5	3 291	11.7
100 to 149	3 721	13.3	3 693	13.1
150 to 199	2 485	8.9	2 556	9.1
200 to 299	3 123	11.1	3 022	10.7
300 to 399	1 700	6.1	1 638	5.8
400 to 499	991	3.5	985	3.5
500 to 699	1 172	4.2	1 060	3.8
700 to 999	785	2.8	731	2.6
1,000 to 1,499	442	1.6	398	1.4
1,500 to 1,999	145	0.5	151	0.5
2,000 to 4,999	149	0.5	130	0.5
5,000 to 9,999	26	0.1	21	0.1
10,000 and over	7	—	8	—
Total	28 073	100.0	28 115	100.0

<i>Herd size</i>	<i>1994</i>		<i>1995</i>	
	<i>Number of meat cattle</i>	<i>Percentage of total meat cattle</i>	<i>Number of meat cattle</i>	<i>Percentage of total meat cattle</i>
	<i>'000</i>	<i>%</i>	<i>'000</i>	<i>%</i>
1 to 29	64.8	1.1	67.2	1.1
30 to 49	114.9	1.9	119.7	2.0
50 to 69	151.4	2.5	164.2	2.8
70 to 99	268.3	4.4	274.3	4.7
100 to 149	453.7	7.4	449.2	7.7
150 to 199	428.1	7.0	440.6	7.5
200 to 299	754.8	12.3	734.7	12.5
300 to 399	583.8	9.5	562.8	9.6
400 to 499	440.2	7.2	438.6	7.5
500 to 699	686.2	11.2	622.8	10.6
700 to 999	648.7	10.6	602.0	10.3
1,000 to 1,499	536.0	8.7	473.3	8.1
1,500 to 1,999	250.0	4.1	255.6	4.4
2,000 to 4,999	422.0	6.9	362.8	6.2
5,000 to 9,999	180.2	2.9	150.0	2.6
10,000 and over	144.0	2.4	149.0	2.5
Total	6 127.1	100.0	5 866.8	100.0

MILK CATTLE NUMBERS BY STATISTICAL DIVISION, AT 31 MARCH 1995

Statistical division	Cows in milk and dry	Other milk cattle	Total milk cattle ¹	Percentage of total milk cattle herd
	'000	'000	'000	%
Sydney	12.3	7.2	19.5	5.3
Hunter	42.8	26.3	69.1	18.7
Illawarra	27.3	18.0	45.2	12.2
Richmond-Tweed	27.0	14.4	41.4	11.2
Mid-North Coast	45.1	23.7	68.8	18.6
Northern	6.8	4.7	11.5	3.1
North Western	3.3	2.9	6.2	1.7
Central West	6.6	4.2	10.8	2.9
South Eastern	26.7	15.1	41.8	11.3
Murrumbidgee	4.0	2.7	6.7	1.8
Murray	28.5	20.0	48.5	13.1
Far West	—	—	—	—
New South Wales				
1995	230.5	139.1	369.6	100.0
1994	231.6	132.3	363.9	100.0

¹ Excludes house cows and heifers.

NUMBER OF ESTABLISHMENTS¹ WITH MILK CATTLE BY TYPE BY STATISTICAL DIVISION, AT 31 MARCH 1995

Statistical division	Cows in milk and dry	Other milk cattle	Total establishments with milk cattle
	Sydney	71	71
Hunter	431	451	485
Illawarra	229	232	250
Richmond-Tweed	261	267	293
Mid-North Coast	496	483	518
Northern	101	91	132
North Western	57	49	72
Central West	78	73	104
South Eastern	185	173	203
Murrumbidgee	61	53	73
Murray	199	222	254
Far West	—	—	—
New South Wales			
1995	2 169	2 165	2 462
1994	2 014	2 257	2 393

¹ Excludes establishments with house cows and heifers only.

<i>Herd size</i>	1994		1995	
	<i>Number of establishments</i>	<i>Percentage of milk cattle establishments</i>	<i>Number of establishments</i>	<i>Percentage of milk cattle establishments</i>
		%		%
1 to 49	464	19.4	559	22.7
50 to 99	462	19.3	436	17.7
100 to 149	498	20.8	476	19.3
150 to 199	343	14.3	347	14.1
200 to 249	243	10.2	236	9.6
250 to 299	136	5.7	139	5.6
300 to 349	97	4.1	109	4.4
350 to 399	54	2.3	59	2.4
400 to 499	52	2.2	45	1.8
500 and over	44	1.8	56	2.3
Total	2 393	100.0	2 462	100.0

<i>Herd size</i>	1994		1995	
	<i>Number of milk cattle</i>	<i>Percentage of total milk cattle</i>	<i>Number of milk cattle</i>	<i>Percentage of total milk cattle</i>
	'000	%	'000	%
1 to 49	9.3	2.6	12.2	3.3
50 to 99	35.0	9.6	32.3	8.7
100 to 149	60.5	16.6	58.1	15.7
150 to 199	58.8	16.2	59.2	16.0
200 to 249	53.7	14.8	52.0	14.1
250 to 299	36.8	10.1	37.6	10.2
300 to 349	30.9	8.5	34.7	9.4
350 to 399	20.1	5.5	21.6	5.8
400 to 499	22.9	6.3	19.6	5.3
500 and over	35.9	9.9	42.2	11.4
Total	363.9	100.0	369.6	100.0

¹ Excludes establishments with house cows and heifers only.

35

NUMBER OF SHEEP AND LAMBS BY STATISTICAL DIVISION, AT 31 MARCH 1995

Statistical division	Sheep ¹	Lambs and hoggets	Total sheep	Percentage of total
	(1 year and over)	(under 1 year)	and lambs	sheep flock
	'000	'000	'000	%
Sydney	21.4	4.0	25.4	0.1
Hunter	395.4	64.5	459.9	1.1
Illawarra	14.8	4.3	19.1	—
Richmond-Tweed	3.4	0.8	4.1	—
Mid-North Coast	4.0	0.7	4.7	—
Northern	5 264.5	1 176.1	6 440.6	15.0
North Western	6 827.3	1 864.5	8 691.8	20.3
Central West	5 669.2	1 707.4	7 376.6	17.2
South Eastern	5 178.2	1 480.9	6 659.1	15.5
Murrumbidgee	4 328.6	1 436.1	5 764.6	13.4
Murray	3 616.2	1 296.8	4 913.0	11.5
Far West	1 958.2	557.1	2 515.2	5.9
New South Wales				
1995	33 281.3	9 593.0	42 874.3	100.0
1994	35 695.3	10 836.2	46 531.5	100.0

¹ Sheep 1 year and over including rams, ewes and wethers.

36

NUMBER OF ESTABLISHMENTS WITH SHEEP AND LAMBS BY STATISTICAL DIVISION, AT 31 MARCH 1995

Statistical division	Sheep ¹	Lambs and hoggets	Total establishments
	(1 year and over)	(under 1 year)	with sheep and lambs
Sydney	52	26	54
Hunter	344	248	362
Illawarra	53	35	63
Richmond-Tweed	35	23	40
Mid-North Coast	50	24	55
Northern	3 205	2 560	3 332
North Western	3 046	2 485	3 118
Central West	4 008	3 302	4 129
South Eastern	2 970	2 437	3 041
Murrumbidgee	2 814	2 336	2 914
Murray	2 142	1 770	2 248
Far West	267	214	267
New South Wales			
1995	18 986	15 460	19 623
1994	20 001	15 995	20 270

¹ Sheep 1 year and over including rams, ewes and wethers.

Flock size	1994		1995	
	Number of establishments	Percentage of sheep and lamb establishments	Number of establishments	Percentage of sheep and lamb establishments
		%		%
1 to 499	3 649	18.0	4 388	22.4
500 to 999	3 462	17.1	3 501	17.8
1,000 to 1,499	3 028	14.9	2 815	14.3
1,500 to 1,999	2 322	11.5	2 084	10.6
2,000 to 2,499	1 741	8.6	1 533	7.8
2,500 to 2,999	1 276	6.3	1 163	5.9
3,000 to 3,999	1 761	8.7	1 453	7.4
4,000 to 4,999	980	4.8	902	4.6
5,000 to 5,999	636	3.1	529	2.7
6,000 to 6,999	406	2.0	360	1.8
7,000 to 7,999	272	1.3	237	1.2
8,000 to 8,999	177	0.9	154	0.8
9,000 to 9,999	130	0.6	120	0.6
10,000 and over	430	2.1	384	2.0
Total	20 270	100.0	19 623	100.0

Flock size	1994		1995	
	Number of sheep and lambs	Percentage of total sheep and lambs	Number of sheep and lambs	Percentage of total sheep and lambs
	'000	%	'000	%
1 to 499	884.3	1.9	949.8	2.2
500 to 999	2 564.9	5.5	2 561.5	6.0
1,000 to 1,499	3 709.7	8.0	3 450.3	8.0
1,500 to 1,999	4 011.4	8.6	3 588.3	8.4
2,000 to 2,499	3 865.0	8.3	3 386.8	7.9
2,500 to 2,999	3 490.0	7.5	3 158.5	7.4
3,000 to 3,999	6 031.6	13.0	4 959.2	11.6
4,000 to 4,999	4 348.3	9.3	3 993.2	9.3
5,000 to 5,999	3 454.9	7.4	2 857.2	6.7
6,000 to 6,999	2 615.4	5.6	2 313.0	5.4
7,000 to 7,999	2 024.6	4.4	1 744.8	4.1
8,000 to 8,999	1 494.6	3.2	1 293.0	3.0
9,000 to 9,999	1 225.2	2.6	1 126.1	2.6
10,000 and over	6 811.4	14.6	7 492.6	17.5
Total	46 531.5	100.0	42 874.3	100.0

Statistical division	Ewes mated ¹	Lambs marked	Lamb marking ratio ²	Lambing expectations year ended 31 March 1996 ³		
				Joined to merino rams	Joined to other rams	Total
	'000	'000	%	'000	'000	'000
Sydney	5.0	3.5	70.0	5.8	1.0	6.9
Hunter	147.5	86.8	58.8	99.7	37.8	137.5
Illawarra	6.9	4.6	66.7	1.5	5.5	7.0
Richmond-Tweed	0.4	0.3	75.0	—	0.5	0.5
Mid-North Coast	1.1	0.6	54.5	0.4	0.6	1.0
Northern	2 492.1	1 441.5	57.8	1 736.4	692.5	2 428.8
North Western	3 835.3	2 301.4	60.0	3 014.8	824.3	3 839.0
Central West	3 333.1	2 600.4	78.0	1 944.9	1 235.6	3 180.5
South Eastern	2 441.7	1 922.2	78.7	1 786.0	597.5	2 383.5
Murrumbidgee	2 940.1	2 350.9	80.0	1 465.3	1 185.8	2 651.1
Murray	2 484.2	1 960.2	78.9	1 639.7	625.4	2 265.1
Far West	929.7	560.8	60.3	930.1	34.3	964.4
New South Wales						
1995	18 617.0	13 233.2	71.1	12 624.6	5 240.8	17 865.3
1994	19 393.2	15 164.1	78.2	13 470.5	6 753.9	20 224.4

¹ Ewes mated to produce lambs marked in the season shown.

² Lambs marked as a proportion of ewes mated to produce lambs.

³ Forecast made at the end of the 1994-95 season.

Statistical division	Total establishments	Total pigs	Percentage of total pigs
		'000	%
Sydney	38	46.4	5.9
Hunter	47	23.3	2.9
Illawarra	11	8.1	1.0
Richmond-Tweed	126	79.3	10.0
Mid-North Coast	51	11.8	1.5
Northern	185	66.2	8.4
North Western	139	35.2	4.5
Central West	365	81.2	10.3
South Eastern	68	65.6	8.3
Murrumbidgee	181	60.1	7.6
Murray	110	313.3	39.6
Far West	1	—	—
New South Wales			
1995	1 322	790.5	100.0
1994	1 586	834.1	100.0

¹ Includes suckers, weaners, growers etc.

<i>Herd size</i>	<i>1994</i>		<i>1995</i>	
	<i>Number of establishments</i>	<i>Percentage of pig establishments</i>	<i>Number of establishments</i>	<i>Percentage of pig establishments</i>
		<i>%</i>		<i>%</i>
1 to 9	253	16.0	226	17.1
10 to 19	178	11.2	120	9.1
20 to 29	111	7.0	101	7.6
30 to 39	91	5.7	65	4.9
40 to 49	65	4.1	54	4.1
50 to 69	106	6.7	99	7.5
70 to 99	108	6.8	85	6.4
100 to 149	105	6.6	92	7.0
150 to 199	84	5.3	77	5.8
200 to 299	123	7.8	81	6.1
300 to 499	128	8.0	109	8.2
500 to 699	59	3.7	56	4.2
700 to 999	59	3.7	43	3.3
1,000 and over	116	7.3	114	8.6
Total	1 586	100.0	1 322	100.0

<i>Herd size</i>	<i>1994</i>		<i>1995</i>	
	<i>Number of pigs</i>	<i>Percentage of total pigs</i>	<i>Number of pigs</i>	<i>Percentage of total pigs</i>
	<i>000</i>	<i>%</i>	<i>000</i>	<i>%</i>
1 to 9	1.1	0.1	0.9	0.1
10 to 19	2.5	0.3	1.6	0.2
20 to 29	2.7	0.3	2.4	0.3
30 to 39	3.1	0.4	2.1	0.3
40 to 49	2.9	0.3	2.3	0.3
50 to 69	6.2	0.7	5.7	0.7
70 to 99	8.9	1.1	6.9	0.9
100 to 149	12.7	1.5	11.1	1.4
150 to 199	14.7	1.8	12.9	1.6
200 to 299	29.4	3.5	18.7	2.4
300 to 499	49.3	5.9	40.8	5.2
500 to 699	35.5	4.3	32.3	4.1
700 to 999	49.3	5.9	34.5	4.4
1,000 and over	615.7	73.8	618.4	78.2
Total	834.1	100.0	790.5	100.0

¹ Includes suckers, weaners, growers etc.

41

POULTRY NUMBERS BY STATISTICAL DIVISION, AT 31 MARCH 1995¹

Statistical division	Number of chickens	
	For egg production	For meat production
	'000	'000
Sydney	2 005.2	10 519.4
Hunter	449.8	10 094.2
Illawarra	18.3	67.1
Richmond-Tweed	61.7	436.4
Mid-North Coast	40.5	108.8
Northern	783.0	475.0
North Western	13.5	19.0
Central West	77.4	0.3
South Eastern	183.2	0.1
Murrumbidgee	372.1	2 250.1
Murray	117.8	—
Far West	—	—
New South Wales		
1995	4 122.7	23 970.6
1994	3 770.6	20 891.0

¹ Figures for 1994 and 1995 are not strictly comparable due to changes in questions asked.

42

NUMBER OF ESTABLISHMENTS WITH AND NUMBER OF DEER AND HORSES BY STATISTICAL DIVISION, AT 31 MARCH 1995

Statistical division	Number of establishments		Number of livestock	
	Deer	Horses for breeding ¹	Deer	Horses for breeding ¹
Sydney	20	142	3 773	2 291
Hunter	20	301	3 645	5 834
Illawarra	13	80	2 254	945
Richmond-Tweed	1	145	2	720
Mid-North Coast	33	194	3 707	1 040
Northern	33	468	2 038	2 790
North Western	19	199	1 528	1 554
Central West	31	293	9 230	3 180
South Eastern	32	258	6 371	3 420
Murrumbidgee	11	199	903	1 787
Murray	22	152	6 191	1 297
Far West	—	15	—	92
New South Wales				
1995	235	2 446	39 642	24 950
1994	192	2 184	44 156	30 131

¹ Comprises horses on establishments with agricultural activity.

	Units	1993	1994	1995
Number of livestock slaughtered^{1, 2}				
Cattle	'000	2 058.1	1 987.9	2 051.0
Calves	'000	224.2	221.4	248.3
Chickens	'000	117 085.9	129 735.5	133 799.9
Lambs	'000	4 140.2	3 991.7	4 133.7
Pigs	'000	1 480.5	1 490.9	1 505.4
Sheep	'000	5 233.6	6 066.9	6 577.8
Meat produced^{1, 3}				
Beef	tonnes	472 313	466 387	471 183
Chicken	tonnes	176 465	193 137	199 491
Lamb	tonnes	72 608	69 246	71 738
Mutton	tonnes	105 819	127 582	131 052
Pigmeat	tonnes	94 760	98 606	102 175
Veal	tonnes	15 448	17 551	16 677
Whole milk intake by factories⁴				
	million litres	997	1 098	1 087
Wool⁵				
Brokers and dealer receipts of taxable wool	tonnes	252 176	205 822	177 627
Eggs produced⁵				
	'000 dozen	68 312	67 802	64 032
Honey produced⁶				
	'000 kg	9 029	11 270	7 754

¹ Source: ABS 'Monthly Livestock Products' publication, Catalogue No. 7215.0.

² Includes estimates of animals slaughtered on farms and country butchers.

³ Dressed carcass weight, excluding offal.

⁴ Source: Australian Dairy Corporation.

⁵ Sources: National Council of Wool Selling Brokers of Australia and ABS Wool Brokers and Dealers Collection.

⁶ Collected at 31 March.

44 GROSS VALUE OF LIVESTOCK PRODUCTS AND OTHER DISPOSALS, YEARS ENDED 31 MARCH 1993 TO 1995p

	1993 ¹	1994	1995p
	\$m	\$m	\$m
Livestock slaughterings ²			
Cattle and calves	965.4	1 088.8	1 069.4
Pigs	190.0	187.0	193.0
Poultry ³	377.6	420.3	421.6
Sheep and lambs ⁴	159.6	201.5	230.0
Other	4.2	5.5	8.5
Total	1 696.8	1 903.2	1 922.4
Wool			
Shorn and crutched	954.3	837.0	1 137.2
Other ⁵	19.1	40.4	40.4
Total	973.4	877.4	1 177.6
Production of milk			
Human consumption	261.7	273.3	300.9
Manufacturing	103.9	130.2	131.0
Total	365.6	403.5	431.9
Eggs	102.5	78.0	77.1
Honey and beeswax	13.0	15.0	10.3

¹ Figures have been collected on the basis of EVAO \$22,500 and over.
² Includes net exports of livestock.
³ Includes the Australian Capital Territory.
⁴ Excludes value of wool on skins.
⁵ Includes dead and fellmongered wool and wool on skins.

45 BEEKEEPING, SUMMARY STATISTICS, YEARS ENDED 30 JUNE 1994 AND 1995

	Units	1994	1995
Number of apiarists		726	485
Beehives			
Productive ¹		163 557	125 305
Unproductive		76 216	77 759
Total		239 773	203 064
Honey produced			
Quantity	kg	11 270 324	7 753 661
Average production ²	kg/hive	68.9	61.9
Beeswax produced	kg	232 674	137 574

¹ Beehives from which honey was taken.
² Average production per productive beehive.

Items	Poultry 0141-0142				Fruit 0114-0119			
	1992-93		1993-94		1992-93		1993-94	
	\$m	%	\$m	%	\$m	%	\$m	%
Sales from crops	3.5	41	1.9	54	295.0	9	265.3	8
Sales from livestock	15.5	37	129.5	24	10.8	54	3.8	26
Sales from livestock products	76.0	12	115.9	11	1.3	68	0.9	60
Turnover	149.8	5	277.6	11	326.0	9	284.6	8
Purchases and selected expenses	95.4	9	157.9	18	168.2	11	132.3	8
Value added ¹	55.9	10	118.6	14	164.0	10	153.8	9
Adjusted value added ²	48.3	11	100.6	15	140.3	11	134.3	10
Gross operating surplus ¹	34.4	15	73.6	20	79.6	17	75.6	16
Interest paid	6.4	14	12.3	13	22.6	15	15.5	16
Cash operating surplus ²	27.7	17	62.6	18	53.6	22	57.8	21
Gross indebtedness	80.0	14	165.9	12	193.7	14	173.1	14
Total net capital expenditure	12.9	44	16.9	35	25.3	21	22.2	26

Items	Vegetables 0113				Grain 0121			
	1992-93		1993-94		1992-93		1993-94	
	\$m	%	\$m	%	\$m	%	\$m	%
Sales from crops	131.8	11	109.8	16	343.0	15	722.0	12
Sales from livestock	6.8	33	6.6	29	64.3	36	102.7	17
Sales from livestock products	1.1	45	2.0	47	26.4	31	44.6	20
Turnover	143.3	10	128.6	16	454.5	15	910.2	11
Purchases and selected expenses	72.2	11	62.5	16	252.2	15	490.5	12
Value added ¹	70.9	17	69.6	18	199.8	17	455.6	11
Adjusted value added ²	63.3	19	61.5	19	171.4	18	407.5	12
Gross operating surplus ¹	27.6	27	33.5	21	141.8	19	366.3	12
Interest paid	5.8	23	3.5	22	31.4	23	50.9	17
Cash operating surplus ²	22.9	29	26.5	23	117.5	22	283.9	13
Gross indebtedness	53.9	23	81.1	40	406.0	25	509.7	14
Total net capital expenditure	7.4	24	16.5	40	39.7	23	65.2	23

Items	Grain-sheep/beef cattle 0122				Sheep-beef cattle 0123			
	1992-93		1993-94		1992-93		1993-94	
	\$m	%	\$m	%	\$m	%	\$m	%
Sales from crops	632.8	9	560.6	10	12.1	39	22.4	52
Sales from livestock	256.2	13	270.3	11	254.3	16	315.1	15
Sales from livestock products	219.5	10	196.5	11	139.6	16	184.4	14
Turnover	1 184.1	8	1 089.7	9	429.3	13	554.7	12
Purchases and selected expenses	689.9	9	640.0	9	253.4	15	352.7	14
Value added ¹	527.0	10	576.0	9	206.6	15	414.3	11
Adjusted value added ¹	433.8	11	497.1	10	164.8	17	353.4	12
Gross operating surplus ¹	356.5	13	417.7	11	93.6	26	281.8	14
Interest paid	118.2	14	83.1	16	31.7	27	42.6	23
Cash operating surplus ²	217.7	20	201.6	18	45.3	48	31.1	98
Gross indebtedness	1 077.5	14	893.8	15	318.3	25	538.9	22
Total net capital expenditure	85.7	23	90.8	19	24.7	32	62.2	21

¹ Includes an estimate for the value of the increase in livestock.

² Excludes an estimate for the value of the increase in livestock.

NOTE: Standard error of change between two successive years is 1.3 times the standard error of the estimate (except for the All industries estimate where it is equal to the standard error of the estimate). Standard error of change between estimates two years apart could be as high as 1.8 times the standard error of the estimate (except for the all industries estimate where it could be 1.5 times the standard error of the estimate).

Items	Sheep 0124				Beef cattle 0125			
	1992-93		1993-94		1992-93		1993-94	
	\$m	SE	\$m	SE	\$m	SE	\$m	SE
Sales from crops	41.3	30	40.3	30	5.6	49	16.3	30
Sales from livestock	243.1	12	143.0	14	339.4	17	654.4	14
Sales from livestock products	365.7	9	363.3	13	12.1	52	19.6	36
Turnover	701.4	8	594.8	12	372.6	17	779.7	13
Purchases and selected expenses	414.3	9	328.1	12	302.4	17	503.7	13
Value added ¹	287.3	10	405.8	12	140.8	45	468.6	19
Adjusted value added ²	215.9	12	351.9	13	106.0	58	404.6	21
Gross operating surplus ¹	141.0	17	286.5	14	61.4	94	337.1	22
Interest paid	106.8	19	44.7	22	30.1	34	60.8	33
Cash operating surplus ²	46.5	52	105.8	26	-34.8	**	95.7	40
Gross indebtedness	1 016.0	18	448.4	22	445.0	34	597.6	41
Total net capital expenditure	19.2	33	46.5	26	63.5	46	46.1	25

Items	Dairy cattle 0130				Pigs 0151			
	1992-93		1993-94		1992-93		1993-94	
	\$m	SE	\$m	SE	\$m	SE	\$m	SE
Sales from crops	1.3	64	8.3	79	3.1	54	14.4	75
Sales from livestock	30.5	12	32.1	14	77.0	18	168.6	8
Sales from livestock products	363.4	6	361.5	12	2.3	44	1.9	39
Turnover	403.1	5	430.8	11	89.4	15	191.5	9
Purchases and selected expenses	242.2	7	220.0	10	59.1	18	123.7	9
Value added ¹	173.5	12	228.5	16	30.6	21	78.2	11
Adjusted value added ²	156.8	14	204.7	16	26.8	23	71.5	11
Gross operating surplus ¹	129.2	17	169.1	16	17.6	36	54.1	13
Interest paid	14.0	28	24.4	32	3.6	32	5.8	20
Cash operating surplus ²	103.2	21	126.5	16	14.0	26	38.1	16
Gross indebtedness	153.2	27	275.7	33	32.9	28	60.3	19
Total net capital expenditure	33.6	20	33.9	32	5.0	34	5.2	23

Items	Sugar 0161				Cotton 0162			
	1992-93		1993-94		1992-93		1993-94	
	\$m	SE	\$m	SE	\$m	SE	\$m	SE
Sales from crops	49.8	12	57.3	38	518.3	7	448.5	8
Sales from livestock	0.5	72	1.9	60	56.7	33	25.3	8
Sales from livestock products	0.1	95	0.2	93	15.6	44	10.9	12
Turnover	53.1	12	61.9	38	620.5	8	546.4	8
Purchases and selected expenses	25.6	11	30.3	30	355.9	9	331.1	8
Value added ¹	27.3	16	31.5	45	260.6	10	222.7	10
Adjusted value added ¹	24.4	18	27.7	47	224.4	11	194.0	11
Gross operating surplus ²	20.6	16	25.4	49	168.4	13	141.3	14
Interest paid	2.5	40	2.7	69	38.7	11	28.3	15
Cash operating surplus ²	20.1	14	23.6	48	132.5	17	105.6	18
Gross indebtedness	21.4	40	65.4	81	453.6	8	453.5	10
Total net capital expenditure	2.4	30	4.0	77	53.5	14	54.2	17

¹ Includes an estimate for the value of the increase in livestock.

² Excludes an estimate for the value of the increase in livestock.

NOTE: Standard error of change between two successive years is 1.3 times the standard error of the estimate (except for the All industries estimate where it is equal to the standard error of the estimate). Standard error of change between estimates two years apart could be as high as 1.8 times the standard error of the estimate (except for the all industries estimate where it could be 1.5 times the standard error of the estimate).

Items	Other agriculture 0111-0112, 0152-0159, 0169				Agriculture all industries			
	1992-93		1993-94		1992-93		1993-94	
	\$m	%	\$m	%	\$m	%	\$m	%
Sales from crops	183.7	25	156.3	32	2 221.3	4	2 423.4	4
Sales from livestock	24.7	41	34.6	24	1 379.4	5	1 888.1	6
Sales from livestock products	26.3	50	9.7	49	1 249.4	3	1 311.6	5
Turnover	254.5	19	208.6	23	5 181.6	2	6 059.0	3
Purchases and selected expenses	114.3	20	113.9	20	3 045.0	3	3 486.6	3
Value added ¹	118.9	28	89.0	35	2 263.3	4	3 312.2	4
Adjusted value added ¹	98.1	31	66.2	42	1 874.4	5	2 875.1	4
Gross operating surplus ¹	38.4	54	17.3	**	1 310.1	7	2 279.2	5
Interest paid	12.6	23	12.4	20	424.3	7	386.8	7
Cash operating surplus ²	47.7	24	11.4	90	813.8	9	1 170.1	7
Gross indebtedness	116.1	22	144.0	19	4 367.7	7	4 407.4	8
Total net capital expenditure	11.6	24	11.2	39	382.1	10	475.0	7

¹ Includes an estimate for the value of the increase in livestock.

² Excludes an estimate for the value of the increase in livestock.

NOTE: Standard error of change between two successive years is 1.3 times the standard error of the estimate (except for the All Industries estimate where it is equal to the standard error of the estimate). Standard error of change between estimates two years apart could be as high as 1.8 times the standard error of the estimate (except for the all industries estimate where it could be 1.5 times the standard error of the estimate).

Items	Aggregates					
	1989-90		1990-91		1991-92	
	\$m	SE	\$m	SE	\$m	SE
Sales from crops	1 735.8	6	1 864.9	7	2 123.9	5
Sales from livestock	1 711.0	5	1 388.4	5	1 327.9	5
Sales from livestock products	2 470.7	5	1 978.2	4	1 351.8	4
Turnover	6 304.4	3	5 613.1	3	5 137.7	2
Purchases and selected expenses	3 416.9	3	3 268.1	3	2 943.2	3
Value added ¹	2 656.7	5	1 674.2	7	2 159.1	6
Adjusted value added ¹	2 246.1	5	1 252.3	8	1 766.7	7
Gross operating surplus ¹	1 627.9	7	702.5	14	1 194.2	10
Interest paid	677.8	7	684.6	6	628.1	11
Cash operating surplus ²	1 324.7	8	798.7	13	670.2	16
Gross indebtedness	4 486.0	8	4 325.6	6	4 691.2	8
Total net capital expenditure	460.4	7	301.0	10	412.2	13

Items	Aggregates					
	1992-93		1993-94		1994-95p	
	\$m	SE	\$m	SE	\$m	SE
Sales from crops	2 221.3	4	2 423.4	4	1 480.5	8
Sales from livestock	1 379.4	5	1 888.1	6	1 843.1	7
Sales from livestock products	1 249.4	3	1 311.6	5	1 529.3	9
Turnover	5 181.6	2	6 059.0	3	5 278.9	4
Purchases and selected expenses	3 045.0	3	3 486.6	3	3 183.2	5
Value added ¹	2 263.3	4	3 312.2	4	n.y.a.	n.y.a.
Adjusted value added ¹	1 874.4	5	2 875.1	4	n.y.a.	n.y.a.
Gross operating surplus ¹	1 310.1	7	2 279.2	5	n.y.a.	n.y.a.
Interest paid	424.3	7	386.8	7	n.y.a.	n.y.a.
Cash operating surplus ²	813.8	9	1 170.1	7	797.9	15
Gross indebtedness	4 367.7	7	4 407.4	8	n.y.a.	n.y.a.
Total net capital expenditure	384.5	10	475.0	7	n.y.a.	n.y.a.

Items	Averages					
	1989-90	1990-91	1991-92	1992-93	1993-94	1994-95p
	\$'000	\$'000	\$'000	\$'000	\$'000	\$'000
Sales from crops	53.3	61.2	68.8	77.2	80.6	n.y.a.
Sales from livestock	52.6	45.6	43.0	47.9	62.8	n.y.a.
Sales from livestock products	75.9	64.9	43.8	43.4	43.6	n.y.a.
Turnover	193.7	184.2	166.3	180.0	201.4	n.y.a.
Purchases and selected expenses	105.0	107.2	95.3	105.8	115.9	n.y.a.
Value added ¹	81.6	54.9	69.9	78.6	110.1	n.y.a.
Adjusted value added ¹	69.0	41.1	57.2	65.1	95.6	n.y.a.
Gross operating surplus ¹	50.0	23.0	38.7	45.5	75.8	n.y.a.
Interest paid	20.8	22.5	20.3	14.7	12.9	n.y.a.
Cash operating surplus ²	40.7	26.2	21.7	28.3	38.9	n.y.a.
Gross indebtedness	137.8	141.9	151.9	151.7	146.5	n.y.a.
Total net capital expenditure	14.1	9.9	13.3	13.4	15.8	n.y.a.

¹ Includes an estimate for the value of the increase in livestock.

² Excludes an estimate for the value of the increase in livestock.

NOTE: Standard error of change between two successive years is 1.3 times the standard error of the estimate (except for the All industries estimate where it is equal to the standard error of the estimate). Standard error of change between estimates two years apart could be as high as 1.8 times the standard error of the estimate (except for the all industries estimate where it could be 1.5 times the standard error of the estimate).

EXPLANATORY NOTES

INTRODUCTION

1 This publication contains statistics on crops, livestock and livestock products and characteristics of farms and includes some summary information on the financial performance of agricultural industries and the value of agricultural commodities produced.

SCOPE AND COVERAGE

2 The statistics on crops (including horticulture), livestock numbers, structure of agricultural industries, land management and farm inputs are derived from the annual Agricultural Census conducted throughout Australia at 31 March, which collects data from establishments with agricultural activity.

3 Establishments which make only a small contribution to overall agricultural production are excluded from the scope of the Census. Information is collected from establishments when their estimated value of agricultural operations (EVAO) is above a certain level. These levels have varied in past Agricultural Censuses, as follows:

1993-94 to present	EVAO \$5,000 and over
1991-92 to 1992-93	EVAO \$22,500 and over
1986-87 to 1990-91	EVAO \$20,000 and over
Before 1986-87	EVAO \$2,500 and over

4 Table 1 shows the number of agricultural establishments having an EVAO of \$5,000 and over according to the population frame selected for the agricultural census. Once data on these units are collected and processed a small number of them are found to have an EVAO of less than \$5,000. These are shown in the first column in Table 5. Some units are found to have an EVAO of zero; these are shown as 'unclassified' in Tables 1, 2, 5 and 6.

5 The effect of the lower EVAO cut off of \$5,000 and over from 1993-94 onwards is to include smaller agricultural establishments that have been excluded in previous years. However, because of their small size they are not expected to change greatly the overall commodity totals. Nevertheless, the changes in scope between years means that care must be taken in comparing Census results over time.

6 Information covering commodities such as livestock slaughterings, dairy produce and beekeeping is obtained from separate ABS collections and from organisations such as the Australian Dairy Corporation.

REFERENCE PERIOD

7 Statistics about crops, pastures, vegetables and fruit relate, in general, to the season ended 31 March. Where harvesting was not completed by 31 March 1995 (for example, maize, rice, apples, grapes and late planted potatoes), the production statistics relate to the completed harvest.

ESTABLISHMENTS WITH AGRICULTURAL ACTIVITY

8 An establishment with agricultural activity is a single physical location which is used for the production of crops (including fruit and vegetables) and/or for the raising of livestock and the production of livestock products.

INDUSTRY AND SIZE CLASSIFICATION

9 Establishments in the Agricultural Sector were classified in accordance with the methodology described in the 1993 *Australian and New Zealand Standard Industrial Classification (ANZSIC) (1292.0)*.

10 The process of determining the industry class for ANZSIC is the 'step by step' method of classification described in Chapter 4 of the *Australian Standard Industrial Classification (1201.0)*. This method requires that the

Division code of the unit be determined first. The Subdivision code within the major Division of the unit is then determined, followed by the Group code and finally the Class code of the unit.

11 The Group and Class codes of agricultural units are determined annually by valuing physical crop and livestock information collected in the Agricultural Census. The valuation procedure allows for the industry classification of individual units to be changed to reflect significant or long term changes in their activities.

12 However, the procedure provides for a dampening or resistance effect to offset instability in allocation to particular classes of the classification which would arise from short-term factors such as floods and drought. To obviate such effects, the valuation procedure takes into account (without double counting) the area of crops sown and numbers of livestock on holdings at a point in time as well as the crops produced and livestock turnoff during the year. The resultant aggregation of these commodity values is termed the Estimated Value of Agricultural Operations (EVAO). It should be noted that EVAO is applicable *only for industry coding and size valuation purposes*. It is not an indicator of receipts obtained by units or of the value of agricultural commodities produced by these units.

DEFINITIONS OF TERMS USED

13 The following are definitions of terms used in the tables of this publication:

- *Agricultural establishment* is an establishment which is engaged *mainly* in agricultural activities.
- *Establishment with agricultural activity* is a land-based establishment which is engaged in agricultural activity, regardless of the unit's predominant activity.

CROPS, PASTURES AND HORTICULTURE

14 Statistics of areas and production of crops relate, in the main, to crops sown during the year ended 31 March. Statistics of perennial crops relate to the position as at 31 March and the production during the year ended on that date, or of fruit set by that date. For example, particulars of area, production and yield per hectare of wheat in Australia refer to wheat sown during the period from April to September and harvested between October and the following February, i.e. the 1994-95 season relates to the harvesting period October 1994 to February 1995. Statistics of other crops which in some States are harvested after 31 March 1995 (e.g. maize, potatoes, apples and pears) are collected by supplementary census returns and are included in this publication.

LIVESTOCK SLAUGHTERING AND LIVESTOCK PRODUCTS

15 The statistics on slaughtering and meat production are based on a monthly collection from abattoirs and other major slaughtering establishments and include estimates of animals slaughtered on farms and by country butchers and other small slaughtering establishments. Care should be taken when using this information as the figures only relate to slaughtering for human consumption and do not include animals condemned or those killed for boiling down. Also, definitions of livestock categories may differ between States and within States, particularly with regard to calves. More detailed information is published monthly in *Livestock Products, Australia* (7215.0).

WOOL

16 Wool receipts statistics show the amount of taxable wool received by brokers and dealers from wool producers. It excludes wool received by brokers on which wool tax has already been paid by other dealers (private

buyers) or brokers. The information shown is on the basis of the State in which the wool has actually been received and does not necessarily reflect the production of wool in that State. This data is published monthly in *Livestock Products, Australia* (7215.0).

17 The wool estimates contained in Table 43 are obtained from these major sources:

(i) A monthly collection of National Council of Wool Selling Brokers of Australia in each State and incorporated in this publication with reference to the twelve months to 30 June. The data are compiled in terms of bales received into stores and converted to wool receivals in tonnes.

(ii) A monthly ABS collection of other wool brokers and dealers in each State, also incorporated with reference to the twelve months to 30 June. Data are reported in tonnes, or converted to tonnes as required.

MILK

18 These statistics have been collected by the Australian Dairy Corporation (ADC). More detailed information is published monthly in *Livestock Products, Australia*, (7215.0).

POULTRY

19 Poultry slaughtering statistics have been compiled from returns supplied by commercial poultry slaughtering establishments.

BEEKEEPING

20 Beekeepers are included in this collection if they have a minimum estimated value of agricultural operations (EVAO) of \$5,000, whether for beekeeping alone or in conjunction with other agricultural activities.

AGRICULTURAL FINANCE SURVEY

21 The financial estimates in this publication have been derived from estimates from the Agricultural Finance Survey (AFS). The survey aims to meet demands of users who require annual financial statistics on a consistent basis across all agricultural industries in each State and Australia.

22 More detailed information including an outline of the reliability of the estimates and the standard error is published in *Agricultural Industries Financial Statistics, Australia* (7507.0).

SCOPE AND COVERAGE OF THE AFS

23 The population of the AFS consisted of all economic units (management units) the principal activity of which resulted in them being classified within Sub-division 01 'Agriculture' of the ANZSIC and which had an Estimated Value of Agricultural Operations (EVAO) of \$22,500 or more.

VALUE OF AGRICULTURAL COMMODITIES PRODUCED

24 This publication contains summary information on the Value of Agricultural Commodities Produced (VACP) compiled annually for all States and Australia. The summary information contains gross values of production for selected agricultural commodities. More detailed information is available in *Value of Agricultural Commodities Produced* (7503.0).

SCOPE AND COVERAGE OF VACP STATISTICS

25 The statistics are derived by multiplying quantity data by price (or unit value) data. The quantity data are collected in the Agricultural Censuses and other ABS collections with some information from external sources. All price information is obtained from non-ABS sources.

PRICE AND MARKETING COSTS DATA

26 The method of collection of relevant prices for, and the costs of marketing of agricultural commodities varies considerably between States and between commodities. Where a statutory authority handles marketing of the whole or portion of a product (e.g. Australian Wheat Board, Australian

Barley Board) data are usually obtained from this source. Information is also obtained from marketing reports, wholesalers, brokers and auctioneers. For all commodities, values are in respect of production during the year (or season) irrespective of whether or when payments are made. For that portion of production not marketed (e.g. hay grown on farm for own use, milk used in farm household, etc.) estimates are made from the best available information and, in general, are valued on a local value basis.

DEFINITION OF GROSS VALUE

27 Gross value of commodities produced is the value placed on recorded production at the wholesale prices realised in the market place.

OTHER FORMS OF RELEASE

28 The ABS also has more detailed agricultural statistics on magnetic tape, microfiche and floppy disk. AgStats on floppy disk offers a wider range of data aggregated at smaller geographic areas than those generally available in printed publications, together with an easy-to-use interrogation facility.

29 Current publications produced by the ABS are listed in the *Catalogue of Publications and Products, Australia* (1101.0). The ABS also issues, on Tuesdays and Fridays, a *Publications Advice* (1105.0) which lists publications to be released in the next few days. The Catalogue and Publications Advice are available from any ABS office.

UNPUBLISHED STATISTICS

30 As well as the statistics in this and related publications, the ABS may have other unpublished data available. Enquires should be directed to Helen Gardiner on (02) 268 4562.

31 Symbols and other usages:

- nil or rounded to zero
- ha hectares
- t tonnes
- n.a. not available
- n.y.a. not yet available
- n.p. not published
- p preliminary
- r revised
- SE% percentage standard error
- * SE% greater than 100. Estimate included for completeness. Sampling variability too high for most practical purposes.
- ** Where an estimate is small compared to previous years, the

relative standard error may be a misleading indicator of the reliability of the estimate.

32 The figures shown in this publication have been revised where necessary and as a consequence may not agree with similar data shown in previous publications.

33 Where the figures have been rounded, discrepancies may occur between sums of the component items and totals.

Other ABS Data on Agricultural Activity

Agriculture Census data not included in ABS publications are also available—

AGSTATS

- Contains data for each commodity collected in the census
- Provides data down to Statistical Local Area level
- Available on microfiche, magnetic tape, floppy disc and CD-ROM
- Available for each year separately from 1976-77 to 1993-94 (except CD-ROM)
- Data available on CD-ROM for seasons 1985-86 to 1992-93
- CD-ROM package includes SUPERMAP software which can produce colour maps showing distribution of particular commodities

UNPUBLISHED DATA

The ABS can also make available information which is not published. Where it is not practicable to provide the required information by telephone, data can be provided as hardcopy, computer printout or on disk.

For more details please contact Helen Gardiner on (02) 268 4562

Other ABS Publications on Agricultural Activity

The ABS also publishes bulletins concerning the agricultural sector compiled from other sources—

Agricultural Industries, Financial Statistics, Australia, 1994-95 *Cat. no. 7507.0 (\$19.00)*

- Estimates of turnover, expenditure, cash operating surplus, capital expenditure and indebtedness of agricultural enterprises in each State (classified by industry for Australia)
- Value of selected assets and net worth of agricultural enterprises are also classified by industry

Agricultural Industries, Financial Statistics, Australia, Preliminary, 1994-95

Cat. no. 7506.0 (\$13.00)

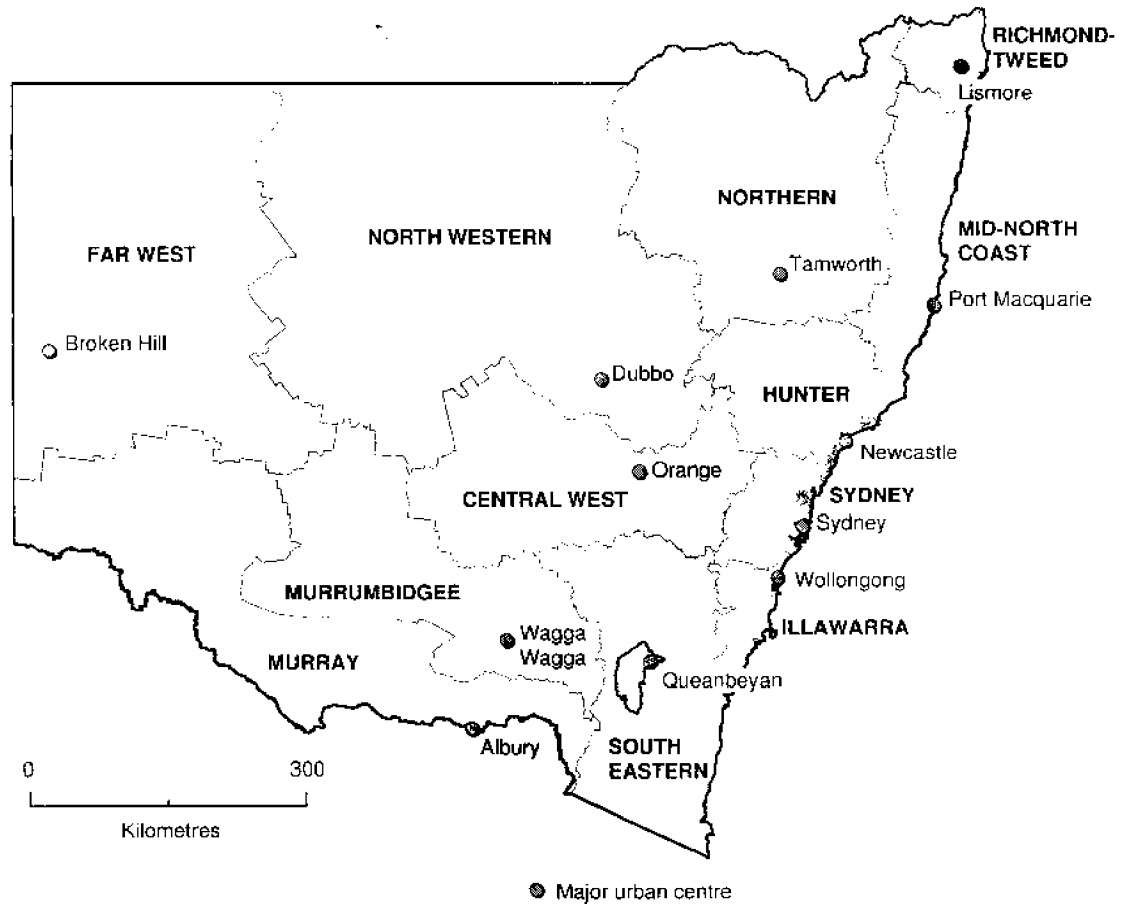
- Estimates of the financial performance of enterprises engaged in agricultural activities

Livestock Products, Australia, *Cat. no. 7215.0 (\$13.00)*

- Published monthly
- Livestock: cattle, sheep, pigs and poultry
- Data: numbers slaughtered, meat production, stocks and exports, milk intake and sales, wool receivals
- Historical data

You can order these publications from the ABS Bookshop on (02) 268 4620

STATISTICAL DIVISIONS OF NEW SOUTH WALES





For more information . . .

The ABS publishes a wide range of statistics and other information on Australia's economic and social conditions. Details of what is available in various publications and other products can be found in the ABS Catalogue of Publications and Products available from all ABS Offices.

ABS Products and Services

Many standard products are available from ABS bookshops located in each State and Territory. In addition to these products, information tailored to the needs of clients can be obtained on a wide range of media by contacting your nearest ABS Office. The ABS also provides a Subscription Service for standard products and some tailored information services.

National Dial-a-Statistic Line

0055 86 400

Steadycom P/L: premium rate 25c/21.4 secs.

This number gives 24-hour access, 365 days a year, for a range of important economic statistics including the CPI.

Internet

<http://www.statistics.gov.au>

A wide range of ABS information is available via the Internet, with basic statistics available for each State, Territory and Australia. We also have Key National Indicators, ABS product release details and other information of general interest.

Sales and Inquiries

Keylink STAT.INFO/ABS
X.400 (C:Australia,PUB:Telememo,O:ABS,FN:STAT,SN:INFO)
Internet stat.info@abs.telememo.au

National Mail Order Service (06) 252 5249
Subscription Service 1800 02 0608

Information Inquiries

Bookshop Sales

SYDNEY	(02) 268 4611	268 4620
MELBOURNE	(03) 9615 7755	9615 7755
BRISBANE	(07) 3222 6351	3222 6350
PERTH	(09) 360 5140	360 5307
ADELAIDE	(08) 237 7100	237 7582
HOBART	(002) 205 800	205 800
CANBERRA	(06) 252 6627	207 0326
DARWIN	(089) 432 111	432 111



Client Services, ABS, PO Box 10, Belconnen ACT 2616



2711310007945

ISSN 1320-8675

Recommended retail price: \$19.00