



FINAL ISSUE

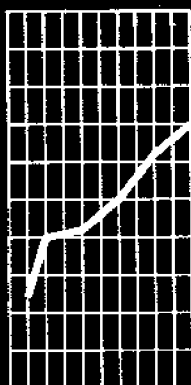
1996-97

EMBARGO: 11:30 AM (CANBERRA TIME) FRI 24 OCT 1997

Principal Agricultural Commodities

South Australia

Preliminary



ABS Catalogue No. 7111.4

NOTES

SYMBOLS AND OTHER USAGES

ABS	Australian Bureau of Statistics
EVAO	estimated value of agricultural output
ha	hectares
n.c.	not collected
n.y.a.	not yet available
p	preliminary
r	figure or series revised since previous issue
RSE	relative standard error
t	tonnes
—	nil or rounded to zero

REVISIONS TO FIGURES

State totals in this publication may differ from those in the recently released national publication *Selected Agricultural Commodities, Australia, Preliminary, 1996-97* (Cat. no. 7112.0). Differences in the totals are due to updated processing.

INQUIRIES

For further information about statistics in this publication and the availability of related unpublished statistics, contact Peter Carmalt on Adelaide (08) 8237 7632 or any ABS State office.

For information about other ABS statistics and services, please refer to the back of this publication.

P. M. Gardner
Regional Director

CONTENTS

.....

Page

EDITORIAL

Summary of findings 4

TABLES

1	Cereals for grain, year ended 31 March 1997p	6
2	Legumes for grain, year ended 31 March 1997p	7
3	Oilseeds, year ended 31 March 1997p	8
4	Citrus and pome fruit, year ended 31 March 1997p	9
5	Stone and berry fruit, year ended 31 March 1997p	10
6	Vegetables for human consumption, years ended 31 March	11
7	Meat cattle numbers, at 31 March 1997p	12
8	Milk cattle numbers, at 31 March 1997p	12
9	Sheep and lamb numbers, at 31 March 1997p	13
10	Lambing, years ended 31 March	13
11	Pig numbers, at 31 March 1997p	14

ADDITIONAL INFORMATION

Explanatory Notes 15

MAP

Statistical Divisions of South Australia 16

SUMMARY OF FINDINGS

CROPS

The area sown to wheat in 1996–97 was 1.6 million hectares, 2.6% more than in 1995–96. Production was 2.8 million tonnes, 4.1% higher than in 1995–96. The Eyre Statistical Division (SD) accounted for 43.4% of area sown and 35.3% of production. The other main wheat production region was Yorke and Lower North SD with 30.1% (see table 1).

Wheat



In 1996–97, the area sown to barley increased 6.2% on 1995–96, to 1.0 million hectares. Production also increased by 6.2%, to 2.0 million tonnes. Barley was sown in all SDs, the major contributor to production being Yorke and Lower North SD, which accounted for 41.3% of the State's production (see table 1).

HORTICULTURE

There was an increase in orange production in 1996–97, the harvest of 182,600 tonnes being 7.1% more than in 1995–96. The total number of trees six years and over increased 4.2% to 1.9 million. Almost all oranges were grown in the Murray Lands SD (see table 4).

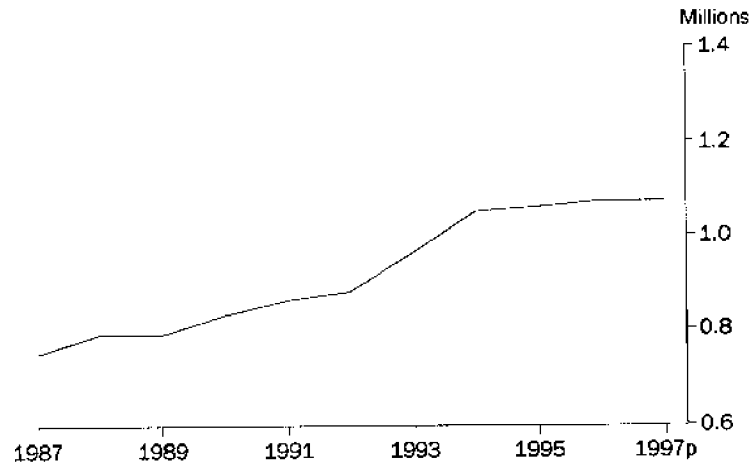
The number of apple trees six years and over at 31 March 1997 was 546,300, an increase of 3.6% from 31 March 1996. The major apple growing areas were the Adelaide and Outer Adelaide SDs, which together accounted for 82.8% of trees six years and over (see table 4).

SUMMARY OF FINDINGS *continued*

LIVESTOCK

At 31 March 1997, the meat cattle herd numbered 1.1 million, virtually unchanged from the 31 March 1996 figure. The South East SD accounted for 48.6% of the total meat cattle herd and the Northern SD accounted for 21.4% (see table 7).

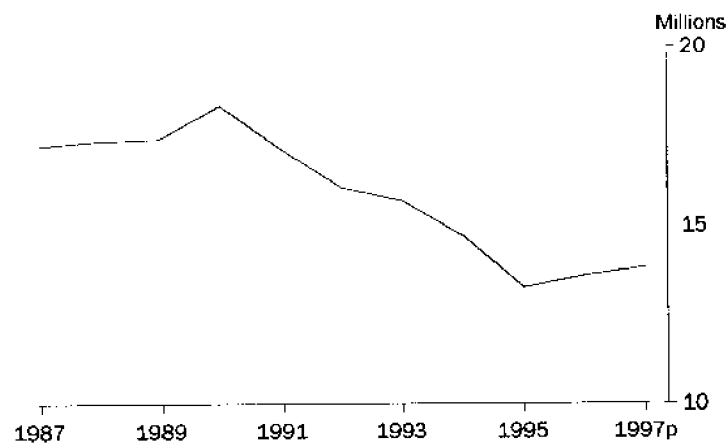
Meat cattle



The milk cattle herd increased to 163,900 at 31 March 1997, a rise of 9.5% from the 31 March 1996 figure. The major regions, in terms of numbers, were Adelaide and Outer Adelaide SDs which together accounted for 40.3% of total milk cattle (see table 8).

Sheep and lamb numbers stood at 13.7 million at 31 March 1997, a slight rise on the 31 March 1996 figure. The major SDs, in terms of numbers, were South East, Northern and Eyre which together accounted for 62.0% of the flock (see table 9). The number of lambs marked increased 3.3% to 5.4 million (see table 10).

Sheep and lambs



1

CEREALS FOR GRAIN—Year ended 31 March 1997p

Statistical division	BARLEY.....		OATS.....		TRITICALE.....	
	Area	Production	Area	Production	Area	Production
	'000 ha	'000 t	'000 ha	'000 t	'000 ha	'000 t
Adelaide and Outer Adelaide	50.9	114.3	14.0	26.9	6.7	15.7
Yorke and Lower North	326.9	812.2	16.9	31.8	19.7	43.2
Murray Lands	247.1	333.2	20.1	21.7	56.6	52.4
South East	46.3	88.8	9.7	16.9	4.4	8.2
Eyre	247.0	403.2	53.9	51.7	18.4	21.3
Northern	105.2	214.3	9.8	12.6	2.1	3.8
South Australia						
1997p	1 023.3	1 966.0	124.4	161.7	107.9	144.6
1996	963.5	1 851.1	119.6	161.9	66.4	103.8
1995	881.9	1 158.7	94.9	87.0	41.4	43.9

WHEAT.....

Statistical division	Area	Production
	'000 ha	'000 t
Adelaide and Outer Adelaide	48.4	132.0
Yorke and Lower North	320.4	854.3
Murray Lands	274.0	371.5
South East	42.3	110.1
Eyre	676.7	1 001.8
Northern	196.3	365.8
South Australia		
1997p	1 558.1	2 835.5
1996	1 519.1	2 724.0
1995	1 394.7	1 487.4

Statistical division	CHICK PEAS		FABA BEANS		FIELD PEAS	
	Area	Production	Area	Production	Area	Production
	'000 ha	'000 t	'000 ha	'000 t	'000 ha	'000 t
Adelaide and Outer Adelaide	1.1	1.7	3.7	8.4	14.0	27.3
Yorke and Lower North	7.0	11.5	5.8	11.5	63.7	108.4
Murray Lands	—	—	2.6	5.7	9.2	13.1
South East	0.3	0.3	12.8	32.1	4.9	8.4
Eyre	0.7	0.6	2.1	4.7	10.8	13.6
Northern	3.2	3.8	6.4	11.6	16.5	25.2
South Australia						
1997p	12.3	17.9	33.5	74.1	119.0	196.0
1996	12.3	17.3	26.0	51.0	151.6	213.5
1995	12.9	7.9	31.9	30.5	167.0	141.4

LUPINS

Statistical division	Area	Production
	'000 ha	'000 t
	Adelaide and Outer Adelaide	3.7
Yorke and Lower North	7.3	12.0
Murray Lands	18.5	26.5
South East	15.7	20.9
Eyre	21.9	32.4
Northern	4.4	5.7
South Australia		
1997p	71.5	103.1
1996	79.6	89.9
1995	82.7	56.3

Statistical division	CANOLA		SAFFLOWER	
	Area '000 ha	Production '000 t	Area '000 ha	Production '000 t
Adelaide and Outer Adelaide	3.5	4.7	0.1	0.1
Yorke and Lower North	12.2	18.9	1.0	0.7
Murray Lands	2.3	3.2	0.2	0.1
South East	10.9	16.7	3.3	2.3
Eyre	4.9	7.6	0.6	0.1
Northern	2.8	3.4	0.3	0.2
South Australia				
1997p	36.6	54.6	5.5	3.4
1996	30.4	48.1	4.7	3.0
1995	24.5	25.9	7.9	3.8

Statistical division	LEMONS AND LIMES.....		MANDARINS.....		ORANGES	
	<i>Trees 6 years and over</i>	<i>Production</i>	<i>Trees 6 years and over</i>	<i>Production</i>	<i>Trees 6 years and over</i>	<i>Production</i>
	'000	t	'000	t	'000	t
Adelaide and Outer Adelaide	5.5	269.4	—	0.3	0.2	0.3
Yorke and Lower North	—	—	—	—	—	—
Murray Lands	87.9	14 303.5	164.4	16 725.2	1 905.0	182 585.4
South East	—	—	—	—	—	—
Eyre	—	—	—	—	—	—
Northern	—	—	—	—	—	—
South Australia						
1997p	93.4	14 572.9	164.4	16 725.4	1 905.2	182 585.7
1996	91.8	13 490.5	140.5	10 885.0	1 828.5	170 454.7
1995	96.9	13 978.2	135.9	11 135.9	1 831.9	199 181.2

Statistical division	APPLES		NASHI		PEARS (EXCLUDING NASHI)	
	<i>Trees 6 years and over</i>	<i>Production</i>	<i>Trees 6 years and over</i>	<i>Production</i>	<i>Trees 6 years and over</i>	<i>Production</i>
	'000	t	'000	t	'000	t
Adelaide and Outer Adelaide	452.5	n.y.a.	20.4	n.y.a.	66.1	n.y.a.
Yorke and Lower North	—	n.y.a.	—	n.y.a.	—	n.y.a.
Murray Lands	20.3	n.y.a.	2.3	n.y.a.	18.3	n.y.a.
South East	73.5	n.y.a.	—	n.y.a.	—	n.y.a.
Eyre	—	n.y.a.	—	n.y.a.	—	n.y.a.
Northern	—	n.y.a.	—	n.y.a.	—	n.y.p.
South Australia						
1997p	546.3	n.y.a.	22.7	n.y.a.	84.3	n.y.a.
1996	527.5	20 314.2	20.5	452.3	83.6	8 156.1
1995	531.8	23 596.1	20.2	399.8	79.3	5 412.3

Statistical division	APRICOTS.....		NECTARINES.....		PEACHES.....	
	<i>Trees 6 years and over</i>	<i>Production</i>	<i>Trees 6 years and over</i>	<i>Production</i>	<i>Trees 6 years and over</i>	<i>Production</i>
	'000	t	'000	t	'000	t
Adelaide and Outer Adelaide	18.0	458.1	1.8	40.4	9.5	333.1
Yorke and Lower North	—	—	—	—	—	—
Murray Lands	301.7	14 318.5	28.4	1 480.0	97.6	7 023.7
South East	—	—	—	—	—	—
Eyre	—	2.0	—	—	—	—
Northern	1.6	29.2	0.4	9.3	7.8	116.8
South Australia						
1997p	321.3	14 807.7	30.6	1 529.7	114.9	7 473.7
1996	346.5	13 371.1	30.6	1 042.1	120.2	7 305.5
1995	348.9	17 349.1	19.1	1 256.9	122.1	8 443.3

Statistical division	PLUMS AND PRUNES		RASPBERRIES.....		STRAWBERRIES.....	
	<i>Trees 6 years and over</i>	<i>Production</i>	<i>Area of bearing age</i>	<i>Production</i>	<i>Area of bearing age</i>	<i>Production</i>
	'000	t	ha	t	ha	t
Adelaide and Outer Adelaide	10.6	238.0	4.3	4.6	67.2	1 216.5
Yorke and Lower North	—	—	—	—	—	—
Murray Lands	87.1	4 104.5	—	—	0.4	0.1
South East	—	—	0.6	0.3	—	—
Eyre	—	—	—	—	5.1	76.4
Northern	1.4	7.6	—	—	—	—
South Australia						
1997p	99.1	4 350.0	5.0	4.9	72.6	1 292.9
1996	97.8	4 030.2	6.4	4.7	69.6	1 371.7
1995	89.8	4 166.2	5.6	12.3	61.0	1 035.0

6

VEGETABLES FOR HUMAN CONSUMPTION—Years ended 31 March

	Units	1995	1996	1997p
Beans — French and runner				
area	ha	59.7	37.6	44.4
production	t	194.4	108.4	158.9
Broccoli				
area	ha	442.2	346.7	288.7
production	t	2 398.1	1 802.0	1 534.5
Cabbages				
area	ha	175.8	178.3	153.0
production	t	5 070.9	4 958.0	5 432.1
Carrots				
area	ha	844.4	985.3	947.7
production	t	36 611.7	39 995.8	40 040.8
Cauliflowers				
area	ha	278.1	258.0	197.3
production	t	7 088.1	6 624.1	3 611.6
Cucumbers				
area	ha	54.0	52.0	55.3
production	t	1 778.6	1 414.7	1 211.5
Green peas (pod weight)(a)				
area	ha	34.5	23.3	19.8
production	t	79.8	98.3	45.8
Lettuces				
area	ha	282.0	280.3	250.2
production	t	6 184.8	5 744.3	6 376.5
Melons — rock and cantaloupe				
area	ha	190.4	176.1	138.2
production	t	5 772.0	5 696.4	2 893.6
Melons — water				
area	ha	17.7	12.4	15.1
production	t	557.7	302.1	420.6
Mushrooms				
area	ha	11.2	10.6	9.5
production	t	1 675.6	2 444.7	2 573.6
Onions — white and brown				
area	ha	1 194.7	1 376.8	1 295.8
production	t	51 394.4	69 576.3	70 750.5
Potatoes				
area	ha	7 830.9	8 114.9	7 928.7
production	t	247 414.1	286 268.4	n.y.a.
Pumpkins				
area	ha	378.9	443.9	327.0
production	t	7 673.4	10 009.7	6 899.4
Tomatoes				
area	ha	165.3	164.0	155.3
production	t	5 442.3	4 199.1	3 094.9

(a) Production figure for 1995 is not comparable to 1996 and 1997 data due to changes in question asked.

7

MEAT CATTLE NUMBERS—At 31 March 1997p

Statistical division	Bulls and bull calves intended for service	Cows and heifers one year and over	Heifers and other calves under one year	Other cattle one year and over	Total meat cattle	Percentage of total meat cattle herd
	'000	'000	'000	'000	'000	%
Adelaide and Outer Adelaide	3.8	64.4	34.3	22.1	124.6	11.7
Yorke and Lower North	1.4	20.2	12.5	7.3	41.3	3.9
Murray Lands	2.4	64.2	40.8	14.4	121.8	11.4
South East	14.9	273.6	140.2	89.3	518.1	48.6
Eyre	0.9	17.7	11.1	3.4	33.1	3.1
Northern	4.9	115.6	58.9	48.6	228.0	21.4
South Australia						
1997p	28.2	555.7	297.9	185.0	1 066.8	100.0
1996	29.1	534.3	283.5	222.0	1 069.0	100.0
1995	28.7	529.5	290.7	214.8	1 063.7	100.0

8

MILK CATTLE NUMBERS—At 31 March 1997p

Statistical division	Cows in milk and dry	Other milk cattle	Total milk cattle(a)	Percentage of total milk cattle herd
	'000	'000	'000	%
Adelaide and Outer Adelaide	43.6	22.5	66.1	40.3
Yorke and Lower North	3.8	2.3	6.1	3.7
Murray Lands	32.1	19.1	51.3	31.3
South East	25.4	14.2	39.6	24.2
Eyre	—	—	—	—
Northern	0.6	0.3	0.9	0.5
South Australia				
1997p	105.5	58.4	163.9	100.0
1996	96.8	53.0	149.7	100.0
1995	96.6	55.7	152.4	100.0

(a) Excludes house cows.

9

SHEEP AND LAMB NUMBERS—At 31 March 1997p

Statistical division	Breeding ewes one year and over	Lambs and hoggets under one year	All other sheep	Total sheep and lambs	Percentage of total sheep flock
	'000	'000	'000	'000	%
Adelaide and Outer Adelaide	791.0	370.4	524.6	1 686.1	12.3
Yorke and Lower North	806.3	503.6	346.1	1 656.0	12.1
Murray Lands	1 048.0	558.6	260.8	1 867.4	13.6
South East	1 924.2	870.2	773.1	3 567.4	26.0
Eyre	998.9	583.9	537.9	2 120.7	15.5
Northern	1 521.4	807.3	493.8	2 822.5	20.6
South Australia					
1997p	7 089.7	3 694.0	2 936.3	13 720.1	100.0
1996	6 817.2	3 541.3	3 217.2	13 575.7	100.0
1995	n.c.	3 109.6	n.c.	13 249.1	100.0

10

LAMBING—Years ended 31 March

Statistical division	1997p		EWES TO BE MATED YEAR ENDED 31 MARCH 1998(c)				Total '000
	Ewes mated(a)	Lambs marked	Lamb marking ratio(b)	Joined to merino rams	Joined to short wool rams	Joined to other rams	
	'000	'000	%	'000	'000	'000	'000
Adelaide and Outer Adelaide	723.4	593.0	82.0	384.3	280.4	120.4	785.1
Yorke and Lower North	756.3	648.6	85.8	489.2	180.2	95.8	765.2
Murray Lands	979.9	863.5	88.1	723.1	197.5	109.4	1 030.0
South East	1 796.0	1 622.5	90.3	726.8	804.0	386.0	1 916.8
Eyre	891.6	702.7	78.8	759.0	111.1	59.6	929.7
Northern	1 303.1	942.1	72.3	1 234.4	82.8	65.9	1 383.1
South Australia							
1997p	6 450.4	5 372.5	83.3	4 316.8	1 656.0	837.1	6 810.0
1996	6 214.6	5 199.6	83.7	4 347.9	n.c.	n.c.	6 407.6
1995	6 251.6	4 816.2	77.0	4 317.0	n.c.	n.c.	6 225.1

(a) Ewes mated to produce lambs marked in the season shown.

(b) Lambs marked as a proportion of ewes mated to produce lambs.

(c) Forecast made at the end of 1996-97.

Statistical division	Total pigs	Percentage of total pigs
	'000	%
Adelaide and Outer Adelaide	133.1	34.9
Yorke and Lower North	66.5	17.4
Murray Lands	104.2	27.3
South East	32.1	8.4
Eyre	26.1	6.8
Northern	19.1	5.0
South Australia		
1997p	381.0	100.0
1996	412.1	100.0
1995	422.9	100.0

EXPLANATORY NOTES

.....

INTRODUCTION

1 This publication contains preliminary agricultural estimates for 1996-97 and comparative data for earlier years. Final figures for 1996-97 will be published early in 1998 when all agricultural census returns have been fully processed.

SCOPE AND COVERAGE

2 Estimates are based on information obtained from a substantial proportion of farms in South Australia, from the agricultural census conducted throughout Australia for the year ended 31 March 1997.

3 Establishments which make only a small contribution to overall agricultural production are excluded from the scope of the census. Information is collected from establishments when their estimated value of agricultural operations (EVAO) is above a certain level. These levels have varied in past agricultural censuses, as follows:

- 1993-94 to present EVAO \$5,000 and over;
- 1991-92 to 1992-93 EVAO \$22,500 and over;
- 1986-87 to 1990-91 EVAO \$20,000 and over; and
- before 1986-87 EVAO \$2,500 and over.

RELIABILITY OF ESTIMATES

4 Preliminary estimates are based on forms received and processed at the point of estimation (approximately 75%) and are subject to sampling error.

5 Sampling error is the variation occurring because information has not been collected from all the relevant units. This is often described in terms of relative standard error (RSE) which makes certain assumptions about the distribution of the units used in estimation. In particular, these units are assumed to have been drawn from the population randomly and are therefore representative of those units for which there is no information (late returns). If there is a bias associated with these units (e.g. units faring poorly may reply later and thus may not be included in preliminary estimates), this assumption is no longer valid. However, the RSE measures should still be regarded as a good guide to the reliability of the estimates, and are available on request.

RELATED PUBLICATIONS

6 Users may also wish to refer to the following priced publications which are available on request:

Agricultural Industries, Financial Statistics, Australia (7507.0)
Value of Agricultural Commodities Produced, Australia (7503.0)

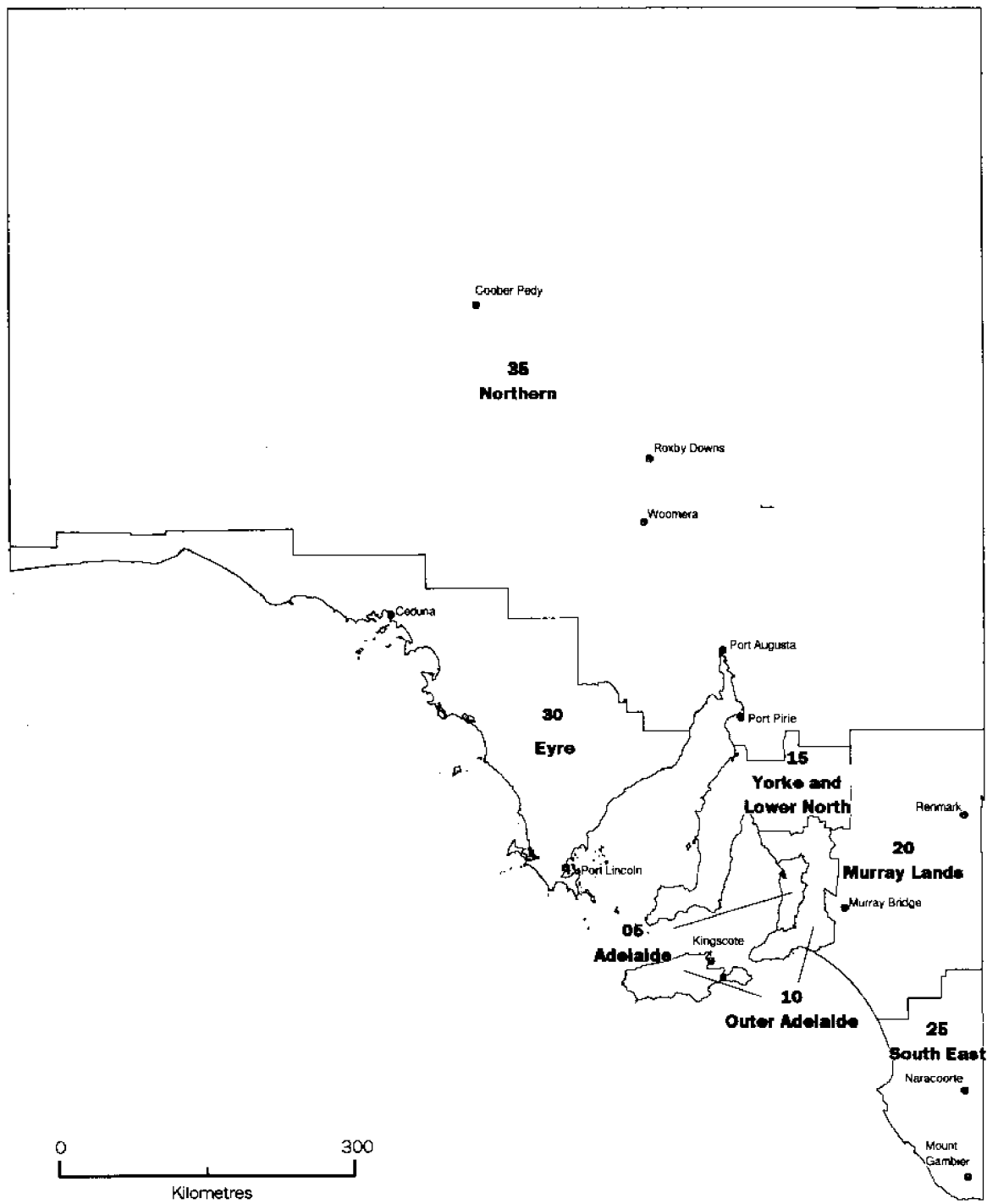
OTHER FORMS OF RELEASE

7 The ABS has more detailed agricultural statistics on floppy disk. AgStats on floppy disk offers a wide range of data aggregated at smaller geographic areas than those available in printed publications, together with an easy-to-use interrogation facility. A smaller range of commodities is available on the CD-ROM product, the Integrated Regional Data Base (IRDB).

8 Current publications produced by the ABS are listed in the Catalogue of Publications and Products, Australia (1101.0). The ABS also issues, on Tuesdays and Fridays, a Release Advice (1105.0) which lists publications to be released in the following few days. The Catalogue and Release Advice are available from any ABS office.

9 Where the figures have been rounded, discrepancies may occur between the sums of the component items and totals.

STATISTICAL DIVISIONS OF SOUTH AUSTRALIA *from 1 July 1996*





For more information . . .

The ABS publishes a wide range of statistics and other information on Australia's economic and social conditions. Details of what is available in various publications and other products can be found in the ABS Catalogue of Publications and Products available from all ABS Offices.

ABS Products and Services

Many standard products are available from ABS bookshops located in each State and Territory. In addition to these products, information tailored to the needs of clients can be obtained on a wide range of media by contacting your nearest ABS Office. The ABS also provides a Subscription Service for standard products and some tailored information services.

National Dial-a-Statistic Line

0055 86 400

Steadycom P/L: premium rate 25c/20 secs.

This number gives 24-hour access, 365 days a year, for a range of important economic statistics including the CPI.

Internet

<http://www.abs.gov.au>

A wide range of ABS information is available via the Internet, with basic statistics available for each State, Territory and Australia. We also have Key National Indicators, ABS product release details and other information of general interest.

Sales and Inquiries

client.services@abs.gov.au

National Mail Order Service (02) 6252 5249
Subscription Service 1300 366 323

	Information Inquiries	Bookshop Sales
CANBERRA	(02) 6252 6627	(02) 6207 0326
SYDNEY	(02) 9268 4611	(02) 9268 4620
MELBOURNE	(03) 9615 7755	(03) 9615 7755
BRISBANE	(07) 3222 6351	(07) 3222 6350
PERTH	(08) 9360 5140	(08) 9360 5307
ADELAIDE	(08) 8237 7100	(08) 8237 7582
HOBART	(03) 6222 5800	(03) 6222 5800
DARWIN	(08) 8943 2111	(08) 8943 2111



Client Services, ABS, PO Box 10, Belconnen ACT 2616

© Commonwealth of Australia 1997

Recommended retail price: \$15.50



2711140007962

ISSN 0729-8684

ABS Catalogue No. 7/11/4 PRINCIPAL AGRICULTURAL COMMUNITIES SOUTH AUSTRALIA Preliminary 1997-98