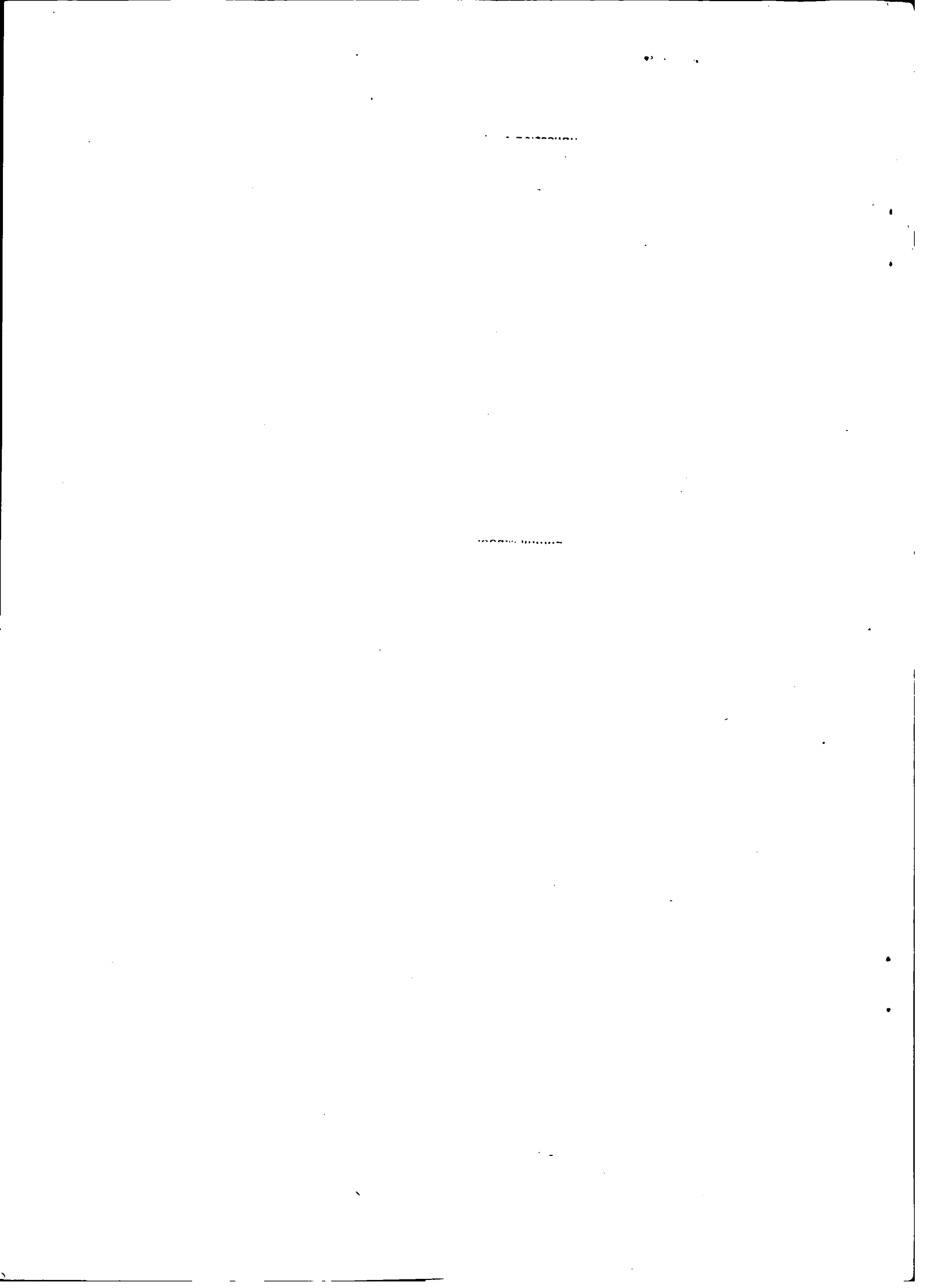




THE LABOUR FORCE
AUSTRALIA
DECEMBER 1979

Catalogue No. 6203.0

AUSTRALIAN BUREAU OF STATISTICS Canberra



INQUIRIES

If you want to know more about these statistics, ring Mr Godfrey Laurie on Canberra 526565 or our State office, or write to Information Services, ABS, P.O. Box 10, Belconnen, A.C.T. 2616.

For copies of this publication contact Information Services, Canberra 526627 or State offices.

CATALOGUE NO. 6203.0

NOON 26 FEBRUARY 1980

THE LABOUR FORCE, AUSTRALIA, DECEMBER 1979

CONTENTS

<i>Table</i>	<i>Page</i>
1. LABOUR FORCE ESTIMATES	
.. Explanatory notes	2
.. Graphs	6
Civilian population aged 15 years and over: employment status	
1. Australia	7
2. Marital status	9
3. States and Territories	9
4. State capital cities	10
Civilian population aged 15 to 24 years (single years) : employment status	
5. Aged 15 to 19 years : whether attending school	11
6. Aged 20 to 24 years	11
Civilian labour force	
7. Employment status, birthplace and period of arrival in Australia	12
8. Age	13
9. Participation rates, by age and birthplace	13
Employed persons	
10. Full-time and part-time status, by age	13
11. Hours worked	14
12. Full-time workers who worked less than 35 hours, by reason	14
13. Part-time workers, whether preferred to work more hours, and whether looking for full-time work, by age	15
Unemployed persons	
14. Age : States	15
15. Age and whether looking for full-time or part-time work	16
16. Age and birthplace	16
17. Duration of unemployment and age, etc.	17
18. Industry and occupation of last full-time job and duration of unemployment	18
19. Aged 15 to 19 years : duration of unemployment and whether attending school	19
Persons not in the labour force	
20. Age and marital status, etc.	19
Technical note	
Estimation procedure	20
Reliability of the estimates	20
Population survey reports	22
NOTE. Some additional labour force survey data are included in other issues of this publication or are available on request. For details see paragraph 35 of the explanatory notes.	
2. JOB VACANCIES	
21. Job vacancies	23

1. LABOUR FORCE ESTIMATES

EXPLANATORY NOTES

Introduction

This section contains estimates of the civilian labour force derived from the population survey, which is now conducted monthly. Until February 1978, surveys were conducted in February, May, August and November each year.

2. A summary of the survey results is published in advance of this more detailed publication in *The Labour Force, Australia (Preliminary)* (6202.0). Preliminary unemployment estimates are also issued in advance of this publication in *Unemployment, Australia, Preliminary Estimates* (6201.0).

3. Although emphasis in the survey is placed on the regular collection of data on demographic and labour force characteristics of the population, supplementary surveys of particular aspects of the labour force or of other subjects are carried out from time to time. Statistics from supplementary surveys are published and are available free on request. A list of titles is given on page 22.

The population survey

4. The survey is based on a multi-stage area sample of private dwellings (about 30,000 houses, flats, etc.) and non-private dwellings (hotels, motels, etc.), and covers about two-thirds of one per cent of the population of Australia. The information is obtained from the occupants of selected dwellings by carefully chosen and specially trained interviewers. The interviews are generally conducted during the two weeks beginning on the Monday between the 6th and 12th of each month. The information obtained relates to the week before the interview (i.e. the survey week). Because of operational problems arising from the Christmas and New Year holidays the December surveys commence a week earlier than usual (with most interviews being conducted during the second week) and the January surveys commence a week later than usual.

Scope

5. The survey includes all persons aged fifteen years and over except :

- (a) members of the permanent defence forces
- (b) certain diplomatic personnel of overseas governments, customarily excluded from census and estimated populations
- (c) overseas visitors holidaying in Australia, and
- (d) members of non-Australian defence forces (and their dependants) stationed in Australia.

Definitions

6. The labour force category to which a person is assigned depends on his *actual activity* (i.e. whether working, looking for work, etc.) during the survey week. The following definitions, which conform closely to the

international standard definitions specified by the ILO, relate only to those persons within the scope of the survey.

7. *Employed persons* comprise all those aged 15 years and over who, during the survey week :

- (a) worked for one hour or more for pay, profit, commission or payment in kind in a job or business, or on a farm (including employees, employers and self-employed persons); or
- (b) worked for 15 hours or more without pay in a family business or on a farm (i.e. unpaid family helpers); or
- (c) were employees who had a job but were not at work and were : on paid leave; on leave without pay for less than four weeks up to the end of the survey week; stood down without pay because of bad weather or plant breakdown at their place of employment for less than four weeks up to the end of the survey week; on strike or locked out; on workers' compensation and expected to be returning to their job; or receiving wages or salary while undertaking full-time study; or
- (d) were employers or self-employed persons who had a job, business or farm, but were not at work.

8. *Unemployed persons* are those aged 15 years and over who were not employed during the survey week, and

- (a) had actively looked for full-time or part-time work at any time in the four weeks up to the end of the survey week and :
 - (i) were available for work in the survey week, or would have been available except for temporary illness (i.e. lasting for less than four weeks to the end of the survey week); or
 - (ii) were waiting to start a new job within four weeks from the end of the survey week and would have started in the survey week if the job had been available then;

or (b) were waiting to be called back to a full-time or part-time job from which they had been stood down without pay for less than four weeks up to the end of the survey week (including the whole of the survey week) for reasons other than bad weather or plant breakdown.

9. *Unemployed persons looking for first job* are those who had never worked for two weeks or more in a full-time job. Prior to November 1977 it comprises persons who had never had a job.

10. The *unemployment rate* for any group is the number unemployed expressed as a percentage of the labour force (i.e. employed plus unemployed) in the same group.

11. *Duration of unemployment* is the period from the time the person began looking for work or was laid off to the end of the survey week. Periods of unemployment are recorded in complete weeks and this results in a slight understatement of duration. *Average (mean) duration* is the duration obtained by dividing the aggregate number of weeks a group has been unemployed by the number of persons in that group. *Median duration* is the duration which divides unemployed persons into two equal groups, one comprising persons whose duration of unemployment is above the median and the other persons whose duration is below it. Medians are calculated from group data, linear interpolation being used within the group which contains the median.

12. The *labour force* comprises all persons who, during the survey week, were employed or unemployed, as defined in paragraphs 7 and 8.

13. The *labour force participation rate* for any group is the labour force expressed as a percentage of the civilian population aged 15 years and over in the same group. Because it is not practicable to ascertain the birthplace of persons in institutions (who are classified as not in the labour force), labour force participation rates for persons classified by birthplace are calculated by using population estimates which exclude those in institutions.

14. *Full-time workers* are those who usually work 35 hours a week or more and others who, although usually part-time workers, worked 35 hours or more during the survey week. *Part-time workers* are those who usually work less than 35 hours a week and who did so during the survey week. When recording hours of work, fractions of an hour are disregarded.

15. *Hours of work.* The figures of aggregate hours and of average hours refer to actual hours worked during the survey week, not hours paid for. The figures may be affected by public holidays, leave, absenteeism; temporary absence from work due to sickness, injury, accident and industrial disputes; and stoppages of work due to bad weather, plant breakdown etc. When hours of work are recorded fractions of an hour are disregarded and this results in slightly lower figures than would be the case if actual time worked was recorded. Persons stood down for the whole of the survey week without pay because of bad weather or plant breakdown at their place of employment are regarded as employed and therefore are included (working no hours) in the calculation of average hours worked. Persons stood down in the survey week for reasons other than bad weather and plant breakdown and waiting to be called back to their job are regarded as unemployed and are therefore excluded from the calculation.

16. *Persons attending school* comprise those who, during the survey week, were enrolled full-time at secondary or high schools. Excluded are persons who were enrolled at universities, colleges of advanced education, technical colleges, other tertiary education institutions, and coaching and business schools. Persons attending school are classified as in the labour force if they were employed or unemployed as defined in paragraphs 7 and 8.

17. *Persons not in the labour force* are those who, during the survey week, were not in the categories 'employed' or 'unemployed'. This category includes persons who were keeping house (unpaid), attending an educational institution (school, university, etc.), retired, voluntarily inactive, permanently unable to work, inmates of institutions, trainee teachers, members of contemplative religious orders, and persons whose only activity during the survey week was jury service or unpaid voluntary work for a charitable organisation, provided they had not actively looked for work in the four weeks up to the end of the survey week, and

(a) in the survey week :

- (i) were without a job, business or farm; or
- (ii) had worked for less than one hour for pay, profit, commission or payment in kind; or
- (iii) had worked for less than 15 hours without pay in a family business or farm;

or (b) had been stood down without pay for four weeks or more up to the end of the survey week.

Classification of industry and occupation

18. Industry is classified according to the *Australian Standard Industrial Classification (ASIC) 1978* and occupation according to the *Classification and Classified List of Occupations, Revised June 1976*.

Population benchmarks

19. The population survey estimates are calculated in such a way as to conform to the independently estimated distribution of the population aged 15 years and over by age and sex. These independent estimates (benchmarks) are necessarily derived from incomplete information about population changes (deaths, internal and overseas migration) and can differ from estimates of the population subsequently published by the ABS. For estimates of the population and other demographic statistics reference should be made to the quarterly publication, *Population and Vital Statistics (3212.0)*.

Revision of series

20. Survey estimates are not revised for the usually small amendments of population benchmarks arising from new data on deaths and migration. Revisions are made, however, after each census and when population estimation bases are reviewed. Survey estimates back to August 1966 have been recalculated to conform to

revised population estimates. The estimates take account of results of the 1966, 1971 and 1976 population censuses, including estimates of under-enumeration, and incorporate a revised method of measuring overseas migration gain (i.e. by excluding movements of less than one year's duration). For information concerning these population estimates for the period June 1971 to June 1977 see *Population and Vital Statistics : June Quarter 1977* (3212.0).

21. *The new sample and revised questionnaire.* Survey estimates for February 1978 and subsequent months have been obtained by using a new sample and revised questionnaire. Estimates for the period August 1966 to November 1977 have been revised in order to provide a series for earlier periods as comparable as possible with the February 1978 and later estimates.

22. The new sample was selected in order to reflect the changes in the distribution of the population shown by the 1976 Population Census results. The questionnaire, which had undergone little change since 1960 except for the inclusion in 1975 of additional questions on job-seeking, was revised to provide more accurate and more detailed information concerning the labour force.

23. Copies of both the current questionnaire and the one previously used, together with a description of the main features of the questionnaire, are contained in *Information Paper : Questionnaires used in the Labour Force Survey* (6232.0).

24. Revised estimates for the period August 1976 to November 1977 were published in the February 1978 issue of this publication, which also contains information concerning the methods used in the revision. For periods prior to August 1976, detailed revised estimates are available for August of each year. For February, May and November only broad revised aggregates (as in Table 1) are available. Revised estimates by States and Territories for each August, 1971 to 1978, were published in the December 1978 issue of this publication. State estimates are not available for periods prior to August 1971.

Comparability of series

25. When comparing estimates for February 1978 and subsequent months with those for earlier periods, it should be noted that with the introduction of monthly surveys the interviews are now conducted during a two-week period, whereas formerly the period was four weeks. This change of timing may affect the level of the figures for any month, but particularly for months during which the employment status of the population may be changing rapidly.

26. Because of the revisions, the estimates in this publication are not comparable with those shown in issues before February 1978 or in the special publications entitled *The Labour Force* (6204.0), covering the period 1964 to 1977.

27. The survey periods for February in the years 1971, 1972, 1974 and 1976 were later than in other years, and as a consequence the estimates of the proportion of the population 15 years and over who attended school was correspondingly higher. In addition, in February 1974 the survey period in Queensland was delayed by a further week in order to avoid as far as possible the effects of the flood in the south-east area of the State.

28. Because of the effects of cyclone Tracy the population survey was not conducted in Darwin in February 1975. The estimates for this period therefore exclude Darwin.

29. From September 1979, industry estimates in labour force survey publications have been classified according to the 1978 version of the Australian Standard Industrial Classification (ASIC). The estimates are therefore not strictly comparable with those for periods prior to September 1979, which were classified according to the 1969 version of ASIC.

Reliability of the estimates

30. Since the estimates in this section are based on information obtained from occupants of a sample of dwellings they are subject to sampling variability; that is, they may differ from the figures that would have been produced if all dwellings had been included in the survey. An indication of the likely differences is given in the Technical note, page 20.

Differences between population census and population survey estimates

31. The results of the 1976 population census show that the census labour force figures differ from the estimates derived from the population surveys of May and August 1976.

32. The labour force definition used in the population census is similar to that used in the survey (see paragraphs 6 to 17). However, evidence from census post-enumeration surveys indicates that the personal interview approach, as used in the population survey, tends to identify a larger number of persons as being in the labour force than does the filling in of the questions on the census schedule by the householder. In addition, the post-enumeration survey following the 1976 census showed an under-enumeration of the population of 2.71 per cent. The published census labour force figures have not been adjusted for any under-enumeration.

33. These considerations should be borne in mind if comparisons of the total labour force or of labour force participation rates are made between the 1976 census and the 1976 labour force survey estimates.

Seasonal adjustment

34. The move to the higher level of unemployment since 1974 appears to have been accompanied by shifts in the pattern of seasonal variation. For this reason the

publication of seasonally adjusted figures of unemployment was suspended as from November 1977. The matter will be kept under review.

35. Seasonally adjusted quarterly estimates of employed persons, the labour force and labour force participation rates are published in the February, May, August and November issues. Calculation of seasonally adjusted monthly figures will not be possible until results of monthly surveys for two or three years are available. A table of revised seasonally adjusted figures for the period August 1966 to February 1979 was published in the February 1979 issue.

Additional tables

36. Labour force estimates for employed persons classified by industry and occupation and for seasonally adjusted series, are available only each quarter. Estimates relating to these characteristics are included in only some issues of this publication, as shown below.

February, May, August and November –

Average weekly hours worked : Industry and occupation

Employed married women : Industry and hours worked

Seasonally adjusted series.

The following estimates are available for February, May, August and November but are published only for the months shown.

February –

Employed persons –
Industry and marital status

Industry and birthplace

Occupation and marital status

Occupation and birthplace.

May –

Employed persons : Occupation – major and minor groups.

August –

Employed persons : Industry by occupation.

November –

Employed persons –
Industry by full-time and part-time status

Occupation by full-time and part-time status

Industry by age.

Other unpublished data from labour force surveys may be available on request.

Related publications

37. Users may also wish to refer to the following publications which are available on request :

Unemployment, Australia (Preliminary Estimates) (6201.0)

The Labour Force, Australia (Preliminary) (6202.0)

The Labour Force, New South Wales (6201.1)

The Labour Force, Victoria (6201.2)

The Labour Force, Queensland (6201.3)

The Labour Force, South Australia (6201.4)

Information Paper : Questionnaires used in the Labour Force Survey (6232.0)

Civilian Employees, Australia (6213.0)

Job Vacancies, Australia (6231.0)

Overtime, Australia (6330.0)

Publications listed on page 22.

38. All current publications produced by the ABS are listed in *Catalogue of Publications* (1101.0) which is available free of charge from any ABS office.

Symbols and other usages

* subject to sampling variability too high for most practical uses. See paragraph 5, page 20.

n.a. not available.

.. not applicable.

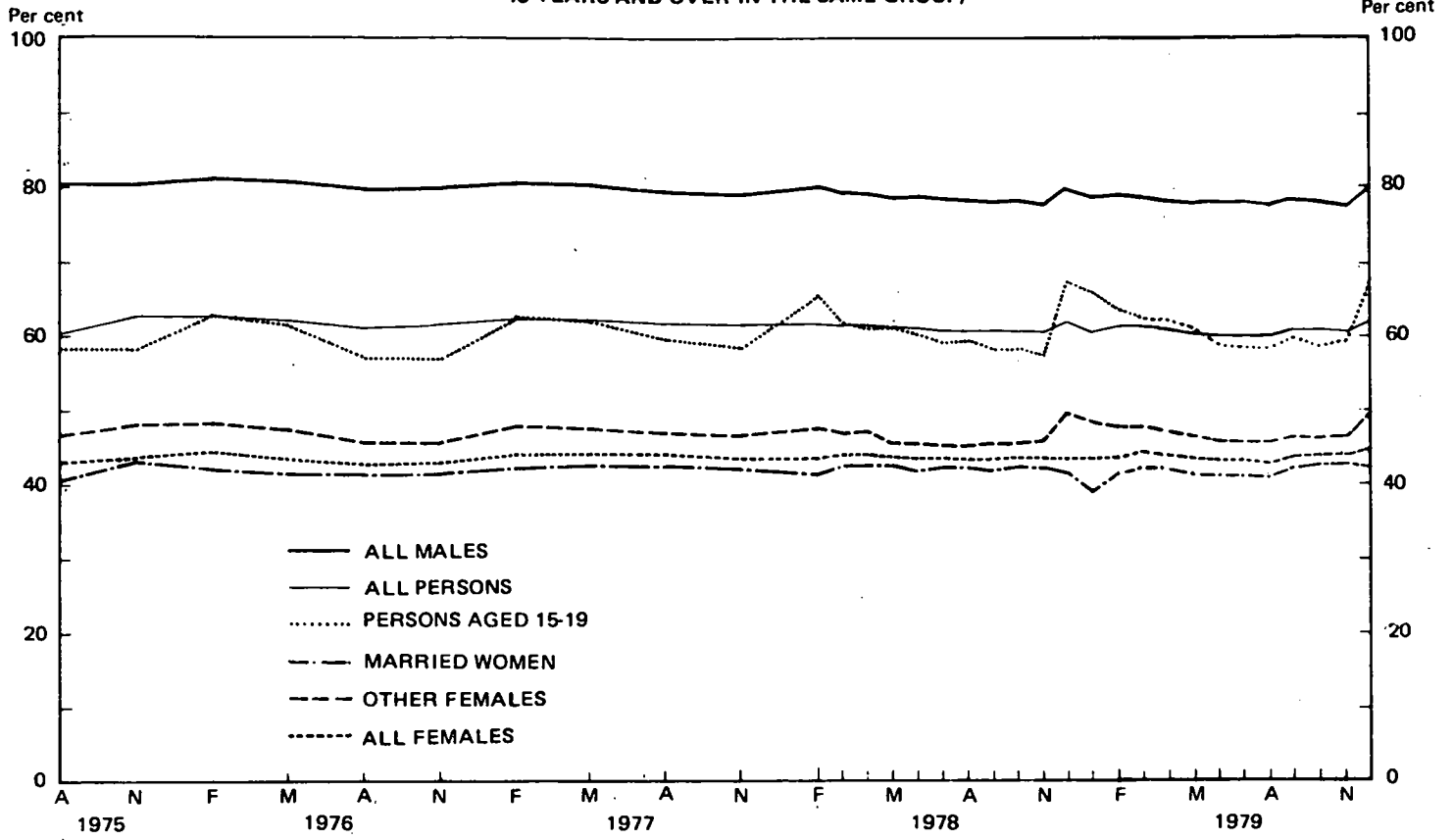
n.e.c. not elsewhere classified.

39. Figures have been rounded and discrepancies may occur between sums of the component items and totals.

R. J. CAMERON
Australian Statistician

LABOUR FORCE PARTICIPATION RATES

(THE LABOUR FORCE IN EACH GROUP AS A PERCENTAGE OF THE CIVILIAN POPULATION AGED 15 YEARS AND OVER IN THE SAME GROUP)



NOTE. From February 1978 the population survey has been conducted monthly. Previously, surveys were conducted in February, May, August and November each year.

UNEMPLOYMENT RATES

(THE UNEMPLOYED IN EACH GROUP AS A PERCENTAGE OF THE CIVILIAN LABOUR FORCE IN THE SAME GROUP)

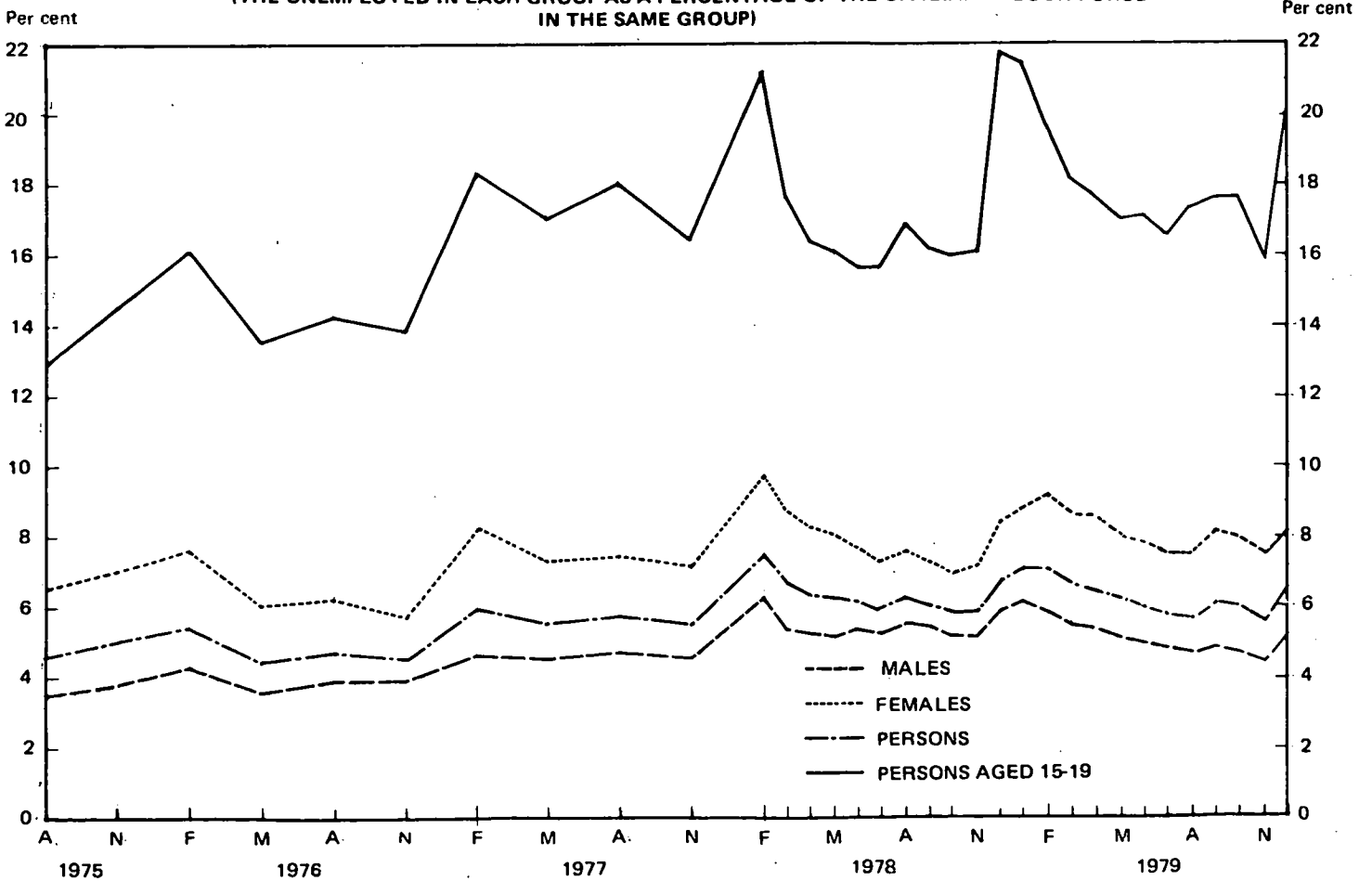


TABLE 1. CIVILIAN POPULATION AGED 15 YEARS AND OVER, BY EMPLOYMENT STATUS (a)

Month	Unemployed									
	Employed	Looking for full-time work		Looking for part-time work	Total	Labour force	Not in labour force	Civilian population aged 15 years and over	Unemployment rate	Participation rate
		Aged 15-19 years looking for first job	Total							
- '000 -					- per cent -					
MALES										
1978 -										
November	3,846.1	18.0	191.0	15.4	206.4	4,052.4	1,147.5	5,199.9	5.1	77.9
December	3,923.7	40.4	219.9	21.6	241.6	4,165.3	1,048.9	5,214.1	5.8	79.9
1979 -										
January	3,869.2	42.4	235.2	14.8	250.0	4,119.3	1,098.9	5,218.2	6.1	78.9
February	3,893.6	33.0	229.5	12.3	241.8	4,135.4	1,091.9	5,227.3	5.8	79.1
March	3,904.2	24.1	206.6	16.5	223.1	4,127.4	1,111.3	5,238.6	5.4	78.8
April	3,907.4	25.6	202.1	15.1	217.2	4,124.6	1,120.6	5,245.2	5.3	78.6
May	3,908.3	22.0	197.7	13.0	210.6	4,118.9	1,132.4	5,251.3	5.1	78.4
June	3,909.6	19.7	192.8	13.2	206.0	4,115.6	1,139.8	5,255.4	5.0	78.3
July	3,910.8	18.1	188.2	13.4	201.6	4,112.4	1,149.7	5,262.1	4.9	78.2
August	3,904.5	20.0	182.8	13.3	196.1	4,100.7	1,167.9	5,268.6	4.8	77.8
September	3,939.3	21.2	184.7	16.9	201.6	4,140.9	1,134.7	5,275.7	4.9	78.5
October	3,930.9	23.2	178.1	17.8	195.9	4,126.8	1,157.2	5,284.1	4.7	78.1
November	3,931.2	20.0	171.5	12.4	183.8	4,115.0	1,177.6	5,292.6	4.5	77.8
December	3,992.3	38.5	202.2	22.0	224.2	4,216.4	1,087.4	5,303.8	5.3	79.5
Standard error of -										
December 1979 estimates	13.9	2.6	5.1	2.1	5.3	14.1	9.3	..	0.1	0.3
November to December 1979 movement	9.7	2.5	4.3	2.0	4.5	9.8	7.2	..	0.1	0.2
MARRIED WOMEN										
1978 -										
November	1,373.4	*	34.9	28.5	63.4	1,436.8	1,983.6	3,420.5	4.4	42.0
December	1,373.6	*	31.5	24.0	55.5	1,429.2	2,006.7	3,435.9	3.9	41.6
1979 -										
January	1,281.6	*	38.4	25.4	63.8	1,345.4	2,101.9	3,447.4	4.7	39.0
February	1,346.1	*	45.5	40.3	85.7	1,431.8	2,024.9	3,456.7	6.0	41.4
March	1,364.7	*	48.2	36.6	84.8	1,449.5	2,002.7	3,452.1	5.8	42.0
April	1,358.5	*	45.4	38.1	83.5	1,442.0	2,007.9	3,449.9	5.8	41.8
May	1,356.3	*	40.0	32.2	72.2	1,428.5	2,035.9	3,464.4	5.1	41.2
June	1,362.6	*	38.3	34.7	73.0	1,435.6	2,009.4	3,445.0	5.1	41.7
July	1,368.2	*	41.4	33.6	75.0	1,443.2	2,004.3	3,447.5	5.2	41.9
August	1,347.2	*	41.7	31.9	73.6	1,420.8	2,020.8	3,441.6	5.2	41.3
September	1,374.8	*	46.8	37.4	84.3	1,459.1	1,990.2	3,449.3	5.8	42.3
October	1,392.7	*	45.1	39.0	84.1	1,476.8	1,973.1	3,450.0	5.7	42.8
November	1,408.5	*	41.8	34.7	76.5	1,485.0	1,980.7	3,465.7	5.1	42.8
December	1,392.6	*	36.8	31.1	67.9	1,460.5	2,011.1	3,471.5	4.6	42.1
Standard error of -										
December 1979 estimates	10.1	..	2.6	2.4	3.3	10.2	11.3	..	0.2	0.3
November to December 1979 movement	7.5	..	2.6	2.4	3.2	7.6	8.2	..	0.2	0.2

For footnote see page 8.

TABLE 1. CIVILIAN POPULATION AGED 15 YEARS AND OVER, BY EMPLOYMENT STATUS (a) - continued

Month	Unemployed					Labour force	Not in labour force	Civilian population aged 15 years and over	Unemployment rate	Participation rate
	Employed	Looking for full-time work	Aged 15-19 years looking for first job	Looking for part-time work	Total					
					- '000 -					
ALL FEMALES										
1978 -										
November	2,151.2	20.3	117.9	45.5	163.3	2,314.6	3,014.5	5,329.1	7.1	43.4
December	2,173.8	47.1	153.9	45.8	199.7	2,373.5	2,970.9	5,344.3	8.4	44.4
1979 -										
January	2,070.7	45.3	155.9	40.2	196.1	2,266.8	3,081.1	5,347.9	8.7	42.4
February	2,125.4	36.1	152.2	59.9	212.1	2,337.5	3,019.6	5,357.1	9.1	43.6
March	2,157.4	30.8	146.9	54.9	201.8	2,359.2	3,006.5	5,365.7	8.6	44.0
April	2,149.0	30.0	144.2	55.3	199.5	2,348.5	3,027.2	5,375.7	8.5	43.7
May	2,135.0	28.9	137.5	48.5	186.0	2,321.0	3,061.3	5,382.3	8.0	43.1
June	2,148.0	27.2	130.7	52.6	183.3	2,331.3	3,055.4	5,386.7	7.9	43.3
July	2,156.8	24.3	131.3	49.7	181.0	2,337.7	3,056.2	5,394.0	7.7	43.3
August	2,136.9	25.2	130.1	47.5	177.7	2,314.6	3,086.4	5,401.0	7.7	42.9
September	2,178.8	27.7	138.3	56.6	194.9	2,373.7	3,035.2	5,408.9	8.2	43.9
October	2,194.4	25.1	133.5	58.4	191.8	2,386.2	3,031.3	5,417.5	8.0	44.0
November	2,219.4	22.7	125.1	51.7	176.8	2,396.2	3,030.2	5,426.4	7.4	44.2
December	2,227.7	45.6	151.6	51.1	202.7	2,430.4	3,007.5	5,437.9	8.3	44.7
Standard error of -										
December 1979 estimates										
	11.7	2.8	4.6	3.0	5.1	12.0	12.8	..	0.2	0.2
November to December 1979 movement										
	8.4	2.6	3.9	2.8	4.3	8.6	9.1	..	0.2	0.2
PERSONS										
1978 -										
November	5,997.3	38.3	308.8	60.9	369.7	6,367.0	4,162.0	10,529.1	5.8	60.5
December	6,097.5	87.5	373.8	67.4	441.2	6,538.7	4,019.8	10,558.5	6.7	61.9
1979 -										
January	5,939.9	87.7	391.1	55.0	446.2	6,386.1	4,180.0	10,566.1	7.0	60.4
February	6,018.9	69.1	381.7	72.3	453.9	6,472.9	4,111.5	10,584.4	7.0	61.2
March	6,061.6	54.9	353.5	71.4	425.0	6,486.6	4,117.7	10,604.3	6.6	61.2
April	6,056.4	55.6	346.4	70.4	416.8	6,473.1	4,147.8	10,621.0	6.4	60.9
May	6,043.3	51.0	335.1	61.4	396.6	6,439.9	4,193.6	10,633.5	6.2	60.6
June	6,057.6	46.9	323.6	65.8	389.3	6,446.9	4,195.2	10,642.1	6.0	60.6
July	6,067.6	42.4	319.5	63.0	382.5	6,450.1	4,205.9	10,656.1	5.9	60.5
August	6,041.5	45.2	312.9	60.8	373.8	6,415.3	4,254.3	10,669.6	5.8	60.1
September	6,118.1	48.8	323.0	73.5	396.5	6,514.6	4,170.0	10,684.6	6.1	61.0
October	6,125.2	48.3	311.6	76.2	387.8	6,513.0	4,188.5	10,701.5	6.0	60.9
November	6,150.6	42.7	296.5	64.1	360.6	6,511.2	4,207.8	10,719.0	5.5	60.7
December	6,219.9	84.0	353.7	73.1	426.9	6,646.8	4,094.9	10,741.7	6.4	61.9
Standard error of -										
December 1979 estimates										
	15.7	3.6	6.3	3.4	6.8	16.0	14.0	..	0.1	0.1
November to December 1979 movement										
	10.8	3.3	5.1	3.1	5.4	10.9	9.8	..	0.1	0.1

(a) For information on standard errors see Technical note, page 20.

TABLE 2. CIVILIAN POPULATION AGED 15 YEARS AND OVER, BY EMPLOYMENT STATUS AND MARITAL STATUS, DECEMBER 1979

	Employed	Unemployed			Labour force	Not in labour force	Civilian population aged 15 years and over	Unemployment rate	Participation rate
		Looking for full-time work	Looking for part-time work	Total					
					- '000 -		- per cent -		
Males -									
Married	2,777.1	62.4	*	65.8	2,843.0	637.3	3,480.3	2.3	81.7
Other (a)	1,215.1	139.7	18.6	158.3	1,373.4	450.0	1,823.5	11.5	75.3
Total	3,992.3	202.2	22.0	224.2	4,216.4	1,087.4	5,303.8	5.3	79.5
Females -									
Married	1,392.6	36.8	31.1	67.9	1,460.5	2,011.1	3,471.5	4.6	42.1
Other (a)	835.1	114.8	20.0	134.8	969.9	996.4	1,966.4	13.9	49.3
Total	2,227.7	151.6	51.1	202.7	2,430.4	3,007.5	5,437.9	8.3	44.7
Persons	6,219.9	353.7	73.1	426.9	6,646.8	4,094.9	10,741.7	6.4	61.9

(a) Comprises never married, widowed and divorced.

TABLE 3. CIVILIAN POPULATION AGED 15 YEARS AND OVER, BY EMPLOYMENT STATUS, STATES AND TERRITORIES, DECEMBER 1979

State or Territory	Employed	Unemployed			Labour force	Not in labour force	Civilian population aged 15 years and over	Unemployment rate	Participation rate
		Looking for full-time work	Looking for part-time work	Total					
					- '000 -		- per cent -		
MALES									
N.S.W.	1,404.7	66.8	7.0	73.9	1,478.6	393.0	1,871.6	5.0	79.0
Vic.	1,080.1	46.8	5.8	52.6	1,132.6	276.9	1,409.6	4.6	80.4
Qld	592.7	32.7	*	35.9	628.6	181.5	810.1	5.7	77.6
S.A.	355.3	20.3	*	22.5	377.7	103.2	480.9	5.9	78.5
W.A.	350.2	23.2	3.3	26.4	376.6	86.1	462.7	7.0	81.4
Tas.	113.8	6.9	*	7.1	120.9	31.4	152.3	5.9	79.4
N.T.	33.6	2.1	*	2.1	35.7	6.4	42.1	5.9	84.9
A.C.T.	61.9	3.4	*	3.7	65.6	9.0	74.6	5.7	87.9
Australia	3,992.3	202.2	22.0	224.2	4,216.4	1,087.4	5,303.8	5.3	79.5
FEMALES									
N.S.W.	777.3	45.3	16.2	61.6	838.8	1,097.8	1,936.7	7.3	43.3
Vic.	617.5	37.5	13.8	51.3	668.8	789.3	1,458.1	7.7	45.9
Qld	315.4	24.1	8.0	32.1	347.5	478.1	825.6	9.2	42.1
S.A.	206.9	17.7	4.4	22.2	229.1	268.4	497.5	9.7	46.0
W.A.	194.7	17.6	5.8	23.4	218.1	235.5	453.7	10.7	48.1
Tas.	59.0	5.3	1.7	7.0	66.1	89.1	155.1	10.7	42.6
N.T.	16.6	*	*	*	17.9	15.4	33.2	*	53.8
A.C.T.	40.3	3.1	*	3.8	44.1	34.0	78.1	8.6	56.5
Australia	2,227.7	151.6	51.1	202.7	2,430.4	3,007.5	5,437.9	8.3	44.7
PERSONS									
N.S.W.	2,182.0	112.2	23.3	135.5	2,317.5	1,490.8	3,808.2	5.8	60.9
Vic.	1,697.6	84.3	19.6	103.9	1,801.4	1,066.2	2,867.6	5.8	62.8
Qld	908.1	56.8	11.2	67.9	976.1	659.6	1,635.7	7.0	59.7
S.A.	562.2	38.0	6.6	44.6	606.8	371.6	978.4	7.4	62.0
W.A.	544.9	40.8	9.1	49.9	594.8	321.6	916.4	8.4	64.9
Tas.	172.8	12.2	1.9	14.2	187.0	120.4	307.4	7.6	60.8
N.T.	50.2	3.0	*	3.4	53.6	21.7	75.3	6.4	71.2
A.C.T.	102.2	6.5	*	7.6	109.7	43.0	152.7	6.9	71.9
Australia	6,219.9	353.7	73.1	426.9	6,646.8	4,094.9	10,741.7	6.4	61.9

TABLE 4. CIVILIAN POPULATION AGED 15 YEARS AND OVER, BY EMPLOYMENT STATUS,
STATE CAPITAL CITIES, DECEMBER 1979

Capital city	Employed	Unemployed		Total	Labour force	Not in labour force	Civilian population aged 15 years and over	Unemployment rate	Participation rate	
		Looking for full-time work	Looking for part-time work							
				- '000 -						
					- per cent -					
MALES										
Sydney	886.4	40.0	5.1	45.1	931.5	246.6	1,178.2	4.8	79.1	
Melbourne	772.3	36.1	5.0	41.2	813.5	193.5	1,007.0	5.1	80.8	
Brisbane	268.7	14.8	*	16.7	285.5	82.9	368.3	5.9	77.5	
Adelaide	250.8	16.7	*	18.5	269.3	77.6	346.9	6.9	77.6	
Perth	237.3	18.6	*	20.9	258.2	61.9	320.1	8.1	80.7	
Hobart	46.1	3.0	*	3.0	49.1	12.7	61.8	6.1	79.5	
<i>Total</i>	<i>2,461.6</i>	<i>129.1</i>	<i>16.3</i>	<i>145.4</i>	<i>2,607.1</i>	<i>675.2</i>	<i>3,282.2</i>	<i>5.6</i>	<i>79.4</i>	
FEMALES										
Sydney	539.1	23.7	10.6	34.3	573.4	679.2	1,252.6	6.0	45.8	
Melbourne	467.1	24.0	9.5	33.5	500.7	554.8	1,055.5	6.7	47.4	
Brisbane	156.9	11.0	3.8	14.8	171.7	224.8	396.5	8.6	43.3	
Adelaide	154.4	13.6	3.3	16.9	171.4	199.2	370.6	9.9	46.2	
Perth	147.1	13.4	4.4	17.8	164.9	171.6	336.5	10.8	49.0	
Hobart	27.2	2.6	*	3.3	30.5	34.2	64.7	10.8	47.2	
<i>Total</i>	<i>1,491.9</i>	<i>88.4</i>	<i>32.3</i>	<i>120.7</i>	<i>1,612.6</i>	<i>1,863.7</i>	<i>3,476.3</i>	<i>7.5</i>	<i>46.4</i>	
PERSONS										
Sydney	1,425.6	63.7	15.6	79.4	1,504.9	925.8	2,430.7	5.3	61.9	
Melbourne	1,239.5	60.1	14.6	74.7	1,314.2	748.3	2,062.5	5.7	63.7	
Brisbane	425.6	25.8	5.8	31.6	457.2	307.6	764.8	6.9	59.8	
Adelaide	405.2	30.3	5.1	35.4	440.6	276.8	717.5	8.0	61.4	
Perth	384.4	32.0	6.7	38.7	423.1	233.5	656.6	9.2	64.4	
Hobart	73.3	5.6	*	6.3	79.6	46.8	126.4	7.9	63.0	
<i>Total</i>	<i>3,953.6</i>	<i>217.5</i>	<i>48.5</i>	<i>266.1</i>	<i>4,219.6</i>	<i>2,538.9</i>	<i>6,758.5</i>	<i>6.3</i>	<i>62.4</i>	

TABLE 5. CIVILIAN POPULATION AGED 15 TO 19 YEARS, BY EMPLOYMENT STATUS AND WHETHER ATTENDING SCHOOL, DECEMBER 1979 (a)

	<i>Unemployed</i>			<i>Total</i>	<i>Labour force</i>	<i>Not in labour force</i>	<i>Civilian population</i>	<i>Unemployment rate</i>	<i>Participation rate</i>
	<i>Employed</i>	<i>Looking for full-time work</i>	<i>Looking for part-time work</i>						
- '000 -									
- per cent -									
NOT ATTENDING SCHOOL									
Males	328.2	58.3	*	62.0	390.2	38.5	428.7	15.9	91.0
Females	264.1	66.5	5.9	72.4	336.6	74.7	411.3	21.5	81.8
Persons	592.4	124.8	9.6	134.4	726.8	113.2	840.0	18.5	86.5
Left school -									
Before 1978	320.7	46.5	*	50.1	370.8	48.2	419.0	13.5	88.5
1978	192.2	33.1	*	36.5	228.6	25.0	253.6	15.9	90.1
1979 to survey date	79.5	45.1	*	47.8	127.3	40.0	167.3	37.6	76.1
Age (years) -									
15	18.4	11.1	*	11.6	30.0	10.7	40.8	38.8	73.6
16	70.1	28.6	*	29.1	99.2	16.1	115.3	29.4	86.1
17	132.3	29.5	*	31.8	164.1	24.7	188.8	19.4	86.9
18	181.3	30.2	*	33.0	214.2	28.5	242.7	15.4	88.3
19	190.3	25.4	*	28.8	219.2	33.2	252.4	13.2	86.8
ATTENDING SCHOOL									
Males	51.9	11.6	10.8	22.5	74.4	151.5	225.9	30.2	32.9
Females	48.9	10.5	9.0	19.5	68.3	148.3	216.6	28.5	31.5
Persons	100.8	22.1	19.9	42.0	142.8	299.8	442.6	29.4	32.3
Age (years) -									
15	39.6	7.6	8.6	16.2	55.8	156.2	212.0	29.0	26.3
16	35.8	10.0	7.4	17.4	53.2	89.4	142.6	32.7	37.3
17	20.1	*	*	6.4	26.5	42.8	69.3	24.2	38.2
18 and 19	5.3	*	*	*	7.3	11.4	18.7	*	39.1

(a) For information on duration of unemployment see Table 19.

TABLE 6. CIVILIAN POPULATION AGED 20 TO 24 YEARS, BY EMPLOYMENT STATUS, DECEMBER 1979

	<i>Unemployed</i>			<i>Total</i>	<i>Labour force</i>	<i>Not in labour force</i>	<i>Civilian population</i>	<i>Unemployment rate</i>	<i>Participation rate</i>
	<i>Employed</i>	<i>Looking for full-time work</i>	<i>Looking for part-time work</i>						
- '000 -									
- per cent -									
Males	518.2	46.2	*	48.9	567.0	43.2	610.3	8.6	92.9
Females	392.2	30.7	6.2	36.9	429.0	177.8	606.8	8.6	70.7
Persons	910.3	76.9	8.8	85.7	996.1	221.1	1,217.1	8.6	81.8
Age (years) -									
20	188.7	22.9	*	25.8	214.5	38.4	253.0	12.0	84.8
21	184.5	19.9	*	22.7	207.2	44.8	252.0	10.9	82.2
22	182.6	11.2	*	12.1	194.7	44.0	238.6	6.2	81.6
23	180.6	12.5	*	13.7	194.3	45.2	239.5	7.1	81.1
24	173.9	10.4	*	11.4	185.3	48.7	234.0	6.2	79.2

TABLE 7. CIVILIAN LABOUR FORCE, BY EMPLOYMENT STATUS, BIRTHPLACE AND PERIOD OF ARRIVAL IN AUSTRALIA, DECEMBER 1979

	<i>Employed</i>		<i>Unemployed</i>		<i>Labour force</i>	<i>Unemployment rate</i>	<i>Participation rate (a)</i>
	<i>Full-time</i>	<i>Total</i>	<i>Looking for full-time work</i>	<i>Total</i>			
- '000 -					- per cent -		
MALES							
Born in Australia	2,756.9	2,921.7	146.4	163.8	3,085.5	5.3	80.1
Born outside Australia	1,025.5	1,070.6	55.7	60.3	1,130.9	5.3	81.4
Italy	111.4	115.5	4.6	4.9	120.4	4.1	84.1
Greece	62.7	64.8	*	*	68.1	*	85.5
Yugoslavia	55.1	56.1	*	*	59.3	*	82.9
U.K. and Ireland	375.2	390.7	19.3	20.8	411.6	5.1	78.2
New Zealand	47.8	49.2	*	*	53.1	*	88.7
Other	373.3	394.3	22.1	24.2	418.4	5.8	82.3
Arrived before 1961	430.7	450.2	11.8	12.6	462.8	2.7	74.0
1961-1965	158.5	165.8	10.5	11.4	177.1	6.4	88.8
1966-1970	207.5	215.1	14.4	15.2	230.3	6.6	87.8
1971-1977	183.9	193.0	14.8	16.5	209.5	7.9	87.6
1978 to survey date	44.8	46.6	*	4.6	51.2	9.0	81.8
MARRIED WOMEN							
Born in Australia	542.3	984.4	20.7	43.8	1,028.2	4.3	40.5
Born outside Australia	261.0	408.2	16.1	24.1	432.3	5.6	47.0
Italy	27.9	42.6	*	*	44.3	*	42.8
Greece	23.8	32.5	*	*	33.3	*	52.3
Yugoslavia	18.6	24.5	*	*	26.7	*	53.0
U.K. and Ireland	86.6	147.1	4.9	8.7	155.8	5.6	45.3
New Zealand	10.6	19.3	*	*	20.0	*	55.9
Other	93.4	142.3	7.4	10.0	152.2	6.6	47.2
Arrived before 1961	88.5	154.7	*	6.7	161.4	4.1	39.6
1961-1965	41.2	66.7	*	*	70.7	*	51.1
1966-1970	60.6	88.4	*	5.1	93.4	5.4	53.5
1971-1977	60.4	84.3	*	5.0	89.4	5.6	56.2
1978 to survey date	10.3	14.1	*	*	17.3	*	43.2
ALL FEMALES							
Born in Australia	1,094.7	1,685.6	114.7	153.9	1,839.5	8.4	44.9
Born outside Australia	371.3	542.0	36.9	48.9	590.9	8.3	47.1
Italy	36.8	52.1	*	*	54.8	*	42.6
Greece	27.1	36.2	*	*	38.1	*	51.4
Yugoslavia	22.8	29.3	*	*	31.8	*	51.8
U.K. and Ireland	130.0	201.6	15.3	20.8	222.4	9.4	45.0
New Zealand	20.5	31.1	*	*	34.0	*	59.0
Other	134.0	191.7	13.7	18.1	209.8	8.6	47.9
Arrived before 1961	116.5	189.4	5.2	8.7	198.1	4.4	36.6
1961-1965	62.4	91.7	6.8	9.8	101.5	9.7	54.0
1966-1970	88.7	123.2	11.0	13.8	137.0	10.1	56.4
1971-1977	85.4	115.0	9.6	11.4	126.4	9.0	56.7
1978 to survey date	18.3	22.8	*	5.1	27.9	18.2	47.5
PERSONS							
Born in Australia	3,851.7	4,607.3	261.1	317.7	4,925.0	6.5	62.0
Born outside Australia	1,396.8	1,612.6	92.6	109.2	1,721.8	6.3	65.1
Italy	148.2	167.5	6.3	7.6	175.2	4.3	64.5
Greece	89.9	101.0	4.7	5.2	106.2	4.9	69.0
Yugoslavia	77.9	85.4	5.1	5.6	91.1	6.2	68.5
U.K. and Ireland	505.3	592.3	34.6	41.6	633.9	6.6	62.1
New Zealand	68.3	80.3	6.2	6.8	87.1	7.8	74.1
Other	507.5	586.0	35.8	42.2	628.2	6.7	66.4
Arrived before 1961	547.2	639.5	17.0	21.4	660.9	3.2	56.6
1961-1965	220.9	257.4	17.3	21.2	278.6	7.6	71.9
1966-1970	296.2	338.3	25.3	29.0	367.3	7.9	72.7
1971-1977	269.3	308.0	24.4	27.9	335.9	8.3	72.7
1978 to survey date	63.1	69.4	8.6	9.7	79.1	12.2	65.2

(a) Excludes persons in institutions. See definition, paragraph 13.

TABLE 8. CIVILIAN LABOUR FORCE, BY AGE, DECEMBER 1979

Age group (years)	Number ('000)					Participation rate (per cent)				
	Males	Married women	Other females (a)	All females	Persons	Males	Married women	Other females (a)	All females	Persons
15-19	464.6	16.3	388.6	404.9	869.5	71.0	48.2	65.4	64.5	67.8
20-24	567.0	169.9	259.2	429.0	996.1	92.9	56.9	84.0	70.7	81.8
25-34	1,107.4	452.8	140.6	593.4	1,700.8	95.9	46.9	75.8	51.5	73.8
35-44	848.4	422.3	66.3	488.6	1,337.0	95.9	56.5	67.3	57.8	77.3
45-54	710.1	295.2	62.0	357.3	1,067.4	91.2	47.3	53.7	48.3	70.3
55-59	295.6	73.8	27.1	100.9	396.5	82.2	25.8	35.8	27.8	54.9
60-64	152.8	21.3	13.9	35.2	188.0	54.3	10.2	14.5	11.6	32.1
65 and over	70.4	8.8	12.3	21.1	91.5	12.1	2.9	2.5	2.6	6.6
Total	4,216.4	1,460.5	969.9	2,430.4	6,646.8	79.5	42.1	49.3	44.7	61.9

(a) Comprises never married, widowed and divorced.

TABLE 9. LABOUR FORCE PARTICIPATION RATES, BY AGE AND BIRTHPLACE, DECEMBER 1979 (a)
(Per cent)

Age group (years)	Born in Australia			Born outside Australia		
	Males	Females	Persons	Males	Females	Persons
15-19	72.4	64.8	68.7	64.9	62.9	63.9
20-24	94.2	71.5	82.8	91.2	68.2	79.9
25-34	96.6	51.1	73.4	96.2	53.6	75.9
35-44	96.6	56.2	76.6	95.7	61.7	79.5
45-54	91.6	46.7	68.6	92.5	53.1	75.4
55-59	81.6	26.2	52.8	85.3	33.0	61.4
60-64	52.4	11.6	30.5	62.3	12.9	40.3
65 and over	13.5	2.8	7.3	11.0	3.1	6.8
Total	80.1	44.9	62.0	81.4	47.1	65.1

(a) Excludes persons in institutions. See definition, paragraph 13.

TABLE 10. EMPLOYED PERSONS : FULL-TIME AND PART-TIME STATUS, BY AGE, DECEMBER 1979 ('000)

	Age group (years)								
	15-19	20-24	25-34	35-44	45-54	55-59	60-64	65 and over	Total
MALES									
Full-time workers	313.7	489.8	1,039.3	810.6	676.2	274.9	134.2	43.7	3,782.4
Part-time workers	66.5	28.3	27.5	18.0	17.5	12.9	13.9	25.2	209.8
Total	380.1	518.2	1,066.8	828.6	693.8	287.8	148.1	68.9	3,992.3
MARRIED WOMEN									
Full-time workers	10.8	125.1	235.2	215.0	162.6	40.7	10.3	*	803.3
Part-time workers	*	34.1	189.5	193.0	123.4	31.1	10.9	4.6	589.3
Total	13.4	159.2	424.7	408.0	286.0	71.8	21.2	8.3	1,392.6
ALL FEMALES									
Full-time workers	228.3	328.6	347.0	265.8	209.3	59.5	18.9	8.7	1,466.1
Part-time workers	84.7	63.6	206.6	204.3	136.8	38.4	15.5	11.9	761.6
Total	313.0	392.2	553.6	470.1	346.0	97.9	34.3	20.6	2,227.7
PERSONS									
Full-time workers	542.0	818.4	1,386.3	1,076.5	885.5	334.4	153.1	52.4	5,248.5
Part-time workers	151.2	91.9	234.1	222.3	154.3	51.3	29.3	37.1	971.5
Total	693.1	910.3	1,620.4	1,298.7	1,039.8	385.6	182.4	89.5	6,219.9

TABLE 11. EMPLOYED PERSONS, BY HOURS WORKED, DECEMBER 1979 (a)

	<i>Males</i>	<i>Married women</i>	<i>Other females (a)</i>	<i>All females</i>	<i>Persons</i>
NUMBER EMPLOYED ('000)					
Weekly hours worked –					
0(b)	172.8	54.8	30.0	84.9	257.7
1–15	111.3	267.6	101.2	368.9	480.1
16–29	171.7	255.6	69.8	325.4	497.0
30–34	179.2	106.8	55.3	162.1	341.3
35–39	450.2	190.9	161.7	352.7	802.8
40	1,399.9	328.7	298.0	626.7	2,026.7
41–44	262.6	50.0	46.8	96.7	359.3
45–48	385.7	44.9	35.1	80.0	465.7
49 and over	858.9	93.2	37.2	130.4	989.3
Total	3,992.3	1,392.6	835.1	2,227.7	6,219.9
WEEKLY HOURS WORKED (c)					
Aggregate weekly hours worked (million)	165.9	41.7	27.8	69.4	235.3
By full-time workers	162.4	32.1	25.3	57.4	219.8
By part-time workers	3.5	9.6	2.4	12.0	15.5
Average weekly hours worked	41.6	29.9	33.3	31.2	37.8
By full-time workers	42.9	39.9	38.2	39.1	41.9
By part-time workers	16.7	16.3	14.2	15.8	16.0
By wage and salary earners	39.5	29.7	33.1	31.1	36.4
By others (d)	51.3	30.7	36.9	31.4	45.6

(a) Comprises never married, widowed and divorced. (b) Persons who had a job but were not at work. See definition, paragraph 15. (c) The figures relate to hours worked, not hours paid for. See paragraph 15. (d) Employers; self-employed persons; unpaid family helpers who worked 15 hours or more in the survey week.

TABLE 12. FULL-TIME WORKERS WHO WORKED LESS THAN 35 HOURS, BY REASON, DECEMBER 1979 ('000)

<i>Reason for working less than 35 hours</i>	<i>Males</i>	<i>Married women</i>	<i>Other females (a)</i>	<i>All females</i>	<i>Persons</i>
Leave, holiday or flexitime	209.6	47.4	44.5	91.9	301.4
Own illness or injury	126.0	27.9	27.1	55.0	181.0
Bad weather, plant breakdown, etc.	5.0	*	*	*	5.7
Began or left job in the survey week	12.0	*	*	5.9	17.9
Stood down, on short time, insufficient work	37.5	8.4	*	11.5	49.0
Other reasons	35.1	9.7	4.8	14.5	49.6
Total	425.1	95.6	84.0	179.6	604.7

(a) Comprises never married, widowed and divorced.

TABLE 13. PART-TIME WORKERS : WHETHER PREFERRED TO WORK MORE HOURS AND WHETHER
LOOKING FOR FULL-TIME WORK, BY AGE, DECEMBER 1979
(000)

	Age group (years)						Total
	15-19	20-24	25-34	35-44	45-54	55 and over	
MALES							
Total	66.5	28.3	27.5	18.0	17.5	52.0	209.8
Preferred not to work more hours	41.5	17.6	20.2	13.7	14.7	48.0	155.8
Preferred to work more hours	25.0	10.7	7.3	*	— 6.8 —	*	54.0
Were actively looking for full-time work (a)	14.9	6.0	— 5.4 —	*	*	*	29.9
MARRIED WOMEN							
Total	*	34.1	189.5	193.0	123.4	46.6	589.3
Preferred not to work more hours	*	29.2	169.8	170.9	115.2	44.7	531.7
Preferred to work more hours	*	4.9	19.7	22.1	8.2	*	57.6
Were actively looking for full-time work (a)	*	— 5.5 —	— 5.0 —	— 5.0 —	*	*	11.2
ALL FEMALES							
Total	84.7	63.6	206.6	204.3	136.8	65.7	761.6
Preferred not to work more hours	53.7	46.7	183.7	180.2	126.5	63.2	654.0
Preferred to work more hours	31.0	16.9	22.9	24.0	10.3	*	107.7
Were actively looking for full-time work (a)	17.2	7.3	5.3	— 5.3 —	*	*	35.5
PERSONS							
Total	151.2	91.9	234.1	222.2	154.3	117.7	971.5
Preferred not to work more hours	95.2	64.3	203.9	193.9	141.2	111.2	809.8
Preferred to work more hours	56.0	27.6	30.2	28.3	13.1	6.5	161.7
Were actively looking for full-time work (a)	32.1	13.4	9.2	5.4	— 5.3 —	*	65.4

(a) In the four weeks up to the end of the survey week.

TABLE 14. UNEMPLOYED PERSONS, BY AGE, STATES, DECEMBER 1979
(000)

Age group (years)	New South Wales	Victoria	Queensland	South Australia	Western Australia	Tasmania	Australia (a)
MALES							
15-19	27.3	19.8	14.0	7.4	10.4	3.4	84.5
20-24	13.5	14.6	6.4	6.8	5.3	* ^o	48.9
25-34	14.8	9.8	4.8	3.5	5.2	*	40.6
35 and over	18.3	8.4	10.7	4.6	5.5	*	50.3
Total	73.9	52.6	35.9	22.5	26.4	7.1	224.2
FEMALES							
15-19	28.9	22.1	14.3	9.7	10.9	3.8	91.9
20-24	10.8	8.5	6.2	4.7	4.5	*	36.9
25-34	11.1	12.0	5.4	4.2	4.6	*	39.8
35 and over	10.7	8.7	6.3	3.6	3.4	*	34.1
Total	61.6	51.3	32.1	22.2	23.4	7.0	202.7
PERSONS							
15-19	56.2	41.9	28.3	17.1	21.3	7.3	176.4
20-24	24.3	23.1	12.6	11.6	9.8	2.4	85.7
25-34	25.9	21.8	10.2	7.7	9.9	2.8	80.4
35 and over	29.0	17.1	16.9	8.2	8.9	1.8	84.4
Total	135.5	103.9	67.9	44.6	49.9	14.2	426.9

(a) Includes the Northern Territory and the Australian Capital Territory.

TABLE 15. UNEMPLOYED PERSONS, BY AGE AND WHETHER LOOKING FOR FULL-TIME OR PART-TIME WORK, DECEMBER 1979

	Number unemployed ('000)					Unemployment rate (per cent)				
	Married men	All males	Married women	All females	All persons	Married men	All males	Married women	All females	All persons
LOOKING FOR FULL-TIME WORK										
Total	62.4	202.2	36.8	151.6	353.7	2.3	5.1	4.4	9.4	6.3
Aged 15-19 years	*	70.0	*	77.0	146.9	*	18.2	*	25.2	21.3
Looking for first job	*	38.5	*	45.6	84.0
Not looking for first job	*	31.5	*	31.4	62.9
Attending school	*	11.6	*	10.5	22.1	n.a.	n.a.	n.a.	n.a.	n.a.
Aged 20 years and over	61.6	132.2	34.7	74.6	206.8	2.2	3.7	4.2	5.7	4.2
20-24 years	9.0	46.2	7.2	30.7	76.9	6.1	8.6	5.5	8.5	8.6
25-34 years	20.1	39.4	13.6	24.3	63.7	2.4	3.7	5.5	6.5	4.4
35-44 years	13.4	18.7	7.4	10.7	29.4	1.8	2.3	3.3	3.9	2.7
45-54 years	10.5	16.1	4.8	6.6	22.7	1.7	2.3	2.9	3.1	2.5
55 years and over	8.6	11.7	*	*	14.1	2.1	2.5	*	*	2.5
LOOKING FOR PART-TIME WORK										
Total	*	22.0	31.1	51.1	73.1	*	9.5	5.0	6.3	7.0
Aged 15-19 years	*	14.5	*	15.0	29.5	*	17.9	*	15.0	16.3
Attending school	*	10.8	*	9.0	19.9	*	21.0	*	17.6	19.3
Aged 20 years and over	*	7.5	30.3	36.2	43.7	*	5.0	4.9	5.1	5.1
20-24 years	*	*	*	6.2	8.8	*	*	*	8.9	8.8
25-34 years	*	*	14.6	15.5	16.7	*	*	7.1	7.0	6.7
35-44 years	*	*	6.9	7.8	8.9	*	*	3.5	3.7	3.9
45-54 years	*	*	5.4	6.6	9.3	*	*	3.1	3.2	3.3
55 years and over	*	*				*	*			
TOTAL										
Total	65.8	224.2	67.9	202.7	426.9	2.3	5.3	4.6	8.3	6.4
Aged 15-19 years	*	84.5	*	91.9	176.4	*	18.2	*	22.7	20.3
Attending school	*	22.5	*	19.5	42.0	*	30.2	*	28.5	29.4
Aged 20 years and over (a)	65.0	139.7	65.0	110.8	250.5	2.3	3.7	4.5	5.5	4.3
20-24 years	9.3	48.9	10.7	36.9	85.7	6.1	8.6	6.3	8.6	8.6
25-34 years	20.3	40.6	28.2	39.8	80.4	2.4	3.7	6.2	6.7	4.7
35-44 years	14.1	19.8	14.3	18.5	38.3	1.9	2.3	3.4	3.8	2.9
45-54 years	10.7	16.4	9.2	11.2	27.6	1.7	2.3	3.1	3.1	2.6
55-59 years	5.2	7.9	*	*	10.9	2.0	2.7	*	*	2.7
60-64 years	*	4.7	*	*	5.6	*	3.1	*	*	3.0

(a) Includes unemployed persons aged 65 years and over, details for whom are not shown separately.

TABLE 16. UNEMPLOYED PERSONS, BY AGE AND BIRTHPLACE, DECEMBER 1979

Age group (years)	Number unemployed ('000)			Unemployment rate (per cent)		
	Males	Females	Persons	Males	Females	Persons
BORN IN AUSTRALIA						
15-19	69.8	75.5	145.4	17.2	21.6	19.3
20 and over	94.0	78.3	172.3	3.5	5.3	4.1
20-24	40.0	30.8	70.8	8.4	8.5	8.4
25-34	25.7	27.6	53.3	3.2	6.3	4.3
35 and over	28.3	19.9	48.2	2.0	2.9	2.3
Total	163.8	153.9	317.7	5.3	8.4	6.5
BORN OUTSIDE AUSTRALIA						
15-19	14.6	16.4	31.0	24.7	29.3	26.9
20 and over	45.7	32.5	78.2	4.3	6.1	4.9
20-24	8.9	6.0	14.9	9.9	9.2	9.6
25-34	14.8	12.2	27.0	4.8	7.9	5.9
35 and over	22.0	14.2	36.2	3.3	4.5	3.7
Total	60.3	48.9	109.2	5.3	8.3	6.3

TABLE 17. UNEMPLOYED PERSONS, BY DURATION OF UNEMPLOYMENT AND AGE, ETC., DECEMBER 1979

Duration of unemployment (weeks)	Age (years)				Total (a)	Married	Not married (b)	Looking for -	
	15-19	20-24	25-34	35-54				Full-time work	Part-time work
MALES ('000)									
Under 2	17.7	5.8	*	6.3	31.7	5.6	26.1	24.1	7.6
2 and under 4	15.6	7.1	6.7						
4 and under 8	14.8	9.0	*	7.7	32.8	7.4	25.4	29.0	5.3
8 and under 13	7.7	5.3	4.8						
13 and under 26	11.0	6.7	6.6	5.9	31.6	11.0	20.6	30.3	*
26 and under 39	6.2	*	*	*	18.8	6.6	12.2	18.3	*
39 and under 52	*	5.5	5.3	5.1	10.4	*	6.3	9.8	*
52 and under 65	4.9								
65 and over	*	5.7	4.8	7.9	27.7	11.6	16.1	26.2	*
Total	84.5	48.9	40.6	36.2	224.2	65.8	158.3	202.2	22.0
WEEKS									
Average (mean) duration	16.1	25.1	28.2	40.7	27.1	34.5	24.0	28.6	13.6
Median duration	6.4	10.4	14.5	22.0	11.0	18.8	8.8	12.5	3.4
FEMALES ('000)									
Under 2	17.0	5.1	4.9	*	30.2	8.3	21.9	19.4	10.8
2 and under 4	17.7	9.5	6.0	5.3	33.1	10.2	22.9	23.0	10.1
4 and under 8	12.5								
8 and under 13	10.3	7.9	*	6.9	21.9	8.1	13.8	16.6	5.3
13 and under 26	11.0								
26 and under 39	6.6	4.5	5.0	7.1	20.2	8.0	12.2	16.4	4.8
39 and under 52	4.8	4.6	5.2	*	11.0	*	7.5	9.9	
52 and under 65	5.4								
65 and over	6.7	5.3	*	7.0	13.6	5.0	8.6	10.6	6.2
Total	91.9	36.9	39.8						
WEEKS									
Average (mean) duration	20.6	33.0	22.0	31.7	25.2	24.8	25.4	27.6	18.2
Median duration	7.6	12.8	9.9	15.1	9.9	11.1	9.2	11.3	6.5
PERSONS ('000)									
Under 2	34.7	10.8	9.0	4.8	61.9	14.0	48.0	43.5	18.5
2 and under 4	33.3	11.0	12.8	8.9	67.1	19.2	47.9	52.2	14.9
4 and under 8	27.2	14.7	11.2	7.7	62.5	17.8	44.7	51.4	11.1
8 and under 13	17.9	9.4	9.1	6.9	44.4	14.0	30.4	37.6	6.8
13 and under 26	22.0	10.5	11.5	9.3	55.0	19.5	35.5	47.1	7.9
26 and under 39	12.8	8.2	9.5	7.0	38.9	14.6	24.4	34.7	5.9
39 and under 52	7.3	*	5.3	*	21.3	7.5	13.8	19.7	
52 and under 65	10.3	5.8	5.2	6.0	28.3	9.6	18.7	25.0	8.0
65 and over	10.8	11.0	7.0	12.1	47.3	17.5	29.8	42.6	
Total	176.4	85.7	80.4	65.9	426.9	133.7	293.2	353.7	73.1
WEEKS									
Average (mean) duration	18.4	28.5	25.1	36.6	26.2	29.6	24.7	28.1	16.8
Median duration	7.0	11.4	12.0	19.5	10.5	14.2	9.0	12.0	5.1

(a) Includes persons aged 55 and over, details for whom are not shown separately. (b) Comprises never married, widowed and divorced.

TABLE 18. UNEMPLOYED PERSONS, BY INDUSTRY AND OCCUPATION OF LAST FULL-TIME JOB AND DURATION OF UNEMPLOYMENT, DECEMBER 1979 (a)
(000)

	Duration of unemployment (weeks)							Total
	Under 4	4 and under 8	8 and under 13	13 and under 26	26 and under 39	39 and under 65	65 and over	
Had worked for two weeks or more in a full-time job in the last two years	51.9	37.0	28.5	37.3	26.6	30.2	13.7	225.3
Industry division -								
Manufacturing	12.3	11.1	6.2	11.3	6.7	8.2	4.8	60.7
Construction	*	6.8		6.1		*	*	21.3
Wholesale and retail trade	12.8	8.0	6.1	8.9	5.9	7.1	*	50.9
Finance, property and business services	4.8			5.3			*	11.0
Community services	6.0	5.1			8.2		*	20.6
Recreation, personal and other services	5.1	7.0		6.9		*	*	23.0
Other industries	9.0	6.3	5.3	6.2	5.4	5.8		37.9
Occupation group (b) -								
Professional, technical, etc.	5.4			5.7		*	*	14.7
Clerical	7.0	5.6		5.8		5.8	*	26.4
Sales	7.5	4.5		7.6		6.1	*	26.6
Farmers, fishermen, etc.	6.4			7.4		*	*	16.5
Transport and communication	*	*		5.1		*	*	11.9
Tradesmen, production-process workers and labourers, n.e.c.	18.4	14.5	13.0	17.1	10.3	11.4	6.8	91.4
Service, sport and recreation	8.6	8.7		5.0	*	6.1		32.6
Stood down (c)	6.7	6.7
Other (d)	70.4	25.5	15.8	17.7	12.4	19.5	33.6	194.9
Total	129.1	62.5	44.4	55.0	38.9	49.7	47.3	426.9

(a) Duration of unemployment is not available for some industry divisions and occupation groups because of the high standard error of the estimates. Industry is classified according to ASIC 1978. (b) Excludes administrative, executive and managerial workers; and miners, quarrymen and related workers. (c) For definition, see paragraph 8 (b). (d) Had never worked for two weeks or more in a full-time job or had not done so in the last two years. Industry and occupation were not obtained for these persons.

TABLE 19. UNEMPLOYED PERSONS AGED 15 TO 19 YEARS, BY DURATION OF UNEMPLOYMENT AND WHETHER ATTENDING SCHOOL, DECEMBER 1979 (a)

Duration of unemployment (weeks)	Attending school	Not attending school		Total
		Left school before 1978	Left school 1978 to survey date	
NUMBER ('000)				
Under 4	20.8	10.4	36.8	68.0
4 and under 13	12.1	10.7	22.4	45.2
13 and under 26	*	7.5	10.1	22.0
26 and over	4.7	21.5	15.0	41.2
Total	42.0	50.1	84.3	176.4
(AVERAGE) MEAN DURATION OF UNEMPLOYMENT (weeks)				
Males	8.0	30.9	12.0	16.1
Females	11.3	40.3	12.7	20.6
Persons	9.6	36.0	12.4	18.4
Looking for —				
Full-time work	9.5	37.7	13.0	20.3
Part-time work	9.7	*	3.9	9.1
MEDIAN DURATION OF UNEMPLOYMENT (weeks)				
Males	3.6	16.2	5.8	6.4
Females	5.4	23.0	5.3	7.6
Persons	4.1	19.9	5.5	7.0
Looking for —				
Full-time work	4.7	22.2	6.2	8.0
Part-time work	3.7	*	2.7	3.3

(a) For employment status of persons aged 15-19 years see Table 5.

TABLE 20. PERSONS NOT IN THE LABOUR FORCE, BY AGE AND MARITAL STATUS, ETC., DECEMBER 1979

Age (years)	Married men	Other males (a)	All males	Married women	Other females (a)	All females	Persons	Per cent of population (b)
	— '000 —							per cent
15-19	*	190.0	190.0	17.5	205.5	223.0	413.0	32.2
20-24	*	39.0	43.2	128.6	49.2	177.8	221.1	18.2
25-34	20.8	26.1	46.9	513.2	44.8	558.0	604.9	26.2
35-44	23.8	12.4	36.2	325.2	32.2	357.4	393.6	22.7
45-54	47.7	20.7	68.3	329.5	53.6	383.1	451.4	29.7
55-59	49.5	14.6	64.0	212.8	48.6	261.5	325.5	45.1
60-64	106.0	22.8	128.8	186.7	81.7	268.3	397.2	67.9
65 and over	385.4	124.5	509.9	297.6	480.8	778.4	1,288.3	93.4
Total	637.3	450.0	1,087.4	2,011.1	996.4	3,007.5	4,094.9	38.1
Permanently unable to work	n.a.	n.a.	25.5	n.a.	n.a.	20.7	46.1	..
In institutions	n.a.	n.a.	60.8	n.a.	n.a.	90.3	151.1	..
Aged 15-20 years attending school	n.a.	n.a.	152.3	n.a.	n.a.	148.8	301.1	..

(a) Comprises never married, widowed and divorced. (b) Persons not in the labour force as a percentage of the civilian population in the same group.

TECHNICAL NOTE

Estimation procedure

The labour force estimates are derived from the population survey by use of a complex ratio estimation procedure, which ensures that the survey estimates conform to an independently estimated distribution of the population by age and sex, rather than to the age and sex distribution within the sample itself.

Reliability of the estimates

2. Since the estimates in this section are based on information obtained from occupants of a sample of dwellings the estimates and the movements derived from them are subject to sampling variability; that is, they may differ from the figures that would have been produced if all dwellings had been included in the surveys. One measure of the likely difference is given by the *standard error*, which indicates the extent to which an estimate might have varied by chance because only a sample of dwellings was included. There are about two chances in three that a sample estimate will differ by less than one standard error from the figure that would have been obtained if all dwellings had been included, and about nineteen chances in twenty that the difference will be less than two standard errors.

3. Space does not allow for the separate indication of the standard errors of all estimates in this section. Standard errors of estimates for the latest month and of estimates of movements since the previous month are shown in Table 1. Standard errors of other estimates and other monthly movements should be determined by using Tables A and B on page 21. Because of the reduction in the sample size for the November 1975 and November 1977 surveys (see November 1975 and February 1978 issues of this publication for details), the standard errors for all estimates from these surveys except those for unemployed persons looking for full-time work in November 1977 are approximately 15 per cent higher than those shown. The standard errors in Table A apply to estimates for all other surveys.

4. The size of the standard error increases with the level of the estimate, so that the larger the estimate the larger the standard error. However, it should be noted that the larger the sample estimate the smaller will be the standard error in percentage terms. Thus, larger sample estimates will be relatively more reliable than smaller estimates.

5. Very small estimates are subject to such high standard errors (relative to the size of the estimate) as to detract seriously from their value for most reasonable uses. In the tables in this section, estimates below the levels shown in Table A, and percentages based on such estimates, have not been included. Although figures for these small components can in some cases be derived by subtraction, they should not be regarded as reliable.

6. The movement in the level of an estimate is also subject to sampling variability. The standard error of the movement depends on the levels of the estimates from

which the movement is obtained rather than the size of the movement. An indication of the magnitude of standard errors of monthly movements is given in Table B on page 21. The estimates of standard error of monthly movements apply only to estimates of movements between two consecutive months. Movements between corresponding months of consecutive years, or between two other non-consecutive months, will generally be subject to somewhat greater sampling variability than is indicated in Table B. A guide to the standard errors of *quarterly* movements for periods from February 1978 can be obtained by multiplying the figures in the table of standard errors of monthly movements (Table B) by 1.4. Standard errors of quarterly movements for periods up to February 1978 were published in the Technical note in the February 1978 issue of this publication. A guide to the standard errors of *annual* movements for periods from February 1978 can be obtained by multiplying the figures in the table of standard errors of estimates (Table A) by 1.4.

7. Examples of the calculation and use of standard errors are given below :

(a) From Table A it will be seen that the estimate of 202,200 unemployed males looking for full-time work in December 1979 has a standard error of about 5,100. Therefore there are about two chances in three that the value that would have been produced if all dwellings had been included in the survey will fall within the range 197,100 to 207,300 and about nineteen chances in twenty that the value will fall within the range 192,000 to 212,400.

(b) The estimate of movement in the number of unemployed males looking for full-time work from November to December 1979 is an increase of 30,700. Table B relates the standard error of the monthly movement to the size of the larger of the two estimates from which the movement is derived. In this case the December 1979 estimate (202,200) is the larger. From Table B it will be seen that the standard error of the monthly movement is about 4,300. Therefore there are about two chances in three that if all dwellings had been included in the surveys the movement would have been within the range 26,400 to 35,000 and about nineteen chances in twenty that it would have been within the range 22,100 to 39,300.

8. The standard errors of estimates relating to agricultural employment are generally somewhat higher than the standard errors of other estimates of the same magnitude. Estimates for females also tend to have higher standard errors than estimates of equivalent size for males in similar categories. Standard errors for capital cities are approximately the same as those for corresponding States.

POPULATION SURVEY REPORTS

Although emphasis in the population survey is placed on the regular collection of data on demographic and labour force characteristics, supplementary surveys of particular aspects of the labour force or of other subjects are carried out from time to time. The results of these surveys are published separately. Copies of the following publications are available free on request.

<i>Title</i>	<i>Catalogue No.</i>
Alcohol and Tobacco Consumption Patterns, February 1977	4312.0
Annual Leave, August 1974	6317.0
Annual and Long Service Leave, Australia, May 1979 (Preliminary)	6331.0
Assisted and Unassisted Migrants, August 1972	3406.0
Birth Expectations of Married Women, November 1976	3215.0
Child Care – May 1969; May 1973; May 1977	4402.0
Chronic Illnesses, Injuries and Impairments – May 1968; May 1974	4305.0
Employment Benefits, February to May 1979 (Preliminary)	6332.0
Employment Status of Teenagers, August 1978 (a)	6234.0
Evening and Night Work, November 1976	6329.0
Ex-service Personnel, November 1966; November 1971	4403.0
Family Status and Employment Status of the Population, November 1974 and 1975	6223.0
Frequency of Pay – August 1974, 1976 and 1977	6320.0
Health Insurance, March 1979	4335.0
Hearing and the Use of Hearing Aids, September 1978	4336.0
Home Ownership and Rental, November 1978	8710.0
Income Distribution, 1968-69 (Consolidated and Revised Edition)	6505.0
Income Distribution, 1973-74 –	
Part 1 (Tables relating to individuals)	6502.0
Part 2 (Tables relating to families)	6503.0
Part 3 (Supplementary Tables)	6504.0
Internal Migration –	
Conducted each year since 1969-70 (except 1975 and 1976); Latest issue, September 1978	3408.0
Job Tenure – February 1974; February 1975; August 1976	6211.0
Journey to Work and Journey to School – May 1970; August 1974	9205.0
Labour Force Experience –	
During 1968; During 1972; During 1974; During 1975; During 1976; During 1978	6206.0
Labour Force Status and Other Characteristics of Families, November 1974	6224.0
Labour Mobility –	
November 1972; February 1975, 1976 and 1979	6209.0
Leavers from Schools, Universities and Other Educational Institutions –	
Conducted each year since 1964. Latest issue, May 1979	6227.0
Migrants in the Labour Force, 1972 to 1976	6230.0
Multiple Jobholding –	
November 1965, August 1966 and 1967, May 1971, August 1973, 1975 and 1977	6216.0
Non-School Study Courses, Survey of, August 1968	Not listed
Persons Covered by Hospital and Medical Expenditure Assistance Schemes, August 1972	4303.0
Persons Aged 15 to 64 Years : Employment Status and Period Since Leaving School, May 1976	6225.0
Persons Not in the Labour Force (including Discouraged Jobseekers) –	
November 1975; May 1977; March 1979	6220.0
September 1979 (Preliminary)	6219.0
Persons Looking for Work –	
May 1976; November 1976; May 1977; July 1978	6222.0
July 1979 (Preliminary)	6221.0
School Leavers, 1970 to 1974 : Their Employment Status and Education Experience in May 1975	6226.0
Superannuation, Survey of –	
Victoria, May 1968	Not listed
February 1974	6319.0
The Labour Force : Country of Birth and Period of Residence, February 1972	6207.0
The Labour Force : Educational Attainment, Australia, February 1979	6235.0
Trade Union Members, November 1976	6325.0
Weekly Earnings of Employees (Distribution) –	
August 1975 to August 1978 (annually)	6310.0
August 1979 (Preliminary)	6309.0
Work Patterns of Employees, November 1976	6328.0

(a) Estimates derived from labour force surveys. For more recent estimates, see Table 5 of this publication.

2. JOB VACANCIES

Surveys of job vacancies were conducted in March each year from 1974 to 1978 and quarterly, by telephone, from May 1977 to May 1978, after which they were suspended. The quarterly surveys were reintroduced in May 1979. For further details and estimates for earlier periods see *Job Vacancies, November 1979* (6231.0).

TABLE 26. JOB VACANCIES (a), MAY, AUGUST AND NOVEMBER 1979
(⁰⁰⁰)

AUSTRALIA									
	May	August	November	Standard error					
For males	14.8	13.7	13.0	1.0					
For females	6.2	5.8	5.0	0.8					
For males or females	13.3	13.4	16.3	1.0					
Manufacturing	9.8	10.1	8.5	0.8					
Metal products, machinery and equipment	5.2	5.7	4.5	0.5					
Basic metal and fabricated metal products; other machinery, etc.	3.6	4.4	3.6	0.5					
Transport equipment	1.6	1.3	0.9	0.1					
Other manufacturing	4.6	4.4	4.0	0.6					
Other industries	24.5	22.9	25.9	1.6					
Wholesale and retail trade	6.1	4.5	4.7	0.9					
Transport and storage; communication	1.1	1.4	1.9	0.2					
Public administration; community services	10.0	8.8	11.8	0.7					
Other	7.3	8.2	7.5	1.1					
Total	34.3	33.0	34.3	1.8					
STATES AND TERRITORIES									
Month	N.S.W.	Vic.	Qld	S.A.	W.A.	Tas.	N.T.	A.C.T.	Australia
Total -									
May	14.0	10.6	3.5	2.2	2.1	(b)0.7	0.5	0.7	34.3
August	13.8	9.5	3.8	(b)2.2	1.9	(b)0.6	0.4	0.9	33.0
November	14.8	8.9	4.3	1.7	2.4	0.9	0.4	0.9	34.3
Manufacturing -									
May	3.9	4.1	(b)0.7	0.7	(b)0.4	0.1	*	*	9.8
August	4.5	3.6	0.7	*	(b)0.2	0.1	*	*	10.1
November	4.1	2.7	0.5	0.5	(b)0.5	0.1	*	*	8.5
Other industries -									
May	10.1	6.5	2.8	1.5	1.8	(b)0.7	0.5	0.7	24.5
August	9.3	5.9	3.1	(b)1.2	1.6	(b)0.5	0.4	0.8	22.9
November	10.7	6.2	3.8	1.1	1.9	(b)0.8	0.4	0.9	25.9
Government -									
May	4.7	2.9	1.7	0.9	0.9	*	0.2	0.6	12.3
August	3.9	2.3	1.9	0.8	0.9	*	0.2	0.7	11.0
November	5.4	4.0	2.6	(b)0.7	0.9	*	0.2	0.8	15.4
Private -									
May	9.4	7.6	1.8	1.3	1.3	0.3	0.3	(b)0.1	22.0
August	10.0	7.2	1.9	(b)1.3	1.0	0.2	0.3	(b)0.1	22.0
November	9.4	4.8	1.8	0.9	1.5	(b)0.2	0.3	*	18.9

(a) A job vacancy is defined as a job available for immediate filling on the survey date and for which recruitment action had been taken by the employer. Jobs available only to existing employees of an organisation are excluded. In this context the Australian Public Service and the Public Services of the States and the Northern Territory are treated as 'organisations'. For further details see *Job Vacancies, November 1979* (6231.0). (b) Standard error greater than 20 per cent but less than 30 per cent.