



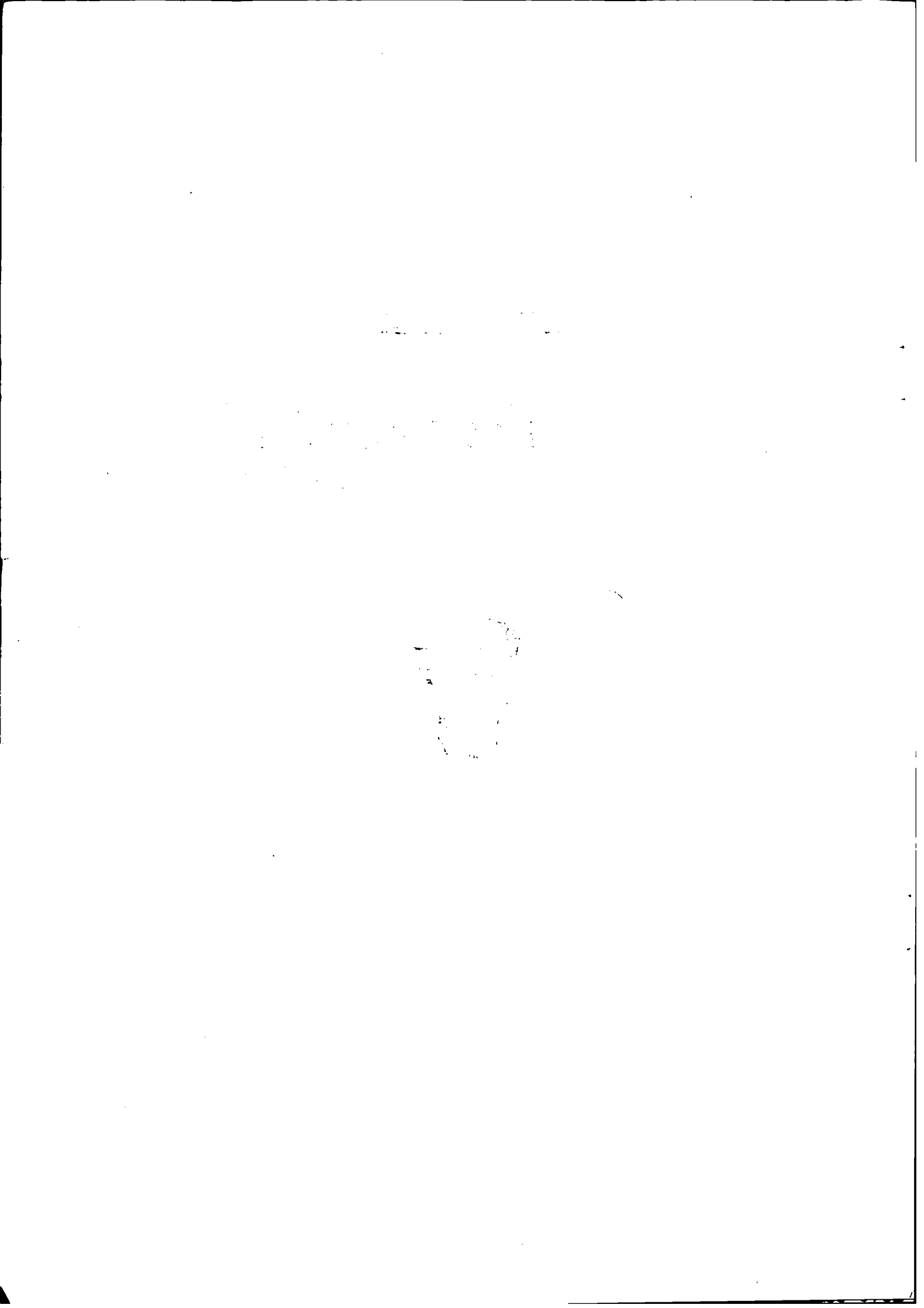
AUSTRALIAN BUREAU OF STATISTICS

CANBERRA

THE LABOUR FORCE AUSTRALIA

AUGUST 1984

CATALOGUE NO. 6203.0



PHONE INQUIRIES *for more information about these statistics*—contact Mr Alan Sharp on Canberra (062) 52 6525 or any of our State offices.

other inquiries including copies of publications—contact Information Services on Canberra (062) 52 6627 or in any of our State offices.

MAIL INQUIRIES *write to* Information Services, ABS, P.O. Box 10, Belconnen, A.C.T. 2616 or any of our State offices.

CATALOGUE NO. 6203.0

EMBARGOED UNTIL 11.30 A.M. 27 SEPTEMBER 1984

THE LABOUR FORCE, AUSTRALIA, AUGUST 1984

CONTENTS

<i>Table</i>		<i>Page</i>
..	Explanatory notes	1
..	Graphs	6
Labour force status of the civilian population aged 15 and over—		
1.	Australia	10
2.	Seasonally adjusted series	12
3.	Marital status	13
4.	States and Territories	13
5.	State capital cities	14
6.	Australian Capital Territory	14
7.	Aged 15 to 19 (single years), by school attendance	15
8.	Aged 20 to 24 (single years)	15
9.	Birthplace	16
10.	Born outside Australia, by birthplace and period of arrival	17
11.	Age	17
12.	Participation rates, by age and birthplace	18
Employed persons—		
13.	Full-time and part-time workers, by age	18
14.	Hours worked	19
15.	Employment/population ratios by age and marital status	19
16.	Full-time workers who worked less than 35 hours, by reason	19
17.	Part-time workers, whether preferred to work more hours, by age	20
18.	Part-time workers, whether preferred to work more hours, by hours worked	20
Industry—		
19.	Full-time and part-time workers	21
20.	Status of worker	21
21.	Age and birthplace	21
22.	Hours worked	22
23.	Occupation	23
24.	Industry subdivisions	24
Occupation—		
25.	Full-time and part-time workers	25
26.	Status of worker	25
27.	Age and birthplace	25
28.	Hours worked	26
29.	Major and minor occupation groups	27

CONTENTS—continued

<i>Table</i>	<i>Page</i>
Unemployed persons—	
30. States, by age	28
31. Aged 15 to 19: duration of unemployment and school attendance	28
32. Age and whether looking for full-time or part-time work	29
33. Birthplace by age	29
34. Duration of unemployment and age, etc.	30
35. Industry and occupation of last full-time job and duration of unemployment	31
36. Industry and occupation of last full-time job—unemployment rates	31
37. Age and active steps taken to find work	32
Persons not in the labour force—	
38. Age and marital status	32
39. Whether looking for work, etc.	32
Gross flows—	
40. Estimates of labour force status and gross changes (flows) derived from matched records, July and August 1984	33
Technical note—	
Estimation procedure	34
Reliability of the estimates	34
Supplementary and special surveys on labour force and related topics	37

EXPLANATORY NOTES

Introduction

This publication contains estimates of the civilian labour force derived from the labour force survey part of the monthly population survey.

2. Preliminary survey results are published in advance of this more detailed publication in *The Labour Force, Australia (Preliminary Estimates)* (6202.0).

3. Although emphasis in the population survey is placed on the regular collection of specific data on demographic and labour force characteristics of the population, supplementary and special surveys of particular aspects of the labour force or of other subjects are carried out from time to time. Statistics from these surveys are published and are available on request. A list of survey publications on labour force and related topics is shown later in this publication.

The population survey

4. The population survey is based on a multi-stage area sample of private dwellings (about 33,000 houses, flats, etc.) and non-private dwellings (hotels, motels, etc.), and covers about two-thirds of one per cent of the population of Australia. The information is obtained from the occupants of selected dwellings by carefully chosen and specially trained interviewers. The interviews are generally conducted during the two weeks beginning on the Monday between the 6th and 12th of each month. Because of operational problems arising from the Christmas and New Year holidays, interviews for the December 1983 survey commenced on Monday 5 December. The information obtained relates to the week before the interview (i.e. the survey week).

Scope

5. The labour force survey includes all persons aged 15 and over except:

- (a) members of the permanent defence forces;
- (b) certain diplomatic personnel of overseas governments, customarily excluded from census and estimated populations;
- (c) overseas residents in Australia; and
- (d) members of non-Australian defence forces (and their dependents) stationed in Australia.

Definitions

6. The labour force category to which a person is assigned depends on his *actual activity* (i.e. whether working, looking for work, etc.) during the survey week. The following definitions, which conform closely to the international standard definitions specified by the International Labour Organisation (ILO), relate only to those persons within the scope of the survey.

7. *Employed persons* comprise all those aged 15 and over who, during the survey week:

- (a) worked for one hour or more for pay, profit, commission or payment in kind in a job or business, or on a farm (including employees, employers and self-employed persons); or
- (b) worked for 15 hours or more without pay in a family business or on a farm (i.e. unpaid family helpers); or
- (c) were employees who had a job but were not at work and were: on paid leave; on leave without pay for less than four weeks up to the end of the survey week; stood down without pay because of bad weather or plant breakdown at their place of employment for less than four weeks up to the end of the survey week; on strike or locked out; on workers' compensation and expected to be returning to their job; or receiving wages or salary while undertaking full-time study; or
- (d) were employers or self-employed persons who had a job, business or farm, but were not at work.

8. The *employment/population ratio* for any group is the number of employed persons expressed as a percentage of the civilian population aged 15 and over in the same group.

9. *Unemployed persons* are those aged 15 and over who were not employed during the survey week, and

- (a) had actively looked for full-time or part-time work at any time in the four weeks up to the end of the survey week and:
 - (i) were available for work in the survey week, or would have been available except for temporary illness (i.e. lasting for less than four weeks to the end of the survey week); or
 - (ii) were waiting to start a new job within four weeks from the end of the survey week and would have started in the survey week if the job had been available then;

or (b) were waiting to be called back to a full-time or part-time job from which they had been stood down without pay for less than four weeks up to the end of the survey week (including the whole of the survey week) for reasons other than bad weather or plant breakdown.

10. *Actively looking for work* includes writing, telephoning or applying in person to an employer for work; answering a newspaper advertisement for a job; checking factory or Commonwealth Employment Service noticeboards; being registered with the Commonwealth Employment Service; checking or registering with any other employment agency; advertising or tendering for work; and contacting friends or relatives. The active steps were asked in the order shown in the table in this

publication showing unemployed persons classified by active steps taken, and since only one response was recorded for each person asked this particular question, the estimates do not reflect the relative importance of the steps taken to find work.

11. *Unemployed persons looking for first job* are those who had never worked full time for two weeks or more.

12. The *unemployment rate* for any group is the number unemployed expressed as a percentage of the labour force (i.e. employed plus unemployed) in the same group.

13. *Duration of unemployment* is the period from the time the person began looking for work or was laid off to the end of the survey week. Thus the survey measures current (and continuing) periods of unemployment rather than completed spells. For persons who may have begun looking for work while still employed, the duration of unemployment is defined as the period from the time the person last worked full time for two weeks or more to the end of the survey week. Periods of unemployment are recorded in complete weeks and this results in a slight understatement of duration. *Average (mean) duration* is the duration obtained by dividing the aggregate number of weeks a group has been unemployed by the number of persons in that group. *Median duration* is the duration which divides unemployed persons into two equal groups, one comprising persons whose duration of unemployment is above the median and the other, persons whose duration is below it.

14. *Unemployed persons classified by industry and occupation.* Unemployed persons who had worked full time for two weeks or more in the last two years are classified according to the industry and occupation of their most recent full-time job. *Unemployment rates* by industry and occupation are only available for February, May, August and November.

15. The *labour force* comprises all persons who, during the survey week, were employed or unemployed, as defined above.

16. The *labour force participation rate* for any group is the labour force expressed as a percentage of the civilian population aged 15 and over in the same group. Because it is not practicable to ascertain the birthplace of persons in institutions (who are classified as not in the labour force), labour force participation rates for persons classified by birthplace are calculated by using population estimates which exclude those in institutions.

17. *Full-time workers* are those who usually work 35 hours or more a week and others who, although usually part-time workers, worked 35 hours or more during the survey week. *Part-time workers* are those who usually work less than 35 hours a week and who did so during the survey week. When recording hours of work, fractions of an hour are disregarded.

18. *Hours of work.* The figures of aggregate hours and of average hours refer to actual hours worked during the survey week, not hours paid for. The figures may be affected by public holidays, leave, absenteeism; temporary absence from work due to sickness, injury, accident and industrial disputes; and stoppages of work due to bad weather, plant breakdown, etc. When hours of work are

recorded, fractions of an hour are disregarded and this results in slightly lower figures than would be the case if actual time worked was recorded. Persons stood down for the whole of the survey week without pay because of bad weather or plant breakdown at their place of employment are regarded as employed and therefore are included (working no hours) in the calculation of average hours worked. Persons stood down in the survey week for reasons other than bad weather and plant breakdown and waiting to be called back to their job are regarded as unemployed and are therefore excluded from the calculations.

19. *Persons attending school* comprise those aged 15 to 20 who, during the survey week, were enrolled full time at secondary or high schools. Excluded are persons who were enrolled at universities, colleges of advanced education, technical colleges, other tertiary educational institutions, and coaching and business schools. Persons attending school are classified as in the labour force if they were employed or unemployed as defined above. Because it is not practicable to ascertain from persons in institutions (who are classified as not in the labour force) whether or not they are enrolled at secondary or high schools, such persons are excluded from estimates classified by school attendance.

20. *Persons not in the labour force* are those who, during the survey week, were not in the categories employed or unemployed, as defined above. They include persons who were keeping house (unpaid), attending an educational institution (school, university, etc.), retired, voluntarily inactive, permanently unable to work, inmates of institutions (hospitals, gaols, sanatoria, etc.), trainee teachers, members of contemplative religious orders, and persons whose only activity during the survey week was jury service or unpaid voluntary work for a charitable organisation. Specific surveys of persons not in the labour force indicate that a number want to work but are not classified as unemployed because they were not actively looking for work and/or were not available to begin work in the survey week. Included in this group are the discouraged jobseekers and other persons marginally attached to the labour force.

21. In the labour force survey, persons are classified as *married* or *not married*. Marital status is determined from information supplied by the respondent about the individual himself or herself and, where the person was reported as being married, about the living arrangements of persons usually resident in the household. Marital status does not therefore necessarily reflect legal status. Persons are classified as married if they are reported as being married (including de facto) and their spouse was a usual resident of the household at the time of the survey. The not-married category includes persons who have never married, or are separated, widowed or divorced, as well as those who, although reported as being married, did not have a spouse who usually lived in the household. Persons who live in a de facto relationship but do not volunteer this information when asked whether they are married are classified as not married. For discontinuities in estimates of marital status, see paragraph 31.

22. The February, May, August and November issues of this publication include a table showing estimates of employed persons, obtained from the labour force survey, classified by *status of worker* i.e. whether they were employers, self-employed persons, wage and salary earners (employees), or unpaid family helpers (who worked 15 hours or more in the survey week).

23. *Industry* is classified according to the *Australian Standard Industrial Classification (ASIC) 1978 (1201.0 and 1202.0)* and *occupation* according to the *Classification and Classified List of Occupations, Revised November 1980*.

24. The areas determining the six *State capital cities* are the Statistical Divisions for those capital cities defined in *Census of Population and Housing 1976, Population and Dwellings in Local Government Areas and Urban Centres (Preliminary) (2401.0-2408.0)*. Capital City Statistical Divisions are predominantly urban in character and the boundaries are delineated to contain the anticipated urban development of the capital cities (and associated urban centres) for a period of at least 20 years.

Population benchmarks

25. Labour force survey estimates of persons employed, unemployed and not in the labour force are calculated in such a way as to add up to the independently estimated distribution of the population aged 15 and over by age and sex. This procedure compensates for under-enumeration in the survey, and leads to more reliable estimates. The independent population statistics (benchmarks) are the latest available estimates at the time the labour force survey is conducted, but they usually differ from the official population estimates subsequently published in *Australian Demographic Statistics Quarterly (3101.0)* because they are necessarily derived from incomplete information about population changes.

Revision of series

26. Survey estimates are not revised for the usually small amendments of population benchmarks arising from new data on deaths and overseas and internal migration. Revisions are made, however, after each census of population and housing, and when population estimation bases are reviewed. Survey estimates back to February 1978 have been recalculated to conform to revised population estimates which take account of results of the 1981 Census. Revised estimates back to February 1978 were published in an appendix to the February 1984 issue of this publication. The next issue of *The Labour Force, Australia (6204.0)* planned for release later this year, will contain more detailed cross-classifications of revised estimates back to February 1978.

27. Following the change in official population estimates to a place of usual residence basis after the 1981 Census, the population benchmarks used in the estimation of labour force survey data are compiled according to place of usual residence. For an explanation of the new conceptual basis of population estimates see *Population Estimates: An outline of The New Conceptual Basis of ABS Population Estimates (3216.0)*. To coordinate with the

new benchmarks, the labour force survey questionnaire was changed in October 1982 to enable identification of each respondent's place of usual residence. The estimates shown in this publication are thus wholly according to place of usual residence. Prior to October 1982, the estimates are based on a combination of place of enumeration and place of usual residence. Persons who are away overseas from their usual residence for less than six weeks at the time of interview are generally enumerated at their usual residence when relevant information can be obtained from other usual residents present at the time of the survey. Persons who, at the time of interview, are overseas for six weeks or more but for less than twelve months are included in the estimates on the assumption that their labour force characteristics are similar to those of the persons responding in the survey.

28. Until February 1978, surveys were conducted in February, May, August and November each year from 1964. From February 1978 the survey has been conducted on a monthly basis. A revised questionnaire was introduced for the February 1978 survey. The questionnaire, which had undergone little change since 1964, except for the inclusion in 1975 of additional questions on jobseeking, was revised to provide more accurate and more detailed information concerning the labour force.

29. Details of the changes made to the questionnaire in February 1978 and additional minor amendments made in November 1981 are contained in the March 1978 and December 1981 issues (respectively) of *Information Paper: Questionnaires Used in the Labour Force Survey (6232.0)*. As noted in paragraph 27, the questionnaire was further changed in October 1982 to enable identification of each respondent's place of usual residence. Questions enabling identification of family relationships within households were also included at that time. A new edition of the *Information Paper (6232.0)* was published in August 1984.

Comparability of series

30. As noted in paragraphs 26 and 27, estimates from February 1978 have been revised to conform to revised population estimates and are thus not strictly comparable with estimates for periods prior to February 1978 which have not been revised. The appendix to the February 1984 issue of this publication contains adjustment factors enabling users to calculate the expected effect of the revisions to estimates for periods prior to February 1978.

31. Paragraph 21 outlines the definition of marital status now used in the labour force survey. In conjunction with the revision of estimates back to February 1978 to conform to revised population estimates, a revision to take account of the new definition of marital status was also applied. Consequently, estimates of marital status contained in this publication are not comparable with estimates published before the February 1984 issue of this publication which classified as married all respondents who reported that they were married or separated. The revision to the marital status classification was undertaken in two parts. Firstly, for all surveys from February 1978, persons who reported that they were separated, were reclassified as not married. Secondly, from June 1983 onwards, in addition to including persons reported

as separated, the not-married category includes persons who although reported as married, did not, at the time of the survey, have a spouse who was a usual resident of the household.

Survey sample

32. For detailed information on sample design and selection see the Technical note in *The Labour Force, Australia, 1978* (6204.0).

33. The population survey sample is reselected every five years to allow data from the latest census of population and housing to be used to improve the efficiency of the population survey sample design. The latest reselection, which used data from the 1981 Census, was introduced for the October 1982 survey.

34. The sampling fraction differs for States and Territories. This is designed to enable estimates of reasonable accuracy to be produced from all States and Territories as well as for Australia. Sampling fractions for each State and Territory are as follows: New South Wales and Victoria, 1 in 200; Queensland, 1 in 140; Western Australia, South Australia, Northern Territory and Australian Capital Territory, 1 in 100; and Tasmania, 1 in 60.

Reliability of the estimates

35. Estimates in this publication are subject to two sources of error:

- (a) sampling error: since the estimates are based on information obtained from occupants of a sample of dwellings they, and the movements derived from them, may differ from the figures that would have been produced if all dwellings had been included in the survey. More information on this topic is given in the Technical note.
- (b) non-sampling error: inaccuracies may occur because of imperfections in reporting by respondents and interviewers and errors made in the coding and processing of data. These inaccuracies may occur in any enumeration, whether it be a full count or a sample. Every effort is made to reduce the non-sampling error to a minimum by careful design of questionnaires, intensive training and supervision of interviewers and efficient operating procedures.

Differences between population census and population survey estimates

36. The results of the 1981 Census of Population and Housing show that labour force figures derived from the census differ from estimates derived from the labour force surveys.

37. The broad concepts underlying the measures of the labour force and its components, employment and unemployment, are similar in the census and the survey. However there are considerable differences in both the collection methodology adopted (including the detailed questions asked) and estimation procedures. Factors contributing to differences in estimates include under-enumeration in the population census for which census

labour force estimates have not been adjusted, the use in the labour force survey of population benchmarks derived from incomplete information about population change (see paragraph 25), the inclusion of permanent defence forces in census estimates, the personal interview approach adopted in the survey as opposed to self-enumeration of census schedules, differing questions used to determine labour force characteristics (particularly the identification of unemployed persons) and, differing methods of adjustment for non-response to the survey or census.

38. The labour force survey provides detailed and up-to-date estimates of employment and unemployment for Australia and States, whereas the census of population and housing provides less detailed counts for small areas.

39. These considerations should be borne in mind if comparisons are made between population census and labour force survey estimates.

Seasonal adjustment

40. Seasonally adjusted series are published in Table 2. As happens with all seasonally adjusted series, the seasonal factors are reviewed annually to take account of each additional year's original data. The latest review, in February 1984, revised the monthly series back to February 1978. Information about the method of adjustment and revised seasonally adjusted figures for all months since February 1978 were published in an appendix to the February 1984 issue of this publication.

41. The large increase in unemployment in 1982 and 1983 may have been accompanied by a change in the seasonal pattern. It would not be possible to quantify any such change adequately until some additional years' data are available. Particular care should therefore be exercised in interpreting current movements in these seasonally adjusted estimates.

Gross flows

42. In order to minimise respondent burden and at the same time maintain continuity within the population survey sample, one eighth of the dwellings in the sample (except the large non-private dwellings) are replaced after each survey. Adoption of this rotation procedure, whereby about seven eighths of the sample remains unchanged from one month to the next, enables more reliable measurements of changes in the labour force characteristics of the population to be made than would be possible if a new sample were introduced each month.

43. Because a high proportion of private dwellings selected in one survey remains in the sample for the following survey, it is possible to match the characteristics of most of the persons in those dwellings from one month to the next, to record any changes that occur, and hence to produce estimates of *flows* between the different categories of the population and labour force.

44. The procedures used to select persons in non-private dwellings preclude the possibility of matching any of them who may be included in successive surveys. For this and other reasons, including the mobility of the population and non-response in either or both surveys, about 10 per cent of persons in those dwellings which are

included in the sample in successive months cannot be matched. Those who can be matched represent about 80 per cent of all persons in the survey.

45. Changes in the characteristics of this latter group are shown in the gross flows table. About one half of the remaining (unmatched) 20 per cent of persons in the survey are likely to have characteristics similar to those in the matched group, but the characteristics of the other half are likely to be somewhat different.

46. Gross flow estimates relate only to those persons in private dwellings for whom information was obtained in successive surveys. The expansion factors used in calculating the estimates were those applying to the second of each pair of months.

47. Although it is not possible to provide gross flow estimates for all persons in the survey it is considered that the estimates derived from matched records will be a useful guide to the magnitude of the movements between categories which underlie the changes in monthly levels. When comparing flows for different periods it is important to take into account the population represented by the matched sample, as shown in the last line of the table.

48. While every effort is made to reduce non-sampling errors to a minimum, any such errors affecting labour force status will tend to accumulate in the gross flow statistics rather than to cancel out. The estimates are also subject to sampling variability, as explained in the Technical note. For these reasons the estimates of flows should be used with caution. The standard errors may be obtained from Table A of the Technical note.

49. Estimates of total flows into or out of the employed category may be less than the sum of the estimates for employed full time and employed part time as the estimates for the latter two categories include movements between these two categories.

Additional data

50. Estimates for employed persons classified by industry, occupation and status of worker are available each February, May, August and November, and the following tables are published in issues of this publication for those months.

Employed persons—
 Industry and occupation—
 Full-time and part-time workers
 Status of worker
 Age and birthplace
 Hours worked
 Industry by occupation
 Industry subdivisions
 Major and minor occupation groups

51. Other unpublished data from labour force surveys, including more detailed cross-classifications of revised estimates back to February 1978, are available on request.

Related publications

52. Users may also wish to refer to the following publications which relate to the labour force and are available on request:

The Labour Force, Australia (Preliminary Estimates) (6202.0)—issued monthly

The Labour Force, New South Wales (6201.1)—issued quarterly

The Labour Force, Victoria (6201.2)—issued monthly

The Labour Force, Queensland (6201.3)—issued quarterly

The Labour Force, South Australia (6201.4)—issued quarterly

Labour Statistics, Australia, 1982 (6101.0)

Job Vacancies, Australia (6231.0)—issued quarterly

Information Paper: Questionnaires used in the Labour Force Survey, August 1984 (6232.0)

Employed Wage and Salary Earners, Australia (6248.0)—issued quarterly

Overtime, Australia (6330.0)—issued quarterly

Persons Not in the Labour Force, Australia (6220.0)—issued twice-yearly

Information Paper: New Statistical Series: Employment, Average Weekly Earnings, Job Vacancies and Overtime (6256.0)

Social Indicators No. 3 1980 (4101.0)

53. Current publications produced by the ABS are listed in the *Catalogue of Publications, Australia* (1101.0). The ABS also issues, on Tuesdays and Fridays, a *Publications Advice* (1105.0) which lists publications to be released in the next few days. The Catalogue and Publications Advice are available from any ABS office.

Symbols and other usages

- * subject to sampling variability too high for most practical uses. See paragraph 6 of the Technical note
- n.a. not available
- .. not applicable
- n.e.c. not elsewhere classified

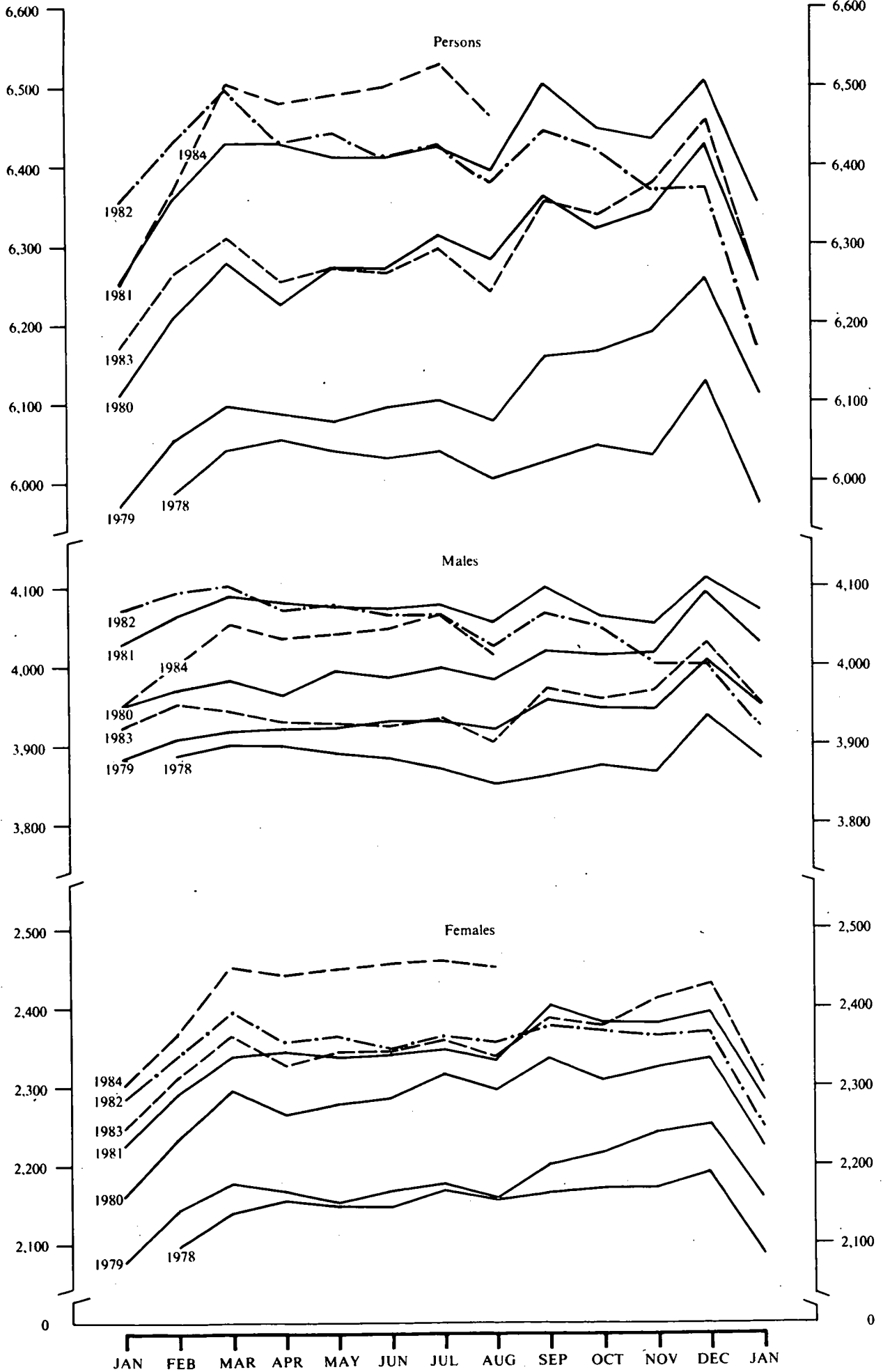
54. Figures have been rounded and discrepancies may occur between sums of the component items and totals.

R. J. CAMERON
 Australian Statistician

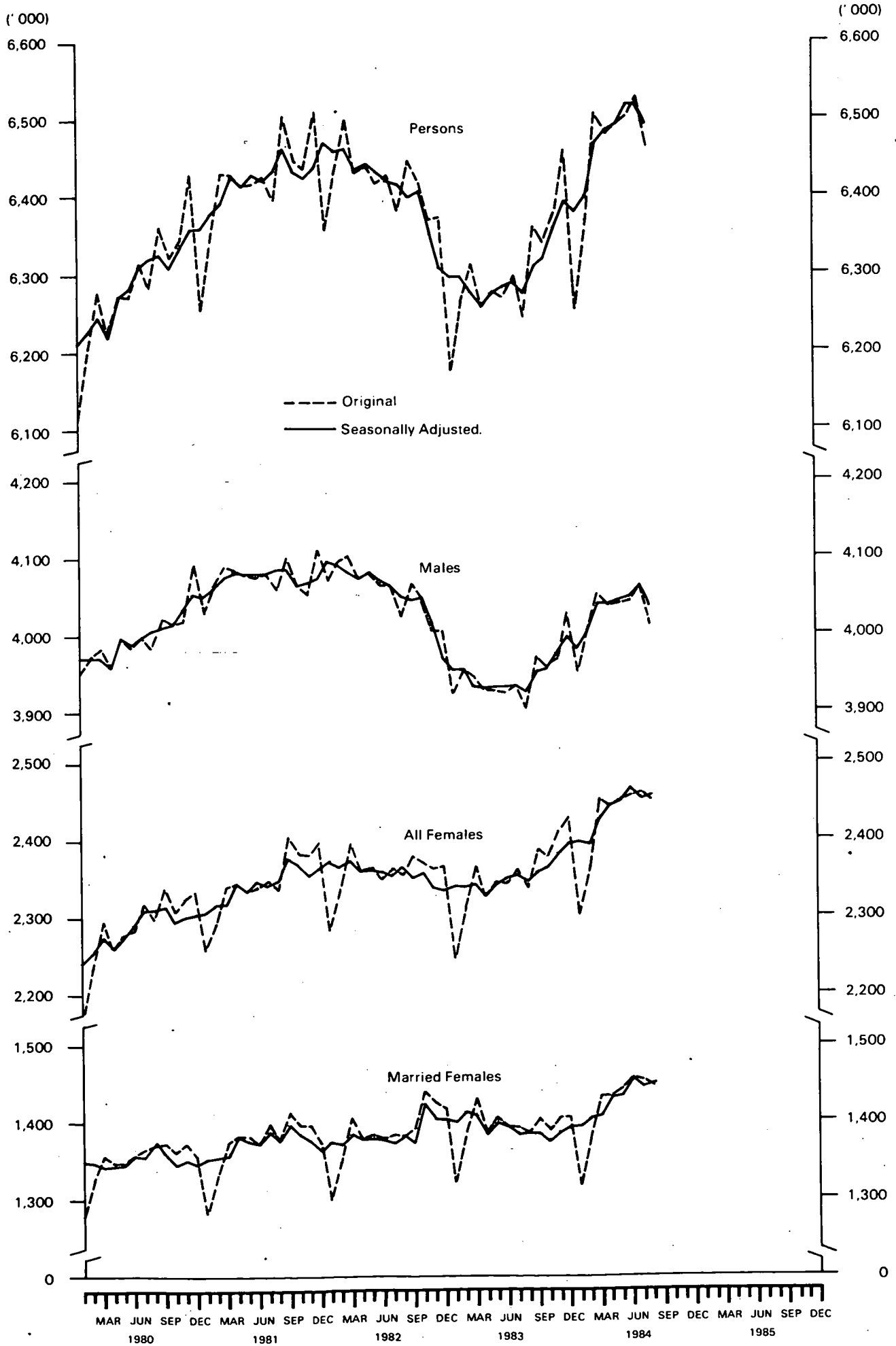
EMPLOYED PERSONS

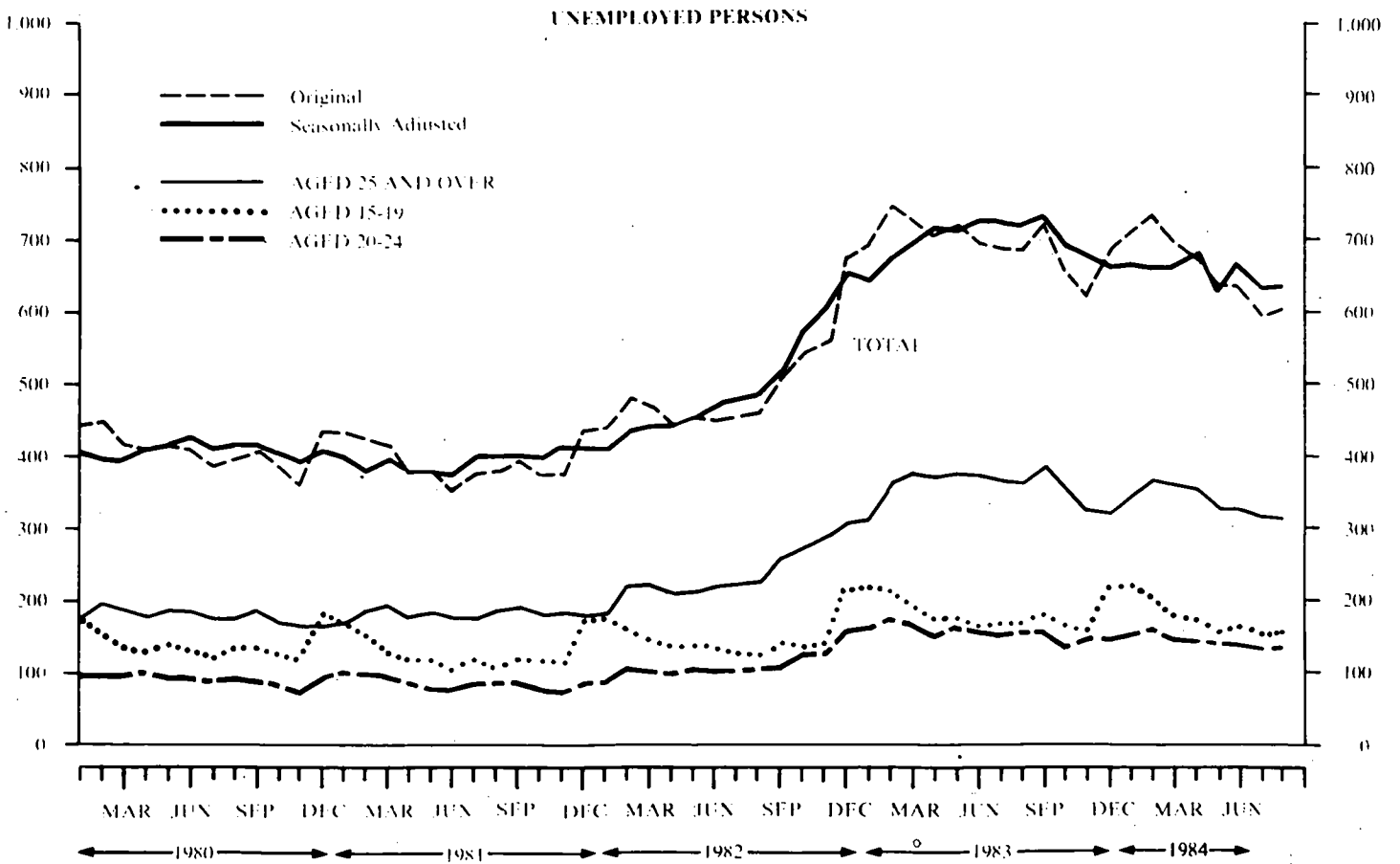
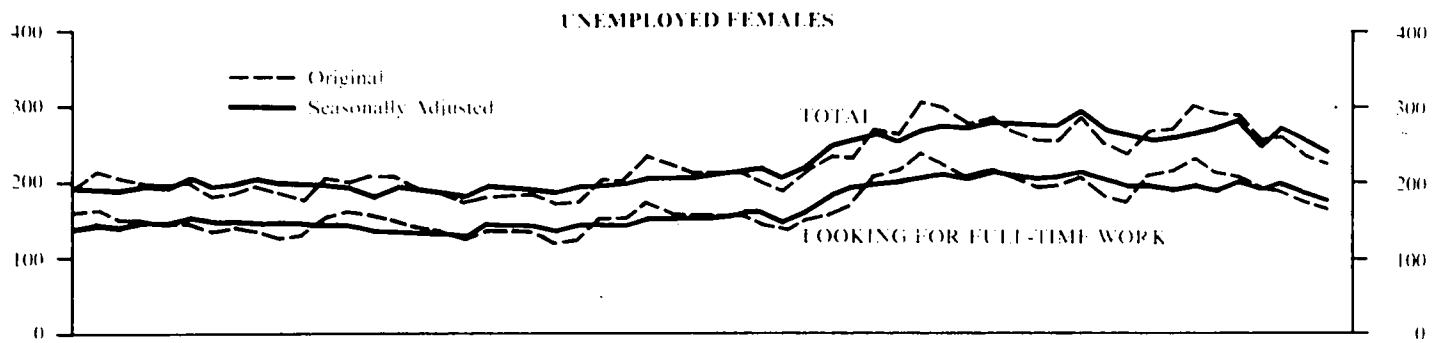
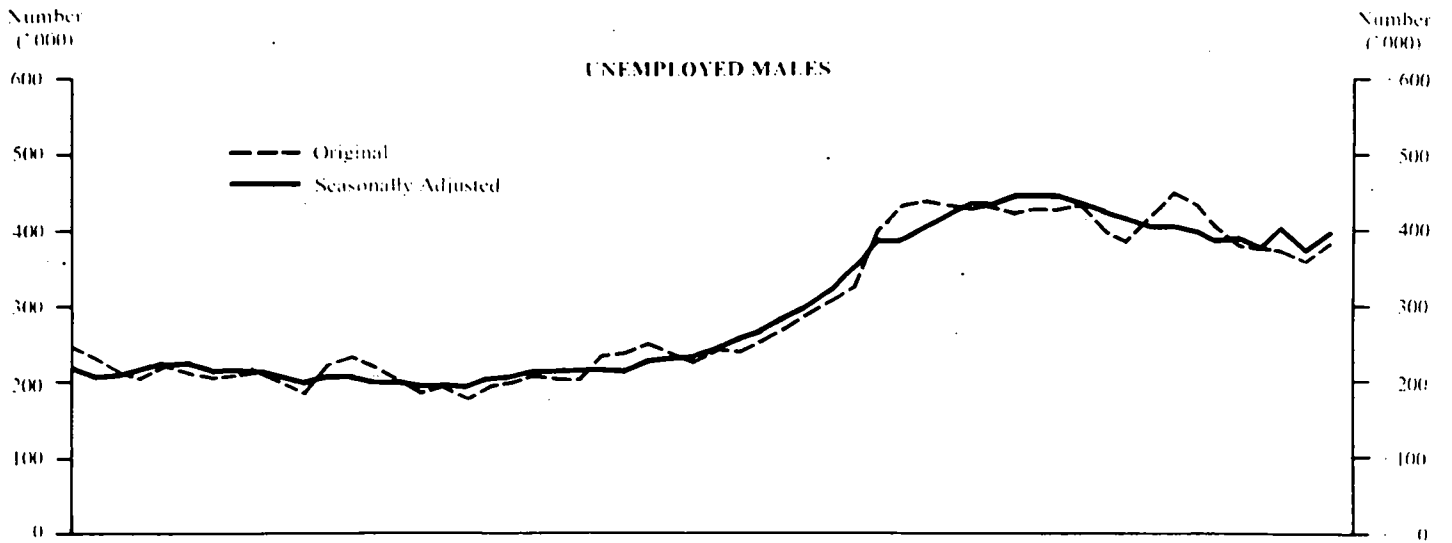
Number ('000)

Number ('000)

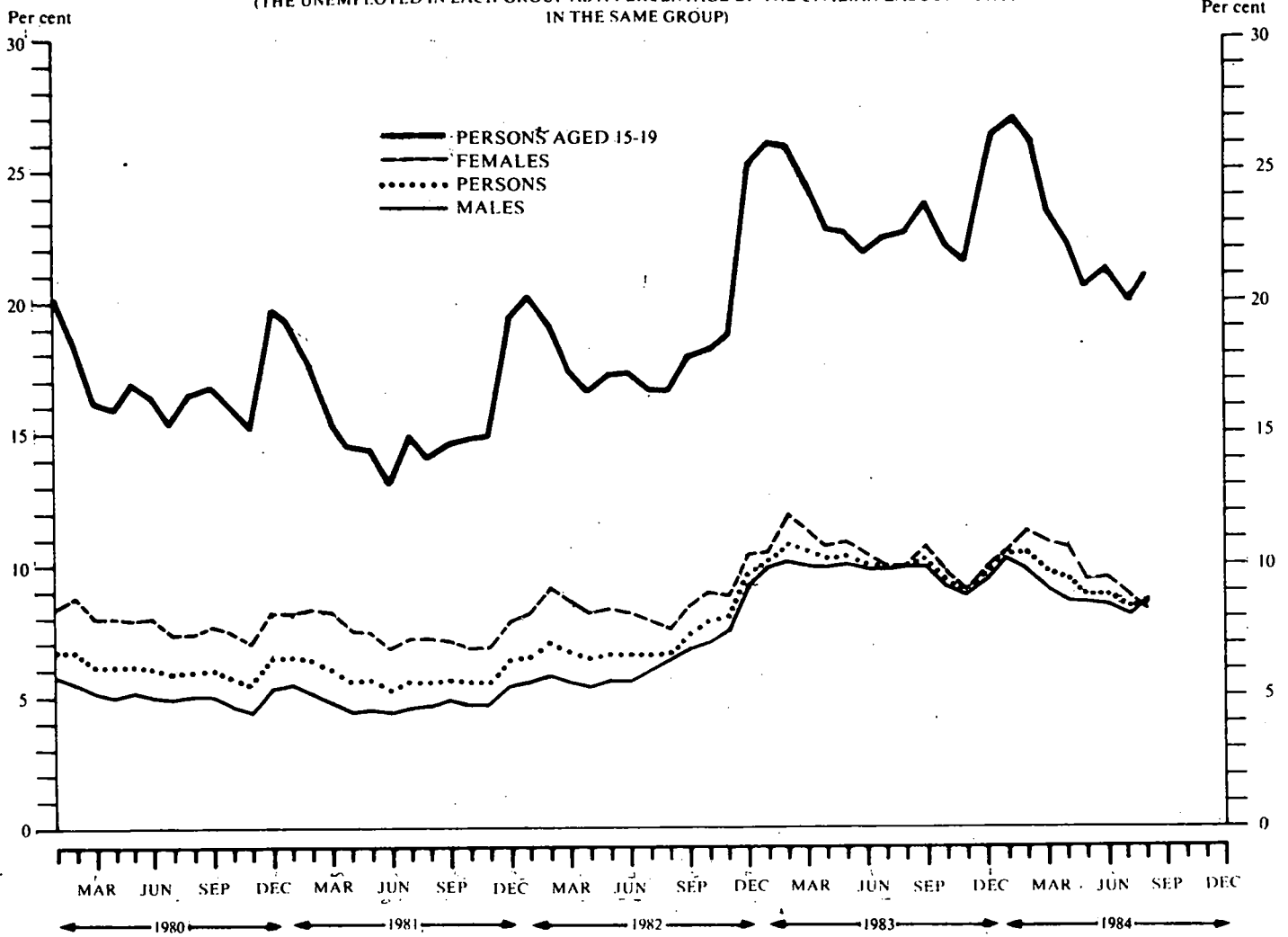


EMPLOYED PERSONS





UNEMPLOYMENT RATES
(THE UNEMPLOYED IN EACH GROUP AS A PERCENTAGE OF THE CIVILIAN LABOUR FORCE IN THE SAME GROUP)



LABOUR FORCE PARTICIPATION RATES
(THE LABOUR FORCE IN EACH GROUP AS A PERCENTAGE OF THE CIVILIAN POPULATION AGED 15 AND OVER IN THE SAME GROUP)

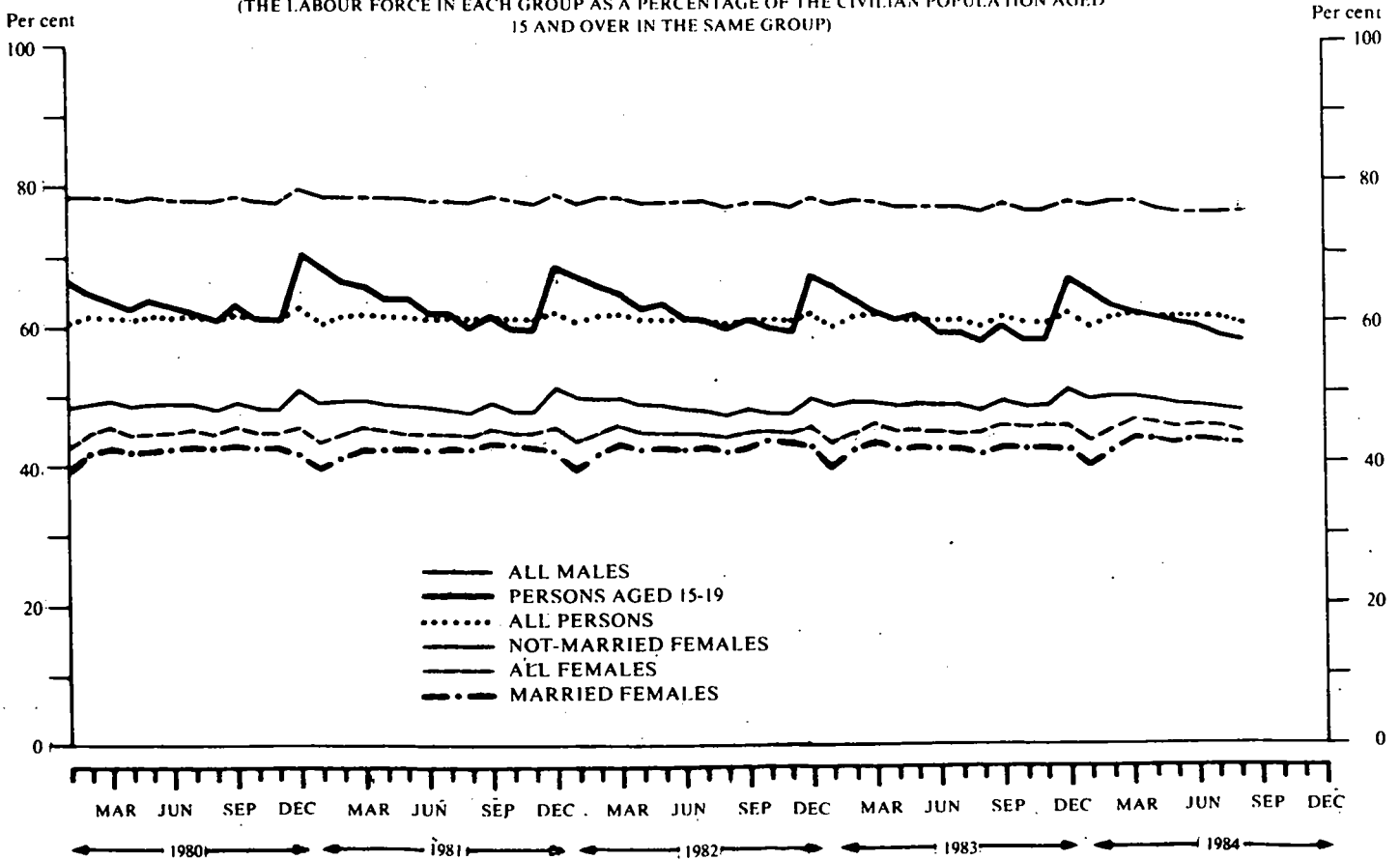


TABLE 1. LABOUR FORCE STATUS OF THE CIVILIAN POPULATION AGED 15 AND OVER

Month	Employed		Unemployed				Labour force	Not in labour force	Civilian population aged 15 and over	Unemployment rate	Participation rate
	Full-time workers	Total	Looking for full-time work		Total						
			Aged 15-19 looking for first job	Looking for part-time work							
- '000 -											
- per cent -											
MALES											
1983 -											
July	3,697.6	3,933.1	27.8	407.0	22.0	429.0	4,362.1	1,341.8	5,704.0	9.8	76.5
August	3,663.4	3,903.6	26.6	409.5	20.2	429.7	4,333.3	1,379.2	5,712.5	9.9	75.9
September	3,740.1	3,971.7	30.6	410.3	24.7	435.0	4,406.7	1,314.5	5,721.2	9.9	77.0
October	3,714.2	3,958.5	32.9	384.5	16.3	400.8	4,359.3	1,369.5	5,728.9	9.2	76.1
November	3,719.3	3,966.7	30.5	365.5	20.4	385.9	4,352.6	1,383.6	5,736.2	8.9	75.9
December	3,781.9	4,028.2	57.4	391.3	28.4	419.8	4,448.0	1,295.6	5,743.6	9.4	77.4
1984 -											
January	3,716.3	3,949.6	53.0	424.0	28.5	452.5	4,402.1	1,350.0	5,752.1	10.3	76.5
February	3,767.0	4,000.3	48.5	413.2	22.7	435.8	4,436.2	1,324.1	5,760.2	9.8	77.0
March	3,809.0	4,052.3	36.8	380.0	24.7	404.7	4,457.1	1,311.3	5,768.4	9.1	77.3
April	3,781.2	4,036.6	33.4	364.3	21.3	385.6	4,422.2	1,353.8	5,776.0	8.7	76.6
May	3,791.4	4,039.3	30.3	356.5	25.7	382.2	4,421.5	1,362.2	5,783.7	8.6	76.4
June	3,797.7	4,042.1	29.1	349.7	25.3	375.0	4,417.2	1,374.1	5,791.3	8.5	76.3
July	3,807.7	4,064.5	27.0	339.9	17.9	357.8	4,422.3	1,375.9	5,798.2	8.1	76.3
August	3,767.3	4,012.4	30.3	359.0	22.5	381.5	4,393.9	1,411.5	5,805.4	8.7	75.7
Standard error of -											
August 1984											
estimates	13.7	13.9	2.4	6.4	2.1	6.5	14.3	10.1	..	0.1	0.2
July 84 to Aug 84											
movements	9.6	9.8	2.3	5.1	2.1	5.2	10.0	7.5	..	0.1	0.2
MARRIED FEMALES											
1983 -											
July	767.0	1,393.0	*	63.2	43.8	107.0	1,500.0	2,054.8	3,554.8	7.1	42.2
August	753.3	1,384.0	*	64.2	34.9	99.1	1,483.1	2,081.3	3,564.4	6.7	41.6
September	782.1	1,405.1	*	70.0	44.2	114.2	1,519.3	2,033.6	3,552.9	7.5	42.8
October	766.9	1,388.1	*	59.6	42.7	102.3	1,490.4	2,048.7	3,539.1	6.9	42.1
November	770.0	1,407.3	*	55.8	36.1	91.9	1,499.2	2,034.5	3,533.7	6.1	42.4
December	780.2	1,406.0	*	54.9	31.9	86.8	1,492.8	2,046.0	3,538.8	5.8	42.2
1984 -											
January	768.9	1,318.5	*	53.1	26.9	80.0	1,398.5	2,146.9	3,545.4	5.7	39.4
February	764.4	1,378.0	*	62.8	41.0	103.8	1,481.8	2,060.6	3,542.4	7.0	41.8
March	773.1	1,433.1	*	70.6	46.2	116.8	1,549.9	1,986.7	3,536.6	7.5	43.8
April	771.8	1,433.1	*	66.4	45.5	111.9	1,545.0	1,999.8	3,544.8	7.2	43.6
May	777.3	1,443.3	*	57.2	39.4	96.6	1,539.9	2,027.0	3,566.9	6.3	43.2
June	786.4	1,454.5	*	59.9	40.4	100.3	1,554.8	2,022.1	3,577.0	6.4	43.5
July	790.7	1,455.3	*	52.5	35.9	88.4	1,543.7	2,033.9	3,577.6	5.7	43.1
August	786.9	1,446.5	*	51.0	34.4	85.3	1,531.8	2,047.2	3,579.1	5.6	42.8
Standard error of -											
August 1984											
estimates	8.4	10.2	0.4	3.0	2.5	3.7	10.4	11.4	..	0.2	0.3
July 84 to Aug 84											
movements	6.4	7.6	0.5	2.8	2.4	3.3	7.7	8.3	..	0.2	0.2

TABLE 1. LABOUR FORCE STATUS OF THE CIVILIAN POPULATION AGED 15 AND OVER (continued)

Month	Employed		Unemployed				Labour force	Not in labour force	Civilian population aged 15 and over	Unemployment rate	Participation rate
	Full-time workers	Total	Aged 15-19 looking for first job	Looking for full-time work	Looking for part-time work	Total					
- '000 -											
- per cent -											
ALL FEMALES											
1983 -											
July	1,516.9	2,361.8	27.0	192.3	65.9	258.2	2,620.1	3,265.3	5,885.4	9.9	44.5
August	1,486.9	2,337.4	28.6	197.9	59.3	257.1	2,594.6	3,299.1	5,893.7	9.9	44.0
September	1,545.8	2,386.5	33.6	208.8	77.2	285.9	2,672.4	3,229.6	5,902.0	10.7	45.3
October	1,526.3	2,377.6	27.8	183.0	69.3	252.3	2,630.0	3,279.5	5,909.4	9.6	44.5
November	1,534.0	2,410.8	27.2	176.7	62.2	238.9	2,649.7	3,267.3	5,917.0	9.0	44.8
December	1,560.6	2,428.2	52.4	210.1	60.2	270.2	2,698.4	3,226.1	5,924.5	10.0	45.6
1984 -											
January	1,533.1	2,303.0	48.2	212.9	54.0	266.9	2,569.9	3,363.2	5,933.1	10.4	43.3
February	1,528.6	2,365.7	51.7	228.6	73.7	302.3	2,668.0	3,273.6	5,941.6	11.3	44.9
March	1,546.3	2,451.9	37.5	212.1	84.2	296.3	2,748.2	3,201.9	5,950.1	10.8	46.2
April	1,537.8	2,442.4	32.1	207.7	83.5	291.2	2,733.5	3,224.5	5,958.1	10.7	45.9
May	1,541.8	2,451.2	29.4	192.7	62.1	254.8	2,706.1	3,260.1	5,966.1	9.4	45.4
June	1,545.4	2,456.6	30.3	189.5	69.5	259.1	2,715.7	3,258.4	5,974.1	9.5	45.5
July	1,561.2	2,461.6	28.1	175.3	62.5	237.8	2,699.5	3,281.9	5,981.3	8.8	45.1
August	1,547.5	2,449.9	25.9	165.1	57.9	223.1	2,673.0	3,315.5	5,988.5	8.3	44.6
Standard error of -											
August 1984											
estimates	10.4	12.0	2.2	4.8	3.1	5.3	12.4	13.2	..	0.2	0.2
July 84 to Aug 84											
movements	7.7	8.7	2.2	4.1	2.9	4.5	8.8	9.3	..	0.2	0.1
PERSONS											
1983 -											
July	5,214.6	6,295.0	54.8	599.3	87.9	687.2	6,982.2	4,607.2	11,589.4	9.8	60.3
August	5,150.3	6,241.1	55.2	607.4	79.5	686.8	6,927.9	4,678.3	11,606.2	9.9	59.7
September	5,285.9	6,338.2	64.1	619.0	101.9	720.9	7,079.1	4,544.1	11,623.2	10.2	60.9
October	5,240.6	6,336.2	60.7	567.5	85.6	653.1	6,989.3	4,649.0	11,638.3	9.3	60.1
November	5,253.3	6,377.5	57.7	542.1	82.6	624.7	7,002.3	4,650.9	11,653.2	8.9	60.1
December	5,342.5	6,456.4	109.8	601.4	88.6	690.0	7,146.4	4,521.7	11,668.1	9.7	61.3
1984 -											
January	5,249.4	6,252.6	101.2	636.9	82.5	719.4	6,972.0	4,713.2	11,685.2	10.3	59.7
February	5,295.6	6,366.0	100.1	641.8	96.4	738.2	7,104.2	4,597.6	11,701.8	10.4	60.7
March	5,355.3	6,504.2	74.3	592.2	108.9	701.0	7,205.3	4,513.2	11,718.5	9.7	61.5
April	5,319.0	6,479.0	65.5	572.0	104.8	676.7	7,155.8	4,578.4	11,734.1	9.5	61.0
May	5,333.2	6,490.5	59.7	549.2	87.8	637.0	7,127.5	4,622.3	11,749.8	8.9	60.7
June	5,343.1	6,498.7	59.5	539.2	94.9	634.1	7,132.8	4,632.5	11,765.4	8.9	60.6
July	5,368.9	6,526.1	55.1	515.2	80.4	595.7	7,121.8	4,657.8	11,779.5	8.4	60.5
August	5,314.8	6,462.3	56.2	524.2	80.5	604.6	7,066.9	4,727.0	11,793.9	8.6	59.9
Standard error of -											
August 1984											
estimates	15.1	15.9	3.1	7.3	3.6	7.6	16.3	14.6	..	0.1	0.1
July 84 to Aug 84											
movements	10.4	10.9	2.8	5.7	3.2	6.0	11.1	10.1	..	0.1	0.1

TABLE 2. CIVILIAN LABOUR FORCE: SEASONALLY ADJUSTED SERIES

Month	Employed		Unemployed				Labour force	Unemp- loyment rate	Partici- pation rate
	Full-time workers	Total	Aged 15-19 looking for first job	Total	Looking for part-time work	Total			

Looking for full-time work									

- '000 -									
- per cent -									
MALES									
1983 -									
July	3,692.5	3,932.3	39.7	423.3	22.6	445.9	4,378.2	10.2	76.8
August	3,690.9	3,925.6	37.3	422.0	22.0	444.0	4,369.6	10.2	76.5
September	3,720.0	3,950.0	36.3	413.8	24.6	438.4	4,388.4	10.0	76.7
October	3,717.2	3,954.4	37.0	407.9	17.5	425.4	4,379.8	9.7	76.5
November	3,732.8	3,974.6	35.7	399.8	24.3	414.1	4,388.7	9.4	76.5
December	3,749.2	3,995.5	33.7	381.9	21.9	403.8	4,399.3	9.2	76.6
1984 -									
January	3,729.2	3,980.1	32.5	379.5	27.3	406.8	4,386.9	9.3	76.3
February	3,753.1	4,003.8	34.6	375.0	22.6	397.6	4,401.4	9.0	76.4
March	3,800.3	4,039.3	36.2	369.1	22.6	391.7	4,431.0	8.8	76.8
April	3,788.2	4,038.6	42.5	373.0	21.7	394.7	4,433.3	8.9	76.8
May	3,800.2	4,042.8	38.1	360.1	23.8	384.0	4,426.8	8.7	76.5
June	3,806.9	4,047.9	43.6	370.0	30.3	400.3	4,448.2	9.0	76.8
July	3,802.2	4,063.7	38.5	353.6	18.4	371.9	4,435.6	8.4	76.5
August	3,796.1	4,035.5	42.6	370.7	24.5	395.2	4,430.7	8.9	76.3
MARRIED FEMALES									
1983 -									
July	768.7	1,384.0	..	67.8	45.9	113.7	1,497.7	7.6	42.1
August	768.8	1,385.4	..	67.0	39.8	106.8	1,492.2	7.2	41.9
September	769.9	1,385.5	..	68.4	42.5	110.9	1,496.4	7.4	42.1
October	764.9	1,375.7	..	64.0	38.6	102.6	1,478.3	6.9	41.8
November	768.0	1,387.0	..	56.5	38.4	94.9	1,481.9	6.4	41.9
December	769.6	1,393.2	..	60.0	35.9	95.9	1,489.1	6.4	42.1
1984 -									
January	771.6	1,393.6	..	58.4	36.6	95.0	1,488.6	6.4	42.0
February	771.9	1,405.1	..	54.4	34.0	88.4	1,493.5	5.9	42.2
March	771.5	1,409.8	..	62.2	40.6	102.8	1,512.6	6.8	42.8
April	770.2	1,433.1	..	62.8	44.1	106.9	1,540.0	6.9	43.4
May	774.4	1,435.4	..	55.6	36.7	92.3	1,527.7	6.0	42.8
June	792.6	1,456.5	..	61.9	40.1	102.0	1,558.5	6.5	43.6
July	792.2	1,445.9	..	56.4	37.5	93.9	1,539.8	6.1	43.0
August	803.0	1,448.0	..	53.2	39.2	92.4	1,540.3	6.0	43.0
ALL FEMALES									
1983 -									
July	1,517.8	2,353.7	34.4	208.3	70.1	278.4	2,632.1	10.6	44.7
August	1,511.2	2,346.3	37.0	207.9	67.0	274.9	2,621.2	10.5	44.5
September	1,528.3	2,358.6	42.6	218.2	73.6	291.8	2,650.4	11.0	44.9
October	1,528.9	2,363.0	37.4	206.6	65.0	271.6	2,634.6	10.3	44.6
November	1,536.8	2,382.6	36.5	196.9	68.4	265.3	2,647.9	10.0	44.8
December	1,534.6	2,395.4	35.5	196.5	63.4	259.9	2,655.3	9.8	44.8
1984 -									
January	1,534.0	2,396.5	31.8	194.2	65.8	260.0	2,656.5	9.8	44.8
February	1,532.8	2,393.9	38.8	198.3	65.0	263.2	2,657.1	9.9	44.7
March	1,547.4	2,427.6	34.1	197.6	72.8	270.4	2,697.9	10.0	45.3
April	1,537.8	2,443.7	33.0	205.4	78.4	283.9	2,727.5	10.4	45.8
May	1,540.3	2,448.2	31.4	191.3	59.8	251.1	2,699.3	9.3	45.2
June	1,555.3	2,466.8	36.4	193.7	70.4	264.1	2,731.0	9.7	45.7
July	1,561.9	2,453.1	35.8	190.1	66.5	256.5	2,709.6	9.5	45.3
August	1,572.5	2,458.4	33.6	173.6	65.5	239.0	2,697.4	8.9	45.0
PERSONS									
1983 -									
July	5,210.3	6,286.0	74.1	631.6	92.7	724.3	7,010.3	10.3	60.5
August	5,202.1	6,271.9	74.3	629.9	89.0	718.9	6,990.8	10.3	60.2
September	5,248.3	6,308.6	78.9	632.0	98.2	730.2	7,038.8	10.4	60.6
October	5,246.1	6,317.4	74.4	614.5	82.5	697.0	7,014.4	9.9	60.3
November	5,269.6	6,357.2	72.2	586.7	92.7	679.4	7,036.6	9.7	60.4
December	5,283.8	6,390.9	69.2	578.4	85.3	663.7	7,054.6	9.4	60.5
1984 -									
January	5,263.2	6,376.6	64.3	573.7	93.1	666.8	7,043.4	9.5	60.3
February	5,285.9	6,397.7	73.4	573.2	87.6	660.8	7,058.5	9.4	60.3
March	5,347.7	6,466.9	70.2	566.7	95.3	662.1	7,128.9	9.3	60.8
April	5,326.0	6,482.3	75.6	578.5	100.1	678.6	7,160.9	9.5	61.0
May	5,340.5	6,491.1	69.5	551.4	83.6	635.0	7,126.1	8.9	60.6
June	5,362.2	6,514.7	80.0	563.7	100.8	664.4	7,179.2	9.3	61.0
July	5,364.2	6,516.8	74.3	543.6	84.8	628.5	7,145.2	8.8	60.7
August	5,368.6	6,493.9	76.2	544.3	89.9	634.2	7,128.1	8.9	60.4

TABLE 3. LABOUR FORCE STATUS OF THE CIVILIAN POPULATION AGED 15 AND OVER:
MARITAL STATUS, AUGUST 1984

	Employed		Unemployed			Labour force	Not in labour force	Civilian population aged 15 and over	Unemployment rate	Participation rate
	Full-time workers	Total	Looking for full-time work	Looking for part-time work	Total					
	- '000 -								- per cent -	
Males	3,767.3	4,012.4	359.0	22.5	381.5	4,393.9	1,411.5	5,805.4	8.7	75.7
Married	2,588.7	2,694.3	143.9	*	146.3	2,840.6	761.9	3,602.5	5.2	78.8
Not married	1,178.6	1,318.1	215.1	20.1	235.2	1,553.3	649.6	2,202.9	15.1	70.5
Females	1,547.5	2,449.9	165.1	57.9	223.1	2,673.0	3,315.5	5,988.5	8.3	44.6
Married	786.9	1,446.5	51.0	34.4	85.3	1,531.8	2,047.2	3,579.1	5.6	42.8
Not married	760.6	1,003.4	114.2	23.6	137.8	1,141.1	1,268.3	2,409.4	12.1	47.4
Persons	5,314.8	6,462.3	524.2	80.5	604.6	7,066.9	4,727.0	11,793.9	8.6	59.9

TABLE 4. LABOUR FORCE STATUS OF THE CIVILIAN POPULATION AGED 15 AND OVER:
STATES AND TERRITORIES, AUGUST 1984

State or Territory	Employed		Unemployed			Labour force	Not in labour force	Civilian population aged 15 and over	Unemployment rate	Participation rate
	Full-time workers	Total	Looking for full-time work	Looking for part-time work	Total					
	- '000 -								- per cent -	
MALES										
New South Wales	1,298.5	1,386.6	137.1	7.3	144.4	1,531.0	495.2	2,026.2	9.4	75.6
Victoria	1,004.1	1,069.9	68.8	6.3	75.2	1,145.0	377.3	1,522.4	6.6	75.2
Queensland	599.5	636.6	67.2	4.8	72.0	708.6	221.4	930.0	10.2	76.2
South Australia	324.9	345.1	33.7	*	35.6	380.7	130.3	511.0	9.4	74.5
Western Australia	346.3	369.5	35.1	*	35.9	405.4	116.6	522.0	8.8	77.7
Tasmania	102.3	107.1	13.2	*	13.8	120.9	40.7	161.6	11.4	74.8
Northern Territory	31.3	33.3	2.2	*	2.4	35.8	14.1	49.8	6.8	71.8
Australian Capital Territory	60.3	64.3	1.7	*	2.2	66.4	15.8	82.2	3.3	80.8
Australia	3,767.3	4,012.4	359.0	22.5	381.5	4,393.9	1,411.5	5,805.4	8.7	75.7
FEMALES										
New South Wales	561.9	861.5	54.7	20.3	74.9	936.5	1,162.6	2,099.1	8.0	44.6
Victoria	416.4	653.1	39.5	15.2	54.8	707.9	879.5	1,587.4	7.7	44.6
Queensland	234.3	369.4	27.4	9.0	36.4	405.8	541.4	947.2	9.0	42.8
South Australia	120.5	213.5	18.4	4.6	23.0	236.6	297.7	534.2	9.7	44.3
Western Australia	135.7	224.1	17.2	4.8	22.0	246.0	274.5	520.5	8.9	47.3
Tasmania	34.5	59.4	5.2	2.0	7.3	66.7	100.2	166.9	10.9	40.0
Northern Territory	13.8	20.4	*	*	2.0	22.5	22.2	44.6	8.9	50.3
Australian Capital Territory	30.4	48.4	*	*	2.7	51.0	37.5	88.5	5.2	57.7
Australia	1,547.5	2,449.9	165.1	57.9	223.1	2,673.0	3,315.5	5,988.5	8.3	44.6
PERSONS										
New South Wales	1,860.4	2,248.1	191.8	27.6	219.4	2,467.5	1,657.8	4,125.3	8.9	59.8
Victoria	1,420.5	1,723.0	108.4	21.6	129.9	1,852.9	1,256.9	3,109.8	7.0	59.6
Queensland	833.8	1,006.0	94.6	13.8	108.4	1,114.4	762.8	1,877.2	9.7	59.4
South Australia	445.4	558.6	52.1	6.5	58.7	617.3	428.0	1,045.3	9.5	59.1
Western Australia	482.0	593.6	52.2	5.6	57.8	651.5	391.1	1,042.5	8.9	62.5
Tasmania	136.8	166.5	18.5	2.6	21.1	187.6	140.9	328.5	11.2	57.1
Northern Territory	45.1	53.8	3.7	*	4.4	58.2	36.3	94.5	7.6	61.6
Australian Capital Territory	90.7	112.6	2.9	2.0	4.9	117.5	53.3	170.8	4.1	68.8
Australia	5,314.8	6,462.3	524.2	80.5	604.6	7,066.9	4,727.0	11,793.9	8.6	59.9

TABLE 5. LABOUR FORCE STATUS OF THE CIVILIAN POPULATION AGED 15 AND OVER:
STATE CAPITAL CITIES, AUGUST 1984

Capital city	Employed		Unemployed			Labour force	Not in labour force	Civilian population aged 15 and over	Unemployment rate	Participation rate
	Full-time workers	Total	Looking for full-time work	Looking for part-time work	Total					
- '000 -										
- per cent -										
MALES										
Sydney	821.1	878.2	73.8	4.6	78.4	956.6	307.4	1,263.9	8.2	75.7
Melbourne	721.2	768.0	48.3	5.4	53.7	821.7	265.4	1,087.1	6.5	75.6
Brisbane	270.4	288.4	30.4	*	32.8	321.3	105.3	426.6	10.2	75.3
Adelaide	228.3	243.7	25.0	*	26.8	270.4	98.7	369.1	9.9	73.3
Perth	232.8	249.5	27.6	*	28.2	277.7	87.1	364.9	10.2	76.1
Hobart	39.6	41.9	5.4	*	5.9	47.8	17.0	64.9	12.4	73.8
Total	2,313.4	2,469.7	210.6	15.3	225.9	2,695.6	880.8	3,576.4	8.4	75.4
FEMALES										
Sydney	397.7	587.3	31.4	13.1	44.5	631.9	707.2	1,339.0	7.0	47.2
Melbourne	327.4	496.5	25.9	11.4	37.3	533.8	610.7	1,144.5	7.0	46.6
Brisbane	121.0	180.5	13.4	5.2	18.6	199.1	256.5	455.6	9.3	43.7
Adelaide	95.8	160.4	12.7	3.9	16.6	177.0	219.8	396.8	9.4	44.6
Perth	106.3	168.9	12.9	3.7	16.7	185.6	200.7	386.2	9.0	48.0
Hobart	16.5	26.7	2.0	*	2.5	29.2	39.9	69.2	8.6	42.2
Total	1,064.7	1,620.3	98.3	37.9	136.2	1,756.5	2,034.9	3,791.4	7.8	46.3
PERSONS										
Sydney	1,218.8	1,465.5	105.2	17.7	122.9	1,588.4	1,014.5	2,602.9	7.7	61.0
Melbourne	1,048.7	1,264.5	74.2	16.9	91.0	1,355.5	876.1	2,231.6	6.7	60.7
Brisbane	391.4	468.9	43.8	7.6	51.4	520.3	361.8	882.1	9.9	59.0
Adelaide	324.1	404.1	37.7	5.6	43.4	447.4	318.5	765.9	9.7	58.4
Perth	339.1	418.4	40.5	4.3	44.9	463.3	287.8	751.1	9.7	61.7
Hobart	56.1	68.6	7.4	1.1	8.4	77.1	57.0	134.0	11.0	57.5
Total	3,378.1	4,090.0	308.8	53.2	362.0	4,452.0	2,915.7	7,367.8	8.1	60.4

TABLE 6. LABOUR FORCE STATUS OF THE CIVILIAN POPULATION AGED 15 AND OVER:
AUSTRALIAN CAPITAL TERRITORY, AUGUST 1984

	Persons							Total
	Males	Females		Aged 15-19	Aged 20-24	Aged 25 and over		
Married		Total						
- '000 -								
Employed	64.3	29.9	48.4	8.7	16.0	87.9		112.6
Full-time workers	60.3	16.4	30.4	4.5	14.2	72.1		90.7
Part-time workers	3.9	13.4	18.0	4.3	*	15.8		21.9
Unemployed	2.2	*	2.7	*	*	2.1		4.9
Looking for full-time work	*	*	*	*	*	*		2.9
Looking for part-time work	*	*	*	*	*	*		2.0
Labour force	66.4	30.9	51.0	10.4	17.0	90.0		117.5
Not in labour force	15.8	23.3	37.5	9.9	3.1	40.3		53.3
Aged 15-19 attending school(a)	4.5	*	3.5	8.0		8.0
Civilian population	82.2	54.2	88.5	20.4	20.1	130.3		170.8
- per cent -								
Unemployment rate	3.3	*	5.2	*	*	2.4		4.1
Looking for full-time work	*	*	*	*	*	*		3.1
Participation rate	80.8	57.0	57.7	51.1	84.7	69.1		68.8
Employment/population ratio	78.1	55.1	54.6	42.9	79.5	67.5		65.9
- number -								
Average (mean) weekly hours worked by employed persons	38.7	28.1	29.2	23.1	35.3	35.6		34.6
Average (mean) duration of unemployment (weeks)	*	*	*	*	*	*		20.8

(a) Excludes persons in institutions. See Explanatory notes.

TABLE 7. LABOUR FORCE STATUS OF THE CIVILIAN POPULATION AGED 15 TO 19:
SCHOOL ATTENDANCE(a), AUGUST 1984

	Employed		Unemployed			Labour force	Not in labour force	Civilian population aged 15-19	Unemployment rate	Participation rate
	Full-time workers	Total	Looking for full-time work	Looking for part-time work	Total					
	- '000 -								- per cent -	
NOT ATTENDING SCHOOL										
Males	234.8	263.0	64.1	*	67.1	330.2	41.0	371.2	20.3	89.0
Females	182.7	224.5	52.0	4.7	56.6	281.1	69.6	350.7	20.1	80.1
Persons	417.5	487.5	116.1	7.7	123.8	611.3	110.6	721.9	20.3	84.7
Left school -										
Before 1982	156.6	172.4	36.9	*	38.2	210.6	27.6	238.2	18.1	88.4
1982	128.6	149.7	31.8)	(34.2	184.0	29.2	213.2	18.6	86.3
1983 to survey date	132.3	165.3	47.4)	(6.3	216.7	53.8	270.5	23.7	80.1
Age -										
15	9.1	11.8	7.4	*	7.8	19.6	6.9	26.4	39.7	74.0
16	45.5	51.4	18.8	*	19.5	70.9	11.2	82.1	27.6	86.4
17	86.3	100.4	26.7	*	27.6	128.0	13.9	141.9	21.6	90.2
18	131.1	152.9	33.1)	(35.9	188.8	35.5	224.3	19.0	84.2
19	145.6	171.0	30.2)	(5.6	204.0	43.1	247.2	16.2	82.5
ATTENDING SCHOOL										
Males	*	38.5	8.5	9.8	18.3	56.8	222.8	279.6	32.3	20.3
Females	*	58.3	4.8	8.0	12.8	71.1	209.3	280.4	18.0	25.3
Persons	*	96.8	13.3	17.8	31.1	127.9	432.1	560.0	24.3	22.8
Age -										
15	*	32.9	*	8.7	12.6	45.5	194.7	240.3	27.7	18.9
16	*	37.8	6.4	5.2	11.5	49.3	126.8	176.1	23.4	28.0
17	*	20.8	*	*	5.1	26.0	85.0	110.9	19.8	23.4
18 and 19	*	5.3	*	*	*	7.1	25.6	32.7	*	21.8
TOTAL										
Males	234.8	301.5	72.6	12.8	85.5	387.0	263.8	650.8	22.1	59.5
Females	183.3	282.7	56.8	12.7	69.4	352.2	278.9	631.1	19.7	55.8
Persons	418.1	584.3	129.4	25.5	154.9	739.2	542.7	1,281.9	21.0	57.7
Age -										
15	9.5	44.7	11.3	9.1	20.4	65.1	201.6	266.7	31.3	24.4
16	45.7	89.1	25.2	5.9	31.1	120.2	137.9	258.1	25.8	46.6
17	86.3	121.2	28.8)	(7.5	32.8	153.9	252.9	21.3	60.9
18	131.1	157.5	33.9)	(37.4	194.9	56.2	251.1	19.2	77.6
19	145.6	171.7	30.3	*	33.4	205.1	48.0	253.1	16.3	81.0

(a) Excludes persons in institutions. See Explanatory notes.

TABLE 8. LABOUR FORCE STATUS OF THE CIVILIAN POPULATION AGED 20 TO 24, AUGUST 1984

	Employed		Unemployed			Labour force	Not in labour force	Civilian population aged 20-24	Unemployment rate	Participation rate
	Full-time workers	Total	Looking for full-time work	Looking for part-time work	Total					
	- '000 -								- per cent -	
Males	472.3	509.8	80.5	4.6	85.0	594.9	70.4	665.3	14.3	89.4
Females	348.3	426.7	40.2	8.8	49.0	475.7	187.5	663.2	10.3	71.7
Persons	820.5	936.5	120.7	13.4	134.0	1,070.6	257.9	1,328.5	12.5	80.6
Age -										
20	152.6	176.7	28.3)	(4.8	30.8	207.5	260.7	14.8	79.6
21	164.1	191.1	26.1)	(28.3	219.4	46.3	265.7	12.9	82.6
22	170.0	191.9	23.3)	(5.9	26.7	218.6	268.1	12.2	81.5
23	167.4	190.3	23.3)	(25.9	216.2	52.3	268.5	12.0	80.5
24	166.4	186.6	19.6	*	22.4	208.9	56.6	265.5	10.7	78.7

TABLE 9. CIVILIAN LABOUR FORCE BY BIRTHPLACE, AUGUST 1984

	Employed		Unemployed		Labour force	Unemployment rate	Participation rate(a)
	Full-time workers	Total	Looking for full-time work	Total			
	- '000 -					- per cent -	
MALES							
Born in Australia	2,761.1	2,954.0	243.9	261.9	3,215.9	8.1	76.8
Born outside Australia	1,006.2	1,058.4	115.1	119.7	1,178.0	10.2	76.9
Africa	30.6	32.5	*	*	35.0	*	79.5
America	28.7	31.8	*	*	35.8	*	79.5
Asia	120.9	130.0	25.3	26.3	156.3	16.8	74.7
Lebanon	16.2	17.6	5.8	5.8	23.4	24.6	77.3
Vietnam	12.6	13.4	8.5	8.6	22.0	39.0	76.9
Europe	760.4	794.5	76.2	79.1	873.6	9.1	76.2
Germany	43.0	45.2	*	*	48.4	*	83.4
Greece	46.4	46.6	*	*	51.1	*	75.8
Italy	101.7	105.8	8.9	8.9	114.7	7.8	75.9
Malta	25.1	25.5	*	*	27.2	*	85.5
Netherlands	37.8	39.9	*	*	42.4	*	76.8
Poland	15.2	16.1	*	*	18.1	*	60.3
UK and Ireland	377.3	394.8	39.7	42.0	436.8	9.6	77.2
Yugoslavia	54.0	55.0	7.6	7.6	62.5	12.1	77.0
Oceania	65.6	69.5	7.6	7.8	77.3	10.1	90.2
New Zealand	55.2	58.6	6.6	6.8	65.3	10.4	90.8
MARRIED FEMALES							
Born in Australia	531.5	1,031.0	26.0	49.7	1,080.7	4.6	41.9
Born outside Australia	255.4	415.3	24.9	35.7	451.2	7.9	45.8
Africa	9.3	13.5	*	*	14.4	*	52.0
America	9.3	15.8	*	*	16.8	*	52.2
Asia	40.4	54.8	8.5	9.6	64.3	14.9	47.0
Lebanon	*	*	*	*	4.7	*	25.0
Vietnam	5.4	6.2	*	*	8.4	*	56.4
Europe	182.2	308.9	14.1	21.9	330.8	6.6	44.8
Germany	9.4	16.2	*	*	17.8	*	41.6
Greece	19.3	25.9	*	*	27.0	*	50.2
Italy	20.3	34.8	*	*	36.1	*	35.9
Malta	5.1	7.2	*	*	7.7	*	37.7
Netherlands	4.8	12.4	*	*	13.9	*	39.9
Poland	*	5.5	*	*	6.0	*	34.3
UK and Ireland	81.9	155.5	7.1	11.6	167.1	7.0	46.7
Yugoslavia	19.1	25.4	*	*	27.5	*	56.1
Oceania	14.3	22.6	*	*	24.8	*	51.5
New Zealand	11.1	18.5	*	*	19.7	*	51.3
ALL FEMALES							
Born in Australia	1,153.0	1,856.3	116.2	159.0	2,015.4	7.9	45.4
Born outside Australia	394.5	593.6	48.9	64.1	657.6	9.7	45.9
Africa	15.6	21.5	*	*	23.1	*	53.6
America	15.2	23.7	*	*	25.8	*	53.7
Asia	64.5	85.8	14.9	16.4	102.2	16.1	48.7
Lebanon	*	*	*	*	7.4	*	30.7
Vietnam	9.7	11.0	*	*	14.9	*	58.4
Europe	266.8	419.1	27.0	38.2	457.3	8.4	43.8
Germany	13.4	21.8	*	*	24.0	*	41.5
Greece	22.9	29.7	*	*	31.1	*	46.8
Italy	26.0	42.7	*	*	44.6	*	36.1
Malta	6.5	9.0	*	*	9.6	*	37.8
Netherlands	7.4	15.1	*	*	17.2	*	39.5
Poland	6.3	8.2	*	*	9.1	*	33.6
UK and Ireland	135.1	224.5	15.8	22.5	247.0	9.1	45.6
Yugoslavia	22.7	30.0	*	*	33.5	*	52.7
Oceania	32.4	43.6	*	5.6	49.2	11.5	56.9
New Zealand	25.4	35.1	*	*	38.3	*	57.1
PERSONS							
Born in Australia	3,914.1	4,810.3	360.1	420.9	5,231.2	8.0	60.6
Born outside Australia	1,400.7	1,651.9	164.0	183.7	1,835.7	10.0	61.9
Africa	46.1	54.0	*	*	58.1	*	66.7
America	43.9	55.4	5.4	6.1	61.6	9.9	66.2
Asia	185.4	215.8	40.2	42.7	258.5	16.5	61.7
Lebanon	20.1	21.7	8.8	9.1	30.8	29.4	56.6
Vietnam	22.3	24.4	12.2	12.5	36.9	33.8	68.2
Europe	1,027.3	1,213.6	103.2	117.3	1,330.9	8.8	60.7
Germany	56.3	67.0	4.7	5.5	72.4	7.6	62.5
Greece	69.3	76.3	4.8	5.9	82.1	7.1	61.4
Italy	127.8	148.4	10.4	10.8	159.3	6.8	58.0
Malta	31.6	34.5	*	*	36.8	*	64.3
Netherlands	45.2	55.0	*	4.5	59.6	7.6	60.4
Poland	21.5	24.3	*	*	27.2	*	47.6
UK and Ireland	512.4	619.3	55.5	64.5	683.8	9.4	61.7
Yugoslavia	76.6	85.0	9.9	11.0	96.0	11.5	66.4
Oceania	98.0	113.1	11.8	13.5	126.6	10.6	73.5
New Zealand	80.6	93.7	9.2	10.0	103.7	9.6	74.5

(a) See the definition of the labour force participation rate in the Explanatory notes.

TABLE 10. CIVILIAN LABOUR FORCE BORN OUTSIDE AUSTRALIA: BIRTHPLACE AND PERIOD OF ARRIVAL IN AUSTRALIA, AUGUST 1984

Period of arrival	Europe						Oceania		Total			
	Africa	America	Asia	Ireland and other countries	U.K. and other countries	Zealand	Total	Males	Married	Total	Persons	
EMPLOYED ('000)												
Before 1971	30.1	18.3	74.9	425.8	493.7	26.6	34.1	715.0	265.8	361.9	1,076.9	
1971 - 1975	11.1	19.4	44.1	100.7	48.4	12.0	15.8	144.1	62.2	95.4	239.5	
1976 - 1980	7.1	12.3	60.5	45.7	27.2	33.1	37.1	114.3	49.9	75.5	189.8	
1981 - 1982)	(21.7	36.5	18.6	15.0	19.0	61.8	26.8	40.6	102.4	
1983 to survey date) 5.7	5.4	(14.6	10.7	6.4	7.0	7.2	23.2	10.7	20.2	43.4	
UNEMPLOYED ('000)												
Before 1971	*)	(6.7	43.0	39.8	*	*	63.6	16.6	31.2	94.9	
1971 - 1975	*) 4.6	(7.0	13.5	5.2	*	*	18.9	6.2	10.3	29.3	
1976 - 1980	*)	(9.5) 5.7	5.5	(5.1	6.2	16.2	4.6	8.1	24.3	
1981 - 1982	*	*	5.5)	*	(*	*	8.1	*	5.3	13.4	
1983 to survey date	*	*	13.9	*	*	(*	*	12.8	5.1	9.1	21.9	
LABOUR FORCE ('000)												
Before 1971	31.8	20.0	81.6	468.7	533.5	27.9	36.0	778.6	282.4	393.1	1,171.8	
1971 - 1975	11.2	21.3	51.1	114.2	53.6	12.7	17.4	163.0	68.4	105.8	268.8	
1976 - 1980	8.9	13.4	70.0	48.6	29.9	38.2	43.3	130.5	54.5	83.6	214.1	
1981 - 1982)	(27.3	39.2	21.3	16.6	21.2	69.9	29.9	45.9	115.8	
1983 to survey date) 6.1	6.9	(28.5	13.1	8.8	8.3	8.6	36.0	15.9	29.3	65.3	
UNEMPLOYMENT RATE (per cent)												
Before 1971	*)	(8.3	9.2	7.5	*	*	8.2	5.9	7.9	8.1	
1971 - 1975	*) 8.4	(13.7	11.8	9.6	*	*	11.6	9.1	9.8	10.9	
1976 - 1980	*)	(13.6) 6.4	10.7	(13.4	14.4	12.4	8.5	9.6	11.4	
1981 - 1982	*	*	20.2)	*	(*	*	11.6	*	11.6	11.6	
1983 to survey date	*	*	48.9	*	*	(*	*	35.6	32.3	31.1	33.6	
PARTICIPATION RATE(a) (per cent)												
Before 1971	66.6	59.1	62.6	58.0	58.5	64.6	65.4	74.4	42.6	41.8	59.0	
1971 - 1975	73.1	73.2	68.6	74.5	65.6	69.5	71.5	85.7	55.1	56.3	71.1	
1976 - 1980	71.9	70.8	61.2	67.6	71.1	82.1	80.2	83.6	51.1	53.1	68.3	
1981 - 1982)	(56.9	71.3	67.2	77.0	75.9	80.8	51.5	52.3	66.4	
1983 to survey date) 52.9	61.6	(55.0	65.1	53.2	86.2	79.0	70.8	48.8	49.1	59.1	

(a) See the definition of the labour force participation rate in the Explanatory notes.

TABLE 11. CIVILIAN LABOUR FORCE, BY AGE, AUGUST 1984

Age group	Number ('000)					Participation rate (per cent)				
	Males	Females			Persons	Males	Females			Persons
		Married	Not married	Total		Married	Not married	Total		
15-64	4,334.6	1,522.7	1,127.3	2,650.1	6,984.7	84.2	47.2	60.9	52.2	68.3
15-19	387.0	12.2	339.9	352.2	739.2	59.1	46.6	56.1	55.7	57.4
20-24	594.9	161.8	313.9	475.7	1,070.6	89.4	59.2	80.5	71.7	80.6
25-34	1,201.5	464.6	227.4	692.0	1,893.4	95.1	49.2	72.0	54.9	75.0
35-44	1,013.6	497.4	113.6	611.0	1,624.6	94.7	57.4	64.9	58.7	76.9
45-54	701.7	294.1	80.9	375.0	1,076.7	90.1	48.9	55.0	50.1	70.5
55-59	291.4	68.6	34.6	103.2	394.6	76.8	24.9	35.5	27.6	52.4
60-64	144.6	24.1	16.9	41.0	185.6	43.5	10.2	14.2	11.5	27.0
65 and over	59.3	9.1	13.8	22.9	82.2	9.0	2.6	2.5	2.5	5.2
Total	4,393.9	1,531.8	1,141.1	2,673.0	7,066.9	75.7	42.8	47.4	44.6	59.9

TABLE 12. LABOUR FORCE PARTICIPATION RATES(a), BY AGE AND BIRTHPLACE, AUGUST 1984
(per cent)

Age group	Born in Australia			Born outside Australia		
	Males	Females	Persons	Males	Females	Persons
15-64	84.8	52.4	68.5	85.4	52.6	69.8
15-19	61.0	57.1	59.1	58.4	51.9	55.3
20-24	91.3	72.3	81.8	85.3	70.2	77.6
25-34	95.8	53.8	74.9	95.0	58.8	76.8
35-44	95.8	58.2	76.8	94.0	60.1	78.1
45-54	91.1	49.9	70.2	89.3	51.1	71.8
55-59	77.2	27.8	51.7	77.8	27.6	55.1
60-64	41.6	11.5	25.4	48.7	12.4	32.2
65 and over	10.5	*	6.1	7.1	*	4.5
Total	76.8	45.4	60.6	76.9	45.9	61.9

(a) See the definition of the labour force participation rate in the Explanatory notes.

TABLE 13. EMPLOYED PERSONS: FULL-TIME AND PART-TIME WORKERS, BY AGE, AUGUST 1984
('000)

	Age group								Total
	15-19	20-24	25-34	35-44	45-54	55-59	60-64	65 and over	
	MALES								
Full-time workers	234.8	472.3	1,076.3	933.2	635.5	262.8	116.7	35.7	3,767.3
Part-time workers	66.7	37.6	33.4	29.3	26.4	12.8	16.2	22.6	245.1
Total	301.5	509.8	1,109.7	962.6	662.0	275.6	132.9	58.3	4,012.4
	MARRIED FEMALES								
Full-time workers	7.6	114.0	238.6	228.2	152.1	33.2	9.8	*	786.9
Part-time workers	*	34.5	194.6	243.9	132.0	33.8	13.9	5.7	659.6
Total	8.7	148.5	433.3	472.1	284.1	66.9	23.7	9.1	1,446.5
	ALL FEMALES								
Full-time workers	183.3	348.3	417.9	306.2	204.5	57.2	19.8	10.3	1,547.5
Part-time workers	99.4	78.5	225.3	270.5	153.2	42.3	20.7	12.5	902.4
Total	282.7	426.7	643.3	576.7	357.8	99.5	40.4	22.8	2,449.9
	PERSONS								
Full-time workers	418.1	820.5	1,494.2	1,239.4	840.0	320.0	136.5	46.0	5,314.8
Part-time workers	166.1	116.0	258.8	299.9	179.7	55.1	36.8	35.1	1,147.5
Total	584.3	936.5	1,752.9	1,539.3	1,019.7	375.1	173.3	81.1	6,462.3

TABLE 14. HOURS WORKED BY EMPLOYED PERSONS, AUGUST 1984

	Females			Total	Persons
	Males	Married	Not married		
NUMBER EMPLOYED ('000)					
Weekly hours worked -					
0	188.5	68.4	40.4	108.8	297.3
1-15	141.1	287.1	139.5	426.6	567.7
16-29	198.4	301.1	101.9	403.1	601.4
30-34	274.5	137.2	81.6	218.8	493.4
35-39	711.8	223.2	229.5	452.8	1,164.7
40	1,046.8	245.2	264.4	509.6	1,556.4
41-44	256.0	46.3	52.2	98.5	354.5
45-48	359.4	47.0	43.5	90.5	449.9
49 and over	835.8	90.9	50.3	141.2	977.0
Total	4,012.4	1,446.5	1,003.4	2,449.9	6,462.3
WEEKLY HOURS WORKED					
Aggregate weekly hours worked (million)	160.5	41.2	32.1	73.3	233.8
By full-time workers	156.6	30.4	28.6	59.0	215.6
By part-time workers	3.9	10.8	3.5	14.3	18.2
Average weekly hours worked	40.0	28.5	32.0	29.9	36.2
By full-time workers	41.6	38.6	37.6	38.1	40.6
By part-time workers	16.1	16.4	14.3	15.8	15.9
By wage and salary earners	38.4	28.3	31.9	29.9	35.1
By other than wage and salary earners	46.9	29.4	33.3	29.9	42.0
Average weekly hours worked by persons who worked one hour or more in the survey week	42.0	29.9	33.3	31.3	37.9
By full-time workers	43.6	40.7	39.3	40.0	42.6
By part-time workers	16.9	17.1	14.8	16.5	16.6

TABLE 15. EMPLOYED PERSONS: EMPLOYMENT/POPULATION RATIOS BY AGE AND MARITAL STATUS, AUGUST 1984 (per cent)

Age group	Males			Females			Persons
	Married	Not married	Total	Married	Not married	Total	
15-19	*	46.0	46.0	33.3	45.2	44.7	45.4
20-24	85.1	74.5	76.6	54.3	71.4	64.3	70.5
25-34	91.6	79.9	87.8	45.9	66.5	51.1	69.5
35-44	92.4	77.4	89.9	54.5	59.8	55.4	72.9
45-54	87.6	71.0	85.0	47.2	50.1	47.8	66.8
55-59	76.3	54.4	72.6	24.3	33.4	26.6	49.8
60-64	41.8	31.4	39.9	10.1	14.0	11.4	25.2
65 and over	9.2	7.8	8.8	2.6	2.5	2.5	5.2
Total	74.8	59.8	69.1	40.4	41.6	40.9	54.8

TABLE 16. FULL-TIME WORKERS WHO WORKED LESS THAN 35 HOURS, BY REASON, AUGUST 1984 ('000)

Reason for working less than 35 hours	Females			Total	Persons
	Males	Married	Not married		
Leave, holiday or flextime	267.0	64.8	63.1	127.9	394.8
Own illness or injury	145.0	44.5	37.5	82.0	227.0
Bad weather, plant breakdown, etc.	28.3	*	*	*	31.2
Began or left job in the survey week	8.5	*	*	4.8	13.3
Stood down, on short time, insufficient work	29.1	6.0	*	8.4	37.5
Shift work, standard work arrangements	60.4	12.7	11.3	24.0	84.3
Other reasons	19.2	*	*	4.9	24.1
Total	557.4	134.2	120.7	254.9	812.3

TABLE 17. PART-TIME WORKERS: WHETHER PREFERRED TO WORK MORE HOURS, BY AGE, AUGUST 1984
(⁰⁰⁰)

	Age group						Total
	15-19	20-24	25-34	35-44	45-54	55 and over	
MALES							
Total	66.7	37.6	33.4	29.3	26.4	51.6	245.1
Preferred not to work more hours	48.4	23.7	21.0	19.4	18.5	44.5	175.4 ✓
Preferred to work more hours	18.4	13.9	12.4	10.0	7.9	7.1	69.6 ✓
Had actively looked for full-time work in the four weeks to the end of the survey week	7.6	8.0	7.9	7.2	-----	6.1 -----	36.8
MARRIED FEMALES							
Total	*	34.5	194.6	243.9	132.0	53.4	659.6
Preferred not to work more hours	*	27.7	171.6	216.2	119.0	49.9	584.8
Preferred to work more hours	*	6.8	23.1	27.7	13.0	*	74.8
Had actively looked for full-time work in the four weeks to the end of the survey week	*	-----	5.6 -----	-----	5.7 -----	*	12.0
ALL FEMALES							
Total	99.4	78.5	225.3	270.5	153.2	75.5	902.4
Preferred not to work more hours	74.4	57.6	193.1	236.1	134.6	70.4	766.3
Preferred to work more hours	25.0	20.8	32.2	34.4	18.7	5.1	136.1
Had actively looked for full-time work in the four weeks to the end of the survey week	10.1	7.8	6.6	6.0	*	*	34.0
PERSONS							
Total	166.1	116.0	258.8	299.9	179.7	127.0	1,147.5
Preferred not to work more hours	122.8	81.3	214.1	255.5	153.1	114.9	941.7
Preferred to work more hours	43.3	34.7	44.6	44.3	26.6	12.2	205.8 ✓
Had actively looked for full-time work in the four weeks to the end of the survey week	17.7	15.8	14.5	13.2	6.9	*	70.8

TABLE 18. PART-TIME WORKERS: WHETHER PREFERRED TO WORK MORE HOURS, BY HOURS WORKED, AUGUST 1984
(⁰⁰⁰)

	Hours worked by persons who worked in the survey week						Persons who did not work in the survey week	Total
	1-5	6-10	11-15	16-20	21-29	30-34		
MALES								
Total	32.9	51.0	28.4	36.7	36.7	46.9	12.4	245.1
Preferred not to work more hours	23.1	36.6	18.9	22.9	24.6	39.7	9.5	175.4
Preferred to work more hours	9.8	14.4	9.5	13.7	12.0	7.2	*	69.6
Had actively looked for full-time work in the four weeks to the end of the survey week	*	8.5	6.4	9.1	5.1	*	*	36.8
MARRIED FEMALES								
Total	70.3	111.9	96.7	143.0	124.7	85.5	27.5	659.6
Preferred not to work more hours	58.2	94.2	83.6	128.5	115.3	80.6	24.4	584.8
Preferred to work more hours	12.2	17.7	13.1	14.5	9.5	4.8	*	74.8
Had actively looked for full-time work in the four weeks to the end of the survey week	*	-----	4.6 -----	-----	5.6 -----	-----	*	12.0
ALL FEMALES								
Total	116.7	173.2	123.4	178.3	157.7	117.6	35.5	902.4
Preferred not to work more hours	93.6	144.1	103.2	151.0	136.8	107.0	30.6	766.3
Preferred to work more hours	23.1	29.1	20.2	27.3	20.9	10.6	4.9	136.1
Had actively looked for full-time work in the four weeks to the end of the survey week	4.5	7.1	4.8	7.2	6.0	*	*	34.0
PERSONS								
Total	149.7	224.2	151.8	215.0	194.4	164.5	47.9	1,147.5
Preferred not to work more hours	116.8	180.7	122.1	173.9	161.4	146.7	40.1	941.7
Preferred to work more hours	32.9	43.5	29.7	41.0	33.0	17.8	7.8	205.8
Had actively looked for full-time work in the four weeks to the end of the survey week	8.1	15.6	11.2	16.3	11.0	6.3	*	70.8

TABLE 19. EMPLOYED PERSONS: INDUSTRY OF FULL-TIME AND PART-TIME WORKERS, AUGUST 1984 ('000)

Industry division or subdivision	Total							
	Full-time workers		Part-time workers		Females			Persons
	Males	Females	Males	Females	Males	Married	Total	
Agriculture, forestry, fishing & hunting	285.8	44.7	17.5	52.2	303.3	81.8	96.9	400.2
Agriculture & services to agriculture	263.2	42.5	16.1	51.3	279.3	80.0	93.8	373.1
Forestry & logging, fishing & hunting	22.6	*	*	*	24.0	*	*	27.1
Mining	84.6	7.4	*	*	84.8	*	8.4	93.2
Manufacturing	827.4	234.2	20.8	58.9	848.2	195.3	293.2	1,141.4
Food, beverages and tobacco	127.6	38.2	5.6	13.8	133.1	35.5	52.0	185.2
Metal products	160.6	19.4	*	6.0	163.3	17.5	25.3	188.6
Other manufacturing	539.2	176.6	12.6	39.2	551.8	142.3	215.8	767.6
Electricity, gas and water	133.0	12.4	*	*	134.3	5.1	13.6	147.9
Construction	361.3	16.4	18.8	26.7	380.1	34.5	43.1	423.2
Wholesale and retail trade	655.3	305.1	66.2	244.7	721.6	296.1	549.8	1,271.4
Wholesale trade	262.9	75.5	11.2	29.5	274.0	60.1	105.0	379.0
Retail trade	392.5	229.6	55.1	215.2	447.5	235.9	444.8	892.3
Transport and storage	284.1	43.3	12.7	14.1	296.7	30.3	57.4	354.1
Communication	97.4	24.7	*	7.2	99.7	19.8	31.9	131.6
Finance, property and business services	301.5	208.3	22.8	86.6	324.4	161.5	294.9	619.3
Public administration and defence	210.5	91.0	*	16.7	213.9	52.1	107.7	321.7
Community services	373.0	452.2	37.7	275.5	410.7	437.7	727.7	1,138.4
Recreation, personal and other services	153.4	107.9	41.3	117.5	194.7	127.9	225.4	420.0
Total	3,767.3	1,547.5	245.1	902.4	4,012.4	1,446.5	2,449.9	6,462.3

TABLE 20. EMPLOYED PERSONS: INDUSTRY AND STATUS OF WORKER, AUGUST 1984 ('000)

Industry division or subdivision	Employers		Self-employed		Wage and salary earners		Total(a)		
	Males	Females	Males	Females	Males	Females	Males	Females	Persons
	Agriculture, forestry, fishing & hunting	46.6	16.0	149.1	51.5	102.8	25.1	303.3	96.9
Agriculture & services to agriculture	44.3	15.9	141.1	50.9	89.1	23.1	279.3	93.8	373.1
Forestry & logging, fishing & hunting	*	*	8.0	*	13.7	*	24.0	*	27.1
Mining	*	*	*	*	83.0	8.0	84.8	8.4	93.2
Manufacturing	19.7	7.7	24.6	9.9	803.0	275.0	848.2	293.2	1,141.4
Food, beverages and tobacco	*	*	*	*	128.7	49.5	133.1	52.0	185.2
Metal products	*	*	*	*	155.7	23.1	163.3	25.3	188.6
Other manufacturing	12.3	*	20.1	8.7	518.6	202.4	551.8	215.8	767.6
Electricity, gas and water	*	*	*	*	134.3	13.6	134.3	13.6	147.9
Construction	29.8	6.3	106.1	10.5	243.3	25.1	380.1	43.1	423.2
Wholesale and retail trade	68.1	35.0	84.2	54.6	567.6	457.4	721.6	549.8	1,271.4
Wholesale trade	10.0	*	16.9	5.8	247.0	95.5	274.0	105.0	379.0
Retail trade	58.1	31.9	67.3	48.8	320.6	361.9	447.5	444.8	892.3
Transport and storage	10.9	*	43.2	6.8	242.2	46.4	296.7	57.4	354.1
Communication	*	*	*	*	98.5	30.7	99.7	31.9	131.6
Finance, property and business services	30.6	4.8	37.7	16.9	255.4	272.8	324.4	294.9	619.3
Public administration and defence	*	*	*	*	213.9	107.7	213.9	107.7	321.7
Community services	16.1	4.5	8.5	15.7	386.0	707.5	410.7	727.7	1,138.4
Recreation, personal and other services	18.9	16.4	32.3	26.4	142.7	181.7	194.7	225.4	420.0
Total	241.2	94.2	488.2	193.6	3,272.7	2,151.2	4,012.4	2,449.9	6,462.3
Full-time workers	233.9	52.9	434.7	84.2	3,092.8	1,404.6	3,767.3	1,547.5	5,314.8

(a) Includes unpaid family helpers

TABLE 21. EMPLOYED PERSONS: INDUSTRY, AGE AND BIRTHPLACE, AUGUST 1984 ('000)

Industry division or subdivision	Age group						Total	Born in	
	15-19	20-24	25-34	35-44	45-54	55 and over		Australia	Born outside Australia
	Agriculture, forestry, fishing & hunting	25.5	42.4	84.4	89.1	85.5		73.3	400.2
Agriculture & services to agriculture	23.8	37.6	77.7	82.8	80.4	70.8	373.1	337.0	36.1
Forestry & logging, fishing & hunting	*	4.7	6.7	6.3	5.1	*	27.1	24.3	*
Mining	4.7	8.6	31.4	28.0	15.6	5.0	93.2	72.0	21.2
Manufacturing	95.0	172.4	290.8	275.6	196.0	111.6	1,141.4	715.5	425.9
Food, beverages and tobacco	15.5	26.6	51.8	42.2	31.6	17.5	185.2	133.3	51.8
Metal products	14.9	30.9	45.7	42.4	36.4	18.5	188.6	116.1	72.5
Other manufacturing	64.6	115.0	193.3	191.0	128.0	75.6	767.6	466.1	301.5
Electricity, gas and water	10.0	19.6	41.4	32.7	26.7	17.7	147.9	113.4	34.5
Construction	26.5	56.3	126.3	111.1	67.1	36.0	423.2	289.5	133.7
Wholesale and retail trade	238.5	192.5	288.0	276.9	172.6	102.9	1,271.4	970.6	300.8
Wholesale trade	22.8	51.6	106.8	98.2	61.7	37.9	379.0	278.4	100.6
Retail trade	215.7	140.8	181.2	178.7	110.9	65.0	892.3	692.2	200.2
Transport and storage	12.5	40.1	106.6	93.7	63.5	37.7	354.1	268.2	85.9
Communication	*	16.8	47.0	30.5	18.8	15.9	131.6	101.3	30.3
Finance, property and business services	53.7	107.3	181.6	141.1	84.3	51.3	619.3	469.1	150.2
Public administration and defence	19.3	50.2	101.5	69.9	48.2	32.5	321.7	258.2	63.4
Community services	47.2	155.6	345.3	296.3	186.2	107.7	1,138.4	883.4	254.9
Recreation, personal and other services	48.7	74.8	108.8	94.5	55.3	38.0	420.0	307.8	112.2
Total	584.3	936.5	1,752.9	1,539.3	1,019.7	629.5	6,462.3	4,810.3	1,651.9

TABLE 22. EMPLOYED PERSONS: INDUSTRY AND HOURS WORKED, AUGUST 1984

Industry division or subdivision	Hours worked									Total	Average weekly hours worked (hours)
	0	1-15	16-29	30-34	35-39	40	41-44	45-48	49 and over		
	--'000--										
MALES											
Agriculture, forestry, fishing & hunting	13.4	11.4	15.6	15.0	13.8	49.8	10.5	22.0	151.7	303.3	47.8
Agriculture & services to agriculture	10.0	9.9	13.8	12.8	11.4	44.9	9.5	20.4	146.5	279.3	49.0
Forestry & logging, fishing & hunting	---	5.0	---	*	---	4.6	---	4.9	*	5.2	24.0
Mining	6.9	*	5.9	5.2	20.4	20.1	8.1	8.2	9.4	84.8	36.9
Manufacturing	33.1	11.1	30.9	65.3	188.0	246.2	67.3	87.6	118.7	848.2	39.4
Food, beverages and tobacco	6.5	*	5.7	9.8	19.1	44.4	11.2	14.5	19.9	133.1	39.3
Metal products	5.8	*	5.4	12.8	37.6	51.3	13.6	16.4	19.5	163.3	39.6
Other manufacturing	20.7	8.4	19.7	42.7	131.3	150.4	42.5	56.7	79.3	551.8	39.4
Electricity, gas and water	8.5	*	6.4	21.4	49.1	21.5	9.6	8.8	7.6	134.3	35.5
Construction	19.6	9.4	25.9	31.7	53.0	120.7	15.4	34.7	69.8	380.1	38.9
Wholesale and retail trade	23.6	47.7	21.5	28.1	68.5	219.8	58.8	68.1	185.4	721.6	41.6
Wholesale trade	9.9	6.5	6.4	11.6	41.2	98.0	20.7	26.8	53.0	274.0	40.8
Retail trade	13.7	41.2	15.1	16.5	27.3	121.9	38.1	41.3	132.5	447.5	42.0
Transport and storage	22.6	6.5	15.6	17.9	44.1	79.0	15.5	29.6	66.0	296.7	39.7
Communication	9.1	*	4.7	12.7	40.8	15.6	8.9	5.3	*	99.7	33.7
Finance, property and business services	12.5	11.1	17.2	16.9	58.0	78.1	19.6	33.7	77.3	324.4	40.7
Public administration and defence	10.0	*	10.9	20.3	83.0	53.7	11.8	10.6	10.9	213.9	36.2
Community services	20.1	13.7	27.7	32.8	79.2	98.2	22.1	38.4	78.4	410.7	39.1
Recreation, personal and other services	9.0	24.4	16.1	7.3	14.0	44.3	8.3	12.4	59.0	194.7	39.9
Total employed	188.5	141.1	198.4	274.5	711.8	1,046.8	256.0	359.4	835.8	4,012.4	40.0
MARRIED FEMALES											
Agriculture, forestry, fishing & hunting	4.5	23.3	21.1	5.7	4.7	4.5	*	*	14.2	81.8	27.5
Agriculture & services to agriculture	*	22.6	21.1	5.3	4.7	---	5.8	---	*	13.7	80.0
Mining	*	*	*	*	*	*	*	*	*	*	30.2
Manufacturing	6.7	17.8	27.8	20.9	54.2	45.4	10.2	6.8	5.6	195.3	32.4
Food, beverages and tobacco	---	4.6	---	6.5	4.5	6.5	8.8	*	*	35.5	31.9
Metal products	*	---	4.7	---	*	4.6	---	5.3	---	17.5	30.8
Other manufacturing	4.8	12.1	18.9	14.6	43.1	33.2	6.2	5.5	*	142.3	32.8
Electricity, gas and water	*	*	*	*	*	*	*	*	*	5.1	26.6
Construction	*	17.0	5.7	---	5.0	---	---	4.7	---	34.5	18.3
Wholesale and retail trade	12.0	59.4	68.5	24.2	29.6	51.7	13.5	9.7	27.4	296.1	29.5
Wholesale trade	*	9.0	11.8	5.2	11.5	11.8	*	---	5.8	60.1	30.1
Retail trade	9.2	50.4	56.7	19.0	18.1	39.9	11.2	7.9	23.5	235.9	29.3
Transport and storage	*	6.4	---	5.3	---	6.7	---	5.0	---	30.3	28.9
Communication	*	---	5.2	---	*	6.0	---	4.7	---	19.8	29.8
Finance, property and business services	5.5	28.1	33.2	17.1	35.0	27.9	4.7	4.9	5.1	161.5	28.9
Public administration and defence	4.8	6.8	7.4	5.3	18.2	6.2	*	*	*	52.1	28.3
Community services	22.0	86.9	97.0	48.2	59.4	78.9	10.0	15.6	19.7	437.7	27.3
Recreation, personal and other services	5.3	39.1	31.4	8.4	7.7	15.6	---	6.2	---	14.3	127.9
Total employed	68.4	287.1	301.1	137.2	223.3	245.2	46.3	47.0	90.9	1,446.5	28.5
ALL FEMALES											
Agriculture, forestry, fishing & hunting	5.2	25.8	23.3	6.4	6.3	7.1	---	5.0	---	17.6	96.9
Agriculture & services to agriculture	5.0	25.0	23.2	6.0	5.3	7.1	---	5.0	---	17.2	93.8
Mining	*	*	*	*	*	---	5.2	---	*	*	8.4
Manufacturing	9.6	22.6	33.3	30.1	87.9	73.1	15.5	11.8	9.3	293.2	33.5
Food, beverages and tobacco	*	4.8	7.9	7.2	8.9	13.7	---	5.5	---	52.0	32.1
Metal products	*	---	5.3	---	7.6	5.3	*	*	*	25.3	32.3
Other manufacturing	6.7	14.9	22.9	20.3	71.4	54.1	9.6	8.6	7.2	215.8	34.0
Electricity, gas and water	---	---	4.9	---	5.2	*	*	*	*	13.6	32.2
Construction	*	17.3	6.8	*	5.6	5.7	*	*	*	43.1	21.2
Wholesale and retail trade	20.8	134.1	91.9	38.3	60.0	121.5	29.9	18.7	34.6	549.8	28.5
Wholesale trade	*	12.5	15.9	8.8	21.5	26.7	5.9	*	5.7	105.0	32.0
Retail trade	16.8	121.6	76.0	29.6	38.5	94.8	24.0	14.6	29.0	444.8	27.7
Transport and storage	4.6	7.2	5.7	*	9.8	14.4	---	6.2	---	5.4	32.7
Communication	---	5.4	---	7.1	---	12.2	4.5	*	*	31.9	30.5
Finance, property and business services	11.8	34.4	45.8	28.2	81.7	64.7	10.4	9.3	8.6	294.9	31.1
Public administration and defence	7.1	8.5	13.4	10.9	44.7	14.7	---	6.0	---	107.7	31.1
Community services	34.9	110.3	129.7	78.3	120.1	162.7	22.5	30.9	38.1	727.7	29.9
Recreation, personal and other services	8.1	64.0	45.5	13.8	16.3	36.6	8.8	8.9	23.5	225.4	27.8
Total employed	108.8	426.6	403.1	218.8	452.8	509.6	98.5	90.5	141.2	2,449.9	29.9
PERSONS											
Agriculture, forestry, fishing & hunting	18.7	37.2	38.9	21.4	20.1	56.9	12.4	25.2	169.4	400.2	43.2
Agriculture & services to agriculture	15.0	34.9	37.0	18.8	16.7	52.0	11.4	23.6	163.8	373.1	43.9
Forestry & logging, fishing & hunting	---	6.0	---	4.5	---	4.9	*	*	5.6	27.1	33.8
Mining	7.4	*	7.3	5.7	23.3	22.4	8.2	8.4	9.6	93.2	36.5
Manufacturing	42.6	33.7	64.2	95.4	275.9	319.2	82.8	99.4	128.0	1,141.4	37.9
Food, beverages and tobacco	8.5	6.8	13.7	17.0	28.0	58.1	14.5	16.7	21.9	185.2	37.3
Metal products	6.7	*	7.9	15.4	45.2	56.6	16.2	17.4	19.6	188.6	38.6
Other manufacturing	27.4	23.3	42.7	63.1	202.8	204.5	52.2	65.2	86.5	767.6	37.9
Electricity, gas and water	9.5	*	8.8	22.7	54.3	23.7	9.9	9.4	7.9	147.9	35.2
Construction	21.5	26.7	32.7	35.1	58.6	126.3	16.4	35.6	70.3	423.2	37.1
Wholesale and retail trade	44.4	181.7	113.4	66.5	128.5	341.3	88.7	86.8	220.1	1,271.4	35.9
Wholesale trade	13.9	19.0	22.3	20.4	62.6	124.7	26.7	30.9	58.6	379.0	38.4
Retail trade	30.5	162.8	91.1	46.1	65.8	216.7	62.1	55.9	161.5	892.3	34.9
Transport and storage	27.1	13.6	21.3	22.0	53.9	93.5	18.0	33.3	71.3	354.1	38.6
Communication	12.4	*	8.5	16.1	53.0	20.1	10.3	5.9	*	131.6	32.9
Finance, property and business services	24.3	45.4	63.0	45.0	139.7	142.8	30.0	43.0	85.9	619.3	36.2
Public administration and defence	17.1	11.3	24.3	31.2	127.7	68.3	16.0	12.4	13.3	321.7	34.5
Community services	55.1	123.9	157.5	111.2	199.4	260.9	44.6	69.3	116.5	1,138.4	33.2
Recreation, personal and other services	17.1	88.4	61.6	21.1	30.2	80.9	17.1	21.2	82.5	420.0	33.4
Total employed	297.3	567.7	601.4	493.4	1,164.7	1,556.4	354.5	449.9	977.0	6,462.3	36.2

TABLE 23. EMPLOYED PERSONS: INDUSTRY BY OCCUPATION, AUGUST 1984
('000)

Industry division	Occupation group								Total
	Professional, technical, etc.	Administrative, executive and managerial	Clerical	Sales	Farmers, fishermen, timber-getters, etc.	Transport and communication	Tradesmen, production-process workers and labourers, n.e.c.; and miners, quarrymen, etc.	Service, sport and recreation etc.	
MALES									
Agriculture, forestry, fishing and hunting	*	*	*	*	289.6	*	*	*	303.3
Mining	9.1	*	*	*	*	4.5	63.8	*	84.8
Manufacturing	64.2	72.7	36.6	32.8	*	20.6	608.6	9.9	848.2
Electricity, gas and water	22.7	*	13.1	*	*	5.3	87.5	*	134.3
Construction	12.8	19.9	6.9	*	6.7	7.3	323.4	*	380.1
Wholesale and retail trade	30.6	140.5	36.2	183.5	6.9	33.9	277.3	12.6	721.6
Transport and storage	6.5	17.7	32.0	*	*	155.7	75.4	6.6	296.7
Communication	13.6	*	14.4	*	*	23.6	46.1	*	99.7
Finance, property and business services	99.9	49.5	79.3	39.8	*	5.6	20.1	28.8	324.4
Public administration & defence	38.7	21.2	65.0	*	13.0	14.4	53.3	7.8	213.9
Community services	224.5	10.5	23.6	*	10.4	8.1	44.7	88.1	410.7
Recreation, personal and other services	21.1	36.4	10.6	*	16.3	*	18.0	86.5	194.7
Total	546.9	375.2	323.8	265.8	350.4	282.2	1,622.7	245.5	4,012.4
FEMALES									
Agriculture, forestry, fishing and hunting	*	*	5.3	*	86.9	*	*	*	96.9
Mining	*	*	4.8	*	*	0*	*	*	8.4
Manufacturing	11.6	6.0	90.0	13.2	*	*	162.7	6.6	293.2
Electricity, gas and water	*	*	9.3	*	*	*	*	*	13.6
Construction	*	*	36.2	*	*	*	*	*	43.1
Wholesale and retail trade	10.1	29.9	169.5	279.2	*	4.7	33.3	19.9	549.8
Transport and storage	*	*	37.7	*	*	8.4	*	5.3	57.4
Communication	*	*	13.0	*	*	16.1	*	*	31.9
Finance, property and business services	23.1	7.8	221.5	9.0	*	*	*	29.3	294.9
Public administration & defence	10.9	*	78.0	*	*	*	*	11.1	107.7
Community services	399.8	5.4	145.0	*	*	*	5.8	164.8	727.7
Recreation, personal and other services	7.3	12.3	35.2	7.0	*	*	*	160.3	225.4
Total	468.5	67.2	845.5	313.2	95.1	42.0	213.7	404.7	2,449.9
PERSONS									
Agriculture, forestry, fishing and hunting	*	*	7.7	*	376.6	*	5.0	*	400.2
Mining	10.6	*	8.6	*	*	4.6	64.7	*	93.2
Manufacturing	75.8	78.8	126.6	45.9	*	23.5	771.3	16.5	1,141.4
Electricity, gas and water	24.8	*	22.5	*	*	5.5	88.1	*	147.9
Construction	13.5	20.6	43.1	*	7.3	7.5	326.8	*	423.2
Wholesale and retail trade	40.8	170.4	205.7	462.7	10.1	38.6	310.6	32.5	1,271.4
Transport and storage	7.1	20.0	69.6	*	*	164.1	76.1	11.9	354.1
Communication	13.7	*	27.4	*	*	39.7	46.4	*	131.6
Finance, property and business services	123.1	57.2	300.8	48.8	*	7.7	22.1	58.0	619.3
Public administration & defence	49.5	23.2	143.0	*	14.9	15.5	56.0	18.9	321.7
Community services	624.3	15.9	168.5	*	11.0	12.4	50.6	253.0	1,138.4
Recreation, personal and other services	28.4	48.7	45.8	10.9	17.6	*	18.7	246.8	420.0
Total	1,015.4	442.4	1,169.2	579.0	445.5	324.2	1,836.4	650.1	6,462.3

TABLE 24. EMPLOYED PERSONS BY INDUSTRY SUBDIVISIONS, AUGUST 1984
(^{'000})

Industry division and subdivision	Males	Females		Persons
		Married	Total	
AGRICULTURE, FORESTRY, FISHING AND HUNTING	303.3	81.8	96.9	400.2
Agriculture and services to agriculture	279.3	80.0	93.8	373.1
Forestry and logging	13.0	*	*	14.8
Fishing and hunting	11.0	*	*	12.3
MINING	84.8	*	8.4	93.2
Metallic minerals	31.4	*	*	34.6
Coal	33.8	*	*	35.0
Oil and gas	*	*	*	*
Other mining	18.2	*	*	21.6
MANUFACTURING	848.2	195.3	293.2	1,141.4
Food, beverages and tobacco	133.1	35.5	52.0	185.2
Textiles	24.0	10.7	14.2	38.2
Knitting mills and clothing	13.5	40.2	57.4	70.9
Footwear	4.7	5.8	8.5	13.2
Wood, wood products and furniture	78.8	8.0	13.3	92.2
Paper, paper products, printing and publishing	85.4	22.0	35.0	120.4
Chemical, petroleum and coal products	41.7	7.8	12.8	54.5
Non-metallic mineral products	43.9	4.9	7.0	50.9
Basic metal products	74.6	*	5.7	80.3
Fabricated metal products	88.7	14.4	19.6	108.3
Transport equipment	105.2	10.5	16.1	121.3
Other machinery and equipment	112.9	20.1	31.6	144.5
Miscellaneous manufacturing	41.7	12.3	19.9	61.6
ELECTRICITY, GAS AND WATER	134.3	5.1	13.6	147.9
Electricity and gas	88.4	4.5	10.7	99.1
Water, sewerage and drainage	45.8	*	*	48.8
CONSTRUCTION	380.1	34.5	43.1	423.2
General construction	168.5	14.0	18.6	187.1
Special trade construction	211.6	20.5	24.4	236.1
WHOLESALE AND RETAIL TRADE	721.6	296.1	549.8	1,271.4
Wholesale trade	274.0	60.1	105.0	379.0
Retail trade	447.5	235.9	444.8	892.3
TRANSPORT AND STORAGE	296.7	30.3	57.4	354.1
Road transport	139.7	15.8	22.8	162.5
Railway transport	76.3	*	6.7	83.0
Water transport	27.3	*	*	29.4
Air transport	32.9	4.7	11.4	44.4
Other transport and storage	20.5	6.2	14.3	34.8
COMMUNICATION	99.7	19.8	31.9	131.6
FINANCE, PROPERTY AND BUSINESS SERVICES	324.4	161.5	294.9	619.3
Finance and investment	91.7	46.7	100.8	192.6
Insurance and services to insurance	39.3	18.6	34.7	74.0
Property and business services	193.3	96.3	159.4	352.7
PUBLIC ADMINISTRATION AND DEFENCE	213.9	52.1	107.7	321.7
Public administration	195.0	48.9	100.1	295.1
Defence	18.9	*	7.6	26.6
COMMUNITY SERVICES	410.7	437.7	727.7	1,138.4
Health	110.9	200.6	342.8	453.7
Education, museum and library services	173.0	184.7	284.0	457.0
Welfare and religious institutions	36.1	32.1	60.7	96.9
Other community services	90.6	20.4	40.2	130.8
RECREATION, PERSONAL AND OTHER SERVICES	194.7	127.9	225.4	420.0
Entertainment and recreational services	66.2	21.4	39.0	105.2
Restaurants, hotels and clubs	98.8	73.0	119.8	218.6
Personal services	28.4	30.4	56.9	85.3
Private households employing staff	*	*	9.7	10.9
TOTAL	4,012.4	1,446.5	2,449.9	6,462.3

TABLE 25. EMPLOYED PERSONS: OCCUPATION OF FULL-TIME AND PART-TIME WORKERS, AUGUST 1984 ('000)

Occupation group	Full-time workers		Part-time workers		Total			Persons
	Males	Females	Males	Females	Females			
					Married	Total		
Professional, technical, etc.	508.2	322.5	38.7	146.0	546.9	265.2	468.5	1,015.4
Administrative, executive and managerial	364.3	53.3	10.9	14.0	375.2	46.8	67.2	442.4
Clerical	312.5	595.4	11.2	250.1	323.8	458.9	845.5	1,169.2
Sales	231.0	160.9	34.8	152.3	265.8	168.4	313.2	579.0
Farmers, fishermen, timber-getters, etc.	325.8	44.8	24.6	50.3	350.4	80.0	95.1	445.5
Miners, quarrymen and related workers	36.3	*	*	*	36.3	*	*	36.6
Transport and communication	265.1	27.2	17.1	14.8	282.2	25.2	42.0	324.2
Tradesmen, production-process workers and labourers, n.e.c.	1,521.3	169.7	65.1	43.6	1,586.4	146.8	213.4	1,799.8
Service, sport and recreation	202.8	173.4	42.7	231.2	245.5	255.0	404.7	650.1
Total	3,767.3	1,547.5	245.1	902.4	4,012.4	1,446.5	2,449.9	6,462.3

TABLE 26. EMPLOYED PERSONS: OCCUPATION AND STATUS OF WORKER, AUGUST 1984 ('000)

Occupation group	Employers		Self-employed		Wage and salary earners		Total(a)		
	Males	Females	Males	Females	Males	Females	Males	Females	Persons
Administrative, executive and managerial	74.7	18.3	13.1	5.2	286.2	43.6	375.2	67.2	442.4
Clerical	*	26.1	*	27.0	320.7	788.0	323.8	845.5	1,169.2
Sales	8.9	16.8	52.4	42.6	203.5	252.2	265.8	313.2	579.0
Farmers, fishermen, timber-getters, etc.	48.8	15.8	156.4	52.7	140.5	22.8	350.4	95.1	445.5
Miners, quarrymen and related workers	*	*	*	*	34.8	*	36.3	*	36.6
Transport and communication	9.7	*	53.5	6.9	218.4	34.6	282.2	42.0	324.2
Tradesmen, production-process workers and labourers, n.e.c.	49.5	4.9	158.5	13.5	1,376.2	194.6	1,586.4	213.4	1,799.8
Service, sport and recreation	10.5	8.7	21.9	25.9	213.0	369.5	245.5	404.7	650.1
Total	241.2	94.2	488.2	193.6	3,272.7	2,151.2	4,012.4	2,449.9	6,462.3
Full-time workers	233.9	52.9	434.7	84.2	3,092.8	1,404.6	3,767.3	1,547.5	5,314.8

(a) Includes unpaid family helpers

TABLE 27. EMPLOYED PERSONS: OCCUPATION, AGE AND BIRTHPLACE, AUGUST 1984 ('000)

Occupation group	Age group						Total	Born in Australia	Born outside Australia
	15-19	20-24	25-34	35-44	45-54	55 and over			
	Professional, technical, etc.	23.1	133.8	353.2	272.2	142.3			
Administrative, executive and managerial	*	13.3	94.7	161.5	108.8	62.6	442.4	330.6	111.9
Clerical	142.6	244.9	340.1	237.1	133.0	71.5	1,169.2	921.1	248.1
Sales	124.3	80.5	123.5	124.7	79.5	46.4	579.0	449.1	129.9
Farmers, fishermen, timber-getters, etc.	31.2	49.0	95.2	94.3	90.9	84.9	445.5	398.9	46.6
Miners, quarrymen and related workers	*	*	12.1	13.0	7.2	*	36.6	29.2	7.4
Transport and communication	7.6	30.8	93.9	91.2	61.4	39.3	324.2	252.2	72.0
Tradesmen, production-process workers and labourers, n.e.c.	191.6	283.9	486.3	396.0	275.2	166.8	1,799.8	1,190.7	609.1
Service, sport and recreation	62.1	97.7	153.9	149.2	121.4	65.8	650.1	463.9	186.2
Total	584.3	936.5	1,752.9	1,539.3	1,019.7	629.5	6,462.3	4,810.3	1,651.9

TABLE 28. EMPLOYED PERSONS: OCCUPATION AND HOURS WORKED, AUGUST 1984

Occupation group	Hours worked									Total	Average weekly hours worked (hours)
	0	1-15	16-29	30-34	35-39	40	41-44	45-48	49 and over		
	- '000 -										
MALES											
Professional, technical, etc.	21.3	17.0	29.6	37.8	121.6	108.0	35.2	54.4	121.9	546.9	40.2
Administrative, executive and managerial	11.3	6.2	8.9	11.2	33.1	72.0	24.9	46.5	161.0	375.2	47.4
Clerical	15.0	7.7	18.2	24.0	117.6	77.4	20.7	20.6	22.6	323.8	36.4
Sales	8.2	25.3	9.2	9.8	22.5	74.8	19.7	24.0	72.3	265.8	41.2
Farmers, fishermen, timber-getters, etc.	16.3	15.4	19.1	19.4	23.3	66.9	10.8	22.9	156.2	350.4	45.9
Transport and communication	20.3	7.9	13.8	17.7	37.6	71.8	21.3	27.1	64.7	282.2	39.9
Tradesmen, production-process workers and labourers, n.e.c.; and miners, quarrymen, etc.	80.1	35.6	81.8	137.4	335.6	510.0	111.2	140.5	190.5	1,622.7	38.0
Service, sport and recreation	15.9	26.0	17.7	17.2	20.6	65.8	12.2	23.3	46.8	245.5	36.7
Total employed	188.5	141.1	198.4	274.5	711.8	1,046.8	256.0	359.4	835.8	4,012.4	40.0
MARRIED FEMALES											
Professional, technical, etc.	13.4	45.7	50.7	30.5	37.8	46.9	10.2	12.6	17.4	265.2	29.0
Administrative, executive and managerial	---	5.5	---	6.6	4.6	6.6	6.5	---	5.4	---	38.7
Clerical	20.9	83.6	89.7	42.5	104.7	80.2	12.0	12.9	12.3	458.9	28.3
Sales	6.3	35.8	41.8	12.0	11.9	28.2	8.8	5.7	18.0	168.4	29.5
Farmers, fishermen, timber-getters, etc.	*	22.5	20.3	5.4	*	5.0	*	*	14.1	80.0	27.8
Transport and communication	*	5.1	4.6	---	6.9	---	---	4.6	---	25.2	28.1
Tradesmen, production-process workers and labourers, n.e.c.; and miners, quarrymen, etc.	5.9	13.0	21.7	15.1	40.3	33.4	6.9	5.8	4.9	147.1	32.4
Service, sport and recreation	13.1	78.5	65.8	24.6	13.3	41.4	*	4.6	10.8	255.0	23.7
Total employed	68.4	287.1	301.1	137.2	223.3	245.2	46.3	47.0	90.9	1,446.5	28.5
ALL FEMALES											
Professional, technical, etc.	23.2	58.1	68.9	52.2	74.2	109.3	20.4	27.7	34.5	468.5	31.7
Administrative, executive and managerial	---	6.7	---	7.8	5.5	9.3	11.5	4.5	4.7	17.3	39.7
Clerical	33.9	116.2	126.1	74.3	238.7	179.6	31.7	24.8	20.2	845.5	30.5
Sales	11.1	84.8	54.7	19.6	26.4	65.4	19.2	9.8	22.1	313.2	27.9
Farmers, fishermen, timber-getters, etc.	4.8	24.8	22.5	6.9	5.0	8.5	---	5.3	---	17.2	29.2
Transport and communication	*	7.1	6.0	*	7.8	6.5	*	---	4.5	---	29.1
Tradesmen, production-process workers and labourers, n.e.c.; and miners, quarrymen, etc.	8.9	17.7	27.1	20.4	63.8	51.3	9.8	8.7	6.1	213.7	32.8
Service, sport and recreation	19.7	114.7	89.9	35.7	27.7	77.5	8.6	10.0	20.8	404.7	25.3
Total employed	108.8	426.6	403.1	218.8	452.8	509.6	98.5	90.5	141.2	2,449.9	29.9
PERSONS											
Professional, technical, etc.	44.5	75.1	98.6	90.0	195.8	217.3	55.6	82.1	156.5	1,015.4	36.3
Administrative, executive and managerial	14.9	9.4	16.7	16.6	42.4	83.5	29.4	51.2	178.2	442.4	46.2
Clerical	48.9	123.9	144.3	98.3	356.2	257.0	52.4	45.4	42.8	1,169.2	32.1
Sales	19.3	110.1	64.0	29.4	48.9	140.2	38.9	33.9	94.4	579.0	34.0
Farmers, fishermen, timber-getters, etc.	21.1	40.3	41.6	26.4	28.3	75.4	13.1	26.0	173.4	445.5	42.3
Transport and communication	24.0	15.0	19.8	22.1	45.3	78.3	23.4	28.7	67.6	324.2	38.5
Tradesmen, production-process workers and labourers, n.e.c.; and miners, quarrymen, etc.	89.0	53.3	109.0	157.7	399.4	561.4	120.9	149.2	196.6	1,836.4	37.4
Service, sport and recreation	35.6	140.7	107.6	52.9	48.3	143.3	20.8	33.3	67.5	650.1	29.6
Total employed	297.3	567.7	601.4	493.4	1,164.7	1,556.4	354.5	449.9	977.0	6,462.3	36.2

TABLE 29. EMPLOYED PERSONS: MAJOR AND MINOR OCCUPATION GROUPS, AUGUST 1984
('000)

Occupation group(a)	Males	Females		Persons
		Married	Total	
PROFESSIONAL, TECHNICAL AND RELATED WORKERS	546.9	265.2	468.5	1,015.4
Architects, engineers and surveyors, professional	72.8	*	*	73.2
Chemists, physicists, geologists and other physical scientists	13.2	*	*	15.7
Biologists, veterinarians, agronomists and related scientists	11.3	*	*	14.2
Medical practitioners and dentists	31.4	*	7.4	38.8
Nurses, including probationers or trainees	11.2	78.0	144.5	155.7
Professional medical workers, n.e.c.	11.7	11.3	19.9	31.6
Teachers	122.4	117.9	179.9	302.3
Clergy and related members of religious orders	12.2	*	*	15.7
Law professionals	16.4	*	*	20.2
Artists, entertainers, writers and related workers	37.8	13.1	25.5	63.4
Draftsmen and technicians, n.e.c.	91.1	12.9	29.6	120.8
Other professional, technical and related workers	115.3	24.1	48.7	163.9
ADMINISTRATIVE, EXECUTIVE AND MANAGERIAL	375.2	46.8	67.2	442.4
Administrative and executive officials, government, n.e.c.	11.4	*	*	11.8
Employers, workers on own account, directors, managers, n.e.c.	363.8	46.5	66.9	430.6
CLERICAL	323.8	458.9	845.5	1,169.2
Book-keepers and cashiers	31.2	71.3	133.7	164.8
Stenographers and typists	*	104.8	198.5	200.4
Other clerical workers	290.7	282.7	513.4	804.0
SALES	265.8	168.4	313.2	579.0
Insurance, real estate salesmen, auctioneers and valuers	40.7	4.5	6.1	46.7
Commercial travellers and manufacturers agents	54.0	7.0	10.7	64.7
Proprietors and shopkeepers, workers on own account, n.e.c. and retail and wholesale trade; salesmen, shop assistants etc.	171.2	156.9	296.4	467.6
FARMERS, FISHERMEN, TIMBER-GETTERS, ETC.	350.4	80.0	95.1	445.5
Farmers and farm managers	202.5	63.2	68.5	271.0
Farm workers, including farm foremen	124.1	16.3	25.9	150.0
Fishermen and related workers	10.8	*	*	11.3
Timber getters and other forestry workers	11.7	*	*	11.7
MINERS, QUARRYMEN AND RELATED WORKERS	36.3	*	*	36.6
Miners, mineral prospectors and quarrymen	29.4	*	*	29.6
Mineral treaters	4.6	*	*	4.6
TRANSPORT AND COMMUNICATION	282.2	25.2	42.0	324.2
Aircraft pilots, navigators and flight engineers, not services	5.3	*	*	5.3
Drivers and firemen, rail transport	12.6	*	*	12.6
Drivers, road transport	202.1	9.0	13.9	216.1
Guards and conductors, railway	5.3	*	*	5.3
Inspectors, supervisors, traffic controllers & despatchers, transport	17.0	*	*	18.0
Telephone, telegraph and related telecommunication operators	*	9.7	18.0	20.7
Postmasters, postmen and messengers	25.7	5.4	7.8	33.5
Workers in transport and communication n.e.c.	*	*	*	5.0
TRADESMEN, PRODUCTION-PROCESS WORKERS AND LABOURERS, N.E.C.	1,586.4	146.8	213.4	1,799.8
Spinners, weavers, knitters, dyers and related workers	10.3	5.5	7.5	17.8
Tailors, cutters, furriers and related workers	25.9	43.6	60.9	86.9
Leather cutters, lasters, sewers (except gloves and garments) and related workers	6.1	5.1	7.5	13.6
Furnacemen, rollers, drawers, moulders and related metal making and treating workers	16.5	*	*	17.4
recision instrument makers, watchmakers, jewellers & related workers	26.5	*	*	29.9
Machine toolmakers, metal machinists, mechanics, plumbers and related metal workers	422.5	5.9	8.0	430.4
Electricians and related electrical and electronic workers	165.1	*	*	167.5
Metal workers, metal & electrical production-process workers, n.e.c.	50.4	12.4	17.1	67.5
Carpenters, woodworking machinists, cabinetmakers & related workers	129.5	*	*	133.8
Painters and decorators	49.0	*	*	51.1
Bricklayers, plasterers and construction workers, n.e.c.	143.9	*	*	145.9
Compositors, printing machinists, engravers, bookbinders and related workers	35.7	4.9	8.9	44.6
Potters, kilnmen, glass and clay formers and related workers	9.0	*	*	10.6
Millers, bakers, butchers, brewers and related food & drink workers	83.5	13.5	20.1	103.6
Chemical, sugar and paper production-process workers	16.2	*	*	18.5
Paper products, rubber, plastic & production-process workers, n.e.c.	37.4	9.2	16.3	53.7
Packers, wrappers, labellers	13.5	23.1	29.3	42.8
Stationary engine, excavating and lifting equipment operators	96.3	*	*	96.7
Storemen and freight handlers	112.0	6.9	9.9	121.9
Labourers, n.e.c.	135.7	*	7.6	143.3
SERVICE, SPORT AND RECREATION WORKERS	245.5	255.0	404.7	650.1
Fire brigade, police and other protective service workers	73.2	*	6.4	79.6
Housekeepers, cooks, maids and related workers	49.6	113.0	173.2	222.8
Waiters, bartenders	23.7	26.6	53.8	77.5
Caretakers, cleaners, buildings	38.7	53.5	67.6	106.3
Barbers, hairdressers and beauticians	8.2	15.0	33.8	42.0
Launderers, dry cleaners and pressers	4.6	7.8	11.5	16.1
Athletes, sportsmen and related workers	9.3	*	5.3	14.6
Photographers and camera operators	6.5	*	*	8.1
Service, sport, recreation workers, n.e.c.	30.8	32.6	51.3	82.2
TOTAL	4,012.4	1,446.5	2,449.9	6,462.3

(a) Some minor occupation groups are not listed separately.

TABLE 30. UNEMPLOYED PERSONS: STATES, BY AGE, AUGUST 1984
('000)

Age group	New South Wales	Victoria	Queensland	South Australia	Western Australia	Tasmania	Australia(a)
MALES							
15-19	28.3	18.8	17.4	9.1	7.4	3.5	85.5
20-24	31.6	15.6	16.6	7.6	8.3	4.1	85.0
25-34	36.1	17.3	16.5	7.7	9.1	3.3	91.8
35 and over	48.4	23.5	21.4	11.3	10.9	2.9	119.2
Total	144.4	75.2	72.0	35.6	35.9	13.8	381.5
FEMALES							
15-19	22.9	18.7	10.6	8.4	5.5	2.1	69.4
20-24	16.1	12.0	7.5	5.7	4.5	1.7	49.0
25-34	16.2	12.2	7.7	5.0	5.2	1.6	48.7
35 and over	19.8	11.9	10.6	4.0	6.8	2.0	55.9
Total	74.9	54.8	36.4	23.0	22.0	7.3	223.1
PERSONS							
Looking for full-time work -							
15-19	42.0	30.1	24.0	15.9	11.5	4.9	129.4
20-24	43.7	23.5	21.3	12.4	12.4	5.3	120.7
25-34	46.2	24.5	21.4	10.5	12.8	4.3	121.9
35-44	28.6	12.8	12.3	6.3	9.0	2.0	71.7
45-54	19.8	10.0	10.7	4.0	4.9	1.1	50.8
55 and over	11.6	7.4	5.0	3.0	*	*	29.6
Total looking for full-time work	191.8	108.4	94.6	52.1	52.2	18.5	524.2
Total -							
15-19	51.3	37.4	28.1	17.5	12.9	5.6	154.9
20-24	47.7	27.6	24.1	13.3	12.8	5.8	134.0
25-34	52.3	29.5	24.3	12.7	14.4	4.9	140.5
35-44	33.8	16.0	14.7	7.0	10.2	2.8	85.4
45-54	21.5	11.5	12.0	4.7	5.4	1.3	57.0
55 and over	12.9	7.9	5.3	3.5	*	*	32.8
Total	219.4	129.9	108.4	58.7	57.8	21.1	604.6

(a) Includes the Northern Territory and the Australian Capital Territory

TABLE 31. UNEMPLOYED PERSONS AGED 15-19:
DURATION OF UNEMPLOYMENT AND SCHOOL ATTENDANCE, AUGUST 1984

	Not attending school		Total
	Attending school	Left school before 1983	
NUMBER ('000)			
Duration of unemployment (weeks) -			
Under 4	6.8	10.3	27.2
4 and under 13	8.8	15.2	37.3
13 and under 26	*	11.3	22.0
26 and over	12.4	35.7	68.4
Total	31.1	72.4	154.9
AVERAGE DURATION OF UNEMPLOYMENT (weeks)			
Mean duration -			
Males	21.2	36.6	28.6
Females	19.1	41.8	29.2
Persons	20.4	38.9	28.9
Looking for full-time work	21.8	39.9	30.9
Looking for part-time work	19.3	*	18.7
Median duration -			
Males	13.0	20.1	17.1
Females	8.0	27.0	17.1
Persons	12.0	24.1	17.1
Looking for full-time work	10.0	26.0	20.0
Looking for part-time work	13.0	*	10.0

TABLE 32. UNEMPLOYED PERSONS, BY AGE AND WHETHER LOOKING FOR FULL-TIME OR PART-TIME WORK, AUGUST 1984

	Number unemployed ('000)					Unemployment rate (per cent)				
	Males		Females		Persons	Males		Females		Persons
	Married	Total	Married	Total		Married	Total	Married	Total	
LOOKING FOR FULL-TIME WORK										
Total	143.9	359.0	51.0	165.1	524.2	5.3	8.7	6.1	9.6	9.0
Aged 15-19	*	72.6	*	56.8	129.4	*	23.6	*	23.6	23.6
Looking for first job	*	30.3	*	25.9	56.2
Attending school	*	8.5	*	4.8	13.3	n.a.	n.a.	n.a.	n.a.	n.a.
Aged 20 and over	142.7	286.4	48.2	108.4	394.7	5.2	7.5	5.8	7.4	7.5
20-24	13.2	80.5	9.1	40.2	120.7	10.8	14.6	7.4	10.4	12.8
Looking for first job	*	*	*	5.4	9.4
25-34	47.3	90.2	17.6	31.7	121.9	5.8	7.7	6.9	7.0	7.5
35-44	32.7	49.7	15.2	22.0	71.7	3.9	5.1	6.2	6.7	5.5
45-54	28.3	38.9	5.6	11.9	50.8	4.9	5.8	3.6	5.5	5.7
55 and over	21.4	27.1	*	*	29.6	5.6	6.1	*	*	5.6
Aged 15-64	143.2	358.3	51.0	165.1	523.5	5.3	8.8	6.1	9.7	9.0
LOOKING FOR PART-TIME WORK										
Total	*	22.5	34.4	57.9	80.5	*	8.4	5.0	6.0	6.6
Aged 15-19	*	12.8	*	12.7	25.5	*	16.1	*	11.3	13.3
Attending school	*	9.8	*	8.0	17.8	*	20.3	*	12.2	15.6
Aged 20 and over	*	9.7	33.6	45.3	55.0	*	5.1	4.9	5.3	5.3
20-24	*	4.6	*	8.8	13.4	*	10.9	*	10.1	10.3
25-34	*	*	13.7	17.0	18.6	*	*	6.6	7.0	6.7
35-44	*	*	10.1	12.3	13.6	*	*	4.0	4.3	4.3
45 and over	*	*	5.6	7.2	9.4	*	*	3.0	3.0	3.0
Aged 15-64	*	22.2	34.4	57.8	80.0	*	9.1	5.0	6.1	6.7
TOTAL										
Total	146.3	381.5	85.3	223.1	604.6	5.2	8.7	5.6	8.3	8.6
Aged 15-19	*	85.5	*	69.4	154.9	*	22.1	*	19.7	21.0
Attending school	*	18.3	*	12.8	31.1	*	32.3	*	18.0	24.3
Aged 20 and over (a)	145.1	296.0	81.8	153.7	449.7	5.1	7.4	5.4	6.6	7.1
20-24	13.3	85.0	13.3	49.0	134.0	10.6	14.3	8.2	10.3	12.5
25-34	47.8	91.8	31.3	48.7	140.5	5.8	7.6	6.7	7.0	7.4
35-44	33.4	51.1	25.3	34.3	85.4	3.9	5.0	5.1	5.6	5.3
45-54	28.5	39.7	10.0	17.2	57.0	4.7	5.7	3.4	4.6	5.3
55-59	11.8	15.7	*	*	19.5	4.7	5.4	*	*	4.9
60-64	9.6	11.7	*	*	12.2	7.7	8.1	*	*	6.6
Aged 15-64	145.4	380.5	85.3	223.0	603.5	5.2	8.8	5.6	8.4	8.6

(a) Includes unemployed persons aged 65 and over, details for whom are not shown separately.

TABLE 33. UNEMPLOYED PERSONS: BIRTHPLACE BY AGE, AUGUST 1984

	Number unemployed ('000)			Unemployment rate (per cent)		
	Males	Females	Persons	Males	Females	Persons
BORN IN AUSTRALIA						
Total	261.9	159.0	420.9	8.1	7.9	8.0
Looking for full-time work	243.9	116.2	360.1	8.1	9.2	8.4
Looking for part-time work	17.9	42.8	60.8	8.5	5.7	6.3
Aged 15-19	72.5	59.5	132.0	21.5	19.0	20.3
Aged 20 and over	189.3	99.6	288.9	6.6	5.8	6.3
20-24	67.3	36.3	103.7	13.7	9.3	11.8
25-34	61.0	32.2	93.3	6.7	6.3	6.6
35-44	26.9	20.0	46.9	4.0	4.7	4.3
45-54	20.6	9.3	29.9	4.5	3.6	4.2
55 and over	13.5	*	15.2	4.0	*	3.3
Aged 15-64	261.8	158.9	420.7	8.3	8.0	8.1
BORN OUTSIDE AUSTRALIA						
Total	119.7	64.1	183.7	10.2	9.7	10.0
Looking for full-time work	115.1	48.9	164.0	10.3	11.0	10.5
Looking for part-time work	4.6	15.1	19.7	8.1	7.1	7.3
Aged 15-19	13.0	10.0	22.9	25.9	25.3	25.6
Aged 20 and over	106.7	54.1	160.8	9.5	8.8	9.2
20-24	17.7	12.7	30.4	17.4	14.5	16.1
25-34	30.8	16.5	47.2	10.6	9.1	10.0
35-44	24.2	14.3	38.5	7.2	7.6	7.4
45-54	19.1	7.9	27.1	7.8	6.7	7.5
55 and over	14.9	*	17.6	9.5	*	8.8
Aged 15-64	118.8	64.1	182.8	10.2	9.8	10.0

TABLE 34. UNEMPLOYED PERSONS, BY DURATION OF UNEMPLOYMENT AND AGE, ETC., AUGUST 1984

Duration of unemployment (weeks)	Age group				Total (a)	Married	Not married	Looking for -	
	15-19	20-24	25-34	35-54				Full-time work	Part-time work
MALES									
- '000 -									
Under 2	6.4	*	5.7	*	18.8	6.6	12.2	15.4) 5.9
2 and under 4	7.6	6.0	7.8	7.1	29.3	12.7	16.6	26.7)
4 and under 8	10.9	9.1	9.6	8.6	39.9	12.0	27.8	37.2) 5.3
8 and under 13	10.1	9.7	5.9	7.2	35.0	10.1	24.8	32.4)
13 and under 26	12.5	12.3	13.4	9.9	52.0	17.4	34.6	49.5) *
26 and under 39	19.8	14.1	12.9	8.8	58.1	16.1	42.0	52.7) 5.4
39 and under 52	4.8	*	4.5	*	16.3	7.0	9.3	16.0) *
52 and under 65	*	6.8	8.9	9.5	30.8	14.2	16.6	29.8) *
65 and under 104	4.5	6.3	8.8	10.7	36.7	18.4	18.4	35.9) *
104 and over	5.4	15.2	14.3	22.0	64.7	31.7	32.9	63.3) *
Total	85.5	85.0	91.8	90.8	381.5	146.3	235.2	359.0) 22.5
- weeks -									
Average duration -									
Mean	28.6	45.5	49.6	61.4	48.6	57.9	42.9	50.1) 24.8
Median	17.1	26.1	26.1	39.2	27.0	35.1	26.0	29.0) 13.0
FEMALES									
- '000 -									
Under 2	----- 5.8 -----		4.7	4.9	15.5	8.3	7.2	8.2) 7.2
2 and under 4	9.8	7.1	4.8	5.8	27.6	11.6	16.0	16.6) 11.0
4 and under 8	8.5	*	5.9	5.0	24.2	9.5	14.8	14.8) 9.4
8 and under 13	7.8	6.0	5.4	4.5	24.0	9.5	14.5	18.0) 6.0
13 and under 26	9.5	6.0	8.5	*	28.5	10.7	17.8	22.6) 5.9
26 and under 39	13.9	7.2	7.0	7.6	36.9	11.5	25.5	28.6) 8.3
39 and under 52	----- 5.7 -----		*	*	9.9	*	7.7	8.8) 5.3
52 and under 65	----- 7.3 -----		*	5.5	16.1	7.3	8.8	12.0)
65 and under 104	----- 6.9 -----		----- 5.3 -----		12.4	*	8.0	11.5) 4.6
104 and over	4.7	7.7	5.7	8.7	27.8	10.3	17.5	24.1)
Total	69.4	49.0	48.7	51.5	223.1	85.3	137.8	165.1) 57.9
- weeks -									
Average duration -									
Mean	29.2	46.4	35.5	50.4	40.1	37.0	42.0	45.8) 23.8
Median	17.1	22.0	16.0	26.1	21.0	15.0	23.1	26.0) 8.0
PERSONS									
- '000 -									
Under 2	9.9	5.6	10.4	7.9	34.2	14.9	19.4	23.6) 10.6
2 and under 4	17.3	13.0	12.6	12.9	56.9	24.3	32.6	43.3) 13.6
4 and under 8	19.4	13.5	15.5	13.6	64.1	21.5	42.6	52.0) 12.2
8 and under 13	17.9	15.7	11.3	11.7	58.9	19.6	39.3	50.4) 8.5
13 and under 26	22.0	18.3	21.9	14.3	80.5	28.1	52.4	72.1) 8.4
26 and under 39	33.7	21.3	19.8	16.4	95.1	27.6	67.5	81.4) 13.7
39 and under 52	8.5	*	6.3	6.3	26.3	9.3	17.0	24.7) *
52 and under 65	7.8	10.0	11.5	15.0	46.9	21.5	25.4	41.8) 5.1
65 and under 104	8.3	9.4	11.2	13.6	49.2	22.8	26.4	47.4) *
104 and over	10.1	23.0	20.0	30.7	92.5	42.0	50.5	87.5) 5.1
Total	154.9	134.0	140.5	142.3	604.6	231.6	373.0	524.2) 80.5
- weeks -									
Average duration -									
Mean	28.9	45.9	44.7	57.4	45.5	50.2	42.5	48.8) 24.1
Median	17.1	26.0	24.0	33.2	26.0	26.1	26.0	27.0) 8.0

(a) Includes persons aged 55 and over, details for whom are not shown separately.

TABLE 35. UNEMPLOYED PERSONS: INDUSTRY AND OCCUPATION OF LAST FULL-TIME JOB AND DURATION OF UNEMPLOYMENT, AUGUST 1984 ('000)

	Duration of unemployment (weeks)							Total		
	Under 4	4 and under 8	8 and under 13	13 and under 26	26 and under 39	39 and under 65	65 and over	Males	Females	Persons
Had worked full time for two weeks or more in the last two years	54.9	43.7	42.3	61.5	54.4	48.7	34.2	248.0	91.8	339.8
Industry division or subdivision -										
Agriculture, forestry, fishing & hunting	---	4.9	---	4.5	4.6	---	5.9	---	*	19.3
Agriculture & services to agriculture	*	---	5.3	---	---	5.9	---	*	*	14.8
Manufacturing	12.6	7.2	9.2	15.3	12.7	12.2	12.8	66.1	15.7	81.8
Food, beverages and tobacco	*	*	---	5.1	---	---	5.0	---	*	11.4
Metal products	*	*	---	5.2	---	---	4.7	---	*	17.0
Other manufacturing	8.0	*	6.3	7.9	6.5	8.6	7.0	37.7	10.6	48.3
Construction	6.2	5.9	5.4	8.3	5.8	7.6	---	40.0	*	41.5
Wholesale and retail trade	11.1	11.0	9.2	15.1	12.3	10.6	6.4	48.9	26.8	75.7
Wholesale trade	---	5.8	---	6.0	---	---	7.0	---	*	15.7
Retail trade	8.7	7.6	7.4	10.9	9.3	6.7	---	33.3	21.2	54.4
Transport and storage	---	4.5	---	*	---	5.1	---	4.8	---	13.4
Finance, property & business services	5.0	*	---	4.8	---	---	5.6	---	*	11.0
Community services	4.8	4.6	---	7.3	---	---	6.6	---	*	9.5
Recreation, personal & other services	5.6	---	8.5	---	4.9	6.5	5.6	---	*	19.1
Other industries	*	4.8	---	7.9	---	5.7	---	5.1	---	20.7
Occupation group -										
Professional, technical, etc.	5.0	---	5.9	---	6.0	---	*	*	9.6	9.9
Clerical	9.4	---	8.6	---	6.7	---	7.8	---	*	8.4
Sales	5.7	---	7.5	---	6.1	5.3	---	7.1	---	15.5
Farmers, fishermen, etc.	---	6.7	---	5.0	4.9	5.2	---	5.0	---	24.7
Transport and communication	---	6.3	---	*	*	4.5	---	4.6	---	17.8
Tradesmen, production-process workers and labourers, n.e.c.	21.2	19.7	18.1	30.0	24.6	25.1	19.9	144.0	14.6	158.6
Service, sport and recreation	5.1	4.9	6.4	6.7	5.3	7.5	*	20.0	18.8	38.8
Other occupations	*	*	---	4.5	---	---	*	*	8.0	10.1
Other	30.2	20.4	16.6	19.0	40.7	24.5	107.5	131.8	126.9	258.7
Looking for first job	14.0	11.5	8.3	8.9	25.4	10.8	14.5	47.5	46.0	93.5
Looking for full-time work	7.8	8.0	5.7	6.1	19.8	8.7	13.9	35.5	34.5	70.0
Other	16.1	8.8	8.3	10.1	15.2	13.7	92.9	84.3	80.9	165.2
Stood down	6.1	*	*	6.1
Total	91.1	64.1	58.9	80.5	95.1	73.2	141.7	381.5	223.1	604.6

TABLE 36. UNEMPLOYMENT RATES: INDUSTRY AND OCCUPATION OF LAST FULL-TIME JOB, AUGUST 1984 (per cent)

	Males	Females	Persons
Had worked full time for two weeks or more in the last two years	5.8	3.6	5.0
Industry division or subdivision -			
Agriculture, forestry, fishing and hunting	6.0	*	5.1
Agriculture and services to agriculture	5.0	*	4.4
Mining	*	*	*
Manufacturing	7.2	5.1	6.7
Food, beverages and tobacco	7.9	*	7.5
Metal products	9.4	*	8.9
Other manufacturing	6.4	4.7	5.9
Electricity, gas and water	*	*	*
Construction	9.5	*	8.9
Wholesale and retail trade	6.4	4.6	5.6
Wholesale trade	5.4	5.1	5.3
Retail trade	6.9	4.5	5.8
Transport and storage	4.3	*	4.1
Communication	*	*	*
Finance, property and business services	3.3	2.1	2.7
Public administration and defence	5.9	4.4	5.4
Community services	2.3	2.1	2.2
Recreation, personal and other services	8.9	6.0	7.4
Occupation group -			
Professional, technical, etc.	1.7	2.1	1.9
Administrative, executive and managerial	1.6	*	1.8
Clerical	2.5	3.0	2.9
Sales	5.5	5.0	5.2
Farmers, fishermen, timber-getters, etc.	6.6	*	5.7
Miners, quarrymen, etc.	*	*	*
Transport and communication	5.9	*	5.7
Tradesmen, production-process workers and labourers, n.e.c.	8.3	6.4	8.1
Service, sport and recreation	7.5	4.4	5.6
Total	8.7	8.3	8.6

TABLE 37. UNEMPLOYED PERSONS: AGE AND ACTIVE STEPS TAKEN TO FIND WORK, AUGUST 1984
(⁰⁰⁰)

	Persons					Total
	Males	Females	Aged 15-19	Aged 20-24	Aged 25 and over	
Took active steps to find work	379.8	218.7	153.9	132.4	312.2	598.5
Wrote, phoned or applied in person to an employer	280.9	164.8	116.8	97.6	231.4	445.7
Answered a newspaper advertisement for a job	13.2	7.6	5.1	*	11.3	20.8
Checked factory or Commonwealth Employment Service noticeboards	55.6	26.2	19.4	19.4	43.0	81.8
Been registered with the Commonwealth Employment Service ?	25.6	15.1	9.7	9.8	21.1	40.7
Checked or registered with any other employment agency	*	*	*	*	*	*
Advertised or tendered for work	*	*	*	*	*	*
Contacted relatives or friends	*	*	*	*	*	6.8
Stood down	*	*	*	*	*	6.1
Total	381.5	223.1	154.9	134.0	315.7	604.6

TABLE 38. PERSONS NOT IN THE LABOUR FORCE: AGE AND MARITAL STATUS, AUGUST 1984

Age group	Males			Females			Persons	Proportion of population - per cent -
	Married	Not married	Total	Married	Not married	Total		
15-19	*	268.2	268.2	14.0	266.4	280.5	548.7	42.6
20-24	6.3	64.1	70.4	111.5	76.0	187.5	257.9	19.4
25-34	23.7	38.6	62.3	479.8	88.2	568.0	630.3	25.0
35-44	34.6	22.2	56.8	368.8	61.4	430.1	486.9	23.1
45-54	52.4	25.1	77.5	307.3	66.1	373.4	450.9	29.5
55-59	63.2	24.9	88.1	207.3	63.0	270.3	358.4	47.6
60-64	149.8	38.3	188.1	211.4	102.3	313.7	501.8	73.0
65-69	172.7	42.4	215.2	163.9	111.3	275.2	490.4	90.9
70 and over	259.2	125.7	384.8	183.2	433.6	616.8	1,001.7	96.8
Total	761.9	649.6	1,411.5	2,047.2	1,268.3	3,315.5	4,727.0	40.1

TABLE 39. PERSONS NOT IN THE LABOUR FORCE: WHETHER LOOKING FOR WORK, ETC., AUGUST 1984
(⁰⁰⁰)

	Males			Females			Persons
	Married	Not married	Total	Married	Not married	Total	
Looking for work	8.1	23.9	32.0	27.5	27.9	55.5	87.5
Took active steps to find work(a)	4.5	16.3	20.8	*	13.7	18.0	38.8
Did not take active steps to find work	*	7.6	11.2	23.2	14.3	37.5	48.7
Not looking for work	727.7	559.9	1,287.6	2,001.1	1,139.4	3,140.6	4,428.2
Permanently unable to work	9.0	7.1	16.0	*	9.3	13.2	29.2
In institutions	17.2	58.6	75.8	14.7	91.6	106.3	182.1
Total	761.9	649.6	1,411.5	2,047.2	1,268.3	3,315.5	4,727.0

(a) Not available to start work in the survey week for reasons other than own temporary illness or injury.

TABLE 40: ESTIMATES OF LABOUR FORCE STATUS AND CROSS CHANGES (FLOWS) DERIVED FROM MATCHED RECORDS
 JULY 1984 AND AUGUST 1984
 ('000)

Labour force status in - July 1984	August 1984	Males	Females		Persons
			Married	Total	
Employed full time	Employed full time	2,973.4	579.5	1,143.6	4,116.9
	Employed part time	39.4	39.6	57.4	96.9
	Unemployed	32.4	*	13.0	45.4
	Not in the labour force	36.8	20.7	30.2	67.0
Employed part time	Employed full time	40.1	41.5	58.9	99.0
	Employed part time	131.3	456.5	613.0	744.3
	Unemployed	11.5	*	9.5	21.0
	Not in the labour force	26.2	54.1	72.0	98.3
Unemployed	Employed full time	30.5	*	15.7	46.2
	Employed part time	11.1	8.6	17.9	29.1
	Unemployed	213.8	35.6	106.3	320.1
	Not in the labour force	21.5	25.5	44.2	65.7
Not in the labour force	Employed full time	20.9	13.4	18.9	39.9
	Employed part time	14.4	52.2	68.1	82.5
	Unemployed	32.4	24.2	40.5	72.8
	Not in the labour force	939.3	1,540.5	2,408.0	3,347.3
Total flows into	Employed	77.0	77.8	120.7	197.6
	Full time	91.5	58.6	93.6	185.1
	Part time	65.0	100.4	143.5	208.5
	Unemployed	76.3	31.5	63.0	139.3
	Not in the labour force	84.6	100.4	146.4	231.0
Total flows out of	Employed	107.0	82.2	124.7	231.8
	Full time	108.7	63.2	100.6	209.3
	Part time	77.8	100.0	140.5	218.3
	Unemployed	63.1	37.8	77.8	141.0
	Not in the labour force	67.7	89.7	127.5	195.2
Total changes of status		237.8	209.7	330.1	567.9
Population represented by the matched sample		4,575.1	2,902.8	4,717.3	9,292.4

TECHNICAL NOTE

For more information on sample design, estimation procedure and reliability of the estimates, for current and earlier surveys, reference should be made to the Technical note in *The Labour Force, Australia, 1978* (6204.0).

Estimation procedure

2. The labour force estimates are derived from the population survey by use of a complex ratio estimation procedure, which ensures that the survey estimates conform to an independently estimated distribution of the population by age and sex, rather than to the age and sex distribution within the sample itself.

Reliability of the estimates

3. Two types of error are possible in an estimate based on a sample survey: sampling error and non-sampling error. The *sampling error* is a measure of the variability that occurs by chance because a sample, rather than the entire population, is surveyed. Since the estimates in this publication are based on information obtained from occupants of a sample of dwellings they, and the movements derived from them, are subject to sampling variability; that is, they may differ from the figures that would have been produced if all dwellings had been included in the surveys. One measure of the likely difference is given by the *standard error*, which indicates the extent to which an estimate might have varied by chance because only a sample of dwellings was included. There are about two chances in three that a sample estimate will differ by less than one standard error from the figure that would have been obtained if all dwellings had been included, and about nineteen chances in twenty that the difference will be less than two standard errors. The standard error can also be expressed as a percentage of the estimate, and this is known as the *relative standard error*.

4. Space does not allow for the separate indication of the standard errors of all estimates in this publication. Standard errors of estimates for the latest month and of estimates of movements since the previous month are shown in Table 1. Standard errors of other estimates and other monthly movements should be determined by using Tables A and B.

5. The size of the standard error increases with the level of the estimate, so that the larger the estimate the larger the standard error. However, it should be noted that the larger the sample estimate the smaller will be the standard error in percentage terms. Thus, larger sample estimates will be relatively more reliable than smaller estimates.

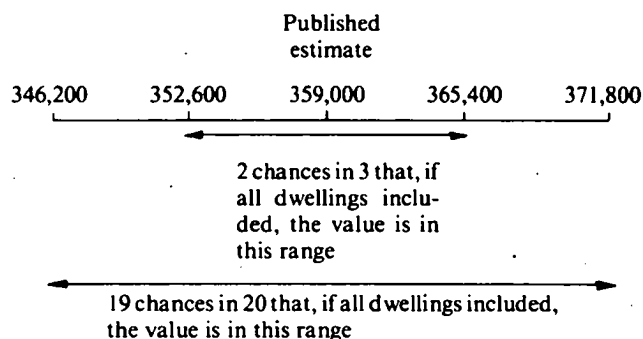
6. As the standard errors in Table A show, *the smaller the estimate the higher is the relative standard error*. Very small estimates are subject to such high standard errors (relative to the size of the estimate) as to detract seriously from their value for most reasonable uses. In the tables in this publication, estimates below the levels shown in Table C, and percentages based on such estimates, have not been included but are indicated with a '*'. Although figures for these small components can in some cases be derived by subtraction, they should not be regarded as reliable. See paragraph 9 concerning higher publication cut-off points for some estimates.

7. The movement in the level of an estimate is also subject to sampling variability. The standard error of the movement depends on the levels of the estimates from which the movement is obtained rather than the size of the movement. An indication of the magnitude of standard errors of monthly movements is given in Table B. The estimates of standard error of monthly movements apply only to estimates of movements between

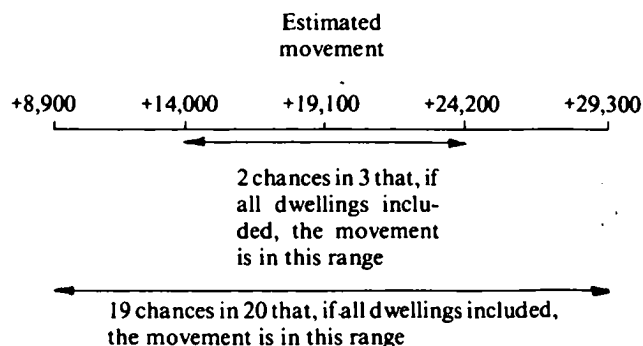
two consecutive months. Movements between corresponding months of consecutive quarters (quarterly movements), corresponding months of consecutive years (annual movements) and other non-consecutive months, will generally be subject to somewhat greater sampling variability than is indicated in Table B. Standard errors of *quarterly* movements can be obtained by multiplying the figures in Table B by 1.4. Standard errors of all *annual* movements can be obtained by multiplying the figures in Table A by 1.4. When using Table A or Table B to calculate standard errors of movements, refer to the larger of the two estimates from which the movement is derived.

8. Examples of the calculation and use of standard errors are given below:

- (a) From Table A it will be seen that the estimate of 359,000 unemployed males looking for full-time work in August 1984 has a standard error of about 6,400. Therefore there are about two chances in three that the number that would have been obtained if all dwellings had been included in the survey would have been within the range 352,600 to 365,400 and about nineteen chances in twenty that it would have been within the range 346,200 to 371,800.



- (b) The estimate of movement in the number of unemployed males looking for full-time work from July to August 1984 is an increase of 19,100. Table B relates the standard error of the monthly movement to the larger of the two estimates from which the movement is derived. In this case the August 1984 estimate (359,000) is the larger. From Table B it will be seen that the standard error of the monthly movement is about 5,100. Therefore there are about two chances in three that if all dwellings had been included in the surveys the movement would have been within the range +14,000 to +24,200 and about nineteen chances in twenty that it would have been within the range +8,900 to +29,300.



9. The relative standard errors of estimates of *aggregate hours worked*, *average hours worked*, *average duration of unemployment*, and *median duration of unemployment* are obtained by first finding the relative standard error of the estimate of the total number of persons contributing to the estimate (see Table A) and then multiplying the figure so obtained by the following relevant factors:

Aggregate hours worked: 1.2
 Average hours worked: 0.5
 Average duration of unemployment: 1.5
 Median duration of unemployment: 2.0

Publication cut-off points for these and other labour force estimates (see paragraph 6) are shown in Table C on the next page. Because of these higher relative standard errors, estimates of aggregate hours worked, average duration of unemployment, and median duration of unemployment have higher cut-off points for publication (see paragraph 6) than other estimates as shown in Table A.

10. An example of the calculation of standard errors by the use of these factors is as follows:

In August 1984 the estimate of median duration of unemployment for unemployed males was 27.0 weeks (from Table 34) and the number unemployed was estimated as 381,500. From Table A it can be estimated that this figure (381,500) has a standard error of about 6,500 and therefore a relative standard error of about 1.7 per cent. The *relative standard error* of the estimate of median duration of unemployment is calculated by multiplying this figure (1.7) by the appropriate factor shown in the previous paragraph (in this case 2.0): $1.7 \times 2.0 = 3.4$ per cent. The *standard error* of this estimate of

median duration of unemployment is therefore 3.4 per cent of 27.0, i.e. 0.9. Therefore there are about two chances in three that the median duration of unemployment for unemployed males that would have been obtained if all dwellings had been included in the survey would have been within the range 26.1 to 27.9 weeks and about nineteen chances in twenty that it would have been within the range 25.2 to 28.8 weeks.

11. The standard errors of estimates relating to agricultural employment are generally somewhat higher than the standard errors of other estimates of the same magnitude. Standard errors for capital cities are approximately the same as those for corresponding States.

12. The reliability of an estimated percentage or rate, computed by using sample data for both numerator and denominator, depends upon both the size of the numerator and the size of the denominator. However, the relative standard error of the estimated percentage will generally be slightly lower than the relative standard error of the estimate of the numerator. The relative standard errors of the numerators can be obtained from Table A.

13. The imprecision due to sampling variability, which is measured by the standard error, should not be confused with inaccuracies that may occur because of imperfections in reporting by respondents, errors made in collection such as in recording and coding of data, and errors made in processing the data. Inaccuracies of this kind are referred to as the *non-sampling error*, and they may occur in any enumeration, whether it be a full count or a sample. Every effort is made to reduce the non-sampling error to a minimum by careful design of questionnaires, intensive training and supervision of interviewers and efficient operating procedures.

TABLE A. STANDARD ERRORS OF ESTIMATES

Size of estimate	N.S.W.	Vic.	Qld	S.A.	W.A.	Tas.	N.T.	A.C.T.	Australia	
									— number —	per cent of estimate
1,000						250				
1,500						300				
1,800						330	440			
2,000						340	470	440		
2,500				510	540	380	510	480		
3,000				550	590	410	550	510		
3,500			740	590	630	430	590	540		
4,000			780	620	660	460	620	560		
4,500	1,000	1,000	820	650	700	480	650	590	970	21.6
5,000	1,100	1,100	860	680	730	500	680	610	1,000	20.0
6,000	1,200	1,200	930	730	790	530	740	650	1,100	18.0
10,000	1,500	1,400	1,200	900	970	640	910	750	1,400	14.0
20,000	2,000	1,900	1,500	1,200	1,300	810	1,200	910	2,000	10.0
50,000	3,000	2,700	2,200	1,600	1,700	1,100	1,700	1,100	2,900	5.8
100,000	3,900	3,500	2,800	2,100	2,200	1,300		1,300	3,900	3.9
200,000	5,000	4,400	3,600	2,600	2,700	1,500			5,100	2.6
300,000	5,800	5,000	4,100	2,900	3,000				6,000	2.0
500,000	6,900	5,800	4,800	3,300	3,500				7,200	1.4
1,000,000	8,500	7,000	5,900						9,100	0.9
2,000,000	10,000	8,400							11,000	0.6
5,000,000									15,000	0.3

TABLE B. STANDARD ERRORS OF ESTIMATES OF MONTHLY MOVEMENTS

<i>Size of larger estimate</i>	<i>N. S. W.</i>	<i>Vic.</i>	<i>Qld</i>	<i>S. A.</i>	<i>W. A.</i>	<i>Tas.</i>	<i>N. T.</i>	<i>A. C. T.</i>	<i>Australia</i>
1,000						210			
1,500						250			
1,800						260	370		
2,000						270	380	370	
2,500				490	520	290	420	390	
3,000				520	560	310	460	410	
3,500			730	540	590	330	490	430	
4,000			760	570	610	340	520	450	
4,500	1,100	1,100	790	590	640	360	550	460	1,100
5,000	1,100	1,100	820	610	660	370	570	480	1,200
6,000	1,200	1,200	880	650	700	390	620	500	1,200
10,000	1,400	1,400	1,000	760	830	460	760	570	1,500
20,000	1,800	1,700	1,300	930	1,000	550	1,000	670	2,000
50,000	2,500	2,300	1,700	1,200	1,300	690	1,400	790	2,700
100,000	3,200	2,800	2,100	1,400	1,600	810		880	3,400
200,000	3,900	3,300	2,500	1,700	1,900	920			4,300
300,000	4,400	3,700	2,800	1,900	2,100				4,900
500,000	5,100	4,200	3,200	2,100	2,300				5,700
1,000,000	6,100	4,900	3,800						6,800
2,000,000	7,200	5,600							8,200
5,000,000									10,000

TABLE C. PUBLICATION CUT-OFF POINTS FOR LABOUR FORCE ESTIMATES(a)

	<i>N. S. W.</i>	<i>Vic.</i>	<i>Qld</i>	<i>S. A.</i>	<i>W. A.</i>	<i>Tas.</i>	<i>N. T.</i>	<i>A. C. T.</i>	<i>Aust.</i>
<i>Estimates classified by—</i>									
Aggregate hours worked	5,400	5,400	4,200	3,000	3,000	1,200	2,200	2,400	5,400
Average hours worked	2,300	2,300	1,800	1,300	1,300	500	900	1,000	2,300
Average (mean) duration of unemployment	6,800	6,800	5,300	3,800	3,800	1,500	2,700	3,000	6,800
Median duration of unemployment	9,000	9,000	7,000	5,000	5,000	2,000	3,600	4,000	9,000
All other estimates	4,500	4,500	3,500	2,500	2,500	1,000	1,800	2,000	4,500

(a) See paragraphs 6 and 9, pages 34 and 35.

SUPPLEMENTARY AND SPECIAL SURVEYS RELATING TO THE LABOUR FORCE

Although emphasis in the population survey is placed on the regular collection of data on demographic and labour force characteristics, supplementary and special surveys of particular aspects of the labour force are carried out from time to time. The results of these surveys on labour force and related topics are published separately as shown below.

<i>Title of Publication</i>	<i>Catalogue No.</i>
Alternative Working Arrangements, Australia, March-May 1982	6341.0
Annual and Long Service Leave, August 1974; May 1979	6317.0
Assisted and Unassisted Migrants, August 1972; March 1980	3406.0
Career Paths of Persons with Trade Qualifications, Australia, September to November 1982	6243.0
Characteristics of Migrants Aged 18 Years and Over at Time of Arrival and who Arrived After 1960, Australia, March 1984, Preliminary	6249.0
Child Care—May 1969, 1973, 1977; June 1980	4402.0
Educational Experience and Intentions Survey, Australia, 1979	4212.0
Employed Married Women in the Labour Force, November 1979 (Queensland)	6203.3
Employment Benefits, February-May 1979, August 1983	6334.0
Employment Status of Teenagers, August 1978(a)	6234.0
Evening and Night Work, November 1976	6329.0
Frequency of Pay, August 1974, 1976 and 1977	6320.0
Income and Housing Survey, 1981-82—	
Income of Individuals	6502.0
Income Distribution, Australia: Income Units	6523.0
Job Tenure. Annually. Latest issue August 1976	6211.0
Journey to Work and Journey to School, May 1970; August 1974	9205.0
Labour Force Experience. Annually. Latest issue February 1983	6206.0
Preliminary, February 1984	6205.0
Labour Force Status and Educational Attainment, Australia. Annually. Latest issue February 1983	6235.0
Preliminary, February 1984	6240.0
Labour Force Status and Other Characteristics of Families. Annually. Latest issue July 1982	6224.0
Labour Mobility. Annually. Latest issue February 1983	6209.0
Preliminary, February 1984	6208.0
Methods of Obtaining Jobs, July 1982	6245.0
Migrants in the Labour Force, 1972 to 1976(a)	6230.0
Multiple Jobholding. Two-yearly. Latest issue August 1983	6216.0
Persons Retired from Full-time Work, Australia, September 1983	6238.0
Persons Aged 15 to 64 Years: Employment Status and Period Since Leaving School, May 1976	6225.0
Persons Not in the Labour Force, Australia. Twice-yearly. Latest issue September 1983	6220.0
Preliminary, March 1984	6219.0
Persons Looking for Work, Characteristics of. Annually. Latest issue July 1983	6222.0
Post School Qualifications of Tradesmen and Other Employed Persons, New South Wales, November 1979	6202.1
School Leavers, 1970 to 1974: Their Employment Status and Education Experience in May 1975	6226.0
Superannuation, Australia, February 1974; September to November 1982	6319.0
Survey of Persons Registered with the CES as Unemployed, March 1977	6229.0
The Labour Force: Country of Birth and Period of Residence, February 1972	6207.0
Trade Union Members, November 1976, March-May 1982	6325.0
Transition From Education to Work (Including leavers from schools, universities, and other educational institutions). Annually. Latest issue May 1983	6227.0
Preliminary, May 1984	6241.0
Weekly Earnings of Employees (Distribution). Annually. Latest issue August 1983	6310.0
Work Patterns of Employees, November 1976	6328.0
Working Conditions, February-May 1979	6335.0
Working Hours Arrangements, Australia, February-May 1981	6338.0
Supplementary Tables	6339.0

(a) Estimates derived from labour force surveys. For more recent estimates, see the relevant tables in this publication.