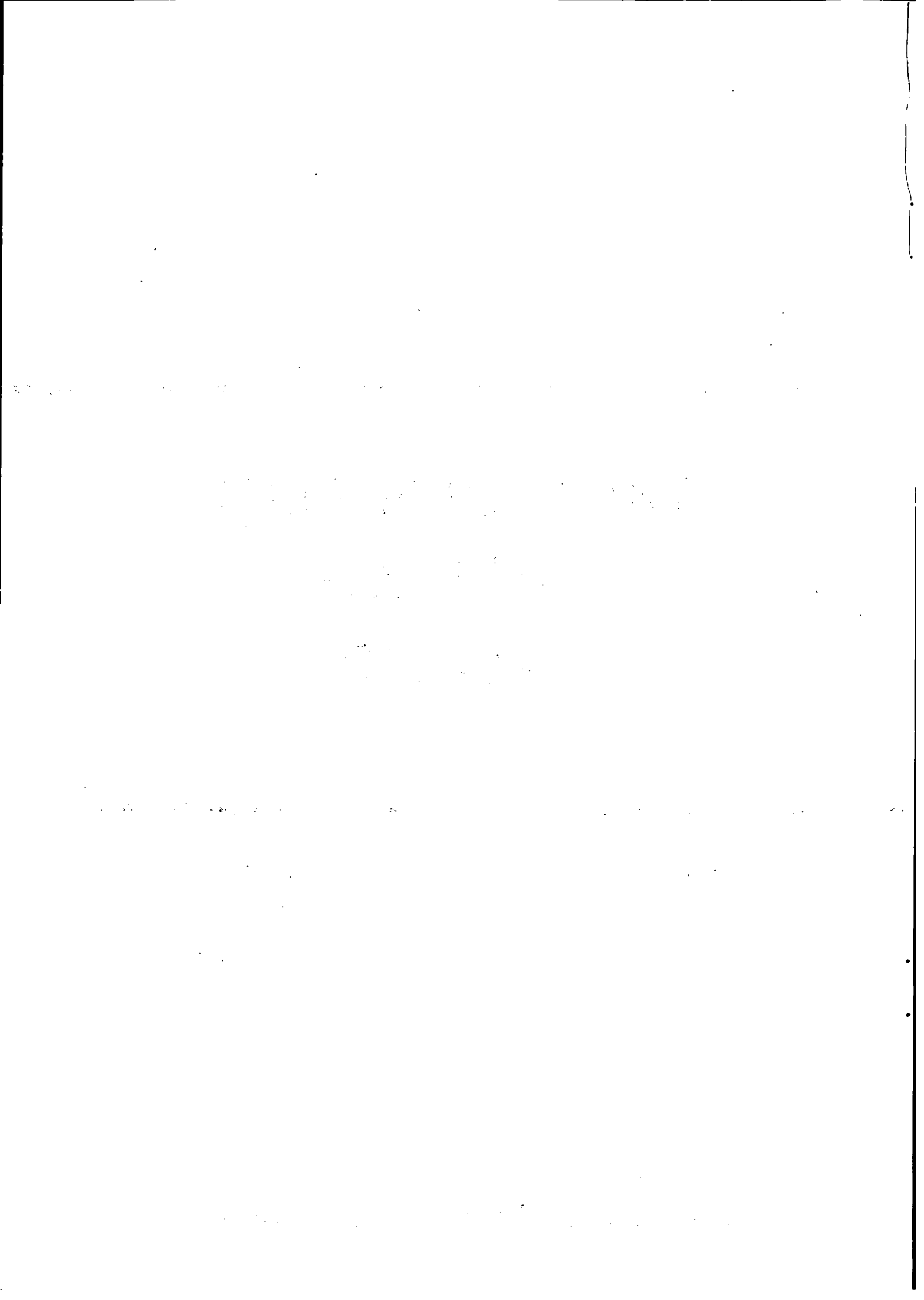

THE LABOUR FORCE
AUSTRALIA
MAY 1979

Catalogue No. 6203.0

AUSTRALIAN BUREAU OF STATISTICS Canberra



INQUIRIES

If you want to know more about these statistics, ring Mr Godfrey Laurie on Canberra 526565 or our State office, or write to Information Services, ABS, P.O. Box 10, Belconnen, A.C.T. 2616

For copies of this publication contact Information Services, Canberra 526627 or State offices.

CATALOGUE NO. 6203.0

NOON 12 JULY 1979

THE LABOUR FORCE, AUSTRALIA, MAY 1979

CONTENTS

<i>Table</i>	<i>Page</i>
1. LABOUR FORCE ESTIMATES	
.. Explanatory notes	2
.. Graphs	6
Civilian population aged 15 years and over: employment status	
1. Australia	7
2. Marital status : Australia	9
3. States and Territories	9
4. State capital cities	10
Civilian population aged 15 to 24 years (single years)	
5. Aged 15 to 19 years: employment status and whether attending school	11
6. Aged 20 to 24 years: employment status	11
Civilian labour force	
7. Employment status, birthplace and period of arrival in Australia	12
8. Seasonally adjusted series	13
9. Age	14
10. Participation rates, by age and birthplace	14
Employed persons	
11. Full-time and part-time status, by age	14
12. Occupation, major and minor groups	15
13. Average weekly hours worked, by industry and occupation	17
14. Married women, by industry and hours worked	17
15. Hours worked	18
16. Full-time workers who worked less than 35 hours, by reason	18
17. Part-time workers, whether preferred to work more hours, and whether looking for full-time work, by age	19
Unemployed persons	
18. Age : States	19
19. Whether looking for full-time or part-time work, by age	20
20. Age and birthplace	20
21. Duration of unemployment and age, etc.	21
22. Industry and occupation of last full-time job and duration of unemployment	22
23. Aged 15 to 19 years : duration of unemployment and whether attending school	23
Persons not in the labour force	
24. Age and marital status, etc.	23
Technical note	
Estimation procedure	24
Reliability of the estimates	24
Population survey reports	26
NOTE. Some additional labour force survey tables are included in other issues of this publication. For details see paragraph 34 of the explanatory notes.	
2. REGISTERED UNEMPLOYED, REGISTERED VACANCIES AND UNEMPLOYMENT BENEFIT RECIPIENTS	
25. Registered unemployed seeking full-time employment, and vacancies registered with the CES	27
26. Persons receiving unemployment benefit	27

1. LABOUR FORCE ESTIMATES

EXPLANATORY NOTES

Introduction

This section contains estimates of the civilian labour force derived from the population survey, which is now conducted monthly. Until February 1978, surveys were conducted in February, May, August and November each year.

2. A summary of the survey results is published in advance of this more detailed publication in *The Labour Force (Preliminary)* (6202.0). Preliminary unemployment estimates are also issued in advance of this publication in *Unemployment, Preliminary Estimates* (6201.0).

3. Although emphasis in the survey is placed on the regular collection of data on demographic and labour force characteristics of the population, supplementary surveys of particular aspects of the labour force or of other subjects are carried out from time to time. Statistics from supplementary surveys are published in publications which are available free on request. A list of titles is given on page 26.

The population survey

4. The survey is based on a multi-stage area sample of private dwellings (about 30,000 houses, flats, etc.) and non-private dwellings (hotels, motels, etc.), and covers about two-thirds of one per cent of the population of Australia. The information is obtained from the occupants of selected dwellings by carefully chosen and specially trained interviewers, the interviews generally being conducted during the two weeks beginning on the Monday between the 6th and 12th of each month. The information obtained relates to the week before the interview (i.e. the survey week). Because of operational problems arising from the Christmas and New Year holidays, the December 1978 survey commenced a week earlier than usual (i.e. on 4 December), but most interviews were conducted during the following week. The January 1979 survey commenced a week later than usual (i.e. on 15 January).

Scope

5. The survey includes all persons aged fifteen years and over except :

- (a) members of the permanent defence forces
- (b) certain diplomatic personnel of overseas governments, customarily excluded from census and estimated populations
- (c) non-Australians on tour or holidaying in Australia, and
- (d) members of non-Australian defence forces (and their dependants) stationed in Australia.

Definitions

6. The labour force category to which a person is assigned depends on his *actual activity* (i.e. whether working, looking for work, etc.) during the survey week. The following definitions, which conform closely to the international standard definitions specified by the ILO, relate only to those persons within the scope of the survey.

7. *Employed persons* comprise all those aged 15 years and over who, during the survey week :

- (a) worked for one hour or more for pay, profit, commission or payment in kind in a job or business, or on a farm (including employees, employers and self-employed persons); or
- (b) worked for 15 hours or more without pay in a family business or on a farm (i.e. unpaid family helper); or
- (c) were employees who had a job but were not at work and were : on paid leave; on leave without pay for less than four weeks up to the end of the survey week; stood down without pay because of bad weather or plant breakdown at their place of employment for less than four weeks up to the end of the survey week; on strike or locked out; on workers' compensation and expected to be returning to their job; or receiving wages or salary while undertaking full-time study; or
- (d) were employers or self-employed persons who had a job, business or farm, but were not at work.

8. *Unemployed persons* are those aged 15 years and over who were not employed during the survey week, and

- (a) had actively looked for full-time or part-time work at any time in the four weeks up to the end of the survey week and :
 - (i) were available for work in the survey week, or would have been available except for temporary illness (i.e. lasting for less than four weeks to the end of the survey week); or
 - (ii) were waiting to start a new job within four weeks from the end of the survey week and would have started in the survey week if the job had been available then;
- or (b) were waiting to be called back to a full-time or part-time job from which they had been stood down without pay for less than four weeks up

to the end of the survey week (including the whole of the survey week) for reasons other than bad weather or plant breakdown.

9. *Unemployed persons looking for first job* are those who had never worked for two weeks or more in a full-time job. Prior to November 1977 it comprises persons who had never had a job.

10. The *unemployment rate* for any group is the number unemployed expressed as a percentage of the labour force (i.e. employed plus unemployed) in the same group.

11. The *labour force* comprises all persons who, during the survey week, were employed or unemployed, as defined in paragraphs 7 and 8.

12. The *labour force participation rate* for any group is the labour force expressed as a percentage of the civilian population aged 15 years and over in the same group. Because it is not practicable to ascertain the birthplace of persons in institutions (who are classified as not in the labour force), labour force participation rates for persons classified by birthplace are calculated by using population estimates which exclude those in institutions.

13. *Full-time workers* are those who usually work 35 hours a week or more and others who, although usually part-time workers, worked 35 hours or more during the survey week. *Part-time workers* are those who usually work less than 35 hours a week and who did so during the survey week. When recording hours of work, fractions of an hour are disregarded.

14. *Hours of work.* The figures of aggregate hours and of average hours refer to actual hours worked during the survey week, not hours paid for. The figures may be affected by public holidays, leave, absenteeism; temporary absence from work due to sickness, injury, accident and industrial disputes; and stoppages of work due to bad weather, plant breakdown etc. When hours of work are recorded fractions of an hour are disregarded and this results in slightly lower figures than would be the case if actual time worked was recorded. Persons stood down for the whole of the survey week without pay because of bad weather or plant breakdown at their place of employment are regarded as employed and therefore are included (working no hours) in the calculation of average hours worked. Persons stood down in the survey week for reasons other than bad weather and plant breakdown and waiting to be called back to their job are regarded as unemployed and are therefore excluded from the calculation.

15. *Persons attending school* comprise those who, during the survey week, were enrolled full-time at secondary or high schools. Excluded are persons who were enrolled at universities, colleges of advanced education, technical colleges, other tertiary education institutions, and coaching and business schools. Persons attending school are classified as in the labour force if they were employed or unemployed as defined in paragraphs 7 and 8.

16. *Persons not in the labour force* are those who, during the survey week, were not in the categories 'employed' or 'unemployed'. This category includes persons who were keeping house (unpaid), attending an educational institution (school, university, etc.), retired, voluntarily inactive, permanently unable to work, inmates of institutions, trainee teachers, members of contemplative religious orders, and persons whose only activity during the survey week was jury service or unpaid voluntary work for a charitable organisation, provided they had not actively looked for work in the four weeks up to the end of the survey week, and

(a) in the survey week :

- (i) were without a job, business or farm; or
- (ii) had worked for less than one hour for pay, profit, commission or payment in kind; or
- (iii) had worked for less than 15 hours without pay in a family business or farm;

or (b) had been stood down without pay for four weeks or more up to the end of the survey week.

Classification of industry and occupation

17. Industry is classified according to the *Australian Standard Industrial Classification (ASIC) 1969* and occupation according to the *Classification and Classified List of Occupations, Revised June 1976*.

Population benchmarks

18. The population survey estimates are calculated in such a way as to conform to the independently estimated distribution of the population aged 15 years and over by age and sex. These independent estimates (benchmarks) are necessarily derived from incomplete information about population changes (deaths, internal and overseas migration) and can differ from estimates of the population subsequently published by the ABS. For estimates of the population and other demographic statistics reference should be made to the quarterly bulletin, *Population and Vital Statistics (3212.0)*.

Revision of series

19. Survey estimates are not revised for the usually small amendments of population benchmarks arising from new data on deaths and migration. Revisions are made, however, after each census and when population estimation bases are reviewed. Survey estimates back to August 1966 have been recalculated to conform to revised population estimates. The estimates take account of results of the 1966, 1971 and 1976 population censuses, including estimates of under-enumeration, and incorporate a revised method of measuring overseas migration gain (i.e. by excluding movements of less than one year's duration). For information concerning these population estimates for the period June 1971 to June 1977 see *Population and Vital Statistics : June Quarter 1977 (3212.0)*.

20. *The new sample and revised questionnaire.* Survey estimates for February 1978 and subsequent months have been obtained by using a new sample and

revised questionnaire. Estimates for the period August 1966 to November 1977 have been revised in order to provide a series for earlier periods as comparable as possible with the February 1978 and later estimates.

21. The new sample was selected in order to reflect the changes in the distribution of the population shown by the 1976 Population Census results. The questionnaire, which had undergone little change since 1960 except for the inclusion in 1975 of additional questions on job-seeking, was revised to provide more accurate and more detailed information concerning the labour force.

22. Copies of both the current questionnaire and the one previously used, together with a description of the main features of the questionnaire, are contained in *Information Paper : Questionnaires used in the Labour Force Survey (6232.0)*.

23. Revised estimates for the period August 1976 to November 1977 were published in the February 1978 issue of this publication, which also contains information concerning the methods used in the revision. For periods prior to August 1976 detailed revised estimates are available for August of each year. For February, May and November only broad revised aggregates (as in Table 1) are available. Revised estimates by States and Territories for each August, 1971 to 1978 were published in the December 1978 issue of this publication. State estimates are not available for periods prior to August 1971.

Comparability of series

24. When comparing estimates for February 1978 and subsequent months with those for earlier periods it should be noted that with the introduction of monthly surveys the interviews are now conducted during a two-week period, whereas formerly the period was four weeks. This change of timing may affect the level of the figures for any month, but particularly for months during which the employment status of the population may be changing rapidly.

25. Because of the revisions, the estimates in this publication are not comparable with those shown in issues before February 1978 or in the special publications entitled *The Labour Force (6204.0)*, covering the period 1964 to 1977.

26. The survey periods for February in the years 1971, 1972, 1974 and 1976 were later than in other years, and as a consequence the estimates of the proportion of the population 15 years and over who attended school was correspondingly higher. In addition, in February 1974 the survey period in Queensland was delayed by a further week in order to avoid as far as possible the effects of the flood in the south-east area of the State.

27. Because of the effects of cyclone Tracy the population survey was not conducted in Darwin in February 1975. The estimates for this period therefore exclude Darwin.

Reliability of the estimates

28. Since the estimates in this section are based on information obtained from occupants of a sample of dwellings they are subject to sampling variability; that is, they may differ from the figures that would have been produced if all dwellings had been included in the survey. An indication of the likely differences is given in the Technical Note, page 24.

Differences between population census and population survey estimates

29. The results of the 1976 population census show that the census labour force figures differ from the estimates derived from the population surveys of May and August 1976.

30. The labour force definition used in the population census is similar to that used in the survey (see paragraphs 6 to 16). However, evidence from census post-enumeration surveys indicates that the personal interview approach, as used in the population survey, tends to identify a larger number of persons as being in the labour force than does the filling in of the questions on the census schedule by the householder. In addition, the post-enumeration survey following the 1976 census showed an under-enumeration of the population of 2.71 per cent. The published census labour force figures have not been adjusted for any under-enumeration.

31. These considerations should be borne in mind if comparisons of the total labour force or of labour force participation rates are made between the 1976 census and the 1976 labour force survey estimates.

Seasonally adjusted estimates

32. The move to the higher level of unemployment since 1974 appears to have been accompanied by shifts in the pattern of seasonal variation. For this reason the publication of seasonally adjusted figures of unemployment was suspended as from November 1977. The matter will be kept under review.

33. Seasonally adjusted quarterly estimates of employed persons, the labour force and labour force participation rates are published in the February, May, August and November issues. Calculation of seasonally adjusted monthly figures will not be possible until results of monthly surveys for two or three years are available. A table of revised seasonally adjusted figures for the period August 1966 to February 1979 was published in the February 1979 issue.

Additional tables

34. Labour force estimates for employed persons classified by industry and occupation and for seasonally adjusted series, are available only each quarter. Estimates relating to these characteristics are included in only some issues of this publication, as shown below.

February, May, August and November –
Average weekly hours worked : Industry and occupation

Employed married women : Industry and hours worked

Seasonally adjusted series.

The following estimates are available for February, May, August and November but are published only for the months shown.

February –

- Employed persons –
 - Industry and marital status
 - Industry and birthplace
 - Occupation and marital status
 - Occupation and birthplace.

May –

- Employed persons : Occupation – major and minor groups.

August –

- Employed persons : Industry by occupation.

Other unpublished data from labour force surveys may be available on request.

Related publications

35. Users may also wish to refer to the following publications which are available on request :

Unemployment : Preliminary Estimates (6201.0)

The Labour Force (Preliminary) (6202.0)

Information Paper : Questionnaires used in the Labour Force Survey (6232.0)

Civilian Employees (6213.0)

Publications listed on page 26

All publications produced by the ABS are listed in *Catalogue of Publications* (1101.0), which is available free of charge from any ABS office.

Symbols and other usages

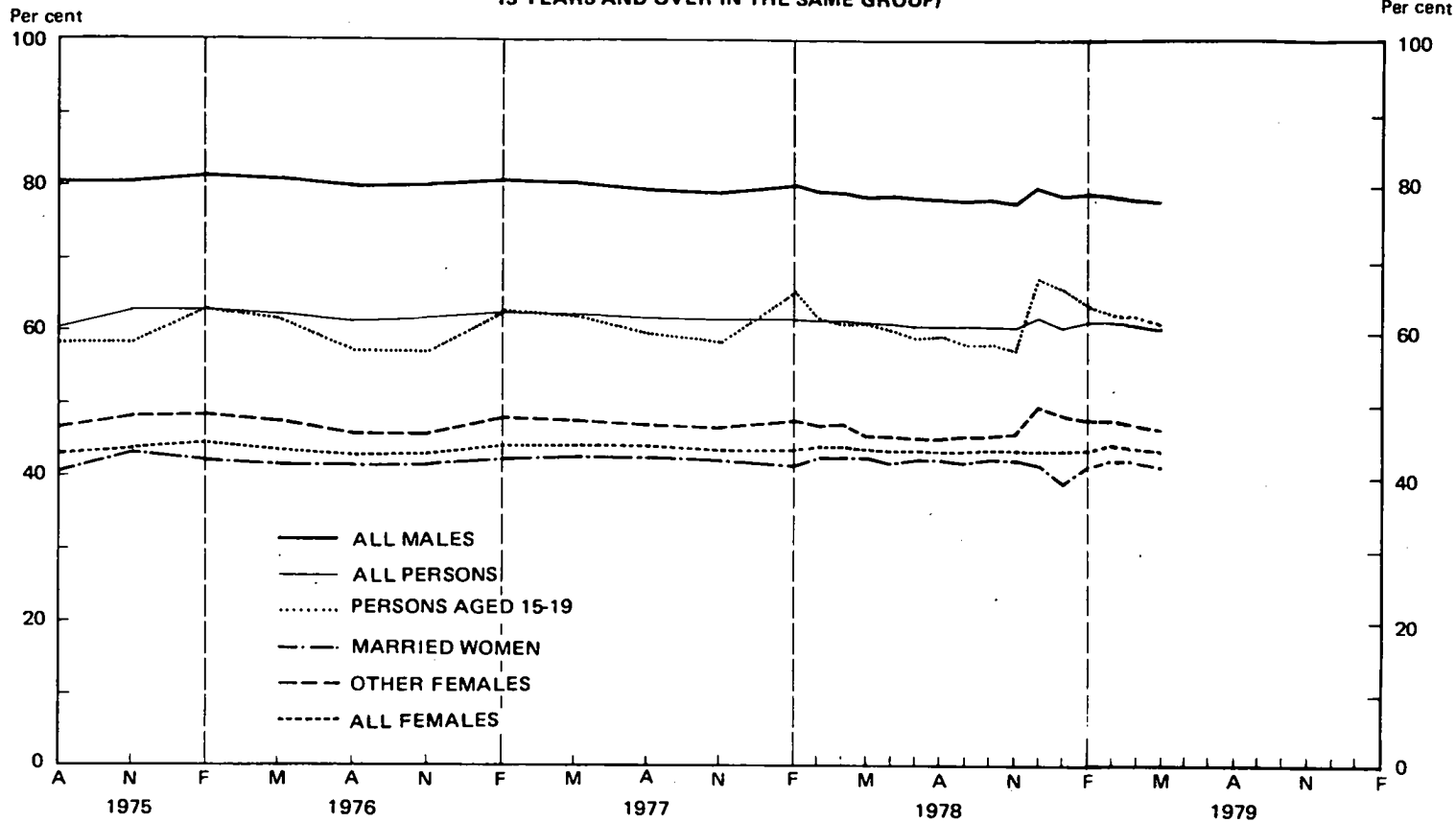
- * Subject to sampling variability too high for most practical uses. See paragraph 5, page 24
- n.a. Not available.
- .. Not applicable.
- n.e.c. Not elsewhere classified.
- (where a line drawn across a column between two consecutive figures) break in continuity of series.

Figures have been rounded, and discrepancies may occur between sums of the component items and totals.

R.J. CAMERON
Australian Statistician

LABOUR FORCE PARTICIPATION RATES

(THE LABOUR FORCE IN EACH GROUP AS A PERCENTAGE OF THE CIVILIAN POPULATION AGED 15 YEARS AND OVER IN THE SAME GROUP)



NOTE. From February 1978 the population survey has been conducted monthly. Previously, surveys were conducted in February, May, August and November each year.

UNEMPLOYMENT RATES

(THE UNEMPLOYED IN EACH GROUP AS A PERCENTAGE OF THE CIVILIAN LABOUR FORCE IN THE SAME GROUP)

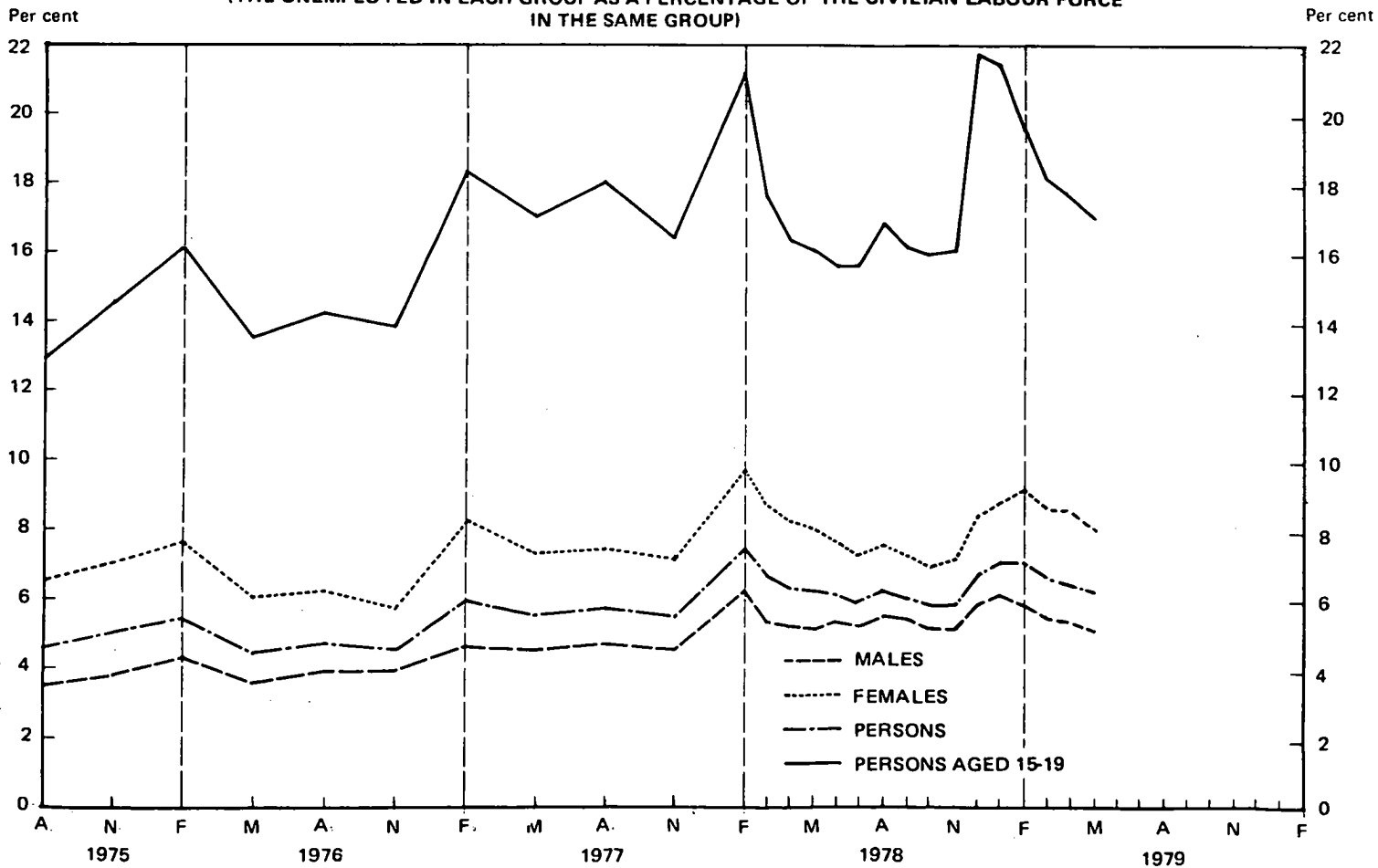


TABLE 1. CIVILIAN POPULATION AGED 15 YEARS AND OVER, BY EMPLOYMENT STATUS (a)

Month	Unemployed									
	Employed	Looking for full-time work		Looking for part-time work		Labour force	Not in labour force	Civilian population aged 15 years and over	Unemployment rate	Participation rate
		Aged 15-19 years looking for first job	Total	Total	Total					
		- '000 -								
MALES										
1978 -										
April	3,867.7	21.9	196.2	14.6	210.9	4,078.5	1,073.9	5,152.4	5.2	79.2
May	3,863.5	18.0	194.8	14.4	209.1	4,072.6	1,087.2	5,159.8	5.1	78.9
June	3,860.0	16.7	205.4	11.3	216.7	4,076.7	1,091.0	5,167.7	5.3	78.9
July	3,848.2	14.1	202.4	8.7	211.1	4,059.3	1,114.8	5,174.1	5.2	78.5
August	3,832.3	18.1	207.3	14.2	221.5	4,053.8	1,126.6	5,180.4	5.5	78.3
September	3,840.9	19.9	204.7	13.4	218.1	4,059.0	1,126.9	5,186.0	5.4	78.3
October	3,854.7	19.1	194.0	13.9	207.9	4,062.7	1,128.5	5,191.1	5.1	78.3
November	3,846.1	18.0	191.0	15.4	206.4	4,052.4	1,147.5	5,199.9	5.1	77.9
December	3,923.7	40.4	219.9	21.6	241.6	4,165.3	1,048.9	5,214.1	5.8	79.9
1979 -										
January	3,869.2	42.4	235.2	14.8	250.0	4,119.3	1,098.9	5,218.2	6.1	78.9
February	3,893.6	33.0	229.5	12.3	241.8	4,135.4	1,091.9	5,227.3	5.8	79.1
March	3,904.2	24.1	206.6	16.5	223.1	4,127.4	1,111.3	5,238.6	5.4	78.8
April	3,907.4	25.6	202.1	15.1	217.2	4,124.6	1,120.6	5,245.2	5.3	78.6
May	3,908.3	22.0	197.7	13.0	210.6	4,118.9	1,132.4	5,251.3	5.1	78.4
Standard error of -										
May 1979 estimates	13.8	2.1	5.1	1.6	5.2	14.0	9.4	..	0.1	0.3
April to May 1979 movement	9.7	2.2	4.3	1.8	4.4	9.8	7.1	..	0.1	0.2
MARRIED WOMEN										
1978 -										
April	1,354.0	*	47.5	35.4	82.9	1,437.0	1,956.2	3,393.2	5.8	42.4
May	1,356.5	*	49.8	34.1	83.9	1,440.4	1,958.7	3,399.1	5.8	42.4
June	1,345.4	*	46.0	34.5	80.5	1,425.9	1,977.6	3,403.5	5.6	41.9
July	1,368.7	*	44.1	28.2	72.4	1,441.1	1,967.8	3,408.9	5.0	42.3
August	1,357.7	*	47.0	30.3	77.2	1,434.9	1,977.5	3,412.4	5.4	42.1
September	1,358.9	*	40.5	29.9	70.4	1,429.3	1,979.2	3,408.5	4.9	41.9
October	1,368.7	*	38.7	28.2	66.9	1,435.6	1,971.3	3,406.9	4.7	42.1
November	1,373.4	*	34.9	28.5	63.4	1,436.8	1,983.6	3,420.5	4.4	42.0
December	1,373.6	*	31.5	24.0	55.5	1,429.2	2,006.7	3,435.9	3.9	41.6
1979 -										
January	1,281.6	*	38.4	25.4	63.8	1,345.4	2,101.9	3,447.4	4.7	39.0
February	1,346.1	*	45.5	40.3	85.7	1,431.8	2,024.9	3,456.7	6.0	41.4
March	1,364.7	*	48.2	36.6	84.8	1,449.5	2,002.7	3,452.1	5.8	42.0
April	1,358.5	*	45.4	38.1	83.5	1,442.0	2,007.9	3,449.9	5.8	41.8
May	1,356.3	*	40.0	32.2	72.2	1,428.5	2,035.9	3,464.4	5.1	41.2
Standard error of -										
May 1979 estimates	10.0	..	2.7	2.4	3.4	10.2	11.4	..	0.2	0.3
April to May 1979 movement	7.4	..	2.6	2.5	3.2	7.6	8.3	..	0.2	0.2

For footnotes see page 8.

TABLE 1. CIVILIAN POPULATION AGED 15 YEARS AND OVER, BY EMPLOYMENT STATUS (a) - continued

Month	Unemployed									
	Employed	Looking for full-time work		Looking for part-time work	Total	Labour force	Not in labour force	Civilian population aged 15 years and over	Unemployment rate	Participation rate
		Aged 15-19 years looking for first job	Total							
- '000 -					- per cent -					
ALL FEMALES										
1978 -										
April	2,136.1	24.5	137.3	53.0	190.3	2,326.4	2,951.7	5,278.0	8.2	44.1
May	2,135.3	23.9	136.8	49.3	186.2	2,321.4	2,964.5	5,285.9	8.0	43.9
June	2,131.9	18.0	125.2	50.5	175.6	2,307.5	2,987.6	5,295.1	7.6	43.6
July	2,149.8	17.8	123.0	43.9	166.9	2,316.8	2,984.8	5,301.6	7.2	43.7
August	2,137.2	20.8	125.3	48.9	174.2	2,311.5	2,997.3	5,308.7	7.5	43.5
September	2,144.1	19.3	120.1	46.3	166.4	2,310.5	3,003.4	5,313.9	7.2	43.5
October	2,151.9	17.4	111.9	47.7	159.6	2,311.5	3,007.6	5,319.0	6.9	43.5
November	2,151.2	20.3	117.9	45.5	163.3	2,314.6	3,014.5	5,329.1	7.1	43.4
December	2,173.8	47.1	153.9	45.8	199.7	2,373.5	2,970.9	5,344.3	8.4	44.4
1979 -										
January	2,070.7	45.3	155.9	40.2	196.1	2,266.8	3,081.1	5,347.9	8.7	42.4
February	2,125.4	36.1	152.2	59.9	212.1	2,337.5	3,019.6	5,357.1	9.1	43.6
March	2,157.4	30.8	146.9	54.9	201.8	2,359.2	3,006.5	5,365.7	8.6	44.0
April	2,149.0	30.0	144.2	55.3	199.5	2,348.5	3,027.2	5,375.7	8.5	43.7
May	2,135.0	28.9	137.5	48.5	186.0	2,321.0	3,061.3	5,382.3	8.0	43.1
<i>Standard error of -</i>										
<i>May 1979 estimates</i>	11.5	2.3	4.4	2.9	5.0	11.8	12.9	..	0.2	0.2
<i>April to May 1979 movement</i>	8.4	2.3	3.9	2.8	4.3	8.6	9.1	..	0.2	0.2
PERSONS										
1978 -										
April	6,003.8	46.5	333.5	67.6	401.1	6,404.9	4,025.6	10,430.5	6.3	61.4
May	5,998.7	41.8	331.6	63.7	395.3	6,394.0	4,051.7	10,445.7	6.2	61.2
June	5,991.9	34.6	330.5	61.8	392.3	6,384.2	4,078.6	10,462.8	6.1	61.0
July	5,998.1	31.9	325.4	52.6	378.0	6,376.1	4,099.6	10,475.7	5.9	60.9
August	5,969.6	38.9	332.6	63.1	395.7	6,365.3	4,123.8	10,489.1	6.2	60.7
September	5,985.1	39.2	324.8	59.7	384.5	6,369.6	4,130.3	10,499.9	6.0	60.7
October	6,006.6	36.5	305.9	61.6	367.5	6,374.1	4,136.1	10,510.2	5.8	60.6
November	5,997.3	38.3	308.8	60.9	369.7	6,367.0	4,162.0	10,529.1	5.8	60.5
December	6,097.5	87.5	373.8	67.4	441.2	6,538.7	4,019.8	10,558.5	6.7	61.9
1979 -										
January	5,939.9	87.7	391.1	55.0	446.2	6,386.1	4,180.0	10,566.1	7.0	60.4
February	6,018.9	69.1	381.7	72.3	453.9	6,472.9	4,111.5	10,584.4	7.0	61.2
March	6,061.6	54.9	353.5	71.4	425.0	6,486.6	4,117.7	10,604.3	6.6	61.2
April	6,056.4	55.6	346.4	70.4	416.8	6,473.1	4,147.8	10,621.0	6.4	60.9
May	6,043.3	51.0	335.1	61.4	396.6	6,439.9	4,193.6	10,633.5	6.2	60.6
<i>Standard error of -</i>										
<i>May 1979 estimates</i>	15.6	3.0	6.2	3.2	6.6	15.9	14.1	..	0.1	0.1
<i>April to May 1979 movement</i>	10.7	2.8	5.1	3.1	5.4	10.9	9.8	..	0.1	0.1

(a) For scope of estimates see paragraph 5. For definitions see paragraphs 6 to 16. For information on standard errors see Technical Note, page 24.

TABLE 2. CIVILIAN POPULATION AGED 15 YEARS AND OVER, BY EMPLOYMENT STATUS AND MARITAL STATUS, MAY 1979 (a)

	Unemployed			Total	Labour force	Not in labour force	Civilian population aged 15 years and over	Unemployment rate	Participation rate
	Employed	Looking for full-time work	Looking for part-time work						
				- '000 -					
					- per cent -				
Males -									
Married	2,747.0	67.2	*	70.8	2,817.9	615.4	3,433.3	2.5	82.1
Other (b)	1,161.2	130.5	9.3	139.8	1,301.0	517.0	1,818.0	10.7	71.6
Total	3,908.3	197.7	13.0	210.6	4,118.9	1,132.4	5,251.3	5.1	78.4
Females -									
Married	1,356.3	40.0	32.2	72.2	1,428.5	2,035.9	3,464.4	5.1	41.2
Other (b)	778.7	97.5	16.3	113.8	892.5	1,025.4	1,917.9	12.7	46.5
Total	2,135.0	137.5	48.5	186.0	2,321.0	3,061.3	5,382.3	8.0	43.1
Persons	6,043.3	335.1	61.4	396.6	6,439.9	4,193.6	10,633.5	6.2	60.6

For footnotes see below.

TABLE 3. CIVILIAN POPULATION AGED 15 YEARS AND OVER, BY EMPLOYMENT STATUS, STATES AND TERRITORIES, MAY 1979 (a)

State or Territory	Unemployed			Total	Labour force	Not in labour force	Civilian population aged 15 years and over	Unemployment rate	Participation rate
	Employed	Looking for full-time work	Looking for part-time work						
				- '000 -					
					- per cent -				
MALES									
N.S.W.	1,365.4	73.9	*	77.9	1,443.3	415.7	1,859.0	5.4	77.6
Vic.	1,050.5	42.6	*	46.6	1,097.0	299.8	1,396.8	4.2	78.5
Qld	590.8	28.9	*	30.9	621.7	175.4	797.0	5.0	78.0
S.A.	352.4	22.1	*	23.4	375.8	101.6	477.3	6.2	78.7
W.A.	346.2	19.3	*	20.2	366.4	90.8	457.2	5.5	80.1
Tas.	112.8	6.2	*	6.3	119.1	31.5	150.6	5.3	79.1
N.T.	34.5	*	*	*	35.7	5.9	41.6	*	85.9
A.C.T.	55.8	3.4	*	4.1	59.9	11.8	71.7	6.9	83.6
Australia	3,908.3	197.7	13.0	210.6	4,118.9	1,132.4	5,251.3	5.1	78.4
FEMALES									
N.S.W.	735.6	47.5	14.6	62.1	797.7	1,123.3	1,921.1	7.8	41.5
Vic.	602.4	31.0	13.3	44.4	646.7	798.4	1,445.1	6.9	44.8
Qld	298.7	21.7	8.2	29.9	328.5	483.9	812.4	9.1	40.4
S.A.	200.3	16.5	4.6	21.1	221.4	271.8	493.2	9.5	44.9
W.A.	187.1	13.6	4.6	18.2	205.3	242.7	448.0	8.9	45.8
Tas.	60.0	3.8	*	4.9	64.9	88.7	153.6	7.5	42.3
N.T.	13.9	*	*	*	15.6	17.2	32.8	*	47.6
A.C.T.	37.2	*	*	3.7	40.9	35.1	76.0	9.0	53.8
Australia	2,135.0	137.5	48.5	186.0	2,321.0	3,061.3	5,382.3	8.0	43.1
PERSONS									
N.S.W.	2,101.0	121.5	18.6	140.1	2,241.1	1,539.0	3,780.1	6.3	59.3
Vic.	1,652.8	73.7	17.3	90.9	1,743.8	1,098.2	2,841.9	5.2	61.4
Qld	889.4	50.6	10.2	60.8	950.2	659.3	1,609.5	6.4	59.0
S.A.	552.7	38.7	5.8	44.5	597.2	373.4	970.6	7.5	61.5
W.A.	533.2	33.0	5.5	38.4	571.6	333.6	905.2	6.7	63.2
Tas.	172.8	10.0	*	11.2	184.0	120.2	304.2	6.1	60.5
N.T.	48.4	2.6	*	2.9	51.3	23.1	74.4	5.7	69.0
A.C.T.	93.0	5.2	2.5	7.8	100.7	46.9	147.7	7.7	68.2
Australia	6,043.3	335.1	61.4	396.6	6,439.9	4,193.6	10,633.5	6.2	60.6

(a) For scope of estimates see paragraph 5. For definitions see paragraphs 6 to 16. (b) Never married, widowed and divorced.

TABLE 4. CIVILIAN POPULATION AGED 15 YEARS AND OVER, BY EMPLOYMENT STATUS,
STATE CAPITAL CITIES, MAY 1979 (a)

Capital City	Employed	Unemployed			Labour force	Not in labour force	Civilian population aged 15 years and over	Unemployment rate	Participation rate
		Looking for full-time work	Looking for part-time work	Total					
- '000 -					- per cent -				
MALES									
Sydney	871.5	43.3	*	46.1	917.6	257.9	1,175.5	5.0	78.1
Melbourne	753.0	30.5	*	34.1	787.1	210.2	997.3	4.3	78.9
Brisbane	271.4	12.6	*	14.1	285.5	81.3	366.8	4.9	77.8
Adelaide	246.1	18.6	*	19.6	265.7	78.0	343.7	7.4	77.3
Perth	231.7	13.7	*	14.3	246.0	67.5	313.5	5.8	78.5
Hobart	43.8	3.5	*	3.6	47.4	13.6	61.0	7.6	77.8
<i>Total</i>	<i>2,417.5</i>	<i>122.3</i>	<i>9.5</i>	<i>131.8</i>	<i>2,549.3</i>	<i>708.5</i>	<i>3,257.8</i>	<i>5.2</i>	<i>78.3</i>
FEMALES									
Sydney	521.9	24.9	9.1	34.0	555.9	692.3	1,248.2	6.1	44.5
Melbourne	456.1	21.5	11.3	32.7	488.8	556.4	1,045.2	6.7	46.8
Brisbane	153.2	9.1	*	12.4	165.6	228.9	394.5	7.5	42.0
Adelaide	147.4	12.5	3.6	16.1	163.5	203.0	366.5	9.9	44.6
Perth	139.9	9.8	3.8	13.5	153.4	176.2	329.6	8.8	46.5
Hobart	27.3	*	*	2.1	29.4	33.5	62.8	7.1	46.7
<i>Total</i>	<i>1,445.8</i>	<i>79.1</i>	<i>31.7</i>	<i>110.8</i>	<i>1,556.6</i>	<i>1,890.3</i>	<i>3,446.8</i>	<i>7.1</i>	<i>45.2</i>
PERSONS									
Sydney	1,393.4	68.2	11.8	80.0	1,473.5	950.2	2,423.7	5.4	60.8
Melbourne	1,209.1	52.0	14.8	66.8	1,275.9	766.6	2,042.5	5.2	62.5
Brisbane	424.6	21.8	4.7	26.5	451.1	310.2	761.3	5.9	59.3
Adelaide	393.5	31.1	4.7	35.7	429.2	281.0	710.2	8.3	60.4
Perth	371.6	23.5	4.4	27.9	399.4	243.7	643.1	7.0	62.1
Hobart	71.1	4.8	*	5.7	76.8	47.0	123.8	7.4	62.0
<i>Total</i>	<i>3,863.3</i>	<i>201.4</i>	<i>41.2</i>	<i>242.6</i>	<i>4,105.9</i>	<i>2,598.8</i>	<i>6,704.6</i>	<i>5.9</i>	<i>61.2</i>

(a) For scope of estimates see paragraph 5. For definitions see paragraphs 6 to 16.

TABLE 5. CIVILIAN POPULATION AGED 15 TO 19 YEARS, BY EMPLOYMENT STATUS, MAY 1979 (a)

	Unemployed			Total	Labour force	Not in labour force	Civilian population	Unemployment rate	Participation rate
	Employed	Looking for full-time work	Looking for part-time work						
- '000 -									
NOT ATTENDING SCHOOL									
Males	320.6	50.9	*	52.9	373.5	50.8	424.3	14.2	88.0
Females	250.8	59.0	*	62.6	313.4	88.3	401.6	20.0	78.0
Persons	571.4	109.9	5.6	115.5	686.8	139.1	826.0	16.8	83.2
Left school -									
Before 1977	226.1	37.7	*	39.0	265.0	46.2	311.2	14.7	85.2
1977	176.1	26.6	*	28.3	204.4	37.9	242.3	13.8	84.4
1978 to survey date	169.2	45.6	*	48.2	217.4	55.1	272.5	22.2	79.8
Age (years) -									
15	20.2	6.7	*	6.8	27.0	8.0	34.9	25.3	77.2
16	77.0	23.5	*	24.4	101.3	14.9	116.2	24.1	87.2
17	124.9	30.2	*	30.7	155.7	25.0	180.7	19.7	86.2
18	173.3	25.5	*	27.3	200.6	43.0	243.6	13.6	82.4
19	176.1	24.0	*	26.2	202.2	48.3	250.6	12.9	80.7
ATTENDING SCHOOL									
Males	36.3	*	*	6.7	43.0	187.7	230.7	15.6	18.6
Females	40.2	*	8.2	10.4	50.6	176.8	227.4	20.5	22.2
Persons	76.5	4.8	12.2	17.1	93.6	364.5	458.1	18.2	20.4
Age (years) -									
15	31.7	*	5.6	7.1	38.8	182.0	220.7	18.3	17.6
16	24.9	*	4.6	6.6	31.5	112.5	144.0	20.9	21.9
17	16.5	*	*	*	19.3	58.7	77.9	*	24.7
18 and 19	*	*	*	*	*	11.4	15.4	*	*

(a) For scope of estimates see paragraph 5. For definitions see paragraphs 6 to 16. For information on duration of unemployment see Table 23.

TABLE 6. CIVILIAN POPULATION AGED 20 TO 24 YEARS, BY EMPLOYMENT STATUS, MAY 1979 (a)

	Unemployed			Total	Labour force	Not in labour force	Civilian population	Unemployment rate	Participation rate
	Employed	Looking for full-time work	Looking for part-time work						
- '000 -									
- per cent -									
Males	499.6	46.5	*	48.6	548.2	53.7	601.9	8.9	91.1
Females	373.7	32.8	8.2	41.1	414.8	185.8	600.6	9.9	69.1
Persons	873.3	79.4	10.3	89.7	963.0	239.5	1,202.4	9.3	80.1
Age (years) -									
20	184.5	16.9	*	19.1	203.6	46.8	250.4	9.4	81.3
21	171.4	21.2	*	23.7	195.2	44.8	240.0	12.2	81.3
22	173.1	18.2	*	20.1	193.2	46.3	239.5	10.4	80.7
23	180.2	11.8	*	14.2	194.4	47.8	242.2	7.3	80.3
24	164.1	11.3	*	12.6	176.7	53.8	230.4	7.1	76.7

(a) For scope of estimates see paragraph 5. For definitions see paragraphs 6 to 16.

TABLE 7. CIVILIAN LABOUR FORCE, BY EMPLOYMENT STATUS, BIRTHPLACE AND PERIOD OF ARRIVAL IN AUSTRALIA, MAY 1979 (a)

	Employed		Unemployed		Labour force	Unemployment rate	Participation rate (b)
	Full-time	Total	Looking for full-time work	Total			
- '000 -					- per cent -		
MALES							
Born in Australia	2,700.7	2,867.7	145.3	155.4	3,023.1	5.1	79.1
Born outside Australia	998.1	1,040.6	52.4	55.2	1,095.7	5.0	80.6
Italy	n.a.	117.0	n.a.	4.7	121.7	3.9	83.6
Greece	n.a.	58.6	n.a.	5.2	63.8	8.1	84.7
Yugoslavia	n.a.	63.4	*	*	66.6	*	87.0
U.K. and Ireland	n.a.	384.3	n.a.	20.1	404.4	5.0	77.0
New Zealand	n.a.	42.5	*	*	45.5	*	85.4
Other	n.a.	374.8	n.a.	18.9	393.7	4.8	81.4
Arrived before 1961	430.6	450.3	13.5	14.3	464.6	3.1	73.6
1961-1965	153.6	159.9	10.0	10.5	170.4	6.2	87.3
1966-1970	205.2	212.6	12.4	13.1	225.8	5.8	87.6
1971-1977	183.0	189.8	12.2	12.9	202.8	6.4	87.6
1978 to survey date	25.8	27.9	*	*	32.2	*	73.6
MARRIED WOMEN							
Born in Australia	501.0	948.7	23.0	45.1	993.9	4.5	39.3
Born outside Australia	272.3	407.6	17.0	27.1	434.7	6.2	46.9
Italy	n.a.	40.4	*	*	43.0	*	41.8
Greece	n.a.	31.6	*	*	32.9	*	53.7
Yugoslavia	n.a.	29.9	*	*	32.1	*	60.1
U.K. and Ireland	n.a.	151.8	n.a.	9.7	161.5	6.0	46.1
New Zealand	n.a.	17.3	*	*	18.9	*	58.4
Other	n.a.	136.5	n.a.	9.7	146.2	6.6	44.8
Arrived before 1961	89.6	152.3	5.5	9.0	161.3	5.6	38.2
1961-1965	46.8	70.4	} 5.2 {	*	74.8	*	53.7
1966-1970	63.9	89.6		4.7	94.4	5.0	57.6
1971-1977	65.7	86.3	4.7	6.8	93.1	7.3	53.6
1978 to survey date	6.3	8.9	*	*	11.1	*	40.5
ALL FEMALES							
Born in Australia	1,017.4	1,597.7	101.9	136.8	1,734.6	7.9	43.0
Born outside Australia	375.3	537.3	35.6	49.1	586.4	8.4	46.2
Italy	n.a.	45.8	*	*	49.2	*	40.0
Greece	n.a.	35.2	*	*	37.5	*	51.5
Yugoslavia	n.a.	33.8	*	*	36.4	*	56.6
U.K. and Ireland	n.a.	211.5	n.a.	18.4	229.9	8.0	45.4
New Zealand	n.a.	29.8	*	*	33.7	*	60.3
Other	n.a.	181.1	n.a.	18.7	199.8	9.4	44.8
Arrived before 1961	118.4	188.6	7.7	11.4	200.0	5.7	35.6
1961-1965	66.4	93.9	7.3	9.7	103.6	9.3	53.3
1966-1970	86.8	121.3	7.9	11.5	132.8	8.7	57.9
1971-1977	88.9	115.0	9.4	12.3	127.3	9.6	54.0
1978 to survey date	14.8	18.5	*	*	22.8	*	48.3
PERSONS							
Born in Australia	3,718.1	4,465.5	247.1	292.2	4,757.7	6.1	60.6
Born outside Australia	1,373.4	1,577.9	88.0	104.3	1,682.2	6.2	64.0
Italy	n.a.	162.8	n.a.	8.0	170.9	4.7	63.6
Greece	n.a.	93.9	n.a.	7.5	101.4	7.4	68.4
Yugoslavia	n.a.	97.2	n.a.	5.8	103.0	5.6	73.1
U.K. and Ireland	n.a.	595.8	n.a.	38.5	634.3	6.1	61.5
New Zealand	n.a.	72.3	n.a.	6.9	79.1	8.7	72.5
Other	n.a.	555.9	n.a.	37.6	593.5	6.3	63.8
Arrived before 1961	549.0	639.0	21.2	25.7	664.7	3.9	55.7
1961-1965	220.0	253.8	17.4	20.2	274.0	7.4	70.3
1966-1970	292.0	333.9	20.2	24.6	358.5	6.9	73.6
1971-1977	271.9	304.8	21.5	25.2	330.0	7.6	70.6
1978 to survey date	40.6	46.4	7.7	8.6	55.0	15.6	60.5

(a) For scope of estimates see paragraph 5. For definitions see paragraphs 6 to 16. (b) Excludes persons in institutions. See definition, paragraph 12.

TABLE 8. SEASONALLY ADJUSTED SERIES (a)

Month	Males		Married women		All females		Persons	
	Original	Seasonally adjusted	Original	Seasonally adjusted	Original	Seasonally adjusted	Original	Seasonally adjusted
EMPLOYED ('000)								
1976 -								
August (b)	3,836.3	3,850.6	1,337.8	1,341.5	2,061.5	2,071.5	5,897.8	5,926.7
November	3,866.0	3,870.5	1,361.6	1,344.7	2,089.0	2,072.6	5,955.0	5,941.9
1977 -								
February	3,890.2	3,884.2	1,355.5	1,369.2	2,095.1	2,107.8	5,985.2	5,991.4
May	3,891.5	3,878.5	1,382.0	1,381.6	2,132.7	2,125.9	6,024.2	6,001.4
August	3,866.8	3,881.4	1,374.5	1,377.5	2,128.6	2,137.5	5,995.4	6,023.5
November	3,867.3	3,871.6	1,368.9	1,353.4	2,128.2	2,113.8	5,995.4	5,984.2
1978 -								
February (c)	3,857.4	3,851.5	1,320.9	1,334.2	2,074.8	2,088.3	5,932.3	5,939.7
May	3,863.5	3,850.7	1,356.5	1,355.7	2,135.3	2,127.1	5,998.7	5,974.5
August	3,832.3	3,846.6	1,357.7	1,360.1	2,137.2	2,145.2	5,969.6	5,996.6
November	3,846.1	3,850.5	1,373.4	1,359.0	2,151.2	2,138.6	5,997.3	5,988.0
1979 -								
February	3,893.6	3,887.6	1,346.1	1,359.6	2,125.4	2,139.8	6,018.9	6,027.0
May	3,908.3	3,895.4	1,356.3	1,355.2	2,135.0	2,126.1	6,043.3	6,018.2
LABOUR FORCE ('000)								
1976 -								
August (b)	3,992.9	4,015.1	1,400.9	1,406.3	2,197.6	2,216.4	6,190.5	6,232.4
November	4,021.2	4,034.0	1,412.9	1,406.4	2,215.3	2,213.2	6,236.5	6,246.4
1977 -								
February	4,076.2	4,049.0	1,438.3	1,439.1	2,281.3	2,266.0	6,357.5	6,313.4
May	4,076.2	4,067.7	1,456.6	1,456.5	2,301.8	2,299.2	6,378.0	6,368.1
August	4,056.9	4,079.2	1,451.2	1,455.4	2,297.8	2,314.8	6,354.7	6,395.2
November	4,050.4	4,064.6	1,436.6	1,432.6	2,291.9	2,294.3	6,342.2	6,358.7
1978 -								
February (c)	4,112.4	4,084.5	1,413.6	1,414.3	2,296.9	2,281.9	6,409.3	6,364.2
May	4,072.6	4,063.9	1,440.4	1,439.5	2,321.4	2,317.0	6,394.0	6,382.0
August	4,053.8	4,075.8	1,434.9	1,438.1	2,311.5	2,327.1	6,365.3	6,404.0
November	4,052.4	4,067.5	1,436.8	1,434.7	2,314.6	2,320.3	6,367.0	6,388.1
1979 -								
February	4,135.4	4,107.1	1,431.8	1,432.5	2,337.5	2,322.4	6,472.9	6,427.1
May	4,118.9	4,110.0	1,428.5	1,427.2	2,321.0	2,315.7	6,439.9	6,426.7
PARTICIPATION RATE (per cent)								
1976 -								
August (b)	80.0	80.4	41.5	41.6	43.0	43.4	61.3	61.7
November	80.2	80.5	41.8	41.6	43.2	43.1	61.5	61.6
1977 -								
February	80.9	80.3	42.3	42.3	44.3	44.0	62.4	62.0
May	80.5	80.4	42.8	42.9	44.4	44.4	62.3	62.2
August	79.8	80.2	42.6	42.7	44.2	44.5	61.8	62.2
November	79.3	79.6	42.3	42.1	43.8	43.9	61.4	61.6
1978 -								
February (c)	80.1	79.5	41.5	41.5	43.7	43.4	61.7	61.3
May	78.9	78.8	42.4	42.4	43.9	43.8	61.2	61.1
August	78.3	78.7	42.1	42.2	43.5	43.8	60.7	61.0
November	77.9	78.2	42.0	41.9	43.4	43.5	60.5	60.7
1979 -								
February	79.1	78.6	41.4	41.4	43.6	43.4	61.2	60.8
May	78.4	78.3	41.2	41.2	43.1	43.0	60.6	60.5

(a) The methods used to seasonally adjust these figures are explained in *Seasonally Adjusted Indicators, 1979* (1308.0). See also paragraphs 32 and 33. For definitions see paragraphs 6 to 16. (b) Affected by industrial disputes. (c) First of monthly series. For information on the change in the timing of the survey see paragraph 24.

TABLE 9. CIVILIAN LABOUR FORCE, BY AGE, MAY 1979 (a)

Age group (years)	Number ('000)					Participation rate (per cent)				
	Males	Married women	Other females (b)	All females	Persons	Males	Married women	Other females (b)	All females	Persons
15-19	416.5	17.3	346.6	363.9	780.4	63.6	53.1	58.1	57.9	60.8
20-24	548.2	167.4	247.4	414.8	963.0	91.1	54.6	84.1	69.1	80.1
25-34	1,100.7	446.2	126.8	573.0	1,673.7	96.2	46.2	73.8	50.4	73.4
35-44	832.1	421.9	55.4	477.3	1,309.4	96.0	56.9	63.4	57.6	77.2
45-54	716.5	275.1	62.5	337.6	1,054.1	91.8	43.8	54.7	45.5	69.2
55-59	288.3	71.1	27.2	98.3	386.6	81.3	25.3	35.2	27.5	54.3
60-64	151.4	23.4	17.2	40.6	192.0	54.3	11.3	18.2	13.5	33.1
65 and over	65.2	6.1	9.4	15.5	80.7	11.5	2.0	2.0	2.0	6.0
Total	4,118.9	1,428.5	892.5	2,321.0	6,439.9	78.4	41.2	46.5	43.1	60.6

(a) For scope of estimates see paragraph 5. For definitions see paragraphs 6 to 16. (b) Never married, widowed and divorced.

TABLE 10. LABOUR FORCE PARTICIPATION RATES, BY AGE AND BIRTHPLACE, MAY 1979 (a)
(Per cent)

Age group (years)	Born in Australia			Born outside Australia		
	Males	Females	Persons	Males	Females	Persons
15-19	65.7	58.7	62.3	54.6	53.5	54.1
20-24	92.6	69.5	81.2	86.9	68.1	77.0
25-34	97.1	48.9	72.9	97.1	54.9	76.2
35-44	96.6	55.7	76.1	96.1	62.0	80.2
45-54	92.1	44.1	67.7	93.1	49.9	74.0
55-59	81.8	26.6	53.2	84.9	30.2	59.0
60-64	53.6	13.1	32.0	60.1	15.8	38.9
65 and over	12.9	2.3	6.7	10.0	*	5.6
Total	79.1	43.0	60.6	80.6	46.2	64.0

(a) Excludes persons in institutions. See definition, paragraph 12.

TABLE 11. EMPLOYED PERSONS: FULL-TIME AND PART-TIME STATUS, BY AGE, MAY 1979 (a)
(‘000)

	Age group (years)								
	15-19	20-24	25-34	35-44	45-54	55-59	60-64	65 and over	Total
MALES									
Full-time workers	297.6	473.8	1,021.3	791.5	677.1	265.4	133.0	39.1	3,698.8
Part-time workers	59.3	25.8	35.2	18.4	19.9	13.7	12.3	24.9	209.5
Total	356.9	499.6	1,056.4	809.9	697.0	279.1	145.3	64.0	3,908.3
MARRIED WOMEN									
Full-time workers	12.5	123.0	223.8	213.2	151.5	35.3	10.7	*	773.3
Part-time workers	*	31.1	195.7	190.3	115.6	34.0	12.2	*	583.0
Total	13.8	154.1	419.5	403.4	267.1	69.3	23.0	6.1	1,356.3
ALL FEMALES									
Full-time workers	215.9	316.7	326.2	253.4	195.9	55.6	22.0	7.1	1,392.7
Part-time workers	75.1	57.0	210.2	203.1	130.6	39.9	17.9	8.4	742.3
Total	291.0	373.7	536.4	456.5	326.5	95.5	39.9	15.5	2,135.0
PERSONS									
Full-time workers	513.5	790.5	1,347.4	1,044.9	873.0	321.0	155.0	46.2	5,091.5
Part-time workers	134.4	82.8	245.4	221.5	150.5	53.6	30.2	33.3	951.8
Total	647.9	873.3	1,592.8	1,266.4	1,023.6	374.6	185.2	79.5	6,043.3

(a) For scope of estimates see paragraph 5. For definitions see paragraphs 6 to 16.

TABLE 12. EMPLOYED PERSONS, BY MAJOR AND MINOR OCCUPATION GROUPS, MAY 1979 (a)
(^{'000})

<i>Occupation group</i>	<i>Males</i>	<i>Married women</i>	<i>All females</i>	<i>Persons</i>
PROFESSIONAL, TECHNICAL AND RELATED WORKERS	454.5	213.3	365.6	820.1
Architects, engineers and surveyors, professional (b)	65.9	*	*	67.3
Chemists, physicists, geologists and other physical scientists	13.4	*	*	14.4
Biologists, veterinarians, agronomists and related scientists	11.0	*	*	12.9
Medical practitioners and dentists	25.0	*	5.1	30.2
Nurses, including probationers or trainees	9.9	63.0	125.1	135.0
Professional medical workers, n.e.c.	13.8	8.5	14.0	27.8
Teachers	94.1	94.4	141.3	235.4
Clergy and related members of religious orders	10.4	*	*	11.6
Law professionals	18.9	*	*	20.4
Artists, entertainers, writers and related workers	27.4	10.2	20.3	47.7
Draftsmen and technicians, n.e.c. (b)	80.2	12.7	24.1	104.4
ADMINISTRATIVE, EXECUTIVE AND MANAGERIAL	339.6	35.3	50.6	390.1
Administrative and executive officials, government, n.e.c.	15.5	*	*	15.8
Employers, workers on own account, directors, managers, n.e.c.	324.2	35.1	50.2	374.3
CLERICAL	327.8	419.7	702.8	1,030.5
Book-keepers and cashiers	39.5	76.8	117.9	157.3
Stenographers and typists	*	99.8	169.6	171.3
SALES	277.4	163.0	290.7	568.1
Insurance, real estate salesmen, auctioneers and valuers	47.4	*	*	49.5
Commercial travellers and manufacturers agents	50.9	4.6	7.8	58.6
Proprietors and shopkeepers, workers on own account, n.e.c., retail and wholesale trade; salesmen, shop assistants and related workers	179.1	156.6	280.8	459.9
FARMERS, FISHERMEN, TIMBER-GETTERS, ETC.	348.8	67.0	80.7	429.6
Farmers and farm managers	192.6	45.6	51.6	244.2
Farm workers, including farm foremen	131.5	20.0	27.7	159.2
Fishermen and related workers	12.6	*	*	13.8
Timber-getters and other forestry workers	9.7	*	*	9.7
MINERS, QUARRYMEN AND RELATED WORKERS	33.1	*	*	33.3
Miners, mineral prospectors and quarry men	27.8	*	*	28.1
TRANSPORT AND COMMUNICATION	289.5	33.9	50.3	339.8
Drivers and firemen, rail transport	11.3	*	*	11.3
Drivers, road transport	209.9	10.0	12.9	222.7
Inspectors, supervisors, traffic controllers and despatchers, transport	22.8	*	*	23.5
Telephone, telegraph and related telecommunication operators	*	17.5	28.0	32.4
Postmasters, postmen and messengers	22.7	5.4	7.8	30.5

For footnotes see next page.

TABLE 12. EMPLOYED PERSONS, BY MAJOR AND MINOR OCCUPATION GROUPS, MAY 1979 (a) – continued
(‘000)

Occupation group	Males	Married women	All females	Persons
TRADESMEN, PRODUCTION-PROCESS WORKERS AND LABOURERS, N.E.C.	1,618.2	176.2	233.6	1,851.7
Spinners, weavers, knitters, dyers and related workers	11.1	10.9	12.7	23.8
Tailors, cutters, furriers and related workers	21.1	44.4	59.9	81.1
Leather cutters, lasters, sewers (except gloves and garments) and related workers	5.5	5.1	6.4	12.0
Furnacemen, rollers, drawers, moulders and related metal making and treating workers	18.6	*	*	18.8
Precision instrument makers, watchmakers, jewellers and related workers	22.0	*	*	23.6
Toolmakers, metal machinists, mechanics, plumbers and related metal workers	417.9	9.0	9.7	427.7
Electricians and related electrical and electronic workers	156.8	*	*	159.4
Metal workers, metal and electrical production-process workers, n.e.c.	63.2	22.0	28.3	91.4
Carpenters, woodworking machinists, cabinetmakers and related workers	134.1	*	*	137.8
Painters and decorators	47.8	*	*	50.0
Bricklayers, plasterers and construction workers, n.e.c.	134.5	*	*	136.0
Compositors, printing machinists, engravers, bookbinders and related workers	35.9	6.9	9.9	45.8
Potters, kilnmen, glass and clay formers and related workers	8.4	*	*	10.2
Millers, bakers, butchers, brewers and related food and drink workers	89.2	17.2	22.6	111.8
Chemical, sugar and paper production-process workers	22.4	*	4.9	27.2
Paper products, rubber, plastic and production-process workers, n.e.c.	38.2	13.7	17.5	55.7
Packers, wrappers, labellers	15.4	20.9	30.7	46.1
Stationary engine, excavating and lifting equipment operations	92.1	*	*	93.0
Storemen and freight handlers	121.6	5.3	8.4	129.9
Labourers, n.e.c.	161.6	5.3	6.9	168.5
SERVICE, SPORT AND RECREATION	219.4	247.9	360.5	579.9
Fire brigade, police and other protective service workers	58.9	*	*	61.4
Housekeepers, cooks, maids and related workers	30.3	111.0	153.3	183.6
Waiters, bartenders	22.5	31.7	53.1	75.6
Caretakers, cleaners : buildings	50.3	53.5	63.5	113.9
Barbers, hairdressers and beauticians	7.7	11.7	25.9	33.6
Launderers, dry cleaners and pressers	5.5	7.7	10.5	16.0
Athletes, sportsmen and related workers	7.9	*	*	10.2
TOTAL	3,908.3	1,356.3	2,135.0	6,043.3

(a) For scope of estimates see paragraph 5. For definitions see paragraphs 6 to 17. Some minor occupation groups have not been listed separately. (b) Caution should be used in comparing these estimates with results from 1971 and 1976 population censuses which use different coding procedures. For the population censuses, minor occupation group 'Architects, engineers and surveyors, professional' was limited solely to persons holding a university degree. Other persons describing themselves in professional terms but not holding a degree were classified to minor group 'Draftsmen and technicians, n.e.c.'. No such coding rules were possible for the labour force survey. See also paragraphs 29 to 31.

TABLE 13. AVERAGE WEEKLY HOURS WORKED BY EMPLOYED PERSONS,
BY INDUSTRY AND OCCUPATION, MAY 1979 (a)

	<i>Males</i>	<i>Married women</i>	<i>Other females (b)</i>	<i>All females</i>	<i>Persons</i>
INDUSTRY					
Agriculture and services to agriculture	50.9	29.6	31.2	29.8	46.3
Forestry, fishing and hunting	41.3	*	*	*	39.8
Mining	38.1	*	*	29.6	37.6
Manufacturing	39.2	32.9	35.0	33.5	37.8
Food, beverages and tobacco	38.4	31.5	33.1	32.0	36.8
Metal products	39.1	28.9	34.5	30.1	38.0
Other manufacturing	39.4	33.6	35.5	34.1	37.9
Construction	38.6	18.9	36.8	21.8	37.0
Wholesale and retail trade	41.4	29.5	29.7	29.6	36.3
Transport and storage	39.8	26.4	33.1	29.1	38.2
Finance, insurance, real estate and business services	39.6	27.6	34.4	30.7	35.6
Community services	37.3	26.9	32.7	29.0	32.1
Entertainment, recreation, restaurants, hotels and personal services	38.9	26.0	28.1	26.8	31.9
Other industries	35.2	27.9	33.3	30.4	34.1
Total employed	39.9	28.4	31.9	29.7	36.3
OCCUPATION					
Professional, technical, etc.	38.5	27.7	33.1	29.9	34.7
Administrative, executive and managerial	46.3	37.8	43.8	39.6	45.5
Clerical	36.3	27.4	33.3	29.8	31.9
Sales	41.3	30.1	28.4	29.3	35.2
Farmers, fishermen, timber-getters, etc.	47.9	29.5	31.8	29.9	44.5
Transport and communication	40.0	29.0	32.8	30.2	38.6
Tradesmen, production-process workers and labourers, n.e.c.; and miners, quarrymen, etc.	38.2	33.3	34.2	33.5	37.6
Service, sport and recreation	35.7	24.3	28.0	25.5	29.3
Total employed	39.9	28.4	31.9	29.7	36.3

(a) For scope of estimates see paragraph 5. For definitions see paragraphs 6 to 17. Figures of hours relate to average weekly hours worked, not hours paid for. See paragraph 14. (b) Never married, widowed and divorced.

TABLE 14. EMPLOYED MARRIED WOMEN, BY INDUSTRY AND HOURS WORKED (b), MAY 1979 (a)
'000

<i>Industry division or sub-division</i>	<i>Part-time workers (a)</i>			<i>Total</i>	<i>Full-time workers (a)</i>	<i>Total</i>
	<i>Hours worked (b)</i>					
	<i>Under 16</i>	<i>16-29</i>	<i>30-34</i>			
Agriculture and services to agriculture	21.6	10.5	*	35.6	30.3	65.9
Manufacturing	17.1	18.8	6.9	42.7	178.3	221.0
Construction	19.8	6.2	*	27.6	11.0	38.6
Wholesale and retail trade	72.8	60.1	12.9	145.8	171.3	317.0
Transport and storage	9.2	*	*	12.8	18.2	31.0
Finance, insurance, real estate and business services	26.1	17.7	6.9	50.7	67.5	118.2
Community services	69.2	67.2	24.2	160.6	195.7	356.3
Entertainment, recreation, restaurants, hotels and personal services	45.8	31.3	8.8	85.9	51.6	137.5
Other industries	10.2	9.3	*	21.4	49.4	70.8
Total	291.7	223.8	67.5	583.0	773.3	1,356.3

(a) For scope of estimates see paragraph 5. For definitions see paragraphs 6 to 17. (b) Hours worked in the survey week. See definition paragraph 14.

TABLE 15. EMPLOYED PERSONS, BY HOURS WORKED, MAY 1979 (a)

	<i>Males</i>	<i>Married women</i>	<i>Other females (b)</i>	<i>All females</i>	<i>Persons</i>
NUMBER EMPLOYED ('000)					
Weekly hours worked –					
O(c)	217.7	90.4	44.1	134.5	352.2
1–15	126.3	259.1	92.5	351.6	477.9
16–29	188.1	256.8	73.1	329.9	518.0
30–34	239.5	118.9	61.1	180.0	419.6
35–39	432.4	167.6	156.1	323.7	756.1
40	1,342.1	302.4	257.3	559.8	1,901.9
41–44	259.4	41.6	39.9	81.5	341.0
45–48	348.6	40.8	26.3	67.1	415.7
49 and over	754.1	78.6	28.3	107.0	861.1
Total	3,908.3	1,356.3	778.7	2,135.0	6,043.3
WEEKLY HOURS WORKED (a)					
Aggregate weekly hours worked (million)	155.8	38.5	24.9	63.4	219.1
By full-time workers	152.4	29.4	22.7	52.1	204.5
By part-time workers	3.3	9.1	2.2	11.3	14.6
Average weekly hours worked	39.9	28.4	31.9	29.7	36.3
By full-time workers	41.2	38.0	36.7	37.4	40.2
By part-time workers	15.9	15.7	13.6	15.2	15.4
By wage and salary earners	38.2	28.2	31.9	29.7	35.1
By others (d)	47.5	29.1	32.5	29.5	42.5

(a) For scope of estimates see paragraph 5. For definitions see paragraphs 6 to 16. The figures relate to hours worked, not hours paid for. See paragraph 14. (b) Never married, widowed and divorced. (c) Persons who had a job but were not at work. See definition, paragraph 14. (d) Employers; self-employed persons; unpaid family helpers who worked 15 hours or more in the survey week.

TABLE 16. FULL-TIME WORKERS WHO WORKED LESS THAN 35 HOURS, BY REASON, MAY 1979 (a)
(‘000)

<i>Reason for working less than 35 hours</i>	<i>Males</i>	<i>Married women</i>	<i>Other females (b)</i>	<i>All females</i>	<i>Persons</i>
Leave, holiday or flextime	323.2	85.3	67.4	152.7	475.9
Own illness or injury	134.5	37.1	32.9	69.9	204.4
Bad weather, plant breakdown, etc.	23.6	*	*	*	24.3
Began or left job in the survey week	12.5	*	*	5.8	18.3
Stood down, on short time, insufficient work	33.3	7.7	*	9.5	42.8
Other reasons	35.1	10.5	4.5	15.0	50.1
Total	562.2	142.2	111.4	253.7	815.8

(a) For scope of estimates see paragraph 5. For definitions see paragraphs 6 to 16. (b) Never married, widowed and divorced.

TABLE 17. PART-TIME WORKERS : WHETHER PREFERRED TO WORK MORE HOURS AND WHETHER LOOKING FOR FULL-TIME WORK, BY AGE, MAY 1979 (a)
(⁰⁰⁰)

	<i>Age group (years)</i>						<i>Total</i>
	<i>15-19</i>	<i>20-24</i>	<i>25-34</i>	<i>35-44</i>	<i>45-54</i>	<i>55 and over</i>	
MALES							
Total	59.3	25.8	35.2	18.4	19.9	50.9	209.4
Preferred not to work more hours	47.9	19.1	26.1	14.7	15.9	47.7	171.4
Preferred to work more hours	11.3	6.7	9.1	—	7.7	*	38.0
Were actively looking for full-time work (b)	5.6	—	6.4	—	*	*	16.1
MARRIED WOMEN							
Total	*	31.1	195.7	190.3	115.6	49.0	583.0
Preferred not to work more hours	*	25.7	176.1	171.6	106.9	47.3	529.0
Preferred to work more hours	—	5.5	19.6	18.6	8.7	*	54.1
Were actively looking for full-time work (b)	*	—	8.0	—	*	*	8.7
ALL FEMALES							
Total	75.1	57.0	210.2	203.1	130.6	66.3	742.3
Preferred not to work more hours	57.2	44.9	188.8	181.2	119.5	63.3	654.8
Preferred to work more hours	18.0	12.2	21.4	21.9	11.2	*	87.5
Were actively looking for full-time work (b)	9.3	4.7	*	—	5.2	*	22.4
PERSONS							
Total	134.4	82.8	245.4	221.5	150.5	117.2	951.8
Preferred not to work more hours	105.1	64.0	214.9	195.9	135.4	111.0	826.2
Preferred to work more hours	29.3	18.8	30.5	25.6	15.1	6.1	125.6
Were actively looking for full-time work (b)	15.0	7.5	6.8	—	8.4	*	38.6

(a) For scope of estimates see paragraph 5. For definitions see paragraphs 6 to 16. (b) Were actively looking for full-time work in the four weeks up to the end of the survey week.

TABLE 18. UNEMPLOYED PERSONS, BY AGE, STATES, MAY 1979 (a)
(⁰⁰⁰)

<i>Age group (years)</i>	<i>New South Wales</i>	<i>Victoria</i>	<i>Queensland</i>	<i>South Australia</i>	<i>Western Australia</i>	<i>Tasmania</i>	<i>Australia (b)</i>
MALES							
15-19	21.8	12.9	8.5	8.0	4.4	2.6	59.6
20-24	18.6	10.2	7.1	5.3	4.8	1.8	48.6
25-34	16.7	10.5	6.2	5.0	4.5	*	44.3
35 and over	20.8	13.0	9.1	5.1	6.5	*	58.1
Total	77.9	46.6	30.9	23.4	20.2	6.3	210.6
FEMALES							
15-19	26.5	15.8	11.3	9.2	6.1	2.2	72.9
20-24	12.2	11.7	6.9	3.6	5.0	*	41.1
25-34	11.4	9.1	5.0	4.4	4.3	*	36.6
35 and over	12.0	7.8	6.7	4.0	2.8	*	35.4
Total	62.1	44.4	29.9	21.1	18.2	4.9	186.0
PERSONS							
15-19	48.3	28.8	19.7	17.2	10.5	4.8	132.5
20-24	30.8	21.8	14.0	8.9	9.8	2.7	89.7
25-34	28.1	19.6	11.2	9.3	8.8	1.6	80.9
35 and over	32.8	20.8	15.8	9.1	9.3	2.2	93.5
Total	140.1	90.9	60.8	44.5	38.4	11.2	396.6

(a) For scope of estimates see paragraph 5. For definitions see paragraphs 6 to 16. (b) Includes the Northern Territory and the Australian Capital Territory.

TABLE 19. UNEMPLOYED PERSONS, BY AGE AND WHETHER LOOKING FOR FULL-TIME OR PART-TIME WORK, MAY 1979 (a)

	Number unemployed ('000)					Unemployment rate (per cent)				
	Married men	All males	Married women	All females	All persons	Married men	All males	Married women	All females	All persons
LOOKING FOR FULL-TIME WORK										
Total	67.2	197.7	40.0	137.5	335.1	2.5	5.1	4.9	9.0	6.2
Aged 15-19 years	*	53.5	*	61.2	114.7	*	15.2	*	22.1	18.3
Looking for first job	*	22.0	*	28.9	51.0
Not looking for first job	*	31.5	*	32.3	63.8
Attending school	*	*	*	*	4.8	*	*	*	*	n.a.
Aged 20 years and over	66.7	144.1	37.3	76.3	220.4	2.5	4.1	4.7	6.1	4.6
20-24 years	7.8	46.5	8.1	32.8	79.4	5.2	8.9	6.2	9.4	9.1
25-34 years	21.3	43.2	13.3	21.9	65.1	2.6	4.1	5.6	6.3	4.6
35-44 years		21.9	11.0	13.1	35.0		2.7	4.9	4.9	3.2
45-54 years		18.7	*	6.5	25.2		2.7	*	3.2	2.8
55 years and over		13.8	*	*	15.7		3.1	*	*	2.9
LOOKING FOR PART-TIME WORK										
Total	*	13.0	32.2	48.5	61.4	*	5.8	5.2	6.1	6.1
Aged 15-19 years	*	6.1	*	11.7	17.8	*	9.3	*	13.5	11.7
Attending school	*	*	*	8.2	12.2	*	*	*	17.3	14.2
Aged 20 years and over	*	6.9	31.4	36.7	43.6	*	4.4	5.1	5.2	5.1
20-24 years	*	*	5.2	8.2	10.3	*	*	14.2	12.6	11.0
25-34 years	*	*	13.4	14.8	15.8	*	*	6.4	6.6	6.1
35-44 years	*	*	7.5	7.6	8.0	*	*	3.8	3.6	3.5
45-54 years		*	5.4	6.2	9.5	*	*	3.2	3.0	3.4
55 years and over		*	*	*	*	*	*	*	*	*
TOTAL										
Total	70.8	210.6	72.2	186.0	396.6	2.5	5.1	5.1	8.0	6.2
Aged 15-19 years	*	59.6	*	72.9	132.5	*	14.3	*	20.0	17.0
Attending school	*	6.7	*	10.4	17.1	*	15.6	*	20.5	18.2
Aged 20 years and over (b)	70.4	151.0	68.7	113.0	264.0	2.5	4.1	4.9	5.8	4.7
20-24 years	8.0	48.6	13.3	41.1	89.7	5.2	8.9	7.9	9.9	9.3
25-34 years	21.4	44.3	26.7	36.6	80.9	2.5	4.0	6.0	6.4	4.8
35-44 years	16.9	22.2	18.5	20.8	43.0	2.3	2.7	4.4	4.3	3.3
45-54 years	12.2	19.4	8.0	11.1	30.5	1.9	2.7	2.9	3.3	2.9
55-59 years	7.0	9.2	*	*	12.0	2.7	3.2	*	*	3.1
60-64 years	*	6.1	*	*	6.8	*	4.0	*	*	3.5

(a) For scope of estimates see paragraph 5. For definitions see paragraphs 6 to 16. (b) Includes unemployed persons aged 65 years and over, details for whom are not shown separately.

TABLE 20. UNEMPLOYED PERSONS, BY AGE AND BIRTHPLACE, MAY 1979 (a)

Age group (years)	Number unemployed ('000)			Unemployment rate (per cent)		
	Males	Females	Persons	Males	Females	Persons
BORN IN AUSTRALIA						
15-19	51.8	61.9	113.7	14.1	19.6	16.6
20 and over	103.6	74.9	178.5	3.9	5.3	4.4
20-24	39.5	31.3	70.9	8.5	9.2	8.8
25-34	31.6	23.3	54.9	3.9	5.7	4.5
35 and over	32.5	20.2	52.8	2.3	3.0	2.6
Total	155.4	136.8	292.2	5.1	7.9	6.1
BORN OUTSIDE AUSTRALIA						
15-19	7.8	11.0	18.8	16.0	23.3	19.6
20 and over	47.4	38.1	85.5	4.5	7.1	5.4
20-24	9.1	9.7	18.8	10.8	13.3	12.0
25-34	12.7	13.3	26.0	4.2	8.0	5.6
35 and over	25.6	15.1	40.7	3.9	5.0	4.2
Total	55.2	49.1	104.3	5.0	8.4	6.2

(a) For scope of estimates see paragraph 5. For definitions see paragraphs 6 to 16.

TABLE 21. UNEMPLOYED PERSONS, BY DURATION OF UNEMPLOYMENT (a) AND AGE, ETC., MAY 1979 (b)

Duration of unemployment (weeks) (a)	Age (years)			Married	Not married (c)	Looking for -		Total
	15-19	20-24	25 and over			Full-time work	Part-time work	
MALES								
Number unemployed ('000) -								
Under 2	*	*	7.0	5.3	7.9	11.5	5.8	13.2
2 and under 4	5.1	4.6	9.4	7.7	11.5	17.5		
4 and under 8	9.2	9.2	12.9	8.8	22.5	29.0	5.0	24.2
8 and under 13	6.6	7.1	10.5	6.4	17.8	22.7		
13 and under 26	16.7	7.8	19.2	13.2	30.5	40.9	*	43.7
26 and under 39	7.6	5.1	11.0	6.9	16.8	23.0		
39 and under 52	5.4	5.9	6.3	4.6	5.8	10.4	*	10.4
52 and under 65			7.5	5.5	9.2	14.1		
65 and over	5.5	6.1	18.7	12.5	17.8	28.7	*	30.3
Total	59.6	48.6	102.4	70.8	139.8	197.7	13.0	210.6
Average duration of unemployment								
	25.0	27.6	35.5	35.5	28.3	30.9	27.7	30.7
FEMALES								
Number unemployed ('000) -								
Under 2	5.2	7.6	10.0	10.9	8.0	10.0	8.9	18.9
2 and under 4	*		8.4	9.9	6.6	10.3	6.2	16.5
4 and under 8	8.3	6.0	11.2	12.7	12.8	17.6	8.0	25.5
8 and under 13	7.1	4.7	6.7	7.1	11.4	14.0	4.5	18.6
13 and under 26	24.1	10.3	15.1	14.1	35.4	38.6	10.9	49.5
26 and under 39	8.6	7.8	7.1	6.2	13.3	15.6	6.9	19.4
39 and under 52	6.6		4.6	*	4.8	5.4		
52 and under 65		6.6	4.6	*	6.3	7.0	*	9.2
65 and over	8.7	4.7	8.8	7.0	15.2	19.0	*	22.1
Total	72.9	41.1	72.0	72.2	113.8	137.5	48.5	186.0
Average duration of unemployment								
	27.8	27.6	28.3	23.8	30.6	30.8	20.0	27.9
PERSONS								
Number unemployed ('000) -								
Under 2	8.6	6.5	17.0	16.2	15.9	21.5	10.7	32.2
2 and under 4	9.4	8.5	17.7	17.6	18.0	27.8	7.9	35.6
4 and under 8	17.5	15.2	24.1	21.5	35.3	46.5	10.3	56.8
8 and under 13	13.7	11.8	17.2	13.5	29.2	36.7	6.0	42.7
13 and under 26	40.9	18.0	34.3	27.2	66.0	79.5	13.7	93.2
26 and under 39	16.2	8.8	18.1	13.1	30.0	38.6	4.5	43.1
39 and under 52	5.4	*	7.9	6.0	10.6	15.8	*	16.6
52 and under 65	6.6	6.7	10.5	8.4	15.5	21.1	*	23.9
65 and over	14.2	10.7	27.5	19.5	33.0	47.7	4.8	52.5
Total	132.5	89.7	174.4	143.0	253.5	335.1	61.4	396.6
Average duration of unemployment								
	26.6	27.6	32.6	29.6	29.3	30.9	21.6	29.4

(a) Period from the time the person began looking for work, or was laid off, to the end of the survey week. Periods of unemployment are recorded in complete weeks and this results in a slight understatement of duration. (b) For scope of estimates see paragraph 5. For definitions see paragraphs 6 to 16. (c) Never married, widowed and divorced.

TABLE 22. UNEMPLOYED PERSONS, BY INDUSTRY AND OCCUPATION OF LAST FULL-TIME JOB AND DURATION OF UNEMPLOYMENT, MAY 1979 (a)
(^{'000})

	Duration of unemployment (weeks)							Total
	Under 4	4 and under 8	8 and under 13	13 and under 26	26 and under 39	39 and under 65	65 and over	
Had worked for two weeks or more in a full-time job in the last two years	42.9	42.5	34.2	54.8	28.6	29.9	12.3	245.1
Industry division –								
Manufacturing	10.7	11.4	8.1	12.0	6.2	8.4	*	60.3
Construction	4.6	—	8.1	7.6	—	8.0	—	28.3
Wholesale and retail trade	9.7	9.4	8.8	14.7	8.6	7.2	*	61.6
Finance, insurance, real estate and business services	—	5.6	—	5.4	—	*	*	12.7
Community services	*	—	6.5	5.9	—	5.5	—	22.0
Entertainment, recreation, restaurants, hotels and personal services	5.1	4.6	*	6.6	—	4.5	—	24.1
Other industries	5.9	7.1	*	6.6	4.9	5.5	*	36.1
Occupation group (b) –								
Professional, technical, etc.	—	5.0	—	7.4	—	*	*	14.6
Clerical	6.7	5.3	*	5.7	—	5.7	—	27.7
Sales	*	4.7	4.6	7.0	—	6.9	—	28.9
Farmers, fishermen, etc.	*	—	5.6	—	5.8	—	*	16.7
Transport and communication	—	—	5.5	—	—	*	*	8.5
Tradesmen, production-process workers and labourers, n.e.c.	18.6	19.3	15.0	23.6	13.7	16.4	6.1	112.6
Service, sport and recreation	6.5	—	8.8	7.4	—	5.9	—	29.8
Stood down (c)	6.7	6.7
Other (d)	18.2	14.3	8.5	38.4	14.5	10.6	40.2	144.7
Total	67.8	56.8	42.7	93.2	43.1	40.5	52.5	396.6

(a) For scope of estimates see paragraph 5. For definitions see paragraphs 6 to 17. See footnote (a) to Table 21. Duration of unemployment is not available for some industry divisions and occupation groups because of the high standard error of the estimates. (b) Excludes administrative, executive and managerial workers; and miners, quarrymen and related workers. (c) For definition, see paragraph 8 (b). (d) Had never worked for two weeks or more in a full-time job or had not done so in the last two years. Industry and occupation were not obtained for these persons.

TABLE 23. UNEMPLOYED PERSONS AGED 15 TO 19 YEARS, BY DURATION OF UNEMPLOYMENT AND WHETHER ATTENDING SCHOOL, MAY 1979 (a)

Duration of unemployment (weeks)	Attending school	Not attending school		Total
		Left school before 1978	Left school 1978 to survey date	
NUMBER ('000)				
Under 4	4.5	8.4	5.2	18.0
4 and under 13	*	17.3	9.9	31.2
13 and under 26	5.5	12.7	22.6	40.9
26 and over	*	28.9	10.5	42.5
Total	17.1	67.3	48.2	132.5
AVERAGE DURATION OF UNEMPLOYMENT (weeks)				
Males	18.3	30.5	19.4	25.0
Females	16.3	37.4	18.9	27.8
Persons	17.1	34.3	19.2	26.6
Looking for –				
Full-time work	19.8	35.2	19.5	28.3
Part-time work	16.1	14.2	12.4	15.2

(a) See footnote (a) to Table 21. For employment status of persons aged 15-19 years see Table 5.

TABLE 24. PERSONS NOT IN THE LABOUR FORCE, BY AGE AND MARITAL STATUS, ETC., MAY 1979 (a)

	Married men	Other males (b)	All males	Married women	Other females (b)	All females	Persons	Per cent of population (c)
	– '000 –							per cent
Age (years)								
15-19	*	238.0	238.5	15.3	249.8	265.1	503.7	39.2
20-24	5.3	48.4	53.7	138.9	46.9	185.8	239.5	19.9
25-34	19.0	24.1	43.1	519.0	45.1	564.1	607.2	26.6
35-44	23.0	11.7	34.8	319.6	32.0	351.5	386.3	22.8
45-54	44.3	20.0	64.3	352.9	51.7	404.6	468.9	30.8
55-59	45.6	20.6	66.2	209.7	50.1	259.8	325.9	45.7
60-64	104.9	22.7	127.6	183.3	77.4	260.6	388.2	66.9
65 and over	372.7	131.6	504.3	297.2	472.5	769.7	1,274.0	94.0
Total	615.4	517.0	1,132.4	2,035.9	1,025.4	3,061.3	4,193.6	39.4
Permanently unable to work	n.a.	n.a.	21.9	n.a.	n.a.	19.9	41.8	..
In institutions	n.a.	n.a.	71.5	n.a.	n.a.	82.4	153.9	..
Aged 15-20 years attending school	n.a.	n.a.	188.1	n.a.	n.a.	177.1	365.2	..

(a) For scope of estimates see paragraph 5. For definitions see paragraphs 6 to 16. (b) Never married, widowed and divorced. (c) Persons not in the labour force as a percentage of the civilian population in the same group.

TECHNICAL NOTE

Estimation procedure

The labour force estimates are derived from the population survey by use of a complex ratio estimation procedure, which ensures that the survey estimates conform to an independently estimated distribution of the population by age and sex, rather than to the age and sex distribution within the sample itself.

Reliability of the estimates

2. Since the estimates in this section are based on information obtained from occupants of a sample of dwellings the estimates and the movements derived from them are subject to sampling variability; that is, they may differ from the figures that would have been produced if all dwellings had been included in the surveys. One measure of the likely difference is given by the *standard error*, which indicates the extent to which an estimate might have varied by chance because only a sample of dwellings was included. There are about two chances in three that a sample estimate will differ by less than one standard error from the figure that would have been obtained if all dwellings had been included, and about nineteen chances in twenty that the difference will be less than two standard errors.

3. Space does not allow for the separate indication of the standard errors of all estimates in this section. Standard errors of estimates for the latest month and of estimates of movements since the previous month are shown in Table 1. Standard errors of other estimates and other monthly movements should be determined by using Tables A and B on page 25. Because of the reduction in the sample size for the November 1975 and November 1977 surveys (see November 1975 and February 1978 issues of this publication for details), the standard errors for all estimates from these surveys except those for unemployed persons looking for full-time work in November 1977 are approximately 15 per cent higher than those shown. The standard errors in Table A apply to estimates for all other surveys.

4. The size of the standard error increases with the level of the estimate, so that the larger the estimate the larger the standard error. However, it should be noted that the larger the sample estimate the smaller will be the standard error in percentage terms. Thus, larger sample estimates will be relatively more reliable than smaller estimates.

5. Very small estimates are subject to such high standard errors (relative to the size of the estimate) as to detract seriously from their value for most reasonable uses. In the tables in this section, estimates below the levels shown in Table A, and percentages based on such estimates, have not been included. Although figures for these small components can in some cases be derived by subtraction, they should not be regarded as reliable.

6. The movement in the level of an estimate is also subject to sampling variability. The standard error of the

movement depends on the levels of the estimates from which the movement is obtained rather than the size of the movement. An indication of the magnitude of standard errors of monthly movements is given in Table B on page 25. The estimates of standard error of monthly movements apply only to estimates of movements between two consecutive months. Movements between corresponding months of consecutive years, or between two other non-consecutive months, will generally be subject to somewhat greater sampling variability than is indicated in Table B. A guide to the standard errors of *quarterly* movements for periods from February 1978 can be obtained by multiplying the figures in the table of standard errors of monthly movements (Table B) by 1.4. Standard errors of quarterly movements for periods up to February 1978 were published in the Technical Note in the February 1978 issue of this publication. A guide to the standard errors of *annual* movements for periods from February 1978 can be obtained by multiplying the figures in the table of standard errors of estimates (Table A) by 1.4.

7. Examples of the calculation and use of standard errors are given below :

(a) From Table A it will be seen that the estimate of 197,700 unemployed males looking for full-time work in May 1979 has a standard error of about 5,100 and therefore there are about two chances in three that the value that would have been produced if all dwellings had been included in the survey will fall within the range 192,600 to 202,800 and about nineteen chances in twenty that the value will fall within the range 187,500 to 207,900.

(b) The estimate of movement in the number of unemployed males looking for full-time work from April to May 1979 is a decrease of 4,400. Table B relates the standard error of the monthly movement to the size of the larger of the two estimates from which the movement is derived. In this case the April 1979 estimate (202,100) is the larger. From Table B it will be seen that the standard error of the monthly movement is about 4,300. Therefore there are about two chances in three that if all dwellings had been included in the surveys the movement would have been within the range -8,700 to -100 and about nineteen chances in twenty that it would have been within the range -13,000 to +4,200.

8. The standard errors of estimates relating to agricultural employment are generally somewhat higher than the standard errors of other estimates of the same magnitude. Estimates for females also tend to have higher standard errors than estimates of equivalent size for males in similar categories. Standard errors for

POPULATION SURVEY REPORTS

Although emphasis in the population survey is placed on the regular collection of data on demographic and labour force characteristics, supplementary surveys of particular aspects of the labour force or of other subjects are carried out from time to time. The results of these surveys are published separately. Copies of the following publications are available free on request.

<i>Title</i>	<i>Catalogue No.</i>
Alcohol and Tobacco Consumption Patterns, February 1977	4312.0
Annual Leave, August 1974	6317.0
Assisted and Unassisted Migrants, August 1972	3406.0
Birth Expectations of Married Women, November 1976	3215.0
Child Care – May 1969; May 1973; May 1977	4402.0
Chronic Illnesses, Injuries and Impairments – May 1968; May 1974	4305.0
Employment Status of Teenagers, August 1978 (a)	6234.0
Evening and Night Work, November 1976	6329.0
Ex-service Personnel, November 1966; November 1971	4403.0
Family Status and Employment Status of the Population, November 1974 and 1975	6223.0
Frequency of Pay – August 1974, 1976 and 1977	6320.0
Health Insurance, March 1979	4335.0
Home Ownership and Rental, November 1978 (Preliminary)	8709.0
Income Distribution, 1968-69 (Consolidated and Revised Edition)	6505.0
Income Distribution, 1973-74 –	
Part 1	6502.0
Part 2	6503.0
Part 3 (Supplementary Tables)	6504.0
Internal Migration –	
1969-70 to 1972-73 (annually); Twelve months ended April 1972, 1973 and 1974;	
December 1974; January 1977	3408.0
Job Tenure – February 1974; February 1975; August 1976	6211.0
Journey to Work and Journey to School – May 1970; August 1974	9205.0
Labour Force Experience –	
During 1978 (Preliminary)	6205.0
During 1968; During 1972; During 1974; During 1975; During 1976	6206.0
Labour Force Status and Other Characteristics of Families, November 1974	6224.0
Labour Mobility – November 1972; February 1975 and 1976	6209.0
Labour Mobility, February 1979 (Preliminary)	6208.0
Leavers from Schools, Universities and Other Educational Institutions –	
February 1964, 1965, 1966 and 1967; 1968, 1969 and 1970;	
February 1971 to February 1974 (Annually); May 1975; May 1976; August 1977; August 1978	6227.0
Migrants in the Labour Force, 1972 to 1976	6230.0
Multiple Jobholding –	
November 1965, August 1966 and 1967, May 1971, August 1973, 1975 and 1977	6216.0
Non-School Study Courses, Survey of, August 1968	Not listed
Persons Covered by Hospital and Medical Expenditure Assistance Schemes, August 1972	4303.0
Persons Aged 15 to 64 Years : Employment Status and Period Since Leaving School, May 1976	6225.0
Persons Not in the Labour Force (including Discouraged Jobseekers) –	
March 1979 (Preliminary)	6219.0
November 1975; May 1977	6220.0
Persons Looking for Work – May 1976; November 1976; May 1977; July 1978	6222.0
School Leavers, 1970 to 1974 : Their Employment Status and Education Experience in May 1975	6226.0
Superannuation, Survey of –	
Victoria, May 1968	Not listed
February 1974	6319.0
The Labour Force : Country of Birth and Period of Residence, February 1972	6207.0
Trade Union Members, November 1976	6325.0
Weekly Earnings of Employees (Distribution) – August 1975 to August 1978 (Annually)	6310.0
Work Patterns of Employees, November 1976	6328.0

(a) Estimates derived from labour force surveys. For more recent estimates, see Table 5 of this bulletin.

2. REGISTERED UNEMPLOYED, REGISTERED VACANCIES AND UNEMPLOYMENT BENEFIT RECIPIENTS

TABLE 25. REGISTERED UNEMPLOYED AND VACANCIES REGISTERED WITH THE COMMONWEALTH EMPLOYMENT SERVICE
(Source : Department of Employment and Youth Affairs)

Month	Registered unemployed (a)				Registered vacancies (b)						
	Persons		Excluding school leavers	Total	Original			Seasonally adjusted (c)			
	Males	Females			For adults	For juniors (d)	Total	For adults	For juniors (d)	Total	
1977 -											
April	208,791	114,398	290,587	323,189	16,632	4,376	21,008	16,597	6,084	22,681	
May	208,937	112,246	293,152	321,183	15,959	3,935	19,894	16,003	6,059	22,062	
1978 -											
April	265,180	137,354	362,868	402,534	13,045	5,523	18,568	13,083	7,705	20,788	
May	261,755	130,408	360,785	392,163	12,923	4,981	17,904	13,033	7,756	20,789	
June	265,232	128,610	367,282	393,842	12,449	4,754	17,203	13,354	8,158	21,512	
July	268,230	125,148	370,293	393,378	13,113	5,187	18,300	13,941	8,248	22,189	
August	266,395	122,221	368,559	388,616	13,040	5,015	18,055	13,224	7,352	20,576	
September	262,255	120,406	363,912	382,661	13,825	5,357	19,182	13,823	6,894	20,717	
October	258,291	121,867	362,608	380,158	14,893	5,821	20,714	14,987	5,822	20,809	
November	265,293	133,919	368,521	399,212	13,585	5,729	19,314	14,221	4,208	18,429	
December	294,598	156,895	383,196	451,493	11,253	6,758	18,011	13,205	3,630	16,835	
1979 -											
January	319,099	174,417	414,046	493,516	16,002	8,927	24,929	13,845	5,188	19,033	
February	307,328	174,379	414,101	481,707	17,530	7,404	24,934	15,173	5,978	21,151	
March	285,140	162,563	394,391	447,703	14,968	6,455	21,423	14,218	8,045	22,263	
April	279,025	157,952	391,210	436,977	14,139	4,078	18,217	14,215	5,736	19,951	
May	272,050	152,528	386,782	424,578	14,259	4,082	18,341	14,424	6,429	20,853	

(a) Comprises all persons who were still registered with the Commonwealth Employment Service (CES) at the Friday nearest the end of the month and who claimed when registering that they were not employed, and who were seeking full-time employment, i.e. 35 hours or more per week. They include persons referred to employers but whose employment was still unconfirmed, and persons who had recently obtained employment without notifying the CES. All recipients of unemployment benefit are included. For an explanation of the differences between this series and unemployment estimates from labour force surveys see *Unemployment (Preliminary)* (6201.0). (b) Vacancies notified to the CES, which were still unfilled at the Friday nearest the end of the month and which employers claimed could be filled if labour were supplied immediately or within the following month. Vacancies for full-time, part-time, permanent, temporary and seasonal positions are included. These figures do not represent the total job vacancies in Australia. (c) For details of the methods used see *Seasonally Adjusted Indicators, 1978* (1308.0). (d) Juniors comprise all persons under 21 years of age, including school leavers.

TABLE 26. PERSONS RECEIVING UNEMPLOYMENT BENEFIT (a)
(Source : Department of Social Security)

Date	Males	Females	Persons	Date	Males	Females	Persons
1977 -				1978 -			
April 22 (b)	152,904	73,903	226,807	June 30	203,328	82,763	286,091
May 20 (b)	162,828	77,156	239,984	July 28	208,432	82,286	290,718
August 26	179,604	75,259	254,863	August 25	205,831	79,593	285,424
September 23	177,668	71,883	249,551	September 22	206,174	78,468	284,642
October 21	182,923	71,162	254,085	October 27	201,747	78,127	279,874
December 2	172,028	66,304	238,332	December 1	199,204	79,625	278,829
December 30	185,211	71,012	256,223	December 29	220,171	91,108	311,279
1978 -				1979 -			
January 27	192,871	77,025	269,896	January 26	237,699	104,178	341,877
February 24	206,991	91,464	298,455	February 23	242,727	114,736	357,463
March 24	192,350	87,893	280,243	March 23	224,665	109,735	334,400
April 21	195,981	87,327	283,308	April 20	223,885	108,687	332,572
June 2	190,786	81,598	272,384	June 1	215,128	103,777	318,905

(a) Number on benefit at the dates indicated. (b) Figures shown for these dates are estimates.