

LABOUR FORCE

AUSTRALIA
PRELIMINARY

EMBARGO: 11:30AM (CANBERRA TIME) THURS 6 NOV 1997

OCTOBER KEY FIGURES

TREND ESTIMATES

	Sep 97	Oct 97	monthly change
Employed persons ('000)	8 424.4	8 434.0	0.1 %
Unemployed persons ('000)	787.8	784.3	-0.4 %
Unemployment rate (%)	8.6	8.5	0.0 pts
Participation rate (%)	63.1	63.0	0.0 pts

SEASONALLY ADJUSTED

	Sep 97	Oct 97	monthly change
Employed persons ('000)	8 450.6	8 450.4	-0.2
Unemployed persons ('000)	791.5	772.7	-18.8
Unemployment rate (%)	8.6	8.4	-0.2 pts
Participation rate (%)	63.3	63.0	-0.2 pts

OCTOBER KEY POINTS

TREND ESTIMATES

EMPLOYMENT

- has been rising since May 1997, to 8,434,000 in October 1997.

UNEMPLOYMENT

- fell slightly to 784,300 in October 1997.

UNEMPLOYMENT RATE

- fell by less than 0.1 points, but due to rounding was 8.5% in October 1997.

PARTICIPATION RATE

- remained relatively steady at 63.0% in October 1997.

SEASONALLY ADJUSTED ESTIMATES

EMPLOYMENT

- remained steady at 8,450,400. Full-time employment fell by 9,900 to 6,294,600, which was offset by a rise in part-time employment of 9,700.

UNEMPLOYMENT

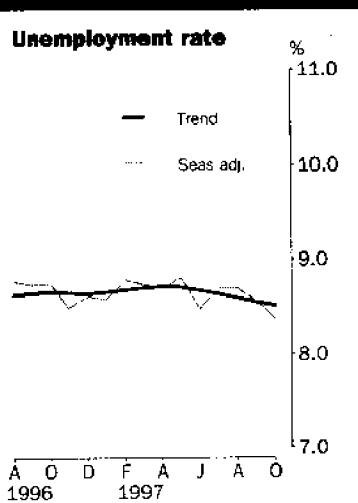
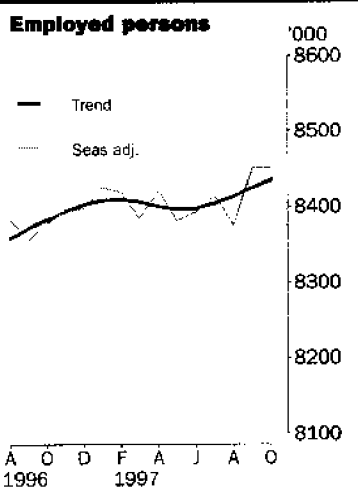
- fell by 18,800 to 772,700 with a fall of 20,400 unemployed males, and a slight rise in unemployed females.

UNEMPLOYMENT RATE

- fell by 0.2 percentage points to 8.4%. The male rate fell by 0.4 points to 8.6% and the female rate rose slightly to 8.1%.
- NSW 8.1% (7.8% last month); Vic 8.4% (9.0%); Qld 9.2% (9.4%); SA 9.6% (9.8%); WA 6.5% (7.0%); Tas 11.6% (11.5%).

PARTICIPATION RATE

- fell by 0.2 percentage points to 63.0% (in rounded terms).



INQUIRIES

- For further information about these and related statistics, contact Donna Maurer on 02 6252 6525 or any ABS office.

NOTES

FORTHCOMING ISSUES

ISSUE	RELEASE DATE
November 1997	11 December 1997
December 1997	15 January 1998
January 1998	12 February 1998
February 1998	12 March 1998
March 1998	9 April 1998
April 1998	7 May 1998

CHANGES THIS MONTH

Following each Census of Population and Housing, the ABS selects a new sample for the Labour Force Survey. This is done to ensure that the sample continues to accurately represent the distribution of the Australian population. A new sample has recently been selected based on the 1996 Census. The bulk of the new sample is being phased in over the period September 1997 to April 1998, with one eighth of this portion of the sample being introduced every month. The remainder of the sample (about 15% of the total), which covers less settled areas of Australia and non-private dwellings, was rotated in fully in September 1997 for New South Wales, Victoria, Tasmania, Northern Territory and Australian Capital Territory and in October 1997 for Queensland, South Australia and Western Australia.

For September and October 1997, there will be a lower than normal proportion of common selections. This means that there will be higher standard error estimates of month-to-month movements for these months.

Detailed information about the new sample is provided in *Information Paper: Labour Force Survey Sample Design* (cat. no 6269.0), which was released on 2 September 1997.

ROUNDING

Estimates of monthly change shown on page 1 have been calculated using unrounded estimates, and may be different from, but are more accurate than, movements obtained from the rounded estimates. The graphs on page 1 also depict movements calculated from unrounded estimates.

SAMPLING ERRORS

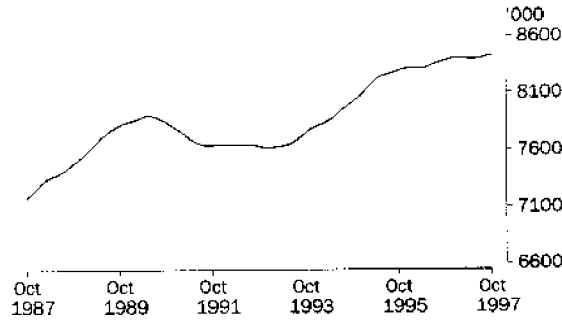
The estimates in this publication are based on a sample survey. Because the entire population is not enumerated, the published estimates and the movements derived from them are subject to sampling variability. Standard errors give a measure of this variability and appear on pages 30 and 31.

Dennis Trewin
Acting Australian Statistician

PRINCIPAL LABOUR FORCE SERIES: Trend estimates

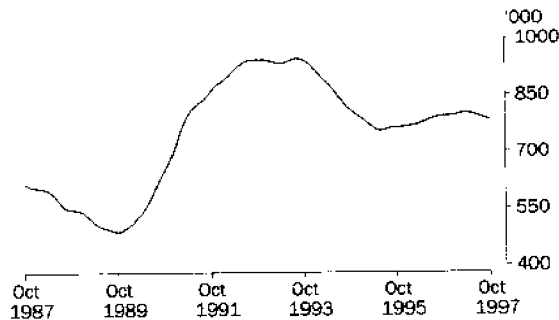
EMPLOYED PERSONS

From a low of 7,616,200 in January 1993 the trend estimate of employed persons rose quite strongly until mid 1995. Since then the trend has generally continued to rise at a slower rate, with minor falls recorded in early 1996 and early 1997. In recent months the trend has been rising steadily and was at 8,434,000 in October 1997.



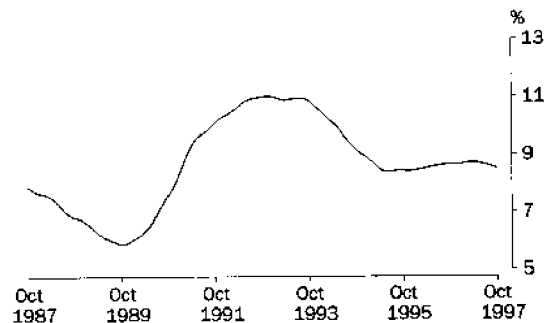
UNEMPLOYED PERSONS

The trend estimate of unemployment peaked at 947,800 in September 1993, before falling rapidly to 755,400 in June 1995. The trend then rose slowly, reaching 802,400 in April 1997. Since then, the trend has fallen steadily, down to 784,300 in October 1997.



UNEMPLOYMENT RATE

From a high of 11.0% for most of 1992 and 1993, the trend unemployment rate fell steadily to a low of 8.4% in May 1995. The trend then rose slowly to reach 8.7% in late 1996 and early 1997. Over the past few months the trend rate has dropped, to 8.5% in October 1997.

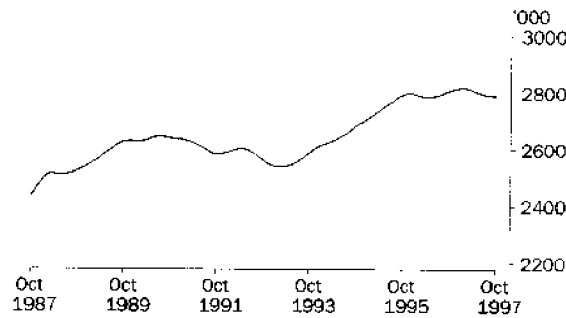


STATES: Trend estimates

EMPLOYED PERSONS

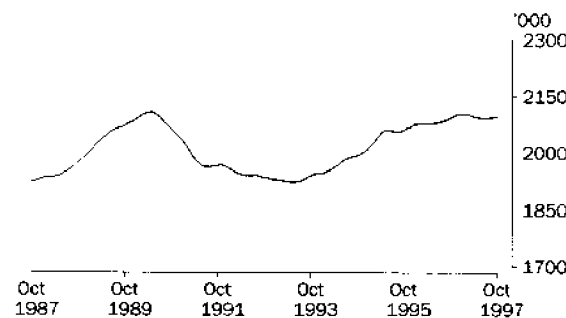
NEW SOUTH WALES

From a low of 2,537,000 in February 1993, the trend estimate of employment for New South Wales increased steadily to reach 2,798,200 in December 1995. After a small decline, the trend resumed rising and reached 2,817,700 in February 1997. Since then, the trend estimate has fallen and was 2,788,700 in October 1997.



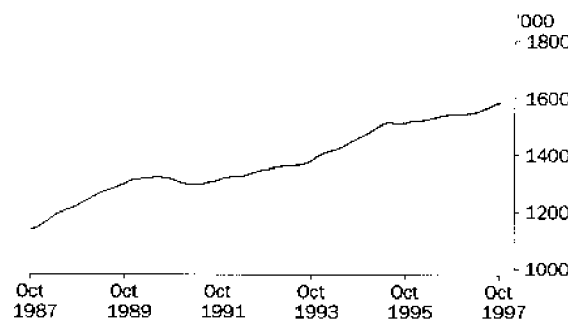
VICTORIA

The trend estimate of employment for Victoria peaked at 2,104,600 in May 1990, before falling to a low of 1,921,800 in June 1993. The trend then increased to 2,102,000 in January 1997, before falling over the following 6 months. In the past few months, the trend estimate has again increased, and was 2,095,400 in October 1997.



QUEENSLAND

For Queensland, strong increases in the trend estimate of employment were recorded between late 1993 and mid 1995, with the only significant decline occurring in late 1990 and early 1991. After a period of relatively slow increase to early 1997, the trend has increased more strongly, to 1,582,800 in October 1997.

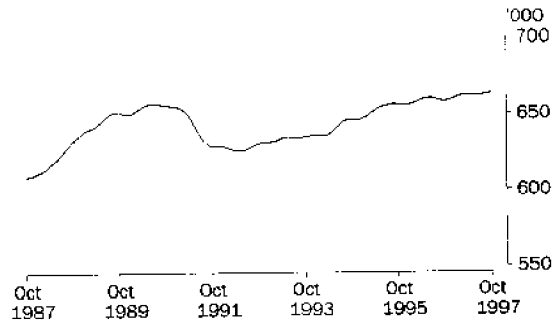


STATES: Trend estimates

EMPLOYED PERSONS

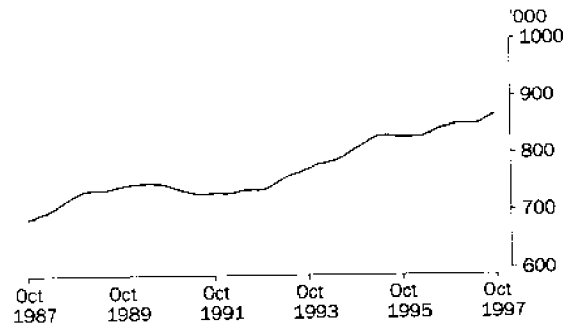
SOUTH AUSTRALIA

The trend estimate of employment in South Australia was at a low of 625,900 in May 1992. Since then, the trend estimate has generally been rising, with no significant periods of employment decline, reaching 663,900 in October 1997.



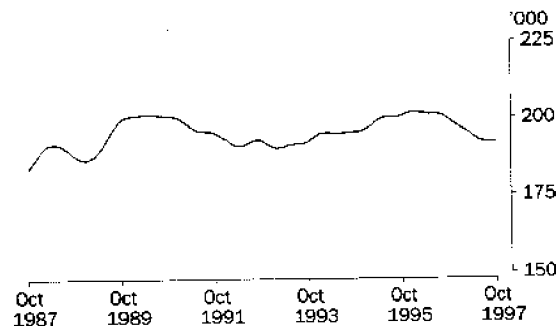
WESTERN AUSTRALIA

From 730,000 in mid 1991, the trend estimate of employment in Western Australia remained relatively flat for a year, before starting to rise. Declines were recorded in late 1995 and early February 1997. The trend has been rising relatively strongly in recent months, reaching 867,800 in October 1997.



TASMANIA

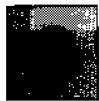
From a low of 190,200 in February 1993, the trend estimate of employment in Tasmania rose slowly to reach 201,800 in early 1996. Since then, the trend estimate has fallen quite strongly, to 192,300 in October 1997.



LABOUR FORCE STATUS (AGED 15 AND OVER): Original (a)

Month	EMPLOYED.....			UNEMPLOYED.....			Labour force	Not in labour force	Civilian population aged 15 and over	Unemp-loyment rate	Partic-ipation rate
	Full time	Part time	Total	Looking for f/t work	Looking for p/t work	Total					
	'000	'000	'000	'000	'000	'000					
MALES											
1996											
August	4 176.4	553.9	4 730.3	406.1	54.1	460.2	5 190.5	1 890.2	7 080.7	8.9	73.3
September	4 212.9	565.4	4 778.3	408.4	57.3	465.8	5 244.0	1 846.4	7 090.5	8.9	74.0
October	4 215.3	549.5	4 764.8	387.3	58.9	446.3	5 211.1	1 888.2	7 099.3	8.6	73.4
November	4 208.9	548.4	4 757.3	385.2	49.2	434.4	5 191.7	1 916.4	7 108.1	8.4	73.0
December	4 277.6	545.2	4 822.8	397.1	65.0	462.1	5 284.9	1 832.0	7 116.9	8.7	74.3
1997											
January	4 221.2	531.2	4 752.4	435.0	65.3	500.3	5 252.6	1 871.5	7 124.2	9.5	73.7
February	4 210.6	527.3	4 737.9	451.7	61.9	513.6	5 251.4	1 880.0	7 131.4	9.8	73.6
March	4 186.6	568.9	4 755.6	418.4	69.5	487.9	5 243.5	1 895.2	7 138.7	9.3	73.5
April	4 189.4	578.1	4 767.5	396.9	63.3	460.2	5 227.7	1 919.5	7 147.1	8.8	73.1
May	4 183.6	577.1	4 760.7	402.9	55.2	458.1	5 218.8	1 936.8	7 155.6	8.8	72.9
June	4 191.0	591.4	4 782.4	384.4	52.0	436.4	5 218.8	1 945.3	7 164.1	8.4	72.8
July	4 231.3	562.9	4 794.2	397.5	50.1	447.6	5 241.8	1 930.9	7 172.8	8.5	73.1
August	4 153.3	575.9	4 729.2	398.5	49.4	447.8	5 177.0	2 004.4	7 181.4	8.7	72.1
September	4 235.5	581.0	4 816.6	399.5	70.0	469.5	5 286.1	1 904.0	7 190.1	8.9	73.5
October	4 234.5	577.3	4 811.8	370.2	56.5	426.7	5 238.5	1 961.2	7 199.7	8.1	72.8
FEMALES											
1996											
August	2 059.8	1 529.6	3 589.4	210.1	100.9	310.9	3 900.3	3 403.3	7 303.6	8.0	53.4
September	2 087.4	1 564.0	3 651.3	220.6	113.9	334.5	3 985.8	3 328.9	7 314.8	8.4	54.5
October	2 089.2	1 538.5	3 627.7	211.1	107.5	318.6	3 946.3	3 378.2	7 324.5	8.1	53.9
November	2 075.0	1 560.2	3 635.2	204.5	98.4	302.9	3 938.0	3 396.3	7 334.3	7.7	53.7
December	2 122.5	1 551.2	3 673.7	231.1	112.4	343.5	4 017.2	3 326.8	7 344.1	8.6	54.7
1997											
January	2 071.8	1 472.1	3 543.9	251.2	102.3	353.5	3 897.5	3 454.5	7 352.0	9.1	53.0
February	2 067.3	1 544.8	3 612.1	262.8	129.8	392.5	4 004.6	3 355.3	7 359.9	9.8	54.4
March	2 044.9	1 592.8	3 637.7	234.8	122.7	357.4	3 995.2	3 372.6	7 367.8	8.9	54.2
April	2 054.1	1 589.6	3 643.7	230.6	108.8	339.4	3 983.1	3 393.4	7 376.5	8.5	54.0
May	2 051.9	1 576.7	3 628.6	220.8	113.0	333.8	3 962.4	3 422.8	7 385.2	8.4	53.7
June	2 031.6	1 604.1	3 635.8	215.6	98.7	314.4	3 950.1	3 443.8	7 393.9	8.0	53.4
July	2 092.2	1 565.7	3 657.9	207.2	96.1	303.3	3 961.2	3 441.4	7 402.6	7.7	53.5
August	2 025.0	1 561.3	3 586.3	213.9	102.9	316.8	3 903.1	3 508.3	7 411.4	8.1	52.7
September	2 084.6	1 625.2	3 709.8	213.3	110.2	323.5	4 033.3	3 386.8	7 420.1	8.0	54.4
October	2 072.2	1 579.8	3 652.1	208.1	101.7	309.8	3 961.8	3 467.4	7 429.2	7.8	53.3
PERSONS											
1996											
August	6 236.2	2 083.5	8 319.7	616.1	155.0	771.1	9 090.8	5 293.5	14 384.3	8.5	63.2
September	6 300.3	2 129.3	8 429.6	629.0	171.2	800.2	9 229.8	5 175.4	14 405.2	8.7	64.1
October	6 304.5	2 088.0	8 392.5	598.4	166.4	764.9	9 157.4	5 266.4	14 423.8	8.4	63.5
November	6 283.9	2 108.6	8 392.5	589.7	147.6	737.2	9 129.7	5 312.7	14 442.4	8.1	63.2
December	6 400.1	2 096.4	8 496.5	628.2	177.4	805.7	9 302.2	5 158.8	14 461.0	8.7	64.3
1997											
January	6 293.0	2 003.3	8 296.3	686.2	167.6	853.8	9 150.1	5 326.0	14 476.2	9.3	63.2
February	6 277.9	2 072.0	8 349.9	714.5	191.6	906.1	9 256.1	5 235.2	14 491.3	9.8	63.9
March	6 231.5	2 161.8	8 393.3	653.2	192.2	845.4	9 238.7	5 267.8	14 506.5	9.2	63.7
April	6 243.5	2 167.6	8 411.2	627.5	172.2	799.6	9 210.8	5 312.8	14 523.6	8.7	63.4
May	6 235.5	2 153.8	8 389.3	623.7	168.2	791.9	9 181.2	5 359.6	14 540.8	8.6	63.1
June	6 222.6	2 195.5	8 418.1	600.1	150.7	750.8	9 168.9	5 389.1	14 558.0	8.2	63.0
July	6 323.5	2 128.6	8 452.1	604.7	146.2	750.9	9 203.0	5 372.4	14 575.4	8.2	63.1
August	6 178.4	2 137.1	8 315.5	612.4	152.2	764.6	9 080.1	5 512.7	14 592.8	8.4	62.2
September	6 320.2	2 206.2	8 526.4	612.8	180.2	793.0	9 319.4	5 290.9	14 610.3	8.5	63.8
October	6 306.7	2 157.2	8 463.9	578.3	158.1	736.4	9 200.3	5 428.6	14 628.9	8.0	62.9

(a) Estimates for employment for the period August 1996 to January 1997 are affected by the implementation of telephone interviewing. See Explanatory Notes 3 and 4.



LABOUR FORCE STATUS (AGED 15 AND OVER): Seasonally adjusted (a)

Month	EMPLOYED.....			UNEMPLOYED.....			Labour force '000	Unemp- loyment rate %	Partic- ipation rate %
	Full time	Part time	Total	Looking for fit work	Looking for p/t work	Total			
	'000	'000	'000	'000	'000	'000			
MALES									
1996									
August	4 213.8	546.2	4 760.0	414.8	59.8	474.6	5 234.7	9.1	73.9
September	4 205.6	547.0	4 752.6	412.5	55.7	468.2	5 220.8	9.0	73.6
October	4 210.5	545.3	4 755.8	409.8	61.7	471.5	5 227.3	9.0	73.6
November	4 219.6	554.8	4 774.5	399.6	57.3	456.9	5 231.4	8.7	73.6
December	4 218.2	550.4	4 768.6	393.2	61.6	454.8	5 223.4	8.7	73.4
1997									
January	4 232.4	555.1	4 787.5	393.5	58.2	451.7	5 239.2	8.6	73.5
February	4 205.2	549.2	4 754.4	415.3	56.2	471.5	5 225.9	9.0	73.3
March	4 204.8	557.0	4 761.8	413.2	59.3	472.5	5 234.3	9.0	73.3
April	4 202.3	569.8	4 772.1	401.5	62.7	464.2	5 236.3	8.9	73.3
May	4 188.5	575.7	4 764.2	404.9	56.8	461.8	5 225.9	8.8	73.0
June	4 194.0	584.1	4 778.1	391.1	56.6	447.7	5 225.9	8.6	72.9
July	4 209.2	565.0	4 774.2	422.9	55.8	478.7	5 252.9	9.1	73.2
August	4 190.0	567.6	4 757.6	406.7	54.4	461.1	5 218.7	8.8	72.7
September	4 228.0	562.2	4 790.2	402.8	68.0	470.8	5 261.0	8.9	73.2
October	4 230.5	572.9	4 803.4	391.3	59.1	450.4	5 253.8	8.6	73.0
FEMALES									
1996									
August	2 095.2	1 526.3	3 621.5	221.5	109.9	331.4	3 953.0	8.4	54.1
September	2 079.3	1 524.1	3 603.4	225.3	106.7	332.0	3 935.4	8.4	53.8
October	2 081.3	1 540.8	3 622.1	222.5	109.6	332.1	3 954.2	8.4	54.0
November	2 074.8	1 544.3	3 619.2	219.2	103.2	322.4	3 941.6	8.2	53.7
December	2 080.5	1 547.6	3 628.1	224.8	112.3	337.1	3 965.2	8.5	54.0
1997									
January	2 068.5	1 569.0	3 637.5	230.7	108.5	339.2	3 976.7	8.5	54.1
February	2 071.6	1 591.9	3 663.5	227.1	112.2	339.2	4 002.8	8.5	54.4
March	2 041.5	1 580.7	3 622.2	224.5	106.0	330.5	3 952.7	8.4	53.6
April	2 072.5	1 576.6	3 649.0	231.3	106.9	338.2	3 987.2	8.5	54.1
May	2 063.2	1 553.5	3 616.7	230.5	117.6	348.1	3 964.7	8.8	53.7
June	2 040.7	1 573.8	3 614.6	223.9	106.3	330.1	3 944.7	8.4	53.4
July	2 078.1	1 561.7	3 639.8	217.5	105.0	322.5	3 962.3	8.1	53.5
August	2 059.7	1 558.5	3 618.3	225.3	112.2	337.6	3 955.8	8.5	53.4
September	2 076.5	1 584.0	3 660.5	217.4	103.3	320.7	3 981.1	8.1	53.7
October	2 064.0	1 582.9	3 647.0	218.7	103.6	322.3	3 969.3	8.1	53.4
PERSONS									
1996									
August	6 309.1	2 072.5	8 381.6	636.3	169.8	806.1	9 187.6	8.8	63.9
September	6 284.9	2 071.1	8 356.0	637.8	162.4	800.3	9 156.3	8.7	63.6
October	6 291.8	2 086.1	8 377.9	632.4	171.3	803.6	9 181.5	8.8	63.7
November	6 294.5	2 099.2	8 393.6	618.8	160.5	779.3	9 172.9	8.5	63.5
December	6 298.7	2 098.0	8 396.7	618.0	173.9	791.9	9 188.6	8.6	63.5
1997									
January	6 300.9	2 124.1	8 425.1	624.2	166.7	790.9	9 215.9	8.6	63.7
February	6 276.8	2 141.1	8 417.9	642.4	168.4	810.8	9 228.7	8.8	63.7
March	6 246.4	2 137.7	8 384.0	637.7	165.3	803.0	9 187.0	8.7	63.3
April	6 274.8	2 146.4	8 421.1	632.8	169.5	802.3	9 223.5	8.7	63.5
May	6 251.7	2 129.1	8 380.8	635.4	174.4	809.8	9 190.7	8.8	63.2
June	6 234.8	2 158.0	8 392.7	615.0	162.9	777.8	9 170.6	8.5	63.0
July	6 287.3	2 126.7	8 414.0	640.4	160.8	801.2	9 215.2	8.7	63.2
August	6 249.8	2 126.1	8 375.9	632.1	166.6	798.7	9 174.6	8.7	62.9
September	6 304.5	2 146.1	8 450.6	620.2	171.3	791.5	9 242.1	8.6	63.3
October	6 294.6	2 155.8	8 450.4	610.0	162.7	772.7	9 223.1	8.4	63.0

(a) Estimates for employment for the period August 1996 to January 1997 are affected by the implementation of telephone interviewing. See Explanatory Notes 3 and 4.

LABOUR FORCE STATUS (AGED 15 AND OVER): Trend (a)(b)

Month	EMPLOYED.....			UNEMPLOYED.....			Labour force '000	Unemp loyment rate %	Partic- ipation rate %
	Full time	Part time	Total	Looking for ft work	Looking for p/t work	Total			
	'000	'000	'000	'000	'000	'000			
MALES									
1996									
August	4 211.0	544.6	4 755.6	403.8	57.9	461.7	5 217.3	8.8	73.7
September	4 213.0	546.9	4 759.9	405.1	58.5	463.7	5 223.6	8.9	73.7
October	4 215.1	548.5	4 763.6	405.0	59.0	464.0	5 227.6	8.9	73.6
November	4 217.4	549.6	4 767.1	403.8	59.1	462.9	5 230.0	8.9	73.6
December	4 218.4	550.8	4 769.2	402.7	59.1	461.8	5 231.0	8.8	73.5
1997									
January	4 216.5	553.0	4 769.5	402.4	59.1	461.5	5 231.0	8.8	73.4
February	4 212.3	556.8	4 769.1	403.2	59.1	462.4	5 231.4	8.8	73.4
March	4 206.0	562.0	4 768.0	404.8	58.8	463.5	5 231.5	8.9	73.3
April	4 199.6	567.2	4 766.8	406.2	58.2	464.4	5 231.1	8.9	73.2
May	4 196.3	570.8	4 767.1	406.7	57.8	464.5	5 231.6	8.9	73.1
June	4 197.4	572.3	4 769.7	406.2	57.7	463.9	5 233.6	8.9	73.1
July	4 202.0	571.7	4 773.7	405.4	58.0	463.4	5 237.1	8.8	73.0
August	4 208.3	570.2	4 778.5	404.3	58.7	463.0	5 241.5	8.8	73.0
September	4 215.0	568.7	4 783.7	402.8	59.6	462.4	5 246.1	8.8	73.0
October	4 221.8	567.1	4 788.9	401.2	60.5	461.7	5 250.6	8.8	72.9
FEMALES									
1996									
August	2 078.8	1 524.2	3 603.0	218.5	109.8	328.3	3 931.4	8.4	53.8
September	2 082.5	1 529.1	3 611.7	220.8	108.7	329.5	3 941.2	8.4	53.9
October	2 082.8	1 536.3	3 619.1	222.9	108.1	331.0	3 950.1	8.4	53.9
November	2 079.6	1 546.6	3 626.2	224.3	108.0	332.4	3 958.6	8.4	54.0
December	2 074.8	1 558.3	3 633.1	225.4	108.4	333.7	3 966.8	8.4	54.0
1997									
January	2 069.5	1 568.4	3 637.8	226.5	108.9	335.5	3 973.3	8.4	54.0
February	2 065.0	1 574.8	3 639.8	227.8	109.5	337.2	3 977.0	8.5	54.0
March	2 061.3	1 576.6	3 637.9	228.4	109.8	338.2	3 976.1	8.5	54.0
April	2 059.0	1 574.1	3 633.1	228.1	109.9	338.0	3 971.1	8.5	53.8
May	2 059.0	1 569.9	3 628.9	226.8	109.6	336.4	3 965.3	8.5	53.7
June	2 060.8	1 566.7	3 627.5	224.9	109.1	333.9	3 961.4	8.4	53.6
July	2 063.3	1 566.6	3 630.0	222.9	108.2	331.1	3 961.1	8.4	53.5
August	2 065.6	1 569.2	3 634.9	221.1	107.1	328.2	3 963.0	8.3	53.5
September	2 067.8	1 572.9	3 640.7	219.5	106.0	325.4	3 966.2	8.2	53.5
October	2 068.1	1 577.0	3 645.1	217.9	104.7	322.6	3 967.7	8.1	53.4
PERSONS									
1996									
August	6 289.8	2 068.8	8 358.6	622.3	167.8	790.0	9 148.6	8.6	63.6
September	6 295.5	2 076.0	8 371.5	626.0	167.2	793.2	9 164.7	8.7	63.6
October	6 297.9	2 084.8	8 382.7	627.9	167.1	795.0	9 177.7	8.7	63.6
November	6 297.1	2 096.2	8 393.3	628.1	167.2	795.3	9 188.6	8.7	63.6
December	6 293.2	2 109.1	8 402.3	628.1	167.5	795.5	9 197.8	8.6	63.6
1997									
January	6 286.0	2 121.3	8 407.4	628.9	168.1	797.0	9 204.3	8.7	63.6
February	6 277.3	2 131.6	8 408.9	631.0	168.6	799.6	9 208.4	8.7	63.5
March	6 267.2	2 138.6	8 405.9	633.2	168.6	801.7	9 207.6	8.7	63.5
April	6 258.6	2 141.3	8 399.9	634.3	168.1	802.4	9 202.3	8.7	63.4
May	6 255.3	2 140.7	8 396.0	633.5	167.4	800.9	9 196.9	8.7	63.2
June	6 258.2	2 138.9	8 397.2	631.1	166.8	797.9	9 195.0	8.7	63.2
July	6 265.4	2 138.4	8 403.7	628.3	166.2	794.5	9 198.2	8.6	63.1
August	6 273.9	2 139.4	8 413.3	625.4	165.8	791.2	9 204.5	8.6	63.1
September	6 282.8	2 141.6	8 424.4	622.3	165.5	787.8	9 212.2	8.6	63.1
October	6 289.9	2 144.1	8 434.0	619.1	165.2	784.3	9 218.3	8.5	63.0

(a) Estimates for April 1997 to September 1997 have been revised.

(b) Estimates for employment from February 1996 have been affected by the implementation of telephone interviewing over the period August 1996 to February 1997. See Explanatory Notes 3, 4 and 15.

UNEMPLOYED PERSONS: Original

NUMBER OF UNEMPLOYED PERSONS..... UNEMPLOYMENT RATE..... UNEMPLOYMENT TO POPULATION RATIO

Month	NUMBER OF UNEMPLOYED PERSONS.....					UNEMPLOYMENT RATE.....					UNEMPLOYMENT TO POPULATION RATIO	
	Aged 15-19 looking for fit work '000	Aged 20 and over looking for work '000	Total looking for work '000	Looking for p/t work '000	Total '000	Aged 15-19 looking for fit work %	Aged 20 and over looking for fit work %	Total looking for fit work %	Looking for p/t work %	Total %	Aged 15-19 looking for fit work %	Aged 20 and over looking for fit work %

MALES

1996												
August	49.3	356.8	406.1	54.1	460.2	25.4	8.1	8.9	8.9	8.9	7.5	5.6
September	48.7	359.7	408.4	57.3	465.8	24.6	8.1	8.8	9.2	8.9	7.4	5.6
October	49.7	337.7	387.3	58.9	446.3	25.0	7.7	8.4	9.7	8.6	7.6	5.2
November	50.6	334.5	385.2	49.2	434.4	26.4	7.6	8.4	8.2	8.4	7.7	5.2
December	67.3	329.8	397.1	65.0	462.1	29.3	7.4	8.5	10.7	8.7	10.3	5.1
1997												
January	60.5	374.5	435.0	65.3	500.3	26.7	8.5	9.3	10.9	9.5	9.2	5.8
February	62.6	389.1	451.7	61.9	513.6	29.1	8.7	9.7	10.5	9.8	9.5	6.0
March	55.2	363.2	418.4	69.5	487.9	28.4	8.2	9.1	10.9	9.3	8.4	5.6
April	50.2	346.7	396.9	63.3	460.2	25.3	7.9	8.7	9.9	8.8	7.6	5.3
May	51.8	351.1	402.9	55.2	458.1	27.7	8.0	8.8	8.7	8.8	7.9	5.4
June	47.9	336.5	384.4	52.0	436.4	26.7	7.7	8.4	8.1	8.4	7.3	5.2
July	47.1	350.5	397.5	50.1	447.6	24.5	7.9	8.6	8.2	8.5	7.1	5.4
August	44.4	354.1	398.5	49.4	447.8	25.1	8.1	8.8	7.9	8.7	6.7	5.4
September	44.7	354.8	399.5	70.0	469.5	24.0	8.0	8.6	10.8	8.9	6.8	5.4
October	44.7	325.5	370.2	56.5	426.7	23.3	7.4	8.0	8.9	8.1	6.8	5.0

FEMALES

1996												
August	33.2	176.9	210.1	100.9	310.9	30.4	8.2	9.3	6.2	8.0	5.3	2.6
September	35.5	185.1	220.6	113.9	334.5	30.3	8.4	9.6	6.8	8.4	5.7	2.8
October	34.8	176.3	211.1	107.5	318.6	29.0	8.1	9.2	6.5	8.1	5.6	2.6
November	35.6	168.9	204.5	98.4	302.9	31.3	7.8	9.0	5.9	7.7	5.7	2.5
December	51.7	179.4	231.1	112.4	343.5	36.6	8.1	9.8	6.8	8.6	8.3	2.7
1997												
January	48.8	202.4	251.2	102.3	353.5	34.1	9.3	10.8	6.5	9.1	7.8	3.0
February	40.6	222.2	262.8	129.8	392.5	32.7	10.1	11.3	7.8	9.8	6.5	3.3
March	36.5	198.3	234.8	122.7	357.4	32.3	9.2	10.3	7.1	8.9	5.8	2.9
April	35.3	195.3	230.6	108.8	339.4	32.3	9.0	10.1	6.4	8.5	5.6	2.9
May	30.3	190.5	220.8	113.0	333.8	29.3	8.8	9.7	6.7	8.4	4.8	2.8
June	31.6	184.1	215.6	98.7	314.4	31.5	8.6	9.6	5.8	8.0	5.0	2.7
July	28.4	178.8	207.2	96.1	303.3	25.5	8.2	9.0	5.8	7.7	4.5	2.6
August	30.5	183.4	213.9	102.9	316.8	29.7	8.6	9.6	6.2	8.1	4.9	2.7
September	29.7	183.6	213.3	110.2	323.5	28.0	8.4	9.3	6.3	8.0	4.7	2.7
October	30.9	177.2	208.1	101.7	309.8	28.6	8.2	9.1	6.0	7.8	4.9	2.6

PERSONS

1996												
August	82.5	533.7	616.1	155.0	771.1	27.2	8.1	9.0	6.9	8.5	6.5	4.1
September	84.2	544.8	629.0	171.2	800.2	26.7	8.2	9.1	7.4	8.7	6.6	4.2
October	84.4	514.0	598.4	166.4	764.9	26.5	7.8	8.7	7.4	8.4	6.6	3.9
November	86.3	503.4	589.7	147.6	737.2	28.2	7.7	8.6	6.5	8.1	6.7	3.8
December	119.0	509.2	628.2	177.4	805.7	32.1	7.6	8.9	7.8	8.7	9.3	3.9
1997												
January	109.3	576.9	686.2	167.6	853.8	29.6	8.7	9.8	7.7	9.3	8.5	4.4
February	103.2	611.2	714.5	191.6	906.1	30.4	9.2	10.2	8.5	9.8	8.1	4.6
March	91.7	561.5	653.2	192.2	845.4	29.8	8.5	9.5	8.2	9.2	7.1	4.2
April	85.5	542.0	627.5	172.2	799.6	27.8	8.3	9.1	7.4	8.7	6.7	4.1
May	82.0	541.7	623.7	168.2	791.9	28.3	8.2	9.1	7.2	8.6	6.4	4.1
June	79.5	520.6	600.1	150.7	750.8	28.4	8.0	8.8	6.4	8.2	6.2	3.9
July	75.4	529.3	604.7	146.2	750.9	24.9	8.0	8.7	6.4	8.2	5.9	4.0
August	74.9	537.5	612.4	152.2	764.6	26.8	8.3	9.0	6.6	8.4	5.8	4.0
September	74.5	538.4	612.8	180.2	793.0	25.4	8.1	8.8	7.6	8.5	5.8	4.0
October	75.6	502.7	578.3	158.1	736.4	25.2	7.6	8.4	6.8	8.0	5.9	3.8

UNEMPLOYED PERSONS: Seasonally adjusted

Month	NUMBER OF UNEMPLOYED PERSONS....					UNEMPLOYMENT RATE.....					UNEMPLOYMENT TO POPULATION RATIO	
	Aged 15-19 looking for f/t work	Aged 20 and over looking for f/t work	Total looking for f/t work	Looking for p/t work	Total	Aged 15-19 looking for f/t work	Aged 20 and over looking for f/t work	Total looking for f/t work	Looking for p/t work	Total	Aged 15-19 looking for f/t work	Aged 20 and over looking for f/t work
	'000	'000	'000	'000	'000	%	%	%	%	%	%	%
MALES												
1996												
August	54.5	360.3	414.8	59.8	474.6	26.2	8.2	9.0	9.9	9.1	8.3	5.6
September	54.2	358.3	412.5	55.7	468.2	26.0	8.1	8.9	9.2	9.0	8.3	5.6
October	56.1	353.7	409.8	61.7	471.5	26.7	8.0	8.9	10.2	9.0	8.6	5.5
November	56.2	343.4	399.6	57.3	456.9	27.1	7.8	8.7	9.4	8.7	8.6	5.3
December	57.2	336.1	393.2	61.6	454.8	27.6	7.6	8.5	10.1	8.7	8.7	5.2
1997												
January	48.9	344.6	393.5	58.2	451.7	24.4	7.8	8.5	9.5	8.6	7.4	5.3
February	54.2	361.2	415.3	56.2	471.5	27.3	8.2	9.0	9.3	9.0	8.2	5.6
March	56.1	357.1	413.2	59.3	472.5	28.8	8.1	8.9	9.6	9.0	8.5	5.5
April	50.3	351.2	401.5	62.7	464.2	25.5	8.0	8.7	9.9	8.9	7.6	5.4
May	50.8	354.2	404.9	56.8	461.8	26.5	8.0	8.8	9.0	8.8	7.7	5.5
June	48.5	342.6	391.1	56.6	447.7	26.2	7.8	8.5	8.8	8.6	7.4	5.3
July	54.9	368.0	422.9	55.8	478.7	27.7	8.3	9.1	9.0	9.1	8.3	5.7
August	49.2	357.5	406.7	54.4	461.1	25.9	8.1	8.8	8.7	8.8	7.5	5.5
September	49.9	352.9	402.8	68.0	470.8	25.5	8.0	8.7	10.8	8.9	7.6	5.4
October	50.5	340.9	391.3	59.1	450.4	24.9	7.7	8.5	9.4	8.6	7.6	5.2
FEMALES												
1996												
August	36.2	185.3	221.5	109.9	331.4	30.5	8.4	9.6	6.7	8.4	5.8	2.8
September	38.9	186.4	225.3	106.7	332.0	32.0	8.5	9.8	6.5	8.4	6.2	2.8
October	41.6	180.9	222.5	109.6	332.1	33.2	8.3	9.7	6.6	8.4	6.7	2.7
November	41.0	178.2	219.2	103.2	322.4	33.0	8.2	9.6	6.3	8.2	6.6	2.7
December	42.0	182.8	224.8	112.3	337.1	34.3	8.4	9.8	6.8	8.5	6.7	2.7
1997												
January	39.8	190.9	230.7	108.5	339.2	32.5	8.8	10.0	6.5	8.5	6.4	2.8
February	33.3	193.8	227.1	112.2	339.2	29.3	8.9	9.9	6.6	8.5	5.3	2.9
March	35.5	189.0	224.5	106.0	330.5	30.4	8.8	9.9	6.3	8.4	5.7	2.8
April	38.1	193.2	231.3	106.9	338.2	33.1	8.8	10.0	6.3	8.5	6.1	2.9
May	31.4	199.0	230.5	117.6	348.1	29.3	9.1	10.0	7.0	8.8	5.0	2.9
June	33.2	190.6	223.9	106.3	330.1	31.2	8.8	9.9	6.3	8.4	5.3	2.8
July	31.0	186.5	217.5	105.0	322.5	27.9	8.5	9.5	6.3	8.1	4.9	2.8
August	33.2	192.1	225.3	112.2	337.6	29.8	8.8	9.9	6.7	8.5	5.3	2.8
September	32.6	184.8	217.4	103.3	320.7	29.5	8.5	9.5	6.1	8.1	5.2	2.7
October	36.9	181.8	218.7	103.6	322.3	32.8	8.4	9.6	6.1	8.1	5.9	2.7
PERSONS												
1996												
August	90.7	545.6	636.3	169.8	806.1	27.7	8.2	9.2	7.6	8.8	7.1	4.2
September	93.0	544.8	637.8	162.4	800.3	28.2	8.3	9.2	7.3	8.7	7.3	4.1
October	97.7	534.6	632.4	171.3	803.6	29.2	8.1	9.1	7.6	8.8	7.6	4.1
November	97.1	521.6	618.8	160.5	779.3	29.3	7.9	9.0	7.1	8.5	7.6	4.0
December	99.2	518.9	618.0	173.9	791.9	30.1	7.9	8.9	7.7	8.6	7.7	3.9
1997												
January	88.7	535.5	624.2	166.7	790.9	27.4	8.1	9.0	7.3	8.6	6.9	4.1
February	87.4	555.0	642.4	168.4	810.8	28.0	8.4	9.3	7.3	8.8	6.8	4.2
March	91.6	546.1	637.7	165.3	803.0	29.4	8.3	9.3	7.2	8.7	7.1	4.1
April	88.4	544.4	632.8	169.5	802.3	28.3	8.3	9.2	7.3	8.7	6.9	4.1
May	82.2	553.2	635.4	174.4	809.8	27.5	8.4	9.2	7.6	8.8	6.4	4.2
June	81.8	533.2	615.0	162.9	777.8	28.0	8.1	9.0	7.0	8.5	6.4	4.0
July	85.9	554.5	640.4	160.8	801.2	27.8	8.4	9.2	7.0	8.7	6.7	4.2
August	82.4	549.6	632.1	166.6	798.7	27.3	8.4	9.2	7.3	8.7	6.4	4.1
September	82.5	537.7	620.2	171.3	791.5	26.9	8.1	9.0	7.4	8.6	6.4	4.0
October	87.3	522.7	610.0	162.7	772.7	27.7	7.9	8.8	7.0	8.4	6.8	3.9

UNEMPLOYED PERSONS: Trend (a)

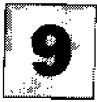
Month	NUMBER OF UNEMPLOYED PERSONS.....					UNEMPLOYMENT RATE.....					UNEMPLOYMENT TO POPULATION RATIO	
	Aged 15-19 looking for fit work	Aged 20 and over looking for fit work	Total looking for fit work	Looking for p/t work	Total	Aged 15-19 looking for fit work	Aged 20 and over looking for fit work	Total looking for fit work	Looking for p/t work	Total	Aged 15-19 looking for fit work	Aged 20 and over looking for fit work
	'000	'000	'000	'000	'000	%	%	%	%	%	%	%
MALES												
1996												
August	55.3	348.5	403.8	57.9	461.7	26.5	7.9	8.7	9.6	8.8	8.4	5.4
September	55.2	349.9	405.1	58.5	463.7	26.5	7.9	8.8	9.7	8.9	8.4	5.4
October	55.2	349.8	405.0	59.0	464.0	26.5	7.9	8.8	9.7	8.9	8.4	5.4
November	55.0	348.8	403.8	59.1	462.9	26.6	7.9	8.7	9.7	8.9	8.4	5.4
December	54.8	347.9	402.7	59.1	461.8	26.7	7.9	8.7	9.7	8.8	8.3	5.4
1997												
January	54.1	348.3	402.4	59.1	461.5	26.8	7.9	8.7	9.7	8.8	8.2	5.4
February	53.3	349.9	403.2	59.1	462.4	26.8	7.9	8.7	9.6	8.8	8.1	5.4
March	52.5	352.2	404.8	58.8	463.5	26.8	8.0	8.8	9.5	8.9	8.0	5.4
April	51.9	354.3	406.2	58.2	464.4	26.8	8.0	8.8	9.3	8.9	7.9	5.5
May	51.5	355.3	406.7	57.8	464.5	26.8	8.1	8.8	9.2	8.9	7.8	5.5
June	51.1	355.1	406.2	57.7	463.9	26.6	8.0	8.8	9.2	8.9	7.8	5.5
July	50.8	354.6	405.4	58.0	463.4	26.3	8.0	8.8	9.2	8.8	7.7	5.4
August	50.5	353.8	404.3	58.7	463.0	26.0	8.0	8.8	9.3	8.8	7.7	5.4
September	50.4	352.4	402.8	59.6	462.4	25.7	8.0	8.7	9.5	8.8	7.6	5.4
October	50.5	350.7	401.2	60.5	461.7	25.6	7.9	8.7	9.6	8.8	7.6	5.4
FEMALES												
1996												
August	36.4	182.1	218.5	109.8	328.3	30.3	8.4	9.5	6.7	8.4	5.9	2.7
September	38.3	182.5	220.8	108.7	329.5	31.5	8.4	9.6	6.6	8.4	6.2	2.7
October	39.9	183.0	222.9	108.1	331.0	32.5	8.4	9.7	6.6	8.4	6.4	2.7
November	40.6	183.7	224.3	108.0	332.4	33.0	8.4	9.7	6.5	8.4	6.5	2.7
December	40.2	185.1	225.4	108.4	333.7	32.9	8.5	9.8	6.5	8.4	6.4	2.8
1997												
January	39.0	187.5	226.5	108.9	335.5	32.4	8.6	9.9	6.5	8.4	6.2	2.8
February	37.4	190.4	227.8	109.5	337.2	31.7	8.8	9.9	6.5	8.5	6.0	2.8
March	35.8	192.7	228.4	109.8	338.2	31.1	8.9	10.0	6.5	8.5	5.7	2.9
April	34.4	193.8	228.1	109.9	338.0	30.6	8.9	10.0	6.5	8.5	5.5	2.9
May	33.4	193.4	226.8	109.6	336.4	30.2	8.9	9.9	6.5	8.5	5.3	2.9
June	32.9	192.0	224.9	109.1	333.9	30.0	8.8	9.8	6.5	8.4	5.2	2.8
July	32.8	190.1	222.9	108.2	331.1	29.9	8.7	9.8	6.5	8.4	5.2	2.8
August	33.0	188.1	221.1	107.1	328.2	30.0	8.6	9.7	6.4	8.3	5.2	2.8
September	33.4	186.1	219.5	106.0	325.4	30.2	8.5	9.6	6.3	8.2	5.3	2.7
October	33.9	184.0	217.9	104.7	322.6	30.5	8.5	9.5	6.2	8.1	5.4	2.7
PERSONS												
1996												
August	91.7	530.6	622.3	167.8	790.0	27.9	8.1	9.0	7.5	8.6	7.2	4.0
September	93.5	532.4	626.0	167.2	793.2	28.3	8.1	9.0	7.5	8.7	7.3	4.1
October	95.1	532.8	627.9	167.1	795.0	28.7	8.1	9.1	7.4	8.7	7.4	4.1
November	95.7	532.5	628.1	167.2	795.3	29.0	8.1	9.1	7.4	8.7	7.5	4.0
December	95.0	533.1	628.1	167.5	795.5	29.0	8.1	9.1	7.4	8.6	7.4	4.0
1997												
January	93.1	535.8	628.9	168.1	797.0	28.9	8.1	9.1	7.3	8.7	7.3	4.1
February	90.7	540.3	631.0	168.6	799.6	28.6	8.2	9.1	7.3	8.7	7.1	4.1
March	88.3	544.9	633.2	168.6	801.7	28.4	8.3	9.2	7.3	8.7	6.9	4.1
April	86.2	548.1	634.3	168.1	802.4	28.2	8.3	9.2	7.3	8.7	6.7	4.1
May	84.8	548.6	633.5	167.4	800.9	28.0	8.3	9.2	7.3	8.7	6.6	4.1
June	84.0	547.1	631.1	166.8	797.9	27.9	8.3	9.2	7.2	8.7	6.5	4.1
July	83.6	544.7	628.3	166.2	794.5	27.6	8.3	9.1	7.2	8.6	6.5	4.1
August	83.5	541.9	625.4	165.8	791.2	27.5	8.2	9.1	7.2	8.6	6.5	4.1
September	83.7	538.5	622.3	165.5	787.8	27.3	8.2	9.0	7.2	8.6	6.5	4.0
October	84.4	534.7	619.1	165.2	784.3	27.3	8.1	9.0	7.2	8.5	6.5	4.0

(a) Estimates for April 1997 to September 1997 have been revised.

PERSONS AGED 15 TO 19—Education and Labour Force: Original—October 1997

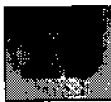
	EMPLOYED.....			UNEMPLOYED.....							
	Full time	Part time	Total	Looking	Looking	Total	Labour	Not in	Civilian	Unemp-	Partic-
				for fit	for p/t						
'000	'000	'000	'000	'000	'000	'000	'000	'000	'000	%	%
ATTENDING NEITHER SCHOOL NOR A TERTIARY EDUCATIONAL INSTITUTION FULL TIME											
Males	136.1	26.6	162.8	39.3	* 1.5	40.8	203.6	16.3	219.9	20.1	92.6
Females	71.6	38.7	110.3	26.4	* 3.2	29.7	139.9	27.3	167.2	21.2	83.7
Persons	207.7	65.3	273.0	65.7	4.8	70.5	343.5	43.6	387.1	20.5	88.7
ATTENDING A TERTIARY EDUCATIONAL INSTITUTION FULL TIME											
Males	* 3.8	32.5	36.2	* 2.3	7.5	9.8	46.1	39.4	85.5	21.3	53.9
Females	* 2.8	52.4	55.2	* 2.6	8.0	10.6	65.7	38.1	103.9	16.1	63.3
Persons	6.6	84.8	91.4	4.9	15.5	20.4	111.8	77.5	189.3	18.2	59.0
ATTENDING SCHOOL											
Males	7.2	98.8	106.1	* 3.1	20.2	23.3	129.4	227.7	357.1	18.0	36.2
Females	* 2.8	124.8	127.6	* 1.9	24.5	26.4	154.1	204.8	358.8	17.2	42.9
Persons	10.1	223.6	233.7	5.0	44.7	49.7	283.4	432.4	715.9	17.6	39.6
TOTAL											
Males	147.1	157.9	305.1	44.7	29.3	74.0	379.0	283.4	662.4	19.5	57.2
Females	77.2	215.8	293.1	30.9	35.7	66.6	359.7	270.2	629.9	18.5	57.1
Persons	224.4	373.8	598.1	75.6	65.0	140.6	738.8	553.5	1 292.3	19.0	57.2

	EMPLOYED.....			UNEMPLOYED.....			Labour force	Not in labour force	Civilian population aged 15 and over	Unemployment rate	Participation rate
	Full time	Part time	Total	Looking for full work	Looking for part work	Total					
	'000	'000	'000	'000	'000	'000					
MALES											
New South Wales	1 428.1	167.2	1 595.3	121.3	17.6	138.9	1 734.2	698.1	2 432.3	8.0	71.3
Victoria	1 043.0	152.9	1 195.9	85.9	15.2	101.1	1 297.0	489.5	1 786.5	7.8	72.6
Queensland	787.1	117.9	905.0	74.5	13.6	88.0	993.0	339.8	1 332.8	8.9	74.5
South Australia	324.1	49.6	373.7	39.8	3.5	43.2	416.9	166.2	583.1	10.4	71.5
Western Australia	438.2	60.1	498.3	27.3	3.5	30.8	529.1	173.3	702.4	5.8	75.3
Tasmania	98.5	13.3	111.8	13.5	1.4	14.9	126.7	55.1	181.8	11.8	69.7
Northern Territory	43.9	4.2	48.1	1.3	* 0.5	1.8	49.9	15.3	65.2	3.6	76.5
Australian Capital Territory	71.8	12.1	83.9	6.6	1.3	7.9	91.7	23.9	115.6	8.6	79.4
Australia	4 234.5	577.3	4 811.8	370.2	56.5	426.7	5 238.5	1 961.2	7 199.7	8.1	72.8
FEMALES											
New South Wales	721.0	473.1	1 194.1	68.1	29.3	97.3	1 291.5	1 230.6	2 522.1	7.5	51.2
Victoria	511.9	404.2	916.1	55.4	27.3	82.8	998.8	866.0	1 864.8	8.3	53.6
Queensland	382.5	312.1	694.6	41.2	21.4	62.6	757.3	600.3	1 357.6	8.3	55.8
South Australia	145.2	143.6	288.8	17.4	9.2	26.6	315.4	288.3	603.7	8.4	52.2
Western Australia	197.2	168.2	365.4	15.5	9.1	24.6	390.0	319.3	709.3	6.3	55.0
Tasmania	40.3	40.5	80.7	6.9	2.9	9.8	90.5	97.5	188.0	10.8	48.1
Northern Territory	27.0	13.4	40.4	* 0.5	* 0.4	* 0.9	41.3	22.9	64.2	* 2.2	64.3
Australian Capital Territory	47.2	24.7	71.9	3.1	2.1	5.2	77.1	42.3	119.5	6.7	64.6
Australia	2 072.2	1 579.8	3 652.1	208.1	101.7	309.8	3 961.8	3 467.4	7 429.2	7.8	53.3
PERSONS											
New South Wales	2 149.1	640.3	2 789.4	189.3	46.9	236.2	3 025.7	1 928.7	4 954.3	7.8	61.1
Victoria	1 554.8	557.1	2 111.9	141.4	42.5	183.9	2 295.8	1 355.5	3 651.3	8.0	62.9
Queensland	1 169.6	430.0	1 599.6	115.7	34.9	150.6	1 750.3	940.1	2 690.4	8.6	65.1
South Australia	469.3	193.2	662.5	57.1	12.7	69.8	732.3	454.6	1 186.9	9.5	61.7
Western Australia	635.3	228.3	863.6	42.8	12.6	55.4	919.0	492.7	1 411.7	6.0	65.1
Tasmania	138.8	53.7	192.5	20.4	4.3	24.7	217.1	152.6	369.8	11.4	58.7
Northern Territory	70.9	17.6	88.5	1.8	* 0.9	2.7	91.2	38.2	129.4	3.0	70.5
Australian Capital Territory	119.0	36.8	155.8	9.7	3.4	13.1	168.9	66.2	235.1	7.7	71.8
Australia	6 306.7	2 157.2	8 463.9	578.3	158.1	736.4	9 200.3	5 428.6	14 628.9	8.0	62.9



UNEMPLOYED PERSONS—New South Wales, Victoria and Queensland: Original

Month	NUMBER OF UNEMPLOYED PERSONS.....					UNEMPLOYMENT RATE.....					UNEMPLOYMENT TO POPULATION RATIO	
	Aged 15-19 looking for f/t work	Aged 20 and over looking for f/t work	Total looking for f/t work	Looking for p/t work	Total	Aged 15-19 looking for f/t work	Aged 20 and over looking for f/t work	Total looking for f/t work	Looking for p/t work	Total	Aged 15-19 looking for f/t work	Aged 20 and over looking for f/t work
	'000	'000	'000	'000	'000	%	%	%	%	%	%	%
NEW SOUTH WALES												
1996												
August	24.8	163.9	188.7	49.4	238.1	25.2	7.4	8.2	7.0	7.9	5.9	3.7
September	23.9	168.2	192.1	57.0	249.2	23.7	7.5	8.2	7.9	8.1	5.7	3.8
October	23.7	155.8	179.6	53.4	233.0	22.2	7.0	7.7	7.5	7.6	5.6	3.5
November	22.1	145.7	167.9	48.3	216.2	23.4	6.6	7.3	6.9	7.2	5.2	3.3
December	37.4	154.0	191.4	53.3	244.7	30.6	6.8	8.0	7.6	7.9	8.8	3.4
1997												
January	35.0	173.2	208.1	49.9	258.0	27.7	7.7	8.8	7.4	8.5	8.3	3.9
February	35.9	186.8	222.7	64.5	287.2	30.5	8.3	9.4	9.2	9.4	8.5	4.2
March	27.7	171.8	199.4	57.7	257.1	26.0	7.6	8.5	8.0	8.4	6.5	3.8
April	29.3	160.5	189.8	53.9	243.6	26.9	7.2	8.1	7.4	7.9	6.9	3.6
May	28.2	166.7	194.9	50.4	245.3	27.8	7.5	8.4	6.9	8.0	6.6	3.7
June	28.7	152.2	181.0	40.5	221.4	31.0	6.9	7.9	5.7	7.3	6.8	3.4
July	24.1	167.9	192.1	46.0	238.1	24.3	7.5	8.2	6.5	7.8	5.7	3.7
August	23.0	162.6	185.6	42.4	228.0	24.8	7.4	8.1	6.1	7.7	5.4	3.6
September	20.1	169.4	189.5	54.2	243.7	21.6	7.5	8.1	7.3	7.9	4.7	3.7
October	24.7	164.6	189.3	46.9	236.2	24.9	7.4	8.1	6.8	7.8	5.8	3.6
VICTORIA												
1996												
August	18.3	141.0	159.3	38.8	198.2	28.8	8.6	9.3	6.9	8.7	5.8	4.3
September	20.5	149.8	170.3	44.5	214.8	30.2	9.0	9.9	7.6	9.3	6.5	4.6
October	19.1	142.2	161.3	43.4	204.7	30.1	8.6	9.4	7.6	8.9	6.1	4.3
November	20.4	146.6	167.0	37.2	204.2	31.3	8.8	9.6	6.4	8.8	6.5	4.4
December	25.8	141.2	167.0	48.4	215.4	34.4	8.4	9.6	8.2	9.2	8.2	4.3
1997												
January	21.9	150.6	172.5	40.7	213.2	29.4	9.1	9.9	7.4	9.3	7.0	4.6
February	19.9	165.3	185.2	48.9	234.1	30.4	9.8	10.6	8.5	10.1	6.3	5.0
March	19.8	148.3	168.1	52.5	220.6	33.0	9.0	9.9	8.7	9.6	6.3	4.5
April	16.7	143.4	160.2	49.7	209.9	28.9	8.7	9.4	8.3	9.1	5.3	4.3
May	17.3	146.5	163.8	44.7	208.4	31.1	8.9	9.6	7.6	9.1	5.5	4.4
June	15.3	149.4	164.6	42.9	207.5	27.1	9.0	9.6	7.1	9.0	4.8	4.5
July	15.1	139.5	154.6	39.7	194.3	24.0	8.4	9.0	6.8	8.5	4.8	4.2
August	16.3	141.6	157.9	44.2	202.1	29.8	8.7	9.4	7.6	8.9	5.2	4.3
September	14.7	145.2	159.9	51.7	211.6	24.5	8.8	9.3	8.4	9.1	4.6	4.4
October	16.7	124.7	141.4	42.5	183.9	26.1	7.6	8.3	7.1	8.0	5.3	3.7
QUEENSLAND												
1996												
August	19.1	106.3	125.4	31.1	156.4	28.7	8.8	9.8	7.6	9.3	7.8	4.5
September	18.5	103.2	121.7	33.0	154.7	26.8	8.4	9.4	7.8	9.0	7.5	4.3
October	20.9	99.0	120.0	34.2	154.2	30.0	8.1	9.3	8.3	9.1	8.5	4.1
November	22.4	94.0	116.4	29.0	145.4	32.9	7.8	9.1	6.9	8.6	9.1	3.9
December	26.8	96.3	123.0	37.7	160.7	33.0	7.9	9.4	9.0	9.3	10.9	4.0
1997												
January	27.4	121.2	148.6	37.8	186.4	35.5	10.0	11.5	9.3	11.0	11.1	5.0
February	23.5	128.1	151.5	32.9	184.5	32.5	10.4	11.6	7.8	10.7	9.5	5.3
March	21.1	123.1	144.2	37.6	181.8	34.1	10.1	11.3	8.5	10.6	8.6	5.1
April	16.1	120.7	136.8	31.1	167.9	27.0	10.0	10.8	7.0	9.8	6.5	5.0
May	16.7	115.3	132.0	34.9	166.9	29.6	9.5	10.4	8.0	9.8	6.7	4.8
June	15.8	102.5	118.3	31.2	149.5	28.1	8.5	9.4	6.7	8.7	6.4	4.2
July	18.7	104.8	123.5	26.5	150.0	28.6	8.5	9.5	6.1	8.7	7.6	4.3
August	16.9	114.6	131.5	29.3	160.8	29.9	9.3	10.2	6.8	9.4	6.8	4.7
September	18.2	102.3	120.5	37.0	157.4	29.6	8.4	9.4	8.0	9.0	7.3	4.2
October	16.1	99.6	115.7	34.9	150.6	27.0	8.1	9.0	7.5	8.6	6.5	4.1



Month	NUMBER OF UNEMPLOYED PERSONS.....					UNEMPLOYMENT RATE.....					UNEMPLOYMENT TO POPULATION RATIO	
	Aged 15-19 looking for full work	Aged 20 and over looking for full work	Total looking for full work	Looking for part work	Total	Aged 15-19 looking for full work	Aged 20 and over looking for full work	Total looking for full work	Looking for part work	Total	Aged 15-19 looking for full work	Aged 20 and over looking for full work
	'000	'000	'000	'000	'000	%	%	%	%	%	%	%
SOUTH AUSTRALIA												
1996												
August	7.8	48.0	55.8	12.2	68.0	35.5	9.6	10.7	6.0	9.4	8.0	4.4
September	8.9	47.9	56.8	13.6	70.5	38.9	9.5	10.8	6.7	9.7	9.1	4.4
October	7.5	47.6	55.2	12.5	67.7	32.8	9.4	10.4	6.3	9.3	7.7	4.4
November	7.0	47.8	54.8	11.6	66.3	31.6	9.5	10.4	5.8	9.2	7.2	4.4
December	10.9	47.1	58.0	12.6	70.6	39.6	9.2	10.8	6.4	9.6	11.1	4.4
1997												
January	8.2	51.4	59.6	14.1	73.6	32.5	10.1	11.2	7.3	10.2	8.4	4.7
February	8.6	51.3	59.9	14.4	74.4	34.7	10.1	11.2	7.2	10.1	8.8	4.7
March	7.6	48.3	55.9	15.2	71.1	34.0	9.7	10.7	7.0	9.6	7.7	4.5
April	10.6	46.8	57.4	13.8	71.1	42.1	9.4	10.9	6.7	9.7	10.8	4.3
May	8.4	49.0	57.4	12.4	69.8	37.1	9.8	10.9	6.1	9.6	8.6	4.5
June	7.6	47.6	55.2	13.0	68.2	36.2	9.3	10.4	6.4	9.3	7.7	4.4
July	7.7	48.0	55.7	12.3	68.0	34.9	9.4	10.5	6.2	9.3	7.8	4.4
August	6.5	48.7	55.2	12.4	67.6	28.7	9.8	10.6	6.1	9.3	6.6	4.5
September	7.2	51.2	58.4	13.8	72.2	31.9	10.1	11.1	6.6	9.8	7.3	4.7
October	7.4	49.8	57.1	12.7	69.8	32.3	9.9	10.9	6.2	9.5	7.5	4.6
WESTERN AUSTRALIA												
1996												
August	7.8	45.8	53.6	15.3	68.8	21.1	7.2	7.9	6.4	7.5	6.0	3.7
September	7.7	46.3	54.1	15.1	69.1	20.4	7.2	7.9	6.4	7.5	6.0	3.7
October	8.6	41.6	50.2	14.9	65.1	21.9	6.5	7.4	6.4	7.2	6.7	3.3
November	9.8	42.7	52.5	13.8	66.3	25.0	6.7	7.8	5.9	7.3	7.6	3.4
December	12.0	43.7	55.7	15.0	70.8	26.5	6.8	8.1	6.3	7.6	9.3	3.5
1997												
January	10.2	50.3	60.4	15.7	76.1	22.0	7.8	8.8	6.7	8.3	7.8	4.0
February	9.6	48.6	58.2	20.8	79.1	23.3	7.5	8.5	8.5	8.5	7.4	3.9
March	9.3	45.6	54.9	18.5	73.4	24.0	7.2	8.2	7.4	8.0	7.2	3.6
April	7.5	44.4	51.9	14.8	66.8	18.7	7.0	7.7	6.1	7.3	5.8	3.5
May	6.7	39.8	46.5	16.7	63.2	17.3	6.2	6.9	7.1	6.9	5.2	3.1
June	6.9	42.4	49.3	14.9	64.2	17.7	6.7	7.3	6.1	7.0	5.3	3.3
July	4.9	43.4	48.3	13.3	61.6	12.9	6.7	7.0	5.8	6.7	3.7	3.4
August	6.4	43.1	49.5	14.8	64.3	16.9	6.7	7.3	6.1	7.0	4.9	3.4
September	8.6	42.9	51.5	13.7	65.2	21.5	6.5	7.4	5.7	6.9	6.6	3.4
October	5.9	36.9	42.8	12.6	55.4	15.3	5.8	6.3	5.2	6.0	4.5	2.9
TASMANIA												
1996												
August	2.2	16.6	18.8	3.9	22.7	24.7	10.9	11.6	6.4	10.2	6.4	5.0
September	2.3	17.6	19.9	3.9	23.8	24.9	11.4	12.2	6.3	10.6	6.8	5.2
October	2.0	17.0	19.0	4.5	23.5	21.8	11.3	11.9	7.1	10.6	5.9	5.1
November	2.5	16.3	18.7	3.4	22.2	26.4	10.8	11.7	5.7	10.1	7.3	4.9
December	3.8	16.2	20.1	5.1	25.1	35.0	10.6	12.2	8.5	11.2	11.1	4.8
1997												
January	4.0	16.5	20.5	4.4	24.9	35.1	11.1	12.8	7.3	11.3	11.7	4.9
February	3.7	17.9	21.6	4.0	25.6	32.8	11.6	13.1	7.1	11.6	10.9	5.3
March	3.8	15.1	18.9	4.6	23.5	35.1	10.3	12.0	7.4	10.7	11.0	4.5
April	3.5	15.9	19.4	3.4	22.8	34.4	10.7	12.3	5.7	10.5	10.2	4.7
May	3.1	14.2	17.3	4.2	21.5	34.3	9.6	11.0	6.9	9.9	9.1	4.2
June	3.3	15.8	19.1	3.6	22.8	37.7	10.9	12.4	6.3	10.7	9.7	4.7
July	3.4	15.4	18.9	4.5	23.4	38.6	10.7	12.3	7.3	10.9	9.9	4.6
August	4.0	15.6	19.6	4.0	23.6	43.3	10.8	12.8	6.5	11.0	11.7	4.6
September	4.0	16.4	20.4	4.2	24.6	42.4	11.1	13.0	7.0	11.4	11.7	4.9
October	3.3	17.1	20.4	4.3	24.7	36.0	11.4	12.8	7.4	11.4	9.5	5.1

UNEMPLOYED PERSONS—Northern Territory and Australian Capital Territory: Original

Month	NUMBER OF UNEMPLOYED PERSONS.....					UNEMPLOYMENT RATE.....					UNEMPLOYMENT TO POPULATION RATIO	
	Aged 15-19 looking for f/t work	Aged 20 and over looking for f/t work	Total looking for f/t work	Looking for p/t work	Total	Aged 15-19 looking for f/t work	Aged 20 and over looking for f/t work	Total looking for f/t work	Looking for p/t work	Total	Aged 15-19 looking for f/t work	Aged 20 and over looking for f/t work
	'000	'000	'000	'000	'000	%	%	%	%	%	%	%
NORTHERN TERRITORY												
1996												
August	* 0.6	2.8	3.4	1.3	4.6	* 17.1	4.3	4.9	6.8	5.3	* 4.6	2.5
September	* 0.2	3.5	3.7	1.3	5.0	* 6.0	5.2	5.2	6.1	5.4	* 1.6	3.1
October	* 0.3	2.7	3.1	* 0.9	3.9	* 11.0	4.2	4.5	* 4.1	4.4	* 2.7	2.4
November	* 0.5	2.8	3.3	* 0.7	4.0	* 16.1	4.5	5.0	* 3.2	4.6	* 3.8	2.4
December	* 0.5	2.7	3.2	* 1.1	4.3	* 14.3	4.2	4.7	* 5.8	5.0	* 3.6	2.4
1997												
January	* 0.9	4.2	5.1	* 1.1	6.2	* 23.7	6.8	7.7	* 6.3	7.4	* 6.7	3.7
February	* 0.7	4.1	4.9	* 1.0	5.9	* 24.8	6.5	7.3	* 4.8	6.7	* 5.6	3.6
March	* 0.8	2.6	3.4	1.6	5.0	* 25.4	4.0	5.0	7.8	5.6	* 5.8	2.3
April	* 0.7	3.6	4.3	* 1.2	5.5	* 26.2	5.6	6.4	* 5.8	6.2	* 5.5	3.1
May	* 0.8	3.6	4.4	* 0.7	5.1	* 25.9	5.4	6.4	* 3.3	5.6	* 6.4	3.1
June	* 0.6	3.6	4.2	* 0.6	4.8	* 23.4	5.4	6.0	* 2.8	5.3	* 4.5	3.1
July	* 0.6	3.0	3.6	* 0.9	4.4	* 18.6	4.5	5.1	* 3.9	4.8	* 4.7	2.5
August	* 0.4	3.3	3.7	* 1.0	4.8	* 16.2	5.4	5.8	* 4.3	5.4	* 3.3	2.9
September	* 0.4	3.4	3.8	* 0.9	4.7	* 14.3	4.9	5.3	* 5.0	5.3	* 3.4	2.9
October	* 0.4	1.5	1.8	* 0.9	2.7	* 11.9	2.1	2.5	* 4.7	3.0	* 2.9	1.3
AUSTRALIAN CAPITAL TERRITORY												
1996												
August	1.9	9.3	11.2	3.2	14.4	50.0	7.6	8.9	7.7	8.6	8.3	4.4
September	2.1	8.4	10.5	2.7	13.1	54.2	6.8	8.3	6.2	7.8	9.2	4.0
October	2.1	8.0	10.2	2.7	12.9	53.5	6.7	8.2	6.4	7.8	9.3	3.8
November	1.5	7.6	9.2	3.5	12.7	38.4	6.4	7.4	8.6	7.7	6.7	3.6
December	1.8	8.1	9.9	4.2	14.1	37.2	6.7	7.9	10.0	8.4	7.8	3.8
1997												
January	1.8	9.5	11.3	3.9	15.2	38.3	7.7	8.8	10.3	9.2	7.7	4.5
February	1.3	9.1	10.4	5.0	15.4	35.8	7.4	8.2	11.6	9.0	5.7	4.3
March	1.6	6.7	8.3	4.6	12.9	43.6	5.5	6.6	10.7	7.6	7.3	3.2
April	1.0	6.7	7.7	4.3	11.9	31.0	5.4	6.1	9.7	7.0	4.5	3.1
May	* 0.9	6.6	7.5	4.2	11.7	* 26.3	5.3	5.8	9.5	6.8	* 3.8	3.1
June	1.3	7.0	8.3	4.0	12.3	42.5	5.6	6.5	9.4	7.2	5.9	3.3
July	* 0.8	7.3	8.1	3.0	11.1	* 25.1	5.8	6.3	7.3	6.6	* 3.7	3.4
August	1.3	8.0	9.3	4.1	13.4	43.0	6.5	7.3	9.7	7.9	5.9	3.8
September	1.2	7.7	8.8	4.7	13.6	36.7	6.0	6.8	11.3	7.9	5.3	3.6
October	1.2	8.5	9.7	3.4	13.1	32.2	6.8	7.5	8.4	7.7	5.3	4.0

LABOUR FORCE STATUS (AGED 15 AND OVER)-New South Wales(a)

Month	SEASONALLY ADJUSTED.....					TREND.....					Civilian population aged 15 and over '000
	Employed full time '000	Total employed '000	Total unemployed '000	Unemployment rate %	Participation rate %	Employed full time '000	Total employed '000	Total unemployed '000	Unemployment rate %	Participation rate %	
MALES											
1996											
August	1 416.5	1 596.5	153.4	8.8	73.0	1 416.0	1 594.8	144.2	8.3	72.6	2 395.8
September	1 420.4	1 596.9	141.5	8.1	72.5	1 419.9	1 597.5	143.1	8.2	72.6	2 399.1
October	1 423.3	1 601.7	141.8	8.1	72.6	1 423.6	1 600.0	142.0	8.2	72.5	2 401.8
November	1 424.2	1 593.0	141.3	8.1	72.1	1 427.2	1 602.3	141.0	8.1	72.5	2 404.6
December	1 432.4	1 610.1	136.2	7.8	72.5	1 429.6	1 604.3	140.8	8.1	72.5	2 407.3
1997											
January	1 438.9	1 618.0	137.3	7.8	72.9	1 430.4	1 605.4	141.3	8.1	72.5	2 409.2
February	1 415.1	1 589.7	151.1	8.7	72.2	1 429.5	1 605.9	142.3	8.1	72.5	2 411.1
March	1 438.9	1 607.1	142.0	8.1	72.5	1 426.7	1 605.2	143.4	8.2	72.5	2 413.0
April	1 424.0	1 610.0	143.7	8.2	72.6	1 422.5	1 603.1	143.8	8.2	72.3	2 415.6
May	1 409.7	1 596.7	147.3	8.4	72.1	1 418.5	1 600.1	143.9	8.2	72.1	2 418.1
June	1 422.2	1 601.8	131.9	7.6	71.6	1 416.1	1 597.4	143.7	8.3	71.9	2 420.7
July	1 411.6	1 595.9	155.1	8.9	72.2	1 415.8	1 595.1	143.7	8.3	71.7	2 423.6
August	1 404.6	1 576.2	140.4	8.2	70.7	1 417.0	1 593.3	144.1	8.3	71.6	2 426.5
September	1 428.6	1 603.9	143.7	8.2	71.9	1 418.9	1 591.9	144.7	8.3	71.5	2 429.3
October	1 429.2	1 593.2	146.2	8.4	71.5	1 422.4	1 591.5	145.0	8.3	71.4	2 432.3
FEMALES											
1996											
August	733.7	1 201.6	97.8	7.5	52.3	725.8	1 200.0	98.0	7.5	52.3	2 482.3
September	720.4	1 195.2	103.6	8.0	52.2	728.6	1 202.8	97.8	7.5	52.3	2 486.2
October	731.9	1 210.0	100.2	7.6	52.6	730.3	1 205.5	98.0	7.5	52.4	2 489.4
November	730.5	1 206.2	87.1	6.7	51.9	730.3	1 207.8	98.4	7.5	52.4	2 492.6
December	731.9	1 210.7	102.1	7.8	52.6	729.8	1 210.4	99.4	7.6	52.5	2 495.8
1997											
January	730.1	1 213.8	101.3	7.7	52.6	729.0	1 212.0	100.8	7.7	52.6	2 498.1
February	726.1	1 212.3	107.7	8.2	52.8	727.8	1 211.8	102.4	7.8	52.6	2 500.3
March	720.3	1 206.3	98.9	7.6	52.2	726.1	1 209.6	103.6	7.9	52.5	2 502.5
April	731.7	1 216.2	104.5	7.9	52.7	724.3	1 206.4	103.8	7.9	52.3	2 505.3
May	726.0	1 202.3	107.0	8.2	52.2	722.7	1 203.5	102.8	7.9	52.1	2 508.0
June	710.2	1 186.3	97.8	7.6	51.1	721.4	1 201.1	101.5	7.8	51.9	2 510.7
July	727.0	1 208.3	100.6	7.7	52.1	720.2	1 199.7	100.4	7.7	51.7	2 513.6
August	716.6	1 191.6	100.8	7.8	51.4	719.1	1 198.8	99.4	7.7	51.6	2 516.5
September	720.5	1 213.5	95.6	7.3	52.0	718.2	1 198.1	98.6	7.6	51.5	2 519.4
October	716.3	1 188.6	99.5	7.7	51.1	717.1	1 197.1	97.6	7.5	51.3	2 522.1
PERSONS											
1996											
August	2 150.3	2 798.1	251.2	8.2	62.5	2 141.9	2 794.8	242.2	8.0	62.3	4 878.1
September	2 140.8	2 792.1	245.0	8.1	62.2	2 148.4	2 800.3	241.0	7.9	62.3	4 885.3
October	2 155.1	2 811.8	242.0	7.9	62.4	2 153.9	2 805.4	240.0	7.9	62.3	4 891.3
November	2 154.7	2 799.3	228.4	7.5	61.8	2 157.5	2 810.2	239.4	7.9	62.3	4 897.2
December	2 164.2	2 820.8	238.3	7.8	62.4	2 159.4	2 814.6	240.2	7.9	62.3	4 903.1
1997											
January	2 169.0	2 831.7	238.5	7.8	62.6	2 159.4	2 817.3	242.1	7.9	62.3	4 907.3
February	2 141.3	2 801.9	258.8	8.5	62.3	2 157.4	2 817.7	244.7	8.0	62.4	4 911.4
March	2 159.2	2 813.4	240.8	7.9	62.1	2 152.9	2 814.7	246.9	8.1	62.3	4 915.5
April	2 155.7	2 826.2	248.2	8.1	62.5	2 146.8	2 809.5	247.6	8.1	62.1	4 920.8
May	2 135.6	2 799.0	254.3	8.3	62.0	2 141.2	2 803.6	246.7	8.1	61.9	4 926.1
June	2 132.4	2 788.1	229.7	7.6	61.2	2 137.5	2 798.5	245.2	8.1	61.7	4 931.4
July	2 138.7	2 804.2	255.7	8.4	62.0	2 136.0	2 794.9	244.1	8.0	61.6	4 937.2
August	2 121.2	2 767.9	241.2	8.0	60.9	2 136.1	2 792.1	243.5	8.0	61.4	4 942.9
September	2 149.2	2 817.4	239.3	7.8	61.8	2 137.2	2 790.0	243.3	8.0	61.3	4 948.7
October	2 145.5	2 781.8	245.6	8.1	61.1	2 139.5	2 788.7	242.6	8.0	61.2	4 954.3

(a) Trend estimates for April 1997 to September 1997 have been revised.

LABOUR FORCE STATUS (AGED 15 AND OVER)-Victoria(a)

SEASONALLY ADJUSTED.....

TREND.....

Month	SEASONALLY ADJUSTED					TREND					Civilian population aged 15 and over '000
	Employed full time '000	Total employed '000	Total unemployed '000	Unemployment rate %	Participation rate %	Employed full time '000	Total employed '000	Total unemployed '000	Unemployment rate %	Participation rate %	
MALES											
1996											
August	1 055.8	1 188.5	114.6	8.8	74.0	1 050.7	1 186.3	114.3	8.8	73.8	1 761.9
September	1 035.2	1 181.9	120.9	9.3	73.9	1 048.1	1 187.0	116.8	9.0	73.9	1 763.9
October	1 046.3	1 185.5	121.9	9.3	74.1	1 046.5	1 187.6	118.9	9.1	74.0	1 765.5
November	1 049.1	1 194.8	118.5	9.0	74.3	1 046.3	1 188.2	120.2	9.2	74.0	1 767.2
December	1 043.0	1 185.0	120.2	9.2	73.8	1 047.2	1 188.7	120.3	9.2	74.0	1 768.8
1997											
January	1 056.7	1 193.5	117.5	9.0	74.1	1 047.8	1 188.4	120.0	9.2	73.9	1 770.2
February	1 046.8	1 182.8	120.1	9.2	73.5	1 047.5	1 187.7	119.9	9.2	73.8	1 771.5
March	1 040.9	1 186.5	122.3	9.3	73.8	1 046.0	1 186.5	120.1	9.2	73.7	1 772.9
April	1 045.7	1 187.3	120.7	9.2	73.7	1 043.4	1 184.8	120.6	9.2	73.6	1 774.8
May	1 044.0	1 183.5	115.7	8.9	73.1	1 040.8	1 183.3	120.7	9.3	73.4	1 776.7
June	1 033.5	1 182.0	126.0	9.6	73.5	1 038.5	1 182.5	120.3	9.2	73.2	1 778.8
July	1 040.5	1 184.1	117.3	9.0	73.1	1 037.1	1 182.6	119.1	9.1	73.1	1 780.6
August	1 033.0	1 174.7	117.9	9.1	72.5	1 036.1	1 183.5	117.4	9.0	73.0	1 782.5
September	1 031.8	1 185.5	121.0	9.3	73.2	1 035.7	1 185.0	115.4	8.9	72.9	1 784.5
October	1 041.9	1 195.7	104.9	8.1	72.8	1 035.4	1 186.9	113.4	8.7	72.8	1 786.5
FEMALES											
1996											
August	512.1	896.8	95.0	9.6	53.9	513.9	895.7	90.5	9.2	53.6	1 838.6
September	510.1	899.6	90.8	9.2	53.8	513.6	899.1	92.1	9.3	53.8	1 841.0
October	514.0	898.8	94.1	9.5	53.9	513.7	903.7	92.5	9.3	54.1	1 842.9
November	516.4	912.3	93.3	9.3	54.5	513.9	908.7	91.7	9.2	54.2	1 844.9
December	511.7	910.4	89.8	9.0	54.2	513.4	912.1	90.2	9.0	54.3	1 846.8
1997											
January	516.2	921.4	86.4	8.6	54.5	512.1	913.6	89.2	8.9	54.3	1 848.3
February	512.4	916.8	88.0	8.8	54.3	510.8	913.6	88.9	8.9	54.2	1 849.7
March	502.9	901.3	88.9	9.0	53.5	509.7	912.4	89.5	8.9	54.1	1 851.1
April	510.3	915.5	90.8	9.0	54.3	509.2	910.5	90.5	9.0	54.0	1 853.1
May	505.4	902.2	94.5	9.5	53.7	509.3	909.0	91.5	9.1	53.9	1 855.1
June	517.2	917.9	92.0	9.1	54.4	509.8	908.3	91.8	9.2	53.9	1 857.1
July	512.7	908.1	88.3	8.9	53.6	510.4	908.2	91.5	9.2	53.8	1 859.0
August	502.9	895.4	95.5	9.6	53.3	510.7	908.4	90.9	9.1	53.7	1 861.0
September	512.8	917.9	87.3	8.7	54.0	510.9	908.7	90.2	9.0	53.6	1 862.9
October	512.0	908.6	89.1	8.9	53.5	510.8	908.5	89.5	9.0	53.5	1 864.8
PERSONS											
1996											
August	1 567.9	2 085.3	209.5	9.1	63.7	1 564.6	2 082.0	204.8	9.0	63.5	3 600.4
September	1 545.2	2 081.6	211.7	9.2	63.6	1 561.7	2 086.1	208.9	9.1	63.7	3 604.9
October	1 560.3	2 084.3	216.0	9.4	63.7	1 560.2	2 091.3	211.4	9.2	63.8	3 608.5
November	1 565.5	2 107.1	211.8	9.1	64.2	1 560.2	2 096.9	211.9	9.2	63.9	3 612.0
December	1 554.8	2 095.4	210.0	9.1	63.8	1 560.5	2 100.8	210.5	9.1	63.9	3 615.7
1997											
January	1 572.9	2 114.8	203.9	8.8	64.1	1 559.9	2 102.0	209.2	9.1	63.9	3 618.4
February	1 559.2	2 099.6	208.1	9.0	63.7	1 558.3	2 101.3	208.9	9.0	63.8	3 621.2
March	1 543.7	2 087.8	211.2	9.2	63.4	1 555.7	2 098.9	209.6	9.1	63.7	3 624.0
April	1 556.0	2 102.8	211.5	9.1	63.8	1 552.6	2 095.3	211.1	9.2	63.6	3 627.9
May	1 549.4	2 085.8	210.2	9.2	63.2	1 550.1	2 092.3	212.2	9.2	63.5	3 631.8
June	1 550.7	2 099.9	217.9	9.4	63.7	1 548.4	2 090.8	212.1	9.2	63.3	3 635.7
July	1 553.2	2 092.3	205.6	8.9	63.1	1 547.4	2 090.8	210.6	9.2	63.2	3 639.6
August	1 535.9	2 070.2	213.4	9.3	62.7	1 546.8	2 091.8	208.3	9.1	63.1	3 643.5
September	1 544.5	2 103.4	208.2	9.0	63.4	1 546.6	2 093.6	205.6	8.9	63.0	3 647.4
October	1 554.0	2 104.3	194.0	8.4	62.9	1 546.2	2 095.4	202.9	8.8	62.9	3 651.3

(a) Trend estimates for April 1997 to September 1997 have been revised.

LABOUR FORCE STATUS (AGED 15 AND OVER)-Queensland(a)

SEASONALLY ADJUSTED.....

TREND.....

Month	Employed	Total	Total	Unemp-	Partic-	Employed	Total	Total	Unemp-	Partic-	Civilian
	full time	employed	unemployed	loyment	ipation		full time	employed	unemployed	loyment	
	'000	'000	'000	rate	rate	'000	'000	'000	rate	rate	aged 15
				%	%				%	%	and over
											'000
MALES											
1996											
August	778.8	876.1	99.5	10.2	75.0	780.3	880.2	93.3	9.6	74.9	1 300.3
September	781.2	880.3	93.3	9.6	74.7	781.3	880.6	93.5	9.6	74.8	1 302.7
October	781.4	876.5	97.0	10.0	74.6	782.0	881.1	93.6	9.6	74.7	1 305.2
November	783.2	886.8	86.5	8.9	74.4	781.6	881.2	93.9	9.6	74.6	1 307.7
December	783.4	882.0	93.6	9.6	74.5	779.7	880.2	94.9	9.7	74.4	1 310.2
1997											
January	774.5	882.4	97.3	9.9	74.6	776.2	878.3	96.3	9.9	74.2	1 312.6
February	777.9	874.2	97.4	10.0	73.9	772.5	876.4	97.2	10.0	74.0	1 315.0
March	762.2	867.9	104.0	10.7	73.8	769.8	875.5	97.4	10.0	73.9	1 317.4
April	766.4	876.3	96.3	9.9	73.7	768.9	876.2	96.8	9.9	73.7	1 319.7
May	771.9	879.7	93.7	9.6	73.6	770.0	878.6	95.6	9.8	73.7	1 321.9
June	766.3	883.8	88.5	9.1	73.4	772.7	882.2	94.7	9.7	73.8	1 324.1
July	787.5	889.0	94.8	9.6	74.2	775.6	885.8	94.4	9.6	73.9	1 326.2
August	775.5	887.6	100.4	10.2	74.4	778.3	889.1	94.5	9.6	74.1	1 328.2
September	776.2	885.9	94.3	9.6	73.7	780.5	892.0	94.7	9.6	74.2	1 330.3
October	784.7	900.8	93.1	9.4	74.6	782.0	894.2	95.2	9.6	74.2	1 332.8
FEMALES											
1996											
August	381.8	661.6	66.8	9.2	55.0	378.3	658.4	67.4	9.3	54.8	1 323.4
September	382.8	662.3	67.1	9.2	55.0	380.4	660.0	67.8	9.3	54.9	1 326.1
October	381.9	660.3	69.4	9.5	54.9	380.9	660.6	68.7	9.4	54.9	1 328.7
November	378.0	657.4	67.7	9.3	54.5	380.1	661.3	69.6	9.5	54.9	1 331.4
December	382.4	662.1	70.0	9.6	54.9	378.8	662.5	70.1	9.6	54.9	1 334.1
1997											
January	370.4	659.4	75.4	10.3	55.0	377.1	664.4	70.1	9.5	55.0	1 336.7
February	377.9	675.5	69.0	9.3	55.6	375.4	667.0	69.5	9.4	55.0	1 339.3
March	375.5	669.5	64.3	8.8	54.7	374.2	669.7	68.5	9.3	55.0	1 341.9
April	375.6	671.5	66.4	9.0	54.9	373.8	672.2	67.4	9.1	55.0	1 344.1
May	374.7	669.4	71.9	9.7	55.1	374.4	674.5	66.7	9.0	55.1	1 346.4
June	365.1	679.7	64.7	8.7	55.2	375.8	676.9	66.6	9.0	55.1	1 348.6
July	381.6	683.3	62.5	8.4	55.2	377.7	679.7	67.0	9.0	55.3	1 350.8
August	386.2	679.0	70.4	9.4	55.4	379.7	682.9	67.6	9.0	55.5	1 352.9
September	380.5	684.1	68.7	9.1	55.6	381.6	686.0	68.1	9.0	55.7	1 355.1
October	381.5	693.4	69.2	9.1	56.2	383.0	688.6	68.6	9.1	55.8	1 357.6
PERSONS											
1996											
August	1 160.6	1 537.7	166.3	9.8	64.9	1 158.6	1 538.6	160.7	9.5	64.8	2 623.7
September	1 163.9	1 542.7	160.3	9.4	64.8	1 161.6	1 540.6	161.4	9.5	64.7	2 628.8
October	1 163.3	1 536.9	166.4	9.8	64.7	1 162.9	1 541.7	162.3	9.5	64.7	2 634.0
November	1 161.2	1 544.2	154.3	9.1	64.4	1 161.7	1 542.4	163.5	9.6	64.6	2 639.1
December	1 165.8	1 544.2	163.6	9.6	64.6	1 158.4	1 542.7	165.0	9.7	64.6	2 644.3
1997											
January	1 144.9	1 541.8	172.7	10.1	64.7	1 153.3	1 542.7	166.3	9.7	64.5	2 649.3
February	1 155.8	1 549.7	166.4	9.7	64.7	1 148.0	1 543.3	166.7	9.7	64.4	2 654.3
March	1 137.7	1 537.4	168.3	9.9	64.1	1 144.0	1 545.2	165.9	9.7	64.3	2 659.3
April	1 142.0	1 547.8	162.8	9.5	64.2	1 142.7	1 548.4	164.1	9.6	64.3	2 663.8
May	1 146.5	1 549.1	165.5	9.7	64.3	1 144.4	1 553.1	162.3	9.5	64.3	2 668.3
June	1 131.4	1 563.5	153.2	8.9	64.2	1 148.5	1 559.1	161.3	9.4	64.4	2 672.8
July	1 169.1	1 572.3	157.3	9.1	64.6	1 153.3	1 565.6	161.4	9.3	64.5	2 676.9
August	1 161.7	1 566.5	170.8	9.8	64.8	1 158.0	1 571.9	162.1	9.3	64.7	2 681.1
September	1 156.7	1 570.0	163.0	9.4	64.5	1 162.1	1 578.0	162.8	9.4	64.8	2 685.3
October	1 166.1	1 594.2	162.3	9.2	65.3	1 165.0	1 582.8	163.7	9.4	64.9	2 690.4

(a) Trend estimates for April 1997 to September 1997 have been revised.

LABOUR FORCE STATUS (AGED 15 AND OVER)-South Australia(a)

SEASONALLY ADJUSTED.....

TREND.....

Month	SEASONALLY ADJUSTED.....					TREND.....					Civilian population aged 15 and over '000
	Employed full time '000	Total employed '000	Total unemployed '000	Unemp-loyment rate %	Partic-ipation rate %	Employed full time '000	Total employed '000	Total unemployed '000	Unemp-loyment rate %	Partic-ipation rate %	
MALES											
1996											
August	318.4	368.2	41.7	10.2	70.9	319.7	368.4	41.2	10.1	70.8	578.4
September	317.1	365.9	42.6	10.4	70.6	319.4	367.8	41.5	10.1	70.7	578.8
October	318.9	367.2	41.2	10.1	70.5	319.5	367.6	41.7	10.2	70.7	579.1
November	320.8	368.1	42.8	10.4	70.9	320.1	367.7	41.7	10.2	70.6	579.5
December	321.6	368.8	41.4	10.1	70.7	320.7	368.0	41.6	10.1	70.6	579.8
1997											
January	323.1	368.0	40.7	10.0	70.5	321.1	368.7	41.6	10.1	70.7	580.0
February	320.5	369.0	41.4	10.1	70.7	321.2	369.3	42.0	10.2	70.9	580.3
March	320.2	372.4	42.0	10.1	71.4	321.1	370.0	42.6	10.3	71.1	580.5
April	322.1	368.7	44.5	10.8	71.1	321.4	370.8	43.1	10.4	71.3	580.8
May	318.8	370.1	45.1	10.9	71.4	322.2	371.9	43.4	10.5	71.5	581.1
June	324.6	375.5	42.3	10.1	71.9	323.3	373.0	43.5	10.4	71.6	581.5
July	325.6	373.3	43.2	10.4	71.6	324.1	373.9	43.4	10.4	71.7	581.9
August	325.9	375.7	42.5	10.2	71.8	324.7	374.7	43.4	10.4	71.8	582.3
September	325.3	375.7	44.1	10.5	72.0	324.8	375.2	43.4	10.4	71.8	582.7
October	321.9	374.1	43.7	10.5	71.6	324.7	375.7	43.3	10.3	71.9	583.1
FEMALES											
1996											
August	150.2	290.4	28.5	8.9	53.2	150.8	291.2	27.6	8.7	53.2	599.2
September	151.1	290.4	27.9	8.8	53.1	150.6	291.0	27.7	8.7	53.1	599.6
October	151.6	294.8	27.6	8.6	53.7	150.4	290.8	27.7	8.7	53.1	599.9
November	148.2	288.6	26.5	8.4	52.5	150.2	291.0	27.5	8.6	53.1	600.2
December	150.5	289.0	28.4	8.9	52.9	150.1	291.4	27.3	8.6	53.1	600.5
1997											
January	150.6	291.7	26.6	8.4	53.0	150.1	292.0	27.1	8.5	53.1	600.7
February	150.1	293.7	27.0	8.4	53.4	150.3	292.4	27.1	8.5	53.2	601.0
March	150.1	295.1	28.0	8.7	53.7	150.7	292.4	27.1	8.5	53.2	601.2
April	150.6	292.1	26.6	8.3	53.0	150.8	291.7	27.3	8.6	53.0	601.5
May	149.9	288.3	26.2	8.3	52.3	150.5	290.5	27.6	8.7	52.8	601.8
June	152.6	289.8	29.1	9.1	53.0	149.6	289.1	27.8	8.8	52.6	602.2
July	149.3	287.9	28.9	9.1	52.6	148.4	288.2	27.9	8.8	52.5	602.6
August	145.0	286.2	27.4	8.7	52.0	147.0	287.8	28.0	8.9	52.4	602.9
September	143.9	286.9	28.1	8.9	52.2	145.6	287.8	27.9	8.8	52.3	603.3
October	145.0	291.4	27.1	8.5	52.7	144.4	288.2	27.8	8.8	52.3	603.7
PERSONS											
1996											
August	468.6	658.6	70.2	9.6	61.9	470.5	659.6	68.8	9.4	61.9	1 177.6
September	468.2	656.3	70.5	9.7	61.7	469.9	658.8	69.2	9.5	61.8	1 178.4
October	470.5	662.0	68.7	9.4	62.0	469.9	658.4	69.3	9.5	61.7	1 179.0
November	469.0	656.7	69.3	9.5	61.5	470.3	658.7	69.2	9.5	61.7	1 179.6
December	472.0	657.8	69.8	9.6	61.6	470.9	659.5	68.9	9.5	61.7	1 180.3
1997											
January	473.6	659.7	67.3	9.3	61.6	471.2	660.7	68.8	9.4	61.8	1 180.8
February	470.6	662.7	68.4	9.4	61.9	471.5	661.7	69.1	9.5	61.9	1 181.2
March	470.3	667.5	69.9	9.5	62.4	471.8	662.4	69.7	9.5	62.0	1 181.7
April	472.8	660.8	71.0	9.7	61.9	472.3	662.6	70.4	9.6	62.0	1 182.3
May	468.7	658.4	71.3	9.8	61.7	472.7	662.4	71.0	9.7	62.0	1 183.0
June	477.2	665.3	71.4	9.7	62.2	472.9	662.1	71.3	9.7	62.0	1 183.6
July	475.0	661.2	72.1	9.8	61.9	472.6	662.1	71.4	9.7	61.9	1 184.4
August	470.9	661.9	69.8	9.5	61.7	471.7	662.5	71.3	9.7	61.9	1 185.2
September	469.3	662.5	72.2	9.8	61.9	470.5	663.0	71.3	9.7	61.9	1 186.0
October	467.0	665.5	70.8	9.6	62.0	469.2	663.9	71.2	9.7	61.9	1 186.9

(a) Trend estimates for April 1997 to September 1997 have been revised.

LABOUR FORCE STATUS (AGED 15 AND OVER)-Western Australia(a)

SEASONALLY ADJUSTED.....

TREND.....

Month	SEASONALLY ADJUSTED.....					TREND.....					Civilian population aged 15 and over '000
	Employed full time '000	Total employed '000	Total unemployed '000	Unemployment rate %	Participation rate %	Employed full time '000	Total employed '000	Total unemployed '000	Unemployment rate %	Participation rate %	
MALES											
1996											
August	426.1	481.3	43.3	8.3	76.6	427.7	480.5	42.4	8.1	76.4	684.7
September	426.0	480.4	41.9	8.0	76.1	428.1	481.2	42.5	8.1	76.3	686.0
October	430.3	484.0	42.8	8.1	76.6	428.8	482.3	42.1	8.0	76.3	687.3
November	429.9	480.3	41.9	8.0	75.8	429.8	483.8	41.3	7.9	76.3	688.6
December	428.5	483.7	41.3	7.9	76.1	431.1	485.7	40.2	7.6	76.2	689.9
1997											
January	434.3	491.4	36.7	7.0	76.4	432.4	487.7	38.9	7.4	76.2	691.0
February	435.9	491.2	38.4	7.3	76.5	433.6	489.5	37.9	7.2	76.2	692.1
March	433.0	490.2	37.4	7.1	76.1	434.4	490.9	37.2	7.0	76.2	693.2
April	434.6	490.4	36.2	6.9	75.8	435.4	491.8	37.2	7.0	76.2	694.5
May	436.1	492.0	37.2	7.0	76.1	436.5	492.4	37.6	7.1	76.2	695.9
June	437.5	495.5	38.2	7.2	76.5	437.6	493.2	38.1	7.2	76.2	697.1
July	439.1	491.0	39.1	7.4	75.9	438.8	494.3	38.4	7.2	76.3	698.4
August	440.2	497.4	38.8	7.2	76.6	439.8	495.5	38.4	7.2	76.3	699.8
September	442.6	496.2	40.6	7.6	76.6	440.6	496.6	38.1	7.1	76.3	701.1
October	438.8	498.4	33.8	6.4	75.8	441.0	497.6	37.7	7.0	76.2	702.4
FEMALES											
1996											
August	201.4	367.9	28.6	7.2	57.4	198.1	362.7	28.1	7.2	56.5	691.4
September	200.1	365.3	27.3	7.0	56.7	198.3	364.4	28.1	7.1	56.6	692.8
October	194.3	360.8	27.4	7.1	55.9	197.8	365.1	28.3	7.2	56.7	694.2
November	195.3	364.0	27.8	7.1	56.3	196.5	365.3	29.1	7.4	56.7	695.5
December	197.6	366.5	29.6	7.5	56.8	194.8	365.0	30.2	7.7	56.7	696.9
1997											
January	194.8	364.5	33.4	8.4	57.0	193.0	364.0	31.3	7.9	56.6	698.0
February	189.7	366.5	32.3	8.1	57.0	191.4	362.4	31.6	8.0	56.4	699.1
March	187.8	359.4	31.6	8.1	55.8	190.3	360.2	31.2	8.0	55.9	700.3
April	191.7	356.8	31.5	8.1	55.4	190.0	358.4	30.2	7.8	55.4	701.6
May	191.7	355.9	26.2	6.9	54.4	190.9	358.0	29.0	7.5	55.0	702.9
June	186.6	356.1	27.5	7.2	54.5	192.7	359.4	27.8	7.2	55.0	704.2
July	198.7	362.4	26.8	6.9	55.2	194.8	362.0	27.1	7.0	55.2	705.5
August	197.1	365.2	28.4	7.2	55.7	196.7	365.0	26.5	6.8	55.4	706.8
September	201.8	374.6	24.7	6.2	56.4	198.2	367.9	26.0	6.6	55.6	708.0
October	195.9	367.3	25.9	6.6	55.4	199.1	370.3	25.7	6.5	55.8	709.3
PERSONS											
1996											
August	627.6	849.2	71.9	7.8	66.9	625.8	843.2	70.5	7.7	66.4	1 376.1
September	626.1	845.7	69.2	7.6	66.3	626.5	845.5	70.5	7.7	66.4	1 378.9
October	624.6	844.8	70.2	7.7	66.2	626.6	847.4	70.4	7.7	66.4	1 381.5
November	625.2	844.3	69.7	7.6	66.0	626.3	849.1	70.4	7.7	66.4	1 384.1
December	626.0	850.2	70.9	7.7	66.4	625.9	850.7	70.4	7.6	66.4	1 386.7
1997											
January	629.1	855.9	70.1	7.6	66.7	625.4	851.7	70.2	7.6	66.4	1 389.0
February	625.6	857.7	70.8	7.6	66.7	625.0	851.9	69.5	7.5	66.2	1 391.2
March	620.8	849.6	69.0	7.5	65.9	624.7	851.1	68.4	7.4	66.0	1 393.5
April	626.3	847.3	67.8	7.4	65.5	625.4	850.1	67.4	7.3	65.7	1 396.1
May	627.8	847.9	63.5	7.0	65.2	627.3	850.4	66.6	7.3	65.6	1 398.8
June	624.1	851.6	65.7	7.2	65.5	630.3	852.6	66.0	7.2	65.5	1 401.4
July	637.8	853.4	66.0	7.2	65.5	633.6	856.4	65.4	7.1	65.7	1 403.9
August	637.3	862.6	67.2	7.2	66.1	636.5	860.6	64.9	7.0	65.8	1 406.5
September	644.3	870.8	65.3	7.0	66.4	638.8	864.5	64.1	6.9	65.9	1 409.1
October	634.7	865.7	59.8	6.5	65.6	640.2	867.8	63.4	6.8	66.0	1 411.7

(a) Trend estimates for April 1997 to September 1997 have been revised.

LABOUR FORCE STATUS (AGED 15 AND OVER)-Tasmania(a)

SEASONALLY ADJUSTED.....

TREND.....

Month	SEASONALLY ADJUSTED.....					TREND.....					Civilian population aged 15 and over '000
	Employed full time '000	Total employed '000	Total unemployed '000	Unemployment rate %	Participation rate %	Employed full time '000	Total employed '000	Total unemployed '000	Unemployment rate %	Participation rate %	
MALES											
1996											
August	102.9	117.7	14.1	10.7	72.7	101.2	115.9	14.6	11.2	71.9	181.3
September	101.2	115.6	14.4	11.1	71.7	101.0	115.6	14.3	11.0	71.6	181.4
October	99.9	114.4	14.2	11.1	70.9	100.6	115.1	14.0	10.9	71.1	181.5
November	100.0	114.8	12.8	10.1	70.3	100.1	114.4	13.9	10.8	70.7	181.5
December	99.4	113.0	14.7	11.5	70.3	99.7	113.7	14.0	10.9	70.3	181.6
1997											
January	98.7	113.4	13.6	10.7	69.9	99.3	113.1	14.1	11.1	70.1	181.6
February	100.2	112.1	14.7	11.6	69.8	98.9	112.7	14.2	11.2	69.9	181.6
March	98.6	113.4	14.0	11.0	70.1	98.4	112.3	14.3	11.3	69.7	181.6
April	97.0	111.5	15.4	12.1	69.8	97.7	111.9	14.3	11.4	69.5	181.6
May	97.6	112.3	13.4	10.6	69.2	97.2	111.6	14.3	11.3	69.3	181.7
June	96.6	110.6	13.7	11.0	68.4	96.9	111.6	14.2	11.3	69.2	181.7
July	95.8	110.4	15.4	12.2	69.3	97.0	111.7	14.2	11.3	69.3	181.7
August	97.5	113.1	14.0	11.0	69.9	97.3	112.0	14.3	11.3	69.5	181.8
September	97.9	112.9	13.4	10.6	69.5	97.7	112.2	14.4	11.4	69.7	181.8
October	99.3	112.5	15.6	12.2	70.4	98.2	112.6	14.5	11.4	69.9	181.8
FEMALES											
1996											
August	42.1	85.6	9.1	9.6	50.5	42.1	85.0	9.4	10.0	50.4	187.5
September	41.9	84.0	9.5	10.1	49.8	42.1	84.7	9.5	10.1	50.2	187.6
October	42.6	85.3	9.8	10.3	50.6	42.2	84.4	9.5	10.1	50.0	187.6
November	43.1	84.0	9.4	10.1	49.8	42.0	84.1	9.4	10.1	49.8	187.7
December	41.6	82.6	9.0	9.8	48.8	41.8	83.8	9.4	10.1	49.6	187.8
1997											
January	41.1	84.5	9.3	9.9	49.9	41.6	83.6	9.3	10.0	49.5	187.8
February	40.6	83.3	9.5	10.3	49.4	41.4	83.3	9.3	10.0	49.3	187.8
March	40.6	82.6	9.7	10.5	49.2	41.2	82.9	9.2	10.0	49.0	187.8
April	42.0	83.3	8.3	9.1	48.7	40.8	82.3	9.2	10.0	48.7	187.8
May	42.0	82.3	9.3	10.2	48.8	40.3	81.7	9.2	10.2	48.4	187.9
June	39.0	79.4	9.8	11.0	47.5	39.7	81.0	9.4	10.4	48.1	187.9
July	37.7	80.1	8.7	9.8	47.3	39.2	80.5	9.7	10.7	48.0	187.9
August	38.3	81.8	10.2	11.0	48.9	38.9	80.1	9.9	11.0	47.9	187.9
September	38.7	78.2	11.4	12.7	47.7	38.9	79.9	10.2	11.3	47.9	188.0
October	41.0	80.8	9.7	10.7	48.1	39.0	79.7	10.4	11.6	48.0	188.0
PERSONS											
1996											
August	145.0	203.3	23.2	10.2	61.4	143.3	200.9	24.0	10.7	61.0	368.8
September	143.2	199.6	23.9	10.7	60.6	143.1	200.3	23.7	10.6	60.7	369.0
October	142.5	199.6	24.0	10.7	60.6	142.7	199.5	23.5	10.5	60.4	369.1
November	143.1	198.8	22.3	10.1	59.9	142.2	198.4	23.3	10.5	60.1	369.2
December	141.0	195.6	23.7	10.8	59.4	141.5	197.5	23.3	10.6	59.8	369.4
1997											
January	139.8	197.8	22.9	10.4	59.8	140.9	196.8	23.4	10.6	59.6	369.4
February	140.8	195.4	24.2	11.0	59.5	140.3	196.0	23.5	10.7	59.4	369.4
March	139.2	196.0	23.7	10.8	59.5	139.5	195.2	23.5	10.7	59.2	369.4
April	139.1	194.7	23.6	10.8	59.1	138.5	194.2	23.5	10.8	58.9	369.5
May	139.6	194.5	22.7	10.4	58.8	137.5	193.3	23.5	10.8	58.7	369.5
June	135.5	189.9	23.5	11.0	57.8	136.6	192.6	23.6	10.9	58.5	369.6
July	133.5	190.6	24.1	11.2	58.1	136.2	192.2	23.9	11.1	58.5	369.7
August	135.8	194.9	24.2	11.0	59.2	136.2	192.1	24.3	11.2	58.5	369.7
September	136.5	191.1	24.8	11.5	58.4	136.6	192.1	24.6	11.4	58.6	369.8
October	140.4	193.3	25.3	11.6	59.1	137.2	192.3	25.0	11.5	58.8	369.8

(a) Trend estimates for April 1997 to September 1997 have been revised.

LABOUR FORCE STATUS (AGED 15 AND OVER)--Northern Territory(a)

TREND.....

Month	Employed full time '000	Total employed '000	Total unemployed '000	Unemp- loyment rate %	Partic- ipation rate %	Civilian population aged 15 and over '000
MALES						
1996						
August	40.4	46.0	2.5	5.2	75.8	64.0
September	40.2	46.1	2.3	4.8	75.6	64.0
October	40.0	46.0	2.3	4.7	75.2	64.2
November	39.8	45.7	2.3	4.9	74.7	64.3
December	39.7	45.5	2.5	5.1	74.4	64.4
1997						
January	39.7	45.4	2.6	5.5	74.4	64.5
February	39.8	45.5	2.8	5.9	74.7	64.7
March	39.9	45.8	3.0	6.1	75.4	64.8
April	39.9	46.2	3.1	6.2	76.1	64.8
May	39.7	46.5	3.1	6.2	76.4	64.9
June	39.6	46.5	3.0	6.1	76.3	64.9
July	39.6	46.4	2.9	6.0	76.0	65.0
August	39.8	46.3	2.8	5.7	75.6	65.0
September	40.1	46.3	2.7	5.4	75.3	65.0
October	40.6	46.2	2.5	5.1	74.7	65.2
FEMALES						
1996						
August	25.4	37.8	2.4	5.9	64.5	62.4
September	25.2	37.7	2.2	5.5	64.0	62.4
October	24.8	37.5	2.1	5.3	63.2	62.6
November	24.2	37.2	2.0	5.2	62.4	62.8
December	23.7	36.9	2.0	5.1	61.8	63.0
1997						
January	23.4	36.9	2.1	5.3	61.6	63.1
February	23.4	37.1	2.2	5.6	62.1	63.3
March	23.5	37.6	2.4	5.9	62.9	63.5
April	23.7	38.1	2.5	6.2	63.9	63.6
May	24.0	38.6	2.5	6.1	64.5	63.7
June	24.4	38.8	2.4	5.8	64.6	63.8
July	24.8	38.9	2.2	5.3	64.2	63.9
August	25.3	38.8	1.9	4.6	63.6	64.0
September	25.9	38.9	1.6	3.9	63.1	64.1
October	26.5	38.9	1.3	3.2	62.5	64.2
PERSONS						
1996						
August	65.8	83.9	4.9	5.5	70.2	126.4
September	65.4	83.8	4.5	5.1	69.9	126.5
October	64.7	83.5	4.4	5.0	69.3	126.8
November	63.9	82.9	4.4	5.0	68.6	127.1
December	63.3	82.4	4.4	5.1	68.2	127.4
1997						
January	63.1	82.2	4.7	5.4	68.1	127.7
February	63.2	82.6	5.0	5.7	68.4	128.0
March	63.4	83.4	5.4	6.0	69.2	128.2
April	63.6	84.3	5.6	6.2	70.0	128.4
May	63.8	85.0	5.6	6.2	70.5	128.6
June	64.0	85.3	5.4	6.0	70.5	128.7
July	64.4	85.3	5.1	5.6	70.2	128.9
August	65.1	85.2	4.7	5.2	69.7	129.0
September	66.0	85.1	4.2	4.7	69.2	129.1
October	67.0	85.1	3.7	4.2	68.6	129.4

(a) Trend estimates for April 1997 to September 1997 have been revised. Estimates for the most recent three months may be subject to significant revisions as data for later months become available.

LABOUR FORCE STATUS (AGED 15 AND OVER)—Australian Capital Territory(a)

TREND.....

Month	Employed full time '000	Total employed '000	Total unemployed '000	Unemp- loyment rate %	Partic- ipation rate %	Civilian population aged 15 and over '000
MALES						
1996						
August	72.7	83.3	7.6	8.4	79.5	114.3
September	72.4	83.0	7.7	8.5	79.1	114.5
October	72.1	82.6	7.8	8.6	78.8	114.6
November	71.8	82.3	7.9	8.7	78.6	114.7
December	71.5	82.0	7.9	8.8	78.3	114.9
1997						
January	71.4	82.0	7.8	8.7	78.1	115.0
February	71.4	82.3	7.6	8.5	78.1	115.1
March	71.6	82.8	7.3	8.1	78.2	115.3
April	71.9	83.5	7.0	7.7	78.5	115.3
May	72.4	84.2	6.8	7.4	78.8	115.3
June	72.9	84.6	6.8	7.4	79.2	115.3
July	73.2	84.9	7.0	7.6	79.6	115.4
August	73.4	85.0	7.2	7.8	79.9	115.4
September	73.5	84.9	7.5	8.1	80.1	115.5
October	73.5	84.7	7.8	8.5	80.0	115.6
FEMALES						
1996						
August	43.4	71.1	6.7	8.7	65.5	118.9
September	43.0	70.5	6.7	8.7	64.9	119.0
October	42.7	70.0	6.6	8.6	64.3	119.1
November	42.7	70.0	6.3	8.3	64.0	119.2
December	43.1	70.5	5.8	7.7	64.0	119.2
1997						
January	44.0	71.6	5.4	7.0	64.5	119.3
February	45.1	72.9	5.0	6.5	65.3	119.4
March	46.3	74.0	4.9	6.2	66.1	119.4
April	47.0	74.7	5.1	6.4	66.8	119.4
May	47.3	74.6	5.4	6.8	67.0	119.4
June	47.2	74.0	5.9	7.3	66.9	119.4
July	47.0	73.2	6.2	7.8	66.5	119.4
August	46.9	72.6	6.4	8.1	66.1	119.4
September	47.0	72.0	6.5	8.3	65.8	119.3
October	47.1	71.6	6.5	8.4	65.4	119.5
PERSONS						
1996						
August	116.0	154.3	14.4	8.5	72.4	233.2
September	115.5	153.4	14.4	8.6	71.9	233.6
October	114.8	152.6	14.4	8.6	71.4	233.7
November	114.5	152.2	14.2	8.5	71.1	233.9
December	114.6	152.6	13.7	8.3	71.0	234.1
1997						
January	115.3	153.6	13.2	7.9	71.2	234.3
February	116.5	155.2	12.7	7.5	71.6	234.5
March	117.8	156.9	12.2	7.2	72.0	234.7
April	118.9	158.2	12.0	7.1	72.5	234.7
May	119.7	158.8	12.2	7.1	72.8	234.7
June	120.0	158.6	12.6	7.4	73.0	234.8
July	120.2	158.1	13.1	7.7	72.9	234.8
August	120.3	157.5	13.6	8.0	72.9	234.8
September	120.5	156.9	14.1	8.2	72.8	234.8
October	120.6	156.3	14.4	8.4	72.6	235.1

(a) Trend estimates for April 1997 to September 1997 have been revised. Estimates for the most recent three months may be subject to significant revisions as data for later months become available.

EXPLANATORY NOTES

INTRODUCTION

1 This publication contains preliminary estimates of the civilian labour force derived from the Labour Force Survey component of the monthly population survey. Estimates for the current month are preliminary and subject to revision. Revised estimates for the current month and more detailed estimates will be published in *Labour Force, Australia* (6203.0).

MONTHLY POPULATION SURVEY

2 The population survey is based on a multi-stage area sample of private dwellings (currently about 30,000 houses, flats, etc.) and a list sample of non-private dwellings (hotels, motels, etc.), and covers about 0.5% of the population of Australia. The information is obtained from the occupants of selected dwellings by specially trained interviewers. The interviews are generally conducted during the two weeks beginning on the Monday between the 6th and 12th of each month. The information obtained relates to the week before the interview (i.e. the reference week).

TELEPHONE INTERVIEWING

3 The ABS has introduced the use of telephone interviewing into the Labour Force Survey. Households selected for the Labour Force Survey are interviewed each month for 8 months, with one eighth of the sample being replaced each month. The first interview will continue to be conducted face-to-face. Subsequent interviews will then be conducted by telephone (if acceptable to the respondent). Telephone interviewing was phased in for each new sample group from August 1996 to February 1997.

4 During the period of implementation, the new method produced different estimates than would have been obtained under the old methodology. The effect peaked in November 1996, when it is estimated that the published estimate of total employment was about 36,000 to 48,000 lower than would have been measured under the old methodology. The effect dissipated over the final months of implementation and was no longer discernible from February 1997. Therefore, the estimates for February 1997 and onwards are directly comparable to estimates for periods prior to August 1996.

SCOPE OF SURVEY

5 The Labour Force Survey includes all persons aged 15 and over except members of the permanent defence forces, certain diplomatic personnel of overseas governments customarily excluded from census and estimated populations, overseas residents in Australia, and members of non-Australian defence forces (and their dependants) stationed in Australia.

COVERAGE

6 In the Labour Force Survey, coverage rules are applied which aim to ensure that each person is associated with only one dwelling, and hence has only one chance of selection. The coverage rules are necessarily a balance between theoretical and operational considerations. Nevertheless, the chance of a person being enumerated at two separate dwellings in the survey is considered to be negligible.

POPULATION BENCHMARKS

7 Labour Force Survey estimates are calculated in such a way as to add up to independent estimates of the civilian population aged 15 and over (population benchmarks). From February 1994, labour force estimates have been compiled using benchmarks based on the results of the 1991 Census of Population and Housing. Small revisions were made to many of the historical estimates from January 1989 to January 1994.

REVISION OF SERIES

8 From April 1986, the definition of employed persons was changed to include persons who worked without pay between 1 and 14 hours per week in a family business or on a farm (i.e. contributing family workers). For further information, see paragraphs 36 and 37 of the Explanatory Notes to the February 1987 issue of *Labour Force, Australia* (6203.0).

EXPLANATORY NOTES

SURVEY SAMPLE REDESIGN

9 The Labour Force Survey sample has been reselected using information collected in the 1996 Census of Population and Housing.

10 The bulk of the new sample will be phased in over the period September 1997 to April 1998, with one eighth of this portion of the sample being introduced every month. The remainder of the sample (about 15% of the total), which covers less settled areas of Australia and non-private dwellings was rotated in full for New South Wales, Victoria, Tasmania, Northern Territory and Australian Capital Territory in September 1997, and for Queensland, South Australia and Western Australia in October 1997. Such a pattern of implementation means that any changes to labour force estimates due to differences between the two samples, or any other influences, will be spread over the eight months.

11 For further details, see *Information Paper: Labour Force Survey Sample Design* (6269.0).

RELIABILITY OF ESTIMATES

12 Two types of error are possible in an estimate based on a sample survey: sampling error and non-sampling error.

Sampling error occurs because a sample, rather than the entire population, is surveyed. One measure of the likely difference resulting from not including all dwellings in the survey is given by the standard error. There are about two chances in three that a sample estimate will differ by less than one standard error from the figure that would have been obtained if all dwellings had been included in the survey, and about nineteen chances in twenty that the difference will be less than two standard errors. Standard errors of estimates for the latest month and of estimates of movements since the previous month are shown on pages 30 and 31. Standard errors of other estimates and other movements may be determined by using information in the Technical Notes in *Labour Force, Australia* (6203.0).

Non sampling error arises from inaccuracies in collecting, recording and processing the data. Every effort is made to minimise reporting error by the careful design of questionnaires, intensive training and supervision of interviewers, and efficient data processing procedures.

SEASONAL ADJUSTMENT AND TREND ESTIMATION

13 Seasonally adjusted series are published in Tables 2, 5 and 12 to 17. Seasonal factors are reviewed annually to take account of each additional year's original data. The results of the latest review were used to compile the revised seasonally adjusted and trend estimates given in this publication. Information about the method of adjustment and revised seasonally adjusted and trend estimates for all months from January 1991 were published in an appendix to the February 1996 issue of *Labour Force, Australia* (6203.0).

14 Seasonal adjustment is a means of removing the estimated effects of normal seasonal variation from the series so that the effects of other influences on the series can be more clearly recognised. Seasonal adjustment does not aim to remove the irregular or non-seasonal influences which may be present in any particular month. This means that month-to-month movements of the seasonally adjusted estimates may not be reliable indicators of trend behaviour. For example, irregular factors unrelated to the trend account for more than half the seasonally adjusted movement with the following frequency:

Employment: 5 in 10 monthly movements

Unemployment: 7 in 10 monthly movements

Unemployment rate: 7 in 10 monthly movements

Participation rate: 9 in 10 monthly movements.

EXPLANATORY NOTES

SEASONAL ADJUSTMENT AND TREND ESTIMATION *continued*

15 The smoothing of seasonally adjusted series reduces the impact of the irregular component of the seasonally adjusted series, and creates trend estimates. These trend estimates are derived by applying a 13-term Henderson-weighted moving average to all months except the last six. The last six monthly trend estimates are obtained by applying surrogates of the Henderson average to the seasonally adjusted series. Trend series are used to analyse the underlying behaviour of the series over time. These are published in tables 3, 6 and 12 to 19.

16 While this smoothing technique enables estimates to be produced for the latest month, it does result in revisions to the most recent months as additional observations become available. Generally, subsequent revisions become smaller, and after three months have a negligible impact on the series. There will also be revisions as a result of the annual review of seasonal factors.

17 Trend estimates are published for the Northern Territory in table 18 and for the Australian Capital Territory in table 19. Unadjusted series for the two Territories have shown, historically, a high degree of variability, which can lead to considerable revisions to the seasonally adjusted estimates after each annual seasonal factor re-analysis. Seasonally adjusted estimates are not currently published for the two Territories. The most recent six months trend estimates are subject to revision. For the three most recent months, the revision may be relatively large. Inferences about trends drawn from smoothed seasonally adjusted (trend) estimates for months earlier than the latest three months are unlikely to be affected by month to month revisions. They may be affected by revision resulting from the annual re-analysis of seasonal factors.

18 For further information, see *A Guide to Interpreting Time Series — Monitoring Trends: an Overview* (1348.0) or contact the Assistant Director, Time Series Analysis on (06) 252 6345.

RELATED PUBLICATIONS

19 Users may also wish to refer to *Labour Force, Australia* (6203.0). This publication contains a detailed list of related publications which are available from ABS Bookshops.

20 Current publications produced by the ABS are listed in the *Catalogue of Publications and Products* (1101.0). The ABS also issues, on Tuesdays and Fridays, a *Release Advice* (1105.0) which lists publications to be released in the next few days. The Catalogue and Release Advice are available from any ABS office.

UNPUBLISHED STATISTICS

21 As well as the statistics included in this and related publications, the ABS may have other relevant unpublished data available. Inquiries should be made to Donna Maurer on 02 6252 6525 or to any ABS office.

EFFECTS OF ROUNDING

22 Estimates have been rounded and discrepancies may occur between sums of the component items and totals.

23 Estimates of movement shown in this publication are obtained by taking the difference of unrounded estimates. The movement estimate is then rounded to one decimal place. Therefore where a discrepancy occurs between the reported movement and the difference of the rounded estimates, the reported movement will be more accurate.

SYMBOLS AND OTHER USAGES

- * subject to sampling variability too high for most practical uses. See the Technical Notes in 6203.0 for more details.
- .. not applicable
- r revised
- pts percentage points

G L O S S A R Y

Actively looking for work	Includes writing, telephoning or applying in person to an employer for work; answering a newspaper advertisement for a job; checking factory or Commonwealth Employment Service noticeboards; being registered with the Commonwealth Employment Service; checking or registering with any other employment agency; advertising or tendering for work; and contacting friends or relatives.
Attending school	Persons aged 15 to 19 enrolled full time at secondary or high schools in the reference week.
Attending tertiary educational institution full time	Persons aged 15 to 24 enrolled full time at a TAFE college, university, or other educational institution in the reference week.
Employed	Persons aged 15 and over who, during the reference week: <ul style="list-style-type: none"> ■ worked for one hour or more for pay, profit, commission or payment in kind in a job or business, or on a farm (comprising employees, employers and own account workers); or ■ worked for one hour or more without pay in a family business or on a farm (i.e. contributing family workers); or ■ were employees who had a job but were not at work and were: <ul style="list-style-type: none"> ■ on paid leave, on leave without pay for less than four weeks up to the end of the reference week, ■ stood down without pay because of bad weather or plant breakdown at their place of employment for less than four weeks up to the end of the reference week, ■ on strike or locked out, ■ on workers' compensation and expected to be returning to their job, or ■ receiving wages or salary while undertaking full-time study; or ■ were employers, own account workers or contributing family workers who had a job, business or farm, but were not at work.
Full-time workers	Employed persons who usually worked 35 hours or more a week (in all jobs) and those who, although usually working less than 35 hours a week, worked 35 hours or more during the reference week
Labour force	For any group, persons who were employed or unemployed, as defined.
Labour force status	A classification of the civilian population aged 15 and over into employed, unemployed or not in the labour force, as defined. The definitions conform closely to the international standard definitions adopted by the International Conferences of Labour Statisticians.
Not in the labour force	Persons who were not in the categories employed or unemployed as defined.
Participation rate	For any group, the labour force expressed as a percentage of the civilian population aged 15 and over in the same group.
Part-time workers	Employed persons who usually worked less than 35 hours a week and who did so during the reference week.
Seasonally adjusted series	A time series of estimates with the estimated effects of normal seasonal variation removed. See Explanatory Note 13 to 14 for more detail.
Trend series	A smoothed seasonally adjusted series of estimates. See Explanatory Notes 15 to 17 for more detail.

G L O S S A R Y

Unemployed	Persons aged 15 and over who were not employed during the reference week, and: <ul style="list-style-type: none">■ had actively looked for full-time or part-time work at any time in the four weeks up to the end of the reference week and:<ul style="list-style-type: none">■ were available for work in the reference week, or would have been available except for temporary illness (i.e. lasting for less than four weeks to the end of the reference week), or■ were waiting to start a new job within four weeks from the end of the reference week and would have started in the reference week if the job had been available then; or■ were waiting to be called back to a full-time or part-time job from which they had been stood down without pay for less than four weeks up to the end of the reference week (including the whole of the reference week) for reasons other than bad weather or plant breakdown.
Unemployed looking for first full-time job	Unemployed persons looking for full-time work (as defined above) who had never worked full time for two weeks or more
Unemployed looking for full-time work	Unemployed persons who actively looked for full-time work, or were to resume a full-time job from which they had been stood down.
Unemployed looking for part-time work	Unemployed persons who had actively looked for part-time work only, or were to resume a part-time job from which they had been stood down.
Unemployment rate	For any group, the number of unemployed persons expressed as a percentage of the labour force in the same group.
Unemployment to population ratio	For any group, the number of unemployed persons expressed as a percentage of the civilian population in the same group.

STANDARD ERRORS

The estimates in this publication are based on information gained from the occupants of a sample survey of dwellings. Because the entire population is not surveyed, the published estimates are subject to sampling error. The most common way of quantifying such sampling error is to calculate the standard error for the published estimate or statistic.

LEVEL ESTIMATES

To illustrate, let us say the published level estimate for employed persons aged 15 to 19 is 500,000. The calculated standard error in this case is 9,000. The standard error is then used to interpret the level estimate of 500,000. For instance, the standard error of 9,000 indicates that:

- There are approximately two chances in three that the real value falls within the range 491,000 to 509,000 (500,000 + or - 9,000)
- There are approximately nineteen chances in twenty that the real value falls within the range 482,000 to 518,000 (500,000 + or - 18,000).

The real value in this case is the result we would obtain if we could enumerate the total population.

The following tables show the standard errors for this month's level estimates.

	EMPLOYED.....			UNEMPLOYED.....			Labour force	Not in labour force	Unemployment rate	Participation rate
	Full time	Part time	Total	Looking for fit work	Looking for p/t work	Total				
	'000	'000	'000	'000	'000	'000				
NSW	14.6	9.6	16.0	6.1	3.5	6.6	16.4	14.1	0.2	0.3
Vic.	12.1	8.5	13.4	5.1	3.1	5.6	13.7	11.5	0.2	0.4
Qld	9.4	6.6	10.5	4.0	2.4	4.4	10.8	8.7	0.3	0.4
SA	5.1	3.7	5.7	2.3	1.3	2.5	5.9	5.0	0.3	0.5
WA	6.4	4.4	7.1	2.3	1.4	2.5	7.2	5.8	0.3	0.5
Tas.	1.7	1.3	1.8	1.0	0.5	1.0	1.8	1.7	0.5	0.5
NT	2.1	1.1	2.3	0.4	0.3	0.5	2.3	1.5	0.5	1.8
ACT	1.6	1.1	1.8	0.6	0.4	0.7	1.8	1.3	0.4	0.8
Males	19.9	9.5	20.8	8.0	3.6	8.5	21.4	15.1	0.2	0.3
Females	15.4	14.0	18.9	6.3	4.6	7.4	19.4	18.5	0.2	0.3
Persons	22.7	15.7	25.1	9.5	5.6	10.5	25.8	21.6	0.1	0.2

	NUMBER OF UNEMPLOYED PERSONS.....						UNEMPLOYMENT RATE.....				
	Aged 15-19 seeking first fit job	Aged 15-19 looking for fit work	Aged 20 and over looking for fit work	Total looking for fit work	Looking for p/t work	Total	Aged 15-19 looking for fit work	Aged 20 and over looking for fit work	Total looking for fit work	Looking for p/t work	Total
	'000	'000	'000	'000	'000	'000	pts	pts	pts	pts	pts
NSW	2.2	2.6	5.8	6.1	3.5	6.6	2.7	0.3	0.3	0.5	0.2
Vic.	1.7	2.1	4.8	5.1	3.1	5.6	3.2	0.3	0.3	0.5	0.2
Qld	1.3	1.8	3.8	4.0	2.4	4.4	3.0	0.3	0.3	0.5	0.3
SA	0.8	1.0	2.2	2.3	1.3	2.5	4.4	0.4	0.4	0.6	0.3
WA	0.6	1.0	2.1	2.3	1.4	2.5	2.6	0.3	0.3	0.6	0.3
Tas.	0.4	0.5	0.9	1.0	0.5	1.0	5.4	0.6	0.6	0.9	0.5
NT	0.0	0.2	0.3	0.4	0.3	0.5	5.9	0.5	0.5	1.5	0.5
ACT	0.2	0.3	0.6	0.6	0.4	0.7	7.2	0.5	0.5	1.0	0.4
Males	2.4	3.2	7.6	8.0	3.6	8.5	1.7	0.2	0.2	0.6	0.2
Females	2.2	2.7	5.9	6.3	4.6	7.4	2.5	0.3	0.3	0.3	0.2
Persons	3.2	4.1	9.0	9.5	5.6	10.5	1.4	0.1	0.1	0.2	0.1

STANDARD ERRORS *continued*

MOVEMENT ESTIMATES

The following example illustrates how to use the standard error to interpret a movement estimate. Let us say that one month the published level estimate for females employed part time in Australia is 1,387,000; the next month the published level estimate is 1,400,000. The calculated standard error for the movement estimate is 11,600. The standard error is then used to interpret the published movement estimate of 13,000. For instance, the standard error of 11,600 indicates that:

- * There are approximately two chances in three that the real movement over the two month period falls within the range 1,400 to 24,600 (13,000 + or - 11,600)
- * There are approximately nineteen chances in twenty that the real movement falls within the range -10,200 to 36,200 (13,000 + or - 23,200).

The following tables show the standard errors for this month's movement estimates.

	EMPLOYED.....			UNEMPLOYED.....			Labour force	Not in labour force	Unemployment rate	Participation rate
	Full time	Part time	Total	Looking for f/t work	Looking for p/t work	Total				
	'000	'000	'000	'000	'000	'000				
NSW	13.2	8.7	14.6	5.4	3.4	5.9	15.0	12.7	0.2	0.3
Vic.	9.7	6.7	10.9	4.2	2.8	4.7	11.3	9.2	0.2	0.3
Qld	7.6	5.4	8.4	3.5	2.3	3.8	8.7	7.0	0.2	0.3
SA	3.8	2.8	4.3	1.8	1.1	1.9	4.5	3.8	0.3	0.4
WA	5.2	3.6	5.8	2.1	1.3	2.3	5.9	4.7	0.2	0.4
Tas.	1.6	1.1	1.8	0.8	0.4	0.8	1.8	1.6	0.4	0.5
NT	1.4	0.8	1.6	0.4	0.2	0.4	1.6	1.1	0.5	1.2
ACT	1.2	0.8	1.4	0.5	0.4	0.6	1.4	1.0	0.3	0.6
Males	16.6	7.9	17.4	6.9	3.6	7.3	18.0	12.4	0.1	0.3
Females	12.7	11.6	15.8	5.4	4.2	6.3	16.3	15.4	0.2	0.2
Persons	19.3	13.0	21.6	8.0	5.1	8.9	22.3	18.2	0.1	0.2

	NUMBER OF UNEMPLOYED PERSONS.....						UNEMPLOYMENT RATE.....				
	Aged 15-19 seeking first f/t job	Aged 15-19 looking for f/t work	Aged 20 and over looking for f/t work	Total looking for f/t work	Looking for p/t work	Total	Aged 15-19 looking for f/t work	Aged 20 and over looking for f/t work	Total looking for f/t work	Looking for p/t work	Total
	'000	'000	'000	'000	'000	'000	pts	pts	pts	pts	pts
NSW	2.2	2.6	5.2	5.4	3.4	5.9	2.6	0.2	0.2	0.5	0.2
Vic.	1.5	1.8	4.1	4.2	2.8	4.7	2.9	0.2	0.2	0.5	0.2
Qld	1.4	1.8	3.3	3.5	2.3	3.8	3.0	0.3	0.3	0.5	0.2
SA	0.7	0.9	1.7	1.8	1.1	1.9	3.7	0.3	0.3	0.5	0.3
WA	0.8	1.1	2.0	2.1	1.3	2.3	2.8	0.3	0.3	0.5	0.2
Tas.	0.4	0.4	0.7	0.8	0.4	0.8	4.5	0.5	0.5	0.8	0.4
NT	0.0	0.2	0.4	0.4	0.2	0.4	5.2	0.6	0.6	1.2	0.5
ACT	0.2	0.2	0.5	0.5	0.4	0.6	7.2	0.4	0.4	0.9	0.3
Males	2.4	3.0	6.6	6.9	3.6	7.3	1.6	0.1	0.1	0.5	0.1
Females	2.2	2.6	5.1	5.4	4.2	6.3	2.4	0.2	0.2	0.2	0.2
Persons	3.0	3.7	7.7	8.0	5.1	8.9	1.2	0.1	0.1	0.2	0.1

WHAT IF...? REVISIONS TO TREND ESTIMATES

EFFECT OF NEW SEASONALLY ADJUSTED ESTIMATES ON TREND ESTIMATES

Each time new seasonally adjusted estimates become available, trend estimates are revised (see paragraphs 13 and 14 of Explanatory Notes).

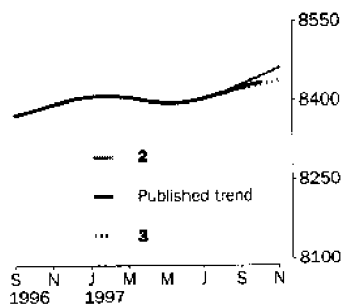
TREND REVISIONS

The examples in the tables below show four illustrative scenarios and the consequent revisions to previous trend estimates of employment and unemployment rate.

- 1** The November seasonally adjusted estimate is the same as the October estimate.
- 2** The November seasonally adjusted estimate is higher than the October estimate by:
 - +0.33% for employment
 - +2.2% for the unemployment rate
- 3** The November seasonally adjusted estimate is lower than the October estimate by:
 - -0.33% for employment
 - -2.2% for the unemployment rate
- 4** The November seasonally adjusted estimate results in a revised October trend estimate which is identical to the new November trend estimate.

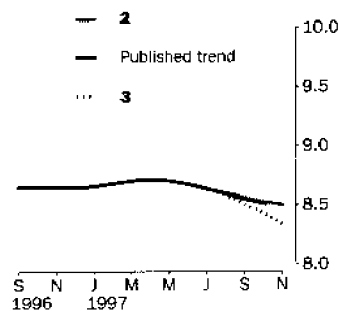
The percentage changes of 0.33% and 2.2% were chosen because they represent the average absolute monthly percentage changes in employment and the unemployment rate respectively.

EMPLOYMENT ('000)



	TREND as PUBLISHED	WHAT IF NEXT MONTH'S SEASONALLY ADJUSTED ESTIMATE IS:			
		1 8 450.4 <i>i.e. the same as Oct 1997</i>	2 8 478.3 <i>i.e. rises by 0.33%</i>	3 8 422.4 <i>i.e. falls by 0.33%</i>	4 8 362.8 <i>i.e. same trend for Oct & Nov</i>
1997					
August	8 413.3	8 414.3	8 415.5	8 413.0	8 410.4
September	8 424.4	8 426.6	8 430.7	8 422.5	8 413.6
October	8 434.0	8 438.4	8 446.2	8 430.6	8 413.9
November (new)	—	8 450.8	8 462.6	8 439.0	8 413.9

UNEMPLOYMENT RATE (%)



	TREND as PUBLISHED	WHAT IF NEXT MONTH'S SEASONALLY ADJUSTED ESTIMATE IS:			
		1 8.4 <i>i.e. the same as Oct 1997</i>	2 8.6 <i>i.e. rises by 2.2%</i>	3 8.2 <i>i.e. falls by 2.2%</i>	4 8.8 <i>i.e. same trend for Oct & Nov</i>
1997					
August	8.6	8.6	8.6	8.6	8.6
September	8.6	8.5	8.6	8.5	8.6
October	8.5	8.5	8.5	8.4	8.6
November (new)	—	8.4	8.5	8.3	8.6





FOR MORE INFORMATION

The ABS publishes a wide range of information on Australia's economic and social conditions. A catalogue of publications and products is available from any of our offices (see below).

INFORMATION CONSULTANCY SERVICES

Information tailored to special needs of clients can be obtained from the Information Consultancy Service available at ABS Offices (see below).

ABS PRODUCTS

A large number of ABS products is available from the ABS Bookshops (see below). The ABS also provides a subscription service - you can telephone the ABS Subscription Service Australia wide toll free on 1300 3663 23.

ELECTRONIC SERVICES

A large range of data is available via on-line services, diskette, magnetic tape, tape cartridge and CD ROM. For more details about our electronic data services, contact any ABS office (see below) or e-mail us at:

- client.services@abs.gov.au

GENERAL SALES AND INQUIRIES

- Sydney 02 9268 4611
- Melbourne 03 9615 7755
- Brisbane 07 3222 6351
- Perth 08 9360 5140
- Adelaide 08 8237 7100
- Hobart 03 6222 5800
- Darwin 08 8943 2111
- Canberra 02 6252 6627
- Information Services, ABS
PO Box 10, Belconnen ACT 2616



2620200010975

ISSN 1031-038X

RRP \$17.50

© Commonwealth of Australia 1997

Produced by the Australian Bureau of Statistics