

LABOUR FORCE

AUSTRALIA
PRELIMINARY

EMBARGO: 11:30AM (CANBERRA TIME) THURS 10 JULY 1997

JUNE KEY FIGURES

TREND ESTIMATES

	May 97	Jun 97	monthly change
Employed persons ('000)	8 396.8	8 392.5	-0.1 %
Unemployed persons ('000)	799.8	796.5	-0.4 %
Unemployment rate (%)	8.7	8.7	0.0 pts
Participation rate (%)	63.2	63.1	-0.1 pts

SEASONALLY ADJUSTED

	May 97	Jun 97	monthly change
Employed persons ('000)	8 380.8	8 392.7	11.9
Unemployed persons ('000)	809.8	777.8	-32.0
Unemployment rate (%)	8.8	8.5	-0.3 pts
Participation rate (%)	63.2	63.0	-0.2 pts

JUNE KEY POINTS

TREND ESTIMATES

EMPLOYMENT

- has been falling since February 1997, to 8,392,500 in June 1997. Full-time employment continued to fall and part-time employment continued to rise slowly.

UNEMPLOYMENT

- fell slightly to 796,500 in June 1997.

UNEMPLOYMENT RATE

- remained at 8.7% in June 1997.

PARTICIPATION RATE

- has been falling steadily since January 1997, to 63.1% in June 1997.

SEASONALLY ADJUSTED ESTIMATES

EMPLOYMENT

- increased by 11,900 to 8,392,700, with an increase of 28,800 in part-time employment partially offset by a fall of 16,900 in full-time employment.

UNEMPLOYMENT

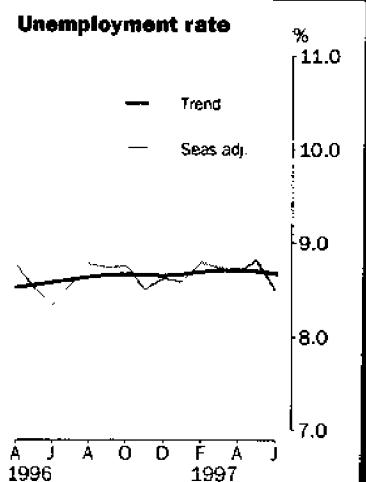
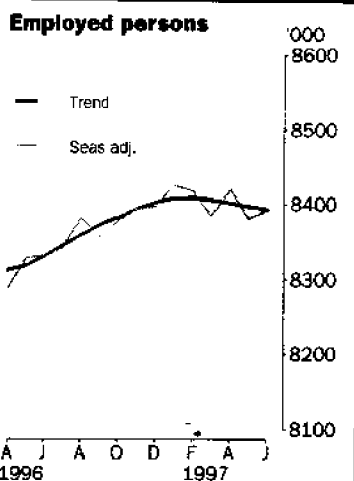
- fell by 32,000 to 777,800, due mainly to a fall of 20,400 people looking for full-time work.

UNEMPLOYMENT RATE

- fell by 0.3 points to 8.5%. The male rate fell by 0.3 points, but due to rounding was 8.6% and the female rate fell by 0.4 points to 8.4%.
- NSW 7.6% (8.3% last month); Vic 9.4% (9.2%); Qld 8.9% (9.7%); SA 9.7% (9.8%); WA 7.2% (7.0%); Tas 11.0% (10.4%).

PARTICIPATION RATE

- fell by 0.2 percentage point



INQUIRIES

- For further information about these and related statistics, contact Alex Cheeseman on 06 252 6525 or any ABS office.

NOTES

FORTHCOMING ISSUES

<i>ISSUE</i>	<i>RELEASE DATE</i>
July 1997	7 August 1997
August 1997	11 September 1997
September 1997	9 October 1997
October 1997	6 November 1997
November 1997	11 December 1997
December 1997	15 January 1998

ROUNDING

Estimates of monthly change shown on page 1 have been calculated using unrounded estimates, and may be different from, but are more accurate than, movements obtained from the rounded estimates. The graphs on page 1 also depict movements calculated from unrounded estimates.

SAMPLING ERRORS

The estimates in this publication are based on a sample survey. Because the entire population is not enumerated, the published estimates and the movements derived from them are subject to sampling variability. Standard errors give a measure of this variability and appear on pages 30 and 31.

The 95% confidence intervals below provide another way of looking at the variability inherent in estimates from sample surveys. The interval bounded by the two limits is the 95% confidence interval. A 95% confidence interval indicates that we are 95% confident that the upper and lower limits enclose the true value of the estimate.

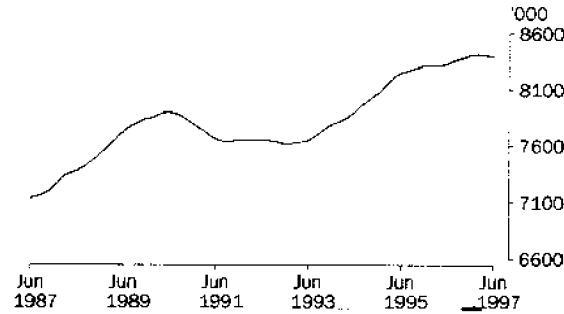
<i>SEASONALLY ADJUSTED DATA SERIES</i>	<i>MOVEMENTS MAY 1997 TO JUNE 1997</i>	
	<i>Monthly change</i>	<i>95% Confidence interval</i>
Total employment	11 900	-27 300 to 51 100
Total unemployment	-32 000	-48 200 to -15 800
Unemployment rate	-0.3 pts	-0.5 pts to -0.1 pts
Participation rate	-0.2 pts	-0.4 pts to 0.0 pts

W. McLennan
Australian Statistician

PRINCIPAL LABOUR FORCE SERIES: Trend estimates

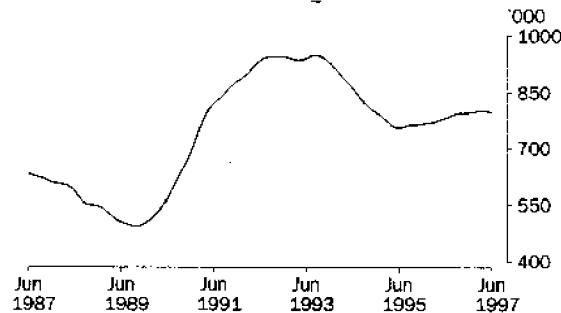
EMPLOYED PERSONS

From a low of 7,616,200 in January 1993, the trend estimate for employed persons increased steadily until late 1995. Apart from a small period of decline in early 1996, the trend then increased to a high of 8,408,400 in February 1997. Since then, the trend estimate has declined and was 8,392,500 in June 1997.



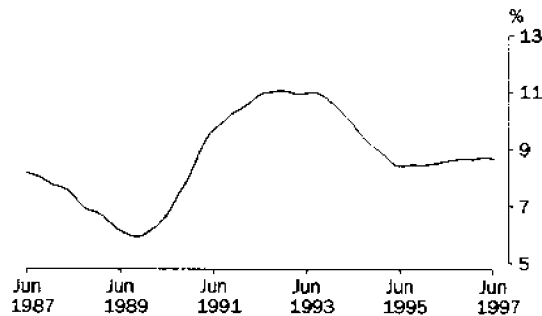
UNEMPLOYED PERSONS

The trend estimate of unemployment peaked at 947,800 in September 1993, before falling rapidly to 755,400 in June 1995. The trend then rose slowly and in March 1997 reached 801,700. The trend estimate has since fallen to 796,500 in June 1997.



UNEMPLOYMENT RATE

From a high of 11.0% for much of 1992 and 1993, the trend unemployment rate fell steadily to a low of 8.4% in May 1995. The trend then rose slowly to reach 8.7% in September 1996. After dipping to 8.6% in December 1996, the trend rate has remained steady at 8.7%.

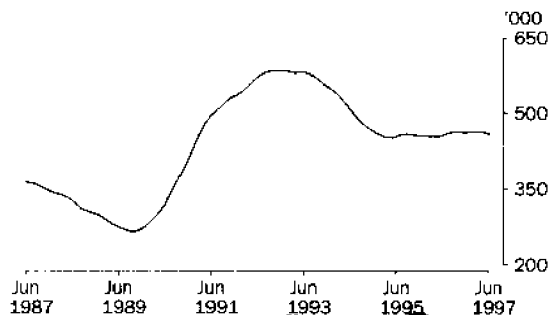


UNEMPLOYED PERSONS: Trend estimates

UNEMPLOYED MALES

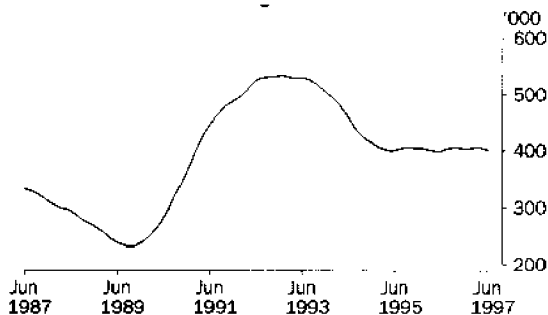
TOTAL

After reaching a peak of 583,800 in December 1992, trend estimate for unemployed males fell to 450,500 in May 1995. After rising over the next four months the trend estimate again fell, to 453,600 in April 1996. Since then, the trend estimate has generally increased, but fell slightly in June 1997 to 459,100.



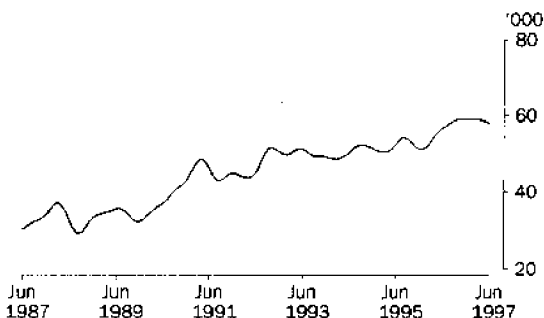
MALES LOOKING FOR FULL TIME WORK

From a high of 533,500 in December 1992, the trend estimate for unemployed males seeking full-time work fell to 399,400 in May 1995. The trend estimate has remained relatively steady since then, and was 401,100 in June 1997.



MALES LOOKING FOR PART TIME WORK

Trend estimates for unemployed males looking for part-time work have almost doubled over the last ten years, from 30,200 in June 1987. Between January and December 1996, the trend estimate increased rapidly, to a high of 59,100. The trend estimate has since declined to 57,900 in June 1997.

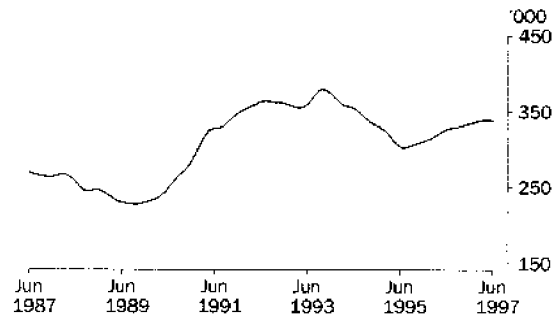


UNEMPLOYED PERSONS: Trend estimates

UNEMPLOYED FEMALES

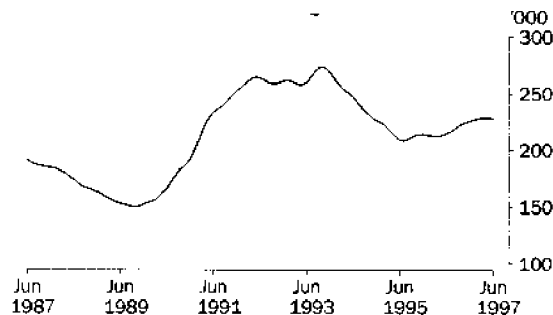
TOTAL

From a peak of 378,900 in October 1993, trend estimates of female unemployment fell steadily to 301,100 in July 1995. Since then, the trend estimate has been rising and was 337,400 in June 1997.



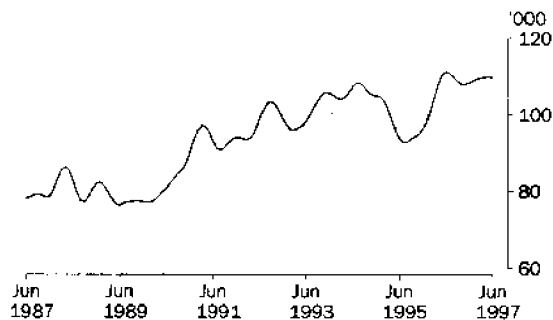
FEMALES LOOKING FOR FULL TIME WORK

The trend estimate for unemployed females looking for full-time work fell from a peak of 273,800 in October 1993 to 208,400 in July 1995. The trend estimate has since risen, apart from small falls in early 1996, to 227,600 in June 1997.



FEMALES LOOKING FOR PART TIME WORK

From a peak of 108,200 in August 1994, the trend estimate for unemployed females looking for part-time work fell to 92,800 in mid 1995, before increasing rapidly to a high of 111,300 in June 1996. The trend then fell to 108,000 in November 1996, but has since risen to 109,800 in June 1997.



LABOUR FORCE STATUS (AGED 15 AND OVER): Original(a)

Month	EMPLOYED.....			UNEMPLOYED.....							Unemp- loyment rate %	Partic- ipation rate %
	Full time	Part time	Total	Looking for full work	Looking for part work	Total	Labour force	Not in labour force	Civilian population aged 15 and over			
										'000		
MALES												
1996												
April	4 187.4	535.4	4 722.9	405.1	57.7	462.8	5 185.7	1 855.2	7 040.9	8.9	73.7	
May	4 210.3	537.6	4 748.0	389.6	52.4	442.0	5 190.0	1 861.0	7 051.0	8.5	73.6	
June	4 201.3	550.4	4 751.6	380.3	51.9	432.1	5 183.8	1 877.4	7 061.1	8.3	73.4	
July	4 237.1	535.5	4 772.6	371.7	50.4	422.1	5 194.7	1 876.2	7 070.9	8.1	73.5	
August	4 176.4	553.9	4 730.3	406.1	54.1	460.2	5 190.5	1 890.2	7 080.7	8.9	73.3	
September	4 212.9	565.4	4 778.3	408.4	57.3	465.8	5 244.0	1 846.4	7 090.5	8.9	74.0	
October	4 215.3	549.5	4 764.8	387.3	58.9	446.3	5 211.1	1 888.2	7 099.3	8.6	73.4	
November	4 208.9	548.4	4 757.3	385.2	49.2	434.4	5 191.7	1 916.4	7 108.1	8.4	73.0	
December	4 277.6	545.2	4 822.8	397.1	65.0	462.1	5 284.9	1 832.0	7 116.9	8.7	74.3	
1997												
January	4 221.2	531.2	4 752.4	435.0	65.3	500.3	5 252.6	1 871.5	7 124.2	9.5	73.7	
February	4 210.6	527.3	4 737.9	451.7	61.9	513.6	5 251.4	1 880.0	7 131.4	9.8	73.6	
March	4 186.6	568.9	4 755.6	418.4	69.5	487.9	5 243.5	1 895.2	7 138.7	9.3	73.5	
April	4 189.4	578.1	4 767.5	396.9	63.3	460.2	5 227.7	1 919.5	7 147.1	8.8	73.1	
May	4 183.6	577.1	4 760.7	402.9	55.2	458.1	5 218.8	1 936.8	7 155.6	8.8	72.9	
June	4 191.0	591.4	4 782.4	384.4	52.0	436.4	5 218.8	1 945.3	7 164.1	8.4	72.8	
FEMALES												
1996												
April	2 042.8	1 512.1	3 555.0	217.7	112.4	330.1	3 885.1	3 375.2	7 260.2	8.5	53.5	
May	2 042.2	1 546.9	3 589.1	207.7	108.5	316.1	3 905.2	3 365.5	7 270.8	8.1	53.7	
June	2 042.2	1 560.2	3 602.4	194.9	103.5	298.4	3 900.9	3 380.5	7 281.4	7.7	53.6	
July	2 092.0	1 515.4	3 607.3	207.8	101.7	309.5	3 916.8	3 375.7	7 292.5	7.9	53.7	
August	2 059.8	1 529.6	3 589.4	210.1	100.9	310.9	3 900.3	3 403.3	7 303.6	8.0	53.4	
September	2 087.4	1 564.0	3 651.3	220.6	113.9	334.5	3 985.8	3 328.9	7 314.8	8.4	54.5	
October	2 089.2	1 538.5	3 627.7	211.1	107.5	318.6	3 946.3	3 378.2	7 324.5	8.1	53.9	
November	2 075.0	1 560.2	3 635.2	204.5	98.4	302.9	3 938.0	3 396.3	7 334.3	7.7	53.7	
December	2 122.5	1 551.2	3 673.7	231.1	112.4	343.5	4 017.2	3 326.8	7 344.1	8.6	54.7	
1997												
January	2 071.8	1 472.1	3 543.9	251.2	102.3	353.5	3 897.5	3 454.5	7 352.0	9.1	53.0	
February	2 067.3	1 544.8	3 612.1	262.8	129.8	392.5	4 004.6	3 355.3	7 359.9	9.8	54.4	
March	2 044.9	1 592.8	3 637.7	234.8	122.7	357.4	3 995.2	3 372.6	7 367.8	8.9	54.2	
April	2 054.1	1 589.6	3 643.7	230.6	108.8	339.4	3 983.1	3 393.4	7 376.5	8.5	54.0	
May	2 051.9	1 576.7	3 628.6	220.8	113.0	333.8	3 962.4	3 422.8	7 385.2	8.4	53.7	
June	2 031.6	1 604.1	3 635.8	215.6	98.7	314.4	3 950.1	3 443.8	7 393.9	8.0	53.4	
PERSONS												
1996												
April	6 230.3	2 047.6	8 277.8	622.8	170.2	793.0	9 070.8	5 230.4	14 301.1	8.7	63.4	
May	6 252.5	2 084.5	8 337.1	597.3	160.9	758.2	9 095.2	5 226.6	14 321.8	8.3	63.5	
June	6 243.5	2 110.6	8 354.1	575.2	155.4	730.5	9 084.6	5 257.9	14 342.5	8.0	63.3	
July	6 329.0	2 050.9	8 379.9	579.5	152.1	731.6	9 111.5	5 251.9	14 363.4	8.0	63.4	
August	6 236.2	2 083.5	8 319.7	616.1	155.0	771.1	9 090.8	5 293.5	14 384.3	8.5	63.2	
September	6 300.3	2 129.3	8 429.6	629.0	171.2	800.2	9 229.8	5 175.4	14 405.2	8.7	64.1	
October	6 304.5	2 088.0	8 392.5	598.4	166.4	764.9	9 157.4	5 266.4	14 423.8	8.4	63.5	
November	6 283.9	2 108.6	8 392.5	589.7	147.6	737.2	9 129.7	5 312.7	14 442.4	8.1	63.2	
December	6 400.1	2 096.4	8 496.5	628.2	177.4	805.7	9 302.2	5 158.8	14 461.0	8.7	64.3	
1997												
January	6 293.0	2 003.3	8 296.3	686.2	167.6	853.8	9 150.1	5 326.0	14 476.2	9.3	63.2	
February	6 277.9	2 072.0	8 349.9	714.5	191.6	906.1	9 256.1	5 235.2	14 491.3	9.8	63.9	
March	6 231.5	2 161.8	8 393.3	653.2	192.2	845.4	9 238.7	5 267.8	14 506.5	9.2	63.7	
April	6 243.5	2 167.6	8 411.2	627.5	172.2	799.6	9 210.8	5 312.8	14 523.6	8.7	63.4	
May	6 235.5	2 153.8	8 389.3	623.7	168.2	791.9	9 181.2	5 359.6	14 540.8	8.6	63.1	
June	6 222.6	2 195.5	8 418.1	600.1	150.7	750.8	9 168.9	5 389.1	14 558.0	8.2	63.0	

(a) Estimates for employment for the period August 1996 to January 1997 are affected by the implementation of telephone interviewing. See Explanatory Notes 3 and 4.

LABOUR FORCE STATUS (AGED 15 AND OVER): Seasonally adjusted(a)

Month	EMPLOYED.....			UNEMPLOYED.....			Labour force	Unemp- loyment rate	Partic- ipation rate
	Full time	Part time	Total	Looking for fit work	Looking for p/t work	Total			
	'000	'000	'000	'000	'000	'000	'000	%	%
MALES									
1996									
April	4 200.3	527.9	4 728.2	409.7	57.1	466.8	5 195.0	9.0	73.8
May	4 215.6	535.9	4 751.5	391.3	53.9	445.2	5 196.7	8.6	73.7
June	4 204.9	543.4	4 748.3	387.0	56.6	443.6	5 191.9	8.5	73.5
July	4 215.0	537.3	4 752.3	395.0	56.2	451.3	5 203.6	8.7	73.6
August	4 213.8	546.2	4 760.0	414.8	59.8	474.6	5 234.7	9.1	73.9
September	4 205.6	547.0	4 752.6	412.5	55.7	468.2	5 220.8	9.0	73.6
October	4 210.5	545.3	4 755.8	409.8	61.7	471.5	5 227.3	9.0	73.6
November	4 219.6	554.8	4 774.5	399.6	57.3	456.9	5 231.4	8.7	73.6
December	4 218.2	550.4	4 768.6	393.2	61.6	454.8	5 223.4	8.7	73.4
1997									
January	4 232.4	555.1	4 787.5	393.5	58.2	451.7	5 239.2	8.6	73.5
February	4 205.2	549.2	4 754.4	415.3	56.2	471.5	5 225.9	9.0	73.3
March	4 204.8	557.0	4 761.8	413.2	59.3	472.5	5 234.3	9.0	73.3
April	4 202.3	569.8	4 772.1	401.5	62.7	464.2	5 236.3	8.9	73.3
May	4 188.5	575.7	4 764.2	404.9	56.8	461.8	5 225.9	8.8	73.0
June	4 194.0	584.1	4 778.1	391.1	56.6	447.7	5 225.9	8.6	72.9
FEMALES									
1996									
April	2 061.4	1 499.6	3 561.0	218.4	110.5	329.0	3 889.9	8.5	53.6
May	2 053.7	1 523.8	3 577.4	216.5	113.0	329.4	3 906.9	8.4	53.7
June	2 052.2	1 531.1	3 583.3	202.3	111.3	313.6	3 896.9	8.0	53.5
July	2 077.9	1 511.9	3 589.8	218.0	111.2	329.2	3 919.0	8.4	53.7
August	2 095.2	1 526.3	3 621.5	221.5	109.9	331.4	3 953.0	8.4	54.1
September	2 079.3	1 524.1	3 603.4	225.3	106.7	332.0	3 935.4	8.4	53.8
October	2 081.3	1 540.8	3 622.1	222.5	109.6	332.1	3 954.2	8.4	54.0
November	2 074.8	1 544.3	3 619.2	219.2	103.2	322.4	3 941.6	8.2	53.7
December	2 080.5	1 547.6	3 628.1	224.8	112.3	337.1	3 965.2	8.5	54.0
1997									
January	2 068.5	1 569.0	3 637.5	230.7	108.5	339.2	3 976.7	8.5	54.1
February	2 071.6	1 591.9	3 663.5	227.1	112.2	339.2	4 002.8	8.5	54.4
March	2 041.5	1 580.7	3 622.2	224.5	106.0	330.5	3 952.7	8.4	53.6
April	2 072.5	1 576.6	3 649.0	231.3	106.9	338.2	3 987.2	8.5	54.1
May	2 083.2	1 553.5	3 616.7	230.5	117.6	348.1	3 964.7	8.8	53.7
June	2 040.7	1 573.8	3 614.6	223.9	106.3	330.1	3 944.7	8.4	53.4
PERSONS									
1996									
April	6 261.7	2 027.5	8 289.2	628.1	167.6	795.8	9 084.9	8.8	63.5
May	6 269.3	2 059.6	8 328.9	607.8	166.9	774.6	9 103.6	8.5	63.6
June	6 257.2	2 074.5	8 331.6	589.2	167.9	757.1	9 088.8	8.3	63.4
July	6 292.9	2 049.2	8 342.1	613.0	167.4	780.5	9 122.6	8.6	63.5
August	6 309.1	2 072.5	8 381.6	636.3	169.8	806.1	9 187.6	8.8	63.9
September	6 284.9	2 071.1	8 356.0	637.8	162.4	800.3	9 156.3	8.7	63.6
October	6 291.8	2 086.1	8 377.9	632.4	171.3	803.6	9 181.5	8.8	63.7
November	6 294.5	2 099.2	8 393.7	618.8	160.5	779.3	9 172.9	8.5	63.5
December	6 298.7	2 098.0	8 396.7	618.0	173.9	791.9	9 188.6	8.6	63.5
1997									
January	6 300.9	2 124.1	8 425.1	624.2	166.7	790.9	9 215.9	8.6	63.7
February	6 276.8	2 141.1	8 417.9	642.4	168.4	810.8	9 228.7	8.8	63.7
March	6 246.4	2 137.7	8 384.0	637.7	165.3	803.0	9 187.0	8.7	63.3
April	6 274.8	2 146.4	8 421.1	632.8	169.5	802.3	9 223.5	8.7	63.5
May	6 251.7	2 129.1	8 380.8	635.4	174.4	809.8	9 190.7	8.8	63.2
June	6 234.8	2 158.0	8 392.7	615.0	162.9	777.8	9 170.6	8.5	63.0

(a) Estimates for employment for the period August 1996 to January 1997 are affected by the implementation of telephone interviewing. See Explanatory Notes 3 and 4.

LABOUR FORCE STATUS (AGED 15 AND OVER): Trend(a)(b)

Month	EMPLOYED.....			UNEMPLOYED.....			Labour force '000	Unemp- loyment rate %	Partic- ipation rate %
	Full time '000	Part time '000	Total '000	Looking for fit work '000	Looking for p/t work '000	Total '000			
MALES									
1996									
April	4 208.8	528.2	4 737.1	399.2	54.4	453.6	5 190.7	8.7	73.7
May	4 207.8	538.8	4 741.7	398.2	55.6	453.8	5 195.4	8.7	73.7
June	4 208.4	538.7	4 747.1	398.8	56.5	455.3	5 202.4	8.8	73.7
July	4 209.5	542.0	4 751.5	401.2	57.2	458.3	5 209.8	8.8	73.7
August	4 211.0	544.6	4 755.6	403.8	57.9	461.7	5 217.3	8.8	73.7
September	4 213.0	546.9	4 759.9	405.1	58.5	463.7	5 223.6	8.9	73.7
October	4 215.1	548.5	4 763.6	405.0	59.0	464.0	5 227.6	8.9	73.6
November	4 217.4	549.6	4 767.1	403.8	59.1	462.9	5 230.0	8.9	73.6
December	4 218.4	550.8	4 769.2	402.7	59.1	461.8	5 231.0	8.8	73.5
1997									
January	4 216.8	552.7	4 769.5	402.8	59.1	461.9	5 231.4	8.8	73.4
February	4 212.5	556.2	4 768.7	404.1	59.0	463.1	5 231.8	8.9	73.4
March	4 206.6	561.2	4 767.8	405.1	58.9	463.9	5 231.7	8.9	73.3
April	4 200.6	567.1	4 767.7	404.6	58.7	463.3	5 231.0	8.9	73.2
May	4 195.3	573.0	4 768.3	403.1	58.4	461.6	5 229.9	8.8	73.1
June	4 191.1	578.8	4 769.8	401.1	57.9	459.1	5 228.9	8.8	73.0
FEMALES									
1996									
April	2 055.6	1 518.9	3 574.6	212.2	108.0	320.2	3 894.7	8.2	53.6
May	2 059.6	1 517.2	3 576.8	213.2	110.4	323.6	3 900.4	8.3	53.6
June	2 066.0	1 518.1	3 584.1	214.7	111.3	326.0	3 910.1	8.3	53.7
July	2 073.0	1 520.7	3 593.7	216.4	110.9	327.3	3 921.0	8.3	53.8
August	2 078.8	1 524.2	3 603.0	218.5	109.8	328.3	3 931.4	8.4	53.8
September	2 082.5	1 529.1	3 611.7	220.8	108.7	329.5	3 941.2	8.4	53.9
October	2 082.8	1 536.3	3 619.1	222.9	108.1	331.0	3 950.1	8.4	53.9
November	2 079.6	1 546.6	3 626.2	224.3	108.0	332.4	3 958.6	8.4	54.0
December	2 074.8	1 558.3	3 633.1	225.4	108.4	333.7	3 966.8	8.4	54.0
1997									
January	2 070.0	1 567.8	3 637.9	226.3	108.9	335.1	3 973.0	8.4	54.0
February	2 066.1	1 573.5	3 639.6	227.3	109.3	336.7	3 976.3	8.5	54.0
March	2 062.3	1 575.6	3 637.9	228.1	109.7	337.7	3 975.6	8.5	54.0
April	2 058.5	1 575.2	3 633.7	228.3	109.9	338.2	3 971.8	8.5	53.8
May	2 055.0	1 573.5	3 628.5	228.2	110.1	338.3	3 966.8	8.5	53.7
June	2 051.6	1 571.0	3 622.6	227.6	109.8	337.4	3 960.0	8.5	53.6
PERSONS									
1996									
April	6 264.5	2 047.1	8 311.6	611.3	162.4	773.8	9 085.4	8.5	63.5
May	6 267.5	2 051.0	8 318.5	611.4	166.0	777.3	9 095.8	8.5	63.5
June	6 274.4	2 056.8	8 331.2	613.5	167.7	781.3	9 112.5	8.6	63.5
July	6 282.5	2 062.7	8 345.2	617.6	168.0	785.6	9 130.8	8.6	63.6
August	6 289.8	2 068.8	8 358.6	622.3	167.8	790.0	9 148.6	8.6	63.6
September	6 295.5	2 076.0	8 371.5	626.0	167.2	793.2	9 164.7	8.7	63.6
October	6 297.9	2 084.8	8 382.7	627.9	167.1	795.0	9 177.7	8.7	63.6
November	6 297.1	2 096.2	8 393.3	628.1	167.2	795.3	9 188.6	8.7	63.6
December	6 293.2	2 109.1	8 402.3	628.1	167.5	795.5	9 197.8	8.6	63.6
1997									
January	6 286.8	2 120.6	8 407.4	629.1	167.9	797.0	9 204.4	8.7	63.6
February	6 278.7	2 129.7	8 408.4	631.4	168.4	799.8	9 208.2	8.7	63.5
March	6 268.9	2 136.8	8 405.6	633.1	168.5	801.7	9 207.3	8.7	63.5
April	6 259.1	2 142.2	8 401.3	632.9	168.5	801.5	9 202.8	8.7	63.4
May	6 250.3	2 146.5	8 396.8	631.3	168.5	799.8	9 196.7	8.7	63.2
June	6 242.7	2 149.8	8 392.5	628.8	167.7	796.5	9 188.9	8.7	63.1

(a) Estimates for December 1996 to May 1997 have been revised.

(b) Estimates for employment from February 1996 have been affected by the implementation of telephone interviewing over the period August 1996 to February 1997. See Explanatory Notes 3, 4 and 15.

UNEMPLOYED PERSONS: Original

Month	NUMBER OF UNEMPLOYED PERSONS.....					UNEMPLOYMENT RATE.....					UNEMPLOYMENT TO POPULATION RATIO	
	Aged 15-19 looking for f/t work	Aged 20 and over looking for f/t work	Total looking for f/t work	Looking for p/t work	Total	Aged 15-19 looking for f/t work	Aged 20 and over looking for f/t work	Total looking for f/t work	Looking for p/t work	Total	Aged 15-19 looking for f/t work	Aged 20 and over looking for f/t work
	'000	'000	'000	'000	'000	%	%	%	%	%	%	%
MALES												
1996												
April	55.0	350.1	405.1	57.7	462.8	25.7	8.0	8.8	9.7	8.9	8.4	5.5
May	55.5	334.2	389.6	52.4	442.0	27.4	7.6	8.5	8.9	8.5	8.5	5.2
June	55.8	324.5	380.3	51.9	432.1	28.0	7.4	8.3	8.6	8.3	8.5	5.1
July	46.6	325.1	371.7	50.4	422.1	22.8	7.4	8.1	8.6	8.1	7.1	5.1
August	49.3	356.8	406.1	54.1	460.2	25.4	8.1	8.9	8.9	8.9	7.5	5.6
September	48.7	359.7	408.4	57.3	465.8	24.6	8.1	8.8	9.2	8.9	7.4	5.6
October	49.7	337.7	387.3	58.9	446.3	25.0	7.7	8.4	9.7	8.6	7.6	5.2
November	50.6	334.5	385.2	49.2	434.4	26.4	7.6	8.4	8.2	8.4	7.7	5.2
December	67.3	329.8	397.1	65.0	462.1	29.3	7.4	8.5	10.7	8.7	10.3	5.1
1997												
January	60.5	374.5	435.0	65.3	500.3	26.7	8.5	9.3	10.9	9.5	9.2	5.8
February	62.6	389.1	451.7	61.9	513.6	29.1	8.7	9.7	10.5	9.8	9.5	6.0
March	55.2	363.2	418.4	69.5	487.9	28.4	8.2	9.1	10.9	9.3	8.4	5.6
April	50.2	346.7	396.9	63.3	460.2	25.3	7.9	8.7	9.9	8.8	7.6	5.3
May	51.8	351.1	402.9	55.2	458.1	27.7	8.0	8.8	8.7	8.8	7.9	5.4
June	47.9	336.5	384.4	52.0	436.4	26.7	7.7	8.4	8.1	8.4	7.3	5.2
FEMALES												
1996												
April	35.0	182.7	217.7	112.4	330.1	29.9	8.5	9.6	6.9	8.5	5.6	2.8
May	35.1	172.6	207.7	108.5	316.1	30.0	8.1	9.2	6.6	8.1	5.7	2.6
June	30.3	164.6	194.9	103.5	298.4	27.8	7.7	8.7	6.2	7.7	4.9	2.5
July	29.9	177.9	207.8	101.7	309.5	25.2	8.2	9.0	6.3	7.9	4.8	2.7
August	33.2	176.9	210.1	100.9	310.9	30.4	8.2	9.3	6.2	8.0	5.3	2.6
September	35.5	185.1	220.6	113.9	334.5	30.3	8.4	9.6	6.8	8.4	5.7	2.8
October	34.8	176.3	211.1	107.5	318.6	29.0	8.1	9.2	6.5	8.1	5.6	2.6
November	35.6	168.9	204.5	98.4	302.9	31.3	7.8	9.0	5.9	7.7	5.7	2.5
December	51.7	179.4	231.1	112.4	343.5	35.6	8.1	9.8	6.8	8.6	8.3	2.7
1997												
January	48.8	202.4	251.2	102.3	353.5	34.1	9.3	10.8	6.5	9.1	7.8	3.0
February	40.6	222.2	262.8	129.8	392.5	32.7	10.1	11.3	7.8	9.8	6.5	3.3
March	36.5	198.3	234.8	122.7	357.4	32.3	9.2	10.3	7.1	8.9	5.8	2.9
April	35.3	195.3	230.6	108.8	339.4	32.3	9.0	10.1	6.4	8.5	5.6	2.9
May	30.3	190.5	220.8	113.0	333.8	29.3	8.8	9.7	6.7	8.4	4.8	2.8
June	31.6	184.1	215.6	98.7	314.4	31.5	8.6	9.6	5.8	8.0	5.0	2.7
PERSONS												
1996												
April	90.0	532.8	622.8	170.2	793.0	27.2	8.2	9.1	7.7	8.7	7.1	4.1
May	90.5	506.8	597.3	160.9	758.2	28.3	7.8	8.7	7.2	8.3	7.1	3.9
June	86.1	489.1	575.2	155.4	730.5	27.9	7.5	8.4	6.9	8.0	6.8	3.7
July	76.5	503.0	579.5	152.1	731.6	23.7	7.6	8.4	6.9	8.0	6.0	3.8
August	82.5	533.7	616.1	155.0	771.1	27.2	8.1	9.0	6.9	8.5	6.5	4.1
September	84.2	544.8	629.0	171.2	800.2	26.7	8.2	9.1	7.4	8.7	6.6	4.2
October	84.4	514.0	598.4	166.4	764.9	26.5	7.8	8.7	7.4	8.4	6.6	3.9
November	86.3	503.4	589.7	147.6	737.2	28.2	7.7	8.6	6.5	8.1	6.7	3.8
December	119.0	509.2	628.2	177.4	805.7	32.1	7.6	8.9	7.8	8.7	9.3	3.9
1997												
January	109.3	576.9	686.2	167.6	853.8	29.6	8.7	9.8	7.7	9.3	8.5	4.4
February	103.2	611.2	714.5	191.6	906.1	30.4	9.2	10.2	8.5	9.8	8.1	4.6
March	91.7	561.5	653.2	192.2	845.4	29.8	8.5	9.5	8.2	9.2	7.1	4.2
April	85.5	542.0	627.5	172.2	799.6	27.8	8.3	9.1	7.4	8.7	6.7	4.1
May	82.0	541.7	623.7	168.2	791.9	28.3	8.2	9.1	7.2	8.6	6.4	4.1
June	79.5	520.6	600.1	150.7	750.8	28.4	8.0	8.8	6.4	8.2	6.2	3.9



UNEMPLOYED PERSONS: Seasonally adjusted

Month	NUMBER OF UNEMPLOYED PERSONS....					UNEMPLOYMENT RATE.....					UNEMPLOYMENT TO POPULATION RATIO	
	Aged 15-19 looking for fit work	Aged 20 and over looking for fit work	Total looking for fit work	Looking for p/t work	Total	Aged 15-19 looking for fit work	Aged 20 and over looking for fit work	Total looking for fit work	Looking for p/t work	Total	Aged 15-19 looking for fit work	Aged 20 and over looking for fit work
	'000	'000	'000	'000	'000	%	%	%	%	%	%	%
MALES												
1996												
April	55.0	354.7	409.7	57.1	466.8	25.9	8.1	8.9	9.8	9.0	8.4	5.6
May	54.6	336.8	391.3	53.9	445.2	26.3	7.7	8.5	9.1	8.6	8.4	5.3
June	56.7	330.2	387.0	56.6	443.6	27.6	7.5	8.4	9.4	8.5	8.7	5.2
July	54.1	340.9	395.0	56.2	451.3	25.8	7.7	8.6	9.5	8.7	8.3	5.3
August	54.5	360.3	414.8	59.8	474.6	26.2	8.2	9.0	9.9	9.1	8.3	5.6
September	54.2	358.3	412.5	55.7	468.2	26.0	8.1	8.9	9.2	9.0	8.3	5.6
October	56.1	353.7	409.8	61.7	471.5	26.7	8.0	8.9	10.2	9.0	8.6	5.5
November	56.2	343.4	399.6	57.3	456.9	27.1	7.8	8.7	9.4	8.7	8.6	5.3
December	57.2	336.1	393.2	61.6	454.8	27.6	7.6	8.5	10.1	8.7	8.7	5.2
1997												
January	48.9	344.6	393.5	58.2	451.7	24.4	7.8	8.5	9.5	8.6	7.4	5.3
February	54.2	361.2	415.3	56.2	471.5	27.3	8.2	9.0	9.3	9.0	8.2	5.6
March	56.1	357.1	413.2	59.3	472.5	28.8	8.1	8.9	9.6	9.0	8.5	5.5
April	50.3	351.2	401.5	62.7	464.2	25.5	8.0	8.7	9.9	8.9	7.6	5.4
May	50.8	354.2	404.9	56.8	461.8	26.5	8.0	8.8	9.0	8.8	7.7	5.5
June	48.5	342.6	391.1	56.6	447.7	26.2	7.8	8.5	8.8	8.6	7.4	5.3
FEMALES												
1996												
April	37.8	180.6	218.4	110.5	329.0	30.7	8.4	9.6	6.9	8.5	6.1	2.7
May	36.4	180.0	216.5	113.0	329.4	30.0	8.4	9.5	6.9	8.4	5.9	2.7
June	31.9	170.4	202.3	111.3	313.6	27.6	8.0	9.0	6.8	8.0	5.1	2.6
July	32.6	185.4	218.0	111.2	329.2	27.5	8.5	9.5	6.9	8.4	5.2	2.8
August	36.2	185.3	221.5	109.9	331.4	30.5	8.4	9.6	6.7	8.4	5.8	2.8
September	38.9	186.4	225.3	106.7	332.0	32.0	8.5	9.8	6.5	8.4	6.2	2.8
October	41.6	180.9	222.5	109.6	332.1	33.2	8.3	9.7	6.6	8.4	6.7	2.7
November	41.0	178.2	219.2	103.2	322.4	33.0	8.2	9.6	6.3	8.2	6.6	2.7
December	42.0	182.8	224.8	112.3	337.1	34.3	8.4	9.8	6.8	8.5	6.7	2.7
1997												
January	39.8	190.9	230.7	108.5	339.2	32.5	8.8	10.0	6.5	8.5	6.4	2.8
February	33.3	193.8	227.1	112.2	339.2	29.3	8.9	9.9	6.6	8.5	5.3	2.9
March	35.5	189.0	224.5	106.0	330.5	30.4	8.8	9.9	6.3	8.4	5.7	2.8
April	38.1	193.2	231.3	106.9	338.2	33.1	8.8	10.0	6.3	8.5	6.1	2.9
May	31.4	199.0	230.5	117.6	348.1	29.3	9.1	10.0	7.0	8.8	5.0	2.9
June	33.2	190.6	223.9	106.3	330.1	31.2	8.8	9.9	6.3	8.4	5.3	2.8
PERSONS												
1996												
April	92.8	535.3	628.1	167.6	795.8	27.7	8.2	9.1	7.6	8.8	7.3	4.1
May	91.0	516.8	607.8	166.9	774.6	27.7	7.9	8.8	7.5	8.5	7.1	4.0
June	88.6	500.6	589.2	167.9	757.1	27.6	7.7	8.6	7.5	8.3	7.0	3.8
July	86.7	526.3	613.0	167.4	780.5	26.4	8.0	8.9	7.6	8.6	6.8	4.0
August	90.7	545.6	636.3	169.8	806.1	27.7	8.2	9.2	7.6	8.8	7.1	4.2
September	93.0	544.8	637.8	162.4	800.3	28.2	8.3	9.2	7.3	8.7	7.3	4.1
October	97.7	534.6	632.4	171.3	803.6	29.2	8.1	9.1	7.6	8.8	7.6	4.1
November	97.1	521.6	618.8	160.5	779.3	29.3	7.9	9.0	7.1	8.5	7.6	4.0
December	99.2	518.9	618.0	173.9	791.9	30.1	7.9	8.9	7.7	8.6	7.7	3.9
1997												
January	88.7	535.5	624.2	166.7	790.9	27.4	8.1	9.0	7.3	8.6	6.9	4.1
February	87.4	555.0	642.4	168.4	810.8	28.0	8.4	9.3	7.3	8.8	6.8	4.2
March	91.6	546.1	637.7	165.3	803.0	29.4	8.3	9.3	7.2	8.7	7.1	4.1
April	88.4	544.4	632.8	169.5	802.3	28.3	8.3	9.2	7.3	8.7	6.9	4.1
May	82.2	553.2	635.4	174.4	809.8	27.5	8.4	9.2	7.6	8.8	6.4	4.2
June	81.8	533.2	615.0	162.9	777.8	28.0	8.1	9.0	7.0	8.5	6.4	4.0

UNEMPLOYED PERSONS: Trend(a)



NUMBER OF UNEMPLOYED PERSONS.....

UNEMPLOYMENT RATE

UNEMPLOYMENT TO POPULATION RATIO

Month	NUMBER OF UNEMPLOYED PERSONS.....					UNEMPLOYMENT RATE					UNEMPLOYMENT TO POPULATION RATIO	
	Aged 15-19 looking for fit work '000	Aged 20 and over looking for fit work '000	Total looking for fit work '000	Looking for p/t work '000	Total '000	Aged 15-19 looking for fit work %	Aged 20 and over looking for fit work %	Total looking for fit work %	Looking for p/t work %	Total %	Aged 15-19 looking for fit work %	Aged 20 and over looking for fit work %
MALES												
1996												
April	54.5	344.6	399.2	54.4	453.6	26.1	7.8	8.7	9.3	8.7	8.4	5.4
May	54.9	343.3	398.2	55.6	453.8	26.3	7.8	8.6	9.4	8.7	8.4	5.4
June	55.0	343.9	398.8	56.5	455.3	26.4	7.8	8.7	9.5	8.8	8.4	5.4
July	55.1	346.1	401.2	57.2	458.3	26.4	7.9	8.7	9.5	8.8	8.4	5.4
August	55.3	348.5	403.8	57.9	461.7	26.5	7.9	8.7	9.6	8.8	8.4	5.4
September	55.2	349.9	405.1	58.5	463.7	26.5	7.9	8.8	9.7	8.9	8.4	5.4
October	55.2	349.8	405.0	59.0	464.0	26.5	7.9	8.8	9.7	8.9	8.4	5.4
November	55.0	348.8	403.8	59.1	462.9	26.6	7.9	8.7	9.7	8.9	8.4	5.4
December	54.8	347.9	402.7	59.1	461.8	26.7	7.9	8.7	9.7	8.8	8.3	5.4
1997												
January	54.2	348.6	402.8	59.1	461.9	26.8	7.9	8.7	9.7	8.8	8.3	5.4
February	53.4	350.7	404.1	59.0	463.1	26.8	7.9	8.8	9.6	8.9	8.1	5.4
March	52.5	352.5	405.1	58.9	463.9	26.8	8.0	8.8	9.5	8.9	8.0	5.4
April	51.6	353.0	404.6	58.7	463.3	26.7	8.0	8.8	9.4	8.9	7.9	5.4
May	50.7	352.4	403.1	58.4	461.6	26.6	8.0	8.8	9.3	8.8	7.7	5.4
June	49.9	351.2	401.1	57.9	459.1	26.4	8.0	8.7	9.1	8.8	7.6	5.4
FEMALES												
1996												
April	35.7	176.5	212.2	108.0	320.2	29.3	8.2	9.4	6.6	8.2	5.8	2.7
May	34.8	178.4	213.2	110.4	323.6	29.0	8.3	9.4	6.8	8.3	5.6	2.7
June	34.5	180.2	214.7	111.3	326.0	29.0	8.3	9.4	6.8	8.3	5.6	2.7
July	35.0	181.4	216.4	110.9	327.3	29.4	8.4	9.5	6.8	8.3	5.6	2.7
August	36.4	182.1	218.5	109.8	328.3	30.3	8.4	9.5	6.7	8.4	5.9	2.7
September	38.3	182.5	220.8	108.7	329.5	31.5	8.4	9.6	6.6	8.4	6.2	2.7
October	39.9	183.0	222.9	108.1	331.0	32.5	8.4	9.7	6.6	8.4	6.4	2.7
November	40.6	183.7	224.3	108.0	332.4	33.0	8.4	9.7	6.5	8.4	6.5	2.7
December	40.2	185.1	225.4	108.4	333.7	32.9	8.5	9.8	6.5	8.4	6.4	2.8
1997												
January	38.9	187.3	226.3	108.9	335.1	32.3	8.6	9.9	6.5	8.4	6.2	2.8
February	37.3	190.0	227.3	109.3	336.7	31.6	8.7	9.9	6.5	8.5	6.0	2.8
March	35.8	192.2	228.1	109.7	337.7	31.1	8.8	10.0	6.5	8.5	5.7	2.9
April	34.7	193.6	228.3	109.9	338.2	30.8	8.9	10.0	6.5	8.5	5.5	2.9
May	33.7	194.5	228.2	110.1	338.3	30.6	9.0	10.0	6.5	8.5	5.4	2.9
June	32.9	194.8	227.6	109.8	337.4	30.5	9.0	10.0	6.5	8.5	5.2	2.9
PERSONS												
1996												
April	90.2	521.1	611.3	162.4	773.8	27.3	8.0	8.9	7.4	8.5	7.1	4.0
May	89.7	521.7	611.4	166.0	777.3	27.3	8.0	8.9	7.5	8.5	7.0	4.0
June	89.5	524.1	613.5	167.7	781.3	27.3	8.0	8.9	7.5	8.6	7.0	4.0
July	90.1	527.5	617.6	168.0	785.6	27.5	8.0	9.0	7.5	8.6	7.1	4.0
August	91.7	530.6	622.3	167.8	790.0	27.9	8.1	9.0	7.5	8.6	7.2	4.0
September	93.5	532.4	626.0	167.2	793.2	28.3	8.1	9.0	7.5	8.7	7.3	4.1
October	95.1	532.8	627.9	167.1	795.0	28.7	8.1	9.1	7.4	8.7	7.4	4.1
November	95.7	532.5	628.1	167.2	795.3	29.0	8.1	9.1	7.4	8.7	7.5	4.0
December	95.0	533.1	628.1	167.5	795.5	29.0	8.1	9.1	7.4	8.6	7.4	4.0
1997												
January	93.1	535.9	629.1	167.9	797.0	28.9	8.1	9.1	7.3	8.7	7.3	4.1
February	90.7	540.7	631.4	168.4	799.8	28.6	8.2	9.1	7.3	8.7	7.1	4.1
March	88.4	544.8	633.1	168.5	801.7	28.4	8.3	9.2	7.3	8.7	6.9	4.1
April	86.3	546.6	632.9	168.5	801.5	28.2	8.3	9.2	7.3	8.7	6.7	4.1
May	84.4	546.9	631.3	168.5	799.8	28.1	8.3	9.2	7.3	8.7	6.6	4.1
June	82.8	546.0	628.8	167.7	796.5	27.9	8.3	9.2	7.2	8.7	6.4	4.1

(a) Estimates for December 1996 to May 1997 have been revised.

PERSONS AGED 15 TO 19—Education and Labour Force: Original—June 1997

	EMPLOYED.....			UNEMPLOYED.....							
	Full time '000	Part time '000	Total '000	Looking for f/t work	Looking for p/t work	Total '000	Labour force '000	Not in labour force '000	Civilian population aged 15-19 '000	Unemp- loyment rate %	Parti- icipation rate %
				'000	'000		'000	'000	'000	'000	'000
.....											
ATTENDING NEITHER SCHOOL NOR A TERTIARY EDUCATIONAL INSTITUTION FULL TIME											
Males	130.7	37.1	167.8	43.9	*1.6	45.5	213.3	15.5	228.8	21.3	93.2
Females	67.4	40.2	107.6	27.2	*1.8	29.0	136.6	28.1	164.6	21.2	83.0
Persons	198.1	77.3	275.4	71.0	*3.5	74.5	349.9	43.5	393.4	21.3	88.9
.....											
ATTENDING A TERTIARY EDUCATIONAL INSTITUTION FULL TIME											
Males	*0.8	41.5	42.3	*0.9	5.5	6.4	48.7	51.5	100.2	13.2	48.6
Females	*0.9	66.7	67.6	*2.8	5.6	8.4	76.0	49.8	125.8	11.1	60.4
Persons	*1.6	108.2	109.9	*3.7	11.2	14.8	124.7	101.3	226.0	11.9	55.2
.....											
ATTENDING SCHOOL											
Males	*0.1	85.1	85.2	*3.2	21.4	24.6	109.7	220.4	330.2	22.4	33.2
Females	*0.4	103.9	104.3	*1.7	23.7	25.3	129.6	207.2	336.8	19.5	38.5
Persons	*0.5	188.9	189.5	4.8	45.1	49.9	239.4	427.6	667.0	20.9	35.9
.....											
TOTAL											
Males	131.5	163.7	295.2	47.9	28.6	76.5	371.8	287.4	659.2	20.6	56.4
Females	68.7	210.8	279.5	31.6	31.1	62.7	342.2	285.0	627.2	18.3	54.6
Persons	200.2	374.5	574.7	79.5	59.7	139.3	714.0	572.4	1 286.4	19.5	55.5
.....											

LABOUR FORCE STATUS (AGED 15 & OVER)-States & Territories: Original-June 1997

EMPLOYED.....

UNEMPLOYED.....

	EMPLOYED			UNEMPLOYED			Labour force	Not in labour force	Civilian population aged 15 and over	Unemployment rate	Participation rate
	Full time	Part time	Total	Looking for f/t work	Looking for p/t work	Total					
	'000	'000	'000	'000	'000	'000	'000	'000	'000	%	%

MALES

New South Wales	1 416.4	182.5	1 598.9	116.8	12.3	129.1	1 728.1	692.7	2 420.7	7.5	71.4
Victoria	1 033.1	149.7	1 182.8	104.0	15.8	119.8	1 302.6	476.0	1 778.6	9.2	73.2
Queensland	768.4	119.6	888.0	75.9	10.3	86.3	974.3	349.9	1 324.1	8.9	73.6
South Australia	324.9	49.1	374.0	37.0	4.5	41.4	415.4	166.0	581.5	10.0	71.4
Western Australia	438.2	57.8	496.0	30.5	5.8	36.3	532.3	164.9	697.1	6.8	76.4
Tasmania	96.5	13.5	110.0	12.6	* 1.1	13.7	123.8	57.9	181.7	11.1	68.1
Northern Territory	41.3	6.9	48.2	2.4	* 0.3	2.7	50.9	14.1	64.9	5.3	78.4
Australian Capital Territory	72.0	12.4	84.4	5.2	1.9	7.0	91.4	23.9	115.3	7.7	79.3
Australia	4 191.0	591.4	4 782.4	384.4	52.0	436.4	5 218.8	1 945.3	7 164.1	8.4	72.8

FEMALES

New South Wales	704.3	488.1	1 192.4	64.1	28.2	92.3	1 284.7	1 226.0	2 510.7	7.2	51.2
Victoria	512.1	409.0	921.1	60.6	27.0	87.6	1 008.8	848.3	1 857.1	8.7	54.3
Queensland	368.5	312.2	680.8	42.4	20.9	63.3	744.0	604.6	1 348.6	8.5	55.2
South Australia	151.1	141.6	292.7	18.2	8.6	26.8	319.5	282.7	602.2	8.4	53.1
Western Australia	185.2	171.1	356.2	18.8	9.1	27.9	384.1	320.1	704.2	7.3	54.5
Tasmania	38.8	40.7	79.5	6.5	2.5	9.0	88.5	99.3	187.9	10.2	47.1
Northern Territory	24.1	15.0	39.1	1.8	* 0.4	2.2	41.3	22.5	63.8	5.3	64.7
Australian Capital Territory	47.4	26.5	73.9	3.2	2.1	5.3	79.2	40.2	119.4	6.7	66.3
Australia	2 031.6	1 604.1	3 635.8	215.6	98.7	314.4	3 950.1	3 443.8	7 393.9	8.0	53.4

PERSONS

New South Wales	2 120.8	670.6	2 791.3	181.0	40.5	221.4	3 012.8	1 918.7	4 931.4	7.3	61.1
Victoria	1 545.2	558.7	2 103.9	164.6	42.9	207.5	2 311.4	1 324.4	3 635.7	9.0	63.6
Queensland	1 137.0	431.8	1 568.8	118.3	31.2	149.5	1 718.3	954.5	2 672.8	8.7	64.3
South Australia	476.0	190.7	666.7	55.2	13.0	68.2	734.9	448.7	1 183.6	9.3	62.1
Western Australia	623.4	228.8	852.2	49.3	14.9	64.2	916.4	484.9	1 401.4	7.0	65.4
Tasmania	135.4	54.2	189.6	19.1	3.6	22.8	212.3	157.2	369.6	10.7	57.5
Northern Territory	65.4	21.9	87.3	4.2	* 0.6	4.8	92.2	36.6	128.7	5.3	71.6
Australian Capital Territory	119.4	38.9	158.3	8.3	4.0	12.3	170.7	64.1	234.8	7.2	72.7
Australia	6 222.6	2 195.5	8 418.1	600.1	150.7	750.8	9 168.9	5 389.1	14 558.0	8.2	63.0

UNEMPLOYED PERSONS—New South Wales, Victoria and Queensland: Original

Month	NUMBER OF UNEMPLOYED PERSONS.....					UNEMPLOYMENT RATE.....					UNEMPLOYMENT TO POPULATION RATIO	
	Aged 15-19 looking for f/t work	Aged 20 and over looking for f/t work	Total looking for f/t work	Looking for p/t work	Total	Aged 15-19 looking for f/t work	Aged 20 and over looking for f/t work	Total looking for f/t work	Looking for p/t work	Total	Aged 15-19 looking for f/t work	Aged 20 and over looking for f/t work
	'000	'000	'000	'000	'000	%	%	%	%	%	%	%
NEW SOUTH WALES												
1996												
April	29.2	165.5	194.7	51.3	246.0	26.9	7.5	8.4	7.4	8.2	6.9	3.7
May	26.5	153.9	180.5	51.4	231.9	25.5	7.0	7.9	7.1	7.7	6.3	3.5
June	25.9	148.8	174.7	50.7	225.4	26.3	6.8	7.6	6.9	7.5	6.2	3.3
July	23.2	155.1	178.4	45.3	223.7	22.6	7.0	7.7	6.5	7.4	5.5	3.5
August	24.8	163.9	188.7	49.4	238.1	25.2	7.4	8.2	7.0	7.9	5.9	3.7
September	23.9	168.2	192.1	57.0	249.2	23.7	7.5	8.2	7.9	8.1	5.7	3.8
October	23.7	155.8	179.6	53.4	233.0	22.2	7.0	7.7	7.5	7.6	5.6	3.5
November	22.1	145.7	167.9	48.3	216.2	23.4	6.6	7.3	6.9	7.2	5.2	3.3
December	37.4	154.0	191.4	53.3	244.7	30.6	6.8	8.0	7.6	7.9	8.8	3.4
1997												
January	35.0	173.2	208.1	49.9	258.0	27.7	7.7	8.8	7.4	8.5	8.3	3.9
February	35.9	186.8	222.7	64.5	287.2	30.5	8.3	9.4	9.2	9.4	8.5	4.2
March	27.7	171.8	199.4	57.7	257.1	26.0	7.6	8.5	8.0	8.4	6.5	3.8
April	29.3	160.5	189.8	53.9	243.6	26.9	7.2	8.1	7.4	7.9	6.9	3.6
May	28.2	166.7	194.9	50.4	245.3	27.8	7.5	8.4	6.9	8.0	6.6	3.7
June	28.7	152.2	181.0	40.5	221.4	31.0	6.9	7.9	5.7	7.3	6.8	3.4
VICTORIA												
1996												
April	20.3	139.2	159.5	47.8	207.3	30.6	8.5	9.3	8.4	9.1	6.5	4.3
May	19.9	133.3	153.2	38.3	191.5	30.0	8.0	8.9	6.9	8.4	6.3	4.1
June	18.5	118.4	136.9	41.0	177.8	28.6	7.2	8.1	7.3	7.9	5.9	3.6
July	14.6	129.8	144.4	42.6	187.0	21.6	7.8	8.4	7.8	8.2	4.7	4.0
August	18.3	141.0	159.3	38.8	198.2	28.8	8.6	9.3	6.9	8.7	5.8	4.3
September	20.5	149.8	170.3	44.5	214.8	30.2	9.0	9.9	7.6	9.3	6.5	4.6
October	19.1	142.2	161.3	43.4	204.7	30.1	8.6	9.4	7.6	8.9	6.1	4.3
November	20.4	146.6	167.0	37.2	204.2	31.3	8.8	9.6	6.4	8.8	6.5	4.4
December	25.8	141.2	167.0	48.4	215.4	34.4	8.4	9.6	8.2	9.2	8.2	4.3
1997												
January	21.9	150.6	172.5	40.7	213.2	29.4	9.1	9.9	7.4	9.3	7.0	4.6
February	19.9	165.3	185.2	48.9	234.1	30.4	9.8	10.6	8.5	10.1	6.3	5.0
March	19.8	148.3	168.1	52.5	220.6	33.0	9.0	9.9	8.7	9.6	6.3	4.5
April	16.7	143.4	160.2	49.7	209.9	28.9	8.7	9.4	8.3	9.1	5.3	4.3
May	17.3	146.5	163.8	44.7	208.4	31.1	8.9	9.6	7.6	9.1	5.5	4.4
June	15.3	149.4	164.6	42.9	207.5	27.1	9.0	9.6	7.1	9.0	4.8	4.5
QUEENSLAND												
1996												
April	20.4	110.6	130.9	31.7	162.7	27.3	9.2	10.3	7.8	9.7	8.4	4.7
May	21.4	102.8	124.2	32.5	156.7	30.7	8.5	9.8	8.0	9.3	8.8	4.3
June	20.9	104.4	125.3	29.7	155.0	30.8	8.7	9.8	7.1	9.2	8.6	4.4
July	16.1	101.1	117.3	31.3	148.6	23.8	8.4	9.2	7.5	8.8	6.6	4.3
August	19.1	106.3	125.4	31.1	156.4	28.7	8.8	9.8	7.6	9.3	7.8	4.5
September	18.5	103.2	121.7	33.0	154.7	26.8	8.4	9.4	7.8	9.0	7.5	4.3
October	20.9	99.0	120.0	34.2	154.2	30.0	8.1	9.3	8.3	9.1	8.5	4.1
November	22.4	94.0	116.4	29.0	145.4	32.9	7.8	9.1	6.9	8.6	9.1	3.9
December	26.8	96.3	123.0	37.7	160.7	33.0	7.9	9.4	9.0	9.3	10.9	4.0
1997												
January	27.4	121.2	148.6	37.8	186.4	35.5	10.0	11.5	9.3	11.0	11.1	5.0
February	23.5	128.1	151.5	32.9	184.5	32.5	10.4	11.6	7.8	10.7	9.5	5.3
March	21.1	123.1	144.2	37.6	181.8	34.1	10.1	11.3	8.5	10.6	8.6	5.1
April	16.1	120.7	136.8	31.1	167.9	27.0	10.0	10.8	7.0	9.8	6.5	5.0
May	16.7	115.3	132.0	34.9	166.9	29.6	9.5	10.4	8.0	9.8	6.7	4.8
June	15.8	102.5	118.3	31.2	149.5	28.1	8.5	9.4	6.7	8.7	6.4	4.2

UNEMPLOYED PERSONS—South Australia, Western Australia and Tasmania: Original

Month	NUMBER OF UNEMPLOYED PERSONS.....					UNEMPLOYMENT RATE.....					UNEMPLOYMENT TO POPULATION RATIO	
	Aged 15-19 looking for f/t work	Aged 20 and over looking for f/t work	Total looking for f/t work	Looking for p/t work	Total	Aged 15-19 looking for f/t work	Aged 20 and over looking for f/t work	Total looking for f/t work	Looking for p/t work	Total	Aged 15-19 looking for f/t work	Aged 20 and over looking for f/t work
	'000	'000	'000	'000	'000	%	%	%	%	%	%	%
SOUTH AUSTRALIA												
1996												
April	7.1	47.7	54.8	14.5	69.3	30.3	9.5	10.5	7.0	9.5	7.3	4.4
May	9.6	44.7	54.3	13.9	68.2	39.7	8.9	10.3	7.0	9.4	9.8	4.1
June	8.0	43.4	51.4	10.4	61.8	37.1	8.7	9.9	5.1	8.5	8.2	4.0
July	9.2	43.0	52.2	11.8	64.1	36.9	8.6	9.9	5.9	8.8	9.5	4.0
August	7.8	48.0	55.8	12.2	68.0	35.5	9.6	10.7	6.0	9.4	8.0	4.4
September	8.9	47.9	56.8	13.6	70.5	38.9	9.5	10.8	6.7	9.7	9.1	4.4
October	7.5	47.6	55.2	12.5	67.7	32.8	9.4	10.4	6.3	9.3	7.7	4.4
November	7.0	47.8	54.8	11.6	66.3	31.6	9.5	10.4	5.8	9.2	7.2	4.4
December	10.9	47.1	58.0	12.6	70.6	39.6	9.2	10.8	6.4	9.6	11.1	4.4
1997												
January	8.2	51.4	59.6	14.1	73.6	32.5	10.1	11.2	7.3	10.2	8.4	4.7
February	8.6	51.3	59.9	14.4	74.4	34.7	10.1	11.2	7.2	10.1	8.8	4.7
March	7.6	48.3	55.9	15.2	71.1	34.0	9.7	10.7	7.0	9.6	7.7	4.5
April	10.6	46.8	57.4	13.8	71.1	42.1	9.4	10.9	6.7	9.7	10.8	4.3
May	8.4	49.0	57.4	12.4	69.8	37.1	9.8	10.9	6.1	9.6	8.6	4.5
June	7.6	47.6	55.2	13.0	68.2	36.2	9.3	10.4	6.4	9.3	7.7	4.4
WESTERN AUSTRALIA												
1996												
April	7.8	41.6	49.5	14.5	64.0	19.4	6.6	7.4	6.5	7.2	6.1	3.4
May	7.8	44.2	52.0	16.9	68.9	20.4	7.0	7.7	7.2	7.6	6.1	3.6
June	7.9	47.0	54.9	15.6	70.5	20.8	7.4	8.1	6.8	7.8	6.2	3.8
July	8.4	44.2	52.5	12.6	65.1	20.4	6.9	7.7	5.5	7.1	6.5	3.5
August	7.8	45.8	53.6	15.3	68.8	21.1	7.2	7.9	6.4	7.5	6.0	3.7
September	7.7	46.3	54.1	15.1	69.1	20.4	7.2	7.9	6.4	7.5	6.0	3.7
October	8.6	41.6	50.2	14.9	65.1	21.9	6.5	7.4	6.4	7.2	6.7	3.3
November	9.8	42.7	52.5	13.8	66.3	25.0	6.7	7.8	5.9	7.3	7.6	3.4
December	12.0	43.7	55.7	15.0	70.8	26.5	6.8	8.1	6.3	7.6	9.3	3.5
1997												
January	10.2	50.3	60.4	15.7	76.1	22.0	7.8	8.8	6.7	8.3	7.8	4.0
February	9.6	48.6	58.2	20.8	79.1	23.3	7.5	8.5	8.5	8.5	7.4	3.9
March	9.3	45.6	54.9	18.5	73.4	24.0	7.2	8.2	7.4	8.0	7.2	3.6
April	7.5	44.4	51.9	14.8	66.8	18.7	7.0	7.7	6.1	7.3	5.8	3.5
May	6.7	39.8	46.5	16.7	63.2	17.3	6.2	6.9	7.1	6.9	5.2	3.1
June	6.9	42.4	49.3	14.9	64.2	17.7	6.7	7.3	6.1	7.0	5.3	3.3
TASMANIA												
1996												
April	2.4	15.2	17.6	4.3	21.9	22.7	10.0	10.8	6.9	9.7	6.9	4.6
May	2.9	15.8	18.8	3.5	22.2	29.2	10.4	11.6	5.7	10.0	8.6	4.7
June	2.9	17.1	20.0	3.7	23.7	28.4	11.1	12.2	6.1	10.5	8.5	5.1
July	3.0	16.7	19.7	4.5	24.2	30.8	11.0	12.2	7.0	10.7	8.8	5.0
August	2.2	16.6	18.8	3.9	22.7	24.7	10.9	11.6	6.4	10.2	6.4	5.0
September	2.3	17.6	19.9	3.9	23.8	24.9	11.4	12.2	6.3	10.6	6.8	5.2
October	2.0	17.0	19.0	4.5	23.5	21.8	11.3	11.9	7.1	10.6	5.9	5.1
November	2.5	16.3	18.7	3.4	22.2	26.4	10.8	11.7	5.7	10.1	7.3	4.9
December	3.8	16.2	20.1	5.1	25.1	35.0	10.6	12.2	8.5	11.2	11.1	4.8
1997												
January	4.0	16.5	20.5	4.4	24.9	35.1	11.1	12.8	7.3	11.3	11.7	4.9
February	3.7	17.9	21.6	4.0	25.6	32.8	11.6	13.1	7.1	11.6	10.9	5.3
March	3.8	15.1	18.9	4.6	23.5	35.1	10.3	12.0	7.4	10.7	11.0	4.5
April	3.5	15.9	19.4	3.4	22.8	34.4	10.7	12.3	5.7	10.5	10.2	4.7
May	3.1	14.2	17.3	4.2	21.5	34.3	9.6	11.0	6.9	9.9	9.1	4.2
June	3.3	15.8	19.1	3.6	22.8	37.7	10.9	12.4	6.3	10.7	9.7	4.7

UNEMPLOYED PERSONS—Northern Territory and Australian Capital Territory: Original

Month	NUMBER OF UNEMPLOYED PERSONS.....					UNEMPLOYMENT RATE.....					UNEMPLOYMENT TO POPULATION RATIO	
	Aged 15-19 looking for fit work	Aged 20 and over looking for fit work	Total looking for fit work	Looking for p/t work	Total	Aged 15-19 looking for fit work	Aged 20 and over looking for fit work	Total looking for fit work	Looking for p/t work	Total	Aged 15-19 looking for fit work	Aged 20 and over looking for fit work
	'000	'000	'000	'000	'000	%	%	%	%	%	%	%
NORTHERN TERRITORY												
1996												
April	* 1.2	4.4	5.5	1.5	7.0	* 41.6	6.7	8.2	7.4	8.0	* 9.2	3.9
May	* 0.7	3.9	4.6	* 0.7	5.3	* 24.3	5.9	6.7	* 3.9	6.1	* 5.6	3.4
June	* 0.3	2.8	3.1	* 0.8	3.9	* 8.4	4.3	4.5	* 4.3	4.4	* 2.2	2.5
July	* 0.4	4.2	4.6	* 1.1	5.7	* 8.6	6.1	6.3	* 6.5	6.3	* 3.2	3.7
August	* 0.6	2.8	3.4	1.3	4.6	* 17.1	4.3	4.9	6.8	5.3	* 4.6	2.5
September	* 0.2	3.5	3.7	1.3	5.0	* 6.0	5.2	5.2	6.1	5.4	* 1.6	3.1
October	* 0.3	2.7	3.1	* 0.9	3.9	* 11.0	4.2	4.5	* 4.1	4.4	* 2.7	2.4
November	* 0.5	2.8	3.3	* 0.7	4.0	* 16.1	4.5	5.0	* 3.2	4.6	* 3.8	2.4
December	* 0.5	2.7	3.2	* 1.1	4.3	* 14.3	4.2	4.7	* 5.8	5.0	* 3.6	2.4
1997												
January	* 0.9	4.2	5.1	* 1.1	6.2	* 23.7	6.8	7.7	* 6.3	7.4	* 6.7	3.7
February	* 0.7	4.1	4.9	* 1.0	5.9	* 24.8	6.5	7.3	* 4.8	6.7	* 5.6	3.6
March	* 0.8	2.6	3.4	1.6	5.0	* 25.4	4.0	5.0	7.8	5.6	* 5.8	2.3
April	* 0.7	3.6	4.3	* 1.2	5.5	* 26.2	5.6	6.4	* 5.8	6.2	* 5.5	3.1
May	* 0.8	3.6	4.4	* 0.7	5.1	* 25.9	5.4	6.4	* 3.3	5.6	* 6.4	3.1
June	* 0.6	3.6	4.2	* 0.6	4.8	* 23.4	5.4	6.0	* 2.8	5.3	* 4.5	3.1
AUSTRALIAN CAPITAL TERRITORY												
1996												
April	1.6	8.6	10.2	4.6	14.8	35.9	7.1	8.1	10.8	8.8	6.8	4.1
May	1.7	8.1	9.8	3.6	13.5	42.6	6.6	7.8	8.4	7.9	7.5	3.9
June	1.8	7.2	9.0	3.4	12.4	43.9	5.9	7.2	7.8	7.3	7.6	3.4
July	1.5	8.9	10.4	2.9	13.2	38.0	7.2	8.2	6.9	7.9	6.5	4.2
August	1.9	9.3	11.2	3.2	14.4	50.0	7.6	8.9	7.7	8.6	8.3	4.4
September	2.1	8.4	10.5	2.7	13.1	54.2	6.8	8.3	6.2	7.8	9.2	4.0
October	2.1	8.0	10.2	2.7	12.9	53.5	6.7	8.2	6.4	7.8	9.3	3.8
November	1.5	7.6	9.2	3.5	12.7	38.4	6.4	7.4	8.6	7.7	6.7	3.6
December	1.8	8.1	9.9	4.2	14.1	37.2	6.7	7.9	10.0	8.4	7.8	3.8
1997												
January	1.8	9.5	11.3	3.9	15.2	38.3	7.7	8.8	10.3	9.2	7.7	4.5
February	1.3	9.1	10.4	5.0	15.4	35.8	7.4	8.2	11.6	9.0	5.7	4.3
March	1.6	6.7	8.3	4.6	12.9	43.6	5.5	6.6	10.7	7.6	7.3	3.2
April	1.0	6.7	7.7	4.3	11.9	31.0	5.4	6.1	9.7	7.0	4.5	3.1
May	* 0.9	6.6	7.5	4.2	11.7	* 26.3	5.3	5.8	9.5	6.8	* 3.8	3.1
June	1.3	7.0	8.3	4.0	12.3	42.5	5.6	6.5	9.4	7.2	5.9	3.3

LABOUR FORCE STATUS (AGED 15 AND OVER)-New South Wales(a)

SEASONALLY ADJUSTED.....

TREND.....

Month	SEASONALLY ADJUSTED					TREND					Civilian population aged 15 and over '000
	Employed full time '000	Total employed '000	Total unemployed '000	Unemployment rate %	Participation rate %	Employed full time '000	Total employed '000	Total unemployed '000	Unemployment rate %	Participation rate %	
MALES											
1996											
April	1 410.0	1 581.2	150.4	8.7	72.7	1 411.2	1 587.1	144.4	8.3	72.7	2 383.1
May	1 410.1	1 592.0	140.8	8.1	72.6	1 409.4	1 588.3	144.9	8.4	72.6	2 386.2
June	1 409.8	1 591.6	141.6	8.2	72.5	1 410.0	1 590.3	145.0	8.4	72.6	2 389.3
July	1 411.5	1 590.7	141.4	8.2	72.4	1 412.3	1 592.3	144.8	8.3	72.6	2 392.5
August	1 416.5	1 596.5	153.4	8.8	73.0	1 416.0	1 594.8	144.2	8.3	72.6	2 395.8
September	1 420.4	1 596.9	141.5	8.1	72.5	1 419.9	1 597.5	143.1	8.2	72.6	2 399.1
October	1 423.3	1 601.7	141.8	8.1	72.6	1 423.6	1 600.0	142.0	8.2	72.5	2 401.8
November	1 424.2	1 593.0	141.3	8.1	72.1	1 427.2	1 602.3	141.0	8.1	72.5	2 404.6
December	1 432.4	1 610.1	136.2	7.8	72.5	1 429.6	1 604.3	140.8	8.1	72.5	2 407.3
1997											
January	1 438.9	1 618.0	137.3	7.8	72.9	1 430.1	1 605.2	141.6	8.1	72.5	2 409.2
February	1 415.1	1 589.7	151.1	8.7	72.2	1 428.8	1 605.1	142.8	8.2	72.5	2 411.1
March	1 438.9	1 607.1	142.0	8.1	72.5	1 426.4	1 604.4	143.4	8.2	72.4	2 413.0
April	1 424.0	1 610.0	143.7	8.2	72.6	1 423.6	1 603.4	143.1	8.2	72.3	2 415.6
May	1 409.7	1 596.7	147.3	8.4	72.1	1 420.9	1 602.4	142.1	8.1	72.1	2 418.1
June	1 422.2	1 601.8	131.9	7.6	71.6	1 418.2	1 600.8	140.9	8.1	72.0	2 420.7
FEMALES											
1996											
April	722.7	1 191.5	100.4	7.8	52.4	720.6	1 197.3	96.4	7.4	52.4	2 467.3
May	707.5	1 188.2	99.6	7.7	52.1	719.9	1 196.3	97.3	7.5	52.4	2 470.9
June	717.8	1 202.2	91.9	7.1	52.3	720.9	1 196.6	98.1	7.6	52.3	2 474.4
July	728.7	1 200.4	98.7	7.6	52.4	723.1	1 197.9	98.2	7.6	52.3	2 478.3
August	733.7	1 201.6	97.8	7.5	52.3	725.8	1 200.0	98.0	7.5	52.3	2 482.3
September	720.4	1 195.2	103.6	8.0	52.2	728.6	1 202.8	97.8	7.5	52.3	2 486.2
October	731.9	1 210.0	100.2	7.6	52.6	730.3	1 205.5	98.0	7.5	52.4	2 489.4
November	730.5	1 206.2	87.1	6.7	51.9	730.3	1 207.8	98.4	7.5	52.4	2 492.6
December	731.9	1 210.7	102.1	7.8	52.6	729.8	1 210.4	99.4	7.6	52.5	2 495.8
1997											
January	730.1	1 213.8	101.3	7.7	52.6	729.1	1 212.0	100.7	7.7	52.6	2 498.1
February	726.1	1 212.3	107.7	8.2	52.8	728.0	1 211.7	102.2	7.8	52.6	2 500.3
March	720.3	1 206.3	98.9	7.6	52.2	726.1	1 209.5	103.3	7.9	52.5	2 502.5
April	731.7	1 216.2	104.5	7.9	52.7	723.9	1 206.2	103.6	7.9	52.3	2 505.3
May	726.0	1 202.3	107.0	8.2	52.2	721.6	1 202.4	103.5	7.9	52.1	2 508.0
June	710.2	1 186.3	97.8	7.6	51.1	719.3	1 198.1	102.3	7.9	51.8	2 510.7
PERSONS											
1996											
April	2 132.7	2 772.7	250.8	8.3	62.3	2 131.8	2 784.4	240.8	8.0	62.4	4 850.5
May	2 117.5	2 780.2	240.4	8.0	62.2	2 129.4	2 784.5	242.2	8.0	62.3	4 857.0
June	2 127.7	2 793.8	233.5	7.7	62.2	2 130.9	2 786.9	243.0	8.0	62.3	4 863.7
July	2 140.2	2 791.1	240.1	7.9	62.2	2 135.4	2 790.2	243.0	8.0	62.3	4 870.9
August	2 150.3	2 798.1	251.2	8.2	62.5	2 141.9	2 794.8	242.2	8.0	62.3	4 878.1
September	2 140.8	2 792.1	245.0	8.1	62.2	2 148.4	2 800.3	241.0	7.9	62.3	4 885.3
October	2 155.1	2 811.8	242.0	7.9	62.4	2 153.9	2 805.4	240.0	7.9	62.3	4 891.3
November	2 154.7	2 799.3	228.4	7.5	61.8	2 157.5	2 810.2	239.4	7.9	62.3	4 897.2
December	2 164.2	2 820.8	238.3	7.8	62.4	2 159.4	2 814.6	240.2	7.9	62.3	4 903.1
1997											
January	2 169.0	2 831.7	238.5	7.8	62.6	2 159.2	2 817.2	242.3	7.9	62.3	4 907.3
February	2 141.3	2 801.9	258.8	8.5	62.3	2 156.8	2 816.8	245.0	8.0	62.3	4 911.4
March	2 159.2	2 813.4	240.8	7.9	62.1	2 152.5	2 813.9	246.7	8.1	62.3	4 915.5
April	2 155.7	2 826.2	248.2	8.1	62.5	2 147.5	2 809.6	246.7	8.1	62.1	4 920.8
May	2 135.6	2 799.0	254.3	8.3	62.0	2 142.5	2 804.8	245.6	8.1	61.9	4 926.1
June	2 132.4	2 788.1	229.7	7.6	61.2	2 137.5	2 798.9	243.3	8.0	61.7	4 931.4

(a) Trend estimates for December 1996 to May 1997 have been revised.

LABOUR FORCE STATUS (AGED 15 AND OVER)-Victoria(a)

SEASONALLY ADJUSTED.....

TREND.....

Month	SEASONALLY ADJUSTED					TREND					Civilian population aged 15 and over '000
	Employed full time '000	Total employed '000	Total unemployed '000	Unemployment rate %	Participation rate %	Employed full time '000	Total employed '000	Total unemployed '000	Unemployment rate %	Participation rate %	
MALES											
1996											
April	1 045.0	1 175.3	121.3	9.4	73.9	1 052.0	1 180.2	113.4	8.8	73.8	1 753.8
May	1 060.8	1 188.5	109.2	8.4	73.9	1 053.7	1 181.9	112.0	8.7	73.7	1 755.8
June	1 057.4	1 186.1	106.3	8.2	73.5	1 054.3	1 183.8	111.4	8.6	73.7	1 757.8
July	1 055.9	1 183.8	109.1	8.4	73.5	1 053.2	1 185.3	112.3	8.7	73.7	1 759.8
August	1 055.8	1 188.5	114.6	8.8	74.0	1 050.7	1 186.3	114.3	8.8	73.8	1 761.9
September	1 035.2	1 181.9	120.9	9.3	73.9	1 048.1	1 187.0	116.8	9.0	73.9	1 763.9
October	1 046.3	1 185.5	121.9	9.3	74.1	1 046.5	1 187.6	118.9	9.1	74.0	1 765.5
November	1 049.1	1 194.8	118.5	9.0	74.3	1 046.3	1 188.2	120.2	9.2	74.0	1 767.2
December	1 043.0	1 185.0	120.2	9.2	73.8	1 047.2	1 188.7	120.3	9.2	74.0	1 768.8
1997											
January	1 056.7	1 193.5	117.5	9.0	74.1	1 047.8	1 188.4	119.9	9.2	73.9	1 770.2
February	1 046.8	1 182.8	120.1	9.2	73.5	1 047.4	1 187.6	119.7	9.2	73.8	1 771.5
March	1 040.9	1 186.5	122.3	9.3	73.8	1 045.6	1 186.3	120.0	9.2	73.7	1 772.9
April	1 045.7	1 187.3	120.7	9.2	73.7	1 043.3	1 185.1	120.5	9.2	73.6	1 774.8
May	1 044.0	1 183.5	115.7	8.9	73.1	1 041.0	1 184.0	121.1	9.3	73.5	1 776.7
June	1 033.5	1 182.0	126.0	9.6	73.5	1 039.0	1 183.4	121.6	9.3	73.4	1 778.6
FEMALES											
1996											
April	514.0	895.8	87.5	8.9	53.8	509.9	895.4	83.7	8.5	53.5	1 829.4
May	518.2	899.6	83.6	8.5	53.7	512.1	893.5	84.8	8.7	53.4	1 831.6
June	510.2	892.7	80.3	8.3	53.1	513.7	893.1	86.2	8.8	53.4	1 833.8
July	517.5	888.4	88.7	9.1	53.2	514.3	893.8	88.2	9.0	53.5	1 836.2
August	512.1	896.8	95.0	9.6	53.9	513.9	895.7	90.5	9.2	53.6	1 838.6
September	510.1	899.6	90.8	9.2	53.8	513.6	899.1	92.1	9.3	53.8	1 841.0
October	514.0	898.8	94.1	9.5	53.9	513.7	903.7	92.5	9.3	54.1	1 842.9
November	516.4	912.3	93.3	9.3	54.5	513.9	908.7	91.7	9.2	54.2	1 844.9
December	511.7	910.4	89.8	9.0	54.2	513.4	912.1	90.2	9.0	54.3	1 846.8
1997											
January	516.2	921.4	86.4	8.6	54.5	512.1	913.4	89.1	8.9	54.2	1 848.3
February	512.4	916.8	88.0	8.8	54.3	510.7	913.0	89.0	8.9	54.2	1 849.7
March	502.9	901.3	88.9	9.0	53.5	509.6	911.8	89.6	8.9	54.1	1 851.1
April	510.3	915.5	90.8	9.0	54.3	509.1	910.8	90.5	9.0	54.0	1 853.1
May	505.4	902.2	94.5	9.5	53.7	509.3	910.3	91.6	9.1	54.0	1 855.1
June	517.2	917.9	92.0	9.1	54.4	510.1	910.3	92.7	9.2	54.0	1 857.1
PERSONS											
1996											
April	1 559.0	2 071.1	208.9	9.2	63.6	1 561.9	2 075.5	197.1	8.7	63.4	3 583.2
May	1 579.1	2 088.1	192.8	8.5	63.6	1 565.8	2 075.4	196.8	8.7	63.3	3 587.4
June	1 567.5	2 078.8	186.6	8.2	63.1	1 568.1	2 076.9	197.6	8.7	63.3	3 591.6
July	1 573.4	2 072.1	197.8	8.7	63.1	1 567.5	2 079.0	200.5	8.8	63.4	3 596.0
August	1 567.9	2 085.3	209.5	9.1	63.7	1 564.6	2 082.0	204.8	9.0	63.5	3 600.4
September	1 545.2	2 081.6	211.7	9.2	63.6	1 561.7	2 086.1	208.9	9.1	63.7	3 604.9
October	1 560.3	2 084.3	216.0	9.4	63.7	1 560.2	2 091.3	211.4	9.2	63.8	3 608.5
November	1 565.5	2 107.1	211.8	9.1	64.2	1 560.2	2 096.9	211.9	9.2	63.9	3 612.0
December	1 554.8	2 095.4	210.0	9.1	63.8	1 560.5	2 100.8	210.5	9.1	63.9	3 615.7
1997											
January	1 572.9	2 114.8	203.9	8.8	64.1	1 560.0	2 101.8	209.0	9.0	63.9	3 618.4
February	1 559.2	2 099.6	208.1	9.0	63.7	1 558.1	2 100.5	208.7	9.0	63.8	3 621.2
March	1 543.7	2 087.8	211.2	9.2	63.4	1 555.2	2 098.2	209.6	9.1	63.7	3 624.0
April	1 556.0	2 102.8	211.5	9.1	63.8	1 552.5	2 096.0	211.0	9.1	63.6	3 627.9
May	1 549.4	2 085.8	210.2	9.2	63.2	1 550.4	2 094.3	212.6	9.2	63.5	3 631.8
June	1 550.7	2 099.9	217.9	9.4	63.7	1 549.2	2 093.7	214.3	9.3	63.5	3 635.7

(a) Trend estimates for December 1996 to May 1997 have been revised.

LABOUR FORCE STATUS (AGED 15 AND OVER)—Queensland(a)

SEASONALLY ADJUSTED.....

TREND.....

Month	SEASONALLY ADJUSTED					TREND					Civilian population aged 15 and over '000
	Employed full time '000	Total employed '000	Total unemployed '000	Unemployment rate %	Participation rate %	Employed full time '000	Total employed '000	Total unemployed '000	Unemployment rate %	Participation rate %	
MALES											
1996											
April	782.7	881.2	88.9	9.2	75.3	782.1	879.3	88.2	9.1	75.1	1 288.8
May	783.9	883.4	86.4	8.9	75.1	781.4	880.6	88.9	9.2	75.0	1 292.1
June	774.6	878.5	91.5	9.4	74.9	780.5	880.8	90.5	9.3	75.0	1 295.4
July	782.0	883.8	88.7	9.1	74.9	780.0	880.4	92.2	9.5	74.9	1 297.8
August	778.8	876.1	99.5	10.2	75.0	780.3	880.2	93.3	9.6	74.9	1 300.3
September	781.2	880.3	93.3	9.6	74.7	781.3	880.6	93.5	9.6	74.8	1 302.7
October	781.4	876.5	97.0	10.0	74.6	782.0	881.1	93.6	9.6	74.7	1 305.2
November	783.2	886.8	86.5	8.9	74.4	781.6	881.2	93.9	9.6	74.6	1 307.7
December	783.4	882.0	93.6	9.6	74.5	779.7	880.2	94.9	9.7	74.4	1 310.2
1997											
January	774.5	882.4	97.3	9.9	74.6	776.6	878.5	96.3	9.9	74.3	1 312.6
February	777.9	874.2	97.4	10.0	73.9	773.4	876.8	97.4	10.0	74.1	1 315.0
March	762.2	867.9	104.0	10.7	73.8	770.5	876.0	97.6	10.0	73.9	1 317.4
April	766.4	876.3	96.3	9.9	73.7	768.3	876.2	96.7	9.9	73.7	1 319.7
May	771.9	879.7	93.7	9.6	73.6	766.8	877.1	95.3	9.8	73.6	1 321.9
June	766.3	883.8	88.5	9.1	73.4	765.9	878.8	93.2	9.6	73.4	1 324.1
FEMALES											
1996											
April	368.0	639.1	68.7	9.7	53.9	369.8	644.7	65.9	9.3	54.2	1 312.2
May	370.5	646.4	68.9	9.6	54.4	370.3	646.8	66.9	9.4	54.3	1 315.2
June	368.6	651.6	67.2	9.3	54.5	372.2	650.8	67.4	9.4	54.5	1 318.2
July	373.9	656.9	66.8	9.2	54.8	375.1	655.2	67.4	9.3	54.7	1 320.8
August	381.8	661.6	66.8	9.2	55.0	378.3	658.4	67.4	9.3	54.8	1 323.4
September	382.8	662.3	67.1	9.2	55.0	380.4	660.0	67.8	9.3	54.9	1 326.1
October	381.9	660.3	69.4	9.5	54.9	380.9	660.6	68.7	9.4	54.9	1 328.7
November	378.0	657.4	67.7	9.3	54.5	380.1	661.3	69.6	9.5	54.9	1 331.4
December	382.4	662.1	70.0	9.6	54.9	378.8	662.5	70.1	9.6	54.9	1 334.1
1997											
January	370.4	659.4	75.4	10.3	55.0	377.3	664.6	70.0	9.5	55.0	1 336.7
February	377.9	675.5	69.0	9.3	55.6	376.1	667.2	69.4	9.4	55.0	1 339.3
March	375.5	669.5	64.3	8.8	54.7	375.0	669.8	68.6	9.3	55.0	1 341.9
April	375.6	671.5	66.4	9.0	54.9	373.7	672.1	67.8	9.2	55.0	1 344.1
May	374.7	669.4	71.9	9.7	55.1	372.2	674.1	67.2	9.1	55.1	1 346.4
June	365.1	679.7	64.7	8.7	55.2	370.6	675.6	66.6	9.0	55.0	1 348.6
PERSONS											
1996											
April	1 150.7	1 520.3	157.6	9.4	64.5	1 151.9	1 524.1	154.1	9.2	64.5	2 601.0
May	1 154.4	1 529.7	155.4	9.2	64.6	1 151.7	1 527.4	155.8	9.3	64.6	2 607.3
June	1 143.2	1 530.1	158.7	9.4	64.6	1 152.6	1 531.6	157.9	9.3	64.6	2 613.5
July	1 155.9	1 540.7	155.5	9.2	64.8	1 155.2	1 535.7	159.6	9.4	64.7	2 618.6
August	1 160.6	1 537.7	166.3	9.8	64.9	1 158.6	1 538.6	160.7	9.5	64.8	2 623.7
September	1 163.9	1 542.7	160.3	9.4	64.8	1 161.6	1 540.6	161.4	9.5	64.7	2 628.8
October	1 163.3	1 536.9	166.4	9.8	64.7	1 162.9	1 541.7	162.3	9.5	64.7	2 634.0
November	1 161.2	1 544.2	154.3	9.1	64.4	1 161.7	1 542.4	163.5	9.6	64.6	2 639.1
December	1 165.8	1 544.2	163.6	9.6	64.6	1 158.4	1 542.7	165.0	9.7	64.6	2 644.3
1997											
January	1 144.9	1 541.8	172.7	10.1	64.7	1 153.9	1 543.1	166.2	9.7	64.5	2 649.3
February	1 155.8	1 549.7	166.4	9.7	64.7	1 149.5	1 544.0	166.7	9.7	64.5	2 654.3
March	1 137.7	1 537.4	168.3	9.9	64.1	1 145.5	1 545.8	166.1	9.7	64.4	2 659.3
April	1 142.0	1 547.8	162.8	9.5	64.2	1 142.0	1 548.3	164.5	9.6	64.3	2 663.8
May	1 146.5	1 549.1	165.5	9.7	64.3	1 139.0	1 551.2	162.5	9.5	64.2	2 668.3
June	1 131.4	1 563.5	153.2	8.9	64.2	1 136.4	1 554.3	159.8	9.3	64.1	2 672.8

(a) Trend estimates for December 1996 to May 1997 have been revised.



LABOUR FORCE STATUS (AGED 15 AND OVER)-South Australia(a)

SEASONALLY ADJUSTED.....

TREND.....

Month	SEASONALLY ADJUSTED					TREND					Civilian population aged 15 and over '000
	Employed full time '000	Total employed '000	Total unemployed '000	Unemp-loyment rate %	Partic-ipation rate %	Employed full time '000	Total employed '000	Total unemployed '000	Unemp-loyment rate %	Partic-ipation rate %	
MALES											
1996											
April	323.6	370.6	43.0	10.4	71.7	324.6	369.9	42.0	10.2	71.4	577.0
May	323.4	366.8	42.4	10.4	70.9	323.3	369.6	41.6	10.1	71.2	577.3
June	321.9	371.3	38.9	9.5	71.0	322.0	369.3	41.2	10.0	71.1	577.6
July	323.4	370.7	40.2	9.8	71.1	320.7	368.9	41.0	10.0	70.9	578.0
August	318.4	368.2	41.7	10.2	70.9	319.7	368.4	41.2	10.1	70.8	578.4
September	317.1	365.9	42.6	10.4	70.6	319.4	367.8	41.5	10.1	70.7	578.8
October	318.9	367.2	41.2	10.1	70.5	319.5	367.6	41.7	10.2	70.7	579.1
November	320.8	368.1	42.8	10.4	70.9	320.1	367.7	41.7	10.2	70.6	579.5
December	321.6	368.8	41.4	10.1	70.7	320.7	368.0	41.6	10.1	70.6	579.8
1997											
January	323.1	368.0	40.7	10.0	70.5	321.2	368.7	41.6	10.1	70.7	580.0
February	320.5	369.0	41.4	10.1	70.7	321.3	369.4	42.0	10.2	70.9	580.3
March	320.2	372.4	42.0	10.1	71.4	321.2	370.0	42.6	10.3	71.1	580.5
April	322.1	368.7	44.5	10.8	71.1	321.3	370.8	43.1	10.4	71.3	580.8
May	318.8	370.1	45.1	10.9	71.4	321.5	371.7	43.6	10.5	71.5	581.1
June	324.6	375.5	42.3	10.1	71.9	321.8	372.5	44.0	10.6	71.6	581.5
FEMALES											
1996											
April	149.4	290.8	26.2	8.3	53.0	149.8	289.0	26.4	8.4	52.8	598.0
May	152.2	290.7	27.2	8.6	53.1	150.1	290.2	26.7	8.4	53.0	598.2
June	149.7	290.7	25.8	8.1	52.9	150.6	291.0	27.0	8.5	53.1	598.5
July	151.0	291.1	27.6	8.7	53.2	150.8	291.3	27.3	8.6	53.2	598.9
August	150.2	290.4	28.5	8.9	53.2	150.8	291.2	27.6	8.7	53.2	599.2
September	151.1	290.4	27.9	8.8	53.1	150.6	291.0	27.7	8.7	53.1	599.6
October	151.6	294.8	27.6	8.6	53.7	150.4	290.8	27.7	8.7	53.1	599.9
November	148.2	288.6	26.5	8.4	52.5	150.2	291.0	27.5	8.6	53.1	600.2
December	150.5	289.0	28.4	8.9	52.9	150.1	291.4	27.3	8.6	53.1	600.5
1997											
January	150.6	291.7	26.6	8.4	53.0	150.1	291.9	27.2	8.5	53.1	600.7
February	150.1	293.7	27.0	8.4	53.4	150.1	292.2	27.1	8.5	53.1	601.0
March	150.1	295.1	28.0	8.7	53.7	150.4	292.2	27.1	8.5	53.1	601.2
April	150.6	292.1	26.6	8.3	53.0	150.6	291.9	27.2	8.5	53.0	601.5
May	149.9	288.3	26.2	8.3	52.3	151.0	291.3	27.4	8.6	52.9	601.8
June	152.6	289.8	29.1	9.1	53.0	151.2	290.5	27.5	8.7	52.8	602.2
PERSONS											
1996											
April	473.0	661.4	69.2	9.5	62.2	474.3	659.0	68.5	9.4	61.9	1 175.0
May	475.5	657.5	69.6	9.6	61.9	473.4	659.8	68.3	9.4	61.9	1 175.6
June	471.6	662.0	64.7	8.9	61.8	472.6	660.3	68.2	9.4	61.9	1 176.1
July	474.4	661.8	67.8	9.3	62.0	471.6	660.2	68.4	9.4	61.9	1 176.9
August	468.6	658.6	70.2	9.6	61.9	470.5	659.6	68.8	9.4	61.9	1 177.6
September	468.2	656.3	70.5	9.7	61.7	469.9	658.8	69.2	9.5	61.8	1 178.4
October	470.5	662.0	68.7	9.4	62.0	469.9	658.4	69.3	9.5	61.7	1 179.0
November	469.0	656.7	69.3	9.5	61.5	470.3	658.7	69.2	9.5	61.7	1 179.6
December	472.0	657.8	69.8	9.6	61.6	470.9	659.5	68.9	9.5	61.7	1 180.3
1997											
January	473.6	659.7	67.3	9.3	61.6	471.3	660.6	68.8	9.4	61.8	1 180.8
February	470.6	662.7	68.4	9.4	61.9	471.4	661.6	69.1	9.5	61.9	1 181.2
March	470.3	667.5	69.9	9.5	62.4	471.6	662.3	69.7	9.5	61.9	1 181.7
April	472.8	660.8	71.0	9.7	61.9	471.9	662.7	70.3	9.6	62.0	1 182.3
May	468.7	658.4	71.3	9.8	61.7	472.4	663.0	70.9	9.7	62.0	1 183.0
June	477.2	665.3	71.4	9.7	62.2	472.9	663.0	71.5	9.7	62.1	1 183.6

(a) Trend estimates for December 1996 to May 1997 have been revised.

LABOUR FORCE STATUS (AGED 15 AND OVER)-Western Australia(a)

SEASONALLY ADJUSTED.....

TREND.....

Month	SEASONALLY ADJUSTED					TREND					Civilian population aged 15 and over '000
	Employed full time '000	Total employed '000	Total unemployed '000	Unemployment rate %	Participation rate %	Employed full time '000	Total employed '000	Total unemployed '000	Unemployment rate %	Participation rate %	
MALES											
1996											
April	425.4	477.3	39.5	7.6	76.0	426.4	477.4	41.3	8.0	76.3	679.6
May	426.5	478.9	41.1	7.9	76.4	426.8	478.2	41.5	8.0	76.3	680.8
June	425.7	477.4	43.0	8.3	76.3	427.2	479.2	41.7	8.0	76.4	682.1
July	432.1	481.4	40.7	7.8	76.4	427.5	479.9	42.1	8.1	76.4	683.4
August	426.1	481.3	43.3	8.3	76.6	427.7	480.5	42.4	8.1	76.4	684.7
September	426.0	480.4	41.9	8.0	76.1	428.1	481.2	42.5	8.1	76.3	686.0
October	430.3	484.0	42.8	8.1	76.6	428.8	482.3	42.1	8.0	76.3	687.3
November	429.9	480.3	41.9	8.0	75.8	429.8	483.8	41.3	7.9	76.3	688.6
December	428.5	483.7	41.3	7.9	76.1	431.1	485.7	40.2	7.6	76.2	689.9
1997											
January	434.3	491.4	36.7	7.0	76.4	432.4	487.6	39.0	7.4	76.2	691.0
February	435.9	491.2	38.4	7.3	76.5	433.6	489.4	38.0	7.2	76.2	692.1
March	433.0	490.2	37.4	7.1	76.1	434.5	490.8	37.4	7.1	76.2	693.2
April	434.6	490.4	36.2	6.9	75.8	435.4	492.0	37.1	7.0	76.2	694.5
May	436.1	492.0	37.2	7.0	76.1	436.1	493.0	37.0	7.0	76.2	695.9
June	437.5	495.5	38.2	7.2	76.5	436.8	493.7	37.1	7.0	76.1	697.1
FEMALES											
1996											
April	195.4	346.5	25.1	6.8	54.2	194.0	353.5	27.7	7.3	55.6	685.8
May	192.6	356.5	27.9	7.3	56.0	195.5	355.6	27.8	7.3	55.8	687.1
June	195.2	356.2	29.3	7.6	56.0	196.6	358.0	28.0	7.3	56.1	688.4
July	197.3	360.9	29.1	7.5	56.5	197.5	360.5	28.1	7.2	56.3	689.9
August	201.4	367.9	28.6	7.2	57.4	198.1	362.7	28.1	7.2	56.5	691.4
September	200.1	365.3	27.3	7.0	56.7	198.3	364.4	28.1	7.1	56.6	692.8
October	194.3	360.8	27.4	7.1	55.9	197.8	365.1	28.3	7.2	56.7	694.2
November	195.3	364.0	27.8	7.1	56.3	196.5	365.3	29.1	7.4	56.7	695.5
December	197.6	366.5	29.6	7.5	56.8	194.8	365.0	30.2	7.7	56.7	696.9
1997											
January	194.8	364.5	33.4	8.4	57.0	193.3	364.1	31.2	7.9	56.6	698.0
February	189.7	366.5	32.3	8.1	57.0	192.0	362.8	31.5	8.0	56.4	699.1
March	187.8	359.4	31.6	8.1	55.8	190.9	360.9	31.1	7.9	56.0	700.3
April	191.7	356.8	31.5	8.1	55.4	189.9	358.8	30.2	7.8	55.4	701.6
May	191.7	355.9	26.2	6.9	54.4	189.1	356.9	29.2	7.6	54.9	702.9
June	186.6	356.1	27.5	7.2	54.5	188.4	355.3	28.1	7.3	54.4	704.2
PERSONS											
1996											
April	620.8	823.8	64.7	7.3	65.1	620.4	831.0	69.0	7.7	65.9	1 365.4
May	619.1	835.4	69.1	7.6	66.1	622.2	833.8	69.3	7.7	66.0	1 368.0
June	620.9	833.6	72.4	8.0	66.1	623.8	837.2	69.8	7.7	66.2	1 370.5
July	629.3	842.3	69.8	7.6	66.4	624.9	840.4	70.2	7.7	66.3	1 373.3
August	627.6	849.2	71.9	7.8	66.9	625.8	843.2	70.5	7.7	66.4	1 376.1
September	626.1	845.7	69.2	7.6	66.3	626.5	845.5	70.5	7.7	66.4	1 378.9
October	624.6	844.8	70.2	7.7	66.2	626.6	847.4	70.4	7.7	66.4	1 381.5
November	625.2	844.3	69.7	7.6	66.0	626.3	849.1	70.4	7.7	66.4	1 384.1
December	626.0	850.2	70.9	7.7	66.4	625.9	850.7	70.4	7.6	66.4	1 386.7
1997											
January	629.1	855.9	70.1	7.6	66.7	625.7	851.8	70.2	7.6	66.4	1 389.0
February	625.6	857.7	70.8	7.6	66.7	625.6	852.2	69.5	7.5	66.3	1 391.2
March	620.8	849.6	69.0	7.5	65.9	625.4	851.7	68.5	7.4	66.0	1 393.5
April	626.3	847.3	67.8	7.4	65.5	625.3	850.8	67.3	7.3	65.8	1 396.1
May	627.8	847.9	63.5	7.0	65.2	625.2	849.9	66.2	7.2	65.5	1 398.8
June	624.1	851.6	65.7	7.2	65.5	625.1	848.9	65.1	7.1	65.2	1 401.4

(a) Trend estimates for December 1996 to May 1997 have been revised.

LABOUR FORCE STATUS (AGED 15 AND OVER)-Tasmania(a)

Month	SEASONALLY ADJUSTED.....					TREND.....					Civilian population aged 15 and over '000
	Employed full time '000	Total employed '000	Total unemployed '000	Unemployment rate %	Participation rate %	Employed full time '000	Total employed '000	Total unemployed '000	Unemployment rate %	Participation rate %	
MALES											
1996											
April	101.3	115.7	15.0	11.5	72.2	101.4	115.6	14.9	11.4	72.1	181.1
May	100.6	114.6	14.8	11.4	71.5	101.2	115.7	15.0	11.5	72.1	181.1
June	101.0	116.0	15.1	11.5	72.4	101.2	115.8	15.0	11.5	72.2	181.1
July	100.5	115.1	15.3	11.8	72.0	101.2	115.9	14.8	11.3	72.1	181.2
August	102.9	117.7	14.1	10.7	72.7	101.2	115.9	14.6	11.2	71.9	181.3
September	101.2	115.6	14.4	11.1	71.7	101.0	115.6	14.3	11.0	71.6	181.4
October	99.9	114.4	14.2	11.1	70.9	100.6	115.1	14.0	10.9	71.1	181.5
November	100.0	114.8	12.8	10.1	70.3	100.1	114.4	13.9	10.8	70.7	181.5
December	99.4	113.0	14.7	11.5	70.3	99.7	113.7	14.0	10.9	70.3	181.6
1997											
January	98.7	113.4	13.6	10.7	69.9	99.3	113.1	14.1	11.1	70.1	181.6
February	100.2	112.1	14.7	11.6	69.8	98.9	112.7	14.3	11.2	69.9	181.6
March	98.6	113.4	14.0	11.0	70.1	98.4	112.4	14.3	11.3	69.8	181.6
April	97.0	111.5	15.4	12.1	69.8	97.9	112.0	14.3	11.3	69.5	181.6
May	97.6	112.3	13.4	10.6	69.2	97.4	111.6	14.2	11.3	69.2	181.7
June	96.6	110.6	13.7	11.0	68.4	96.9	111.4	14.0	11.1	69.0	181.7
FEMALES											
1996											
April	44.8	86.5	7.7	8.2	50.3	43.2	85.8	8.5	9.0	50.4	187.3
May	42.7	84.9	8.7	9.3	50.0	42.9	85.6	8.7	9.2	50.3	187.3
June	42.8	85.7	9.3	9.7	50.7	42.5	85.4	9.0	9.5	50.4	187.3
July	40.8	85.1	9.6	10.1	50.5	42.2	85.2	9.2	9.8	50.4	187.4
August	42.1	85.6	9.1	9.6	50.5	42.1	85.0	9.4	10.0	50.4	187.5
September	41.9	84.0	9.5	10.1	49.8	42.1	84.7	9.5	10.1	50.2	187.6
October	42.6	85.3	9.8	10.3	50.6	42.2	84.4	9.5	10.1	50.0	187.6
November	43.1	84.0	9.4	10.1	49.8	42.0	84.1	9.4	10.1	49.8	187.7
December	41.6	82.6	9.0	9.8	48.8	41.8	83.8	9.4	10.1	49.6	187.8
1997											
January	41.1	84.5	9.3	9.9	49.9	41.5	83.6	9.3	10.0	49.5	187.8
February	40.6	83.3	9.5	10.3	49.4	41.3	83.3	9.3	10.0	49.3	187.8
March	40.6	82.6	9.7	10.5	49.2	41.1	82.9	9.2	10.0	49.1	187.8
April	42.0	83.3	8.3	9.1	48.7	41.0	82.4	9.3	10.1	48.8	187.8
May	42.0	82.3	9.3	10.2	48.8	40.8	81.8	9.3	10.2	48.5	187.9
June	39.0	79.4	9.8	11.0	47.5	40.7	81.2	9.4	10.4	48.2	187.9
PERSONS											
1996											
April	146.1	202.2	22.7	10.1	61.0	144.6	201.4	23.4	10.4	61.0	368.4
May	143.3	199.5	23.5	10.5	60.5	144.1	201.3	23.7	10.5	61.1	368.4
June	143.8	201.7	24.4	10.8	61.4	143.6	201.2	24.0	10.6	61.1	368.4
July	141.3	200.2	24.9	11.1	61.1	143.4	201.1	24.1	10.7	61.1	368.6
August	145.0	203.3	23.2	10.2	61.4	143.3	200.9	24.0	10.7	61.0	368.8
September	143.2	199.6	23.9	10.7	60.6	143.1	200.3	23.7	10.6	60.7	369.0
October	142.5	199.6	24.0	10.7	60.6	142.7	199.5	23.5	10.6	60.4	369.1
November	143.1	198.8	22.3	10.1	59.9	142.2	198.4	23.3	10.6	60.1	369.2
December	141.0	195.6	23.7	10.8	59.4	141.5	197.5	23.3	10.6	59.8	369.4
1997											
January	139.8	197.8	22.9	10.4	59.8	140.8	196.8	23.4	10.6	59.6	369.4
February	140.8	195.4	24.2	11.0	59.5	140.2	196.1	23.5	10.7	59.4	369.4
March	139.2	196.0	23.7	10.8	59.5	139.5	195.3	23.5	10.8	59.2	369.4
April	139.1	194.7	23.6	10.8	59.1	138.9	194.4	23.5	10.8	59.0	369.5
May	139.6	194.5	22.7	10.4	58.8	138.2	193.4	23.5	10.8	58.7	369.5
June	135.5	189.9	23.5	11.0	57.8	137.6	192.5	23.3	10.8	58.4	369.6

(a) Trend estimates for December 1996 to May 1997 have been revised.

LABOUR FORCE STATUS (AGED 15 AND OVER)-Northern Territory(a)

TREND.....

Month	Employed full time '000	Total employed '000	Total unemployed '000	Unemp- loyment rate %	Partic- ipation rate %	Civilian population aged 15 and over '000
MALES						
1996						
April	39.8	45.4	3.2	6.6	76.4	63.6
May	39.9	45.3	3.1	6.4	75.9	63.8
June	40.1	45.5	2.9	6.1	75.6	64.0
July	40.3	45.8	2.7	5.6	75.8	64.0
August	40.4	46.0	2.5	5.2	75.8	64.0
September	40.2	46.1	2.3	4.8	75.6	64.0
October	40.0	46.0	2.3	4.7	75.2	64.2
November	39.8	45.7	2.3	4.9	74.7	64.3
December	39.7	45.5	2.5	5.1	74.4	64.4
1997						
January	39.7	45.4	2.6	5.5	74.4	64.5
February	39.7	45.5	2.8	5.8	74.7	64.7
March	39.8	45.8	3.0	6.1	75.2	64.8
April	39.9	46.1	3.1	6.3	75.9	64.8
May	40.1	46.5	3.2	6.5	76.6	64.9
June	40.2	46.8	3.3	6.6	77.2	64.9
FEMALES						
1996						
April	24.7	37.3	3.0	7.6	65.1	62.0
May	24.9	37.4	3.0	7.5	65.1	62.1
June	25.2	37.5	2.9	7.1	64.9	62.3
July	25.3	37.7	2.6	6.5	64.8	62.3
August	25.4	37.8	2.4	5.9	64.5	62.4
September	25.2	37.7	2.2	5.5	64.0	62.4
October	24.8	37.5	2.1	5.3	63.2	62.6
November	24.2	37.2	2.0	5.2	62.4	62.8
December	23.7	36.9	2.0	5.1	61.8	63.0
1997						
January	23.4	36.9	2.0	5.3	61.7	63.1
February	23.4	37.1	2.2	5.5	62.1	63.3
March	23.6	37.5	2.3	5.8	62.8	63.5
April	23.8	38.0	2.5	6.1	63.7	63.6
May	24.0	38.5	2.6	6.3	64.5	63.7
June	24.2	39.0	2.7	6.4	65.3	63.8
PERSONS						
1996						
April	64.5	82.7	6.3	7.1	70.8	125.6
May	64.9	82.7	6.1	6.9	70.5	125.9
June	65.3	83.0	5.8	6.5	70.3	126.3
July	65.7	83.5	5.4	6.0	70.3	126.3
August	65.8	83.9	4.9	5.5	70.2	126.4
September	65.4	83.8	4.5	5.1	69.9	126.5
October	64.7	83.5	4.4	5.0	69.3	126.8
November	63.9	82.9	4.4	5.0	68.6	127.1
December	63.3	82.4	4.4	5.1	68.2	127.4
1997						
January	63.1	82.3	4.7	5.4	68.1	127.7
February	63.1	82.6	5.0	5.7	68.4	128.0
March	63.4	83.3	5.3	6.0	69.1	128.2
April	63.7	84.1	5.6	6.2	69.9	128.4
May	64.1	85.0	5.8	6.4	70.6	128.6
June	64.4	85.8	6.0	6.5	71.3	128.7

(a) Trend estimates for December 1996 to May 1997 have been revised. Estimates for the most recent three months may be subject to significant revisions as data for later months become available.

LABOUR FORCE STATUS (AGED 15 AND OVER)--Australian Capital Territory(a)

TREND.....

Month	Employed full time '000	Total employed '000	Total unemployed '000	Unemp- loyment rate %	Partic- ipation rate %	Civilian population aged 15 and over '000
MALES						
1996						
April	73.1	83.6	7.5	8.2	80.1	113.8
May	73.0	83.6	7.6	8.3	80.0	113.8
June	72.9	83.6	7.6	8.3	80.0	113.9
July	72.8	83.5	7.6	8.4	79.8	114.1
August	72.7	83.3	7.6	8.4	79.5	114.3
September	72.4	83.0	7.7	8.5	79.1	114.5
October	72.1	82.6	7.8	8.6	78.8	114.6
November	71.8	82.3	7.9	8.7	78.6	114.7
December	71.5	82.0	7.9	8.8	78.3	114.9
1997						
January	71.4	82.1	7.8	8.7	78.1	115.0
February	71.5	82.3	7.6	8.5	78.1	115.1
March	71.6	82.8	7.3	8.1	78.2	115.3
April	71.9	83.4	7.0	7.8	78.5	115.3
May	72.2	84.0	6.8	7.5	78.8	115.3
June	72.5	84.6	6.6	7.3	79.1	115.3
FEMALES						
1996						
April	44.0	72.4	6.3	8.0	66.5	118.3
May	43.8	72.1	6.5	8.2	66.4	118.4
June	43.7	71.9	6.6	8.5	66.2	118.5
July	43.6	71.6	6.7	8.6	66.0	118.7
August	43.4	71.1	6.7	8.7	65.5	118.9
September	43.0	70.5	6.7	8.7	64.9	119.0
October	42.7	70.0	6.6	8.6	64.3	119.1
November	42.7	70.0	6.3	8.3	64.0	119.2
December	43.1	70.5	5.8	7.7	64.0	119.2
1997						
January	44.0	71.6	5.4	7.0	64.5	119.3
February	45.1	72.8	5.1	6.5	65.2	119.4
March	46.1	73.8	5.0	6.4	66.0	119.4
April	47.0	74.6	5.1	6.4	66.7	119.4
May	47.6	75.0	5.4	6.7	67.3	119.4
June	48.0	75.1	5.7	7.0	67.7	119.4
PERSONS						
1996						
April	117.1	156.0	13.8	8.1	73.1	232.1
May	116.8	155.7	14.0	8.3	73.1	232.3
June	116.7	155.5	14.2	8.4	73.0	232.4
July	116.4	155.1	14.3	8.5	72.8	232.8
August	116.0	154.3	14.4	8.5	72.4	233.2
September	115.5	153.4	14.4	8.6	71.9	233.6
October	114.8	152.6	14.4	8.6	71.4	233.7
November	114.5	152.2	14.2	8.5	71.1	233.9
December	114.6	152.6	13.7	8.3	71.0	234.1
1997						
January	115.4	153.6	13.2	7.9	71.2	234.3
February	116.5	155.1	12.7	7.6	71.6	234.5
March	117.8	156.7	12.3	7.3	72.0	234.7
April	118.9	158.0	12.2	7.2	72.5	234.7
May	119.8	159.0	12.2	7.1	72.9	234.7
June	120.5	159.7	12.3	7.1	73.3	234.8

(a) Trend estimates for December 1996 to May 1997 have been revised.

Estimates for the most recent three months may be subject to significant revisions as data for later months become available.

EXPLANATORY NOTES

INTRODUCTION

1 This publication contains preliminary estimates of the civilian labour force derived from the Labour Force Survey component of the monthly population survey. Estimates for the current month are preliminary and subject to revision. Revised estimates for the current month and more detailed estimates will be published in *Labour Force, Australia* (6203.0).

MONTHLY POPULATION SURVEY

2 The population survey is based on a multi-stage area sample of private dwellings (currently about 30,000 houses, flats, etc.) and a list sample of non-private dwellings (hotels, motels, etc.), and covers about 0.5% of the population of Australia. The information is obtained from the occupants of selected dwellings by specially trained interviewers. The interviews are generally conducted during the two weeks beginning on the Monday between the 6th and 12th of each month. The information obtained relates to the week before the interview (i.e. the reference week).

TELEPHONE INTERVIEWING

3 The ABS has introduced the use of telephone interviewing into the Labour Force Survey. Households selected for the Labour Force Survey are interviewed each month for 8 months, with one eighth of the sample being replaced each month. The first interview will continue to be conducted face-to-face. Subsequent interviews will then be conducted by telephone (if acceptable to the respondent). Telephone interviewing was phased in for each new sample group from August 1996 to February 1997.

4 During the period of implementation, the new method produced different estimates than would have been obtained under the old methodology. The effect peaked in November 1996, when it is estimated that the published estimate of total employment was about 36,000 to 48,000 lower than would have been measured under the old methodology. The effect dissipated over the final months of implementation and was no longer discernible from February 1997. Therefore, the estimates for February 1997 and onwards are directly comparable to estimates for periods prior to August 1996.

SCOPE OF SURVEY

5 The Labour Force Survey includes all persons aged 15 and over except members of the permanent defence forces, certain diplomatic personnel of overseas governments customarily excluded from census and estimated populations, overseas residents in Australia, and members of non-Australian defence forces (and their dependants) stationed in Australia.

COVERAGE

6 In the Labour Force Survey, coverage rules are applied which aim to ensure that each person is associated with only one dwelling, and hence has only one chance of selection. The coverage rules are necessarily a balance between theoretical and operational considerations. Nevertheless, the chance of a person being enumerated at two separate dwellings in the survey is considered to be negligible.

POPULATION BENCHMARKS

7 Labour Force Survey estimates are calculated in such a way as to add up to independent estimates of the civilian population aged 15 and over (population benchmarks). From February 1994, labour force estimates have been compiled using benchmarks based on the results of the 1991 Census of Population and Housing. Small revisions were made to many of the historical estimates from January 1989 to January 1994.

REVISION OF SERIES

8 From April 1986, the definition of employed persons was changed to include persons who worked without pay between 1 and 14 hours per week in a family business or on a farm (i.e. contributing family workers). For further information, see paragraphs 36 and 37 of the Explanatory Notes to the February 1987 issue of *Labour Force, Australia* (6203.0).

EXPLANATORY NOTES

SURVEY SAMPLE REDESIGN

9 The Labour Force Survey sample was redesigned and reselected using information collected in the 1991 Census of Population and Housing. The new sample was phased in over the period September to December 1992. For details, see *Information Paper: Labour Force Survey Sample Design* (6269.0).

10 For the most part, one quarter of the new sample was introduced each month so that, by December 1992, the entire new sample was in place. Replacement generally occurred at the rotation group level with two groups being substituted each month. Such a pattern of implementation meant that any changes to labour force estimates due to differences between the two samples, or any other influences, were spread over the four months rather than being concentrated in one inter-month period.

11 This phase-in scheme applied to the private dwelling sample in urban areas. The new sample for non-private dwellings and private dwellings in rural areas was introduced in a single stage in November 1992.

RELIABILITY OF ESTIMATES

12 Two types of error are possible in an estimate based on a sample survey: sampling error and non-sampling error.

Sampling error occurs because a sample, rather than the entire population, is surveyed. One measure of the likely difference resulting from not including all dwellings in the survey is given by the standard error. There are about two chances in three that a sample estimate will differ by less than one standard error from the figure that would have been obtained if all dwellings had been included in the survey, and about nineteen chances in twenty that the difference will be less than two standard errors. Standard errors of estimates for the latest month and of estimates of movements since the previous month are shown on pages 30 and 31. Standard errors of other estimates and other movements may be determined by using information in the Technical Notes in *Labour Force, Australia* (6203.0).

Non sampling error arises from inaccuracies in collecting, recording and processing the data. Every effort is made to minimise reporting error by the careful design of questionnaires, intensive training and supervision of interviewers, and efficient data processing procedures.

SEASONAL ADJUSTMENT AND TREND ESTIMATION

13 Seasonally adjusted series are published in Tables 2, 5 and 12 to 17. Seasonal factors are reviewed annually to take account of each additional year's original data. The results of the latest review were used to compile the revised seasonally adjusted and trend estimates given in this publication. Information about the method of adjustment and revised seasonally adjusted and trend estimates for all months from January 1991 were published in an appendix to the February 1996 issue of *Labour Force, Australia* (6203.0).

14 Seasonal adjustment is a means of removing the estimated effects of normal seasonal variation from the series so that the effects of other influences on the series can be more clearly recognised. Seasonal adjustment does not aim to remove the irregular or non-seasonal influences which may be present in any particular month. This means that month-to-month movements of the seasonally adjusted estimates may not be reliable indicators of trend behaviour. For example, irregular factors unrelated to the trend account for more than half the seasonally adjusted movement with the following frequency:

- Employment: 5 in 10 monthly movements
- Unemployment: 7 in 10 monthly movements
- Unemployment rate: 7 in 10 monthly movements
- Participation rate: 9 in 10 monthly movements.

EXPLANATORY NOTES

SEASONAL ADJUSTMENT AND TREND ESTIMATION *continued*

15 The smoothing of seasonally adjusted series reduces the impact of the irregular component of the seasonally adjusted series, and creates trend estimates. These trend estimates are derived by applying a 13-term Henderson-weighted moving average to all months except the last six. The last six monthly trend estimates are obtained by applying surrogates of the Henderson average to the seasonally adjusted series. Trend series are used to analyse the underlying behaviour of the series over time. These are published in tables 3, 6 and 12 to 19.

16 While this smoothing technique enables estimates to be produced for the latest month, it does result in revisions to the most recent months as additional observations become available. Generally, subsequent revisions become smaller, and after three months have a negligible impact on the series. There will also be revisions as a result of the annual review of seasonal factors.

17 Trend estimates are published for the Northern Territory in table 18 and for the Australian Capital Territory in table 19. Unadjusted series for the two Territories have shown, historically, a high degree of variability, which can lead to considerable revisions to the seasonally adjusted estimates after each annual seasonal factor re-analysis. Seasonally adjusted estimates are not currently published for the two Territories. The most recent six months trend estimates are subject to revision. For the three most recent months, the revision may be relatively large. Inferences about trends drawn from smoothed seasonally adjusted (trend) estimates for months earlier than the latest three months are unlikely to be affected by month to month revisions. They may be affected by revision resulting from the annual re-analysis of seasonal factors.

18 For further information, see *A Guide to Interpreting Time Series — Monitoring Trends: an Overview* (1348.0) or contact the Assistant Director, Time Series Analysis on (06) 252 6345.

RELATED PUBLICATIONS

19 Users may also wish to refer to *Labour Force, Australia* (6203.0). This publication contains a detailed list of related publications which are available from ABS Bookshops.

20 Current publications produced by the ABS are listed in the *Catalogue of Publications and Products* (1101.0). The ABS also issues, on Tuesdays and Fridays, a *Release Advice* (1105.0) which lists publications to be released in the next few days. The Catalogue and Release Advice are available from any ABS office.

UNPUBLISHED STATISTICS

21 As well as the statistics included in this and related publications, the ABS may have other relevant unpublished data available. Inquiries should be made to Alex Cheeseman on 06 252 6525 or to any ABS office.

EFFECTS OF ROUNDING

22 Estimates have been rounded and discrepancies may occur between sums of the component items and totals.

23 Estimates of movement shown in this publication are obtained by taking the difference of unrounded estimates. The movement estimate is then rounded to one decimal place. Therefore where a discrepancy occurs between the reported movement and the difference of the rounded estimates, the reported movement will be more accurate.

SYMBOLS AND OTHER USAGES

- * subject to sampling variability too high for most practical uses. See the Technical Notes in 6203.0 for more details.
- . . not applicable
- r revised
- pts percentage points

GLOSSARY

Actively looking for work Includes writing, telephoning or applying in person to an employer for work; answering a newspaper advertisement for a job; checking factory or Commonwealth Employment Service noticeboards; being registered with the Commonwealth Employment Service; checking or registering with any other employment agency; advertising or tendering for work; and contacting friends or relatives.

Attending school Persons aged 15 to 19 enrolled full time at secondary or high schools in the reference week.

Attending tertiary educational institution full time Persons aged 15 to 24 enrolled full time at a TAFE college, university, or other educational institution in the reference week.

Employed Persons aged 15 and over who, during the reference week:

- worked for one hour or more for pay, profit, commission or payment in kind in a job or business, or on a farm (comprising employees, employers and own account workers); or
- worked for one hour or more without pay in a family business or on a farm (i.e. contributing family workers); or
- were employees who had a job but were not at work and were:
 - on paid leave, on leave without pay for less than four weeks up to the end of the reference week,
 - stood down without pay because of bad weather or plant breakdown at their place of employment for less than four weeks up to the end of the reference week,
 - on strike or locked out,
 - on workers' compensation and expected to be returning to their job, or
 - receiving wages or salary while undertaking full-time study; or
- were employers, own account workers or contributing family workers who had a job, business or farm, but were not at work.

Full-time workers Employed persons who usually worked 35 hours or more a week (in all jobs) and those who, although usually working less than 35 hours a week, worked 35 hours or more during the reference week

Labour force For any group, persons who were employed or unemployed, as defined.

Labour force status A classification of the civilian population aged 15 and over into employed, unemployed or not in the labour force, as defined. The definitions conform closely to the international standard definitions adopted by the International Conferences of Labour Statisticians.

Not in the labour force Persons who were not in the categories employed or unemployed as defined.

Participation rate For any group, the labour force expressed as a percentage of the civilian population aged 15 and over in the same group.

Part-time workers Employed persons who usually worked less than 35 hours a week and who did so during the reference week.

Seasonally adjusted series A time series of estimates with the estimated effects of normal seasonal variation removed. See Explanatory Note 11 to 12 for more detail.

Trend series A smoothed seasonally adjusted series of estimates. See Explanatory Notes 13 to 15 for more detail.

GLOSSARY

.....

Unemployed	Persons aged 15 and over who were not employed during the reference week, and: <ul style="list-style-type: none">■ had actively looked for full-time or part-time work at any time in the four weeks up to the end of the reference week and:<ul style="list-style-type: none">* were available for work in the reference week, or would have been available except for temporary illness (i.e. lasting for less than four weeks to the end of the reference week), or* were waiting to start a new job within four weeks from the end of the reference week and would have started in the reference week if the job had been available then; or■ were waiting to be called back to a full-time or part-time job from which they had been stood down without pay for less than four weeks up to the end of the reference week (including the whole of the reference week) for reasons other than bad weather or plant breakdown.
Unemployed looking for first full-time job	Unemployed persons looking for full-time work (as defined above) who had never worked full time for two weeks or more
Unemployed looking for full-time work	Unemployed persons who actively looked for full-time work, or were to resume a full-time job from which they had been stood down.
Unemployed looking for part-time work	Unemployed persons who had actively looked for part-time work only, or were to resume a part-time job from which they had been stood down.
Unemployment rate	For any group, the number of unemployed persons expressed as a percentage of the labour force in the same group.
Unemployment to population ratio	For any group, the number of unemployed persons expressed as a percentage of the civilian population in the same group.

STANDARD ERRORS

The estimates in this publication are based on information gained from the occupants of a sample survey of dwellings. Because the entire population is not surveyed, the published estimates are subject to sampling error. The most common way of quantifying such sampling error is to calculate the standard error for the published estimate or statistic.

LEVEL ESTIMATES

To illustrate, let us say the published level estimate for employed persons aged 15 to 19 is 500,000. The calculated standard error in this case is 9,000. The standard error is then used to interpret the level estimate of 500,000. For instance, the standard error of 9,000 indicates that:

- There are approximately two chances in three that the real value falls within the range 491,000 to 509,000 ($500,000 \pm 9,000$)
- There are approximately nineteen chances in twenty that the real value falls within the range 482,000 to 518,000 ($500,000 \pm 18,000$).

The real value in this case is the result we would obtain if we could enumerate the total population.

The following tables show the standard errors for this month's level estimates.

	EMPLOYED.....			UNEMPLOYED.....			Labour force	Not in labour force	Unemployment rate	Participation rate
	Full time	Part time	Total	Looking for f/t work	Looking for p/t work	Total				
	'000	'000	'000	'000	'000	'000				
NSW	14.6	9.8	16.0	6.0	3.3	6.5	16.4	14.1	0.2	0.3
Vic.	12.0	8.5	13.3	5.4	3.1	5.9	13.8	11.4	0.3	0.4
Qld	9.3	6.6	10.4	4.0	2.3	4.4	10.8	8.8	0.3	0.4
SA	5.1	3.7	5.7	2.3	1.3	2.5	5.9	5.0	0.3	0.5
WA	6.3	4.4	7.0	2.4	1.5	2.7	7.2	5.8	0.3	0.5
Tas.	1.7	1.3	1.8	0.9	0.5	1.0	1.8	1.7	0.6	0.5
NT	2.0	1.2	2.3	0.6	0.2	0.6	2.3	1.5	0.6	1.8
ACT	1.6	1.1	1.8	0.6	0.4	0.7	1.9	1.3	0.4	0.8
Males	19.8	9.6	20.7	8.1	3.4	8.5	21.3	15.1	0.2	0.3
Females	15.3	14.1	18.9	6.4	4.6	7.5	19.4	18.5	0.2	0.3
Persons	22.6	15.8	25.0	9.7	5.5	10.6	25.7	21.6	0.1	0.2

	NUMBER OF UNEMPLOYED PERSONS.....						UNEMPLOYMENT RATE.....				
	Aged 15-19 seeking first f/t job	Aged 15-19 looking for f/t work	Aged 20 and over looking for f/t work	Total looking for f/t work	Looking for p/t work	Total	Aged 15-19 looking for f/t work	Aged 20 and over looking for f/t work	Total looking for f/t work	Looking for p/t work	Total
	'000	'000	'000	'000	'000	'000	pts	pts	pts	pts	pts
NSW	2.3	2.8	5.6	6.0	3.3	6.5	3.0	0.3	0.3	0.5	0.2
Vic.	1.5	2.0	5.2	5.4	3.1	5.9	3.5	0.3	0.3	0.5	0.3
Qld	1.3	1.7	3.8	4.0	2.3	4.4	3.1	0.3	0.3	0.5	0.3
SA	0.8	1.0	2.2	2.3	1.3	2.5	4.9	0.4	0.4	0.6	0.3
WA	0.8	1.1	2.3	2.4	1.5	2.7	2.7	0.4	0.4	0.6	0.3
Tas.	0.4	0.5	0.9	0.9	0.5	1.0	5.6	0.6	0.6	0.9	0.5
NT	0.2	0.2	0.5	0.6	0.2	0.6	9.0	0.8	0.8	1.0	0.6
ACT	0.2	0.3	0.6	0.6	0.4	0.7	8.9	0.4	0.5	1.0	0.4
Males	2.6	3.3	7.7	8.1	3.4	8.5	1.8	0.2	0.2	0.5	0.2
Females	2.1	2.7	6.0	6.4	4.6	7.5	2.7	0.3	0.3	0.3	0.2
Persons	3.2	4.2	9.2	9.7	5.5	10.6	1.5	0.1	0.1	0.2	0.1

STANDARD ERRORS *continued*

MOVEMENT ESTIMATES

The following example illustrates how to use the standard error to interpret a movement estimate. Let us say that one month the published level estimate for females employed part time in Australia is 1,387,000; the next month the published level estimate is 1,400,000. The calculated standard error for the movement estimate is 10,500. The standard error is then used to interpret the published movement estimate of 13,000. For instance, the standard error of 10,500 indicates that:

- * There are approximately two chances in three that the real movement over the two month period falls within the range 2,500 to 23,500 (13,000 + or - 10,500)
- * There are approximately nineteen chances in twenty that the real movement falls within the range -8,000 to 34,000 (13,000 + or - 21,000).

The following tables show the standard errors for this month's movement estimates.

	EMPLOYED.....			UNEMPLOYED.....			Labour force	Not in labour force	Unemployment rate	Participation rate
	Full time	Part time	Total	Looking for f/t work	Looking for p/t work	Total				
	'000	'000	'000	'000	'000	'000				
NSW	11.3	7.4	12.5	4.7	2.9	5.1	12.9	10.9	0.2	0.3
Vic.	8.7	6.0	9.8	3.8	2.4	4.2	10.1	8.3	0.2	0.3
Qld	6.5	4.6	7.2	3.1	2.0	3.3	7.4	6.1	0.2	0.3
SA	3.5	2.5	3.9	1.6	0.9	1.7	4.1	3.4	0.2	0.3
WA	4.5	3.2	5.1	1.8	1.2	2.0	5.2	4.1	0.2	0.4
Tas.	1.5	1.1	1.7	0.7	0.4	0.8	1.7	1.5	0.4	0.5
NT	1.3	0.8	1.4	0.4	0.2	0.4	1.5	1.0	0.5	1.1
ACT	1.2	0.8	1.4	0.5	0.4	0.5	1.4	1.0	0.3	0.6
Males	15.1	7.2	15.8	6.3	3.0	6.6	16.4	11.3	0.1	0.2
Females	11.5	10.5	14.3	5.0	3.9	5.8	14.8	14.0	0.1	0.2
Persons	17.5	11.8	19.6	7.4	4.5	8.1	20.2	16.6	0.1	0.1

	NUMBER OF UNEMPLOYED PERSONS.....						UNEMPLOYMENT RATE.....				
	Aged 15-19 seeking first f/t job	Aged 15-19 looking for f/t work	Aged 20 and over looking for f/t work	Total looking for f/t work	Looking for p/t work	Total	Aged 15-19 looking for f/t work	Aged 20 and over looking for f/t work	Total looking for f/t work	Looking for p/t work	Total
	'000	'000	'000	'000	'000	'000	pts	pts	pts	pts	pts
NSW	2.0	2.4	4.5	4.7	2.9	5.1	2.5	0.2	0.2	0.4	0.2
Vic.	1.4	1.7	3.7	3.8	2.4	4.2	3.0	0.2	0.2	0.4	0.2
Qld	1.2	1.5	2.9	3.1	2.0	3.3	2.7	0.2	0.2	0.4	0.2
SA	0.6	0.8	1.5	1.6	0.9	1.7	3.6	0.3	0.3	0.5	0.2
WA	0.7	0.9	1.7	1.8	1.2	2.0	2.3	0.3	0.3	0.5	0.2
Tas.	0.3	0.4	0.7	0.7	0.4	0.8	4.3	0.5	0.5	0.7	0.4
NT	0.2	0.2	0.4	0.4	0.2	0.4	5.9	0.5	0.6	0.8	0.5
ACT	0.2	0.2	0.4	0.5	0.4	0.5	7.8	0.4	0.4	0.8	0.3
Males	2.3	2.9	6.0	6.3	3.0	6.6	1.6	0.1	0.1	0.5	0.1
Females	1.9	2.4	4.7	5.0	3.9	5.8	2.4	0.2	0.2	0.2	0.1
Persons	2.8	3.5	7.0	7.4	4.5	8.1	1.2	0.1	0.1	0.2	0.1

WHAT IF...? REVISIONS TO TREND ESTIMATES

EFFECT OF NEW SEASONALLY ADJUSTED ESTIMATES ON TREND ESTIMATES

Each time new seasonally adjusted estimates become available, trend estimates are revised (see paragraphs 13 and 14 of Explanatory Notes).

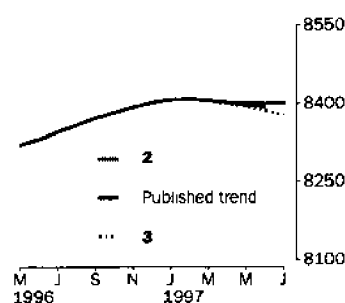
TREND REVISIONS

The examples in the tables below show four illustrative scenarios and the consequent revisions to previous trend estimates of employment and unemployment rate.

- 1** The July seasonally adjusted estimate is the same as the June estimate.
- 2** The July seasonally adjusted estimate is higher than the June estimate by:
 - +0.33% for employment
 - +2.2% for the unemployment rate
- 3** The July seasonally adjusted estimate is lower than the June estimate by:
 - -0.33% for employment
 - -2.2% for the unemployment rate
- 4** The July seasonally adjusted estimate results in a revised June trend estimate which is identical to the new July trend estimate.

The percentage changes of 0.33% and 2.2% were chosen because they represent the average absolute monthly percentage changes in employment and the unemployment rate respectively.

EMPLOYMENT ('000)

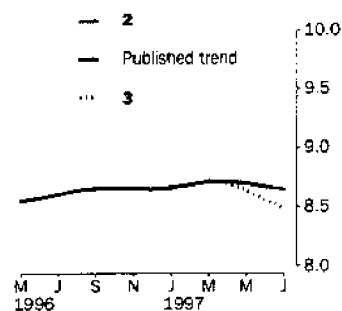


1997
April
May
June
July
(new)

WHAT IF NEXT MONTH'S SEASONALLY ADJUSTED ESTIMATE IS:

	1	2	3	4
TREND as PUBLISHED	8 392.7	8 420.3	8 365.1	8 420.2
	<i>i.e. the same as Jun 1997</i>	<i>i.e. rises by 0.33%</i>	<i>i.e. falls by 0.33%</i>	<i>i.e. same trend for Jun & Jul</i>
April	8 400.9	8 402.2	8 399.7	8 402.2
May	8 396.8	8 400.4	8 392.3	8 400.4
June	8 392.5	8 392.6	8 400.3	8 400.2
July	—	8 388.7	8 400.3	8 377.0
(new)				

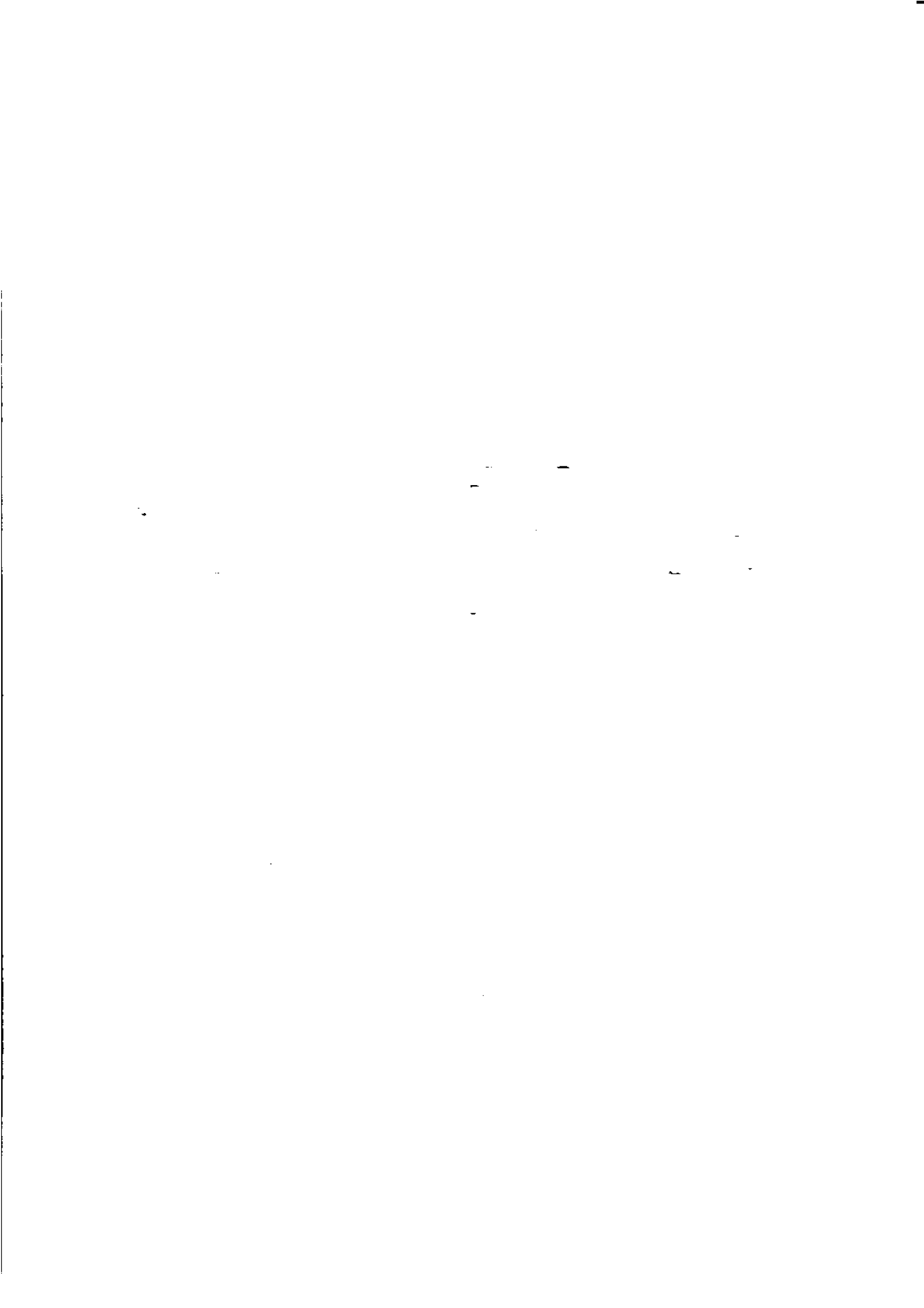
UNEMPLOYMENT RATE (%)

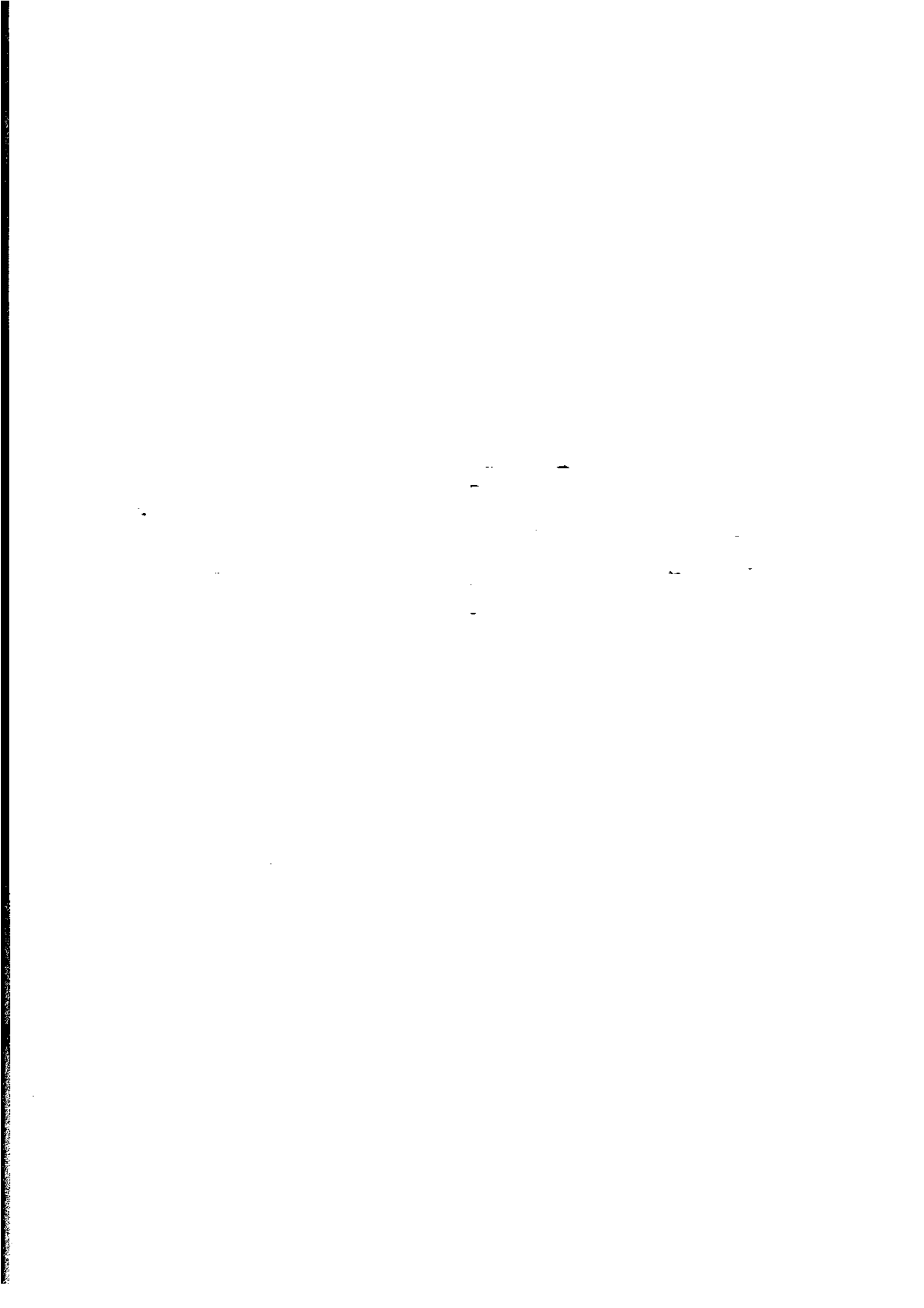


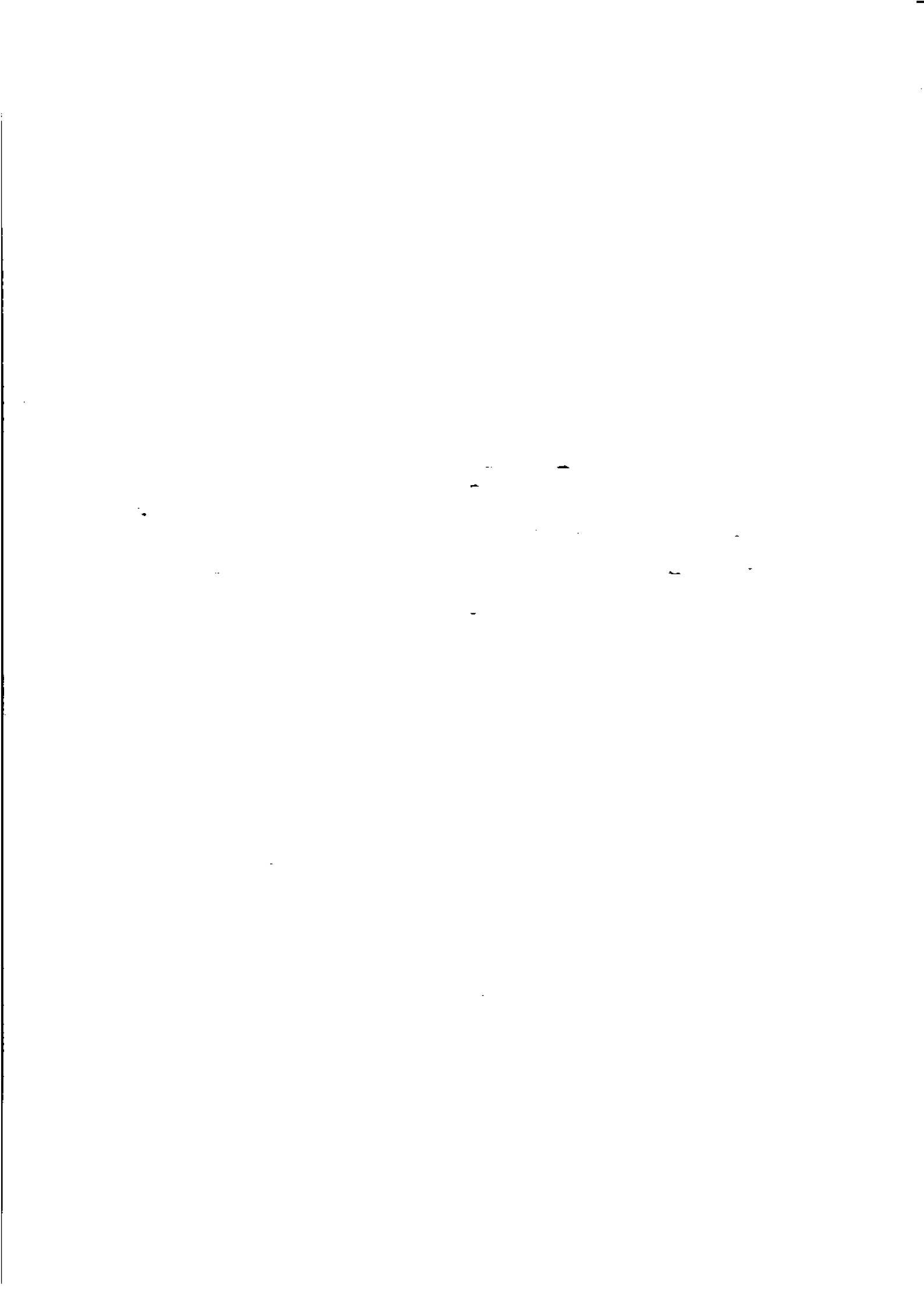
1997
April
May
June
July
(new)

WHAT IF NEXT MONTH'S SEASONALLY ADJUSTED ESTIMATE IS:

	1	2	3	4
TREND as PUBLISHED	8.5	8.7	8.3	8.8
	<i>i.e. the same as Jun 1997</i>	<i>i.e. rises by 2.2%</i>	<i>i.e. falls by 2.2%</i>	<i>i.e. same trend for Jun & Jul</i>
April	8.7	8.7	8.7	8.7
May	8.7	8.7	8.6	8.7
June	8.7	8.6	8.7	8.7
July	—	8.6	8.6	8.5
(new)				







FOR MORE INFORMATION...

The ABS publishes a wide range of information on Australia's economic and social conditions. A catalogue of publications and products is available from any of our offices (see below).

INFORMATION CONSULTANCY SERVICES

Information tailored to special needs of clients can be obtained from the Information Consultancy Service available at ABS Offices (see below).

ABS PRODUCTS

A large number of ABS products is available from the ABS Bookshops (see below). The ABS also provides a subscription service – you can telephone the ABS Subscription Service Australia wide toll free on 1800 0206 08.

ELECTRONIC SERVICES

A large range of data is available via on-line services, diskette, magnetic tape, tape cartridge and CD ROM. For more details about our electronic data services, contact any ABS office (see below) or e-mail us at:

- client.services@abs.gov.au

GENERAL SALES AND INQUIRIES

- Sydney 02 9268 4611
- Melbourne 03 9615 7755
- Brisbane 07 3222 6351
- Perth 08 9360 5140
- Adelaide 08 8237 7100
- Hobart 03 6222 5800
- Darwin 08 8943 2111
- Canberra 06 252 6627
- Information Services, ABS
PO Box 10, Belconnen ACT 2616



2620200006978

ISSN 1031-038X

RRP \$17.50