

# LABOUR FORCE

AUSTRALIA  
PRELIMINARY

EMBARGO: 11:30AM (CANBERRA TIME) THURS 8 MAY 1997

## APRIL KEY FIGURES

### TREND ESTIMATES

	Mar 97	Apr 97	monthly change
Employed persons (no. in '000s)	8 412.6	8 413.0	0.0 %
Unemployed persons (no. in '000s)	801.8	804.3	0.3 %
Unemployment rate (%)	8.7	8.7	0.0 pts
Participation rate (%)	63.5	63.5	-0.1 pts

### SEASONALLY ADJUSTED

	Mar 97	Apr 97	monthly change
Employed persons (no. in '000s)	8 384.0	8 421.1	37.1
Unemployed persons (no. in '000s)	803.0	802.3	-0.7
Unemployment rate (%)	8.7	8.7	0.0 pts
Participation rate (%)	63.3	63.5	0.2 pts

## APRIL KEY POINTS

### TREND ESTIMATES

#### EMPLOYMENT

- was relatively steady at 8,413,000 in April 1997. Full-time employment continued to decline; part-time employment continued to rise steadily.

#### UNEMPLOYMENT

- continued to rise slowly to 804,300 in April 1997.

#### UNEMPLOYMENT RATE

- has risen slightly in recent months but in rounded terms was steady at 8.7% in April 1997.

#### PARTICIPATION RATE

- fell by 0.1 points, but due to rounding stood at 63.5% in April 1997.

### SEASONALLY ADJUSTED ESTIMATES

#### EMPLOYMENT

- rose by 37,100 to 8,421,100 in April 1997, with female full-time employment rising by 31,000 to 2,072,500.

#### UNEMPLOYMENT

- fell slightly to 802,300 in April 1997.

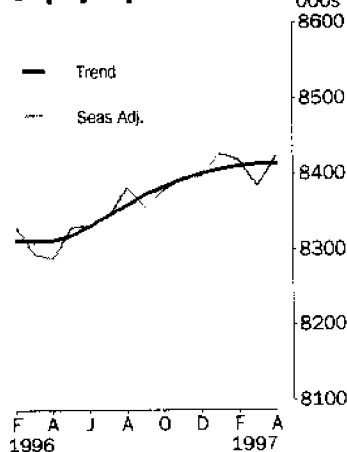
#### UNEMPLOYMENT RATE

- remained steady at 8.7%. The male rate fell to 8.9% and the female rate rose to 8.5%.
- NSW 8.1% (7.9% last month); Vic 9.1% (9.2%); Qld 9.5% (9.9%); SA 9.7% (9.5%); WA 7.4% (7.5%); Tas 10.8% (10.8%).

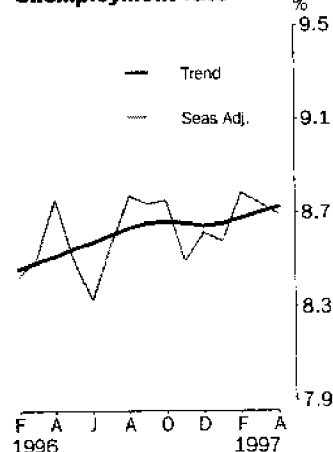
#### PARTICIPATION RATE

- rose by 0.2 percentage poi

### Employed persons



### Unemployment rate



## INQUIRIES

- For further information about these and related statistics, contact Donna Maurer on 06 252 6525 or any ABS office.

# LABOUR FORCE NOTES

## FORTHCOMING ISSUES

<i>ISSUE</i>	<i>RELEASE DATE</i>
May 1997	12 June 1997
June 1997	10 July 1997
July 1997	7 August 1997
August 1997	11 September 1997
September 1997	9 October 1997
October 1997	6 November 1997

.....

## ROUNDING

Estimates of monthly change shown on page 1 have been calculated using unrounded estimates, and may be different from, but are more accurate than, movements obtained from the rounded estimates. The graphs on page 1 also depict movements calculated from unrounded estimates.

.....

## SAMPLING ERRORS

The estimates in this publication are based on a sample survey. Because the entire population is not enumerated, the published estimates and the movements derived from them are subject to sampling variability. Standard errors give a measure of this variability and appear on pages 30 and 31.

The 95% confidence intervals below provide another way of looking at the variability inherent in estimates from sample surveys. The interval bounded by the two limits is the 95% confidence interval. A 95% confidence interval indicates that we are 95% confident that the upper and lower limits enclose the true value of the estimate.

<i>SEASONALLY ADJUSTED DATA SERIES</i>	<i>MOVEMENTS</i>	
	<i>MARCH 1997 TO APRIL 1997</i>	
	<i>Monthly change</i>	<i>95% Confidence interval</i>
Total employment	37 100	-2 100 to 76 300
Total unemployment	- 700	-17 300 to 15 900
Unemployment rate	0.0 pts	-0.2 pts to 0.2 pts
Participation rate	0.2 pts	0.0 pts to 0.4 pts

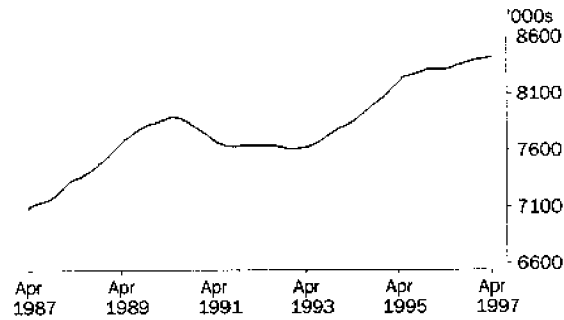
.....

W. McLennan  
Australian Statistician

# PRINCIPAL LABOUR FORCE SERIES: Trend estimates

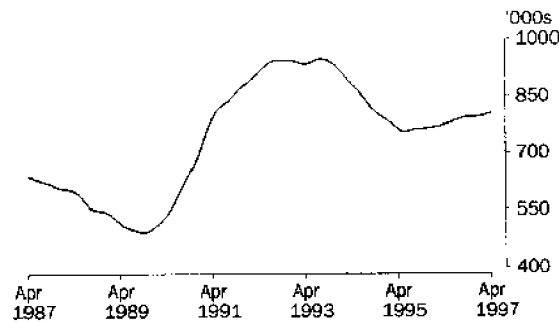
## EMPLOYED PERSONS

From a low of 7,616,200 in January 1993, the trend estimate for employed persons increased steadily until mid 1995, then more slowly. Following a short period of decline in early 1996, the trend estimate continued to rise, to 8,413,000 in April 1997.



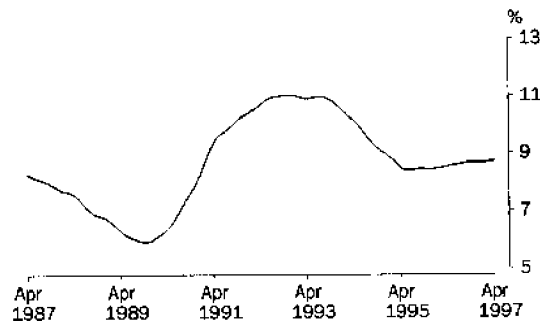
## UNEMPLOYED PERSONS

The trend estimate of unemployment peaked at 947,800 in September 1993, before falling rapidly to 755,400 in June 1995. Since then, the trend has been rising slowly, and reached 804,300 in April 1997.



## UNEMPLOYMENT RATE

From a high of 11.0% for much of 1992 and 1993, the trend unemployment rate fell rapidly to a low of 8.4% in May 1995. The trend then rose slowly to 8.7% in September 1996. The rate has remained relatively steady since and also stood at 8.7%, in April 1997.

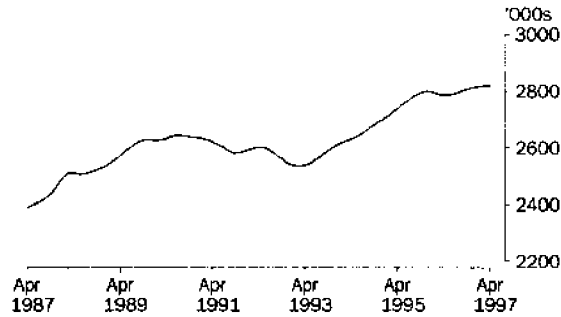


# STATES: Trend estimates

## EMPLOYED PERSONS

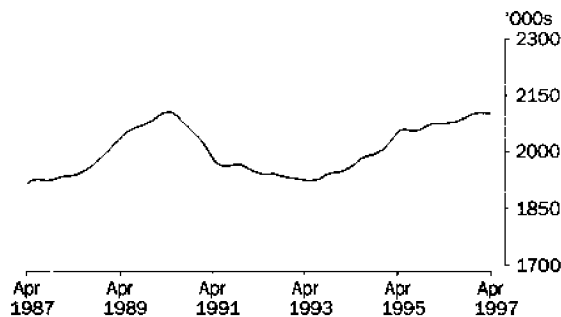
### NEW SOUTH WALES

From a low of 2,537,000 in February 1993, trend estimates of employment for New South Wales increased steadily to reach 2,798,200 in December 1995. The trend estimate then fell slightly over the next four months, before resuming its rise, to reach 2,819,200 in April 1997.



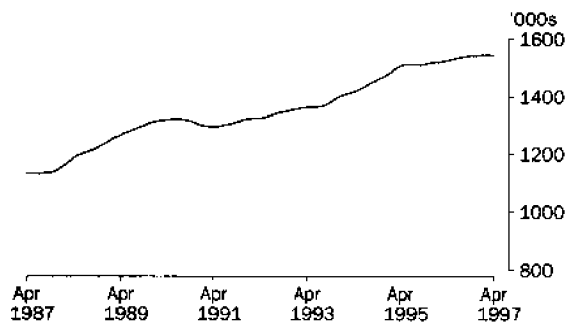
### VICTORIA

The trend estimate of employment for Victoria peaked at 2,104,600 in May 1990, before falling by almost 9% to a low of 1,921,800 in June 1993. Subsequently the trend estimate increased, rapidly at first, then more slowly until January 1997. Over the past few months, the trend estimate has fallen slightly and stood at 2,099,500 in April 1997.



### QUEENSLAND

Over the past 10 years, the trend estimate of employment in Queensland has increased by 36.5%, from 1,131,600 in April 1987. The increase in employment was relatively strong between late 1993 and mid 1995, but has slowed more recently. In April 1997, the trend estimate was 1,545,000.

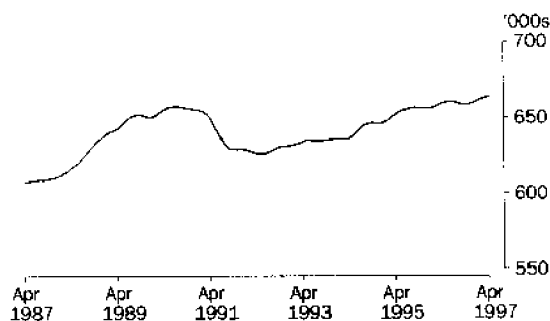


# STATES: Trend estimates

## EMPLOYED PERSONS

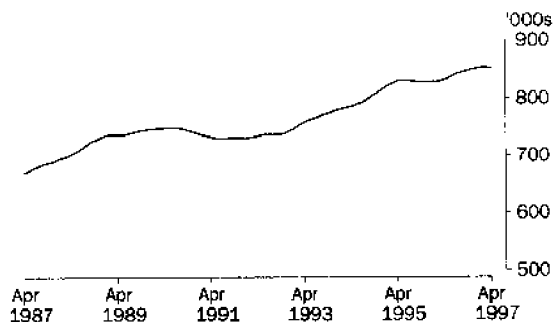
### SOUTH AUSTRALIA

Trend employment in South Australia peaked at 657,400 in July 1990 before falling, very sharply at first, to 625,900 in May 1992. Apart from some short periods of decline, trend estimates have risen slowly since then, and reached 663,600 in April 1997.



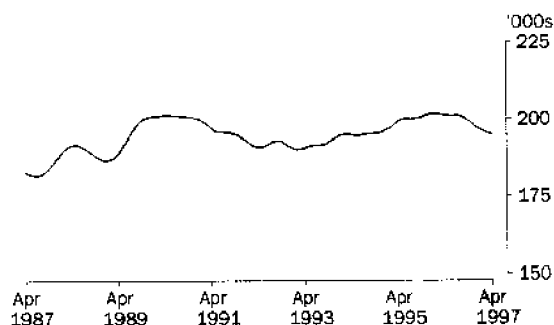
### WESTERN AUSTRALIA

The trend estimate of employment in Western Australia fell to 730,000 in mid 1991, and remained relatively steady for the next year, before starting to rise. The trend peaked at 831,700 in June 1995, then fell until February 1996. The trend rose, to 852,100 in April 1997, with growth slowing in recent months.



### TASMANIA

From a low of 190,200 in February 1993, the trend estimate of employment in Tasmania rose to reach 201,800 in early 1996. Since then, the trend estimate has fallen, to 195,000 in April 1997.



LABOUR FORCE STATUS (AGED 15 AND OVER): Original (a)

Month	EMPLOYED.....			UNEMPLOYED.....							Unemp- loyment rate %	Partic- ipation rate %
	Employed full time '000s	Employed part time '000s	Total employed '000s	Unemp. looking for f/t work '000s	Unemp. looking for p/t work '000s	Total unemployed '000s	Labour force '000s	Not in labour force '000s	Civilian population aged 15 and over '000s			
<b>MALES</b>												
<b>1996</b>												
February	4 223.2	502.7	4 725.9	437.4	54.6	492.0	5 217.9	1 803.2	7 021.2	9.4	74.3	
March	4 180.6	534.4	4 715.0	410.6	63.5	474.1	5 189.1	1 841.7	7 030.8	9.1	73.8	
April	4 187.4	535.4	4 722.9	405.1	57.7	462.8	5 185.7	1 855.2	7 040.9	8.9	73.7	
May	4 210.3	537.6	4 748.0	389.6	52.4	442.0	5 190.0	1 861.0	7 051.0	8.5	73.6	
June	4 201.3	550.4	4 751.6	380.3	51.9	432.1	5 183.8	1 877.4	7 061.1	8.3	73.4	
July	4 237.1	535.5	4 772.6	371.7	50.4	422.1	5 194.7	1 876.2	7 070.9	8.1	73.5	
August	4 176.4	553.9	4 730.3	406.1	54.1	460.2	5 190.5	1 890.2	7 080.7	8.9	73.3	
September	4 212.9	565.4	4 778.3	408.4	57.3	465.8	5 244.0	1 846.4	7 090.5	8.9	74.0	
October	4 215.3	549.5	4 764.8	387.3	58.9	446.3	5 211.1	1 888.2	7 099.3	8.6	73.4	
November	4 208.9	548.4	4 757.3	385.2	49.2	434.4	5 191.7	1 916.4	7 108.1	8.4	73.0	
December	4 277.6	545.2	4 822.8	397.1	65.0	462.1	5 284.9	1 832.0	7 116.9	8.7	74.3	
<b>1997</b>												
January	4 221.2	531.2	4 752.4	435.0	65.3	500.3	5 252.6	1 871.5	7 124.2	9.5	73.7	
February	4 210.6	527.3	4 737.9	451.7	61.9	513.6	5 251.4	1 880.0	7 131.4	9.8	73.6	
March	4 186.6	568.9	4 755.6	418.4	69.5	487.9	5 243.5	1 895.2	7 138.7	9.3	73.5	
April	4 189.4	578.1	4 767.5	396.9	63.3	460.2	5 227.7	1 919.5	7 147.1	8.8	73.1	
<b>FEMALES</b>												
<b>1996</b>												
February	2 049.1	1 489.3	3 538.4	248.5	116.1	364.6	3 903.0	3 336.9	7 239.9	9.3	53.9	
March	2 057.2	1 530.5	3 587.7	219.3	117.5	336.9	3 924.5	3 325.1	7 249.7	8.6	54.1	
April	2 042.8	1 512.1	3 555.0	217.7	112.4	330.1	3 885.1	3 375.2	7 260.2	8.5	53.5	
May	2 042.2	1 546.9	3 589.1	207.7	108.5	316.1	3 905.2	3 365.5	7 270.8	8.1	53.7	
June	2 042.2	1 560.2	3 602.4	194.9	103.5	298.4	3 900.9	3 380.5	7 281.4	7.7	53.6	
July	2 092.0	1 515.4	3 607.3	207.8	101.7	309.5	3 916.8	3 375.7	7 292.5	7.9	53.7	
August	2 059.8	1 529.6	3 589.4	210.1	100.9	310.9	3 900.3	3 403.3	7 303.6	8.0	53.4	
September	2 087.4	1 564.0	3 651.3	220.6	113.9	334.5	3 985.8	3 328.9	7 314.8	8.4	54.5	
October	2 089.2	1 538.5	3 627.7	211.1	107.5	318.6	3 946.3	3 378.2	7 324.5	8.1	53.9	
November	2 075.0	1 560.2	3 635.2	204.5	98.4	302.9	3 938.0	3 396.3	7 334.3	7.7	53.7	
December	2 122.5	1 551.2	3 673.7	231.1	112.4	343.5	4 017.2	3 326.8	7 344.1	8.6	54.7	
<b>1997</b>												
January	2 071.8	1 472.1	3 543.9	251.2	102.3	353.5	3 897.5	3 454.5	7 352.0	9.1	53.0	
February	2 067.3	1 544.8	3 612.1	262.8	129.8	392.5	4 004.6	3 355.3	7 359.9	9.8	54.4	
March	2 044.9	1 592.8	3 637.7	234.8	122.7	357.4	3 995.2	3 372.6	7 367.8	8.9	54.2	
April	2 054.1	1 589.6	3 643.7	230.6	108.8	339.4	3 983.1	3 393.4	7 376.5	8.5	54.0	
<b>PERSONS</b>												
<b>1996</b>												
February	6 272.3	1 992.0	8 264.3	686.0	170.7	856.6	9 120.9	5 140.1	14 261.0	9.4	64.0	
March	6 237.7	2 064.9	8 302.7	629.9	181.0	810.9	9 113.6	5 166.8	14 280.5	8.9	63.8	
April	6 230.3	2 047.6	8 277.8	622.8	170.2	793.0	9 070.8	5 230.4	14 301.1	8.7	63.4	
May	6 252.5	2 084.5	8 337.1	597.3	160.9	758.2	9 095.2	5 226.6	14 321.8	8.3	63.5	
June	6 243.5	2 110.6	8 354.1	575.2	155.4	730.5	9 084.6	5 257.9	14 342.5	8.0	63.3	
July	6 329.0	2 050.9	8 379.9	579.5	152.1	731.6	9 111.5	5 251.9	14 363.4	8.0	63.4	
August	6 236.2	2 083.5	8 319.7	616.1	155.0	771.1	9 090.8	5 293.5	14 384.3	8.5	63.2	
September	6 300.3	2 129.3	8 429.6	629.0	171.2	800.2	9 229.8	5 175.4	14 405.2	8.7	64.1	
October	6 304.5	2 088.0	8 392.5	598.4	166.4	764.9	9 157.4	5 266.4	14 423.8	8.4	63.5	
November	6 283.9	2 108.6	8 392.5	589.7	147.6	737.2	9 129.7	5 312.7	14 442.4	8.1	63.2	
December	6 400.1	2 096.4	8 496.5	628.2	177.4	805.7	9 302.2	5 158.8	14 461.0	8.7	64.3	
<b>1997</b>												
January	6 293.0	2 003.3	8 296.3	686.2	167.6	853.8	9 150.1	5 326.0	14 476.2	9.3	63.2	
February	6 277.9	2 072.0	8 349.9	714.5	191.6	906.1	9 256.1	5 235.2	14 491.3	9.8	63.9	
March	6 231.5	2 161.8	8 393.3	653.2	192.2	845.4	9 238.7	5 267.8	14 506.5	9.2	63.7	
April	6 243.5	2 167.6	8 411.2	627.5	172.2	799.6	9 210.8	5 312.8	14 523.6	8.7	63.4	

(a) Estimates for employment for the period August 1996 to January 1997 are affected by the implementation of telephone interviewing. See Explanatory Notes 3 and 4.

LABOUR FORCE STATUS (AGED 15 AND OVER): Seasonally adjusted(a)

Month	EMPLOYED.....			UNEMPLOYED.....					
	Employed full time	Employed part time	Total employed	Unemp. looking for f/t work	Unemp. looking for p/t work	Total unemployed	Labour force	Unemp. employment rate	Participation rate
	'000s	'000s	'000s	'000s	'000s	'000s	'000s	%	%
<b>MALES</b>									
<b>1996</b>									
February	4 217.8	523.4	4 741.2	402.4	49.5	452.0	5 193.2	8.7	74.0
March	4 198.4	523.0	4 721.3	405.4	54.1	459.5	5 180.9	8.9	73.7
April	4 200.3	527.9	4 728.2	409.7	57.1	466.8	5 195.0	9.0	73.8
May	4 215.6	535.9	4 751.5	391.3	53.9	445.2	5 196.7	8.6	73.7
June	4 204.9	543.4	4 748.3	387.0	56.6	443.6	5 191.9	8.5	73.5
July	4 215.0	537.3	4 752.3	395.0	56.2	451.3	5 203.6	8.7	73.6
August	4 213.8	546.2	4 760.0	414.8	59.8	474.6	5 234.7	9.1	73.9
September	4 205.6	547.0	4 752.6	412.5	55.7	468.2	5 220.8	9.0	73.6
October	4 210.5	545.3	4 755.8	409.8	61.7	471.5	5 227.3	9.0	73.6
November	4 219.6	554.8	4 774.5	399.6	57.3	456.9	5 231.4	8.7	73.6
December	4 218.2	550.4	4 768.6	393.2	61.6	454.8	5 223.4	8.7	73.4
<b>1997</b>									
January	4 232.4	555.1	4 787.5	393.5	58.2	451.7	5 239.2	8.6	73.5
February	4 205.2	549.2	4 754.4	415.3	56.2	471.5	5 225.9	9.0	73.3
March	4 204.8	557.0	4 761.8	413.2	59.3	472.5	5 234.3	9.0	73.3
April	4 202.3	569.8	4 772.1	401.5	62.7	464.2	5 236.3	8.9	73.3
<b>FEMALES</b>									
<b>1996</b>									
February	2 053.2	1 534.6	3 587.7	214.5	100.4	314.9	3 902.6	8.1	53.9
March	2 054.0	1 518.6	3 572.6	210.0	101.3	311.3	3 883.9	8.0	53.6
April	2 061.4	1 499.6	3 561.0	218.4	110.5	329.0	3 889.9	8.5	53.6
May	2 053.7	1 523.8	3 577.4	216.5	113.0	329.4	3 906.9	8.4	53.7
June	2 052.2	1 531.1	3 583.3	202.3	111.3	313.6	3 896.9	8.0	53.5
July	2 077.9	1 511.9	3 589.8	218.0	111.2	329.2	3 919.0	8.4	53.7
August	2 095.2	1 526.3	3 621.5	221.5	109.9	331.4	3 953.0	8.4	54.1
September	2 079.3	1 524.1	3 603.4	225.3	106.7	332.0	3 935.4	8.4	53.8
October	2 081.3	1 540.8	3 622.1	222.5	109.6	332.1	3 954.2	8.4	54.0
November	2 074.8	1 544.3	3 619.2	219.2	103.2	322.4	3 941.6	8.2	53.7
December	2 080.5	1 547.6	3 628.1	224.8	112.3	337.1	3 965.2	8.5	54.0
<b>1997</b>									
January	2 068.5	1 569.0	3 637.5	230.7	108.5	339.2	3 976.7	8.5	54.1
February	2 071.6	1 591.9	3 663.5	227.1	112.2	339.2	4 002.8	8.5	54.4
March	2 041.5	1 580.7	3 622.2	224.5	106.0	330.5	3 952.7	8.4	53.6
April	2 072.5	1 576.6	3 649.0	231.3	106.9	338.2	3 987.2	8.5	54.1
<b>PERSONS</b>									
<b>1996</b>									
February	6 270.9	2 058.0	8 328.9	616.9	149.9	766.9	9 095.8	8.4	63.8
March	6 252.4	2 041.6	8 294.0	615.4	155.4	770.8	9 064.8	8.5	63.5
April	6 261.7	2 027.5	8 289.2	628.1	167.6	795.8	9 084.9	8.8	63.5
May	6 269.3	2 059.6	8 328.9	607.8	166.9	774.6	9 103.6	8.5	63.6
June	6 257.2	2 074.5	8 331.6	589.2	167.9	757.1	9 088.8	8.3	63.4
July	6 292.9	2 049.2	8 342.1	613.0	167.4	780.5	9 122.6	8.6	63.5
August	6 309.1	2 072.5	8 381.6	636.3	169.8	806.1	9 187.6	8.8	63.9
September	6 284.9	2 071.1	8 356.0	637.8	162.4	800.3	9 156.3	8.7	63.6
October	6 291.8	2 086.1	8 377.9	632.4	171.3	803.6	9 181.5	8.8	63.7
November	6 294.5	2 099.2	8 393.6	618.8	160.5	779.3	9 172.9	8.5	63.5
December	6 298.7	2 098.0	8 396.7	618.0	173.9	791.9	9 188.6	8.6	63.5
<b>1997</b>									
January	6 300.9	2 124.1	8 425.1	624.2	166.7	790.9	9 215.9	8.6	63.7
February	6 276.8	2 141.1	8 417.9	642.4	168.4	810.8	9 228.7	8.8	63.7
March	6 246.4	2 137.7	8 384.0	637.7	165.3	803.0	9 187.0	8.7	63.3
April	6 274.8	2 146.4	8 421.1	632.8	169.5	802.3	9 223.5	8.7	63.5

(a) Estimates for employment for the period August 1996 to January 1997 are affected by the implementation of telephone interviewing. See Explanatory Notes 3 and 4.

LABOUR FORCE STATUS (AGED 15 AND OVER): Trend(a)(b)

Month	EMPLOYED.....			UNEMPLOYED.....					
	Employed full time	Employed part time	Total employed	Unemp. looking for f/t work	Unemp. looking for p/t work	Total unemployed	Labour force	Unemp-loyment rate	Partic-ipation rate
	'000s	'000s	'000s	'000s	'000s	'000s	'000s	%	%
<b>MALES</b>									
<b>1996</b>									
February	4 210.5	519.6	4 730.2	403.1	51.6	454.7	5 184.9	8.8	73.8
March	4 210.1	523.2	4 733.3	401.1	53.0	454.0	5 187.3	8.8	73.8
April	4 208.8	528.2	4 737.1	399.2	54.4	453.6	5 190.7	8.7	73.7
May	4 207.8	533.8	4 741.7	398.2	55.6	453.8	5 195.4	8.7	73.7
June	4 208.4	538.7	4 747.1	398.8	56.5	455.3	5 202.4	8.8	73.7
July	4 209.5	542.0	4 751.5	401.2	57.2	458.3	5 209.8	8.8	73.7
August	4 211.0	544.6	4 755.6	403.8	57.9	461.7	5 217.3	8.8	73.7
September	4 213.0	546.9	4 759.9	405.1	58.5	463.7	5 223.6	8.9	73.7
October	4 215.1	548.5	4 763.6	405.0	59.0	464.0	5 227.6	8.9	73.6
November	4 217.0	549.9	4 766.9	403.7	59.0	462.8	5 229.6	8.8	73.6
December	4 217.5	551.5	4 769.0	402.3	58.9	461.2	5 230.2	8.8	73.5
<b>1997</b>									
January	4 216.2	553.4	4 769.6	402.3	58.9	461.3	5 230.9	8.8	73.4
February	4 213.3	555.9	4 769.2	403.8	59.1	462.9	5 232.1	8.8	73.4
March	4 209.9	558.6	4 768.5	405.6	59.5	465.1	5 233.5	8.9	73.3
April	4 205.9	561.4	4 767.3	407.3	59.8	467.0	5 234.3	8.9	73.2
<b>FEMALES</b>									
<b>1996</b>									
February	2 056.7	1 526.2	3 582.8	212.7	101.1	313.8	3 896.7	8.1	53.8
March	2 054.9	1 522.6	3 577.5	212.1	104.8	316.9	3 894.4	8.1	53.7
April	2 055.6	1 518.9	3 574.6	212.2	108.0	320.2	3 894.7	8.2	53.6
May	2 059.6	1 517.2	3 576.8	213.2	110.4	323.6	3 900.4	8.3	53.6
June	2 066.0	1 518.1	3 584.1	214.7	111.3	326.0	3 910.1	8.3	53.7
July	2 073.0	1 520.7	3 593.7	216.4	110.9	327.3	3 921.0	8.3	53.8
August	2 078.8	1 524.2	3 603.0	218.5	109.8	328.3	3 931.4	8.4	53.8
September	2 082.5	1 529.1	3 611.7	220.8	108.7	329.5	3 941.2	8.4	53.9
October	2 082.8	1 536.3	3 619.1	222.9	108.1	331.0	3 950.1	8.4	53.9
November	2 079.5	1 545.9	3 625.4	224.3	108.3	332.6	3 958.0	8.4	54.0
December	2 074.3	1 556.9	3 631.1	225.1	108.6	333.7	3 964.8	8.4	54.0
<b>1997</b>									
January	2 069.5	1 566.7	3 636.2	226.0	108.9	334.9	3 971.1	8.4	54.0
February	2 065.6	1 575.0	3 640.6	227.2	108.8	336.0	3 976.6	8.4	54.0
March	2 062.5	1 581.6	3 644.1	228.2	108.6	336.8	3 980.9	8.5	54.0
April	2 060.0	1 585.7	3 645.7	229.2	108.1	337.3	3 983.0	8.5	54.0
<b>PERSONS</b>									
<b>1996</b>									
February	6 267.2	2 045.8	8 313.0	615.8	152.7	768.5	9 081.5	8.5	63.7
March	6 265.0	2 045.8	8 310.8	613.2	157.7	770.9	9 081.7	8.5	63.6
April	6 264.5	2 047.1	8 311.6	611.3	162.4	773.8	9 085.4	8.5	63.5
May	6 267.5	2 051.0	8 318.5	611.4	166.0	777.3	9 095.8	8.5	63.5
June	6 274.4	2 056.8	8 331.2	613.5	167.7	781.3	9 112.5	8.6	63.5
July	6 282.5	2 062.7	8 345.2	617.6	168.0	785.6	9 130.8	8.6	63.6
August	6 289.8	2 068.8	8 358.6	622.3	167.8	790.0	9 148.6	8.6	63.6
September	6 295.5	2 076.0	8 371.5	626.0	167.2	793.2	9 164.7	8.7	63.6
October	6 297.9	2 084.8	8 382.7	627.9	167.1	795.0	9 177.7	8.7	63.6
November	6 296.5	2 095.8	8 392.3	628.0	167.3	795.3	9 187.6	8.7	63.6
December	6 291.7	2 108.4	8 400.1	627.4	167.5	794.9	9 195.1	8.6	63.6
<b>1997</b>									
January	6 285.6	2 120.2	8 405.8	628.4	167.8	796.2	9 202.0	8.7	63.6
February	6 278.9	2 130.9	8 409.8	631.0	167.9	798.9	9 208.7	8.7	63.5
March	6 272.4	2 140.2	8 412.6	633.8	168.1	801.8	9 214.4	8.7	63.5
April	6 265.9	2 147.0	8 413.0	636.5	167.8	804.3	9 217.3	8.7	63.5

(a) Estimates for October 1996 to March 1997 have been revised.

(b) Estimates for employment from February 1996 have been affected by the implementation of telephone interviewing over the period August 1996 to February 1997. See Explanatory Notes 3, 4 and 15.



# UNEMPLOYED PERSONS: Original

Month	NUMBER OF UNEMPLOYED PERSONS.....					UNEMPLOYMENT RATE.....					UNEMPLOYMENT TO POPULATION RATIO	
	Aged 15-19 looking for fit work	Aged 20 and over looking for fit work	Total looking for fit work	Looking for p/t work	Total unemployed	Aged 15-19 looking for fit work	Aged 20 and over looking for fit work	Total looking for fit work	Looking for p/t work	Total unemployed	Aged 15-19 looking for fit work	Aged 20 and over looking for fit work
	'000s	'000s	'000s	'000s	'000s	%	%	%	%	%	%	%
<b>MALES</b>												
<b>1996</b>												
February	58.4	379.0	437.4	54.6	492.0	26.5	8.5	9.4	9.8	9.4	9.0	6.0
March	53.7	356.8	410.6	63.5	474.1	25.5	8.1	8.9	10.6	9.1	8.2	5.6
April	55.0	350.1	405.1	57.7	462.8	25.7	8.0	8.8	9.7	8.9	8.4	5.5
May	55.5	334.2	389.6	52.4	442.0	27.4	7.6	8.5	8.9	8.5	8.5	5.2
June	55.8	324.5	380.3	51.9	432.1	28.0	7.4	8.3	8.6	8.3	8.5	5.1
July	46.6	325.1	371.7	50.4	422.1	22.8	7.4	8.1	8.6	8.1	7.1	5.1
August	49.3	356.8	406.1	54.1	460.2	25.4	8.1	8.9	8.9	8.9	7.5	5.6
September	48.7	359.7	408.4	57.3	465.8	24.6	8.1	8.8	9.2	8.9	7.4	5.6
October	49.7	337.7	387.3	58.9	446.3	25.0	7.7	8.4	9.7	8.6	7.6	5.2
November	50.6	334.5	385.2	49.2	434.4	26.4	7.6	8.4	8.2	8.4	7.7	5.2
December	67.3	329.8	397.1	65.0	462.1	29.3	7.4	8.5	10.7	8.7	10.3	5.1
<b>1997</b>												
January	60.5	374.5	435.0	65.3	500.3	26.7	8.5	9.3	10.9	9.5	9.2	5.8
February	62.6	389.1	451.7	61.9	513.6	29.1	8.7	9.7	10.5	9.8	9.5	6.0
March	55.2	363.2	418.4	69.5	487.9	28.4	8.2	9.1	10.9	9.3	8.4	5.6
April	50.2	346.7	396.9	63.3	460.2	25.3	7.9	8.7	9.9	8.8	7.6	5.3
<b>FEMALES</b>												
<b>1996</b>												
February	45.9	202.6	248.5	116.1	364.6	33.4	9.4	10.8	7.2	9.3	7.4	3.1
March	37.7	181.6	219.3	117.5	336.9	31.9	8.4	9.6	7.1	8.6	6.1	2.7
April	35.0	182.7	217.7	112.4	330.1	29.9	8.5	9.6	6.9	8.5	5.6	2.8
May	35.1	172.6	207.7	108.5	316.1	30.0	8.1	9.2	6.6	8.1	5.7	2.6
June	30.3	164.6	194.9	103.5	298.4	27.8	7.7	8.7	6.2	7.7	4.9	2.5
July	29.9	177.9	207.8	101.7	309.5	25.2	8.2	9.0	6.3	7.9	4.8	2.7
August	33.2	176.9	210.1	100.9	310.9	30.4	8.2	9.3	6.2	8.0	5.3	2.6
September	35.5	185.1	220.6	113.9	334.5	30.3	8.4	9.6	6.8	8.4	5.7	2.8
October	34.8	176.3	211.1	107.5	318.6	29.0	8.1	9.2	6.5	8.1	5.6	2.6
November	35.6	168.9	204.5	98.4	302.9	31.3	7.8	9.0	5.9	7.7	5.7	2.5
December	51.7	179.4	231.1	112.4	343.5	36.6	8.1	9.8	6.8	8.6	8.3	2.7
<b>1997</b>												
January	48.8	202.4	251.2	102.3	353.5	34.1	9.3	10.8	6.5	9.1	7.8	3.0
February	40.6	222.2	262.8	129.8	392.5	32.7	10.1	11.3	7.8	9.8	6.5	3.3
March	36.5	198.3	234.8	122.7	357.4	32.3	9.2	10.3	7.1	8.9	5.8	2.9
April	35.3	195.3	230.6	108.8	339.4	32.3	9.0	10.1	6.4	8.5	5.6	2.9
<b>PERSONS</b>												
<b>1996</b>												
February	104.3	581.7	686.0	170.7	856.6	29.2	8.8	9.9	7.9	9.4	8.2	4.5
March	91.4	538.5	629.9	181.0	810.9	27.8	8.2	9.2	8.1	8.9	7.2	4.1
April	90.0	532.8	622.8	170.2	793.0	27.2	8.2	9.1	7.7	8.7	7.1	4.1
May	90.5	506.8	597.3	160.9	758.2	28.3	7.8	8.7	7.2	8.3	7.1	3.9
June	86.1	489.1	575.2	155.4	730.5	27.9	7.5	8.4	6.9	8.0	6.8	3.7
July	76.5	503.0	579.5	152.1	731.6	23.7	7.6	8.4	6.9	8.0	6.0	3.8
August	82.5	533.7	616.1	155.0	771.1	27.2	8.1	9.0	6.9	8.5	6.5	4.1
September	84.2	544.8	629.0	171.2	800.2	26.7	8.2	9.1	7.4	8.7	6.6	4.2
October	84.4	514.0	598.4	166.4	764.9	26.5	7.8	8.7	7.4	8.4	6.6	3.9
November	86.3	503.4	589.7	147.6	737.2	28.2	7.7	8.6	6.5	8.1	6.7	3.8
December	119.0	509.2	628.2	177.4	805.7	32.1	7.6	8.9	7.8	8.7	9.3	3.9
<b>1997</b>												
January	109.3	576.9	686.2	167.6	853.8	29.6	8.7	9.8	7.7	9.3	8.5	4.4
February	103.2	611.2	714.5	191.6	906.1	30.4	9.2	10.2	8.5	9.8	8.1	4.6
March	91.7	561.5	653.2	192.2	845.4	29.8	8.5	9.5	8.2	9.2	7.1	4.2
April	85.5	542.0	627.5	172.2	799.6	27.8	8.3	9.1	7.4	8.7	6.7	4.1

# UNEMPLOYED PERSONS: Seasonally adjusted

Month	NUMBER OF UNEMPLOYED PERSONS.....					UNEMPLOYMENT RATE.....					UNEMPLOYMENT TO POPULATION RATIO	
	Aged 15-19 looking for f/t work	Aged 20 and over looking for f/t work	Total looking for f/t work	Looking for p/t work	Total unemployed	Aged 15-19 looking for f/t work	Aged 20 and over looking for f/t work	Total looking for f/t work	Looking for p/t work	Total unemployed	Aged 15-19 looking for f/t work	Aged 20 and over looking for f/t work
	'000s	'000s	'000s	'000s	'000s	%	%	%	%	%	%	%
<b>MALES</b>												
<b>1996</b>												
February	50.5	351.9	402.4	49.5	452.0	24.8	8.0	8.7	8.6	8.7	7.8	5.5
March	54.6	350.8	405.4	54.1	459.5	25.9	8.0	8.8	9.4	8.9	8.4	5.5
April	55.0	354.7	409.7	57.1	466.8	25.9	8.1	8.9	9.8	9.0	8.4	5.6
May	54.6	336.8	391.3	53.9	445.2	26.3	7.7	8.5	9.1	8.6	8.4	5.3
June	56.7	330.2	387.0	56.6	443.6	27.6	7.5	8.4	9.4	8.5	8.7	5.2
July	54.1	340.9	395.0	56.2	451.3	25.8	7.7	8.6	9.5	8.7	8.3	5.3
August	54.5	360.3	414.8	59.8	474.6	26.2	8.2	9.0	9.9	9.1	8.3	5.6
September	54.2	358.3	412.5	55.7	468.2	26.0	8.1	8.9	9.2	9.0	8.3	5.6
October	56.1	353.7	409.8	61.7	471.5	26.7	8.0	8.9	10.2	9.0	8.6	5.5
November	56.2	343.4	399.6	57.3	456.9	27.1	7.8	8.7	9.4	8.7	8.6	5.3
December	57.2	336.1	393.2	61.6	454.8	27.6	7.6	8.5	10.1	8.7	8.7	5.2
<b>1997</b>												
January	48.9	344.6	393.5	58.2	451.7	24.4	7.8	8.5	9.5	8.6	7.4	5.3
February	54.2	361.2	415.3	56.2	471.5	27.3	8.2	9.0	9.3	9.0	8.2	5.6
March	56.1	357.1	413.2	59.3	472.5	28.8	8.1	8.9	9.6	9.0	8.5	5.5
April	50.3	351.2	401.5	62.7	464.2	25.5	8.0	8.7	9.9	8.9	7.6	5.4
<b>FEMALES</b>												
<b>1996</b>												
February	37.6	176.9	214.5	100.4	314.9	29.9	8.3	9.5	6.1	8.1	6.1	2.7
March	36.8	173.2	210.0	101.3	311.3	30.1	8.1	9.3	6.3	8.0	5.9	2.6
April	37.8	180.6	218.4	110.5	329.0	30.7	8.4	9.6	6.9	8.5	6.1	2.7
May	36.4	180.0	216.5	113.0	329.4	30.0	8.4	9.5	6.9	8.4	5.9	2.7
June	31.9	170.4	202.3	111.3	313.6	27.6	8.0	9.0	6.8	8.0	5.1	2.6
July	32.6	185.4	218.0	111.2	329.2	27.5	8.5	9.5	6.9	8.4	5.2	2.8
August	36.2	185.3	221.5	109.9	331.4	30.5	8.4	9.6	6.7	8.4	5.8	2.8
September	38.9	186.4	225.3	106.7	332.0	32.0	8.5	9.8	6.5	8.4	6.2	2.8
October	41.6	180.9	222.5	109.6	332.1	33.2	8.3	9.7	6.6	8.4	6.7	2.7
November	41.0	178.2	219.2	103.2	322.4	33.0	8.2	9.6	6.3	8.2	6.6	2.7
December	42.0	182.8	224.8	112.3	337.1	34.3	8.4	9.8	6.8	8.5	6.7	2.7
<b>1997</b>												
January	39.8	190.9	230.7	108.5	339.2	32.5	8.8	10.0	6.5	8.5	6.4	2.8
February	33.3	193.8	227.1	112.2	339.2	29.3	8.9	9.9	6.6	8.5	5.3	2.9
March	35.5	189.0	224.5	106.0	330.5	30.4	8.8	9.9	6.3	8.4	5.7	2.8
April	38.1	193.2	231.3	106.9	338.2	33.1	8.8	10.0	6.3	8.5	6.1	2.9
<b>PERSONS</b>												
<b>1996</b>												
February	88.1	528.8	616.9	149.9	766.9	26.8	8.1	9.0	6.8	8.4	6.9	4.1
March	91.4	524.0	615.4	155.4	770.8	27.4	8.0	9.0	7.1	8.5	7.2	4.0
April	92.8	535.3	628.1	167.6	795.8	27.7	8.2	9.1	7.6	8.8	7.3	4.1
May	91.0	516.8	607.8	166.9	774.6	27.7	7.9	8.8	7.5	8.5	7.1	4.0
June	88.6	500.6	589.2	167.9	757.1	27.6	7.7	8.6	7.5	8.3	7.0	3.8
July	86.7	526.3	613.0	167.4	780.5	26.4	8.0	8.9	7.6	8.6	6.8	4.0
August	90.7	545.6	636.3	169.8	806.1	27.7	8.2	9.2	7.6	8.8	7.1	4.2
September	93.0	544.8	637.8	162.4	800.3	28.2	8.3	9.2	7.3	8.7	7.3	4.1
October	97.7	534.6	632.4	171.3	803.6	29.2	8.1	9.1	7.6	8.8	7.6	4.1
November	97.1	521.6	618.8	160.5	779.3	29.3	7.9	9.0	7.1	8.5	7.6	4.0
December	99.2	518.9	618.0	173.9	791.9	30.1	7.9	8.9	7.7	8.6	7.7	3.9
<b>1997</b>												
January	88.7	535.5	624.2	166.7	790.9	27.4	8.1	9.0	7.3	8.6	6.9	4.1
February	87.4	555.0	642.4	168.4	810.8	28.0	8.4	9.3	7.3	8.8	6.8	4.2
March	91.6	546.1	637.7	165.3	803.0	29.4	8.3	9.3	7.2	8.7	7.1	4.1
April	88.4	544.4	632.8	169.5	802.3	28.3	8.3	9.2	7.3	8.7	6.9	4.1

## UNEMPLOYED PERSONS: Trend(a)

Month	NUMBER OF UNEMPLOYED PERSONS.....					UNEMPLOYMENT RATE.....					UNEMPLOYMENT TO POPULATION RATIO	
	Aged 15-19 looking for fit work	Aged 20 and over looking for fit work	Total looking for fit work	Looking for p/t work	Total unemployed	Aged 15-19 looking for fit work	Aged 20 and over looking for fit work	Total looking for fit work	Looking for p/t work	Total unemployed	Aged 15-19 looking for fit work	Aged 20 and over looking for fit work
	'000s	'000s	'000s	'000s	'000s	%	%	%	%	%	%	%
<b>MALES</b>												
<b>1996</b>												
February	53.6	349.5	403.1	51.6	454.7	25.7	7.9	8.7	9.0	8.8	8.2	5.5
March	54.1	347.0	401.1	53.0	454.0	25.9	7.9	8.7	9.2	8.8	8.3	5.4
April	54.5	344.6	399.2	54.4	453.6	26.1	7.8	8.7	9.3	8.7	8.4	5.4
May	54.9	343.3	398.2	55.6	453.8	26.3	7.8	8.6	9.4	8.7	8.4	5.4
June	55.0	343.9	398.8	56.5	455.3	26.4	7.8	8.7	9.5	8.8	8.4	5.4
July	55.1	346.1	401.2	57.2	458.3	26.4	7.9	8.7	9.5	8.8	8.4	5.4
August	55.3	348.5	403.8	57.9	461.7	26.5	7.9	8.7	9.6	8.8	8.4	5.4
September	55.2	349.9	405.1	58.5	463.7	26.5	7.9	8.8	9.7	8.9	8.4	5.4
October	55.2	349.8	405.0	59.0	464.0	26.5	7.9	8.8	9.7	8.9	8.4	5.4
November	55.0	348.7	403.7	59.0	462.8	26.6	7.9	8.7	9.7	8.8	8.4	5.4
December	54.6	347.7	402.3	58.9	461.2	26.7	7.9	8.7	9.7	8.8	8.3	5.4
<b>1997</b>												
January	54.1	348.3	402.3	58.9	461.3	26.8	7.9	8.7	9.6	8.8	8.2	5.4
February	53.4	350.3	403.8	59.1	462.9	26.8	7.9	8.7	9.6	8.8	8.1	5.4
March	52.9	352.7	405.6	59.5	465.1	26.8	8.0	8.8	9.6	8.9	8.0	5.4
April	52.3	355.0	407.3	59.8	467.0	26.8	8.0	8.8	9.6	8.9	8.0	5.5
<b>FEMALES</b>												
<b>1996</b>												
February	38.3	174.4	212.7	101.1	313.8	30.6	8.1	9.4	6.2	8.1	6.2	2.6
March	37.0	175.2	212.1	104.8	316.9	29.9	8.2	9.4	6.4	8.1	6.0	2.6
April	35.7	176.5	212.2	108.0	320.2	29.3	8.2	9.4	6.6	8.2	5.8	2.7
May	34.8	178.4	213.2	110.4	323.6	29.0	8.3	9.4	6.8	8.3	5.6	2.7
June	34.5	180.2	214.7	111.3	326.0	29.0	8.3	9.4	6.8	8.3	5.6	2.7
July	35.0	181.4	216.4	110.9	327.3	29.4	8.4	9.5	6.8	8.3	5.6	2.7
August	36.4	182.1	218.5	109.8	328.3	30.3	8.4	9.5	6.7	8.4	5.9	2.7
September	38.3	182.5	220.8	108.7	329.5	31.5	8.4	9.6	6.6	8.4	6.2	2.7
October	39.9	183.0	222.9	108.1	331.0	32.5	8.4	9.7	6.6	8.4	6.4	2.7
November	40.5	183.8	224.3	108.3	332.6	32.9	8.4	9.7	6.5	8.4	6.5	2.7
December	39.9	185.2	225.1	108.6	333.7	32.7	8.5	9.8	6.5	8.4	6.4	2.8
<b>1997</b>												
January	38.7	187.3	226.0	108.9	334.9	32.2	8.6	9.8	6.5	8.4	6.2	2.8
February	37.5	189.6	227.2	108.8	336.0	31.7	8.7	9.9	6.5	8.4	6.0	2.8
March	36.6	191.6	228.2	108.6	336.8	31.4	8.8	10.0	6.4	8.5	5.8	2.8
April	35.8	193.5	229.2	108.1	337.3	31.1	8.9	10.0	6.4	8.5	5.7	2.9
<b>PERSONS</b>												
<b>1996</b>												
February	91.9	524.0	615.8	152.7	768.5	27.5	8.0	8.9	6.9	8.5	7.2	4.0
March	91.0	522.2	613.2	157.7	770.9	27.4	8.0	8.9	7.2	8.5	7.2	4.0
April	90.2	521.1	611.3	162.4	773.8	27.3	8.0	8.9	7.4	8.5	7.1	4.0
May	89.7	521.7	611.4	166.0	777.3	27.3	8.0	8.9	7.5	8.5	7.0	4.0
June	89.5	524.1	613.5	167.7	781.3	27.3	8.0	8.9	7.5	8.6	7.0	4.0
July	90.1	527.5	617.6	168.0	785.6	27.5	8.0	9.0	7.5	8.6	7.1	4.0
August	91.7	530.6	622.3	167.8	790.0	27.9	8.1	9.0	7.5	8.6	7.2	4.0
September	93.5	532.4	626.0	167.2	793.2	28.3	8.1	9.0	7.5	8.7	7.3	4.1
October	95.1	532.8	627.9	167.1	795.0	28.7	8.1	9.1	7.4	8.7	7.4	4.1
November	95.5	532.6	628.0	167.3	795.3	28.9	8.1	9.1	7.4	8.7	7.5	4.0
December	94.5	532.8	627.4	167.5	794.9	29.0	8.1	9.1	7.4	8.6	7.4	4.0
<b>1997</b>												
January	92.8	535.6	628.4	167.8	796.2	28.8	8.1	9.1	7.3	8.7	7.2	4.1
February	91.0	540.0	631.0	167.9	798.9	28.7	8.2	9.1	7.3	8.7	7.1	4.1
March	89.4	544.3	633.8	168.1	801.8	28.5	8.3	9.2	7.3	8.7	7.0	4.1
April	88.1	548.4	636.5	167.8	804.3	28.4	8.3	9.2	7.3	8.7	6.9	4.1

(a) Estimates for October 1996 to March 1997 have been revised.

PERSONS AGED 15 TO 19—Education and Labour Force: Original—April 1997



	EMPLOYED.....			UNEMPLOYED.....							Unemp- loyment rate %	Partic- ipation rate %
	Employed full time '000s	Employed part time '000s	Total employed '000s	Unemp. looking for f/t work '000s	Unemp. looking for p/t work '000s	Total unemployed '000s	Labour force '000s	Not in labour force '000s	Civilian population aged 15-19 '000s			
ATTENDING NEITHER SCHOOL NOR A TERTIARY EDUCATIONAL INSTITUTION FULL TIME												
Males	142.4	30.9	173.3	43.3	* 2.7	46.0	219.4	19.5	238.8	21.0	91.9	
Females	71.1	45.4	116.4	30.1	* 1.9	31.9	148.4	30.6	179.0	21.5	82.9	
Persons	213.5	76.3	289.8	73.4	4.5	78.0	367.7	50.1	417.8	21.2	88.0	
ATTENDING A TERTIARY EDUCATIONAL INSTITUTION FULL TIME												
Males	4.6	46.8	51.4	* 3.8	10.5	14.3	65.6	44.2	109.9	21.7	59.7	
Females	* 2.1	69.5	71.6	* 2.4	10.1	12.5	84.1	49.3	133.4	14.8	63.0	
Persons	6.7	116.3	123.0	6.1	20.6	26.7	149.7	93.5	243.2	17.9	61.6	
ATTENDING SCHOOL												
Males	* 1.4	82.5	83.9	* 3.1	20.5	23.6	107.5	201.5	309.1	21.9	34.8	
Females	* 0.8	104.3	105.1	* 2.8	22.6	25.5	130.5	183.1	313.6	19.5	41.6	
Persons	* 2.1	186.9	189.0	5.9	43.2	49.1	238.1	384.6	622.7	20.6	38.2	
TOTAL												
Males	148.4	160.3	308.7	50.2	33.7	83.9	392.5	265.2	657.8	21.4	59.7	
Females	74.0	219.1	293.1	35.3	34.6	69.9	363.0	263.0	626.0	19.3	58.0	
Persons	222.3	379.5	601.8	85.5	68.3	153.8	755.5	528.2	1 283.8	20.4	58.9	

LABOUR FORCE STATUS (AGED 15 & OVER)-States & Territories: Original-April 1997

	EMPLOYED.....			UNEMPLOYED.....							
	<i>Employed full time</i>	<i>Employed part time</i>	<i>Total employed</i>	<i>Unemp. looking for f/t work</i>	<i>Unemp. looking for p/t work</i>	<i>Total unemployed</i>	<i>Labour force</i>	<i>Not in labour force</i>	<i>Civilian population aged 15 and over</i>	<i>Unemp-loyment rate</i>	<i>Partic-ipation rate</i>
	'000s	'000s	'000s	'000s	'000s	'000s	'000s	'000s	'000s	%	%
MALES											
New South Wales	1 421.2	188.9	1 610.1	120.9	18.2	139.1	1 749.3	666.3	2 415.6	8.0	72.4
Victoria	1 044.3	142.0	1 186.3	97.1	19.3	116.5	1 302.8	472.0	1 774.8	8.9	73.4
Queensland	762.4	109.0	871.4	87.4	13.2	100.6	972.0	347.7	1 319.7	10.3	73.7
South Australia	319.9	49.3	369.2	39.0	4.8	43.8	413.0	167.9	580.8	10.6	71.1
Western Australia	434.0	55.9	489.9	31.7	4.5	36.2	526.1	168.4	694.5	6.9	75.8
Tasmania	96.9	14.9	111.8	13.5	* 1.0	14.5	126.4	55.3	181.6	11.5	69.6
Northern Territory	38.9	6.0	44.9	2.4	* 0.3	2.7	47.6	17.2	64.8	5.8	73.5
Australian Capital Territory	71.7	12.0	83.7	4.8	2.0	6.8	90.5	24.8	115.3	7.5	78.5
<b>Australia</b>	<b>4 189.4</b>	<b>578.1</b>	<b>4 767.5</b>	<b>396.9</b>	<b>63.3</b>	<b>460.2</b>	<b>5 227.7</b>	<b>1 919.5</b>	<b>7 147.1</b>	<b>8.8</b>	<b>73.1</b>
FEMALES											
New South Wales	730.2	481.4	1 211.6	68.9	35.7	104.5	1 316.1	1 189.1	2 505.3	7.9	52.5
Victoria	503.8	410.5	914.2	63.0	30.4	93.4	1 007.7	845.4	1 853.1	9.3	54.4
Queensland	369.8	301.4	671.2	49.4	17.9	67.4	738.5	605.6	1 344.1	9.1	54.9
South Australia	148.2	143.2	291.5	18.4	9.0	27.4	318.8	282.7	601.5	8.6	53.0
Western Australia	189.5	170.6	360.1	20.2	10.3	30.5	390.6	310.9	701.6	7.8	55.7
Tasmania	41.7	41.7	83.4	5.9	2.4	8.3	91.7	96.1	187.8	9.0	48.8
Northern Territory	24.5	13.2	37.6	1.9	* 0.8	2.8	40.4	23.2	63.6	6.8	63.5
Australian Capital Territory	46.5	27.6	74.1	2.9	2.3	5.2	79.2	40.2	119.4	6.5	66.3
<b>Australia</b>	<b>2 054.1</b>	<b>1 589.6</b>	<b>3 643.7</b>	<b>230.6</b>	<b>108.8</b>	<b>339.4</b>	<b>3 983.1</b>	<b>3 393.4</b>	<b>7 376.5</b>	<b>8.5</b>	<b>54.0</b>
PERSONS											
New South Wales	2 151.5	670.2	2 821.7	189.8	53.9	243.6	3 065.4	1 855.5	4 920.8	7.9	62.3
Victoria	1 548.1	552.5	2 100.6	160.2	49.7	209.9	2 310.5	1 317.4	3 627.9	9.1	63.7
Queensland	1 132.2	410.5	1 542.6	136.8	31.1	167.9	1 710.5	953.2	2 663.8	9.8	64.2
South Australia	468.1	192.5	660.7	57.4	13.8	71.1	731.8	450.5	1 182.3	9.7	61.9
Western Australia	623.5	226.5	850.0	51.9	14.8	66.8	916.8	479.4	1 396.1	7.3	65.7
Tasmania	138.7	56.6	195.3	19.4	3.4	22.8	218.1	151.4	369.5	10.5	59.0
Northern Territory	63.4	19.2	82.5	4.3	* 1.2	5.5	88.0	40.4	128.4	6.2	68.5
Australian Capital Territory	118.1	39.6	157.8	7.7	4.3	11.9	169.7	65.0	234.7	7.0	72.3
<b>Australia</b>	<b>6 243.5</b>	<b>2 167.6</b>	<b>8 411.2</b>	<b>627.5</b>	<b>172.2</b>	<b>799.6</b>	<b>9 210.8</b>	<b>5 312.8</b>	<b>14 523.6</b>	<b>8.7</b>	<b>63.4</b>

# UNEMPLOYED PERSONS—New South Wales, Victoria and Queensland: Original

Month	NUMBER OF UNEMPLOYED PERSONS.....					UNEMPLOYMENT RATE.....					UNEMPLOYMENT TO POPULATION RATIO	
	Aged 15-19 looking for f/t work	Aged 20 and over looking for f/t work	Total looking for f/t work	Looking for p/t work	Total unemployed	Aged 15-19 looking for f/t work	Aged 20 and over looking for f/t work	Total looking for f/t work	Looking for p/t work	Total unemp-loyed	Aged 15-19 looking for f/t work	Aged 20 and over looking for f/t work
	'000s	'000s	'000s	'000s	'000s	%	%	%	%	%	%	%
NEW SOUTH WALES												
<b>1996</b>												
February	30.3	180.5	210.8	49.6	260.4	26.1	8.1	9.0	7.3	8.6	7.2	4.1
March	28.4	171.8	200.1	56.2	256.4	26.2	7.7	8.6	7.9	8.4	6.8	3.9
April	29.2	165.5	194.7	51.3	246.0	26.9	7.5	8.4	7.4	8.2	6.9	3.7
May	26.5	153.9	180.5	51.4	231.9	25.5	7.0	7.9	7.1	7.7	6.3	3.5
June	25.9	148.8	174.7	50.7	225.4	26.3	6.8	7.6	6.9	7.5	6.2	3.3
July	23.2	155.1	178.4	45.3	223.7	22.6	7.0	7.7	6.5	7.4	5.5	3.5
August	24.8	163.9	188.7	49.4	238.1	25.2	7.4	8.2	7.0	7.9	5.9	3.7
September	23.9	168.2	192.1	57.0	249.2	23.7	7.5	8.2	7.9	8.1	5.7	3.8
October	23.7	155.8	179.6	53.4	233.0	22.2	7.0	7.7	7.5	7.6	5.6	3.5
November	22.1	145.7	167.9	48.3	216.2	23.4	6.6	7.3	6.9	7.2	5.2	3.3
December	37.4	154.0	191.4	53.3	244.7	30.6	6.8	8.0	7.6	7.9	8.8	3.4
<b>1997</b>												
January	35.0	173.2	208.1	49.9	258.0	27.7	7.7	8.8	7.4	8.5	8.3	3.9
February	35.9	186.8	222.7	64.5	287.2	30.5	8.3	9.4	9.2	9.4	8.5	4.2
March	27.7	171.8	199.4	57.7	257.1	26.0	7.6	8.5	8.0	8.4	6.5	3.8
April	29.3	160.5	189.8	53.9	243.6	26.9	7.2	8.1	7.4	7.9	6.9	3.6
VICTORIA												
<b>1996</b>												
February	26.9	155.6	182.5	47.9	230.4	36.4	9.4	10.5	8.6	10.1	8.6	4.8
March	21.8	135.5	157.3	45.1	202.4	32.5	8.3	9.2	8.0	8.9	7.0	4.1
April	20.3	139.2	159.5	47.8	207.3	30.6	8.5	9.3	8.4	9.1	6.5	4.3
May	19.9	133.3	153.2	38.3	191.5	30.0	8.0	8.9	6.9	8.4	6.3	4.1
June	18.5	118.4	136.9	41.0	177.8	28.6	7.2	8.1	7.3	7.9	5.9	3.6
July	14.6	129.8	144.4	42.6	187.0	21.6	7.8	8.4	7.8	8.2	4.7	4.0
August	18.3	141.0	159.3	38.8	198.2	28.8	8.6	9.3	6.9	8.7	5.8	4.3
September	20.5	149.8	170.3	44.5	214.8	30.2	9.0	9.9	7.6	9.3	6.5	4.6
October	19.1	142.2	161.3	43.4	204.7	30.1	8.6	9.4	7.6	8.9	6.1	4.3
November	20.4	146.6	167.0	37.2	204.2	31.3	8.8	9.6	6.4	8.8	6.5	4.4
December	25.8	141.2	167.0	48.4	215.4	34.4	8.4	9.6	8.2	9.2	8.2	4.3
<b>1997</b>												
January	21.9	150.6	172.5	40.7	213.2	29.4	9.1	9.9	7.4	9.3	7.0	4.6
February	19.9	165.3	185.2	48.9	234.1	30.4	9.8	10.6	8.5	10.1	6.3	5.0
March	19.8	148.3	168.1	52.5	220.6	33.0	9.0	9.9	8.7	9.6	6.3	4.5
April	16.7	143.4	160.2	49.7	209.9	28.9	8.7	9.4	8.3	9.1	5.3	4.3
QUEENSLAND												
<b>1996</b>												
February	20.7	115.9	136.6	28.9	165.5	26.3	9.6	10.6	7.5	9.9	8.5	4.9
March	18.6	111.4	130.0	33.0	163.0	26.3	9.3	10.2	8.1	9.7	7.6	4.7
April	20.4	110.6	130.9	31.7	162.7	27.3	9.2	10.3	7.8	9.7	8.4	4.7
May	21.4	102.8	124.2	32.5	156.7	30.7	8.5	9.8	8.0	9.3	8.8	4.3
June	20.9	104.4	125.3	29.7	155.0	30.8	8.7	9.8	7.1	9.2	8.6	4.4
July	16.1	101.1	117.3	31.3	148.6	23.8	8.4	9.2	7.5	8.8	6.6	4.3
August	19.1	106.3	125.4	31.1	156.4	28.7	8.8	9.8	7.6	9.3	7.8	4.5
September	18.5	103.2	121.7	33.0	154.7	26.8	8.4	9.4	7.8	9.0	7.5	4.3
October	20.9	99.0	120.0	34.2	154.2	30.0	8.1	9.3	8.3	9.1	8.5	4.1
November	22.4	94.0	116.4	29.0	145.4	32.9	7.8	9.1	6.9	8.6	9.1	3.9
December	26.8	96.3	123.0	37.7	160.7	33.0	7.9	9.4	9.0	9.3	10.9	4.0
<b>1997</b>												
January	27.4	121.2	148.6	37.8	186.4	35.5	10.0	11.5	9.3	11.0	11.1	5.0
February	23.5	128.1	151.5	32.9	184.5	32.5	10.4	11.6	7.8	10.7	9.5	5.3
March	21.1	123.1	144.2	37.6	181.8	34.1	10.1	11.3	8.5	10.6	8.6	5.1
April	16.1	120.7	136.8	31.1	167.9	27.0	10.0	10.8	7.0	9.8	6.5	5.0



UNEMPLOYED PERSONS—South Australia, Western Australia and Tasmania: Original

Month	NUMBER OF UNEMPLOYED PERSONS.....					UNEMPLOYMENT RATE.....					UNEMPLOYMENT TO POPULATION RATIO	
	Aged 15-19 looking for fit work	Aged 20 and over looking for fit work	Total looking for fit work	Looking for p/t work	Total unemployed	Aged 15-19 looking for fit work	Aged 20 and over looking for fit work	Total looking for fit work	Looking for p/t work	Total unemp-loyed	Aged 15-19 looking for fit work	Aged 20 and over looking for fit work
	'000s	'000s	'000s	'000s	'000s	%	%	%	%	%	%	%
<b>SOUTH AUSTRALIA</b>												
<b>1996</b>												
February	10.3	51.2	61.5	15.0	76.4	37.8	10.0	11.4	7.8	10.5	10.5	4.8
March	8.4	45.1	53.5	15.5	69.0	34.7	9.0	10.2	7.7	9.5	8.6	4.2
April	7.1	47.7	54.8	14.5	69.3	30.3	9.5	10.5	7.0	9.5	7.3	4.4
May	9.6	44.7	54.3	13.9	68.2	39.7	8.9	10.3	7.0	9.4	9.8	4.1
June	8.0	43.4	51.4	10.4	61.8	37.1	8.7	9.9	5.1	8.5	8.2	4.0
July	9.2	43.0	52.2	11.8	64.1	36.9	8.6	9.9	5.9	8.8	9.5	4.0
August	7.8	48.0	55.8	12.2	68.0	35.5	9.6	10.7	6.0	9.4	8.0	4.4
September	8.9	47.9	56.8	13.6	70.5	38.9	9.5	10.8	6.7	9.7	9.1	4.4
October	7.5	47.6	55.2	12.5	67.7	32.8	9.4	10.4	6.3	9.3	7.7	4.4
November	7.0	47.8	54.8	11.6	66.3	31.6	9.5	10.4	5.8	9.2	7.2	4.4
December	10.9	47.1	58.0	12.6	70.6	39.6	9.2	10.8	6.4	9.6	11.1	4.4
<b>1997</b>												
January	8.2	51.4	59.6	14.1	73.6	32.5	10.1	11.2	7.3	10.2	8.4	4.7
February	8.6	51.3	59.9	14.4	74.4	34.7	10.1	11.2	7.2	10.1	8.8	4.7
March	7.6	48.3	55.9	15.2	71.1	34.0	9.7	10.7	7.0	9.6	7.7	4.5
April	10.6	46.8	57.4	13.8	71.1	42.1	9.4	10.9	6.7	9.7	10.8	4.3
<b>WESTERN AUSTRALIA</b>												
<b>1996</b>												
February	9.2	51.2	60.3	18.6	78.9	21.7	8.0	8.8	8.3	8.7	7.2	4.1
March	8.4	45.6	54.0	20.0	74.0	20.4	7.2	8.1	8.5	8.2	6.6	3.7
April	7.8	41.6	49.5	14.5	64.0	19.4	6.6	7.4	6.5	7.2	6.1	3.4
May	7.8	44.2	52.0	16.9	68.9	20.4	7.0	7.7	7.2	7.6	6.1	3.6
June	7.9	47.0	54.9	15.6	70.5	20.8	7.4	8.1	6.8	7.8	6.2	3.8
July	8.4	44.2	52.5	12.6	65.1	20.4	6.9	7.7	5.5	7.1	6.5	3.5
August	7.8	45.8	53.6	15.3	68.8	21.1	7.2	7.9	6.4	7.5	6.0	3.7
September	7.7	46.3	54.1	15.1	69.1	20.4	7.2	7.9	6.4	7.5	6.0	3.7
October	8.6	41.6	50.2	14.9	65.1	21.9	6.5	7.4	6.4	7.2	6.7	3.3
November	9.8	42.7	52.5	13.8	66.3	25.0	6.7	7.8	5.9	7.3	7.6	3.4
December	12.0	43.7	55.7	15.0	70.8	26.5	6.8	8.1	6.3	7.6	9.3	3.5
<b>1997</b>												
January	10.2	50.3	60.4	15.7	76.1	22.0	7.8	8.8	6.7	8.3	7.8	4.0
February	9.8	48.6	58.2	20.8	79.1	23.3	7.5	8.5	8.5	8.5	7.4	3.9
March	9.3	45.6	54.9	18.5	73.4	24.0	7.2	8.2	7.4	8.0	7.2	3.6
April	7.5	44.4	51.9	14.8	66.8	18.7	7.0	7.7	6.1	7.3	5.8	3.5
<b>TASMANIA</b>												
<b>1996</b>												
February	4.2	14.7	18.9	4.7	23.6	34.1	9.4	11.2	8.0	10.4	12.3	4.4
March	3.3	15.8	19.1	4.3	23.4	31.8	10.4	11.7	7.0	10.4	9.7	4.7
April	2.4	15.2	17.6	4.3	21.9	22.7	10.0	10.8	6.9	9.7	6.9	4.6
May	2.9	15.8	18.8	3.5	22.2	29.2	10.4	11.6	5.7	10.0	8.6	4.7
June	2.9	17.1	20.0	3.7	23.7	28.4	11.1	12.2	6.1	10.5	8.5	5.1
July	3.0	16.7	19.7	4.5	24.2	30.8	11.0	12.2	7.0	10.7	8.8	5.0
August	2.2	16.6	18.8	3.9	22.7	24.7	10.9	11.6	6.4	10.2	6.4	5.0
September	2.3	17.6	19.9	3.9	23.8	24.9	11.4	12.2	6.3	10.6	6.8	5.2
October	2.0	17.0	19.0	4.5	23.5	21.8	11.3	11.9	7.1	10.6	5.9	5.1
November	2.5	16.3	18.7	3.4	22.2	26.4	10.8	11.7	5.7	10.1	7.3	4.9
December	3.8	16.2	20.1	5.1	25.1	35.0	10.6	12.2	8.5	11.2	11.1	4.8
<b>1997</b>												
January	4.0	16.5	20.5	4.4	24.9	35.1	11.1	12.8	7.3	11.3	11.7	4.9
February	3.7	17.9	21.6	4.0	25.6	32.8	11.6	13.1	7.1	11.6	10.9	5.3
March	3.8	15.1	18.9	4.6	23.5	35.1	10.3	12.0	7.4	10.7	11.0	4.5
April	3.5	15.9	19.4	3.4	22.8	34.4	10.7	12.3	5.7	10.5	10.2	4.7

UNEMPLOYED PERSONS—Northern Territory and Australian Capital Territory: Original

Month	NUMBER OF UNEMPLOYED PERSONS.....					UNEMPLOYMENT RATE.....					UNEMPLOYMENT TO POPULATION RATIO	
	Aged 15-19 looking for f/t work	Aged 20 and over looking for f/t work	Total looking for f/t work	Looking for p/t work	Total unemployed	Aged 15-19 looking for f/t work	Aged 20 and over looking for f/t work	Total looking for f/t work	Looking for p/t work	Total unemp-loyed	Aged 15-19 looking for f/t work	Aged 20 and over looking for f/t work
	'000s	'000s	'000s	'000s	'000s	%	%	%	%	%	%	%
NORTHERN TERRITORY												
<b>1996</b>												
February	* 0.8	4.6	5.4	* 0.9	6.3	* 30.8	7.0	7.8	* 4.8	7.2	* 6.1	4.1
March	* 0.8	4.7	5.5	1.6	7.1	* 29.5	6.8	7.7	8.5	7.9	* 6.5	4.1
April	* 1.2	4.4	5.5	1.5	7.0	* 41.6	6.7	8.2	7.4	8.0	* 9.2	3.9
May	* 0.7	3.9	4.6	* 0.7	5.3	* 24.3	5.9	6.7	* 3.9	6.1	* 5.6	3.4
June	* 0.3	2.8	3.1	* 0.8	3.9	* 8.4	4.3	4.5	* 4.3	4.4	* 2.2	2.5
July	* 0.4	4.2	4.6	* 1.1	5.7	* 8.6	6.1	6.3	* 6.5	6.3	* 3.2	3.7
August	* 0.6	2.8	3.4	1.3	4.6	* 17.1	4.3	4.9	6.8	5.3	* 4.6	2.5
September	* 0.2	3.5	3.7	1.3	5.0	* 6.0	5.2	5.2	6.1	5.4	* 1.6	3.1
October	* 0.3	2.7	3.1	* 0.9	3.9	* 11.0	4.2	4.5	* 4.1	4.4	* 2.7	2.4
November	* 0.5	2.8	3.3	* 0.7	4.0	* 16.1	4.5	5.0	* 3.2	4.6	* 3.8	2.4
December	* 0.5	2.7	3.2	* 1.1	4.3	* 14.3	4.2	4.7	* 5.8	5.0	* 3.6	2.4
<b>1997</b>												
January	* 0.9	4.2	5.1	* 1.1	6.2	* 23.7	6.8	7.7	* 6.3	7.4	* 6.7	3.7
February	* 0.7	4.1	4.9	* 1.0	5.9	* 24.8	6.5	7.3	* 4.8	6.7	* 5.6	3.6
March	* 0.8	2.6	3.4	1.6	5.0	* 25.4	4.0	5.0	7.8	5.6	* 5.8	2.3
April	* 0.7	3.6	4.3	* 1.2	5.5	* 26.2	5.6	6.4	* 5.8	6.2	* 5.5	3.1
AUSTRALIAN CAPITAL TERRITORY												
<b>1996</b>												
February	2.0	8.0	10.0	5.1	15.1	42.9	6.5	7.8	11.8	8.8	8.4	3.8
March	1.8	8.6	10.4	5.3	15.7	40.7	7.0	8.2	11.8	9.1	7.6	4.1
April	1.6	8.6	10.2	4.6	14.8	35.9	7.1	8.1	10.8	8.8	6.8	4.1
May	1.7	8.1	9.8	3.6	13.5	42.6	6.6	7.8	8.4	7.9	7.5	3.9
June	1.8	7.2	9.0	3.4	12.4	43.9	5.9	7.2	7.8	7.3	7.6	3.4
July	1.5	8.9	10.4	2.9	13.2	38.0	7.2	8.2	6.9	7.9	6.5	4.2
August	1.9	9.3	11.2	3.2	14.4	50.0	7.6	8.9	7.7	8.6	8.3	4.4
September	2.1	8.4	10.5	2.7	13.1	54.2	6.8	8.3	6.2	7.8	9.2	4.0
October	2.1	8.0	10.2	2.7	12.9	53.5	6.7	8.2	6.4	7.8	9.3	3.8
November	1.5	7.6	9.2	3.5	12.7	38.4	6.4	7.4	8.6	7.7	6.7	3.6
December	1.8	8.1	9.9	4.2	14.1	37.2	6.7	7.9	10.0	8.4	7.8	3.8
<b>1997</b>												
January	1.8	9.5	11.3	3.9	15.2	38.3	7.7	8.8	10.3	9.2	7.7	4.5
February	1.3	9.1	10.4	5.0	15.4	35.8	7.4	8.2	11.6	9.0	5.7	4.3
March	1.6	6.7	8.3	4.6	12.9	43.6	5.5	6.6	10.7	7.6	7.3	3.2
April	1.0	6.7	7.7	4.3	11.9	31.0	5.4	6.1	9.7	7.0	4.5	3.1



LABOUR FORCE STATUS (AGED 15 AND OVER)-New South Wales(a)

SEASONALLY ADJUSTED.....

TREND.....

Month	Employed	Total	Total	Unemp-	Partic-	Employed	Total	Total	Unemp-	Partic-	Civilian
	full time	employed	unemployed	loyment	ipation		full time	employed	unemployed	loyment	
	'000s	'000s	'000s	rate	rate	'000s	'000s	'000s	rate	rate	aged 15
				%	%				%	%	and over
											'000s
<b>MALES</b>											
<b>1996</b>											
February	1 417.5	1 590.0	140.5	8.1	72.8	1 417.5	1 588.0	142.1	8.2	72.8	2 377.1
March	1 405.9	1 585.6	145.8	8.4	72.7	1 414.4	1 587.2	143.4	8.3	72.7	2 380.0
April	1 410.0	1 581.2	150.4	8.7	72.7	1 411.2	1 587.1	144.4	8.3	72.7	2 383.1
May	1 410.1	1 592.0	140.8	8.1	72.6	1 409.4	1 588.3	144.9	8.4	72.6	2 386.2
June	1 409.8	1 591.6	141.6	8.2	72.5	1 410.0	1 590.3	145.0	8.4	72.6	2 389.3
July	1 411.5	1 590.7	141.4	8.2	72.4	1 412.3	1 592.3	144.8	8.3	72.6	2 392.5
August	1 416.5	1 596.5	153.4	8.8	73.0	1 416.0	1 594.8	144.2	8.3	72.6	2 395.8
September	1 420.4	1 596.9	141.5	8.1	72.5	1 419.9	1 597.5	143.1	8.2	72.6	2 399.1
October	1 423.3	1 601.7	141.8	8.1	72.6	1 423.6	1 600.0	142.0	8.2	72.5	2 401.8
November	1 424.2	1 593.0	141.3	8.1	72.1	1 426.7	1 602.1	141.1	8.1	72.5	2 404.6
December	1 432.4	1 610.1	136.2	7.8	72.5	1 428.7	1 603.7	140.7	8.1	72.5	2 407.3
<b>1997</b>											
January	1 438.9	1 618.0	137.3	7.8	72.9	1 429.6	1 604.8	141.3	8.1	72.5	2 409.2
February	1 415.1	1 589.7	151.1	8.7	72.2	1 429.8	1 605.6	142.3	8.1	72.5	2 411.1
March	1 438.9	1 607.1	142.0	8.1	72.5	1 429.6	1 606.2	143.5	8.2	72.5	2 413.0
April	1 424.0	1 610.0	143.7	8.2	72.8	1 429.1	1 606.7	144.3	8.2	72.5	2 415.6
<b>FEMALES</b>											
<b>1996</b>											
February	718.2	1 201.0	94.3	7.3	52.6	725.7	1 203.2	94.7	7.3	52.7	2 460.7
March	732.8	1 207.7	94.9	7.3	52.9	722.6	1 199.7	95.7	7.4	52.6	2 463.8
April	722.7	1 191.5	100.4	7.8	52.4	720.6	1 197.3	96.4	7.4	52.4	2 467.3
May	707.5	1 188.2	99.6	7.7	52.1	719.9	1 196.3	97.3	7.5	52.4	2 470.9
June	717.8	1 202.2	91.9	7.1	52.3	720.9	1 196.6	98.1	7.6	52.3	2 474.4
July	728.7	1 200.4	98.7	7.6	52.4	723.1	1 197.9	98.2	7.6	52.3	2 478.3
August	733.7	1 201.6	97.8	7.5	52.3	725.8	1 200.0	98.0	7.5	52.3	2 482.3
September	720.4	1 195.2	103.6	8.0	52.2	728.6	1 202.8	97.8	7.5	52.3	2 486.2
October	731.9	1 210.0	100.2	7.6	52.6	730.3	1 205.5	98.0	7.5	52.4	2 489.4
November	730.5	1 206.2	87.1	6.7	51.9	730.2	1 207.6	98.5	7.5	52.4	2 492.6
December	731.9	1 210.7	102.1	7.8	52.6	729.3	1 209.4	99.3	7.6	52.4	2 495.8
<b>1997</b>											
January	730.1	1 213.8	101.3	7.7	52.6	728.5	1 210.9	100.6	7.7	52.5	2 498.1
February	726.1	1 212.3	107.7	8.2	52.8	727.7	1 211.8	102.0	7.8	52.5	2 500.3
March	720.3	1 206.3	98.9	7.6	52.2	727.2	1 212.6	103.1	7.8	52.6	2 502.5
April	731.7	1 216.2	104.5	7.9	52.7	726.2	1 212.5	104.3	7.9	52.6	2 505.3
<b>PERSONS</b>											
<b>1996</b>											
February	2 135.7	2 791.0	234.8	7.8	62.5	2 143.1	2 791.2	236.8	7.8	62.6	4 837.7
March	2 138.7	2 793.3	240.7	7.9	62.6	2 137.0	2 786.9	239.1	7.9	62.5	4 843.9
April	2 132.7	2 772.7	250.8	8.3	62.3	2 131.8	2 784.4	240.8	8.0	62.4	4 850.5
May	2 117.5	2 780.2	240.4	8.0	62.2	2 129.4	2 784.5	242.2	8.0	62.3	4 857.0
June	2 127.7	2 793.8	233.5	7.7	62.2	2 130.9	2 786.9	243.0	8.0	62.3	4 863.7
July	2 140.2	2 791.1	240.1	7.9	62.2	2 135.4	2 790.2	243.0	8.0	62.3	4 870.9
August	2 150.3	2 798.1	251.2	8.2	62.5	2 141.9	2 794.8	242.2	8.0	62.3	4 878.1
September	2 140.8	2 792.1	245.0	8.1	62.2	2 148.4	2 800.3	241.0	7.9	62.3	4 885.3
October	2 155.1	2 811.8	242.0	7.9	62.4	2 153.9	2 805.4	240.0	7.9	62.3	4 891.3
November	2 154.7	2 799.3	228.4	7.5	61.8	2 156.9	2 809.6	239.6	7.9	62.3	4 897.2
December	2 164.2	2 820.8	238.3	7.8	62.4	2 158.0	2 813.2	240.1	7.9	62.3	4 903.1
<b>1997</b>											
January	2 169.0	2 831.7	238.5	7.8	62.6	2 158.1	2 815.7	241.8	7.9	62.3	4 907.3
February	2 141.3	2 801.9	258.8	8.5	62.3	2 157.5	2 817.4	244.3	8.0	62.3	4 911.4
March	2 159.2	2 813.4	240.8	7.9	62.1	2 156.7	2 818.8	246.6	8.0	62.4	4 915.5
April	2 155.7	2 826.2	248.2	8.1	62.5	2 155.2	2 819.2	248.6	8.1	62.3	4 920.8

(a) Trend estimates for October 1996 to March 1997 have been revised.

LABOUR FORCE STATUS (AGED 15 AND OVER)-Victoria(a)

SEASONALLY ADJUSTED.....

TREND.....

Month	SEASONALLY ADJUSTED.....					TREND.....					Civilian population aged 15 and over '000s
	Employed full time '000s	Total employed '000s	Total unemployed '000s	Unemp-loyment rate %	Partic-ipation rate %	Employed full time '000s	Total employed '000s	Total unemployed '000s	Unemp-loyment rate %	Partic-ipation rate %	
MALES											
<b>1996</b>											
February	1 048.1	1 178.3	118.3	9.1	74.1	1 048.8	1 177.3	115.1	8.9	73.9	1 749.9
March	1 045.5	1 172.1	113.1	8.8	73.4	1 050.1	1 178.6	114.6	8.9	73.8	1 751.8
April	1 045.0	1 175.3	121.3	9.4	73.9	1 052.0	1 180.2	113.4	8.8	73.8	1 753.8
May	1 060.8	1 188.5	109.2	8.4	73.9	1 053.7	1 181.9	112.0	8.7	73.7	1 755.8
June	1 057.4	1 186.1	106.3	8.2	73.5	1 054.3	1 183.8	111.4	8.6	73.7	1 757.8
July	1 055.9	1 183.8	109.1	8.4	73.5	1 053.2	1 185.3	112.3	8.7	73.7	1 759.8
August	1 055.8	1 188.5	114.6	8.8	74.0	1 050.7	1 186.3	114.3	8.8	73.8	1 761.9
September	1 035.2	1 181.9	120.9	9.3	73.9	1 048.1	1 187.0	116.8	9.0	73.9	1 763.9
October	1 046.3	1 185.5	121.9	9.3	74.1	1 046.5	1 187.6	118.9	9.1	74.0	1 765.5
November	1 049.1	1 194.8	118.5	9.0	74.3	1 046.3	1 188.1	120.0	9.2	74.0	1 767.2
December	1 043.0	1 185.0	120.2	9.2	73.8	1 047.0	1 188.4	120.1	9.2	74.0	1 768.8
<b>1997</b>											
January	1 056.7	1 193.5	117.5	9.0	74.1	1 047.5	1 188.2	119.9	9.2	73.9	1 770.2
February	1 046.8	1 182.8	120.1	9.2	73.5	1 047.3	1 187.7	120.1	9.2	73.8	1 771.5
March	1 040.9	1 186.5	122.3	9.3	73.8	1 046.7	1 187.1	120.4	9.2	73.8	1 772.9
April	1 045.7	1 187.3	120.7	9.2	73.7	1 045.3	1 186.4	120.7	9.2	73.6	1 774.8
FEMALES											
<b>1996</b>											
February	498.8	895.5	86.7	8.8	53.8	506.4	898.3	82.8	8.4	53.7	1 825.4
March	503.3	889.0	80.6	8.3	53.1	507.9	897.4	82.9	8.5	53.7	1 827.2
April	514.0	895.8	87.5	8.9	53.8	509.9	895.4	83.7	8.5	53.5	1 829.4
May	518.2	899.6	83.6	8.5	53.7	512.1	893.5	84.8	8.7	53.4	1 831.6
June	510.2	892.7	80.3	8.3	53.1	513.7	893.1	86.2	8.8	53.4	1 833.8
July	517.5	888.4	88.7	9.1	53.2	514.3	893.8	88.2	9.0	53.5	1 836.2
August	512.1	896.8	95.0	9.6	53.9	513.9	895.7	90.5	9.2	53.6	1 838.6
September	510.1	899.6	90.8	9.2	53.8	513.6	899.1	92.1	9.3	53.8	1 841.0
October	514.0	898.8	94.1	9.5	53.9	513.7	903.7	92.5	9.3	54.1	1 842.9
November	516.4	912.3	93.3	9.3	54.5	513.8	908.4	91.8	9.2	54.2	1 844.9
December	511.7	910.4	89.8	9.0	54.2	513.4	911.6	90.4	9.0	54.3	1 846.8
<b>1997</b>											
January	516.2	921.4	86.4	8.6	54.5	512.4	913.2	89.3	8.9	54.2	1 848.3
February	512.4	916.8	88.0	8.8	54.3	511.1	913.7	88.7	8.9	54.2	1 849.7
March	502.9	901.3	88.9	9.0	53.5	509.7	913.6	88.6	8.8	54.1	1 851.1
April	510.3	915.5	90.8	9.0	54.3	508.2	913.2	88.5	8.8	54.1	1 853.1
PERSONS											
<b>1996</b>											
February	1 546.9	2 073.8	205.0	9.0	63.7	1 555.1	2 075.6	197.9	8.7	63.6	3 575.3
March	1 548.8	2 061.1	193.7	8.6	63.0	1 557.9	2 076.0	197.5	8.7	63.5	3 579.0
April	1 559.0	2 071.1	208.9	9.2	63.6	1 561.9	2 075.5	197.1	8.7	63.4	3 583.2
May	1 579.1	2 088.1	192.8	8.5	63.6	1 565.8	2 075.4	196.8	8.7	63.3	3 587.4
June	1 567.5	2 078.8	186.6	8.2	63.1	1 568.1	2 076.9	197.6	8.7	63.3	3 591.6
July	1 573.4	2 072.1	197.8	8.7	63.1	1 567.5	2 079.0	200.5	8.8	63.4	3 596.0
August	1 567.9	2 085.3	209.5	9.1	63.7	1 564.6	2 082.0	204.8	9.0	63.5	3 600.4
September	1 545.2	2 081.6	211.7	9.2	63.6	1 561.7	2 086.1	208.9	9.1	63.7	3 604.9
October	1 560.3	2 084.3	216.0	9.4	63.7	1 560.2	2 091.3	211.4	9.2	63.8	3 608.5
November	1 565.5	2 107.1	211.8	9.1	64.2	1 560.2	2 096.5	211.8	9.2	63.9	3 612.0
December	1 554.8	2 095.4	210.0	9.1	63.8	1 560.4	2 100.0	210.4	9.1	63.9	3 615.7
<b>1997</b>											
January	1 572.9	2 114.8	203.9	8.8	64.1	1 559.9	2 101.4	209.2	9.1	63.9	3 618.4
February	1 559.2	2 099.6	208.1	9.0	63.7	1 558.3	2 101.3	208.8	9.0	63.8	3 621.2
March	1 543.7	2 087.8	211.2	9.2	63.4	1 556.4	2 100.7	208.9	9.0	63.7	3 624.0
April	1 556.0	2 102.8	211.5	9.1	63.8	1 553.5	2 099.5	209.2	9.1	63.6	3 627.9

(a) Trend estimates for October 1996 to March 1997 have been revised.

LABOUR FORCE STATUS (AGED 15 AND OVER)-Queensland(a)

SEASONALLY ADJUSTED.....

TREND.....

Month	SEASONALLY ADJUSTED					TREND					Civilian population aged 15 and over '000s
	Employed full time '000s	Total employed '000s	Total unemployed '000s	Unemployment rate %	Participation rate %	Employed full time '000s	Total employed '000s	Total unemployed '000s	Unemployment rate %	Participation rate %	
<b>MALES</b>											
<b>1996</b>											
February	785.1	875.1	85.9	8.9	74.9	779.0	873.0	90.8	9.4	75.1	1 282.7
March	780.4	874.3	89.4	9.3	75.0	781.5	876.7	88.9	9.2	75.1	1 285.6
April	782.7	881.2	88.9	9.2	75.3	782.1	879.3	88.2	9.1	75.1	1 288.8
May	783.9	883.4	86.4	8.9	75.1	781.4	880.6	88.9	9.2	75.0	1 292.1
June	774.6	878.5	91.5	9.4	74.9	780.5	880.8	90.5	9.3	75.0	1 295.4
July	782.0	883.8	88.7	9.1	74.9	780.0	880.4	92.2	9.5	74.9	1 297.8
August	778.8	876.1	99.5	10.2	75.0	780.3	880.2	93.3	9.6	74.9	1 300.3
September	781.2	880.3	93.3	9.6	74.7	781.3	880.6	93.5	9.6	74.8	1 302.7
October	781.4	876.5	97.0	10.0	74.6	782.0	881.1	93.6	9.6	74.7	1 305.2
November	783.2	886.8	86.5	8.9	74.4	781.6	881.3	93.8	9.6	74.6	1 307.7
December	783.4	882.0	93.6	9.6	74.5	779.7	880.5	94.5	9.7	74.4	1 310.2
<b>1997</b>											
January	774.5	882.4	97.3	9.9	74.6	776.7	878.9	95.8	9.8	74.3	1 312.6
February	777.9	874.2	97.4	10.0	73.9	773.2	876.8	97.4	10.0	74.1	1 315.0
March	762.2	867.9	104.0	10.7	73.8	769.7	874.7	98.9	10.2	73.9	1 317.4
April	766.4	876.3	96.3	9.9	73.7	766.5	873.0	99.9	10.3	73.7	1 319.7
<b>FEMALES</b>											
<b>1996</b>											
February	375.9	647.9	63.2	8.9	54.4	372.2	647.3	63.7	9.0	54.4	1 306.2
March	368.9	641.7	61.4	8.7	53.7	370.6	645.2	64.8	9.1	54.2	1 309.2
April	368.0	639.1	68.7	9.7	53.9	369.8	644.7	65.9	9.3	54.2	1 312.2
May	370.5	646.4	68.9	9.6	54.4	370.3	646.8	66.9	9.4	54.3	1 315.2
June	368.6	651.6	67.2	9.3	54.5	372.2	650.8	67.4	9.4	54.5	1 318.2
July	373.9	656.9	66.8	9.2	54.8	375.1	655.2	67.4	9.3	54.7	1 320.8
August	381.8	661.6	66.8	9.2	55.0	378.3	658.4	67.4	9.3	54.8	1 323.4
September	382.8	662.3	67.1	9.2	55.0	380.4	660.0	67.8	9.3	54.9	1 326.1
October	381.9	660.3	69.4	9.5	54.9	380.9	660.6	68.7	9.4	54.9	1 328.7
November	378.0	657.4	67.7	9.3	54.5	380.1	661.2	69.6	9.5	54.9	1 331.4
December	382.4	662.1	70.0	9.6	54.9	378.5	662.6	70.1	9.6	54.9	1 334.1
<b>1997</b>											
January	370.4	659.4	75.4	10.3	55.0	377.0	664.8	69.9	9.5	55.0	1 336.7
February	377.9	675.5	69.0	9.3	55.6	375.9	667.4	69.1	9.4	55.0	1 339.3
March	375.5	669.5	64.3	8.8	54.7	375.3	669.9	68.2	9.2	55.0	1 341.9
April	375.6	671.5	66.4	9.0	54.9	374.9	672.0	67.1	9.1	55.0	1 344.1
<b>PERSONS</b>											
<b>1996</b>											
February	1 161.0	1 523.0	149.2	8.9	64.6	1 151.3	1 520.3	154.5	9.2	64.7	2 588.9
March	1 149.3	1 516.0	150.8	9.0	64.2	1 152.1	1 521.8	153.7	9.2	64.6	2 594.8
April	1 150.7	1 520.3	157.6	9.4	64.5	1 151.9	1 524.1	154.1	9.2	64.5	2 601.0
May	1 154.4	1 529.7	155.4	9.2	64.6	1 151.7	1 527.4	155.8	9.3	64.6	2 607.3
June	1 143.2	1 530.1	158.7	9.4	64.6	1 152.6	1 531.6	157.9	9.3	64.6	2 613.5
July	1 155.9	1 540.7	155.5	9.2	64.8	1 155.2	1 535.7	159.6	9.4	64.7	2 618.6
August	1 160.6	1 537.7	166.3	9.8	64.9	1 158.6	1 538.6	160.7	9.5	64.8	2 623.7
September	1 163.9	1 542.7	160.3	9.4	64.8	1 161.6	1 540.6	161.4	9.5	64.7	2 628.8
October	1 163.3	1 536.9	166.4	9.8	64.7	1 162.9	1 541.7	162.3	9.5	64.7	2 634.0
November	1 161.2	1 544.2	154.3	9.1	64.4	1 161.7	1 542.5	163.4	9.6	64.6	2 639.1
December	1 165.8	1 544.2	163.6	9.6	64.6	1 158.1	1 543.1	164.6	9.6	64.6	2 644.3
<b>1997</b>											
January	1 144.9	1 541.8	172.7	10.1	64.7	1 153.6	1 543.7	165.7	9.7	64.5	2 649.3
February	1 155.8	1 549.7	166.4	9.7	64.7	1 149.1	1 544.2	166.6	9.7	64.5	2 654.3
March	1 137.7	1 537.4	168.3	9.9	64.1	1 144.9	1 544.5	167.1	9.8	64.4	2 659.3
April	1 142.0	1 547.8	162.8	9.5	64.2	1 141.4	1 545.0	167.0	9.8	64.3	2 663.8

(a) Trend estimates for October 1996 to March 1997 have been revised.



LABOUR FORCE STATUS (AGED 15 AND OVER)-South Australia(a)

SEASONALLY ADJUSTED.....

TREND.....

Month	SEASONALLY ADJUSTED					TREND					Civilian population aged 15 and over '000s
	Employed full time '000s	Total employed '000s	Total unemployed '000s	Unemployment rate %	Participation rate %	Employed full time '000s	Total employed '000s	Total unemployed '000s	Unemployment rate %	Participation rate %	
<b>MALES</b>											
<b>1996</b>											
February	326.5	370.8	43.8	10.6	71.9	326.3	370.7	42.3	10.2	71.6	576.5
March	326.0	369.3	42.4	10.3	71.4	325.5	370.3	42.3	10.2	71.5	576.7
April	323.6	370.6	43.0	10.4	71.7	324.6	369.9	42.0	10.2	71.4	577.0
May	323.4	366.8	42.4	10.4	70.9	323.3	369.6	41.6	10.1	71.2	577.3
June	321.9	371.3	38.9	9.5	71.0	322.0	369.3	41.2	10.0	71.1	577.6
July	323.4	370.7	40.2	9.8	71.1	320.7	368.9	41.0	10.0	70.9	578.0
August	318.4	368.2	41.7	10.2	70.9	319.7	368.4	41.2	10.1	70.8	578.4
September	317.1	365.9	42.6	10.4	70.6	319.4	367.8	41.5	10.1	70.7	578.8
October	318.9	367.2	41.2	10.1	70.5	319.5	367.6	41.7	10.2	70.7	579.1
November	320.8	368.1	42.8	10.4	70.9	320.1	367.7	41.7	10.2	70.6	579.5
December	321.6	368.8	41.4	10.1	70.7	320.7	368.2	41.6	10.2	70.7	579.8
<b>1997</b>											
January	323.1	368.0	40.7	10.0	70.5	321.3	368.9	41.6	10.1	70.8	580.0
February	320.5	369.0	41.4	10.1	70.7	321.5	369.5	41.9	10.2	70.9	580.3
March	320.2	372.4	42.0	10.1	71.4	321.6	369.9	42.3	10.3	71.0	580.5
April	322.1	368.7	44.5	10.8	71.1	321.5	370.2	42.7	10.4	71.1	580.8
<b>FEMALES</b>											
<b>1996</b>											
February	147.9	283.8	26.5	8.5	51.9	149.8	286.3	26.1	8.4	52.3	597.5
March	149.3	288.4	25.7	8.2	52.5	149.7	287.8	26.2	8.4	52.5	597.7
April	149.4	290.8	26.2	8.3	53.0	149.8	289.0	26.4	8.4	52.8	598.0
May	152.2	290.7	27.2	8.6	53.1	150.1	290.2	26.7	8.4	53.0	598.2
June	149.7	290.7	25.8	8.1	52.9	150.6	291.0	27.0	8.5	53.1	598.5
July	151.0	291.1	27.6	8.7	53.2	150.8	291.3	27.3	8.6	53.2	598.9
August	150.2	290.4	28.5	8.9	53.2	150.8	291.2	27.6	8.7	53.2	599.2
September	151.1	290.4	27.9	8.8	53.1	150.6	291.0	27.7	8.7	53.1	599.6
October	151.6	294.8	27.6	8.6	53.7	150.4	290.8	27.7	8.7	53.1	599.9
November	148.2	288.6	26.5	8.4	52.5	150.2	290.9	27.5	8.6	53.1	600.2
December	150.5	289.0	28.4	8.9	52.9	150.2	291.2	27.4	8.6	53.1	600.5
<b>1997</b>											
January	150.6	291.7	26.6	8.4	53.0	150.1	291.8	27.2	8.5	53.1	600.7
February	150.1	293.7	27.0	8.4	53.4	150.2	292.4	27.2	8.5	53.2	601.0
March	150.1	295.1	28.0	8.7	53.7	150.3	293.0	27.1	8.5	53.3	601.2
April	150.6	292.1	26.6	8.3	53.0	150.4	293.4	27.1	8.5	53.3	601.5
<b>PERSONS</b>											
<b>1996</b>											
February	474.4	654.7	70.3	9.7	61.8	476.1	657.0	68.4	9.4	61.8	1 173.9
March	475.3	657.7	68.1	9.4	61.8	475.3	658.0	68.5	9.4	61.9	1 174.4
April	473.0	661.4	69.2	9.5	62.2	474.3	659.0	68.5	9.4	61.9	1 175.0
May	475.5	657.5	69.6	9.6	61.9	473.4	659.8	68.3	9.4	61.9	1 175.6
June	471.6	662.0	64.7	8.9	61.8	472.8	660.3	68.2	9.4	61.9	1 176.1
July	474.4	661.8	67.8	9.3	62.0	471.6	660.2	68.4	9.4	61.9	1 176.9
August	468.6	658.6	70.2	9.6	61.9	470.5	659.6	68.8	9.4	61.9	1 177.6
September	468.2	656.3	70.5	9.7	61.7	469.9	658.8	69.2	9.5	61.8	1 178.4
October	470.5	662.0	68.7	9.4	62.0	469.9	658.4	69.3	9.5	61.7	1 179.0
November	469.0	656.7	69.3	9.5	61.5	470.3	658.6	69.2	9.5	61.7	1 179.6
December	472.0	657.8	69.8	9.6	61.6	470.9	659.4	69.0	9.5	61.7	1 180.3
<b>1997</b>											
January	473.6	659.7	67.3	9.3	61.6	471.4	660.7	68.9	9.4	61.8	1 180.8
February	470.6	662.7	68.4	9.4	61.9	471.7	661.9	69.1	9.4	61.9	1 181.2
March	470.3	667.5	69.9	9.5	62.4	471.9	662.9	69.4	9.5	62.0	1 181.7
April	472.8	660.8	71.0	9.7	61.9	471.9	663.6	69.9	9.5	62.0	1 182.3

(a) Trend estimates for October 1996 to March 1997 have been revised.

LABOUR FORCE STATUS (AGED 15 AND OVER)-Western Australia(a)

SEASONALLY ADJUSTED.....

TREND.....

Month	SEASONALLY ADJUSTED					TREND					Civilian population aged 15 and over '000s
	Employed full time '000s	Total employed '000s	Total unemployed '000s	Unemployment rate %	Participation rate %	Employed full time '000s	Total employed '000s	Total unemployed '000s	Unemployment rate %	Participation rate %	
<b>MALES</b>											
<b>1996</b>											
February	427.6	476.2	41.4	8.0	76.4	426.3	476.8	40.6	7.9	76.4	677.2
March	426.7	477.6	41.9	8.1	76.6	426.2	476.9	41.1	7.9	76.4	678.4
April	425.4	477.3	39.5	7.6	76.0	426.4	477.4	41.3	8.0	76.3	679.6
May	426.5	478.9	41.1	7.9	76.4	426.8	478.2	41.5	8.0	76.3	680.8
June	425.7	477.4	43.0	8.3	76.3	427.2	479.2	41.7	8.0	76.4	682.1
July	432.1	481.4	40.7	7.8	76.4	427.5	479.9	42.1	8.1	76.4	683.4
August	426.1	481.3	43.3	8.3	76.6	427.7	480.5	42.4	8.1	76.4	684.7
September	426.0	480.4	41.9	8.0	76.1	428.1	481.2	42.5	8.1	76.3	686.0
October	430.3	484.0	42.8	8.1	76.6	428.8	482.3	42.1	8.0	76.3	687.3
November	429.9	480.3	41.9	8.0	75.8	429.9	483.8	41.3	7.9	76.3	688.6
December	428.5	483.7	41.3	7.9	76.1	431.2	485.7	40.2	7.6	76.2	689.9
<b>1997</b>											
January	434.3	491.4	36.7	7.0	76.4	432.5	487.7	39.1	7.4	76.2	691.0
February	435.9	491.2	38.4	7.3	76.5	433.6	489.5	38.0	7.2	76.2	692.1
March	433.0	490.2	37.4	7.1	76.1	434.4	490.8	37.1	7.0	76.2	693.2
April	434.6	490.4	36.2	6.9	75.8	434.9	491.7	36.4	6.9	76.0	694.5
<b>FEMALES</b>											
<b>1996</b>											
February	193.0	359.1	29.4	7.6	56.9	191.0	351.9	28.4	7.5	55.7	683.2
March	194.2	354.5	27.6	7.2	55.8	192.5	352.3	27.9	7.3	55.5	684.5
April	195.4	346.5	25.1	6.8	54.2	194.0	353.5	27.7	7.3	55.6	685.8
May	192.6	356.5	27.9	7.3	56.0	195.5	355.6	27.8	7.3	55.8	687.1
June	195.2	356.2	29.3	7.6	56.0	196.6	358.0	28.0	7.3	56.1	688.4
July	197.3	360.9	29.1	7.5	56.5	197.5	360.5	28.1	7.2	56.3	689.9
August	201.4	367.9	28.6	7.2	57.4	198.1	362.7	28.1	7.2	56.5	691.4
September	200.1	365.3	27.3	7.0	56.7	198.3	364.4	28.1	7.1	56.6	692.8
October	194.3	360.8	27.4	7.1	55.9	197.8	365.1	28.3	7.2	56.7	694.2
November	195.3	364.0	27.8	7.1	56.3	196.5	365.1	29.0	7.4	56.7	695.5
December	197.6	366.5	29.6	7.5	56.8	194.8	364.7	30.0	7.6	56.6	696.9
<b>1997</b>											
January	194.8	364.5	33.4	8.4	57.0	193.2	364.0	31.0	7.8	56.6	698.0
February	189.7	366.5	32.3	8.1	57.0	191.8	362.9	31.7	8.0	56.5	699.1
March	187.8	359.4	31.6	8.1	55.8	190.6	361.6	32.3	8.2	56.2	700.3
April	191.7	356.8	31.5	8.1	55.4	189.9	360.3	32.5	8.3	56.0	701.6
<b>PERSONS</b>											
<b>1996</b>											
February	620.6	835.3	70.8	7.8	66.6	617.2	828.7	69.0	7.7	66.0	1360.4
March	620.9	832.1	69.5	7.7	66.2	618.6	829.3	69.0	7.7	65.9	1362.9
April	620.8	823.8	64.7	7.3	65.1	620.4	831.0	69.0	7.7	65.9	1365.4
May	619.1	835.4	69.1	7.6	66.1	622.2	833.8	69.3	7.7	66.0	1368.0
June	620.9	833.6	72.4	8.0	66.1	623.8	837.2	69.8	7.7	66.2	1370.5
July	629.3	842.3	69.8	7.6	66.4	624.9	840.4	70.2	7.7	66.3	1373.3
August	627.6	849.2	71.9	7.8	66.9	625.8	843.2	70.5	7.7	66.4	1376.1
September	626.1	845.7	69.2	7.6	66.3	626.5	845.5	70.5	7.7	66.4	1378.9
October	624.6	844.8	70.2	7.7	66.2	626.6	847.4	70.4	7.7	66.4	1381.5
November	625.2	844.3	69.7	7.6	66.0	626.3	849.0	70.3	7.6	66.4	1384.1
December	626.0	850.2	70.9	7.7	66.4	626.0	850.4	70.2	7.6	66.4	1386.7
<b>1997</b>											
January	629.1	855.9	70.1	7.6	66.7	625.7	851.7	70.1	7.6	66.4	1389.0
February	625.6	857.7	70.8	7.6	66.7	625.4	852.4	69.8	7.6	66.3	1391.2
March	620.8	849.6	69.0	7.5	65.9	625.1	852.5	69.4	7.5	66.2	1393.5
April	626.3	847.3	67.8	7.4	65.5	624.8	852.1	68.9	7.5	66.0	1396.1

(a) Trend estimates for October 1996 to March 1997 have been revised.

LABOUR FORCE STATUS (AGED 15 AND OVER)--Tasmania(a)

SEASONALLY ADJUSTED.....

TREND.....

Month	Employed	Total	Total	Unemp-	Partic-	Employed	Total	Total	Unemp-	Partic-	Civilian
	full time	employed	unemployed	loyment	ipation		full time	employed	unemployed	loyment	
	'000s	'000s	'000s	%	%	'000s	'000s	'000s	%	%	'000s
<b>MALES</b>											
<b>1996</b>											
February	103.0	116.6	14.1	10.8	72.2	101.8	115.3	14.4	11.1	71.7	181.0
March	100.9	115.2	14.8	11.4	71.8	101.6	115.5	14.7	11.3	71.9	181.1
April	101.3	115.7	15.0	11.5	72.2	101.4	115.6	14.9	11.4	72.1	181.1
May	100.6	114.6	14.8	11.4	71.5	101.2	115.7	15.0	11.5	72.1	181.1
June	101.0	116.0	15.1	11.5	72.4	101.2	115.8	15.0	11.5	72.2	181.1
July	100.5	115.1	15.3	11.8	72.0	101.2	115.9	14.8	11.3	72.1	181.2
August	102.9	117.7	14.1	10.7	72.7	101.2	115.9	14.6	11.2	71.9	181.3
September	101.2	115.6	14.4	11.1	71.7	101.0	115.6	14.3	11.0	71.6	181.4
October	99.9	114.4	14.2	11.1	70.9	100.6	115.1	14.0	10.9	71.1	181.5
November	100.0	114.8	12.8	10.1	70.3	100.1	114.4	13.9	10.8	70.7	181.5
December	99.4	113.0	14.7	11.5	70.3	99.7	113.7	13.9	10.9	70.3	181.6
<b>1997</b>											
January	98.7	113.4	13.6	10.7	69.9	99.2	113.1	14.1	11.1	70.1	181.6
February	100.2	112.1	14.7	11.6	69.8	98.9	112.7	14.3	11.3	69.9	181.6
March	98.6	113.4	14.0	11.0	70.1	98.5	112.3	14.5	11.4	69.9	181.6
April	97.0	111.5	15.4	12.1	69.8	98.2	112.1	14.8	11.6	69.8	181.6
<b>FEMALES</b>											
<b>1996</b>											
February	43.4	86.8	8.3	8.8	50.8	43.6	86.5	8.3	8.8	50.7	187.2
March	43.0	85.6	8.9	9.4	50.5	43.4	86.1	8.4	8.9	50.5	187.2
April	44.8	86.5	7.7	8.2	50.3	43.2	85.8	8.5	9.0	50.4	187.3
May	42.7	84.9	8.7	9.3	50.0	42.9	85.6	8.7	9.2	50.3	187.3
June	42.8	85.7	9.3	9.7	50.7	42.5	85.4	9.0	9.5	50.4	187.3
July	40.8	85.1	9.6	10.1	50.5	42.2	85.2	9.2	9.8	50.4	187.4
August	42.1	85.6	9.1	9.6	50.5	42.1	85.0	9.4	10.0	50.4	187.5
September	41.9	84.0	9.5	10.1	49.8	42.1	84.7	9.5	10.1	50.2	187.6
October	42.6	85.3	9.8	10.3	50.6	42.2	84.4	9.5	10.1	50.0	187.6
November	43.1	84.0	9.4	10.1	49.8	42.1	84.1	9.4	10.1	49.8	187.7
December	41.6	82.6	9.0	9.8	48.8	41.8	83.8	9.4	10.1	49.6	187.8
<b>1997</b>											
January	41.1	84.5	9.3	9.9	49.9	41.5	83.5	9.3	10.1	49.4	187.8
February	40.6	83.3	9.5	10.3	49.4	41.2	83.3	9.3	10.0	49.3	187.8
March	40.6	82.6	9.7	10.5	49.2	41.0	83.1	9.1	9.9	49.1	187.8
April	42.0	83.3	8.3	9.1	48.7	41.0	83.0	9.0	9.8	49.0	187.8
<b>PERSONS</b>											
<b>1996</b>											
February	146.4	203.5	22.4	9.9	61.4	145.4	201.8	22.8	10.1	61.0	368.2
March	143.9	200.8	23.7	10.6	60.9	145.1	201.6	23.1	10.3	61.0	368.3
April	146.1	202.2	22.7	10.1	61.0	144.6	201.4	23.4	10.4	61.0	368.4
May	143.3	199.5	23.5	10.5	60.5	144.1	201.3	23.7	10.5	61.1	368.4
June	143.8	201.7	24.4	10.8	61.4	143.6	201.2	24.0	10.6	61.1	368.4
July	141.3	200.2	24.9	11.1	61.1	143.4	201.1	24.1	10.7	61.1	368.6
August	145.0	203.3	23.2	10.2	61.4	143.3	200.9	24.0	10.7	61.0	368.8
September	143.2	199.6	23.9	10.7	60.6	143.1	200.3	23.7	10.6	60.7	369.0
October	142.5	199.6	24.0	10.7	60.6	142.7	199.5	23.5	10.5	60.4	369.1
November	143.1	198.8	22.3	10.1	59.9	142.2	198.4	23.3	10.5	60.1	369.2
December	141.0	195.6	23.7	10.8	59.4	141.4	197.4	23.3	10.6	59.8	369.4
<b>1997</b>											
January	139.8	197.8	22.9	10.4	59.8	140.7	196.6	23.4	10.6	59.6	369.4
February	140.8	195.4	24.2	11.0	59.5	140.1	196.0	23.6	10.7	59.4	369.4
March	139.2	196.0	23.7	10.8	59.5	139.5	195.5	23.7	10.8	59.3	369.4
April	139.1	194.7	23.6	10.8	59.1	139.1	195.0	23.8	10.9	59.2	369.5

(a) Trend estimates for October 1996 to March 1997 have been revised.

LABOUR FORCE STATUS (AGED 15 AND OVER)-Northern Territory(a)

TREND.....

Month	Employed full time '000s	Total employed '000s	Total unemployed '000s	Unemp- loyment rate %	Partic- ipation rate %	Civilian population aged 15 and over '000s
<b>MALES</b>						
<b>1996</b>						
February	39.9	46.1	3.4	6.9	78.2	63.3
March	39.8	45.7	3.3	6.8	77.3	63.5
April	39.8	45.4	3.2	6.6	76.4	63.6
May	39.9	45.3	3.1	6.4	75.9	63.8
June	40.1	45.5	2.9	6.1	75.6	64.0
July	40.3	45.8	2.7	5.6	75.8	64.0
August	40.4	46.0	2.5	5.2	75.8	64.0
September	40.2	46.1	2.3	4.8	75.6	64.0
October	40.0	46.0	2.3	4.7	75.2	64.2
November	39.8	45.8	2.3	4.9	74.8	64.3
December	39.8	45.6	2.5	5.2	74.6	64.4
<b>1997</b>						
January	39.7	45.5	2.6	5.5	74.5	64.5
February	39.7	45.4	2.8	5.8	74.5	64.7
March	39.5	45.3	2.9	6.0	74.4	64.8
April	39.4	45.3	3.0	6.1	74.4	64.8
<b>FEMALES</b>						
<b>1996</b>						
February	24.3	37.2	2.7	6.8	64.8	61.6
March	24.5	37.3	2.9	7.3	65.1	61.8
April	24.7	37.3	3.0	7.6	65.1	62.0
May	24.9	37.4	3.0	7.5	65.1	62.1
June	25.2	37.5	2.9	7.1	64.9	62.3
July	25.3	37.7	2.6	6.5	64.8	62.3
August	25.4	37.8	2.4	5.9	64.5	62.4
September	25.2	37.7	2.2	5.5	64.0	62.4
October	24.8	37.5	2.1	5.3	63.2	62.6
November	24.2	37.2	2.0	5.2	62.5	62.8
December	23.7	37.0	2.0	5.1	62.0	63.0
<b>1997</b>						
January	23.5	37.0	2.1	5.3	61.8	63.1
February	23.4	37.0	2.2	5.5	61.9	63.3
March	23.4	37.1	2.3	5.9	62.1	63.5
April	23.5	37.3	2.5	6.2	62.5	63.6
<b>PERSONS</b>						
<b>1996</b>						
February	64.2	83.3	6.1	6.9	71.6	124.9
March	64.4	83.0	6.3	7.0	71.3	125.3
April	64.5	82.7	6.3	7.1	70.8	125.6
May	64.9	82.7	6.1	6.9	70.5	125.9
June	65.3	83.0	5.8	6.5	70.3	126.3
July	65.7	83.5	5.4	6.0	70.3	126.3
August	65.8	83.9	4.9	5.5	70.2	126.4
September	65.4	83.8	4.5	5.1	69.9	126.5
October	64.7	83.5	4.4	5.0	69.3	126.8
November	64.0	83.0	4.4	5.0	68.7	127.1
December	63.5	82.6	4.5	5.2	68.4	127.4
<b>1997</b>						
January	63.2	82.4	4.7	5.4	68.2	127.7
February	63.0	82.4	4.9	5.7	68.3	128.0
March	62.9	82.5	5.2	5.9	68.4	128.2
April	62.9	82.6	5.4	6.2	68.5	128.4

(a) Trend estimates for October 1996 to March 1997 have been revised. Estimates for the most recent three months may be subject to significant revisions as data for later months become available.

LABOUR FORCE STATUS (AGED 15 AND OVER)—Australian Capital Territory(a)

TREND.....

Month	Employed full time '000s	Total employed '000s	Total unemployed '000s	Unemp- loyment rate %	Partic- ipation rate %	Civilian population aged 15 and over '000s
<b>MALES</b>						
<b>1996</b>						
February	73.2	83.9	7.3	8.0	80.3	113.6
March	73.1	83.7	7.4	8.1	80.1	113.7
April	73.1	83.6	7.5	8.2	80.1	113.8
May	73.0	83.6	7.6	8.3	80.0	113.8
June	72.9	83.6	7.6	8.3	80.0	113.9
July	72.8	83.5	7.6	8.4	79.8	114.1
August	72.7	83.3	7.6	8.4	79.5	114.3
September	72.4	83.0	7.7	8.5	79.1	114.5
October	72.1	82.6	7.8	8.6	78.8	114.6
November	71.8	82.3	7.8	8.7	78.6	114.7
December	71.6	82.1	7.9	8.7	78.4	114.9
<b>1997</b>						
January	71.4	82.1	7.8	8.7	78.2	115.0
February	71.4	82.3	7.7	8.5	78.1	115.1
March	71.4	82.5	7.5	8.3	78.1	115.3
April	71.4	82.8	7.3	8.1	78.1	115.3
<b>FEMALES</b>						
<b>1996</b>						
February	44.6	73.1	6.0	7.5	66.9	118.1
March	44.3	72.7	6.1	7.8	66.7	118.2
April	44.0	72.4	6.3	8.0	66.5	118.3
May	43.8	72.1	6.5	8.2	66.4	118.4
June	43.7	71.9	6.6	8.5	66.2	118.5
July	43.6	71.6	6.7	8.6	66.0	118.7
August	43.4	71.1	6.7	8.7	65.5	118.9
September	43.0	70.5	6.7	8.7	64.9	119.0
October	42.7	70.0	6.6	8.6	64.3	119.1
November	42.7	70.0	6.3	8.3	64.0	119.2
December	43.1	70.5	5.9	7.8	64.1	119.2
<b>1997</b>						
January	44.0	71.5	5.5	7.1	64.5	119.3
February	45.1	72.7	5.0	6.5	65.1	119.4
March	46.2	73.9	4.6	5.9	65.8	119.4
April	47.3	75.0	4.3	5.5	66.5	119.4
<b>PERSONS</b>						
<b>1996</b>						
February	117.8	157.0	13.2	7.8	73.5	231.7
March	117.4	156.4	13.5	8.0	73.3	231.9
April	117.1	156.0	13.8	8.1	73.1	232.1
May	116.8	155.7	14.0	8.3	73.1	232.3
June	116.7	155.5	14.2	8.4	73.0	232.4
July	116.4	155.1	14.3	8.5	72.8	232.8
August	116.0	154.3	14.4	8.5	72.4	233.2
September	115.5	153.4	14.4	8.6	71.9	233.6
October	114.8	152.6	14.4	8.6	71.4	233.7
November	114.5	152.3	14.2	8.5	71.2	233.9
December	114.7	152.7	13.8	8.3	71.1	234.1
<b>1997</b>						
January	115.4	153.7	13.3	7.9	71.3	234.3
February	116.5	155.0	12.7	7.6	71.5	234.5
March	117.6	156.4	12.1	7.2	71.8	234.7
April	118.7	157.9	11.6	6.8	72.2	234.7

(a) Trend estimates for October 1996 to March 1997 have been revised.  
Estimates for the most recent three months may be subject to significant revisions as data for later months become available.



# EXPLANATORY NOTES

---

## INTRODUCTION

**1** This publication contains preliminary estimates of the civilian labour force derived from the Labour Force Survey component of the monthly population survey. Estimates for the current month are preliminary and subject to revision. Revised estimates for the current month and more detailed estimates will be published in *Labour Force, Australia* (6203.0).

## MONTHLY POPULATION SURVEY

**2** The population survey is based on a multi-stage area sample of private dwellings (currently about 30,000 houses, flats, etc.) and a list sample of non-private dwellings (hotels, motels, etc.), and covers about 0.5% of the population of Australia. The information is obtained from the occupants of selected dwellings by specially trained interviewers. The interviews are generally conducted during the two weeks beginning on the Monday between the 6th and 12th of each month. The information obtained relates to the week before the interview (i.e. the reference week).

## TELEPHONE INTERVIEWING

**3** The ABS has introduced the use of telephone interviewing into the Labour Force Survey. Households selected for the Labour Force Survey are interviewed each month for 8 months, with one eighth of the sample being replaced each month. The first interview will continue to be conducted face-to-face. Subsequent interviews will then be conducted by telephone (if acceptable to the respondent). Telephone interviewing was phased in for each new sample group from August 1996 to February 1997.

**4** During the period of implementation, the new method produced different estimates than would have been obtained under the old methodology. The effect peaked in November 1996, when it is estimated that the published estimate of total employment was about 36,000 to 48,000 lower than would have been measured under the old methodology. The effect dissipated over the final months of implementation and was no longer discernible from February 1997. Therefore, the estimates for February 1997 and onwards are directly comparable to estimates for periods prior to August 1996.

## SCOPE OF SURVEY

**5** The Labour Force Survey includes all persons aged 15 and over except members of the permanent defence forces, certain diplomatic personnel of overseas governments customarily excluded from census and estimated populations, overseas residents in Australia, and members of non-Australian defence forces (and their dependants) stationed in Australia.

## COVERAGE

**6** In the Labour Force Survey, coverage rules are applied which aim to ensure that each person is associated with only one dwelling, and hence has only one chance of selection. The coverage rules are necessarily a balance between theoretical and operational considerations. Nevertheless, the chance of a person being enumerated at two separate dwellings in the survey is considered to be negligible.

## POPULATION BENCHMARKS

**7** Labour Force Survey estimates are calculated in such a way as to add up to independent estimates of the civilian population aged 15 and over (population benchmarks). From February 1994, labour force estimates have been compiled using benchmarks based on the results of the 1991 Census of Population and Housing. Small revisions were made to many of the historical estimates from January 1989 to January 1994.

## REVISION OF SERIES

**8** From April 1986, the definition of employed persons was changed to include persons who worked without pay between 1 and 14 hours per week in a family business or on a farm (i.e. contributing family workers). For further information, see paragraphs 36 and 37 of the Explanatory Notes to the February 1987 issue of *The Labour Force, Australia* (6203.0).

SURVEY SAMPLE REDESIGN

**9** The Labour Force Survey sample was redesigned and reselected using information collected in the 1991 Census of Population and Housing. The new sample was phased in over the period September to December 1992. For details, see *Information Paper: Labour Force Survey Sample Design* (6269.0).

**10** For the most part, one quarter of the new sample was introduced each month so that, by December 1992, the entire new sample was in place. Replacement generally occurred at the rotation group level with two groups being substituted each month. Such a pattern of implementation meant that any changes to labour force estimates due to differences between the two samples, or any other influences, were spread over the four months rather than being concentrated in one inter-month period.

**11** This phase-in scheme applied to the private dwelling sample in urban areas. The new sample for non-private dwellings and private dwellings in rural areas was introduced in a single stage in November 1992.

RELIABILITY OF ESTIMATES

**12** Two types of error are possible in an estimate based on a sample survey: sampling error and non-sampling error.

*Sampling error* occurs because a sample, rather than the entire population, is surveyed. One measure of the likely difference resulting from not including all dwellings in the survey is given by the standard error. There are about two chances in three that a sample estimate will differ by less than one standard error from the figure that would have been obtained if all dwellings had been included in the survey, and about nineteen chances in twenty that the difference will be less than two standard errors. Standard errors of estimates for the latest month and of estimates of movements since the previous month are shown on pages 30 and 31. Standard errors of other estimates and other movements may be determined by using information in the Technical Notes in *Labour Force, Australia* (6203.0).

*Non sampling error* arises from inaccuracies in collecting, recording and processing the data. Every effort is made to minimise reporting error by the careful design of questionnaires, intensive training and supervision of interviewers, and efficient data processing procedures.

SEASONAL ADJUSTMENT AND  
TREND ESTIMATION

**13** Seasonally adjusted series are published in Tables 2, 5 and 12 to 17. Seasonal factors are reviewed annually to take account of each additional year's original data. The results of the latest review were used to compile the revised seasonally adjusted and trend estimates given in this publication. Information about the method of adjustment and revised seasonally adjusted and trend estimates for all months from January 1995 were published in a feature article in the February 1997 issue of *Labour Force, Australia* (6203.0).

**14** Seasonal adjustment is a means of removing the estimated effects of normal seasonal variation from the series so that the effects of other influences on the series can be more clearly recognised. Seasonal adjustment does not aim to remove the irregular or non-seasonal influences which may be present in any particular month. This means that month-to-month movements of the seasonally adjusted estimates may not be reliable indicators of trend behaviour. For example, irregular factors unrelated to the trend account for more than half the seasonally adjusted movement with the following frequency:

- Employment: 5 in 10 monthly movements
- Unemployment: 7 in 10 monthly movements
- Unemployment rate: 7 in 10 monthly movements
- Participation rate: 9 in 10 monthly movements

SEASONAL ADJUSTMENT AND  
TREND ESTIMATION (continued)

**15** The smoothing of seasonally adjusted series reduces the impact of the irregular component of the seasonally adjusted series, and creates trend estimates. These trend estimates are derived by applying a 13-term Henderson-weighted moving average to all months except the last six. The last six monthly trend estimates are obtained by applying surrogates of the Henderson average to the seasonally adjusted series. Trend series are used to analyse the underlying behaviour of the series over time. These are published in Tables 3, 6 and 12 to 19.

**16** While this smoothing technique enables estimates to be produced for the latest month, it does result in revisions to the most recent months as additional observations become available. Generally, subsequent revisions become smaller, and after three months have a negligible impact on the series. There will also be revisions as a result of the annual review of seasonal factors.

**17** Trend estimates are published for the Northern Territory in Table 18 and for the Australian Capital Territory in Table 19. Unadjusted series for the two Territories have shown, historically, a high degree of variability, which can lead to considerable revisions to the seasonally adjusted estimates after each annual seasonal factor re-analysis. Seasonally adjusted estimates are not currently published for the two Territories. The most recent six months trend estimates are subject to revision. For the three most recent months, the revision may be relatively large. Inferences about trends drawn from smoothed seasonally adjusted (trend) estimates for months earlier than the latest three months are unlikely to be affected by month to month revisions. They may be affected by revision resulting from the annual re-analysis of seasonal factors.

**18** For further information, see *A Guide to Interpreting Time Series — Monitoring Trends: an Overview* (1348.0) or contact the Assistant Director, Time Series Analysis on (06) 252 6345.

RELATED PUBLICATIONS

**19** Users may also wish to refer to *Labour Force, Australia* (6203.0). This publication contains a detailed list of related publications which are available from ABS Bookshops.

**20** Current publications produced by the ABS are listed in the *Catalogue of Publications and Products, Australia* (1101.0). The ABS also issues, on Tuesdays and Fridays, a *Release Advice* (1105.0) which lists publications to be released in the next few days. The Catalogue and Release Advice are available from any ABS office.

UNPUBLISHED STATISTICS

**21** As well as the statistics included in this and related publications, the ABS may have other relevant unpublished data available. Inquiries should be made to Donna Maurer on 06 252 6525 or to any ABS office.

EFFECTS OF ROUNDING

**22** Estimates have been rounded and discrepancies may occur between sums of the component items and totals.

**23** Estimates of movement shown in this publication are obtained by taking the difference of unrounded estimates. The movement estimate is then rounded to one decimal place. Therefore where a discrepancy occurs between the reported movement and the difference of the rounded estimates, the reported movement will be more accurate.

SYMBOLS AND OTHER USAGES

- \* subject to sampling variability too high for most practical uses. See the Technical Notes in 6203.0 for more details.
- .. not applicable
- r revised
- pts percentage points

## GLOSSARY

---

<b>Actively looking for work</b>	Includes writing, telephoning or applying in person to an employer for work; answering a newspaper advertisement for a job; checking factory or Commonwealth Employment Service noticeboards; being registered with the Commonwealth Employment Service; checking or registering with any other employment agency; advertising or tendering for work; and contacting friends or relatives.
<b>Attending school</b>	Persons aged 15 to 19 enrolled full time at secondary or high schools in the reference week.
<b>Attending tertiary educational institution full time</b>	Persons aged 15 to 24 enrolled full time at a TAFE college, university, or other educational institution in the reference week.
<b>Employed</b>	Persons aged 15 and over who, during the reference week: <ul style="list-style-type: none"><li>■ worked for one hour or more for pay, profit, commission or payment in kind in a job or business, or on a farm (comprising employees, employers and own account workers); or</li><li>■ worked for one hour or more without pay in a family business or on a farm (i.e. contributing family workers); or</li><li>■ were employees who had a job but were not at work and were:<ul style="list-style-type: none"><li>■ on paid leave, on leave without pay for less than four weeks up to the end of the reference week,</li><li>■ stood down without pay because of bad weather or plant breakdown at their place of employment for less than four weeks up to the end of the reference week,</li><li>■ on strike or locked out,</li><li>■ on workers' compensation and expected to be returning to their job, or</li><li>■ receiving wages or salary while undertaking full-time study; or</li></ul></li><li>■ were employers, own account workers or contributing family workers who had a job, business or farm, but were not at work.</li></ul>
<b>Full-time workers</b>	Employed persons who usually worked 35 hours or more a week (in all jobs) and those who, although usually working less than 35 hours a week, worked 35 hours or more during the reference week
<b>Labour force</b>	For any group, persons who were employed or unemployed, as defined.
<b>Labour force status</b>	A classification of the civilian population aged 15 and over into employed, unemployed or not in the labour force, as defined. The definitions conform closely to the international standard definitions adopted by the International Conferences of Labour Statisticians.
<b>Not in the labour force</b>	Persons who were not in the categories employed or unemployed as defined.
<b>Participation rate</b>	For any group, the labour force expressed as a percentage of the civilian population aged 15 and over in the same group.
<b>Part-time workers</b>	Employed persons who usually worked less than 35 hours a week and who did so during the reference week.
<b>Seasonally adjusted series</b>	A time series of estimates with the estimated effects of normal seasonal variation removed. See Explanatory Note 11 to 12 for more detail.
<b>Trend series</b>	A smoothed seasonally adjusted series of estimates. See Explanatory Notes 13 to 15 for more detail.

<b>Unemployed</b>	Persons aged 15 and over who were not employed during the reference week, and: <ul style="list-style-type: none"> <li>■ had actively looked for full-time or part-time work at any time in the four weeks up to the end of the reference week and:           <ul style="list-style-type: none"> <li>■ were available for work in the reference week, or would have been available except for temporary illness (i.e. lasting for less than four weeks to the end of the reference week), or</li> <li>■ were waiting to start a new job within four weeks from the end of the reference week and would have started in the reference week if the job had been available then; or</li> </ul> </li> <li>■ were waiting to be called back to a full-time or part-time job from which they had been stood down without pay for less than four weeks up to the end of the reference week (including the whole of the reference week) for reasons other than bad weather or plant breakdown.</li> </ul>
<b>Unemployed looking for first full-time job</b>	Unemployed persons looking for full-time work (as defined above) who had never worked full time for two weeks or more
<b>Unemployed looking for full-time work</b>	Unemployed persons who actively looked for full-time work, or were to resume a full-time job from which they had been stood down.
<b>Unemployed looking for part-time work</b>	Unemployed persons who had actively looked for part-time work only, or were to resume a part-time job from which they had been stood down.
<b>Unemployment rate</b>	For any group, the number of unemployed persons expressed as a percentage of the labour force in the same group.
<b>Unemployment to population ratio</b>	For any group, the number of unemployed persons expressed as a percentage of the civilian population in the same group.

## STANDARD ERRORS

The estimates in this publication are based on information gained from the occupants of a sample survey of dwellings. Because the entire population is not surveyed, the published estimates are subject to sampling error. The most common way of quantifying such sampling error is to calculate the standard error for the published estimate or statistic.

### LEVEL ESTIMATES

To illustrate, let us say the published level estimate for employed persons aged 15 to 19 is 500,000. The calculated standard error in this case is 9,000. The standard error is then used to interpret the level estimate of 500,000. For instance, the standard error of 9,000 indicates that:

- There are approximately two chances in three that the real value falls within the range 491,000 to 509,000 (500,000 + or - 9,000)
- There are approximately nineteen chances in twenty that the real value falls within the range 482,000 to 518,000 (500,000 + or - 18,000)

The real value in this case is the result we would obtain if we could enumerate the total population.

The following tables show the standard errors for this month's level estimates.

	EMPLOYED.....			UNEMPLOYED.....				Labour force	Not in labour force	Unemployment rate	Participation rate
	Employed full time	Employed part time	Total employed	Unemp. looking for f/t work	Unemp. looking for p/t work	Total unemployed					
	'000s	'000s	'000s	'000s	'000s	'000s					
NSW	14.6	9.8	16.0	6.1	3.7	6.7	16.5	13.9	0.2	0.3	
Vic.	12.1	8.4	13.3	5.3	3.3	5.9	13.8	11.4	0.3	0.4	
Qld	9.3	6.5	10.4	4.3	2.3	4.6	10.8	8.8	0.3	0.4	
SA	5.1	3.7	5.7	2.4	1.3	2.6	5.9	5.0	0.3	0.5	
WA	6.3	4.4	7.0	2.5	1.5	2.7	7.2	5.7	0.3	0.5	
Tas.	1.7	1.3	1.8	0.9	0.5	1.0	1.8	1.7	0.5	0.5	
NT	2.0	1.1	2.2	0.6	0.3	0.6	2.3	1.6	0.7	1.8	
ACT	1.6	1.1	1.8	0.6	0.5	0.7	1.9	1.3	0.4	0.8	
Males	19.8	9.5	20.7	8.2	3.8	8.7	21.4	15.0	0.2	0.3	
Females	15.4	14.0	18.9	6.6	4.8	7.7	19.5	18.4	0.2	0.3	
Persons	22.7	15.7	25.0	9.8	5.8	10.8	25.8	21.5	0.1	0.2	

	NUMBER OF UNEMPLOYED PERSONS.....						UNEMPLOYMENT RATE.....				
	Aged 15-19 seeking first f/t job	Aged 15-19 looking for f/t work	Aged 20 and over looking for f/t work	Total looking for f/t work	Looking for p/t work	Total unemployed	Aged 15-19 looking for f/t work	Aged 20 and over looking for f/t work	Total looking for f/t work	Looking for p/t work	Total unemployed
	'000s	'000s	'000s	'000s	'000s	'000s	pts	pts	pts	pts	pts
NSW	2.4	2.8	5.7	6.1	3.7	6.7	2.6	0.3	0.3	0.5	0.2
Vic.	1.8	2.1	5.1	5.3	3.3	5.9	3.6	0.3	0.3	0.5	0.3
Qld	1.3	1.8	4.1	4.3	2.3	4.6	2.9	0.3	0.3	0.5	0.3
SA	0.9	1.2	2.2	2.4	1.3	2.6	4.7	0.4	0.4	0.6	0.3
WA	0.8	1.1	2.3	2.5	1.5	2.7	2.7	0.4	0.4	0.6	0.3
Tas.	0.4	0.5	0.9	0.9	0.5	1.0	4.9	0.6	0.6	0.8	0.5
NT	0.2	0.2	0.5	0.6	0.3	0.6	9.2	0.8	0.8	1.5	0.7
ACT	0.2	0.2	0.5	0.6	0.5	0.7	7.5	0.4	0.5	1.0	0.4
Males	2.7	3.4	7.8	8.2	3.8	8.7	1.7	0.2	0.2	0.6	0.2
Females	2.4	2.9	6.1	6.6	4.8	7.7	2.6	0.3	0.3	0.3	0.2
Persons	3.5	4.3	9.3	9.8	5.8	10.8	1.4	0.1	0.1	0.2	0.1

# STANDARD ERRORS continued

## MOVEMENT ESTIMATES

The following example illustrates how to use the standard error to interpret a movement estimate. Let us say that one month the published level estimate for females employed part time in Australia is 1,387,000; the next month the published level estimate is 1,400,000. The calculated standard error for the movement estimate is 10,500. The standard error is then used to interpret the published movement estimate of 13,000. For instance, the standard error of 10,500 indicates that:

- There are approximately two chances in three that the real movement over the two month period falls within the range 2,500 to 23,500 (13,000 + or - 10,500)
- There are approximately nineteen chances in twenty that the real movement falls within the range -8,000 to 34,000 (13,000 + or - 21,000).

The following tables show the standard errors for this month's movement estimates.

	EMPLOYED.....			UNEMPLOYED.....			Labour force	Not in labour force	Unemployment rate	Participation rate
	Employed full time	Employed part time	Total employed	Unemp. looking for f/t work	Unemp. looking for p/t work	Total unemployed				
	'000s	'000s	'000s	'000s	'000s	'000s				
NSW	11.4	7.4	12.6	4.8	3.0	5.2	13.0	10.8	0.2	0.3
Vic.	8.7	6.0	9.8	3.9	2.5	4.3	10.1	8.2	0.2	0.3
Qld	6.4	4.5	7.2	3.2	2.0	3.4	7.4	6.1	0.2	0.3
SA	3.5	2.5	3.9	1.6	1.0	1.8	4.1	3.4	0.2	0.3
WA	4.5	3.2	5.1	1.9	1.3	2.1	5.2	4.1	0.2	0.4
Tas.	1.5	1.1	1.7	0.7	0.4	0.8	1.8	1.5	0.4	0.5
NT	1.3	0.7	1.4	0.4	0.3	0.4	1.4	1.0	0.5	1.1
ACT	1.2	0.8	1.4	0.5	0.4	0.5	1.4	1.0	0.3	0.6
Males	15.1	7.2	15.8	6.4	3.2	6.7	16.4	11.3	0.1	0.2
Females	11.5	10.5	14.3	5.1	4.0	6.0	14.8	13.9	0.2	0.2
Persons	17.5	11.8	19.6	7.5	4.8	8.3	20.3	16.5	0.1	0.1

	NUMBER OF UNEMPLOYED PERSONS.....						UNEMPLOYMENT RATE.....				
	Aged 15-19 seeking first f/t job	Aged 15-19 looking for f/t work	Aged 20 and over looking for f/t work	Total looking for f/t work	Looking for p/t work	Total unemployed	Aged 15-19 looking for f/t work	Aged 20 and over looking for f/t work	Total looking for f/t work	Looking for p/t work	Total unemp-loyed
	'000s	'000s	'000s	'000s	'000s	'000s	pts	pts	pts	pts	pts
NSW	2.0	2.4	4.5	4.8	3.0	5.2	2.2	0.2	0.2	0.4	0.2
Vic.	1.5	1.8	3.7	3.9	2.5	4.3	2.9	0.2	0.2	0.4	0.2
Qld	1.3	1.6	3.0	3.2	2.0	3.4	2.7	0.2	0.2	0.5	0.2
SA	0.7	0.9	1.5	1.6	1.0	1.8	3.5	0.3	0.3	0.5	0.2
WA	0.8	1.0	1.8	1.9	1.3	2.1	2.6	0.3	0.3	0.5	0.2
Tas.	0.3	0.4	0.7	0.7	0.4	0.8	3.7	0.5	0.5	0.7	0.4
NT	0.1	0.2	0.4	0.4	0.3	0.4	6.4	0.6	0.6	1.2	0.5
ACT	0.2	0.3	0.4	0.5	0.4	0.5	6.9	0.4	0.4	0.9	0.3
Males	2.5	3.0	6.0	6.4	3.2	6.7	1.5	0.1	0.1	0.5	0.1
Females	2.2	2.6	4.8	5.1	4.0	6.0	2.3	0.2	0.2	0.2	0.2
Persons	3.0	3.6	7.1	7.5	4.8	8.3	1.2	0.1	0.1	0.2	0.1

# WHAT IF...? REVISIONS TO TREND ESTIMATES

## EFFECT OF NEW SEASONALLY ADJUSTED ESTIMATES ON TREND ESTIMATES

Each time new seasonally adjusted estimates become available, trend estimates are revised (see paragraphs 13 and 14 of Explanatory Notes).

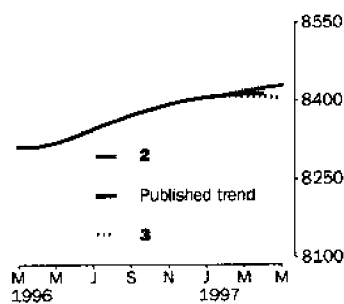
### TREND REVISIONS

The examples in the tables below show four illustrative scenarios and the consequent revisions to previous trend estimates of employment and unemployment rate.

- 1** The May seasonally adjusted estimate is the same as the April estimate.
- 2** The May seasonally adjusted estimate is higher than the April estimate by:
  - +0.33% for employment
  - +2.2% for the unemployment rate
- 3** The May seasonally adjusted estimate is lower than the April estimate by:
  - -0.33% for employment
  - -2.2% for the unemployment rate
- 4** The May seasonally adjusted estimate results in a revised April trend estimate which is identical to the new May trend estimate.

The percentage changes of 0.33% and 2.2% were chosen because they represent the average absolute monthly percentage changes in employment and the unemployment rate respectively.

### EMPLOYMENT ('000)



1997

February  
March  
April  
May  
(new)

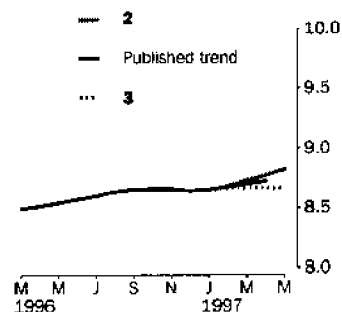
TREND as  
PUBLISHED

WHAT IF NEXT MONTH'S SEASONALLY ADJUSTED ESTIMATE IS:

1	2	3	4
8 421.1	8 448.9	8 393.4	8 411.5
<i>i.e. the same as Apr 1997</i>	<i>i.e. rises by 0.33%</i>	<i>i.e. falls by 0.33%</i>	<i>i.e. same trend for Apr &amp; May</i>

	TREND as PUBLISHED	1	2	3	4
February	8 409.8	8 409.9	8 411.1	8 408.6	8 409.4
March	8 412.6	8 412.4	8 416.5	8 408.3	8 411.0
April	8 413.0	8 414.3	8 422.1	8 406.6	8 411.6
May (new)	—	8 415.7	8 427.4	8 404.0	8 411.6

### UNEMPLOYMENT RATE (%)



1997

February  
March  
April  
May  
(new)

TREND as  
PUBLISHED

WHAT IF NEXT MONTH'S SEASONALLY ADJUSTED ESTIMATE IS:

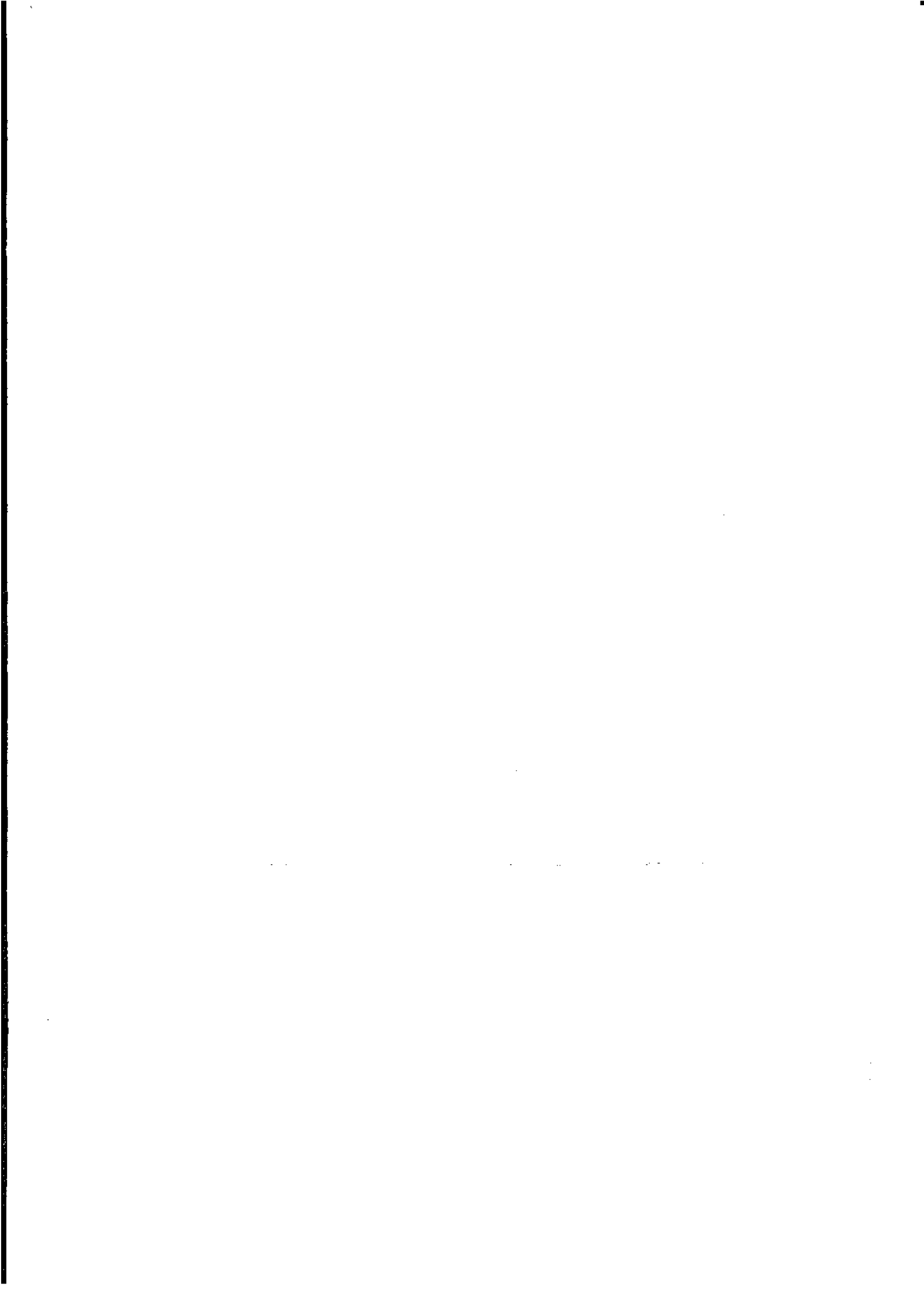
1	2	3	4
8.7	8.9	8.5	8.6
<i>i.e. the same as Apr 1997</i>	<i>i.e. rises by 2.2%</i>	<i>i.e. falls by 2.2%</i>	<i>i.e. same trend for Apr &amp; May</i>

	TREND as PUBLISHED	1	2	3	4
February	8.7	8.7	8.7	8.7	8.7
March	8.7	8.7	8.7	8.7	8.7
April	8.7	8.7	8.8	8.7	8.7
May (new)	—	8.7	8.8	8.7	8.7









## FOR MORE INFORMATION...

The ABS publishes a wide range of information on Australia's economic and social conditions. A catalogue of publications and products is available from any of our offices (see below).

### INFORMATION CONSULTANCY SERVICES

Information tailored to special needs of clients can be obtained from the Information Consultancy Service available at ABS Offices (see below).

### ABS PRODUCTS

A large number of ABS products is available from the ABS Bookshops (see below). The ABS also provides a subscription service - you can telephone the ABS Subscription Service Australia wide toll free on 1800 0206 08.

### ELECTRONIC SERVICES

A large range of data is available via on-line services, diskette, magnetic tape, tape cartridge and CD ROM. For more details about our electronic data services, contact any ABS office (see below) or e-mail us at:

- [client.services@abs.gov.au](mailto:client.services@abs.gov.au)

### GENERAL SALES AND INQUIRIES

- Sydney 02 9268 4611
- Melbourne 03 9615 7755
- Brisbane 07 3222 6351
- Perth 08 9360 5140
- Adelaide 08 8237 7100
- Hobart 03 6222 5800
- Darwin 08 8943 2111
- Canberra 06 252 6627
- Information Services, ABS  
PO Box 10, Belconnen ACT 2616



2620200004974

ISSN 1031-038X

RRP \$15.50