

LABOUR FORCE

AUSTRALIA
PRELIMINARY

EMBARGO: 11:30AM (CANBERRA TIME) THURS 13 FEB 1997

JANUARY KEY ESTIMATES

TREND ESTIMATES

	Dec 96	Jan 97	monthly change
Employed persons (no. in '000s)	8 406.8	8 419.0	0.1 %
Unemployed persons (no. in '000s)	793.8	791.5	-0.3 %
Unemployment rate (%)	8.6	8.6	0.0 pts
Participation rate (%)	63.6	63.6	0.0 pts

SEASONALLY ADJUSTED

	Dec 96	Jan 97	monthly change
Employed persons (no. in '000s)	8 401.5	8 439.9	38.4
Unemployed persons (no. in '000s)	794.5	791.8	-2.6
Unemployment rate (%)	8.6	8.6	-0.1 pts
Participation rate (%)	63.6	63.8	0.2 pts

JANUARY KEY POINTS

TREND ESTIMATES

EMPLOYMENT

- has been rising since May 1996, to stand at 8,419,000 in January 1997.

UNEMPLOYMENT

- fell slightly to 791,500 in January 1997 after rising for most of 1996.

UNEMPLOYMENT RATE

- peaked at 8.7% in October 1996 and has fallen gradually to 8.6% in January 1997.

PARTICIPATION RATE

- was steady at 63.6% in January 1997.

SEASONALLY ADJUSTED ESTIMATES

EMPLOYMENT

- increased by 38,400 to 8,439,900. Part-time employment rose by 34,900 to 2,138,400 with female part-time employment rising by 27,700.

UNEMPLOYMENT

- fell slightly to 791,800. Persons seeking full-time work rose by 8,700, while persons seeking part-time work fell by 11,300.

UNEMPLOYMENT RATE

- actually fell by 0.1 percentage points, but due to rounding stands at 8.6%. The male rate fell by 0.1 points to 8.6%. The female rate fell slightly to 8.5%.
- NSW 7.8% (7.7% last month); Vic. 8.7% (9.2%); Qld 10.3% (9.6%); SA 9.2% (9.6%); WA 7.6% (7.7%); Tas. 10.2% (10.9%).

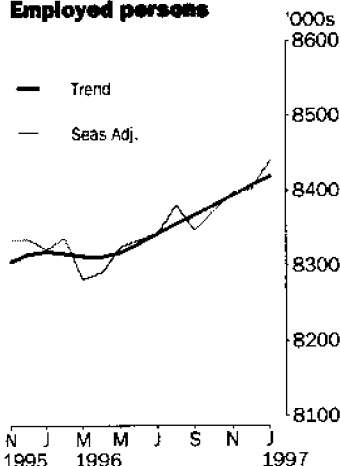
PARTICIPATION RATE

- rose by 0.2 percentage pc

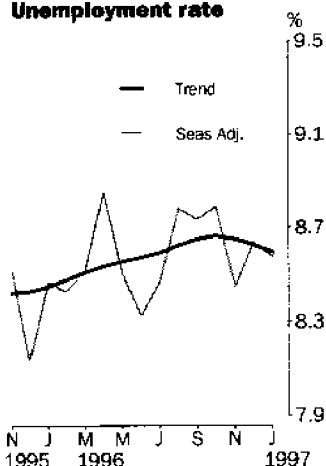
NOTE
Employment estimates affected by telephone interviewing - see page 2.

Australian
Bureau of
Statistics

Employed persons



Unemployment rate



INQUIRIES

- For further information about these and related statistics, contact Donna Maurer on 06 252 6525 or any ABS office.

LABOUR FORCE NOTES

FORTHCOMING ISSUES

ISSUE	RELEASE DATE
February 1997	13 March 1997
March 1997	10 April 1997
April 1997	8 May 1997
May 1997	12 June 1997
June 1997	10 July 1997
July 1997	7 August 1997

.....

EMPLOYMENT ESTIMATES AFFECTED BY TELEPHONE INTERVIEWING

The ABS is progressively introducing the use of telephone interviewing into the Labour Force Survey (LFS). Households selected for the LFS are interviewed each month for 8 months, with one eighth of the sample being replaced each month. The first interview continues to be conducted face-to-face with subsequent interviews conducted by telephone (if acceptable to the respondent). Telephone interviewing is being phased in for each new sample group from August 1996 and will be fully implemented by February 1997.

Last month, the ABS reported that evidence has emerged that the new methodology has had an impact on employment estimates. Analysis of data for January 1997 has shown a continuation of the impact. It further indicates that the average impact on aggregate employment estimates continues to be of the order of 6,000 to 9,000 per month lower than those that would have been obtained if the previous survey method had continued. The cumulative effect on the estimate of employment to January 1997 would therefore be of the order of 36,000 to 54,000 persons.

This relatively small change on the level estimate of total employment (8,439,900) makes it impossible to apportion the impact on individual component series (eg sex, age and State/Territory).

Analysis continues to show no distinct pattern for either the unemployment or labour force participation rates.

An article about the analysis conducted by the ABS, and its findings, was published in the December issue of *Labour Force, Australia* (6203.0).

The ABS will continue to monitor the implementation of telephone interviewing and continue to assess its effect on key labour force series. The results will be reported in this publication.

Any inquiries should be directed to Donna Maurer on 06 252 6525.

.....

FORTHCOMING CHANGES

Seasonal factors for the Monthly Labour Force Survey are reviewed each February. Revised seasonally adjusted and trend data, and seasonal factors up to January 1997 will be available on Thursday 6 March 1997, on request. The February issue of this publication (to be released on Thursday 13 March 1997) will also contain revised seasonally adjusted and trend estimates. For further inquiries, contact Donna Maurer on 06 252 6525.

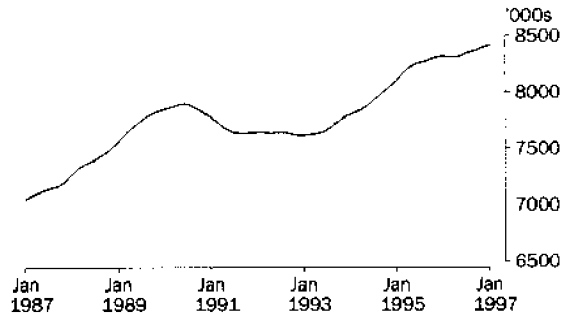
.....

T.J. Skinner
Acting Australian Statistician

PRINCIPAL LABOUR FORCE SERIES: Trend estimates

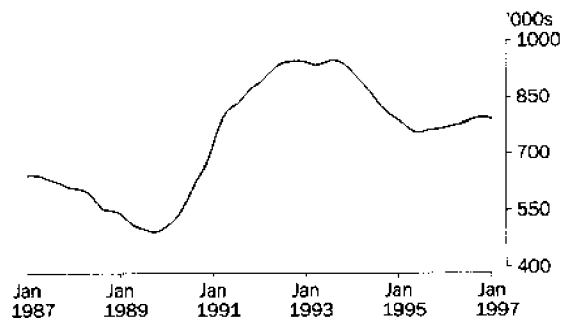
EMPLOYED PERSONS

Trend employment reached a high of 7,894,000 in June 1990, before falling to 7,617,200 in January 1993. The trend estimate rose to 8,318,200 in January 1996, before falling until April 1996. Since then, the trend has been rising to reach 8,419,000 in January 1997 (Note: the growth in recent months may be understated - see page 2).



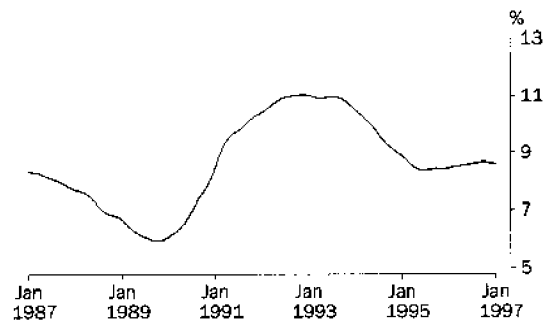
UNEMPLOYED PERSONS

After peaking at 946,800 in September 1993, the trend estimate for unemployed persons fell rapidly to 754,600 in June 1995. The trend then rose steadily, to 794,900 in November 1996, before falling slightly to 791,500 in January 1997.



UNEMPLOYMENT RATE

From a high of 11.0% for much of 1992 and 1993, the trend unemployment rate fell rapidly to reach a low of 8.4% between May 1995 and January 1996. The trend then rose slowly to 8.7% between September and November 1996, but has since fallen to 8.6% in January 1997.

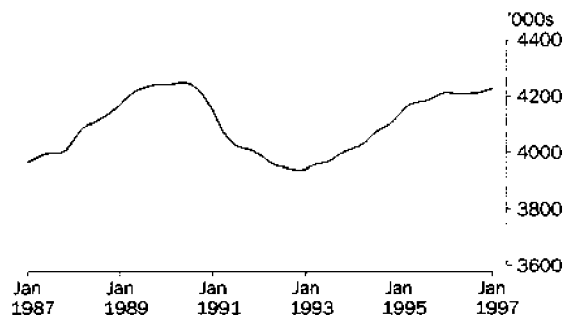


EMPLOYED PERSONS: Trend estimates

MALES EMPLOYED FULL TIME

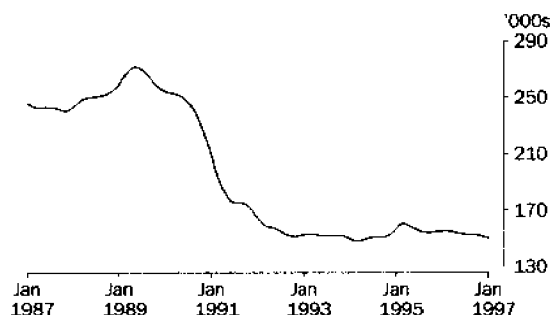
TOTAL

From a low of 3,936,700 in November 1992, the trend estimate for male full-time employment rose to 4,212,400 in February 1996. After falling slightly to 4,207,000 in May 1996, trend estimates continued to rise, to reach 4,225,600 in January 1997.



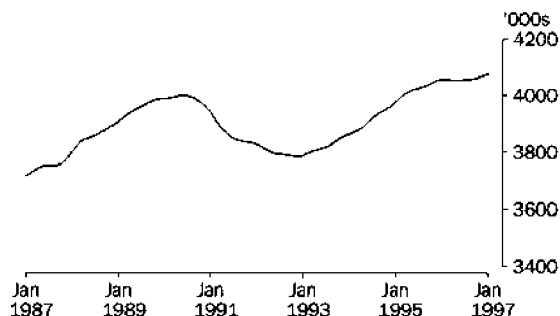
MALES AGED 15-19

Trend male junior full-time employment peaked at 271,200 in May 1989, before falling rapidly until late 1992. The trend remained relatively steady until late 1994, before rising to 160,500 in March 1995. Since then, the trend estimate has been falling slowly to 150,300 in January 1997.



MALES AGED 20 AND OVER

From a low of 3,785,100 in December 1992, male adult full-time employment estimates increased steadily to reach 4,056,700 in February 1996. The trend estimate then fell slightly until May 1996 before again rising, to 4,075,300 in January 1997.

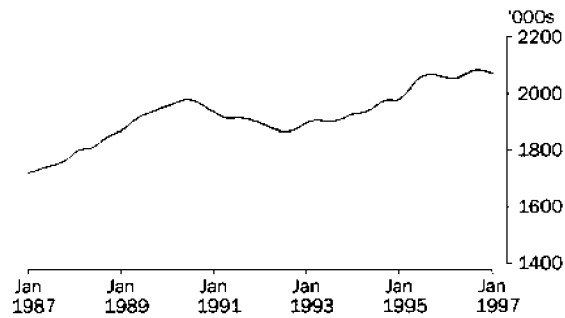


EMPLOYED PERSONS: Trend estimates

FEMALES EMPLOYED FULL TIME

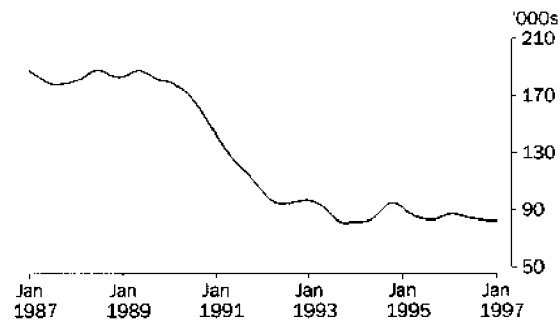
TOTAL

The trend estimate for female full-time employment rose steadily from a low of 1,864,600 in August 1992 to 2,083,700 in September 1996, although there were some short periods of decline. In recent months, the trend estimate has fallen, to 2,071,600 in January 1997.



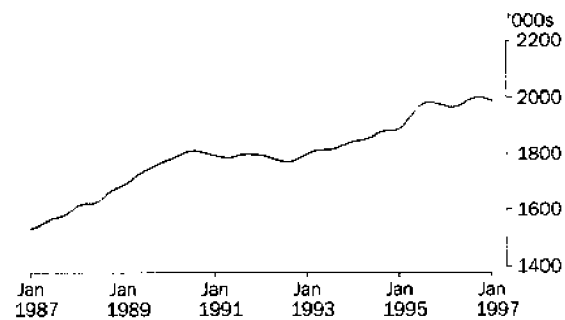
FEMALES AGED 15-19

After falling steeply from 187,700 in May 1989 to 94,100 in June 1992, trend junior female full-time employment has remained low compared with levels reached in the late 1980's. In January 1997, the trend stood at 81,900 and has been falling slowly for the last eleven months.



FEMALES AGED 20 AND OVER

Over the past 10 years, female adult full-time employment has generally increased. Recently, from a high of 1,984,100 in September 1995, the trend fell slightly until March 1996, before rising to a new high of 2,000,700 in late 1996. The trend has since fallen, to 1,989,700 in January 1997.



LABOUR FORCE STATUS (AGED 15 AND OVER): Original

Month	EMPLOYED.....			UNEMPLOYED.....							
	Employed full time '000s	Employed part time '000s	Total employed '000s	Unemp. looking for fit work '000s	Unemp. looking for p/t work '000s	Total unemployed '000s	Labour force '000s	Not in labour force '000s	Civilian population aged 15 and over '000s	Unemp-loyment rate %	Partic-ipation rate %
MALES											
1995											
November	4 190.5	527.2	4 717.7	388.1	44.4	432.5	5 150.2	1 843.7	6 993.8	8.4	73.6
December	4 272.4	513.0	4 785.4	399.4	49.8	449.3	5 234.7	1 767.2	7 001.9	8.6	74.8
1996											
January	4 208.0	478.8	4 686.9	447.8	59.1	506.9	5 193.7	1 817.8	7 011.6	9.8	74.1
February	4 223.2	502.7	4 725.9	437.4	54.6	492.0	5 217.9	1 803.2	7 021.2	9.4	74.3
March	4 180.6	534.4	4 715.0	410.6	63.5	474.1	5 189.1	1 841.7	7 030.8	9.1	73.8
April	4 187.4	535.4	4 722.9	405.1	57.7	462.8	5 185.7	1 855.2	7 040.9	8.9	73.7
May	4 210.3	537.6	4 748.0	389.6	52.4	442.0	5 190.0	1 861.0	7 051.0	8.5	73.6
June	4 201.3	550.4	4 751.6	380.3	51.9	432.1	5 183.8	1 877.4	7 061.1	8.3	73.4
July	4 237.1	535.5	4 772.6	371.7	50.4	422.1	5 194.7	1 876.2	7 070.9	8.1	73.5
August	4 176.4	553.9	4 730.3	406.1	54.1	460.2	5 190.5	1 890.2	7 080.7	8.9	73.3
September	4 212.9	565.4	4 778.3	408.4	57.3	465.8	5 244.0	1 846.4	7 090.5	8.9	74.0
October	4 215.3	549.5	4 764.8	387.3	58.9	446.3	5 211.1	1 888.2	7 099.3	8.6	73.4
November	4 208.9	548.4	4 757.3	385.2	49.2	434.4	5 191.7	1 916.4	7 108.1	8.4	73.0
December	4 277.6	545.2	4 822.8	397.1	65.0	462.1	5 284.9	1 832.0	7 116.9	8.7	74.3
1997											
January	4 221.2	531.2	4 752.4	435.0	65.3	500.3	5 252.6	1 871.5	7 124.2	9.5	73.7
FEMALES											
1995											
November	2 068.5	1 543.6	3 612.1	211.5	92.8	304.3	3 916.4	3 295.4	7 211.8	7.8	54.3
December	2 105.3	1 539.9	3 645.3	211.2	88.1	299.3	3 944.6	3 275.7	7 220.3	7.6	54.6
1996											
January	2 066.9	1 431.2	3 498.1	228.4	96.4	324.8	3 823.0	3 407.1	7 230.1	8.5	52.9
February	2 049.1	1 489.3	3 538.4	248.5	116.1	364.6	3 903.0	3 336.9	7 239.9	9.3	53.9
March	2 057.2	1 530.5	3 587.7	219.3	117.5	336.9	3 924.5	3 325.1	7 249.7	8.6	54.1
April	2 042.8	1 512.1	3 555.0	217.7	112.4	330.1	3 885.1	3 375.2	7 260.2	8.5	53.5
May	2 042.2	1 546.9	3 589.1	207.7	108.5	316.1	3 905.2	3 365.5	7 270.8	8.1	53.7
June	2 042.2	1 560.2	3 602.4	194.9	103.5	298.4	3 900.9	3 380.5	7 281.4	7.7	53.6
July	2 092.0	1 515.4	3 607.3	207.8	101.7	309.5	3 916.8	3 375.7	7 292.5	7.9	53.7
August	2 059.8	1 529.6	3 589.4	210.1	100.9	310.9	3 900.3	3 403.3	7 303.6	8.0	53.4
September	2 087.4	1 564.0	3 651.3	220.6	113.9	334.5	3 985.8	3 328.9	7 314.8	8.4	54.5
October	2 089.2	1 538.5	3 627.7	211.1	107.5	318.6	3 946.3	3 378.2	7 324.5	8.1	53.9
November	2 075.0	1 560.2	3 635.2	204.5	98.4	302.9	3 938.0	3 396.3	7 334.3	7.7	53.7
December	2 122.5	1 551.2	3 673.7	231.1	112.4	343.5	4 017.2	3 326.8	7 344.1	8.6	54.7
1997											
January	2 071.8	1 472.1	3 543.9	251.2	102.3	353.5	3 897.5	3 454.5	7 352.0	9.1	53.0
PERSONS											
1995											
November	6 259.1	2 070.8	8 329.8	599.6	137.2	736.8	9 066.6	5 139.0	14 205.7	8.1	63.8
December	6 377.8	2 052.9	8 430.7	610.7	137.9	748.6	9 179.3	5 042.9	14 222.2	8.2	64.5
1996											
January	6 275.0	1 910.0	8 185.0	676.2	155.5	831.7	9 016.7	5 225.0	14 241.7	9.2	63.3
February	6 272.3	1 992.0	8 264.3	686.0	170.7	856.6	9 120.9	5 140.1	14 261.0	9.4	64.0
March	6 237.7	2 064.9	8 302.7	629.9	181.0	810.9	9 113.6	5 166.8	14 280.5	8.9	63.8
April	6 230.3	2 047.6	8 277.8	622.8	170.2	793.0	9 070.8	5 230.4	14 301.1	8.7	63.4
May	6 252.5	2 084.5	8 337.1	597.3	160.9	758.2	9 095.2	5 226.6	14 321.8	8.3	63.5
June	6 243.5	2 110.6	8 354.1	575.2	155.4	730.5	9 084.6	5 257.9	14 342.5	8.0	63.3
July	6 329.0	2 050.9	8 379.9	579.5	152.1	731.6	9 111.5	5 251.9	14 363.4	8.0	63.4
August	6 236.2	2 083.5	8 319.7	616.1	155.0	771.1	9 090.8	5 293.5	14 384.3	8.5	63.2
September	6 300.3	2 129.3	8 429.6	629.0	171.2	800.2	9 229.8	5 175.4	14 405.2	8.7	64.1
October	6 304.5	2 088.0	8 392.5	598.4	166.4	764.9	9 157.4	5 266.4	14 423.8	8.4	63.5
November	6 283.9	2 108.6	8 392.5	589.7	147.6	737.2	9 129.7	5 312.7	14 442.4	8.1	63.2
December	6 400.1	2 096.4	8 496.5	628.2	177.4	805.7	9 302.2	5 158.8	14 461.0	8.7	64.3
1997											
January	6 293.0	2 003.3	8 296.3	686.2	167.6	853.8	9 150.1	5 326.0	14 476.2	9.3	63.2

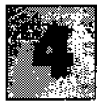
LABOUR FORCE STATUS (AGED 15 AND OVER): Seasonally adjusted

Month	EMPLOYED.....			UNEMPLOYED.....					
	Employed full time	Employed part time	Total employed	Unemp. looking for full work	Unemp. looking for part work	Total unemployed	Labour force	Unemp- loyment rate	Partic- ipation rate
	'000s	'000s	'000s	'000s	'000s	'000s	'000s	%	%
MALES									
1995									
November	4 203.5	534.8	4 738.2	403.5	51.6	455.1	5 193.3	8.8	74.3
December	4 212.6	519.2	4 731.8	395.9	47.2	443.1	5 174.9	8.6	73.9
1996									
January	4 223.9	503.9	4 727.8	406.5	52.1	458.5	5 186.3	8.8	74.0
February	4 228.0	523.6	4 751.6	403.7	48.3	452.0	5 203.6	8.7	74.1
March	4 192.0	521.0	4 713.0	407.6	54.1	461.7	5 174.7	8.9	73.6
April	4 197.3	528.0	4 725.3	410.7	59.2	470.0	5 195.2	9.0	73.8
May	4 217.2	534.5	4 751.7	389.2	53.6	442.8	5 194.5	8.5	73.7
June	4 201.7	543.9	4 745.5	386.9	57.5	444.4	5 189.9	8.6	73.5
July	4 217.1	534.3	4 751.4	386.8	56.5	443.3	5 194.8	8.5	73.5
August	4 214.7	547.7	4 762.4	415.1	61.2	476.3	5 238.7	9.1	74.0
September	4 202.3	547.9	4 750.1	415.2	52.7	467.9	5 218.0	9.0	73.6
October	4 205.6	542.6	4 748.2	411.1	63.6	474.7	5 222.8	9.1	73.6
November	4 221.2	556.5	4 777.7	400.7	57.0	457.6	5 235.3	8.7	73.7
December	4 217.8	551.5	4 769.3	392.6	62.0	454.5	5 223.8	8.7	73.4
1997									
January	4 237.8	558.7	4 796.5	395.5	57.4	452.9	5 249.4	8.6	73.7
FEMALES									
1995									
November	2 069.8	1 526.6	3 596.4	224.1	96.3	320.3	3 916.7	8.2	54.3
December	2 062.8	1 540.7	3 603.5	205.3	89.9	295.2	3 898.7	7.6	54.0
1996									
January	2 057.7	1 536.5	3 594.2	209.3	102.1	311.4	3 905.6	8.0	54.0
February	2 046.9	1 537.8	3 584.7	215.0	100.4	315.4	3 900.1	8.1	53.9
March	2 051.5	1 516.5	3 568.0	209.6	99.8	309.4	3 877.4	8.0	53.5
April	2 066.3	1 499.3	3 565.6	221.7	113.5	335.3	3 900.8	8.6	53.7
May	2 050.6	1 522.5	3 573.1	216.1	115.2	331.3	3 904.4	8.5	53.7
June	2 049.2	1 538.7	3 587.9	201.3	111.4	312.7	3 900.6	8.0	53.6
July	2 084.0	1 507.8	3 591.8	217.0	112.1	329.1	3 920.9	8.4	53.8
August	2 097.6	1 521.0	3 618.7	222.1	108.8	330.9	3 949.5	8.4	54.1
September	2 079.7	1 517.2	3 596.9	227.4	103.8	331.2	3 928.1	8.4	53.7
October	2 086.1	1 538.3	3 624.4	223.1	109.1	332.2	3 956.6	8.4	54.0
November	2 076.1	1 543.2	3 619.3	215.9	101.7	317.6	3 936.8	8.1	53.7
December	2 080.3	1 551.9	3 632.2	224.9	115.1	339.9	3 972.1	8.6	54.1
1997									
January	2 063.7	1 579.6	3 643.4	230.6	108.3	338.9	3 982.3	8.5	54.2
PERSONS									
1995									
November	6 273.2	2 061.4	8 334.6	627.6	147.9	775.5	9 110.1	8.5	64.1
December	6 275.4	2 059.9	8 335.3	601.2	137.1	738.3	9 073.6	8.1	63.8
1996									
January	6 281.5	2 040.4	8 321.9	615.7	154.2	770.0	9 091.9	8.5	63.8
February	6 274.9	2 061.4	8 336.3	618.7	148.8	767.4	9 103.7	8.4	63.8
March	6 243.5	2 037.5	8 281.0	617.2	153.9	771.1	9 052.1	8.5	63.4
April	6 263.6	2 027.2	8 290.8	632.5	172.8	805.2	9 096.0	8.9	63.6
May	6 267.7	2 057.1	8 324.8	605.3	168.8	774.1	9 098.9	8.5	63.5
June	6 250.9	2 082.6	8 333.5	588.1	168.9	757.1	9 090.5	8.3	63.4
July	6 301.1	2 042.1	8 343.2	603.9	168.6	772.5	9 115.7	8.5	63.5
August	6 312.3	2 068.8	8 381.1	637.2	169.9	807.1	9 188.2	8.8	63.9
September	6 281.9	2 065.1	8 347.0	642.6	156.5	799.1	9 146.2	8.7	63.5
October	6 291.7	2 080.9	8 372.5	634.2	172.7	806.9	9 179.4	8.8	63.6
November	6 297.3	2 099.7	8 397.0	616.5	158.7	775.2	9 172.1	8.5	63.5
December	6 298.0	2 103.4	8 401.5	617.4	177.0	794.5	9 195.9	8.6	63.6
1997									
January	6 301.5	2 138.4	8 439.9	626.1	165.8	791.8	9 231.7	8.6	63.8

LABOUR FORCE STATUS (AGED 15 AND OVER): Trend¹

Month	EMPLOYED.....			UNEMPLOYED.....					
	Employed full time '000s	Employed part time '000s	Total employed '000s	Unemp. looking for full work '000s	Unemp. looking for part work '000s	Total unemployed '000s	Labour force '000s	Unemployment rate %	Participation rate %
MALES									
1995									
November	4 202.1	517.0	4 719.1	405.5	51.5	457.0	5 176.1	8.8	74.0
December	4 207.9	517.9	4 725.8	405.8	50.7	456.4	5 182.2	8.8	74.0
1996									
January	4 211.5	518.6	4 730.1	405.6	50.7	456.3	5 186.5	8.8	74.0
February	4 212.4	520.1	4 732.5	404.3	51.6	455.9	5 188.4	8.8	73.9
March	4 211.0	523.2	4 734.2	401.8	53.2	455.0	5 189.1	8.8	73.8
April	4 208.8	527.7	4 736.5	399.0	54.8	453.8	5 190.3	8.7	73.7
May	4 207.0	533.0	4 740.1	397.0	56.2	453.2	5 193.3	8.7	73.7
June	4 207.3	537.9	4 745.2	397.0	57.0	454.0	5 199.2	8.7	73.6
July	4 208.2	541.3	4 749.5	399.4	57.5	456.9	5 206.4	8.8	73.6
August	4 209.5	543.9	4 753.4	402.9	58.0	460.9	5 214.3	8.8	73.6
September	4 210.7	546.4	4 757.1	405.6	58.4	464.0	5 221.1	8.9	73.6
October	4 213.0	548.8	4 761.8	406.0	58.9	465.0	5 226.8	8.9	73.6
November	4 216.8	551.5	4 768.3	404.0	59.2	463.3	5 231.5	8.9	73.6
December	4 221.6	553.9	4 775.5	401.0	59.4	460.3	5 235.8	8.8	73.6
1997									
January	4 225.6	556.5	4 782.1	397.5	59.5	456.9	5 239.0	8.7	73.5
FEMALES									
1995									
November	2 064.2	1 521.2	3 585.4	212.8	94.2	307.1	3 892.5	7.9	54.0
December	2 061.2	1 527.3	3 588.6	213.3	95.7	309.0	3 897.5	7.9	54.0
1996									
January	2 057.7	1 530.4	3 588.0	213.3	98.1	311.4	3 899.5	8.0	53.9
February	2 054.2	1 529.1	3 583.3	213.0	101.6	314.6	3 897.9	8.1	53.8
March	2 052.6	1 525.0	3 577.7	212.6	105.6	318.2	3 895.9	8.2	53.7
April	2 054.2	1 520.3	3 574.5	212.7	109.1	321.7	3 896.2	8.3	53.7
May	2 059.4	1 517.4	3 576.8	213.6	111.4	325.0	3 901.8	8.3	53.7
June	2 066.9	1 517.0	3 583.9	215.0	111.9	326.9	3 910.8	8.4	53.7
July	2 074.9	1 518.3	3 593.2	216.6	110.9	327.4	3 920.6	8.4	53.8
August	2 081.0	1 521.6	3 602.6	218.6	109.2	327.8	3 930.4	8.3	53.8
September	2 083.7	1 527.1	3 610.7	220.7	107.7	328.4	3 939.2	8.3	53.9
October	2 083.2	1 534.7	3 617.9	222.6	107.3	329.9	3 947.8	8.4	53.9
November	2 080.4	1 544.4	3 624.8	224.1	107.5	331.6	3 956.4	8.4	53.9
December	2 076.8	1 554.5	3 631.3	225.4	108.1	333.5	3 964.8	8.4	54.0
1997									
January	2 071.6	1 565.3	3 636.9	225.8	108.8	334.6	3 971.4	8.4	54.0
PERSONS									
1995									
November	6 266.3	2 038.2	8 304.5	618.3	145.7	764.0	9 068.5	8.4	63.8
December	6 269.1	2 045.2	8 314.3	619.1	146.3	765.4	9 079.7	8.4	63.8
1996									
January	6 269.2	2 049.0	8 318.2	619.0	148.8	767.7	9 085.9	8.4	63.8
February	6 266.6	2 049.3	8 315.8	617.3	153.2	770.5	9 086.3	8.5	63.7
March	6 263.6	2 048.2	8 311.8	614.4	158.8	773.2	9 085.0	8.5	63.6
April	6 263.0	2 048.1	8 311.0	611.6	163.9	775.6	9 086.6	8.5	63.5
May	6 266.4	2 050.5	8 316.9	610.6	167.6	778.2	9 095.1	8.6	63.5
June	6 274.2	2 054.9	8 329.1	612.0	168.9	780.9	9 110.0	8.6	63.5
July	6 283.1	2 059.6	8 342.7	616.0	168.4	784.4	9 127.1	8.6	63.5
August	6 290.4	2 065.5	8 355.9	621.5	167.2	788.7	9 144.6	8.6	63.6
September	6 294.4	2 073.4	8 367.8	626.3	166.1	792.5	9 160.3	8.7	63.6
October	6 296.2	2 083.5	8 379.7	628.7	166.2	794.8	9 174.5	8.7	63.6
November	6 297.2	2 095.9	8 393.1	628.1	166.8	794.9	9 187.9	8.7	63.6
December	6 298.3	2 108.4	8 406.8	626.3	167.5	793.8	9 200.6	8.6	63.6
1997									
January	6 297.2	2 121.7	8 419.0	623.2	168.2	791.5	9 210.4	8.6	63.6

¹ Estimates for July 1996 to December 1996 have been revised.



UNEMPLOYED PERSONS: Original

NUMBER OF UNEMPLOYED PERSONS..... UNEMPLOYMENT RATE..... UNEMPLOYMENT TO POPULATION RATIO

Month	NUMBER OF UNEMPLOYED PERSONS.....					UNEMPLOYMENT RATE.....					UNEMPLOYMENT TO POPULATION RATIO	
	Aged 15-19 looking for f/t work	Aged 20 and over looking for f/t work	Total looking for f/t work	Looking for p/t work	Total unemployed	Aged 15-19 looking for f/t work	Aged 20 and over looking for f/t work	Total looking for f/t work	Looking for p/t work	Total unemployed	Aged 15-19 looking for f/t work	Aged 20 and over looking for f/t work
	'000s	'000s	'000s	'000s	'000s	%	%	%	%	%	%	%
MALES												
1995												
November	48.0	340.1	388.1	44.4	432.5	24.9	7.8	8.5	7.8	8.4	7.4	5.4
December	59.6	339.8	399.4	49.8	449.3	26.3	7.6	8.5	8.9	8.6	9.2	5.3
1996												
January	69.4	378.4	447.8	59.1	506.9	28.9	8.6	9.6	11.0	9.8	10.7	5.9
February	58.4	379.0	437.4	54.6	492.0	26.5	8.5	9.4	9.8	9.4	9.0	6.0
March	53.7	356.8	410.6	63.5	474.1	25.5	8.1	8.9	10.6	9.1	8.2	5.6
April	55.0	350.1	405.1	57.7	462.8	25.7	8.0	8.8	9.7	8.9	8.4	5.5
May	55.5	334.2	389.6	52.4	442.0	27.4	7.6	8.5	8.9	8.5	8.5	5.2
June	55.8	324.5	380.3	51.9	432.1	28.0	7.4	8.3	8.6	8.3	8.5	5.1
July	46.6	325.1	371.7	50.4	422.1	22.8	7.4	8.1	8.6	8.1	7.1	5.1
August	49.3	356.8	406.1	54.1	460.2	25.4	8.1	8.9	8.9	8.9	7.5	5.6
September	48.7	359.7	408.4	57.3	465.8	24.6	8.1	8.8	9.2	8.9	7.4	5.6
October	49.7	337.7	387.3	58.9	446.3	25.0	7.7	8.4	9.7	8.6	7.6	5.2
November	50.6	334.5	385.2	49.2	434.4	26.4	7.6	8.4	8.2	8.4	7.7	5.2
December	67.3	329.8	397.1	65.0	462.1	29.3	7.4	8.5	10.7	8.7	10.3	5.1
1997												
January	60.5	374.5	435.0	65.3	500.3	26.7	8.5	9.3	10.9	9.5	9.2	5.8
FEMALES												
1995												
November	41.1	170.4	211.5	92.8	304.3	34.4	7.9	9.3	5.7	7.8	6.7	2.6
December	47.2	164.0	211.2	88.1	299.3	32.6	7.6	9.1	5.4	7.6	7.6	2.5
1996												
January	47.2	181.2	228.4	96.4	324.8	32.2	8.4	10.0	6.3	8.5	7.6	2.7
February	45.9	202.6	248.5	116.1	364.6	33.4	9.4	10.8	7.2	9.3	7.4	3.1
March	37.7	181.6	219.3	117.5	336.9	31.9	8.4	9.6	7.1	8.6	6.1	2.7
April	35.0	182.7	217.7	112.4	330.1	29.9	8.5	9.6	6.9	8.5	5.6	2.8
May	35.1	172.6	207.7	108.5	316.1	30.0	8.1	9.2	6.6	8.1	5.7	2.6
June	30.3	164.6	194.9	103.5	298.4	27.8	7.7	8.7	6.2	7.7	4.9	2.5
July	29.9	177.9	207.8	101.7	309.5	25.2	8.2	9.0	6.3	7.9	4.8	2.7
August	33.2	176.9	210.1	100.9	310.9	30.4	8.2	9.3	6.2	8.0	5.3	2.6
September	35.5	185.1	220.6	113.9	334.5	30.3	8.4	9.6	6.8	8.4	5.7	2.8
October	34.8	176.3	211.1	107.5	318.6	29.0	8.1	9.2	6.5	8.1	5.6	2.6
November	35.6	168.9	204.5	98.4	302.9	31.3	7.8	9.0	5.9	7.7	5.7	2.5
December	51.7	179.4	231.1	112.4	343.5	36.6	8.1	9.8	6.8	8.6	8.3	2.7
1997												
January	48.8	202.4	251.2	102.3	353.5	34.1	9.3	10.8	6.5	9.1	7.8	3.0
PERSONS												
1995												
November	89.0	510.5	599.6	137.2	736.8	28.5	7.8	8.7	6.2	8.1	7.0	3.9
December	106.9	503.8	610.7	137.9	748.6	28.8	7.6	8.7	6.3	8.2	8.4	3.9
1996												
January	116.6	559.6	676.2	155.5	831.7	30.2	8.5	9.7	7.5	9.2	9.2	4.3
February	104.3	581.7	686.0	170.7	856.6	29.2	8.8	9.9	7.9	9.4	8.2	4.5
March	91.4	538.5	629.9	181.0	810.9	27.8	8.2	9.2	8.1	8.9	7.2	4.1
April	90.0	532.8	622.8	170.2	793.0	27.2	8.2	9.1	7.7	8.7	7.1	4.1
May	90.5	506.8	597.3	160.9	758.2	28.3	7.8	8.7	7.2	8.3	7.1	3.9
June	86.1	489.1	575.2	155.4	730.5	27.9	7.5	8.4	6.9	8.0	6.8	3.7
July	76.5	503.0	579.5	152.1	731.6	23.7	7.6	8.4	6.9	8.0	6.0	3.8
August	82.5	533.7	616.1	155.0	771.1	27.2	8.1	9.0	6.9	8.5	6.5	4.1
September	84.2	544.8	629.0	171.2	800.2	26.7	8.2	9.1	7.4	8.7	6.6	4.2
October	84.4	514.0	598.4	166.4	764.9	26.5	7.8	8.7	7.4	8.4	6.6	3.9
November	86.3	503.4	589.7	147.6	737.2	28.2	7.7	8.6	6.5	8.1	6.7	3.8
December	119.0	509.2	628.2	177.4	805.7	32.1	7.6	8.9	7.8	8.7	9.3	3.9
1997												
January	109.3	576.9	686.2	167.6	853.8	29.6	8.7	9.8	7.7	9.3	8.5	4.4

UNEMPLOYED PERSONS: Seasonally adjusted

Month	NUMBER OF UNEMPLOYED PERSONS.....					UNEMPLOYMENT RATE.....					UNEMPLOYMENT TO POPULATION RATIO	
	Aged 15-19 looking for f/t work	Aged 20 and over looking for f/t work	Total looking for f/t work	Looking for p/t work	Total unemployed	Aged 15-19 looking for f/t work	Aged 20 and over looking for f/t work	Total looking for f/t work	Looking for p/t work	Total unemployed	Aged 15-19 looking for f/t work	Aged 20 and over looking for f/t work
	'000s	'000s	'000s	'000s	'000s	%	%	%	%	%	%	%
MALES												
1995												
November	53.9	349.6	403.5	51.6	455.1	26.0	7.9	8.8	8.8	8.8	8.3	5.5
December	51.3	344.7	395.9	47.2	443.1	25.0	7.8	8.6	8.3	8.6	7.9	5.4
1996												
January	56.2	350.3	406.5	52.1	458.5	26.3	7.9	8.8	9.4	8.8	8.6	5.5
February	49.5	354.1	403.7	48.3	452.0	24.5	8.0	8.7	8.5	8.7	7.6	5.6
March	55.0	352.6	407.6	54.1	461.7	25.8	8.0	8.9	9.4	8.9	8.4	5.5
April	55.9	354.9	410.7	59.2	470.0	26.0	8.1	8.9	10.1	9.0	8.6	5.6
May	55.7	333.4	389.2	53.6	442.8	26.7	7.6	8.4	9.1	8.5	8.5	5.2
June	58.7	328.2	386.9	57.5	444.4	28.7	7.5	8.4	9.6	8.6	9.0	5.1
July	50.5	336.3	386.8	56.5	443.3	24.5	7.6	8.4	9.6	8.5	7.7	5.2
August	53.5	361.6	415.1	61.2	476.3	25.9	8.2	9.0	10.0	9.1	8.2	5.6
September	53.5	361.6	415.2	52.7	467.9	25.7	8.2	9.0	8.8	9.0	8.2	5.6
October	56.6	354.4	411.1	63.6	474.7	27.0	8.0	8.9	10.5	9.1	8.6	5.5
November	57.0	343.7	400.7	57.0	457.6	27.6	7.8	8.7	9.3	8.7	8.7	5.3
December	57.8	334.7	392.6	62.0	454.5	27.9	7.6	8.5	10.1	8.7	8.8	5.2
1997												
January	49.0	346.5	395.5	57.4	452.9	24.4	7.8	8.5	9.3	8.6	7.5	5.4
FEMALES												
1995												
November	47.6	176.5	224.1	96.3	320.3	36.5	8.2	9.8	5.9	8.2	7.7	2.7
December	38.4	166.9	205.3	89.9	295.2	30.5	7.8	9.1	5.5	7.6	6.2	2.5
1996												
January	38.1	171.1	209.3	102.1	311.4	30.2	8.0	9.2	6.2	8.0	6.2	2.6
February	37.4	177.5	215.0	100.4	315.4	29.5	8.3	9.5	6.1	8.1	6.0	2.7
March	37.2	172.4	209.6	99.8	309.4	30.4	8.1	9.3	6.2	8.0	6.0	2.6
April	38.0	163.8	221.7	113.5	335.3	30.9	8.5	9.7	7.0	8.6	6.1	2.8
May	37.4	178.7	216.1	115.2	331.3	30.5	8.3	9.5	7.0	8.5	6.0	2.7
June	31.4	169.8	201.3	111.4	312.7	27.5	8.0	8.9	6.8	8.0	5.1	2.5
July	31.1	186.0	217.0	112.1	329.1	26.2	8.5	9.4	6.9	8.4	5.0	2.8
August	36.1	186.0	222.1	108.8	330.9	30.7	8.4	9.6	6.7	8.4	5.8	2.8
September	38.9	188.6	227.4	103.8	331.2	32.2	8.6	9.9	6.4	8.4	6.2	2.8
October	43.0	180.1	223.1	109.1	332.2	34.0	8.3	9.7	6.6	8.4	6.9	2.7
November	41.2	174.7	215.9	101.7	317.6	33.3	8.1	9.4	6.2	8.1	6.6	2.6
December	42.1	182.8	224.9	115.1	339.9	34.5	8.4	9.8	6.9	8.6	6.7	2.7
1997												
January	39.4	191.2	230.6	108.3	338.9	32.0	8.8	10.1	6.4	8.5	6.3	2.8
PERSONS												
1995												
November	101.5	526.1	627.6	147.9	775.5	30.0	8.0	9.1	6.7	8.5	8.0	4.1
December	89.7	511.5	601.2	137.1	738.3	27.1	7.8	8.7	6.2	8.1	7.1	3.9
1996												
January	94.3	521.4	615.7	154.2	770.0	27.8	8.0	8.9	7.0	8.5	7.4	4.0
February	87.0	531.7	618.7	148.8	767.4	26.4	8.1	9.0	6.7	8.4	6.8	4.1
March	92.2	525.0	617.2	153.9	771.1	27.5	8.0	9.0	7.0	8.5	7.3	4.0
April	93.8	538.6	632.5	172.8	805.2	27.8	8.2	9.2	7.9	8.9	7.4	4.1
May	93.1	512.2	605.3	168.8	774.1	28.1	7.8	8.8	7.6	8.5	7.3	3.9
June	90.1	498.0	588.1	168.9	757.1	28.2	7.6	8.6	7.5	8.3	7.1	3.8
July	81.6	522.3	603.9	168.6	772.5	25.1	7.9	8.7	7.6	8.5	6.4	4.0
August	89.6	547.6	637.2	169.9	807.1	27.6	8.3	9.2	7.6	8.8	7.0	4.2
September	92.4	550.2	642.6	156.5	799.1	28.1	8.3	9.3	7.0	8.7	7.2	4.2
October	99.6	534.6	634.2	172.7	806.9	29.6	8.1	9.2	7.7	8.8	7.8	4.1
November	98.2	518.3	616.5	158.7	775.2	29.7	7.9	8.9	7.0	8.5	7.7	3.9
December	99.9	517.5	617.4	177.0	794.5	30.4	7.9	8.9	7.8	8.6	7.8	3.9
1997												
January	88.5	537.6	626.1	165.8	791.8	27.3	8.1	9.0	7.2	8.6	6.9	4.1

UNEMPLOYED PERSONS: Trend¹

- NUMBER OF UNEMPLOYED PERSONS..... UNEMPLOYMENT RATE..... UNEMPLOYMENT TO POPULATION RATIO

Month	NUMBER OF UNEMPLOYED PERSONS.....					UNEMPLOYMENT RATE.....					UNEMPLOYMENT TO POPULATION RATIO	
	Aged 15-19 looking for f/t work	Aged 20 and over looking for f/t work	Total looking for f/t work	Looking for p/t work	Total unemployed	Aged 15-19 looking for f/t work	Aged 20 and over looking for f/t work	Total looking for f/t work	Looking for p/t work	Total unemployed	Aged 15-19 looking for f/t work	Aged 20 and over looking for f/t work
	'000s	'000s	'000s	'000s	'000s	%	%	%	%	%	%	%
MALES												
1995												
November	52.5	353.0	405.5	51.5	457.0	25.3	8.0	8.8	9.1	8.8	8.1	5.6
December	52.7	353.0	405.8	50.7	456.4	25.4	8.0	8.8	8.9	8.8	8.1	5.6
1996												
January	53.2	352.5	405.6	50.7	456.3	25.5	8.0	8.8	8.9	8.8	8.2	5.5
February	53.9	350.5	404.3	51.6	455.9	25.7	8.0	8.8	9.0	8.8	8.3	5.5
March	54.5	347.3	401.8	53.2	455.0	26.0	7.9	8.7	9.2	8.8	8.4	5.4
April	55.0	344.0	399.0	54.8	453.8	26.2	7.8	8.7	9.4	8.7	8.4	5.4
May	55.1	341.9	397.0	56.2	453.2	26.3	7.8	8.6	9.5	8.7	8.4	5.3
June	54.8	342.2	397.0	57.0	454.0	26.3	7.8	8.6	9.6	8.7	8.4	5.3
July	54.6	344.8	399.4	57.5	456.9	26.3	7.8	8.7	9.6	8.8	8.4	5.4
August	54.6	348.3	402.9	58.0	460.9	26.3	7.9	8.7	9.6	8.8	8.3	5.4
September	54.8	350.8	405.6	58.4	464.0	26.4	8.0	8.8	9.7	8.9	8.4	5.5
October	55.1	351.0	406.0	58.9	465.0	26.5	8.0	8.8	9.7	8.9	8.4	5.4
November	55.1	348.9	404.0	59.2	463.3	26.6	7.9	8.7	9.7	8.9	8.4	5.4
December	54.8	346.1	401.0	59.4	460.3	26.6	7.8	8.7	9.7	8.8	8.4	5.4
1997												
January	54.6	342.8	397.5	59.5	456.9	26.7	7.8	8.6	9.7	8.7	8.3	5.3
FEMALES												
1995												
November	41.4	171.5	212.8	94.2	307.1	32.8	8.0	9.3	5.8	7.9	6.7	2.6
December	40.8	172.5	213.3	95.7	309.0	32.2	8.0	9.4	5.9	7.9	6.6	2.6
1996												
January	39.8	173.6	213.3	98.1	311.4	31.4	8.1	9.4	6.0	8.0	6.4	2.6
February	38.5	174.5	213.0	101.6	314.6	30.7	8.1	9.4	6.2	8.1	6.2	2.6
March	37.1	175.5	212.6	105.6	318.2	30.0	8.2	9.4	6.5	8.2	6.0	2.6
April	35.7	176.9	212.7	109.1	321.7	29.4	8.2	9.4	6.7	8.3	5.8	2.7
May	34.7	178.8	213.6	111.4	325.0	29.0	8.3	9.4	6.8	8.3	5.6	2.7
June	34.3	180.7	215.0	111.9	326.9	28.9	8.4	9.4	6.9	8.4	5.5	2.7
July	34.7	181.8	216.6	110.9	327.4	29.3	8.4	9.5	6.8	8.4	5.6	2.7
August	36.1	182.5	218.6	109.2	327.8	30.2	8.4	9.5	6.7	8.3	5.8	2.7
September	38.0	182.7	220.7	107.7	328.4	31.4	8.4	9.6	6.6	8.3	6.1	2.7
October	39.8	182.8	222.6	107.3	329.9	32.5	8.4	9.7	6.5	8.4	6.4	2.7
November	41.1	183.0	224.1	107.5	331.6	33.3	8.4	9.7	6.5	8.4	6.6	2.7
December	41.9	183.5	225.4	108.1	333.5	33.8	8.4	9.8	6.5	8.4	6.7	2.7
1997												
January	42.2	183.6	225.8	108.8	334.6	34.0	8.4	9.8	6.5	8.4	6.8	2.7
PERSONS												
1995												
November	93.9	524.5	618.3	145.7	764.0	28.2	8.0	9.0	6.7	8.4	7.4	4.1
December	93.5	525.6	619.1	146.3	765.4	27.9	8.0	9.0	6.7	8.4	7.4	4.1
1996												
January	93.0	526.0	619.0	148.8	767.7	27.7	8.0	9.0	6.8	8.4	7.3	4.1
February	92.3	525.0	617.3	153.2	770.5	27.6	8.0	9.0	7.0	8.5	7.3	4.0
March	91.6	522.8	614.4	158.8	773.2	27.4	8.0	8.9	7.2	8.5	7.2	4.0
April	90.7	521.0	611.6	163.9	775.6	27.4	8.0	8.9	7.4	8.5	7.1	4.0
May	89.8	520.8	610.6	167.6	778.2	27.3	8.0	8.9	7.6	8.6	7.1	4.0
June	89.2	522.9	612.0	168.9	780.9	27.3	8.0	8.9	7.6	8.6	7.0	4.0
July	89.4	526.6	616.0	168.4	784.4	27.4	8.0	8.9	7.6	8.6	7.0	4.0
August	90.7	530.8	621.5	167.2	788.7	27.7	8.1	9.0	7.5	8.6	7.1	4.0
September	92.8	533.5	626.3	166.1	792.5	28.2	8.1	9.1	7.4	8.7	7.3	4.1
October	94.9	533.8	628.7	166.2	794.8	28.8	8.1	9.1	7.4	8.7	7.4	4.1
November	96.2	531.9	628.1	166.8	794.9	29.1	8.1	9.1	7.4	8.7	7.5	4.0
December	96.7	529.6	626.3	167.5	793.8	29.3	8.0	9.0	7.4	8.6	7.6	4.0
1997												
January	96.8	526.4	623.2	168.2	791.5	29.4	8.0	9.0	7.3	8.6	7.6	4.0

¹ Estimates for July 1996 to December 1996 have been revised.

PERSONS AGED 15 TO 19—Education and Labour Force: Original—January 1997

	EMPLOYED.....			UNEMPLOYED.....							
	<i>Employed full time</i>	<i>Employed part time</i>	<i>Total employed</i>	<i>Unemp. looking for f/t work</i>	<i>Unemp. looking for p/t work</i>	<i>Total unemployed</i>	<i>Labour force</i>	<i>Not in labour force</i>	<i>Civilian population aged 15-19</i>	<i>Unemp- loyment rate</i>	<i>Partic- ipation rate</i>
	'000s	'000s	'000s	'000s	'000s	'000s	'000s	'000s	'000s	%	%
ATTENDING NEITHER SCHOOL NOR A TERTIARY EDUCATIONAL INSTITUTION FULL TIME											
Males	143.1	51.8	194.9	53.1	7.8	61.0	255.9	45.1	301.0	23.8	85.0
Females	80.6	66.2	146.8	42.9	6.0	48.9	195.7	44.7	240.4	25.0	81.4
Persons	223.7	118.0	341.7	96.0	13.9	109.9	451.6	89.8	541.4	24.3	83.4
ATTENDING A TERTIARY EDUCATIONAL INSTITUTION FULL TIME											
Males	11.6	30.4	42.0	* 3.5	7.0	10.5	52.5	25.0	77.6	20.0	67.7
Females	8.9	49.5	58.4	* 2.9	8.3	11.2	69.6	28.9	98.5	16.1	70.6
Persons	20.5	79.9	100.4	6.4	15.3	21.7	122.1	53.9	176.0	17.8	69.4
ATTENDING SCHOOL											
Males	10.9	77.1	88.1	* 3.9	27.4	31.2	119.3	158.7	278.0	26.2	42.9
Females	5.0	101.1	106.0	* 3.0	21.1	24.0	130.1	155.7	285.8	18.5	45.5
Persons	15.9	178.2	194.1	6.8	48.4	55.3	249.4	314.5	563.8	22.2	44.2
TOTAL											
Males	165.7	159.4	325.1	60.5	42.2	102.7	427.7	228.9	656.6	24.0	65.1
Females	94.4	216.8	311.2	48.8	35.4	84.2	395.3	229.3	624.7	21.3	63.3
Persons	260.1	376.2	636.2	109.3	77.5	186.8	823.1	458.2	1 281.3	22.7	64.2



LABOUR FORCE STATUS (AGED 15 & OVER)-States & Territories: Original-January 1997

	EMPLOYED.....			UNEMPLOYED.....			Labour force	Not in labour force	Civilian population aged 15 and over	Unemp-loyment rate	Partic-ipatio- rate
	Employed full time	Employed part time	Total employed	Unemp. looking for f/t work	Unemp. looking for p/t work	Total unemployed					
	'000s	'000s	'000s	'000s	'000s	'000s	'000s	'000s	'000s	%	%
MALES											
New South Wales	1 437.6	168.0	1 605.6	133.2	18.5	151.6	1 757.3	651.9	2 409.2	8.6	72.9
Victoria	1 050.9	133.9	1 184.8	108.4	16.6	125.0	1 309.8	460.3	1 770.2	9.5	74.0
Queensland	770.9	99.3	870.2	93.4	15.7	109.1	979.3	333.3	1 312.6	11.1	74.6
South Australia	321.3	44.8	366.2	38.7	6.2	44.9	411.0	169.0	580.0	10.9	70.9
Western Australia	431.4	55.5	486.9	37.4	4.6	42.1	529.0	162.0	691.0	8.0	76.6
Tasmania	99.2	14.4	113.6	13.6	1.4	14.9	128.5	53.1	181.6	11.6	70.8
Northern Territory	38.0	5.2	43.1	3.2	* 0.4	3.6	46.7	17.8	64.5	7.7	72.4
Australian Capital Territory	71.9	10.1	82.0	7.1	1.9	9.0	91.0	24.0	115.0	9.9	79.1
Australia	4 221.2	531.2	4 752.4	435.0	65.3	500.3	5 252.6	1 871.5	7 124.2	9.5	73.7
FEMALES											
New South Wales	729.7	452.6	1 182.3	75.0	31.4	106.4	1 288.6	1 209.5	2 498.1	8.3	51.6
Victoria	511.9	376.2	888.2	64.1	24.1	88.2	976.4	871.9	1 848.3	9.0	52.8
Queensland	375.1	267.7	642.8	55.2	22.0	77.3	720.0	616.7	1 336.7	10.7	53.9
South Australia	151.3	133.5	284.8	20.8	7.9	28.8	313.6	287.2	600.7	9.2	52.2
Western Australia	194.9	164.6	359.5	23.0	11.1	34.1	393.6	304.4	698.0	8.7	56.4
Tasmania	41.2	41.7	82.9	7.0	3.0	10.0	92.9	94.9	187.8	10.8	49.5
Northern Territory	23.0	11.6	34.6	1.9	* 0.7	2.6	37.2	25.9	63.1	7.0	59.0
Australian Capital Territory	44.7	24.2	68.9	4.2	2.1	6.2	75.2	44.1	119.3	8.3	63.0
Australia	2 071.8	1 472.1	3 543.9	251.2	102.3	353.5	3 897.5	3 454.5	7 352.0	9.1	53.0
PERSONS											
New South Wales	2 167.3	620.6	2 787.9	208.1	49.9	258.0	3 045.9	1 861.4	4 907.3	8.5	62.1
Victoria	1 562.8	510.1	2 073.0	172.5	40.7	213.2	2 286.2	1 332.2	3 618.4	9.3	63.2
Queensland	1 146.0	367.0	1 513.0	148.6	37.8	186.4	1 699.4	949.9	2 649.3	11.0	64.1
South Australia	472.6	178.3	651.0	59.6	14.1	73.6	724.6	456.2	1 180.8	10.2	61.4
Western Australia	626.3	220.1	846.4	60.4	15.7	76.1	922.6	466.4	1 389.0	8.3	66.4
Tasmania	140.4	56.1	196.5	20.5	4.4	24.9	221.4	148.0	369.4	11.3	59.9
Northern Territory	61.0	16.8	77.7	5.1	* 1.1	6.2	84.0	43.7	127.7	7.4	65.8
Australian Capital Territory	118.6	34.3	150.9	11.3	3.9	15.2	166.1	68.2	234.3	9.2	70.9
Australia	6 293.0	2 003.3	8 296.3	686.2	167.6	853.8	9 150.1	5 326.0	14 476.2	9.3	63.2

UNEMPLOYED PERSONS—New South Wales, Victoria and Queensland: Original

Month	NUMBER OF UNEMPLOYED PERSONS.....					UNEMPLOYMENT RATE.....					UNEMPLOYMENT TO POPULATION RATIO	
	Aged 15-19 looking for fit work	Aged 20 and over looking for fit work	Total looking for fit work	Looking for p/t work	Total unemployed	Aged 15-19 looking for fit work	Aged 20 and over looking for fit work	Total looking for fit work	Looking for p/t work	Total unemp-loyed	Aged 15-19 looking for fit work	Aged 20 and over looking for fit work
	'000s	'000s	'000s	'000s	'000s	%	%	%	%	%	%	%
NEW SOUTH WALES												
1995												
November	27.5	158.7	186.2	42.4	228.6	26.0	7.1	8.0	6.0	7.5	6.6	3.6
December	33.3	152.9	186.2	39.3	225.5	27.0	6.8	7.9	5.7	7.4	8.0	3.5
1996												
January	35.4	171.4	206.7	47.9	254.7	27.1	7.7	8.7	7.6	8.5	8.4	3.9
February	30.3	180.5	210.8	49.6	260.4	26.1	8.1	9.0	7.3	8.6	7.2	4.1
March	28.4	171.8	200.1	56.2	256.4	26.2	7.7	8.6	7.9	8.4	6.8	3.9
April	29.2	165.5	194.7	51.3	246.0	26.9	7.5	8.4	7.4	8.2	6.9	3.7
May	26.5	153.9	180.5	51.4	231.9	25.5	7.0	7.9	7.1	7.7	6.3	3.5
June	25.9	148.8	174.7	50.7	225.4	26.3	6.8	7.6	6.9	7.5	6.2	3.3
July	23.2	155.1	178.4	45.3	223.7	22.6	7.0	7.7	6.5	7.4	5.5	3.5
August	24.8	163.9	188.7	49.4	238.1	25.2	7.4	8.2	7.0	7.9	5.9	3.7
September	23.9	168.2	192.1	57.0	249.2	23.7	7.5	8.2	7.9	8.1	5.7	3.8
October	23.7	155.8	179.6	53.4	233.0	22.2	7.0	7.7	7.5	7.6	5.6	3.5
November	22.1	145.7	167.9	48.3	216.2	23.4	6.6	7.3	6.9	7.2	5.2	3.3
December	37.4	154.0	191.4	53.3	244.7	30.6	6.8	8.0	7.6	7.9	8.8	3.4
1997												
January	35.0	173.2	208.1	49.9	258.0	27.7	7.7	8.8	7.4	8.5	8.3	3.9
VICTORIA												
1995												
November	19.8	132.8	152.6	34.7	187.2	31.4	8.1	8.9	6.3	8.3	6.3	4.1
December	21.3	133.0	154.4	36.2	190.6	28.1	8.0	8.8	6.6	8.3	6.8	4.1
1996												
January	21.2	147.2	168.4	40.2	208.6	29.8	9.0	9.8	7.4	9.2	6.8	4.5
February	26.9	155.6	182.5	47.9	230.4	36.4	9.4	10.5	8.6	10.1	8.6	4.8
March	21.8	135.5	157.3	45.1	202.4	32.5	8.3	9.2	8.0	8.9	7.0	4.1
April	20.3	139.2	159.5	47.8	207.3	30.6	8.5	9.3	8.4	9.1	6.5	4.3
May	19.9	133.3	153.2	38.3	191.5	30.0	8.0	8.9	6.9	8.4	6.3	4.1
June	18.5	118.4	136.9	41.0	177.8	28.6	7.2	8.1	7.3	7.9	5.9	3.6
July	14.6	129.8	144.4	42.6	187.0	21.6	7.8	8.4	7.8	8.2	4.7	4.0
August	18.3	141.0	159.3	38.8	198.2	28.8	8.6	9.3	6.9	8.7	5.8	4.3
September	20.5	149.8	170.3	44.5	214.8	30.2	9.0	9.9	7.6	9.3	6.5	4.6
October	19.1	142.2	161.3	43.4	204.7	30.1	8.6	9.4	7.6	8.9	6.1	4.3
November	20.4	146.6	167.0	37.2	204.2	31.3	8.8	9.6	6.4	8.8	6.5	4.4
December	25.8	141.2	167.0	48.4	215.4	34.4	8.4	9.6	8.2	9.2	8.2	4.3
1997												
January	21.9	150.6	172.5	40.7	213.2	29.4	9.1	9.9	7.4	9.3	7.0	4.6
QUEENSLAND												
1995												
November	19.8	103.9	123.8	27.5	151.3	29.4	8.7	9.8	6.8	9.0	8.2	4.5
December	23.4	102.8	126.1	29.5	155.7	29.1	8.5	9.8	7.1	9.2	9.6	4.4
1996												
January	29.5	115.2	144.7	26.8	171.5	32.8	9.6	11.2	7.3	10.3	12.2	4.9
February	20.7	115.9	136.6	28.9	165.5	26.3	9.6	10.6	7.5	9.9	8.5	4.9
March	18.6	111.4	130.0	33.0	163.0	26.3	9.3	10.2	8.1	9.7	7.6	4.7
April	20.4	110.6	130.9	31.7	162.7	27.3	9.2	10.3	7.8	9.7	8.4	4.7
May	21.4	102.8	124.2	32.5	156.7	30.7	8.5	9.8	8.0	9.3	8.8	4.3
June	20.9	104.4	125.3	29.7	155.0	30.8	8.7	9.8	7.1	9.2	8.6	4.4
July	16.1	101.1	117.3	31.3	148.6	23.8	8.4	9.2	7.5	8.8	6.6	4.3
August	19.1	106.3	125.4	31.1	156.4	28.7	8.8	9.8	7.6	9.3	7.8	4.5
September	18.5	103.2	121.7	33.0	154.7	26.8	8.4	9.4	7.8	9.0	7.5	4.3
October	20.9	99.0	120.0	34.2	154.2	30.0	8.1	9.3	8.3	9.1	8.5	4.1
November	22.4	94.0	116.4	29.0	145.4	32.9	7.8	9.1	6.9	8.6	9.1	3.9
December	26.8	96.3	123.0	37.7	160.7	33.0	7.9	9.4	9.0	9.3	10.9	4.0
1997												
January	27.4	121.2	148.6	37.8	186.4	35.5	10.0	11.5	9.3	11.0	11.1	5.0

UNEMPLOYED PERSONS—South Australia, Western Australia and Tasmania: Original

Month	NUMBER OF UNEMPLOYED PERSONS.....					UNEMPLOYMENT RATE.....					UNEMPLOYMENT TO POPULATION RATIO	
	Aged 15-19 looking for f/t work	Aged 20 and over looking for f/t work	Total looking for f/t work	Looking for p/t work	Total unemployed	Aged 15-19 looking for f/t work	Aged 20 and over looking for f/t work	Total looking for f/t work	Looking for p/t work	Total unemp-loyed	Aged 15-19 looking for f/t work	Aged 20 and over looking for f/t work
	'000s	'000s	'000s	'000s	'000s	%	%	%	%	%	%	%
SOUTH AUSTRALIA												
1995												
November	9.1	45.5	54.6	9.4	64.0	39.8	8.9	10.2	5.0	8.9	9.3	4.2
December	10.2	45.6	55.8	10.7	66.5	36.2	8.8	10.2	5.8	9.1	10.4	4.2
1996												
January	12.3	48.8	61.1	13.7	74.8	42.3	9.6	11.4	7.3	10.4	12.7	4.5
February	10.3	51.2	61.5	15.0	76.4	37.8	10.0	11.4	7.8	10.5	10.5	4.8
March	8.4	45.1	53.5	15.5	69.0	34.7	9.0	10.2	7.7	9.5	8.6	4.2
April	7.1	47.7	54.8	14.5	69.3	30.3	9.5	10.5	7.0	9.5	7.3	4.4
May	9.6	44.7	54.3	13.9	68.2	39.7	8.9	10.3	7.0	9.4	9.8	4.1
June	8.0	43.4	51.4	10.4	61.8	37.1	8.7	9.9	5.1	8.5	8.2	4.0
July	9.2	43.0	52.2	11.8	64.1	36.9	8.6	9.9	5.9	8.8	9.5	4.0
August	7.8	48.0	55.8	12.2	68.0	35.5	9.6	10.7	6.0	9.4	8.0	4.4
September	8.9	47.9	56.8	13.6	70.5	38.9	9.5	10.8	6.7	9.7	9.1	4.4
October	7.5	47.6	55.2	12.5	67.7	32.8	9.4	10.4	6.3	9.3	7.7	4.4
November	7.0	47.8	54.8	11.6	66.3	31.6	9.5	10.4	5.8	9.2	7.2	4.4
December	10.9	47.1	58.0	12.6	70.6	39.6	9.2	10.8	6.4	9.6	11.1	4.4
1997												
January	8.2	51.4	59.6	14.1	73.6	32.5	10.1	11.2	7.3	10.2	8.4	4.7
WESTERN AUSTRALIA												
1995												
November	7.9	41.9	49.8	14.8	64.6	21.4	6.7	7.5	6.5	7.2	6.2	3.4
December	10.6	43.2	53.8	14.0	67.8	24.4	6.9	8.0	6.1	7.5	8.3	3.5
1996												
January	10.3	48.8	59.1	17.7	76.8	23.0	7.8	8.8	8.0	8.6	8.1	4.0
February	9.2	51.2	60.3	18.6	78.9	21.7	8.0	8.8	8.3	8.7	7.2	4.1
March	8.4	45.6	54.0	20.0	74.0	20.4	7.2	8.1	8.5	8.2	6.6	3.7
April	7.8	41.6	49.5	14.5	64.0	19.4	6.6	7.4	6.5	7.2	6.1	3.4
May	7.8	44.2	52.0	16.9	68.9	20.4	7.0	7.7	7.2	7.6	6.1	3.6
June	7.9	47.0	54.9	15.6	70.5	20.8	7.4	8.1	6.8	7.8	6.2	3.8
July	8.4	44.2	52.5	12.6	65.1	20.4	6.9	7.7	5.5	7.1	6.5	3.5
August	7.8	45.8	53.6	15.3	68.8	21.1	7.2	7.9	6.4	7.5	6.0	3.7
September	7.7	46.3	54.1	15.1	69.1	20.4	7.2	7.9	6.4	7.5	6.0	3.7
October	8.6	41.6	50.2	14.9	65.1	21.9	6.5	7.4	6.4	7.2	6.7	3.3
November	9.8	42.7	52.5	13.8	66.3	25.0	6.7	7.8	5.9	7.3	7.6	3.4
December	12.0	43.7	55.7	15.0	70.8	26.5	6.8	8.1	6.3	7.6	9.3	3.5
1997												
January	10.2	50.3	60.4	15.7	76.1	22.0	7.8	8.8	6.7	8.3	7.8	4.0
TASMANIA												
1995												
November	2.3	16.7	19.0	3.9	22.9	25.1	11.0	11.8	6.4	10.3	6.8	5.0
December	4.9	15.9	20.8	3.3	24.1	39.3	10.2	12.3	5.4	10.5	14.3	4.8
1996												
January	4.6	15.5	20.2	4.0	24.2	38.9	10.1	12.1	7.1	10.8	13.6	4.7
February	4.2	14.7	18.9	4.7	23.6	34.1	9.4	11.2	8.0	10.4	12.3	4.4
March	3.3	15.8	19.1	4.3	23.4	31.8	10.4	11.7	7.0	10.4	9.7	4.7
April	2.4	15.2	17.6	4.3	21.9	22.7	10.0	10.8	6.9	9.7	6.9	4.6
May	2.9	15.8	18.8	3.5	22.2	29.2	10.4	11.6	5.7	10.0	8.6	4.7
June	2.9	17.1	20.0	3.7	23.7	28.4	11.1	12.2	6.1	10.5	8.5	5.1
July	3.0	16.7	19.7	4.5	24.2	30.8	11.0	12.2	7.0	10.7	8.8	5.0
August	2.2	16.6	18.8	3.9	22.7	24.7	10.9	11.6	6.4	10.2	6.4	5.0
September	2.3	17.6	19.9	3.9	23.8	24.9	11.4	12.2	6.3	10.6	6.8	5.2
October	2.0	17.0	19.0	4.5	23.5	21.8	11.3	11.9	7.1	10.6	5.9	5.1
November	2.5	16.3	18.7	3.4	22.2	26.4	10.8	11.7	5.7	10.1	7.3	4.9
December	3.8	16.2	20.1	5.1	25.1	35.0	10.6	12.2	8.5	11.2	11.1	4.8
1997												
January	4.0	16.5	20.5	4.4	24.9	35.1	11.1	12.8	7.3	11.3	11.7	4.9

UNEMPLOYED PERSONS—Northern Territory and Australian Capital Territory: Original

Month	NUMBER OF UNEMPLOYED PERSONS.....					UNEMPLOYMENT RATE.....					UNEMPLOYMENT TO POPULATION RATIO	
	Aged 15-19 looking for f/t work	Aged 20 and over looking for f/t work	Total looking for f/t work	Looking for p/t work	Total unemployed	Aged 15-19 looking for f/t work	Aged 20 and over looking for f/t work	Total looking for f/t work	Looking for p/t work	Total unemp-loyed	Aged 15-19 looking for f/t work	Aged 20 and over looking for f/t work
	'000s	'000s	'000s	'000s	'000s	%	%	%	%	%	%	%
NORTHERN TERRITORY												
1995												
November	* 0.5	4.3	4.8	1.5	6.3	* 18.6	6.7	7.2	6.7	7.1	* 3.9	3.9
December	* 0.9	3.7	4.7	1.3	6.0	* 34.3	5.9	7.0	6.0	6.8	* 7.5	3.4
1996												
January	* 1.0	4.1	5.1	1.3	6.4	* 30.1	6.2	7.4	6.4	7.2	* 8.2	3.7
February	* 0.8	4.6	5.4	* 0.9	6.3	* 30.8	7.0	7.8	* 4.8	7.2	* 6.1	4.1
March	* 0.8	4.7	5.5	1.6	7.1	* 29.5	6.8	7.7	8.5	7.9	* 6.5	4.1
April	* 1.2	4.4	5.5	1.5	7.0	* 41.6	6.7	8.2	7.4	8.0	* 9.2	3.9
May	* 0.7	3.9	4.6	* 0.7	5.3	* 24.3	5.9	6.7	* 3.9	6.1	* 5.6	3.4
June	* 0.3	2.8	3.1	* 0.8	3.9	* 8.4	4.3	4.5	* 4.3	4.4	* 2.2	2.5
July	* 0.4	4.2	4.6	* 1.1	5.7	* 8.6	6.1	6.3	* 6.5	6.3	* 3.2	3.7
August	* 0.6	2.8	3.4	1.3	4.6	* 17.1	4.3	4.9	6.8	5.3	* 4.6	2.5
September	* 0.2	3.5	3.7	1.3	5.0	* 6.0	5.2	5.2	6.1	5.4	* 1.6	3.1
October	* 0.3	2.7	3.1	* 0.9	3.9	* 11.0	4.2	4.5	* 4.1	4.4	* 2.7	2.4
November	* 0.5	2.8	3.3	* 0.7	4.0	* 16.1	4.5	5.0	* 3.2	4.6	* 3.8	2.4
December	* 0.5	2.7	3.2	* 1.1	4.3	* 14.3	4.2	4.7	* 5.8	5.0	* 3.6	2.4
1997												
January	* 0.9	4.2	5.1	* 1.1	6.2	* 23.7	6.8	7.7	* 6.3	7.4	* 6.7	3.7
AUSTRALIAN CAPITAL TERRITORY												
1995												
November	2.1	6.7	8.8	3.1	11.9	47.2	5.5	6.9	6.9	6.9	9.0	3.2
December	2.3	6.7	9.0	3.6	12.6	43.4	5.3	6.8	8.4	7.2	9.6	3.2
1996												
January	2.2	8.6	10.8	3.8	14.6	43.0	6.8	8.2	9.9	8.6	9.5	4.1
February	2.0	8.0	10.0	5.1	15.1	42.9	6.5	7.8	11.8	8.8	8.4	3.8
March	1.8	8.6	10.4	5.3	15.7	40.7	7.0	8.2	11.8	9.1	7.6	4.1
April	1.6	8.6	10.2	4.6	14.8	35.9	7.1	8.1	10.8	8.8	6.8	4.1
May	1.7	8.1	9.8	3.6	13.5	42.6	6.6	7.8	8.4	7.9	7.5	3.9
June	1.8	7.2	9.0	3.4	12.4	43.9	5.9	7.2	7.8	7.3	7.6	3.4
July	1.5	8.9	10.4	2.9	13.2	38.0	7.2	8.2	6.9	7.9	6.5	4.2
August	1.9	9.3	11.2	3.2	14.4	50.0	7.6	8.9	7.7	8.6	8.3	4.4
September	2.1	8.4	10.5	2.7	13.1	54.2	6.8	8.3	6.2	7.8	9.2	4.0
October	2.1	8.0	10.2	2.7	12.9	53.5	6.7	8.2	6.4	7.8	9.3	3.8
November	1.5	7.6	9.2	3.5	12.7	38.4	6.4	7.4	8.6	7.7	6.7	3.6
December	1.8	8.1	9.9	4.2	14.1	37.2	6.7	7.9	10.0	8.4	7.8	3.8
1997												
January	1.8	9.5	11.3	3.9	15.2	38.3	7.7	8.8	10.3	9.2	7.7	4.5

LABOUR FORCE STATUS (AGED 15 AND OVER)-New South Wales¹

SEASONALLY ADJUSTED.....

TREND.....

Month	SEASONALLY ADJUSTED					TREND					Civilian population aged 15 and over '000s
	Employed full time '000s	Total employed '000s	Total unemployed '000s	Unemp- loyment rate %	Partic- ipation rate %	Employed full time '000s	Total employed '000s	Total unemployed '000s	Unemp- loyment rate %	Partic- ipation rate %	
MALES											
1995											
November	1 415.6	1 594.0	142.8	8.2	73.3	1 419.4	1 590.1	139.2	8.1	73.0	2 368.7
December	1 426.2	1 595.2	129.1	7.5	72.7	1 420.5	1 591.1	139.8	8.1	73.0	2 371.1
1996											
January	1 434.8	1 591.2	144.7	8.3	73.1	1 420.1	1 590.5	141.1	8.1	72.9	2 374.1
February	1 417.7	1 592.9	139.3	8.0	72.9	1 417.7	1 588.7	142.6	8.2	72.8	2 377.1
March	1 402.9	1 582.9	148.4	8.6	72.7	1 413.8	1 586.8	143.9	8.3	72.7	2 380.0
April	1 409.1	1 576.7	151.0	8.7	72.5	1 410.0	1 585.6	144.8	8.4	72.6	2 383.1
May	1 409.1	1 591.0	140.8	8.1	72.6	1 408.1	1 586.2	145.0	8.4	72.6	2 386.2
June	1 408.4	1 590.3	141.2	8.2	72.5	1 408.8	1 588.5	144.7	8.4	72.5	2 389.3
July	1 411.2	1 588.6	139.8	8.1	72.2	1 411.5	1 591.1	144.3	8.3	72.5	2 392.5
August	1 415.9	1 597.1	152.8	8.7	73.0	1 415.3	1 593.9	143.9	8.3	72.5	2 395.8
September	1 421.3	1 598.1	142.2	8.2	72.5	1 419.4	1 596.9	143.2	8.2	72.5	2 399.1
October	1 422.7	1 602.1	141.2	8.1	72.6	1 423.9	1 600.4	142.2	8.2	72.5	2 401.8
November	1 423.8	1 592.0	142.2	8.2	72.1	1 428.7	1 604.6	140.6	8.1	72.6	2 404.6
December	1 437.2	1 613.0	134.6	7.7	72.6	1 433.3	1 609.3	139.1	8.0	72.6	2 407.3
1997											
January	1 441.0	1 623.0	139.0	7.9	73.1	1 437.3	1 613.8	137.6	7.9	72.7	2 409.2
FEMALES											
1995											
November	737.3	1 214.1	98.4	7.5	53.5	733.6	1 210.5	91.2	7.0	53.1	2 451.9
December	731.4	1 212.0	89.2	6.9	53.0	732.9	1 210.8	92.2	7.1	53.1	2 454.4
1996											
January	732.0	1 207.1	90.9	7.0	52.8	730.1	1 208.0	93.6	7.2	53.0	2 457.5
February	714.8	1 198.3	95.1	7.4	52.6	726.0	1 203.2	95.3	7.3	52.8	2 460.7
March	737.4	1 212.0	95.6	7.3	53.1	722.2	1 198.7	96.6	7.5	52.6	2 463.8
April	720.9	1 184.7	102.7	8.0	52.2	719.6	1 195.5	97.4	7.5	52.4	2 467.3
May	704.8	1 183.7	101.0	7.9	52.0	718.6	1 194.3	98.1	7.6	52.3	2 470.9
June	714.6	1 204.3	91.2	7.0	52.4	719.6	1 194.9	98.3	7.6	52.3	2 474.4
July	728.6	1 199.5	98.6	7.6	52.4	722.1	1 196.9	98.0	7.6	52.2	2 478.3
August	735.9	1 202.0	95.1	7.3	52.3	725.4	1 200.0	97.5	7.5	52.3	2 482.3
September	718.1	1 193.0	104.9	8.1	52.2	728.7	1 203.5	97.4	7.5	52.3	2 486.2
October	734.3	1 213.8	99.1	7.5	52.7	730.9	1 206.6	97.5	7.5	52.4	2 489.4
November	732.8	1 208.3	85.9	6.6	51.9	731.9	1 209.5	97.6	7.5	52.4	2 492.6
December	733.5	1 213.1	102.7	7.8	52.7	732.6	1 212.2	97.8	7.5	52.5	2 495.8
1997											
January	731.1	1 216.5	99.9	7.6	52.7	732.5	1 215.1	97.8	7.5	52.6	2 498.1
PERSONS											
1995											
November	2 152.8	2 808.1	241.2	7.9	63.3	2 153.0	2 800.5	230.4	7.6	62.9	4 820.6
December	2 157.6	2 807.3	218.3	7.2	62.7	2 153.4	2 801.9	232.0	7.6	62.9	4 825.5
1996											
January	2 166.9	2 798.3	235.7	7.8	62.8	2 150.3	2 798.6	234.7	7.7	62.8	4 831.6
February	2 132.5	2 791.2	234.4	7.7	62.5	2 143.7	2 791.9	237.9	7.9	62.6	4 837.7
March	2 140.3	2 794.9	244.0	8.0	62.7	2 136.0	2 785.4	240.6	7.9	62.5	4 843.9
April	2 129.9	2 761.3	253.7	8.4	62.2	2 129.6	2 781.1	242.2	8.0	62.3	4 850.5
May	2 113.9	2 774.6	241.8	8.0	62.1	2 126.7	2 780.5	243.0	8.0	62.3	4 857.0
June	2 122.9	2 794.6	232.4	7.7	62.2	2 128.4	2 783.4	243.0	8.0	62.2	4 863.7
July	2 139.9	2 788.1	238.5	7.9	62.1	2 133.6	2 788.0	242.2	8.0	62.2	4 870.9
August	2 151.8	2 799.1	247.9	8.1	62.5	2 140.7	2 793.9	241.4	8.0	62.2	4 878.1
September	2 139.4	2 791.1	247.1	8.1	62.2	2 148.1	2 800.4	240.6	7.9	62.2	4 885.3
October	2 157.0	2 815.9	240.3	7.9	62.5	2 154.8	2 806.9	239.6	7.9	62.3	4 891.3
November	2 156.7	2 800.3	228.1	7.5	61.8	2 160.6	2 814.1	238.2	7.8	62.3	4 897.2
December	2 170.7	2 826.1	237.3	7.7	62.5	2 165.9	2 821.5	236.9	7.7	62.4	4 903.1
1997											
January	2 172.1	2 839.5	238.8	7.8	62.7	2 169.8	2 828.9	235.5	7.7	62.4	4 907.3

¹ Trend estimates for July 1996 to December 1996 have been revised.

LABOUR FORCE STATUS (AGED 15 AND OVER)-Victoria¹

SEASONALLY ADJUSTED.....

TREND.....

Month	SEASONALLY ADJUSTED.....					TREND.....					Civilian population aged 15 and over '000s
	Employed full time '000s	Total employed '000s	Total unemployed '000s	Unemployment rate %	Participation rate %	Employed full time '000s	Total employed '000s	Total unemployed '000s	Unemployment rate %	Participation rate %	
MALES											
1995											
November	1 048.0	1 175.2	108.3	8.4	73.6	1 047.0	1 171.9	115.8	9.0	73.8	1 744.8
December	1 051.1	1 177.1	114.1	8.8	73.9	1 047.9	1 174.7	115.3	8.9	73.9	1 746.1
1996											
January	1 051.0	1 179.8	113.2	8.8	74.0	1 048.2	1 176.8	115.4	8.9	73.9	1 748.0
February	1 049.1	1 183.7	120.1	9.2	74.5	1 048.6	1 178.2	115.3	8.9	73.9	1 749.9
March	1 043.5	1 170.1	113.2	8.8	73.3	1 050.0	1 179.4	114.4	8.8	73.9	1 751.8
April	1 043.8	1 173.6	121.0	9.3	73.8	1 052.2	1 180.6	112.8	8.7	73.8	1 753.8
May	1 063.2	1 191.5	108.3	8.3	74.0	1 054.0	1 182.1	111.2	8.6	73.7	1 755.8
June	1 057.6	1 185.3	104.6	8.1	73.4	1 054.9	1 183.7	110.5	8.5	73.6	1 757.8
July	1 056.3	1 181.2	107.1	8.3	73.2	1 053.8	1 184.9	111.8	8.6	73.7	1 759.8
August	1 057.0	1 192.8	115.0	8.8	74.2	1 051.0	1 185.6	114.4	8.8	73.8	1 761.9
September	1 035.4	1 178.0	123.6	9.5	73.8	1 047.9	1 185.9	117.4	9.0	73.9	1 763.9
October	1 044.3	1 183.5	123.3	9.4	74.0	1 046.0	1 186.5	119.6	9.2	74.0	1 765.5
November	1 049.2	1 196.4	118.3	9.0	74.4	1 045.8	1 187.8	120.6	9.2	74.0	1 767.2
December	1 041.2	1 183.2	120.2	9.2	73.7	1 046.8	1 189.3	120.8	9.2	74.1	1 768.8
1997											
January	1 058.3	1 194.5	116.8	8.9	74.1	1 048.4	1 190.8	120.2	9.2	74.1	1 770.2
FEMALES											
1995											
November	506.2	892.2	87.0	8.9	53.8	503.4	890.9	84.8	8.7	53.6	1 820.4
December	509.2	898.5	72.6	7.5	53.3	502.8	894.0	84.1	8.6	53.7	1 821.7
1996											
January	503.8	911.5	84.3	8.5	54.6	503.2	897.0	83.3	8.5	53.8	1 823.6
February	496.4	894.9	87.5	8.9	53.8	504.7	898.6	82.6	8.4	53.8	1 825.4
March	501.2	887.0	79.3	8.2	52.9	507.3	898.2	82.5	8.4	53.7	1 827.2
April	515.3	897.8	88.4	9.0	53.9	510.7	896.5	83.1	8.5	53.5	1 829.4
May	521.1	903.9	82.4	8.4	53.9	514.1	894.7	84.2	8.6	53.4	1 831.6
June	511.1	893.5	79.3	8.2	53.1	516.4	893.9	85.8	8.8	53.4	1 833.8
July	525.3	887.1	88.1	9.0	53.1	516.7	894.0	88.2	9.0	53.5	1 836.2
August	512.4	895.8	96.5	9.7	54.0	515.4	895.3	90.8	9.2	53.6	1 838.6
September	507.9	899.9	90.9	9.2	53.8	513.6	897.9	92.5	9.3	53.8	1 841.0
October	513.0	896.7	95.2	9.6	53.8	512.6	902.1	93.1	9.4	54.0	1 842.9
November	516.4	911.1	94.5	9.4	54.5	512.2	907.2	92.6	9.3	54.2	1 844.9
December	508.2	908.6	90.5	9.1	54.1	512.1	912.4	91.5	9.1	54.4	1 846.8
1997											
January	514.6	924.6	85.1	8.4	54.6	511.7	917.1	89.7	8.9	54.5	1 848.3
PERSONS											
1995											
November	1 554.1	2 067.4	195.3	8.6	63.5	1 550.4	2 062.9	200.6	8.9	63.5	3 565.2
December	1 560.3	2 075.6	186.7	8.3	63.4	1 550.7	2 068.7	199.4	8.8	63.6	3 567.8
1996											
January	1 554.7	2 091.3	197.5	8.6	64.1	1 551.4	2 073.8	198.7	8.7	63.6	3 571.6
February	1 545.5	2 078.5	207.6	9.1	63.9	1 553.3	2 076.8	198.0	8.7	63.6	3 575.3
March	1 544.8	2 057.1	192.4	8.6	62.9	1 557.3	2 077.6	197.0	8.7	63.6	3 579.0
April	1 559.1	2 071.4	209.3	9.2	63.6	1 562.8	2 077.2	195.9	8.6	63.4	3 583.2
May	1 584.2	2 095.4	190.7	8.3	63.7	1 568.2	2 078.8	195.4	8.6	63.3	3 587.4
June	1 568.7	2 078.8	183.9	8.1	63.0	1 571.3	2 077.6	196.4	8.6	63.3	3 591.6
July	1 581.6	2 068.3	195.1	8.6	62.9	1 570.5	2 078.9	199.9	8.8	63.4	3 596.0
August	1 569.4	2 088.7	211.5	9.2	63.9	1 566.4	2 080.9	205.2	9.0	63.5	3 600.4
September	1 543.3	2 078.0	214.6	9.4	63.6	1 561.5	2 083.8	209.9	9.2	63.6	3 604.9
October	1 557.2	2 080.3	218.5	9.5	63.7	1 558.6	2 088.7	212.7	9.2	63.8	3 608.5
November	1 565.6	2 107.5	212.9	9.2	64.2	1 558.0	2 095.0	213.2	9.2	63.9	3 612.0
December	1 549.5	2 091.8	210.8	9.2	63.7	1 558.9	2 101.7	212.2	9.2	64.0	3 615.7
1997											
January	1 572.9	2 119.0	201.8	8.7	64.1	1 560.0	2 107.9	209.9	9.1	64.1	3 618.4

¹ Trend estimates for July 1996 to December 1996 have been revised.

LABOUR FORCE STATUS (AGED 15 AND OVER)-Queensland¹

SEASONALLY ADJUSTED.....

TREND.....

Month	SEASONALLY ADJUSTED					TREND					Civilian population aged 15 and over '000s
	Employed full time '000s	Total employed '000s	Total unemployed '000s	Unemp-loyment rate %	Partic-ipation rate %	Employed full time '000s	Total employed '000s	Total unemployed '000s	Unemp-loyment rate %	Partic-ipation rate %	
MALES											
1995											
November	764.1	862.7	98.0	10.2	75.4	764.9	860.8	98.6	10.3	75.3	1 274.2
December	769.6	864.8	97.0	10.1	75.3	769.4	863.8	97.2	10.1	75.3	1 276.9
1996											
January	771.9	864.6	97.9	10.2	75.2	774.7	867.9	94.4	9.8	75.2	1 279.8
February	786.5	876.1	85.3	8.9	74.9	779.4	872.8	90.9	9.4	75.1	1 282.7
March	781.2	873.9	89.4	9.3	74.9	782.5	877.3	88.1	9.1	75.1	1 285.6
April	784.9	883.5	88.2	9.1	75.4	783.5	880.7	86.6	9.0	75.1	1 288.8
May	786.7	886.5	82.3	8.5	75.0	782.9	882.3	87.0	9.0	75.0	1 292.1
June	774.6	878.8	90.7	9.4	74.8	781.5	882.4	88.8	9.1	75.0	1 295.4
July	782.3	886.2	86.7	8.9	75.0	780.3	881.4	91.3	9.4	74.9	1 297.8
August	777.6	875.1	99.8	10.2	75.0	779.9	880.2	93.5	9.6	74.9	1 300.3
September	780.9	880.4	93.9	9.6	74.8	780.0	879.5	94.9	9.7	74.8	1 302.7
October	779.4	872.8	102.8	10.5	74.7	780.1	879.5	95.6	9.8	74.7	1 305.2
November	782.1	887.5	87.4	9.0	74.6	779.8	879.8	95.8	9.8	74.6	1 307.7
December	782.4	880.4	94.2	9.7	74.4	779.2	880.3	95.9	9.8	74.5	1 310.2
1997											
January	772.1	878.9	99.8	10.2	74.6	777.9	880.3	96.3	9.9	74.4	1 312.6
FEMALES											
1995											
November	378.7	654.0	63.4	8.8	55.3	377.0	652.6	61.9	8.7	55.1	1 297.4
December	373.3	658.6	61.2	8.5	55.4	375.5	652.3	62.3	8.7	55.0	1 300.4
1996											
January	372.8	656.1	63.6	8.8	55.2	373.6	650.6	62.8	8.8	54.7	1 303.3
February	376.8	648.2	62.7	8.8	54.4	371.4	647.6	63.7	9.0	54.5	1 306.2
March	367.8	640.0	60.4	8.6	53.5	369.4	644.6	65.0	9.2	54.2	1 309.2
April	366.1	636.0	70.0	9.9	53.8	368.4	643.6	66.2	9.3	54.1	1 312.2
May	369.1	645.2	70.1	9.8	54.4	369.2	645.5	67.2	9.4	54.2	1 315.2
June	367.9	650.9	67.2	9.4	54.5	371.7	649.7	67.7	9.4	54.4	1 318.2
July	373.3	657.1	66.3	9.2	54.8	375.5	654.6	67.6	9.4	54.7	1 320.8
August	383.8	661.6	66.8	9.2	55.0	379.3	658.5	67.3	9.3	54.8	1 323.4
September	385.6	662.9	66.9	9.2	55.0	381.7	660.5	67.4	9.3	54.9	1 326.1
October	383.5	660.2	69.8	9.6	54.9	382.0	661.3	68.2	9.4	54.9	1 328.7
November	378.6	657.3	67.2	9.3	54.4	380.9	661.8	69.5	9.5	54.9	1 331.4
December	384.2	664.4	69.4	9.5	55.0	379.0	662.3	70.8	9.7	55.0	1 334.1
1997											
January	366.7	663.2	76.4	10.3	55.3	376.4	662.5	72.2	9.8	55.0	1 336.7
PERSONS											
1995											
November	1 142.8	1 516.7	161.3	9.6	65.3	1 141.9	1 513.4	160.5	9.6	65.1	2 571.6
December	1 142.8	1 523.4	158.1	9.4	65.2	1 144.8	1 516.1	159.5	9.5	65.0	2 577.4
1996											
January	1 144.8	1 520.7	161.5	9.6	65.1	1 148.2	1 518.5	157.2	9.4	64.9	2 583.2
February	1 163.3	1 524.4	148.0	8.8	64.6	1 150.8	1 520.4	154.7	9.2	64.7	2 588.9
March	1 149.0	1 513.9	149.8	9.0	64.1	1 151.9	1 522.0	153.1	9.1	64.6	2 594.8
April	1 150.9	1 519.4	158.2	9.4	64.5	1 152.0	1 524.3	152.9	9.1	64.5	2 601.0
May	1 155.8	1 531.7	152.4	9.0	64.6	1 152.1	1 527.8	154.2	9.2	64.5	2 607.3
June	1 142.5	1 529.7	158.0	9.4	64.6	1 153.1	1 532.1	156.5	9.3	64.6	2 613.5
July	1 155.6	1 543.3	153.0	9.0	64.8	1 155.9	1 536.0	158.9	9.4	64.7	2 618.6
August	1 161.4	1 536.7	166.5	9.8	64.9	1 159.3	1 538.7	160.8	9.5	64.8	2 623.7
September	1 166.5	1 543.3	160.8	9.4	64.8	1 161.7	1 540.0	162.3	9.5	64.8	2 628.8
October	1 163.0	1 532.9	172.6	10.1	64.8	1 162.1	1 540.8	163.8	9.6	64.7	2 634.0
November	1 160.7	1 544.8	154.6	9.1	64.4	1 160.7	1 541.6	165.3	9.7	64.7	2 639.1
December	1 166.7	1 544.8	163.5	9.6	64.6	1 158.2	1 542.6	166.8	9.8	64.6	2 644.3
1997											
January	1 138.9	1 542.2	176.2	10.3	64.9	1 154.4	1 542.8	168.5	9.8	64.6	2 649.3

¹ Trend estimates for July 1996 to December 1996 have been revised.

LABOUR FORCE STATUS (AGED 15 AND OVER)—South Australia¹

SEASONALLY ADJUSTED.....

TREND.....

Month	SEASONALLY ADJUSTED.....					TREND.....					Civilian population aged 15 and over '000s
	Employed full time '000s	Total employed '000s	Total unemployed '000s	Unemp-loyment rate %	Partic-ipation rate %	Employed full time '000s	Total employed '000s	Total unemployed '000s	Unemp-loyment rate %	Partic-ipation rate %	
MALES											
1995											
November	329.1	372.1	42.2	10.2	72.0	327.4	372.1	42.4	10.2	72.0	575.7
December	329.0	373.1	40.4	9.8	71.8	327.5	371.9	42.1	10.2	71.9	575.9
1996											
January	326.6	372.1	40.7	9.9	71.7	327.0	371.3	42.2	10.2	71.8	576.2
February	326.3	370.7	44.2	10.6	72.0	326.2	370.6	42.3	10.3	71.6	576.5
March	325.5	368.6	42.6	10.4	71.3	325.2	370.1	42.4	10.3	71.5	576.7
April	322.3	370.5	43.4	10.5	71.7	324.1	369.7	42.2	10.2	71.4	577.0
May	323.3	365.9	42.5	10.4	70.8	322.9	369.5	41.7	10.1	71.2	577.3
June	321.9	371.9	39.1	9.5	71.2	321.8	369.3	41.2	10.0	71.1	577.6
July	323.8	371.2	39.5	9.6	71.1	320.7	369.0	41.0	10.0	70.9	578.0
August	318.5	368.7	41.8	10.2	71.0	319.9	368.5	41.2	10.1	70.8	578.4
September	317.2	365.5	43.0	10.5	70.6	319.6	368.1	41.5	10.1	70.8	578.8
October	319.0	366.6	41.0	10.1	70.4	319.9	367.8	41.8	10.2	70.7	579.1
November	321.3	368.4	43.0	10.5	71.0	320.5	367.8	41.7	10.2	70.7	579.5
December	322.4	369.6	41.0	10.0	70.8	321.4	367.9	41.6	10.2	70.6	579.8
1997											
January	323.7	368.2	40.1	9.8	70.4	322.3	366.2	41.2	10.1	70.6	580.0
FEMALES											
1995											
November	149.8	284.8	24.6	7.9	51.8	149.5	283.5	25.5	8.2	51.8	596.7
December	152.0	284.6	25.1	8.1	51.9	149.5	283.5	25.6	8.3	51.8	596.9
1996											
January	149.3	283.2	26.8	8.7	51.9	149.4	284.3	25.8	8.3	51.9	597.2
February	147.5	282.9	26.8	8.6	51.8	149.5	285.8	26.0	8.4	52.2	597.5
March	149.1	287.8	25.6	8.2	52.4	149.7	287.6	26.2	8.4	52.5	597.7
April	148.8	291.6	26.1	8.2	53.1	150.1	289.4	26.4	8.4	52.8	598.0
May	154.9	291.8	27.4	8.6	53.3	150.6	290.8	26.7	8.4	53.1	598.2
June	149.4	291.9	25.3	8.0	53.0	151.1	291.8	27.0	8.5	53.3	598.5
July	151.3	292.1	28.0	8.7	53.4	151.3	292.1	27.4	8.6	53.4	598.9
August	150.1	290.1	28.8	9.0	53.2	151.1	291.8	27.7	8.7	53.3	599.2
September	151.4	290.9	28.0	8.8	53.2	150.6	291.2	27.8	8.7	53.2	599.6
October	152.2	294.6	27.7	8.6	53.7	150.2	290.8	27.7	8.7	53.1	599.9
November	147.9	288.1	26.1	8.3	52.4	149.9	290.3	27.5	8.6	52.9	600.2
December	148.1	288.1	28.5	9.0	52.7	149.7	289.9	27.3	8.6	52.8	600.5
1997											
January	151.2	290.8	26.3	8.3	52.8	149.5	289.6	26.9	8.5	52.7	600.7
PERSONS											
1995											
November	478.8	656.9	66.8	9.2	61.7	476.9	655.6	67.8	9.4	61.7	1 172.4
December	481.0	657.7	65.5	9.1	61.7	477.0	655.4	67.7	9.4	61.7	1 172.9
1996											
January	475.9	655.4	67.6	9.3	61.6	476.4	655.6	68.0	9.4	61.7	1 173.4
February	473.8	653.6	70.9	9.8	61.7	475.7	656.4	68.4	9.4	61.7	1 173.9
March	474.6	656.4	68.2	9.4	61.7	474.9	657.7	68.6	9.4	61.8	1 174.4
April	471.0	662.1	69.4	9.5	62.3	474.2	659.1	68.5	9.4	61.9	1 175.0
May	478.2	657.7	69.9	9.6	61.9	473.5	660.3	68.3	9.4	62.0	1 175.6
June	471.3	663.8	64.3	8.8	61.9	472.9	661.1	68.2	9.4	62.0	1 176.1
July	475.1	663.4	67.5	9.2	62.1	472.0	661.1	68.4	9.4	62.0	1 176.9
August	468.6	658.8	70.6	9.7	61.9	470.9	660.3	68.9	9.4	61.9	1 177.6
September	468.6	656.4	71.0	9.8	61.7	470.2	659.3	69.3	9.5	61.8	1 178.4
October	471.2	661.2	68.7	9.4	61.9	470.1	658.6	69.4	9.5	61.7	1 179.0
November	469.1	656.5	69.1	9.5	61.5	470.4	658.1	69.2	9.5	61.7	1 179.6
December	470.5	657.7	69.5	9.6	61.6	471.1	657.8	68.8	9.5	61.6	1 180.3
1997											
January	474.9	659.0	66.4	9.2	61.4	471.8	657.8	68.1	9.4	61.5	1 180.8

¹ Trend estimates for July 1996 to December 1996 have been revised.



LABOUR FORCE STATUS (AGED 15 AND OVER)-Western Australia¹

SEASONALLY ADJUSTED.....

TREND.....

Month	SEASONALLY ADJUSTED					TREND					Civilian population aged 15 and over '000s
	Employed full time '000s	Total employed '000s	Total unemployed '000s	Unemployment rate %	Participation rate %	Employed full time '000s	Total employed '000s	Total unemployed '000s	Unemployment rate %	Participation rate %	
MALES											
1995											
November	429.6	479.6	37.4	7.2	76.8	428.2	477.8	38.0	7.4	76.6	673.5
December	425.2	477.2	38.2	7.4	76.4	427.4	477.5	39.2	7.6	76.6	674.7
1996											
January	424.9	476.0	40.9	7.9	76.5	426.7	477.1	40.2	7.8	76.5	675.9
February	428.5	475.8	42.4	8.2	76.5	426.2	476.8	41.0	7.9	76.5	677.2
March	426.9	477.9	42.6	8.2	76.7	426.1	476.8	41.4	8.0	76.4	678.4
April	424.9	477.1	39.3	7.6	76.0	426.4	477.3	41.6	8.0	76.3	679.6
May	426.4	478.8	40.9	7.9	76.3	426.7	478.1	41.6	8.0	76.3	680.8
June	425.4	476.2	43.7	8.4	76.2	427.2	479.1	41.6	8.0	76.3	682.1
July	432.9	482.5	39.9	7.6	76.4	427.6	479.9	41.9	8.0	76.3	683.4
August	425.5	481.2	43.1	8.2	76.6	428.0	480.6	42.1	8.1	76.3	684.7
September	426.3	480.1	41.4	7.9	76.0	428.5	481.4	42.1	8.0	76.3	686.0
October	431.3	484.5	42.5	8.1	76.7	428.9	482.5	41.7	8.0	76.3	687.3
November	429.7	480.2	42.2	8.1	75.9	429.5	483.8	41.1	7.8	76.2	688.6
December	427.0	483.9	40.9	7.8	76.1	430.3	485.3	40.3	7.7	76.2	689.9
1997											
January	434.3	491.5	36.6	6.9	76.4	430.8	486.5	39.6	7.5	76.1	691.0
FEMALES											
1995											
November	189.4	352.7	31.3	8.1	56.5	188.0	351.2	30.1	7.9	56.1	679.5
December	185.2	349.9	29.6	7.8	55.8	188.4	351.3	29.8	7.8	56.0	680.7
1996											
January	185.2	346.2	29.7	7.9	55.1	189.5	351.5	29.1	7.6	55.8	682.0
February	194.3	359.1	29.6	7.6	56.9	191.0	351.7	28.3	7.5	55.6	683.2
March	194.9	355.1	27.1	7.1	55.8	192.7	352.2	27.7	7.3	55.5	684.5
April	197.0	346.2	24.2	6.5	54.0	194.3	353.4	27.6	7.2	55.6	685.8
May	192.2	356.7	27.8	7.2	56.0	195.8	355.5	27.8	7.2	55.8	687.1
June	194.6	354.4	30.4	7.9	55.9	196.9	358.1	28.1	7.3	56.1	688.4
July	196.3	361.9	29.5	7.5	56.7	197.6	360.8	28.2	7.3	56.4	689.9
August	203.3	369.8	28.3	7.1	57.6	198.1	363.1	28.2	7.2	56.6	691.4
September	200.9	365.5	27.2	6.9	56.7	198.1	364.4	28.2	7.2	56.7	692.8
October	193.2	360.2	27.1	7.0	55.8	197.4	364.7	28.4	7.2	56.6	694.2
November	194.5	363.6	28.2	7.2	56.3	196.3	364.6	29.0	7.4	56.6	695.5
December	199.2	367.3	29.9	7.5	57.0	195.0	364.5	29.9	7.6	56.6	696.9
1997											
January	190.7	362.8	33.9	8.5	56.8	193.8	364.0	30.9	7.8	56.6	698.0
PERSONS											
1995											
November	618.9	832.3	68.6	7.6	66.6	616.2	829.0	68.1	7.6	66.3	1 353.0
December	610.5	827.1	67.8	7.6	66.0	615.8	828.8	68.9	7.7	66.2	1 355.4
1996											
January	610.1	822.2	70.6	7.9	65.7	616.1	828.6	69.3	7.7	66.1	1 357.9
February	622.8	834.9	71.9	7.9	66.7	617.2	828.5	69.3	7.7	66.0	1 360.4
March	621.8	833.1	69.7	7.7	66.2	618.8	829.0	69.1	7.7	65.9	1 362.9
April	621.9	823.3	63.4	7.2	64.9	620.7	830.7	69.1	7.7	65.9	1 365.4
May	618.5	835.4	68.7	7.6	66.1	622.5	833.6	69.4	7.7	66.0	1 368.0
June	620.0	830.6	74.2	8.2	66.0	624.1	837.2	69.7	7.7	66.2	1 370.5
July	629.3	844.4	69.5	7.6	66.5	625.2	840.7	70.1	7.7	66.3	1 373.3
August	628.8	851.1	71.4	7.7	67.0	626.1	843.7	70.4	7.7	66.4	1 376.1
September	627.2	845.5	68.6	7.5	66.3	626.5	845.9	70.3	7.7	66.4	1 378.9
October	624.5	844.7	69.6	7.6	66.2	626.3	847.2	70.1	7.6	66.4	1 381.5
November	624.3	843.8	70.4	7.7	66.1	625.8	848.4	70.1	7.6	66.4	1 384.1
December	626.2	851.2	70.8	7.7	66.5	625.3	849.8	70.1	7.6	66.3	1 386.7
1997											
January	625.0	854.4	70.5	7.6	66.6	624.6	850.5	70.5	7.7	66.3	1 389.0

¹ Trend estimates for July 1996 to December 1996 have been revised.

LABOUR FORCE STATUS (AGED 15 AND OVER)-Tasmania¹

SEASONALLY ADJUSTED.....

TREND.....

Month	Employed	Total	Total	Unemp-	Partic-	Employed	Total	Total	Unemp-	Partic-	Civilian
	full time	employed	unemployed	loyment	ipation		full time	employed	unemployed	loyment	
	'000s	'000s	'000s	rate	rate	'000s	'000s	'000s	rate	rate	aged 15
				%	%				%	%	and over
	'000s	'000s	'000s	%	%	'000s	'000s	'000s	%	%	'000s
MALES											
1995											
November	100.5	112.8	13.6	10.8	70.0	100.8	113.5	13.4	10.6	70.2	180.8
December	101.4	113.8	14.7	11.4	71.0	101.4	114.1	13.8	10.8	70.7	180.8
1996											
January	102.4	114.7	14.0	10.9	71.1	101.8	114.9	14.1	11.0	71.3	180.9
February	103.5	117.0	14.0	10.7	72.4	101.9	115.4	14.5	11.2	71.8	181.0
March	100.4	115.5	15.0	11.5	72.1	101.7	115.7	14.9	11.4	72.1	181.1
April	101.6	116.3	15.3	11.6	72.6	101.4	115.8	15.1	11.5	72.3	181.1
May	100.6	114.5	15.0	11.6	71.5	101.2	115.9	15.1	11.6	72.3	181.1
June	101.3	116.2	15.2	11.6	72.5	101.2	115.9	15.1	11.5	72.3	181.1
July	100.4	114.9	15.5	11.9	71.9	101.2	115.8	14.8	11.3	72.1	181.2
August	102.6	117.5	13.7	10.5	72.4	101.1	115.7	14.5	11.1	71.8	181.3
September	101.1	115.6	14.4	11.1	71.7	100.8	115.4	14.2	10.9	71.4	181.4
October	99.5	114.1	13.9	10.9	70.6	100.4	114.8	14.0	10.8	71.0	181.5
November	100.0	114.6	12.7	10.0	70.1	99.9	114.2	13.8	10.8	70.5	181.5
December	99.6	112.6	15.1	11.8	70.3	99.5	113.6	13.7	10.8	70.1	181.6
1997											
January	98.9	113.3	13.3	10.5	69.7	99.1	113.1	13.7	10.8	69.8	181.6
FEMALES											
1995											
November	44.2	86.7	9.4	9.8	51.4	44.7	87.4	8.2	8.6	51.1	187.0
December	43.9	88.2	8.2	8.5	51.5	44.1	87.3	8.4	8.7	51.1	187.0
1996											
January	43.0	86.5	7.8	8.2	50.4	43.7	87.0	8.4	8.8	51.0	187.1
February	43.3	86.9	8.4	8.9	50.9	43.5	86.6	8.4	8.8	50.7	187.2
March	42.9	85.3	9.1	9.7	50.4	43.4	86.2	8.4	8.9	50.5	187.2
April	45.1	87.0	7.6	8.0	50.5	43.2	85.9	8.5	9.0	50.4	187.3
May	42.7	84.6	8.7	9.3	49.8	42.9	85.6	8.7	9.2	50.4	187.3
June	42.9	86.0	8.9	9.3	50.6	42.5	85.5	8.9	9.5	50.4	187.3
July	40.4	85.0	9.7	10.3	50.5	42.2	85.3	9.2	9.7	50.4	187.4
August	42.2	85.5	9.0	9.5	50.4	42.1	85.0	9.4	9.9	50.3	187.5
September	41.9	83.8	9.4	10.1	49.7	42.2	84.7	9.5	10.1	50.2	187.6
October	43.1	85.5	10.0	10.5	50.9	42.3	84.3	9.5	10.1	50.0	187.6
November	43.5	83.9	9.7	10.4	49.9	42.2	84.0	9.4	10.1	49.8	187.7
December	41.3	82.1	8.8	9.7	48.4	42.0	83.8	9.4	10.0	49.6	187.8
1997											
January	40.8	84.9	9.1	9.7	50.1	41.9	83.7	9.2	9.9	49.5	187.8
PERSONS											
1995											
November	144.7	199.6	23.0	10.3	60.5	145.4	200.9	21.6	9.7	60.5	367.8
December	145.3	201.9	22.9	10.2	61.1	145.5	201.4	22.1	9.9	60.8	367.9
1996											
January	145.5	201.2	21.8	9.8	60.6	145.5	201.8	22.5	10.0	61.0	368.0
February	146.9	203.9	22.5	9.9	61.5	145.4	202.0	22.9	10.2	61.1	368.2
March	143.3	200.8	24.2	10.7	61.1	145.1	201.9	23.3	10.3	61.1	368.3
April	146.7	203.2	22.9	10.1	61.4	144.7	201.7	23.5	10.5	61.2	368.4
May	143.2	199.2	23.7	10.6	60.5	144.1	201.5	23.8	10.6	61.2	368.4
June	144.2	202.2	24.1	10.6	61.4	143.6	201.3	24.0	10.6	61.2	368.4
July	140.8	199.8	25.2	11.2	61.1	143.3	201.1	24.0	10.7	61.1	368.6
August	144.8	203.0	22.7	10.0	61.2	143.2	200.7	23.9	10.6	60.9	368.8
September	143.0	199.5	23.9	10.7	60.5	143.0	200.0	23.7	10.6	60.6	369.0
October	142.6	199.6	23.9	10.7	60.6	142.7	199.1	23.5	10.5	60.3	369.1
November	143.4	198.5	22.4	10.1	59.8	142.2	198.2	23.2	10.5	60.0	369.2
December	140.9	194.7	23.9	10.9	59.2	141.5	197.4	23.1	10.5	59.7	369.4
1997											
January	139.7	198.2	22.4	10.2	59.7	141.0	196.8	22.9	10.4	59.5	369.4

¹ Trend estimates for July 1996 to December 1996 have been revised.

LABOUR FORCE STATUS (AGED 15 AND OVER)-Northern Territory¹

TREND.....

Month	Employed full time '000s	Total employed '000s	Total unemployed '000s	Unemp- loyment rate %	Partic- ipation rate %	Civilian population aged 15 and over '000s

MALES						
1995						
November	39.5	45.5	3.7	7.5	78.1	63.0
December	39.8	46.0	3.6	7.2	78.8	62.9
1996						
January	40.0	46.2	3.5	7.1	78.8	63.1
February	40.1	46.1	3.5	7.0	78.3	63.3
March	40.0	45.8	3.4	6.9	77.4	63.5
April	39.9	45.4	3.3	6.7	76.5	63.6
May	40.0	45.2	3.1	6.5	75.8	63.8
June	40.1	45.4	3.0	6.1	75.5	64.0
July	40.2	45.7	2.7	5.6	75.6	64.0
August	40.3	46.0	2.5	5.2	75.8	64.0
September	40.1	46.1	2.3	4.8	75.7	64.0
October	39.9	46.0	2.3	4.7	75.2	64.2
November	39.7	45.7	2.3	4.8	74.7	64.3
December	39.5	45.4	2.4	5.1	74.2	64.4
1997						
January	39.4	45.0	2.6	5.4	73.7	64.5

FEMALES						
1995						
November	22.6	35.7	2.2	5.7	62.0	61.0
December	23.3	36.4	2.3	5.9	63.2	61.1
1996						
January	23.9	36.9	2.5	6.3	64.3	61.3
February	24.4	37.2	2.8	7.0	65.0	61.6
March	24.7	37.3	3.1	7.6	65.3	61.8
April	24.9	37.3	3.2	7.9	65.3	62.0
May	25.1	37.4	3.2	7.8	65.3	62.1
June	25.3	37.5	3.0	7.3	65.0	62.3
July	25.4	37.7	2.7	6.6	64.8	62.3
August	25.3	37.8	2.4	5.9	64.4	62.4
September	25.1	37.8	2.2	5.5	64.0	62.4
October	24.6	37.5	2.1	5.3	63.3	62.6
November	24.1	37.2	2.0	5.1	62.5	62.8
December	23.7	36.9	2.0	5.0	61.7	63.0
1997						
January	23.2	36.5	1.9	4.9	60.8	63.1

PERSONS						
1995						
November	62.1	81.1	5.9	6.7	70.2	123.9
December	63.1	82.4	5.8	6.6	71.1	124.1
1996						
January	63.9	83.1	6.0	6.8	71.6	124.5
February	64.5	83.3	6.3	7.0	71.8	124.9
March	64.7	83.0	6.5	7.2	71.4	125.3
April	64.8	82.7	6.5	7.3	71.0	125.6
May	65.0	82.6	6.3	7.1	70.6	125.9
June	65.4	82.9	5.9	6.7	70.3	126.3
July	65.6	83.4	5.4	6.1	70.3	126.3
August	65.6	83.8	4.9	5.5	70.2	126.4
September	65.2	83.9	4.5	5.1	69.9	126.5
October	64.4	83.5	4.4	5.0	69.3	126.8
November	63.7	83.0	4.3	5.0	68.7	127.1
December	63.2	82.3	4.4	5.1	68.0	127.4
1997						
January	62.7	81.6	4.4	5.2	67.4	127.7

¹ Trend estimates for July 1996 to December 1996 have been revised. Estimates for the most recent three months may be subject to significant revisions as data for later months become available.

LABOUR FORCE STATUS (AGED 15 AND OVER)—Australian Capital Territory¹

TREND.....

Month	Employed full time '000s	Total employed '000s	Total unemployed '000s	Unemp- loyment rate %	Partic- ipation rate %	Civilian population aged 15 and over '000s
MALES						
1995						
November	73.7	85.2	6.9	7.5	81.3	113.3
December	73.5	84.7	6.9	7.6	80.8	113.3
1996						
January	73.3	84.2	7.1	7.8	80.4	113.5
February	73.1	83.8	7.3	8.0	80.2	113.6
March	73.0	83.6	7.4	8.2	80.0	113.7
April	73.0	83.5	7.5	8.3	80.0	113.8
May	73.0	83.5	7.6	8.4	80.0	113.8
June	72.9	83.5	7.7	8.4	80.1	113.9
July	72.9	83.5	7.7	8.4	79.9	114.1
August	72.7	83.4	7.7	8.4	79.6	114.3
September	72.4	83.1	7.7	8.5	79.3	114.5
October	72.2	82.8	7.7	8.6	78.9	114.6
November	71.9	82.5	7.8	8.6	78.7	114.7
December	71.7	82.3	7.8	8.7	78.5	114.9
1997						
January	71.5	82.2	7.8	8.7	78.3	115.0
FEMALES						
1995						
November	45.2	74.1	5.2	6.6	67.3	117.9
December	45.2	73.9	5.4	6.8	67.2	118.0
1996						
January	44.9	73.5	5.7	7.2	67.1	118.1
February	44.6	73.0	5.9	7.5	66.8	118.1
March	44.2	72.6	6.1	7.8	66.6	118.2
April	43.9	72.2	6.4	8.1	66.4	118.3
May	43.7	72.0	6.6	8.4	66.3	118.4
June	43.7	71.8	6.8	8.6	66.3	118.5
July	43.6	71.6	6.8	8.7	66.1	118.7
August	43.5	71.2	6.8	8.7	65.6	118.9
September	43.3	70.8	6.7	8.6	65.1	119.0
October	43.1	70.4	6.5	8.5	64.6	119.1
November	42.9	70.1	6.3	8.2	64.1	119.2
December	42.7	70.0	6.1	8.0	63.8	119.2
1997						
January	42.7	70.0	5.8	7.7	63.6	119.3
PERSONS						
1995						
November	118.9	159.3	12.1	7.0	74.1	231.2
December	118.7	158.6	12.4	7.2	73.9	231.3
1996						
January	118.3	157.7	12.8	7.5	73.6	231.5
February	117.7	156.8	13.2	7.7	73.4	231.7
March	117.2	156.1	13.6	8.0	73.2	231.9
April	116.9	155.7	13.9	8.2	73.1	232.1
May	116.7	155.4	14.2	8.4	73.0	232.3
June	116.6	155.4	14.5	8.5	73.1	232.4
July	116.5	155.1	14.5	8.6	72.9	232.8
August	116.2	154.6	14.5	8.6	72.5	233.2
September	115.7	153.8	14.4	8.5	72.0	233.6
October	115.3	153.2	14.2	8.5	71.6	233.7
November	114.8	152.6	14.1	8.4	71.3	233.9
December	114.4	152.3	13.9	8.4	71.0	234.1
1997						
January	114.1	152.2	13.7	8.2	70.8	234.3

¹ Trend estimates for July 1996 to December 1996 have been revised. Estimates for the most recent three months may be subject to significant revisions as data for later months become available.

EXPLANATORY NOTES

.....

INTRODUCTION

1 This publication contains preliminary estimates of the civilian labour force derived from the labour force survey component of the monthly population survey. Estimates for the current month are preliminary and subject to revision. Revised estimates for the current month and more detailed estimates will be published in *Labour Force, Australia* (6203.0).

MONTHLY POPULATION SURVEY

2 The population survey is based on a multi-stage area sample of private dwellings (currently about 30,000 houses, flats, etc.) and a list sample of non-private dwellings (hotels, motels, etc.), and covers about 0.5% of the population of Australia. The information is obtained from the occupants of selected dwellings by specially trained interviewers. The interviews are generally conducted during the two weeks beginning on the Monday between the 6th and 12th of each month. The information obtained relates to the week before the interview (i.e. the reference week).

SCOPE OF SURVEY

3 The Labour Force Survey includes all persons aged 15 and over except members of the permanent defence forces, certain diplomatic personnel of overseas governments customarily excluded from census and estimated populations, overseas residents in Australia, and members of non-Australian defence forces (and their dependants) stationed in Australia.

COVERAGE

4 In the Labour Force Survey, coverage rules are applied which aim to ensure that each person is associated with only one dwelling, and hence has only one chance of selection. The coverage rules are necessarily a balance between theoretical and operational considerations. Nevertheless, the chance of a person being enumerated at two separate dwellings in the survey is considered to be negligible.

POPULATION BENCHMARKS

5 Labour Force Survey estimates are calculated in such a way as to add up to independent estimates of the civilian population aged 15 and over (population benchmarks). From February 1994, labour force estimates have been compiled using benchmarks based on the results of the 1991 Census of Population and Housing. Small revisions were made to many of the historical estimates from January 1989 to January 1994.

REVISION OF SERIES

6 From April 1986, the definition of employed persons was changed to include persons who worked without pay between 1 and 14 hours per week in a family business or on a farm (i.e. contributing family workers). For further information, see paragraphs 36 and 37 of the Explanatory Notes to the February 1987 issue of *The Labour Force, Australia* (6203.0).

SURVEY SAMPLE REDESIGN

7 The Labour Force Survey sample was redesigned and reselected using information collected in the 1991 Census of Population and Housing. The new sample was phased in over the period September to December 1992. For details, see *Information Paper: Labour Force Survey Sample Design* (6269.0).

8 For the most part, one quarter of the new sample was introduced each month so that, by December 1992, the entire new sample was in place. Replacement generally occurred at the rotation group level with two groups being substituted each month. Such a pattern of implementation meant that any changes to labour force estimates due to differences between the two samples, or any other influences, were spread over the four months rather than being concentrated in one inter-month period.

9 This phase-in scheme applied to the private dwelling sample in urban areas. The new sample for non-private dwellings and private dwellings in rural areas was introduced in a single stage in November 1992.

10 Two types of error are possible in an estimate based on a sample survey: sampling error and non-sampling error.

Sampling error occurs because a sample, rather than the entire population, is surveyed. One measure of the likely difference resulting from not including all dwellings in the survey is given by the standard error. There are about two chances in three that a sample estimate will differ by less than one standard error from the figure that would have been obtained if all dwellings had been included in the survey, and about nineteen chances in twenty that the difference will be less than two standard errors. Standard errors of estimates for the latest month and of estimates of movements since the previous month are shown on pages 30 and 31. Standard errors of other estimates and other movements may be determined by using information in the Technical Notes in *Labour Force, Australia* (6203.0).

Non sampling error arises from inaccuracies in collecting, recording and processing the data. Every effort is made to minimise reporting error by the careful design of questionnaires, intensive training and supervision of interviewers, and efficient data processing procedures.

11 Seasonally adjusted series are published in Tables 2, 5 and 12 to 17. Seasonal factors are reviewed annually to take account of each additional year's original data. The results of the latest review were used to compile the revised seasonally adjusted and trend estimates given in this publication. Information about the method of adjustment and revised seasonally adjusted and trend estimates for all months from January 1991 were published in an appendix to the February 1996 issue of *Labour Force, Australia* (6203.0).

12 Seasonal adjustment is a means of removing the estimated effects of normal seasonal variation from the series so that the effects of other influences on the series can be more clearly recognised. Seasonal adjustment does not aim to remove the irregular or non-seasonal influences which may be present in any particular month. This means that month-to-month movements of the seasonally adjusted estimates may not be reliable indicators of trend behaviour. For example, irregular factors unrelated to the trend account for more than half the seasonally adjusted movement with the following frequency:

- Employment: 5 in 10 monthly movements
- Unemployment: 7 in 10 monthly movements
- Unemployment rate: 7 in 10 monthly movements
- Participation rate: 9 in 10 monthly movements

13 The smoothing of seasonally adjusted series reduces the impact of the irregular component of the seasonally adjusted series, and creates trend estimates. These trend estimates are derived by applying a 13-term Henderson-weighted moving average to all months except the last six. The last six monthly trend estimates are obtained by applying surrogates of the Henderson average to the seasonally adjusted series. Trend series are used to analyse the underlying behaviour of the series over time. These are published in Tables 3, 6 and 12 to 19.

14 While this smoothing technique enables estimates to be produced for the latest month, it does result in revisions to the most recent months as additional observations become available. Generally, subsequent revisions become smaller, and after three months have a negligible impact on the series. There will also be revisions as a result of the annual review of seasonal factors.

SEASONAL ADJUSTMENT AND
TREND ESTIMATION (continued)

15 Trend estimates are published for the Northern Territory in Table 18 and for the Australian Capital Territory in Table 19. Unadjusted series for the two Territories have shown, historically, a high degree of variability, which can lead to considerable revisions to the seasonally adjusted estimates after each annual seasonal factor re-analysis. Seasonally adjusted estimates are not currently published for the two Territories. The most recent six months trend estimates are subject to revision. For the three most recent months, the revision may be relatively large. Inferences about trends drawn from smoothed seasonally adjusted (trend) estimates for months earlier than the latest three months are unlikely to be affected by month to month revisions. They may be affected by revision resulting from the annual re-analysis of seasonal factors.

16 For further information, see *A Guide to Interpreting Time Series — Monitoring 'Trends': an Overview* (1348.0) or contact the Assistant Director, Time Series Analysis on (06) 252 6345.

RELATED PUBLICATIONS

17 Users may also wish to refer to *Labour Force, Australia* (6203.0). This publication contains a detailed list of related publications which are available from ABS Bookshops.

18 Current publications produced by the ABS are listed in the *Catalogue of Publications and Products, Australia* (1101.0). The ABS also issues, on Tuesdays and Fridays, a *Release Advice* (1105.0) which lists publications to be released in the next few days. The Catalogue and Release Advice are available from any ABS office.

UNPUBLISHED STATISTICS

19 As well as the statistics included in this and related publications, the ABS may have other relevant unpublished data available. Inquiries should be made to Donna Maurer on 06 252 6525 or to any ABS office.

EFFECTS OF ROUNDING

20 Estimates have been rounded and discrepancies may occur between sums of the component items and totals.

21 Estimates of movement shown in this publication are obtained by taking the difference of unrounded estimates. The movement estimate is then rounded to one decimal place. Therefore where a discrepancy occurs between the reported movement and the difference of the rounded estimates, the reported movement will be more accurate.

SYMBOLS AND OTHER USAGES

- * subject to sampling variability too high for most practical uses. See the Technical Notes in 6203.0 for more details.
- .. not applicable
- r revised
- pts percentage points

GLOSSARY

.....*

Actively looking for work	Includes writing, telephoning or applying in person to an employer for work; answering a newspaper advertisement for a job; checking factory or Commonwealth Employment Service noticeboards; being registered with the Commonwealth Employment Service; checking or registering with any other employment agency; advertising or tendering for work; and contacting friends or relatives.
Attending school	Persons aged 15 to 19 enrolled full time at secondary or high schools in the reference week.
Attending tertiary educational institution full time	Persons aged 15 to 24 enrolled full time at a TAFE college, university, or other educational institution in the reference week.
Employed	Persons aged 15 and over who, during the reference week: <ul style="list-style-type: none">■ worked for one hour or more for pay, profit, commission or payment in kind in a job or business, or on a farm (comprising employees, employers and own account workers); or■ worked for one hour or more without pay in a family business or on a farm (i.e. contributing family workers); or■ were employees who had a job but were not at work and were:<ul style="list-style-type: none">■ on paid leave, on leave without pay for less than four weeks up to the end of the reference week,■ stood down without pay because of bad weather or plant breakdown at their place of employment for less than four weeks up to the end of the reference week,■ on strike or locked out,■ on workers' compensation and expected to be returning to their job, or■ receiving wages or salary while undertaking full-time study; or■ were employers, own account workers or contributing family workers who had a job, business or farm, but were not at work.
Full-time workers	Employed persons who usually worked 35 hours or more a week (in all jobs) and those who, although usually working less than 35 hours a week, worked 35 hours or more during the reference week
Labour force	For any group, persons who were employed or unemployed, as defined.
Labour force status	A classification of the civilian population aged 15 and over into employed, unemployed or not in the labour force, as defined. The definitions conform closely to the international standard definitions adopted by the International Conferences of Labour Statisticians.
Not in the labour force	Persons who were not in the categories employed or unemployed as defined.
Participation rate	For any group, the labour force expressed as a percentage of the civilian population aged 15 and over in the same group.
Part-time workers	Employed persons who usually worked less than 35 hours a week and who did so during the reference week.
Seasonally adjusted series	A time series of estimates with the estimated effects of normal seasonal variation removed. See Explanatory Note 11 to 12 for more detail.
Trend series	A smoothed seasonally adjusted series of estimates. See Explanatory Notes 13 to 15 for more detail.

Unemployed	Persons aged 15 and over who were not employed during the reference week, and: <ul style="list-style-type: none"> ■ had actively looked for full-time or part-time work at any time in the four weeks up to the end of the reference week and: <ul style="list-style-type: none"> • were available for work in the reference week, or would have been available except for temporary illness (i.e. lasting for less than four weeks to the end of the reference week), or • were waiting to start a new job within four weeks from the end of the reference week and would have started in the reference week if the job had been available then; or ■ were waiting to be called back to a full-time or part-time job from which they had been stood down without pay for less than four weeks up to the end of the reference week (including the whole of the reference week) for reasons other than bad weather or plant breakdown.
Unemployed looking for first full-time job	Unemployed persons looking for full-time work (as defined above) who had never worked full time for two weeks or more
Unemployed looking for full-time work	Unemployed persons who actively looked for full-time work, or were to resume a full-time job from which they had been stood down.
Unemployed looking for part-time work	Unemployed persons who had actively looked for part-time work only, or were to resume a part-time job from which they had been stood down.
Unemployment rate	For any group, the number of unemployed persons expressed as a percentage of the labour force in the same group.
Unemployment to population ratio	For any group, the number of unemployed persons expressed as a percentage of the civilian population in the same group.

STANDARD ERRORS

The estimates in this publication are based on information gained from the occupants of a sample survey of dwellings. Because the entire population is not surveyed, the published estimates are subject to sampling error. The most common way of quantifying such sampling error is to calculate the standard error for the published estimate or statistic.

LEVEL ESTIMATES

To illustrate, let us say the published level estimate for employed persons aged 15 to 19 is 500,000. The calculated standard error in this case is 9,000. The standard error is then used to interpret the level estimate of 500,000. For instance, the standard error of 9,000 indicates that:

- There are approximately two chances in three that the real value falls within the range 491,000 to 509,000 (500,000 + or - 9,000)
- There are approximately nineteen chances in twenty that the real value falls within the range 482,000 to 518,000 (500,000 + or - 18,000)

The real value in this case is the result we would obtain if we could enumerate the total population.

The following tables show the standard errors for this month's level estimates.

	EMPLOYED.....			UNEMPLOYED.....						
	Employed full time	Employed part time	Total employed	Unemp. looking for f/t work	Unemp. looking for p/t work	Total unemployed	Labour force	Not in labour force	Unemp- loyment rate	Partic- ipation rate
	'000s	'000s	'000s	'000s	'000s	'000s	'000s	'000s	pts	pts
NSW	14.7	9.5	16.0	6.3	3.6	6.9	16.4	14.0	0.2	0.3
Vic.	12.1	8.2	13.3	5.5	3.0	5.9	13.7	11.5	0.3	0.4
Qld	9.4	6.2	10.3	4.4	2.5	4.8	10.7	8.8	0.3	0.4
SA	5.1	3.6	5.7	2.4	1.3	2.6	5.9	5.1	0.4	0.5
WA	6.3	4.3	7.0	2.6	1.5	2.9	7.2	5.7	0.3	0.5
Tas.	1.7	1.3	1.8	1.0	0.5	1.0	1.9	1.7	0.5	0.5
NT	1.9	1.1	2.2	0.6	0.3	0.7	2.2	1.6	0.8	1.8
ACT	1.6	1.0	1.8	0.7	0.4	0.8	1.8	1.3	0.5	0.8
Males	19.9	9.2	20.7	8.5	3.8	9.0	21.4	14.9	0.2	0.3
Females	15.4	13.6	18.7	6.8	4.7	7.8	19.3	18.5	0.2	0.3
Persons	22.7	15.3	24.9	10.2	5.8	11.1	25.7	21.5	0.1	0.2

	NUMBER OF UNEMPLOYED PERSONS.....						UNEMPLOYMENT RATE.....				
	Aged 15-19 seeking first f/t job	Aged 15-19 looking for f/t work	Aged 20 and over looking for f/t work	Total looking for f/t work	Looking for p/t work	Total unemployed	Aged 15-19 looking for f/t work	Aged 20 and over looking for f/t work	Total looking for f/t work	Looking for p/t work	Total unemp- loyed
	'000s	'000s	'000s	'000s	'000s	'000s	pts	pts	pts	pts	pts
NSW	2.7	3.1	5.9	6.3	3.6	6.9	2.4	0.3	0.3	0.5	0.2
Vic.	2.0	2.3	5.2	5.5	3.0	5.9	3.1	0.3	0.3	0.6	0.3
Qld	1.7	2.2	4.1	4.4	2.5	4.8	2.9	0.3	0.3	0.6	0.3
SA	0.9	1.1	2.3	2.4	1.3	2.6	4.2	0.4	0.4	0.7	0.4
WA	0.9	1.3	2.4	2.6	1.5	2.9	2.7	0.4	0.4	0.6	0.3
Tas.	0.5	0.5	0.9	1.0	0.5	1.0	4.6	0.6	0.6	0.9	0.5
NT	0.2	0.3	0.6	0.6	0.3	0.7	7.4	0.9	0.9	1.7	0.8
ACT	0.3	0.3	0.6	0.7	0.4	0.8	6.8	0.5	0.5	1.1	0.5
Males	3.0	3.7	8.0	8.5	3.8	9.0	1.6	0.2	0.2	0.6	0.2
Females	2.8	3.3	6.2	6.8	4.7	7.8	2.3	0.3	0.3	0.3	0.2
Persons	4.0	4.8	9.5	10.2	5.8	11.1	1.3	0.1	0.1	0.3	0.1

STANDARD ERRORS *continued*

MOVEMENT ESTIMATES

The following example illustrates how to use the standard error to interpret a movement estimate. Let us say that one month the published level estimate for females employed part time in Australia is 1,387,000; the next month the published level estimate is 1,400,000. The calculated standard error for the movement estimate is 10,400. The standard error is then used to interpret the published movement estimate of 13,000. For instance, the standard error of 10,400 indicates that:

- There are approximately two chances in three that the real movement over the two month period falls within the range 2,600 to 23,400 (13,000 + or - 10,400)
- There are approximately nineteen chances in twenty that the real movement falls within the range -7,800 to 33,800 (13,000 + or - 20,800).

The following tables show the standard errors for this month's movement estimates.

	EMPLOYED.....			UNEMPLOYED.....			Labour force	Not in labour force	Unemployment rate	Participation rate
	Employed full time	Employed part time	Total employed	Unemp. looking for f/t work	Unemp. looking for p/t work	Total unemployed				
	'000s	'000s	'000s	'000s	'000s	'000s				
NSW	11.5	7.4	12.6	4.8	2.9	5.2	13.0	10.8	0.2	0.3
Vic.	8.8	5.9	9.8	3.9	2.4	4.2	10.2	8.3	0.2	0.3
Qld	6.5	4.4	7.2	3.2	2.0	3.5	7.4	6.1	0.2	0.3
SA	3.5	2.5	3.9	1.6	1.0	1.8	4.1	3.4	0.2	0.3
WA	4.6	3.1	5.1	2.0	1.2	2.1	5.2	4.1	0.2	0.4
Tas.	1.5	1.1	1.7	0.7	0.4	0.8	1.8	1.5	0.4	0.5
NT	1.2	0.7	1.4	0.4	0.2	0.5	1.4	1.1	0.5	1.1
ACT	1.2	0.8	1.4	0.5	0.4	0.6	1.4	1.0	0.4	0.6
Males	15.2	7.0	15.9	6.5	3.2	6.8	16.4	11.1	0.1	0.2
Females	11.7	10.4	14.3	5.3	3.9	6.0	14.8	14.0	0.2	0.2
Persons	17.7	11.6	19.6	7.7	4.6	8.3	20.3	16.5	0.1	0.1

	NUMBER OF UNEMPLOYED PERSONS.....						UNEMPLOYMENT RATE.....				
	Aged 15-19 seeking first f/t job	Aged 15-19 looking for f/t work	Aged 20 and over looking for f/t work	Total looking for f/t work	Looking for p/t work	Total unemployed	Aged 15-19 looking for f/t work	Aged 20 and over looking for f/t work	Total looking for f/t work	Looking for p/t work	Total unemployed
	'000s	'000s	'000s	'000s	'000s	'000s	pts	pts	pts	pts	pts
NSW	2.3	2.6	4.5	4.8	2.9	5.2	2.1	0.2	0.2	0.4	0.2
Vic.	1.7	1.9	3.7	3.9	2.4	4.2	2.6	0.2	0.2	0.4	0.2
Qld	1.5	1.8	3.0	3.2	2.0	3.5	2.3	0.2	0.2	0.5	0.2
SA	0.8	0.9	1.6	1.6	1.0	1.8	3.2	0.3	0.3	0.5	0.2
WA	0.9	1.1	1.8	2.0	1.2	2.1	2.4	0.3	0.3	0.5	0.2
Tas.	0.4	0.4	0.7	0.7	0.4	0.8	3.6	0.5	0.5	0.7	0.4
NT	0.2	0.2	0.4	0.4	0.2	0.5	5.3	0.6	0.6	1.2	0.5
ACT	0.3	0.3	0.5	0.5	0.4	0.6	5.7	0.4	0.4	0.9	0.4
Males	2.7	3.2	6.1	6.5	3.2	6.8	1.4	0.1	0.1	0.5	0.1
Females	2.6	2.9	4.8	5.3	3.9	6.0	2.1	0.2	0.2	0.2	0.2
Persons	3.4	4.0	7.2	7.7	4.6	8.3	1.1	0.1	0.1	0.2	0.1

WHAT IF...? REVISIONS TO TREND ESTIMATES

EFFECT OF NEW SEASONALLY ADJUSTED ESTIMATES ON TREND ESTIMATES

Each time new seasonally adjusted estimates become available, trend estimates are revised (see paragraphs 13 and 14 of Explanatory Notes).

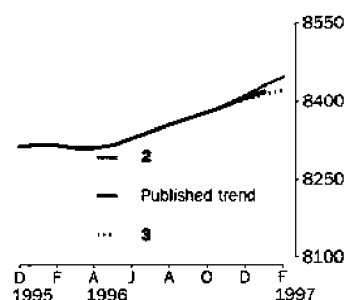
TREND REVISIONS

The examples in the tables below show four illustrative scenarios and the consequent revisions to previous trend estimates of employment and unemployment rate.

- 1** The February seasonally adjusted estimate is the same as the January estimate.
- 2** The February seasonally adjusted estimate is higher than the January estimate by:
 - +0.33% for employment
 - +2.2% for the unemployment rate
- 3** The February seasonally adjusted estimate is lower than the January estimate by:
 - -0.33% for employment
 - -2.2% for the unemployment rate
- 4** The February seasonally adjusted estimate results in a revised January trend estimate which is identical to the new February trend estimate.

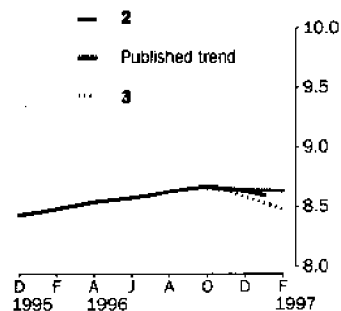
The percentage changes of 0.33% and 2.2% were chosen because they represent the average absolute monthly percentage changes in employment and the unemployment rate respectively.

EMPLOYMENT ('000)



		WHAT IF NEXT MONTH'S SEASONALLY ADJUSTED ESTIMATE IS:			
		1	2	3	4
		8 439.9 <i>i.e. the same as Jan 1997</i>	8 468.1 <i>i.e. rises by 0.33%</i>	8 411.7 <i>i.e. falls by 0.33%</i>	8 356.3 <i>i.e. same trend for Jan & Feb</i>
TREND as PUBLISHED					
1996	November	8 393.1	8 393.7	8 395.0	8 392.4
	December	8 406.8	8 408.9	8 413.1	8 404.7
1997	January	8 419.0	8 423.5	8 431.3	8 415.6
	February (new)	—	8 435.4	8 447.2	8 423.5

UNEMPLOYMENT RATE (%)



		WHAT IF NEXT MONTH'S SEASONALLY ADJUSTED ESTIMATE IS:			
		1	2	3	4
		8.6 <i>i.e. the same as Jan 1997</i>	8.8 <i>i.e. rises by 2.2%</i>	8.4 <i>i.e. falls by 2.2%</i>	8.8 <i>i.e. same trend for Jan & Feb</i>
TREND as PUBLISHED					
1996	November	8.7	8.7	8.7	8.6
	December	8.6	8.6	8.6	8.7
1997	January	8.6	8.6	8.6	8.5
	February (new)	—	8.6	8.6	8.5



FOR MORE INFORMATION...

The ABS publishes a wide range of information on Australia's economic and social conditions. A catalogue of publications and products is available from any of our offices (see below).

INFORMATION CONSULTANCY SERVICES

Information tailored to special needs of clients can be obtained from the Information Consultancy Service available at ABS Offices (see below).

ABS PRODUCTS

A large number of ABS products is available from the ABS Bookshops (see below). The ABS also provides a subscription service – you can telephone the ABS Subscription Service Australia wide toll free on 1800 0206 08.

ELECTRONIC SERVICES

A large range of data is available via on-line services, diskette, magnetic tape, tape cartridge and CD ROM. For more details about our electronic data services, contact any ABS office (see below) or e-mail us at:

X.400 (C:Australia,PUB:Telememo,O:ABS,FN:STAT,SN:INFO)
Internet Stat.info@abs.telememo.au
Keylink STAT.INFO/ABS

You can visit us on the Internet at: <http://www.abs.gov.au>

GENERAL SALES AND INQUIRIES

- Sydney 02 9268 4611
 - Melbourne 03 9615 7755
 - Brisbane 07 3222 6351
 - Perth 09 360 5140
 - Adelaide 08 8237 7100
 - Hobart 03 6220 5800
 - Darwin 08 8943 2111
 - Canberra 06 252 6627
- Information Services, ABS
PO Box 10, Belconnen ACT 2616



2620200001973

ISSN 1031-038X

RRP \$15.50