

2004 Labour Statistics In Brief Australia



KEY FACTS

		Annual average	
	Units	1993	2003
CIVILIAN POPULATION			
Aged 15 years and over	'000	13 771.7	15 900.8

LABOUR FORCE PARTICIPATION

Participation rates			
Males	%	73.7	72.0
Females	%	51.8	56.0
Persons	%	62.6	63.9

EMPLOYMENT

Males	'000	4 420.5	5 311.2
Females	'000	3 259.1	4 244.4
Persons	'000	7 679.6	9 555.6
Employment/population ratio	%	55.8	60.1
Part-time employment:			
Proportion of total employment			
Males	%	10.1	14.7
Females	%	41.5	45.8

UNEMPLOYMENT

Unemployed persons	'000	939.1	602.7
Unemployment rate			
Males	%	11.5	5.9
Females	%	10.1	6.0
Persons	%	10.9	5.9
Average duration of unemployment for August, persons	weeks	57.1	49.7

HOURS OF WORK

Average weekly hours worked by employed persons	hours	35.6	34.8
Full-time	hours	41.8	42.1
Part-time	hours	15.6	16.4

INDUSTRIAL RELATIONS

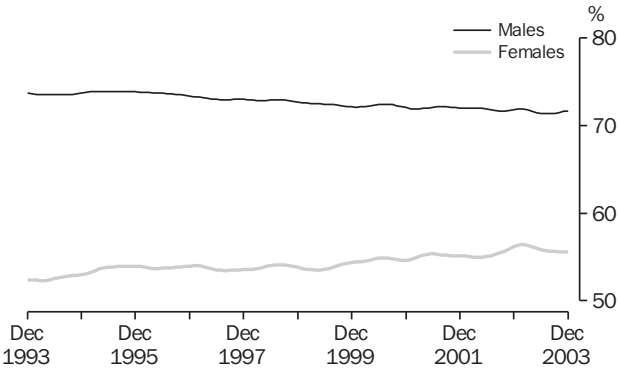
		12 months ended	December
		1993	2003
Industrial disputes			
Working days lost per thousand employees	no.	100	53
Working days lost	'000	635.8	439.4
		Aug 1993	Aug 2003
Trade union members	%	37.6	23.0

CHANGE IN WAGES AND PRICES

		12 months to Dec qtr	10 years to Dec qtr
		2003	2003
Wage cost index, total hourly rate of pay excluding bonuses	%	3.7	na
Consumer price index, all groups	%	2.4	29.8
		Nov 1993	Nov 2003
Average weekly earnings, full-time adults	\$	642.50	987.30

Source: Australian Labour Market Statistics (cat. no. 6105.0); Average Weekly Earnings, Australia (cat. no. 6302.0); Consumer Price Index, Australia (cat. no. 6401.0); Employee Earnings, Benefits and Trade Union Membership, Australia (cat. no. 6310.0); Industrial Disputes, Australia (cat. no. 6321.0); Labour Force, Australia (cat. no. 6202.0); Wage Cost Index, Australia (cat. no. 6345.0).

LABOUR FORCE PARTICIPATION RATES: Trend estimates



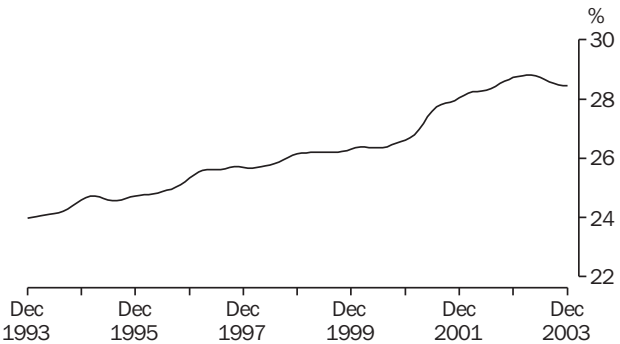
Source: Labour Force, Australia (cat. no. 6202.0).

EMPLOYED PERSONS: OCCUPATION

	November 2003	
	'000	%
Managers and administrators	708.6	7.4
Professionals	1 817.0	18.9
Associate professionals	1 163.0	12.1
Tradespersons and related workers	1 237.5	12.9
Advanced clerical and service workers	389.3	4.0
Intermediate clerical, sales and service workers	1 642.0	17.1
Intermediate production and transport workers	784.7	8.2
Elementary clerical, sales and service workers	970.8	10.1
Labourers and related workers	914.5	9.5
Total	9 627.4	100.0

Source: Labour Force, Australia, Detailed - Electronic Delivery (cat. no. 6291.0.55.001), spreadsheet 7.

PART-TIME EMPLOYMENT AS A PROPORTION OF TOTAL EMPLOYMENT: Trend estimates



Source: Labour Force, Australia (cat. no. 6202.0).

EMPLOYED PERSONS: STATUS IN EMPLOYMENT

	November 2003	
	'000	%
Employees	8 305.3	86.3
Own account workers	963.7	10.0
Employers	322.6	3.4
Contributing family workers	35.7	0.4
Total	9 627.4	100.0

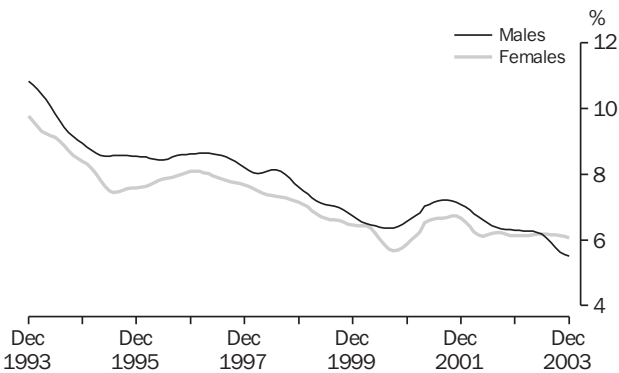
Source: Labour Force, Australia, Detailed - Electronic Delivery (cat. no. 6291.0.55.001), spreadsheet 8.

EMPLOYED PERSONS: INDUSTRY

	November 2003	
	'000	%
Agriculture, forestry and fishing	372.6	3.9
Mining	93.6	1.0
Manufacturing	1 056.8	11.0
Electricity, gas and water supply	69.8	0.7
Construction	791.4	8.2
Wholesale trade	454.4	4.7
Retail trade	1 477.8	15.4
Accommodation, cafes and restaurants	485.3	5.0
Transport and storage	445.9	4.6
Communication services	175.9	1.8
Finance and insurance	347.6	3.6
Property and business services	1 159.3	12.0
Government administration and defence	454.6	4.7
Education	700.4	7.3
Health and community services	951.6	9.9
Cultural and recreational services	232.5	2.4
Personal and other services	357.8	3.7
Total	9 627.4	100.0

Source: Labour Force, Australia, Detailed - Electronic Delivery (cat. no. 6291.0.55.001), spreadsheet 5.

UNEMPLOYMENT RATES: Trend estimates



Source: Labour Force, Australia (cat. no. 6202.0).

LABOUR FORCE STATUS: PERSONS AGED 15–19 YEARS AND WHETHER ATTENDING FULL-TIME EDUCATION

Annual average 2003				
	Units	Not attending full-time education	Attending full-time education	Total
Employed	'000	323.1	366.3	689.5
Full-time	'000	218.1	12.8	230.8
Part-time	'000	105.1	353.6	458.7
Unemployed	'000	59.9	68.1	128.1
Looking for full-time work	'000	53.6	9.9	63.5
Looking for part-time work	'000	6.3	58.3	64.6
Unemployment rate	%	15.6	15.7	15.7
Labour force participation rate	%	86.6	46.5	59.4
Unemployment to population ratio	%	13.5	7.3	9.3
Looking for full-time work	%	12.2	1.1	4.6

Source: Labour Force, Australia (cat. no. 6202.0).

UNEMPLOYED PERSONS: DURATION OF UNEMPLOYMENT

November 2003		
	'000	%
Under 52 weeks		
Under 4 weeks	136.3	25.4
4 weeks and under 13 weeks	106.8	19.9
13 weeks and under 26 weeks	80.7	15.1
26 weeks and under 52 weeks	88.4	16.5
52 weeks and over (long-term unemployed)		
52 weeks and under 104 weeks	47.1	8.8
104 weeks and over	76.8	14.3
Total	536.1	100.0

Source: Labour Force, Australia, Detailed - Electronic Delivery (cat. no. 6291.0.55.001), spreadsheet 14a.

LABOUR FORCE UNDERUTILISATION

September 2002		
	'000	%
Underutilised labour force(a)	1 202.8	(b)11.9
Underemployed(c)	574.3	5.7
Unemployed	628.5	6.2
Labour force	10 075.9	100.0

(a) Underutilised labour force comprises the unemployed plus underemployed.

(b) Referred to as the labour force underutilisation rate.

(c) Underemployed workers are persons employed part-time who want, and are available for, more hours of work than they currently have.

Source: Australian Labour Market Statistics (cat. no. 6105.0).

WAGE COST INDEX(a): OCCUPATION

Annual % change to Dec qtr 2003	
Managers and administrators	3.3
Professionals	4.0
Associate professionals	3.6
Tradespersons and related workers	3.5
Advanced clerical and service workers	4.0
Intermediate clerical, sales and service workers	3.9
Intermediate production and transport workers	3.3
Elementary clerical, sales and service workers	3.4
Labourers and related workers	3.4
Total	3.7
(a) Index: Total hourly rates of pay excluding bonuses.	
Source: Wage Cost Index, Australia (cat. no. 6345.0).	

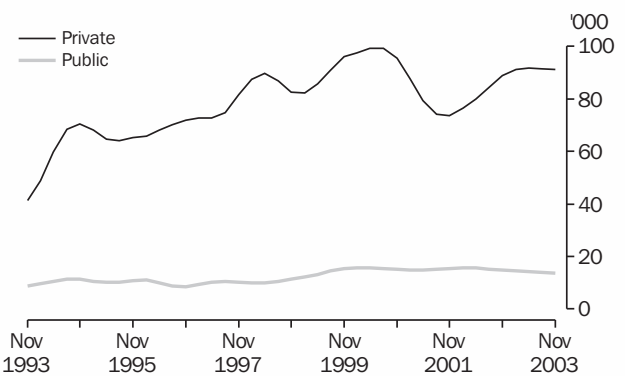
AVERAGE WEEKLY TOTAL EARNINGS (\$)

	Nov 1993	Nov 2003	% change
Full-time adults			
Males	692.80	1061.30	53.2
Females	550.80	852.70	54.8
Persons	642.50	987.30	53.7
Source: Average Weekly Earnings, Australia (cat. no. 6302.0).			

METHODS OF SETTING PAY

	Males %	Females %	May 2002 Persons %
Awards only	15.1	26.1	20.5
Registered collective agreements	34.7	37.5	36.1
Unregistered collective agreements	2.6	1.7	2.2
Registered individual agreements	2.2	1.8	2.0
Unregistered individual agreements	45.3	32.9	39.3
Total	100.0	100.0	100.0
Source: Employee Earnings and Hours, Australia (cat. no. 6306.0).			

JOB VACANCIES BY SECTOR: Trend estimates



Source: Survey of Job Vacancies, Australia (cat. no. 6354.0).

INDUSTRIAL DISPUTES,
Working days lost per thousand employees



Source: *Industrial Disputes, Australia* (cat. no. 6321.0).

INTERNATIONAL COMPARISONS: SELECTED CHARACTERISTICS

	Population 2002 (million)	Standardised unemployment rate(a) 2002 %
Australia	19.7	6.3
Canada	31.4	7.7
France	59.5	8.8
Germany	81.6	8.6
Japan	127.4	5.4
Sweden	8.9	4.9
United Kingdom	59.0	5.1
United States of America	288.6	5.8

(a) ILO/OECD definition.

Source: *OECD Quarterly Labour Force Statistics, 2003, No. 4.*

SYMBOLS AND ABBREVIATIONS USED

Values shown in Australian dollars (\$). Where figures have been rounded, discrepancies may occur between the sums of the component items and totals.

- Aug** — August

Dec — December

no. — number

OECD — Organisation for Economic Co-operation & Development

ILO — International Labour Organisation
- Nov** — November

na — not available

'000 — thousand
- qtr** — quarter

% — per cent

ACKNOWLEDGMENTS

ABS publications draw extensively on information provided freely by individuals, businesses, governments and other organisations. Their continued cooperation is very much appreciated; without it the wide range of statistics published by the ABS would not be available for general use by the community. Information received by the ABS is treated in strict confidence as required by the *Census and Statistics Act 1905*.

FOR MORE INFORMATION...

INTERNET

www.abs.gov.au The ABS web site is the best place to start for access to summary data from our latest publications, information about the ABS, advice about upcoming releases, our catalogue, and Australia Now — a statistical profile.

LIBRARY

A range of ABS publications is available from public and tertiary libraries Australia-wide. Contact your nearest library to determine whether it has the ABS statistics you require, or visit our web site for a list of libraries.

CPI INFOLINE

For current and historical Consumer Price Index data, call 1902 981 074 (call cost 77c per minute).

DIAL-A-STATISTIC

For the latest figures for National Accounts, Balance of Payments, Labour Force, Average Weekly Earnings, Estimated Resident Population and the Consumer Price Index call 1900 986 400 (call cost 77c per minute).

INFORMATION SERVICE

Data which have been published and can be provided within five minutes are free of charge. Our information consultants can also help you to access the full range of ABS information — ABS user-pays services can be tailored to your needs, time frame and budget. Publications may be purchased. Specialists are on hand to help you with analytical or methodological advice.

PHONE

1300 135 070

EMAIL

client.services@abs.gov.au

FAX

1300 135 211

POST

Client Services, ABS, GPO Box 796, Sydney 2001

WHY NOT SUBSCRIBE?

ABS subscription services provide regular, convenient and prompt deliveries of ABS publications and products as they are released. Email delivery of monthly and quarterly publications is available.

PHONE

1300 366 323

EMAIL

subscriptions@abs.gov.au

FAX

(03) 9615 7848

POST

Subscription Services, ABS, GPO Box 2796Y, Melbourne 3001



2610400001040

ISSN 1031-041X

© Commonwealth of Australia 2004

.....
Produced by the Australian Bureau of Statistics