

CHAPTER 2

THE LABOUR FORCE

Fundamental to the measurement of employment and unemployment is the concept of the labour force. The labour force is defined broadly as those persons who, during a particular week, are either employed or unemployed. The labour force represents the total supply of labour available to the labour market during a given week.

This chapter presents some summary statistics on the civilian labour force. The most important labour force measure is the participation rate, which represents the proportion of the working age population (defined to be those aged 15 and over) who are in the labour force. Analysis of the participation rates provides a basis for monitoring changes in the size and composition of labour supply, particularly in terms of age, sex and marital status. Other characteristics of the labour force such as birthplace, educational attainment and family characteristics are also of interest.

The principal source for statistics on the civilian labour force is the ABS population survey, which consists of the monthly labour force survey and attached supplementary surveys. The labour force survey collects information on the labour force status of individuals (i.e. whether they are employed, unemployed or not in the labour force) together with a range of demographic and other characteristics. It has provided the basis for an analysis of underemployment and labour underutilisation, a topic included in Chapter 3. The supplementary surveys cover a range of topics including the Survey of Labour Force Experience, conducted in February in each year, which examines the movements into and out of the labour force over twelve months.

Members of the permanent Defence Forces are excluded from the labour force survey. Their numbers totalled 64,522 males and 6,239 females at the end of June 1987.

SELECTED FEATURES

Labour force

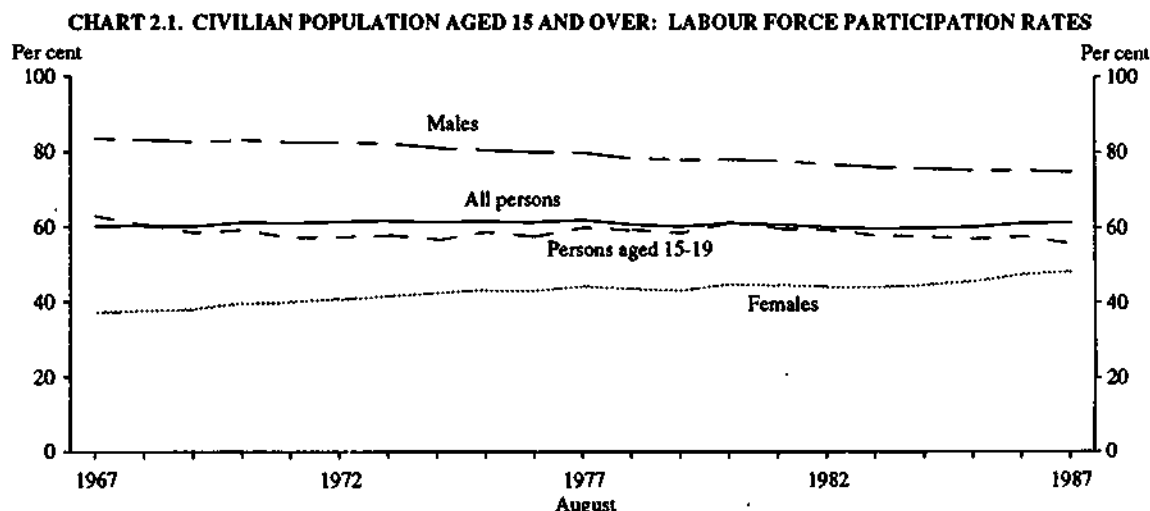
The total labour force in Australia in August 1987 comprised 7,675,100 persons - 4,609,300 males and 3,065,800 females. Over the ten year period August 1977 to August 1987, the labour force participation rate for females increased by about four percentage points to 48.3 per cent with a large increase recorded in the 25 to 35 age group (50.4 per cent to 61.9 per cent) and in the 35 to 44 age group (55.9 per cent to 65.8 per cent). For males, the overall participation rate decreased from 79.8 per cent to 74.9 per cent.

Education

An estimated 2,022,700 persons aged 15 to 64 (19.0 per cent of the civilian population in the same age group) attended an educational institution at some time in 1986. Some 1,200,900 (59.4 per cent) of these persons attended full-time while the remaining 821,800 (40.6 per cent) attended part-time.

An estimated 871,700 persons aged 15 to 64 (about 3 out of every 4 persons in this age group who attended full-time education in 1986) were continuing full-time education in May 1987. The remaining 329,200 were classified as *Leavers* - that is, persons who were full-time students at any time in 1986 but were not full-time students in May 1987.

During the period May 1983 to May 1987 the proportion of working age teenagers who were attending an educational institution full-time has been increasing. Some 48.0 per cent of persons aged 15-19 were attending full-time in May 1983 and this proportion increased to 55.5 per cent in May 1987.



Source: The Labour Force, Australia (6203.0).

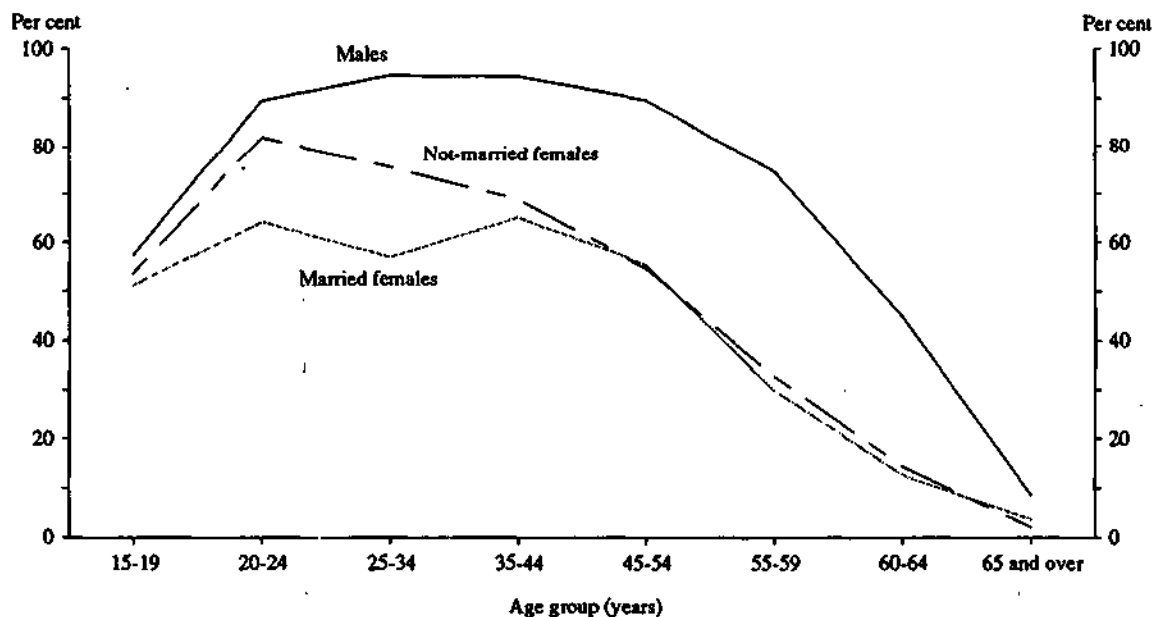
TABLE 2.1. LABOUR FORCE PARTICIPATION RATES BY AGE, AUGUST 1977 TO AUGUST 1987
(per cent)

August	Age group								Total
	15-19	20-24	25-34	35-44	45-54	55-59	60-64	65 and over	
MALES									
1977	62.1	91.2	96.9	97.0	93.2	86.3	62.2	13.7	79.8
1978	61.0	89.6	95.9	95.6	91.6	81.9	59.7	12.0	78.2
1979	61.4	90.2	95.8	95.6	91.2	82.0	53.5	11.5	77.8
1980	62.8	90.5	95.5	95.9	91.4	83.3	50.2	11.1	77.9
1981	61.8	91.3	95.3	95.2	91.3	81.1	51.2	10.6	77.5
1982	62.4	89.3	94.9	95.1	90.0	79.1	47.7	9.2	76.6
1983	58.2	89.6	95.4	95.0	90.4	78.2	42.8	8.6	75.9
1984	59.1	89.4	95.1	94.7	90.1	76.8	43.5	9.0	75.7
1985	57.8	89.7	94.5	94.8	90.0	76.4	42.7	8.9	75.2
1986(a)	58.6	89.1	94.8	94.4	90.0	75.7	45.2	8.4	75.2
1987	57.5	89.5	94.6	94.4	89.6	74.5	44.7	8.5	74.9
FEMALES									
1977	57.6	68.7	50.4	55.9	48.3	31.6	15.2	3.5	44.2
1978	57.5	66.9	51.0	56.7	47.5	30.2	13.8	2.8	43.5
1979	55.0	69.2	50.3	57.1	46.8	26.2	13.2	2.4	42.9
1980	59.2	71.1	52.8	58.7	47.6	29.1	13.5	2.9	44.7
1981	57.1	70.7	52.9	58.1	49.0	29.8	12.0	2.6	44.4
1982	56.1	70.0	53.6	58.0	49.5	26.0	9.1	2.5	44.0
1983	57.0	70.8	52.8	58.0	48.5	28.3	12.1	2.1	44.0
1984	55.7	71.7	54.9	58.7	50.1	27.6	11.5	2.5	44.6
1985	56.1	73.6	57.7	61.4	50.2	27.2	11.2	2.0	45.7
1986(a)	56.6	74.4	60.1	64.6	54.5	28.7	12.7	2.0	47.6
1987	53.7	75.5	61.9	65.8	55.3	30.5	13.2	2.6	48.3
PERSONS									
1977	59.9	79.8	73.7	76.8	71.2	58.8	38.0	7.9	61.8
1978	59.3	78.2	73.6	76.5	70.0	55.8	35.8	6.7	60.6
1979	58.3	79.7	73.1	76.7	69.5	53.8	32.5	6.2	60.1
1980	61.1	80.8	74.2	77.6	70.0	56.0	31.0	6.4	61.0
1981	59.5	81.0	74.2	76.9	70.6	55.4	30.7	5.9	60.7
1982	59.3	79.6	74.3	76.9	70.2	52.5	27.9	5.3	60.0
1983	57.6	80.2	74.1	76.8	69.9	53.4	26.9	4.8	59.7
1984	57.4	80.6	75.0	76.9	70.5	52.4	27.0	5.2	59.9
1985	56.9	81.7	76.1	78.3	70.5	52.0	26.5	4.9	60.2
1986(a)	57.6	81.8	77.5	79.7	72.6	52.4	28.6	4.7	61.2
1987	55.6	82.6	78.2	80.3	72.8	52.8	28.7	5.1	61.4

(a) Estimates from August 1986 are based on a revised definition introduced in April 1986. See paragraph 25 of Appendix 3 for further information.

Source: *The Labour Force, Australia* (6203.0).

CHART 2.2. CIVILIAN POPULATION AGED 15 AND OVER:
LABOUR FORCE PARTICIPATION RATES, AUGUST 1987



Source: *The Labour Force, Australia* (6203.0).

TABLE 2.2. CIVILIAN POPULATION AGED 15 AND OVER : LABOUR FORCE STATUS, AUGUST 1967 TO AUGUST 1987

August	Employed		Unemployed			Labour force	Not in labour force	Civilian population aged 15 and over	Un-employment rate —per cent—	Participation rate
	Full-time workers	Total	Looking for full-time work	Looking for part-time work	Total					
					—'000—					
MALES										
1967	3,272.8	3,410.0	38.2	*	42.4	3,452.5	681.9	4,134.4	1.2	83.5
1968	3,346.2	3,478.2	30.8	4.9	35.8	3,514.0	711.3	4,225.3	1.0	83.2
1969	3,409.2	3,546.7	30.9	*	34.1	3,580.8	750.4	4,331.2	1.0	82.7
1970	3,533.4	3,647.7	33.4	*	36.7	3,684.4	749.0	4,433.4	1.0	83.0
1971	3,600.4	3,712.7	39.9	*	43.8	3,756.5	799.6	4,556.1	1.2	82.5
1972	3,632.3	3,757.7	67.7	7.0	74.8	3,832.5	813.8	4,646.2	2.0	82.5
1973	3,697.5	3,839.6	38.3	13.0	51.3	3,891.0	847.9	4,738.8	1.3	82.1
1974	3,710.9	3,847.1	60.0	7.9	67.9	3,914.9	920.5	4,835.4	1.7	81.0
1975	3,668.4	3,820.6	122.5	16.3	138.8	3,959.4	956.6	4,916.0	3.5	80.5
1976	3,665.6	3,836.3	142.7	13.9	156.6	3,992.9	1,000.1	4,993.0	3.9	80.0
1977	3,682.6	3,866.8	168.5	21.6	190.1	4,056.9	1,024.9	5,081.8	4.7	79.8
1978	3,642.5	3,850.9	207.9	14.3	222.2	4,073.1	1,137.7	5,210.8	5.5	78.2
1979	3,715.9	3,921.2	184.0	13.5	197.5	4,118.7	1,177.6	5,296.3	4.8	77.8
1980	3,773.8	3,982.8	193.9	15.7	209.6	4,192.4	1,193.2	5,385.6	5.0	77.9
1981	3,835.6	4,057.9	187.8	12.7	200.5	4,258.4	1,236.6	5,494.9	4.7	77.5
1982	3,782.5	4,024.3	250.4	21.3	271.7	4,296.0	1,314.6	5,610.6	6.3	76.6
1983	3,663.4	3,903.6	409.5	20.2	429.7	4,333.3	1,379.2	5,712.5	9.9	75.9
1984	3,767.3	4,012.4	359.0	22.5	381.5	4,393.9	1,411.5	5,805.4	8.7	75.7
1985	3,836.0	4,089.0	324.5	23.7	348.1	4,437.1	1,459.7	5,896.9	7.8	75.2
1986(a)	3,901.6	4,179.8	319.9	28.1	348.0	4,527.8	1,492.4	6,020.2	7.7	75.2
1987	3,947.0	4,262.3	317.3	29.7	347.0	4,609.3	1,548.5	6,157.8	7.5	74.9
FEMALES										
1967	1,150.4	1,523.0	31.8	12.5	44.4	1,567.3	2,646.6	4,214.0	2.8	37.2
1968	1,178.6	1,577.5	29.9	15.4	45.3	1,622.8	2,684.3	4,307.1	2.8	37.7
1969	1,201.1	1,636.2	27.4	17.5	44.8	1,681.1	2,731.1	4,412.2	2.7	38.1
1970	1,292.5	1,747.8	24.5	17.0	41.5	1,789.3	2,728.1	4,517.5	2.3	39.6
1971	1,339.2	1,803.0	30.2	18.7	48.9	1,851.9	2,783.1	4,635.0	2.6	40.0
1972	1,356.1	1,852.1	43.4	25.9	69.3	1,921.4	2,811.6	4,733.0	3.6	40.6
1973	1,395.4	1,943.3	28.8	25.6	54.5	1,997.8	2,826.8	4,824.6	2.7	41.4
1974	1,416.9	2,008.1	45.8	27.2	73.1	2,081.2	2,851.8	4,933.0	3.5	42.2
1975	1,378.5	2,020.8	93.0	46.6	139.7	2,160.3	2,859.6	5,019.9	6.5	43.0
1976	1,371.3	2,061.5	94.1	42.0	136.1	2,197.6	2,909.8	5,107.4	6.2	43.0
1977	1,411.9	2,128.6	114.8	54.4	169.2	2,297.8	2,904.3	5,202.1	7.4	44.2
1978	1,402.9	2,154.4	126.5	49.6	176.1	2,330.5	3,029.1	5,359.7	7.6	43.5
1979	1,397.2	2,157.4	131.8	48.1	179.9	2,337.4	3,117.0	5,454.4	7.7	42.9
1980	1,477.3	2,298.5	140.7	44.2	184.9	2,483.4	3,071.7	5,555.1	7.4	44.7
1981	1,501.5	2,335.8	135.9	44.2	180.1	2,515.9	3,154.6	5,670.5	7.2	44.4
1982	1,503.4	2,355.0	137.2	52.5	189.7	2,544.7	3,242.8	5,787.5	7.5	44.0
1983	1,486.9	2,337.4	197.9	59.3	257.1	2,594.6	3,299.1	5,893.7	9.9	44.0
1984	1,547.5	2,449.9	165.1	57.9	223.1	2,673.0	3,315.5	5,988.5	8.3	44.6
1985	1,603.2	2,557.1	162.4	60.7	223.0	2,780.1	3,302.7	6,082.8	8.0	45.7
1986(a)	1,680.7	2,705.9	170.8	76.9	247.6	2,953.6	3,253.1	6,206.7	8.4	47.6
1987	1,709.2	2,810.8	178.1	76.9	254.9	3,065.8	3,279.6	6,345.4	8.3	48.3
PERSONS										
1967	4,423.2	4,933.0	70.1	16.7	86.8	5,019.8	3,328.6	8,348.4	1.7	60.1
1968	4,524.8	5,055.6	60.7	20.4	81.1	5,136.8	3,395.5	8,532.3	1.6	60.2
1969	4,610.3	5,183.0	58.3	20.6	78.9	5,261.9	3,481.5	8,743.3	1.5	60.2
1970	4,825.9	5,395.6	57.9	20.3	78.2	5,473.8	3,477.1	8,950.9	1.4	61.2
1971	4,939.6	5,515.7	70.1	22.6	92.7	5,608.4	3,582.7	9,191.1	1.7	61.0
1972	4,988.4	5,609.9	111.1	32.9	144.0	5,753.9	3,625.3	9,379.2	2.5	61.3
1973	5,092.9	5,783.0	67.2	38.6	105.8	5,888.7	3,674.7	9,563.4	1.8	61.6
1974	5,127.8	5,855.2	105.8	35.1	140.9	5,996.1	3,772.3	9,768.4	2.4	61.4
1975	5,046.8	5,841.3	215.5	62.9	278.4	6,119.7	3,816.2	9,935.9	4.6	61.6
1976	5,036.9	5,897.8	236.8	55.9	292.7	6,190.5	3,909.8	10,100.4	4.7	61.3
1977	5,049.6	5,995.4	283.3	76.0	359.3	6,354.7	3,929.2	10,283.9	5.7	61.8
1978	5,045.3	6,005.4	334.4	63.9	398.3	6,403.7	4,166.8	10,570.5	6.2	60.6
1979	5,113.1	6,078.5	315.8	61.7	377.5	6,456.0	4,294.6	10,750.7	5.9	60.1
1980	5,251.1	6,281.4	334.6	59.9	394.5	6,675.9	4,264.9	10,940.7	5.9	61.0
1981	5,337.1	6,393.7	323.7	56.9	380.6	6,774.3	4,391.2	11,165.5	5.6	60.7
1982	5,285.9	6,379.3	387.6	73.8	461.4	6,840.7	4,557.4	11,398.1	6.7	60.0
1983	5,150.3	6,241.1	607.4	79.5	686.8	6,927.9	4,678.3	11,606.2	9.9	59.7
1984	5,314.8	6,462.3	524.2	80.5	604.6	7,066.9	4,727.0	11,793.9	8.6	59.9
1985	5,439.2	6,646.1	486.8	84.3	571.2	7,217.2	4,762.5	11,979.7	7.9	60.2
1986(a)	5,582.4	6,885.7	490.7	105.0	595.6	7,481.4	4,745.6	12,226.9	8.0	61.2
1987	5,656.3	7,073.2	495.4	106.5	601.9	7,675.1	4,828.1	12,503.2	7.8	61.4

(a) Estimates from August 1986 are based on a revised definition introduced in April 1986. See paragraph 25 of Appendix 3 for further information.

Source: *The Labour Force, Australia* (6203.0).

TABLE 2.3. CIVILIAN POPULATION AGED 15 AND OVER : LABOUR FORCE STATUS, STATES AND TERRITORIES
AUGUST 1987

State or Territory	Employed		Unemployed			Labour force	Not in labour force	Civilian population aged 15 and over	Unemployment rate	Participation rate
	Full-time workers	Total	Looking for full-time work	Looking for part-time work	Total					
—per cent—										
MALES										
New South Wales	1,337.9	1,442.2	122.1	7.6	129.7	1,571.9	569.7	2,141.6	8.3	73.4
Victoria	1,076.0	1,155.3	56.6	8.1	64.7	1,220.0	390.6	1,610.6	5.3	75.7
Queensland	618.7	676.9	61.3	5.6	66.9	743.8	246.3	990.1	9.0	75.1
South Australia	329.5	355.3	32.7	2.4	35.1	390.5	141.8	532.3	9.0	73.4
Western Australia	375.6	406.9	29.2	3.5	32.7	439.5	123.7	563.3	7.4	78.0
Tasmania	106.0	113.0	9.6	1.2	10.8	123.8	45.9	169.7	8.7	72.9
Northern Territory	37.4	40.7	3.0	*	3.2	43.9	11.6	55.5	7.2	79.1
Australian Capital Territory	65.7	72.1	2.9	*	3.9	76.0	18.8	94.8	5.2	80.2
<i>Australia</i>	<i>3,947.0</i>	<i>4,262.3</i>	<i>317.3</i>	<i>29.7</i>	<i>347.0</i>	<i>4,609.3</i>	<i>1,548.5</i>	<i>6,157.8</i>	<i>7.5</i>	<i>74.9</i>
FEMALES										
New South Wales	593.2	948.2	65.1	25.6	90.8	1,039.0	1,174.3	2,213.2	8.7	46.9
Victoria	474.5	775.9	35.8	21.5	57.3	833.2	839.7	1,672.9	6.9	49.8
Queensland	260.9	432.3	34.8	11.6	46.4	478.6	533.8	1,012.5	9.7	47.3
South Australia	128.9	238.2	19.2	6.8	26.0	264.3	291.4	555.7	9.9	47.6
Western Australia	152.0	258.0	14.2	6.7	21.0	278.9	284.7	563.6	7.5	49.5
Tasmania	41.8	70.9	5.0	2.5	7.5	78.4	97.2	175.6	9.6	44.6
Northern Territory	20.1	28.3	1.9	*	2.4	30.7	19.7	50.4	7.9	60.9
Australian Capital Territory	37.8	59.1	2.0	1.6	3.6	62.7	38.8	101.6	5.7	61.8
<i>Australia</i>	<i>1,709.2</i>	<i>2,810.8</i>	<i>178.1</i>	<i>76.9</i>	<i>254.9</i>	<i>3,065.8</i>	<i>3,279.6</i>	<i>6,345.4</i>	<i>8.3</i>	<i>48.3</i>
PERSONS										
New South Wales	1,931.2	2,390.4	187.2	33.3	220.5	2,610.9	1,744.0	4,354.9	8.4	60.0
Victoria	1,550.5	1,931.2	92.4	29.6	122.0	2,053.2	1,230.4	3,283.5	5.9	62.5
Queensland	879.7	1,109.2	96.1	17.2	113.2	1,222.4	780.1	2,002.6	9.3	61.0
South Australia	458.4	593.6	51.9	9.2	61.2	654.7	433.2	1,087.9	9.3	60.2
Western Australia	527.6	664.8	43.4	10.2	53.6	718.5	408.4	1,126.8	7.5	63.8
Tasmania	147.8	183.8	14.6	3.7	18.3	202.1	143.1	345.3	9.0	58.5
Northern Territory	57.5	69.0	4.9	*	5.6	74.6	31.3	105.8	7.5	70.4
Australian Capital Territory	103.5	131.2	4.9	2.7	7.5	138.7	57.6	196.3	5.4	70.6
<i>Australia</i>	<i>5,656.3</i>	<i>7,073.2</i>	<i>495.4</i>	<i>106.5</i>	<i>601.9</i>	<i>7,675.1</i>	<i>4,828.1</i>	<i>12,503.2</i>	<i>7.8</i>	<i>61.4</i>

Source: *The Labour Force, Australia* (6203.0).

TABLE 2.4. CIVILIAN LABOUR FORCE STATUS : BIRTHPLACE, AUGUST 1987

Birthplace	Employed		Unemployed		Labour force	Unemployment rate	Participation rate
	Full-time workers	Total	Looking for full-time work	Total			
—'000—							
—per cent—							
Born in Australia	4,202.2	5,316.2	354.4	433.9	5,750.2	7.5	63.1
Born outside Australia	1,454.1	1,756.9	141.0	168.0	1,924.9	8.7	61.1
Africa	52.2	62.2	4.9	5.0	67.2	7.4	71.2
America	47.0	59.5	7.5	9.6	69.1	13.9	68.7
Asia	234.8	273.2	43.7	48.4	321.6	15.1	60.3
Lebanon	17.9	20.1	7.4	7.7	27.8	27.6	50.0
Vietnam	36.2	39.3	11.7	12.6	51.9	24.3	68.6
Europe	996.0	1,208.8	70.7	88.2	1,297.1	6.8	59.0
Germany	46.8	60.1	4.2	5.0	65.2	7.7	58.9
Greece	61.1	72.2	4.4	5.7	77.9	7.3	57.6
Italy	117.3	138.1	5.7	7.1	145.2	4.9	52.8
Malta	25.3	28.9	*	*	30.5	*	57.4
Netherlands	46.7	58.5	*	3.8	62.3	6.2	62.6
Poland	21.2	25.3	*	*	28.3	*	43.6
UK and Ireland	511.1	634.0	35.4	44.6	678.7	6.6	62.0
Yugoslavia	78.4	88.3	7.8	9.0	97.3	9.3	63.2
Oceania	124.0	153.2	14.1	16.7	169.9	9.8	75.4
New Zealand	104.5	128.1	11.7	13.4	141.5	9.5	76.8

Source: *The Labour Force, Australia* (6203.0).

TABLE 2.5. CIVILIAN POPULATION AGED 15 AND OVER : PROPORTION WHO PARTICIPATED IN THE LABOUR FORCE AT SOME TIME DURING THE REFERENCE PERIOD(a) AND AGE, FEBRUARY 1981 TO FEBRUARY 1987
(per cent)

Survey conducted in February—	Age group at the time of the survey								Total
	15-19	20-24	25-34	35-44	45-54	55-59	60-64	65 and over	
MALES									
1981	78.4	97.2	98.4	97.3	93.3	85.6	59.8	15.7	83.2
1982	76.8	98.0	98.2	97.5	93.2	87.9	56.7	13.6	82.8
1983	75.8	97.6	98.4	97.1	94.0	84.1	59.4	12.9	82.4
1984	73.8	96.3	98.1	97.7	94.3	83.5	54.6	13.3	81.8
1985	72.3	95.9	97.6	96.9	92.7	82.1	53.4	12.3	80.8
1986	73.8	96.6	97.2	96.6	92.2	82.3	50.7	10.7	80.0
1987	71.9	96.1	97.5	96.3	91.9	83.2	52.1	11.5	79.8
FEMALES									
1981	73.5	81.8	65.9	65.8	54.0	34.0	17.7	3.8	53.6
1982	73.7	81.8	65.5	67.9	58.1	34.7	14.8	3.6	54.1
1983	72.4	81.7	66.8	67.7	54.7	36.0	16.7	3.8	54.3
1984	71.1	82.2	65.9	66.7	55.9	34.7	15.9	3.1	53.9
1985	72.0	82.4	68.4	69.3	57.9	33.6	15.6	2.8	54.5
1986	72.6	84.1	70.9	71.6	58.3	36.1	15.8	3.0	55.1
1987	72.0	85.0	71.9	72.6	61.7	36.7	17.4	3.5	56.1
PERSONS									
1981	76.0	89.6	82.1	81.9	74.1	59.7	38.1	9.0	68.2
1982	75.3	89.9	81.7	83.0	76.0	61.4	35.2	7.9	68.3
1983	74.1	89.7	82.5	82.7	74.9	59.9	37.2	7.8	68.2
1984	72.5	89.2	82.0	82.0	75.7	59.3	34.4	7.7	67.7
1985	72.1	89.2	83.0	83.3	75.6	58.0	34.0	6.9	67.5
1986	73.2	90.3	84.0	84.3	75.6	59.4	32.8	6.2	67.4
1987	71.9	90.6	84.7	84.6	77.1	60.1	34.5	6.9	67.8

(a) Persons who participated in the labour force at some time during the reference period as a proportion of the civilian population in each group.

Source: Labour Force Experience, Australia (6206.0).

TABLE 2.6. CIVILIAN POPULATION AGED 15 AND OVER : LABOUR FORCE EXPERIENCE DURING THE YEAR ENDING FEBRUARY 1987 AND MARITAL STATUS
(*000)

	Married			Not-married			Total		
	Males	Females	Persons	Males	Females	Persons	Males	Females	Persons
<i>Out of the labour force for the whole of the period</i>	739.8	1,682.0	2,421.8	488.9	1,074.1	1,563.0	1,228.7	2,756.0	3,984.8
<i>In the labour force at some time during the period</i>	3,044.9	2,096.0	5,140.8	1,818.6	1,427.5	3,246.1	4,863.5	3,523.4	8,387.0
<i>Time in the labour force (weeks)(a)—</i>									
1 and under 4	7.1	61.0	68.1	49.8	50.8	100.5	56.8	111.8	168.7
4 and under 13	21.0	106.4	127.3	115.5	124.9	240.3	136.4	231.2	367.7
13 and under 26	23.3	124.2	147.5	60.2	82.6	142.8	83.4	206.8	290.2
26 and under 39	48.4	157.7	206.0	68.4	68.6	137.0	116.8	226.3	343.0
39 and under 49	143.9	251.5	395.4	119.3	118.4	237.7	263.2	370.0	633.1
49 and under 52	142.4	127.8	270.2	98.3	78.0	176.3	240.7	205.8	446.5
52	2,649.3	1,250.8	3,900.1	1,293.0	890.0	2,183.0	3,942.2	2,140.8	6,083.0
<i>Worked at some time during the period</i>	2,954.9	1,970.0	4,924.9	1,649.4	1,266.3	2,915.6	4,604.2	3,236.3	7,840.5
<i>Full-time/part-time status of weeks worked(b)—</i>									
All were full-time	2,711.9	950.2	3,662.2	1,335.8	838.9	2,174.7	4,047.7	1,789.2	5,836.9
More full-time than part-time	120.7	100.2	220.9	91.0	71.0	162.0	211.7	171.2	382.9
More part-time than full-time	19.6	59.3	79.0	37.4	40.2	77.6	57.0	99.5	156.5
All were part-time	101.3	856.6	957.9	182.6	313.2	495.7	283.9	1,169.7	1,453.6
<i>Time worked during the period(weeks)(c)—</i>									
1 and under 4	8.7	36.3	45.0	45.7	43.4	89.1	54.4	79.7	134.1
4 and under 13	31.1	95.2	126.3	105.0	100.4	205.4	136.1	195.6	331.7
13 and under 26	50.8	131.3	182.1	85.6	85.6	171.1	136.4	216.8	353.2
26 and under 39	97.5	161.9	259.5	124.0	96.6	220.6	221.5	258.6	480.1
39 and under 49	217.2	261.4	478.6	183.2	162.0	345.2	400.4	423.5	823.8
49 and under 52	149.2	120.4	269.5	90.8	73.8	164.6	240.0	194.1	434.1
52	2,396.0	1,155.3	3,551.2	1,007.2	697.4	1,704.7	3,403.2	1,852.7	5,255.9
<i>Looked for work at some time during the period</i>	345.3	309.4	654.7	530.7	443.6	974.3	876.0	752.9	1,629.0
<i>Number of spells of looking for work(d)—</i>									
One	273.6	247.2	520.8	418.8	362.1	780.9	692.4	609.3	1,301.7
Two	32.0	21.1	53.1	54.2	42.1	96.3	86.2	63.2	149.4
Three	14.3	11.9	26.2	23.6	13.3	37.0	37.9	25.2	63.1
Four or more	23.4	22.8	46.2	30.8	20.1	50.9	54.2	42.9	97.1
Total	3,784.7	3,777.9	7,562.6	2,307.6	2,501.6	4,809.1	6,092.3	6,279.5	12,371.7

(a) Excludes 54,800 persons whose time in the labour force could not be determined. (b) Excludes 10,600 persons whose full-time/part-time status could not be determined. (c) Excludes 27,600 persons whose time worked could not be determined. (d) Excludes 17,700 persons whose number of spells could not be determined.

Source: Labour Force Experience, Australia, During the Year Ending February 1987, Summary (6205.0).

TABLE 2.7. PERSONS AGED 15 TO 64 : WHETHER ATTENDED AN EDUCATIONAL INSTITUTION AND TYPE OF ATTENDANCE IN PREVIOUS YEAR, WHETHER CONTINUING FULL-TIME EDUCATION, LABOUR FORCE STATUS AND AGE MAY 1982 TO MAY 1987 ('000)

	1982	1983	1984	1985	1986	1987
AGED 15 TO 19						
Attended an educational institution in previous year	894.2	897.9	941.3	985.1	1,020.9	1,061.0
Attended full-time in previous year	784.7	804.2	848.4	896.2	941.1	973.5
Continuing full-time education at May	552.2	595.2	622.5	656.2	691.6	744.8
Leavers	232.5	209.0	225.9	240.0	249.5	228.8
Employed	174.8	140.8	162.1	184.0	187.3	171.3
Full-time	155.3	115.8	140.3	159.4	165.9	143.6
Part-time	19.5	25.0	21.8	24.6	21.4	27.7
Unemployed	42.3	53.5	50.6	45.4	47.7	44.3
Not in labour force	15.4	14.7	13.2	10.7	14.4	13.1
Attended part-time in previous year	109.5	93.6	92.9	89.0	79.8	87.5
Attending an educational institution at May	73.8	61.4	55.7	55.4	47.8	57.0
Full-time	*	*	*	*	*	*
Part-time	71.0	58.9	53.3	54.0	44.7	53.5
Not attending an educational institution at May	35.7	32.2	37.2	33.6	32.1	30.5
Did not attend an educational institution in previous year	366.9	364.9	336.6	310.7	308.9	306.4
Total	1,261.0	1,262.8	1,277.9	1,295.8	1,329.8	1,367.4
AGED 20 TO 24						
Attended an educational institution in previous year	285.3	296.1	316.0	319.5	307.4	308.7
Attended full-time in previous year	142.2	136.8	155.3	151.0	147.6	151.4
Continuing full-time education at May	82.8	76.6	94.2	87.0	86.7	92.6
Leavers	59.4	60.2	61.1	64.0	60.9	58.8
Employed	46.9	43.8	46.4	46.9	49.7	44.7
Full-time	40.2	37.0	39.3	41.3	40.3	38.4
Part-time	6.7	6.9	7.1	5.6	9.4	6.3
Unemployed	9.0	13.4	12.0	13.2	8.0	9.6
Not in labour force	3.5	*	*	3.9	*	4.5
Attended part-time in previous year	143.1	159.2	160.7	168.5	159.8	157.2
Attending an educational institution at May	70.2	81.3	83.7	78.4	75.7	76.6
Full-time	3.8	5.7	4.9	5.3	7.0	8.9
Part-time	66.4	75.6	78.8	73.1	68.7	67.8
Not attending an educational institution at May	72.9	77.9	77.0	90.1	84.1	80.6
Did not attend an educational institution in previous year	1,004.1	1,019.6	1,003.9	978.4	993.8	995.0
Total	1,289.4	1,315.6	1,319.8	1,297.9	1,301.2	1,303.6
AGED 25 TO 64						
Attended an educational institution in previous year	497.4	536.8	570.8	592.6	667.7	653.1
Attended full-time in previous year	58.8	61.8	65.7	67.8	74.7	76.0
Continuing full-time education at May	23.3	22.7	24.6	26.5	28.7	34.3
Leavers	35.5	39.1	41.2	41.3	46.0	41.6
Employed	25.6	28.8	28.6	33.2	36.2	31.6
Full-time	22.1	24.2	23.6	27.4	29.7	25.6
Part-time	3.5	4.6	5.1	5.9	6.5	6.1
Unemployed	4.0	4.2	5.3	4.1	4.3	5.1
Not in labour force	5.8	6.2	7.2	4.1	5.5	4.9
Attended part-time in previous year	438.6	475.0	505.1	524.8	593.0	577.1
Attending an educational institution at May	193.4	210.9	220.6	220.7	244.1	246.3
Full-time	6.9	3.9	6.9	9.2	7.8	9.3
Part-time	186.5	207.0	213.6	211.5	236.2	237.0
Not attending an educational institution at May	245.3	264.2	284.5	304.0	348.9	330.8
Did not attend an educational institution in previous year	6,661.1	6,812.2	6,943.2	7,051.6	7,128.3	7,328.3
Total	7,158.5	7,349.0	7,514.0	7,644.2	7,796.0	7,981.3
TOTAL						
Attended an educational institution in previous year	1,676.9	1,730.7	1,828.1	1,897.1	1,995.9	2,022.7
Attended full-time in previous year	985.6	1,002.8	1,069.4	1,114.9	1,163.3	1,200.9
Continuing full-time education at May	658.3	694.5	741.3	769.6	807.0	871.7
Leavers	327.3	308.3	328.1	345.3	356.3	329.2
Employed	247.3	213.4	237.2	264.1	273.3	247.7
Full-time	17.6	176.9	203.2	228.1	235.9	207.6
Part-time	29.8	36.3	34.0	36.0	37.4	40.1
Unemployed	55.3	71.3	67.8	62.6	60.0	59.1
Not in labour force	24.7	23.8	23.1	18.6	23.1	22.4
Attended part-time in previous year	691.3	727.9	758.7	782.2	832.6	821.8
Attending an educational institution at May	337.4	353.6	359.9	354.4	367.5	379.9
Full-time	13.5	12.2	14.2	15.8	17.8	21.6
Part-time	323.9	341.4	345.7	338.6	349.7	358.3
Not attending an educational institution at May	353.9	374.3	398.8	427.8	465.1	442.0
Did not attend an educational institution in previous year	8,032.1	8,196.7	8,283.6	8,340.7	8,431.1	8,629.7
Total	9,709.0	9,927.4	10,111.7	10,237.9	10,427.0	10,652.4

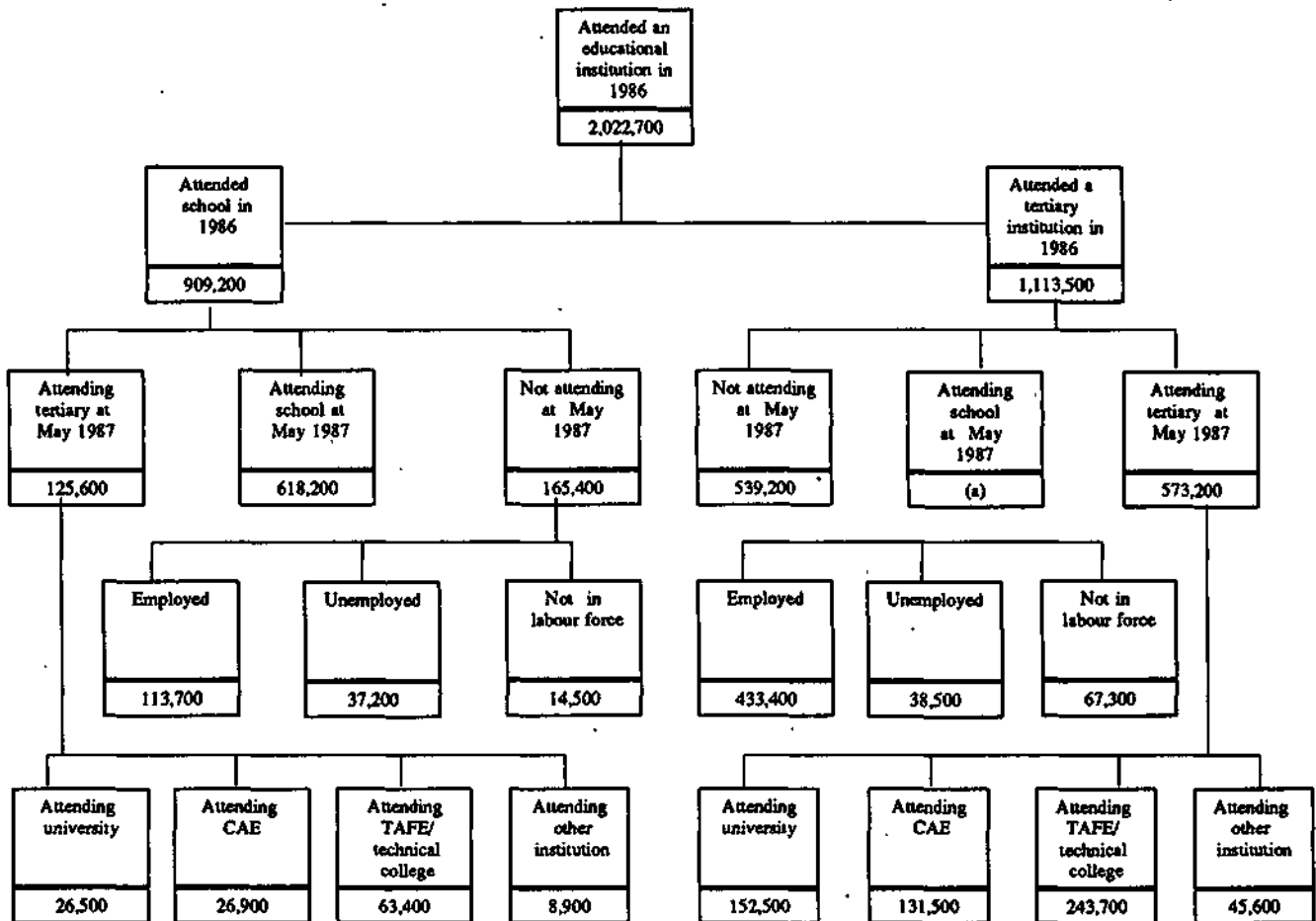
Source: Transition from Education to Work, Australia, May 1987 (6227.0).

TABLE 2.8. PERSONS AGED 15 TO 19 : AGE, WHETHER ATTENDING AN EDUCATIONAL INSTITUTION FULL-TIME, TYPE OF EDUCATIONAL INSTITUTION ATTENDING
MAY 1983 TO MAY 1987

At May—	Males					Females					Persons					Total
	15	16	17	18	19	15	16	17	18	19	15	16	17	18	19	
	ATTENDING SCHOOL FULL-TIME															
	—'000—															
1983	122.1	75.7	38.2	7.8	*	109.5	73.9	41.1	8.8	*	231.6	149.7	79.4	16.6	*	480.4
1984	121.7	86.4	42.0	9.5	*	113.4	85.5	43.7	8.1	*	235.0	171.9	85.7	17.6	4.7	514.8
1985	130.8	89.2	45.9	6.9	*	127.6	85.3	46.8	7.7	*	258.4	174.5	92.7	14.6	4.8	545.0
1986	132.5	93.1	49.5	7.6	*	133.0	84.4	49.0	7.6	*	265.5	177.5	98.5	15.3	4.8	561.6
1987	135.3	99.1	60.3	10.6	*	131.8	110.6	55.4	5.9	*	267.2	209.7	115.7	16.5	*	612.3
	ATTENDING TERTIARY FULL-TIME															
	—'000—															
1983	*	5.9	9.8	20.5	22.4	*	6.9	10.5	23.8	22.4	4.2	12.8	20.3	44.2	44.8	126.3
1984	*	4.2	10.5	17.4	16.3	*	7.4	10.7	25.0	19.8	4.1	11.6	21.2	42.4	36.0	115.4
1985	*	4.8	7.8	19.5	16.8	*	6.0	11.5	27.5	22.7	*	10.8	19.3	47.0	39.5	119.8
1986	*	4.8	11.6	26.4	22.4	*	7.3	14.0	30.6	23.6	*	12.1	25.6	57.0	46.0	143.3
1987	*	6.0	13.1	23.4	22.9	*	7.1	15.0	29.3	27.0	*	13.1	28.1	52.8	49.9	146.6
	NOT ATTENDING AN EDUCATIONAL INSTITUTION FULL-TIME															
	—'000—															
1983	12.3	40.1	79.2	106.1	101.7	11.7	38.7	68.0	97.6	100.6	23.9	78.8	147.2	203.8	202.3	656.0
1984	13.4	46.3	75.1	97.4	104.1	11.4	33.9	67.4	90.9	107.7	24.8	80.3	142.6	188.3	211.8	647.7
1985	13.0	46.0	76.0	94.7	102.6	10.4	35.1	66.2	91.3	95.7	23.5	81.1	142.1	186.0	198.3	631.1
1986	11.9	45.6	75.3	98.3	93.3	10.7	38.1	68.8	90.5	92.4	22.6	83.7	144.1	188.8	185.8	624.9
1987	13.2	46.6	67.7	89.0	103.9	9.5	31.6	63.1	86.3	97.6	22.7	78.2	130.9	175.3	201.5	608.5
	TOTAL															
	—'000—															
1983	135.8	121.7	127.2	134.4	125.5	123.9	119.6	119.6	130.2	124.8	259.7	241.3	246.8	264.6	250.3	1,262.8
1984	137.2	137.0	127.6	124.3	122.3	126.7	126.8	121.8	124.0	130.1	263.9	263.8	249.5	248.3	252.5	1,277.9
1985	145.7	140.0	129.7	121.1	122.5	139.4	126.4	124.5	126.4	130.1	285.1	266.4	254.2	247.5	242.6	1,295.8
1986	145.5	143.5	136.5	132.3	118.9	145.2	129.8	131.7	128.7	117.7	290.7	273.3	268.2	261.0	236.6	1,329.8
1987	149.7	151.6	141.1	123.1	128.4	142.9	149.4	133.5	121.5	126.2	292.6	301.0	274.6	244.6	254.6	1,367.4
	PROPORTION ATTENDING AN EDUCATIONAL INSTITUTION FULL-TIME															
	—per cent—															
1983	91.0	67.1	37.8	21.0	19.0	90.6	67.6	43.1	25.0	19.4	90.8	67.3	40.4	23.0	19.2	48.0
1984	90.2	66.2	41.1	21.7	14.9	91.0	73.2	44.7	26.6	17.2	90.6	69.6	42.9	24.1	16.1	49.3
1985	91.0	67.1	41.4	21.8	16.2	92.5	72.2	46.9	27.8	20.3	91.8	69.5	44.1	24.9	18.2	51.3
1986	91.8	68.2	44.8	25.7	21.5	92.7	70.6	47.8	29.7	21.5	92.2	69.4	46.3	27.7	21.5	53.0
1987	91.2	69.3	52.0	27.7	19.1	93.4	78.8	52.7	29.0	22.7	92.3	74.0	52.3	28.3	20.9	55.5

Source: Transition from Education to Work, Australia, May 1983 and May 1987 (6227.0).

CHART 2.3. PERSONS AGED 15 TO 64 WHO ATTENDED AN EDUCATIONAL INSTITUTION IN 1986: TYPE OF EDUCATIONAL INSTITUTION ATTENDED IN 1986, WHETHER ATTENDING AN EDUCATIONAL INSTITUTION, TYPE OF EDUCATIONAL INSTITUTION ATTENDING AND LABOUR FORCE STATUS, MAY 1987
(Source of data: Table 6, 9 and 10)



(a) Estimate subject to sampling variability too high for most practical uses.

TABLE 2.9. LEAVERS AGED 15 TO 64 : TYPE OF EDUCATIONAL INSTITUTION ATTENDED FULL-TIME IN PREVIOUS YEAR AND LABOUR FORCE STATUS, MAY 1982 TO MAY 1987

	1982	1983	1984	1985	1986	1987
	—'000—					
Attended school full-time in previous year	187.2	174.4	188.1	199.1	212.2	194.5
Labour force	174.7	162.1	176.7	190.2	198.8	181.4
Employed	140.0	116.5	133.3	152.2	157.4	141.1
Unemployed	34.7	45.5	43.4	38.0	41.4	40.3
Not in labour force	12.5	12.4	11.4	8.9	13.4	13.2
	—per cent—					
Unemployment rate	19.8	28.1	24.5	20.0	20.8	22.2
Participation rate	93.3	92.9	93.9	95.5	93.7	93.2
	—'000—					
Attended tertiary full-time in previous year	140.2	133.9	140.0	146.1	144.2	134.7
Labour force	128.0	122.5	128.3	136.5	134.5	125.4
Employed	107.3	96.8	103.9	111.9	115.8	106.6
Unemployed	20.6	25.7	24.4	24.5	18.7	18.8
Not in labour force	12.2	11.4	11.7	9.7	9.7	9.3
	—per cent—					
Unemployment rate	16.1	21.0	19.1	18.0	13.9	15.0
Participation rate	91.3	91.5	91.7	93.4	93.3	93.1
	—'000—					
Total	327.3	308.3	328.1	345.3	356.3	329.2

Source: Transition from Education to Work, Australia, May 1987 (6227.0).

TABLE 2.10. PERSONS AGED 15 TO 24 WHO ATTENDED SCHOOL IN 1986 BUT WERE NOT ATTENDING SCHOOL AT MAY 1987 : TYPE OF SCHOOL LAST ATTENDED, LABOUR FORCE STATUS, WHETHER ATTENDING A TERTIARY INSTITUTION AND TYPE OF ATTENDANCE, MAY 1987

Type of school last attended	Employed			Unem- ployed —'000—	Labour force	Not in labour force	Total	Unem- ployment rate —per cent—	Partic- ipation rate
	Full-time	Part-time	Total						
ATTENDING TERTIARY FULL-TIME									
Males—									
Government/state	*	5.6	5.9	*	8.7	16.7	25.4	*	34.1
Non-government	*	3.9	4.1	*	5.0	8.5	13.5	*	37.2
Total	*	9.5	10.0	3.7	13.7	25.2	38.9	26.7	35.2
Females—									
Government/state	*	10.4	10.6	*	13.5	16.6	30.1	*	44.9
Non-government	*	4.4	4.9	*	6.0	9.5	15.5	*	38.7
Total	*	14.8	15.5	4.1	19.5	26.1	45.6	20.8	42.8
Persons—									
Government/state	*	16.0	16.5	5.7	22.2	33.3	55.5	25.6	40.0
Non-government	*	8.3	9.0	*	11.0	18.0	29.0	*	38.0
Total	*	24.3	25.5	7.7	33.2	51.3	84.5	23.3	39.3
ATTENDING TERTIARY PART-TIME									
Males—									
Government/state	15.6	*	17.4	*	18.9	*	19.3	*	98.0
Non-government	4.6	*	5.0	*	5.2	*	5.2	*	100.0
Total	20.2	*	22.4	*	24.1	*	24.5	*	98.4
Females—									
Government/state	8.6	*	10.3	*	11.7	*	12.2	*	95.8
Non-government	*	*	*	*	*	*	*	*	*
Total	11.2	*	13.2	*	14.8	*	15.3	*	96.7
Persons—									
Government/state	24.3	*	27.6	*	30.6	*	31.5	*	97.2
Non-government	7.2	*	8.0	*	8.4	*	8.4	*	100.0
Total	31.4	4.2	35.6	*	39.0	*	39.8	*	97.8
NOT ATTENDING TERTIARY									
Males—									
Government/state	41.9	5.0	47.0	19.8	66.8	4.9	71.7	29.7	93.2
Non-government	8.3	*	9.7	*	11.9	*	12.5	*	95.2
Total	50.2	6.5	56.7	22.0	78.7	5.5	84.2	27.9	93.4
Females—									
Government/state	31.5	10.4	41.9	13.7	55.5	5.5	61.0	24.6	91.0
Non-government	7.0	*	8.9	*	10.3	*	11.9	*	86.3
Total	38.5	12.3	50.8	15.0	65.8	7.1	72.9	22.8	90.3
Persons—									
Government/state	73.4	15.4	88.8	33.5	122.4	10.4	132.7	27.4	92.2
Non-government	15.3	*	18.6	3.5	22.1	*	24.4	15.8	90.8
Total	88.7	18.8	107.5	37.0	144.5	12.6	157.1	25.6	92.0
TOTAL									
Males—									
Government/state	57.9	12.4	70.3	24.1	94.4	22.0	116.4	25.6	81.1
Non-government	13.1	5.8	18.9	*	22.1	9.1	31.2	*	70.8
Total	71.0	18.2	89.2	27.3	116.5	31.1	147.6	23.5	78.9
Females—									
Government/state	40.3	22.4	62.7	18.0	80.7	22.6	103.3	22.3	78.1
Non-government	10.0	6.7	16.7	*	19.5	11.1	30.6	*	63.6
Total	50.3	29.1	79.5	20.7	100.2	33.7	133.9	20.7	74.8
Persons—									
Government/state	98.2	34.8	133.0	42.1	175.1	44.6	219.7	24.0	79.7
Non-government	23.1	12.5	35.6	5.9	41.6	20.2	61.8	14.3	67.2
Total	121.3	47.3	168.6	48.0	216.7	64.8	281.5	22.2	77.0

Source: Transition from Education to Work, Australia, May 1987 (6227.0).

TABLE 2.11. CIVILIAN POPULATION AGED 15 AND OVER: EDUCATIONAL ATTAINMENT AND LABOUR FORCE STATUS
FEBRUARY 1987

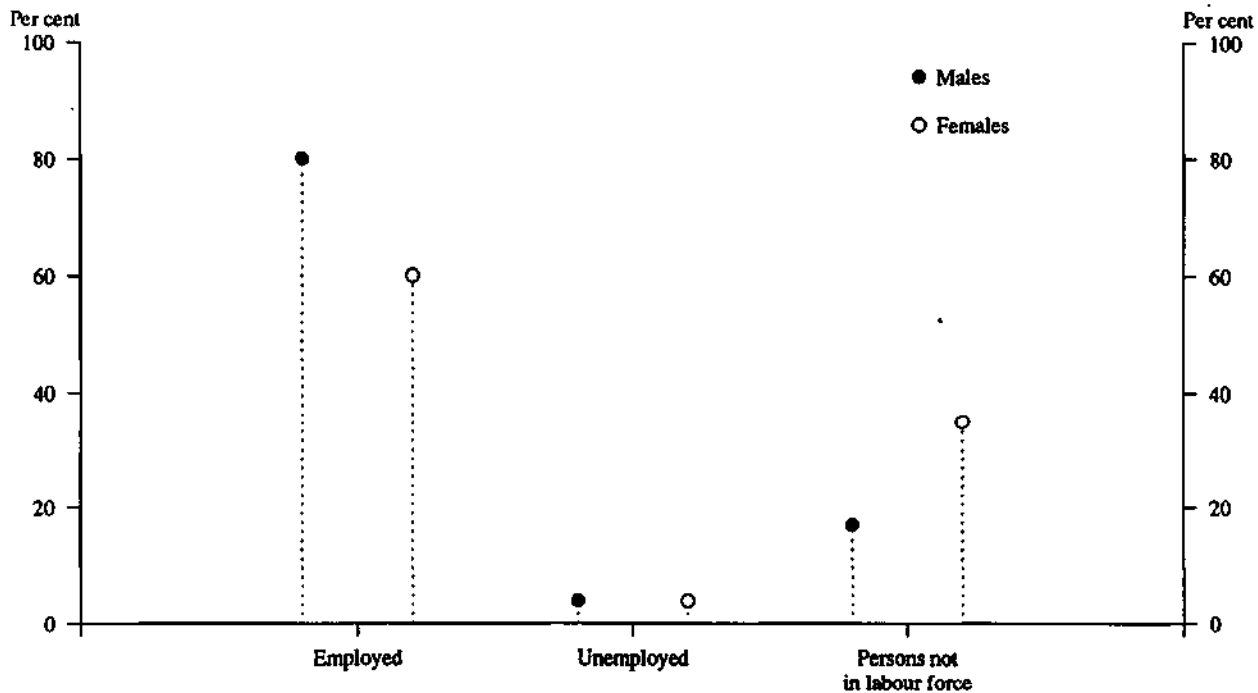
Educational attainment	Employed			Unem- ployed —'000—	Labour force	Not in Labour force	Total	Unem- ployment rate —per cent—	Partici- pation rate
	Full-time	Part-time	Total						
MALES									
With post-school qualifications	2,006.1	85.8	2,091.9	97.6	2,189.5	433.5	2,623.0	4.5	83.5
Degree	436.7	20.1	456.8	14.5	471.3	60.4	531.7	3.1	88.6
Trade qualification or apprenticeship	1,089.5	40.3	1,129.8	59.9	1,189.7	277.7	1,467.4	5.0	81.1
Certificate or diploma	470.9	24.3	495.2	21.9	517.1	93.6	610.7	4.2	84.7
Other	9.0	*	10.1	*	11.3	*	13.2	11.0	85.9
Without post-school qualifications(a)	1,951.6	134.8	2,086.3	279.6	2,365.9	819.2	3,185.1	11.8	74.3
Attended highest level of secondary school available	462.0	54.5	516.5	61.0	577.5	119.2	696.8	10.6	82.9
Did not attend highest level of secondary school available	1,485.7	80.0	1,565.7	216.9	1,782.6	686.8	2,469.3	12.2	72.2
Left at age—									
18 and over	30.3	*	32.6	5.6	38.2	8.6	46.8	14.7	81.6
16 or 17	536.8	30.5	567.3	77.6	644.9	90.3	735.3	12.0	87.7
14 or 15	779.2	37.9	817.2	117.7	934.8	409.6	1,344.4	12.6	69.5
13 and under	139.4	9.2	148.6	16.0	164.6	178.2	342.9	9.7	48.0
Never attended school	*	*	*	*	5.6	12.6	18.2	30.8	30.6
Still at school	*	50.8	52.7	18.2	70.8	213.3	284.1	25.7	24.9
Total	3,959.5	271.4	4,230.9	395.4	4,626.3	1,466.0	6,092.3	8.5	75.9
FEMALES									
With post-school qualifications	767.5	380.2	1,147.7	83.2	1,230.9	673.4	1,904.3	6.8	64.6
Degree	178.4	52.0	230.4	11.1	241.6	77.8	319.4	4.6	75.6
Trade qualification or apprenticeship	53.5	34.6	88.1	5.7	93.9	90.3	184.2	6.1	51.0
Certificate or diploma	526.7	287.1	813.8	64.3	878.1	492.3	1,370.4	7.3	64.1
Other	8.9	6.5	15.3	*	17.3	12.9	30.3	11.7	57.3
Without post-school qualifications(a)	948.6	604.9	1,553.5	197.3	1,750.9	2,352.3	4,103.2	11.3	42.7
Attended highest level of secondary school available	249.0	121.8	370.8	49.7	420.5	278.3	698.9	11.8	60.2
Did not attend highest level of secondary school available	696.8	481.9	1,178.8	147.3	1,326.1	2,048.0	3,374.0	11.1	39.3
Left at age—									
18 and over	11.1	*	15.1	*	18.4	21.8	40.3	18.3	45.8
16 or 17	298.3	158.6	456.9	60.5	517.4	407.1	924.5	11.7	56.0
14 or 15	341.0	291.4	632.4	75.5	707.8	1,272.2	1,980.0	10.7	35.7
13 and under	46.5	27.9	74.4	8.0	82.4	346.9	429.2	9.7	19.2
Never attended school	*	*	*	*	*	25.8	30.0	7.0	14.2
Still at school	*	65.8	66.1	23.7	89.8	182.2	272.0	26.4	33.0
Total	1,716.4	1,050.9	2,767.3	304.2	3,071.5	3,207.9	6,279.5	9.9	48.9
PERSONS									
With post-school qualifications	2,773.5	466.0	3,239.6	180.8	3,420.4	1,106.9	4,527.3	5.3	75.6
Degree	615.1	72.1	687.3	25.6	712.9	138.2	851.1	3.6	83.8
Trade qualification or apprenticeship	1,143.0	75.0	1,217.9	65.7	1,283.6	368.0	1,651.6	5.1	77.7
Certificate or diploma	997.6	311.4	1,309.0	86.2	1,395.2	585.9	1,981.1	6.2	70.4
Other	17.8	7.6	25.4	*	28.7	14.8	43.4	11.4	66.0
Without post-school qualifications(a)	2,900.2	739.7	3,639.9	476.9	4,116.8	3,171.5	7,288.3	11.6	56.5
Attended highest level of secondary school available	711.1	176.3	887.4	110.7	998.1	397.5	1,395.6	11.1	71.5
Did not attend highest level of secondary school available	2,182.5	561.9	2,744.4	364.2	3,108.6	2,734.7	5,843.3	11.7	53.2
Left at age—									
18 and over	41.3	6.3	47.6	9.0	56.6	30.4	87.0	15.9	65.0
16 or 17	835.1	189.2	1,024.2	138.1	1,162.4	497.4	1,659.8	11.9	70.0
14 or 15	1,120.2	329.3	1,449.5	193.1	1,642.7	1,681.8	3,324.5	11.8	49.4
13 and under	185.9	37.1	223.0	23.9	247.0	525.1	772.1	9.7	32.0
Never attended school	6.3	*	7.8	*	9.8	38.4	48.2	20.4	20.4
Still at school	*	116.6	118.8	41.9	160.7	395.5	556.2	26.1	28.9
Total	5,675.9	1,322.3	6,998.2	699.6	7,697.8	4,673.9	12,371.7	9.1	62.2

(a) Includes persons for whom secondary school qualifications could not be determined.

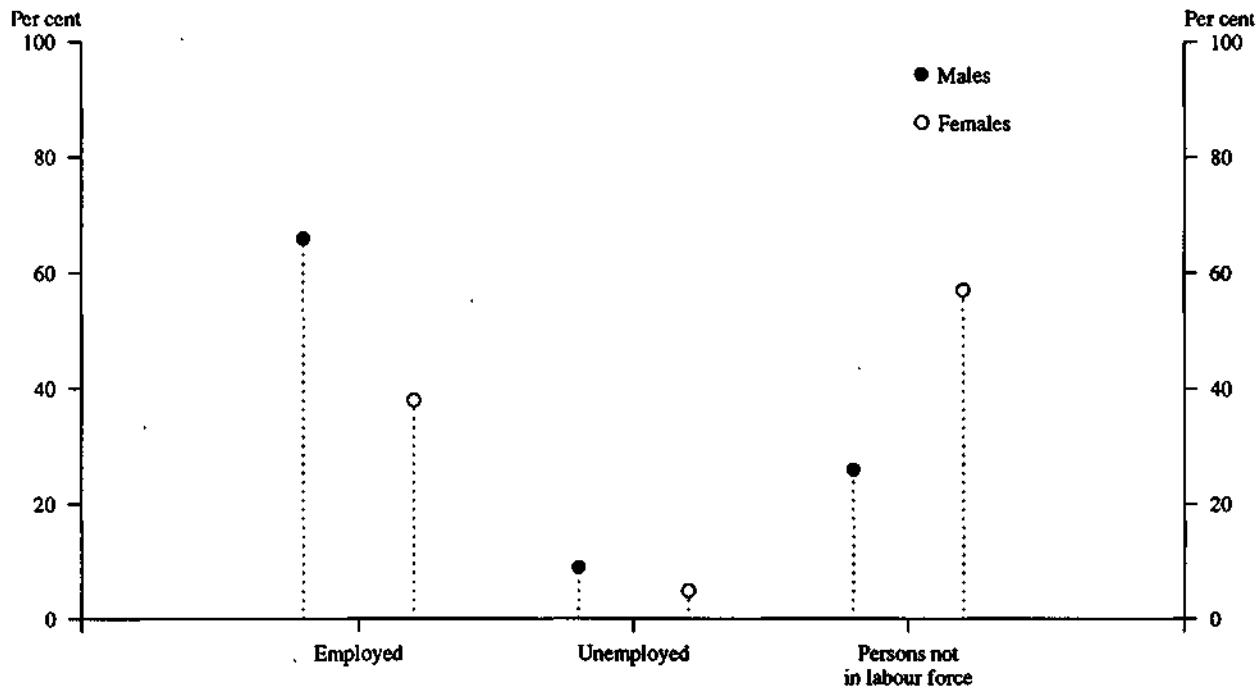
Source: Labour Force Status and Educational Attainment, Australia, February 1987 (6235.0).

**CHART 2.4. CIVILIAN POPULATION AGED 15 AND OVER:
LABOUR FORCE STATUS AND EDUCATIONAL ATTAINMENTS(a)
FEBRUARY 1987**

WITH POST-SCHOOL QUALIFICATIONS



WITHOUT POST-SCHOOL QUALIFICATIONS



(a) Excludes persons in institutions and boarding school pupils from whom details of educational attainment were not obtained and persons aged 15 to 20 still at school.

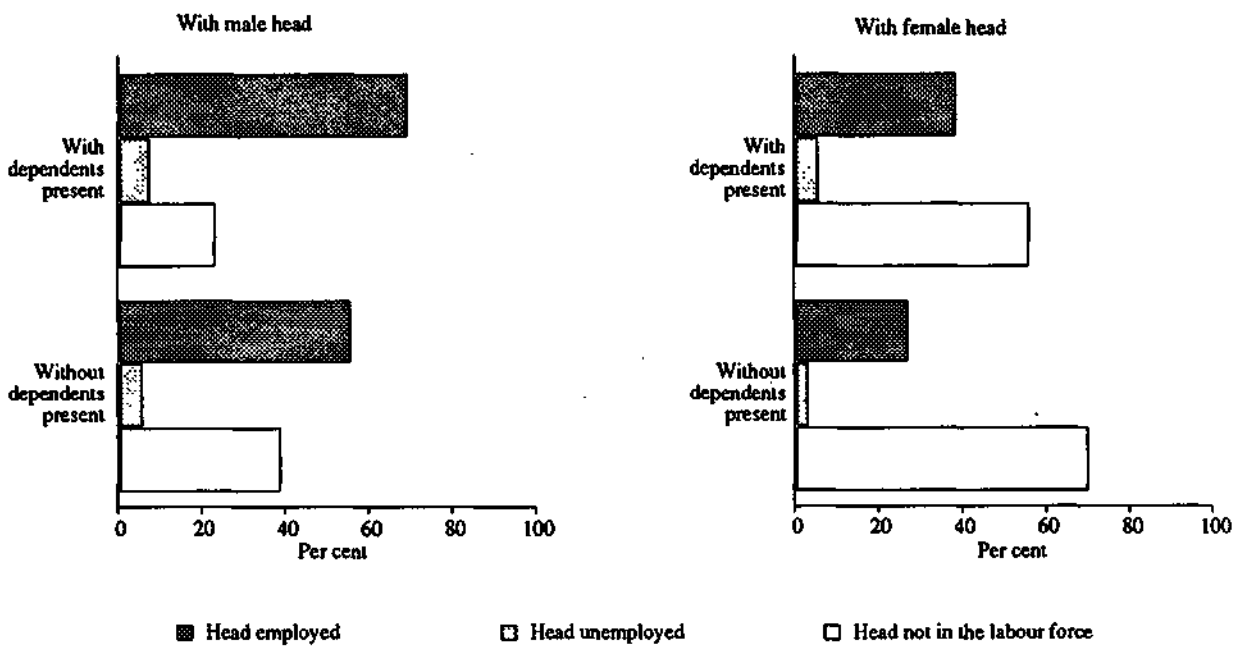
Source: Labour Force Status and Educational Attainment, Australia, February 1987 (6235.0).

CHART 2.5. LABOUR FORCE STATUS OF HUSBAND, WIFE OR FAMILY HEAD, JUNE 1987

MARRIED-COUPLE FAMILIES



OTHER FAMILIES



Source: Labour Force Status and Other Characteristics of Families, Australia, June 1987 (6224.0).

TABLE 2.12. FAMILY STATUS AND LABOUR FORCE STATUS OF PERSONS AGED 15 AND OVER(a), JUNE 1987

	Employed		Unemployed		Labour force	Not in labour force	Total	Unemployment rate —per cent—	Participation rate	
	Full-time workers	Part-time workers	Looking for full-time work							
			Total	Total —'000—						
MALES										
<i>Member of a family</i>	3,276.2	246.3	3,522.6	247.0	269.4	3,792.0	1,135.8	4,927.8	7.1	77.0
Husband	2,587.0	112.4	2,699.3	129.1	133.4	2,832.8	763.2	3,596.0	4.7	78.8
With dependents present	1,663.5	51.6	1,715.1	87.8	89.6	1,804.7	108.6	1,913.3	5.0	94.3
Without dependents present	923.5	60.7	984.2	41.3	43.8	1,028.1	654.6	1,682.7	4.3	61.1
Not-married family head	61.7	4.5	66.1	6.8	7.0	73.1	35.3	108.4	9.5	67.4
With dependents present	27.4	*	29.1	*	*	32.3	9.7	42.0	*	76.9
Without dependents present	34.3	*	37.0	3.8	3.8	40.8	25.6	66.4	9.4	61.4
Full-time student aged 15-24(b)	5.1	83.9	88.9	4.1	20.9	109.8	256.2	366.1	19.0	30.0
Other child(c) of family head	578.2	42.8	621.0	98.9	100.0	721.0	50.8	771.9	13.9	93.4
Other relative	44.4	*	47.2	8.1	8.1	55.3	30.2	85.5	14.7	64.7
<i>Not a member of a family</i>	537.3	41.3	578.6	55.3	58.6	637.2	196.5	833.7	9.2	76.4
Living alone	255.8	16.1	271.9	21.2	21.7	293.6	144.8	438.5	7.4	67.0
Not living alone	281.5	25.1	306.6	34.1	36.9	343.5	51.7	395.2	10.7	86.9
<i>Total</i>	3,813.5	287.6	4,101.1	302.2	328.0	4,429.2	1,332.3	5,761.5	7.4	76.9
FEMALES										
<i>Member of a family</i>	1,310.6	1,005.8	2,316.4	135.3	198.9	2,515.3	2,442.0	4,957.3	7.9	50.7
Wife	860.4	789.7	1,650.1	57.6	95.4	1,745.5	1,791.1	3,536.6	5.5	49.4
With dependents present	416.4	562.6	979.1	32.6	65.0	1,044.1	827.5	1,871.5	6.2	55.8
Without dependents present	444.0	227.0	671.0	25.0	30.4	701.5	963.7	1,665.1	4.3	42.1
Not-married family head	100.9	61.5	162.4	17.5	22.3	184.6	286.0	470.7	12.1	39.2
With dependents present	71.4	46.7	118.1	12.6	17.4	135.5	171.6	307.1	12.8	44.1
Without dependents present	29.5	14.8	44.3	4.9	4.9	49.1	114.5	163.6	9.9	30.0
Full-time student aged 15-24(b)	*	103.2	104.9	4.0	23.2	128.1	241.2	369.3	18.1	34.7
Other child(c) of family head	321.2	46.3	367.5	50.8	52.4	419.9	41.0	460.9	12.5	91.1
Other relative	26.4	5.1	31.5	5.4	5.7	37.1	82.6	119.8	15.3	31.0
<i>Not a member of a family</i>	316.8	66.9	383.8	31.4	36.2	420.0	482.3	902.3	8.6	46.5
Living alone	131.9	29.2	161.1	7.7	9.2	170.2	429.6	599.8	5.4	28.4
Not living alone	185.0	37.8	222.7	23.7	27.0	249.7	52.8	302.5	10.8	82.6
<i>Total</i>	1,627.4	1,072.7	2,700.2	166.7	235.1	2,935.3	2,924.3	5,859.6	8.0	50.1
PERSONS										
<i>Member of a family</i>	4,586.8	1,252.1	5,838.9	382.3	468.4	6,307.3	3,577.8	9,885.1	7.4	63.8
Husband or wife	3,447.4	902.0	4,349.4	186.7	228.8	4,578.3	2,554.3	7,132.6	5.0	64.2
With dependents present	2,079.9	614.3	2,694.2	120.4	154.6	2,848.8	936.0	3,784.8	5.4	75.3
Without dependents present	1,367.5	287.8	1,655.3	66.3	74.3	1,729.5	1,618.3	3,347.8	4.3	51.7
Not-married family head	162.5	66.0	228.5	24.2	29.3	257.7	321.3	579.1	11.3	44.5
With dependents present	98.8	48.5	147.2	15.5	20.5	167.8	181.2	349.0	12.2	48.1
Without dependents present	63.7	17.5	81.2	8.7	8.7	90.0	140.1	230.1	9.7	39.1
Full-time student aged 15-24(b)	6.8	187.0	193.9	8.1	44.1	237.9	497.4	735.4	18.5	32.4
Other child(c) of family head	899.4	89.2	988.5	149.6	152.4	1,140.9	91.9	1,232.8	13.4	92.5
Other relative	70.7	7.9	78.6	13.6	13.8	92.4	112.8	205.3	14.9	45.0
<i>Not a member of a family</i>	854.1	108.2	962.4	86.7	94.8	1,057.1	678.8	1,736.0	9.0	60.9
Living alone	387.7	45.3	433.0	28.9	30.9	463.9	574.4	1,038.3	6.7	44.7
Not living alone	466.4	62.9	529.4	57.8	63.9	593.3	104.4	697.7	10.8	85.0
<i>Total</i>	5,441.0	1,360.3	6,801.3	468.9	563.1	7,364.4	4,256.6	11,621.1	7.6	63.4

(a) Civilians who were residents of private dwellings where family status was determined. (b) Excludes persons age 20 to 24 attending school. (c) Aged 15 and over.

Source: Labour Force Status and Other Characteristics of Families, Australia, June 1987 (622A.0).

TABLE 2.13. FAMILY STATUS OF FULL-TIME AND PART-TIME WORKERS, JUNE 1987
(*000)

	Full-time workers	Part-time worker				Average weekly hours worked			
		Weekly hours worked				Total workers	By full-time workers	By part-time workers	Total
		0(a)	1-14	15-34	Total				
MALES									
<i>Member of a family</i>	3,276.2	10.4	116.5	119.4	246.3	3,522.6	40.7	15.1	38.9
Husband	2,587.0	5.9	32.2	74.3	112.4	2,699.3	41.5	10.3	40.5
With dependents present	1,663.5	*	13.0	35.7	51.6	1,715.1	42.1	18.7	41.4
Without dependents present	923.5	*	19.1	38.6	60.7	984.2	40.4	17.9	39.0
Not-married family head	61.7	*	*	*	4.5	66.1	39.8	17.2	38.3
With dependents present	27.4	*	*	*	*	29.1	41.1	14.9	39.5
Without dependents present	34.3	*	*	*	*	37.0	38.8	18.6	37.3
Full-time student aged 15-24(b)	5.1	3.6	71.3	8.9	83.9	88.9	30.1	8.0	9.2
Other child(c) of family head	578.2	*	11.4	31.0	42.8	621.0	37.6	19.9	36.4
Other relative of family head	44.4	*	*	*	*	47.2	38.1	22.2	37.1
<i>Not a member of a family</i>	537.3	*	15.8	22.9	41.3	578.6	40.1	16.3	38.4
Living alone	255.8	*	5.6	8.7	16.1	271.9	40.8	15.2	39.3
Not living alone	281.5	*	10.1	14.2	25.1	306.6	39.5	17.0	37.7
Total	3,813.5	13.1	132.3	142.2	287.6	4,101.1	40.6	15.3	38.8
FEMALES									
<i>Member of a family</i>	1,310.6	49.1	442.1	514.6	1,005.8	2,316.4	36.7	14.9	27.2
Wife	860.4	39.8	312.8	437.2	789.7	1,650.1	37.3	15.5	26.9
With dependents present	416.4	26.7	235.4	300.6	562.6	979.1	37.7	15.1	24.7
Without dependents present	444.0	13.1	77.4	136.6	227.0	671.0	36.9	16.6	30.0
Not-married family head	100.9	*	26.1	32.7	61.5	162.4	36.6	15.7	28.7
With dependents present	71.4	*	20.6	24.2	46.7	118.1	36.7	15.3	28.3
Without dependents present	29.5	*	5.5	8.4	14.8	44.3	36.3	16.7	29.7
Full-time student aged 15-24(b)	*	4.1	90.4	8.7	103.2	104.9	39.4	7.4	7.9
Other child(c) of family head	321.2	*	11.3	32.7	46.3	367.5	35.1	19.3	33.1
Other relative of family head	26.4	*	*	*	5.1	31.5	35.5	17.8	32.7
<i>Not a member of a family</i>	316.8	4.8	21.6	40.6	66.9	383.8	36.4	17.5	33.1
Living alone	131.9	*	10.6	16.4	29.2	161.1	36.9	16.7	33.2
Not living alone	185.0	*	11.0	24.1	37.8	222.7	36.0	18.0	33.0
Total	1,627.4	53.9	463.7	555.2	1,072.7	2,700.2	36.6	15.1	28.0
PERSONS									
<i>Member of a family</i>	4,586.8	59.5	558.6	634.0	1,252.1	5,838.9	39.5	14.9	34.3
Husband or wife	3,447.4	45.7	344.9	511.4	902.0	4,349.4	40.4	15.9	35.3
With dependents present	2,079.9	29.6	248.4	336.3	614.3	2,694.2	41.2	15.4	35.3
Without dependents present	1,367.5	16.1	96.5	175.2	287.8	1,655.3	39.3	16.9	35.4
Not-married family head	162.5	*	27.5	35.4	66.0	228.5	37.8	15.8	31.5
With dependents present	98.8	*	21.3	25.0	48.5	147.2	37.9	15.3	30.5
Without dependents present	63.7	*	6.1	10.3	17.5	81.2	37.6	17.0	33.2
Full-time student aged 15-24(b)	6.8	7.7	161.7	17.6	187.0	193.9	32.5	7.6	8.5
Other child(c) of family head	899.4	*	22.7	63.8	89.2	988.5	36.7	19.6	35.2
Other relative of family head	70.7	*	*	5.8	7.9	78.6	37.1	19.4	35.3
<i>Not a member of a family</i>	854.1	7.4	37.3	63.4	108.2	962.4	38.7	17.0	36.3
Living alone	387.7	4.0	16.2	25.1	45.3	433.0	39.5	16.2	37.0
Not living alone	466.4	*	21.1	38.3	62.9	529.4	38.1	17.6	35.7
Total	5,441.0	67.0	596.0	697.4	1,360.3	6,801.3	39.4	15.1	34.6

(a) Persons who had a job in which they usually worked part-time, i.e. less than 35 hours per week, but were not at work during the survey week. (b) Excludes persons aged 20-24 attending school. (c) Aged 15 and over.

TABLE 2.14. ALL FAMILIES : TYPE OF FAMILY, NUMBER OF DEPENDENTS PRESENT, AND NUMBER OF FAMILY MEMBERS EMPLOYED(a), JUNE 1986 AND JUNE 1987 ('000)

Number of dependents present	None employed		One employed		Two or more employed		Total	
	June 1986	June 1987(b)	June 1986	June 1987(b)	June 1986	June 1987(b)	June 1986	June 1987(b)
MARRIED-COUPLE FAMILIES								
None	556.8	564.8	352.5	353.5	741.7	758.9	1,651.0	1,677.3
One or more	116.5	129.3	710.5	680.4	1,046.9	1,077.0	1,873.9	1,886.7
One	38.4	46.8	200.2	198.1	357.2	371.5	595.9	616.4
Two	37.3	39.4	312.3	293.4	438.8	451.1	788.4	783.9
Three	25.1	26.2	146.0	139.0	189.0	195.8	360.1	361.0
Four or more	15.7	16.9	52.0	50.0	62.0	58.6	129.6	125.4
Total	673.4	694.1	1,063.0	1,034.2	1,788.5	1,836.0	3,524.9	3,564.3
OTHER FAMILIES WITH MALE HEAD								
None	12.1	12.8	21.5	22.3	31.2	31.6	64.9	66.8
One or more	11.9	10.0	23.1	24.9	5.2	6.7	40.3	41.6
One	8.2	6.4	15.6	16.0	4.1	4.8	27.9	27.3
Two	*	*	5.8	7.2	*	*	8.9	11.2
Three	*	*	*	*	*	*	*	*
Four or more	*	*	*	*	*	*	*	*
Total	24.0	22.9	44.6	47.2	36.5	38.3	105.1	108.3
OTHER FAMILIES WITH A FEMALE HEAD								
None	43.3	46.1	79.8	69.4	54.3	50.7	177.5	166.1
One or more	146.0	163.3	103.0	113.5	30.6	29.9	279.6	306.7
One	68.1	80.5	58.5	65.1	19.0	19.6	145.7	165.2
Two	47.5	52.2	35.5	34.7	9.0	6.9	91.6	93.9
Three	22.1	21.3	7.3	11.1	*	*	31.4	34.9
Four or more	8.1	9.3	*	*	*	*	11.0	12.7
Total	189.3	209.4	182.8	182.9	84.9	80.6	457.1	472.8
OTHER FAMILIES : TOTAL								
None	55.5	58.9	101.3	91.7	85.5	82.3	242.3	232.9
One or more	157.9	173.4	126.1	138.4	35.9	36.6	319.9	348.3
One	76.4	87.0	74.1	81.1	23.1	24.4	173.6	192.5
Two	49.9	54.6	40.9	41.9	9.8	8.5	100.5	105.1
Three	23.3	22.0	8.7	12.2	*	*	34.3	37.1
Four or more	8.3	9.7	*	*	*	*	11.5	13.6
Total	213.3	232.3	227.4	230.0	121.4	118.9	562.2	581.2
ALL FAMILIES								
None	612.3	623.7	453.7	445.2	827.2	841.2	1,893.3	1,910.2
One or more	274.4	302.6	836.7	818.8	1,082.8	1,113.5	2,193.8	2,235.0
One	114.8	133.8	274.4	279.2	380.4	395.9	769.5	808.9
Two	87.2	94.1	353.1	335.3	448.5	459.6	888.9	889.0
Three	48.4	48.2	154.7	151.2	191.3	198.6	394.4	398.0
Four or more	24.0	26.6	54.4	53.0	62.6	59.4	141.1	139.0
Total	886.7	926.4	1,290.4	1,264.2	1,910.0	1,954.8	4,087.1	4,145.5

(a) Employment status refers to persons aged 15 and over only. (b) Estimates from June 1986 are based on a revised definition introduced in April 1986. See paragraph 25 of Appendix 3 for further information.

Source: Labour Force Status and Other Characteristics of Families, Australia, June 1987 (6224.0).

TABLE 2.15. MARRIED-COUPLE FAMILIES : LABOUR FORCE STATUS OF HUSBAND AND WIFE, AND AGE OF YOUNGEST DEPENDENT PRESENT, JUNE 1987 ('000)

	Wife employed			Wife unemployed	Wife in the labour force	Wife not in the labour force	Total
	Full-time	Part-time	Total				
HUSBAND EMPLOYED FULL-TIME							
<i>Families with dependents present</i>	383.8	538.1	922.0	48.1	970.0	670.3	1,640.4
Age of youngest dependent							
0-4	95.5	201.0	296.4	20.3	316.8	373.9	690.7
5-9	92.5	147.9	240.3	15.5	255.8	127.9	383.8
10-14	123.2	129.7	252.8	8.2	261.0	110.9	371.9
15-24	72.8	59.6	132.4	4.0	136.4	57.6	194.0
<i>Families without dependents present</i>	404.6	194.2	598.8	18.1	616.9	303.7	920.6
Total	788.4	732.4	1,520.8	66.2	1,586.9	974.0	2,560.9
HUSBAND EMPLOYED : TOTAL							
<i>Families with dependents present</i>	396.6	551.5	948.1	50.8	998.9	692.5	1,691.4
Age of youngest dependent							
0-4	99.1	206.5	305.6	21.9	327.6	383.5	711.1
5-9	95.5	150.7	246.2	16.2	262.4	132.6	394.9
10-14	126.9	132.5	259.4	8.5	267.9	115.3	383.2
15-24	75.1	61.8	136.9	4.2	141.1	61.1	202.2
<i>Families without dependents present</i>	418.0	210.2	628.2	19.3	647.5	333.7	981.2
Total	814.6	761.7	1,576.3	70.1	1,646.3	1,026.2	2,672.5
HUSBAND IN THE LABOUR FORCE							
<i>Families with dependents present</i>	403.7	557.5	961.2	62.2	1,023.3	756.4	1,779.8
Age of youngest dependent							
0-4	101.2	209.2	310.4	26.8	337.1	421.7	758.8
5-9	97.4	152.3	249.6	18.2	267.8	146.1	413.9
10-14	128.9	133.6	262.5	11.2	273.8	124.2	397.9
15-24	76.2	62.4	138.6	6.0	144.6	64.5	209.1
<i>Families without dependents present</i>	425.6	214.2	639.8	28.2	667.9	357.1	1,025.1
Total	829.3	771.6	1,600.9	90.3	1,691.3	1,113.6	2,804.8
TOTAL							
<i>Families with dependents present</i>	419.9	567.3	987.2	65.5	1,052.7	834.3	1,887.0
Age of youngest dependent							
0-4	105.3	210.0	315.4	28.2	343.6	445.1	788.7
5-9	101.2	154.7	255.9	18.9	274.8	160.3	435.1
10-14	133.0	137.0	270.0	12.2	282.2	143.9	426.2
15-24	80.4	65.5	145.9	6.2	152.2	85.0	237.1
<i>Families without dependents present</i>	446.6	229.8	676.3	30.6	706.9	970.4	1,677.3
Total	866.5	797.1	1,663.5	96.1	1,759.6	1,804.7	3,564.3

Source: Labour Force Status and Other Characteristics of Families, Australia, June 1987 (622A.0).

TABLE 2.16. OTHER FAMILIES: LABOUR FORCE STATUS OF FAMILY HEAD AND AGE OF YOUNGEST DEPENDENT PRESENT, JUNE 1987 ('000)

	Family head employed			Family head unemployed	Family head in the labour force	Family head not in the labour force	Total
	Full-time	Part-time	Total				
<i>Families with dependents present</i>	98.6	48.2	146.8	20.4	167.2	181.1	348.3
Age of youngest dependent							
0-4	12.2	10.2	22.4	4.9	27.3	76.4	103.7
5-9	22.4	15.3	37.7	7.2	44.9	40.7	85.6
10-14	34.7	15.2	49.9	5.3	55.2	39.2	94.4
15-24	29.3	7.6	36.9	*	39.8	24.9	64.7
<i>Families without dependents present</i>	64.2	17.9	82.0	9.0	91.0	141.9	232.9
Total	162.8	66.0	228.8	29.4	258.2	323.0	581.2

Source: Labour Force Status and Other Characteristics of Families, Australia, June 1987 (622A.0).

TABLE 2.17. CIVILIAN POPULATION AGED 15 AND OVER : WHETHER IN THE LABOUR FORCE AND WHETHER HAD RE-ENTERED THE LABOUR FORCE, MAY 1985 ('000)

Whether in the labour force and whether had re-entered the labour force	Males	Females	Persons
Persons aged 15 and over	5,871.3	6,056.1	11,927.4
Out of the labour force	1,402.2	3,205.6	4,607.8
In the labour force	4,469.1	2,850.5	7,319.5
Persons who had re-entered the labour force	20.3	136.5	156.8
Working	14.6	97.3	111.8
Looking for work	5.7	39.3	45.0
Other	4,448.7	2,714.0	7,162.7

Source: Persons Who Had Re-entered the Labour Force, Australia, May 1985 (6264.0).

TABLE 2.18. PERSONS WHO HAD RE-ENTERED THE LABOUR FORCE: SUMMARY OF CHARACTERISTICS AND WHETHER WORKING OR LOOKING FOR WORK, MAY 1985 ('000)

	Working			Looking for Work			Total		
	Males	Females	Persons	Males	Females	Persons	Males	Females	Persons
Age group (years)—									
15-24	*	7.1	9.6	*	4.1	4.6	*	11.2	14.2
25-34	5.5	51.6	57.1	} 3.5 {	21.4	23.5	7.6	73.0	80.6
35-44	} 4.0 {	29.8	32.1		10.4	11.8	3.7	40.2	43.9
45-54		7.2	8.8	*	*	} 5.1 {	*	9.7	12.2
55 and over	*	*	4.2	*	*		3.6	*	6.0
Family status—									
Member of a family	9.7	90.0	99.7	3.7	35.6	39.3	13.4	125.7	139.1
Husband or wife	7.2	80.6	87.8	*	29.0	32.0	10.2	109.6	119.8
With children aged 0-14 present	*	70.2	73.3	*	26.8	28.3	4.5	97.1	101.6
Without children aged 0-14 present	4.2	10.3	14.5	*	*	3.7	5.7	12.5	18.2
Not married family head	*	7.4	7.8	*	6.0	6.4	*	13.4	14.2
Child of family head	*	*	3.7	*	*	*	*	*	4.3
Other relative of family head	*	*	*	*	*	*	*	*	*
Not a member of a family	4.5	*	7.6	*	*	*	5.9	4.4	10.2
Not family coded	*	4.2	4.5	*	*	*	*	6.5	7.5
Birthplace and year of arrival—									
Born in Australia	10.9	73.1	84.0	*	29.1	32.1	13.8	102.2	116.0
Born outside Australia	3.7	24.1	27.9	*	10.2	12.9	6.5	34.3	40.8
Arrived before 1971	*	14.5	16.6	*	6.2	8.2	4.1	20.7	24.8
Arrived 1971-1985	*	9.7	11.3	*	3.9	4.7	*	13.6	16.0
Born in Main English speaking countries(a)	*	14.4	16.3	*	5.7	7.5	3.6	20.1	23.8
Born in other countries	*	9.7	11.6	*	4.5	5.5	*	14.2	17.0
Total	14.6	97.3	111.8	5.7	39.3	45.0	20.3	136.5	156.8

(a) Comprises UK, Ireland, Canada, South Africa, USA and New Zealand.

Source: Persons Who Had Re-entered the Labour Force, Australia, May 1985 (6264.0).

TABLE 2.19. PERSONS WHO HAD RE-ENTERED THE LABOUR FORCE : DETAILS OF PREVIOUS JOB AND WHETHER WORKING OR LOOKING FOR WORK, MAY 1985 ('000)

	Working			Looking for Work			Total		
	Males	Females	Persons	Males	Females	Persons	Males	Females	Persons
Full-time or part-time status in previous job									
Previous job less than 20 years ago									
Full-time	13.8	74.3	88.1	5.7	33.0	38.8	19.5	107.4	126.9
Part-time	*	16.5	17.2	*	4.5	4.5	*	21.0	21.7
Total(a)	14.6	92.8	107.4	5.7	37.8	43.5	20.3	130.6	150.9
Previous job 20 or more years ago	*	4.4	4.4	*	*	*	*	5.9	5.9
Time in previous job (years)—									
1-2	4.5	28.0	32.5	*	10.9	12.9	6.4	38.9	45.3
3-4	} 4.5	{ 19.8	22.3	*	8.3	8.6	} 6.2	{ 28.0	31.0
5-9		{ 33.2	35.2	*	15.1	16.4		{ 48.3	51.6
10-19	} 5.7	{ 15.6	18.9	*	4.8	5.5	3.9	20.5	24.4
20 or more		{ *	*	*	*	*	3.8	*	4.6
Reason left previous job—									
Retrenched/made redundant/lost job	*	4.8	7.2	*	*	4.6	3.6	8.1	11.8
Returned to studies	5.0	3.6	8.6	*	*	*	5.3	4.5	9.8
Retired/did not want to work any longer	*	3.8	5.1	*	*	*	*	4.6	6.2
Unsatisfactory work arrangements	*	*	*	*	*	*	*	4.2	4.7
Own ill health or injury	*	4.5	7.7	*	*	4.0	5.5	6.1	11.6
To get married	*	7.3	7.3	*	3.9	3.9	*	11.2	11.2
Pregnancy/to have children	*	51.7	51.7	*	19.1	19.1	*	70.8	70.8
To look after family, house or someone else	*	4.5	4.7	*	*	*	*	7.4	7.6
Moved house/spouse transferred	*	7.0	7.3	*	*	3.6	*	10.4	10.9
Travel	*	4.5	5.5	*	*	*	*	5.6	7.0
Other	*	*	4.1	*	*	*	*	3.7	5.3
Educational attainment when left previous job—									
With post-school qualifications	5.4	38.1	43.5	*	11.8	13.9	7.6	49.8	57.4
Degree	*	8.4	10.0	*	*	*	*	10.4	12.7
Trade, technical or other certificate	3.5	28.0	31.5	*	9.5	10.9	4.9	37.5	42.4
Without post-school qualifications(b)	9.2	59.2	68.4	3.6	27.5	31.1	12.8	86.7	99.4
Attended highest level of secondary school available	4.7	12.0	16.7	*	4.2	4.7	5.1	16.2	21.3
Did not attend highest level of secondary school available	4.5	47.2	51.7	*	23.3	26.4	7.6	70.5	78.1
Left at age—									
16 or over	*	19.7	21.1	*	9.0	10.0	*	28.6	31.1
15 or under	*	27.5	30.6	*	14.3	16.4	5.2	41.8	47.0
Never attended school	*	*	*	*	*	*	*	*	*
Still at school	*	*	*	*	*	*	*	*	*
Time since previous job (years)—									
1-2	8.7	28.9	37.6	3.7	9.2	12.9	12.4	38.1	50.5
3-4	3.9	21.5	25.4	*	5.5	6.4	4.9	26.9	31.8
5-9	*	25.1	26.7	*	14.6	15.4	*	39.7	42.1
10-19	*	17.3	17.7	*	8.6	8.8	*	25.9	26.5
20 or more	*	4.4	4.4	*	*	*	*	5.9	5.9
Total	14.6	97.3	111.8	5.7	39.3	45.0	20.3	136.5	156.8

(a) Includes varied/did not know. (b) Includes other.

Source: Persons Who Had Re-entered the Labour Force, Australia, May 1985 (6264.0).

TABLE 2.20. PERSONS WHO HAVE LEFT THE LABOUR FORCE WITHIN THE LAST TWELVE MONTHS : DURATION OF CONTINUOUS PERIOD IN THE LABOUR FORCE BEFORE LEAVING, WHETHER INTENDED TO RETURN TO THE LABOUR FORCE AND AGE, NOVEMBER 1985 ('000)

	Age group				Total
	15-24	25-44	45-59	60 and over	
MALES					
Continuous period of at least twelve months in the labour force before leaving	11.7	18.1	17.1	31.1	78.0
Intended to return to the labour force	10.6	12.4	5.9	*	31.1
Did not intend to return to the labour force	*	*	6.9	25.3	34.7
Undecided about whether would return to the labour force		4.4	4.3	*	12.2
Continuous period of less than twelve months in the labour force before leaving	35.9	12.8	4.8	6.3	59.9
Intended to return to the labour force	32.2	9.2	*	*	45.3
Did not intend to return to the labour force	*	*	*	4.1	8.7
Undecided about whether would return to the labour force	*	*	*	*	5.8
Total	47.6	31.0	21.9	37.4	137.9
Intended to return to the labour force	42.8	21.6	8.6	*	76.4
Did not intend to return to the labour force		6.0	8.0	29.4	43.5
Undecided about whether would return to the labour force	*	5.8	5.3	4.4	18.0
FEMALES					
Continuous period of at least twelve months in the labour force before leaving	30.5	82.3	27.7	12.6	153.0
Intended to return to the labour force	17.1	43.9	6.1	*	67.8
Did not intend to return to the labour force	8.1	20.8	17.6	11.0	57.5
Undecided about whether would return to the labour force	5.3	17.5	4.0	*	27.8
Continuous period of less than twelve months in the labour force before leaving	53.4	95.0	18.5	*	170.3
Intended to return to the labour force	41.0	48.3	9.0	*	99.1
Did not intend to return to the labour force	8.2	24.7	7.2	*	41.8
Undecided about whether would return to the labour force	4.3	21.9	*	*	29.5
Total	83.9	177.3	46.2	16.0	323.4
Intended to return to the labour force	58.0	92.3	15.1	*	166.8
Did not intend to return to the labour force	16.3	45.5	24.8	12.7	99.2
Undecided about whether would return to the labour force	9.6	39.5	6.3	*	57.3
PERSONS					
Continuous period of at least twelve months in the labour force before leaving	42.2	100.4	44.8	43.7	231.1
Intended to return to the labour force	27.6	56.3	12.0	*	98.9
Did not intend to return to the labour force	8.6	22.8	24.5	36.3	92.2
Undecided about whether would return to the labour force	5.9	21.3	8.3	4.4	40.0
Continuous period of less than twelve months in the labour force before leaving	89.4	107.8	23.3	9.7	230.2
Intended to return to the labour force	73.2	57.6	11.7	*	144.4
Did not intend to return to the labour force	10.0	26.3	8.3	5.8	50.5
Undecided about whether would return to the labour force	6.1	23.9		5.2	35.3
Total	131.5	208.2	68.2	53.4	461.3
Intended to return to the labour force	100.8	113.9	23.7	4.9	243.3
Did not intend to return to the labour force	18.6	49.1	32.9	42.1	142.7
Undecided about whether would return to the labour force	12.1	45.3	11.6	6.4	75.3

Source: Persons Who Have Left the Labour Force, Australia, November 1985 (6267.0).

TABLE 2.21. PERSONS WHO HAVE LEFT THE LABOUR FORCE WITHIN THE LAST TWELVE MONTHS : WHETHER INTENDED TO RETURN TO THE LABOUR FORCE AND SUMMARY OF CHARACTERISTICS, NOVEMBER 1985 ('000)

	Whether intended to return to the labour force									
	Intended to return			Did not intend to return			Un- decided	Total		
	Males	Females	Persons	Males	Females	Persons		Males	Females	Persons
<i>Family status—</i>										
Member of a family	58.9	141.2	200.1	34.8	88.7	123.5	63.9	106.6	280.9	387.5
Husband or wife	20.0	97.6	117.6	31.5	77.6	109.1	52.3	60.1	218.8	278.9
With children aged 0-14 present	9.7	74.0	83.7	*	43.0	45.8	35.2	16.5	148.2	164.7
Without children aged 0-14 present	10.3	23.5	33.8	28.7	34.6	63.3	17.1	43.6	70.6	114.3
Not married family head	*	17.2	19.3	*	6.3	6.9	6.8	*	29.4	33.0
With children aged 0-14 present	*	14.4	15.7	*	4.2	4.4	5.0	*	23.2	25.1
Without children aged 0-14 present	*	*	*	*	*	*	*	*	6.2	7.9
Child of family head	35.0	25.2	60.2	*	4.1	6.1	4.1	39.5	30.8	70.3
Other relative of family head	*	*	*	*	*	*	*	*	*	5.3
Not a member of a family	11.3	11.1	22.4	6.4	5.7	12.1	7.5	22.1	19.8	41.9
Living alone	4.1	*	6.8	4.6	*	8.4	5.1	12.3	8.0	20.3
Not living alone	7.1	8.4	15.6	*	*	*	*	9.8	11.9	21.7
Not family coded	6.3	14.5	20.8	*	4.8	7.1	*	9.2	22.6	31.8
<i>Birthplace—</i>										
Born in Australia	58.9	130.1	188.9	29.3	73.8	103.1	54.0	99.7	246.3	346.0
Born outside Australia	17.6	36.8	54.3	14.2	25.4	39.6	21.3	38.2	77.0	115.3
<i>Area—</i>										
Metropolitan	53.3	106.4	159.7	29.0	57.5	86.4	43.8	94.4	195.5	289.9
Non-metropolitan	23.1	60.5	83.6	14.5	41.8	56.3	31.5	43.5	127.9	171.4
<i>Duration of continuous period in the labour force before leaving (years)—</i>										
Less than 1	45.3	99.1	144.4	8.7	41.8	50.5	35.3	59.9	170.3	230.2
1 and under 3	11.2	27.2	38.5	*	12.5	15.2	8.7	15.5	46.8	62.4
3 and under 5	5.0	11.5	16.5	*	7.9	9.8	7.3	8.7	24.8	33.5
5 and under 10	5.3	16.5	21.8	*	12.7	13.9	11.0	8.3	38.4	46.7
10 and under 20	*	11.0	14.4	5.2	16.8	22.0	7.1	10.6	32.8	43.4
20 or more	6.2	*	7.8	23.7	7.6	31.3	5.9	34.9	10.2	45.0
<i>Time since last left the labour force (weeks)—</i>										
1 and under 4	11.7	22.2	33.9	*	10.1	13.5	7.5	16.1	38.8	54.9
4 and under 8	11.4	25.3	36.8	*	10.3	13.0	7.2	15.3	41.6	56.9
8 and under 13	10.1	26.3	36.3	5.2	9.6	14.8	10.1	18.0	43.2	61.2
13 and under 26	11.9	35.6	47.5	13.5	21.8	35.3	16.2	29.2	69.8	99.0
26 and under 39	12.1	24.3	36.3	9.9	22.3	32.2	17.6	26.3	59.9	86.2
39 and under 52	19.3	33.1	52.4	8.8	25.1	33.9	16.7	33.0	70.1	103.1
<i>Main source of income—</i>										
Investments/savings	15.9	9.8	25.6	8.2	6.3	14.5	5.0	26.2	18.9	45.1
Superannuation	*	*	*	8.6	*	10.7	*	10.4	*	13.7
TEAS(a)	9.6	6.2	15.8	*	*	*	*	10.7	6.7	17.4
Unemployment/sickness benefit	13.0	8.7	21.7	*	*	7.3	4.9	20.1	13.8	33.9
Invalid/age/supporting parent's/widow's pension	*	16.5	18.8	12.5	14.2	26.7	9.9	17.4	37.9	55.3
War disability/repatriation/service/war widow's pension	*	*	*	5.1	*	7.1	*	6.3	*	8.9
Someone else's income	28.0	120.0	148.0	*	68.1	70.4	43.6	32.7	229.4	262.1
Other(b)	5.9	4.6	10.6	*	*	5.4	9.0	14.2	10.8	24.9
Total	76.4	166.8	243.3	43.5	99.2	142.7	75.3	137.9	323.4	461.3

(a) Tertiary Education Assistance Scheme. (b) Includes life assurance, other retirement schemes; and persons permanently unable to work who were not asked their main source of income.

Source: Persons Who Have Left the Labour Force, Australia, November 1985 (6267.0).

TABLE 2.22. PERSONS AGED 45 AND OVER : AGE AT NOVEMBER 1986 AND WHETHER HAD RETIRED OR INTENDED TO RETIRE FROM FULL-TIME WORK, NOVEMBER 1986
(*000)

Age at November 1986	Whether had retired or intended to retire from full-time work				Total
	Had retired	Intended to retire	Did not intend to retire	Had never had a full-time job and did not intend to work full-time	
45-49	212.4	543.1	42.2	41.9	839.5
50-54	233.6	419.7	34.9	45.8	734.0
55-59	313.3	332.8	32.3	51.4	729.7
60-64	452.9	157.0	23.2	77.2	710.3
65-69	451.6	18.8	13.8	79.6	563.8
70 and over	731.3	5.5	13.3	193.5	943.6
Total	2,395.0	1,476.9	159.7	489.4	4,521.1
Males	936.6	1,099.5	122.5	17.3	2,175.9
Females	1,458.4	377.5	37.2	472.0	2,345.1

Source: Retirement and Retirement Intentions, Australia, November 1986 (6238.0).

TABLE 2.23. PERSONS WHO HAD RETIRED FROM FULL-TIME WORK : AGE AT RETIREMENT AND AGE AT NOVEMBER 1986
(*000)

Age at retirement	Age at November 1986						Total
	45-49	50-54	55-59	60-64	65-69	70 and over	
MALES							
Less than 45	16.8	13.7	7.9	4.8	*	*	49.0
45-49	7.3	12.6	8.7	4.1	*	*	36.7
50-54	..	12.2	25.3	22.1	6.7	6.7	73.0
55-59	33.7	71.1	36.2	20.0	160.9
60-64	84.7	119.4	114.9	319.1
65-69	62.1	199.8	261.9
70 and over	36.0	36.0
Total	24.1	38.5	75.7	186.8	229.4	382.1	936.6
FEMALES							
Less than 45	169.6	138.8	140.2	136.2	108.3	185.5	878.6
45-49	18.7	34.1	24.9	17.6	13.8	9.7	118.9
50-54	..	22.1	47.2	38.4	22.4	22.0	152.1
55-59	25.2	47.0	31.4	28.1	131.8
60-64	26.9	38.4	64.1	129.3
65-69	7.9	29.9	37.7
70 and over	9.9	9.9
Total	188.3	195.1	237.5	266.1	222.2	349.2	1,458.4
PERSONS							
Less than 45	186.4	152.5	148.2	141.0	111.2	188.3	927.6
45-49	26.0	46.7	33.6	21.7	15.9	11.6	155.6
50-54	..	34.3	72.5	60.5	29.1	28.7	225.1
55-59	58.9	118.1	67.6	48.1	292.8
60-64	111.6	157.8	179.0	448.4
65-69	70.0	229.6	299.6
70 and over	45.9	45.9
Total	212.4	233.6	313.3	452.9	451.6	731.3	2,395.0

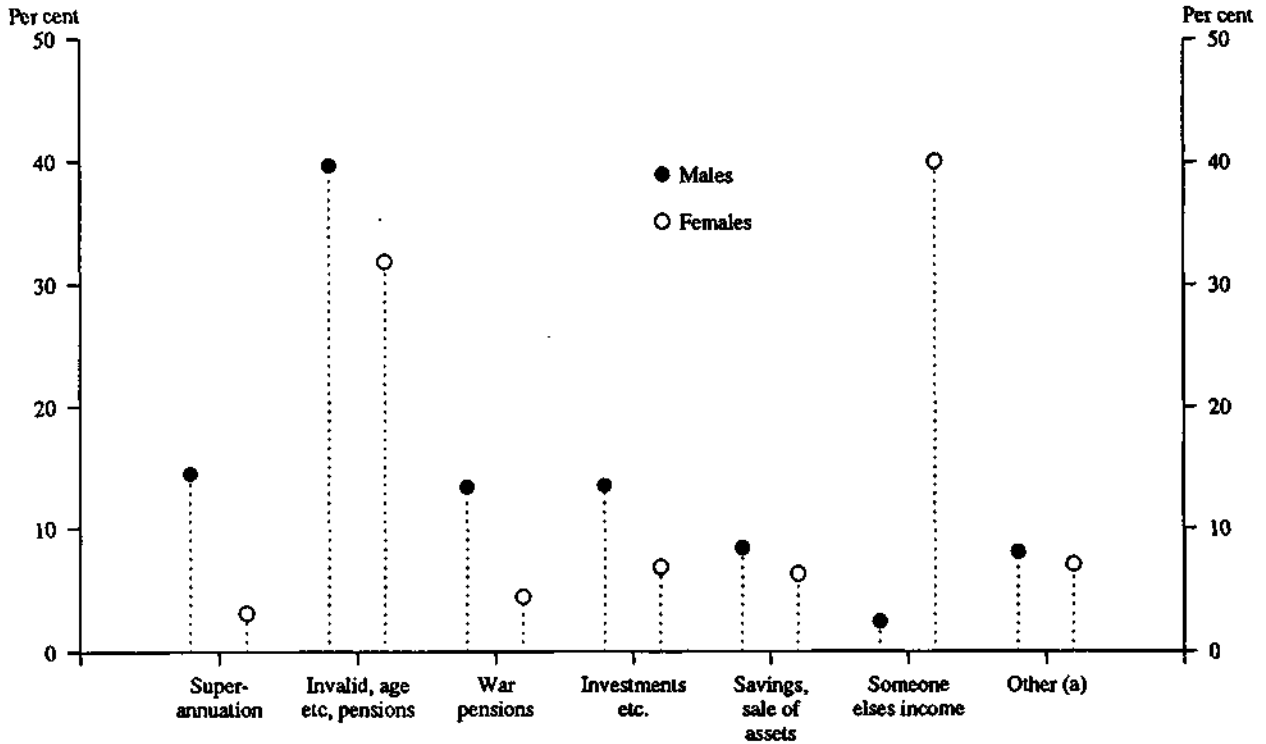
Source: Retirement and Retirement Intentions, Australia, November 1986 (6238.0).

TABLE 2.24. PERSONS WHO HAD RETIRED FROM FULL-TIME WORK AT AGE 45 OR MORE : SUMMARY OF CHARACTERISTICS, NOVEMBER 1986

	Males	Females	Persons	Males	Females	Person
	—'000—			—per cent—		
<i>Reason for ceasing last full-time job—</i>						
Job loser	287.2	164.0	451.2	32.4	28.3	30.7
Retrenched	48.5	46.5	95.0	5.5	8.0	6.5
Job was temporary or seasonal and did not leave to return to studies	*	4.8	6.3	*	0.8	0.4
Own ill health or injury	224.8	98.1	322.8	25.3	16.9	22.0
Business closed down for economic reasons	12.5	14.7	27.1	1.4	2.5	1.8
Job leaver	600.4	415.8	1,016.2	67.6	71.7	69.3
Unsatisfactory work arrangements	5.4	13.9	19.3	0.6	2.4	1.3
Retired	489.9	152.1	642.0	55.2	26.2	43.8
Did not want to work any longer	22.6	82.1	104.7	2.5	14.2	7.1
Too old	26.8	18.7	45.5	3.0	3.2	3.1
Reached compulsory retirement age	*	26.7	7.8	34.5	3.0	2.8
To get married	*	12.0	12.2	*	2.1	0.8
To look after family, house or someone else	5.9	57.9	63.8	0.7	10.0	4.3
To have holiday/to move house/spouse transferred	4.6	30.7	35.3	0.5	5.3	2.4
Business closed down or sold for other reasons	11.9	19.5	31.4	1.3	3.4	2.1
Other(a)	6.4	21.1	27.5	0.7	3.6	1.9
<i>Retirement scheme membership—</i>						
Belonged to a retirement scheme	448.4	123.2	571.6	50.5	21.2	39.0
Had superannuation cover	404.7	108.8	513.5	45.6	18.8	35.0
In last full-time job	396.7	103.1	499.8	44.7	17.8	34.1
In some previous job	8.0	5.7	13.7	0.9	1.0	0.9
Had life assurance or other schemes(b)	43.7	14.4	58.1	4.9	2.5	4.0
Did not belong to a retirement scheme	439.2	456.6	895.8	49.5	78.8	61.0
<i>Type of payment from retirement scheme—</i>						
Belonged to a retirement scheme	448.4	123.2	571.6	50.5	21.2	39.0
Lump sum only	260.7	78.7	339.4	29.4	13.6	23.1
Regular payments only	80.6	17.9	98.5	9.1	3.1	6.7
Lump sum and regular payments	81.5	15.7	97.1	9.2	2.7	6.6
No lump sum or regular payments	17.0	7.0	23.9	1.9	1.2	1.6
Did not know type of payments	8.7	3.9	12.6	1.0	0.7	0.9
Did not belong to a retirement scheme	439.2	456.6	895.8	49.5	78.8	61.0
<i>Main source of income at retirement—</i>						
Superannuation	128.8	18.8	147.6	14.5	3.2	10.1
Life assurance, other retirement schemes	4.9	*	6.1	0.5	*	0.4
Invalid/age/supporting parent's/widow's pension	352.3	184.8	537.0	39.7	31.9	36.6
War disability/repai/service/war widow's pension	117.8	26.1	144.0	13.3	4.5	9.8
Investments/interest/stocks/debentures, etc.	119.9	40.0	159.9	13.5	6.9	10.9
Savings/sale of assets	75.1	36.9	112.1	8.5	6.4	7.6
Part-time work	29.5	26.9	56.3	3.3	4.6	3.8
Someone else's income	21.8	232.0	253.8	2.5	40.0	17.3
Other	37.5	13.0	50.5	4.2	2.2	3.4
<i>Main source of income at November 1986—</i>						
Superannuation	104.3	19.0	123.3	11.7	3.3	8.4
Life assurance, other retirement schemes	*	*	*	*	*	*
Invalid/age/supporting parent's/widow's pension	462.6	316.8	779.4	52.1	54.6	53.1
War disability/repai/service/war widow's pension	145.2	44.8	190.0	16.4	7.7	12.9
Investments/interest/stocks/debentures, etc.	121.0	48.0	169.0	13.6	8.3	11.5
Savings/sales of assets	12.6	6.6	19.2	1.4	1.1	1.3
Part-time work	16.3	23.4	39.7	1.8	4.0	2.7
Someone else's income	12.2	113.4	125.5	1.4	19.6	8.6
Other	11.7	7.0	18.8	1.3	1.2	1.3
<i>Labour force status and hours worked—</i>						
Employed part-time	43.9	50.4	94.3	4.9	8.7	6.4
Worked less than 16 hours	21.3	18.9	40.2	2.4	3.3	2.7
Worked 16-34 hours	19.5	27.9	47.4	2.2	4.8	3.2
Not at work	*	*	6.7	*	*	0.5
Unemployed and looking for part-time work	3.6	*	5.9	0.4	*	0.4
Not in the labour force	840.1	527.1	1,367.2	94.7	90.9	93.2
<i>Time since retirement(years)—</i>						
Less than 2	103.4	57.2	160.7	11.7	9.9	10.9
2 and less than 5	212.1	112.6	324.7	23.9	19.4	22.1
5 and less than 10	294.5	163.6	458.1	33.2	28.2	31.2
10 and less than 15	179.5	129.9	309.5	20.2	22.4	21.1
15 and less than 20	57.2	58.5	115.7	6.4	10.1	7.9
20 or more	40.8	57.9	98.8	4.6	10.0	6.7
Total	887.6	579.8	1,467.4	100.0	100.0	100.0

(a) Includes returned to studies, pregnancy/to have children; and job was temporary or seasonal and left to return to studies. (b) Excludes persons who had superannuation cover.

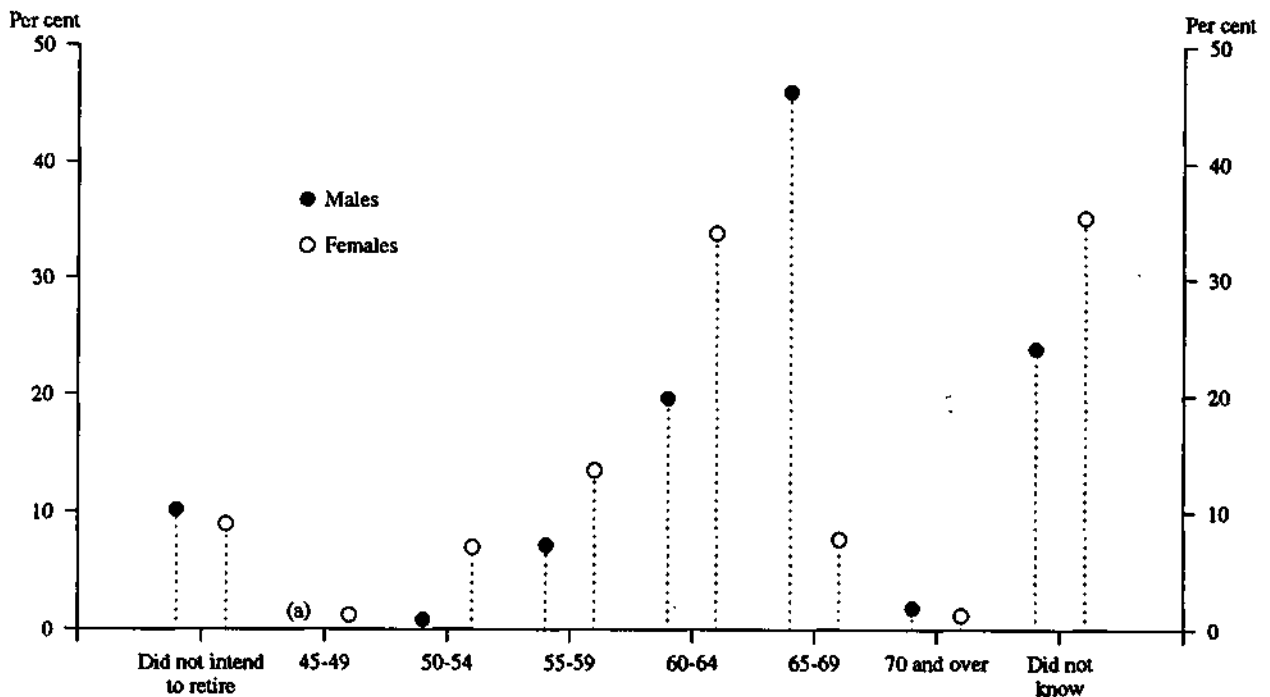
**CHART 2.6. PERSONS WHO HAD RETIRED FROM FULL-TIME WORK AT AGE 45 OR MORE:
MAIN SOURCE OF INCOME AT RETIREMENT, NOVEMBER 1986**



(a) Includes Life assurance and similar schemes, part-time work and other.

Source: Retirement and Retirement Intentions, Australia, November 1986 (6238.0).

**CHART 2.7. PERSONS AGED 45 AND OVER: WHETHER INTENDED TO RETIRE
FROM FULL-TIME WORK AND AGE INTENDED TO RETIRE, NOVEMBER 1986**



(a) Estimate subject to sampling variability too high for most practical uses.

Source: Retirement and Retirement Intentions, Australia, November 1986 (6238.0).

TABLE 2.25. PERSONS AGED 45 AND OVER WHO INTENDED TO RETIRE FROM FULL-TIME WORK : SUMMARY OF CHARACTERISTICS AND AGE INTENDED TO RETIRE, NOVEMBER 1986 ('000)

	Age intended to retire						Persons (a)
	Males			Females			
	45-64	65 and over	Total(a)	45-59	60 and over	Total(a)	
Expected time until retirement (years)—							
Less than 2	34.6	16.1	50.7	15.7	9.6	25.3	76.0
2 and less than 5	65.4	55.5	120.9	27.7	19.8	47.4	168.3
5 and less than 10	104.9	134.2	239.1	32.9	54.1	87.0	326.0
10 and less than 15	87.1	133.0	220.1	6.4	53.5	59.9	279.9
15 and less than 20	16.7	153.3	170.0	*	22.5	22.5	192.5
20 or more	*	35.2	35.2	*	*	*	37.4
Did not know	*	*	263.6	*	*	133.3	396.8
Retirement scheme membership—							
Belonged to a retirement scheme	259.4	351.9	755.9	44.0	80.0	167.9	923.8
Had superannuation cover	239.3	297.9	651.0	39.5	70.8	144.1	795.1
In job at November 1986	230.8	278.9	616.1	38.7	66.9	138.8	754.8
In some previous job	8.5	19.0	35.0	*	4.0	5.4	40.3
Had life assurance or other schemes(b)	20.1	54.0	104.9	4.5	9.2	23.8	128.7
Did not belong to a retirement scheme	49.3	175.3	343.6	38.5	81.6	209.5	553.1
Expected type of payment from retirement scheme—							
Belonged to a retirement scheme	259.4	351.9	755.9	44.0	80.0	167.9	923.8
Lump sum only	123.1	184.5	370.0	26.4	39.7	88.0	458.0
Regular payments only	30.3	42.5	84.5	5.0	8.7	16.7	101.2
Lump sum and regular payments	44.6	34.8	94.2	4.5	9.6	18.3	112.5
No lump sum or regular payments	*	*	6.9	*	*	*	8.0
Did not know type of payment	59.2	87.8	200.3	7.9	21.7	43.8	244.1
Did not belong to a retirement scheme	49.3	175.3	343.6	38.5	81.6	209.5	553.1
Expected main source of income at retirement—							
Superannuation	121.2	107.4	269.3	11.7	27.4	48.4	317.7
Life assurance, other retirement schemes	6.6	9.3	20.5	*	*	*	23.8
Invalid/age/supporting parent's/widow's pension	40.8	298.7	427.3	10.1	75.7	128.9	556.2
War disability/repatriation/service/war widow's pension	10.4	9.0	22.9	*	*	4.2	27.1
Investments interest/stocks/debentures, etc.	67.4	42.1	148.8	11.2	15.9	38.4	187.2
Savings/sale of assets	20.7	17.7	59.0	4.1	5.1	16.3	75.3
Part-time work	15.5	10.6	33.4	*	*	5.1	38.5
Someone else's income	*	*	6.8	39.7	23.9	95.9	102.7
Other	7.6	*	14.9	*	*	4.6	19.5
Did not know	15.5	26.5	96.6	*	7.2	32.4	128.9
Intended disbursement of lump sum payment from retirement scheme—							
Belonged to a retirement scheme	259.4	351.9	755.9	44.0	80.0	167.9	923.8
Expected to receive a lump sum payment	167.7	219.3	464.2	30.9	49.2	106.3	570.5
Purchase an annuity	*	*	5.9	*	*	*	6.7
Invest in an approved deposit fund/deferred annuity	24.9	16.9	47.3	*	3.9	8.7	56.0
Invest the money	80.6	83.8	186.6	13.3	20.0	41.0	227.6
Pay off home/pay for home improvements	11.3	23.2	38.5	*	6.2	10.7	49.2
Clear other outstanding debts	*	4.3	9.5	*	*	*	12.4
Pay for a holiday	9.7	17.3	30.9	4.4	4.3	10.8	41.7
Other	9.1	13.5	27.4	*	*	5.3	32.7
Did not know	26.7	58.2	118.0	5.5	9.9	26.1	144.1
Did not expect to receive a lump sum payment	82.6	119.0	264.1	11.3	28.4	56.5	320.6
Did not know	9.1	13.6	27.6	*	*	5.2	32.7
Did not belong to a retirement scheme	49.3	175.3	343.6	38.5	81.6	209.5	553.1
Housing arrangements at November 1986—							
Owning home	152.5	264.7	563.9	41.5	76.9	183.5	747.3
Paying off home	121.1	164.5	361.1	36.1	48.7	130.7	491.8
Renting	28.6	77.7	140.0	4.0	29.0	49.7	189.7
From Housing Commission	5.5	16.7	28.1	*	5.7	10.7	38.8
From other	23.1	61.0	111.9	*	23.3	39.0	151.0
Rent free	4.5	14.0	23.5	*	4.7	8.8	32.4
Other	*	6.4	11.0	*	*	4.7	15.7
Expected housing arrangements at retirement—							
Own home	246.7	397.9	839.4	62.5	113.8	262.3	1,101.6
Paying off home	31.8	43.1	90.8	14.8	17.5	46.9	137.7
Renting	12.3	45.1	71.0	*	14.6	25.3	96.2
From Housing Commission	4.1	15.1	24.0	*	4.7	8.4	32.4
From other	8.2	29.9	47.0	*	9.8	16.9	63.9
Rent free	*	6.6	11.2	*	*	5.2	16.4
Other	*	3.9	7.2	*	*	*	10.1
Did not know	12.6	30.6	80.0	*	11.3	34.9	114.9
Total	308.7	527.2	1,099.5	82.6	161.6	377.5	1,476.9

(a) Includes persons who did not know at what age they intended to retire. (b) Excludes persons who had superannuation cover.

Source: Retirement and Retirement Intentions, Australia, November 1986 (6238.0).