

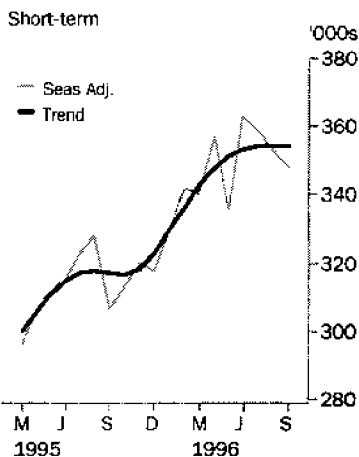
# OVERSEAS ARRIVALS AND DEPARTURES

AUSTRALIA

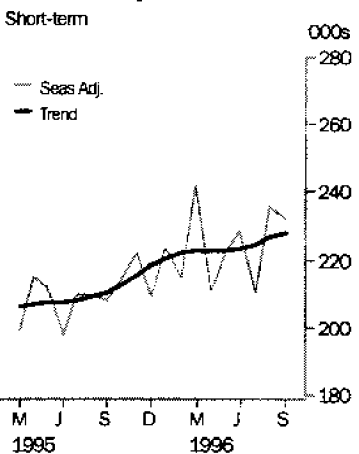
EMBARGOED UNTIL 11:30AM MON 25 NOVEMBER 1996

## SEPTEMBER KEY FIGURES

### Visitor arrivals



### Resident departures



	Sep 96 '000s	% change between Aug 96 and Sep 96	Jan 96 to Sep 96 '000s	% change on previous corresponding period
<b>Short-term</b>				
Visitor arrivals				
Trend	354.3	0.0	..	..
Original	309.2	..	2 973.7	12.6
Resident departures				
Trend	227.8	0.6	..	..
Original	281.5	..	2 004.7	8.7
<b>Permanent*</b>				
Settler arrivals	7.4	..	69.5	0.0
Resident departures	2.1	..	21.3	3.2
<b>Total permanent &amp; long-term*</b>				
Arrivals	18.5	..	196.9	4.9
Departures	10.7	..	113.9	4.9

\*Original

## SEPTEMBER KEY POINTS

### SHORT-TERM

- After ten consecutive months of growth, the trend estimate for visitor arrivals showed a marginal decrease in September 1996, at 354,300 compared to 354,400 for August 1996. The October 1996 seasonally adjusted figure will need to be 3.5% higher than the September 1996 estimate for zero trend growth.

### PERMANENT

- There were 7,420 permanent arrivals in Australia during September 1996, bringing the total for the nine months from January to 69,520. 40% of permanent arrivals were from Southeast Asia, Northeast Asia and Southern Asia.
- During September 1996, 2,070 residents departed Australia permanently, bringing the total for the nine months from January to 21,260. This was an increase of 3% over the same period in 1995 (20,600).

### TOTAL PERMANENT AND LONG-TERM

- The net gain of arrivals over departures during the nine month period to September 1996 was 83,000, 5% higher than the net gain recorded during the corresponding period in 1995 (79,170).

## INQUIRIES

- For further information about these and related statistics, contact Katrina Phelan on 06 252 6573, or any ABS Office.

# NOTES

**FORTHCOMING ISSUES**

*ISSUE*

*EXPECTED RELEASE DATE*

October 1996

23 December 1997

\*\*\*\*\*

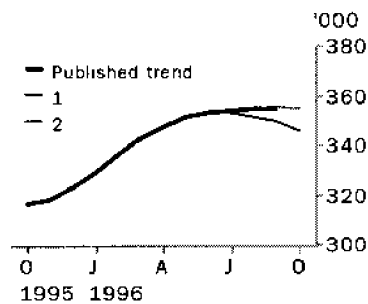
**TREND REVISIONS**

Each time new seasonally adjusted estimates become available, trend estimates of short-term arrivals and departures are revised (see paragraph 17 of the Explanatory Notes).

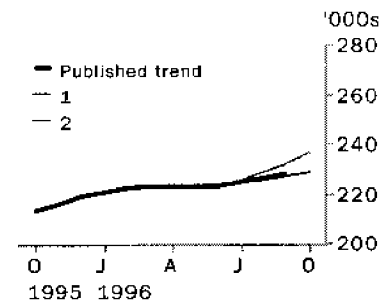
The examples in the graphs below show two illustrative scenarios and the consequent revisions to previous trend estimates of visitor arrivals and resident departures.

- 1** The October seasonally adjusted estimate is higher than the September estimate by:
  - 3.08% for visitor arrivals
  - 4.10% for resident departures
- 2** The October seasonally adjusted estimate is lower than the September estimate by:
  - 3.08% for visitor arrivals
  - 4.10% for resident departures

**VISITOR ARRIVALS**



**RESIDENT DEPARTURES**



The percentage changes of 3.08 and 4.10 were chosen because they represent the average absolute monthly percentage changes in visitor arrivals and resident departures over the last four years.

**W. McLennan**  
 Australian Statistician

# ANALYSES AND COMMENTS

---

## SHORT-TERM VISITOR ARRIVALS

### VISITOR ARRIVALS

During September 1996 there were 309,200 short-term visitor arrivals in Australia, bringing the total number of overseas visitors during the nine months from January 1996 to 2,973,700, an increase of 13% over the number of overseas visitors arriving during the corresponding period in 1995 (2,640,000).

The main source countries of visitor arrivals during the nine months to September 1996 were Japan (21% of all visitor arrivals), New Zealand (17%), the United Kingdom and the United States of America (both 8%) and Korea and Singapore (both 5%). All of the top ten source countries increased in visitor numbers during the nine months to September 1996 compared with the corresponding nine month period in 1995. The increases varied from 36% for visitors from Korea to 1% for visitors from the United Kingdom.

In the nine months to September 1996:

- 621,000 visitors arrived from Japan, an increase of 6% compared with the same period in 1995;
- 504,300 visitors arrived from New Zealand, an increase of 29%
- 237,500 visitors arrived from the United Kingdom, an increase of 1%;
- 227,400 visitors arrived from the United States of America, an increase of 4%;
- 154,300 visitors arrived from Korea, an increase of 36%;
- 142,600 visitors arrived from Singapore, an increase of 14%; and
- 123,100 visitors arrived from Taiwan, an increase of 5%.

### RESIDENT DEPARTURES

There were 281,500 short-term departures of Australian residents during September 1996, bringing the total for the period January to September 1996 to 2,004,700. This was an increase of 9% compared with the same period in 1995. The main destination for departing Australian residents was New Zealand (15%), followed by the United States of America and the United Kingdom (both 12%), Indonesia (9%) and Hong Kong (6%).

During the nine months to September 1996:

- 293,500 Australian residents visited New Zealand, an increase of 10% over the same period in 1995;
- 245,600 residents visited the United States of America, an increase of 6%;
- 231,500 residents visited the United Kingdom, an increase of 11%;
- 190,300 residents visited Indonesia, an increase of 16%; and
- 116,300 residents visited Hong Kong, an increase of 7%.

### PURPOSE OF JOURNEY

Between January and September 1996, 60% of all short-term visitors stated on arrival that they had travelled to Australia for a holiday (1,794,600). A further 18% stated that they were visiting friends/relatives (522,100), 10% were on business trips (289,900) and a further 4% arrived for the purpose of education.

### STATE OF STAY

Overseas visitors departing Australia during the nine months to September 1996 stated that they spent most of their time in New South Wales (44%), followed by Queensland (29%), Victoria (12%) and Western Australia (9%). These proportions were the same for Queensland, Victoria and Western Australia in the corresponding period in 1995, but represented a decrease of 1 percentage point for New South Wales.

## ANALYSES AND COMMENTS

---

### MIGRATION

#### PERMANENT ARRIVALS

There were 7,420 permanent arrivals in Australia during September 1996, bringing the total number of settlers arriving between January and September 1996 to 69,520.

On a regional basis, Europe and the Former USSR was the main source of settlers during the nine months to September 1996 with 18,590 arrivals, or 27% of all settlers.

Other important regions for permanent arrivals during the nine months to September 1996 were:

- Northeast Asia (14,370), 55% higher than the number arriving in the corresponding period in 1995;
- Oceania (12,460), 11% more; and
- Southeast Asia (8,550), 20% less.

The main country of birth for settlers was New Zealand (contributing 14% of all settler arrivals during the nine months to September 1996), closely followed by China (12%) and the United Kingdom (11%).

# ANALYSES AND COMMENTS

---

## PURPOSE OF JOURNEY - IMPACT OF CATEGORY CHANGES

In September 1994 the following changes to the purpose of journey categories on the Incoming and Outgoing Passenger cards were introduced: on the Incoming Passenger Card 'In transit' was dropped; on the Outgoing Passenger Card 'Student vacation' was dropped; and on both cards 'Visiting relatives' was changed to 'Visiting friends/relatives', 'Convention' was changed to 'Convention/conference' and 'Accompanying business visitor' was dropped. The effect of these changes can be examined by comparing data from before and after the change.

The possible effects of these changes are that previous 'In transit' travellers (visitor arrivals only) and 'Student vacation' travellers (resident departures only) would now probably select either 'Holiday' or 'Other'. Persons who would have selected 'Accompanying business visitor' would probably choose 'Holiday', 'Other' or 'Business'. Similarly, previous 'Visiting friends' travellers would select 'Visiting friend/relatives' instead of 'Holiday' or 'Other'. Likewise, previous conference travellers could now select 'Convention/conference' instead of 'Business' or 'Other'. The category changes are not expected to have any effect on the 'Employment' or 'Education' categories.

### VISITOR ARRIVALS

The short-term 'Holiday' category does not appear to be greatly affected by the changes to the Passenger Cards. The proportion of long-term holiday travellers showed a slight increase, taking into consideration the normal yearly variations. This increase may be related to 'Accompanying business travellers' being dropped. However, some people who previously selected 'Accompanying business traveller' may now select 'Other'. The 'Other' category is most susceptible to changes and increased substantially for both short and long-term arrivals. The 'Other' category for short-term arrivals may now include 'In transit' and 'Accompanying business travellers'. The 'Visiting friends/relatives' category for both short and long-term arrivals showed a slight increase in 1994-95 then continued its downward trend. The 'Conference/convention' category increased for short-term arrivals but not for long-term, probably because this category is mainly a short-term activity. The proportion of 'Business' travellers continued to fluctuate around 9% and 10% for both short-term and long-term travellers for the period both before and after the category changes were introduced. This probably indicates little or no effect from the category changes. 'Employment' and 'Education' were not affected by the category changes and no impact was detected as the proportion of travellers selecting these categories continued their overall trend.

### RESIDENT DEPARTURES

The Passenger Card changes only appear to have altered the distribution of short-term resident departures marginally, while long-term departures are not affected at all. The proportion of short-term departures selecting the 'Other' category decreased slightly probably due to 'Conference' and 'Visiting friends' travellers previously selecting 'Other' but now able to select 'Convention/conference' or 'Visiting friends/relatives'. Offsetting this decrease in the proportion selecting 'Other', the proportion selecting 'Convention/conference' and 'Visiting friends/relatives' have increased.

TABLE 1. TOTAL MOVEMENT — ARRIVALS: CATEGORY OF MOVEMENT

Period	Permanent arrivals Settlers	Long-term arrivals		Total permanent and long-term arrivals	Short-term arrivals(a) ( '000)			Total arrivals (a) ( '000)	
		Australian residents	Overseas visitors		Australian residents	Overseas visitors (Seasonally adjusted b)	Overseas visitors (Trend estimate c)		
<i>Year ended 31 December —</i>									
1993	65,680	73,430	58,830	197,930	2,215.2	2,996.2	..	5,409.3	
1994	77,940	78,060	65,910	221,910	2,302.5	3,361.7	..	5,886.2	
1995	96,970	78,790	78,170	253,940	2,470.8	3,725.8	..	6,450.6	
<i>Year ended 30 June —</i>									
1994	69,770	75,600	62,000	207,370	2,245.6	3,169.0	..	5,621.9	
1995	87,430	79,060	72,030	238,520	2,387.0	3,535.3	..	6,160.8	
1996	99,140	79,210	84,370	262,720	2,569.3	3,966.2	..	6,798.2	
<i>1995 —</i>									
July	8,420	6,950	11,470	26,840	247.2	329.7	322.9	317.1	603.8
August	8,210	5,610	4,510	18,330	202.3	304.9	327.7	317.5	525.5
September	8,250	6,070	4,470	18,790	232.7	268.6	306.4	316.6	520.0
October	8,660	6,240	5,090	19,990	272.7	320.7	312.6	316.1	613.3
November	8,960	7,050	4,060	20,080	187.6	342.9	319.6	318.1	550.6
December	9,800	12,230	4,110	26,130	155.0	422.3	317.7	322.5	603.4
<i>1996 —</i>									
January	9,400	7,600	13,680	30,670	312.9	317.2	328.7	328.9	660.7
February	8,200	6,320	17,320	31,840	184.5	392.7	341.8	336.0	609.0
March	8,420	5,670	6,060	20,150	185.9	365.6	340.0	342.6	571.6
April	7,170	5,180	5,350	17,700	208.4	333.2	356.6	347.6	559.3
May	6,330	4,370	3,670	14,370	179.7	261.5	335.7	351.1	455.6
June	7,300	5,930	4,600	17,830	200.7	306.9	363.3	353.0	525.4
July	7,530	6,760	13,070	27,360	261.3	358.2	358.5	354.1	646.9
August	7,740	5,590	5,220	18,550	226.3	329.2	353.2	354.4	574.1
September	7,420	5,980	5,050	18,450	251.1	309.2	348.0	354.3	578.7

(a) Figures for short-term movement are based on a sample and are subject to sampling error. See paragraphs 9 and 10 of the Explanatory Notes for more detail. (b) See paragraphs 14 and 15 of the Explanatory Notes. (c) See paragraphs 16 and 17 of the Explanatory Notes.

TABLE 2. TOTAL MOVEMENT — DEPARTURES: CATEGORY OF MOVEMENT

Period	Permanent departures	Long-term departures		Total permanent and long-term departures	Short-term departures(a) ( '000)			Total departures (a) ( '000)	
		Australian residents	Overseas visitors		Australian residents (Seasonally adjusted b)	Australian residents (Trend estimate c)	Overseas visitors		
<i>Year ended 31 December —</i>									
1993	28,070	64,300	48,050	140,430	2,267.1	..	..	2,931.0	5,338.5
1994	27,020	66,370	48,290	141,680	2,354.3	..	..	3,314.2	5,810.2
1995	27,870	69,080	52,410	149,360	2,518.6	..	..	3,676.8	6,344.8
<i>Year ended 30 June —</i>									
1994	27,280	64,790	47,920	139,990	2,304.0	..	..	3,118.9	5,562.9
1995	26,950	68,380	50,160	145,480	2,422.0	..	..	3,486.4	6,053.8
1996	28,670	70,250	54,130	153,060	2,624.4	..	..	3,910.1	6,687.5
<i>1995 —</i>									
July	2,500	5,980	4,430	12,910	233.6	209.7	208.0	282.5	529.1
August	2,430	6,250	3,360	12,050	197.5	209.9	209.3	336.2	545.8
September	2,040	4,740	3,300	10,080	254.6	208.3	210.7	265.6	530.2
October	2,070	4,260	2,810	9,130	194.0	214.3	213.0	289.0	492.2
November	2,220	4,610	5,840	12,670	201.1	222.2	215.9	334.3	548.1
December	2,980	5,740	10,270	18,990	279.5	209.4	218.4	344.1	642.6
<i>1996 —</i>									
January	3,070	9,770	4,310	17,150	175.8	223.9	220.6	396.6	589.6
February	2,250	6,270	3,950	12,470	167.2	215.0	222.2	354.0	533.7
March	2,540	6,600	4,290	13,420	235.9	242.1	222.8	366.7	615.9
April	2,380	5,910	3,290	11,570	207.4	210.9	222.7	353.9	572.9
May	2,180	5,230	3,020	10,420	215.9	222.1	222.8	290.3	516.6
June	2,020	4,900	5,270	12,180	261.8	228.6	223.2	296.9	570.8
July	2,330	5,880	4,980	13,180	236.8	210.7	224.5	323.1	573.1
August	2,440	6,430	3,910	12,780	222.4	235.6	226.5	367.5	602.7
September	2,070	4,730	3,930	10,730	281.5	231.9	227.8	292.2	584.5

(a) Figures for short-term movement are based on a sample and are subject to sampling error. See paragraphs 9 and 10 of the Explanatory Notes for more detail. (b) See paragraphs 14 and 15 of the Explanatory Notes. (c) See paragraphs 16 and 17 of the Explanatory Notes.

**TABLE 3. SHORT-TERM MOVEMENT(a) — ARRIVALS OF OVERSEAS VISITORS AND DEPARTURES OF AUSTRALIAN RESIDENTS BY INTENDED LENGTH OF STAY AND PURPOSE OF JOURNEY(b)**  
(<sup>'000</sup>)

	<i>Year ended</i>		<i>Quarter ended</i>		<i>Nine months to</i>		<i>Month of</i>	
	<i>31 December</i>		<i>30 September</i>		<i>September</i>		<i>September</i>	
	<i>1994</i>	<i>1995</i>	<i>1995</i>	<i>1996</i>	<i>1995</i>	<i>1996</i>	<i>1995</i>	<i>1996</i>
<b>ARRIVALS</b>								
<b>Intended length of stay</b>								
Under 1 week	1,000.6	1,144.7	283.9	309.8	839.5	937.4	85.7	96.9
1 and under 2 weeks	1,051.3	1,158.2	275.1	307.2	817.4	944.7	83.5	99.2
2 weeks and under 1 month	624.1	675.6	172.8	193.8	469.9	530.2	47.8	57.1
1 and under 2 months	335.4	352.7	81.1	84.5	235.6	245.2	22.7	24.8
2 and under 3 months	102.5	110.2	22.1	23.1	73.6	78.6	6.8	7.9
3 and under 6 months	119.3	138.7	31.6	36.7	93.8	107.1	10.4	12.3
6 and under 12 months	125.6	145.7	36.6	41.7	110.3	130.5	11.7	10.8
<b>Total(c)</b>	<b>3,361.7</b>	<b>3,725.8</b>	<b>903.2</b>	<b>996.6</b>	<b>2,640.0</b>	<b>2,973.7</b>	<b>268.6</b>	<b>309.2</b>
<b>Purpose of journey(b)</b>								
Convention/conference	64.9	89.7	26.9	31.8	65.0	83.5	9.5	12.3
Business	321.9	361.0	102.9	97.1	268.8	289.9	28.8	32.3
Visiting friends/relatives	605.0	700.1	150.8	169.7	465.9	522.1	52.6	57.7
Holiday	2,109.0	2,257.5	539.1	599.2	1,591.4	1,794.6	154.7	182.4
Employment	27.0	21.7	5.3	5.6	16.5	17.6	1.8	1.7
Education	83.4	97.8	29.7	39.1	83.1	113.1	5.5	6.7
Other and not stated	150.5	198.0	48.6	54.1	149.3	153.1	15.7	16.0
<b>Total</b>	<b>3,361.7</b>	<b>3,725.8</b>	<b>903.2</b>	<b>996.6</b>	<b>2,640.0</b>	<b>2,973.7</b>	<b>268.6</b>	<b>309.2</b>
<b>DEPARTURES</b>								
<b>Intended length of stay</b>								
Under 1 week	245.8	271.4	71.7	76.4	200.5	222.1	23.5	26.1
1 and under 2 weeks	577.6	615.5	179.1	193.5	459.7	509.1	73.7	76.5
2 weeks and under 1 month	617.0	671.1	181.8	192.1	493.8	528.4	77.7	87.9
1 and under 2 months	434.0	458.4	120.5	146.0	312.0	354.8	43.8	56.1
2 and under 3 months	185.6	193.8	54.8	57.0	132.9	143.4	16.1	15.3
3 and under 6 months	165.2	171.8	44.6	43.3	134.5	133.3	11.8	10.3
6 and under 12 months	129.1	136.6	33.2	32.5	110.7	113.5	7.9	9.3
<b>Total(c)</b>	<b>2,354.3</b>	<b>2,518.6</b>	<b>685.7</b>	<b>740.8</b>	<b>1,844.0</b>	<b>2,004.7</b>	<b>254.6</b>	<b>281.5</b>
<b>Purpose of journey(b)</b>								
Convention/conference	66.9	100.8	28.5	29.6	78.1	80.2	11.7	12.4
Business	408.3	438.8	110.9	127.2	329.1	369.1	41.0	47.6
Visiting friends/relatives	561.2	644.7	150.5	163.9	439.5	478.3	52.1	58.2
Holiday	1,143.7	1,140.4	334.3	367.0	846.5	925.2	131.3	144.3
Employment	55.7	72.2	27.1	17.3	58.0	52.5	4.7	5.3
Education	30.4	38.2	12.7	12.1	29.6	28.9	6.3	5.1
Other and not stated	88.1	83.5	21.7	23.6	63.1	70.6	7.4	8.5
<b>Total</b>	<b>2,354.3</b>	<b>2,518.6</b>	<b>685.7</b>	<b>740.8</b>	<b>1,844.0</b>	<b>2,004.7</b>	<b>254.6</b>	<b>281.5</b>

(a) Figures for short-term movement are based on a sample and are subject to sampling error. See paragraphs 9 and 10 of the Explanatory Notes for more detail. (b) Break in time series data. See paragraphs 3 and 4 of the Explanatory Notes for more detail. (c) Includes not stated.

**TABLE 4. PERMANENT (SETTLER) ARRIVALS: COUNTRY OF BIRTH(a)**

<i>Country of birth(a)</i>	<i>Year ended</i>		<i>Quarter ended</i>		<i>Nine months to</i>		<i>Month of</i>	
	<i>31 December</i>		<i>30 September</i>		<i>September</i>		<i>September</i>	
	<i>1994</i>	<i>1995</i>	<i>1995</i>	<i>1996</i>	<i>1995</i>	<i>1996</i>	<i>1995</i>	<i>1996</i>
<b>Major group —</b>								
Oceania and Antarctica	11,490	15,120	3,610	3,770	11,190	12,460	1,310	1,250
Europe and the Former USSR	22,990	26,740	6,680	6,170	19,390	18,590	2,420	2,200
Middle East and North Africa	5,820	8,340	2,350	1,670	6,090	4,680	600	500
Southeast Asia	14,790	14,590	3,570	2,870	10,690	8,550	1,170	1,000
Northeast Asia	8,590	14,250	4,000	4,670	9,280	14,370	1,290	1,280
Southern Asia	6,380	8,450	2,230	1,450	6,150	4,630	700	470
The Americas	3,510	4,000	1,070	1,010	2,960	2,720	330	350
Africa (excluding North Africa)	4,300	5,430	1,360	1,060	3,780	3,500	440	380
<b>Total(b)</b>	<b>77,940</b>	<b>96,970</b>	<b>24,890</b>	<b>22,690</b>	<b>69,550</b>	<b>69,520</b>	<b>8,250</b>	<b>7,420</b>
<b>Major source countries —</b>								
Bosnia-Herzegovina	1,700	3,100	910	700	2,350	2,450	340	230
China	2,940	7,370	2,060	2,560	4,190	8,580	830	740
Fiji	1,280	1,690	410	520	1,270	1,400	140	140
Former USSR and Baltic States	2,350	1,910	410	420	1,410	1,190	140	160
Former Yugoslavia n.f.d.(c)	2,410	3,000	820	730	2,250	2,200	260	270
Hong Kong	3,640	4,490	1,190	1,160	3,350	3,190	250	280
India	3,130	4,300	1,070	660	3,150	2,150	350	230
New Zealand	8,970	11,430	2,680	2,730	8,520	9,410	970	900
Philippines	4,050	3,810	860	560	2,830	1,970	290	160
South Africa	2,390	3,150	760	660	2,220	2,160	220	250
Sri Lanka	1,830	2,110	630	360	1,500	1,080	190	120
United Kingdom	9,560	11,470	2,740	2,470	8,240	7,780	1,040	920
United States of America	1,550	1,780	450	430	1,340	1,160	130	120
Viet Nam	5,350	4,630	1,020	780	3,360	2,060	370	430

(a) See paragraphs 6 and 7 of the Explanatory Notes. (b) Includes not stated. (c) Includes vague responses which cannot be coded to any other category.

TABLE 5. SHORT-TERM MOVEMENT(a) — ARRIVALS OF OVERSEAS VISITORS  
COUNTRY OF RESIDENCE(b)  
(<sup>'000</sup>)

Country of residence(b)	Year ended		Quarter ended		Nine months to		Month of	
	31 December		30 September		September		September	
	1994	1995	1995	1996	1995	1996	1995	1996
<b>OCEANIA &amp; ANTARCTICA —</b>								
Fiji	19.5	19.0	3.8	4.4	12.4	14.5	1.4	1.7
New Caledonia	20.2	21.4	3.7	4.6	16.0	17.7	1.1	1.6
New Zealand	480.4	538.4	166.4	205.1	391.7	504.3	55.6	71.7
Papua New Guinea	41.9	42.3	10.5	11.8	31.5	31.5	3.4	4.2
Other	24.3	26.1	6.8	6.0	18.0	17.6	2.2	2.1
<i>Total</i>	<i>586.2</i>	<i>647.2</i>	<i>191.2</i>	<i>232.0</i>	<i>469.7</i>	<i>585.6</i>	<i>63.6</i>	<i>81.3</i>
<b>EUROPE &amp; THE FORMER USSR —</b>								
Austria	15.5	17.0	4.6	4.2	11.4	11.2	1.8	1.1
Belgium	7.0	7.7	2.2	2.5	5.3	6.2	0.7	0.6
Denmark	14.7	15.8	3.2	3.6	10.3	12.0	1.2	1.4
Former USSR & Baltic States	7.3	8.6	1.6	1.6	5.6	6.1	0.5	0.5
France	34.5	35.2	10.8	10.7	26.3	24.3	2.3	2.7
Germany	122.7	124.2	28.0	26.2	87.0	84.4	10.8	9.6
Greece	7.0	7.6	1.5	1.3	4.6	4.5	0.4	0.3
Ireland	15.1	17.4	3.6	4.3	11.8	13.6	1.3	1.8
Italy	36.7	36.8	11.4	13.0	24.4	26.8	2.7	2.9
Netherlands	30.9	34.5	8.0	9.1	21.9	24.7	2.9	3.4
Norway	5.8	6.6	1.4	1.3	4.4	4.7	0.6	0.5
Spain	6.9	7.3	2.8	2.8	5.4	5.7	0.7	0.6
Sweden	20.2	22.4	3.9	3.8	13.0	13.8	1.8	1.5
Switzerland	36.4	35.3	6.9	8.1	22.5	24.8	2.8	3.4
United Kingdom	335.3	347.9	59.3	64.7	236.2	237.5	20.7	23.9
Other	25.3	27.8	6.1	6.8	17.6	20.6	2.0	2.1
<i>Total</i>	<i>721.2</i>	<i>752.0</i>	<i>155.4</i>	<i>164.3</i>	<i>507.8</i>	<i>520.9</i>	<i>53.1</i>	<i>56.3</i>
<b>MIDDLE EAST &amp; NORTH AFRICA —</b>								
Israel	6.9	8.1	2.2	2.4	5.8	6.8	0.9	0.9
Other	17.0	20.6	6.1	8.3	14.3	17.4	1.7	1.6
<i>Total</i>	<i>23.9</i>	<i>28.7</i>	<i>8.3</i>	<i>10.7</i>	<i>20.1</i>	<i>24.1</i>	<i>2.6</i>	<i>2.5</i>
<b>SOUTHEAST ASIA —</b>								
Brunei	5.4	5.9	1.4	1.6	4.3	4.9	0.3	0.4
Indonesia	105.7	135.0	29.5	33.6	95.0	110.4	7.1	8.4
Malaysia	95.1	108.2	21.6	26.6	75.0	94.1	6.5	7.9
Philippines	21.7	27.0	6.3	6.8	19.6	24.1	2.1	2.3
Singapore	187.6	202.4	35.8	37.4	125.2	142.6	14.4	12.3
Thailand	66.8	81.3	14.8	18.9	59.5	65.5	4.7	6.8
Other	5.5	6.3	1.5	1.6	4.3	5.1	0.4	0.5
<i>Total</i>	<i>487.8</i>	<i>566.0</i>	<i>111.0</i>	<i>126.4</i>	<i>382.9</i>	<i>446.7</i>	<i>35.4</i>	<i>38.7</i>
<b>NORTHEAST ASIA —</b>								
China	29.7	42.6	10.2	12.9	27.7	37.4	3.3	4.4
Hong Kong	109.5	131.7	38.4	35.6	96.7	114.5	7.1	8.3
Japan	721.1	782.7	214.0	219.3	584.8	621.0	57.6	64.4
Korea	110.8	168.0	38.1	51.1	113.3	154.3	9.1	11.5
Taiwan	142.5	152.0	35.9	35.1	117.7	123.1	7.7	9.4
Other	2.8	1.9	0.6	0.6	1.5	1.4	0.1	0.1
<i>Total</i>	<i>1,116.4</i>	<i>1,278.8</i>	<i>337.2</i>	<i>354.6</i>	<i>941.7</i>	<i>1,051.6</i>	<i>84.8</i>	<i>98.1</i>
<b>SOUTHERN ASIA —</b>								
India	12.1	17.1	3.4	5.1	12.0	15.5	1.2	1.8
Other	7.6	10.3	2.2	2.7	6.5	8.8	0.7	0.8
<i>Total</i>	<i>19.6</i>	<i>27.5</i>	<i>5.6</i>	<i>7.7</i>	<i>18.5</i>	<i>24.4</i>	<i>1.9</i>	<i>2.7</i>
<b>THE AMERICAS —</b>								
Canada	54.3	58.4	12.4	11.9	39.2	42.0	3.6	3.7
United States of America	289.7	304.9	69.2	71.4	219.7	227.4	18.8	20.1
Other	17.6	18.6	4.0	5.2	12.8	15.7	1.5	1.7
<i>Total</i>	<i>361.6</i>	<i>381.9</i>	<i>85.6</i>	<i>88.6</i>	<i>271.7</i>	<i>285.1</i>	<i>23.8</i>	<i>25.5</i>
<b>AFRICA (excluding North Africa) —</b>								
South Africa	30.3	32.7	6.1	9.8	20.2	27.6	2.6	3.5
Other	12.3	9.5	2.4	2.1	6.2	6.7	0.7	0.5
<i>Total</i>	<i>42.6</i>	<i>42.2</i>	<i>8.6</i>	<i>11.9</i>	<i>26.4</i>	<i>34.3</i>	<i>3.3</i>	<i>4.0</i>
Not stated	2.4	1.6	0.4	0.4	1.1	1.0	-	0.1
<b>Total</b>	<b>3,361.7</b>	<b>3,725.8</b>	<b>903.2</b>	<b>996.6</b>	<b>2,640.0</b>	<b>2,973.7</b>	<b>268.6</b>	<b>309.2</b>

(a) Figures for short-term movement are based on a sample and are subject to sampling error. See paragraphs 9 and 10 of the Explanatory Notes for more detail. (b) See paragraphs 6 and 7 of the Explanatory Notes.



**TABLE 6. SHORT-TERM MOVEMENT(a) — DEPARTURES OF AUSTRALIAN RESIDENTS  
MAIN DESTINATION(b)**  
(\*000)

Main destination(b)	Year ended		Quarter ended		Nine months to		Month of	
	31 December		30 September		September		September	
	1994	1995	1995	1996	1995	1996	1995	1996
<b>OCEANIA &amp; ANTARCTICA —</b>								
Fiji	82.9	74.6	21.6	19.8	54.1	51.2	7.8	6.5
New Caledonia	14.7	13.2	3.3	3.9	9.6	9.0	1.4	1.8
New Zealand	353.3	371.4	94.4	96.0	266.4	293.5	39.1	39.3
Norfolk Island	20.0	17.6	3.5	4.7	12.4	14.1	1.6	1.6
Papua New Guinea	35.0	35.6	8.5	9.6	25.6	28.1	2.8	3.1
Vanuatu	20.3	18.1	4.9	4.5	13.7	14.1	1.6	1.7
Other	25.3	25.8	7.7	7.9	18.6	18.7	2.7	3.1
<i>Total</i>	<i>551.5</i>	<i>556.3</i>	<i>143.8</i>	<i>146.2</i>	<i>400.3</i>	<i>428.7</i>	<i>56.9</i>	<i>57.0</i>
<b>EUROPE &amp; THE FORMER USSR —</b>								
France	27.9	27.9	6.8	7.8	22.4	21.3	2.8	3.7
Germany	32.3	34.4	8.1	9.2	26.8	25.4	2.9	3.8
Greece	33.8	34.2	13.3	12.6	30.3	29.8	3.0	3.2
Ireland	13.6	15.5	5.8	7.9	12.1	14.8	2.1	2.2
Italy	45.1	50.3	16.3	21.5	40.3	48.3	6.4	8.2
Netherlands	14.3	15.9	4.4	5.8	12.6	13.8	1.1	2.2
Poland	6.3	7.3	1.6	2.0	5.4	5.2	0.3	0.3
Spain	6.4	8.2	2.0	2.8	5.8	7.3	0.9	1.2
Switzerland	10.4	9.6	2.7	3.0	7.5	8.5	0.8	1.5
United Kingdom	254.5	265.4	81.6	91.7	209.4	231.5	29.0	34.3
Other	68.1	74.9	23.1	27.3	60.4	69.7	6.4	6.5
<i>Total</i>	<i>512.7</i>	<i>543.5</i>	<i>165.6</i>	<i>191.6</i>	<i>433.0</i>	<i>475.6</i>	<i>55.5</i>	<i>67.0</i>
<b>MIDDLE EAST &amp; NORTH AFRICA —</b>								
Israel	8.9	8.5	2.0	2.0	5.8	6.5	1.2	0.9
Lebanon	14.8	16.5	5.6	6.1	13.2	14.4	1.2	1.4
Turkey	9.8	10.9	3.2	4.9	9.6	11.0	1.0	1.6
Other	18.2	18.2	4.9	4.8	12.7	15.3	2.3	1.8
<i>Total</i>	<i>51.7</i>	<i>54.0</i>	<i>15.8</i>	<i>17.7</i>	<i>41.2</i>	<i>47.2</i>	<i>5.8</i>	<i>5.6</i>
<b>SOUTHEAST ASIA —</b>								
Indonesia	214.2	222.2	68.7	79.1	163.9	190.3	24.2	30.0
Malaysia	84.5	88.6	23.6	26.4	63.2	68.3	8.9	10.2
Philippines	47.3	51.5	10.0	11.3	34.7	37.6	3.9	5.0
Singapore	91.7	95.0	24.1	25.6	68.0	73.0	9.1	8.7
Thailand	71.8	75.3	20.4	18.5	54.7	58.3	7.7	6.8
Viet Nam	32.6	40.6	7.4	9.3	27.1	27.8	2.3	3.5
Other	9.8	10.3	2.0	1.4	7.0	5.2	0.6	0.5
<i>Total</i>	<i>551.8</i>	<i>583.5</i>	<i>156.0</i>	<i>171.5</i>	<i>418.6</i>	<i>460.6</i>	<i>56.8</i>	<i>64.7</i>
<b>NORTHEAST ASIA —</b>								
China	39.3	52.9	14.4	13.3	38.0	38.3	5.7	6.0
Hong Kong	130.4	156.9	35.8	38.4	108.2	116.3	12.0	15.0
Japan	42.6	42.7	12.2	12.9	31.6	34.5	5.5	6.2
Korea	12.0	14.3	3.4	4.8	10.3	12.0	1.2	2.0
Taiwan	28.3	28.8	6.8	7.2	19.0	20.4	2.3	2.7
Other	1.5	1.5	0.9	0.4	1.3	1.0	0.4	0.1
<i>Total</i>	<i>254.1</i>	<i>297.0</i>	<i>73.5</i>	<i>77.0</i>	<i>208.4</i>	<i>222.3</i>	<i>27.1</i>	<i>32.1</i>
<b>SOUTHERN ASIA —</b>								
India	27.0	35.4	6.6	5.7	18.5	20.5	2.9	2.3
Sri Lanka	9.8	9.8	2.1	1.7	7.0	5.7	0.7	0.6
Other	9.8	13.2	2.0	3.2	6.8	8.1	1.2	1.4
<i>Total</i>	<i>46.6</i>	<i>58.4</i>	<i>10.7</i>	<i>10.6</i>	<i>32.3</i>	<i>34.2</i>	<i>4.8</i>	<i>4.3</i>
<b>THE AMERICAS —</b>								
Canada	39.5	40.5	15.5	14.8	32.3	35.4	5.3	4.6
United States of America	288.3	314.0	90.2	88.9	232.7	245.6	36.7	37.1
Other	20.4	20.9	3.3	5.0	11.2	14.7	1.2	2.6
<i>Total</i>	<i>348.1</i>	<i>375.4</i>	<i>109.0</i>	<i>108.8</i>	<i>276.1</i>	<i>295.7</i>	<i>43.1</i>	<i>44.3</i>
<b>AFRICA (excluding North Africa) —</b>								
South Africa	15.7	24.2	4.7	7.4	16.2	17.7	1.9	2.7
Other	14.7	15.7	3.6	7.1	9.9	14.4	1.6	2.8
<i>Total</i>	<i>30.4</i>	<i>39.9</i>	<i>8.3</i>	<i>14.4</i>	<i>26.2</i>	<i>32.1</i>	<i>3.5</i>	<i>5.5</i>
Not stated	7.3	10.5	3.1	3.1	7.8	8.3	1.0	1.0
<b>Total</b>	<b>2,354.3</b>	<b>2,518.6</b>	<b>685.7</b>	<b>740.8</b>	<b>1,844.0</b>	<b>2,004.7</b>	<b>254.6</b>	<b>281.5</b>

(a) Figures for short-term movement are based on a sample and are subject to sampling error. See paragraphs 9 and 10 of the Explanatory Notes for more detail. (b) See paragraphs 6 and 7 of the Explanatory Notes.

**TABLE 7. SHORT-TERM MOVEMENT(a) — DEPARTURES OF OVERSEAS VISITORS  
STATE/TERRITORY IN WHICH MOST TIME WAS SPENT  
(<sup>'000</sup>)**

State/Territory in which most time was spent	Year ended		Quarter ended		Nine months to		Month of	
	31 December		30 September		September		September	
	1994	1995	1995	1996	1995	1996	1995	1996
New South Wales	1,511.7	1,646.6	387.0	413.1	1,219.1	1,348.2	114.3	121.4
Victoria	393.3	451.3	95.5	108.8	331.6	377.4	29.5	34.2
Queensland	924.8	1,044.4	286.2	334.3	772.8	887.9	85.7	96.7
South Australia	75.9	79.6	16.5	17.1	57.7	61.4	5.2	5.4
Western Australia	328.7	347.4	72.0	80.5	251.1	278.6	23.4	25.2
Tasmania	20.3	23.6	2.5	3.5	16.2	18.8	0.9	1.2
Northern Territory	34.9	41.2	14.1	13.8	31.1	31.8	3.5	3.7
Australian Capital Territory	24.7	29.9	7.1	7.6	21.4	23.8	1.8	2.5
Other Territories(b)	n.a.	n.a.	3.6	4.2	n.a.	13.4	1.2	2.1
<b>Total(c)</b>	<b>3,314.2</b>	<b>3,676.8</b>	<b>884.3</b>	<b>982.9</b>	<b>2,709.4</b>	<b>3,041.3</b>	<b>265.6</b>	<b>292.2</b>

(a) Figures for short-term movement are based on a sample and are subject to sampling error. See paragraphs 9 and 10 of the Explanatory Notes for more detail. (b) Not available prior to February 1995. Includes Territories of Christmas Island, Cocos (Keeling) Islands and Jervis Bay. (c) Includes not stated.

**TABLE 8. SHORT-TERM MOVEMENT(a) — ARRIVALS OF OVERSEAS VISITORS  
COUNTRY OF RESIDENCE(b) AND PURPOSE OF JOURNEY(c)  
EIGHT MONTHS TO SEPTEMBER**

Country of residence(b)	Nine months to September						Percentage change 1994 to 1996	Percentage change 1995 to 1996
	1994		1995		1996			
	( <sup>'000</sup> )	%	( <sup>'000</sup> )	%	( <sup>'000</sup> )	%		
<b>Major group —</b>								
Oceania and Antarctica	428.3	18	469.7	18	585.6	20	37	25
Europe and the Former USSR	478.4	20	507.8	19	520.9	18	9	3
Middle East and North Africa	17.1	1	20.1	1	24.1	1	41	20
Southeast Asia	319.3	14	382.9	15	446.7	15	40	17
Northeast Asia	817.6	35	941.7	36	1,051.6	35	29	12
Southern Asia	13.8	1	18.5	1	24.4	1	77	32
The Americas	260.2	11	271.7	10	285.1	10	10	5
Africa (excluding North Africa)	28.4	1	26.4	1	34.3	1	21	30
<b>Total(d)</b>	<b>2,365.1</b>	<b>100</b>	<b>2,640.0</b>	<b>100</b>	<b>2,973.7</b>	<b>100</b>	<b>26</b>	<b>13</b>
<b>Selected source countries(b) —</b>								
Germany	84.5	4	87.0	3	84.4	3	—	-3
Hong Kong	79.8	3	96.7	4	114.5	4	43	18
Indonesia	70.2	3	95.0	4	110.4	4	57	16
Japan	532.8	23	584.8	22	621.0	21	17	6
Korea	77.3	3	113.3	4	154.3	5	100	36
Malaysia	64.7	3	75.0	3	94.1	3	45	25
New Zealand	352.5	15	391.7	15	504.3	17	43	29
Singapore	113.4	5	125.2	5	142.6	5	26	14
Taiwan	105.7	4	117.7	4	123.1	4	16	5
United Kingdom	219.6	9	236.2	9	237.5	8	8	1
United States of America	211.5	9	219.7	8	227.4	8	8	4
<b>Purpose of journey(c)</b>								
Convention/conference	41.9	2	65.0	2	83.5	3	99	28
Business	242.4	10	268.8	10	289.9	10	20	8
Visiting friends/relatives	380.9	16	465.9	18	522.1	18	(c)	12
Holiday	1,502.8	64	1,591.4	60	1,794.6	60	(c)	13
Employment	22.4	1	16.5	1	17.6	1	-21	7
Education	71.9	3	83.1	3	113.1	4	57	36
Other and not stated	102.7	4	149.3	6	153.1	5	49	3
<b>Total</b>	<b>2,365.1</b>	<b>100</b>	<b>2,640.0</b>	<b>100</b>	<b>2,973.7</b>	<b>100</b>	<b>26</b>	<b>13</b>

(a) Figures for short-term movement are based on a sample and are subject to sampling error. See paragraphs 9 and 10 of the Explanatory Notes for more detail. (b) See paragraphs 6 and 7 of the Explanatory Notes for more detail. (c) Break in time series data. See paragraphs 3 and 4 of the Explanatory Notes for more detail. (d) Includes not stated.

# EXPLANATORY NOTES

.....

## INTRODUCTION

**1** This publication contains statistics of persons arriving in, and departing from, Australia, together with the major characteristics of travellers. More detailed statistics can be made available on request (see paragraph 21).

## SOURCE OF THE STATISTICS

**2** Persons arriving in, or departing from, Australia are required to complete prescribed questionnaires in the form of Incoming and Outgoing Passenger Cards (see Appendix). These cards provide information to the Department of Immigration and Multicultural Affairs (DIMA) for administrative purposes and serve as the source of statistics of overseas arrivals and departures. In some cases pre-recorded visa data is used in lieu of passenger card data by DIMA. In accordance with the *Census and Statistics Act 1905*, information relating to individuals, individual flights or ships and individual carriers, which is contained in these cards or other documents, is treated as confidential by the Australian Bureau of Statistics (ABS).

**3** Implementation of the *Migration Reform Act 1992* by DIMA required that a health and character check be incorporated with the Incoming Passenger Card. The redesign of both passenger cards followed and new passenger cards were officially introduced on 1 September 1994, with minor alterations to the cards in March 1995. The two main statistical changes affect *Marital status* and *Purpose of journey* and constitute a break in time series for these data items.

**4** In addition to the four *Marital status* categories of 'Never married', 'Married', 'Widowed' and 'Divorced', both passenger cards now include 'Separated but not divorced' and 'Common law/de facto'. The following changes were also made to the *Purpose of journey* question: on the Incoming Passenger Card 'In transit' was dropped; on the Outgoing Passenger Card 'Student vacation' was dropped; and on both cards 'Visiting relatives' was changed to 'Visiting friends/relatives', 'Convention' was changed to 'Convention/conference' and 'Accompanying business visitor' was dropped.

## SCOPE

**5** The statistics in this publication relate to the number of movements of travellers rather than the number of travellers (i.e. the multiple movements of individual persons during a given reference period are each counted separately). The statistics exclude the movements of operational air and ships' crew, of transit passengers who pass through Australia but are not cleared for entry, and of passengers on pleasure cruises commencing and finishing in Australia aboard ships not then engaged on regular voyages.

## COUNTRY CLASSIFICATION

**6** The classification of countries in this publication is the *Australian Standard Classification of Countries for Social Statistics (ASCCSS)*. For more detailed information refer to the ABS publication *Australian Standard Classification of Countries for Social Statistics (1269.0)*. Political developments in Europe, the former USSR and Africa have resulted in a number of changes, and are detailed in Revisions 1.01, 1.02 and 1.03 of the ASCCSS.

**7** Statistics on country of birth, citizenship, residence or main destination have certain limitations because of inadequate reporting on passenger cards. For instance, it is not possible to identify separately England, Scotland and Wales. Similarly Korea includes both the Republic of Korea and the Democratic People's Republic of Korea.

## STATE AND TERRITORY CLASSIFICATION

**8** Following the 1992 amendment to the *Acts Interpretation Act* to include the Indian Ocean Territories of Christmas Island and the Cocos (Keeling) Islands as part of geographic Australia, population estimates commencing with the September quarter 1993 include estimates for these two territories. To reflect this change, another category of the State/Territory classification has been created, known as Other Territories. Other Territories includes Jervis Bay Territory as well as Christmas Island and the Cocos (Keeling) Islands. Data for Other Territories are included in tables where specifically noted.

# EXPLANATORY NOTES

## ESTIMATION METHOD

**9** Overseas arrival and departure statistics are derived from a combination of full enumeration and sampling. All permanent movements and all movements with a duration of stay of one year or more are fully enumerated. All movements with a duration of stay of less than one year are sampled. Statistics relating to these movements are therefore estimates which may differ from statistics which would have been obtained if details of all these movements had been processed.

**10** From April 1995, the fractions used for sampling movements of the citizens of Australia, France, Germany, Japan and Taiwan were changed, reflecting increases in the number of movements. From May 1995 further changes were made to the fractions used for sampling movements of citizens of Indonesia, Italy, Malaysia, Netherlands, Singapore, Republic of Korea, Switzerland and Thailand. Comments on the sampling errors associated with the estimates are contained in the Standard Errors pages. All movements with a duration of stay less than one year are sampled using the following stratification:

<i>Country of Citizenship</i>	<i>Sample</i>
Australia	1 in 55
Japan	1 in 50
New Zealand, United Kingdom (excluding Ireland) and the United States of America	1 in 40
Germany, Malaysia, Singapore and Taiwan	1 in 20
Canada, France, Indonesia, Italy, Netherlands, Republic of Korea, Switzerland and Thailand	1 in 15
Any other individual country depending on the number of movements	1 in 1, or 1 in 4, or 1 in 10

**11** The statistics in this publication have been rounded to the nearest 100 for short-term movements and to the nearest 10 for permanent and long-term movements. In tables showing both short-term and permanent and long-term movements the total movements have been rounded to the nearest 100. The sums of the components may, due to rounding, not add exactly to totals.

## CORRECTIONS AND IMPUTATIONS

**12** The imprecision due to sampling errors should not be confused with errors arising from imperfections in reporting, which may occur in any data collection, whether sampled or not. Every effort is made to minimise such errors, both through careful design of the passenger cards and through checks on the information once it is received. During the edit process some items are corrected where they conflict with other known information. Missing replies to certain items such as age and country of birth are also imputed by reference to other related items.

**13** Errors of this kind differ from discrepancies arising from the fact that certain information reflects the travellers' intentions at the time the passenger cards were completed. These intentions are, of course, subject to change. Particularly affected is the distinction between permanent and temporary movement and in the latter case, length of intended stay, country in which most time will be spent and purpose of journey.

## SEASONAL ADJUSTMENT AND TREND ESTIMATES

**14** Original and seasonally adjusted short-term overseas visitor arrivals and short-term Australian resident departures are shown in Tables 1 and 2 respectively. In the seasonally adjusted series, account has been taken of normal seasonal factors and trading day effects (arising from the varying numbers of Sundays, Mondays, Tuesdays etc. in the month) and the effect of movement in the date of Easter which may, in successive years, affect figures for different months.

# EXPLANATORY NOTES

## SEASONAL ADJUSTMENT AND TREND ESTIMATES (continued)

**15** Seasonal adjustment is a means of removing the estimated effects of normal seasonal variation from the series so that the effects of other influences on the series may be more clearly recognised. Seasonal adjustment procedures do not aim to remove the irregular or non-seasonal influences which may be present in any particular month, such as the effect of major sporting and cultural events, changes in airfares and the fluctuation of \$A relative to other currencies. Irregular influences that are highly volatile can make it difficult to interpret the movement of the series even after adjustment for seasonal variation.

**16** The trend estimates for short-term overseas visitor arrivals and short-term Australian resident departures are shown in Tables 1 and 2 respectively. These trend estimates are derived by applying a 13-term Henderson-weighted moving average to all months of the respective seasonally adjusted series except the first and last six months. Trend series are created for the last six months by applying surrogates of the Henderson-weighted moving average to the seasonally adjusted series.

**17** While this technique enables smoothed data for the latest period to be produced, it does result in revisions to the smoothed series, principally of recent months, as additional observations become available. There may also be revisions as a result of the re-estimation of the seasonal factors. For further information, see *A Guide to Interpreting Time Series — Monitoring Trends, an Overview* (1348.0) or contact the Assistant Director, Time Series Analysis on 06 252 6345.

## RELATED PUBLICATIONS

**18** Users of these statistics may also wish to refer to the following ABS publications:

- *Overseas Arrivals and Departures, Australia* (3402.0) — issued quarterly to December quarter 1994
- *Overseas Arrivals and Departures, Australia* (3404.0) — issued annually to 1993
- *Australian Demographic Statistics* (3101.0) — issued quarterly
- *Migration, Australia* (3412.0) — issued annually
- *Tourism Indicators, Australia* (8634.0) — issued quarterly

**19** Related statistics are also published by the Department of Immigration and Multicultural Affairs, the Department of Transport and Communications and the Bureau of Tourism Research.

**20** Current publications produced by the ABS are listed in the *Catalogue of Publications and Products, Australia* (1101.0). The ABS also issues, on Tuesdays and Fridays, a *Release Advice* (1105.0) which lists publications to be released in the next few days. Both are available from any ABS office.

## ADDITIONAL STATISTICS AVAILABLE

**21** In some cases, the ABS can make available information which is not published. This information may be made available in one or more of the following forms: microfiche, photocopy, data tape, floppy disk, computer printout, clerically-extracted tabulations. Generally, a charge is made for providing unpublished information. A full list of unpublished Overseas Arrival and Departure tabulations is available on request. Inquiries should be made to Katrina Phelan on 06 252 6573.

## SYMBOLS AND OTHER USAGES

- nil or rounded to zero
- .. not applicable
- n.a. not available
- n.f.d. not further defined
- r revised

## GLOSSARY

.....

<b>Australian resident</b>	Australian residence is self-defined as reported by travellers when completing Incoming and Outgoing Passenger Cards.
<b>Category of movement</b>	<p>Overseas Arrivals and Departures are classified according to length of stay (in Australia or overseas), recorded in months and days by travellers on passenger cards. There are three main <i>categories of movement</i>:</p> <ul style="list-style-type: none"><li>permanent movements</li><li>long-term movements</li><li>short-term movements.</li></ul> <p>A significant number of travellers (i.e. overseas visitors to Australia on arrival and Australian residents going abroad) state exactly 12 months or one year as their intended period of stay. Many of them stay for less than that period and on their departure from, or return to, Australia are therefore classified as short-term. Accordingly in an attempt to maintain consistency between arrivals and departures, movements of travellers who report their actual or intended period of stay as being one year exactly are randomly allocated to long-term or short-term, in proportion to the number of movements of travellers who report their actual length of stay as up to one month more, or one month less, than one year.</p>
<b>Country of residence</b>	Country of residence refers to the country in which travellers regard themselves as living or as last having lived.
<b>Intended length of stay</b>	On arrival in Australia, all overseas visitors are asked to state their 'Intended length of stay in Australia'. On departure from Australia, all Australian residents are asked to state their 'Intended length of stay abroad'.
<b>Long-term arrivals</b>	<p>Long-term arrivals comprise:</p> <ul style="list-style-type: none"><li>overseas visitors who intend to stay in Australia for 12 months or more (but not permanently); and</li><li>Australian residents returning after an absence of 12 months or more overseas.</li></ul>
<b>Long-term departures</b>	<p>Long-term departures comprise:</p> <ul style="list-style-type: none"><li>Australian residents who intend to stay abroad for 12 months or more (but not permanently); and</li><li>overseas visitors departing who stayed 12 months or more in Australia.</li></ul>
<b>Main destination</b>	Australian residents travelling overseas are asked on departure for the name of the country in which they intend to spend most time.
<b>Overseas Arrivals and Departures (OAD)</b>	Overseas Arrivals and Departures refer to the arrival or departure of Australian residents or overseas visitors, through Australian airports (or sea ports), which have been recorded on Incoming or Outgoing Passenger Cards. Statistics on Overseas Arrivals and Departures relate to the number of movements of travellers rather than the number of travellers (i.e. the multiple movements of individual persons during a given reference period are all counted).

## GLOSSARY

.....

- Permanent arrivals** Permanent arrivals (settlers) comprise:
- travellers who hold migrant visas (regardless of stated intended period of stay);
  - New Zealand citizens who indicate an intention to settle; and
  - those who are otherwise eligible to settle (e.g. overseas born children of Australian citizens).
- This definition of settlers is used by the Department of Immigration and Multicultural Affairs. Prior to 1985 the definition of settlers used by the ABS was the stated intention of the traveller only. Numerically the effect of the change in definition is insignificant. The change was made to avoid the confusion caused by minor differences between data on settlers published separately by the ABS and the Department of Immigration and Multicultural Affairs.
- Permanent departures** Permanent departures are Australian residents (including former settlers) who on departure state that they intend to settle permanently in another country.
- Purpose of journey** On arrival in, or departure from, Australia all overseas visitors and Australian residents are asked to state their purpose of journey. From September 1994, all statistics relating to *purpose of journey* have been published using the following categories:
- convention/conference
  - business
  - visiting friends/relatives
  - holiday
  - employment
  - education
  - other
- In tabulations of data collected before September 1994, the 'Other' category includes 'In transit' and the 'Holiday' category includes both 'Student vacation' and 'Accompanying business visitor'.
- Short-term arrivals** Short-term arrivals comprise:
- overseas visitors whose intended stay in Australia is less than 12 months;
  - and Australian residents returning after an absence of less than 12 months overseas.
- Short-term departures** Short-term departures comprise:
- Australian residents who intend to stay abroad for less than 12 months; and
  - overseas visitors departing who stayed less than 12 months in Australia.
- State/Territory of stay** Overseas visitors are asked on departure for the name of the State or Territory in which they spent the most time.

# STANDARD ERRORS

## RELIABILITY OF ESTIMATES

**1** Estimates based on a sample are subject to sampling variability i.e. they may differ from those that would be obtained from full enumeration.

**2** The sampling error associated with any estimate can be estimated from the sample results and one measure so derived is the standard error. Given an estimate and the standard error on that estimate, there are about two chances in three that the sample estimate will differ by less than one standard error from the figure that would have been obtained from full enumeration, and about nineteen chances in twenty that the difference will be less than two standard errors. The relative standard error is the standard error on the estimate expressed as a percentage of the estimate.

**3** It would be impractical to publish estimates of standard errors for all figures in individual tables. However, the following tables of standard errors and relative standard errors give an indication of the magnitude of the sampling error associated with any estimate of a particular size for short-term and total movement.

### APPROXIMATE STANDARD ERRORS ON ESTIMATES FOR STRATIFIED SAMPLE

<i>Estimated number of persons</i>	SHORT-TERM DEPARTURE OR ARRIVAL OF AUSTRALIAN RESIDENTS		SHORT-TERM ARRIVAL OR DEPARTURE OF OVERSEAS VISITORS		TOTAL ARRIVALS OR DEPARTURES	
	<i>Standard error</i>	<i>Relative standard error</i>	<i>Standard error</i>	<i>Relative standard error</i>	<i>Standard error</i>	<i>Relative standard error</i>
	Number	%	Number	%	Number	%
10 000	550	6	490	5	550	6
5 000	450	9	330	7	410	8
2 000	280	14	230	11	250	13
1 000	200	20	150	15	170	17
750	180	24	140	19	150	20
500	130	26	110	22	125	25
400	120	30	100	25	115	29
300	110	36	84	28	97	32
200	90	45	70	35	80	40
100	63	63	49	49	56	56

**4** An example of the use of this table is as follows. If the estimate of the number of Australian resident departures for short-term visits abroad is 500, then the standard error on this estimate is 130 i.e. there are two chances in three that the actual number of Australian resident departures for short-term visits abroad will lie between 370 and 630 and nineteen chances in twenty that it will lie between 240 and 760.

**5** The larger the size of an estimate the smaller the relative standard error. For any estimate of greater than 10,000 the relative standard error will be less than 6%.



## STANDARD ERRORS

---

### RELIABILITY OF ESTIMATES

(continued)

**6** The estimate of the difference between an estimate in two different periods or between different estimates from the same period is also subject to sampling error. The standard error on the difference between any two estimates which are subject to sampling error can be approximated by using the larger standard error of the estimates inflated by a factor of 1.4.

**7** An example of the use of this procedure is as follows. Assume the estimates of the number of arrivals to Australia from Taiwan during January 1994 and January 1995 are 1,500 and 750 respectively. The difference between the 1994 and 1995 figures is 750 and the standard errors on these estimates are approximately 190 and 140. The standard error on the difference is approximately 266 ( $1.4 \times 190$ ), and there are nineteen chances in twenty that the estimate of the difference between the two years will lie between 218 and 1,282.

# APPENDIX — PASSENGER CARDS (a)

## INCOMING CARD

One of these cards must be answered for each passenger.  
Complete in **ENGLISH**, using **BLOCK LETTERS**.

**AUSTRALIA**  
**INCOMING PASSENGER CARD**

**1** Family/Surname

**2** Given names

**3** Passport number

**4** Nationality as shown in passport

**5** Country of birth

**6** Date of birth Day Month Year

**7** Sex Male  Female

**8** Current marital status Never married  Widowed  Separated but not divorced   
Married  Divorced  Common law / de facto

**9** Please  and answer **only one** of A or B or C

<p><b>A</b> Migrating permanently to Australia <input type="radio"/></p> <p>(1) Previous country of residence</p> <p>(2) Main reason for coming to Australia ( <input checked="" type="checkbox"/> one only):                  Convention/conference <input type="radio"/> a Business <input type="radio"/> b                  Visiting friends/relatives <input type="radio"/> c Holiday <input type="radio"/> d                  Employment <input type="radio"/> e Education <input type="radio"/> f Other <input type="radio"/> g</p> <p>(3) Country of residence</p>	<p><b>B</b> Visitor or temporary entrant <input type="radio"/></p> <p>(1) Intended length of stay in Australia                  Years Months Days                  OR</p> <p>(2) Country where you spent most time while abroad</p>	<p><b>C</b> Resident returning to Australia <input type="radio"/></p> <p>(1) Time you have been away from Australia                  Years Months Days                  OR</p>
---	---	--

**10** Usual occupation

**11** Intended address in Australia State

**12** Flight number or name of ship

**13** Country where boarded this flight/ship

**Questions continue** →

**14** Are you an Australian **CITIZEN**?

Yes  → Go straight to 'Please sign here' at 15

No  → Please answer the following questions.

You may answer 'No change' if there is no change to the answer you gave to the same question on your last Australian visa application form.

	<table border="1" style="display: inline-table; border-collapse: collapse;"> <tr> <td style="padding: 2px;">No change</td> <td style="padding: 2px;">No</td> <td style="padding: 2px;">Yes</td> </tr> </table>	No change	No	Yes
No change	No	Yes		

(a) Do you currently suffer from tuberculosis?

(b) Have you any criminal conviction/s for which the sentence/s (whether served or not) totalled 12 months imprisonment or more?

**15** Please sign here  
 I declare that the information you have given on this card is complete. Migration legislation requires that you answer all questions truthfully.

Date DAY MONTH YEAR

The Department of Immigration and Ethnic Affairs (DIEA) is authorised to collect information provided on this form under Part 2 of the Migration Act 1958 (Control of Arrival and Presence of Non-citizens). The information will be used to administer the Migration Act. It might also be disclosed to agencies authorised to receive information on adoption, border control, business skills, citizenship, education, health assessment, health insurance, health services, law enforcement, payment of pensions and benefits, refugees, settlement planning, taxation and review of decisions. You should read the information form *Safeguarding Your Personal Information*, which is available at Australian ports and airports and offices of DIEA.

**OFFICE USE ONLY**

Visa number \_\_\_\_\_ © Commonwealth of Australia 1995  
 Visa class \_\_\_\_\_ McMillan Print

**PZ 015 (03-95)**

(a) From March 1995. See paragraph 3 of the Explanatory Notes for more detail.

# APPENDIX — PASSENGER CARDS (a)

## OUTGOING CARD

One of these cards must be answered for each passenger  
Complete in **ENGLISH**, using **BLOCK LETTERS**

**AUSTRALIA**  
**OUTGOING PASSENGER CARD**

**1** Family/Surname

**2** Given names

**3** Passport number

**4** Nationality as shown in passport

**5** Country of birth

**6** Date of birth Day:      Month:      Year:

**7** Sex: Male  Female

**8** Current marital status: Never married  Widowed  Separated but not divorced   
Married  Divorced  Common law / de facto

**9** Please  and answer **only one** of D or E or F

<p><b>D Visitor or temporary entrant departing</b></p> <p>(1) Length of time you have been in Australia this visit Years:      Months:      Days:      OR</p> <p>(2) Australian city or State where you spent most time</p> <p>(3) Country of residence</p>	<p><b>E Resident departing temporarily</b></p> <p>(1) Intended length of stay abroad Years:      Months:      Days:      OR</p> <p>(2) Main reason for going abroad (one only): Convention/conference <input type="radio"/> Business <input type="radio"/> Visiting friends/relatives <input type="radio"/> Holiday <input type="radio"/> Employment <input type="radio"/> Education <input type="radio"/> Other <input type="radio"/></p> <p>(3) Country in which you will spend most time while abroad</p> <p>(4) Australian State where you live</p>	<p><b>F Resident departing permanently</b></p> <p>(1) Country of future residence</p> <p>(2) Australian State where you lived</p> <p>(3) If you were not born in Australia: • How long ago did you come to live in Australia? Years:      Months:       • Did you intend to settle permanently? Yes <input type="radio"/> No <input type="radio"/></p>
---	---	--

**10** Usual occupation

**11** Flight number or name of ship

**12** Overseas country where you will get off this flight or ship

**Questions continue** ➔

**13** Airport / Port of departure

**14** Departure date Day:      Month:      Year:

**15 Please sign here**  
to declare that the information you have given on this card is complete. Migration legislation requires that you answer all questions truthfully.

Date DAY:      MONTH:      YEAR:

The Department of Immigration and Ethnic Affairs (DIEA) is authorised to collect information provided on this form under Part 2 of the Migration Act 1958: Control of Arrival and Presence of Non-Citizens. The information will be used to administer the Migration Act. It might also be disclosed to agencies authorised to receive information on adoption, border control, business skills, citizenship, education, health assessment, health insurance, health services, law enforcement, payment of pensions and benefits, refugees, settlement planning, taxation and review of decisions. You should read the information form *Safeguarding Your Personal Information*, which is available at Australian ports and airports and offices of DIEA.

**OFFICE USE ONLY** ➔ Departure tab

© Commonwealth of Australia 1995  
McMillan Print

**PZ 016 (03-95)**

(a) From March 1995. See paragraph 3 of the Explanatory Notes for more detail.

## FOR MORE INFORMATION

The ABS publishes a wide range of information on Australia's economic and social conditions. A catalogue of publications and products is available from any of our offices (see below).

### INFORMATION CONSULTANCY SERVICES

Information tailored to special needs of clients can be obtained from the Information Consultancy Service available at ABS Offices (see below).

### ABS PRODUCTS

A large number of ABS products is available from the ABS Bookshops (see below). The ABS also provides a subscription service – you can telephone the ABS Subscription Service Australia wide toll free on 1800 0206 08.

### ELECTRONIC SERVICES

A large range of data is available via on-line services, diskette, magnetic tape, tape cartridge and CD ROM. For more details about our electronic data services, contact any ABS office (see below) or email us at:

X.400 (C:Australia,PUB:Telememo,O:ABS,FN:STAT,SN:INFO)  
Internet Stat.info@abs.telememo.au  
Keylink STAT.INFO/ABS

You can visit us on the Internet at: <http://www.abs.gov.au>

### GENERAL SALES AND INQUIRIES

- Sydney 02 9268 4611
  - Melbourne 03 9615 7755
  - Brisbane 07 3222 6351
  - Perth 09 360 5140
  - Adelaide 08 8237 7100
  - Hobart 002 20 5800
  - Darwin 08 8943 2111
  - Canberra 06 252 6627
- Information Services, ABS  
PO Box 10, Belconnen ACT 2616



2340100009960

ISSN 1031-0495

RRP \$14.00