



VICTORIA

Demography Victoria 1993

Catalogue No. 3311.2

January 1995

Demography Victoria 1993

Stuart Jackson
Deputy Commonwealth Statistician

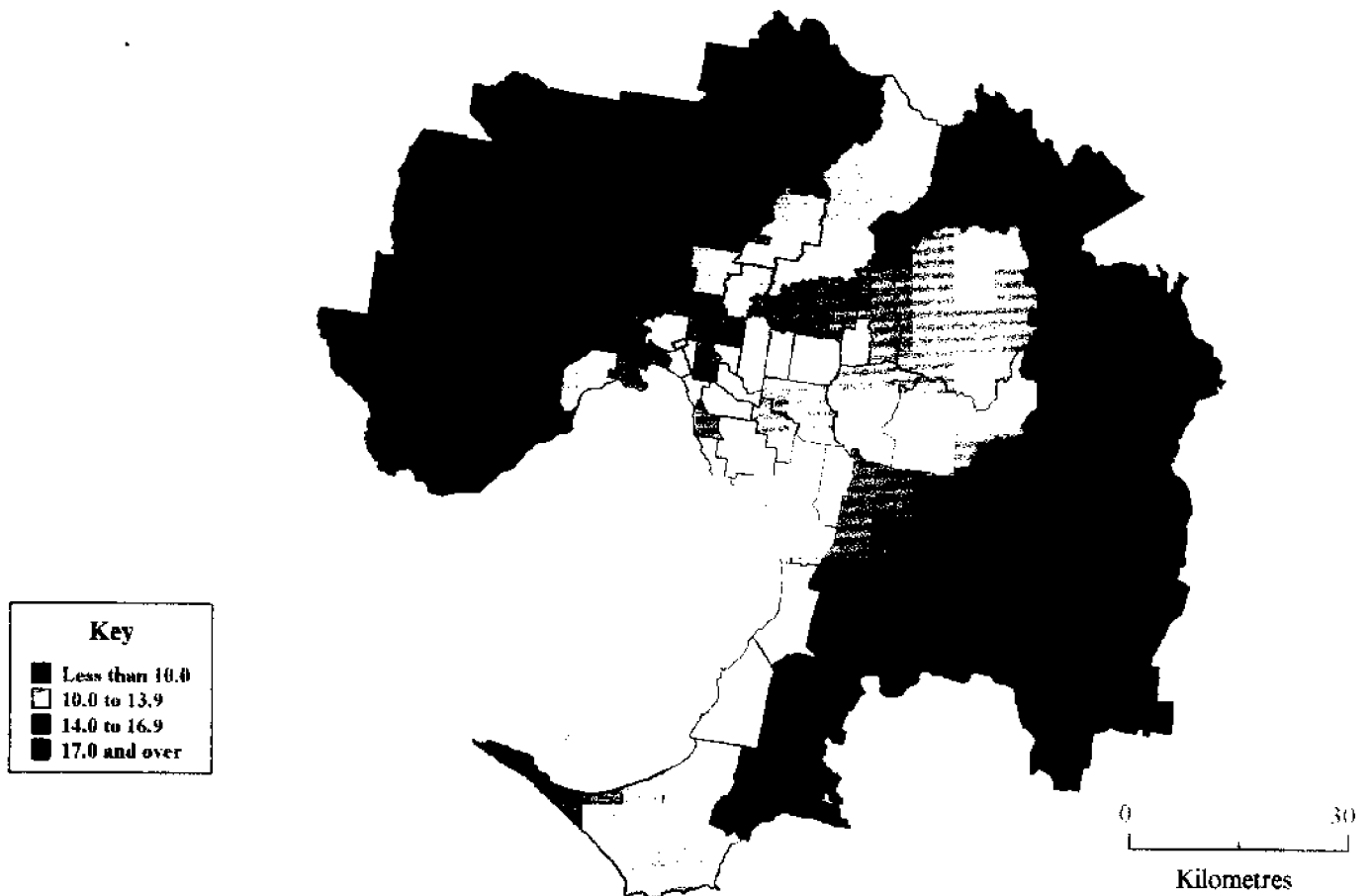
CONTENTS (continued)

<i>Table</i>		<i>Page</i>
MARRIAGES		
	Summary of findings	28
26	Summary, Victoria 1988 to 1993	30
27	Age and marital status specific marriage rates, Census years, 1961-1991	31
28	Relative previous marital status of parties, 1993	32
29	Age and previous marital status of parties, 1993	32
30	Relative ages of parties, 1993	32
31	Relative birthplaces of parties, 1993	33
32	Category of rite by previous marital status of parties, 1993	34
33	Category of rite by order of marriage, 1993	34
34	Remarriages by number of previous marriages and number of children fifteen and under, 1993	35
35	Remarriages by interval to remarriage and reason for termination of last marriage, 1993	35
DIVORCES		
	Summary of findings	36
36	Summary, States and Territories, 1993	38
37	Age at marriage by duration of marriage, 1993	39
38	Age at final separation and interval between marriage and final separation, 1993	40
39	Relative age at divorce, 1993	40
40	Number of children of the marriage, average number of children and duration of marriage, 1993	41
41	Age of youngest child and duration of marriage, 1993	41
42	Relative birthplaces of parties, 1993	42
43	Summary, Victoria 1988 to 1993	43
	Explanatory Notes	44
	Glossary of Terms	48
APPENDIXES		
Appendix A	Data items collected in Victoria but not published in this publication	50
Appendix B	Historical Table: Mean population and vital statistics, Victoria, 1891-1993	51

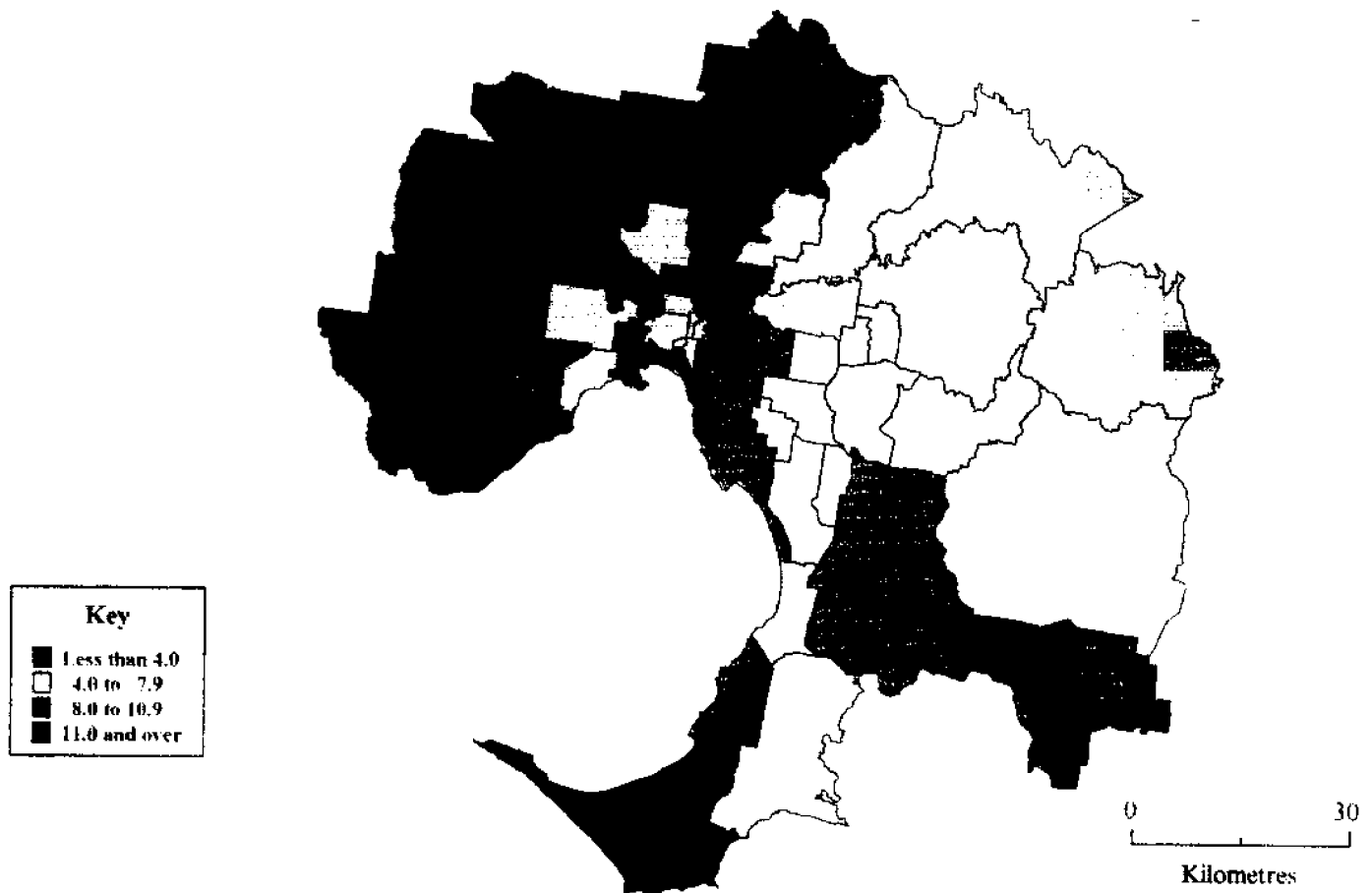
CONTENTS

<i>Table</i>		<i>Page</i>
DEMOGRAPHIC SUMMARY		
1	Summary: States and Territories, 1993	1
	Summary by statistical divisions	3
2	Summary by statistical local area, 1993	4
POPULATION		
	Summary of findings	8
3	Summary, Victoria 1988 to 1993	9
4	Estimated resident population by age and sex, 30 June 1993	10
5	Projected population by sex	11
BIRTHS AND CONFINEMENTS		
	Summary of findings	12
6	Summary, Victoria 1988 to 1993	15
7	Confinements: relative ages of parents, 1993	16
8	Confinements: nuptiality and plurality by age group of mother, 1993	17
9	Nuptial first confinements: age of mother by duration of current marriage, 1993	17
10	Nuptial confinements: age of mother by previous issue and average issue, 1993	18
11	Nuptial confinements: duration of current marriage by previous issue and average issue, 1993	18
12	Nuptial confinements: relative birthplaces of parents, 1993	19
13	Births: numbers by year of occurrence, States and Territories, 1988 to 1993	20
14	Birth: Crude birth rates by year of occurrence, States and Territories, 1988 to 1993	20
15	Births: age group of mother by year of occurrence, 1988 to 1993	20
16	Births: age specific birth rates by age group of mother and year of occurrence 1988 to 1993	20
DEATHS		
	Summary of findings	21
17	Summary, Victoria 1988 to 1993	23
18	Age at death by sex, 1993	24
19	Age-specific death rates, 1988 to 1993	25
20	Expectation of life	25
21	Infant deaths and mortality rates by age and sex, 1993	26
22	Cause of death, by sex, 1993	26
23	Numbers by year of occurrence, States and Territories, 1988 to 1993	27
24	Crude death rates by year of occurrence, States and Territories, 1988 to 1993	27
25	Age specific death rates by sex and year of occurrence, 1991 to 1993	27

INQUIRIES . for more information about statistics in this publication and the availability of related unpublished statistics, contact Mary-Lou Johnston on (03) 615 7729 or any ABS State Office. For information about other ABS statistics and services please contact Information Services on Melbourne (03) 615 7000, call at 525 Collins Street, Melbourne or write to Information Services, ABS, GPO Box 2796Y, Melbourne Victoria 3001.



**DIAGRAM 1: BIRTH RATES PER 1,000 ESTIMATED RESIDENT POPULATION
MELBOURNE STATISTICAL DIVISION, 1993**



**DIAGRAM 2: DEATH RATES PER 1,000 ESTIMATED RESIDENT POPULATION
MELBOURNE STATISTICAL DIVISION, 1993**

TABLE 1. DEMOGRAPHIC SUMMARY(a): STATES AND TERRITORIES, YEAR ENDED 31 DECEMBER 1993

Particulars	NSW	Vic.	Qld	SA	WA	Tas.	NT	ACT	Australia(b)
Population p									
Estimated resident population ('000)	6,023.5	4468.3	3,155.4	1,466.5	1,687.3	472.1	170.5	299.3	17,745.8
Components of population change(c)—									
Natural increase(d)	46,106	32,915	26,735	8,527	14,816	3,168	2,845	3,194	138,486
Net overseas migration(e)	14,889	7,599	3,916	1,745	5,355	106	516	-622	33,485
Net interstate migration	-16,148	-31,533	53,037	-4,138	599	-1,926	-1,461	1,570	..
Total increase	44,847	8,981	83,688	6,134	20,770	1,348	1,900	4,178	171,971
Growth rate (%)	0.8	0.2	2.7	0.4	1.2	0.3	1.1	1.4	1.0
Births and confinements									
Live births—									
Number	89,354	64,049	46,778	20,078	25,081	6,835	3,603	4,414	260,229
Crude birth rate	14.9	14.3	15.0	13.7	15.0	14.5	21.2	14.8	14.7
Total fertility rate	2	2	2	2	2	2	2	2	2
Female net reproduction rate	0.918	0.859	0.913	0.862	0.902	0.923	1.063	0.829	0.896
All confinements—									
Number	88,163	63,172	46,122	19,802	24,725	6,773	3,560	4,349	256,703
Median age of mother (years)	28.9	29.3	28.3	29.1	28.7	27.9	26.7	29.1	28.9
Nuptial confinements—									
Median age (years)—									
Father	32.2	32.1	31.7	32.2	32.0	31.4	32.1	32.1	32.0
Mother	29.7	29.9	29.4	30.0	29.7	29.0	29.5	29.8	29.7
First nuptial confinements—									
Number	26,805	20,769	12,960	6,220	6,868	2,079	644	1,357	77,718
Median age of mother	28.2	28.5	28.0	28.6	28.3	27.6	28.4	28.3	28.3
Deaths									
Number	43,069	31,197	19,972	11,528	10,316	3,637	765	1,110	121,599
Crude death rate	7.2	7.0	6.4	7.9	6.2	7.7	4.5	3.7	6.9
Median age at death (years)—									
Males	72.8	73.5	72.6	73.7	72.6	73.1	53.7	69.8	72.9
Females	79.5	80.1	79.0	79.9	79.8	79.0	56.8	77.4	79.5
Infant death rate	6.2	5.4	7.0	5.2	5.9	5.9	15.3	4.3	6.1
Marriages									
Number registered	39,993	27,418	20,704	9,114	10,382	3,055	806	1,783	113,255
Crude marriage rate	6.7	6.1	6.6	6.2	6.2	6.5	4.8	6.0	6.4
First marriage, both parties	26,976	19,195	13,463	5,998	6,677	1,957	502	1,200	75,968
First marriage, one partner	7,689	4,737	3,994	1,590	2,023	567	201	322	21,123
Remarriage, both parties	5,328	3,486	3,247	1,526	1,682	531	103	261	16,164
Median age at marriage (years)—									
Bridegroom	28.9	28.6	28.7	28.8	29.3	28.6	30.7	29.0	28.8
Bride	26.4	26.4	26.2	26.3	26.5	26.0	27.7	26.6	26.4
Divorces									
Number granted	16,358	10,935	8,501	3,939	4,620	1,425	390	887	48,324
Crude divorce rate	2.7	2.4	2.7	2.7	2.8	3.0	2.3	3.0	2.7
Median duration of marriage (years)	10.3	10.6	11.0	11.3	11.5	11.1	10.6	11.1	10.7
Median interval between marriage and final separation (years)	7.1	7.7	7.9	8.2	8.1	8.3	6.9	8.2	7.6

(a) For definitions used see the Glossary of Terms. (b) Includes Jervis Bay Territory, Christmas Island and Cocos (Keeling) Islands for population, births and deaths. Divorces include Christmas Island, Cocos (Keeling) Islands, and usual residence overseas and not stated. (c) Components of population change from previous year. (d) Final figures for births and deaths may differ slightly from those used to compile natural increase for population estimates because it is necessary to use preliminary births and deaths when finalising population estimates. (e) Net overseas migration includes an estimate of those persons who changed category from short-term visitor to long-term visitor or resident of Australia.

TABLE 2. DEMOGRAPHIC SUMMARY BY STATISTICAL LOCAL AREA, VICTORIA, 1993

STATISTICAL DIVISION Statistical local area(a)	Estimated mid-year resident population	Births		Deaths	
		Number	Rate(b)	Number	Rate(b)
MELBOURNE	3,189,201	45,476	14.3	20,985	6.6
Altona (C)	36,141	481	13.3	193	5.3
Berwick (C)	79,468	1,537	19.3	268	3.4
Box Hill (C)	47,998	613	12.8	434	9.0
Brighton (C)	34,254	315	9.2	403	11.8
Broadmeadows (C)	108,472	1,775	16.4	595	5.5
Brunswick (C)	40,686	660	16.2	271	6.7
Bulla (S)	45,139	917	20.3	115	2.5
Camberwell (C)	90,609	926	10.2	831	9.2
Caulfield (C)	71,065	903	12.7	757	10.7
Chelsea (C)	27,278	374	13.7	269	9.9
Coburg (C)	52,547	808	15.4	450	8.6
Collingwood (C)	14,174	239	16.9	112	7.9
Cranbourne (S)	82,759	1,897	22.9	269	3.3
Croydon (C)	49,468	814	16.5	286	5.8
Dandenong (C)	58,361	909	15.6	397	6.8
Diamond Valley (S)	64,139	892	13.9	293	4.6
Doncaster and Templestowe (C)	108,713	957	8.8	497	4.6
Eltham (S)	45,148	580	12.8	189	4.2
Essendon (C)	57,175	806	14.1	534	9.3
Fitzroy (C)	17,706	253	14.3	125	7.1
Flinders (S)	40,073	498	12.4	516	12.9
Footscray (C)	47,818	854	17.9	471	9.8
Frankston (C)	89,012	1,176	13.2	693	7.8
Hastings (S)	31,055	589	19.0	164	5.3
Hawthorn (C)	31,400	345	11.0	263	8.4
Healesville (S)	12,297	211	17.2	89	7.2
Heidelberg (C)	62,138	785	12.6	554	8.9
Keilor (C)	112,271	1,619	14.4	387	3.4
Kew (C)	29,084	268	9.2	306	10.5
Knox (C)	130,284	2,033	15.6	642	4.9
Lillydale (S)	83,331	1,295	15.5	335	4.0
Malvern (C)	43,334	485	11.2	391	9.0
Melbourne (C) (Inner & Remainder)	53,890	661	12.3	386	7.2
Melton (S)	37,629	696	18.5	100	2.7
Moorabbin (C)	100,176	1,275	12.7	816	8.1
Mordialloc (C)	27,906	335	12.0	249	8.9
Mornington (S)	32,828	412	12.6	331	10.1
Northcote (C)	48,109	815	16.9	409	8.5
Nunawading (C)	95,526	1,101	11.5	667	7.0
Oakleigh (C)	55,603	808	14.5	366	6.6
Pakenham (S)	30,315	541	17.8	141	4.7
Port Melbourne (C)	7,838	113	14.4	74	9.4
Prahran (C)	41,905	363	8.7	365	8.7
Preston (C)	78,788	1,101	14.0	656	8.3
Richmond (C)	22,505	336	14.9	180	8.0
Ringwood (C)	42,009	512	12.2	300	7.1
St Kilda (C)	44,764	502	11.2	501	11.2
Sandringham (C)	32,329	336	10.4	312	9.7
Sherbrooke (S)	37,632	605	16.1	156	4.1
South Melbourne (C)	17,805	187	10.5	191	10.7
Springvale (C)	93,879	1,415	15.1	503	5.4
Sunshine (C)	97,692	1,473	15.1	591	6.0
Upper Yarra (S) (Pt A)	15,265	264	17.3	70	4.6
Waverley (C)	124,291	1,068	8.6	702	5.6
Werribee (C)	81,185	1,642	20.2	266	3.3
Whittlesea (C)	102,722	1,737	16.9	364	3.5
Williamstown (C)	23,213	364	15.7	190	8.2
BARWON	230,963	3,160	13.7	1,810	7.8
Bannockburn (S) (Pt A & Pt B)	4,451	61	13.7	18	4.0
Barrabool (S) (Pt A & Pt B)	6,366	157	24.7	48	7.5
Bellarine (RC) (Pt A & Pt B)	44,718	623	13.9	293	6.6
Colac (C)	9,713	148	15.2	150	15.4
Colac (S)	7,259	93	12.8	41	5.6
Corio (S) (Pt A & Pt B)	57,892	840	14.5	391	6.8
Geelong (C)	13,276	180	13.6	143	10.8
Geelong West (C)	13,521	195	14.4	172	12.7
Leigh (S)	2,379	33	13.9	14	5.9

See footnotes at end of table.

DEMOGRAPHIC SUMMARY BY STATISTICAL DIVISIONS

Births

Mothers resident in the Melbourne Statistical Division accounted for 45,476 live births (71 per cent of Victorian total) in 1993, which represented a crude birth rate of 14.3 per 1,000 estimated mid year population. For the fourth consecutive year, Cranbourne (S) recorded the highest crude birth rate, with 22.9, followed by Bulla (S) with 20.3 and Werribee (S) with 20.2. The municipalities of Waverley (C) and Prahran (C) recorded the lowest crude birth rates in 1993 with 8.6 and 8.7 respectively.

Mothers resident in the Rest of Victoria accounted for 18,573 live births (29 per cent of the Victorian total) in 1993, which represented a crude birth rate of 14.6 per 1,000 estimated mid year population. The Mallee Statistical Division recorded the highest crude birth rate, with 16.2. The Wimmera and Barwon Statistical Divisions recorded the lowest crude birth rates of 13.6 and 13.7 respectively.

Deaths

In the Melbourne Statistical Division there were 20,985 deaths (67.3 per cent of the Victorian total) registered in 1993, which represented a crude death rate of 6.6 per 1,000 estimated mid year population. The highest crude death rate was recorded in Flinders (S) with 12.9, followed by Brighton (C) with 11.8 and St Kilda (C) with 11.2. The lowest death rate was recorded in Bulla (S) with 2.5, followed by Melton (S) with 2.7.

In the Rest of Victoria there were 10,212 deaths (32.7 per cent of the Victorian total) registered in 1993. The Wimmera Statistical Division recorded the highest crude death rate with 10.1 and the Ovens-Murray Statistical Division recorded the lowest with 6.7.

CRUDE BIRTH AND DEATH RATES BY STATISTICAL DIVISION,
VICTORIA, 1993

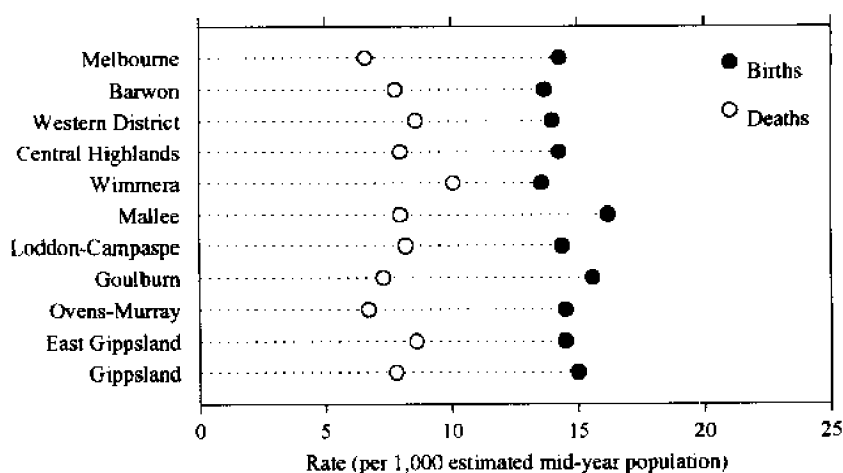


TABLE 2. DEMOGRAPHIC SUMMARY BY STATISTICAL LOCAL AREA, VICTORIA, 1993—continued

STATISTICAL DIVISION Statistical local area(a)	Estimated mid-year resident population	Births		Deaths	
		Number	Rate(b)	Number	Rate(b)
Waipeup (S)	3,252	29	8.9	40	12.3
Wycheproof (S)	3,105	36	11.6	34	11.0
LODDON-CAMPASPE	180,562	2,605	14.4	1,482	8.2
Bendigo (C)	30,703	467	15.2	428	13.9
Bet Bet (S)	2,132	31	14.5	28	13.1
Castlemaine (C)	7,336	104	14.2	105	14.3
Charlton (S)	1,827	20	10.9	15	8.2
Cohuna (S)	4,511	68	15.1	41	9.1
Eaglehawk (B)	8,889	157	17.7	63	7.1
East Loddon (S)	1,334	18	13.5	10	7.5
Echuca (C)	9,969	160	16.0	94	9.4
Gisborne (S)	10,378	136	13.1	77	7.4
Gordon (S)	2,686	33	12.3	29	10.8
Huntly (S) (Pt A & Pt B)	4,845	84	17.3	27	5.6
Korong (S)	3,485	37	10.6	35	10.0
Kyneton (S)	8,915	145	16.3	63	7.1
McIvor (S)	3,484	51	14.6	23	6.6
Maldon (S)	3,110	26	8.4	29	9.3
Marong (RC) (Pt A & Pt B)	16,445	224	13.6	68	4.1
Maryborough (C)	7,919	113	14.3	95	12.0
Metcalfe (S)	3,415	58	17.0	19	5.6
Newham and Woodend (S)	5,637	92	16.3	21	3.7
Newstead (S)	3,133	50	16.0	21	6.7
Pyalong (S)	813	8	9.8	3	3.7
Rochester (S)	7,962	124	15.6	33	4.1
Romsey (S)	8,595	147	17.1	37	4.3
Strathfieldsaye (S) (Pt A & Pt B)	20,213	225	11.1	102	5.0
Tullaroop (S)	2,826	27	9.6	16	5.7
GOULBURN	155,974	2,441	15.6	1,143	7.3
Alexandra (S)	6,228	84	13.5	49	7.9
Benalla (C)	8,840	175	19.8	89	10.1
Benalla (S)	5,726	53	9.3	17	3.0
Broadford (S)	4,339	64	14.7	26	6.0
Cobram (S)	6,810	111	16.3	58	8.5
Deakin (S)	5,741	69	12.0	25	4.4
Euroa (S)	4,611	65	14.1	64	13.9
Goulburn (S)	2,703	33	12.2	31	11.5
Kilmore (S)	9,574	169	17.7	36	3.8
Kyabram (T)	6,033	93	15.4	84	13.9
Mansfield (S)	6,179	81	13.1	47	7.6
Nathalia (S)	3,491	51	14.6	24	6.9
Numurkah (S)	7,208	98	13.6	68	9.4
Rodney (S) (Pt A & Pt B)	16,391	255	15.6	122	7.4
Seymour (S)	12,163	243	20.0	72	5.9
Shepparton (C)	26,115	440	16.8	209	8.0
Shepparton (S) (Pt A & Pt B)	9,358	114	12.2	32	3.4
Tungamah (S)	3,055	37	12.1	7	2.3
Violet Town (S)	1,512	19	12.6	19	12.6
Waranga (S)	4,704	91	19.3	40	8.5
Yea (S)	5,193	96	18.5	24	4.6
OVENS MURRAY	92,826	1,345	14.5	622	6.7
Beechworth (S)	5,134	47	9.2	58	11.3
Bright (S)	6,615	81	12.2	39	5.9
Chiltern (S)	2,791	40	14.3	22	7.9
Myrtleford (S)	4,345	77	17.7	31	7.1
Oxley (S)	5,354	64	12.0	13	2.4
Rutherglen (S)	3,558	41	11.5	30	8.4
Tallangatta (S) (Pt A & Pt B)	4,292	41	9.6	30	7.0
Upper Murray (S)	2,431	28	11.5	22	9.0
Wangaratta (C)	15,917	266	16.7	142	8.9
Wangaratta (S)	3,204	41	12.8	16	5.0
Wodonga (Rural City)	28,697	488	17.0	131	4.6
Yackandandah (S)	4,637	55	11.9	24	5.2
Yarrawonga (S)	5,851	76	13.0	64	10.9

See footnotes at end of table.

TABLE 2. DEMOGRAPHIC SUMMARY BY STATISTICAL LOCAL AREA, VICTORIA, 1993—continued

STATISTICAL DIVISION Statistical local area(a)	Estimated mid-year resident population	Births		Deaths	
		Number	Rate(b)	Number	Rate(b)
Newtown (C)	10,078	121	12.0	118	11.7
Otway (S)	4,018	52	12.9	27	6.7
Queenscliffe (B)	3,326	34	10.2	66	19.8
South Barwon (C) (Pt A & Pt B)	48,918	536	11.0	300	6.1
Winchelsea (S)	5,048	87	17.2	29	5.7
WESTERN DISTRICT	101,734	1,423	14.0	872	8.6
Belfast (S)	1,459	18	12.3	9	6.2
Camperdown (T)	3,444	76	22.1	44	12.8
Dundas (S)	3,390	20	5.9	17	5.0
Glenelg (S)	4,193	50	11.9	50	11.9
Hamilton (C)	9,952	123	12.4	95	9.5
Hampden (S)	6,891	113	16.4	75	10.9
Heytesbury (S)	7,583	137	18.1	54	7.1
Heywood (S)	7,463	75	10.0	48	6.4
Minhamite (S)	1,817	23	12.7	17	9.4
Mortlake (S)	3,037	37	12.2	22	7.2
Mount Rouse (S)	2,290	24	10.5	20	8.7
Port Fairy (B)	2,609	28	10.7	31	11.9
Portland (C)	10,596	179	16.9	87	8.2
Warrnambool (S)	2,698	32	11.9	30	11.1
Warrnambool (C)	25,386	359	14.1	224	8.8
Warrnambool (S)	8,926	129	14.5	49	5.5
CENTRAL HIGHLANDS	140,217	2,000	14.3	1,119	8.0
Ararat (C)	7,907	132	16.7	89	11.3
Ararat (S)	4,417	43	9.7	27	6.1
Avoca (S)	2,299	27	11.7	22	9.6
Bacchus Marsh (S)	12,954	209	16.1	64	4.9
Ballarat (C)	35,166	529	15.0	408	11.6
Ballan (S)	5,019	81	16.1	32	6.4
Ballarat (S) (Pt A & Pt B)	19,325	249	12.9	154	8.0
Bungaree (S) (Pt A & Pt B)	4,968	58	11.7	17	3.4
Buninyong (S) (Pt A & Pt B)	12,919	157	12.2	51	3.9
Creswick (S)	5,044	75	14.9	46	9.1
Daylesford and Glenlyon (S)	6,034	87	14.4	53	8.8
Grenville (S) (Pt A & Pt B)	8,788	118	13.4	28	3.2
Lexton (S)	1,388	21	15.1	9	6.5
Ripon (S)	3,492	36	10.3	22	6.3
Sebastopol (B)	7,891	149	18.9	68	8.6
Talbot and Clunes(S)	2,606	29	11.1	29	11.1
WIMMERA	52,920	718	13.6	532	10.1
Arapiles (S)	1,890	23	12.2	9	4.8
Dimboola (S)	4,292	46	10.7	54	12.6
Donald (S)	2,470	27	10.9	23	9.3
Dunmunkle (S)	2,863	40	14.0	33	11.5
Horsham (C)	13,011	230	17.7	121	9.3
Kaniva (S)	1,710	23	13.5	17	9.9
Kara Kara (S)	1,160	4	3.4	5	4.3
Kowree (S)	3,670	47	12.8	26	7.1
Lowan (S)	2,936	36	12.3	44	15.0
St Arnaud (S)	2,905	48	16.5	40	13.8
Stawell (C)	6,616	104	15.7	83	12.5
Stawell (S)	2,642	25	9.5	12	4.5
Warracknabeal (S)	3,782	42	11.1	52	13.7
Wimmera (S)	2,973	23	7.7	13	4.4
MALLEE	82,511	1,340	16.2	662	8.0
Birchip (S)	1,236	15	12.1	15	12.1
Karkarooc (S)	2,712	51	18.8	14	5.2
Kerang (B)	4,282	85	19.9	45	10.5
Kerang (S)	4,346	43	9.9	21	4.8
Mildura (C)	20,565	403	19.6	214	10.4
Mildura (S) (Pt A & Pt B)	21,378	307	14.4	107	5.0
Swan Hill (C)	9,778	185	18.9	98	10.0
Swan Hill (S)	11,857	186	15.7	74	6.2

See footnotes at end of table.

POPULATION: SUMMARY OF FINDINGS

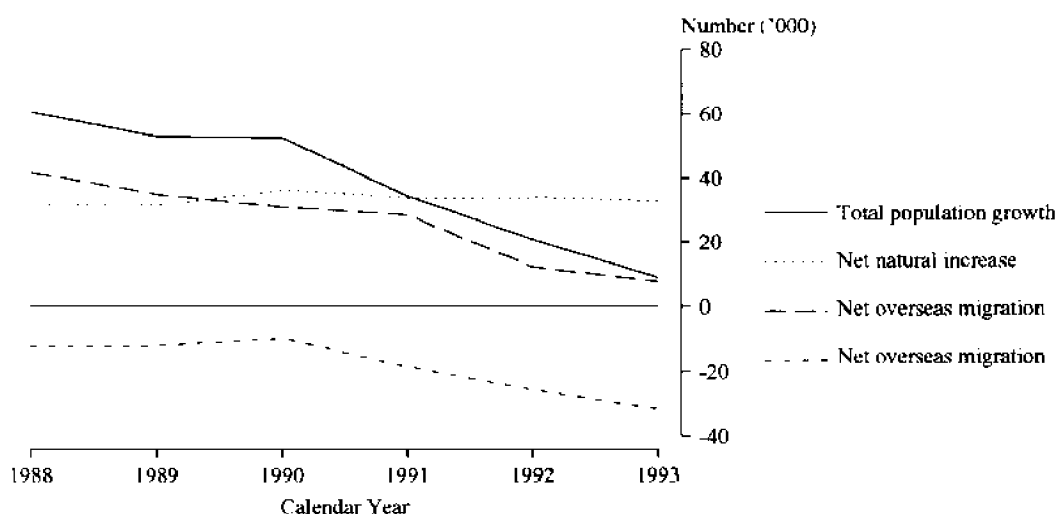
Estimated resident population

■ The estimated resident population of Victoria at the end of December 1993, was 4,468,300, comprising 2,212,900 males and 2,255,500 females.

Population growth

■ In 1993 the population increased in Victoria by an estimated 9,000 persons, of which the net natural increase was the largest component (32,900). Net overseas migration contributed 7,600, while the substantial loss of Victorian residents to other States continued, with a loss of 31,500 residents (an increase of 23.0 per cent from 1992).

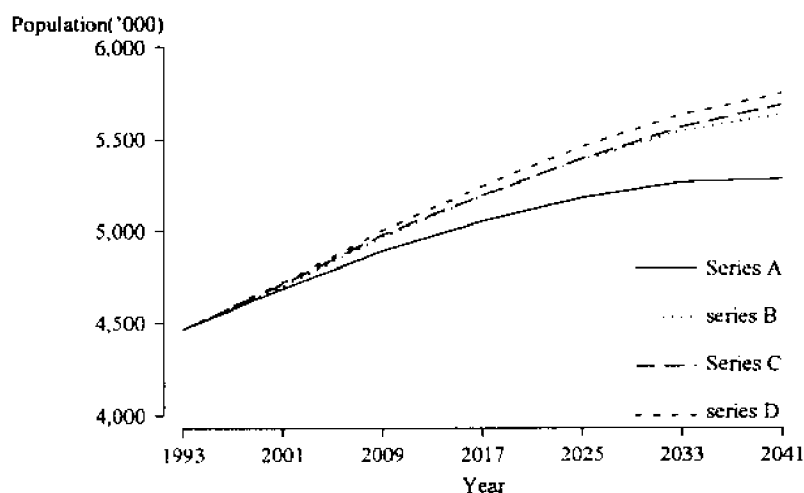
COMPONENTS OF POPULATION GROWTH, VICTORIA



Population projections

■ Based on the current fertility, mortality and migration rates (Series A), it is projected that the Victorian population will rise from 4.46 million in 1993 to 5.28 million in the year 2041.

POPULATION PROJECTIONS, VICTORIA



Overseas arrivals and departures

■ Total arrivals and departures in Victoria for 1993 were 1,982,480, an increase of 3.8 per cent on 1992.

The number of permanent arrivals decreased from the 1992 total by 31.8 per cent, and the departures increased by 2.9 per cent.

Long term arrivals increased by 2.6 per cent and departures decreased by 5.5 per cent from 1992 to 1993. Short term arrivals increased by 4.6 per cent and departures by 4.2 per cent in the same period.

TABLE 2. DEMOGRAPHIC SUMMARY BY STATISTICAL LOCAL AREA, VICTORIA, 1993—continued

STATISTICAL DIVISION Statistical local area(a)	Estimated mid-year resident population	Births		Deaths	
		Number	Rate(b)	Number	Rate(b)
EAST GIPPSLAND	67,647	980	14.5	579	8.6
Avon (S)	4,342	51	11.7	17	3.9
Bairnsdale (C)	11,409	172	15.1	152	13.3
Bairnsdale (S) (Pt A & Pt B)	7,839	70	8.9	53	6.8
Maffra (S)	10,606	170	16.0	87	8.2
Omoo (S)	1,720	35	20.3	9	5.2
Orbost (S)	6,777	93	13.7	47	6.9
Sale (C)	13,970	225	16.1	111	7.9
Tambo (S) (Pt A & Pt B)	10,984	164	14.9	103	9.4
GIPPSLAND	169,949	2,542	15.0	1,326	7.8
Alberton (S)	6,368	86	13.5	68	10.7
Bass (S)	5,177	63	12.2	56	10.8
Buln Buln (S)	12,056	175	14.5	88	7.3
French Island	71	—	—	1	14.1
Korumburra (S)	8,054	115	14.3	56	7.0
Mirboo (S)	2,680	37	13.8	21	7.8
Moe (C)	17,681	286	16.2	150	8.5
Morwell (C) (Pt A & Pt B)	26,968	450	16.7	176	6.5
Narracan (S) (Pt A & Pt B)	11,432	159	13.9	64	5.6
Phillip Island (S)	5,421	68	12.5	50	9.2
Rosedale (S)	9,322	151	16.2	56	6.0
South Gippsland (S)	6,150	84	13.7	65	10.6
Traralgon (C)	20,521	343	16.7	150	7.3
Traralgon (S) (Pt A & Pt B)	4,832	44	9.1	9	1.9
Upper Yarra (S) (Pt B)	550	10	18.2	5	9.1
Warragul (S)	13,636	232	17.0	113	8.3
Wonthaggi (B)	6,990	97	13.9	98	14.0
Woorayl (S)	12,040	142	11.8	100	8.3
Offshore areas and not stated	0	19	—	59	—
TOTAL STATE	4,464,504	64,049	14.3	31,197	7.0

(a) The boundaries used in the compilation of these statistics are those in existence at 1 January 1991. (b) Per 1,000 estimated mid-year population.

TABLE 4. ESTIMATED RESIDENT POPULATION(a) BY AGE AND SEX VICTORIA 1993

Age (years)	Males	Females	Persons	Age (years)	Males	Females	Persons
Under 1	33,030	31,638	64,668	50	23,436	22,716	46,152
1	32,981	30,983	63,964	51	24,043	22,976	47,019
2	33,178	31,605	64,783	52	23,467	22,589	46,056
3	33,004	31,269	64,273	53	22,105	21,010	43,115
4	32,239	30,777	63,016	54	21,939	21,084	43,023
0-4	164,432	156,272	320,704	50-54	114,990	110,375	225,365
5	32,233	30,905	63,138	55	20,951	20,625	41,576
6	31,977	30,204	62,181	56	20,060	19,893	39,953
7	32,059	30,423	62,482	57	19,867	19,684	39,551
8	32,143	31,027	63,170	58	18,627	18,521	37,148
9	31,876	30,207	62,083	59	18,706	18,468	37,174
5-9	160,288	152,766	313,054	55-59	98,211	97,191	195,402
10	32,234	30,208	62,442	60	17,944	17,763	35,707
11	31,409	30,195	61,604	61	17,949	17,866	35,815
12	32,046	30,456	62,502	62	18,753	19,604	38,357
13	31,068	29,628	60,696	63	18,635	18,546	37,181
14	31,606	29,921	61,527	64	18,355	18,822	37,177
10-14	158,363	150,408	308,771	60-64	91,636	92,601	184,237
15	32,130	29,976	62,106	65	18,122	18,869	36,991
16	32,253	30,192	62,445	66	17,651	18,720	36,371
17	32,991	31,170	64,161	67	17,382	19,273	36,655
18	34,266	32,746	67,012	68	15,999	18,164	34,163
19	35,812	34,497	70,309	69	15,775	17,936	33,711
15-19	167,452	158,581	326,033	65-69	84,929	92,962	177,891
20	36,998	35,450	72,448	70	14,259	16,946	31,205
21	38,827	37,892	76,719	71	13,969	16,700	30,669
22	39,405	38,975	78,380	72	13,254	16,956	30,210
23	37,648	36,843	74,491	73	11,840	14,828	26,668
24	36,365	36,100	72,465	74	9,706	12,744	22,450
20-24	189,243	185,260	374,503	70-74	63,028	78,174	141,202
25	35,070	35,048	70,118	75	8,904	12,144	21,048
26	34,372	34,587	68,959	76	8,761	12,132	20,893
27	34,259	35,181	69,440	77	8,511	12,215	20,726
28	34,578	35,643	70,221	78	7,870	11,885	19,755
29	36,076	36,569	72,645	79	7,203	11,181	18,384
25-29	174,355	177,028	351,383	75-79	41,249	59,557	100,806
30	36,557	36,688	73,245	80	6,353	9,987	16,340
31	36,789	37,092	73,881	81	5,602	8,962	14,564
32	38,196	38,468	76,664	82	4,827	8,475	13,302
33	37,135	37,068	74,203	83	4,229	7,370	11,599
34	36,038	35,915	71,953	84	3,510	6,561	10,071
30-34	184,715	185,231	369,946	80-84	24,521	41,355	65,876
35	35,193	35,643	70,836	85	2,885	5,957	8,842
36	34,686	35,154	69,840	86	2,434	5,109	7,543
37	35,331	35,430	70,761	87	1,986	4,439	6,425
38	33,368	34,131	67,499	88	1,608	3,717	5,325
39	32,854	33,480	66,334	89	1,265	3,084	4,349
35-39	171,432	173,838	345,270	85-89	10,178	22,306	32,484
40	32,686	33,134	65,820	90	999	2,571	3,570
41	32,471	32,498	64,969	91	771	2,121	2,892
42	32,883	33,864	66,747	92	530	1,689	2,219
43	31,864	31,830	63,694	93	381	1,378	1,759
44	32,108	31,753	63,861	94	250	904	1,154
40-44	162,012	163,079	325,091	90-94	2,931	8,663	11,594
45	32,239	32,107	64,346	95 and over	498	2,424	2,922
46	32,408	31,922	64,330	All ages	2,211,704	2,252,800	4,464,504
47	29,519	28,692	58,211				
48	27,148	26,611	53,759				
49	25,927	25,397	51,324				
45-49	147,241	144,729	291,970				

(a) See Glossary of Terms for definitions used.

TABLE 3. POPULATION(a): SUMMARY, VICTORIA

Particulars	1988	1989	1990	1991	1992	1993
Estimated resident population at 31 December ('000):						
Males	2,132.2	2,157.6	2,183.0	r2,198.9	p2,209.7	p2,212.9
Females	2,163.1	2,190.6	2,217.7	r2,236.8	p2,249.6	p2,255.5
Persons	4,295.3	4,348.2	4,400.7	r4,435.7	p4,459.3	p4,468.3
Components of population change (b) ('000)						
Net natural increase(c)	31.4	31.5	36.3	33.9	34.0	p32.9
Net overseas migration(d)	41.6	34.9	30.8	28.4	12.3	p7.6
Net interstate migration	-12.3	-11.9	-9.8	-18.5	-25.6	p-31.5
Total population growth:						
Number(e)	60.4	52.9	52.5	34.5	20.8	p9.0
Percentage increase(f)	1.43	1.23	1.21	0.78	0.47	p0.20
Overseas arrivals and departures(g)						
Permanent movement:						
Arrivals:	35,560	33,170	32,520	30,240	23,740	16,200
Departures:	4,080	4,900	6,690	6,700	6,170	6,350
Former settlers	2,050	2,300	3,010	3,460	2,970	2,890
Other Australian residents	2,030	2,600	3,680	3,240	3,200	3,460
Long-term movement:						
Arrivals:	24,010	25,320	26,260	27,690	29,290	30,060
Australian residents returning	13,740	13,030	13,480	13,950	15,420	16,790
Overseas visitors arriving	10,270	12,290	12,780	13,740	13,870	13,270
Departures:	19,260	22,290	25,200	27,470	27,280	25,770
Australian residents departing	12,800	14,150	15,880	16,300	16,540	15,670
Overseas visitors departing	6,460	8,140	9,320	11,170	10,740	10,100
Short-term movement:						
Arrivals:	653,800	696,700	805,700	874,800	912,000	953,800
Australian residents returning	360,900	418,100	507,500	494,900	535,400	536,000
Overseas visitors arriving	292,900	278,500	298,200	379,900	376,600	418,800
Departures:	711,600	782,900	823,500	873,800	912,100	950,300
Australian residents departing	423,500	491,400	525,300	521,200	560,700	548,700
Overseas visitors departing	288,100	291,500	298,200	352,600	351,400	401,600

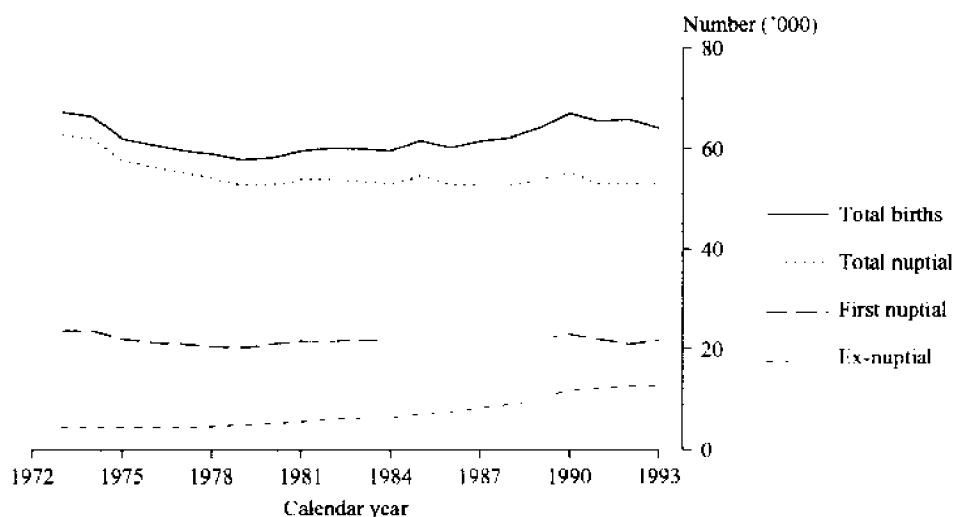
(a) See Glossary of Terms for definitions used. (b) From previous year. (c) Final figures for births and deaths may differ slightly from those used to compile natural increase for population estimates, which are compiled at a preliminary stage. (d) Includes an estimate of those persons who changed category from short-term visitor to long-term visitor or resident of Australia. (e) For dates prior to June 1991, differences between the total population growth shown and the sum of components of population change arise from retrospective adjustments to population estimates (which are made after each Census) to eliminate any intercensal discrepancy. (f) Percentage increase over the previous year's estimated resident population. (g) Statistics have been rounded to the nearest 100 for short term movement, and to the nearest 10 for permanent and long term movement.

BIRTHS: SUMMARY OF FINDINGS

Total births

■ There were 64,049 births to mothers resident in Victoria in 1993, a significant decrease of 2.6 per cent from the 65,766 births registered in 1992. This is also reflected in the crude birth rate (per 1,000 of the estimated resident mid year population) which dropped from 14.8 in 1992 to 14.3 in 1993.

NUMBER OF BIRTHS BY NUPTIALITY,
VICTORIA, 1973-1993



Multiple births

■ Of the 64,049 births resulting from 63,172 confinements in 1993, there were 756 multiple births, comprising 733 sets of twins and 23 sets of triplets or higher order.

Median ages

■ The long established upward trend in median ages of mothers and fathers at nuptial confinements continued in 1993. Since 1988 it has risen steadily from 28.8 years to 29.9 years for mothers, and from 31.2 years to 32.1 years for fathers. The median age of mothers at first nuptial first confinements has now risen to 28.5 years from 27.4 in 1988.

CONFINEMENTS, MEDIAN AGE OF MOTHER
BY NUPTIALITY, VICTORIA, 1978-1993

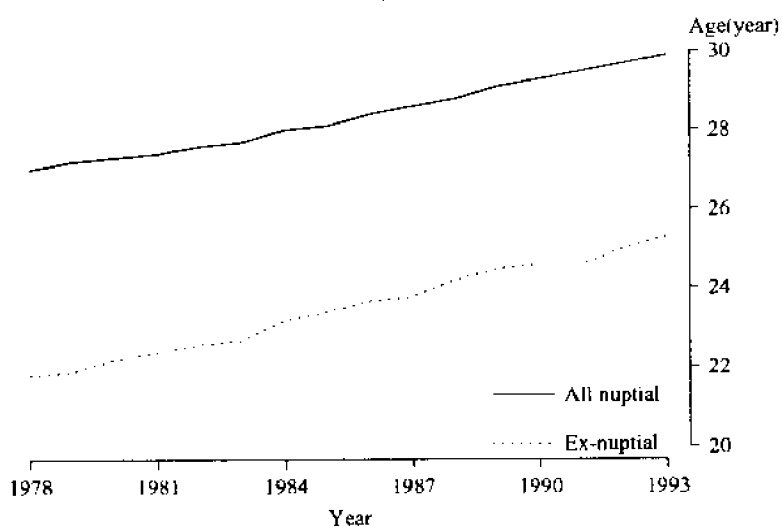


TABLE 5. PROJECTED POPULATION, VICTORIA
(^{'000})

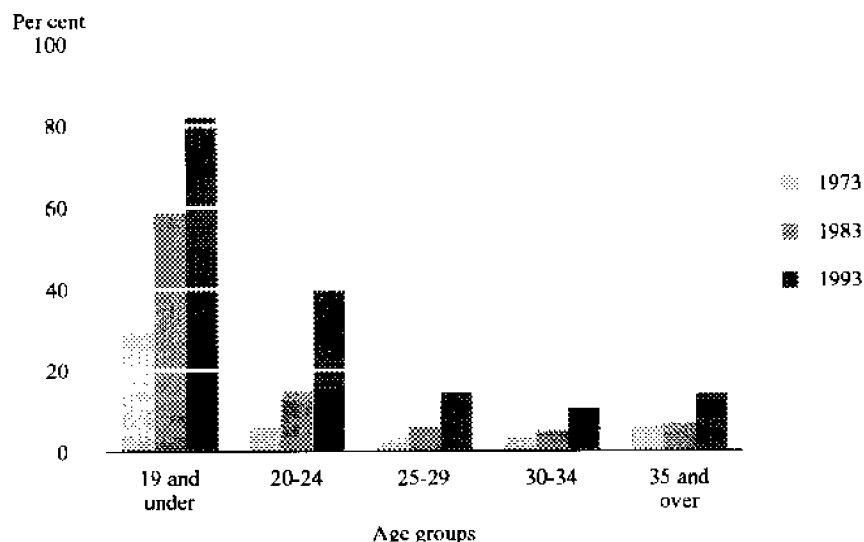
At 30 June	Series A(a)			Series B(a)			Series C(a)			Series D(a)		
	Males	Females	Persons	Males	Females	Persons	Males	Females	Persons	Males	Females	Persons
1993(b)	2210.3	2251.8	4462.1	2210.3	2251.8	4462.1	2210.3	2251.8	4462.1	2210.3	2251.8	4462.1
1994	2216.1	2260.2	4476.2	2217.6	2261.6	4479.2	2216.8	2260.9	4477.7	2216.1	2260.2	4476.2
1995	2227.3	2273.4	4500.8	2227.9	2273.9	4501.8	2229.2	2275.2	4504.4	2227.9	2274.1	4502.0
1996	2240.9	2288.8	4529.8	2240.4	2288.4	4528.8	2244.2	2292.0	4536.2	2242.8	2290.8	4533.6
1997	2254.8	2304.5	4559.4	2254.4	2304.1	4558.4	2260.0	2309.4	4569.4	2258.7	2308.6	4567.3
1998	2269.0	2320.5	4589.6	2269.6	2321.0	4590.6	2276.4	2327.5	4603.9	2275.5	2327.3	4602.8
1999	2283.5	2336.8	4620.3	2286.0	2338.9	4624.9	2293.4	2346.2	4639.6	2293.3	2347.0	4640.4
2000	2298.2	2353.3	4651.6	2303.6	2358.1	4661.7	2311.0	2365.4	4676.4	2311.8	2367.5	4679.4
2001	2312.5	2369.4	4681.9	2321.4	2377.4	4698.8	2328.5	2384.6	4713.1	2330.3	2388.0	4718.3
2002	2326.3	2385.1	4711.4	2338.8	2396.2	4735.1	2345.9	2403.7	4749.5	2348.3	2408.1	4756.4
2003	2339.6	2400.4	4740.0	2355.8	2414.8	4770.6	2362.9	2422.5	4785.4	2366.0	2427.9	4793.9
2004	2352.5	2415.2	4767.7	2372.4	2432.9	4805.3	2379.4	2440.8	4820.2	2383.3	2447.3	4830.6
2005	2364.8	2429.5	4794.3	2388.5	2450.7	4839.2	2395.4	2458.6	4854.0	2400.1	2466.4	4866.5
2006	2376.6	2443.4	4820.0	2404.1	2468.0	4872.1	2410.8	2475.9	4886.7	2416.5	2485.0	4901.4
2007	2387.8	2456.8	4844.6	2419.2	2484.9	4904.1	2425.5	2492.6	4918.2	2432.3	2503.2	4935.5
2008	2398.5	2469.7	4868.2	2433.8	2501.4	4935.2	2439.8	2508.9	4948.7	2447.7	2521.0	4968.7
2009	2408.8	2482.2	4891.0	2448.1	2517.5	4965.6	2453.6	2524.8	4978.4	2462.8	2538.4	5001.2
2010	2418.6	2494.4	4913.0	2462.0	2533.4	4995.4	2467.0	2540.3	5007.2	2477.5	2555.6	5033.1
2011	2428.1	2506.2	4934.4	2475.6	2548.9	5024.5	2479.9	2555.4	5035.4	2491.8	2572.5	5064.3
2012	2437.2	2517.8	4955.0	2488.8	2564.2	5053.1	2492.6	2570.3	5062.9	2505.9	2589.1	5095.0
2013	2446.1	2529.0	4975.1	2501.8	2579.3	5081.1	2504.9	2584.9	5089.8	2519.7	2605.5	5125.2
2014	2454.6	2540.1	4994.7	2514.5	2594.2	5108.8	2517.0	2599.4	5116.3	2533.2	2621.8	5155.0
2015	2462.9	2551.0	5013.8	2527.1	2608.9	5136.0	2528.9	2613.6	5142.5	2546.5	2637.8	5184.4
2016	2470.9	2561.6	5032.6	2539.4	2623.5	5162.9	2540.6	2627.8	5168.4	2559.7	2653.8	5213.5
2017	2478.7	2572.1	5050.9	2551.5	2638.0	5189.5	2552.1	2641.9	5194.0	2572.7	2669.6	5242.3
2018	2486.3	2582.5	5068.8	2563.4	2652.3	5215.7	2563.5	2655.8	5219.4	2585.4	2685.3	5270.8
2019	2493.7	2592.7	5086.4	2575.2	2666.5	5241.7	2574.8	2669.8	5244.6	2598.0	2700.9	5298.9
2020	2500.8	2602.7	5103.5	2586.6	2680.6	5267.3	2586.0	2683.6	5269.6	2610.4	2716.4	5326.8
2021	2507.6	2612.6	5120.2	2597.9	2694.5	5292.4	2597.0	2697.5	5294.5	2622.5	2731.8	5354.3
2022	2514.1	2622.2	5136.3	2608.9	2708.3	5317.1	2607.9	2711.3	5319.1	2634.4	2746.9	5381.4
2023	2520.3	2631.6	5151.9	2619.6	2721.8	5341.3	2618.6	2725.0	5343.6	2646.1	2761.9	5408.0
2024	2526.2	2640.7	5167.0	2629.9	2735.1	5365.0	2629.2	2738.6	5367.8	2657.4	2776.7	5434.1
2025	2531.7	2649.6	5181.3	2639.9	2748.1	5388.1	2639.6	2752.2	5391.7	2668.4	2791.2	5459.6
2026	2536.8	2658.1	5194.8	2649.6	2760.9	5410.4	2649.8	2765.5	5415.3	2679.0	2805.4	5484.4
2027	2541.4	2666.2	5207.6	2658.8	2773.2	5432.0	2659.8	2778.7	5438.5	2689.3	2819.3	5508.6
2028	2545.6	2673.9	5219.4	2667.6	2785.2	5452.8	2669.5	2791.7	5461.2	2699.1	2832.8	5531.9
2029	2549.3	2681.1	5230.4	2675.9	2796.8	5472.8	2679.0	2804.5	5483.4	2708.5	2846.0	5554.4
2030	2552.5	2687.8	5240.3	2683.8	2807.9	5491.8	2688.1	2816.9	5505.0	2717.4	2858.6	5576.0
2031	2555.2	2694.0	5249.3	2691.3	2818.5	5509.8	2697.0	2829.0	5525.9	2725.9	2870.8	5596.7
2032	2557.4	2699.7	5257.1	2698.2	2828.6	5526.8	2705.5	2840.6	5546.0	2733.9	2882.4	5616.4
2033	2559.2	2704.7	5263.9	2704.7	2838.1	5542.8	2713.6	2851.8	5565.3	2741.5	2893.5	5635.1
2034	2560.4	2709.2	5269.6	2710.7	2847.1	5557.9	2721.4	2862.5	5583.8	2748.7	2904.1	5652.8
2035	2561.2	2713.1	5274.3	2716.3	2855.5	5571.9	2728.8	2872.6	5601.4	2755.4	2914.1	5669.5
2036	2561.6	2716.3	5277.9	2721.5	2863.4	5584.9	2735.8	2882.3	5618.1	2761.7	2923.5	5685.2
2037	2561.5	2719.0	5280.5	2726.3	2870.6	5596.9	2742.5	2891.4	5633.8	2767.6	2932.4	5700.0
2038	2561.1	2721.1	5282.2	2730.7	2877.4	5608.1	2748.8	2900.0	5648.7	2773.1	2940.7	5713.9
2039	2560.3	2722.7	5283.0	2734.9	2883.6	5618.4	2754.8	2908.0	5662.8	2778.4	2948.5	5726.9
2040	2559.2	2723.7	5282.9	2738.7	2889.3	5627.9	2760.6	2915.6	5676.2	2783.3	2955.8	5739.1
2041	2557.9	2724.3	5282.2	2742.2	2894.5	5636.8	2766.1	2922.7	5688.8	2788.0	2962.6	5750.6

(a) Refer explanatory notes. (b) Base year.

Nuptial and ex-nuptial births

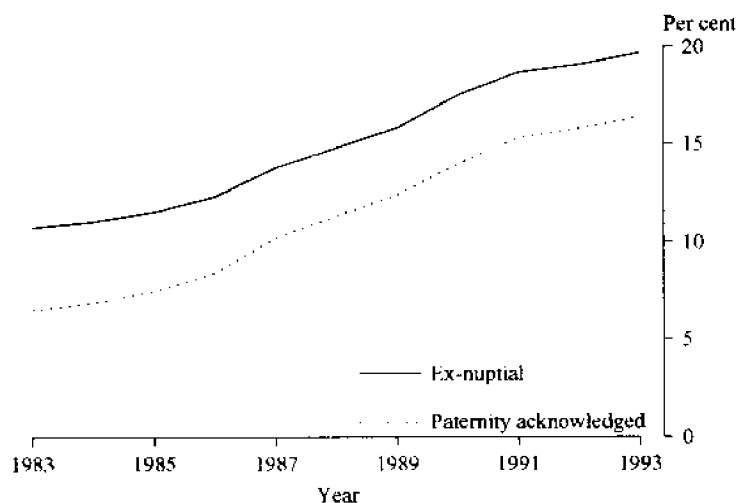
■ In 1993 there were 51,420 nuptial and 12,629 ex-nuptial births with ex-nuptial births increasing gradually every year, from 14.8 per cent in 1988 to 19.7 per cent in 1993.

PERCENTAGE OF EX-NUPTIAL CONFINEMENTS WITHIN
SELECTED AGE GROUPS, VICTORIA 1973, 1983 AND 1993



proportion of ex-nuptial births where paternity was acknowledged has continued to rise from 60.7 per cent in 1983 to 83.3 per cent in 1993.

EX-NUPTIAL AND PATERNITY ACKNOWLEDGED EX-NUPTIAL BIRTHS,
VICTORIA, 1983-1993 (PERCENTAGE OF TOTAL BIRTHS)

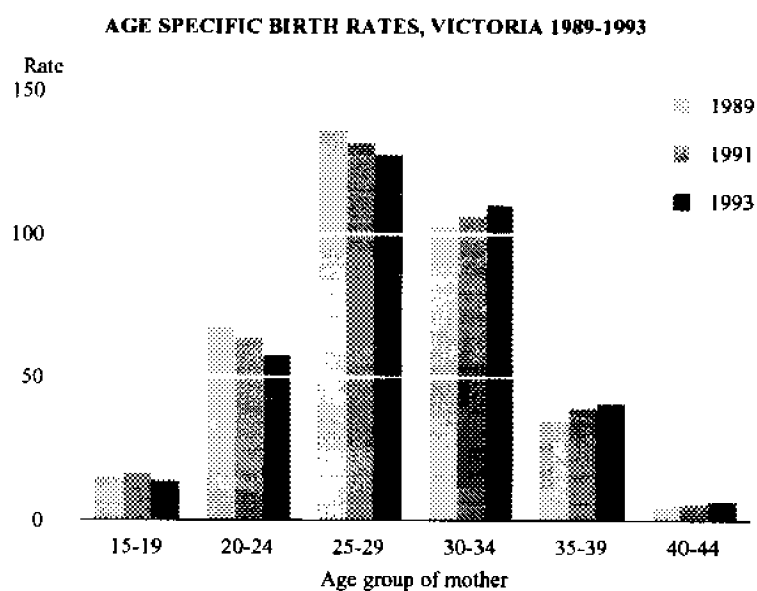


Birthplaces of parents

■ Of the nuptial confinements resulting in liveborn children, 60.3 per cent were to parents both born in Australia, and 14.7 per cent were to parents both born in the same overseas country. Of those born in the same overseas country, the major contributing country was Viet Nam with 15.5 per cent.

Age specific birth rates

■ The age specific birth rates declined in 1993 for most of the age groups with the exception of 30-34 and 40-44 where there was a marginal increase of 0.4 and 0.2 respectively. When compared with Australian birth rates, the most significant differences were noted in the 15-19 (Victoria 13.8 and Australia 20.9) and 20-24 (Victoria 57.7 and Australia 71.1) age groups.



Fertility rate

■ The total fertility rate for Victorian women decreased from 1,822 in 1992 to 1,784 in 1993 and was reflected in the female net reproduction rate which dropped from 0.878 to 0.859 in the same period.

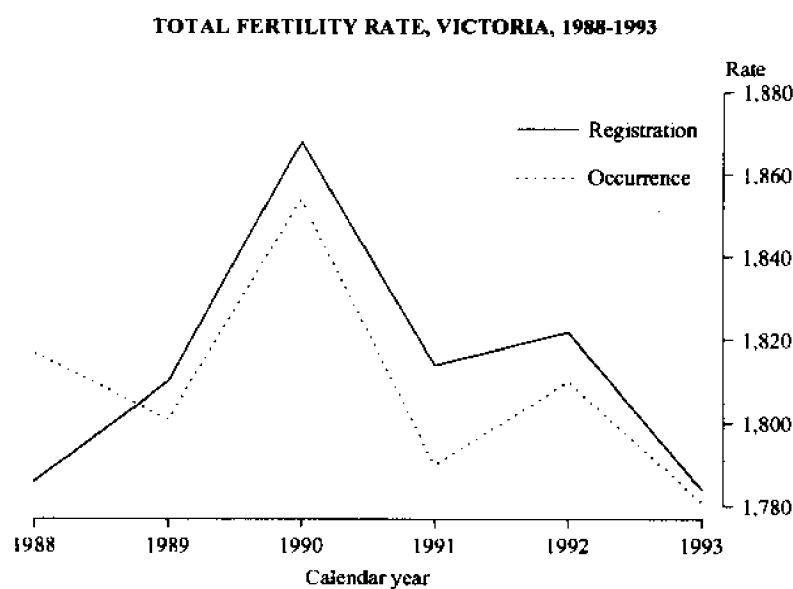


TABLE 7. CONFINEMENTS : RELATIVE AGES OF PARENTS, VICTORIA 1993

Age of father (years)	Age of mother (years)																			All confinements(a)				
	16 and under	17	18	19	20	21	22	23	24	25	26	27	28	29	30	31	32	33	34	35-39	40 and over	Nuptial	Ex- nuptial	Total
19 and under	71	117	116	110	63	29	17	10	7	7	2	3	—	1	2	2	—	—	2	—	1	48	512	560
20	17	50	90	116	92	54	32	29	9	16	10	4	7	4	2	2	—	—	—	3	—	118	419	537
21	8	37	63	112	146	156	96	53	39	21	16	11	10	10	4	3	2	—	2	4	—	235	558	793
22	8	27	50	120	163	181	175	107	69	48	31	19	12	15	7	7	3	5	3	3	2	436	620	1,056
23	3	25	41	96	144	194	223	193	139	79	48	46	23	25	17	14	9	10	3	7	4	703	641	1,344
24	3	10	36	61	100	180	299	280	305	171	106	77	52	35	24	16	13	9	9	12	1	1,165	638	1,803
25	1	7	30	61	94	132	239	298	385	356	238	118	105	53	36	31	19	14	10	15	3	1,604	645	2,249
26	4	7	13	47	79	120	192	242	376	427	483	285	142	130	88	45	32	12	17	33	3	2,156	624	2,780
27	2	9	15	31	53	87	161	226	328	428	542	499	242	161	117	79	56	35	24	55	2	2,568	586	3,154
28	2	3	10	27	47	74	144	178	296	427	595	643	594	347	216	115	103	61	42	73	1	3,439	561	4,000
29	—	3	5	22	35	65	104	138	242	372	505	627	715	669	396	214	124	83	48	88	10	3,895	571	4,466
30	—	3	5	11	33	42	76	126	211	238	406	478	725	759	644	409	207	131	91	123	8	4,199	530	4,729
31	—	4	2	17	31	32	71	85	140	188	313	430	500	693	712	591	332	187	112	182	14	4,194	444	4,638
32	—	1	1	8	15	27	50	76	106	159	234	307	456	565	698	625	491	289	149	232	22	4,073	439	4,512
33	—	1	—	15	13	25	38	61	92	117	162	241	314	415	524	543	592	418	258	331	32	3,776	417	4,193
35-39	1	—	2	3	11	25	21	25	48	91	108	165	210	322	407	478	548	490	368	375	26	3,388	338	3,726
40-44	—	—	4	8	24	39	70	98	126	173	239	364	469	690	776	999	1,221	1,312	1,258	3,273	236	10,242	1,140	11,382
45 and over	1	2	—	1	4	11	18	17	18	38	58	67	105	129	177	206	286	290	313	1,521	403	3,177	491	3,668
Not applicable (b)	—	—	1	3	2	5	9	8	14	18	28	26	39	44	51	80	71	117	102	518	298	1,206	228	1,434
	50	88	131	123	166	154	151	121	130	102	105	91	99	83	62	81	63	61	50	135	38	..	2,099	2,099
All confinements(a):																								
Nuptial confinements																								
Ex-nuptial confinements																								
Total																								

(a) Includes confinements where age was not stated. (b) Confinements where paternity was not acknowledged.

TABLE 6. BIRTHS AND CONFINEMENTS (a): SUMMARY, VICTORIA

	1988	1989	1990	1991	1992	1993
BIRTHS						
All births	62,134	64,002	66,970	65,438	65,766	64,049
Males	31,688	32,841	34,357	33,636	33,691	32,793
Females	30,446	31,161	32,613	31,802	32,075	31,256
Sex ratio	104.1	105.4	105.3	105.8	105.0	104.9
Nuptial births	52,921	53,868	55,220	53,217	53,175	51,420
Ex-nuptial births						
Number	9,213	10,134	11,750	12,221	12,591	12,629
Percentage of total live births	14.8	15.8	17.5	18.7	19.1	19.7
Paternity acknowledged births						
Number	7,049	7,907	9,406	10,043	10,372	10,514
Percentage of total ex-nuptial births	76.5	78.0	80.1	82.2	82.4	83.3
Crude birth rate(b)	14.6	14.8	15.3	14.8	14.8	14.3
Age-specific birth rates(b)—						
15-19	14.2	14.9	15.9	16.1	14.7	13.8
20-24	69.2	67.3	67.7	63.7	61.8	57.7
25-29	136.3	136.3	137.8	131.7	130.3	127.4
30-34	99.8	102.9	109.0	106.1	109.6	110.0
35-39	32.7	34.9	37.1	39.2	41.2	41.0
40-44	4.8	5.4	5.8	5.8	6.5	6.7
45-49	0.2	0.2	0.2	0.2	0.4	0.2
Total fertility rate	1,786	1,810	1,868	1,814	1,822	1,784
Female net reproduction rate	0.861	0.868	0.896	0.870	0.878	0.859
CONFINEMENTS						
All confinements	61,398	63,209	66,136	64,566	64,898	63,172
Median age of mother (years) —						
Nuptial first confinements	27.4	27.6	27.8	28.0	28.3	28.5
All nuptial confinements	28.8	29.0	29.3	29.5	29.7	29.9
Ex-nuptial confinements	24.2	24.5	24.5	24.6	25.0	25.3
Paternity acknowledged confinements	24.6	24.9	24.8	24.9	25.2	25.5
All confinements	28.4	28.6	28.8	28.9	29.2	29.3
Median age of father (years) —						
Nuptial confinements	31.2	31.3	31.5	31.7	32.0	32.1
Paternity acknowledged confinements	27.2	27.4	27.4	27.5	27.7	27.9
Median duration of marriage (years)						
Nuptial first confinements	2.5	2.5	2.5	2.6	2.6	2.7
Nuptial confinements	4.7	4.7	4.6	4.6	4.7	4.7
Nuptial confinements —						
Previous births —						
0	21,336	22,025	22,988	21,985	21,814	20,769
1	17,938	18,097	18,223	17,972	18,316	17,955
2	8,944	9,021	9,116	8,703	8,645	8,282
3	2,848	2,834	2,919	2,690	2,604	2,553
4	747	744	814	666	671	651
5 and over	465	452	444	469	398	445
Average number of births	2.0	2.0	1.9	1.9	1.9	2.0

(a) See Glossary of Terms for definitions used. (b) Per 1,000 of the estimated mid-year population.

TABLE 10. NUPTIAL CONFINEMENTS : AGE OF MOTHER BY PREVIOUS ISSUE AND AVERAGE ISSUE
VICTORIA 1993

Age of mother (years)	Married mothers with previous issue to the current marriage of:						All married mothers(a)	Total issue (b)	Average issue (b)
	0	1	2	3	4	5 and over			
16 and under	6	1	—	—	—	—	7	8	1.14
17	29	1	—	—	—	—	30	31	1.03
18	81	15	—	—	—	—	96	111	1.16
19	201	55	3	—	—	—	259	322	1.24
20	347	114	13	1	—	—	475	621	1.31
21	464	240	33	8	1	—	746	1,087	1.46
22	744	418	97	3	2	—	1,264	1,905	1.51
23	900	527	134	17	4	—	1,582	2,458	1.55
24	1,335	703	195	29	3	—	2,265	3,483	1.54
25	1,594	853	252	51	8	2	2,760	4,355	1.58
26	1,873	1,182	405	80	19	5	3,564	5,952	1.67
27	1,926	1,389	464	100	23	5	3,907	6,704	1.72
28	1,889	1,597	550	136	30	4	4,206	7,522	1.79
29	1,904	1,710	733	171	38	14	4,570	8,562	1.87
30	1,596	1,721	816	246	44	20	4,443	8,879	2.00
31	1,386	1,542	824	246	50	17	4,065	8,346	2.05
32	1,084	1,441	841	269	59	40	3,734	8,210	2.20
33	888	1,157	733	264	59	40	3,141	7,066	2.25
34	661	930	631	226	58	44	2,550	5,938	2.33
35-39	1,596	2,062	1,375	613	211	184	6,041	14,759	2.44
40 and over	257	277	180	91	42	69	916	2,466	2.69
All ages(c)	20,769	17,955	8,282	2,553	651	445	50,655	98,857	1.95

(a) Includes confinements where previous issue is not stated. (b) Excludes not stated previous issue. (c) Includes records where age of mother is not stated.

TABLE 11. NUPTIAL CONFINEMENTS : DURATION OF CURRENT MARRIAGE BY PREVIOUS ISSUE AND AVERAGE ISSUE
VICTORIA 1993

Duration of current marriage (years)	Married mothers with previous issue to the current marriage of:						All married mothers(a)	Total issue (b)	Average issue (b)
	0	1	2	3	4	5 and over			
Under 1	3,561	508	91	21	3	2	4,186	5,014	1.20
1	4,473	839	100	23	3	—	5,438	6,623	1.22
2	3,521	1,840	211	35	2	3	5,612	8,067	1.44
3	2,843	2,685	402	50	4	1	5,985	9,728	1.63
4	2,048	2,833	671	71	15	3	5,641	10,205	1.81
5	1,434	2,475	917	132	15	2	4,975	9,842	1.98
6	943	1,888	999	191	30	2	4,053	8,708	2.15
7	650	1,562	1,018	257	40	10	3,537	8,181	2.31
8	392	1,099	934	310	49	15	2,799	7,006	2.50
9	289	715	785	279	50	10	2,128	5,547	2.61
10 and over	613	1,509	2,154	1,184	440	396	6,296	19,923	3.16
All marriages(c)	20,769	17,955	8,282	2,553	651	445	50,655	98,857	1.95

(a) Includes confinements where previous issue is not stated. (b) Excludes not stated previous issue. (c) Includes records where duration of current marriage is not stated.

**TABLE 8. CONFINEMENTS : NUPTIALITY AND PLURALITY BY AGE GROUP OF MOTHER
VICTORIA 1993**

Confinements	Age group of mother (years)						All ages (a)
	19 and under	20-24	25-29	30-34	35-39	40 and over	
NUMBER—							
Nuptial :							
Single	390	6,269	18,713	17,667	5,925	901	49,899
Twins	2	63	282	258	113	15	733
Triplets or higher order	—	—	12	8	3	—	23
<i>Nuptial confinements</i>	392	6,332	19,007	17,933	6,041	916	50,655
Ex-nuptial :							
Single	1,776	4,223	3,151	2,104	928	186	12,403
Twins or higher order	5	30	34	27	15	2	114
<i>Ex-nuptial confinements</i>	1,781	4,253	3,185	2,131	943	188	12,517
All confinements	2,173	10,585	22,192	20,064	6,984	1,104	63,172
PER CENT—							
Nuptial confinements	18.0	59.8	85.6	89.4	86.5	83.0	80.2
Ex-nuptial confinements	82.0	40.2	14.4	10.6	13.5	17.0	19.8

(a) Includes records where age of mother is not stated.

**TABLE 9. NUPTIAL FIRST CONFINEMENTS (a) : AGE OF MOTHER BY DURATION OF CURRENT MARRIAGE
VICTORIA 1993**

Age group of mother (years)	Duration of marriage (years)									Total (b)
	Under 1	1	2	3	4	5	6	7	8 and over	
16 and under	5	1	—	—	—	—	—	—	—	6
17-19	204	82	18	7	—	—	—	—	—	311
20-24	1,130	1,216	764	433	154	67	19	5	1	3,790
25-29	1,143	1,768	1,716	1,557	1,218	802	501	289	192	9,186
30-34	712	1,037	790	673	545	461	336	303	758	5,615
35-39	316	315	201	145	116	84	75	49	294	1,596
40 and over	49	52	31	28	14	20	11	4	48	257
<i>All ages(c)</i>	3,561	4,473	3,521	2,843	2,048	1,434	943	650	1,294	20,769

(a) See Glossary of Terms for definitions used. (b) Includes records where duration of marriage is not stated. (c) Includes records where age of mother is not stated.

TABLE 13. BIRTHS: NUMBERS BY YEAR OF OCCURRENCE, STATES AND TERRITORIES (p)

	<i>NSW</i>	<i>Vic.</i>	<i>Qld</i>	<i>SA</i>	<i>WA(a)</i>	<i>Tas.</i>	<i>NT</i>	<i>ACT(b)</i>	<i>Other territories</i>	<i>Australia</i>
1988	86,454	63,242	41,245	19,275	24,835	6,868	3,415	4,369	—	249,703
1989	87,027	63,725	42,655	19,511	25,222	6,853	3,436	4,296	—	252,725
1990	88,930	66,506	44,732	19,669	25,564	6,991	3,492	4,517	—	260,401
1991	87,414	64,594	44,316	19,409	24,646	6,900	3,627	4,610	—	255,517
1992	89,273	65,466	46,036	19,702	24,924	6,967	3,714	4,429	—	260,512
1993	86,752	63,996	46,347	19,529	24,727	6,765	3,631	4,388	38	256,173

(a) Includes Christmas and Cocos (Keeling) Islands prior to 1993. (b) Includes Jervis Bay Territory prior to 1993.

TABLE 14. CRUDE BIRTH RATES BY YEAR OF OCCURRENCE, STATES AND TERRITORIES (p)

	<i>NSW</i>	<i>Vic.</i>	<i>Qld</i>	<i>SA</i>	<i>WA(a)</i>	<i>Tas.</i>	<i>NT</i>	<i>ACT(b)</i>	<i>Other territories</i>	<i>Australia</i>
1988	15.1	14.8	15.0	13.7	16.2	15.2	21.4	16.1	—	15.1
1989	15.1	14.7	15.1	13.7	16.0	15.0	21.3	15.5	—	15.0
1990	15.2	15.2	15.4	13.7	15.9	15.1	21.4	16.0	—	15.3
1991	14.8	14.6	15.0	13.4	15.1	14.8	21.9	16.0	—	14.8
1992	15.0	14.7	15.2	13.5	15.0	14.8	22.2	15.1	—	14.9
1993	14.5	14.3	14.9	13.3	14.7	14.3	21.4	14.7	n.a.	14.5

(a) Includes Christmas and Cocos (Keeling) Islands prior to 1993. (b) Includes Jervis Bay Territory prior to 1993.

TABLE 15. BIRTHS: AGE GROUP OF MOTHER BY YEAR OF OCCURRENCE, VICTORIA (p)

	<i>Age group (years)</i>						<i>Total(a)</i>
	<i>19 and under</i>	<i>20-24</i>	<i>25-29</i>	<i>30-34</i>	<i>35-39</i>	<i>40 and over</i>	
1988	2,632	12,107	24,930	17,354	5,424	753	63,242
1989	2,667	11,741	24,709	17,923	5,781	857	63,725
1990	2,773	12,023	25,011	19,483	6,259	922	66,506
1991	2,572	11,449	23,660	19,274	6,604	993	64,594
1992	2,382	11,343	23,263	20,271	7,059	1,096	65,466
1993	2,120	10,652	22,424	20,431	7,171	1,132	63,996

(a) Includes Not Stated.

TABLE 16. BIRTHS: AGE SPECIFIC BIRTH RATES BY AGE GROUP OF MOTHER AND YEAR OF OCCURRENCE, VICTORIA (p)

	<i>Age group (years)</i>						<i>Total fertility rate</i>
	<i>15-19(a)</i>	<i>20-24</i>	<i>25-29</i>	<i>30-34</i>	<i>35-39</i>	<i>40-44</i>	
1988	14.5	70.0	138.9	101.5	33.2	5.0	1.817
1989	14.8	66.8	135.6	102.4	34.9	5.4	1.801
1990	15.6	67.1	136.3	108.7	37.2	5.7	1.854
1991	15.1	62.2	130.3	105.3	38.9	5.9	1.790
1992	14.6	60.9	129.5	109.4	41.0	6.4	1.810
1993	13.4	57.5	126.7	110.3	41.3	6.8	1.780

(a) Includes births to mothers aged less than 15. (b) Includes births to mothers aged 50 and over

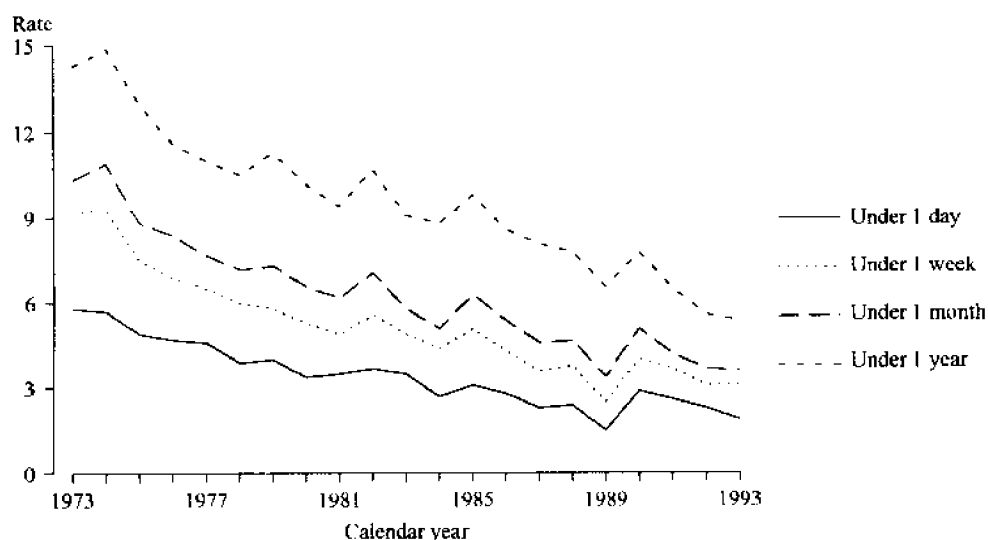
TABLE 12. NUPTIAL CONFINEMENTS: RELATIVE BIRTHPLACES OF PARENTS, VICTORIA 1993

Country of birth	Father born in country shown and mother born in				Mother born in country shown and father born in			
	Australia	Same overseas country	Different overseas country	Total	Australia	Same overseas country	Different overseas country	Total
OCEANIA AND ANTARCTICA—								
Australia	31,000	—	4,415	35,415	31,000	—	5,533	36,533
Fiji	19	85	16	120	37	85	27	149
New Zealand	364	198	116	678	406	198	129	733
Other	60	109	26	195	61	109	35	205
Total	31,443	392	4,573	36,408	31,504	392	5,724	37,620
EUROPE AND FORMER USSR—								
Austria	22	2	14	38	15	2	17	34
Former USSR & Baltic States	6	63	5	74	8	63	17	88
Former Yugoslav Republics	336	506	90	932	134	506	69	709
Germany	127	21	54	202	86	21	51	158
Greece	386	153	88	627	156	153	53	362
Hungary	18	11	9	38	4	11	6	21
Ireland	84	56	26	166	74	56	29	159
Italy	583	161	103	847	287	161	69	517
Malta	159	63	44	266	90	63	29	182
Netherlands	148	18	46	212	85	18	28	131
Poland	34	119	22	175	21	119	8	148
United Kingdom	1,902	531	295	2,728	1,679	531	280	2,490
Other	219	260	124	603	160	260	92	512
Total	4,024	1,964	920	6,908	2,799	1,964	748	5,511
MIDDLE EAST AND NORTH AFRICA—								
Egypt	48	111	31	190	31	111	15	157
Lebanon	124	611	70	805	38	611	73	722
Turkey	74	502	33	609	24	502	29	555
Other	82	146	114	342	36	146	75	257
Total	328	1,370	248	1,946	129	1,370	192	1,691
SOUTHEAST ASIA—								
Indonesia	34	140	28	202	22	140	38	200
Malaysia	54	265	89	408	96	265	88	449
Philippines	14	241	7	262	183	241	117	541
Singapore	28	33	26	87	25	33	38	96
Thailand	1	12	3	16	29	12	20	61
Viet Nam	9	1,172	127	1,308	16	1,172	82	1,270
Other	3	180	52	235	11	180	56	247
Total	143	2,043	332	2,518	382	2,043	439	2,864
NORTHEAST ASIA—								
China	25	382	81	488	42	382	138	562
Hong Kong	15	173	54	242	17	173	59	249
Other	7	54	21	82	26	54	33	113
Total	47	609	156	812	85	609	230	924
SOUTHERN ASIA—								
India	82	309	49	440	63	309	66	438
Sri Lanka	60	332	43	435	56	332	25	413
Other	16	99	18	133	7	99	4	110
Total	158	740	110	1,008	126	740	95	961
THE AMERICAS—								
Canada	54	8	10	72	48	8	15	71
Chile	16	96	19	131	13	96	21	130
United States of America	104	40	33	177	128	40	40	208
Other	51	93	41	185	57	93	60	210
Total	225	237	103	565	246	237	136	619
AFRICA (Excluding North Africa)—								
South Africa	64	39	19	122	48	39	31	118
Other	93	168	96	357	91	168	83	342
Total	157	207	115	479	139	207	114	460
Other and not stated	8	—	3	11	5	—	—	5
Total	36,533	7,562	6,560	50,655	35,415	7,562	7,678	50,655

Infant mortality

■ In 1993 there were 347 infant deaths (200 males and 147 females), a decrease of 5.2 per cent over the 366 infant deaths in 1992. This resulted in an infant mortality rate of 5.4 infant deaths per thousand live births, which continued the long term downward trend.

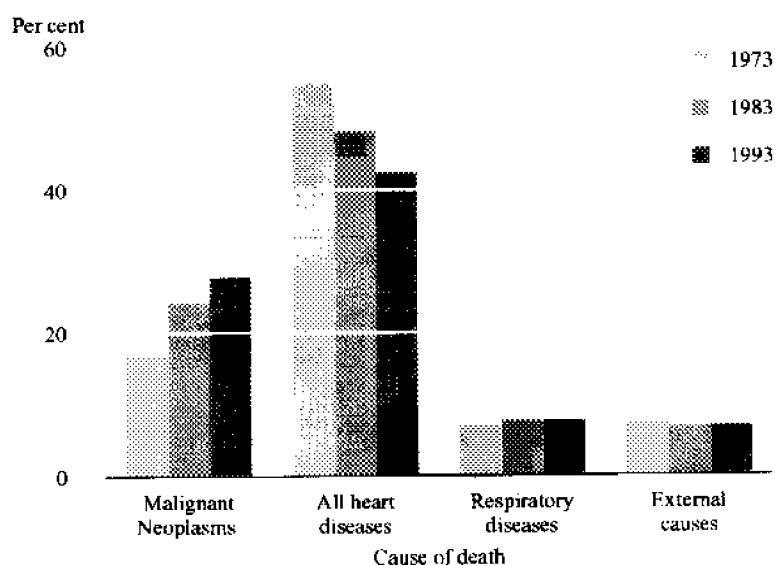
INFANT MORTALITY RATE, VICTORIA, 1973-1993



Causes of death

■ In 1993, *diseases of the circulatory system* (including heart attack and stroke) accounted for 42.4 per cent of all deaths in Victoria. The major single cause of death was *malignant neoplasms* (cancer) which accounted for 28.2 per cent of all deaths. This was also the major cause for both males, (29.4 per cent) and females (26.8 per cent). The number of deaths from motor vehicle accidents remained steady, whilst deaths from suicides declined in 1993 by 10.8 per cent as compared to 1992.

LEADING CAUSES OF DEATH, VICTORIA, 1973, 1983 AND 1993



DEATHS: SUMMARY OF FINDINGS

Total deaths

■ There were 31,197 deaths of Victorian residents registered in 1993. Of those 16,389 were males and 14,808 were females. This represented a decrease of 2.4 per cent from the 31,951 deaths registered in 1992. The crude death rate (per 1,000 of the estimated resident population) decreased marginally from 7.2 in 1992 to 7.0 in 1993.

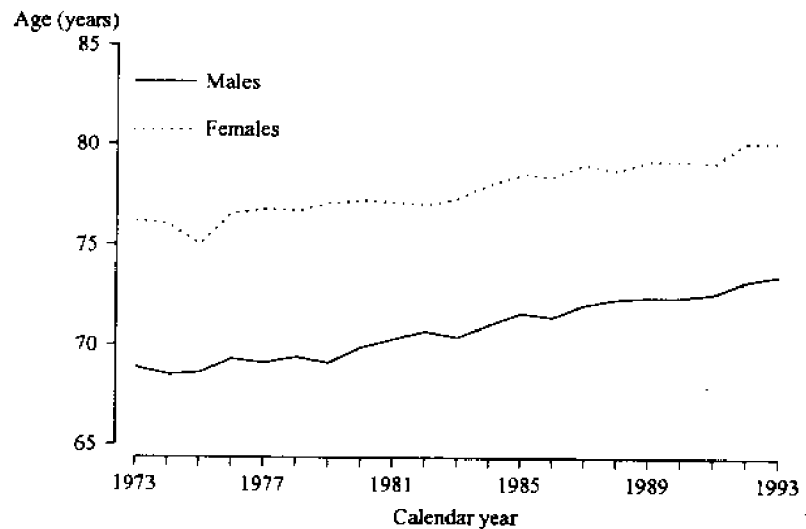
Age at death

■ Of the 31,197 deaths, 84.6 per cent of male deaths and 91.2 per cent of female deaths occurred after the age of 55, and 72.0 per cent of male deaths and 83.7 per cent of female deaths occurred after the age of 65.

Median age at death

■ The median age at death in 1993 for males was 73.5 years and for females 80.1 years, both higher than the Australian median ages of 72.9 and 79.5 years respectively.

MEDIAN AGE AT DEATH, VICTORIA, 1973-1993



Life expectancy

■ Since the mortality rates for females are relatively lower than for males, the life expectancy of females is greater at each age group. The life expectancy of a female child born in 1993 to a mother resident in Victoria is 81.1, while for a male child the life expectancy is 75.4 years.

EXPECTATION OF LIFE AT SELECTED AGES, VICTORIA, 1993

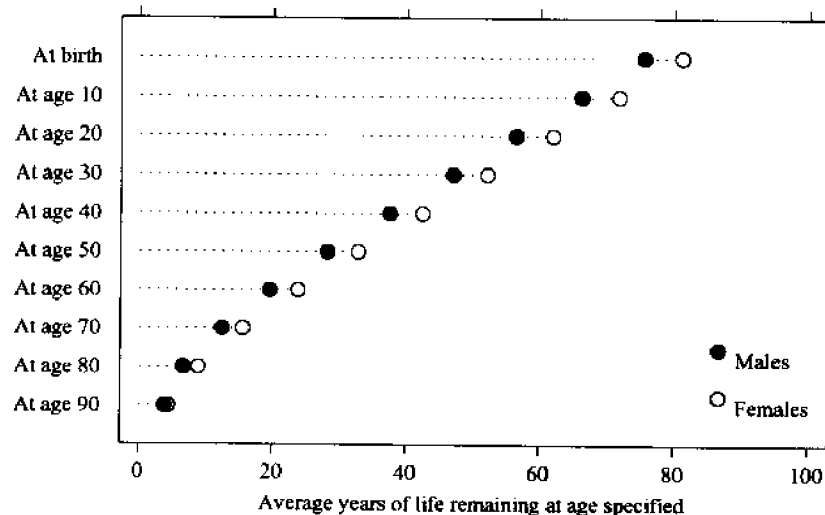


TABLE 18. DEATHS : AGE AT DEATH BY SEX, VICTORIA 1993

Age at death (years)	Males	Females	Persons	Age at death (years)	Males	Females	Persons
Under 1	200	147	347	50	96	38	134
1	27	19	46	51	103	46	149
2	16	11	27	52	108	60	168
3	12	7	19	53	118	58	176
4	6	8	14	54	117	69	186
0-4	261	192	453	50-54	542	271	813
5	5	7	12	55	138	65	203
6	5	5	10	56	133	87	220
7	—	2	2	57	150	96	246
8	3	5	8	58	166	88	254
9	2	2	4	59	181	112	293
5-9	15	21	36	55-59	768	448	1,216
10	8	7	15	60	191	109	300
11	5	3	8	61	216	97	313
12	5	5	10	62	272	140	412
13	5	6	11	63	306	165	471
14	7	5	12	64	311	162	473
10-14	30	26	56	60-64	1,296	673	1,969
15	12	7	19	65	345	179	524
16	15	10	25	66	375	213	588
17	17	11	28	67	369	222	591
18	43	12	55	68	407	249	656
19	53	11	64	69	426	253	679
15-19	140	51	191	65-69	1,922	1,116	3,038
20	40	14	54	70	473	301	774
21	41	16	57	71	467	309	776
22	56	20	76	72	507	334	841
23	43	14	57	73	504	349	853
24	43	14	57	74	445	349	794
20-24	223	78	301	70-74	2,396	1,642	4,038
25	30	14	44	75	444	362	806
26	30	15	45	76	486	420	906
27	35	12	47	77	511	418	929
28	33	11	44	78	597	476	1,073
29	43	12	55	79	584	492	1,076
25-29	171	64	235	75-79	2,622	2,168	4,790
30	42	19	61	80	552	550	1,102
31	49	12	61	81	481	545	1,026
32	44	22	66	82	482	526	1,008
33	39	22	61	83	448	516	964
34	44	16	60	84	426	519	945
30-34	218	91	309	80-84	2,389	2,656	5,045
35	49	18	67	85	378	532	910
36	44	21	65	86	400	546	946
37	40	28	68	87	329	492	821
38	45	27	72	88	297	511	808
39	36	34	70	89	231	425	656
35-39	214	128	342	85-89	1,635	2,506	4,141
40	58	35	93	90	218	394	612
41	54	36	90	91	149	347	496
42	49	22	71	92	143	340	483
43	64	39	103	93	115	294	409
44	64	33	97	94	49	223	272
40-44	289	165	454	90-94	674	1,598	2,272
45	83	39	122	95 and over	160	702	862
46	75	29	104	All ages(a)	16,389	14,808	31,197
47	77	46	123				
48	89	44	133				
49	99	54	153				
45-49	423	212	635				

(a) Includes records where age is not stated.

TABLE 17. DEATHS (a): SUMMARY, VICTORIA

	1988	1989	1990	1991	1992	1993
DEATHS						
All deaths	30,726	32,379	30,986	31,216	31,951	31,197
Males	16,426	17,079	16,321	16,508	16,816	16,389
Females	14,300	15,300	14,665	14,708	15,135	14,808
<i>Crude death rates (b) --</i>						
Males	7.2	7.5	7.1	7.1	7.2	7.0
Females	7.8	8.0	7.5	7.5	7.6	7.4
Females	6.7	7.0	6.6	6.6	6.7	6.6
<i>Standardised death rates (b) --</i>						
Males	6.9	7.1	6.6	6.5	6.4	6.5
Females	9.0	9.1	8.5	8.4	8.3	8.4
Females	5.3	5.5	5.1	5.0	5.0	5.1
<i>Median age at death --</i>						
Males	72.3	72.4	72.4	72.6	73.2	73.5
Females	78.7	79.2	79.2	79.1	80.1	80.1
<i>Principal causes of death (per cent) --</i>						
Males --						
Malignant neoplasms (cancer)	26.9	26.9	28.0	28.7	28.3	29.0
Ischaemic heart disease	25.0	26.1	25.7	25.6	25.1	24.6
Cerebrovascular disease	7.3	7.0	6.7	7.1	6.5	6.8
Other diseases of the circulatory system	7.8	7.8	7.9	7.8	8.2	7.9
Diseases of the respiratory system	9.0	9.3	8.4	8.3	9.0	8.7
Diseases of the digestive system	3.4	3.5	3.3	3.2	3.3	2.8
All other diseases	11.2	10.8	11.8	11.2	12.1	13.0
Motor vehicle traffic accidents	3.6	3.5	2.6	2.4	1.8	1.9
All other accidents	2.4	2.1	2.2	2.2	2.3	2.4
Suicide	2.5	2.2	2.4	2.9	2.6	2.5
Other external causes	0.8	0.7	0.8	0.6	0.6	0.3
Females --						
Malignant neoplasms (cancer)	24.0	23.5	24.7	26.5	24.6	26.3
Ischaemic heart disease	23.2	24.1	23.9	23.2	24.6	22.2
Cerebrovascular disease	12.8	12.0	12.3	11.8	11.6	12.6
Other diseases of the circulatory system	11.4	11.8	11.1	11.1	11.4	10.9
Diseases of the respiratory system	6.6	7.1	6.2	6.3	6.9	6.6
Diseases of the digestive system	3.7	3.4	3.5	3.6	3.3	3.1
All other diseases	13.3	13.7	14.0	13.4	13.9	15.1
Motor vehicle traffic accidents	1.8	1.7	1.3	1.1	1.0	1.0
All other accidents	1.7	1.7	1.7	1.7	1.5	1.3
Suicide	0.8	0.8	0.7	0.9	0.7	0.6
Other external causes	0.6	0.3	0.5	0.4	0.4	0.2
<i>Expectation of life (years) --</i>						
Males --						
Age 0	73.6	73.6	74.3	74.6	74.8	75.4
Age 1	73.3	73.2	74.0	74.1	74.3	74.9
Age 25	50.3	50.1	50.8	50.9	51.0	51.6
Age 45	31.6	31.3	32.0	32.1	32.2	32.7
Age 65	15.0	14.8	15.3	15.4	15.4	15.8
Females --						
Age 0	79.9	79.8	80.3	80.4	80.7	81.1
Age 1	79.4	79.2	79.8	79.8	80.1	80.5
Age 25	55.9	55.7	56.3	56.3	56.5	56.9
Age 45	36.6	36.4	36.9	36.9	37.1	37.5
Age 65	18.9	18.7	19.1	19.2	19.2	19.5
INFANT DEATHS						
All infant deaths	486	414	523	428	366	347
Males	291	248	305	249	220	200
Females	195	166	218	179	146	147
<i>Infant mortality rates</i>						
Males	7.8	6.5	7.8	6.5	5.6	5.4
Females	9.2	7.6	8.9	7.4	6.5	6.1
Females	6.4	5.3	6.7	5.6	4.6	4.7

(a) See Glossary of Terms for definitions used. (b) Per 1,000 of the estimated mid-year population.

TABLE 21. INFANT DEATHS AND MORTALITY RATES BY AGE AND SEX, VICTORIA 1993

Age at death	Number			Infant mortality rate (a)		
	Males	Females	Persons	Males	Females	Persons
Under 1 day	69	55	124	2.1	1.8	1.9
1 and under 2 days	9	9	18	0.3	0.3	0.3
2 and under 3 days	17	10	27	0.5	0.3	0.4
3 and under 4 days	4	5	9	0.1	0.2	0.1
4 and under 5 days	3	4	7	0.1	0.1	0.1
5 and under 6 days	3	1	4	0.1		0.1
6 and under 7 days	5	2	7	0.2	0.1	0.1
<i>Total under 1 week</i>	<i>110</i>	<i>86</i>	<i>196</i>	<i>3.4</i>	<i>2.8</i>	<i>3.1</i>
1 and under 2 weeks	9	7	16	0.3	0.2	0.2
2 and under 3 weeks	8	3	11	0.2	0.1	0.2
3 and under 4 weeks	7	2	9	0.2	0.1	0.1
<i>Total under 4 weeks</i>	<i>134</i>	<i>98</i>	<i>232</i>	<i>4.1</i>	<i>3.1</i>	<i>3.6</i>
4 weeks and under 3 months	26	16	42	0.8	0.5	0.7
3 and under 6 months	23	17	40	0.7	0.5	0.6
6 and under 12 months	17	16	33	0.5	0.5	0.5
All infant deaths	200	147	347	6.1	4.7	5.4

(a) Per 1,000 live births registered.

TABLE 22. DEATHS: CAUSE OF DEATH BY SEX, VICTORIA 1993

Cause of death(a)	Number			Percentage of all deaths	Rate(b)
	Males	Females	Persons		
Infectious and parasitic diseases (001-139)	106	103	209	0.7	4.7
Neoplasms (140-239)	4,818	3,966	8,784	28.2	196.8
Malignant neoplasms (140-208)	4,749	3,900	8,649	27.7	193.7
Endocrine, nutritional and metabolic diseases and immunity disorders (240-279)	685	579	1,264	4.1	28.3
Diseases of the blood and blood forming organs (280-289)	39	73	112	0.4	2.5
Mental disorders (290-319)	269	431	700	2.2	15.7
Diseases of the nervous system and sense organs (320-389)	385	386	771	2.5	17.3
Diseases of the circulatory system (390-459)	6,457	6,772	13,229	42.4	296.3
Ischaemic heart disease (410-414)	4,036	3,294	7,330	23.5	164.2
Cerebrovascular disease (430-438)	1,119	1,863	2,982	9.6	66.8
Diseases of the respiratory system (460-519)	1,420	981	2,401	7.7	53.8
Diseases of the digestive system (520-579)	465	465	930	3.0	20.8
Diseases of the genito-urinary system (580-629)	239	250	489	1.6	11.0
Complications of pregnancy, childbirth and the puerperium (630-676)	—	2	2	(c)	
Diseases of the skin and subcutaneous tissue (680-709)	16	18	34	0.1	0.8
Diseases of the musculoskeletal system and connective tissue (710-739)	65	112	177	0.6	4.0
Congenital anomalies (740-759)	99	94	193	0.6	4.3
Certain conditions originating in the perinatal period (760-779)	100	56	156	0.5	3.5
Symptoms, signs and ill-defined conditions (780-799)	54	62	116	0.4	2.6
Accidents, poisonings and violence (E800-E999)	1,172	458	1,630	5.2	36.5
Motor vehicle traffic accidents (E810-E819)	319	143	462	1.5	10.3
All causes of death	16,389	14,808	31,197	..	698.8

(a) Classified according to the Ninth edition of the World Health Organization's International Classification of Diseases (ICD). (b) Rates are calculated on the number of deaths per 100,000 estimated mean resident population. (c) Less than 0.1 per cent of all deaths.

TABLE 19. AGE-SPECIFIC DEATH RATES(a), VICTORIA

Age group (years)	1988	1989	1990	1991	r1992	1993
MALES						
Under 1	9.2	7.7	9.2	7.5	6.6	6.1
1 - 4	0.4	0.4	0.6	0.3	0.4	0.5
5 - 9	0.2	0.2	0.2	0.2	0.2	0.1
10 - 14	0.2	0.3	0.2	0.3	0.2	0.2
15 - 19	1.1	1.0	0.8	0.8	0.7	0.8
20 - 24	1.5	1.4	1.2	1.3	1.0	1.2
25 - 29	1.4	1.4	1.3	1.2	1.2	1.0
30 - 34	1.5	1.4	1.3	1.2	1.2	1.2
35 - 39	1.3	1.6	1.4	1.4	1.4	1.2
40 - 44	2.3	1.8	2.0	1.9	2.0	1.8
45 - 49	3.0	3.2	2.8	3.1	3.0	2.9
50 - 54	5.4	5.5	4.7	4.6	4.9	4.7
55 - 59	9.2	9.8	9.0	9.1	8.4	7.8
60 - 64	16.3	16.3	15.5	15.8	14.7	14.1
65 - 69	25.3	27.5	25.8	24.1	24.4	22.6
70 - 74	44.3	44.6	41.6	40.4	39.4	38.0
75 - 79	71.5	71.7	66.8	65.2	66.2	63.6
80 - 84	111.1	112.0	100.6	109.6	104.7	97.4
85 and over	189.1	195.5	183.3	170.5	187.6	181.5
FEMALES						
Under 1	6.4	5.4	6.9	5.6	4.7	4.6
1 - 4	0.4	0.4	0.3	0.2	0.3	0.4
5 - 9	0.1	0.2	0.1	0.2	0.1	0.1
10 - 14	0.1	0.2	0.2	0.1	0.1	0.2
15 - 19	0.4	0.4	0.4	0.3	0.3	0.3
20 - 24	0.5	0.5	0.4	0.5	0.4	0.4
25 - 29	0.5	0.4	0.4	0.5	0.3	0.4
30 - 34	0.6	0.7	0.5	0.6	0.5	0.5
35 - 39	0.8	0.8	0.7	0.8	0.7	0.7
40 - 44	1.2	1.4	1.0	1.1	1.2	1.0
45 - 49	2.0	1.9	1.7	1.8	1.8	1.5
50 - 54	3.0	3.2	3.1	3.3	2.7	2.5
55 - 59	5.4	4.9	4.7	4.8	4.7	4.6
60 - 64	8.4	8.4	8.1	7.7	7.1	7.3
65 - 69	13.5	13.6	13.3	13.2	12.5	12.0
70 - 74	22.5	24.2	22.5	22.3	21.2	21.0
75 - 79	40.7	42.0	38.9	38.4	38.8	36.4
80 - 84	69.8	73.1	68.6	66.0	69.8	64.2
85 and over	145.8	160.4	149.2	143.1	151.9	143.9

(a) Rates are calculated on the estimated mid-year resident population for each age group by sex.

TABLE 20. EXPECTATION OF LIFE(a)

Age (years)	Victoria								Australia 1993(p)	
	1971		1981		1992		1993(p)			
	Male	Female	Male	Female	Male	Female	Male	Female	Male	Female
0	68.59	75.20	71.90	78.41	74.82	80.74	75.39	81.07	74.99	80.86
5	64.85	71.44	67.83	74.20	70.42	76.22	70.99	76.56	70.64	76.39
10	60.01	66.55	62.91	69.26	65.50	71.25	66.02	71.61	65.70	71.44
15	55.12	61.63	58.00	64.31	60.57	66.30	61.07	66.67	60.76	66.49
20	50.47	56.80	53.26	59.43	55.76	61.40	56.30	61.77	55.98	61.60
25	45.91	51.98	48.59	54.57	51.04	56.51	51.61	56.89	51.29	56.72
30	41.20	47.12	43.85	49.70	46.34	51.60	46.87	52.00	46.60	51.82
35	36.48	42.29	39.08	44.84	41.60	46.71	42.13	47.11	41.90	46.95
40	31.80	37.52	34.34	40.01	36.87	41.86	37.39	42.28	37.20	42.13
45	27.28	32.88	29.72	35.29	32.22	37.09	32.69	37.48	32.53	37.35
50	23.04	28.43	25.29	30.71	27.67	32.42	28.13	32.73	27.97	32.65
55	19.11	24.10	21.16	26.25	23.27	27.82	23.74	28.11	23.59	28.08
60	15.51	19.91	17.35	21.98	19.17	23.40	19.58	23.70	19.49	23.68
65	12.31	16.04	13.88	17.97	15.44	19.16	15.81	19.48	15.73	19.49
70	9.59	12.49	10.83	14.26	12.11	15.22	12.42	15.53	12.38	15.55
75	7.33	9.44	8.30	10.93	9.23	11.65	9.48	11.97	9.46	11.98
80	5.53	6.98	6.27	8.07	6.89	8.61	7.07	8.87	7.03	8.86
85	4.23	5.23	4.66	5.72	5.08	6.20	5.14	6.29	5.14	6.29
90	3.47	4.03	3.47	4.03	3.81	4.38	3.81	4.38	3.81	4.38
95	2.97	3.14	2.97	3.14	3.14	3.29	3.14	3.29	3.14	3.29

(a) The average number of years of life remaining to persons who reach a specified age and are subject to the mortality conditions of the years shown. The populations used in the calculation of these figures are those based on the concept of 'estimated resident population', as defined in the Glossary of Terms. All figures are based on Annual Life Tables calculated by the Australian Bureau of Statistics. These tables are not constructed according to strict actuarial principles, and consequently, it is recommended that they not be used for actuarial purposes. Those wishing to use life tables for actuarial purposes are advised to refer to the official Life Tables prepared by the Australian Government Actuary, published in 1991.

MARRIAGES: SUMMARY OF FINDINGS

Number of marriages

■ There were 27,418 marriages registered in Victoria in 1993, a decrease of 3.6 per cent from the 28,429 marriages registered in 1992.

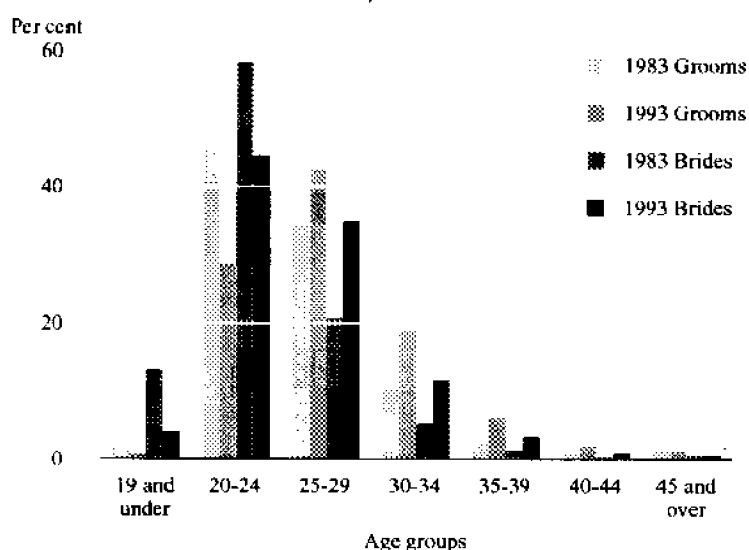
Crude marriage rate

■ The crude marriage rate (the number of marriages per 1,000 of the estimated resident population) also reflected this decrease, dropping from 6.4 in 1992 to 6.1 in 1993.

Age at marriage

■ In 1993, the age at marriage continued to increase. Of those persons marrying for the first time, 70.5 per cent of bridegrooms and 51.5 per cent of brides were aged 25 years and over, compared with 69.2 per cent and 50.3 per cent respectively in 1992.

AGE OF BRIDEGROOMS AND BRIDES AT FIRST MARRIAGE
VICTORIA, 1983 AND 1993



Though the trend towards an older age at marriage was reflected, the median age at marriage for all marriages, remained steady at 28.6 years as in 1992 for bridegrooms, and marginally increased from 26.3 years to 26.4 years for brides in 1993. The median age for first marriage was 27.0 years for bridegrooms and 25.2 for brides.

MEDIAN AGE AT FIRST MARRIAGE, VICTORIA, 1973-1993

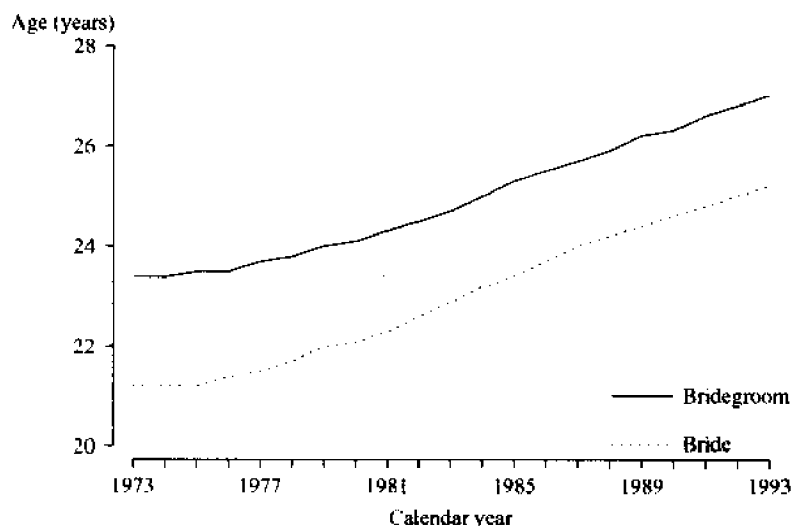


TABLE 23. DEATHS: NUMBERS BY YEAR OF OCCURRENCE, STATES AND TERRITORIES ^p

	NSW	Vic.	Qld	SA	WA	Tas.	NT	ACT(a)	Other territories	Australia
1988	43,466	31,033	19,109	10,704	9,401	3,587	672	1,007	—	118,979
1989	45,912	32,216	20,507	11,475	9,646	3,732	740	1,032	—	125,260
1990	43,065	30,705	19,288	10,838	9,419	3,733	812	1,076	—	118,936
1991	42,548	30,952	19,074	11,139	9,301	3,631	771	1,122	—	118,538
1992	43,988	31,723	20,430	11,239	9,981	3,742	758	1,047	—	122,908
1993	42,492	31,066	20,034	11,323	10,274	3,625	738	1,128	7	120,687

TABLE 24. CRUDE DEATH RATES BY YEAR OF OCCURRENCE, STATES AND TERRITORIES ^p

	NSW	Vic.	Qld	SA	WA	Tas.	NT	ACT(a)	Other territories	Australia
1988(b)	7.6	7.3	7.0	7.6	6.1	7.9	4.2	3.7	—	7.2
1989(b)	7.9	7.5	7.3	8.1	6.1	8.2	4.6	3.7	—	7.4
1990(b)	7.4	7.0	6.7	7.6	5.8	8.1	5.0	3.8	—	7.0
1991(b)	7.2	7.0	6.4	7.7	5.7	7.8	4.6	3.9	—	6.9
1992	7.4	7.1	6.7	7.7	6.0	8.0	4.5	3.6	—	7.0
1993	7.1	7.0	6.4	7.7	6.1	7.7	4.4	3.8	—	6.8

TABLE 25. DEATHS(s): AGE SPECIFIC DEATH RATES
BY SEX AND YEAR OF OCCURRENCE, VICTORIA ^p

Age group (years)	Males			Females		
	1990	1991	1993	1990	1991	1993
Under 1	7.1	6.5	5.4	4.8	4.8	4.2
1-4	0.4	0.4	0.4	0.3	0.3	0.4
5-9	0.2	0.2	0.1	0.2	0.1	0.1
10-14	0.3	0.2	0.2	0.2	0.1	0.2
15-19	0.8	0.7	0.8	0.3	0.3	0.3
20-24	1.2	1.0	1.1	0.4	0.4	0.4
25-29	1.1	1.2	0.9	0.5	0.3	0.4
30-34	1.1	1.1	1.1	0.5	0.4	0.5
35-39	1.4	1.3	1.2	0.8	0.6	0.7
40-44	1.9	2.0	1.7	1.1	1.2	1.0
45-49	3.2	2.9	2.9	1.8	1.8	1.4
50-54	4.5	5.0	4.6	3.3	2.6	2.5
55-59	9.2	8.3	7.7	4.7	4.8	4.5
60-64	15.6	14.5	14.1	7.5	7.1	7.3
65-69	24.2	24.3	22.5	13.1	12.5	12.1
70-74	39.5	39.6	38.1	22.1	21.0	20.9
75-79	65.3	64.7	63.7	37.9	38.6	36.1
80-84	108.7	105.2	96.9	66.1	69.2	64.3
85 and over	170.5	187.2	180.9	143.3	151.0	145.3

January 1995

Demography Victoria 1993

Stuart Jackson
Deputy Commonwealth Statistician

TABLE 27. MARRIAGES: AGE AND MARITAL STATUS SPECIFIC MARRIAGE RATES(a)
VICTORIA, CENSUS YEARS

Age at marriage	1961	1966	1971	1976	1981	1986	1991
First marriages:							
Age of bridegroom (years):							
15 - 19	8.8	12.6	13.6	8.4	4.5	1.9	1.4
20 - 24	123.0	147.1	185.5	130.0	92.2	65.6	44.5
25 - 29	171.0	220.8	209.6	152.7	128.8	119.1	105.9
30 - 34	102.7	115.6	110.0	92.1	86.3	86.6	81.5
35 - 39	52.7	53.7	56.9	51.8	45.9	46.2	48.0
40 - 44	29.0	28.9	28.2	28.8	24.3	23.5	24.6
45 - 49	21.2	16.2	14.1	17.7	14.3	15.9	14.1
50 and over	6.5	6.0	5.7	6.5	5.8	5.1	3.4
Age of bride (years):							
15 - 19	50.5	55.6	65.0	44.6	25.9	12.7	7.2
20 - 24	268.1	273.9	300.2	194.8	143.0	112.1	79.0
25 - 29	201.8	203.9	194.5	142.9	125.3	130.2	121.2
30 - 34	100.5	101.7	93.4	93.7	70.3	79.4	75.6
35 - 39	51.0	49.6	51.9	52.3	41.0	43.0	40.5
40 - 44	23.9	22.9	27.6	30.1	20.5	23.9	15.9
45 - 49	15.5	15.2	11.4	16.8	13.9	10.4	10.9
50 and over	3.5	2.9	2.8	3.7	2.1	2.3	2.3
Remarriages:							
Age of bridegroom (years):							
15 - 19							
20 - 24	243.2	131.7	131.7	255.8	197.8	102.8	35.7
25 - 29	261.5	419.9	351.0	401.7	247.6	195.1	143.6
30 - 34	249.7	320.5	298.1	346.4	210.3	179.0	150.2
35 - 39	168.5	205.1	206.4	298.6	171.9	144.0	114.0
40 - 44	114.4	120.7	145.3	223.2	129.5	112.5	91.2
45 - 49	95.9	102.9	96.8	167.7	95.3	97.1	71.6
50 - 54	68.1	71.6	68.0	118.2	71.6	80.5	58.5
55 - 59	45.8	61.1	56.2	84.9	53.2	57.5	45.2
60 and over	16.2	16.4	17.4	22.9	16.8	14.0	13.8
Age of bride (years):							
15 - 19	142.9	16.7	43.5	111.1	98.4	30.5	9.8
20 - 24	310.9	294.6	322.0	338.1	225.8	164.6	92.4
25 - 29	305.2	301.7	300.7	312.9	194.8	169.1	140.4
30 - 34	185.1	217.6	162.4	219.0	136.3	130.5	109.9
35 - 39	116.2	107.3	98.9	138.5	92.3	85.6	75.6
40 - 44	61.6	66.7	68.4	104.6	68.2	58.2	48.3
45 - 49	38.7	46.2	43.0	67.4	46.2	49.7	38.3
50 - 54	21.4	19.5	25.3	34.9	24.8	27.9	25.2
55 - 59	11.3	13.3	11.6	18.3	13.5	15.0	12.0
60 and over	2.7	3.0	2.8	3.3	2.6	2.5	2.3

(a) Per 1,000 of the appropriate population. See paragraph 1 of the Glossary of Terms.

TABLE 28. MARRIAGES : RELATIVE PREVIOUS MARITAL STATUS OF PARTIES
VICTORIA 1993

Previous marital status of bridegroom	Previous marital status of bride						All brides	
	Never married		Widowed		Divorced			
	Number	Per cent	Number	Per cent	Number	Per cent	Number	Per cent
Never married	19,195	70.0	153	0.6	2,087	7.6	21,435	78.2
Widowed	99	0.4	253	0.9	269	1.0	621	2.3
Divorced	2,398	8.7	278	1.0	2,686	9.8	5,362	19.6
All bridegrooms	21,692	79.1	684	2.5	5,042	18.4	27,418	100.0

TABLE 29. MARRIAGES : AGE AND PREVIOUS MARITAL STATUS OF PARTIES
VICTORIA 1993

Age at marriage (years)	Previous marital status							
	Bridegrooms				Brides			
	Never married	Widowed	Divorced	Total	Never married	Widowed	Divorced	Total
17 and under	5	—	—	5	46	—	—	46
18	42	—	—	42	317	—	—	317
19	123	—	—	123	495	—	3	498
20	327	—	3	330	1,003	—	2	1,005
21	696	—	1	697	1,664	1	9	1,674
22	1,253	—	3	1,256	2,277	—	24	2,301
23	1,726	—	7	1,733	2,400	3	37	2,440
24	2,152	—	23	2,175	2,317	3	79	2,399
25	2,185	—	39	2,224	2,157	2	83	2,242
26	2,140	—	56	2,196	1,788	5	134	1,927
27	1,825	2	83	1,910	1,467	6	169	1,642
28	1,535	1	101	1,637	1,196	7	172	1,375
29	1,410	4	142	1,556	948	10	229	1,187
30-34	4,057	18	1,082	5,157	2,537	53	1,186	3,776
35-39	1,278	19	1,066	2,363	735	46	1,020	1,801
40-44	400	33	975	1,408	215	57	799	1,071
45-49	151	63	787	1,001	72	85	570	727
50-54	54	64	480	598	31	80	311	422
55-59	37	81	255	373	15	92	121	228
60 and over	39	336	259	634	12	234	94	340
All ages	21,435	621	5,362	27,418	21,692	684	5,042	27,418

TABLE 30. MARRIAGES : RELATIVE AGES OF PARTIES, VICTORIA 1993

Age group of bridegroom (years)	Age group of bride (years)													All ages
	16 and under	17	18	19	20-24	25-29	30-34	35-39	40-44	45-49	50-54	55-59	60 and over	
18 and under	2	5	17	5	12	3	3	—	—	—	—	—	—	47
19	2	6	23	24	62	4	—	1	—	1	—	—	—	123
20-24	4	20	178	305	4,504	1,018	121	34	4	3	—	—	—	6,191
25-29	2	4	80	128	4,034	4,298	790	144	33	6	3	1	—	9,523
30-34	—	1	14	26	925	2,198	1,478	381	110	17	6	1	—	5,157
35-39	—	—	5	7	194	585	823	528	158	52	6	4	1	2,363
40-44	—	—	—	1	57	181	353	392	282	108	29	4	1	1,408
45-49	—	—	—	1	17	55	138	208	277	219	71	15	—	1,001
50-54	—	—	—	—	10	20	47	75	127	170	112	29	8	598
55-59	—	—	—	—	2	8	17	24	51	89	98	57	27	373
60 and over	—	—	—	1	2	3	6	14	29	62	97	117	303	634
All ages	10	36	317	498	9,819	8,373	3,776	1,801	1,071	727	422	228	340	27,418

TABLE 31. MARRIAGES : RELATIVE BIRTHPLACES OF PARTIES, VICTORIA 1993

Country of birth	<i>Bridegroom born in country shown and bride born in</i>				<i>Bride born in country shown and bridegroom born in</i>			
	<i>Australia</i>	<i>Same overseas country</i>	<i>Different overseas country</i>	<i>Total</i>	<i>Australia</i>	<i>Same overseas country</i>	<i>Different overseas country</i>	<i>Total</i>
OCEANIA AND ANTARCTICA—								
Australia	17,876	—	2,600	20,476	17,876	—	3,268	21,144
Fiji	14	22	6	42	21	22	16	59
New Zealand	278	51	67	396	238	51	66	355
Other	37	25	10	72	28	25	22	75
<i>Total</i>	<i>18,205</i>	<i>98</i>	<i>2,683</i>	<i>20,986</i>	<i>18,163</i>	<i>98</i>	<i>3,372</i>	<i>21,633</i>
EUROPE AND FORMER USSR—								
Austria	9	4	14	27	14	4	7	25
Former USSR & Baltic States	6	72	11	89	16	72	20	108
Former Yugoslav Republics	181	131	56	368	102	131	41	274
Germany	104	31	56	191	73	31	42	146
Greece	144	32	39	215	78	32	30	140
Hungary	17	4	8	29	9	4	11	24
Ireland	56	10	15	81	26	10	10	46
Italy	209	43	49	301	101	43	35	179
Malta	56	17	15	88	28	17	13	58
Netherlands	84	18	21	123	69	18	13	100
Poland	21	54	20	95	20	54	16	90
United Kingdom	1,193	237	219	1,649	911	237	125	1,273
Other	139	65	77	281	97	65	72	234
<i>Total</i>	<i>2,219</i>	<i>718</i>	<i>600</i>	<i>3,537</i>	<i>1,544</i>	<i>718</i>	<i>435</i>	<i>2,697</i>
MIDDLE EAST AND NORTH AFRICA—								
Egypt	32	20	14	66	9	20	18	47
Lebanon	61	72	18	151	27	72	14	113
Turkey	36	53	15	104	9	53	11	73
Other	52	20	35	107	18	20	26	64
<i>Total</i>	<i>181</i>	<i>165</i>	<i>82</i>	<i>428</i>	<i>63</i>	<i>165</i>	<i>69</i>	<i>297</i>
SOUTHEAST ASIA—								
Indonesia	17	31	15	63	8	31	22	61
Malaysia	31	51	54	136	55	51	53	159
Philippines	9	75	2	86	124	75	73	272
Singapore	16	6	10	32	12	6	16	34
Thailand	—	3	5	8	24	3	10	37
Viet Nam	2	706	65	773	19	706	74	799
Other	8	43	17	68	11	43	29	83
<i>Total</i>	<i>83</i>	<i>915</i>	<i>168</i>	<i>1,166</i>	<i>253</i>	<i>915</i>	<i>277</i>	<i>1,445</i>
NORTHEAST ASIA—								
China	18	192	77	287	74	192	97	363
Hong Kong	13	37	29	79	12	37	32	81
Other	8	20	8	36	35	20	33	88
<i>Total</i>	<i>39</i>	<i>249</i>	<i>114</i>	<i>402</i>	<i>121</i>	<i>249</i>	<i>162</i>	<i>532</i>
SOUTHERN ASIA—								
India	56	58	26	140	52	58	30	140
Sri Lanka	44	82	20	146	22	82	23	127
Other	27	22	21	70	4	22	3	29
<i>Total</i>	<i>127</i>	<i>162</i>	<i>67</i>	<i>356</i>	<i>78</i>	<i>162</i>	<i>56</i>	<i>296</i>
THE AMERICAS—								
Canada	40	1	6	47	38	1	13	52
Chile	23	20	7	50	18	20	15	53
United States of America	90	7	20	117	75	7	14	96
Other	39	40	27	106	31	40	28	99
<i>Total</i>	<i>192</i>	<i>68</i>	<i>60</i>	<i>320</i>	<i>162</i>	<i>68</i>	<i>70</i>	<i>300</i>
AFRICA (Excluding North Africa)—								
South Africa	40	15	16	71	48	15	21	84
Other	57	61	33	151	44	61	29	134
<i>Total</i>	<i>97</i>	<i>76</i>	<i>49</i>	<i>222</i>	<i>92</i>	<i>76</i>	<i>50</i>	<i>218</i>
Other and not stated	1	—	—	1	—	—	—	—
Total	21,144	2,451	3,823	27,418	20,476	2,451	4,491	27,418

TABLE 32. MARRIAGES : CATEGORY OF RITE BY PREVIOUS MARITAL STATUS OF PARTIES
VICTORIA 1993

Category of rite	Previous marital status of bridegroom			Previous marital status of bride		
	Never married	Widowed	Divorced	Never married	Widowed	Divorced
Religious (a):						
Anglican	2,853	71	562	2,984	69	433
Baptist	356	19	79	356	12	86
Catholic	6,139	81	200	6,178	90	152
Churches of Christ	305	13	68	304	14	68
Lutheran	160	4	44	169	5	34
Orthodox	1,084	7	89	1,098	7	75
Presbyterian	226	6	50	236	7	39
Uniting Church	1,997	68	470	2,093	61	381
Other denominations	1,260	46	356	1,269	52	341
<i>All religious rites</i>	<i>14,380</i>	<i>315</i>	<i>1,918</i>	<i>14,687</i>	<i>317</i>	<i>1,609</i>
Civil:						
Official registrars	1,344	39	574	1,343	62	552
Other civil celebrants	5,711	267	2,870	5,662	305	2,881
<i>All civil rites</i>	<i>7,055</i>	<i>306</i>	<i>3,444</i>	<i>7,005</i>	<i>367</i>	<i>3,433</i>
All rites	21,435	621	5,362	21,692	684	5,042
Per cent	78.2	2.3	19.6	79.1	2.5	18.4

(a) Recognised denominations under authority of the Australian Marriage Act 1961.

TABLE 33. MARRIAGES : CATEGORY OF RITE BY ORDER OF MARRIAGE, VICTORIA 1993

Category of rite	Order of marriage		All marriages	Percentage of all marriages	Ministers of religion and civil celebrants registered at 1 January 1993
	First(a)	Other			
Religious (b):					
Anglican	2,633	853	3,486	12.7	831
Baptist	321	133	454	1.7	317
Catholic	5,997	423	6,420	23.4	1248
Churches of Christ	274	112	386	1.4	239
Lutheran	145	63	208	0.8	75
Orthodox	1,041	139	1,180	4.3	104
Presbyterian	212	70	282	1.0	144
Uniting Church	1,803	732	2,535	9.2	774
Other denominations	1,108	554	1,662	6.1	971
<i>All religious rites</i>	<i>13,534</i>	<i>3,079</i>	<i>16,613</i>	<i>60.6</i>	<i>4,703</i>
Civil:					
Official registrars	1,099	858	1,957	7.1	37
Other civil celebrants	4,562	4,286	8,848	32.3	171
<i>All civil rites</i>	<i>5,661</i>	<i>5,144</i>	<i>10,805</i>	<i>39.4</i>	<i>208</i>
All rites	19,195	8,223	27,418	100.0	4,911
Per cent	70.0	30.0	100.0

(a) First marriage for both bridegroom and bride. (b) Recognised denominations under authority of the Australian Marriage Act 1961.

TABLE 34. REMARRIAGES BY NUMBER OF PREVIOUS MARRIAGES AND
NUMBER OF CHILDREN 15 AND UNDER, VICTORIA 1993

Number of previous marriages	Number of children 15 and under					All parties(a)	All children(b)
	0	1	2	3	4 or more		
BRIDEGROOMS							
One	3,340	970	741	193	36	5,284	3,181
Two	419	113	85	22	5	644	371
Three or more	35	9	9	1	1	55	34
All bridegrooms remarrying(a)	3,794	1,092	835	216	42	5,983	3,586
BRIDES							
One	3,150	920	706	228	48	5,052	3,219
Two	406	108	76	22	7	619	358
Three or more	37	7	9	2	—	55	31
All brides remarrying(a)	3,593	1,035	791	252	55	5,726	3,608

(a) Includes records with values of 'not stated'. (b) Excludes records with values of 'not stated'.

TABLE 35. REMARRIAGES BY INTERVAL TO REMARRIAGE AND REASON
FOR TERMINATION OF LAST MARRIAGE, VICTORIA 1993

Interval between termination of last marriage and remarriage (years)	Reason for termination of last marriage					
	Bridegrooms			Brides		
	Death of spouse	Divorce	Total	Death of spouse	Divorce	Total
Less than 1	17	923	940	10	731	741
1	83	1,163	1,246	56	1,019	1,075
2	115	746	861	80	667	747
3	97	562	659	73	503	576
4	74	399	473	60	353	413
Total 0-4 years	386	3,793	4,179	279	3,273	3,552
5	50	317	367	63	323	386
6	50	213	263	63	253	316
7	36	174	210	43	184	227
8	22	153	175	42	173	215
9	14	120	134	22	147	169
Total 5-9 years	172	977	1,149	233	1,080	1,313
10-14	38	387	425	92	449	541
15-19	18	161	179	38	198	236
20 and over	7	42	49	42	41	83
Not stated	—	2	2	—	1	1
All remarriages	621	5,362	5,983	684	5,042	5,726

DIVORCES: SUMMARY OF FINDINGS

Number of divorces

■ Based on state of usual residence, there were 10,935 divorces granted in Victoria in 1993 and the crude divorce rate was 2.4.

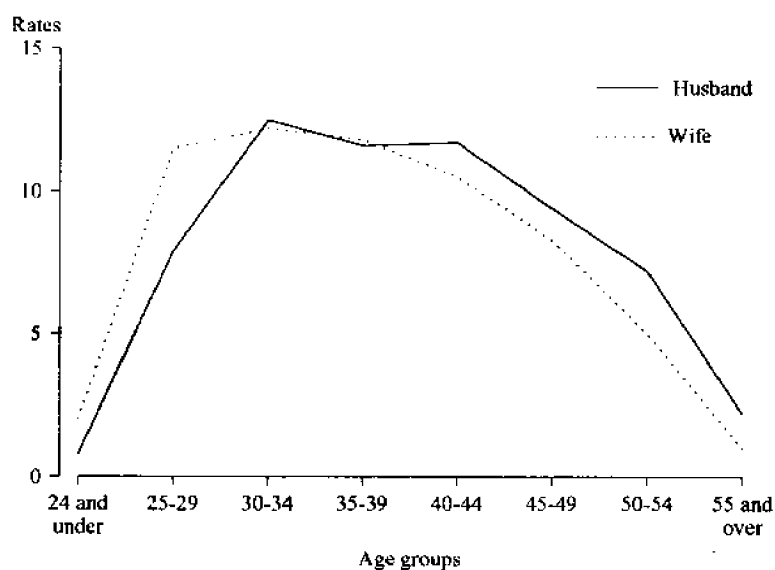
Median age at divorce

■ In 1993 the median age at divorce was 38.9 years for husbands and 36.3 years for wives.

Age specific divorce rate

■ The highest age specific divorce rates were in the 30 to 34 year age group, the rates being 12.5 for husbands and 12.2 for wives.

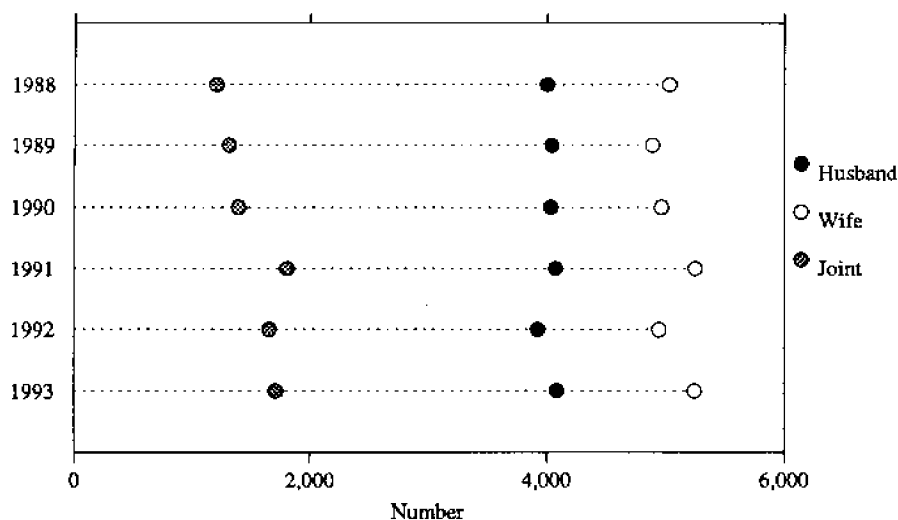
AGE SPECIFIC DIVORCE RATES, VICTORIA 1993



Application for divorce

■ The proportion of divorces resulting from joint applications was 15.5 per cent in 1993. Applications lodged by husbands accounted for 37.4 per cent, and by wives 47.1 per cent, of the divorces granted.

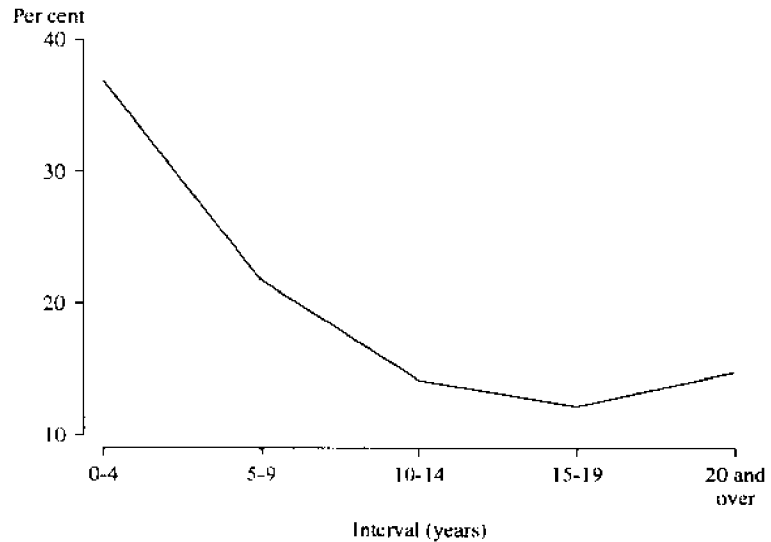
APPLICANTS AT DIVORCE PROCEEDINGS, VICTORIA, 1988-1993



Interval between marriage and final separation

■ Nearly 36.9 per cent of the couples who divorced in 1993 had separated within 0-4 years of marriage (the most common interval was between two and three years), and more than 58.7 per cent had separated within 0-9 years. The median interval between marriage and separation was 7.7 years.

INTERVAL BETWEEN MARRIAGE AND FINAL SEPARATION
OF COUPLES, VICTORIA, 1993



Children of the marriage

■ The average number of children per divorce, involving at least one child under the age of eighteen, has remained steady since 1987 (at 1.9). There were 11,012 children who were dependants of persons divorcing in 1993, compared with 10,470 in 1992.

Birthplaces of divorcees

■ In 1993 of the divorces granted 56.0 per cent involved partners who were both born in Australia and 23.5 per cent had one non Australian partner.

**TABLE 37. DIVORCES : AGE AT MARRIAGE BY
DURATION OF MARRIAGE, VICTORIA 1993**

Duration of marriage (years)	Age group (years)								All ages (a)
	19 and under	20-24	25-29	30-34	35-39	40-44	45-49	50 and over	
HUSBANDS									
1	7	22	43	27	11	8	3	17	138
2	22	156	194	91	46	20	23	28	584
3	23	244	254	112	64	41	26	37	801
4	29	264	248	107	50	35	24	23	781
5	15	219	220	80	53	26	21	20	654
6	13	236	210	75	40	23	12	16	626
7	9	223	191	87	38	31	12	14	606
8	18	208	152	63	39	12	15	17	524
9	15	193	135	54	29	20	8	17	471
10-14	81	834	497	240	106	43	30	31	1,863
15-19	94	788	343	105	39	27	17	13	1,427
20 and over	196	1,465	587	133	49	14	7	5	2,460
All divorces	522	4,852	3,074	1,174	564	300	198	238	10,935
WIVES									
1	14	43	38	14	16	3	1	9	138
2	75	234	144	51	27	21	18	14	584
3	77	325	192	73	55	42	17	20	801
4	101	325	182	77	38	27	17	14	781
5	72	295	142	65	33	21	13	11	654
6	73	296	129	60	35	21	6	5	626
7	73	287	133	57	24	15	8	8	606
8	73	255	102	43	25	16	4	6	524
9	73	224	84	54	22	5	4	5	471
10-14	354	888	358	153	56	31	17	6	1,863
15-19	468	661	188	66	19	11	9	4	1,427
20 and over	834	1,319	222	44	21	7	7	2	2,460
All divorces	2,287	5,152	1,914	757	371	220	121	104	10,935

(a) Includes records where age was not stated.

TABLE 38. DIVORCES : AGE AT FINAL SEPARATION AND INTERVAL BETWEEN MARRIAGE
AND FINAL SEPARATION, VICTORIA 1993

Interval (years)	Age group (years)									Not stated	All ages
	19 and under	20-24	25-29	30-34	35-39	40-44	45-49	50-54	55 and over		
HUSBANDS											
Under 1	22	174	263	132	75	44	28	19	37	4	798
1	4	218	327	163	100	43	32	15	18	3	923
2	2	141	410	192	93	42	28	28	24	—	960
3	—	61	317	182	67	49	23	16	17	—	732
4	—	31	242	190	65	47	22	12	16	—	625
5	—	5	223	181	83	44	23	14	14	1	588
6	—	1	164	181	79	49	18	8	20	—	520
7	—	1	102	172	85	34	21	12	20	—	447
8	—	1	56	196	94	43	20	14	15	—	439
9	—	—	26	185	91	35	27	7	12	1	384
10-14	—	—	10	465	644	258	77	45	59	—	1,558
15-19	—	—	—	19	520	562	146	55	34	2	1,338
20 and over	—	—	—	—	10	399	559	345	308	2	1,623
Total	28	633	2,140	2,258	2,006	1,649	1,024	590	594	13	10,935
WIVES											
Under 1	73	285	205	83	60	37	25	15	13	2	798
1	43	335	289	107	69	36	21	12	11	—	923
2	16	310	341	130	67	40	26	17	13	—	960
3	5	180	302	126	57	26	21	8	7	—	732
4	—	105	298	108	61	27	15	6	5	—	625
5	—	55	279	136	67	26	11	6	6	2	588
6	—	25	235	147	62	25	13	6	7	—	520
7	—	8	182	151	49	31	12	7	7	—	447
8	—	3	147	160	77	34	12	6	—	—	439
9	—	1	104	170	61	26	7	7	7	1	384
10-14	—	—	99	772	426	153	58	21	29	—	1,558
15-19	—	—	—	123	764	342	78	14	15	2	1,338
20 and over	—	—	—	—	116	624	481	211	189	2	1,623
Total	137	1,307	2,481	2,213	1,936	1,427	780	336	309	9	10,935

TABLE 39. DIVORCES : RELATIVE AGE AT DIVORCE, VICTORIA 1993

Age group of husband (years)	Age group of wife (years)									Total
	24 and under	25-29	30-34	35-39	40-44	45-49	50-54	55 and over	Not stated	
24 and under	153	50	9	1	1	—	—	—	—	214
25-29	330	839	163	28	10	5	2	—	—	1,377
30-34	106	868	1,069	200	42	13	4	3	—	2,305
35-39	21	192	734	859	144	30	8	2	1	1,991
40-44	8	49	208	703	765	132	20	4	1	1,890
45-49	—	12	51	183	545	513	73	12	—	1,389
50-54	1	9	16	44	140	366	211	40	—	827
55 and over	—	6	14	22	57	142	235	452	1	929
Not stated	—	3	—	3	—	—	1	—	6	13
Total	619	2,028	2,264	2,043	1,704	1,201	554	513	9	10,935

TABLE 40. DIVORCES : NUMBER OF CHILDREN OF THE MARRIAGE(a), AVERAGE NUMBER OF CHILDREN AND DURATION OF MARRIAGE, VICTORIA 1993

Duration of marriage (years)	Number of children					All divorces (b)	All children (c)	Average number of children (c)
	0	1	2	3	4 or more			
Under 2	110	19	4	3	2	138	44	1.6
2	455	89	29	9	2	584	184	1.4
3	578	152	51	15	5	801	320	1.4
4	523	174	68	12	4	781	365	1.4
5	372	156	101	18	7	654	440	1.6
6	322	152	119	24	9	626	499	1.6
7	254	165	141	35	11	606	596	1.7
8	199	131	130	48	16	524	603	1.9
9	153	101	171	36	10	471	595	1.9
10-14	432	335	733	286	77	1,863	2,989	2.1
15-19	242	211	572	299	103	1,427	2,696	2.3
20 and over	1,424	554	349	108	25	2,460	1,681	1.6
Total	5,064	2,239	2,468	893	271	10,935	11,012	1.9

(a) See Glossary of Terms for definitions used in this table. (b) Total includes any records where the number and ages of children were not stated. (c) Excludes those records where the numbers and ages of children were not stated.

TABLE 41. DIVORCES : AGE OF YOUNGEST CHILD AND DURATION OF MARRIAGE VICTORIA 1993

Duration of marriage (years)	Age of youngest child								All divorces involving children (a)
	Under 1	1	2	3	4	5-9	10-14	15-17	
Under 2	7	3	6	3	1	7	1	—	28
2	15	43	29	8	7	14	7	6	129
3	8	34	85	33	15	21	19	7	223
4	4	28	65	85	25	25	18	8	258
5	2	24	56	64	67	44	19	5	282
6	5	20	55	59	53	85	21	6	304
7	3	17	44	59	67	137	18	7	352
8	1	15	41	50	68	136	8	6	325
9	4	11	26	30	42	189	14	2	318
10-14	13	25	53	90	129	856	244	21	1,431
15-19	8	10	12	21	27	434	572	101	1,185
20 and over	2	2	2	2	7	132	454	435	1,036
Total(b)	72	232	474	504	508	2,080	1,395	604	5,871

(a) Total includes any records where the age of the youngest child was not stated. (b) Includes any records where the duration of marriage is not stated.

TABLE 42. DIVORCES : RELATIVE BIRTHPLACES OF PARTIES, VICTORIA 1993

Country of birth	Husband born in country shown and wife born in				Wife born in country shown and husband born in			
	Australia	Same overseas country	Different overseas country	Total	Australia	Same overseas country	Different overseas country	Total
OCEANIA AND ANTARCTICA—								
Australia	6,128	—	1,049	7,177	6,128	—	1,519	7,647
Fiji	18	19	6	43	18	19	21	58
New Zealand	84	64	26	174	75	64	40	179
Other	14	5	2	21	8	5	7	20
Total	6,244	88	1,083	7,415	6,229	88	1,587	7,904
EUROPE AND FORMER USSR—								
Austria	17	3	15	35	8	3	6	17
Former USSR & Baltic States	6	35	11	52	5	35	14	54
Former Yugoslav Republics	74	144	46	264	32	144	18	194
Germany	67	24	29	120	62	24	36	122
Greece	66	68	20	154	21	68	9	98
Hungary	7	19	12	38	4	19	7	30
Ireland	31	15	18	64	22	15	8	45
Italy	86	71	45	202	38	71	22	131
Malta	43	31	11	85	21	31	18	70
Netherlands	70	14	24	108	34	14	9	57
Poland	17	48	10	75	4	48	16	68
United Kingdom	579	287	112	978	439	287	119	845
Other	52	70	41	163	31	70	41	142
Total	1,115	829	394	2,338	721	829	323	1,873
MIDDLE EAST AND NORTH AFRICA—								
Egypt	17	20	16	53	8	20	10	38
Lebanon	23	41	8	72	4	41	5	50
Turkey	13	63	14	90	3	63	5	71
Other	29	16	28	73	5	16	20	41
Total	82	140	66	288	20	140	40	200
SOUTHEAST ASIA—								
Indonesia	11	7	10	28	6	7	4	17
Malaysia	17	20	19	56	11	20	25	56
Philippines	2	35	—	37	52	35	42	129
Singapore	3	6	4	13	4	6	8	18
Thailand	2	1	—	3	5	1	14	20
Viet Nam	4	145	40	189	—	145	23	168
Other	1	13	13	27	—	13	4	17
Total	40	227	86	353	78	227	120	425
NORTHEAST ASIA—								
China	14	64	27	105	21	64	62	147
Hong Kong	4	16	15	35	3	16	13	32
Other	3	5	5	13	7	5	7	19
Total	21	85	47	153	31	85	82	198
SOUTHERN ASIA—								
India	30	26	15	71	9	26	16	51
Sri Lanka	20	30	11	61	7	30	7	44
Other	5	1	1	7	2	1	1	4
Total	55	57	27	139	18	57	24	99
THE AMERICAS—								
Canada	6	2	5	13	10	2	5	17
Chile	3	10	7	20	1	10	5	16
United States of America	20	6	6	32	31	6	8	45
Other	15	24	17	56	18	24	13	55
Total	44	42	35	121	60	42	31	133
AFRICA (Excluding North Africa)—								
South Africa	14	14	7	35	4	14	8	26
Other	24	41	12	77	12	41	13	66
Total	38	55	19	112	16	55	21	92
Other and not stated	8	6	2	16	4	6	1	11
Total	7,647	1,529	1,759	10,935	7,177	1,529	2,229	10,935

TABLE 43. DIVORCES(a)(b) : SUMMARY, REGISTERED IN VICTORIA

	1988	1989	1990	1991	1992	1993
PERSONS						
Divorces granted	10,250	10,253	10,406	11,134	10,533	11,050
Crude divorce rate	2.4	2.4	2.4	2.5	2.4	2.5
Median duration of marriage (years)	10.4	10.2	10.1	10.0	10.4	10.6
Median interval between marriage and final separation (years)	7.6	7.5	7.3	7.3	7.5	7.7
<i>Divorces involving children —</i>						
Number	5,867	5,596	5,712	5,894	5,616	5,905
Percentage of total divorces	57.2	54.6	54.9	52.9	53.3	53.4
Average issue	1.9	1.9	1.9	1.9	1.9	1.9
<i>Applicant</i>						
Husband	4,007	4,046	4,037	4,078	3,927	4,090
Wife	5,038	4,894	4,971	5,250	4,946	5,246
Joint	1,205	1,313	1,398	1,806	1,660	1,714
HUSBANDS						
<i>Age specific divorce rate</i>						
24 and under	1.1	1.0	1.0	1.2	1.0	0.9
25-29	9.2	8.7	8.7	9.3	7.9	7.9
30-34	12.6	12.3	12.3	12.7	11.7	12.5
35-39	12.4	11.5	11.5	11.9	11.6	12.1
40-44	10.5	10.7	10.4	11.0	10.6	11.7
45-49	9.1	9.2	9.1	9.8	9.0	9.5
50-54	6.5	6.7	6.7	7.4	7.3	7.3
55 and over	2.1	2.1	2.1	2.2	2.3	2.2
<i>Marital status at marriage (number)</i>						
Never married	8,666	8,670	8,749	9,380	8,899	9,249
Widowed	115	105	98	108	98	115
Divorced	1,469	1,478	1,559	1,646	1,536	1,686
<i>Total</i>	<i>10,250</i>	<i>10,253</i>	<i>10,406</i>	<i>11,134</i>	<i>10,533</i>	<i>11,050</i>
<i>Median age (years) —</i>						
at marriage	24.4	24.6	24.7	24.8	25.1	25.1
at final separation	34.8	35.1	35.1	35.3	35.8	35.9
at decree made absolute	37.4	37.8	37.9	38.1	38.6	38.9
WIVES						
<i>Age specific divorce rate—</i>						
24 and under	2.7	2.3	2.4	2.6	2.1	2.1
25-29	12.0	12.0	12.0	12.3	11.5	11.5
30-34	12.7	12.2	12.0	12.6	11.7	12.3
35-39	11.4	11.2	11.3	11.5	11.3	12.0
40-44	9.5	9.6	9.6	10.6	9.5	10.6
45-49	7.9	7.5	7.2	8.3	8.2	8.3
50-54	4.4	4.8	4.9	5.0	4.9	5.1
55 and over	1.1	1.0	1.0	1.0	1.0	1.0
<i>Marital status at marriage (number) —</i>						
Never married	8,748	8,747	8,831	9,450	8,923	9,423
Widowed	146	118	114	148	135	124
Divorced	1,356	1,388	1,461	1,536	1,475	1,503
<i>Total</i>	<i>10,250</i>	<i>10,253</i>	<i>10,406</i>	<i>11,134</i>	<i>10,533</i>	<i>11,050</i>
<i>Median age (years) —</i>						
at marriage	21.9	22.1	22.2	22.4	22.5	22.6
at final separation	32.2	32.4	32.5	32.6	33.1	33.3
at decree made absolute	34.8	35.1	35.3	35.4	35.9	36.3

(a) See Glossary of Terms for definitions used. (b) See paragraph 26 of the Explanatory Notes

EXPLANATORY NOTES

Introduction

1 This publication is the fourth in a series replacing the separate publications of Births, Deaths, Marriages and Divorces, which were discontinued after the 1989 issues. It also includes some information on estimated resident population, migration and population projection. For details of publication of other data related to demography, readers should refer to paragraph (35) of these Notes.

2 A Glossary of Terms follows the Explanatory Notes. More detailed definitions are to be found in more specialised publications.

Population

3 This Section provides estimates of the resident population and population projection, with information on overseas arrivals and departures and net interstate migration.

4 Estimates of the Victorian population are made to varying degrees of detail throughout the year, and this publication has used the most up to date estimates available for each particular table.

5 The figures for natural increase in Tables 1 and 3 are those used in the preliminary estimate of the population as at 31 December 1993. These estimates have been rounded to the nearest thousand. The final estimate of population, using final Census and vital statistics data, were published in the March quarter 1993 issue of the *Australian Demographic Statistics Quarterly* (3101.0).

Projections

6 Population projections are published twice in each intercensal period. The latest projections are based on the results of 1991 Census of Population and Housing and relate to the period from 1993-2041.

7 The population projections are not intended as predictions or forecasts; they are illustrations of growth and change in the population which would occur if certain specified assumptions about future demographic trends were realised. While the selection of the assumptions is based on analysis of past demographic trends, both in Australia and overseas, and an assessment of their likely future movement, there is no certainty that any of the assumptions will be realised.

8 Four alternative projections have been provided in recognition of the uncertainty of future movements in demographic trends, and to give users a range of options.

9 The mortality assumptions are the same for all series, while for fertility, a higher rate is assumed for Series A and B. For the migration assumptions, Series A, B, and C have a higher level of overseas migration, while Series B and C have a high level of interstate migration.

10 Full details of the projection assumptions and results are available in *Projections of the Populations of Australia, States and Territories, 1993 to 2041* (3222.0).

Migration

11 Data on overseas arrivals and departures relate to the number of movements of travellers rather than to the number of travellers. However, the statistics exclude the movements of operational air crew and ships' crew, transit passengers who pass through Australia but are not cleared for entry, and passengers on pleasure cruises commencing and finishing in Australia aboard ships not engaged on regular voyages. Estimates of transit sea passengers are no longer available.

12 Data on interstate migration have been derived from aggregated statistical information on interstate changes of addresses advised to the Health Insurance Commission in the process of administering Medicare. The ABS adjusts the Health Insurance Commission data to make allowance for the persons who do not inform the Commission of their changed addresses. Further details are shown in the Explanatory Notes to *Australian Demographic Statistics Quarterly* (3101.0).

Births

13 Birth statistics are presented on the basis of the State or Territory of usual residence of the mother, regardless of where in Australia the birth occurred or was registered.

14 Births to mothers usually resident in Australia which took place overseas are excluded. Births to mothers usually resident overseas which occurred in Australia are included in the State or Territory where the birth occurred.

15 Except for Tables 13 to 16, the statistics in this publication refer to births registered during the calendar year shown. Tables 13 to 16 refer to births which occurred in the years shown and were registered up to 30 June 1994. There is usually an interval between the occurrence and registration of a birth, and some births occurring in one year are not registered until the following year, or even later. However, more than 99 per cent of births occurring in one year are registered by 30 June of the following year.

16 Data on stillbirths (fetal deaths) may be found in *Deaths Victoria* (3312.2) and *Perinatal Deaths, Australia* (3304.0).

17 The live birth statistics used to calculate the fetal and neonatal death rates have been adjusted (in accordance with the WHO definition of perinatal death) to exclude cases where the birthweight was known to be less than 500 grams. However, infant death rates are calculated using all live births registered, because figures are not available for infants who weigh less than 500 grams at birth, and who live for 28 days, but die before they are one year old.

Deaths

18 Death statistics are presented on the basis of the State or Territory of usual residence of the deceased, regardless of where in Australia the death occurred and was registered.

19 Deaths of people normally resident in Victoria, which occurred overseas, are excluded from this publication. Deaths of people usually resident overseas but which occurred in Victoria are included.

20 Except for Tables 23 to 25, the death statistics in this publication refer to deaths registered during the year shown. Tables 23 to 25 refer to deaths which occurred in the years shown, and were registered up to 30 June 1994. There is usually an interval between the occurrence and registration of a death, however, more than 99 per cent of deaths occurring in one year are registered by 30 June of the following year.

21 The Deaths and Perinatal Deaths collections are published in more detail in *Deaths, Victoria* (3312.2).

Marriages

22 The statistics in this publication refer to marriages registered by the Victorian Registrar during the years shown. There is usually an interval of at least some days between the celebration and the registration of a marriage. As a result of the delay in registration, some marriages celebrated in one year are not registered until the following year.

23 Under the *Australian Marriage Act 1961*, marriages may be celebrated by a minister of religion registered as an authorised celebrant, by a district registrar or by other persons authorised by the Attorney-General. Notice of the intended marriage must be given to the celebrant at least one calendar month, and within 6 calendar months, before the marriage. A celebrant must lodge an official certificate of the marriage for registration to a District Registrar in the State in which the marriage took place.

24 From 20 June 1973, the minimum age at which a person may marry without parental or guardian consent has been 18 years. Persons between the age of 16 and 18 years may marry with parental or guardian consent combined with the judicial order.

25 Figures for years before 1966 exclude registered marriages identified as those of full-blood Aborigines. Tribal marriages are excluded from the statistics.

Divorces

26 Under the *Family Law Act 1975*, the only ground on which a divorce may be granted is that of irretrievable breakdown of the marriage. This ground is established by the husband and wife having lived apart for 12 months or more, with there being no reasonable likelihood of reconciliation. Application for nullity of marriage under Family Law legislation must be on the ground that there was a failure to meet a legal requirement, such as that neither party be already lawfully married to another person. There is no provision for judicial separation under Family Law legislation.

27 Successful applicants for a divorce are initially granted a decree *nisi*. This becomes absolute after one month, unless it is rescinded or appealed against, or the Court is not satisfied that proper arrangements have been made for the welfare of any children involved.

28 The statistics shown in this publication are compiled by the ABS from details provided by the Family Court in respect of each application which resulted in the granting of a decree absolute. These details are forwarded to the ABS on finalisation of proceedings.

29 In the interpretation of data, it is important to bear in mind that the availability of judges, and complexity of the cases brought before them can affect the number of decrees granted or made absolute in any one year. A rise in numbers may reflect only the clearing of a backlog of cases from an earlier period.

30 The details of divorces granted in 1993, are for the first time presented on a State or Territory of usual residence at separation basis, in tables 36-41. Divorces granted on Registration basis in Victoria are shown in Table 42 giving a 6 years summary (1988-1993). Details presented on a State of usual residence basis are considered to be a more accurate reflection of divorce on a State basis.

Geographic Boundaries

31 The geographic boundaries for small area data are defined in the *Australian Standard Geographical Classification, Edition 2.1* (1216.0) with effect from January 1991. They equate directly with local government areas, with the sole exception that the Shire of Upper Yarra is divided between Melbourne Statistical Division (Part A) and Gippsland Statistical Division (Part B).

32 The boundaries of statistical local areas used in determining the population are those in existence at 30 June 1991. The boundaries used for Births and Deaths statistics are the SLA boundaries at January 1991.

33 The country of birth tables use the Australian Standard Classification of Countries (ASCCSS) which was developed for Australian users. In this classification, neighbouring countries are grouped into progressively broader geographic areas on the basis of social, cultural, political and economic similarities. The base units of ASCCSS are broadly compatible with those of the United Nations birthplace classification. ASCCSS has been applied to Demographic statistics since January 1990.

Related Publications

34 The format of this publication of demographic statistics is repeated, with minor amendments, across all States and Territories. Each State Demography bulletin has a catalogue number of 3311 and a suffixed number appropriate to the State of publication.

35 Other ABS publications which may be of interest include:

Australian Demographic Statistics (3101.0)
Australian Demographic Trends, 1986 (3102.0)
Australian Standard Classification of Countries for Social Statistics (1269.0)
Births, Australia (3301.0)
Causes of Death, Australia (3303.0)
Census Counts of Small Areas, 1991 (2730.2)
Census of Population and Housing. Counts of Aborigines and Torres Strait Islanders, Australia, States and Territories, 30 June 1971, 1976, 1981 (2164.0)
Deaths, Australia (3302.0)
Deaths, Victoria (3312.2)
Divorces, Australia (3307.0)
Estimated Resident Population by Age and Sex in SLA, Victoria (3204.2)
Estimated Resident Population by Sex and Age; States and Territories of Australia (3201.0)
Estimated Resident Population in Statistical Local Areas, Victoria, Preliminary (3201.2)
Marriages, Australia (3306.0)
Overseas Arrivals and Departures (3404.0)
Perinatal Deaths, Australia (3304.0)
Projections of the Populations of Australia, States and Territories, 1993 to 2041 (3222.0)

Additional statistics and services available

36 In most cases, the ABS can also make available information which is not published. This information may be made available in one or more of the following forms: microfiche, photocopy, data tape, floppy disk, computer printout, or clerically extracted tabulation.

37 Current publications produced by the ABS are listed in the *Catalogue of Publications and Products, Australia* (1101.0). The ABS also issues, on Tuesdays and Fridays, a *Publications Advice* (1105.0) which lists publications to be released in the next few days. These publications are available from any ABS office.

38 Life tables prepared by the Australian Bureau of Statistics are included in Table 20, and summarise mortality expectation relating to the number of deaths registered in 1992. These tables are not constructed according to strict actuarial principles. Readers wishing to use life tables for actuarial purposes are advised to refer to the Official Australian Life Tables 1980-82, prepared by the Australian Government Actuary. These were released in April 1985, and copies are available from the AGPS Bookshop in each State capital city.

Symbols and other usages

p preliminary - figures or series subject to revision
 r figures or series revised since last issue
 — nil or rounded to zero
 . . not applicable

GLOSSARY OF TERMS

Age and marital status specific marriage rates	1 <i>Age and marital status specific marriage rates</i> distinguish first marriages and remarriages, and use as the denominator the appropriate population estimates by age and marital status. Thus, first marriage rates are the numbers of males and females of a certain age marrying for the first time per 1,000 (mid-year) population of never married males and females of the same age. Remarriage rates are based on the number of remarrying males and females per 1,000 widowed or divorced males and females respectively of the same age. These rates for Victoria are calculated on the population census count, as the estimated resident population by marital status by age and sex is calculated only for Australia.
Age specific birth rates	2 <i>Age specific birth rates</i> are the live births registered during the calendar year, according to age of mother, per 1,000 of the estimated mid-year female resident population of the same age. For the purposes of calculating these rates, births to mothers under 15 are included in the 15-19 year age group, and births to mothers aged 50 and over are included in the 45-49 year age group.
Age specific death rate	3 The <i>age specific death rate</i> is the number of deaths at a specified age per 1,000 of the population of that age.
Age specific divorce rate	4 The <i>age specific divorce rate</i> (per 1,000 population) relates the number of divorced parties by age to the estimated mid-year resident population in specific age groups. Males under 18 and females under 16 are excluded from the population.
Birth	5 A <i>birth</i> , unless otherwise stated, is a <i>live birth</i> , i.e., the delivery, irrespective of the duration of pregnancy, of a child who, after being born, breathes or shows any other evidence of life such as a heartbeat. A <i>multiple birth</i> is a <i>confinement</i> (see below) which results in two or more births, at least one of which is liveborn.
Category of movement	6 <i>Category of movement</i> in overseas arrivals and departures is primarily determined by the traveller's own selection of his or her category on the passenger card. This selection is accepted, provided it is consistent with other information on the card.
Children	7 <i>Children</i> are <i>unmarried children of the marriage</i> who were aged under 18 years at the time of application for divorce. Under the <i>Family Law Act 1975</i> , these may include (in certain cases) adopted and ex-nuptial children and children from a former marriage. Children who are married or aged 18 years or more are not subject to custody and guardianship orders and are excluded. In the Marriages collection, the term <i>children</i> refers to persons under 16 years of age born from previous marriages. The term <i>children</i> must not be confused with <i>previous issue</i> , used in the Births collection (see paragraph 36).
Confinement	8 A <i>confinement</i> is a pregnancy which results in at least one live birth. <i>Nuptial first confinements</i> are the first confinements in the current marriage, and do not necessarily represent the woman's first ever confinement resulting in a live birth.
Crude birth rate	9 The <i>crude birth rate</i> is the number of registered live births per 1,000 of the estimated mean resident population, except for Table 2 in which the crude birth rate is measured as the number of registered live births per 1,000 of the mid-year estimated resident population for each statistical local area.
Crude death rate	10 The <i>crude death rate</i> is the number of registered deaths per 1,000 of the estimated mean resident population, except for Table 2 in which the crude death rate is measured as the number of registered deaths per 1,000 of the mid-year estimated resident population for each statistical local area.

Crude divorce rate	11 The <i>crude divorce rate</i> is the number of decrees absolute granted per 1,000 of the estimated mean resident population. (In the interpretation of this rate, it must be kept in mind that a large and varying proportion of the population used in the denominator is unmarried or below the minimum age of marriage.)
Crude marriage rate	12 The <i>crude marriage rate</i> is the number of marriages per 1,000 estimated mean resident population.
Date of final separation	13 <i>Date of final separation</i> is the date, given on the application for divorce, from which the period of living apart is calculated for the purpose of establishing grounds for divorce. In determining the date of final separation, a single period of resumed cohabitation of less than 3 months may be ignored, provided the periods of living apart before and after resumed cohabitation amount to a total of 12 months or more.
Divorce	14 The term <i>divorce</i> , as used in this publication, refers to decrees absolute of dissolution of marriage.
Duration of marriage	15 <i>Duration of marriage</i> is the interval measured in completed years between the date of marriage and the date the marriage ended by decree made absolute or death of the spouse.
Estimated resident population	16 The <i>estimated resident population</i> (ERP) is the official ABS estimate of the Australian population. The ERP for the whole of Victoria is based on the final results of the 1991 population census.
Female net reproduction rate	17 The <i>female net reproduction rate</i> represents the number of daughters a woman would bear if she were subject to the female age-specific fertility and mortality rates of the year shown. It is obtained by multiplying the female age-specific birth rates by the proportion of survivors at corresponding ages in a life table, adding the products and dividing by 1,000.
Fetal deaths	18 <i>Fetal deaths</i> relate to the delivery of a child, weighing at least 500 grams at delivery (or, when birthweight is unavailable, of at least 22 weeks gestation) who did not, at any time after delivery, breathe or show any other evidence of life such as a heartbeat.
Fetal death rate	19 The <i>fetal death rate</i> is the number of fetal deaths per 1,000 live births of babies who weighed at least 500 grams at birth (or, when birthweight is unavailable, of at least 22 weeks gestation) plus fetal deaths.
Infant death	20 An <i>infant death</i> is the death of a live-born child who died when less than one year old.
Infant mortality rate	21 The <i>infant mortality rate</i> is the number of deaths of children under 1 year of age per 1,000 live births.
Interstate migration	22 Net estimated <i>interstate migration</i> is derived from information on interstate changes of address advised to the Health Insurance Commission.
Life expectancy	23 <i>Life expectancy</i> refers to the average number of additional years a person of a given age and sex might expect to live if the age-specific death rates of the given year continued throughout his or her lifetime.
Long term arrivals	24 <i>Long term arrivals</i> comprise overseas visitors (except those who hold migrant visas) who intend to stay in Australia for 12 months or more, and Australian residents returning after an absence of 12 months or more overseas.

Long term departures	25 <i>Long-term departures</i> comprise Australian residents who intend to stay abroad for 12 months or more, and overseas visitors departing who stayed 12 months or more in Australia.
Median values	26 The <i>median value (age, duration or interval)</i> is that value which divides the relevant population into two equal parts, half falling below this value, and half exceeding it. Where the value for a particular record has not been stated, that record is excluded from the calculation.
Natural increase	27 <i>Natural increase</i> is the excess of births over deaths registered in the recording year.
Neonatal deaths	28 <i>Neonatal deaths</i> are deaths of babies who weighed at least 500 grams at birth (or, when birthweight is unavailable, were of at least 22 weeks gestation) and who died within 28 days of birth.
Neonatal death rate	29 The <i>neonatal death rate</i> is the number of neonatal deaths per 1,000 live births of babies who weighed at least 500 grams at birth, (or, when birthweight is unavailable, were of at least 22 weeks gestation). See also paragraph (13) in the Explanatory Notes.
Never married	30 <i>Never married</i> refers to those persons who have never been validly married.
Nuptiality	31 <i>Nuptiality</i> relates to the relative marital status of parents in the Births collection. Confinements and births are identified as being nuptial where the father registered was married to the mother at the time of the birth, or where the husband died during the pregnancy. Other confinements, and the children resulting from them, are classified as ex-nuptial whether or not the parents were living together at the time of the birth, and whether or not the child may subsequently have been legitimised or adopted.
Perinatal death	32 A <i>perinatal death</i> is either a fetal or a neonatal death, as elsewhere defined.
Perinatal death rate	33 The <i>perinatal death rate</i> is the number of perinatal deaths per 1,000 live births and fetal deaths combined.
Permanent movement	34 <i>Permanent movement</i> comprises arrivals of settlers, and permanent departures of Australian residents, (i.e., those who, on departure, state that they do not intend to return to Australia).
Rate of population growth	35 The <i>rate of population growth</i> expresses population change over a period as a proportion (per cent) of the population at the beginning of that period. In this publication, population growth rate is measured over the twelve months to 31 December of the recording year.
Previous issue	36 <i>Previous issue</i> in the Births collection refers to previous live-born issue of a mother to the current marriage only, and excludes foster, step, or adopted children.
Sex ratio	37 The <i>sex ratio</i> is the number of males per 100 females.
Short-term movements	38 <i>Short-term movements</i> relate to movements of travellers (other than those who, on arrival, hold migrant visas) whose intended or actual length of stay is less than 12 months.
Total fertility rate	39 The <i>total fertility rate</i> is obtained by summing the five year age-specific birth rates and multiplying by five. It represents the number of children 1,000 women would bear during their lifetimes if they experienced the rates of the year shown.

APPENDIX A

Data items relating to Vital Statistics which are collected in Victoria, but not published in this bulletin :

Births:

- Aboriginality of mother, father (if paternity acknowledged) and child
- Month of registration
- Occupation of father (if paternity acknowledged)

Deaths:

- Aboriginality
- All causes of death (ICD9)
- Date of death
- Duration of residence in Australia
- Month of registration
- Occupation at time of death (or previous occupation, if retired)
- Place of occurrence
- Total issue (children)

Marriages:

- Birthplace of parents of bridegroom
- Birthplace of parents of bride
- Duration of residence in Australia, if born overseas
- Year of celebration of last marriage
- Year of termination of last marriage
- Year of first previous marriage
- Year of birth of youngest child

Divorces:

- Occupation of husband
- Occupation of wife

APPENDIX B HISTORICAL SUMMARY: MEAN POPULATION AND VITAL STATISTICS, VICTORIA, 1891 TO 1993

Year	Mean population	Live births			All deaths			Infant deaths			Marriages			Divorces		
		Males	Females	Total	Rate(a)	Males	Females	Total	Rate(a)	Total	Rate(b)	Total	Rate(a)	Total	Rate(a)	Total
1891	1,146.0	19,598	18,907	38,505	33.6	10,666	7,965	18,631	16.2	4,861	126.2	8,780	7.7	99	0.0	99
1896	1,177.4	16,460	15,718	32,178	27.3	8,902	6,812	15,714	13.4	3,540	110.0	7,625	6.5	108	0.0	108
1901	1,203.1	15,876	15,132	31,008	25.8	9,035	6,869	15,904	13.2	3,192	102.9	8,406	7.0	83	0.1	83
1906	1,213.6	15,716	15,128	30,844	25.4	8,342	6,895	15,237	12.6	2,866	92.9	8,930	7.4	125	0.1	125
1911	1,320.6	16,934	16,092	33,026	25.0	8,355	6,861	15,216	11.5	2,269	68.7	11,088	8.4	214	0.2	214
1916	1,414.4	17,623	16,612	34,235	24.2	8,901	7,588	16,489	11.7	2,555	74.6	11,342	8.0	207	0.2	207
1921	1,537.0	18,288	17,303	35,591	23.2	8,662	7,503	16,165	10.5	2,582	72.5	13,676	8.9	389	0.3	389
1926	1,696.7	18,203	17,159	35,362	20.8	8,765	7,570	16,335	9.6	1,969	55.7	13,405	7.9	470	0.3	470
1931	1,799.2	15,632	14,700	30,332	16.9	9,190	7,843	17,033	9.5	1,349	44.5	10,182	5.7	425	0.2	425
1936	1,845.9	14,796	14,087	28,883	15.7	9,996	8,782	18,778	10.2	1,222	42.3	15,915	8.6	690	0.4	690
1941	1,932.4	17,748	16,658	34,406	17.8	10,856	9,666	20,522	10.6	1,246	36.2	20,898	10.8	842	0.4	842
1946	2,025.4	24,119	22,574	46,693	23.1	11,280	10,254	21,534	10.6	1,268	27.2	21,405	10.6	1,651	0.8	1,651
1951	2,276.2	26,019	24,534	50,553	22.2	12,662	11,024	23,886	10.3	1,143	22.6	21,117	9.3	1,730	0.8	1,730
1956	2,592.6	30,115	28,278	58,393	22.5	12,862	10,966	24,500	9.2	1,128	19.3	20,137	7.8	1,270	0.5	1,270
1961	2,926.0	33,875	32,011	65,886	22.5	13,534	13,104	28,673	8.4	1,173	17.8	21,264	7.3	1,257	0.4	1,257
1966(c)	3,221.4	32,782	31,226	64,008	19.9	15,569	13,104	28,673	8.9	1,116	17.4	27,089	8.4	2,144	0.7	2,144
1971	3,519.8	38,432	37,066	75,498	21.5	16,728	13,870	30,598	8.7	1,107	14.7	32,386	9.2	3,079	0.9	3,079
1976	3,811.3	31,005	29,526	60,531	15.9	16,816	14,068	30,884	8.1	687	11.3	28,760	7.6	(d)16,633	4.4	(d)16,633
1981	3,949.2	30,268	29,016	59,284	15.0	15,728	13,360	29,088	7.4	554	9.3	28,648	7.3	9,769	2.5	9,769
1986	4,161.2	30,855	29,307	60,162	14.5	16,021	14,154	30,175	7.2	517	8.6	29,390	7.1	9,670	2.3	9,670
1991	4,420.8	33,636	31,802	65,438	14.8	16,508	14,708	31,216	7.1	428	6.5	28,535	6.5	11,134	2.5	11,134
1993	p4450.3	33,691	32,075	65,766	14.8	16,816	15,135	31,951	7.2	366	5.6	28,429	6.4	10,533	2.4	10,533
1993	p4465.2	32,793	31,256	64,049	14.3	16,389	14,808	31,197	7.0	347	5.4	27,418	6.1	(e)10,935	2.4	(e)10,935

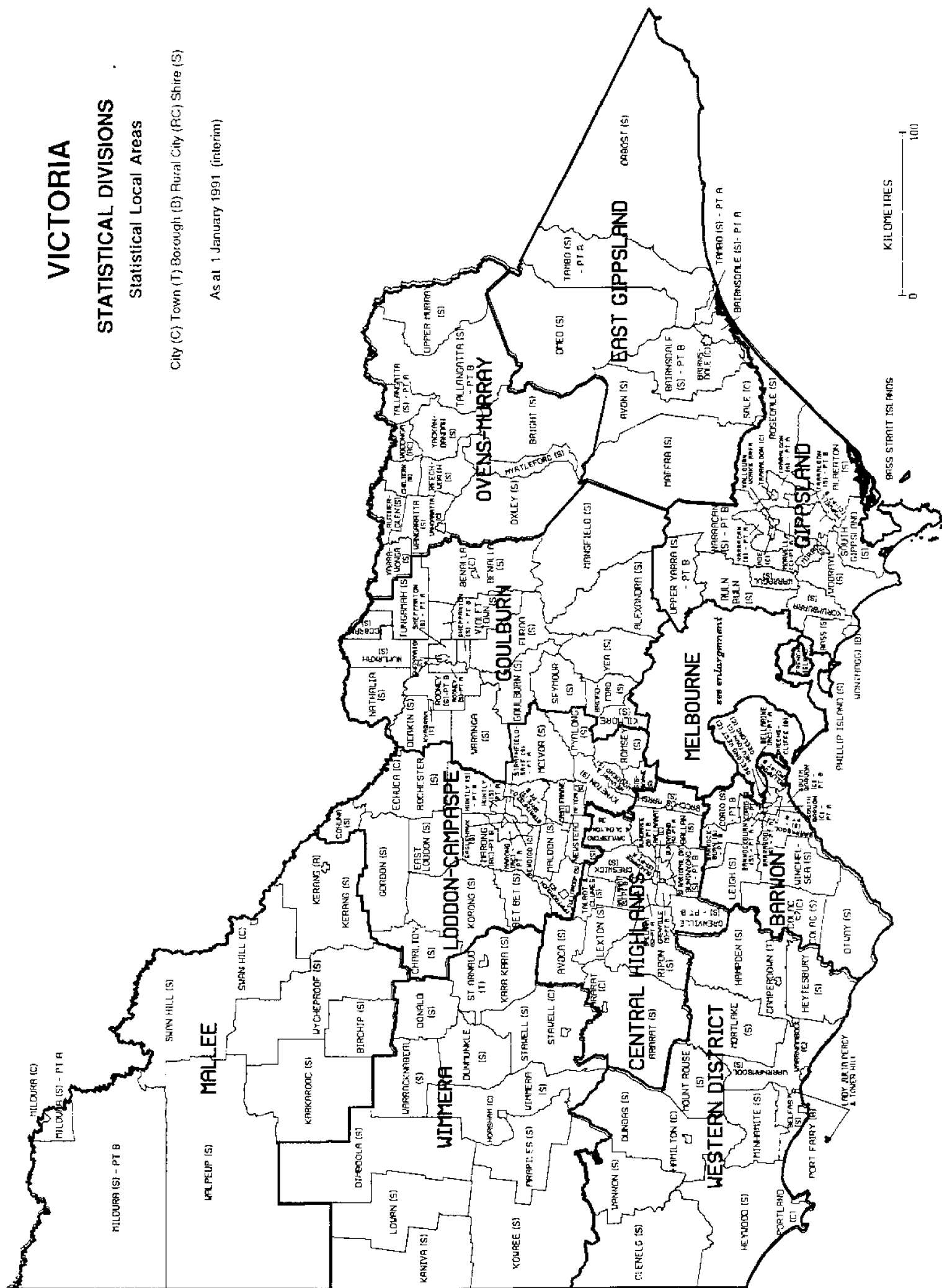
(a) Rate per 1,000 mean population. (b) Rate per 1,000 live births registered. (c) Vital events of full-blood Aboriginals, where identified in registrations, were excluded before 1966. (d) The Family Law Act (Cwlth), repealing State legislation came into operation throughout Australia in 1976. (e) Divorces by state of usual residence instead of registration.

STATISTICAL DIVISIONS

Statistical Local Areas

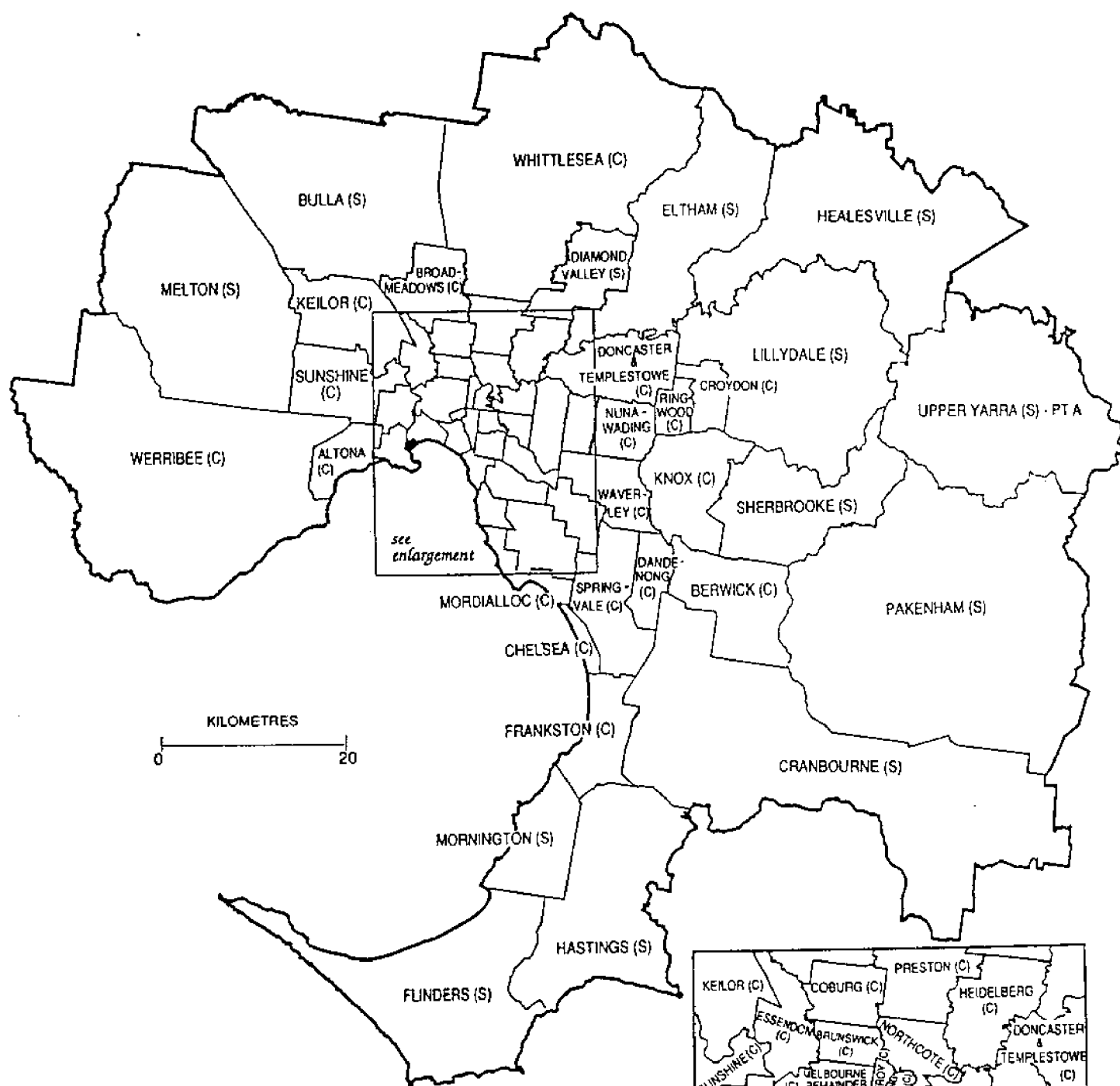
City (C) Town (T) Borough (B) Rural City (RC) Shire (S)

As at 1 January 1991 (interim)



KILOMETRES

100



MELBOURNE STATISTICAL DIVISION

Statistical Local Areas

As at September 1992
City (C) Shire (S)





For more information ...

The ABS publishes a wide range of statistics and other information on Australia's economic and social conditions. Details of what is available in various publications and other products can be found in the *ABS Catalogue of Publications and Products* available at all ABS Offices (see below for contact details).

Information Consultancy Service

Information tailored to special needs of clients can be obtained from the Information Consultancy Service available at ABS Offices (see Information Inquiries below for contact details).

National *Dial-a-Statistic* Line

0055 86 400

(Steadycom P/L: premium rate 25c/21.4 secs.)

This number gives 24-hour access, 365 days a year for a range of statistics.

Electronic Data Services

A large range of data is available via on-line services, diskette, magnetic tape, tape cartridge and CD ROM. For more details about our electronic data services, contact any ABS Office (see below).

Bookshops and Subscriptions

There are over 400 titles of various publications available from ABS bookshops in all ABS Offices (see below Bookshop Sales for contact details). The ABS also provides a subscription service through which nominated publications are provided by mail on a regular basis at no additional cost (telephone Publications Subscription Service toll free on 008 02 0608 Australia wide).

Sales and Inquiries

Regional Offices	Information Inquiries	Bookshop Sales
SYDNEY (02)	268 4611	268 4620
MELBOURNE (03)	615 7000	615 7829
BRISBANE (07)	222 6351	222 6350
PERTH (09)	360 5140	360 5307
ADELAIDE (08)	237 7100	237 7582
HOBART (002)	20 5800	20 5800
CANBERRA (06)	207 0326	207 0326
DARWIN (089)	43 2111	43 2111
 National Office		
ACT (06)	252 6007	008 020 608

ABS Email Addresses

Keylink	STAT.INFO/ABS
X.400	(C:AU,A:TELMEMO,O:ABS,SN:INFO,FN:STAT)
Internet	STAT.INFO@ABS. TELEMEMO.AU



Information Services, ABS, PO Box 10, Belconnen ACT 2616

© Commonwealth of Australia 1995

Recommended retail price: \$27.50



2331120001935
ISSN 1036-2622