



Australian  
Bureau of  
Statistics

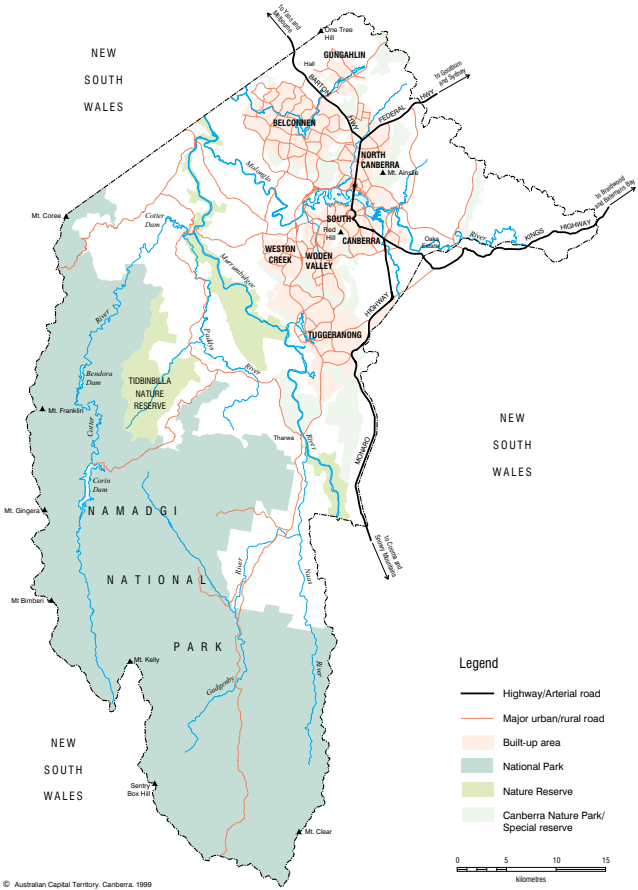
# 2002 AUSTRALIAN CAPITAL TERRITORY AT A GLANCE



In 1911, an area of approximately 2,360 square kilometres was transferred to the Commonwealth of Australia by the State of New South Wales to become the Australian Capital Territory (ACT). The city of Canberra, Australia's national capital, is located in the northern part of this area, 300 km south-west of Sydney and 650 km north-east of Melbourne by road.

On 11 May 1989 self-government for the Territory was proclaimed. The ACT is the smallest of Australia's six states and two territories, but has the highest population density and is the only state or territory without a sea border.

## AUSTRALIAN CAPITAL TERRITORY



© Australian Capital Territory, Canberra, 1999  
ACT Land Information Centre

## CLIMATE OF THE ACT

(Lat. 35 19'S, Long. 149 11'E, Height above Main Sea Level 571 metres)

The weather in the ACT in 2001 was drier and warmer than the average. The ACT also recorded fewer fogs in 2001 and an increase in the number of frosts for the period.

	During 2001	Annual average
Annual rainfall	500.0 mm	630.2 mm
Days of rain	90	106
Thunderstorms	21	23
Average daily temperature	13.6°C	13.1°C
Days temperature exceeded 30°C	37	30
Days of frost	109	99
Days of fog	26	46
Average hours of sunshine per day	7.8	7.5
	During 2001	Long term
Air temperature—hottest	39.9°C (24 Jan)	42.2°C (1.2.68)
—coldest	-6.0°C (30 May)	-10.0°C(11.7.71)
Rainfall—highest month	98 mm (Feb)	312 mm (Mar 1950)
—lowest month	2.6 mm (May)	0.0 mm (multiple)

## ACT IN COMPARISON TO AUSTRALIA

	Unit	Period	ACT	Australia
Area	'000 sq km	June 2001	2.4	7 682.3
<b>Demography</b>				
Estimated resident population	'000	Dec 2001	322.6	19 603.5
Annual population growth rate	%	2000-01	1.0	1.3
<b>Rates per 1000 mean population</b>				
Births	no.	2000	13.1	13.0
Deaths, standardised rate	no.	2000	5.1	5.1
Marriages	no.	2000	5.6	5.9
<b>Economy</b>				
Gross State Product				
Current prices	\$m	2000-01	13 401	670 030
Chain volume measures	\$m	2000-01	13 087	641 370
Percentage change from previous year	%	2000-01	3.4	1.9
Final Consumption Expenditure				
General government	\$m	2000-01	10 187	125 189
Household	\$m	2000-01	7 752	402 685
Consumer Price Index	% chg	2000-01	6.2	6.0
<b>Labour force (annual average trend)</b>				
Total in Labour force	'000	June 2002	179.1	9 935.1
Employed persons	'000	June 2002	170.2	9 311.5
Unemployed persons	'000	June 2002	8.3	623.6
Unemployment rate	%	June 2002	4.6	6.3
Participation rate	%	June 2002	72.2	63.6
<b>Average weekly earnings full time adult (trend)</b>				
All males—ordinary time earnings	\$	Feb 2002	1 010	919
All females—ordinary time earnings	\$	Feb 2002	867	770
<b>Transport</b>				
New motor vehicle registrations	'000	2000-01	14	807
Road fatalities	no.	2000-01	20	1 775

## AGRICULTURE (at June 2000)

	Unit	1998	1999	2000
Number of establishments	no.	105	101	96
Total area of establishments	ha	50 000	49 000	47 000
<b>Livestock</b>				
Cattle and calves	no.	10 000	10 000	10 000
Sheep and lambs	no.	76 000	80 000	80 000
Poultry	no.	122 000	120 000	120 000
<b>Gross value of production</b>				
Crops (incl. pasture and grasses)	\$'000	2 800	2 300	3 300
Livestock slaughterings	\$'000	1 900	2 500	2 700
Livestock products (incl. wool and milk)	\$'000	6 500	9 800	9 100

## BUILDING AND CONSTRUCTION

<b>Building commencements</b>		<b>1998-99</b>	<b>1999-00</b>	<b>2000-01</b>
Residential building	\$m	308.3	402.0	285.5
Non-residential building	\$m	315.2	277.5	158.6
Engineering construction	\$m	268.3	266.3	185.8
Total	\$m	891.8	945.8	629.9
<b>New residential building approvals</b>				
Houses	no.	1 297	1 500	967
Other residential	no.	644	804	779
Total	no.	1 941	2 304	1 746
<b>Moving annual median house prices (at Dec qtr)</b>				
		<b>1999</b>	<b>2000</b>	<b>2001</b>
Established house	\$'000	161.5	180.8	206.3
Established unit/townhouse	\$'000	131.1	140.3	156.9

## CRIME

<b>Offences reported or becoming known to police</b>		<b>1998-99</b>	<b>1999-00</b>	<b>2000-01</b>
Offences against the person	no.	2 344	2 389	2 580
Robbery and extortion	no.	304	328	323
Burglary, fraud and theft	no.	27 731	33 817	27 676
Property damage and environment offences	no.	8 467	10 144	9 353
Offences against good order	no.	3 076	2 796	3 797
All other offences n.e.c.	no.	2 581	3 828	4 407
Total	no.	44 503	53 302	48 136

## DEMOGRAPHY

		<b>1999</b>	<b>2000</b>	<b>2001</b>
Estimated resident population (at 31 Dec)	'000	315.2	319.3	322.6
<b>Statistical subdivision (at 30 June)</b>				
North Canberra	'000	38.5	38.8	39.3
Belconnen	'000	84.1	84.4	86.2
Woden Valley	'000	32.4	32.3	32.9
Weston Creek-Stromlo	'000	24.1	23.9	23.8
Tuggeranong	'000	89.1	88.9	90.8
South Canberra	'000	23.0	23.0	23.7
Gungahlin-Hall	'000	17.8	19.4	24.6
Remainder of ACT	'000	0.3	0.3	0.4
<b>Vital events registered</b>				
Births	no.	3 982	4 253	4 065
Deaths	no.	1 272	1 331	1 300
Marriages	no.	1 692	1 814	1 735
Divorces	no.	1 521	1 485	1 561
<b>Rates per 1000 mean population</b>				
Births	no.	12.9	13.7	13.1
Deaths, standardised rate	no.	5.4	5.4	5.1
Marriages	no.	5.5	5.8	5.6

## EDUCATION

<b>Establishments</b>		<b>1999</b>	<b>2000</b>	<b>2001</b>
Pre-schools	no.	85	85	85
Schools				
Government	no.	96	95	94
Non-government	no.	42	43	42
Higher education	no.	4	4	4
Vocational Education and Training	no.	3	3	3
<b>Student Enrolments</b>				
Government Pre-schools	no.	4 045	3 604	3 529
Schools				
Government	no.	38 730	38 192	37 343
Non-government	no.	21 704	22 927	22 921
Higher education	no.	20 531	20 162	20 559

## GOVERNMENT FINANCE

		<b>1998-99</b>	<b>1999-00</b>	<b>2000-01(a)</b>
<b>Revenue</b>				
Taxation	\$m	626	690	639
Current grants and subsidies	\$m	573	654	828
Other	\$m	433	575	656
Total	\$m	1 632	1 919	2 123
<b>Expenses</b>				
Operating	\$m	1 434	1 477	1 631
Other	\$m	330	360	463
Total	\$m	1 764	1 837	2 094
<b>Net operating balance</b>	\$m	-132	82	30

(a) Includes GST related transactions.

## INTERNATIONAL TRADE

		<b>1998-99</b>	<b>1999-00</b>	<b>2000-01</b>
Imports	\$'000	12 280	8 761	4 840
Exports	\$'000	21 436	32 756	21 579

## LABOUR FORCE (annual average trend)

		<b>1998-99</b>	<b>1999-00</b>	<b>2000-01</b>
Employed persons	'000	157.0	164.8	169.0
Males	'000	81.8	86.2	88.4
Females	'000	75.2	78.6	80.6
Unemployed persons	'000	9.9	9.1	8.4
Males	'000	6.1	5.3	5.1
Females	'000	3.9	3.8	3.3
Unemployment rate	%	6.3	5.5	4.9
Males	%	7.0	6.1	5.6
Females	%	5.4	4.9	4.1
Participation rate	%	70.9	72.7	72.9
Males	%	77.1	78.7	78.6
Females	%	65.0	67.0	67.4
<b>Industry, average annual employment</b>		<b>1999-00</b>	<b>2000-01</b>	<b>2001-02</b>
		<b>(a)</b>		<b>(b)</b>
Agriculture, forestry and fishing	'000	1.0	0.6	0.6
Mining	'000	—	—	—
Manufacturing	'000	4.7	5.7	4.6
Electricity, gas and water supply	'000	0.9	1.3	0.8
Construction	'000	7.5	9.9	8.0
Wholesale trade	'000	4.3	3.1	2.7
Retail trade	'000	23.8	20.8	23.8
Accommodation, cafes and restaurants	'000	7.7	7.2	8.1
Transport and storage	'000	4.2	4.6	4.3
Communication services	'000	2.5	2.5	2.5
Finance and insurance	'000	3.8	4.9	4.2
Property and business services	'000	22.0	24.4	25.2

<b>Industry, average annual employment—continued</b>		<b>1999-00 (a)</b>	<b>2000-01</b>	<b>2001-02 (b)</b>
Government administration and defence	'000	38.7	35.8	39.6
Education	'000	14.5	14.5	14.1
Health and community services	'000	13.3	17.1	16.5
Cultural and recreational services	'000	6.4	7.3	5.8
Personal and other services	'000	6.9	7.3	9.5

(a) Year ending August

(b) Year ending May

#### **Average weekly earnings (Feb qtr trend)**

		<b>2000</b>	<b>2001</b>	<b>2002</b>
Male employees	\$	964	1 017	1 010
Female employees	\$	818	854	867
All employees	\$	900	938	949

#### **Industrial disputes (year ending May)**

		<b>2000</b>	<b>2001</b>	<b>2002</b>
Working days lost	'000	4.6	1.2	0.4
Working days lost per 1,000 employees	no.	31	8	2

#### **Sector of Employment (Dec qtr 2001 original series)**

		<b>1999</b>	<b>2000</b>	<b>2001</b>
Private sector	'000	79.7	85.4	92.1
Public sector	'000	69.5	69.9	71.2
Private sector % of workforce	%	53	55	56
Public sector % of workforce	%	47	45	44

## **MEDICARE SERVICES**

#### **Average number of services**

		<b>1998-99</b>	<b>1999-00</b>	<b>2000-01</b>
Males	no.	7.1	7.0	7.1
Females	no.	10.9	10.9	10.9
Persons	no.	9.0	9.0	9.1
Males 75 years and over	no.	18.1	16.4	17.5
Females 75 years and over	no.	22.4	23.0	22.8

## **PRICES**

#### **Consumer price index for Canberra % change**

		<b>1998-99</b>	<b>1999-00</b>	<b>2000-01</b>
All groups	%	0.9	2.2	6.2
Food	%	2.8	1.2	5.8
Tobacco and alcohol	%	2.2	2.6	11.2
Clothing	%	0.6	-1.1	6.9
Housing	%	-0.2	4.3	9.7
Household furnishings, supplies and services	%	1.1	0.7	4.2
Health	%	-2.3	-1.4	3.7
Transportation	%	-1.6	4.9	4.6
Communication	%	-3.9	-4.9	7.0
Recreation	%	1.9	1.2	2.7
Education	%	4.1	3.0	3.7
Miscellaneous	%	4.8	8.7	10.1

#### **Average retail prices (cents) June qtr**

		<b>1999</b>	<b>2000</b>	<b>2001</b>
Milk, carton, supermarket sales	1 litre	115	123	128
Bread, white loaf, supermarket sales	650g	212	231	246
Rump steak	1 kg	1 214	1 250	1 398
Coffee instant	150g jar	520	634	644
Draught beer, full strength, public bar	285ml glass	180	186	203
Petrol, unleaded	1 litre	72.3	87.8	97.8

## PRIVATE FINANCE

		1998-99	1999-00	2000-01
Bank deposits (at 30 June)	\$m	5 292	5 792	6 597
<b>Lending commitments</b>				
Housing finance for owner occupation	\$m	1 122	1 436	1 159
Personal	\$m	893	945	834
Commercial	\$m	1 140	1 449	1 484
Lease	\$m	171	224	129

## RETAIL TRADE

<b>Turnover</b>		1999-00	2000-01	2001-02
Food retailing	\$m	1 014	1 168	1 357
Department stores	\$m	315	314	330
Clothing and soft good retailing	\$m	192	225	270
Household goods retailing	\$m	439	425	486
Recreational good retailing	\$m	190	174	148
Other retailing	\$m	273	329	330
Hospitality and service industries	\$m	416	539	604
Total	\$m	2 839	3 174	3 525

## STATE ACCOUNTS

<b>Gross State Product</b>		1998-99	1999-00	2000-01
At current prices	\$m	11 964	12 656	13 401
Chain volume measures (experimental series)	\$m	12 165	12 656	13 087

## TOURIST ACCOMMODATION (Mar qtr)

<b>Hotels, motels and guest houses</b>		2000	2001	2002
Establishments	no.	59	59	62
Guest rooms	no.	4 959	5 004	5 228
Bed spaces	no.	14 927	14 817	15 427
Room occupancy rates	%	61	59	62
Takings from accommodation	\$'000	27 305	30 611	31 992

## TRANSPORT

<b>New motor vehicle registrations</b>		1998-99	1999-00	2000-01
Passenger vehicles	no.	13 741	11 660	12 530
Light commercial vehicles	no.	1 065	1 221	1 173
Trucks	no.	70	100	78
Total motor vehicles	no.	14 939	13 050	13 811
Motor cycles	no.	601	504	660
<b>Motor vehicles on register at March 31</b>		1999	2000	2001
Passenger vehicles	'000	170	n.a.	176
Light commercial vehicles	'000	17	n.a.	17
Trucks	'000	3	n.a.	3
Total motor vehicles	'000	191	n.a.	197
Motor cycles	'000	6.0	n.a.	6

## SYMBOLS AND ABBREVIATIONS USED

°C	— degrees Celsius	\$'000	— dollars thousand
\$m	— dollars million	\$	— dollars
km/h	— kilometres per hour	%	— percent
mm	— millimetres	n.a.	— not available
'000	— thousand	n.e.c.	— not elsewhere classified
qtr	— quarter	no.	— number
sq km	— square kilometre	ha	— hectare
Lat.	— latitude	km	— kilometre
e	— estimated	Long.	— longitude
ml	— milliliters	g	— gram
		incl	— including

## FOR MORE INFORMATION...

### INTERNET

**www.abs.gov.au** The ABS web site is the best place to start for access to summary data from our latest publications, information about the ABS, advice about upcoming releases, our catalogue, and Australia Now—a statistical profile.

### LIBRARY

A range of ABS publications is available from public and tertiary libraries Australia-wide. Contact your nearest library to determine whether it has the ABS statistics you require, or visit our web site for a list of libraries.

### CPI INFOLINE

For current and historical Consumer Price Index data, call 1902 981 074 (call cost 77c per minute).

### DIAL-A-STATISTIC

For the latest figures for National Accounts, Balance of Payments, Labour Force, Average Weekly Earnings, Estimated Resident Population and the Consumer Price Index call 1900 986 400 (call cost 77c per minute).

## INFORMATION SERVICE

Data which have been published and can be provided within five minutes are free of charge. Our information consultants can also help you to access the full range of ABS information—ABS user-pays services can be tailored to your needs, time frame and budget. Publications may be purchased. Specialists are on hand to help you with analytical or methodological advice.

### PHONE

**1300 135 070**

### EMAIL

**client.services@abs.gov.au**

### FAX

1300 135 211

### POST

Client Services, ABS, GPO Box 796, Sydney 1041

## WHY NOT SUBSCRIBE?

ABS subscription services provide regular, convenient and prompt deliveries of ABS publications and products as they are released. Email delivery of monthly and quarterly publications is available.

### PHONE

1300 366 323

### EMAIL

subscriptions@abs.gov.au

### FAX

(03) 9615 7848

### POST

Subscription Services, ABS, GPO Box 2796Y,  
Melbourne 3001



2131480001022

ISSN 0815-3523

© Commonwealth of Australia 2002

RRP \$1.25

Produced by the Australian Bureau of Statistics