



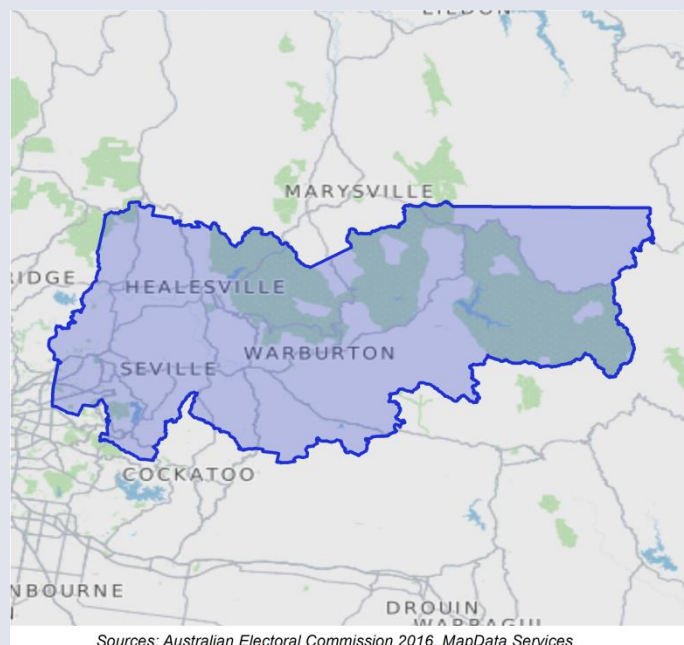
Casey

The ABS provides detailed statistics for every Commonwealth Electorate. The date of the next Census of Population and Housing is 9 August 2016, with results available from mid-2017.

	Population (ERP*)	142,779
	Male	49%
	Female	51%
	Median age (years)	39.1
	Average household size (2011 Census)	2.7
	No. of private dwellings (2011 Census)	51,795
	Median weekly household income	\$1,248
	Median monthly mortgage repayments	\$1,647
	Median weekly rent	\$270
	Dwellings with no motor vehicles	4%

Occupation (2011 Census)	%
<i>Employed people aged 15 years and over</i>	
Professionals	15.7
Clerical and administrative workers	14.9
Technicians and trade workers	19.4
Managers	11.7
Sales workers	10.0
Community and personal service workers	10.0
Labourers	10.0
Machinery operators and drivers	6.3

Tenure (2011 Census)	%
Owned outright	33.9
Owned with a mortgage	47.2
Rented	15.9



Sources: Australian Electoral Commission 2016, MapData Services

Employment (2011 Census)	%
<i>Of people who reported being in the labour force, aged 15 years and over</i>	
Worked full-time	58.4
Worked part-time	31.5
Away from work (e.g. holidays, paid leave)	6.1
Unemployed	4.0

People characteristics (2011 Census)	%
Aboriginal and Torres Strait Islander	0.7
Born in Australia	82.8
Born overseas	17.2

*ERP (estimated resident population) is for 2015. The latest available age and sex breakdowns are based on 2014 ERP. The 2016 Commonwealth Electoral Division (CED) boundaries are provided by the Australian Electoral Commission. ABS 2011 Census of Population and Housing data and ERP data are based on 2011 Australian Statistical Geography Standard boundaries that closely approximate the new CED boundaries.