
STATISTICS

OF

THE COLONY OF VICTORIA, 1861.

PART VIII.

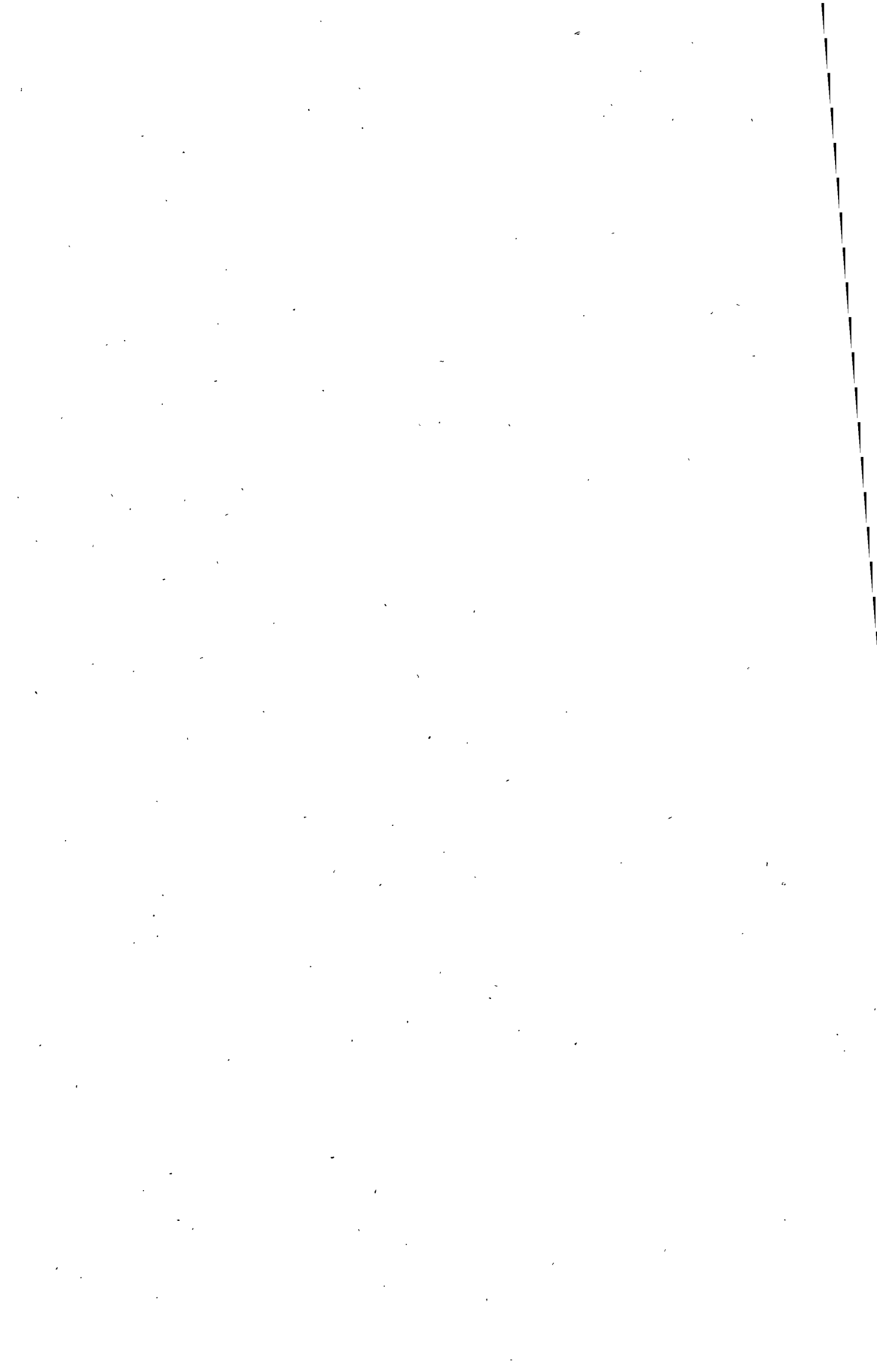
VITAL STATISTICS, ETC.



PART VIII.—VITAL STATISTICS, ETC.

CONTENTS.

	Page
VICTORIA—PROPORTION OF DEATHS TO THE LIVING POPULATION	301
„ DEATHS IN EACH MONTH	301
„ CAUSES OF DEATH	302
MELBOURNE AND SUBURBS—DEATHS AND MEAN TEMPERATURE IN EACH MONTH	306
„ DEATHS IN EACH DISTRICT	307
„ CAUSES OF DEATH	308
DISEASES IN GAOLS—GENERAL SUMMARY	312
„ DETAILED TABLE	313
VITAL STATISTICS OF HOSPITALS	317
„ BENEVOLENT ASYLUMS	320
„ ORPHAN ASYLUMS	323
METEOROLOGY—GENERAL SUMMARY	324
„ MONTHLY OBSERVATIONS AT THE VARIOUS STATIONS	324



STATISTICS OF VICTORIA, 1861.

VITAL STATISTICS, ETC.

PROPORTION OF DEATHS TO THE LIVING POPULATION.

RETURN of the Mean Population of Males and Females living in Victoria during the Year 1861, the Number of Deaths of either Sex, and the Number of Deaths to every Thousand living.

Sexes.	Mean Population.	Number of Deaths.	Number of Deaths to every Thousand of the Population.
Males	325,530	6,124	18·81
Females	215,495	4,398	20·41
Total	541,025	10,522	19·45

WILLIAM HENRY ARCHER,
Registrar-General.

DEATHS IN EACH MONTH.

RETURN of Deaths of Persons of both Sexes under and over five years of age, registered in Victoria during each Month of the Year 1861.

Month.	Both Sexes.			Males.			Females.		
	Under Five Years.	Over Five Years.	Total.	Under Five Years.	Over Five Years.	Total.	Under Five Years.	Over Five Years.	Total.
January	789	396	1,185	404	261	665	385	135	520
February	619	345	964	316	212	528	303	133	436
March	706	457	1,163	364	322	686	342	135	477
April	652	419	1,071	338	267	605	314	152	466
May	505	400	905	261	247	508	244	153	397
June	424	392	816	211	264	475	213	128	341
July	386	403	789	206	271	477	180	132	312
August	360	406	766	197	278	475	163	128	291
September	320	370	690	199	243	442	121	127	248
October	356	357	713	180	239	419	176	118	294
November	335	290	625	176	180	356	159	110	269
December	491	344	835	263	225	488	228	119	347
Total	5,943	4,579	10,522	3,115	3,009	6,124	2,828	1,570	4,398
Monthly Average for the Year ...	495·25	381·58	876·83	259·58	250·75	510·33	235·67	130·83	366·50
Daily Average for the Year ...	16·28	12·54	28·82	8·53	8·24	16·77	7·75	4·30	12·05

WILLIAM HENRY ARCHER,
Registrar-General.

VICTORIA.—CAUSES OF DEATH.

RETURN of the Causes of Death in Victoria during each Month of the Year 1861, specifying Classes, Orders, and Diseases.

Classes.	Orders.	Diseases.	January.	February.	March.	April.	May.	June.	July.	August.	September.	October.	November.	December.	Total for the Year.	Proportions per cent. of each Class to the Total specified.	
Class I. Zymotic Diseases.	Order 1. Miasmatic Diseases.	Measles	37	25	20	38	33	36	27	16	8	7	3	2	252		
		Scarlatina	93	82	119	109	101	82	88	49	57	31	31	29	871		
		Diphtheria	21	32	54	65	56	47	41	46	43	35	32	38	510		
		Quinsy	7	2	4	8	4	2	4	5	1	3	1	5	46		
		Croup	16	7	12	21	19	13	17	14	16	11	12	8	166		
		Hooping Cough	17	19	13	16	18	14	24	26	14	20	16	13	210		
		Typhus and Infantile Fever	36	34	37	40	31	25	22	18	18	13	6	21	301		
		Erysipelas	3	5	4	2	2	3	2	4	2	4	2	3	2	36	
		Metria	3	3	4	5	6	8	3	2	2	2	3	3	3	44	
		Influenza	3	2	3	2	5	2	...	4	6	3	5	3	3	38	
		Dysentery	96	54	99	69	38	18	23	17	15	6	20	57	512		
		Diarrhœa	128	84	106	72	24	15	10	4	15	15	17	56	546		
		Cholera	11	11	3	3	1	...	1	3	...	1	...	1	...	35	
		Rheumatism	4	2	2	1	2	3	5	6	1	2	3	2	33		
		Remittent Fever	...	1	...	2	...	1	2	1	2	9	
		Smallpox	1	1	...	1	3	
		Carbuncle	1	1	
	Ague	1	1		
		Total, Order 1	...	475	363	480	453	341	269	269	214	200	154	153	243	3,614	
		Order 2. Enthetic Diseases	Syphilis	1	2	2	1	1	...	6	1	2	1	1	3	21	
			Stricture of Urethra	...	1	1	1	2	5	
			Glanders	1	1	
		Total, Order 2	...	1	3	2	2	1	1	6	1	3	1	1	5	27	
		Order 3. Dietic Diseases	Privation	2	2	1	1	...	6	2	1	1	2	18	
			Delirium Tremens	9	1	4	2	3	1	5	4	1	2	2	2	36	
			Want of Breast Milk	...	4	2	2	4	5	1	1	...	4	4	8	35	
			Purpura and Scurvy	1	1	2	...	1	3	1	1	3	1	14	
	Intemperance		1	2	2	3	1	...	1	...	1	...	11		
	Total, Order 3	...	11	7	9	8	11	15	10	9	4	7	10	13	114		
	Order 4. Parasitic Diseases	Thrush	5	3	6	2	2	4	1	2	2	2	2	...	31		
		Worms	2	...	1	2	1	1	2	1	...	10		
	Total, Order 4	...	7	3	7	2	2	4	3	3	3	4	3	...	41		
	Total Class I.	...	494	376	498	465	355	289	288	227	210	166	167	261	3,796	36.26	

Class II. Constitutional Diseases.	Order 1.	Gout	1	1	
		Diathetic Diseases	5	9	10	6	14	4	12	12	5	2	6	9	94	
		Cancer	13	10	13	8	7	6	6	4	7	4	10	14	102	
		Mortification	1	2	...	3	2	4	1	...	1	...	14	
	Total, Order 1		19	22	23	17	23	14	18	16	13	6	17	23	211	
	Order 2.	Scrofula	2	3	3	6	3	4	1	2	4	6	1	4	39	
		Tubercular Diseases	15	24	18	15	11	4	2	2	2	7	3	13	116	
		Phthisis	71	62	65	51	67	58	81	64	56	60	53	65	753	
		Hydrocephalus	29	24	29	18	20	18	15	21	5	6	15	24	224	
	Total, Order 2		117	113	115	90	101	84	99	89	67	79	72	106	1,132	
Total Class II.		136	135	138	107	124	98	117	105	80	85	89	129	1,343		
Class III. Local Diseases.	Order 1.	Diseases of the Nervous System	Cephalitis	14	6	11	10	9	8	7	7	10	11	12	11	116
		Apoplexy	16	8	13	19	8	6	9	15	8	10	6	14	132	
		Paralysis	2	6	3	5	6	5	4	4	6	4	4	4	53	
		Insanity	3	1	1	1	...	1	2	...	1	...	10	
		Chorea	1	2	2	5	
		Epilepsy	2	1	4	3	1	1	5	1	3	2	23	
		Convulsions	56	43	34	49	36	46	34	32	29	42	25	41	467	
		Brain Disease, &c.	50	35	34	22	20	21	19	24	16	19	18	14	292	
	Total, Order 1		143	100	96	107	85	90	74	85	76	87	69	86	1,098	
	Order 2.	Diseases of the Organs of Circulation	Pericarditis	2	...	1	1	2	5	2	5	2	1	1	1	23
		Aneurism	4	2	3	11	...	6	6	2	4	3	3	10	54	
		Heart Disease, &c.	18	17	28	31	21	38	30	34	19	30	20	25	311	
	Total, Order 2		24	19	32	43	23	49	38	41	25	34	24	36	388	
	Order 3.	Diseases of the Organs of Respiration	Laryngitis	5	3	4	5	6	4	5	2	3	4	1	2	44
		Bronchitis	19	15	9	22	23	22	27	21	30	28	37	25	278	
		Pleurisy	3	6	2	6	3	3	2	6	7	2	4	5	49	
		Pneumonia	42	25	33	18	33	37	30	44	45	49	27	30	413	
		Asthma	1	1	1	3	2	2	1	...	3	14	
Lung Disease, &c.		6	3	5	3	3	6	4	1	6	7	3	2	49		
Total, Order 3		75	53	54	55	68	72	71	76	93	91	72	67	847		
Order 4.	Diseases of the Digestive Organs	Gastritis	10	14	8	6	4	6	4	1	1	4	5	4	67	
	Enteritis	19	20	13	21	10	4	9	8	6	9	7	14	140		
	Peritonitis	7	4	3	4	4	7	6	6	2	4	2	3	52		
	Ascites	3	2	...	1	6	1	2	2	1	1	3	22		
	Ulceration of Intestines	1	...	2	5	4	1	...	1	...	3	17		
	Hernia	5	1	1	1	1	1	1	...	11		
	Ileus	2	2	...	3	1	...	4	2	1	3	6	2	26		
Intussusception	1	...	2	2	1	2	1	2	11			

VICTORIA.—CAUSES OF DEATH.

RETURN of the Causes of Death in Victoria during each Month of the Year 1861, specifying Classes, Orders, and Diseases—*continued.*

Classes.	Orders.	Diseases.	January.	February.	March.	April.	May.	June.	July.	August.	September.	October.	November.	December.	Total for the Year.	Proportions per cent. of each Class to the Total specified.	
Class III. Local Diseases— <i>continued.</i>	Diseases of the Digestive Organs— (<i>continued</i>)	Stricture of Intestines	1	...	
		Fistula	1	...
		Stomach Disease, &c. ...	3	...	2	2	6	...	1	1	...	1	2	18	...
		Hepatitis ...	5	7	12	11	1	4	5	4	3	5	5	4	...	69	...
		Jauddice ...	3	4	3	1	5	4	2	24	...
		Liver Disease, &c. ...	8	6	8	11	8	9	7	12	3	6	5	4	...	87	...
		Spleen Disease, &c.	1	2	3	...
		Pancreas Disease, &c. ...	1	1	...
		Total, Order 4	59	60	56	63	37	42	45	42	22	42	39	42	549	...
	Diseases of the Urinary Organs ...	Nephritis	2	1	2	1	1	1	...	8	...
		Nephria ...	1	1	2	1	2	2	5	4	...	1	1	3	...	23	...
		Diabetes	1	1	2	4	...
		Stone ...	1	...	1	1	...	1	1	5	...
		Cystitis ...	1	1	2	4	2	1	11	...
		Kidney Disease, &c.	2	2	2	1	1	...	4	1	3	2	2	20	...	
		Total, Order 5	3	6	8	3	4	5	5	15	4	8	5	5	71	...
	Diseases of the Organs of Generation ...	Ovarian Dropsy	2	1	...	3	1	2	...	9	...
		Uterus Disease, &c. ...	1	...	2	3	3	1	1	3	5	2	1	2	...	24	...
		Total, Order 6	1	2	3	3	6	1	1	3	5	3	3	2	33	...
	Diseases of Organs of Locomotion ...	Arthritis	1	1	...	2	...
Joint Disease, &c. ...		3	6	3	1	5	4	5	...	1	2	4	34	...	
	Total, Order 7	3	6	3	1	5	4	...	5	...	2	3	4	36	...	
Diseases of the Integumentary System ...	Phlegmon	1	2	3	...	
	Ulcer ...	2	1	1	2	1	...	7	...	
	Skin Disease, &c. ...	2	1	2	2	2	1	...	1	2	1	...	14	...	
	Total, Order 8	4	1	...	1	5	3	2	1	...	3	3	1	24	...	
	Total, Class III	312	247	252	276	233	266	236	268	225	270	218	243	3,046	29.09	

Class IV. Developmental Diseases.	Order 1. Developmental Diseases of Children	Premature Birth	11	10	21	18	19	15	8	20	13	11	15	16	177		
		Cyanosis	1	...	2	1	1	...	5		
		Spina Bifida	1	...	1	1	1	1	6		
		Other Malformations	3	2	2	1	3	4	3	1	3	2	28		
		Teething	65	47	57	41	15	17	12	14	16	14	15	29	342	
		Total, Order 1	78	59	81	63	36	36	25	38	32	28	34	48	558	
		Order 2. Developmental Diseases of Adults ...	Paramenia	1	1	
	Childbirth (see "Metria")	8	7	4	4	4	5	4	4	5	7	4	7	63	
		Total, Order 2	8	7	4	4	4	6	4	4	5	7	4	7	64	
		Order 3. Developmental Diseases of Old People	Old Age	9	4	4	3	5	5	7	8	1	9	5	7	67	
		Order 4. Diseases of Nutrition	Atrophy and Debility	81	60	69	73	75	40	39	36	36	49	49	67	674	
		Total, Class IV.	176	130	158	143	120	87	75	86	74	93	92	129	1,363	13.02
	Class V. Violent Deaths.	Order 1. Accident or Negligence	Fractures and Contusions	5	17	20	18	25	26	21	23	41	35	18	20	269	
			Wounds	2	3	3	1	2	1	2	1	1	16	
			Burns and Scalds	8	7	15	10	12	11	13	5	13	7	5	5	111
Poison	1	3	4	3	1	2	5	4	23		
Drowning	24	25	15	10	9	11	19	22	22	40	25	26	248	
Suffocation	1	...	5	7	7	5	3	13	10	4	1	4	60	
Otherwise	12	18	33	16	9	8	4	2	3	2	107	
		Total, Order 1	50	69	92	67	67	66	62	69	92	87	52	61	834	
		Order 3. Homicide	Murder and Manslaughter	6	1	3	2	...	3	...	2	1	1	1	1	21	
		Order 4. Suicide	Wounds	2	...	4	2	...	1	2	2	2	1	2	1	19	
Poison	1	1	1	...	3	6	
Drowning	2	...	1	4	1	4	12	
Hanging	1	1	4	2	4	2	1	...	2	1	3	1	22	
		Otherwise	2	2		
		Total, Order 4	6	3	9	5	4	3	3	2	4	7	6	9	61	
	Order 5. Execution	Hanging	1	1	1	1	1	...	5			
	Total, Class V.	62	73	104	75	71	72	66	74	98	96	59	71	921	8.80	
	Total, Specified Causes	1,180	961	1,150	1,066	903	812	782	760	687	710	625	833	10,469	100.00	
	Causes not Specified	5	3	13	5	2	4	7	6	3	3	...	2	53		
	Total, all Causes	1,185	964	1,163	1,071	905	816	789	766	690	713	625	835	10,522		

MELBOURNE AND SUBURBS.—DEATHS AND MEAN TEMPERATURE IN EACH MONTH.

RETURN of the Deaths of Persons of both sexes, under and over Five years of age, which occurred in Melbourne and Suburbs (embracing a radius of ten miles) during each Month of the Year 1861, with the Mean Temperature of each month.

Month.	Both Sexes.			Males.			Females.			Mean Monthly Temperature.
	Under five years.	Over five years.	Total.	Under five years.	Over five years.	Total.	Under five years.	Over five years.	Total.	
January	321	129	450	176	69	245	145	60	205	67·2
February	235	110	345	114	56	170	121	54	175	65·0
March	219	118	337	118	66	184	101	52	153	65·8
April	201	145	346	98	80	178	103	65	168	59·3
May	179	158	337	98	87	185	81	71	152	52·7
June	143	141	284	73	83	156	70	58	128	50·5
July	133	135	268	71	83	154	62	52	114	46·6
August	130	138	268	70	80	150	60	58	118	49·2
September	94	140	234	57	88	145	37	52	89	57·2
October	116	111	227	54	71	125	62	40	102	58·7
November	95	94	189	51	62	113	44	32	76	60·4
December	184	138	322	98	88	186	86	50	136	62·8
Total	2,050	1,557	3,607	1,078	913	1,991	972	644	1,616	Mean Temperature for year.
Monthly average for the year	170·83	129·75	300·58	89·83	76·08	165·91	81·00	53·67	134·67	58·0
Daily average for the year	5·62	4·26	9·88	2·95	2·50	5·45	2·67	1·76	4·43	

WILLIAM HENRY ARCHER, Registrar-General.

MELBOURNE AND SUBURBS.—DEATHS IN EACH DISTRICT.

RETURN of the Number of Persons of all ages according to the last census; the Number of Deaths of Persons under and over Five years of age; the Total at all ages; and the Number of Deaths to every 1000 of the population during the Year 1861, in the Statistical District of Melbourne and Suburbs, and in each of the Sub-districts of which it is composed.

Sub-districts.	Number of Persons of all ages in each Sub-district on 7th April, 1861.	Deaths of both Sexes in the Year 1861.			Number of Deaths to every 1000 of the Population.
		Under five years.	Over five years.	Total.	
Melbourne Proper	23,766	334	534	868	36·52
East Melbourne	2,023	24	23	47	23·23
North Melbourne and Carlton	16,798	293	191	484	28·81
Fitzroy Municipality	11,807	172	106	278	23·55
East Collingwood	12,653	251	101	352	27·82
Richmond	11,355	156	87	243	21·40
Jika-jika parish (remainder of)	8,215	71	83	154	18·75
South Yarra and Prahran	12,900	197	98	295	22·87
Emerald Hill and Sandridge	12,393	226	93	319	25·74
St. Kilda and Brighton	11,236	115	81	196	17·44
Doutta Galla and Keilor	3,087	51	34	85	27·53
Boroondara and Heidelberg	5,722	83	71	154	26·91
Cut-paw-paw parish	6,234	70	45	115	18·62
Shipping in Hobson's Bay	1,727	7	10	17	9·84
Total, Melbourne and Suburbs	139,916	2,050	1,557	3,607	25·78

NOTE.—The Hospital is situated in Melbourne Proper; the Benevolent Asylum and the Lying-in Hospital are situated in North Melbourne and Carlton.

WILLIAM HENRY ARCHER, Registrar-General.

MELBOURNE AND SUBURBS.—CAUSES OF DEATH.

RETURN of the Causes of Death in Melbourne and Suburbs during each Month of the Year 1861, specifying Classes, Orders, and Diseases.

Class.	Order.	Diseases.	January.	February.	March.	April.	May.	June.	July.	August.	September.	October.	November.	December.	Total for the Year.	Proportions per cent. of each class to the total specified.		
Class I. Zymotic Diseases.	Order 1. Miasmatic Diseases	Measles	16	5	3	4	4	2	3	2	1	1	41			
		Scarlatina	73	51	68	63	54	53	41	31	25	12	2	1	474			
		Diphtheria	8	9	10	5	9	6	10	13	6	7	1	1	85			
		Quinsy	3	2	...	2	1	...	1	2	...	1	...	1	13			
		Croup	8	3	1	7	9	2	5	4	4	1	2	1	47			
		Hooping Cough	7	7	7	9	9	7	4	10	5	5	7	5	82			
		Typhus (and Infantile Fever)	12	6	8	11	5	7	11	6	2	4	2	3	77			
		Erysipelas	...	3	1	2	3	2	1	3	2	19		
		Carbuncle	1	1	1		
		Influenza	1	1	1	3	...	3	9		
		Dysentery	...	15	26	27	15	10	4	8	9	4	4	10	18	150		
		Diarrhœa	...	65	37	24	26	9	6	6	1	3	4	13	32	226		
		Cholera	...	5	1	...	1	1	1	9	
		Remittent Fever	1	2	4	
		Rheumatism	1	2	...	2	1	1	1	8		
		Total, Order 1	...	212	151	150	144	114	90	95	82	55	40	44	68	1,245		
		Order 2. Euthetic Diseases	Syphilis	1	1	1	1	2	6		
			Stricture of Urethra	...	1	1	1	1	4		
			Glanders	1	1		
		Total, Order 2	1	1	2	...	1	1	1	1	3	11		
		Order 3. Dietic Diseases	Purpura and Scurvy	1	1	2	4		
			Alcoholism (Delirium Tremens)	1	...	1	1	1	1	1	...	1	1	1	...	9		
		Total, Order 3	...	1	...	1	1	1	1	1	1	2	1	1	2	13		
		Order 4. Parasitic Diseases	Thrush	5	1	1	2	1	1	1	1	13		
			Worms	2	1	1	1	1	1	...	7		
	Total, Order 4	...	7	1	1	1	1	3	2	2	1	1	20			
	Total, Class I.	...	220	153	153	147	115	93	98	87	60	43	46	74	1,289	35.93		

Class II.
Constitutional Diseases.

Order 1.	Diathetic Diseases	Gout	1	1													
		Dropsy	2	36													
Order 2.	Tubercular Diseases	Scrofula	1	1	2	6													
		Phthisis	27	30	18	28	44	328													
Total, Class II.																54	49	37	45	63	33	46	41	33	38	26	56	521	14.52

Class III.
Local Diseases.

Order 1.	Diseases of Nervous System	Cephalitis	14	1	4	2	13	14	11	8	8	7	1	6	89						
		Paralysis	3	1	1	7	4	5	3	4	7	7	3	7	52					
Order 2.	Diseases of the Organs of Circulation	Pericarditis	1	...	1	3	3	1	1	10						
		Heart Disease, &c.	3	4	5	7	5	10	10	6	10	7	8	12	87					
Order 3.	Diseases of Organs of Respiration	Laryngitis	5	1	3	2	1	...	1	...	3	16						
		Pneumonia	5	4	4	8	6	8	10	9	16	14	8	10	102					
Total, Class III.																51	35	33	42	46	37	32	34	35	36	22	44	447	

MELBOURNE AND SUBURBS.—CAUSES OF DEATH.

RETURN of the Causes of Death in Melbourne and Suburbs during each Month of the Year 1861, specifying Classes, Orders, and Diseases—*continued.*

Class.	Order.	Diseases.	January.	February.	March.	April.	May.	June.	July.	August.	September.	October.	November.	December.	Total for the Year.	Proportion per cent. of each class to the total specified.	
Class III. Local Diseases— <i>continued.</i>	Order 4. Diseases of Digestive Organs	Gastritis...	4	3	2	3	1	1	1	4	3	22		
		Enteritis...	3	3	3	6	1	2	1	2	2	1	24	
		Peritonitis...	1	2	3	1	1	...	1	...	2	11	
		Ascites	4	1	...	2	1	1	1	2	...	11	
		Ulceration of Intestines	2	2	1	2	7	
		Hernia	1	1	2	
		Ileus	1	2	1	1	4	...	9	
		Intussusception	1	1	2	
		Stricture of Intestines	1	1	2	
		Stomach Disease, &c.	1	2	4	
		Hepatitis	2	3	3	5	1	4	1	4	2	4	4	5	38	
		Jaundice...	...	2	2	1	1	1	...	4	4	1	14	
		Liver Disease, &c.	...	1	...	2	2	7	4	2	1	20	
		Total, Order 4	...	13	16	15	20	14	12	12	11	4	14	19	16	166	
		Order 5. Diseases of Urinary Organs	Nephritis	1	1	1	1	4	
	Nephria	1	1	3	
	Diabetes	1	1	
	Cystitis	1	1	1	...	1	4	
	Kidney Disease, &c.		1	4	...	2	1	3	11
		Total, Order 5	2	1	2	2	...	1	6	1	4	1	3	23	
		Order 6. Diseases of Organs of Generation	Uterus Disease, &c.	...	3	2	1	7	1	2	...	2	1	19	
			Order 7. Diseases of Organs of Locomotion	Arthritis	1	1
		Joint Disease, &c.		1	5	...	1	1	1	9	
		Total, Order 7		...	1	5	...	1	1	1	1	10	
		Order 8. Diseases of Integumentary System	Phlegmon	1	1	
			Ulcer	2	...	1	1	1	1	1	...	7	
			Skin Disease, &c....	5	1	2	...	2	...	2	...	3	1	3	19
	Total, Order 8	2	5	2	4	1	2	2	...	4	2	3	27		
	Total, Class III.	...	94	81	82	103	101	98	81	83	99	100	76	110	1,108	30.88	

Class IV. Developmental Diseases.	Order 1. Developmental Diseases of Children	Malformations	1	...	5	3	1	1	3	1	15		
		Teething...	26	10	8	4	3	5	3	7	2	4	1	...	8	81	
		Total, Order 1	...	27	10	13	4	3	8	4	8	5	5	1	8	96	
	Order 2. Developmental Diseases of Adults ...	Paramenia	1	1	
		Childbirth	4	...	2	1	2	8	2	4	...	1	24	
		Total, Order 2	...	4	...	2	1	2	9	2	4	...	1	25	
	Order 3. Developmental Diseases of Old People	Old Age	6	3	1	...	1	2	3	3	...	4	2	6	31		
		Order 4. Diseases of Nutrition	Atrophy and Debility	42	42	35	32	39	21	19	22	18	26	22	48	366	
	Total, Class IV.	79	55	51	37	45	40	28	37	23	36	25	62	518	14.44
	Class V. Violent Deaths.	Order 1. Accident or Negligence	Fractures and Contusions	3	3	3	2	1	3	2	1	4	22	
Wounds	1	1	1	1	1	1	5		
Burns and Scalds	1	1	1	1	4	4	2	3	1	1	1	20		
Poison	1	2	...	1	1	2	1	8		
Drowning			2	3	1	2	1	2	1	5	6	3	8	9	43		
Suffocation	3	...	1	4	4	2	...	3	17		
Otherwise	1	6	4	3	3	1	2	4	1	25		
Total, Order 1		...	2	6	9	11	13	12	11	16	17	8	16	19	140		
Order 3. Homicide		Murder and Manslaughter	2	1	3		
Order 4. Suicide		Wounds—Cut, Stab, &c.	1	1	1		
	Poison	1	1			
	Hanging...	1	...	1	2			
	Otherwise	1	1			
Total, Order 4		2	...	2	1	5			
Order 5. Execution	Hanging...	1	1	1	1	4			
Total, Class V.	2	6	9	14	13	16	13	17	19	8	16	19	152	4.23	
Total, Specified Causes	449	344	332	346	337	280	266	265	234	225	189	321	3,588	100.00	
Total, Causes not specified...	1	1	5	4	2	3	...	2	...	1	19		
Total, all Causes	450	345	337	346	337	284	268	268	234	227	189	322	3,607		

WILLIAM HENRY ARCHER, Registrar-General.

DISEASES IN GAOLS—GENERAL SUMMARY.

SUMMARY of Diseases in Gaols, Penal Establishments, &c., during the Year 1861.

Name of Gaol, &c.	Diseases										Casualties.	Total.
	Zymotic.	Of Uncertain Seat.	Of the Nervous System.	Of the Respiratory Organs.	Of the Digestive Organs.	Of the Organs of Circulation.	Of the Urinary Organs.	Of the Organs of Generation.	Of the Organs of Locomotion.	Of the Integumentary System.		
Ararat Gaol	2	...	3	1	2	1	1	2	...	12
Ballaarat Gaol	26	15	66	7	9	...	1	6	6	4	10	150
Beechworth Gaol	26	2	60	5	1	3	2	4	6	109
Castlemaine Gaol	93	13	90	12	7	...	5	3	20	4	5	252
Geelong Gaol... ..	43	40	44	17	96	3	3	9	14	11	16	296
Kilmore Gaol	3	...	5	4	4	1	4	1	3	25
Maryborough Gaol	2	...	9	1	5	2	1	...	20
Melbourne { Main Gaol	147	46	43	65	107	...	14	6	1	63	56	548
{ Western Gaol	67	52	130	68	326	...	3	5	25	48	60	784
Portland Gaol	7	5	10	3	15	...	1	...	2	3	2	48
Sandhurst Gaol	22	5	75	11	17	1	1	13	10	6	7	168
Collingwood Stockade... ..	86	41	40	75	66	1	24	1	32	38	29	433
Pentridge Stockade	135	55	36	36	88	16	16	6	4	34	73	499
Hulks	71	33	10	39	40	8	12	4	4	221
Total	730	307	621	344	783	22	68	61	135	223	271	3,565

WILLIAM HENRY ARCHER, Registrar-General.

DISEASES IN GAOLS—DETAILED TABLE.

RETURN of Diseases which have been most prevalent in the various Gaols and Penal Establishments throughout the Colony during the Year 1861.

Name of Gaol, &c.	Zymotic.																				Total.	
	Scabies.	Diarrhoea.	Dysentery.	Influenza.	Ague.	Remittent Fever.	Typhus Fever.	Scurvy.	Erysipelas.	Syphilis.	Parotitis.	Gonorrhoea.	Colonial Fever.	Rheumatic Fever.	Diphtheria.	Scarlatina.	Measles.	Portigo.	Erythema.	English Cholera.		Metria.
Ararat Gaol	2	2
Ballaarat Gaol	14	3	2	3	4	26
Becchworth Gaol	1	6	8	1	1	6	1	2	26
Castlemaine Gaol	28	10	13	20	2	...	10	...	2	2	5	1	93
Geelong Gaol	8	9	1	2	...	1	5	...	3	6	5	1	1	1	...	43
Kilmore Gaol	1	1	1	3
Maryborough Gaol...	1	1	2
Melbourne { Main Gaol	4	36	8	17	...	46	...	35	...	1	147
{ Western Gaol	25	13	5	...	3	8	...	12	1	67
Portland Gaol	1	4	2	7
Sandhurst Gaol	6	8	5	3	22
Collingwood Stockade	29	4	1	2	...	17	...	17	1	15	86
Pentridge Stockade	33	9	12	10	...	13	9	47	2	135
Hulks	1	39	6	1	1	1	...	6	...	1	1	3	...	9	1	...	1	71
Total	5	222	81	36	1	3	28	15	4	90	4	90	17	105	2	16	4	3	2	1	1	730

DISEASES IN GAOLS.—DETAILED TABLE.

RETURN of Diseases which have been most prevalent in the various Gaols and Penal Establishments throughout the Colony during the Year 1861—continued.

Name of Gaol, &c.	Of Uncertain or Variable Seat.														Of the Nervous System.															
	Hæmorrhage.	Dropsy.	Abscess and Scrophula.	Gout.	Debility.	Worms.	Ulcer.	Hæmorrhoids.	Hæmatæmia.	Menorrhagia.	Hæmoptysis.	Fistula.	Hydrocele.	Tumour.	Tabes.	Total.	Apoplexy.	Paralysis.	Convulsions.	Neuralgia.	Epilepsy.	Insanity.	Delirium Tremens.	Ophthalmia.	Brain, Disease of.	Spine, Disease of.	Otitis.	Cerebral Congestion.	Total.	
Ararat Gaol	1	1	1
Ballaarat Gaol	6	...	3	6	15	2	28	26	8	2	66
Beechworth Gaol	1	...	1	2	...	1	47	1	7	...	4	60
Castlemaine Gaol	3	2	8	13	...	1	...	3	...	70	7	9	90
Geelong Gaol	1	...	3	2	22	1	2	2	1	6	40	1	2	5	...	18	10	2	6	44	
Kilmore Gaol	1	1	2	1	5
Maryborough Gaol	1	...	3	3	2	9
Melbourne { Main Gaol	7	2	32	5	46	7	5	5	21	5	...	48	
Melbourne { Western Gaol	1	1	6	3	40	1	52	3	5	14	24	54	23	7	...	130	
Portland Gaol	2	...	3	5	7	3	10
Sandhurst Gaol	5	5	...	3	...	6	2	35	22	6	1	75
Collingwood Stockade	5	...	1	7	25	1	1	1	...	41	4	6	...	26	4	40	
Pentridge Stockade	1	...	7	7	9	7	11	6	6	1	55	14	5	...	17	36	
Hulks	5	1	13	...	9	2	...	2	1	33	1	9	10	
Total	14	1	27	12	56	20	141	15	1	8	1	7	2	1	307	4	12	2	10	48	232	142	140	3	4	18	6	621		

DISEASES IN GAOLS.—DETAILED TABLE.

RETURN of Diseases which have been most prevalent in the various Gaols and Penal Establishments throughout the Colony during the Year 1861—*continued.*

Name of Gaol, &c.	Of the Respiratory Organs.								Of the Digestive Organs.								Of the Organs of Circulation.				Of the Urinary Organs.										
	Laryngitis.	Quinsy.	Bronchitis.	Pleurisy.	Pneumonia.	Asthma.	Phthisis.	Lungs, Disease of.	Total.	Odontalgia.	Peritonitis.	Hernia.	Colic.	Alimentary Canal, Disease of.	Liver, Disease of.	Dyspepsia.	Jaundice.	Total.	Palpitation.	Disease of the Heart.	Varicose Veins.	Total.	Cystitis.	Stricture of Urethra.	Dysuria.	Ischuria.	Emaciation.	Diabetes.	Diuresis.	Total.	
Ararat Gaol	1	1	2	2
Ballaarat Gaol	...	1	5	7	2	3	2	2	...	9	1	1
Beechworth Gaol	4	1	5	1	1
Castlemaine Gaol	...	1	10	12	2	2	1	2	...	7	1	4	5	
Geelong Gaol	...	2	11	1	...	3	...	17	8	...	1	22	65	...	96	...	3	...	3	...	2	1	3	
Kilmore Gaol	3	1	4	3	1	4	...	1	...	1	
Maryborough Gaol...	1	1	2	3	...	5
Melbourne { Main Gaol	...	12	48	5	65	5	18	84	...	107	14	14	
{ Western Gaol	...	21	45	2	68	1	13	312	...	326	1	...	2	3	
Portland Gaol	1	2	...	3	1	12	...	2	...	15	1	1	
Sandhurst Gaol	11	11	1	...	16	...	17	...	1	...	1	...	1	1	
Collingwood Stockade	...	16	53	5	1	75	2	2	1	9	52	...	66	...	1	...	1	...	17	7	24		
Pentridge Stockade	...	10	19	7	36	3	83	2	88	9	...	7	16	...	11	...	2	...	1	2	16		
Hulks	...	7	29	2	1	39	40	...	40	
Total	...	1	70	239	13	1	6	13	1	344	14	2	12	68	19	5	661	2	783	9	6	7	22	2	36	2	16	9	1	2	68

STATISTICS OF VICTORIA, 1861.—VITAL STATISTICS, ETC.

DISEASES IN GAOLS—DETAILED TABLE.

RETURN of Diseases which have been most prevalent in the various Gaols and Penal Establishments throughout the Colony during the Year 1861—*continued.*

Name of Gaol, &c.	Of the Organs of Generation.						Of the Organs of Locomotion.						Of the Elementary System.											Casualties.	Total Number of Diseases.						
	Childbirth.	Organs of Generation, Disease of.	Sore Breast.	Leucorrhoea.	Ochritis.	Amenorrhoea.	Total.	Arthritis.	Rheumatism.	Joints, Disease of.	Necrosis.	Peritostitis.	Caries.	Total.	Carbuncle.	Phlegmon.	Skin, Disease of.	Boils.	Whitlow.	Urticaria.	Montagra.	Psoriasis.	Furunculus.			Herpes.	Eczema.	Anthrax.	Impetigo.	Acne.	Total.
Ararat Gaol	1	1	...	1	1	...	1	1	2	...	12
Ballaarat Gaol	6	6	1	5	6	2	...	2	4	10	150	
Beechworth Gaol	3	3	2	2	4	4	6	109	
Castlemaine Gaol	3	1	19	20	1	...	3	4	5	252	
Geelong Gaol	2	...	1	2	4	9	4	7	...	3	...	14	3	2	2	2	2	11	16	236	
Kilmore Gaol	3	1	4	1	1	3	25	
Maryborough Gaol	2	2	1	1	...	20	
Melbourne { Main Gaol	6	6	1	1	...	31	1	...	6	10	1	14	63	56	548	
Melbourne { Western Gaol	...	1	4	5	4	21	25	...	30	1	...	6	...	1	9	1	48	60	784	
Portland Gaol	2	2	...	2	1	3	2	48	
Sandhurst Gaol	13	13	...	10	10	...	1	5	6	7	168	
Collingwood Stockade	1	1	...	29	...	1	1	1	32	...	21	8	...	1	5	...	1	2	38	29	433	
Pentridge Stockade	6	6	...	1	3	4	...	26	5	3	34	73	499	
Hulks	1	1	1	8	...	10	2	12	3	1	4	4	221	
Total	8	22	1	2	16	12	61	10	110	3	4	1	7	135	3	112	18	3	2	4	2	30	10	3	29	4	1	2	223	271	3,565

WILLIAM HENRY ARCHER, Registrar-General.

VITAL STATISTICS OF HOSPITALS.

VITAL STATISTICS of the various Hospitals in the Colony for the Year ending 31st December, 1861.

No. 9, 4 h.

Where Situated.	MALES.																															
	Numbers remaining on 31st December, 1860.										Numbers remaining on 31st December, 1861.										Mean of the Numbers remaining at the beginning and end of the Year.											
	Under 5.	5 to 10.	10 to 15.	15 to 25.	25 to 35.	35 to 45.	45 to 55.	55 to 65.	65 and up-wards.	Total.	Under 5.	5 to 10.	10 to 15.	15 to 25.	25 to 35.	35 to 45.	45 to 55.	55 to 65.	65 and up-wards.	Total.	Under 5.	5 to 10.	10 to 15.	15 to 25.	25 to 35.	35 to 45.	45 to 55.	55 to 65.	65 and up-wards.	Total.		
Amherst	2	4	1	1	...	8	2	3	1	4	...	1	11	2.0	3.5	1.0	2.5	5	9.5		
Ararat	2	4	1	3	...	10	3	2	1	...	1	7	1.0	3.5	1.5	2.0	5	8.5			
Ballaarat	5	28	12	4	2	1	52	1	5	17	7	6	2	1	39	5	5.0	22.5	9.5	5.0	2.0	1.0	45.5		
Beechworth	5	17	8	6	...	36	7	15	7	3	3	1	36	6.0	16.0	7.5	4.5	1.5	5	36.0			
Belfast*	1	3	...	2	...	6	1	1	1	5	1	...	9	1.0	2.0	...	3.5	...	5	7.5			
Castlemaine	2	1	...	9	28	13	9	7	2	71	...	2	1	14	21	21	9	5	...	73	1.0	1.5	5	11.5	24.5	17.0	9.0	6.0	1.0	72.0		
Dunolly	10	3	1	1	...	15	...	1	1	2	7	4	4	...	19	5	1.0	8.5	3.5	2.5	17.0			
Heathcote	1	4	2	1	...	8	1	5	3	2	...	11	5	3.0	3.5	2.0	9.5			
Kilmore	3	1	1	1	1	7	2	2	2	8	1.0	2.5	1.5	1.5	...	5	7.5			
Kyneton	...	1	...	4	8	1	...	2	...	16	2	5	12	2	3	...	24	1.0	5	...	4.5	10.0	1.5	1.5	20.0			
Lower Murray	2	3	4	...	1	10	2	2	...	2	...	6	2.0	2.5	2.0	1.0	...	5	8.0			
Maldon	1	1	1	...	1	...	4	1	4	1	7	1.0	1.0	2.5	...	5	...	5.5			
Maryborough	4	8	6	18	2	10	3	2	...	17	3.0	9.0	4.5	1.0	17.5			
Melbourne	1	4	7	52	94	42	31	9	1	241	5	5	13	43	91	52	26	9	2	246	3.0	4.5	10.0	47.5	92.5	47.0	28.5	9.0	1.5	243.5		
(Lying-in)	1	1	2	1.0	5	5	2.0			
Pleasant Creek	...	1	6	5	2	14	1	1	3	6	7	3	...	21	...	5	5	...	4.5	5.5	4.5	1.5	...	17.5		
Sandhurst		
Warrnambool*	1	1	...	1	1	2	1	1	1	9	1	2	1	2	1	1	...	10	5	5	5	1.5	1.0	2.0	1.5	1.0	9.5			
Total	4	8	7	86	218	103	67	25	7	525	8	9	18	88	194	119	77	26	7	546	6.5	8.5	13.0	87.0	206.0	111.0	72.0	25.5	6.0	536.5		
FEMALES.																																
Amherst	1	1	5	
Ararat	
Ballaarat	1	4	2	1	1	9	2	3	5	1	1	1	...	13	1.5	3.5	3.5	1.0	1.0	...	5	11.0		
Beechworth	1	1	2	3	3	...	1	1	...	8	2.0	2.0	...	5	5	5.0		
Belfast*	
Castlemaine	1	1	2	1	5	1	3	1	1	6	5	1.0	2.5	1.0	...	5	5.5		
Dunolly	3	...	1	1	5	
Heathcote	2.0	...	5	3.0	
Kilmore	
Kyneton	1	2	3	2	2	1	1	1.5	
Lower Murray	5.0	
Maldon	
Maryborough	1	1	1.5	
Melbourne	2	5	1	39	26	10	7	1	...	91	3	4	7	33	33	6	4	3	...	93	2.5	4.5	4.0	36.0	29.5	8.0	5.5	2.0	...	92.0		
(Lying-in)	...	1	...	11	7	2	21	...	1	...	16	5	7	1	30	...	1.0	...	13.5	6.0	4.5	25.5		
Pleasant Creek	
Sandhurst	
Warrnambool*	1	2	2	5	1	...	1	3.5	
Total	3	6	3	61	43	18	9	2	...	145	5	7	10	56	51	19	9	5	1	163	4.0	6.5	6.5	58.5	47.0	18.5	9.0	3.5	0.5	154.0		

NOTE.—Those marked with asterisks are also Benevolent Asylums.

No return was furnished by the authorities of the Sandhurst Hospital.

VITAL STATISTICS OF HOSPITALS.

VITAL STATISTICS of the various Hospitals in the Colony for the Year ending 31st December, 1861—continued.

Where Situated.	MALES.																														
	Numbers admitted within the Year.										Numbers discharged cured or relieved.										Numbers discharged incurable, or at their own request.										
	Under 5.	5 to 10.	10 to 15.	15 to 25.	25 to 35.	35 to 45.	45 to 55.	55 to 65.	65 and upwards.	Total.	Under 5.	5 to 10.	10 to 15.	15 to 25.	25 to 35.	35 to 45.	45 to 55.	55 to 65.	65 and upwards.	Total.	Under 5.	5 to 10.	10 to 15.	15 to 25.	25 to 35.	35 to 45.	45 to 55.	55 to 65.	65 and upwards.	Total.	
Amherst	1	9	48	28	13	4	3	106	9	40	24	9	4	2	88	1	1	
Ararat	1	11	36	40	25	5	6	124	1	13	37	36	23	3	5	118	2	2	...	4	
Ballaarat	2	1	3	67	178	100	49	15	7	422	...	1	3	61	167	93	38	11	6	380	1	8	3	3	1	17	
Beechworth	1	1	72	144	70	38	11	6	343	...	1	1	63	133	58	36	7	5	304	1	1	1	...	3	
Belfast*	3	4	8	4	2	1	22	3	6	6	2	17	
Castlemaine	1	6	7	88	145	115	56	25	5	448	2	9	10	73	124	90	43	20	4	375	
Dunolly	1	3	5	27	60	48	25	13	5	187	1	2	3	20	56	36	20	11	3	152	1	2	1	1	5
Heathcote	11	18	22	7	8	1	67	9	10	17	6	8	1	51
Kilmore	13	21	23	20	7	3	87	8	21	18	13	5	2	67	1	1	1	3	
Kyneton	7	3	2	48	114	56	17	10	5	262	5	3	1	42	90	48	12	9	4	214	1	1	1	1	4	
Lower Murray	1	...	16	23	15	3	9	1	68	...	1	...	16	22	13	6	6	2	66	1	...	1	...	2	
Maldon	4	8	12	6	1	...	31	3	4	5	5	1	...	18	2	1	...	1	...	4	
Maryborough	2	13	57	34	15	1	3	125	2	12	47	28	10	...	3	162	
Melbourne ...	36	61	89	518	1,143	573	347	97	23	2,887	24	48	74	463	910	473	275	73	17	2,357	1	9	4	22	152	26	41	11	...	266	
(Lying in) ...	11	1	12	7	7	1	1	
Pleasant Creek	1	1	7	45	35	37	10	3	139	...	1	1	6	41	32	33	9	3	126	1	2	3	
Sandhurst
Warrnambool*	3	...	7	8	3	24	...	2	47	...	3	...	5	5	...	19	...	2	34	
Total ...	58	81	112	914	2,052	1,182	686	218	74	5,377	39	69	96	806	1,713	977	550	167	59	4,476	2	9	5	25	172	36	49	13	2	313	
FEMALES.																															
Amherst	3	6	9	3	3	6	1	1	
Ararat	1	2	3	2	1	3	12	...	1	2	3	2	1	3	12	
Ballaarat	2	1	21	24	16	6	1	...	71	...	2	2	21	21	12	3	1	...	62	3	2	4	...	2	11	
Beechworth	2	1	2	11	21	9	1	5	1	53	1	1	2	10	16	5	1	3	39	1	
Belfast*	5	1	6	5	1	6	
Castlemaine	5	18	14	14	7	...	1	59	5	16	9	13	5	...	1	49	
Dunolly	2	5	8	2	1	...	20	2	8	7	3	3	23	
Heathcote	2	1	1	1	1	
Kilmore	1	3	6	2	2	4	...	1	1	2	
Kyneton	5	7	2	2	18	6	8	1	49	3	3	1	1	17	6	5	1	...	37	...	1	1	2	
Lower Murray	1	1	1	3	1	1	1	3	
Maldon
Maryborough	2	2	1	5	3	...	1	4	
Melbourne ...	36	27	70	409	328	138	50	29	3	1,090	23	26	59	381	290	113	45	21	3	966	2	15	8	7	4	2	...	38	
(Lying in) ...	3	9	1	171	127	27	4	2	...	344	3	9	1	150	125	19	2	1	...	310	4	4	3	1	12		
Pleasant Creek	2	2	2	1	1	...	8	2	2	2	1	1	...	8	
Sandhurst
Warrnambool*	4	7	4	3	18	3	5	4	3	15	
Total ...	46	48	90	660	560	222	82	40	6	1,754	35	42	78	609	500	180	68	28	5	1,545	...	2	2	22	16	15	8	2	...	67	

NOTE.—Those marked with asterisks are also Benevolent Asylums.

No return was furnished by the authorities of the Sandhurst Hospital.

VITAL STATISTICS OF HOSPITALS.

VITAL STATISTICS of the various Hospitals in the Colony for the Year ending 31st December, 1861—continued.

Where Situated.	MALES.																														
	Deaths.										Total discharged within the Year (including Deaths).										Numbers treated.										
	Under 5.	5 to 10.	10 to 15.	15 to 25.	25 to 35.	35 to 45.	45 to 55.	55 to 65.	65 and upwards.	Total.	Under 5.	5 to 10.	10 to 15.	15 to 25.	25 to 35.	35 to 45.	45 to 55.	55 to 65.	65 and upwards.	Total.	Under 5.	5 to 10.	10 to 15.	15 to 25.	25 to 35.	35 to 45.	45 to 55.	55 to 65.	65 and upwards.	Total.	
Amherst	1	...	4	4	4	...	1	14	1	9	45	28	13	4	3	103	1.0	9.0	46.5	28.0	13.0	4.0	3.0	104.5	
Ararat	1	5	3	2	1	12	1	13	40	41	28	5	6	134	1.0	12.0	38.0	40.5	26.5	5.0	6.0	129.0	
Ballaarat	2	10	31	16	12	5	1	77	2	1	3	72	206	112	53	17	8	474	2.0	1.0	3.0	69.5	192.0	106.0	51.0	16.0	7.5	448.0	
Beechworth	7	12	12	4	1	...	36	...	1	1	70	146	71	41	8	5	343	...	1.0	1.0	7.0	145.0	70.5	39.5	9.5	5.5	343.0	
Belfast*	1	...	1	...	2	3	6	7	2	1	...	19	3.0	5.0	7.5	3.0	1.5	5	20.5	
Castlemaine	1	1	...	8	19	17	9	1	1	57	3	10	10	81	143	107	52	21	5	432	2.0	8.0	8.5	84.5	144.0	111.0	54.0	23.0	5.0	440.0	
Dunolly	1	4	5	10	2	3	1	26	1	2	4	25	63	47	22	14	5	183	1.0	2.5	4.5	26.0	61.5	47.5	23.5	13.5	5.0	185.0	
Heathcote	1	4	6	1	1	...	13	10	14	23	7	9	1	64	10.5	16.0	22.5	7.0	8.5	1.0	65.5	
Kilmore	1	2	2	2	2	9	8	23	21	16	7	4	79	10.5	22.0	22.0	18.0	7.0	3.5	83.0	
Kyncton	11	5	2	1	1	20	5	3	2	43	102	54	14	10	5	238	6.0	3.0	2.0	45.5	108.0	55.0	15.0	10.0	5.0	250.0	
Lower Murray	3	...	1	...	4	...	1	...	16	23	16	7	7	2	72	...	1.0	...	16.0	23.0	15.5	5.0	8.0	1.5	70.0	
Maldon	1	2	3	6	4	8	9	5	2	...	28	4.0	8.0	10.5	5.5	1.5	...	29.5	
Maryborough	3	8	9	3	1	...	24	2	15	55	37	13	1	3	126	2.0	14.0	56.0	35.5	14.0	1.0	3.0	125.5	
Melbourne	7	3	5	42	84	64	36	13	5	259	32	60	83	527	1,146	563	352	97	22	2,882	34.0	60.5	86.0	522.5	1,144.5	568.0	349.5	97.0	22.5	2,884.5	
" (Lying-in)	2	2	10	10	10.5	5	11.0	
Pleasant Creek	1	3	1	4	1	...	10	...	1	1	7	45	35	37	10	3	139	...	1.0	1.0	7.0	45.0	35.0	37.0	10.0	3.0	139.0	
Sandhurst
Warrnambool*	3	3	...	3	...	5	5	...	22	...	2	37	...	3.0	...	6.0	6.5	1.5	23.0	...	2.0	42.0	
Total	12	4	7	77	185	158	85	33	13	574	53	82	108	908	2,070	1,171	684	213	74	5,363	55.5	81.5	110.0	911.0	2,061.0	1,176.5	685.0	215.5	74.0	5,370.0	

Where Situated.	FEMALES.																														
	Deaths.										Total discharged within the Year (including Deaths).										Numbers treated.										
	Under 5.	5 to 10.	10 to 15.	15 to 25.	25 to 35.	35 to 45.	45 to 55.	55 to 65.	65 and upwards.	Total.	Under 5.	5 to 10.	10 to 15.	15 to 25.	25 to 35.	35 to 45.	45 to 55.	55 to 65.	65 and upwards.	Total.	Under 5.	5 to 10.	10 to 15.	15 to 25.	25 to 35.	35 to 45.	45 to 55.	55 to 65.	65 and upwards.	Total.	
Amherst	3	3	3	7	10	3.0	6.5	9.5	
Ararat	1	2	3	2	1	3	12	...	1.0	2.0	3.0	2.0	1.0	3.0	12.0
Ballaarat	1	3	1	2	...	7	...	2	2	25	26	17	7	1	80	...	2.0	1.0	23.0	25.0	16.5	6.5	1.0	...	75.5	
Beechworth	1	1	2	2	...	1	...	7	2	1	2	11	19	7	1	4	...	47	2.0	1.0	2.0	11.0	20.0	8.0	1.0	4.5	5	50.0	
Belfast*	5	1	6	5.0	1.0	6.0	
Castlemaine	2	3	5	5	18	13	12	5	...	1	...	54	5.0	18.0	13.5	13.0	6.0	...	1.0	56.5	
Dunolly	1	1	2	8	8	3	3	24	2.0	6.5	8.0	2.5	2.5	5	...	22.0	
Heathcote	1	1	1.0	
Kilmore	1	2	3	6	...	1.0	3.0	6.0	
Kyncton	...	1	1	2	3	5	1	1	18	6	6	1	41	4.0	6.0	1.5	1.5	18.0	6.0	7.0	1.0	...	45.0	
Lower Murray	1	1	1	3	1.0	1.0	1.0	3.0	
Maldon
Maryborough	3	...	1	4	2.5	1.0	1.0	4.5
Melbourne	7	2	3	19	23	22	4	4	...	84	35	28	64	415	321	142	53	27	3	1,088	35.5	27.5	67.0	412.0	324.5	140.0	51.5	28.0	3.0	1,089.0	
" (Lying-in)	1	1	...	2	3	9	1	155	129	22	3	2	...	324	3.0	9.0	1.0	163.0	128.0	24.5	3.5	2.0	...	334.0	
Pleasant Creek	2	2	2	1	1	8	2.0	2.0	2.0	1.0	1.0	...	8.0	
Sandhurst
Warrnambool*	1	3	6	4	3	16	3.5	6.5	4.0	3.0	17.0	
Total	8	3	3	25	36	25	6	6	...	112	43	47	83	656	553	219	82	36	5	1,724	44.5	47.5	86.5	658.0	556.5	220.5	82.0	38.0	5.5	1,739.0	

NOTE.—Those marked with asterisks are also Benevolent Asylums.

No return was furnished by the authorities of the Sandhurst Hospital.

WILLIAM HENRY ARCHER, Registrar-General.

VITAL STATISTICS OF BENEVOLENT ASYLUMS.

VITAL STATISTICS of the various Benevolent Asylums in the Colony for the Year ending 31st December, 1861.

Where Situated.	MALES.																													
	Numbers remaining on 31st December, 1860.										Numbers remaining on 31st December, 1861.										Mean of Numbers remaining at the beginning and end of the Year.									
	Under 5	5 to 10	10 to 15	15 to 25	25 to 35	35 to 45	45 to 55	55 to 65	65 and upwards	Total.	Under 5	5 to 10	10 to 15	15 to 25	25 to 35	35 to 45	45 to 55	55 to 65	65 and upwards	Total.	Under 5	5 to 10	10 to 15	15 to 25	25 to 35	35 to 45	45 to 55	55 to 65	65 and upwards	Total.
Ballaarat
Bendigo	2	1	5	7	5	4	2	26	1	2	...	2	5	3	6	5	2	26	1.5	1.0	...	1.5	5.0	5.0	5.5	4.5	2.0	26.0
Castlemaine	2	2	2	1	1	1	2	11	10	9	1	...	1	2	...	2	4	29	6.0	5.5	.5	...	1.5	1.5	.5	1.5	3.0	20.0
Geelong	1	4	21	16	13	12	6	73	...	2	...	4	17	19	7	11	12	72	...	1.0	.5	4.0	19.0	17.5	10.0	11.5	9.0	72.5
Melbourne	14	33	37	42	48	78	252	11	30	35	42	49	85	252	12.5	31.5	36.0	42.0	48.5	81.5	252.0
„ (Immigrants' Home)	31	48	17	12	29	13	12	6	6	174	45	75	35	7	20	17	6	7	...	212	38.0	61.5	26.0	9.5	24.5	15.0	9.0	6.5	3.0	193.0
Portland	1	1	...	7	3	3	15	3	2	4	4	5	18	.5	2.0	1.0	5.5	3.5	4.0	16.5
Total	36	50	18	31	91	74	80	74	97	551	56	88	36	24	76	78	65	78	108	609	46.0	69.0	27.0	27.5	83.5	76.0	72.5	76.0	102.5	580.0
FEMALES.																														
Ballaarat
Bendigo	1	1	...	1	6	1	1	11	2	2	6	...	1	...	1	12	1.5	.5	...	1.5	6.0	.5	.5	...	1.0	11.5
Castlemaine	2	1	...	1	1	...	5	4	5	4	1	...	14	3.0	2.5	2.55	1.0	...	9.5
Geelong	1	3	6	4	4	2	1	2	23	...	1	1	2	5	3	3	3	4	22	...	1.0	2.0	4.0	4.5	3.5	2.5	2.0	3.0	22.5
Melbourne	9	13	6	8	15	13	64	4	11	5	5	16	19	60	6.5	12.0	5.5	6.5	15.5	16.0	62.0
„ (Immigrants' Home)	41	38	7	7	13	3	3	1	2	115	26	69	34	17	14	2	1	3	...	166	33.5	53.5	20.5	12.0	13.5	2.5	2.0	2.0	1.0	140.5
Portland	1	...	1	...	1	1	1	5	1	1	1	1	...	4	1.055	1.0	1.0	.5	...	4.5
Total	45	40	11	23	38	15	15	18	18	223	33	75	35	25	40	11	11	24	24	278	39.0	57.5	23.0	24.0	39.0	13.0	13.0	21.0	21.0	250.5

NOTE.—The Geelong Benevolent Asylum is also an Infirmary. No return has been received in this Department of the Vital Statistics of the Ballaarat Benevolent Asylum.

VITAL STATISTICS OF BENEVOLENT ASYLUMS.

VITAL STATISTICS of the various Benevolent Asylums in the Colony for the Year ending 31st December, 1861—continued.

No. 9, 47.

Where Situated.		MALES.																													
		Numbers admitted within the Year.										Numbers discharged cured or relieved.										Number discharged incurable or at their own request.									
		Under 5	5 to 10	10 to 15	15 to 25	25 to 35	35 to 45	45 to 55	55 to 65	65 and upwards	Total.	Under 5	5 to 10	10 to 15	15 to 25	25 to 35	35 to 45	45 to 55	55 to 65	65 and upwards	Total.	Under 5	5 to 10	10 to 15	15 to 25	25 to 35	35 to 45	45 to 55	55 to 65	65 and upwards	Total.
Ballaarat	
Bendigo	...	12	18	...	47	51	49	...	70	329 ¹	9	9	...	19	34	22	34	43	67	237	...	4	...	4	11	18	5	10	...	52	
Castlemaine	...	16	13	1	...	2	4	2	6	7	51	6	5	...	4	3	3	3	4	28	
Geelong	...	2	13	12	83	149	152	71	42	26	550	1	11	12	75	132	129	66	36	17	479	1	4	7	6	3	1	...	22
Melbourne	5	28	26	34	39	54	186	7	11	11	8	7	44	4	13	10	15	21	25	88
„ (Immigrants' Home)	...	113	113	58	307	530	336	196	119	59	1,831	52	38	23	300	510	319	190	111	59	1,602
Portland	2	10	8	3	14	6	43	1	2	7	5	5	11	3	34
Total	...	143	157	71	397	766	577	355	220	222	2,990	69	63	35	396	694	489	309	212	157	2,424	...	4	1	12	31	34	23	32	25	162
		FEMALES.																													
		Numbers admitted within the Year.										Numbers discharged cured or relieved.										Number discharged incurable or at their own request.									
		Under 5	5 to 10	10 to 15	15 to 25	25 to 35	35 to 45	45 to 55	55 to 65	65 and upwards	Total.	Under 5	5 to 10	10 to 15	15 to 25	25 to 35	35 to 45	45 to 55	55 to 65	65 and upwards	Total.	Under 5	5 to 10	10 to 15	15 to 25	25 to 35	35 to 45	45 to 55	55 to 65	65 and upwards	Total.
Ballaarat
Bendigo	...	3	3	4	2	2	421 ²	10	20	7	23	58	33	71	51	89	362	...	11	3	17	8	2	41
Castlemaine	...	11	8	1	2	12	1	1	1	...	37	8	5	1	2	7	1	2	1	...	27
Geelong	11	4	58	48	28	8	7	9	173	...	10	5	56	41	23	5	4	7	151	...	1	...	4	1	2	8
Melbourne	2	2	2	5	10	11	32	3	1	4	3	3	1	4	4	2	17	
„ (Immigrants' Home)	...	99	100	59	103	118	38	11	16	3	547	64	30	24	86	103	36	10	13	3	369
Portland	...	3	1	...	1	2	1	1	1	...	10	3	1	1	3	1	1	11	
Total	...	116	120	64	169	186	72	26	35	25	1,220	85	66	38	168	212	94	89	72	100	924	...	12	3	24	12	5	4	4	2	66

¹ The ages of 82 of these were not stated.

² The ages of 407 of these were not stated.

NOTE.—The Geelong Benevolent Asylum is also an Infirmary. No return has been received in this Department of the Vital Statistics of the Ballaarat Benevolent Asylum.

VITAL STATISTICS OF BENEVOLENT ASYLUMS.

VITAL STATISTICS of the various Benevolent Asylums in the Colony for the Year ending 31st December, 1861—continued.

Where Situated.	MALES.																														
	Deaths.									Total discharges within the Year, including Deaths.									Mean of the Numbers admitted and discharged.												
	Under 5	5 to 10	10 to 15	15 to 25	25 to 35	35 to 45	45 to 55	55 to 65	65 and upwards	Total	Under 5	5 to 10	10 to 15	15 to 25	25 to 35	35 to 45	45 to 55	55 to 65	65 and upwards	Total	Under 5	5 to 10	10 to 15	15 to 25	25 to 35	35 to 45	45 to 55	55 to 65	65 and upwards	Total	
Ballaarat	
Bendigo	1	1	...	2	3	2	2	1	12	10	14	...	25	45	43	41	55	68	301	11.0	16.0	
Castlemaine	1	1	1	2	5	7	5	5	3	4	6	33	11.5	9.0	0.5	...	3.5	3.5	2.5	5.0	6.5	42.0	
Geelong	1	4	14	14	8	6	50	2	11	13	83	153	149	77	43	20	551	2.0	12.0	12.5	83.0	151.0	150.5	74.0	42.5	23.0	550.5
Melbourne	4	14	5	15	5	14	57	8	34	26	41	46	189	6.5	31.0	26.0	37.5	36.5	50.0	187.5
„ (Immigrants' Home)	16	1	...	17	68	38	23	300	510	319	190	112	59	1,619	90.5	75.5	40.5	303.5	520.0	327.5	193.0	115.5	59.0	1,725.0
Portland	1	2	...	2	1	6	1	2	8	7	5	13	4	40	5	2.0	9.0	7.5	4.0	13.5	5.0	41.5
Total	19	1	...	10	30	24	25	17	21	147	88	68	36	418	755	547	357	261	2,733	115.5	112.5	53.5	407.5	760.5	562.0	356.0	240.5	212.5	2,861.5
FEMALES.																															
Ballaarat
Bendigo	1	2	1	4	11	32	10	40	68	36	71	51	89	408	7.0	16.0	5.0	21.5	36.0	19.0	35.5	25.5	45.5	414.5
Castlemaine	1	1	8	5	1	2	8	1	2	1	...	28	9.5	6.5	1.0	2.0	10.0	1.0	1.5	1.0	...	32.5
Geelong	1	2	5	4	2	1	15	...	11	6	62	47	29	7	5	7	174	...	11.0	5.0	60.0	47.5	28.5	7.5	6.0	8.0	173.5
Melbourne	1	3	1	1	4	2	12	4	6	2	5	11	5	33	3.0	4.0	2.0	5.0	10.5	8.0	32.5
„ (Immigrants' Home)	9	1	1	12	73	31	25	86	104	36	10	13	3	381	86.0	65.5	42.0	94.5	111.0	37.0	10.5	14.5	3.0	464.0
Portland	3	1	1	1	3	1	1	11	3.0	1.0	0.5	1.0	2.5	1.0	1.0	0.5	...	10.5
Total	10	1	2	3	12	6	3	5	2	44	95	80	43	195	236	105	96	81	1,035	105.5	100.0	53.5	182.0	211.0	88.5	61.0	58.0	64.5	1,127.5

NOTE.—The Geelong Benevolent Asylum is also an Infirmary. No return has been received in this Department of the Vital Statistics of the Ballaarat Benevolent Asylum.

VITAL STATISTICS OF ORPHAN ASYLUMS.

VITAL STATISTICS of the various Orphan Asylums in the Colony for the Year ending the 31st December, 1861.

Where Situated.	MALES.																
	Numbers remaining on 31st December, 1860.					Numbers remaining on 31st December, 1861.				Mean of the Numbers remaining at the beginning and end of the Year.				Numbers admitted within the Year.			
	Under 5.	5 to 10.	10 to 15.	15 to 25.	Total.	Under 5.	5 to 10.	10 to 15.	Total.	Under 5.	5 to 10.	10 to 15.	Total.	Under 5.	5 to 10.	10 to 15.	Total.
Melbourne Protestant Orphanage ...	9	73	4	...	86	3	63	21	87	6.0	68.0	12.5	86.5	8	12	...	20
Melbourne Roman Catholic Orphanage ...	1	32	15	...	48	4	35	12	51	2.5	33.5	13.5	49.5	3	3	...	6
Geelong Protestant Orphanage ...	18	30	3	1	52	14	44	4	62	16.0	37.0	4.0	57.0	4	7	1	12
Geelong Roman Catholic Orphanage ...	7	20	5	...	32	8	22	4	34	7.5	21.0	4.5	33.0	3	2	...	5
Total ...	35	155	27	1	218	29	164	41	234	32.0	159.5	34.5	226.0	18	24	1	43
Where Situated.	FEMALES.																
	Under 5.	5 to 10.	10 to 15.	15 to 25.	Total.	Under 5.	5 to 10.	10 to 15.	Total.	Under 5.	5 to 10.	10 to 15.	Total.	Under 5.	5 to 10.	10 to 15.	Total.
	Melbourne Protestant Orphanage ...	13	47	3	...	63	5	41	21	67	9.0	44.0	12.0	65.0	5	10	3
Melbourne Roman Catholic Orphanage ...	4	27	5	...	36	5	28	3	36	4.5	27.5	4.0	36.0	1	1	1	3
Geelong Protestant Orphanage ...	11	17	2	...	30	16	19	2	37	13.5	18.0	2.0	33.5	9	5	1	15
Geelong Roman Catholic Orphanage ...	3	8	4	...	15	2	11	4	17	2.5	9.5	4.0	16.0	1	3	...	4
Total ...	31	99	14	...	144	28	99	30	157	29.5	99.0	22.0	150.5	16	19	5	40
Where Situated.	MALES.																
	Numbers discharged.				Deaths.				Total Number of Discharges (including Deaths).				Mean of the Numbers admitted and discharged.				
	Under 5.	5 to 10.	10 to 15.	Total.	Under 5.	5 to 10.	10 to 15.	Total.	Under 5.	5 to 10.	10 to 15.	Total.	Under 5.	5 to 10.	10 to 15.	Total.	
Melbourne Protestant Orphanage ...	3	4	9	16	3	3	6	4	9	19	7.0	8.0	4.5	19.5	
Melbourne Roman Catholic Orphanage	3	3	3	3	1.5	1.5	1.5	4.5	
Geelong Protestant Orphanage	2	...	2	2	...	2	2.0	4.5	0.5	7.0	
Geelong Roman Catholic Orphanage	3	3	3	3	1.5	1.0	1.5	4.0	
Total ...	3	6	15	24	3	3	6	6	15	27	12.0	15.0	8.0	35.0	
Where Situated.	FEMALES.																
	Under 5.	5 to 10.	10 to 15.	Total.	Under 5.	5 to 10.	10 to 15.	Total.	Under 5.	5 to 10.	10 to 15.	Total.	Under 5.	5 to 10.	10 to 15.	Total.	
	Melbourne Protestant Orphanage ...	2	6	6	14	2	6	6	14	3.5	8.0	4.5	16.0
Melbourne Roman Catholic Orphanage	3	3	3	3	0.5	0.5	2.0	3.0	
Geelong Protestant Orphanage ...	1	5	2	8	1	5	2	8	5.0	5.0	1.5	11.5	
Geelong Roman Catholic Orphanage	2	2	2	2	0.5	1.5	1.0	3.0	
Total ...	3	11	13	27	3	11	13	27	9.5	15.0	9.0	33.5	

WILLIAM HENRY ARCHER, Registrar-General.

STATISTICS OF VICTORIA, 1861.—VITAL STATISTICS, ETC.

METEOROLOGY—GENERAL SUMMARY.

SUMMARY of the Returns at various Meteorological Stations for the Year 1861.

Meteorological Stations.	Temperature in the Shade.			Atmospheric Pressure.			Amount of Rainfall during the Year.
	Maximum during the Year.	Minimum during the Year.	Mean of Twelve Months.	Maximum during the Year.	Minimum during the Year.	Mean of Twelve Months.	
Melbourne	98·4	31·8	57·7	inches 30·581	inches 29·137	inches 29·879	inches 31·138
Ballaarat	100·0	28·2	53·1	29·125	27·805	28·488	28·660
Castlemaine or Sandhurst ¹	103·2	29·0	57·4	29·825	28·509	29·318	24·720
Heathcote ²	103·0	32·7	65·1	29·698	28·539	29·130	27·380
Camperdown ³	53·3	29·699	28·550	29·227	36·941
Portland	100·0	32·0	59·9	30·630	28·971	29·899	39·583

¹ At this station the maximum, minimum, and mean of temperature and atmospheric pressure are given for only eleven months, no return of those elements having been made for the month of March.

² The maximum, minimum, and mean of temperature and atmospheric pressure are given for only six months, viz., January, February, March, April, November, and December.

³ At this station the mean of temperature, and maximum, minimum, and mean of atmospheric pressure are given only for nine months—March, November, and October being omitted.

WILLIAM HENRY ARCHER, Registrar-General.

METEOROLOGY—MONTHLY OBSERVATIONS AT THE VARIOUS STATIONS.

RETURN of the Mean Temperature, Atmospheric Pressure, Amount of Rain, and Prevailing Winds at various Meteorological Stations in Victoria during each Month of the Year 1861.

JANUARY.

Stations.		Periods of Five Days.						Maximum for the Month.	Minimum for the Month.	Mean for the Month.
		1 to 5.	6 to 10.	11 to 15.	16 to 20.	21 to 25.	26 to 30.			
PORTLAND ..	Temperature of Air	66·7 inches	70·7 inches	65·2 inches	68·1 inches	63·6 inches	69·0 inches	95·0 inches	52·0 inches	67·2 inches
	Pressure of Air ...	29·805 inches	29·994	29·958 inches	29·827 inches	29·882 inches	29·761	30·121 inches	29·486 inches	29·871 inches
	Amount of Rain ...	1·900 inches	...	0·060 inches	0·780 inches	0·400 inches	...	Total Rainfall, 3·140 inches		
	Prevailing Wind—S.E., E., and S.W.									
MELBOURNE ..	Temperature of Air	66·6 inches	73·7 inches	64·2 inches	68·3 inches	62·5 inches	68·9 inches	98·4 inches	51·6 inches	67·4 inches
	Pressure of Air ...	29·752 inches	29·940	29·875 inches	29·751 inches	29·790 inches	29·718	30·069 inches	29·428 inches	29·804 inches
	Amount of Rain ...	0·512 inches	...	0·267 inches	1·194 inches	0·269 inches	0·004	Total Rainfall, 2·246 inches		
	Prevailing Wind—S., S.W., and W.									
CAMPERDOWN	Temperature of Air	62·4 inches	73·4 inches	57·2 inches	63·5 inches	55·9 inches	64·8 inches	62·9 inches
	Pressure of Air ...	29·230 inches	29·237	29·255 inches	29·276 inches	29·224 inches	29·218	29·342 inches	28·867 inches	29·240 inches
	Amount of Rain ...	0·500 inches	...	0·250 inches	0·340 inches	2·500 inches	...	Total Rainfall, 3·590 inches		
	Prevailing Wind—S. and W.									
HEATHCOTE ..	Temperature of Air	66·9 inches	77·1 inches	65·7 inches	69·4 inches	61·8 inches	71·4 inches	103·0 inches	45·0 inches	68·7 inches
	Pressure of Air ...	29·066 inches	29·253	29·153 inches	29·053 inches	29·095 inches	29·000	29·382 inches	28·780 inches	29·103 inches
	Amount of Rain ...	0·080 inches	...	0·020 inches	1·730 inches	Total Rainfall, 1·830 inches		
	Prevailing Wind—S. and S.E.									
CASTLEMAINE	Temperature of Air	63·2 inches	75·8 inches	65·1 inches	69·6 inches	59·9 inches	70·7 inches	103·2 inches	44·2 inches	67·4 inches
	Pressure of Air ...	28·829 inches	29·007	28·944 inches	28·832 inches	28·882 inches	28·780	29·138 inches	28·582 inches	28·879 inches
	Amount of Rain ...	0·020 inches	...	0·060 inches	0·510 inches	0·260 inches	0·200	Total Rainfall, 1·050 inches		
	Prevailing Wind—S., S.E., E., and W.									
BALLAARAT ..	Temperature of Air	58·3 inches	75·7 inches	59·1 inches	64·6 inches	54·4 inches	67·2 inches	100·0 inches	45·0 inches	63·2 inches
	Pressure of Air ...	28·408 inches	28·560	28·499 inches	28·384 inches	28·451 inches	28·345	28·665 inches	28·139 inches	28·441 inches
	Amount of Rain ...	0·460 inches	...	0·100 inches	0·460 inches	0·630 inches	...	Total Rainfall, 1·650 inches		
	Prevailing Wind—S., S.E., and S.W.									

METEOROLOGY—MONTHLY OBSERVATIONS AT THE VARIOUS STATIONS.

RETURN of the Mean Temperature, Atmospheric Pressure, Amount of Rain, and Prevailing Winds at various Meteorological Stations in Victoria during each Month of the Year 1861—*continued.*

FEBRUARY.

Stations.		Periods of Five Days.						Maximum for the Month.	Minimum for the Month.	Mean for the Month.
		31 to 4	5 to 9	10 to 14	15 to 19	20 to 24	25 to 1			
PORTLAND ..	Temperature of Air	64°1 inches	65°6 inches	68°4 inches	66°1 inches	64°0 inches	66°9 inches	83°0 inches	45°0 inches	65°9 inches
	Pressure of Air ...	29·881 inches	29·848 inches	29·807 inches	29·523 inches	29·841 inches	30·041 inches	30·194 inches	29·260 inches	29·824 inches
	Amount of Rain ...	0·160 inches	0·300 inches	...	0·560 inches	0·100 inches	...	Total Rainfall, 1·120 inches		
	Prevailing Wind—S.E. and W.									
MELBOURNE ..	Temperature of Air	61°2 inches	64°0 inches	67°7 inches	65°0 inches	64°7 inches	63°4 inches	89°6 inches	51°2 inches	65°0 inches
	Pressure of Air ...	29·734 inches	29·788 inches	29·755 inches	29·504 inches	29·790 inches	30·017 inches	30·165 inches	29·339 inches	29·765 inches
	Amount of Rain...	3·520 inches	0·081 inches	0·378 inches	0·531 inches	0·108 inches	...	Total Rainfall, 4·618 inches		
	Prevailing Wind—S.W., S., and S.E.									
CAMPERDOWN	Temperature of Air	56°0 inches	57°7 inches	64°5 inches	60°1 inches	58°9 inches	66°2 inches	60°6 inches
	Pressure of Air ...	29·280 inches	29·276 inches	29·248 inches	28·879 inches	29·197 inches	29·316 inches	...	28·662 inches	29·199 inches
	Amount of Rain...	0·800 inches	0·180 inches	...	0·390 inches	0·130 inches	...	Total Rainfall, 1·500 inches		
	Prevailing Wind—W., S.W., and E.									
HEATHCOTE ..	Temperature of Air	62°4 inches	64°2 inches	69°9 inches	66°2 inches	64°2 inches	71°2 inches	94°1 inches	45°5 inches	66°4 inches
	Pressure of Air ...	29·056 inches	29·055 inches	29·040 inches	28·835 inches	29·098 inches	29·306 inches	29·479 inches	28·720 inches	29·065 inches
	Amount of Rain...	1·790 inches	0·415 inches	0·155 inches	0·090 inches	Total Rainfall, 2·450 inches		
	Prevailing Wind—S. and S.E.									
CASTLEMAINE	Temperature of Air	61°0 inches	62°4 inches	68°8 inches	65°8 inches	65°0 inches	69°2 inches	96°5 inches	43°9 inches	65°4 inches
	Pressure of Air ...	28·810 inches	28·834 inches	28·723 inches	28·611 inches	28·880 inches	29·079 inches	29·232 inches	28·509 inches	28·823 inches
	Amount of Rain ...	0·530 inches	0·100 inches	Total Rainfall, 0·630 inches		
	Prevailing Wind—S., S.E., E., and W.									
BALLAARAT ..	Temperature of Air	54°8 inches	58°2 inches	64°4 inches	58°7 inches	61°0 inches	70°8 inches	91°0 inches	39°8 inches	61°3 inches
	Pressure of Air ...	28·402 inches	28·441 inches	28·385 inches	28·164 inches	28·437 inches	28·594 inches	28·783 inches	28·016 inches	28·404 inches
	Amount of Rain...	1·650 inches	...	0·020 inches	0·420 inches	Total Rainfall, 2·090 inches		
	Prevailing Wind—S. and S.E.									

METEOROLOGY—MONTHLY OBSERVATIONS AT THE VARIOUS STATIONS.

RETURN of the Mean Temperature, Atmospheric Pressure, Amount of Rain, and Prevailing Winds at various Meteorological Stations in Victoria during each Month of the Year 1861—*continued*.

MARCH.

Stations.		Periods of Five Days.						Maximum for the Month.	Minimum for the Month.	Mean for the Month.
		2 to 6.	7 to 11.	12 to 15.	17 to 21.	22 to 26.	27 to 31.			
PORTLAND ..	Temperature of Air	68°·9	66°·1	73°·2	65°·2	65°·4	65°·8	100°·0	44°·0	66°·8°
	Pressure of Air ...	29·754	30·050	29·894	29·874	29·492	30·148	30·337	29·492	29·952
	Amount of Rain ...	0·370	0·003	0·010	0·080	1·380	...	Total Rainfall, 1·843 inches		
	Prevailing Wind—E., W., and N.W.									
MELBOURNE ..	Temperature of Air	69°·3	66°·5	73°·2	63°·1	60°·2	60°·9	96°·1	44°·1	65°·5
	Pressure of Air ...	29·733	30·036	29·885	29·832	29·959	30·115	30·266	29·466	29·927
	Amount of Rain ...	0·023	0·002	...	4·467	0·157	...	Total Rainfall, 4·649 inches		
	Prevailing Wind—N.E., S., and S.W.									
CAMPERDOWN	Temperature of Air	66°·0	64°·3
	Pressure of Air ...	29·209	29·319
	Amount of Rain ...	0·050	0·100	...	0·100	1·120	...	Total Rainfall, 1·370 inches		
	Prevailing Wind—									
SANDHURST ..	Temperature of Air	66°·7	61°·0	64°·3
	Pressure of Air	29·122	29·250	29·378
	Amount of Rain	1·000	0·220
	Prevailing Wind—									
HEATHCOTE ..	Temperature of Air	69°·4	66°·2	73°·0	64°·9	59°·0	61°·0	99°·8	40°·3	65°·6
	Pressure of Air ...	29·058	29·352	29·202	29·168	29·259	29·390	29·519	28·823	29·238
	Amount of Rain	1·705	0·200	...	Total Rainfall, 1·905 inches		
	Prevailing Wind—S. and S.E.									
BALLAARAT ..	Temperature of Air	65°·0	65°·3	71°·7	56°·8	54°·8	58°·6	93°·5	40°·0	62°·0
	Pressure of Air ...	28·378	28·658	28·511	28·466	28·574	28·374	28·833	28·231	28·549
	Amount of Rain ...	0·010	0·140	...	2·170	0·310	...	Total Rainfall, 2·630 inches		
	Prevailing Wind—S., S.E., and N.									

METEOROLOGY—MONTHLY OBSERVATIONS AT THE VARIOUS STATIONS.

Return of the Mean Temperature, Atmospheric Pressure, Amount of Rain, and Prevailing Winds at various Meteorological Stations in Victoria during each Month of the Year 1861—*continued.*

APRIL.

Stations.		Periods of Five Days.						Maximum for the Month.	Minimum for the Month.	Mean for the Month.
		1 to 5.	6 to 10.	11 to 15.	16 to 20.	21 to 25.	26 to 30.			
PORTLAND ..	Temperature of Air	64°·8	64°·2	63°·8	57°·4	58°·5	60°·6	84°·0	46°·0	61°·5
	inches							inches	inches	inches
	Pressure of Air ...	29·938	29·978	29·852	30·033	30·309	29·892	30·547	29·453	30·000
	inches									
	Amount of Rain ...	0·050	0·820	0·440	1·650	0·690	...	Total Rainfall, 3·650 inches		
	Prevailing Wind—S.E. and N.W.									
MELBOURNE ..	Temperature of Air	64°·0	62°·2	62°·7	55°·0	54°·4	57°·5	81°·8	40°·1	59°·3
	inches							inches	inches	inches
	Pressure of Air ...	29·914	29·957	29·853	29·991	30·215	29·946	30·473	29·347	29·979
	inches									
	Amount of Rain ...	0·008	0·232	0·302	0·724	0·022	...	Total Rainfall, 1·288 inches		
	Prevailing Wind—N.E., N., and S.									
CAMPERDOWN	Temperature of Air	60°·3	57°·0	58°·8	48°·6	50°·8	56°·3	55°·3
	inches							inches	inches	inches
	Pressure of Air ...	29·306	29·293	29·198	29·311	29·412	29·251	29·685	28·772	29·295
	inches									
	Amount of Rain	1·320	0·570	1·270	0·110	...	Total Rainfall, 3·270 inches		
	Prevailing Wind—W. and E.									
SANDHURST ..	Temperature of Air	67°·3	63°·5	62°·9	50°·0	54°·1	61°·0	84°·6	39°·5	59°·8
	inches							inches	inches	inches
	Pressure of Air ...	29·196	29·346	29·143	29·336	29·287	29·231	29·743	28·797	29·256
	inches									
	Amount of Rain	0·260	0·750	1·600	Total Rainfall, 2·610 inches		
	Prevailing Wind—S., S.E., and S.W.									
HEATHCOTE ..	Temperature of Air	63°·6	59°·8	61°·3	51°·2	85°·8	32°·7	...
	inches							inches	inches	...
	Pressure of Air ...	29·207	29·276	29·155	29·286	29·698	28·789	...
	inches									
	Amount of Rain	0·320	0·620	1·630	Total Rainfall, 2·570 inches		
	Prevailing Wind—									
BALLAARAT ..	Temperature of Air	59°·5	57°·8	59°·5	47°·2	48°·2	56°·5	80°·8	33°·3	54°·8
	inches							inches	inches	inches
	Pressure of Air ...	28·519	28·605	28·440	28·617	28·816	28·544	29·053	28·115	28·590
	inches									
	Amount of Rain ...	0·170	0·750	0·140	0·720	0·040	...	Total Rainfall, 1·820 inches		
	Prevailing Wind—N., N.W., S., and S.E.									

METEOROLOGY—MONTHLY OBSERVATIONS AT THE VARIOUS STATIONS.

RETURN of the Mean Temperature, Atmospheric Pressure, Amount of Rain, and Prevailing Winds at various Meteorological Stations in Victoria during each Month of the Year 1861—*continued.*

Stations.		Periods of Five Days.						Maximum for the Month.	Minimum for the Month.	Mean for the Month.
		1 to 5.	6 to 10.	11 to 15.	16 to 20.	21 to 25.	26 to 30.			
PORTLAND ..	Temperature of Air	58°3	59°5	58°3	56°8	55°3	51°8	74°0	43°0	56°7
	Pressure of Air ...	inches 29·984	inches 20·079	inches 29·839	inches 30·022	inches 29·873	inches 29·940	inches 30·417	inches 29·409	inches 29·956
	Amount of Rain ...	inches 1·740	inches 0·230	inches 2·370	inches 0·220	inches 0·880	inches 0·330	Total Rainfall, 5·770 inches		
	Prevailing Wind—N., N.W., W. and S.W.									
MELBOURNE ..	Temperature of Air	53°5	58°4	55°5	50°5	50°2	49°0	72°4	37°7	52°8
	Pressure of Air ...	inches 29·936	inches 30·127	inches 29·875	inches 29·981	inches 29·873	inches 29·921	inches 30·434	inches 29·403	inches 29·932
	Amount of Rain ...	inches 0·313	inches 0·096	inches 0·183	inches 0·038	inches 0·032	inches 0·174	Total Rainfall, 0·836 inches		
	Prevailing Wind—N.E., N., N.W., and W.									
CAMPERDOWN	Temperature of Air	51°6	54°2	53°3	50°5	46°3	45°4	50°2
	Pressure of Air ...	inches 29·179	inches 29·346	inches 29·229	inches 29·327	inches 29·235	inches 29·301	inches 29·666	inches 28·777	inches 29·269
	Amount of Rain ...	inches 0·580	inches 0·200	inches 1·590	...	inches 0·640	inches 0·250	Total Rainfall, 3·260 inches		
	Prevailing Wind—N.W. and W.									
SANDHURST ..	Temperature of Air	51°7	51°6	45°1	46°3	72°0	33°0	...
	Pressure of Air ...	inches 29·276	inches 29·432	inches 29·237	inches 29·256	inches 29·231	inches 29·245	inches 29·825	inches 28·768	inches 29·279
	Amount of Rain ...	inches 0·520	inches 0·140	inches 1·890	...	inches 0·100	inches 0·270	Total Rainfall, 2·920 inches		
	Prevailing Wind—N.W., S.W., and S.									
HEATHCOTE ..	Temperature of Air
	Pressure of Air
	Amount of Rain ...	inches 0·525	inches 0·090	inches 1·380	...	inches 0·300	inches 0·240	Total Rainfall, 2·535 inches		
	Prevailing Wind—									
BALLAARAT ..	Temperature of Air	48°2	55°2	49°4	48°3	43°4	43°2	68°3	32°0	47°9
	Pressure of Air ...	inches 28·560	inches 28·710	inches 28·518	inches 28·634	inches 28·466	inches 28·528	inches 29·005	inches 28·057	inches 28·569
	Amount of Rain ...	inches 0·680	inches 0·160	inches 1·410	inches 0·090	inches 0·370	inches 0·390	Total Rainfall, 3·100 inches		
	Prevailing Wind—N. and S.W.									

METEOROLOGY—MONTHLY OBSERVATIONS AT THE VARIOUS STATIONS.

RETURN of the Mean Temperature, Atmospheric Pressure, Amount of Rain, and Prevailing Winds at various Meteorological Stations in Victoria during each Month of the Year 1861—*continued.*

JUNE.

Stations.		Periods of Five Days.							Maximum for the Month.	Minimum for the Month.	Mean for the Month.
		31 to 4.	5 to 9.	10 to 14.	15 to 19.	20 to 24.	25 to 29.	30 to 4.			
PORTLAND ..	Temperature of Air	53·4	54·2	57·1	55·4	53·8	51·7	52·9	66·0	38·0	54·1
	Pressure of Air ...	30·056	30·125	29·857	29·608	29·424	29·712	29·539	inches 30·371	inches 29·300	inches 29·760
	Amount of Rain ...	0·050	0·010	0·350	0·540	1·680	0·730	1·500	Total Rainfall, 4·860 in.		
	Prevailing Wind—N., N.W., and W.										
MELBOURNE ..	Temperature of Air	48·4	48·5	55·3	49·9	51·7	48·5	50·7	64·1	34·6	50·4
	Pressure of Air ...	30·029	30·125	29·904	29·677	29·505	29·774	29·605	inches 30·359	inches 29·346	inches 29·803
	Amount of Rain ...	0·423	0·034	0·315	0·652	0·121	0·038	0·197	Total Rainfall, 1·780 in.		
	Prevailing Wind—N.E. and N.										
CAMPERDOWN	Temperature of Air	45·5	47·1	51·3	48·8	48·0	48·1	46·3	47·9
	Pressure of Air ...	29·332	29·357	29·299	28·981	28·732	29·155	28·876	inches 29·390	inches 28·590	inches 29·105
	Amount of Rain	0·150	0·691	...	0·650	0·550	Total Rainfall, 2·041 in.		
	Prevailing Wind—N.W. and W.										
SANDHURST ..	Temperature of Air	46·7	49·2	52·2	49·0	46·5	52·0	45·6	63·2	31·6	48·7
	Pressure of Air ...	29·339	29·412	29·043	28·935	28·863	29·145	28·939	inches 29·616	inches 28·717	inches 29·104
	Amount of Rain	0·100	0·200	1·520	0·220	0·040	1·050	Total Rainfall, 3·130 in.		
	Prevailing Wind—N., N.W., and W.										
HEATHCOTE ..	Temperature of Air
	Pressure of Air
	Amount of Rain	0·510	1·390	0·180	0·210	1·300	Total Rainfall, 3·590 in.		
	Prevailing Wind—										
BALLAARAT ..	Temperature of Air	44·2	45·3	49·3	46·5	45·6	42·7	44·1	59·4	28·8	45·4
	Pressure of Air ...	28·629	28·700	28·504	28·245	28·105	28·407	28·183	inches 28·915	inches 27·994	inches 28·396
	Amount of Rain ...	0·020	0·080	0·270	0·450	0·330	0·180	0·330	Total Rainfall, 1·660 in.		
	Prevailing Wind—N. and N.W.										

METEOROLOGY—MONTHLY OBSERVATIONS AT THE VARIOUS STATIONS.

Return of the Mean Temperature, Atmospheric Pressure, Amount of Rain, and Prevailing Winds at various Meteorological Stations in Victoria during each Month of the Year 1861—*continued*.

JULY.

Stations.		Periods of Five Days.						Maximum for the Month.	Minimum for the Month.	Mean for the Month.
		5 to 9.	10 to 14.	15 to 19.	20 to 24.	25 to 29.	30 to 3.			
PORTLAND ..	Temperature of Air	49.2	52.7	51.3	50.5	52.6	51.3	60.0	34.0	51.3
	Pressure of Air ...	29.751	29.684	29.955	30.041	30.205	30.205	30.322	29.393	29.974
	Amount of Rain ...	2.130	0.670	0.730	0.580	0.550	0.760	Total Rainfall, 5.420 inches		
	Prevailing Wind—W., S.W., and S.									
MELBOURNE ..	Temperature of Air	43.8	48.5	47.5	45.2	46.0	45.8	58.1	31.8	46.1
	Pressure of Air ...	29.722	29.668	29.922	30.041	30.130	30.136	30.253	29.419	29.936
	Amount of Rain ...	0.244	0.190	0.860	0.019	0.183	0.642	Total Rainfall, 2.138 inches		
	Prevailing Wind—N.E., N., N.W., and W.									
CAMPERDOWN	Temperature of Air	45.6	47.1	45.6	44.3	47.1	41.8	45.2
	Pressure of Air ...	29.096	29.043	29.251	29.327	29.347	29.352	29.374	28.713	29.236
	Amount of Rain ...	2.030	0.220	1.750	0.470	...	0.530	Total Rainfall, 5.000 inches		
	Prevailing Wind—W.									
SANDHURST ..	Temperature of Air	41.6	45.6	45.3	43.5	46.1	42.2	59.0	29.8	44.0
	Pressure of Air ...	29.039	28.978	29.241	29.334	29.383	29.424	29.546	28.825	29.233
	Amount of Rain ...	0.180	1.520	0.710	0.560	...	0.010	Total Rainfall, 2.980 inches		
	Prevailing Wind—W., S.W., and S.									
HEATHCOTE ..	Temperature of Air
	Pressure of Air
	Amount of Rain ...	0.130	1.660	0.580	0.530	Total Rainfall, 2.900 inches		
	Prevailing Wind—									
BALLAARAT ..	Temperature of Air	40.0	43.0	41.6	40.4	43.4	39.1	58.3	28.2	41.2
	Pressure of Air ...	28.324	28.262	28.449	28.613	28.694	28.715	28.826	28.061	28.509
	Amount of Rain ...	0.510	0.980	1.170	0.170	0.130	0.230	Total Rainfall, 3.190 inches		
	Prevailing Wind—S. and S.W.									

METEOROLOGY—MONTHLY OBSERVATIONS AT THE VARIOUS STATIONS.

RETURN of the Mean Temperature, Atmospheric Pressure, Amount of Rain, and Prevailing Winds at various Meteorological Stations in Victoria during each Month of the Year 1861—*continued.*

AUGUST.

Stations.		Periods of Five Days.						Maximum for the Month.	Minimum for the Month.	Mean for the Month.
		4 to 8.	9 to 13.	14 to 18.	19 to 23.	24 to 28.	29 to 2.			
PORTLAND ..	Temperature of Air	51.1 inches	53.6 inches	54.0 inches	56.6 inches	55.5 inches	53.1 inches	68.0 inches	32.0 inches	54.0 inches
	Pressure of Air ...	30.138 inches	29.955 inches	30.140 inches	29.824 inches	30.140 inches	30.184 inches	30.530 inches	29.537 inches	30.064 inches
	Amount of Rain ...	0.420 inches	0.390 inches	0.040 inches	0.530 inches	0.070 inches	0.970 inches	Total Rainfall, 2.420 inches		
	Prevailing Wind—N.E., N., N.W., and W.									
MELBOURNE ..	Temperature of Air	44.5 inches	50.1 inches	48.4 inches	53.7 inches	50.4 inches	50.0 inches	67.1 inches	34.2 inches	49.5 inches
	Pressure of Air ...	30.107 inches	29.944 inches	30.142 inches	29.835 inches	30.120 inches	30.149 inches	30.509 inches	29.543 inches	30.049 inches
	Amount of Rain ...	0.017 inches	0.309 inches	0.144 inches	0.731 inches	0.071 inches	0.198 inches	Total Rainfall, 1.470 inches		
	Prevailing Wind—N.E.									
CAMPERDOWN	Temperature of Air	45.8 inches	47.0 inches	46.0 inches	51.5 inches	49.5 inches	49.2 inches	48.2 inches
	Pressure of Air ...	29.378 inches	29.323 inches	29.367 inches	29.198 inches	29.364 inches	29.326 inches	29.405 inches	28.985 inches	29.326 inches
	Amount of Rain ...	0.220 inches	0.300 inches	0.080 inches	1.500 inches	0.180 inches	0.750 inches	Total Rainfall, 3.030 inches		
	Prevailing Wind—E., N.W., and W.									
SANDHURST ..	Temperature of Air	42.1 inches	45.6 inches	48.2 inches	51.4 inches	51.1 inches	48.6 inches	65.6 inches	32.6 inches	47.8 inches
	Pressure of Air ...	29.385 inches	29.263 inches	29.419 inches	29.143 inches	29.432 inches	29.474 inches	29.812 inches	28.917 inches	29.353 inches
	Amount of Rain	0.540 inches	...	1.160 inches	0.010 inches	0.360 inches	Total Rainfall, 2.070 inches		
	Prevailing Wind—S. and N.									
HEATHCOTE ..	Temperature of Air
	Pressure of Air
	Amount of Rain	0.810 inches	...	0.910 inches	0.100 inches	0.160 inches	Total Rainfall, 1.980 inches		
	Prevailing Wind—									
BALLAARAT ..	Temperature of Air	43.4 inches	43.4 inches	45.6 inches	48.7 inches	47.7 inches	45.1 inches	65.0 inches	28.5 inches	45.6 inches
	Pressure of Air ...	29.705 inches	28.530 inches	28.706 inches	28.409 inches	28.712 inches	28.617 inches	29.070 inches	28.166 inches	28.613 inches
	Amount of Rain ...	0.040 inches	0.570 inches	0.060 inches	1.180 inches	0.330 inches	0.390 inches	Total Rainfall, 2.570 inches		
	Prevailing Wind—S., N.E., and N.									

METEOROLOGY—MONTHLY OBSERVATIONS AT THE VARIOUS STATIONS.

RETURN of the Mean Temperature, Atmospheric Pressure, Amount of Rain, and Prevailing Winds at various Meteorological Stations in Victoria during each Month of the Year 1861—*continued.*

SEPTEMBER.

Stations.		Periods of Five Days.						Maximum for the Month.	Minimum for the Month.	Mean for the Month.
		3 to 7.	8 to 12.	13 to 17.	18 to 22.	23 to 27.	28 to 2.			
PORTLAND ..	Temperature of Air	58°0	59°1	55°8	53°3	59°0	61°6	79°0	41°0	57°8
	Pressure of Air ...	inches 30·226	inches 30·033	inches 29·923	inches 29·920	inches 29·865	inches 29·684	inches 30·630	inches 29·319	inches 29·942
	Amount of Rain ...	inches 0·090	inches 0·250	inches 0·490	inches 0·360	inches 0·220	inches 0·660	Total Rainfall, 2·070 inches		
	Prevailing Wind—N.W. and W.									
MELBOURNE ..	Temperature of Air	52°2	56°9	52°5	48°9	57°8	58°3	77°0	34°6	54°4
	Pressure of Air ...	inches 30·276	inches 29·882	inches 29·919	inches 29·842	inches 29·841	inches 29·707	inches 30·581	inches 30·335	inches 29·911
	Amount of Rain ...	inches 0·165	inches 1·170	inches 0·443	inches 0·651	inches 0·246	inches 0·515	Total Rainfall, 3·190 inches		
	Prevailing Wind—N.E. and N.									
CAMPERDOWN	Temperature of Air	51°4	51°2	52°1	45°7	54°3	54°4	51°5
	Pressure of Air ...	inches 29·366	inches 29·257	inches 29·296	inches 29·327	inches 29·259	inches 29·133	inches 29·699	inches 28·762	inches 29·273
	Amount of Rain ...	inches 0·050	inches 0·220	inches 0·480	inches 1·210	inches 0·670	inches 0·590	Total Rainfall, 3·220 inches		
	Prevailing Wind—N. and W.									
SANDHURST ..	Temperature of Air	49°8	52°8	51°8	46°8	56°4	56°3	77°4	37°2	52°3
	Pressure of Air ...	inches 29·550	inches 29·217	inches 29·226	inches 29·178	inches 29·153	inches 29·063	inches 29·824	inches 28·727	inches 29·231
	Amount of Rain ...	inches 0·100	inches 1·620	inches 0·030	inches 0·090	inches 0·080	inches 0·810	Total Rainfall, 2·730 inches		
	Prevailing Wind—S. and N.									
HEATHCOTE ..	Temperature of Air
	Pressure of Air
	Amount of Rain	inches 2·390	inches 0·010	inches 0·170	...	inches 0·850	Total Rainfall, 3·420 inches		
	Prevailing Wind—									
BALLAARAT ..	Temperature of Air	47°5	49°8	48°6	41°9	51°7	52°2	72°8	32°6	48°6
	Pressure of Air ...	inches 28·812	inches 28·488	inches 28·506	inches 28·474	inches 28·460	inches 28·320	inches 29·125	inches 28·039	inches 28·510
	Amount of Rain	inches 1·510	inches 0·250	inches 0·290	inches 0·510	inches 0·560	Total Rainfall, 3·120 inches		
	Prevailing Wind—N., N.W., and S.W.									

METEOROLOGY—MONTHLY OBSERVATIONS AT THE VARIOUS STATIONS.

RETURN of the Mean Temperature, Atmospheric Pressure, Amount of Rain, and Prevailing Winds at various Meteorological Stations in Victoria during each Month of the Year 1861—*continued*.

OCTOBER.

Stations.		Periods of Five Days.						Maximum for the Month.	Minimum for the Month.	Mean for the Month.
		3 to 7.	8 to 12.	13 to 17.	18 to 22.	23 to 27.	28 to 1.			
PORTLAND ..	Temperature of Air	58°2 inches	56°7 inches	60°1 inches	65°0 inches	62°8 inches	61°4 inches	85°0 inches	42°0 inches	60°7 inches
	Pressure of Air ...	29·678 inches	29·904 inches	30·007 inches	29·812 inches	29·827 inches	29·624 inches	30·312 inches	29·470 inches	29·809 inches
	Amount of Rain...	0·380 inches	0·590 inches	0·200 inches	1·530 inches	...	0·680 inches	Total Rainfall, 3·380 inches		
	Prevailing Wind—N.W. and W.									
MELBOURNE ..	Temperature of Air	56°7 inches	53°9 inches	58°6 inches	64°6 inches	59°6 inches	58°8 inches	87°1 inches	40°0 inches	58°7 inches
	Pressure of Air ...	29·690 inches	29·845 inches	29·988 inches	29·836 inches	29·852 inches	29·634 inches	30·224 inches	29·356 inches	29·808 inches
	Amount of Rain...	1·595 inches	1·298 inches	0·059 inches	0·037 inches	0·661 inches	1·238 inches	Total Rainfall, 4·880 inches		
	Prevailing Wind—N.E. and N.									
CAMPERDOWN	Temperature of Air	52°0 inches	51°1 inches	55°2 inches
	Pressure of Air ...	29·048 inches	29·264 inches	29·265 inches
	Amount of Rain ...	1·080 inches	0·750 inches	0·100 inches	0·530 inches	0·150 inches	0·780 inches	Total Rainfall, 3·390 inches		
	Prevailing Wind —									
SANDHURST ..	Temperature of Air	47°1 inches	51°3 inches	58°6 inches	69°5 inches	64°6 inches	58°2 inches	89°4 inches	39°0 inches	58°2 inches
	Pressure of Air ...	29·009 inches	29·197 inches	29·282 inches	29·147 inches	29·132 inches	29·005 inches	29·506 inches	28·745 inches	29·129 inches
	Amount of Rain ...	0·210 inches	0·290 inches	...	0·060 inches	0·120 inches	1·060 inches	Total Rainfall, 1·740 inches		
	Prevailing Wind—S., N., and W.									
HEATHCOTE ..	Temperature of Air
	Pressure of Air
	Amount of Rain ...	0·110 inches	0·270 inches	...	0·090 inches	0·350 inches	0·650 inches	Total Rainfall, 1·470 inches		
	Prevailing Wind —									
BALLAARAT ..	Temperature of Air	50°0 inches	45°3 inches	54°2 inches	62°5 inches	56°2 inches	52°6 inches	85°0 inches	34°7 inches	53°5 inches
	Pressure of Air ...	28·275 inches	28·478 inches	28·577 inches	28·452 inches	28·437 inches	28·300 inches	28·778 inches	28·078 inches	28·420 inches
	Amount of Rain ...	0·580 inches	1·080 inches	...	0·150 inches	0·140 inches	0·330 inches	Total Rainfall, 2·280 inches		
	Prevailing Wind—N., N.W., and S.W.									

METEOROLOGY—MONTHLY OBSERVATIONS AT THE VARIOUS STATIONS.

Return of the Mean Temperature, Atmospheric Pressure, Amount of Rain, and Prevailing Winds at various Meteorological Stations in Victoria during each Month of the Year 1861—*continued.*

NOVEMBER.

Stations		Periods of Five Days.						Maximum for the Month.	Minimum for the Month.	Mean for the Month.
		2 to 6.	7 to 11.	12 to 16.	17 to 21.	22 to 26.	27 to 1.			
PORTLAND ..	Temperature of Air	59°0 inches	62°2 inches	60°9 inches	65°3 inches	60°5 inches	64°2 inches	83°0 inches	41°0 inches	62°0 inches
	Pressure of Air ...	30·068 inches	29·967 inches	30·063 inches	29·722 inches	29·872 inches	29·905 inches	30·252 inches	29·446 inches	29·933 inches
	Amount of Rain ...	0·220 inches	0·080 inches	...	0·200 inches	0·310 inches	0·060 inches	Total Rainfall, 0·870 inches		
	Prevailing Wind—S.E. and S.W.									
MELBOURNE ..	Temperature of Air	56°5 inches	61°3 inches	58°8 inches	66°7 inches	58°7 inches	64°3 inches	91°2 inches	40°4 inches	61°0 inches
	Pressure of Air ...	30·051 inches	29·938 inches	30·007 inches	29·696 inches	29·810 inches	29·890 inches	30·225 inches	29·399 inches	29·899 inches
	Amount of Rain ...	0·226 inches	0·170 inches	0·119 inches	0·189 inches	0·377 inches	0·378 inches	Total Rainfall, 1·459 inches		
	Prevailing Wind—N.E., S.W., and S.									
CAMPERDOWN	Temperature of Air
	Pressure of Air
	Amount of Rain ...	0·160 inches	...	0·300 inches	...	0·660 inches	0·450 inches	Total Rainfall, 1·570 inches		
	Prevailing Wind—									
SANDHURST ..	Temperature of Air	59°5 inches	63°3 inches	62°8 inches	80°6 inches	58°1 inches	68°2 inches	98°4 inches	41°6 inches	65°4 inches
	Pressure of Air ...	29·328 inches	29·220 inches	29·279 inches	28·979 inches	29·137 inches	29·166 inches	29·431 inches	28·715 inches	29·185 inches
	Amount of Rain ...	0·210 inches	0·230 inches	0·490 inches	0·930 inches	Total Rainfall, 1·860 inches		
	Prevailing Wind—S. and N.									
HEATHCOTE ..	Temperature of Air	56°8 inches	61°3 inches	59°2 inches	73°5 inches	57°4 inches	62°3 inches	97°2 inches	36°2 inches	61°8 inches
	Pressure of Air ...	29·338 inches	29·290 inches	29·286 inches	28·979 inches	29·096 inches	29·260 inches	29·495 inches	28·881 inches	29·208 inches
	Amount of Rain ...	0·160 inches	0·420 inches	0·490 inches	0·090 inches	Total Rainfall, 1·160 inches		
	Prevailing Wind—S. and W.									
BALLAARAT ..	Temperature of Air	52°1 inches	56°8 inches	56°3 inches	68°0 inches	52°7 inches	60°2 inches	94°5 inches	35°0 inches	57°7 inches
	Pressure of Air ...	28·624 inches	28·547 inches	28·617 inches	28·329 inches	28·463 inches	28·484 inches	28·769 inches	28·120 inches	28·511 inches
	Amount of Rain ...	0·240 inches	0·040 inches	0·290 inches	0·050 inches	0·370 inches	0·370 inches	Total Rainfall, 1·360 inches		
	Prevailing Wind—S., S.E., and N.									

METEOROLOGY—MONTHLY OBSERVATIONS AT THE VARIOUS STATIONS.

RETURN of the Mean Temperature, Atmospheric Pressure, Amount of Rain, and Prevailing Winds at various Meteorological Stations in Victoria during each Month of the Year 1861—*continued.*

DECEMBER.

Stations.		Periods of Five Days.						Maximum for the Month.	Minimum for the Month.	Mean for the Month.
		2 to 6	7 to 11	12 to 16	17 to 21	22 to 26	27 to 31			
PORTLAND ..	Temperature of Air	59°7	60°3	63°0	62°9	62°6	63°2	86°0	43°0	61°9
	Pressure of Air ...	inches 29·577	inches 29·909	inches 29·375	inches 29·600	inches 29·715	inches 30·076	inches 30·242	inches 28·971	inches 29·709
	Amount of Rain...	inches 1·610	inches 0·110	inches 1·590	inches 0·890	inches 0·820	inches 0·020	Total Rainfall, 5·040 inches		
	Prevailing Wind— N.W., W., and S.W.									
MELBOURNE ..	Temperature of Air	60°9	59°2	65°1	64°5	63°4	62°0	86°9	45°0	62°5
	Pressure of Air ...	inches 29·693	inches 29·859	inches 29·443	inches 29·627	inches 29·705	inches 29·993	inches 30·176	inches 29·137	inches 29·720
	Amount of Rain...	inches 1·220	inches 0·048	inches 0·398	inches 0·006	inches 0·784	inches 0·128	Total Rainfall, 2·584 inches		
	Prevailing Wind—S.									
CAMPERDOWN	Temperature of Air	...	60°5	57°9	57°0	56°8	56°9	57°8
	Pressure of Air	inches 29·087	inches 28·937	inches 29·033	inches 29·084	inches 29·386	inches 29·584	inches 28·550	inches 29·105
	Amount of Rain...	inches 3·860	...	inches 0·260	inches 0·800	inches 0·700	inches 0·080	Total Rainfall, 5·700 inches		
	Prevailing Wind—									
SANDHURST ..	Temperature of Air	62°0	67°8	66°0	65°2	66°4	64°7	92°8	42°4	65°4
	Pressure of Air ...	inches 29·025	inches 29·164	inches 28·790	inches 28·920	inches 29·039	inches 29·254	inches 29·431	inches 28·533	inches 29·032
	Amount of Rain...	inches 0·640	...	inches 0·600	inches 0·040	inches 0·670	inches 0·050	Total Rainfall, 2·000 inches		
	Prevailing Wind—N.W., S.W., and S.									
HEATHCOTE ..	Temperature of Air	58°7	63°5	66°5	63°9	64°4	63°6	91°8	37°8	63°4
	Pressure of Air ...	inches 29·008	inches 29·133	inches 28·824	inches 28·964	inches 29·052	inches 29·248	inches 29·396	inches 28·539	inches 29·038
	Amount of Rain...	inches 1·580	...	inches 0·710	...	inches 0·680	...	Total Rainfall, 2·970 inches		
	Prevailing Wind—S. and W.									
BALLAARAT ..	Temperature of Air	58°0	56°2	58°0	57°6	57°5	56°4	86°2	37°0	56°4
	Pressure of Air ...	inches 28·328	inches 28·469	inches 28·093	inches 28·288	inches 28·352	inches 28·593	inches 28·745	inches 27·805	inches 28·354
	Amount of Rain...	inches 1·470	...	inches 0·580	inches 0·110	inches 1·000	inches 0·030	Total Rainfall, 3·190 inches		
	Prevailing Wind—N., N.W., and S.W.									

