

COMMONWEALTH BUREAU OF CENSUS AND STATISTICS
MELBOURNE, AUSTRALIA.

LABOUR AND INDUSTRIAL BRANCH
REPORT No. 2.

Trade Unionism, Unemployment, Wages,
Prices, and Cost of Living in
Australia, 1891-1912

Prepared under instructions from
THE HON. KING O'MALLEY, M.P.
Minister of State for Home Affairs.

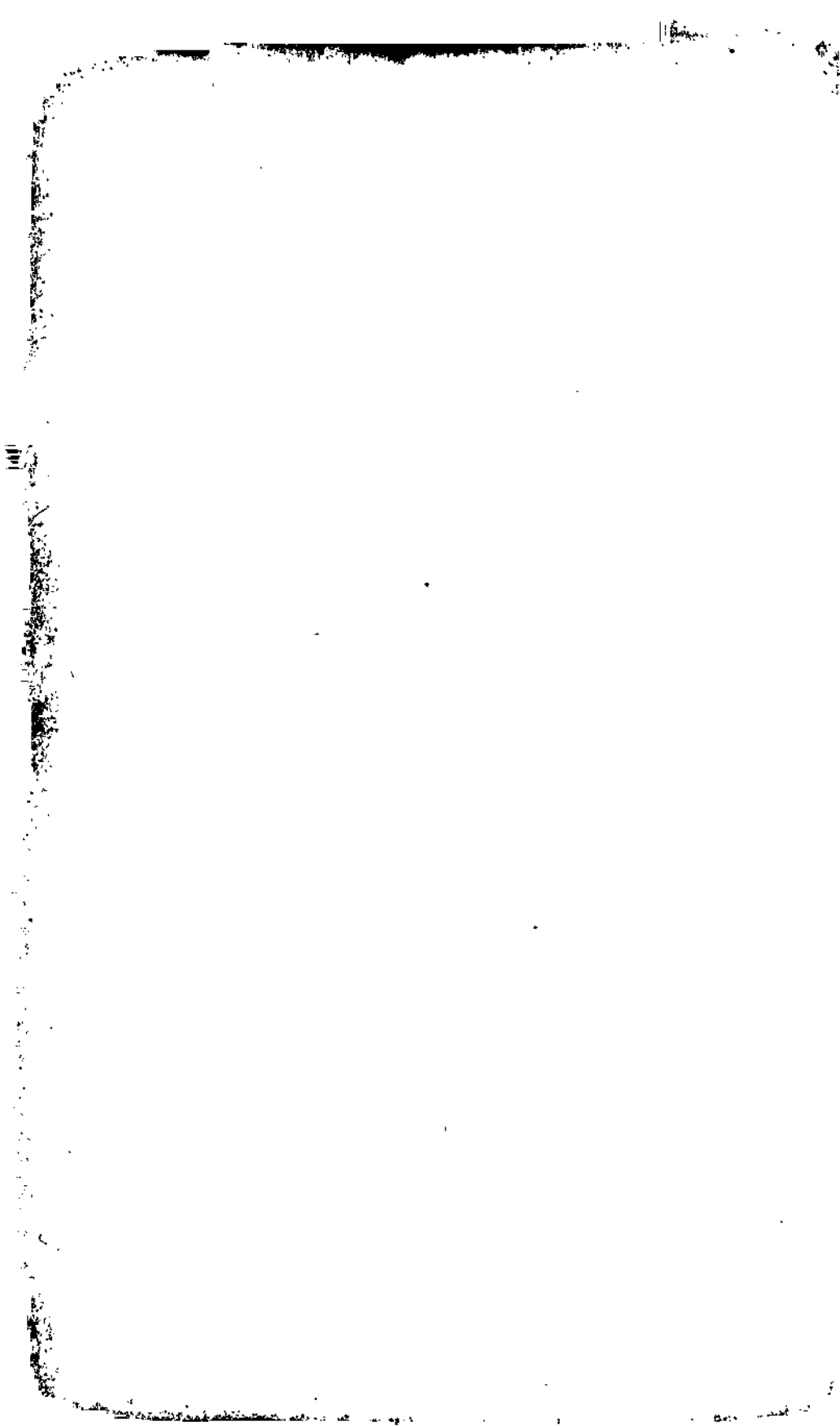
BY

G. H. KNIBBS, C.M.G., F.S.S., F.R.A.S., etc.
Commonwealth Statistician.
April, 1913.

By Authority: McCARRON, BIRD & CO., Printers 479 Collins Street, Melbourne

3949

ROYAL SOCIETY OF TASMANIA



SYNOPSIS.

	Page.		Page
Section I.—Introduction.			
1. General	5	3. Variations in Wage Index-Numbers in various Industries, 1891 to 1912 ..	24
2. Sources of Information	5	4. Variations in Wage Index-Numbers in different States, 1891 to 1912 ..	26
3. Classification of Industries	6		
Section II.—Labour Organisations		Section V.—Current Rates of Wages in different Occupations and States.	
1. General	7	1. General	28
2. Confidential Nature of Individual Returns	7	2. Comparative Table of Time Rates of Wages, 1913	28
3. Types of Trade Unions in Australia ..	7	3. Relative Wages and Wage Index-Numbers in different Industries and States, 1913	41
(i.) Local Independent Unions ..	7	(i.) Weighted Average Rates of Wages in each State	41
(ii.) State Organisations	8	(ii.) Weighted Average Rates of Wages in each Industrial Group ..	42
(iii.) Interstate or Federated Unions	8	4. Relative amounts of Wages Payable on the average in the Several States, 1891 to 1912	43
(iv.) Australian, British and International Organisations	9		
4. Number and Membership of Trade Unions and Branches, 1912	9	Section VI.—Retail Prices, House Rents, and Cost of Living.	
5. Number of Unions and Membership in Industry Groups and in each State, 1912	10	1. Introduction	44
6. Number of Male and Female Members of Trade Unions, 1912	11	2. Scope of Investigation	45
7. Percentage of Members of Unions on Total Adult Population, 1912	11	3. Commodities and Requirements included ..	46
8. Development of Trade Unions in Commonwealth, 1891 to 1912	12	4. Cost of Living in each Metropolitan Town, 1901 to 1912	48
9. Classification of Unions according to Number of Members, 1912	13	(i.) Food and Groceries	48
10. Number and Membership of Federated Unions, 1912	14	(ii.) House Rent	51
11. Central Labour Organisations	14	(iii.) Cost of Living	52
		(iv.) Reversibility of Index-Numbers ..	53
Section III.—Fluctuations in Employment and Unemployment.		5. Relative Cost of Living in different Towns, 1912	53
1. General	16	(i.) Groceries and Food	54
2. Scope and Method of Inquiry	16	(ii.) House Rent	54
3. Number Unemployed in various Industries, 1891 to 1912	17	(iii.) Cost of Living	54
4. Employment Index-Numbers, 1891 to 1912	19	6. Variation in Purchasing Power of Money, 1901 to 1912	56
5. Unemployment in different Industries, 1912	19	7. Monthly Fluctuations in Cost of Living 1912	57
6. Unemployment in each State, 1912 ..	21	8. Cost of Living in Northern Territory, 1913	58
7. Trade Unions and Records of Unemployment	21	9. Tables of Prices and House Rents, 1912 ..	50
Section IV.—Variations in Rates of Wages and Hours of Labour.		Section VII.—Wholesale Prices.	
1. General	23	1. General	60
2. Methods of Compilation and Weighting ..	23	2. Commodities included and Methods adopted	60

	Page.		Page.
3. Index-Numbers and Graphs	62	GRAPHS.	
(i.) Table of Index-Numbers	62	Retail Prices and Cost of Living in Capital Towns, 1901 to 1912	50-1
(ii.) Graphs	62	Monthly Fluctuations in Cost of Living in Commonwealth, 1912	58
(iii.) Seasonal Fluctuations	64	Melbourne Wholesale Price Index-Numbers, 1891 to 1912	63
4. Table of Prices, 1912	64	Unemployment, Nominal and Effective Wages and Cost of Living, 1891 to 1912	67
Section VIII.—Nominal and Effective Wages.		Relative Productive Activity and Effective Wages, 1871 to 1911	70
1. General	65	APPENDIXES.	
2. Variations in Effective Wage Index- Numbers and Standard of Comfort, 1891 to 1912	65	I. Specimen Form used for Collection of Information	71
3. Relative Standard of Comfort and Effec- tive Wage Index-Numbers in each State, 1912	66	II. Retail Prices in 1912	72-5
4. Relative Productive Activity and Nominal and Effective Wages, 1871 to 1911	68	III. House Rents in 1912	76
		IV. Wholesale Prices in Melbourne in 1912	77