
STATISTICS
OF
THE COLONY OF VICTORIA, 1863.

PART I.

POPULATION.

.....

.....

.....

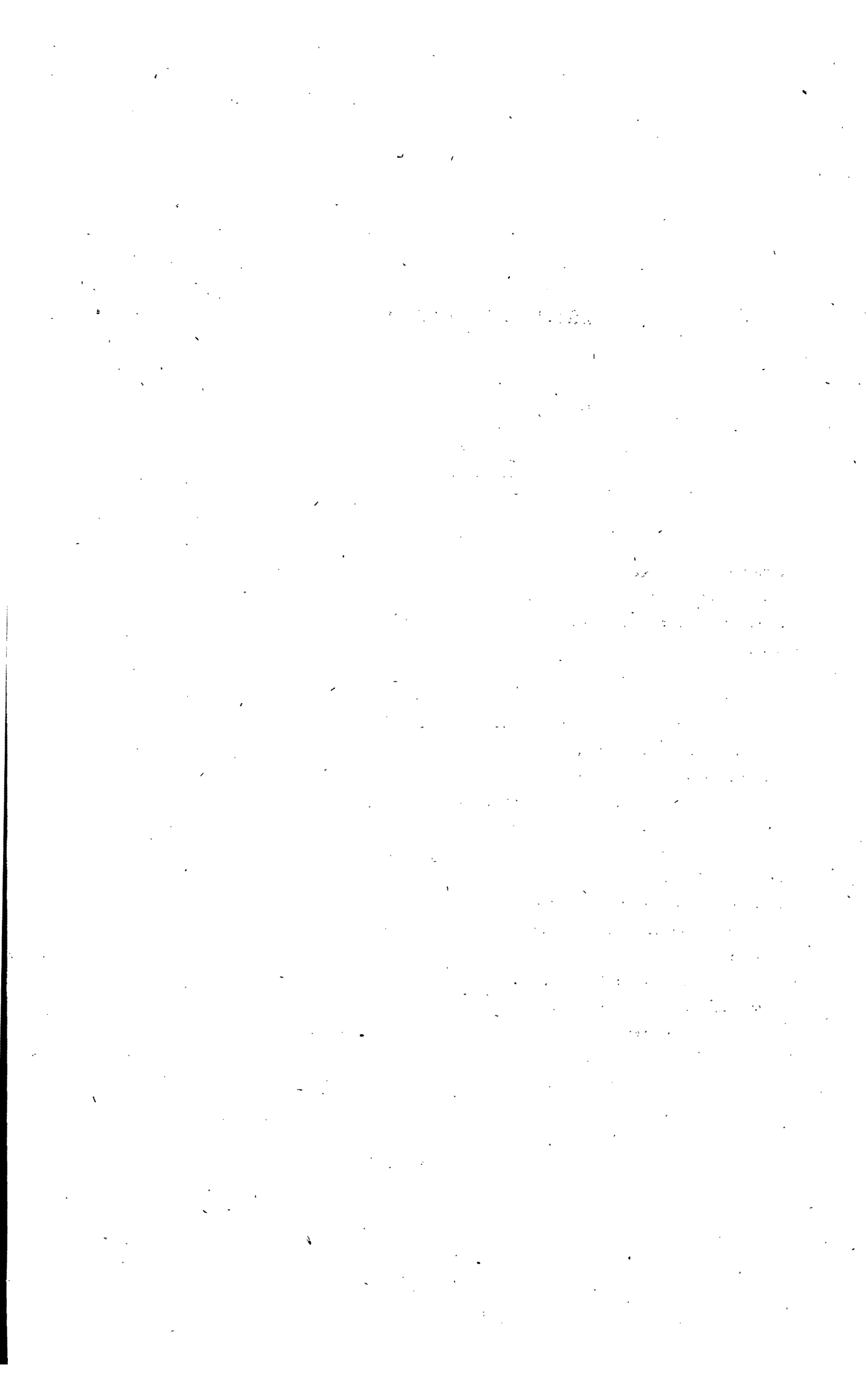
.....

.....

PART I.—POPULATION.

CONTENTS.

	PAGE
IMMIGRATION	9
GOVERNMENT IMMIGRATION	11
IMMIGRATION FROM THE UNITED KINGDOM	11
EMIGRATION	12
IMMIGRATION AND EMIGRATION—(I.)	14
" " (II.)	14
" " DECENNIAL RETURN	16
CHINESE IMMIGRATION AND EMIGRATION	16
POPULATION—INCREASE OR DECREASE IN 1863	16
" " " IN EACH QUARTER	17
" " OF VICTORIA—DECENNIAL RETURN	18
" " ON THE GOLD FIELDS	18
ABORIGINAL POPULATION	19
CORPORATE TOWNS AND MUNICIPAL BOROUGHES	20
MUNICIPALITIES—RETURN FOR SEVEN YEARS	21
SHIRES AND ROAD DISTRICTS	22
ROAD DISTRICTS.—RETURN FOR SEVEN YEARS	24
NATURALIZATION.—NATIVE PLACES AND AGES	25
" " OCCUPATIONS AND AGES	28



STATISTICS OF VICTORIA, 1863.

POPULATION.

IMMIGRATION.

RETURN classifying the Immigrants who arrived in the Colony of Victoria by Sea during the Year 1863, showing the Number of Adults, Children, and Infants arriving in each Month, and distinguishing those coming from the adjacent Colonies, the United Kingdom, and Foreign Ports.

Month.	Place of Departure.																	
	New South Wales.						South and Western Australia.						Tasmania.					
	Adults.		Children 12 to 1 year.		Infants.		Adults.		Children 12 to 1 year.		Infants.		Adults.		Children 12 to 1 year.		Infants.	
	Males.	Females.	Males.	Females.	Males.	Females.	Males.	Females.	Males.	Females.	Males.	Females.	Males.	Females.	Males.	Females.	Males.	Females.
January	312	89	11	13	1	...	122	51	11	19	1	...	179	105	12	15	2	2
February	278	86	13	13	...	1	157	37	12	5	3	...	197	89	13	15	2	1
March	293	89	6	11	196	52	18	14	3	...	291	169	31	33	5	3
April	237	80	15	13	1	...	159	78	29	15	1	...	164	105	19	21	6	3
May	256	79	8	7	83	43	13	8	183	119	30	20	2	1
June	189	47	12	9	...	1	92	31	13	10	135	66	16	13	2	...
July	224	84	11	14	64	21	11	7	...	1	155	84	14	13	2	1
August	237	56	13	10	1	...	88	43	15	9	2	2	173	80	15	9	1	...
September	263	68	9	6	6	...	70	34	7	6	1	1	203	94	25	20	2	2
October	282	77	13	10	2	1	86	29	10	10	2	...	124	64	18	15	7	1
November	193	66	6	15	3	2	86	46	8	13	2	1	157	58	23	11	3	1
December	290	72	8	2	122	37	13	10	3	1	144	73	5	4
Total	3,054	893	125	123	14	5	1,325	502	160	126	18	6	2,105	1,106	221	189	34	15

IMMIGRATION.

RETURN classifying the Immigrants who arrived in the Colony of Victoria, by Sea, during the Year 1863, showing the Number of Adults, Children, and Infants arriving in each Month, and distinguishing those coming from the adjacent Colonies, the United Kingdom, and Foreign Ports—*continued.*

Month.	Place of Departure.																							
	New Zealand and South Seas.						Total from the neighboring Colonies.						The United Kingdom.						Foreign Ports.					
	Adults.		Children 12 to 1 year.		Infants.		Adults.		Children 12 to 1 year.		Infants.		Adults.		Children 12 to 1 year.		Infants.		Adults.		Children 12 to 1 year.		Infants.	
	Males.	Females.	Males.	Females.	Males.	Females.	Males.	Females.	Males.	Females.	Males.	Females.	Males.	Females.	Males.	Females.	Males.	Females.	Males.	Females.	Males.	Females.	Males.	Females.
January ...	326	29	4	8	989	274	38	55	4	2	832	339	83	75	20	13	23	5	3
February ...	420	23	8	5	1	1	1,052	235	46	38	6	3	716	580	96	103	31	13	31	7	2	1
March ...	595	21	3	2	2	...	1,375	331	58	60	10	3	315	233	51	27	9	6	62	13	3	3
April ...	910	43	7	5	1,470	306	70	54	8	3	818	947	132	140	20	14	55	12	7	8	1	2
May ...	857	31	9	7	5	1	1,379	272	60	42	7	2	284	96	23	17	3	5	72	18	1	7	...	4
June ...	690	31	4	3	1,106	175	45	35	2	1	1,420	1,305	219	223	33	36	45	11	4	2
July ...	561	77	6	8	1,004	266	42	42	2	2	994	653	119	109	30	18	94	9	8	6	1	...
August ...	571	18	7	3	2	...	1,069	197	50	31	6	2	1,040	937	142	159	25	32	59	10	5	3
September ...	460	34	9	13	1	1	996	230	50	45	10	4	678	611	78	73	20	23	76	9	3
October ...	354	27	7	7	...	1	846	197	48	42	11	3	321	393	54	44	10	11	25	7	4	2	1	1
November ...	433	33	11	10	1	1	869	203	48	49	9	5	1,157	838	162	167	29	37	99	19	6	5
December ...	1,067	46	14	12	2	2	1,623	228	40	28	5	3	869	776	125	120	38	31	44	10	6	4	2	2
Total ...	7,244	413	89	83	14	7	13,728	2,914	595	521	80	33	9,444	7,708	1,284	1,247	268	239	685	130	52	41	5	9

GENERAL TOTAL.

Month.	Adults.		Children 12 to 1 year.		Infants.		Total Persons.	Month.	Adults.		Children 12 to 1 year.		Infants.		Total Persons.
	Males.	Females.	Males.	Females.	Males.	Females.			Males.	Females.	Males.	Females.	Males.	Females.	
January ...	1,794	618	124	130	24	15	2,705	August ...	2,168	1,144	197	183	31	34	3,757
February ...	1,799	822	144	142	37	16	2,960	September ...	1,750	850	131	118	30	27	2,906
March ...	1,752	577	112	90	19	9	2,539	October ...	1,192	597	106	81	22	15	2,020
April ...	2,343	1,265	209	202	29	19	4,067	November ...	2,125	1,060	216	221	38	42	3,702
May ...	1,735	386	84	66	10	11	2,292	December ...	2,536	1,014	171	152	45	36	3,954
June ...	2,571	1,491	268	260	35	37	4,662	Total ...	23,857	10,752	1,931	1,809	353	281	38,983
July ...	2,092	928	169	157	33	20	3,399								

WILLIAM HENRY ARCHER, Registrar-General.

GOVERNMENT IMMIGRATION.

RETURN of the Number of Persons who arrived in Victoria in Government Immigrant Vessels during the Year 1863.

Month.	Adults.		Children.		Infants.		Total Souls.
	Males.	Females.	Males.	Females.	Males.	Females.	
February ...	37	282	15	12	6	3	355
April ...	72	471	32	21	10	3	609
June ...	32	223	10	10	5	5	285
August ...	51	301	16	20	7	3	398
September ...	30	226	9	10	4	5	284
October ...	30	227	14	11	5	2	289
December ...	43	287	7	10	7	8	362
Total ...	295	2,017	103	94	44	29	2,582*

* Of this number, 540, viz., 15 males and 494 females were Passage Warrant Holders.

J. CHATFIELD TYLER,
Immigration Agent.

IMMIGRATION FROM THE UNITED KINGDOM.

RETURN showing the Number of Assisted and Unassisted Immigrants who arrived in Victoria, from the United Kingdom, during the Year 1863.

Description of Immigrants.	Adults.		Children.		Total Souls.
	Males.	Females.	Males.	Females.	
Warrant Holders in Private Passenger Ships	2,240	2,745	531	524	6,040
Warrant Holders in Government Immigrant Ships	15	494	14	17	540
Government Immigrants	280	1,523	133	106	2,042
Total Warrant Holders and Government Immigrants	2,535	4,762	678	647	8,622
Unassisted Immigrants	6,909	2,946	874	839	11,568
Total ...	9,444	7,708	1,552	1,486	20,190

J. CHATFIELD TYLER,
Immigration Agent

EMIGRATION.

RETURN classifying the Emigrants who departed from the Colony of Victoria by Sea, during the Year 1863, showing the Number of Adults, Children, and Infants leaving during each Month, and distinguishing those proceeding to the adjacent Colonies, to the United Kingdom, and to Foreign Ports.

Month.	Place of Destination.																	
	New South Wales and Queensland.						South and Western Australia.						Tasmania.					
	Adults.		Children 12 to 1 year.		Infants.		Adults.		Children 12 to 1 year.		Infants.		Adults.		Children 12 to 1 year.		Infants.	
	Males.	Females.	Males.	Females.	Males.	Females.	Males.	Females.	Males.	Females.	Males.	Females.	Males.	Females.	Males.	Females.	Males.	Females.
January	321	115	38	30	4	2	52	32	9	5	...	1	59	48	13	9	1	3
February	186	69	18	21	6	1	87	46	9	16	1	...	38	21	3	2
March	295	109	21	30	10	...	105	38	13	8	5	1	26	22	2	1
April	207	107	24	20	5	3	162	37	11	9	2	3	40	23	7	7
May	256	104	32	20	4	...	66	18	3	1	21	15	8	4	1	2
June	238	101	12	13	6	1	73	23	14	10	3	...	43	21	10	5
July	198	75	14	14	4	2	58	18	7	4	2	2	16	16	3	7
August	236	82	15	12	2	...	73	28	2	3	36	17	...	1
September	221	98	23	30	5	1	72	28	4	4	1	...	43	35	5	7	1	1
October... ..	219	71	24	22	2	3	90	31	9	5	4	2	31	14	1
November	156	77	18	12	4	1	117	24	6	8	3	1	15	9	7	7	1	...
December	223	79	17	17	2	4	120	35	7	10	3	1	51	45	4	10	1	2
Total	2,756	1,087	256	241	54	18	1,075	358	94	83	24	11	419	286	63	60	5	8

EMIGRATION.

RETURN classifying the Emigrants who departed from the Colony of Victoria by Sea, during the Year 1863, showing the Number of Adults, Children, and Infants leaving during each Month, and distinguishing those proceeding to the adjacent Colonies, to the United Kingdom, and to Foreign Ports—*continued.*

No. 11—c.

Month.	Place of Destination.																							
	New Zealand and South Seas.						Total to the neighboring Colonies.						The United Kingdom.						Foreign Ports.					
	Adults.		Children 12 to 1 year.		Infants.		Adults.		Children 12 to 1 year.		Infants.		Adults.		Children 12 to 1 year.		Infants.		Adults.		Children 12 to 1 year.		Infants.	
	Males.	Females.	Males.	Females.	Males.	Females.	Males.	Females.	Males.	Females.	Males.	Females.	Males.	Females.	Males.	Females.	Males.	Females.	Males.	Females.	Males.	Females.	Males.	Females.
January ...	3,056	244	89	89	27	26	3,488	439	149	133	32	32	239	77	34	36	14	...	323	11	1	...	1	...
February ...	4,082	350	99	90	19	33	4,393	486	129	129	26	34	300	112	46	33	14	2	8
March ...	3,239	332	120	102	22	25	3,665	501	156	141	37	26	214	68	29	25	10	...	24	9	3	3	...	1
April ...	745	220	98	91	23	29	1,154	387	140	127	30	35	118	52	26	24	8	1	17	3
May ...	453	157	85	74	16	10	796	294	128	99	21	12	496	152	60	52	10	12	556	9	2	1
June ...	433	185	68	50	13	18	787	330	104	78	22	19	168	45	27	19	10	...	18	10	1
July ...	371	103	33	38	10	7	643	212	57	63	16	11	79	28	12	8	3	1	22	8	3	5
August ...	1,140	171	63	60	17	16	1,485	298	80	76	19	16	123	32	20	13	8	...	256	11	...	3	...	1
September ...	1,360	162	71	61	21	19	1,696	323	103	102	28	21	176	52	24	12	5	2	232	8	3	2	1	...
October ...	1,207	218	78	90	18	22	1,547	334	112	117	24	27	61	16	4	3	1	1	41	4
November ...	847	172	72	64	16	13	1,135	282	103	91	24	15	127	51	23	17	2	5	16	5	1	3	1	1
December ...	411	173	65	61	5	18	805	332	93	98	11	25	168	48	16	17	...	6	483	4	3	2
Total ...	17,344	2,487	941	870	207	236	21,594	4,218	1,354	1,254	290	273	2,269	733	321	259	85	30	1,996	82	17	19	3	3

GENERAL TOTAL.

Month.	Adults.		Children 12 to 1 year.		Infants.		Total Persons.
	Males.	Females.	Males.	Females.	Males.	Females.	
January ...	4,050	527	184	169	47	32	5,009
February ...	4,701	598	175	162	40	36	5,712
March ...	3,903	578	188	169	47	27	4,912
April ...	1,289	442	166	151	38	36	2,122
May ...	1,848	455	190	152	31	24	2,700
June ...	973	385	132	97	32	19	1,638
July ...	744	248	72	76	19	12	1,171
August ...	1,864	341	100	92	27	17	2,441
September ...	2,104	383	130	116	34	23	2,790
October ...	1,649	354	116	120	25	28	2,292
November ...	1,278	338	127	111	27	21	1,902
December ...	1,456	384	112	117	11	31	2,111
Total ...	25,859	5,033	1,692	1,532	378	306	34,800

WILLIAM HENRY ARCHER, Registrar-General.

IMMIGRATION AND EMIGRATION.—(II.)

RETURN of Immigration and Emigration by Sea during the Year 1863, showing the Excess of the former over the latter, or the contrary, and distinguishing the Numbers of Adults, Children, and Infants, from and to the adjacent Colonies, the United Kingdom, and Foreign Ports—*continued.*

		Place of Departure and Destination.																							
		New Zealand and South Seas.						Total from and to the neighboring Colonies.						The United Kingdom.						Foreign Ports.					
		Adults.		Children 12 to 1 year.		Infants.		Adults.		Children 12 to 1 year.		Infants.		Adults.		Children 12 to 1 year.		Infants.		Adults.		Children 12 to 1 year.		Infants.	
		Males.	Females	Males.	Females	Males.	Females	Males.	Females	Males.	Females	Males.	Females	Males.	Females	Males.	Females	Males.	Females	Males.	Females	Males.	Females	Males.	Females
Immigration	...	7,244	413	89	83	14	7	13,728	2,914	595	521	80	33	9,444	7,708	1,284	1,247	268	239	685	130	52	41	5	9
Emigration	...	17,344	2,487	941	870	207	236	21,594	4,218	1,354	1,254	290	273	2,269	733	321	259	85	30	1,996	82	17	19	3	3
Immigration in excess of Emigration	7,175	6,975	963	988	183	209	...	48	35	22	2	6
Emigration in excess of Immigration	...	10,100	2,074	852	787	193	229	7,866	1,304	759	733	210	240	1,311

GENERAL TOTAL.

			Adults.		Children 12 to 1 year.		Infants.		Total Persons.
			Males.	Females.	Males.	Females.	Males.	Females.	
Immigration	23,857	10,752	1,931	1,809	353	281	38,983
Emigration	25,859	5,033	1,692	1,532	378	306	34,800
Immigration in excess of Emigration	5,719	239	277	4,183
Emigration in excess of Immigration	2,002	25	25	...

WILLIAM HENRY ARCHER, Registrar-General.

IMMIGRATION AND EMIGRATION.—DECENNIAL RETURN.

Year.	IMMIGRATION.			EMIGRATION.		
	Males.	Females.	Persons.	Males.	Females.	Persons.
1854	57,369	26,041	83,410	28,669	6,306	34,975
1855	47,889	18,682	66,571	20,585	5,810	26,395
1856	28,335	13,259	41,594	17,362	3,825	21,187
1857	51,951	22,304	74,255	16,752	3,719	20,471
1858	43,006	13,162	56,168	21,691	4,191	25,882
1859	21,961	10,774	32,735	15,349	4,266	19,615
1860	19,566	9,471	29,037	17,220	4,469	21,689
1861	18,491	8,421	26,912	30,914	4,984	35,898
1862	28,434	9,402	37,836	31,043	7,160	38,203
1863	26,141	12,842	38,983	27,929	6,871	34,800

WILLIAM HENRY ARCHER,
Registrar-General.

CHINESE IMMIGRATION AND EMIGRATION.

RETURN showing the Number of Chinese who arrived in the Colony of Victoria and departed therefrom during the Year 1863.

Month.	Number of Chinese.	
	Arrivals.	Departures.
January	305
February
March	5	...
April	3	...
May	1	534
June
July	*21	...
August	14	218
September	30	212
October	12
November
December	6	478
Total	80	1,759

* This number includes a Chinese woman, and a female child nine years of age. The rest of the arrivals and all the departures were of males.

J. CHATFIELD TYLER,
Secretary and Immigration Agent.

POPULATION.—INCREASE OR DECREASE IN 1863.

RETURN showing the Increase or Decrease of the Population of Victoria.

1863.	Males.	Females.	Persons.
Population on the 1st January	325,768	229,976	555,744
Increase by excess of Births over Deaths during the year	6,591	7,813	14,404
Increase of Female Population by excess of Immigration over Emigration during the year	5,971	5,971
Decrease of Male Population by excess of Emigration over Immigration during the year	332,359	243,760	576,119
Population on the 31st December	1,788	...	1,788
Population on the 31st December	330,571	243,760	574,331
Increase during the year	4,803	13,784	18,587

WILLIAM HENRY ARCHER,
Registrar-General.

POPULATION.—INCREASE OR DECREASE IN EACH QUARTER.

RETURN showing the Increase or Decrease of the Population of Victoria during each of the four Quarters of 1863.

FIRST QUARTER.

1863.	Males.	Females.	Persons.
Population on the 1st January	325,768	229,976	555,744
Increase by excess of Births over Deaths during the Quarter	935	1,319	2,254
Increase of Female Population by excess of Immigration over Emigration during the Quarter	121	121
Decrease of Male Population by excess of Emigration over Immigration during the Quarter	326,703	231,416	558,119
Population on the 31st March	7,530	...	7,530
Population on the 31st March	319,173	231,416	550,589
Increase of Females during the Quarter	1,440	...
Decrease of Males and Persons during the Quarter	6,595	...	5,155

SECOND QUARTER.

Population on the 1st April	319,173	231,416	550,589
Increase by excess of Births over Deaths during the Quarter	1,661	2,006	3,667
Increase of Population by excess of Immigration over Emigration during the Quarter	2,585	1,976	4,561
Population on the 30th June	323,419	235,398	558,817
Increase during the Quarter	4,246	3,982	8,228

THIRD QUARTER.

Population on the 1st July	323,419	235,398	558,817
Increase by excess of Births over Deaths during the Quarter	2,221	2,434	4,655
Increase of Population by excess of Immigration over Emigration during the Quarter	1,507	2,153	3,660
Population on the 30th September	327,147	239,985	567,132
Increase during the Quarter	3,728	4,587	8,315

FOURTH QUARTER.

Population on the 1st October	327,147	239,985	567,132
Increase by excess of Births over Deaths during the Quarter	1,774	2,054	3,828
Increase of Population by excess of Immigration over Emigration during the Quarter	1,650	1,721	3,371
Population on the 31st December	330,571	243,760	574,331
Increase during the Quarter	3,424	3,775	7,199

WILLIAM HENRY ARCHER,
Registrar-General.

POPULATION OF VICTORIA—DECENNIAL RETURN.

Year.	Males.	Females.	Total.
1854 ...	205,629	106,678	312,307
1855 ...	234,450	129,874	364,324
1856 ...	255,827	141,733	397,560
1857 ...	297,547	165,588	463,135
1858 ...	323,576	180,943	504,519
1859 ...	335,708	194,554	530,262
1860 ...	328,251	209,596	537,847
1861 ...	321,724	220,076	541,800
1862 ...	325,768	229,976	555,744
1863 ...	330,571	243,760	574,331

NOTE.—This Return shows the Population on the 31st December of each Year.

WILLIAM HENRY ARCHER,

Registrar-General.

POPULATION ON THE GOLD FIELDS.

RETURN of the Estimated Population on the various Gold Fields on the 31st December, 1863.

Mining Districts.	Alluvial Miners.		Quartz Miners.		Total.		Grand Total Miners.	Grand Total of all classes.
	Europeans.	Chinese.	Europeans.	Chinese.	Europeans.	Chinese.		
Ballarat District ...	10,865	4,268	2,383	...	13,248	4,268	17,516	58,294
Beechworth District ...	11,815	7,200	1,985	...	13,800	7,200	21,000	38,675
Sandhurst District ...	8,064	1,769	3,297	...	11,361	1,769	13,130	33,227
Maryborough District ...	12,180	3,130	4,774	12	16,954	3,142	20,096	42,676
Castlemaine District ...	7,433	5,344	2,566	...	9,999	5,344	15,343	45,749
Ararat District ...	3,693	1,560	656	...	4,349	1,560	5,909	14,579
Total ...	54,050	23,271	15,661	12	69,711	23,283	92,994	233,200

R. BROUGH SMYTH,

Secretary for Mines.

ABORIGINAL POPULATION.

RETURN of the Estimated Numbers and Distribution of the Aboriginal Population in the Colony during the Year 1863.

NUMBER AND LOCATION OF ABORIGINES.

Districts.	Localities and Tribes.	Authority.	Total number of men, women, and children.	
Southern ...	Wawoorong or Yarra tribe	Green	22	33
	Boonoorong or Coast tribe	Thomas	11	
South-Western ...	Geelong and Colac tribes	Green	28	645
	Camperdown	Green	40	
	Warrnambool	Musgrove	51	
	Belfast and Port Fairy	Green	17	
	Portland	Green	100	
	Casterton	Green	45	
	Balmoral	Green	53	
	Hamilton	Learmonth	58	
	Mortlake	Green	43	
	Mount Emu and Ballarat	Porteous	69	
	Wickliffe, Mount Rouse, and Hexham	Gray	70	
	Bacchus Marsh	Macleay and Young	33	
Franklynford	Stanbridge	38		
North-Western ...	Yaako-yaako tribe	Goodwin	66	768
	Yarre-yarre tribe	Goodwin	39	
	Kamink tribe	Goodwin	27	
	Kulkyne, Lower Murray	Green	50	
	Swan Hill, Lower Murray	Green	171	
	Boort, Lower Loddon	Green	65	
	Gunbower	Houston	72	
	Cobram	Green	38	
	Horsham and vicinity	Speiseke	31	
	Glenelg and Mount Talbot	Speiseke	45	
Richardson and Morton Plains	Speiseke	52		
Lake Hindmarsh and vicinity	Speiseke	112		
Northern ...	Campaspe and Echuca	Strutt	74	169
	Goulburn	Green	95	
South-Eastern ...	Port Albert	Hagenauer	17	221
	La Trobe and Rosedale	Hagenauer	51	
	Macalister, Mafra, Upper Mitchell, Omeo, &c.	Hagenauer	52	
	Nicholson, Tambo, Bruethen, and Lake Tyers	Hagenauer	66	
	Buchan, Snowy River, &c.	Hagenauer	35	
North-Eastern ...	Tangamballanga	Green	45	72
	Barnawartha	Green	27	
				1,908

NOTE.

The principle adopted last year has been adhered to in compiling the above return, namely, to obtain from one person, where possible, returns for a whole district, using the other returns only as a check.

The above figures must be taken as approximations only. It would be very difficult and expensive to take a census yearly, and no good purpose would be served if it were done.

There is apparently a reduction in the total numbers amounting to 257, which is accounted for thus:—The Taa-Tatty and Lutche-lutche tribes, numbering 180, improperly included in Mr. Goodwin's return last year, are omitted in this; and at Swan Hill Mr. Green could find only 171 blacks, less by 44 than last year's return. The reduction, therefore, in the total sum is only 33.

Comparing the tables district by district, it will be seen that the Southern is 1 less than last year. In the South-western there is an increase of 71, which is thus accounted for: Franklynford, numbering 25, was omitted last year; and in other cases more recently careful returns made by the Honorary Correspondents have been substituted for those obtained by Mr. Green during his hasty visit to the Western district. The difference in the numbers for the North-western district have been already explained; and those observed in the Northern, South-eastern, and North-eastern districts do not call for remark.

The figures in the table are sufficient to show that the aborigines are not decreasing so rapidly as is generally supposed. If, instead of looking at the totals, which are liable to error, for reasons already explained, we compare the returns made by Honorary Correspondents who have a complete knowledge of the blacks under their charge, and who keep accurate accounts of the births and deaths, we shall see that in no case is the diminution very startling, having regard to the habits and present condition of this people.

It is to be regretted that it has been necessary to use last year's returns for some localities; but it is almost unreasonable to expect the Honorary Correspondents to make elaborate returns every year.

The Central Board are now in possession of the names and other particulars of 1738 aborigines; those respecting whom such information is wanting amount to 120, and they are located principally at Wickliffe, Mount Rouse, Hexham, Bacchus Marsh, and Warrnambool.

As the above return is imperfect, the Central Board would be glad if Honorary Correspondents and others possessing information would communicate with the Secretary. There is reason to believe that some aborigines in the central part of Victoria are not included.

R. BROUGH SMYTH,

Secretary to the Central Board for the Protection of Aborigines

CORPORATE TOWNS AND MUNICIPAL BOROUGHES.

RETURN of the Area, Population, Number of Dwellings, Amount of Rate levied, and Total and Annual Value of Rateable Property in the various Corporate Towns and Municipal Boroughs throughout the Colony of Victoria at the time the last Rate was struck; also, the Amount of Revenue and Expenditure for the Year 1863.

Name of Corporate Town or Municipal Borough.	Estimated Area in Acres.	Estimated Population	Estimated Number of Dwellings.	Date when last Rate was struck.	Amount of Rate levied in the Pound.	Estimated Total Value of Rateable Property.	Estimated Annual Value of Rateable Property.	Revenue.						Expenditure.			
								From Government.		From Local Sources		From All Sources.					
								£	s. d.	£	s. d.	£	s. d.	£	s. d.	£	s. d.
Amherst	5,760	4,600	2,000	Jan. 21, 1863	2 0	16,432 10 0	1,643 5 0	724 4 9	1,484 12 6	2,208 17 3	2,208 17 3	2,208 17 3	2,208 17 3				
Ararat	3,840	1,200	347	Jan. 11, 1862	1 0	20,000 0 0	12,302 0 0	519 18 0	488 5 8	1,008 3 8	1,387 17 8	1,387 17 8	1,387 17 8				
Avoca	5,760	1,500	360	May, 1863	1 0	60,000 0 0	12,000 0 0	435 14 2	769 1 5	1,204 15 7	1,156 11 2	1,156 11 2	1,156 11 2				
Ballarat	3,000	10,000	3,109	June 22, 1863	2 0	700,000 0 0	102,434 11 0	2,950 12 11	8,098 13 10	11,049 6 9	16,659 15 6	16,659 15 6	16,659 15 6				
Ballarat East	4,320	15,000	3,500	Nov. 4, 1863	2 0	480,036 0 0	80,006 0 0	3,823 14 3	5,958 12 3	9,782 6 6	11,154 5 11	11,154 5 11	11,154 5 11				
Beechworth	1,562	2,600	620	Nov. 21, 1862	1 6	162,758 10 0	22,600 12 0	393 9 8	1,527 1 5	1,920 11 1	2,105 2 8	2,105 2 8	2,105 2 8				
Belfast	5,440	2,300	420	Jan. 28, 1864	1 6	150,000 0 0	13,330 10 0	350 13 0	891 5 5	1,241 18 5	1,399 14 5	1,399 14 5	1,399 14 5				
Brighton	2,812	2,600	537	April 20, 1863	1 0	291,120 0 0	24,260 0 0	995 12 4	1,580 16 0	2,576 8 4	1,783 14 5	1,783 14 5	1,783 14 5				
Brown's and Scarsdale	5,760	4,000	700	Nov. 16, 1863	1 6	40,000 0 0	8,500 0 0	1,121 6 0	1,049 4 0	2,170 10 0	1,833 7 0	1,833 7 0	1,833 7 0				
Brunswick	5,760	3,000	726	Jan., 1863	1 0	207,610 0 0	20,761 0 0	492 9 6	3,592 11 3	4,084 19 9	3,794 0 1	3,794 0 1	3,794 0 1				
Buninyong	3,360	1,500	300	Sept. 9, 1863	1 0	34,565 0 0	6,913 0 0	275 14 8	447 11 3	723 5 11	850 2 7	850 2 7	850 2 7				
Carisbrook	5,760	1,500	500	Dec. 21, 1863	1 0	80,000 0 0	6,587 18 0	500 12 2	917 18 10	1,418 11 0	1,476 8 10	1,476 8 10	1,476 8 10				
Castlemaine	5,760	9,500	2,000	May 12, 1863	1 0	537,124 0 0	76,732 0 0	2,602 18 4	4,633 6 10	7,236 5 2	9,053 2 4	9,053 2 4	9,053 2 4				
Chewton	5,760	4,000	914	April 16, 1863	1 0	33,677 5 0	9,895 17 0	518 5 10	442 17 7	961 3 5	1,221 1 11	1,221 1 11	1,221 1 11				
Chiltern	1,120	1,760	396	March 20, 1863	1 0	40,432 0 0	7,608 0 0	410 3 9	180 4 8	590 8 5	541 10 2	541 10 2	541 10 2				
Clunes	5,760	2,800	750	Feb. 4, 1863	2 0	60,000 0 0	14,817 0 0	1,580 16 2	1,413 18 0	3,127 14 3	3,230 17 7	3,230 17 7	3,230 17 7				
Collingwood East	1,900	13,000	4,000	Jan. 6, 1863	1 0	768,630 0 0	76,863 0 0	2,004 19 8	3,831 19 1	5,836 18 9	5,112 0 6	5,112 0 6	5,112 0 6				
Creswick	4,760	2,600	700	Feb. 17, 1863	2 0	70,140 0 0	13,080 10 0	770 3 4	1,453 1 11	2,223 5 3	1,541 9 4	1,541 9 4	1,541 9 4				
Daylesford	4,800	4,500	1,000	Jan., 1863	1 6	290,000 0 0	28,198 0 0	1,720 3 6	1,543 7 6	3,263 11 0	3,147 3 3	3,147 3 3	3,147 3 3				
Dunolly	5,757	2,000	400	Dec. 21, 1863	1 6	84,654 7 6	9,080 4 3	353 9 1	850 0 3	1,203 9 4	1,399 15 7	1,399 15 7	1,399 15 7				
Eaglehawk	3,737	4,000	1,097	Dec. 11, 1862	1 3	56,083 10 0	18,694 10 0	1,167 5 4	1,122 17 8	2,290 3 6	1,879 8 7	1,879 8 7	1,879 8 7				
Emerald Hill	2,292	9,500	2,150	Sept. 30, 1863	1 3	450,000 0 0	60,000 0 0	940 10 10	3,727 15 6	4,668 6 4	6,101 1 11	6,101 1 11	6,101 1 11				
Essendon and Flemington	4,907	1,580	395	May 18, 1863	1 0	148,806 0 0	14,880 0 0	1,182 14 4	768 14 3	1,951 8 7	1,220 8 10	1,220 8 10	1,220 8 10				
Fitz Roy	800	12,000	2,748	Dec. 23, 1863	1 3	946,000 0 0	94,696 0 0	3,318 3 10	7,773 9 0	11,091 12 10	10,486 17 2	10,486 17 2	10,486 17 2				
Footscray	4,101	1,069	281	Sept. 12, 1862	1 0	125,261 10 0	12,526 3 0	199 16 7	414 15 6	614 12 1	639 12 7	639 12 7	639 12 7				
Geelong	3,800	16,000	3,650	Jan. 23, 1863	1 10	666,534 0 0	111,089 0 0	2,812 0 0	12,297 10 8	15,109 10 8	15,939 0 6	15,939 0 6	15,939 0 6				
Gisborne	640	300	110	Dec. 18, 1863	1 0	26,290 5 0	2,629 5 0	188 18 4	442 7 9	631 6 1	626 5 6	626 5 6	626 5 6				
Hamilton	5,333	1,500	284	Feb. 11, 1863	1 3	85,000 0 0	14,060 0 0	686 19 7	913 15 5	1,600 15 0	1,130 9 7	1,130 9 7	1,130 9 7				
Hawthorn	2,236	2,339	507	Nov. 23, 1863	1 0	235,104 0 0	19,592 0 0	948 17 4	2,013 7 8	2,962 5 0	2,008 9 1	2,008 9 1	2,008 9 1				
Heathcote	4,160	1,200	450	June 4, 1863	1 0	82,865 0 0	8,286 10 0	342 3 8	402 2 4	744 6 0	1,593 8 5	1,593 8 5	1,593 8 5				
Hotham	502	7,000	1,700	Dec. 14, 1863	1 3	325,000 0 0	34,000 0 0	1,713 10 6	2,199 15 6	3,913 6 0	3,790 18 1	3,790 18 1	3,790 18 1				
Inglewood	2,560	2,000	400	March 4, 1863	1 6	80,000 0 0	12,000 0 0	1,170 5 10	584 16 9	1,780 2 7	1,461 11 6	1,461 11 6	1,461 11 6				
Kew	3,400	1,600	323	Dec. 8, 1863	2 0	202,000 0 0	17,132 8 0	915 6 10	1,561 11 8	2,476 18 6	2,105 6 2	2,105 6 2	2,105 6 2				
Kilmore	646	1,800	460	Dec. 21, 1863	1 0	88,204 0 0	11,025 0 0	483 8 8	845 6 0	1,328 9 8	1,529 15 7	1,529 15 7	1,529 15 7				
Kyneton	830	2,094	464	June 1, 1863	1 6	135,882 0 0	19,411 15 0	677 13 7	1,593 2 8	2,270 16 3	3,234 17 4	3,234 17 4	3,234 17 4				
Maldon	5,760	3,250	800	Nov. 30, 1863	1 6	16,402 0 0	1,230 0 0	904 3 2	1,191 4 0	2,095 7 2	2,281 3 6	2,281 3 6	2,281 3 6				
Malmsbury	3,520	1,400	350	Dec. 9, 1863	1 0	73,300 8 0	7,330 8 0	699 2 2	367 7 0	1,066 9 2	969 12 6	969 12 6	969 12 6				
Maryborough	5,760	2,447	921	Aug. 11, 1863	1 6	121,226 0 0	17,318 0 0	2,704 1 8	1,628 19 1	4,333 0 9	4,911 4 5	4,911 4 5	4,911 4 5				

STATISTICS OF VICTORIA, 1863.—POPULATION.

Municipality	No. 1— ^a			Date			
																	
Melbourne	4,000	41,000	8,850	April 13, 1863...	1 0	4,445,664	0 0	555,708	0 0	7,031	0 0	64,495	14 9	71,526	14 9	69,708	18 8
Moonambel	5,000	700	150	Feb. 5, 1863	1 6	10,824	0 0	5,412	0 0	554	6 8	183	0 4	737	7 0	645	1 2
Newtown and Chilwell	1,347½	4,500	1,450	April 13, 1863	1 9	281,560	0 0	28,156	0 0	1,280	18 7	3,249	4 6	4,530	3 1	4,530	3 1
Portland	4,160	2,500	630	Feb. 11, 1863	1 0	136,341	0 0	17,042	12 6	323	15 11	1,191	13 3	1,515	9 2	2,199	8 7
Prahran	2,400	10,500	2,650	April 27, 1863	1 0	692,984	0 0	86,623	0 0	1,257	16 2	6,578	7 0	7,836	3 3	7,770	16 10
Queenscliff	1,760	640	160	Nov. 23, 1863	1 6	41,567	12 6	4,618	12 6	200	0 0	181	19 8	381	19 8	75	15 8
Richmond	2,400	12,000	2,000	July 9, 1863	1 0	699,651	12 0	58,304	6 0	760	3 10	4,426	18 10	5,187	2 8	4,850	18 10
Rutherglen ⁶	1,280	1,200	250	Dec. 11, 1862	1 6	19,292	13 0	7,635	0 0	459	4 1	372	12 6	1,031	16 7	1,000	0 0
Sale	2,250	1,030	206	Nov. 11, 1863	1 0	160,000	0 0	8,000	0 0	333	6 8	632	0 0	965	6 8	83	0 0
Saudhurst	7,520	15,000	5,000	Aug. 30, 1863	1 6	1,098,160	0 0	109,816	0 0	1,100	0 0	12,652	17 2	13,806	17 2	13,337	18 4
Sandridge	2,300	3,900	1,027	Nov. 24, 1863	1 3	314,102	0 0	38,921	0 0	1,816	3 2	2,613	12 3	4,429	15 5	4,285	7 4
Smythesdale	1,440	800	250	Nov. 19, 1863	1 6	36,250	0 0	7,250	0 0	632	2 10	744	3 1	1,376	5 11	1,184	15 0
South Barwon	9,000	1,400	400	Nov. 17, 1863	0 9	96,230	0 0	9,623	0 0	213	2 2	2,483	8 1	2,696	10 3	2,744	13 9
St. Arnaud	6,256	1,050	290	Dec. 9, 1863	1 3	59,200	0 0	7,413	0 0	786	10 6	797	1 4	1,583	11 10	945	6 9
St. Kilda	2,320	7,756	1,401	April 1, 1863	1 0	947,625	0 0	75,967	0 0	1,398	18 0	4,386	1 10	5,874	19 10	6,230	15 0
Taradale	5,760	1,500	400	Aug. 12, 1863	1 0	61,460	0 0	7,682	10 0	543	12 8	474	19 0	1,018	11 8	1,593	10 7
Wangaratta ⁷	5,760	1,200	168	Dec. 23, 1863	1 0	55,526	13 4	8,329	0 0	Nil		169	12 3	169	12 3	Nil	
Warrnambool	3,262½	2,300	502	Feb. 4, 1863	1 3	140,370	0 0	12,896	0 0	591	7 4	3,564	0 6	4,155	7 10	3,988	4 5
Williamstown	2,540	5,000	1,250	July 13, 1863	1 3	373,980	0 0	37,398	0 0	604	4 2	2,302	13 0	2,906	17 2	3,006	17 2
Woodend ⁸	10,240	1,800	400	May 13, 1863	1 0	88,100	0 0	8,810	11 0	680	0 0	470	0 0	1,150	0 0	1,021	15 2
Total	224,131½	276,815	67,803	17,750,026	16 4	2,119,119	18 3	64,106	11 1	193,173	7 5	257,641	18 8	262,169	15 9

¹ In addition to this amount, £2,000 was received from Government for the construction of a reservoir dam for Clunes water supply.
² In addition, about £4,800 was expended in kerbing and channelling public streets, the funds being derived from a loan of £5,000 undertaken for public improvements.
³ This return is for the year ending 30th June, 1863.
⁴ In addition, the council borrowed £750 towards the erection of a Town Hall, which is to be repaid out of the rates during three years.

⁵ A special grant of £2,000 for water supply is included in this return.
⁶ These figures are taken from last year's returns. No return from the Rutherglen municipality has been received for 1863, although it has been repeatedly applied for.
⁷ This borough was only established on the 16th July, 1863.
⁸ This return is for the year ending 18th October, 1863.

WILLIAM HENRY ARCHER,
Registrar-General.

MUNICIPALITIES—RETURN FOR SEVEN YEARS.

Year.	Number of Municipalities formed.	Estimated Value of Rateable Property.		Revenue.		Expenditure.	
		Total.	Annual.	£ s. d.	£ s. d.	£ s. d.	£ s. d.
1857	19	2,557,794	0 0	219,360	5 8	296,176	14 4
1858	29	2,605,546	0 0	314,316	3 6	290,358	19 11
1859	37	3,384,737	0 0	318,623	11 7	353,869	11 2
1860	41	18,715,561	0 0	324,728	3 8	336,629	5 6
1861	48	20,690,476	0 0	284,177	15 7	287,819	15 9
1862	53	18,377,042	0 0	262,179	4 8	290,110	14 8
1863	58	17,750,027	0 0	257,641	18 8	262,169	15 9

WILLIAM HENRY ARCHER, Registrar-General.

SHIRES AND ROAD DISTRICTS.

RETURN of the Area, Population, Number of Dwellings, Amount of Rate levied, and Total and Annual Value of Rateable Property in the various Shires and Road Districts in the Colony of Victoria at the time the last rate was struck; also the Amount of Revenue and Expenditure for the Year 1863.

Name of Shire or District.	Estimated Area in Acres.	Estimated Population.	Estimated Number of Dwellings.	Date when last Rate was struck.	Amount of Rate levied.				Estimated Total Value of Rateable Property.		Estimated Annual Value of Rateable Property.		Revenue.			Expenditure.
					On Crown Lands held under License or Lease, per acre.	On Pasture Lands Allotted from the Crown, per acre.	On Cultivated Lands, per acre.	On the Annual Rental of Messuages, Tenements, and Dwelling-houses, in the pound.	£	s. d.	£	s. d.	From Government.	From Local sources.	From all sources.	
Alberton ...	1,543,680	2,500	600	Nov. 3, 1863	a	a	a	a	130,000	0 0	13,965	0 2	£ 1,367 10 4	935 12 8	2,303 3 0	2,275 8 0
Amherst and Clunes ...	113,920	*	600	Dec. 8, 1862	½d.	1d.	1s.	1s.	477 2 0	965 3 2	1,442 5 2	1,947 3 1
Ararat ...	1,169,280	2,800	800	Nov. 25, 1863	b	b	b	b	*	*	27,839	15 5	1,250 0 0	1,387 9 1	2,637 9 1	2,015 11 10
Avoca ...	216,320	*	*	Feb. 9, 1863	¾d.	3d.	9d.	9d.	*	*	*	*	394 16 10	460 12 4	1,783 2 0	1,980 9 6
Bacchus Marsh & Maddingley	119,040	2,000	334	Dec. 7, 1863	½d.	½d.	6d.	6d.	40,656	0 0	13,552	0 0	750 0 0	269 15 3	1,019 15 3	Nil
Ballarat, Shire of	126,720	*	*	Dec. 5, 1862	½d.	1d.	1s.	1s.	8,159 10 3	5,674 3 3	13,833 13 6	15,833 14 7
Ballan ...	235,520	3,600	600	Nov. 18, 1863	c	c	c	c	1,000 0 0	900 11 5	1,900 11 5	1,642 3 10
Bannockburn ...	86,400	2,700	420	Dec. 9, 1862	Nil	1d	1s.	1s.	212,100	0 0	21,000	0 0	500 0 0	1,194 7 7	1,694 7 7	1,678 8 0
Baringhup ...	123,520	2,470	444	Nov. 23, 1863	b	b	b	b	76,461	0 0	10,923	15 11	Nil	541 3 9	541 3 9	74 19 6
Barrabool ...	89,600	4,100	660	Mar. 12, 1863	Nil	½d.	6d.	6d.	290,000	0 0	24,600	0 0	4,339 1 7	1,998 3 5	6,337 5 0	6,034 17 7
Belfast, Shire of ...	487,680	3,800	1,540	Nov. 28, 1863	a	a	a	a	540,980	0 0	54,098	15 6	4,254 5 3	2,287 12 2	6,541 17 5	9,529 6 1
Berwick ...	310,400	1,680	260	Nov. 4, 1863	b	b	b	b	99,188	0 0	9,188	0 0	1,700 0 0	695 11 11	2,395 11 11	2,100 14 4
Bet-Bet ...	186,880	6,000	2,500	Mar. 18, 1863	½d.	½d.	3d.	3d.	138,283	18 9	27,656	15 9	539 6 0	265 5 6	804 11 6	1,104 15 6
Boroondara ...	8,320	1,205	242	Nov. 14, 1863	b	b	b	b	62,262	18 0	8,894	14 0	634 2 4	951 6 4	1,585 8 8	1,508 12 0
Braybrook ...	58,080	1,200	230	Oct. 1, 1863	b	b	b	b	72,632	0 0	13,772	12 4	1,281 12 10	647 8 0	1,929 0 10	1,929 0 10
Broadmeadows ...	44,800	2,450	350	Nov. 23, 1863	b	b	b	b	363,120	0 0	18,789	0 0	798 14 9	1,703 8 6	2,502 3 3	2,629 5 6
Buckland ...	531,200	4,300	900	Nov. 24, 1862	½d.	1d.	1s.	1s.	33,298	0 0	8,324	10 0	1,000 0 0	542 18 11	1,542 18 11	1,485 17 8
Bulla ...	64,640	2,405	185	Nov. 18, 1863	b	b	b	b	240,000	0 0	18,747	16 8	2,522 6 4	933 2 1	3,455 8 5	3,014 1 1
Bungaree ...	56,960	*	1,040	Mar. 14, 1863	½d.	1d.	1s.	1s.	*	*	*	*	Nil	349 9 5	349 9 5	207 14 3
Buninyong ...	184,960	7,500	1,200	Nov. 5, 1863	b	b	b	b	136,906	5 0	27,381	5 0	1,524 3 0	1,235 7 5	2,759 10 5	4,570 8 0
Campaspe ...	111,360	3,000	700	April 8, 1863	½d.	½d.	6d.	6d.	118,000	0 0	17,000	0 0	1,134 5 6	322 14 1	1,456 19 7	1,108 15 3
Campbell's Creek ...	5,120	3,800	900	Jan. 1, 1864	Nil	Nil	1s.	1s.	70,000	0 0	8,900	0 0	612 0 0	800 0 0	1,412 0 0	1,412 0 0
Carlsruhe ...	25,600	950	190	...	Nil	1d.	1s.	1s.	66,380	0 0	6,638	0 0	623 16 6	369 1 9	992 18 3	870 19 0
Caulfield ...	5,280	900	175	Jan. 7, 1863	Nil	1d.	1s.	1s.	100,000	0 0	9,200	0 0	368 5 9	354 6 8	722 12 5	1,081 6 2
Colac ...	298,240	2,450	420	Dec. 19, 1862	½d.	1d.	1s.	1s.	175,400	0 0	35,080	0 0	1,410 1 2	1,400 8 6	2,810 9 8	2,810 9 8
Connemara ...	25,920	500	119	Nov. 13, 1862	½d.	1d	1s.	1s.	55,000	0 0	5,500	0 0	572 1 10	275 18 7	848 0 5	955 19 4
Corio ...	144,000	2,500	500	April 25, 1863	½d.	½d.	6d.	6d.	328,300	0 0	30,090	0 0	1,091 0 0	569 13 7	1,660 13 7	1,660 13 7
Cranbourne ...	116,480	1,104	368	Nov. 18, 1863	b	b	b	b	179,404	3 9	11,960	10 7	1,148 10 6	747 18 11	1,896 9 5	1,678 16 8
Creswick, Shire of ...	111,360	3,500	700	Nov. 26, 1863	b	b	b	b	273,947	18 4	39,135	8 4	2,971 16 0	1,890 5 1	4,862 1 1	5,378 14 1
Dandenong ...	20,480	...	121	Dec. 5, 1863	b	b	b	b	4,674	10 0	1,000 0 0	278 17 6	1,278 17 6	1,076 10 9
Donnybrook & Wallan-wallan	52,480	1,850	265	Nov. 18, 1863	½d.†	½d.†	3d.†	3d.†	340,000	0 0	11,460	0 0	300 0 0	367 7 2	667 7 2	46 11 8
Dundas, Shire of ...	1,258,240	Dec. 22, 1863	b	b	b	b	109,421	0 0	2,917 9 2	1,596 8 5	4,513 17 7 ²	8,746 0 0
Eltham ...	344,960	1,500	150	Jan. 14, 1864	½d.	½d.	6d.	6d.	55,000	0 0	6,800	0 0	799 15 8	814 18 2	1,614 13 10	2,082 17 9
Epping ...	28,160	*	260	Nov. 2, 1863	b	b	b	b	*	*	9,832	10 0	1,171 2 8	1,677 0 11	2,848 3 7	2,297 13 5
Franklin and Yandoit	83,200	3,000	900	June 9, 1863	½d.	1d.	1s.	1s.	106,000	0 0	10,600	0 0	486 13 6	603 4 10	1,089 18 4	842 11 9
Fryers ...	24,320	9,000	1,600	Dec. 27, 1863	9d.	9d.	35,000	0 0	8,300	0 0	469 18 0	304 14 2	774 12 2	974 1 11
Gardiner ...	7,680	1,000	200	Dec. 20, 1862	Nil	1d.	1s.	1s.	200,000	0 0	10,011	0 0	956 15 8	478 7 10	1,435 3 6	1,020 16 10

Shire	Population	Rateable Property	Dwellings	Date of Formation	Rate	Rate	Rate	Rate	Total	Total	Total	Total	Total	Total
Gisborne	80,640	1,200	288	May 1, 1863	½d.	¾d.	9d.	1s.	86,400 0 0	6,480 0 0	Nil	376 10 5	376 10 5	373 14 0
Glenelg...	No Returns.	Board only recently formed.												
Glenlyon	83,200	4,000	400	Dec. 26, 1863	b	b	b	b	124,050 0 0	12,405 0 0	489 12 0	497 7 6	986 19 6	986 19 6
Greensborough	24,320	672	120	Oct. 21, 1863	b	b	b	b	28,776 0 0	3,597 0 0	237 0 0	226 15 10	463 15 10	274 17 11
Hampden, Shire of	1,034,880	3,000	1,000	Nov. 25, 1863	b	b	b	b	5,480 0 0	3,046 0 0	8,526 0 0	6,836 2 10
Heathcote	526,720	*	350	Jan. 2, 1863	½d.	¾d.	3d.	3d.	400,000 0 0	40,000 0 3	483 15 8	3,986 17 7	4,016 1 3	4,016 1 3
Heidelberg	7,680	1,200	300	Oct. 26, 1863	c	c	c	c	1,670 0 0	2,287 0 0	3,957 0 0	6,366 18 0
Horsham	6,778,240	2,000	150	Nov. 18, 1863	†	1d.	1s.	1s.	*	22,576 16 6	1,356 17 8	1,128 16 5	5,347 6 1	6,058 11 6
Indented Heads	74,240	3,300	600	July 15, 1863	Nil	1d.	1s.	1s.	180,702 0 0	20,078 0 0	4,458 1 4	1,189 6 6	5,647 7 10	5,836 1 1
Indigo	63,360	1,600	260	Aug. 11, 1863	¾d.	1d.	1s.	1s.	18,425 0 0	3,685 0 0	250 0 0	102 10 0	352 10 0	117 6 6
Kangerong	48,640	...	120	Aug. 3, 1863	¾d.	¾d.	9d.	9d.	35,000 0 0	3,297 0 0	500 0 5	98 0 0	598 0 0	231 0 0
Keilor	33,280	1,500	220	Nov. 18, 1863	b	b	b	b	166,400 0 0	9,300 0 0	Nil	465 0 0	465 0 0	33 12 6
Kingower and Wedderburn	648,320	4,500	1,200	Oct. 4, 1862	¾d.	¾d.	6d.	6d.	385,557 0 0	30,000 0 0	1,500 0 0	615 12 9	2,115 12 9	2,101 9 10
Lancefield	27,520	1,950	243	Nov. 3, 1862	¾d.	1d.	1s.	1s.	120,000 0 0	9,790 0 0	1,000 0 0	484 17 3	1,484 17 3	1,337 12 3
Lauriston and Edgcombe...	28,800	2,000	300	Dec. 7, 1863	Nil	¾d.	9d.	9d.	140,000 0 0	14,000 0 0	1,150 10 4	646 18 1	1,797 8 5	1,797 8 5
Lexton	172,800	Jan. 26, 1864	b	b	b	b	...	1,005 6 1	Nil	1,163 17 7	1,163 17 7	1,733 19 2
Maldon, Shire of...	No Returns.	Shire only recently formed.												
Marong	364,800	5,500	1,100	Sept. 16, 1862	¾d.	¾d.	6d.	6d.	539,720 13 4	26,986 6 8	2,015 19 0	580 13 11	2,596 12 11	4,077 2 9
Melton	73,600	1,000	212	Dec. 28, 1863	e	e	e	e	593 0 0	456 0 0	2,000 0 0	2,000 0 0
Meredith	114,080	1,420	284	Aug. 3, 1863	¾d.	1d.	1s.	1s.	...	9,228 16 8	500 0 0	461 8 10	961 8 10	80 0 6
Metcalf...	102,400	1,700	600	Dec. 16, 1863	b	b	b	b	165,816 0 0	13,765 10 0	904 16 0	1,402 6 6	1,599 0 2	1,599 0 2
Moorabbin	19,200	4,200	697	June 16, 1863	Nil	1d.	1s.	1s.	81,200 0 0	11,600 0 0	1,080 15 2	579 10 9	1,660 5 11	1,660 5 11
Mortlake	398,400	1,000	170	Nov. 24, 1863	b	b	b	b	544,145 8 8	28,549 15 8	1,007 1 3	1,408 11 2	5,656 10 7 ^a	3,871 4 1
Mount Eliza	89,600	890	178	...	b	b	b	b	100,000 0 0	10,000 0 0	2,731 12 0	394 1 0	3,125 13 0	2,948 14 8
Mount Jeffcott	1,464,320	700	230	Nov. 30, 1863	f	f	f	f	16,063 5 0	5,691 6 10	Nil	569 1 4	569 1 4	Nil
Mount Rouse, Shire of	367,360	1,500	300	Nov. 14, 1862	¾d.	1d.	1s.	1s.	405,480 0 0	37,057 0 0	3,563 0 0	2,278 0 0	5,841 0 0	4,854 0 0
Newstead	65,920	4,800	800	July 20, 1863	¾d.	1d.	1s.	1s.	100,000 0 0	20,000 0 0	1,038 0 0	890 0 0	1,928 0 0	1,800 0 0
North Harrow	873,600	1,000	26 ⁴	Mar. 8, 1863	¾d.	¾d.	1s 5d	1s. 5d.	*	16,000 0 0	Nil	198 16 6	198 16 6	124 14 6
North Ovens	106,240	1,220	244	Oct. 8, 1862	¾d.	¾d.	6d.	6d.	83,667 0 0	12,550 0 0	500 0 0	345 7 10	845 7 10	539 7 0
Nunawading	16,640	1,084	241	Nov. 12, 1863	b	b	b	b	...	5,004 8 0	631 2 4	214 15 11	845 18 3	440 0 0
Oakleigh and Mulgrave	17,920	1,250	320	Dec. 17, 1863	Nil	¾d to 4d	1d to ¾d.	1s.	76,760 0 0	7,676 0 0	334 5 1	322 12 9	656 17 10	656 17 10
Oxley	417,920	700	112	Dec. 13, 1862	¾d.	1d.	1s	1s.	61,433 0 0	9,215 10 2	500 0 0	474 16 7	974 16 7	1,146 13 1
Pentridge	4,800	1,289	320	Nov. 1, 1863	Nil	¾d.	6d.	6d.	70,910 0 0	7,091 0 0	340 18 8	773 1 5	1,114 0 1	883 4 4
Portland	1,014,400	3,000	518	Mar. 12, 1863	¾d.	1d.	1s.	1s.	*	*	5,367 10 0	2,517 13 3	7,885 3 3	10,263 6 6
Pyalong	No Returns.	Board only recently formed.												
Ripon, Shire of	365,440	6,000	1,400	May 26, 1863	¾d.	1d.	1s.	1s.	298,569 0 0	40,000 0 0	1,811 0 8	1,600 0 0	3,411 0 8	2,971 0 0
Rutherglen	176,640	5,000	700	Oct. 8, 1862	¾d.	¾d.	6d.	6d.	280,000 0 0	28,000 0 0	1,000 0 0	739 7 4	1,739 7 4	1,483 0 10
Saint Arnaud	583,680	2,800	...	Dec. 4, 1863	f	f	f	f	8,900 5 11	4,616 4 3	1,525 5 7	831 15 9	2,357 1 4	2,784 6 9
Seymour	85,760	1,512	189	Oct. 21, 1863	b	b	b	b	...	9,000 0 0	Nil	289 12 0	289 12 0	145 2 4
Shelford	235,520	...	317	Nov. 18, 1863	¼d to ¼d	1d. to ¾d.	4d. to 1s.	1s.	253,930 0 0	25,393 17 10	670 0 0	2,433 12 1	3,103 12 1	2,902 19 11
Springfield	64,000	843	176	Dec. 16, 1863	b	b	b	b	101,770 0 0	10,294 8 9	1,000 0 0	208 1 4	1,208 1 4	1,208 1 4
Stanley	148,480	5,000	900	Dec. 23, 1862	¾d.	1d.	1s.	1s.	*	13,933 0 0	500 0 0	850 7 9	1,350 7 9	1,454 18 5
Stawell	403,200	3,200	850	Oct. 13, 1863	¾d.	¾d.	6d.	6d.	120,000 0 0	25,000 0 0	457 5 2	650 3 0	1,107 8 2	1,203 6 0
Strathfieldsaye	113,280	6,000	1,014	May 27, 1863	¾d.	1d.	1s.	1s.	101,473 0 0	27,369 0 0	533 2 6	858 14 11	1,391 17 5	1,465 7 8
Swan Hill	2,012,800	550	65	Dec. 7, 1863	a	a	a	a	157,170 0 0	15,717 6 8	250 0 0	546 4 11	796 4 11	157 15 3
Templestowe	12,800	1,272	212	Dec. 17, 1863	¾d.	1d.	1s.	1s.	66,640 0 0	4,760 0 0	300 19 8	142 10 1	443 9 9	389 13 9

¹ £442 2s. due to the Bulla Road Board from the Broadmeadows Road Board, being a balance of tolls.
² In addition to this amount, there was a balance of £4,556 18s. 6d. from last year.

³ This amount includes balance brought over from last year.
⁴ Only 26 dwellings returned as rated.

^a 8½ per cent. on net annual value of all rateable property.
^b 5 per cent. on net annual value of all rateable property.

^c 2½ per cent. on net annual value of all rateable property.
^d 7½ per cent. on net annual value of all rateable property.

^e 3½ per cent. on net annual value of all rateable property.
^f 10 per cent. on net annual value of all rateable property.

* Those marked with an asterisk are not known.

† And on 18th November an additional rate of 2½ per cent. on all rateable property.

‡ One-third of the annual rent paid to Government for valuation.

NOTE.—In several instances the above returns are incomplete, especially as regards the estimated population, number of dwellings, and total and annual values of rateable property. The totals of these columns do not, therefore, represent the sum of these items in all the Shires and Road Districts.

SHIRES AND ROAD DISTRICTS.

RETURN of the Area, Population, Number of Dwellings, Amount of Rate levied, and Total and Annual Value of Rateable Property in the various Shires and Road Districts in the Colony of Victoria at the time the last rate was struck; also the Amount of Revenue and Expenditure for the Year 1863—continued.

Name of Shire or District.	Estimated Area in Acres.	Estimated Population.	Estimated Number of Dwellings.	Date when last Rate was struck.	Amount of Rate levied.				Estimated Total Value of Rateable Property.	Estimated Annual Value of Rateable Property.	Revenue.			Expenditure.
					On Crown Lands held under License or Lease, per acre.	On Pasture Lands Alienated from the Crown, per acre.	On Cultivated Lands, per acre.	On the Annual Rental of Messuages, Tenements, and Dwelling-houses, in the pound.			From Government.	From Local sources.	From all sources.	
					£ s. d.	£ s. d.	£ s. d.	£ s. d.	£ s. d.	£ s. d.	£ s. d.	£ s. d.	£ s. d.	
Tullaroop ...	142,080	7,875	1,970	Feb. 13, 1863	½d.	½d.	6d.	6d.	257,500 0 0	25,756 0 0	923 0 2	730 13 9	1,653 13 11	2,506 10 7
Tylden and Trentham ...	42,880	1,000	200	Dec. 19, 1863	½d.	½d.	1s.	1s.	100,000 0 0	10,000 0 0	668 1 2	375 6 0	1,043 7 2	1,033 7 2
Upper Plenty or Morang ...	17,280	1,700	240	Nov. 7, 1863	b	b	b	b	124,000 0 0	6,981 15 0	1,200 0 0	399 14 11	1,599 14 11	1,306 9 0
Upper Yarra ...	57,600	590	170	Dec. 1, 1863	b	b	b	b	20,000 0 0	5,776 0 0	175 12 6	260 10 6	436 3 0	561 7 6
Waranga ...	755,840	No Returns received.												
Warrnambool ...	488,320	3,500	980	Nov. 23, 1863	b	b	b	b	600,000 0 0	54,132 0 0	3,692 2 10	2,219 7 7	5,911 10 5	10,848 17 10
Whittlesea ...	62,080	875	175	Mar. 7, 1863	½d.	½d.	1s.	1s.	48,530 0 0	5,040 0 0	409 11 0	204 15 6	614 6 6	201 4 3
Willowmavin ...	5,120	600	110	Oct. 16, 1863	b	b	b	b	24,646 0 0	2,441 0 0	Nil	92 6 6	92 6 6	103 18 4
Winchelsea ...	211,200	1,850	340	Dec. 10, 1862	½d.	½d.	1s.	1s.	240,000 0 0	21,200 0 0	1,384 8 8	769 1 6	2,153 10 2	2,750 18 0
Woody Yaloak ...	96,640	6,500	1,600	Nov. 18, 1863	½d.	½d.	1s.	1s.	131,218 0 0	27,559 0 0	1,448 1 8	2,090 9 3	3,538 10 11	3,347 4 6
Woodend, Newham, & Rochford	40,320	1,047	161	April 2, 1863	½d.	½d.	1s.	1s.	81,750 0 0	8,175 0 0	369 17 6	367 4 0	737 1 6	973 15 11
Woodstock ...	28,800	700	100	Nov. 18, 1863	b	b	b	b	118,325 0 0	4,733 10 0	Nil	249 0 9	249 0 9	462 18 6
Wooragee ...	42,880	3,000	500	Dec. 22, 1863	b	b	b	b	...	7,935 6 0	200 0 0	Nil	200 0 0	108 19 0
Wyndham ...	183,680	1,400	170	Dec. 16, 1863	g	g	g	g	504,150 0 0	30,247 0 0	500 0 0	819 5 6	1,319 5 6	1,017 12 7
Yackandandah ...	373,120	9,000	600	Dec. 14, 1863	½d.	½d.	9d.	1s.	380,000 0 0	21,813 0 0
Total ...	30,314,080	216,753	44,915	12,487,402 16 9	1,479,681 4 9	112,247 15 3	79,723 11 8	200,521 11 3	212,042 10 6

NOTE.—In several instances the above returns are incomplete, especially as regards the estimated population, number of dwellings, and total and annual values of rateable property. The totals of these columns do not, therefore, represent the sum of these items in all the Shires and Road Districts.

b 5 per cent. on net annual value of all rateable property. g 3½ per cent. on net annual value of all rateable property.

WILLIAM HENRY ARCHER, Registrar-General.

ROAD DISTRICTS.—RETURN FOR SEVEN YEARS.

Year.	Number of Road Districts formed.	Estimated Value of Rateable Property.		Revenue.	Expenditure.
		Total.	Annual.		
		£	£ s. d.	£ s. d.	£ s. d.
1857 ...	16	641,112	...	58,113 0 11	53,482 0 9
1858 ...	24	2,663,398	...	98,780 2 7	91,300 5 3
1859 ...	30	3,107,226	582,559 14 11	118,620 8 7	115,256 18 1
1860 ...	42	5,409,687	494,029 8 6	122,469 18 1	125,852 5 11
1861 ...	60	9,916,311	1,023,759 14 11	146,128 14 2	131,091 10 9
1862 ...	84	4,231,308*	562,496 5 9*	226,833 5 3	198,647 17 0
1863 ...	98†	12,487,403	1,479,681 4 9	200,521 11 3	212,042 10 6

* This Total and Annual Value for the year 1862 does not apply, as in other years, to all the Rateable Property in the District, but only to Messuages, Tenements, and Dwelling-houses. † Of this number eight were Shires.

WILLIAM HENRY ARCHER, Registrar-General.

NATURALIZATION.—NATIVE PLACES AND AGES.

RETURN of the Number, Native Places, and Ages of Foreigners who have procured Certificates of Naturalization in the Colony of Victoria during the Year 1863.

Native Place.	Ages.										Total.
	Years— 20 to 25.	Years— 25 to 30.	Years— 30 to 35.	Years— 35 to 40.	Years— 40 to 45.	Years— 45 to 50.	Years— 50 to 55.	Years— 55 to 60.	Years— 60 to 65.	Years— 65 to 70.	
Austria	1	1
Belgium	2	2
China	2	5	1	8
Denmark	2	5	6	2	1	1	1	...	18
France	3	2	2	1	8
Altona...	1	1
Anhalt Dessau... ..	1	1
Baden	1	1
Bavaria	1	1	2
Brunswick	1	1
Hamburg	1	1	2
Hanover	1	...	8	4	2	1	16
Hesse	1	1	...	1	3
Kurhessen	1	1
Lubec	1	1
Mecklenburg	3	...	1	...	1	5
Nassau... ..	1	1	...	1	3
Oldenburg	1	1
Wurtemberg	1	1	1	3
Holland	2	1	3
Italy	3	1	1	5
Netherlands	1	1
Norway	1	3	4
Poland	1	...	1	1	1	1	5
Prussia	8	11	6	9	6	4	2	1	47
Russia	1	...	1	2
South America	1	1
States, U. A.	2	1	1	4
Sweden	1	1
Switzerland	3	5	2	1	2	13
Total	19	35	46	31	15	7	6	4	1	...	164

WILLIAM HENRY ARCHER,
Registrar-General.

NATURALIZATION.—OCCUPATIONS AND AGES.

RETURN of the Number, Occupations, and Ages of Foreigners who have procured Certificates of Naturalization in the Colony of Victoria, during the Year 1853.

Occupations	Ages.										Total.
	Years— 20 to 25.	Years— 25 to 30.	Years— 30 to 35.	Years— 35 to 40.	Years— 40 to 45.	Years— 45 to 50.	Years— 50 to 55.	Years— 55 to 60.	Years— 60 to 65.	Years— 65 to 70.	
Bachelor of Arts	1	1
Baker	...	2	2	5
Blacksmith	2	2
Boatman	1	1
Bookseller	1	...	1
Brewer	...	1	...	1	2
Bricklayer	1	1
Builder	1	1
Butcher	1	1	2
Cabinetmaker	...	1	1
Carpenter	...	1	1	...	1	1	1	5
Carrier	...	1	1
Dairyman	2	...	1	1	...	1	5
Dealer	1	1
Drayman	1	1
Engineer	1	1
Farmer	6	5	2	4	5	2	2	1	27
Fisherman	1	2
Furniture broker	1	1
Gardener	1	1
Gentleman	...	2	2
Goldbroker	1	1
Hairdresser	1	1
Hawker	1	2	3
Jeweller and Watchmaker	...	1	...	2	3
Laborer	...	2	1	1	4
Law Student	1	1
Mail Contractor	1	1
Mariner	1	1	1	3
Merchant	2	2	4	1	9
Miner	3	7	12	2	1	1	1	27
Missionary	2	2
Pawnbroker	1	1	2
Postmaster	1	1
Publican	4	4
Stonemason	2	...	1	3
Storekeeper	1	7	7	2	17
Storeman	...	1	1
Surveyor	1	1
Tanner	1	1
Teacher	1	1
Tentmaker	1	1
Timber Merchant	1	1
Tinsmith	1	...	1	2
Tobacconist	...	2	1	1	4
Vinegrower	1	1	1	...	1	4
Wheelwright	1	1
Widow	1	1
Total	19	35	46	31	15	7	6	4	1	...	164