




Jagajaga

The ABS provides detailed statistics for every Commonwealth Electorate. The date of the next Census of Population and Housing is 9 August 2016, with results available from mid-2017.

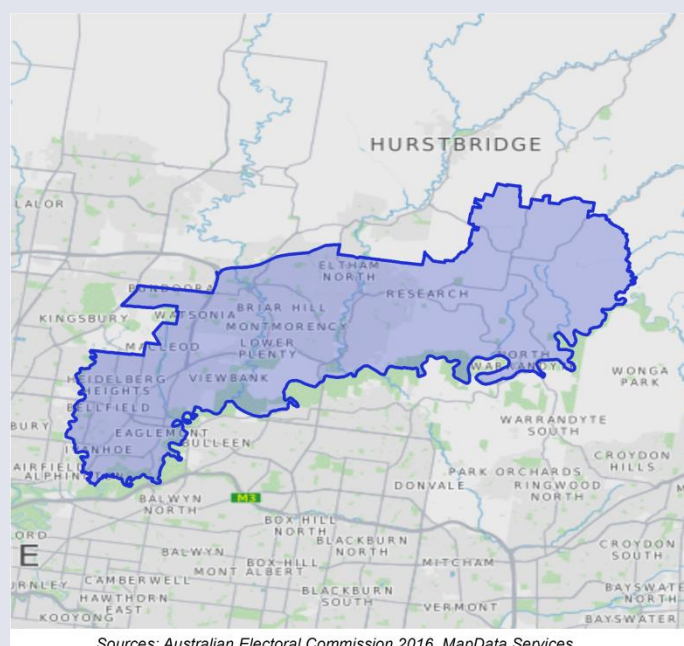
	Population (ERP*)	146,126
	Male	49%
	Female	51%
	Median age (years)	39.4
	Average household size (2011 Census)	2.6
	No. of private dwellings (2011 Census)	53,486
	Median weekly household income	\$1,483
	Median monthly mortgage repayments	\$1,907
	Median weekly rent	\$300
	Dwellings with no motor vehicles	6%

Occupation (2011 Census) %

<i>Employed people aged 15 years and over</i>	
Professionals	29.0
Clerical and administrative workers	15.7
Technicians and trade workers	12.8
Managers	13.2
Sales workers	9.4
Community and personal service workers	9.3
Labourers	5.3
Machinery operators and drivers	3.1

Tenure (2011 Census) %

Owned outright	38.7
Owned with a mortgage	36.8
Rented	21.9



Employment (2011 Census) %

<i>Of people who reported being in the labour force, aged 15 years and over</i>	
Worked full-time	58.1
Worked part-time	32.0
Away from work (e.g. holidays, paid leave)	5.6
Unemployed	4.2

People characteristics (2011 Census) %

Aboriginal and Torres Strait Islander	0.5
Born in Australia	78.7
Born overseas	21.3

*ERP (estimated resident population) is for 2015. The latest available age and sex breakdowns are based on 2014 ERP. The 2016 Commonwealth Electoral Division (CED) boundaries are provided by the Australian Electoral Commission. ABS 2011 Census of Population and Housing data and ERP data are based on 2011 Australian Statistical Geography Standard boundaries that closely approximate the new CED boundaries.