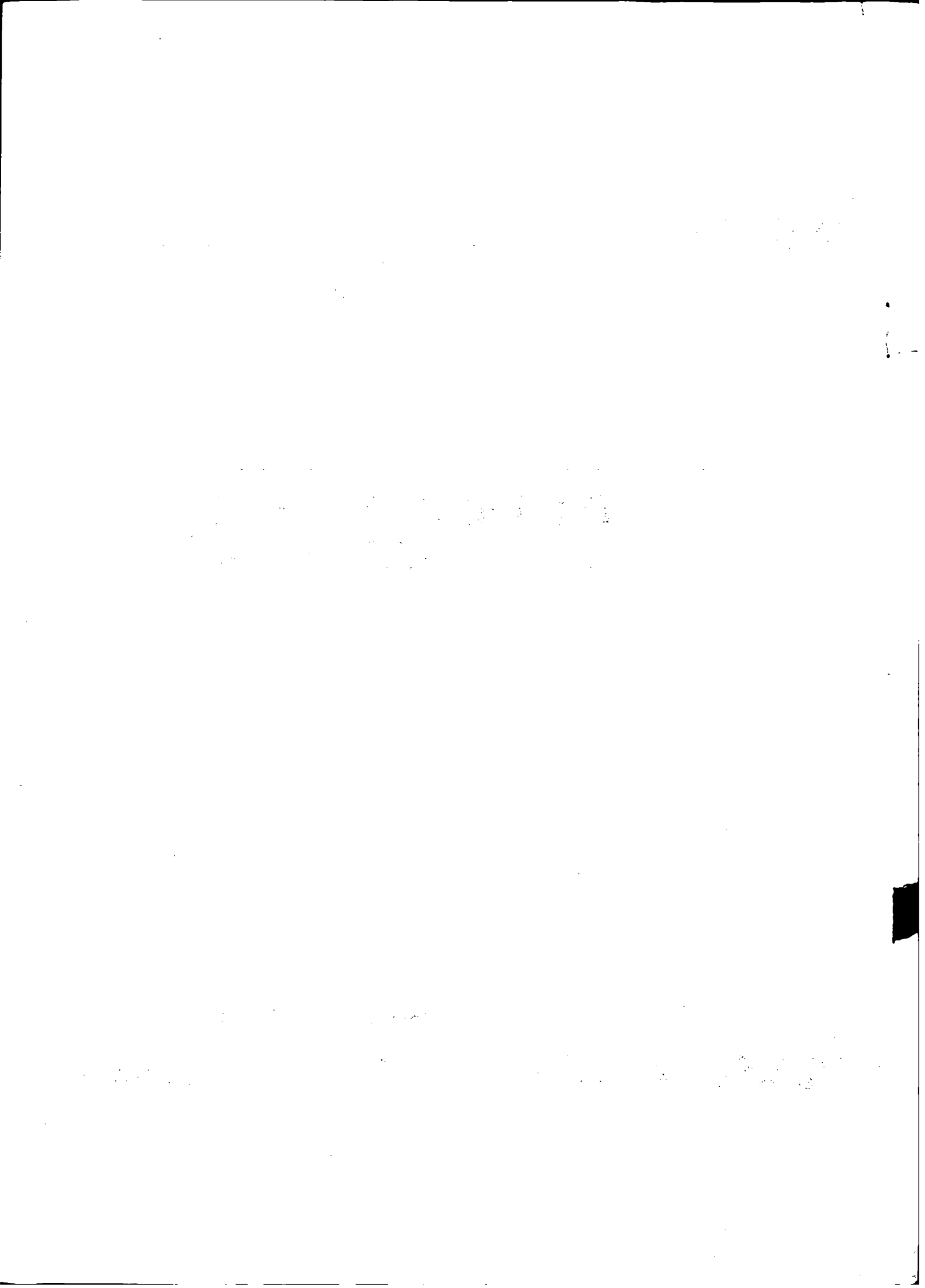




**Australian  
Bureau of  
Statistics**

**April 1989  
THE LABOUR FORCE  
AUSTRALIA**

**Catalogue No. 6203.0**



**EMBARGOED UNTIL 11.30 A.M. 30 MAY 1989**

**THE LABOUR FORCE, AUSTRALIA  
APRIL 1989**

**IAN CASTLES  
Australian Statistician**

**AUSTRALIAN BUREAU OF STATISTICS**

**CATALOGUE NO. 6203.0**

© Commonwealth of Australia 1989

PHONE INQUIRIES	• <i>about these statistics</i> and the availability of <i>related unpublished statistics</i> — contact Mr Bruce McClelland on Canberra (062) 52 6525 or any ABS State office. • <i>about other statistics and ABS services</i> —contact Information Services on Canberra (062) 52 6007, 52 6627, 52 5402 or any ABS State office.
MAIL INQUIRIES	• <i>write to Information Services</i> , ABS, P.O. Box 10, Belconnen, A.C.T. 2616 or any ABS State office.
ELECTRONIC SERVICES	• on VIATEL — key *656#. • on AUSSTATS — phone (062) 52 6017. • on TELESTATS — phone (062) 52 5404.

## CONTENTS

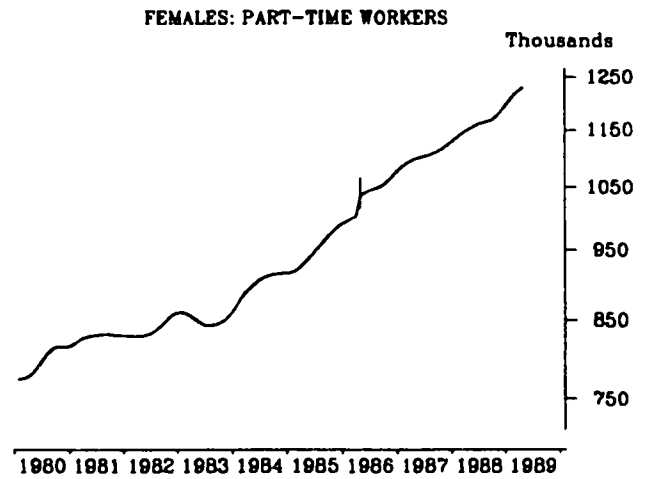
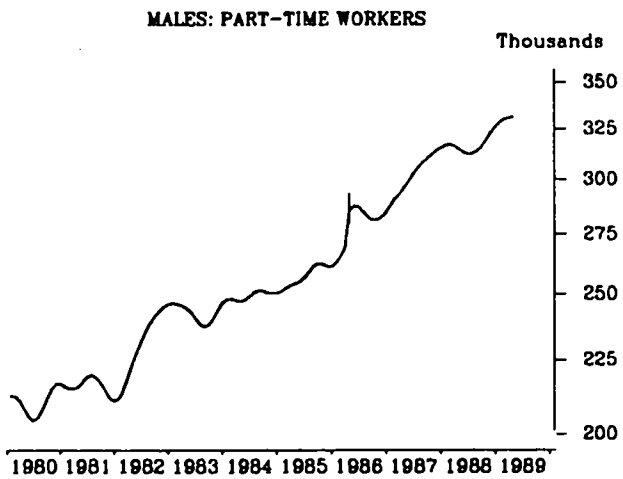
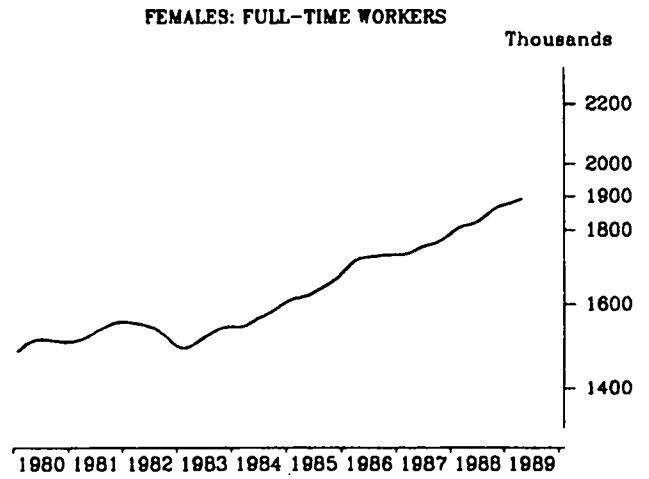
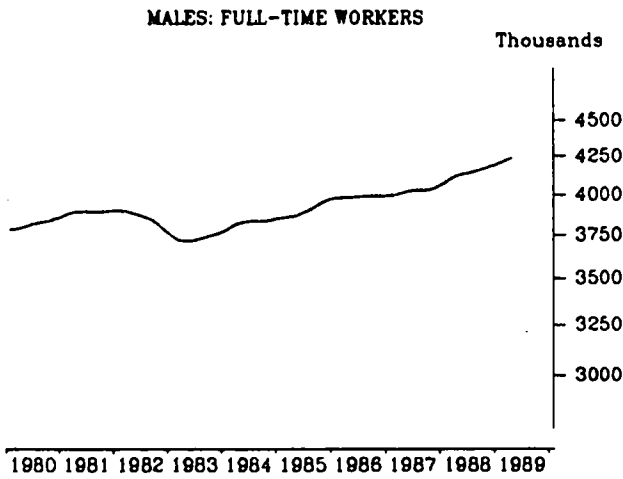
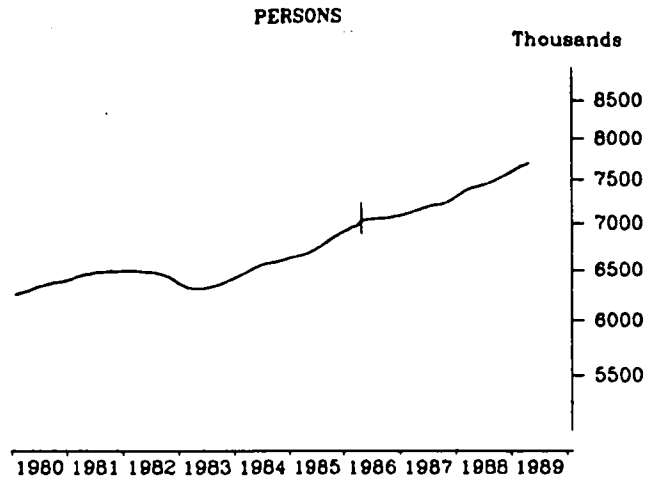
<i>Table</i>	<i>Page</i>
.. Graphs — trend series	1
<b>Labour force status of the civilian population aged 15 and over—</b>	
1. Original series, Australia	6
2. Seasonally adjusted series, Australia	8
3. Trend series, Australia	9
4. Marital status	10
5. States and Territories	10
6. State capital cities	11
7. Australian Capital Territory	11
8. Seasonally adjusted series, States	12
9. Trend series, States	14
10. Age	16
11. Aged 15 to 19 (single years), by attendance at school or a tertiary educational institution	16
12. Aged 20 to 24 (single years), by attendance at a tertiary educational institution	17
13. Participation rates, by age and birthplace	17
14. Birthplace	18
15. Born outside Australia, by birthplace and period of arrival	19
<b>Employed persons—</b>	
16. Full-time and part-time workers, by age	19
17. Hours worked	20
18. Employment/population ratios by age and marital status	20
19. Full-time workers who worked less than 35 hours, by reason	20
20. Part-time workers, whether preferred to work more hours, by age	21
21. Part-time workers, whether preferred to work more hours, by hours worked	21
<b>Unemployed persons—</b>	
22. States, by age	22
23. Aged 15 to 19: duration of unemployment and school attendance	22
24. Age and whether looking for full-time or part-time work	23
25. Birthplace by age	23
26. Duration of unemployment and age, etc.	24
27. Age and active steps taken to find work	24
28. Industry and occupation of last full-time job and duration of unemployment	25
29. Reason for unemployment	26
<b>Unemployed persons who had worked full time for two weeks or more in the last two years—</b>	
30. Reason for ceasing last full-time job, by industry and occupation of last full-time job and age.	26
<b>Persons not in the labour force—</b>	
31. Age and marital status	27
32. Whether looking for work, etc.	27

**CONTENTS—continued**

<i>Table</i>	<i>Page</i>
<b>Gross flows—</b>	
33. Estimates of labour force status and gross changes (flows) derived from matched records, March 1989 and April 1989	27
<b>Family status of the civilian population aged 15 and over—</b>	
34. Summary table	28
35. Labour force status	29
<b>All families, by type of family—</b>	
36. Number of family members, and employment status	30
37. Number of children aged 0-14 present, number of dependents present and labour force status	31
<b>APPENDIXES</b>	
.. A Glossary	32
.. B Explanatory Notes	34
.. C Technical Note	39
<b>Supplementary and special surveys relating to the labour force</b>	42

### EMPLOYED PERSONS: TREND SERIES

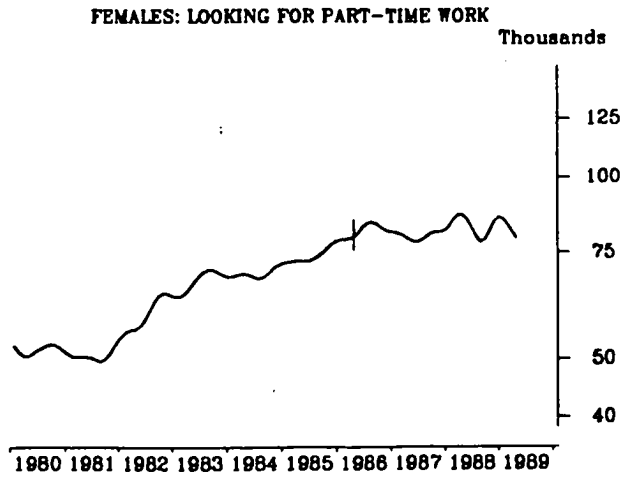
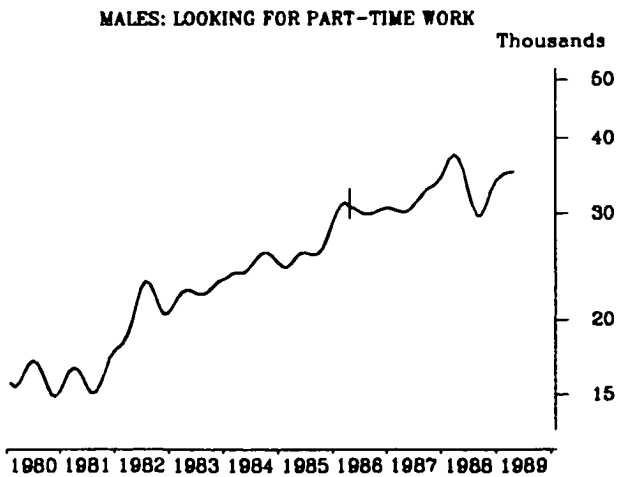
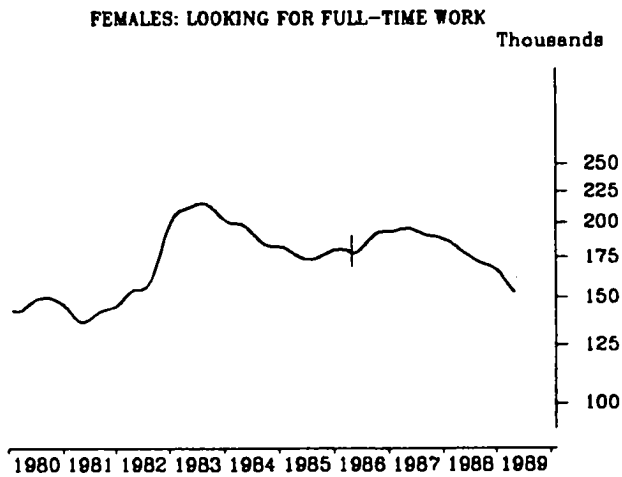
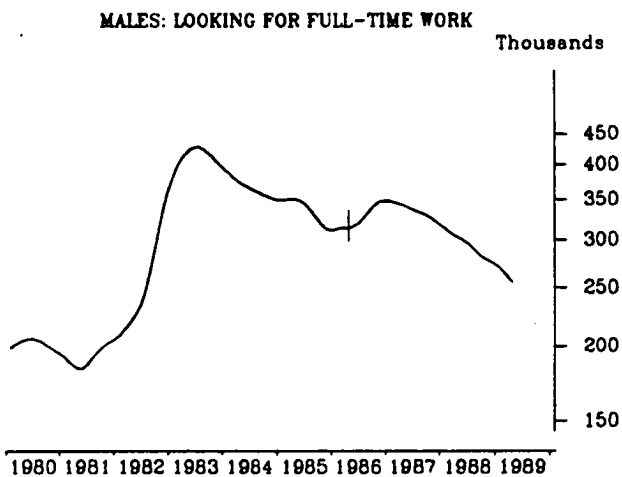
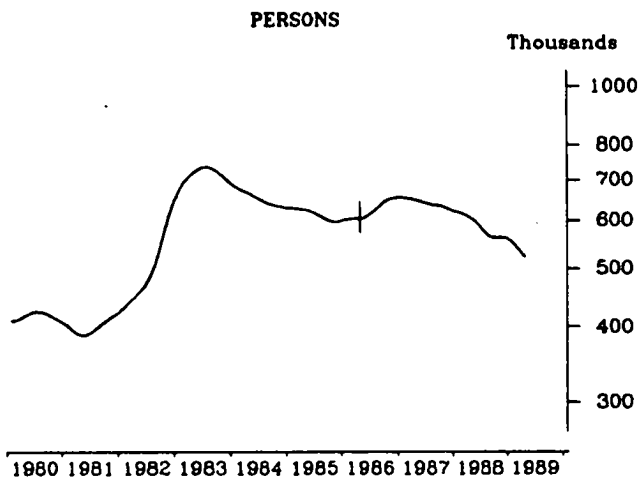
The graphs on this page have been drawn to a semi-logarithmic scale to enable comparisons to be made of rates of change—See paragraph 51 of the Explanatory Notes, Appendix B.



| Indicates break in series. Estimates for the period prior to April 1986 are based on the old definition. See paragraphs 14 and 15 of the Explanatory Notes, Appendix B.

**UNEMPLOYED PERSONS: TREND SERIES**

The graphs on this page have been drawn to a semi-logarithmic scale to enable comparisons to be made of rates of change—See paragraph 51 of the Explanatory Notes, Appendix B.

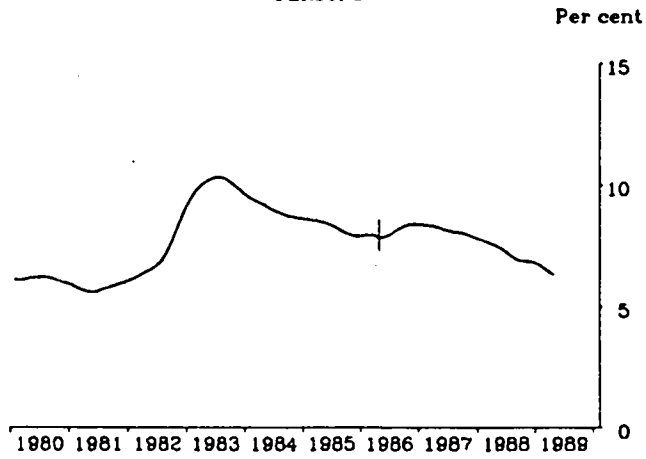


| Indicates break in series. Estimates for the period prior to April 1986 are based on the old definition. See paragraphs 14 and 15 of the Explanatory Notes, Appendix B.

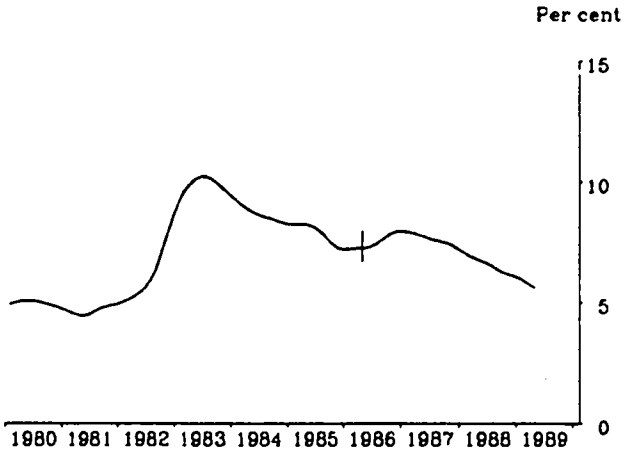


UNEMPLOYMENT RATE: TREND SERIES

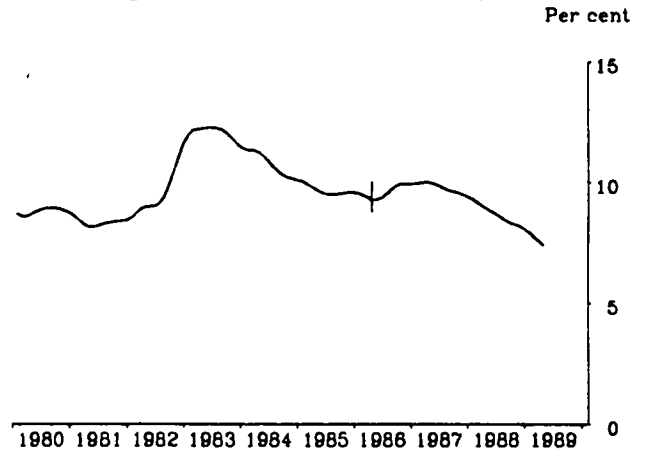
PERSONS



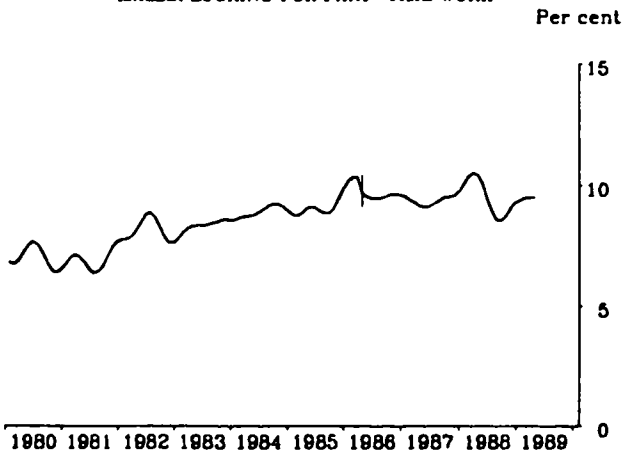
MALES: LOOKING FOR FULL-TIME WORK



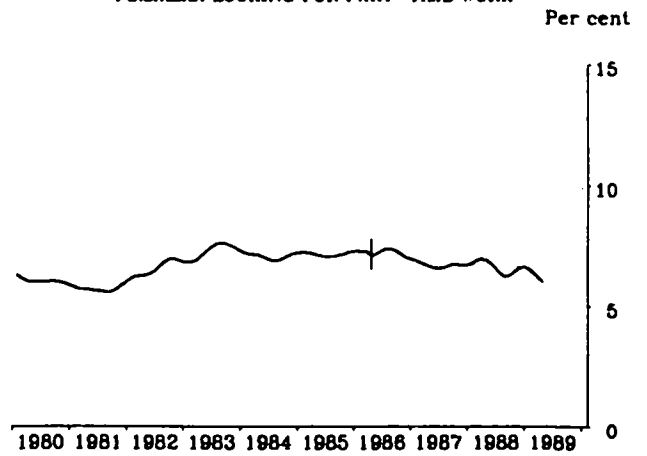
FEMALES: LOOKING FOR FULL-TIME WORK



MALES: LOOKING FOR PART-TIME WORK

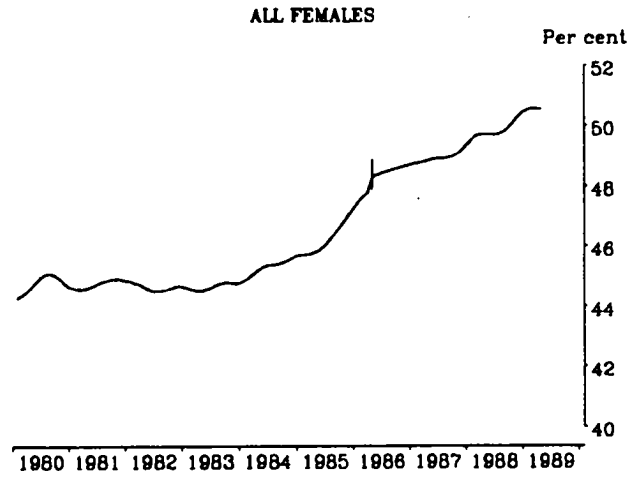
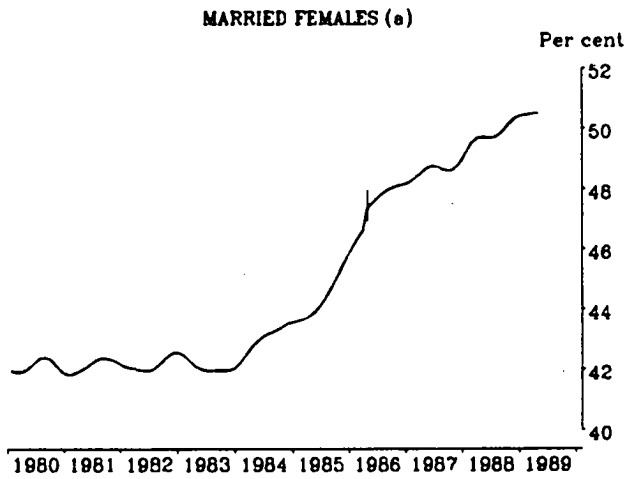
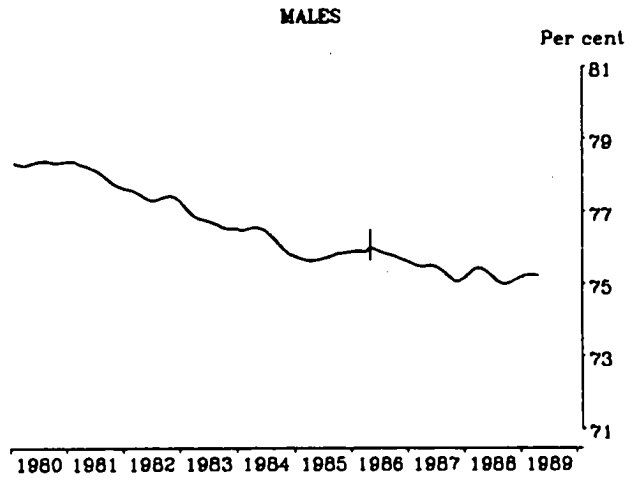
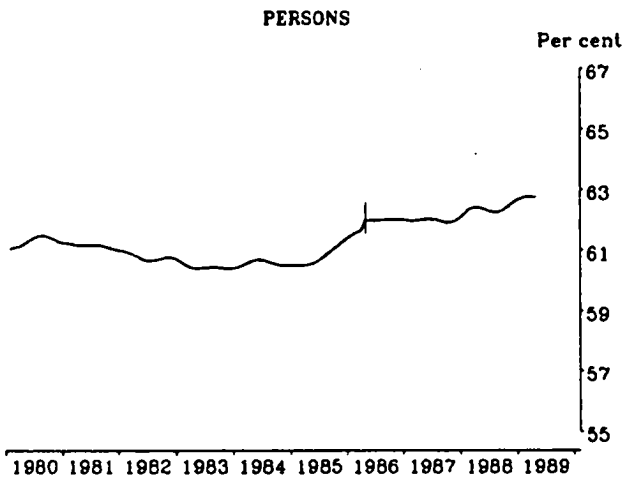


FEMALES: LOOKING FOR PART-TIME WORK



| Indicates break in series. Estimates for the period prior to April 1986 are based on the old definition. See paragraphs 14 and 15 of the Explanatory Notes, Appendix B.

**PARTICIPATION RATE: TREND SERIES**



(a) See paragraph 32 of the Explanatory Notes, Appendix B.

| Indicates break in series. Estimates for the period prior to April 1986 are based on the old definition. See paragraphs 14 and 15 of the Explanatory Notes, Appendix B.

# **TABLES**

TABLE 1. LABOUR FORCE STATUS OF THE CIVILIAN POPULATION AGED 15 AND OVER

Month	Employed		Unemployed		Looking for part-time work		Labour force	Not in labour force	Civilian population aged 15 and over	Unemployment rate	Participation rate
	Full-time workers	Total	Aged 15-19 looking for first job	Total	Looking for part-time work	Total					
	- '000 -										
<b>MALES</b>											
1988 -											
March	4,093.0	4,420.2	25.3	304.0	41.9	345.9	4,766.2	1,503.7	6,269.9	7.3	76.0
April	4,095.3	4,417.3	23.8	303.5	46.9	350.4	4,767.7	1,512.5	6,280.2	7.3	75.9
May	4,079.0	4,393.8	24.0	293.9	35.2	329.1	4,722.9	1,567.7	6,290.5	7.0	75.1
June	4,098.6	4,418.4	19.1	287.9	28.3	316.2	4,734.6	1,566.3	6,301.0	6.7	75.1
July	4,121.2	4,423.8	22.6	278.3	21.7	300.0	4,723.8	1,587.6	6,311.4	6.4	74.8
August	4,076.4	4,382.1	19.0	279.9	25.8	305.7	4,687.8	1,633.9	6,321.7	6.5	74.2
September	4,133.4	4,457.5	22.9	280.0	29.8	309.8	4,767.4	1,564.6	6,332.0	6.5	75.3
October	4,151.7	4,461.9	19.5	255.9	29.9	285.8	4,747.7	1,595.4	6,343.0	6.0	74.8
November	4,136.9	4,469.7	19.9	244.0	26.8	270.8	4,740.5	1,613.6	6,354.1	5.7	74.6
December	4,206.6	4,532.1	35.2	272.8	38.5	311.3	4,843.4	1,521.8	6,365.1	6.4	76.1
1989 -											
January	4,147.0	4,455.4	36.4	296.1	37.8	333.8	4,789.2	1,587.1	6,376.3	7.0	75.1
February	4,204.3	4,513.3	28.5	286.9	39.6	326.6	4,839.9	1,547.5	6,387.4	6.7	75.8
March	4,196.5	4,530.7	15.2	257.4	36.5	293.9	4,824.6	1,574.1	6,398.6	6.1	75.4
April	4,222.7	4,563.7	14.7	236.4	37.3	273.7	4,837.4	1,572.0	6,409.4	5.7	75.5
Standard error of -											
April 1989 estimates	18.6	19.1	1.8	6.2	2.8	6.6	19.5	13.1	..	0.1	0.3
Mar 89 to Apr 89 movements	14.2	14.6	1.7	5.0	2.4	5.2	14.9	9.8	..	0.1	0.2
<b>MARRIED FEMALES</b>											
1988 -											
March	969.5	1,804.0	* 1.0	68.1	50.6	118.7	1,922.7	1,854.9	3,777.6	6.2	50.9
April	959.0	1,795.1	* 0.6	61.4	55.0	116.4	1,911.5	1,889.8	3,801.3	6.1	50.3
May	954.2	1,804.1	* 0.8	61.4	46.8	108.2	1,912.2	1,907.3	3,819.5	5.7	50.1
June	960.6	1,818.7	* 1.1	59.2	42.0	101.2	1,919.9	1,915.3	3,835.3	5.3	50.1
July	975.5	1,805.4	* 0.4	50.9	35.8	86.7	1,892.1	1,937.7	3,829.9	4.6	49.4
August	958.8	1,820.7	* 1.0	60.8	29.9	90.7	1,911.5	1,945.1	3,856.5	4.7	49.6
September	991.2	1,866.5	* 0.8	54.1	42.8	96.9	1,963.4	1,892.4	3,855.8	4.9	50.9
October	1,010.9	1,844.6	* 0.2	55.4	35.7	91.0	1,935.6	1,920.0	3,855.5	4.7	50.2
November	1,005.9	1,865.4	* 0.1	50.8	34.9	85.7	1,951.1	1,910.4	3,861.6	4.4	50.5
December	1,015.8	1,869.8	* 0.4	54.2	35.4	89.6	1,959.4	1,904.8	3,864.3	4.6	50.7
1989 -											
January	981.0	1,760.2	* 0.5	59.9	34.5	94.5	1,854.7	2,028.6	3,883.2	5.1	47.8
February	986.5	1,826.6	* 0.8	64.0	44.9	108.8	1,935.4	1,943.6	3,879.0	5.6	49.9
March	1,000.8	1,872.1	* 0.9	56.1	45.3	101.5	1,973.6	1,896.2	3,869.8	5.1	51.0
April	1,003.3	1,882.0	* 1.2	56.6	45.2	101.9	1,983.8	1,890.1	3,874.0	5.1	51.2
Standard error of -											
April 1989 estimates	11.1	14.0	0.5	3.4	3.0	4.4	14.3	14.0	..	0.2	0.4
Mar 89 to Apr 89 movements	8.3	10.5	0.7	2.8	2.6	3.5	10.7	10.5	..	0.2	0.3

TABLE 1. LABOUR FORCE STATUS OF THE CIVILIAN POPULATION AGED 15 AND OVER — continued

Month	Employed		Unemployed		Labour force	Not in labour force	Civilian population aged 15 and over	Unemployment rate	Participation rate		
	Full-time workers	Total	Aged 15-19 looking for first job	Looking for part-time work							
			Total	Total	Total						
	- '000 -										
	- per cent -										
ALL FEMALES											
1988 -											
March	1,817.0	2,977.2	27.2	190.8	108.5	299.3	3,276.5	3,165.4	6,441.9	9.1	50.9
April	1,803.5	2,966.0	22.8	189.1	105.3	294.4	3,260.5	3,191.9	6,452.4	9.0	50.5
May	1,798.5	2,961.1	20.7	175.1	88.8	263.9	3,225.0	3,237.9	6,462.9	8.2	49.9
June	1,784.7	2,959.8	21.4	171.7	81.2	252.9	3,212.7	3,260.7	6,473.4	7.9	49.6
July	1,812.4	2,959.3	16.9	153.2	65.6	218.8	3,178.1	3,305.1	6,483.2	6.9	49.0
August	1,798.1	2,971.3	17.4	165.5	67.4	233.0	3,204.2	3,288.6	6,492.9	7.3	49.4
September	1,847.6	3,045.6	17.3	158.7	86.1	244.7	3,290.4	3,212.2	6,502.6	7.4	50.6
October	1,864.6	3,015.4	15.4	150.1	72.0	222.1	3,237.5	3,276.3	6,513.9	6.9	49.7
November	1,855.6	3,039.0	14.4	147.3	70.3	217.6	3,256.6	3,268.6	6,525.2	6.7	49.9
December	1,896.7	3,090.8	30.4	169.6	82.4	252.0	3,342.9	3,193.7	6,536.5	7.5	51.1
1989 -											
January	1,868.3	2,969.5	33.6	181.1	77.4	258.6	3,228.1	3,320.0	6,548.1	8.0	49.3
February	1,872.4	3,056.4	32.7	184.7	86.9	271.5	3,327.9	3,231.8	6,559.7	8.2	50.7
March	1,885.0	3,107.6	19.8	159.2	93.2	252.4	3,360.0	3,211.3	6,571.3	7.5	51.1
April	1,890.8	3,119.6	18.4	153.4	89.0	242.4	3,362.0	3,220.4	6,582.4	7.2	51.1
Standard error of -											
April 1989 estimates	14.0	16.8	2.0	5.2	4.1	6.3	17.2	16.9	..	0.2	0.3
Mar 89 to Apr 89 movements	10.5	12.7	1.9	4.2	3.4	4.9	13.0	12.8	..	0.1	0.2
PERSONS											
1988 -											
March	5,910.0	7,397.4	52.5	494.8	150.4	645.2	8,042.7	4,669.1	12,711.8	8.0	63.3
April	5,898.8	7,383.4	46.6	492.6	152.2	644.8	8,028.2	4,704.4	12,732.6	8.0	63.1
May	5,877.4	7,354.9	44.8	469.0	124.0	593.0	7,947.9	4,805.5	12,753.4	7.5	62.3
June	5,883.3	7,378.3	40.5	459.6	109.5	569.1	7,947.3	4,827.0	12,774.3	7.2	62.2
July	5,933.6	7,383.1	39.5	431.5	87.3	518.8	7,901.8	4,892.7	12,794.6	6.6	61.8
August	5,874.6	7,353.4	36.3	445.4	93.3	538.7	7,892.1	4,922.5	12,814.5	6.8	61.6
September	5,981.0	7,503.2	40.3	438.7	115.9	554.6	8,057.7	4,776.8	12,834.5	6.9	62.8
October	6,016.3	7,477.3	34.9	406.0	101.9	507.9	7,985.2	4,871.7	12,856.9	6.4	62.1
November	5,992.6	7,508.7	34.3	391.3	97.1	488.4	7,997.1	4,882.2	12,879.3	6.1	62.1
December	6,103.3	7,622.9	65.6	442.4	120.9	563.3	8,186.2	4,715.4	12,901.7	6.9	63.5
1989 -											
January	6,015.3	7,424.9	70.0	477.2	115.2	592.4	8,017.3	4,907.1	12,924.4	7.4	62.0
February	6,076.8	7,569.7	61.2	471.6	126.5	598.1	8,167.8	4,779.3	12,947.1	7.3	63.1
March	6,081.4	7,638.3	34.9	416.6	129.6	546.3	8,184.5	4,785.4	12,969.9	6.7	63.1
April	6,113.5	7,683.2	33.1	389.8	126.4	516.1	8,199.4	4,792.4	12,991.8	6.3	63.1
Standard error of -											
April 1989 estimates	21.1	22.8	2.6	7.6	4.8	8.6	23.3	19.4	..	0.1	0.2
Mar 89 to Apr 89 movements	16.3	17.7	2.4	6.0	3.8	6.6	18.2	14.9	..	0.1	0.1

TABLE 2. CIVILIAN LABOUR FORCE: SEASONALLY ADJUSTED SERIES

Month	Employed		Unemployed		Labour force		Unemployment rate	Participation rate
	Full-time workers	Total	Looking for full-time work		Looking for part-time work	Total		
			Aged 15-19 looking for first job	Total				
				-'000		- per cent -		
MALES								
1988 -								
March	4,076.7	4,393.3	25.3	296.5	35.1	331.5	4,724.8	7.0
April	4,107.0	4,415.5	26.5	307.8	44.2	352.0	4,767.5	7.4
May	4,086.5	4,396.2	26.7	294.1	35.1	329.2	4,725.4	7.0
June	4,107.8	4,421.8	25.2	292.3	31.2	323.5	4,745.4	6.8
July	4,112.6	4,421.3	26.2	282.8	26.4	309.2	4,730.5	6.5
August	4,115.1	4,424.2	23.7	283.9	27.9	311.9	4,736.1	6.6
September	4,125.4	4,442.8	26.0	280.7	29.7	310.4	4,753.3	6.5
October	4,148.4	4,460.8	24.6	272.6	33.1	305.6	4,766.4	6.4
November	4,147.5	4,469.9	25.4	261.4	31.7	293.1	4,762.9	6.2
December	4,160.3	4,482.5	23.7	271.8	32.2	304.0	4,786.5	6.4
1989 -								
January	4,164.4	4,494.2	24.2	272.3	33.3	305.6	4,799.8	6.4
February	4,190.3	4,523.8	21.4	269.0	39.4	308.4	4,832.3	6.4
March	4,179.9	4,502.5	15.2	251.0	30.4	281.3	4,783.9	5.9
April	4,234.4	4,561.1	16.3	239.6	35.0	274.6	4,835.7	5.7
MARRIED FEMALES								
1988 -								
March	963.7	1,779.8	n.a.	59.8	40.4	100.2	1,880.0	5.3
April	962.7	1,790.7	n.a.	56.7	47.6	104.3	1,894.9	5.5
May	960.1	1,794.8	n.a.	58.6	43.7	102.4	1,897.2	5.4
June	971.8	1,807.9	n.a.	59.8	41.0	100.8	1,908.7	5.3
July	971.1	1,790.1	n.a.	54.9	37.6	92.5	1,882.6	4.9
August	976.9	1,828.8	n.a.	60.9	33.1	93.9	1,922.7	4.9
September	984.8	1,845.3	n.a.	56.5	39.6	96.1	1,941.5	5.0
October	996.8	1,835.9	n.a.	58.9	36.5	95.4	1,931.4	4.9
November	998.7	1,837.9	n.a.	57.4	38.5	95.9	1,933.8	5.0
December	1,003.6	1,854.6	n.a.	58.9	40.9	99.8	1,954.4	5.1
1989 -								
January	984.3	1,859.8	n.a.	62.2	49.9	112.0	1,971.8	5.7
February	993.1	1,859.5	n.a.	55.6	39.9	95.5	1,955.0	4.9
March	994.6	1,846.9	n.a.	49.4	36.2	85.6	1,932.5	4.4
April	1,007.1	1,877.1	n.a.	52.3	39.1	91.4	1,968.5	4.6
ALL FEMALES								
1988 -								
March	1,802.5	2,938.8	25.5	175.6	85.9	261.4	3,200.3	8.2
April	1,801.4	2,949.7	24.6	181.3	89.5	270.7	3,220.4	8.4
May	1,806.1	2,951.7	23.1	175.2	86.6	261.9	3,213.6	8.1
June	1,807.5	2,958.9	24.8	175.0	84.1	259.0	3,218.0	8.0
July	1,813.5	2,958.2	21.2	163.5	68.3	231.8	3,190.0	7.3
August	1,830.8	2,998.0	21.2	174.7	76.5	251.2	3,249.2	7.7
September	1,846.6	3,023.0	21.1	167.9	80.8	248.6	3,271.6	7.6
October	1,858.0	3,004.3	19.6	166.0	76.8	242.8	3,247.0	7.5
November	1,856.2	3,013.7	18.9	163.9	80.1	244.0	3,257.7	7.5
December	1,866.5	3,048.6	21.5	164.6	87.5	252.1	3,300.8	7.6
1989 -								
January	1,861.1	3,078.8	21.9	165.2	94.8	260.0	3,338.8	7.8
February	1,867.9	3,094.0	24.9	163.1	79.9	242.9	3,336.9	7.3
March	1,869.7	3,067.4	18.6	146.5	73.6	220.2	3,287.6	6.7
April	1,888.3	3,101.8	19.9	147.2	75.5	222.7	3,324.5	6.7
PERSONS								
1988 -								
March	5,879.2	7,332.1	50.8	472.1	120.9	593.0	7,925.1	7.5
April	5,908.4	7,365.1	51.1	489.1	133.7	622.7	7,987.8	7.8
May	5,892.6	7,347.9	49.8	469.3	121.7	591.0	7,938.9	7.4
June	5,915.4	7,380.8	50.0	467.3	115.3	582.6	7,963.4	7.3
July	5,926.1	7,379.5	47.4	446.3	94.7	541.0	7,920.5	6.8
August	5,945.8	7,422.2	44.9	458.6	104.4	563.0	7,985.2	7.1
September	5,972.0	7,465.8	47.2	448.6	110.5	559.1	8,024.9	7.0
October	6,006.4	7,465.0	44.2	438.5	109.9	548.4	8,013.4	6.8
November	6,003.6	7,483.6	44.3	425.3	111.8	537.1	8,020.7	6.7
December	6,026.8	7,531.2	45.2	436.4	119.7	556.1	8,087.2	6.9
1989 -								
January	6,025.4	7,573.0	46.1	437.5	128.1	565.6	8,138.6	6.9
February	6,058.2	7,617.8	46.3	432.1	119.3	551.4	8,169.2	6.7
March	6,049.6	7,569.9	33.8	397.5	104.0	501.5	8,071.4	6.2
April	6,122.8	7,662.9	36.2	386.9	110.4	497.3	8,160.2	6.1

TABLE 3. CIVILIAN LABOUR FORCE: TREND SERIES

Month	Employed		Unemployed				Labour force	Unemployment rate	Participation rate
	Full-time workers	Total	Aged 15-19 looking for first job	Total	Looking for part-time work	Total			
- '000 -									
MALES									
1988 -									
March	4,079.2	4,393.4	26.1	300.7	36.9	337.6	4,731.0	7.1	75.5
April	4,090.7	4,403.3	25.8	297.7	36.4	334.1	4,737.4	7.1	75.4
May	4,098.6	4,409.6	25.7	295.2	34.8	329.9	4,739.5	7.0	75.3
June	4,105.1	4,415.3	25.7	291.7	32.5	324.2	4,739.4	6.8	75.2
July	4,112.3	4,422.7	25.5	287.0	30.4	317.4	4,740.2	6.7	75.1
August	4,120.2	4,431.7	25.4	281.7	29.2	310.9	4,742.7	6.6	75.0
September	4,129.2	4,443.0	25.3	277.1	29.3	306.5	4,749.5	6.5	75.0
October r	4,138.8	4,455.9	25.2	274.1	30.5	304.6	4,760.5	6.4	75.1
November r	4,148.9	4,469.5	24.8	271.8	32.1	303.9	4,773.4	6.4	75.1
December r	4,159.7	4,483.6	23.8	269.1	33.3	302.3	4,785.9	6.3	75.2
1989 -									
January r	4,171.6	4,497.9	22.2	265.4	33.9	299.3	4,797.2	6.2	75.2
February r	4,184.3	4,512.0	20.4	260.8	34.3	295.1	4,801.7	6.1	75.3
March r	4,197.0	4,525.3	18.5	255.7	34.5	290.2	4,815.5	6.0	75.3
April	4,208.1	4,536.9	16.9	250.8	34.6	285.4	4,822.2	5.9	75.2
MARRIED FEMALES (a)									
1988 -									
March	959.9	1,778.7	n.a.	59.8	43.0	102.8	1,881.6	5.5	49.7
April	963.3	1,787.9	n.a.	58.9	42.9	101.9	1,889.7	5.4	49.7
May	965.8	1,795.7	n.a.	58.2	42.1	100.3	1,896.0	5.3	49.7
June	968.6	1,803.4	n.a.	57.9	40.6	98.4	1,901.8	5.2	49.7
July	973.6	1,812.0	n.a.	57.8	38.7	96.5	1,908.5	5.1	49.7
August	980.1	1,821.5	n.a.	58.0	37.2	95.2	1,916.7	5.0	49.8
September	986.7	1,831.0	n.a.	58.3	37.1	95.4	1,926.5	5.0	50.0
October r	991.7	1,839.5	n.a.	58.7	38.2	97.0	1,936.5	5.0	50.2
November r	994.5	1,846.0	n.a.	58.8	40.0	98.8	1,944.8	5.1	50.3
December r	995.4	1,850.6	n.a.	58.4	41.2	99.6	1,950.1	5.1	50.4
1989 -									
January r	995.6	1,854.1	n.a.	57.2	41.6	98.8	1,953.0	5.1	50.4
February r	996.0	1,858.0	n.a.	55.7	41.3	97.0	1,955.1	5.0	50.5
March r	997.0	1,861.9	n.a.	54.1	40.5	94.7	1,956.5	4.8	50.5
April	998.0	1,865.9	n.a.	52.5	39.9	92.3	1,958.2	4.7	50.5
ALL FEMALES									
1988 -									
March	1,799.5	2,937.0	24.9	179.5	85.1	264.6	3,201.7	8.3	49.7
April	1,802.5	2,945.0	24.4	177.0	85.0	262.0	3,207.1	8.2	49.7
May	1,805.9	2,953.3	23.8	174.9	83.5	258.4	3,211.7	8.0	49.7
June	1,811.5	2,963.2	23.1	172.9	81.0	254.0	3,217.1	7.9	49.7
July	1,820.4	2,974.7	22.2	171.1	78.3	249.4	3,224.1	7.7	49.7
August	1,831.1	2,987.0	21.2	169.3	76.8	246.1	3,233.2	7.6	49.8
September	1,842.0	3,001.0	20.5	168.0	77.5	245.5	3,246.5	7.6	49.9
October r	1,851.3	3,016.6	20.4	167.2	80.1	247.3	3,263.9	7.6	50.1
November r	1,857.9	3,032.7	20.6	166.1	82.9	249.0	3,281.7	7.6	50.3
December r	1,862.3	3,048.3	21.0	164.1	84.3	248.4	3,296.8	7.5	50.4
1989 -									
January r	1,865.9	3,063.2	21.3	161.1	83.9	245.0	3,308.2	7.4	50.5
February r	1,869.9	3,077.0	21.4	157.6	82.3	239.9	3,316.9	7.2	50.6
March r	1,874.1	3,088.5	21.2	154.0	80.1	234.1	3,322.6	7.0	50.6
April	1,877.9	3,098.4	21.0	150.5	78.0	228.5	3,326.9	6.9	50.5
PERSONS									
1988 -									
March	5,878.7	7,330.4	51.0	480.2	122.0	602.3	7,932.7	7.6	62.4
April	5,893.2	7,348.3	50.2	474.8	121.4	596.2	7,944.5	7.5	62.4
May	5,904.5	7,362.9	49.5	470.0	118.3	588.4	7,951.2	7.4	62.3
June	5,916.5	7,378.4	48.8	464.6	113.5	578.1	7,956.6	7.3	62.3
July	5,932.7	7,397.4	47.7	458.1	108.7	566.8	7,964.2	7.1	62.2
August	5,951.2	7,418.8	46.6	451.0	106.0	557.0	7,975.8	7.0	62.2
September	5,971.2	7,444.0	45.8	445.1	106.9	552.0	7,996.0	6.9	62.3
October r	5,990.1	7,472.5	45.6	441.2	110.6	551.9	8,024.4	6.9	62.4
November r	6,006.8	7,502.2	45.4	437.9	115.0	552.9	8,055.2	6.9	62.5
December r	6,022.0	7,531.9	44.8	433.2	117.6	550.8	8,082.7	6.8	62.6
1989 -									
January r	6,037.6	7,561.1	43.5	426.5	117.8	544.3	8,105.4	6.7	62.7
February r	6,054.2	7,589.0	41.7	418.5	116.6	535.0	8,124.0	6.6	62.7
March r	6,071.1	7,613.8	39.7	409.7	114.7	524.3	8,138.1	6.4	62.7
April	6,086.0	7,635.3	37.9	401.3	112.5	513.8	8,149.2	6.3	62.7

(a) See Explanatory Notes paragraph 32, Appendix B.

TABLE 4. LABOUR FORCE STATUS OF THE CIVILIAN POPULATION AGED 15 AND OVER:  
MARITAL STATUS, APRIL 1989

	Employed		Unemployed			Labour force	Not in labour force	Civilian population aged 15 and over	Unemployment rate	Participation rate
	Full-time workers	Total	Looking for full-time work	Looking for part-time work	Total					
	- '000 -								- per cent -	
Males	4,222.7	4,563.7	236.4	37.3	273.7	4,837.4	1,572.0	6,409.4	5.7	75.5
Married	2,815.2	2,943.7	113.6	6.1	119.7	3,063.4	865.2	3,928.6	3.9	78.0
Not married	1,407.5	1,620.0	122.8	31.3	154.0	1,774.0	706.8	2,480.8	8.7	71.5
Females	1,890.8	3,119.6	153.4	89.0	242.4	3,362.0	3,220.4	6,582.4	7.2	51.1
Married	1,003.3	1,882.0	56.6	45.2	101.9	1,983.8	1,890.1	3,874.0	5.1	51.2
Not married	887.5	1,237.6	96.8	43.8	140.6	1,378.2	1,330.2	2,708.4	10.2	50.9
Persons	6,113.5	7,683.2	389.8	126.4	516.1	8,199.4	4,792.4	12,991.8	6.3	63.1

TABLE 5. LABOUR FORCE STATUS OF THE CIVILIAN POPULATION AGED 15 AND OVER:  
STATES AND TERRITORIES, APRIL 1989

State or Territory	Employed		Unemployed			Labour force	Not in labour force	Civilian population aged 15 and over	Unemployment rate	Participation rate
	Full-time workers	Total	Looking for full-time work	Looking for part-time work	Total					
	- '000 -								- per cent -	
MALES										
New South Wales	1,417.5	1,534.4	84.9	9.5	94.4	1,628.8	570.6	2,199.4	5.8	74.1
Victoria	1,118.3	1,203.6	43.7	11.4	55.0	1,258.6	395.0	1,653.6	4.4	76.1
Queensland	701.8	754.9	46.5	6.9	53.4	808.3	259.8	1,068.1	6.6	75.7
South Australia	350.5	382.8	27.4	3.2	30.6	413.4	139.1	552.4	7.4	74.8
Western Australia	414.4	448.2	19.6	3.3	23.0	471.2	137.1	608.3	4.9	77.5
Tasmania	106.9	116.2	9.2	* 0.9	10.1	126.2	43.5	169.7	8.0	74.4
Northern Territory	45.1	47.4	2.0	* 0.6	2.7	50.1	8.1	58.2	5.4	86.1
Australian Capital Territory	68.3	76.2	3.0	1.5	4.6	80.8	18.8	99.6	5.6	81.1
Australia	4,222.7	4,563.7	236.4	37.3	273.7	4,837.4	1,572.0	6,409.4	5.7	75.5
FEMALES										
New South Wales	661.8	1,036.3	55.1	27.2	82.3	1,118.7	1,153.5	2,272.2	7.4	49.2
Victoria	512.9	835.0	32.9	24.1	56.9	891.9	821.9	1,713.8	6.4	52.0
Queensland	297.2	505.4	28.9	17.5	46.4	551.8	536.2	1,088.1	8.4	50.7
South Australia	150.2	270.2	13.2	7.1	20.3	290.5	279.0	569.5	7.0	51.0
Western Australia	165.9	300.9	13.8	8.0	21.8	322.7	283.5	606.2	6.8	53.2
Tasmania	37.6	72.5	6.5	2.3	8.7	81.2	94.4	175.6	10.7	46.3
Northern Territory	25.7	34.6	* 0.8	* 0.7	* 1.6	36.1	16.8	52.9	* 4.3	68.3
Australian Capital Territory	39.4	64.7	2.3	2.1	4.4	69.1	35.1	104.2	6.3	66.3
Australia	1,890.8	3,119.6	153.4	89.0	242.4	3,362.0	3,220.4	6,582.4	7.2	51.1
PERSONS										
New South Wales	2,079.3	2,570.8	140.0	36.7	176.7	2,747.5	1,724.1	4,471.6	6.4	61.4
Victoria	1,631.2	2,038.5	76.6	35.4	112.0	2,150.5	1,216.9	3,367.4	5.2	63.9
Queensland	999.0	1,260.3	75.4	24.4	99.8	1,360.1	796.0	2,156.1	7.3	63.1
South Australia	500.7	652.9	40.6	10.3	50.9	703.8	418.1	1,121.9	7.2	62.7
Western Australia	580.3	749.1	33.5	11.4	44.8	793.9	420.6	1,214.6	5.6	65.4
Tasmania	144.4	188.7	15.7	3.1	18.8	207.5	137.9	345.3	9.1	60.1
Northern Territory	70.9	82.0	2.9	* 1.4	4.2	86.2	24.9	111.1	4.9	77.6
Australian Capital Territory	107.6	141.0	5.3	3.6	8.9	149.9	53.8	203.7	5.9	73.6
Australia	6,113.5	7,683.2	389.8	126.4	516.1	8,199.4	4,792.4	12,991.8	6.3	63.1



TABLE 6. LABOUR FORCE STATUS OF THE CIVILIAN POPULATION AGED 15 AND OVER:  
STATE CAPITAL CITIES (a), APRIL 1989

Capital city	Employed		Unemployed			Labour force	Not in labour force	Civilian population aged 15 and over	Unemployment rate	Participation rate
	Full-time workers	Total	Looking for full-time work	Looking for part-time work	Total					
- '000 -										
- per cent -										
MALES										
Sydney	913.7	989.4	44.6	6.9	51.5	1,040.9	351.8	1,392.8	5.0	74.7
Melbourne	806.7	867.8	26.7	7.6	34.3	902.1	273.4	1,175.5	3.8	76.7
Brisbane	325.1	348.5	17.0	4.0	21.0	369.5	111.7	481.2	5.7	76.8
Adelaide	250.5	273.2	19.0	2.8	21.7	294.9	106.2	401.1	7.4	73.5
Perth	288.5	313.5	13.2	3.0	16.2	329.7	106.0	435.7	4.9	75.7
Hobart	41.4	45.3	3.2	* 0.4	3.6	48.9	18.8	67.8	7.3	72.2
Total	2,625.9	2,837.7	123.8	24.5	148.3	2,986.0	967.9	3,954.0	5.0	75.5
FEMALES										
Sydney	470.9	698.3	32.3	16.2	48.5	746.8	705.8	1,452.6	6.5	51.4
Melbourne	395.6	618.8	18.8	16.3	35.0	653.8	572.6	1,226.4	5.4	53.3
Brisbane	150.8	243.5	13.1	8.8	21.9	265.4	245.3	510.7	8.2	52.0
Adelaide	115.2	201.0	9.6	5.6	15.2	216.3	208.4	424.7	7.1	50.9
Perth	125.8	224.0	9.7	6.4	16.1	240.1	214.4	454.4	6.7	52.8
Hobart	17.4	32.6	2.7	1.4	4.1	36.7	35.4	72.1	11.3	50.9
Total	1,275.6	2,018.2	86.1	54.7	140.8	2,159.0	1,981.9	4,141.0	6.5	52.1
PERSONS										
Sydney	1,384.6	1,687.7	77.0	23.1	100.0	1,787.7	1,057.6	2,845.4	5.6	62.8
Melbourne	1,202.2	1,486.5	45.5	23.9	69.3	1,555.9	846.0	2,401.9	4.5	64.8
Brisbane	475.9	592.1	30.1	12.8	42.9	634.9	357.0	991.9	6.8	64.0
Adelaide	365.8	474.2	28.6	8.4	37.0	511.2	314.6	825.8	7.2	61.9
Perth	414.3	537.5	22.9	9.3	32.2	569.7	320.4	890.1	5.7	64.0
Hobart	58.7	77.9	6.0	1.8	7.7	85.6	54.3	139.9	9.0	61.2
Total	3,901.5	4,855.9	209.9	79.2	289.1	5,145.1	2,949.8	8,094.9	5.6	63.6

(a) Consists of capital city statistical divisions. See the Glossary, Appendix A.

TABLE 7. LABOUR FORCE STATUS OF THE CIVILIAN POPULATION AGED 15 AND OVER:  
AUSTRALIAN CAPITAL TERRITORY, APRIL 1989

	Persons							Total
	Males	Females		Aged 15-19	Aged 20-24	Aged 25 and over		
		Married	Total					
- '000 -								
Employed	76.2	38.4	64.7	13.8	20.1	107.1	141.0	
Full-time workers	68.3	22.1	39.4	6.0	15.1	86.5	107.6	
Part-time workers	8.0	16.3	25.4	7.7	5.0	20.6	33.3	
Unemployed	4.6	1.8	4.4	3.0	1.9	4.1	8.9	
Looking for full-time work	3.0	* 1.3	2.3	* 0.9	* 1.0	3.4	5.3	
Looking for part-time work	1.5	* 0.5	2.1	2.1	* 0.8	* 0.7	3.6	
Labour force	80.8	40.2	69.1	16.8	21.9	111.2	149.9	
Not in labour force	18.8	19.7	35.1	8.8	4.0	41.1	53.8	
Aged 15-19 attending school (a)	3.0	* 0.1	3.8	6.8	..	..	6.8	
Civilian population	99.6	59.9	104.2	25.6	25.9	152.3	203.7	
- per cent -								
Unemployment rate	5.6	4.5	6.3	17.8	8.4	3.7	5.9	
Looking for full-time work	4.2	* 5.5	5.5	* 13.1	* 6.4	3.7	4.7	
Participation rate	81.1	67.1	66.3	65.6	84.7	73.0	73.6	
Employment/population ratio	76.6	64.1	62.2	53.9	77.6	70.3	69.2	
- number -								
Average weekly hours worked by employed persons	38.5	28.7	29.5	23.5	31.6	36.3	34.4	
Average duration of unemployment (weeks)	26.0	* 18.5	13.2	8.2	* 21.1	27.7	19.8	

(a) Excludes persons in institutions such as hospitals, gaols, sanatoriums, etc.







TABLE 9. CIVILIAN LABOUR FORCE, STATES: TREND SERIES — continued

Month	Males					Females					Persons				
	Employed	Unemployed	Labour force	Unemployment rate	Participation rate	Employed	Unemployed	Labour force	Unemployment rate	Participation rate	Employed	Unemployed	Labour force	Unemployment rate	Participation rate
	- '000 -		- per cent -			- '000 -		- per cent -			- '000 -		- per cent -		
SOUTH AUSTRALIA															
1988 -															
March	361.6	35.7	397.3	9.0	73.0	252.8	24.9	277.7	9.0	49.4	614.4	60.6	675.0	9.0	61.0
April	362.4	35.8	398.2	9.0	73.1	253.7	24.8	278.4	8.9	49.5	616.1	60.6	676.6	9.0	61.1
May	363.8	35.9	399.6	9.0	73.3	254.2	24.7	278.9	8.8	49.5	618.0	60.5	678.5	8.9	61.2
June	365.7	35.5	401.3	8.9	73.5	254.7	24.5	279.2	8.8	49.6	620.4	60.1	680.5	8.8	61.3
July	368.2	34.7	402.9	8.6	73.7	255.2	24.4	279.6	8.7	49.6	623.4	59.1	682.5	8.7	61.5
August	370.7	33.7	404.5	8.3	73.9	255.9	24.1	280.0	8.6	49.6	626.6	57.8	684.4	8.4	61.6
September	373.2	32.8	405.9	8.1	74.1	256.7	23.8	280.5	8.5	49.7	629.9	56.6	686.5	8.2	61.7
October r	375.2	32.1	407.3	7.9	74.3	257.9	23.6	281.5	8.4	49.8	633.0	55.8	688.8	8.1	61.8
November r	376.6	31.9	408.5	7.8	74.4	259.3	23.3	282.6	8.3	49.9	635.9	55.2	691.1	8.0	62.0
December r	377.6	31.9	409.4	7.8	74.5	260.9	22.9	283.9	8.1	50.1	638.5	54.8	693.3	7.9	62.1
1989 -															
January r	378.4	31.9	410.3	7.8	74.6	262.6	22.4	285.0	7.9	50.2	641.0	54.3	695.3	7.8	62.2
February r	379.1	31.8	410.9	7.7	74.6	264.3	21.8	286.0	7.6	50.4	643.4	53.6	697.0	7.7	62.3
March r	379.8	31.7	411.5	7.7	74.6	265.8	21.1	286.8	7.3	50.4	645.6	52.8	698.4	7.6	62.3
April	380.3	31.6	412.0	7.7	74.6	266.9	20.4	287.3	7.1	50.5	647.2	52.0	699.3	7.4	62.3
WESTERN AUSTRALIA															
1988 -															
March	423.3	33.7	456.9	7.4	77.8	276.3	25.6	301.9	8.5	51.6	699.6	59.2	758.8	7.8	64.8
April	425.2	33.5	458.7	7.3	77.9	277.0	25.4	302.5	8.4	51.6	702.2	58.9	761.2	7.7	64.8
May	427.3	32.8	460.1	7.1	78.0	278.0	25.1	303.1	8.3	51.6	705.3	57.9	763.2	7.6	64.8
June	429.5	31.8	461.3	6.9	78.0	279.6	24.6	304.1	8.1	51.6	709.0	56.3	765.4	7.4	64.8
July	431.9	30.7	462.5	6.6	78.0	281.4	24.1	305.5	7.9	51.7	713.3	54.8	768.0	7.1	64.9
August	434.5	29.8	464.2	6.4	78.0	283.4	23.9	307.2	7.8	51.8	717.8	53.6	771.4	7.0	65.0
September	437.1	29.2	466.3	6.3	78.2	285.6	23.8	309.4	7.7	52.1	722.8	53.0	775.7	6.8	65.1
October r	439.7	28.9	468.5	6.2	78.3	288.2	23.9	312.0	7.7	52.4	727.8	52.8	780.6	6.8	65.4
November r	441.8	28.6	470.4	6.1	78.4	290.7	23.9	314.5	7.6	52.6	732.5	52.5	785.0	6.7	65.5
December r	443.7	28.0	471.7	5.9	78.4	293.1	23.5	316.6	7.4	52.8	736.8	51.5	788.3	6.5	65.6
1989 -															
January r	445.3	27.0	472.3	5.7	78.3	295.3	22.8	318.1	7.2	52.9	740.6	49.8	790.4	6.3	65.6
February r	446.6	25.9	472.5	5.5	78.1	297.3	21.9	319.2	6.9	52.9	743.9	47.8	791.7	6.0	65.5
March r	447.6	24.8	472.4	5.3	77.9	298.9	21.0	319.9	6.6	52.9	746.5	45.8	792.4	5.8	65.4
April	448.4	23.9	472.2	5.1	77.6	300.3	20.2	320.5	6.3	52.9	748.7	44.0	792.7	5.6	65.3
TASMANIA															
1988 -															
March	115.3	11.0	126.3	8.7	75.0	75.2	8.3	83.5	10.0	47.9	190.5	19.4	209.8	9.2	61.2
April	115.6	10.9	126.6	8.6	75.1	75.4	8.3	83.7	10.0	48.0	191.0	19.2	210.2	9.2	61.3
May	115.9	10.9	126.7	8.6	75.2	75.5	8.2	83.7	9.8	48.0	191.3	19.1	210.4	9.1	61.3
June	116.0	10.9	126.9	8.6	75.2	75.4	8.2	83.6	9.8	47.9	191.4	19.1	210.5	9.1	61.3
July	116.1	11.1	127.2	8.7	75.4	75.1	8.1	83.3	9.8	47.7	191.2	19.3	210.5	9.1	61.3
August	116.2	11.4	127.6	8.9	75.6	74.6	8.2	82.8	9.9	47.4	190.7	19.6	210.3	9.3	61.2
September	116.2	11.6	127.8	9.1	75.6	73.8	8.5	82.2	10.3	47.0	189.9	20.1	210.0	9.6	61.1
October r	116.1	11.7	127.8	9.2	75.6	72.8	8.8	81.6	10.8	46.7	188.9	20.6	209.4	9.8	60.9
November r	115.8	11.7	127.5	9.2	75.4	71.9	9.2	81.1	11.4	46.3	187.7	20.9	208.6	10.0	60.6
December r	115.4	11.6	127.0	9.1	75.0	71.1	9.4	80.5	11.7	46.0	186.4	21.1	207.5	10.1	60.2
1989 -															
January r	114.9	11.5	126.3	9.1	74.6	70.5	9.5	80.0	11.9	45.6	185.4	21.0	206.4	10.2	59.9
February r	114.4	11.3	125.8	9.0	74.2	70.1	9.4	79.5	11.8	45.4	184.6	20.8	205.3	10.1	59.5
March r	114.1	11.2	125.3	8.9	73.9	69.9	9.2	79.1	11.6	45.1	184.0	20.4	204.4	10.0	59.2
April	113.9	11.1	125.0	8.9	73.6	69.9	8.9	78.8	11.3	44.9	183.8	20.0	203.7	9.8	59.0

TABLE 10. CIVILIAN LABOUR FORCE, BY AGE, APRIL 1989

Age group	Number ('000)					Participation rate (per cent)				
	Females					Females				
	Males	Married	Not married	Total	Persons	Males	Married	Not married	Total	Persons
15-64	4,766.7	1,971.6	1,368.9	3,340.5	8,107.3	84.8	57.2	66.0	60.5	72.7
15-19	437.3	13.8	393.8	407.5	844.9	61.1	57.4	59.2	59.1	60.1
20-24	599.7	144.9	366.9	511.8	1,111.5	90.3	66.8	84.1	78.3	84.4
25-34	1,296.8	601.3	287.5	888.8	2,185.6	94.4	60.2	76.8	64.7	79.6
35-44	1,179.2	699.2	159.7	858.9	2,038.1	94.0	69.4	70.3	69.5	81.9
45-54	791.3	391.6	110.9	502.5	1,293.8	89.7	58.3	65.7	59.8	75.1
55-59	280.7	84.3	32.6	117.0	397.7	75.5	30.8	37.6	32.4	54.3
60-64	181.6	36.5	17.5	54.0	235.7	50.2	14.4	15.2	14.7	32.3
65 and over	70.6	12.2	9.3	21.5	92.1	9.0	2.9	1.5	2.0	5.0
Total	4,837.4	1,983.8	1,378.2	3,362.0	8,199.4	75.5	51.2	50.9	51.1	63.1

TABLE 11. LABOUR FORCE STATUS OF THE CIVILIAN POPULATION AGED 15 TO 19: FULL-TIME ATTENDANCE AT SCHOOL OR A TERTIARY EDUCATIONAL INSTITUTION, APRIL 1989

	Employed		Unemployed			Labour force	Not in labour force	Civilian population aged 15-19	Unemployment rate	Participation rate
	Full-time workers	Total	Looking for full-time work	Looking for part-time work	Total					
	- '000 -					- per cent -				
ATTENDING NEITHER SCHOOL NOR A TERTIARY EDUCATIONAL INSTITUTION FULL TIME (a)										
Males	262.2	283.3	30.8	* 0.8	31.6	314.9	16.1	331.0	10.0	95.1
Females	179.9	213.0	36.7	* 2.1	38.8	251.8	32.0	283.8	15.4	88.7
Persons	442.1	496.3	67.5	* 2.9	70.4	566.7	48.1	614.8	12.4	92.2
Left school -										
Before 1987	182.2	197.7	26.6	* 1.2	27.8	225.5	21.5	247.0	12.3	91.3
1987	134.9	147.0	16.3	* 0.5	16.9	163.9	9.4	173.3	10.3	94.6
1988 to survey date	125.0	151.6	24.6	* 1.1	25.7	177.3	13.0	190.3	14.5	93.2
Age -										
15	9.4	11.1	3.6	* 0.0	3.6	14.7	* 3.0	17.6	24.7	83.2
16	41.4	47.6	9.8	* 0.3	10.0	57.7	7.0	64.6	17.4	89.2
17	95.8	110.6	12.2	* 0.7	12.9	123.4	8.9	132.4	10.4	93.3
18	141.3	159.0	24.4	* 1.3	25.7	184.6	15.6	200.2	13.9	92.2
19	154.2	168.1	17.6	* 0.6	18.2	186.3	13.7	200.0	9.8	93.2
ATTENDING A TERTIARY EDUCATIONAL INSTITUTION FULL TIME										
Males	4.6	29.2	* 1.3	5.6	6.9	36.1	47.7	83.8	19.2	43.1
Females	* 3.0	42.4	* 0.7	7.6	8.3	50.6	52.6	103.3	16.4	49.0
Persons	7.6	71.5	* 2.0	13.3	15.2	86.7	100.3	187.1	17.6	46.4
Left school -										
Before 1987	* 1.1	9.8	* 0.4	* 1.7	* 2.1	11.9	12.3	24.2	* 17.9	49.2
1987	3.6	29.6	* 0.1	* 2.7	* 2.8	32.4	32.3	64.7	* 8.6	50.0
1988 to survey date	* 2.9	32.1	* 1.4	8.9	10.3	42.4	55.7	98.2	24.3	43.2
Age -										
15 and 16	* 0.5	* 1.9	* 0.5	* 1.0	* 1.6	3.5	9.2	12.7	* 44.6	27.5
17	* 3.1	13.4	* 0.8	* 2.5	* 3.3	16.7	17.8	34.6	* 20.0	48.4
18	* 1.7	27.1	* 0.0	7.2	7.2	34.2	35.9	70.1	20.9	48.8
19	* 2.2	29.1	* 0.7	* 2.5	* 3.2	32.3	37.4	69.7	* 9.8	46.3
ATTENDING SCHOOL										
Males	* 0.3	68.1	* 2.8	15.4	18.2	86.3	214.8	301.1	21.1	28.7
Females	* 0.4	85.2	* 2.9	17.1	19.9	105.1	197.2	302.3	19.0	34.8
Persons	* 0.7	153.3	5.7	32.4	38.1	191.4	411.9	603.4	19.9	31.7
Age -										
15	* 0.3	54.1	* 1.4	16.2	17.6	71.7	176.1	247.9	24.6	28.9
16	* 0.2	59.1	* 3.0	10.3	13.4	72.4	132.5	204.9	18.5	35.3
17	* 0.2	35.4	* 1.0	4.3	5.2	40.6	84.1	124.7	12.9	32.5
18 and 19	* 0.0	4.8	* 0.2	* 1.7	* 1.9	6.7	19.2	25.8	* 28.4	25.9
TOTAL										
Males	267.2	380.6	35.0	21.8	56.7	437.3	278.6	715.9	13.0	61.1
Females	183.3	340.5	40.2	26.8	67.0	407.5	281.8	689.4	16.4	59.1
Persons	450.4	721.1	75.1	48.6	123.8	844.9	560.4	1,405.3	14.6	60.1
Age -										
15	9.7	65.3	5.0	16.6	21.7	86.9	180.8	267.7	24.9	32.5
16	42.2	108.5	13.3	11.2	24.5	133.0	147.0	280.1	18.4	47.5
17	99.1	159.3	13.9	7.5	21.4	180.8	110.9	291.7	11.9	62.0
18	143.0	190.4	24.6	10.1	34.7	225.1	66.1	291.2	15.4	77.3
19	156.4	197.7	18.2	* 3.1	21.4	219.0	55.6	274.6	9.7	79.8

(a) The components of the "Left school" category in the "Not in labour force" column do not add to the total because institutionalised persons are not asked the "school attendance" question.

TABLE 12. LABOUR FORCE STATUS OF THE CIVILIAN POPULATION AGED 20-24: FULL-TIME ATTENDANCE AT A TERTIARY EDUCATIONAL INSTITUTION, APRIL 1989

	Employed		Unemployed			Labour force	Not in labour force	Civilian population aged 20-24	Unemployment rate	Participation rate
	Full-time workers	Total	Looking for full-time work	Looking for part-time work	Total					
- '000 -										
- per cent -										
NOT ATTENDING A TERTIARY EDUCATIONAL INSTITUTION FULL TIME										
Males	498.3	525.2	42.0	* 1.2	43.2	568.4	23.1	591.5	7.6	96.1
Females	372.2	440.1	29.9	5.3	35.2	475.3	107.1	582.4	7.4	81.6
Persons	870.5	965.3	72.0	6.5	78.4	1,043.7	130.2	1,173.9	7.5	88.9
Age -										
20	160.0	179.3	15.4	* 0.9	16.3	195.6	21.8	217.4	8.3	90.0
21	166.8	184.3	17.6	* 1.1	18.7	203.0	21.4	224.3	9.2	90.5
22	174.6	194.0	11.9	* 1.3	13.1	207.1	27.5	234.6	6.3	88.3
23	179.4	197.8	13.2	* 1.7	14.9	212.7	28.7	241.4	7.0	88.1
24	189.7	209.8	13.9	* 1.6	15.4	225.3	30.9	256.1	6.8	87.9
ATTENDING A TERTIARY EDUCATIONAL INSTITUTION FULL TIME										
Males	5.1	25.2	* 1.0	5.0	6.0	31.2	41.6	72.9	19.2	42.9
Females	3.7	32.1	* 0.8	3.7	4.5	36.5	34.3	70.9	12.3	51.5
Persons	8.8	57.3	* 1.8	8.7	10.5	67.8	76.0	143.8	15.5	47.2
Age -										
20	* 1.7	21.9	* 0.2	* 3.1	* 3.2	25.1	28.7	53.9	* 12.8	46.7
21	* 3.2	16.0	* 0.9	* 2.4	* 3.2	19.2	18.8	38.0	* 16.8	50.4
22	* 2.3	10.2	* 0.0	* 1.5	* 1.5	11.7	12.6	24.4	* 13.1	48.1
23	* 0.7	5.9	* 0.4	* 1.6	* 2.0	7.9	10.7	18.6	* 25.5	42.4
24	* 1.0	* 3.4	* 0.4	* 0.1	* 0.5	3.9	5.1	9.0	* 12.9	43.3
TOTAL										
Males	503.4	550.4	43.0	6.2	49.2	599.7	64.7	664.3	8.2	90.3
Females	375.9	472.1	30.7	9.0	39.7	511.8	141.5	653.3	7.8	78.3
Persons	879.3	1,022.6	73.7	15.2	88.9	1,111.5	206.2	1,317.6	8.0	84.4
Age -										
20	161.7	201.2	15.6	3.9	19.5	220.7	50.5	271.2	8.8	81.4
21	170.0	200.2	18.5	* 3.4	21.9	222.2	40.2	262.4	9.9	84.7
22	176.8	204.2	11.9	* 2.8	14.6	218.8	40.1	259.0	6.7	84.5
23	180.1	203.7	13.6	* 3.3	16.9	220.6	39.4	260.0	7.7	84.9
24	190.7	213.2	14.2	* 1.7	15.9	229.1	36.0	265.1	6.9	86.4

TABLE 13. LABOUR FORCE PARTICIPATION RATES (a), BY AGE AND BIRTHPLACE, APRIL 1989 (per cent)

Age group	Born in Australia			Born outside Australia		
	Males	Females	Persons	Males	Females	Persons
15-64	85.7	62.0	73.8	84.4	57.4	71.4
15-19	63.5	61.8	62.7	51.1	47.1	49.2
20-24	92.0	79.8	85.9	84.7	73.1	78.8
25-34	95.5	65.2	80.4	93.2	64.0	78.5
35-44	94.8	70.3	82.5	93.9	68.4	81.5
45-54	91.3	60.5	75.8	87.7	58.8	74.4
55-59	75.3	33.4	54.2	77.1	30.6	55.2
60-64	50.9	16.2	32.7	50.1	11.6	32.3
65 and over	10.2	2.3	5.6	7.7	2.1	4.8
Total	77.1	53.1	64.9	74.4	49.5	62.3

(a) See the definition of the labour force participation rate in the Glossary, Appendix A.

TABLE 14. CIVILIAN LABOUR FORCE BY BIRTHPLACE, APRIL 1989

	Employed		Unemployed		Labour force	Unemployment rate	Participation rate (a)
	Full-time workers	Total	Looking for full-time work	Total			
			- '000 -			- per cent -	
MALES							
Born in Australia	3,074.2	3,338.8	168.7	194.2	3,533.0	5.5	77.1
Born outside Australia	1,148.5	1,224.9	67.6	79.5	1,304.4	6.1	74.4
Africa	43.3	45.6	* 1.0	* 1.6	47.2	* 3.4	78.7
America	39.0	41.9	* 2.4	* 2.7	44.6	* 6.0	80.4
Asia	192.5	206.8	21.8	26.9	233.7	11.5	75.0
India	16.4	17.3	* 1.1	* 1.1	18.5	* 6.2	77.0
Lebanon	17.3	18.1	5.1	5.6	23.6	23.6	70.5
Malaysia	18.2	20.2	* 1.0	* 2.0	22.1	* 8.9	75.9
Vietnam	24.0	25.4	6.0	6.5	31.9	20.3	76.6
Europe	774.0	823.4	37.5	42.4	865.8	4.9	72.4
Germany	37.7	39.3	* 2.8	* 2.9	42.2	* 7.0	78.5
Greece	53.0	56.6	* 3.0	* 3.3	59.8	* 5.5	71.7
Italy	98.4	106.5	* 2.6	* 3.2	109.7	* 2.9	70.7
Malta	21.9	22.1	* 0.5	* 0.6	22.8	* 2.8	76.1
Netherlands	35.2	36.6	* 1.4	* 1.4	38.0	* 3.7	75.3
Poland	15.8	18.4	* 1.7	* 1.7	20.1	* 8.5	54.0
UK and Ireland	381.8	408.1	17.2	20.1	428.2	4.7	73.9
Yugoslavia	60.0	62.4	4.3	4.5	66.9	6.7	74.8
Oceania	99.8	107.1	4.9	5.9	113.0	5.2	86.4
New Zealand	84.2	89.2	4.1	4.6	93.8	4.9	87.5
MARRIED FEMALES							
Born in Australia	677.9	1,338.1	32.7	62.7	1,400.9	4.5	51.8
Born outside Australia	325.4	543.9	23.9	39.1	583.0	6.7	50.5
Africa	14.6	20.4	* 0.6	* 0.8	21.1	* 3.6	54.5
America	11.5	19.0	* 1.5	* 1.9	21.0	* 9.3	61.0
Asia	67.1	89.5	8.1	11.3	100.8	11.2	49.2
India	6.6	10.7	* 0.3	* 0.6	11.3	* 5.1	68.2
Lebanon	* 3.2	4.1	* 1.3	* 1.5	5.7	* 27.1	23.5
Malaysia	8.8	11.2	* 0.1	* 0.1	11.3	* 1.1	62.2
Vietnam	8.2	9.1	* 1.4	* 1.7	10.8	* 15.9	50.4
Europe	203.8	369.0	11.6	21.0	390.0	5.4	48.7
Germany	11.7	22.6	* 0.2	* 0.7	23.4	* 3.1	56.2
Greece	19.0	27.8	* 1.0	* 2.4	30.2	* 8.0	48.2
Italy	22.2	37.1	* 0.8	* 1.3	38.4	* 3.5	36.5
Malta	6.9	10.6	* 0.0	* 0.2	10.8	* 2.3	43.7
Netherlands	5.1	12.0	* 0.4	* 0.9	12.9	* 6.9	43.2
Poland	4.7	6.7	* 1.0	* 1.2	7.9	* 14.9	39.1
UK and Ireland	98.8	193.7	6.2	11.5	205.3	5.6	52.2
Yugoslavia	19.9	28.0	* 1.1	* 1.6	29.7	* 5.5	51.5
Oceania	28.4	46.0	* 2.1	4.0	50.1	8.1	66.2
New Zealand	21.6	35.9	* 1.0	* 2.6	38.5	* 6.8	64.5
ALL FEMALES							
Born in Australia	1,409.9	2,360.3	111.7	177.9	2,538.2	7.0	53.1
Born outside Australia	480.9	759.3	41.7	64.5	823.8	7.8	49.5
Africa	19.1	27.7	* 1.3	* 1.7	29.4	* 5.8	53.0
America	18.2	28.8	* 2.3	3.8	32.6	11.7	63.3
Asia	97.4	135.4	12.3	17.0	152.4	11.1	48.8
India	9.5	14.5	* 0.5	* 0.7	15.2	* 4.6	60.6
Lebanon	4.6	7.0	* 2.0	* 2.5	9.5	* 26.2	29.6
Malaysia	12.3	16.8	* 0.2	* 0.2	17.1	* 1.5	59.5
Vietnam	11.9	14.0	* 2.0	* 2.5	16.5	* 15.3	45.3
Europe	293.1	491.6	19.6	33.1	524.7	6.3	46.8
Germany	16.0	29.5	* 0.5	* 1.6	31.1	* 5.1	54.5
Greece	23.2	33.4	* 1.2	* 3.4	36.7	* 9.1	45.9
Italy	29.5	46.4	* 1.1	* 1.9	48.3	* 4.0	35.0
Malta	7.6	12.0	* 0.6	* 0.8	12.8	* 6.6	42.7
Netherlands	7.6	15.5	* 0.6	* 1.3	16.8	* 7.9	44.3
Poland	5.9	8.3	* 1.2	* 1.6	9.9	* 16.1	33.9
UK and Ireland	155.3	270.7	11.1	17.8	288.4	6.2	50.1
Yugoslavia	24.1	33.7	* 1.7	* 2.2	35.9	* 6.0	48.9
Oceania	53.0	75.8	6.1	9.0	84.7	10.6	67.7
New Zealand	42.7	60.6	4.1	6.5	67.1	9.7	68.6
PERSONS							
Born in Australia	4,484.1	5,699.0	280.4	372.2	6,071.2	6.1	64.9
Born outside Australia	1,629.4	1,984.2	109.4	144.0	2,128.2	6.8	62.3
Africa	62.4	73.4	* 2.3	* 3.3	76.6	* 4.3	66.4
America	57.2	70.8	4.8	6.5	77.3	8.4	72.2
Asia	290.0	342.2	34.1	43.8	386.0	11.3	61.9
India	26.0	31.8	* 1.6	* 1.8	33.7	* 5.4	68.6
Lebanon	21.9	25.1	7.1	8.1	33.1	24.4	50.5
Malaysia	30.5	37.0	* 1.2	* 2.2	39.2	* 5.6	67.8
Vietnam	35.8	39.4	8.1	9.0	48.4	18.6	62.0
Europe	1,067.1	1,315.0	57.1	75.5	1,390.5	5.4	60.0
Germany	53.7	68.8	* 3.3	4.5	73.4	6.2	66.2
Greece	76.2	89.9	4.2	6.7	96.6	6.9	59.0
Italy	127.9	152.9	3.7	5.1	158.0	3.3	53.9
Malta	29.5	34.1	* 1.1	* 1.5	35.6	* 4.2	59.4
Netherlands	42.8	52.1	* 2.0	* 2.7	54.9	* 5.0	62.0
Poland	21.8	26.7	* 2.9	* 3.3	30.0	* 11.0	45.1
UK and Ireland	537.1	678.8	28.3	37.9	716.6	5.3	62.1
Yugoslavia	84.1	96.1	5.9	6.6	102.8	6.4	63.1
Oceania	152.8	182.9	11.0	14.9	197.8	7.5	77.3
New Zealand	126.9	149.8	8.2	11.1	160.9	6.9	78.5

(a) See the definition of the labour force participation rate in the Glossary, Appendix A.



TABLE 15. CIVILIAN LABOUR FORCE BORN OUTSIDE AUSTRALIA: BIRTHPLACE AND PERIOD OF ARRIVAL IN AUSTRALIA, APRIL 1989

Period of arrival	Africa	America	Asia	Europe		Oceania		Total			Persons
				U.K. and Ireland	Other countries	New Zealand	Total	Males	Females		
								Married	Total		
EMPLOYED ('000)											
Before 1971	27.8	16.0	76.6	414.5	483.3	27.1	34.3	670.0	293.6	382.6	1,052.6
1971 - 1975	10.4	21.0	41.2	114.6	66.1	15.0	20.7	162.6	72.5	111.4	274.1
1976 - 1980	10.9	10.3	67.3	50.4	26.0	32.7	36.1	119.6	56.0	81.5	201.0
1981 - 1985	10.3	14.3	72.8	47.6	40.5	32.4	40.5	131.3	66.6	94.6	226.0
1986 to survey date	14.0	9.1	84.3	51.6	20.3	42.5	51.3	141.4	55.1	89.2	230.6
UNEMPLOYED ('000)											
Before 1971	* 1.0	* 0.4	3.8	21.3	24.3	* 1.0	* 1.5	30.7	14.6	21.5	52.2
1971 - 1975	* 0.2	* 1.4	4.5	7.0	4.4	* 0.9	* 1.3	9.1	5.7	9.8	18.9
1976 - 1980	* 0.4	* 1.6	7.2	* 2.5	* 0.8	* 2.0	* 2.2	8.6	* 2.8	6.1	14.7
1981 - 1985	* 0.9	* 0.9	9.0	3.6	3.7	* 1.8	* 3.2	10.5	5.7	10.8	21.3
1986 to survey date	* 0.8	* 2.2	19.3	3.5	4.4	5.4	6.7	20.6	10.3	16.3	36.9
LABOUR FORCE ('000)											
Before 1971	28.7	16.4	80.4	435.8	507.6	28.1	35.9	700.7	308.1	404.1	1,104.7
1971 - 1975	10.6	22.5	45.7	121.6	70.6	16.0	22.0	171.7	78.2	121.3	293.0
1976 - 1980	11.3	11.9	74.6	53.0	26.8	34.7	38.2	128.1	58.8	87.6	215.7
1981 - 1985	11.2	15.2	81.8	51.2	44.2	34.2	43.7	141.9	72.4	105.4	247.3
1986 to survey date	14.9	11.3	103.6	55.1	24.6	47.9	58.0	162.0	65.5	105.5	267.5
UNEMPLOYMENT RATE (per cent)											
Before 1971	* 3.3	* 2.3	4.7	4.9	4.8	* 3.4	* 4.3	4.4	4.7	5.3	4.7
1971 - 1975	* 2.2	* 6.4	9.8	5.8	6.3	* 5.9	* 5.8	5.3	7.2	8.1	6.4
1976 - 1980	* 3.3	* 13.4	9.7	* 4.7	* 3.1	* 5.7	* 5.6	6.7	* 4.8	7.0	6.8
1981 - 1985	* 7.9	* 6.2	11.0	6.9	8.4	* 5.3	* 7.4	7.4	7.9	10.2	8.6
1986 to survey date	* 5.7	* 19.2	18.7	6.3	17.8	11.3	11.5	12.7	15.8	15.5	13.8
PARTICIPATION RATE(a) (per cent)											
Before 1971	57.2	66.6	62.9	56.6	55.1	64.7	66.9	69.0	46.0	43.4	56.7
1971 - 1975	74.1	76.2	65.5	74.5	69.0	75.5	76.3	85.1	56.6	58.8	71.8
1976 - 1980	75.6	83.5	65.8	72.7	73.3	84.9	82.5	83.5	60.1	60.5	72.3
1981 - 1985	72.7	72.3	62.4	69.3	70.1	83.7	82.0	81.7	59.0	57.3	69.1
1986 to survey date	71.9	64.0	57.1	73.3	63.7	81.8	78.5	77.5	52.4	53.2	65.7

(a) See the definition of the labour force participation rate in the Glossary, Appendix A.

TABLE 16. EMPLOYED PERSONS: FULL-TIME AND PART-TIME WORKERS, BY AGE, APRIL 1989 ('000)

	Age group								Total	
	15-19	20-24	25-34	35-44	45-54	55-59	60-64	65 and over		
MALES										
Full-time workers	267.2	503.4	1,176.4	1,105.8	736.1	246.0	147.0	40.8	4,222.7	
Part-time workers	113.5	47.0	47.3	36.9	26.1	19.4	21.9	28.9	341.0	
Total	380.6	550.4	1,223.8	1,142.6	762.2	265.5	168.8	69.7	4,563.7	
MARRIED FEMALE										
Full-time workers	8.3	104.4	308.1	331.8	193.3	37.5	14.5	5.4	1,003.3	
Part-time workers	* 2.5	30.3	255.4	332.3	186.4	43.3	22.0	6.6	878.7	
Total	10.8	134.6	563.5	664.1	379.7	80.7	36.5	12.0	1,882.0	
ALL FEMALE										
Full-time workers	183.3	375.9	523.7	441.9	273.1	56.8	25.6	10.5	1,890.8	
Part-time workers	157.3	96.2	305.5	368.4	209.3	54.2	28.0	10.0	1,228.8	
Total	340.5	472.1	829.2	810.3	482.4	111.0	53.5	20.5	3,119.6	
PERSONS										
Full-time workers	450.4	879.3	1,700.1	1,547.7	1,009.2	302.8	172.5	51.4	6,113.5	
Part-time workers	270.7	143.3	352.8	405.3	235.5	73.6	49.8	38.8	1,569.8	
Total	721.1	1,022.6	2,053.0	1,952.9	1,244.7	376.4	222.3	90.2	7,683.2	

TABLE 17. HOURS WORKED BY EMPLOYED PERSONS, APRIL 1989

	Females			Total	Persons
	Males	Married	Not married		
NUMBER EMPLOYED ('000)					
Weekly hours worked -					
0	249.9	110.1	59.3	169.4	419.3
1-15	217.0	386.0	206.6	592.6	809.6
16-29	255.9	403.0	133.2	536.2	792.1
30-34	260.6	153.5	91.1	244.5	505.2
35-39	737.1	295.8	286.4	582.1	1,319.3
40	959.0	247.1	242.5	489.7	1,448.6
41-44	293.3	69.9	65.4	135.3	428.7
45-48	469.9	73.1	64.9	138.0	607.9
49 and over	1,120.9	143.6	88.1	231.7	1,352.6
Total	4,563.7	1,882.0	1,237.6	3,119.6	7,683.2
WEEKLY HOURS WORKED					
Aggregate weekly hours worked (million)	183.6	52.9	36.6	91.5	275.1
By full-time workers	178.6	38.9	33.8	72.7	251.3
By part-time workers	5.0	14.0	4.8	18.9	23.8
Average weekly hours worked	40.2	28.1	31.2	29.3	35.8
By full-time workers	42.3	38.8	38.1	38.4	41.1
By part-time workers	14.6	16.0	13.8	15.3	15.2
Average weekly hours worked by persons who worked one hour or more in the reference week	42.6	29.9	32.8	31.0	37.9
By full-time workers	44.8	41.3	40.0	40.7	43.5
By part-time workers	15.4	16.9	14.4	16.2	16.0

TABLE 18. EMPLOYED PERSONS: EMPLOYMENT/POPULATION RATIOS BY AGE AND MARITAL STATUS, APRIL 1989 (per cent)

Age group	Males			Females			Persons
	Married	Not married	Total	Married	Not married	Total	
15-19	65.5	53.1	53.2	45.0	49.6	49.4	51.3
20-24	87.7	81.9	82.9	62.1	77.3	72.3	77.6
25-34	92.1	83.9	89.1	56.4	70.9	60.4	74.8
35-44	93.1	81.4	91.1	65.9	64.3	65.6	78.4
45-54	89.0	73.5	86.4	56.5	60.9	57.4	72.2
55-59	75.0	55.1	71.4	29.5	34.8	30.8	51.4
60-64	49.2	35.7	46.7	14.4	14.9	14.5	30.4
65 and over	9.4	7.5	8.9	2.8	1.3	1.9	4.9
Total	74.9	65.3	71.2	48.6	45.7	47.4	59.1

TABLE 19. FULL-TIME WORKERS WHO WORKED LESS THAN 35 HOURS, BY REASON, APRIL 1989 ('000)

Reason for working less than 35 hours	Females			Total	Persons
	Males	Married	Not married		
Leave, holiday or flexitime	297.2	86.9	66.7	153.6	450.9
Own illness or injury	125.4	45.4	39.5	84.9	210.3
Bad weather, plant breakdown, etc.	97.9	11.0	7.8	18.7	116.6
Began or left job in the reference week	11.6	* 3.0	5.7	8.7	20.3
Stood down, on short time, insufficient work	24.9	7.9	* 3.4	11.3	36.1
Shift work, standard work arrangements	65.6	15.6	12.5	28.1	93.8
Other reasons	20.0	3.9	4.6	8.5	28.5
Total	642.5	173.8	140.1	313.9	956.5

TABLE 20. PART-TIME WORKERS: WHETHER PREFERRED TO WORK MORE HOURS, BY AGE, APRIL 1989 ('000)

	Age group						Total
	15-19	20-24	25-34	35-44	45-54	55 and over	
MALES							
Total	113.5	47.0	47.3	36.9	26.1	70.1	341.0
Preferred not to work more hours	93.3	29.7	29.0	26.1	18.1	62.4	258.7
Preferred to work more hours	20.2	17.3	18.3	10.7	8.0	7.7	82.3
Had actively looked for full-time work in the four weeks to the end of the reference week	8.7	10.7	10.2	5.5	3.9	* 1.3	40.4
MARRIED FEMALES							
Total	* 2.5	30.3	255.4	332.3	186.4	71.8	878.7
Preferred not to work more hours	* 1.3	22.9	223.5	293.0	166.0	68.7	775.4
Preferred to work more hours	* 1.1	7.3	31.9	39.4	20.4	* 3.1	103.3
Had actively looked for full-time work in the four weeks to the end of the reference week	* 0.7	3.7	8.4	7.5	3.7	* 0.2	24.2
ALL FEMALES							
Total	157.3	96.2	305.5	368.4	209.3	92.1	1,228.8
Preferred not to work more hours	125.2	67.8	263.0	317.2	181.8	87.4	1,042.5
Preferred to work more hours	32.1	28.4	42.5	51.2	27.5	4.7	186.3
Had actively looked for full-time work in the four weeks to the end of the reference week	14.6	14.3	12.7	10.0	6.4	* 0.2	58.2
PERSONS							
Total	270.7	143.3	352.8	405.3	235.5	162.2	1,569.8
Preferred not to work more hours	218.5	97.5	292.0	343.3	200.0	149.8	1,301.2
Preferred to work more hours	52.2	45.7	60.8	61.9	35.5	12.4	268.6
Had actively looked for full-time work in the four weeks to the end of the reference week	23.3	24.9	22.8	15.6	10.3	* 1.6	98.6

TABLE 21. PART-TIME WORKERS: WHETHER PREFERRED TO WORK MORE HOURS, BY HOURS WORKED, APRIL 1989 ('000)

	Hours worked by persons who worked in the reference week						Persons who did not work in the reference week	Total
	1-5	6-10	11-15	16-20	21-29	30-34		
MALES								
Total	55.2	79.7	38.6	55.3	48.6	46.4	17.1	341.0
Preferred not to work more hours	41.7	61.2	29.1	40.5	34.7	37.3	14.3	258.7
Preferred to work more hours	13.5	18.5	9.5	14.8	13.9	9.1	* 2.8	82.3
Had actively looked for full-time work in the four weeks to the end of the reference week	5.8	9.3	6.0	8.9	6.3	* 3.2	* 0.9	40.4
MARRIED FEMALES								
Total	93.1	156.1	125.0	170.5	187.3	97.3	49.1	878.7
Preferred not to work more hours	76.8	130.5	109.2	153.5	172.1	89.6	43.6	775.4
Preferred to work more hours	16.4	25.6	15.8	17.0	15.2	7.7	5.5	103.3
Had actively looked for full-time work in the four weeks to the end of the reference week	* 2.9	4.7	4.3	5.2	4.9	* 2.0	* 0.3	24.2
ALL FEMALES								
Total	155.0	253.3	166.4	211.9	243.4	134.2	64.7	1,228.8
Preferred not to work more hours	123.8	209.4	140.2	182.7	212.7	118.1	55.6	1,042.5
Preferred to work more hours	31.2	43.9	26.2	29.2	30.7	16.1	9.1	186.3
Had actively looked for full-time work in the four weeks to the end of the reference week	8.9	12.4	9.5	9.2	12.2	5.0	* 1.0	58.2
PERSONS								
Total	210.2	333.0	205.0	267.2	292.0	180.6	81.8	1,569.8
Preferred not to work more hours	165.6	270.6	169.3	223.2	247.4	155.4	69.9	1,301.2
Preferred to work more hours	44.7	62.4	35.7	44.0	44.6	25.3	11.9	268.6
Had actively looked for full-time work in the four weeks to the end of the reference week	14.7	21.7	15.5	18.1	18.6	8.2	* 1.9	98.6

TABLE 22. UNEMPLOYED PERSONS: STATES, BY AGE, APRIL 1989  
( '000)

Age group	New South Wales	Victoria	Queensland	South Australia	Western Australia	Tasmania	Australia (a)
MALES							
15-19	13.8	15.2	12.9	5.5	5.0	1.9	56.7
20-24	16.2	8.4	10.1	5.6	4.7	2.3	49.2
25-34	27.9	14.0	13.1	9.4	5.1	2.3	73.1
35 and over	36.5	17.4	17.3	10.1	8.2	3.5	94.7
Total	94.4	55.0	53.4	30.6	23.0	10.1	273.7
FEMALES							
15-19	21.8	15.3	12.7	6.3	6.4	2.7	67.0
20-24	9.9	9.7	8.3	4.3	3.7	2.4	39.7
25-34	23.2	11.1	11.6	4.8	5.5	1.9	59.6
35 and over	27.4	20.9	13.9	4.9	6.2	1.7	76.1
Total	82.3	56.9	46.4	20.3	21.8	8.7	242.4
PERSONS							
Looking for full-time work -							
15-19	24.0	17.4	14.5	7.4	6.6	3.6	75.1
20-24	22.9	13.6	15.5	8.4	7.2	4.1	73.7
25-34	41.2	19.8	20.3	12.0	8.3	3.6	107.5
35-44	20.6	13.2	11.7	6.4	6.4	1.9	61.5
45-54	18.8	6.7	7.1	4.0	2.9	1.7	42.1
55 and over	12.5	5.9	6.3	2.3	* 2.1	* 0.8	29.8
Total looking for full-time work	140.0	76.6	75.4	40.6	33.5	15.7	389.8
Total -							
15-19	35.6	30.5	25.5	11.8	11.4	4.6	123.8
20-24	26.1	18.1	18.4	10.0	8.5	4.7	88.9
25-34	51.1	25.1	24.6	14.1	10.6	4.3	132.7
35-44	26.7	22.0	16.1	7.9	8.3	2.4	85.2
45-54	22.5	8.2	8.1	4.5	3.3	1.8	49.2
55 and over	14.8	8.1	7.0	2.6	2.8	* 1.0	36.5
Total	176.7	112.0	99.8	50.9	44.8	18.8	516.1

(a) Includes the Northern Territory and the Australian Capital Territory

TABLE 23. UNEMPLOYED PERSONS AGED 15-19:  
DURATION OF UNEMPLOYMENT AND SCHOOL ATTENDANCE, APRIL 1989

	Attending school	Not attending school		Total
		Left school before 1988	Left school 1988 to survey date	
NUMBER ('000)				
Duration of unemployment (weeks) -				
Under 4	12.7	11.1	8.5	32.3
4 and under 13	12.2	12.9	14.5	39.6
13 and under 26	7.5	9.0	11.2	27.7
26 and over	5.7	16.7	* 1.8	24.1
Total	38.1	49.6	36.0	123.8
DURATION OF UNEMPLOYMENT (weeks)				
Average duration -				
Males	12.8	33.4	10.4	20.9
Females	14.8	30.0	10.9	19.4
Persons	13.9	31.6	10.7	20.1
Looking for full-time work	* 15.2	34.2	11.8	25.0
Looking for part-time work	13.6	13.5	7.9	12.4
Median duration -				
Males	8	14	* 8	11
Females	9	9	8	9
Persons	8	13	8	9
Looking for full-time work	* 12	15	11	13
Looking for part-time work	8	* 4	* 6	6

TABLE 24. UNEMPLOYED PERSONS, BY AGE AND WHETHER LOOKING FOR FULL-TIME OR PART-TIME WORK, APRIL 1989

	Number unemployed ('000)					Unemployment rate (per cent)				
	Males		Females		Persons	Males		Females		Persons
	Married	Total	Married	Total		Married	Total	Married	Total	
LOOKING FOR FULL-TIME WORK										
Total	113.6	236.4	56.6	153.4	389.8	3.9	5.3	5.3	7.5	6.0
Aged 15-19	* 1.3	35.0	* 2.2	40.2	75.1	* 27.0	11.6	* 20.7	18.0	14.3
Looking for first job	* 0.2	14.7	* 1.2	18.4	33.1	..	..	..	..	..
Attending school	* 0.0	* 2.8	* 0.0	* 2.9	5.7	n.a.	n.a.	n.a.	n.a.	n.a.
Attending a tertiary educational institution full time	* 0.0	* 1.3	* 0.3	* 0.7	* 2.0	n.a.	n.a.	n.a.	n.a.	n.a.
Aged 20 and over	112.3	201.4	54.5	113.2	314.6	3.8	4.8	5.2	6.2	5.3
20-24	8.3	43.0	7.9	30.7	73.7	8.3	7.9	7.1	7.6	7.7
Looking for first job	* 0.0	4.0	* 0.8	* 2.8	6.9	..	..	..	..	..
25-34	37.1	68.9	21.0	38.6	107.5	4.6	5.5	6.4	6.9	5.9
35-44	25.6	34.6	16.2	26.9	61.5	2.7	3.0	4.7	5.7	3.8
45-54	20.9	28.4	7.1	13.6	42.1	3.2	3.7	3.5	4.8	4.0
55 and over	20.5	26.4	* 2.2	* 3.4	29.8	5.3	5.7	* 3.7	* 3.5	5.4
Aged 15-64	113.4	236.0	56.6	153.4	389.4	3.9	5.3	5.4	7.5	6.0
LOOKING FOR PART-TIME WORK										
Total	6.1	37.3	45.2	89.0	126.4	4.5	9.9	4.9	6.8	7.5
Aged 15-19	* 0.0	21.8	* 0.8	26.8	48.6	* 0.0	16.1	* 24.4	14.6	15.2
Attending school	* 0.0	15.4	* 0.0	17.1	32.4	* 0.0	18.5	* 0.0	16.8	17.5
Attending a tertiary educational institution full time	* 0.0	5.6	* 0.2	7.6	13.3	* 0.0	18.7	* 100.0	16.2	17.2
Aged 20 and over	6.1	15.6	44.4	62.2	77.7	4.5	6.4	4.8	5.5	5.6
20-24	* 0.2	6.2	* 2.4	9.0	15.2	* 5.2	11.6	* 7.3	8.5	9.6
Attending a tertiary educational institution full time	* 0.0	5.0	* 0.3	3.7	8.7	* 0.0	19.9	* 28.8	11.6	15.2
25-34	* 2.0	4.1	16.7	21.0	25.2	* 8.2	8.0	6.2	6.4	6.7
35-44	* 1.6	* 2.0	18.9	21.7	23.7	* 5.8	* 5.1	5.4	5.6	5.5
45 and over	* 2.3	* 3.2	6.4	10.5	13.7	* 2.9	* 3.3	2.4	3.4	3.3
Aged 15-64	5.8	36.8	45.0	88.1	124.8	5.2	10.5	4.9	6.7	7.5
TOTAL										
Total	119.7	273.7	101.9	242.4	516.1	3.9	5.7	5.1	7.2	6.3
Aged 15-19	* 1.3	56.7	* 3.0	67.0	123.8	* 26.2	13.0	* 21.6	16.4	14.6
Attending school	* 0.0	18.2	* 0.0	19.9	38.1	* 0.0	21.1	* 0.0	19.0	19.9
Attending a tertiary educational institution full time	* 0.0	6.9	* 0.5	8.3	15.2	* 0.0	19.2	* 100.0	16.4	17.6
Aged 20 and over(a)	118.4	217.0	98.9	175.4	392.4	3.9	4.9	5.0	5.9	5.3
20-24	8.5	49.2	10.3	39.7	88.9	8.2	8.2	7.1	7.8	8.0
Attending a tertiary educational institution full time	* 0.0	6.0	* 0.3	4.5	10.5	* 0.0	19.2	* 17.0	12.3	15.5
25-34	39.1	73.1	37.8	59.6	132.7	4.7	5.6	6.3	6.7	6.1
35-44	27.1	36.6	35.1	48.6	85.2	2.7	3.1	5.0	5.7	4.2
45-54	21.4	29.1	11.9	20.1	49.2	3.2	3.7	3.0	4.0	3.8
55-59	11.4	15.3	3.6	6.0	21.3	4.8	5.4	4.2	5.1	5.4
60-64	10.3	12.8	* 0.1	* 0.5	13.3	6.7	7.1	* 0.2	* 0.9	5.6
Aged 15-64	119.1	272.8	101.7	241.5	514.3	4.0	5.7	5.2	7.2	6.3

(a) Includes unemployed persons aged 65 and over, details for whom are not shown separately.

TABLE 25. UNEMPLOYED PERSONS: BIRTHPLACE BY AGE, APRIL 1989

	Number unemployed ('000)			Unemployment rate (per cent)		
	Males	Females	Persons	Males	Females	Persons
BORN IN AUSTRALIA						
Total	194.2	177.9	372.2	5.5	7.0	6.1
Looking for full-time work	168.7	111.7	280.4	5.2	7.3	5.9
Looking for part-time work	25.5	66.2	91.7	8.8	6.5	7.0
Aged 15-19	48.6	60.3	108.9	12.3	16.3	14.2
Aged 20 and over	145.7	117.6	263.3	4.6	5.4	5.0
20-24	40.6	30.8	71.4	8.1	7.3	7.7
25-34	51.7	40.9	92.6	5.2	6.1	5.6
35-44	21.7	30.8	52.5	2.7	5.2	3.8
45-54	16.8	11.0	27.8	3.4	3.3	3.3
55 and over	14.7	4.2	18.8	4.1	3.0	3.8
Aged 15-64	193.8	177.2	371.0	5.6	7.0	6.2
BORN OUTSIDE AUSTRALIA						
Total	79.5	64.5	144.0	6.1	7.8	6.8
Looking for full-time work	67.6	41.7	109.4	5.6	8.0	6.3
Looking for part-time work	11.8	22.8	34.6	13.4	7.6	8.9
Aged 15-19	8.1	6.7	14.9	19.9	18.4	19.2
Aged 20 and over	71.3	57.8	129.1	5.6	7.3	6.3
20-24	8.6	8.9	17.5	8.8	10.1	9.4
25-34	21.3	18.7	40.0	6.9	8.7	7.6
35-44	14.8	17.8	32.6	3.8	6.7	5.0
45-54	12.2	9.1	21.3	4.2	5.5	4.6
55 and over	14.3	* 3.3	17.6	8.0	* 6.4	7.7
Aged 15-64	78.9	64.3	143.2	6.1	7.8	6.8

TABLE 26. UNEMPLOYED PERSONS, BY DURATION OF UNEMPLOYMENT AND AGE, ETC., APRIL 1989

Duration of unemployment (weeks)	Age group				Total (a)	Married	Not married	Looking for -	
	15-19	20-24	25-34	35-54				Full-time work	Part-time work
MALES									
- '000 -									
Under 2	7.0	5.4	5.7	5.0	24.2	7.7	16.5	18.2	6.0
2 and under 4	7.1	5.8	6.6	5.0	25.9	10.0	15.9	20.6	5.3
4 and under 8	7.8	6.5	9.8	6.0	31.5	11.0	20.5	23.9	7.7
8 and under 13	8.6	5.3	6.4	5.9	27.5	10.9	16.6	20.9	6.6
13 and under 26	14.9	8.0	15.9	9.6	51.9	18.5	33.4	45.5	6.4
26 and under 39	* 3.3	4.7	5.5	5.6	20.8	9.5	11.4	19.1	* 1.8
39 and under 52	* 1.1	* 1.4	* 1.5	* 1.9	7.0	* 3.4	3.6	6.4	* 0.6
52 and under 65	* 1.6	3.5	4.4	3.7	14.4	7.5	6.9	13.3	* 1.1
65 and under 104	* 2.6	* 1.8	4.5	* 1.9	14.6	7.7	6.9	13.7	* 0.9
104 and over	* 2.6	6.9	12.8	21.0	55.9	33.6	22.3	54.8	* 1.1
Total	56.7	49.2	73.1	65.7	273.7	119.7	154.0	236.4	37.3
- weeks -									
Average duration -	20.9	44.0	54.0	81.4	58.6	74.3	46.4	65.5	15.1
Median duration -	11	13	16	27	16	26	14	21	7
FEMALES									
- '000 -									
Under 2	8.4	4.5	9.7	9.1	33.2	17.8	15.4	15.8	17.3
2 and under 4	9.7	5.1	9.3	7.4	32.6	13.9	18.8	15.8	16.9
4 and under 8	10.3	5.9	8.1	9.5	34.3	15.7	18.6	19.4	14.9
8 and under 13	12.9	6.1	9.1	8.9	37.6	14.2	23.3	21.9	15.7
13 and under 26	12.8	7.4	7.0	10.2	37.5	12.3	25.2	26.4	11.1
26 and under 39	* 3.3	* 2.3	* 2.8	6.0	15.2	7.0	8.3	12.5	* 2.7
39 and under 52	* 1.8	* 1.0	* 1.4	* 1.0	5.2	* 1.4	3.9	3.6	* 1.7
52 and under 65	* 3.1	3.5	4.2	5.2	16.6	6.7	9.9	12.3	4.4
65 and under 104	* 1.2	* 0.7	* 2.2	* 3.2	7.8	* 2.7	5.2	6.8	* 1.0
104 and over	* 3.4	* 3.4	5.8	8.1	22.4	10.3	12.1	19.0	* 3.4
Total	67.0	39.7	59.6	68.7	242.4	101.9	140.6	153.4	89.0
- weeks -									
Average duration -	19.4	30.9	30.7	42.7	32.1	31.6	32.4	40.1	18.2
Median duration -	9	10	8	12	9	8	10	14	5
PERSONS									
- '000 -									
Under 2	15.4	9.9	15.4	14.1	57.4	25.4	31.9	34.0	23.3
2 and under 4	16.8	10.9	15.9	12.4	58.5	23.8	34.7	36.3	22.2
4 and under 8	18.1	12.3	17.9	15.5	65.8	26.7	39.1	43.2	22.6
8 and under 13	21.5	11.4	15.5	14.8	65.0	25.1	39.9	42.8	22.2
13 and under 26	27.7	15.3	22.9	19.8	89.4	30.8	58.6	71.9	17.4
26 and under 39	6.7	7.0	8.3	11.7	36.1	16.5	19.6	31.6	4.5
39 and under 52	* 2.9	* 2.3	* 3.0	* 2.9	12.2	4.7	7.5	9.9	* 2.3
52 and under 65	4.7	7.0	8.6	9.0	31.1	14.2	16.9	25.6	5.5
65 and under 104	3.8	* 2.4	6.7	5.1	22.4	10.4	12.0	20.5	* 1.9
104 and over	6.0	10.3	18.6	29.1	78.3	43.9	34.4	73.9	4.4
Total	123.8	88.9	132.7	134.3	516.1	221.5	294.6	389.8	126.4
- weeks -									
Average duration -	20.1	38.2	43.5	61.6	46.1	54.7	39.7	55.5	17.3
Median duration -	9	12	13	16	13	15	13	17	6

(a) Includes persons aged 55 and over, details for whom are not shown separately.

TABLE 27. UNEMPLOYED PERSONS: AGE AND ACTIVE STEPS TAKEN TO FIND WORK(a), APRIL 1989 ('000)

	Persons			Total
	Males	Females	Aged 25 and over	
Took active steps to find work	270.2	232.7	120.6	503.0
Wrote, phoned or applied in person to an employer	222.9	190.5	97.6	413.4
Answered a newspaper advertisement for a job	6.8	7.8	* 3.0	14.6
Checked factory or Commonwealth Employment Service noticeboards	20.3	16.4	10.6	36.7
Been registered with the Commonwealth Employment Service	15.9	10.7	6.4	26.6
Checked or registered with any other employment agency	* 1.5	* 1.2	* 0.3	* 2.7
Advertised or tendered for work	* 0.2	* 0.9	* 0.0	* 1.1
Contacted relatives or friends	* 2.7	5.2	* 2.7	7.9
Stood down	3.5	9.7	* 3.1	13.2
Total	273.7	242.4	123.8	516.1

(a) See the Glossary, Appendix A.

TABLE 28. UNEMPLOYED PERSONS: INDUSTRY AND OCCUPATION OF LAST FULL-TIME JOB  
AND DURATION OF UNEMPLOYMENT, APRIL 1989  
( '000)

	Duration of unemployment (weeks)					Total		
	Under 4	4 and under 13	13 and under 26	26 and under 52	52 and over	Males	Females	Persons
Had worked full time for two weeks or more in the last two years	65.6	77.1	50.1	31.4	27.2	152.2	99.2	251.4
Industry division or subdivision -								
Agriculture, forestry, fishing & hunting	4.7	* 2.7	* 2.8	* 1.3	* 2.5	10.4	3.5	14.0
Agriculture & services to agriculture	4.1	* 2.5	* 2.1	* 1.1	* 2.4	9.0	* 3.2	12.2
Manufacturing	11.5	15.0	11.1	8.7	5.8	36.4	15.8	52.1
Food, beverages and tobacco	* 1.6	3.8	* 3.2	* 1.7	* 1.3	7.7	3.9	11.6
Metal products	* 1.6	* 2.9	* 0.8	* 1.4	* 1.0	7.2	* 0.5	7.7
Other manufacturing	8.2	8.3	7.1	5.6	3.6	21.5	11.3	32.8
Construction	6.5	7.2	4.5	* 2.2	* 2.2	21.2	* 1.4	22.6
Wholesale and retail trade	16.1	20.7	11.4	6.3	3.8	28.9	29.4	58.3
Wholesale trade	4.6	3.5	* 2.4	* 1.5	* 0.2	8.7	3.5	12.2
Retail trade	11.5	17.2	9.0	4.9	3.6	20.2	25.9	46.1
Transport and storage	* 1.6	* 3.4	* 2.9	* 1.0	* 1.6	9.5	* 1.0	10.5
Finance, property & business services	6.0	5.4	* 3.4	* 2.1	* 0.9	9.9	7.9	17.8
Public administration and defence	* 2.0	4.3	* 2.5	* 1.7	* 2.8	8.3	4.9	13.2
Community services	8.8	9.3	4.6	* 3.2	* 3.4	8.7	20.6	29.3
Recreation, personal & other services	6.9	7.2	4.5	3.7	3.6	11.7	14.2	25.9
Other industries	* 1.7	* 1.8	* 2.5	* 1.1	* 0.6	7.2	* 0.6	7.7
Occupation group -								
Managers and administrators	* 2.2	3.5	* 2.3	* 1.5	* 1.7	7.9	* 3.2	11.1
Professionals	* 3.2	6.3	3.8	* 1.9	* 1.3	8.5	8.2	16.7
Para-professionals	* 2.9	* 3.1	* 1.9	* 1.3	* 0.7	6.2	3.7	9.9
Tradespersons	11.3	8.1	5.1	3.8	5.0	27.7	5.6	33.3
Clerks	9.6	11.8	6.2	* 3.4	* 2.9	8.1	25.7	33.9
Salespersons and personal service workers	9.3	17.2	7.3	3.7	3.6	12.1	29.0	41.1
Plant and machine operators	4.7	6.3	8.8	3.5	* 2.2	19.8	5.8	25.6
Labourers and related workers	22.5	20.7	14.7	12.2	9.8	62.0	17.9	79.9
Other	37.1	53.7	39.3	16.9	104.5	118.1	133.5	251.6
Looking for first job	17.9	28.5	24.0	7.1	16.9	40.8	53.7	94.5
Looking for full-time work	5.2	11.6	16.8	4.6	12.4	22.2	28.4	50.6
Former workers	19.2	25.2	15.3	9.8	87.6	77.3	79.8	157.0
Stood down	13.2	..	..	..	..	3.5	9.7	13.2
Total	115.9	130.9	89.4	48.3	131.7	273.7	242.4	516.1

TABLE 29. UNEMPLOYED PERSONS: REASON FOR LEAVING LAST FULL-TIME JOB

Month	Reason for unemployment					Total	Percent of unemployed				
	Job loser	Job leaver	Stood down	Looking for first job	Former workers		Job loser	Job leaver	Stood down	Looking for first job	Former workers
		-'000 -						- per cent -			
1988 -											
February	201.4	120.6	12.1	137.1	173.6	644.8	31.2	18.7	1.9	21.3	26.9
March	203.0	121.6	16.7	130.4	173.6	645.2	31.5	18.8	2.6	20.2	26.9
April	207.9	124.8	25.6	114.6	171.9	644.8	32.2	19.4	4.0	17.8	26.7
May	190.0	115.0	13.2	103.2	171.6	593.0	32.0	19.4	2.2	17.4	28.9
June	183.7	110.0	11.9	94.0	169.4	569.1	32.3	19.3	2.1	16.5	29.8
July	172.9	96.5	15.3	82.5	151.5	518.8	33.3	18.6	3.0	15.9	29.2
August	170.7	113.5	8.6	90.6	155.3	538.7	31.7	21.1	1.6	16.8	28.8
September	169.8	113.3	16.6	98.3	156.5	554.6	30.6	20.4	3.0	17.7	28.2
October	156.9	95.9	12.3	90.4	152.3	507.9	30.9	18.9	2.4	17.8	30.0
November	152.0	91.4	14.1	85.2	145.6	488.4	31.1	18.7	2.9	17.4	29.8
December	146.5	109.6	11.7	147.0	148.6	563.3	26.0	19.4	2.1	26.1	26.4
1989 -											
January	172.0	110.6	19.1	141.7	149.0	592.4	29.0	18.7	3.2	23.9	25.2
February	164.7	126.3	15.1	128.0	164.0	598.1	27.5	21.1	2.5	21.4	27.4
March	150.8	124.3	15.8	99.8	155.6	546.3	27.6	22.8	2.9	18.3	28.5
April	140.0	111.4	13.2	94.5	157.0	516.1	27.1	21.6	2.6	18.3	30.4

TABLE 30. UNEMPLOYED PERSONS WHO HAD WORKED FULL TIME FOR TWO WEEKS OR MORE IN THE LAST TWO YEARS: REASON FOR CEASING LAST FULL-TIME JOB, INDUSTRY AND OCCUPATION OF LAST FULL-TIME JOB AND AGE, APRIL 1989 ('000)

Industry group	Reason for ceasing last full-time job										Total
	Job loser						Job leaver				
	Laid-off, retrenched			Total							
	Males	Females	Persons	Males	Females	Persons	Males	Females	Persons		
Agriculture, forestry, fishing and hunting	* 3.3	* 0.2	* 3.4	8.6	* 1.9	10.5	* 1.8	* 1.6	* 3.4	14.0	
Manufacturing	15.8	* 3.2	19.0	21.5	6.5	28.0	14.9	9.2	24.1	52.1	
Construction	9.8	* 0.0	9.8	14.3	* 0.2	14.5	6.9	* 1.2	8.0	22.6	
Wholesale and retail	12.7	10.6	23.3	16.7	15.1	31.8	12.2	14.3	26.5	58.3	
Transport and storage	4.5	* 0.0	4.5	6.2	* 0.1	6.3	* 3.4	* 0.8	4.2	10.5	
Public administration & defence	* 2.5	* 1.0	3.6	4.2	3.8	8.0	4.1	* 1.1	5.2	13.2	
Community services	* 1.9	* 3.2	5.1	5.0	8.8	13.8	3.8	11.8	15.5	29.3	
Recreation, personal and other services	3.6	5.1	8.7	6.2	7.3	13.5	5.5	6.9	12.4	25.9	
Other industries	7.4	* 2.0	9.4	10.6	* 3.0	13.6	6.4	5.5	11.9	25.6	
Occupation group											
Tradespersons	11.9	* 3.0	14.9	17.3	3.9	21.2	10.3	* 1.8	12.1	33.3	
Clerks	* 1.9	5.0	6.9	4.0	11.7	15.7	4.1	14.0	18.1	33.9	
Salespersons and personal service workers	4.4	9.9	14.4	5.4	13.7	19.0	6.7	15.4	22.1	41.1	
Plant and machine operators, and drivers	8.3	* 1.0	9.3	12.1	* 2.8	14.9	7.7	* 3.0	10.7	25.6	
Labourers and related workers	27.2	3.5	30.7	42.7	7.8	50.6	19.3	10.0	29.3	79.9	
Other occupations	7.7	* 2.8	10.5	11.8	6.9	18.7	10.7	8.3	19.0	37.7	
Age group											
15-19	7.3	6.1	13.4	11.1	10.3	21.4	9.1	12.7	21.9	43.3	
20-24	13.0	7.1	20.1	20.5	10.7	31.1	14.1	13.4	27.5	58.6	
25-34	20.4	4.5	24.9	29.7	12.1	41.9	20.4	14.9	35.2	77.1	
35-44	7.3	4.7	12.0	11.2	9.0	20.2	9.0	8.6	17.6	37.7	
45-54	7.5	* 1.9	9.3	11.8	3.5	15.3	3.9	* 2.4	6.3	21.7	
55 and over	6.1	* 0.9	7.0	9.0	* 1.1	10.2	* 2.3	* 0.6	* 2.9	13.0	
Total	61.5	25.2	86.7	93.3	46.7	140.0	58.8	52.5	111.4	251.4	



TABLE 31. PERSONS NOT IN THE LABOUR FORCE: AGE AND MARITAL STATUS, APRIL 1989

Age group	Males			Females			Persons	Proportion of population - per cent -
	Married	Not married	Total	Married	Not married	Total		
15-19	* 0.6	277.9	278.6	10.2	271.6	281.8	560.4	39.9
20-24	4.9	59.8	64.7	72.0	69.5	141.5	206.2	15.6
25-34	29.1	47.4	76.5	397.1	87.1	484.2	560.7	20.4
35-44	44.2	31.3	75.4	308.8	67.5	376.3	451.7	18.1
45-54	59.6	31.6	91.1	280.6	57.8	338.4	429.6	24.9
55-59	64.6	26.5	91.1	189.6	54.2	243.8	334.9	45.7
60-64	138.5	41.7	180.2	217.1	97.3	314.4	494.6	67.7
65-69	207.8	57.0	264.8	193.1	135.4	328.5	593.3	91.5
70 and over	316.0	133.6	449.6	221.6	489.7	711.4	1,161.0	96.9
Total	865.2	706.8	1,572.0	1,890.1	1,330.2	3,220.4	4,792.4	36.9

TABLE 32. PERSONS NOT IN THE LABOUR FORCE: WHETHER LOOKING FOR WORK, ETC., APRIL 1989 ('000)

	Males			Females			Persons
	Married	Not married	Total	Married	Not married	Total	
Looking for work							
Took active steps to find work (a)	13.0	18.7	31.8	24.0	21.1	45.1	76.9
Did not take active steps to find work	6.8	9.2	16.0	9.7	8.9	18.6	34.6
Total	6.2	9.6	15.8	14.3	12.2	26.5	42.3
Not looking for work	819.8	628.7	1,448.4	1,845.7	1,188.7	3,034.4	4,482.9
Permanently unable to work	13.5	12.0	25.5	4.8	9.0	13.9	39.3
In institutions	18.9	47.4	66.3	15.6	111.3	126.9	193.3
Total	865.2	706.8	1,572.0	1,890.1	1,330.2	3,220.4	4,792.4

(a) Not available to start work in the reference week for reasons other than own temporary illness or injury.

TABLE 33. ESTIMATES OF LABOUR FORCE STATUS AND GROSS CHANGES (FLOWS) DERIVED FROM MATCHED RECORDS MARCH 1989 AND APRIL 1989 ('000)

Labour force status in - March 1989	April 1989	Females			Persons
		Males	Married	Total	
Employed full time	Employed full time	3,253.4	725.5	1,365.0	4,618.5
	Employed part time	51.1	55.1	77.7	128.8
	Unemployed	26.7	4.6	14.3	41.0
	Not in the labour force	34.9	26.7	35.6	70.5
Employed part time	Employed full time	49.8	58.7	88.5	138.3
	Employed part time	175.4	599.6	816.8	992.2
	Unemployed	9.6	10.1	21.8	31.5
	Not in the labour force	28.7	54.4	77.2	105.9
Unemployed	Employed full time	32.5	6.8	20.2	52.7
	Employed part time	16.0	13.1	29.0	44.9
	Unemployed	139.7	37.0	98.3	238.0
	Not in the labour force	30.6	23.4	46.7	77.3
Not in the labour force	Employed full time	30.6	18.0	25.7	56.3
	Employed part time	28.0	58.2	82.0	110.0
	Unemployed	28.3	29.2	52.5	80.8
	Not in the labour force	1,069.7	1,413.8	2,302.4	3,372.1
Total flows into	Employed	107.2	96.1	156.8	264.0
	Full time	113.0	83.5	134.4	247.4
	Part time	95.1	126.4	188.7	283.8
	Unemployed	64.6	43.8	88.6	153.2
	Not in the labour force	94.3	104.5	159.5	253.8
Total flows out of	Employed	100.0	95.7	148.9	248.9
	Full time	112.7	86.3	127.6	240.3
	Part time	88.2	123.2	187.5	275.7
	Unemployed	79.2	43.3	95.8	175.0
	Not in the labour force	86.9	105.4	160.2	247.1
Total changes of status		266.0	244.4	405.0	671.0
Population represented by the matched sample		5,005.3	3,134.1	5,153.7	10,159.0

TABLE 34. FAMILY STATUS OF THE CIVILIAN POPULATION AGED 15 AND OVER: SUMMARY TABLE, APRIL 1989

	Employed	Unemployed	Labour force	Not in labour force	Civilian population aged 15 and over		
					Males	Females	Persons
NUMBER ('000)							
Member of a family	6,325.6	409.0	6,734.6	3,609.9	5,150.2	5,194.3	10,344.5
Husband or wife	4,648.8	209.4	4,858.3	2,607.3	3,774.2	3,691.4	7,465.6
With children aged 0-14 present	2,453.5	131.8	2,585.2	772.0	1,706.8	1,650.4	3,357.2
Without children aged 0-14 present	2,195.4	77.6	2,273.0	1,835.3	2,067.4	2,041.0	4,108.3
With dependents present	2,841.1	139.9	2,981.0	875.3	1,958.7	1,897.6	3,856.4
Without dependents present	1,807.8	69.5	1,877.3	1,732.0	1,815.5	1,793.8	3,609.2
Other family head	267.6	28.7	296.3	295.7	115.0	477.0	592.0
With children aged 0-14 present	121.2	17.6	138.8	135.0	29.5	244.3	273.7
Without children aged 0-14 present	146.5	11.1	157.6	160.7	85.5	232.7	318.3
With dependents present	162.1	20.8	182.9	151.9	41.9	292.9	334.8
Without dependents present	105.6	7.9	113.4	143.8	73.1	184.1	257.2
Full-time student aged 15-24(a)	241.6	52.0	293.6	486.1	386.7	393.0	779.7
Other child of married-couple or other family head	1,078.1	104.7	1,182.8	92.3	778.3	496.8	1,275.1
Other relative of married-couple or other family head	89.5	14.2	103.7	128.5	96.1	136.0	232.1
Not a member of a family	1,014.7	75.1	1,089.8	727.0	874.8	942.0	1,816.8
Living alone	441.1	28.9	470.0	621.2	458.2	633.0	1,091.2
Not living alone	573.7	46.2	619.9	105.8	416.6	309.0	725.7
Usual resident of a private dwelling where family status was determined	7,340.4	484.1	7,824.4	4,336.9	6,025.0	6,136.3	12,161.3
Usual resident of a private dwelling where family status was not determined	167.9	12.5	180.4	77.5	113.9	144.0	257.8
Total usual residents of private dwellings	7,508.2	496.6	8,004.8	4,414.4	6,138.9	6,280.3	12,419.2
Visitors to private dwellings	47.6	7.4	55.1	63.1	57.4	60.8	118.2
Persons enumerated in non-private dwellings	127.4	12.1	139.5	314.9	213.1	241.3	454.4
Total	7,683.2	516.1	8,199.4	4,792.4	6,409.4	6,582.4	12,991.8
PROPORTION OF TOTAL (per cent)							
Member of a family	82.3	79.2	82.1	75.3	80.4	78.9	79.6
Husband or wife	60.5	40.6	59.3	54.4	58.9	56.1	57.5
With children aged 0-14 present	31.9	25.5	31.5	16.1	26.6	25.1	25.8
Without children aged 0-14 present	28.6	15.0	27.7	38.3	32.3	31.0	31.6
With dependents present	37.0	27.1	36.4	18.3	30.6	28.8	29.7
Without dependents present	23.5	13.5	22.9	36.1	28.3	27.3	27.8
Other family head	3.5	5.6	3.6	6.2	1.8	7.2	4.6
With children aged 0-14 present	1.6	3.4	1.7	2.8	0.5	3.7	2.1
Without children aged 0-14 present	1.9	2.2	1.9	3.4	1.3	3.5	2.4
With dependents present	2.1	4.0	2.2	3.2	0.7	4.4	2.6
Without dependents present	1.4	1.5	1.4	3.0	1.1	2.8	2.0
Full-time student aged 15-24(a)	3.1	10.1	3.6	10.1	6.0	6.0	6.0
Other child of married-couple or other family head	14.0	20.3	14.4	1.9	12.1	7.5	9.8
Other relative of married-couple or other family head	1.2	2.7	1.3	2.7	1.5	2.1	1.8
Not a member of a family	13.2	14.5	13.3	15.2	13.6	14.3	14.0
Living alone	5.7	5.6	5.7	13.0	7.1	9.6	8.4
Not living alone	7.5	8.9	7.6	2.2	6.5	4.7	5.6
Usual resident of a private dwelling where family status was determined	95.5	93.8	95.4	90.5	94.0	93.2	93.6
Usual resident of a private dwelling where family status was not determined	2.2	2.4	2.2	1.6	1.8	2.2	2.0
Total usual residents of private dwellings	97.7	96.2	97.6	92.1	95.8	95.4	95.6
Visitors to private dwellings	0.6	1.4	0.7	1.3	0.9	0.9	0.9
Persons enumerated in non-private dwellings	1.7	2.3	1.7	6.6	3.3	3.7	3.5
Total	100.0	100.0	100.0	100.0	100.0	100.0	100.0

(a) Excludes persons aged 20-24 attending school.

TABLE 35. FAMILY STATUS AND LABOUR FORCE STATUS OF PERSONS AGED 15 AND OVER(a), APRIL 1989

	Employed			Unemployed		Labour force	Not in labour force	Civilian population aged 15 and over	Unemployment rate	Participation rate
	Full-time workers	Part-time workers	Total	Looking for full-time work	Total					
	- '000 -									
	- per cent -									
<b>MALES</b>										
Member of a family	3,482.8	272.0	3,754.8	181.4	210.0	3,964.8	1,185.4	5,150.2	5.3	77.0
Husband	2,725.3	123.0	2,848.3	107.6	113.2	2,961.5	812.7	3,774.2	3.8	78.5
With children aged 0-14 present	1,514.2	41.8	1,556.0	66.6	69.2	1,625.2	81.7	1,706.8	4.3	95.2
Without children aged 0-14 present	1,211.1	81.2	1,292.3	41.0	44.0	1,336.3	731.0	2,067.4	3.3	64.6
With dependents present	1,730.1	49.5	1,779.6	70.5	73.4	1,853.0	105.7	1,958.7	4.0	94.6
Without dependents present	995.3	73.4	1,068.7	37.1	39.8	1,108.5	707.0	1,815.5	3.6	61.1
Other family head	73.7	4.6	78.4	5.0	5.2	83.6	31.4	115.0	6.2	72.7
With children aged 0-14 present	20.4	* 1.2	21.6	* 1.9	* 2.0	23.5	5.9	29.5	* 8.3	79.8
Without children aged 0-14 present	53.3	3.5	56.8	* 3.1	* 3.2	60.0	25.5	85.5	* 5.4	70.2
With dependents present	30.5	* 1.6	32.1	* 2.4	* 2.6	34.7	7.2	41.9	* 7.4	82.7
Without dependents present	43.3	* 3.0	46.3	* 2.6	* 2.6	48.9	24.2	73.1	* 5.4	66.9
Full-time student aged 15-24(b)	6.8	98.4	105.2	4.4	25.4	130.6	256.1	386.7	19.4	33.8
Other child of married-couple or other family head	624.4	43.2	667.6	57.0	58.1	725.7	52.5	778.3	8.0	93.2
Other relative of married-couple or other family head	52.6	* 2.8	55.4	7.3	8.1	63.5	32.6	96.1	12.7	66.0
Not a member of a family	565.2	47.0	612.2	40.2	45.3	657.5	217.3	874.8	6.9	75.2
Living alone	256.5	19.8	276.3	16.9	18.1	294.4	163.8	458.2	6.1	64.2
Not living alone	308.6	27.3	335.9	23.4	27.2	363.1	53.5	416.6	7.5	87.2
Total	4,048.0	319.0	4,367.0	221.6	255.3	4,622.3	1,402.7	6,025.0	5.5	76.7
<b>FEMALES</b>										
Member of a family	1,468.4	1,102.4	2,570.9	121.1	198.9	2,769.8	2,424.5	5,194.3	7.2	53.3
Wife	956.0	844.6	1,800.6	52.3	96.2	1,896.8	1,794.6	3,691.4	5.1	51.4
With children aged 0-14 present	368.4	529.1	897.5	27.4	62.6	960.1	690.3	1,650.4	6.5	58.2
Without children aged 0-14 present	587.6	315.5	903.1	24.9	33.6	936.7	1,104.3	2,041.0	3.6	45.9
With dependents present	453.3	608.2	1,061.5	29.7	66.5	1,128.0	769.6	1,897.6	5.9	59.4
Without dependents present	502.7	236.4	739.1	22.6	29.7	768.7	1,025.0	1,793.8	3.9	42.9
Other family head	119.2	70.1	189.3	15.5	23.5	212.8	264.2	477.0	11.0	44.6
With children aged 0-14 present	53.0	46.6	99.6	8.9	15.6	115.2	129.0	244.3	13.6	47.2
Without children aged 0-14 present	66.2	23.5	89.7	6.6	7.9	97.5	135.2	232.7	8.1	41.9
With dependents present	75.6	54.4	130.0	11.2	18.3	148.3	144.6	292.9	12.3	50.6
Without dependents present	43.6	15.7	59.3	4.3	5.2	64.5	119.6	184.1	8.1	35.0
Full-time student aged 15-24(b)	4.4	132.0	136.4	3.7	26.6	163.0	230.0	393.0	16.3	41.5
Other child of married-couple or other family head	360.1	50.4	410.5	44.1	46.6	457.1	39.8	496.8	10.2	92.0
Other relative of married-couple or other family head	28.8	5.2	34.1	5.4	6.1	40.2	95.8	136.0	15.2	29.6
Not a member of a family	328.1	74.4	402.5	23.1	29.8	432.3	509.7	942.0	6.9	45.9
Living alone	132.5	32.3	164.8	7.8	10.8	175.6	457.4	633.0	6.2	27.7
Not living alone	195.6	42.2	237.8	15.3	19.0	256.7	52.3	309.0	7.4	83.1
Total	1,796.5	1,176.9	2,973.4	144.1	228.7	3,202.2	2,934.2	6,136.3	7.1	52.2
<b>PERSONS</b>										
Member of a family	4,951.2	1,374.4	6,325.6	302.4	409.0	6,734.6	3,609.9	10,344.5	6.1	65.1
Husband or wife	3,681.3	967.6	4,648.8	159.9	209.4	4,858.3	2,607.3	7,465.6	4.3	65.1
With children aged 0-14 present	1,882.6	570.9	2,453.5	94.0	131.8	2,585.2	772.0	3,357.2	5.1	77.0
Without children aged 0-14 present	1,798.7	396.7	2,195.4	66.0	77.6	2,273.0	1,835.3	4,108.3	3.4	55.3
With dependents present	2,183.4	657.7	2,841.1	100.3	139.9	2,981.0	875.3	3,856.4	4.7	77.3
Without dependents present	1,497.9	309.8	1,807.8	59.7	69.5	1,877.3	1,732.0	3,609.2	3.7	52.0
Other family head	192.9	74.7	267.6	20.5	28.7	296.3	295.7	592.0	9.7	50.1
With children aged 0-14 present	73.4	47.8	121.2	10.8	17.6	138.8	135.0	273.7	12.7	50.7
Without children aged 0-14 present	119.5	27.0	146.5	9.7	11.1	157.6	160.7	318.3	7.0	49.5
With dependents present	106.1	56.0	162.1	13.6	20.8	182.9	151.9	334.8	11.4	54.6
Without dependents present	86.8	18.7	105.6	6.9	7.9	113.4	143.8	257.2	6.9	44.1
Full-time student aged 15-24(b)	11.2	230.4	241.6	8.2	52.0	293.6	486.1	779.7	17.7	37.7
Other child of married-couple or other family head	984.4	93.6	1,078.1	101.1	104.7	1,182.8	92.3	1,275.1	8.9	92.8
Other relative of married-couple or other family head	81.4	8.0	89.5	12.7	14.2	103.7	128.5	232.1	13.7	44.7
Not a member of a family	893.3	121.5	1,014.7	63.3	75.1	1,089.8	727.0	1,816.8	6.9	60.0
Living alone	389.0	52.1	441.1	24.6	28.9	470.0	621.2	1,091.2	6.1	43.1
Not living alone	504.3	69.4	573.7	38.6	46.2	619.9	105.8	725.7	7.5	85.4
Total	5,844.5	1,495.9	7,340.4	365.7	484.1	7,824.4	4,336.9	12,161.3	6.2	64.3

(a) Civilians who were residents of private dwellings where family status was determined. See the Explanatory Notes paragraphs 44 to 46, Appendix B.

(b) Excludes persons aged 20-24 attending school.

TABLE 36. ALL FAMILIES(a): TYPE OF FAMILY, NUMBER OF FAMILY MEMBERS AND EMPLOYMENT STATUS(b), APRIL 1989 ('000 families)

Number of family members(c)	None employed			One employed			Two or more employed			Total		
	None unemployed	One or more unemployed	Total	None unemployed	One or more unemployed	Total	None unemployed	One or more unemployed	Total	None unemployed	One or more unemployed	Total
<b>MARRIED-COUPLE FAMILIES</b>												
Two	556.2	24.1	580.3	242.3	25.1	267.4	496.5	..	496.5	1,294.9	49.3	1,344.2
Three	39.4	21.1	60.6	211.1	27.9	239.0	414.1	14.5	428.6	664.6	63.6	728.2
Four	14.5	23.3	37.9	256.4	33.0	289.4	618.5	37.1	655.7	889.5	93.4	982.9
Five	10.2	12.1	22.2	125.3	19.7	145.0	285.9	24.2	310.2	421.4	56.0	477.4
Six or more	7.3	11.1	18.5	49.6	8.5	58.0	103.1	13.6	116.7	160.0	33.2	193.2
Total	627.6	91.8	719.5	884.6	114.2	998.8	1,918.2	89.4	2,007.6	3,430.4	295.5	3,725.9
<b>OTHER FAMILIES WITH A MALE HEAD</b>												
Two	11.1	4.0	15.1	25.6	6.6	32.2	30.2	..	30.2	66.9	10.6	77.5
Three	* 3.1	* 1.4	4.5	8.0	* 2.5	10.5	11.3	* 1.6	12.9	22.4	5.5	28.0
Four or more	* 1.3	* 0.1	* 1.4	* 3.1	* 0.4	3.5	* 3.4	* 0.7	4.0	7.8	* 1.2	9.0
Total	15.5	5.5	21.0	36.7	9.6	46.2	44.9	* 2.3	47.2	97.1	17.3	114.4
<b>OTHER FAMILIES WITH A FEMALE HEAD</b>												
Two	84.3	18.2	102.5	106.4	7.8	114.2	42.3	..	42.3	233.0	26.0	259.0
Three	42.6	8.4	50.9	47.1	7.6	54.6	36.8	* 1.9	38.8	126.5	17.9	144.3
Four	17.3	3.8	21.1	13.8	* 3.1	16.9	12.4	* 1.9	14.3	43.5	8.8	52.3
Five or more	11.1	* 1.9	13.0	* 2.8	* 1.1	3.9	5.4	* 1.2	6.6	19.2	4.2	23.4
Total	155.2	32.3	187.5	170.0	19.6	189.6	96.9	5.0	101.9	422.2	56.8	479.0
<b>OTHER FAMILIES: TOTAL</b>												
Two	95.4	22.2	117.6	132.0	14.4	146.4	72.5	..	72.5	299.8	36.6	336.4
Three	45.6	9.8	55.4	55.1	10.1	65.2	48.1	3.5	51.7	148.9	23.4	172.3
Four	17.9	3.9	21.7	16.3	3.5	19.8	14.7	* 2.3	17.0	48.8	9.7	58.5
Five	8.8	* 1.2	10.0	* 2.8	* 0.7	3.5	3.9	* 1.2	5.0	15.5	* 3.0	18.6
Six or more	* 3.0	* 0.7	3.7	* 0.5	* 0.4	* 0.9	* 2.7	* 0.2	* 2.9	6.2	* 1.4	7.5
Total	170.7	37.8	208.5	206.7	29.1	235.8	141.9	7.2	149.1	519.3	74.1	593.4
<b>ALL FAMILIES</b>												
Two	651.6	46.3	697.9	374.3	39.6	413.8	569.0	..	569.0	1,594.8	85.9	1,680.7
Three	85.1	30.9	116.0	266.2	38.0	304.2	462.2	18.1	480.3	813.5	87.0	900.5
Four	32.4	27.2	59.6	272.7	36.5	309.2	633.2	39.4	672.7	938.3	103.2	1,041.4
Five	19.0	13.3	32.3	128.1	20.4	148.5	289.8	25.4	315.2	436.9	59.1	496.0
Six or more	10.4	11.8	22.2	50.0	8.9	59.0	105.8	13.8	119.6	166.2	34.5	200.7
Total	798.4	129.6	928.0	1,091.3	143.3	1,234.6	2,060.0	96.7	2,156.7	3,949.7	369.6	4,319.3

(a) See the Explanatory Notes paragraphs 44 to 46, Appendix B, for details of exclusions to family tables.  
 (b) Employment status refers to persons aged 15 and over only.  
 (c) Of any age.

TABLE 37. ALL FAMILIES(a): TYPE OF FAMILY, NUMBER OF CHILDREN AGED 0-14 PRESENT, NUMBER OF DEPENDENTS PRESENT, AND LABOUR FORCE STATUS(b), APRIL 1989 ('000 families)

	Number of children aged 0-14 present			Number of dependents present			Total
	None	One	Two or more	None	One	Two or more	
NO FAMILY MEMBER EMPLOYED							
Married-couple families	622.3	31.9	65.3	611.5	35.5	72.3	719.5
One or both spouses unemployed(c)	27.3	16.0	38.4	26.4	13.9	41.3	81.6
Husband unemployed, wife unemployed	4.2	* 2.2	5.4	4.2	* 1.6	6.0	11.8
Husband unemployed, wife not in the labour force	19.7	13.0	31.6	18.8	11.7	33.7	64.3
Neither spouse unemployed	595.0	16.0	26.9	585.1	21.6	31.0	637.9
Other families	68.6	68.0	71.9	54.3	74.3	79.9	208.5
Family head unemployed	5.1	9.7	6.4	* 2.3	10.5	8.4	21.2
Male head unemployed	* 1.3	* 1.5	* 0.5	* 0.7	* 1.6	* 0.9	* 3.2
Female head unemployed	3.8	8.2	5.9	* 1.5	8.9	7.5	18.0
Family head not unemployed	63.5	58.3	65.4	52.1	63.8	71.4	187.3
Male head not in the labour force	12.4	* 2.9	* 2.5	10.9	4.0	* 2.9	17.8
Female head not in the labour force	51.1	55.4	62.9	41.2	59.8	68.5	169.5
All families	690.9	99.9	137.1	665.8	109.8	152.2	928.0
ONE OR MORE FAMILY MEMBERS EMPLOYED							
Married-couple families	1,429.5	578.6	998.3	1,187.6	597.3	1,221.6	3,006.4
One or both spouses unemployed(c)	44.7	26.2	42.2	37.9	26.2	49.0	113.1
Husband employed, wife unemployed	24.2	18.9	33.9	20.9	17.3	38.8	77.0
Husband unemployed, wife employed	13.7	5.4	6.0	11.0	6.7	7.5	25.2
Husband unemployed, wife unemployed	* 1.5	* 0.3	* 0.6	* 0.8	* 0.6	* 1.0	* 2.4
Husband unemployed, wife not in the labour force	4.9	* 1.5	* 1.4	4.7	* 1.6	* 1.5	7.8
Neither spouse unemployed	1,384.8	552.5	956.1	1,149.7	571.1	1,172.6	2,893.4
Husband employed, wife employed	852.1	339.8	536.3	695.0	344.4	688.8	1,728.1
Husband employed, wife not in the labour force	404.1	193.2	404.3	341.7	202.4	457.5	1,001.6
Husband not in the labour force, wife employed	44.9	10.3	12.4	37.8	12.3	17.5	67.6
Husband not in the labour force, wife not in the labour force	83.8	9.1	* 3.1	75.3	12.0	8.8	96.1
Other families	250.5	83.5	51.0	192.5	113.8	78.6	384.9
Family head unemployed	6.1	* 0.8	* 0.7	5.4	* 1.4	* 0.8	7.6
Male head unemployed	* 2.0	* 0.0	* 0.0	* 1.7	* 0.3	* 0.0	* 2.0
Female head unemployed	4.1	* 0.8	* 0.7	3.7	* 1.1	* 0.8	5.7
Family head not unemployed	244.3	82.7	50.3	187.1	112.4	77.8	377.3
Male head employed	56.7	13.7	7.8	43.4	22.6	12.2	78.2
Female head employed	90.0	60.0	39.9	55.7	75.1	59.2	189.9
Male head not in the labour force	12.7	* 0.4	* 0.1	12.1	* 1.0	* 0.1	13.2
Female head not in the labour force	84.9	8.6	* 2.4	76.0	13.7	6.3	95.9
All families	1,680.0	662.1	1,049.3	1,380.1	711.1	1,300.2	3,391.4
TOTAL							
Married-couple families	2,051.8	610.6	1,063.6	1,799.1	632.8	1,293.9	3,725.9
One or both spouses unemployed(c)	71.9	42.1	80.6	64.2	40.1	90.3	194.6
Husband employed, wife unemployed	24.2	18.9	33.9	20.9	17.3	38.8	77.0
Husband unemployed, wife employed	13.7	5.4	6.0	11.0	6.7	7.5	25.2
Husband unemployed, wife unemployed	5.7	* 2.5	6.0	5.0	* 2.2	7.0	14.2
Husband unemployed, wife not in the labour force	24.6	14.5	33.0	23.6	13.3	35.3	72.1
Neither spouse unemployed	1,979.9	568.4	983.0	1,734.8	592.7	1,203.6	3,531.3
Husband employed, wife employed	852.1	339.8	536.3	695.0	344.4	688.8	1,728.1
Husband employed, wife not in the labour force	404.1	193.2	404.3	341.7	202.4	457.5	1,001.6
Husband not in the labour force, wife employed	44.9	10.3	12.4	37.8	12.3	17.5	67.6
Husband not in the labour force, wife not in the labour force	678.8	25.1	30.0	660.4	33.7	39.8	734.0
Other families	319.1	151.5	122.8	246.8	188.1	158.5	593.4
Family head unemployed	11.2	10.5	7.1	7.7	11.9	9.3	28.9
Male head unemployed	* 3.2	* 1.5	* 0.5	* 2.4	* 1.8	* 0.9	5.2
Female head unemployed	8.0	9.0	6.6	5.2	10.1	8.4	23.7
Family head not unemployed	307.8	141.0	115.7	239.2	176.1	149.2	564.5
Male head employed	56.7	13.7	7.8	43.4	22.6	12.2	78.2
Female head employed	90.0	60.0	39.9	55.7	75.1	59.2	189.9
Male head not in the labour force	25.1	* 3.3	* 2.6	23.0	5.0	* 3.0	31.0
Female head not in the labour force	136.1	64.0	65.3	117.1	73.5	74.8	265.4
All families	2,370.9	762.0	1,186.4	2,045.9	820.9	1,452.4	4,319.3

(a) See the Explanatory Notes paragraphs 44 to 46, Appendix B, for details of exclusions to family tables.

(b) Labour force status refers to persons aged 15 and over only.

(c) Includes a small number of families with husband not in the labour force and wife unemployed.

## APPENDIX A

## GLOSSARY

**Actively looking for work:** Includes writing, telephoning or applying in person to an employer for work; answering a newspaper advertisement for a job; checking factory or Commonwealth Employment Service noticeboards; being registered with the Commonwealth Employment Service; checking or registering with any other employment agency; advertising or tendering for work; and contacting friends or relatives.

**Aggregate hours worked:** The total number of hours a group of employed persons has actually worked during the reference week, not necessarily hours paid for.

**Attending school:** Persons aged 15 to 19 who, during the reference week, were enrolled full-time at secondary or high schools.

**Attending tertiary educational institution full time:** Persons aged 15 to 24 who, during the reference week, were enrolled full time at universities, colleges of advanced education, technical colleges, colleges of technical and further education and theological colleges.

**Average hours worked:** Aggregate hours worked by a group divided by the number of persons in that group.

**Average duration of unemployment:** For a group of unemployed persons, the aggregate duration of unemployment divided by the number of persons in the group.

**Dependents:** All family members under 15 years of age; all family members aged 15 to 19 attending school; and all family members aged 15 to 24 attending a tertiary educational institution full time.

**Duration of unemployment:** The period from the time a person began looking for work or was stood down, to the end of the reference week. Thus the survey measures current (and continuing) periods of unemployment rather than completed spells. For persons who may have begun looking for work while still employed, the duration of unemployment is defined as the period from the time the person last worked full time for two weeks or more to the end of the reference week.

**Employed:** Persons aged 15 and over who, during the reference week:

- (a) worked for one hour or more for pay, profit, commission or payment in kind in a job or business, or on a farm (comprising employees, employers and self-employed persons); or
- (b) worked for one hour or more without pay in a family business or on a farm (i.e. unpaid family helpers); or
- (c) were employees who had a job but were not at work and were: on paid leave; on leave without pay for less than four weeks up to the end of the reference week; stood down without pay because of bad weather or plant breakdown at their place of employment for less than four weeks up to the end of the reference week; on

strike or locked out; on workers' compensation and expected to be returning to their job; or receiving wages or salary while undertaking full-time study; or

- (d) were employers, self-employed persons or unpaid family helpers who had a job, business or farm, but were not at work.

**Employment/population ratio:** For any group, the number of employed persons expressed as a percentage of the civilian population aged 15 and over in the same group.

**Employment status:** Persons in the labour force classified according to whether they are employed or unemployed.

**Family:** Two or more related persons (*relationship* includes relationships by blood, marriage or adoption) usually resident in the same household at the time of the survey. A family comprises a married couple or a family head as defined, together with any persons having any of the following relationships to them:

- (a) sons or daughters of any age, if not married and with no children of their own present;
- (b) other relatives if not accompanied by a spouse, sons or daughters, or parents of their own; or
- (c) any children under 15 years of age who do not have a parent present.

**Family head:** The parent in the case of a one-parent family or, in the case of other groups of related persons, generally defined to be the eldest person in the family. No family head is defined for a married-couple family.

**Former workers:** Unemployed persons who have previously worked full time for two weeks or more but not in the past two years.

**Full-time workers:** Employed persons who usually worked 35 hours or more a week (in all jobs) and others who, although usually working less than 35 hours a week, worked 35 hours or more during the reference week.

**Industry:** Classified according to the *Australian Standard Industrial Classification (ASIC) 1983* (1201.0 and 1202.0).

**Job leavers:** Unemployed persons who have worked full time for two weeks or more in the past two years and left that job voluntarily, that is, because of unsatisfactory work arrangements/pay/hours; the job was seasonal, temporary or a holiday job and they left that job to return to studies; their last job was running their own business and they closed down or sold that business for reasons other than financial difficulties; or any other reasons.

**Job losers:** Unemployed persons who have worked full time for two weeks or more in the past two years and left that job involuntarily, that is; were laid off or retrenched from that job; left that job because of their own ill-health or injury; the job was seasonal or temporary and they did

not leave that job to return to studies; or their last job was running their own business and the business closed down because of financial difficulties.

**Labour force:** For any group, persons who were employed or unemployed, as defined.

**Labour force status:** A classification of the civilian population aged 15 and over into employed, unemployed or not in the labour force, as defined. The definitions conform closely to the international standard definitions adopted by the International Conferences of Labour Statisticians.

**Living alone:** A person who is the sole member of a household.

**Marital status:** Persons are classified as married (husband and wife) if they are reported as being married (including de facto) and their spouse was a usual resident of the household at the time of the survey. The not-married category comprises persons who have never married, or are separated, widowed or divorced, as well as those who, although reported as being married, did not have a spouse who usually lived in the household.

**Married-couple families:** Families in which there are two married persons and these persons are husband and wife. See *Marital status*.

**Median duration of unemployment:** The duration which divides unemployed persons into two equal groups, one comprising persons whose duration of unemployment is above the median and the other, persons whose duration is below it.

**Not a member of a family:** A person who is not related to any other member of the household in which they are living.

**Not in the labour force:** Persons who were not in the categories employed or unemployed, as defined. They include persons who were keeping house (unpaid), retired, voluntarily inactive, permanently unable to work, persons in institutions (hospitals, gaols, sanatoriums, etc.), trainee teachers, members of contemplative religious orders, and persons whose only activity during the reference week was jury service or unpaid voluntary work for a charitable organisation.

**Occupation:** Classified according to the *Australian Standard Classification of Occupations (ASCO) 1986 (1222.0)*.

**Other families:** One-parent families and families in which there is no parent, for example a family head living with a brother or sister.

**Participation rate:** For any group, the labour force expressed as a percentage of the civilian population aged 15 and over in the same group. Participation rates for persons classified by birthplace are calculated using population estimates which exclude those in institutions. Participation rates for persons classified by school or tertiary educational institution attendance are calculated using population estimates which include those in institutions.

**Part-time workers:** Employed persons who usually worked less than 35 hours a week and who did so during the reference week.

**State capital cities:** The areas determining the six State capital cities are the Statistical Divisions for those capital cities defined in the *Australian Standard Geographical Classification (ASGC) Manual, Edition 3 (1216.0)*.

**Seasonally adjusted series:** A time series of estimates with the estimated effects of normal seasonal variation removed. See paragraphs 28 to 31 of the Explanatory Notes for more detail.

**Status of worker:** Employed persons classified by whether they were employers, self-employed persons, wage and salary earners (employees), or unpaid family helpers.

**Trend series:** A smoothed seasonally adjusted series of estimates. See paragraphs 32 to 34 of the Explanatory Notes for more detail.

**Unemployed:** Persons aged 15 and over who were not employed during the reference week, and:

- (a) had actively looked for full-time or part-time work at any time in the four weeks up to the end of the reference week and:
  - (i) were available for work in the reference week, or would have been available except for temporary illness (i.e. lasting for less than four weeks to the end of the reference week); or
  - (ii) were waiting to start a new job within four weeks from the end of the reference week and would have started in the reference week if the job had been available then; or
- (b) were waiting to be called back to a full-time or part-time job from which they had been stood down without pay for less than four weeks up to the end of the reference week (including the whole of the reference week) for reasons other than bad weather or plant breakdown.

**Unemployed persons classified by industry and occupation:** Unemployed persons who had worked full time for two weeks or more in the last two years are classified according to the industry and occupation of their most recent full-time job.

**Unemployed looking for first full-time job:** Unemployed persons looking for full-time work who had never worked full time for two weeks or more.

**Unemployed looking for first job:** Unemployed persons who had never worked full time for two weeks or more.

**Unemployed looking for full-time work:** Unemployed persons who actively looked for full-time work or were to resume a full-time job, from which they had been stood down.

**Unemployed looking for part-time work:** Unemployed persons who had actively looked for part-time work only, or were to resume a part-time job, from which they had been stood down.

**Unemployment rate:** For any group, the number of unemployed persons expressed as a percentage of the labour force in the same group.

## APPENDIX B

## EXPLANATORY NOTES

From February 1989, both current and historical estimates in this publication are compiled using benchmarks based on the 1986 Census of Population and Housing. See paragraphs 10 and 17.

From March 1989, standard errors associated with estimates in this publication have been revised consistent with the new sample introduced in September 1987. See the Technical Note for detailed tables containing new standard errors.

**Introduction**

1. This publication contains estimates of the civilian labour force derived from the labour force survey part of the monthly population survey. Estimates of the labour force characteristics of family members and of family composition are also included.
2. Estimates of the civilian labour force are available for about fifty regions across Australia and are shown in various publications produced by State offices of the ABS. For details, see the list of related publications provided in paragraph 52.
3. Preliminary survey results are published in advance of this more detailed publication in *The Labour Force, Australia, Preliminary* (6202.0).
4. Although emphasis in the population survey is placed on the regular collection of specific data on demographic and labour force characteristics of the population, supplementary and special surveys of particular aspects of the labour force or of other subjects are carried out from time to time. Statistics from these surveys are published and are available on request. A list of survey publications on labour force and related topics is shown later in this publication.

**The population survey**

5. The population survey is based on a multi-stage area sample of private dwellings (about 31,000 houses, flats, etc.) and a list sample of non-private dwellings (hotels, motels, etc.), and covers about three-fifths of one per cent of the population of Australia. The information is obtained from the occupants of selected dwellings by carefully chosen and specially trained interviewers. The interviews are generally conducted during the two weeks beginning on the Monday between the 6th and 12th of each month. To avoid a clash with the Christmas period, the December 1988 survey interviews commenced on Monday 5th December 1988. The information obtained relates to the week before the interview (i.e. the reference week).

**Scope**

6. The labour force survey includes all persons aged 15 and over except:

- (a) members of the permanent defence forces;

- (b) certain diplomatic personnel of overseas governments, customarily excluded from census and estimated populations;

- (c) overseas residents in Australia; and

- (d) members of non-Australian defence forces (and their dependents) stationed in Australia.

**Coverage**

7. In the labour force survey, coverage rules are applied which aim to ensure that each person is associated with only one dwelling, and hence has only one chance of selection. The coverage rules are, necessarily, a balance between theoretical and operational considerations. Nevertheless, the chance of a person being enumerated at two separate dwellings in the one survey is considered to be negligible. See paragraph 45 for information about the effect of the coverage rules on family statistics.

8. Persons who are away overseas from their usual residence for less than six weeks at the time of interview are generally enumerated at their usual residence when relevant information can be obtained from other usual residents present at the time of the survey. Persons who, at the time of interview, are overseas for six weeks or more but for less than twelve months are included in the estimates on the assumption that their labour force characteristics are similar to those of the persons responding in the survey.

**Population benchmarks**

9. Labour force survey estimates of persons employed, unemployed and not in the labour force are calculated in such a way as to add up to the independently estimated distribution of the population aged 15 and over by age and sex. This procedure compensates for under-enumeration in the survey, and leads to more reliable estimates. The independent population statistics (benchmarks) are the latest available estimates at the time the labour force survey is conducted, but they usually differ from the official population estimates subsequently published in *Australian Demographic Statistics* (3101.0) because they are derived from incomplete information about population changes.

**Revision of series**

10. Survey estimates are not revised for the usually small amendments of population benchmarks arising from new data on deaths and overseas and internal migration. Revisions are made, however, after each census of population and housing, and when population estimation bases are reviewed. These revisions affect unadjusted, seasonally adjusted and trend estimates. The last such revision was made in February 1989 to take account of the results of the 1986 Census of Population and Housing, which affected all the monthly estimates from January 1984 to January 1989.

11. Following the change in official population estimates to a place of usual residence basis after the 1981 census, the population benchmarks used in the estimation of



labour force survey data are compiled according to place of usual residence. For an explanation of the conceptual basis of population estimates see *Information Paper: Population Estimates: An Outline of The New Conceptual Basis of ABS Population Estimates* (3216.0). To coordinate with the new benchmarks, the labour force survey questionnaire was changed in October 1982 to enable identification of each respondent's place of usual residence. The estimates shown in this publication are based entirely on place of usual residence. Prior to October 1982, the estimates are based on a combination of place of enumeration and place of usual residence.

12. Until February 1978, surveys were conducted in February, May, August and November each year from 1964. From February 1978 the survey has been conducted on a monthly basis.

13. The questionnaire used in the survey for the collection of labour force data has been revised a number of times, the latest occasion being for the April 1986 survey. Details of these changes have been published in *Information Paper: Questionnaires Used in the Labour Force Survey* (6232.0) in March 1978, December 1981, August 1984 and June 1986.

14. The latest revision to the questionnaire, in April 1986, follows the extension of the definition of employed persons to include persons who worked without pay between 1 and 14 hours per week in a family business or on a farm (i.e. unpaid family helpers). This new definition aligns the Australian labour force concepts with a set of changed international definitions adopted by the 13th International Conference of Labour Statisticians in October 1982.

15. Previously, such persons who worked 1 to 14 hours, or who had such a job but were not at work, were defined as either unemployed or not in the labour force, depending on whether they were actively looking for work. In order to assist users to assess the impact of the change, estimates for March 1986 based on the new definition were shown in footnotes to Tables 1 and 2 of the February, March and April 1987 issues of this publication.

16. A revised procedure for weighting families estimates, as presented in this publication, was also introduced in April 1986. Additional tables were included in the April 1986 issue of this publication to show the impact of this new procedure. Paragraph 47 contains more details.

#### Comparability of series

17. As noted in paragraphs 10 and 11, estimates from January 1984 have been revised to conform to revised population estimates following the 1986 Census of Population and Housing, and are thus not strictly comparable with estimates for periods prior to January 1984 which have not been revised.

18. A revision of estimates to take account of the new definition of marital status was applied back to February 1978. Consequently, estimates of marital status contained in this publication are not comparable with estimates published before the February 1984 issue which classified as married all respondents who reported that they were married or separated. The revision to the marital status

classification was undertaken in two parts. First, for all surveys from February 1978, persons who reported that they were separated, were reclassified as not married. Second, from June 1983 onwards, the not-married category was expanded to also include persons who, although reported as married, did not have a spouse who was a usual resident of the household at the time of the survey. See the Glossary for the definition of marital status now used in the labour force survey.

19. Comparability with estimates produced from the quarterly survey of employment and earnings is affected by the use of a different survey methodology and definitions. The labour force survey provides estimates of people in jobs whereas the survey of employment and earnings provides an estimate of the number of jobs held by wage and salary earners. A more detailed description of the differences between these two series is provided in *Information Paper: Comparison of Employment Estimates from the Labour Force Survey and the Survey of Employment and Earnings* (6263.0).

#### Survey sample redesign

20. The LFS sample has been redesigned and reselected using information collected in the 1986 Census of Population and Housing. The new sample was phased in over the period September to December 1987. For details, see *Information Paper: Labour Force Survey — Sample Design* (6269.0).

21. The sampling fraction differs for States and Territories. This enables estimates of reasonable accuracy to be produced for all States and Territories as well as for Australia. Sampling fractions for each State and Territory are as follows: New South Wales and Victoria, 1 in 230; Queensland, 1 in 160; Western Australia, South Australia, Northern Territory and Australian Capital Territory, 1 in 115; and Tasmania, 1 in 70.

#### Change in collection methodology

22. For the April to October 1989 surveys information will be collected by telephone interview where practicable, from approximately ten per cent of survey respondents. At the end of this period, consideration will be given to changing to telephone interviewing as the principal method of obtaining data.

#### Reliability of the estimates

23. Estimates in this publication are subject to two sources of error:

- (a) sampling error: since the estimates are based on information obtained from occupants of a sample of dwellings they, and the movements derived from them, may differ from the figures that would have been produced if all dwellings had been included in the survey. More information on this topic is given in the Technical Note; and
- (b) non-sampling error: inaccuracies may occur because of imperfections in reporting by respondents and interviewers and errors made in coding and processing data. These inaccuracies may occur in any enumeration, whether it be a full count or a sample. Every effort is made to reduce the non-sampling error to a minimum by

careful design of questionnaires, intensive training and supervision of interviewers and efficient operating procedures.

#### **Differences between population census and population survey estimates**

24. The results of the 1986 Census of Population and Housing show that labour force figures derived from the census differ from estimates derived from the labour force surveys.

25. The broad concepts underlying the measures of the labour force and its components, employment and unemployment, are similar in the census and the surveys. However there are considerable differences in both the collection methodology adopted (including the detailed questions asked) and estimation procedures. Factors contributing to differences in estimates include under-enumeration in the population census for which census labour force estimates have not been adjusted, the use in the labour force survey of population benchmarks derived from incomplete information about population change (see paragraph 9), the inclusion of permanent defence forces in census estimates, the personal interview approach adopted in the survey as opposed to self-enumeration of census schedules, differing questions used to determine labour force characteristics (particularly the identification of unemployed persons) and differing methods of adjustment for non-response to the survey or census.

26. The labour force survey provides detailed and up-to-date estimates of employment and unemployment for Australia, States and regions, whereas the census of population and housing provides counts for small areas but in less detail than is available from the survey.

27. These considerations should be borne in mind if comparisons are made between population census and labour force survey estimates.

#### **Seasonal adjustment**

28. Seasonally adjusted series are published in Tables 2 and 8. Seasonal adjustment is a means of removing the estimated effects of normal seasonal variation from the series so that the effects of other influences on the series can be more clearly recognised. Seasonal adjustment does not remove the irregular or non-seasonal influences which may be present in any particular month. Influences that are volatile can still make it difficult to interpret the movement of the series even after adjustment for seasonal variation.

29. As happens with all seasonally adjusted series, the seasonal factors are reviewed annually to take account of each additional year's original data. The latest review, in February 1989, revised the Australian and State seasonally adjusted and trend monthly series back to February 1978. Information about the method of adjustment and revised seasonally adjusted and trend estimates for all months since January 1983 for Australia and the States were published in the appendix of the February 1989 issue of this publication.

30. It is possible that the seasonality of employment, unemployment and the labour force participation has been

affected by the changed pattern of school holidays in some States.

31. The impact of these changes on seasonally adjusted estimates of labour force characteristics cannot be assessed at this stage.

#### **Trend estimation**

32. Smoothing seasonally adjusted series produces a measure of trend by reducing the impact of the irregular component of the series. The trend estimates are derived by applying a 13-term Henderson-weighted moving average to the respective seasonally adjusted series. These trend series are used to analyse the underlying behaviour of the series over time. Tables 3 and 9 show trend estimates for the past 14 months, while the appendix to the February 1989 issue shows estimates for the six States and Australia back to January 1983. Trend series graphs are shown on pages 1 to 4. Data from February 1978 are available on the ABS on-line data dissemination service, AUSSTATS. The trend series of the participation rate for married females are based on smoothed population estimates.

33. While this smoothing technique enables estimates to be produced which include the latest month, it does result in revisions to the most recent months as additional observations become available. Generally, subsequent revisions become smaller, and after three months have a negligible impact on the series. There will also be revisions as a result of the annual review of seasonal factors mentioned above in paragraph 29.

34. Users may wish to refer to the ABS Information Papers *A Guide to Smoothing Time Series — Estimates of 'Trend'* (1316.0), and *Time Series Decomposition — An Overview* (1317.0) for more detailed information on producing trend estimates by smoothing seasonally adjusted time series data.

#### **Month-to-month movements**

35. Care should be taken in the interpretation of month-to-month movements in these estimates. Survey estimates are subject to sampling and non-sampling variability as explained in paragraph 23. Particular care should be taken in the interpretation of the recent original and seasonally adjusted monthly movements as these may have been affected by the changed pattern of school holidays in some States. Trend estimates are expected to be relatively unaffected by these changes.

#### **Gross flows**

36. In order to minimise respondent burden and at the same time maintain continuity within the population survey sample, one eighth of the dwellings in the sample (except the large non-private dwellings) are replaced after each survey. Adoption of this rotation procedure, whereby about seven-eighths of the sample remains unchanged from one month to the next, enables more reliable measurements of changes in the labour force characteristics of the population to be made than would be possible if a new sample were introduced each month.

37. Because a high proportion of private dwellings selected in one survey remains in the sample for the following survey, it is possible to match the characteristics

of most of the persons in those dwellings from one month to the next, to record any changes that occur, and hence to produce estimates of *flows* between the different categories of the population and labour force.

38. The procedures used to select persons in non-private dwellings preclude the possibility of matching any of them who may be included in successive surveys. For this and other reasons, including the mobility of the population and non-response in either or both surveys, about 10 per cent of persons in those dwellings which are included in the sample in successive months cannot be matched. Those who can be matched represent about 80 per cent of all persons in the survey.

39. Changes in the characteristics of this latter group are shown in the gross flows table. About one half of the remaining (unmatched) 20 per cent of persons in the survey are likely to have characteristics similar to those in the matched group, but the characteristics of the other half are likely to be somewhat different.

40. Gross flow estimates relate only to those persons in private dwellings for whom information was obtained in successive surveys. The expansion factors used in calculating the estimates were those applying to the second of each pair of months.

41. Although it is not possible to provide gross flow estimates for all persons in the survey it is considered that the estimates derived from matched records will be a useful guide to the magnitude of the movements between categories which underlie the changes in monthly levels. When comparing flows for different periods it is important to take into account the population represented by the matched sample, as shown in the last line of the table.

42. While every effort is made to reduce non-sampling errors to a minimum, any such errors affecting labour force status will tend to accumulate in the gross flow statistics rather than cancel out. The estimates are also subject to sampling variability, as explained in the Technical Note. For these reasons the estimates of flows should be used with caution. The standard errors may be obtained from Table A of the Technical Note.

43. Estimates of total flows into or out of the employed category may be less than the sum of the estimates for employed full-time and employed part-time as the estimates for the latter two categories include movements between these two categories.

#### **Labour force status and other characteristics of families**

44. As a part of survey procedures, family relationships are determined each month, enabling both the estimation of persons cross-classified by their family status and the estimation of families. This publication contains tables showing the labour force status and family status of individuals and families classified by family type, number of family members, the labour force status of persons within families, the number of children aged 0-14 present and, from the May 1986 issue onwards, the number of dependents present.

45. Because of the coverage rules of the population survey which associate persons with particular dwellings so

that each person has an equal chance of selection in the survey, persons who usually live with other members of their family may be enumerated, at the time of the survey, as not living with all the usual members of their family. This situation is more likely for persons who are enumerated as visitors to other private dwellings or as persons staying in non-private dwellings (hotels, caravan parks, hospitals, etc.). The determination of family structure and family characteristics in such cases is most difficult. Thus, family information is not obtained for the following persons:

- (a) all persons enumerated in non-private dwellings (including hotels, motels, hospitals and other institutions); and
- (b) persons enumerated as visitors to (rather than usual residents of) private dwellings.

46. In addition, in those private dwellings where it is not possible to obtain information relating to all the usual residents, no family information is recorded. Thus the family characteristics of persons living in families which include a member of the permanent defence forces, who is outside the scope of the population survey, are not determined because family information cannot be obtained from each usual resident. Similarly, families in which one or more members are away from the usual residence at the time of the survey are also excluded from family determination. A summary of those persons for whom family information is obtained as well as those usual residents of private dwellings for whom complete family information cannot be obtained, and those persons specifically excluded from the family determination procedures is contained in the family tables. Generally, family status is determined for more than 90 per cent of all civilians aged 15 and over.

47. Estimates of the number of families in this publication differ from those in publications prior to the April 1986 issue. This is due to the adoption of a new weighting procedure where the weight for a family is determined using an average of the weights for all family members responding to the labour force survey. Previously, the weight used to derive estimates of the number of families was determined by nomination of a proxy 'head of household' as representative of the family.

48. Revised data for March 1986 using the new weighting procedure for families and the revised definition of employed persons were shown in the April 1986 issue of this publication. Revised data for March 1986 using the new weighting procedure for families and the old definition of employed persons as well as data using the old weighting procedure for families and the new definition for employed persons are available on request.

#### **Additional data**

49. Estimates for employed persons classified by industry, occupation and status of worker are available each February, May, August and November, and the following tables are published in issues of this publication for those months:

- Employed persons—
- Industry and occupation—

Full-time and part-time workers  
 Status of worker  
 Age and birthplace  
 Hours worked  
 Industry by occupation  
 Industry subdivisions  
 Major and minor occupation groups.

50. In some cases, the ABS can also make available information which is not published. This information may be made available in one or more of the following forms: floppy disk, microfiche, photocopy, data tape, computer printout, manually-extracted tabulation. In general, a charge is made for providing unpublished information. Inquiries should be made to the officer whose name appears in the *Phone Inquiries* section at the front of this publication, or to Information Services in the nearest ABS office.

#### Semi-logarithmic graphs

51. Graphs on pages 1 and 2 have been drawn using a logarithmic vertical scale to facilitate comparisons of rates of growth in series of differing magnitude. Equal distances on the vertical scale (over equal time periods) indicate equal rates of growth for graphs on the same page.

#### Related publications

52. Users may also wish to refer to the following publications which relate to the labour force and are available on request:

*The Labour Force, Australia, Preliminary* (6202.0)—issued monthly

*The Labour Force, Australia: Historical Summary, 1966 to 1984* (6204.0)

*The Labour Force, New South Wales* (6201.1)—issued quarterly

*The Labour Force, Victoria* (6202.2)—issued quarterly

*Information Paper, Victorian Labour Force Statistics* (6262.2)

*The Labour Force, Queensland* (6201.3)—issued quarterly

*The Labour Force, South Australia* (6201.4)—issued quarterly

*Labour Force Statistics, Tasmania 1985* (6201.6)

*Monthly Summary of Statistics, Tasmania* (1303.6)—issued monthly

*Labour Statistics, Australia, 1986* (6101.0)—issued annually

*A Guide to Labour Statistics* (6102.0)

*Information Paper: Questionnaires Used in the Labour Force Survey, June 1986* (6232.0)

*Employed Wage and Salary Earners, Australia* (6248.0)—issued quarterly

*Persons Not in the Labour Force, Australia* (6220.0)—issued annually

*Labour Force Status and Other Characteristics of Families, Australia, June 1988* (6224.0)—issued annually

*Social Indicators No. 4, 1984* (4101.0)

*Information Paper: Comparison of Employment Estimates From the Labour Force Survey and the Survey of Employment and Earnings* (6263.0)

*A Guide to Smoothing Time Series — Estimates of 'Trend'* (1316.0)

*Time Series Decomposition — An Overview* (1317.0)

*Information Paper: Labour Force Survey — Sample Design* (6269.0)

*Information Paper: Labour Force Survey — Measuring Teenage Unemployment* (6270.0)

53. Current publications produced by the ABS are listed in the *Catalogue of Publications, Australia* (1101.0). The ABS also issues, on Tuesdays and Fridays, a *Publications Advice* (1105.0) which lists publications to be released in the next few days. The *Catalogue and Publications Advice* are available from any ABS office.

#### Unpublished statistics

54. As well as the statistics included in this and related publications, the ABS may have other relevant unpublished data available. Inquiries should be made to the contact in the *Phone Inquiries* box at the front of this publication.

#### Symbols and other usages

- \* subject to sampling variability too high for most practical uses. See paragraph 6 of the Technical Note
- n.a. not available
- .. not applicable
- n.e.c. not elsewhere classified
- r revised

55. Estimates have been rounded and discrepancies may occur between sums of the component items and totals.

#### Electronic services

VIATEL. Key \*656# for selected current economic, social and demographic statistics.

AUSSTATS. Thousands of up-to-date time series are available on this ABS on-line service through CSIRONET.

For further information phone the AUSSTATS Help Desk on (062) 52 6017.

TELESTATS. This service provides foreign trade statistics tailored to users' requirements.

Further information is available on (062) 52 5404.

#### Floppy disk service

Selected ABS statistics are available on floppy disk. For further information phone (062) 52 6684.

## APPENDIX C

## TECHNICAL NOTE

1. The LFS sample has been redesigned and reselected using information collected in the 1986 Population Census. The new sample was phased in over the period September 1987 to December 1987. For details, see *Information Paper — Labour Force Survey — Sample Design* (6269.0). For more information on sample design estimation procedures and reliability of the estimates for surveys prior to September 1987, reference should be made to the Technical Note in *The Labour Force, Australia, Historical Summary, 1966 to 1984* (6204.0).

**Estimation procedure**

2. The labour force estimates are derived from the population survey by use of a complex ratio estimation procedure, which ensures that the survey estimates conform to an independently estimated distribution of the population by age and sex, rather than to the age and sex distribution within the sample itself.

**Reliability of the estimates**

3. Two types of error are possible in an estimate based on a sample survey: sampling error and non-sampling error. The *sampling error* is a measure of the variability that occurs by chance because a sample, rather than the entire population, is surveyed. Since the estimates in this publication are based on information obtained from occupants of a sample of dwellings they, and the movements derived from them, are subject to sampling variability; that is, they may differ from the estimates that would have been produced if all dwellings had been included in the surveys. One measure of the likely difference is given by the *standard error*, which indicates the extent to which an estimate might have varied by chance because only a sample of dwellings was included. There are about two chances in three that a sample estimate will differ by less than one standard error from the estimate that would have been obtained if all dwellings had been included, and about nineteen chances in twenty that the difference will be less than two standard errors. Another measure of sampling variability is the *relative standard error* which is obtained by expressing the standard error as a percentage of the estimate to which it refers. The relative standard error is a useful measure in that it provides an immediate indication of the percentage errors likely to have occurred due to sampling, and thus avoids the need to refer also to the size of the estimate.

4. Space does not allow for the separate indication of the standard errors of all estimates in this publication. Standard errors of estimates for the latest month and of estimates of movements since the previous month are shown in Table 1. Standard errors of other estimates and other monthly movements should be determined by using Tables A and B.

5. The size of the standard error increases with the level of the estimate, so that the larger the estimate the larger is the standard error. However, it should be noted that the larger the sample estimate the smaller will be the

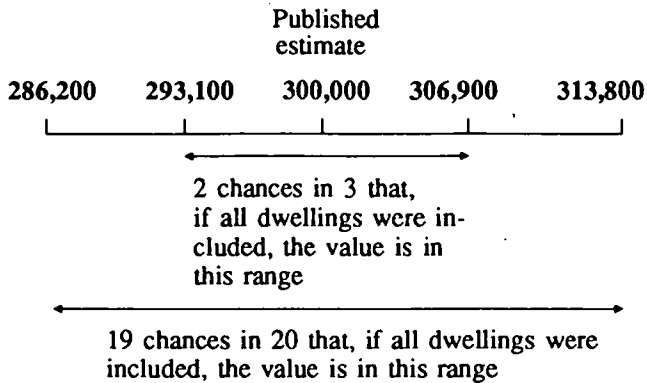
standard error in percentage terms. Thus, larger sample estimates will be relatively more reliable than smaller estimates.

6. As the standard errors in Table A show, *the smaller the estimate the higher is the relative standard error*. Very small estimates are subject to such high standard errors (relative to the size of the estimate) as to detract seriously from their value for most reasonable uses. In the tables in this publication, only estimates with relative standard errors of 25 per cent or less, and percentages based on such estimates, are considered sufficiently reliable for most purposes. However, estimates and percentages with larger relative standard errors have been included and are preceded by an asterisk (e.g. \*3.4) to indicate they are subject to high standard errors and should be used with caution. See paragraph 9 concerning the derivation of relative standard errors for some estimates.

7. The movement in the level of an estimate is also subject to sampling variability. The standard error of the movement depends on the levels of the estimates from which the movement is obtained rather than the size of the movement. An indication of the magnitude of standard errors of monthly movements is given in Table B. The estimates of standard error of monthly movements apply only to estimates of movements between two consecutive months. Movements between corresponding months of consecutive quarters (quarterly movements), corresponding months of consecutive years (annual movements) and other non-consecutive months, will generally be subject to somewhat greater sampling variability than is indicated in Table B. Standard errors of *quarterly* movements can be obtained by multiplying the figures in Table A by 1.22. Standard errors of quarterly movements calculated this way will not necessarily agree with those obtained by multiplying the figures in Table B by 1.5, which was the method shown in the June 1985 and previous issues of this publication. This is because Tables A and B are derived independently of each other. Standard errors of all *annual* movements can be obtained by multiplying the figures in Table A by 1.3. When using Table A or Table B to calculate standard errors of movements, refer to the larger of the two estimates from which the movement is derived.

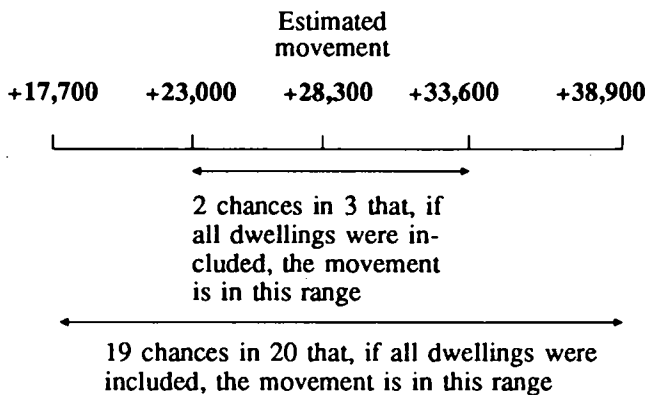
8. Examples of the calculation and use of standard errors are given below:

- (a) From Table A it will be seen that an estimate of 300,000 unemployed males looking for full-time work has a standard error of about 6,900. Therefore there are about two chances in three that the number that would have been obtained if all dwellings had been included in the survey would have been within the range 293,100 to 306,900 and about nineteen chances in twenty that it would have been within the range 286,200 to 313,800.



- (b) Suppose that there is an increase of 28,300 in the number of unemployed males looking for full-time work from one month to the next.

Table B relates the standard error of the monthly movement to the larger of the two estimates from which the movement is derived. In this case, if the larger of the two estimates from which the movement is derived was 300,000, from Table B it will be seen that the standard error of the monthly movement is about 5,300. Therefore there are about two chances in three that if all dwellings had been included in the surveys the movement would have been within the range +23,000 to +33,600 and about nineteen chances in twenty that it would have been with the range +17,700 to +38,900



9. The relative standard errors of estimates of *aggregate hours worked*, *average hours worked*, *average duration of unemployment*, and *median duration of unemployment* are obtained by first finding the relative standard error of the estimate of the total number of persons contributing to the estimate (see Table A) and then multiplying the figure so obtained by the following relevant factors:

Aggregate hours worked: 1.2  
Average hours worked: 0.7  
Average duration of unemployment: 1.3  
Median duration of unemployment: 2.0

The levels at which these and other labour force estimates have a relative standard error of 25 per cent are shown in Table C.

10. An example of the calculation of standard errors by the use of these factors is as follows:

If an estimate of median duration of unemployment for unemployed males is 19 weeks and the number unemployed is estimated as 300,000, from Table A it can be estimated that this figure (300,000) has a standard error of about 6,900 and therefore a relative standard error of about 2.3 per cent. The *relative standard error* of the estimate of median duration of unemployment is calculated by multiplying this figure (2.3) by the appropriate factor shown in the previous paragraph (in this case 2.0):  $2.3 \times 2.0 = 4.6$  per cent. The *standard error* of this estimate of median duration of unemployment is therefore 4.6 per cent of 19, i.e. about 1. Therefore there are about two chances in three that the median duration of unemployment for unemployed males that would have been obtained if all dwellings had been included in the survey would have been within the range 18 to 20 weeks and about nineteen chances in twenty that it would have been within the range 17 to 21 weeks.

11. Proportions and percentages (for example, participation rates) formed from the ratio of two estimates are also subject to sampling error. The size of the error depends on the accuracy of both the numerator and denominator. The formula for the relative standard error (RSE) of a proportion or percentage is given below:

$$RSE(x/y) = \sqrt{[RSE(x)]^2 + [RSE(y)]^2}$$

12. Standard errors contained in Tables A and B are designed to provide an average standard error applicable for all monthly labour force survey estimates. Analysis of the standard errors applicable to particular survey estimates has shown that the standard errors of estimates of employment are generally equivalent to those shown in Tables A and B, while standard errors for unemployment and not in the labour force are approximately 3 per cent and 11 per cent respectively higher than those shown in the tables. Standard errors for capital cities are approximately the same as those for corresponding States. Standard errors of estimates of numbers of families are approximately the same as those for numbers of persons. Standard errors of estimates of persons born in Australia are approximately the same as those shown in Tables A and B. For aggregate estimates of persons born outside Australia the standard errors are about 15 per cent higher. The standard errors vary for individual countries of birth, but are generally less than 10 per cent higher.

13. The imprecision due to sampling variability, which is measured by the standard error, should not be confused with inaccuracies that may occur because of imperfections in reporting by respondents, errors made in collection such as in recording and coding data, and errors made in processing the data. Inaccuracies of this kind are referred to as the *non-sampling error* and they may occur in any enumeration, whether it be a full count or a sample. Every effort is made to reduce the non-sampling error to a minimum by careful design of questionnaires, intensive training and supervision of interviewers and efficient operating procedures.

TABLE A. STANDARD ERRORS OF ESTIMATES FROM MARCH 1989(a)

Size of estimate	N.S.W.	Vic.	Qld	S.A.	W.A.	Tas.	N.T.	A.C.T.	Australia	
									— number —	per cent of estimate
100			130	110	120	80	130	100	120	117.6
200	230	230	190	160	180	120	170	140	180	89.0
300	290	280	240	200	220	150	210	170	230	75.2
400	340	330	280	230	250	180	240	200	270	66.6
500	380	370	310	260	280	200	260	220	300	60.5
600	420	410	340	280	310	220	280	240	340	55.9
800	480	470	390	330	350	250	320	270	390	49.2
1,000	540	530	440	370	390	280	360	300	450	44.5
1,300	620	610	500	410	440	320	400	340	510	39.6
1,500	660	650	530	440	470	340	430	360	560	37.0
1,800	720	710	580	480	510	360	470	390	610	34.0
2,000	760	750	610	510	540	380	490	410	650	32.4
2,500	850	840	680	560	600	420	540	450	730	29.2
3,000	920	910	740	610	650	450	590	490	800	26.8
3,500	990	980	800	660	700	480	630	520	870	24.9
4,000	1,050	1,050	850	700	740	510	670	550	930	23.3
4,500	1,100	1,100	900	730	780	540	710	580	990	22.0
5,000	1,200	1,150	940	770	820	560	750	600	1,050	20.9
6,000	1,300	1,250	1,000	830	880	600	810	650	1,150	19.1
10,000	1,600	1,600	1,300	1,050	1,100	730	1,050	800	1,500	14.8
20,000	2,200	2,200	1,750	1,400	1,500	920	1,400	1,050	2,050	10.4
50,000	3,250	3,250	2,600	2,050	2,150	1,200	2,150	1,500	3,150	6.3
100,000	4,300	4,300	3,400	2,650	2,850	1,500	3,000	1,900	4,300	4.3
200,000	5,700	5,600	4,500	3,450	3,700	1,750	4,200	2,450	5,800	2.9
300,000	6,600	6,600	5,200	3,950	4,300	1,900		2,800	6,900	2.3
500,000	8,000	7,900	6,300	4,750	5,200	2,100		3,300	8,400	1.7
1,000,000	10,300	10,100	8,100	6,000	6,600				11,100	1.1
2,000,000	13,000	12,800	10,300	7,500	8,400				14,300	0.7
5,000,000	17,600	17,100	13,900						19,700	0.4
10,000,000	21,800								24,800	0.2

TABLE B. STANDARD ERRORS OF ESTIMATES OF MONTHLY MOVEMENTS FROM FEBRUARY 1989 — MARCH 1989 ONWARDS(a)

Size of larger estimate	N.S.W.	Vic.	Qld	S.A.	W.A.	Tas.	N.T.	A.C.T.	Australia
100					150		100		120
200					190		130		150
300				350	220	260	150		170
400		450	410	380	250	290	170		190
500		490	440	410	270	320	180		210
600		520	470	440	280	340	200		220
800		580	530	480	310	380	220		250
1,000		630	570	520	340	410	240		270
1,300		690	630	570	380	450	260		300
1,500		730	660	600	400	470	270		310
1,800		780	710	640	420	500	290		330
2,000		810	740	660	440	520	300		350
2,500		880	800	720	480	560	330		370
3,000		940	860	760	510	600	350		410
3,500		990	910	800	540	630	370		440
4,000		1,050	950	840	560	670	390		470
4,500		1,100	1,000	880	590	690	410		490
5,000		1,150	1,050	910	610	720	430		510
6,000		1,200	1,100	970	650	770	450		560
10,000		1,450	1,350	1,150	780	920	550		690
20,000		1,900	1,700	1,450	1,000	1,200	700		930
50,000		2,600	2,400	2,000	1,400	1,650	980	1,400	1,100
100,000		3,400	3,100	2,550	1,800	2,100	1,250	1,850	1,450
200,000		4,350	4,000	3,200	2,300	2,700	1,650	2,550	1,850
300,000		5,000	4,650	3,700	2,700	3,100	1,900		2,150
500,000		6,100	5,600	4,400	3,200	3,700	2,300		2,550
1,000,000		7,800	7,300	5,600	4,150	4,750			
2,000,000		10,100	9,400	7,100	5,300	6,100			
5,000,000		14,100	13,100	9,700					
10,000,000		18,200							

TABLE C. LEVELS AT WHICH LABOUR FORCE ESTIMATES HAVE A RELATIVE STANDARD ERROR OF 25 PER CENT(b)  
FROM MARCH 1989 (a)

	N.S.W.	Vic.	Qld	S.A.	W.A.	Tas.	N.T.	A.C.T.	Aust.
Estimates classified by—									
Aggregate hours worked	6,300	6,300	4,200	2,900	3,300	1,800	2,700	2,000	5,100
Average hours worked	2,300	2,300	1,500	1,100	1,200	700	1,000	800	1,700
Average duration of unemployment	7,300	7,300	4,900	3,400	3,800	2,000	3,200	2,300	6,000
Median duration of unemployment	15,900	15,900	10,600	7,300	8,100	4,200	7,000	4,700	14,000
All other estimates	4,500	4,500	3,000	2,100	2,300	1,300	2,000	1,400	3,500

(a) For standard errors, etc. for earlier periods, see previous issues of this publication. (b) See paragraph 9 of this Technical Note.

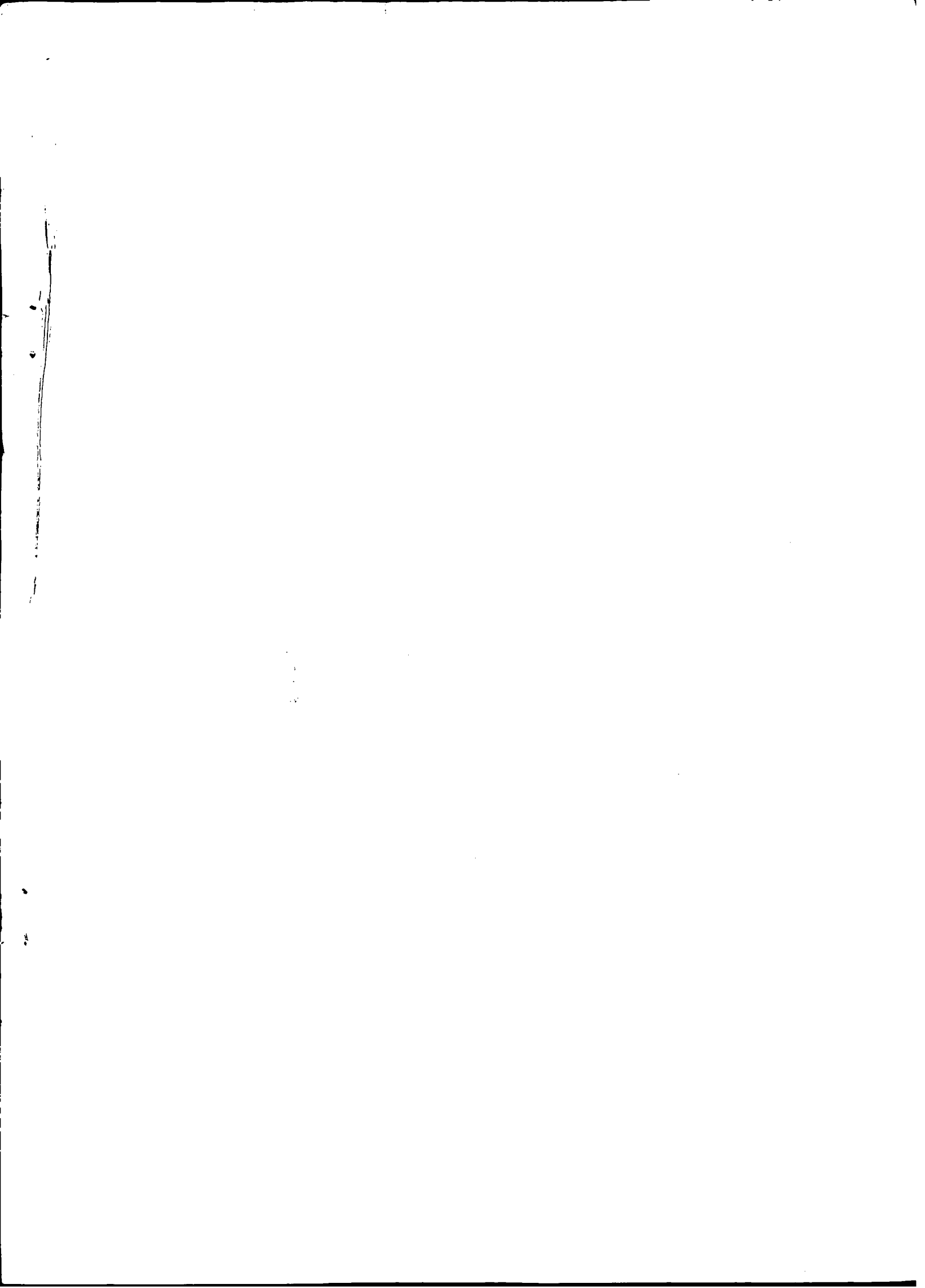
### SUPPLEMENTARY AND SPECIAL SURVEYS RELATING TO THE LABOUR FORCE

Although emphasis in the population survey is placed on the regular collection of data on demographic and labour force characteristics, supplementary and special surveys of particular aspects of the labour force are carried out from time to time. The results of these surveys on labour force and related topics are published separately as shown below.

<i>Title of Publication</i>	<i>Catalogue No.</i>
Alternative Working Arrangements, Australia, March to May 1982, September to November 1986	6341.0
Annual and Long Service Leave Taken, Australia, May 1983 to April 1984	6317.0
Child Care—May 1969, 1973, 1977; June 1980; November 1984; June 1987	4402.0
Employment Benefits. Annually. Latest issue August 1988	6334.0
Income Distribution Survey, Australia, Persons with Earned Income, 1986	6546.0
Job Search Experience of Unemployed Persons, Australia. Two-yearly. Latest issue July 1988	6222.0
Labour Force Experience. Annually. Latest issue February 1988	6206.0
Labour Force Status and Educational Attainment, Australia. Annually. Latest issue February 1988	6235.0
Labour Force Status and Other Characteristics of Families. Annually. Latest issue June 1988	6224.0
Labour Force Status and Other Characteristics of Migrants, Australia, March 1987 (previously: Characteristics of Migrants Aged 18 Years and Over at Time of Arrival and who Arrived after 1960)	6250.0
Labour Mobility. Annually. Latest issue February 1988	6209.0
Multiple Jobholding. Two-yearly. Latest issue August 1987	6216.0
Persons Who Intended to Retire from Full-time Work, Australia, September 1984	6258.0
Persons Not in the Labour Force, Australia. Twice-yearly. Latest issue September 1988	6220.0
Persons Who Had Re-entered the Labour Force, Australia, May 1985, May 1987	6264.0
Persons Who Have Left the Labour Force, Australia, November 1985, April 1988	6267.0
Retirement and Retirement Intentions, Australia, November 1986 (previously: Persons Retired from Full-time Work)	6238.0
Successful and Unsuccessful Job Search Experience, (previously: Methods of Obtaining Jobs) June 1986	6245.0
Superannuation, Australia, February 1974; September to November 1982, November 1988	6319.0
Trade Union Members, November 1976, March-May 1982, August 1986	6325.0
Transition From Education to Work. Annually. Latest issue May 1988	6227.0
Underemployed Workers, May 1988	6265.0
Weekly Earnings of Employees (Distribution). Annually. Latest issue August 1987	6310.0
Summary, August 1988	6309.0
Working Hours Arrangements, Australia, February-May 1981	6338.0
Working Hours Arrangements—Supplementary Tables, Australia, February-May 1981	6339.0

(a) Estimates derived from labour force surveys. For more recent estimates, see the relevant tables in this publication.





**Recommended retail price: \$12.00**



**2062030004890**

ISSN 1030-0996