

SECTION IV.—RETAIL PRICES, HOUSE RENT, AND PURCHASING-POWER OF MONEY.

1. **General.**—In normal circumstances properly computed index-numbers of food and groceries, and house-rent combined, form one of the best possible measures of those variations in the "purchasing-power of money" which affect the cost of living: in short, the variations of the cost of a "composite unit," consisting of appropriate quantities of suitably chosen commodities, and including also house rent, reflect the variations in the cost of living. The main investigations carried out as to retail prices and purchasing-power of money are of a threefold nature and consist of:—

- (i.) Quarterly variations in the purchasing-power of money in thirty towns.
- (ii.) Annual variations in the purchasing-power of money in 150 towns.
- (iii.) Householders' Budget Inquiries.

It is principally with the first of these that this Section deals. In previous Reports of this Branch of the Bureau the results of comprehensive investigations into the subjects of Prices and Price-Indexes for past years were published, and an account was given of the methods used in the collection of the data and the computation of the results. A discussion of the theory upon which the calculation of the index-numbers is based was furnished in Appendixes to Report No. 1, issued in December, 1912. In Appendix I. to Report No. 9, an endeavour was made to set forth the essentials of the problem and of its solution.

For the computations of the index-numbers the "aggregate expenditure" method is adopted, i.e., the average price for each commodity included is multiplied by its respective "mass unit." The "mass-unit" represents the relative extent to which each commodity is used or consumed, and is regarded as constant over the period under review. By taking the aggregate expenditure for any one year as base, the index-number for the relative aggregate expenditure for any other year is readily calculated. Certain aspects of this method, not dealt with in previous Reports, are discussed on pages 19 and 20 of Labour Report No. 6.

In order to illustrate clearly the method adopted it will be well to take a simple numerical example. Suppose that in 1901 the average price of butter was 1s. 3d. per lb., of bread was 3d. per 2 lb. loaf, of mutton was 3d. per lb., and of milk was 4d. per quart; and suppose that in 1911 the prices of these four commodities were 1s. 6d. for butter, 4d. for bread, 5d. for mutton, and 5d. for milk. Now the total quantities of each of these commodities consumed in Australia per annum are approximately 90 million lb. of butter, 470 million 2-lb. loaves of bread, 330 million lb. of mutton, and 300 million quarts of milk. Therefore, the actual expenditure of the people of Australia on these commodities in 1901 and 1911 respectively would be as follows:—

Computation of Index-Numbers: Illustrative Example of Aggregate Expenditure Method.

Particulars.	Unit.	Quantities consumed. (0,000,000 omitted.)	Prices.		Total Expenditure.	
			1901	1911	1901.	1911.
			d.	d.	d. (0,000,000 omitted.)	d. (0,000,000 omitted.)
Butter ..	lb.	9	15	18	135	162
Bread ..	2lb. loaf	47	3	4	141	188
Mutton ..	lb.	33	3	5	99	165
Milk ..	quart	30	4	5	120	150
					495	665

The relative aggregate expenditure was 495 in 1901, and rose to 665 in 1911; in other words, the index-number in 1901, taking the expenditure in 1911 as the base ($= 1000$) was $\frac{665}{1000} \times 1000 = 665$, and the index-number in 1911, taking the expenditure in 1901 as the base ($= 1000$) was $\frac{495}{1000} \times 1000 = 495$, which might, of course have been obtained directly by taking the reciprocal of the result previously obtained. If now, instead of only four commodities, a representative group of fifty or more were treated in this way for a series of years, the numbers thus obtained would furnish a satisfactory index of the variations in price from year to year.

2. Changes in Cost of Commodities, Standard of Living, and Expenditure on Living.—A change in the "Cost of Living" may occur either in the *standard of living* or in the *purchasing-power of money*, or in both; both affect the expenditure on living, which expenditure itself depends on three things, viz. :—

- (i.) The *particular commodities* consumed ;
- (ii.) The *relative quantities* of the commodities consumed ; and
- (iii.) The *price* of these commodities.

To avoid confusion as to the significance of the results given in this section, the conception of what is meant by "cost of living" ought to be clearly apprehended, for evidently a change in any one of the above may produce a change in the *expenditure* on living. In order to obtain index-numbers which are independent of (arbitrary) variations of (i) and (ii.) above, and which unequivocally reflect the variations caused by *price* alone, it is necessary that the particular series of commodities selected, and the relative quantities of these, remain constant. This phase of the subject is dealt with more fully in Labour Report No. 1, Appendix VIII. ; in Labour Report No. 5, pp. 17-18; in Labour Bulletin No. 9, pp. 27 to 46; in Labour Bulletin No. 14, pp. 127 to 130; and in Part II. of Appendix I. of Labour Report No. 9. In the places indicated it has been shewn that in order to avoid all confusion between "changes in the regimen" (i.e., change in the standard of living) which is at the disposal of the individual, and "changes in prices," which are not at his disposal, it is necessary to adopt the "aggregate expenditure" method; that is, to ascertain the cost of a definite regimen or what may be called the cost of a definite "composite unit." To be of the highest general value, the "composite unit" must be one applicable to the whole community. It has also been shewn that what has been called the method of "aggregate expenditures,"

i.e., the estimation of the cost of this composite unit, as the basis of the method, is, technically, the only satisfactory method, while any other method is less satisfactory, especially if it introduces some change of regimen. Variations in quantity or in the items of the composite unit introduce ambiguity, for the resulting change in the price of the composite unit is partly due to change of the unit and partly due to change of the prices of its constituent items.

Notwithstanding the very explicit statement of the purpose and scope of these investigations given in the various Labour Reports, evidence is continually coming to hand that misunderstanding in regard thereto is still prevalent. Many persons, having noticed the obvious fact that a different regimen gives a very different aggregate cost, have imagined that deductions as to the "purchasing-power of money" vary enormously with change of regimen. This phase of the matter has been dealt with fully in previous publications of the Labour and Industrial Branch, and in particular in Labour Bulletin No 14, pp. 127 to 130, published in October, 1916. It is there demonstrated, by basing the deductions upon various widely differing regimens, that the mode of investigating the purchasing-power of money adopted is not vitiated by employing a fixed regimen; on the contrary, it has reached a high degree of precision as compared with any alternative which has been suggested. Again, it should be observed that any proposed change of regimen must be freed from the effect of a change in the standard of living, otherwise the results are confused, that is, they embody two things, viz.: (a) change in price, and (b) change in standard of living. The conclusion therein arrived at may be repeated here, viz.: That once a standard of living, or living wage, has been fixed, the tables published by the Commonwealth Statistician can be legitimately used as shewing the variations in the cost of living. The only criticism which could be applicable would be that the regimen used as a basis for estimation had ceased to be representative of the usage of the community to such an extent that the calculations founded on it were misleading. If then, under these circumstances a change were made, certain safeguards which have been indicated in Labour Report No. 1, Appendixes VIII. and IX., and further dealt with in Appendix I. of Labour Report No. 9 would be necessary.

3. Commodities and Requirements Included.—The 47 items of expenditure included are divided into four groups, viz., (i.) groceries and bread, (ii.) dairy produce, (iii.) meat, and (iv.) house-rent. These items cover about 60 per cent. of the total expenditure of a normal family. There are very cogent reasons for the restriction of the inquiry to the items mentioned. If the comparisons are to be satisfactory, confusion must not arise between changes in standard of living and changes arising from a variation of the purchasing-power of money. In order to avoid such confusion the items selected are such as are sensibly identical and identifiable in the various localities. The most important group of expenditure which is not included is clothing, the cost of which amounts to about 13 per cent. of the total expenditure.

Investigations have been made with reference to variations in the cost of the items and services included in the balance of expenditure not

covered by the index-numbers published in the past, and the results are given in Section VI. hereof.

It should be remembered, however, that the index-numbers computed for food, groceries and rent in the past can be accepted as a fair reflection of the variation in the whole ordinary household expenditure. It is only in abnormal times that results based upon these items can be to any great extent vitiated.

The question of procedure in abnormal circumstances was sufficiently referred to in Report No. 6, pp. 20 to 22.

The following tabular statement gives particulars of the commodities and items included, the units of measurement for which prices are collected, and the mass-units shewing the relative extent to which each item is used or consumed.

Retail Prices.—Table shewing Commodities, etc., included in Investigation, Units of Measurement, and "Mass-Units."

Commodity.	Unit.	"Mass Unit."	Commodity.	Unit.	"Mass Unit."
GROUP I.—GROCERIES (INCLUDING BREAD)			GROUP III.—MEAT.		
1. Bread	2 lb. loaf	468	26. Beef, sirloin	lb.	67
2. Flour, ordinary ..	25 lb. bags	11	27. " rib	"	82
3. Tea	lb.	30	28. " flank	"	12
4. Coffee	"	2	29. " shin	"	14
5. Sugar	"	460	30. " steak, rump	"	24
6. Rice	"	50	31. " " shoulder	"	53
7. Sago	"	8	32. " " stewing	"	53
8. Jam	"	73	33. " corned round	"	39
9. Oatmeal	"	35	34. " brisket, with bone ..	"	11
10. Raisins	"	14	35. " " without bone ..	"	32
11. Currants	"	14	36. Mutton, leg	"	92
12. Starch	"	1	37. " " shoulder	"	92
13. Blue	doz. eqs.	1	38. " loin	"	30
14. Candles	lb.	16	39. " neck	"	40
15. Soap	"	64	40. " chops, loin	"	82
16. Potatoes	14 lbs.	64	41. " " leg	"	15
17. Onions	lb.	68	42. " " neck	"	31
18. Kerosene	gallon	17	43. Pork, leg	"	9
GROUP II.—DAIRY PRODUCTS.			44. " loin	"	8
19. Milk	quart	300	45. " belly	"	10
20. Butter	lb.	95	46. " chops	"	8
21. Cheese	"	15	GROUP IV.—HOUSE RENT.		
22. Eggs	dozen	18			
23. Bacon, middles ..	lb.	16	47. House Rent.	per week	46
24. " shoulder	"	16			
25. Ham	"	8			

It may here be pointed out that both in the collection of the data and computation of the results great care is exercised, and that there is reason to believe that the price-indexes are based upon more extensive data than any which have been obtained in similar investigations in other parts of the world.

In order to give some idea of the thorough manner in which the work has been performed, it may be mentioned that with regard to the 46 commodities and house rent included in this inquiry, nearly 11,000 prices and quotations are received and tabulated for the 30 towns dealt with each month. The complete scheme in regard to the determination of the price-indexes shewing the purchasing-power of money provides for the collection and analysis of over 150,000 separate prices and quotations each year, but owing to the difficulty in getting in all the returns regularly it was necessary to provide for a larger number of returns than was actually required.

When it is understood that this inquiry goes back for the capital towns as far as 1901, and the wholesale price inquiry (80 commodities) as far as 1871, some idea may be gathered as to the magnitude of the work involved. All the returns received are carefully examined, and in cases where the accuracy of any price or quotation is open to doubt, special inquiries are made from the person furnishing the quotation. Each return as received is compared with the previous return from the same dealer and with all other returns received for the same period. It is believed, therefore, that a high degree of accuracy is obtained in the investigations, and their validity cannot be impugned by mere personal opinions or by returns based on a less systematic inquiry.

4. Other Investigations as to Price-Indexes and Cost of Living.—

While this report is concerned principally with variations in price-indexes on the lines indicated in the preceding paragraphs, it will not be out of place to refer briefly to other cognate investigations which have been carried out. These consist, as already indicated, of (i.) Annual Variations in the price index-numbers for 150 Towns, (ii.) the cost of living according to Householders' Budget Inquiries, (iii.) special inquiries as to the cost of food, groceries and house rent in various towns and localities in the several States, and (iv.) the investigation by the Royal Commission on the Basic Wage.

(i.) *Price-Indexes in 150 Towns.*—The investigation as to variation in price-indexes in 100 towns was carried out for the months of November 1913 and November 1914. For subsequent years the number of towns from which returns are collected annually has been increased from 100 to 150. The results of the investigations for November of each year from 1913 to 1920 are published in previous issues of this Report. Prior to 1912 investigations were made concerning the price-indexes in the capital towns only, but during 1912 and subsequent years these investigations have been extended to 30 towns. On pages 64-5 hereinafter comparisons are made to test the accuracy with which the results obtained from these inquiries reflect the conditions obtaining throughout the States and Commonwealth. It will be seen on examination that the table reveals the fact that there is but little variation in the results obtained from the different sources indicated. This approximation between the various results indicates that the index-numbers published for the capital towns only, for the years prior to 1912 and for the 30 towns for 1912 and subsequent years, probably reflect, with a substantial degree of accuracy, the variations in the purchasing-power of money, not only in each State separately, but also throughout the Commonwealth as a whole.

(ii.) *Householders' Budget Inquiries.*—The first of these was held in 1910-11, and covered a period of twelve months. The results of that investigation were published in December, 1911.* A second was held during 1913 for the month of November only. The results of this second investigation are given in a special report, entitled "Labour Report, No. 4, Expenditure on Living in the Commonwealth, November, 1913." In September 1917 the Government of Western Australia appointed a Royal Commission of Inquiry into the cost of the necessities of life in that State. Under the authority of this Commission a budget inquiry was instituted, and steps were taken to obtain from householders, budgets shewing their weekly expenditure in detail. The Commonwealth Statistician (Mr. G. H. Knibbs) was requested to undertake the necessary analysis of the returns, and the budgets were accordingly forwarded by the Commission to this Bureau. The report, when completed, was forwarded to the Western Australian Government, and at the request of that Government was published in Labour Report No. 9, pp. 63-71.

(iii.) *Special Investigations as to the cost of Food, Groceries and House Rent in Towns and Localities not included in the 150 Towns Investigation.*—During recent years the question of the cost of living in certain country towns and districts in the several States, as compared with the cost in the towns ordinarily covered by the investigations of the Bureau, has arisen in connection with Arbitration Court proceedings. In order to furnish reliable information special inquiries as to the cost of food, groceries and house rent have been made. Forms have been issued direct from the Bureau to retailers and house agents situated in considerably over 100 towns and localities throughout the Commonwealth. From the data collected, index-numbers have been computed, and the results submitted to the tribunals concerned.*

(iv.) *Investigation by the Royal Commission on the Basic Wage.*—In December 1919 the Commonwealth Government appointed a Commission consisting of three representatives of employers' organisations, and three representatives of the Federated Trade Unions, with an independent chairman, to enquire into—

1. The actual cost of living at the present time according to reasonable standards of comfort, including all matters comprised in the ordinary expenditure of a household, for a man with a wife and three children under fourteen years of age, and the several items and amounts which make up that cost.
2. The actual cost of living during each of the last five years.
3. How the basic wage may be automatically adjusted to the rise and fall from time to time of the purchasing-power of money.

* See Report on an "Inquiry into the Cost of Living in Australia, 1910-11," by G. H. Knibbs, C.M.G., etc., December, 1911. Owing to the small number of budgets returned, the deductions and tabulations based thereon are necessarily restricted.

This Commission issued two reports; the first in November 1920, and the second in April 1921.

The two reports read together shew that according to the standard fixed by the Commission the cost of living for the family postulated was at the 1st of November, 1920, as follows:—

Particulars.	Melbourne	Sydney.	Brisbane.	Adelaide.	Perth.	Hobart.
	£ s. d.	£ s. d.	£ s. d.	£ s. d.	£ s. d.	£ s. d.
Rent ..	1 0 6	1 2 0	0 17 0	0 19 6	0 19 0	0 19 0
Food ..	2 6 2	2 6 9	2 3 1	2 7 2	2 4 11	2 8 11
Clothing	1 9 0	1 7 0	1 6 0	1 8 3	1 7 9	1 9 2
Miscellaneous	1 0 10	1 1 4	1 0 1	1 1 2	1 2 3	0 19 10
	5 16 6	5 17 1	5 6 2	5 16 1	5 13 11	5 16 11

The corresponding cost of the articles and services included (which are all fully set out in the first report) for the years 1914 to 1920 are as follows:—

Years.	Melbourne	Sydney.	Brisbane.	Adelaide.	Perth.	Hobart.
	£ s. d.	£ s. d.	£ s. d.	£ s. d.	£ s. d.	£ s. d.
1914 ..	3 7 9	3 12 11	3 4 0	3 11 2	3 12 9	3 6 9
1915 ..	3 16 9	4 1 6	3 11 3	3 19 0	3 17 1	3 15 1
1916 ..	3 17 5	4 4 6	3 13 10	3 19 7	4 1 2	3 15 6
1917 ..	4 2 2	4 9 8	3 19 3	4 3 2	4 4 2	4 4 10
1918 ..	4 8 10	4 14 8	4 6 0	4 10 11	4 9 2	4 8 6
1919 ..	4 18 5	5 5 3	4 15 10	5 2 6	5 0 9	5 0 4
1920 ..	5 16 6	5 17 1	5 6 2	5 16 1	5 13 11	5 16 11

The results of an investigation into the variation in the cost of this regimen since 1920 are given in Section VI. hereof.

5. Purchasing-Power of Money. General Results of Investigation in each Metropolitan Town, 1901 to 1921.—Index-numbers, computed separately for each group of commodities (and for house-rent) included in the investigation, as well as the weighted average for all groups together, are shewn for the capital town of each State in the tables given hereinafter. In these tables the weighted aggregate expenditure for the whole of the capital towns in 1911 is taken as base (= 1,000), and the figures for that year (as well as other years) for the individual towns shew the relative purchasing-power of money as between the respective towns. The result is that the index-numbers given herein are comparable in all respects, that is to say, they shew not only the variations from year to year in each town, but they also furnish comparisons as to the relative cost in the different towns, either in any given year or as between one year and another and one town and another.

Retail Price Index-Numbers** in Metropolitan Towns, 1901 to 1921.†

It is, of course, obvious that the index-numbers given in the separate parts of the table cannot be compared with each other in order to shew the relative cost of (say) house-rent, and groceries and food, since the weighted average cost for the six towns taken together in 1911 in each case is made equal to 1000, although the cost is, of course, not the same.

TOWN.	1901.	1907.	1911.	1912.	1913.	1914.	1915.	1916.	1917.	1918.	1919.	1920.	1921.
GROUP I.—GROCERIES.													
Sydney ..	876	904	1,018	1,151	1,106	1,112	1,281	1,329	1,320	1,393	1,710	2,180	1,976
Melbourne ..	897	817	924	1,061	963	996	1,222	1,210	1,188	1,263	1,528	1,926	1,897
Brisbane ..	1,011	969	1,087	1,195	1,110	1,076	1,331	1,315	1,323	1,406	1,795	2,155	1,958
Adelaide ..	949	903	958	1,138	1,039	1,061	1,310	1,274	1,210	1,344	1,592	2,030	1,907
Perth ..	1,006	1,013	1,276	1,186	1,073	1,113	1,351	1,345	1,329	1,394	1,618	2,008	1,955
Hobart ..	935	888	1,003	1,169	1,061	1,070	1,250	1,236	1,263	1,341	1,582	1,995	1,927
Weighted Average*	912	885	1,000	1,124	1,043	1,062	1,272	1,279	1,261	1,342	1,631	2,030	1,937

GROUP II.—DAIRY PRODUCE.													
Sydney ..	881	932	971	1,098	1,095	1,110	1,221	1,291	1,319	1,358	1,578	1,957	1,828
Melbourne ..	960	917	959	1,077	1,019	1,075	1,350	1,338	1,271	1,325	1,454	1,929	1,840
Brisbane ..	833	837	983	1,055	1,008	995	1,277	1,287	1,294	1,334	1,573	1,816	1,664
Adelaide ..	975	928	1,103	1,203	1,167	1,194	1,360	1,283	1,228	1,315	1,487	1,887	1,723
Perth ..	1,290	1,200	1,241	1,320	1,262	1,244	1,475	1,434	1,406	1,427	1,617	1,954	1,951
Hobart ..	931	955	994	1,102	1,109	1,177	1,439	1,334	1,313	1,365	1,540	1,976	1,848
Weighted Average*	945	955	1,000	1,115	1,080	1,108	1,307	1,316	1,295	1,345	1,526	1,928	1,815

GROUP III.—MEAT.													
Sydney ..	1,025	994	959	1,107	1,213	1,280	1,778	2,091	2,154	2,020	2,125	2,383	1,838
Melbourne ..	1,077	1,067	929	1,123	1,149	1,270	1,800	2,027	1,949	1,963	1,956	2,414	1,972
Brisbane ..	1,026	1,024	935	991	965	1,169	1,549	1,766	1,667	1,819	1,905	2,126	1,719
Adelaide ..	1,221	1,059	1,037	1,130	1,206	1,502	1,930	2,240	2,079	2,169	2,187	2,567	2,097
Perth ..	1,378	1,511	1,577	1,643	1,667	1,688	1,722	1,997	1,913	1,708	2,200	2,224	2,113
Hobart ..	1,225	1,279	1,221	1,321	1,400	1,493	1,789	2,217	2,274	2,427	2,256	2,645	2,382
Weighted Average*	1,101	1,074	1,000	1,144	1,198	1,323	1,781	2,056	2,022	1,992	2,063	2,390	1,934

GROUPS I., II., AND III. COMBINED.—GROCERIES AND FOOD.

Sydney ..	917	936	989	1,124	1,131	1,156	1,306	1,520	1,540	1,549	1,783	2,148	1,868
Melbourne ..	965	925	935	1,082	1,024	1,091	1,411	1,462	1,412	1,466	1,620	2,056	1,901
Brisbane ..	965	947	1,018	1,102	1,042	1,078	1,378	1,426	1,406	1,495	1,762	2,052	1,812
Adelaide ..	1,028	951	1,020	1,154	1,119	1,215	1,487	1,532	1,445	1,554	1,719	2,132	1,960
Perth ..	1,154	1,197	1,464	1,345	1,267	1,302	1,483	1,542	1,505	1,486	1,772	2,050	1,995
Hobart ..	1,011	1,010	1,053	1,190	1,164	1,212	1,445	1,523	1,544	1,635	1,748	2,162	2,025
Weighted Average*	972	955	1,000	1,129	1,095	1,144	1,416	1,495	1,472	1,514	1,716	2,101	1,902

GROUP IV.—HOUSE RENT.

Sydney ..	858	911	1,090	1,183	1,246	1,279	1,220	1,212	1,215	1,252	1,289	1,415	1,474
Melbourne ..	733	804	970	1,016	1,039	1,126	1,085	1,089	1,124	1,180	1,283	1,405	1,502
Brisbane ..	488	575	767	804	863	882	859	847	859	905	983	1,061	1,079
Adelaide ..	629	812	1,112	1,160	1,125	1,040	932	930	959	1,022	1,108	1,216	1,299
Perth ..	801	684	810	880	928	914	848	869	874	885	916	996	1,055
Hobart ..	667	708	805	829	887	914	928	928	951	956	1,134	1,373	1,440
Weighted Average*	751	816	1,000	1,063	1,118	1,135	1,081	1,081	1,098	1,143	1,215	1,333	1,404

ALL GROUPS COMBINED.—GROCERIES, FOOD, AND HOUSE RENT.

Sydney ..	893	926	1,031	1,148	1,178	1,206	1,323	1,394	1,406	1,427	1,580	1,917	1,724
Melbourne ..	870	875	950	1,055	1,051	1,105	1,277	1,309	1,294	1,349	1,481	1,788	1,737
Brisbane ..	769	794	915	979	969	997	1,161	1,188	1,181	1,262	1,442	1,615	1,511
Adelaide ..	864	894	1,058	1,157	1,121	1,143	1,250	1,285	1,245	1,335	1,468	1,756	1,653
Perth ..	1,027	986	1,126	1,154	1,128	1,143	1,222	1,266	1,246	1,239	1,420	1,617	1,609
Hobart ..	809	886	954	1,042	1,053	1,090	1,233	1,278	1,301	1,356	1,496	1,837	1,785
Weighted Average*	880	897	1,000	1,101	1,104	1,140	1,278	1,324	1,318	1,362	1,510	1,785	1,607

Note.—As to basis of index-numbers, see remarks on pages 23 to 26

* For all capital towns.

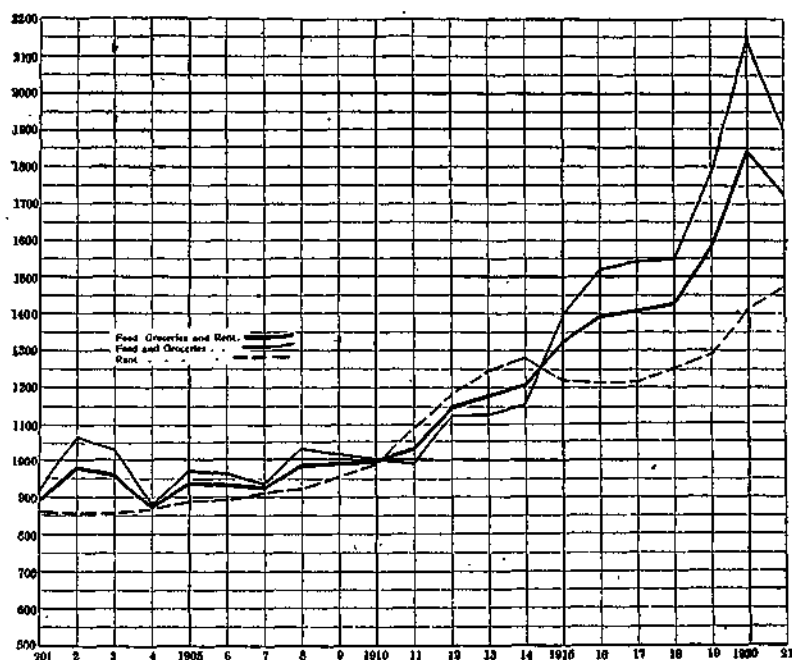
† Index-numbers for years 1902-10 are given in Labour Report No 6, p. 26.

** As the price index-number increases, the purchasing-power of money diminishes.

The index-numbers for the last three groups (Food and Groceries, House Rent, and Food, Groceries and House Rent combined) are shewn, for each capital town, together with the weighted average of the six towns considered as a whole, in the graphs on pages 30 to 33. The paragraphs on pages 34 and 35 briefly indicate the general nature of the variations in each group.

GRAPHS SHEWING THE PURCHASING-POWER OF MONEY,* METROPOLITAN TOWNS, 1901 to 1921.

SYDNEY.

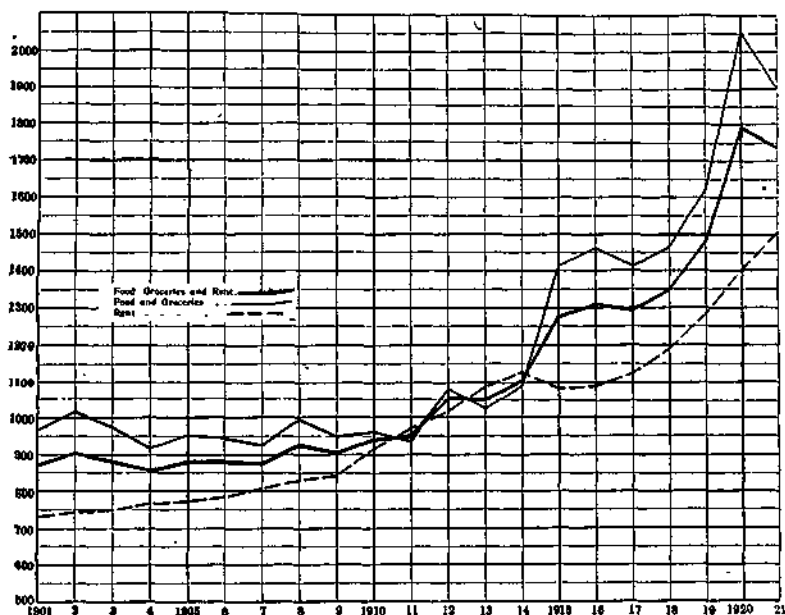


* Based upon a constant "composite unit."

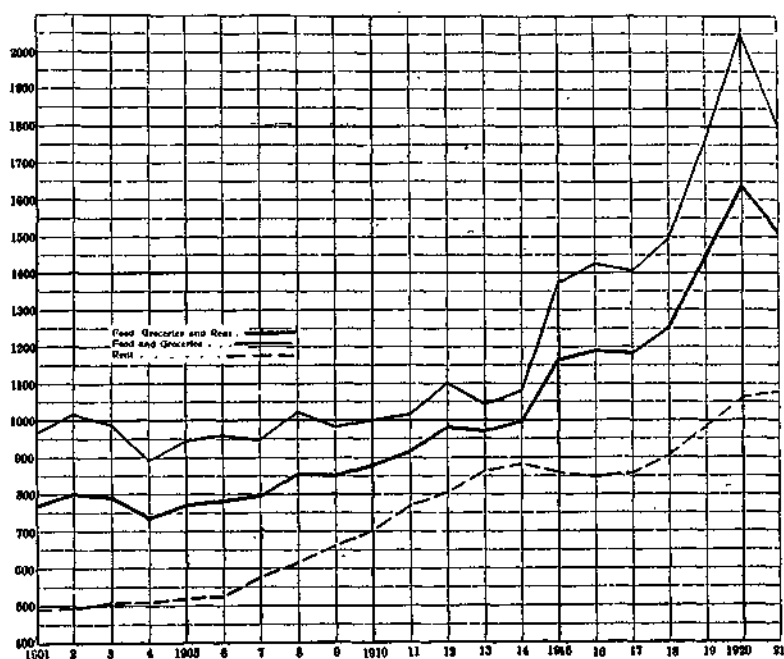
RETAIL PRICES, HOUSE RENT, AND PURCHASING-POWER OF MONEY. 31

GRAPHS SHEWING PURCHASING-POWER OF MONEY, METROPOLITAN TOWNS
1901 TO 1921.

MELBOURNE.

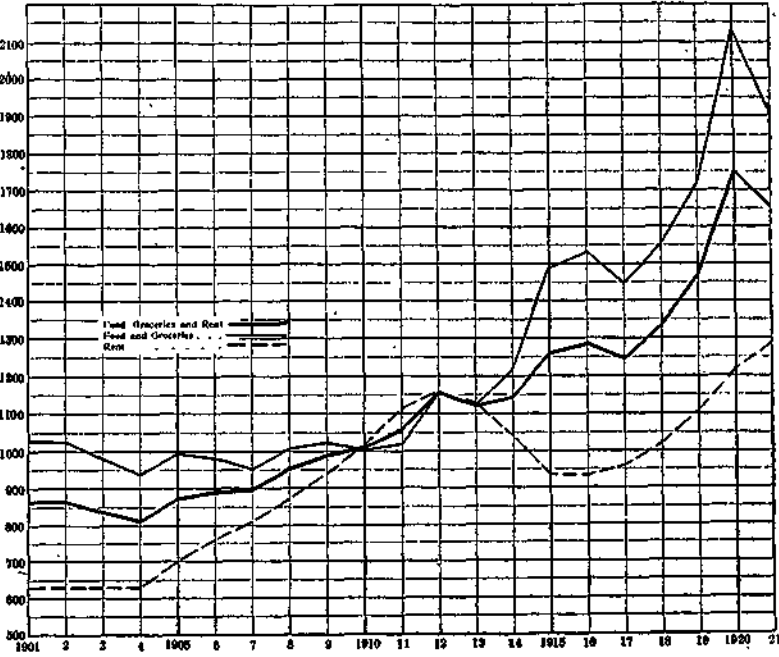


BRISBANE.

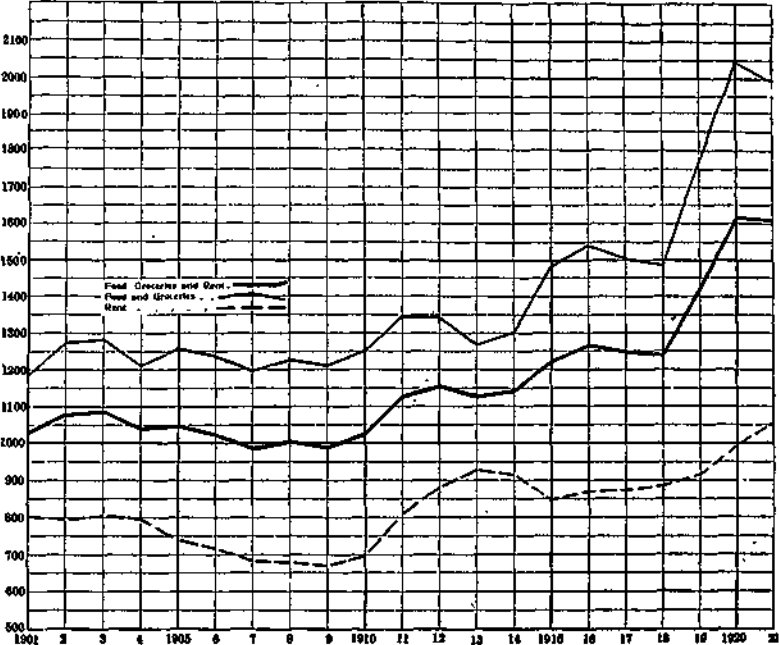


See footnote previous page.

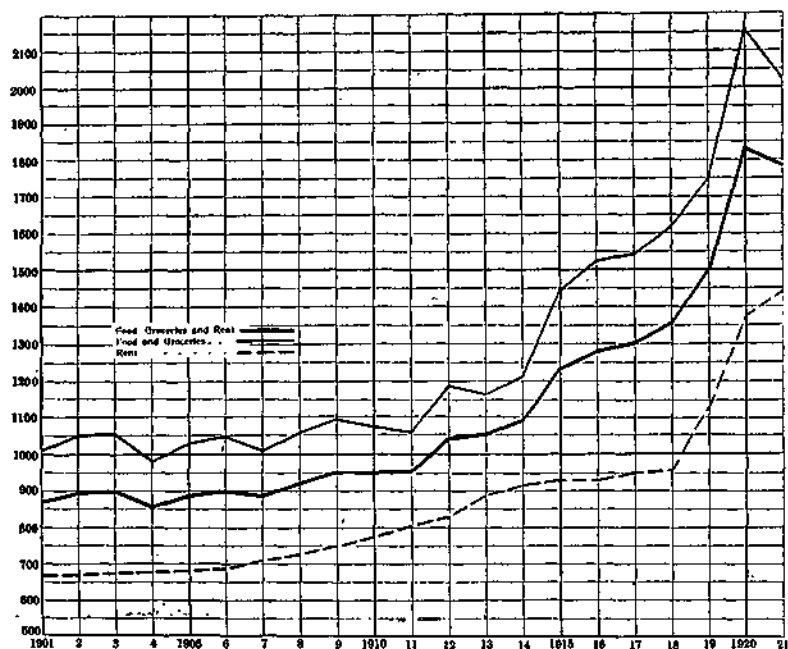
GRAPHS SHewing PURCHASING-POWER OF MONEY, METROPOLITAN TOWNS
1901 TO 1921.
ADELAIDE.



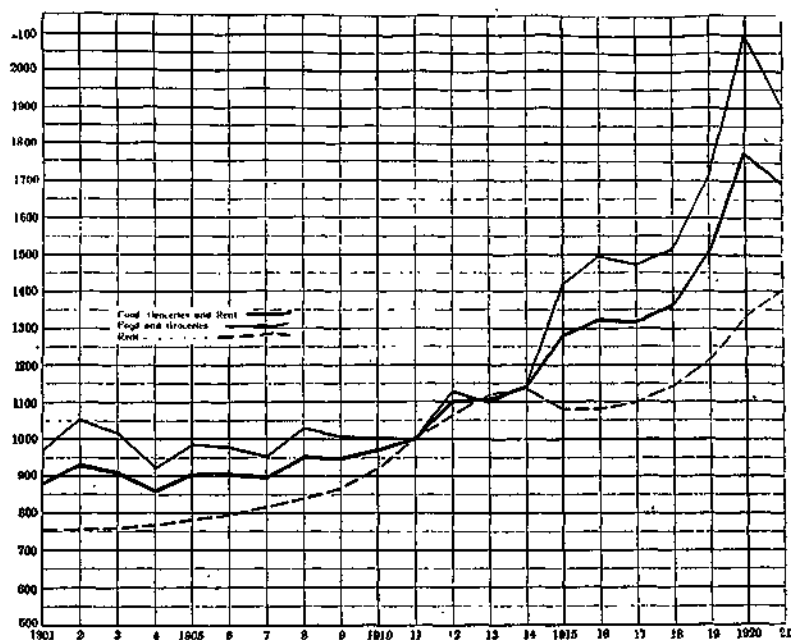
PERTH.



RETAIL PRICES, HOUSE RENT, AND PURCHASING-POWER OF MONEY. 33
 GRAPHS SHEWING THE PURCHASING-POWER OF MONEY, METROPOLITAN TOWNS,
 1901 to 1921.
 HOBART.



PURCHASING-POWER OF MONEY.—WEIGHTED AVERAGE SIX CAPITAL TOWNS
 1901 to 1921.



See footnote p. 30.

(i.) *Groceries (18 Commodities).*—It may be seen that the index-number for this Group was lower in 1921 than in 1920 in all the capital towns. The decrease in the weighted average index-number for all towns in 1921 compared with 1920 amounts to 5.0 per cent.; compared with 1911 there has been an increase of 92.8 per cent.; and compared with 1901 an increase of 112.4 per cent. The average cost in 1921 of the commodities included in this group was greatest in Sydney and least in Melbourne.

(ii.) *Dairy Produce (7 Commodities).*—The index-numbers for this group were lower for 1921 than for 1920 in all the towns. The weighted average index-number for all towns in 1921 was 5.9 per cent. lower than in 1920, 81.5 per cent. higher than in 1911, and 92.1 per cent. higher than in 1901. The average cost in 1921 of the commodities in this group was highest in Perth and lowest in Brisbane.

(iii.) *Meat (21 Cuts or Joints of Butcher's Meat).*—The index-numbers for this group were lower in 1921 than in 1920 in all the capital towns. The weighted average index-number for all towns taken together in 1921 was 19.1 per cent. lower than in 1920; 93.4 per cent. higher than in 1911, and 75.7 per cent. higher than in 1901. The average cost for 1921 of the commodities included in this group was greatest in Hobart and least in Brisbane.

(iv.) *Groceries and Food (Groups I., II., and III. combined).**—The index-numbers for this combined group shew the aggregate effect upon the purchasing-power-of-money index-numbers of movements in prices of commodities, apart from variations in house rent. There was a decrease in 1921 compared with the immediately preceding year in all the towns. During the whole of the period covered by the table on page 29 the index-numbers were higher in Perth than in any other capital town up to and including 1914. The disparity between that town and the remaining towns was greater in the earlier years of the period, and less in the later years, and for 1915 the index-number for Perth, while still higher than for all the towns except Adelaide, shows less divergence from the weighted average than for any other year. In 1916 the index-number for Perth was again higher than for any other town, but in 1917 it was lower in that town than in Sydney or Hobart. In 1918 the index-number for Perth was lower than in all the towns except Melbourne, and in 1919 was higher than in all the towns except Sydney. In 1920 the index-number for Perth was the lowest of the 6 capital towns, but in 1921 was higher than in all capital towns except Hobart. Taking the weighted average for all the towns, the prices of the 46 items of food and groceries specified on page 25 were 9.5 per cent. lower in 1921 than in 1920; 90.2 per cent. higher than in 1911; and 95.7 per cent. higher than in 1901. The average cost of these items for 1921 was greatest in Hobart and least in Brisbane.

(v.) *House Rent.*—Except in Adelaide, where rents remained stationary from 1901 to 1904, and declined in 1913, and in Perth, where they decreased from 1903 to 1907, and again in 1908-9 and 1914, there was a uniform increase in each of the metropolitan towns from 1901 to 1914. The abnormal conditions arising out of the war has resulted in entirely changed conditions for the years 1915 to 1921. It will be seen that

* That is the "composite unit" upon which these index-numbers are computed.

for 1915 there was a decrease in the cost of housing accommodation in all the towns except Hobart, where there was a small increase. In 1916 Melbourne and Perth shew slight increases, Sydney, Brisbane and Adelaide slight decreases, while the index-number for Hobart was the same for 1916 as for 1915. From 1917 to 1921, there was an increase in the average rentals in all the towns. The weighted average index-number for 1921 is 5.3 per cent. higher than for 1920, 40.4 per cent. higher than in 1911, and 87.0 per cent. higher than in 1901. The greatest increase since 1901 has occurred in Brisbane (121.1 per cent.), followed in the order named by Hobart (115.9 per cent.), Adelaide and Melbourne equal (104.9 per cent.), Sydney (71.8 per cent.), and Perth (31.7 per cent.).

(vi.) *Price Index-numbers for Food, Groceries and House Rent combined.*—The weighted average index-numbers for the combined expenditure upon the 46 items of food and groceries and housing accommodation show a decrease of 4.9 per cent. in 1921 compared with 1920, an increase of 69.7 compared with 1911, and 92.8 compared with 1901. Reference to the graph on page 33 will shew that the weighted average price index-number was lower in 1904 than in any other year during the period covered by the investigations. The index-number rose in 1905 and 1906, and fell in 1907. There was a substantial rise in 1908, followed by a slight decline in 1909. Further rises occurred in 1910 and 1911, and again in 1912, when the increase was very considerable (10.1 per cent.). The index-number for 1913 was practically the same as for 1912, but in 1914 there was a rise of 3.2 per cent., in 1915 of 12.1 per cent., and a further rise in 1916 of 3.6 per cent. The index-number for 1917 was 0.5 per cent. lower than for 1916, but in 1918 there was a rise of 3.3 per cent. The index-number for 1919 shews a rise of 10.9 per cent., and there was a further sharp rise of 18.2 per cent. for 1920, which is the highest recorded. The index-number for 1921 shews a decline, being 4.9 per cent. lower than in 1920.

Compared with 1911, the base year of the period, the weighted average purchasing-power-of-money index-number shews an increase of 69.7 per cent. for 1921. It may further be seen that, except for the year 1909, from 1901 to 1912 inclusive, the index-number for Perth was higher than for any other capital town. From 1913 to 1920 the index-number for Sydney was the highest, and for 1921 the index-number for Hobart was higher than for any other town. Attention has already been drawn to the fact that the increase in prices of food and groceries during 1915 and subsequent years was considerably less in Perth than in the remaining towns. The result of this is to alter the relative cost of food, groceries, and house rent combined in the several towns.

6. Index-numbers Shewing Variations in Cost of Food, Groceries and House Rent, 1912 to 1921.—In the following tables, index-numbers are given shewing variations in the cost of food and groceries (46 commodities), in thirty of the more important towns throughout the Commonwealth at yearly and quarterly periods from 1912 to 1921. Index-numbers for food and groceries are also given for each month of 1921. In addition, index-numbers shewing for these years the quarterly and yearly variations in house rents and in the combined cost of food, groceries and house rent are given. As explained on pp. 31 and 32 of Labour Report No. 6, these are now computed to the same base as the index-numbers relating to the six capital cities, which go back to the year 1901.

**Food and Groceries (46 Commodities), Price Index-Numbers* for Each of Thirty Towns,
with Weighted Average of Six Capital Towns in 1911 as Base (= 1000).**

	N.S.W.—INDEX-NUMBERS.						VICTORIA—INDEX-NUMBERS.					
	Sydney.	Newcastle.	Broken Hill.	Goulburn.	Bathurst.	Weighted Average, N.S.W.	Melbourne.	Bellarat.	Bendigo.	Geelong.	Warrnambool.	Weighted Average, Victoria.
1912	1,124	1,134	1,352	1,128	1,083	1,134	1,082	1,110	1,112	1,086	1,057	1,086
1913	1,131	1,127	1,343	1,161	1,053	1,139	1,024	1,028	1,057	1,040	1,043	1,026
1914	1,156	1,142	1,388	1,174	1,094	1,164	1,091	1,086	1,098	1,099	1,074	1,091
1915	1,366	1,389	1,642	1,388	1,336	1,404	1,411	1,443	1,429	1,399	1,425	1,414
1916	1,520	1,508	1,810	1,532	1,466	1,630	1,462	1,460	1,453	1,404	1,466	1,462
1917	1,540	1,537	1,778	1,490	1,483	1,548	1,412	1,401	1,407	1,419	1,429	1,412
1918	1,549	1,564	1,752	1,526	1,504	1,557	1,466	1,441	1,443	1,445	1,493	1,463
1919	1,793	1,803	1,900	1,781	1,681	1,788	1,620	1,587	1,553	1,588	1,604	1,612
1920	2,148	2,146	2,306	2,185	2,113	2,158	2,056	2,080	2,009	1,995	2,036	2,052
1921	1,898	1,936	2,128	1,931	1,884	1,911	1,901	1,812	1,889	1,932	1,920	1,902
1913 1st Qtr.	1,136	1,124	1,329	1,189	1,060	1,143	1,036	1,055	1,101	1,085	1,051	1,048
2nd "	1,153	1,147	1,381	1,189	1,083	1,166	1,040	1,040	1,093	1,072	1,067	1,046
3rd "	1,128	1,124	1,321	1,118	1,036	1,134	1,021	1,013	1,037	1,030	1,037	1,022
4th "	1,104	1,112	1,343	1,109	1,034	1,114	990	996	999	1,009	1,018	999
1914 1st Qtr.	1,150	1,110	1,340	1,134	1,065	1,153	1,028	1,029	1,043	1,038	1,034	1,030
2nd "	1,163	1,153	1,423	1,201	1,121	1,173	1,118	1,090	1,115	1,133	1,073	1,116
3rd "	1,184	1,148	1,393	1,177	1,095	1,163	1,101	1,113	1,099	1,099	1,089	1,102
4th "	1,156	1,154	1,376	1,184	1,092	1,164	1,115	1,113	1,123	1,126	1,100	1,116
1915 1st Qtr.	1,231	1,233	1,488	1,222	1,182	1,241	1,186	1,202	1,201	1,178	1,162	1,187
2nd "	1,288	1,293	1,605	1,299	1,254	1,300	1,382	1,411	1,389	1,348	1,377	1,383
3rd "	1,536	1,506	1,721	1,518	1,453	1,540	1,584	1,627	1,634	1,567	1,628	1,590
4th "	1,530	1,522	1,753	1,512	1,455	1,537	1,491	1,631	1,493	1,489	1,533	1,494
1916 1st Qtr.	1,566	1,532	1,784	1,538	1,454	1,570	1,510	1,503	1,504	1,499	1,502	1,509
2nd "	1,517	1,496	1,827	1,545	1,479	1,528	1,483	1,501	1,479	1,506	1,484	1,485
3rd "	1,510	1,500	1,816	1,532	1,468	1,523	1,448	1,449	1,417	1,449	1,468	1,447
4th "	1,485	1,494	1,817	1,511	1,462	1,500	1,407	1,412	1,411	1,400	1,408	1,407
1917 1st Qtr.	1,499	1,518	1,804	1,522	1,467	1,513	1,395	1,400	1,395	1,405	1,415	1,398
2nd "	1,506	1,528	1,809	1,481	1,471	1,520	1,412	1,403	1,425	1,438	1,435	1,414
3rd "	1,588	1,548	1,743	1,460	1,487	1,587	1,410	1,392	1,415	1,418	1,435	1,417
4th "	1,566	1,555	1,754	1,496	1,506	1,671	1,422	1,408	1,395	1,416	1,430	1,419
1918 1st Qtr.	1,553	1,562	1,783	1,481	1,502	1,561	1,447	1,433	1,434	1,453	1,448	1,446
2nd "	1,549	1,574	1,828	1,526	1,521	1,561	1,478	1,450	1,483	1,475	1,506	1,477
3rd "	1,514	1,522	1,705	1,509	1,487	1,522	1,449	1,422	1,427	1,426	1,501	1,445
4th "	1,579	1,599	1,692	1,583	1,508	1,585	1,490	1,459	1,429	1,426	1,515	1,482
1919 1st Qtr.	1,702	1,727	1,789	1,737	1,619	1,707	1,566	1,530	1,498	1,528	1,555	1,557
2nd "	1,770	1,774	1,849	1,743	1,656	1,772	1,574	1,533	1,526	1,541	1,582	1,567
3rd "	1,766	1,812	1,900	1,756	1,693	1,774	1,605	1,583	1,560	1,582	1,607	1,599
4th "	1,893	1,901	2,060	1,887	1,765	1,890	1,734	1,701	1,648	1,699	1,693	1,724
1920 1st Qtr.	1,993	1,988	2,117	1,946	1,893	1,995	1,717	1,754	1,695	1,717	1,718	1,718
2nd "	2,101	2,099	2,384	2,085	2,040	2,112	2,026	2,039	1,981	1,957	1,937	2,020
3rd "	2,300	2,230	2,538	2,412	2,265	2,395	2,289	2,297	2,228	2,175	2,238	2,280
4th "	2,198	2,267	2,547	2,295	2,282	2,220	2,190	2,228	2,130	2,128	2,246	2,187
1921 1st Qtr.	2,122	2,103	2,495	2,179	2,124	2,141	2,166	2,176	2,112	2,171	2,188	2,164
2nd "	1,917	1,963	2,345	1,975	1,930	1,940	1,965	1,968	1,952	2,037	1,955	1,967
3rd "	1,834	1,882	1,962	1,819	1,821	1,843	1,819	1,833	1,807	1,839	1,836	1,821
4th "	1,719	1,734	1,711	1,711	1,661	1,719	1,654	1,670	1,647	1,680	1,701	1,657
1921.												
January	2,175	2,229	2,503	2,247	2,199	2,194	2,188	2,178	2,128	2,166	2,194	2,182
February	2,155	2,177	2,497	2,183	2,145	2,171	2,153	2,175	2,110	2,171	2,176	2,157
March	2,036	2,083	2,486	2,106	2,026	2,059	2,154	2,174	2,098	2,177	2,198	2,154
April	1,996	2,007	2,480	2,045	1,982	1,993	2,013	2,024	2,001	2,070	2,024	2,016
May	1,906	1,947	2,326	1,950	1,925	1,927	1,964	1,960	1,939	2,051	1,949	1,946
June	1,879	1,934	2,220	1,931	1,884	1,890	1,918	1,920	1,915	1,980	1,892	1,920
July	1,859	1,906	2,107	1,890	1,845	1,872	1,863	1,883	1,853	1,909	1,871	1,866
August	1,835	1,888	1,935	1,823	1,842	1,843	1,881	1,827	1,822	1,835	1,840	1,831
September	1,809	1,853	1,844	1,803	1,775	1,814	1,764	1,788	1,745	1,773	1,792	1,766
October	1,775	1,790	1,688	1,742	1,708	1,771	1,683	1,705	1,701	1,712	1,744	1,687
November	1,723	1,747	1,737	1,699	1,673	1,724	1,650	1,658	1,644	1,682	1,696	1,652
December	1,659	1,666	1,706	1,692	1,603	1,661	1,630	1,647	1,597	1,645	1,663	1,630

Index-numbers for each of the months of 1912, 1913, 1914, and 1915 are given on pp. 33-35 of Labour Report No. 6; for 1918 on pp. 371-3 of Labour Report No. 7; for 1917 on pp. 32-4, Labour Report No. 8; for 1918 on pp. 33-35 of Labour Report No. 9; for 1919 on pp. 36 to 38 of Labour Report No. 10; and for 1920 on pp. 37 to 45 of Labour Report No. 11.

* As the price index number increases, the purchasing-power of money diminishes.

Food and Groceries (46 Commodities), Price Index-Numbers* for Each of Thirty Towns, with Weighted Average of Six Capital Towns in 1911 as Base (= 1000)—cont.

	QUEENSLAND—INDEX-NUMBERS.						SOUTH AUSTRALIA—INDEX-NUMBERS.					
	Brisbane.	Toowoomba.	Rockhampton.	Charters Towers.	Warwick.	Weighted Average, Queensland.	Adelaide.	Kadina, Mount and Wallaroo.	Port Pirie.	Mt. Gambler.	Peterborough.	Weighted Average, S.A.
1912	1,102	1,100	1,142	1,292	1,144	1,123	1,154	1,154	1,195	1,031	1,160	1,152
1913	1,042	1,045	1,067	1,212	1,073	1,060	1,119	1,139	1,161	1,021	1,108	1,119
1914	1,078	1,088	1,145	1,206	1,088	1,102	1,215	1,210	1,247	1,062	1,268	1,216
1915	1,373	1,405	1,429	1,546	1,372	1,396	1,487	1,506	1,560	1,382	1,504	1,480
1916	1,426	1,432	1,530	1,599	1,422	1,452	1,532	1,583	1,604	1,467	1,593	1,637
1917	1,405	1,390	1,427	1,574	1,413	1,420	1,445	1,535	1,579	1,422	1,552	1,457
1918	1,495	1,496	1,523	1,700	1,563	1,517	1,553	1,569	1,628	1,467	1,590	1,556
1919	1,762	1,800	1,827	1,999	1,807	1,792	1,719	1,706	1,744	1,580	1,731	1,710
1920	2,052	1,999	2,067	2,133	2,045	2,055	2,132	2,089	2,096	1,976	2,092	2,123
1921	1,812	1,714	1,834	1,901	1,817	1,812	1,806	1,818	1,960	1,882	1,954	1,909
1913 1st Qtr.	1,036	1,018	1,064	1,233	1,079	1,055	1,123	1,140	1,155	1,018	1,109	1,122
2nd "	1,060	1,047	1,074	1,231	1,116	1,076	1,145	1,161	1,183	1,037	1,118	1,144
3rd "	1,040	1,054	1,052	1,192	1,058	1,056	1,117	1,137	1,162	1,039	1,117	1,118
4th "	1,035	1,058	1,078	1,191	1,041	1,055	1,090	1,119	1,142	989	1,088	1,091
1914 1st Qtr.	1,044	1,078	1,110	1,218	1,090	1,070	1,147	1,146	1,161	1,030	1,166	1,144
2nd "	1,058	1,056	1,125	1,255	1,073	1,082	1,250	1,252	1,255	1,066	1,291	1,246
3rd "	1,085	1,069	1,161	1,252	1,076	1,105	1,229	1,231	1,283	1,067	1,319	1,228
4th "	1,124	1,151	1,186	1,338	1,114	1,151	1,233	1,209	1,289	1,084	1,294	1,231
1915 1st Qtr.	1,193	1,228	1,261	1,423	1,221	1,223	1,315	1,325	1,402	1,189	1,353	1,317
2nd "	1,318	1,360	1,381	1,553	1,360	1,347	1,506	1,522	1,553	1,395	1,515	1,506
3rd "	1,450	1,483	1,466	1,549	1,422	1,463	1,602	1,624	1,673	1,493	1,607	1,603
4th "	1,531	1,549	1,630	1,660	1,484	1,552	1,526	1,552	1,612	1,445	1,540	1,520
1916 1st Qtr.	1,551	1,554	1,663	1,678	1,523	1,572	1,550	1,591	1,648	1,461	1,598	1,556
2nd "	1,456	1,453	1,580	1,645	1,440	1,484	1,574	1,610	1,643	1,512	1,630	1,578
3rd "	1,356	1,383	1,447	1,530	1,373	1,383	1,521	1,579	1,565	1,461	1,584	1,525
4th "	1,341	1,338	1,431	1,539	1,353	1,367	1,469	1,648	1,561	1,426	1,563	1,477
1917 1st Qtr.	1,349	1,308	1,384	1,542	1,335	1,364	1,476	1,564	1,583	1,419	1,566	1,486
2nd "	1,373	1,352	1,400	1,570	1,374	1,391	1,469	1,572	1,605	1,441	1,586	1,482
3rd "	1,410	1,404	1,440	1,575	1,440	1,433	1,402	1,494	1,552	1,408	1,521	1,416
4th "	1,480	1,498	1,473	1,610	1,503	1,492	1,432	1,511	1,575	1,419	1,539	1,444
1918 1st Qtr.	1,447	1,406	1,483	1,662	1,493	1,466	1,514	1,571	1,630	1,463	1,596	1,522
2nd "	1,482	1,448	1,503	1,681	1,529	1,490	1,607	1,584	1,647	1,513	1,603	1,605
3rd "	1,488	1,515	1,506	1,699	1,588	1,513	1,538	1,552	1,602	1,488	1,566	1,541
4th "	1,562	1,614	1,599	1,758	1,642	1,589	1,554	1,567	1,633	1,485	1,594	1,557
1919 1st Qtr.	1,707	1,790	1,773	1,888	1,770	1,739	1,652	1,647	1,710	1,593	1,684	1,651
2nd "	1,709	1,756	1,782	1,939	1,770	1,742	1,702	1,668	1,722	1,544	1,702	1,696
3rd "	1,730	1,754	1,782	2,041	1,773	1,785	1,708	1,686	1,713	1,580	1,712	1,703
4th "	1,899	1,898	1,972	2,047	1,904	1,919	1,817	1,825	1,833	1,684	1,825	1,813
1920 1st Qtr.	2,017	2,013	2,067	2,168	1,977	2,033	1,896	1,872	1,853	1,690	1,883	1,877
2nd "	2,065	2,006	2,056	2,107	2,056	2,061	2,136	2,051	2,072	1,930	2,105	2,121
3rd "	2,103	2,042	2,101	2,149	2,068	2,100	2,203	2,240	2,236	2,148	2,226	2,291
4th "	2,023	1,936	2,041	2,106	2,049	2,024	2,273	2,194	2,222	2,136	2,154	2,200
1921 1st Qtr.	1,990	1,831	1,971	2,095	1,970	1,960	2,144	2,139	2,185	2,078	2,121	2,143
2nd "	1,832	1,737	1,881	1,931	1,848	1,837	1,988	2,018	2,053	1,981	2,035	1,993
3rd "	1,763	1,684	1,776	1,801	1,751	1,759	1,814	1,806	1,868	1,810	1,871	1,817
4th "	1,694	1,602	1,707	1,778	1,701	1,693	1,678	1,686	1,733	1,660	1,790	1,682
1921.												
January	1,990	1,860	1,966	2,176	1,975	1,969	2,157	2,173	2,214	2,128	2,142	2,160
February	1,963	1,847	1,930	2,080	1,970	1,964	2,137	2,128	2,177	2,049	2,117	2,135
March	1,956	1,788	1,967	2,029	1,956	1,947	2,137	2,116	2,166	2,067	2,104	2,134
April	1,885	1,755	1,915	1,967	1,911	1,883	2,075	2,101	2,097	2,033	2,084	2,076
May	1,833	1,734	1,877	1,927	1,837	1,836	1,975	2,005	2,060	1,969	2,026	1,981
June	1,779	1,722	1,851	1,900	1,797	1,791	1,914	1,949	2,002	1,942	1,995	1,922
July	1,762	1,713	1,799	1,837	1,759	1,767	1,853	1,871	1,934	1,888	1,920	1,860
August	1,757	1,705	1,766	1,774	1,738	1,754	1,826	1,819	1,855	1,835	1,966	1,828
September	1,769	1,634	1,763	1,793	1,754	1,756	1,763	1,720	1,816	1,707	1,826	1,763
October	1,711	1,592	1,695	1,774	1,708	1,703	1,710	1,697	1,755	1,667	1,783	1,711
November	1,708	1,600	1,697	1,756	1,674	1,690	1,683	1,690	1,731	1,651	1,782	1,686
December	1,663	1,616	1,730	1,805	1,721	1,679	1,641	1,672	1,714	1,661	1,804	1,649

Index-numbers for each of the months of 1912, 1913, 1914 and 1915 are given on pp. 33-5 of Labour Report No. 6; for 1916 on pp. 371-3, Labour Report No. 7; for 1917 on pp. 32-4, Labour Report No. 8; for 1918 on pp. 33-5, Labour Report No. 9; for 1919 on pp. 36-38 of Labour Report No. 10; and for 1920 on pp. 37 to 45 of Labour Report No. 11.

* See footnote on preceding page.

Food and Groceries (46 Commodities), Price Index-Numbers* for Each of Thirty Towns, with Weighted Average of Six Capital Towns in 1911 as Base (= 1000)—cont.

	WESTERN AUSTRALIA—INDEX-NUMBERS.						TASMANIA—INDEX-NUMBERS.						Weighted Average 6 Capital Towns.	Weighted Average 30 Towns, C'wealth.
	Perth.	Kalgoorlie.	Midland Junction and Gulford.	Bunbury.	Geraldton.	Weighted Average, W.A.	Hobart.	Launceston.	Zeehan.	Beaconsfield.	Queens- town.	Weighted Average, Tasmania.		
1912	1,345	1,677	1,370	1,403	1,410	1,418	1,190	1,125	1,302	1,201	1,289	1,182	1,129	1,140
1913	1,267	1,607	1,301	1,352	1,366	1,344	1,164	1,073	1,268	1,181	1,201	1,149	1,096	1,106
1914	1,302	1,654	1,323	1,393	1,458	1,382	1,212	1,130	1,290	1,205	1,305	1,196	1,144	1,155
1915	1,483	1,809	1,516	1,580	1,659	1,559	1,445	1,406	1,571	1,512	1,581	1,450	1,416	1,426
1916	1,642	1,823	1,570	1,666	1,652	1,608	1,523	1,504	1,652	1,611	1,601	1,535	1,495	1,508
1917	1,505	1,790	1,520	1,632	1,626	1,571	1,544	1,510	1,638	1,615	1,647	1,548	1,472	1,481
1918	1,486	1,784	1,479	1,592	1,598	1,553	1,635	1,575	1,732	1,625	1,729	1,626	1,514	1,523
1919	1,772	2,036	1,737	1,851	1,761	1,827	1,747	1,708	1,855	1,782	1,883	1,740	1,716	1,722
1920	2,050	2,302	2,060	2,055	2,071	2,103	2,162	2,108	2,274	2,069	2,149	2,146	2,101	2,104
1921	1,995	2,207	2,037	2,023	2,017	2,042	2,025	1,934	2,134	1,829	2,058	2,000	1,902	1,911
1913 1st Qtr.	1,275	1,595	1,298	1,349	1,384	1,346	1,158	1,062	1,259	1,182	1,280	1,142	1,100	1,113
2nd "	1,299	1,621	1,284	1,370	1,407	1,372	1,188	1,090	1,287	1,205	1,331	1,171	1,117	1,129
3rd "	1,248	1,622	1,298	1,359	1,387	1,334	1,170	1,086	1,266	1,194	1,289	1,157	1,091	1,101
4th "	1,245	1,590	1,274	1,328	1,368	1,323	1,139	1,051	1,259	1,143	1,282	1,125	1,070	1,082
1914 1st Qtr.	1,245	1,580	1,260	1,330	1,399	1,320	1,162	1,075	1,245	1,149	1,285	1,146	1,104	1,115
2nd "	1,296	1,617	1,315	1,373	1,429	1,368	1,231	1,133	1,290	1,193	1,312	1,206	1,158	1,168
3rd "	1,336	1,693	1,356	1,431	1,482	1,417	1,212	1,143	1,284	1,232	1,311	1,201	1,151	1,163
4th "	1,330	1,727	1,362	1,440	1,503	1,420	1,243	1,170	1,342	1,245	1,311	1,230	1,161	1,174
1915 1st Qtr.	1,420	1,747	1,473	1,483	1,596	1,496	1,293	1,225	1,377	1,302	1,404	1,289	1,235	1,248
2nd "	1,508	1,796	1,531	1,596	1,688	1,576	1,413	1,348	1,510	1,431	1,523	1,405	1,364	1,378
3rd "	1,546	1,882	1,571	1,654	1,711	1,623	1,541	1,628	1,713	1,647	1,679	1,559	1,554	1,563
4th "	1,460	1,812	1,486	1,586	1,641	1,542	1,584	1,523	1,684	1,668	1,717	1,555	1,512	1,524
1916 1st Qtr.	1,504	1,823	1,532	1,610	1,678	1,578	1,593	1,544	1,692	1,628	1,687	1,590	1,540	1,549
2nd "	1,564	1,825	1,567	1,654	1,676	1,623	1,555	1,539	1,690	1,652	1,701	1,569	1,510	1,523
3rd "	1,580	1,851	1,622	1,737	1,656	1,644	1,489	1,476	1,685	1,605	1,654	1,507	1,479	1,498
4th "	1,520	1,794	1,568	1,656	1,698	1,584	1,452	1,456	1,593	1,559	1,600	1,474	1,448	1,459
1917 1st Qtr.	1,500	1,755	1,526	1,648	1,609	1,580	1,493	1,491	1,599	1,507	1,590	1,507	1,448	1,459
2nd "	1,555	1,780	1,572	1,725	1,631	1,609	1,481	1,437	1,610	1,594	1,622	1,503	1,461	1,473
3rd "	1,485	1,790	1,496	1,671	1,620	1,557	1,533	1,503	1,632	1,620	1,662	1,540	1,487	1,493
4th "	1,490	1,834	1,485	1,562	1,643	1,550	1,670	1,560	1,709	1,670	1,708	1,640	1,491	1,500
1918 1st Qtr.	1,480	1,825	1,482	1,572	1,628	1,557	1,559	1,582	1,707	1,663	1,712	1,640	1,501	1,511
2nd "	1,535	1,792	1,526	1,657	1,634	1,593	1,645	1,584	1,748	1,630	1,720	1,635	1,527	1,536
3rd "	1,472	1,750	1,463	1,599	1,571	1,535	1,594	1,554	1,720	1,670	1,726	1,596	1,491	1,501
4th "	1,457	1,769	1,443	1,540	1,560	1,526	1,641	1,580	1,744	1,624	1,758	1,634	1,538	1,545
1919 1st Qtr.	1,540	1,811	1,521	1,588	1,594	1,596	1,693	1,609	1,797	1,637	1,839	1,679	1,639	1,644
2nd "	1,841	2,081	1,779	1,841	1,749	1,885	1,686	1,654	1,813	1,678	1,849	1,692	1,692	1,696
3rd "	1,913	2,145	1,806	2,034	1,874	1,961	1,730	1,710	1,850	1,713	1,872	1,738	1,709	1,718
4th "	1,701	2,116	1,781	1,939	1,828	1,863	1,884	1,860	1,961	1,900	1,973	1,886	1,823	1,829
1920 1st Qtr.	1,907	2,152	1,877	1,857	1,896	1,954	1,934	1,856	2,036	1,876	1,996	1,916	1,880	1,886
2nd "	2,121	2,355	2,135	2,100	2,115	2,169	2,090	2,017	2,193	2,001	2,144	2,072	2,077	2,079
3rd "	2,135	2,409	2,171	2,156	2,167	2,194	2,307	2,291	2,440	2,220	2,272	2,304	2,270	2,267
4th "	2,036	2,291	2,093	2,107	2,107	2,094	2,315	2,267	2,417	2,172	2,187	2,292	2,174	2,182
1921 1st Qtr.	2,160	2,372	2,171	2,106	2,124	2,202	2,221	2,141	2,301	2,072	2,178	2,191	2,131	2,138
2nd "	2,109	2,309	2,120	2,134	2,092	2,150	2,075	1,989	2,163	1,953	2,065	2,047	1,950	1,964
3rd "	1,917	2,133	1,976	1,960	2,006	1,969	1,980	1,883	2,093	1,913	2,037	1,956	1,830	1,836
4th "	1,796	2,014	1,881	1,879	1,844	1,848	1,820	1,724	1,981	1,778	1,950	1,808	1,697	1,704
1921.														
January	2,157	2,398	2,164	2,070	2,104	2,203	2,204	2,172	2,330	2,139	2,195	2,229	2,161	2,167
February	2,153	2,357	2,174	2,106	2,116	2,193	2,220	2,146	2,293	2,049	2,175	2,191	2,140	2,145
March	2,171	2,360	2,175	2,142	2,152	2,200	2,177	2,106	2,279	2,029	2,165	2,153	2,093	2,103
April	2,158	2,337	2,170	2,164	2,129	2,195	2,119	2,039	2,197	1,977	2,075	2,090	2,004	2,017
May	2,104	2,315	2,105	2,141	2,079	2,148	2,063	1,990	2,159	1,952	2,066	2,041	1,944	1,957
June	2,064	2,273	2,084	2,096	2,069	2,109	2,042	1,937	2,134	1,929	2,054	2,010	1,904	1,917
July	2,007	2,181	2,047	2,059	2,051	2,047	2,030	1,910	2,107	1,943	2,041	1,966	1,885	1,878
August	1,902	2,109	1,987	1,990	2,047	1,954	1,993	1,902	2,093	1,922	2,043	1,972	1,834	1,841
September	1,842	2,110	1,894	1,938	1,921	1,904	1,911	1,828	2,077	1,875	2,026	1,899	1,790	1,798
October	1,824	2,060	1,902	1,896	1,870	1,870	1,860	1,757	1,907	1,778	1,975	1,858	1,735	1,740
November	1,797	2,002	1,884	1,875	1,844	1,846	1,836	1,714	1,981	1,781	1,925	1,808	1,699	1,705
December	1,767	1,980	1,857	1,864	1,817	1,819	1,784	1,701	1,965	1,776	1,940	1,777	1,657	1,666

Index-numbers for each of the months of 1912, 1913, 1914 and 1915 are given on pp. 33-5 of Labour Report No. 6; for 1916 on pp. 371-3 of Labour Report No. 7; for 1917 on pp. 32-4, Labour Report No. 8; for 1918 on pp. 33-35 of Labour Report No. 9; for 1919 on pp. 36-38 of Labour Report No. 10; and for 1920 on pp. 37-45 of Labour Report No. 11.

* See footnote on page 36.

House Rents. Index-Numbers for Each of Thirty Towns, with Weighted Average of Six Capital Towns in 1911 as Base (= 1000).

	N.S.W.—INDEX-NUMBERS.						VICTORIA—INDEX-NUMBERS.					
	Sydney.	Newcastle.	Broken Hill.	Goulburn.	Bathurst.	Weighted Average, N.S.W.	Melbourne.	Ballarat.	Bendigo.	Geelong.	Warrnambool.	Weighted Average, Victoria.
1912	1,183	699	689	918	883	1,112	1,016	634	659	868	759	957
1913	1,246	785	775	995	802	1,179	1,089	630	674	860	778	1,017
1914	1,279	783	617	1,067	835	1,201	1,126	644	670	887	795	1,048
1915	1,320	800	292	1,110	771	1,140	1,085	638	653	878	772	1,013
1916	1,212	778	524	1,090	765	1,140	1,089	637	639	901	784	1,017
1917	1,216	771	651	1,120	777	1,148	1,124	628	642	937	794	1,046
1918	1,252	846	703	1,125	788	1,187	1,180	628	703	920	788	1,095
1919	1,289	1,048	731	1,156	853	1,238	1,283	640	723	1,002	891	1,185
1920	1,415	1,221	731	1,337	901	1,363	1,405	810	856	1,090	1,073	1,310
1921	1,474	1,286	731	1,369	933	1,419	1,502	914	935	1,155	1,151	1,405
1913 1st Qtr	1,222	773	755	939	755	1,155	1,069	626	660	859	780	999
2nd "	1,241	792	770	1,020	774	1,175	1,086	632	671	860	776	1,014
3rd "	1,246	792	796	1,010	838	1,180	1,099	632	675	865	776	1,026
4th "	1,275	783	780	1,010	843	1,204	1,106	630	679	869	779	1,030
1914 1st Qtr	1,273	783	779	1,057	867	1,203	1,120	644	673	829	804	1,041
2nd "	1,286	783	780	1,056	845	1,214	1,144	644	678	906	810	1,064
3rd "	1,285	783	741	1,060	834	1,212	1,147	644	678	908	784	1,067
4th "	1,271	783	109	1,093	806	1,176	1,093	643	650	905	781	1,021
1915 1st Qtr	1,228	811	222	1,093	772	1,144	1,092	638	654	879	786	1,019
2nd "	1,219	811	293	1,098	772	1,140	1,087	638	667	880	789	1,015
3rd "	1,219	793	293	1,098	772	1,138	1,079	634	649	879	758	1,008
4th "	1,213	785	380	1,151	707	1,136	1,081	634	651	876	767	1,000
1916 1st Qtr	1,208	779	393	1,048	767	1,131	1,068	640	644	902	774	1,016
2nd "	1,214	779	454	1,100	703	1,139	1,085	636	644	901	784	1,013
3rd "	1,214	784	621	1,115	766	1,146	1,088	638	633	901	788	1,015
4th "	1,214	770	620	1,098	763	1,145	1,097	634	635	901	788	1,022
1917 1st Qtr	1,213	771	630	1,107	763	1,144	1,115	628	621	937	794	1,037
2nd "	1,213	770	945	1,124	781	1,147	1,111	628	635	937	793	1,036
3rd "	1,213	771	660	1,124	782	1,146	1,129	628	639	937	794	1,049
4th "	1,223	771	669	1,125	782	1,156	1,143	628	673	937	794	1,064
1918 1st Qtr	1,238	778	676	1,125	782	1,169	1,152	628	686	926	784	1,071
2nd "	1,255	805	698	1,125	782	1,186	1,157	628	699	926	781	1,075
3rd "	1,251	888	714	1,125	782	1,190	1,181	628	713	929	790	1,096
4th "	1,262	914	724	1,125	804	1,203	1,230	628	713	936	799	1,136
1919 1st Qtr	1,272	988	731	1,126	843	1,218	1,249	628	714	979	840	1,154
2nd "	1,278	998	731	1,137	856	1,224	1,274	633	718	995	849	1,176
3rd "	1,291	1,059	731	1,180	856	1,242	1,282	635	721	1,014	867	1,183
4th "	1,316	1,148	731	1,180	856	1,270	1,327	667	737	1,022	1,008	1,226
1920 1st Qtr	1,366	1,142	731	1,312	867	1,315	1,357	717	809	1,074	1,031	1,260
2nd "	1,417	1,196	731	1,298	901	1,362	1,375	769	859	1,085	1,066	1,283
3rd "	1,416	1,274	731	1,357	901	1,369	1,425	872	865	1,087	1,087	1,331
4th "	1,459	1,274	731	1,331	933	1,406	1,464	882	892	1,114	1,108	1,366
1921 1st Qtr	1,460	1,286	731	1,372	933	1,408	1,464	912	907	1,134	1,121	1,371
2nd "	1,462	1,286	731	1,371	933	1,409	1,473	914	912	1,154	1,144	1,380
3rd "	1,481	1,286	731	1,361	933	1,425	1,523	914	961	1,154	1,167	1,424
4th "	1,491	1,286	731	1,371	933	1,434	1,547	916	961	1,177	1,171	1,444

* See remarks re House Rent on page 45

House Rents. Index-Numbers for Each of Thirty Towns, with Weighted Average of Six Capital Towns in 1911 as Base (= 1000).—cont.

	QUEENSLAND—INDEX-NUMBERS.						SOUTH AUSTRALIA—INDEX-NUMBERS.					
	Brisbane.	Toowoomba.	Rockhampton.	Charters Towers.	Warwick.	Weighted Average Queensland.	Adelaide.	Kadina, Moonta and Wallaroo.	Port Pirie.*	Mt. Gambier.	Peterborough.	Weighted Average, S.A.
1912	804	800	705	001	803	777	1,160	576	731	650	803	1,087
1913	863	751	758	592	719	814	1,125	558	785	678	903	1,003
1914	882	753	762	589	659	826	1,040	602	780	724	922	992
1915	859	744	759	586	629	808	932	612	615	718	848	891
1916	847	705	706	584	642	796	930	660	709	731	760	809
1917	859	724	786	632	711	815	950	701	824	716	760	928
1918	905	795	796	670	777	859	1,022	746	878	729	771	987
1919	983	831	807	701	811	921	1,108	701	966	708	851	1,068
1920	1,061	969	826	731	884	995	1,216	829	961	740	911	1,163
1921	1,079	1,028	835	736	866	937	1,289	847	802	753	937	1,225
1913 1st Qtr.	840	779	748	587	762	801	1,148	573	758	667	844	1,078
2nd "	860	763	700	594	752	815	1,147	592	772	670	895	1,080
3rd "	860	737	760	595	715	812	1,116	569	800	672	936	1,056
4th "	891	726	763	593	647	830	1,093	596	808	695	936	1,038
1914 1st Qtr.	882	740	757	588	647	824	1,075	579	823	703	936	1,023
2nd "	891	745	756	592	647	831	1,080	613	844	722	940	1,021
3rd "	890	763	766	585	676	833	1,052	624	844	737	943	1,008
4th "	865	763	767	585	667	816	962	594	607	735	869	917
1915 1st Qtr.	863	738	767	587	627	804	942	588	607	713	865	899
2nd "	866	755	766	585	630	814	924	584	607	718	865	883
3rd "	880	753	752	585	629	809	920	640	607	717	860	890
4th "	859	729	752	585	630	805	931	634	638	722	794	892
1916 1st Qtr.	841	730	752	580	630	793	928	651	686	727	760	892
2nd "	844	700	770	585	630	795	929	661	764	733	760	898
3rd "	848	670	770	585	624	794	931	661	813	734	760	902
4th "	853	719	770	585	623	804	934	669	813	732	760	905
1917 1st Qtr.	855	717	786	620	684	810	963	677	818	713	760	921
2nd "	861	728	786	623	698	815	953	706	826	713	760	923
3rd "	861	728	786	636	716	817	960	708	826	711	760	930
4th "	859	723	786	649	744	817	960	714	826	726	760	938
1918 1st Qtr.	885	742	786	646	752	837	982	743	832	726	760	951
2nd "	887	766	799	646	777	849	1,010	743	838	730	766	979
3rd "	920	831	799	694	783	876	1,037	744	874	730	766	1,000
4th "	927	843	799	694	795	882	1,054	752	967	731	792	1,020
1919 1st Qtr.	954	807	799	700	805	898	1,083	758	967	708	822	1,045
2nd "	960	815	803	700	805	904	1,111	781	967	708	861	1,070
3rd "	983	826	804	700	822	921	1,113	810	964	708	861	1,073
4th "	1,033	878	820	706	813	962	1,123	813	964	708	861	1,082
1920 1st Qtr.	1,035	951	820	733	861	974	1,154	809	964	734	887	1,100
2nd "	1,050	959	828	734	883	993	1,204	819	964	739	902	1,153
3rd "	1,066	978	826	728	896	999	1,245	827	964	739	919	1,188
4th "	1,084	989	832	728	896	1,014	1,261	859	951	746	938	1,204
1921 1st Qtr.	1,077	1,020	833	732	901	1,015	1,283	853	936	753	938	1,222
2nd "	1,075	1,029	836	729	962	1,014	1,286	828	903	753	938	1,221
3rd "	1,079	1,029	836	729	962	1,016	1,286	840	881	753	937	1,221
4th "	1,085	1,034	836	764	950	1,024	1,301	870	888	753	937	1,235

* See Remarks re House Rents on p. 48.

House Rents. Index-Numbers for Each of Thirty Towns, with Weighted Average of Six Capital Towns in 1911 as Base (= 1000)—*cont.*

	WESTERN AUSTRALIA—INDEX-NUMBERS.						TASMANIA—INDEX-NUMBERS.						Weighted Average of Capital Towns.	Weighted Average of Towns, C. wealth.
	Perth.	Kalgoorlie.	Midland Junction and Guildford.	Bunbury.	Geraldton.	Weighted Average, W.A.	Hobart.	Launceston.	Zeehan.	Beaconsfield.	Queensdown.	Weighted Average, Tasmania.		
1912	880	843	757	874	1,033	868	829	819	450	291	557	769	1,063	894
1913	925	786	814	898	1,077	892	887	826	442	264	557	804	1,118	1,042
1914	914	770	790	707	1,117	879	914	847	335	251	614	820	1,135	1,054
1915	848	808	757	641	935	834	928	879	399	244	673	839	1,081	1,006
1916	809	838	782	567	976	851	925	803	296	203	686	848	1,090	1,008
1917	874	836	708	537	953	852	951	895	238	200	627	852	1,093	1,026
1918	935	833	708	502	929	857	956	930	303	202	617	865	1,143	1,089
1919	916	836	705	533	944	881	1,131	981	313	205	603	876	1,215	1,137
1920	996	851	752	619	976	944	1,373	1,096	374	137	619	1,143	1,333	1,251
1921	1,055	843	890	710	992	992	1,440	1,149	406	201	622	1,198	1,404	1,317
1913 1st Qtr.	914	839	811	682	1,063	891	902	823	461	264	558	809	1,102	1,028
2nd "	924	773	815	691	1,082	886	858	825	461	264	556	802	1,117	1,041
3rd "	930	774	815	697	1,080	891	854	827	461	264	552	800	1,120	1,045
4th "	947	760	814	715	1,084	900	901	828	383	264	563	806	1,135	1,056
1914 1st Qtr.	921	764	795	712	1,130	883	904	824	375	264	560	809	1,135	1,056
2nd "	923	770	795	724	1,151	886	911	843	346	248	632	817	1,148	1,048
3rd "	917	770	795	702	1,177	882	919	856	312	248	638	825	1,147	1,047
4th "	996	770	776	690	1,011	862	924	856	305	244	636	827	1,110	1,027
1915 1st Qtr.	869	806	756	693	1,019	851	928	856	300	244	636	827	1,089	1,010
2nd "	843	817	753	658	992	833	929	867	300	244	686	843	1,081	1,009
3rd "	839	804	759	641	987	826	920	867	300	244	686	843	1,078	1,003
4th "	842	807	759	572	981	827	931	867	297	244	686	844	1,077	1,003
1916 1st Qtr.	870	838	788	569	978	852	920	892	290	210	686	839	1,077	1,004
2nd "	869	837	784	569	969	851	924	893	291	210	686	841	1,078	1,006
3rd "	868	839	786	570	972	851	923	893	301	210	686	843	1,080	1,010
4th "	868	839	719	559	959	849	940	891	301	210	686	849	1,084	1,014
1917 1st Qtr.	872	835	711	542	959	851	945	892	301	198	628	848	1,092	1,021
2nd "	872	837	707	542	950	851	951	893	290	199	628	851	1,092	1,021
3rd "	875	837	707	536	950	852	953	895	280	199	626	852	1,093	1,027
4th "	875	837	708	526	952	853	956	899	280	205	620	855	1,109	1,036
1918 1st Qtr.	883	827	708	495	928	854	941	906	292	198	621	849	1,121	1,047
2nd "	884	834	704	495	928	856	941	917	293	198	616	852	1,133	1,058
3rd "	884	834	705	494	928	856	968	940	313	205	616	875	1,146	1,073
4th "	889	836	705	524	932	861	972	958	313	207	616	883	1,170	1,094
1919 1st Qtr.	913	836	705	510	926	877	1,061	964	314	207	616	932	1,189	1,113
2nd "	913	836	705	508	942	878	1,087	979	314	210	598	960	1,204	1,126
3rd "	913	836	705	538	954	879	1,173	982	312	200	598	996	1,216	1,139
4th "	926	838	705	577	954	889	1,214	999	312	202	598	1,023	1,248	1,171
1920 1st Qtr.	961	867	714	599	966	921	1,305	1,065	343	196	614	1,096	1,285	1,206
2nd "	983	846	714	601	978	932	1,349	1,077	366	196	617	1,124	1,321	1,238
3rd "	1,019	849	782	620	981	961	1,414	1,117	366	198	622	1,171	1,347	1,265
4th "	1,020	840	706	655	981	962	1,422	1,123	424	198	622	1,180	1,379	1,294
1921 1st Qtr.	1,041	839	872	670	981	980	1,436	1,127	424	200	622	1,189	1,384	1,300
2nd "	1,042	839	875	716	981	982	1,451	1,127	424	202	622	1,197	1,388	1,303
3rd "	1,065	847	880	736	981	1,000	1,442	1,159	402	202	622	1,205	1,414	1,326
4th "	1,072	847	892	718	1,027	1,007	1,481	1,175	370	200	622	1,200	1,429	1,338

**Purchasing-Power of Money. (Food, Groceries and House Rent Combined).
Price Index-Numbers* for each of Thirty Towns, with Weighted Average for
Six Capital Towns in 1911 as Base (= 1000).**

	N.S.W.—INDEX-NUMBERS.						VICTORIA—INDEX-NUMBERS.					
	Sydney.	Newcastle.	Broken Hill.†	Goulburn.	Bathurst.	Weighted Average, N.S.W.	Melbourne.	Ballarat.	Bendigo.	Geelong.	Warran-bool.	Weighted Average, Victoria.
1912	1,148	955	1,080	1,042	919	1,125	1,055	914	926	996	935	1,033
1913	1,178	986	1,110	1,087	950	1,155	1,051	865	900	972	934	1,023
1914	1,206	994	1,068	1,130	987	1,179	1,105	904	922	1,012	959	1,073
1915	1,323	1,147	1,087	1,274	1,104	1,295	1,277	1,111	1,110	1,182	1,157	1,240
1916	1,394	1,208	1,282	1,350	1,178	1,370	1,300	1,126	1,118	1,233	1,185	1,279
1917	1,407	1,222	1,315	1,338	1,193	1,383	1,294	1,083	1,093	1,231	1,168	1,262
1918	1,427	1,260	1,321	1,362	1,210	1,406	1,349	1,107	1,139	1,233	1,203	1,311
1919	1,580	1,493	1,419	1,524	1,340	1,562	1,481	1,198	1,215	1,347	1,311	1,436
1920	1,847	1,766	1,712	1,836	1,615	1,831	1,788	1,538	1,535	1,623	1,640	1,747
1921	1,724	1,669	1,554	1,694	1,493	1,709	1,737	1,502	1,492	1,612	1,604	1,698
1913 1st Qtr.	1,171	980	1,003	1,086	935	1,148	1,049	878	923	992	940	1,025
2nd "	1,192	1,001	1,130	1,120	956	1,170	1,059	878	920	984	947	1,033
3rd "	1,176	988	1,105	1,074	954	1,153	1,053	857	886	902	980	1,023
4th "	1,174	977	1,111	1,069	956	1,151	1,043	846	867	947	920	1,012
1914 1st Qtr.	1,201	976	1,109	1,102	970	1,174	1,066	870	891	952	940	1,034
2nd "	1,214	1,001	1,158	1,142	1,008	1,190	1,122	907	936	1,040	985	1,096
3rd "	1,208	998	1,125	1,129	988	1,183	1,120	920	932	1,020	964	1,088
4th "	1,203	1,001	879	1,146	976	1,169	1,106	920	930	1,035	969	1,077
1915 1st Qtr.	1,229	1,000	968	1,169	1,013	1,201	1,147	970	976	1,065	1,008	1,118
2nd "	1,259	1,096	1,006	1,217	1,056	1,234	1,261	1,094	1,088	1,155	1,135	1,232
3rd "	1,406	1,213	1,184	1,346	1,173	1,375	1,377	1,219	1,230	1,276	1,271	1,351
4th "	1,400	1,219	1,181	1,364	1,172	1,372	1,322	1,162	1,147	1,237	1,214	1,295
1916 1st Qtr.	1,419	1,223	1,212	1,336	1,172	1,389	1,337	1,148	1,151	1,254	1,203	1,306
2nd "	1,393	1,203	1,203	1,362	1,135	1,368	1,310	1,146	1,136	1,258	1,196	1,291
3rd "	1,388	1,212	1,225	1,361	1,180	1,368	1,300	1,116	1,095	1,224	1,189	1,269
4th "	1,374	1,197	1,227	1,341	1,175	1,354	1,290	1,092	1,092	1,195	1,153	1,249
1917 1st Qtr.	1,381	1,211	1,222	1,352	1,178	1,361	1,290	1,083	1,077	1,213	1,159	1,249
2nd "	1,380	1,217	1,231	1,334	1,188	1,366	1,288	1,084	1,100	1,232	1,171	1,258
3rd "	1,434	1,229	1,298	1,322	1,197	1,406	1,300	1,078	1,096	1,221	1,172	1,266
4th "	1,425	1,233	1,308	1,344	1,208	1,400	1,308	1,087	1,098	1,210	1,169	1,273
1918 1st Qtr.	1,424	1,239	1,328	1,335	1,206	1,400	1,326	1,102	1,126	1,237	1,175	1,292
2nd "	1,423	1,253	1,364	1,361	1,217	1,407	1,346	1,112	1,161	1,250	1,208	1,312
3rd "	1,406	1,201	1,298	1,351	1,198	1,386	1,330	1,096	1,134	1,222	1,200	1,302
4th "	1,449	1,317	1,204	1,399	1,210	1,428	1,383	1,118	1,135	1,225	1,221	1,340
1919 1st Qtr.	1,525	1,423	1,354	1,486	1,300	1,507	1,436	1,159	1,176	1,302	1,281	1,392
2nd "	1,589	1,455	1,390	1,494	1,327	1,547	1,451	1,163	1,194	1,317	1,280	1,406
3rd "	1,571	1,503	1,419	1,519	1,343	1,555	1,472	1,193	1,215	1,349	1,303	1,428
4th "	1,656	1,591	1,514	1,596	1,391	1,641	1,567	1,276	1,274	1,421	1,412	1,519
1920 1st Qtr.	1,735	1,640	1,547	1,685	1,454	1,715	1,569	1,328	1,331	1,453	1,436	1,530
2nd "	1,820	1,728	1,704	1,761	1,572	1,804	1,758	1,517	1,520	1,598	1,579	1,717
3rd "	1,937	1,837	1,795	1,970	1,701	1,921	1,924	1,711	1,668	1,728	1,705	1,890
4th "	1,894	1,859	1,801	1,919	1,727	1,886	1,892	1,675	1,622	1,711	1,778	1,850
1921 1st Qtr.	1,850	1,803	1,770	1,847	1,634	1,840	1,878	1,656	1,617	1,745	1,750	1,838
2nd "	1,730	1,685	1,682	1,727	1,520	1,722	1,763	1,535	1,525	1,674	1,622	1,726
3rd "	1,689	1,637	1,456	1,681	1,456	1,671	1,698	1,455	1,459	1,557	1,561	1,657
4th "	1,625	1,550	1,308	1,571	1,362	1,602	1,610	1,360	1,365	1,473	1,483	1,569

* See footnote on page 36

† See remarks re House Rent on page 48:

Purchasing-Power of Money. (Food, Groceries and House Rent Combined.)
Price Index-Numbers* for each of Thirty Towns, with Weighted Average for
Six Capital Towns in 1911 as Base (=1000).—cont.

	QUEENSLAND—INDEX-NUMBERS.						SOUTH AUSTRALIA—INDEX-NUMBERS.					
	Brisbane.	Toowoomba.	Rock-hampton.	Charlton Towns.	Warwick.	Weighted Average, Queensland.	Adelaide.	Edina. Mounta and Wallaroo.	Port Pirie.†	Mt. Gambier.	Petersborough.	Weighted Average, S.A.
1912	979	977	962	1,008	1,004	981	1,157	917	1,004	874	1,014	1,126
1913	969	924	940	957	928	959	1,121	913	1,006	880	1,024	1,096
1914	997	950	988	988	912	988	1,143	960	1,055	923	1,126	1,122
1915	1,163	1,133	1,154	1,151	1,067	1,155	1,239	1,139	1,172	1,109	1,232	1,249
1916	1,183	1,133	1,216	1,182	1,102	1,185	1,285	1,204	1,261	1,165	1,251	1,275
1917	1,181	1,116	1,163	1,187	1,124	1,172	1,245	1,193	1,260	1,132	1,226	1,230
1918	1,262	1,208	1,224	1,277	1,240	1,247	1,335	1,231	1,320	1,176	1,253	1,328
1919	1,442	1,402	1,403	1,454	1,398	1,434	1,468	1,330	1,424	1,222	1,369	1,449
1920	1,645	1,576	1,557	1,557	1,568	1,619	1,756	1,571	1,630	1,468	1,607	1,723
1921	1,511	1,432	1,424	1,423	1,468	1,486	1,653	1,476	1,525	1,418	1,536	1,628
1918 1st Qtr.	956	920	934	968	949	951	1,133	907	992	874	1,000	1,104
2nd "	978	930	945	969	966	960	1,146	927	1,014	889	1,026	1,118
3rd "	968	923	932	947	917	955	1,116	912	1,013	888	1,043	1,092
4th "	976	922	948	945	879	962	1,092	904	1,005	868	1,026	1,069
1914 1st Qtr.	977	939	965	959	908	969	1,118	913	1,022	896	1,072	1,094
2nd "	990	928	973	983	898	979	1,176	939	1,086	925	1,147	1,153
3rd "	1,005	943	999	978	912	993	1,150	981	1,103	932	1,164	1,137
4th "	1,018	962	1,014	1,029	930	1,013	1,122	957	1,009	940	1,120	1,102
1916 1st Qtr.	1,053	1,026	1,058	1,079	977	1,051	1,162	1,024	1,075	993	1,162	1,146
2nd "	1,132	1,111	1,116	1,155	1,060	1,128	1,267	1,136	1,164	1,117	1,248	1,250
3rd "	1,208	1,183	1,178	1,153	1,096	1,194	1,325	1,220	1,235	1,177	1,304	1,310
4th "	1,255	1,212	1,269	1,218	1,133	1,245	1,282	1,174	1,212	1,148	1,234	1,268
1916 1st Qtr.	1,259	1,216	1,289	1,327	1,156	1,252	1,295	1,205	1,253	1,171	1,263	1,283
2nd "	1,205	1,144	1,247	1,209	1,107	1,201	1,309	1,220	1,232	1,192	1,273	1,299
3rd "	1,147	1,090	1,169	1,142	1,065	1,141	1,278	1,202	1,256	1,162	1,245	1,269
4th "	1,140	1,083	1,160	1,149	1,077	1,135	1,257	1,188	1,251	1,134	1,231	1,249
1917 1st Qtr.	1,146	1,065	1,138	1,163	1,068	1,137	1,261	1,200	1,269	1,128	1,231	1,263
2nd "	1,163	1,095	1,153	1,181	1,096	1,154	1,257	1,216	1,285	1,142	1,246	1,252
3rd "	1,189	1,126	1,171	1,189	1,142	1,180	1,221	1,171	1,254	1,122	1,208	1,216
4th "	1,225	1,179	1,190	1,215	1,191	1,215	1,242	1,183	1,267	1,134	1,219	1,236
1918 1st Qtr.	1,216	1,133	1,197	1,244	1,188	1,208	1,295	1,231	1,302	1,160	1,252	1,287
2nd "	1,237	1,168	1,214	1,256	1,220	1,239	1,364	1,239	1,315	1,191	1,259	1,348
3rd "	1,254	1,234	1,215	1,286	1,257	1,251	1,332	1,220	1,303	1,177	1,238	1,319
4th "	1,301	1,297	1,270	1,321	1,294	1,299	1,349	1,232	1,359	1,175	1,265	1,336
1919 1st Qtr.	1,398	1,386	1,372	1,400	1,379	1,393	1,418	1,282	1,405	1,194	1,330	1,402
2nd "	1,401	1,369	1,380	1,430	1,374	1,397	1,459	1,303	1,411	1,200	1,356	1,439
3rd "	1,423	1,373	1,380	1,490	1,382	1,418	1,463	1,326	1,405	1,221	1,362	1,444
4th "	1,543	1,479	1,499	1,496	1,455	1,526	1,581	1,409	1,476	1,271	1,429	1,513
1920 1st Qtr.	1,613	1,577	1,555	1,578	1,518	1,598	1,585	1,435	1,488	1,297	1,474	1,562
2nd "	1,652	1,575	1,550	1,543	1,574	1,622	1,753	1,544	1,617	1,441	1,610	1,728
3rd "	1,677	1,605	1,577	1,565	1,604	1,648	1,868	1,660	1,714	1,569	1,689	1,837
4th "	1,637	1,547	1,544	1,540	1,575	1,609	1,816	1,645	1,700	1,565	1,664	1,791
1921 1st Qtr.	1,597	1,498	1,508	1,535	1,568	1,572	1,790	1,611	1,672	1,534	1,635	1,764
2nd "	1,521	1,446	1,452	1,437	1,484	1,499	1,700	1,529	1,580	1,476	1,584	1,676
3rd "	1,482	1,415	1,390	1,357	1,427	1,454	1,597	1,413	1,462	1,375	1,487	1,572
4th "	1,444	1,369	1,349	1,361	1,392	1,418	1,523	1,351	1,386	1,287	1,439	1,499

* See footnote on page 36.

† See remarks re House Rent on page 48.

Purchasing-Power of Money. (Food, Groceries and House Rent Combined.)
Price Index-Numbers* for each of Thirty Towns, with Weighted Average for
Six Capital Towns in 1911 as Base (=1000)—*cont.*

	WESTERN AUSTRALIA—INDEX-NUMBERS.							TASMANIA—INDEX-NUMBERS.							Weighted Average 6 Capital Towns.	Weighted Average 30 Towns, C wealth.
	Perth.	Kalgoorlie.	Midland Junction and Gouldford.	Bunbury.	Geraldton.	Weighted Average, W.A.		Hobart.	Launceston.	Zeelan.	Beaconsfield.	Queensdown.	Weighted Average, Tasmania.			
1912	1,164	1,334	1,123	1,104	1,255	1,191		1,042	999	952	827	988	1,012	1,101	1,080	
1913	1,128	1,270	1,101	1,082	1,259	1,158		1,053	971	928	804	989	1,007	1,104	1,080	
1914	1,143	1,291	1,104	1,111	1,315	1,175		1,090	1,014	898	813	1,021	1,041	1,140	1,113	
1915	1,222	1,398	1,204	1,194	1,386	1,281		1,233	1,190	1,048	991	1,208	1,199	1,278	1,256	
1916	1,266	1,418	1,226	1,214	1,372	1,297		1,278	1,253	1,095	1,034	1,260	1,251	1,324	1,301	
1917	1,246	1,398	1,186	1,193	1,349	1,275		1,301	1,258	1,083	1,034	1,228	1,261	1,316	1,294	
1918	1,239	1,393	1,161	1,144	1,323	1,267		1,356	1,310	1,145	1,040	1,272	1,313	1,362	1,336	
1919	1,420	1,545	1,313	1,309	1,425	1,438		1,496	1,409	1,222	1,105	1,357	1,431	1,510	1,481	
1920	1,617	1,706	1,528	1,465	1,621	1,627		1,837	1,692	1,493	1,300	1,521	1,734	1,785	1,753	
1921	1,609	1,647	1,661	1,487	1,596	1,611		1,785	1,612	1,424	1,219	1,488	1,671	1,697	1,668	
1913 1st Qtr.	1,126	1,284	1,098	1,075	1,252	1,159		1,053	984	931	805	988	1,005	1,101	1,078	
2nd "	1,145	1,272	1,121	1,091	1,273	1,172		1,064	981	947	819	1,012	1,019	1,117	1,093	
3rd "	1,118	1,274	1,100	1,087	1,261	1,152		1,053	979	935	812	986	1,010	1,103	1,079	
4th "	1,123	1,249	1,085	1,076	1,251	1,149		1,041	959	899	782	975	994	1,096	1,071	
1914 1st Qtr.	1,112	1,245	1,069	1,076	1,288	1,141		1,056	976	887	785	987	1,008	1,117	1,090	
2nd "	1,143	1,269	1,101	1,106	1,314	1,170		1,099	1,014	897	804	1,029	1,046	1,154	1,127	
3rd "	1,164	1,314	1,125	1,131	1,357	1,197		1,091	1,025	891	828	1,034	1,046	1,160	1,134	
4th "	1,152	1,354	1,121	1,181	1,301	1,191		1,112	1,041	916	834	1,034	1,064	1,140	1,113	
1915 1st Qtr.	1,193	1,361	1,178	1,158	1,359	1,231		1,141	1,073	934	867	1,088	1,095	1,174	1,151	
2nd "	1,235	1,394	1,211	1,211	1,402	1,270		1,214	1,159	1,012	938	1,179	1,174	1,247	1,226	
3rd "	1,255	1,439	1,237	1,238	1,418	1,296		1,290	1,265	1,132	1,071	1,271	1,264	1,368	1,333	
4th "	1,206	1,399	1,188	1,170	1,370	1,248		1,286	1,282	1,114	1,083	1,293	1,262	1,333	1,310	
1916 1st Qtr.	1,243	1,418	1,206	1,182	1,390	1,230		1,317	1,276	1,116	1,045	1,276	1,281	1,350	1,325	
2nd "	1,278	1,419	1,219	1,208	1,386	1,305		1,296	1,274	1,115	1,059	1,284	1,270	1,333	1,310	
3rd "	1,287	1,435	1,258	1,257	1,375	1,318		1,259	1,236	1,087	1,032	1,256	1,234	1,316	1,284	
4th "	1,252	1,402	1,219	1,206	1,335	1,232		1,242	1,234	1,062	1,005	1,234	1,217	1,300	1,278	
1917 1st Qtr.	1,242	1,377	1,191	1,194	1,342	1,289		1,268	1,245	1,066	1,004	1,198	1,236	1,302	1,279	
2nd "	1,274	1,393	1,217	1,239	1,351	1,297		1,263	1,243	1,068	1,021	1,213	1,235	1,309	1,287	
3rd "	1,234	1,399	1,171	1,204	1,345	1,267		1,295	1,253	1,076	1,041	1,236	1,257	1,328	1,301	
4th "	1,282	1,424	1,166	1,186	1,359	1,269		1,377	1,289	1,122	1,068	1,264	1,317	1,334	1,310	
1918 1st Qtr.	1,235	1,415	1,164	1,129	1,341	1,268		1,364	1,304	1,125	1,061	1,264	1,315	1,345	1,320	
2nd "	1,268	1,398	1,188	1,179	1,344	1,290		1,356	1,310	1,150	1,045	1,266	1,313	1,365	1,339	
3rd "	1,230	1,373	1,152	1,145	1,307	1,256		1,337	1,302	1,147	1,014	1,270	1,300	1,349	1,325	
4th "	1,223	1,386	1,140	1,123	1,302	1,252		1,366	1,324	1,156	1,041	1,289	1,325	1,337	1,359	
1919 1st Qtr.	1,283	1,410	1,186	1,145	1,319	1,302		1,434	1,344	1,187	1,049	1,336	1,372	1,454	1,426	
2nd "	1,459	1,570	1,338	1,293	1,417	1,471		1,440	1,376	1,197	1,075	1,335	1,387	1,491	1,462	
3rd "	1,502	1,607	1,389	1,419	1,496	1,516		1,501	1,411	1,218	1,092	1,348	1,433	1,596	1,480	
4th "	1,436	1,591	1,339	1,379	1,469	1,463		1,609	1,506	1,284	1,208	1,408	1,532	1,587	1,558	
1920 1st Qtr.	1,518	1,624	1,399	1,340	1,514	1,530		1,676	1,532	1,340	1,186	1,428	1,579	1,638	1,606	
2nd "	1,654	1,735	1,550	1,484	1,648	1,661		1,785	1,631	1,442	1,259	1,516	1,662	1,766	1,734	
3rd "	1,676	1,768	1,600	1,525	1,679	1,688		1,940	1,809	1,593	1,393	1,594	1,839	1,891	1,856	
4th "	1,618	1,695	1,560	1,510	1,644	1,629		1,948	1,797	1,598	1,361	1,544	1,835	1,848	1,817	
1921 1st Qtr.	1,700	1,742	1,637	1,516	1,654	1,700		1,898	1,724	1,529	1,303	1,539	1,779	1,824	1,794	
2nd "	1,670	1,705	1,608	1,551	1,635	1,670		1,818	1,635	1,448	1,233	1,472	1,698	1,719	1,692	
3rd "	1,567	1,605	1,526	1,478	1,585	1,571		1,759	1,680	1,398	1,210	1,456	1,647	1,659	1,627	
4th "	1,498	1,534	1,474	1,402	1,508	1,502		1,664	1,498	1,321	1,130	1,404	1,558	1,587	1,554	

* See footnote on page 36.

(i.) *Food and Groceries (46 commodities).*—Information as to variations in prices of Group I. (Groceries), Group II. (Dairy Produce), and Group III. (Meat) are collected monthly, and in the tables on pp. 36 to 38 the index-numbers for the combined expenditure on the three groups are given at yearly, quarterly, and (for 1921) at monthly intervals.

(ii.) *House Rent.*—Information as to variations in housing accommodation is collected quarterly, and index-numbers at yearly and quarterly periods are given in the tables on pp 39 to 41.

(iii.) *Food, Groceries, and House Rent combined.*—The tables on pp. 42 to 44 furnish comparisons in the form of index-numbers of the variations in the combined expenditure on the 46 items of food and groceries and housing accommodation at yearly and quarterly periods for 1912 to 1921 inclusive. It should be observed that the index-numbers in these tables are comparable in every respect in so far as they relate to the capital towns with those given on page 29 for the respective groups, and where they relate to the same period are of course identical in both tables. Thus for the years 1912 to 1921 inclusive, the index-numbers for the six capital towns are (as they should be) the same in both sets of tables.

The last columns in each of the above tables refer to the weighted average for the thirty towns. The method of computing these weighted average index-numbers is explained in Report No. 1, page 35. The population weights used in the computations are as follows:—

Population Weights used in Computation of Index-Numbers in different towns in order to arrive at the Weighted Average for each State and for the Commonwealth, with Weighted Average for all Towns as Base.

Town.	Weight.	Town.	Weight.	Town.	Weight.	Town.	Weight.	Town.	Weight.	Town.	Weight.
Sydney	633	Melbourne	590	Brisbane	140	Adelaide	190	Perth, etc.	105	Hobart	42
Newcastle	62	Ballarat	53	T'woomba	20	Kadina, etc.	12	Kalg'lie, etc.	31	Launceston	25
Br'ken Hill	31	Bendigo	44	R'k'h'mton	21	Pt. Pirie	11	Mid. J'n., etc.	7	Q'ntown	5
Goulburn	13	Geelong	34	Ch'ts Twrs	17	Mt. Gamb'r	7	Bunbury	4	Zeehan	4
Bathurst	9	W'nambo'1	9	Warwick	6	Peterbor'gh	3	Geraldton	4	Beac'nsfield	3

(iv.) *Care to Avoid Erroneous Comparisons.*—It is, of course, obvious that the index-numbers given in the separate parts of the table cannot be directly compared with each other, in order to shew the relative cost of (say) house rent and groceries and food, since the weighted average cost in 1911 is in each case made equal to 1000, although the cost is, of course, not the same.

7. Relative Cost of Food and Groceries and Housing Accommodation in Different Towns, 1921.—The figures given in the following table shew the relative index-numbers for 1921 in the thirty towns for which particulars are regularly collected. The index-numbers are comparable in all respects, and further, it will be observed that the index-numbers in the last column of the table are identical for each town with those given in the table on pages 42 to 44 for the year 1921. The first column

gives the relative expenditure on groceries and food. The second, third, fourth, and fifth columns give comparative information with regard to expenditure on house rent for houses of four, five, and six rooms, and for all houses respectively, while the remaining columns give similar information for food and groceries, combined with house rent of each class of house indicated.

1921.—Index-Numbers, shewing Relative Cost in each of Thirty Towns, of Food and Groceries and House Rent (including 4, 5, and 6-roomed Houses, and all Houses), compared with Weighted Average Expenditure on Groceries, Food and Rent (all Houses) in the Six Capital Towns in 1911 as Base (= 1000).

TOWN.	Groceries and Food.	HOUSE RENT.				GROCERIES, FOOD AND RENT, INCLUDING HOUSES HAVING—			
		Four-roomed Houses only.	Five-roomed Houses only.	Six-roomed Houses only.	All Houses Weighted Average.	Four Rooms.	Five Rooms.	Six Rooms.	All Houses Weighted Average.
NEW SOUTH WALES—									
Sydney	1,118	485	568	663	606	1,603	1,686	1,781	1,724
Newcastle	1,140	380	546	636	529	1,520	1,668	1,826	1,609
Broken Hill*	1,254	282	382	438	300	1,536	1,606	1,692	1,554
Goulburn	1,132	372	489	655	662	1,504	1,621	1,787	1,604
Bathurst	1,110	247	342	461	383	1,357	1,452	1,571	1,493
Weighted Average ..	1,126	463	553	653	583	1,580	1,679	1,779	1,709
VICTORIA—									
Melbourne	1,120	434	553	713	617	1,554	1,673	1,833	1,737
Ballarat	1,126	201	306	413	376	1,327	1,432	1,539	1,502
Bendigo	1,107	262	340	467	385	1,369	1,447	1,574	1,492
Geelong	1,138	332	430	550	474	1,470	1,568	1,688	1,612
Warrnambool ..	1,131	384	472	548	473	1,465	1,603	1,679	1,604
Weighted Average ..	1,120	401	516	667	578	1,521	1,636	1,787	1,698
QUEENSLAND—									
Brisbane	1,068	291	378	490	443	1,359	1,446	1,558	1,511
Toowoomba	1,010	257	341	447	422	1,267	1,351	1,457	1,432
Rockhampton ..	1,080	225	271	369	344	1,305	1,351	1,449	1,424
Charter Towers ..	1,120	248	308	390	303	1,368	1,428	1,510	1,423
Warwick	1,071	266	343	424	397	1,337	1,414	1,495	1,468
Weighted Average ..	1,068	276	356	463	418	1,344	1,424	1,531	1,486
SOUTH AUSTRALIA—									
Adelaide	1,123	384	530	650	530	1,507	1,653	1,773	1,653
Moonta, etc. ..	1,127	265	342	451	349	1,382	1,469	1,578	1,476
Port Pirie*	1,155	324	404	482	370	1,479	1,559	1,637	1,525
Mt. Gambier ..	1,109	226	287	380	309	1,335	1,396	1,480	1,418
Peterborough ..	1,151	293	392	448	385	1,444	1,543	1,599	1,536
Weighted Average ..	1,124	309	505	621	504	1,493	1,620	1,745	1,628
WESTERN AUSTRALIA—									
Perth, etc.	1,175	373	464	564	434	1,548	1,639	1,739	1,609
Kalgoorlie, etc. .	1,300	355	431	500	347	1,655	1,731	1,800	1,647
Mid. Junction, etc.	1,200	283	393	505	361	1,483	1,593	1,705	1,561
Bunbury	1,195	312	373	410	292	1,507	1,568	1,605	1,487
Geraldton	1,188	387	474	592	408	1,575	1,662	1,780	1,596
Weighted Average ..	1,203	364	561	544	408	1,567	1,664	1,747	1,611
TASMANIA—									
Hobart	1,193	448	553	653	592	1,641	1,746	1,846	1,785
Launceston	1,139	321	460	432	473	1,400	1,590	1,571	1,612
Zeehan	1,257	176	227	273	167	1,433	1,484	1,530	1,424
Beaconsfield ..	1,136	61	89	103	83	1,197	1,225	1,239	1,219
Queenstown	1,212	263	342	369	256	1,475	1,554	1,581	1,468
Weighted Average ..	1,178	368	476	525	493	1,546	1,654	1,703	1,671
Commonwealth									
Weighted Average ..	1,126	403	506	624	542	1,529	1,632	1,750	1,668
30 Towns	1,126	403	506	624	542	1,529	1,632	1,750	1,668

* See Remarks on page 48 with reference to house rents.

The weighted average for all houses is obtained separately for each of the thirty towns by "weighting" the rent paid for each class of house by the number of houses in each respective class in each town. If houses of only one particular size are included, different results may be obtained. This is evident when it is remembered that the distribution of houses according to number of rooms is substantially different in some of the towns; that is to say, there are a greater number of large, and therefore of relatively more expensive, houses in some towns than in others, and vice versa, and consequently the weighted average rents in the former class of town refer to a larger size of house than in the latter class. Separate results are accordingly given for the several classes of houses specified in the table.

The figures in the last four columns furnish results for expenditure on groceries and food, combined with expenditure on rent, for each of the three classes of houses indicated, and also for the weighted average for all houses.

Some few words as to the proper interpretation of the preceding table may not be out of place. The total expenditure in each town for food and groceries, as well as the average rental paid, is multiplied by a number representing the population of the town, and a weighted average expenditure for all towns is thus computed. The weights used are given on page 45. The relative expenditure in each town for (a) food and groceries, (b) house rents, and (c) food, groceries, and house rent combined, is shewn, the base of the table being the weighted average expenditure in the six capital towns for 1911 = 1000. Thus in each horizontal line the sum of the index-number for food and groceries and that for rent of houses of each specified size is equal to the index-number for food, groceries, and house rent combined, taking the corresponding house-rent group. The table is comparable in all respects, and in addition shews the proportionate cost of food and groceries and of rent. For example, taking the last line in the table on the preceding page, it may be seen that the weighted average expenditure for all the towns on food, groceries, and average rents being £1668, the expenditure on food and groceries alone is £1126 (1st column), and the average rental £542 (5th column), the sum of the two latter amounts being £1668. Again, if it be desired to ascertain the relative expenditure for food and groceries and rent of four-roomed houses, it will be found the figures are £1126 and £403, which, together amount to £1529 (6th column). In addition to shewing the relative cost of food and groceries and house rent (for different classes of houses) in each town individually, the table also furnishes comparisons as to the relative cost of these items as between the several towns. Thus taking food and groceries only (1st column), it may be seen that commodities which would cost £1118 in Sydney can be purchased for £1120 in Melbourne, or £1123 in Adelaide. Again, taking the combined expenditure on food, groceries, and house rent for houses of five rooms (7th column), it will be seen that an expenditure of £1673 in Melbourne is equivalent to an expenditure of £1686 in Sydney, £1653 in Adelaide, £1731 in Kalgoorlie, or £1662 in Geraldton.

The index-numbers are reversible, and may be used for comparisons as to purchasing-power of money as between any of the towns included. Thus if it be ascertained that the average rental of five-roomed

houses in Melbourne is, say, 21s. 0d. weekly, and the average rental of the same class of house in Bendigo is required, all that is necessary is to multiply the rental in Melbourne by the index-number for five-roomed houses in Bendigo and divide by the index-number for Melbourne (3rd column), 21s. 0d. $\times \frac{310}{255} = 12s. 11d.$, which will be found to be the average rental of five-roomed houses in Bendigo (see Appendix II.).

(i.) *Food and Groceries.*—As regards food and groceries it may be seen that the weighted average of the five towns was above the weighted average for all towns for 1921 in Western Australia and Tasmania; equal to the average in New South Wales, and lower in the remaining States. The most expensive towns are Broken Hill, in New South Wales; Kalgoorlie, in Western Australia; and Zeehan, in Tasmania; Broken Hill being 11.4 per cent., Kalgoorlie 15.5 per cent., and Zeehan 11.3 per cent. above the weighted average for all towns.

(ii.) *House Rent.*—It will be seen that for house rents of four-roomed houses, Sydney, Melbourne and Hobart are the most expensive towns. For rentals of five-roomed houses, Sydney, Hobart and Melbourne are highest, while for six-roomed houses, rentals are highest in Melbourne, Newcastle and Sydney. Taking the weighted average of all houses, Sydney, Melbourne and Hobart are the most expensive towns, and comparing house rents of any size of house given or of the weighted average of all houses, Beaconsfield and Zeehan, in Tasmania, are the cheapest.

With reference to house rents in Broken Hill and Port Pirie, it is necessary to observe that for some time after the outbreak of war a number of houses were occupied at purely nominal or reduced rentals by families of which the wage-earner was out of employment. It was not until the latter half of 1916 that enquiries elicited the fact that normal conditions again obtained. In 1919 and 1920 industrial troubles in Broken Hill caused similar conditions to obtain as in 1914-15. It must be borne in mind, therefore, that in some years the average rents in these towns have been computed in accordance with special investigations which have been made each quarter.

(iii.) *Food and Groceries and House Rent combined.*—The last column in the foregoing table shews the relative cost according to average prices of the commodities and housing accommodation in each town during 1921. It may be seen that the average cost was greatest in Hobart, followed by Melbourne and Sydney. The index-number for Hobart was 7.0 per cent., Melbourne 4.1 per cent., Sydney 3.9 per cent., above the weighted average cost for all towns. The cost was least in Beaconsfield.

8. *Purchasing-Power of Money.*—In the following table the average cost for the six capital towns in the year 1911 has again been taken as base. This base has been taken as equal to 20s. instead of 1000 as in the former tables. The figures shew the variations in purchasing-power of money from year to year in each town separately (in the vertical lines), and the relative cost in the several towns in each year (in the horizontal lines). It may be seen, for instance, that 20s. 7d. in Sydney in 1911 was equivalent to 18s. 4d. in Brisbane, or 19s. 1d. in Hobart; or that 32s. 2d. in Melbourne for the last quarter of 1921 was equivalent to 15s. 5d. in Brisbane in 1901, or 22s. 6d. in Perth in 1913.

Measurement of Change in the Purchasing-Power of Money.—Amounts necessary on the Average in each Year from 1901 to 1922 (2nd Quarter) to purchase in each Capital Town what would have cost on the Average £1 in 1911 in the Australian Capitals regarded as a whole.*

Year.	Sydney.	Melb'ne.	Brisbane	Adelaide	Perth.	Hobart.	Weighted Average of 6 Capital Towns
	s. d.	s. d.	s. d.	s. d.	s. d.	s. d.	s. d.
1901	17 10	17 5	15 5	17 3	20 6	17 5	17 7
1902	19 7	18 1	16 0	17 3	21 7	17 10	18 7
1903	19 2	17 7	15 9	16 9	21 8	17 11	18 2
1904	17 5	17 1	14 8	16 3	20 10	17 1	17 2
1905	18 9	17 7	15 5	17 6	20 11	17 9	18 0
1906	18 8	17 7	15 7	17 10	20 5	18 0	18 0
1907	18 6	17 6	15 11	17 11	19 9	17 9	17 11
1908	19 9	18 6	17 1	19 1	20 0	18 5	19 0
1909	19 9	18 1	17 0	19 10	19 9	19 0	19 0
1910	19 11	18 10	17 6	20 2	20 6	19 0	19 5
1911	20 7	19 0	18 4	21 2	22 6	19 1	20 0†
1912	22 11	21 1	19 7	23 2	23 1	20 10	22 0
1913	23 7	21 0	19 5	22 5	22 6	21 1	22 1
1914	24 1	22 1	19 11	22 10	22 10	21 10	22 10
1915	26 6	25 6	23 3	25 2	24 5	24 8	25 7
1916	27 10	26 2	23 9	25 8	25 4	25 7	26 6
1917	28 1	25 11	23 7	24 11	24 11	26 0	26 4
1918	28 6	27 0	25 1	26 8	24 9	27 1	27 3
1919	31 7	29 7	28 10	29 4	28 5	29 11	30 2
1920	36 11	35 9	32 11	35 1	32 4	36 9	35 8
1921	34 6	34 10	30 3	33 1	32 2	35 8	33 11
1st Quarter	24 7	22 11	21 1	23 3	23 10	22 10	23 6
1915 { 2nd	25 2	25 3	22 8	25 4	24 8	24 3	24 11
3rd	28 1	27 6	24 2	26 6	25 1	25 10	27 2
4th	28 0	26 5	25 1	25 8	24 1	25 9	26 8
1916 { 1st	28 4	26 9	25 2	25 11	24 10	26 4	27 0
2nd	27 10	26 5	24 1	26 2	25 7	25 11	26 8
3rd	27 9	26 0	22 11	25 7	25 9	25 2	26 4
4th	27 6	25 7	22 10	25 2	25 1	24 10	26 0
1917 { 1st	27 7	25 7	22 11	25 3	24 10	25 4	26 0
2nd	27 9	25 9	23 3	25 2	25 6	25 3	26 2
3rd	28 8	26 0	23 9	24 5	24 8	25 11	26 7
4th	28 6	26 2	24 6	24 10	24 8	27 6	26 8
1918 { 1st	28 6	26 6	24 4	25 11	24 8	27 3	26 11
2nd	28 7	26 11	24 9	27 3	25 4	27 1	27 4
3rd	28 1	26 9	25 1	26 8	24 7	26 9	27 0
4th	29 0	27 8	26 0	27 0	24 6	27 4	27 9
1919 { 1st	30 6	28 9	27 11	28 4	25 8	28 8	29 1
2nd	31 4	29 1	28 1	29 2	29 2	28 10	29 10
3rd	31 5	29 5	28 6	29 3	30 1	30 0	30 2
4th	33 1	31 4	30 10	30 8	28 9	32 2	31 9
1920 { 1st	34 8	31 5	32 3	31 8	30 4	33 6	32 9
2nd	36 5	35 2	33 0	35 1	33 1	35 8	35 4
3rd	38 9	38 8	33 6	37 4	33 6	38 10	37 10
4th	37 11	37 10	32 9	36 4	32 4	39 0	36 11
1921 { 1st	37 0	37 7	31 11	35 10	34 0	38 0	36 6
2nd	34 7	35 3	30 5	34 0	33 5	36 4	34 5
3rd	33 9	33 11	29 8	31 11	31 4	35 2	33 2
4th	32 6	32 2	28 11	30 6	30 0	33 3	31 9
1922 { 1st	31 9	31 4	28 7	30 8	29 4	32 9	31 1
2nd	32 4	32 7	28 8	32 1	30 6	33 4	32 0

* These results are based upon the regimen referred to on pp. 23-5 herein, which includes food, groceries and housing accommodation. † Basis of Table.

(i.) *Groceries and Food only.*—The following table has been computed in the same manner as that indicated above, but relates to

groceries and food (46 items) only. The average expenditure for the six capital towns in 1911 has again been taken as the basis of the table (=20s.), and the figures are, of course, comparable throughout.

Measurement of Change in the Purchasing-Power of Money.—Groceries and Food only.—Amount necessary on the Average in each Year from 1901 to 1922 (2nd Quarter) to purchase in each Capital Town what would have cost on the Average £1 in 1911 in the Australian Capitals regarded as a whole.*

Year	Sydney.	Melb'ne.	Brisbane.	Adelaide.	Perth.	Hobart.	Weighted Average of 6 Capital Towns
	s. d.	s. d.	s. d.	s. d.	s. d.	s. d.	s. d.
1901 ..	18 4	19 4	19 4	20 7	23 8	20 3	19 4
1902 ..	21 4	20 4	20 4	20 6	25 6	21 0	21 1
1903 ..	20 7	19 6	19 9	19 8	25 8	21 1	20 4
1904 ..	17 6	18 4	17 10	18 10	24 3	19 8	18 5
1905 ..	19 5	19 1	18 11	19 10	25 2	20 7	19 8
1906 ..	19 3	18 11	19 2	19 8	24 9	20 11	19 7
1907 ..	18 9	18 6	18 11	19 0	23 11	20 2	19 1
1908 ..	20 7	19 11	20 6	20 2	24 6	21 1	20 7
1909 ..	20 3	19 0	19 8	20 6	24 3	21 10	20 1
1910 ..	20 0	19 2	20 0	20 0	25 0	21 6	20 1
1911 ..	19 9	18 8	20 4	20 5	26 11	21 2	20 0†
1912 ..	22 6	21 8	22 0	23 1	26 11	23 10	22 6
1913 ..	22 8	20 6	20 10	22 5	25 4	23 3	21 11
1914 ..	23 1	21 10	21 7	24 4	26 0	24 3	22 11
1915 ..	27 11	28 3	27 6	29 9	29 8	28 11	28 4
1916 ..	30 5	29 3	28 6	30 8	30 10	30 5	29 11
1917 ..	30 10	28 3	28 2	28 11	30 1	30 11	29 5
1918 ..	31 0	29 4	29 11	31 1	29 9	32 8	30 3
1919 ..	35 8	32 5	35 3	34 5	35 5	35 0	34 4
1920 ..	43 0	41 1	41 1	42 8	41 0	43 3	42 0
1921 ..	38 0	38 0	36 3	38 1	40 0	40 6	38 0
1915 { 1st Qtr	24 7	23 9	23 11	26 4	28 5	25 10	24 8
1915 { 2nd "	25 9	27 8	26 4	30 2	30 2	28 3	27 3
1915 { 3rd "	30 9	31 8	29 0	32 0	30 11	30 10	31 1
1915 { 4th "	30 7	29 10	30 8	30 6	29 2	30 8	30 3
1916 { 1st "	31 4	30 2	31 0	31 0	30 1	31 10	30 10
1916 { 2nd "	30 4	29 8	29 1	31 6	31 3	31 1	30 2
1916 { 3rd "	30 2	29 0	27 1	30 5	31 7	29 9	29 7
1916 { 4th "	29 8	28 2	26 10	29 8	30 5	29 1	28 11
1917 { 1st "	30 0	27 11	27 0	29 6	30 0	29 10	28 11
1917 { 2nd "	30 1	28 3	27 6	29 4	31 1	29 8	29 3
1917 { 3rd "	31 9	28 5	28 5	28 1	29 8	30 8	29 9
1917 { 4th "	31 4	28 5	29 7	28 8	29 7	33 5	29 10
1918 { 1st "	31 1	28 11	28 11	30 3	29 7	33 2	30 0
1918 { 2nd "	31 0	29 7	29 8	32 2	30 8	32 11	30 6
1918 { 3rd "	30 3	29 0	29 9	30 9	29 5	31 11	29 10
1918 { 4th "	31 7	29 10	31 3	31 1	29 2	32 10	30 9
1919 { 1st "	34 0	31 3	34 2	33 0	30 10	33 10	32 9
1919 { 2nd "	35 5	31 6	34 2	34 0	36 10	33 9	33 10
1919 { 3rd "	35 4	32 1	34 7	34 2	38 3	34 7	34 2
1919 { 4th "	37 10	34 8	38 0	36 4	35 10	37 8	36 6
1920 { 1st "	39 10	34 4	40 4	37 9	38 2	38 8	37 7
1920 { 2nd "	42 0	40 6	41 4	42 9	42 5	41 10	41 7
1920 { 3rd "	46 0	45 9	42 1	46 1	42 8	46 2	45 5
1920 { 4th "	44 0	43 10	40 5	44 1	40 9	46 4	43 6
1921 { 1st "	42 5	43 4	39 2	42 10	43 2	44 5	42 7
1921 { 2nd "	38 4	39 4	36 8	39 9	42 2	41 6	39 0
1921 { 3rd "	36 8	36 5	35 3	36 3	38 4	39 7	36 7
1921 { 4th "	34 4	33 1	33 11	33 7	35 11	36 6	33 11
1922 { 1st "	32 10	31 6	32 3	33 5	34 9	35 10	32 7
1922 { 2nd "	33 6	33 0	31 11	35 7	36 7	36 5	33 8

* These results are based upon the regimen referred to on pp. 23-5 herein. † Basis of Table.

(ii.) *House Rent Only*.—The following table gives similar particulars for *house rent only*, the average for the six towns in 1911 being again taken as the basis of the table (= 20s.):—

Measurement of Change in the Purchasing-Power of Money.—House Rent.—Amount payable on the Average in each Year from 1901 to 1922 (2nd Quarter) for House Rent in each Capital Town, compared with a Rent of £1 in 1911 in the Australian Capitals regarded as a whole.

Year.	Sydney.	Melb'ne.	Brisbane.	Adelaide.	Perth.	Hobart.	Weighted Average of 6 Capital Towns
	s. d.	s. d.	s. d.	s. d.	s. d.	s. d.	s. d.
1901 ..	17 3	14 8	9 9	12 7	16 0	13 4	15 1
1902 ..	17 3	14 11	9 10	12 7	15 11	13 5	15 2
1903 ..	17 4	14 11	10 1	12 7	16 0	13 6	15 3
1904 ..	17 5	15 3	10 2	12 7	16 0	13 6	15 4
1905 ..	17 10	15 5	10 5	14 0	14 9	13 7	15 8
1906 ..	17 11	15 8	10 6	15 3	14 4	13 9	15 11
1907 ..	18 4	16 1	11 6	16 3	13 8	14 2	16 4
1908 ..	18 7	16 7	12 4	17 5	13 7	14 7	16 10
1909 ..	19 2	16 10	13 3	18 10	13 4	15 0	17 5
1910 ..	19 10	18 4	14 0	20 4	13 11	15 6	18 5
1911 ..	21 10	19 5	15 4	22 3	16 3	16 1	20 0†
1912 ..	23 8	20 4	16 1	23 2	17 7	16 7	21 3
1913 ..	24 11	21 10	17 3	22 6	18 7	17 10	22 4
1914 ..	25 7	22 6	17 8	20 10	18 3	18 3	22 8
1915 ..	24 5	21 8	17 2	18 8	17 0	18 7	21 7
1916 ..	24 3	21 9	17 0	18 7	17 4	18 7	21 7
1917 ..	24 3	22 6	17 5	19 2	17 5	19 0	22 0
1918 ..	25 0	23 7	18 1	20 5	17 8	19 1	22 10
1919 ..	25 9	25 8	19 8	22 2	18 4	22 8	24 4
1920 ..	28 4	28 1	21 3	24 4	19 11	27 5	26 8
1921 ..	29 6	30 0	21 7	25 9	21 0	28 10	28 1
1915 { 1st Qtr	24 7	21 10	17 1	18 10	17 5	18 6	21 9
1915 { 2nd "	24 5	21 9	17 4	18 6	16 11	18 7	21 7
1915 { 3rd "	24 5	21 7	17 2	18 7	16 10	18 7	21 7
1915 { 4th "	24 3	21 7	17 2	18 7	16 10	18 7	21 6
1916 { 1st "	24 2	21 9	16 10	18 7	17 5	18 5	21 6
1916 { 2nd "	24 3	21 8	16 11	18 7	17 5	18 6	21 7
1916 { 3rd "	24 3	21 9	17 0	18 7	17 4	18 7	21 7
1916 { 4th "	24 3	21 11	17 2	18 8	17 4	18 10	21 8
1917 { 1st "	24 3	22 3	17 10	19 1	17 5	18 11	21 10
1917 { 2nd "	24 3	22 3	17 3	19 1	17 5	19 0	21 10
1917 { 3rd "	24 2	22 7	17 3	19 2	17 6	19 1	22 0
1917 { 4th "	24 6	22 10	17 2	19 5	17 6	19 1	22 2
1918 { 1st "	24 9	23 1	17 8	19 8	17 8	18 10	22 5
1918 { 2nd "	25 1	23 2	17 9	20 4	17 8	18 10	22 8
1918 { 3rd "	25 0	23 8	18 5	20 9	17 8	19 4	22 11
1918 { 4th "	25 3	24 7	18 6	21 1	17 9	19 5	23 5
1919 { 1st "	25 5	25 0	19 1	21 8	18 3	21 3	23 9
1919 { 2nd "	25 7	25 6	19 2	22 3	18 3	21 9	24 1
1919 { 3rd "	25 10	25 8	19 8	22 3	18 3	23 6	24 4
1919 { 4th "	26 4	26 7	20 8	22 6	18 6	24 3	25 0
1920 { 1st "	27 4	27 2	20 8	23 1	19 3	26 1	25 8
1920 { 2nd "	28 4	27 6	21 2	24 1	19 8	27 0	26 5
1920 { 3rd "	28 4	28 6	21 4	24 11	20 5	28 3	26 11
1920 { 4th "	29 2	29 3	21 8	25 3	20 5	28 5	27 7
1921 { 1st "	29 2	29 3	21 6	25 8	20 10	28 9	27 8
1921 { 2nd "	29 3	29 6	21 6	25 9	20 10	29 0	27 9
1921 { 3rd "	29 7	30 6	21 7	25 9	21 4	28 10	28 3
1921 { 4th "	29 10	30 11	21 8	26 0	21 5	28 8	28 7
1922 { 1st "	30 3	31 1	23 4	26 10	21 7	28 4	29 0
1922 { 2nd "	30 8	31 11	24 1	27 0	21 10	29 0	29 7

† Basis of Table

9. **Monthly Fluctuations in Retail Prices of Food and Groceries, July, 1914, to May, 1922.**—The following table has been prepared in order

to shew the variations in retail prices of food and groceries since July, 1914, the last month prior to the outbreak of war. Particulars for each town are given in the form of index-numbers for food and groceries in each of the months specified. In the last column the percentage increase is shewn for each town in May, 1922, compared with July, 1914. It is necessary to observe that the index-numbers given in the following table are computed to the same base as those given in the preceding tables in this section, referring to food and groceries only, viz., the weighted average expenditure in the six capital towns for 1911 of food and groceries (46 commodities) is made equal to 1000.

Retail Price Index-Numbers (Food and Groceries), for each of Thirty Towns for the Months specified, with Weighted Average for Six Capital Towns in 1911 as Base (=1000).†**

Particulars.	1914.	1915.	1916.	1917.	1918.	1919.	1920.	1921.	1922.	Percent increase from July, 1914, to May, 1922.
	July.	May.	May.	May.	May.	May.	May.	May.	May	
NEW SOUTH WALES—										%
Sydney	1,153	1,268	1,509	1,499	1,546	1,768	2,052	1,906	1,686	46.2
Newcastle	1,147	1,235	1,507	1,527	1,576	1,776	2,079	1,947	1,690	47.3
Broken Hill	1,468	1,575	1,817	1,814	1,848	1,927	2,378	2,326	1,819	23.9
Goulburn	1,183	1,312	1,550	1,476	1,523	1,746	2,067	1,950	1,712	44.7
Bathurst	1,097	1,243	1,479	1,473	1,521	1,663	2,016	1,925	1,627	48.3
* Weighted Average ..	1,165	1,283	1,522	1,514	1,560	1,770	2,068	1,927	1,691	48.2
VICTORIA—										
Melbourne	1,106	1,386	1,485	1,409	1,486	1,564	2,007	1,904	1,673	51.3
Ballarat	1,103	1,424	1,506	1,406	1,459	1,530	2,037	1,900	1,680	52.3
Bendigo	1,107	1,390	1,482	1,432	1,487	1,522	1,937	1,939	1,670	50.9
Geelong	1,089	1,350	1,514	1,432	1,481	1,541	1,935	2,051	1,679	54.2
Warrnambool	1,087	1,404	1,493	1,436	1,514	1,567	1,945	1,949	1,619	48.9
* Weighted Average ..	1,105	1,388	1,488	1,412	1,484	1,558	2,001	1,906	1,673	51.4
QUEENSLAND—										
Brisbane	1,057	1,326	1,491	1,375	1,480	1,704	2,060	1,833	1,598	51.2
Toowoomba	1,041	1,371	1,457	1,360	1,440	1,755	2,001	1,784	1,503	44.4
Rockhampton	1,156	1,378	1,618	1,404	1,501	1,797	2,068	1,877	1,504	37.9
Charter Towers	1,246	1,686	1,644	1,582	1,694	1,911	2,082	1,927	1,681	34.9
Warwick	1,083	1,379	1,462	1,369	1,520	1,770	2,045	1,837	1,507	44.7
* Weighted Average ..	1,082	1,369	1,512	1,394	1,496	1,738	2,056	1,836	1,595	47.4
SOUTH AUSTRALIA—										
Adelaide	1,250	1,485	1,584	1,480	1,620	1,703	2,114	1,975	1,812	45.0
Kadina, Moonta, Wallaroo ..	1,230	1,488	1,612	1,573	1,595	1,661	2,045	2,005	1,742	41.6
Port Pirie	1,291	1,530	1,643	1,603	1,657	1,726	2,056	2,060	1,795	39.0
Mt. Gambier	1,064	1,382	1,504	1,445	1,523	1,543	1,913	1,969	1,654	55.5
Peterborough	1,340	1,536	1,622	1,584	1,611	1,699	2,125	2,026	1,800	34.3
* Weighted Average ..	1,247	1,485	1,586	1,491	1,618	1,697	2,101	1,981	1,803	44.8
WESTERN AUSTRALIA—										
Perth and Fremantle ..	1,340	1,502	1,550	1,586	1,524	1,891	2,121	2,104	1,838	37.2
Kalgoorlie and Boulder ..	1,664	1,806	1,814	1,799	1,791	2,188	2,311	2,315	2,021	21.5
Mid. Junc. & Guildford ..	1,354	1,532	1,534	1,598	1,524	1,827	2,138	2,105	1,919	41.7
Bunbury	1,418	1,593	1,608	1,753	1,656	1,895	2,100	2,141	1,896	33.7
Geraldton	1,445	1,689	1,675	1,630	1,633	1,745	2,112	2,079	1,880	30.1
* Weighted Average ..	1,412	1,573	1,608	1,636	1,585	1,946	2,160	2,148	1,882	33.3
TASMANIA—										
Hobart	1,211	1,401	1,551	1,471	1,648	1,678	2,095	2,063	1,834	51.4
Launceston	1,144	1,345	1,538	1,478	1,588	1,645	2,034	1,990	1,738	51.9
Zeehan	1,202	1,531	1,683	1,610	1,756	1,804	2,188	2,159	1,988	53.9
Beaconsfield	1,230	1,486	1,647	1,587	1,617	1,678	2,038	1,952	1,712	39.2
Queenstown	1,315	1,519	1,697	1,625	1,722	1,842	2,132	2,066	1,858	41.3
* Weighted Average ..	1,201	1,399	1,566	1,494	1,638	1,684	2,080	2,041	1,808	50.5
† Weighted Aver. for Cwth. ..	1,164	1,372	1,524	1,473	1,539	1,696	2,054	1,957	1,705	48.5

* Average for the five towns. † Average for thirty towns.

† See remarks on page 31 of Labour Report No. 6 with reference to change of base period.

** As the price index-number increases the purchasing power of money diminishes.

NOTE.—Corresponding index-numbers for the intervening months are given in Labour Reports Nos. 6, 7, 8, 9, 10 and 11, in Labour Bulletins Nos. 17 and 18, and in the Quarterly Summaries of Statistics Nos. 76 to 87.

10. **Tables of Prices and House Rents, 1921.**—While the summarised results of price-movements are published quarterly, the actual data from which such results are obtained are only published in full annually. In appendixes to Report No. 1, particulars were given of prices and house rents in the metropolitan towns in each year from 1901 to 1911, and in appendixes to Report No. 2, particulars were given of average prices and house rents in 1912 for each of the thirty towns from which returns are collected. In Appendixes I. and II. of Report No. 5 similar particulars were given for the year 1913; in Appendixes I. and III. to Report No. 6 particulars were given of average prices for 1914 and 1915; in Appendixes II. and IV. of the same Report similar information was given in regard to house rents. In Appendixes Nos. I and II. of Report No. 7; in Appendixes Nos. I. and II. of Report No. 8; in Appendixes Nos. IV. and V. of Report No. 9; in Appendixes Nos. I. and II. of Reports Nos. 10 and 11; and in Appendixes Nos. I. and II. hereof, information is given in regard to average prices and house rents respectively for the years 1916 to 1921.

11. **Increase in Cost of Food and Groceries and House Rent, 1921, compared with previous years.**—The following tables have been prepared in order to shew for each capital town (i.) the total increase (or decrease) in the cost of food, groceries, and house rent combined in 1921 compared with each preceding year since 1901, and (ii.) amount of the percentage increase (or decrease) due to variations (a) in prices of food and groceries, and (b) in house rent. The sum of the percentages for any year and town in the last two parts of the table must, of course, equal the corresponding total percentage in the first part of the table. Thus the total percentage of increase in cost of food, groceries, and house rent in Sydney for 1921 compared with 1904 is 97.6 per cent., of which 69.0 per cent. is due to increased cost of food and groceries, and 28.6 per cent. to increase in house rents.

Percentage of Increase in Purchasing-Power-of-Money Price Index-Numbers in 1921 compared with previous Years 1901 to 1920.

Year	Sydney	Melbourne	Brisbane	Adelaide	Perth	Hobart	Weighted Average for 6 Capital Towns
1901 ..	93.0	99.7	96.3	91.2	56.7	105.3	93.0
1902 ..	76.0	92.2	88.8	91.4	49.3	99.8	82.6
1903 ..	79.9	97.2	91.3	97.5	48.3	98.9	86.5
1904 ..	97.6	103.4	105.7	103.4	54.5	108.7	97.8
1905 ..	83.9	97.9	96.3	89.2	53.9	101.4	88.3
1906 ..	84.5	97.8	93.6	85.4	57.3	98.6	88.2
1907 ..	86.1	98.4	90.3	84.8	63.1	101.4	89.3
1908 ..	74.9	87.5	76.5	73.4	60.8	93.9	78.6
1909 ..	74.3	91.9	77.5	66.9	62.8	87.6	79.1
1910 ..	73.2	84.4	72.3	63.9	57.2	87.6	75.1
1911 ..	67.2	82.9	65.2	56.2	42.9	87.1	69.7
1912 ..	50.1	64.7	54.2	42.9	39.4	71.3	54.2
1913 ..	46.2	65.3	56.0	47.3	42.6	69.5	53.7
1914 ..	42.9	57.2	51.5	44.6	40.8	63.8	48.9
1915 ..	30.3	36.0	30.0	31.3	31.6	44.8	32.8
1916 ..	29.7	32.7	27.2	28.6	27.1	39.6	28.2
1917 ..	22.6	34.2	28.0	32.7	29.2	37.2	28.7
1918 ..	20.8	28.8	20.7	23.8	29.8	31.7	24.7
1919 ..	9.1	17.3	4.8	12.6	13.3	19.3	12.4
1920 ..	-6.7	-2.9	-8.1	-5.9	-0.5	-2.9	-4.9

**Percentage of Increase in Purchasing-Power-of-Money Price Index-Numbers
in 1921 compared with previous years 1901 to 1920—cont.**

Year.	Sydney.	Melbourne.	Brisbane.	Adelaide.	Porth.	Hobart	Weighted Average for 6 Capital Towns.
-------	---------	------------	-----------	-----------	--------	--------	--

PERCENTAGE DUE TO VARIATIONS IN COST OF FOOD AND GROCERIES.

1901 ..	64.7	63.4	64.8	59.8	46.5	68.8	62.5
1902 ..	50.0	57.8	58.7	60.0	39.4	64.3	53.9
1903 ..	53.5	62.0	61.5	65.1	38.7	63.8	57.3
1904 ..	69.0	67.9	73.8	70.0	44.4	71.9	67.3
1905 ..	58.2	63.7	66.4	61.6	41.5	66.2	60.0
1906 ..	58.9	64.1	64.4	61.1	43.7	64.1	60.4
1907 ..	61.2	65.7	64.2	62.9	47.7	67.5	62.4
1908 ..	51.9	57.6	54.3	55.4	45.3	62.1	54.2
1909 ..	52.8	62.0	57.4	52.4	46.7	57.8	55.8
1910 ..	53.2	58.9	54.5	52.9	42.8	59.0	54.6
1911 ..	51.9	59.9	51.2	49.4	34.0	59.7	53.1
1912 ..	39.7	45.7	42.7	38.3	33.2	47.2	41.5
1913 ..	38.3	49.2	46.8	41.3	38.0	48.2	43.1
1914 ..	36.3	43.2	43.4	35.6	35.8	44.0	39.2
1915 ..	22.4	22.6	22.3	19.6	24.7	27.7	22.4
1916 ..	16.0	19.8	19.1	17.1	21.1	23.2	18.1
1917 ..	15.0	22.2	20.3	21.8	23.2	21.8	19.2
1918 ..	14.4	19.0	15.0	15.6	24.2	17.0	16.8
1919 ..	4.3	11.2	2.1	7.5	9.3	10.9	7.3
1920 ..	-8.0	-5.1	-8.6	-7.6	-2.0	-4.4	-6.5

PERCENTAGE DUE TO VARIATION IN HOUSE RENTS.

1901 ..	28.3	36.3	31.5	31.4	10.2	36.5	30.5
1902 ..	26.0	34.4	30.1	31.4	9.9	35.5	28.7
1903 ..	26.4	35.2	29.8	32.4	9.6	35.1	29.2
1904 ..	28.6	35.5	31.9	33.4	10.1	30.8	30.5
1905 ..	25.7	34.2	29.9	27.6	12.4	35.2	28.3
1906 ..	25.6	33.7	29.2	24.3	13.6	34.5	27.8
1907 ..	24.9	32.7	26.1	21.9	15.4	33.9	26.9
1908 ..	23.0	29.9	22.2	18.0	15.5	31.8	24.4
1909 ..	21.5	29.9	20.1	14.5	16.1	29.8	23.3
1910 ..	20.0	25.5	17.8	11.0	14.4	28.6	20.5
1911 ..	15.3	23.0	14.0	6.8	8.9	27.4	16.6
1912 ..	10.4	19.0	11.5	4.6	6.2	24.1	12.7
1913 ..	7.9	16.1	9.2	6.0	4.6	21.3	10.6
1914 ..	6.6	14.0	8.1	9.0	5.0	19.8	9.7
1915 ..	7.9	13.4	7.7	11.7	6.9	17.1	10.4
1916 ..	7.7	12.9	8.1	11.5	6.0	16.4	10.1
1917 ..	7.6	12.0	7.7	10.9	6.0	15.4	9.5
1918 ..	6.4	9.8	5.7	8.2	5.6	14.7	7.9
1919 ..	4.8	6.1	2.7	5.1	4.0	8.4	5.1
1920 ..	1.3	2.2	0.5	1.7	1.5	1.5	1.6

NOTE:—The minus sign, (—) indicates a decrease