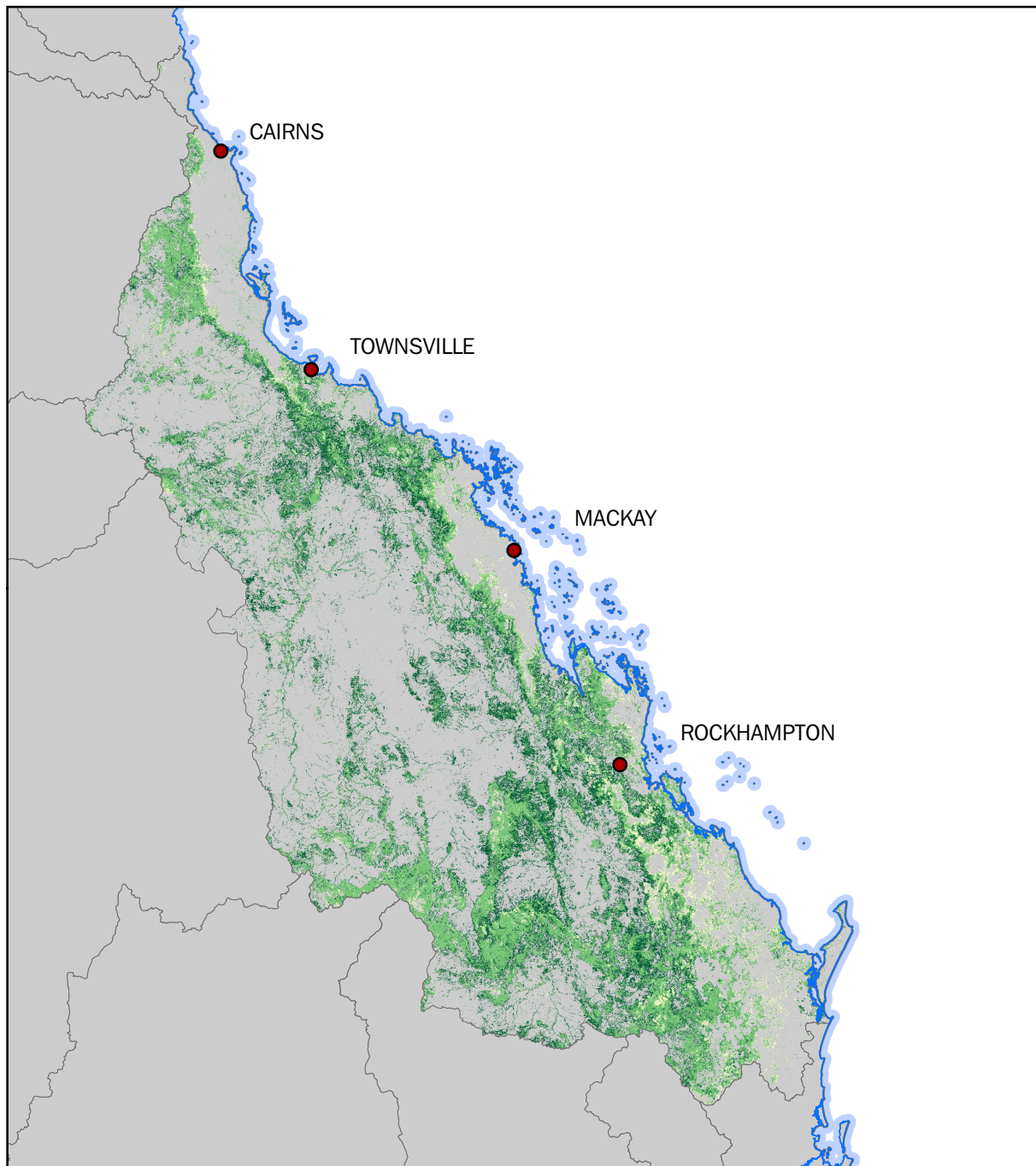


LAND ACCOUNT: GREAT BARRIER REEF REGION EXPERIMENTAL ESTIMATES, 2014

Map 5 - Physical change in Trees - Open land cover
between 2008-09 and 2010-11



Source:
Dynamic Land Cover Dataset v2
(beta) - Geoscience Australia
© Commonwealth of Australia,
2014

0 300
Kilometres

- Reduction in Trees - Open
- No change to Trees - Open
- Additions to Trees - Open