



1996–97

8221.2

MANUFACTURING INDUSTRY

VICTORIA

EMBARGO: 11:30AM (CANBERRA TIME) WED 25 NOV 1998

CONTENTS

	<i>page</i>
Notes.....	2
Main features	3
 TABLES	
MANUFACTURING ESTABLISHMENTS	
1 Summary of operations—1991–92 to 1996–97	8
2 Summary of operations—industry class	10
3 Percentage change in Industry Gross Product— 1992–93 to 1996–97	16
4 Summary of operations—employment size	17
5 Exported goods produced—broad employment size	21
6 Summary of operations—proportion of exports	22
MANUFACTURING LOCATIONS	
7 Summary of operations—statistical divisions	23
 ADDITIONAL INFORMATION	
Explanatory notes	27
Technical note	34
Glossary	35
Statistical division map	40

- For further information about these and related statistics, contact John Ridley on Sydney 02 9268 4541, or any ABS office shown on the back cover of this publication.

NOTES

ANNUAL MANUFACTURING INDUSTRY COLLECTION

The 1996–97 collection was a census of manufacturing businesses. It is the first census of the manufacturing sector since 1993–94. All manufacturing businesses were requested to provide data on employment, wages and salaries, turnover, purchases and whether their products were exported. Samples of businesses provided additional information related to detailed structural and performance data, environmental protection expenditure and the value of sales for commodities produced.

ABOUT THIS ISSUE

Data in this publication have been adjusted for all known deficiencies in the number of businesses recorded on the Australian Bureau of Statistics (ABS) business register. The nature of these various adjustments and the reasons for making them are described in paragraphs 10–12 of the Explanatory Notes. Because of these adjustments, comparison of data in this publication with data previously published should be undertaken with caution. Other adjusted data for earlier periods are available on request.

This publication presents data relating to the operations of both manufacturing establishments and manufacturing locations. Details on employment, wages and salaries, turnover, Industry Gross Product (IGP) and direct exports are presented as appropriate. This publication also contains a table showing industry subdivision data by statistical division and a map displaying the boundaries of each Victorian statistical division.

DATA TO BE RELEASED IN OTHER PUBLICATIONS

More detailed manufacturing industry statistics for each State are being released progressively in a series of publications *Manufacturing Industry, [State], 1996–97* (Cat. nos 8221.1–8221.6). The publication for New South Wales (Cat. no. 8221.1) also contains selected data for the Australian Capital Territory. For 1996–97, all of these publications contain a table showing industry subdivision data by statistical division.

Commodity data will be released in *Manufacturing Production, Commodities Produced, Australia, 1996–97* (Cat. no. 8365.0), to be released in December 1998.

Management unit data and a wide range of manufacturing related ABS data, as well as data from other sources, will be presented in the compendium publication *Manufacturing, Australia, 1998* (Cat. no. 8225.0), to be released in December 1998.

SYMBOLS AND OTHER USAGES

ABS	Australian Bureau of Statistics
ANZSIC	Australian and New Zealand Standard Industrial Classification
ASIC	Australian Standard Industrial Classification
IGP	Industry Gross Product
mfg	manufacturing
n.e.c.	not elsewhere classified
n.p.	not available for publication but included in totals where applicable
..	not applicable
—	nil or rounded to zero

Zia Abbasi
Regional Director

MAIN FEATURES

OVERVIEW

Turnover for the year 1996–97 by manufacturing establishments operating in Victoria was \$68,420m, which resulted in an Industry Gross Product (IGP) for the year of \$21,807m. These establishments employed 306,600 persons at the end of June 1997 and paid \$10,662m in wages and salaries in 1996–97.

The percentage of Australian manufacturing employment in Victoria at the end of June 1997 was 32.4%, an increase of 0.1 percentage points on that reported at the end of June 1996. The Victorian industry subdivisions which made a significant contribution to national manufacturing employment at the end of June 1997 at the industry subdivision level were Textile, clothing, footwear and leather manufacturing (48.1%), Petroleum, coal, chemical and associated product manufacturing (38.5%) and Machinery and equipment manufacturing (35.5%).

The percentage contribution by Victoria to total Australian manufacturing turnover and IGP in 1996–97 was 32.8% and 34.2% (respectively). This represents an increase of 0.5 percentage points for turnover and 1.8 percentage points for IGP on the contribution reported in 1995–96. The Victorian industry subdivisions which made a significant contribution to national manufacturing turnover and IGP in 1996–97 at the industry subdivision level were also Textile, clothing, footwear and leather manufacturing (47.4% and 48.2% respectively), Machinery and equipment manufacturing (42.6% and 42.8% respectively) and Petroleum, coal, chemical and associated product manufacturing (34.8% and 38.7% respectively).

STATE COMPARISON

For the first time since the commencement of integrated economic statistics with the 1968–69 collection, the contribution to Australian turnover for 1996–97 by Victorian manufacturers (\$68,420m) has exceeded that of manufacturers located in New South Wales (\$68,211m). However, more people are still employed in manufacturing in New South Wales (310,300 persons) than in Victoria (306,600 persons).

INDUSTRY GROSS PRODUCT

IGP (see the Glossary for its definition) is very similar to the national accounting measure gross product at factor cost, which is the official statistical measure of production. IGP for 1996–97 was \$21,807m. This represents a 6.4% increase, in current price terms, on the \$20,486m recorded for 1995–96 and a 28.2% increase, in current price terms, on the \$17,006m recorded for 1992–93.

IGP per person employed at the end of June closely followed this trend, with a 6.0% increase (to \$71,100) for 1996–97 over the \$67,100 recorded for 1995–96 and a 26.9% increase over the \$56,000 recorded for 1992–93.

Total manufacturing IGP increased by 6.4%, in current price terms, between 1995–96 and 1996–97. Six industry subdivisions recorded an increase while three recorded a decrease. Machinery and equipment manufacturing (up 29.5%—\$4,382m to \$5,672m) recorded the largest percentage increase in IGP between 1995–96 and 1996–97 and also recorded the largest dollar increase. Other manufacturing (up 13.6%—\$652m to \$741m) recorded the second largest percentage increase.

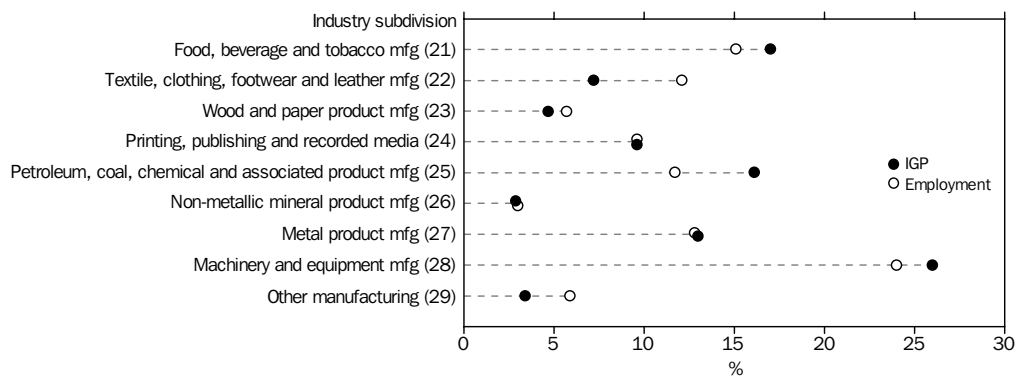
MAIN FEATURES *continued*

INDUSTRY GROSS PRODUCT *continued*

The industry subdivisions which recorded the largest percentage decreases between 1995–96 and 1996–97 also recorded the largest dollar decreases. These were Non-metallic mineral product manufacturing (down 21.6%—\$812m to \$637m) and Metal product manufacturing (down 9.5%—\$3,140m to \$2,842m).

All nine industry subdivisions recorded an increase, in current price terms, in IGP between 1992–93 and 1996–97, with Machinery and equipment manufacturing (up 54.7%—\$3,667m to \$5,672m) recording the largest percentage and dollar increases.

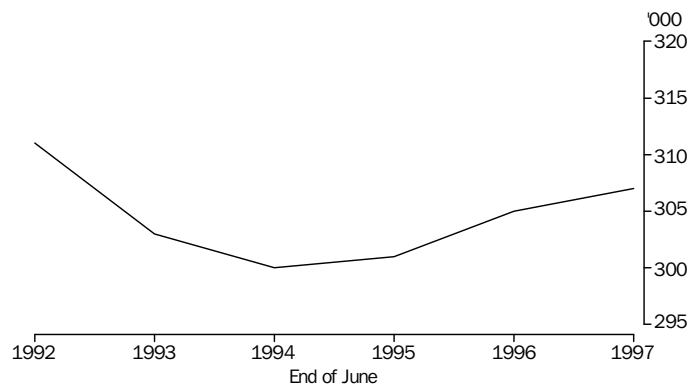
DISTRIBUTION OF IGP AND EMPLOYMENT



EMPLOYMENT AND WAGES

The Victorian manufacturing industry employed 306,600 persons at the end of June 1997 and paid \$10,662m in wages and salaries in 1996–97. This represents an average of \$34,800 paid in annual wages and salaries per person employed at the end of June 1997.

EMPLOYMENT



Victorian manufacturing employment slowly declined from June 1992 (310,700 persons) to June 1994 (299,900 persons), after which it has slowly increased. Employment increased marginally between June 1996 (305,300 persons) and June 1997 (306,600 persons). Over the five years from June 1992 to June 1997, employment fell by 1.3%.

EMPLOYMENT AND WAGES *continued*

Between June 1996 and June 1997, employment increased in five of the nine manufacturing industry subdivisions and decreased in the other four subdivisions. The industry subdivisions with the largest percentage increases were Other manufacturing (up 8.7%), Food, beverage and tobacco manufacturing (up 5.4%) and Printing, publishing and recorded media (up 4.2%). The industry subdivisions with the largest percentage decreases were Wood and paper product manufacturing (down 13.1%) and Non-metallic mineral product manufacturing (down 4.4%).

Average wages and salaries paid per person employed at the end of June rose in all nine manufacturing industry subdivisions between 1995–96 and 1996–97. The industry subdivisions recording the largest percentage increases in average wages and salaries paid, Machinery and equipment manufacturing (up 10.3%) and Metal product manufacturing (up 9.8%), had small changes in employment (down 0.4% and up 0.6% respectively) and much larger changes (increases) in total wages and salaries paid (up 9.9% and up 10.4% respectively).

The industry subdivisions to record the largest percentage increases between 1995–96 and 1996–97 in wages and salaries paid per person employed at the end of June were:

- Machinery and equipment manufacturing (up 10.3%—\$33,700 to \$37,100) where 23 (out of 28) industry classes recorded an increase, with the largest (where publishable) being:
 - ◆ Aircraft manufacturing (ANZSIC Class 2824) (up 27.1%—\$44,500 to \$56,600);
 - ◆ Motor vehicle body manufacturing (ANZSIC Class 2812) (up 19.4%—\$25,800 to \$30,800); and
 - ◆ Lifting and material handling equipment manufacturing (ANZSIC Class 2865) (up 17.9%—\$29,300 to \$34,500).
- Metal product manufacturing (up 9.8%—\$32,000 to \$35,200) where 18 (out of 20) industry classes recorded an increase, with the largest being:
 - ◆ Aluminium rolling, drawing, extruding (ANZSIC Class 2731) (up 28.9%—\$34,400 to \$44,400).

The industry subdivisions to record the smallest percentage increases between 1995–96 and 1996–97 in wages and salaries paid per person employed were:

- Other manufacturing (up 2.8%—\$24,400 to \$25,100), although seven industry classes (out of nine) recorded increases. Wooden furniture and upholstered seat manufacturing (ANZSIC Class 2921) (which contributes almost half of the employment in this subdivision) recorded a 3.8% increase (\$22,000 to \$22,800).
- Printing, publishing and recorded media (up 2.9%—\$33,200 to \$34,200), although five (out of seven) industry classes recorded increases. The main influence on the subdivision result was Printing (ANZSIC Class 2412) (which contributes almost half of the employment in this subdivision), where a substantial increase in employment (up 11.2%) nearly matched the increase in total wages and salaries paid (up 11.8%). Book and other publishing (ANZSIC Class 2423) (up 15.9%—\$30,900 to \$35,800) recorded the largest percentage increase.

EMPLOYMENT AND WAGES *continued*

Industry classes (where publishable) belonging to other industry subdivisions and which had the largest percentage increases in wages and salaries paid per person employed between 1995–96 and 1996–97 were Petroleum and coal product manufacturing n.e.c. (ANZSIC Class 2520) (up 52.7%—\$39,000 to \$59,500), Flour mill product manufacturing (ANZSIC Class 2151) (up 32.1%—\$40,800 to \$53,900) and Knitting mill product manufacturing n.e.c. (ANZSIC Class 2239) (up 30.9%—\$33,700 to \$44,200).

TURNOVER

Turnover rose, in current price terms, by \$3,136m to \$68,420m for 1996–97. This represents a 4.8% increase on the \$65,284m recorded for 1995–96.

Seven of the nine manufacturing industry subdivisions recorded an increase in turnover between 1995–96 and 1996–97. Machinery and equipment manufacturing and Food, beverage and tobacco manufacturing remain the largest contributors to total Victorian manufacturing turnover, and also recorded the largest increases in dollar terms. The largest percentage increases between 1995–96 and 1996–97 were recorded by Other manufacturing (up 13.9%) and Printing, publishing and recorded media (up 9.5%). Non-metallic mineral product manufacturing (down 6.3%) and Wood and paper product manufacturing (down 1.6%) were the industry subdivisions to record a fall in turnover.

The industry classes (where publishable) with the largest percentage increases between 1995–96 and 1996–97 were:

- Ceramic product manufacturing (ANZSIC Class 2622) (up 88.3% or \$10m); and
- Prefabricated building manufacturing n.e.c. (ANZSIC Class 2919) (up 58.7% or \$7m).

The industry classes with the largest dollar increases between 1995–96 and 1996–97 were:

- Motor vehicle manufacturing (ANZSIC Class 2811) (up \$791m or 14.6%);
- Dairy product manufacturing n.e.c. (ANZSIC Class 2129) (up \$382m or 16.5%); and
- Printing (ANZSIC Class 2412) (up \$300m or 17.1%).

The industry classes (where publishable) with the largest percentage decreases between 1995–96 and 1996–97 were:

- Non-ferrous pipe fitting manufacturing (ANZSIC Class 2765) (down 34.4% or \$55m); and
- Concrete product manufacturing n.e.c. (ANZSIC Class 2635) (down 32.0% or \$90m).

The industry classes (where publishable) with the largest dollar decreases between 1995–96 and 1996–97 were:

- Meat processing (ANZSIC Class 2111) (down \$226m or 18.2%); and
- Plastic bag and film manufacturing (ANZSIC Class 2563) (down \$112m or 12.4%).

MAIN FEATURES *continued*

TURNOVER *continued*

Over the four year period from 1992–93 to 1996–97, industry classes (of those available for publication) which made a significant movement (when ranked by turnover) were Synthetic fibre textile manufacturing (ANZSIC Class 2212) which fell from the 36th rank position to the 59th rank position (out of 152 ANZSIC classes with data classified to them) and Metal container manufacturing (ANZSIC Class 2751), which fell from the 30th rank position to the 50th rank position.

EXPORTS

For 1996–97, Victorian manufacturers directly exported \$8,844m of the goods that they produced. This represents a 0.6% increase on the \$8,794m recorded for 1995–96. The percentage of the total sales and transfers out of goods produced that were exported has decreased (from 14.4% for 1995–96 to 13.8% for 1996–97).

Between 1995–96 and 1996–97, manufacturers' direct exports increased in five industry subdivisions and decreased in the other four. However, the Metal product manufacturing subdivision's decrease of \$438m or 25.5% (from \$1,720m to \$1,282m) was, by far, the largest dollar decrease. The industry subdivisions to record the largest dollar increases in direct exports between 1995–96 and 1996–97 were Machinery and equipment manufacturing (\$493m or 18.1%—\$2,728m to \$3,221m) and Textile, clothing, footwear and leather manufacturing (\$124m or 33.6%—\$368m to \$492m).

REGIONAL ACTIVITY

As in previous census years, Melbourne Statistical Division dominated manufacturing activity in Victoria in 1996–97. It contributed 82.0% of all locations at 30 June 1997, 80.4% of employment at the end of June 1997 and 77.0% of turnover for 1996–97. The only other statistical division to contribute significantly was Barwon (3.5% of locations, 4.6% of employment and 7.0% of turnover).

Melbourne Statistical Division was also the leading contributor, by far, in all nine industry subdivisions. For Melbourne Statistical Division, Machinery and equipment manufacturing was the main contributor (with 62,489 persons employed and \$15,359m turnover). Other manufacturing and Printing, publishing and recorded media were the subdivisions most concentrated in Melbourne for turnover (at 91.6% and 90.9% respectively), while Petroleum, coal, chemical and associated product manufacturing was the subdivision most concentrated in Melbourne for employment (at 91.7%).

For those industries available for publication, notable contributions to Victorian turnover were made by Barwon Statistical Division in Metal product manufacturing (11.0%), Non-metallic mineral product manufacturing (10.9%) and Textile, clothing, footwear and leather manufacturing (10.0%).

Food, beverage and tobacco manufacturing dominated total manufacturing in seven out of nine of the remaining statistical divisions. This industry subdivision accounted for more than 70% of turnover in both Mallee (82.4%) and Goulburn (70.2%) Statistical Divisions. Metal product manufacturing made a significant contribution (at 44.5%) to total manufacturing turnover for Western District Statistical Division.

1

MANUFACTURING ESTABLISHMENTS(a), Summary of Operations(b)

INDUSTRY SUBDIVISION			Employment at end of June(c)	Wages and salaries(d)(e)	Turnover(e)	Industry gross product(e)	Ratio of wages and salaries to turnover(e)	Turnover per person employed(e)(f)
ANZSIC code	Description		'000	\$m	\$m	\$m	ratio	\$'000
21	Food, beverage and tobacco mfg	1996-97	46.4	1 649.2	14 029.6	3 712.9	0.12	302.2
		1995-96	44.0	(g)1 479.6	13 064.5	3 600.9	0.11	296.7
		1994-95	46.4	1 510.5	12 471.9	..	0.12	269.1
		1993-94	45.3	1 427.9	11 924.2	..	0.12	263.3
		1992-93	45.3	1 411.7	11 291.1	2 999.8	0.13	249.4
		1991-92	47.6	1 385.5	10 811.4	..	0.13	227.3
22	Textile, clothing, footwear and leather mfg	1996-97	37.1	986.7	4 714.3	1 574.3	0.21	127.0
		1995-96	37.9	(g)933.9	4 649.8	1 545.6	0.20	122.6
		1994-95	36.8	942.5	4 472.6	..	0.21	121.6
		1993-94	38.6	929.6	4 784.4	..	0.19	124.0
		1992-93	39.7	967.0	4 575.7	1 539.6	0.21	115.2
		1991-92	41.1	1 015.7	4 777.4	..	0.21	116.2
23	Wood and paper product mfg	1996-97	17.4	596.0	3 416.8	1 029.6	0.17	196.9
		1995-96	20.0	(g)629.8	3 471.9	1 038.6	0.18	174.0
		1994-95	17.8	566.8	3 306.3	..	0.17	186.2
		1993-94	17.4	534.3	3 182.1	..	0.17	182.4
		1992-93	16.6	512.1	2 976.6	913.8	0.17	178.9
		1991-92	16.4	490.8	2 678.3	..	0.18	163.6
24	Printing, publishing and recorded media	1996-97	29.5	1 009.0	4 567.4	2 082.8	0.22	154.6
		1995-96	28.3	(g)940.4	4 172.7	1 927.5	0.23	147.3
		1994-95	29.3	972.1	4 255.5	..	0.23	145.3
		1993-94	27.3	874.4	3 933.7	..	0.22	143.9
		1992-93	28.0	899.5	3 733.5	1 703.8	0.24	133.2
		1991-92	27.2	838.0	3 447.4	..	0.24	126.7
25	Petroleum, coal, chemical and associated product mfg	1996-97	36.0	1 497.0	11 423.6	3 515.9	0.13	317.6
		1995-96	35.7	(g)1 408.7	11 170.7	3 386.9	0.13	312.6
		1994-95	36.3	1 384.3	10 486.6	..	0.13	288.6
		1993-94	34.9	1 319.7	10 240.7	..	0.13	293.6
		1992-93	35.0	1 288.3	9 806.0	2 768.9	0.13	280.1
		1991-92	35.5	1 232.5	9 700.7	..	0.13	273.4
26	Non-metallic mineral product mfg	1996-97	9.3	356.6	2 085.9	636.5	0.17	224.2
		1995-96	9.7	(g)348.2	2 225.4	812.2	0.16	228.8
		1994-95	9.6	345.2	2 023.3	..	0.17	209.8
		1993-94	10.0	345.8	2 081.2	..	0.17	209.0
		1992-93	10.0	349.9	2 086.2	634.0	0.17	208.9
		1991-92	10.3	340.0	1 751.8	..	0.19	170.3

(a) See paragraph 5 of the Explanatory Notes.

(b) For factors affecting comparability of data over the time periods shown, see paragraphs 13-17 of the Explanatory Notes.

(c) Includes working proprietors.

(d) Excludes the drawings of working proprietors.

(e) Value data are at current prices and, therefore, do not discount the impact of price changes.

(f) Turnover divided by the number of persons employed at the end of June. Includes working proprietors.

(g) For 1995-96, excludes provision expenses for employee entitlements. See paragraph 16 of the Explanatory Notes.

1

MANUFACTURING ESTABLISHMENTS(a), Summary of Operations(b) *continued*

INDUSTRY SUBDIVISION		Employment at end of June(c)	Wages and salaries(d)(e)	Turnover(e)	Industry gross product(e)	Ratio of wages and salaries to turnover(e)	Turnover per person employed(e)(f)	
ANZSIC code	Description	'000	\$m	\$m	\$m	ratio	\$'000	
27	Metal product mfg	1996-97	39.1	1 376.5	8 540.2	2 841.7	0.16	218.3
		1995-96	38.9	(g)1 246.3	8 522.9	3 140.1	0.15	219.1
		1994-95	37.3	1 219.3	7 827.9	..	0.16	209.9
		1993-94	37.6	1 170.7	7 626.6	..	0.15	202.9
		1992-93	37.0	1 151.6	7 396.1	2 209.1	0.16	200.1
		1991-92	38.6	1 185.1	7 671.3	..	0.15	198.8
28	Machinery and equipment mfg	1996-97	73.7	2 735.9	17 591.5	5 672.0	0.16	238.8
		1995-96	73.9	(g)2 489.9	16 206.1	4 381.6	0.15	219.2
		1994-95	70.4	2 444.8	15 353.3	..	0.16	218.0
		1993-94	71.7	2 312.2	14 676.2	..	0.16	204.8
		1992-93	75.0	2 409.3	13 484.9	3 666.5	0.18	179.8
		1991-92	77.7	2 389.7	12 347.5	..	0.19	159.0
29	Other manufacturing	1996-97	18.2	455.2	2 051.1	740.9	0.22	113.0
		1995-96	16.7	(g)407.2	1 800.0	652.2	0.23	107.7
		1994-95	17.3	400.5	1 859.1	..	0.22	107.2
		1993-94	17.2	383.2	1 810.4	..	0.21	105.2
		1992-93	16.8	377.5	1 610.9	570.6	0.23	95.7
		1991-92	16.5	364.4	1 523.0	..	0.24	92.4
21-29 Total manufacturing		1996-97	306.6	10 662.1	68 420.4	21 806.7	0.16	223.1
		1995-96	305.3	(g)9 883.9	65 284.1	20 485.6	0.15	213.9
		1994-95	301.2	9 786.2	62 056.6	..	0.16	206.0
		1993-94	299.9	9 297.9	60 259.5	..	0.15	200.9
		1992-93	303.5	9 366.9	56 960.9	17 006.2	0.16	187.7
		1991-92	310.7	9 241.8	54 708.8	..	0.17	176.1

(a) See paragraph 5 of the Explanatory Notes.

(b) For factors affecting comparability of data over the time periods shown, see paragraphs 13-17 of the Explanatory Notes.

(c) Includes working proprietors.

(d) Excludes the drawings of working proprietors.

(e) Value data are at current prices and, therefore, do not discount the impact of price changes.

(f) Turnover divided by the number of persons employed at the end of June. Includes working proprietors.

(g) For 1995-96, excludes provision expenses for employee entitlements. See paragraph 16 of the Explanatory Notes.

INDUSTRY CLASS		Employment at end of June(b)	Wages and salaries(c)	Turnover	Industry gross product	Turnover per person employed(d)	Industry gross product per person employed(e)
ANZSIC code	Description	no.	\$m	\$m	\$m	\$'000	\$'000
FOOD, BEVERAGE AND TOBACCO MFG							
Meat and meat product mfg							
2111	Meat processing	5 621	154.4	1 016.0	260.6	180.8	46.4
2112	Poultry processing	2 535	71.4	491.7	99.0	194.0	39.1
2113	Bacon, ham and smallgood mfg	1 769	57.3	317.0	79.6	179.2	45.0
211	<i>Total</i>	9 924	283.2	1 824.7	439.1	183.9	44.2
Dairy product mfg							
2121	Milk and cream processing	1 606	67.3	783.4	185.8	487.8	115.7
2122	Ice cream mfg	1 281	33.7	266.5	115.5	208.1	90.2
2129	Dairy product mfg n.e.c.	5 216	220.8	2 698.6	449.8	517.4	86.2
212	<i>Total</i>	8 103	321.9	3 748.6	751.1	462.6	92.7
213	Fruit and vegetable processing	3 995	174.9	1 427.7	345.5	357.4	86.5
214	Oil and fat mfg	<i>n.p.</i>	<i>n.p.</i>	<i>n.p.</i>	<i>n.p.</i>	<i>n.p.</i>	<i>n.p.</i>
Flour mill and cereal food mfg							
2151	Flour mill product mfg	474	25.6	280.9	68.4	593.0	144.5
2152	Cereal food and baking mix mfg	1 881	66.7	510.2	141.2	271.3	75.1
215	<i>Total</i>	2 354	92.3	791.2	209.6	336.0	89.0
Bakery product mfg							
2161	Bread mfg	3 131	85.4	311.8	119.6	99.6	38.2
2162	Cake and pastry mfg	3 167	72.5	345.0	112.1	108.9	35.4
2163	Biscuit mfg	1 651	51.4	255.3	93.0	154.7	56.4
216	<i>Total</i>	7 949	209.3	912.1	324.7	114.8	40.9
Other food mfg							
2171	Sugar mfg	<i>n.p.</i>	<i>n.p.</i>	<i>n.p.</i>	<i>n.p.</i>	<i>n.p.</i>	<i>n.p.</i>
2172	Confectionery mfg	3 375	150.1	709.4	237.7	210.2	70.4
2173	Seafood processing	<i>n.p.</i>	<i>n.p.</i>	<i>n.p.</i>	<i>n.p.</i>	<i>n.p.</i>	<i>n.p.</i>
2174	Prepared animal and bird feed mfg	1 299	62.8	902.2	205.7	694.7	158.4
2179	Food mfg n.e.c.	4 355	162.7	1 008.1	297.2	231.5	68.2
217	<i>Total</i>	9 777	395.9	2 903.3	830.8	297.0	85.0
Beverage and malt mfg							
2181	Soft drink, cordial and syrup mfg	1 150	<i>n.p.</i>	<i>n.p.</i>	<i>n.p.</i>	<i>n.p.</i>	<i>n.p.</i>
2182	Beer and malt mfg	649	<i>n.p.</i>	<i>n.p.</i>	<i>n.p.</i>	<i>n.p.</i>	<i>n.p.</i>
2183	Wine mfg	1 535	41.7	477.2	192.2	310.9	125.2
2184	Spirit mfg	83	<i>n.p.</i>	<i>n.p.</i>	<i>n.p.</i>	<i>n.p.</i>	<i>n.p.</i>
218	<i>Total</i>	3 416	123.3	1 697.8	569.5	496.9	166.7
219	Tobacco product mfg	<i>n.p.</i>	<i>n.p.</i>	<i>n.p.</i>	<i>n.p.</i>	<i>n.p.</i>	<i>n.p.</i>
21	Total food, beverage and tobacco mfg	46 425	1 649.2	14 029.6	3 712.9	302.2	80.0

(a) See paragraph 5 of the Explanatory Notes.

(b) Includes working proprietors.

(c) Excludes the drawings of working proprietors. Now again includes provision expenses for employee entitlements. See paragraph 16 of the Explanatory Notes.

(d) Turnover divided by the number of persons employed at the end of June. Includes working proprietors.

(e) Industry gross product divided by the number of persons employed at the end of June. Includes working proprietors.

INDUSTRY CLASS		Employment at end of June(b)	Wages and salaries(c)	Turnover	Industry gross product	Turnover per person employed(d)	Industry gross product per person employed(e)
ANZSIC code	Description	no.	\$m	\$m	\$m	\$'000	\$'000
TEXTILE, CLOTHING, FOOTWEAR AND LEATHER MFG							
Textile fibre, yarn and woven fabric mfg							
2211	Wool scouring	562	22.7	83.1	43.5	148.0	77.4
2212	Synthetic fibre textile mfg	2 327	77.7	363.8	114.8	156.3	49.3
2213	Cotton textile mfg	1 272	39.6	222.4	77.2	174.8	60.7
2214	Wool textile mfg	1 342	38.1	151.2	50.7	112.6	37.8
2215	Textile finishing	1 291	44.3	174.4	75.3	135.1	58.3
221	<i>Total</i>	6 795	222.4	994.9	361.6	146.4	53.2
Textile product mfg							
2221	Made-up textile product mfg	1 792	41.5	187.6	66.7	104.7	37.2
2222	Textile floor covering mfg	2 199	79.7	469.7	129.3	213.6	58.8
2223	Rope, cordage and twine mfg	556	21.4	91.8	32.3	165.1	58.2
2229	Textile product mfg n.e.c.	1 460	43.7	207.4	78.7	142.0	53.9
222	<i>Total</i>	6 007	186.4	956.6	307.0	159.2	51.1
Knitting mills							
2231	Hosiery mfg	1 876	n.p.	n.p.	n.p.	n.p.	n.p.
2232	Cardigan and pullover mfg	1 036	n.p.	n.p.	n.p.	n.p.	n.p.
2239	Knitting mill product mfg n.e.c.	1 210	53.5	287.8	65.3	237.8	53.9
223	<i>Total</i>	4 122	130.7	606.3	205.0	147.1	49.7
Clothing mfg							
2241	Men's and boys' wear mfg	3 525	93.2	311.6	114.8	88.4	32.6
2242	Women's and girls' wear mfg	4 485	95.3	542.4	198.3	120.9	44.2
2243	Sleepwear, underwear and infant clothing mfg	1 799	45.9	232.8	74.2	129.4	41.3
2249	Clothing mfg n.e.c.	5 807	83.6	341.8	125.0	58.9	21.5
224	<i>Total</i>	15 615	318.0	1 428.6	512.3	91.5	32.8
225	Footwear mfg	3 094	78.7	354.6	112.1	114.6	36.2
Leather and leather product mfg							
2261	Leather tanning and fur dressing	1 140	42.5	328.7	62.9	288.2	55.2
2262	Leather and leather substitute product mfg	333	8.0	44.6	13.3	133.7	39.8
226	<i>Total</i>	1 474	50.5	373.3	76.2	253.2	51.7
22	Total textile, clothing, footwear and leather mfg	37 107	986.7	4 714.3	1 574.3	127.0	42.4
WOOD AND PAPER PRODUCT MFG							
Log sawmilling and timber dressing							
2311	Log sawmilling	1 523	40.0	184.3	61.4	121.0	40.3
2312	Wood chipping	77	1.9	12.5	7.1	162.4	91.6
2313	Timber resawing and dressing	1 708	51.9	254.2	90.6	148.8	53.0
231	<i>Total</i>	3 309	93.9	451.0	159.0	136.3	48.1
Other wood product mfg							
2321	Plywood and veneer mfg	240	9.0	47.7	13.4	199.0	55.7
2322	Fabricated wood mfg	1 123	44.5	233.0	64.0	207.5	57.0
2323	Wooden structural component mfg	3 843	101.3	421.8	132.1	109.7	34.4
2329	Wood product mfg n.e.c.	2 158	49.0	230.3	79.6	106.7	36.9
232	<i>Total</i>	7 364	203.8	932.8	289.1	126.7	39.3

(a) See paragraph 5 of the Explanatory Notes.

(b) Includes working proprietors.

(c) Excludes the drawings of working proprietors. Now again includes provision expenses for employee entitlements. See paragraph 16 of the Explanatory Notes.

(d) Turnover divided by the number of persons employed at the end of June. Includes working proprietors.

(e) Industry gross product divided by the number of persons employed at the end of June. Includes working proprietors.

INDUSTRY CLASS		Employment at end of June(b)	Wages and salaries(c)	Turnover	Industry gross product	Turnover per person employed(d)	Industry gross product per person employed(e)
ANZSIC code	Description	no.	\$m	\$m	\$m	\$'000	\$'000
Paper and paper product mfg							
2331	Pulp, paper and paperboard mfg	1 914	n.p.	n.p.	n.p.	n.p.	n.p.
2332	Solid paperboard container mfg	1 006	40.0	212.3	78.5	211.0	78.1
2333	Corrugated paperboard container mfg	2 012	n.p.	n.p.	n.p.	n.p.	n.p.
2334	Paper bag and sack mfg	366	11.7	83.1	25.2	227.0	69.0
2339	Paper product mfg n.e.c.	1 381	57.1	364.5	122.6	263.9	88.7
233	<i>Total</i>	6 679	298.3	2 033.0	581.6	304.4	87.1
23	Total wood and paper product mfg	17 352	596.0	3 416.8	1 029.6	196.9	59.3
PRINTING, PUBLISHING AND RECORDED MEDIA							
Printing and services to printing							
2411	Paper stationery mfg	2 999	97.8	534.0	188.6	178.0	62.9
2412	Printing	13 773	443.3	2 050.7	850.9	148.9	61.8
2413	Services to printing	2 670	86.8	244.4	136.0	91.5	50.9
241	<i>Total</i>	19 442	627.9	2 829.1	1 175.5	145.5	60.5
Publishing							
2421	Newspaper printing or publishing	6 837	266.2	1 019.8	476.9	149.2	69.8
2422	Other periodical publishing	807	27.3	157.3	54.9	194.9	68.0
2423	Book and other publishing	1 839	65.9	466.2	320.9	253.5	174.5
242	<i>Total</i>	9 483	359.4	1 643.2	852.7	173.3	89.9
243	Recorded media manufacturing and publishing	610	21.7	95.1	54.6	155.8	89.5
24	Total printing, publishing and recorded media	29 536	1 009.0	4 567.4	2 082.8	154.6	70.5
PETROLEUM, COAL, CHEMICAL AND ASSOCIATED PRODUCT MFG							
251	Petroleum refining	965	n.p.	n.p.	n.p.	n.p.	n.p.
252	Petroleum and coal product mfg n.e.c.	222	13.2	74.2	25.3	334.2	114.1
Basic chemical mfg							
2531	Fertiliser mfg	585	20.9	228.4	95.8	390.4	163.8
2532	Industrial gas mfg	n.p.	n.p.	n.p.	n.p.	n.p.	n.p.
2533	Synthetic resin mfg	3 056	169.8	1 398.6	305.6	457.6	100.0
2534	Organic industrial chemical mfg n.e.c.	n.p.	n.p.	n.p.	n.p.	n.p.	n.p.
2535	Inorganic industrial chemical mfg n.e.c.	556	24.9	229.9	83.0	413.4	149.3
253	<i>Total</i>	5 681	291.8	2 467.1	649.4	434.3	114.3
Other chemical product mfg							
2541	Explosive mfg	176	n.p.	n.p.	n.p.	n.p.	n.p.
2542	Paint mfg	1 677	71.0	593.5	220.2	353.9	131.3
2543	Medicinal and pharmaceutical product mfg	4 251	176.1	1 434.7	507.4	337.5	119.4
2544	Pesticide mfg	394	21.1	398.1	115.1	1 010.1	292.1
2545	Soap and other detergent mfg	948	32.5	260.1	74.9	274.3	79.0
2546	Cosmetic and toiletry preparation mfg	1 011	36.2	207.6	57.2	205.5	56.6
2547	Ink mfg	417	n.p.	n.p.	n.p.	n.p.	n.p.
2549	Chemical product mfg n.e.c.	1 295	46.9	343.3	91.6	265.1	70.7
254	<i>Total</i>	10 170	407.7	3 395.9	1 105.8	333.9	108.7

(a) See paragraph 5 of the Explanatory Notes.

(b) Includes working proprietors.

(c) Excludes the drawings of working proprietors. Now again includes provision expenses for employee entitlements. See paragraph 16 of the Explanatory Notes.

(d) Turnover divided by the number of persons employed at the end of June. Includes working proprietors.

(e) Industry gross product divided by the number of persons employed at the end of June. Includes working proprietors.

INDUSTRY CLASS		Employment at end of June(b)	Wages and salaries(c)	Turnover	Industry gross product	Turnover per person employed(d)	Industry gross product per person employed(e)
ANZSIC code	Description	no.	\$m	\$m	\$m	\$'000	\$'000
Rubber product mfg							
2551	Rubber tyre mfg	2 089	n.p.	n.p.	n.p.	n.p.	n.p.
2559	Rubber product mfg n.e.c.	2 299	85.1	386.4	137.8	168.1	60.0
255	<i>Total</i>	4 388	n.p.	n.p.	n.p.	n.p.	n.p.
Plastic product mfg							
2561	Plastic blow moulded product mfg	1 229	46.2	252.2	97.2	205.2	79.1
2562	Plastic extruded product mfg	957	36.7	220.6	63.5	230.5	66.4
2563	Plastic bag and film mfg	3 205	131.9	788.9	280.8	246.2	87.6
2564	Plastic product, rigid fibre reinforced, mfg	872	22.8	119.3	36.8	136.8	42.2
2565	Plastic foam product mfg	476	15.5	100.9	32.3	212.1	67.8
2566	Plastic injection moulded product mfg	7 807	258.5	1 189.3	425.8	152.3	54.5
256	<i>Total</i>	14 546	511.6	2 671.1	936.3	183.6	64.4
25	Total petroleum, coal, chemical and associated product mfg	35 971	1 497.0	11 423.6	3 515.9	317.6	97.7
NON-METALLIC MINERAL PRODUCT MFG							
261	Glass and glass product mfg	1 897	83.4	391.0	155.5	206.1	82.0
Ceramic mfg							
2621	Clay brick mfg	751	24.5	125.5	53.3	167.1	71.0
2622	Ceramic product mfg	207	6.1	22.3	9.2	107.8	44.6
2623	Ceramic tile and pipe mfg	672	25.5	93.2	36.4	138.6	54.2
2629	Ceramic product mfg n.e.c.	761	19.6	84.8	41.2	111.5	54.1
262	<i>Total</i>	2 391	75.7	325.8	140.1	136.3	58.6
Cement, lime, plaster and concrete product mfg							
2631	Cement and lime mfg	411	n.p.	n.p.	n.p.	n.p.	n.p.
2632	Plaster product mfg	433	20.9	188.4	58.2	435.6	134.5
2633	Concrete slurry mfg	977	41.4	492.2	54.6	503.8	55.8
2634	Concrete pipe and box culvert mfg	300	n.p.	n.p.	n.p.	n.p.	n.p.
2635	Concrete product mfg n.e.c.	1 120	33.4	192.1	46.6	171.6	41.6
263	<i>Total</i>	3 240	131.3	1 071.6	233.5	330.7	72.1
264	Non-metallic mineral product mfg n.e.c.	1 776	66.2	297.6	107.4	167.6	60.5
26	Total non-metallic mineral product mfg	9 303	356.6	2 085.9	636.5	224.2	68.4
METAL PRODUCT MFG							
Iron and steel mfg							
2711	Basic iron and steel mfg	3 525	173.6	2 122.1	706.7	601.9	200.4
2712	Iron and steel casting and forging	2 174	75.4	289.7	113.7	133.2	52.3
2713	Steel pipe and tube mfg	476	21.3	122.0	29.2	256.2	61.3
271	<i>Total</i>	6 176	270.3	2 533.8	849.6	410.3	137.6
Basic non-ferrous metal mfg							
2721	Alumina production	—	—	—	—	—	—
2722	Aluminium smelting	1 477	n.p.	n.p.	n.p.	n.p.	n.p.
2723	Copper, silver, lead and zinc smelting, refining	n.p.	4.3	40.9	8.6	n.p.	n.p.
2729	Basic non-ferrous metal mfg n.e.c.	n.p.	n.p.	n.p.	n.p.	n.p.	n.p.
272	<i>Total</i>	1 745	94.1	1 092.4	334.9	626.0	191.9

(a) See paragraph 5 of the Explanatory Notes.

(b) Includes working proprietors.

(c) Excludes the drawings of working proprietors. Now again includes provision expenses for employee entitlements. See paragraph 16 of the Explanatory Notes.

(d) Turnover divided by the number of persons employed at the end of June. Includes working proprietors.

(e) Industry gross product divided by the number of persons employed at the end of June. Includes working proprietors.

INDUSTRY CLASS		Employment at end of June(b)	Wages and salaries(c)	Turnover	Industry gross product	Turnover per person employed(d)	Industry gross product per person employed(e)
ANZSIC code	Description	no.	\$m	\$m	\$m	\$'000	\$'000
Non-ferrous basic metal product mfg							
2731	Aluminium rolling, drawing, extruding	940	41.7	322.6	59.6	343.4	63.4
2732	Non-ferrous metal rolling, drawing, extruding n.e.c.	605	23.4	105.7	34.4	174.9	56.9
2733	Non-ferrous metal casting	595	16.1	53.1	21.3	89.2	35.8
273	<i>Total</i>	2 139	81.2	481.4	115.3	225.0	53.9
Structural metal product mfg							
2741	Structural steel fabricating	3 260	117.6	664.8	191.0	203.9	58.6
2742	Architectural aluminium product mfg	2 662	79.3	393.5	115.3	147.8	43.3
2749	Structural metal product mfg n.e.c.	1 337	38.6	174.3	50.8	130.3	38.0
274	<i>Total</i>	7 259	235.5	1 232.5	357.1	169.8	49.2
Sheet metal product mfg							
2751	Metal container mfg	1 485	56.3	442.9	110.2	298.3	74.2
2759	Sheet metal product mfg n.e.c.	5 477	175.3	889.0	295.8	162.3	54.0
275	<i>Total</i>	6 962	231.6	1 331.9	406.0	191.3	58.3
Fabricated metal product mfg							
2761	Hand tool and general hardware mfg	1 443	39.3	141.5	67.3	98.1	46.7
2762	Spring and wire product mfg	1 876	65.6	344.3	122.1	183.5	65.1
2763	Nut, bolt, screw and rivet mfg	1 222	44.5	208.1	87.2	170.2	71.4
2764	Metal coating and finishing	2 127	56.5	193.6	100.5	91.0	47.2
2765	Non-ferrous pipe fitting mfg	929	29.7	105.5	44.2	113.6	47.6
2769	Fabricated metal product mfg n.e.c.	7 253	228.1	875.3	357.5	120.7	49.3
276	<i>Total</i>	14 849	463.8	1 868.2	778.9	125.8	52.5
27	Total metal product mfg	39 130	1 376.5	8 540.2	2 841.7	218.3	72.6
MACHINERY AND EQUIPMENT MFG							
Motor vehicle and part mfg							
2811	Motor vehicle mfg	11 964	492.2	6 201.4	1 723.6	518.3	144.1
2812	Motor vehicle body mfg	2 873	88.4	436.8	130.8	152.0	45.5
2813	Automotive electrical and instrument mfg	3 781	144.5	697.8	194.8	184.6	51.5
2819	Automotive component mfg n.e.c.	9 522	314.0	1 428.3	531.7	150.0	55.8
281	<i>Total</i>	28 139	1 039.2	8 764.2	2 580.8	311.5	91.7
Other transport equipment mfg							
2821	Shipbuilding	1 868	n.p.	n.p.	n.p.	n.p.	n.p.
2822	Boatbuilding	491	12.1	52.4	18.3	106.9	37.2
2823	Railway equipment mfg	805	n.p.	n.p.	n.p.	n.p.	n.p.
2824	Aircraft mfg	4 606	260.6	449.9	164.4	97.7	35.7
2829	Transport equipment mfg n.e.c.	282	8.1	37.4	14.8	132.5	52.4
282	<i>Total</i>	8 052	394.1	1 174.1	391.0	145.8	48.6
Photographic and scientific equipment mfg							
2831	Photographic and optical good mfg	1 275	55.2	543.7	224.9	426.3	176.4
2832	Medical and surgical equipment mfg	1 010	22.1	92.5	28.7	91.6	28.4
2839	Professional and scientific equipment mfg n.e.c.	1 192	51.0	158.8	67.4	133.2	56.5
283	<i>Total</i>	3 477	128.3	795.0	321.0	228.6	92.3

(a) See paragraph 5 of the Explanatory Notes.

(b) Includes working proprietors.

(c) Excludes the drawings of working proprietors. Now again includes provision expenses for employee entitlements. See paragraph 16 of the Explanatory Notes.

(d) Turnover divided by the number of persons employed at the end of June. Includes working proprietors.

(e) Industry gross product divided by the number of persons employed at the end of June. Includes working proprietors.

INDUSTRY CLASS		Employment at end of June(b)	Wages and salaries(c)	Turnover	Industry gross product	Turnover per person employed(d)	Industry gross product per person employed(e)
ANZSIC code	Description	no.	\$m	\$m	\$m	\$'000	\$'000
Electronic equipment mfg							
2841	Computer and business machine mfg	993	n.p.	n.p.	n.p.	n.p.	n.p.
2842	Telecommunication, broadcasting and transceiving equipment mfg	3 195	148.0	1 254.7	628.3	392.7	196.7
2849	Electronic equipment mfg n.e.c.	2 388	n.p.	n.p.	n.p.	n.p.	n.p.
284	<i>Total</i>	6 576	262.3	2 409.7	870.9	366.4	132.4
Electrical equipment and appliance mfg							
2851	Household appliance mfg	4 360	132.1	706.1	216.6	161.9	49.7
2852	Electric cable and wire mfg	1 981	78.7	655.1	164.1	330.7	82.8
2853	Battery mfg	n.p.	n.p.	n.p.	n.p.	n.p.	n.p.
2854	Electric light and sign mfg	n.p.	n.p.	n.p.	n.p.	n.p.	n.p.
2859	Electrical equipment mfg n.e.c.	4 316	151.3	699.0	235.5	162.0	54.6
285	<i>Total</i>	11 847	395.7	2 184.6	659.2	184.4	55.6
Industrial machinery and equipment mfg							
2861	Agricultural machinery mfg	1 157	28.6	117.7	36.2	101.7	31.3
2862	Mining and construction machinery mfg	763	25.5	181.7	65.6	238.3	86.0
2863	Food processing machinery mfg	865	31.6	119.3	49.7	137.8	57.4
2864	Machine tool and part mfg	3 228	103.6	391.0	190.2	121.1	58.9
2865	Lifting and material handling equipment mfg	2 077	71.7	321.8	104.8	155.0	50.4
2866	Pump and compressor mfg	1 375	50.5	251.7	83.4	183.0	60.6
2867	Commercial space heating and cooling equipment mfg	1 075	40.5	177.7	48.0	165.2	44.7
2869	Industrial machinery and equipment mfg n.e.c.	5 021	164.3	702.8	271.2	140.0	54.0
286	<i>Total</i>	15 562	516.2	2 263.8	849.1	145.5	54.6
28	Total machinery and equipment mfg	73 653	2 735.9	17 591.5	5 672.0	238.8	77.0
OTHER MANUFACTURING							
Prefabricated building mfg							
2911	Prefabricated metal building mfg	374	9.5	73.4	23.6	196.5	63.2
2919	Prefabricated building mfg n.e.c.	108	3.1	18.2	5.8	169.0	53.9
291	<i>Total</i>	481	12.6	91.6	29.4	190.3	61.1
Furniture mfg							
2921	Wooden furniture and upholstered seat mfg	8 607	196.2	856.4	299.7	99.5	34.8
2922	Sheet metal furniture mfg	962	26.5	127.6	49.3	132.7	51.3
2923	Mattress mfg (except rubber)	1 190	29.6	172.3	52.6	144.7	44.2
2929	Furniture mfg n.e.c.	2 576	76.5	294.8	132.8	114.5	51.6
292	<i>Total</i>	13 334	328.9	1 451.1	534.4	108.8	40.1
Miscellaneous manufacturing							
2941	Jewellery and silverware mfg	999	25.7	132.8	41.3	132.9	41.3
2942	Toy and sporting good mfg	813	21.0	96.8	28.9	119.0	35.6
2949	Manufacturing n.e.c.	2 531	67.1	278.8	106.9	110.2	42.2
294	<i>Total</i>	4 343	113.7	508.4	177.1	117.1	40.8
29	Total other manufacturing	18 159	455.2	2 051.1	740.9	113.0	40.8
21–29	TOTAL MANUFACTURING	306 636	10 662.1	68 420.4	21 806.7	223.1	71.1

(a) See paragraph 5 of the Explanatory Notes.

(b) Includes working proprietors.

(c) Excludes the drawings of working proprietors. Now again includes provision expenses for employee entitlements. See paragraph 16 of the Explanatory Notes.

(d) Turnover divided by the number of persons employed at the end of June. Includes working proprietors.

(e) Industry gross product divided by the number of persons employed at the end of June. Includes working proprietors.

3

MANUFACTURING ESTABLISHMENTS(a), Percentage Change(b) in Industry Gross Product

INDUSTRY SUBDIVISION		1992-93 TO 1996-97.....			
ANZSIC Code	Description	1992-93 to 1995-96	1995-96 to 1996-97	Percentage movement	Change in IGP per person employed(c)
21	Food, beverage and tobacco mfg	20.0	3.1	23.8	20.7
22	Textile, clothing, footwear and leather mfg	0.4	1.9	2.3	9.5
23	Wood and paper product mfg	13.7	-0.9	12.7	8.1
24	Printing, publishing and recorded media	13.1	8.1	22.2	16.0
25	Petroleum, coal, chemical and associated product mfg	22.3	3.8	27.0	23.6
26	Non-metallic mineral product mfg	28.1	-21.6	0.4	7.8
27	Metal product mfg	42.1	-9.5	28.6	21.5
28	Machinery and equipment mfg	19.5	29.5	54.7	57.5
29	Other manufacturing	14.3	13.6	29.9	20.3
21-29	Total manufacturing	20.5	6.4	28.2	26.9

(a) See paragraph 5 of the Explanatory Notes.

(b) Percentage changes are calculated using current price data and, therefore, do not discount the impact of price changes. For factors affecting comparability of data over the time periods shown, see paragraphs 13-17 of the Explanatory Notes.

(c) Based on employment at the end of June of the reference year. Includes working proprietors.

4

MANUFACTURING ESTABLISHMENTS(a), Summary of Operations—Employment size(b)

Employment size group(f)	Employment at end of June(c).....		Wages and salaries(d)(e).....		Turnover(e).....		Industry gross product(e).....	
	no.	%	\$m	%	\$m	%	\$m	%
FOOD, BEVERAGE AND TOBACCO MANUFACTURING								
0–4 persons	792	1.7	14.3	0.9	101.0	0.7	26.0	0.7
5–9 persons	1 406	3.0	28.3	1.7	209.2	1.5	55.8	1.5
10–19 persons	2 550	5.5	55.7	3.4	450.3	3.2	110.9	3.0
20–49 persons	4 895	10.5	134.4	8.2	1 208.6	8.7	259.6	7.0
50–99 persons	5 896	12.7	187.7	11.4	1 734.6	12.4	434.9	11.7
<i>Total less than 100 persons</i>	<i>15 539</i>	<i>33.5</i>	<i>420.4</i>	<i>25.6</i>	<i>3 703.6</i>	<i>26.5</i>	<i>887.2</i>	<i>23.9</i>
100–199 persons	5 911	12.7	198.7	12.1	1 797.9	12.9	474.4	12.8
200–499 persons	15 960	34.4	635.9	38.7	5 837.0	41.8	1 655.6	44.6
500–999 persons	n.p.	n.p.	n.p.	n.p.	n.p.	n.p.	n.p.	n.p.
1 000 or more persons	n.p.	n.p.	n.p.	n.p.	n.p.	n.p.	n.p.	n.p.
<i>Total 100 or more persons</i>	<i>30 885</i>	<i>66.5</i>	<i>1 221.0</i>	<i>74.4</i>	<i>10 260.0</i>	<i>73.5</i>	<i>2 823.2</i>	<i>76.1</i>
Total	46 425	100.0	1 641.4	100.0	13 963.6	100.0	3 710.3	100.0
TEXTILE, CLOTHING, FOOTWEAR AND LEATHER MANUFACTURING								
0–4 persons	4 602	12.4	58.1	6.0	290.1	6.3	106.9	6.9
5–9 persons	3 656	9.9	61.5	6.4	276.8	6.0	98.6	6.4
10–19 persons	3 802	10.2	85.6	8.9	397.5	8.6	148.5	9.6
20–49 persons	5 360	14.4	138.4	14.4	717.4	15.6	227.5	14.7
50–99 persons	4 252	11.5	126.1	13.1	540.9	11.8	180.9	11.7
<i>Total less than 100 persons</i>	<i>21 671</i>	<i>58.4</i>	<i>469.8</i>	<i>48.8</i>	<i>2 222.7</i>	<i>48.3</i>	<i>762.5</i>	<i>49.2</i>
100–199 persons	6 824	18.4	217.3	22.6	1 140.3	24.8	389.9	25.2
200–499 persons	n.p.	n.p.	n.p.	n.p.	n.p.	n.p.	n.p.	n.p.
500–999 persons	n.p.	n.p.	n.p.	n.p.	n.p.	n.p.	n.p.	n.p.
1 000 or more persons	—	—	—	—	—	—	—	—
<i>Total 100 or more persons</i>	<i>15 436</i>	<i>41.6</i>	<i>492.4</i>	<i>51.2</i>	<i>2 378.7</i>	<i>51.7</i>	<i>787.0</i>	<i>50.8</i>
Total	37 107	100.0	962.2	100.0	4 601.4	100.0	1 549.5	100.0
WOOD AND PAPER PRODUCT MANUFACTURING								
0–4 persons	1 435	8.3	27.2	4.6	124.1	3.6	42.2	4.1
5–9 persons	1 779	10.3	41.3	7.0	183.6	5.4	59.4	5.8
10–19 persons	2 370	13.7	59.5	10.0	253.4	7.4	86.8	8.5
20–49 persons	3 010	17.3	83.7	14.1	446.3	13.1	136.7	13.3
50–99 persons	2 064	11.9	77.1	13.0	420.6	12.3	126.8	12.4
<i>Total less than 100 persons</i>	<i>10 657</i>	<i>61.4</i>	<i>288.8</i>	<i>48.7</i>	<i>1 428.0</i>	<i>41.9</i>	<i>451.9</i>	<i>44.0</i>
100–199 persons	2 992	17.2	127.8	21.5	757.3	22.2	295.7	28.8
200–499 persons	n.p.	n.p.	n.p.	n.p.	n.p.	n.p.	n.p.	n.p.
500–999 persons	n.p.	n.p.	n.p.	n.p.	n.p.	n.p.	n.p.	n.p.
1 000 or more persons	—	—	—	—	—	—	—	—
<i>Total 100 or more persons</i>	<i>6 695</i>	<i>38.6</i>	<i>304.8</i>	<i>51.3</i>	<i>1 979.4</i>	<i>58.1</i>	<i>574.4</i>	<i>56.0</i>
Total	17 352	100.0	593.7	100.0	3 407.4	100.0	1 026.3	100.0

(a) See paragraph 5 of the Explanatory Notes.

(b) See paragraph 21 of the Explanatory Notes for an explanation of the impact of unincorporated joint ventures on these estimates.

(c) Includes working proprietors.

(d) Excludes the drawings of working proprietors. Now again includes provision expenses for employee entitlements. See paragraph 16 of the Explanatory Notes.

(e) Figures may differ slightly from those presented in other tables, because they exclude those manufacturing establishments which operated during 1996–97 but were not operating at 30 June 1997. See paragraph 19 of the Explanatory Notes.

(f) See paragraph 18 of the Explanatory Notes.

4

MANUFACTURING ESTABLISHMENTS(a), Summary of Operations—Employment size(b) *continued*

Employment size group(f)	Employment at end of June(c).....		Wages and salaries(d)(e).....		Turnover(e).....		Industry gross product(e).....	
	no.	%	\$m	%	\$m	%	\$m	%
PRINTING, PUBLISHING AND RECORDED MEDIA								
0–4 persons	2 222	7.5	47.5	4.7	203.8	4.5	89.2	4.3
5–9 persons	2 585	8.8	69.2	6.9	260.0	5.7	113.3	5.5
10–19 persons	3 265	11.1	98.4	9.8	363.0	8.0	158.4	7.7
20–49 persons	4 575	15.5	149.3	14.9	583.6	12.9	266.1	12.9
50–99 persons	3 642	12.3	120.2	12.0	526.4	11.6	216.4	10.5
<i>Total less than 100 persons</i>	<i>16 290</i>	<i>55.2</i>	<i>484.6</i>	<i>48.4</i>	<i>1 936.7</i>	<i>42.7</i>	<i>843.4</i>	<i>40.7</i>
100–199 persons	4 751	16.1	184.7	18.5	1 008.2	22.2	369.9	17.9
200–499 persons	3 282	11.1	116.1	11.6	468.5	10.3	209.9	10.1
500–999 persons	n.p.	n.p.	n.p.	n.p.	n.p.	n.p.	n.p.	n.p.
1 000 or more persons	n.p.	n.p.	n.p.	n.p.	n.p.	n.p.	n.p.	n.p.
<i>Total 100 or more persons</i>	<i>13 246</i>	<i>44.8</i>	<i>516.1</i>	<i>51.6</i>	<i>2 601.2</i>	<i>57.3</i>	<i>1 226.6</i>	<i>59.3</i>
Total	29 536	100.0	1 000.6	100.0	4 537.9	100.0	2 070.0	100.0
PETROLEUM, COAL, CHEMICAL AND ASSOCIATED PRODUCT MANUFACTURING								
0–4 persons	892	2.5	19.0	1.3	117.8	1.0	37.1	1.1
5–9 persons	1 290	3.6	34.9	2.3	214.0	1.9	67.6	1.9
10–19 persons	2 284	6.3	69.1	4.6	506.2	4.4	161.7	4.6
20–49 persons	5 470	15.2	186.2	12.5	1 281.2	11.2	406.8	11.6
50–99 persons	7 271	20.2	300.4	20.1	2 102.7	18.4	668.2	19.0
<i>Total less than 100 persons</i>	<i>17 206</i>	<i>47.8</i>	<i>609.6</i>	<i>40.8</i>	<i>4 221.9</i>	<i>37.0</i>	<i>1 341.6</i>	<i>38.2</i>
100–199 persons	7 110	19.8	304.3	20.4	2 047.6	17.9	584.2	16.6
200–499 persons	n.p.	n.p.	n.p.	n.p.	n.p.	n.p.	n.p.	n.p.
500–999 persons	n.p.	n.p.	n.p.	n.p.	n.p.	n.p.	n.p.	n.p.
1 000 or more persons	—	—	—	—	—	—	—	—
<i>Total 100 or more persons</i>	<i>18 765</i>	<i>52.2</i>	<i>885.5</i>	<i>59.2</i>	<i>7 190.2</i>	<i>63.0</i>	<i>2 170.5</i>	<i>61.8</i>
Total	35 971	100.0	1 495.0	100.0	11 412.1	100.0	3 512.0	100.0
NON-METALLIC MINERAL PRODUCT MANUFACTURING								
0–4 persons	710	7.6	14.0	4.0	78.7	3.8	21.4	3.4
5–9 persons	737	7.9	17.3	4.9	88.1	4.2	24.7	3.9
10–19 persons	869	9.3	25.0	7.1	131.6	6.3	39.9	6.3
20–49 persons	1 151	12.4	41.3	11.7	230.6	11.1	69.3	10.9
50–99 persons	1 340	14.4	49.9	14.1	339.4	16.4	77.9	12.3
<i>Total less than 100 persons</i>	<i>4 808</i>	<i>51.7</i>	<i>147.6</i>	<i>41.7</i>	<i>868.5</i>	<i>41.9</i>	<i>233.2</i>	<i>36.8</i>
100–199 persons	2 054	22.1	99.6	28.1	726.6	35.0	173.0	27.3
200–499 persons	2 441	26.2	107.2	30.2	479.7	23.1	227.3	35.9
500–999 persons	—	—	—	—	—	—	—	—
1 000 or more persons	—	—	—	—	—	—	—	—
<i>Total 100 or more persons</i>	<i>4 495</i>	<i>48.3</i>	<i>206.7</i>	<i>58.3</i>	<i>1 206.2</i>	<i>58.1</i>	<i>400.3</i>	<i>63.2</i>
Total	9 303	100.0	354.4	100.0	2 074.7	100.0	633.5	100.0

(a) See paragraph 5 of the Explanatory Notes.

(b) See paragraph 21 of the Explanatory Notes for an explanation of the impact of unincorporated joint ventures on these estimates.

(c) Includes working proprietors.

(d) Excludes the drawings of working proprietors. Now again includes provision expenses for employee entitlements. See paragraph 16 of the Explanatory Notes.

(e) Figures may differ slightly from those presented in other tables, because they exclude those manufacturing establishments which operated during 1996–97 but were not operating at 30 June 1997. See paragraph 19 of the Explanatory Notes.

(f) See paragraph 18 of the Explanatory Notes.

4

MANUFACTURING ESTABLISHMENTS(a), Summary of Operations—Employment size(b) *continued*

Employment size group(f)	Employment at end of June(c).....		Wages and salaries(d)(e).....		Turnover(e).....		Industry gross product(e).....	
	no.	%	\$m	%	\$m	%	\$m	%
METAL PRODUCT MANUFACTURING								
0–4 persons	3 000	7.7	63.8	4.7	856.5	10.1	581.2	20.5
5–9 persons	3 608	9.2	94.9	6.9	390.8	4.6	149.1	5.3
10–19 persons	5 119	13.1	150.5	11.0	634.5	7.5	242.2	8.5
20–49 persons	6 166	15.8	195.5	14.3	1 030.8	12.1	339.9	12.0
50–99 persons	6 825	17.4	242.2	17.7	1 455.3	17.1	421.5	14.9
<i>Total less than 100 persons</i>	<i>24 718</i>	<i>63.2</i>	<i>746.9</i>	<i>54.5</i>	<i>4 367.9</i>	<i>51.3</i>	<i>1 734.0</i>	<i>61.2</i>
100–199 persons	5 775	14.8	214.0	15.6	1 240.6	14.6	361.5	12.8
200–499 persons	n.p.	n.p.	n.p.	n.p.	n.p.	n.p.	n.p.	n.p.
500–999 persons	n.p.	n.p.	n.p.	n.p.	n.p.	n.p.	n.p.	n.p.
1 000 or more persons	n.p.	n.p.	n.p.	n.p.	n.p.	n.p.	n.p.	n.p.
<i>Total 100 or more persons</i>	<i>14 412</i>	<i>36.8</i>	<i>623.3</i>	<i>45.5</i>	<i>4 139.1</i>	<i>48.7</i>	<i>1 100.2</i>	<i>38.8</i>
Total	39 130	100.0	1 370.2	100.0	8 507.0	100.0	2 834.2	100.0
MACHINERY AND EQUIPMENT MANUFACTURING								
0–4 persons	3 400	4.6	72.8	2.7	317.8	1.8	126.2	2.2
5–9 persons	3 997	5.4	105.5	3.9	427.3	2.4	170.3	3.0
10–19 persons	5 167	7.0	150.9	5.5	639.5	3.6	248.1	4.4
20–49 persons	8 093	11.0	263.4	9.7	1 199.9	6.8	431.9	7.6
50–99 persons	8 441	11.5	300.7	11.1	1 691.2	9.6	542.1	9.6
<i>Total less than 100 persons</i>	<i>29 098</i>	<i>39.5</i>	<i>893.4</i>	<i>32.8</i>	<i>4 275.6</i>	<i>24.4</i>	<i>1 518.6</i>	<i>26.9</i>
100–199 persons	9 137	12.4	332.5	12.2	1 577.8	9.0	562.6	10.0
200–499 persons	13 893	18.9	568.2	20.9	3 811.3	21.7	1 151.9	20.4
500–999 persons	5 578	7.6	218.4	8.0	1 548.3	8.8	623.7	11.0
1 000 or more persons	15 947	21.7	708.7	26.0	6 324.7	36.1	1 796.7	31.8
<i>Total 100 or more persons</i>	<i>44 555</i>	<i>60.5</i>	<i>1 827.9</i>	<i>67.2</i>	<i>13 262.0</i>	<i>75.6</i>	<i>4 134.9</i>	<i>73.1</i>
Total	73 653	100.0	2 721.3	100.0	17 537.6	100.0	5 653.6	100.0
OTHER MANUFACTURING								
0–4 persons	3 277	18.0	55.6	12.3	264.1	13.0	93.7	12.8
5–9 persons	3 055	16.8	63.9	14.2	279.0	13.8	103.0	14.0
10–19 persons	3 518	19.4	87.3	19.4	387.1	19.1	144.7	19.7
20–49 persons	3 703	20.4	102.5	22.8	462.1	22.8	176.0	24.0
50–99 persons	2 607	14.4	74.8	16.6	353.7	17.4	114.7	15.6
<i>Total less than 100 persons</i>	<i>16 160</i>	<i>89.0</i>	<i>384.0</i>	<i>85.3</i>	<i>1 745.9</i>	<i>86.1</i>	<i>632.1</i>	<i>86.1</i>
100–199 persons	1 017	5.6	32.7	7.3	176.6	8.7	56.9	7.8
200–499 persons	981	5.4	33.0	7.4	106.1	5.2	45.2	6.2
500–999 persons	—	—	—	—	—	—	—	—
1 000 or more persons	—	—	—	—	—	—	—	—
<i>Total 100 or more persons</i>	<i>1 998</i>	<i>11.0</i>	<i>66.0</i>	<i>14.7</i>	<i>282.7</i>	<i>13.9</i>	<i>102.1</i>	<i>13.9</i>
Total	18 159	100.0	450.2	100.0	2 028.6	100.0	734.2	100.0

(a) See paragraph 5 of the Explanatory Notes.

(b) See paragraph 21 of the Explanatory Notes for an explanation of the impact of unincorporated joint ventures on these estimates.

(c) Includes working proprietors.

(d) Excludes the drawings of working proprietors. Now again includes provision expenses for employee entitlements. See paragraph 16 of the Explanatory Notes.

(e) Figures may differ slightly from those presented in other tables, because they exclude those manufacturing establishments which operated during 1996–97 but were not operating at 30 June 1997. See paragraph 19 of the Explanatory Notes.

(f) See paragraph 18 of the Explanatory Notes.

4

MANUFACTURING ESTABLISHMENTS(a), Summary of Operations—Employment size(b) *continued*

Employment size group(f)	Employment at end of June(c).....		Wages and salaries(d)(e).....		Turnover(e).....		Industry gross product(e).....	
	no.	%	\$m	%	\$m	%	\$m	%
TOTAL MANUFACTURING								
0–4 persons	20 329	6.6	372.4	3.5	2 353.8	3.5	1 124.0	5.2
5–9 persons	22 113	7.2	516.9	4.9	2 328.9	3.4	841.9	3.9
10–19 persons	28 944	9.4	782.0	7.4	3 763.1	5.5	1 341.3	6.2
20–49 persons	42 423	13.8	1 294.7	12.2	7 160.4	10.5	2 313.8	10.7
50–99 persons	42 338	13.8	1 479.1	14.0	9 164.7	13.5	2 783.5	12.8
<i>Total less than 100 persons</i>	<i>156 147</i>	<i>50.9</i>	<i>4 445.1</i>	<i>42.0</i>	<i>24 770.9</i>	<i>36.4</i>	<i>8 404.5</i>	<i>38.7</i>
100–199 persons	45 572	14.9	1 711.9	16.2	10 472.9	15.4	3 268.1	15.0
200–499 persons	56 147	18.3	2 279.5	21.5	15 545.8	22.8	4 917.6	22.6
500–999 persons	26 830	8.7	1 135.3	10.7	8 360.1	12.3	2 493.2	11.5
1 000 or more persons	21 940	7.2	1 017.1	9.6	8 920.6	13.1	2 640.2	12.2
<i>Total 100 or more persons</i>	<i>150 489</i>	<i>49.1</i>	<i>6 143.9</i>	<i>58.0</i>	<i>43 299.4</i>	<i>63.6</i>	<i>13 319.1</i>	<i>61.3</i>
Total	306 636	100.0	10 589.0	100.0	68 070.3	100.0	21 723.6	100.0

(a) See paragraph 5 of the Explanatory Notes.

(b) See paragraph 21 of the Explanatory Notes for an explanation of the impact of unincorporated joint ventures on these estimates.

(c) Includes working proprietors.

(d) Excludes the drawings of working proprietors. Now again includes provision expenses for employee entitlements. See paragraph 16 of the Explanatory Notes.

(e) Figures may differ slightly from those presented in other tables, because they exclude those manufacturing establishments which operated during 1996–97 but were not operating at 30 June 1997. See paragraph 19 of the Explanatory Notes.

(f) See paragraph 18 of the Explanatory Notes.

INDUSTRY SUBDIVISION		<i>Sales and transfers out of goods produced by this establishment</i>	<i>Amount exported by this business or its agent</i>	<i>Exports as a proportion of sales of goods produced</i>
ANZSIC code	Description	\$m	\$m	%
0–49 PERSONS				
21	Food, beverage and tobacco mfg	1 885.5	346.2	18.4
22	Textile, clothing, footwear and leather mfg	1 542.7	90.7	5.9
23	Wood and paper product mfg	962.8	14.3	1.5
24	Printing, publishing and recorded media	1 261.6	25.5	2.0
25	Petroleum, coal, chemical and associated product mfg	1 980.5	118.1	6.0
26	Non-metallic mineral product mfg	486.6	11.4	2.3
27	Metal product mfg	2 667.5	645.1	24.2
28	Machinery and equipment mfg	2 299.9	184.4	8.0
29	Other manufacturing	1 278.3	18.0	1.4
21–29	<i>Total manufacturing</i>	14 365.5	1 453.6	10.1
50–99 PERSONS				
21	Food, beverage and tobacco mfg	1 691.2	320.6	19.0
22	Textile, clothing, footwear and leather mfg	480.1	37.4	7.8
23	Wood and paper product mfg	407.3	26.1	6.4
24	Printing, publishing and recorded media	469.0	7.0	1.5
25	Petroleum, coal, chemical and associated product mfg	2 023.8	136.9	6.8
26	Non-metallic mineral product mfg	329.2	12.9	3.9
27	Metal product mfg	1 384.4	70.4	5.1
28	Machinery and equipment mfg	1 597.7	277.9	17.4
29	Other manufacturing	328.5	13.4	4.1
21–29	<i>Total manufacturing</i>	8 711.1	902.8	10.4
100 OR MORE PERSONS				
21	Food, beverage and tobacco mfg	10 043.3	1 946.5	19.4
22	Textile, clothing, footwear and leather mfg	2 178.0	364.0	16.7
23	Wood and paper product mfg	1 949.9	77.0	4.0
24	Printing, publishing and recorded media	1 722.9	41.8	2.4
25	Petroleum, coal, chemical and associated product mfg	6 934.2	666.5	9.6
26	Non-metallic mineral product mfg	1 176.8	57.5	4.9
27	Metal product mfg	4 037.9	566.7	14.0
28	Machinery and equipment mfg	12 740.9	2 758.7	21.7
29	Other manufacturing	267.0	8.9	3.3
21–29	<i>Total manufacturing</i>	41 050.9	6 487.6	15.8
TOTAL				
21	Food, beverage and tobacco mfg	13 620.0	2 613.3	19.2
22	Textile, clothing, footwear and leather mfg	4 200.8	492.1	11.7
23	Wood and paper product mfg	3 320.0	117.5	3.5
24	Printing, publishing and recorded media	3 453.5	74.3	2.2
25	Petroleum, coal, chemical and associated product mfg	10 938.5	921.5	8.4
26	Non-metallic mineral product mfg	1 992.6	81.8	4.1
27	Metal product mfg	8 089.7	1 282.2	15.8
28	Machinery and equipment mfg	16 638.5	3 221.1	19.4
29	Other manufacturing	1 873.8	40.3	2.1
21–29	Total manufacturing	64 127.5	8 844.0	13.8

(a) See paragraph 5 of the Explanatory Notes.

(b) See paragraphs 22–24 of the Explanatory Notes.

(c) This table excludes those manufacturing establishments which operated during 1996–97 but were not operating at 30 June 1997. See paragraph 19 of the Explanatory Notes. Also, see paragraph 20 of the Explanatory Notes for an explanation of the impact of unincorporated joint ventures on these estimates.

INDUSTRY SUBDIVISION		Employment at end of June(c)	Wages and salaries(d)	Turnover	Industry gross product
ANZSIC code	Description	%	%	%	%
ESTABLISHMENTS THAT DO NOT EXPORT					
21	Food, beverage and tobacco mfg	42.3	35.5	30.3	26.7
22	Textile, clothing, footwear and leather mfg	60.9	51.7	46.1	51.6
23	Wood and paper product mfg	71.0	62.9	59.0	65.3
24	Printing, publishing and recorded media	78.2	76.3	72.7	76.5
25	Petroleum, coal, chemical and associated product mfg	35.6	33.2	26.5	28.5
26	Non-metallic mineral product mfg	59.1	55.4	62.3	53.6
27	Metal product mfg	59.8	53.4	46.5	46.1
28	Machinery and equipment mfg	38.9	37.0	24.3	28.2
29	Other manufacturing	81.4	79.0	76.0	79.5
21–29	Total manufacturing	53.1	47.3	37.9	40.9
ESTABLISHMENTS WITH EXPORTS UP TO AND INCLUDING 50% OF SALES OF GOODS THAT THEY PRODUCED					
21	Food, beverage and tobacco mfg	44.1	49.8	51.4	59.6
22	Textile, clothing, footwear and leather mfg	35.4	42.9	46.2	42.6
23	Wood and paper product mfg	28.6	36.8	40.7	34.3
24	Printing, publishing and recorded media	n.p.	n.p.	n.p.	n.p.
25	Petroleum, coal, chemical and associated product mfg	63.9	66.2	72.7	70.6
26	Non-metallic mineral product mfg	40.2	43.8	37.2	45.7
27	Metal product mfg	37.3	42.9	45.7	44.9
28	Machinery and equipment mfg	53.3	53.4	65.7	63.1
29	Other manufacturing	n.p.	n.p.	n.p.	n.p.
21–29	Total manufacturing	42.0	46.9	54.1	52.7
ESTABLISHMENTS WITH EXPORTS OF MORE THAN 50% OF SALES OF GOODS THAT THEY PRODUCED					
21	Food, beverage and tobacco mfg	13.6	14.7	18.3	13.8
22	Textile, clothing, footwear and leather mfg	3.7	5.5	7.7	5.7
23	Wood and paper product mfg	0.4	0.3	0.3	0.4
24	Printing, publishing and recorded media	n.p.	n.p.	n.p.	n.p.
25	Petroleum, coal, chemical and associated product mfg	0.5	0.5	0.8	0.9
26	Non-metallic mineral product mfg	0.7	0.9	0.5	0.7
27	Metal product mfg	2.9	3.7	7.8	9.0
28	Machinery and equipment mfg	7.9	9.6	9.9	8.7
29	Other manufacturing	n.p.	n.p.	n.p.	n.p.
21–29	Total manufacturing	4.9	5.9	8.0	6.4

(a) See paragraph 5 of the Explanatory Notes.

(b) See paragraphs 22–24 of the Explanatory Notes.

(c) Includes working proprietors.

(d) Excludes the drawings of working proprietors. Now again includes provision expenses for employee entitlements. See paragraph 16 of the Explanatory Notes.

INDUSTRY SUBDIVISION		Locations at 30 June	Employment at end of June(c)	Wages and salaries(d)	Turnover
ANZSIC code	Description	no.	no.	\$m	\$m
MELBOURNE STATISTICAL DIVISION					
21	Food, beverage and tobacco mfg	725	27 090	963.2	8 028.7
22	Textile, clothing, footwear and leather mfg	3 084	29 913	790.2	3 747.9
23	Wood and paper product mfg	909	11 739	407.2	2 376.6
24	Printing, publishing and recorded media	1 679	25 242	895.3	4 116.5
25	Petroleum, coal, chemical and associated product mfg	1 009	32 449	1 351.5	8 977.3
26	Non-metallic mineral product mfg	404	6 993	275.5	1 671.7
27	Metal product mfg	2 124	29 964	1 036.2	6 133.1
28	Machinery and equipment mfg	2 548	62 489	2 386.4	15 359.5
29	Other manufacturing	1 924	16 130	419.8	1 885.0
21–29	Total manufacturing	14 406	242 010	8 525.3	52 296.4
BARWON STATISTICAL DIVISION					
21	Food, beverage and tobacco mfg	41	1 550	46.4	343.0
22	Textile, clothing, footwear and leather mfg	83	2 576	83.0	468.8
23	Wood and paper product mfg	66	771	20.6	94.0
24	Printing, publishing and recorded media	52	n.p.	n.p.	n.p.
25	Petroleum, coal, chemical and associated product mfg	34	n.p.	n.p.	n.p.
26	Non-metallic mineral product mfg	40	824	40.9	228.6
27	Metal product mfg	101	2 410	114.0	924.2
28	Machinery and equipment mfg	98	3 402	116.0	594.6
29	Other manufacturing	94	470	10.7	47.5
21–29	Total manufacturing	609	13 786	514.0	4 742.1
WESTERN DISTRICT STATISTICAL DIVISION					
21	Food, beverage and tobacco mfg	36	1 449	47.6	590.8
22	Textile, clothing, footwear and leather mfg	12	n.p.	n.p.	n.p.
23	Wood and paper product mfg	31	320	10.6	48.0
24	Printing, publishing and recorded media	21	392	9.2	23.4
25	Petroleum, coal, chemical and associated product mfg	11	n.p.	n.p.	n.p.
26	Non-metallic mineral product mfg	14	79	1.7	7.3
27	Metal product mfg	41	1 300	56.5	646.1
28	Machinery and equipment mfg	29	213	5.7	19.9
29	Other manufacturing	21	67	0.9	5.1
21–29	Total manufacturing	216	4 358	146.9	1 451.0
CENTRAL HIGHLANDS STATISTICAL DIVISION					
21	Food, beverage and tobacco mfg	40	2 463	108.7	766.6
22	Textile, clothing, footwear and leather mfg	28	603	15.1	66.9
23	Wood and paper product mfg	46	693	21.8	100.9
24	Printing, publishing and recorded media	23	304	9.5	36.9
25	Petroleum, coal, chemical and associated product mfg	15	263	8.2	49.8
26	Non-metallic mineral product mfg	34	411	12.3	46.8
27	Metal product mfg	69	636	19.7	103.6
28	Machinery and equipment mfg	78	2 076	56.1	265.5
29	Other manufacturing	42	178	3.6	16.7
21–29	Total manufacturing	375	7 627	254.9	1 453.7

(a) See paragraph 8 of the Explanatory Notes.

(b) Figures in this table differ to those in the other tables. See paragraphs 25–28 of the Explanatory Notes.

(c) Includes working proprietors.

(d) Excludes the drawings of working proprietors. Includes provision expenses for employee entitlements. See paragraph 16 of the Explanatory Notes.

INDUSTRY SUBDIVISION		Locations at 30 June	Employment at end of June(c)	Wages and salaries(d)	Turnover
ANZSIC code	Description	no.	no.	\$m	\$m
WIMMERA STATISTICAL DIVISION					
21	Food, beverage and tobacco mfg	26	497	13.1	83.0
22	Textile, clothing, footwear and leather mfg	7	n.p.	n.p.	n.p.
23	Wood and paper product mfg	9	n.p.	n.p.	n.p.
24	Printing, publishing and recorded media	11	97	2.8	7.6
25	Petroleum, coal, chemical and associated product mfg	2	n.p.	n.p.	n.p.
26	Non-metallic mineral product mfg	9	75	1.7	6.6
27	Metal product mfg	23	187	4.8	27.9
28	Machinery and equipment mfg	24	121	2.4	11.0
29	Other manufacturing	27	118	2.2	9.2
21–29	<i>Total manufacturing</i>	138	1 465	36.6	180.2
MALLEE STATISTICAL DIVISION					
21	Food, beverage and tobacco mfg	39	1 367	41.1	527.7
22	Textile, clothing, footwear and leather mfg	5	49	1.2	4.0
23	Wood and paper product mfg	18	97	2.0	11.2
24	Printing, publishing and recorded media	18	100	2.3	8.2
25	Petroleum, coal, chemical and associated product mfg	14	121	3.4	26.9
26	Non-metallic mineral product mfg	13	72	1.9	17.3
27	Metal product mfg	25	161	3.4	17.3
28	Machinery and equipment mfg	30	224	5.3	22.1
29	Other manufacturing	25	67	1.0	5.4
21–29	<i>Total manufacturing</i>	187	2 258	61.7	640.2
LODDON STATISTICAL DIVISION					
21	Food, beverage and tobacco mfg	43	2 625	82.5	500.1
22	Textile, clothing, footwear and leather mfg	28	678	18.5	87.8
23	Wood and paper product mfg	30	197	5.0	18.5
24	Printing, publishing and recorded media	39	823	23.3	81.7
25	Petroleum, coal, chemical and associated product mfg	16	465	14.8	76.0
26	Non-metallic mineral product mfg	23	209	5.6	25.2
27	Metal product mfg	66	702	20.7	80.9
28	Machinery and equipment mfg	75	1 513	51.9	242.2
29	Other manufacturing	54	227	4.4	21.0
21–29	<i>Total manufacturing</i>	374	7 439	226.6	1 133.5
GOULBURN STATISTICAL DIVISION					
21	Food, beverage and tobacco mfg	76	4 499	184.2	1 724.9
22	Textile, clothing, footwear and leather mfg	35	588	14.2	65.0
23	Wood and paper product mfg	53	893	27.6	135.6
24	Printing, publishing and recorded media	47	592	15.5	67.3
25	Petroleum, coal, chemical and associated product mfg	17	175	5.2	33.4
26	Non-metallic mineral product mfg	39	214	6.4	44.8
27	Metal product mfg	91	1 432	53.1	240.6
28	Machinery and equipment mfg	87	687	21.5	114.5
29	Other manufacturing	59	268	5.4	30.0
21–29	<i>Total manufacturing</i>	504	9 348	333.1	2 456.1

(a) See paragraph 8 of the Explanatory Notes.

(b) Figures in this table differ to those in the other tables. See paragraphs 25–28 of the Explanatory Notes.

(c) Includes working proprietors.

(d) Excludes the drawings of working proprietors. Includes provision expenses for employee entitlements. See paragraph 16 of the Explanatory Notes.

INDUSTRY SUBDIVISION		Locations at 30 June	Employment at end of June(c)	Wages and salaries(d)	Turnover
ANZSIC code	Description	no.	no.	\$m	\$m
OVENS-MURRAY STATISTICAL DIVISION					
21	Food, beverage and tobacco mfg	33	2 455	103.8	885.1
22	Textile, clothing, footwear and leather mfg	12	966	30.5	114.6
23	Wood and paper product mfg	23	495	16.7	76.3
24	Printing, publishing and recorded media	17	n.p.	n.p.	n.p.
25	Petroleum, coal, chemical and associated product mfg	7	n.p.	n.p.	n.p.
26	Non-metallic mineral product mfg	23	140	4.7	22.7
27	Metal product mfg	40	382	11.0	121.3
28	Machinery and equipment mfg	37	n.p.	n.p.	n.p.
29	Other manufacturing	31	155	3.3	13.7
21–29	<i>Total manufacturing</i>	223	6 124	223.5	2 015.1
EAST GIPPSLAND STATISTICAL DIVISION					
21	Food, beverage and tobacco mfg	23	459	13.5	196.8
22	Textile, clothing, footwear and leather mfg	7	35	0.6	2.3
23	Wood and paper product mfg	38	n.p.	n.p.	n.p.
24	Printing, publishing and recorded media	16	111	3.0	11.6
25	Petroleum, coal, chemical and associated product mfg	5	n.p.	n.p.	n.p.
26	Non-metallic mineral product mfg	23	80	1.6	9.3
27	Metal product mfg	29	250	7.0	30.6
28	Machinery and equipment mfg	30	239	11.7	37.8
29	Other manufacturing	26	113	2.3	10.7
21–29	<i>Total manufacturing</i>	197	2 004	60.0	404.3
GIPPSLAND STATISTICAL DIVISION					
21	Food, beverage and tobacco mfg	36	996	27.1	356.5
22	Textile, clothing, footwear and leather mfg	19	539	15.4	90.5
23	Wood and paper product mfg	39	n.p.	n.p.	n.p.
24	Printing, publishing and recorded media	30	353	8.8	28.1
25	Petroleum, coal, chemical and associated product mfg	14	253	8.5	56.2
26	Non-metallic mineral product mfg	18	102	2.5	14.6
27	Metal product mfg	72	526	17.3	76.7
28	Machinery and equipment mfg	63	n.p.	n.p.	n.p.
29	Other manufacturing	45	197	3.6	13.7
21–29	<i>Total manufacturing</i>	336	4 739	160.8	1 145.7
VICTORIA EXCLUDING MELBOURNE STATISTICAL DIVISION					
21	Food, beverage and tobacco mfg	393	18 360	668.0	5 974.6
22	Textile, clothing, footwear and leather mfg	236	6 640	192.6	954.0
23	Wood and paper product mfg	353	5 490	188.8	1 044.7
24	Printing, publishing and recorded media	274	3 803	105.9	409.9
25	Petroleum, coal, chemical and associated product mfg	135	2 935	123.5	2 386.3
26	Non-metallic mineral product mfg	236	2 206	79.5	423.1
27	Metal product mfg	557	7 986	307.5	2 269.3
28	Machinery and equipment mfg	551	9 869	314.9	1 986.9
29	Other manufacturing	424	1 860	37.4	173.2
21–29	Total manufacturing	3 159	59 149	2 018.0	15 621.9

(a) See paragraph 8 of the Explanatory Notes.

(b) Figures in this table differ to those in the other tables. See paragraphs 25–28 of the Explanatory Notes.

(c) Includes working proprietors.

(d) Excludes the drawings of working proprietors. Includes provision expenses for employee entitlements. See paragraph 16 of the Explanatory Notes.

7

MANUFACTURING LOCATIONS(a), Summary of Operations: Statistical divisions(b) *continued*

INDUSTRY SUBDIVISION		Locations at 30 June	Employment at end of June(c)	Wages and salaries(d)	Turnover
ANZSIC code	Description	no.	no.	\$m	\$m
VICTORIA					
21	Food, beverage and tobacco mfg	1 118	45 450	1 631.2	14 003.3
22	Textile, clothing, footwear and leather mfg	3 320	36 553	982.8	4 701.9
23	Wood and paper product mfg	1 262	17 229	596.1	3 421.3
24	Printing, publishing and recorded media	1 953	29 045	1 001.2	4 526.3
25	Petroleum, coal, chemical and associated product mfg	1 144	35 384	1 475.0	11 363.6
26	Non-metallic mineral product mfg	640	9 199	354.9	2 094.8
27	Metal product mfg	2 681	37 950	1 343.7	8 402.5
28	Machinery and equipment mfg	3 099	72 358	2 701.3	17 346.4
29	Other manufacturing	2 348	17 990	457.1	2 058.2
21–29	TOTAL MANUFACTURING	17 565	301 159	10 543.4	67 918.3

(a) See paragraph 8 of the Explanatory Notes.

(b) Figures in this table differ to those in the other tables. See paragraphs 25–28 of the Explanatory Notes.

(c) Includes working proprietors.

(d) Excludes the drawings of working proprietors. Includes provision expenses for employee entitlements. See paragraph 16 of the Explanatory Notes.

EXPLANATORY NOTES

INTRODUCTION

1 This publication presents final statistics for Victoria compiled from a census of manufacturing establishments for 1996–97, with some comparative statistics relating to preceding years. The emphasis of this publication is on the release of statistics for the main data items included in the census.

2 The manufacturing collection is conducted on an annual basis. For the 1996–97 collection, all manufacturing businesses were requested to provide data on employment, wages and salaries, turnover, purchases and whether their products were exported. Data on IGP are also available from this collection. In addition, a variety of samples was selected to produce data on a range of other variables. The next manufacturing census will be conducted in respect of 2001–02, with sample surveys conducted for the next four years.

3 All data in this publication, with the exception of IGP estimates, have been compiled from the full census population. Estimates of IGP were compiled using data from this census population and a sample of approximately 7,000 establishments nationally which were asked to provide detailed structural and performance data. These 7,000 establishments were also asked to supply value of sales for commodities produced. (These commodity data will be released in the publication *Manufacturing Production, Commodities Produced, Australia, 1996–97* (Cat. no. 8365.0).) A sample of approximately 5,300 manufacturing management units nationally was asked the detailed information required to derive operating profit before tax. A separate sample of 5,000 manufacturing management units nationally was asked for information related to waste management and environmental protection. Information from this sample will be published in *Environment Protection Expenditure, Australia, 1995–96 and 1996–97* (Cat. no. 4603.0). Selected data from the census and sample populations as well as data from other collections will be included in the compendium publication *Manufacturing, Australia, 1998* (Cat. no. 8225.0).

4 Manufacturing, as specified in Division C of the Australian and New Zealand Standard Industrial Classification (ANZSIC), broadly relates to the physical or chemical transformation of materials or components into new products, whether the work is performed by power-driven machines or by hand.

SCOPE AND COVERAGE

5 The main business unit for which statistics are presented in this publication is the establishment. A manufacturing establishment is one predominantly engaged in manufacturing activities, but the data collected for it cover all activities of the establishment (including non-manufacturing activities). Conversely, there are some establishments predominantly engaged in non-manufacturing activities which also undertake limited manufacturing activities and which are excluded.

6 A small number of manufacturing establishments engage, in a significant way, in a variety of activities which are normally carried out by different industries. For example, a predominantly manufacturing establishment may also undertake significant amounts of wholesaling. Similarly, a manufacturing establishment may produce significant volumes of a variety of goods which are normally produced in different manufacturing industries. In such cases, the original establishment is 'split' into a separate establishment for each significant activity which belongs to a separate industry. For the 1996–97 manufacturing collection, 'significant' was defined as \$7.3 million or more.

EXPLANATORY NOTES *continued*

SCOPE AND COVERAGE *continued*

7 The statistics in this publication exclude some very small manufacturers. Those excluded are manufacturers not employing staff at 30 June of the reference year (such as sole proprietorships or family partnerships) which had not registered as group employers with the Australian Taxation Office. Though a substantial number, these businesses would contribute only marginally to aggregate data were they to be included. In addition, the ABS attempts to obtain data for those businesses which ceased operation during the year, but it is not possible to obtain data for all of them.

STANDARD UNITS

8 For the definition of the standard units now in use, see the Glossary.

RELIABILITY OF ESTIMATES

9 For information on this subject, see the Technical Note.

DATA ADJUSTED

10 As was done for the 1993–94 to 1995–96 (inclusive) issues of this publication, data have been adjusted to allow for lags in processing new businesses to the ABS business register, and the omission of some businesses from the business register. First, adjustments have been made to allow for new businesses which had commenced operations but for which details had not been processed to the ABS business register in time for inclusion in the annual manufacturing industry collection. Adjustments of this type will continue to be applied in future periods. Second, adjustments have been made for businesses which had been in existence for several years, but, for various reasons, were not previously added to the ABS business register. In this issue of this publication, a further set of adjustments have been made to allow for omissions not previously identified. In respect of this further set of adjustments, actual data have been collected for 1996–97 and adjustment factors have been applied for each year back to 1991–92. For more information on these various adjustments, please refer to the *Information Paper: Improvements to ABS Economic Statistics, 1997* (Cat. no. 1357.0).

11 The majority of businesses affected by these lags and omissions, and to which both types of adjustments apply, are small in size. The effect of these adjustments on 1996–97 turnover for Victoria is an increase of 2.5% while the effect on employment is an increase of 5.1%. Most industries were affected to a similar degree. The exceptions are Other manufacturing (for which the adjustments are 12.7% and 13.8% respectively) and Wood and paper product manufacturing (for which the adjustment for employment is 8.4%).

12 At the same time as these adjustments have been applied to the time series statistics in this publication, some revisions have been made to the underlying data previously published, as a result of further processing and/or additional information becoming available.

COMPARABILITY WITH PREVIOUS STATISTICS

13 Commencing with the 1993–94 manufacturing collection, manufacturers not employing staff at 30 June of the reference year (such as sole proprietorships or family partnerships) which had registered as group employers with the Australian Taxation Office are included in the manufacturing collection. Data in respect of these 'non-employers' were excluded from the scope of the manufacturing collection for the 1988–89 to 1992–93 (inclusive) reference years. However, the inclusion of these types of businesses has only had a marginal affect on statistical aggregates.

14 Commencing with the 1994–95 manufacturing collection, multi-establishment management units have been 'collapsed' for reporting purposes into single establishment management units, unless they had significant activity in more than one industry and/or State or Territory. The effect of this process is that most manufacturing businesses which previously reported for more than one establishment were asked to combine operations by those establishments into a single reporting unit. The effect of this on manufacturing statistics as contained in this publication has been minimal.

15 As explained above, about 7,000 establishments included in the 1996–97 collection were asked to supply value of sales for commodities produced. A similar sampling procedure was followed for the 1993–94 to 1995–96 (inclusive) collections. The availability of this fine level commodity/activity data for these units has enabled ABS survey processing staff to better identify those establishments which were actually in the scope of the manufacturing collection and those which should not be included in the manufacturing collection, because (for example) they were actually wholesalers or retailers. These fine level commodity/activity data have also enabled an objective industry code to be determined for the responding units in the samples, compared to the more subjective industry coding which occurred for all units in each of the 1990–91 to 1992–93 (inclusive) manufacturing collections. The industry code for the units not responding or not included in any of these commodity samples has continued to be a subjectively determined code.

16 For the 1996–97 collection, provision expenses for employee entitlements are included in wages and salaries, as was the case prior to 1995–96. For the 1995–96 collection, these provision expenses were excluded from wages and salaries.

17 Data in this publication have been subjected to various adjustments (see paragraphs 10–12). As a result, they are not on a comparable basis to previously published data. Comparable data for earlier periods are available from the ABS. A charge is made for providing such information.

18 The two smallest employment size categories used in table 4 in this publication have been changed to accord with standard ABS size ranges. That is, the categories now used are 0–4 and 5–9 persons employed instead of the 0–3 and 4–9 persons employed previously used. However, as the 1996–97 collection is a census, it may be possible (depending on confidentiality constraints) to, on request, construct data on the previous basis. From the 1997–98 collection onwards, the sample design used will only deliver reliable data in accordance with the standard ABS size ranges.

EMPLOYMENT SIZE DATA

19 Summary of operations data at the industry subdivision level classified by employment size are presented in table 4. Similarly, exports of goods produced data at the industry subdivision level classified by broad employment size are presented in table 5. The statistics in these two tables relate only to those manufacturing establishments operating at 30 June 1997. As such, the figures presented may differ slightly from those presented in the other tables from the manufacturing collection. These other tables include data for those manufacturing establishments which operated at any time during 1996–97.

20 The treatment of unincorporated joint ventures according to the ABS's standard units definitions has an effect on the data when the data are classified by employment size. This is because joint venture participants report details of turnover, but often have few or no employees or operating expenses. The labour for such operations is usually employed and paid for by the joint venture operator. Similarly, the operating expenses are usually reported by the joint venture operator. On the other hand, the operator does not report any details of turnover (unless it also happens to be a participant). If each of these joint venture operations were to be treated as a single business unit in the statistics, it is highly probable that the Metal product manufacturing industry would reflect a similar dominance pattern to the other manufacturing industries.

21 The two smallest employment size categories used in table 4 in this publication have been changed. See paragraph 18 for details.

EXPORTS BY MANUFACTURERS

22 All establishments included in the manufacturing census were asked whether they exported and, if so, what percentage of their sales of goods produced plus transfers out of goods produced by the establishment for sale were exported by their business or an agent on their behalf. The data presented in table 5 are derived by applying the percentage of exports reported for each exporting unit and then aggregating that figure. The data in table 5 exclude those manufacturing establishments which operated during 1996–97 but were not operating at 30 June 1997.

23 The statistics presented in table 5 for the value of exports by manufacturers or their agents are not intended to be the same as the value of exports classified by manufacturing industry of origin as published by the ABS in international trade statistics. These latter statistics are intended to measure total exports regardless of which business or organisation does the exporting (and to identify the probable industry from which the goods originated), whereas the statistics in tables 5 and 6 only include exports directly undertaken by the manufacturer or by its agent.

EXPORTS BY MANUFACTURERS *continued*

24 The data in table 5 showing exports by manufacturers or their agents can be expected to show a much lower value than the exports data from the international trade series. The main reason is that for many exports of goods manufactured in Australia, the actual exporting activity is undertaken by a business other than the manufacturer. Also, the value of goods produced on a commission or fee basis for non-manufacturing businesses and which are then exported is not included in the data in tables 5 and 6. Examples of relevant commission work are the 'slaughtering fee' charged by an abattoir for processing livestock owned by a meat exporter and the 'tolling fee' charged by an aluminium smelter to process ores owned by other (e.g. mining) businesses. Also excluded from tables 5 and 6 are any exports by manufacturers of goods which were not produced by that manufacturer. These and other goods exported (e.g. re-exports) are included in the international trade data. Finally, differences in valuation of exports arise because the value of exports in the international trade series would include the value to the manufacturer plus profit margins for the exporter and for any intermediaries between the manufacturer and the exporter.

STATISTICAL DIVISION DATA

25 The location data presented in table 7 are based on additional data collected in the 1996–97 census. The extra data requested were the activity carried out at the location, the number of persons employed and the address of the location.

26 Employment data shown in this table are based on reported employment, but in the case of wages and salaries and turnover data they do not reflect reported data in all cases. This is because in those circumstances where an establishment operates at more than one location or where small multi-establishment management units have been 'collapsed' for reporting purposes into single establishment management units (see paragraph 14), the data have been synthesised to derive location-level wages and salaries and turnover data. (However, it should be noted that most establishments operate at only the one location.) The location-level synthesised data were derived by using the location data collected on activity and employment, and then pro-rating wages and salaries and turnover based on the reported employment.

27 As indicated in paragraph 5, a manufacturing establishment covers all activities of the establishment, including any non-manufacturing activities. In table 7, the non-manufacturing locations of manufacturing establishments have been excluded. For this reason, the State industry subdivision totals (for location data) in table 7 may be less than those shown in the other tables (for establishment data). However, it is also possible for State industry subdivision totals in table 7 to be greater than those shown in the other tables, as a result of individual locations of establishments being allocated a different industry classification to that of the 'parent' establishment. Differences between the data in table 7 and in the other tables may also occur because of the existence of multi-establishment management units which have been 'collapsed' (as explained in paragraph 14). In these circumstances, it is also possible that at least one of the locations of these units may be situated in a State or Territory other than the principal State or Territory of the 'parent' establishment.

EXPLANATORY NOTES *continued*

STATISTICAL DIVISION DATA *continued*

28 A map displaying the boundaries of each statistical division in Victoria can be found on page 40 of this publication. The statistical division structure is based on the *Australian Standard Geographical Classification (ASGC)* (Cat. no. 1216.0), 1996 edition. Statistical division data were last published in respect of 1993–94. Since that time, there has been a major re-organisation of local government areas in Victoria (from 1 July 1995), which has affected the statistical division data now published (which are based on the new boundaries) as compared to the data previously published.

USE OF ANZSIC

29 The 1992–93 manufacturing survey introduced the ANZSIC into the annual manufacturing collection. This classification replaced the Australian Standard Industrial Classification (ASIC) previously used. All time series statistics contained in this publication are ANZSIC-based. Corresponding ANZSIC-based data for years prior to 1989–90 are not available, except for constant prices data (see paragraph 35). Similarly, ASIC-based data are not available from 1992–93.

ACKNOWLEDGMENT

30 ABS publications draw extensively on information provided freely by individuals, businesses, governments and other organisations. Their continued cooperation is very much appreciated: without it, the wide range of statistics published by the ABS would not be available. Information received by the ABS is treated in strict confidence as required by the *Census and Statistics Act 1905*.

INFORMATION PAPER

31 The *Information Paper: Availability of Statistics Related to Manufacturing* (Cat. no. 8205.0) outlines the vast amount of published and unpublished data available from the annual manufacturing industry collection, as well as data from other ABS collections.

RELATED PUBLICATIONS

32 A series of publications *Manufacturing Industry, [State], 1996–97* (Cat. nos 8221.1–8221.6) will be produced for each State. The publication for New South Wales (Cat. no. 8221.1) also contains selected data for the Australian Capital Territory. For 1996–97, all of these publications contain a table showing industry subdivision data by statistical division. These publications are being released progressively.

33 Users may also wish to refer to the following publications:

- *Australian Standard Geographical Classification (ASGC)* (Cat. no. 1216.0), 1996 edition—Annual publication
- *Business Operations and Industry Performance, Australia, 1996–97* (Cat. no. 8140.0), to be released in January 1999—Annual publication
- *Business Operations and Industry Performance, Australia, Preliminary, 1996–97* (Cat. no. 8142.0), released on 29 May 1998—Annual publication
- *Environment Protection Expenditure, Australia, 1995–96 and 1996–97* (Cat. no. 4603.0), to be released in March 1999—Annual publication
- *Indexes of Industrial Production, Australia* (Cat. no. 8125.0)—Quarterly publication (Discontinued with release of December quarter 1997 issue)
- *Information Paper: Availability of Statistics Related to Manufacturing, 1996* (Cat. no. 8205.0), released on 21 March 1996—Irregular publication
- *Information Paper: Availability of Statistics Related to Manufacturing, 1997* (Cat. no. 8205.0), released on 16 January 1998—Irregular publication

EXPLANATORY NOTES *continued*

RELATED PUBLICATIONS *continued*

- *Information Paper: Improvements to ABS Economic Statistics, 1997* (Cat. no. 1357.0), released on 22 August 1997—Irregular publication
- *Labour Force, Australia* (Cat. no. 6203.0)—Monthly publication
- *Manufacturing, Australia, 1998* (Cat. no. 8225.0), to be released in December 1998—Annual publication
- *Manufacturing Industry, Australia, Preliminary, 1997–98* (Cat. no. 8201.0), to be released in March 1999—Annual publication
- *Manufacturing Production, Commodities Produced, Australia, 1996–97* (Cat. no. 8365.0), to be released in December 1998—Annual publication

BACK DATA AND UNPUBLISHED STATISTICS

34 A range of manufacturing industry statistics publications is available for previous years. As well, a considerable amount of data from the annual manufacturing collection exists in unpublished form. More detailed information to satisfy individual user requirements may be available on request. In general, unpublished data consist of finer industry dissections of the published data. A charge is made for providing such information. The Information Paper (Cat. no. 8205.0) referred to in paragraphs 31 and 33 provides more details.

35 In particular, constant price estimates of gross product at factor cost on an ANZSIC basis are available back to 1984–85. However, constant price estimates on a true ANZSIC basis are only available from 1989–90. Nevertheless, an exercise has been undertaken to convert estimates for earlier years onto an ANZSIC basis using the relationships that applied between ASIC and ANZSIC in the years 1990–91 and 1991–92. These estimates are available at both the Australian and State and Territory levels back to 1984–85. It should be noted that the relationships that applied in 1990–91 and 1991–92 are less likely to apply the earlier the reference year. Also, annual constant price estimates of gross product at factor cost for the period 1989–90 to 1996–97 (inclusive) by ANZSIC class are available as unpublished data. All of these data can be purchased from the ABS in Canberra by contacting Paul Curran on 02 6252 6801.

ROUNDING

36 Where figures have been rounded, discrepancies may occur between totals and the sums of the component items. Due to data being adjusted for lags in processing new businesses to the ABS business register (see paragraph 10), this 'rounding rule' also applies to employment counts and to counts of locations (in table 7).

37 Proportions, ratios and other calculated figures shown in this publication have been calculated using unrounded estimates and may be different from, but are more accurate than, calculations based on the rounded estimates.

SAMPLE ERROR

The 1996–97 manufacturing collection comprised a census component and a sample component. All manufacturing establishments were requested to provide data on employment, wages and salaries, turnover, purchases and whether their products were exported. A sample of approximately 7,000 manufacturing establishments nationally were asked to provide additional structural and performance data.

As the data items listed above were collected from the full 1996–97 census population, they are not subject to sampling variability. Estimates of IGP on the other hand were compiled using data from both the census and sample components. As such, IGP data are subject to sampling variability; that is, they may differ from the figures that would have been produced if all the components of IGP had been obtained from all manufacturers in the census population.

However, as turnover and purchases (two of the major components in calculating IGP) are collected from the census population, the variability due to sampling, especially at the industry subdivision level, is minimal.

All data for 1991–92 and 1993–94 as contained in this publication were obtained from a census and, as such, are not subject to sampling variability.

All data for 1992–93, 1994–95 and 1995–96 as contained in this publication were obtained from samples of manufacturers and are, therefore, subject to sampling variability. For further information, see these issues of this publication.

NON-SAMPLE ERROR

The imprecision due to sampling variability should not be confused with inaccuracies that may occur because of inadequacies in available sources from which the population frame was compiled, imperfections in reporting by providers, errors made in collection such as in recording and coding data, and errors made in processing data. Inaccuracies of this kind are referred to collectively as non-sampling error and they may occur in any enumeration, whether it be a full census or a sample.

While it is not possible to quantify non-sampling error, every effort is made to reduce it to a minimum. Collection forms are designed to be easy to complete and assist businesses to report accurately. Efficient and effective operating procedures and systems are used to compile the statistics. In addition, the ABS has undertaken a program of upgrading the business register. This upgrade has resulted in improvements in the quality of the statistical series whose population frames are drawn from the register.

G L O S S A R Y

ABS	Australian Bureau of Statistics
Amount of goods produced by this establishment (or for it on commission) that are exported by this business or its agent	This represents the sales value of goods produced by an establishment (or for it on commission), including the value of manufactured goods transferred to other establishments of the business for sale, that are exported (or are intended for export) outside Australia by the business or its agent.
ANZSIC	Australian and New Zealand Standard Industrial Classification
ASIC	Australian Standard Industrial Classification
Capital work done for own use	The value of work done by the employees or proprietors of an establishment for the business' own use, or for rental or lease. This item includes the capitalised value of the cost of the materials and the wages and salaries involved.
Change in stocks	The value of total closing stocks minus total opening stocks.
Closing stocks	The value of all stocks of finished goods, work-in-progress, raw materials, fuels, containers and packaging as at the end of the reference period.
Employment at end of June	The number of working proprietors, working partners, permanent, part-time, temporary and casual employees, and managerial and executive employees working for an establishment during the last pay period ending in June each year. Employees absent on paid or prepaid leave are included, as are employees on workers' compensation who continue to be paid through the payroll system. Non-salaried directors, self-employed persons such as consultants, contractors and persons paid solely by commission without a retainer, and volunteer workers are excluded.
Enterprise group	A unit covering all the operations in Australia of one or more legal entities under common ownership and/or control. It covers all the operations in Australia of legal entities which are related in terms of the current Corporations Law (as amended by the <i>Corporations Legislation Amendment Act 1991</i>). These may be legal entities such as trusts and partnerships as well as companies. Majority ownership is not required for control to be exercised.
Establishment	The establishment is the smallest accounting unit of a business, within a State or Territory, controlling its productive activities and maintaining a specified range of detailed data enabling value added to be calculated. In general, an establishment covers all operations at a physical location, but may consist of a group of locations provided they are within the same State or Territory. The majority of establishments operate at one location only.
Establishments that do not export	Establishments that reported no exports (either by their business or for them by an agent) of goods that they produced.
Establishments with exports of more than 50% of sales	Establishments that reported exports (either by their business or for them by an agent) of more than 50% of sales and transfers out of goods for sale that they produced.
Establishments with exports up to and including 50% of sales	Establishments that reported exports (either by their business or for them by an agent) of up to and including 50% of sales and transfers out of goods for sale that they produced.

Exports as a proportion of sales of goods produced (Table 5) For an individual establishment, this represents the percentage of the total sales and transfers out of goods for sale produced by the establishment (or for it on commission) which are exported (or are intended for export) outside Australia by the business or its agent. In table 5, the ratio is calculated by dividing the total value of goods exported by the total value of sales and transfers out of goods for sale produced by all establishments, not just the aggregated value for those units which exported.

Income from services Income received from service activities. This income includes: repair, maintenance and service income and fees; income from work done on a commission basis; delivery and/or installation charges separately invoiced to customers; advertising income; and management fees/charges from related and unrelated businesses. Excluded are rent, leasing and hiring income, interest income and royalties income.

Industry class Within ANZSIC, there is a structure comprising four levels ranging from industry division (broadest level) to the industry class (finest level). At the industry class level, the activities are narrowly defined and recognised by a four-digit code, e.g. industry class 2331 for Pulp, paper and paperboard manufacturing. Usually, an activity is primarily confined to one class. However, some activities may be primary to more than one class.

Industry gross product (IGP) IGP is very similar to the national accounting measure gross product at factor cost which is the official statistical measure of production. IGP for an industry is a measure of the value which is added by the industry's production processes to the raw materials and services which are input to those processes. Another way of describing IGP is the value of an industry's output minus the value of intermediate inputs.

The formula used to calculate IGP is as follows—definitions of the relevant component items also appear in this Glossary.

$$\begin{aligned}
 \text{Calculation of IGP} &= \text{Turnover} \\
 &+ \text{Change in stocks} \\
 &- \text{Purchases, transfers in and selected expenses} \\
 &= \text{Establishment value added} \\
 &- \text{Fringe benefits tax} \\
 &- \text{Payroll tax} \\
 &- \text{Other operating expenses} \\
 &= \text{Industry Gross Product}
 \end{aligned}$$

Industry gross product (IGP) per person employed IGP of manufacturing establishments which operated during the year ended 30 June divided by employment at the end of June in the same year.

Industry group This is the intermediate level within the manufacturing industry division of ANZSIC and is recognised by a three-digit code, e.g. industry group 233 for Paper and paper product manufacturing. It gives more detail than the industry subdivision and is created in a way that groups like industry classes together.

Industry subdivision	<p>This is the broadest level category within the manufacturing industry division of ANZSIC and is recognised by a two-digit code, e.g. industry subdivision 23 for Wood and paper product manufacturing. Industry subdivisions are built up from industry groups which, in turn, are built up from industry classes. The following list gives the manufacturing industry subdivision codes and their descriptions:</p> <ul style="list-style-type: none"> 21 Food, beverage and tobacco mfg 22 Textile, clothing, footwear and leather mfg 23 Wood and paper product mfg 24 Printing, publishing and recorded media 25 Petroleum, coal, chemical and associated product mfg 26 Non-metallic mineral product mfg 27 Metal product mfg 28 Machinery and equipment mfg 29 Other manufacturing
Location	<p>A location is a physical unit of the establishment. It consists usually of an unbroken physical area or site, occupied by an establishment, at which, or from which, the establishment engages in productive activity on a relatively permanent basis. An establishment can consist of one or more locations. In specified circumstances, non-contiguous sites occupied by the same establishment can be combined to form a location.</p>
Locations at 30 June	<p>The number of locations in operation at 30 June in the year of a given reference period.</p>
Management unit	<p>The management unit is the highest-level unit within a business, having regard to industry homogeneity, for which accounts are maintained; in nearly all cases, it coincides with the legal entity owning the business (that is, company, partnership, trust, sole operator, etc.). In the case of large diversified businesses, however, there may be more than one management unit, each coinciding with a 'division' or 'line of business'. A division or line of business is recognised where separate and comprehensive accounts are compiled for it.</p>
Manufacturing establishment	<p>An establishment predominantly engaged in manufacturing activities. The data collected for such establishments cover all activities of the establishment (including non-manufacturing activities). Conversely, there are some establishments predominantly engaged in non-manufacturing activities which also undertake limited manufacturing activities and which are excluded.</p>
Manufacturing location	<p>A location predominantly engaged in manufacturing activities.</p>
Manufacturing management unit	<p>A management unit predominantly engaged in manufacturing activities. The data collected for such management units cover all activities of the management unit (including in respect of non-manufacturing activities). Conversely, there are some management units predominantly engaged in non-manufacturing activities which have establishments engaged in manufacturing activities and which are excluded.</p>
Opening stocks	<p>The value of all stocks of finished goods, work-in-progress, raw materials, fuels, containers and packaging as at the beginning of the reference period.</p>
Other operating expenses	<p>Includes operating expenses such as management fees and charges paid to related and unrelated businesses, office supplies and printing costs, rates, telephone and postage charges, travelling and entertainment expenses, accounting and legal expenses, advertising costs and land tax. Excludes income and sales taxes, and extraordinary expenses.</p>

Own account capital work	The value of work done by the employees or proprietors of an establishment for the business' own use, or for rental or lease. This item includes the capitalised value of the cost of the materials and the wages and salaries involved.
Purchases	Purchase of materials, components, containers, packaging, fuels, electricity and water, and of finished goods for resale. The purchase of parts and fuel for motor vehicles is excluded.
Purchases, transfers in and selected expenses	Purchase of materials, components, containers, packaging, fuels, electricity and water, and of finished goods for resale, plus transfers in of goods from other establishments of the same business for further processing, assembly, installation or for sale or resale, plus commission expenses (including sales commission expenses), repair and maintenance expenses, freight and cartage expenses, motor vehicle running expenses, and rent, leasing and hiring expenses. Transfers in are valued, for statistical purposes, at prices commensurate with the prices which would have been paid if the establishments concerned had been under separate ownership, i.e. at commercial selling price.
Reference period	Businesses are asked to report data for the financial year ended 30 June. However, if a business has a different financial year, it is asked to report for the 12-month period which ends between 1 October of the previous year and 30 September of the current year. This period is then used as a substitute for the financial year ended 30 June. For example, for the 1996–97 collection, a business may have reported data for the year ended 31 December 1996.
Sales and transfers out of goods produced by the establishment	Includes sales of goods produced by the establishment (or for it on commission), sales or transfers to related businesses, progress payments billed for long-term contracts, and delivery and/or installation charges not separately invoiced to customers. Also included are goods transferred out to other establishments of the same business for sale. Transfers out are valued, for statistical purposes, at prices commensurate with the prices which would have been paid if the establishments concerned had been under separate ownership, i.e. at commercial selling price. Excluded are export freight charges, sales of fixed tangible assets, and sales tax, excise and duties received (on behalf of the Government).
Service income	Income received from service activities. This income includes: repair, maintenance and service income and fees; income from work done on a commission basis; delivery and/or installation charges separately invoiced to customers; advertising income; and management fees/charges from related and unrelated businesses. Excluded are rent, leasing and hiring income, interest income and royalties income.
Statistical division	A general purpose spatial unit and is the largest and most stable spatial unit within each State and Territory in the Main Structure of the Australian Standard Geographical Classification. The map on page 40 indicates the statistical division boundaries for Victoria.



Turnover Sales (exclusive of excise and sales tax) of goods whether produced by the establishment or not, plus transfers out of goods to other establishments of the same business, plus bounties and subsidies on production, plus all other operating income from outside the establishment (such as commission income, repair and service income, and rent, leasing and hiring income), plus capital work done by an establishment's own employees for the business' own use, or for rental or lease. Receipts from interest, royalties, dividends and the sale of fixed tangible assets are excluded.

Note: Transfers to other establishments of the same business referred to in the definition of turnover are valued, for statistical purposes, at prices commensurate with the prices which would have been received if the establishments concerned had been under separate ownership, i.e. at commercial selling price. A significant proportion of the commodities manufactured by some industries is manufactured on commission for non-manufacturing businesses from materials owned and supplied by those businesses. As a consequence, the turnover figures do not reflect the gross value of those commodities but only the commission earned relating to them.

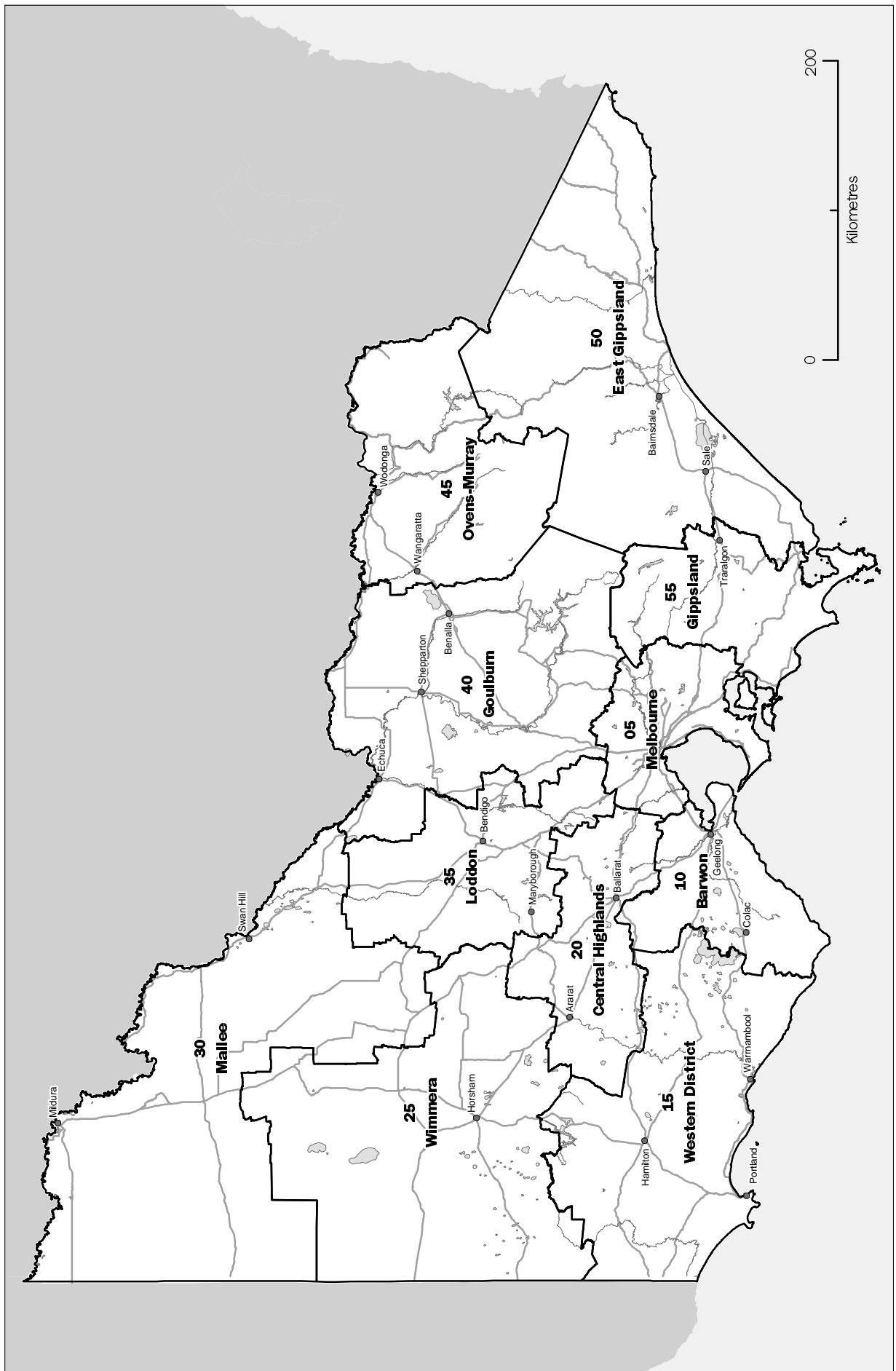
Turnover per person employed Turnover of manufacturing establishments which operated during the year ended 30 June divided by employment at the end of June in the same year.

Value added Turnover, plus the increase (or less the decrease) in the value of stocks, less purchases, transfers in and selected expenses.

Wages and salaries The gross wages and salaries (including capitalised wages and salaries) of all employees of the establishment. The item includes severance, termination and redundancy payments, but excludes reimbursements or allowances to employees for travel, entertainment, etc. For the 1995–96 collection only, provisions for employee entitlements (e.g. provisions for annual leave and leave bonus, long service leave, sick leave, and severance, termination and redundancy payments) are excluded. The drawings of working proprietors are also excluded.

Wages and salaries to turnover ratio The wages and salaries paid by manufacturing establishments which operated during the year ended 30 June as a proportion of the turnover of manufacturing establishments which operated during the same year.





SELF-HELP ACCESS TO STATISTICS

PHONE Call 1900 986 400 for the latest statistics on CPI, Labour Force, Earnings, National Accounts, Balance of Payments and other topics. (Call cost is 75c per minute)

INTERNET <http://www.abs.gov.au>

LIBRARY A range of ABS publications is available from public and tertiary libraries Australia wide. Contact your nearest library to determine whether it has the ABS statistics you require.

WHY NOT SUBSCRIBE?

PHONE +61 1300 366 323

FAX +61 3 9615 7848

CONTACTING THE ABS

ABS provides a range of services, including: a telephone inquiry service; information consultancy tailored to your needs; survey, sample and questionnaire design; survey evaluation and methodological reviews; and statistical training.

<i>INQUIRIES</i>	<i>By phone</i>	<i>By fax</i>
Canberra	02 6252 6627	02 6253 1404
Sydney	02 9268 4611	02 9268 4668
Melbourne	03 9615 7755	03 9615 7798
Brisbane	07 3222 6351	07 3222 6283
Perth	08 9360 5140	08 9360 5955
Adelaide	08 8237 7400	08 8237 7566
Hobart	03 6222 5800	03 6222 5995
Darwin	08 8943 2111	08 8981 1218

POST Client Services, ABS, PO Box 10, Belconnen, ACT 2616

EMAIL client.services@abs.gov.au



2822120007961
ISSN 1036-2754

RRP \$18.00