



2003

8127.0

CHARACTERISTICS OF SMALL BUSINESS

AUSTRALIA

EMBARGO: 11.30AM (CANBERRA TIME) WED 28 APR 2004

CONTENTS

	<i>page</i>
Notes	2
List of tables	3
 CHAPTERS	
Introduction	4
Characteristics of small business operators	6
Characteristics of small businesses	32
Home based small business	70
 ADDITIONAL INFORMATION	
Explanatory Notes	94
Appendix: Standard error tables	99
Glossary	101

INQUIRIES

- For further information about these and related statistics, contact the National Information and Referral Service on 1300 135 070 or Murray Klee on Canberra (02) 6252 5452.

NOTES

ABOUT THIS PUBLICATION This publication presents the results of the Characteristics of Small Business Owners Survey which was conducted in June 2003 as a supplementary topic in the Australian Bureau of Statistics (ABS) monthly Labour Force Survey. This survey of households addressed a number of aspects of the operations of small business as well as identifying the characteristics of small business operators. The survey covers all private sector, non-agricultural small businesses. Similar surveys were previously conducted in February 1995, February 1997, November 1999 and June 2001. The ABS plans to conduct the next survey in June 2004 followed by an expanded version of the survey in June 2005.

COMMENTS ON THIS PUBLICATION The ABS welcomes comments and suggestions from users on data items for future surveys. They should be addressed to the Director, Business Demography and Frames Section, Australian Bureau of Statistics, Locked Bag 10, Belconnen ACT 2616.

RELATED PUBLICATIONS Other publications which may be of interest are:

- *Small Business in Australia, 1999* (cat. no.1321.0) — biennial
- *Small Business in Australia, 2001* (cat. no. 1321.0)
- *Business Use of Information Technology, 2000–01* (cat. no. 8129.0) — annual.

UNPUBLISHED STATISTICS More detailed small business statistics from the survey are available on request from the ABS. For example, many of the statistics presented here may be available by different cross classifications from the data presented in the publication.

ROUNDING Where figures have been rounded discrepancies may occur between the sum of component items and the total.



ABBREVIATIONS

ABS	Australian Bureau of Statistics
ANZSIC	Australian and New Zealand Standard Industrial Classification
FTE	full-time equivalent
RSE	relative standard error
SE	standard error

Dennis Trewin
Australian Statistician



LIST OF TABLES

page

SMALL BUSINESS OPERATORS

2.1 Small business operators, by sex and age for states and territories 11

2.2 Small business operators, by sex and usual hours worked per week for states and territories 15

2.3 Small business operators, by sex and Australian born and overseas born for states and territories 24

2.4 Small business operators, by sex and number of businesses operated for states and territories 27

SMALL BUSINESSES

3.1 Small businesses, by employer size group and length of operation by current owner for states and territories 38

3.2 Small businesses, by employer size group and number of business operators for states and territories 46

3.3 Small businesses, by predominance of male and female operators and selected characteristics 51

3.4 Small businesses, by employer size group and use of computers and Internet access for states and territories 55

3.5 Small businesses, by employer size group and major uses of the Internet for states and territories 64

HOME BASED SMALL BUSINESS

4.1 Home based small business operators, by sex and selected characteristics 73

4.2 Home based small business operators, by states and territories and selected characteristics 76

4.3 Home based small businesses, by states and territories and selected characteristics 85

CHAPTER 1

INTRODUCTION

ABOUT THE SURVEY

This publication presents the results of the Characteristics of Small Business Owners Survey which was conducted in June 2003 as a supplementary topic to the monthly Labour Force Survey undertaken by the Australian Bureau of Statistics (ABS). This collection was based on a survey of households and addressed a number of aspects of the operations of the small business as well as identifying the characteristics of small business operators. The survey covered all private sector, non-agricultural small businesses. Similar surveys were conducted in February 1995, February 1997, November 1999, and June 2001.

ABOUT THIS PUBLICATION

The publication comprises distinct chapters, each dealing with different components of small businesses:

- Chapter 2 focuses on the characteristics of small business operators
- Chapter 3 details the characteristics of small businesses
- Chapter 4 provides details on home based small businesses.

COMPARISONS WITH PREVIOUS CHARACTERISTICS OF SMALL BUSINESS SURVEYS

Where possible, results from both the June 2001 and June 2003 surveys are presented. Due to the length of time that has elapsed between the two most recent surveys, 24 months, average annual change statistics are presented where appropriate.

DEFINING A SMALL BUSINESS

During 1999 the ABS conducted a review of the way businesses should be defined by size. This review is reported in detail in *Small Business in Australia, 1999* (cat. no. 1321.0). In summary, the review recommended that for statistical purposes, small businesses (excluding agricultural businesses) should be defined on the basis of full-time equivalent (FTE) employment. However, because FTE measures are not available from the monthly Labour Force Survey, the recommended business size categories have been adopted, but based on total employment. This definition is in line with the categories defined in the most recent edition of *Small Business in Australia, 2001* (cat. no. 1321.0) as well as the previous edition of this publication. The categories presented in this publication are as follows:

- non-employing businesses — sole proprietorships and partnerships without employees
- businesses with 1–4 employees
- businesses with 5–19 employees.

Note that because operators of all incorporated businesses are considered employees of that corporation, all incorporated businesses will be classified as employing businesses.

Together, these three groups form the small business category — those businesses employing less than 20 people.

COMPARISONS WITH
OTHER ABS DATA

Estimates of the number of businesses operating in Australia can be derived from a number of sources within the ABS. They may relate to a particular point in time or may be presented as an average annual figure. However, these estimates will not always show the same results. Variations will occur because of differing data sources, differing scope and coverage definitions between surveys, as well as variations due to sampling and non-sampling error. These terms are described in the Explanatory Notes.

The estimates of the number of business operators provided in this publication include own account workers (sole proprietors and partners of non-employing businesses); employers (operators of unincorporated employing sole proprietorships and partnerships); as well as working directors of incorporated companies. In other ABS publications, information can be found on numbers of own account workers and employers, but working directors of incorporated companies are generally treated as employees of the business and are not identified as business owners or operators.

Users comparing these results to those of other ABS series, should do so with care, as some other series only relate to employing businesses and do not include details of non-employing businesses.

CHAPTER 2

CHARACTERISTICS OF SMALL BUSINESS OPERATORS

INTRODUCTION

This chapter presents information on Australian small business operators, including data on their age, sex, hours worked, and operators born in Australia and born overseas.

The term 'business operator' has been used to describe the person or persons who own and run the business. Generally these business operators can be identified as:

- the proprietor of a sole proprietorship
- the partners of a partnership
- the working director(s) of an incorporated company.

There is no standard definition of a small business operator and other ABS publications do not use the term, nor do they provide statistics about small business operators as a group. However, the expression 'small business operator' is one that is often used in research and policy debate and is generally taken to include the above group of people.

NUMBER OF OPERATORS

In June 2003 there were an estimated 1,591,500 business operators of the estimated 1,179,300 small businesses in Australia. Whereas, the annual average growth rate on the number of businesses was 0.7%, over the preceding two years the number of business operators declined, on average, 0.2%.

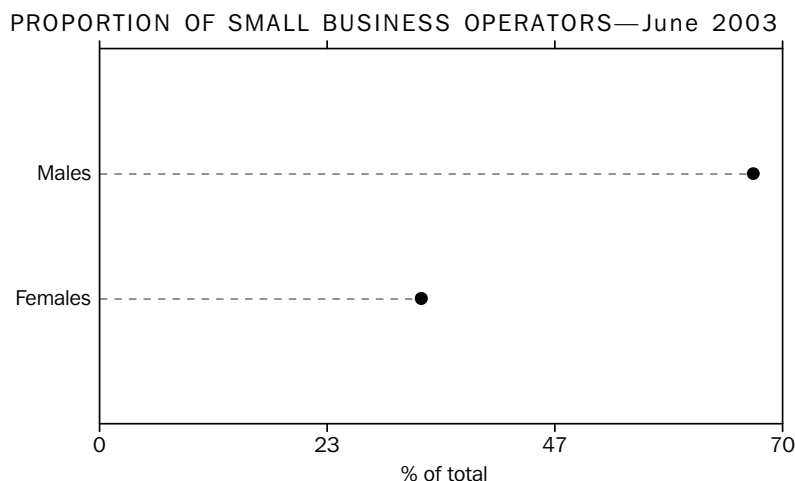
The contrasting growth rates between the number of operators and the number of small businesses (in table 3.2) is highlighted by the following:

- the rise in the proportion of small businesses with only one operator, an average annual increase of 2.4%
- the decline in the number of businesses with two operators, down by an average annual rate of 2.7%
- for businesses with three or more operators, an annual decrease of 2.0%.

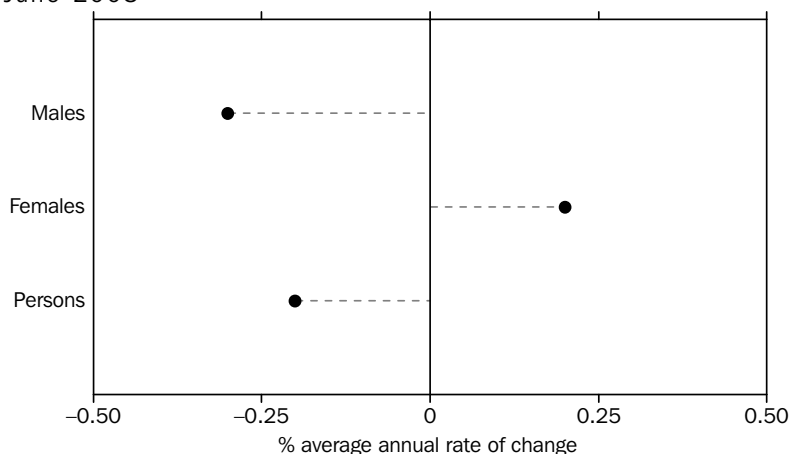
SEX OF OPERATORS

Of the 1,591,500 small business operators, 1,063,000 (67%) were male and 528,600 (33%) were female at June 2003. The numbers for male and female operators remained consistent with the June 2001 survey findings.

SEX OF OPERATORS
continued



AVERAGE ANNUAL GROWTH, Small business operators—June 2001 to June 2003



LOCATION OF OPERATORS

While the distribution of small business operators across states and territories generally reflected the population distribution, growth between June 2001 and June 2003 varied considerably between states. Victoria recorded the highest average annual growth rate of 3.1%. The results in Victoria were accentuated by the increase in female small business operators, where there was an average annual growth rate of 6.5%, more than five percentage points higher than the other states and territories. South Australia recorded the largest decrease in the number of operators down by 6.7%, with a 13% decrease in the number of female operators. Decreases were also recorded in the Australian Capital Territory (5.2%), the Northern Territory (3.0%) and Tasmania (2.7%).

AGE OF OPERATORS

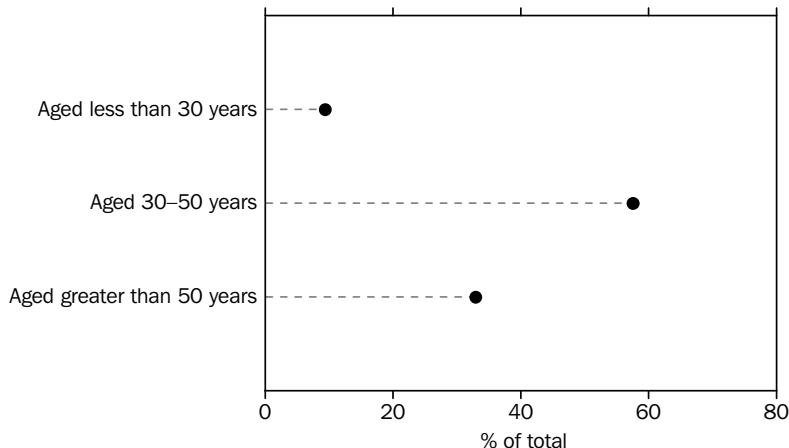
Table 2.1 indicates that most small business operators (58%) were aged between 30 and 50 years. The distribution across age groups was as follows:

- 9.4% (149,600) were less than 30 years old
- 58% (917,300) were aged between 30 and 50 years
- 33% (524,600) were aged greater than 50 years.

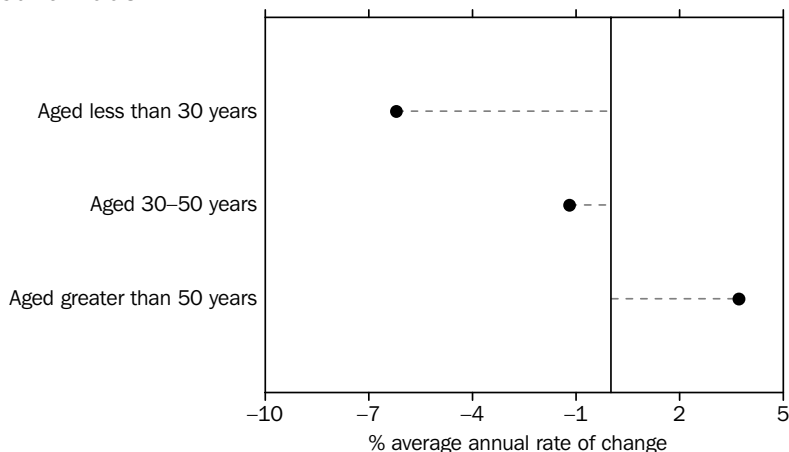
The number of business operators aged greater than 50 years increased at an average annual rate of 3.7%. Those operators in age groups less than 30 years and those aged between 30 and 50 years recorded a decrease of an average annual rate of 6.2% and 1.2% respectively.

AGE OF OPERATORS
continued

PROPORTION OF SMALL BUSINESS OPERATORS—June 2003



AVERAGE ANNUAL GROWTH, Small business operators—June 2001 to June 2003



By sex

The distribution of small business operators by sex across the age groups at June 2003 was:

- for small business operators aged less than 30 years: 65% were male, 35% were female
- for small business operators aged between 30 years and 50 years: 65% were male, 35% were female
- for small business operators aged more than 50 years: 70% were male, 30% were female.

The number of male operators aged less than 30 years decreased by an average annual rate of 6.2%. However, for male operators aged greater than 50 years the average annual rate increased by 2.4%. This was also true for females, female operators aged less than 30 years had a negative growth rate of 6.1% and those aged greater than 50 years increased by an average annual rate of 6.9%.

By state and territory

In Victoria, growth in the number of small business operators was strongest, up by an average annual rate of 3.1% overall. This growth was underpinned by the group aged 30 to 50 years which grew, by an average annual rate of 4.6%. In Victoria, the average annual rate of growth for those operators aged less than 30 years recorded a

*By state and territory
continued*

slight decrease of 0.3%, since June 2001. There was a slight increase in the average annual rate for operators aged greater than 50 years (1.3%).

The average annual increase of female operators was highest in Victoria (6.5%). Female operators aged less than 30 years led this growth, up by an average annual rate of 23%. In contrast, South Australia recorded the largest average annual decrease of small business operators of all of the states and territories (6.7%). This average annual decrease was accentuated by the decrease in female operators (13%), a three percentage point greater decline than any other state or territory.

**USUAL HOURS WORKED
BY OPERATORS**

Table 2.2 shows details of hours worked by small business operators for both full-time and part-time operators.

Full-time operators

Of the 1.6 million small business operators in Australia at June 2003, just under 1.1 million (66%) were classified as full-time operators; that is, they usually worked 35 or more hours each week in the business. This proportion has declined from 70% in June 2001 to 66% in June 2003.

For all small business operators:

- 41% usually worked between 35 and 50 hours each week
- 22% usually worked between 51 and 75 hours per week
- 3.6% usually worked more than 75 hours a week.

The overall decrease in full-time operators is underscored by the 5.3 percentage point decrease in the proportion of operators working 35–50 hours between June 2001 and June 2003.

BY SEX

An estimated 857,600 (81%) of male small business operators worked full-time and 49% of these operators usually worked between 35 and 50 hours a week.

In contrast, only 38% of female small business operators worked full-time and 25% of these operators usually worked between 35 and 50 hours a week. The average annual growth rates for male and female operators who worked more than 75 hours a week were 8.7% and 13% respectively.

BY STATE AND TERRITORY

Across the states, New South Wales recorded the highest proportion of small business operators that were working full-time in their business, with 69% working more than 35 hours per week. Most other states recorded around 65% of operators working full-time, with the exception of Western Australia (62%). The Northern Territory recorded the highest incidence of full-time operators at 76%. The Australian Capital Territory recorded the lowest proportion of full-time operators with 59%.

A similar distribution across the usual hours worked categories was recorded in each of the states and territories. The Northern Territory recorded the highest proportion (9.3%) of all operators in the more than 75 hours usually worked category, as well as the highest proportion (31%) of all operators usually working between 51 and 75 hours per week. South Australia recorded the highest proportion (45%) of all operators usually working between 35 and 50 hours per week.

<i>Part-time operators</i>	<p>Part-time operators, those who usually worked less than 35 hours a week in their business, constituted 535,000 (34%) of the 1.6 million small business operators in Australia at June 2003. Since June 2001 the proportion of part-time operators has increased from 29% to 34%.</p> <p>In June 2003 there were 329,600 female small business operators working part-time, an average annual increase of 3.7% over the 2001 level of 306,800. The proportion of female part-time operators to total part-time operators increased to 62% in 2003 from 58% in 2001. The number of male small business operators working part-time increased by an average annual rate of 12%,</p>
OPERATORS BORN IN AUSTRALIA OR BORN OVERSEAS	<p>Table 2.3 shows details of operators born in Australia and those born overseas. In June 2003 an estimated 468,100 (29%) of small business operators were born overseas. This was consistent with the results recorded in June 2001.</p>
<i>By sex</i>	<p>An estimated 325,200 (31%) male small business operators were born overseas compared to 143,000 (27%) females. Over the period June 2001 to June 2003 the number of overseas born females increased by an average annual rate of 2.1%. The number of male small business operators born overseas was similar to the June 2001 results, with a slight decline of 0.3% in the average annual rate.</p>
<i>By state and territory</i>	<p>The state with the highest proportion of small business operators who were born overseas was Western Australia (39%). The proportion of overseas born operators in Western Australia increased to 39% in June 2003 from 37% in June 2001. New South Wales (33%) had the second highest proportion of small business operators born overseas, which was consistent with the June 2001 survey findings. Tasmania with 13% of small business operators born overseas, recorded the lowest proportion. The proportion of operators born overseas in Queensland remained steady at 24%. In contrast the Northern Territory recorded the greatest average annual rate of decrease (25%) of all the states and territories, from 33% in June 2001 to 19% in June 2003. This was followed by Tasmania where the proportion decreased from 18% in 2001 to 13% in 2003.</p>
NUMBER OF BUSINESSES OPERATED	<p>Table 2.4 provides data on the number of businesses owned by small business operators at June 2003, classified by the sex of operators and the number of businesses operated. Most operators (93%) were involved in just the one business; a further 5.3% were involved in two businesses and 1.9% were involved in three or more businesses.</p>
<i>By sex</i>	<p>Both male and female operators recorded similar figures as multiple business operators, with 7.4% and 6.9% respectively, involved in more than one business.</p>
<i>By state and territory</i>	<p>The proportions of operators involved in only one business were similar across all states and territories (between 91% and 94%).</p>

2.1

SMALL BUSINESS OPERATORS, By sex and age for states and territories

	JUNE 2001		JUNE 2003		Average annual rate of change
	Number of operators	Proportion of operators	Number of operators	Proportion of operators	
	'000	%	'000	%	
.....					
AUSTRALIA					
Males					
Aged less than 30 years	110.8	10.4	97.5	9.2	-6.2
Aged 30-50 years	610.2	57.0	599.3	56.4	-0.9
Aged greater than 50 years	349.3	32.6	366.1	34.4	2.4
Total	1 070.3	100.0	1 063.0	100.0	-0.3
Females					
Aged less than 30 years	59.1	11.2	52.1	9.9	-6.1
Aged 30-50 years	329.0	62.4	318.0	60.2	-1.7
Aged greater than 50 years	138.8	26.3	158.5	30.0	6.9
Total	526.9	100.0	528.6	100.0	0.2
Persons					
Aged less than 30 years	169.9	10.6	149.6	9.4	-6.2
Aged 30-50 years	939.3	58.8	917.3	57.6	-1.2
Aged greater than 50 years	488.0	30.6	524.6	33.0	3.7
Total	1 597.2	100.0	1 591.5	100.0	-0.2
.....					
NEW SOUTH WALES					
Males					
Aged less than 30 years	^ 37.6	10.6	^ 31.5	9.1	-8.4
Aged 30-50 years	198.3	55.7	191.8	55.6	-1.6
Aged greater than 50 years	120.1	33.7	121.7	35.3	0.7
Total	356.0	100.0	345.1	100.0	-1.5
Females					
Aged less than 30 years	^ 23.3	14.6	^ 15.4	9.9	-18.6
Aged 30-50 years	95.3	59.9	93.1	59.5	-1.2
Aged greater than 50 years	^ 40.6	25.5	47.9	30.6	8.6
Total	159.2	100.0	156.4	100.0	-0.9
Persons					
Aged less than 30 years	60.9	11.8	47.0	9.4	-12.2
Aged 30-50 years	293.6	57.0	284.9	56.8	-1.5
Aged greater than 50 years	160.7	31.2	169.6	33.8	2.7
Total	515.2	100.0	501.4	100.0	-1.3
.....					
VICTORIA					
Males					
Aged less than 30 years	^ 26.9	10.4	^ 23.0	8.6	-7.5
Aged 30-50 years	144.3	55.5	156.9	58.6	4.3
Aged greater than 50 years	88.9	34.2	87.7	32.8	-0.6
Total	260.1	100.0	267.6	100.0	1.4
Females					
Aged less than 30 years	^ 7.2	5.9	^ 10.9	7.9	23.0
Aged 30-50 years	78.1	64.6	86.2	62.9	5.1
Aged greater than 50 years	35.7	29.5	^ 40.0	29.2	5.8
Total	120.9	100.0	137.1	100.0	6.5
Persons					
Aged less than 30 years	34.1	9.0	^ 33.9	8.4	-0.3
Aged 30-50 years	222.3	58.4	243.1	60.1	4.6
Aged greater than 50 years	124.5	32.7	127.7	31.6	1.3
Total	381.0	100.0	404.7	100.0	3.1

^ estimate has a relative standard error of 10% to less than 25% and should be used with caution

2.1 SMALL BUSINESS OPERATORS, By sex and age for states and territories *continued*

	JUNE 2001		JUNE 2003		Average annual rate of change
	Number of operators	Proportion of operators	Number of operators	Proportion of operators	
	'000	%	'000	%	
.....					
QUEENSLAND					
Males					
Aged less than 30 years	^ 22.5	10.7	^ 18.1	8.8	-10.3
Aged 30–50 years	124.3	59.1	116.8	57.0	-3.1
Aged greater than 50 years	63.6	30.2	69.9	34.1	4.9
Total	210.4	100.0	204.9	100.0	-1.3
Females					
Aged less than 30 years	^ 12.2	10.4	^ 13.9	11.6	6.8
Aged 30–50 years	76.6	65.6	72.0	60.0	-3.1
Aged greater than 50 years	28.0	24.0	34.0	28.4	10.2
Total	116.8	100.0	119.9	100.0	1.3
Persons					
Aged less than 30 years	34.7	10.6	^ 32.0	9.9	-3.9
Aged 30–50 years	201.0	61.4	188.8	58.1	-3.1
Aged greater than 50 years	91.6	28.0	103.9	32.0	6.5
Total	327.2	100.0	324.8	100.0	-0.4
.....					
SOUTH AUSTRALIA					
Males					
Aged less than 30 years	^ 6.5	8.3	^ 5.7	7.8	-6.2
Aged 30–50 years	47.3	60.8	42.2	58.0	-5.5
Aged greater than 50 years	24.0	30.9	24.8	34.1	1.8
Total	77.7	100.0	72.7	100.0	-3.3
Females					
Aged less than 30 years	^ 4.3	10.1	^ 3.6	11.4	-8.2
Aged 30–50 years	27.2	63.8	^ 18.1	56.6	-18.5
Aged greater than 50 years	^ 11.1	26.0	^ 10.2	32.1	-3.8
Total	42.6	100.0	32.0	100.0	-13.4
Persons					
Aged less than 30 years	^ 10.8	9.0	^ 9.3	8.9	-7.0
Aged 30–50 years	74.5	61.9	60.3	57.6	-10.0
Aged greater than 50 years	35.1	29.1	35.1	33.5	—
Total	120.3	100.0	104.7	100.0	-6.7
.....					
WESTERN AUSTRALIA					
Males					
Aged less than 30 years	^ 13.9	11.4	^ 15.1	11.6	4.1
Aged 30–50 years	70.3	57.7	68.1	52.4	-1.6
Aged greater than 50 years	37.7	30.9	46.7	36.0	11.3
Total	122.0	100.0	129.9	100.0	3.2
Females					
Aged less than 30 years	^ 8.6	13.4	^ 6.6	10.3	-12.6
Aged 30–50 years	38.6	60.0	36.9	58.0	-2.3
Aged greater than 50 years	^ 17.1	26.6	^ 20.2	31.7	8.6
Total	64.3	100.0	63.6	100.0	-0.5
Persons					
Aged less than 30 years	^ 22.5	12.1	^ 21.7	11.2	-1.9
Aged 30–50 years	108.9	58.5	105.0	54.2	-1.8
Aged greater than 50 years	54.8	29.4	66.9	34.6	10.5
Total	186.3	100.0	193.5	100.0	1.9

^ estimate has a relative standard error of 10% to less than 25% and should be used with caution

— nil or rounded to zero (including null cells)

2.1 SMALL BUSINESS OPERATORS, By sex and age for states and territories *continued*

	JUNE 2001		JUNE 2003		Average annual rate of change
	Number of operators	Proportion of operators	Number of operators	Proportion of operators	
	'000	%	'000	%	
TASMANIA					
Males					
Aged less than 30 years	*1.3	6.2	*1.2	5.7	-4.6
Aged 30-50 years	12.1	58.3	^ 11.8	57.6	-1.2
Aged greater than 50 years	^ 7.4	35.5	^ 7.6	36.8	1.2
Total	20.8	100.0	20.6	100.0	-0.5
Females					
Aged less than 30 years	^ 1.9	16.6	*0.6	5.9	-44.3
Aged 30-50 years	^ 6.6	56.6	^ 6.1	59.4	-4.3
Aged greater than 50 years	^ 3.1	26.8	^ 3.6	34.7	6.3
Total	11.7	100.0	^ 10.2	100.0	-6.6
Persons					
Aged less than 30 years	^ 3.2	9.9	*1.8	5.7	-26.0
Aged 30-50 years	18.8	57.7	^ 17.9	58.2	-2.3
Aged greater than 50 years	10.5	32.4	^ 11.1	36.1	2.8
Total	32.5	100.0	30.8	100.0	-2.7
NORTHERN TERRITORY (a)					
Males					
Aged less than 30 years	**0.5	6.5	**0.5	6.3	-3.7
Aged 30-50 years	^ 4.9	64.0	^ 4.8	65.9	-0.8
Aged greater than 50 years	^ 2.2	29.6	*2.0	27.9	-5.1
Total	^ 7.6	100.0	^ 7.3	100.0	-2.2
Females					
Aged less than 30 years	**0.5	18.3	**0.2	9.1	-32.8
Aged 30-50 years	*1.7	59.0	*1.8	68.0	2.0
Aged greater than 50 years	*0.7	22.7	*0.6	22.9	-4.7
Total	^ 2.9	100.0	^ 2.7	100.0	-5.0
Persons					
Aged less than 30 years	*1.0	9.8	*0.7	7.0	-17.6
Aged 30-50 years	^ 6.6	62.6	^ 6.6	66.4	-0.1
Aged greater than 50 years	^ 2.9	27.6	^ 2.6	26.5	-5.0
Total	^ 10.5	100.0	^ 9.9	100.0	-3.0

^ estimate has a relative standard error of 10% to less than 25% and should be used with caution

* estimate has a relative standard error of 25% to 50% and should be used with caution

** estimate has a relative standard error greater than 50% and is considered too unreliable for general use

(a) Refers to mainly urban areas only.

2.1SMALL BUSINESS OPERATORS, By sex and age for states and territories *continued*

	JUNE 2001		JUNE 2003		Average annual rate of change
	Number of operators	Proportion of operators	Number of operators	Proportion of operators	
	'000	%	'000	%	
.....					
AUSTRALIAN CAPITAL TERRITORY					
Males					
Aged less than 30 years	*1.6	10.3	^ 2.5	16.6	23.8
Aged 30–50 years	^ 8.7	55.3	^ 6.9	46.1	-11.2
Aged greater than 50 years	^ 5.4	34.4	^ 5.6	37.4	1.5
Total	15.8	100.0	15.0	100.0	-2.6
Females					
Aged less than 30 years	*1.1	12.6	*0.9	12.8	-9.8
Aged 30–50 years	^ 4.9	57.7	^ 3.8	56.6	-11.2
Aged greater than 50 years	^ 2.5	29.6	^ 2.1	30.6	-8.8
Total	^ 8.4	100.0	^ 6.8	100.0	-10.3
Persons					
Aged less than 30 years	^ 2.7	11.1	^ 3.3	15.4	11.6
Aged 30–50 years	13.6	56.2	^ 10.7	49.4	-11.2
Aged greater than 50 years	^ 7.9	32.7	^ 7.7	35.3	-1.7
Total	24.2	100.0	21.8	100.0	-5.2

^ estimate has a relative standard error of 10% to less than 25% and should be used with caution

* estimate has a relative standard error of 25% to 50% and should be used with caution

2.2

SMALL BUSINESS OPERATORS, By sex and usual hours worked per week for states and territories

	JUNE 2001		JUNE 2003		Average annual rate of change
	Number of operators	Proportion of operators	Number of operators	Proportion of operators	
	'000	%	'000	%	
AUSTRALIA					
Males					
1–10 hours worked	44.4	4.1	58.6	5.5	14.8
11–20 hours worked	46.8	4.4	66.4	6.3	19.2
21–34 hours worked	71.4	6.7	80.3	7.6	6.1
Total part-time	162.6	15.2	205.3	19.3	12.4
35–50 hours worked	568.6	53.1	519.3	48.9	–4.4
51–75 hours worked	300.7	28.1	292.9	27.6	–1.3
More than 75 hours worked	38.4	3.6	45.4	4.3	8.7
Total full-time	907.7	84.8	857.6	80.7	–2.8
Total	1 070.3	100.0	1 063.0	100.0	–0.3
Females					
1–10 hours worked	116.5	22.1	141.4	26.8	10.2
11–20 hours worked	97.0	18.4	97.4	18.4	0.2
21–34 hours worked	93.3	17.7	90.8	17.2	–1.3
Total part-time	306.8	58.2	329.6	62.4	3.7
35–50 hours worked	160.6	30.5	134.0	25.3	–8.7
51–75 hours worked	50.8	9.6	53.9	10.2	3.0
More than 75 hours worked	^ 8.8	1.7	^ 11.1	2.1	12.5
Total full-time	220.2	41.8	199.0	37.6	–4.9
Total	526.9	100.0	528.6	100.0	0.2
Persons					
1–10 hours worked	160.9	10.1	200.0	12.6	11.5
11–20 hours worked	143.8	9.0	163.9	10.3	6.8
21–34 hours worked	164.7	10.3	171.1	10.8	1.9
Total part-time	469.3	29.4	535.0	33.6	6.8
35–50 hours worked	729.2	45.7	653.3	41.0	–5.3
51–75 hours worked	351.5	22.0	346.7	21.8	–0.7
More than 75 hours worked	47.2	3.0	56.6	3.6	9.5
Total full-time	1 127.9	70.6	1 056.6	66.4	–3.2
Total	1 597.2	100.0	1 591.5	100.0	–0.2

^ estimate has a relative standard error of 10% to less than 25% and should be used with caution

2.2SMALL BUSINESS OPERATORS, By sex and usual hours worked per week for states and territories *continued*

	JUNE 2001		JUNE 2003		Average annual rate of change
	Number of operators	Proportion of operators	Number of operators	Proportion of operators	
	'000	%	'000	%	
NEW SOUTH WALES					
Males					
1–10 hours worked	^ 14.5	4.1	^ 19.9	5.8	17.0
11–20 hours worked	^ 15.6	4.4	^ 19.9	5.8	12.8
21–34 hours worked	^ 16.3	4.6	^ 23.9	6.9	21.1
Total part-time	^ 46.5	13.0	63.7	18.5	17.1
35–50 hours worked	198.2	55.7	169.1	49.0	-7.6
51–75 hours worked	100.0	28.1	94.1	27.3	-3.0
More than 75 hours worked	^ 11.4	3.2	^ 18.2	5.3	26.4
Total full-time	309.6	87.0	281.4	81.5	-4.7
Total	356.0	100.0	345.1	100.0	-1.5
Females					
1–10 hours worked	^ 37.2	23.4	^ 38.2	24.5	1.4
11–20 hours worked	^ 29.3	18.4	^ 25.1	16.1	-7.4
21–34 hours worked	^ 30.5	19.2	^ 26.4	16.9	-6.9
Total part-time	97.0	61.0	89.8	57.4	-3.8
35–50 hours worked	47.7	29.9	^ 41.2	26.3	-7.1
51–75 hours worked	^ 12.9	8.1	^ 20.9	13.4	27.4
More than 75 hours worked	**1.6	1.0	*4.4	2.8	66.8
Total full-time	62.2	39.0	66.5	42.6	3.5
Total	159.2	100.0	156.4	100.0	-0.9
Persons					
1–10 hours worked	51.7	10.0	58.1	11.6	6.0
11–20 hours worked	^ 45.0	8.7	^ 45.0	9.0	0.1
21–34 hours worked	^ 46.8	9.1	50.4	10.0	3.7
Total part-time	143.5	27.9	153.5	30.6	3.4
35–50 hours worked	245.9	47.7	210.3	41.9	-7.5
51–75 hours worked	112.9	21.9	115.0	22.9	0.9
More than 75 hours worked	^ 13.0	2.5	^ 22.6	4.5	32.0
Total full-time	371.7	72.1	347.9	69.4	-3.3
Total	515.2	100.0	501.4	100.0	-1.3

^ estimate has a relative standard error of 10% to less than 25% and should be used with caution

* estimate has a relative standard error of 25% to 50% and should be used with caution

** estimate has a relative standard error greater than 50% and is considered too unreliable for general use

2.2SMALL BUSINESS OPERATORS, By sex and usual hours worked per week for states and territories *continued*

	JUNE 2001		JUNE 2003		Average annual rate of change
	Number of operators	Proportion of operators	Number of operators	Proportion of operators	
	'000	%	'000	%	
VICTORIA					
Males					
1–10 hours worked	^ 11.5	4.4	^ 12.7	4.7	5.0
11–20 hours worked	^ 9.9	3.8	^ 13.4	5.0	16.1
21–34 hours worked	^ 21.5	8.3	^ 20.1	7.5	-3.4
Total part-time	42.9	16.5	46.2	17.2	3.7
35–50 hours worked	134.4	51.7	139.0	52.0	1.7
51–75 hours worked	74.3	28.6	71.5	26.7	-1.9
More than 75 hours worked	^ 8.4	3.2	^ 10.9	4.1	14.0
Total full-time	217.1	83.5	221.5	82.8	1.0
Total	260.1	100.0	267.6	100.0	1.4
Females					
1–10 hours worked	^ 26.4	21.8	^ 36.4	26.5	17.4
11–20 hours worked	^ 24.0	19.8	^ 29.7	21.7	11.3
21–34 hours worked	^ 17.0	14.1	^ 23.8	17.4	18.3
Total part-time	67.4	55.7	89.9	65.6	15.5
35–50 hours worked	37.1	30.7	^ 33.2	24.2	-5.5
51–75 hours worked	^ 13.5	11.2	^ 11.1	8.1	-9.4
More than 75 hours worked	*2.9	2.4	*2.9	2.1	0.2
Total full-time	53.5	44.3	47.2	34.4	-6.1
Total	120.9	100.0	137.1	100.0	6.5
Persons					
1–10 hours worked	37.9	9.9	49.0	12.1	13.8
11–20 hours worked	33.9	8.9	43.1	10.6	12.7
21–34 hours worked	38.6	10.1	43.9	10.9	6.7
Total part-time	110.3	29.0	136.0	33.6	11.0
35–50 hours worked	171.6	45.0	172.2	42.6	0.2
51–75 hours worked	87.8	23.0	82.6	20.4	-3.0
More than 75 hours worked	^ 11.3	3.0	^ 13.8	3.4	10.7
Total full-time	270.6	71.0	268.7	66.4	-0.4
Total	381.0	100.0	404.7	100.0	3.1

^ estimate has a relative standard error of 10% to less than 25% and should be used with caution

* estimate has a relative standard error of 25% to 50% and should be used with caution

2.2SMALL BUSINESS OPERATORS, By sex and usual hours worked per week for states and territories *continued*

	JUNE 2001		JUNE 2003		Average annual rate of change
	Number of operators	Proportion of operators	Number of operators	Proportion of operators	
	'000	%	'000	%	
QUEENSLAND					
Males					
1–10 hours worked	^ 8.0	3.8	^ 7.3	3.6	-4.6
11–20 hours worked	^ 10.0	4.7	^ 15.0	7.3	22.7
21–34 hours worked	^ 16.1	7.6	^ 17.1	8.4	3.3
Total part-time	34.1	16.2	39.5	19.3	7.6
35–50 hours worked	104.9	49.9	93.3	45.5	-5.7
51–75 hours worked	62.3	29.6	64.9	31.7	2.1
More than 75 hours worked	^ 9.0	4.3	^ 7.2	3.5	-10.9
Total full-time	176.3	83.8	165.4	80.7	-3.1
Total	210.4	100.0	204.9	100.0	-1.3
Females					
1–10 hours worked	^ 23.7	20.3	^ 28.0	23.4	8.8
11–20 hours worked	^ 21.7	18.6	^ 23.1	19.3	3.2
21–34 hours worked	^ 20.3	17.4	^ 21.2	17.7	2.1
Total part-time	65.7	56.3	72.4	60.3	4.9
35–50 hours worked	37.7	32.3	^ 31.2	26.1	-9.0
51–75 hours worked	^ 11.2	9.6	^ 15.1	12.6	15.9
More than 75 hours worked	* 2.2	1.8	* 1.2	1.0	-24.7
Total full-time	51.1	43.7	47.6	39.7	-3.5
Total	116.8	100.0	119.9	100.0	1.3
Persons					
1–10 hours worked	31.7	9.7	35.3	10.9	5.6
11–20 hours worked	31.7	9.7	38.2	11.7	9.7
21–34 hours worked	36.4	11.1	38.3	11.8	2.6
Total part-time	99.8	30.5	111.8	34.4	5.9
35–50 hours worked	142.6	43.6	124.5	38.3	-6.6
51–75 hours worked	73.6	22.5	80.0	24.6	4.3
More than 75 hours worked	^ 11.2	3.4	^ 8.4	2.6	-13.4
Total full-time	227.4	69.5	212.9	65.6	-3.2
Total	327.2	100.0	324.8	100.0	-0.4

^ estimate has a relative standard error of 10% to less than 25% and should be used with caution

* estimate has a relative standard error of 25% to 50% and should be used with caution

2.2SMALL BUSINESS OPERATORS, By sex and usual hours worked per week for states and territories *continued*

	JUNE 2001		JUNE 2003		Average annual rate of change
	Number of operators	Proportion of operators	Number of operators	Proportion of operators	
	'000	%	'000	%	
SOUTH AUSTRALIA					
Males					
1–10 hours worked	^ 3.5	4.5	^ 5.7	7.8	26.6
11–20 hours worked	^ 3.7	4.8	^ 5.0	6.9	16.1
21–34 hours worked	^ 5.9	7.5	^ 6.1	8.3	1.7
Total part-time	^ 13.1	16.9	^ 16.7	23.0	13.0
35–50 hours worked	41.5	53.4	36.7	50.5	-5.9
51–75 hours worked	^ 20.2	26.0	^ 17.3	23.7	-7.7
More than 75 hours worked	* 2.9	3.7	* 2.0	2.7	-17.7
Total full-time	64.6	83.1	56.0	77.0	-6.9
Total	77.7	100.0	72.7	100.0	-3.3
Females					
1–10 hours worked	^ 8.4	19.7	^ 9.9	30.9	8.4
11–20 hours worked	^ 8.2	19.2	^ 5.0	15.6	-22.0
21–34 hours worked	^ 9.9	23.1	^ 5.5	17.2	-25.4
Total part-time	26.4	62.0	^ 20.3	63.6	-12.3
35–50 hours worked	^ 11.1	26.0	^ 10.0	31.1	-5.3
51–75 hours worked	^ 4.5	10.5	* 1.5	4.7	-42.3
More than 75 hours worked	** 0.6	1.4	** 0.2	0.6	-43.6
Total full-time	^ 16.2	38.0	^ 11.6	36.4	-15.2
Total	42.6	100.0	32.0	100.0	-13.4
Persons					
1–10 hours worked	^ 11.9	9.9	^ 15.5	14.8	14.1
11–20 hours worked	^ 11.9	9.9	^ 10.0	9.5	-8.3
21–34 hours worked	^ 15.7	13.1	^ 11.5	11.0	-14.3
Total part-time	39.5	32.9	37.1	35.4	-3.2
35–50 hours worked	52.6	43.7	46.7	44.6	-5.7
51–75 hours worked	24.7	20.5	^ 18.8	17.9	-12.9
More than 75 hours worked	^ 3.5	2.9	* 2.2	2.1	-21.5
Total full-time	80.8	67.1	67.6	64.6	-8.5
Total	120.3	100.0	104.7	100.0	-6.7

^ estimate has a relative standard error of 10% to less than 25% and should be used with caution

* estimate has a relative standard error of 25% to 50% and should be used with caution

** estimate has a relative standard error greater than 50% and is considered too unreliable for general use

2.2SMALL BUSINESS OPERATORS, By sex and usual hours worked per week for states and territories *continued*

	JUNE 2001		JUNE 2003		Average annual rate of change
	Number of operators	Proportion of operators	Number of operators	Proportion of operators	
	'000	%	'000	%	%
WESTERN AUSTRALIA					
Males					
1–10 hours worked	^ 5.2	4.2	^ 9.9	7.6	38.1
11–20 hours worked	^ 6.0	4.9	^ 9.6	7.4	25.8
21–34 hours worked	^ 8.9	7.3	^ 10.0	7.7	5.5
Total part-time	^ 20.1	16.5	29.4	22.6	20.7
35–50 hours worked	65.5	53.7	62.2	47.9	-2.5
51–75 hours worked	32.2	26.4	33.0	25.4	1.2
More than 75 hours worked	^ 4.1	3.4	^ 5.4	4.1	14.4
Total full-time	101.8	83.5	100.6	77.4	-0.6
Total	122.0	100.0	129.9	100.0	3.2
Females					
1–10 hours worked	^ 16.5	25.7	22.6	35.6	16.9
11–20 hours worked	^ 10.8	16.9	^ 11.2	17.7	1.9
21–34 hours worked	^ 10.6	16.5	^ 11.1	17.4	2.1
Total part-time	38.0	59.1	44.9	70.6	8.7
35–50 hours worked	^ 18.5	28.8	^ 13.7	21.5	-14.1
51–75 hours worked	^ 6.4	10.0	*3.5	5.5	-26.5
More than 75 hours worked	*1.3	2.0	*1.5	2.4	7.4
Total full-time	26.3	40.9	^ 18.7	29.4	-15.7
Total	64.3	100.0	63.6	100.0	-0.5
Persons					
1–10 hours worked	^ 21.7	11.7	32.5	16.8	22.3
11–20 hours worked	^ 16.9	9.1	^ 20.8	10.7	11.0
21–34 hours worked	^ 19.6	10.5	^ 21.0	10.9	3.7
Total part-time	58.1	31.2	74.3	38.4	13.0
35–50 hours worked	84.0	45.1	75.9	39.2	-5.0
51–75 hours worked	38.7	20.8	36.5	18.8	-2.9
More than 75 hours worked	^ 5.4	2.9	^ 6.9	3.6	12.7
Total full-time	128.1	68.8	119.2	61.6	-3.5
Total	186.3	100.0	193.5	100.0	1.9

^ estimate has a relative standard error of 10% to less than 25% and should be used with caution

* estimate has a relative standard error of 25% to 50% and should be used with caution

2.2SMALL BUSINESS OPERATORS, By sex and usual hours worked per week for states and territories *continued*

	JUNE 2001		JUNE 2003		Average annual rate of change
	Number of operators	Proportion of operators	Number of operators	Proportion of operators	
	'000	%	'000	%	
TASMANIA					
Males					
1–10 hours worked	*0.7	3.6	*1.8	8.9	57.2
11–20 hours worked	*0.7	3.2	*1.7	8.2	58.8
21–34 hours worked	*1.6	7.9	*1.2	6.0	–13.5
Total part-time	^ 3.0	14.6	^ 4.7	23.0	24.8
35–50 hours worked	11.5	55.1	^ 8.7	42.5	–12.6
51–75 hours worked	^ 5.0	24.2	^ 6.2	30.0	10.7
More than 75 hours worked	*1.2	6.0	*0.9	4.4	–14.8
Total full-time	17.7	85.4	^ 15.8	77.0	–5.6
Total	20.8	100.0	20.6	100.0	–0.5
Females					
1–10 hours worked	^ 2.4	20.4	^ 3.3	32.7	18.2
11–20 hours worked	^ 1.8	15.1	*1.5	14.3	–9.0
21–34 hours worked	^ 2.7	23.3	*1.4	13.2	–29.6
Total part-time	^ 6.9	58.8	^ 6.2	60.2	–5.5
35–50 hours worked	^ 3.6	30.3	^ 3.0	29.2	–8.2
51–75 hours worked	*1.2	9.9	*0.6	6.2	–25.9
More than 75 hours worked	**0.1	1.1	**0.4	4.3	90.0
Total full-time	^ 4.8	41.2	^ 4.1	39.8	–8.2
Total	11.7	100.0	^ 10.2	100.0	–6.6
Persons					
1–10 hours worked	^ 3.1	9.6	^ 5.2	16.8	28.5
11–20 hours worked	^ 2.4	7.5	^ 3.1	10.2	13.7
21–34 hours worked	^ 4.4	13.4	^ 2.6	8.4	–23.2
Total part-time	9.9	30.6	^ 10.9	35.4	4.7
35–50 hours worked	15.0	46.2	^ 11.7	38.1	–11.6
51–75 hours worked	^ 6.2	19.1	^ 6.8	22.1	4.8
More than 75 hours worked	*1.4	4.2	*1.3	4.4	–0.7
Total full-time	22.6	69.4	19.9	64.6	–6.1
Total	32.5	100.0	30.8	100.0	–2.7

^ estimate has a relative standard error of 10% to less than 25% and should be used with caution

* estimate has a relative standard error of 25% to 50% and should be used with caution

** estimate has a relative standard error greater than 50% and is considered too unreliable for general use

2.2 SMALL BUSINESS OPERATORS, By sex and usual hours worked per week for states and territories *continued*

	JUNE 2001		JUNE 2003		Average annual rate of change
	Number of operators	Proportion of operators	Number of operators	Proportion of operators	
	'000	%	'000	%	
NORTHERN TERRITORY (a)					
Males					
1–10 hours worked	**0.2	3.2	**0.2	2.4	-14.5
11–20 hours worked	—	—	*0.7	10.3	—
21–34 hours worked	**0.5	6.0	**0.3	4.0	-20.0
Total part-time	*0.7	9.2	*1.2	16.7	32.0
35–50 hours worked	^ 4.1	54.0	^ 3.2	43.9	-11.8
51–75 hours worked	^ 2.2	28.8	*2.2	30.7	1.0
More than 75 hours worked	*0.6	8.0	*0.6	8.6	1.4
Total full-time	^ 6.9	90.8	^ 6.0	83.3	-6.4
Total	^ 7.6	100.0	^ 7.3	100.0	-2.2
Females					
1–10 hours worked	**0.5	17.9	**0.4	15.2	-12.6
11–20 hours worked	**0.3	11.4	*0.5	20.3	26.8
21–34 hours worked	**0.2	8.3	**0.2	7.4	-9.9
Total part-time	*1.1	37.7	*1.1	43.0	1.5
35–50 hours worked	*1.4	49.1	**0.4	14.7	-48.1
51–75 hours worked	**0.4	13.2	*0.8	31.3	46.1
More than 75 hours worked	—	—	**0.3	11.1	—
Total full-time	*1.8	62.3	*1.5	57.0	-9.1
Total	^ 2.9	100.0	^ 2.7	100.0	-5.0
Persons					
1–10 hours worked	*0.8	7.3	*0.6	5.8	-13.2
11–20 hours worked	**0.3	3.2	*1.3	13.0	95.6
21–34 hours worked	*0.7	6.6	*0.5	4.9	-16.4
Total part-time	*1.8	17.1	*2.4	23.8	14.2
35–50 hours worked	^ 5.5	52.6	^ 3.6	36.1	-19.7
51–75 hours worked	^ 2.6	24.4	^ 3.1	30.9	9.0
More than 75 hours worked	*0.6	5.8	*0.9	9.3	22.9
Total full-time	^ 8.7	82.9	^ 7.6	76.2	-7.0
Total	^ 10.5	100.0	^ 9.9	100.0	-3.0

^ estimate has a relative standard error of 10% to less than 25% and should be used with caution

* estimate has a relative standard error of 25% to 50% and should be used with caution

** estimate has a relative standard error greater than 50% and is considered too unreliable for general use

— nil or rounded to zero (including null cells)

(a) Refers to mainly urban areas only.

2.2SMALL BUSINESS OPERATORS, By sex and usual hours worked per week for states and territories *continued*

	JUNE 2001		JUNE 2003		Average annual rate of change
	Number of operators	Proportion of operators	Number of operators	Proportion of operators	
	'000	%	'000	%	
AUSTRALIAN CAPITAL TERRITORY					
Males					
1–10 hours worked	*0.7	4.4	*1.2	8.0	31.2
11–20 hours worked	*0.8	5.3	*1.2	7.7	17.4
21–34 hours worked	*0.5	3.4	*1.6	10.7	72.9
Total part-time	^2.1	13.1	^4.0	26.4	38.2
35–50 hours worked	^8.5	54.1	^7.0	47.0	-9.3
51–75 hours worked	^4.4	27.9	^3.6	24.3	-9.1
More than 75 hours worked	*0.8	4.9	**0.3	2.2	-33.9
Total full-time	13.7	86.9	^11.0	73.6	-10.4
Total	15.8	100.0	15.0	100.0	-2.6
Females					
1–10 hours worked	*1.4	16.6	^2.5	37.4	34.6
11–20 hours worked	*0.9	10.2	*1.2	18.4	20.4
21–34 hours worked	^2.0	23.4	*1.2	18.3	-20.7
Total part-time	^4.2	50.3	^5.0	74.0	8.9
35–50 hours worked	^3.4	40.8	*1.3	19.6	-37.8
51–75 hours worked	*0.6	7.6	**0.3	4.6	-30.1
More than 75 hours worked	**0.1	1.4	**0.1	1.7	0.5
Total full-time	^4.2	49.7	*1.8	26.0	-35.2
Total	^8.4	100.0	^6.8	100.0	-10.3
Persons					
1–10 hours worked	^2.1	8.7	^3.7	17.2	33.5
11–20 hours worked	^1.7	7.0	^2.4	11.0	18.9
21–34 hours worked	^2.5	10.4	^2.8	13.1	6.4
Total part-time	^6.3	26.1	^9.0	41.3	19.3
35–50 hours worked	12.0	49.5	^8.4	38.4	-16.5
51–75 hours worked	^5.0	20.8	^4.0	18.2	-11.5
More than 75 hours worked	*0.9	3.6	**0.5	2.1	-28.4
Total full-time	17.9	73.9	12.8	58.7	-15.6
Total	24.2	100.0	21.8	100.0	-5.2

^ estimate has a relative standard error of 10% to less than 25% and should be used with caution

* estimate has a relative standard error of 25% to 50% and should be used with caution

** estimate has a relative standard error greater than 50% and is considered too unreliable for general use

2.3 SMALL BUSINESS OPERATORS, By sex and Australian born and overseas born for states and territories

	JUNE 2001		JUNE 2003		Average annual rate of change
	Number of operators	Proportion of operators	Number of operators	Proportion of operators	
	'000	%	'000	%	
AUSTRALIA					
Males					
Born in Australia	743.2	69.4	737.8	69.4	-0.4
Born overseas	327.1	30.6	325.2	30.6	-0.3
Total	1 070.3	100.0	1 063.0	100.0	-0.3
Females					
Born in Australia	389.7	74.0	385.6	73.0	-0.5
Born overseas	137.2	26.0	143.0	27.0	2.1
Total	526.9	100.0	528.6	100.0	0.2
Persons					
Born in Australia	1 132.9	70.9	1 123.4	70.6	-0.4
Born overseas	464.3	29.1	468.1	29.4	0.4
Total	1 597.2	100.0	1 591.5	100.0	-0.2
NEW SOUTH WALES					
Males					
Born in Australia	233.2	65.5	223.0	64.6	-2.2
Born overseas	122.8	34.5	122.1	35.4	-0.3
Total	356.0	100.0	345.1	100.0	-1.5
Females					
Born in Australia	112.7	70.8	111.3	71.2	-0.6
Born overseas	^ 46.5	29.2	45.1	28.8	-1.6
Total	159.2	100.0	156.4	100.0	-0.9
Persons					
Born in Australia	345.9	67.1	334.3	66.7	-1.7
Born overseas	169.3	32.9	167.2	33.3	-0.6
Total	515.2	100.0	501.4	100.0	-1.3
VICTORIA					
Males					
Born in Australia	186.2	71.6	193.2	72.2	1.9
Born overseas	73.9	28.4	74.5	27.8	0.4
Total	260.1	100.0	267.6	100.0	1.4
Females					
Born in Australia	92.4	76.4	101.2	73.9	4.7
Born overseas	^ 28.5	23.6	^ 35.8	26.1	12.0
Total	120.9	100.0	137.1	100.0	6.5
Persons					
Born in Australia	278.5	73.1	294.4	72.7	2.8
Born overseas	102.4	26.9	110.3	27.3	3.8
Total	381.0	100.0	404.7	100.0	3.1

^ estimate has a relative standard error of 10% to less than 25% and should be used with caution

2.3**SMALL BUSINESS OPERATORS, By sex and Australian born and overseas born for states and territories *continued***

	JUNE 2001		JUNE 2003		Average annual rate of change
	Number of operators	Proportion of operators	Number of operators	Proportion of operators	
	'000	%	'000	%	
..... QUEENSLAND					
Males					
Born in Australia	159.7	75.9	154.3	75.3	-1.7
Born overseas	50.7	24.1	50.5	24.7	-0.2
Total	210.4	100.0	204.9	100.0	-1.3
Females					
Born in Australia	89.7	76.8	93.8	78.2	2.2
Born overseas	^ 27.1	23.2	^ 26.1	21.8	-1.7
Total	116.8	100.0	119.9	100.0	1.3
Persons					
Born in Australia	249.4	76.2	248.1	76.4	-0.3
Born overseas	77.8	23.8	76.7	23.6	-0.7
Total	327.2	100.0	324.8	100.0	-0.4
..... SOUTH AUSTRALIA					
Males					
Born in Australia	56.3	72.4	52.6	72.3	-3.3
Born overseas	^ 21.4	27.6	^ 20.1	27.7	-3.1
Total	77.7	100.0	72.7	100.0	-3.3
Females					
Born in Australia	34.5	81.0	25.5	79.7	-14.1
Born overseas	^ 8.1	19.0	^ 6.5	20.3	-10.5
Total	42.6	100.0	32.0	100.0	-13.4
Persons					
Born in Australia	90.8	75.5	78.1	74.6	-7.3
Born overseas	29.5	24.5	26.6	25.4	-5.1
Total	120.3	100.0	104.7	100.0	-6.7
..... WESTERN AUSTRALIA					
Males					
Born in Australia	74.6	61.1	80.4	61.9	3.9
Born overseas	47.4	38.9	49.5	38.1	2.2
Total	122.0	100.0	129.9	100.0	3.2
Females					
Born in Australia	43.6	67.8	38.2	60.0	-6.4
Born overseas	^ 20.7	32.2	25.4	40.0	10.9
Total	64.3	100.0	63.6	100.0	-0.5
Persons					
Born in Australia	118.2	63.5	118.6	61.3	0.2
Born overseas	68.1	36.5	74.9	38.7	4.9
Total	186.3	100.0	193.5	100.0	1.9

^ estimate has a relative standard error of 10% to less than 25% and should be used with caution

2.3 SMALL BUSINESS OPERATORS, By sex and Australian born and overseas born for states and territories *continued*

	JUNE 2001		JUNE 2003		Average annual rate of change
	Number of operators	Proportion of operators	Number of operators	Proportion of operators	
	'000	%	'000	%	
TASMANIA					
Males					
Born in Australia	16.8	80.7	^ 17.8	86.6	3.0
Born overseas	^ 4.0	19.3	^ 2.8	13.4	-17.1
Total	20.8	100.0	20.6	100.0	-0.5
Females					
Born in Australia	9.8	83.3	^ 8.9	87.1	-4.5
Born overseas	^ 2.0	16.7	* 1.3	12.9	-17.9
Total	11.7	100.0	^ 10.2	100.0	-6.6
Persons					
Born in Australia	26.5	81.7	26.7	86.8	0.3
Born overseas	^ 6.0	18.3	^ 4.1	13.2	-17.4
Total	32.5	100.0	30.8	100.0	-2.7
NORTHERN TERRITORY (a)					
Males					
Born in Australia	^ 5.6	73.8	^ 5.7	79.2	1.2
Born overseas	* 2.0	26.2	* 1.5	20.8	-12.7
Total	^ 7.6	100.0	^ 7.3	100.0	-2.2
Females					
Born in Australia	* 1.5	51.2	* 2.2	84.8	22.3
Born overseas	* 1.4	48.8	** 0.4	15.2	-46.9
Total	^ 2.9	100.0	^ 2.7	100.0	-5.0
Persons					
Born in Australia	^ 7.1	67.5	^ 8.0	80.7	6.0
Born overseas	^ 3.4	32.5	* 1.9	19.3	-25.1
Total	^ 10.5	100.0	^ 9.9	100.0	-3.0
AUSTRALIAN CAPITAL TERRITORY					
Males					
Born in Australia	10.9	69.1	^ 10.7	71.8	-0.7
Born overseas	^ 4.9	30.9	^ 4.2	28.2	-7.1
Total	15.8	100.0	15.0	100.0	-2.6
Females					
Born in Australia	^ 5.5	65.4	^ 4.5	66.0	-9.9
Born overseas	^ 2.9	34.6	^ 2.3	34.0	-11.1
Total	^ 8.4	100.0	^ 6.8	100.0	-10.3
Persons					
Born in Australia	16.4	67.8	15.2	70.0	-3.7
Born overseas	^ 7.8	32.2	^ 6.5	30.0	-8.6
Total	24.2	100.0	21.8	100.0	-5.2

^ estimate has a relative standard error of 10% to less than 25% and should be used with caution

* estimate has a relative standard error of 25% to 50% and should be used with caution

** estimate has a relative standard error greater than 50% and is considered too unreliable for general use

(a) Refers to mainly urban areas only.

2.4

SMALL BUSINESS OPERATORS, By sex and number of businesses operated for states and territories

	JUNE 2001		JUNE 2003		Annual average rate of change
	Number of operators	Proportion of operators	Number of operators	Proportion of operators	
	'000	%	'000	%	
AUSTRALIA					
Males					
One business	991.7	92.7	984.5	92.6	-0.4
Two businesses	58.8	5.5	55.1	5.2	-3.2
Three businesses or more	^ 19.8	1.8	^ 23.4	2.2	8.7
Total	1 070.3	100.0	1 063.0	100.0	-0.3
Females					
One business	489.1	92.8	492.5	93.2	0.3
Two businesses	^ 30.0	5.7	^ 28.8	5.5	-2.0
Three businesses or more	^ 7.9	1.5	^ 7.3	1.4	-3.7
Total	526.9	100.0	528.6	100.0	0.2
Persons					
One business	1 480.8	92.7	1 477.0	92.8	-0.1
Two businesses	88.8	5.6	83.9	5.3	-2.8
Three businesses or more	^ 27.6	1.7	^ 30.7	1.9	5.3
Total	1 597.2	100.0	1 591.5	100.0	-0.2
NEW SOUTH WALES					
Males					
One business	329.1	92.4	319.4	92.5	-1.5
Two businesses	^ 20.5	5.8	^ 19.8	5.7	-1.9
Three businesses or more	* 6.3	1.8	* 5.9	1.7	-3.2
Total	356.0	100.0	345.1	100.0	-1.5
Females					
One business	146.8	92.2	146.4	93.6	-0.1
Two businesses	^ 9.3	5.8	* 7.5	4.8	-10.2
Three businesses or more	* 3.2	2.0	* 2.5	1.6	-11.4
Total	159.2	100.0	156.4	100.0	-0.9
Persons					
One business	475.9	92.4	465.7	92.9	-1.1
Two businesses	^ 29.8	5.8	^ 27.3	5.4	-4.4
Three businesses or more	^ 9.5	1.8	^ 8.4	1.7	-5.8
Total	515.2	100.0	501.4	100.0	-1.3

^ estimate has a relative standard error of 10% to less than 25% and should be used with caution

* estimate has a relative standard error of 25% to 50% and should be used with caution

2.4 SMALL BUSINESS OPERATORS, By sex and number of businesses operated for states and territories *continued*

	JUNE 2001		JUNE 2003		Annual average rate of change
	Number of operators	Proportion of operators	Number of operators	Proportion of operators	
	'000	%	'000	%	
VICTORIA					
Males					
One business	241.5	92.9	250.5	93.6	1.8
Two businesses	^ 14.1	5.4	^ 10.7	4.0	-12.8
Three businesses or more	*4.4	1.7	^ 6.5	2.4	21.0
Total	260.1	100.0	267.6	100.0	1.4
Females					
One business	113.7	94.1	129.6	94.5	6.7
Two businesses	^ 5.8	4.8	^ 6.5	4.7	5.7
Three businesses or more	**1.4	1.2	**1.0	0.7	-14.3
Total	120.9	100.0	137.1	100.0	6.5
Persons					
One business	355.3	93.3	380.0	93.9	3.4
Two businesses	^ 19.9	5.2	^ 17.2	4.2	-7.1
Three businesses or more	^ 5.8	1.5	^ 7.5	1.8	13.5
Total	381.0	100.0	404.7	100.0	3.1
QUEENSLAND					
Males					
One business	193.3	91.9	188.5	92.0	-1.2
Two businesses	^ 13.7	6.5	^ 12.0	5.8	-6.3
Three businesses or more	*3.4	1.6	*4.3	2.1	12.5
Total	210.4	100.0	204.9	100.0	-1.3
Females					
One business	108.3	92.7	109.3	91.1	0.4
Two businesses	^ 6.5	5.6	^ 8.7	7.3	15.7
Three businesses or more	*2.0	1.7	*2.0	1.6	-1.0
Total	116.8	100.0	119.9	100.0	1.3
Persons					
One business	301.6	92.2	297.8	91.7	-0.6
Two businesses	^ 20.2	6.2	^ 20.7	6.4	1.3
Three businesses or more	^ 5.4	1.7	^ 6.3	1.9	7.8
Total	327.2	100.0	324.8	100.0	-0.4

^ estimate has a relative standard error of 10% to less than 25% and should be used with caution

* estimate has a relative standard error of 25% to 50% and should be used with caution

** estimate has a relative standard error greater than 50% and is considered too unreliable for general use

2.4SMALL BUSINESS OPERATORS, By sex and number of businesses operated for states and territories *continued*

	JUNE 2001		JUNE 2003		Annual average rate of change
	Number of operators	Proportion of operators	Number of operators	Proportion of operators	
	'000	%	'000	%	
SOUTH AUSTRALIA					
Males					
One business	72.4	93.2	67.2	92.4	-3.7
Two businesses	*2.9	3.7	^ 3.8	5.3	14.6
Three businesses or more	*2.4	3.1	*1.7	2.3	-15.9
Total	77.7	100.0	72.7	100.0	-3.3
Females					
One business	39.9	93.6	29.4	92.0	-14.1
Two businesses	*2.0	4.6	*2.2	6.8	5.6
Three businesses or more	**0.8	1.8	**0.4	1.2	-29.5
Total	42.6	100.0	32.0	100.0	-13.4
Persons					
One business	112.3	93.3	96.6	92.3	-7.3
Two businesses	^ 4.9	4.0	^ 6.0	5.7	11.1
Three businesses or more	^ 3.2	2.6	*2.1	2.0	-19.1
Total	120.3	100.0	104.7	100.0	-6.7
WESTERN AUSTRALIA					
Males					
One business	114.6	93.9	119.0	91.6	1.9
Two businesses	^ 4.9	4.0	^ 7.2	5.6	21.0
Three businesses or more	*2.5	2.0	*3.7	2.8	22.7
Total	122.0	100.0	129.9	100.0	3.2
Females					
One business	59.1	91.9	59.7	93.9	0.6
Two businesses	^ 4.8	7.5	*3.0	4.7	-21.6
Three businesses or more	**0.4	0.6	**0.9	1.4	47.8
Total	64.3	100.0	63.6	100.0	-0.5
Persons					
One business	173.7	93.2	178.7	92.4	1.5
Two businesses	^ 9.7	5.2	^ 10.2	5.3	2.2
Three businesses or more	*2.9	1.5	^ 4.6	2.4	26.6
Total	186.3	100.0	193.5	100.0	1.9

^ estimate has a relative standard error of 10% to less than 25% and should be used with caution

* estimate has a relative standard error of 25% to 50% and should be used with caution

** estimate has a relative standard error greater than 50% and is considered too unreliable for general use

2.4 SMALL BUSINESS OPERATORS, By sex and number of businesses operated for states and territories *continued*

	JUNE 2001		JUNE 2003		Annual average rate of change
	Number of operators	Proportion of operators	Number of operators	Proportion of operators	
	'000	%	'000	%	
TASMANIA					
Males					
One business	19.0	91.5	19.2	93.6	0.6
Two businesses	*1.3	6.1	**0.4	2.0	-43.5
Three businesses or more	*0.5	2.4	*0.9	4.4	35.7
Total	20.8	100.0	20.6	100.0	-0.5
Females					
One business	10.6	90.3	^ 9.6	93.6	-4.9
Two businesses	*1.0	8.7	**0.4	4.3	-34.1
Three businesses or more	**0.1	1.0	**0.2	2.1	34.0
Total	11.7	100.0	^ 10.2	100.0	-6.6
Persons					
One business	29.6	91.1	28.8	93.6	-1.3
Two businesses	^ 2.3	7.0	*0.8	2.7	-39.2
Three businesses or more	*0.6	1.9	*1.1	3.7	35.3
Total	32.5	100.0	30.8	100.0	-2.7
NORTHERN TERRITORY (a)					
Males					
One business	^ 7.5	98.4	^ 6.8	93.6	-4.6
Two businesses	—	—	**0.4	4.9	—
Three businesses or more	**0.1	1.6	**0.1	1.5	-5.6
Total	^ 7.6	100.0	^ 7.3	100.0	-2.2
Females					
One business	^ 2.7	92.6	*2.2	83.1	-10.0
Two businesses	**0.2	7.4	**0.2	8.8	3.5
Three businesses or more	—	—	**0.2	8.0	—
Total	^ 2.9	100.0	^ 2.7	100.0	-5.0
Persons					
One business	^ 10.2	96.8	^ 9.0	90.8	-6.0
Two businesses	**0.2	2.1	*0.6	5.9	63.8
Three businesses or more	**0.1	1.2	**0.3	3.3	61.8
Total	^ 10.5	100.0	^ 9.9	100.0	-3.0

^ estimate has a relative standard error of 10% to less than 25% and should be used with caution

* estimate has a relative standard error of 25% to 50% and should be used with caution

** estimate has a relative standard error greater than 50% and is considered too unreliable for general use

— nil or rounded to zero (including null cells)

(a) Refers to mainly urban areas only.

2.4SMALL BUSINESS OPERATORS, By sex and number of businesses operated for states and territories *continued*

	JUNE 2001		JUNE 2003		Annual average rate of change
	Number of operators '000	Proportion of operators %	Number of operators '000	Proportion of operators %	
AUSTRALIAN CAPITAL TERRITORY					
Males					
One business	14.3	90.6	13.9	93.1	-1.3
Two businesses	*1.4	8.6	*0.8	5.4	-22.7
Three businesses or more	**0.1	0.7	**0.2	1.5	39.2
Total	15.8	100.0	15.0	100.0	-2.6
Females					
One business	^ 8.0	94.9	^ 6.3	93.3	-11.0
Two businesses	**0.4	5.1	**0.4	5.2	-10.1
Three businesses or more	—	—	**0.1	1.6	—
Total	^ 8.4	100.0	^ 6.8	100.0	-10.3
Persons					
One business	22.3	92.1	20.3	93.1	-4.7
Two businesses	^ 1.8	7.4	*1.2	5.4	-19.5
Three businesses or more	**0.1	0.5	**0.3	1.5	69.4
Total	24.2	100.0	21.8	100.0	-5.2

^ estimate has a relative standard error of 10% to less than 25% and should be used with caution

* estimate has a relative standard error of 25% to 50% and should be used with caution

** estimate has a relative standard error greater than 50% and is considered too unreliable for general use

— nil or rounded to zero (including null cells)

INTRODUCTION

This chapter presents selected characteristics of small businesses including details of the ownership structure, business age, the use of computers and Internet access. Data are classified both by state/territory and business size.

Where comparable, estimates of businesses from the June 2001 and June 2003 surveys are presented in the tables, together with the average annual rate of change to assist analysis.

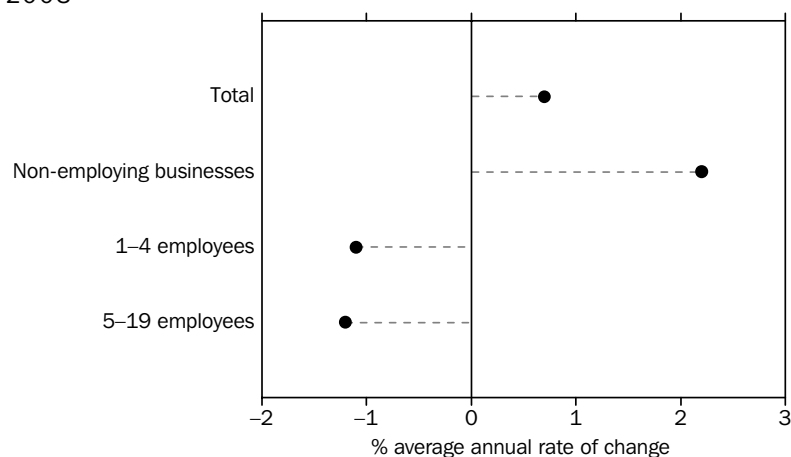
NUMBER OF BUSINESSES

There were an estimated 1,179,300 small businesses operating in Australia in June 2003. This represented a slight average annual increase of 0.7% since June 2001.

Of these:

- 666,200 (56%) were non-employed businesses, up by an average annual rate of 2.2% since June 2001
- 389,100 (33%) employed 1–4 people, down by an average annual rate of 1.1% since June 2001
- 124,000 (11%) employed 5–19 people, down by an average annual rate of 1.2% since June 2001.

AVERAGE ANNUAL GROWTH, Small businesses—June 2001 to June 2003



LOCATION OF OPERATION

Small businesses were distributed across states and territories in a similar proportion to small business operators, reflecting the general population distribution within Australia. The strongest average annual growth over the period June 2001 to June 2003 was recorded in Victoria (4.3%), followed by Western Australia (2.8%) and the Northern Territory (2.6%); New South Wales, Queensland and Tasmania recorded similar levels to the June 2001 survey. South Australia and the Australian Capital Territory recorded decreases, down average annual rates of 5.5% and 6.6% respectively.

LOCATION OF OPERATION
continued

In the Northern Territory the growth was strongest in non-employed businesses, at an average annual rate of 25%, though in absolute terms this was an increase of only 1,900 businesses. In Victoria, growth was strongest for businesses employing 5–19 people, with an average annual growth rate of 7.8%. Victoria also grew strongly in the non-employed businesses category with an average annual rate of 5.0%. Not all states recorded growth in non-employed businesses, there was an average annual rate of decline of 6.7% in South Australia; 4.3% in the Australian Capital Territory and 0.4% in Queensland.

LENGTH OF OPERATION

Table 3.1 also provides details of the length of operation of small businesses. Length of operation refers to the length of time the business has been operated by the current owner. Where an established business has been taken over, the operations of the previous owner have not been taken into account.

Of the 1,179,300 small businesses operating in Australia at June 2003:

- 152,700 (13%) had been in operation for less than one year, down by an average annual rate of 2.2% from June 2001
- 398,500 (34%) had been in operation for one year but less than five years, down by an average annual rate of 1.4% from June 2001
- 239,200 (20%) had been in operation for five years but less than 10 years, up by an average annual rate of 3.9% from June 2001
- 388,900 (33%) had been in operation for 10 or more years, up by an average annual rate of 2.3% from June 2001.

By size of business

For non-employed businesses, the highest proportion (37%) were aged one to less than five years. For businesses employing 1–4 people, the highest proportion was 38% for businesses aged 10 or more years. In the larger size group (businesses employing 5–19 people), businesses were more likely to be older, with 49% of businesses falling into the 10 or more years category.

Across the different business size groups, the most significant positive growth in the number of businesses over the period June 2001 to June 2003 occurred in the older business category, particularly those in the five to less than 10 years category. There was an average annual increase of 6.2% in the number of non-employed businesses aged five to less than 10 years, 1.7% in the number of 1–4 employing businesses; and 1.4% in the number of 5–19 employing businesses.

Decreases were recorded in the less than one year category in all size groups. Tasmania reported the largest decrease in the less than one year category for non-employed businesses, with an average annual rate of decline of 25%.

OPERATORS PER
BUSINESS

In June 2003, there were 808,300 (69%) small businesses operating as single operator businesses. This represented an average annual increase in single operator businesses of 2.4% since June 2001. The numbers of businesses with two operators, and three or more operators decreased by an average annual rate of 2.7% and 2.0% respectively over the same period.

By size of business

Table 3.2 shows that:

For non-employed businesses:

- 81% had one operator (compared to 78% in June 2001)
- 18% had two operators (compared to 21% in June 2001)
- 0.8% had three or more operators (which is consistent with the June 2001 survey results).

For businesses employing 1–4 people:

- 58% had one operator (which is consistent with the June 2001 survey results)
- 39% had two operators (compared to 40% in June 2001)
- 2.2% had three or more operators (compared to 2.1% in June 2001).

For businesses employing 5–19 people:

- 34% had one operator (compared to 32% in June 2001)
- 55% had two operators (compared to 56% in June 2001)
- 12% had three or more operators (which is consistent with the June 2001 survey results).

By state and territory

There was little variation across states and territories with the Northern Territory (78%), New South Wales, Victoria and South Australia (70%) recording the highest proportion of small businesses with one operator. For small businesses with three or more operators, the highest proportions were recorded in Queensland (3.0%) and the lowest in the Northern Territory (1.2%).

PREDOMINANT SEX OF OPERATORS

Of the 1,179,300 small businesses in Australia in June 2003, 649,600 (55%) were operated by an individual male or predominantly by males. This represented an average annual increase of 1.4% since June 2001.

There were 299,600 businesses (25%), operated by equal numbers of males and females. The number of businesses in this group declined, down an average annual rate of 3.9%, from the 324,600 businesses recorded in June 2001, reversing the average annual increase of 6.2% over the 1999 data.

There was a further 230,200 businesses (20%) operated predominantly by females, up from 205,900 businesses in June 2001, an average annual growth of 5.7%.

By size of business

The non-employed business category was the most common business size group for both predominantly male operated businesses (59%) and predominantly female operated businesses (75%). The number of predominantly female operated non-employed businesses recorded an average annual growth rate of 9.9%, which was much higher than the growth rate for non-employed businesses predominantly operated by males, which had an average rate of growth (1.3%).

Businesses operated by equal number of male and female operators were more evenly spread across the three business size categories:

- 109,300 (37%) of businesses were non-employed businesses, down by an average annual rate of 4.6%
- 136,000 (45%) of businesses were employing 1–4 people, down by an average annual rate of 2.7%

*By size of business
continued*

- 54,300 (18%) of businesses were employing 5–19 people, down by an average annual rate of 5.6%.

USE OF COMPUTERS AND THE INTERNET

In June 2003, 846,500 (72%) of the 1,179,300 small businesses reported they were using computers in their business operations. As the size of the business increases, the likelihood that a business uses a computer increases, with 94% of businesses with 5–19 employees using a computer, compared to 62% of non-employing businesses. The figures for all business sizes has increased since June 2001, the overall average annual rate of growth is 4.6%.

When comparing these results to that of other ABS series, it should be noted that some series only measure the use of computers and the Internet by employing businesses.

Use of computers

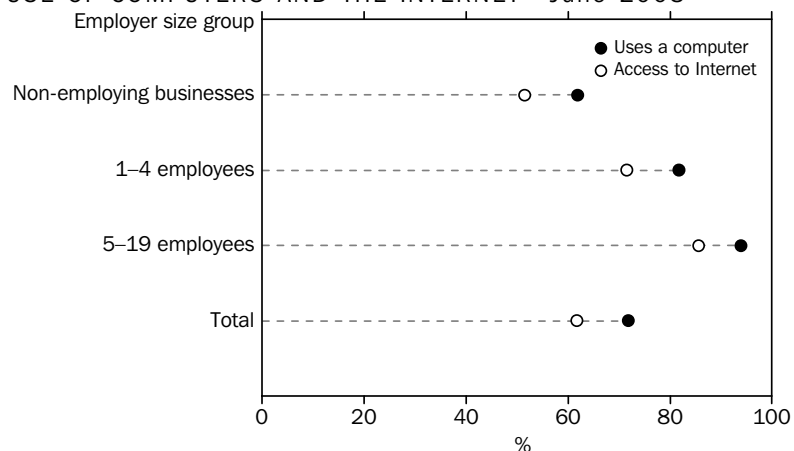
Table 3.4 shows that between June 2001 and June 2003, there was a strong growth in the number of businesses using computers:

- 412,000 (62%) of non-employing businesses had a computer, up from 354,400 (56%) in June 2001
- 318,100 (82%) of businesses employing 1–4 people had a computer, up from 306,700 (77%) in June 2001
- 116,400 (94%) of businesses employing 5–19 people had a computer, up from 112,300 (89%) in June 2001.

Businesses that had access to the Internet increased to 727,700 businesses (62%) an average annual growth rate of 9.2%. Again the use of the Internet was more common in the larger businesses:

- 343,400 (52%) of non-employing businesses had access to the Internet, up from 271,500 (43%) in June 2001
- 278,200 (72%) of businesses employing 1–4 people had access to the Internet, up from 245,600 (62%) in June 2001
- 106,100 (86%) of businesses employing 5–19 people had access to the Internet, up from 92,900 (73%) in June 2001.

USE OF COMPUTERS AND THE INTERNET—June 2003



Use of Internet

The major uses of the Internet for small business operators include Email (52%), Research (48%), Making or receiving payments (29%) and 'Other' (53%). The 'Other' category can encompass a wide range of Internet related activities and this may contribute to the high response rate in this category.

It should be noted that 'making and receiving payments' is not a measure of E-commerce or I-commerce, as these are defined as ordering goods and services electronically or via the Internet, not on the method of making/receiving payments.

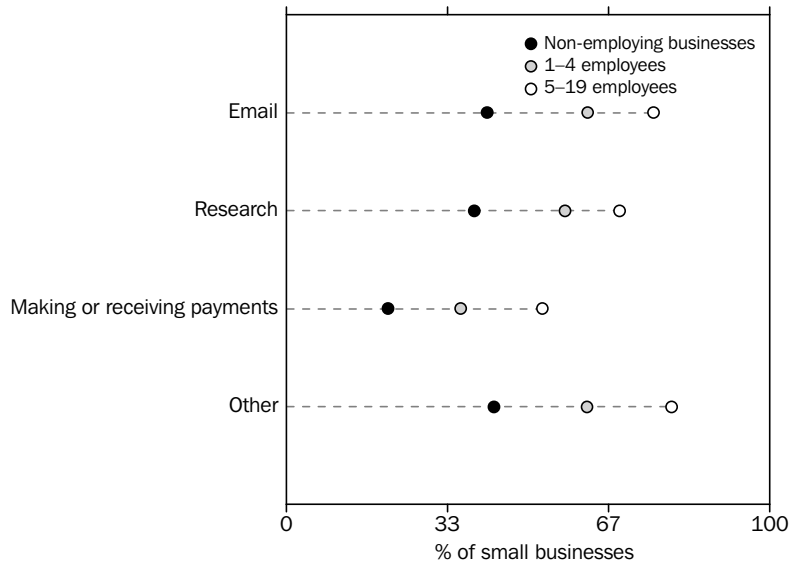
Between June 2001 and June 2003 use of the Internet by non-employed small businesses reported increases across the various uses as well as an overall average annual rate of increase of 2.2%. Proportionally, employing businesses made greater use of the Internet than did non-employed businesses, but the rate of growth in the two year period to June 2003 was greatest amongst non-employers.

More than half (52%) of small businesses used the Internet for email, at June 2003 there was an average annual increase of 9.5%. Making or receiving payments increased significantly (an average annual rate of increase of 28% during the period June 2001 and June 2003). Almost 30% of all small businesses were using the Internet for this purpose, at June 2003, with non-employed small businesses significantly increasing their usage (an average annual rate of increase of 35%).

At June 2003, there were some 29% (up from only 18% of small businesses in June 2001) involved in 'making or receiving payments' via the Internet. Increasing use of the Internet for 'making and receiving payments' is reported across all small business sizes:

- 21% (139,800) of non-employed businesses used the Internet for 'making and receiving payments', up from 12% (76,300) in June 2001
- 36% (140,200) of businesses employing 1–4 people used the Internet for 'making and receiving payments', up from 22% (86,800) in June 2001
- 53% (65,600) of businesses employing 5–19 people used the Internet for 'making and receiving payments', up from 37% (47,100) in June 2001.

USES OF THE INTERNET BY SMALL BUSINESSES—June 2003



By state and territory

The proportion of small businesses using computers in their business operations was relatively consistent (70%–75%) across most states and territories. The Australian Capital Territory recorded the highest proportion with 75% of small businesses using computers. The Northern Territory, where 60% of small businesses were using computers, was more than 10 percentage points lower than any other state or territory.

Access to the Internet across states and territories followed a similar pattern to computer usage with levels highest in the Australian Capital Territory (68%) and lowest in Tasmania and the Northern Territory (both 57%).

3.1 SMALL BUSINESSES, By employer size group and length of operation by current owner for states and territories

	JUNE 2001		JUNE 2003		Average annual rate of change
	Number of businesses	Proportion of businesses	Number of businesses	Proportion of businesses	
	'000	%	'000	%	
AUSTRALIA					
Non-employed businesses					
Less than 1 year	116.5	18.3	112.4	16.9	-1.8
1 to less than 5 years	248.2	38.9	247.8	37.2	-0.1
5 to less than 10 years	110.4	17.3	124.4	18.7	6.2
10 or more years	162.3	25.5	181.6	27.3	5.8
Total	637.3	100.0	666.2	100.0	2.2
1-4 employees					
Less than 1 year	36.1	9.1	34.2	8.8	-2.7
1 to less than 5 years	133.4	33.5	123.4	31.7	-3.8
5 to less than 10 years	82.4	20.7	85.3	21.9	1.7
10 or more years	145.9	36.7	146.3	37.6	0.2
Total	397.7	100.0	389.1	100.0	-1.1
5-19 employees					
Less than 1 year	^ 7.1	5.6	^ 6.1	4.9	-7.5
1 to less than 5 years	28.0	22.0	27.3	22.1	-1.1
5 to less than 10 years	28.7	22.6	29.5	23.8	1.4
10 or more years	63.1	49.8	61.0	49.2	-1.7
Total	126.9	100.0	124.0	100.0	-1.2
Total					
Less than 1 year	159.7	13.7	152.7	12.9	-2.2
1 to less than 5 years	409.5	35.2	398.5	33.8	-1.4
5 to less than 10 years	221.4	19.1	239.2	20.3	3.9
10 or more years	371.4	32.0	388.9	33.0	2.3
Total	1 162.0	100.0	1 179.3	100.0	0.7
NEW SOUTH WALES					
Non-employed businesses					
Less than 1 year	^ 39.2	20.4	^ 30.4	14.8	-12.0
1 to less than 5 years	77.2	40.2	77.4	37.7	0.1
5 to less than 10 years	^ 28.4	14.8	^ 35.6	17.3	12.1
10 or more years	47.4	24.6	62.0	30.2	14.4
Total	192.2	100.0	205.4	100.0	3.4
1-4 employees					
Less than 1 year	^ 11.7	8.0	^ 7.7	5.7	-19.2
1 to less than 5 years	51.4	35.3	42.8	31.8	-8.8
5 to less than 10 years	^ 27.1	18.6	^ 30.0	22.3	5.2
10 or more years	55.6	38.1	53.9	40.2	-1.5
Total	145.8	100.0	134.4	100.0	-4.0
5-19 employees					
Less than 1 year	* 1.9	4.5	* 2.4	6.5	12.8
1 to less than 5 years	^ 11.2	26.6	* 5.3	14.3	-31.4
5 to less than 10 years	^ 7.1	16.9	^ 8.8	24.1	11.4
10 or more years	^ 21.9	52.0	^ 20.2	55.1	-3.9
Total	42.1	100.0	^ 36.8	100.0	-6.6
Total					
Less than 1 year	52.8	13.9	40.4	10.7	-12.5
1 to less than 5 years	139.9	36.8	125.5	33.3	-5.3
5 to less than 10 years	62.6	16.5	74.5	19.8	9.0
10 or more years	124.8	32.8	136.2	36.2	4.4
Total	380.1	100.0	376.5	100.0	-0.5

^ estimate has a relative standard error of 10% to less than 25% and should be used with caution

* estimate has a relative standard error of 25% to 50% and should be used with caution

3.1**SMALL BUSINESSES, By employer size group and length of operation by current owner for states and territories *continued***

	JUNE 2001		JUNE 2003		Average annual rate of change
	Number of businesses	Proportion of businesses	Number of businesses	Proportion of businesses	
	'000	%	'000	%	
VICTORIA					
Non-employed businesses					
Less than 1 year	^ 22.8	15.6	^ 26.8	16.6	8.4
1 to less than 5 years	50.9	34.8	59.7	37.0	8.3
5 to less than 10 years	^ 27.1	18.5	^ 31.4	19.5	7.6
10 or more years	45.4	31.1	43.3	26.9	-2.3
Total	146.3	100.0	161.3	100.0	5.0
1-4 employees					
Less than 1 year	^ 7.2	7.1	^ 12.1	11.4	29.1
1 to less than 5 years	32.7	32.3	^ 33.7	31.8	1.5
5 to less than 10 years	^ 20.4	20.1	^ 18.6	17.6	-4.3
10 or more years	41.0	40.5	41.6	39.3	0.7
Total	101.2	100.0	105.9	100.0	2.3
5-19 employees					
Less than 1 year	*1.8	5.7	*1.6	4.5	-4.3
1 to less than 5 years	^ 4.2	13.4	^ 6.8	18.7	27.1
5 to less than 10 years	^ 8.8	28.0	^ 8.6	23.8	-0.8
10 or more years	^ 16.5	52.9	^ 19.3	53.1	8.0
Total	31.3	100.0	^ 36.4	100.0	7.8
Total					
Less than 1 year	31.8	11.4	40.5	13.3	12.8
1 to less than 5 years	87.8	31.5	100.2	33.0	6.8
5 to less than 10 years	56.3	20.2	58.7	19.3	2.1
10 or more years	102.9	36.9	104.2	34.3	0.6
Total	278.8	100.0	303.5	100.0	4.3

^ estimate has a relative standard error of 10% to less than 25% and should be used with caution

* estimate has a relative standard error of 25% to 50% and should be used with caution

3.1 SMALL BUSINESSES, By employer size group and length of operation by current owner for states and territories *continued*

	JUNE 2001		JUNE 2003		Average annual rate of change
	Number of businesses	Proportion of businesses	Number of businesses	Proportion of businesses	
	'000	%	'000	%	
QUEENSLAND					
Non-employed businesses					
Less than 1 year	^ 22.1	15.8	27.5	19.8	11.4
1 to less than 5 years	61.6	44.1	51.3	37.0	-8.7
5 to less than 10 years	24.8	17.7	23.3	16.8	-3.0
10 or more years	31.3	22.4	36.6	26.4	8.1
Total	139.8	100.0	138.7	100.0	-0.4
1-4 employees					
Less than 1 year	^ 10.0	14.6	^ 7.4	10.5	-13.9
1 to less than 5 years	^ 21.1	30.7	^ 21.8	30.6	1.5
5 to less than 10 years	^ 15.8	23.0	^ 18.3	25.8	7.7
10 or more years	^ 21.8	31.7	23.6	33.2	4.0
Total	68.7	100.0	71.0	100.0	1.7
5-19 employees					
Less than 1 year	*2.6	9.9	*1.1	4.4	-34.5
1 to less than 5 years	^ 6.0	22.9	^ 7.7	30.6	12.9
5 to less than 10 years	^ 7.3	27.8	^ 6.5	25.8	-5.9
10 or more years	^ 10.4	39.5	^ 9.8	39.1	-2.8
Total	26.3	100.0	25.0	100.0	-2.4
Total					
Less than 1 year	34.8	14.8	36.0	15.3	1.8
1 to less than 5 years	88.7	37.8	80.7	34.4	-4.6
5 to less than 10 years	47.8	20.4	48.1	20.5	0.2
10 or more years	63.4	27.0	69.9	29.8	5.0
Total	234.8	100.0	234.7	100.0	—

^ estimate has a relative standard error of 10% to less than 25% and should be used with caution

* estimate has a relative standard error of 25% to 50% and should be used with caution

— nil or rounded to zero (including null cells)

3.1**SMALL BUSINESSES, By employer size group and length of operation by current owner for states and territories *continued***

	JUNE 2001		JUNE 2003		Average annual rate of change
	Number of businesses	Proportion of businesses	Number of businesses	Proportion of businesses	
	'000	%	'000	%	
SOUTH AUSTRALIA					
Non-employed businesses					
Less than 1 year	^ 10.5	19.6	^ 6.5	14.0	-21.1
1 to less than 5 years	18.3	34.2	^ 17.2	36.9	-3.1
5 to less than 10 years	^ 10.0	18.6	^ 8.2	17.6	-9.2
10 or more years	^ 14.8	27.6	^ 14.7	31.5	-0.2
Total	53.6	100.0	46.7	100.0	-6.7
1-4 employees					
Less than 1 year	^ 2.0	8.0	* 2.6	10.9	12.3
1 to less than 5 years	^ 9.6	37.7	^ 6.8	28.6	-16.1
5 to less than 10 years	^ 4.8	18.9	^ 5.8	24.6	9.8
10 or more years	^ 9.0	35.4	^ 8.5	35.9	-3.0
Total	25.5	100.0	23.6	100.0	-3.7
5-19 employees					
Less than 1 year	* 0.6	7.0	** 0.3	3.3	-33.9
1 to less than 5 years	^ 2.2	26.5	* 1.8	23.3	-10.1
5 to less than 10 years	* 1.1	13.0	* 2.1	27.2	38.5
10 or more years	^ 4.5	53.4	^ 3.6	46.2	-10.8
Total	^ 8.4	100.0	^ 7.7	100.0	-4.1
Total					
Less than 1 year	^ 13.1	15.0	^ 9.3	12.0	-15.6
1 to less than 5 years	30.2	34.5	25.8	33.0	-7.6
5 to less than 10 years	^ 15.9	18.2	^ 16.1	20.7	0.8
10 or more years	28.3	32.3	26.8	34.3	-2.7
Total	87.4	100.0	78.0	100.0	-5.5

^ estimate has a relative standard error of 10% to less than 25% and should be used with caution

* estimate has a relative standard error of 25% to 50% and should be used with caution

** estimate has a relative standard error greater than 50% and is considered too unreliable for general use

3.1 SMALL BUSINESSES, By employer size group and length of operation by current owner for states and territories *continued*

	JUNE 2001		JUNE 2003		Average annual rate of change
	Number of businesses	Proportion of businesses	Number of businesses	Proportion of businesses	
	'000	%	'000	%	
WESTERN AUSTRALIA					
Non-employed businesses					
Less than 1 year	^ 16.8	21.5	^ 17.6	20.5	2.1
1 to less than 5 years	29.1	37.3	31.4	36.6	3.9
5 to less than 10 years	^ 14.5	18.5	^ 19.0	22.1	14.4
10 or more years	^ 17.7	22.6	^ 17.8	20.8	0.5
Total	78.1	100.0	85.8	100.0	4.8
1-4 employees					
Less than 1 year	^ 3.9	9.7	*2.7	6.7	-17.5
1 to less than 5 years	^ 12.5	31.0	^ 13.8	34.9	5.3
5 to less than 10 years	^ 10.2	25.4	^ 9.5	23.9	-3.8
10 or more years	^ 13.6	33.9	^ 13.6	34.5	0.1
Total	40.2	100.0	39.5	100.0	-0.8
5-19 employees					
Less than 1 year	**0.2	1.5	**0.6	3.9	66.4
1 to less than 5 years	*2.4	17.4	^ 4.7	33.2	40.2
5 to less than 10 years	^ 3.5	25.3	*2.6	18.4	-13.5
10 or more years	^ 7.7	55.8	^ 6.3	44.5	-9.3
Total	^ 13.7	100.0	^ 14.1	100.0	1.5
Total					
Less than 1 year	^ 20.9	15.9	^ 20.8	14.9	-0.4
1 to less than 5 years	44.0	33.3	49.9	35.8	6.6
5 to less than 10 years	28.2	21.3	31.0	22.2	4.9
10 or more years	38.9	29.5	37.8	27.1	-1.5
Total	132.0	100.0	139.5	100.0	2.8

^ estimate has a relative standard error of 10% to less than 25% and should be used with caution

* estimate has a relative standard error of 25% to 50% and should be used with caution

** estimate has a relative standard error greater than 50% and is considered too unreliable for general use

3.1SMALL BUSINESSES, By employer size group and length of operation by current owner for states and territories *continued*

	JUNE 2001		JUNE 2003		Average annual rate of change
	Number of businesses	Proportion of businesses	Number of businesses	Proportion of businesses	
	'000	%	'000	%	
TASMANIA					
Non-employed businesses					
Less than 1 year	^ 2.2	16.3	*1.3	9.2	-25.1
1 to less than 5 years	^ 5.5	40.6	^ 4.3	31.2	-12.3
5 to less than 10 years	^ 2.7	19.7	^ 3.9	28.7	20.8
10 or more years	^ 3.2	23.4	^ 4.2	30.9	15.1
Total	13.6	100.0	13.7	100.0	0.1
1-4 employees					
Less than 1 year	*0.5	8.0	*0.9	12.6	31.2
1 to less than 5 years	^ 1.7	25.4	*1.9	25.8	5.4
5 to less than 10 years	^ 2.2	32.7	*1.4	18.9	-20.3
10 or more years	^ 2.3	33.9	^ 3.1	42.6	17.4
Total	^ 6.6	100.0	^ 7.3	100.0	4.7
5-19 employees					
Less than 1 year	—	—	—	—	na
1 to less than 5 years	*0.6	25.7	*0.4	21.4	-19.3
5 to less than 10 years	*0.5	19.1	*0.5	28.3	7.9
10 or more years	*1.3	54.0	*1.0	50.3	-14.5
Total	^ 2.5	100.0	*1.9	100.0	-11.4
Total					
Less than 1 year	^ 2.8	12.3	^ 2.2	9.5	-11.8
1 to less than 5 years	^ 7.9	34.5	^ 6.6	28.6	-8.7
5 to less than 10 years	^ 5.3	23.4	^ 5.8	25.6	4.8
10 or more years	^ 6.8	29.8	^ 8.3	36.3	10.7
Total	22.7	100.0	22.9	100.0	0.3

^ estimate has a relative standard error of 10% to less than 25% and should be used with caution

* estimate has a relative standard error of 25% to 50% and should be used with caution

— nil or rounded to zero (including null cells)

na not available

3.1 SMALL BUSINESSES, By employer size group and length of operation by current owner for states and territories *continued*

	JUNE 2001		JUNE 2003		Average annual rate of change
	Number of businesses	Proportion of businesses	Number of businesses	Proportion of businesses	
	'000	%	'000	%	%
NORTHERN TERRITORY (a)					
Non-employed businesses					
Less than 1 year	*0.7	22.8	*0.7	14.1	-1.4
1 to less than 5 years	*1.0	30.6	^ 2.6	50.4	60.8
5 to less than 10 years	*0.9	29.3	*0.9	17.1	-4.4
10 or more years	*0.6	17.3	*0.9	18.4	29.4
Total	^ 3.2	100.0	^ 5.1	100.0	25.3
1-4 employees					
Less than 1 year	**0.1	3.6	**0.1	6.4	2.2
1 to less than 5 years	*1.7	48.5	*0.9	42.6	-27.9
5 to less than 10 years	*0.8	23.2	*0.6	29.8	-12.7
10 or more years	*0.9	24.7	*0.5	21.3	-28.6
Total	^ 3.6	100.0	*2.1	100.0	-23.0
5-19 employees					
Less than 1 year	—	—	**0.1	13.7	—
1 to less than 5 years	**0.2	30.2	*0.5	56.9	38.8
5 to less than 10 years	**0.1	17.5	**0.1	9.3	-26.1
10 or more years	*0.4	52.3	**0.2	20.2	-37.2
Total	*0.8	100.0	*0.8	100.0	1.2
Total					
Less than 1 year	*0.9	11.4	*1.0	12.0	5.3
1 to less than 5 years	^ 3.0	39.0	^ 3.9	48.9	14.8
5 to less than 10 years	*1.9	25.2	*1.6	19.7	-9.3
10 or more years	*1.9	24.4	*1.6	19.4	-8.6
Total	^ 7.6	100.0	^ 8.0	100.0	2.6

^ estimate has a relative standard error of 10% to less than 25% and should be used with caution

* estimate has a relative standard error of 25% to 50% and should be used with caution

** estimate has a relative standard error greater than 50% and is considered too unreliable for general use

— nil or rounded to zero (including null cells)

(a) Refers to mainly urban areas only.

3.1**SMALL BUSINESSES, By employer size group and length of operation by current owner for states and territories *continued***

	JUNE 2001		JUNE 2003		Average annual rate of change
	Number of businesses	Proportion of businesses	Number of businesses	Proportion of businesses	
	'000	%	'000	%	
AUSTRALIAN CAPITAL TERRITORY					
Non-employed businesses					
Less than 1 year	^ 2.1	19.4	^ 1.8	18.4	-7.0
1 to less than 5 years	^ 4.4	41.8	^ 3.8	39.7	-6.7
5 to less than 10 years	^ 2.0	19.1	^ 2.1	21.6	1.7
10 or more years	^ 2.1	19.7	^ 2.0	20.4	-2.8
Total	10.6	100.0	^ 9.7	100.0	-4.3
1-4 employees					
Less than 1 year	* 0.5	8.9	* 0.8	14.4	18.2
1 to less than 5 years	^ 2.6	43.5	^ 1.8	34.9	-16.8
5 to less than 10 years	* 1.1	18.1	* 1.1	20.8	-0.2
10 or more years	^ 1.8	29.5	* 1.6	29.9	-6.3
Total	^ 6.0	100.0	^ 5.2	100.0	-7.0
5-19 employees					
Less than 1 year	** 0.1	3.0	—	—	na
1 to less than 5 years	* 1.1	56.8	** 0.3	21.3	-50.1
5 to less than 10 years	* 0.3	16.1	** 0.2	19.8	-9.7
10 or more years	* 0.5	24.1	* 0.7	55.3	23.5
Total	^ 1.9	100.0	* 1.3	100.0	-18.5
Total					
Less than 1 year	^ 2.6	14.3	^ 2.6	15.9	-1.4
1 to less than 5 years	^ 8.1	43.9	^ 5.9	36.7	-14.6
5 to less than 10 years	^ 3.4	18.5	^ 3.4	21.2	0.2
10 or more years	^ 4.3	23.3	^ 4.2	26.2	-1.1
Total	18.5	100.0	16.1	100.0	-6.6

^ estimate has a relative standard error of 10% to less than 25% and should be used with caution

* estimate has a relative standard error of 25% to 50% and should be used with caution

** estimate has a relative standard error greater than 50% and is considered too unreliable for general use

— nil or rounded to zero (including null cells)

na not available

3.2 SMALL BUSINESSES, By employer size group and number of business operators for states and territories

	JUNE 2001		JUNE 2003		Average annual rate of change
	Number of businesses	Proportion of businesses	Number of businesses	Proportion of businesses	
	'000	%	'000	%	
AUSTRALIA					
Non-employed businesses					
1 operator	499.4	78.4	539.5	81.0	3.9
2 operators	132.7	20.8	121.6	18.3	-4.3
3 or more operators	^ 5.3	0.8	^ 5.1	0.8	-1.9
Total	637.3	100.0	666.2	100.0	2.2
1-4 employees					
1 operator	231.0	58.1	227.3	58.4	-0.8
2 operators	158.2	39.8	153.2	39.4	-1.6
3 or more operators	^ 8.5	2.1	^ 8.7	2.2	1.0
Total	397.7	100.0	389.1	100.0	-1.1
5-19 employees					
1 operator	40.2	31.7	41.5	33.5	1.6
2 operators	71.0	55.9	67.8	54.7	-2.2
3 or more operators	^ 15.8	12.4	^ 14.7	11.8	-3.7
Total	126.9	100.0	124.0	100.0	-1.2
Total					
1 operator	770.6	66.3	808.3	68.5	2.4
2 operators	361.8	31.1	342.6	29.0	-2.7
3 or more operators	29.6	2.5	28.4	2.4	-2.0
Total	1 162.0	100.0	1 179.3	100.0	0.7
NEW SOUTH WALES					
Non-employed businesses					
1 operator	156.2	81.3	167.4	81.5	3.5
2 operators	^ 34.1	17.7	^ 36.6	17.8	3.6
3 or more operators	* 1.9	1.0	* 1.4	0.7	-13.9
Total	192.2	100.0	205.4	100.0	3.4
1-4 employees					
1 operator	89.7	61.5	81.4	60.6	-4.7
2 operators	52.6	36.1	49.7	37.0	-2.8
3 or more operators	* 3.5	2.4	* 3.2	2.4	-4.1
Total	145.8	100.0	134.4	100.0	-4.0
5-19 employees					
1 operator	^ 14.1	33.6	^ 14.7	40.0	2.0
2 operators	^ 22.8	54.1	^ 17.8	48.5	-11.5
3 or more operators	* 5.2	12.3	* 4.2	11.4	-10.1
Total	42.1	100.0	^ 36.8	100.0	-6.6
Total					
1 operator	260.0	68.4	263.5	70.0	0.7
2 operators	109.5	28.8	104.2	27.7	-2.5
3 or more operators	^ 10.6	2.8	^ 8.9	2.4	-8.7
Total	380.1	100.0	376.5	100.0	-0.5

^ estimate has a relative standard error of 10% to less than 25% and should be used with caution

* estimate has a relative standard error of 25% to 50% and should be used with caution

3.2SMALL BUSINESSES, By employer size group and number of business operators
for states and territories *continued*

	JUNE 2001		JUNE 2003		Average annual rate of change
	Number of businesses	Proportion of businesses	Number of businesses	Proportion of businesses	
	'000	%	'000	%	
VICTORIA					
Non-employed businesses					
1 operator	114.3	78.2	134.6	83.4	8.5
2 operators	30.9	21.1	[^] 26.2	16.3	-7.9
3 or more operators	*1.1	0.7	**0.5	0.3	-32.0
Total	146.3	100.0	161.3	100.0	5.0
1-4 employees					
1 operator	61.8	61.1	66.8	63.1	3.9
2 operators	37.7	37.3	37.6	35.5	-0.2
3 or more operators	*1.6	1.6	*1.6	1.5	-1.9
Total	101.2	100.0	105.9	100.0	2.3
5-19 employees					
1 operator	[^] 10.6	33.9	[^] 10.2	28.0	-2.0
2 operators	[^] 16.4	52.3	[^] 22.4	61.6	16.9
3 or more operators	[^] 4.3	13.8	*3.8	10.4	-6.5
Total	31.3	100.0	[^]36.4	100.0	7.8
Total					
1 operator	186.8	67.0	211.5	69.7	6.4
2 operators	85.0	30.5	86.2	28.4	0.7
3 or more operators	[^] 7.0	2.5	[^] 5.8	1.9	-8.8
Total	278.8	100.0	303.5	100.0	4.3
QUEENSLAND					
Non-employed businesses					
1 operator	104.7	74.9	109.4	78.9	2.2
2 operators	34.4	24.6	27.7	19.9	-10.3
3 or more operators	*0.7	0.5	*1.7	1.2	54.7
Total	139.8	100.0	138.7	100.0	-0.4
1-4 employees					
1 operator	35.7	52.0	37.8	53.2	2.8
2 operators	31.5	45.9	30.9	43.5	-1.0
3 or more operators	*1.5	2.1	*2.4	3.3	27.5
Total	68.7	100.0	71.0	100.0	1.7
5-19 employees					
1 operator	[^] 7.7	29.1	[^] 8.2	32.5	3.2
2 operators	[^] 17.0	64.6	[^] 13.9	55.7	-9.4
3 or more operators	*1.7	6.3	*3.0	11.8	33.6
Total	26.3	100.0	25.0	100.0	-2.4
Total					
1 operator	148.1	63.1	155.3	66.2	2.4
2 operators	82.9	35.3	72.5	30.9	-6.5
3 or more operators	[^] 3.8	1.6	[^] 7.0	3.0	35.4
Total	234.8	100.0	234.7	100.0	—

[^] estimate has a relative standard error of 10% to less than 25% and should be used with caution

* estimate has a relative standard error of 25% to 50% and should be used with caution

** estimate has a relative standard error greater than 50% and is considered too unreliable for general use

— nil or rounded to zero (including null cells)

3.2 SMALL BUSINESSES, By employer size group and number of business operators for states and territories *continued*

	JUNE 2001		JUNE 2003		Average annual rate of change
	Number of businesses	Proportion of businesses	Number of businesses	Proportion of businesses	
	'000	%	'000	%	
SOUTH AUSTRALIA					
Non-employed businesses					
1 operator	42.5	79.4	37.3	80.0	-6.3
2 operators	^ 10.2	19.0	^ 8.9	19.0	-6.8
3 or more operators	* 0.8	1.5	** 0.5	1.0	-25.5
Total	53.6	100.0	46.7	100.0	-6.7
1-4 employees					
1 operator	^ 13.5	52.9	^ 13.8	58.5	1.2
2 operators	^ 11.8	46.3	^ 9.4	40.0	-10.6
3 or more operators	** 0.2	0.8	** 0.4	1.5	37.3
Total	25.5	100.0	23.6	100.0	-3.7
5-19 employees					
1 operator	* 2.0	23.6	^ 3.0	39.0	23.3
2 operators	^ 5.1	60.9	^ 3.5	45.0	-17.6
3 or more operators	* 1.3	15.4	* 1.2	16.0	-2.3
Total	^ 8.4	100.0	^ 7.7	100.0	-4.1
Total					
1 operator	58.0	66.4	54.2	69.5	-3.4
2 operators	27.1	31.0	21.8	27.9	-10.4
3 or more operators	^ 2.3	2.6	* 2.1	2.6	-5.6
Total	87.4	100.0	78.0	100.0	-5.5
WESTERN AUSTRALIA					
Non-employed businesses					
1 operator	59.2	75.8	67.7	78.9	7.0
2 operators	^ 18.4	23.6	^ 17.1	19.9	-3.6
3 or more operators	** 0.5	0.6	* 1.0	1.1	41.0
Total	78.1	100.0	85.8	100.0	4.8
1-4 employees					
1 operator	^ 20.9	52.1	^ 19.0	48.1	-4.7
2 operators	^ 17.7	44.1	^ 19.5	49.3	4.9
3 or more operators	* 1.5	3.8	* 1.0	2.6	-17.7
Total	40.2	100.0	39.5	100.0	-0.8
5-19 employees					
1 operator	^ 4.9	35.9	^ 4.4	31.2	-5.4
2 operators	^ 6.5	47.4	^ 7.8	55.2	9.7
3 or more operators	* 2.3	16.7	* 1.9	13.6	-8.5
Total	^ 13.7	100.0	^ 14.1	100.0	1.5
Total					
1 operator	85.0	64.4	91.1	65.4	3.5
2 operators	42.6	32.3	44.4	31.8	2.1
3 or more operators	^ 4.3	3.3	^ 3.9	2.8	-4.7
Total	132.0	100.0	139.5	100.0	2.8

^ estimate has a relative standard error of 10% to less than 25% and should be used with caution

* estimate has a relative standard error of 25% to 50% and should be used with caution

** estimate has a relative standard error greater than 50% and is considered too unreliable for general use

3.2

SMALL BUSINESSES, By employer size group and number of business operators
for states and territories *continued*

	JUNE 2001		JUNE 2003		Average annual rate of change
	Number of businesses	Proportion of businesses	Number of businesses	Proportion of businesses	
	'000	%	'000	%	
TASMANIA					
Non-employed businesses					
1 operator	10.6	77.4	^ 10.4	76.3	-0.7
2 operators	^ 3.0	21.6	^ 3.2	23.5	4.3
3 or more operators	**0.1	1.0	—	—	na
Total	13.6	100.0	13.7	100.0	0.1
1-4 employees					
1 operator	^ 3.2	48.3	^ 4.2	57.6	14.4
2 operators	^ 3.3	50.3	^ 3.0	41.8	-4.5
3 or more operators	**0.1	1.4	—	—	na
Total	^ 6.6	100.0	^ 7.3	100.0	4.7
5-19 employees					
1 operator	*0.3	13.5	*0.7	37.1	47.0
2 operators	^ 1.7	69.7	*0.9	48.2	-26.3
3 or more operators	*0.4	16.9	**0.3	14.8	-17.1
Total	^ 2.5	100.0	*1.9	100.0	-11.4
Total					
1 operator	14.1	62.0	15.3	67.0	4.3
2 operators	^ 8.0	35.2	^ 7.2	31.4	-5.3
3 or more operators	*0.6	2.8	**0.4	1.5	-25.8
Total	22.7	100.0	22.9	100.0	0.3
NORTHERN TERRITORY (a)					
Non-employed businesses					
1 operator	^ 2.5	77.6	^ 4.6	91.1	35.8
2 operators	*0.7	22.4	*0.5	8.9	-21.2
3 or more operators	—	—	—	—	na
Total	^ 3.2	100.0	^ 5.1	100.0	25.3
1-4 employees					
1 operator	^ 2.3	62.9	*1.5	72.3	-17.5
2 operators	*1.3	36.1	*0.6	27.7	-32.6
3 or more operators	—	—	—	—	na
Total	^ 3.6	100.0	*2.1	100.0	-23.0
5-19 employees					
1 operator	**0.2	30.5	**0.1	12.3	-35.6
2 operators	**0.3	39.2	*0.6	75.7	40.7
3 or more operators	**0.2	30.3	**0.1	11.9	-36.5
Total	*0.8	100.0	*0.8	100.0	1.2
Total					
1 operator	^ 5.0	65.8	^ 6.3	78.3	11.8
2 operators	^ 2.3	30.6	*1.6	20.5	-16.0
3 or more operators	**0.3	3.6	**0.1	1.2	-40.7
Total	^ 7.6	100.0	^ 8.0	100.0	2.6

^ estimate has a relative standard error of 10% to less than 25% and should be used with caution

* estimate has a relative standard error of 25% to 50% and should be used with caution

** estimate has a relative standard error greater than 50% and is considered too unreliable for general use

— nil or rounded to zero (including null cells)

na not available

(a) Refers to mainly urban areas only.

3.2 SMALL BUSINESSES, By employer size group and number of business operators for states and territories *continued*

	JUNE 2001		JUNE 2003		Average annual rate of change
	Number of businesses	Proportion of businesses	Number of businesses	Proportion of businesses	
	'000	%	'000	%	
AUSTRALIAN CAPITAL TERRITORY					
Non-employed businesses					
1 operator	9.4	89.1	[^] 8.1	84.0	-7.1
2 operators	*1.0	9.2	*1.5	15.3	23.1
3 or more operators	**0.2	1.6	**0.1	0.7	-36.3
Total	10.6	100.0	[^]9.7	100.0	-4.3
1-4 employees					
1 operator	[^] 3.9	64.0	[^] 2.7	52.2	-16.0
2 operators	[^] 2.1	35.3	[^] 2.4	46.5	6.7
3 or more operators	—	—	**0.1	1.3	32.8
Total	[^]6.0	100.0	[^]5.2	100.0	-7.0
5-19 employees					
1 operator	*0.3	16.1	**0.2	17.9	-14.2
2 operators	*1.2	63.3	*0.8	66.0	-16.8
3 or more operators	*0.4	20.6	**0.2	16.1	-27.9
Total	[^]1.9	100.0	*1.3	100.0	-18.5
Total					
1 operator	13.6	73.5	[^] 11.1	68.6	-9.7
2 operators	[^] 4.3	23.3	[^] 4.7	29.3	4.9
3 or more operators	*0.6	3.3	*0.3	2.1	-24.8
Total	18.5	100.0	16.1	100.0	-6.6

[^] estimate has a relative standard error of 10% to less than 25% and should be used with caution

* estimate has a relative standard error of 25% to 50% and should be used with caution

** estimate has a relative standard error greater than 50% and is considered too unreliable for general use

— nil or rounded to zero (including null cells)

3.3**SMALL BUSINESSES, By predominance of male and female operators and selected characteristics**

	JUNE 2001		JUNE 2003		Annual average rate of change
	Number of businesses	Proportion of businesses	Number of businesses	Proportion of businesses	
	'000	%	'000	%	
PREDOMINANTLY MALE					
Total small businesses	631.5	100.0	649.6	100.0	1.4
Home based small business					
Operated at home	110.1	17.4	116.3	17.9	2.8
Operated from home	437.1	69.2	440.6	67.8	0.4
Employer size group					
Non-employing businesses	373.5	59.1	383.5	59.0	1.3
1–4 employees	202.7	32.1	206.7	31.8	1.0
5–19 employees	55.3	8.8	59.3	9.1	3.5
Length of operation					
Less than 1 year	91.8	14.5	78.1	12.0	–7.8
1 to less than 5 years	225.2	35.7	235.5	36.3	2.3
5 to less than 10 years	116.0	18.4	136.0	20.9	8.3
10 or more years	198.5	31.4	200.0	30.8	0.4
Number of operators					
1 operator	574.7	91.0	587.9	90.5	1.1
2 operators	38.1	6.0	40.5	6.2	3.1
3 or more operators	^ 18.7	3.0	^ 21.2	3.3	6.7
Use of computers					
Uses a computer	394.9	62.5	447.2	68.8	6.4
Does not use a computer	236.6	37.5	202.4	31.2	–7.5
Internet use					
Has access to the Internet	312.5	49.5	380.3	58.5	10.3
Internet used for					
Email	258.9	41.0	318.1	49.0	10.8
Research	250.4	39.7	288.0	44.3	7.2
Making or receiving payments	103.4	16.4	176.7	27.2	30.7
Other	248.4	39.3	326.0	50.2	14.6
State					
New South Wales	219.0	34.7	218.9	33.7	—
Victoria	156.1	24.7	163.0	25.1	2.2
Queensland	116.2	18.4	118.6	18.3	1.0
South Australia	45.2	7.2	46.0	7.1	0.9
Western Australia	68.7	10.9	76.8	11.8	5.7
Tasmania	10.8	1.7	12.1	1.9	5.7
Northern Territory(a)	^ 4.9	0.8	^ 5.1	0.8	1.2
Australian Capital Territory	10.5	1.7	^ 9.1	1.4	–7.1

^ estimate has a relative standard error of 10% to less than 25% and should be used with caution

— nil or rounded to zero (including null cells)
(a) Refers to mainly urban areas only.

3.3 SMALL BUSINESSES, By predominance of male and female operators and selected characteristics *continued*

	JUNE 2001		JUNE 2003		Annual average rate of change
	Number of businesses	Proportion of businesses	Number of businesses	Proportion of businesses	
	'000	%	'000	%	%
PREDOMINANTLY FEMALE					
Total small businesses	205.9	100.0	230.2	100.0	5.7
Home based small business					
Operated at home	85.7	41.6	98.6	42.8	7.3
Operated from home	139.6	67.8	156.8	68.1	6.0
Employer size group					
Non-employing businesses	143.7	69.8	173.4	75.3	9.9
1–4 employees	51.5	25.0	46.4	20.1	–5.1
5–19 employees	^ 10.7	5.2	^ 10.4	4.5	–1.5
Length of operation					
Less than 1 year	41.0	19.9	51.1	22.2	11.7
1 to less than 5 years	87.7	42.6	90.3	39.2	1.5
5 to less than 10 years	35.6	17.3	38.9	16.9	4.6
10 or more years	41.6	20.2	49.8	21.6	9.4
Number of operators					
1 operator	195.8	95.1	220.4	95.8	6.1
2 operators	^ 6.5	3.2	^ 8.1	3.5	11.6
3 or more operators	^ 3.5	1.7	* 1.6	0.7	–33.0
Use of computers					
Uses a computer	127.6	62.0	154.0	66.9	9.8
Does not use a computer	78.2	38.0	76.2	33.1	–1.3
Internet use					
Has access to the Internet	104.0	50.5	137.3	59.6	14.9
Internet used for					
Email	90.4	43.9	116.7	50.7	13.6
Research	84.3	40.9	112.7	48.9	15.6
Making or receiving payments	31.5	15.3	53.0	23.0	29.7
Other	84.5	41.0	117.7	51.1	18.0
State					
New South Wales	64.8	31.5	68.6	29.8	2.9
Victoria	46.3	22.5	66.7	29.0	20.0
Queensland	42.2	20.5	49.5	21.5	8.3
South Australia	18.4	8.9	^ 13.0	5.7	–15.7
Western Australia	24.5	11.9	23.5	10.2	–2.2
Tasmania	^ 4.3	2.1	^ 4.1	1.8	–2.8
Northern Territory(a)	* 1.1	0.6	* 1.5	0.7	14.8
Australian Capital Territory	^ 4.2	2.0	^ 3.2	1.4	–12.5

^ estimate has a relative standard error of 10% to less than 25% and should be used with caution

* estimate has a relative standard error of 25% to 50% and should be used with caution

(a) Refers to mainly urban areas only.

3.3**SMALL BUSINESSES, By predominance of male and female operators and selected characteristics** *continued*

	JUNE 2001		JUNE 2003		Annual average rate of change
	Number of businesses	Proportion of businesses	Number of businesses	Proportion of businesses	
	'000	%	'000	%	
EQUAL MALE AND FEMALE					
Total small businesses	324.6	100.0	299.6	100.0	-3.9
Home based small business					
Operated at home	70.3	21.6	65.7	21.9	-3.3
Operated from home	166.3	51.2	150.8	50.3	-4.8
Employer size group					
Non-employing businesses	120.1	37.0	109.3	36.5	-4.6
1-4 employees	143.6	44.2	136.0	45.4	-2.7
5-19 employees	60.9	18.8	54.3	18.1	-5.6
Length of operation					
Less than 1 year	26.9	8.3	^ 23.5	7.8	-6.6
1 to less than 5 years	96.7	29.8	72.7	24.3	-13.3
5 to less than 10 years	69.8	21.5	64.2	21.4	-4.1
10 or more years	131.2	40.4	139.2	46.5	3.0
Number of operators					
1 operator	—	—	—	—	na
2 operators	317.1	97.7	293.9	98.1	-3.7
3 or more operators	^ 7.4	2.3	^ 5.6	1.9	-12.9
Use of computers					
Uses a computer	251.2	77.4	245.4	81.9	-1.2
Does not use a computer	73.4	22.6	54.2	18.1	-14.1
Internet use					
Has access to the Internet	193.4	59.6	210.2	70.2	4.3
Internet used for					
Email	159.8	49.2	175.5	58.6	4.8
Research	147.9	45.6	167.5	55.9	6.4
Making or receiving payments	75.3	23.2	115.9	38.7	24.1
Other	160.9	49.6	182.4	60.9	6.5
State					
New South Wales	96.3	29.7	88.9	29.7	-3.9
Victoria	76.4	23.5	73.9	24.7	-1.7
Queensland	76.3	23.5	66.6	22.2	-6.6
South Australia	23.9	7.4	18.9	6.3	-10.9
Western Australia	38.7	11.9	39.2	13.1	0.6
Tasmania	^ 7.6	2.3	^ 6.7	2.2	-6.1
Northern Territory(a)	*1.5	0.5	*1.5	0.5	-2.9
Australian Capital Territory	^ 3.8	1.2	^ 3.9	1.3	1.0

^ estimate has a relative standard error of 10% to less than 25% and should be used with caution

* estimate has a relative standard error of 25% to 50% and should be used with caution

— nil or rounded to zero (including null cells)

na not available

(a) Refers to mainly urban areas only.

3.3 SMALL BUSINESSES, By predominance of male and female operators and selected characteristics *continued*

	JUNE 2001		JUNE 2003		Annual average rate of change
	Number of businesses	Proportion of businesses	Number of businesses	Proportion of businesses	
	'000	%	'000	%	%
TOTAL					
Total small businesses	1 162.0	100.0	1 179.3	100.0	0.7
Home based small business					
Operated at home	266.1	22.9	280.6	23.8	2.7
Operated from home	743.0	63.9	748.2	63.4	0.3
Employer size group					
Non-employing businesses	637.3	54.8	666.2	56.5	2.2
1–4 employees	397.7	34.2	389.1	33.0	–1.1
5–19 employees	126.9	10.9	124.0	10.5	–1.2
Length of operation					
Less than 1 year	159.7	13.7	152.7	12.9	–2.2
1 to less than 5 years	409.5	35.2	398.5	33.8	–1.4
5 to less than 10 years	221.4	19.1	239.2	20.3	3.9
10 or more years	371.4	32.0	388.9	33.0	2.3
Number of operators					
1 operator	770.6	66.3	808.3	68.5	2.4
2 operators	361.8	31.1	342.6	29.0	–2.7
3 or more operators	29.6	2.5	28.4	2.4	–2.0
Use of computers					
Uses a computer	773.6	66.6	846.5	71.8	4.6
Does not use a computer	388.3	33.4	332.8	28.2	–7.4
Internet use					
Has access to the Internet	609.9	52.5	727.7	61.7	9.2
Internet used for					
Email	509.1	43.8	610.3	51.8	9.5
Research	482.6	41.5	568.2	48.2	8.5
Making or receiving payments	210.2	18.1	345.6	29.3	28.2
Other	493.8	42.5	626.2	53.1	12.6
State					
New South Wales	380.1	32.7	376.5	31.9	–0.5
Victoria	278.8	24.0	303.5	25.7	4.3
Queensland	234.8	20.2	234.7	19.9	—
South Australia	87.4	7.5	78.0	6.6	–5.5
Western Australia	132.0	11.4	139.5	11.8	2.8
Tasmania	22.7	2.0	22.9	1.9	0.3
Northern Territory(a)	^ 7.6	0.7	^ 8.0	0.7	2.6
Australian Capital Territory	18.5	1.6	16.1	1.4	–6.6

^ estimate has a relative standard error of 10% to less than 25% and should be used with caution

— nil or rounded to zero (including null cells)
(a) Refers to mainly urban areas only.

3.4

SMALL BUSINESSES, By employer size group and use of computers and Internet access for states and territories

	JUNE 2001		JUNE 2003		Average annual rate of change
	Number of businesses	Proportion of businesses	Number of businesses	Proportion of businesses	
	'000	%	'000	%	
AUSTRALIA					
Non-employed businesses					
Uses a computer	354.4	55.6	412.0	61.9	7.8
Does not use a computer	282.9	44.4	254.1	38.1	-5.2
Has access to the Internet	271.5	42.6	343.4	51.5	12.5
Does not have access to the Internet	365.8	57.4	322.8	48.5	-6.1
Total	637.3	100.0	666.2	100.0	2.2
1-4 employees					
Uses a computer	306.9	77.2	318.1	81.7	1.8
Does not use a computer	90.8	22.8	71.0	18.3	-11.5
Has access to the Internet	245.6	61.7	278.2	71.5	6.4
Does not have access to the Internet	152.1	38.3	110.9	28.5	-14.6
Total	397.7	100.0	389.1	100.0	-1.1
5-19 employees					
Uses a computer	112.3	88.5	116.4	93.9	1.8
Does not use a computer	^ 14.6	11.5	^ 7.6	6.1	-27.9
Has access to the Internet	92.9	73.2	106.1	85.6	6.9
Does not have access to the Internet	34.1	26.8	^ 17.9	14.4	-27.6
Total	126.9	100.0	124.0	100.0	-1.2
Total					
Uses a computer	773.6	66.6	846.5	71.8	4.6
Does not use a computer	388.3	33.4	332.8	28.2	-7.4
Has access to the Internet	609.9	52.5	727.7	61.7	9.2
Does not have access to the Internet	552.0	47.5	451.6	38.3	-9.6
Total	1 162.0	100.0	1 179.3	100.0	0.7

^ estimate has a relative standard error of 10% to less than 25% and should be used with caution

3.4SMALL BUSINESSES, By employer size group and use of computers and Internet access for states and territories *continued*

	JUNE 2001		JUNE 2003		Average annual rate of change
	Number of businesses	Proportion of businesses	Number of businesses	Proportion of businesses	
	'000	%	'000	%	%
NEW SOUTH WALES					
Non-employed businesses					
Uses a computer	102.2	53.2	124.9	60.8	10.5
Does not use a computer	89.9	46.8	80.5	39.2	-5.4
Has access to the Internet	81.3	42.3	105.3	51.3	13.8
Does not have access to the Internet	110.8	57.7	100.1	48.7	-5.0
Total	192.2	100.0	205.4	100.0	3.4
1-4 employees					
Uses a computer	115.1	78.9	110.0	81.9	-2.2
Does not use a computer	^ 30.7	21.1	^ 24.4	18.1	-11.0
Has access to the Internet	96.2	66.0	97.2	72.4	0.5
Does not have access to the Internet	49.6	34.0	^ 37.1	27.6	-13.4
Total	145.8	100.0	134.4	100.0	-4.0
5-19 employees					
Uses a computer	^ 35.5	84.3	^ 34.5	93.7	-1.5
Does not use a computer	^ 6.6	15.7	* 2.3	6.3	-40.9
Has access to the Internet	^ 27.4	65.0	^ 32.3	87.9	8.6
Does not have access to the Internet	^ 14.7	35.0	* 4.4	12.1	-45.1
Total	42.1	100.0	^ 36.8	100.0	-6.6
Total					
Uses a computer	252.8	66.5	269.3	71.5	3.2
Does not use a computer	127.3	33.5	107.2	28.5	-8.2
Has access to the Internet	205.0	53.9	234.8	62.4	7.0
Does not have access to the Internet	175.2	46.1	141.7	37.6	-10.1
Total	380.1	100.0	376.5	100.0	-0.5

^ estimate has a relative standard error of 10% to less than 25% and should be used with caution

* estimate has a relative standard error of 25% to 50% and should be used with caution

3.4SMALL BUSINESSES, By employer size group and use of computers and Internet access for states and territories *continued*

	JUNE 2001		JUNE 2003		Average annual rate of change
	Number of businesses	Proportion of businesses	Number of businesses	Proportion of businesses	
	'000	%	'000	%	
VICTORIA					
Non-employed businesses					
Uses a computer	82.5	56.4	96.6	59.9	8.3
Does not use a computer	63.8	43.6	64.6	40.1	0.6
Has access to the Internet	55.9	38.2	78.1	48.5	18.3
Does not have access to the Internet	90.4	61.8	83.1	51.5	-4.1
Total	146.3	100.0	161.3	100.0	5.0
1-4 employees					
Uses a computer	75.7	74.8	85.6	80.8	6.3
Does not use a computer	^ 25.5	25.2	^ 20.3	19.2	-10.8
Has access to the Internet	57.2	56.5	74.0	69.9	13.8
Does not have access to the Internet	44.0	43.5	^ 31.9	30.1	-14.9
Total	101.2	100.0	105.9	100.0	2.3
5-19 employees					
Uses a computer	^ 28.8	92.1	^ 34.4	94.5	9.2
Does not use a computer	* 2.5	7.9	* 2.0	5.5	-10.1
Has access to the Internet	^ 24.9	79.5	^ 29.8	81.9	9.4
Does not have access to the Internet	^ 6.4	20.5	^ 6.6	18.1	1.3
Total	31.3	100.0	^ 36.4	100.0	7.8
Total					
Uses a computer	187.0	67.1	216.6	71.4	7.6
Does not use a computer	91.8	32.9	87.0	28.6	-2.7
Has access to the Internet	138.0	49.5	182.0	59.9	14.8
Does not have access to the Internet	140.8	50.5	121.6	40.1	-7.1
Total	278.8	100.0	303.5	100.0	4.3

^ estimate has a relative standard error of 10% to less than 25% and should be used with caution

* estimate has a relative standard error of 25% to 50% and should be used with caution

3.4 SMALL BUSINESSES, By employer size group and use of computers and Internet access for states and territories *continued*

	JUNE 2001		JUNE 2003		Average annual rate of change
	Number of businesses	Proportion of businesses	Number of businesses	Proportion of businesses	
	'000	%	'000	%	
QUEENSLAND					
Non-employed businesses					
Uses a computer	75.8	54.2	89.3	64.4	8.5
Does not use a computer	64.0	45.8	49.4	35.6	-12.1
Has access to the Internet	60.6	43.4	75.5	54.4	11.6
Does not have access to the Internet	79.2	56.6	63.2	45.6	-10.6
Total	139.8	100.0	138.7	100.0	-0.4
1-4 employees					
Uses a computer	54.8	79.8	59.1	83.2	3.8
Does not use a computer	^ 13.9	20.2	^ 12.0	16.8	-7.2
Has access to the Internet	44.6	64.9	51.0	71.8	7.0
Does not have access to the Internet	24.1	35.1	^ 20.0	28.2	-8.8
Total	68.7	100.0	71.0	100.0	1.7
5-19 employees					
Uses a computer	24.0	91.1	23.6	94.4	-0.7
Does not use a computer	* 2.3	8.9	* 1.4	5.6	-22.3
Has access to the Internet	^ 19.9	75.7	^ 21.8	87.1	4.7
Does not have access to the Internet	^ 6.4	24.3	^ 3.2	12.9	-29.1
Total	26.3	100.0	25.0	100.0	-2.4
Total					
Uses a computer	154.6	65.8	172.0	73.3	5.5
Does not use a computer	80.2	34.2	62.8	26.7	-11.5
Has access to the Internet	125.1	53.3	148.3	63.2	8.9
Does not have access to the Internet	109.7	46.7	86.5	36.8	-11.2
Total	234.8	100.0	234.7	100.0	—

^ estimate has a relative standard error of 10% to less than 25% and should be used with caution

* estimate has a relative standard error of 25% to 50% and should be used with caution

— nil or rounded to zero (including null cells)

3.4SMALL BUSINESSES, By employer size group and use of computers and Internet access for states and territories *continued*

	JUNE 2001		JUNE 2003		Average annual rate of change
	Number of businesses	Proportion of businesses	Number of businesses	Proportion of businesses	
	'000	%	'000	%	
SOUTH AUSTRALIA					
Non-employed businesses					
Uses a computer	29.5	55.1	29.0	62.2	-0.8
Does not use a computer	24.0	44.9	^ 17.7	37.8	-14.3
Has access to the Internet	23.0	43.0	23.9	51.3	2.0
Does not have access to the Internet	30.6	57.0	22.7	48.7	-13.7
Total	53.6	100.0	46.7	100.0	-6.7
1-4 employees					
Uses a computer	19.3	75.7	^ 18.7	79.1	-1.6
Does not use a computer	^ 6.2	24.3	^ 5.0	20.9	-10.5
Has access to the Internet	^ 14.2	55.8	^ 16.4	69.5	7.5
Does not have access to the Internet	^ 11.3	44.2	^ 7.2	30.5	-20.0
Total	25.5	100.0	23.6	100.0	-3.7
5-19 employees					
Uses a computer	^ 7.7	92.6	^ 7.2	94.0	-3.4
Does not use a computer	*0.6	7.4	**0.5	6.0	-13.5
Has access to the Internet	^ 6.4	76.6	^ 6.9	89.9	3.9
Does not have access to the Internet	*2.0	23.4	*0.8	10.1	-37.0
Total	^ 8.4	100.0	^ 7.7	100.0	-4.1
Total					
Uses a computer	56.6	64.7	54.9	70.4	-1.5
Does not use a computer	30.9	35.3	23.1	29.6	-13.5
Has access to the Internet	43.6	49.9	47.3	60.6	4.1
Does not have access to the Internet	43.8	50.1	30.7	39.4	-16.2
Total	87.4	100.0	78.0	100.0	-5.5

^ estimate has a relative standard error of 10% to less than 25% and should be used with caution

* estimate has a relative standard error of 25% to 50% and should be used with caution

** estimate has a relative standard error greater than 50% and is considered too unreliable for general use

3.4**SMALL BUSINESSES, By employer size group and use of computers and Internet access for states and territories** *continued*

	JUNE 2001		JUNE 2003		Average annual rate of change
	Number of businesses	Proportion of businesses	Number of businesses	Proportion of businesses	
	'000	%	'000	%	
WESTERN AUSTRALIA					
Non-employed businesses					
Uses a computer	47.8	61.2	54.0	63.0	6.3
Does not use a computer	30.3	38.8	31.7	37.0	2.4
Has access to the Internet	36.7	47.0	44.9	52.4	10.7
Does not have access to the Internet	41.4	53.0	40.9	47.6	-0.7
Total	78.1	100.0	85.8	100.0	4.8
1-4 employees					
Uses a computer	29.9	74.3	33.3	84.3	5.6
Does not use a computer	^ 10.3	25.7	^ 6.2	15.7	-22.3
Has access to the Internet	^ 23.4	58.2	29.7	75.1	12.7
Does not have access to the Internet	^ 16.8	41.8	^ 9.8	24.9	-23.5
Total	40.2	100.0	39.5	100.0	-0.8
5-19 employees					
Uses a computer	^ 11.5	83.9	^ 13.3	93.9	7.4
Does not use a computer	* 2.2	16.1	* 0.9	6.1	-37.4
Has access to the Internet	^ 10.3	75.3	^ 12.1	85.8	8.4
Does not have access to the Internet	^ 3.4	24.7	* 2.0	14.2	-23.0
Total	^ 13.7	100.0	^ 14.1	100.0	1.5
Total					
Uses a computer	89.2	67.6	100.6	72.2	6.2
Does not use a computer	42.8	32.4	38.8	27.8	-4.8
Has access to the Internet	70.4	53.3	86.8	62.2	11.0
Does not have access to the Internet	61.6	46.7	52.7	37.8	-7.5
Total	132.0	100.0	139.5	100.0	2.8

^ estimate has a relative standard error of 10% to less than 25% and should be used with caution

* estimate has a relative standard error of 25% to 50% and should be used with caution

3.4SMALL BUSINESSES, By employer size group and use of computers and Internet access for states and territories *continued*

	JUNE 2001		JUNE 2003		Average annual rate of change
	Number of businesses	Proportion of businesses	Number of businesses	Proportion of businesses	
	'000	%	'000	%	%
TASMANIA					
Non-employed businesses					
Uses a computer	^ 7.1	52.2	^ 8.8	64.4	11.2
Does not use a computer	^ 6.5	47.8	^ 4.9	35.6	-13.6
Has access to the Internet	^ 6.2	45.1	^ 7.1	52.0	7.4
Does not have access to the Internet	^ 7.5	54.9	^ 6.6	48.0	-6.4
Total	13.6	100.0	13.7	100.0	0.1
1-4 employees					
Uses a computer	^ 5.0	74.6	^ 5.8	79.2	7.9
Does not use a computer	^ 1.7	25.4	* 1.5	20.8	-5.3
Has access to the Internet	^ 3.9	58.5	^ 4.6	63.3	8.9
Does not have access to the Internet	^ 2.8	41.5	^ 2.7	36.7	-1.6
Total	^ 6.6	100.0	^ 7.3	100.0	4.7
5-19 employees					
Uses a computer	^ 2.0	79.5	* 1.6	84.8	-8.5
Does not use a computer	* 0.5	20.5	** 0.3	15.2	-23.6
Has access to the Internet	^ 2.0	79.5	* 1.4	70.7	-16.5
Does not have access to the Internet	^ 2.5	100.0	* 0.6	29.3	-52.1
Total	^ 2.5	100.0	* 1.9	100.0	-11.4
Total					
Uses a computer	14.5	63.9	16.2	70.8	5.6
Does not use a computer	^ 8.2	36.1	^ 6.7	29.2	-9.9
Has access to the Internet	12.0	52.8	13.1	57.2	4.4
Does not have access to the Internet	10.7	47.2	^ 9.8	42.8	-4.5
Total	22.7	100.0	22.9	100.0	0.3

^ estimate has a relative standard error of 10% to less than 25% and should be used with caution

* estimate has a relative standard error of 25% to 50% and should be used with caution

** estimate has a relative standard error greater than 50% and is considered too unreliable for general use

3.4**SMALL BUSINESSES, By employer size group and use of computers and Internet access for states and territories *continued***

	JUNE 2001		JUNE 2003		Average annual rate of change
	Number of businesses	Proportion of businesses	Number of businesses	Proportion of businesses	
	'000	%	'000	%	
NORTHERN TERRITORY (a)					
Non-employed businesses					
Uses a computer	*1.6	47.8	^ 2.7	53.2	32.2
Does not use a computer	*1.7	52.2	^ 2.4	46.8	18.7
Has access to the Internet	*1.3	40.4	^ 2.5	49.9	39.3
Does not have access to the Internet	*1.9	59.6	^ 2.5	50.1	14.9
Total	^ 3.2	100.0	^ 5.1	100.0	25.3
1-4 employees					
Uses a computer	^ 2.5	69.5	*1.4	64.8	-25.7
Does not use a computer	*1.1	30.5	*0.8	35.2	-17.3
Has access to the Internet	*1.9	54.0	*1.4	64.8	-15.7
Does not have access to the Internet	*1.7	46.0	*0.8	35.2	-32.7
Total	^ 3.6	100.0	*2.1	100.0	-23.0
5-19 employees					
Uses a computer	*0.6	75.4	*0.7	86.3	8.3
Does not use a computer	**0.2	24.6	**0.1	13.7	-24.6
Has access to the Internet	*0.6	75.4	*0.6	80.5	4.6
Does not have access to the Internet	*0.8	100.0	**0.2	19.5	-55.3
Total	*0.8	100.0	*0.8	100.0	1.2
Total					
Uses a computer	^ 4.8	63.4	^ 4.8	59.6	-0.6
Does not use a computer	^ 2.8	36.6	^ 3.2	40.4	7.8
Has access to the Internet	^ 3.8	50.4	^ 4.6	56.9	9.0
Does not have access to the Internet	^ 3.8	49.6	^ 3.5	43.1	-4.4
Total	^ 7.6	100.0	^ 8.0	100.0	2.6

^ estimate has a relative standard error of 10% to less than 25% and should be used with caution
 * estimate has a relative standard error of 25% to 50% and should be used with caution

** estimate has a relative standard error greater than 50% and is considered too unreliable for general use
 (a) Refers to mainly urban areas only.

3.4SMALL BUSINESSES, By employer size group and use of computers and Internet access for states and territories *continued*

	JUNE 2001		JUNE 2003		Average annual rate of change
	Number of businesses	Proportion of businesses	Number of businesses	Proportion of businesses	
	'000	%	'000	%	
AUSTRALIAN CAPITAL TERRITORY					
Non-employed businesses					
Uses a computer	^ 7.9	74.7	^ 6.7	69.4	-7.8
Does not use a computer	^ 2.7	25.3	^ 3.0	30.6	5.2
Has access to the Internet	^ 6.5	61.9	^ 6.0	62.1	-4.2
Does not have access to the Internet	^ 4.0	38.1	^ 3.7	37.9	-4.6
Total	10.6	100.0	^ 9.7	100.0	-4.3
1-4 employees					
Uses a computer	^ 4.7	78.0	^ 4.3	81.8	-4.8
Does not use a computer	* 1.3	22.0	* 0.9	18.2	-15.4
Has access to the Internet	^ 4.1	67.7	^ 3.8	72.9	-3.5
Does not have access to the Internet	^ 1.9	32.3	* 1.4	27.1	-14.8
Total	^ 6.0	100.0	^ 5.2	100.0	-7.0
5-19 employees					
Uses a computer	* 1.5	81.2	* 1.1	89.5	-14.5
Does not use a computer	* 0.4	18.8	** 0.1	10.5	-39.1
Has access to the Internet	* 1.4	75.5	* 1.1	89.5	-11.3
Does not have access to the Internet	* 0.5	24.5	** 0.1	10.5	-46.7
Total	^ 1.9	100.0	* 1.3	100.0	-18.5
Total					
Uses a computer	14.1	76.5	^ 12.1	75.0	-7.5
Does not use a computer	^ 4.4	23.5	^ 4.0	25.0	-3.7
Has access to the Internet	12.1	65.2	^ 10.9	67.8	-4.7
Does not have access to the Internet	^ 6.4	34.8	^ 5.2	32.2	-10.1
Total	18.5	100.0	16.1	100.0	-6.6

^ estimate has a relative standard error of 10% to less than 25% and should be used with caution

* estimate has a relative standard error of 25% to 50% and should be used with caution

** estimate has a relative standard error greater than 50% and is considered too unreliable for general use

3.5 SMALL BUSINESSES, By employer size group and major uses of the Internet for states and territories

	JUNE 2001		JUNE 2003		Average annual rate of change
	Number of businesses	Proportion of businesses	Number of businesses	Proportion of businesses	
	'000	%	'000	%	
AUSTRALIA					
Non-employed businesses					
Email	221.2	34.7	277.4	41.6	12.0
Research	214.4	33.6	258.7	38.8	9.8
Making or receiving payments	76.3	12.0	139.8	21.0	35.3
Other	209.7	32.9	285.6	42.9	16.7
Total	637.3	100.0	666.2	100.0	2.2
1-4 employees					
Email	209.0	52.6	238.7	61.3	6.9
Research	198.7	50.0	224.2	57.6	6.2
Making or receiving payments	86.8	21.8	140.2	36.0	27.1
Other	203.8	51.2	241.8	62.1	8.9
Total	397.7	100.0	389.1	100.0	-1.1
5-19 employees					
Email	78.9	62.2	94.2	76.0	9.2
Research	69.4	54.7	85.4	68.9	10.9
Making or receiving payments	47.1	37.1	65.6	52.9	18.0
Other	80.3	63.3	98.7	79.6	10.9
Total	126.9	100.0	124.0	100.0	-1.2
Total					
Email	509.1	43.8	610.3	51.8	9.5
Research	482.6	41.5	568.2	48.2	8.5
Making or receiving payments	210.2	18.1	345.6	29.3	28.2
Other	493.8	42.5	626.2	53.1	12.6
Total	1 162.0	100.0	1 179.3	100.0	0.7
NEW SOUTH WALES					
Non-employed businesses					
Email	68.5	35.7	82.8	40.3	9.9
Research	67.0	34.9	78.4	38.2	8.2
Making or receiving payments	^ 21.6	11.2	38.3	18.6	33.1
Other	62.9	32.7	86.5	42.1	17.3
Total	192.2	100.0	205.4	100.0	3.4
1-4 employees					
Email	82.0	56.2	83.3	62.0	0.8
Research	78.8	54.1	77.0	57.3	-1.2
Making or receiving payments	^ 31.8	21.8	47.3	35.2	21.8
Other	80.8	55.4	86.1	64.1	3.2
Total	145.8	100.0	134.4	100.0	-4.0
5-19 employees					
Email	^ 23.4	55.6	^ 29.3	79.7	11.8
Research	^ 20.7	49.1	^ 25.1	68.2	10.1
Making or receiving payments	^ 14.6	34.7	^ 18.2	49.4	11.5
Other	^ 24.3	57.7	^ 31.4	85.3	13.6
Total	42.1	100.0	^ 36.8	100.0	-6.6
Total					
Email	173.9	45.8	195.4	51.9	6.0
Research	166.5	43.8	180.4	47.9	4.1
Making or receiving payments	68.1	17.9	103.7	27.5	23.4
Other	167.9	44.2	203.9	54.2	10.2
Total	380.1	100.0	376.5	100.0	-0.5

^ estimate has a relative standard error of 10% to less than 25% and should be used with caution

3.5**SMALL BUSINESSES, By employer size group and major uses of the Internet for states and territories *continued***

	JUNE 2001		JUNE 2003		Average annual rate of change
	Number of businesses	Proportion of businesses	Number of businesses	Proportion of businesses	
	'000	%	'000	%	
VICTORIA					
Non-employed businesses					
Email	45.9	31.4	64.1	39.7	18.1
Research	43.8	30.0	55.8	34.6	12.9
Making or receiving payments	^ 18.1	12.4	^ 31.2	19.4	31.2
Other	44.4	30.4	63.8	39.5	19.8
Total	146.3	100.0	161.3	100.0	5.0
1-4 employees					
Email	47.9	47.3	64.3	60.7	15.9
Research	45.8	45.2	60.0	56.6	14.5
Making or receiving payments	^ 19.3	19.0	^ 33.8	31.9	32.5
Other	45.6	45.0	61.5	58.0	16.1
Total	101.2	100.0	105.9	100.0	2.3
5-19 employees					
Email	^ 20.5	65.4	^ 25.5	70.0	11.6
Research	^ 17.9	57.2	^ 24.4	67.2	16.8
Making or receiving payments	^ 10.0	32.0	^ 17.4	48.0	31.9
Other	^ 20.4	65.1	^ 26.3	72.2	13.5
Total	31.3	100.0	^ 36.4	100.0	7.8
Total					
Email	114.2	41.0	153.8	50.7	16.0
Research	107.5	38.6	140.2	46.2	14.2
Making or receiving payments	47.4	17.0	82.5	27.2	31.9
Other	110.4	39.6	151.5	49.9	17.2
Total	278.8	100.0	303.5	100.0	4.3
QUEENSLAND					
Non-employed businesses					
Email	48.1	34.4	61.0	44.0	12.7
Research	46.8	33.5	56.6	40.8	9.9
Making or receiving payments	^ 17.4	12.4	35.1	25.3	42.2
Other	45.1	32.2	64.4	46.5	19.6
Total	139.8	100.0	138.7	100.0	-0.4
1-4 employees					
Email	38.4	55.9	43.6	61.4	6.6
Research	36.8	53.5	40.9	57.5	5.4
Making or receiving payments	^ 17.8	26.0	28.1	39.6	25.6
Other	37.3	54.2	43.5	61.2	8.0
Total	68.7	100.0	71.0	100.0	1.7
5-19 employees					
Email	^ 16.5	62.7	^ 19.4	77.6	8.5
Research	^ 14.1	53.5	^ 18.2	72.5	13.7
Making or receiving payments	^ 10.7	40.7	^ 14.4	57.5	16.0
Other	^ 17.2	65.3	^ 20.6	82.1	9.4
Total	26.3	100.0	25.0	100.0	-2.4
Total					
Email	102.9	43.8	124.1	52.9	9.8
Research	97.6	41.6	115.6	49.2	8.8
Making or receiving payments	45.9	19.6	77.7	33.1	30.1
Other	99.5	42.4	128.5	54.7	13.6
Total	234.8	100.0	234.7	100.0	—

^ estimate has a relative standard error of 10% to less than 25% and should be used with caution

— nil or rounded to zero (including null cells)

3.5 SMALL BUSINESSES, By employer size group and major uses of the Internet for states and territories *continued*

	JUNE 2001		JUNE 2003		Average annual rate of change
	Number of businesses	Proportion of businesses	Number of businesses	Proportion of businesses	
	'000	%	'000	%	
SOUTH AUSTRALIA					
Non-employed businesses					
Email	17.9	33.4	19.6	42.0	4.7
Research	18.9	35.3	19.8	42.3	2.2
Making or receiving payments	^ 6.7	12.6	^ 10.5	22.6	25.1
Other	16.9	31.5	20.6	44.0	10.3
Total	53.6	100.0	46.7	100.0	-6.7
1-4 employees					
Email	^ 11.6	45.6	^ 14.2	60.0	10.5
Research	^ 10.8	42.5	^ 14.3	60.3	14.7
Making or receiving payments	^ 4.7	18.6	^ 7.7	32.5	27.3
Other	^ 12.3	48.3	^ 15.7	66.4	13.0
Total	25.5	100.0	23.6	100.0	-3.7
5-19 employees					
Email	^ 6.0	71.9	^ 6.1	79.4	0.8
Research	^ 5.6	67.0	^ 6.0	77.8	3.4
Making or receiving payments	^ 3.1	36.6	^ 5.0	65.6	28.5
Other	^ 5.6	66.4	^ 6.6	86.2	9.3
Total	^ 8.4	100.0	^ 7.7	100.0	-4.1
Total					
Email	35.5	40.6	39.9	51.2	6.0
Research	35.4	40.4	40.0	51.3	6.4
Making or receiving payments	^ 14.5	16.6	23.3	29.8	26.5
Other	34.8	39.8	42.9	55.0	11.1
Total	87.4	100.0	78.0	100.0	-5.5
WESTERN AUSTRALIA					
Non-employed businesses					
Email	28.7	36.7	38.1	44.5	15.3
Research	25.8	33.1	36.0	42.0	18.1
Making or receiving payments	^ 7.9	10.1	^ 18.4	21.5	52.8
Other	29.4	37.7	38.2	44.5	13.9
Total	78.1	100.0	85.8	100.0	4.8
1-4 employees					
Email	^ 20.4	50.8	24.9	63.0	10.5
Research	^ 18.4	45.7	24.0	60.6	14.3
Making or receiving payments	^ 9.1	22.7	^ 17.9	45.3	40.2
Other	^ 19.4	48.3	27.0	68.2	17.9
Total	40.2	100.0	39.5	100.0	-0.8
5-19 employees					
Email	^ 9.1	66.1	^ 11.1	78.3	10.5
Research	^ 8.0	58.5	^ 9.0	63.9	6.1
Making or receiving payments	^ 6.6	48.1	^ 8.5	60.1	13.4
Other	^ 9.4	68.4	^ 10.9	77.0	7.7
Total	^ 13.7	100.0	^ 14.1	100.0	1.5
Total					
Email	58.1	44.1	74.1	53.1	12.9
Research	52.2	39.6	69.1	49.5	15.0
Making or receiving payments	^ 23.6	17.9	44.9	32.2	37.8
Other	58.2	44.1	76.0	54.5	14.3
Total	132.0	100.0	139.5	100.0	2.8

^ estimate has a relative standard error of 10% to less than 25% and should be used with caution

3.5**SMALL BUSINESSES, By employer size group and major uses of the Internet for states and territories *continued***

	JUNE 2001		JUNE 2003		Average annual rate of change
	Number of businesses	Proportion of businesses	Number of businesses	Proportion of businesses	
	'000	%	'000	%	
TASMANIA					
Non-employed businesses					
Email	^ 5.1	37.4	^ 4.6	33.6	-5.2
Research	^ 5.2	38.2	^ 5.0	36.8	-1.7
Making or receiving payments	^ 1.9	14.2	^ 2.6	19.1	15.9
Other	^ 4.4	32.0	^ 5.1	37.0	7.6
Total	13.6	100.0	13.7	100.0	0.1
1-4 employees					
Email	^ 3.5	52.9	^ 3.8	52.8	4.6
Research	^ 3.1	46.5	^ 3.6	49.6	8.1
Making or receiving payments	*1.1	16.4	^ 2.4	32.8	48.1
Other	^ 3.0	44.9	^ 3.6	49.9	10.3
Total	^ 6.6	100.0	^ 7.3	100.0	4.7
5-19 employees					
Email	^ 1.6	64.8	*1.1	58.8	-15.6
Research	*1.4	56.7	*1.1	58.0	-10.4
Making or receiving payments	*0.8	32.3	*0.6	30.3	-14.2
Other	^ 1.6	66.9	*1.3	65.2	-12.6
Total	^ 2.5	100.0	*1.9	100.0	-11.4
Total					
Email	10.2	44.9	^ 9.6	41.8	-3.2
Research	9.7	42.6	^ 9.8	42.7	0.4
Making or receiving payments	^ 3.8	16.8	^ 5.6	24.4	20.8
Other	^ 9.0	39.5	^ 9.9	43.5	5.1
Total	22.7	100.0	22.9	100.0	0.3

^ estimate has a relative standard error of 10% to less than 25% and should be used with caution

* estimate has a relative standard error of 25% to 50% and should be used with caution

3.5 SMALL BUSINESSES, By employer size group and major uses of the Internet for states and territories *continued*

	JUNE 2001		JUNE 2003		Average annual rate of change
	Number of businesses	Proportion of businesses	Number of businesses	Proportion of businesses	
	'000	%	'000	%	
NORTHERN TERRITORY (a)					
Non-employed businesses					
Email	*0.9	29.3	*2.1	41.2	48.7
Research	*0.9	29.2	*1.9	37.2	41.4
Making or receiving payments	**0.3	8.1	*0.9	18.2	87.5
Other	*0.8	24.4	*2.1	41.5	63.3
Total	^ 3.2	100.0	^ 5.1	100.0	25.3
1-4 employees					
Email	*1.3	36.8	*1.2	55.7	-5.2
Research	*1.4	39.1	*1.2	56.7	-7.3
Making or receiving payments	*0.9	24.4	*0.8	38.3	-3.5
Other	*1.6	45.7	*1.1	51.3	-18.5
Total	^ 3.6	100.0	*2.1	100.0	-23.0
5-19 employees					
Email	*0.6	75.4	*0.6	77.9	2.8
Research	*0.5	67.7	*0.6	74.4	6.1
Making or receiving payments	**0.2	31.6	*0.6	77.9	58.9
Other	*0.6	75.4	*0.6	80.5	4.6
Total	*0.8	100.0	*0.8	100.0	1.2
Total					
Email	^ 2.9	37.5	^ 3.9	48.7	16.9
Research	^ 2.9	37.8	^ 3.7	46.1	13.2
Making or receiving payments	*1.4	18.2	^ 2.4	29.5	30.6
Other	^ 3.0	39.7	^ 3.9	48.0	12.8
Total	^ 7.6	100.0	^ 8.0	100.0	2.6

^ estimate has a relative standard error of 10% to less than 25% and should be used with caution

* estimate has a relative standard error of 25% to 50% and should be used with caution

** estimate has a relative standard error greater than 50% and is considered too unreliable for general use

(a) Refers to mainly urban areas only.

3.5SMALL BUSINESSES, By employer size group and major uses of the Internet for states and territories *continued*

	JUNE 2001		JUNE 2003		Average annual rate of change
	Number of businesses	Proportion of businesses	Number of businesses	Proportion of businesses	
	'000	%	'000	%	
AUSTRALIAN CAPITAL TERRITORY					
Non-employed businesses					
Email	^ 6.0	57.3	^ 5.2	53.3	-7.7
Research	^ 5.9	55.7	^ 5.1	53.2	-6.5
Making or receiving payments	^ 2.4	22.4	^ 2.6	27.3	5.6
Other	^ 5.8	55.0	^ 5.0	52.1	-6.9
Total	10.6	100.0	^ 9.7	100.0	-4.3
1-4 employees					
Email	^ 4.0	65.7	^ 3.4	64.5	-7.8
Research	^ 3.7	60.6	^ 3.3	62.9	-5.2
Making or receiving payments	^ 2.0	32.5	^ 2.1	40.9	4.3
Other	^ 3.9	63.9	^ 3.4	64.6	-6.5
Total	^ 6.0	100.0	^ 5.2	100.0	-7.0
5-19 employees					
Email	*1.3	69.1	*1.1	85.4	-9.4
Research	*1.2	65.2	*1.0	79.0	-10.3
Making or receiving payments	*1.1	57.3	*0.9	67.7	-11.5
Other	*1.3	68.4	*1.1	89.5	-6.8
Total	^ 1.9	100.0	*1.3	100.0	-18.5
Total					
Email	11.3	61.2	^ 9.6	59.5	-7.9
Research	10.8	58.2	^ 9.4	58.3	-6.5
Making or receiving payments	^ 5.4	29.3	^ 5.6	34.9	1.9
Other	11.0	59.3	^ 9.5	59.0	-6.7
Total	18.5	100.0	16.1	100.0	-6.6

^ estimate has a relative standard error of 10% to less than 25% and should be used with caution

* estimate has a relative standard error of 25% to 50% and should be used with caution

INTRODUCTION

Home based businesses have been identified based on two definitions:

- where most of the work of the business was carried out at the home(s) of the operator(s) — these businesses are referred to as 'Businesses operated at home'
- where the business has no other premises owned or rented other than the home(s) of the operator(s) — these businesses are referred to as 'Businesses operated from home'.

When combining figures for the two groups it should be noted that some overlap does occur.

In the first edition of this publication (1995), businesses were considered home based if 'one or more of the operators of the business worked more hours at home than away from home'. This definition is similar to the category 'Businesses operated at home' (as defined above), but is not strictly comparable.

NUMBER OF HOME BASED BUSINESSES

Home based businesses make up a very large proportion of the total small business population in Australia. At June 2003, there were an estimated 784,800 home based small businesses which were either operated from home or operated at home. This represented 67% of all small businesses. These businesses were operated by 987,700 people, representing 62% of all small business operators. Since June 2001, the number of home based businesses has increased at an average annual rate of 0.4% while the number of operators involved decreased at an average annual rate of 0.6% over the same period. These rates compare with an average annual growth rate of 0.7% for small businesses in general and an average annual decline rate of 0.2% for small business operators overall.

At June 2003, 95% (748,200) of all home based small businesses were operated from home. This represented a small average annual increase of 0.3% since June 2001. These businesses involved 935,100 operators, down by an average annual rate of 0.5% since 2001.

In June 2003, there were 280,600 small businesses (36%) operated at home, involving 360,100 operators. For this category growth was stronger, with the number of businesses increasing at an average annual rate of 2.7% and the number of operators increasing at an average annual rate of 1.0% over the two year period.

As mentioned above, overlap can occur between the 'operated at home' and 'operated from home' definitions as businesses can operate without premises and also have most of the work carried out at the home of the operators. In June 2003 there were 244,000 of these businesses involving 307,500 operators.

NUMBER OF HOME BASED
BUSINESSES *continued*

HOME BASED SMALL BUSINESSES

	<i>Number of businesses</i>	<i>Number of operators</i>
	'000	'000
Operated from home	748.2	935.1
Operated at home	280.6	360.1
Operated both from home and at home	244.0	307.5
Total home based, operating either from home or at home	784.8	987.7
Total home based and non-home based businesses	1 179.3	1 591.5

OPERATORS OF HOME
BASED BUSINESSES*By sex*

At June 2003, across all home based small businesses, 669,600 (68%) operators were male. This represented an average annual decrease of 0.9% over the two years since June 2001. There were 318,100 female operators of home based businesses which represented an average annual increase of 0.1% over the same period. Males were less dominant in the 'operated at home' category, where they made up 54% of all such operators. This compared to the 'operated from home' category, for which 68% of such operators were male.

By age

The age distribution of home based small business operators was very similar to the overall distribution for small businesses with 11% aged less than 30 years; 57% aged between 30 and 50 years; and 33% more than 50 years old.

By hours worked

Home based operators were more likely to be working part time than all small business operators, with 41% usually working less than 35 hours per week. This compares with 34% for all small business operators. Female home based business operators in particular were more likely to work part time in their business than those in all small businesses, with 73% working less than 35 hours compared to 62% overall. For male home based business operators, only 26% were working part time compared to 19% overall.

Born in Australia or born overseas

The proportion of home based small business operators who were born overseas was 29%, the same proportion recorded for all small business operators.

Number of businesses operated

At June 2003, 94% of home based business operators operated just the one business; this compared with 93% across all small businesses.

By state and territory

Home based small business operators were distributed across states and territories in a similar proportion to small business operators overall, with both reflecting the general population distribution within Australia.

In terms of change since June 2001, the strongest growth in the number of home based business operators was recorded in Western Australia with an average annual increase of 5.2%, and Victoria with an average annual increase of 2.0%. At the other end of the scale, the greatest declines in the number of home based business operators were in the Australian Capital Territory and the Northern Territory, which recorded average annual decline rates of 11% and 6.5% respectively. South Australia reported an average annual decline rate of 5.8%.

CHARACTERISTICS OF
HOME BASED
BUSINESSES

Table 4.3 shows a range of characteristics of home based small businesses. Of the 784,800 home based small businesses operating at June 2003 most (70%) were non-employing businesses. There were 214,500 (27%) home based businesses employing 1–4 people and 20,000 (2.5%) employing 5–19 people.

In terms of age of business, home based businesses followed a similar distribution pattern to that of total small businesses with:

- 15% aged less than one year old
- 35% aged one year to less than five years
- 20% aged five years to less than 10 years
- 30% aged 10 years or more.

Operators per business

In June 2003, 76% of home based small businesses were single operator businesses. This proportion was higher than that recorded for small businesses overall where 69% were single operator businesses. Conversely, there was a lower proportion of multi-operator home based small businesses, with 24% of home based small businesses having two operators, compared to 29% of small businesses overall, and 1.0% having three or more operators, compared to 2.4% overall.

Predominant gender of operators

Most home based businesses (58%) were operated predominantly by males, which is consistent with the figure recorded in June 2001. The number of home based businesses operated predominantly by females increased from 19% in June 2001 to 21% by June 2003. The proportion of businesses operated by equal numbers of males and females decreased to 21% in June 2003, an average annual decrease of 5.0%.

Use of computers and the Internet

At June 2003, 529,600 (68%) of Australia's home based businesses were using computers in their business operations. This was slightly below the proportion recorded for all small businesses (72%). In addition, 460,500 (59%) businesses had access to the Internet; this is marginally below the proportion for all small businesses (62%). The most common use being made of the Internet was for email and other purposes (49% of home based small businesses). In addition, 45% were using the Internet for research purposes; and 26% were involved in 'making or receiving payments' via the Internet. Use of the Internet for this latter purpose increased at an average annual rate of 29% between June 2001 and June 2003.

4.1**HOME BASED SMALL BUSINESS OPERATORS, By sex and selected characteristics**

	JUNE 2001		JUNE 2003		Average annual rate of change
	Number of operators	Proportion of operators	Number of operators	Proportion of operators	
	'000	%	'000	%	
MALES					
Total home based business operators	681.5	100.0	669.6	100.0	-0.9
Home based business					
Operated at home	196.5	28.8	194.9	29.1	-0.4
Operated from home	652.4	95.7	638.2	95.3	-1.1
Age of operator					
Aged less than 30 years	82.4	12.1	72.8	10.9	-6.0
Aged 30-50 years	378.8	55.6	369.7	55.2	-1.2
Aged greater than 50 years	220.2	32.3	227.0	33.9	1.5
Hours worked by operators					
1-10 hours worked	38.6	5.7	53.0	7.9	17.2
11-20 hours worked	40.2	5.9	52.8	7.9	14.6
21-34 hours worked	58.9	8.6	68.8	10.3	8.1
35-50 hours worked	375.7	55.1	338.1	50.5	-5.1
51-75 hours worked	147.9	21.7	136.9	20.4	-3.8
More than 75 hours worked	^ 20.2	3.0	^ 20.0	3.0	-0.5
Australian born and overseas born operators					
Born in Australia	474.7	69.7	465.9	69.6	-0.9
Born overseas	206.7	30.3	203.7	30.4	-0.7
Number of businesses operated					
One business	645.0	94.6	630.3	94.1	-1.1
Two businesses	^ 27.9	4.1	^ 29.8	4.5	3.4
Three businesses or more	^ 8.6	1.3	^ 9.4	1.4	4.7
State					
New South Wales	223.6	32.8	221.0	33.0	-0.6
Victoria	161.9	23.8	158.4	23.7	-1.1
Queensland	139.3	20.4	130.5	19.5	-3.2
South Australia	50.1	7.4	46.6	7.0	-3.6
Western Australia	76.9	11.3	87.3	13.0	6.6
Tasmania	12.9	1.9	^ 11.7	1.7	-4.7
Northern Territory(a)	^ 4.6	0.7	^ 4.3	0.6	-3.9
Australian Capital Territory	12.2	1.8	^ 9.8	1.5	-10.1

^ estimate has a relative standard error of 10% to less than 25% and should be used with caution

(a) Refers to mainly urban areas only.

4.1 HOME BASED SMALL BUSINESS OPERATORS, By sex and selected characteristics

continued

	JUNE 2001		JUNE 2003		Average annual rate of change
	Number of operators '000	Proportion of operators %	Number of operators '000	Proportion of operators %	
FEMALES					
Total home based business operators	317.3	100.0	318.1	100.0	0.1
Home based business					
Operated at home	156.2	49.2	165.2	51.9	2.8
Operated from home	293.0	92.3	296.9	93.3	0.7
Age of operator					
Aged less than 30 years	38.4	12.1	^ 32.3	10.1	-8.3
Aged 30-50 years	198.1	62.4	188.0	59.1	-2.6
Aged greater than 50 years	80.8	25.5	97.9	30.8	10.0
Hours worked by operators					
1-10 hours worked	90.7	28.6	112.6	35.4	11.4
11-20 hours worked	65.8	20.7	63.6	20.0	-1.7
21-34 hours worked	52.2	16.5	55.6	17.5	3.1
35-50 hours worked	82.7	26.1	62.1	19.5	-13.3
51-75 hours worked	^ 21.8	6.9	^ 21.2	6.7	-1.4
More than 75 hours worked	*4.0	1.3	*2.9	0.9	-14.2
Australian born and overseas born operators					
Born in Australia	238.7	75.2	236.6	74.4	-0.4
Born overseas	78.7	24.8	81.5	25.6	1.8
Number of businesses operated					
One business	297.9	93.9	298.6	93.9	0.1
Two businesses	^ 15.7	4.9	^ 15.5	4.9	-0.4
Three businesses or more	*3.7	1.2	*3.9	1.2	2.6
State					
New South Wales	99.6	31.4	92.8	29.2	-3.5
Victoria	69.9	22.0	83.1	26.1	9.0
Queensland	71.8	22.6	72.0	22.6	0.1
South Australia	25.2	8.0	^ 20.2	6.4	-10.5
Western Australia	37.4	11.8	39.2	12.3	2.4
Tasmania	^ 6.1	1.9	^ 5.3	1.7	-6.8
Northern Territory(a)	*1.5	0.5	*1.1	0.3	-15.0
Australian Capital Territory	^ 5.7	1.8	^ 4.4	1.4	-12.0

^ estimate has a relative standard error of 10% to less than 25% and should be used with caution

* estimate has a relative standard error of 25% to 50% and should be used with caution

(a) Refers to mainly urban areas only.

4.1**HOME BASED SMALL BUSINESS OPERATORS, By sex and selected characteristics***continued*

	JUNE 2001		JUNE 2003		Average annual rate of change
	Number of operators	Proportion of operators	Number of operators	Proportion of operators	
	'000	%	'000	%	
PERSONS					
Total home based business operators	998.8	100.0	987.7	100.0	-0.6
Home based business					
Operated at home	352.7	35.3	360.1	36.5	1.0
Operated from home	945.4	94.7	935.1	94.7	-0.5
Age of operator					
Aged less than 30 years	120.9	12.1	105.1	10.6	-6.8
Aged 30-50 years	576.9	57.8	557.7	56.5	-1.7
Aged greater than 50 years	301.0	30.1	324.8	32.9	3.9
Hours worked by operators					
1-10 hours worked	129.3	12.9	165.6	16.8	13.2
11-20 hours worked	106.0	10.6	116.3	11.8	4.8
21-34 hours worked	111.1	11.1	124.4	12.6	5.8
35-50 hours worked	458.5	45.9	400.3	40.5	-6.6
51-75 hours worked	169.7	17.0	158.1	16.0	-3.5
More than 75 hours worked	^ 24.2	2.4	^ 22.9	2.3	-2.7
Australian born and overseas born operators					
Born in Australia	713.4	71.4	702.5	71.1	-0.8
Born overseas	285.4	28.6	285.2	28.9	—
Number of businesses operated					
One business	942.9	94.4	929.0	94.1	-0.7
Two businesses	43.5	4.4	45.3	4.6	2.0
Three businesses or more	^ 12.3	1.2	^ 13.4	1.4	4.1
State					
New South Wales	323.2	32.4	313.8	31.8	-1.5
Victoria	231.8	23.2	241.4	24.4	2.0
Queensland	211.1	21.1	202.4	20.5	-2.1
South Australia	75.4	7.5	66.9	6.8	-5.8
Western Australia	114.3	11.4	126.5	12.8	5.2
Tasmania	19.0	1.9	^ 17.0	1.7	-5.4
Northern Territory(a)	^ 6.1	0.6	^ 5.4	0.5	-6.5
Australian Capital Territory	17.9	1.8	14.3	1.4	-10.7

^ estimate has a relative standard error of 10% to less than 25% and should be used with caution

— nil or rounded to zero (including null cells)

(a) Refers to mainly urban areas only.

4.2 HOME BASED SMALL BUSINESS OPERATORS, By states and territories and selected characteristics

	JUNE 2001		JUNE 2003		Average annual rate of change
	Number of operators	Proportion of operators	Number of operators	Proportion of operators	
	'000	%	'000	%	
AUSTRALIA					
Total home based business operators	998.8	100.0	987.7	100.0	-0.6
Home based business					
Operated at home	352.7	35.3	360.1	36.5	1.0
Operated from home	945.4	94.7	935.1	94.7	-0.5
Sex of operators					
Males	681.5	68.2	669.6	67.8	-0.9
Females	317.3	31.8	318.1	32.2	0.1
Age of operators					
Aged less than 30 years	120.9	12.1	105.1	10.6	-6.8
Aged 30–50 years	576.9	57.8	557.7	56.5	-1.7
Aged greater than 50 years	301.0	30.1	324.8	32.9	3.9
Hours worked by operators					
1–10 hours worked	129.3	12.9	165.6	16.8	13.2
11–20 hours worked	106.0	10.6	116.3	11.8	4.8
21–34 hours worked	111.1	11.1	124.4	12.6	5.8
35–50 hours worked	458.5	45.9	400.3	40.5	-6.6
51–75 hours worked	169.7	17.0	158.1	16.0	-3.5
More than 75 hours worked	^ 24.2	2.4	^ 22.9	2.3	-2.7
Born in Australia or born overseas					
Born in Australia	713.4	71.4	702.5	71.1	-0.8
Born overseas	285.4	28.6	285.2	28.9	—
Number of businesses operated					
One business	942.9	94.4	929.0	94.1	-0.7
Two businesses	43.5	4.4	45.3	4.6	2.0
Three businesses or more	^ 12.3	1.2	^ 13.4	1.4	4.1

^ estimate has a relative standard error of 10% to less than 25% and should be used with caution

— nil or rounded to zero (including null cells)

4.2

HOME BASED SMALL BUSINESS OPERATORS, By states and territories and selected characteristics *continued*

	JUNE 2001		JUNE 2003		Average annual rate of change
	Number of operators	Proportion of operators	Number of operators	Proportion of operators	
	'000	%	'000	%	
NEW SOUTH WALES					
Total home based business operators	323.2	100.0	313.8	100.0	-1.5
Home based business					
Operated at home	119.9	37.1	117.5	37.5	-1.0
Operated from home	306.2	94.7	296.3	94.4	-1.6
Sex of operators					
Males	223.6	69.2	221.0	70.4	-0.6
Females	99.6	30.8	92.8	29.6	-3.5
Age of operators					
Aged less than 30 years	^ 42.8	13.3	^ 33.3	10.6	-11.8
Aged 30-50 years	177.4	54.9	179.0	57.0	0.5
Aged greater than 50 years	102.9	31.9	101.5	32.3	-0.7
Hours worked by operators					
1-10 hours worked	^ 42.2	13.1	49.5	15.8	8.3
11-20 hours worked	^ 30.9	9.6	^ 30.5	9.7	-0.6
21-34 hours worked	^ 29.4	9.1	^ 36.9	11.8	12.1
35-50 hours worked	159.0	49.2	133.0	42.4	-8.5
51-75 hours worked	56.2	17.4	54.4	17.3	-1.6
More than 75 hours worked	*5.5	1.7	^ 9.4	3.0	31.4
Born in Australia or born overseas					
Born in Australia	222.9	69.0	216.5	69.0	-1.4
Born overseas	100.3	31.0	97.3	31.0	-1.5
Number of businesses operated					
One business	303.3	93.8	294.4	93.8	-1.5
Two businesses	^ 15.3	4.7	^ 14.6	4.7	-2.4
Three businesses or more	*4.6	1.4	*4.8	1.5	2.6

^ estimate has a relative standard error of 10% to less than 25% and should be used with caution

* estimate has a relative standard error of 25% to 50% and should be used with caution

4.2 HOME BASED SMALL BUSINESS OPERATORS, By states and territories and selected characteristics *continued*

	JUNE 2001		JUNE 2003		Average annual rate of change
	Number of operators	Proportion of operators	Number of operators	Proportion of operators	
	'000	%	'000	%	
VICTORIA					
Total home based business operators	231.8	100.0	241.4	100.0	2.0
Home based business					
Operated at home	82.3	35.5	91.6	37.9	5.4
Operated from home	218.8	94.4	230.2	95.3	2.6
Sex of operators					
Males	161.9	69.8	158.4	65.6	-1.1
Females	69.9	30.2	83.1	34.4	9.0
Age of operators					
Aged less than 30 years	*24.4	10.5	^ 20.1	8.3	-9.3
Aged 30-50 years	129.4	55.8	144.4	59.8	5.6
Aged greater than 50 years	78.0	33.7	77.0	31.9	-0.7
Hours worked by operators					
1-10 hours worked	*31.7	13.7	^ 40.9	16.9	13.7
11-20 hours worked	*26.7	11.5	^ 29.5	12.2	5.1
21-34 hours worked	*27.7	11.9	^ 31.9	13.2	7.3
35-50 hours worked	101.6	43.8	99.9	41.4	-0.8
51-75 hours worked	38.9	16.8	^ 34.6	14.3	-5.7
More than 75 hours worked	*5.3	2.3	*4.7	1.9	-6.5
Born in Australia or born overseas					
Born in Australia	172.1	74.2	172.3	71.4	0.1
Born overseas	59.7	25.8	69.1	28.6	7.5
Number of businesses operated					
One business	220.7	95.2	229.5	95.1	2.0
Two businesses	*9.0	3.9	^ 9.4	3.9	2.0
Three businesses or more	*2.1	0.9	*2.5	1.0	9.8

^ estimate has a relative standard error of 10% to less than 25% and should be used with caution

* estimate has a relative standard error of 25% to 50% and should be used with caution

4.2HOME BASED SMALL BUSINESS OPERATORS, By states and territories and selected characteristics *continued*

	JUNE 2001		JUNE 2003		Average annual rate of change
	Number of operators	Proportion of operators	Number of operators	Proportion of operators	
	'000	%	'000	%	
QUEENSLAND					
Total home based business operators	211.1	100.0	202.4	100.0	-2.1
Home based business					
Operated at home	71.6	33.9	74.2	36.6	1.8
Operated from home	198.1	93.8	191.0	94.3	-1.8
Sex of operators					
Males	139.3	66.0	130.5	64.5	-3.2
Females	71.8	34.0	72.0	35.5	0.1
Age of operators					
Aged less than 30 years	^ 24.5	11.6	^ 23.3	11.5	-2.5
Aged 30-50 years	132.3	62.7	113.7	56.2	-7.3
Aged greater than 50 years	54.3	25.7	65.4	32.3	9.8
Hours worked by operators					
1-10 hours worked	^ 24.6	11.7	^ 29.1	14.4	8.6
11-20 hours worked	^ 24.5	11.6	^ 28.2	13.9	7.2
21-34 hours worked	^ 25.8	12.2	^ 27.6	13.6	3.3
35-50 hours worked	89.0	42.2	76.1	37.6	-7.5
51-75 hours worked	40.0	18.9	38.4	19.0	-2.1
More than 75 hours worked	^ 7.1	3.4	*3.1	1.5	-34.0
Born in Australia or born overseas					
Born in Australia	159.5	75.5	154.2	76.2	-1.7
Born overseas	51.7	24.5	48.2	23.8	-3.4
Number of businesses operated					
One business	197.9	93.8	188.5	93.1	-2.4
Two businesses	^ 9.8	4.6	^ 11.1	5.5	6.2
Three businesses or more	*3.4	1.6	*2.9	1.4	-8.0

^ estimate has a relative standard error of 10% to less than 25% and should be used with caution

* estimate has a relative standard error of 25% to 50% and should be used with caution

4.2 HOME BASED SMALL BUSINESS OPERATORS, By states and territories and selected characteristics *continued*

	JUNE 2001		JUNE 2003		Average annual rate of change
	Number of operators	Proportion of operators	Number of operators	Proportion of operators	
	'000	%	'000	%	%
SOUTH AUSTRALIA					
Total home based business operators	75.4	100.0	66.9	100.0	-5.8
Home based business					
Operated at home	25.6	34.0	25.3	37.9	-0.6
Operated from home	72.5	96.2	61.2	91.5	-8.2
Sex of operators					
Males	50.1	66.5	46.6	69.7	-3.6
Females	25.2	33.5	^ 20.2	30.3	-10.5
Age of operators					
Aged less than 30 years	^ 8.1	10.7	^ 6.4	9.6	-10.7
Aged 30-50 years	46.5	61.7	37.2	55.7	-10.5
Aged greater than 50 years	^ 20.8	27.6	23.2	34.7	5.5
Hours worked by operators					
1-10 hours worked	^ 9.4	12.5	^ 13.4	20.1	19.3
11-20 hours worked	^ 8.8	11.7	^ 7.4	11.1	-8.3
21-34 hours worked	^ 11.5	15.2	^ 8.0	12.0	-16.4
35-50 hours worked	32.0	42.5	28.2	42.2	-6.1
51-75 hours worked	^ 11.7	15.5	^ 8.8	13.1	-13.3
More than 75 hours worked	* 2.0	2.6	* 1.0	1.5	-28.3
Born in Australia or born overseas					
Born in Australia	54.4	72.2	50.5	75.6	-3.7
Born overseas	^ 20.9	27.8	^ 16.3	24.4	-11.7
Number of businesses operated					
One business	73.1	97.0	62.8	93.9	-7.3
Two businesses	* 1.7	2.2	^ 3.6	5.3	45.8
Three businesses or more	** 0.6	0.7	** 0.5	0.8	-4.4

^ estimate has a relative standard error of 10% to less than 25% and should be used with caution

* estimate has a relative standard error of 25% to 50% and should be used with caution

** estimate has a relative standard error greater than 50% and is considered too unreliable for general use

4.2HOME BASED SMALL BUSINESS OPERATORS, By states and territories and selected characteristics *continued*

	JUNE 2001		JUNE 2003		Average annual rate of change
	Number of operators	Proportion of operators	Number of operators	Proportion of operators	
	'000	%	'000	%	
WESTERN AUSTRALIA					
Total home based business operators	114.3	100.0	126.5	100.0	5.2
Home based business					
Operated at home	37.1	32.5	37.5	29.7	0.5
Operated from home	108.4	94.9	122.0	96.5	6.1
Sex of operators					
Males	76.9	67.3	87.3	69.0	6.6
Females	37.4	32.7	39.2	31.0	2.4
Age of operators					
Aged less than 30 years	^ 16.3	14.3	^ 18.1	14.3	5.2
Aged 30–50 years	67.4	58.9	63.9	50.5	–2.6
Aged greater than 50 years	30.6	26.8	44.6	35.2	20.6
Hours worked by operators					
1–10 hours worked	^ 16.1	14.1	25.3	20.0	25.3
11–20 hours worked	^ 11.7	10.2	^ 16.2	12.8	18.0
21–34 hours worked	^ 11.4	10.0	^ 16.1	12.7	18.8
35–50 hours worked	56.8	49.7	48.4	38.3	–7.6
51–75 hours worked	^ 15.5	13.6	^ 17.1	13.5	4.9
More than 75 hours worked	*2.8	2.5	*3.4	2.7	9.8
Born in Australia or born overseas					
Born in Australia	71.4	62.5	78.8	62.3	5.1
Born overseas	42.9	37.5	47.7	37.7	5.5
Number of businesses operated					
One business	108.1	94.6	117.9	93.2	4.5
Two businesses	^ 4.8	4.2	^ 6.3	5.0	14.5
Three businesses or more	*1.4	1.2	*2.2	1.8	27.9

^ estimate has a relative standard error of 10% to less than 25% and should be used with caution

* estimate has a relative standard error of 25% to 50% and should be used with caution

4.2 HOME BASED SMALL BUSINESS OPERATORS, By states and territories and selected characteristics *continued*

	JUNE 2001		JUNE 2003		Average annual rate of change
	Number of operators	Proportion of operators	Number of operators	Proportion of operators	
	'000	%	'000	%	%
TASMANIA					
Total home based business operators	19.0	100.0	^ 17.0	100.0	-5.4
Home based business					
Operated at home	^ 7.3	38.2	^ 7.4	43.5	0.9
Operated from home	18.3	96.1	^ 15.6	91.8	-7.5
Sex of operators					
Males	12.9	67.7	^ 11.7	68.6	-4.7
Females	^ 6.1	32.3	^ 5.3	31.4	-6.8
Age of operators					
Aged less than 30 years	^ 2.1	11.0	*1.1	6.7	-26.5
Aged 30-50 years	10.0	52.6	^ 9.0	52.9	-5.2
Aged greater than 50 years	^ 6.9	36.3	^ 6.9	40.4	-0.2
Hours worked by operators					
1-10 hours worked	^ 2.8	14.6	^ 3.5	20.4	11.9
11-20 hours worked	*1.7	8.8	^ 1.9	11.4	7.5
21-34 hours worked	^ 3.1	16.5	*1.5	8.8	-30.9
35-50 hours worked	^ 7.9	41.8	^ 6.9	40.9	-6.4
51-75 hours worked	^ 2.8	14.8	^ 2.4	14.4	-6.8
More than 75 hours worked	*0.7	3.5	*0.7	4.2	3.1
Born in Australia or born overseas					
Born in Australia	16.9	89.2	^ 15.1	88.6	-5.7
Born overseas	^ 2.0	10.8	^ 1.9	11.4	-2.9
Number of businesses operated					
One business	17.0	89.7	^ 16.8	98.6	-0.8
Two businesses	*1.6	8.3	**0.1	0.8	-71.5
Three businesses or more	**0.4	1.9	**0.1	0.6	-46.0

^ estimate has a relative standard error of 10% to less than 25% and should be used with caution

* estimate has a relative standard error of 25% to 50% and should be used with caution

** estimate has a relative standard error greater than 50% and is considered too unreliable for general use

4.2

HOME BASED SMALL BUSINESS OPERATORS, By states and territories and selected characteristics *continued*

	JUNE 2001		JUNE 2003		Average annual rate of change
	Number of operators	Proportion of operators	Number of operators	Proportion of operators	
	'000	%	'000	%	
NORTHERN TERRITORY					
Total home based business operators	^ 6.1	100.0	^ 5.4	100.0	-6.5
Home based business					
Operated at home	*1.4	22.4	*1.2	22.6	-6.0
Operated from home	^ 5.9	96.4	^ 5.3	97.9	-5.8
Sex of operators					
Males	^ 4.6	75.0	^ 4.3	79.3	-3.9
Females	*1.5	25.0	*1.1	20.7	-15.0
Age of operators					
Aged less than 30 years	*0.6	10.3	**0.3	5.7	-30.4
Aged 30-50 years	^ 3.9	64.1	^ 3.5	65.2	-5.7
Aged greater than 50 years	*1.6	25.6	*1.6	29.1	-0.4
Hours worked by operators					
1-10 hours worked	*0.6	9.8	**0.5	8.8	-11.5
11-20 hours worked	**0.3	5.5	*1.0	19.4	76.1
21-34 hours worked	**0.4	6.2	**0.4	6.6	-3.4
35-50 hours worked	^ 3.2	51.8	*2.0	37.6	-20.4
51-75 hours worked	*1.3	20.7	*1.1	20.9	-6.1
More than 75 hours worked	**0.4	6.0	**0.4	6.7	-1.5
Born in Australia or born overseas					
Born in Australia	^ 4.0	65.8	^ 4.3	80.1	3.1
Born overseas	^ 2.1	34.2	*1.1	19.9	-28.6
Number of businesses operated					
One business	^ 6.1	100.0	^ 5.4	100.0	-6.5
Two businesses	—	—	—	—	na
Three businesses or more	—	—	—	—	na

^ estimate has a relative standard error of 10% to less than 25% and should be used with caution

* estimate has a relative standard error of 25% to 50% and should be used with caution

** estimate has a relative standard error greater than 50% and is considered too unreliable for general use

— nil or rounded to zero (including null cells)

na not available

4.2 HOME BASED SMALL BUSINESS OPERATORS, By states and territories and selected characteristics *continued*

	JUNE 2001		JUNE 2003		Average annual rate of change
	Number of operators	Proportion of operators	Number of operators	Proportion of operators	
	'000	%	'000	%	
AUSTRALIAN CAPITAL TERRITORY					
Total home based business operators	17.9	100.0	14.3	100.0	-10.7
Home based business					
Operated at home	^ 7.4	41.4	^ 5.3	37.4	-15.1
Operated from home	17.2	96.2	13.6	95.4	-11.1
Sex of operators					
Males	12.2	68.1	^ 9.8	69.0	-10.1
Females	^ 5.7	31.9	^ 4.4	31.0	-12.0
Age of operators					
Aged less than 30 years	^ 2.0	11.1	^ 2.4	17.2	11.0
Aged 30–50 years	10.1	56.5	^ 7.0	49.2	-16.7
Aged greater than 50 years	^ 5.8	32.4	^ 4.8	33.7	-9.0
Hours worked by operators					
1–10 hours worked	^ 1.9	10.5	^ 3.5	24.4	35.8
11–20 hours worked	*1.4	7.6	*1.5	10.7	5.4
21–34 hours worked	^ 1.8	10.3	^ 2.1	14.6	6.1
35–50 hours worked	^ 9.0	50.3	^ 5.6	39.1	-21.3
51–75 hours worked	^ 3.4	18.7	*1.4	9.6	-36.0
More than 75 hours worked	**0.4	2.5	**0.2	1.7	-26.5
Born in Australia or born overseas					
Born in Australia	12.1	67.7	^ 10.7	75.4	-5.8
Born overseas	^ 5.8	32.3	^ 3.5	24.6	-22.2
Number of businesses operated					
One business	16.6	92.8	13.7	95.9	-9.3
Two businesses	*1.3	7.2	**0.3	1.8	-55.2
Three businesses or more	—	—	**0.3	2.3	—

^ estimate has a relative standard error of 10% to less than 25% and should be used with caution

* estimate has a relative standard error of 25% to 50% and should be used with caution

** estimate has a relative standard error greater than 50% and is considered too unreliable for general use

— nil or rounded to zero (including null cells)

4.3

HOME BASED SMALL BUSINESS OPERATORS, By states and territories and selected characteristics

	JUNE 2001		JUNE 2003		Average annual rate of change
	Number of businesses	Proportion of businesses	Number of businesses	Proportion of businesses	
	'000	%	'000	%	
AUSTRALIA					
Total home based small businesses	778.4	100.0	784.8	100.0	0.4
Home based business					
Operated at home	266.1	34.2	280.6	35.7	2.7
Operated from home	743.0	95.5	748.2	95.3	0.3
Gender predominance					
Predominantly male	448.5	57.6	456.5	58.2	0.9
Predominantly female	148.9	19.1	165.1	21.0	5.3
Equal male and female	180.9	23.2	163.2	20.8	-5.0
Employer size group					
Non-employing businesses	535.6	68.8	550.4	70.1	1.4
1-4 employees	218.2	28.0	214.5	27.3	-0.9
5-19 employees	24.6	3.2	^ 20.0	2.5	-9.8
Age of business					
Less than 1 year	124.2	15.9	116.1	14.8	-3.3
1 to less than 5 years	294.1	37.8	276.7	35.3	-3.0
5 to less than 10 years	133.0	17.1	154.8	19.7	7.9
10 or more years	227.1	29.2	237.3	30.2	2.2
Number of operators					
1 operator	574.3	73.8	592.7	75.5	1.6
2 operators	193.2	24.8	184.1	23.5	-2.4
3 or more operators	^ 10.9	1.4	^ 8.0	1.0	-14.2
Use of computers					
Uses a computer	484.6	62.3	529.6	67.5	4.5
Does not use a computer	293.8	37.7	255.2	32.5	-6.8
Internet use					
Has access to the Internet	386.3	49.6	460.5	58.7	9.2
Internet used for					
Email	320.0	41.1	380.9	48.5	9.1
Research	304.1	39.1	352.3	44.9	7.6
Making or receiving payments	123.8	15.9	206.3	26.3	29.1
Other	308.9	39.7	387.7	49.4	12.0

^ estimate has a relative standard error of 10% to less than 25% and should be used with caution

4.3 HOME BASED SMALL BUSINESS OPERATORS, By states and territories and selected characteristics *continued*

	JUNE 2001		JUNE 2003		Average annual rate of change
	Number of businesses	Proportion of businesses	Number of businesses	Proportion of businesses	
	'000	%	'000	%	%
NEW SOUTH WALES					
Total home based small businesses	254.4	100.0	249.4	100.0	-1.0
Home based business					
Operated at home	87.4	34.4	93.2	37.4	3.3
Operated from home	243.0	95.5	236.4	94.8	-1.4
Gender predominance					
Predominantly male	151.9	59.7	154.8	62.1	1.0
Predominantly female	47.6	18.7	45.7	18.3	-2.0
Equal male and female	54.9	21.6	48.8	19.6	-5.7
Employer size group					
Non-employing businesses	163.2	64.1	165.6	66.4	0.7
1-4 employees	84.2	33.1	76.7	30.8	-4.6
5-19 employees	^ 7.0	2.8	^ 7.1	2.8	0.4
Age of business					
Less than 1 year	^ 41.0	16.1	^ 29.0	11.6	-15.8
1 to less than 5 years	100.7	39.6	87.3	35.0	-6.9
5 to less than 10 years	^ 35.8	14.1	49.3	19.8	17.4
10 or more years	76.9	30.2	83.8	33.6	4.3
Number of operators					
1 operator	191.9	75.4	188.2	75.5	-1.0
2 operators	58.5	23.0	58.2	23.4	-0.2
3 or more operators	* 4.1	1.6	* 2.9	1.2	-14.8
Use of computers					
Uses a computer	157.1	61.8	170.8	68.5	4.2
Does not use a computer	97.3	38.2	78.6	31.5	-10.1
Internet use					
Has access to the Internet	130.9	51.4	150.1	60.2	7.1
Internet used for					
Email	111.6	43.9	125.1	50.2	5.9
Research	105.4	41.4	115.4	46.3	4.6
Making or receiving payments	^ 39.6	15.6	66.1	26.5	29.2
Other	107.1	42.1	126.6	50.8	8.7

^ estimate has a relative standard error of 10% to less than 25% and should be used with caution

* estimate has a relative standard error of 25% to 50% and should be used with caution

4.3

HOME BASED SMALL BUSINESS OPERATORS, By states and territories and selected characteristics *continued*

	JUNE 2001		JUNE 2003		Average annual rate of change
	Number of businesses	Proportion of businesses	Number of businesses	Proportion of businesses	
	'000	%	'000	%	
VICTORIA					
Total home based small businesses	181.8	100.0	195.6	100.0	3.7
Home based business					
Operated at home	61.8	34.0	71.3	36.4	7.4
Operated from home	173.7	95.6	187.7	96.0	4.0
Gender predominance					
Predominantly male	108.7	59.8	107.5	54.9	-0.6
Predominantly female	31.4	17.3	49.8	25.5	25.9
Equal male and female	41.6	22.9	38.3	19.6	-4.1
Employer size group					
Non-employed businesses	121.6	66.9	133.7	68.4	4.9
1-4 employees	54.0	29.7	57.0	29.1	2.8
5-19 employees	^ 6.2	3.4	^ 4.8	2.5	-11.9
Age of business					
Less than 1 year	^ 24.9	13.7	^ 28.4	14.5	6.7
1 to less than 5 years	62.8	34.6	68.2	34.9	4.2
5 to less than 10 years	32.4	17.9	37.4	19.1	7.4
10 or more years	61.6	33.9	61.6	31.5	—
Number of operators					
1 operator	134.9	74.2	151.8	77.6	6.1
2 operators	44.5	24.5	42.5	21.7	-2.3
3 or more operators	* 2.4	1.3	* 1.4	0.7	-24.2
Use of computers					
Uses a computer	114.3	62.9	127.0	64.9	5.4
Does not use a computer	67.5	37.1	68.6	35.1	0.8
Internet use					
Has access to the Internet	82.9	45.6	108.9	55.7	14.6
Internet used for					
Email	69.3	38.1	89.5	45.8	13.7
Research	65.2	35.8	79.9	40.8	10.7
Making or receiving payments	^ 28.6	15.8	45.9	23.5	26.6
Other	66.1	36.4	88.8	45.4	15.9

^ estimate has a relative standard error of 10% to less than 25% and should be used with caution

* estimate has a relative standard error of 25% to 50% and should be used with caution

— nil or rounded to zero (including null cells)

4.3 HOME BASED SMALL BUSINESS OPERATORS, By states and territories and selected characteristics *continued*

	JUNE 2001		JUNE 2003		Average annual rate of change
	Number of businesses	Proportion of businesses	Number of businesses	Proportion of businesses	
	'000	%	'000	%	
QUEENSLAND					
Total home based small businesses	161.5	100.0	157.3	100.0	-1.3
Home based business					
Operated at home	54.2	33.6	56.9	36.2	2.4
Operated from home	153.1	94.9	150.1	95.4	-1.0
Gender predominance					
Predominantly male	85.9	53.2	84.5	53.7	-0.9
Predominantly female	32.5	20.2	35.3	22.4	4.2
Equal male and female	43.0	26.6	37.5	23.9	-6.6
Employer size group					
Non-employed businesses	117.6	72.9	114.0	72.5	-1.6
1-4 employees	37.5	23.2	39.2	24.9	2.2
5-19 employees	^ 6.3	3.9	^ 4.2	2.6	-18.7
Age of business					
Less than 1 year	25.8	16.0	28.9	18.4	5.9
1 to less than 5 years	66.0	40.9	55.1	35.1	-8.6
5 to less than 10 years	28.6	17.7	29.2	18.6	1.0
10 or more years	41.0	25.4	44.0	28.0	3.6
Number of operators					
1 operator	114.1	70.7	115.2	73.2	0.4
2 operators	45.7	28.3	40.3	25.6	-6.1
3 or more operators	* 1.7	1.0	* 1.9	1.2	6.2
Use of computers					
Uses a computer	101.3	62.7	108.2	68.8	3.3
Does not use a computer	60.1	37.3	49.1	31.2	-9.6
Internet use					
Has access to the Internet	83.6	51.8	95.1	60.4	6.6
Internet used for					
Email	68.0	42.1	77.3	49.1	6.6
Research	66.2	41.0	70.3	44.7	3.0
Making or receiving payments	28.6	17.7	46.0	29.2	26.9
Other	65.5	40.5	81.0	51.5	11.2

^ estimate has a relative standard error of 10% to less than 25% and should be used with caution

* estimate has a relative standard error of 25% to 50% and should be used with caution

4.3

HOME BASED SMALL BUSINESS OPERATORS, By states and territories and selected characteristics *continued*

	JUNE 2001		JUNE 2003		Average annual rate of change
	Number of businesses	Proportion of businesses	Number of businesses	Proportion of businesses	
	'000	%	'000	%	
SOUTH AUSTRALIA					
Total home based small businesses	59.2	100.0	53.3	100.0	-5.1
Home based business					
Operated at home	19.8	33.5	19.5	36.6	-0.8
Operated from home	57.2	96.6	49.2	92.4	-7.2
Gender predominance					
Predominantly male	33.5	56.7	32.3	60.6	-1.8
Predominantly female	^ 12.8	21.6	^ 9.8	18.4	-12.4
Equal male and female	^ 12.9	21.7	^ 11.2	21.0	-6.7
Employer size group					
Non-employed businesses	45.2	76.4	39.5	74.1	-6.5
1-4 employees	^ 12.8	21.6	^ 12.3	23.0	-2.1
5-19 employees	* 1.2	2.0	* 1.5	2.9	14.3
Age of business					
Less than 1 year	^ 10.6	18.0	^ 7.4	13.9	-16.5
1 to less than 5 years	20.4	34.5	^ 18.6	35.0	-4.4
5 to less than 10 years	^ 10.8	18.2	^ 10.0	18.7	-3.9
10 or more years	17.3	29.3	^ 17.3	32.4	-0.1
Number of operators					
1 operator	44.4	75.0	40.3	75.6	-4.7
2 operators	^ 13.8	23.2	^ 12.6	23.6	-4.4
3 or more operators	* 1.0	1.7	** 0.4	0.8	-34.4
Use of computers					
Uses a computer	35.0	59.1	35.8	67.2	1.2
Does not use a computer	24.2	40.9	^ 17.5	32.8	-15.0
Internet use					
Has access to the Internet	27.3	46.1	30.9	57.9	6.4
Internet used for					
Email	21.6	36.5	25.3	47.5	8.2
Research	21.1	35.7	25.7	48.2	10.3
Making or receiving payments	^ 8.1	13.6	^ 14.2	26.6	32.7
Other	20.2	34.2	26.9	50.4	15.3

^ estimate has a relative standard error of 10% to less than 25% and should be used with caution

* estimate has a relative standard error of 25% to 50% and should be used with caution

** estimate has a relative standard error greater than 50% and is considered too unreliable for general use

4.3 HOME BASED SMALL BUSINESS OPERATORS, By states and territories and selected characteristics *continued*

	JUNE 2001		JUNE 2003		Average annual rate of change
	Number of businesses	Proportion of businesses	Number of businesses	Proportion of businesses	
	'000	%	'000	%	
WESTERN AUSTRALIA					
Total home based small businesses	87.7	100.0	100.0	100.0	6.8
Home based business					
Operated at home	29.9	34.1	28.5	28.5	-2.4
Operated from home	83.1	94.8	96.9	97.0	8.0
Gender predominance					
Predominantly male	48.4	55.2	60.1	60.2	11.5
Predominantly female	^ 18.1	20.6	^ 18.7	18.7	1.5
Equal male and female	^ 21.2	24.2	21.2	21.2	—
Employer size group					
Non-employed businesses	64.6	73.7	75.8	75.8	8.3
1-4 employees	^ 19.8	22.6	22.3	22.3	6.1
5-19 employees	^ 3.3	3.7	*1.8	1.9	-24.8
Age of business					
Less than 1 year	^ 16.7	19.1	^ 18.5	18.5	5.1
1 to less than 5 years	30.6	34.9	36.3	36.3	8.9
5 to less than 10 years	^ 17.8	20.3	22.1	22.1	11.6
10 or more years	^ 22.6	25.8	23.1	23.1	1.0
Number of operators					
1 operator	63.4	72.3	75.2	75.2	8.9
2 operators	^ 22.9	26.1	23.5	23.5	1.4
3 or more operators	*1.3	1.5	*1.2	1.2	-3.9
Use of computers					
Uses a computer	55.1	62.9	68.4	68.5	11.4
Does not use a computer	32.5	37.1	31.5	31.5	-1.6
Internet use					
Has access to the Internet	43.0	49.1	58.5	58.5	16.6
Internet used for					
Email	33.7	38.5	50.2	50.2	22.0
Research	30.8	35.1	47.7	47.8	24.5
Making or receiving payments	^ 12.2	13.9	26.8	26.8	48.3
Other	35.2	40.1	51.1	51.1	20.5

^ estimate has a relative standard error of 10% to less than 25% and should be used with caution

* estimate has a relative standard error of 25% to 50% and should be used with caution

— nil or rounded to zero (including null cells)

4.3 HOME BASED SMALL BUSINESS OPERATORS, By states and territories and selected characteristics *continued*

	JUNE 2001		JUNE 2003		Average annual rate of change
	Number of businesses	Proportion of businesses	Number of businesses	Proportion of businesses	
	'000	%	'000	%	
TASMANIA					
Total home based small businesses	14.4	100.0	13.2	100.0	-4.1
Home based business					
Operated at home	^ 5.8	40.0	^ 5.6	42.0	-1.8
Operated from home	13.9	96.6	12.4	93.9	-5.5
Gender predominance					
Predominantly male	^ 7.8	54.2	^ 7.2	54.3	-4.0
Predominantly female	^ 2.7	18.9	^ 2.6	19.6	-2.3
Equal male and female	^ 3.9	26.9	^ 3.5	26.1	-5.5
Employer size group					
Non-employed businesses	11.0	76.5	^ 9.5	71.4	-7.3
1-4 employees	^ 3.3	22.6	^ 3.5	26.1	3.0
5-19 employees	**0.1	0.9	**0.3	2.5	56.7
Age of business					
Less than 1 year	^ 2.3	16.2	*1.5	11.4	-19.5
1 to less than 5 years	^ 5.2	36.1	^ 4.1	31.3	-10.7
5 to less than 10 years	^ 3.3	22.6	^ 3.8	28.8	8.2
10 or more years	^ 3.6	25.1	^ 3.8	28.5	2.2
Number of operators					
1 operator	10.1	70.1	^ 9.5	71.9	-2.9
2 operators	^ 4.1	28.6	^ 3.7	27.9	-5.3
3 or more operators	*0.2	1.3	—	-12.0	na
Use of computers					
Uses a computer	^ 8.1	56.5	^ 8.8	66.7	4.2
Does not use a computer	^ 6.3	43.5	^ 4.4	33.3	-16.1
Internet use					
Has access to the Internet	^ 6.7	46.4	^ 7.2	54.7	4.1
Internet used for					
Email	^ 5.4	37.2	^ 5.2	39.2	-1.5
Research	^ 5.3	36.8	^ 5.3	40.3	0.3
Making or receiving payments	^ 1.9	12.9	^ 2.9	21.7	24.3
Other	^ 4.4	30.5	^ 5.2	39.6	9.2

^ estimate has a relative standard error of 10% to less than 25% and should be used with caution

* estimate has a relative standard error of 25% to 50% and should be used with caution

** estimate has a relative standard error greater than 50% and is considered too unreliable for general use

— nil or rounded to zero (including null cells)

na not available

4.3 HOME BASED SMALL BUSINESS OPERATORS, By states and territories and selected characteristics *continued*

	JUNE 2001		JUNE 2003		Average annual rate of change
	Number of businesses	Proportion of businesses	Number of businesses	Proportion of businesses	
	'000	%	'000	%	
NORTHERN TERRITORY					
Total home based small businesses	^ 4.9	100.0	^ 4.7	100.0	-2.0
Home based business					
Operated at home	*1.0	20.0	*1.0	21.7	1.9
Operated from home	^ 4.7	96.7	^ 4.6	97.7	-1.5
Gender predominance					
Predominantly male	^ 3.4	68.6	^ 3.4	73.1	1.1
Predominantly female	*0.4	8.5	*0.8	16.8	37.3
Equal male and female	*1.1	22.8	*0.5	10.1	-34.9
Employer size group					
Non-employed businesses	^ 2.9	59.9	^ 3.9	83.6	15.7
1-4 employees	*2.0	40.1	*0.8	16.4	-37.3
5-19 employees	—	—	—	—	na
Age of business					
Less than 1 year	*0.7	14.0	*0.5	10.5	-15.1
1 to less than 5 years	*2.0	40.0	^ 2.4	51.9	11.5
5 to less than 10 years	*1.5	31.1	*0.8	17.4	-26.7
10 or more years	*0.7	14.9	*1.0	20.2	14.2
Number of operators					
1 operator	^ 3.7	74.7	^ 4.0	86.0	5.1
2 operators	*1.2	25.3	*0.7	14.0	-27.1
3 or more operators	—	—	—	—	na
Use of computers					
Uses a computer	^ 2.8	56.4	^ 2.4	51.9	-6.1
Does not use a computer	^ 2.1	43.6	*2.3	48.1	3.0
Internet use					
Has access to the Internet	^ 2.4	48.3	^ 2.4	50.1	-0.2
Internet used for					
Email	*1.5	30.7	*2.0	43.1	16.0
Research	*1.5	30.0	*1.7	35.1	6.0
Making or receiving payments	*0.8	16.0	*0.9	19.5	8.0
Other	*1.7	33.9	*1.9	39.6	5.9

^ estimate has a relative standard error of 10% to less than 25% and should be used with caution
 * estimate has a relative standard error of 25% to 50% and should be used with caution
 — nil or rounded to zero (including null cells)
 na not available

4.3

HOME BASED SMALL BUSINESS OPERATORS, By states and territories and selected characteristics *continued*

	JUNE 2001		JUNE 2003		Average annual rate of change
	Number of businesses	Proportion of businesses	Number of businesses	Proportion of businesses	
	'000	%	'000	%	%
AUSTRALIAN CAPITAL TERRITORY					
Total home based small businesses	14.6	100.0	^ 11.3	100.0	-12.1
Home based business					
Operated at home	^ 6.2	42.4	^ 4.6	40.5	-14.2
Operated from home	14.2	97.0	^ 10.7	95.1	-12.9
Gender predominance					
Predominantly male	8.9	61.0	^ 6.7	59.0	-13.5
Predominantly female	^ 3.4	23.0	^ 2.4	21.4	-15.4
Equal male and female	^ 2.3	16.0	^ 2.2	19.7	-2.5
Employer size group					
Non-employed businesses	9.5	65.2	^ 8.3	73.8	-6.5
1-4 employees	^ 4.7	31.9	^ 2.8	24.5	-22.9
5-19 employees	* 0.4	2.9	** 0.2	1.6	-34.0
Age of business					
Less than 1 year	^ 2.1	14.3	^ 1.9	16.6	-5.5
1 to less than 5 years	^ 6.4	43.7	^ 4.5	39.8	-16.1
5 to less than 10 years	^ 2.9	19.9	^ 2.1	18.9	-14.2
10 or more years	^ 3.2	22.1	^ 2.8	24.7	-7.0
Number of operators					
1 operator	11.9	81.1	^ 8.5	75.5	-15.2
2 operators	^ 2.5	17.0	^ 2.6	23.3	2.9
3 or more operators	* 0.3	1.9	** 0.1	1.1	-31.7
Use of computers					
Uses a computer	10.9	74.8	^ 8.2	72.2	-13.7
Does not use a computer	^ 3.7	25.2	^ 3.1	27.8	-7.6
Internet use					
Has access to the Internet	9.5	64.9	^ 7.4	65.3	-11.8
Internet used for					
Email	8.9	60.7	^ 6.3	55.6	-15.8
Research	8.6	58.7	^ 6.3	55.6	-14.4
Making or receiving payments	^ 4.1	28.1	^ 3.5	31.1	-7.4
Other	8.7	59.6	^ 6.2	54.7	-15.8

^ estimate has a relative standard error of 10% to less than 25% and should be used with caution

* estimate has a relative standard error of 25% to 50% and should be used with caution

** estimate has a relative standard error greater than 50% and is considered too unreliable for general use

EXPLANATORY NOTES

INTRODUCTION

1 The Characteristics of Small Business Owners survey, Australia, was conducted in June 2003 as a supplementary topic to the Labour Force Survey. Similar surveys were conducted previously in respect of February 1995, February 1997, November 1999 and June 2001.

2 The Labour Force Survey is designed to regularly collect specific data on demographic and labour force characteristics of the Australian population. From time to time supplementary and special surveys of particular aspects of the labour force or other subjects are carried out.

DATA COLLECTION METHOD

3 The data were collected by trained interviewers over a two week period. When completing the Labour Force Survey, those people whose main job or second job was operating a small business with less than 20 employees were asked some additional questions relating to the operations of that business.

4 The supplementary survey asked small business operators to provide details on themselves as operators of small businesses and on the operations of their particular business. If there was more than one operator of the same small business in a household only one of the operators was asked to complete the questions relating to the operations of that business.

5 The above method enabled the estimation of two discrete populations:

(i) Small business operators and their characteristics.

(ii) Small businesses and their characteristics.

SCOPE OF THE SURVEY

Business size

6 Only those businesses which employ less than 20 people and their operators are included in the survey results.

Industry

7 All businesses identified were classified according to the Australian and New Zealand Standard Industrial Classification (ANZSIC) (cat. no. 1292.0), a detailed description of which appears in ANZSIC 1993.

The survey included businesses in the following industries:

Mining

Manufacturing

Construction

Wholesale trade

Retail trade

Accommodation, cafes and restaurants

Transport and storage

Communication services

Finance and insurance

Property and business services

Education, Health and community services

Cultural and recreational services

Personal and other services.

<i>Geographical areas</i>	<p>8 The survey covered both rural and urban areas in all states and territories, excluding some 175,000 persons living in remote and sparsely settled parts of Australia. The exclusion of these persons will have only a minor impact on any aggregate estimates that are produced for individual states or territories, with the exception of the Northern Territory where such persons account for over 20% of the population.</p>
<i>Persons</i>	<p>9 The population for the survey includes all persons aged 15 years or over except:</p> <ul style="list-style-type: none"> ■ diplomatic personnel of overseas governments ■ overseas residents temporarily in Australia ■ members of non-Australian defence forces and their dependants stationed in Australia ■ members of the permanent Australian defence forces ■ boarding school students ■ people in institutions such as hospitals, sanatoria and inmates of jails, reformatories etc. <p>10 While these categories of people have an effect on the measurement of labour force levels, their exclusion is not expected to have significant impact on the identification of small businesses.</p>
SURVEY DESIGN	<p>11 As the Characteristics of Small Business Owners survey is a supplementary survey to the Labour Force Survey, it has the same basic design. The survey was based on a multi-stage area sample of private dwellings (about 30,000 houses and flats), and covered about one-half of one per cent of the population of Australia.</p>
COVERAGE OF THE SURVEY	<p>12 Coverage rules are applied which aim to ensure that each person is associated with only one dwelling, and hence has only one chance of selection. The chance of a person being enumerated at two separate dwellings in the one survey is considered to be negligible.</p> <p>13 Persons who are away from their usual residence for six weeks or less at the time of the interview are enumerated at their usual residence.</p>
PREVIOUS ESTIMATES	<p>14 Where comparative data are available, this publication presents estimates from the June 2001 Characteristics of Small Business Owners Surveys.</p>
RELIABILITY OF ESTIMATES	<p>15 The estimates provided in this publication are subject to two types of error: sampling error and non-sampling error.</p>
<i>Sampling error</i>	<p>16 As the estimates in this publication are based on information obtained from occupants of a sample of dwellings they are subject to sampling variability, that is, the estimates may differ from those that would have been produced if all dwellings had been included in the survey.</p> <p>17 One measure of the likely difference is given by the standard errors (SEs) (see the tables in the Appendix), which indicate the extent to which an estimate might have varied by chance because only a sample of dwellings was included. There are about two chances in three (67%) that a sample estimate will vary by less than one SE from the estimate that would have been obtained if all dwellings had been included, and about nineteen chances in twenty (95%) that the difference will be less than two SEs.</p> <p>18 Another measure of the sampling variability is the relative standard error (RSE), which is obtained by expressing the SE as a percentage of the estimate to which it refers. The RSE is a useful measure in that it provides an immediate indication of the error likely to have occurred due to sampling expressed as a percentage of the estimate.</p> <p>19 As the Appendix shows, the size of the SE increases with the size of the estimate. However, the smaller the estimate the higher the RSE. Thus, larger estimates will be relatively more reliable than smaller estimates.</p>

Sampling error continued

20 Very small estimates are subject to large RSEs, so that their value for most practical purposes is unreliable. In the tables in this publication, only estimates with RSEs of less than 25% are considered reliable for most purposes. Estimates with RSEs greater than 25% but less than or equal to 50% are preceded by an asterisk (e.g. *3.4) to indicate they are subject to high SEs and should be used with caution. Estimates with RSEs of greater than 50%, preceded by a double asterisk (e.g. **0.3), are considered too unreliable for general use and should only be used to aggregate with other estimates to provide derived estimates with RSEs of 25% or less.

21 Space does not allow for separate indication of the standard errors of all estimates in this publication. As a guide, the Appendix provides an average standard error applicable for estimates of the number of small business operators and the number of small businesses for any classification. Each SE Appendix is derived from a mathematical model, referred to as the 'SE model', which is created using data from the survey. It should be noted that the SE model only gives an approximate value for the SE for any particular estimate, since there is some minor variation between SEs for different estimates of the same size.

22 If the actual value for a particular estimate is not shown in the Appendix, an approximate SE can be derived by taking the SEs shown for estimates on either side of the required value and interpolating a figure within that range.

CALCULATIONS OF STANDARD ERROR (SE)

23 An example of the calculation and the use of SEs in relation to estimates of the number of small business operators is as follows. The table 2.1 shows that the estimated number of male small business operators in New South Wales is 345,100. Since this estimate is between 300,000 and 500,000, Appendix A shows that the SE for New South Wales will be between 10,400 and 12,900, and can be approximated by interpolation using the following general formula:

$$\begin{aligned} \text{SE of estimate} &= \text{lower SE} + (((\text{size of estimate} - \text{lower estimate}) / (\text{upper estimate} - \\ &\quad \text{lower estimate})) \times (\text{upper SE} - \text{lower SE})) \\ &= 10,400 + (((345,100 - 300,000) / (500,000 - 300,000)) \times (12,900 - 10,400)) \\ &= 10,964 \\ &= 11,000 \text{ (rounded to the nearest 100)} \end{aligned}$$

24 Therefore, there are about two chances in three that the value that would have been produced if all dwellings had been included in the survey will fall in the range 334,100 to 356,100 and about 19 chances in 20 that the value will fall in the range 323,100 to 357,100.

25 Similarly, SEs are calculated for estimates of the number of small businesses using the Appendix. For example, table 3.1 shows that the estimated total number of small businesses in Australia is 1,179,300. This estimate is between 1,000,000 and 2,000,000, so the SE for this estimate will be between 18,100 and 26,200, and can be approximated using the same interpolation formula as above, with the resulting SE being 19,600 (rounded to the nearest 100).

PROPORTIONS AND PERCENTAGES

26 Proportions and percentages formed from the ratio of two estimates are also subject to sampling errors. The size of the error depends on the accuracy of both the numerator and the denominator. A formula to approximate the RSE of a proportion is given below. This formula is only valid when x is a subset of y.

$$RSE\left(\frac{x}{y}\right) = \sqrt{[RSE(x)]^2 - [RSE(y)]^2}$$

Sampling error continued

27 For example, in table 2.1, the estimate for the total number of small business operators in NSW is 501,400. The estimated number of male small business operators in NSW is 345,100, so the proportion of small business operators in NSW who are male is 345,100/501,400 or 68.8%. The SE of the total number of small business operators in NSW may be calculated by interpolation as 12,900. To convert this to a RSE we express the SE as a percentage of the estimate, or 12,900/501,400 = 2.6%. The SE for the number of male small business operators in NSW was calculated above as 11,000, which converted to a RSE is 11,000/345,100 = 3.2%. Applying the above formula, the RSE of the proportion is

$$RSE = \sqrt{(3.7)^2 - (3.2)^2} = 1.9\%$$

giving a SE for the proportion (68.8%) of 1.3 percentage points (= (68.8/100)*1.9).

28 Therefore, there are about two chances in three that the proportion of small business operators in NSW who are male is between 67.5% and 70.1% and 19 chances in 20 that the proportion is within the range 66.2% to 71.4%.

29 Similarly, SEs can be calculated for estimates of the proportion of small businesses using the same formula.

DIFFERENCES

30 Published estimates may also be used to calculate the difference between two survey estimates (of numbers or percentages). Such an estimate is subject to sampling error. The sampling error of the difference between two estimates depends on their SEs and the relationship (correlation) between them. An approximate SE of the difference between two estimates (x-y) may be calculated by the following formula:

$$SE(x-y) = \sqrt{[SE(x)]^2 + [SE(y)]^2}$$

31 While this formula will only be exact for differences between separate and uncorrelated characteristics or sub-populations, it is expected to provide a good approximation for all differences likely to be of interest in this publication.

Non-sampling errors

32 The imprecision due to sampling variability, which is measured by the SE, should not be confused with inaccuracies that may occur due to non-sampling errors.

33 Non-sampling errors can occur whether the estimates are derived from a sample or from a complete enumeration. Three major sources of non-sampling error are:

- Inability to obtain comprehensive data from all people included in the sample. These errors arise because of differences which exist between the characteristics of respondents and non-respondents.
- Errors in reporting on the part of both respondents and interviewers. These reporting errors may arise through inappropriate wording of questions, misunderstanding of what data are required, inability or unwillingness to provide accurate information and mistakes in answers to questions.
- Errors arising during processing of the survey data. These processing errors may arise through mistakes in coding and data recording.

34 Non-sampling errors are difficult to measure in any collection. However, every effort was made to minimise these errors. In particular, the effect of the reporting and processing errors described above was minimised by careful questionnaire design, intensive training and supervision of interviewers, asking respondents to refer to records whenever possible and extensive editing and quality control checking at all stages of data processing.

SURVEY ESTIMATION AND
WEIGHTING PROCEDURES

35 Estimates derived from the survey are obtained by using a calibrated weighting procedure which ensures that the survey estimates conform to an independently estimated distribution of the population by area of residence, age and sex.

36 Two separate weights were used for the survey:

- a person weight used in the estimation of small business operators
- a business weight used in the estimation of small businesses.

37 Each person in the sample is assigned a 'weight' which takes into account their probability of selection in the sample from their region, with adjustments to account for under-enumeration (e.g. non-response) at the age and sex level.

38 The 'weights' are also adjusted to reduce the bias introduced by varying levels of non-response in different sub-groups of the population.

39 Business weights are derived from the person weights using partner per business information.

APPENDIX

STANDARD ERROR TABLES

STANDARD ERROR TABLES

STANDARD ERRORS OF ESTIMATES, Number of small business operator: **Estimates**

.....

Size of estimate ('000)									AUST.	
	NSW	Vic.	Qld	SA	WA	Tas.	NT	ACT	Standard error	Relative standard error
	'000	'000	'000	'000	'000	'000	'000	'000	'000	%
0.1	0.2	0.2	0.1	0.2	0.2	0.1	0.1	0.1	0.2	200.0
0.2	0.3	0.3	0.2	0.2	0.3	0.2	0.2	0.2	0.3	145.0
0.3	0.4	0.3	0.3	0.3	0.3	0.2	0.2	0.2	0.4	116.7
0.5	0.5	0.4	0.4	0.3	0.4	0.2	0.3	0.3	0.5	90.0
0.7	0.6	0.5	0.4	0.4	0.5	0.3	0.3	0.3	0.5	77.1
1.0	0.7	0.6	0.5	0.5	0.5	0.3	0.4	0.4	0.6	64.0
1.5	0.9	0.8	0.7	0.6	0.6	0.4	0.5	0.4	0.8	52.0
2.0	1.0	0.9	0.8	0.6	0.7	0.5	0.5	0.5	0.9	45.0
2.5	1.1	1.0	0.9	0.7	0.8	0.6	0.6	0.6	1.0	40.0
3.0	1.2	1.1	1.0	0.8	0.9	0.6	0.7	0.6	1.1	36.7
3.5	1.3	1.2	1.1	0.9	0.9	0.7	0.8	0.7	1.2	34.3
4.0	1.4	1.3	1.2	0.9	1.0	0.8	0.9	0.7	1.3	31.3
5.0	1.6	1.4	1.3	1.0	1.1	0.9	1.0	0.8	1.4	28.0
7.0	1.9	1.7	1.5	1.2	1.3	1.0	1.2	1.0	1.7	23.6
10	2.2	2.0	1.9	1.5	1.5	1.3	1.5	1.1	2.0	19.5
15	2.7	2.5	2.3	1.8	1.8	1.6	1.9	1.4	2.4	16.0
20	3.1	2.9	2.6	2.1	2.1	2.0	2.4	1.6	2.8	13.8
30	3.7	3.5	3.1	2.6	2.6	2.5	3.1	2.0	3.4	11.2
40	4.2	4.1	3.6	3.0	3.0	3.1	3.8	2.4	3.9	9.6
50	4.7	4.6	4.0	3.4	3.4	3.5	4.4	2.7	4.3	8.6
100	6.4	6.6	5.4	4.9	5.0	5.7	7.2	3.9	6.0	6.0
150	7.7	8.1	6.4	6.1	6.3	7.5	9.6	4.9	7.3	4.9
200	8.7	9.4	7.2	7.1	7.4	9.2	11.9	5.7	8.4	4.2
300	10.4	11.6	8.5	8.9	9.4	12.4	—	7.2	10.2	3.4
500	12.9	15.2	10.4	11.8	12.8	18.0	—	—	13.0	2.6
1000	17.2	21.8	13.6	17.5	19.9	—	—	—	18.1	1.8
2000	22.8	31.4	17.4	26.0	31.3	—	—	—	25.1	1.3
5000	32.6	51.0	23.6	—	—	—	—	—	38.8	0.8
10000	—	—	—	—	—	—	—	—	53.8	0.5

.....

— nil or rounded to zero (including null cells)

STANDARD ERROR TABLES

*continued*STANDARD ERRORS OF ESTIMATES, Number of small business:
Estimates

Size of estimate ('000)	AUST.									Standard error '000	Relative standard error %
	NSW	Vic.	Qld	SA	WA	Tas.	NT	ACT			
	'000	'000	'000	'000	'000	'000	'000	'000	'000		
0.1	0.1	0.1	0.1	0.1	0.1	0.1	0.1	0.1	0.1	0.2	150.0
0.2	0.2	0.2	0.2	0.2	0.2	0.1	0.1	0.1	0.1	0.2	105.0
0.3	0.3	0.2	0.2	0.2	0.2	0.2	0.2	0.2	0.2	0.3	86.7
0.5	0.4	0.3	0.3	0.3	0.3	0.2	0.2	0.2	0.2	0.3	66.0
0.7	0.4	0.4	0.4	0.3	0.3	0.3	0.3	0.3	0.3	0.4	57.1
1.0	0.5	0.5	0.4	0.4	0.4	0.3	0.4	0.3	0.3	0.5	48.0
1.5	0.7	0.6	0.5	0.5	0.5	0.4	0.5	0.4	0.4	0.6	39.3
2.0	0.8	0.7	0.6	0.6	0.6	0.5	0.5	0.5	0.5	0.7	34.5
2.5	1.0	0.8	0.7	0.7	0.7	0.6	0.6	0.5	0.5	0.8	30.0
3.0	1.1	0.9	0.8	0.8	0.8	0.6	0.7	0.6	0.6	0.9	28.3
3.5	1.1	1.0	0.9	0.8	0.8	0.7	0.8	0.7	0.7	0.9	25.7
4.0	1.2	1.1	0.9	0.9	0.9	0.7	0.8	0.7	0.7	1.0	25.0
5.0	1.4	1.2	1.0	1.0	1.0	0.8	0.9	0.8	0.8	1.1	22.0
7.0	1.7	1.5	1.2	1.2	1.2	0.9	1.1	0.9	0.9	1.3	18.6
10	2.0	1.8	1.5	1.4	1.5	1.1	1.4	1.1	1.1	1.6	16.0
15	2.5	2.2	1.9	1.7	1.8	1.3	1.7	1.4	1.4	2.0	13.0
20	2.8	2.6	2.2	2.0	2.1	1.5	2.0	1.6	1.6	2.3	11.5
30	3.4	3.3	2.7	2.4	2.5	1.7	2.5	2.0	2.0	2.8	9.3
40	3.9	3.9	3.1	2.7	2.9	1.9	2.9	2.3	2.3	3.3	8.3
50	4.3	4.4	3.4	3.0	3.2	2.0	3.2	2.6	2.6	3.7	7.4
100	5.8	6.4	4.9	4.0	4.5	2.6	4.7	3.6	3.6	5.3	5.3
150	6.8	8.0	6.0	4.8	5.4	2.9	5.8	4.4	4.4	6.6	4.4
200	7.6	9.4	6.9	5.4	6.1	3.2	6.7	5.0	5.0	7.7	3.8
300	8.9	11.7	8.5	6.3	7.3	3.5	—	6.0	6.0	9.5	3.2
500	10.6	15.4	10.9	7.6	9.0	4.0	—	—	—	12.5	2.5
1000	13.4	22.3	15.2	9.7	12.0	—	—	—	—	18.1	1.8
2000	16.4	32.0	21.1	12.2	15.7	—	—	—	—	26.2	1.3
5000	20.9	51.4	32.5	—	—	—	—	—	—	42.8	0.9
10000	—	—	—	—	—	—	—	—	—	62.2	0.6

— nil or rounded to zero (including null cells)

GLOSSARY

Business operator(s)	<p>There is no standard definition of a small business operator and other ABS publications do not use the term, or provide statistics about small business operators as a group. However, the expression 'small business operator' is one that is often used in research and policy debate and is generally taken to include the following group of people:</p> <p>The person or persons who own and run the business. Generally these business operators can be identified as:</p> <ul style="list-style-type: none">■ the proprietor of a sole proprietorship■ the partners of a partnership■ the working director(s) of an incorporated company.
Computer	<p>Includes personal computers (PCs), laptops, note books, mainframes and mini-computers.</p>
Email	<p>Electronic mail is a facility which allows network users to exchange messages (including text and attachments).</p>
Full-time (work)	<p>Employed persons who usually worked 35 hours or more a week (in all jobs) and those who, although usually working less than 35 hours a week, worked 35 hours or more during the reference week.</p>
Home based businesses	<p>Where the person(s) usually conducts most of their work at or from their residential address. Refer also to Chapter 4 — Introduction, for additional clarification.</p>
Internet	<p>A world-wide collection of computers which are linked together to form a repository of stored information and to provide a range of communication services. These services include, but are not limited to, the World Wide Web (www), Internet Electronic Data Interchange and Simple Mail Transport Protocol (SMTP).</p>
Operated at home	<p>A home based business where most of the work of the business was carried out at the home(s) of the operator(s).</p>
Operated from home	<p>A home based business where the business had no other premises owned or rented other than the home(s) of the operator(s).</p>
Part-time (work)	<p>Employed persons who usually worked less than 35 hours a week (in all jobs) and either did so during the reference week, or were not at work in the reference week.</p>
Small business	<p>Small businesses (excluding agricultural businesses) are those businesses employing less than 20 people. The categories presented in this publication are as follows:</p> <ul style="list-style-type: none">■ non-employing businesses — sole proprietors and partnerships without employees■ businesses with 1–4 employees■ businesses with 5–19 employees. <p>Together, these three groups form the small business category — those businesses employing less than 20 people.</p> <p>Note that because operators of all incorporated businesses are considered employees of that corporation, all incorporated businesses will be classified as employing businesses.</p>

FOR MORE INFORMATION . . .

- INTERNET* **www.abs.gov.au** the ABS web site is the best place to start for access to summary data from our latest publications, information about the ABS, advice about upcoming releases, our catalogue, and Australia Now—a statistical profile.
- LIBRARY* A range of ABS publications is available from public and tertiary libraries Australia-wide. Contact your nearest library to determine whether it has the ABS statistics you require, or visit our web site for a list of libraries.
- CPI INFOLINE* For current and historical Consumer Price Index data, call 1902 981 074 (call cost 77c per minute).
- DIAL-A-STATISTIC* For the latest figures for National Accounts, Balance of Payments, Labour Force, Average Weekly Earnings, Estimated Resident Population and the Consumer Price Index call 1900 986 400 (call cost 77c per minute).

INFORMATION SERVICE

Data already published that can be provided within five minutes will be free of charge. Our information consultants can also help you to access the full range of ABS information—ABS user pays services can be tailored to your needs, time frame and budget. Publications may be purchased. Specialists are on hand to help you with analytical or methodological advice.

- PHONE* 1300 135 070
- EMAIL* client.services@abs.gov.au
- FAX* 1300 135 211
- POST* Client Services, ABS, GPO Box 796, Sydney NSW 2001

WHY NOT SUBSCRIBE?

ABS subscription services provide regular, convenient and prompt deliveries of ABS publications and products as they are released. Email delivery of monthly and quarterly publications is available.

- PHONE* 1300 366 323
- EMAIL* subscriptions@abs.gov.au
- FAX* (03) 9615 7848
- POST* Subscription Services, ABS, GPO Box 2796Y, Melbourne Vic 3001



2812700001038

ISSN 1327 3949

RRP \$31.00